

1974

Industrial Resources: Barren County - Glasgow

Kentucky Library Research Collections
Western Kentucky University, spcol@wku.edu

Follow this and additional works at: https://digitalcommons.wku.edu/barren_cty

 Part of the [Business Administration, Management, and Operations Commons](#), [Growth and Development Commons](#), and the [Infrastructure Commons](#)

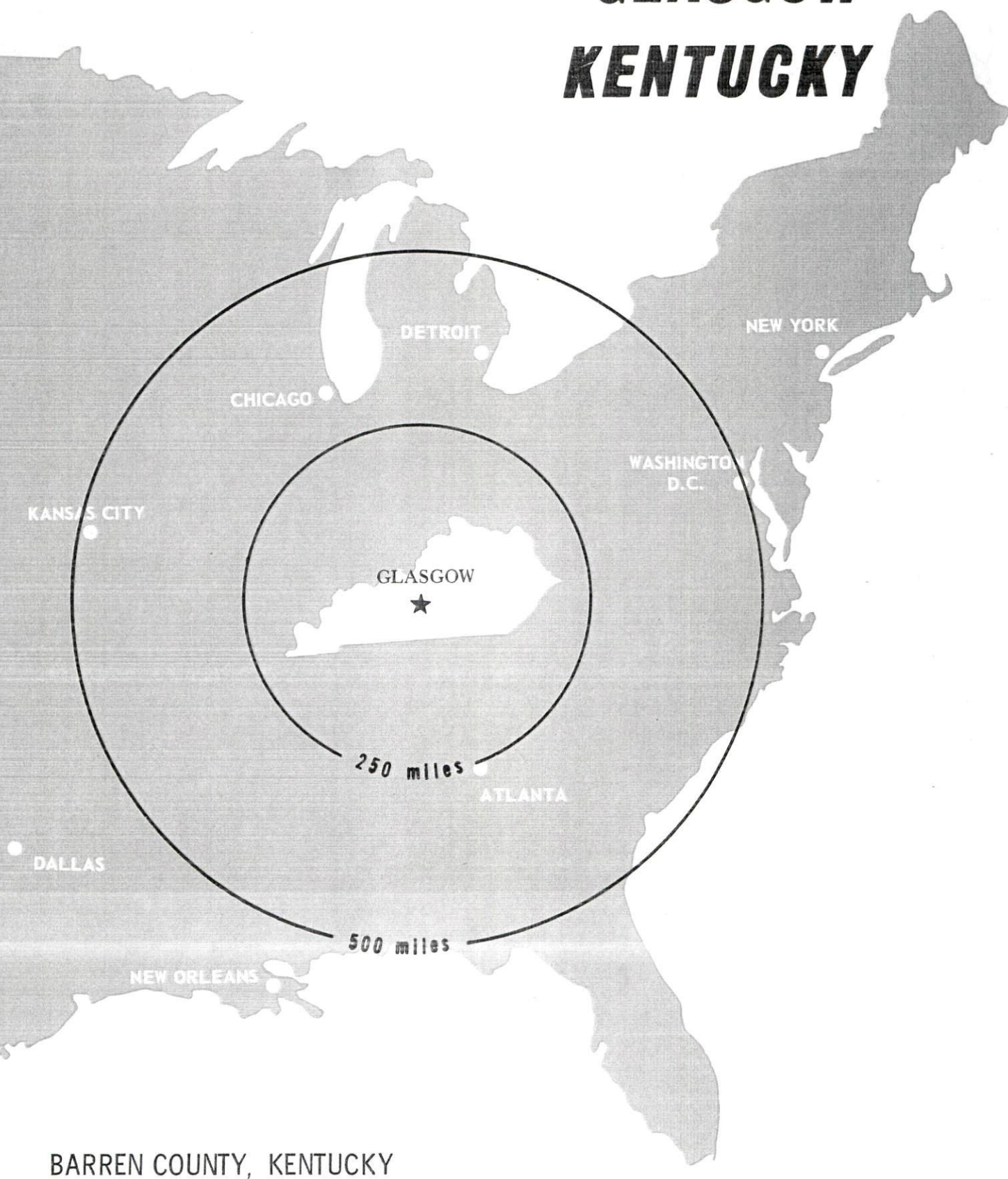
Recommended Citation

Kentucky Library Research Collections, "Industrial Resources: Barren County - Glasgow" (1974). *Barren County*. Paper 18.
https://digitalcommons.wku.edu/barren_cty/18

This Report is brought to you for free and open access by TopSCHOLAR®. It has been accepted for inclusion in Barren County by an authorized administrator of TopSCHOLAR®. For more information, please contact topscholar@wku.edu.

INDUSTRIAL RESOURCES

GLASGOW KENTUCKY



BARREN COUNTY, KENTUCKY

GLASGOW INDUSTRIAL SITES

1974

GLASGOW INDUSTRIAL SITES

For more information about the following sites, contact Mr. Leslie Moran, Glasgow-Barren County Chamber of Commerce, Glasgow, Kentucky; or the Kentucky Department of Commerce, Capital Plaza Office Tower, Frankfort, Kentucky.

SITE #1: ACREAGE: 25 acres
 LOCATION: In city limits, southwest of Glasgow proper
 ZONING: Light industrial
 HIGHWAY ACCESS: U.S. 31-E bypass along eastern boundary of site
 RAILROAD: Louisville & Nashville Railroad - rail service is not available
 WATER: Glasgow Water Company
 SIZE LINE: 12-inch line adjacent to southern boundary of site across access road
 GAS: Western Kentucky Gas Company
 SIZE MAIN: 6-inch main adjacent to eastern boundary across U.S. 31-E bypass
 ELECTRICITY: Glasgow Electric Plant Board - 12 KV line along east boundary
 SEWERAGE: Glasgow Water Company
 SIZE LINE: 12-inch line through western portion of site
 OWNERSHIP: Private

SITE #2: ACREAGE: 40 acres
 LOCATION: In Barren County, adjacent to city limits southwest of Glasgow proper
 ZONING: None
 HIGHWAY ACCESS: Kentucky Highway 1297 along northern boundary of site
 RAILROAD: Louisville & Nashville Railroad - rail service not available
 WATER: Glasgow Water Company
 SIZE LINE: 12-inch line adjacent to southern boundary of site across access road and an 8-inch line adjacent to western boundary across access road
 GAS: Western Kentucky Gas Company
 SIZE MAIN: 4-inch main along northeast corner of site
 ELECTRICITY: Glasgow Electric Plant Board - 12 KV line bisects site
 SEWERAGE: Glasgow Water Company
 SIZE LINE: 12-inch line approximately 150 feet east of northeast boundary of site
 OWNERSHIP: Private

SITE #3: ACREAGE: 93 acres
 LOCATION: Partially in Barren County and partially in city limits southwest of Glasgow proper
 ZONING: Residential in western section and none in eastern section
 HIGHWAY ACCESS: Kentucky Highway 1297 along northern boundary and a gravel access road through southern portion of site
 RAILROAD: Louisville & Nashville Railroad - rail service not available
 WATER: Glasgow Water Company
 SIZE LINE: 12-inch line runs through site from east to north
 GAS: Western Kentucky Gas Company
 SIZE MAIN: 4-inch main approximately 2,400 feet from northeast corner of site
 ELECTRICITY: Glasgow Electric Plant Board - 7.2 KV line adjacent to site across Kentucky Highway 1297
 SEWERAGE: Glasgow Water Company
 SIZE LINE: 12-inch line on site
 OWNERSHIP: Private

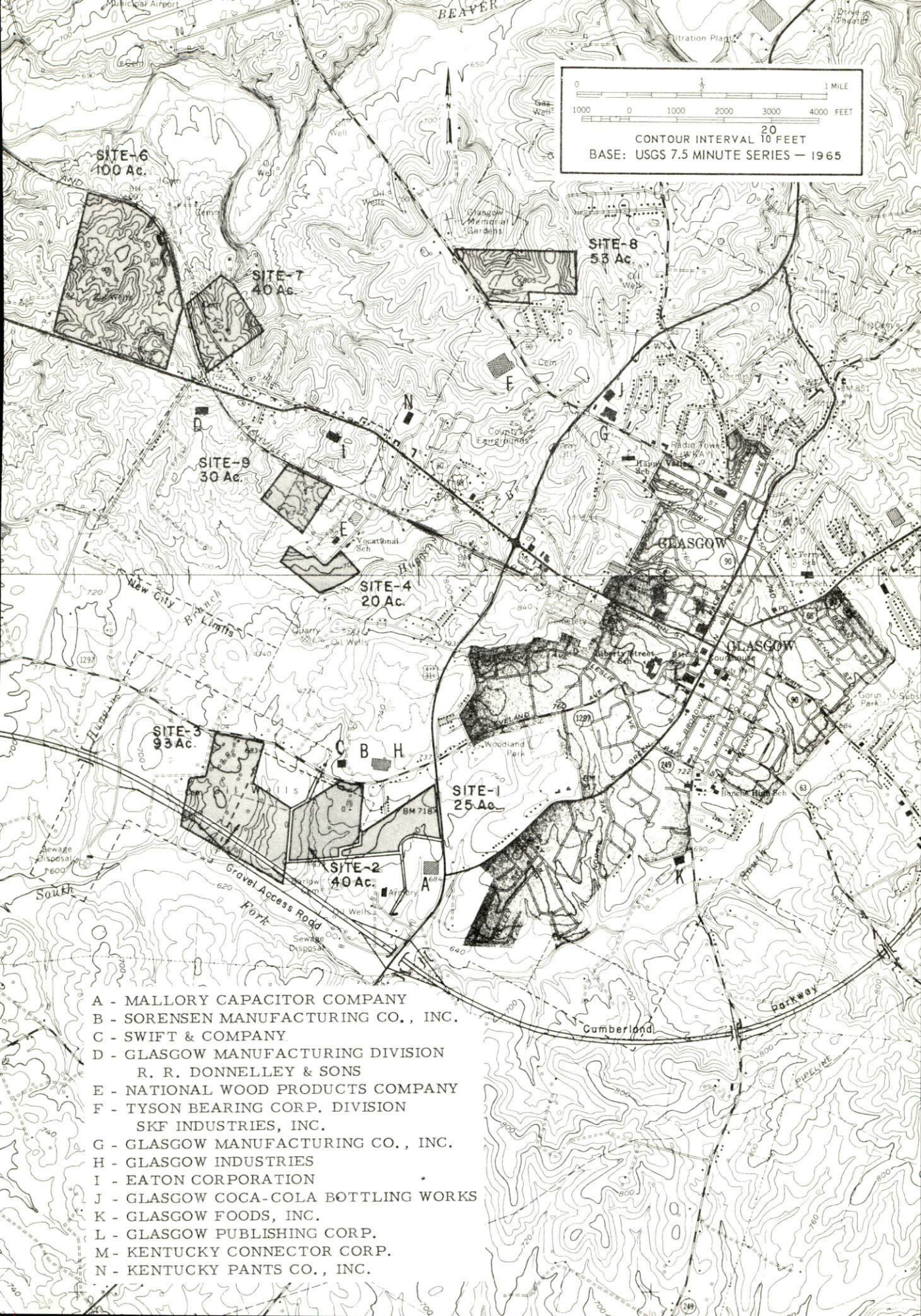
SITE #4: ACREAGE: 20 acres
 LOCATION: In city limits, west of Glasgow proper
 ZONING: Light industrial
 HIGHWAY ACCESS: U.S. 68 and Kentucky Highway 80 approximately one-half mile north of site via paved access road
 RAILROAD: Louisville & Nashville Railroad - rail service available
 WATER: Glasgow Water Company
 SIZE LINE: 8-inch line bisects site from north to south
 GAS: Western Kentucky Gas Company
 SIZE MAIN: 4-inch main approximately 300 feet from northeast corner of site
 ELECTRICITY: Glasgow Electric Plant Board
 SEWERAGE: Glasgow Water Company
 SIZE LINE: 12-inch line on eastern section of site and 15-inch line on western section of site
 OWNERSHIP: Glasgow Development Corporation

SITE #6: ACREAGE: 100 acres
 LOCATION: In Barren County, northwest of Glasgow proper
 ZONING: None
 HIGHWAY ACCESS: U.S. 68 and Kentucky Highway 80 along southern boundary of site
 RAILROAD: Louisville & Nashville Railroad - rail service available
 WATER: Glasgow Water Company
 SIZE LINE: 12-inch line adjacent to southern boundary across U.S. 68 and Kentucky Highway 80
 GAS: Western Kentucky Gas Company
 SIZE MAIN: 4-inch main approximately 1,000 feet east of site along U.S. 68 and Kentucky Highway 80
 ELECTRICITY: Farmers RECC - 7.2 KV line along southern boundary of site
 SEWERAGE: Package treatment plant necessary
 OWNERSHIP: Private

SITE #7: ACREAGE: 40 acres
 LOCATION: In Barren County, adjacent to Glasgow northwestern city limits
 ZONING: None
 HIGHWAY ACCESS: U.S. 68 and Kentucky Highway 80 approximately one-half mile via paved county road
 RAILROAD: Louisville & Nashville Railroad - rail service available
 WATER: Glasgow Water Company
 SIZE LINE: 12-inch line approximately 700 feet south of site and 6-inch line on site
 GAS: Western Kentucky Gas Company
 SIZE MAIN: 2-inch main along western side of paved county road to site
 ELECTRICITY: Farmers RECC - 7.2 KV line runs through site from west to north
 SEWERAGE: Package treatment plant necessary
 OWNERSHIP: Private

SITE #8: ACREAGE: 53 acres
 LOCATION: Partially in Barren County and partially in city limits northwest of Glasgow proper
 ZONING: Residential in eastern section and none in western section
 HIGHWAY ACCESS: Kentucky Highway 90 along western boundary of site
 RAILROAD: Louisville & Nashville Railroad - rail service not available
 WATER: Glasgow Water Company
 SIZE LINE: 12-inch line adjacent to northwest corner of site across Kentucky Highway 90; an 8-inch line adjacent to western boundary across Kentucky Highway 90 and a 6-inch line on site
 GAS: Western Kentucky Gas Company
 SIZE MAIN: 4-inch main along the western boundary of site
 ELECTRICITY: Glasgow Electric Plant Board - 12 KV line bisects site from north to south
 SEWERAGE: Glasgow Water Company
 SIZE LINE: 8-inch line along western boundary of site
 OWNERSHIP: Private

SITE #9: ACREAGE: 30 acres
 LOCATION: In city limits, west of Glasgow proper
 ZONING: Light industrial
 HIGHWAY ACCESS: U.S. 68 and Kentucky Highway 80 approximately one-half mile via paved and gravel access road
 RAILROAD: Louisville & Nashville Railroad - rail service available
 WATER: Glasgow Water Company
 SIZE LINE: 8-inch line parallel with southside of L & N Railroad to northeast corner of site
 GAS: Western Kentucky Gas Company
 SIZE MAIN: 8-inch transmission line and 4-inch main along northern boundary of site adjacent to L & N Railroad
 ELECTRICITY: Glasgow Electric Plant Board - 12 KV line adjacent to southwest corner of site
 SEWERAGE: Glasgow Water Company
 SIZE LINE: 12-inch line along northeastern boundary of site
 OPTIONED BY: City of Glasgow



0 1 MILE
 1000 0 1000 2000 3000 4000 FEET
 CONTOUR INTERVAL 10 FEET
 BASE: USGS 7.5 MINUTE SERIES — 1965

SITE-6
 100 Ac.

SITE-7
 40 Ac.

SITE-8
 53 Ac.

SITE-9
 30 Ac.

SITE-4
 20 Ac.

SITE-3
 93 Ac.

SITE-1
 25 Ac.

SITE-2
 40 Ac.

- A - MALLORY CAPACITOR COMPANY
- B - SORENSEN MANUFACTURING CO., INC.
- C - SWIFT & COMPANY
- D - GLASGOW MANUFACTURING DIVISION
R. R. DONNELLEY & SONS
- E - NATIONAL WOOD PRODUCTS COMPANY
- F - TYSON BEARING CORP. DIVISION
SKF INDUSTRIES, INC.
- G - GLASGOW MANUFACTURING CO., INC.
- H - GLASGOW INDUSTRIES
- I - EATON CORPORATION
- J - GLASGOW COCA-COLA BOTTLING WORKS
- K - GLASGOW FOODS, INC.
- L - GLASGOW PUBLISHING CORP.
- M - KENTUCKY CONNECTOR CORP.
- N - KENTUCKY PANTS CO., INC.

INDUSTRIAL RESOURCES

GLASGOW, KENTUCKY

Prepared by

The Kentucky Department of Commerce

in cooperation with

The Glasgow-Barren County Chamber of Commerce

1974

This copy has been prepared by the Kentucky Department of Commerce,
Division of Research and Planning, and the cost of printing paid from
state funds.

TABLE OF CONTENTS

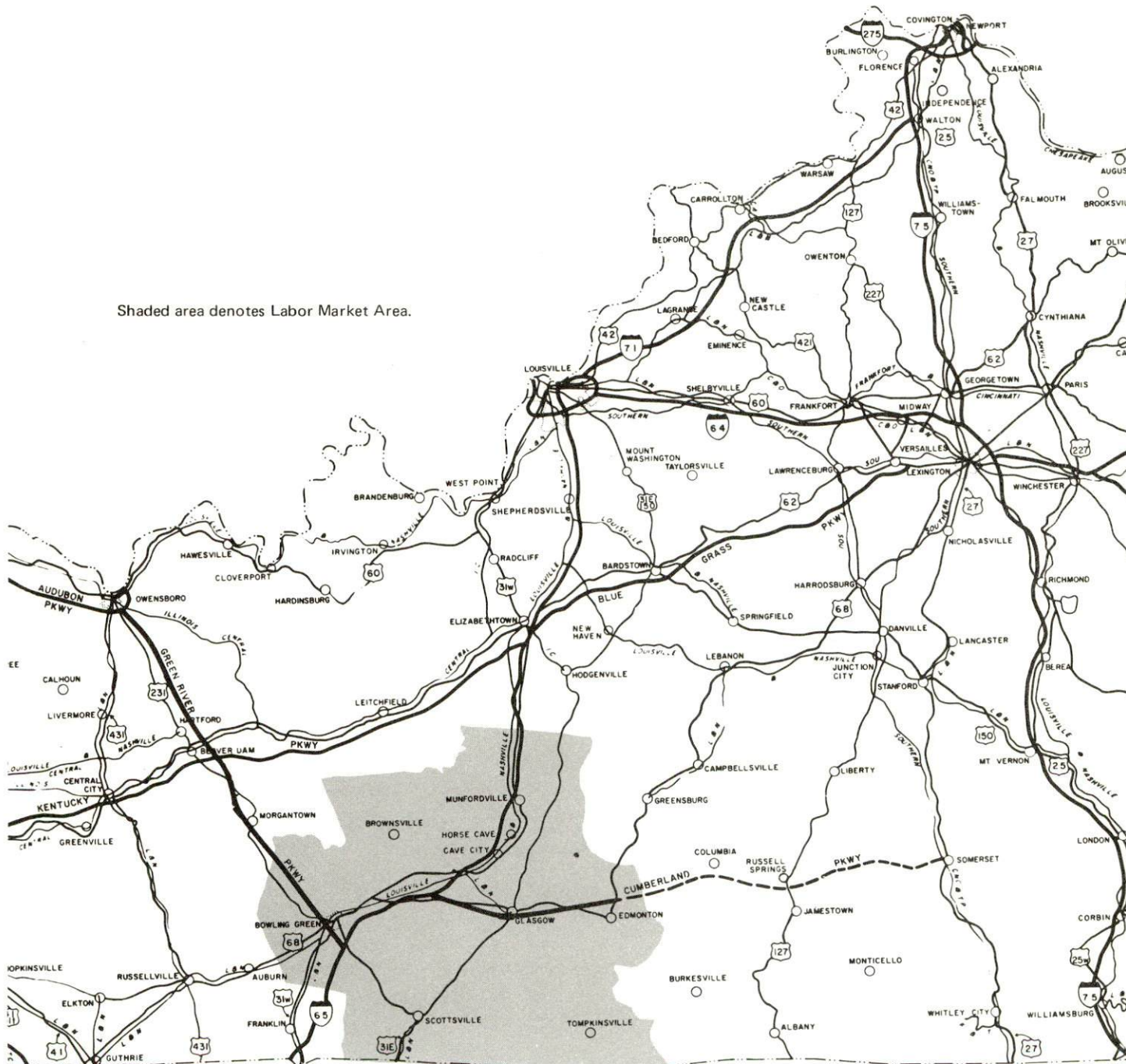
<u>Chapter</u>	<u>Page</u>
INDUSTRIAL SITES	i
GLASGOW, KENTUCKY - A RESOURCE PROFILE	1
THE LABOR MARKET.	5
Population Trends	5
General Employment Characteristics, 1972	5
Manufacturing Employment Trends by Industry.	6
Major Glasgow Manufacturing Firms, Their Products and Employment	6
Wages.	12
Labor Organizations	13
Estimated Male Labor Supply	13
Estimated Female Labor Supply	14
Per Capita Personal Income.	14
TRANSPORTATION	15
Rail.	15
Truck Service	15
Air	16
Bus	18
Taxi	18
Rental Services.	18
POWER AND FUEL	19
Electricity.	19
Natural Gas	19
Other Fuels	20
WATER AND SEWERAGE	21
Water	21
Sewerage	22
LOCAL GOVERNMENT	23
City.	23
County.	23
Assessed Value of Property, 1973	23

<u>Chapter</u>	<u>Page</u>
Property Taxes	23
Local Property Tax Rate Per \$100 of Assessed	
Valuation, 1973	23
Planning and Zoning	24
Safety	24
Police	24
Fire	24
Rescue Service	25
Sanitation	25
 EDUCATION	 27
Public Schools	27
Vocational Schools	27
Colleges and Universities	28
 HEALTH	 29
Hospitals	29
Nursing Homes	29
Public Health	29
 OTHER LOCAL FACILITIES	 31
Communications	31
Library Services	31
Religious Institutions	33
Financial Institutions	33
Hotels and Motels	33
Clubs and Organizations	34
 RECREATION	 35
Local	35
Area	35
 AGRICULTURE - NATURAL RESOURCES - CLIMATE	 36
Agriculture	36
Natural Resources	36
Climate	37
 HISTORY	 38

GLASGOW LABOR MARKET AREA



Shaded area denotes Labor Market Area.



GLASGOW, KENTUCKY - A RESOURCE PROFILE

Glasgow, county seat of Barren County, is located in the scenic rolling hills and cave area of southcentral Kentucky. Glasgow, only 2 miles north of the Cumberland Parkway and 10 miles southeast from Interstate 65, is ideally situated for both north-south and east-west travel. Glasgow is located in the eastern part of the Pennyrile Region, 30 miles east of Bowling Green and 100 miles south of Louisville, Kentucky; 90 miles northeast of Nashville and 284 miles northwest of Knoxville, Tennessee; 140 miles southeast of Evansville, Indiana; and 200 miles southwest of Cincinnati, Ohio. Glasgow's proximity to the cave area provides the city with many recreational advantages.

Glasgow had a 1970 population of 11,301 and Barren County had a population of 28,677. The total land area of Barren County is 468 square miles.

The Economic Framework

Total employment in Barren County averaged 13,320 in 1972, including 2,350 in agriculture, 1,300 in government, 2,965 in trade and services and 3,460 in manufacturing. During the ten-year span of 1962-72, manufacturing employment increased by over 2,000 jobs or more than 138 percent. Major industrial products are: men's work clothing, ladies' wearing apparel, automotive parts, roller bearings, axles, commercial printing, and electrolytic capacitors.

Per capita personal income in the county in 1970 was \$2,696, an increase of 124 percent since 1960.

Glasgow is the hub of a labor market area that includes Barren and the six adjoining counties. Area employment totaled 59,760 jobs in 1972, including 9,620 in agriculture, 8,450 in government, 12,900 in trade and services, and 12,990 in manufacturing. Area manufacturing employment has increased by over 112 percent since 1962 with the sharpest gains in the machinery and apparel industries.

Despite important industrial gains in recent years the area still has a deficit of 431 jobs in manufacturing when measured against the national industrial employment-population ratio. This indicates an area where the potential for additional manufacturing production is good.

Resources for Growth

1. There is a current labor supply of 13,220 men and 11,090 women available for industrial jobs in the labor market area. In addition, 6,930 young men and 6,560 young women in the area will become 18 years of age by 1979 and potentially available for work.

2. The local transportation capability is good. The Louisville and Nashville Railroad serves Glasgow with a variety of services. There is easy access to the Cumberland Parkway and Interstate 65, which provides Glasgow with access to the Western Kentucky Parkway, the Kentucky Turnpike, the Blue Grass Parkway, and the Green River Parkway. These are major highway arteries which lead to the north, south, east and west; and are advantageous to the nine truck lines serving Glasgow. The Glasgow Municipal Airport provides service for light aircraft and commercial air service is available in Nashville, 90 miles southwest of Glasgow.

3. Energy - In Glasgow, natural gas is provided by the Western Kentucky Gas Company, and electricity by the Glasgow Electric Plant Board, which receives its power from the Tennessee Valley Authority. Electricity is furnished to Barren County by Farmers Rural Electric Cooperative Corporation which receives its power from the East Kentucky Power Cooperative. The local raw water supply is more than adequate for continued growth.

4. Industrial sites - Glasgow has 8 available industrial sites totaling 401 acres.

5. Education - Two school systems operate in Barren County - the Glasgow Independent School District and the Barren County School System.

Western Kentucky University is located only 30 miles to the west in Bowling Green, and two other colleges are located within 50 miles. The nearest state vocational-technical school is in Bowling Green and offers 24 courses. Also serving the community is the Glasgow Area Vocational Education Center which offers 4 courses.

Community Programs for Improvement

Recent: A new \$1,600,000 Barren County High School is scheduled to open for the 1973-74 school year, with a new vocational school, football field and dressing rooms, and ten new areas of study, both general and advanced, added to the curriculum.

A Physical Education building for the Glasgow Independent School District's seventh and eighth grade students will open in September, 1973.

Underway and planned: The replacing of two 750 gpm pumps with one 1,750 gpm pump at water plant No. 1 is in progress.

\$1,750,000 water improvement project includes construction of a 12-inch main around the city and extending on all major roads west to Beaver Creek and east to Boyds Creek, and a 12-inch main through the central part of the city connecting water storage tanks. A 2,000,000 gallon standpipe is to be constructed and in use by January, 1974.

Adding tertiary treatment and enlarging the sewerage treatment plant to 4,000,000 gallons a day is expected to be completed by late January, 1975.

The Glasgow Electric Plant Board has plans underway to add 10,000 KVA to the large switching station at Gorin Park; a new 10,000 KVA sub-station is to be completed November of 1973; and five miles of 69 KV circuit is to be completed August, 1974.

Transportation study is underway to alleviate problems of traffic in the city.

Estimated \$1,000,000 renovation planned to begin in October, 1973, for two wings of the T. J. Samson Community Hospital, which will enlarge coronary and intensive care units. Construction recently began on a new administration building for the Glasgow Independent School District; and an addition to the Glasgow High School gym for health instruction and physical education, storage and dressing.

Glasgow Municipal Airport has under construction a new 10,000 square foot storage and service hangar, and a new 400 square foot over-run. Future planning includes a new landing system.

Recreation, Entertainment and Livability

The city of Glasgow has a Municipal Recreation and Playground Board which maintains four parks and two playgrounds and a full-time recreation program.

The Barren River Dam and Lake, southwest of Glasgow, provides fishing, swimming, and boating. The Barren River Lake Resort Park, open all year, features lodge accommodations and camping facilities.

Just a few miles northwest of Glasgow is the world-famous Mammoth Cave region which covers more than 150 miles of charted caverns and vast areas not yet mapped. No other state has as many known caves as Kentucky (about 2000), and the best known are in this cave region: Mammoth Cave, Mammoth Onyx Cave, Diamond Caverns, Crystal Onyx Cave, Hundred Dome Cave in the Park Mammoth Resort area, and smaller ones.

Cave attractions include Snowball Dining Room (267 feet below the surface), Frozen Niagara, Crystal Lake, and Bottomless Pit, plus many others.

Above ground this region offers a 51,000-acre national park, a state park, both with motel and lodging accommodations, and camping facilities. The area also offers two state shrines, two large lakes, many historical sights, festivals, hillside chair lifts, and a wax museum.

THE LABOR MARKET

POPULATION TRENDS

Area	Population				Percent Change	
	1972*	1970	1960	1950	1960-70	1950-60
Glasgow Labor Market	NA	11,301	10,069	7,025	+12.2	+43.3
Area	148,100	141,257	128,433	133,324	+10.0	- 3.8
Barren Co.	29,500	28,677	28,303	28,461	+ 1.3	- 0.6
Allen Co.	12,800	12,598	12,269	13,787	+ 2.7	-11.0
Edmonson Co.	9,600	8,751	8,085	9,376	+ 8.2	-13.8
Hart Co.	14,500	13,980	14,119	15,321	- 1.0	- 7.8
Metcalf Co.	8,100	8,177	8,367	9,851	- 2.3	-15.1
Monroe Co.	12,400	11,642	11,799	13,770	- 1.3	-14.3
Warren Co.	61,200	57,432	45,491	42,758	+26.2	+ 6.4

*Provisional estimates.

Sources: U. S. Department of Commerce, Bureau of the Census, Census of Population, 1970, 1960, 1950. U. S. Bureau of the Census, Current Population Reports, Series P-26, June 1973.

GENERAL EMPLOYMENT CHARACTERISTICS, 1972

Major Employment Group	Employment	
	Barren County	Labor Market Area
TOTAL	13,320	59,760
Agricultural	2,350	9,620
Nonagricultural	10,970	50,140
Manufacturing	3,460	12,988
Government	1,300	8,450
Trade and Services	2,965	12,896
Other	3,245	15,806

Source: Kentucky Department of Economic Security, Division of Research and Statistics.

MANUFACTURING EMPLOYMENT TRENDS BY INDUSTRY
SEPTEMBER 1972 AND 1962

Industry	Barren County			Labor Market Area		
	1972	1962	% Change	1972	1962	% Change
TOTAL	3,489	1,463	+138.5	13,638	6,419	+112.5
Food & Kindred Products	249	231	+ 7.8	914	1,011	- 10.6
Tobacco	1	1	0	106	136	- 28.3
Apparel, Textiles, Leather	764	874	- 14.4	4,664	2,751	+ 69.5
Lumber, Furniture	153	85	+ 80.0	1,222	824	+ 48.3
Printing & Publishing, Paper	352	46	+665.2	547	143	+282.5
Chemicals, Petroleum & Coal, Rubber	41	15	+173.3	61	23	+165.2
Stone, Clay & Glass	13	13	0	68	30	+126.7
Primary Metals	0	0	0	103	0	--
Machinery, Metal Products, Equipment	1,916	198	+867.7	5,921	1,499	+295.0
Other	0	0	0	32	2	--

Source: Kentucky Department of Economic Security, Number of Workers in Manufacturing Industries Covered by Kentucky Unemployment Insurance Law Classified by Industry and County, September 1972, September 1962.

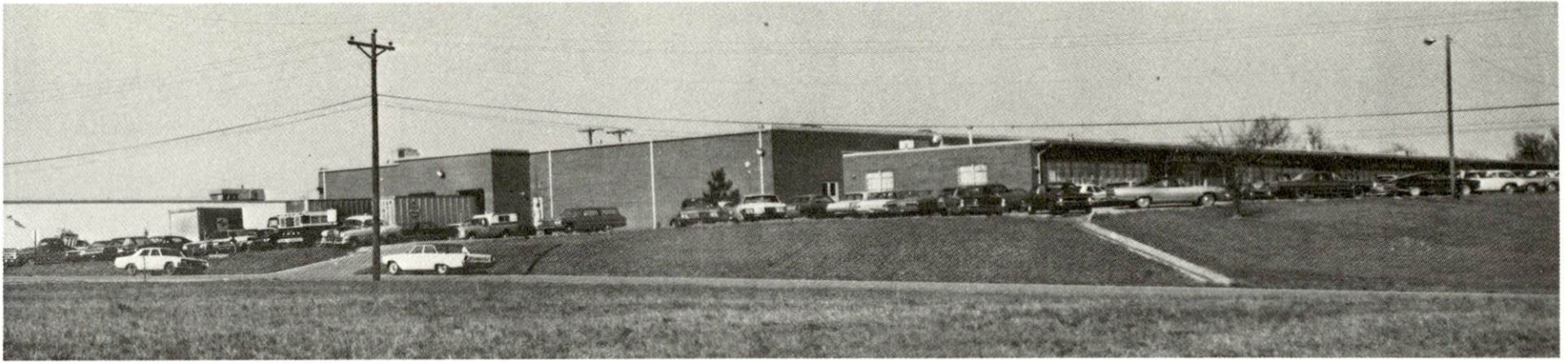
MAJOR GLASGOW MANUFACTURING FIRMS,
THEIR PRODUCTS AND EMPLOYMENT

Firm (Establishment date)	Product	Employment		
		Total	Male	Female
Eaton Corp. (1971)	Axles	300		
Glasgow Foods, Inc. (1969)	Poultry processing	194	113	81
Glasgow Industries (1962)	Automotive parts, electrical connectors	1,250	250	1,000
Glasgow Manufacturing Co., Inc. (1946)	Ladies' dresses	233	23	210
Glasgow Manufacturing Div., R. R. Donnelley & Sons Co. (1968)	Printing	356	294	62

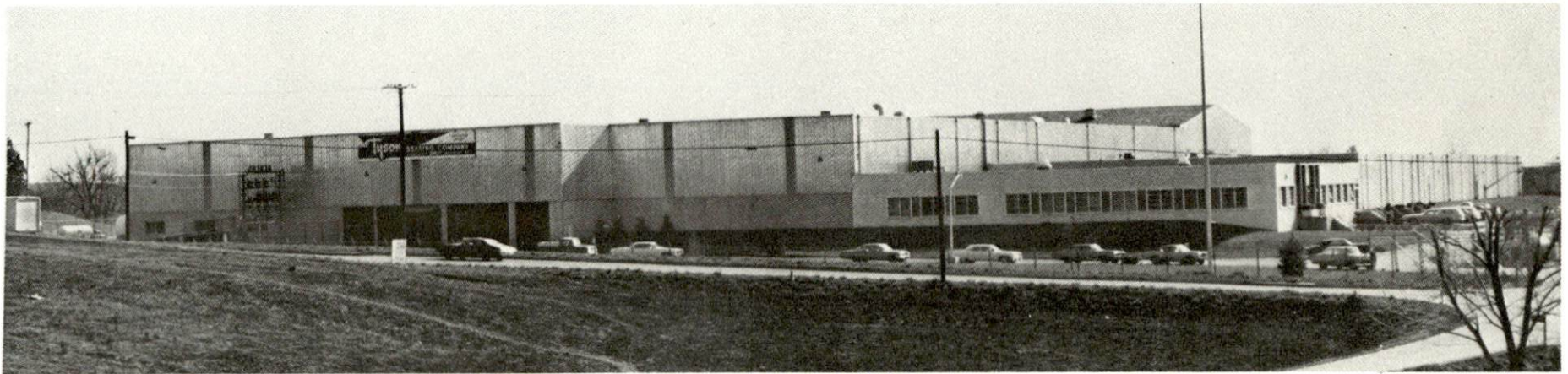
(continued)

<u>Firm</u> (Establishment date)	<u>Product</u>	<u>Employment</u>		
		<u>Total</u>	<u>Male</u>	<u>Female</u>
Glasgow Publishing Corp. (1865)	Newspaper, offset printing, letterpress printing	40	17	23
Kentucky Pants Co., Inc. (1937)	Men's work pants, men's dress pants	455	70	385
Mallory Capacitor Co. (1964)	Electrolytic capacitors	600	110	490
National Wood Products Co. (1958)	Brush blocks, wood handles, shaped wood parts	51	44	7
Sorensen Manufacturing Co., Inc. (1962)	Automotive parts	144	75	69
Tyson Bearing Corp., Division SKF Industries, Inc. (1965)	Roller bearings, tapered	525	450	75

Source: Kentucky Department of Commerce, Economic Research Division.



SORENSEN MANUFACTURING CO., INC.
GLASGOW INDUSTRIES



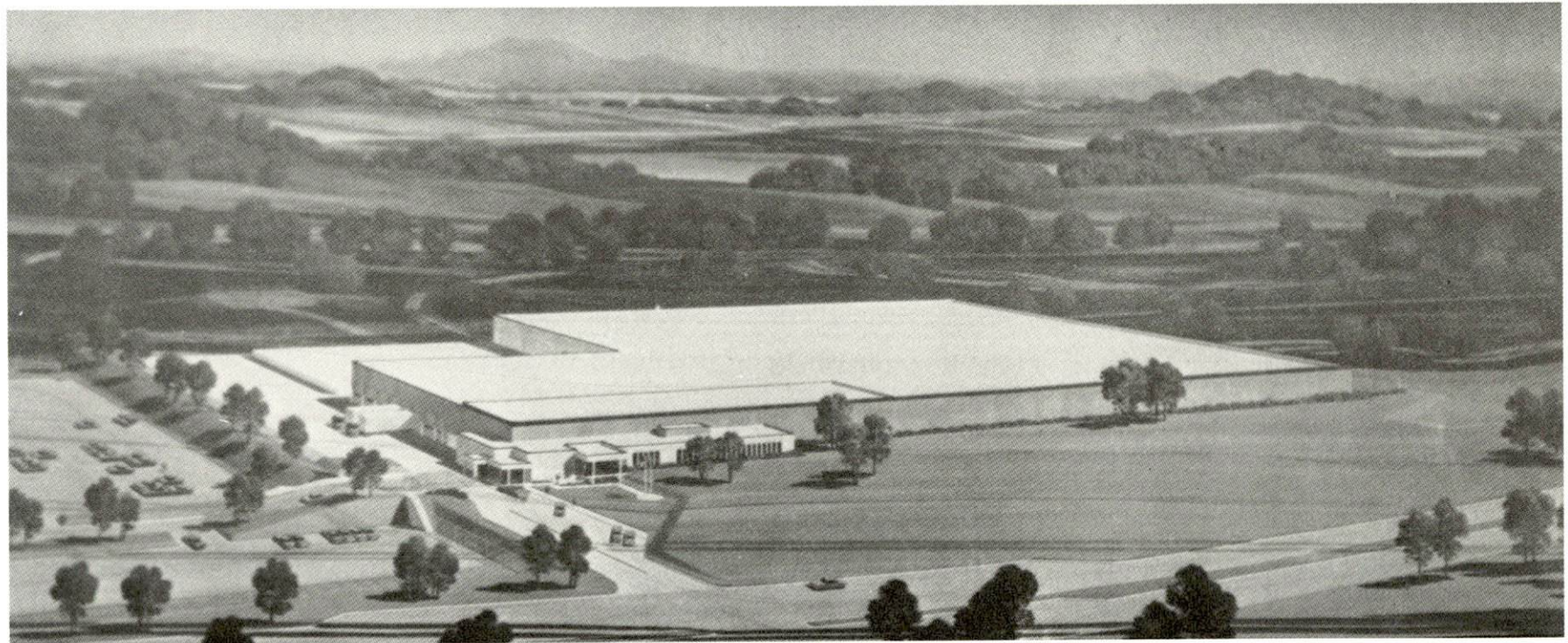
TYSON BEARING CORP.



MALLORY CAPACITOR COMPANY



SWIFT AND COMPANY



EATON AXLE PLANT



R. R. DONNELLEY & SON

LABOR ORGANIZATIONS

<u>Union</u>	<u>Representing manufacturing workers at:</u>
Auto Workers	Glasgow Industries
International Ladies' Garment Workers (AFL-CIO)	Glasgow Manufacturing Company
Teamsters	J. F. Pace Concrete Products, Inc.
Amalgamated Meat Cutters and Butcher Workmen of North America	Swift and Company
United Steel Workers	Tyson Bearing Corporation, Division of SKF Industries, Inc.

ESTIMATED MALE LABOR SUPPLY GLASGOW LABOR MARKET AREA

<u>Area</u>	<u>Current</u>			<u>Future</u>	
	<u>Total</u>	<u>Not in Labor Force</u>	<u>Unemployed</u>	<u>Under- employed</u>	<u>Reaching 18 yrs. of age by 1979</u>
Labor Market					
Area	13,217	4,489	2,988	6,640	6,930
Barren	1,784	368	364	1,052	1,449
Allen	890	367	157	366	587
Edmonson	1,022	537	261	224	456
Hart	922	378	158	386	731
Metcalfe	613	233	128	252	410
Monroe	1,296	609	191	496	644
Warren	6,690	1,997	829	3,864	2,653

Sources: Kentucky Department of Economic Security, Kentucky Labor Supply Estimates by County, 1972. Kentucky Department of Commerce, Future Labor Supply by 1979.

ESTIMATED FEMALE LABOR SUPPLY
GLASGOW LABOR MARKET AREA

Area	Current			Under- employed	Future
	Total	Not in Labor Force	Unemployed		Reaching 18 yrs. of age by 1979
Labor Market					
Area	11,092	2,653	1,202	7,237	6,561
Barren	1,817	547	216	1,054	1,406
Allen	777	152	93	532	560
Edmonson	940	494	139	307	454
Hart	1,246	535	92	619	668
Metcalfe	632	390	72	170	414
Monroe	899	338	109	452	557
Warren	4,781	197	481	4,103	2,502

Sources: Kentucky Department of Economic Security, Kentucky Labor Supply Estimates by County, 1972. Kentucky Department of Commerce, Future Labor Supply by 1979.

PER CAPITA PERSONAL INCOME

Area	1970	1960	% Change
Barren County	\$2,696*	\$1,204	123.9
Labor Market Area			
Range	\$2,817 - 1,490*	\$636 - 1,375	N. A.
Kentucky	3,099	1,581	96.0
U. S.	3,933	2,216	77.5

*Unadjusted for commuting.

Sources: University of Kentucky, Office of Development Services and Business Research, Per Capita Income in Kentucky. U. S. Department of Commerce, Bureau of Economic Analysis, Survey of Current Business, August 1972.

TRANSPORTATION

Rail

Line serving Glasgow - Louisville & Nashville Railroad Company
Services - 1 eastbound and 1 westbound freight daily, switching, siding
space for eighty cars, private sidings, piggyback service
For details on routing, schedules, rates, and services, contact:

Manager of Industrial Development
Louisville & Nashville Railroad Co.
908 West Broadway
Louisville, Kentucky 40203

Truck Service

<u>Company</u>	<u>Home Office</u>
Great Lakes Express Company	172 Davenport Street Saginaw, Michigan 48602
Manning Motor Express, Inc. *	1203 South Green Street Glasgow, Kentucky 42141
McLean Trucking Company	P. O. Box 213 617 Waughtown St. Winston-Salem, North Carolina 27107
Renner's Express, Inc. *	1350 South West Street P. O. Box 613 Indianapolis, Indiana 46206
Southern Forwarding Company	728 Alston Avenue Memphis, Tennessee 38102
Terminal Transport Co., Inc.	5101 South Lawndale Avenue Summit, Illinois 60501
Theatres Service Company	830 Willoughby Way, N. E. Atlanta, Georgia 30301

Other Freight Services

Nearest Shipping Center

United Parcel Service**
REA Express

Bowling Green, 28 miles away
Pickup and delivery service

*Local terminal.

**For regular scheduled pickups or for occasional pickups, arrangements
must be made with the Louisville office of UPS.

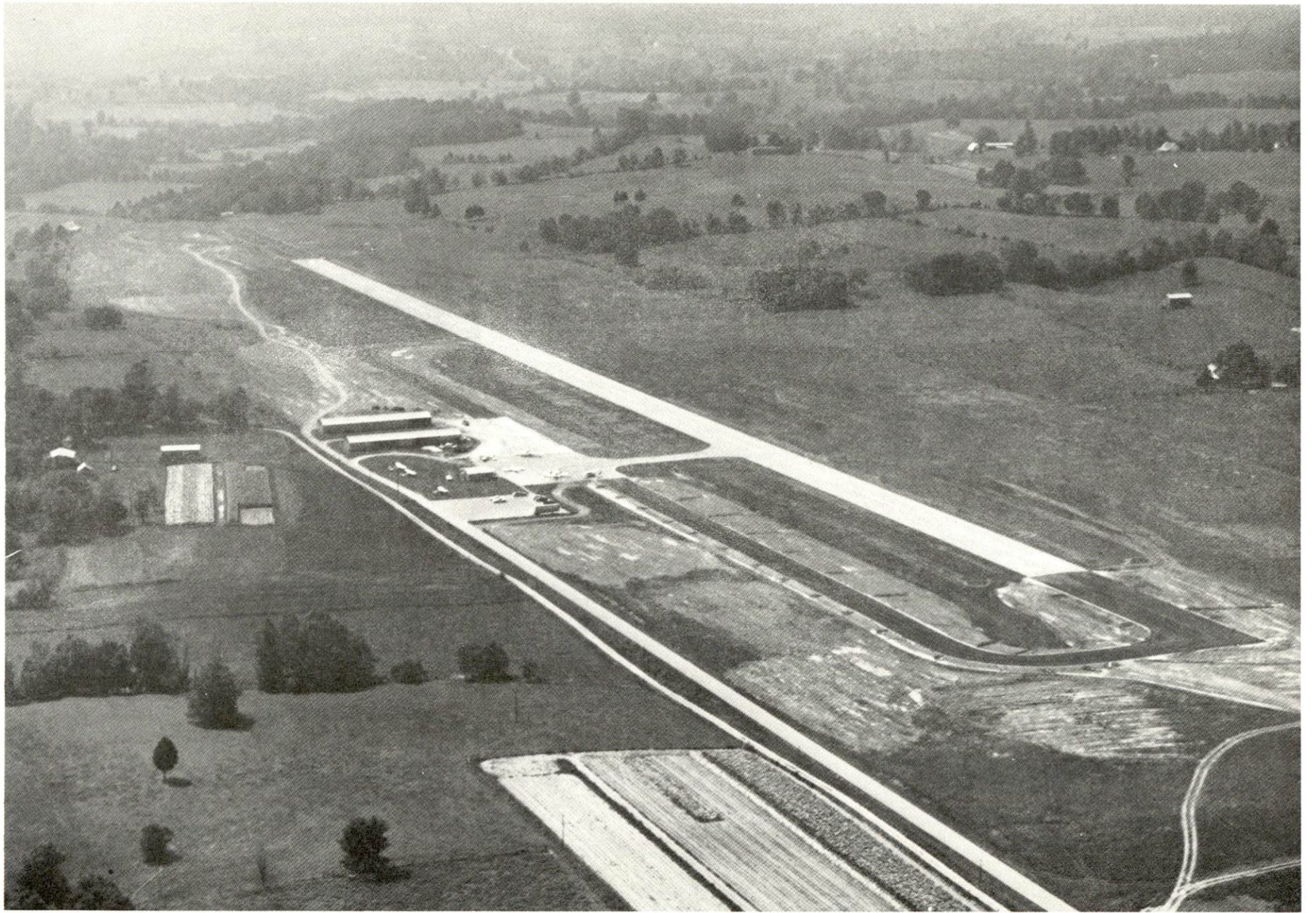
HIGHWAY MILES AND TRUCK TRANSIT TIME IN DAYS FROM
GLASGOW, KENTUCKY, TO SELECTED MARKET CENTERS

City	Delivery		City	Delivery	
	Highway Miles	Time TL		Highway Miles	Time TL
Atlanta, Ga.	348	3rd a.m.	Los Angeles, Calif.	2,157	5th a.m.
Birmingham, Ala.	286	3rd a.m.	Louisville, Ky.	100	2nd a.m.
Chicago, Ill.	439	3rd a.m.	Nashville, Tenn.	90	2nd a.m.
Cincinnati, Ohio	200	3rd a.m.	New Orleans, La.	629	4th a.m.
Cleveland, Ohio	452	3rd a.m.	New York, N. Y.	869	4th a.m.
Detroit, Mich.	513	3rd a.m.	Pittsburgh, Pa.	494	3rd a.m.
Knoxville, Tenn.	284	3rd a.m.	St. Louis, Mo.	330	3rd a.m.

Source: Delivery time only - Manning Motor Express, Inc., 1203 South Green Street, Glasgow, Kentucky 42141.

Air

	<u>Local</u>	<u>Nearest Commercial</u>
Location:	Glasgow Municipal Airport Glasgow	Metropolitan Nashville Airport Nashville, Tennessee, 90 miles south
Runways:	1 paved	3 paved
Length:	4,000 feet	8,500 feet, 7,700 feet, 4,025 feet
Traffic Control:	Wind cone	FAA control, control tower, approach and ground control, departure control, guards
Lighting:	Runway lights sundown to sunrise	High intensity for instrument runway, medium intensity for other runways; obstructions, beacon and approach lights
Services:	80 - 100 octane charter, flight instruction, taxi, A & E repairs, rental cars available	80, 91, 100 and 115 octane, jet fuel, major A & E repairs, storage, taxi and rental car service, city bus service, res- taurant, hotel, FAA Flight Service Station; American, Ozark, Braniff, Eastern, Piedmont, Allegheny, Delta, TWA and Southern Airlines
Air Freight Service:	Chartered air freight services must be arranged.	Air freight terminal



GLASGOW MUNICIPAL AIRPORT

Bus - Southern Greyhound Bus Lines

Taxi - 24-hour service, radio equipped

Rental Services - Car, truck and trailer rentals

POWER AND FUEL

Electricity

Company serving Glasgow - Glasgow Electric Plant Board
Source of power - Tennessee Valley Authority
Total generating capacity - 19,400,000 KW
For industrial rates contact:

Glasgow Electric Plant Board
100 Mallory Drive
Glasgow, Kentucky 42141

Company serving Barren County - Farmers RECC
Source of power - East Kentucky Power Cooperative
Total generating capacity - 548,000 KW
For industrial rates contact:

Farmers Rural Electric Cooperative Corp.
504 South Broadway
Glasgow, Kentucky 42141

Company serving Barren County - Warren RECC
Source of power - Tennessee Valley Authority
Total generating capacity - 19,400,000 KW
For industrial rates contact:

Warren Rural Electric Cooperative Corp.
P. O. Box 1118
Bowling Green, Kentucky 42101

Natural Gas

Company serving Glasgow - Western Kentucky Gas Company
Source of supply - Texas Gas Transmission Corporation
Size of transmission mains - 8-inch (supplier) ; 4-inch (distributor)
Distribution mains - 8, 6, 4, 3, and 2 inches
Distribution pressure - 18 psi summer; 45 psi winter
Btu content - 1,000
Specific gravity - .60
For rates and supplies contact:

Director, Industrial Utilization
Western Kentucky Gas Company
311 West Seventh Street
Owensboro, Kentucky 42301

Other Fuels

Propane and Butane

Pargas, Inc., Industrial Drive, Glasgow
Williams Energy Company, West Main Street, Glasgow

Fuel Oils

Distillate fuel oil -

Ashland Oil Company (bulk plant), West Main Street, Glasgow
Gulf Oil Company (bulk plant), West Main Street, Glasgow
Standard Oil Company (bulk plant), 210 Leslie Avenue, Glasgow
Shell Oil Company, Glasgow

Residual fuel oil -

Arrangements must be made with the refinery

Low sulphur content coal

Available in Kentucky

WATER AND SEWERAGE

Water

Company serving Glasgow - Glasgow Water Company
 Source - Beaver Creek and Barren River Lake
 Treatment plant capacity - 8,500,000 gallons per day
 Average daily consumption - 3,000,000 gallons
 Peak daily consumption - 3,200,000 gallons
 Type treatment - Settling basin and rapid sand
 Storage capacity - 4,050,000 gallons*
 Size mains - 20, 12, 8, and 6 inches
 Average pressure - 75 psi
 Average temperature - 68 degrees F.

MONTHLY WATER RATES FOR WHOLESALE AND INDUSTRIAL CONSUMERS**

Domestic and commercial customers

First	2,000 gallons	\$3.60 Minimum
Next	8,000 gallons	1.00 per 1,000 gallons
Next	40,000 gallons	.60 per 1,000 gallons
Next	50,000 gallons	.50 per 1,000 gallons
Over	100,000 gallons	.40 per 1,000 gallons

Industrial customers (2,000,000 or more to qualify)

First	400,000 gallons	\$120.00 Minimum
Over	400,000 gallons	.30 per 1,000 gallons

Sprinkler charge - \$.02 per month per sprinkler head

Fire hydrant charge - \$.50 per hydrant per month

Tap-in and connection charges -

Water tap-in charges; Outside city limits - \$200
 Within city limits - \$ 25

Service charge for meter installation and water turn on - \$5

*Includes one 2,000,000 gallon ground storage tank to be constructed and in use by January, 1974.

**Rates subject to revision January 1, 1974.

LOCAL GOVERNMENT

City

Structure - Mayor - 4-year term; 12 councilmen - 2-year terms
 Budget 1973 - General Fund - \$889,438
 Fees and licenses - 1% net profit - \$25 minimum

County

Structure - County Judge - 4-year term; 7 magistrates - 4-year terms
 Budget 1972-73 - General Fund \$229,925; Road Fund \$166,460

Assessed Value of Property, 1973

<u>Classes of Property</u>	<u>Glasgow</u>	<u>Barren County</u>
Real Estate	\$62,232,337	\$160,899,293
Tangibles	20,800,409	36,594,272
Public Service	7,286,291	26,286,609

Property Taxes

Land and buildings are taxed by the state and may be taxed by local jurisdictions. The state rate is \$0.015 per \$100 of assessed valuation.

Tangible personal property owned by manufacturers (automobiles, trucks, finished goods, office furniture, office equipment) is taxed by the state at \$0.15 per \$100 and may be taxed by local jurisdictions.

Manufacturing machinery, raw materials inventories, and goods in process inventories are not subject to local taxation. The state rate is \$0.15 per \$100.

Property stored in public warehouses is not subject to local taxation. The state rate is only \$0.015 per \$100.

All property is assessed at 100 percent of fair cash value.

Local Property Tax Rate Per \$100 of Assessed Valuation, 1973*

<u>Taxing Jurisdiction</u>	<u>Glasgow</u>	<u>Barren County</u>
County	\$.146	\$.146
School	.781	.407
<u>City</u>	.290	

*Kentucky Department of Revenue; Kentucky Department of Education.

Planning and Zoning

Joint agency - Joint City-County Planning Commission of Barren County
Zoning enforced - Within city of Glasgow only
Subdivision regulations enforced - Within Glasgow and five miles beyond the city
Local codes enforced - Building and housing within Glasgow
Mandatory state codes enforced - Plumbing, National Fire Protection Association Code, National Building Code (for major buildings and residential construction containing more than 12 bedrooms per building)

Safety

<u>Police</u>	<u>Glasgow</u>	<u>Barren County</u>
Total staff	23	4
Radio-patrol cars	5	3
Other equipment	Radar equipment	Office radio which connects with police or sheriffs covering 10 county radius; complete photographic laboratory

Fire

American Insurance Association Fire Rating	6 & 9
Full-time staff	22
Equipment:	
750 gpm pumpers	2
600 gpm pumper	1
500 gpm pumper	1
Other	1 65-foot aerial platform truck - 1,000 gpm pumper 1 pickup service truck and station wagon 1 boat, motor, and dragging equipment

Rescue Service

Glasgow-Barren County Civil Defense Rescue Squad:

Number of volunteers - 25

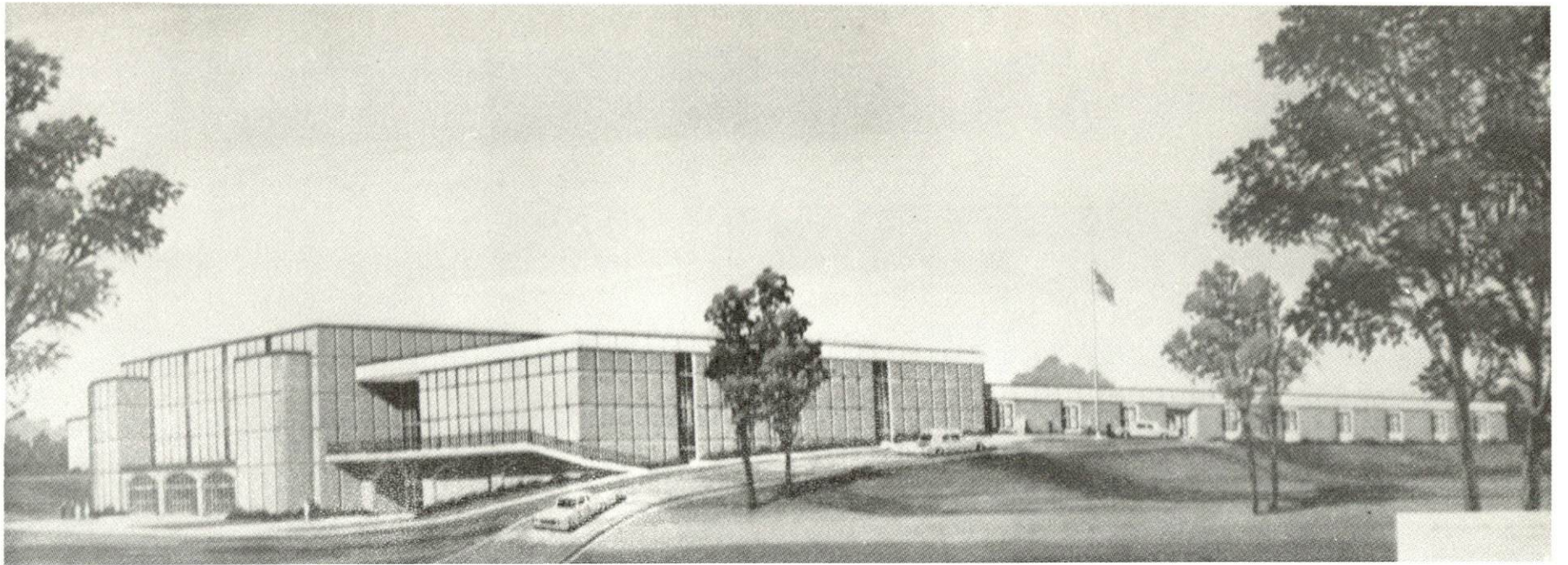
Equipment - 14-foot flat bottom boat used for dragging, 7 1/2 horsepower
boat motor, 2 jeeps, 2 trailers for hauling, 2 trucks and 2 truck vans,
1 bus with kitchen facilities

Personnel training - First Aid

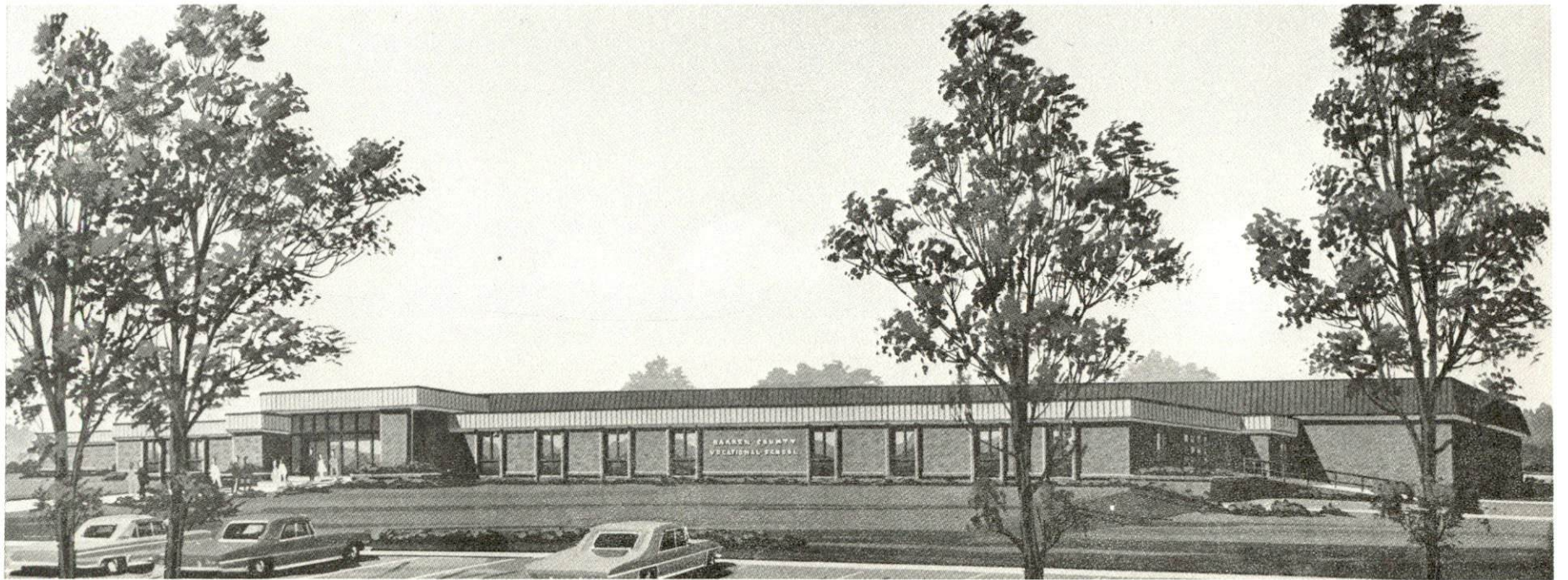
Sanitation

Glasgow

Type service	Municipal
Fee charged:	
residential	No charge
small businesses	No charge
Collection frequency:	
residential	Weekly
small businesses	Weekly
Trash pickup	None
Disposal method	Landfill



BARREN COUNTY HIGH SCHOOL



BARREN COUNTY VOCATIONAL SCHOOL

EDUCATION

Public Schools

	<u>Caverna Independent</u>	<u>Glasgow Independent</u>	<u>Barren County</u>
Total Enrollment (Fall 72)	1,040	1,646	3,431
Elementary	540	846	2,411
High School	500	800	1,020
Student-Teacher Ratio	22-1	24-1	22-1
Elementary	22-1	25-1	23-1
High School	23-1	24-1	21-1
Accreditation		Southern Asso- ciation of Colleges and Schools	
Percent High School Graduates to College	55.7	49.3	22.5
Expenditures Per Pupil (1971-72)	\$469.48	\$470.08	\$477.39
Bonded Indebtedness, June 30, 1972	\$1,433,000	\$1,649,000	\$396,000

Vocational Schools

Nearest State School

Location	Bowling Green State Vocational-Technical School
Miles Distant	Bowling Green
Curriculum	30 miles from Glasgow
	Marketing & Distributive Education, Dental Assistant, Dental Technician, Health Careers, Nurse Aide, Practical Nursing, Surgical Technician, Ward Clerk, Electronics (Technology), Highway Technology, Technical Drafting, Air Conditioning and Refrigeration, Auto Body Repair, Auto Mechanics, Carpentry, Commercial Foods, Drafting, Electricity, Machine Shop, Printing, Radio and TV Repair, Tool and Die Making, Welding

Vocational Schools (contd.)

Nearest Area Education Center

Location	Glasgow Area Vocational Education Center
Curriculum	Glasgow Health Careers Auto Mechanics Carpentry Drafting
Location	Glasgow School of Practical Nursing
Curriculum	Glasgow Practical Nursing

Arrangements can be made to provide training in the specific production skills required by an industrial plant. Instruction may be conducted either in the vocational school or in the industrial plant, depending upon the desired arrangement and the availability of special equipment.

Colleges and Universities

<u>Name</u>	<u>Area - Within 50 miles</u>		<u>Highest Degree Conferred</u>
	<u>Location</u>	<u>Enrollment (Fall, 1972)</u>	
Western Kentucky University*	Bowling Green	11,329	Masters, Ph.D.**
Campbellsville College	Campbellsville	743	Baccalaureate
Lindsey Wilson Junior College	Columbia	306	Associate

*Three college courses are being offered by Western Kentucky University to the community of Glasgow. They will be held in the Mary Wood Weldon Memorial Library.

**Cooperative program with the University of Kentucky, Lexington, for a Ph. D. in Education only.

HEALTH

Hospitals

<u>General Hospital</u>	<u>Location</u>	<u>Beds</u>
T. J. Samson Community Hospital	Glasgow	200

General hospital facilities - 3 operating rooms, 2 X-ray rooms, laboratory, emergency room, licensed practical nurse school, pathology laboratory, delivery room, nursery, mental health wing, extended care wing, coronary care, intensive care and recovery room, physical therapy, and inhalation therapy*

Medical staff - 26 doctors, 30 registered nurses, 50 licensed practical nurses, radiologist, pathologist, psychologist, ophthalmologist, internist, pediatrician, neurologist

Other - District 6 State Tuberculosis Hospital, Barren River Comprehensive Care Center Mental Health-Mental Retardation

<u>Nursing Homes</u>	<u>Number</u>	<u>Beds</u>
Extended care homes	2	106
Personal care homes	3	146

Public Health

Facility - Barren County Health Center

Staff - 2 registered nurses, 1 clerk, 1 sanitarian, 1 clerk and 1 plumbing inspector (part-time)

Budget 1973-74 - \$42,747

*Approximately one million dollars is to be spent in the renovation of two old wings. The coronary and intensive care units will be enlarged.



T. J. SAMSON COMMUNITY HOSPITAL

OTHER LOCAL FACILITIES

Communications

Telephone - South Central Rural Telephone Company, General Telephone Company; South Central Rural Telephone Company - office and headquarters serves 7 counties from this office; General Telephone Company - office

Telegraph - Western Union Telegraph Services - Telephone

Postal - U. S. Post Office

Class - First

Mail received - Twice daily

Mail dispatched - Twice daily

Receipts - Fiscal year 1973, gross receipts - \$1,752,516.48

Newspapers -

Daily and circulation - The Glasgow Daily Times, 8,200

Weekly and circulation - The Glasgow Republican, 4,250

Other papers received from - Bowling Green and Louisville, Kentucky; Nashville, Tennessee

Radio - WKAY - AM, WGGC - FM, WCDS - AM, WOVO - FM

Stations received from - Bowling Green, Louisville, Scottsville, Tompkinsville and Munfordsville, Kentucky; Nashville, Tennessee

Television -

Cable Service

Reception from - Louisville and Bowling Green, Kentucky; Nashville, Tennessee

Kentucky Educational Television - Elizabethtown, Kentucky

Tennessee Educational Television - Nashville, Tennessee

Library Services

Public library - The Mary Wood Weldon Memorial Library

Size collection - 31,289 volumes

Circulation, 1972-73 - 123,641 (includes bookmobile and satellite library)

Services - Provide recreational games, films, film strips, reading programs, participate in head start story hour, bookmobile operating full 12 months, framed paintings, access to state interlibrary loan services, circulated magazines; new community room, 4 full-time certified librarians; 11,250 square feet of floor space; serving 9 schools, 13 shut-ins, and 11 deposit stations



MARY WOOD WELDON MEMORIAL LIBRARY

Religious Institutions

Number of churches - 40

Denominations - Baptist, Methodist, Church of Christ, Presbyterian, Christian, Nazarene, Seventh Day Adventist, Pentecostal, Catholic, Church of God, Church of Jesus Christ of Latter Day Saints, Jehovah's Witnesses, Assembly of God, Evangelistic Tabernacle, Episcopal

Nearest Synagogues - Louisville, Kentucky - 90 miles
Nashville, Tennessee - 90 miles

Congregations - Louisville - Adath Israel (Reform), Adath Jeshurun (Conservative), Anshei Sfard (Orthodox), Brith Shalom (Reform), Keneseth Israel (Orthodox); Nashville - Sherith Israel (Orthodox), Ahabai Shalom (Reform), West End Synagogue (Conservative)

Financial Institutions

<u>Banks</u>	<u>Statement as of June 30, 1973</u>	
	<u>Assets</u>	<u>Deposits</u>
Citizens Bank and Trust Company	\$35,917,104.28	\$32,222,816.80
New Farmers National Bank	28,766,602.87	25,370,539.92
<u>Savings and Loan Associations</u>	<u>Assets</u>	<u>Shared Accounts</u>
First Federal Savings and Loan Association	\$25,881,954.31	\$22,990,324.57
Security Savings and Loan Association	4,802,594.56	4,286,447.96

Hotels and Motels

Total number - 5

Units - 250

Clubs and Organizations

Women's Clubs - Ladies Matinee Musicale, Barren County War Mothers, Edmund Rogers Chapter DAR, Glasgow Business and Professional Women's Club, Younger Business and Professional Women's Club, Heritage Garden Club, Glasgow Garden Club, Glasgow Women's Club

Men's Clubs - American Legion Post 24, Veterans of Foreign Wars, Rotary Club, Lions Club, Junior Chamber of Commerce, Travelers Protective Association, Little League, Kiwanis Club, Optimist Club

Miscellaneous - Glasgow-Barren County Chamber of Commerce, Barren County Wildlife Conservation Club, Historical Club, Barren County Association for Retarded Children, Barren County Farm Bureau, Barren River Rod and Gun Club, Ministerial Association

School - Barren County Teachers Association, Glasgow Education Association, Glasgow Band Boosters, Liberty Street Elementary PTA, E. B. Terry Elementary PTA, Happy Valley Elementary PTA, Bunche 6th Grade Center PTA

RECREATION

Local

Public Recreation Facilities

Supervised program - Full-time recreation program

Parks - 4

Playgrounds - 2

Swimming pool - 1

Tennis courts - 2

Baseball diamonds - 3

Football field - 1

Other - Picnic areas - 3

Private Recreation Facilities

Country club - 1

Golf course - 1 (18-hole)

Swimming pools - 2

Movie theaters - 1 indoor, 1 drive-in

Bowling lanes - 1

Area (Within 25 miles)

Barren River Lake State Resort Park

Mammoth Cave National Park

Crystal Onyx Cave

Mammoth Onyx Cave

Park Mammoth Resort

AGRICULTURE - NATURAL RESOURCES - CLIMATE

Agriculture*

	<u>Barren County</u>	<u>Labor Market Area</u>
Total land area (acres)	299,520	1,736,320
Percent of area in farm land	92.7	80.6
Number of farms	3,092	13,156
Average size of farms (acres)	89.7	101.8
1969 value of all farm products	\$ 17,649,172	\$66,532,554
Value per farm	5,708	5,057
Total crop sales	7,659,114	26,056,071
Total livestock & livestock products	9,897,334	39,912,426
1970 agricultural production included:		
Burley tobacco (lbs.)	11,251,000	38,578,000
Corn (bu.)	924,000	4,256,000
Cattle and calves (number)	62,400	281,300
Hogs and pigs (number)	33,500	158,200
Milk production, 1969 (lbs.)	116,960,000	361,390,000

Natural Resources

Principal mineral resources	Limestone and petroleum
Acres of commercial forest land	81,400 (26 percent of land area)
Most abundant tree species	Red oak, white oak, hickory, ash, yellow poplar, hard maple, sweet gum

*U. S. Department of Commerce, Bureau of the Census, Census of Agriculture, 1969. U. S. Department of Agriculture and Kentucky Department of Agriculture, Kentucky Agricultural Statistics, 1971.

Climate*

Barren County

Temperature	
Annual mean (30-year record)	60.0 degrees
Average annual 1972	59.6 degrees
Record highest, July, 1966 (7-year record)	103.0 degrees
Record lowest, January, 1966 (7-year record)	- 6.0 degrees
Normal heating degree days (30-year record)	3,578
(Heating degree day totals are the sums of negative departures of average daily temperatures from 65 degrees F.)	
Precipitation	
Mean annual total (30-year record)	45.14 inches
Mean annual snow and sleet (31-year record)	11.40 inches
Total precipitation 1972	54.41 inches
Mean number days precipitation (.01 inch or more)	
(31-year record)	118
Average number days thunderstorms (31-year record)	56
Prevailing winds (22-year record)	South

*U. S. Department of Commerce, Environmental Science Services Administration, Climatological Data, 1972. Station of record: Nashville, Tennessee.

HISTORY

Barren County is located in the southcentral part of Kentucky and covers an area of 486 square miles. Barren River forms the Barren River Reservoir, a large man-made lake on the county's southwestern edge, and Beaver Creek flows through the central area. The county's northern section, which is part of the state's famous cave country, is generally hilly. The area to the south is level to rolling, with a fertile limestone-based soil and a clay subsoil.

In 1798 Barren became Kentucky's thirty-seventh county, its territory taken from Green and Warren Counties. Originally part of a great Indian hunting ground known as the "barrens region," the county was so-named because of its sparcity of timber.

Glasgow, the county seat, was established in 1799 and incorporated ten years later. It was named for Glasgow, Virginia, from which many of its early settlers came. Major John Gorin, a Revolutionary War veteran, was the first to settle there and donated land for the townsite. Alexander Spottswood, who was the first lawyer in the region, built Glasgow's first brick house. The Georgian Colonial structure was constructed from plans drawn by George Washington. One of the first state roads passed through Glasgow between Lexington and Nashville.

Cave City, to the north, is the county's second largest town. This and nearby Park City are the tourist gateways via Interstate Highway 65 to Mammoth Cave. Mammoth Cave National Park extends into Barren County and is one of the state's leading tourist attractions. Commercial facilities catering to park-bound tourists have developed rapidly in the Cave City area since the opening of Interstate 65.

In 1800, two years after its formation, Barren County had 4,784 inhabitants. This grew to 28,303 by 1960, and by 1970 population had increased to 28,677. Glasgow's population was 11,301 in 1970 and Cave City's was 1,818.

Agriculture provided 2,350 of the county's 13,320 jobs in 1972, with burley tobacco, cattle, hogs, and milk the principal products. Glasgow is one of the state's leading tobacco markets. Manufacturing employment grew significantly during the 1960's, and reached 3,460 in 1972. The greatest production is in the machinery, metal products, and apparel industries. Largest of the county's firms are: Kentucky Pants Company, Tyson Bearing Corporation, Eaton Corporation, Glasgow Manufacturing Company, R. R. Donnelley and Sons Company, Mallory Capacitor Company and Glasgow Industries.

Barren County's distinguished citizens have included Preston H. Leslie Kentucky's twenty-sixth Governor, and Louis B. Nunn, Governor of Kentucky (1968-1971).