

1983

Industrial Resources: Boyle County - Danville

Kentucky Library Research Collections
Western Kentucky University, spcol@wku.edu

Follow this and additional works at: https://digitalcommons.wku.edu/boyle_cty

 Part of the [Business Administration, Management, and Operations Commons](#), [Growth and Development Commons](#), and the [Infrastructure Commons](#)

Recommended Citation

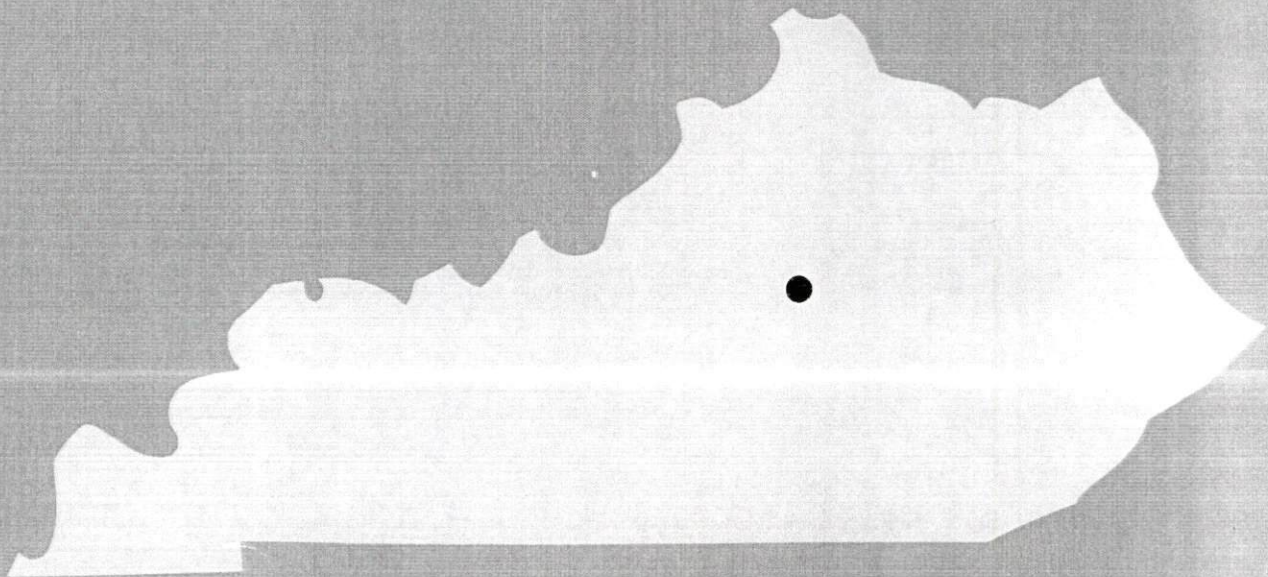
Kentucky Library Research Collections, "Industrial Resources: Boyle County - Danville" (1983). *Boyle County*. Paper 19.
https://digitalcommons.wku.edu/boyle_cty/19

This Report is brought to you for free and open access by TopSCHOLAR®. It has been accepted for inclusion in Boyle County by an authorized administrator of TopSCHOLAR®. For more information, please contact topscholar@wku.edu.

Boyle

1983

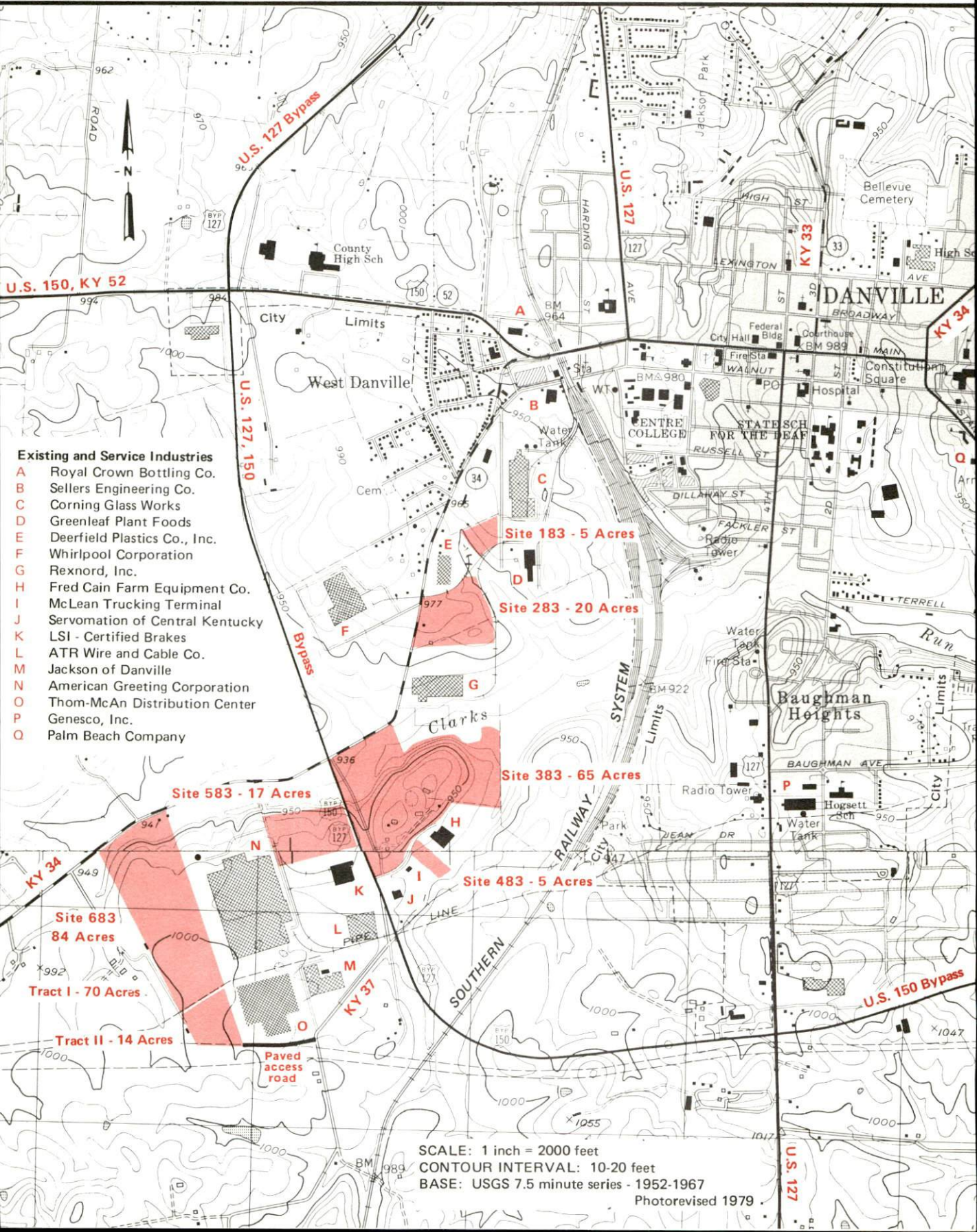
A comprehensive
report on
Danville, Ky.



KENTUCKY & CO.
The state that's run like a business.

DANVILLE, KENTUCKY --- Index to Industrial Sites --- 1983

For more information contact the Department of Economic Development, Office of Business Development, Industrial Development Division, Capital Plaza Tower, Frankfort, Kentucky 40601 (502-564-7140).



- Existing and Service Industries**
- A Royal Crown Bottling Co.
 - B Sellers Engineering Co.
 - C Corning Glass Works
 - D Greenleaf Plant Foods
 - E Deerfield Plastics Co., Inc.
 - F Whirlpool Corporation
 - G Rexnord, Inc.
 - H Fred Cain Farm Equipment Co.
 - I McLean Trucking Terminal
 - J Servomation of Central Kentucky
 - K LSI - Certified Brakes
 - L ATR Wire and Cable Co.
 - M Jackson of Danville
 - N American Greeting Corporation
 - O Thom-McAn Distribution Center
 - P Genesco, Inc.
 - Q Palm Beach Company

SCALE: 1 inch = 2000 feet
 CONTOUR INTERVAL: 10-20 feet
 BASE: USGS 7.5 minute series - 1952-1967
 Photorevised 1979

A COMPREHENSIVE REPORT ON
DANVILLE, KENTUCKY

Prepared by
The Kentucky Department of Economic Development
Division of Research and Planning
in cooperation with
The Danville-Boyle County Chamber of Commerce

1983

Program manager - Pam Riley; research - Bill Morris; clerical - Bobbi Medley; graphics - Frank Ferrante, Tony Cecconi, Robert Owens; cartography - Site Evaluation Section, Division of New Industries. Cost of printing paid from state funds.

TABLE OF CONTENTS

<u>Chapter</u>	<u>Page</u>
INDUSTRIAL SITES	i
DANVILLE, KENTUCKY - A RESOURCE PROFILE	1
THE LABOR MARKET AREA	3
Population	3
Labor Force Characteristics of Residents, 1982	3
Selected Components of Nonagricultural Employment, by Place of Work, 1982	4
Danville Manufacturing Firms, Their Products and Employment	5
Labor Organizations in Manufacturing Firms	7
Distribution Centers	7
Industrial Services	8
Estimated Male Labor Supply	9
Estimated Female Labor Supply	10
Average Weekly Wages by Industry, by Place of Work, 1982	11
Per Capita Personal Income	13
TRANSPORTATION	14
Rail	14
Highways	14
Truck Service	15
Air	17
Bus	17
Taxi	17
Rental Services	17
Water	17
POWER AND FUEL	18
Electricity	18
Natural Gas	19
Other Fuels	19
WATER AND SEWERAGE	20
Public Water Supply	20
Raw Water	22
Sewerage	22
CLIMATE	23

<u>Chapter</u>	<u>Page</u>
LOCAL GOVERNMENT	24
City	24
County	24
Assessed Value of Property, 1982	24
Property Taxes	24
Combined State and Local Rates Per \$100 Valuation, 1982	25
Planning and Zoning	25
Safety	26
Police	26
Fire	26
Rescue Service	26
Refuse Collection and Disposal	26
EDUCATION	27
Public Schools	27
Special Schools	27
Area Colleges and Universities	28
Vocational Schools	29
HEALTH	31
Local Medical Personnel	31
Hospitals	31
Other Medical Facilities	31
Ambulance Service	31
Public Health	31
OTHER LOCAL FACILITIES	32
Communications	32
Library Services	33
Religious Institutions	33
Financial Institutions	34
Hotels and Motels	34
Clubs and Organizations	34
RECREATION	36
COMMUNITY IMPROVEMENTS	38

1983 EDITION
GENERAL HIGHWAY MAP
BOYLE COUNTY
KENTUCKY

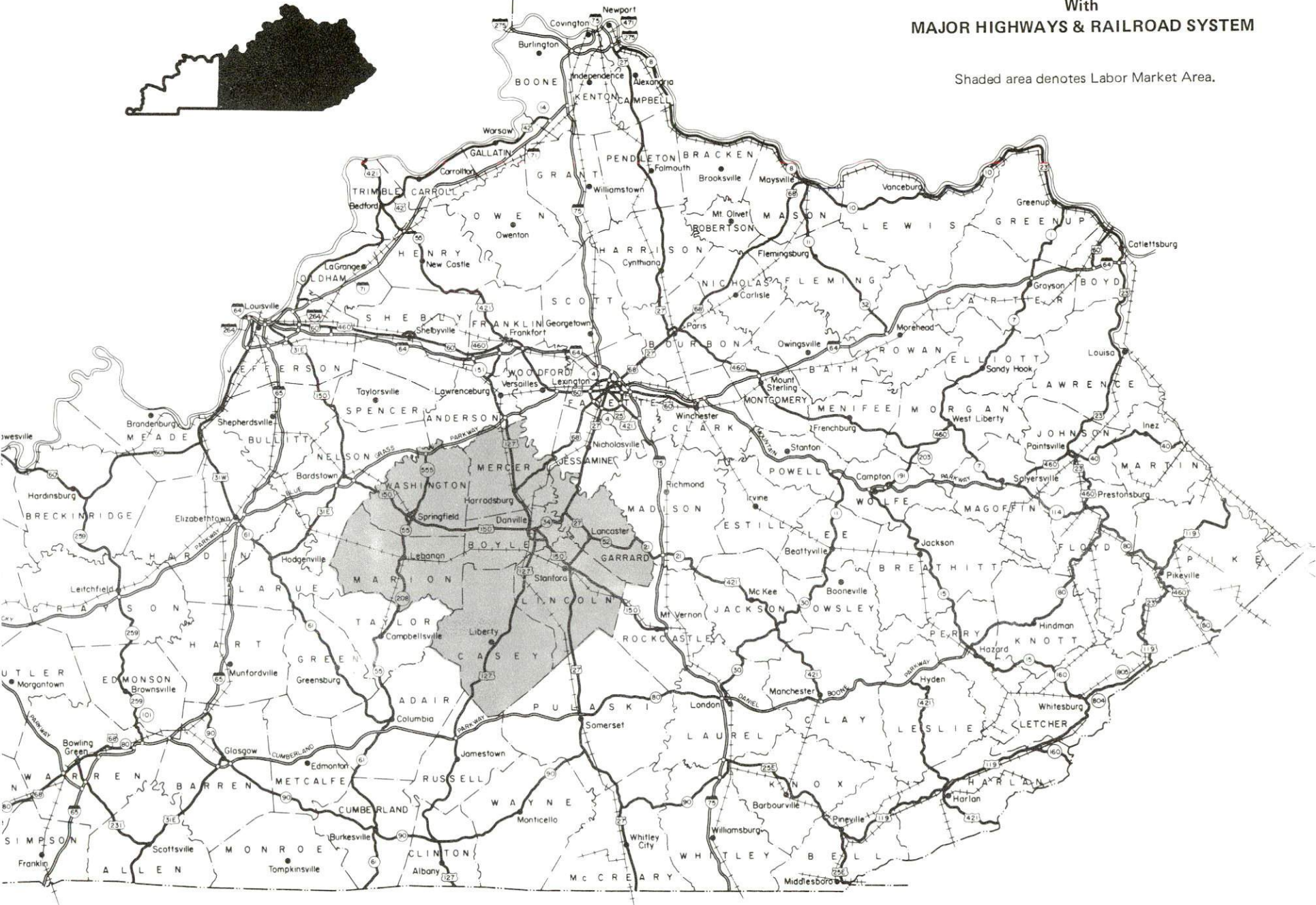


PREPARED BY THE
KENTUCKY TRANSPORTATION CABINET
DEPARTMENT OF HIGHWAYS
DIVISION OF PROJECT DEVELOPMENT
IN COOPERATION WITH THE
U.S. DEPARTMENT OF TRANSPORTATION
FEDERAL HIGHWAY ADMINISTRATION



**DANVILLE LABOR MARKET AREA
With
MAJOR HIGHWAYS & RAILROAD SYSTEM**

Shaded area denotes Labor Market Area.



DANVILLE, KENTUCKY - A RESOURCE PROFILE

Danville, located in central Kentucky's Bluegrass Region, is the county seat of Boyle County and the home of Centre College, an independent liberal arts college with a tradition of academic excellence. The city had a 1980 population of 12,942. Boyle County, with a population of 25,066 in 1980, covers a land area of 182 square miles which ranges from gently rolling to hilly terrain.

Danville played a prominent role in Kentucky's history, serving as the site for the drafting of the state's first constitution. Today, Danville is a progressive community which continues to develop its economic base, while preserving its historical heritage.

Danville is 35 miles southwest of Lexington, Kentucky; 85 miles southeast of Louisville, Kentucky; and 130 miles south of Cincinnati, Ohio. A central location and good transportation facilities have been major factors in the city's growth in distribution and manufacturing industries.

The Economic Framework

The total number of Boyle County residents employed in 1982 averaged 11,915, with nonagricultural jobs accounting for 11,265 workers. Manufacturing employers in the county reported 3,410 workers; wholesale and retail trade 3,010; service occupations 1,500; and 1,175 employees in state and local government. Manufacturing employment is greatest in stone, clay and glass products; apparel and related products; electrical and nonelectrical equipment; and fabricated metal products.

Per capita personal income in Boyle County in 1981 was \$8,736. Between 1977 and 1981, per capita income increased by 53 percent.

The Danville labor market area includes Boyle County and the adjoining Kentucky counties of Casey, Garrard, Lincoln, Marion, Mercer and Washington. The total number of residents of the labor market area employed in 1982 averaged 46,840, with nonagricultural jobs accounting for 40,680 workers. Manufacturing employers in this area reported 8,160 workers; wholesale and retail trade 6,080; state and local government 3,930; and 3,530 employees in the service industries.

Resources for Growth

1. Labor Supply - There is a current labor supply of 8,830 men and 4,720 women available for industrial jobs in the labor market area. In addition, from 1983 through 1987, 5,635 young men and 5,360 young women in the area will become 18 years of age and potentially available for industrial jobs.

2. Transportation - The Southern Railway System provides rail freight service to Danville, with daily stops and piggyback facilities available. U.S. Highways 127 and 150 are "AAA"-rated, 80,000-pound gross load limit highways serving Danville. U.S. 127 provides access to the Blue Grass Parkway, 25 miles north of Danville, and to the Cumberland Parkway, 51 miles south of Danville. Interstates 64 and 75 are both accessible near Lexington, 35 miles northeast of Danville. Twenty-two common carriers serve the city, and four of these maintain local terminals. The nearest scheduled commercial airline service is available at Blue Grass Field near Lexington. Chartered air freight service is available by prior arrangement at the Danville-Boyle County Airport, 4 miles south of Danville.

3. Power and Fuel - Kentucky Utilities Company provides electric power to Danville and portions of Boyle County. The major portion of Boyle County is served by Inter County Rural Electric Cooperative Corporation, whose source of power is East Kentucky Power Cooperative. Western Kentucky Gas Company, whose source of supply is Tennessee Gas Pipeline Company, provides natural gas service to Danville. Five propane dealers and six distillate fuel oil dealers are located within 15 miles of the city.

4. Education - The Boyle County School System enrolled 2,535 students in 1983. The Danville Independent School System had an enrollment of 2,193 students and is accredited by the Southern Association of Colleges and Schools. The Kentucky School for the Deaf, a state supported institution for the hearing impaired, is also located in Danville.

Centre College, located in Danville, is a four-year, independent, liberal arts college which confers Bachelor of Arts and Bachelor of Science degrees. The Fall 1982 enrollment at Centre College was 718. Also located in Danville is the Kentucky Junior College of Business which confers the Associate in Science degree. The college's Fall 1982 enrollment was 415.

In addition, three universities, two senior colleges, a junior college and a technical institute are located within 36 miles of Danville.

Central Kentucky State Vocational-Technical School is located in Lexington, 35 miles northeast of Danville, and offers instruction in 20 course areas. Harrodsburg Area Vocational Education Center, 9 miles north at Harrodsburg, offers training in seven course areas. Garrard County Area Vocational Education Center at Lancaster, 12 miles east of Danville, offers six course areas.

THE LABOR MARKET AREA

The Danville Labor Market Area includes Boyle County and the adjoining Kentucky counties of Casey, Garrard, Lincoln, Marion, Mercer and Washington.

POPULATION			
Area	1980	1970	Percent Nonwhite
Danville	12,942	11,542	14.9
Labor Market Area	117,475	104,313	N/A
Boyle County	25,066	21,861	9.5
Casey County	14,818	12,930	0.3
Garrard County	10,853	9,457	5.5
Lincoln County	19,053	16,663	4.2
Marion County	17,910	16,714	8.0
Mercer County	19,011	15,960	4.6
Washington County	10,764	10,728	10.3

Note: The 1980 counts of population by race are provisional.

Sources: U.S. Department of Commerce, Bureau of the Census, 1980 Census of Population and Housing, March 1981; 1980 Census of Population, Number of Inhabitants. Population Research Unit, Urban Studies Center, University of Louisville, Kentucky Demographics: The 1980 Census of Kentucky, Characteristics of Population, Households, Housing, January 1982.

LABOR FORCE CHARACTERISTICS OF RESIDENTS, 1982

	Boyle County	Labor Market Area
Civilian Labor Force	13,221	53,324
Employment	11,915	46,843
Agricultural	650	6,159
Nonagricultural	11,265	40,684
Unemployment	1,306	6,481
Rate of Unemployment (%)	9.9	12.2

Source: Kentucky Cabinet for Human Resources, Kentucky Labor Force Estimates, Annual Averages, 1982.

SELECTED COMPONENTS OF NONAGRICULTURAL EMPLOYMENT,
BY PLACE OF WORK, 1982

	<u>Boyle County</u>	<u>Labor Market Area</u>
All Industries (total)	10,203	24,693
Manufacturing	3,407	8,161
Wholesale & Retail Trade	3,014	6,082
Services	1,502	3,551
State/Local Government	1,175	3,934
Contract Construction	255	844

Note: Excludes domestic workers, railway workers, certain nonprofit corporations, majority of federal government workers, and self-employed workers.

Source: Kentucky Cabinet for Human Resources, Average Monthly Workers Covered by Kentucky Unemployment Insurance Law, 1982.

DANVILLE MANUFACTURING FIRMS,
THEIR PRODUCTS AND EMPLOYMENT

Firm (Establishment date)	Product	Employment			Labor Unions
		Total	Male	Female	
ATR Wire & Cable Company, Inc. (1971)	Steel tire cord, bead cord	410	301	99	
Advocate Communications, Inc.; DBA-Advocate- Messenger Company (1865)	Newspaper	51	20	31	
Boyle Block Company (1943)	Concrete block, precast concrete items	15	15	--	
Fred Cain Farm Equipment Company (1959)	Tractor accessories, field tillers	32	30	2	
Caldwell Stone Company, Inc. (1928)	Agricultural lime, crushed stone	23	22	1	
Concrete Materials Corporation (1948)	Ready-mixed concrete, septic tanks, water troughs, concrete block	7	7	--	
Corps Line, Inc. (1972)	Parade equipment, men's and women's band uniforms	22	2	20	
Danville Machine Company (1973)	Screw machine products, custom machine products	7	6	1	
Danville Manufacturing Company, Inc. (1982)	Handcrafted caskets	12	10	2	
Deerfield Plastics Company, Inc. (1978)	Polyethylene film	36	33	3	
The Elements Pottery (1972)	Handcrafted pottery, hand-rolled beeswax candles	6	4	2	

(contd.)

Firm (Establishment date)	Product	Employment			Labor Unions
		Total	Male	Female	
Genesco, Inc. (1946)	Ladies' shoes, men's shoes	125	20	105	
Greenleaf Plant Foods (1953)	Fertilizer mixing	12	10	2	
Jackson of Danville (1946)	Upholstered chairs and sofas, tables	146	109	37	
LSI Certified Brakes, Division of Lear Siegler (1969)	Friction brake lining disc pads	350	230	120	Steelworkers*
North American Philips Lighting Corporation (1952)	Glass bulbs, tubing	300	255	45	Flint Glass Workers*
Palm Beach Company (1937)	Men's suits	624	34	590	Clothing and Textile Workers*
Pioneer Vocational/ Industrial Service, Inc. (1969)	Foam packaging, wood pallets, industrial subassemblies	50	25	25	
Rexnord, Inc., Material Handling Division (1973)	Roller conveyors, conveyor systems	415	--	--	
Royal Crown Bottling Company (1938)	Soft drinks	41	38	3	
Sellers Engineering Company (1947)	Boilers, commercial gas-fired water heaters, deaerating equipment	N/A	--	--	
Swiss Ice Company, Inc. (1971)	Ice	6	5	1	

<u>Firm (Establishment date)</u>	<u>Product</u>	<u>Employment</u>			<u>Labor Unions</u>
		<u>Total</u>	<u>Male</u>	<u>Female</u>	
Whirlpool Corporation (1970)	Trash compactors, ice makers for refrigerators, motors and components	550	400	150	

* See Labor Organizations below.

Source: Kentucky Department of Economic Development, Division of Research and Planning.

Manufacturing Firm Expansions

ATR Wire & Cable Company Inc., is expanding its facilities. The project, when completed in 1984, is expected to double the plant's output and add 200 employees.

Whirlpool Corporation announced plans for a \$3 million expansion project which will add 200 to 250 employees to its work force. When the project is completed in 1984, the firm will begin manufacturing vacuum cleaner components.

LABOR ORGANIZATIONS IN MANUFACTURING FIRMS

<u>Union</u>	<u>Representing workers at:</u>
Amalgamated Clothing and Textile Workers Union, AFL-CIO	Palm Beach Company
American Flint Glass Workers Union, AFL-CIO	North American Philips Lighting Corporation
United Steelworkers of America, AFL-CIO	LSI Certified Brakes, Division of Lear Siegler

DISTRIBUTION CENTERS

<u>Firm (Establishment date)</u>	<u>Employment</u>
American Greetings Corporation (1965)	750
Thom McAn Shoe Company, Inc. (1981)	150

Source: Danville-Boyle County Chamber of Commerce.

INDUSTRIAL SERVICES

<u>Types of Services</u>	<u>Location</u>	<u>Mileage from Danville</u>
Custom Plastics Producers	Nicholasville, Kentucky	23
	Springfield, Kentucky	27
Electric Motor Repair	Lebanon, Kentucky	31
	Lexington, Kentucky	35
Grinding, Precision & Tool	Richmond, Kentucky	36
Heat Treating Facilities	Lexington, Kentucky	35
	Richmond, Kentucky	36
Industrial Equipment & Supplies	Lexington, Kentucky	35
	Frankfort, Kentucky	44
Industrial Gases	Lexington, Kentucky	35
	Richmond, Kentucky	36
Industrial Waste Removal	Lexington, Kentucky	35
	Frankfort, Kentucky	44
Machine Shops, Tool & Die	Danville, Kentucky	-
Metal Finishers	Lexington, Kentucky	35
	Richmond, Kentucky	36
Metal Service Centers	Lexington, Kentucky	35
Millwrights	Nicholasville, Kentucky	23
	Lexington, Kentucky	35

Sources: Kentucky Department of Economic Development, Kentucky Directory of Selected Industrial Services, 1983. Kentucky Department of Economic Development, Division of Research and Planning.

ESTIMATED MALE LABOR SUPPLY
DANVILLE LABOR MARKET AREA

Area	Current			Not in Labor Force	Future Becoming 18 years of age 1983 thru 1987
	Total	Unemployed	Under- employed		
Labor Market Area*	8,830	3,064	2,266	3,500	5,635
Boyle	1,108	546	562	0	1,220
Casey	989	353	325	311	702
Garrard	1,190	229	193	768	419
Lincoln	2,225	561	368	1,296	926
Marion	1,356	572	337	447	994
Mercer	1,154	421	353	380	801
Washington	808	382	128	298	573

*Additional workers may be drawn from other nearby counties.

Note: Unemployed - persons unemployed and actively seeking work;
Underemployed - persons employed but working only 14 to 26 weeks per year;
Not in Labor Force - represents the number of persons who would enter the labor force if suitable employment were available (based on the assumption that persons in Kentucky would like to participate in the labor force in the same proportion that they do nationally).

Sources: Kentucky Cabinet for Human Resources, Kentucky Labor Supply Estimates by Area Development District and County, 1981. Kentucky Department of Economic Development, Future Labor Supply Becoming 18 Years of Age, 1983 thru 1987.

ESTIMATED FEMALE LABOR SUPPLY
DANVILLE LABOR MARKET AREA

Area	Current			Not in Labor Force	Future
	Total	Unemployed	Under- employed		Becoming 18 years of age 1983 thru 1987
Labor Market					
Area*	4,722	2,035	2,093	594	5,360
Boyle	1,000	454	546	0	1,148
Casey	526	171	256	99	682
Garrard	588	192	205	191	451
Lincoln	1,016	467	290	259	807
Marion	583	239	299	45	946
Mercer	700	351	349	0	840
Washington	309	161	148	0	486

*Additional workers may be drawn from other nearby counties.

Note: Unemployed - persons unemployed and actively seeking work;
Underemployed - persons employed but working only 14 to 26 weeks per year;
Not in Labor Force - represents the number of persons who would enter the labor force if suitable employment were available (based on the assumption that persons in Kentucky would like to participate in the labor force in the same proportion that they do nationally).

Sources: Kentucky Cabinet for Human Resources, Kentucky Labor Supply Estimates by Area Development District and County, 1981. Kentucky Department of Economic Development, Future Labor Supply Becoming 18 Years of Age, 1983 thru 1987.

AVERAGE WEEKLY WAGES BY INDUSTRY,
BY PLACE OF WORK, 1982

	<u>Boyle County</u>	<u>Casey County</u>	<u>Garrard County</u>	<u>Lincoln County</u>
All Industries	\$258.08	\$185.09	\$196.21	\$213.85
Mining & Quarrying	301.60	*	*	*
Contract Construction	274.28	220.34	203.23	209.84
Manufacturing	310.46	155.36	217.50	196.77
Transportation, Communications & Public Utilities	366.80	365.24	297.84	331.54
Wholesale & Retail Trade	196.57	147.23	137.76	153.58
Finance, Insurance & Real Estate	261.56	243.20	244.49	228.72
Services	217.60	142.71	176.54	180.54
State/Local Government	270.86	245.00	205.49	253.85
Other	189.46	*	*	120.37
	<u>Marion County</u>	<u>Mercer County</u>	<u>Washington County</u>	
All Industries	\$203.35	\$238.10	\$200.50	
Mining & Quarrying	*	*	*	
Contract Construction	260.33	261.97	322.71	
Manufacturing	244.32	300.85	208.58	
Transportation, Communications & Public Utilities	235.98	366.24	198.58	
Wholesale & Retail Trade	159.92	155.11	154.34	
Finance, Insurance & Real Estate	243.19	251.54	271.01	
Services	158.30	162.09	140.14	
State/Local Government	228.89	246.98	215.24	
Other	143.65	147.06	124.81	

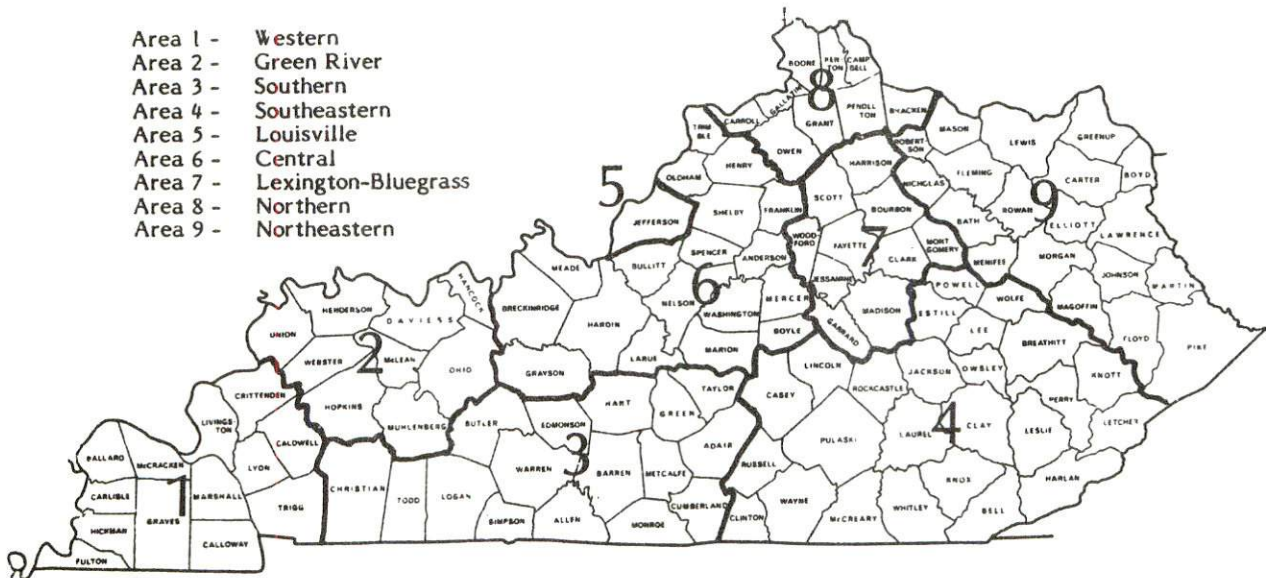
*Not disclosed.

Note: Excludes domestic workers, railway workers, certain nonprofit corporations, majority of federal government workers, and self-employed workers.

Source: Kentucky Cabinet for Human Resources, Average Weekly Wages of Workers Covered by Kentucky Unemployment Insurance Law, 1982.

Occupational wage rates for specific industries are usually not available to most government agencies, and wage data furnished to state employment agencies by individual industrial employers are protected from disclosure by federal law. The most reliable up-to-date wage information can be obtained by direct contact with local employers.

Associated Industries of Kentucky, a voluntary organization of Kentucky businesses, regularly collects occupational wage rates and fringe benefits data from participating member firms. Data are compiled for over 127 clearly defined office, production, and service occupations. Tabulations are published for nine geographical areas of Kentucky, as shown on the map below. It should be noted that the data may be weighted by the preponderance of firms in the larger cities and may be somewhat higher than the rates paid in the smaller communities. Data from these tabulations are available, upon request, from the Kentucky Department of Economic Development, Frankfort, Kentucky 40601.



Associated Industries of Kentucky Area Wage Surveys

PER CAPITA PERSONAL INCOME

<u>Area</u>	<u>1977</u>	<u>1981</u>	<u>Percent Change</u>
Boyle County	\$ 5,702	\$ 8,736	53.2
Labor Market Area Range	\$ 3,121-5,702	\$ 4,839-8,736	N/A
Kentucky	5,797	8,416	45.2
U. S.	6,984	10,495	50.3

Source: U. S. Bureau of Economic Analysis, Kentucky Economic Information System, May 1983.

TRANSPORTATION

Rail

Line serving **Danville** - Southern Railway System

Services - Main line; eight westbound, 24 southbound, and seven northbound freights make daily stops; 10 freights traveling in all directions make daily stops for crew change only; switching facilities; team track space for 18 cars; siding space for 15 cars; piggyback facilities

For details on routing, schedules, rates, and services, contact:

District Sales Manager
Norfolk Southern Corporation
701 South Broadway
Lexington, Kentucky 40508
(606) 259-1352

Highways

U.S. Highways 127 and 150 are "AAA" rated (80,000-pound gross load limit) highways serving Danville. U.S. 127 north provides Danville with four-lane access to the Blue Grass Parkway, 25 miles to the north. The Blue Grass Parkway is a four-lane toll road which interconnects with Interstate 65 to the west and provides direct access eastward to Lexington where Interstates 64 and 75 intersect.

The U.S. 127 Bypass, which bypasses the city of Danville on the west and south, interconnects with U.S. 150, a direct access route to Interstate 75, 38 miles southeast of Danville. The Bypass serves as an extension of U.S. 127 which continues south to the multi-lane Cumberland Parkway, another access route to Interstate 65.

Danville is also served by Kentucky Routes 33, 34 and 52, all "AA" rated highways with 62,000-pound gross load limits.

Truck Service

<u>Company</u>	<u>Home Office</u>
ANR Freight System, Inc.*	One Woodward Avenue Detroit, Michigan 48226
Bestway Express, Inc. (T)*	520 Lester Avenue Nashville, Tennessee 37210
Buske Lines, Inc.* (Truck load only)	P.O. Box 349, 123 West Tyler Street Litchfield, Illinois 62056
Commercial Lovelace Motor Freight, Inc.**	3400 Refugee Road Columbus, Ohio 43227
F.M.S. Transportation** (Truck load only)	2564 Harley Drive St. Louis, Missouri 63043
Helms Express**	Irwin, Pennsylvania 15642
Interstate System**	110 Ionia Avenue, N.W. Grand Rapids, Michigan 49503
Lawrenceburg Transfer, Inc. (T)**	P.O. Box 220, Highway 127 Lawrenceburg, Kentucky 40342
The Mason and Dixon Lines, Inc.**	P.O. Box 969 Kingsport, Tennessee 37662
McLean Trucking Company*	P.O. Box 213 Winston-Salem, North Carolina 27102
Mercury Motor Express, Inc.**	2511 North Grady Avenue Tampa, Florida 33607
Middlewest Freightways, Inc.**	6810 Prescott Avenue St. Louis, Missouri 63147
The O.K. Trucking Company**	3000 East Crescentville Road Cincinnati, Ohio 45241
Overnite Transportation Company*	P.O. Box 1216, 1000 Semmes Avenue Richmond, Virginia 23209
P.I.E. (Pacific Intermountain Express)**	25 North Via Monte Walnut Creek, California 94598
Renner's Express, Inc.*	P.O. Box 882, 1350 South West Street Indianapolis, Indiana 46206
Roadway Express, Inc.**	1077 Gorge Boulevard Akron, Ohio 44310
Russell Transfer, Inc.**	5259 Aviation Drive, N.W. Roanoke, Virginia 24012
Ryder Truck Lines, Inc.**	2050 Kings Road, P.O. Box 2408 Jacksonville, Florida 32203

(contd.)

<u>Company</u>	<u>Home Office</u>
J. Fred Smith Trucking Company (T)**	112 Nichols Street Danville, Kentucky 40422
Smith's Transfer Corporation (T)*	P.O. Box 1000 Staunton, Virginia 24401
United Trucking Service, Inc.**	8505 West Warren Dearborn, Michigan 48126

(T) Local terminal

* Interstate service only.

** Interstate and intrastate service.

Source: American Motor Carrier Directory, Spring 1983.

<u>Other Freight Services</u>	<u>Nearest Office or Shipping Center</u>
Emery	Lexington, 35 miles northeast
Federal Express	Lexington, 35 miles northeast
Purolater Courier Corporation	Lexington, 35 miles northeast
United Parcel Service	Danville

HIGHWAY MILES AND TRUCK TRANSIT TIME IN DAYS FROM
DANVILLE, KENTUCKY, TO SELECTED MARKET CENTERS

City	Highway Miles	Delivery	City	Highway Miles	Delivery
		Time TL			Time TL
Atlanta, Ga.	347	1	Los Angeles, Ca.	2,193	4
Baltimore, Md.	588	1	Louisville, Ky.	85	1
Birmingham, Ala.	391	1	Nashville, Tenn.	195	1
Chicago, Ill.	377	1	New Orleans, La.	712	2
Cincinnati, Ohio	130	1	New York, N. Y.	750	2
Cleveland, Ohio	364	1	Pittsburgh, Pa.	390	1
Detroit, Mich.	384	1	St. Louis, Mo.	348	1
Knoxville, Tenn.	154	1			

Note: Mileage computations are via the best interstate or primary highways, not necessarily the most direct route of travel.

Sources: Rand McNally Road Atlas, 1979. Official Kentucky Mileage Map, 1980.
Delivery time - Lawrenceburg Transfer, Inc., P.O. Box 220, Lawrenceburg, Kentucky 40342.

Air

Local

Location: Goodall Field, Danville-Boyle County Airport*
4 miles south of Danville
Runways: Two paved
Length: 4,000 feet and 2,500 feet
Traffic
Control: Wind sock, instrument approach
Lighting: Rotating beacon, sundown to sunrise
Services: 100 octane, jet-A; major and minor A & P repairs;
charter; hangar; tie-down; flight instruction;
aircraft rental

Air Freight
Service: Chartered air freight service must be arranged

Nearest Scheduled Commercial Airline Service

Location: Blue Grass Field
5 miles west of Lexington, Kentucky;
36 miles north of Danville
Runways: 2 paved
Length: 6,500 feet; 3,500 feet
Traffic
Control: Tower
Lighting: Approach lighting system, beacon, runways and
obstructions lighted, VASI
Services: Delta, Frontier, Piedmont, USAir, Comair, Tennessee
Airways; fuel - 100LL and jet-A; hangars, tie-
downs; major A & P repairs, major Avionics repairs;
APU, charter, flight instruction, oxygen, plane
rentals, survival equipment; taxi, limousine,
car rentals, courtesy car; weather information;
restaurant, snack bar
Air Freight
Service: Air freight terminal

Bus - Southern Greyhound, Inc.; Trailway Bus Lines

Taxi - One cab company with 24-hour, radio-dispatched service

Rental Services - Car, trailer and truck rentals

Water

Danville is located approximately 44 miles south of the Kentucky River at Frankfort, where a six-foot navigation channel is maintained.

* Tentative improvement plans being made for Goodall Field include lengthening the 4,000-foot runway to 5,000 feet, widening the runway from 75 feet to 100 feet, expanding the size of the apron, and adding VASI and REILS lighting. Construction is expected to cost \$580,000 and work is to begin in early 1984.

POWER AND FUEL

Electricity

Company serving **Danville** and portions of **Boyle County** - Kentucky Utilities Company
Source of power - Kentucky Utilities Company
Total generating capacity - 2,639,100 KW*
For industrial rates contact:

Industrial Development Department
Kentucky Utilities Company
One Quality Street
Lexington, Kentucky 40507
(606) 255-1461

Company serving major portion of **Boyle County** - Inter-County Rural Electric Cooperative Corporation
Source of power - East Kentucky Power Cooperative
Total generating capacity - 1,304,000 KW**
For industrial rates contact:

Industrial Development Division
East Kentucky Power Cooperative
P.O. Box 707
Winchester, Kentucky 40391
(606) 744-4812

-
- * A new generating unit is under construction in Carroll County. Due to be completed in 1984, the unit will have a generating capacity of 511,000 KW.
- ** East Kentucky Power Cooperative's total generating capacity will be increased when a new 600,000 KW coal-fired generation plant is completed in southeast Clark County in 1992.

Natural Gas

Company serving **Danville** - Western Kentucky Gas Company
Source of supply - Tennessee Gas Pipeline Company
Size of transmission mains - 24 and 30 inches (supplier); 4 and 6 inches
(distributor)
Distribution mains - 2 to 8 inches
Distribution pressure - 4 ounces to 45 psi
Btu content - 1,000 per cubic foot
Specific gravity - 0.6
For rates and supplies contact:

District Manager
Western Kentucky Gas Company
P.O. Box 640
Danville, Kentucky 40422
(606) 236-5371

Other Fuels (Within 15 miles)

Propane

Bright's Bottled Gas Company, Inc.
813 Maple Avenue
Danville, Kentucky 40422

Jack Campbell Bottle Gas
Route 3
Danville, Kentucky 40422

Bright's Bottle Gas Company
(bulk plant)
100 West Brook Street
Burgin, Kentucky 40310

Southern States Boyle Cooperative,
Inc.
Route 4, Lebanon Road
Danville, Kentucky 40422

Buckeye Gas Products Company
(bulk plant)
Moreland, Kentucky 40454

Fuel oils

Distillate fuel oil -

Acton-Massey Oil Company
Box 178
Danville, Kentucky 40422

Little Jack & Doug Gulf Oil
Products
Highway 150 Bypass, Box 202
Danville, Kentucky 40422

Ashland Petroleum Company
Danville Pike, Route 2
Harrodsburg, Kentucky 40330

Scheuer Oil Company
Stanford Road, Box 687
Danville, Kentucky 40422

Ensslin Enterprises, Inc.
David Avenue
Danville, Kentucky 40422

Texaco, Inc.
Hope Street, Box 719
Danville, Kentucky 40422

Residual fuel oil - Arrangements must be made with the refinery.

Low sulphur content coal - Available in Kentucky.

WATER AND SEWERAGE

Public Water Supply

Company serving **Danville** - Danville City Water and Wastewater System*
P.O. Box 670
Danville, Kentucky 40422
(606) 236-1990

Source - Herrington Lake

Treatment plant capacity - 5,000,000 gallons per day

Average daily consumption - 3,500,000 gallons

Peak daily consumption - 4,300,000 gallons

Type treatment - Coagulation, sedimentation, filtration, chlorination
and fluoridation

Storage capacity - 3,200,000 gallons including clear well

Size lines - 4 to 12 inches

Average pressure - 75 psi

Average temperature - 55 degrees F.

(contd.)

* A \$400,000 renovation project is scheduled to be completed by Spring of 1984. The project will consist of upgrading equipment, including a pump, a filter and piping, and adding new chemical feed equipment.

MONTHLY WATER RATES FOR RESIDENTIAL
AND COMMERCIAL CONSUMERS

First	300 cubic feet	\$ 4.05 (minimum)
Next	1,500 cubic feet	1.01 per 100 cubic feet
Next	2,000 cubic feet	.81 per 100 cubic feet
All over	3,800 cubic feet	.79 per 100 cubic feet

MONTHLY WATER RATES FOR WHOLESALE
AND INDUSTRIAL CONSUMERS

First	20,000 cubic feet	\$200.00 (minimum)
Next	80,000 cubic feet	.80 per 100 cubic feet
Next	100,000 cubic feet	.62 per 100 cubic feet
Next	300,000 cubic feet	.52 per 100 cubic feet
All over	500,000 cubic feet	.50 per 100 cubic feet

Customers outside the city limits are assessed a 30 percent surcharge on water rates.

Tap-on charge:

3/4-inch to 5/8-inch -	\$200 (residential and commercial)
1-inch -	235 (residential and commercial)
Split service-	300 (residential and commercial)
2-inch -	325 (plus time, material, meter, and sales tax)
4-inch -	500 (plus time, material, meter, and sales tax)
6-inch -	600 (plus time, material, meter, and sales tax)
8-inch -	750 (plus time, material, meter, and sales tax)
Industrial fee-	300
Fee for sprinkler system in town-	600

Raw Water

Surface water sources - Salt River, Dix River, Herrington Lake

Average discharge - Dix River near Danville, 468 cfs (40 years, USGS)

Expected ground water yield - 5 to 50 gpm in eastern and north central portions of the county; 5 gpm or less in remainder of the county

Sewerage

Company serving **Danville** - Danville City Water and Wastewater System
P.O. Box 670
Danville, Kentucky 40422
(606) 236-1990

Design capacity - 2,700,000 gallons per day

Average daily flow - 2,000,000 gallons

Type of treatment - Primary and secondary

Treatment process - Aeration, sedimentation, chlorination and land spreading

Treated effluent discharged into - Clarks Run

Size of sanitary mains - 8 inches to 36 inches

Size of storm mains - Varies

Monthly rates - Residential and commercial customers - 40 percent of monthly water bill; wholesale and industrial customers - 50 percent of monthly water bill. Large industrial plants may arrange special contracts with sewerage company.

Tap-on charge: \$50

CLIMATE

Temperature

Normal (30-year record)	55.20 degrees
Average annual 1982	55.50 degrees
Record highest, September 1954 (38-year record)	103.00 degrees
Record lowest, January 1963 (38-year record)	-21.00 degrees
Normal heating degree days (30-year record) (Heating degree day totals are the sums of negative departures of average daily temperatures from 65 degrees F.)	4,729

Precipitation

Normal (30-year record)	44.49 inches
Mean annual snowfall (39-year record)	16.40 inches
Total precipitation 1982	38.76 inches
Mean number days precipitation (.01 inch or more) (38-year record)	131
Mean number days thunderstorms (38-year record)	46

Prevailing Winds (17-year record)

South

Relative Humidity

1 a.m.	77 percent (18-year record)
7 a.m.	81 percent (19-year record)
1 p.m.	60 percent (19-year record)
7 p.m.	64 percent (19-year record)

Source: U.S. Department of Commerce, Environmental Science Services Administration, Climatological Data, 1982. Station of record: Lexington, Kentucky.

LOCAL GOVERNMENT

City

Structure - Mayor - 4-year term; 4 commissioners - 2-year terms; city manager

Budget 1982-83- General Fund \$1,860,923

Water and Sewer Fund 1,697,747

Fees and licenses - Occupational license fees - one percent on wages of individuals and one percent on net profits of businesses with a minimum of \$25; auto sticker - \$10 for each car or truck

County

Structure - County Judge/Executive - 4-year term; 6 magistrates - 4-year terms

Budget 1982-83 - General Fund \$742,955; Road Fund \$551,300

Fees and licenses - Occupational license fee - 0.25 of one percent on wages and net profits

Assessed Value of Property, 1982*

<u>Classes of Property</u>	<u>Danville</u>	<u>Boyle County</u>
Real Estate	\$164,159,595	\$337,650,679
Tangibles	17,794,129	92,808,164

Property Taxes

All property in Kentucky is assessed at 100 percent of fair cash value.

Land and buildings are taxed by the state and may be taxed by local jurisdictions. The state rate is \$0.224 per \$100 of assessed valuation.

Manufacturing machinery, raw materials inventories, pollution control equipment, and goods in the process of manufacture are not subject to local taxation. The state rate is \$0.15 per \$100.

Other tangible personal property owned by manufacturers (automobiles, trucks, finished goods, office furniture, office equipment) is taxed by the state at \$0.45 per \$100 and may be taxed by local jurisdictions.

Intangible personal property located in Kentucky (money in hand, shares of stock, notes, bonds, accounts receivable, and other credits) is taxed by the state at \$0.25 per \$100, and is not subject to local taxation.

Property stored in public warehouses in a transit status is not subject to local taxation. The state rate is only \$0.015 per \$100.

Private leaseholds in industrial facilities owned by cities or counties and financed by industrial revenue bonds are subject to a state tax of \$0.015 per \$100 of value (essentially the lessee's equity, adjusted for appreciation or depreciation). Local taxation is not permitted.

* Excludes Homestead Exemptions.

Combined State and Local Rates Per \$100 Valuation, 1982*
(100% assessment)

Kentucky school districts levy property taxes on property located within individual school district boundaries. Two types of school districts are operated in Kentucky: 1) independent school districts which usually operate within a single city and often do not cover the entire city; and 2) common school districts which operate in portions of counties not covered by independent districts and cover the entire county when there is no independent district. School district boundaries are mutually exclusive and do not cross.

	Site Inside City of Danville and within the Danville <u>School District</u>	Site Inside City of Danville and within the Boyle County <u>School District</u>	Site Inside Unincorporated Boyle County
1. Land and buildings	\$0.942	\$0.842	0.631
2. Mfg. machinery, raw materials, goods in process, pollution control equipment	0.150	0.150	0.150
3. Finished goods, office equipment, vehicles, other tangibles	1.260	1.144	0.933
4. Intangibles (accounts rec., notes, bonds, etc.)	0.250	0.250	0.250
5. Property stored in public warehouses in a transit status	0.015	0.015	0.015
6. Leaseholds in industrial revenue bond financed plants	0.015	0.015	0.015

Planning and Zoning

Joint agency - Danville-Boyle County Planning and Zoning Commission**

Zoning enforced - All areas

Subdivision regulations enforced - All areas

Local codes enforced - Building code enforced in all areas, housing code enforced in Danville only

Mandatory state codes enforced - Kentucky Plumbing Code, National Electric Code, Kentucky Boiler Regulations and Standards, Kentucky Building Code (modeled after BOCA code)

* Kentucky Department of Economic Development

** Includes Boyle County and participating cities of Danville, Junction City and Perryville.

Safety

<u>Police</u>	Danville	Boyle County
Total staff	30	7
Radio-patrol cars	9	6

Fire

Insurance Services Office, Public Protection Classification	6	7/9*
Full-time staff	22	
Volunteers	20	110

Rescue Service

Danville-Boyle County Rescue Squad:

Number of volunteers - 27

Equipment - Three ambulances, one crash truck, and one boat

Personnel training - Standard and advanced first aid, cardiopulmonary resuscitation, emergency medical technician training

Refuse Collection and Disposal

	Danville	Boyle County
Type service	Municipal	Private
Fee charged:		
residential	None	By contract
business	None	By contract
industrial	N/A	By contract
Collection frequency:		
residential	Weekly	By contract
business	Daily	By contract
industrial	N/A	By contract
Trash pickup	Monthly	By contract
Disposal method	Landfill	Landfill

* The Boyle County Fire Protection District consists of six fire departments with fire stations located at Danville, Forkland, Junction City, Mitchellsburg, Parksville and Perryville. The Class 7 rating applies to areas within the district limits, within 5 miles accessible road distance of a district fire station, and within 1,000 feet of a fire hydrant. The Class 9 rating applies to areas within the district limits and within five road miles of a district fire station, but more than 1,000 feet from a fire hydrant.

EDUCATION

Public Schools

	Danville	Boyle County
Total Enrollment (Spring 1983)	2,193	2,535*
Elementary	1,042	1,290
Junior High	--	469
Middle School	536	--
High School	615	776
Student-Teacher Ratio	20-1	16-1**
Elementary	21-1	19-1
Junior High	--	18-1
Middle School	22-1	--
High School	17-1	12-1
Accreditation	Southern Association of Colleges and Schools	
Percent High School Graduates to College (1982)	57.1	43.2
Expenditures Per Pupil (1981-82)	\$ 1,560.35	\$ 1,532.69
Bonded Indebtedness (June 30, 1983)	\$3,180,000	\$2,270,000

Special Schools

Kentucky School for the Deaf

Total Enrollment	408
Elementary	212
High School	196
Student-Teacher Ratio	5-1

The Kentucky School for the Deaf is a state-supported institution for the hearing impaired. The school's instructional program offers both elementary and secondary education, as well as vocational training and career preparation programs.

* Includes students at the Danville Youth Development Center.

** Includes staff of the Danville Youth Development Center.

Area Colleges and Universities

<u>Name</u>	<u>Location (Miles distant)</u>	<u>Enrollment (Fall, 1982)</u>	<u>Highest Degree Conferred</u>
Centre College	Danville	718	Baccalaureate*
Asbury College	Wilmore (24)	1,179	Baccalaureate
St. Catharine College	Springfield (30)	227	Associate
Berea College	Berea (34)	1,599	Baccalaureate
Lexington Technical Institute	Lexington (35)	2,462	Associate
Transylvania University	Lexington (35)	701	Baccalaureate**
University of Kentucky	Lexington (35)	22,829	Doctorate, M.D. D.M.D., J.D.
Eastern Kentucky University	Richmond (36)	13,041	Masters, Specialist***

Centre College

Centre College of Kentucky, located in Danville, was founded in 1819. It is an independent, coeducational institution with a tradition of academic excellence in the liberal arts and sciences. The college is a member of the Southern Association of Colleges and Schools, the Association of American Colleges, the Southern University Conference, the Southern College University Union, The College Entrance Examination Board and the College Scholarship Service. A chapter of the National Council of Phi Beta Kappa was established here in 1970. Both Bachelor of Arts and Bachelor of Science degrees are offered at Centre.*

Kentucky Junior College of Business

Kentucky Junior College of Business is accredited as a junior college of business by the Accrediting Commission of the Association of Independent Colleges and Schools, Washington, D. C. The college confers the degree of Associate in Science, and also awards diploma courses and special courses. The college's Fall 1982 student enrollment was 415.

* Centre College also offers a 3-2 engineering program (three years at Centre, two years in engineering school) in cooperation with the University of Kentucky in Lexington, Kentucky; Vanderbilt University in Nashville, Tennessee; Washington University in St. Louis, Missouri; Columbia University in New York, New York; Georgia Institute of Technology in Atlanta, Georgia; and Texas A&M University in Galveston, Texas.

** Courses in a masters degree program are taught on the Transylvania campus by faculty members of Xavier University of Cincinnati. The degree is issued by Xavier University.

*** Joint doctoral degree programs are offered in cooperation with the University of Kentucky, Lexington. The degrees are issued by the University of Kentucky.

Vocational Schools

Both the state vocational-technical schools and the area vocational education centers are operated by the Kentucky Department of Education. The state vocational-technical schools enroll persons full time who are at least 16 years of age and not in school. These students attend classes for six hours each day. The area vocational education centers are designed to accommodate high school students who are at least 15 years of age. These students attend vocational school for three hours each day. The state vocational-technical schools and the area education centers offer evening courses to enable working adults to upgrade current job skills.

Nearest State School

Location	Central Kentucky State Vocational- Technical School
Miles Distant	Lexington 35
Curriculum	Business and Office Accounting Clerical Secretarial Consumer and Home Economics Commercial Foods Health and Personal Services Occupations Cosmetology Dental Assistant Nurse's Aide Practical Nursing Surgical Technician Industrial Education Air Conditioning Auto Body Repair Auto Mechanics Carpentry Drafting Electronics Graphic Arts Industrial Electricity Machine Shop Masonry Welding Learning Resource Center

Nearest Area Education Centers

Location	Harrodsburg Area Vocational Education Center
Miles Distant	Harrodsburg 9
Curriculum	Business and Office Clerical Secretarial Health and Personal Services Occupations Health Services Industrial Education Auto Mechanics Carpentry Electricity Welding

Location	Garrard County Area Vocational Education Center
Miles Distant	Lancaster 12
Curriculum	Health and Personal Services Occupations Health Services Industrial Education Auto Mechanics Carpentry Drafting Electricity Welding

Arrangements can be made to provide training in the specific production skills required by an industrial plant. Instruction may be conducted either in the vocational school or in the industrial plant, depending upon the desired arrangement and the availability of special equipment.

Lexington Technical Institute

The Lexington Technical Institute is a unit of Kentucky's community college system operating on the University of Kentucky campus. The Institute awards the Associate in Applied Science degree in the following programs: Accounting Technology; Architectural Technology; Civil Engineering Technology; Data Processing Technology; Dental Hygiene; Dental Laboratory Technology; Electrical Engineering Technology (Electronics Option); Management Technology (Business and Transportation options); Mechanical Engineering Technology; Nuclear Medicine Technology; Nursing; Radiologic Technology; Real Estate; Respiratory Therapy; Secretarial Administration; Transportation.

HEALTH

Local Medical Personnel

Physicians - 44
Dentists - 12

Hospitals

<u>General Hospital</u>	<u>Location</u>	<u>Beds</u>
Ephraim McDowell Memorial Hospital*	Danville	120

General hospital facilities - Four operating rooms, one cystoscopy room, recovery room, obstetrical service, X-ray, laboratories, intensive care unit, coronary care unit, pharmacy, emergency service, nuclear medicine services, respiratory therapy, physical therapy, ultrasound facility

Medical staff - 40 physicians on active staff including general surgeons and specialists, 74 registered nurses, 75 licensed practical nurses and graduate licensed practical nurses, 28 nurse's aides, 8 X-ray technicians, 9 laboratory technicians, 3 pharmacists

Other Medical Facilities

Southern Blue Grass Comprehensive Care Center

Ambulance Service

Name - Danville-Boyle County Rescue Squad
Staff - 27 volunteers
Service - 24-hour service to Danville and northeastern portions of Boyle County
Equipment - Three ambulances, one crash truck, one boat

Public Health

Facility - Boyle County Health Department
Staff - Administrator, three registered nurses including one nurse practitioner, one health environmentalist, one environmental technician, three clerks, one dentist (part time)

* Approval has been granted for the installation of CT scanning equipment at the hospital in 1983.

OTHER LOCAL FACILITIES

Communications

Telephone- Services-	South Central Bell Telephone Company Standard
Telegraph- Services-	Western Union Counter service available Toll-free number, 1-800-325-5100
Postal- Class- Mail received- Mail dispatched-	U. S. Post Office First Twice daily Once daily
Newspapers- Daily and circulation- Weekly and circulation- Other papers received from-	The Advocate Messenger (Monday-Friday) - 12,141 The Kentucky Advocate (Sunday) - 12,902 Louisville and Lexington, Kentucky
Radio- Major stations received from-	WHIR-AM, WMGE-FM, WKLO-AM Louisville and Lexington, Kentucky; Cincinnati, Ohio
Television- Cable service Reception from-	Louisville and Lexington, Kentucky, without cable
Kentucky Educational Television-	Lexington-Richmond transmitter - Channel 46

Library Services

Public library - Danville-Boyle County Public Library

Size collection - 41,093 volumes

Circulation, 1981-82 - 150,000

Services - Bookmobile furnishes all library services to outlying city and county areas with 76 county-wide bookmobile stops, current issues of four newspapers and 120 magazines available, framed prints, genealogy collection plus genealogy on microfilm, filmstrips and records, audiovisual equipment loaned, interlibrary loan, children's story hours, teen room, noon-hour programs for adults, weekly children's movies, community meeting room, services for senior citizens, nursing homes and the handicapped

College library - The Grace Doherty Library, Centre College

Size collection - 135,000 volumes

Special collections - A wide variety of periodicals, government documents, pamphlets, recordings, music scores, microfilm, microcards, audiovisual materials, Centre College archives, historical documents on Centre College

Services - More than 600 periodicals and more than a dozen newspapers received regularly; music listening facilities and photo duplication service provided to students; video transfer services available

Religious Institutions

Denominations-

AME

Apostolic

Baptist

Catholic

Christian

Church of Christ

Church of God

Church of Jesus Christ of

Latter Day Saints

Community Service

Episcopal

Interdenominational

Jehovah's Witnesses

Lutheran

Nazarene

Pentecostal

Presbyterian

Salvation Army

United Methodist

Nearest Synagogues-
Congregations-

Lexington, 35 miles northeast

Adath Israel (reform)

Ohavey Zion (traditional)

Financial Institutions

<u>Banks</u>	<u>Assets</u>	<u>Deposits</u>	<u>Statement Date</u>
Bank of Danville	\$36,541,047.00	\$33,018,575.00	12/31/82
Citizens National Bank	36,068,129.00	32,051,765.00	12/31/82
Farmers National Bank	57,739,000.00	51,468,000.00	12/31/82
<u>Savings and Loan Associations</u>	<u>Assets</u>	<u>Savings Accounts</u>	<u>Statement Date</u>
Central Kentucky Federal Savings and Loan Association	\$30,806,618.12	\$28,792,758.49	12/31/82
Great Financial Federal (Main Office in Louisville)	762,275,846.00	641,643,433.00	12/31/82

Hotels and Motels

Total number - 2
Total rooms - 145

Clubs and Organizations

Al-Anon	Demolay
Alcoholics Anonymous	Eastern Star
Ambassadors	Ephraim McDowell Hospital
American Association of University Women	Auxiliary
American Cancer Society	Fair Board
American Legion	Fish and Game Club
Bar Association	4-H
Beta Sigma Phi	Future Farmers of America
Board of Realtors	Future Homemakers of America
Boy Scouts	Garden Clubs
Boyle Community Association	Girl Scouts
Boyle County Homemakers	Good O' Boys
Brotherhood	Heart Fund
Business and Professional Women's Club	Historical Society
Central Kentucky Wildlife Refuge	Home Builders Association
Centre Circle	Home Builders Auxiliary
Chamber of Commerce	Industrial Council
Danville Business Association	International Order of Odd Fellows
Danville Community Theatre	Jaycees
Daughters of the American Revolution	Jolly Believers
Democratic Party	Junior Achievement
Democratic Women's Club	Kentucky Club
	Kiwanis
	Knights of Columbus
	Knights of Pythias

(contd.)

Ladies Domestic Economy Club
Lions
Little League Baseball and Football
Masonic Lodge
Medical Association
Ministerial Association
National Association for the
 Advancement of Colored People
Newcomers
Optimist
Over-Eaters Anonymous
Phythian Sisters
Rainbow Girls
Rebekah
Religious Education Association
 of Danville

Republican Party
Retired and Veteran Railroad
 Club
Retired Teachers
Right to Life
Rotary
Salvation Army
Shriners
Sunshine Club
United Way
Wilderness Road Amateur Radio Club
Wilderness Trace Art League
Wilderness Trail Riding Club
Women's Club

RECREATION

Local

Danville and **Boyle County** offer a wide variety of recreational opportunities. Public recreation facilities include three large parks, five mini-parks, nine playgrounds, two tennis courts, three baseball diamonds, four softball fields, four football fields and four soccer fields. The **Danville-Boyle County Recreational Department** offers year-round programs for all ages. The city sponsors exercise, karate, boxing, indoor soccer, and arts and crafts programs. A supervised playground program is available during the summer months, and sports enthusiasts may participate in leagues for basketball, football, baseball, softball, fast-pitch softball, soccer and motocross. The state YMCA also offers a variety of year-round activities. Construction of an outdoor ice-skating rink is scheduled for 1983.

Private recreational facilities include a country club, a golf course, two swimming pools, two movie theatres, a bowling facility, a roller-skating rink and a racquetball court.

A community theatre is also active in Danville, and presents several productions each year.

Constitution Square State Shrine in Danville is an authentic reproduction of Kentucky's first courthouse square. The first post office west of the Alleghenies still stands in the square alongside replicas of the jail, courthouse and meeting house. The recently completed Governor's Circle Monument features a landscaped ring of plaques, each with a likeness of a Kentucky governor. Newly renovated buildings house historical displays, Kentucky crafts and a Centre College exhibit.

The **McDowell House** is the home in which pioneer surgeon Dr. Ephraim McDowell lived and worked. Now a registered national historic landmark, the house is located adjacent to Constitution Square and is open to the public year-round. The Apothecary Shop next door displays authentic 18th and 19th century pharmaceuticals.

The **Centre College** campus is the site of a variety of intercollegiate sports activities throughout the fall, winter and spring months. The college's track is available for public use. The **Regional Arts Center**, also located on the Centre campus, offers a variety of cultural and entertainment activities to the community, including art exhibits, concerts and theatrical performances by national touring companies.

Dining and outdoor theatre is available at **Pioneer Playhouse**. An 18th century village has been constructed on the theatre grounds, depicting a typical street scene at the time Kentucky's constitution was adopted.

Perryville Battlefield State Shrine, located in Boyle County, 13 miles west of Danville, is the site of the largest Civil War battle in Kentucky. A museum, a picnic area, and a playground are located on the grounds.

Crawford Springs Park, a small county park two miles from Perryville, offers a nature area, picnic and barbecue equipment, and wildflower and tree identification.

Central Kentucky Wildlife Refuge, a 500-acre, non-profit refuge, is located in western Boyle County. Open seven days per week, it offers hiking trails, and a wildflower walk is scheduled each April.

Area (Within 25 miles)

Many other recreational attractions are available within a 25-mile radius of Danville.

Isaac Shelby State Shrine, 5 miles south of Danville, is the burial site of Kentucky's first governor and one of the Commonwealth's foremost statesmen.

Herrington Lake, 8 miles northeast of Danville, is a 1,860-acre lake offering fishing, boating and swimming. Camping facilities are available near Danville.

Old Fort Harrod State Park, 9 miles north of Danville, is a 28-acre park in Harrodsburg that features a full-scale reproduction of the original Fort Harrod. The park also contains the log cabin where Abraham Lincoln's parents were wed, the Mansion Museum which houses mementos associated with the great periods of Kentucky history, a pioneer cemetery, and a federal monument dedicated to pioneers. The "Legend of Daniel Boone", an outdoor drama which brings to life on stage the men and women who made Kentucky, is performed in the park amphitheatre during the summer months.

Many other points of historical interest are located in Harrodsburg, Kentucky's oldest city.

Pleasant Hill (better known as **Shakertown**) is located approximately 12 miles north of Danville, and features a restored Shaker village of 27 buildings and numerous displays of Shaker skills, crafts, and handmade articles. Dining, lodging and conference facilities are available in the village buildings.

William Whitley House State Shrine, 21 miles southeast of Danville near Stanford, is the first brick house west of the Allegheny Mountains, built in 1787-94. Whitley laid out Kentucky's first race track here and started U.S. counterclockwise racing. The facility provides picnic and playground areas in a ten-acre park.

COMMUNITY IMPROVEMENTS

Recent

A new \$2,600,000 multi-handicapped facility at the Kentucky School for the Deaf was completed in late 1981.

Both the Danville Independent and the Boyle County school systems are installing computer facilities and developing computer instruction programs.

The Governor's Circle Monument at Constitution Square State Shrine was completed recently.

Under Way

ATR Wire and Cable Company, Inc., is expanding its Danville plant. The project is to be completed in 1984, and will add 200 employees. The plant's output capacity is expected to double.

Renovation projects at Danville's water treatment plant, totalling \$400,000, are scheduled for completion in 1984. The projects include upgrading the plant's chemical feed equipment, piping, and pumping and filtration systems.

Planned

Present airport expansion plans at the Danville-Boyle County Airport include lengthening the 4,000-foot runway to 5,000 feet, widening the runway to 100 feet, expanding the apron, and adding VASI and REIL lights. Construction cost is estimated at \$580,000, with the work to begin in 1984.

CT scanning equipment is scheduled to be installed at Ephraim McDowell Memorial Hospital in 1983.

Construction of an outdoor skating rink is scheduled for 1983.

Whirlpool Corporation has announced plans for a \$3,000,000 expansion project which is scheduled to be completed in 1984. The expansion will add approximately 200 to 250 employees and will involve the manufacture of an additional product - vacuum cleaner components.

The Ad-Mart Company has announced plans to locate a facility in Danville. The company will manufacture advertising supplies and plastic lettering and will employ between 35 and 60 employees. The plant is scheduled to begin operations in 1984.



Kentucky Department of Economic Development
Capital Plaza Tower
Franklin, Kentucky 40601 • Phone (502) 564-4270