

1981

Industrial Resources: Fayette County - Lexington

Kentucky Library Research Collections
Western Kentucky University, spcol@wku.edu

Follow this and additional works at: https://digitalcommons.wku.edu/fayette_cty

 Part of the [Business Administration, Management, and Operations Commons](#), [Growth and Development Commons](#), and the [Infrastructure Commons](#)

Recommended Citation

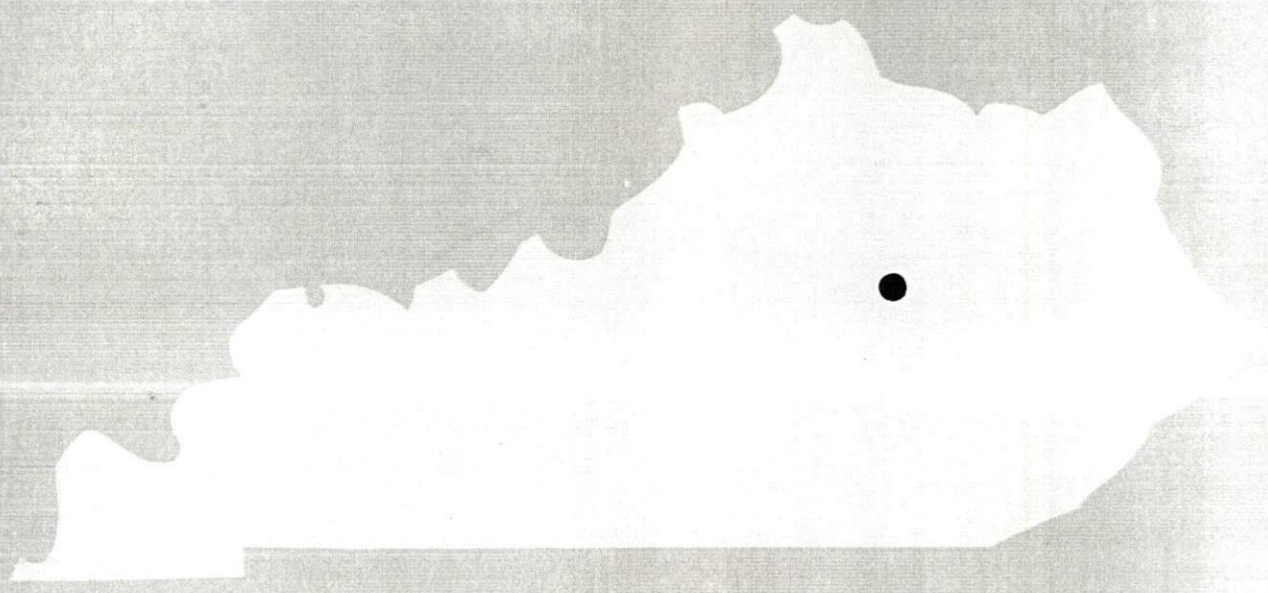
Kentucky Library Research Collections, "Industrial Resources: Fayette County - Lexington" (1981). *Fayette County*. Paper 19.
https://digitalcommons.wku.edu/fayette_cty/19

This Report is brought to you for free and open access by TopSCHOLAR®. It has been accepted for inclusion in Fayette County by an authorized administrator of TopSCHOLAR®. For more information, please contact topscholar@wku.edu.

239

Fayette County

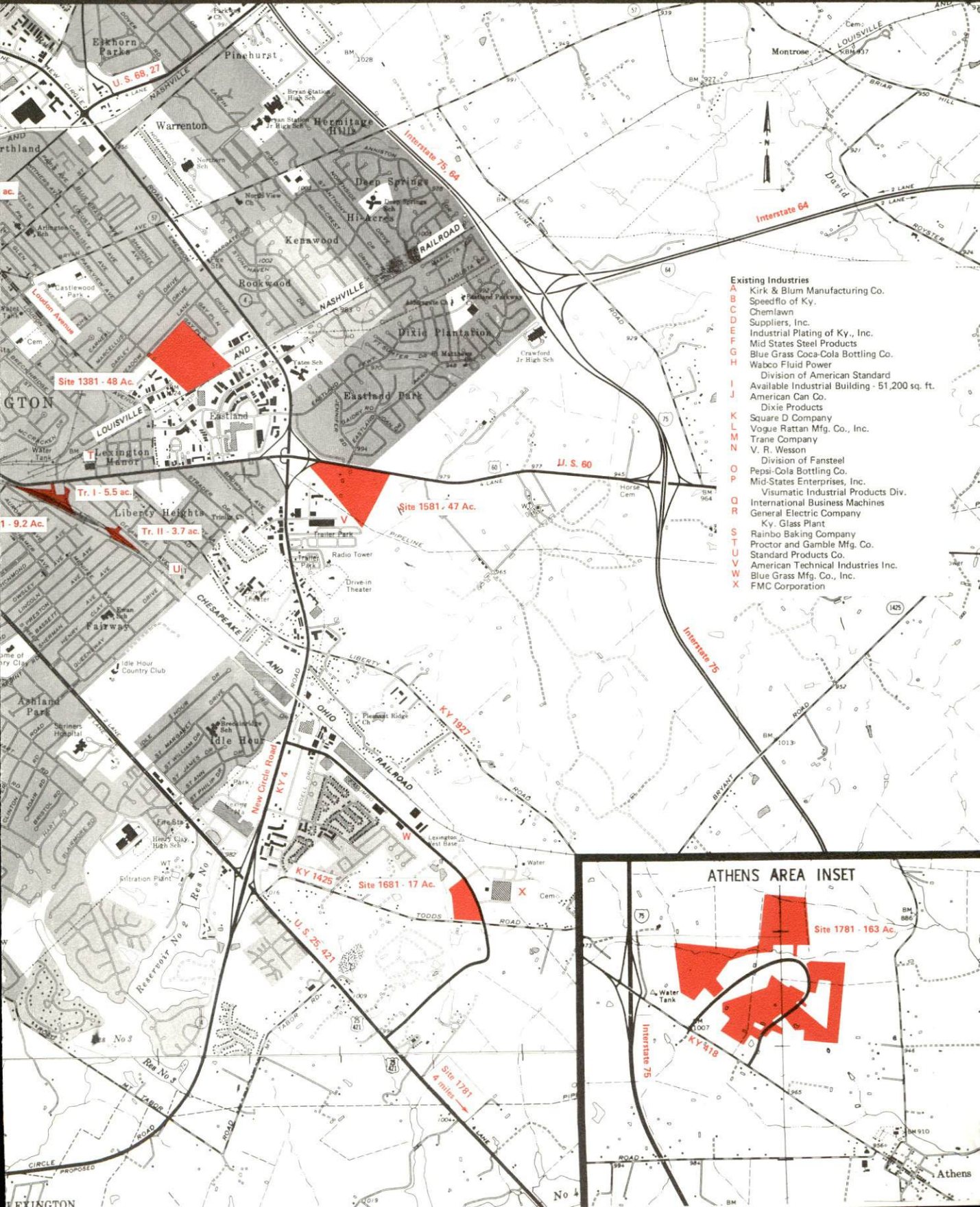
A comprehensive
report on
**Lexington-Fayette
Urban County, Ky.**



KENTUCKY & CO.
The state that's run like a business.

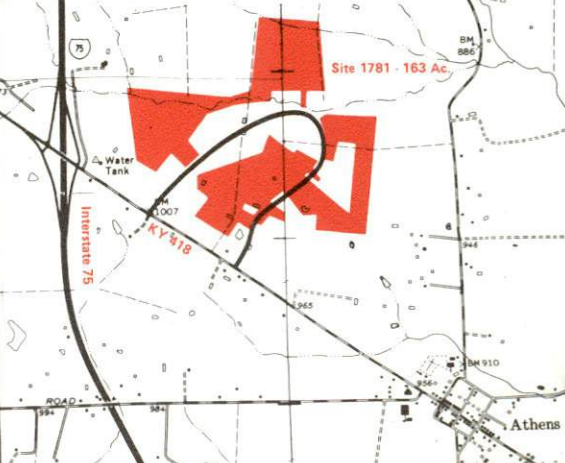
LEXINGTON, KENTUCKY --- Index to Industrial Sites --- 1982

For detailed data on individual sites contact the Department of Economic Development, Office of Business Development, Industrial Development Division, Capital Plaza Tower, Frankfort, Kentucky 40601 (502-564-7140).



- Existing Industries**
- A** Kirk & Blum Manufacturing Co.
 - B** Speedflo of Ky.
 - C** Chemlawn
 - D** Suppliers, Inc.
 - E** Industrial Plating of Ky., Inc.
 - F** Mid States Steel Products
 - G** Blue Grass Coca-Cola Bottling Co.
 - H** Wabco Fluid Power
 - I** Division of American Standard
 - J** Available Industrial Building - 51,200 sq. ft.
 - K** American Can Co.
 - L** Dixie Products
 - M** Square D Company
 - N** Vogue Rattan Mfg. Co., Inc.
 - O** Trane Company
 - P** V. R. Wesson
 - Q** Division of Fansteel
 - R** Pepsi-Cola Bottling Co.
 - S** Mid-States Enterprises, Inc.
 - T** Visumatic Industrial Products Div.
 - U** International Business Machines
 - V** General Electric Company
 - W** Ky. Glass Plant
 - X** Rainbo Baking Company
 - Y** Proctor and Gamble Mfg. Co.
 - Z** Standard Products Co.
 - AA** American Technical Industries Inc.
 - AB** Blue Grass Mfg. Co., Inc.
 - AC** FMC Corporation

ATHENS AREA INSET





Site 281 - 87 Ac.

Site 181 - 10 Ac.

Site 481
7 Ac.

Site 381 - 6 Ac.

Site 681 - 86 Ac.

Site 991 - 2.5 Ac.

Site 1081 - 7.5 Ac.

Site 781 - 70 Ac.

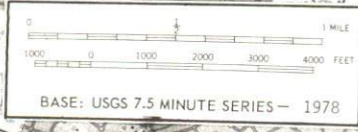
Site 581 - 90 Ac.

Site 1181 - 11 Ac.

Site 1281 - 14 Ac.

Site 881 - 68 Ac.

Site 14



A COMPREHENSIVE REPORT ON
LEXINGTON-FAYETTE URBAN COUNTY, KENTUCKY

Prepared by
The Kentucky Department of Commerce
Division of Research and Planning
in cooperation with
The Greater Lexington Area Chamber of Commerce

1981

Program supervisor - Brenda Roberts; research - Andrew Dennis; clerical - Annette Mitchell, Linda Fint; graphics - Frank Ferrante, Tony Cecconi, Jimmy Thompson; cartography - Site Evaluation Section, Division of New Industries. Cost of printing paid from state funds.

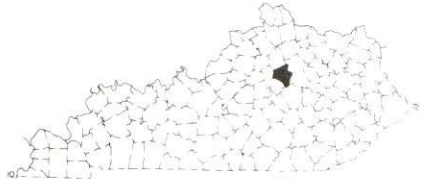
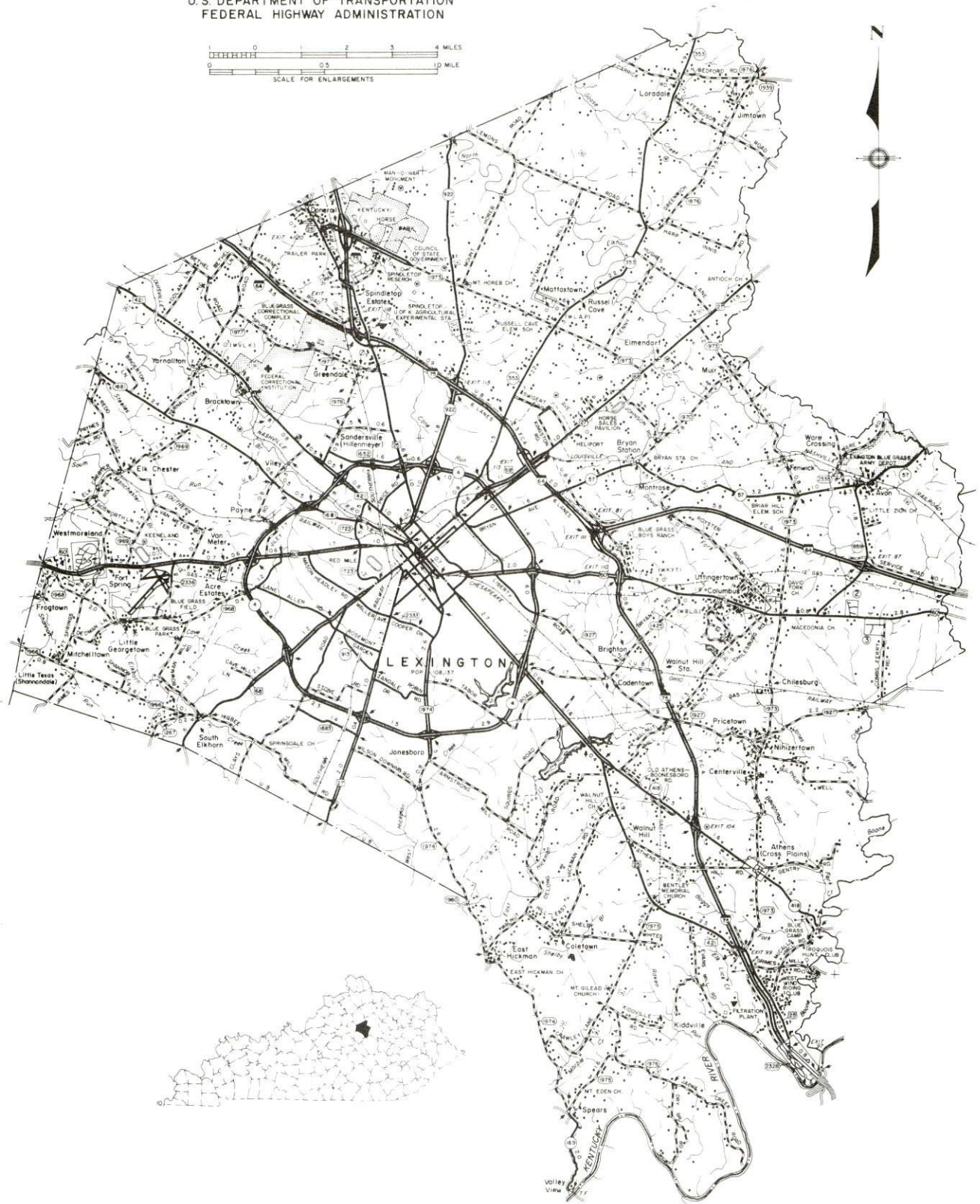
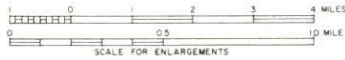
TABLE OF CONTENTS

<u>Chapter</u>	<u>Page</u>
INDUSTRIAL SITES	i
LEXINGTON-FAYETTE URBAN COUNTY - A RESOURCE PROFILE	1
THE LABOR MARKET AREA	3
Population	3
Labor Force Characteristics of Residents, 1980	3
Estimated Male Labor Supply	4
Estimated Female Labor Supply	4
Major Lexington-Fayette Urban County Manufacturing Firms, Their Products and Employment	5
Labor Organizations in Manufacturing Firms	8
Industrial Services	9
Average Weekly Wages by Industry, by Place of Work, 1980	10
Per Capita Personal Income	12
TRANSPORTATION	13
Rail	13
Major Highways	14
Truck Service	15
Air	18
Bus	18
Taxi	18
Rental Services	18
Water	18
POWER AND FUEL	19
Electricity	19
Natural Gas	20
Other Fuels	20
WATER AND SEWERAGE	21
Public Water Supply	21
Raw Water	22
Sewerage	23
CLIMATE	24

<u>Chapter</u>	<u>Page</u>
LOCAL GOVERNMENT	25
Lexington-Fayette Urban County	25
Assessed Value of Property, 1980	25
Property Taxes	26
Utilities Gross Receipts Tax for Schools	27
Planning and Zoning	27
Safety	27
Police	27
Fire	27
Rescue Service	27
Refuse Collection and Disposal	28
EDUCATION	29
Public Schools	29
Nonpublic Schools	30
Special Schools	30
Area Colleges and Universities	31
Vocational Schools	33
HEALTH	35
Local Medical Personnel	35
Hospitals	35
Other Health Care Facilities	35
Ambulance Service	36
Public Health	36
OTHER LOCAL FACILITIES	37
Communications	37
Library Services	38
Religious Institutions	39
Financial Institutions	40
Hotels and Motels	41
Clubs and Organizations	41
RECREATION	42

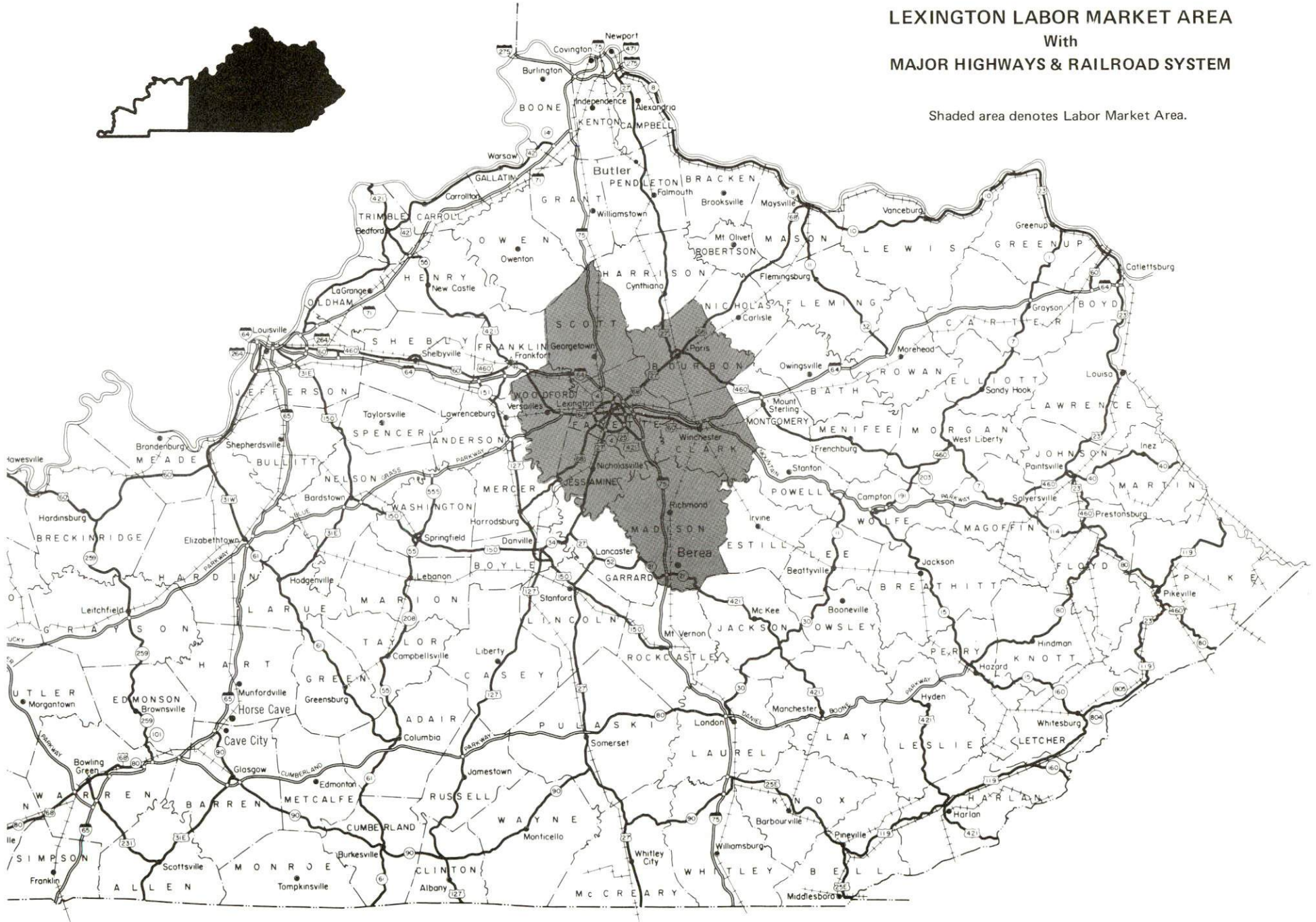
1980 EDITION
GENERAL HIGHWAY MAP
FAYETTE COUNTY
KENTUCKY

PREPARED BY THE
KENTUCKY DEPARTMENT OF TRANSPORTATION
OFFICE OF TRANSPORTATION PLANNING
DIVISION OF FACILITIES PLANNING
IN COOPERATION WITH THE
U.S. DEPARTMENT OF TRANSPORTATION
FEDERAL HIGHWAY ADMINISTRATION



LEXINGTON LABOR MARKET AREA With MAJOR HIGHWAYS & RAILROAD SYSTEM

Shaded area denotes Labor Market Area.



LEXINGTON-FAYETTE URBAN COUNTY - A RESOURCE PROFILE

Lexington-Fayette Urban County, home of the University of Kentucky and Transylvania University, is Kentucky's second largest metropolitan area with a 1980 population of 204,165. The governments of the City of Lexington and the County of Fayette merged in 1974 to form Kentucky's only Urban County government. Located in the heart of the Bluegrass Region, Lexington is only 72 miles east of Louisville, Kentucky; 78 miles south of Cincinnati, Ohio; 210 miles northeast of Nashville, Tennessee; and 335 miles east of St. Louis, Missouri.

The Economic Framework

Total employment in Fayette County in 1980 averaged 105,392 with 103,125 employed in nonagricultural jobs. Manufacturing provided 18,496 jobs, wholesale and retail trade provided 25,578 jobs, service occupations provided 18,930 jobs, and government provided 18,311 jobs. Manufacturing employment is greatest in the nonelectrical machinery, electrical machinery, fabricated metals, and food and kindred products industries.

Per capita income in the county in 1979 was \$8,856, or \$1,804 above the state average and \$219 above the national average. Between 1975 and 1979, per capita income increased by 51 percent.

Lexington is the hub of a labor market area which includes Fayette and its six surrounding counties. Area employment in 1980 averaged 190,330 with 181,508 employed in nonagricultural jobs. Manufacturing provided 33,459 jobs, wholesale and retail trade provided 35,874 jobs, service occupations provided 25,062 jobs, and government provided 25,663 jobs.

Resources for Growth

1. There is a current estimated labor supply of 13,628 men and 13,597 women available for industrial jobs in the labor market area. In addition, 14,340 young men and 13,569 young women will become 18 years of age before 1986 and potentially available for work.

2. Local transportation capability is excellent. Both the Louisville and Nashville Railroad and the Southern Railway System provide Lexington with main line service. Interstate 64, a major east-west route, and Interstate 75, a major north-south highway, intersect in Fayette County north of Lexington. In addition, two of Kentucky's multilane parkways are within 25 miles of the city. Twenty-six of the thirty common carriers that serve Fayette County maintain terminals in Lexington.

3. Electric power is provided by the Kentucky Utilities Company, the Blue Grass Rural Electric Cooperative Corporation and the Clark Rural Electric Cooperative Corporation. Natural gas service is provided by Columbia Gas of Kentucky, Inc. There are two distributors of propane and six distributors of distillate fuel oil located in the county.

4. Education is an important growth asset for Lexington. The Fayette County public schools are accredited by the Southern Association of Colleges and Schools. There are fifteen private and parochial schools plus four schools which provide educational opportunities to students with special needs.

The Central Kentucky State Vocational-Technical School, located in Lexington, offers training in 19 different courses. The Northside and the Southside Area Vocational Education Centers offer training in a combined total of 17 different courses.

The University of Kentucky is the state's primary public institution of higher learning. U K has a graduate school and 17 academic colleges. The university also operates community colleges in 13 Kentucky cities.

Transylvania University, the first college or university west of the Allegheny Mountains, offers a Bachelor of Arts degree in 28 majors through 24 departments.

THE LABOR MARKET AREA

The Lexington Labor Market Area includes Fayette County and the adjoining Kentucky counties of Bourbon, Clark, Jessamine, Madison, Scott, and Woodford.

Area	POPULATION		Percent Nonwhite
	1980	1970	
Labor Market Area	371,488	309,431	N/A
Lexington-Fayette			
Urban County	204,165	174,323	14.5
Bourbon County	19,405	18,476	10.2
Clark County	28,322	24,090	6.5
Jessamine County	26,653	17,430	4.6
Madison County	53,352	42,730	6.8
Scott County	21,813	17,948	7.3
Woodford County	17,778	14,434	8.0

Note: The 1980 counts of population by race are provisional.

Source: U.S. Department of Commerce, Bureau of the Census, March 1981, as published in Special Report No. 8, State Data Center, Urban Studies Center, University of Louisville, March 1981.

LABOR FORCE CHARACTERISTICS OF RESIDENTS, 1980

	Fayette County	Labor Market Area
Civilian Labor Force	110,062	200,385
Employment	105,392	190,330
Agricultural	2,267	8,822
Nonagricultural	103,125	181,508
Unemployment	4,670	10,055
Rate of Unemployment (%)	4.2	5.0

Source: Kentucky Department for Human Resources, Kentucky Labor Force Estimates, Annual Averages, 1980.

ESTIMATED MALE LABOR SUPPLY
LEXINGTON LABOR MARKET AREA

Area	Current			Future	
	Total	Not in Labor Force	Unemployed	Under-employed	Reaching 18 years of age before 1986
Labor Market Area*	13,628	2,201	3,507	7,920	14,340
Lexington-Fayette Urban	7,159	1,217	1,762	4,180	8,091
Bourbon	610	132	208	270	893
Clark	935	177	368	390	1,219
Jessamine	970	155	265	550	808
Madison	2,769	276	593	1,900	1,747
Scott	714	132	172	410	839
Woodford	471	112	139	220	743

*Additional workers may be drawn from other nearby counties.

Note: Not in Labor Force - persons who would enter the labor force if suitable employment were available; Unemployed - persons unemployed and actively seeking work; Underemployed - persons employed but working only 14 to 26 weeks per year.

Sources: Kentucky Department for Human Resources, Kentucky Labor Supply Estimates by County, 1979. Kentucky Department of Commerce, Future Labor Supply before 1986.

ESTIMATED FEMALE LABOR SUPPLY
LEXINGTON LABOR MARKET AREA

Area	Current			Future	
	Total	Not in Labor Force	Unemployed	Under-employed	Reaching 18 years of age before 1986
Labor Market Area*	13,597	980	3,297	9,320	13,569
Lexington-Fayette Urban	7,135	554	1,671	4,910	7,563
Bourbon	643	60	193	390	840
Clark	1,094	83	351	660	1,144
Jessamine	982	58	254	670	819
Madison	2,503	119	544	1,840	1,636
Scott	722	55	157	510	818
Woodford	518	51	127	340	749

*Additional workers may be drawn from other nearby counties.

Note: Not in Labor Force - persons who would enter the labor force if suitable employment were available; Unemployed - persons unemployed and actively seeking work; Underemployed - persons employed but working only 14 to 26 weeks per year.

Sources: Kentucky Department for Human Resources, Kentucky Labor Supply Estimates by County, 1979. Kentucky Department of Commerce, Future Labor Supply before 1986.

MAJOR LEXINGTON-FAYETTE URBAN COUNTY MANUFACTURING FIRMS,
THEIR PRODUCTS AND EMPLOYMENT*

<u>Firm (Establishment date)</u>	<u>Product</u>	<u>Employment</u>			<u>Labor Unions</u>
		<u>Total</u>	<u>Male</u>	<u>Female</u>	
American Can Company- Dixie Products (1958)	Paper cups, containers	427	250	177	Teamsters**
American Standard, Inc., Wabco Fluid Power Division (1964)	Pneumatic valves, hydraulic and pneu- matic cylinders	472	327	145	Teamsters**
American Technical Industries, Inc. (1962)	Artificial Christmas wreaths and trees, hair brush curlers, machine parts	207	153	54	Electrical Workers (IUE)**
Blue Grass Coca-Cola Bottling Company (1904)	Soft drinks	108	99	9	
Blue Grass Manufacturing Company, Inc. (1962)	Mechanical sub- assemblies	100	15	85	
Brown & Williamson Tobacco Corporation (1946)	Tobacco redrying	250	190	60	Bakery, Con- fectionery and Tobacco Workers**
Fansteel, Inc., V. R. Wesson Division (1958)	Carbide cutting tools, blades, mining tools	225	145	80	

(Contd.)

<u>Firm (Establishment date)</u>	<u>Product</u>	<u>Employment</u>			<u>Labor Unions</u>
		<u>Total</u>	<u>Male</u>	<u>Female</u>	
FMC Corporation, Hydraulic Crane Division (1973)	Hydraulic trucks, self- propelled cranes, rough terrain tracked vehicles	750	---	---	
General Electric Company, Kentucky Glass Plant (1947)	Incandescent lamp glass bulbs	140	100	40	Electrical Workers (IBEW)**
General Electric Company, Lexington Lamp Plant (1947)	Sealed beam automotive headlamps	530	170	360	Electrical Workers (IBEW)**
International Business Machines (1956)	Electric type- writers, electronic typewriters, ribbons, tapes, supplies	7,032	6,063	969	
Lexington Herald-Leader Company (1870)	Newspapers	469	311	158	Newspaper Guild; Printing and Graphic Communications; Typographical**
Medusa Aggregates Company (1978)	Crushed lime- stone ag- gregate, asphalt paving	337	288	49	Operating Engineers; Steelworkers**

(Contd.)

<u>Firm (Establishment date)</u>	<u>Product</u>	<u>Employment</u>			<u>Labor Unions</u>
		<u>Total</u>	<u>Male</u>	<u>Female</u>	
Mid-States Enterprises, Inc., Visumatic Industrial Products Division (1962)	Electronic mechanical sub-assembly, screw feeding equipment, automated assembly equipment	160	25	135	
Opportunity Workshop of Lexington (1961)	Typewriter parts, electronic mechanical sub-assembly, wood parts machined	130	80	50	
Pepsi-Cola Bottling Company (1941)	Soft drinks	136	130	6	Teamsters**
Procter and Gamble Manufacturing Company, Lexington Food Product Plant (1957)	Peanut butter	195	161	34	
Rainbo Baking Company (1959)	Bread, rolls	204	176	28	Bakery, Con- fectionery, and Tobacco Workers; Teamsters**
R. J. Reynolds Tobacco Company (1917)	Tobacco processing	237	151	86	
Square D Company (1957)	Electrical equipment	1,732	1,157	575	Electrical Workers (IBEW); Machinists**
Standard Products Company (1952)	Motor vehicle weatherstrip	230	125	105	Auto Workers**
Trane Company (1963)	Air condition- ing equipment, heating equip- ment, air handling equipment	908	722	186	Auto Workers**

(Contd.)

<u>Firm (Establishment date)</u>	<u>Product</u>	<u>Employment</u>			<u>Labor Unions</u>
		<u>Total</u>	<u>Male</u>	<u>Female</u>	
G. F. Vaughan Tobacco Company, Inc. (1963)	Tobacco steaming, redrying	200	150	50	Bakery, Confectionery, and Tobacco Workers**
Vogue Rattan Manufacturing Company, Inc. (1951)	Rattan furniture	119	79	40	Teamsters**

*Firms with 100 employees or more.

**See Labor Organizations below.

Source: Kentucky Department of Commerce, Division of Research and Planning.

LABOR ORGANIZATIONS IN MANUFACTURING FIRMS

<u>Union</u>	<u>Representing workers at:</u>
Bakery, Confectionery and Tobacco Workers' International Union, AFL-CIO	Brown & Williamson Tobacco Corporation Rainbo Baking Company G. F. Vaughan Tobacco Company, Inc.
International Association of Machinists and Aerospace Workers, AFL-CIO	Square D Company
International Brotherhood of Electrical Workers, AFL-CIO (IBEW)	General Electric Company, Kentucky Glass Plant General Electric Company, Lexington Lamp Plant Square D Company
International Brotherhood of Teamsters, Chauffeurs, Warehousemen and Helpers of America	American Can Company - Dixie Products American Standard, Inc., Wabco Fluid Power Division Borden, Inc. W. T. Congleton Company Industrial Plating of Kentucky, Inc. Kentucky Concrete Pipe Company, Inc. Pepsi-Cola Bottling Company Rainbo Baking Company Raytor Lexington Top Yield Industries, Inc. Vogue Rattan Manufacturing Company, Inc.
International Printing and Graphic Communications Union, AFL-CIO	Lexington Herald-Leader Company

Union

International Typographical Union,
AFL-CIO

International Union of Electrical,
Radio and Machine Workers,
AFL-CIO (IUE)

International Union of Operating
Engineers, AFL-CIO

International Union, United Auto-
mobile, Aerospace and Agricultural
Implement Workers of America

Laborer's International Union of
North America, AFL-CIO

Sheet Metal Workers' International
Association, AFL-CIO

The Newspaper Guild, AFL-CIO

United Steelworkers of America,
AFL-CIO

Representing workers at:

Byron-Page Printing Company, Inc.
The Keystone Printery, Inc.
Lexington Herald-Leader Company

American Technical Industries, Inc.

Medusa Aggregates Company

Standard Products Company
Trane Company

Featherlite Pre-Cast

Kirk and Blum Manufacturing Company
H. H. Thomas Sheet Metal Works
Lexington Herald-Leader Company

Medusa Aggregates Company

INDUSTRIAL SERVICES

<u>Types of Services</u>	<u>Location</u>	<u>Mileage from Lexington</u>
Tool & Die, Machine & Pattern Shops	Lexington	--
Metal Service Centers	Lexington	--
Heat Treating	Georgetown Richmond	16 25
Metal Finishers	Lexington	--
Electric Motor Repair	Lexington	--

Source: Kentucky Directory of Selected Industrial Services, 1979.

AVERAGE WEEKLY WAGES BY INDUSTRY,
BY PLACE OF WORK, 1980

	<u>Fayette County</u>	<u>Bourbon County</u>	<u>Clark County</u>	<u>Jessamine County</u>
All Industries	\$255.40	\$205.02	\$242.63	\$209.98
Mining & Quarrying	493.78	*	*	341.81
Contract Construction	306.91	272.28	260.96	260.49
Manufacturing	358.97	228.97	296.88	248.62
Transportation, Communications & Public Utilities	315.04	278.95	362.48	243.64
Wholesale & Retail Trade	180.07	175.30	154.22	169.23
Finance, Insurance & Real Estate	245.30	242.29	208.51	191.16
Services	221.00	135.07	154.41	166.88
State/Local Government	260.81	206.34	201.68	241.39
Other	217.99	199.97	142.97	191.18

	<u>Madison County</u>	<u>Scott County</u>	<u>Woodford County</u>
All Industries	\$206.64	\$226.25	\$238.84
Mining & Quarrying	*	*	0
Contract Construction	237.59	238.01	228.83
Manufacturing	260.33	277.88	286.81
Transportation, Communications & Public Utilities	248.09	373.99	338.10
Wholesale & Retail Trade	150.59	147.60	146.90
Finance, Insurance & Real Estate	200.68	210.71	190.71
Services	170.98	156.33	174.42
State/Local Government	233.28	207.66	226.32
Other	94.12	201.03	227.25

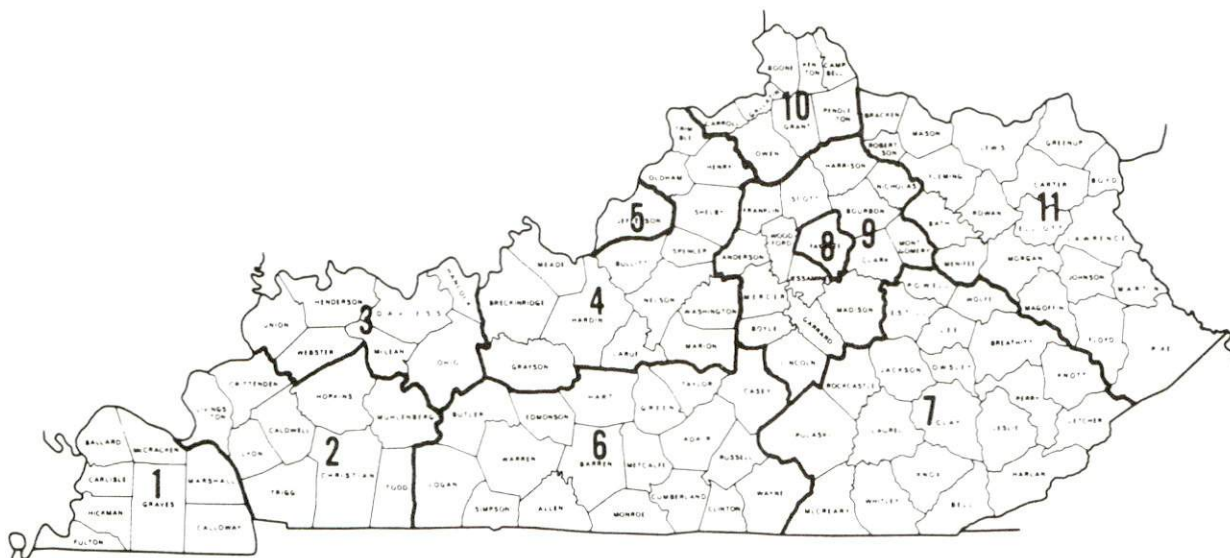
*Not disclosed.

Note: Excludes domestic workers, railway workers, certain nonprofit corporations, majority of federal government workers, and self-employed workers.

Source: Kentucky Department for Human Resources, Average Weekly Wages of Workers Covered by Kentucky Unemployment Insurance Law, 1980.

Occupational wage rates for specific industries are usually not available to most government agencies, and wage data furnished to state employment agencies by individual industrial employers is protected from disclosure by federal law. The most reliable up-to-date wage information can be obtained by direct contact with local employers.

Associated Industries of Kentucky, a voluntary organization of Kentucky businesses, regularly collects occupational wage rates and fringe benefits data from participating member firms. Data is compiled for over 127 clearly defined office, production, and service occupations. Tabulations are published for eleven regions of Kentucky, as shown on the map below. It should be noted that the data may be weighted by the preponderance of firms in the larger cities and may be somewhat higher than the rates paid in the smaller communities. Data from these tabulations are available, upon request, from the Kentucky Department of Commerce, Frankfort, Kentucky 40601.



Associated Industries of Kentucky Area Wage Surveys

PER CAPITA PERSONAL INCOME

<u>Area</u>	<u>1979</u>	<u>1975</u>	<u>Percent Change</u>
Fayette County	\$8,856	\$5,845	51.5
Labor Market Area Range	\$6,020 - 8,856	\$4,017 - 5,845	N/A
Kentucky	7,052	4,882	44.4
U.S.	8,637	5,861	47.4

Source: U.S. Department of Commerce, Bureau of Economic Analysis,
April 1981.

TRANSPORTATION

Rail

Line serving Lexington - Louisville & Nashville Railroad

Services - Main line; three northbound and three southbound freights make daily stops; switching facilities; team track space available for 10 cars; yards available for siding space; the nearest piggyback service is available in Frankfort, 28 miles northwest of Lexington. L & N provides piggyback service to Frankfort through the Louisville ramp with highway service substituted for rail between the two cities.

Line serving Lexington - Southern Railway System

Services - Main line; one northbound freight stops daily except Sunday, one southbound stops daily except Saturday; eight northbound and eight southbound through freights daily; switching facilities; team track space available for 35 cars; nearest piggyback facilities are in Danville, 35 miles southwest of Lexington.

For details on routing, schedules, rates, and services, contact:

Director of Industrial Development
Louisville and Nashville Railroad
P. O. Box 32290
Louisville, Kentucky 40232
(502) 587-5723

and/or

District Sales Manager
Southern Railway System
701 South Broadway
Lexington, Kentucky 40508
(606) 252-2242

Major Highways

Lexington is served by two interstate highways, two parkways and five U.S. highways.

Interstate 75, a major north-south route, serves Lexington with four interchanges along the north and east sides of the city. Interstate 64, a major east-west highway, serves the city with two interchanges four miles north of downtown Lexington. Access to the Blue Grass Parkway, a four-lane toll-road providing access to western Kentucky, is 10 miles west of Lexington via U.S. 60. Access to the Mountain Parkway, a multi-lane toll-road to southeastern Kentucky, is 22 miles east of Lexington via Interstate 64. Other "AAA" trucking highways serving Lexington are U.S. 25, U.S. 27, U.S. 60, U.S. 68, and U.S. 421. The primary and access roads serving Lexington are linked together by Kentucky Highway 4 (New Circle Road), a beltway encircling the city.

Improvements at the I-64 and I-75 interchange north of Lexington have been completed and U.S. 60 west of Lexington has been widened to six lanes to improve the traffic flow.

Truck Service

<u>Company</u>	<u>Home Office</u>
Bestway Express, Inc.*(T)	905 Visco Drive Nashville, Tennessee 37210
Branch Motor Express Company*(T)	114 Fifth Avenue New York, New York 10011
Bronaugh Motor Express, Inc.**(T)	1025 Nandino Boulevard Lexington, Kentucky 40511
Claxon Truck Line, Inc.**	453 Versailles Road P. O. Box 678 Frankfort, Kentucky 40602
Cleveland, Columbus and Cincinnati Highway, Inc.*(T) (operated in Lexington through Brock Cartage, Inc.)	3091 Broadway Cleveland, Ohio 44115
Commercial Lovelace Motor Freight*(T)	3400 Refugee Road Columbus, Ohio 43227
Commercial Motor Freight, Inc., of Indiana*(T) (operated in Lexington through Fister Cartage, Inc.)	2141 South High School Road Indianapolis, Indiana 46241
Consolidated Freightways Corporation of Delaware**(T)	175 Linfield Drive Menlo Park, California 94025
Cooper-Jarrett, Inc.*(T)	Hanover Plaza Morristown, New Jersey 07960
C W Transport, Inc.***(T)	610 High Street Wisconsin Rapids, Wisconsin 54494
Eagle Express Company*(T)	P. O. Box 12047 Lexington, Kentucky 40580
Eldridge Truck Line**(T)	P. O. Box 659 Somerset, Kentucky 42501
Epes Transport System, Inc.*(T)	P. O. Box 24038 Richmond, Virginia 23224
General Highway Express, Inc.*(T)	P. O. Box 727 Sidney, Ohio 45365
Hazard Express, Inc.***(T)	P. O. Box 746 Hazard, Kentucky 41701
Helms Express*(T)	P. O. Box 340 Irwin, Pennsylvania 15642
Interstate Motor Freight System*(T)	110 Ionia Northwest Grand Rapids, Michigan 49501

<u>Company</u>	<u>Home Office</u>
McDaniel Motor Express Inc.**(T)	P. O. Box 64 Lexington, Kentucky 40505
McLean Trucking Company*(T)	P. O. Box 213 Winston-Salem, North Carolina 27154
Mercury Motor Express, Inc.*(T)	2511 North Grady Avenue Tampa, Florida 33607
Middlewest Freightways, Inc.**(T)	6810 Prescott Avenue St. Louis, Missouri 63147
Oak's Truck Line**(T)	Irvine Road Beattyville, Kentucky 41311
Overnite Transportation Company**(T)	P. O. Box 1216 Richmond, Virginia 23209
Roadway Express, Inc.*(T)	1077 Gorge Boulevard Akron, Ohio 44309
Shepherd Truck Line, Inc.**(T)	P. O. Box 117 Irvine, Kentucky 40336
Smith's Transfer Corporation*(T)	P. O. Box 1000 Staunton, Virginia 24401
Stewart Truck Lines**	U.S. 25 Dry Ridge, Kentucky 41035
Transcon Lines*	P. O. Box 92220 Los Angeles, California 90009
United Trucking Service, Inc.**(T)	8505 West Warren Dearborn, Michigan 48126
Yellow Freight System, Inc.*	10990 Roe Avenue Overland Park, Kansas 66207

(T)Local terminal.

*Interstate only.

**Interstate and intrastate.

Other Freight ServicesNearest Shipping Center

Purolator Courier Corporation*	Lexington
United Parcel Service**	Lexington
Federal Express***	Lexington

Air freight service is available through numerous companies in Lexington.

HIGHWAY MILES AND TRUCK TRANSIT TIME IN DAYS FROM
LEXINGTON, KENTUCKY, TO SELECTED MARKET CENTERS

City	Highway Miles	Delivery		City	Highway Miles	Delivery	
		Time TL				Time TL	
Atlanta, Ga.	362	2		Los Angeles, Ca.	2,180	5-6	
Baltimore, Md.	541	3		Louisville, Ky.	72	1	
Birmingham, Ala.	398	2		Nashville, Tenn.	210	1	
Chicago, Ill.	352	2		New Orleans, La.	727	3	
Cincinnati, Ohio	78	1		New York, N. Y.	703	3	
Cleveland, Ohio	317	2		Pittsburgh, Pa.	343	2-3	
Detroit, Mich.	337	2		St. Louis, Mo.	335	2	
Knoxville, Tenn.	175	1					

Note: Mileage computations are via the best interstate or primary highways, not necessarily the most direct route of travel.

Sources: Rand McNally Road Atlas, 1979. Official Kentucky Mileage Map, 1979. Delivery time - Bronaugh Motor Express, Inc., 1025 Nandino Boulevard, Lexington, Kentucky 40511.

*For regular scheduled pickups or for occasional pickups, arrangements must be made with the Lexington office of Purolator Courier Corporation.

**For regular scheduled pickups or for occasional pickups, arrangements must be made with the Louisville office of United Parcel Service.

***For information on scheduling, rates, and services, contact the Federal Express shipping station in Lexington.

Air

Commercial Airline Service

Blue Grass Field*
Location: 4.5 miles west of Lexington
Runways: 2 paved
Length: 6,500 feet; 3,500 feet
Traffic
Control: Tower
Lighting: Approach lighting system, beacon,
runways and obstructions lighted,
VASI
Services: Delta, Frontier, Piedmont, and
USAir airlines; Tennessee Airways
commuter air carrier; fuel - 24-hour
service, 100, and jet fuel; repair
service - major A & E repairs,
Certified Avionics repair station;
National Weather Service; flight
instructions; charter service;
storage; taxi, limousine and car
rentals; restaurant
Air Freight
Service: Air freight terminal

Bus - Lextran (intracity), Greyhound Bus Lines

Taxi - 2 companies, 24-hour radio-dispatched service

Rental Services - Car, truck, limousine, bus, trailer, and camper
rentals; aircraft rental and charter service
available at Blue Grass Field

Water

The nearest navigable river is the Kentucky River. Lexington is 28 miles east of a point on the Kentucky River in Frankfort, Kentucky, where a six-foot navigation channel is maintained.

*Improvements to the General Aviation Area at Blue Grass Field are currently under way. The improvements include expanded facilities for the fixed base operator, increased ability to accommodate corporate aviation departments, and increased storage capacity for privately owned aircraft. The projects are targeted for completion in late 1983 or early 1984 at an approximate cost of \$3.5 million.

POWER AND FUEL

Electricity

Company serving Lexington and the major portion of Fayette County -
Kentucky Utilities Company
Source of power - Kentucky Utilities Company
Total generating capacity - 2,383,767 KW
For industrial rates contact:

Industrial Development Department
Kentucky Utilities Company
One Quality Street
Lexington, Kentucky 40507
(606) 255-1461

Companies serving parts of Fayette County - Blue Grass Rural Electric
Cooperative Corporation and Clark Rural Electric Cooperative
Corporation
Source of power - East Kentucky Power Cooperative
Total generating capacity - 1,318,010 KW
For industrial rates contact:

Industrial Development Division
East Kentucky Power Cooperative
P. O. Box 707
Winchester, Kentucky 40391
(606) 744-4812

and/or

Blue Grass RECC
U.S. 27 North
P. O. Drawer D
Nicholasville, Kentucky 40356
(606) 885-4191

and/or

Clark RECC
Route 15
P. O. Box 748
Winchester, Kentucky 40391
(606) 744-4251

Natural Gas

Company serving Lexington - Columbia Gas of Kentucky, Inc.
Source of supply - Columbia Gas Transmission Corporation
Size of transmission mains - 12 inches (supplier);
12, 10, 8, and 6 inches (distributor)
Distribution mains - 16, 12, 10, 8, 6, 4, and 2 inches
Distribution pressure - Low: 0.25 psi (ounces)
Intermediate: 2 to 10 psi
Medium: 10 to 60 psi
High: 60 to 250 psi
Btu content - 1,030 per cubic foot
Specific gravity - 0.59
For rates and supplies contact:

District Manager
Columbia Gas of Kentucky, Inc.
P. O. Box 241
Lexington, Kentucky 40584
(606) 255-3612

Other Fuels

Propane

Buckeye Gas Products Company
(bulk plant)
Spurr Road
Lexington, Kentucky 40511

Crawford Gas and Appliances, Inc.
1104 Winchester Road
Lexington, Kentucky 40505

Fuel oils

Distillate fuel oil -

Ashland Petroleum Company
Old Frankfort Pike
Lexington, Kentucky 40504

Doc Ferrell Gulf Distributor, Inc.
1102 West Manchester
Lexington, Kentucky 40508

Chevron U.S.A., Inc.
1750 Old Frankfort Pike
Lexington, Kentucky 40504

H & R Oil Company, Inc.
Georgetown Road
Lexington, Kentucky 40502

Exxon Company, U.S.A.
1506 Old Frankfort Pike
Lexington, Kentucky 40504

Moore Oil Company
Old Frankfort Pike
Lexington, Kentucky 40504

Residual fuel oil - Arrangements must be made with the refinery.

Low sulphur content coal - Available in Kentucky

WATER AND SEWERAGE

Public Water Supply

Company serving Lexington - Kentucky-American Water Company*
2300 Richmond Road
Lexington, Kentucky 40502
(606) 269-2386

Source - Kentucky River and Number 4 Reservoir

Treatment plant capacity - Kentucky River Plant: 28,000,000 gpd
Richmond Road Plant: 20,000,000 gpd
Total: 48,000,000 gpd

Average daily consumption - 32,000,000 gallons

Peak daily consumption - 48,010,000 gallons

Type treatment - Coagulation, sedimentation, filtration, chlorination,
fluoridation

Storage capacity - 13,000,000 gallons

Size lines - 2 1/2 to 30 inches

Average pressure - Pumped at 80 psi

Average temperature - 60 degrees F.

*An expansion is currently under way which will increase the treatment capacity to 60,000,000 gpd and increase storage capacity to 15,000,000 gallons. Improvements should be completed in December 1981.

MONTHLY AND QUARTERLY WATER RATES FOR RESIDENTIAL,
COMMERCIAL, AND INDUSTRIAL CONSUMERS*

	Cubic Feet Per		Rate per 100 Cubic Feet
	Month	Quarter	
For the first	5,000	15,000	\$.97972
For the next	30,000	90,000	.70955
For the next	300,000	900,000	.41233
For all over	335,000	1,005,000	.27254

MINIMUM CHARGES

All metered general water service customers shall pay a minimum charge based on the size of meter installed. Such minimum charge will entitle the customer to as much water as the charge will pay for at the scheduled meter rates. Water used in excess of such amount will be billed at the meter rate schedule.

Size of Meter	Minimum Charge per	
	Month	Quarter
5/8-inch	\$ 2.91	\$ 8.73
3/4-inch	4.37	13.11
1-inch	7.25	21.75
1 1/2-inch	14.58	43.74
2-inch	23.32	69.96
3-inch	50.41	151.23
4-inch	76.94	230.82
6-inch	161.90	485.70

Tap-on charge: None

Raw Water

Surface water sources - Kentucky River, North Elkhorn Creek, South Elkhorn Creek, East Hickman Creek, West Hickman Creek
 Average discharge - Kentucky River at Lock 10 near Winchester, Kentucky - 5,307 cfs (73 years, unadjusted, USGS); North Elkhorn Creek near Georgetown, Kentucky - 168 cfs (31 years, USGS); South Elkhorn Creek at Fort Spring, Kentucky - 33.3 cfs (30 years, USGS); West Elkhorn Creek at Jonestown, Kentucky - 18.0 cfs (5 years, USGS)
 Expected ground water yield - 50 to 200 gpm along southeastern border and in northwestern corner of county; 5 gpm or less along eastern border and in east central portion of county; 5 to 50 gpm over remainder of county

*The Kentucky-American Water Company has applied to the Public Service Commission for a 32 percent increase in water rates.

Sewerage

Company serving Lexington - Lexington-Fayette Urban County
Government*

Sanitary Sewer Division
136 Walnut Street
Lexington, Kentucky 40507
(606) 255-5631 (Extension 215)

Design capacity - Plant No. 1: 18,000,000 gpd
Plant No. 2: 8,750,000 gpd
Total: 26,750,000 gpd

Average daily flow - Plant No. 1: 16,500,000 gallons
Plant No. 2: 6,500,000 gallons
Total: 23,000,000 gallons

Treatment - Plant No. 1: Primary and secondary
Plant No. 2: Primary, secondary and tertiary

Type treatment - Modified Kraus process, drying beds, and heat
treatment in both plants

Treated effluent discharged into - Plant No. 1: Town Branch
Plant No. 2: West Hickman Creek

Size of sanitary mains - 8 to 48 inches

Size of storm mains - 8 to 108 inches

Rates - Sewer charges are included in the property tax rates in
urban service districts where sewer service is provided. (A
sewer charge based on the amount of water used is under study.)

Tap-on charge: Prior to every future tap-on or connection to any
sewer pipe, main lateral, trunk line, interceptor or other
installation or facility of the sanitary sewer system, there shall
be paid a fee or charge which shall be solely for the privilege of
connecting to the system and shall be in addition to the require-
ment that connections to the system be made at the sole expense
of connecting property owner. Such tap-on, connection or privi-
lege fee, is established as follows:

Business, professional, commercial and industrial buildings -
a fee to be based on \$0.20 per square foot of floor space
with a minimum of \$175 for each sewer connection. (This
rate may be revised in 1982.)

*Step I of a 201 Facilities Plan to determine the feasibility of expand-
ing the Town Branch treatment plant to a capacity of 40,000,000 gpd has
recently been completed and applications have been approved by EPA to
begin work on construction plans and specifications for the project.
Construction bids are currently out to expand the West Hickman sewage
treatment plant to a capacity of 16,800,000 gpd.
A Sewer System Evaluation Survey for replacement of lines and re-
habilitation of the sewer system is under way.

CLIMATE

Fayette County

Temperature

Normal (30-year record)	55.2 degrees
Average annual 1980	54.3 degrees
Record highest, September 1954 (36-year record)	103.0 degrees
Record lowest, January 1963 (36-year record)	-21.0 degrees
Normal heating degree days (30-year record)	4,729
(Heating degree day totals are the sums of negative departures of average daily temperatures from 65 degrees F.)	

Precipitation

Normal (30-year record)	44.49 inches
Mean annual snowfall (36-year record)	17.00 inches
Total precipitation 1980	34.69 inches
Mean number days precipitation (.01 inch or more) (36-year record)	131
Mean number days thunderstorms (36-year record)	47

Prevailing Winds (17-year record)

South

Relative Humidity

1 a.m.	77 percent (16-year record)
7 a.m.	81 percent (17-year record)
1 p.m.	60 percent (17-year record)
7 p.m.	64 percent (17-year record)

Source: U.S. Department of Commerce, Environmental Science Services Administration, Climatological Data, 1980.
Station of record: Lexington, Kentucky.

LOCAL GOVERNMENT

Lexington-Fayette Urban County

Structure - The governments of the City of Lexington and the County of Fayette merged on January 1, 1974, to form the Lexington-Fayette Urban County. The citizens of the Urban County are represented by a 15-member council. Twelve council members are elected from districts for two-year terms, and three are elected at-large for four-year terms. The government's organization provides that:

The Chief Executive shall be the Mayor who is elected for a four-year term.

Administrative coordination shall be provided by the Chief Administrative Officer who is appointed by the Mayor subject to confirmation by 3/5 of the Council.

Operational management shall be provided by six departmental commissioners who are appointed by the Mayor.

Service and taxing districts - The Charter of the Urban County Government established separate service and taxing districts:

- I. The General Services District includes the entire Urban County. Property owners receive all services of the Urban County Government except
 - (1) Sanitary sewers
 - (2) Refuse collection
 - (3) Street lights
 - (4) Street cleaning
- II. The Full Urban Services District property owners receive the above four services. Partial Urban Services Districts have been established for those property owners who receive one, two or three of the above four services.

Budget 1981-82 - General Funds:

General Services District -	\$51,800,000
Urban Services District -	11,000,000
Sewer Fund -	800,000*

Fees and licenses - Occupational license fees of 2 percent of all salaries, wages, commissions and other compensation earned by persons in the Urban County for work done or services performed in the Urban County, and 2 percent of the net profits of all businesses, professions or occupations from activities conducted in the Urban County.

Assessed Value of Property, 1980

<u>Classes of Property</u>	<u>Lexington-Fayette Urban County</u>
Real Estate	\$3,725,584,600
Tangibles	633,635,179

*This amount is in addition to funds collected in the Urban Services Fund for the Sewer Fund.

Property Taxes

All property in Kentucky is assessed at 100 percent of fair cash value.

Land and buildings are taxed by the state and may be taxed by local jurisdictions. The state rate is \$0.241 per \$100 of assessed valuation. Lexington-Fayette Urban County is divided into thirteen urban service districts. The property tax rates for land and buildings in each district reflect the level of urban services provided. The combined state and local rates per \$100 of assessed valuation of land and buildings and the urban services included in the tax rate are shown in the following table.

<u>Service District</u>	<u>Land and Buildings</u>	<u>Urban Services</u>
1	\$1.1120	Garbage, sewer, street cleaning, street lights
2	0.7290	No urban services
3	1.0674	Garbage, sewer
4	0.9243	Garbage
5	0.8721	Sewer
6	0.7633	Street lights
7	0.9064	Sewer, street lights
8	0.9586	Garbage, street lights
9	*	*
10	1.0777	Garbage, sewer, street cleaning
11	1.1017	Garbage, sewer, street lights
12	0.9167	Sewer, street cleaning, street lights
13	0.9689	Garbage, street cleaning, street lights

Manufacturing machinery, raw materials inventories, pollution control equipment, and goods in the process of manufacture are not subject to local taxation. The state rate is \$0.15 per \$100.

Other tangible personal property owned by manufacturers (automobiles, trucks, finished goods, office furniture, office equipment) is taxed by the state at \$0.45 per \$100 and may be taxed by local jurisdictions. The combined state and local rate per \$100 of assessed valuation is \$0.938 for the entire Lexington-Fayette Urban County.

Property stored in public warehouses in a transit status is not subject to local taxation. The state rate is only \$0.015 per \$100.

Intangible personal property located in Kentucky (money in hand, shares of stock, notes, bonds, accounts receivable, and other credits) is taxed by the state at \$0.25 per \$100, and is not subject to local taxation.

Private leaseholds in industrial facilities owned by cities or counties and financed by industrial revenue bonds are subject to a state tax of \$0.015 per \$100 of value (essentially the lessee's equity, adjusted for appreciation or depreciation). Local taxation is not permitted.

*The taxing district designated as District #9 is reserved for intangible property taxed by the state only and is not a physical area of the Urban County.

Utilities Gross Receipts Tax for Schools

A 3 percent tax is levied on utilities receipts for schools in Fayette County. Tax is paid by all consumers of utilities as an add-on to the utilities bills. Exempted are receipts from utilities services that are resold and the receipts from the sale of energy or energy producing fuels that exceed 3 percent of the cost of production in manufacturing, processing, mining or refining.

Planning and Zoning

Agency - Lexington-Fayette Urban County Planning Commission
Zoning enforced - All areas
Subdivision regulations enforced - All areas
Local codes enforced - Building and housing
Mandatory state codes enforced - Kentucky Plumbing Code, National Electric Code, Kentucky Boiler Regulations and Standards, Kentucky Building Code (modeled after BOCA code)

Safety

<u>Police</u>	<u>Lexington-Fayette Urban County Police</u>	<u>Fayette County Sheriff's Office</u>
Total staff	343 police officers 35 safety officers	32
Radio-patrol cars	365 (including patrol wagons and motorcycles)	15

<u>Fire</u>	<u>Lexington-Fayette County Metro</u>
American Insurance Association Fire Rating	Zone 1 - Class 3* Zones 2 and 3 - Class 5, 9 and 10**
Full-time staff	401
Number of stations	14 plus a training center

Rescue Service

Emergency Medical Rescue Squad, operated by the Lexington-Fayette County Metro Fire Department, provides rescue service.

*Zone 1 - Class 3 applies to all class rated property.

**Zones 2 and 3 -

Within five miles of in service Lexington-Fayette Metro Fire Station:
Within 1,000 feet of accessible fire hydrant - Class 5 applies;
Over 1,000 feet from accessible fire hydrant - Class 9 applies.
Over five miles from in service Lexington-Fayette Metro Fire Station:
Class 10 applies.

Refuse Collection and Disposal

Lexington-Fayette Urban County

	<u>Inside</u> <u>Service District</u>	<u>Outside</u> <u>Service District</u>
Type service	Municipal	Private
Fee charged:		
residential	*	\$10 per month
business	*	Contract
industrial	**	Contract
Collection frequency:		
residential	Twice weekly	Twice weekly
business	Twice weekly	Contract
industrial	Twice weekly	Contract
Trash pickup	Once weekly	Once weekly (residential)
Disposal method	Landfill	Landfill

*Fees for refuse collection are included in the property tax rates in the urban service districts where this service is provided. The rate is \$0.1953 per \$100 of assessed value.

**Municipal service for industry is limited to "office type" refuse. Collection of most other types of industrial waste must be arranged with private haulers.

EDUCATION

Public Schools

Fayette County*

Total Enrollment (Fall 1980)	31,760
Elementary	17,292
Junior High	7,391
High School	7,077
Student-Teacher Ratio	18-1
Elementary	18-1
Junior High	17-1
High School	20-1
Accreditation	All 47 of the Fayette County public schools are accredited by the Southern Association of Colleges and Schools.
Percent High School Graduates to College (1980)	61.9
Expenditures Per Pupil (1979-80)	\$1,604.46
Bonded Indebtedness (June 30, 1980)	\$55,083,000

*The Fayette County Public Schools will have exclusive access to a local cable television station beginning with the 1981-82 school year. The station will be used for instructional programming, student productions and announcements.

Renovations are currently under way at two elementary schools and one high school at a total cost of \$8,500,000.

Nonpublic Schools

<u>Private & Parochial School</u>	<u>Grades</u>	<u>Estimated 1980 Enrollment</u>
Alpine Village School	1-3	25
Blue Grass Baptist School	K-12	293
Christ the King Church School	K-8	450
Clays Mill Road Christian Academy	K-12	80
Community Montessori School	Preschool-6	160
Hallis Elementary	Preschool-1	56
Lexington Catholic High School	9-12	560
Lexington Christian School	1-10	270
Lexington Seventh-Day Adventist	1-8	40
The Lexington School	Preschool-9	430
Mary Queen of the Holy Rosary School & Convent	K-8	525
New Covenant Academy	2-12	65
St. Paul School	K-8	367
St. Peter School	K-8	155
Sayre School	K-12	403

Special Schools

Central Kentucky Re-ed Program
Lexington Deaf Oral School
Porter Project (operated by Blue Grass Association for Retarded
Citizens, Inc.)
United Cerebral Palsy of the Blue Grass

Area Colleges and Universities

<u>Name</u>	<u>Location (Miles distant)</u>	<u>Enrollment (Fall, 1980)</u>	<u>Highest Degree Conferred</u>
University of Kentucky	Lexington	23,468	Doctorate, M.D., D.M.D., J.D.
Transylvania University	Lexington	810	Masters*
Lexington Technical Institute	Lexington	2,111	Associate
Georgetown College	Georgetown (16)	1,270	Masters
Midway College	Midway (18)	316	Associate
Asbury College	Wilmore (18)	1,222	Baccalaureate
Eastern Kentucky University	Richmond (25)	14,185	Masters, Specialist**
Kentucky State University	Frankfort (28)	2,342	Masters

The University of Kentucky enjoys a national and international reputation in such diverse fields as medicine, business, engineering, law and agriculture.

The University of Kentucky has a graduate school and 17 academic colleges. The colleges include arts and sciences, agriculture, engineering, business and economics, education, home economics, library science, social work, architecture, communications, fine arts, law, medicine, dentistry, nursing, allied health professions and pharmacy.

New in the U K College of Engineering is the Kentucky Transportation Center. The center's activities encompass all facets of the transport of goods and persons and the delivery of services as well as all modes of transportation.

The University's main campus is located in the center of Lexington. U K also operates 13 community colleges in the Kentucky cities of Ashland, Henderson, Cumberland, Elizabethtown, Prestonsburg, Hopkinsville, Somerset, Louisville, Paducah, Hazard, Maysville, Madisonville and Lexington.

(Contd.)

*Courses in the masters degree program are taught on the Transylvania campus by faculty members of Xavier University of Cincinnati. The degree is issued by Xavier University.

**Joint doctoral degree programs are offered in cooperation with the University of Kentucky, Lexington, and cooperative doctoral degree programs are offered with Michigan State University and the University of Maryland.

The Lexington Technical Institute is a unit of the University of Kentucky's community college system. Courses parallel university offerings and are transferable to the Lexington U of K campus or to another 4-year institution, either public or private. The Institute awards the Associate in Arts degree and the Associate in Applied Science degree.

The Associate in Applied Science Degree is awarded in the following programs: Accounting Technology; Architectural Technology; Civil Engineering Technology; Data Processing Technology (Business Option, Science Option); Dental Hygiene; Dental Laboratory Technology; Electrical Engineering Technology (Electronics Option); Management Technology (Business Option); Mechanical Engineering Technology; Nursing; Radiologic Technology; Real Estate; Respiratory Therapy; Secretarial Administration; Transportation.

Transylvania University, founded in 1780, was the first college or university west of the Allegheny Mountains. Transylvania has an excellent academic reputation and is known for the large number of national leaders who went there, including: 2 U.S. Vice Presidents, 50 U.S. Senators, over 100 Representatives, 36 Governors and 34 Ambassadors.

Transylvania offers a Bachelor of Arts degree in 28 majors through 24 departments.

Master's degree program courses are taught on the Transylvania campus by faculty members of Xavier University of Cincinnati, Ohio. The degree is issued by Xavier University.

Vocational Schools

Both the state vocational-technical schools and the area vocational education centers are operated by the Kentucky Department of Education. The state vocational-technical schools enroll persons full time who are at least 16 years of age and not in school. These students attend classes for six hours each day. The area vocational education centers are designed to accommodate high school students who are at least 15 years of age. These students attend vocational school for three hours each day. The state vocational-technical schools and the area education centers offer evening courses to enable working adults to upgrade current job skills.

State School

Location	Central Kentucky State Vocational-Technical School Lexington
Curriculum	Business and Office Clerical Secretarial Consumer and Home Economics Commercial Foods Health and Personal Services Occupations Cosmetology Dental Assistant Nurse's Aide Practical Nursing Surgical Technician Industrial Education Auto Body Repair Auto Mechanics Carpentry Drafting Electronics Graphic Arts Industrial Electricity Machine Shop Masonry Sheet Metal, Heating and Cooling Welding Learning Resource Center

(Contd.)

Area Education Centers

Location	Southside Area Vocational
Curriculum	Education Center
	Lexington
	Health and Personal Services Occupations
	Health Careers
	Industrial Education
	Air Conditioning and Refrigeration
	Auto Body Repair
	Auto Mechanics
	Carpentry
	Electricity
	Electronic Service
	Masonry
	Plumbing

Location	Northside Area Vocational
Curriculum	Education Center
	Lexington
	Agriculture
	Horticulture
	Health and Personal Services Occupations
	Health Careers
	Industrial Education
	Auto Mechanics
	Auto Parts
	Construction Electricity
	Diesel Mechanics
	Graphic Arts
	Industrial Equipment Mechanics
	Machine Shop
	Welding

Arrangements can be made to provide training in the specific production skills required by an industrial plant. Instruction may be conducted either in the vocational school or in the industrial plant, depending upon the desired arrangement and the availability of special equipment.

HEALTH

Local Medical Personnel

Physicians - 950
Dentists - 222

Hospitals

<u>General Hospitals*</u>	<u>Beds</u>
Central Baptist Hospital	297
Good Samaritan Hospital	298
St. Joseph Hospital	436
University of Kentucky Hospital	486
Veterans Administration Medical Center	937

<u>Special Hospitals</u>	<u>Beds</u>
Cardinal Hill Hospital (Convalescent and rehabilitation)	100
Eastern State Hospital (Psychiatric)	455
Shriners Hospital For Crippled Children (pediatric and orthopedic)	64

Other Health Care Facilities

Bluegrass East Comprehensive Care Center
Bluegrass Home Health Agency
Dialysis Clinic
Exception-Lexington Campus
Hunter Foundation for Health Care, Inc.
Lexington Planned Parenthood
Nursefinders

*Expansions currently planned or under way will increase bed space at three Lexington hospitals. Construction at St. Joseph's will add 32 new beds during 1982. Good Samaritan is currently expanding many of its facilities including 9 more beds targeted for 1983. Central Baptist has received approval for expansion which will provide 70 new beds during 1983. In addition, Humana, Inc., of Louisville will begin construction of a new hospital in August 1981 which will provide 170 beds.

Ambulance Service

Name - Emergency Medical Rescue Service (operated by the Lexington-Fayette County Metro Fire Department)
Staff - 36 employees (emergency medical technicians and paramedics) plus back-up provided by Lexington-Fayette County Metro Fire Department
Service - 24-hours daily
Equipment - 6 fully equipped ambulances

In addition, ambulance service is provided by several private businesses in Lexington.

Public Health

Facility - Lexington-Fayette County Health Department
Staff - (Professional and technical services only) 8 public health administrators, 4 physicians, 51 registered nurses, 7 licensed practical nurses, 7 nurse practitioners/physician assistants, 23 environmentalists, 2 researchers, 7 health educators, 5 nutritionists, 2 medical technologists, 3 physical therapists, 4 social workers, 1 recreation therapist, 2 accountants, 1 personnel officer, 2 staff assistants, 1 maintenance supervisor, 3 general supervisors, 1 clinical pharmacist, 1 medical records administrator

OTHER LOCAL FACILITIES

Communications

Telephone - General Telephone of Kentucky
Services - Standard

Telegraph - Western Union
Services - Counter service; toll-free number, 1-800-325-5100,
for mailgrams and international and telegram messages

Postal - U.S. Post Office
Class - First
Mail received - 24 hours daily
Mail dispatched - 24 hours daily

Newspapers - The Lexington Herald, The Lexington Leader
Daily and
circulation - 72,141 33,504
Saturday and
circulation - The Lexington Herald-Leader - 97,547
Sunday and
circulation - The Lexington Herald-Leader - 116,205
Other papers
received from - Louisville, Kentucky, and Cincinnati, Ohio

Radio - WTKC-AM, WVLK-AM & FM, WNVL-AM, WJMM-FM, WKQQ-FM, WLAP-AM & FM
Stations received from - Louisville, Kentucky, and Cincinnati, Ohio

Television - WKYT-Channel 27 (CBS), WLEX-Channel 18 (NBC),
WTVQ-Channel 36 (ABC)

Cable service
Reception from - Louisville, Kentucky; Cincinnati, Ohio; Atlanta,
Georgia; Chicago, Illinois; New York, New York

Kentucky Educational
Television - Lexington-Richmond transmitter, Channel 46

Library Services

Public library - Lexington Public Library

Size collection - 231,839 volumes

Circulation, 1979-80 - 753,332

Services - Main library; 3 branches open full time, 1 satellite branch, 3 bookmobiles; special services provided to the jails, nursing homes, homebound, senior citizens, and the disadvantaged; framed prints; tapes; large print books; records, copying skills materials for the new adult reader; 850 periodicals; 36 current newspapers; newspapers on microfilm, Urban County documents and news magazines on microfiche; general vertical file; community information index; local history index; regularly scheduled children's programs and movies; adult programs and movies; artist in residence and art displays

University library - Frances Carrick Thomas Library, Transylvania University (open to the public)

Size collection - 100,000 volumes

Special collections - Early medicine, Kentucky history, manuscripts from Jefferson Davis

University library - University of Kentucky Libraries (14 branches open to the public)

Size collection - 1,753,044 volumes and 2,010,756 microforms

Specialized libraries - Art, music, chemistry and physics, biological sciences, agriculture, business, law, math, education, medicine, rare books room

Special collections - Regional Ohio Valley and Kentucky history, including manuscripts of prominent political figures; photographic and audiovisual archives; history of printing and the private press including five operational hand presses dating back to the 1840's; family and local history materials

Religious Institutions

Number of churches - Approximately 200

Denominations - African Methodist Episcopal
Apostolic
Apostolic - Pentecostal
Assembly of God
Baha'i
Baptist
Baptist-Freewill
Baptist-Southern
Catholic
Christian
Christian-Disciples of Christ
Christian and Missionary Alliance
Christian Science
Church of God
Community
Eastern Orthodox
Episcopal
Evangelical Free
Free Methodist
Holiness
Jehovah's Witnesses
Latter Day Saints,
Lutheran
Methodist
Nazarene
Pentecostal
Presbyterian
Salvation Army
Seventh-Day Adventist
Unitarian Universalist
United Church of Christ
United Pentecostal
Wesleyan

Number of Synagogues - 2

Congregations - Ohavey Zion (traditional)
Adath Israel (reform)

Financial Institutions

<u>Banks</u>	<u>Assets</u>	<u>Deposits</u>	<u>Statement Date</u>
American Bank and Trust Company	\$ 14,979,955.00	\$ 12,301,426.00	12/31/80
Bank of the Bluegrass	14,802,553.00	13,273,602.00	12/31/80
Bank of Commerce and Trust Company	150,338,754.36	133,421,269.48	12/31/80
Bank of Lexington	97,168,743.00	87,382,482.00	3/31/80
Central Bank and Trust Company	181,105,223.00	159,825,857.00	3/31/80
Citizens Fidelity Bank and Trust Company*	1,992,892,000.00	1,429,579,000.00	12/31/80
Citizens Union National Bank and Trust Company	171,062,226.00	147,823,994.00	12/31/80
First Security National Bank and Trust Company**	780,055,115.00	565,680,096.00	12/31/80
Second National Bank and Trust Company	136,746,850.38	120,931,872.46	12/31/80
<u>Savings and Loan Associations</u>	<u>Assets</u>	<u>Savings Accounts</u>	<u>Statement Date</u>
First Federal Savings and Loan Association	\$ 89,233,252.60	\$ 80,123,648.30	12/31/80
Lexington Federal Savings and Loan Association	141,430,156.28	127,445,498.23	12/31/80
Lincoln Federal Savings and Loan Association	98,481,000.00	57,885,000.00	12/31/80
New Union Federal Savings and Loan Association	15,167,550.00	13,763,916.00	12/31/80
Peoples Federal Savings and Loan Association	14,707,911.79	13,681,373.12	12/31/80

*Asset and deposit figures are taken from the consolidated statement of condition for the Citizens Fidelity Corporation and Subsidiaries of Louisville, Kentucky.

**Asset and deposit figures are taken from the consolidated balance sheet for the First Security Corporation of Kentucky.

Hotels and Motels

Total number - 31*

Total rooms - Approximately 4,000*

Clubs and Organizations

There are more than 300 clubs and organizations in Lexington including most major civic, business, professional, fraternal, charitable, sports, farm and youth organizations.

*Two motels presently under construction will provide 700 additional rooms.

RECREATION

Local

Lexington is an outstanding Kentucky center for sports and cultural events and the site of many historic buildings and homes.

Sports and entertainment events are available at Rupp Arena (seating capacity 23,000) in the Lexington Center. Rupp Arena is the home court of the 5-time NCAA basketball champions, the University of Kentucky Wildcats. A convention center, hotel, shopping mall, and numerous restaurants round out the facilities at the center. The 57,000-seat University of Kentucky Commonwealth Stadium is the scene of exciting football games.

Some of the finest thoroughbred and harness racing in the world is available at Keeneland Race Course and the Red Mile Trotting Track. The Lexington Junior League Horse Show, the nation's largest outdoor saddlehorse show, is held at the trotting track each July. The Kentucky Horse Park was recently completed and hosted the World Championship Three Day Event -- the first time the event has ever been held in the United States. Facilities at the park include a visitors information center with a film presentation, a museum, a gift shop, a walking tour, an events area, horseback and pony rides, horse-drawn rides, a vehicle demonstration area, a restaurant, a picnic area and a campground. Several private companies offer tours of Lexington thoroughbred, standardbred and saddlebred horse farms.

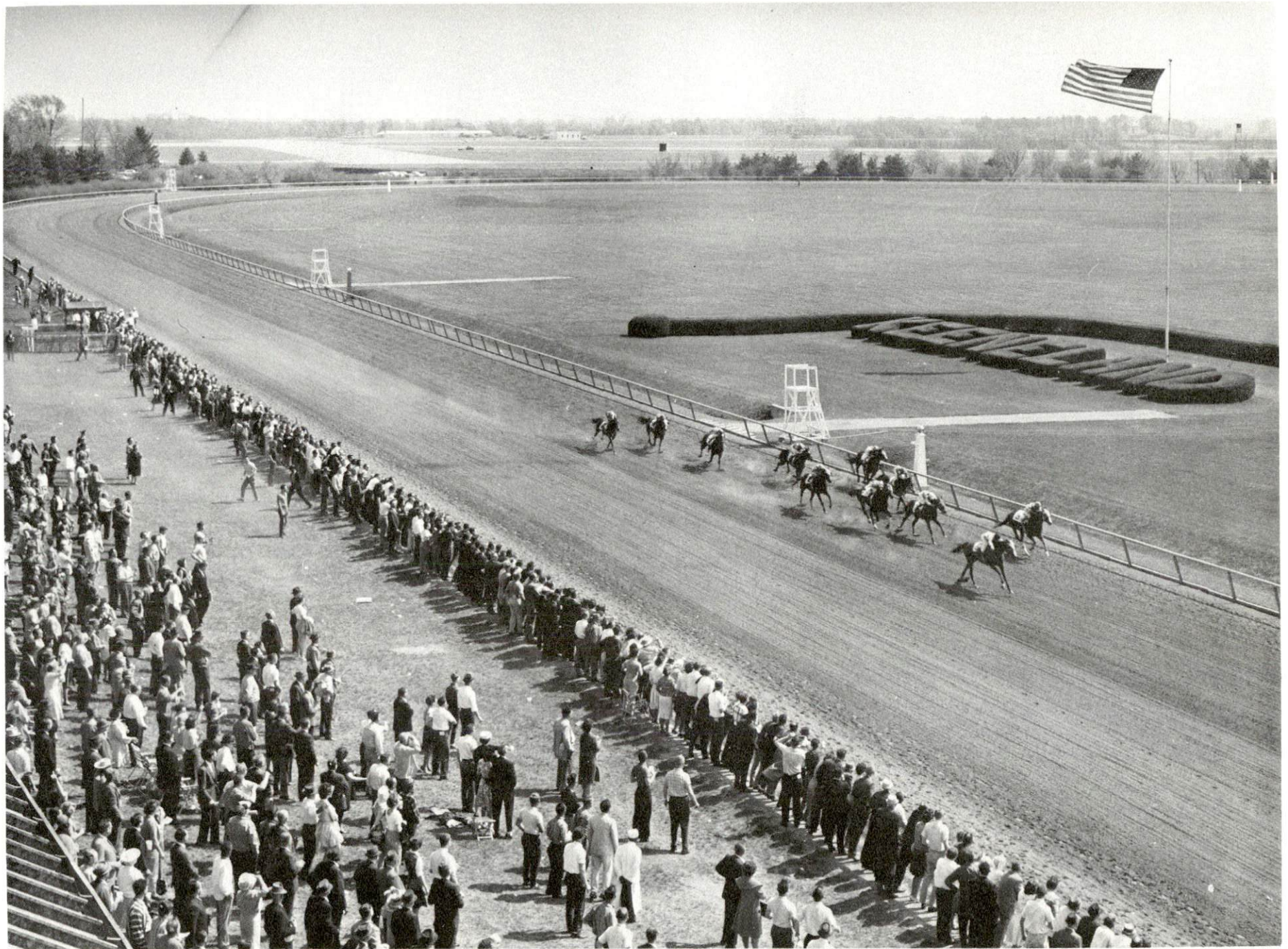
The Lexington Opera House hosts national tours of Broadway shows, concerts by the Lexington Philharmonic Orchestra and the Central Kentucky Youth Symphony and Youth Concert Orchestras, and productions of the Lexington Children's Theatre and the Lexington Ballet.

The Chamber Music Society of Central Kentucky presents concerts annually featuring chamber music ensembles of national and international reputation. In addition to its regular subscription concerts, the Lexington Philharmonic Orchestra performs youth concerts, operas, summer concerts in city parks and performances in the Fayette County Schools. Subscriptions are available to the Central Kentucky Concert and Lecture Series which sponsors appearances by world renowned groups and individuals in the arts and sciences.

The Lexington Lions Club Blue Grass Fair held each summer at Masterson Station Park has the distinction of being the largest U. S. fair under canvas. A Bluegrass music festival is also held at Masterson Station Park.



ONE OF KENTUCKY'S BLUEGRASS HORSE FARMS



KEENELAND RACE COURSE

The important historic buildings and homes in Lexington include Ashland, the estate of Kentucky statesman Henry Clay; the Hunt-Morgan House, built by Kentucky's first millionaire; the restored Lexington Opera House; the Mary Todd Lincoln House, home of Abraham Lincoln's wife before her marriage; and the Patterson Cabin, Lexington's oldest building.

A variety of museums, galleries and libraries are open to the public in Lexington. The Headley Museum, Inc., features an outstanding collection of jeweled bibelots; the Keeneland Library at the race track is a leading depository for information about thoroughbred racing; the Lexington Public Library features an artist in residence and art displays; Transylvania University has a museum of early 1800's medical equipment; the University of Kentucky features the U. K. Art Gallery, King Library with over 1.7 million volumes, a special rare books room, and an anthropology museum.

The Lexington-Fayette Urban County Division of Parks and Recreation was established to provide a wide variety of leisure services. The urban county government maintains 74 parks, 10 swimming pools, 3 golf courses, 97 tennis courts and approximately 100 ball fields. Services are provided in athletics, cultural arts, equestrian programs, nature programs, special events, adult education programs, day camps, senior citizens' programs and recreational programs for special populations.

Other facilities open to the public include 2 golf courses, bowling facilities, and over 20 indoor and drive-in movie theaters.

Private facilities include six country clubs.

Area (Within 60 miles)

The spirit of Daniel Boone and his pioneers is reborn at Fort Boonesborough State Park in Boonesborough, 15 miles southeast of Lexington. In the re-created fort 16 pioneer crafts of the eighteenth century are demonstrated by Kentuckians using functioning antiques from the frontier era. Cabins are furnished as they would have been in the days of Boone and documentary films are presented which depict the struggle of the first Kentuckians to make the Kentucky wilderness a home. A gift shop within the fort offers for sale all the handcrafted items made at the fort, along with a wide variety of handcrafts from throughout Kentucky. Other recreational facilities and activities of the park include the finest sand beach on the Kentucky River with a modern bathhouse, sun deck, and snack shop; a modern camping area with 187 sites; a central service building housing showers, restrooms, and laundry facilities for campers; a pavilion with a gift shop and grocery inside and a playground and basketball, volleyball, and shuffleboard courts on the grounds; and planned daily activities and special events under the guidance of a trained recreation director. Near the park is the dock of the Dixie Belle sternwheel excursion boat which operates one-hour trips daily on the Kentucky River leaving from the Fort Boonesborough boat dock.

White Hall State Shrine, south of Lexington near Richmond, one of the grand estate houses of post-Civil War Kentucky, is the Italianate mansion of Cassius Marcellus Clay, the early abolitionist and politician. Kentucky hand-crafts are sold in the White Hall gift shop, only a short walk from the mansion.

Pleasant Hill, a restored historic Shaker Village, is 22 miles south of Lexington. Pleasant Hill is the only restored village in the United States with lodging and dining in the original buildings on the site.

Frankfort, the capital of Kentucky located 29 miles northwest of Lexington, offers numerous tourist attractions. The Capitol Building, the 34-foot Floral Clock, the Governor's Mansion, the Old State House, and the Corner of Celebrities are only a few of the many tourist attractions in Frankfort.

Old Fort Harrod State Park, 29 miles southwest of Lexington, is a 28-acre park in Harrodsburg that features a full-scale reproduction of the original Fort Harrod. The park also contains the log cabin where Abraham Lincoln's parents were wed, the Mansion Museum which houses mementos associated with the great periods of Kentucky history, a pioneer cemetery, and a federal monument dedicated to pioneers. The "Legend of Daniel Boone," an outdoor drama which brings to life on stage the men and women who made Kentucky, is performed in the park amphitheatre during the summer months.

Constitution Square State Shrine, 31 miles south of Lexington in Danville, is a reproduction of Kentucky's first courthouse square, including the original 1792 post office which was the first in the west.

Issac Shelby State Shrine also near Danville, is the burial site of Kentucky's first governor and one of Kentucky's foremost statesmen.

Bybee Pottery, established in 1809, is located 34 miles southeast of Lexington and is the oldest existing pottery maker west of the Allegheny Mountains. Clay is mined from an open pit, mixed with water, and ground in a pug mill. Each piece is hand-thrown in the original pioneer tradition.

Herrington Lake, about 35 miles southwest of Lexington, was developed by the Kentucky Utilities Company in 1925. Dix River Dam near Pleasant Hill is located on the 1,860-acre lake. Fishing, boating, and swimming can all be enjoyed on the lake. Camping and fishing facilities are available near Danville and Harrodsburg.

William Whitley House State Shrine, 38 miles south of Lexington near Stanford, is the first brick house west of the Allegheny Mountains, built 1787-94. Whitley laid out Kentucky's first race track here and started U. S. counterclockwise racing. The facility provides picnic and playground areas in a ten-acre park.

Berea, located 39 miles south of Lexington, is the home of Churchill Weavers, the largest handweaving company in the country, and Berea College. The Berea College Student Craft Industries serves to preserve and promote the art of craftsmanship and includes the industries of woodcraft, broomcraft, fireside weaving, needlecraft, ceramics, and lapidary arts. Boone Tavern, owned by Berea College and staffed by college students, is noted for its southern charm and excellent food.

Perryville Battlefield State Shrine, 39 miles southwest near Perryville, is the site of the largest Civil War battle in Kentucky. A museum, a picnic area, and a playground are located on the grounds.

Natural Bridge State Resort Park at Slade, 49 miles east of Lexington, is a 1,899-acre park located in the Daniel Boone National Forest where cliffs and stone arches fill the landscape. The rugged awesomeness of the great Natural Bridge, the largest of 12 natural sandstone arches in the park, is the main attraction. The park has a 35-room resort lodge with a dining room and gift shop, efficiency and one-bedroom cottages, and 95 camping sites. Other facilities include a 54-acre lake, a swimming pool, picnic shelters and playgrounds, hiking trails, and a riding stable. A skylift going up to Natural Bridge is operated from April 15 to October 31 each year.

The Daniel Boone National Forest, about 50 miles east of Lexington, provides 640,000 acres of rugged woodlands for hiking, camping, and picnicking. Nearby features in the Daniel Boone National Forest include the Red River Gorge, natural sandstone arches, waterfalls, and rare plant and animal life.

My Old Kentucky Home State Park, 54 miles west of Lexington in Bardstown, portrays an image of the South's gentle and leisurely home life before the Civil War. The restored Georgian Colonial mansion is where composer Stephen Foster visited and where he was inspired to write "My Old Kentucky Home." One of the nation's most successful outdoor dramas, "The Stephen Foster Story," is presented in the park's amphitheatre mid-June until Labor Day. The park also offers a 40-site campground, a gift shop, a 9-hole golf course and pro shop, a picnic area, and planned recreation.

Cave Run Lake, constructed by the U. S. Army Corps of Engineers, is located about 60 miles east of Lexington within the 640,000-acre Daniel Boone National Forest. The lake area offers everything for the camper, the boatsman, the hunter, the fisherman, and "the lover of leisure." It is becoming a very popular spot for muskie fishing, as sited in Outdoor Life, Sports Afield, The Courier Journal, and other publications.

