

1984

# Industrial Resources: Grayson County - Leitchfield

Kentucky Library Research Collections  
Western Kentucky University, [spcol@wku.edu](mailto:spcol@wku.edu)

Follow this and additional works at: [https://digitalcommons.wku.edu/grayson\\_cty](https://digitalcommons.wku.edu/grayson_cty)



Part of the [Business Administration, Management, and Operations Commons](#), [Growth and Development Commons](#), and the [Infrastructure Commons](#)

---

## Recommended Citation

Kentucky Library Research Collections, "Industrial Resources: Grayson County - Leitchfield" (1984). *Grayson County*. Paper 17.  
[https://digitalcommons.wku.edu/grayson\\_cty/17](https://digitalcommons.wku.edu/grayson_cty/17)

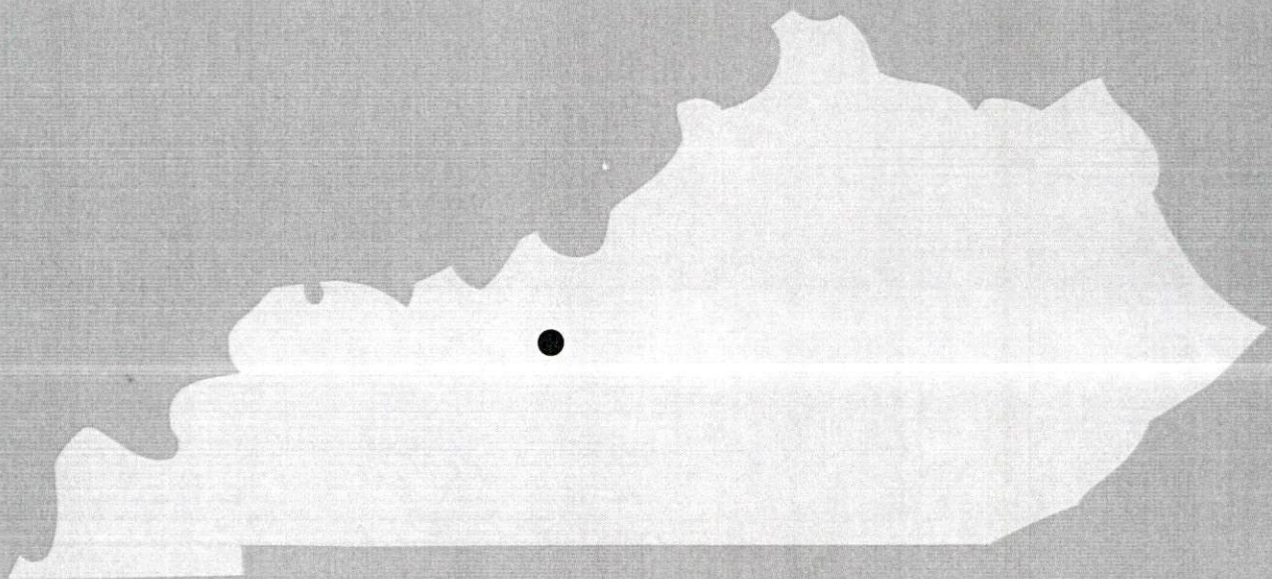
This Report is brought to you for free and open access by TopSCHOLAR®. It has been accepted for inclusion in Grayson County by an authorized administrator of TopSCHOLAR®. For more information, please contact [topscholar@wku.edu](mailto:topscholar@wku.edu).

IR Grayson County

379

**1984**

**A comprehensive  
report on  
Leitchfield, Ky.**

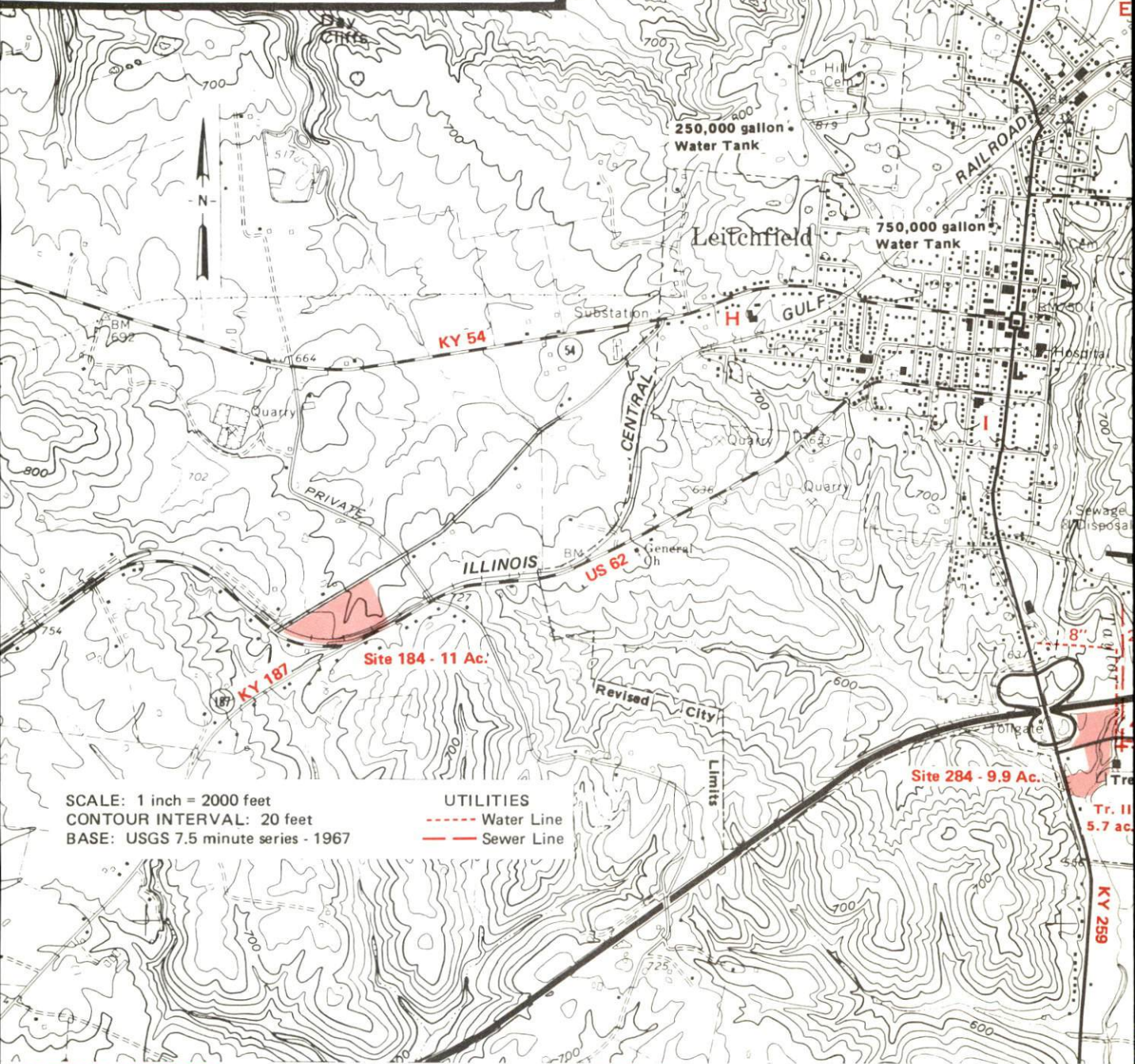




# LEITCHFIELD, KENTUCKY

## Industrial Sites — 1984

For more information contact the Kentucky Department of Economic Development, Industrial Development & Marketing Division, Capital Plaza Tower, Frankfort, Kentucky 40601 (502-564-7140).



SCALE: 1 inch = 2000 feet  
CONTOUR INTERVAL: 20 feet  
BASE: USGS 7.5 minute series - 1967

### UTILITIES

----- Water Line  
----- Sewer Line

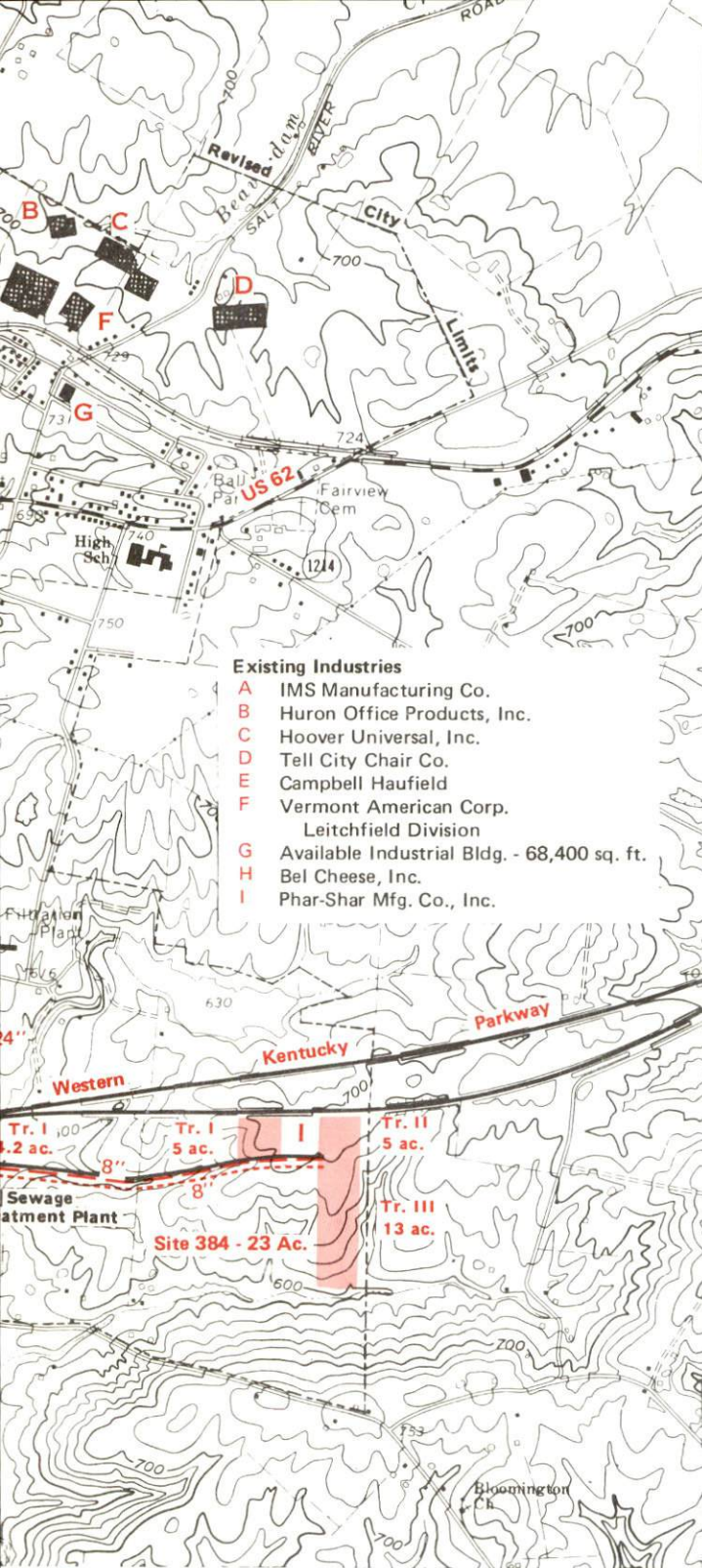
### SITE 184 - 11 ACRES

**LOCATION:** Approximately 0.4 mile southwest of city limits  
**ZONING:** Not zoned  
**HIGHWAY ACCESS:** US 62 approximately 200 feet south across Illinois Central Gulf Railroad; Western Kentucky Parkway approximately 2.4 miles east via US 62 and KY 259  
**RAILROAD:** Illinois Central Gulf Railroad along southern boundary  
**WATER:** Grayson County Water District  
Size Line: 8-inch line along south side of US 62  
**NATURAL GAS:** Leitchfield Utilities Commission  
Size Line: 4-inch medium pressure line along south side of KY 187 and US 62  
**ELECTRICITY:** Warren RECC  
**SEWERAGE:** Sewerage service not available  
**OWNERSHIP:** Leitchfield-Grayson County Industrial and Development Foundation, Inc.

### SITE 284 - 9.9 ACRES

**LOCATION:** Within southeastern city limits  
**ZONING:** Not zoned  
**HIGHWAY ACCESS:** Paved access road passes through site; Western Kentucky Parkway and KY 259 interchange adjacent to western boundary of Tract I  
**RAILROAD:** Not rail served  
**WATER:** Leitchfield Utilities Commission  
Size Line: 8-inch line along eastern boundary  
**NATURAL GAS:** Leitchfield Utilities Commission  
Size Line: 4-inch low pressure line along eastern boundary  
**ELECTRICITY:** Warren RECC  
**SEWERAGE:** Leitchfield Utilities Commission  
Size Line: 24-inch line along eastern boundary; sewage treatment plant adjacent to southeastern boundary of Tract II  
**OWNERSHIP:** Private





**SITE 384 - 23 ACRES**

LOCATION: Within southeast city limits

**ZONING:** Not zoned

**HIGHWAY ACCESS:** Western Kentucky Parkway interchange approximately 0.9 mile west via paved access road and KY 259

RAILROAD: Not rail served

**WATER:** Leitchfield Utilities Commission

Size Line: 8-inch line along south side of paved access road

**NATURAL GAS:** Leitchfield Utilities Commission

Size Line: 4-inch low pressure line along south side of paved access road

ELECTRICITY: Warren RECC

**SEWERAGE:** Leitchfield Utilities Commission

Size Line: 8-inch line along south side of paved access road

**OWNERSHIP:** Leitchfield-Grayson County Industrial and Development Foundation, Inc.

Foundation, Inc.



A COMPREHENSIVE REPORT ON  
LEITCHFIELD, KENTUCKY

Prepared by  
The Kentucky Department of Economic Development  
Division of Research and Planning  
in cooperation with  
The Leitchfield-Grayson County Chamber of Commerce

1984



Program manager - Pamela Riley; research - Bill Morris; clerical - Shirley Wood; graphics - Frank Ferrante, Tony Cecconi, Robert Owens; cartography - Site Evaluation Branch, Division of Industrial Development. Cost of printing paid from state funds.



# TABLE OF CONTENTS

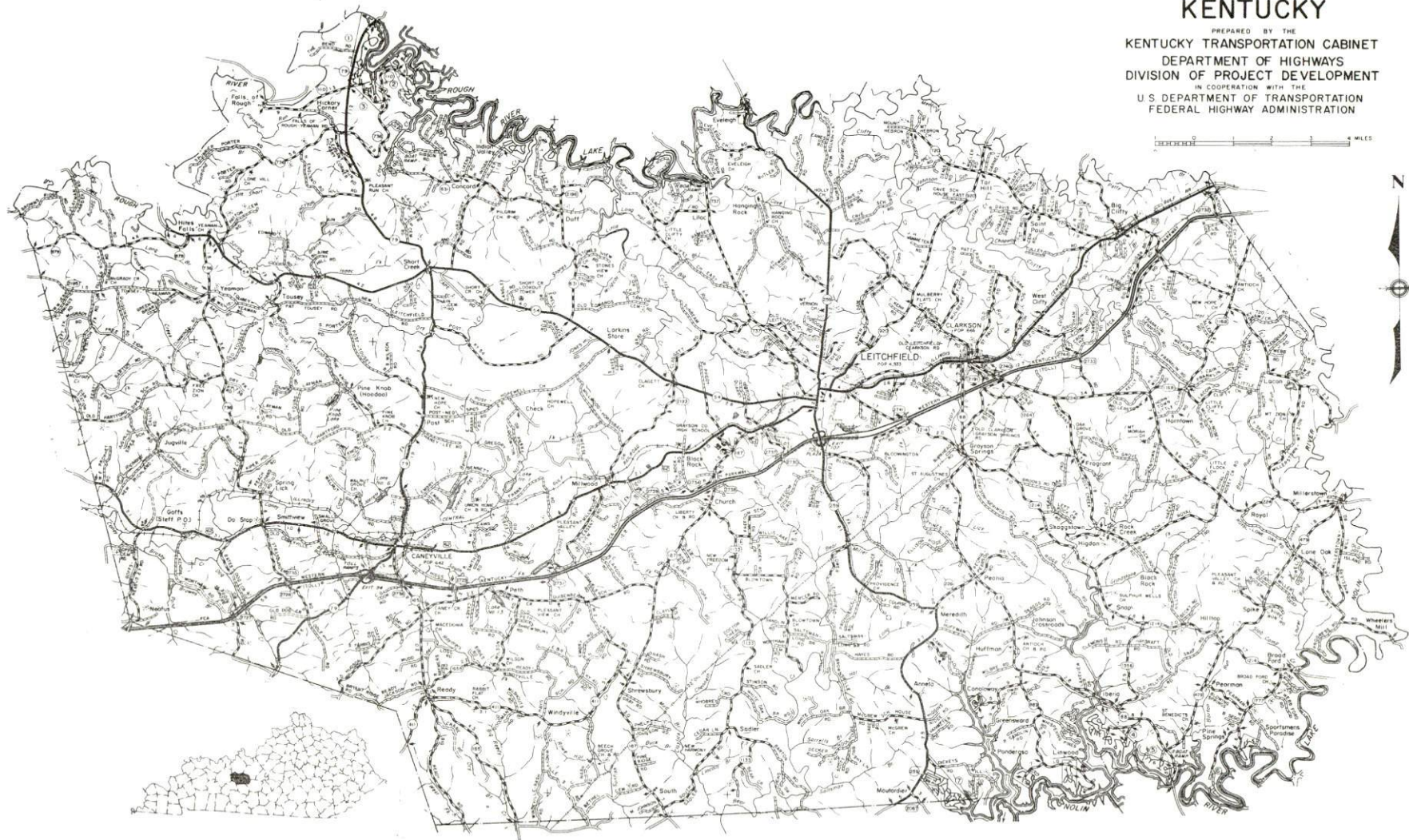
<u>Chapter</u>	<u>Page</u>
INDUSTRIAL SITES . . . . .	i
LEITCHFIELD, KENTUCKY - A RESOURCE PROFILE . . . . .	1
THE LABOR MARKET AREA . . . . .	3
Population . . . . .	3
Labor Force Characteristics of Residents, 1982 . . . . .	3
Selected Components of Nonagricultural Employment, by Place of Work, 1982 . . . . .	4
Grayson County Manufacturing Firms, Their Products and Employment . . . . .	5
Labor Organizations in Manufacturing Firms . . . . .	8
Industrial Services . . . . .	8
Estimated Male Labor Supply . . . . .	9
Estimated Female Labor Supply . . . . .	9
Average Weekly Wages by Industry, by Place of Work, 1982 . . . . .	10
Per Capita Personal Income . . . . .	12
TRANSPORTATION . . . . .	13
Rail . . . . .	13
Highways . . . . .	13
Truck Service . . . . .	14
Air . . . . .	15
Bus . . . . .	16
Taxi . . . . .	16
Rental Services . . . . .	16
Water . . . . .	16
POWER AND FUEL . . . . .	17
Electricity . . . . .	17
Natural Gas . . . . .	18
Other Fuels . . . . .	18
WATER AND SEWERAGE . . . . .	19
Public Water Supply . . . . .	19
Raw Water . . . . .	21
Sewerage . . . . .	21
CLIMATE . . . . .	22



<u>Chapter</u>	<u>Page</u>
LOCAL GOVERNMENT . . . . .	23
City . . . . .	23
County . . . . .	23
Assessed Value of Property, 1983 . . . . .	23
Property Taxes . . . . .	24
Combined State and Local Rates Per \$100 Valuation, 1983 . . . . .	24
Utilities Gross Receipts Tax for Schools . . . . .	25
Planning and Zoning . . . . .	25
Safety . . . . .	25
Police . . . . .	25
Fire . . . . .	25
Rescue Service . . . . .	25
Refuse Collection and Disposal . . . . .	26
EDUCATION . . . . .	27
Public Schools . . . . .	27
Nonpublic Schools . . . . .	27
Area Colleges and Universities . . . . .	28
Vocational Schools . . . . .	28
HEALTH . . . . .	30
Local Medical Personnel . . . . .	30
Hospitals . . . . .	30
Other Medical Facilities . . . . .	30
Ambulance Service . . . . .	30
Public Health . . . . .	30
OTHER LOCAL FACILITIES . . . . .	31
Communications . . . . .	31
Library Services . . . . .	31
Religious Institutions . . . . .	32
Financial Institutions . . . . .	32
Hotels and Motels . . . . .	32
Clubs and Organizations . . . . .	33
RECREATION . . . . .	34
COMMUNITY IMPROVEMENTS . . . . .	36

1983 EDITION  
GENERAL HIGHWAY MAP  
**GRAYSON COUNTY**  
**KENTUCKY**

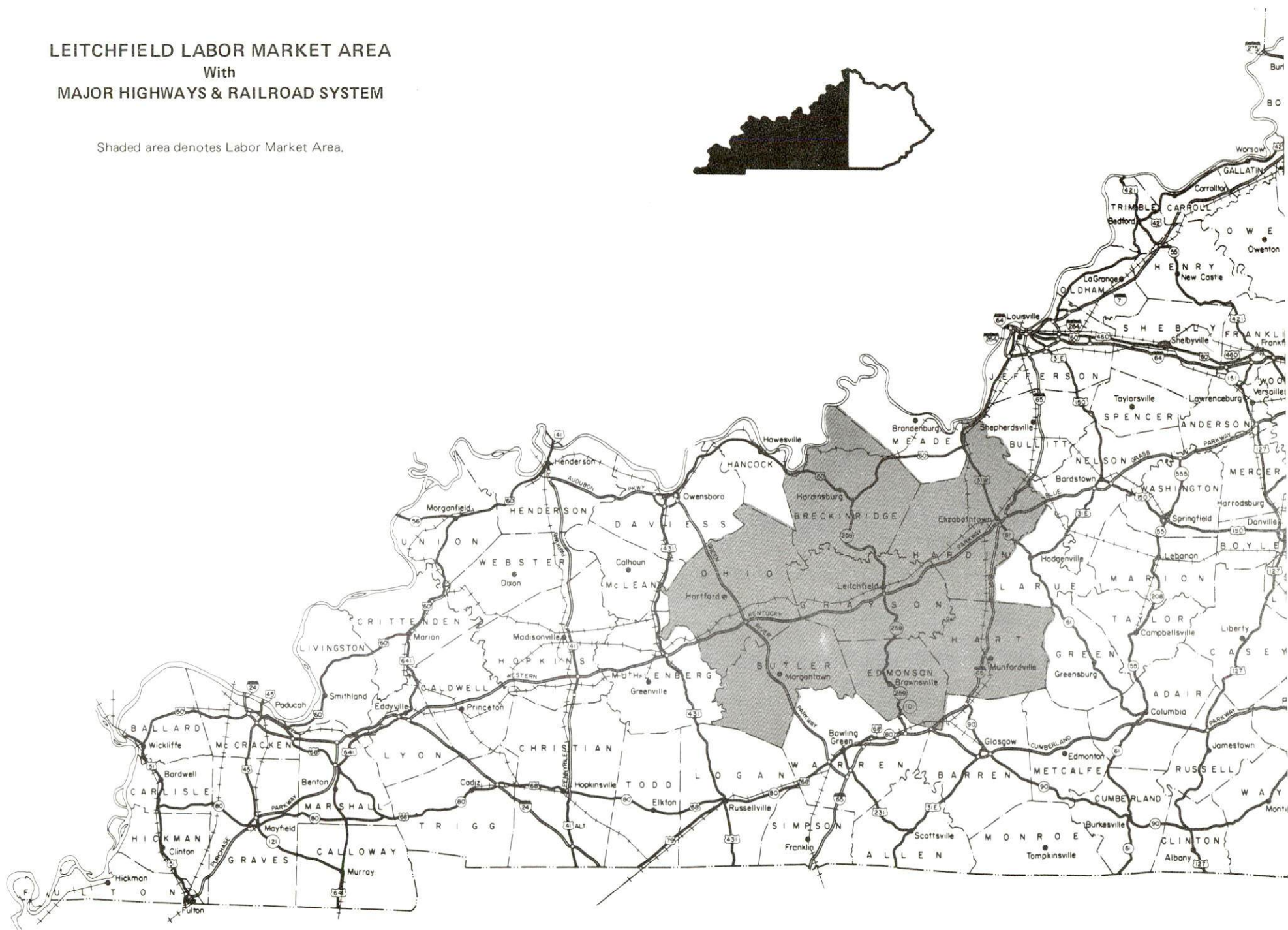
PREPARED BY THE  
KENTUCKY TRANSPORTATION CABINET  
DEPARTMENT OF HIGHWAYS  
DIVISION OF PROJECT DEVELOPMENT  
IN COOPERATION WITH THE  
U.S. DEPARTMENT OF TRANSPORTATION  
FEDERAL HIGHWAY ADMINISTRATION





# LEITCHFIELD LABOR MARKET AREA With MAJOR HIGHWAYS & RAILROAD SYSTEM

Shaded area denotes Labor Market Area.



## LEITCHFIELD, KENTUCKY - A RESOURCE PROFILE

Leitchfield, county seat of Grayson County, is located in western Kentucky's Rough River Lake area, 76 miles southwest of Louisville, Kentucky; 130 miles north of Nashville, Tennessee; and 273 miles southeast of St. Louis, Missouri. Leitchfield had a 1980 population of 4,533.

Grayson County covers a total land area of 493 square miles divided between two of Kentucky's distinctive land regions - the Mississippian Plateaus Region and the Western Coal Field Region. Rough River and Rough River Lake form the northern boundary of the county. Nolin Lake marks part of the southern boundary while Nolin River flows along most of the eastern boundary. Grayson County had a 1980 population of 20,854.

### The Economic Framework

The total number of Grayson County residents employed in 1982 averaged 9,920, with nonagricultural jobs accounting for 9,150 workers. Manufacturing employers in the county reported 1,720 workers; wholesale and retail trade 960; state and local government 660; and 530 employees in service occupations. Manufacturing employment is greatest in furniture and fixtures, apparel and related products, nonelectrical machinery, fabricated metal products, and food and kindred products.

Per capita personal income in Grayson County in 1981 was \$6,622. Between 1977 and 1981, per capita income increased by 57 percent.

The Leitchfield labor market area includes Grayson County and the adjoining Kentucky counties of Breckinridge, Butler, Edmonson, Hardin, Hart and Ohio. The total number of residents of the labor market area employed in 1982 averaged 62,505, with nonagricultural jobs accounting for 57,580 jobs. Manufacturing employers in this area reported 7,830 workers; wholesale and retail trade 8,350; state and local government 5,290; and 4,530 in the service industries.

### Resources for Growth

1. Labor Supply - There is a current labor supply of 13,750 men and 12,530 women available for industrial jobs in the labor market area. In addition, from 1984 through 1988, 7,340 young men and 7,060 young women in the area will become 18 years of age and potentially available for industrial jobs.

2. Transportation - The Illinois Central Gulf Railroad serves Leitchfield with local stops scheduled three times per week. An interchange of the Western Kentucky Parkway is located one mile south of Leitchfield and provides access to Interstate 65 and the Blue Grass Parkway at Elizabethtown, 32 miles northeast, and to the Green River Parkway, 32 miles west. U. S. Highway 62 and Kentucky Route 259 also serve Leitchfield. Ten motor freight carriers serve Leitchfield, including one local company which maintains terminal facilities. The nearest scheduled commercial airline service is available at Standiford



Field, 71 miles northeast of Leitchfield near Louisville. Local airfields are located at the Leitchfield-Grayson County Airport, 5 miles southeast of Leitchfield, and at the Rough River Dam State Resort Park Airport, 17 miles northwest of Leitchfield.

3. Power and Fuel - Kentucky Utilities Company, an electric generation and transmission company, provides electric power to most of Leitchfield and portions of Grayson County. Warren Rural Electric Cooperative Corporation, whose source of power is the Tennessee Valley Authority, serves the remainder of Leitchfield and the major portion of Grayson County. Leitchfield Utilities, whose source of natural gas is Texas Gas Resources Corporation and a private gas well, provides natural gas service in the city. Two propane dealers and four fuel oil dealers are located in Leitchfield.

4. Education - The Grayson County School System, accredited by the Southern Association of Colleges and Schools, enrolled 3,977 students during the spring of 1983. The St. Paul School is a nonpublic elementary school located in Clarkson, Kentucky, 4 miles east of Leitchfield.

Three universities, four senior colleges, one junior college, and two community colleges are located within 76 miles of Leitchfield.

The Elizabethtown State Vocational-Technical School, 32 miles northeast of Elizabethtown, offers training in thirteen courses with nine courses scheduled to be added to the curriculum in April 1984. The Grayson County Area Vocational Education Center in Leitchfield offers training in eight course areas.

## THE LABOR MARKET AREA

The Leitchfield Labor Market Area includes Grayson County and the adjoining Kentucky counties of Breckinridge, Butler, Edmonson, Hardin, Hart and Ohio.

### POPULATION

<u>Area</u>	<u>1980</u>	<u>1970</u>	<u>Percent Nonwhite</u>
Leitchfield	4,533	2,983	1.9
Labor Market Area	184,825	160,899	N/A
Grayson County	20,854	16,445	0.6
Breckinridge County	16,861	14,789	3.8
Butler County	11,064	9,723	0.6
Edmonson County	9,962	8,751	1.9
Hardin County	88,917	78,421	14.7
Hart County	15,402	13,980	8.1
Ohio County	21,765	18,790	1.4

Note: The 1980 counts of population by race are provisional.

Sources: U. S. Department of Commerce, Bureau of the Census, 1980 Census of Population and Housing, March 1981; 1980 Census of Population, Number of Inhabitants. Population Research Unit, Urban Studies Center, University of Louisville, Kentucky Demographics: The 1980 Census of Kentucky, Characteristics of Population, Households, Housing, January 1982.

### LABOR FORCE CHARACTERISTICS OF RESIDENTS, 1982

	<u>Grayson County</u>	<u>Labor Market Area</u>
Civilian Labor Force	11,230	70,314
Employment	9,918	62,505
Agricultural	771	4,924
Nonagricultural	9,147	57,581
Unemployment	1,312	7,809
Rate of Unemployment (%)	11.7	11.1

Source: Kentucky Cabinet for Human Resources, Kentucky Labor Force Estimates, Annual Averages, 1982.



SELECTED COMPONENTS OF NONAGRICULTURAL EMPLOYMENT,  
BY PLACE OF WORK, 1982

	<u>Grayson County</u>	<u>Labor Market Area</u>
All Industries (total)	4,331	31,806
Manufacturing	1,717	7,829
Wholesale & Retail Trade	964	8,351
Services	534	4,531
State/Local Government	663	5,294
Contract Construction	84	1,328

Note: Excludes domestic workers, railway workers, certain nonprofit corporations, majority of federal government workers, and self-employed workers.

Source: Kentucky Cabinet for Human Resources, Average Monthly Workers Covered by Kentucky Unemployment Insurance Law, 1982.

GRAYSON COUNTY MANUFACTURING FIRMS,  
THEIR PRODUCTS AND EMPLOYMENT

Firm (Establishment date)	Product	Employment			Labor Unions
		Total	Male	Female	
Leitchfield					
Alarm Associates, Inc. (1983)	Electronic security systems, electric fire alarm apparatus	30	-	-	
Baillie Lumber Company, Inc. (1981)	Lumber, kiln dried	30	27	3	
Bel Cheese, Inc. (1958)	Cheese, cream	175	82	93	
Campbell Hausfeld (1979)	Air compressors, paint guns, airless paint sprayers	200	140	60	
Golf Heads & Sales of Kentucky, Inc. (1979)	Golf head turnings, golf clubs	12	-	-	
Grayson County News-Gazette (1940)	Newspaper	13	2	11	
Grayson County Ready Mix, Inc. (1966)	Ready mix concrete	5	4	1	
Grayson County Stone Company (1983)	Agricultural lime, crushed stone	32	30	2	
Hoover Universal, Inc., Leitchfield Plant (1969)	Metal furniture parts	249	187	62	Electrical Workers, IUE*
Huron Office Products, Inc. (1972)	Manifold carbon paper sets, adding machine rolls, paper pads, tablets	150	-	-	

(Contd.)



<u>Firm (Establishment date)</u>	<u>Product</u>	<u>Employment</u>			<u>Labor Unions</u>
		<u>Total</u>	<u>Male</u>	<u>Female</u>	
I.M.S. Manufacturing Company (1983)	Men's sports-wear, women's sportswear	270	55	215	
Leitchfield Machining, Inc. (1980)	Machine shop, machine castings, tools and dies	5	5	-	
Lowes Concrete, Inc. (1946)	Concrete blocks, ready mixed concrete, precast concrete products	26	24	2	
Middle Ground, Inc. (1975)	Golf clubs	18	15	3	
Mid Park Metal Products, Inc. (1978)	Metal stamping, hinges farm gates, machine shop threading	18	17	1	
Phar-Shar Manufacturing Company, Inc. (1979)	Men's clothing, ladies' clothing, children's clothing	305	-	-	
Rauco, Inc. (1978)	Golf clubs	2	-	-	
The Record (1980)	Newspaper	4	2	2	
Tell City Chair Company (1974)	Furniture components	90	68	22	
Vermont American Corporation, Leitchfield Division (1977)	Miscellaneous hand tools	179	103	76	Aluminum, Brick and Glass Workers*

(Contd.)

<u>Firm</u> (Establishment date)	<u>Product</u>	<u>Employment</u>			<u>Labor Unions</u>
		<u>Total</u>	<u>Male</u>	<u>Female</u>	
<u>Caneyville</u>					
Otis Bryant & Son Milling Company (1962)	Feed	14	13	1	
Caneyville Crushed Stone (1982)	Crushed limestone	6	5	1	
Caneyville Roller Mill (1953)	Feed	6	5	1	
Ray's Custom Processing (1982)	Meat processing	4	-	-	
<u>Clarkson</u>					
Crop Production Services, Inc. (1966)	Bulk fertilizer blending	5	5	-	
Walter T. Kelly Company (1953)	Bee hives, bee comb foundation, honey extracting equipment	70	50	20	
<u>Millwood</u>					
Escue Wood Preserving Company (1980)	Wood preserving	17	15	2	
L & L Hardwoods, Inc. (1969)	Wood products	33	31	2	

\*See Labor Organizations below.

Sources: Kentucky Department of Economic Development, 1984 Kentucky Directory of Manufacturers; Division of Research and Planning.

#### New Manufacturing Development

Alarm Associates, Inc., began operations in 1983 with a work force of 30 people. The company manufactures components of alarm systems, and at full production may employ up to 90 persons.

#### Manufacturing Plant Expansions

Phar-Shar Manufacturing Company, Inc., recently completed a new 20,000-square-foot distribution center. Mid-Park Metal Products, Inc., recently completed a \$170,000 expansion project which added 6,600 square feet of manufacturing space to the present structure and provides employment potential for 7 to 15 additional persons.



# LABOR ORGANIZATIONS IN MANUFACTURING FIRMS

<u>Union</u>	<u>Representing workers at:</u>
Aluminum, Brick and Glass Workers International Union, AFL-CIO	Vermont American Corporation, Leitchfield Division
International Union of Electrical, Radio and Machine Workers, AFL-CIO	Hoover Universal, Inc., Leitchfield Plant

## INDUSTRIAL SERVICES

<u>Types of Services</u>	<u>Location</u>	<u>Mileage from Leitchfield</u>
Custom Plastics Producers	Owensboro	66
	Livermore	67
	Bowling Green	69
Electric Motor Repair	Leitchfield	-
Grinding, Precision & Tool	Louisville	76
Heat Treating Facilities	Louisville	76
Industrial Equipment & Supplies	Greenville	60
	Owensboro	66
	Bowling Green	69
Industrial Gases	Elizabethtown	32
Industrial Waste Removal	Elizabethtown	32
Machine Shops, Tool & Die	Leitchfield	-
Metal Finishers	Elizabethtown	32
	Hartford	41
Metal Service Centers	Greenville	60
	Owensboro	66
	Bowling Green	69
Millwrights	Elizabethtown	32

Sources: Kentucky Department of Economic Development, Kentucky Directory of Selected Industrial Services, 1983; Division of Research and Planning.

ESTIMATED MALE LABOR SUPPLY  
LEITCHFIELD LABOR MARKET AREA

Area	Total	Unemployed	Current		Future Becoming 18 years of age 1984 thru 1988
			Under- employed	Not in Labor Force	
Labor Market					
Area*	13,752	4,654	6,661	2,437	7,342
Grayson	1,345	962	383	0	941
Breckinridge	815	488	268	59	713
Butler	1,093	450	236	407	479
Edmonson	1,087	402	127	558	428
Hardin	7,149	1,190	5,097	862	3,212
Hart	1,177	412	214	551	660
Ohio	1,086	750	336	0	909

\*Additional workers may be drawn from other nearby counties.

Note: Unemployed - persons unemployed and actively seeking work; Underemployed - persons employed but working only 14 to 26 weeks per year. Not in Labor Force - represents the number of persons who would enter the labor force if suitable employment were available (based on the assumption that persons in Kentucky would like to participate in the labor force in the same proportion that they do nationally).

Sources: Kentucky Cabinet for Human Resources, Kentucky Labor Supply Estimates by Area Development District and County, 1982. Kentucky Department of Economic Development, Future Labor Supply Becoming 18 Years of Age 1984 thru 1988.

ESTIMATED FEMALE LABOR SUPPLY  
LEITCHFIELD LABOR MARKET AREA

Area	Total	Unemployed	Current		Future Becoming 18 years of age 1984 thru 1988
			Under- employed	Not in Labor Force	
Labor Market					
Area*	12,530	3,155	3,493	5,882	7,063
Grayson	690	350	340	0	860
Breckinridge	1,331	320	267	744	720
Butler	1,229	146	223	860	424
Edmonson	1,165	325	159	681	434
Hardin	5,182	1,232	1,782	2,168	3,095
Hart	1,745	356	321	1,068	634
Ohio	1,188	426	401	361	896

\*Additional workers may be drawn from other nearby counties.

Note: Unemployed - persons unemployed and actively seeking work; Underemployed - persons employed but working only 14 to 26 weeks per year. Not in Labor Force - represents the number of persons who would enter the labor force if suitable employment were available (based on the assumption that persons in Kentucky would like to participate in the labor force in the same proportion that they do nationally).

Sources: Kentucky Cabinet for Human Resources, Kentucky Labor Supply Estimates by Area Development District and County, 1982. Kentucky Department of Economic Development, Future Labor Supply Becoming 18 Years of Age 1984 thru 1988.



AVERAGE WEEKLY WAGES BY INDUSTRY,  
BY PLACE OF WORK, 1982

	<u>Grayson County</u>	<u>Breckinridge County</u>	<u>Butler County</u>	<u>Edmonson County</u>
All Industries	\$218.03	\$220.18	\$207.99	\$190.32
Mining & Quarrying	*	188.61	366.29	*
Contract Construction	229.55	200.80	181.24	141.15
Manufacturing	231.59	226.15	169.54	*
Transportation, Communications & Public Utilities	280.39	371.27	315.01	185.30
Wholesale & Retail Trade	184.32	177.40	180.24	161.76
Finance, Insurance & Real Estate	259.43	270.90	220.56	203.52
Services	181.59	171.00	149.08	193.86
State/Local Government	233.69	246.30	218.18	208.98
Other	137.84	*	*	*
	<u>Hardin County</u>	<u>Hart County</u>	<u>Ohio County</u>	
All Industries	\$249.04	\$214.12	\$323.35	
Mining & Quarrying	*	184.09	570.92	
Contract Construction	289.20	266.14	428.46	
Manufacturing	324.66	247.56	239.67	
Transportation, Communications & Public Utilities	298.75	221.08	272.34	
Wholesale & Retail Trade	182.15	165.10	176.44	
Finance, Insurance & Real Estate	247.84	224.12	254.58	
Services	226.02	166.09	205.36	
State/Local Government	270.23	246.72	216.29	
Other	191.24	*	126.38	

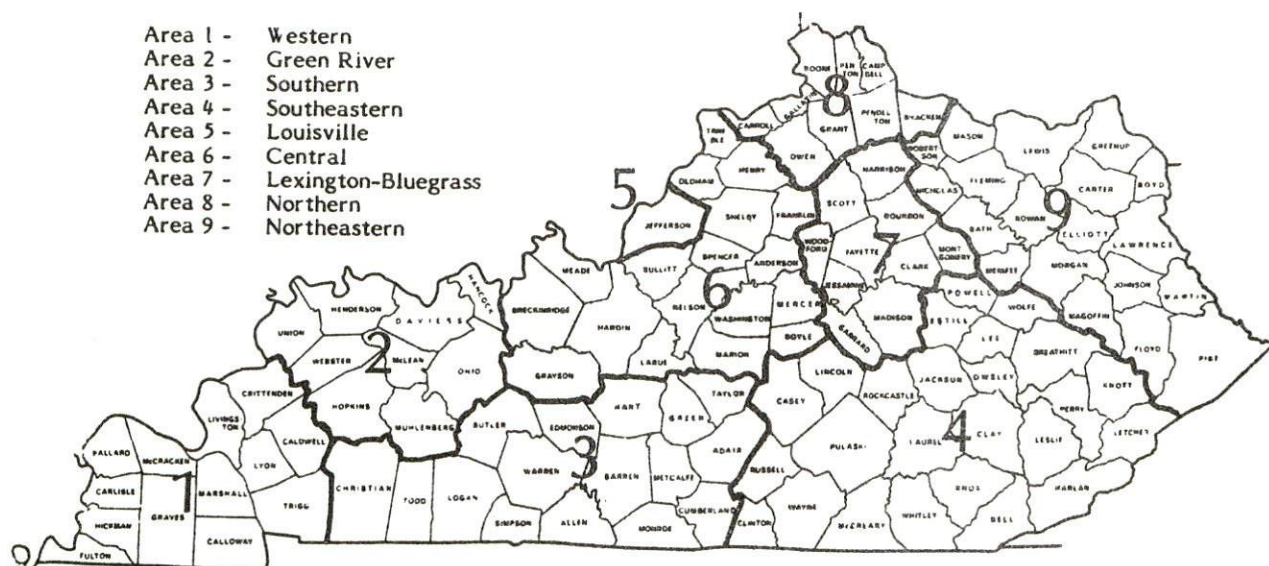
\*Not disclosed.

Note: Excludes domestic workers, railway workers, certain nonprofit corporations, majority of federal government workers, and self-employed workers.

Source: Kentucky Cabinet for Human Resources, Average Weekly Wages of Workers Covered by Kentucky Unemployment Insurance Law, 1982.

Occupational wage rates for specific industries are usually not available to most government agencies, and wage data furnished to state employment agencies by individual industrial employers are protected from disclosure by federal law. The most reliable up-to-date wage information can be obtained by direct contact with local employers.

Associated Industries of Kentucky, a voluntary organization of Kentucky businesses, regularly collects occupational wage rates and fringe benefits data from participating member firms. Data are compiled for over 127 clearly defined office, production, and service occupations. Tabulations are published for nine geographical areas of Kentucky, as shown on the map below. It should be noted that the data may be weighted by the preponderance of firms in the larger cities and may be somewhat higher than the rates paid in the smaller communities. Data from these tabulations are available, upon request, from the Kentucky Department of Economic Development, Frankfort, Kentucky 40601.



Associated Industries of Kentucky Area Wage Surveys



Up-to-date occupational wage rates of the existing industries are maintained by South Kentucky Industrial Development Association, Post Office Box 726, Hopkinsville, Kentucky 42240

PER CAPITA PERSONAL INCOME

<u>Area</u>	<u>1977</u>	<u>1981</u>	<u>Percent Change</u>
Grayson County	\$4,211	\$6,622	57.3
Labor Market Area Range	\$3,345 - 5,704	\$5,140 - 7,611	N/A
Kentucky	5,797	8,416	45.2
U.S.	6,984	10,495	50.3

Source: U. S. Bureau of Economic Analysis, Kentucky Economic Information System, May 1983.

## TRANSPORTATION

### Rail

Line serving Leitchfield - Illinois Central Gulf Railroad

Services - Local freight Monday, Wednesday, and Friday, supplemented by night freights as needed by customers; 2 scheduled northbound and 2 scheduled southbound through freights daily; average of 2 unscheduled northbound or southbound through coal freights per day; switching facilities; siding space for 78 cars at Leitchfield, 105 cars at Caneyville, and 95 cars at Big Clifty. Illinois Central Gulf Railroad piggyback service is available in Louisville, 76 miles northeast of Leitchfield. Piggyback facilities are also provided by Seaboard System Railroad at Owensboro, 66 miles northwest of Leitchfield.

For details on routing, schedules, rates, and services, contact:

Manager of Industrial Development  
Illinois Central Gulf Railroad  
Central Region  
Pet Plaza  
400 South 4th Street  
St. Louis, Missouri 63102  
(314) 622-6430

### Highways

Highway access to Leitchfield is provided by the Western Kentucky Parkway; U. S. Highway 62, a "AAA"-rated, 80,000-pound gross load limit trucking highway; and Kentucky Highway 259, a "AA"-rated, 62,000-pound gross load limit trucking highway. Leitchfield is located approximately one mile north of an interchange to the Western Kentucky Parkway which connects with Interstate 65 and the Blue Grass Parkway at Elizabethtown, 32 miles northeast. The Western Kentucky Parkway also provides direct access to the Green River Parkway, 32 miles west of Leitchfield.



## Truck Service

### Company

### Home Office

Branch Motor Express Company*	114 Fifth Avenue New York, New York 10011
Briggs Transportation Company*	St. Paul, Minnesota 55113
Expressway, Inc.*	1105 St. Louis Louisville, Kentucky 40210
Leitchfield Transfer Company(T)*	U. S. 62 East P. O. Box 366 Leitchfield, Kentucky 42754
Leoni Motor Express, Inc.*	Chicago Heights, Illinois 60411
Majors Transit, Inc.**	P. O. Box 9 Caneyville, Kentucky 42721
McLean Trucking Company**	P. O. Box 213 Winston-Salem, North Carolina 27154
Overnite Transportation Company*	1000 Semmes Avenue P. O. Box 1216 Richmond, Virginia 23209
Robbins Truck Line, Inc.*	P. O. Box 429 Hardinsburg, Kentucky 40143
Smith's Transfer Corporation*	P. O. Box 1000 Staunton, Virginia 24401

### Other Freight Services

### Nearest Office or Shipping Center

Emery	Louisville, 76 miles northeast
Federal Express	Owensboro, 66 miles northwest
KATO Express, Inc. (air cargo service)	Elizabethtown, 32 miles northeast
Purolator Courier	Louisville, 76 miles northeast
United Parcel Service	Owensboro, 66 miles northwest
	Bowling Green, 69 miles south

(T)Local terminal.

\*Interstate and intrastate service.

\*\*Interstate service only.

Source: American Motor Carrier Directory, Spring 1984.

HIGHWAY MILES AND TRUCK TRANSIT TIME IN DAYS FROM  
LEITCHFIELD, KENTUCKY, TO SELECTED MARKET CENTERS

City	Highway Miles	Delivery Time		City	Highway Miles	Delivery Time	
		TL				TL	
Atlanta, Ga.	372	1		Los Angeles, Ca.	2,118	4	
Baltimore, Md.	655	2		Louisville, Ky.	76	1	
Birmingham, Ala.	326	1		Nashville, Tenn.	130	1	
Chicago, Ill.	368	1		New Orleans, La.	647	2	
Cincinnati, Ohio	177	1		New York, N. Y.	817	2	
Cleveland, Ohio	421	2		Pittsburgh, Pa.	457	2	
Detroit, Mich.	436	2		St. Louis, Mo.	273	1	
Knoxville, Tenn.	287	1					

Note: Mileage computations are via the best interstate or primary highways, not necessarily the most direct route of travel.

Sources: Rand McNally Road Atlas, 1979. Official Kentucky Mileage Map, 1980. Delivery time - Leitchfield Transfer Company, P. O. Box 366, Leitchfield, Kentucky 42754.

Air

Local

	Leitchfield-Grayson County Airport*
Location:	5 nautical miles southeast of Leitchfield
Runways:	1 paved
Length:	4,000 feet
Traffic	
Control:	Wind sock
Lighting:	MIRL, VASI, rotating beacon, lighted wind sock
Services:	100 LL fuel, tie downs, A & E repairs
	Rough River Dam State Resort Park Airport
Location:	17 miles northwest of Leitchfield
Runways:	1 paved
Length:	2,500
Traffic	
Control:	Wind sock
Lighting:	Runway lights, VASI, rotating beacon, lighted wind sock
Services:	100 LL fuel, tie downs

\*Recent improvements to the Leitchfield-Grayson County Airport include an 1,800-foot expansion of the runway, a relocated access road, new lighting systems, an apron expansion, and the addition of fuel facilities. Future plans call for construction of new taxiways, apron space, a hangar, and an airport office. The installation of a radio navigation system and an extension of the lighting system is also planned.

### Nearest Scheduled Commercial Airline Service

Standiford Field  
Location: 5 miles southeast of center of Louisville, Kentucky;  
71 miles northeast of Leitchfield  
Runways: 3 paved  
Length: 7,800 feet; 7,250 feet; 5,000 feet  
Traffic  
Control: Control tower  
Lighting: Runways, obstructions, beacon and approach and touch-  
down lights, center line on one runway  
Services: Continental, Delta, Eastern, Ozark, Piedmont, TWA, United,  
USAir, Wright Airways, Allegheny Commuter, Comair,  
Florida Express; fuel - 100 and jet-A; tie downs;  
major A & P repairs; major Avionics repairs; APU,  
charter, oxygen, U. S. Customs; taxi, car rentals,  
limousine, courtesy car, public transit; weather  
information; restaurant, snack bar  
Air Freight  
Service: Air freight terminal

Bus - Trailways Bus Systems

Taxi - One company operates from 8 a.m. to 6 p.m.

Rental Services - Nearest car, truck and trailer rentals available at  
Elizabethtown, 32 miles northeast of Leitchfield.

### Water

Leitchfield is located approximately 50 miles northeast of the Green River near Central City, where a 9-foot navigation channel is maintained to the confluence of the Green and Ohio Rivers. The Ohio River, one of the nations major arteries of commerce, is accessible 66 miles northwest at Owensboro, where public riverport facilities are available.



## POWER AND FUEL

### Electricity

Company serving most of Leitchfield and portions of Grayson County -  
Kentucky Utilities Company  
Source of power - Kentucky Utilities Company  
Total generating capacity - 2,639,100 KW\*  
For industrial rates contact:

Industrial Development Department  
Kentucky Utilities Company  
One Quality Street  
Lexington, Kentucky 40507  
(606) 255-1461

Company serving most of Grayson County and portions of Leitchfield -  
Warren Rural Electric Cooperative Corporation  
Source of power - Tennessee Valley Authority  
Total generating capacity - 31,109,160 KW  
For industrial rates contact:

South Kentucky Industrial Development  
Association, Inc.  
P. O. Box 726  
Hopkinsville, Kentucky 42240  
(502) 885-5392

and/or

Warren RECC  
951 Fairview Avenue  
P. O. Box 1118  
Bowling Green, Kentucky 42101  
(502) 842-6541

\*A new generating unit is under construction in Carroll County. Due to be completed in 1984, the unit will have a generating capacity of 511,000 KW.

## Natural Gas

Company serving Leitchfield - Leitchfield Utilities

Source of supply - Texas Gas Resources Corporation and private gas well\*

Size of transmission mains - 24 inches (supplier);

6 inches (distributor)

Distribution mains - 2 through 6 inches

Distribution pressure - 4 ounces to 17 psi

Btu content - 1,000 per cubic foot

Specific gravity - .585

For rates and supplies contact:

Leitchfield Utilities  
314 West White Oak Street  
Leitchfield, Kentucky 42754  
(502) 259-4034

## Other Fuels

### Propane

John E. Foster & Son, Inc.\*\*  
207 North Main  
Leitchfield, Kentucky 42754

Foster's Gas, Inc.\*\*  
126 West Market Street  
Leitchfield, Kentucky 42754

### Fuel oils

Distillate fuel oil -

Ashland Petroleum Company\*\*  
200 West White Oak Street  
Leitchfield, Kentucky 42754

Independent Oil Company, Inc.\*\*  
206 Marion Street  
Leitchfield, Kentucky 42754

Hatfield Fuel Service\*\*  
313 Floyd Street  
Leitchfield, Kentucky 42754

B. W. Lyons Oil Company\*\*  
308 South Main Street  
Leitchfield, Kentucky 42754

Residual fuel oil - Arrangements must be made with the refinery.

Low sulphur content coal - Available in Kentucky.

\*The city has a contract with the owner of a private gas well in Shrewsbury, Kentucky, to purchase a minimum of 6 million cubic feet of natural gas per month.

\*\*Bulk plant.

## WATER AND SEWERAGE

### Public Water Supply

Company serving Leitchfield - Leitchfield Utilities\*  
314 West White Oak Street  
Leitchfield, Kentucky 42754  
(502) 259-4034

Source - Rough River Lake  
Treatment plant capacity - 1,000,000 gallons per day  
Average daily consumption - 775,000 gallons  
Peak daily consumption - 885,000 gallons  
Type treatment - Coagulation, rapid sand filtration, chlorination,  
sedimentation, fluoridation  
Storage capacity - 775,000 gallons  
Size lines - 2 through 12 inches  
Average pressure - 50 psi  
Average temperature - 55 degrees F.

### MONTHLY WATER RATES

First	2,000 gallons	\$6.40 (Minimum)
Next	3,000 gallons	3.00 per M gallons
Next	5,000 gallons	2.40 per M gallons
Next	10,000 gallons	1.80 per M gallons
Next	10,000 gallons	1.70 per M gallons
Next	20,000 gallons	1.30 per M gallons
All over	50,000 gallons	1.20 per M gallons

Tap-on charge: 3/4-inch meter - \$125  
1-inch or larger meter - Cost of labor and  
materials plus 10 percent

\*An expansion project was begun in 1983 to increase the plant's treatment capacity to 1,700,000 gallons per day. The \$300,000 project involves upgrading filters, constructing an additional flocculation basin and clearwell storage facility, and the installation of new high service and raw water pumps. The project is scheduled for completion in 1985.



Name of water district - Grayson County Water District  
 Warren RECC Building  
 P. O. Box 345  
 Leitchfield, Kentucky 42754  
 (502) 259-3161

Area served - From Leitchfield east along U. S. 62 to within 1 mile of the Grayson County line. West of Leitchfield approximately 11 miles along U. S. 62; along Kentucky 187 south approximately 10 miles

Date when water district began operating - 1974

Source of supply of treated water - Leitchfield Utilities

Average amount of water used in a 24-hour period - 144,800 gallons

Peak amount of water used in a 24-hour period - 220,000 gallons

Storage capacity - 275,000 gallons

Average pressure - 75 psi

Average temperature - 68 degrees F.

Size lines - 2, 3, 4, 6 and 8 inches

#### MONTHLY WATER RATES

First	1,500 gallons	\$7.54 (Minimum)
Next	3,500 gallons	3.94 per M gallons
Next	5,000 gallons	3.44 per M gallons
Next	15,000 gallons	2.39 per M gallons
All over	25,000 gallons	1.29 per M gallons

#### Minimum Monthly Charges

<u>Meter Size</u>	<u>Allowable Usage</u>	<u>Minimum Bill</u>
5/8-inch	1,500 gallons	\$ 7.54
3/4-inch	3,000 gallons	13.45
1-inch	5,000 gallons	21.33
1 1/2-inch	10,000 gallons	38.53
2-inch	16,000 gallons	52.87
3-inch	30,000 gallons	80.83
4-inch	50,000 gallons	106.63
6-inch	100,000 gallons	171.13

#### Contribution in Aid of Construction

5/8-inch meter	(Residential)	\$ 250
3/4-inch meter		300
1-inch meter		350
2-inch meter		675
3-inch meter		950
4-inch meter		1,350
6-inch or larger meter		Actual Cost

## Raw Water

Surface water sources - Rough River and Rough River Lake, Nolin River and Nolin Lake

Average discharge - Rough River at Falls of Rough, Kentucky -769 cfs (34 years, USGS, unadjusted); Nolin River at Kyrock, Kentucky - 929 cfs (34 years, USGS, unadjusted)

Expected ground water yield - 50 to 200 gpm along the western and southwestern border of the county and small portions throughout the county; 5 to 50 gpm in northeastern and northwestern tips of county; 5 gpm or less over remainder of county

## Sewerage

Company serving Leitchfield - Leitchfield Utilities  
314 West White Oak Street  
Leitchfield, Kentucky 42754  
(502) 259-4034

Design capacity - 1,300,000 gallons per day

Average daily flow - 450,000 gallons

Type of treatment - Primary, secondary (2 types) and tertiary

Treatment processes - Bio-filter, clarifier, rapid sand filter, chlorine, sludge applicator

Treated effluent discharged into - Taylor Fork of Bear Creek

Size of sanitary mains - 6, 8, 10, 12, 15 and 24 inches

Size of storm mains - 24 and 36 inches

Monthly rates - Customers are billed according to the following rate schedule with an \$0.88 per M gallons operation and maintenance (O & M) surcharge added to all bills.

First	2,000 gallons	\$4.90 (Minimum)
Next	3,000 gallons	2.35 per M gallons
Next	5,000 gallons	1.79 per M gallons
Next	10,000 gallons	1.42 per M gallons
Next	10,000 gallons	1.32 per M gallons
Next	20,000 gallons	.98 per M gallons
All over	50,000 gallons	.82 per M gallons

Tap-on charge: \$300

## CLIMATE

### Grayson County

#### Temperature

Normal (30-year record)	55.20 degrees
Average annual 1982	55.50 degrees
Record highest, September 1954 (38-year record)	103.00 degrees
Record lowest, January 1963 (38-year record)	-21.00 degrees
Normal heating degree days (30-year record)	4,729
(Heating degree day totals are the sums of negative departures of average daily temperatures from 65 degrees F.)	

#### Precipitation

Normal (30-year record)	44.49 inches
Mean annual snowfall (39-year record)	16.40 inches
Total precipitation 1982	38.76 inches
Mean number days precipitation (.01 inch or more) (38-year record)	131
Mean number days thunderstorms (38-year record)	46

#### Prevailing Winds (17-year record)

South

#### Relative Humidity

1 a.m.	77 percent (18-year record)
7 a.m.	81 percent (19-year record)
1 p.m.	60 percent (19-year record)
7 p.m.	64 percent (19-year record)

Source: U. S. Department of Commerce, Environmental Science  
Services Administration, Climatological Data, 1982.  
Station of record: Lexington, Kentucky.



## LOCAL GOVERNMENT

### City

Structure - Mayor - 4-year term; 6 council members - 2-year terms  
Budget 1983-84 - General Fund \$1,045,500  
                    Water and Sewer Fund 401,125  
                    City Gas System 1,253,595  
Fees and licenses - Occupational license taxes - one percent on wages  
                    and one percent on net profits of businesses figured after state  
                    and federal withholding; unloading license - \$10 - \$35 annually

### County

Structure - County Judge/Executive - 4-year term;  
            6 magistrates - 4-year terms  
Budget 1983-84 - General Fund \$470,180; Road Fund \$649,500

### Assessed Value of Property, 1983\*

<u>Classes of Property</u>	<u>Leitchfield</u>	<u>Grayson County</u>
Real Estate	\$46,971,012	\$218,356,529
Tangibles	15,442,993	43,403,954

\*Excludes Homestead Exemptions.

## Property Taxes

All property in Kentucky is assessed at 100 percent of fair cash value.

Land and buildings are taxed by the state and may be taxed by local jurisdictions. The state rate is \$0.221 per \$100 of assessed valuation.

Manufacturing machinery, raw materials inventories, pollution control equipment, and goods in the process of manufacture are not subject to local taxation. The state rate is \$0.15 per \$100.

Other tangible personal property owned by manufacturers (automobiles, trucks, finished goods, office furniture, office equipment) is taxed by the state at \$0.45 per \$100 and may be taxed by local jurisdictions.

Intangible personal property located in Kentucky (money in hand, shares of stock, notes, bonds, accounts receivable, and other credits) is taxed by the state at \$0.25 per \$100, and is not subject to local taxation.

Property stored in public warehouses in a transit status is not subject to local taxation. The state rate is only \$0.015 per \$100.

Private leaseholds in industrial facilities owned by cities or counties and financed by industrial revenue bonds are subject to a state tax of \$0.015 per \$100 of value (essentially the lessee's equity, adjusted for appreciation or depreciation). Local taxation is not permitted.

### Combined State and Local Rates Per \$100 Valuation, 1983\* (100% assessment)

	<u>Site Inside City of Leitchfield</u>	<u>Site Inside Unincorporated Grayson County</u>
1. Land and buildings	\$0.6051	\$0.4851
2. Mfg. machinery, raw materials, goods in process, pollution control equipment	0.1500	0.1500
3. Finished goods, office equipment, vehicles, other tangibles	0.8593	0.7393
4. Intangibles (accounts rec., notes, bonds, etc.)	0.2500	0.2500
5. Property stored in public warehouses in a transit status	0.0150	0.0150
6. Leaseholds in industrial revenue bond financed plants	0.0150	0.0150

\*Kentucky Department of Economic Development.

### Utilities Gross Receipts Tax for Schools

A 3 percent tax is levied on utilities receipts for schools in Grayson County. Tax is paid by all consumers of utilities as an add-on to the utilities bills. Exempted are receipts from utilities services that are resold and the receipts from the sale of energy or energy producing fuels that exceed 3 percent of the cost of production in manufacturing, processing, mining or refining.

### Planning and Zoning

There is no planning and zoning agency in Leitchfield at the present time.

Mandatory state codes enforced - Kentucky Plumbing Code, National Electric Code, Kentucky Boiler Regulations and Standards, Kentucky Building Code (modeled after BOCA code)

### Safety

<u>Police</u>	<u>Leitchfield</u>	<u>Grayson County</u>
Total staff	14 full time 1 part time	6
Radio-patrol vehicles	6 cars 1 motorcycle	6

### Fire

Insurance Services Office, Public Protection Classification	5	*
Volunteers	35	-

### Rescue Service

Leitchfield Rescue Squad: (Operated by the Leitchfield Fire Department)

Number of volunteers - 35

Equipment - 7 complete sets of scuba diving equipment, 2 14-foot boats, 2 resuscitators, porta-power, "Jaws of Life", and miscellaneous rescue equipment

Personnel training - 6 licensed rescue instructors, first aid, emergency medical technician training, 8 licensed scuba divers, annual refresher training conducted for volunteer firemen

\*There are four volunteer fire departments that serve portions of Grayson County. The Caneyville Fire Department has a Class 8 rating; the Clarkson Fire Department has a Class 7 rating; and the Falls of Rough Fire Department and Wax Fire Department both have Class 10 ratings.



## Refuse Collection and Disposal

### Leitchfield

Type service	Municipal
Fee charged:	
residential	\$5 per month inside city limits; \$7.50 per month outside city limits
business	\$10 per month minimum
industrial	\$10 per month minimum
Collection frequency:	
residential	Weekly
business	As needed
industrial	As needed
Trash pickup	Twice monthly
Disposal method	Sanitary landfill

## EDUCATION

### Public Schools

#### Grayson County\*

Total Enrollment (Spring 1983)	3,977
Elementary	2,168
Middle School	656
High School	1,153
Student-Teacher Ratio	19-1
Elementary	20-1
Middle School	18-1
High School	19-1
Accreditation	Southern Association of Colleges and Schools
Percent High School Graduates to Colleges (1982)	27.6
Expenditures Per Pupil (1982-83)	\$1,531.02
Bonded Indebtedness (June 30, 1983)	\$3,284,000

### Nonpublic Schools

#### St. Paul (Clarkson, Ky.)

Total Enrollment	118
Elementary	118
Student-Teacher Ratio	30-1
Elementary	30-1

\*Improvement projects completed since 1981 by the Grayson County School System include construction of a new \$140,000 high school athletic center, a \$725,000 construction and renovation project at the middle school and Wilkey Elementary, paving of all school lots, air conditioning of all schools, installation of high school and middle school computer labs, and the institution of a gifted and talented program. Additions at the Caneyville, Clarkson, and Wilkey Elementary schools are planned for 1984.

### Area Colleges and Universities

<u>Name</u>	<u>Location (Miles distant)</u>	<u>Enrollment (Fall, 1983)</u>	<u>Highest Degree Conferred</u>
Elizabethtown Community College	Elizabethtown (32)	2,259	Associate
Brescia College	Owensboro (66)	930	Baccalaureate*
Kentucky Wesleyan College	Owensboro (66)	1,029	Baccalaureate*
Western Kentucky University	Bowling Green (69)	12,666	Masters, Specialist**
Campbellsville College	Campbellsville (71)	701	Baccalaureate
St. Catharine College	Springfield (73)	201	Associate
Bellarmine College	Louisville (76)	2,809	Masters
Jefferson Community College	Louisville (76)	7,076	Associate
Spalding University	Louisville (76)	1,115	Masters, Specialist
University of Louisville	Louisville (76)	19,750	Doctorate, M.D., D.M.D., J.D.

### Vocational Schools

Both the state vocational-technical schools and the area vocational education centers are operated by the Kentucky Department of Education. The state vocational-technical schools enroll persons full time who are at least 16 years of age and not in school. These students attend classes for six hours each day. The area vocational education centers are designed to accommodate high school students who are at least 15 years of age. These students attend vocational school for three hours each day. The state vocational-technical schools and the area education centers offer evening courses to enable working adults to upgrade current job skills.

(Contd.)

\*Courses in masters degree programs are taught on campus by faculty members of Western Kentucky University or Murray State University. The degrees are issued by Western Kentucky University or Murray State University.

\*\*Joint doctoral degree programs are offered in cooperation with the University of Kentucky, Lexington, and cooperative doctoral degree programs are offered with the University of Louisville. The degrees are issued by the University of Kentucky or the University of Louisville.



Nearest State School

Location	Elizabethtown State Vocational-Technical School
Miles Distant	Elizabethtown
Curriculum	32
	Business and Office
	Accounting Management*
	Clerical
	Secretarial
	Word Processing*
	Consumer and Home Economics
	Commercial Foods
	Retail Store Worker*
	Industrial Education
	Agricultural Mechanics*
	Air Conditioning
	Appliance Repair
	Auto Mechanics
	Carpentry
	Diesel Mechanics*
	Drafting
	Electronics*
	General Industry Worker*
	Industrial Electricity
	Industrial Maintenance
	Machine Shop
	Masonry*
	Plumbing*
	Radio and T.V. Repair
	Welding

Nearest Area Education Center

Location	Grayson County Area Vocational Education Center
Curriculum	Leitchfield
	Distributive Education
	Health and Personal Services Occupations
	Health Careers
	Industrial Education
	Auto Mechanics
	Carpentry
	Industrial Electricity
	Industrial Electronics
	Radio and Television Repair
	Welding

Arrangements can be made to provide training in the specific production skills required by an industrial plant. Instruction may be conducted either in the vocational school or in the industrial plant, depending upon the desired arrangement and the availability of special equipment.

\*Tentatively scheduled to begin April 1984.

## HEALTH

### Local Medical Personnel

Physicians - 10  
Dentists - 7

### Hospitals

<u>General Hospital</u>	<u>Location</u>	<u>Beds</u>
Grayson County Hospital	Leitchfield	75

General hospital facilities - 2 operating rooms, X-ray department, laboratory, ultrasound, recovery room, maternity ward, emergency room, outpatient clinic, respiratory therapy, physical therapy, stress test, EKG, EEG, 24-hour emergency room physician coverage

Medical staff - 8 staff physicians, 3 consulting physicians, 2 certified nurse anesthetists, 55 registered nurses, 8 licensed practical nurses, 2 respiratory therapists, 1 physical therapist, 8 medical technologists, 2 ultrasound technologists, 4 radiology technologists, 2 pharmacists, 1 registered dietician

### Other Medical Facilities

Comprehensive Care Center - North Central  
Staff - MSW social worker, mental health associate, psychiatrist (part time), secretary

### Ambulance Service

Name - Grayson County-City Ambulance Service, Inc.  
Staff - 12 employees including 9 certified emergency medical technicians  
Service - 24-hour, county-wide  
Equipment - 2 conforming and 1 nonconforming ambulances

### Public Health

Facility - Grayson County Health Center, Lincoln Trail District Health Department  
Staff - 1 health environmentalist; 5 registered nurses, including 1 family planning nurse; 2 home health nurses; 5 clerks

## OTHER LOCAL FACILITIES

### Communications

Telephone - General Telephone Company of Kentucky serves Leitchfield  
Continental Telephone Company of Kentucky serves Grayson  
County  
Services - Standard

Telegraph - Western Union  
Services - Toll-free number, 1-800-325-5100

Postal - U. S. Post Office  
Class - First  
Mail received - Once daily  
Mail dispatched - Once daily

Newspapers  
Twice weekly and circulation - Grayson County News-Gazette - 6,800  
Weekly and circulation - The Record - 2,000  
Other papers  
received from - Bowling Green and Louisville, Kentucky

Radio - WMTL-AM, WKHG-FM  
Stations received from - Elizabethtown, Bowling Green, Louisville and  
Owensboro, Kentucky; Evansville, Indiana

Television -  
Cable service  
Reception from - Bowling Green and Louisville, Kentucky; Evansville,  
Indiana; Nashville, Tennessee  
Educational Television - Bowling Green, Madisonville, and Elizabethtown,  
Kentucky; Evansville, Indiana

### Library Services

Public library - Grayson County Public Library  
Size collection - 23,000 volumes  
Circulation, 1982-83 - 65,000  
Services - Bookmobile, meeting room, study tables, periodicals,  
records, story hour, copy machine, Interlibrary Loan, Grayson  
County genealogy collection on microfilm, night depository,  
microfilm reader-printer, talking books, filmstrips, reference  
service



### Religious Institutions

Denominations - Baptist  
Catholic  
Christian  
Church of Christ  
Church of God  
Methodist  
Nazarene  
Pentecostal  
Pilgrim Holiness  
Presbyterian  
Seventh Day Adventist

Nearest Synagogue - Owensboro, 66 miles northwest  
Congregation - Adath Israel (reform)

### Financial Institutions

<u>Banks</u>	<u>Assets</u>	<u>Deposits</u>	<u>Statement Date</u>
<u>Leitchfield</u>			
The Citizens Bank & Trust Company of Grayson County	\$41,103,736.64	\$36,892,550.42	6/30/83
Leitchfield Deposit Bank and Trust Company	38,186,825.79	34,323,391.96	6/30/83
<u>Caneyville</u>			
Bank of Caneyville	15,137,190.02	13,827,690.62	6/30/83
<u>Clarkson</u>			
Bank of Clarkson	44,139,743.66	39,891,579.06	6/30/83
<u>Savings and Loan Associations</u>	<u>Assets</u>	<u>Savings Accounts</u>	<u>Statement Date</u>
First Federal Savings and Loan Association of Leitchfield	\$32,234,197.51	\$30,926,237.09	12/31/82

### Hotels and Motels\*

Total number - 3  
Total rooms - 56

\*Construction of a new 60-room motel is planned. Overnight lodging is also available at Rough River Dam State Resort Park, 18 miles northwest of Leitchfield, where 55 rooms are available.

## Clubs and Organizations

Alumni Associations  
American Cancer Society  
American Legion  
American Legion Ladies  
Auxiliary  
Artists' Guild  
Bass Club  
Bicycle Club  
Business and Professional  
Women's Club  
Caneyville Community Club  
Chamber of Commerce  
Community Arts Project  
Cub Scouts  
Democratic Women's Club  
Eastern Star  
4-H Club  
Four-Wheel Drive Club  
Future Farmers of America  
Girl Scouts  
Golf & Tennis Club  
Grayson County Republicans  
Historical Society  
Homemakers' Clubs  
Hospital Auxiliary  
Humane Society  
Jaycees  
Jayceettes  
Leitchfield-Grayson County  
Industrial & Development  
Foundation  
Lions  
Little League  
Masons  
Ministerial Association  
Parents Anonymous  
Regional Artists Group  
Republican Women's Club  
Retail Merchants Association  
Retired Teachers Association  
Rotary  
Rough River Scout Reservation  
Running Club  
Scottish Rite  
Senior Citizens  
Shriners  
Sportsman's Club  
Veterans of Foreign Wars  
Woman's Club  
Youth String Orchestra  
Zeta Chi Sorority

## RECREATION

### Local

Leitchfield provides supervised summer recreation programs which include tennis, little league, and arts and crafts classes. As part of the program, the Grayson County Middle School gymnasium is open to adults in the community for organized sports such as volleyball, badminton, floor tennis and table tennis. Three parks, two playgrounds, two baseball diamonds, two tennis courts and a municipal swimming pool are provided for recreational activities. A new softball field was recently constructed at the Grayson County Middle School.

Private recreational facilities include a movie theater, a drive-in theater, a lake and pay-fishing area, and a golf and tennis club available to residents on a membership basis. Facilities at the golf and tennis club include an 18-hole golf course; a clubhouse with a pro shop, snack bar, locker room and party room; a driving range; a putting green; and tennis courts.

Regular events and festivals in Grayson County include the annual Grayson County Fiddlin' Festival and the Old Time Fiddlers Contest, held each July; and the annual Grayson County Fair, held each Labor Day holiday. A Labor Day parade and a Christmas parade are also held in Leitchfield.

### Area (Within 60 miles)

Nolin River Lake, 16 miles south of Leitchfield, is just north of Mammoth Cave National Park. The lake has a surface area of 5,800 acres and offers facilities for camping, boating, and fishing.

Noteworthy for its spaciousness and perfect grooming, Rough River Dam State Resort Park at Falls of Rough is 18 miles northwest of Leitchfield. The 377-acre park on Rough River Lake has a 40-room lodge with a dining room, a coffee shop, a gift shop, and a meeting room. Cottages and camping sites are also available. Recreational facilities include a launching ramp, a dock with open and covered slips, fishing and pleasure boat rentals, a 9-hole golf course, a swimming pool, a sand beach with a bathhouse complex, tennis courts, an archery range, hiking trails, picnic and playground areas, and planned recreation. Cruise boat excursions on Rough River Lake are available on the "Lady of the Lake" in season.

Mammoth Cave National Park is located 40 miles south of Leitchfield near Cave City. Beneath 52,000 park acres, Mammoth Cave is among the major tourist attractions of all times. It is one of the largest cave networks ever discovered, with at least 230 miles of caverns. Some famous sights are Snowball Dining Room (267 feet below surface), Frozen Niagara, Crystal Lake, and Bottomless Pit. The park also features scenic boat trips on the Green River and nature and hiking trails. Park accommodations include a hotel with a distinctive gift shop featuring



native Kentucky and Southern Highland handicrafts, a motor lodge, hotel cottages, woodland cottages, and a hotel annex with budget accommodations and craft shop featuring live exhibits of broom making and weaving. Other park facilities include the hotel dining room and coffee shop, a service center, group meeting facilities, a campground, a picnic area, and tennis and shuffleboard courts.

Abraham Lincoln Birthplace National Historic Site, located 44 miles east of Leitchfield near Hodgenville, features the log cabin which was the birthplace of Abraham Lincoln, enclosed within a granite memorial shrine. The grounds include 116 acres of the original Thomas Lincoln farm and a visitors' center with audiovisual programs and exhibits on the Lincoln family.

Otter Creek Park is located on the Ohio River, 52 miles northeast of Leitchfield near Muldraugh. This 3,000-acre woodland offers lodges; cabins; campsites; picnic areas; a visitors' center; dining facilities; meeting facilities; hiking trails; a boat ramp; tennis, basketball and volleyball courts; a ball field; and a playground.

Bernheim Forest Arboretum and Nature Center, located 53 miles northeast of Leitchfield, is a privately endowed 10,000-acre forest and wildlife refuge. The area contains over 1,400 labeled varieties of plants, trees and shrubs; ornamental gardens; a museum; nature trails and waterfowl ponds.

Bowling Green, located 54 miles south of Leitchfield, is home to Western Kentucky University - a focal point of many cultural and sporting events, and Beech Bend Park, featuring a swimming pool, a small zoo, an amusement park, stage entertainment, horseback riding, restaurants, playgrounds and 6,500 campsites. Beech Bend International Raceway, an NHRA sanctioned track, hosts several national drag racing championships.

Owensboro, located 55 miles northwest of Leitchfield on the Ohio River, offers numerous cultural activities, collegiate sporting events, and entertainment and convention facilities.

My Old Kentucky Home State Park, 56 miles northeast of Leitchfield in Bardstown, portrays an image of the South's gentle and leisurely home life before the Civil War. The restored Georgian Colonial mansion is where composer Stephen Foster visited and where he was inspired to write "My Old Kentucky Home". One of the nation's most successful outdoor dramas, "The Stephen Foster Story", is presented in the park's amphitheatre mid-June until Labor Day. The park also offers a 40-site campground, a gift shop, a 9-hole golf course and pro shop, a picnic area, and planned recreation.

Ben Hawes State Park, 58 miles northwest of Leitchfield near Owensboro, is a 300-acre park which is open year-round. It contains tennis courts, hiking trails, a picnic area and shelters, and an 18- and 9-hole golf course.

## COMMUNITY IMPROVEMENTS

### Recent

Alarm Associates, Inc., began operations in 1983 with a work force of 30 people. The company manufactures components of alarm systems, and at full production may employ up to 90 persons.

Phar-Shar Manufacturing Company, Inc., recently completed a new 20,000-square-foot distribution center.

Mid-Park Metal Products, Inc., recently completed an expansion project which added approximately 6,600 square feet of manufacturing space to the present structure. The \$170,000 project provides employment potential for 7 to 15 additional persons.

Development of a new 28-acre industrial park with all utilities was completed in June 1983 at a cost of \$150,000.

Recent improvements to the Leitchfield-Grayson County Airport include an 1,800-foot expansion of the runway, a relocated access road, new lighting systems, an apron expansion, and the installation of fuel facilities.

Improvement projects completed since 1981 by the Grayson County School System include construction of a new \$140,000 high school athletic center, a \$725,000 construction and renovation project at the middle school and Wilkey Elementary, paving of all school lots, air conditioning of all schools, installation of high school and middle school computer labs, and institution of a gifted and talented program.

A \$130,000 clubhouse was constructed at the Leitchfield Golf and Tennis Club in 1982; the clubhouse includes a pro shop, a snack bar, a locker room, and a party room. Other recent additions include a driving range, tennis courts, and an additional nine holes on the golf course.

### Under Way

An Expansion of the Leitchfield Utilities water treatment system began in 1983, with completion scheduled for early 1985. The \$300,000 project involves upgrading filters, constructing an additional flocculation basin and clearwell storage facility, installing a high service pump, and installing two new raw water pumps. The plant's treatment capacity will be increased from 1,000,000 gallons per day to 1,700,000 gallons per day.

Leitchfield is undergoing a "TVA Townlift" project in cooperation with the Lincoln Trail Area Development District and the Tennessee Valley Authority. Phase One, a \$5,000 project completed in 1983, involved building facade improvement and downtown landscaping. Funds have been allocated for the second phase of the project.

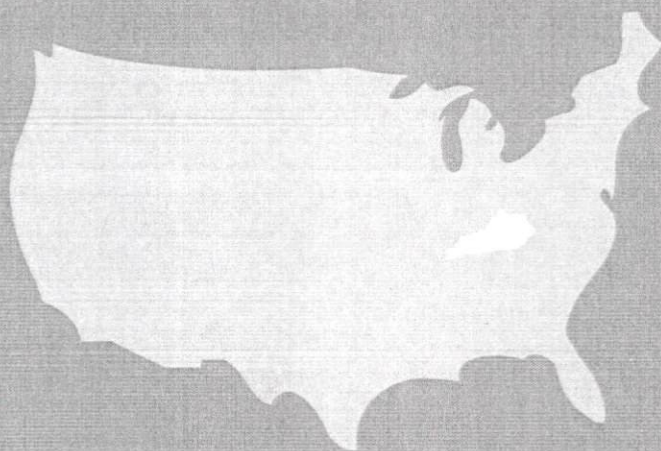
## Planned

Addition of an office, extended lighting, a radio navigation system, a new apron, new taxiways and a hangar is planned for the Leitchfield-Grayson County Airport.

Planned improvements to the Grayson County School System include additions to the Caneyville, Clarkson, and Wilkey Elementary Schools, and the installation of new doors, carpeting and energy-saving windows.

Construction of a new 60-unit motel is planned.





Kentucky Department of Economic Development  
Capital Plaza Tower  
Frankfort, Kentucky 40601 • Phone (502) 564-4270