

1990

# Industrial Resources: Henry County

Kentucky Library Research Collection  
Western Kentucky University, [spcol@wku.edu](mailto:spcol@wku.edu)

Follow this and additional works at: [https://digitalcommons.wku.edu/henry\\_cty](https://digitalcommons.wku.edu/henry_cty)



Part of the [Business Administration, Management, and Operations Commons](#), [Growth and Development Commons](#), and the [Infrastructure Commons](#)

---

## Recommended Citation

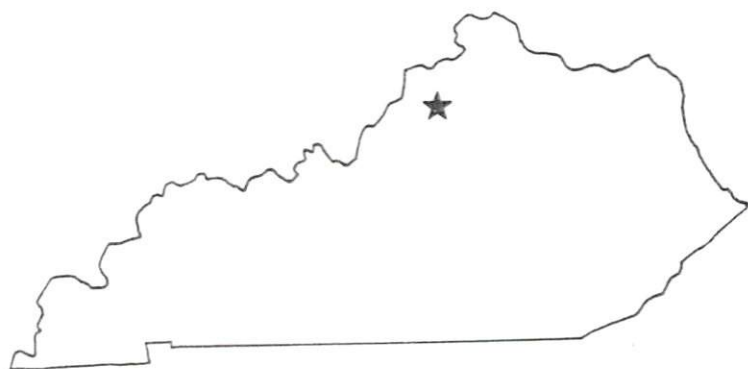
Kentucky Library Research Collection, "Industrial Resources: Henry County" (1990). *Henry County*. Paper 5.  
[https://digitalcommons.wku.edu/henry\\_cty/5](https://digitalcommons.wku.edu/henry_cty/5)

This Report is brought to you for free and open access by TopSCHOLAR®. It has been accepted for inclusion in Henry County by an authorized administrator of TopSCHOLAR®. For more information, please contact [topscholar@wku.edu](mailto:topscholar@wku.edu).

2637  
Henry Co

# *Resources for Economic Development*

## Henry County



**KENTUCKY**  
*Open for Business*

---

RESOURCES FOR ECONOMIC DEVELOPMENT

HENRY COUNTY, KENTUCKY

Prepared by  
The Kentucky Cabinet for Economic Development  
Division of Research and Planning  
in cooperation with  
the Henry County Industrial Foundation  
The Cities of Campbellsburg, Eminence, and New Castle

1990

Division Director - Pamela K. Riley; program coordinator - Keith Roberts; research - Barry K. Holder, Jr.; clerical - Wanda Sharp; graphics - Robert Owens, Pat Coleman; cartography - Edwin Scott, Dave Clark. Cost of printing paid from state funds.

## TABLE OF CONTENTS

<u>Chapter</u>	<u>Page</u>
HENRY COUNTY, KENTUCKY - A RESOURCE PROFILE .....	1
THE LABOR MARKET STATISTICS .....	2
Labor Market Area Map .....	2
Population .....	3
Population Projections .....	3
Estimated Labor Supply .....	3
Labor Force Characteristics of Residents, 1988 .....	4
Selected Components of Nonagricultural Employment, by Place of Work, 1988 .....	5
Per Capita Personal Income .....	6
Average Placement Wages .....	7
Average Weekly Wages of Workers Covered by Unemployment Insurance F.Y. 1987-88 - Bar Chart .....	8
Average Weekly Wages by Industry, by Place of Work, 1988 .....	9
EXISTING INDUSTRY .....	10
Henry County Manufacturing Firms, Their Products and Employment .....	10
Recent Industrial Developments .....	11
Labor Organizations in Manufacturing Firms .....	11
Selected Industrial Services .....	12
TRANSPORTATION .....	13
Highways .....	13
Truck Service .....	13
Selected Market Location Map .....	14
Rail .....	15
Air .....	15
UTILITIES .....	16
Electricity .....	16
Natural Gas .....	16
Public Water Supply .....	17
Sewerage .....	18
CLIMATE .....	19

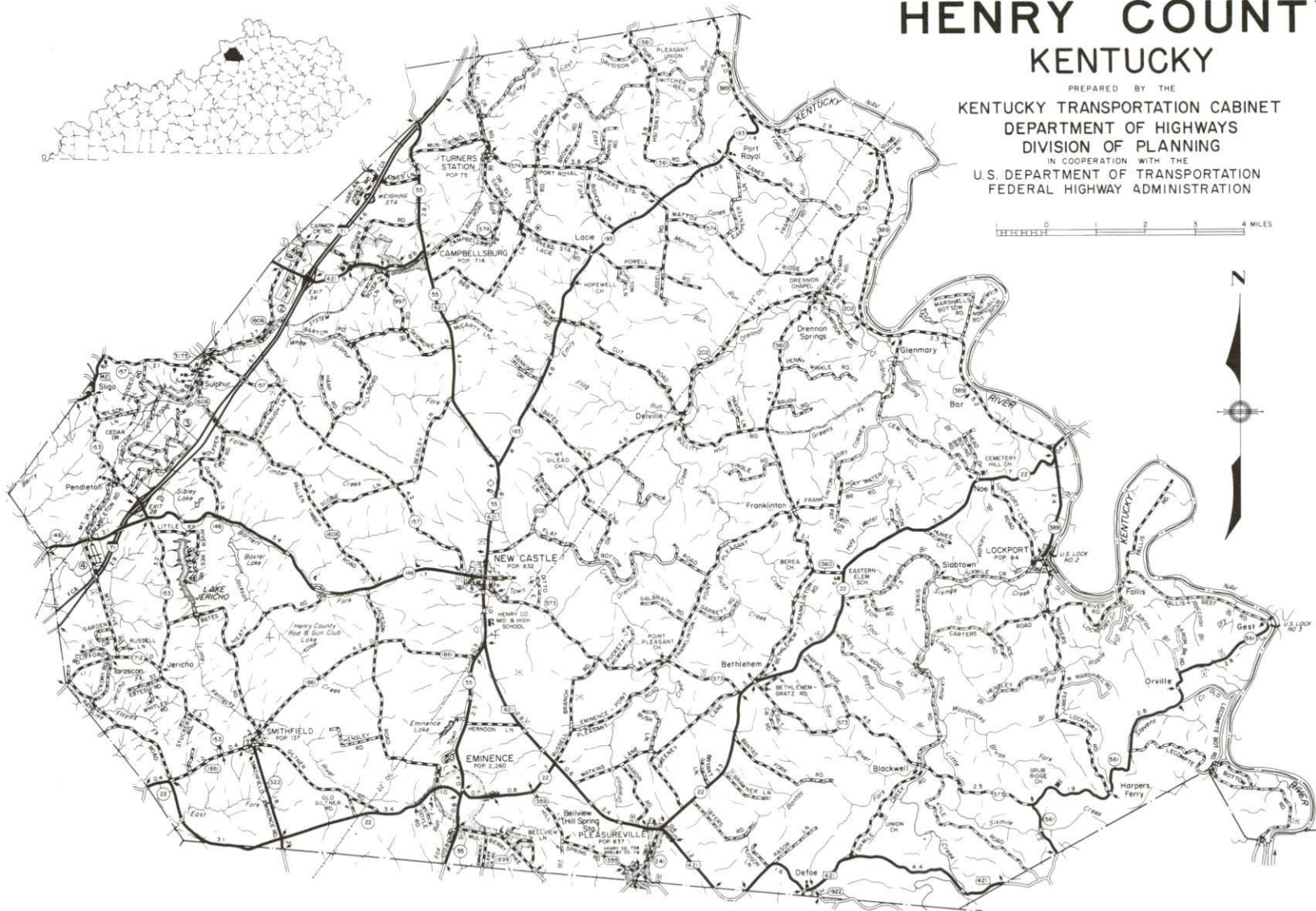
<u>Chapter</u>	<u>Page</u>
LOCAL GOVERNMENT. . . . .	20
Structure . . . . .	20
Planning and Zoning . . . . .	20
Local Fees and Licenses . . . . .	20
State and Local Property Taxes . . . . .	21
Combined State and Local Rates Per \$100 Valuation, 1989 . . . . .	21
EDUCATION . . . . .	23
Public Schools . . . . .	23
Area Colleges and Universities . . . . .	23
Vocational Training . . . . .	24
OTHER LOCAL FACILITIES . . . . .	25
Local Medical Personnel . . . . .	25
Hospitals . . . . .	25
Other Medical Facilities and Services . . . . .	25
Banks and Savings & Loan Associations . . . . .	25
Newspapers . . . . .	25
Telephone Service . . . . .	25
RECREATION . . . . .	26
COMMUNITY IMPROVEMENTS. . . . .	27



GENERAL HIGHWAY MAP  
**HENRY COUNTY**  
**KENTUCKY**

PREPARED BY THE  
KENTUCKY TRANSPORTATION CABINET  
DEPARTMENT OF HIGHWAYS  
DIVISION OF PLANNING  
IN COOPERATION WITH THE  
U.S. DEPARTMENT OF TRANSPORTATION  
FEDERAL HIGHWAY ADMINISTRATION

0 1 2 3 4 MILES



## HENRY COUNTY, KENTUCKY - A RESOURCE PROFILE

Henry County, located in north-central Kentucky, is situated in the Outer Blue Grass Region and has a land area of 291 square miles. The Kentucky River forms the eastern boundary of the county. In 1988, Henry County had an estimated population of 13,400 persons.

New Castle, the county seat, is located 38 miles northeast of Louisville, Kentucky; 75 miles southwest of Cincinnati, Ohio; and 211 miles northeast of Nashville, Tennessee. New Castle had an estimated population of 850 in 1988. Campbellsburg, located eight miles north of New Castle, had a 1988 estimated population of 850. Eminence, the largest city in Henry County, is four miles south of New Castle and had a 1988 estimated population of 2,210.

**The Economic Framework** - The total number of Henry County residents employed in 1988 averaged 6,140. Manufacturing firms in the county reported 565 employees; wholesale and retail trade provided 570 jobs; 310 people were employed in service occupations; state and local government accounted for 470 employees; and contract construction firms provided 80 jobs.

**Labor Supply** - There is a current estimated labor supply of 11,670 persons available for industrial jobs in the labor market area. In addition, from 1990 through 1994, 9,850 young persons in the area will become 18 years of age and potentially available for industrial jobs.

**Transportation** - Major AAA-rated trucking highways serving Henry County include Interstate 71, U.S. Highway 421, and Kentucky Route 55. Other AAA-rated highways serving the county include Kentucky Routes 22, 146, and 322. Twenty-four trucking companies provide interstate and/or intrastate service to Henry County. CSX Transportation provides main line rail service to Campbellsburg. The Capital City Airport in Frankfort, 29 miles southeast of New Castle, maintains a 5,000-foot paved runway. The nearest scheduled commercial airline service is available at Standiford Field in Louisville, 42 miles southwest of New Castle.

**Power and Fuel** - Electric power is provided to Henry County by the Kentucky Utilities Company and by the Shelby Rural Electric Cooperative Corporation. Louisville Gas and Electric supplies natural gas service to the county.

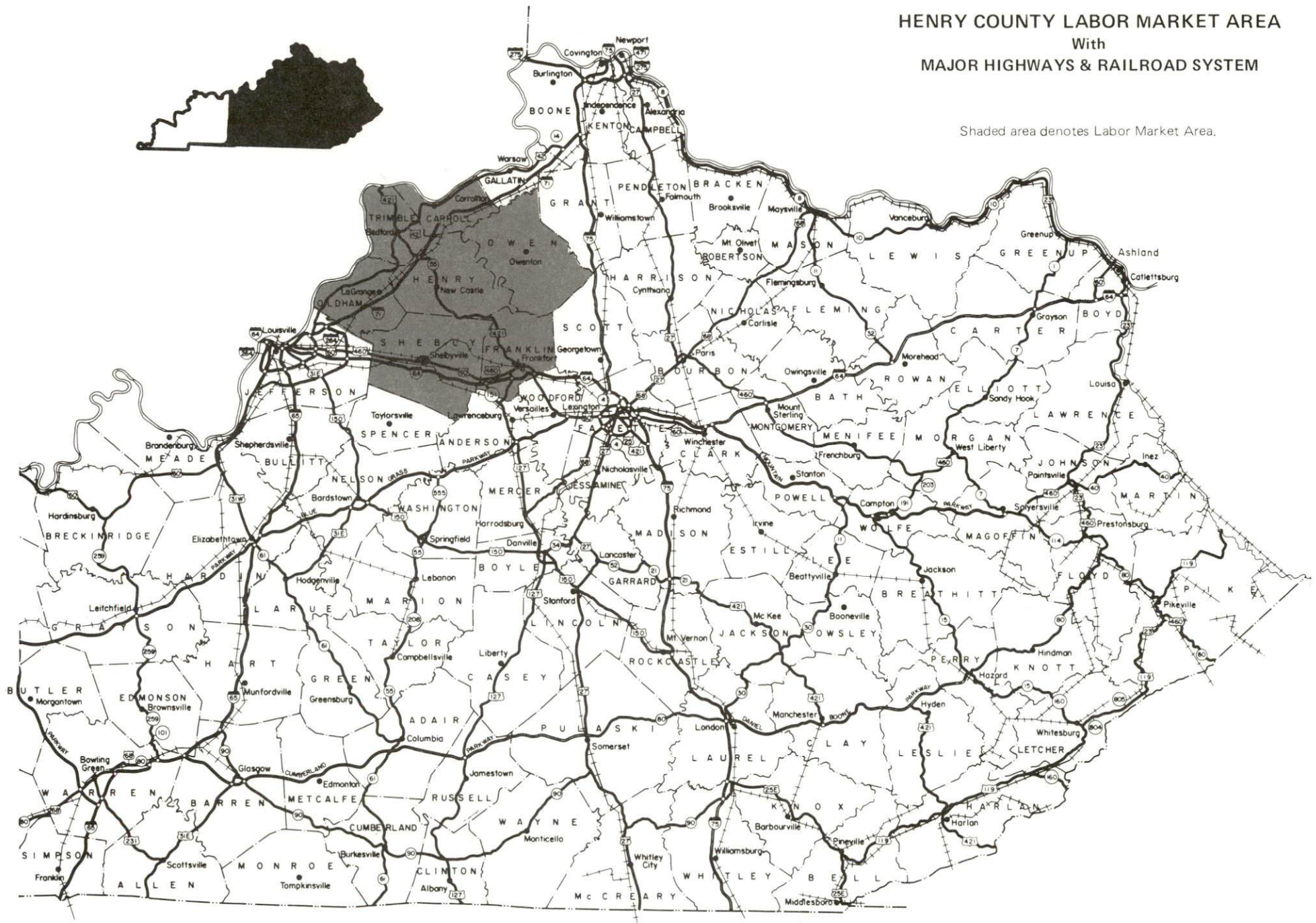
**Education** - Primary and secondary education is provided locally by the Eminence Independent School System and the Henry County School System. Twelve colleges and universities are located within 55 miles of New Castle. Vocational training is available at the Jefferson State Vocational-Technical School in Louisville, 38 miles southwest of New Castle; the Shelby County Vocational Education Center in Shelbyville, 16 miles south of New Castle; and the Oldham County Area Vocational Education Center in Buckner, 18 miles west of New Castle.



# HENRY COUNTY LABOR MARKET AREA

## With MAJOR HIGHWAYS & RAILROAD SYSTEM

Shaded area denotes Labor Market Area.



## LABOR MARKET STATISTICS

The Henry County Labor Market Area includes Henry County and the adjoining Kentucky counties of Carroll, Franklin, Oldham, Owen, Shelby, and Trimble.

POPULATION			
	1988*	1980	1970
Labor Market Area	143,400	130,140	100,419
Campbellsburg	850	714	479
Eminence	2,210	2,260	2,225
New Castle	850	832	755
Pleasureville	770	758	685
Smithfield	190	137	185
Henry County	13,400	12,740	10,910

\* Population estimates.

Sources: U.S. Department of Commerce, Bureau of the Census, October 1988; University of Louisville, Urban Studies Center, Population Unit.

POPULATION PROJECTIONS				
	1995	2000	2010	2020
Labor Market Area	145,321	152,260	157,916	165,529
Henry County	14,038	14,672	15,137	15,734

Source: University of Louisville, Urban Studies Center, State Data Center.

ESTIMATED LABOR SUPPLY					
	Current			Future	
	Total	Unemployed	Employed Part-Time	Not in Labor Force	Becoming 18 years of age 1990 thru 1994
Labor Market Area*	11,673	3,687	6,340	1,646	9,852
Henry County	1,516	380	661	475	911

\* Additional workers may be drawn from other nearby counties.

Note: Unemployed - persons unemployed and actively seeking work; Employed Part-Time - persons employed but working only 14 to 26 weeks per year; Not in Labor Force - represents the number of persons who would enter the labor force if suitable employment were available (based on the assumption that persons in Kentucky would like to participate in the labor force in the same proportion that they do nationally).

Sources: Kentucky Cabinet for Human Resources, Kentucky Labor Supply Estimates by County, 1988. Kentucky Cabinet for Economic Development, Future Labor Supply Becoming 18 Years of Age, 1990 thru 1994.

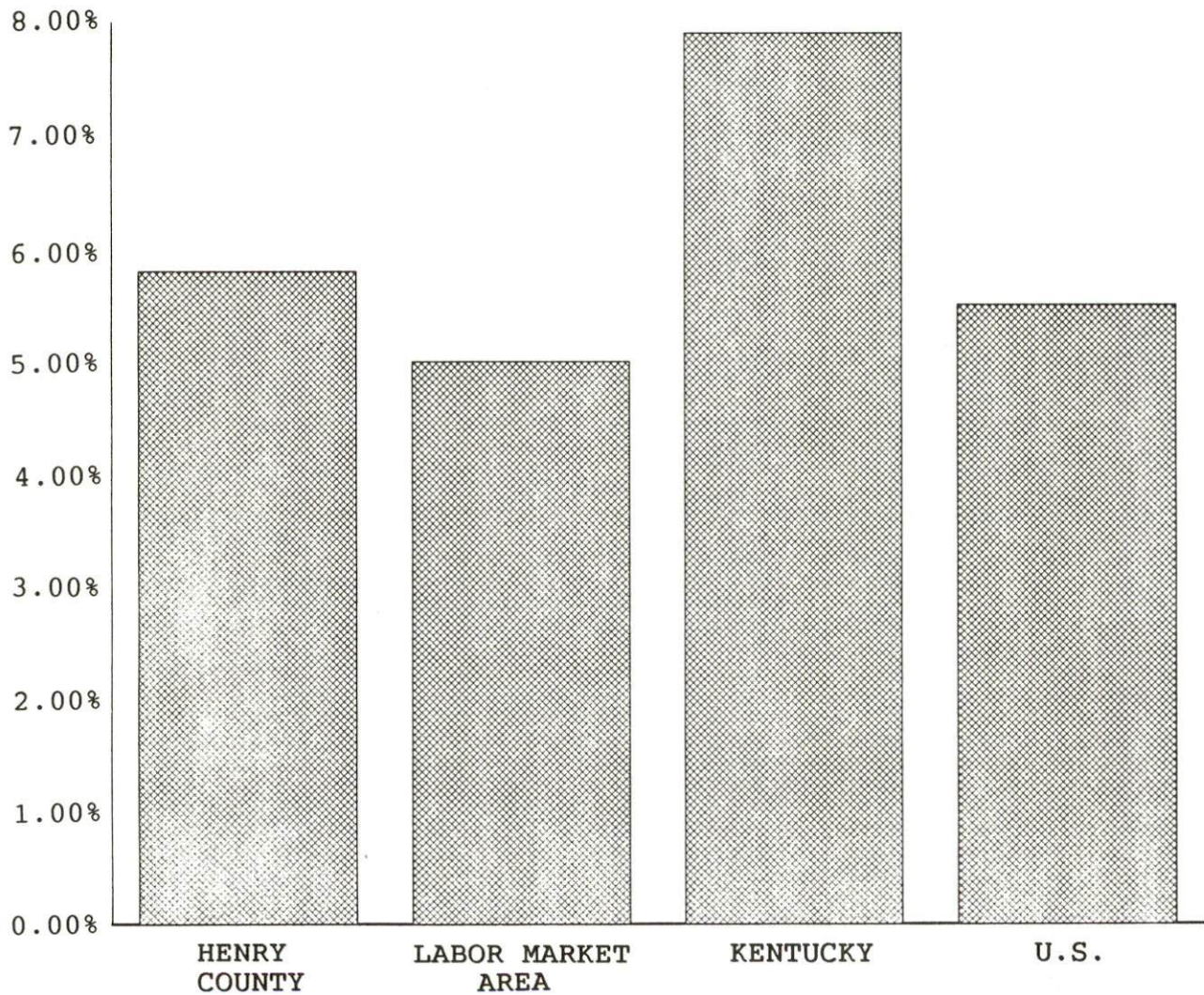


# LABOR FORCE CHARACTERISTICS OF RESIDENTS, 1988

	Henry County	Labor Market Area
Civilian Labor Force	6,522	73,316
Employment	6,142	69,629
Unemployment	380	3,687
Rate of Unemployment (%)	5.8	5.0

Source: Kentucky Cabinet for Human Resources, Kentucky Labor Force Estimates, Annual Averages, 1988.

## UNEMPLOYMENT RATES 1988

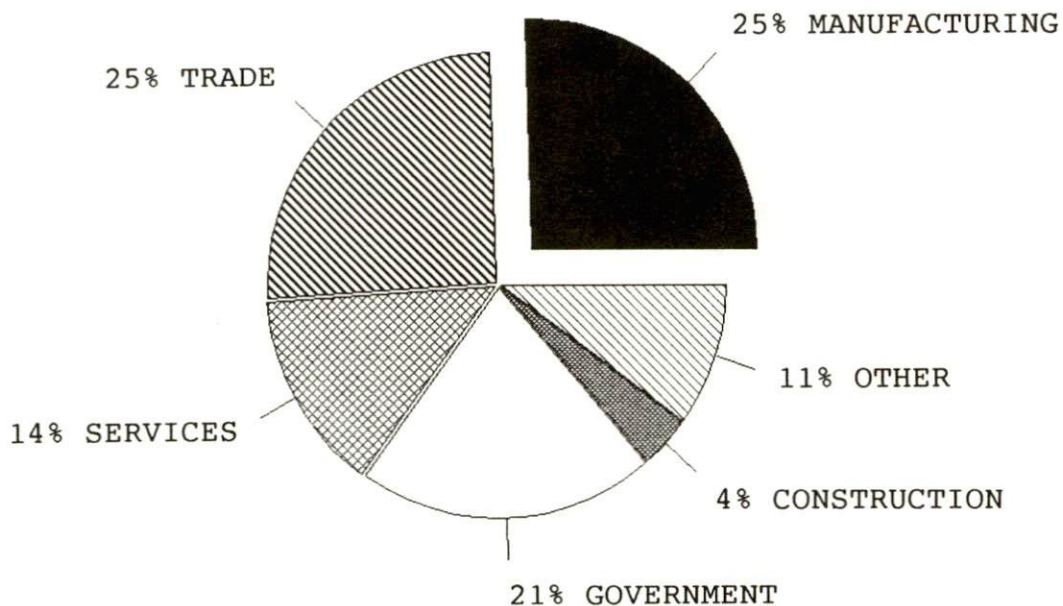


SELECTED COMPONENTS OF NONAGRICULTURAL EMPLOYMENT  
BY PLACE OF WORK, 1988

	Henry County	Labor Market Area
All Industries (total)	2,224	50,667
Manufacturing	565	10,488
Wholesale & Retail Trade	571	8,680
Services	312	6,519
State/Local Government	469	18,114
Contract Construction	82	2,308

Note: Excludes domestic workers, railway workers, certain nonprofit corporations, majority of federal government workers, and self-employed workers.  
Source: Kentucky Cabinet for Human Resources, Average Monthly Workers Covered by Kentucky Unemployment Insurance Law, 1988.

HENRY COUNTY



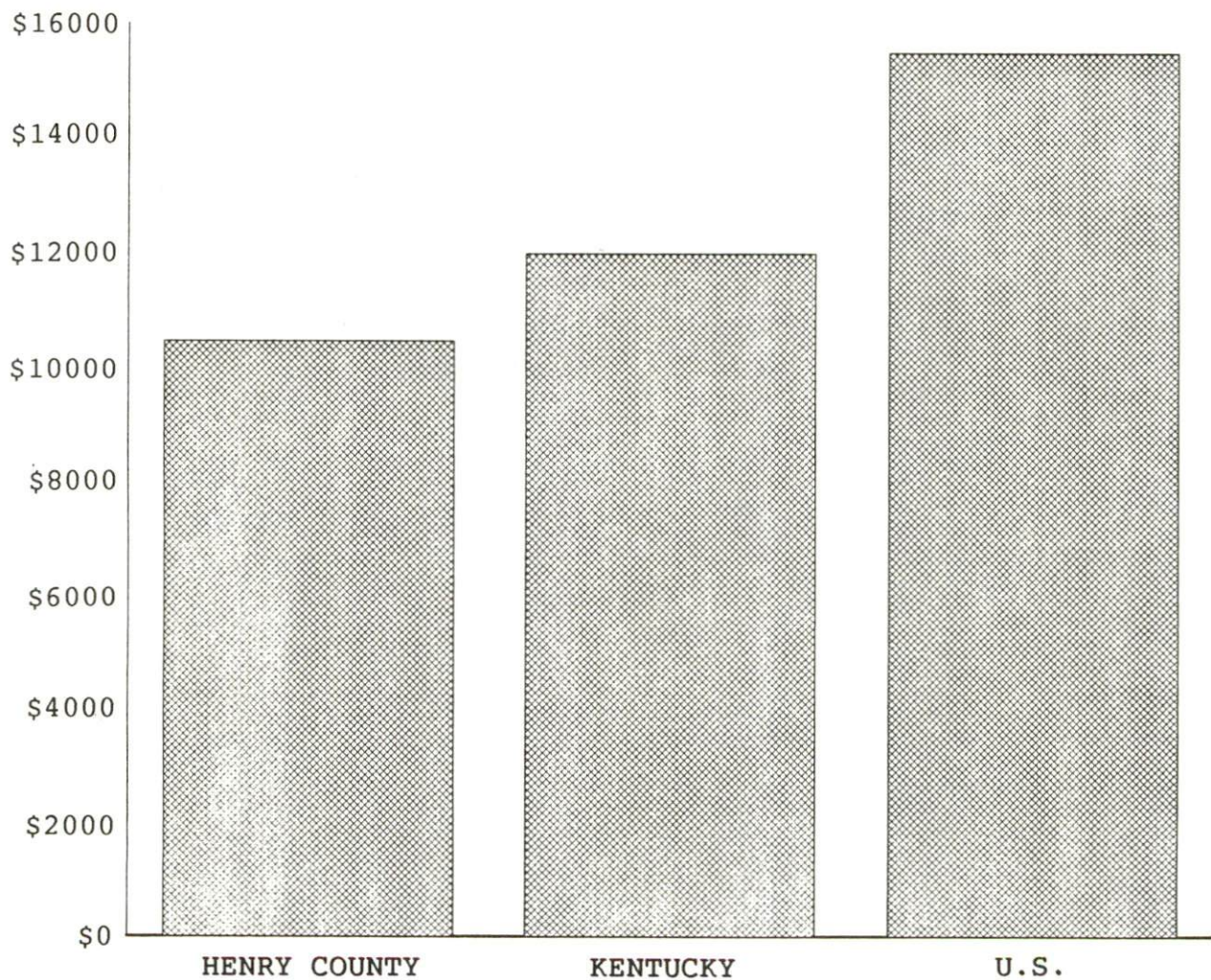


PER CAPITA PERSONAL INCOME

Area	1983	1987	Percent Change
Henry County	\$8,616	\$10,461	21.4
Labor Market Area Range	\$6,769 - 11,507	\$8,627 - 13,837	-
Kentucky	\$9,513	\$11,997	26.1
U.S.	\$12,098	\$15,484	28.0

Sources: U.S. Bureau of Economic Analysis, Kentucky Economic Information System, August 1988 and April 1989.

PER CAPITA PERSONAL INCOME  
1987



## AVERAGE PLACEMENT WAGES

---

Henry County is served by the Louisville local office of the Kentucky Department for Employment Services. The focus of the following data is on job placements made by the Louisville local office and may therefore be used as an indicator of the wages which employers in the area pay new employees. During the twelve months which ended on June 30, 1989, the local employment office filled 16,119 job openings in various occupational categories. The average hourly wage for selected occupational categories were:

<u>OCCUPATIONAL CATEGORY</u>	<u>NUMBER OF PLACEMENTS</u>	<u>AVERAGE WAGE(\$)</u>
All Occupations	16,119	5.48
Clerical	2,324	4.42
Sales	745	4.04
Services (excluding domestic)	2,364	3.73
Agricultural, Fishery, Forestry, etc.	184	4.13
Processing	526	5.48
Machine Trades	572	6.06
Bench Work	547	4.39
Structural	1,705	7.63
Motor Freight/ Transportation	431	4.53
Packaging and Materials Handling	6,037	6.09
Other	195	3.50

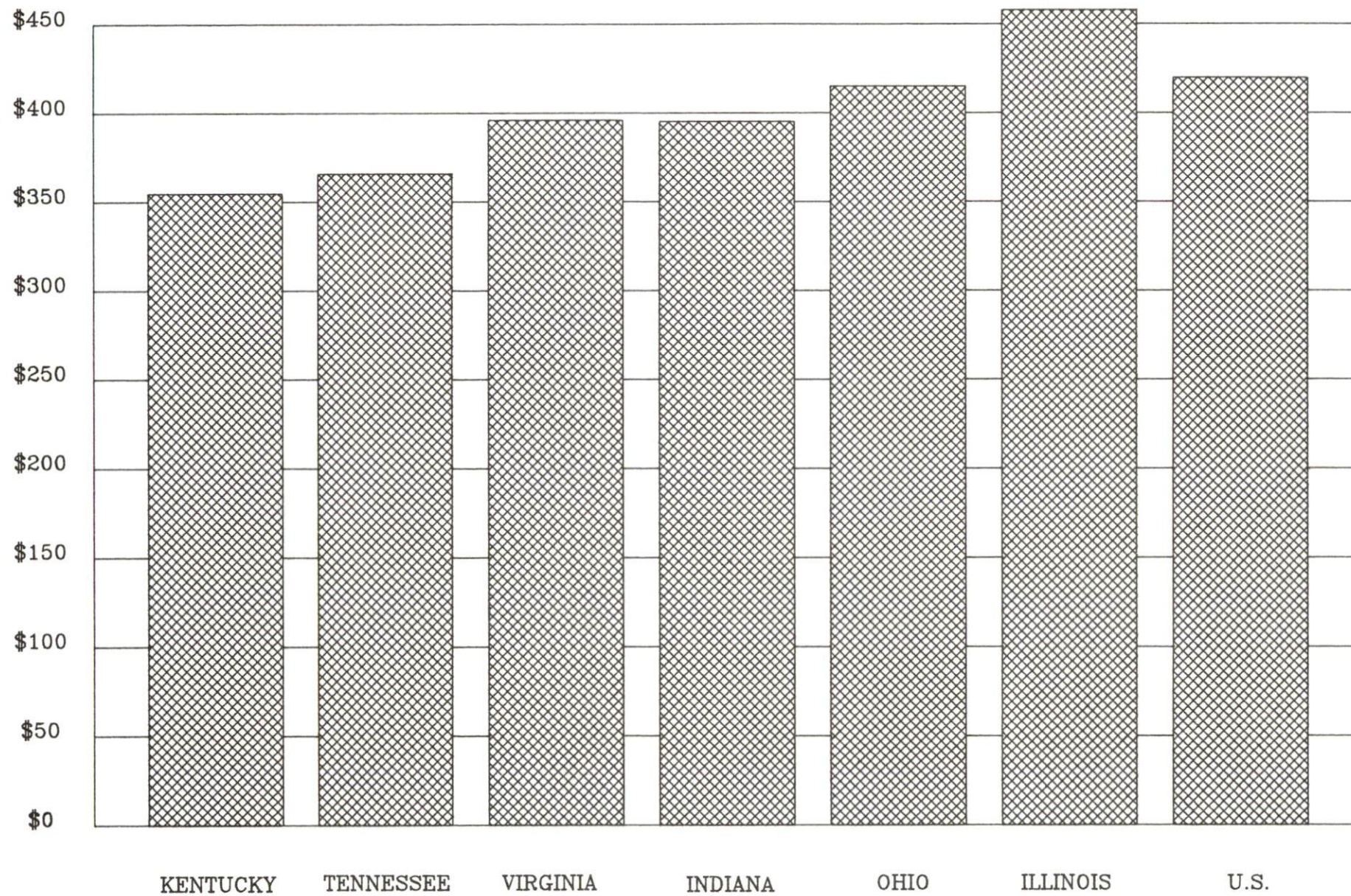
The Louisville local office also serves Bullitt, Jefferson, Oldham, Shelby, Spencer, and Trimble Counties. The above occupational categories are taken from the Dictionary of Occupational Titles published by the U.S. Department of Labor.

---

Source: Kentucky Cabinet for Human Resources, Department for Employment Services.



AVERAGE WEEKLY WAGES OF WORKERS COVERED BY  
UNEMPLOYMENT INSURANCE F.Y. 1987-88





AVERAGE WEEKLY WAGES BY INDUSTRY  
BY PLACE OF WORK, 1988

	Henry County	Kentucky (State- Wide)	Tennessee	Virginia
All Industries	\$316.42	\$352.31	\$363.12	\$392.56
Mining & Quarrying	*	603.27	495.85	596.88
Contract Construction	268.36	380.71	394.27	422.27
Manufacturing	457.14	464.92	416.73	452.60
Transportation, Communications & Public Utilities	367.51	468.17	485.13	554.17
Wholesale & Retail Trade	183.81	238.88	N/A	N/A
Finance, Insurance & Real Estate	321.05	401.17	269.27	466.23
Services	319.70	298.98	343.48	391.67
State/Local Government	317.47	377.81	403.21	457.00
	<u>Indiana</u>	<u>Ohio</u>	<u>Illinois</u>	<u>U. S.</u>
All Industries	\$392.63	\$411.08	\$454.10	\$416.33
Mining & Quarrying	635.77	579.73	674.62	660.40
Contract Construction	449.87	465.46	584.10	469.85
Manufacturing	532.06	569.98	555.83	517.62
Transportation, Communications & Public Utilities	502.69	519.17	584.83	542.33
Wholesale & Retail Trade	N/A	N/A	N/A	N/A
Finance, Insurance & Real Estate	406.58	444.33	579.88	532.52
Services	317.98	348.48	402.38	384.31
State/Local Government	395.31	428.10	453.12	442.71

\* Not disclosed.

N/A Not Available.

Note: The average weekly wage for each category includes the salaries and wages of all persons working for that type business. For example, the manufacturing category includes both production workers and administrative personnel. Excludes domestic workers, railway workers, certain nonprofit corporations, majority of federal government workers, and self-employed workers.

Source: Kentucky Cabinet for Human Resources, Average Weekly Wages of Workers Covered by Kentucky Unemployment Insurance Law, 1988. U.S. Department of Labor, Bureau of Labor Statistics, Average Annual Pay by State and Industry, August 29, 1989.



## EXISTING INDUSTRY

### HENRY COUNTY MANUFACTURING FIRMS, THEIR PRODUCTS AND EMPLOYMENT

<u>Firm</u> <u>(Establishment date)</u>	<u>Product</u>	<u>1989</u> <u>Average Employment</u>
<u>Eminence</u>		
Brunswick Corporation, Eminence Plant (1961)	Golf & bowling bags; carryalls	185
Eminence Speaker (1966)	Electronic speakers	70
Hussey Copper, Ltd. (1966)	Copper products	52
Steel Technologies, Inc. (1971)	Hot rolled steel, cold rolled steel; strip & sheet steel; steel slitting	70
<u>Lake Jericho</u>		
Lake Jericho Veneer, Inc. (1983)	Fine hardwood veneers	83
<u>Lockport</u>		
Mago Construction Company, Inc. (1966)	Bituminous concrete mixes	3
<u>New Castle</u>		
The Henry County Local Company, Inc. (1876)	Newspaper	7
Safety Kleen Enviro- systems (1970)	Solvent recycling	65
<u>Pendleton</u>		
Atlas Tri-County Concrete, Inc. (1972)	Ready-mixed concrete	6

Sources: Kentucky Cabinet for Economic Development, Division of Research and Planning.

(Continued)

## LABOR ORGANIZATIONS IN MANUFACTURING FIRMS

### Union

### Representing workers at:

Amalgamated Clothing and  
Textile Workers Union,  
AFL-CIO

Brunswick Corporation,  
Eminence Plant

International Brotherhood  
of Teamsters, Chauffeurs,  
Warehousemen and Helpers  
of America

Atlas Tri-County Concrete, Inc.

## RECENT INDUSTRIAL DEVELOPMENTS

Electro-Wire, located in Campbellsburg, recently initiated operations. The facility manufactures electric wiring harnesses for a major truck assembly plant. Employment is projected to reach 200 persons at full production.

# SELECTED INDUSTRIAL SERVICES

<u>Types of Services</u>	<u>Location</u>	<u>Mileage from New Castle</u>
Custom Data Processing	Frankfort, Kentucky	30
Custom Plastics Producers	LaGrange, Kentucky	15
	Shelbyville, Kentucky	16
Electric Motor Repair	Louisville, Kentucky	38
Grinding, Precision & Tool	Madison, Indiana	31
Heat Treating Facilities	Frankfort, Kentucky	30
Industrial Equipment & Supplies	Frankfort, Kentucky	30
	Madison, Indiana	31
Industrial Gases	Louisville, Kentucky	38
Industrial Waste Removal	Buckner, Kentucky	18
Machine Shops, Tool & Die	Shelbyville, Kentucky	16
Metal Castings	Carrollton, Kentucky	20
Metal Finishers	Louisville, Kentucky	38
Metal Service Centers	Louisville, Kentucky	38
Millwrights	Louisville, Kentucky	38
Public Warehouse Facilities	Frankfort, Kentucky	30

Sources: Kentucky Cabinet for Economic Development, Kentucky Directory of Selected Industrial Services, 1987; Division of Research and Planning.

## TRANSPORTATION

### Highways

Major AAA-rated (80,000-pound gross load limit) trucking highways serving Henry County include Interstate 71 and U.S. Highway 421/Kentucky Route 55. Kentucky Highway 55 is AA-rated (62,000-pound gross load limit) north of Campbellsburg. New Castle and Campbellsburg are located along U.S. 421 and Eminence is located along Kentucky 55. Other AAA-rated highways serving the county include Kentucky Routes 22, 146, and 322.

Interstate 71, a major highway connecting Louisville and Cincinnati, traverses west Henry County. Interchanges are located one mile west of Campbellsburg, via U.S. 421; and eight miles west of New Castle, via Kentucky 146. Access to Interstate 64, which connects Louisville and Lexington, is available 15 miles south of Eminence via Kentucky 55.

Kentucky Routes 193 and 389, AA-rated trucking highways, also serve Henry County.

#### HIGHWAY MILES FROM NEW CASTLE, KENTUCKY, TO SELECTED MARKET CENTERS

City	Highway Miles	City	Highway Miles
Atlanta, GA	418	Los Angeles, CA	2,124
Baltimore, MD	573	Louisville, KY	38
Birmingham, AL	398	Nashville, TN	211
Chicago, IL	325	New Orleans, LA	731
Cincinnati, OH	75	New York, NY	734
Cleveland, OH	322	Pittsburgh, PA	362
Detroit, MI	333	St. Louis, MO	296
Knoxville, TN	225		

Note: Mileage computations are via the best interstate or primary highways, not necessarily the most direct route of travel.

Sources: Rand McNally Deluxe Motor Carriers' Road Atlas, 1989. Official Kentucky Mileage Map, 1980.

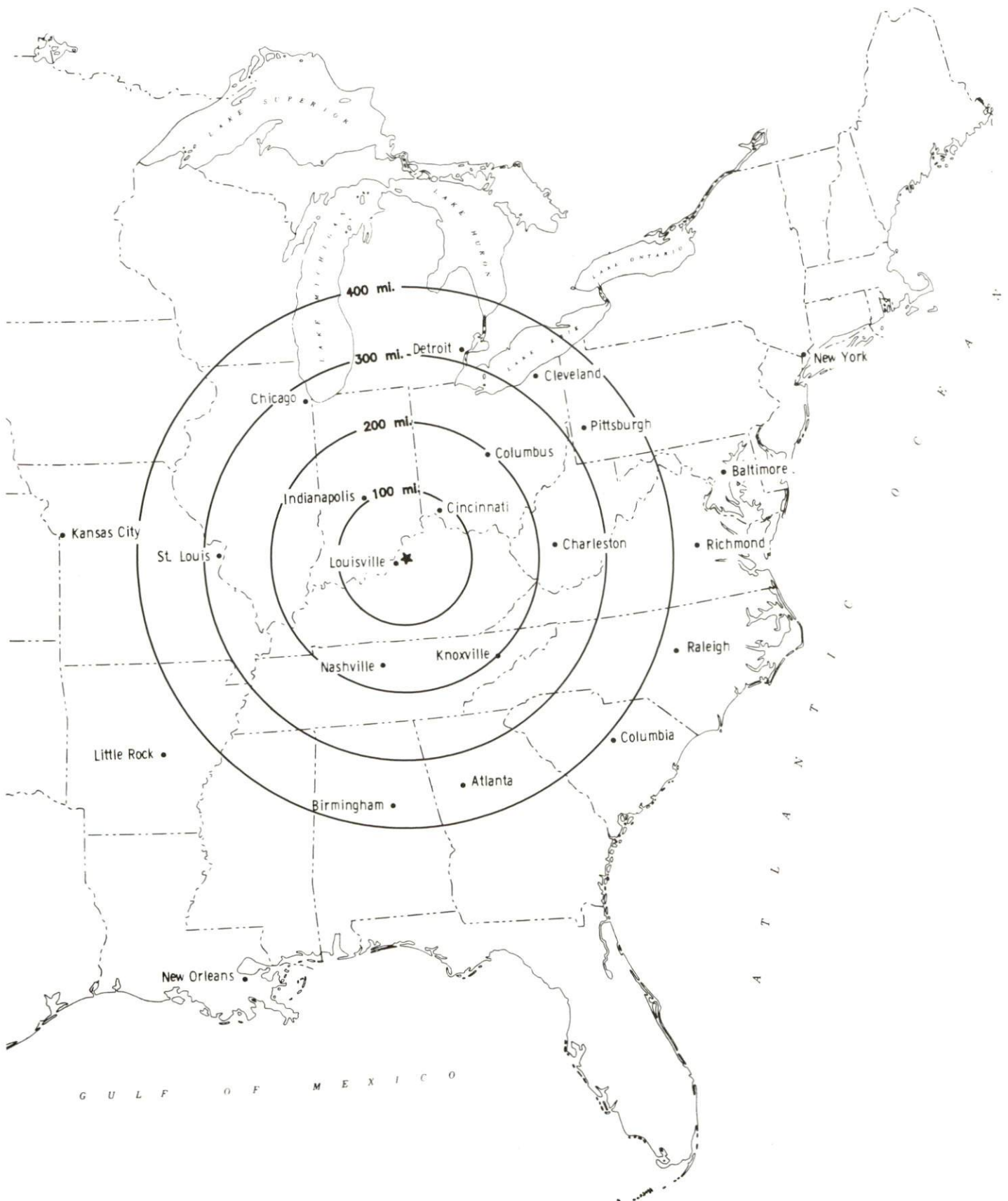
### Truck Service

Twenty-four common carrier trucking companies provide interstate and/or intrastate service in Henry County.

Source: American Motor Carrier Directory, Spring 1990.



## Selected Market Centers



## Rail

CSX Transportation provides main line rail service to Henry County at Campbellsburg, 10 miles north of New Castle. Eminence and New Castle are not directly served by a rail line. The nearest piggyback facilities are available in Louisville, Kentucky, 38 miles southwest of New Castle.

For details on routing, schedules, rates, and services contact:

Manager  
Industrial Development  
CSX Transportation  
9420 Bunsen Parkway  
Suite 212  
Louisville, Kentucky 40220  
(502) 499-3025

## Air

### Nearest Small Craft Airport

Location:	Capital City Airport One mile west of Frankfort; 29 miles southeast of New Castle
Runways:	One paved
Length:	5,000 feet
Traffic Control:	Wind tee
Lighting:	Rotating beacon, runway lights sundown to sunrise, REILS and VASI
Services	100 octane, jet fuel; hangars; storage; taxi service

### Nearest Scheduled Commercial Airline Service

Location:	Standiford Field 4 miles southeast of center of Louisville, Kentucky; 42 miles southwest of New Castle
Air Service:	Air Toronto, Delta, Eastern, Northwest, American, TWA, United, USAir, Midstate, Nashville Eagle, ComAir, JetStream, Simmons Eagle
Daily Arrivals & Departures:	192

## UTILITIES

### Electricity

Company serving Campbellsburg, Eminence, New Castle, and parts of  
Henry County - Kentucky Utilities Company

Source of power - Kentucky Utilities Company

For industrial rates contact:

Industrial Development Department  
Kentucky Utilities Company  
One Quality Street  
Lexington, Kentucky 40507  
(606) 255-1461

Company serving a major portion of Henry County - Shelby Rural  
Electric Cooperative Corporation

Source of power - East Kentucky Power Cooperative

For industrial rates contact:

Industrial Development Division  
East Kentucky Power Cooperative  
P. O. Box 707  
Winchester, Kentucky 40391  
(606) 744-4812

and/or

Shelby Rural Electric Cooperative  
Corporation  
P.O. Box 309  
Shelbyville, Kentucky 40065  
(502) 633-4420

### Natural Gas

Company serving Campbellsburg, Eminence, and New Castle - Louisville  
Gas and Electric Company

Source of supply - Texas Gas Transmission Corporation

For rates and supplies contact:

Economic Development Department  
Louisville Gas and Electric Company  
P.O. Box 32010  
Louisville, Kentucky 40232  
(502) 566-4488

## Public Water Supply

Company serving **Campbellsburg**-      Campbellsburg Water Works  
P.O. Box 67  
Campbellsburg, Kentucky 40011  
(502) 532-6019

Source - Henry County Water District #2  
Average daily consumption -      45,000 gallons  
Peak daily consumption -      52,000 gallons  
Storage capacity -      50,000 gallons  
Water pressure -      15 psi to 60 psi

Company serving **Eminence** -      Eminence Water Works  
P.O. Box 163  
Eminence, Kentucky 40019  
(502) 845-4268

Source - Henry County Water District #2  
Average daily consumption -      200,000 gallons  
Peak daily consumption -      300,000 gallons  
Storage capacity -      375,000 gallons  
Water pressure -      45 psi to 65 psi

The Eminence Water Works recently completed the installation of booster pumps for the intake water lines from Henry County Water District No. 2. Total cost of the project approximated \$20,000.

Company serving **New Castle** -      New Castle Water Company  
P.O. Box 171  
New Castle, Kentucky 40050  
(502) 845-2900

Source - Henry County Water District #2  
Average daily consumption -      90,000 gallons  
Peak daily consumption -      125,000 gallons  
Water pressure -      60 psi to 65 psi

Name of water district -      Henry County Water District #2  
P.O. Box 219  
Campbellsburg, Kentucky 40011  
(502) 532-6279

Area served - Henry, Trimble, Carroll, Oldham, and Shelby Counties  
Source of raw water - Six wells  
Capacity of treatment plant - 5,328,000 gallons per day  
Average amount of water used in a 24-hour period - 1,750,000 gallons  
Peak amount of water used in a 24-hour period - 2,000,000 gallons  
Storage capacity - 1,425,000 gallons  
Water pressure - 45 psi to 230 psi



## Sewerage

Company serving **Campbellsburg** - Campbellsburg Wastewater Company  
P.O. Box 67  
Campbellsburg, Kentucky 40011  
(502) 532-6019

Design capacity - 75,000 gallons per day  
Average daily flow - 50,000 gallons  
Type of treatment - Primary, Secondary and Tertiary  
Treated effluent discharged into - Carmine Creek

The Campbellsburg Wastewater Company plans to upgrade its treatment plant and sewer mains contingent upon funding appropriations.

Company serving **Eminence** - City of Eminence Wastewater  
Treatment Plant  
P.O. Box 163  
Eminence, Kentucky 40019  
(502) 845-4268

Design capacity - 210,000 gallons per day  
Average daily flow - 200,000 gallons  
Type of treatment - Secondary  
Treated effluent discharged into - Fox Run Creek

The City of Eminence plans to construct a new wastewater treatment facility and extend service to areas that are presently not served by this system. This \$1.2 million project should be completed by mid-1991.

Company serving **New Castle** - New Castle Wastewater Treatment  
Plant  
P.O. Box 171  
New Castle, Kentucky 40050  
(502) 845-2938

Design capacity - 1,000,000 gallons per day  
Average daily flow - 100,000 gallons  
Type of treatment - Primary  
Treated effluent discharged into - Town Creek

## CLIMATE

### Henry County

#### Temperature

Normal (30-year record)	54.90 degrees
Average annual 1988	54.90 degrees
Record highest, July 1988 (44-year record)	103.00 degrees
Record lowest, January 1963 (44-year record)	-21.00 degrees
Normal heating degree days (30-year record)	4,818
(Heating degree day totals are the sums of negative departures of average daily temperatures from 65 degrees F.)	

#### Precipitation

Normal (30-year record)	45.68 inches
Mean annual snowfall (44-year record)	16.20 inches
Total precipitation 1988	38.90 inches
Mean number days precipitation (.01 inch or more) (44-year record)	129.50
Mean number days thunderstorms (44-year record)	45.30

#### Prevailing winds (through 1963)

South

#### Relative Humidity (25-year record, except 1 a.m. - 24-year record)

1 a.m.	77 percent
7 a.m.	81 percent
1 p.m.	60 percent
7 p.m.	64 percent

Source: U.S. Department of Commerce, Environmental Science Services Administration, Climatological Data, 1988. Station of record: Lexington, Kentucky.

## LOCAL GOVERNMENT

### Structure

Campbellsburg, Eminence, and New Castle are each served by a mayor-city council form of government. Henry County is served by a county judge/executive and six magistrates.

### Planning and Zoning

County-wide planning and zoning will be implemented in Henry County during the summer of 1990. At that time, a planning and zoning board, regulations for the county, and participating cities will be established. There is presently no planning and zoning agency in Henry County.

Mandatory state codes enforced - Kentucky Plumbing Code, National Electric Code, Kentucky Boiler Regulations and Standards, Kentucky Building Code (modeled after BOCA code)

### Local Fees and Licenses

The City of Campbellsburg levies a business license fee ranging from \$15 to \$50. The business license fees in the City of Eminence range from \$7.50 to \$86.25. The City of New Castle levies \$35.00 business license fee.



## State and Local Property Taxes

All property in Kentucky, except items exempted by the state constitution, is taxed by the state. Property which also may be taxed by local jurisdictions includes land and buildings, finished goods inventories, automobiles, trucks, office furniture and office equipment. Local taxing jurisdictions in Kentucky include counties, cities, and school districts.

All property in Kentucky is assessed at 100 percent of fair cash value.

### COMBINED STATE AND LOCAL RATES PER \$100 VALUATION, 1989

	<u>Campbellsburg</u>	<u>New Castle</u>
Land and Buildings	0.9753	0.9314
Manufacturing		
Machinery	0.1500	0.1500
Pollution Control		
Equipment	0.1500	0.1500
Inventories		
Raw Materials	0.0010	0.0010
Goods in Process	0.0010	0.0010
Finished Goods	0.7719	0.7280
Automobiles & Trucks	1.2359	1.1910
Other Tangible		
Personal Property	1.2209	1.1770
Intangibles (Accounts		
receivable*, money		
in hand, stock,		
notes, bonds)	0.2500	0.2500
Goods Stored in Public		
Warehouses in Transit		
Status	0.0010	0.0010
Private Leaseholds in		
Industrial Revenue		
Bond Financed		
Facilities	0.0150	0.0150

(Continued)

COMBINED STATE AND LOCAL RATES PER \$100 VALUATION, 1989

	<u>Eminence &amp; Eminence Independent</u>	<u>Eminence &amp; Henry County</u>	<u>Unincorporated Henry County</u>
Land and Buildings	1.1144	0.9844	0.7224
Manufacturing			
Machinery	0.1500	0.1500	0.1500
Pollution Control			
Equipment	0.1500	0.1500	0.1500
Inventories			
Raw Materials	0.0010	0.0010	0.0010
Goods in Process	0.0010	0.0010	0.0010
Finished Goods	0.9150	0.7850	0.5190
Automobiles & Trucks	1.5400	1.2490	0.9580
Other Tangible			
Personal Property	1.3640	1.2340	0.9680
Intangibles (Accounts			
receivable*, money			
in hand, stock,			
notes, bonds)	0.2500	0.2500	0.2500
Goods Stored in Public			
Warehouses in Transit			
Status	0.0010	0.0010	0.0010
Private Leaseholds in			
Industrial Revenue			
Bond Financed			
Facilities	0.0150	0.0150	0.0150

One watershed district in Henry County levies a special tax on property within its boundaries, not county-wide. The rate is \$0.025 per \$100 valuation.

\* Accounts receivable are taxed at 85 percent of face value, for an effective rate of \$0.2125 per \$100 valuation.

## EDUCATION

### Public Schools

	<u>Eminence</u>	<u>Henry County</u>
Total Enrollment (Fall, 1989)	548	1,897
Pupil-Teacher Ratio (1988-89)	16-1	18-1
Percent High School Graduates to College (1988-89)	54.5	47.4
Expenditures Per Pupil (1988-89)	2,760.20	2,623.23

The Eminence Independent School System recently completed construction for a five-room addition at the elementary school. The \$400,000 project created more classroom space including a new computer lab.

The Henry County School System recently completed several projects. These included construction of a library and four new classrooms at the elementary schools, construction of a new bus maintenance facility, and renovation of the central office and the middle school. The school system is in the process of constructing four new classrooms and a new roof at the high school. Additional plans include to renovate the facade of the building.

### Area Colleges and Universities

<u>Name</u>	<u>Location (Mileage from New Castle)</u>	<u>Enrollment (Fall, 1989)</u>
Kentucky State University	Frankfort, Kentucky (30)	2,205
Ballarmine College	Louisville, Kentucky (38)	2,644
Jefferson Community College	Louisville, Kentucky (38)	6,996
Spalding College	Louisville, Kentucky (38)	1,154
University of Louisville	Louisville, Kentucky (38)	20,217
Hanover College	Hanover, Indiana (40)	1,075
Midway College	Midway, Kentucky (44)	340
Indiana University Southeast	New Albany, Indiana (45)	4,657
Georgetown College	Georgetown, Kentucky (48)	1,362
Lexington Community College	Lexington, Kentucky (54)	2,587
Transylvania University	Lexington, Kentucky (54)	970
University of Kentucky	Lexington, Kentucky (54)	20,788



## Vocational Training

Vocational training is available at both the state vocational-technical schools and the area vocational education centers. The state vocational-technical schools are post-secondary institutions. The area vocational education centers are designed to supplement the curriculum of high school students. Both the state vocational-technical schools and the area vocational education centers offer evening courses to enable working adults to upgrade current job skills.

Arrangements can be made to provide training in the specific production skills required by an industrial plant. Instruction may be conducted either in the vocational school or in the industrial plant, depending upon the desired arrangement and the availability of special equipment.

### Bluegrass State Skills Corporation

The Bluegrass State Skills Corporation, an independent public corporation created and funded by the Kentucky General Assembly, provides programs of skills training to meet the needs of business and industry from entry level to advanced training, and from upgrading present employees to retraining experienced workers.

The Bluegrass State Skills Corporation is the primary source for skills training assistance for a new or existing company. The Corporation works in partnership with other employment and job training resources and programs, as well as Kentucky's economic development activities, to package a program customized to meet the specific needs of a company.

<u>Vocational School</u>	<u>Location (Miles distant)</u>	<u>Cumulative Enrollment 1988-1989</u>
Jefferson State Vocational- Technical and Manpower Skill Center	Louisville (38)	1,251
Shelby County Area Vocational Education Center	Shelbyville (16)	211
Oldham County Area Vocational Education Center	Buckner (18)	372

## OTHER LOCAL FACILITIES

### Local Medical Personnel (Henry County)

Physicians - 12  
Dentists - 7

### Hospitals

<u>General Hospital</u>	<u>Location</u>	<u>Beds</u>
Tri-County Community Hospital	LaGrange, 15 miles from New Castle	120
United Medical Center	Shelbyville, 16 miles from New Castle	76
Carroll County Memorial Hospital	Carrollton, 20 miles from New Castle	54

#### Tri-County Community Hospital

Medical staff - 54 physicians, 78 registered nurses, and 10 licensed practical nurses

#### United Medical Center

Medical staff - 30 active and 50 courtesy physicians, 69 registered nurses, and 12 licensed practical nurses

#### Carroll County Memorial Hospital

Medical staff - eight active and seven courtesy physicians, 19 registered nurses, and 7 licensed practical nurses

### Other Medical Facilities and Services

Henry County Medical Center  
Henry County Primary Care Center  
Seven Counties Services (Mental Health Services)  
Henry County Emergency Squad

### Banks and Savings & Loans

United Citizens Bank  
and Trust Company  
Farmers Deposit Bank  
The Central Bank

### Newspapers

Henry County Local (weekly)

### Telephone Service

South Central Bell Telephone Company

## RECREATION

### Local

Harry Hill Recreational Park, located one mile south of New Castle, includes two softball fields, playground area, basketball court, shelter house and restrooms, horseshoe court and a volleyball court. A public park, located in New Castle, contains a tennis court and a baseball diamond. The Henry County Fairgrounds, located two miles south of New Castle provides facilities for the annual County Fair which features agricultural exhibits, rides and special events. Facilities at a private county club located a few miles north of the city include a swimming pool, an 18-hole golf course and two tennis courts.

Lake Jericho and Lake Jericho Recreation Area are located approximately eight miles from New Castle and Campbellsburg. Fishing and boating are favorite activities at this 136-acre lake. Private facilities are available for picnicking and tent and trailer camping.

Recreational facilities in Eminence include a public swimming pool and playground, two public tennis courts, and a little league ballfield. Facilities at the Eminence schools are also open to the public.

### Area (Within 40 miles)

Churchill Downs (thoroughbred racing)  
E.P. "Tom" Sawyer State Park  
General Butler State Resort Park  
Kentucky State Capitol Building (Frankfort)  
Taylorsville Lake State Park



## COMMUNITY IMPROVEMENTS

### Recent

Electro-Wire, located in Campbellsburg, recently initiated operations. The facility manufactures electric wiring harnesses for a major truck assembly plant. Employment is projected to reach 200 persons at full production.

The Eminence Water Works recently completed the installation of booster pumps for the intake water lines from Henry County Water District No. 2. Total cost of the project approximated \$20,000.

The Eminence Independent School System recently completed construction for a five-room addition at the elementary school. The \$400,000 project created more classroom space including a new computer lab.

The Henry County School System recently completed several projects. These included construction of a library and four new classrooms at the elementary schools, construction of a bus maintenance facility, and renovation of the central office and the middle school.

A \$750,000 redevelopment project in the King-McElroy section of Eminence was recently completed. The project consisted of the construction of new housing, the rehabilitation of existing housing, water and sewer line expansion, and street and sidewalk reconstruction.

### Under Way

The Henry County School System is in the process of constructing four new classrooms and a new roof at the high school. Additional plans include to renovate the facade of the building.

### Planned

The City of Eminence plans to construct a new wastewater treatment facility and extend service to areas that are presently not served by this system. This \$1.2 million project should be completed by mid-1991.

The Campbellsburg Wastewater Company plans to upgrade its treatment plant and sewer mains contingent upon funding appropriations.

The City of Eminence is planning a downtown revitalization project for one block of the downtown business district. Scheduled improvements include storefront and housing refurbishment, landscaping, new sidewalks and streetlights.