

3-2000

## Industrial Resources: Hopkins County - Madisonville, Earlington and Hanson

Kentucky Library Research Collections  
Western Kentucky University, [spcol@wku.edu](mailto:spcol@wku.edu)

Follow this and additional works at: [https://digitalcommons.wku.edu/hopkins\\_cty](https://digitalcommons.wku.edu/hopkins_cty)

 Part of the [Business Administration, Management, and Operations Commons](#), [Growth and Development Commons](#), and the [Infrastructure Commons](#)

---

### Recommended Citation

Kentucky Library Research Collections, "Industrial Resources: Hopkins County - Madisonville, Earlington and Hanson" (2000).  
*Hopkins County*. Paper 14.  
[https://digitalcommons.wku.edu/hopkins\\_cty/14](https://digitalcommons.wku.edu/hopkins_cty/14)

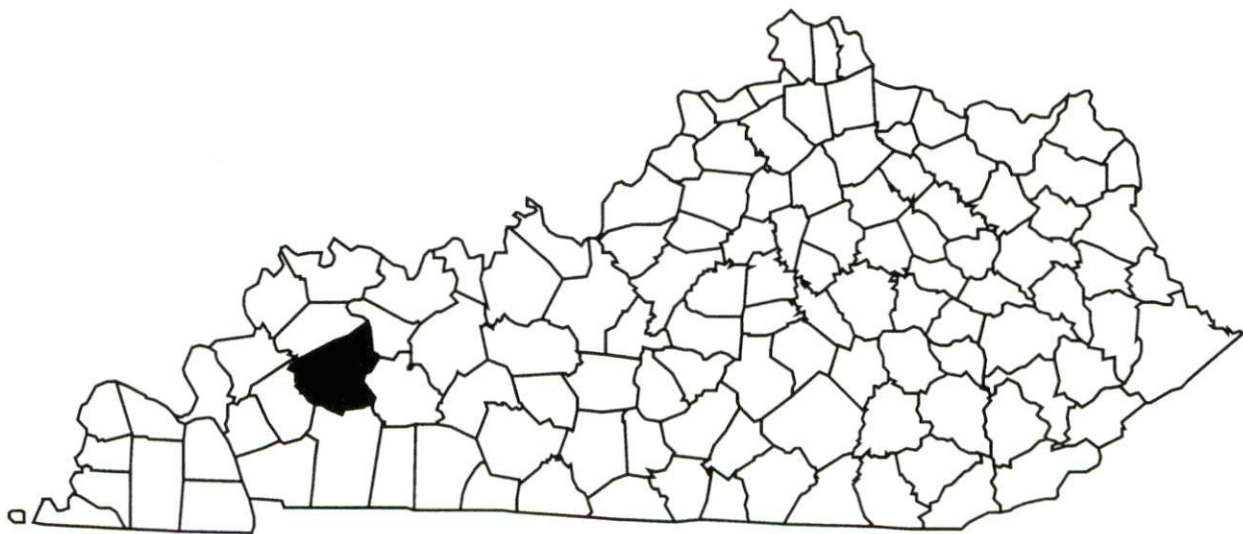
This Report is brought to you for free and open access by TopSCHOLAR®. It has been accepted for inclusion in Hopkins County by an authorized administrator of TopSCHOLAR®. For more information, please contact [topscholar@wku.edu](mailto:topscholar@wku.edu).

# Kentucky

## Resources For Economic Development

### Madisonville, Earlington, & Hanson (Hopkins County)

March 2000



Prepared by  
Kentucky Cabinet for Economic Development  
Division of Research  
in cooperation with  
Madisonville/Hopkins County Chamber of Commerce  
15 E. Center St.  
Madisonville, KY 42431  
Phone: 270-821-3435 Fax: 270-821-9190  
E-mail: [chamber@wko.com](mailto:chamber@wko.com)

Kentucky Cabinet for Economic Development  
Division of Research  
500 Mero Street  
2300 Capital Plaza Tower  
Frankfort, KY 40601  
Telephone: (502) 564-4886  
Fax: (502) 564-3256  
Email: [econdev@mail.state.ky.us](mailto:econdev@mail.state.ky.us)

Cost of printing paid from state funds.

## TABLE OF CONTENTS

	Page
<b>MADISONVILLE, EARLINGTON, &amp; HANSON, KENTUCKY – A RESOURCE PROFILE</b> .....	1
<b>LABOR MARKET STATISTICS</b> .....	3
Population.....	3
Population Projections.....	3
Estimated Labor Supply.....	3
Labor Force Characteristics of Residents, 1998.....	4
Work Force Commuting Patterns, 1990.....	4
Selected Components of Nonagricultural Employment by Place of Work, 1997.....	4
Per Capita Personal Income.....	6
Average Placement Wages.....	6
Average Weekly Wages by Industry by Place of Work, 1998.....	7
<b>EXISTING INDUSTRY</b> .....	8
Madisonville Area Manufacturing Firms, Their Products and Employment.....	8
Recent Industrial Developments.....	10
Labor Organizations in Hopkins County.....	10
Selected Industrial Services – Within 50 Miles of Madisonville.....	11
<b>TRANSPORTATION</b> .....	12
Highways.....	12
Truck Service.....	12
Rail.....	14
Air.....	14
Water.....	14
<b>UTILITIES</b> .....	15
Electricity.....	15
Natural Gas.....	16
Public Water Supply.....	16
Sewerage.....	17
<b>CLIMATE</b> .....	18
<b>LOCAL GOVERNMENT</b> .....	19
Structure.....	19
Planning and Zoning.....	19
Local Fees and Licenses.....	19
Sales and Use Tax.....	19
State and Local Property Taxes.....	19
<b>EDUCATION</b> .....	21
Primary and Secondary Schools.....	21
Colleges and Technical Schools.....	22
<b>OTHER LOCAL FACILITIES</b> .....	24
<b>RECREATION</b> .....	25
<b>APPENDIX - DEFINITIONS</b> .....	26

## MADISONVILLE, EARLINGTON, & HANSON, KENTUCKY – A RESOURCE PROFILE

Madisonville, the county seat of Hopkins County, is located in the Western Kentucky Coal Field Region. Madisonville is 49 miles south of Evansville, Indiana; 103 miles northwest of Nashville, Tennessee; 153 miles southwest of Louisville, Kentucky; and 227 miles southeast of St. Louis, Missouri. Madisonville had an estimated 1998 population of 19,034.

Earlington, located four miles south of Madisonville, is situated in the south central portion of Hopkins County. In 1998, Earlington had an estimated population of 1,711. Hanson, north of Madisonville had an estimated 1998 population of 432.

Hopkins County, with a land area of 550 square miles, has a topography that ranges from nearly flat along the broad valleys of the Green Pond and Tradewater Rivers to hilly in the southern and central parts of the county. Hopkins County had a 1998 population of 46,364.

**The Economic Framework** – Hopkins County firms employed 17,476 people in 1997. Contract construction firms provided 687 jobs; mining and quarrying firms in the county employed 1,030; manufacturing firms in the county reported 2,866 employees; wholesale and retail trade provided 4,364 jobs; 4,511 were employed in the service industry; and state and local government accounted for 2,535 jobs.

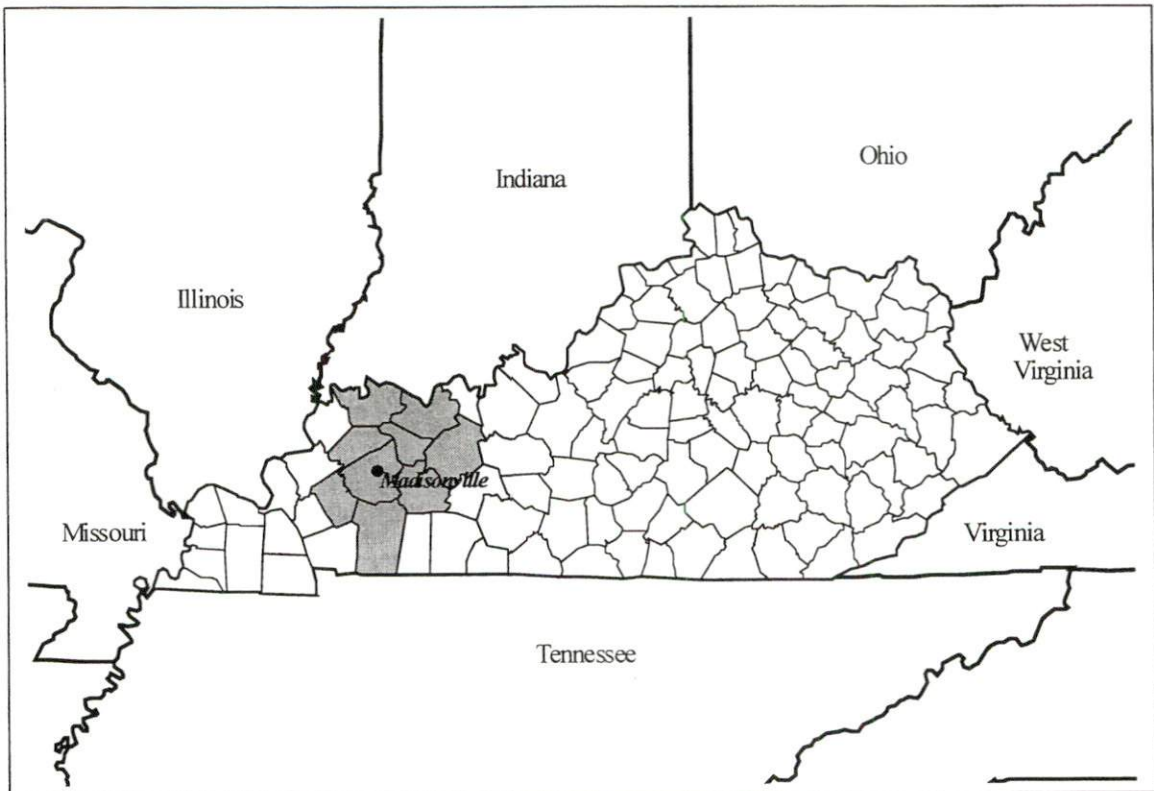
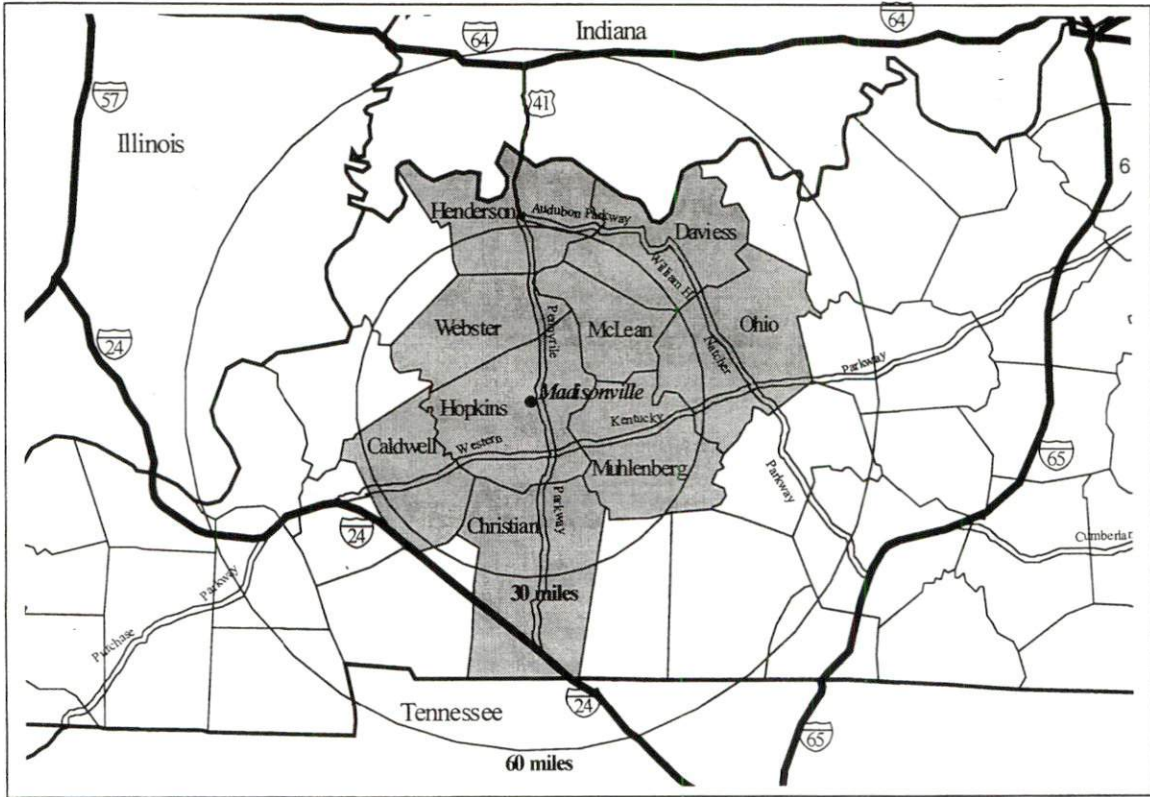
**Labor Supply** – There is a current estimated labor supply of 57,521 persons available for industrial jobs in the labor market area. In addition, from 2000 through 2004, approximately 24,594 young persons in the labor market area will become 18 years of age and potentially available for industrial jobs.

**Transportation** – Madisonville is served directly by the Pennyryle Parkway, U.S. Highways 41 and 41A, and Kentucky Highways 70 and 85. Twenty-nine common carriers serve Madisonville, Earlington, and Hanson. One trucking company maintains its corporate headquarters in Madisonville. Rail service is provided to Madisonville, Earlington, and Hanson by CSX Transportation. Madisonville is also served by the Paducah and Louisville Railway. The nearest scheduled commercial airline service is available at Evansville Regional Airport near Evansville, Indiana, 51 miles north of Madisonville. The Madisonville Municipal Airport, located six miles east of Madisonville, has one paved 5,000-foot runway.

**Power and Fuel** – Madisonville Municipal Utilities provides electric power to Madisonville. The Kentucky Utilities Company provides electric power to Earlington and southern Hopkins County. The remainder of Hopkins County is served by Kenergy Corporation. Natural gas service is provided to Madisonville, Earlington, and Hanson by the Western Kentucky Gas Company.

**Education** – Primary and secondary education is provided to Madisonville, Earlington, Hanson and Hopkins County by the Hopkins County School System. Madisonville Community College offers Associate degrees in Arts, Science, and Applied Sciences. In addition, eight other colleges and universities are within 60 miles of Madisonville. Secondary and post-secondary technical education is provided by the Madisonville Technical College. By the fall of 2000, the technical college and the community college will merge as one entity.

### Labor Market Area Maps



**Note:** To obtain detailed topographical and general highway maps contact Maps and Publications at 502-564-4715, or for industrial site maps contact the Site Evaluation Division at 502-564-7140.

## LABOR MARKET STATISTICS

The Madisonville, Earlington, & Hanson labor market area includes Hopkins County and the following additional counties: Caldwell, Christian, Daviess, Henderson, McLean, Muhlenberg, Ohio, and Webster.

### Population

	<u>1980</u>	<u>1990</u>	<u>1995*</u>	<u>1998*</u>
Labor Market Area	332,248	334,538	342,916	345,272
Hopkins County	46,174	46,126	46,439	46,364
Madisonville	16,979	18,693	19,041	19,034
Earlington	2,011	1,833	1,753	1,711
Hanson	485	450	440	432

**Note:** \* Population estimates.

**Source:** U.S. Department of Commerce, Bureau of the Census.

### Population Projections

	<u>2000</u>	<u>2010</u>	<u>2020</u>
Labor Market Area	350,149	360,491	365,794
Hopkins County	46,207	45,911	45,344

**Source:** University of Louisville, Urban Studies Center, State Data Center.

### Estimated Labor Supply

	<u>Available Labor, 1998</u>			<u>Under- employed</u>	<u>Future Labor Becoming 18 years of age 2000 through 2004</u>
	<u>Total</u>	<u>Unemployed</u>	<u>Potential Labor Supply</u>		
Labor Market Area	57,521	8,514	6,335	42,672	24,594
Hopkins County	7,985	988	1,084	5,914	3,565

**Note:** Unemployed – people not working but actively seeking work. Potential Labor Supply – represents the number of persons not in the labor force, but would like a job (based on national estimates). Underemployed – people employed in wholesale/retail trade and non-professional services. See Appendix for further explanation.

**Sources:** U.S. Department of Labor, Bureau of Labor Statistics. U.S. Department of Commerce, Bureau of the Census. Kentucky Cabinet for Economic Development, Future Labor Supply Becoming 18 Years of Age, 1999 through 2003.

### Labor Force Characteristics of Residents, 1998

	<u>Hopkins County</u>	<u>Labor Market Area</u>
Civilian Labor Force	20,027	160,102
Employed	19,039	151,588
Unemployed	988	8,514
Unemployment Rate (%)	4.9	5.3

**Source:** U.S. Department of Labor, Bureau of Labor Statistics.

### Work Force Commuting Patterns, 1990

Workers commuting into Hopkins County	3,692
Workers commuting out of Hopkins County	2,687
Workers residing and working in Hopkins County	15,647

**Source:** University of Louisville, State Data Center.

### Selected Components of Nonagricultural Employment by Place of Work, 1997

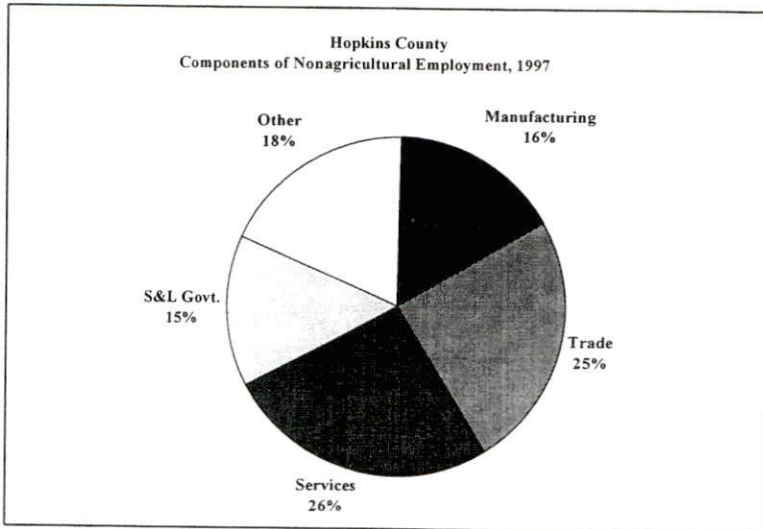
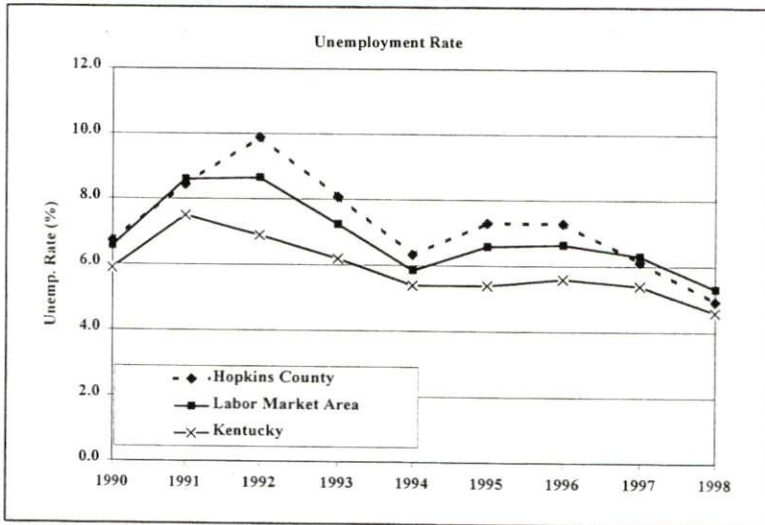
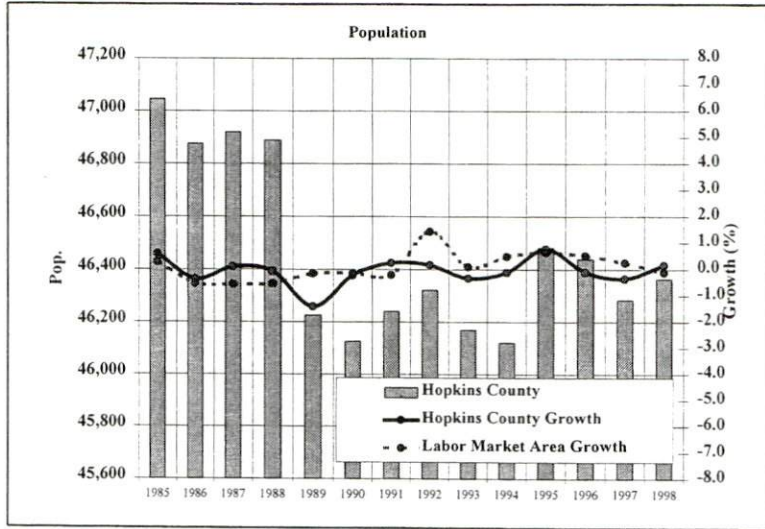
	<u>Hopkins County</u>	<u>Labor Market Area</u>
All Industries	17,476	126,295
Mining & Quarrying	1,030	3,240
Contract Construction	687	6,209
Manufacturing	2,866	29,409
Transportation & Public Utilities	750	5,544
Wholesale & Retail Trade	4,364	30,270
Finance, Insurance, & Real Estate	589	4,389
Services	4,511	26,717
State & Local Government	2,535	19,413
Other	143	907

**Note:** Excludes domestic workers, railway workers, certain nonprofit corporations, majority of federal government workers, and self-employed workers. N/A – Data not available.

**Source:** Kentucky Workforce Development Cabinet, Average Monthly Workers Covered by Kentucky Unemployment Insurance Law, 1997.



## Selected Charts



### Per Capita Personal Income

	<u>1993</u>	<u>1997</u>	<u>Percent Change (1993-1997)</u>
Hopkins County	\$16,799	\$19,245	14.6%
Kentucky	\$17,309	\$20,570	18.8%
U.S.	\$21,368	\$25,288	18.3%
Labor Market Area Range	\$12,652 - \$18,179	\$14,651 - \$22,069	-

**Source:** U.S. Department of Commerce, Bureau of Economic Analysis, 1998.

### Average Placement Wages

The Kentucky Department for Employment Services local office in Madisonville serves Hopkins County. The focus of the following data is on job placements made by the Madisonville local office and may therefore be used as an indicator of the wages which employers in the area pay new employees. During the twelve months ended on June 30, 1999, the local employment office filled Hopkins County job openings in various occupational categories. The average hourly wage for selected occupational categories were:

	<u>Number of Placements</u>	<u>Average Wage (\$)</u>
All Occupations	2,732	6.13
Professional, Technical & Managerial	43	5.34
Clerical	330	5.79
Sales	73	5.43
Domestic	12	5.80
Services (excluding domestic)	549	5.32
Agricultural, Fishery, Forestry, etc.	61	5.76
Processing	1,138	6.71
Machine Trades	113	5.60
Bench Work	103	5.22
Structural	138	7.20
Motor Freight & Transportation	92	5.73
Packaging & Materials Handling	79	6.67
Other	1	6.50

**Note:** Occupational categories are taken from the Dictionary of Occupational Titles published by the U.S. Department of Labor. The Madisonville local office serves Crittenden, Hopkins, and Muhlenberg Counties.

**Source:** Kentucky Workforce Development Cabinet, Department for Employment Services.

**Average Weekly Wages by Industry by Place of Work, 1998**

	<b>Hopkins County</b>	<b>Kentucky (Statewide)</b>	<b>Tennessee</b>	<b>Virginia</b>
All Industries	\$484.09	\$512.00	\$546.00	\$595.00
Mining & Quarrying	818.32	808.00	896.00	799.00
Contract Construction	542.03	543.00	585.00	567.00
Manufacturing	659.49	666.00	641.00	670.00
Transportation & Public Utilities	577.81	686.00	674.00	842.00
Wholesale & Retail Trade	300.10	357.00	413.00	416.00
Finance, Insurance, & Real Estate	540.92	652.00	757.00	815.00
Services	453.75	462.00	521.00	628.00
State & Local Government	463.83	494.00	511.00	551.00
	<b>Indiana</b>	<b>Ohio</b>	<b>Illinois</b>	<b>U.S.</b>
All Industries	\$560.00	\$579.00	\$668.00	\$610.00
Mining & Quarrying	883.00	813.00	910.00	1,000.00
Contract Construction	642.00	650.00	804.00	641.00
Manufacturing	772.00	801.00	816.00	770.00
Transportation & Public Utilities	662.00	698.00	798.00	756.00
Wholesale & Retail Trade	371.00	409.00	479.00	435.00
Finance, Insurance, & Real Estate	686.00	736.00	1,023.00	935.00
Services	476.00	510.00	608.00	577.00
State & Local Government	526.00	586.00	638.00	598.00

**Note:** The average weekly wage for each category includes salaries and wages of all persons working for that type of business. For example, the manufacturing category includes both production workers and administrative personnel. Domestic workers, railway workers, certain nonprofit corporations, majority of federal government workers, and self-employed workers are excluded. Wages for U.S. and surrounding states rounded to nearest dollar. N/A – Data not available.

**Sources:** Kentucky Workforce Development Cabinet, Average Weekly Wages of Workers Covered by Kentucky Unemployment Insurance Law, 1998. U.S. Department of Labor, Bureau of Labor Statistics, Employment and Wages, Annual Averages, 1998, December 1999.

## EXISTING INDUSTRY

### Madisonville Area Manufacturing Firms, Their Products and Employment

<u>Firm</u>	<u>Product(s)</u>	<u>1999 Emp.</u>	<u>Date Established</u>
A & B Sign Co., Inc.	Electrical, magnetic, neon, painted, plastic & wooden signs	8	1949
Ahlstrom Filtration, Inc.	Paper filters	100	1974
Alliance Laundry Systems, LLC	Commercial laundry dryers	250	1968
American Printing Co.	Commercial offset printing; ring, sewn, staple, side & saddle stitch binding	20	1948
Bluegrass Mining Tools	Mining tools & drilling bits	15	1971
Bowles Tool & Die Co., Inc.	Fabricated metal parts: tools, dies, jigs, fixtures & industrial molds	10	1966
Carhartt, Inc.	Men's & women's work coats, jackets & jeans	375	1980
Champion Trophies	Plastic trophies	1	1986
Clayton-Hall Printing Co.	Commercial offset & letterpress printing; computer typesetting; glue, staple & spiral binding	4	1986
Dr. Pepper Bottling Co.	Soft drinks	25	1938
Electro-Cycle	Recycled aluminum ingots	45	1989
Fabco Machine & Supply, Inc.	Machine shop: tool & die, jigs & fixtures, custom fabricating	10	N/A
Falcon Inc.	Screw machine products	9	1988
G E Aircraft Engines	Aircraft engines, turbines, blades & vanes	914	1980
Goldenrod Dairy	Liquid milk, cultured buttermilk, fruit juices & plastic milk jugs	185	1927
Grapevine Lumber Co.	Hardwood & softwood lumber sawing	10	N/A
Hanner Machine Co.	Machine shop: precision machining, fabricated steel, hard chrome plating, custom welding, hydraulic cylinders & components	12	1976
Hibbs Electric, Inc.	AC & DC motor electric form coils	48	52
High Tech Chrome Plating, Inc.	Industrial chrome plating on hydraulic cylinder parts	18	1988
Ice Products, Inc.	Ice	10	1966
Interstate Hydraulic Inds., Inc.	Hydraulic equipment: pumps, motors, cylinders & valves	3	N/A
Irving Materials, Inc.	Ready-mixed concrete	10	1966
Latco Of KY, Inc.	Wooden floor & roof trusses & panel units	30	1997
Lear Corp.	Plastic automotive components	230	1994
Leasure, Joe & Sons, Inc.	Machine shop: CNC machining, arc & submerged arc welding & lathe work	18	1935
Lebco, Inc.	Hydraulic & pneumatic mining lifts	11	1972
M & M Cabinets, Inc.	Custom commercial & household kitchen, bath, entertainment, laminated cabinets; vanities; counter tops	10	1988
Macon Apparel Corp.	Military shirts	2	1986

<u>Firm</u>	<u>Product(s)</u>	<u>1999 Emp.</u>	<u>Date Established</u>
Madisonville Log & Lumber Co.	Hardwood & grade lumber	30	1984
Madisonville Paving Co.	Asphalt paving mix	15	N/A
Messenger, The	Newspaper publishing, offset printing & computer typesetting	45	1917
Michigan Industrial Hardwood	Rough & hardwood lumber	4	N/A
Modern Welding Co. of Kentucky	Custom structural steel & metal fabricating; arc & MIG welding	30	1932
Polyweave Packaging Co., Inc.	Plastic bags	20	1983
Pond River Steel, Inc.	Conveyors & radial stackers; aggregate & mining equipment	4	1985
Pride, Bayne Signs	Magnetic, metal, painted, plastic, wooden, sandblasted, etched & engraved signs	2	N/A
Rite-Crete Concrete Products	Concrete dry mixes, sand, gravel & waterproof masonry coatings	9	1984
Royal Brass & Hose Co., Inc.	Hydraulic hose, pump & cylinder assemblies	25	1966
Royal Crown Bottling Co.	Soft drinks	3	1916
Ruby Concrete Co.	Concrete blocks	22	1945
Scott Heavy Equipment, Inc.	Steel military tank components: mine sweeps	8	1989
Screening Plus	Textile screen printing	1	1990
Sew It Seams	Embroidering service	2	1995
Show 'N Tell Inc.	Shopper guide publishing	9	1982
Sign Writers	Metal, wooden, magnetic, painted & vinyl lettered signs	2	N/A
Slim's Custom Cabinets	Vanities, shelving, mantels, counter tops, commercial & household kitchen, bath, entertainment, laminated cabinets	4	1976
Sprint Print, Inc.	Commercial offset printing; computerized typesetting; desktop publishing; glue, stitch & perfect binding	25	1979
Summitt Molding & Engineering	Plastic injection molds & molded plastics	30	1991
Titan Steel Products	Mine roof bolts; steel fabrication	24	1992
Versnick Manufacturing Co., Inc.	Cylinder sleeves	20	1945
Woodruff Supply Co., Inc.	Coal mining & industrial equipment: shuttle car flights & hydraulic hose assembly	28	1944

**Note:** N/A - Data not available.

**Sources:** Kentucky Directory of Manufacturers published by Harris InfoSource in cooperation with the Kentucky Cabinet for Economic Development, Division of Research; Madisonville/Hopkins County Chamber of Commerce.

## **Recent Industrial Developments**

Carhartt, Inc. has constructed a 350,000 square foot state-of-the-art distribution center in Hanson, Kentucky. Carhartt invested \$25 million in the project and plans to employ up to 500 persons in the new facility by 2002. Lear Corporation has undertaken a 35,750 square foot expansion of its Madisonville plant. Capital investment in the project is \$9.5 million with 70 new jobs anticipated. Period Furniture, Inc., makers of solid wood dormitory and barrack furniture will locate a plant in Madisonville. The company plans to invest over \$5 million in the building and equipment at the Madisonville facility. Period Furniture will employ 150 persons initially increasing the workforce to 400 employees in the next five years. Hibbs Electric, Inc. has expanded into a 40,000 square foot plant.

---

**Source:** Madisonville/Hopkins County Chamber of Commerce.

## **Labor Organizations in Hopkins County**

---

International Union of Electronic, Electrical, Technical, Salaried, Machine and Furniture Workers, AFL-CIO  
Union of Needletrades, Industrial and Textile Employees (UNITE)  
United Association of Journeymen and Apprentices of the Plumbing and Pipe Fitting Industry of the United States and Canada  
United Garment Workers of America  
United Steelworkers of America, AFL-CIO, CLC

---

**Source:** Kentucky Cabinet for Economic Development, Division of Research.

**Selected Industrial Services – Within 50 Miles of Madisonville**

Miles	City	Custom Plastics Producers	Electric Motor Repair	Heat Treating Facilities	Industrial Waste Removal	Machine Shops, Tool & Die	Metal Castings	Metal Finishers	Metal Service Centers	Mill- wrights & Riggers
-	Madisonville				X	X		X		
14	Providence					X				
15	Dawson Springs	X								
16	Dixon	X								
20	Greenville					X			X	
23	Livermore					X				
26	Princeton		X							
30	Corydon	X								
32	Marion					X				
32	McHenry					X				
33	Hopkinsville	X	X		X	X			X	
35	Hartford							X		
35	Henderson	X				X	X			
36	Owensboro	X	X		X	X		X	X	X
37	Cadiz	X								
41	Elkton				X					
48	Russellville				X		X			

**Note:** Miles are calculated as the straight-line distance from city center to city center; not road miles.

**Source:** Kentucky Cabinet for Economic Development, Division of Research.

## TRANSPORTATION

### Highways

Madisonville is served directly by the Pennyrile Parkway, U.S. Highways 41 and 41A, and Kentucky Highways 70 and 85. All are AAA-rated (80,000-pound gross load limit) trucking highways. A one-mile stretch of Highway 41 has been widened to five lanes beginning at Highway 41A and Highway 281 north. The Pennyrile Parkway, along with U.S. 41 and 41A, provides easy access to the Western Kentucky Parkway, nine miles south of Madisonville; Interstate 24, forty-five miles south of Madisonville; and Interstate 64, sixty-five miles north of Madisonville.

Earlington is served directly by U.S. Highway 41 and Kentucky Highway 112. The Pennyrile Parkway is accessible five miles north of Earlington.

Hanson is served directly by U.S. Highway 41 and Pennyrile Parkway.

### Highway Miles from Madisonville, Kentucky to Selected Market Centers

<u>City</u>	<u>Highway Miles</u>	<u>City</u>	<u>Highway Miles</u>
Atlanta, GA	349	Indianapolis, IN	266
Baltimore, MD	728	Kansas City, MO	467
Birmingham, AL	295	Knoxville, TN	281
Charleston, WV	365	Lexington, KY	193
Chicago, IL	393	Louisville, KY	153
Cincinnati, OH	250	Minneapolis, MN	762
Cleveland, OH	501	Nashville, TN	103
Columbia, SC	543	New Orleans, LA	635
Columbus, OH	357	New York, NY	888
Dallas, TX	712	Pittsburgh, PA	539
Des Moines, IA	613	Raleigh, NC	641
Detroit, MI	513	Richmond, VA	682
Evansville, IN	49	St. Louis, MO	227
Huntington, WV	316	Tallahassee, FL	620

**Note:** Mileage computations are via the best interstate or primary highways, not necessarily the most direct route of travel.

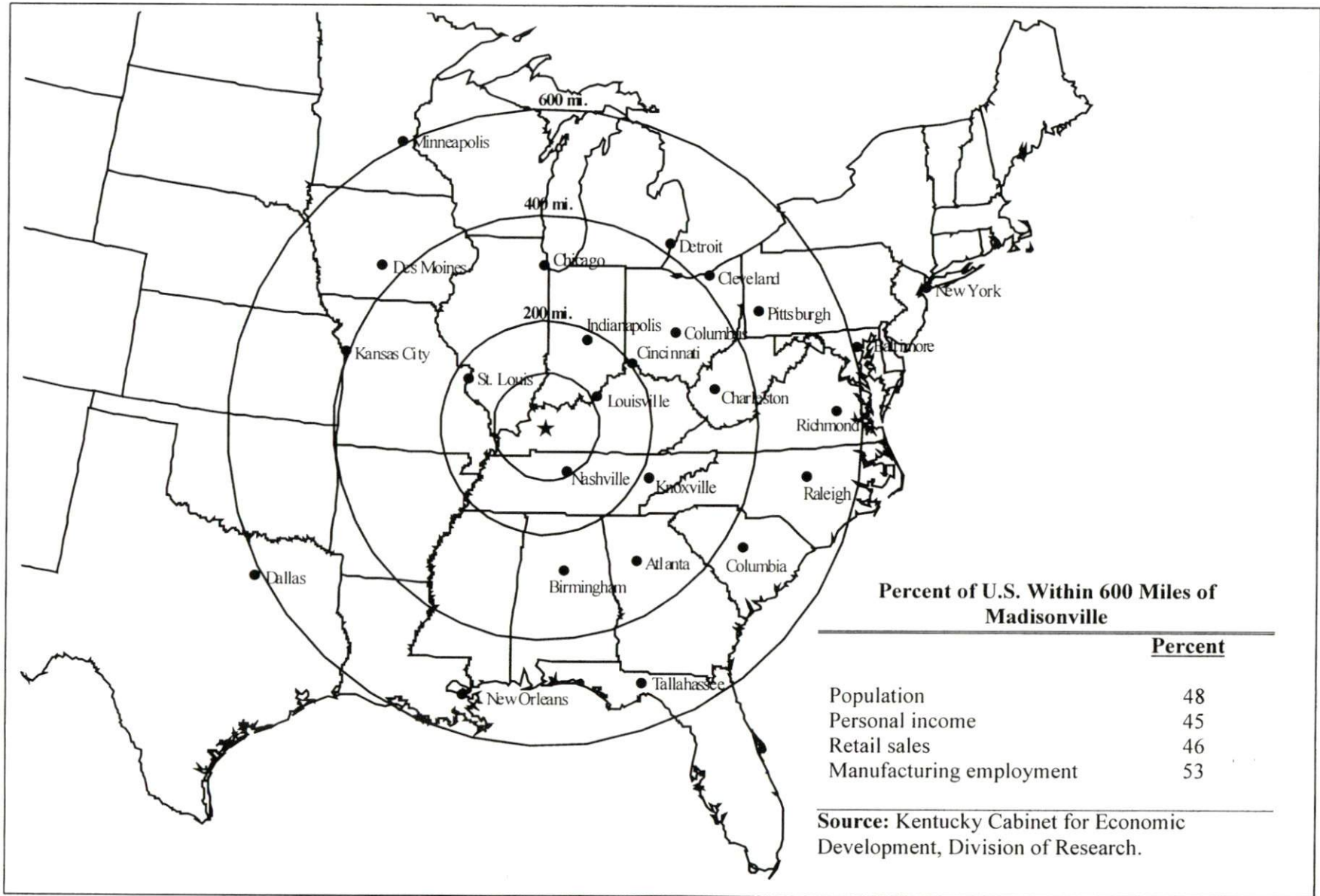
**Source:** AAA Map 'n' Go, DeLORME, 1998.

### Truck Service

Twenty-nine trucking companies provide interstate and/or intrastate service to Madisonville, Earlington, and Hanson. Landstar Ligon Trucking Company maintains its corporate headquarters in Madisonville and maintains a fleet of 1,600 trucks. American Motor Carrier Directory, 2000 Edition.



### Selected Market Centers Map



## **Rail**

CSX Transportation provides main line rail service to Madisonville and Earlington. Main line rail service is also provided to Madisonville by the Paducah and Louisville Railway. The nearest intermodal facilities are available from CSX Transportation in Evansville, 49 miles north of Madisonville.

For details on routing, schedules, rates, and services contact:

Manager of Industrial Development  
CSX Transportation  
9420 Bunsen Parkway  
Suite 212  
Louisville, KY 40220  
(502) 499-3025

## **Air**

### **Local**

	<b>Madisonville Municipal Airport</b>
Location:	Madisonville, KY
Phone:	(270) 821-3453
Number of runways:	1
Length and type of longest runway:	5,000 feet, asphalt

### **Commercial/International**

	<b>Evansville Regional Airport</b>
Location:	Evansville, IN
Distance from Madisonville:	51 miles north
Phone:	(812) 421-4401
Air service:	ASA, Comair, American Eagle, Northwest Airlinck, TWA Express, US Airways Express
Daily arrivals & departures:	98

## **Water**

The nearest navigable rivers to Madisonville are the Green and Ohio Rivers, approximately 25 miles north and 39 miles north, respectively. Both rivers maintain a nine-foot navigation channel. The Henderson County Riverport Authority operates port facilities on the Ohio River at Henderson, 39 miles north of Madisonville. The Riverport offers full port facilities, coal loading facilities, bulk and cargo handling, warehouse and yard storage, and intermodal transportation. The Port Authority of Lyon County operates public facilities in the Lick Creek embayment on Barkley Lake, 49 miles southwest of Madisonville. The Port offers grain, crushed limestone, and coal loading facilities, coal storage, public dock with crane service, outside storage area, mooring facilities, harbor service, and truck scales. The Owensboro Riverport Authority operates a public riverport on the Ohio River at Owensboro, 46 miles northeast of Madisonville. Facilities include more than 100,000 square-feet of general commodity warehousing, two 600,000 gallon liquid storage tanks, a four-acre asphalt storage pad for outside storage, a coal preparation plant with a loading capacity of 2,000 tons per hour and a 12-acre stock pile area, two 110-ton cranes, eight mooring dolphins and rail service.

## UTILITIES

### Electricity

Service area:  
Company:  
Source of power:  
For industrial rates contact:

**Madisonville and Hanson**  
Madisonville Municipal Utilities  
Kentucky Utilities Company

Madisonville Municipal Utilities  
P. O. Box 704  
Madisonville, KY 42431  
(270) 821-0903

Service area:  
Company:  
Source of power:  
For industrial rates contact:

**Earlington and southern Hopkins County**  
Kentucky Utilities Company  
Kentucky Utilities Company

Kentucky Utilities Company  
Economic Development Department  
One Quality Street  
Lexington, KY 40507  
(606) 255-2100

Service area:  
Company:  
Source of power:  
For industrial rates contact:

**portions of northern Hopkins County**  
Kenergy Corporation  
Big Rivers Electric Corporation

Kenergy Corporation  
3111 Fairview Drive  
P.O. Box 1389  
Owensboro, KY 42302  
(270) 926-4141

and/or

Big Rivers Electric Corporation  
Manager of Economic Development  
201 Third St., P. O. Box 24  
Henderson, KY 42420  
(270) 827-2561

Service area:  
Company:  
Source of power:  
For industrial rates contact:

**portions of western Hopkins County**  
Kenergy Corporation  
Big Rivers Electric Corporation

Kenergy Corporation  
6402 Old Corydon Road  
P.O. Box 18  
Henderson, KY 42420  
(270) 826-3991

and/or

Big Rivers Electric Corporation  
Manager of Economic Development  
201 Third Street, P.O. Box 24  
Henderson, KY 42420  
(270) 827-2561

## **Natural Gas**

Service area:  
Company:  
Source of supply:  
For rates and supplies contact:

**Madisonville, Earlington, and Hanson**  
Western Kentucky Gas Company  
Texas Gas Transmission Company

Western Kentucky Gas Company  
2401 New Hartford Rd., P. O. Box 886  
Owensboro, KY 42302-0866  
(270) 685-8069

## **Public Water Supply**

Service area:  
Company:

**Madisonville**  
Madisonville Municipal Utilities  
P. O. Box 704  
Madisonville, KY 42431  
(270) 824-2145

Treatment facilities information:

Source of raw water: Surface supply/Lake Pee Wee/Green River  
Treatment plant capacity: 8,000,000 gallons per day  
Average daily consumption: 3,700,000 gallons  
Peak daily consumption: 5,600,000 gallons  
Storage capacity: 6,100,000 gallons  
Water pressure: 70 psi to 80 psi

Improvements:

The City of Madisonville plans to invest approximately \$3.6 million in various improvements to the sewage system over the next two years.

Service area:  
Company:

**Earlington**  
Earlington Water Department  
103 W. Main St.  
Earlington, KY 42410  
(270) 383-5121

Treatment facilities information:

Source of raw water: Loch Mary Lake  
Treatment plant capacity: 432,000 gallons per day  
Average daily consumption: 115,000 gallons  
Peak daily consumption: 200,000 gallons  
Storage capacity: 440,000 gallons  
Water pressure: 40 psi to 90 psi

Additional water source (maximum available for purchase): South Hopkins Water Co. (approx. 100,000 gallons per day)

Service area: **Hanson**  
Company: Hanson Water System  
P. O. Box 337  
Hanson, KY 42431  
(270) 322-8521

Treatment facilities information:  
Source of supply of treated water: City of Madisonville  
Amount that can be purchased: 200,000 gallons per day  
Average daily consumption: 75,000 gallons  
Peak daily consumption: 90,000 gallons  
Storage capacity: 150,000 gallons  
Water pressure: 60 psi to 75 psi

**Sewerage**

Service area: **Madisonville**  
Company: Madisonville Municipal Utilities  
P. O. Box 705  
37 East Center St.  
Madisonville, KY 42431  
(270) 824-2105

Design capacity: 6,000,000 gallons per day  
Average daily flow: 4,200,000 gallons  
Type of treatment: Secondary  
Treated effluent discharged into: Greasy Creek

Service area: **Earlington**  
Company: City of Earlington Sewer Department  
103 West Main St.  
Earlington, KY 42410  
(270) 383-5121

Treated effluent discharged into: Lines connecting to Madisonville Wastewater Treatment Plant

Improvements: In Summer 2000 work will begin to improve the collection system. Estimated investment in the project is \$2.0 million with completion anticipated by June 2001.

Service area: **Hanson**  
Company: Hanson Wastewater System  
53 Sunset Rd., P. O. Box 337  
Hanson, KY 42413  
(270) 322-8521

Treated effluent discharged into: Lines connecting to Madisonville Wastewater Treatment Plant

## CLIMATE

### Hopkins County

---

#### Temperature

Normal (101-year record)	56.6 degrees
Average annual, 1997	54.3 degrees
Record highest, July 1954 (57-year record)	105 degrees
Record lowest, February 1951 (57-year record)	-23 degrees
Normal heating degree days (30-year record)	4,708
Normal cooling degree days (30-year record)	1,376

#### Precipitation

Normal (30-year record)	43.14 inches
Mean annual snowfall (30-year record)	15.5 inches
Total precipitation, 1997	47.58 inches
Mean number days precipitation (0.01 inch or more) (30-year record)	114.9
Mean number days thunderstorms (57-year record)	44.7

Prevailing Winds (29-year record) South

#### Relative Humidity (30-year record)

12 midnight	79 percent
6 a.m.	82 percent
12 noon	59 percent
6 p.m.	62 percent

---

**Notes:** Heating degree day totals are the sums of negative departures of average daily temperatures from 65 degrees F. Cooling degree day totals are the sums of positive departures of average daily temperatures from 65 degrees F.

**Source:** U.S. Department of Commerce, National Climatic Data Center, Local Climatological Data, 1997.  
Station of record: Evansville, Indiana.

## LOCAL GOVERNMENT

### Structure

The cities of Madisonville and Earlington are served by a mayor/city council form of government. The mayors each serve four-year terms and the council members serve two-year terms. The City of Hanson is served by a mayor and four commissioners. Hopkins County is served by a county judge/executive and seven magistrates.

### Planning and Zoning

Joint agency - Hopkins County Joint Planning Commission

Participating cities - Madisonville, Earlington, Dawson Springs, Hanson, Nortonville, Mortons Gap

Zoning enforced - Madisonville, Earlington, Hanson, Morton's Gap and Dawson Springs

Subdivision regulations enforced - All areas

Local codes enforced - Hopkins County has only codes for multi-family, commercial and industry. Madisonville has codes for all developments

Mandatory state codes enforced - Kentucky Plumbing Code, National Electric Code, Kentucky Boiler Regulations and Standards, Kentucky Building Code (modeled after BOCA code)

### Local Fees and Licenses

The City of Madisonville levies an occupational license fee of 1.5% on wages, salaries, and commissions of individuals and on net profits of businesses within the city.

The City of Earlington levies annual business license fees ranging from \$10.75 to \$60.75.

The City of Hanson does not levy any business license fees.

### Sales and Use Tax

A state sales and use tax is levied at the rate of 6.0% on the purchase or lease price of taxable goods and on utility services. Local sales taxes are not levied in Kentucky.

### State and Local Property Taxes

The Kentucky Constitution requires the state to tax all classes of taxable property, and state statutes allow local jurisdictions to tax only a few classes. All locally taxed property is subject to county taxes and school district taxes (either a county school district or an independent school district). Property located inside the city limits may also be subject to city property taxes. Property assessments in Kentucky are at 100% fair cash value. Accounts receivable are taxed at 85% of face value. Special local taxing jurisdictions (fire protection districts, watershed districts, and sanitation districts) levy taxes within their operating areas (usually a small portion of community or county).

**State Property Tax Rates Per \$100 Valuation**

<u>Selected Classes of Property</u>	<u>State Rate, 1998</u>	<u>Local Taxation Permitted</u>
Real Estate	\$0.153	Yes
Manufacturing Machinery	0.150	No
Pollution Control Equipment	0.150	No
Inventories:		
Raw Materials	0.050	No
Goods in Process	0.050	No
Finished Goods	0.050	Yes
Motor Vehicles	0.450	Yes
Other Tangible Personal Property	0.450	Yes
Intangibles (Accounts Receivable, Money on Hand)	0.250	No

**Source:** Property Tax Rates 1998, Kentucky Revenue Cabinet, Department of Property Valuation.

**Local Property Tax Rates Per \$100 Valuation, 1998**

<u>Taxing Jurisdiction</u>	<u>Real Estate</u>	<u>Finished Goods &amp; Tangibles</u>	<u>Motor Vehicles</u>
<b><u>County</u></b>			
Hopkins County	0.1490	0.1426	0.1435
<b><u>Cities</u></b>			
Earlington	0.2230	0.4550	0.2350
Hanson	0.1650	0.1950	0.1590
Madisonville	0.1420	0.1420	0.1500
<b><u>School Districts</u></b>			
Hopkins County	0.5850	0.5850	0.5470

**Source:** Property Tax Rates 1998, Kentucky Revenue Cabinet, Department of Property Valuation.



## EDUCATION

### Primary and Secondary Schools

#### Public School District Enrollments and Expenditures, 1998-99

	<u>Total Enrollment</u>	<u>Expenditures Per Pupil</u>	<u>Pupil to Teacher Ratio</u>
Hopkins County	7,372	5,613	16.4

**Source:** Kentucky Department of Education, Office of Curriculum, Assessment, and Accountability.

#### Transition to Adult Life of High School Graduates, 1996-97

<u>County-wide</u>	<u>Number of Graduates</u>	<u>Percent of Total Graduates (%)</u>
Total High School Graduates	518	
To College	269	51.9
To Vocational/Technical School	29	5.6
To Workforce	162	31.3
To Work & School	26	5.0
To Military	17	3.3
Other	15	2.9

**Source:** Kentucky Department of Education, Office of Curriculum, Assessment, and Accountability.

#### Nonpublic Schools, 1999-2000

	<u>Enrollment</u>	<u>Grades</u>
Christ the King Elementary	170	K-8
Christian Tabernacle Elementary	13	K-8
Christian Tabernacle High School	6	9-12
Grace Baptist Elementary	76	K-8
Grace Baptist High School	31	9-12
Madisonville Christian Elementary	4	PS-8
Madisonville Christian High School	1	9-12
Pennyrile Christian Academy Elementary	40	PS-8
Pennyrile Christian Academy High School	30	9-12

**Source:** Kentucky Schools Directory 1999-2000, Kentucky Department of Education.

## Colleges and Technical Schools

### Area Colleges and Universities Within 60 Miles of Madisonville

<u>Miles</u>	<u>Institution</u>	<u>Location</u>	<u>Enrollment (Fall 1999)</u>
-	Madisonville Community College	Madisonville	1,742
33	Hopkinsville Community College	Hopkinsville	2,449
35	Henderson Community College	Henderson	1,176
36	Brescia College	Owensboro	720
36	Kentucky Wesleyan College	Owensboro	748
36	Owensboro Community College	Owensboro	2,134
45	University of Evansville	Evansville, IN	3,130
45	University of Southern Indiana	Evansville, IN	8,695
54	Austin Peay State University	Clarksville, TN	7,500
Total Enrollment			28,294

**Note:** Miles are calculated as the straight-line distance from Madisonville, not road miles.

**Source:** Kentucky Council on Higher Education.

### Kentucky Technical Schools Within 60 Miles of Madisonville

<u>Miles</u>	<u>Institution</u>	<u>Location</u>	<u>Enrollment (1997-98)</u>		
			<u>Sec</u>	<u>P/S</u>	<u>Total</u>
-	Madisonville Technical College Madisonville Health Extension	Madisonville	0	372	372
-	Madisonville Technical College	Madisonville	74	128	202
16	Webster County ATC	Dixon	409	1	410
20	Muhlenberg County ATC	Greenville	142	57	199
26	Caldwell County ATC	Princeton	342	26	368
33	Christian County ATC	Hopkinsville	241	28	269
35	Ohio County ATC	Hartford	673	23	696
35	Henderson County ATC	Henderson	701	2	703
36	Owensboro Technical College	Owensboro	109	365	474
36	Owensboro Technical College Davies County Extension	Owensboro	225	150	375
48	Russellville ATC	Russellville	543	6	549
58	Marshall County Area Vocational Education Center	Benton	348	0	348
Total Enrollment			3,807	1,158	4,965

**Notes:** Kentucky Tech secondary schools (Sec), called area technology centers (ATC), are operated by the Cabinet for Workforce Development and the post-secondary schools (P/S), called technical colleges, are governed by the Kentucky Community and Technical College System (KCTCS). Adult courses may be offered at some secondary technical schools. Miles are calculated as the straight-line distance from Madisonville, not road miles.

**Source:** Kentucky Workforce Development Cabinet, KCTCS.

### **Customized Training**

The Kentucky Tech system, through its training and development coordinators, will provide technical assistance and will identify and develop low-cost customized training programs and services for both established and prospective businesses. Businesses wanting to establish a customized training program should contact a Training and Development Coordinator at the Madisonville Technical College (270) 824-7552.

### **Assessment Services**

Kentucky Tech Career Connections offers business, education, and government agencies testing packages for evaluating job applicants, selecting employees for promotional consideration and developing training programs within the organization. The Career Connections Assessment Center serving the Madisonville, Earlington, & Hanson area is located at the Madisonville Technical College (270) 824-7009.

### **Adult Education Services**

Adult education programs are available to adults who want to develop new academic skills, improve basic skills, or earn a high school equivalency diploma. In the Madisonville, Earlington, & Hanson area, adult basic education and adult literacy classes are administered through the Hopkins County Board of Education.

### **Bluegrass State Skills Corporation**

The Bluegrass State Skills Corporation (BSSC) was established in 1984 by the General Assembly of the Commonwealth of Kentucky as an independent, de jure corporation to stimulate economic development through customized business and industry specific skills training programs. The BSSC works with business and industry and Kentucky's educational institutions to establish programs of skills training. The BSSC is attached to the Cabinet for Economic Development for administrative purposes, in recognition of the relationship between economic development and skills training efforts.

The BSSC is comprised of two economic development tools, matching grants and the newly authorized Skills Training Investment Credit Act. The BSSC grant program is available to new, expanding and existing business and industry. Eligible training activities include pre-employment skills training and assessment; entry level, skills upgrade and occupational upgrade training; train-the-trainer travel; and capacity-building. The Skills Training Investment Credit Act provides tax credits to existing businesses for skills upgrade training.

## OTHER LOCAL FACILITIES

### Madisonville, Earlington, and Hanson

#### Local Medical Personnel

Physicians – 145      Dentists - 22

#### Hospitals

<u>General Hospital</u>	<u>Location</u>	<u>Beds</u>
Regional Medical Center	Madisonville	410

In Madisonville the Trover Foundation offers a total system of health care. The Foundation has been recognized nationally as a model of excellence in rural health care. Regional Medical Center (RMC), is a key component of Trover Foundation. RMC is a 410-bed acute care facility that is designated as a regional referral center for western Kentucky.

#### Other Medical Facilities and Services

The following are health care services offered by Trover Foundation:

Calumet Counseling Center

Certified Registered Nurse Anesthetists – the only program in Kentucky for CRN Anesthetists

Family Practice Residency Center

Home Health Services

Mahr Cancer Center

Managed Care

Multicare Specialists, PSC - a single specialty group of primary care physicians including thirteen Board certified family physicians, an internal medicine physician, physician assistants, and nurse practitioners. The “WorkKare” department provides a complete line of services to industry both in-clinic and on-site. Specialists in cardiac care, orthopaedics, obstetrics and gynecology, otolaryngology (ENT), dermatology, and urology also reside in the multicare building. The facility also offers a full service lab and radiology services.

Occupational Medicine

Renal Dialysis Center

Sports Medicine and Rehabilitation

The Wound Healing and Hyperbaric Center

Walk-in Care Centers

West Area Health Education Center

Western Kentucky Forensic Science Center

#### Banks and Savings & Loan Associations

Fifth Third Bank

First United Bank of Hopkins County, Inc.

Firststar

Madisonville Building and Loan Association

Old National Bank

West Kentucky Bank

#### Newspapers

The Messenger (Daily)

#### Telephone Service

BellSouth

## RECREATION

Madisonville and the surrounding area offer many recreational opportunities. Madisonville, with 480 acres of park land provides year-round supervised recreational programs for all ages. Facilities at the 185-acre Municipal Park include a nine-hole golf course, a clubhouse containing a golf pro shop and a large clubroom, an Olympic-size swimming pool, a ball park, a lighted basketball court and several small courts, playgrounds, shelter house, amphitheater, restrooms, tennis courts, fitness trail and picnic areas. Supervised baseball leagues, football teams, tennis clinics, and golf clinics are also sponsored by the city and local civic groups. Other recreational opportunities include four indoor movie theaters, a 20-lane bowling alley, a roller-skating rink, and a Youth Athletic Association sports complex with eight baseball diamonds on a 31-acre tract, and a YMCA. Instructional soccer leagues are offered, as well as karate and gymnastics.

Two private country clubs are located in Madisonville. The Madisonville Country Club, located on a 170-acre site at the southern edge of the city, has a clubhouse, 18-hole golf course, Olympic-size swimming pool and bathhouse, and tennis courts. Lakeshore Country Club is located on 90 acres on the shores of Lake Peewee and facilities include a clubhouse, 18-hole golf course and driving range, a double Olympic-size swimming pool, bathhouse, tennis courts, and a boat dock.

Madisonville Community College serves as an important source of cultural events. The Fine Arts Center located on campus offers performances of ballet, music and theatre.

The Loch Mary Lake, a 147-acre lake at Earlington, not only offers boating and fishing, but also has a city park with playground equipment, a picnic area and boat ramp. Earlington also has three tennis courts, outdoor basketball courts, a baseball diamond, and three supervised baseball leagues.

Pennyrile Forest State Resort Park near Dawson Springs is located 31 miles south of Madisonville. The park provides a 24-room lodge and cottages and numerous recreational activities and facilities.

### Area (within 65 miles)

Ben Hawes State Park (Owensboro)  
Ellis Park Thoroughbred Racetrack (Henderson)  
Jefferson Davis Monument State Historic Site (Hopkinsville)  
John James Audubon State Park (Henderson)  
Kentucky Dam Village State Resort Park (Gilbertsville)  
Lake Barkley State Resort Park (Cadiz)  
Lake Malone State Park (Dunmor)  
Land Between the Lakes (Western Kentucky)

## APPENDIX - DEFINITIONS

### Geographic definition of the labor market area

A county's labor market area is defined as the base county, adjacent counties, and any other major commuting counties. Adjacency is used to define the labor market area primarily because of the small size of Kentucky's counties. The major commuting counties are defined from the point of view of the base county. Major commuting counties are those counties that comprise 90% of the base county's total commuters. The source of the commuting patterns is the 1990 journey-to-work data available from the U.S. Department of Commerce, Bureau of Economic Analysis.

### Example – Logan County

To determine the labor market area for Logan County the following steps are taken. First, the counties with workers commuting into Logan county are listed in ascending order (see the table below). The cumulative percent is calculated. Next, all counties that comprise up to 90% of the commuters are included in the labor market area (actually the cut-off will be the county that breaks the 90% threshold – Montgomery County, TN at 92.6% in this case). Although Robertson is not a major commuter county, it is included since it is adjacent. The Logan County labor market is then comprised of the seven bold-faced counties in the table below.

<b>Labor Market Area – Logan County (Example Only)</b>				
<u>Adjacent to Logan</u>	<u>Commuter County</u>	<u>Commuters into Logan</u>	<u>Percent of Total Commuters</u>	<u>Cumulative Percent</u>
Y	<b>Todd</b>	<b>385</b>	<b>24.4%</b>	<b>24.4%</b>
Y	<b>Warren</b>	<b>377</b>	<b>23.9</b>	<b>48.4</b>
Y	<b>Muhlenberg</b>	<b>365</b>	<b>23.2</b>	<b>71.5</b>
Y	<b>Simpson</b>	<b>162</b>	<b>10.3</b>	<b>81.8</b>
Y	<b>Butler</b>	<b>116</b>	<b>7.4</b>	<b>89.1</b>
	<b>Montgomery, TN</b>	<b>55</b>	<b>3.5</b>	<b>92.6</b>
	Christian	36	2.3	94.9
	Sumner, TN	35	2.2	97.1
Y	<b>Robertson, TN</b>	<b>25</b>	<b>1.6</b>	<b>98.7</b>
	Davidson, TN	20	1.3	100.0
	<i>Total Commuters into Logan County</i>	<i>1,576</i>	<i>100.0</i>	

**Source:** U.S. Department of Commerce, Bureau of Economic Analysis. Regional Economic Information System, CD-ROM. August 1997.

### **Potential Labor Supply**

The potential labor supply is an estimate of those persons not classified as in the labor force (not employed and not unemployed), but who want a job. The assumption is that people not in the labor force at the local level would like a job at the same rate as the nation. The U.S. Department of Labor, Bureau of Labor Statistics provides national, yearly estimates of the percent of the people not in the labor force who want a job. This percent is applied to the county-level number of people not in the labor force.

### **Underemployed**

Wholesale/retail trade and non-professional services have historically paid low wages. The assumption is that workers in these industries would take higher paying jobs if they were available. Non-professional services excludes Miscellaneous Repair Services (SIC 7600), Health Services (SIC 8000), Legal Services (SIC 8100), and Engineering and Management Services (SIC 8700).

### **Total Available Labor**

Total available labor is the sum of the number of unemployed, potential labor supply, and underemployed. Please note that the number of unemployed is the only generally accepted measure of labor availability. The other concepts are weaker measures and should be used with caution.