

1994

Industrial Resources: Laurel County - London

Kentucky Library Research Collections
Western Kentucky University, spcol@wku.edu

Follow this and additional works at: https://digitalcommons.wku.edu/laurel_cty

 Part of the [Business Administration, Management, and Operations Commons](#), [Growth and Development Commons](#), and the [Infrastructure Commons](#)

Recommended Citation

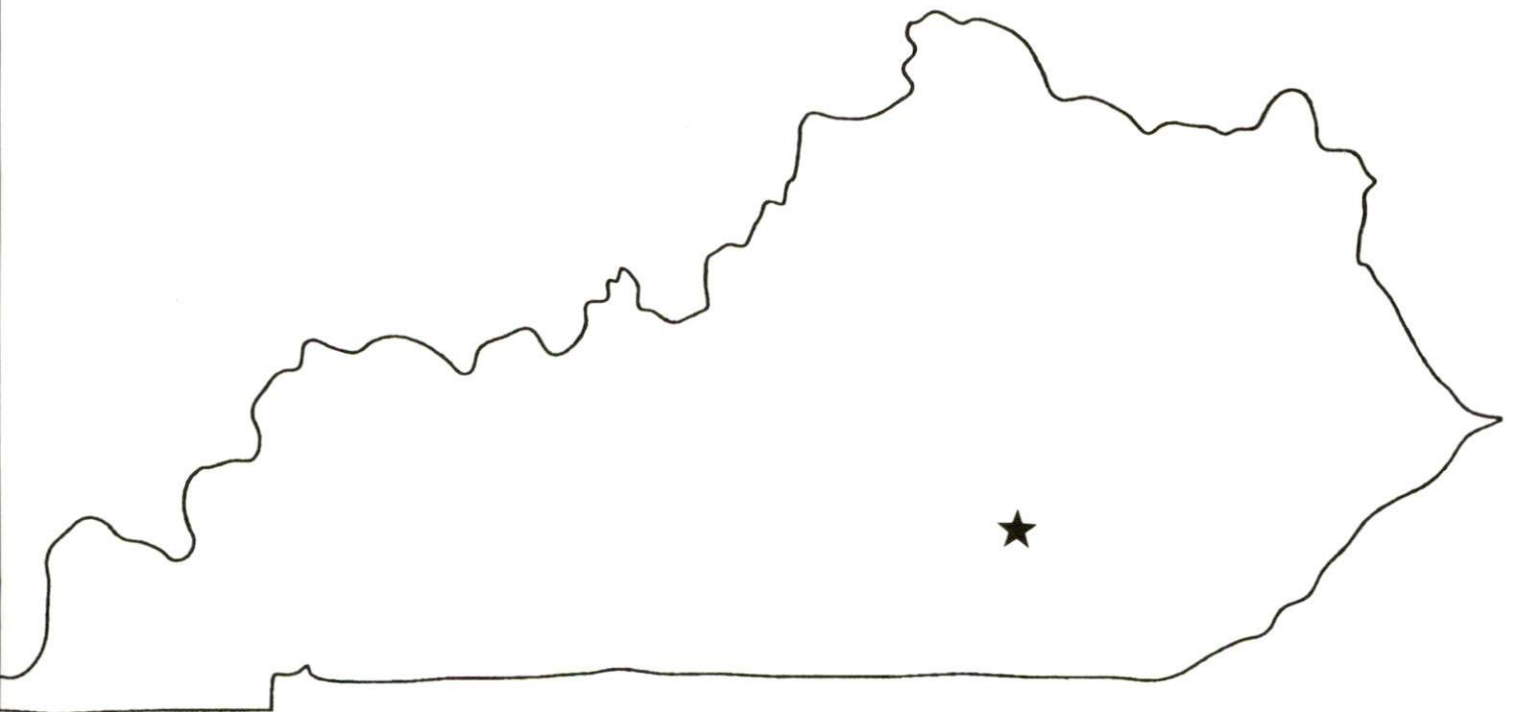
Kentucky Library Research Collections, "Industrial Resources: Laurel County - London" (1994). *Laurel County*. Paper 5.
https://digitalcommons.wku.edu/laurel_cty/5

This Report is brought to you for free and open access by TopSCHOLAR®. It has been accepted for inclusion in Laurel County by an authorized administrator of TopSCHOLAR®. For more information, please contact topscholar@wku.edu.

Kentucky

**Resources For
Economic Development**

London



Prepared by
The Kentucky Cabinet for Economic Development
Division of Research
in cooperation with
London-Laurel County Chamber of Commerce

1994

Division Director - Pamela K. Riley; program manager - Keith Roberts; research - Keith Roberts; clerical - Wanda Sharp; graphics - Robert Owens. Cost of printing paid from state funds.

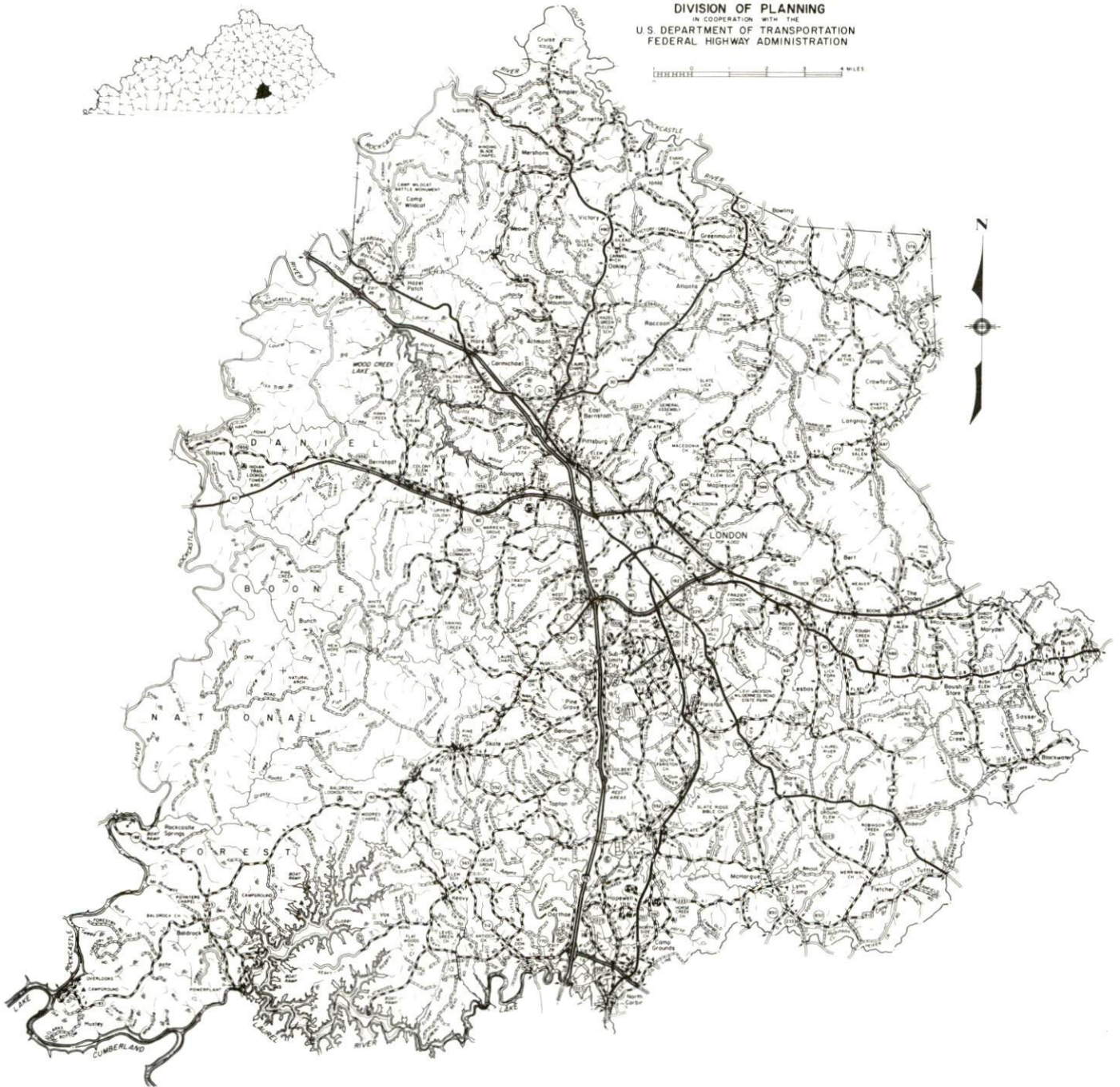
TABLE OF CONTENTS

<u>Chapter</u>	<u>Page</u>
LONDON, KENTUCKY - A RESOURCE PROFILE	1
THE LABOR MARKET STATISTICS	2
Labor Market Area Map	2
Population	3
Population Projections	3
Estimated Labor Supply	3
Labor Force Characteristics of Residents, 1992	4
Selected Components of Nonagricultural Employment, by Place of Work, 1992	5
Per Capita Personal Income	6
Average Placement Wages	7
Average Weekly Wages of Workers Covered by Unemployment Insurance 1992 - Bar Chart	8
Average Weekly Wages by Industry, by Place of Work, 1992	9
EXISTING INDUSTRY	10
London Manufacturing Firms, Their Products and Employment	10
Major Non-Manufacturing Firms	11
Labor Organizations in Manufacturing Firms	11
Selected Industrial Services	12
TRANSPORTATION	13
Highways	13
Truck Service	13
Selected Market Location Map	14
Rail	15
Air	15
UTILITIES	16
Electricity	16
Natural Gas	16
Public Water Supply	17
Sewerage	17
CLIMATE	18

<u>Chapter</u>	<u>Page</u>
LOCAL GOVERNMENT	19
Structure	19
Planning and Zoning	19
Local Fees and Licenses	19
State and Local Property Taxes	20
EDUCATION	21
Public Schools	21
Nonpublic Schools	21
Area Colleges and Universities	22
Vocational Training	23
OTHER LOCAL FACILITIES	25
Local Medical Personnel	25
Hospitals	25
Other Medical Facilities and Services	25
Banks and Savings & Loan Associations	25
Newspapers	25
Telephone Service	25
RECREATION	26

GENERAL HIGHWAY MAP
LAUREL COUNTY
KENTUCKY

PREPARED BY THE
KENTUCKY TRANSPORTATION CABINET
DEPARTMENT OF HIGHWAYS
DIVISION OF PLANNING
IN COOPERATION WITH THE
U. S. DEPARTMENT OF TRANSPORTATION
FEDERAL HIGHWAY ADMINISTRATION



LONDON, KENTUCKY - A RESOURCE PROFILE

London, the county seat of Laurel County is located in southeastern Kentucky. The city of London is located 75 miles south of Lexington, Kentucky; 97 miles north of Knoxville, Tennessee; and 150 miles south of Cincinnati, Ohio. In 1990, London had a population of 5,757 with several populated developments lying just outside the city limits.

Laurel County has a land area of 435 square miles. Approximately one-half of the county is located in the eastern coal field region and the western portion of the county is located within the Daniel Boone National Forest. In 1990, Laurel County had a population of 43,438.

The Economic Framework - The total number of Laurel County residents employed in 1992 averaged 16,765. Manufacturing firms in the county reported 3,615 employees; wholesale and retail trade provided 5,044 jobs; 2,967 people were employed in service occupations; state and local government accounted for 1,744 employees; and contract construction firms provided 1,078 jobs.

Labor Supply - There is a current estimated labor supply of 34,154 persons available for industrial jobs in the labor market area. In addition, from 1994 through 1998, 18,031 young persons in the area will become 18 years of age and potentially available for industrial jobs.

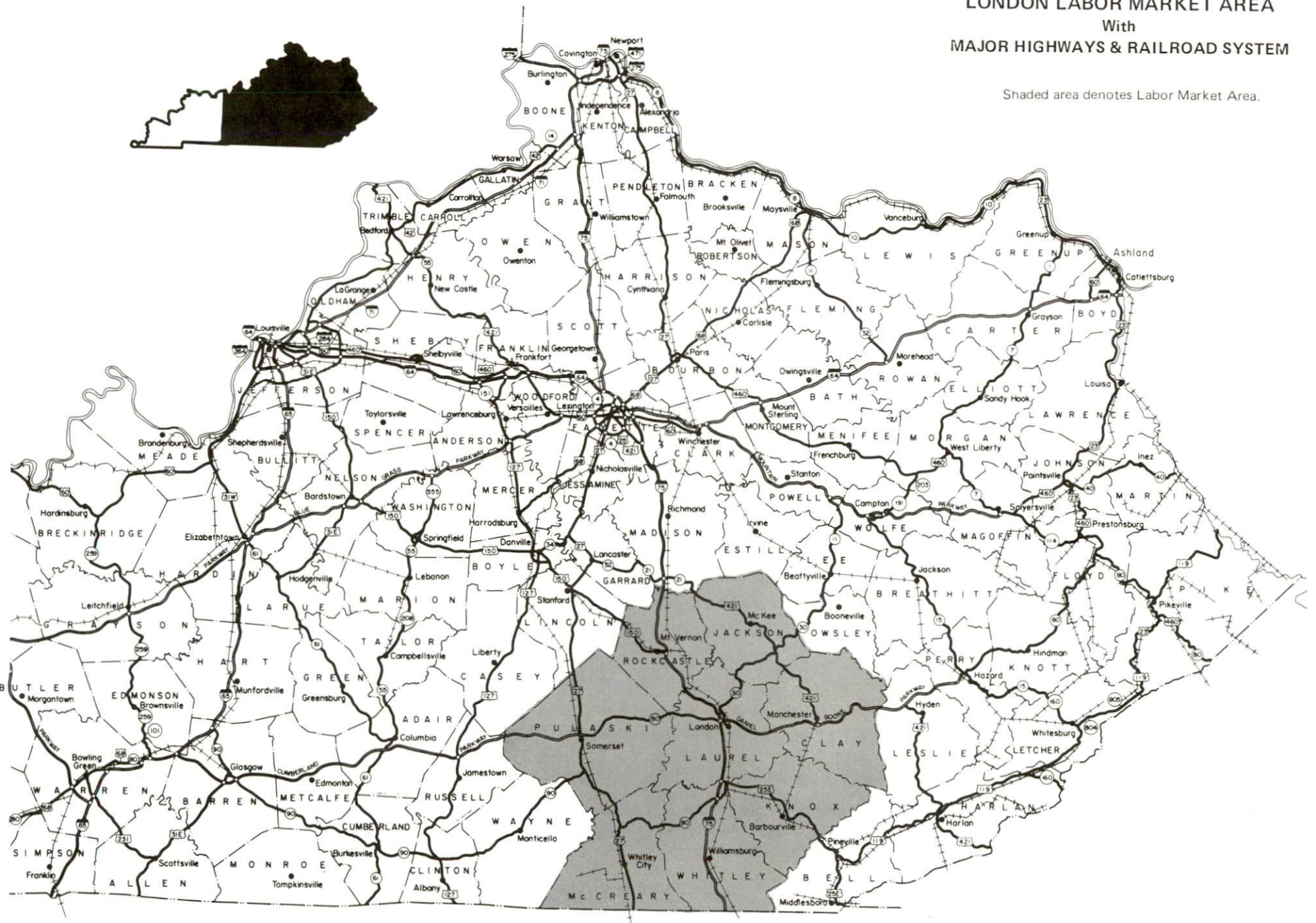
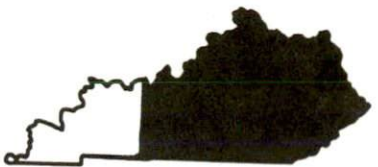
Transportation - CSX Transportation provides main line rail service to London. Interstate 75, a major north-south highway corridor, directly serves London with two interchanges just west of the downtown area. London is located on the Daniel Boone Parkway, a multi-lane toll road, which extends from London to the east. U.S. Highway 25 and Kentucky 80, both AAA-rated trucking highways, also serve London. Twenty-two trucking companies provide interstate and/or intrastate service to London. The London-Corbin Airport, a local airport located three miles south of London, has a 6,000-foot paved runway. Scheduled commercial airline service is available at Blue Grass Airport near Lexington, Kentucky, 79 miles north of London.

Power and Fuel - Electric power is provided to London and Laurel County by the Kentucky Utilities Company and by the Jackson County Rural Electric Cooperative Corporation. Natural gas service is provided by the Delta Natural Gas Company.

Education - The Laurel County School System provides primary and secondary education in London and Laurel County, and the East Bernstadt Independent School System provides education to students in the East Bernstadt area through the eighth grade. In addition, there are two non-public schools in London. London is the home of Sue Bennett College, a four-year college, with a Fall 1993 enrollment of 497. Somerset Community College, a part of the University of Kentucky Community College System, operates an extended campus in London and had a Fall 1993 enrollment of 658. In addition, there are 13 other colleges and universities within 75 miles of London. Vocational training is available locally at the Laurel State Vocational-Technical School.

LONDON LABOR MARKET AREA With MAJOR HIGHWAYS & RAILROAD SYSTEM

Shaded area denotes Labor Market Area.



LABOR MARKET STATISTICS

The London Labor Market Area includes Laurel County and the adjoining Kentucky counties of Clay, Jackson, Knox, McCreary, Pulaski, Rockcastle, and Whitley.

POPULATION			
	1990	1980	1970
Labor Market Area	220,036	212,775	163,793
London	5,757	4,002	4,337
Laurel County	43,438	38,982	27,386

Source: U.S. Department of Commerce, Bureau of the Census, January 1991.

POPULATION PROJECTIONS				
	1995	2000	2010	2020
Labor Market Area	226,404	231,792	239,063	241,122
Laurel County	45,939	48,229	51,588	53,114

Note: Population projections are from Moderate Growth Series forecast.
 Source: University of Louisville, Urban Studies Center, State Data Center.

ESTIMATED LABOR SUPPLY				
	Current			Future
	Total	Unemployed	Not in Labor Force	Becoming 18 years of age 1994 thru 1998
Labor Market Area*	34,154	7,513	26,641	18,031
Laurel County	5,402	1,454	3,948	3,619

* Additional workers may be drawn from other nearby counties.

Note: Unemployed - persons unemployed and actively seeking work; Not in Labor Force - represents the number of persons who would enter the labor force if suitable employment were available (based on the assumption that persons in Kentucky would like to participate in the labor force in the same proportion that they do nationally). Underemployed persons (employed only 14 to 26 weeks during the year) are no longer included in labor surplus estimates.

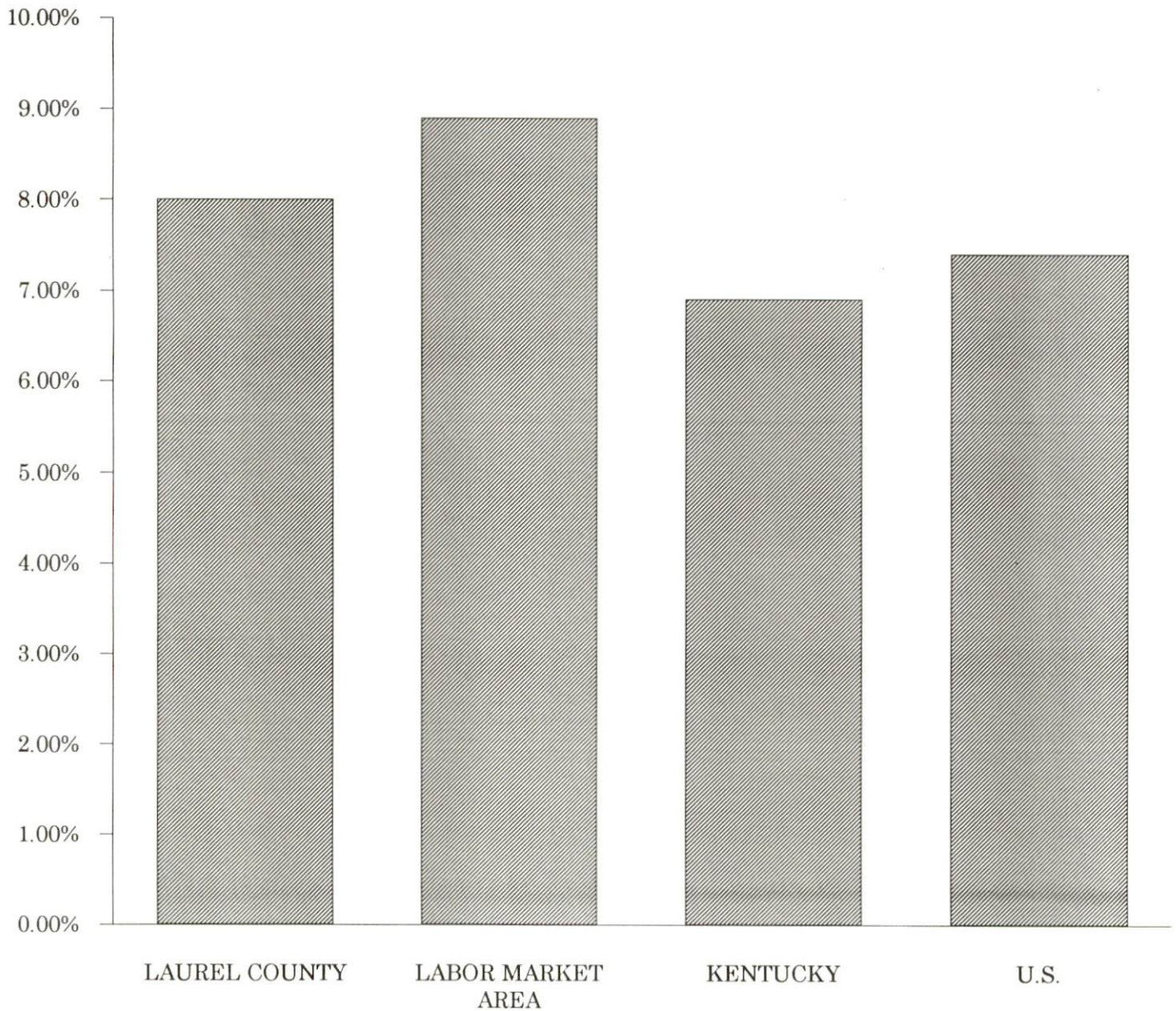
Sources: Kentucky Cabinet for Human Resources, Kentucky Labor Surplus Estimates by County, 1992. Kentucky Cabinet for Economic Development, Future Labor Supply Becoming 18 Years of Age, 1994 thru 1998.

LABOR FORCE CHARACTERISTICS OF RESIDENTS, 1992

	<u>Laurel County</u>	<u>Labor Market Area</u>
Civilian Labor Force	18,219	84,166
Employment	16,765	76,653
Unemployment	1,454	7,513
Rate of Unemployment (%)	8.0	8.9

Source: Kentucky Cabinet for Human Resources, Kentucky Labor Force Estimates, Annual Averages, 1992.

**UNEMPLOYMENT RATES
1992**

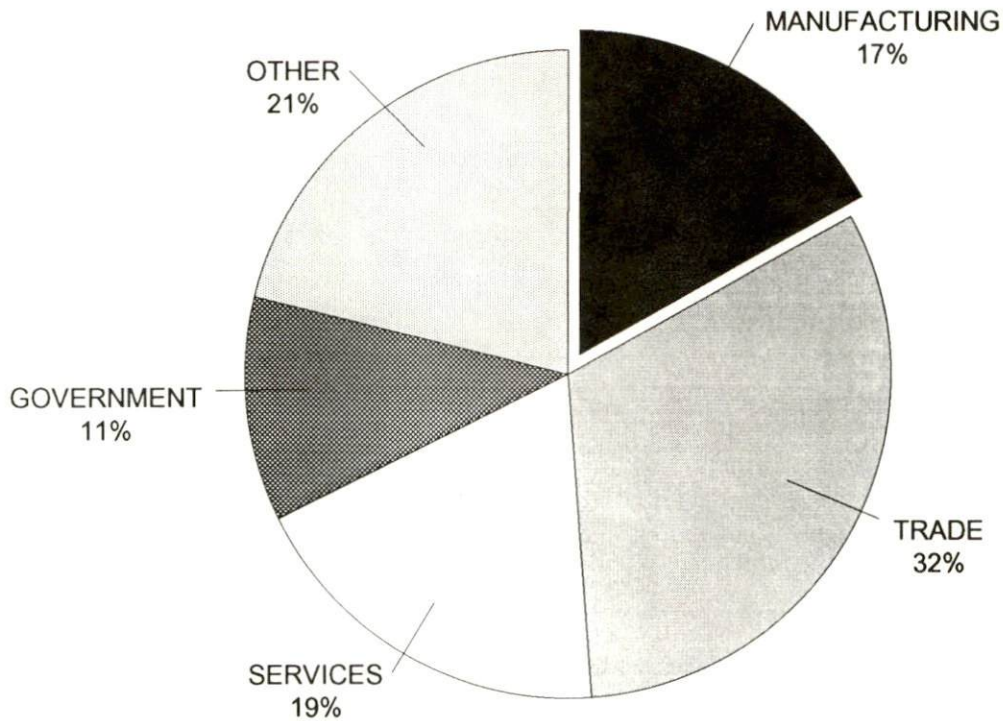


SELECTED COMPONENTS OF NONAGRICULTURAL EMPLOYMENT
BY PLACE OF WORK, 1992

	<u>Laurel County</u>	<u>Labor Market Area</u>
All Industries (total)	15,711	61,293
Manufacturing	3,615	12,756
Wholesale & Retail Trade	5,044	16,632
Services	2,967	12,432
State/Local Government	1,744	10,668
Contract Construction	1,078	2,568

Note: Excludes domestic workers, railway workers, certain nonprofit corporations, majority of federal government workers, and self-employed workers.
Source: Kentucky Cabinet for Human Resources, Average Monthly Workers Covered by Kentucky Unemployment Insurance Law, 1992.

LAUREL COUNTY

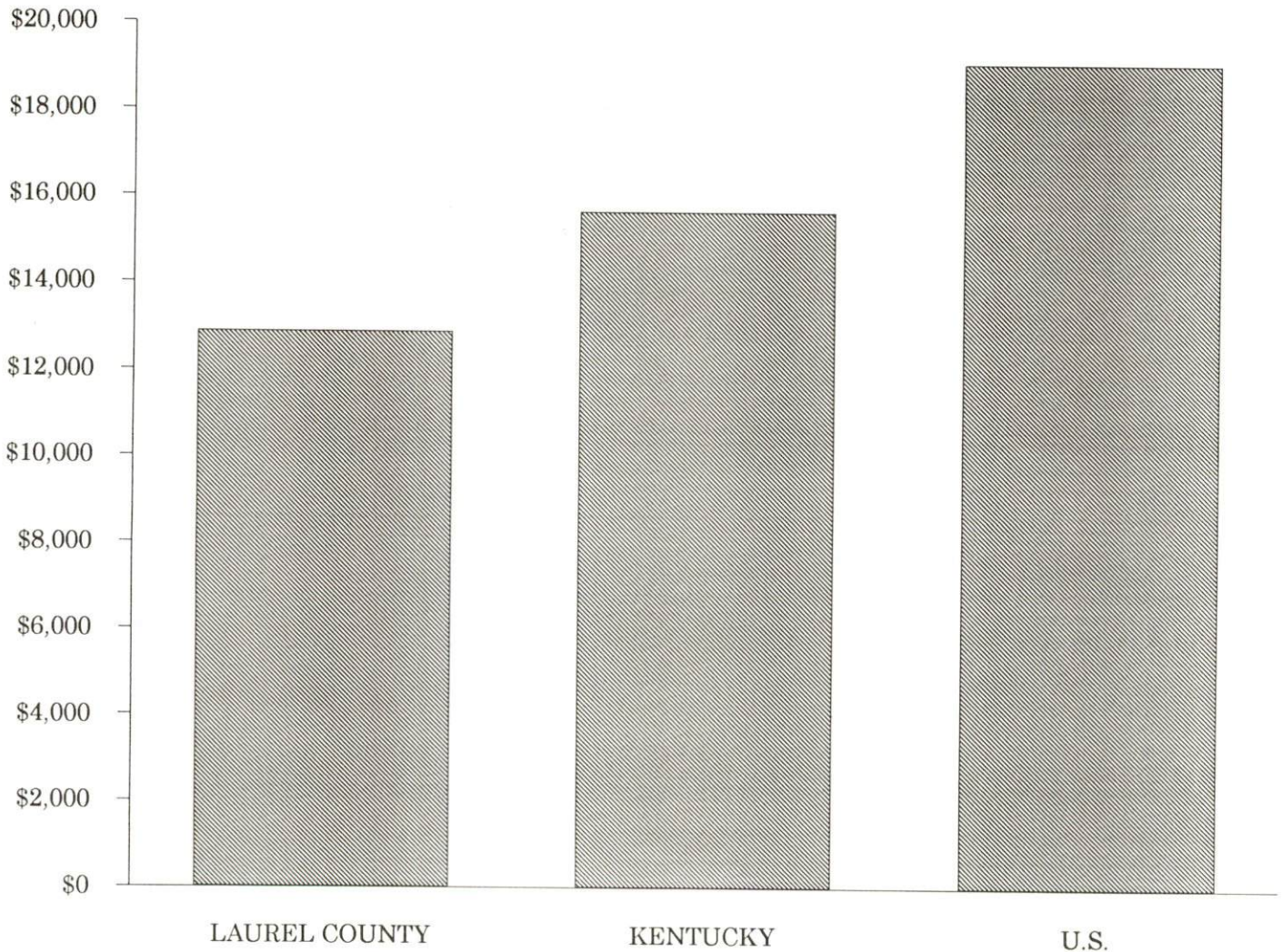


PER CAPITA PERSONAL INCOME

<u>Area</u>	<u>1987</u>	<u>1991</u>	<u>Percent Change</u>
Laurel County	\$10,270	\$12,885	25.5
Labor Market Area Range	\$5,948 - \$10,590	\$8,741 - \$13,884	-
Kentucky	\$12,216	\$15,626	27.9
U.S.	\$15,638	\$19,091	22.0

Source: U.S. Bureau of Economic Analysis, Regional Economic Information System, April 1993.

PER CAPITA PERSONAL INCOME
1991



AVERAGE PLACEMENT WAGES

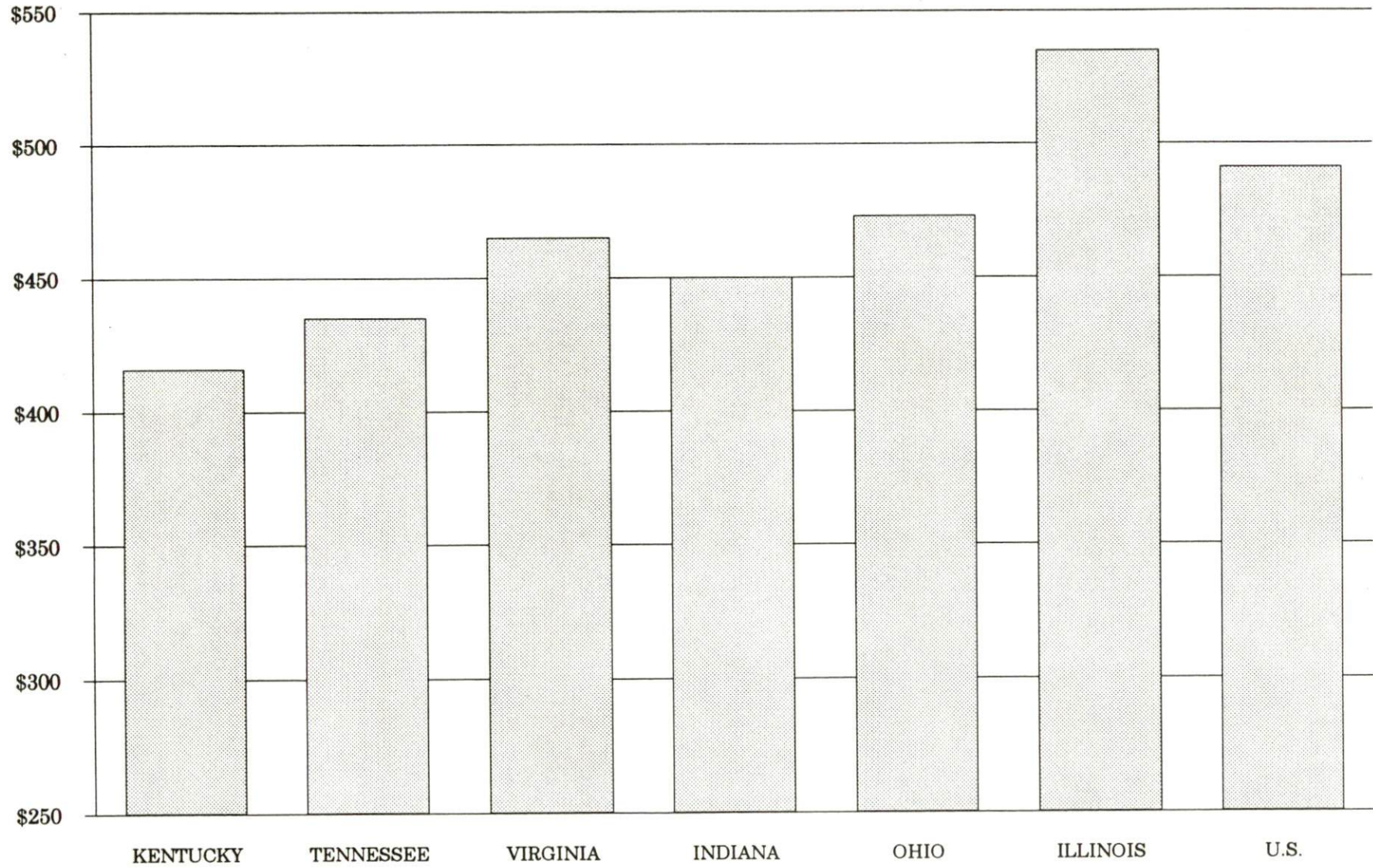
Laurel County is served by the Corbin local office of the Kentucky Department for Employment Services. The focus of the following data is on job placements made by the Corbin local office and may therefore be used as an indicator of the wages which employers in the area pay new employees. During the twelve months which ended on June 30, 1993, the local employment office filled 3,185 job openings in various occupational categories. The average hourly wage for selected occupational categories were:

<u>OCCUPATIONAL CATEGORY</u>	<u>NUMBER OF PLACEMENTS</u>	<u>AVERAGE WAGE(\$)</u>
All Occupations	3,185	4.67
Clerical	848	4.25
Sales	87	4.40
Services (excluding domestic)	717	4.16
Agricultural, Fishery, Forestry, etc.	43	4.62
Processing	98	6.41
Machine Trades	42	5.49
Bench Work	726	4.40
Structural	263	4.67
Motor Freight/ Transportation	62	5.20
Packaging and Materials Handling	250	7.23
Other	4	6.56

The Corbin local office also serves Clay, Jackson, Knox, Rockcastle, and Whitley Counties. The above occupational categories are taken from the Dictionary of Occupational Titles published by the U.S. Department of Labor.

Source: Kentucky Cabinet for Human Resources, Department for Employment Services.

**AVERAGE WEEKLY WAGES OF WORKERS COVERED BY
UNEMPLOYMENT INSURANCE - 1992**



AVERAGE WEEKLY WAGES BY INDUSTRY
BY PLACE OF WORK, 1992*

	Laurel County	Kentucky (State- Wide)	Tennessee	Virginia
All Industries	\$360.17	\$415.94	\$435.00	\$465.00
Mining & Quarrying	574.50	685.48	564.00	690.00
Contract Construction	462.43	431.97	456.00	456.00
Manufacturing	413.76	535.73	510.00	535.00
Transportation, Communications & Public Utilities	481.15	560.84	561.00	637.00
Wholesale & Retail Trade	280.80	282.29	N/A	N/A
Finance, Insurance & Real Estate	367.15	493.68	548.00	576.00
Services	304.48	371.91	419.00	483.00
State/Local Government	446.80	434.01	N/A	N/A
	Indiana	Ohio	Illinois	U. S.
All Industries	\$450.00	\$473.00	\$535.00	\$491.00
Mining & Quarrying	731.00	639.00	787.00	799.00
Contract Construction	504.00	525.00	658.00	527.00
Manufacturing	609.00	653.00	652.00	612.00
Transportation, Communications & Public Utilities	548.00	590.00	674.00	632.00
Wholesale & Retail Trade	N/A	N/A	N/A	N/A
Finance, Insurance & Real Estate	511.00	545.00	728.00	670.00
Services	386.00	419.00	488.00	468.00
State/Local Government	N/A	N/A	N/A	N/A

* Wages for U.S. and surrounding states rounded to nearest dollar.

N/A Not Available.

Note: The average weekly wage for each category includes the salaries and wages of all persons working for that type business. For example, the manufacturing category includes both production workers and administrative personnel. Excludes domestic workers, railway workers, certain nonprofit corporations, majority of federal government workers, and self-employed workers.

Source: Kentucky Cabinet for Human Resources, Average Weekly Wages of Workers Covered by Kentucky Unemployment Insurance Law, 1992. U.S. Department of Labor, Bureau of Labor Statistics, Employment and Wages, Annual Averages, 1992, October 1993.

EXISTING INDUSTRY

LONDON MANUFACTURING FIRMS, THEIR PRODUCTS AND EMPLOYMENT

<u>Firm</u> <u>(Establishment date)</u>	<u>Product</u>	<u>1993</u> <u>Average Employment</u>
Begley Lumber Company (1992)	Hardwoods, wood chips, mulch	85
Binder & Wilson Lumber Company (1974)	Lumber	12
Chaney Lumber Company, Inc. (1956)	Millwork, kiln drying, hardwood	46
Cumberland Forest Products Company, Inc. (1952)	Veneer & plywood	20
Custom Woodworks, Inc. (1984)	Moulding & woodwork, mantels, doors	4
E & C Web Printing, Inc. (1987)	Commercial printing	6
Flav-O-Rich, Inc. (1976)	Ice cream mix, fluid milk, orange juice	154
Griffin Pie Company, Inc. (1953)	Bakery products	477
Independent Concrete Pipe Company of Kentucky (1956)	Concrete pipe, precast manholes	12
Jasper Iron and Metal Company, Inc. (1974)	Aluminum, secondary smelting	30
Ken Al Company, Inc. (1961)	Hydraulic telescopic cranes, aluminum awnings, marquees	3
The Kentucky Stone Company (1967)	Bituminous concrete, agricultural lime	21
Kerns Bakery, Inc. (1948)	Bakery products (bread, buns, rolls)	425
Laminated Timbers, Inc. (1960)	Wood roof decking, laminated wood structural members	48
London Bucket Company, Inc. (1931)	Fabricated sheet metal products and steel, well buckets, aluminum and stainless fabrication	13
London Church Furniture, Inc. (1967)	Church furniture	30
London-Clay Ready Mix, Inc. (1950)	Precast concrete specialties, ready-mixed concrete	20
London Rotary Forms, Inc. (1982)	Typesetting, computer & snap-out forms	65

(Continued)

<u>Firm</u> <u>(Establishment date)</u>	<u>Product</u>	<u>1993</u> <u>Average Employment</u>
Micro Devices Products Group (1973)	Thermal cutoffs, thermostats	280
Moore Signs, Inc. (1949)	Neon, plastic, and metal signs	3
Phoenix Manufacturing Company (1972)	Non-woven fabrics, fabric dryer sheets, wet-wipe towels	88
Salem Tool, Inc. (1988)	Coal mining equipment	15
The Sentinel-Echo (1873)	Shopping circulars, commercial printing, newspaper	18
W.C. Turner Lumber Company (1990)	Lumber	8
Westinghouse Electric Corporation (1979)	Automatic transfer switches, insulated case circuit breakers, enclosures for circuit breakers	90

Sources: Kentucky Cabinet for Economic Development, Division of Research.

MAJOR NON-MANUFACTURING EMPLOYER

One of the largest non-manufacturing employers in London is First Image, formerly Appalachian Computer Services, which employs 1,250. Image Entry, another computer services company, began operations in London in 1993 and employs approximately 200.

LABOR ORGANIZATIONS IN MANUFACTURING FIRMS

<u>Union</u>	<u>Representing workers at:</u>
International Brotherhood of Teamsters, Chauffeurs, Warehousemen and Helpers of America	Independent Concrete Pipe Company of Kentucky Flav-O-Rich, Inc. Phoenix Manufacturing Company

SELECTED INDUSTRIAL SERVICES

<u>Types of Services</u>	<u>Location</u>	<u>Mileage from London</u>
Custom Plastics Producers	Corbin, Kentucky	14
Electric Motor Repair	Corbin, Kentucky	14
Heat Treating Facilities	Richmond, Kentucky	51
Industrial Waste Removal	London, Kentucky	-
Machine Shops, Tool & Die	Corbin, Kentucky	14
Metal Castings	Middlesboro, Kentucky	59
Metal Finishers	Richmond, Kentucky	51
Metal Service Centers	Corbin, Kentucky	14
Millwrights & Riggers	Lexington, Kentucky	75
	Knoxville, Tennessee	97

Sources: Kentucky Cabinet for Economic Development, Division of Research.

TRANSPORTATION

Highways

London is located two miles east of Interstate 75, a major north-south interstate highway. The Daniel Boone Parkway originates in London and extends to the east. Kentucky Highway 80, a "AAA"-rated highway with an 80,000-pound gross load limit, serves London to the east and west; and U.S. 25, another "AAA"-rated trucking highway, serves London to the north and south. Kentucky Highway 229, a "AA"-rated highway with a 62,000-pound gross load limit, extends from London to the south.

HIGHWAY MILES FROM LONDON, KENTUCKY, TO SELECTED MARKET CENTERS

City	Highway Miles	City	Highway Miles
Atlanta, GA	291	Knoxville, TN	97
Baltimore, MD	551	Los Angeles, CA	2,234
Birmingham, AL	332	Louisville, KY	144
Chicago, IL	418	Nashville, TN	198
Cincinnati, OH	150	New Orleans, LA	671
Cleveland, OH	383	New York, NY	751
Detroit, MI	410	Pittsburgh, PA	406
Indianapolis, IN	243	St. Louis, MO	402

Note: Mileage computations are via the best interstate or primary highways, not necessarily the most direct route of travel.

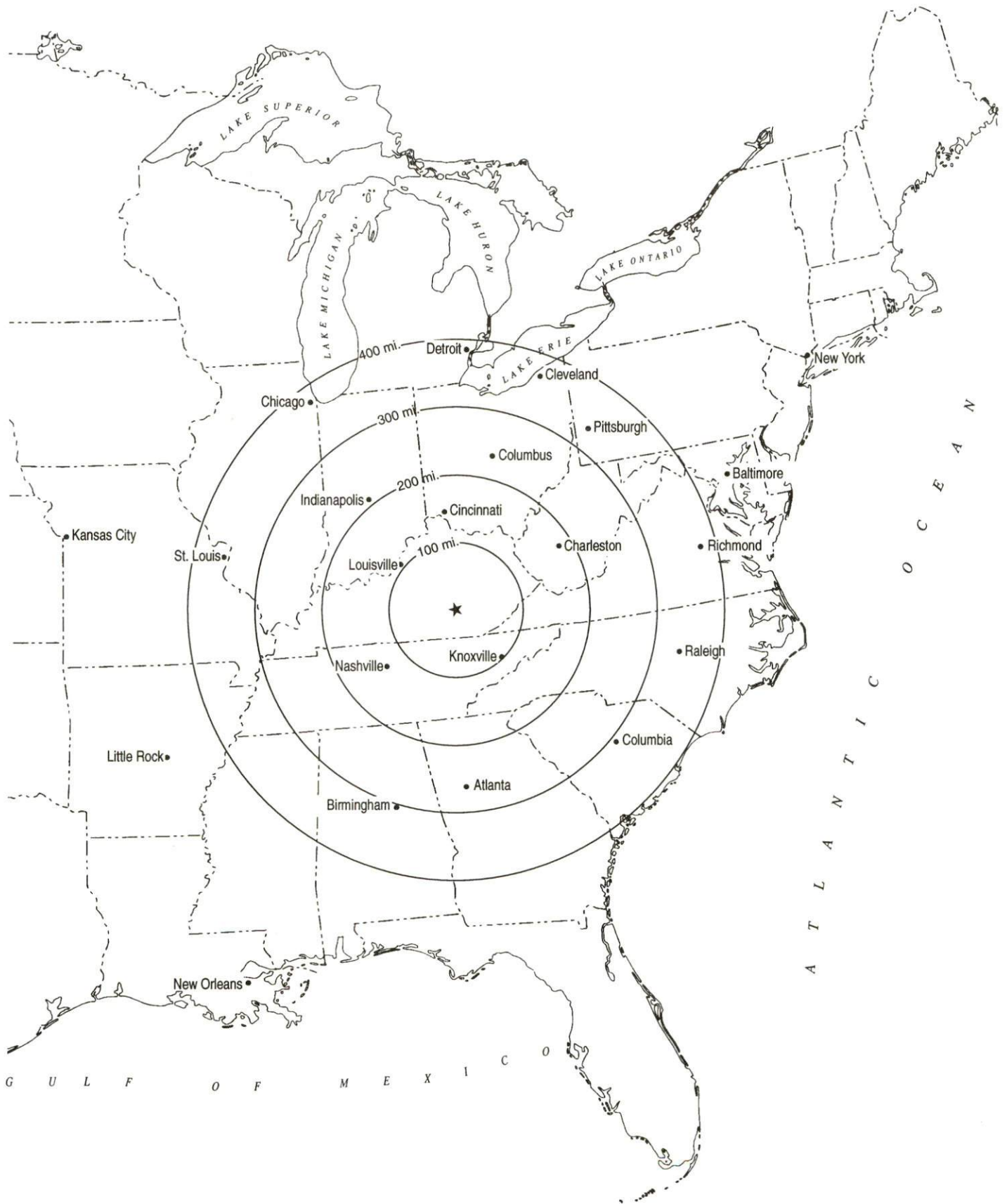
Sources: Rand McNally Standard Highway Mileage Guide, 1990. Official Kentucky Mileage Map 1985.

Truck Service

Twenty-two trucking companies provide interstate and/or intrastate service to the London area. One company maintains a local terminal.

Source: American Motor Carrier Directory, Spring 1994.

Selected Market Centers



Rail

Main line rail service is provided to London by CSX Transportation. The nearest intermodal facilities are available in Knoxville, 97 miles south of London, and are provided by Norfolk Southern Corporation.

For details on routing, schedules, rates, and services contact:

Manager
Industrial Development
CSX Transportation
9420 Bunsen Parkway
Suite 212
Louisville, Kentucky 40220
(502) 499-3025

Air

Local

Location:	London-Corbin Airport (Magee Field)
Runways:	3 miles south of London
Length:	1 paved
Traffic	6,000 feet
Contol:	Wind sock and FSS advisory services
Lighting:	Beacon, runway and obstruction lights, REIL, VASI
Services:	Fuel (100 octane, JP-A-50); minor A&P repairs; tie-downs; aircraft rental, auto rental, taxi; weather data; flight training; charter flights and ambulance service

Nearest Scheduled Commercial Airline Service

Location:	Blue Grass Airport
	4 miles west of Lexington, Kentucky;
	79 miles north of London
Air Service:	Delta, USAir, United Express, American Eagle, ComAir, TW Express, Atlantic Southeast Airlines, Northwest Airlink
Daily Arrivals & Departures:	120

UTILITIES

Electricity

Company serving London and central Laurel County - Kentucky Utilities Company

Source of power - Kentucky Utilities Company
For industrial rates contact:

Economic Development Department
Kentucky Utilities Company
One Quality Street
Lexington, Kentucky 40507
(606) 255-2100

Company serving a majority of Laurel County - Jackson County Rural Electric Cooperative Corporation

Source of power - East Kentucky Power
For industrial rates contact:

Industrial Development Department
East Kentucky Power
P.O. Box 707
Winchester, Kentucky 40392-0707
(606) 744-4812

and/or

Jackson County Rural Electric
Cooperative Corporation
P.O. Box 307
McKee, Kentucky 40447
(606) 287-7161

Natural Gas

Company serving London and Laurel County - Delta Natural Gas Company, Inc.

Source of supply - Wiser Oil Company
For rates and supplies contact:

VP-Public and Consumer Affairs
Delta Natural Gas Company, Inc.
3617 Lexington Road
Winchester, Kentucky 40391
(606) 744-6171

Public Water Supply

Company serving **London** - London Utility Commission
801 North Main Street
P.O. Box 918
London, Kentucky 40743-0918
(606) 864-2103

Source - Laurel Lake Impoundment
Treatment plant capacity - 3,024,000 gallons per day
Average daily consumption - 1,628,989 gallons
Peak daily consumption - 2,268,000 gallons
Storage capacity - 2,403,640 gallons
Water pressure - 40 psi to 90 psi

Company serving parts of **Laurel County** - Wood Creek Water District
1670 Daniel Boone Parkway
P.O. Box 726
London, Kentucky 40743
(606) 878-9420

Source - Wood Creek Lake
Treatment plant capacity - 4,320,000 gallons per day
Average daily consumption - 2,000,000 gallons
Peak daily consumption - 2,200,000 gallons
Storage capacity - 2,100,000 gallons
Water pressure - 35 psi to 150 psi

Sewerage

Company serving **London** - London Utility Commission
801 North Main Street
P.O. Box 918
London, Kentucky 40743-0918
(606) 864-2103

Design capacity - 4,000,000 gallons per day
Average daily flow - 2,000,000 gallons
Type of treatment - Tertiary
Treated effluent discharged into - Whitley Branch

The London Utility Commission recently completed construction of a 36-mile sewer collector project which serves areas surrounding London. Cost of this project was approximately \$6 million.

CLIMATE

Laurel County

Temperature

Normal (30-year record)	58.90 degrees
Average annual 1991	60.50 degrees
Record highest, September 1954 (50-year record)	103.00 degrees
Record lowest, January 1985 (50-year record)	-24.00 degrees
Normal heating degree days (30-year record) (Heating degree day totals are the sums of negative departures of average daily temperatures from 65 degrees F.)	3,658

Precipitation

Normal (30-year record)	47.29 inches
Mean annual snowfall (49-year record)	12.00 inches
Total precipitation 1991	58.26 inches
Mean number days precipitation (.01 inch or more) (49-year record)	126.20
Mean number days thunderstorms (49-year record)	47.20

Prevailing winds (through 1963)

Northeast

Relative Humidity (31-year record)

1 a.m.	81 percent
7 a.m.	86 percent
1 p.m.	59 percent
7 p.m.	63 percent

Source: U.S. Department of Commerce, Environmental Science Services Administration, Climatological Data, 1991. Station of record: Knoxville, Tennessee.

LOCAL GOVERNMENT

Structure

The city of London is served by a mayor and six council members. The mayor is elected to a four-year term and the council members serve two-year terms. Laurel County is served by a county judge/executive and six magistrates. The judge/executive and magistrates are elected to four-year terms.

Planning and Zoning

Joint agency - London-Laurel County Planning & Zoning Commission

Participating cities - London

Zoning enforced - Within city limits of London

Subdivision regulations enforced - All areas of Laurel County

Local codes enforced - Building and housing within city limits of London

Mandatory state codes enforced - Kentucky Plumbing Code, National Electric Code, Kentucky Boiler Regulations and Standards, Kentucky Building Code (modeled after BOCA code)

Local Fees and Licenses

The City of London levies business license fees which range from \$5 to \$300 annually. An annual fee of \$10 is charged by the city for automobiles and trucks.

PROPERTY TAXES

The Kentucky Constitution requires the state to tax all classes of taxable property, and state statutes allow local jurisdictions to tax only a few classes. All locally taxed property is subject to county taxes and school district taxes (either a county school district or an independent school district). Property located inside of city limits may also be subject to city property taxes.

Special local taxing jurisdictions (fire protection districts, watershed districts, and sanitation districts) levy taxes within their operating areas (usually a small portion of community or county).

Property assessments in Kentucky are at 100% fair cash value. Accounts receivable are taxed at 85% of face value.

STATE PROPERTY TAX RATES PER \$100 VALUATION

<u>Selected Classes of Property</u>	<u>1992 State Rate</u>	<u>Local Taxation Permitted</u>
Real Estate	\$0.184	YES
Manufacturing Machinery	0.150	NO
Pollution Control Equipment	0.150	NO
Inventories		
Raw Materials	0.050	NO
Goods in Process	0.050	NO
Finished Goods	0.050	YES
Motor Vehicles	0.450	YES
Other Tangible Personal Property	0.450	YES
Intangibles (Accounts Receivable, Money on Hand)	0.250	NO

LOCAL PROPERTY TAX RATES PER \$100 VALUATION, 1992

<u>Taxing Jurisdiction</u>	<u>Real Estate</u>	<u>Finished Goods & Tangibles</u>	<u>Motor Vehicles</u>
Laurel County	\$0.2037	\$0.1840	\$0.1838
School Districts:			
Laurel County	0.4370	0.4440	0.3500
East Bernstadt			
Independent	0.3910	0.3920	0.2740
Cities:			
London	0.1610	0.1810	0.1810

EDUCATION

Public Schools

	East Bernstadt Independent	Laurel County
Total Enrollment (Fall, 1992)	393	8,670
Accreditation		Southern Association of Colleges and Schools
Pupil-Teacher Ratio (1991-92)	18.8-1	18.7-1
Percent High School Graduates to College (1991-92)	N/A	48.6
Expenditures Per Pupil (1991-92)	\$3,228.14	\$3,223.52

The Laurel County School System recently completed construction of a new high school and new middle school. These facilities are in addition to the existing schools in Laurel County. Construction is also under way on a new elementary school in the community of Lily.

Nonpublic Schools

<u>School</u>	<u>Enrollment</u>	<u>Grades</u>
London Christian Academy	40	K-12
Cornerstone Christian School	100	P-3

Area Colleges and Universities

<u>Name</u>	<u>Location (Miles distant)</u>	<u>Enrollment (Fall, 1992)</u>
Sue Bennett College	London, Kentucky	455
Union College	Barbourville, Kentucky (28)	995
Cumberland College	Williamsburg, Kentucky (31)	1,498
Somerset Community College	Somerset, Kentucky (33)	2,485
Berea College	Berea, Kentucky (33)	1,579
Eastern Kentucky University	Richmond, Kentucky (51)	16,866
Hazard Community College	Hazard, Kentucky (57)	1,695
Centre College	Danville, Kentucky (57)	906
Lindsey Wilson College	Columbia, Kentucky (59)	1,091
Lincoln Memorial University	Harrogate, Tennessee (66)	1,860
University of Kentucky	Lexington, Kentucky (75)	24,197
Transylvania University	Lexington, Kentucky (75)	974
Lexington Community College	Lexington, Kentucky (75)	4,862
Lees College	Jackson, Kentucky (75)	459

Sue Bennett College

Sue Bennett College is a four-year, coeducational institution located in London. The school was established in 1896 for elementary students and became a college in 1922. Sue Bennett College is affiliated with the United Methodist Church. The College offers an Associate degree in the following areas of study: accounting, art, business administration, communications, computer information systems, elementary education, English, finance, management, music, nursing, physical education, pre-correctional studies, pre-engineering, pre-law, pre-medicine, pre-paralegal studies, pre-pharmacy, pre-theology, pre-veterinary medicine, psychology, science, secondary education, and social work.

The College offers Baccalaureate degrees in business administration, health, physical education, recreation, and social sciences.

Somerset Community College-Laurel Center

Somerset Community College, a unit of the University of Kentucky Community College System, opened an extended campus (Laurel Center) in London during 1992. The College offers Associate degrees and courses which are transferrable to other four-year colleges and universities. The Laurel Center had a Fall 1993 enrollment of 658 students.

VOCATIONAL-TECHNICAL TRAINING

Kentucky Tech schools are operated by the Cabinet for Workforce Development and provide secondary (Sec) and postsecondary (P/S) vocational-technical training.

<u>Kentucky Tech Schools</u>	<u>Location (Mileage from London)</u>	<u>Number of Program Offerings</u>	<u>Cumulative Enrollment 1992-1993</u>	<u>Approximate Number Completing Programs Annually</u>
Laurel State Vocational- Technical School	London	10	<u>Sec</u> <u>P/S</u> 158 213	146
Corbin Area Vocational Education Center	Corbin (14)	6	<u>Sec</u> <u>P/S</u> 166 113	68

Customized Training

The Kentucky Tech system, through its Training and Development Coordinators, will provide technical assistance and will identify and develop low cost customized training programs and services for both established and prospective businesses. Businesses wanting to establish a customized training should simply contact a Training and Development Coordinator located on the campus of Laurel SVTS.

Assessment Services

Kentucky Tech Career Connections offers to business, education, and government agencies testing packages for evaluating job applicants, selecting employees for promotional consideration and developing training programs within the organization. A Career Connections Assessment Center is located on the campus of Laurel SVTS.

Tech Prep

Tech Prep is a combined secondary and postsecondary program of studies that leads to an associate degree or diploma in a vocational-technical field. North Laurel High School, in partnership with Laurel SVTS, Somerset Community College and Eastern Kentucky University is currently in the first year planning stage for its tech prep program in Industrial Technology Occupations, Business/Marketing, Agriculture, Home Economics, Fine Arts and Health Services.

Adult Education Services

Adult education programs are available to adults who want to develop new skills, improve basic skills or earn a high school equivalency diploma. In Laurel County, adult education is provided by the Laurel County Board of Education and the Laurel SVTS, and adult literacy programs are provided through the Laurel County Literacy Council.

Bluegrass State Skills Corporation

The Bluegrass State Skills Corporation, an independent public corporation created and funded by the Kentucky General Assembly, provides programs of skills training to meet the needs of business and industry from entry level to advanced training, and from upgrading present employees to retraining experienced workers.

The Bluegrass State Skills Corporation is a major source for skills training assistance for a new or existing company. The Corporation works in partnership with other employment and job training resources and programs, as well as Kentucky's economic development activities, to package a program customized to meet the specific needs of a company.

OTHER LOCAL FACILITIES

Local Medical Personnel

Physicians - 36
Dentists - 15

Hospitals

<u>General Hospital</u>	<u>Location</u>	<u>Beds</u>
Marymount Hospital	London	100

Medical staff - 36 active, 11 consulting, and 23 courtesy physicians;
61 registered nurses, 25 licensed practical nurses

Marymount Hospital recently completed a \$7 million expansion project. The project included: construction of a new wing and advanced heart catheterization lab; expanded radiology, laboratory, surgery, obstetric, intensive/cardiac care, therapy, and nursing services; installed high-tech equipment for nuclear medicine and CT scanner; and installed a new heliport.

Other Medical Facilities and Services

Cumberland River Comprehensive Care Center
Ambulance, Inc. of Laurel County
Laurel County Health Department

Banks and Savings & Loan Associations

Cumberland Valley National Bank & Trust Company
First Federal Savings & Loan
First National Bank & Trust
London Bank & Trust

Newspapers

Sentinel-Echo (daily)
Laurel News-Leader (weekly)

Telephone Service

GTE of Kentucky

RECREATION

Local

London offers a wide variety of public recreation facilities including two playgrounds, a swimming pool, three baseball diamonds, four football fields, and a park and fairgrounds area with a horse show ring, one basketball court, two tennis courts, and a picnic shelter house. The city supervises Little League baseball and football programs and men's and women's softball leagues.

Private recreation facilities include a country club, two golf courses, two swimming pools, four tennis courts, a Cinema 7 movie theatre, and a go-cart track. There are approximately 800 motel rooms in London to serve the tourist industry.

London residents enjoy fishing in Daniel Boone National Forest and Wood Creek Lake, a large reservoir just northwest of London, and the Laurel River Lake and Dam, 10 miles southwest of London, where camping facilities and a marina are also available. Laurel Lake covers over 6,000 surface acres.

Levi Jackson Wilderness Road State Park, two miles south of London, is a 815-acre park located where the Boone Trace and Wilderness Road pioneer trails converge. In addition to a reproduced pioneer settlement, the park offers a pool, a bathhouse, hiking trails, horseback riding, shuffleboard, 200 campsites, a picnic area, a playground, and an amphitheater.

The Sue Bennett Folk Festival is an annual event held at Sue Bennett College in London each spring. This festival includes folk music plus arts and crafts exhibits.

Area (Within 60 miles)

Dr. Thomas Walker State Historic Site
Cumberland Falls State Resort Park
General Burnside State Park
William Whitley House State Historic Site
Pine Mountain State Resort Park
Isaac Shelby State Historic Site
The Big South Fork National River and Recreation Area
Lake Cumberland (62,000 acres)