

1993

Industrial Resources: McLean County

Kentucky Library Research Collections
Western Kentucky University, spcol@wku.edu

Follow this and additional works at: https://digitalcommons.wku.edu/mclean_cty

 Part of the [Business Administration, Management, and Operations Commons](#), [Growth and Development Commons](#), and the [Infrastructure Commons](#)

Recommended Citation

Kentucky Library Research Collections, "Industrial Resources: McLean County" (1993). *McLean County*. Paper 2.
https://digitalcommons.wku.edu/mclean_cty/2

This Report is brought to you for free and open access by TopSCHOLAR®. It has been accepted for inclusion in McLean County by an authorized administrator of TopSCHOLAR®. For more information, please contact topscholar@wku.edu.

2
9
McLean

Resources for Economic Development

McLean County



KENTUCKY

RESOURCES FOR ECONOMIC DEVELOPMENT
MCLEAN COUNTY, KENTUCKY

Prepared by
The Kentucky Cabinet for Economic Development
Division of Research
in cooperation with
McLean County Chamber of Commerce

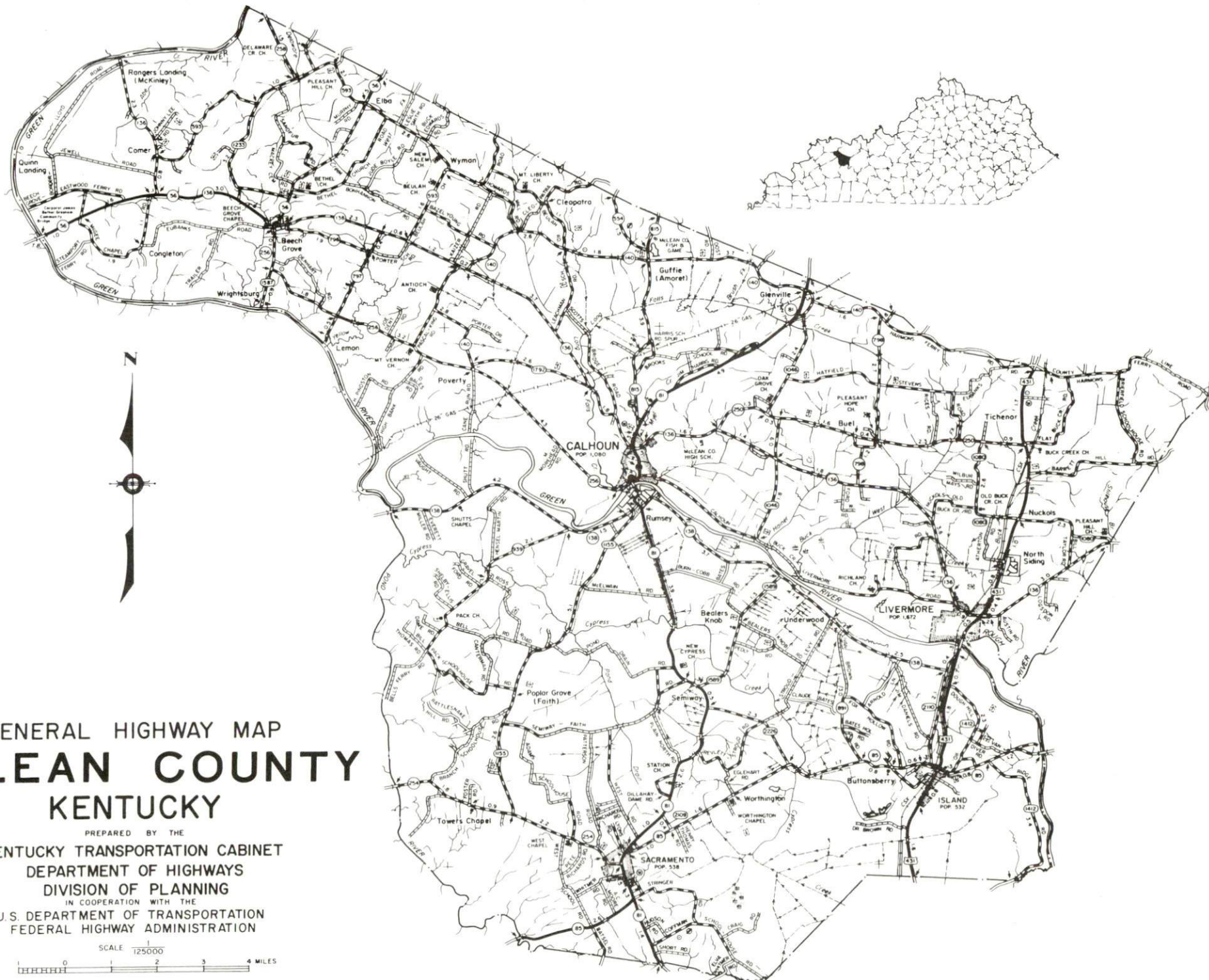
1993

Division Director - Pamela K. Riley; program manager - Keith Roberts; research - Barry K. Holder, Jr.; clerical - Wanda Sharp; graphics - Robert Owens, Pat Coleman; cartography - Edwin Scott, Dave Clark. Cost of printing paid from state funds.

TABLE OF CONTENTS

<u>Chapter</u>	<u>Page</u>
MCLEAN COUNTY, KENTUCKY - A RESOURCE PROFILE	1
THE LABOR MARKET STATISTICS	2
Labor Market Area Map	2
Population	3
Population Projections	3
Estimated Labor Supply	3
Labor Force Characteristics of Residents, 1992	4
Selected Components of Nonagricultural Employment, by Place of Work, 1991	5
Per Capita Personal Income	6
Average Placement Wages	7
Average Weekly Wages of Workers Covered by Unemployment Insurance 1991 - Bar Chart	8
Average Weekly Wages by Industry, by Place of Work, 1991	9
EXISTING INDUSTRY	10
McLean County Manufacturing Firms, Their Products and Employment	10
Labor Organizations in Manufacturing Firms	10
Selected Industrial Services	11
TRANSPORTATION	12
Highways	12
Truck Service	12
Selected Market Location Map	13
Rail	14
Air	14
Water	15
UTILITIES	16
Electricity	16
Natural Gas	16
Public Water Supply	17
Sewerage	18
CLIMATE	19

<u>Chapter</u>	<u>Page</u>
LOCAL GOVERNMENT	20
Structure	20
Planning and Zoning	20
Local Fees and Licenses	20
State and Local Property Taxes	21
EDUCATION	22
Public Schools	22
Nonpublic Schools	22
Area Colleges and Universities	22
Vocational Training	23
OTHER LOCAL FACILITIES	25
Local Medical Personnel	25
Hospitals	25
Other Medical Facilities and Services	25
Banks and Savings & Loan Associations	25
Newspapers	25
Telephone Service	25
RECREATION	26
COMMUNITY IMPROVEMENTS	27



GENERAL HIGHWAY MAP
MCLEAN COUNTY
 KENTUCKY

PREPARED BY THE
 KENTUCKY TRANSPORTATION CABINET
 DEPARTMENT OF HIGHWAYS
 DIVISION OF PLANNING
 IN COOPERATION WITH THE
 U.S. DEPARTMENT OF TRANSPORTATION
 FEDERAL HIGHWAY ADMINISTRATION



MCLEAN COUNTY, KENTUCKY - A RESOURCE PROFILE

McLean County is located in the Western Kentucky Coal Field Region. The county covers a total land area of 254 square miles. Calhoun, the county seat of McLean County, is located 21 miles south of Owensboro, Kentucky; 55 miles southeast of Evansville, Indiana; 125 miles southwest of Louisville, Kentucky; and 142 miles north of Nashville, Tennessee.

McLean County had a 1990 population of 9,628, with 854 persons residing in Calhoun, 446 in Island, and 1,534 in Livermore.

The Economic Framework - The total number of McLean County residents employed in 1992 averaged 3,361. In 1991, manufacturing firms in the county reported 304 employees; wholesale and retail trade provided 380 jobs; 299 people were employed in service occupations; state and local government accounted for 360 employees; and contract construction firms provided 29 jobs.

Labor Supply - There is a current estimated labor supply of 24,331 persons available for industrial jobs in the labor market area. In addition, from 1993 through 1997, 19,148 young persons in the area will become 18 years of age and potentially available for industrial jobs.

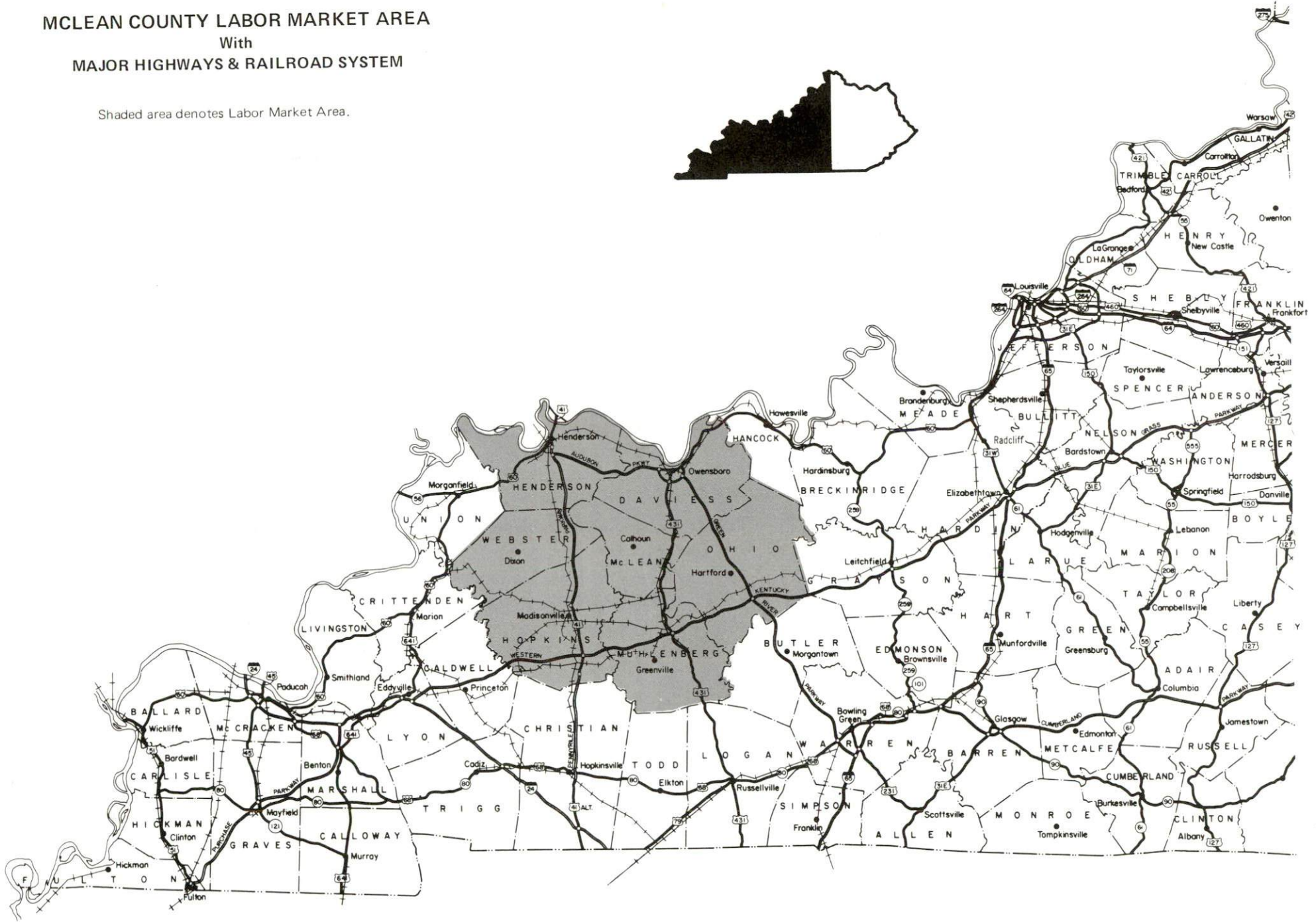
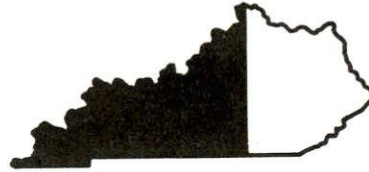
Transportation - Major highways serving McLean County include U.S. Highway 431 and Kentucky Route 81. Access to the Pennyrile Parkway, the Audubon Parkway, the Western Kentucky Parkway, and the Green River Parkway is available within thirty miles of Calhoun. Sixteen commercial trucking companies provide interstate and/or intrastate service to McLean County. CSX Transportation provides rail service to Livermore and Island. The Owensboro-Daviess County Airport, 19 miles north of Calhoun, maintains a 6,500-foot and a 3,700-foot paved runway. Scheduled commercial airline service is available at the Evansville Regional Airport near Evansville, Indiana, 58 miles northwest of Calhoun. Calhoun and Livermore are located on the Green River, which has a nine-foot navigation channel to the Ohio River.

Power and Fuel - Kentucky Utilities Company and Green River Electric Corporation each provide electric power to McLean County. Western Kentucky Gas Company provides natural gas service to Calhoun and Sacramento. Livermore is provided natural gas by Livermore Utilities, which is supplied by the Texas Gas Transmission Corporation.

Education - The McLean County School System provides primary and secondary education to McLean County. Eight institutions of higher learning, including three universities, two senior colleges, and three community colleges, are located within 75 miles of Calhoun. The Daviess County State Vocational-Technical School and the Owensboro State Vocational-Technical School, both located 21 miles north of Calhoun in Owensboro, provide the nearest vocational training facilities and services.

MCLEAN COUNTY LABOR MARKET AREA
 With
MAJOR HIGHWAYS & RAILROAD SYSTEM

Shaded area denotes Labor Market Area.



LABOR MARKET STATISTICS

The McLean County Labor Market Area includes McLean County and the adjoining Kentucky counties of Daviess, Henderson, Hopkins, Muhlenberg, Ohio, and Webster.

	POPULATION		
	<u>1990</u>	<u>1980</u>	<u>1970</u>
Labor Market Area	252,365	251,897	222,355
Calhoun	854	1,080	901
Island	446	532	410
Livermore	1,534	1,672	1,594
McLean County	9,628	10,090	9,062

Source: U.S. Department of Commerce, Bureau of the Census, January 1991.

	POPULATION PROJECTIONS			
	<u>1995</u>	<u>2000</u>	<u>2010</u>	<u>2020</u>
Labor Market Area	254,309	255,015	254,891	252,009
McLean County	9,526	9,404	9,108	8,741

Note: Population projections are from Moderate Growth Series forecast.
 Source: University of Louisville, Urban Studies Center, State Data Center.

	ESTIMATED LABOR SUPPLY			
	<u>Current</u>		<u>Not in Labor Force</u>	<u>Future</u>
	<u>Total</u>	<u>Unemployed</u>		<u>Becoming 18 years of age 1993 thru 1997</u>
Labor Market Area*	24,331	9,599	14,732	19,148
McLean County	1,301	510	791	702

* Additional workers may be drawn from other nearby counties.

Note: Unemployed - persons unemployed and actively seeking work; Not in Labor Force - represents the number of persons who would enter the labor force if suitable employment were available (based on the assumption that persons in Kentucky would like to participate in the labor force in the same proportion that they do nationally).

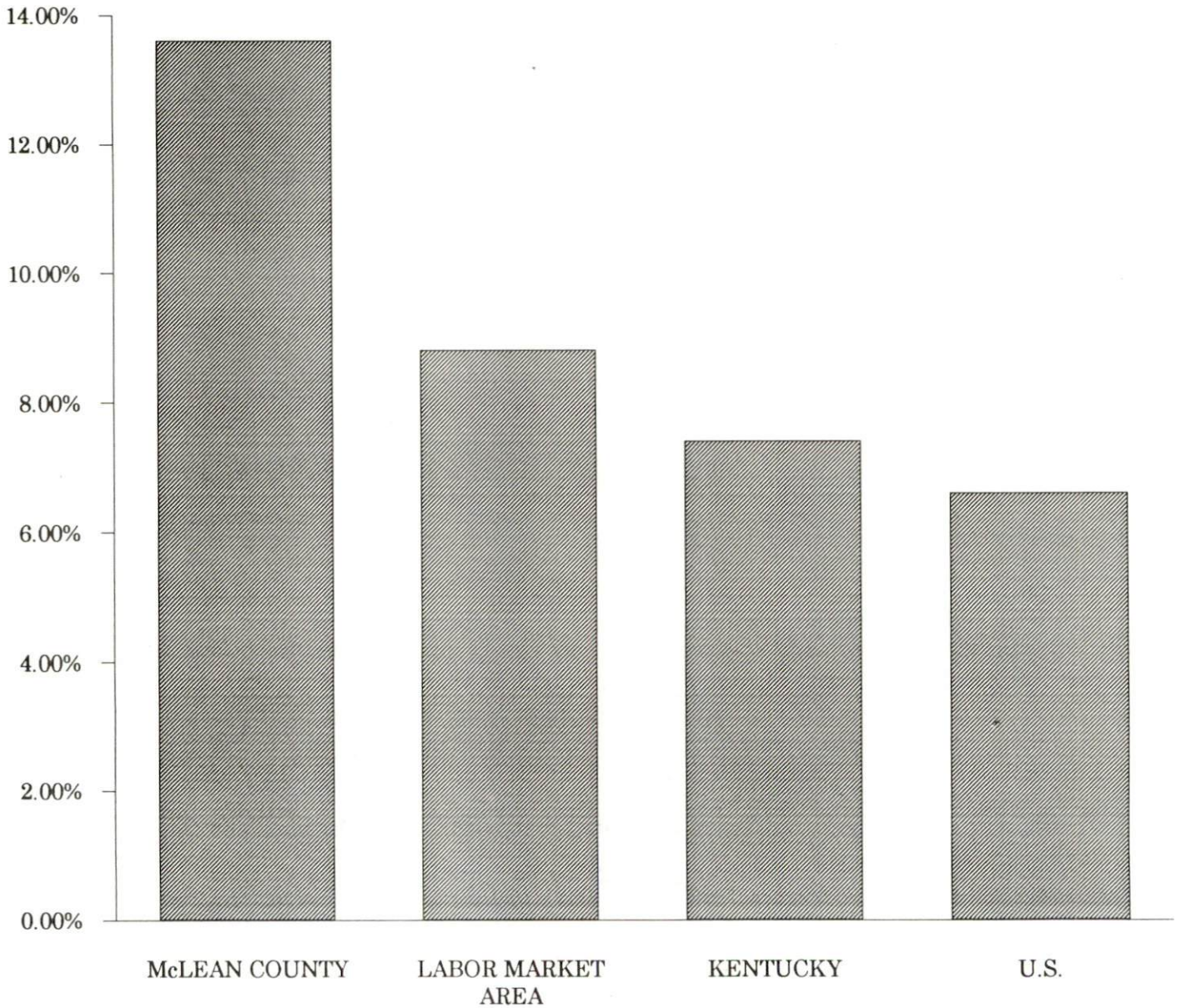
Sources: Kentucky Cabinet for Human Resources, Kentucky Labor Supply Estimates by County, 1991. Kentucky Cabinet for Economic Development, Future Labor Supply Becoming 18 Years of Age, 1993 thru 1997.

LABOR FORCE CHARACTERISTICS OF RESIDENTS, 1992

	McLean County	Labor Market Area
Civilian Labor Force	3,890	111,312
Employment	3,361	101,540
Unemployment	529	9,772
Rate of Unemployment (%)	13.6	8.8

Source: Kentucky Cabinet for Human Resources, Kentucky Labor Force Estimates, Annual Averages, 1992.

UNEMPLOYMENT RATES
1992

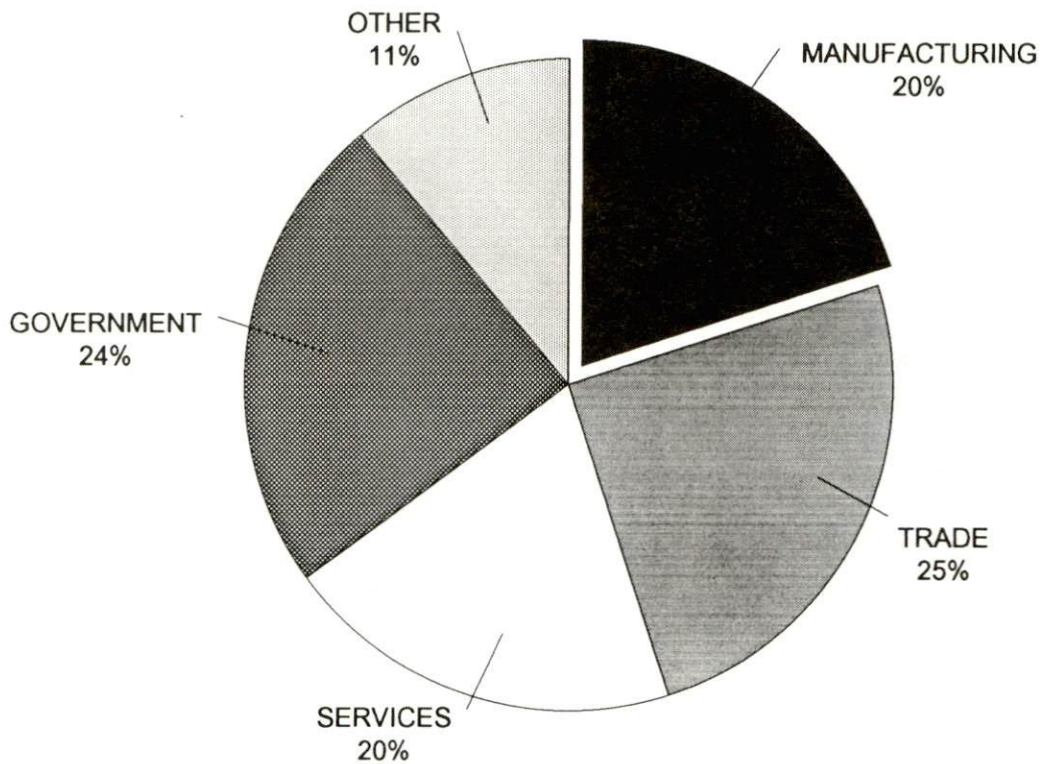


SELECTED COMPONENTS OF NONAGRICULTURAL EMPLOYMENT
BY PLACE OF WORK, 1991

	McLean County	Labor Market Area
All Industries (total)	1,492	86,018
Manufacturing	304	18,271
Wholesale & Retail Trade	380	20,915
Services	299	17,308
State/Local Government	360	12,806
Contract Construction	29	3,456

Note: Excludes domestic workers, railway workers, certain nonprofit corporations, majority of federal government workers, and self-employed workers.
Source: Kentucky Cabinet for Human Resources, Average Monthly Workers Covered by Kentucky Unemployment Insurance Law, 1991.

MCLEAN COUNTY

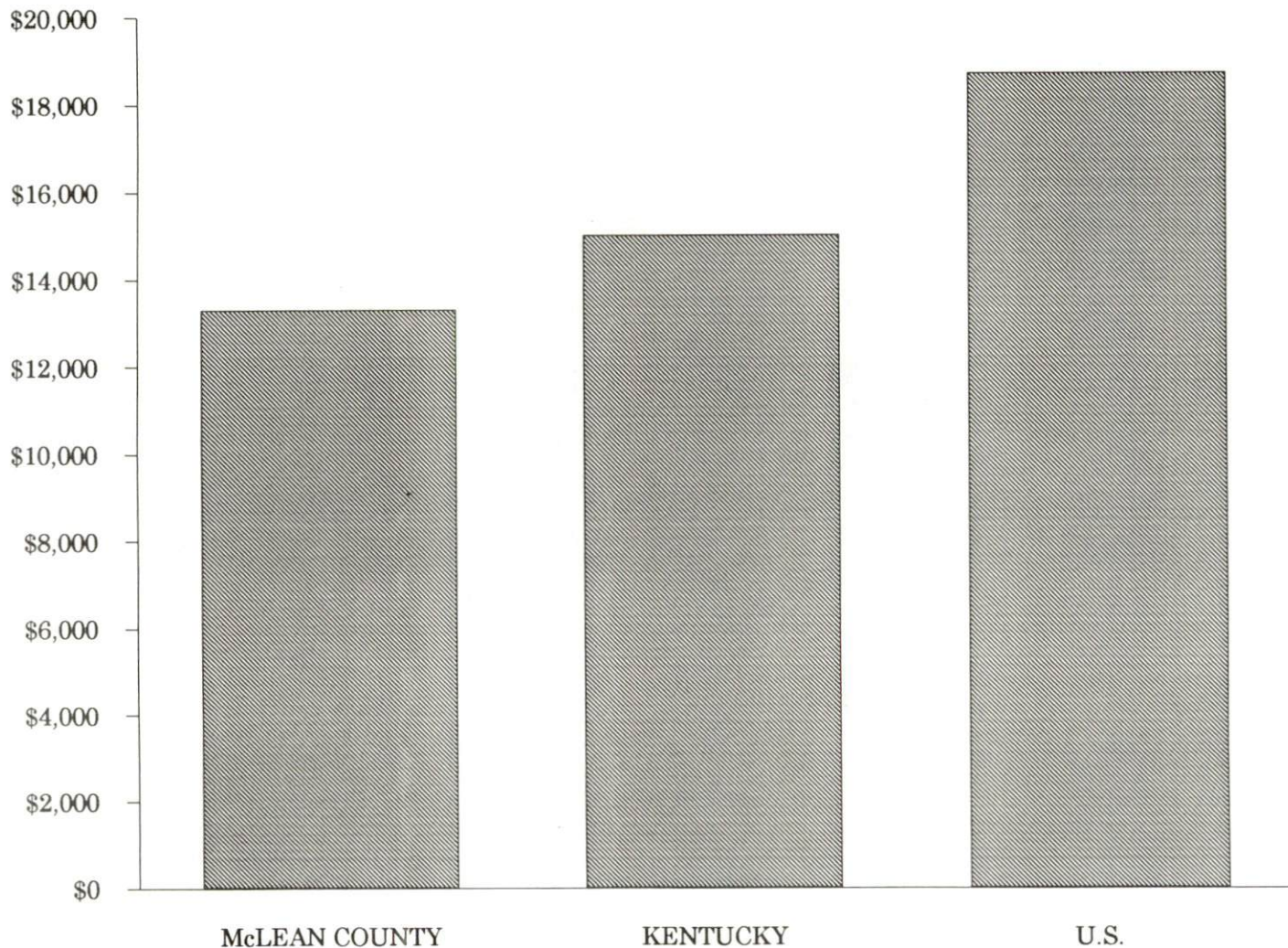


PER CAPITA PERSONAL INCOME

Area	1986	1990	Percent Change
McLean County	\$10,480	\$13,301	26.9
Labor Market Area Range	\$9,127 - \$12,927	\$11,400 - \$16,934	-
Kentucky	\$11,273	\$14,992	33.0
U.S.	\$14,654	\$18,696	27.6

Source: U.S. Bureau of Economic Analysis, Kentucky Economic Information System, April 1992.

PER CAPITA PERSONAL INCOME
1990



AVERAGE PLACEMENT WAGES

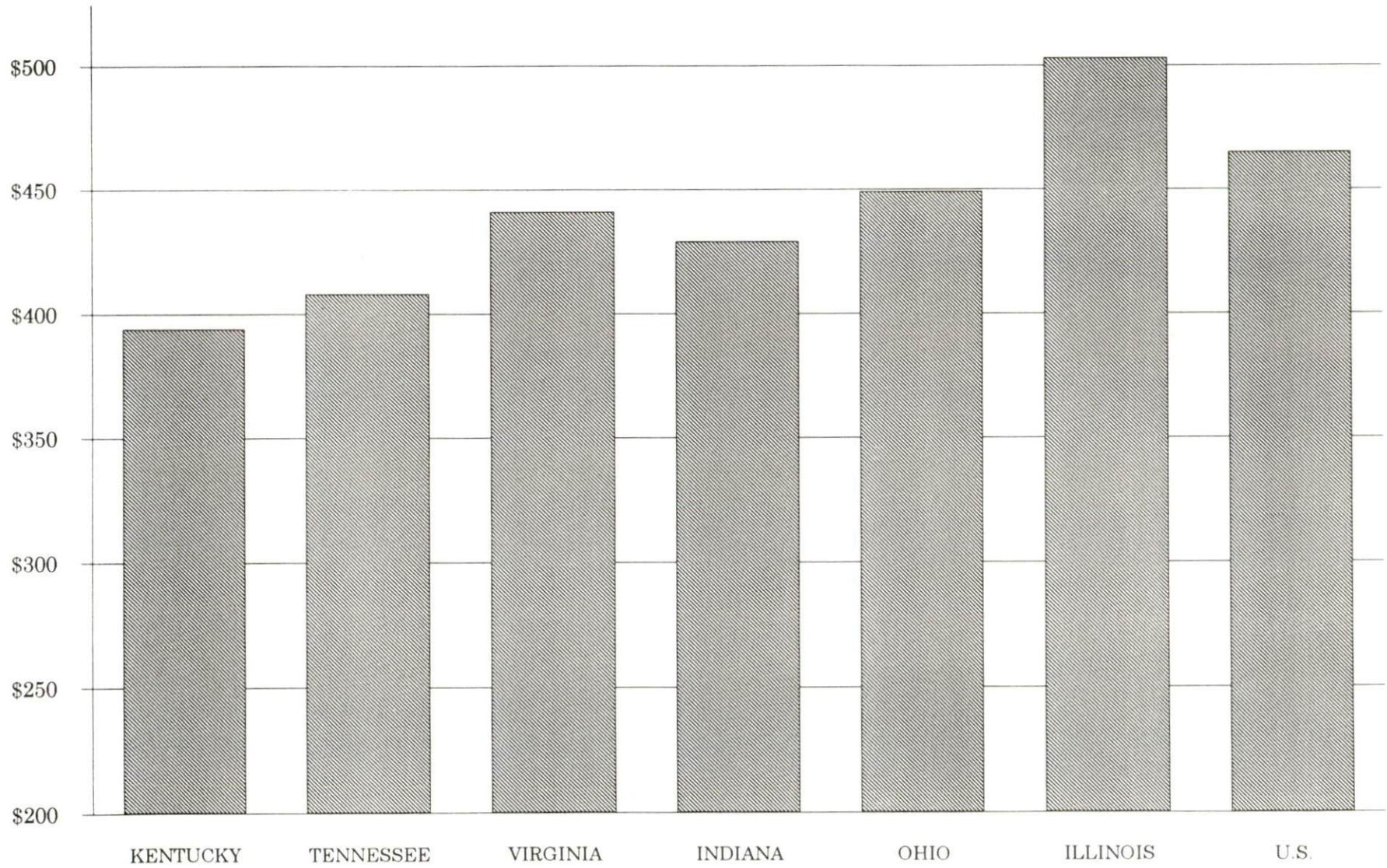
McLean County is served by the Owensboro local office of the Kentucky Department for Employment Services. The focus of the following data is on job placements made by the Owensboro local office and may therefore be used as an indicator of the wages which employers in the area pay new employees. During the twelve months which ended on June 30, 1990, the local employment office filled 2,230 job openings in various occupational categories. The average hourly wage for selected occupational categories were:

<u>OCCUPATIONAL CATEGORY</u>	<u>NUMBER OF PLACEMENTS</u>	<u>AVERAGE WAGE(\$)</u>
All Occupations	2,230	4.82
Clerical	340	4.20
Sales	54	5.17
Services (excluding domestic)	275	3.63
Agricultural, Fishery, Forestry, etc.	48	3.61
Processing	326	6.60
Machine Trades	56	5.46
Bench Work	229	5.23
Structural	123	5.97
Motor Freight/ Transportation	29	4.95
Packaging and Materials Handling	729	4.39
Other	1	3.35

The Owensboro local office also serves Daviess, Hancock, and Ohio Counties. The above occupational categories are taken from the Dictionary of Occupational Titles published by the U.S. Department of Labor.

Source: Kentucky Cabinet for Human Resources, Department for Employment Services.

AVERAGE WEEKLY WAGES OF WORKERS COVERED BY
UNEMPLOYMENT INSURANCE - 1991



AVERAGE WEEKLY WAGES BY INDUSTRY
BY PLACE OF WORK, 1991*

	McLean County	Kentucky (State- Wide)	Tennessee	Virginia
All Industries	\$288.45	\$394.46	\$408.00	\$441.00
Mining & Quarrying	0	661.68	528.00	655.00
Contract Construction	208.52	410.33	436.00	452.00
Manufacturing	354.13	505.56	477.00	509.00
Transportation, Communications & Public Utilities	376.43	528.78	541.00	605.00
Wholesale & Retail Trade	242.30	268.42	N/A	N/A
Finance, Insurance & Real Estate	322.37	449.89	495.00	523.00
Services	198.74	350.41	394.00	455.00
State/Local Government	349.88	413.84	N/A	N/A
	<u>Indiana</u>	<u>Ohio</u>	<u>Illinois</u>	<u>U. S.</u>
All Industries	\$429.00	\$449.00	\$503.00	\$465.00
Mining & Quarrying	708.00	609.00	758.00	747.00
Contract Construction	499.00	510.00	635.00	514.00
Manufacturing	583.00	613.00	609.00	579.00
Transportation, Communications & Public Utilities	531.00	567.00	632.00	599.00
Wholesale & Retail Trade	N/A	N/A	N/A	N/A
Finance, Insurance & Real Estate	458.00	498.00	650.00	596.00
Services	368.00	398.00	462.00	443.00
State/Local Government	N/A	N/A	N/A	N/A

* Wages for U.S. and surrounding states rounded to nearest dollar.

N/A Not Available.

Note: The average weekly wage for each category includes the salaries and wages of all persons working for that type business. For example, the manufacturing category includes both production workers and administrative personnel. Excludes domestic workers, railway workers, certain nonprofit corporations, majority of federal government workers, and self-employed workers.

Source: Kentucky Cabinet for Human Resources, Average Weekly Wages of Workers Covered by Kentucky Unemployment Insurance Law, 1991. U.S. Department of Labor, Bureau of Labor Statistics, Employment and Wages, Annual Averages, 1991, January 1993.

EXISTING INDUSTRY

MCLEAN COUNTY MANUFACTURING FIRMS, THEIR PRODUCTS AND EMPLOYMENT

<u>Firm</u> (Establishment date)	<u>Product</u>	<u>1992</u> <u>Average Employment</u>
Calhoun		
Abrasion Control Systems (1987)	Abrasion resistant linings for ceramics, epoxies, and plastics	6
Brackett Vaults, Inc. (1985)	Burial vaults	3
McLean County News (1884)	Newspaper	7
Quest Apparel Ltd. (1993)	Denim work jackets, denim sport jackets	20
Livermore		
A & S Fabricating Company (1969)	Metal fabrication, structural steel, machine shop	50
Advanced Drainage Systems, Inc. (1977)	Corrugated plastic pipe and fittings	40
Geary Brothers Lumber Company (1984)	Crossties, mining timbers, oak grade lumber	34
Livermore Industrial Plating (1976)	Industrial plating	13
James A. Logsdon Lumber Company (1946)	Rough lumber, crossties, wood pallets and skids	4
Once-A-Tree, Inc. (1987)	Bedroom furniture, drawer pedestals, custom wood furniture	16
Trinity Welding and Machine (1987)	Steel fabrication, machine shop	2

Sources: Kentucky Cabinet for Economic Development, Division of Research; McLean County Chamber of Commerce.

LABOR ORGANIZATIONS IN MANUFACTURING FIRMS

There are no unions representing manufacturing workers in McLean County at the present time.

SELECTED INDUSTRIAL SERVICES

<u>Types of Services</u>	<u>Location</u>	<u>Mileage from Calhoun</u>
Custom Plastics Producers	Owensboro, Kentucky	21
Electric Motor Repair	Owensboro, Kentucky	21
Heat Treating Facilities	Evansville, Indiana	55
Industrial Waste Removal	Calhoun, Kentucky	-
Machine Shops, Tool & Die	Livermore, Kentucky	10
Metal Castings	Owensboro, Kentucky	21
Metal Finishers	Livermore, Kentucky	10
Metal Service Centers	Owensboro, Kentucky	21
Millwrights and Riggers	Owensboro, Kentucky	21

Sources: Kentucky Cabinet for Economic Development, Division of Research.

TRANSPORTATION

Highways

The two major highways serving McLean County include U.S. Highway 431 and Kentucky Route 81. U.S. 431 is a "AAA"-rated (80,000-pound gross load limit) trucking highway. Kentucky Route 81 is a "AAA"-rated trucking highway north of Calhoun and a "AA"-rated (62,000-pound gross load limit) trucking highway south of Calhoun. The Pennyrile Parkway, 14 miles west of Calhoun; the Audubon Parkway, 19 miles north of Calhoun; the Western Kentucky Parkway, 26 miles south of Calhoun; and the Green River Parkway, 27 miles east of Calhoun, provide McLean County with excellent multi-lane highway accessibility.

HIGHWAY MILES FROM CALHOUN, KENTUCKY, TO SELECTED MARKET CENTERS

City	Highway Miles	City	Highway Miles
Atlanta, GA	380	Los Angeles, CA	2,035
Baltimore, MD	725	Louisville, KY	125
Birmingham, AL	331	Nashville, TN	142
Chicago, IL	346	New Orleans, LA	650
Cincinnati, OH	228	New York, NY	885
Cleveland, OH	473	Pittsburgh, PA	515
Detroit, MI	471	St. Louis, MO	222
Knoxville, TN	283		

Note: Mileage computations are via the best interstate or primary highways, not necessarily the most direct route of travel.

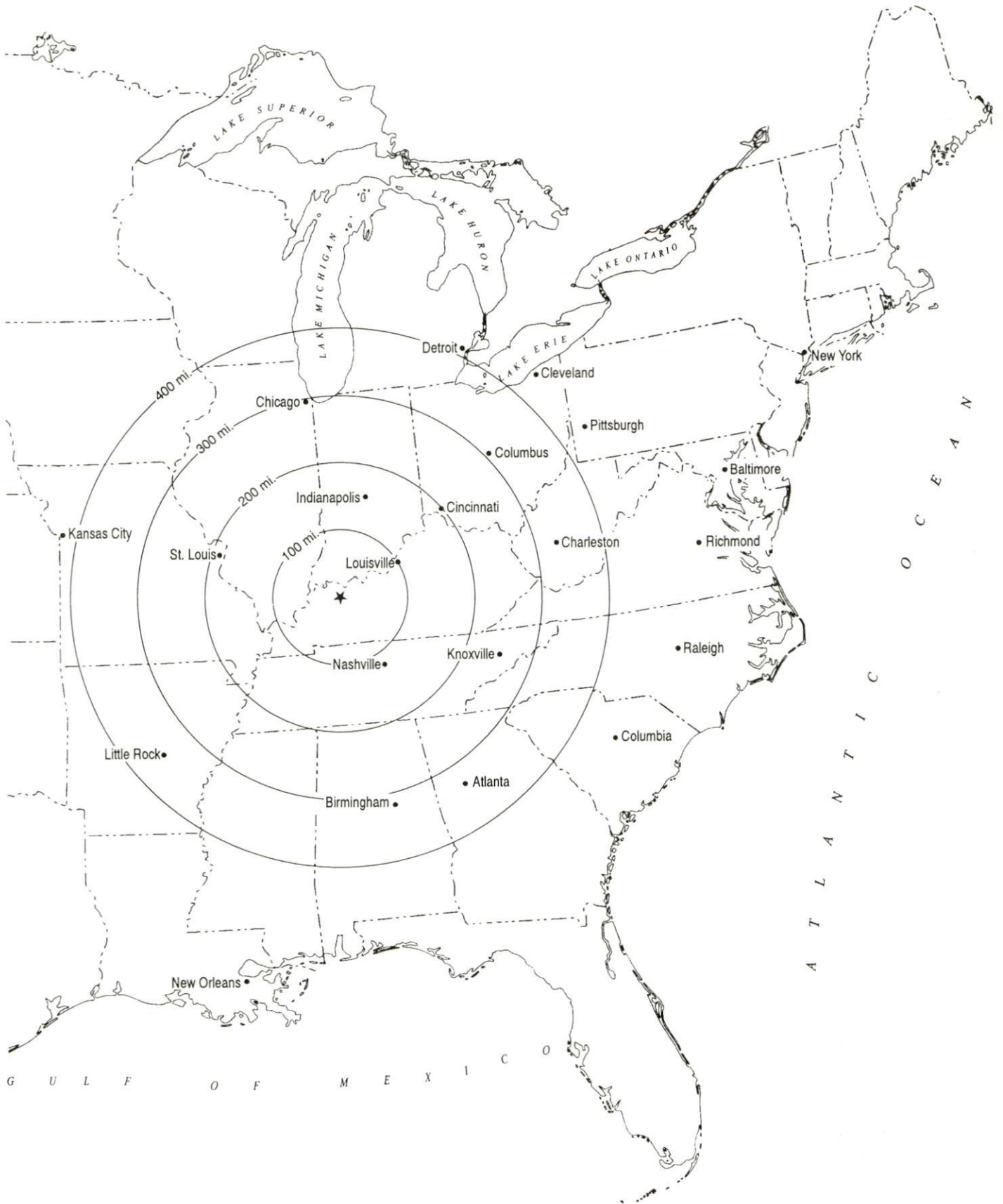
Sources: Rand McNally Standard Highway Mileage Guide, 1990. Official Kentucky Mileage Map, 1985.

Truck Service

Sixteen common carrier trucking companies provide interstate and/or intrastate service to McLean County.

Source: American Motor Carrier Directory, Spring 1993.

Selected Market Centers



Rail

CSX Transportation provides branch line rail service to Island and to a point less than one mile south of Livermore. Calhoun is not directly served by rail. The nearest intermodal facilities are available in Owensboro, Kentucky, 21 miles northeast of Calhoun.

For details on routing, schedules, rates, and services contact:

Manager
Industrial Development
CSX Transportation
9420 Bunsen Parkway
Suite 212
Louisville, Kentucky 40220
(502) 499-3025

Air

Nearest Airport

Location: Owensboro-Daviess County Regional Airport
2 miles west of Owensboro;
19 miles north of Calhoun

Runways: 2 paved
Length: 6,500 feet; 3,700 feet

Traffic Control: Control tower, ground control, ILS

Lighting: Beacon, runway, wind sock, obstruction, and
taxi lights

Fixed Base Operators: Million-Air-Owensboro, Singleton Aviation,
Owensboro Aviation

Services: American Eagle, Northwest Air Link; 100LL and
jet-A fuels, storage; hangar; tie-downs;
major A & P repairs; general flying services;
taxi, rental cars; snack bar; direct line to
motel; Avionics; terminal lounge

Daily Arrivals & Departures: 8

Air Freight Service: Air carriers accept air freight on space
available basis

Nearest Scheduled Commercial Airline Service

Location: Evansville Regional Airport
3 miles north of Evansville, Indiana;
58 miles northwest of Calhoun

Air Service: ComAir, TransWorld Express, Northwest Air
Link, USAir, Atlantic Southeast, American Eagle

Daily Arrivals & Departures: 88

Water

Calhoun and Livermore are located on the banks of the Green River, where a nine-foot navigation channel is maintained to the Ohio River. Commercial barge service is available on the Green River.

The Owensboro Riverport Authority operates a public riverport on the Ohio River at Owensboro, 21 miles north of Calhoun. Available services include direct transfer to and from rail, truck, or barge; over 100,000 square feet of covered warehousing, as well as liquid, bulk, and open storage; and coal processing and loading. Owensboro is a designated Port of Entry, offering U.S. customs service on a daily basis.

UTILITIES

Electricity

Company serving Calhoun, Island, Livermore and parts of McLean County -
Kentucky Utilities Company
Source of power - Kentucky Utilities Company
For industrial rates contact:

Industrial Development Department
Kentucky Utilities Company
One Quality Street
Lexington, Kentucky 40507
(606) 255-2100

Company serving a major portion of McLean County - Green River Electric
Corporation
Source of power - Big Rivers Electric Corporation
For industrial rates contact:

Manager of Economic Development
Big Rivers Electric Corporation
P.O. Box 24
Henderson, Kentucky 42420
(502) 827-2561

and/or

Green River Electric Corporation
P.O. Box 1389
Owensboro, Kentucky 42302
(502) 926-4141

Natural Gas

Company serving Calhoun - Western Kentucky Gas Company
Source of supply - Texas Gas Transmission Corporation
For rates and supplies contact:

Western Kentucky Gas Company
P.O. Box 866
Owensboro, Kentucky 42302
(502) 685-8067

Company serving Livermore - Livermore Utilities
Source of supply - Texas Gas Transmission Corporation
For rates and supplies contact:

Livermore Utilities
P.O. Box 279
Livermore, Kentucky 42352
(502) 278-2113

Island is currently not provided natural gas service.

Public Water Supply

Company serving **Calhoun** - Calhoun Water Works
P.O. Box 294
Calhoun, Kentucky 42327
(502) 273-3216

Source - Green River
Treatment plant capacity - 1,000,000 gallons per day
Average daily consumption - 200,000 gallons
Peak daily consumption - 504,000 gallons
Storage capacity - 590,000 gallons
Water pressure - 18 psi to 50 psi

The City of Calhoun recently completed construction of a new one million-gallon-per-day water treatment facility and a new 250,000-gallon elevated water storage tank at a total cost of \$2.5 million.

Company serving **Island** - Island Water Department
P.O. Box 33
Island, Kentucky 42350
(502) 486-9948

Source - 2 wells
Treatment plant capacity - 259,200 gallons per day
Average daily consumption - 85,289 gallons
Peak daily consumption - 130,000 gallons
Storage capacity - 150,000 gallons
Water pressure - 30 psi to 35 psi

Company serving **Livermore** - Livermore Utilities
P.O. Box 279
Livermore, Kentucky 42352
(502) 278-2113

Source - Green River
Treatment plant capacity - 500,000 gallons per day
Average daily consumption - 230,000 gallons
Peak daily consumption - 396,000 gallons
Storage capacity - 490,000 gallons
Water pressure - 52 psi to 60 psi

Livermore Utilities is in the process of extending its new raw water intake which will effectively improve the quality of the treated water. The \$83,000 project is scheduled for completion by July 1993.

Name of water district - North McLean County Water District
390 Hickory Hills Drive
Livermore, Kentucky 42352
(502) 278-2800

Area served - Northern McLean County
Source of supply of treated water - Calhoun Water Works, Livermore
Utilities, West Daviess County Water District
Amount of water that can be purchased - 100,000 gallons per day
for West Daviess County, no specified limit for other companies
Average daily consumption - 194,900 gallons
Peak daily consumption - 204,900 gallons
Storage capacity - 410,000 gallons
Water pressure - 28 psi to 92 psi

Sewerage

Company serving Calhoun - Calhoun Sewer Plant
P.O. Box 294
Calhoun, Kentucky 42327
(502) 273-3092

Design capacity - 400,000 gallons per day
Average daily flow - 257,000 gallons
Type of treatment - Secondary
Treated effluent discharged into - Green River

Company serving Island - Island Wastewater Treatment Plant
P.O. Box 33
Island, Kentucky 42350
(502) 486-9967

Design capacity - 128,000 gallons per day
Average daily flow - 30,000 gallons
Type of treatment - Secondary
Treated effluent discharged into - Green River

Company serving Livermore - Livermore Utilities
P.O. Box 279
Livermore, Kentucky 42352
(502) 278-2113

Design capacity - 315,000 gallons per day
Average daily flow - 230,000 gallons
Type of treatment - Secondary
Treated effluent discharged into - Green River

CLIMATE

McLean County

Temperature

Normal (30-year record)	55.70 degrees
Average annual 1991	57.80 degrees
Record highest, July 1954 (51-year record)	105.00 degrees
Record lowest, February 1951 (51-year record)	-23.00 degrees
Normal heating degree days (30-year record) (Heating degree day totals are the sums of negative departures of average daily temperatures from 65 degrees F.)	4,729

Precipitation

Normal (30-year record)	41.55 inches
Mean annual snowfall (51-year record)	13.50 inches
Total precipitation 1991	32.68 inches
Mean number days precipitation (.01 inch or more) (51-year record)	115.20
Mean number days thunderstorms (51-year record)	45.10

Prevailing winds (through 1963)

South-Southwest

Relative Humidity (29-year record)

Midnight	79 percent
6 a.m.	82 percent
Noon	59 percent
6 p.m.	63 percent

Source: U.S. Department of Commerce, Environmental Science Services Administration, Climatological Data, 1991. Station of record: Evansville, Indiana.

LOCAL GOVERNMENT

Structure

The Cities of Calhoun and Livermore are each governed by a mayor-city council form of government. The City of Island is served by a mayor-commission form of government. McLean County is governed by a county judge/executive and seven magistrates. Effective January 1, 1994, the number of magistrates in McLean County will be reduced from seven to four.

Planning and Zoning

Joint agency - McLean County Planning Commission
Participating cities - Calhoun and Livermore
Subdivision regulations enforced - All areas
Mandatory state codes enforced - Kentucky Plumbing Code, National Electric Code, Kentucky Boiler Regulations and Standards, Kentucky Building Code (modeled after BOCA code)

Local Fees and Licenses

The City of Calhoun levies business license fees ranging from \$25 to \$50 per year for most businesses. Manufacturers pay \$50 annually. Business license fees in Island range from \$3.75 to \$25.50; and in Livermore the fees range from \$6 to \$210. Manufacturing plants in Island and Livermore are assessed \$1 per \$1,000 capital stock. The City of Island also levies an unloading license fee of \$22.50 per year, while the City of Livermore levies an annual unloading license fee of \$18. Auto stickers are \$20 per year in Livermore.

PROPERTY TAXES

The Kentucky Constitution requires the state to tax all classes of taxable property, and state statutes allow local jurisdictions to tax only a few classes. All locally taxed property is subject to county taxes and school district taxes (either a county school district or an independent school district). Property located inside of city limits may also be subject to city property taxes.

Special local taxing jurisdictions (fire protection districts, watershed districts, and sanitation districts) levy taxes within their operating areas (usually a small portion of community or county).

Property assessments in Kentucky are at 100% fair cash value. A 15% reduction is automatically granted for accounts receivable.

STATE PROPERTY TAX RATES PER \$100 VALUATION

<u>Selected Classes of Property</u>	<u>1992 State Rate</u>	<u>Local Taxation Permitted</u>
Real Estate	\$0.184	YES
Manufacturing Machinery	0.150	NO
Pollution Control Equipment	0.150	NO
Inventories		
Raw Materials	0.050	NO
Goods in Process	0.050	NO
Finished Goods	0.050	YES
Motor Vehicles	0.450	YES
Other Tangible Personal Property	0.450	YES
Intangibles (Accounts Receivable, Money on Hand)	0.250	NO

LOCAL PROPERTY TAX RATES PER \$100 VALUATION, 1992

<u>Taxing Jurisdiction</u>	<u>Real Estate</u>	<u>Finished Goods & Tangibles</u>	<u>Motor Vehicles</u>
McLean County	\$0.1590	\$0.1750	\$0.1630
School Districts:			
McLean County	0.3300	0.3300	0.3300
Cities:			
Calhoun	0.1470	0.1680	0.1700
Island	0.1330	0.2410	0.1510
Livermore	0.1750	0.1750	0.1770
Other:			
Special (not county-wide)			
Buck Creek Watershed	0.1000	None	None
Fire Protection	0.0300	None	None

EDUCATION

Public Schools

	McLean County
Total Enrollment (Fall, 1992)	1,744
Pupil-Teacher Ratio (1991-92)	15.6-1
Percent High School Graduates to College (1991-92)	57.9
Expenditures Per Pupil (1991-92)	\$3,216.66

McLean County School System plans to begin construction of a new middle school in Spring 1994 and then remodel two elementary schools. Total cost of the projects are estimated at \$8.5 million.

Area Colleges and Universities

<u>Name</u>	<u>Location (Miles distant)</u>	<u>Enrollment (Fall, 1992)</u>
Brescia College	Owensboro, Kentucky (21)	800
Kentucky Wesleyan College	Owensboro, Kentucky (21)	769
Owensboro Community College	Owensboro, Kentucky (21)	2,900
Madisonville Community College	Madisonville, Kentucky (26)	2,403
Henderson Community College	Henderson, Kentucky (45)	1,458
University of Evansville	Evansville, Indiana (55)	3,071
University of Southern Indiana	Evansville, Indiana (55)	7,430
Western Kentucky University	Bowling Green, Kentucky (71)	15,750

VOCATIONAL-TECHNICAL TRAINING

Kentucky Tech schools are operated by the Cabinet for Workforce Development and provide secondary (Sec) and postsecondary (P/S) vocational-technical training.

<u>Kentucky Tech Schools</u>	<u>Location (Mileage from Calhoun)</u>	<u>Number of Program Offerings</u>	<u>Cumulative Enrollment 1991-1992</u>	<u>Approximate Number Completing Programs Annually</u>
Daviess County State Vocational Technical School	Owensboro (21)	13	<u>Sec</u> <u>P/S</u> 145 227	77
Owensboro State Vocational-Technical School	Owensboro (21)	15	<u>Sec</u> <u>P/S</u> 76 239	128
Ohio County Area Vocational Education Center	Hartford (25)	8	<u>Sec</u> <u>P/S</u> 275 49	77

Customized Training

The Kentucky Tech system, through its Training and Development Coordinators, will provide technical assistance and will identify and develop low cost customized training programs and services for existing, as well as new and expanding businesses and industries. Businesses and industries needing customized training or a continuing education program for its employees should simply contact a Training and Development Coordinator located at the Daviess County SVTS in Owensboro.

Assessment Services

Kentucky Tech Career Connections offers to business, education, and government agencies customized assessment in career inventories, interest inventories, psychomotor skills and academic potential, as well as pre-hire assessment. The center also has a Career Connections mobile unit that is available to potential Kentucky Tech students, business and industry, and other agencies within McLean County.

Adult Basic Education

Adult education programs are available to adults who want to develop new skills, improve basic skills or earn a high school equivalency diploma. In McLean County, adult literacy is provided by the McLean County, Literacy Council and adult basic education is provided through the Livermore Community Library.

Bluegrass State Skills Corporation

The Bluegrass State Skills Corporation, an independent public corporation created and funded by the Kentucky General Assembly, provides programs of skills training to meet the needs of business and industry from entry level to advanced training, and from upgrading present employees to retraining experienced workers.

The Bluegrass State Skills Corporation is a major source for skills training assistance for a new or existing company. The Corporation works in partnership with other employment and job training resources and programs, as well as Kentucky's economic development activities, to package a program customized to meet the specific needs of a company.

OTHER LOCAL FACILITIES

Local Medical Personnel

Physicians - 3
Dentists - 3

Hospitals

<u>General Hospital</u>	<u>Location</u>	<u>Beds</u>
McLean County General Hospital	Calhoun	26

Medical staff - 2 physicians, 1 consulting pathologist, 2 dentists,
7 registered nurses, 7 licensed practical nurses

Additional hospitals are located in Owensboro, 21 miles north of Calhoun. The Owensboro-Daviess County Hospital provides 480 beds, and Mercy Hospital maintains 149 beds.

Other Medical Facilities and Services

Green River Comprehensive Care Center
Green River District Health Department
McLean County Ambulance Service
McLean County Health Center

Banks and Savings and Loan Associations

Cardinal Federal Savings Bank
Citizens Deposit Bank (Calhoun)
Farmers & Merchants Bank (Livermore)
First Kentucky Federal Savings Bank
First Security Bank & Trust (Island)
Sacramento Deposit Bank (Sacramento)

Newspapers

The McLean County News (weekly)

Telephone Service

South Central Bell

RECREATION

Local

A variety of public recreation facilities are available in McLean County. In Calhoun, there are two parks, a playground, two tennis courts, two lighted baseball diamonds, and a movie theater. The Island Recreation Committee maintains a miniature park which has a tennis court, a basketball court, a paved multi-use area, playground equipment and picnic tables. A skating rink is located in Sacramento. Beech Grove Community Park has a lighted ball field and playground. In addition, four tennis courts, a softball field, a baseball field, and playground equipment are available at the McLean County High School.

The Cleat Johnson Memorial Park, located in Livermore, offers picnic areas and a shelter house, tennis courts, baseball diamonds, and playground equipment. Two mini-parks, also in Livermore, contain picnic areas, playgrounds, and basketball courts. A private business in Livermore offers slot car racing.

Two new nine-hole golf courses are presently under development in McLean County. One in Sacramento will open summer of 1993 and the other, to be located in Livermore, should open by spring of 1994.

Windy Hollow Recreation Area, ten miles north of Calhoun, features 13 well-stocked lakes, cabins, trailer sites, a restaurant and a country store. The parkland area offers swimming, fishing, picnicking, hiking, playground facilities, miniature golf, and a 250-foot water slide.

Miller Lakes, 12 miles north of Calhoun, offers three fishing lakes, one swimming lake, a campground, cabins, a snack bar, fishing, picnicking, hiking, playground equipment, paddle boats, and miniature golf.

The Green and Rough Rivers provide many fishing and boating opportunities throughout McLean County. Fishing is also available at pay lakes near Calhoun. Development of a ten-acre recreational park, including a camping area and marina is planned along the banks of the Green River.

Area (Within 45 miles)

Owensboro, 21 miles north of Calhoun, is Kentucky's third largest city. Owensboro is a source of many entertainment and recreational facilities associated with larger communities. Points of interest include museums, an orchestra and three colleges. Several festivals are held annually, including the International Bar-B-Que Festival, the Summer Festival, and the Bluegrass Festival.

Ben Hawes State Park, 29 miles north of Calhoun near Owensboro, is a 300-acre park which is open year-round. It features a playground, softball field, tennis courts, hiking trails, a picnic area and shelters, including an 18-hole and nine-hole golf course, a pro shop, a driving range and an archery range.

Lake Malone State Park, located in southern Muhlenberg County, 44 miles south of Calhoun, offers camping facilities, swimming, fishing, and boating on an 826-acre lake. Playground facilities and picnic shelters are located in a beautiful scenic cliff area. Located across from the entrance to the park is a resort inn featuring luxury rooms, a restaurant, a swimming lake, a beach, boating, fishing, tennis, and nature trails.

COMMUNITY IMPROVEMENTS

Recent

Quest Apparel Ltd. recently initiated operations in Calhoun. The new plant produces denim sport jackets and denim work jackets. Employment is currently 20 but will eventually reach 40 persons at full production.

McLean County Literacy 1st 2000 was recently launched in the county. This newly organized effort will augment the literacy potential of McLean County and prepare it for the 21st century.

The City of Calhoun recently completed construction of a new one million-gallon-per-day water treatment facility and a new 250,000-gallon elevated water storage tank at a total cost of \$2.5 million.

McLean County Senior Citizens Center recently opened in Calhoun. Services include food and recreation for the senior citizens of McLean County.

Under Way

Two new nine-hole golf courses are presently under development in McLean County. One in Sacramento will open summer of 1993 and the other, to be located in Livermore, should open by spring of 1994.

Livermore Utilities is in the process of extending its raw water intake which will effectively improve the quality of the treated water. The \$83,000 project is scheduled for completion by July 1993.

Planned

McLean County School System plans to begin construction of a new middle school in Spring 1994 and then remodel two elementary schools. Total cost of the projects are estimated at \$8.5 million.

Development of a ten-acre recreational park, including a camping area and marina is planned along the banks of the Green River.