

1989

Industrial Resources: Scott County - Georgetown

Kentucky Library Research Collections
Western Kentucky University, spcol@wku.edu

Follow this and additional works at: https://digitalcommons.wku.edu/scott_cty

 Part of the [Business Administration, Management, and Operations Commons](#), [Growth and Development Commons](#), and the [Infrastructure Commons](#)

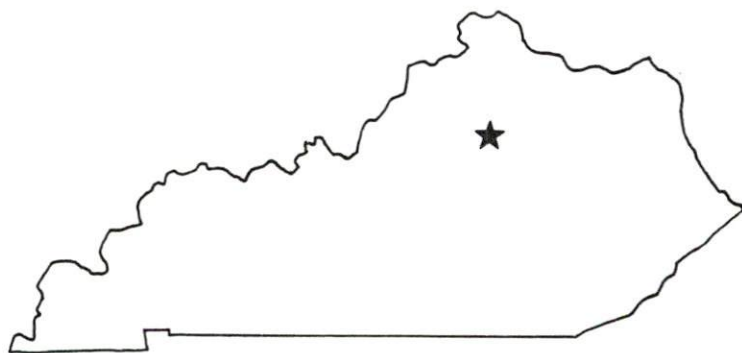
Recommended Citation

Kentucky Library Research Collections, "Industrial Resources: Scott County - Georgetown" (1989). *Scott County*. Paper 10.
https://digitalcommons.wku.edu/scott_cty/10

This Report is brought to you for free and open access by TopSCHOLAR®. It has been accepted for inclusion in Scott County by an authorized administrator of TopSCHOLAR®. For more information, please contact topscholar@wku.edu.

Resources for Economic Development

Georgetown



KENTUCKY
Open for Business

RESOURCES FOR ECONOMIC DEVELOPMENT

GEORGETOWN, KENTUCKY

Prepared by
The Kentucky Cabinet for Economic Development
Division of Research and Planning
in cooperation with
The Georgetown/Scott County Chamber of Commerce

1989

TABLE OF CONTENTS

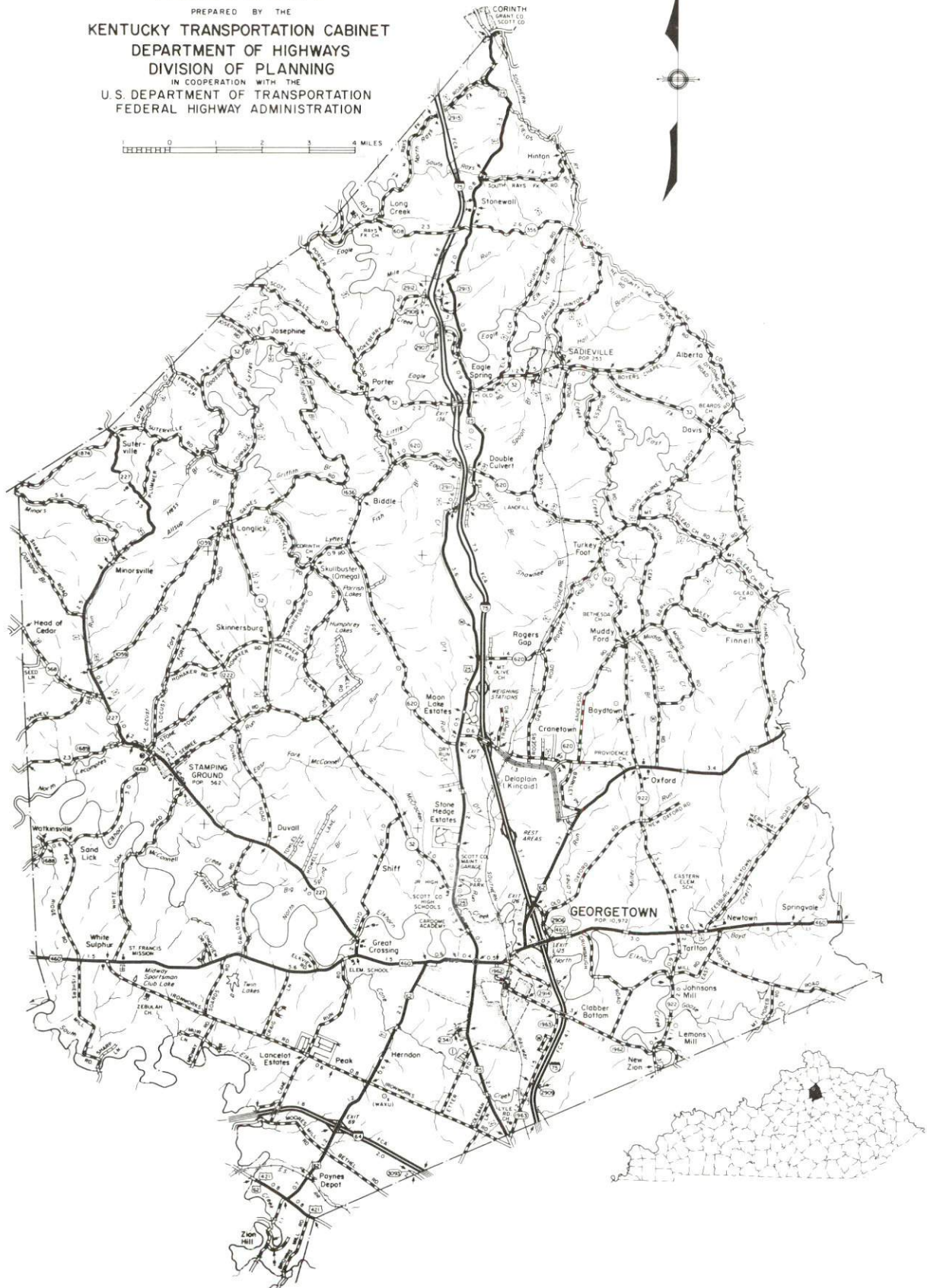
<u>Chapter</u>	<u>Page</u>
GEORGETOWN, KENTUCKY - A RESOURCE PROFILE	1
THE LABOR MARKET STATISTICS	2
Labor Market Area Map	2
Population	3
Population Projections.	3
Estimated Labor Supply	3
Labor Force Characteristics of Residents, 1988	4
Selected Components of Nonagricultural Employment, by Place of Work, 1988	5
Per Capita Personal Income	6
Average Placement Wages	7
Average Weekly Wages of Workers Covered by Unemployment Insurance F.Y. 1987-88 - Bar Chart	8
Average Weekly Wages by Industry, by Place of Work, 1988	9
EXISTING INDUSTRY.	10
Major Georgetown Manufacturing Firms, Their Products and Employment	10
Recent Industrial Developments	11
Labor Organizations in Manufacturing Firms	11
Selected Industrial Services	12
TRANSPORTATION	13
Highways	13
Truck Service	13
Selected Market Location Map	14
Rail	15
Air	15
UTILITIES.	16
Electricity	16
Natural Gas	16
Public Water Supply	16
Sewerage	17
CLIMATE.	18

<u>Chapter</u>	<u>Page</u>
LOCAL GOVERNMENT	19
Structure	19
Planning and Zoning.	19
Local Fees and Licenses.	19
State and Local Property Taxes.	20
Combined State and Local Rates Per \$100 Valuation, 1988	20
EDUCATION.	21
Public Schools	21
Area Colleges and Universities	21
Vocational Training.	22
OTHER LOCAL FACILITIES	23
Local Medical Personnel.	23
Hospitals	23
Other Medical Facilities and Services	23
Banks and Savings & Loan Associations	23
Newspapers	23
Telephone Service	23
RECREATION	24
COMMUNITY IMPROVEMENTS	26

GENERAL HIGHWAY MAP SCOTT COUNTY KENTUCKY

PREPARED BY THE
KENTUCKY TRANSPORTATION CABINET
DEPARTMENT OF HIGHWAYS
DIVISION OF PLANNING
IN COOPERATION WITH THE
U.S. DEPARTMENT OF TRANSPORTATION
FEDERAL HIGHWAY ADMINISTRATION

0 1 2 3 4 MILES



GEORGETOWN, KENTUCKY - A RESOURCE PROFILE

Georgetown, the county seat of Scott County, is located in central Kentucky's scenic Blue Grass Region, an area famous for its many beautiful horse farms and low rolling hills. Only 2 miles from Interstate Highway 75 and 9 miles from Interstate 64, Georgetown is ideally situated for easy highway access. Georgetown is 15 miles north of Lexington, Kentucky; 69 miles east of Louisville, Kentucky; and 69 miles south of Cincinnati, Ohio. Georgetown was named a "Kentucky Certified City" again in 1988 based upon progress in community and economic development, and had an estimated 1986 population of 12,360 persons.

Scott County, which covers a land area of 286 square miles, had an estimated 1987 population of 22,400 persons.

The Economic Framework - The total number of Scott County residents employed in 1988 averaged 11,108. Manufacturing firms in the county reported 3,274 employees; wholesale and retail trade provided 1,494 jobs; 1,155 people were employed in service occupations; state and local government accounted for 920 employees; and contract construction firms provided 719 jobs.

Labor Supply - There is a current estimated labor supply of 30,943 persons available for industrial jobs in the labor market area. In addition, from 1989 through 1993, 24,882 young persons in the area will become 18 years of age and potentially available for industrial jobs.

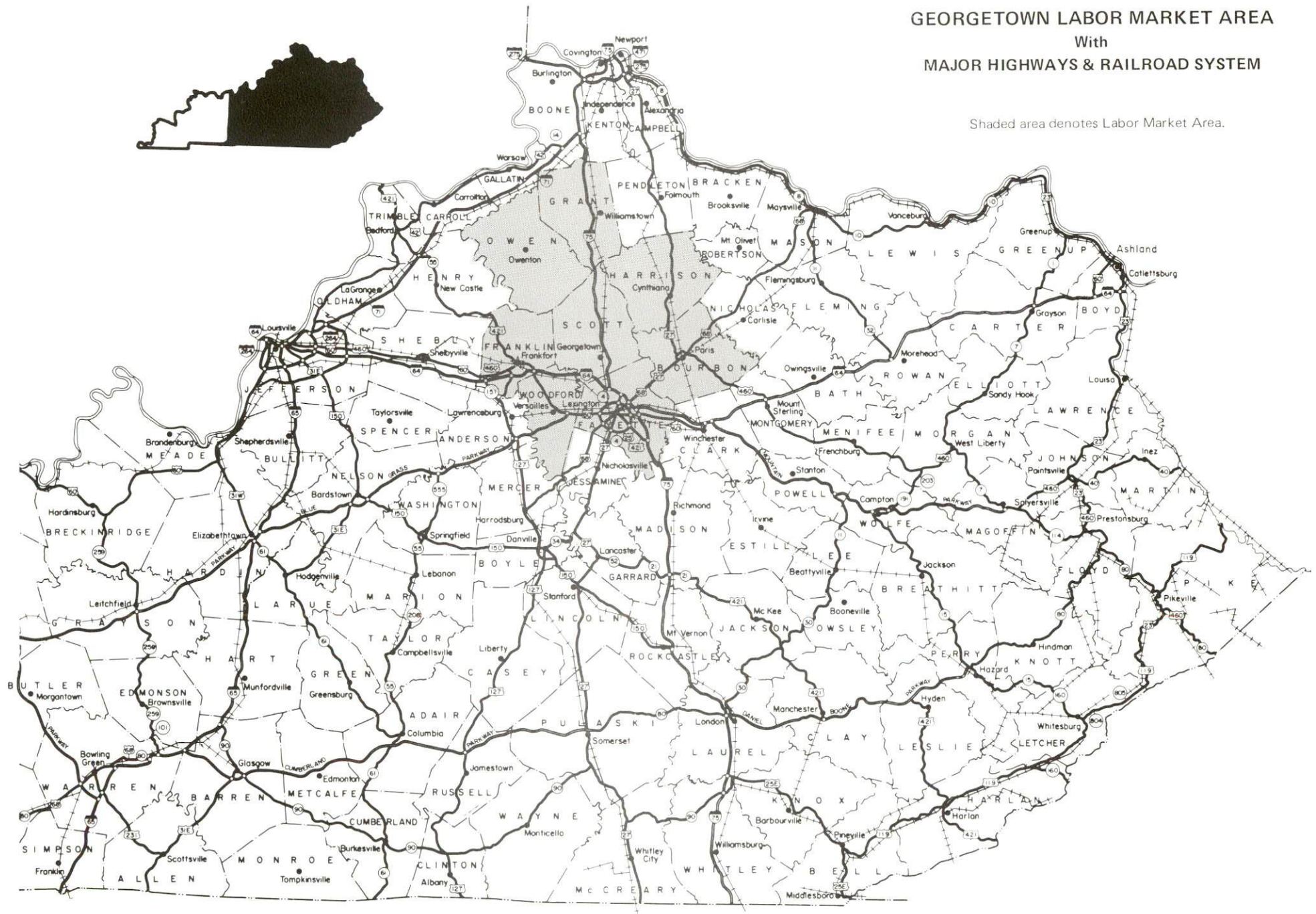
Transportation - U.S. Highways 25, 62, and 460 are "AAA"-rated trucking highways serving Georgetown, and an interchange of Interstate 75 is only 2 miles east of the city. Interstate Highway 64 is accessible 9 miles south of Georgetown. A total of 35 common carrier trucking companies provide interstate and/or intrastate service. The Southern Railway Company provides daily rail freight service to Georgetown. The nearest scheduled commercial airline service is available at Bluegrass Field near Lexington, 18 miles south. A local airfield for small craft is available 1 mile south of the city, which has a 1,600-foot turf runway.

Power and Fuel - Kentucky Utilities Company, an electric power generation and transmission company, provides electricity to Georgetown and parts of Scott County. The remainder of the county is served by East Kentucky Power Cooperative through the Harrison Rural Electric Cooperative Corporation and the Owen County Rural Electric Cooperative Corporation. Columbia Gas of Kentucky, Inc., whose source of supply is Columbia Gas Transmission Corporation, provides natural gas service to Georgetown.

Education - The Scott County Public School System provides primary and secondary education in Scott County. Georgetown College is a coeducational, liberal arts college conferring Baccalaureate and Masters degrees, as well as offering a Rank I program. There are seven other institutions of higher learning within 40 miles of Georgetown. The nearest vocational training is available at the Central Kentucky State Vocational-Technical School, the Northside Area Vocational Education Center, and the Southside Area Vocational Education Center, all located in Lexington, Kentucky, 15 miles south of Georgetown.

GEORGETOWN LABOR MARKET AREA With MAJOR HIGHWAYS & RAILROAD SYSTEM

Shaded area denotes Labor Market Area.



LABOR MARKET STATISTICS

The Georgetown Labor Market Area includes Scott County and the adjoining Kentucky counties of Bourbon, Fayette, Franklin, Grant, Harrison, Owen and Woodford.

POPULATION			
	<u>1987*</u>	<u>1980</u>	<u>1970</u>
Labor Market Area	366,400	342,389	291,289
Georgetown	12,360	10,972	8,629
Scott County	22,400	21,813	17,948

* Population estimates. City estimates are for 1986.

Sources: U.S. Department of Commerce, Bureau of the Census, October 1988; University of Louisville, Urban Studies Center, Population Unit.

POPULATION PROJECTIONS				
	<u>1990</u>	<u>1995</u>	<u>2000</u>	<u>2010</u>
Labor Market Area	379,051	394,721	406,480	423,912
Scott County	25,322	27,213	28,979	32,280

Source: University of Louisville, Urban Studies Center, State Data Center.

ESTIMATED LABOR SUPPLY					
	Current			Future	
	<u>Total</u>	<u>Unemployed</u>	<u>Employed Part-Time</u>	<u>Not in Labor Force</u>	<u>Becoming 18 years of age 1989 thru 1993</u>
Labor Market Area*	30,943	10,021	19,059	1,863	24,882
Scott Co.	2,212	877	1,335	0	1,746

* Additional workers may be drawn from other nearby counties.

Note: Unemployed - persons unemployed and actively seeking work; Employed Part-Time - persons employed but working only 14 to 26 weeks per year; Not in Labor Force - represents the number of persons who would enter the labor force if suitable employment were available (based on the assumption that persons in Kentucky would like to participate in the labor force in the same proportion that they do nationally).

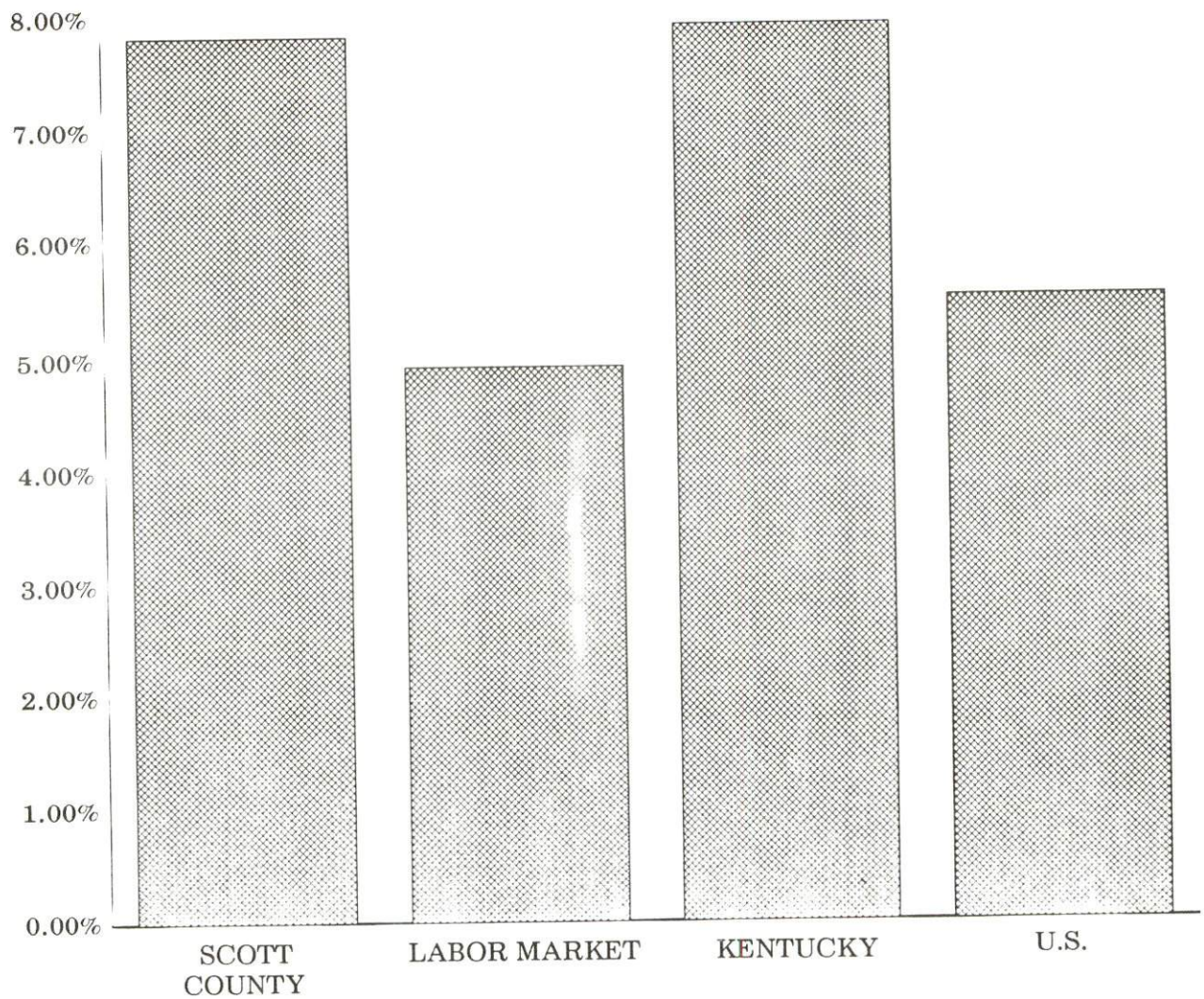
Sources: Kentucky Cabinet for Human Resources, Kentucky Labor Supply Estimates by County, 1987. Kentucky Cabinet for Economic Development, Future Labor Supply Becoming 18 Years of Age, 1989 thru 1993.

LABOR FORCE CHARACTERISTICS OF RESIDENTS, 1988

	Scott County	Labor Market Area
Civilian Labor Force	12,053	206,187
Employment	11,108	196,077
Unemployment	945	10,110
Rate of Unemployment (%)	7.8	4.9

Source: Kentucky Cabinet for Human Resources, Kentucky Labor Force Estimates, Annual Averages, 1988.

UNEMPLOYMENT RATES 1988

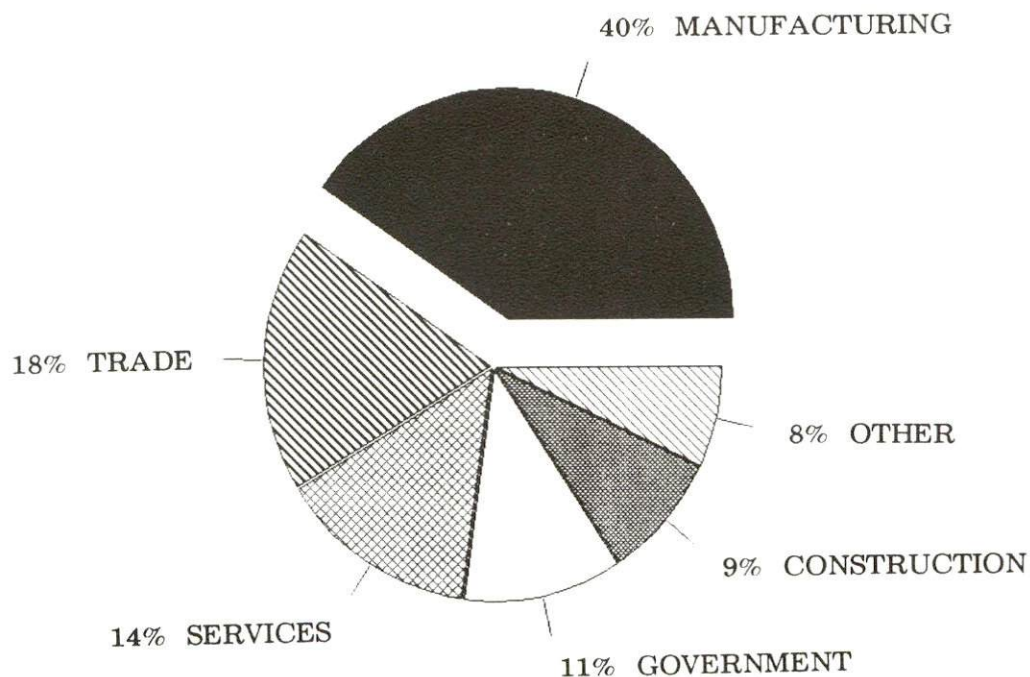


SELECTED COMPONENTS OF NONAGRICULTURAL EMPLOYMENT
BY PLACE OF WORK, 1988

	<u>Scott County</u>	<u>Labor Market Area</u>
All Industries (total)	8,135	186,952
Manufacturing	3,274	33,494
Wholesale & Retail Trade	1,494	44,154
Services	1,155	39,190
State/Local Government	920	36,973
Contract Construction	719	9,903

Note: Excludes domestic workers, railway workers, certain nonprofit corporations, majority of federal government workers, and self-employed workers.
Source: Kentucky Cabinet for Human Resources, Average Monthly Workers Covered by Kentucky Unemployment Insurance Law, 1988.

SCOTT COUNTY

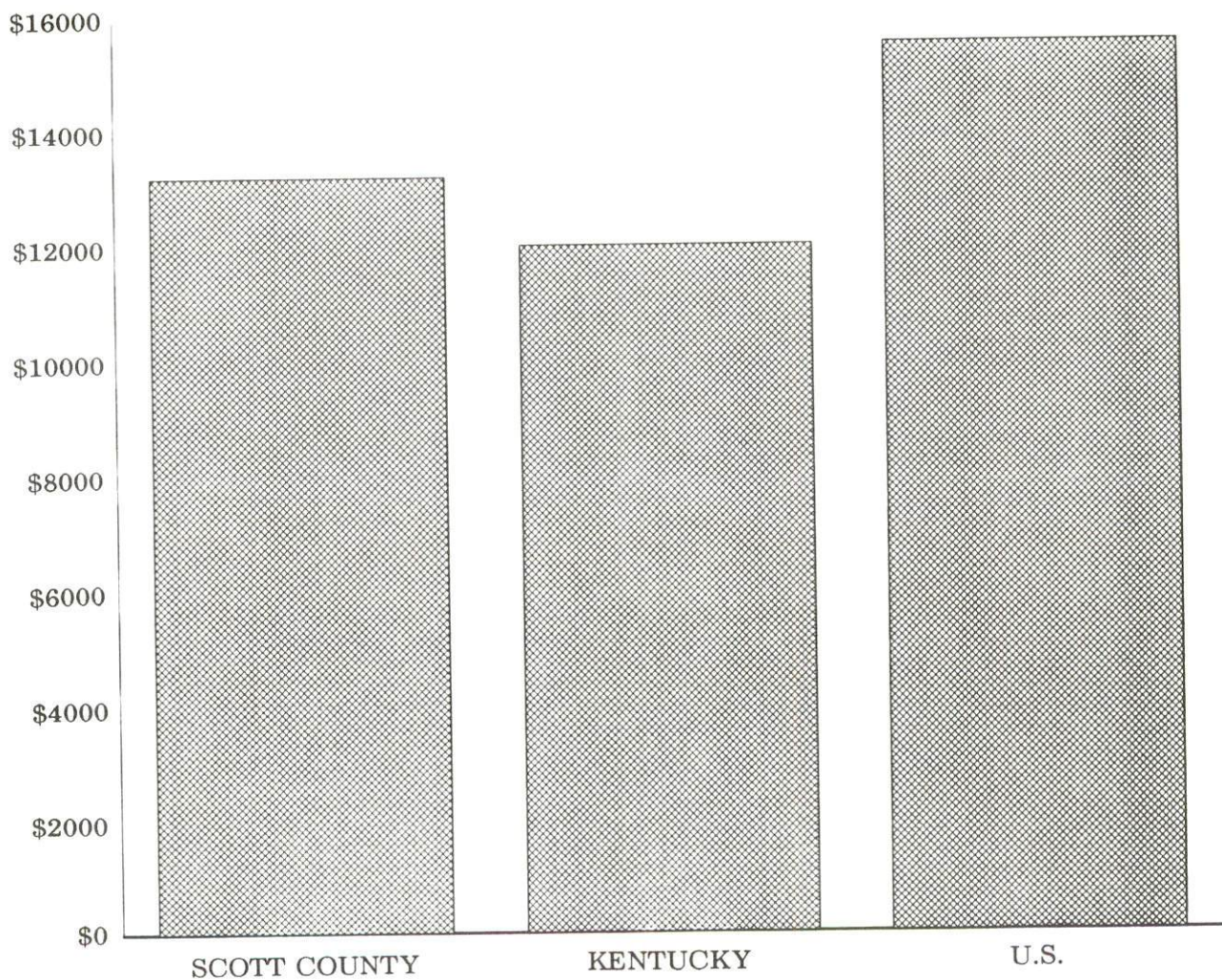


PER CAPITA PERSONAL INCOME

Area	1983	1987	Percent Change
Scott County	\$10,126	\$13,177	30.1
Labor Market Area Range	\$6,769 - 17,336	\$8,627 - 20,299	-
Kentucky	\$9,513	\$11,997	26.1
U.S.	\$12,098	\$15,484	28.0

Sources: U.S. Bureau of Economic Analysis, Kentucky Economic Information System, August 1988 and April 1989.

PER CAPITA PERSONAL INCOME
1987



AVERAGE PLACEMENT WAGES

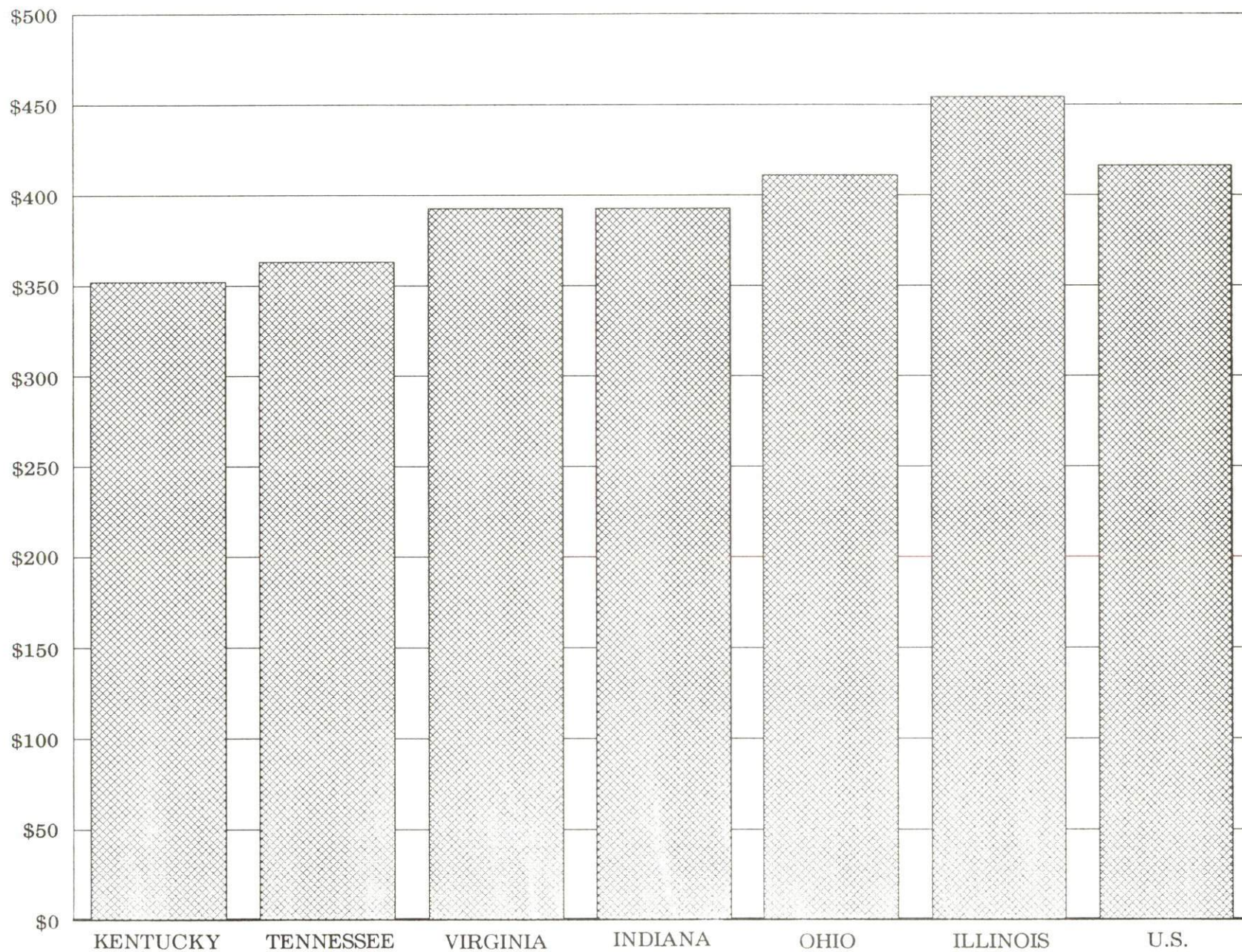
Scott County is served by the Georgetown local office of the Kentucky Department for Employment Services. The focus of the following data is on job placements made by the Georgetown local office and may therefore be used as an indicator of the wages which employers in the area pay new employees. During the twelve months which ended on June 30, 1988, the local employment office filled 1,792 job openings in various occupational categories. The average hourly wage for selected occupational categories were:

<u>OCCUPATIONAL CATEGORY</u>	<u>NUMBER OF PLACEMENTS</u>	<u>AVERAGE WAGE(\$)</u>
All Occupations	1,792	5.46
Clerical	142	5.00
Sales	26	4.41
Services (excluding domestic)	317	4.89
Agricultural, Fishery, Forestry, etc.	20	3.76
Processing	79	4.34
Machine Trades	116	6.40
Bench Work	383	3.50
Structural	361	6.97
Motor Freight/ Transportation	7	4.62
Packaging and Materials Handling	241	3.72
Other	4	3.35

The Georgetown local office also serves Bourbon, Harrison, and Nicholas Counties. The above occupational categories are taken from the Dictionary of Occupational Titles published by the U.S. Department of Labor.

Source: Kentucky Cabinet for Human Resources, Department for Employment Services.

AVERAGE WEEKLY WAGES OF WORKERS COVERED BY
UNEMPLOYMENT INSURANCE F. Y. 1987-88



AVERAGE WEEKLY WAGES BY INDUSTRY
BY PLACE OF WORK, 1988

	Scott County	Kentucky (State- Wide)	Tennessee	Virginia
All Industries	\$379.33	\$352.31	\$363.12	\$392.56
Mining & Quarrying	423.07	603.27	495.85	596.88
Contract Construction	396.16	380.71	394.27	422.27
Manufacturing	539.44	464.92	416.73	452.60
Transportation, Communications & Public Utilities	415.36	468.17	485.13	554.17
Wholesale & Retail Trade	179.70	238.88	N/A	N/A
Finance, Insurance & Real Estate	350.29	401.17	269.27	466.23
Services	254.25	298.98	343.48	391.67
State/Local Government	296.22	377.81	403.21	457.00
	<u>Indiana</u>	<u>Ohio</u>	<u>Illinois</u>	<u>U. S.</u>
All Industries	\$392.63	\$411.08	\$454.10	\$416.33
Mining & Quarrying	635.77	579.73	674.62	660.40
Contract Construction	449.87	465.46	584.10	469.85
Manufacturing	532.06	569.98	555.83	517.62
Transportation, Communications & Public Utilities	502.69	519.17	584.83	542.33
Wholesale & Retail Trade	N/A	N/A	N/A	N/A
Finance, Insurance & Real Estate	406.58	444.33	579.88	532.52
Services	317.98	348.48	402.38	384.31
State/Local Government	395.31	428.10	453.12	442.71

N/A Not Available.

Note: The average weekly wage for each category includes the salaries and wages of all persons working for that type business. For example, the manufacturing category includes both production workers and administrative personnel. Excludes domestic workers, railway workers, certain nonprofit corporations, majority of federal government workers, and self-employed workers.

Source: Kentucky Cabinet for Human Resources, Average Weekly Wages of Workers Covered by Kentucky Unemployment Insurance Law, 1988. U.S. Department of Labor, Bureau of Labor Statistics, Average Annual Pay by State and Industry, August 29, 1989.

EXISTING INDUSTRY

MAJOR GEORGETOWN MANUFACTURING FIRMS, THEIR PRODUCTS AND EMPLOYMENT*

<u>Firm</u> <u>(Establishment date)</u>	<u>Product</u>	<u>1988</u> <u>Average Employment</u>
Blue Ribbon Pen and Pencil Company, Inc. (1958)	Imprinted pens, pencils, key tags, etc.	75
C & D Products, Inc. (1984)	Machine shop	71
Carbide Products, Inc. (1943)	Boring tools, cutter blades, carbide tools & accessories	42
Celtite, Inc. (1981)	Resin cartridges, mine roof control, construction chemicals	60
The GCA Group (Georgetown Cable & Assembly) (1962)	Electronic subassemblies and wiring harnesses	100
Georgetown Metal-American Swiss Company (1959)	Machined metal parts, wire foams, centerless grinding	50
Georgetown Tool and Manufacturing, Inc. (1969)	Special machined parts, precision tooling	22
Hoover Group, Inc. (1965)	Automotive seating components, bed & furniture springs	132
Interstate Transformer Company (1982)	Electrical switch gear, transformers	36
Johnson Controls, Inc., Auto Systems Group (1961)	Automotive metal seating	450
Jordan Plating, Inc. (1969)	Etching on metals, electroplating metal finishing	76
Kardon Industries, Inc. (1958)	Plastic closures, electronic components	60
The Molding Company, Kentucky (TMC) (1989)	Custom plastic injection molding	30
Nally & Gibson Georgetown, Inc. (1959)	Crushed limestone, ready mix concrete	37
Pioneer Manufacturing Company (1977)	Automotive fittings, furniture components	60
Quik-Pik, Inc. (1989)	Gravity flow racks	30
R & J Manufacturing, Inc. (1976)	Millwork, wooden handles, chair & ladder rungs, dowels	45

(Continued)

<u>Firm (Establishment date)</u>	<u>Product</u>	<u>1988 Average Employment</u>
STM, Inc. (1971)	Production grinding & polish, tools, dies, jigs, fixtures, special machines	23
Toyota Motor Manufacturing U.S.A., Inc. (1987)	Four-door sedan automobiles	2,929
Trinity Industrial Corporation of America (1987)	Auto paint finishes	50
Vuteq Corporation (1987)	Auto glass, glass sunroofs	30

* Firms with 20 or more employees.

Sources: Kentucky Cabinet for Economic Development, 1989 Kentucky Directory of Manufacturers; Division of Research and Planning.

RECENT INDUSTRIAL DEVELOPMENTS

Dial-A-Firm recently began operations in Georgetown. They employ seven persons and produce bedding, box springs, and mattresses.

Polycraft Tool recently established a machine shop and tooling operation in Georgetown and employ five persons.

Vehicle Processors, Inc., recently located in Georgetown. They are a vehicle distributor for Toyota Motor Manufacturing U.S.A., Inc., and employ 55 persons.

LABOR ORGANIZATIONS IN MANUFACTURING FIRMS

There are no labor organizations representing workers in Scott County manufacturing firms at the present time.

SELECTED INDUSTRIAL SERVICES

<u>Types of Services</u>	<u>Location</u>	<u>Mileage from Georgetown</u>
Custom Data Processing	Lexington	15
	Frankfort	18
Custom Plastics Producers	Georgetown	-
Electric Motor Repair	Lexington	15
Grinding, Precision & Tool	Georgetown	-
Heat Treating Facilities	Georgetown	-
Industrial Equipment & Supplies	Lexington	15
	Frankfort	18
Industrial Gases	Lexington	15
Industrial Waste Removal	Lexington	15
	Frankfort	18
Machine Shops, Tool & Die	Georgetown	-
Metal Castings	Cynthiana	21
Metal Finishers	Georgetown	-
Metal Service Centers	Lexington	15
Millwrights	Lexington	15
Public Warehouse Facilities	Georgetown	-

Sources: Kentucky Cabinet for Economic Development, Kentucky Directory of Selected Industrial Services, 1987; Division of Research and Planning.

TRANSPORTATION

Highways

Interstate 75, a major north-south highway, has an interchange 2 miles east of Georgetown. U.S. Highways 25, 62, and 460 are "AAA"-rated (80,000-pound gross load limit) trucking highways serving Georgetown. Access to Interstate 64, a major east-west highway, is 9 miles south of Georgetown via Interstate 75.

HIGHWAY MILES FROM GEORGETOWN, KENTUCKY, TO SELECTED MARKET CENTERS

City	Highway Miles	City	Highway Miles
Atlanta, GA	379	Los Angeles, CA	2,155
Baltimore MD	567	Louisville, KY	69
Birmingham, AL	384	Nashville, TN	225
Chicago, IL	356	New Orleans, LA	745
Cincinnati, OH	69	New York, NY	728
Cleveland, OH	316	Pittsburgh, PA	356
Detroit, MI	327	St. Louis, MO	327
Knoxville, TN	186		

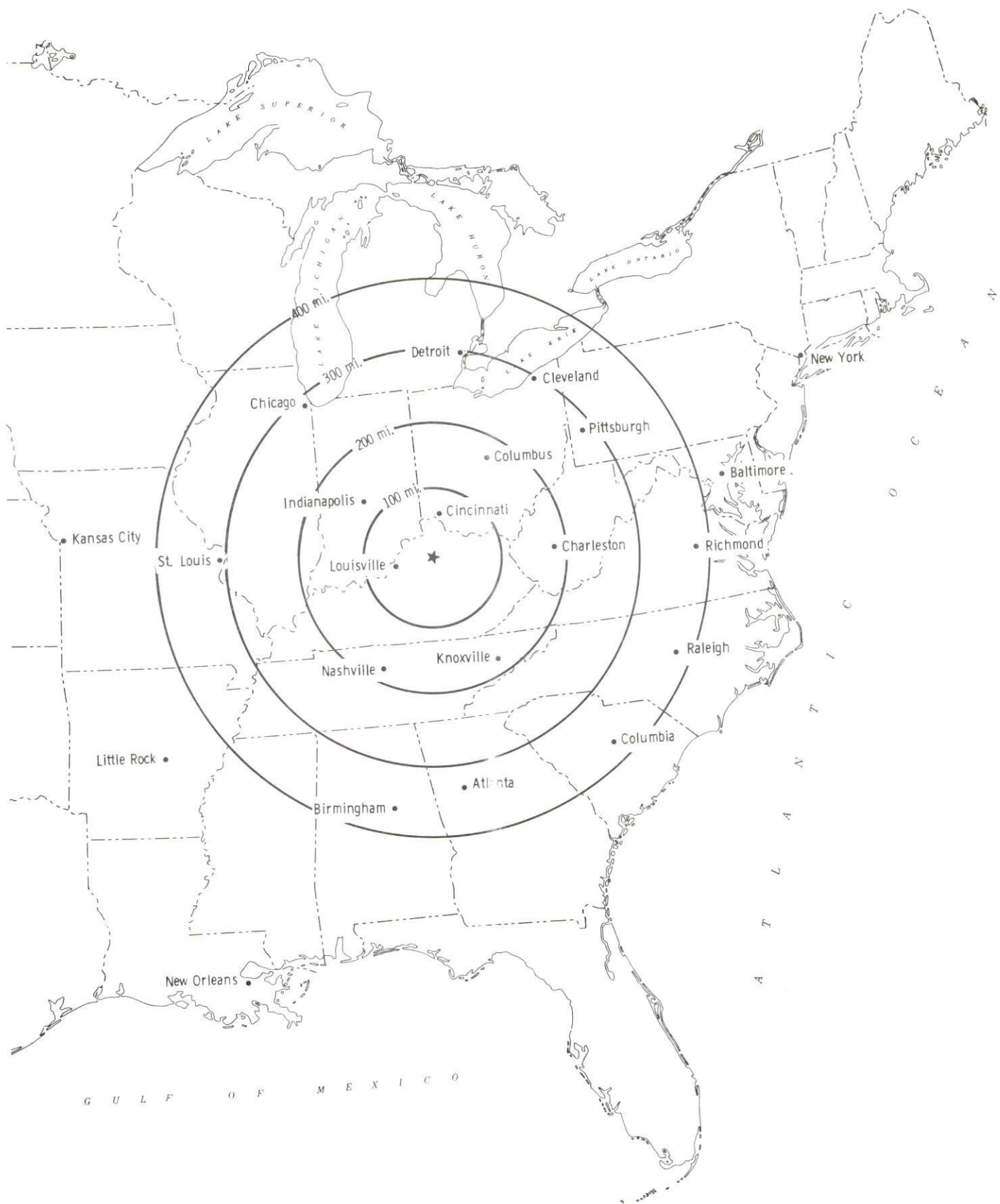
Note: Mileage computations are via the best interstate or primary highways, not necessarily the most direct route of travel.

Sources: Rand McNally Deluxe Motor Carriers' Road Atlas, 1989. Official Kentucky Mileage Map, 1980.

Truck Service

Thirty-five common carrier trucking companies provide interstate and/or intrastate service to Georgetown.

Source: American Motor Carrier Directory, Fall 1989.



Rail

Southern Railway Company provides main line rail service and piggyback facilities to Georgetown.

For details on routing, schedules, rates, and services contact:

District Sales Manager
Norfolk Southern Corporation
1402 South 15th Street
Louisville, Kentucky 40210
(502) 636-6023

Air

Local

Location:	Marshall Field
Runways:	1 mile south of Georgetown
Length:	1 turf
Traffic	1,600 feet
Control:	Wind sock
Lighting:	None
Services:	80 and 100 octane, tie-downs, flight instruction, major A & P repairs, ultralight and balloon training

Nearest Scheduled Commercial Airline Service

Location:	Bluegrass Airport
	4 miles west of Lexington, Kentucky;
	18 miles south of Georgetown
Air Service:	Delta, USAir, TWA, United Express, JetStream, Air Kentucky, American Eagle, ComAir
Daily Arrivals & Departures:	116

UTILITIES

Electricity

Company serving Georgetown and parts of Scott County - Kentucky Utilities Company

Source of power - Kentucky Utilities Company

For industrial rates contact:

Industrial Development Department
Kentucky Utilities Company
One Quality Street
Lexington, Kentucky 40507
(606) 255-1461

Company serving parts of Scott County - Harrison County Rural Electric Cooperative Corporation and Owen County Rural Electric Cooperative Corporation

Source of power - East Kentucky Power Cooperative

For industrial rates contact:

Industrial Development Division
East Kentucky Power Cooperative
P. O. Box 707
Winchester, Kentucky 40391
(606) 744-4812

Natural Gas

Company serving Georgetown - Columbia Gas of Kentucky, Inc.

Source of supply - Columbia Gas Transmission Corporation

For rates and supplies contact:

Columbia Gas of Kentucky, Inc.
220 East Main
Georgetown, Kentucky 40324
(502) 863-1323

Public Water Supply

Company serving Georgetown - Georgetown Municipal Water & Sewer Service
214 West Main Street
Georgetown, Kentucky 40324
(502) 863-7816

Source - Royal Spring & North Elkhorn Creek

Treatment plant capacity - 4,000,000 gallons per day

Average daily consumption - 2,200,000 gallons

Peak daily consumption - 3,800,000 gallons

Storage capacity - 1,960,000 gallons

Water pressure - 30 psi to 100 psi

A 600,000-gallon storage tank is currently under construction. Completion of the \$490,000 project is expected by December 1989.

Company serving eastern Scott County - Kentucky-American Water
Company
2300 Richmond Road
Lexington, Kentucky 40502
(606) 269-2386

Source - Kentucky River and #4 Reservoir (fed from Hickman Creek)
Treatment plant capacity - 60,000,000 gallons per day
Average daily consumption - 36,000,000 gallons
Peak daily consumption - 47,700,000 gallons
Storage capacity for Scott County - 1,460,000 gallons
Water pressure - 40 psi to 120 psi

In October 1989, in Scott County, Kentucky-American placed in service a new 750,000-gallon elevated storage tank and a 2 to 5-million-gallon-per-day capacity booster pumping station which will operate in conjunction with an 18-mile, 24-inch transmission main completed in 1987 in Scott County.

In 1988, Kentucky-American installed about 4.7 miles of 16-inch water mains in areas of Scott County, greatly reinforcing the transmission system in its service area. Plans call for additional system improvements to be constructed in the county over the next five years, which will require an investment by Kentucky-American Water Company in excess of \$1 million.

Sewerage

Company serving Georgetown - Georgetown Municipal Water & Sewer Service
Wastewater Treatment Plant No. 1
P. O. Box 653
Georgetown, Kentucky 40324
(502) 863-7816

Design capacity - 2,339,000 gallons per day
Average daily flow - 1,500,000 gallons
Type of treatment - Tertiary
Treated effluent discharged into - North Elkhorn Creek

The dechlorination of effluent is planned to start in 1990, costing \$390,000.

Company serving Georgetown - Georgetown Municipal Water & Sewer Service
Wastewater Treatment Plant No. 2
P. O. Box 653
Georgetown, Kentucky 40324
(502) 863-7816

Design capacity - 2,200,000 gallons per day
Average daily flow - 750,000 gallons
Type of treatment - Tertiary
Treated effluent discharged into - Lanes Run Creek

CLIMATE

Scott County

Temperature

Normal (30-year record)	54.90 degrees
Average annual 1987	56.80 degrees
Record highest, August 1983 (43-year record)	103.00 degrees
Record lowest, January 1963 (43-year record)	-21.00 degrees
Normal heating degree days (30-year record)	4,814
(Heating degree day totals are the sums of negative departures of average daily temperatures from 65 degrees F.)	

Precipitation

Normal (30-year record)	45.68 inches
Mean annual snowfall (43-year record)	16.40 inches
Total precipitation 1987	36.68 inches
Mean number days precipitation (.01 inch or more) (43-year record)	130.10
Mean number days thunderstorms (43-year record)	45.40

Prevailing winds (through 1963)

South

Relative Humidity (24-year record)

1 a.m.	77 percent
7 a.m.	81 percent
1 p.m.	60 percent
7 p.m.	64 percent

Source: U.S. Department of Commerce, Environmental Science Services Administration, Climatological Data, 1987. Station of record: Lexington, Kentucky.

LOCAL GOVERNMENT

Structure

The City of Georgetown is served by a mayor and eight council members. The mayor is elected to a four-year term and the council members serve two-year terms. Scott County is served by a county judge/executive and three commissioners. The judge/executive and commissioners are elected to four-year terms.

Planning and Zoning

Joint agency - Georgetown-Scott County Joint Planning Commission
Participating cities - Georgetown, Stamping Ground and Sadieville
Zoning enforced - In all areas
Subdivision regulations enforced - In all areas
Local codes enforced - Building and housing in all areas
Mandatory state codes enforced - Kentucky Plumbing Code, National Electric Code, Kentucky Boiler Regulations and Standards, Kentucky Building Code (modeled after BOCA code)

Local Fees and Licenses

The city of Georgetown levies a one percent payroll license fee on wages, salaries, and commissions of individuals and a net profit license fee of one percent on net profits of business.

The city of Georgetown also levies a 5% license tax on premiums received by insurance companies doing business in Georgetown.

Scott County levies a one percent occupational license tax on wages, salaries, and commissions of individuals and on net profits of businesses. The first \$10,000 in wages or net profits is exempt.

Motels and hotels in Scott County charge an additional three percent to room rates, with the proceeds going to the Georgetown/Scott County Tourism Commission.

The Scott County School District levies a one-half of one percent occupational license tax on wages, salaries, and commissions of individuals employed within the school district and on net profits of businesses within the district. Non-residents employed within the school district are exempt from this tax.

State and Local Property Taxes

All property in Kentucky, except items exempted by the state constitution, is taxed by the state. Property which also may be taxed by local jurisdictions includes land and buildings, finished goods inventories, automobiles, trucks, office furniture and office equipment. Local taxing jurisdictions in Kentucky include counties, cities, and school districts.

All property in Kentucky is assessed at 100 percent of fair cash value.

COMBINED STATE AND LOCAL RATES PER \$100 VALUATION, 1988

	City of Georgetown	Unincorporated Scott County
Land and Buildings	\$0.694	\$0.590
Manufacturing		
Machinery	0.150	0.150
Pollution Control		
Equipment	0.150	0.150
Inventories		
Raw Materials	0.001	0.001
Goods in Process	0.001	0.001
Finished Goods	0.599	0.431
Automobiles & Trucks	1.312	0.959
Other Tangible		
Personal Property	1.048	0.880
Intangibles (Accounts receivable*, money in hand, stock, notes, bonds)	0.250	0.250
Goods Stored in Public Warehouses in Transit Status	0.001	0.001
Private Leaseholds in Industrial Revenue Bond Financed Facilities	0.015	0.015

* Accounts receivable are taxed at 85 percent of face value, for an effective rate of \$0.2125 per \$100 valuation.

EDUCATION

Public Schools

Scott County

Total Enrollment (Fall, 1988)	4,452
Accreditation	Southern Association of Colleges and Schools
Pupil-Teacher Ratio (1987-88)	18.9-1
Percent High School Graduates to College (1987-88)	57.5
Expenditures Per Pupil (1987-88)	\$2,413.13

Area Colleges and Universities

<u>Name</u>	<u>Location (Miles distant)</u>	<u>Enrollment (Fall, 1988)</u>
Georgetown College	Georgetown	1,471
Midway College	Midway (10)	396
Lexington Community College	Lexington (15)	3,401
Transylvania University	Lexington (15)	1,041
University of Kentucky	Lexington (15)	22,824
Kentucky State University	Frankfort (18)	2,222
Asbury College	Wilmore (34)	987
Eastern Kentucky University	Richmond (37)	13,664

Georgetown College

Georgetown College is a coeducational liberal arts college related to the Kentucky Baptist Convention. The college is accredited by the Southern Association of Colleges and Schools and is approved by the Kentucky Department of Education for the certification of teachers. Georgetown College confers the degrees: Bachelor of Arts, Bachelor of Science, Bachelor of Science in Medical Technology, Bachelor of Music Education, Master of Arts in Education, and a Rank I program.

Vocational Training

Vocational training is available at both the state vocational-technical schools and the area vocational education centers. The state vocational-technical schools are post-secondary institutions. The area vocational education centers are designed to supplement the curriculum of high school students. Both the state vocational-technical schools and the area vocational education centers offer evening courses to enable working adults to upgrade current job skills.

Arrangements can be made to provide training in the specific production skills required by an industrial plant. Instruction may be conducted either in the vocational school or in the industrial plant, depending upon the desired arrangement and the availability of special equipment.

Bluegrass State Skills Corporation

The Bluegrass State Skills Corporation, an independent public corporation created and funded by the Kentucky General Assembly, provides programs of skills training to meet the needs of business and industry from entry level to advanced training, and from upgrading present employees to retraining experienced workers.

The Bluegrass State Skills Corporation is the primary source for skills training assistance for a new or existing company. The Corporation works in partnership with other employment and job training resources and programs, as well as Kentucky's economic development activities, to package a program customized to meet the specific needs of a company.

<u>Vocational School</u>	<u>Location (Miles distant)</u>	<u>Enrollment (Fall, 1987)</u>
Central Kentucky State Vocational- Technical School	Lexington (15)	1,431
Northside Area Vocational Education Center	Lexington (15)	363
Southside Area Vocational Education Center	Lexington (15)	309
Franklin County Area Vocational Education Center	Frankfort (18)	216

OTHER LOCAL FACILITIES

Local Medical Personnel

Physicians - 23
Dentists - 12
Chiropractors - 3

Hospitals

<u>General Hospital</u>	<u>Location</u>	<u>Beds</u>
HCA Scott General Hospital	Georgetown	75

Medical staff - 70 physicians, 37 registered nurses, and 12 licensed practical nurses

Other Medical Facilities and Services

WEDCO District Health Department
Bluegrass West Comprehensive Care Center
Scott County Home Health Agency
Scott County Rescue Squad
Georgetown-Scott County Ambulance Service

Banks and Savings & Loan Associations

Farmers Bank & Trust Company
First Federal Savings & Loan Association
First National Bank & Trust Company
Georgetown Bank & Trust Company

Newspapers

The Georgetown Graphic (weekly)
Georgetown News & Times (weekly)

Telephone Service

South Central Bell

RECREATION

Local

A wide variety of recreational opportunities are available to residents of Georgetown and Scott County. Public facilities include four parks at which the city schedules supervised recreational programs each summer.

Features at the 12-acre Suffoletta Park include a swimming pool, tennis courts, basketball and volleyball courts, 4 baseball fields, a horseshoe pitching complex, a picnic pavilion, picnic tables, and playground equipment.

The Ed Davis Playground features playground equipment, a recreation building, 2 basketball courts, horseshoe pits, and a picnic shelter.

Marshall Park features a softball field, a youth football field, and playground equipment.

The 90-acre Scott County Community Park has a baseball and softball field, 2 new soccer fields, tennis courts, basketball courts, volleyball courts, a lighted horse show ring with a show barn, a picnic area, several playground areas, a lighted regulation-size croquet court, a tractor pull area, a concession-multi-purpose building, and parking.

The Georgetown-Scott County Parks and Recreation Board sponsors youth sports programs in baseball, football, soccer, T-ball, basketball, swimming, tennis, and ponytail softball. The board sponsors a supervised summer playground program at four locations for ages 6 to 15, a summer camp for handicapped children, and a year-round supervised latchkey service is offered at the Ed Davis Recreation Building. The board also offers Red Cross-approved swimming lessons and sponsors a 10K race and two tennis tournaments yearly. During the evening hours, the community pool may be rented for private parties. Adult programs are offered in men's, women's, co-recreational, and church softball; men's, women's, and co-recreational volleyball; men's basketball; square dance classes; horseshoe pitching leagues; and tennis lessons and leagues.

Annual events in Georgetown include the Festival of the Horse and the Bourbon-Scott Classic 30K Race. The Festival of the Horse is held during the last weekend in September and features a variety of entertainment, including a parade featuring all types of horses, appearances by celebrities, a 2.4-mile run, games and contests, arts and crafts, food booths, music and bands, dances, a picnic and style show, and carnival rides. The Bourbon-Scott Classic is a 30-kilometer (18.1-mile) state championship run. The event is held on the second Saturday in May.

Ward Hall Historic Home, a national historic landmark located at Georgetown, is a superb example of Greek Revival architectural design. The mansion is open to the public for tours from May through October.

Private facilities in the county include a country club, an 18-hole golf course, a swimming pool, a bowling alley, a riding club, and campgrounds.

Georgetown College offers sporting events and cultural activities including concerts, lectures, and theater. Most of these events are open to the public.

Area (Within 50 miles)

The Kentucky Horse Park
Lexington
Frankfort
Waveland State Shrine
White Hall State Shrine
Fort Boonesborough State Park
Blue Licks Battlefield State Park
Pleasant Hill
Herrington Lake
Kincaid Lake State Park
Old Fort Harrod State Park

COMMUNITY IMPROVEMENTS

Recent

Georgetown was again chosen in 1988 as a "Kentucky Certified City" as sponsored by the Kentucky Chamber of Commerce and awarded to communities based on achievement in development categories.

Toyota Motor Manufacturing U.S.A., Inc., has constructed a \$1.1 billion automobile assembly plant and component parts manufacturing facility in Scott County. The automotive complex is designed to manufacture 200,000 Camry model Toyota sedans per year. Production began with the 1989 model year. The Toyota Motor Manufacturing U.S.A., Inc., Power Train Plant is a \$300 million expansion to Toyota's Georgetown, Kentucky, facility. The Power Train Plant will produce engines, axles and steering components for the Camry four-door sedan. The Power Train Plant's production is divided into two phases. Phase I, completed in Fall 1989, includes the assembly and testing only of 200,000 engines per year for the Georgetown assembly plant. Phase II, expected to be completed in Fall 1991, includes the machining and assembly of engine components, and axle assembly and steering component assembly to meet production requirements of the Georgetown assembly plant.

A new 2.2 million gallon per day waste water treatment plant has recently been constructed which will primarily serve the Toyota plant. Estimated cost of this project is \$15,000,000, which will be funded by Toyota.

A solid waste program has been started and addresses the issues of illegal dumps, county-wide refuse collection, recycling, and education.

Georgetown Municipal Water & Sewer Service recently constructed a new 600,000-gallon storage tank at a cost of \$490,000. The Wastewater Treatment Plant No. 1 plans to begin the dechlorination of effluent, costing \$390,000, starting in 1990.

In October 1989, in Scott County, Kentucky-American placed in service a new 750,000-gallon elevated storage tank and a 2 to 5-million-gallon-per-day capacity booster pumping station which will operate in conjunction with an 18-mile, 24-inch transmission main completed in 1987 in Scott County. In 1988, Kentucky-American installed about 4.7 miles of 16-inch water mains in areas of Scott County, greatly reinforcing the transmission system in its service area. Plans call for additional system improvements to be constructed in the county over the next five years, which will require an investment by Kentucky-American Water Company in excess of \$1 million.

Under Way

Construction of the North Scott County Industrial Park is currently under way. The 390-acre site is located south of Sadieville, on U.S. 25 North.

A complete revision of the Comprehensive Plan for Georgetown, for the 15 years of 1990 through 2005, is under way. Areas covered in this plan include economic development (industrial recruitment, business retention, start-ups of small/minority businesses); capital budget for roads; water and sewer service; recycling; and county-wide refuse collection.

The Scott County Board of Education has started construction of a new elementary school in the northern area of the county and renovation of the Garth Elementary School is also in progress. Plans are also under way for the following: a new elementary school in the southwestern area of the county; the middle schools and the elementary school facilities designated as permanent school facilities will be upgraded; a new facility designated to house the vocational-technical program will be constructed; and Scott County High School will be upgraded.

Planned

Construction of the Scott County Jail/Justice Center is planned to start in 1990. The facility is scheduled to open in 1991 at a cost of \$5,000,000.

Plans for a 6,300-acre reservoir for water supply in northwest Scott County are currently being studied. The estimated cost for purchasing the land and construction of the dam is \$5,000,000.

Two new industrial parks, a 161-acre site northeast of the Toyota plant in the Delaplain area and an 11-acre site in Stamping Ground on U.S. Highway 227, are currently in the planning stages.

The City of Georgetown is planning to expand its landfill. Construction is expected to begin in 1991 and will increase the landfill from 10 to 36 acres at a cost of \$1,525,000. The expansion is expected to open in 1992 and will serve Georgetown and Scott County until the year 2030.

The Georgetown Municipal Water and Sewer Service is presently reviewing several alternatives which will greatly improve the water storage capacity and distribution system.

Plans are currently under way to construct a Bypass connecting U.S. Highway 25 South and U.S. 460 East, to widen U.S. Highway 25 South from Clinton Avenue to Etter Lane, and to widen U.S. Highway 62.