

1991

Industrial Resources: Shelby County - Shelbyville

Kentucky Library Research Collections
Western Kentucky University, spcol@wku.edu

Follow this and additional works at: https://digitalcommons.wku.edu/shelby_cty

 Part of the [Business Administration, Management, and Operations Commons](#), [Growth and Development Commons](#), and the [Infrastructure Commons](#)

Recommended Citation

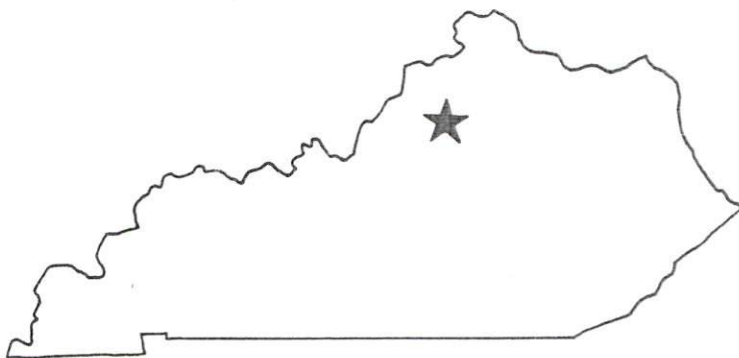
Kentucky Library Research Collections, "Industrial Resources: Shelby County - Shelbyville" (1991). *Shelby County*. Paper 4.
https://digitalcommons.wku.edu/shelby_cty/4

This Report is brought to you for free and open access by TopSCHOLAR®. It has been accepted for inclusion in Shelby County by an authorized administrator of TopSCHOLAR®. For more information, please contact topscholar@wku.edu.

R 710
Shelby Co

Resources for Economic Development

Shelbyville



KENTUCKY
Open for Business

RESOURCES FOR ECONOMIC DEVELOPMENT

SHELBYVILLE, KENTUCKY

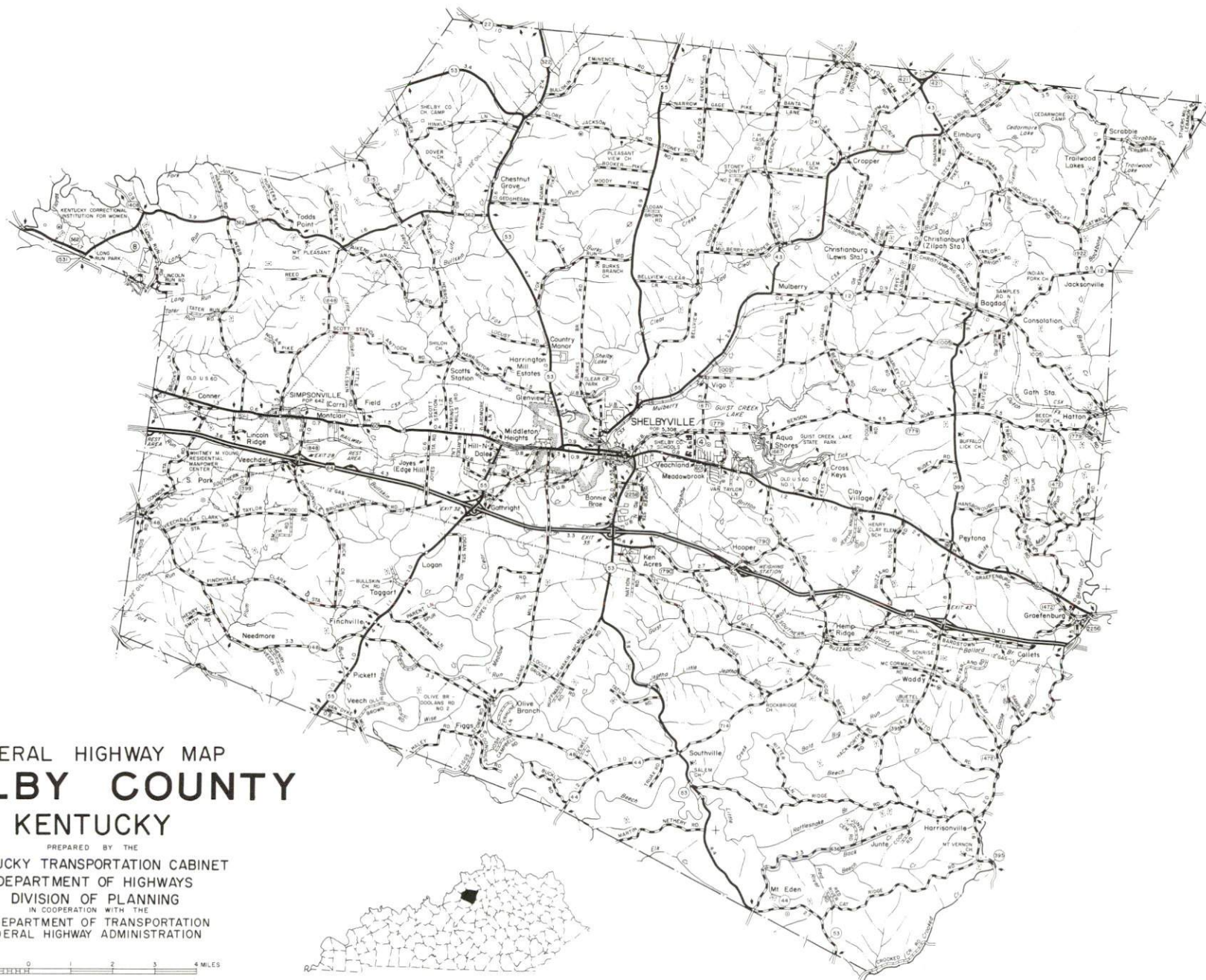
Prepared by
The Kentucky Cabinet for Economic Development
Division of Research and Planning
in cooperation with
The Shelby County Industrial and Development Foundation

1991

TABLE OF CONTENTS

<u>Chapter</u>	<u>Page</u>
SHELBYVILLE, KENTUCKY - A RESOURCE PROFILE	1
THE LABOR MARKET STATISTICS	2
Labor Market Area Map	2
Population	3
Population Projections	3
Estimated Labor Supply	3
Labor Force Characteristics of Residents, 1990	4
Selected Components of Nonagricultural Employment, by Place of Work, 1989	5
Per Capita Personal Income	6
Average Placement Wages	7
Average Weekly Wages of Workers Covered by Unemployment Insurance 1989 - Bar Chart	8
Average Weekly Wages by Industry, by Place of Work, 1989	9
EXISTING INDUSTRY	10
Shelbyville Manufacturing Firms, Their Products and Employment	10
Recent Industrial Developments	11
Labor Organizations in Manufacturing Firms	12
Selected Industrial Services	12
TRANSPORTATION	13
Highways	13
Truck Service	13
Selected Market Location Map	14
Rail	15
Air	15
Water	16
UTILITIES	17
Electricity	17
Natural Gas	17
Public Water Supply	18
Sewerage	18
CLIMATE	19

<u>Chapter</u>	<u>Page</u>
LOCAL GOVERNMENT	20
Structure	20
Planning and Zoning	20
Local Fees and Licenses	20
State and Local Property Taxes	21
EDUCATION	22
Public Schools	22
Area Colleges and Universities	22
Vocational Training	23
OTHER LOCAL FACILITIES	24
Local Medical Personnel	24
Hospitals	24
Other Medical Facilities and Services	24
Banks and Savings & Loan Associations	24
Newspapers	24
Telephone Service	24
RECREATION	25
COMMUNITY IMPROVEMENTS	26



GENERAL HIGHWAY MAP **SHELBY COUNTY** KENTUCKY

PREPARED BY THE
 KENTUCKY TRANSPORTATION CABINET
 DEPARTMENT OF HIGHWAYS
 DIVISION OF PLANNING
 IN COOPERATION WITH THE
 U.S. DEPARTMENT OF TRANSPORTATION
 FEDERAL HIGHWAY ADMINISTRATION

0 1 2 3 4 MILES

SHELBYVILLE, KENTUCKY - A RESOURCE PROFILE

Shelbyville, the county seat of Shelby County, is located in the Outer Bluegrass Region of north central Kentucky. Shelbyville, with a 1990 population of 6,238, is located 31 miles east of Louisville, Kentucky; 50 miles west of Lexington, Kentucky; 95 miles southwest of Cincinnati, Ohio; and 204 miles northeast of Nashville, Tennessee.

Shelby County, with a rolling to hilly terrain, covers a total land area of 385 square miles. In 1990, Shelby County had a population of 24,824.

The Economic Framework - The total number of Shelby County residents employed in 1990 averaged 12,619. In 1989, manufacturing firms in the county reported 3,148 employees; wholesale and retail trade provided 1,843 jobs; 1,321 people were employed in service occupations; state and local government accounted for 962 employees; and contract construction firms provided 233 jobs.

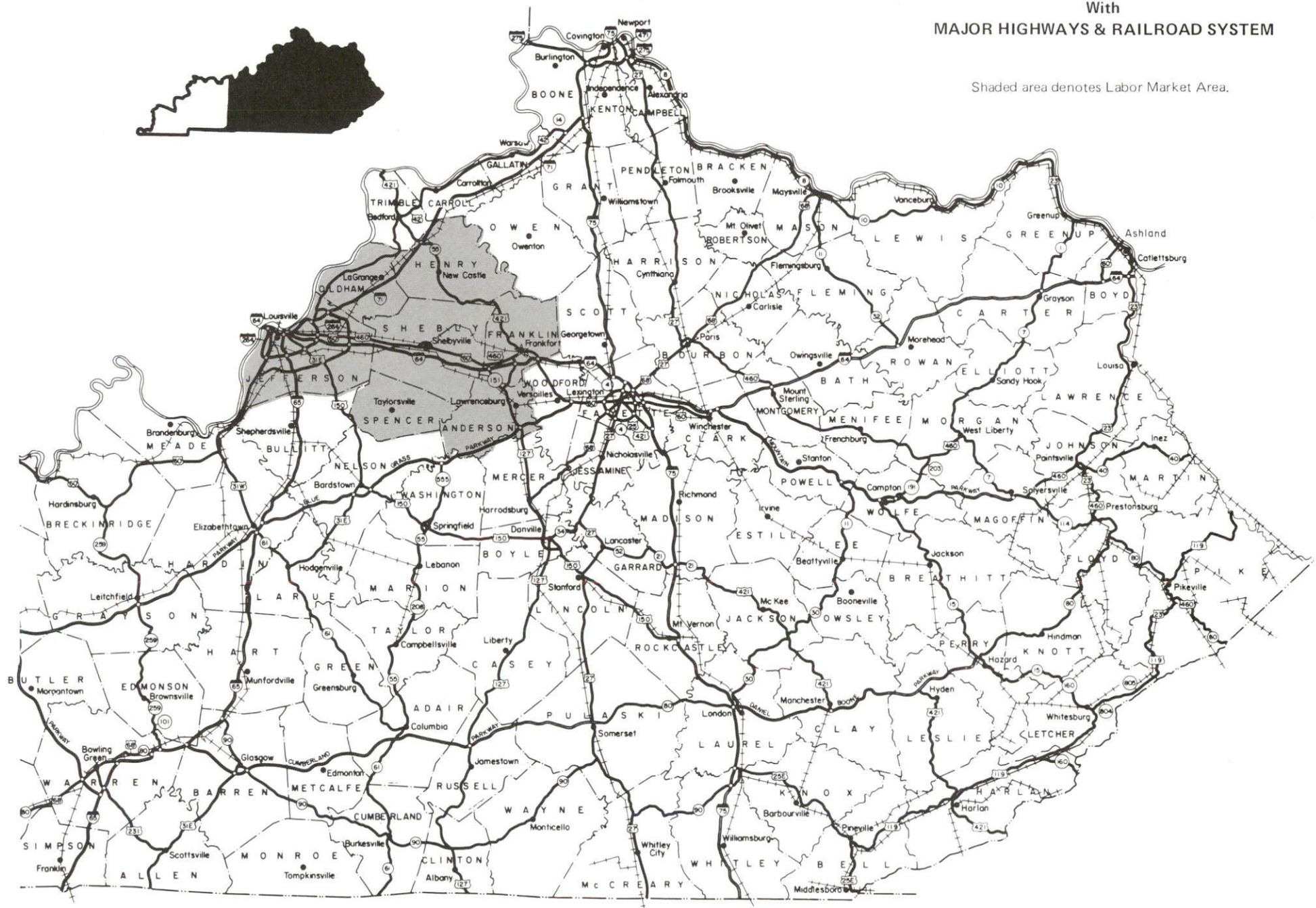
Labor Supply - There is a current estimated labor supply of 61,442 persons available for industrial jobs in the labor market area. In addition, from 1990 through 1994, 58,351 young persons in the area will become 18 years of age and potentially available for industrial jobs.

Transportation - Major highways serving Shelbyville are Interstate 64, U.S. Highways 60 and 460, and Kentucky Routes 53 and 55. Thirty-two trucking companies provide interstate and/or intrastate service to the area. Shelbyville is provided main line rail service by CSX Transportation and Southern Railway System. The nearest piggyback facility is available at Louisville, 31 miles west of Shelbyville. The Capital City Airport, 20 miles east of Shelbyville in Frankfort, and Bowman Field in Louisville, 26 miles west, provide facilities for small aircraft operation. The nearest scheduled commercial airline service is available at Standiford Field near Louisville, 35 miles west of Shelbyville.

Power and Fuel - Electric power is provided to Shelbyville and portions of Shelby County by Kentucky Utilities Company. The major portion of Shelby County is served by the Shelby Rural Electric Cooperative Corporation. Natural gas service is provided by Western Kentucky Gas Company.

Education - Primary and secondary education is provided by the Shelby County School System, which is accredited by the Southern Association of Colleges and Schools. Twelve colleges and universities are located within 50 miles of Shelbyville. Vocational training is available locally at the Shelby County Area Vocational Education Center. The Jefferson State Vocational-Technical School in Louisville, 31 miles west of Shelbyville, is the nearest state vocational training center.

Shaded area denotes Labor Market Area.



LABOR MARKET STATISTICS

The Shelbyville Labor Market Area includes Shelby County and the adjoining Kentucky counties of Anderson, Franklin, Henry, Jefferson, Oldham, and Spencer.

POPULATION

	<u>1990</u>	<u>1980</u>	<u>1970</u>
Labor Market Area	801,000	808,827	788,978
Shelbyville	6,238	5,329	4,182
Shelby County	24,824	23,328	18,999

Source: U.S. Department of Commerce, Bureau of the Census, January 1991.

POPULATION PROJECTIONS

	<u>2000</u>	<u>2010</u>	<u>2020</u>	<u>2030</u>
Labor Market Area	807,890	794,570	769,540	733,570
Shelby County	26,520	27,180	27,390	27,140

Source: University of Louisville, Urban Studies Center, State Data Center.

ESTIMATED LABOR SUPPLY

	<u>Current</u>				<u>Future</u>
	<u>Total</u>	<u>Unemployed</u>	<u>Employed Part-Time</u>	<u>Not in Labor Force</u>	<u>Becoming 18 years of age 1990 thru 1994</u>
Labor Market Area*	61,442	24,397	35,903	1,142	58,351
Shelby County	1,303	492	811	-	1,633

* Additional workers may be drawn from other nearby counties.

Note: Unemployed - persons unemployed and actively seeking work; Employed Part-Time - persons employed but working only 14 to 26 weeks per year; Not in Labor Force - represents the number of persons who would enter the labor force if suitable employment were available (based on the assumption that persons in Kentucky would like to participate in the labor force in the same proportion that they do nationally).

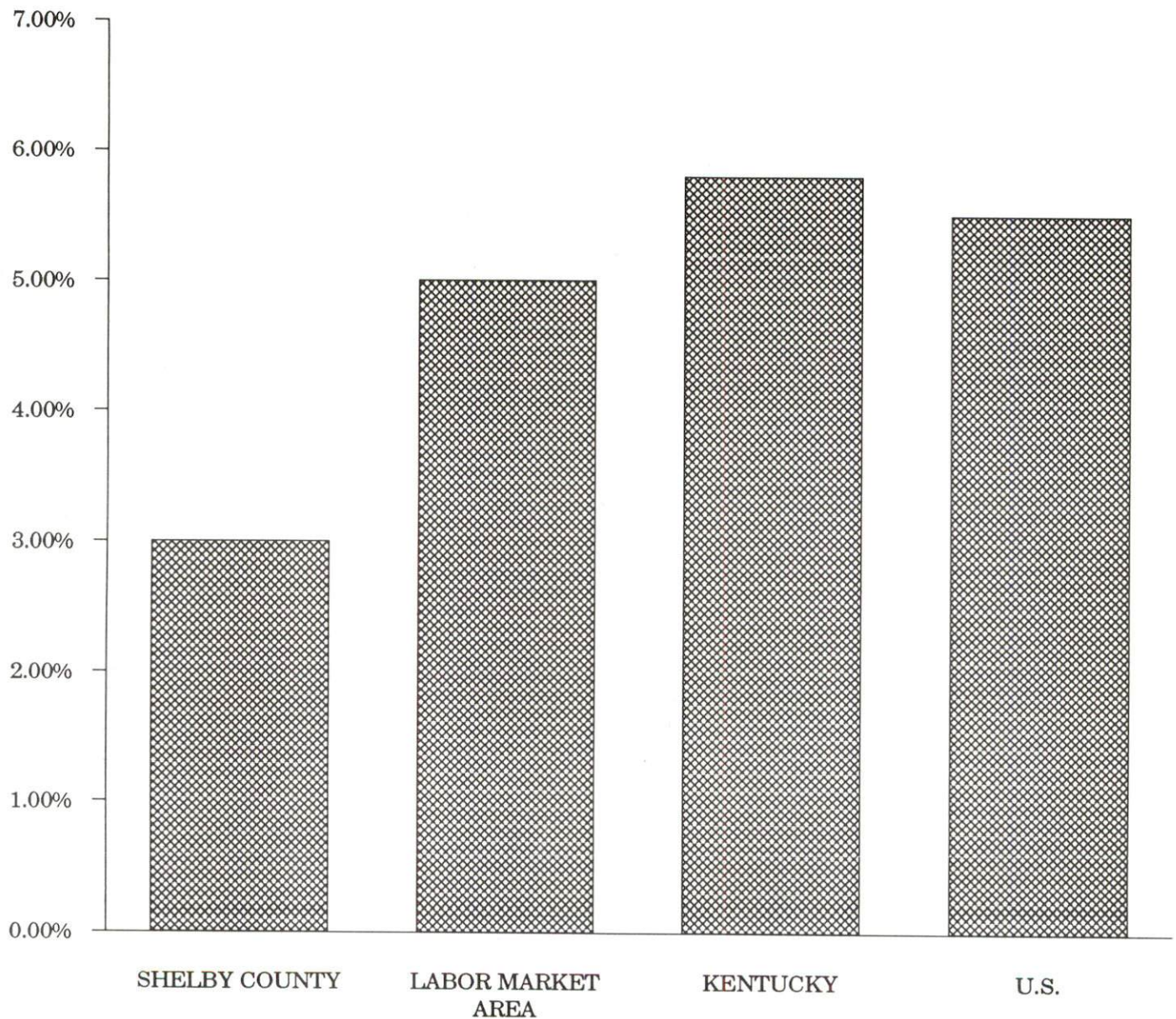
Sources: Kentucky Cabinet for Human Resources, Kentucky Labor Supply Estimates by County, 1989. Kentucky Cabinet for Economic Development, Future Labor Supply Becoming 18 Years of Age, 1990 thru 1994.

LABOR FORCE CHARACTERISTICS OF RESIDENTS, 1990

	<u>Shelby County</u>	<u>Labor Market Area</u>
Civilian Labor Force	13,009	443,800
Employment	12,619	421,487
Unemployment	390	22,313
Rate of Unemployment (%)	3.0	5.0

Source: Kentucky Cabinet for Human Resources, Kentucky Labor Force Estimates, Annual Averages, 1990.

UNEMPLOYMENT RATES 1990

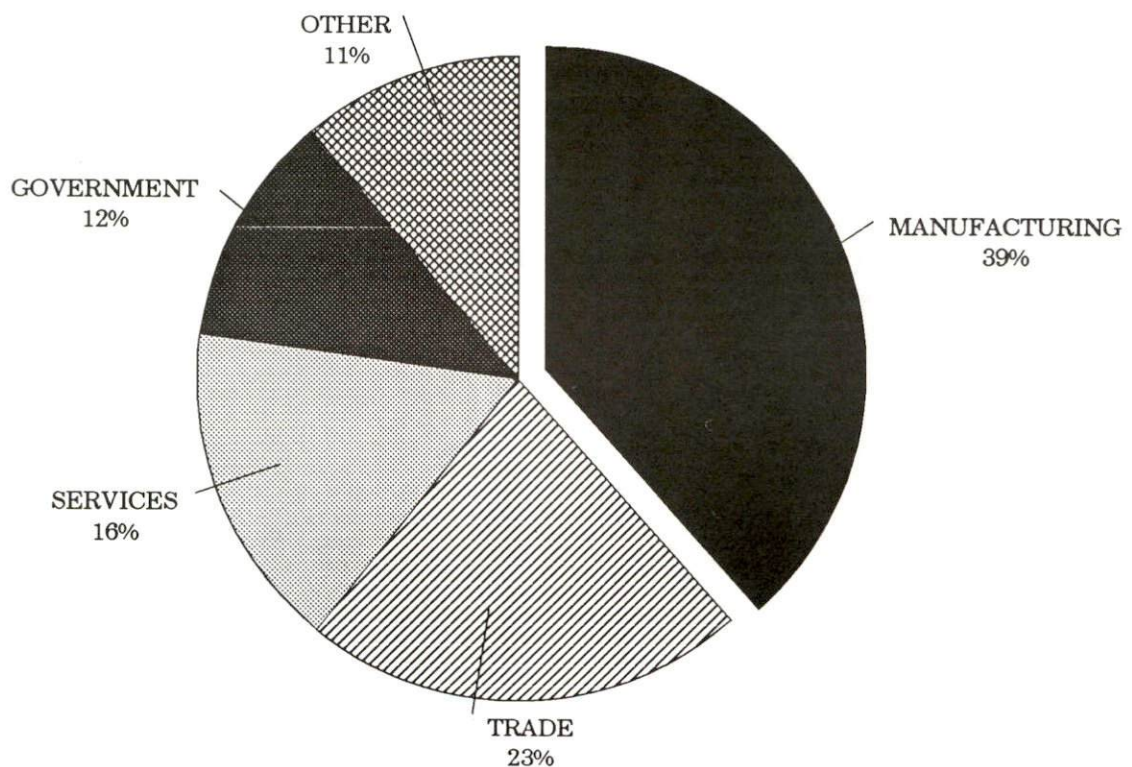


SELECTED COMPONENTS OF NONAGRICULTURAL EMPLOYMENT
BY PLACE OF WORK, 1989

	<u>Shelby County</u>	<u>Labor Market Area</u>
All Industries (total)	8,155	403,198
Manufacturing	3,148	79,381
Wholesale & Retail Trade	1,843	102,569
Services	1,321	99,768
State/Local Government	962	50,111
Contract Construction	233	19,421

Note: Excludes domestic workers, railway workers, certain nonprofit corporations, majority of federal government workers, and self-employed workers.
Source: Kentucky Cabinet for Human Resources, Average Monthly Workers Covered by Kentucky Unemployment Insurance Law, 1989.

SHELBY COUNTY

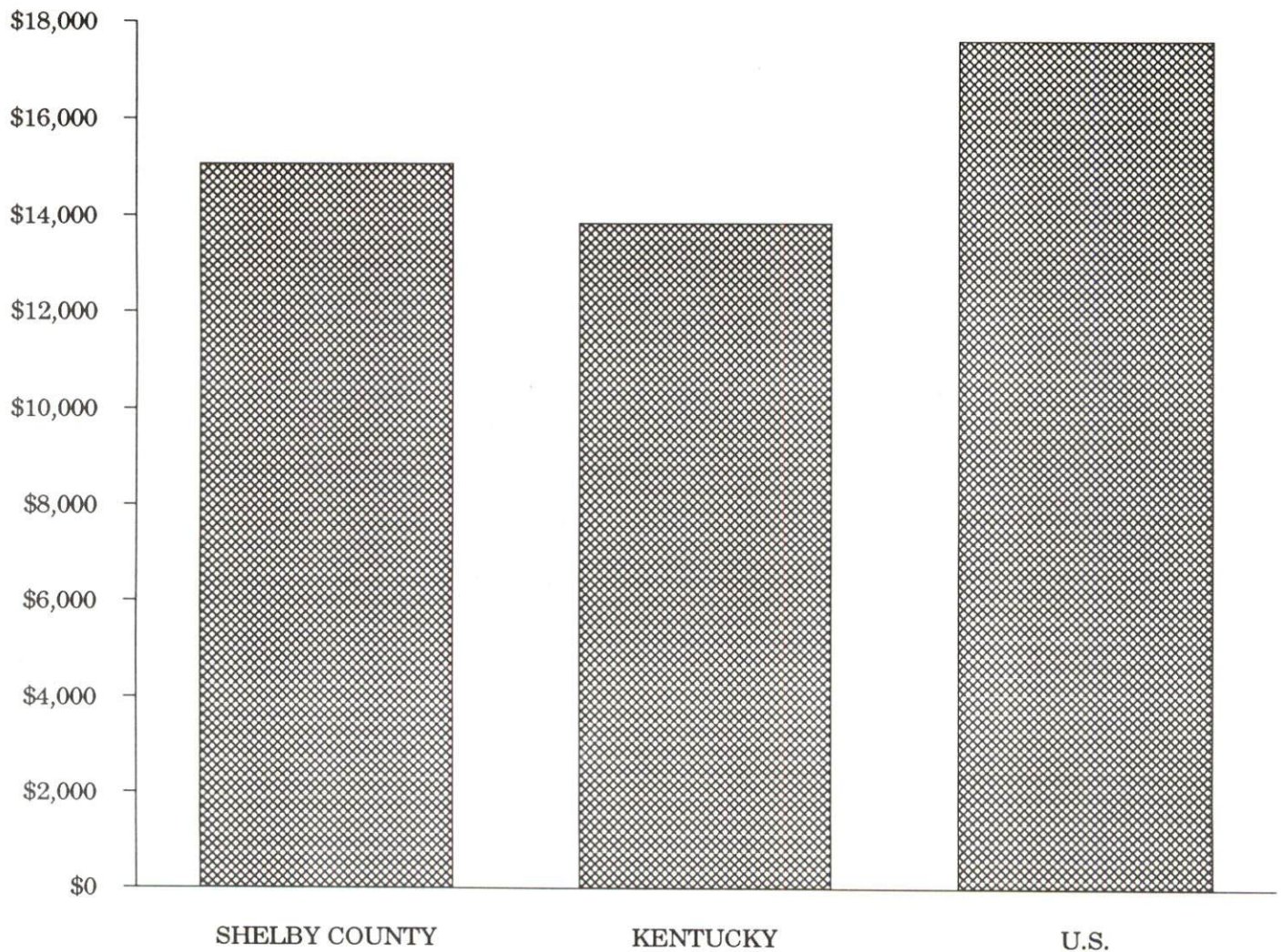


PER CAPITA PERSONAL INCOME

Area	1985	1989	Percent Change
Shelby County	\$11,586	\$15,059	29.9
Labor Market Area Range	\$9,098 - \$13,604	\$11,929 - \$17,783	-
Kentucky	\$10,755	\$13,823	28.5
U.S.	\$13,899	\$17,594	26.5

Source: U.S. Bureau of Economic Analysis, Kentucky Economic Information System, April 1990.

PER CAPITA PERSONAL INCOME
1989



AVERAGE PLACEMENT WAGES

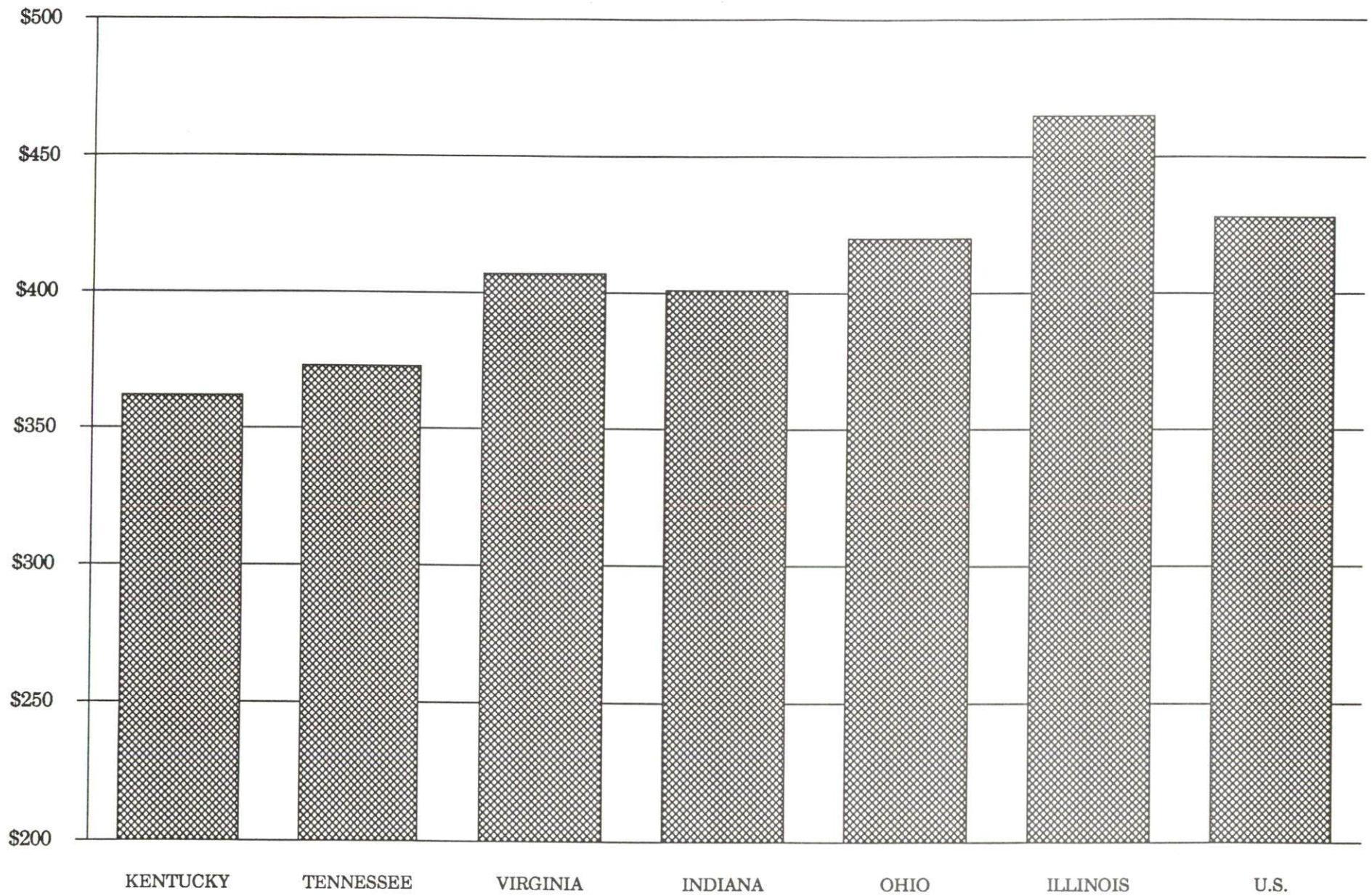
Shelby County is served by the Louisville local office of the Kentucky Department for Employment Services. The focus of the following data is on job placements made by the Louisville local office and may therefore be used as an indicator of the wages which employers in the area pay new employees. During the twelve months which ended on June 30, 1990, the local employment office filled 15,967 job openings in various occupational categories. The average hourly wage for selected occupational categories were:

<u>OCCUPATIONAL CATEGORY</u>	<u>NUMBER OF PLACEMENTS</u>	<u>AVERAGE WAGE(\$)</u>
All Occupations	15,967	5.24
Clerical	3,716	4.54
Sales	554	4.38
Services (excluding domestic)	1,901	3.85
Agricultural, Fishery, Forestry, etc.	259	4.01
Processing	808	4.97
Machine Trades	913	6.28
Bench Work	800	5.29
Structural	1,131	6.50
Motor Freight/ Transportation	408	4.36
Packaging and Materials Handling	5,079	6.00
Other	113	3.58

The Louisville local office also serves Bullitt, Henry, Jefferson, Oldham, Spencer, and Trimble Counties. The above occupational categories are taken from the Dictionary of Occupational Titles published by the U.S. Department of Labor.

Source: Kentucky Cabinet for Human Resources, Department for Employment Services.

AVERAGE WEEKLY WAGES OF WORKERS COVERED BY
UNEMPLOYMENT INSURANCE - 1989



AVERAGE WEEKLY WAGES BY INDUSTRY
BY PLACE OF WORK, 1989*

	Shelby County	Kentucky (State- Wide)	Tennessee	Virginia
All Industries	\$316.04	\$362.03	\$373.00	\$407.00
Mining & Quarrying	0	623.82	522.00	576.00
Contract Construction	276.81	388.21	407.00	434.00
Manufacturing	391.84	472.92	431.00	470.00
Transportation, Communications & Public Utilities	452.78	482.22	493.00	575.00
Wholesale & Retail Trade	208.41	245.12	N/A	N/A
Finance, Insurance & Real Estate	327.17	417.89	448.00	488.00
Services	262.29	310.29	357.00	409.00
State/Local Government	335.16	370.61	N/A	N/A
	<u>Indiana</u>	<u>Ohio</u>	<u>Illinois</u>	<u>U. S.</u>
All Industries	\$401.00	\$420.00	\$465.00	\$428.00
Mining & Quarrying	693.00	596.00	707.00	688.00
Contract Construction	464.00	480.00	608.00	485.00
Manufacturing	546.00	580.00	566.00	534.00
Transportation, Communications & Public Utilities	504.00	533.00	582.00	556.00
Wholesale & Retail Trade	N/A	N/A	N/A	N/A
Finance, Insurance & Real Estate	418.00	456.00	594.00	544.00
Services	328.00	360.00	419.00	399.00
State/Local Government	N/A	N/A	N/A	N/A

* Wages for U.S. and surrounding states rounded to nearest dollar.

N/A Not Available.

Note: The average weekly wage for each category includes the salaries and wages of all persons working for that type business. For example, the manufacturing category includes both production workers and administrative personnel. Excludes domestic workers, railway workers, certain nonprofit corporations, majority of federal government workers, and self-employed workers.

Source: Kentucky Cabinet for Human Resources, Average Weekly Wages of Workers Covered by Kentucky Unemployment Insurance Law, 1989. U.S. Department of Labor, Bureau of Labor Statistics, Employment and Wages, Annual Averages, 1989, October 1990.

EXISTING INDUSTRY

SHELBYVILLE MANUFACTURING FIRMS, THEIR PRODUCTS AND EMPLOYMENT

<u>Firm</u> <u>(Establishment date)</u>	<u>Product</u>	<u>1990</u> <u>Average Employment</u>
AAPER Alcohol & Chemical Company (1980)	Ethyl alcohol, chafing dish fuel	84
Alusuisse Flexible Packaging, Inc. (1987)	Foil packaging, food & health care packaging	150
American Emblem Tool Company (1977)	Circular saw steel and carbide blades	220
Atlantic Envelope Company (1972)	Envelopes	88
Bekaert Corporation (1989)	Preformed staple wire	38
Bluegrass Forging Tool & Die, Inc. (1967)	Forging dies, die inserts	18
The Budd Company (1988)	Auto stamping, sheet metal assemblies	520
Cargill, Inc. (1960)	Fertilizer	10
Coca-Cola Bottling Company (1920)	Soft drinks	48
Dotson Concrete, Inc. (1965)	Ready mixed concrete	19
Electro-Wire Truck and Industrial (1985)	Wiring harness	150
Ichikoh Manufacturing, Inc. (1988)	Auto mirrors (inside/outside)	320
Industrial Powder Coating, Inc. (1987)	Powder coating	100
Irotas Manufacturing Company (1977)	Corrugated boxes, conveyor rolls, printing cylinders	53
Katayama American Company, Inc. (1989)	Auto parts	117
The Kentucky Stone Company (1988)	Asphalt	4
Landmark Web Press (1968)	Commercial printing, newspapers	44
Ledco, Inc. (1979)	Metal and wood doors	92
Lee-McClain Company, Inc. (1933)	Men's slacks, suits, and sport coats	75
Long Block & Supply Company (1938)	Concrete septic tanks, precast products, concrete block	21
Monroe Pallet and Manufacturing Company (1979)	Pallet parts	3
Nationwide Imprinting Corporation (1979)	Job printing, imprinted pencils	3
Ohio Valley Aluminum Company, Inc. (1960)	Aluminum extrusions, aluminum reclaimed scrap ingot, aluminum billets	63
Plastic Parts, Inc. (1969)	Molds for plastics, injection molded structural foam	50

(Continued)

<u>Firm</u> <u>(Establishment date)</u>	<u>Product</u>	<u>1990</u> <u>Average Employment</u>
Revere Foil Containers (1967)	Aluminum foil containers, polystyrene dome covers	70
Reynolds Aluminum (1990)	Aluminum foil	40
Roll Forming Corporation (1947)	Structural sheet metal work, custom roll formed products	190
The Sentinel News (1986)	Newspaper	19
Shelby Industries, Inc. (1982)	Couplers, trailer jacks, winches	60
Soltech, Inc. (1985)	Fiber glass insulation	155
Southwestern Tobacco Company, Inc. (1925)	Hogsheads repairing	26
Sparrows' Farm Service (1971)	Dry and liquid fertilizer mixing	10
Union Camp Corporation (1980)	Hi-density polyethylene bags	180
Wikoff Color Corporation of South Carolina	Printing ink	9
Simpsonville		
Leggett & Platt, Inc. (1959)	Recliner chair mechanisms, swivel chair mechanisms	450
F.B. Purnell Sausage Company, Inc. (1955)	Sausage products	190

Sources: Kentucky Cabinet for Economic Development, Division of Research and Planning.

RECENT INDUSTRIAL DEVELOPMENTS

Reynolds Aluminum opened in Shelbyville in 1990. The aluminum foil manufacturer employs 40. American Emblem Tool recently expanded its workforce to 240. Soltech, Inc. added 80,000 square feet to its plant and added 95 new jobs. AAPER Alcohol and Chemical Company completed a 24,000 square-foot expansion in 1990 and added 40 new jobs.

Ichikoh plans to double the size of its plant in 1991, bringing the total square-footage of the plant to 160,000. The company also plans to increase employment from 320 to 400. Katayama plans to implement a 60,000 square-foot expansion and increase employment from 117 to 350 in 1991. In addition, Electro-Wire plans to double the size of its plant in 1991.

Nearly every plant that has located in Shelbyville in the past several years has both expanded the size of its workforce and increased the size of its plant.

Blue Cross and Blue Shield recently built a \$6 million building to house a new data processing facility in Shelbyville.

A new connector road is nearing completion which connects Kentucky Highway 53 with Kentucky Highway 55 east of Shelbyville. The connector has opened 500 acres for development. Plans for both single family and multi-family housing have been made. Zoning for commercial and light industrial development has been approved.

LABOR ORGANIZATIONS IN MANUFACTURING FIRMS

<u>Union</u>	<u>Representing workers at:</u>
Aluminum, Brick and Glass Workers International Union, AFL-CIO	Revere Foil Containers
International Association of Machinist and Aerospace Workers, AFL-CIO	Leggett and Platt, Inc.

SELECTED INDUSTRIAL SERVICES

<u>Types of Services</u>	<u>Location</u>	<u>Mileage from Shelbyville</u>
Custom Data Processing	Shelbyville	-
Custom Plastics Producers	Shelbyville	-
Electric Motor Repair	Louisville	31
Grinding, Precision & Tool	Louisville	31
Heat Treating Facilities	Frankfort	21
	Louisville	31
Industrial Equipment & Supplies	Frankfort	21
	Louisville	31
Industrial Gases	Louisville	31
Industrial Waste Removal	Frankfort	21
	Buckner	24
	Louisville	31
Machine Shops, Tool & Die	Shelbyville	-
Metal Castings	Louisville	31
Metal Finishers	Jeffersontown	19
	Louisville	31
Metal Service Centers	Louisville	31
Millwrights	Louisville	31
Public Warehouse Facilities	Shelbyville	-

Sources: Kentucky Cabinet for Economic Development, Division of Research and Planning.

TRANSPORTATION

Highways

Major highways serving Shelbyville are Interstate 64, U.S. Highways 60 and 460, and Kentucky Routes 53 and 55. All are "AAA"-rated (80,000-pound gross load limit) trucking highways.

Interstate 64, a major east-west route, serves Shelbyville with two interchanges. An interchange of Interstate 64 is located three miles southeast of downtown Shelbyville via Kentucky Highway 53. Another interchange is located four miles southwest of the downtown area via Kentucky Highway 55.

Interstate 64 provides direct access to Louisville, 31 miles west, where it connects with Interstates 65 and 71. Interstate 64 also provides direct access to Lexington, 50 miles east of Shelbyville, where it connects with Interstate 75.

HIGHWAY MILES FROM SHELBYVILLE, KENTUCKY, TO SELECTED MARKET CENTERS

City	Highway Miles	City	Highway Miles
Atlanta, GA	414	Los Angeles, CA	2,117
Baltimore, MD	584	Louisville, KY	31
Birmingham, AL	446	Nashville, TN	204
Chicago, IL	318	New Orleans, LA	724
Cincinnati, OH	95	New York, NY	763
Cleveland, OH	379	Pittsburgh, PA	391
Detroit, MI	390	St. Louis, MO	289
Knoxville, TN	221		

Note: Mileage computations are via the best interstate or primary highways, not necessarily the most direct route of travel.

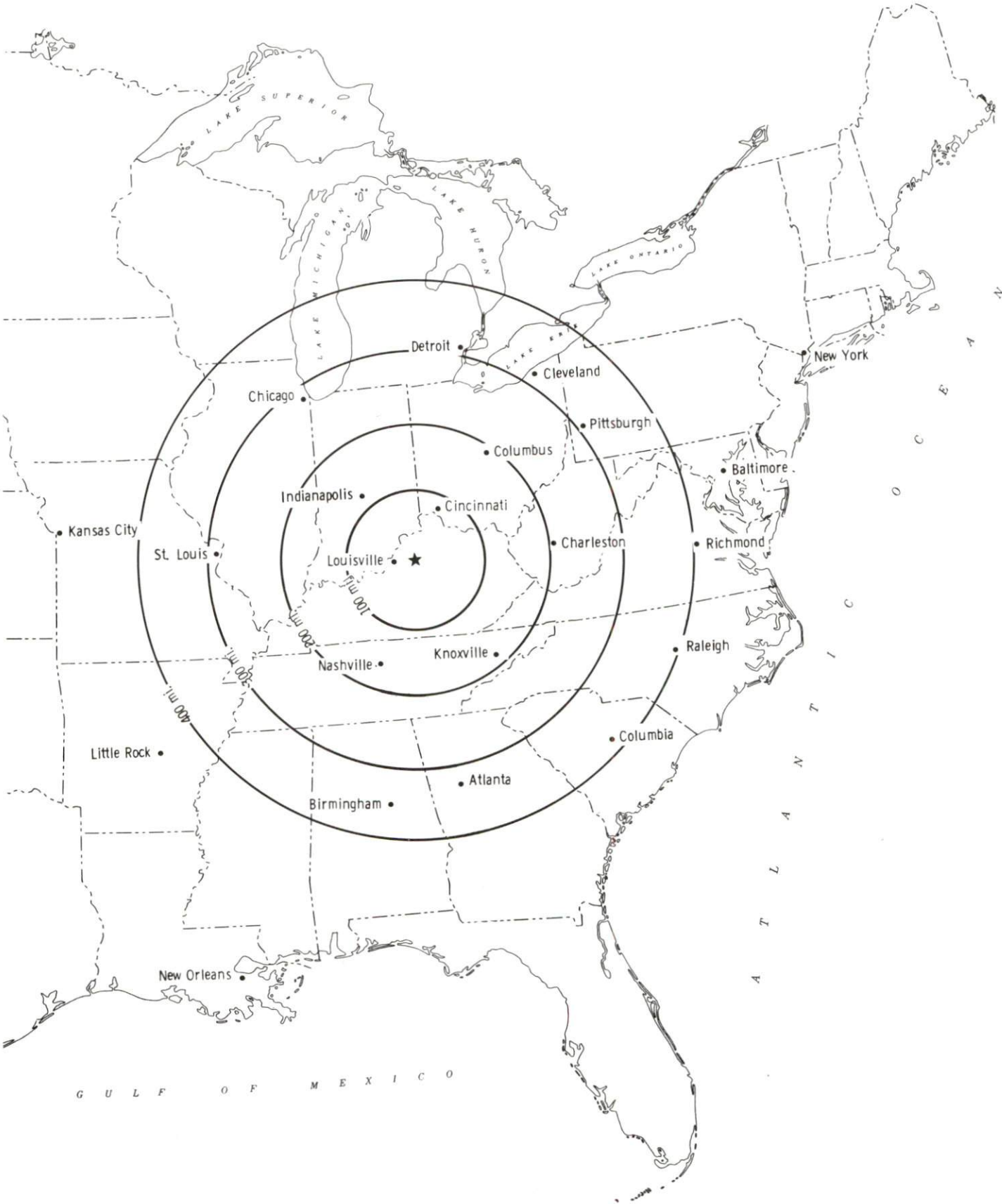
Sources: Rand McNally Deluxe Motor Carriers' Road Atlas, 1989. Official Kentucky Mileage Map, 1980.

Truck Service

Thirty-two trucking companies provide interstate and/or intrastate service to Shelbyville.

Source: American Motor Carrier Directory, Spring 1991.

Selected Market Centers



Rail

Shelbyville is provided main line rail service by CSX Transportation and Southern Railway System. Piggyback facilities are available in Louisville, 31 miles west of Shelbyville. The following railroad companies have piggyback facilities in Louisville: CSX Transportation, Southern Railway System, and Paducah and Louisville Railway.

For details on routing, schedules, rates, and services contact:

District Sales Manager
Norfolk Southern Corporation
1402 South 15th Street
Louisville, Kentucky 40210
(502) 636-6023

and/or

Manager
Industrial Development
CSX Transportation
9420 Bunsen Parkway
Suite 212
Louisville, Kentucky 40220
(502) 499-3025

Air

Local

Location:	Capital City Airport 1 mile west of Frankfort; 20 miles east of Shelbyville
Runways:	One paved
Length:	5,000 feet
Traffic	
Control:	Wind tee
Lighting:	Beacon, runway lights sundown to sunrise, REILS, VASI
Services:	100 octane, jet fuel, storage, taxi
Location:	Bowman Field 4 miles southeast of center of Louisville; 26 miles west of Shelbyville
Runways:	Three
Length:	4,312 feet, 3,677 feet, 3,539 feet
Traffic	
Control:	Control tower
Lighting:	Runways, obstruction, beacon, and wind tee lighted; VASI
Services:	100 octane and jet fuel, major A & P repairs, storage, radio service, FAA Flight Standards District Office, FAA Automated Flight Service Station, charter service (aircraft & helicopter), taxi, city bus, rental car service, restaurant, 3 fixed base operators

Nearest Scheduled Commercial Airline Service

Standiford Field
Location: 4 miles southeast of center of Louisville, Kentucky;
35 miles west of Shelbyville
Air Service: Air Toronto, Delta, Northwest, American,
Continental, TWA, United, USAir, ComAir,
JetStream, Simmons Eagle
Daily Arrivals
& Departures: 164

Bluegrass Airport
Location: 4 miles west of Lexington, Kentucky;
44 miles east of Shelbyville
Air Service: Delta, USAir, United Express, American Eagle,
ComAir, TW Express, Atlantic Southeast Airlines,
Northwest Airlink
Daily Arrivals
& Departures: 74

Water

Shelbyville is located 31 miles east of Louisville, where port facilities are available on the Ohio River. The Louisville and Jefferson County Riverport Authority has been designated as a Foreign Trade Zone and offers complete U.S. Customs services for exports and imports. The Port of Louisville is also available for public use.

UTILITIES

Electricity

Company serving Shelbyville and parts of Shelby County - Kentucky

Utilities Company

Source of power - Kentucky Utilities Company

For industrial rates contact:

Industrial Development Department
Kentucky Utilities Company
One Quality Street
Lexington, Kentucky 40507
(606) 255-1461

Company serving a major portion of Shelby County - Shelby Rural Electric

Cooperative Corporation

Source of power - East Kentucky Power Cooperative

For industrial rates contact:

Industrial Development Division
East Kentucky Power Cooperative
P. O. Box 707
Winchester, Kentucky 40392-0707
(606) 744-4812

and/or

Shelby Rural Electric Cooperative
Corporation
Old Finchville Road
Shelbyville, Kentucky 40065
(502) 633-4420

Natural Gas

Company serving Shelbyville - Western Kentucky Gas Company

Source of supply - Texas Gas Transmission Corporation

For rates and supplies contact:

Western Kentucky Gas Company
311 West 7th Street
Owensboro, Kentucky 42301
(502) 685-8067

Public Water Supply

Company serving Shelbyville - Shelbyville Municipal Water and Sewer Commission
1059 Washington Street
Shelbyville, Kentucky 40066-0608
(502) 633-2840

Source -	Guist Creek Lake
Treatment plant capacity -	4,600,000 gallons per day
Average daily consumption -	2,320,000 gallons
Peak daily consumption -	3,600,000 gallons
Storage capacity -	2,540,000 gallons
Water pressure -	30 psi to 120 psi

Company serving portions of Shelby County - West Shelby Water District
P.O. Box 26
Simpsonville, Kentucky 40067
(502) 722-8944

Source -	Shelbyville Municipal Water and Louisville Water Company
Maximum amount available -	597,000 gallons per day
Average daily consumption -	375,000 gallons
Peak daily consumption -	435,000 gallons
Storage capacity -	950,000 gallons
Water pressure -	50 psi to 100 psi

Sewerage

Company serving Shelbyville - Shelbyville Municipal Water and Sewer Commission
P.O. Box 608
Shelbyville, Kentucky 40066
(502) 633-2840

Design capacity -	1,070,000 gallons per day
Average daily flow -	1,040,000 gallons
Type of treatment -	Secondary
Treated effluent discharged into -	Clear Creek

An expansion of the wastewater treatment facility was begun in March 1991 with completion scheduled for April 1992. The \$2.6 million project will increase the treatment plant's capacity from 1.07 million gallons per day to 1.87 million gallons.

Company serving the perimeter of Shelbyville - Sanitation District #1 of Shelby County
P.O. Box 728
Shelbyville, Kentucky 40065
(502) 633-3521

The Sanitation District utilizes the treatment facilities of the Shelbyville Municipal Water and Sewer Commission. The district began providing sewerage service in April 1989.

CLIMATE

Shelby County

Temperature

Normal (29-year record)	54.90 degrees
Average annual 1989	54.20 degrees
Record highest, July 1988 (45-year record)	103.00 degrees
Record lowest, January 1963 (45-year record)	-21.00 degrees
Normal heating degree days (29-year record)	4,814
(Heating degree day totals are the sums of negative departures of average daily temperatures from 65 degrees F.)	

Precipitation

Normal (29-year record)	45.68 inches
Mean annual snowfall (45-year record)	16.10 inches
Total precipitation 1989	53.16 inches
Mean number days precipitation (.01 inch or more) (45-year record)	129.50
Mean number days thunderstorms (45-year record)	45.30

Prevailing winds (through 1963)

South

Relative Humidity (26-year record, except 1 a.m. - 25-year record)

1 a.m.	77 percent
7 a.m.	81 percent
1 p.m.	60 percent
7 p.m.	64 percent

Source: U.S. Department of Commerce, Environmental Science Services Administration, Climatological Data, 1989. Station of record: Lexington, Kentucky.

LOCAL GOVERNMENT

Structure

The city of Shelbyville is served by a mayor and six council members. The mayor serves a four-year term and the council members serve two-year terms. Shelby County is served by a county judge/executive and seven magistrates. The judge/executive and magistrates are elected to serve four-year terms.

Planning and Zoning

Joint agency - Triple S Planning Commission
Participating cities - Shelbyville, Simpsonville
Zoning enforced - All areas, both county and cities
Subdivision regulations enforced - All areas, both county and cities
Local codes enforced - Building
Mandatory state codes enforced - Kentucky Plumbing Code, National Electric Code, Kentucky Boiler Regulations and Standards, Kentucky Building Code (modeled after BOCA code)

Local Fees and Licenses

The city of Shelbyville levies an occupational tax of one percent on gross wages, salaries, and commissions of individuals. A net profits business tax of \$50 for the first year is also charged by the city. Thereafter, the net profits tax is one percent with a maximum of \$3,000 per year.

Shelby County levies an occupational tax of one percent on wages and net profits, in unincorporated areas, exempting the first \$10,000 of net profits.

PROPERTY TAXES

The Kentucky Constitution requires the state to tax all classes of taxable property, and state statutes allow local jurisdictions to tax only a few classes. All locally taxed property is subject to county taxes and school district taxes (either a county school district or an independent school district). Property located inside of city limits may also be subject to city property taxes.

Special local taxing jurisdictions (fire protection districts, watershed districts, and sanitation districts) levy taxes within their operating areas (usually a small portion of community or county).

Property assessments in Kentucky are at 100% fair cash value. A 15% reduction is automatically granted for accounts receivable.

STATE PROPERTY TAX RATES PER \$100 VALUATION

<u>Selected Classes of Property</u>	<u>1990 State Rate</u>	<u>Local Taxation Permitted</u>
Real Estate	\$0.189	YES
Manufacturing Machinery	0.150	NO
Pollution Control Equipment	0.150	NO
Inventories		
Raw Materials	0.050	NO
Goods in Process	0.050	NO
Finished Goods	0.050	YES
Motor Vehicles	0.450	YES
Other Tangible Personal Property	0.450	YES
Intangibles (Accounts Receivable, Money on Hand)	0.250	NO

LOCAL PROPERTY TAX RATES PER \$100 VALUATION, 1990

<u>Taxing Jurisdiction</u>	<u>Real Estate</u>	<u>Finished Goods & Tangibles</u>	<u>Motor Vehicles</u>
Shelby County	\$0.2250	\$0.2210	\$0.2210
School Districts:			
Shelby County	0.5430	0.5430	0.2880
Cities:			
Shelbyville	0.1700	0.2610	0.2610
Simpsonville	0.1700	None	None

EDUCATION

Public Schools

	Shelby County
Total Enrollment (Fall, 1990)	4,403
Accreditation	Southern Association of Colleges and Schools
Pupil-Teacher Ratio (1989-90)	18.9-1
Percent High School Graduates to College (1989-90)	57.6
Expenditures Per Pupil (1989-90)	\$2,626.95

Area Colleges and Universities

<u>Name</u>	<u>Location (Miles distant)</u>	<u>Enrollment (Fall, 1990)</u>
Kentucky State University	Frankfort, Kentucky (21)	2,512
Bellarmino College	Louisville, Kentucky (31)	3,907
Jefferson Community College	Louisville, Kentucky (31)	10,240
Spalding University	Louisville, Kentucky (31)	1,028
University of Louisville	Louisville, Kentucky (31)	23,610
Midway College	Midway, Kentucky (34)	556
Indiana University, Southeast Campus	New Albany, Indiana (37)	5,642
Georgetown College	Georgetown, Kentucky (39)	1,595
Saint Catharine College	Springfield, Kentucky (49)	257
Lexington Community College	Lexington, Kentucky (50)	4,588
Transylvania University	Lexington, Kentucky (50)	1,091
University of Kentucky	Lexington, Kentucky (50)	23,087

Vocational Training

Vocational training is available at both the state vocational-technical schools and the area vocational education centers. The state vocational-technical schools are post-secondary institutions. The area vocational education centers are designed to supplement the curriculum of high school students. Both the state vocational-technical schools and the area vocational education centers offer evening courses to enable working adults to upgrade current job skills.

Arrangements can be made to provide training in the specific production skills required by an industrial plant. Instruction may be conducted either in the vocational school or in the industrial plant, depending upon the desired arrangement and the availability of special equipment.

Bluegrass State Skills Corporation

The Bluegrass State Skills Corporation, an independent public corporation created and funded by the Kentucky General Assembly, provides programs of skills training to meet the needs of business and industry from entry level to advanced training, and from upgrading present employees to retraining experienced workers.

The Bluegrass State Skills Corporation is the primary source for skills training assistance for a new or existing company. The Corporation works in partnership with other employment and job training resources and programs, as well as Kentucky's economic development activities, to package a program customized to meet the specific needs of a company.

<u>Vocational School</u>	<u>Location (Miles distant)</u>	<u>Cumulative Enrollment 1989-1990</u>
Shelby County Area Vocational Education Center	Shelbyville	347
Jefferson State Vocational-Technical School and Manpower Skill Center	Louisville (31)	1,225

OTHER LOCAL FACILITIES

Local Medical Personnel

Physicians - 20

Dentists - 9

Hospitals

<u>General Hospital</u>	<u>Location</u>	<u>Beds</u>
United Medical Center	Shelbyville	76

Medical staff - 28 active physicians, 67 courtesy physicians,
50 registered nurses, and 12 licensed practical nurses

The United Medical Center is currently planning construction of a new emergency department, physical therapy and occupational therapy unit as well as an expanded cardio-pulmonary unit.

Other Medical Facilities and Services

North Central District Health Department
Shelby County Emergency Medical Services
Shelbyville-Shelby County Rescue Squad

Banks and Savings & Loan Associations

Liberty National Bank of Shelbyville
Citizens Union Bank
Republic Bank
Shelby County Trust Bank
The Cumberland
Great Financial Federal

Newspapers

The Sentinel-News (twice weekly)

Telephone Service

South Central Bell Telephone Company

RECREATION

Local

Public recreational facilities in Shelbyville include nine baseball diamonds, one central park, three mini-parks, one swimming pool with a winter enclosure, nine tennis courts, a bowling alley and three golf courses. The country club offers an 18-hole golf course, a swimming pool, a clubhouse and tennis courts.

The 132-acre Clear Creek Park is located adjacent to Lake Shelby, a 100-acre fishing lake. The park contains three softball fields, four baseball fields, six tennis courts, three soccer fields, boat rentals, a boat ramp and dock, three shelters, a playground, four horseshoe pits, an activities center, a miniature golf course, and a nine-hole golf course.

Guist Creek Lake, located four miles east of the city, is a 325-acre skiing and fishing lake with both primitive and recreational vehicle camping available.

Persimmon Ridge, a recreation and residential development, includes an 18-hole golf course, swimming pool, and tennis courts.

A new public 18-hole golf course recently opened at the intersection of Kentucky 53 and Interstate 64.

A fine collection of English antiques, Georgian silver, limited edition porcelain and paintings are featured at Shelbyville's Wakefield-Scearce Galleries. Historic Science Hill Inn is located beside the Galleries. Shelbyville also has numerous other stores and specialty shops.

Area (Within 50 miles)

Taylorsville Lake State Park
E. P. "Tom" Sawyer State Park
Lincoln Homestead State Park
My Old Kentucky Home State Park
The Kentucky Horse Park
Old Fort Harrod State Park
Bernheim Forest Arboretum

COMMUNITY IMPROVEMENTS

Recent

Shelbyville re-certified as a "Kentucky Certified City" in 1990, and is distinguished as a gold award winner recognizing eight consecutive years of certification. Re-certification is based on achievement in the following areas: existing industry assistance, small business assistance, educational resources, and community development factors of health care, public safety, arts and culture, recreation, governmental awareness and resources. The Certified Cities Program is sponsored by the Kentucky Chamber of Commerce.

Reynolds Aluminum opened in Shelbyville in 1990. American Emblem Tool recently expanded its workforce to 240. Soltech, Inc. expanded its plant 80,000 square feet and added 95 new jobs. AAPER Alcohol and Chemical Company completed a 24,000 square-foot expansion in 1990 and added 40 new jobs.

Blue Cross and Blue Shield recently built a \$6 million building to house a new data processing facility in Shelbyville.

The Undulata Golf Club, a privately owned public 18-hole golf course, was opened in 1990. There are currently three public golf courses in Shelbyville.

Under Way

An expansion of the wastewater treatment facility was begun in March 1991 with completion scheduled for April 1992. The \$2.6 million project will increase the treatment plant's capacity from 1.07 million gallons per day to 1.87 million gallons.

A new connector road is nearing completion which connects Kentucky Highway 53 with Kentucky Highway 55, east of Shelbyville. The connector has opened 500 acres for development. Plans for both single family and multi-family housing have been made. Zoning for commercial and light industrial development has also been approved.

The Martinsville Rehabilitation Project is currently underway. The housing project involves the rehabilitation of 12 existing houses and the construction of 13 new homes for low income families.

The Shelby County School System is renovating the high school. The \$12 million project entails the addition of new classrooms and improvements to the whole school.

Planned

Ichikoh plans to double the size of its plant in 1991, bringing the total square-footage to 160,000. The company also plans to increase employment from 320 to 400. Katayama plans to implement a 60,000 square-foot expansion and increase employment from 117 to 350 in 1991. Electro-Wire plans to double the size of its plant in 1991.