

1976

## Industrial Resources: Barren County - Glasgow

Kentucky Library Research Collections  
Western Kentucky University, [spcol@wku.edu](mailto:spcol@wku.edu)

Follow this and additional works at: [https://digitalcommons.wku.edu/barren\\_cty](https://digitalcommons.wku.edu/barren_cty)

 Part of the [Business Administration, Management, and Operations Commons](#), [Growth and Development Commons](#), and the [Infrastructure Commons](#)

---

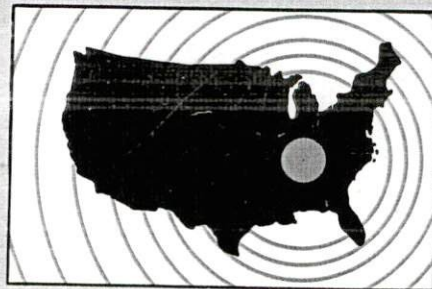
### Recommended Citation

Kentucky Library Research Collections, "Industrial Resources: Barren County - Glasgow" (1976). *Barren County*. Paper 17.  
[https://digitalcommons.wku.edu/barren\\_cty/17](https://digitalcommons.wku.edu/barren_cty/17)

This Report is brought to you for free and open access by TopSCHOLAR®. It has been accepted for inclusion in Barren County by an authorized administrator of TopSCHOLAR®. For more information, please contact [topscholar@wku.edu](mailto:topscholar@wku.edu).

*INDUSTRIAL  
RESOURCES*  
**Glasgow, Kentucky**

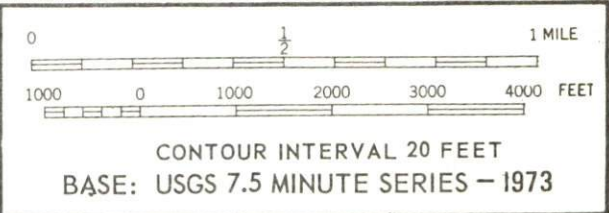
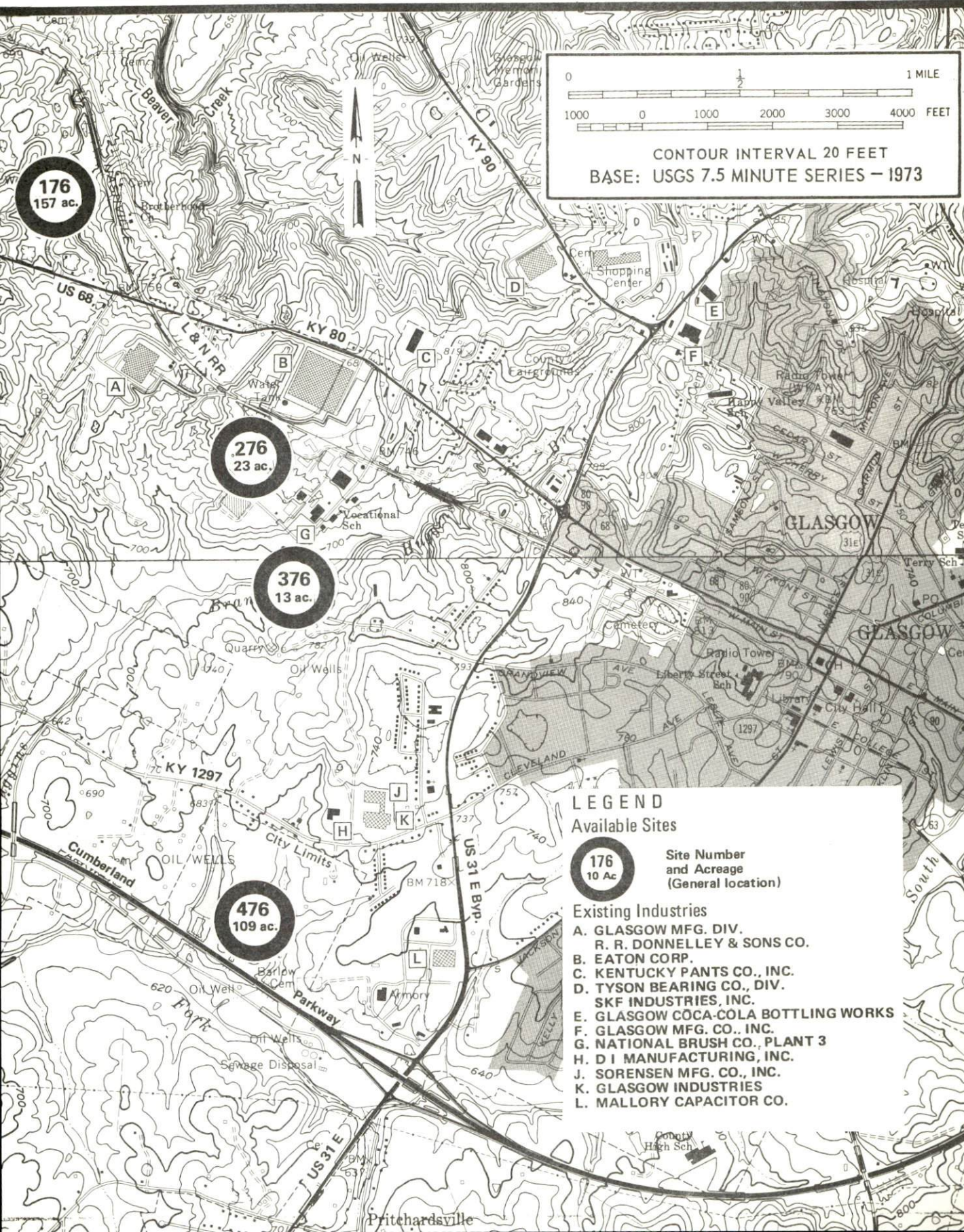
*Kentucky  
first*



**DEPARTMENT OF COMMERCE**

# GLASGOW, KENTUCKY --- Index to Industrial Sites --- 1976

For detailed data on individual sites, contact Ted W. Simmons, Glasgow-Barren County Chamber of Commerce, 301 West Main Street, Glasgow, Kentucky 42141, or the Industrial Development Division, Kentucky Department of Commerce, Capital Plaza Tower, Frankfort, Kentucky 40601.



## LEGEND

- Available Sites**
- 176**  
10 Ac.      Site Number and Acreage (General location)
  - 276**  
23 ac.
  - 376**  
13 ac.
  - 476**  
109 ac.
- Existing Industries**
- A. GLASGOW MFG. DIV. R. R. DONNELLEY & SONS CO.
  - B. EATON CORP.
  - C. KENTUCKY PANTS CO., INC.
  - D. TYSON BEARING CO., DIV. SKF INDUSTRIES, INC.
  - E. GLASGOW COCA-COLA BOTTLING WORKS
  - F. GLASGOW MFG. CO., INC.
  - G. NATIONAL BRUSH CO., PLANT 3
  - H. D I MANUFACTURING, INC.
  - J. SORENSEN MFG. CO., INC.
  - K. GLASGOW INDUSTRIES
  - L. MALLORY CAPACITOR CO.

INDUSTRIAL RESOURCES  
GLASGOW, KENTUCKY

Prepared by  
The Kentucky Department of Commerce  
in cooperation with  
The Glasgow-Barren County Chamber of Commerce

1976

This copy has been prepared by the Kentucky Department of Commerce, Division of Research and Planning, and the cost of printing paid from state funds.

Research

Patsy Wallace

Clerical

Dorothy Tierney

Graphics

N. C. Montague

Frank Ferrante

Tony Cecconi

Cartography

Site Development Section

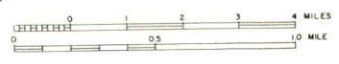
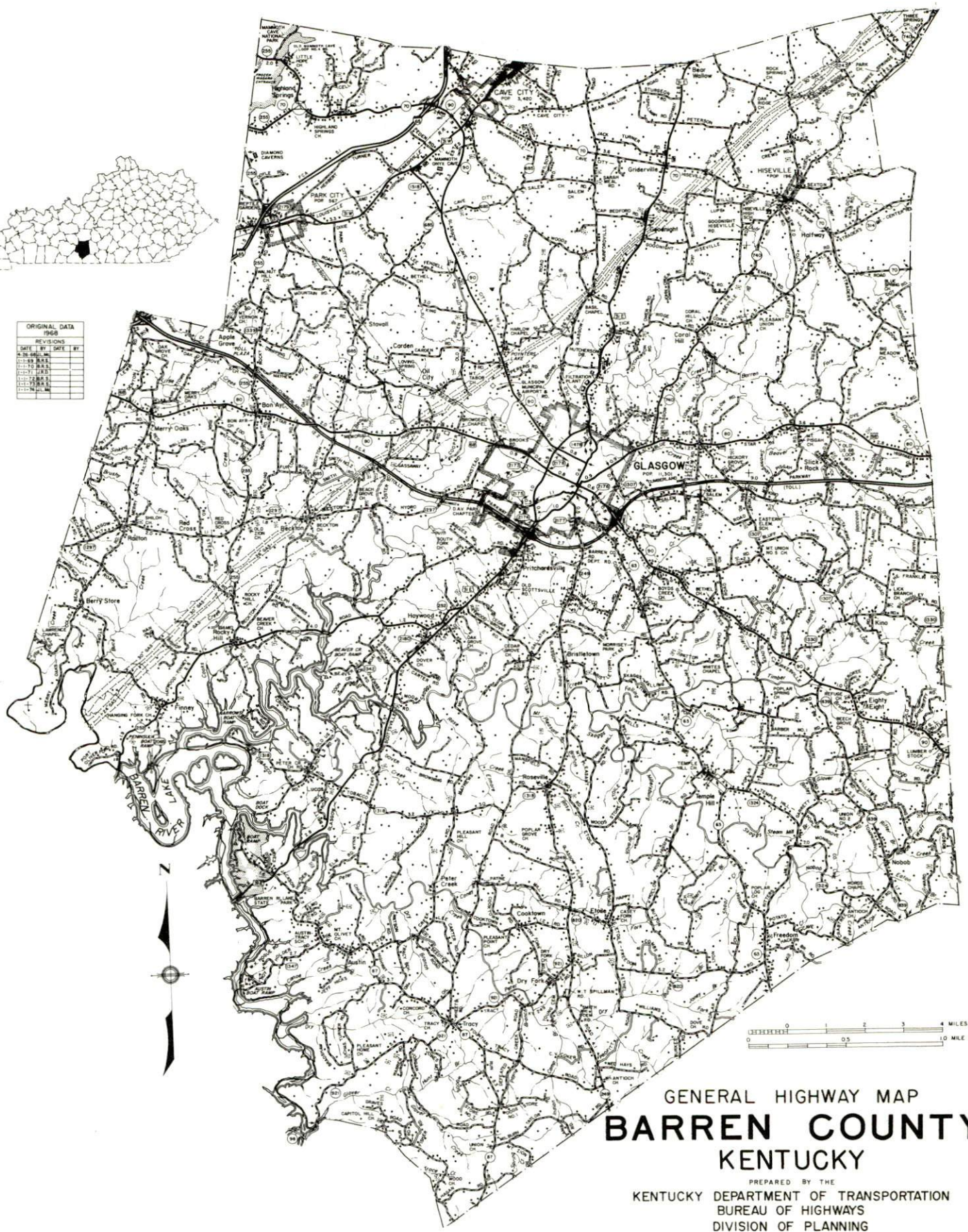
## TABLE OF CONTENTS

<u>Chapter</u>	<u>Page</u>
INDUSTRIAL SITES . . . . .	i
GLASGOW, KENTUCKY - A RESOURCE PROFILE . . . . .	1
THE LABOR MARKET AREA . . . . .	3
Population . . . . .	3
General Employment Characteristics, 1974 . . . . .	3
Manufacturing Employment by Industry . . . . .	4
Major Glasgow Manufacturing Firms, Their Products and Employment . . . . .	4
Labor Organizations . . . . .	5
Estimated Male Labor Supply . . . . .	9
Estimated Female Labor Supply . . . . .	9
Wages . . . . .	10
Per Capita Personal Income . . . . .	11
TRANSPORTATION . . . . .	12
Rail . . . . .	12
Highways . . . . .	12
Truck Service . . . . .	12
Air . . . . .	13
Bus . . . . .	16
Taxi . . . . .	16
Rental Services . . . . .	16
POWER AND FUEL . . . . .	17
Electricity . . . . .	17
Natural Gas . . . . .	18
Other Fuels . . . . .	18
WATER AND SEWERAGE . . . . .	19
Water . . . . .	19
Sewerage . . . . .	21
CLIMATE . . . . .	22

<u>Chapter</u>	<u>Page</u>
LOCAL GOVERNMENT . . . . .	23
City . . . . .	23
County . . . . .	23
Assessed Value of Property, 1975 . . . . .	23
Property Taxes . . . . .	23
Local Property Tax Rate Per \$100 of	
Assessed Valuation, 1975 . . . . .	24
Planning and Zoning . . . . .	24
Safety . . . . .	24
Police . . . . .	24
Fire . . . . .	24
Rescue Service . . . . .	24
Solid Waste . . . . .	25
EDUCATION . . . . .	27
Public Schools . . . . .	27
Area Colleges and Universities . . . . .	27
Vocational Schools . . . . .	28
HEALTH . . . . .	29
Local Medical Personnel . . . . .	29
Hospitals . . . . .	29
Other Medical Facilities . . . . .	29
Ambulance Service . . . . .	29
Nursing Homes . . . . .	30
Public Health . . . . .	30
OTHER LOCAL FACILITIES . . . . .	32
Communications . . . . .	32
Library Services . . . . .	32
Religious Institutions . . . . .	33
Financial Institutions . . . . .	33
Hotels and Motels . . . . .	33
Clubs and Organizations . . . . .	35
RECREATION . . . . .	36
COMMUNITY IMPROVEMENTS . . . . .	37
HISTORY . . . . .	39



ORIGINAL DATA		1968	
REVISIONS			
DATE	BY	TASK	BY
10-15-68	...	...	...
11-15-68	...	...	...
12-15-68	...	...	...
1-15-69	...	...	...
2-15-69	...	...	...
3-15-69	...	...	...
4-15-69	...	...	...
5-15-69	...	...	...
6-15-69	...	...	...
7-15-69	...	...	...
8-15-69	...	...	...
9-15-69	...	...	...
10-15-69	...	...	...
11-15-69	...	...	...
12-15-69	...	...	...



GENERAL HIGHWAY MAP  
**BARREN COUNTY**  
 KENTUCKY

PREPARED BY THE  
 KENTUCKY DEPARTMENT OF TRANSPORTATION  
 BUREAU OF HIGHWAYS  
 DIVISION OF PLANNING  
 IN COOPERATION WITH THE  
 U.S. DEPARTMENT OF TRANSPORTATION  
 FEDERAL HIGHWAY ADMINISTRATION





## GLASGOW, KENTUCKY - A RESOURCE PROFILE

Glasgow, county seat of Barren County and National Bicentennial Community, is located in the scenic rolling hills and cave area of south central Kentucky. Glasgow, only 2 miles north of the Cumberland Parkway and 12 miles southeast of Interstate 65, is located 90 miles south of Louisville, Kentucky; 90 miles northeast of Nashville, Tennessee; and 203 miles southwest of Cincinnati, Ohio. In 1973, Glasgow had an estimated population of 11,801.

Barren County, which had a 1974 estimated population of 30,500, encompasses an area of 468 square miles in the south central part of Kentucky in the Mississippian Plateau physiographic region. Barren River Lake forms the southwest boundary of the county while the northwestern tip of the county touches the Mammoth Cave National Park area.

### The Economic Framework

The total number of Barren County residents employed in 1974 averaged 15,890, including 2,820 in agriculture and 1,365 in government. Manufacturing employers in the county reported 4,460 workers; trade and services firms employed 3,530. The major industrial products are: clothing, axles, poultry processing, automotive parts, automotive wire and cable products and carburetor repair kits, electrical connectors, printing, electrolytic capacitors, sonalerts, and roller bearings.

Total unemployment in Barren County averaged 4.5 percent of the labor force in 1974.

Per capita personal income in the county in 1973 was \$3,668, an increase of 51.6 percent since 1969.

The Glasgow labor market area includes Barren and the six adjoining counties. The total number of residents of the labor market area employed in 1974 averaged 69,360, including 9,780 in agriculture and 9,250 in government. Manufacturing employers in the labor market area reported 15,710 workers; trade and services firms employed 16,180.

### Resources for Growth

1. Labor Supply - There is a current labor supply of 5,620 men and 5,910 women available for industrial jobs in the labor market area. In addition, 6,910 young men and 6,550 young women in the area will become 18 years of age before 1982 and potentially available for work.

2. Transportation - The local transportation capability is very good. The Louisville and Nashville Railroad serves Glasgow with a variety of services including piggyback facilities. There is easy access to the Cumberland Parkway and Interstate 65, which provides Glasgow with access to the Western Kentucky Parkway, the Blue Grass Parkway and the Green River Parkway. These are major highway arteries leading to the north, south, east, and west, and provide excellent highway routes for the seven truck lines serving Glasgow. Two of these truck lines maintain terminal facilities in Glasgow. Moore Field at Glasgow provides service for light aircraft, and two major commercial airports, Standiford Field in Louisville, Kentucky, and the Nashville Metropolitan Airport in Nashville, Tennessee, are both only 90 miles from Glasgow via Interstate 65.

3. Utilities and Fuel - Electric power is provided to the city of Glasgow by the Glasgow Electric Plant Board, whose source of supply is the Tennessee Valley Authority. Electric power is furnished to Barren County by Farmers Rural Electric Cooperative Corporation and Warren Rural Electric Cooperative Corporation. Natural gas service is provided to Glasgow by the Western Kentucky Gas Company, whose source of supply is the Texas Gas Transmission Corporation. There are two distributors of propane and six distributors of distillate fuel oil located in Glasgow.

4. Education - Three public school systems operate in Barren County - the Barren County School System, the Glasgow Independent School District, and the Caverna Independent School District. Western Kentucky University is located only 35 miles from Glasgow and three other colleges are located within 60 miles. A state vocational-technical school is located 35 miles from Glasgow and provides a variety of vocational training opportunities, with courses offered in twenty-one course areas. The Barren County Vocational Education Center at Glasgow offers courses in ten different areas.

THE LABOR MARKET AREA

POPULATION

<u>Area</u>	<u>1974*</u>	<u>1970</u>	<u>Percent Nonwhite</u>
			<u>1970</u>
Glasgow	11,801**	11,301	9.1
Labor Market Area	149,500	141,709	
Barren County	30,500	28,677	6.3
Allen County	13,400	12,598	2.1
Edmonson County	9,100	8,751	2.7
Hart County	14,900	13,980	9.9
Metcalf County	8,200	8,177	3.9
Monroe County	11,800	11,642	3.5
Warren County	61,600	57,884	8.6

\*Provisional Estimates.

\*\*1973 Population Estimates.

Sources: U. S. Department of Commerce, Bureau of the Census, Census of Population, 1970. U. S. Bureau of the Census, Current Population Reports, Series P-25, No. 562, June 1975; Series P-26, No. 120, June 1975.

GENERAL EMPLOYMENT CHARACTERISTICS, 1974

<u>Major Employment Group</u>	<u>Employment by Place of Residence of Workers</u>	
	<u>Barren County</u>	<u>Labor Market Area</u>
	Total Employment	15,889
Agriculture	2,824	9,776
Government	1,365	9,246

<u>Major Employment Group</u>	<u>Employment by Location of Jobs</u>	
	<u>Barren County</u>	<u>Labor Market Area</u>
	Manufacturing	4,464
Trade and Services	3,526	16,182

Sources: Kentucky Department for Human Resources, Bureau for Administration and Operations; Kentucky Department of Commerce, 1975 Kentucky Directory of Manufacturers.

MANUFACTURING EMPLOYMENT BY INDUSTRY  
MARCH 1975

<u>Industry</u>	<u>Barren County</u>	<u>Labor Market Area</u>
TOTAL	3,420	13,238
Food & Kindred Products	303	1,032
Tobacco	0	163
Apparel, Textiles, Leather	731	4,495
Lumber, Furniture	89	764
Printing & Publishing, Paper	490	684
Chemicals, Petroleum &		
Coal, Rubber	60	91
Stone, Clay & Glass	0	58
Primary Metals	0	51
Machinery, Metal Products,		
Equipment	1,747	5,886
Other	0	14

Source: Kentucky Department for Human Resources, Number of Workers in Manufacturing Industries Covered by Kentucky Unemployment Insurance Law Classified by Industry and County, March, 1975.

MAJOR GLASGOW MANUFACTURING FIRMS,  
THEIR PRODUCTS AND EMPLOYMENT  
(100 or More Employees)

<u>Firm (Establishment date)</u>	<u>Product</u>	<u>Employment</u>			<u>Organized</u>
		<u>Total</u>	<u>Male</u>	<u>Female</u>	
R. R. Donnelley & Sons Company, Glasgow Manufacturing Division (1968)	Printing	427	347	80	
Eaton Corp., Axle Division (1971)	Axles	285	254	31	
Glasgow Foods, Inc. (1969)	Poultry processing	194	113	81	
Glasgow Industries (1962)	Automotive parts, electrical con- nectors	590	147	443	*
Glasgow Manufacturing Company, Inc. (1946)	Ladies' dresses, suits and sportswear	242	33	209	*
Kentucky Pants Company, Inc. (1937)	Men's work pants and dress pants	455	70	385	

(Cont.)

<u>Firm (Establishment date)</u>	<u>Product</u>	<u>Employment</u>			
		<u>Total</u>	<u>Male</u>	<u>Female</u>	<u>Organized</u>
Mallory Capacitor Company (1964)	Electrolytic capacitors, sonalerts	500	100	400	
Sorensen Manufacturing Company, Inc. (1962)	Automotive ignition parts, automotive wire and cable products, automotive carburetor repair kits	144	74	69	
Tyson Bearing Co., Division of SKF Industries, Inc. (1965)	Roller bearings, tapered	545	465	80	*

\*See Labor Organizations below.

Source: Kentucky Department of Commerce, 1976 Kentucky Directory of Manufacturers.

#### LABOR ORGANIZATIONS

<u>Union</u>	<u>Representing manufacturing workers at:</u>
Auto Workers	Glasgow Industries
International Ladies' Garment Workers (AFL-CIO)	Glasgow Manufacturing Company
Teamsters	J. F. Pace Concrete Products, Inc.
Amalgamated Meat Cutters and Butcher Workmen of North America	D I Manufacturing, Inc.
United Steel Workers	Tyson Bearing Co., Division of SKF Industries, Inc.



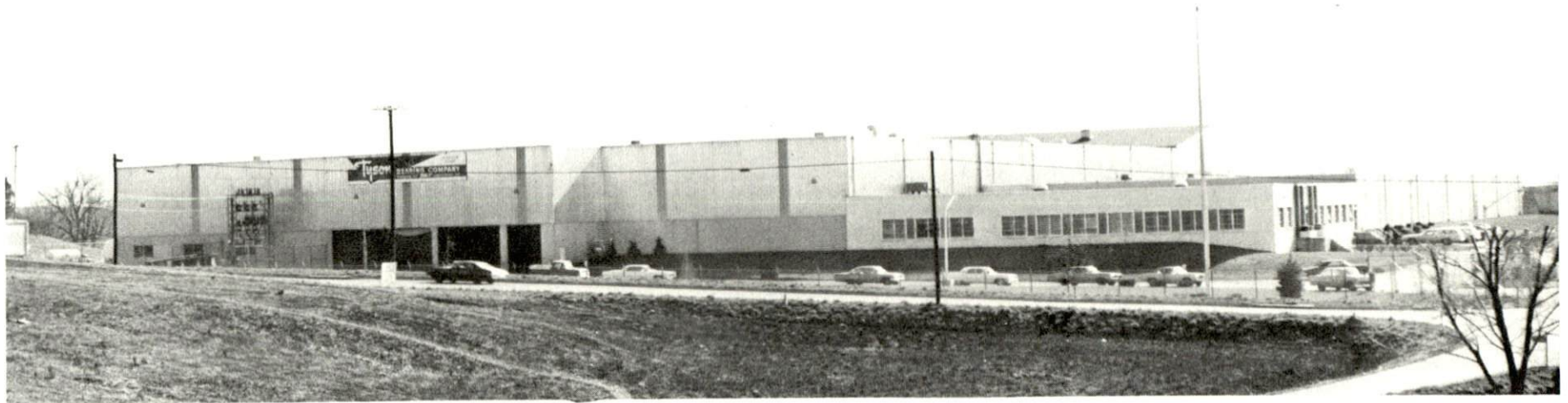
EATON CORPORATION



R. R. DONNELLEY & SONS COMPANY



SORENSEN MANUFACTURING CO., INC.  
GLASGOW INDUSTRIES - GULF + WESTERN INDUSTRIES



TYSON BEARING COMPANY





D I MANUFACTURING, INC.



MALLORY CAPACITOR COMPANY

ESTIMATED MALE LABOR SUPPLY  
GLASGOW LABOR MARKET AREA

Area	Current			Under- employed	Future
	Total	Not in Labor Force	Unemployed		Reaching 18 yrs. of age before 1982
Labor Market					
Area	5,620	400	1,870	3,350	6,909
Barren	970	0	440	530	1,458
Allen	370	0	190	180	542
Edmonson	240	0	130	110	443
Hart	360	0	160	200	747
Metcalfe	240	0	120	120	421
Monroe	840	400	200	240	636
Warren	2,600	0	630	1,970	2,662

Sources: Kentucky Department for Human Resources, Kentucky Labor Supply Estimates by County, 1975. Kentucky Department of Commerce, Future Labor Supply before 1982.

ESTIMATED FEMALE LABOR SUPPLY  
GLASGOW LABOR MARKET AREA

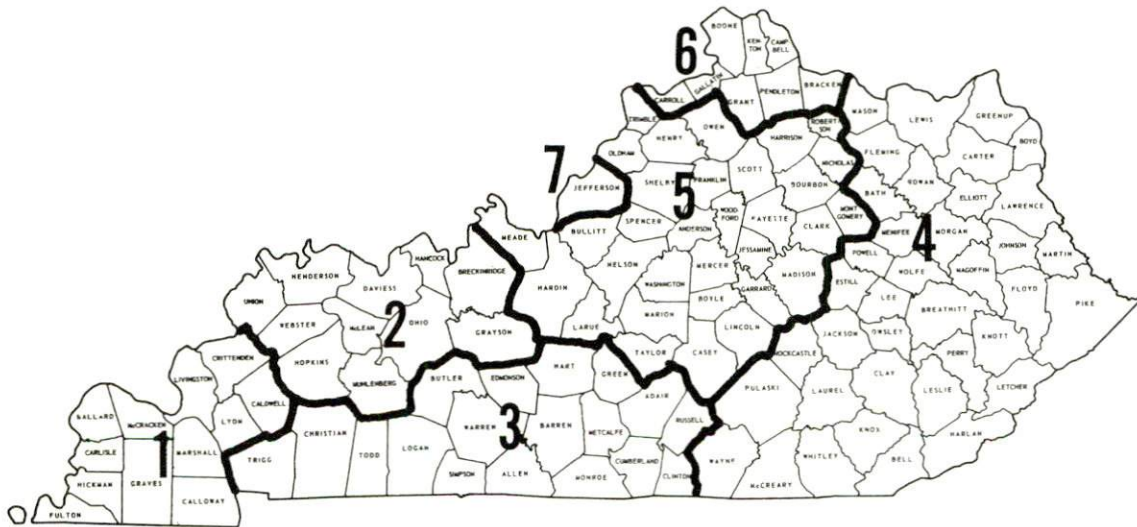
Area	Current			Under- employed	Future
	Total	Not in Labor Force	Unemployed		Reaching 18 yrs. of age before 1982
Labor Market					
Area	5,910	1,230	1,330	3,350	6,550
Barren	790	0	300	490	1,318
Allen	390	0	140	250	578
Edmonson	590	350	100	140	441
Hart	660	260	110	290	709
Metcalfe	390	240	80	70	408
Monroe	710	380	130	200	556
Warren	2,380	0	470	1,910	2,540

Sources: Kentucky Department for Human Resources, Kentucky Labor Supply Estimates by County, 1975. Kentucky Department of Commerce, Future Labor Supply before 1982.

## WAGES

Occupational wage rates for specific industries are usually not available to most government agencies, and wage data furnished to state employment agencies by individual industrial employers is protected from disclosure by federal law. The most reliable up-to-date wage information can be obtained by direct contact with local employers.

Associated Industries of Kentucky, a voluntary organization of Kentucky businesses, regularly collects occupational wage rates and fringe benefits data from participating member firms. Data is compiled for over 127 clearly defined office, production, and service occupations. Tabulations are published for seven regions of Kentucky, as shown on the map below. It should be noted that the data may be weighted by the preponderance of firms in the larger cities and may be somewhat higher than the rates paid in the smaller communities. Data from these tabulations are available, upon request, from the Kentucky Department of Commerce, Frankfort, Kentucky 40601.



Associated Industries of Kentucky Area Wage Surveys

Up-to-date occupational wage rates of the existing industries are maintained by South Kentucky Industrial Development Association, Post Office Box 726, Hopkinsville, Kentucky 42240.

PER CAPITA PERSONAL INCOME

<u>Area</u>	<u>1973</u>	<u>1969</u>	<u>Percent Change</u>
Barren County	\$3,668	\$2,420	51.6
Labor Market Area Range	\$2,364 - 3,826	\$1,742 - 2,692	N.A.
Kentucky	4,050	2,894	39.9
U. S.	5,041	3,733	35.1

Sources: U. S. Department of Commerce, Office of Business Economics, Survey of Current Business, August, 1974. U. S. Department of Commerce, Bureau of Economic Analysis, April, 1975.

## TRANSPORTATION

### Rail

Line serving Glasgow - Louisville and Nashville Railroad

Services - Freight service Monday through Friday; switcher stationed at Glasgow; team track space for 12 cars plus siding space for 21 cars; piggyback facilities

For details on routing, schedules, rates, and services, contact:

Manager of Industrial Development  
Louisville and Nashville Railroad  
908 West Broadway  
Louisville, Kentucky 40203  
(502) 587-5000

### Highways

Glasgow is served by the Cumberland Parkway, which intersects with Interstate 65 only 12 miles northwest of Glasgow. Highway access to the city is also provided by U. S. Routes 31-E and 68, and Kentucky Routes 90, 63, 249, and 1207.

### Truck Service

<u>Company</u>	<u>Home Office</u>
Great Lakes Express	1105 North Niagara Street Saginaw, Michigan 48602
*Manning Motor Express, Inc.	1203 South Green Street Glasgow, Kentucky 42141
McLean Trucking Company	617 Waughtown Street Winston-Salem, North Carolina 27107
Renner's Express, Inc.	1350 South West Street Indianapolis, Indiana 46206
Southern Forwarding Company	728 Alston Avenue Memphis, Tennessee 38102
*Terminal Transport Company Inc.	248 Chester Avenue, S. E. Atlanta, Georgia 30316
Theatres Service Company	830 Willoughby Way, N. E. Atlanta, Georgia 30301

\*Local terminals.

Other Freight ServicesNearest Shipping Center

United Parcel Service\*

Bowling Green, 35 miles distant

HIGHWAY MILES AND TRUCK TRANSIT TIME IN DAYS FROM  
GLASGOW, KENTUCKY, TO SELECTED MARKET CENTERS

City	Delivery		City	Delivery	
	Highway Miles	Time TL*		Highway Miles	Time TL*
Atlanta, Ga.	356	3	Los Angeles, Calif.	2,149	5
Birmingham, Ala.	290	3	Louisville, Ky.	90	1
Chicago, Ill.	391	3	Nashville, Tenn.	90	1
Cincinnati, Ohio	203	1	New Orleans, La.	634	4
Cleveland, Ohio	444	2	New York, N. Y.	859	4
Detroit, Mich.	465	2	Pittsburgh, Pa.	484	3
Knoxville, Tenn.	276	2	St. Louis, Mo.	354	3

\*Manning Motor Express, Inc., to Louisville, Kentucky, or Nashville, Tennessee, gateways, one carrier beyond.

Source: Delivery Time Only - Manning Motor Express, Inc., Box 685, Glasgow, Kentucky 42141.

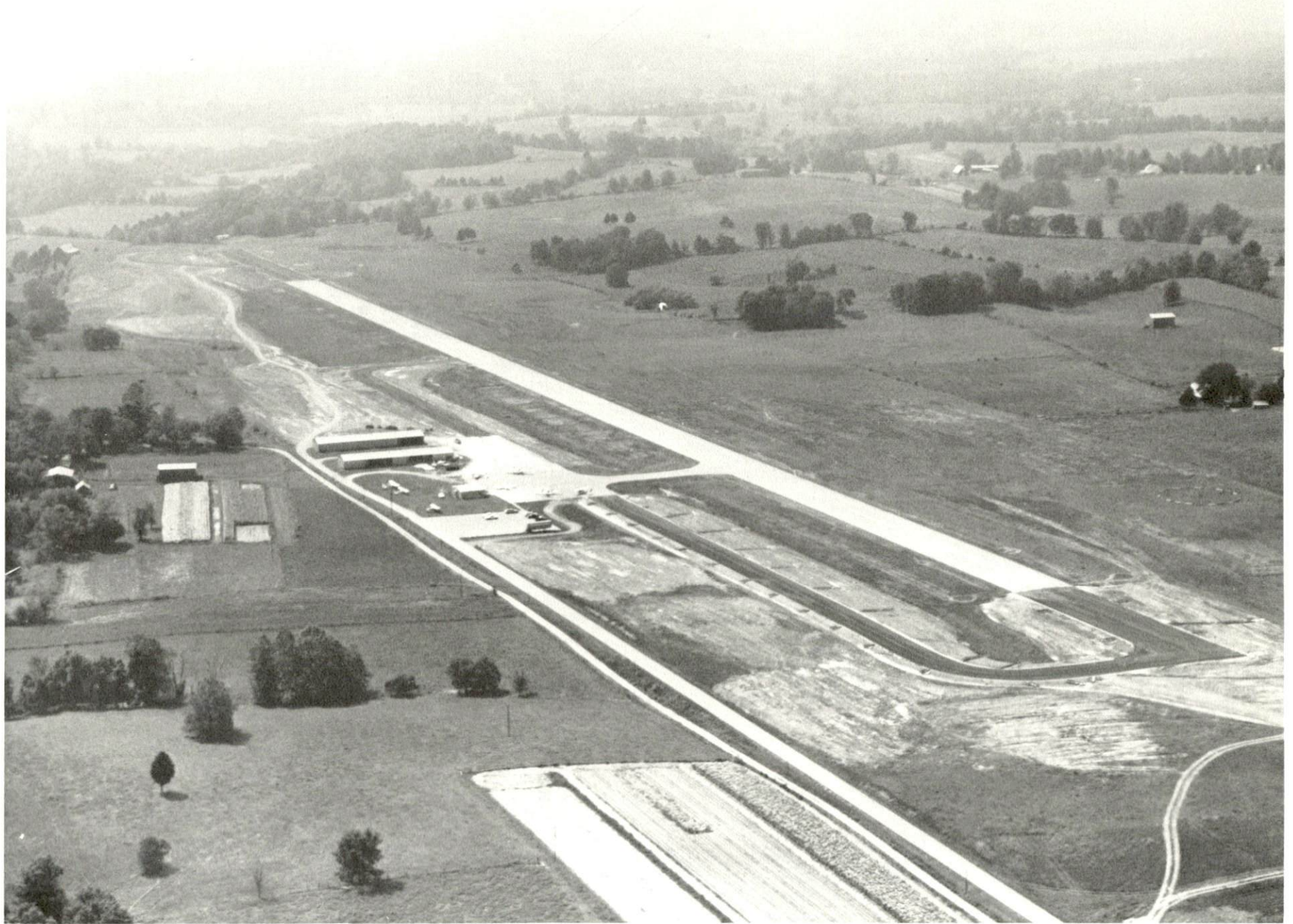
AirLocal Airport

Moore Field  
 Location: Glasgow, 2 miles northwest of Glasgow  
 Runways: 1 paved  
 Length: 4,000 feet  
 Traffic  
 Control: Wind sock  
 Lighting: Runway lights sundown to sunrise  
 Services: 100 octane, jet fuel, charter, flight instruction, taxi,  
 A & E repairs, rental cars available, hangar rental,  
 tug, auxiliary power unit

Air Freight

Services: Chartered air freight services must be arranged.

\*For regular scheduled pickups or for occasional pickups, arrangements must be made with the Louisville office of U. P. S.



GLASGOW MUNICIPAL AIRPORT

Nearest Commercial Airports

	Nashville Metropolitan Airport	Standiford Field
Location:	Nashville, Tennessee, 90 miles southwest of Glasgow	Louisville, 90 miles north of Glasgow
Runways:	3 paved	3 paved
Length:	8,000 feet, 7,700 feet, 4,025 feet	7,800 feet, 7,250 feet, 5,000 feet
Traffic Control:	FAA control tower; full instrument landing system (ILS); radar approach and departure control; Stage 3 radar service for VFR aircraft	Control tower: approach and ground control; guards; radar service: departure control; clearance delivery
Lighting:	High intensity for instrument runway, medium intensity for other runways; VASI; obstructions, beacon, and approach lights	Runways, obstructions, beacon and approach and touchdown lights, center line on runways 1-19
Services:	Allegheny, American, Braniff, Delta, Eastern, Ozark, Piedmont and Southern Airlines; Aerie Airlines (air taxi); 80 to 145 octane, jet fuel; major repairs; tie downs and hangars; charter service; flight instruction; limousine, bus, taxi, and car rentals; weather information; restaurant, hotel	TWA, American, Eastern, Delta, Piedmont, Ozark and Allegheny Airlines; Louisville-Jefferson County Air Board; 80, 100, 115, jet fuel, storage; major A & E repairs; Hertz, Avis and Nat'l rent-a-car service; restaurant; taxi; city bus service; Budget rent-a-car service
Air Freight Service:	Air Freight Terminal	Freight carrying airlines regularly service this terminal.

Air Kentucky Airlines (commuter air carrier) serves the Bowling Green - Warren County Airport, 35 miles from Glasgow, providing daily connecting service to Louisville, Cincinnati, Frankfort and Owensboro.



Bus - Southern Greyhound Bus Lines

Taxi - 24-hour service, radio equipped

Rental Services - Car, truck and trailer rentals

POWER AND FUEL

Electricity

Company serving Glasgow - Glasgow Electric Plant Board  
Source of power - Tennessee Valley Authority  
Total generating capacity - 26, 723, 430 KW  
For industrial rates contact:

South Kentucky Industrial Development Association, Inc.  
Post Office Box 726  
Hopkinsville, Kentucky 42240  
(502) 885-5392

and/or

Glasgow Electric Plant Board  
100 Mallory Drive  
Glasgow, Kentucky 42141  
(502) 651-8341

Company serving Barren County - Farmers Rural Electric Cooperative  
Corporation  
Source of power - East Kentucky Power Cooperative  
Total generating capacity - 496,000 KW  
For industrial rates contact:

Industrial Development Division  
East Kentucky Power Cooperative  
P. O. Box 707  
Winchester, Kentucky 40391  
(606) 744-4812

and/or

Farmers Rural Electric Cooperative Corporation  
504 South Broadway  
Glasgow, Kentucky 42141  
(502) 651-2191

Company serving Barren County - Warren Rural Electric Cooperative Corporation

Source of power - Tennessee Valley Authority

Total generating capacity - 26,723,430 KW

For industrial rates contact:

Warren Rural Electric Cooperative Corporation  
951 Fairview Avenue  
Bowling Green, Kentucky 42101  
(502) 842-6541

### Natural Gas

Company serving Glasgow - Western Kentucky Gas Company

Source of supply - Texas Gas Transmission Corporation

Size of transmission mains - 8-inch H. P. (supplier); 4-inch H. P. (distributor)

Distribution mains - 8, 6, 4, 3, and 2 inches

Distribution pressure - 18 psi summer; 45 psi winter

Btu content - 1,000 per cubic foot; Specific gravity - .60

For rates and supplies contact:

Director of Industrial Utilization  
Western Kentucky Gas Company  
311 West Seventh Street  
Owensboro, Kentucky 42301  
(502) 684-8811

### Other Fuels

Propane (All located in Glasgow)

Pargas of Glasgow, 214 Industrial Drive  
Williams Energy Company, West Main Street

Fuel oils

Distillate fuel oil - (All located in Glasgow)

Virgil Taylor - Distributor (Gulf), 700 West Main Street  
Tri County Oil Company, Inc. (Shell), 715 West Main Street  
Standard Oil Company, 210 Leslie Avenue  
Ashland Petroleum Company, West Main and U. S. 31 bypass  
Ward Oil Company (Atlantic Richfield), 201 Leslie Avenue  
Paul Bridges Oil Company (Exxon), Industrial Drive

Residual fuel oil - Arrangements must be made with the refinery.

Low sulphur content coal - Available in Kentucky.

## WATER AND SEWERAGE

### Water

Company serving Glasgow - Glasgow Water Company  
118 East Washington Street  
Glasgow, Kentucky 42141  
(502) 651-3727

Source - Barren River Lake and Beaver Creek

Treatment plant capacity - 8,500,000 gallons per day

Average daily consumption - 3,000,000 gallons

Peak daily consumption - 3,500,000 gallons

Type treatment - Coagulation, settling, rapid sand filtering, disinfection

Storage capacity - 4,150,000 gallons

Size lines - 20, 12, 10, 8, 6, and 4 inches

Average pressure - 65 psi

Average temperature - 70 degrees F.

---

\*A \$500,000 project, including extension of lines into the southern and eastern parts of Barren County and the construction of a 100,000-gallon ground storage tank, has just been completed. A \$400,000 project, which includes extending lines west of Glasgow, is now underway.

MONTHLY WATER RATES FOR WHOLESALE  
AND INDUSTRIAL CONSUMERS

Industrial customers

Customers using over

1,000 gallons per month - \$ .40 per 1,000 gallons

Residential and commercial customers

Inside City

First	2,000 gallons	\$4.50 (Minimum bill)
Next	18,000 gallons	1.10 per 1,000 gallons
Next	80,000 gallons	.60 per 1,000 gallons
Next	900,000 gallons	.50 per 1,000 gallons
Over	1,000,000 gallons	.40 per 1,000 gallons

Sprinkler charge

\$ .02 per month per sprinkler head

Fire hydrant charge

\$ .50 per hydrant per month

Tap-on charge

Inside City

\$ 50.00 for 5/8-, 3/4- and 1-inch meter service  
200.00 for 2-inch meter service  
750.00 for 4-inch meter service  
1,500.00 for 6-inch meter service

Outside City

\$ 200.00 for 5/8-, 3/4- and 1-inch meter service  
500.00 for 2-inch meter service  
1,000.00 for 4-inch meter service  
2,000.00 for 6-inch meter service

Water connection fee

\$5.00 for the start of water service at change of location

Surface water sources - Barren River and Barren River Lake  
Average discharge - Barren River near Finney, Kentucky, 1,466 cfs  
(24-year record), unadjusted, USGS  
Expected ground water yield - 50 to 200 gpm from east-west belt through  
central section; 5 to 50 gpm in northern section; 5 gpm or less in  
southern part of county

Sewerage

Company serving Glasgow - Glasgow Water Company  
118 East Washington Street  
Glasgow, Kentucky 42141  
(502) 651-3727

Design capacity - 4,000,000 gallons per day\*  
Average daily flow - 2,200,000 gallons  
Treatment - Primary, secondary and tertiary  
Type treatment - Aeration, clarifiers, drying beds, upflow sand filters  
Treated effluent discharged into - Beaver Creek  
Size of sanitary mains - 24 to 6 inches  
Rates -

Industrial customers

\$.60 per 1,000 gallons

Residential and commercial customers

(Based on water meter reading)

First	2,000 gallons	\$1.50 (Minimum bill)
Over	2,000 gallons	.60 per 1,000 gallons

Sewer service surcharge

Effective January 1, 1977, for high organic loadings  
a sewer service surcharge shall be paid as follows:

If B.O.D. is	300 to 500 mg/l	\$ .10 per 1,000 gallons
If B.O.D. is greater than	500 mg/l	.20 per 1,000 gallons

---

\*Capacity of the sewage treatment plant will be 4,000,000 gpd by the end of 1976 when the \$4.5 million improvement project now underway is completed.

## CLIMATE

### Barren County

#### Temperature

Annual mean (30-year record)	55.2 degrees
Average annual 1974	55.1 degrees
Record highest, July, 1966 (11-year record)	98.0 degrees
Record lowest, January, 1972 (11-year record)	-11.0 degrees
Normal heating degree days (30-year record) (Heating degree day totals are the sums of negative departures of average daily temperatures from 65 degrees F.)	4,729

#### Precipitation

Mean annual total (30-year record)	44.49 inches
Mean annual snowfall (30-year record)	15.70 inches
Total precipitation 1974	60.09 inches
Mean number days precipitation (.01 inch or more) (30-year record)	130
Average number days thunderstorms (30-year record)	47

#### Prevailing Winds (17-year record)

South

#### Relative Humidity (11-year record)

1 a. m.	76 percent
7 a. m.	81 percent
1 p. m.	59 percent
7 p. m.	64 percent

---

Source: U. S. Department of Commerce, Environmental Science Services Administration, Climatological Data, 1974. Station of record: Lexington, Kentucky.

## LOCAL GOVERNMENT

### City

Structure - Mayor - 4-year term; 12 councilmen - 2-year terms  
Estimated Budget 1976 - General Fund - \$1,217,000  
Fees and licenses - 1 percent occupational license tax on wages and net profits

### County

Structure - County Judge - 4-year term; 7 magistrates - 4-year terms  
Budget 1975-76 - General Fund \$644,880; Road Fund \$112,600

### Assessed Value of Property, 1975

<u>Classes of Property</u>	<u>Glasgow</u>	<u>Barren County</u>
Real Estate	\$73,515,215	\$212,432,568
Tangibles	16,089,204	46,566,654

### Property Taxes

Land and buildings are taxed by the state and may be taxed by local jurisdictions. The state rate is \$0.015 per \$100 of assessed valuation.

Tangible personal property owned by manufacturers (automobiles, trucks, finished goods, office furniture, office equipment) is taxed by the state at \$0.15 per \$100 and may be taxed by local jurisdictions.

Manufacturing machinery, raw materials inventories, pollution control equipment, and goods in process inventories, are not subject to local taxation. The state rate is \$0.15 per \$100.

Property stored in public warehouses is not subject to local taxation. The state rate is only \$0.015 per \$100.

All property is assessed at 100 percent of fair cash value.



Local Property Tax Rate Per \$100 of Assessed Valuation, 1975\*

<u>Taxing Jurisdiction</u>	<u>Glasgow</u>	<u>Barren County</u>
County	\$ .149	\$ .149
School	.794	.427
City	.290	

Planning and Zoning

Joint agency - Joint City-County Planning Commission (includes Barren County and cities of Glasgow, Cave City, Park City and Hiseville)  
Zoning enforced - Within city of Glasgow  
Subdivision regulations enforced - Within city of Glasgow  
Local codes enforced - Building and housing codes within the city of Glasgow  
Mandatory state codes enforced - Plumbing, National Fire Protection Association Code, National Building Code (for major buildings and residential construction containing more than 12 bedrooms per building)

Safety

<u>Police</u>	<u>Glasgow</u>	<u>Barren County</u>
Total staff	26	4
Radio-patrol cars	5	3

Fire

American Insurance Association Fire Rating	6
Full-time staff	29

Rescue Service

Glasgow-Barren County Civil Defense Rescue Squad:  
Number of volunteers - 25  
Equipment - 14-foot flat bottom boat used for dragging, 2 jeeps, 2 trailers for hauling, 1 truck and 2 truck vans, 1 bus with kitchen facilities  
Personnel training - First aid

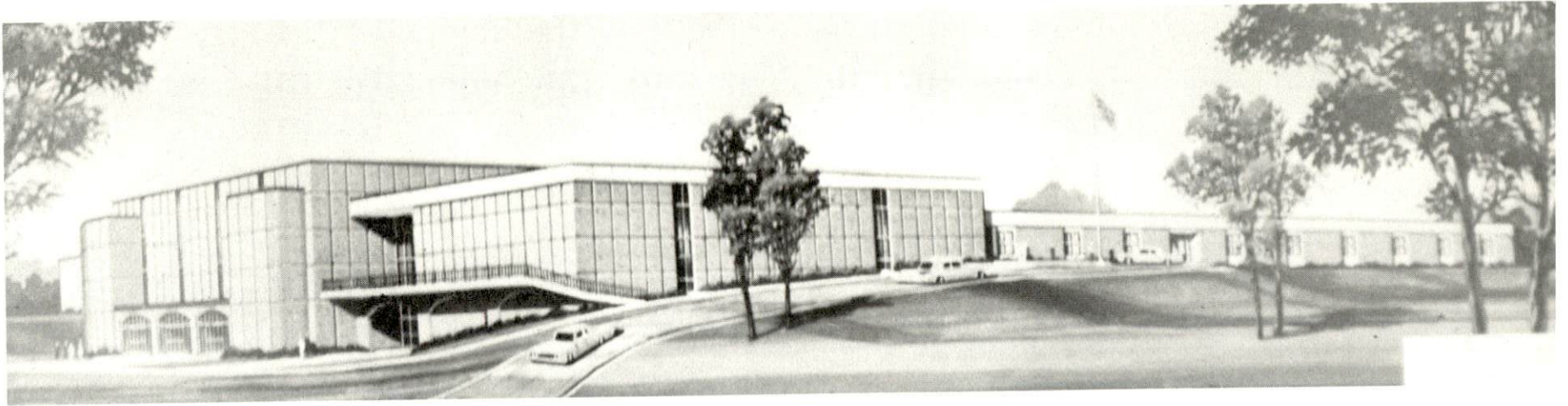
\*Kentucky Department of Revenue, Kentucky Property Tax Rates, 1975.

Solid Waste

Glasgow

Type service	Municipal
Fee charged:	
residential	No charge
business	No charge
Collection frequency:	
residential	Weekly
business	Weekly
Trash pickup	Weekly
Disposal method	Landfill

The landfill is available to the manufacturing firms without charge.



BARREN COUNTY HIGH SCHOOL



BARREN COUNTY VOCATIONAL EDUCATION CENTER

## EDUCATION

### Public Schools

	<u>Glasgow Independent</u>	<u>Barren County</u>
Total Enrollment	2,644*	3,329**
Elementary	1,410	1,694
Middle School	486	
Junior High		904
High School	748	731
Student-Teacher Ratio	21 to 1	17 to 1
Elementary	19 to 1	14 to 1
Middle School	24 to 1	
Junior High		20 to 1
High School	22 to 1	20 to 1
Accreditation	Southern Association of Colleges and Schools	
Percent High School Graduates to College	47.1	16.2
Expenditures Per Pupil (1974-75)	\$618.03	\$606.42
Bonded Indebtedness, June 30, 1975	\$1,419,000	\$1,702,000

### Area Colleges and Universities

<u>Name</u>	<u>Location (Miles distant)</u>	<u>Enrollment (Fall, 1975)</u>	<u>Highest Degree Conferred</u>
Western Kentucky University	Bowling Green (35)	13,040	Masters, Ph. D. ***
Lindsey Wilson Junior College	Columbia (37)	354	Associate
Elizabethtown Com- munity College	Elizabethtown (53)	1,345	Associate
Campbellsville College	Campbellsville (56)	711	Baccalaureate

\*March 1976 enrollment.

\*\*January 1976 enrollment.

\*\*\*Cooperative program with the University of Kentucky, Lexington, for a Ph. D. in education only.

## Vocational Schools

	<u>Nearest State School</u>	<u>Nearest Area Education Center</u>
Location	Bowling Green State Vocational-Technical School	Barren County Vocational Education Center
Miles Distant	Bowling Green 35	Glasgow
Curriculum	Commercial Foods Distributive Education Dental Assisting Health Careers Nursing Assistant Surgical Technician Industrial Education Air Conditioning and Heating Auto Body Repair Auto Mechanics Carpentry Civil Highway Technician Drafting Electronics (Technology) Graphic Arts (Printing) Industrial Electricity Machine Shop Masonry Radio and TV Repair Small Engine Repair Tool and Die Making Welding	Agribusiness Business and Office Health and Personal Services Industrial Education Air Conditioning and Refrigeration Auto Mechanics Building Trades Drafting Electricity Machine Shop Welding

Arrangements can be made to provide training in the specific production skills required by an industrial plant. Instruction may be conducted either in the vocational school or in the industrial plant, depending upon the desired arrangement and the availability of special equipment.

## HEALTH

### Local Medical Personnel

Physicians - 18

Dentists - 8

### Hospitals

<u>General Hospital</u>	<u>Location</u>	<u>Beds</u>
T. J. Samson Community Hospital*	Glasgow	199

General Hospital Information - 3 operating rooms, intensive recovery room, 3 emergency rooms, coronary care-intensive care, 2 diagnostic radiological rooms with image intensifiers and automatic film processor, nuclear medicine department, inhalation therapy department, physical therapy department, and clinical and anatomical laboratory services on the premises

Medical Staff - 26 doctors, 30 registered nurses, 50 licensed practical nurses, radiologist, pathologist, psychiatrist, ophthalmologist, internist, pediatrician, neurologist, urologist, obstetrical-gynecologist, general surgery, general practice, and family practice

### Other Medical Facilities

Respiratory Disease Hospital - Region 1; Barren River Comprehensive Care Center Mental Health-Mental Retardation

### Ambulance Service

Name - Barren-Metcalfe County Ambulance Service (based in Glasgow)

Staff - 18 attendants (full time), 1 supervisor, 1 secretary

Service - County-wide in Barren and Metcalfe Counties, 24 hours a day, 7 days a week

Equipment - 5 medi-cruisers (comply with all federal and state requirements) complemented with a variety of rescue equipment

---

\*One section of the hospital was completely remodeled in 1975, costing over \$700,000. Another wing is to be remodeled in the very near future.

Nursing Homes

<u>Barren County</u>	<u>Number</u>	<u>Beds</u>
Intermediate care homes	1	52
Personal care homes	2	98 (one home also has 70 extended care beds)

Public Health

Facility - Barren County Health Department  
Staff - 2 registered nurses, 2 clerks (full time), 1 sanitarian, 1 plumbing  
inspector



T. J. SAMSON COMMUNITY HOSPITAL



## OTHER LOCAL FACILITIES

### Communications

Telephone - Glasgow-General Telephone Company  
Barren County-South Central Rural Telephone Company

Telegraph - Western Union Telegraph  
Services - Telephone

Postal - U. S. Post Office  
Class - First  
Mail received - Once daily  
Mail dispatched - Once daily

Newspapers -  
Daily and circulation - The Glasgow Daily Times, 7,800  
Weekly and circulation - The Glasgow Republican, 3,400  
Other papers received from - Bowling Green and Louisville, Kentucky;  
Nashville, Tennessee

Radio - WKAY-AM, WGGC-FM, WCDS-AM, WOVO-FM  
Stations received from - Bowling Green, Louisville, Scottsville,  
Tompkinsville, and Munfordville, Kentucky; Nashville, Tennessee

Television -  
Cable service  
Reception from - Louisville and Bowling Green, Kentucky; Nashville,  
Tennessee  
Kentucky Educational Television - Lexington-Richmond transmitter  
Elizabethtown transmitter  
Tennessee Educational Television - Nashville transmitter

### Library Services

Public library - The Mary Wood Weldon Memorial Library  
Staff - 4 certified librarians (full time)  
Size collection - 35,490 volumes  
Circulation, 1973-74 - 187,041 (includes bookmobile and satellite library)  
Services - Provide recreational games; films, film strips; reading  
programs; participate in story hour; bookmobile operating full 12  
months; framed paintings; access to state interlibrary loan services;  
circulated magazines; new community room; 11,250 square feet of  
floor space; serve 9 schools, 13 shut-ins, and 14 deposit stations;  
free parking area located in rear of building

Religious Institutions

Number of churches - 40

Denominations - Baptist, Methodist, Church of Christ, Presbyterian, Christian, Nazarene, Seventh Day Adventist, Pentecostal, Catholic, Church of God, Church of Jesus Christ of Latter Day Saints, Jehovah's Witnesses, Assembly of God, Evangelistic Tabernacle, Episcopal, Lutheran, nondenominational

Nearest synagogues - Louisville, 90 miles distant  
Nashville, 90 miles distant

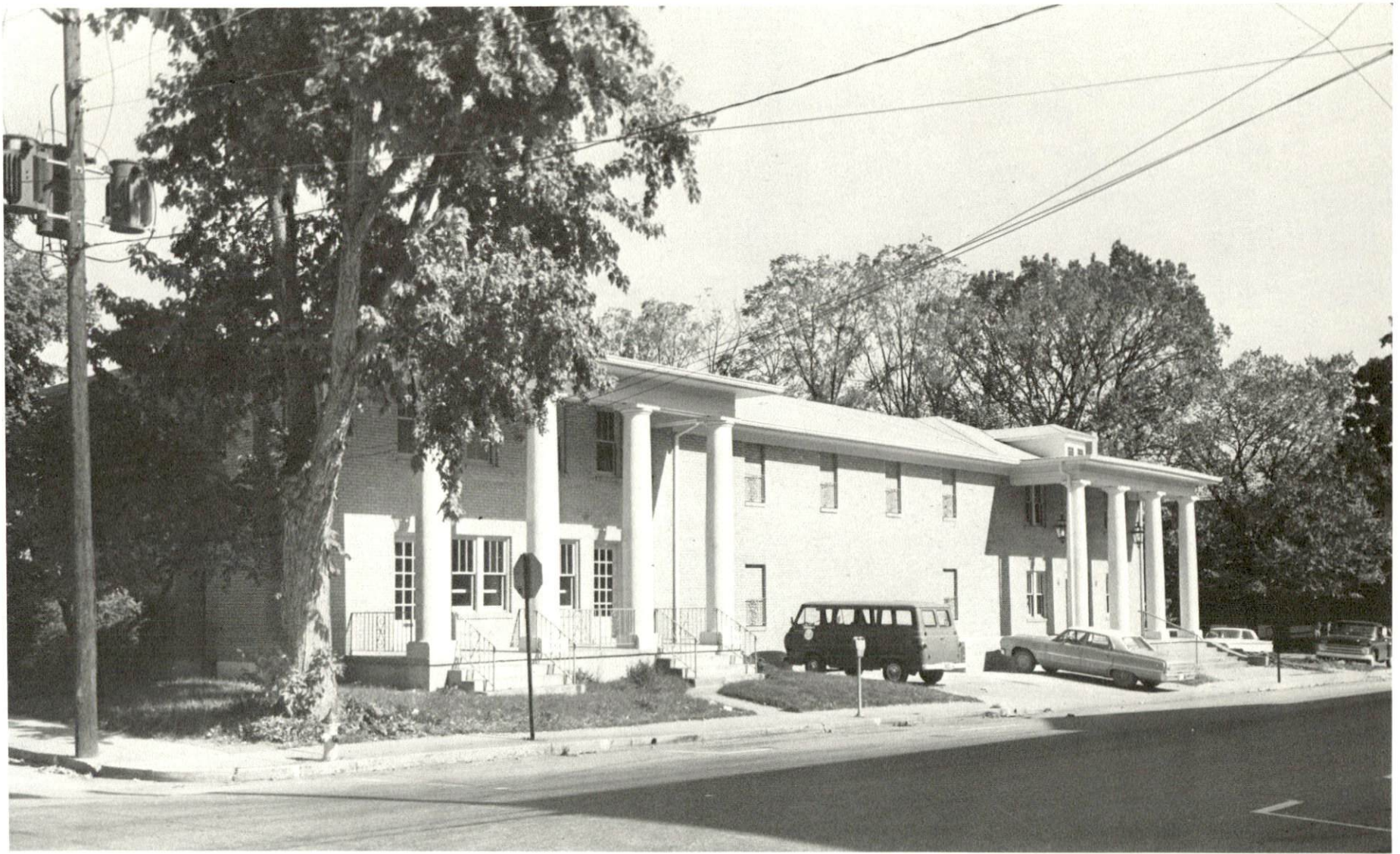
Congregations - Louisville - Adath Israel (reform)  
Adath Jeshurun (conservative)  
Anshei Sfard (orthodox)  
Brith Sholom (reform)  
Keneseth Israel (orthodox)  
Nashville - Sherith Israel (orthodox)  
Ohabai Shalom (reform)  
West End Synagogue (conservative)

Financial Institutions

<u>Banks</u>	<u>Assets</u>	<u>Deposits</u>	<u>Statement Date</u>
Citizens Bank and Trust Company	\$47,333,536.90	\$42,011,258.28	12/31/75
New Farmers National Bank	41,304,881.07	36,918,627.50	12/31/75
<u>Savings and Loan Associations</u>	<u>Assets</u>	<u>Shared Accounts</u>	<u>Statement Date</u>
First Federal Savings and Loan Association of Glasgow	\$31,155,728.78	\$28,446,735.31	12/31/75
Security Savings & Loan Association of Glasgow	8,136,247.44	7,424,764.97	12/31/75

Hotels and Motels

Total number - 3  
Total units - 132



MARY WOOD WELDON MEMORIAL LIBRARY

## Clubs and Organizations

Women's Clubs - Ladies Matinee Musicale, Barren County War Mothers, Edmund Rogers Chapter DAR, Business and Professional Women's Clubs, Garden Clubs, Glasgow Woman's Club, Altrusa Club, Barren County Federation of Republican Women, Barren County Democratic Ladies Club, Homemakers

Men's Clubs - American Legion, VFW, Rotary, Lions, Travelers Protective Association, Kiwanis, Optimist, Jaycees

Youth - Little League, Young Teenage Republican Club

Other - Glasgow-Barren County Chamber of Commerce, Historical Club, South Central Kentucky Geneological and Historical Society, Southern Kentucky Association for Handicapped Citizens, Farm Bureau, Rod and Gun Club, Ministerial Association, T. J. Samson Community Hospital Auxiliary, Barren County Teachers Association, Glasgow Education Association, Glasgow Band Boosters, Barren County Boosters, Parent-Teachers Association

## RECREATION

### Local

A full-time recreation program provides the Glasgow residents with a wide variety of recreational activities. Public recreation facilities include five parks, two playgrounds, a swimming pool, twelve tennis courts, four baseball diamonds, two football fields, and several picnic areas. Also, a Youth and Senior Citizens Center provides space for many recreational activities. Private recreation facilities include a country club, golf course (four within easy driving distance), two swimming pools, a bowling facility, an indoor theater, and a drive-in theater.

### Area (Within 40 miles)

Barren River Lake State Park is a full-facility resort park offering a resort lodge, coffee shop, cottages, lodge pool, riding stables, nature trails, open and covered boat slips, 9-hole par 3 golf course, park camping with service building, restaurant, boats, picnic area and playground. Barren River Lake, covering 10,000 acres, is a popular area for recreation and fishing.

Renowned Mammoth Cave is but one of the many caves located near Glasgow. The national park offers guided tours through the cave, hotel accommodations, cottages, park camping, nature trails, visitor center, wildlife, tennis, shuffleboard, naturalist programs, dining room, coffee shop, and gift and craft shops. Other caves in the area include Crystal Onyx Cave, Mammoth Onyx Cave, Diamond Caverns, and Jesse James Cave.

Western Kentucky University at Bowling Green, 35 miles from Glasgow, offers an array of cultural and athletic activities, including a fine arts series, a university lecture series, various musical performances, and productions by the Western players. The Hardin Planetarium and the Kentucky Building, housing a collection of art and artifacts devoted to local and state history, are open to the public.

## COMMUNITY IMPROVEMENTS

### Recent:

The Glasgow Water Company has completed a \$500,000 project which included extending water lines into the southern and eastern parts of Barren County and the construction of a 100,000-gallon ground storage tank.

The Glasgow Electric Plant Board has added 10,000 kva to the large switching station at Gorin Park.

New services now available for aircraft at Moore Field include three five unit T hangars and a 100- by 100-foot service hangar.

The Glasgow Independent School District has recently completed the construction of a new administrative office building.

Recent additions to the Barren County School System curriculum include chorus and band, agriculture and home economics at the junior high level, and remedial math at the elementary and junior high levels.

A grant has been awarded to the Glasgow Police Department for the purpose of hiring a full-time crime prevention officer.

Funds have recently been expended for paving of streets, drainage projects, sidewalk improvements, new equipment for the Sanitation Department for use at the landfill, development of the American Legion Park (public city park) including a bathhouse and swimming pool, new equipment for the Recreation Department, new fire truck, and a new fire department substation.

One section of the T. J. Samson Community Hospital was completely remodeled in 1975, costing over \$700,000.

The Barren-Metcalf County Ambulance Service recently moved into new quarters. Equipment includes five med-cruisers.

The Mary Wood Weldon Memorial Library has added a parking area and back entrance, and has installed a ramp for patrons using wheelchairs. Also, landscaping has been recently completed.

Underway:

The Glasgow Water Company has a \$400,000 project underway which includes extending water lines west of Glasgow.

The Glasgow Water Company has a \$4.5 million sewerage system improvement project underway which will provide the city with a 4,000,000 gallon per day sewage treatment plant and improve the treatment process.

The city is actively engaged in an Operation Townlift program. Planning is completed for off-street and on-street parking, a new traffic-flow plan, sidewalk improvements, and facade improvements. Signs have already been placed at all intersections on the bypass pointing to the downtown business district. Ninety percent of the truck routes have been re-routed away from the downtown shopping area.

The Civil War Fort has been designated as a National Historic Site and work is progressing on complete restoration of the fort.

A simplified direction facility is being installed at Moore Field.

Planned:

The Glasgow Electric Plant Board plans to construct a new 7,500 kva substation.

Construction of a new 400 square foot overrun is planned for Moore Field.

The T. J. Samson Community Hospital is planning to remodel one of the hospital wings.

The Glasgow City School Board plans to award contracts on construction work in the various schools. Major projects include an addition of a library and office at Bunche, and electrical work and fire alarm systems in several of the schools.

## HISTORY

Barren County is located in the south central part of Kentucky and covers an area of 468 square miles. Barren River forms the Barren River Reservoir, a large man-made lake on the county's southwestern edge, and Beaver Creek flows through the central area. The county's northern section, which is part of the state's famous cave country, is generally hilly. The area to the south is level to rolling, with a fertile limestone-based soil and a clay subsoil.

In 1798, Barren became Kentucky's thirty-seventh county, its territory taken from Green and Warren Counties. Originally part of a great Indian hunting ground known as the "barrens region," the county was so-named because of its sparcity of timber.

Glasgow, the county seat, was established in 1799 and incorporated ten years later. It was named for Glasgow, Virginia, from which many of its early settlers came. Major John Gorin, a Revolutionary War veteran, was the first to settle there and donated land for the town-site. Alexander Spottswood, who was the first lawyer in the region, built Glasgow's first brick house. The Georgian Colonial structure was constructed from plans drawn by George Washington. One of the first state roads passed through Glasgow between Lexington and Nashville.

Cave City, to the north, is the county's second largest town. This and nearby Park City are the tourist gateways via Interstate Highway 65 to Mammoth Cave. Mammoth Cave National Park extends into Barren County and is one of the state's leading tourist attractions. Commercial facilities catering to park-bound tourists have developed rapidly in the Cave City area since the opening of Interstate 65.

In 1800, two years after its formation, Barren County had 4,784 inhabitants. This grew to 28,677 by 1970, and by 1974 population was estimated at 30,500. Glasgow's population was 11,301 in 1970 and Cave City's was 1,818. In 1973, Glasgow had an estimated population of 11,801, and Cave City had an estimated population of 2,031.

The total number of Barren County residents employed in 1974 averaged 15,890, including 2,820 in agriculture and 1,365 in government. Manufacturing employers in the county reported 4,460 workers, and trade and services firms employed 3,530. The largest manufacturing firms in



Barren County are Eaton Corporation, producer of axles; Glasgow Foods, Inc., a poultry processing firm; Glasgow Industries, manufacturing automotive parts and electrical connectors; Glasgow Manufacturing Company, Inc., manufacturer of ladies' apparel; Glasgow Manufacturing Division of R. R. Donnelley & Sons, Inc., a printing firm; Kentucky Pants Company, Inc., manufacturer of men's apparel; Mallory Capacitor Company, manufacturing electrolytic capacitors and sonalerts; Sorensen Manufacturing Company, Inc., producer of automobile ignition parts, wire and cable products and carburetor repair kits; Tyson Bearing Company, Division of SKF Industries, Inc., manufacturer of roller bearings; and Mammoth Cave Garment Company, an apparel manufacturer.