

1981

Industrial Resources: Christian County - Hopkinsville

Kentucky Library Research Collections
Western Kentucky University, spcol@wku.edu

Follow this and additional works at: https://digitalcommons.wku.edu/christian_cty

 Part of the [Business Administration, Management, and Operations Commons](#), [Growth and Development Commons](#), and the [Infrastructure Commons](#)

Recommended Citation

Kentucky Library Research Collections, "Industrial Resources: Christian County - Hopkinsville" (1981). *Christian County*. Paper 20.
https://digitalcommons.wku.edu/christian_cty/20

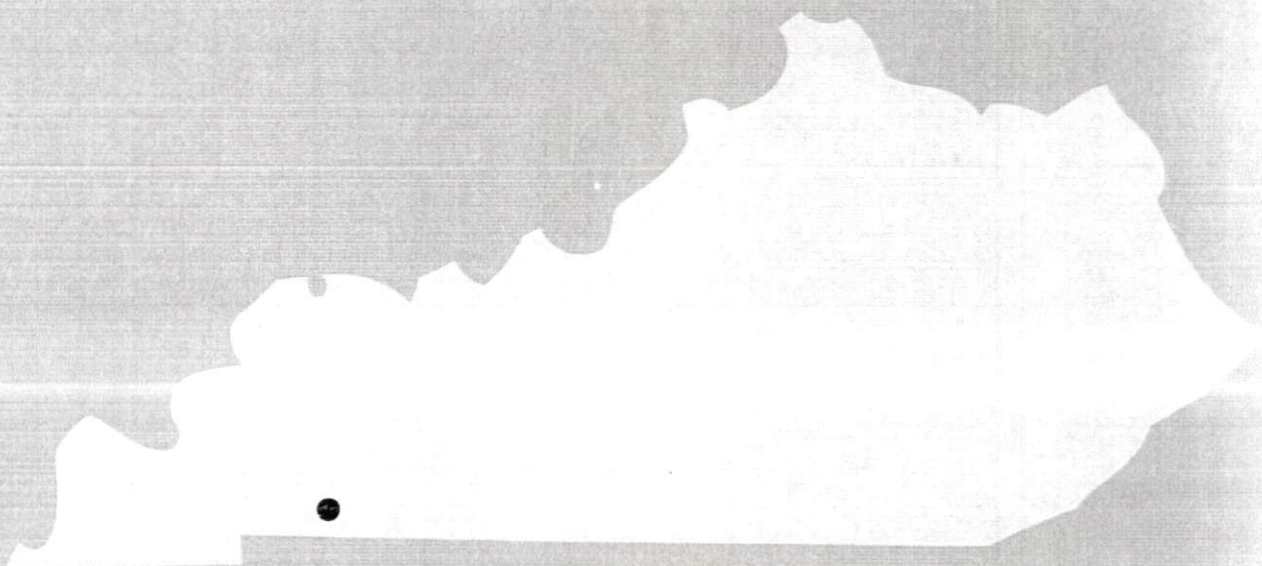
This Report is brought to you for free and open access by TopSCHOLAR®. It has been accepted for inclusion in Christian County by an authorized administrator of TopSCHOLAR®. For more information, please contact topscholar@wku.edu.

IK

Christian County

330

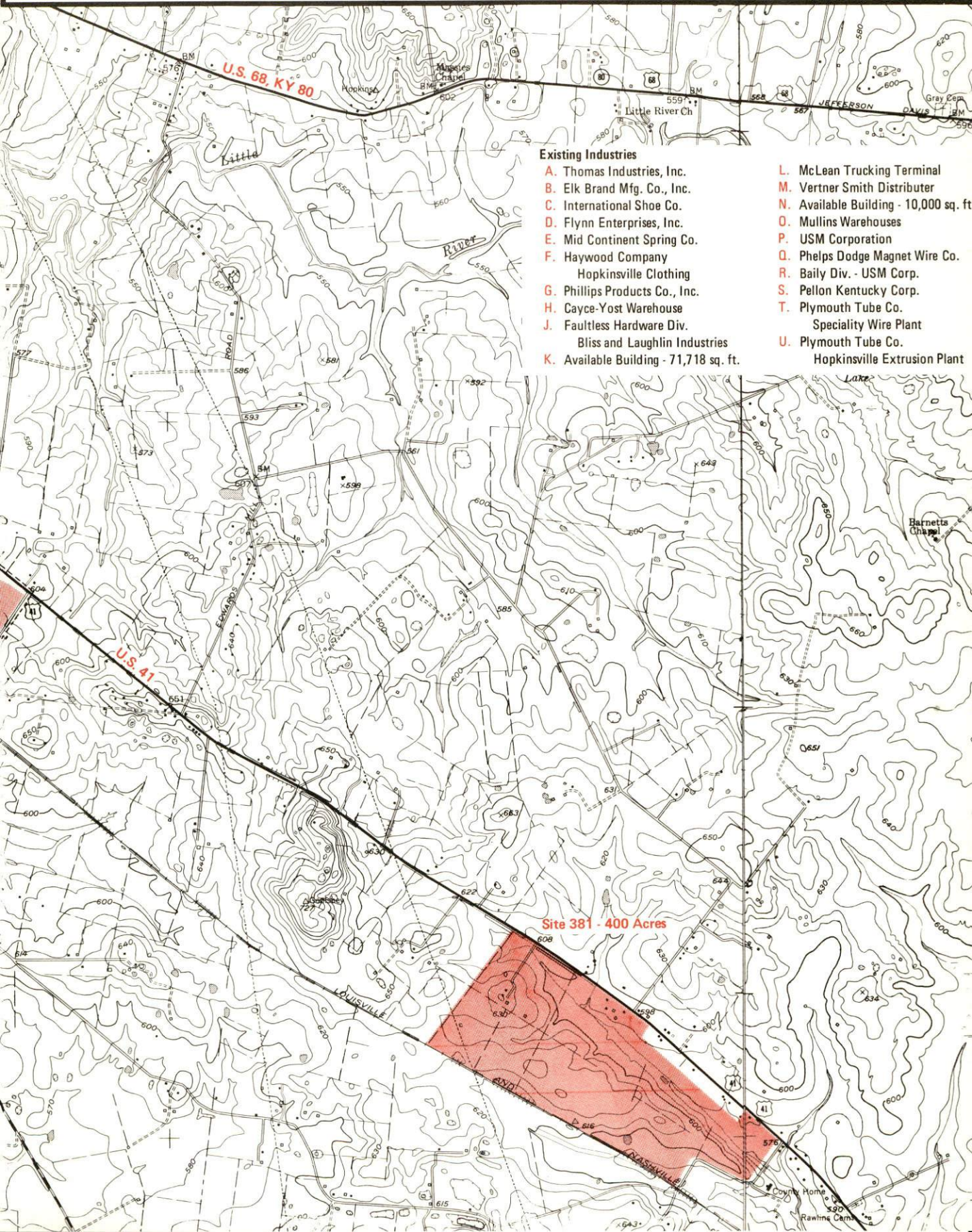
A comprehensive
report on
Hopkinsville, Ky.



KENTUCKY & CO.
The state that's run like a business.

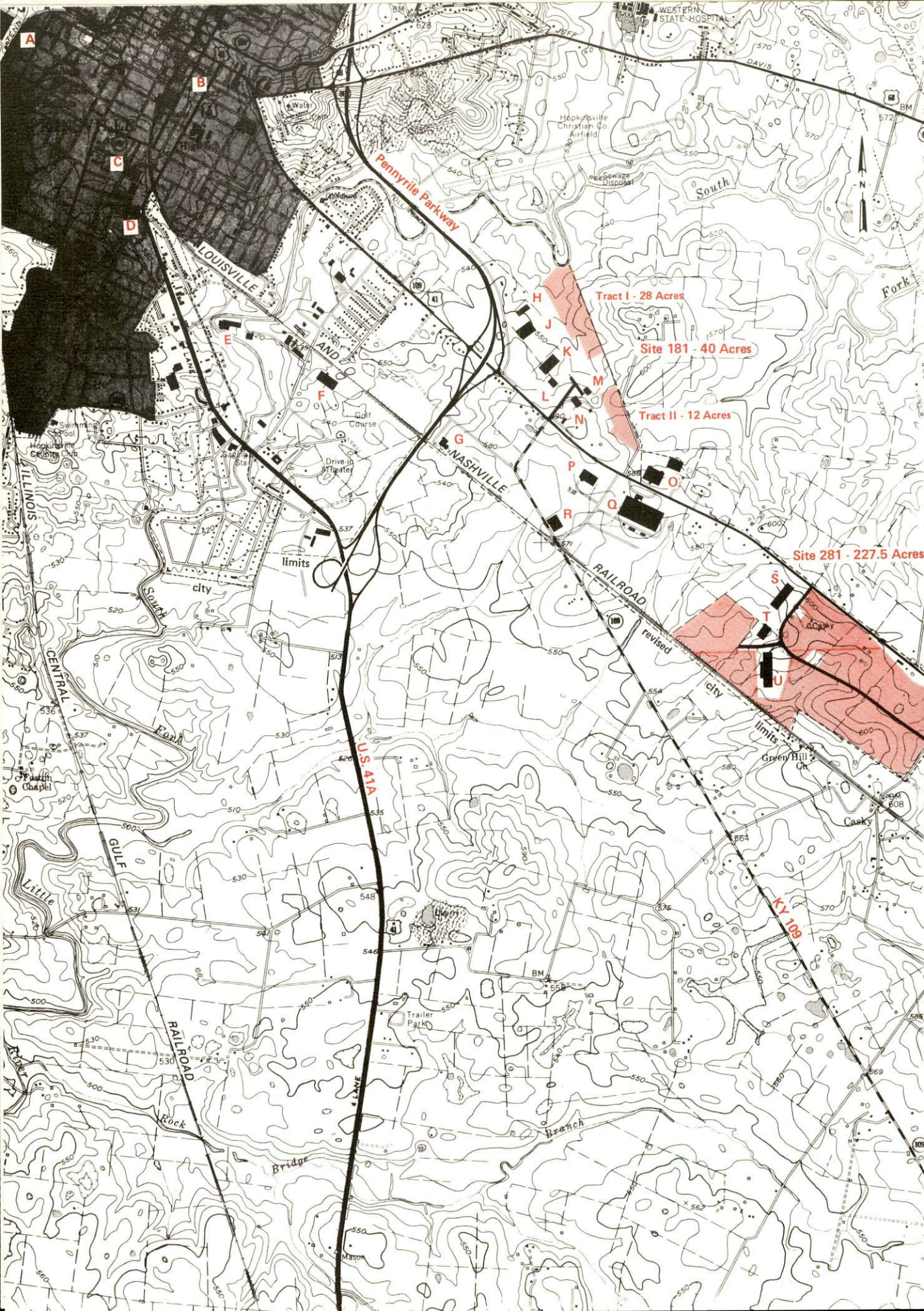
HOPKINSVILLE, KENTUCKY --- Index to Industrial Sites -- 1981

For detailed data on individual sites, contact Hopkinsville-Christian County Chamber of Commerce, P. O. Box 565, Hopkinsville, Kentucky 42240 or the Kentucky Department of Commerce, Capital Plaza Tower, Frankfort, Kentucky 40601.



Existing Industries

- | | |
|--|---|
| A. Thomas Industries, Inc. | L. McLean Trucking Terminal |
| B. Elk Brand Mfg. Co., Inc. | M. Vertner Smith Distributer |
| C. International Shoe Co. | N. Available Building - 10,000 sq. ft. |
| D. Flynn Enterprises, Inc. | O. Mullins Warehouses |
| E. Mid Continent Spring Co. | P. USM Corporation |
| F. Haywood Company
Hopkinsville Clothing | Q. Phelps Dodge Magnet Wire Co. |
| G. Phillips Products Co., Inc. | R. Baily Div. - USM Corp. |
| H. Cayce-Yost Warehouse | S. Pellon Kentucky Corp. |
| J. Faultless Hardware Div.
Bliss and Laughlin Industries | T. Plymouth Tube Co.
Speciality Wire Plant |
| K. Available Building - 71,718 sq. ft. | U. Plymouth Tube Co.
Hopkinsville Extrusion Plant |



A

B

C

D

E

F

G

H

J

K

L

M

N

O

P

R

Q

S

T

U

Pennyrite Parkway

LOUISVILLE

AND

NASHVILLE

RAILROAD

US 41A

ILLINOIS

CENTRAL

GULF

RAILROAD

KY 119

revised

city

limits

Green Hill

Casky

Tract I - 28 Acres

Site 181 - 40 Acres

Tract II - 12 Acres

Site 281 - 227.5 Acres

WESTERN STATE HOSPITAL

HOPKISSVILLE CHRISTIAN CO. AIRFIELD

South

Fork

Fossil Chapel

Little Fork

Rock

Bridge

Branch

Trailer Park

Energy

FOB

FOB

FOB

FOB

FOB

FOB

FOB

FOB

FOB

FOB

FOB

FOB

FOB

FOB

A COMPREHENSIVE REPORT ON
HOPKINSVILLE, KENTUCKY

Prepared by
The Kentucky Department of Commerce
Division of Research and Planning
in cooperation with
The Hopkinsville-Christian County Chamber of Commerce

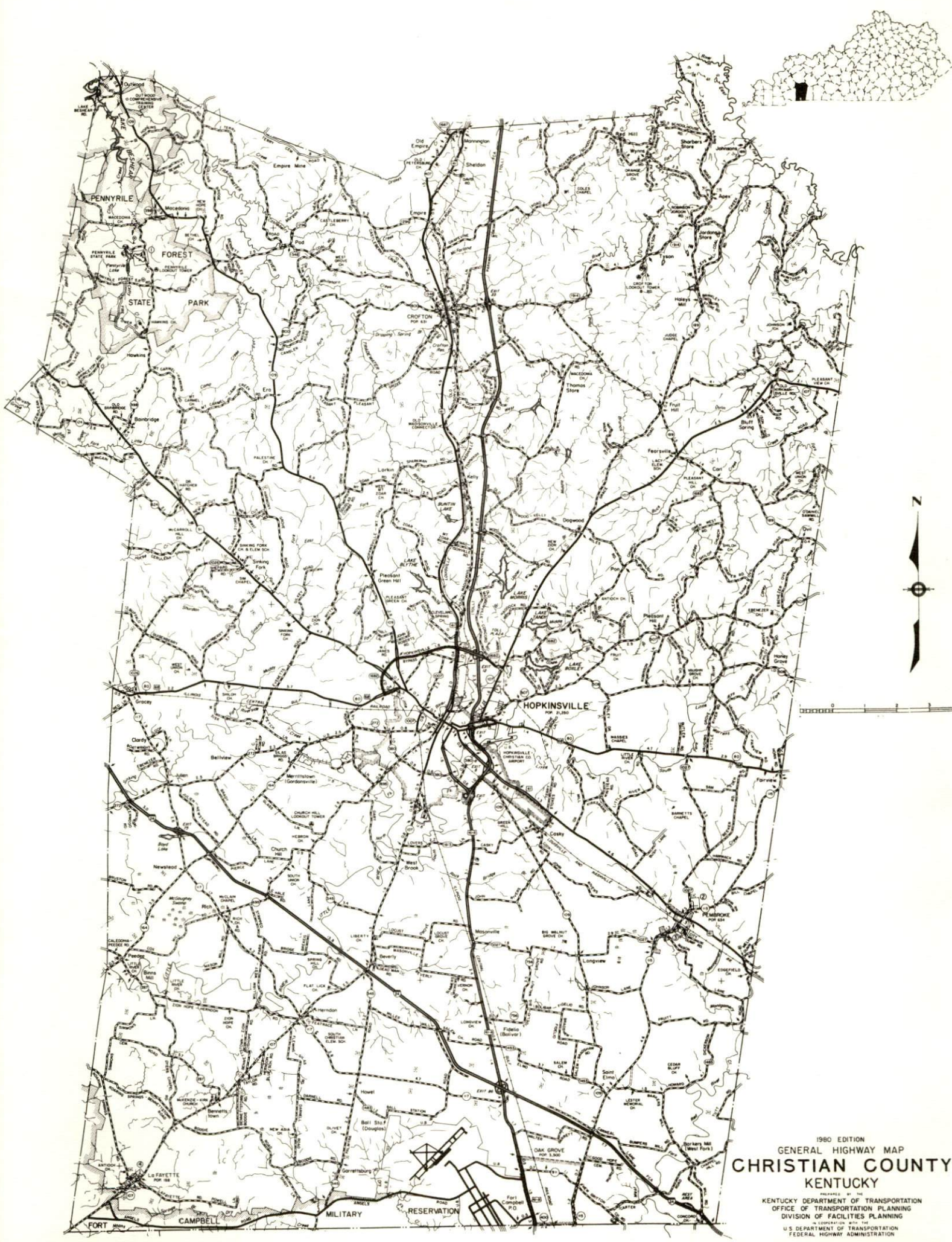
1981

Program supervisor - Brenda Roberts; research - Chris Karibo; clerical - Linda Fint, Annette Mitchell; graphics - Frank Ferrante, Tony Cecconi; cartography - Economic Development Division. Cost of printing paid from state funds.

TABLE OF CONTENTS

<u>Chapter</u>	<u>Page</u>
INDUSTRIAL SITES	i
THE LABOR MARKET AREA	1
Population	1
Labor Force Characteristics of Residents, 1979	1
Estimated Male Labor Supply	2
Estimated Female Labor Supply	2
Major Hopkinsville Manufacturing Firms, Their Products and Employment	3
Labor Organizations in Manufacturing Firms	5
Industrial Services	5
Average Weekly Wages by Industry, by Place of Work, 1979	11
Per Capita Personal Income	13
TRANSPORTATION	14
Rail	14
Highways	15
Truck Service	15
Air	17
Bus	18
Taxi	18
Rental Services	18
Travel Agency	18
Water	18
POWER AND FUEL	19
Electricity	19
Natural Gas	20
Other Fuels	21
WATER AND SEWERAGE	22
Water	22
Sewerage	24
CLIMATE	25

<u>Chapter</u>	<u>Page</u>
LOCAL GOVERNMENT	26
City	26
County	26
Assessed Value of Property	26
Property Taxes	27
Combined State and Local Rates Per \$100 Valuation, 1980	28
Utilities Gross Receipts Tax for Schools	28
Planning and Zoning	28
Safety	29
Police	29
Fire	29
Rescue Service	29
Refuse Collection and Disposal	30
EDUCATION	31
Public Schools	31
Nonpublic Schools	31
Area Colleges and Universities	32
Vocational Schools	33
HEALTH	36
Local Medical Personnel	36
Hospitals	36
Other Medical Facilities	36
Ambulance Service	36
Public Health	36
OTHER LOCAL FACILITIES	37
Communications	37
Library Services	38
Religious Institutions	38
Financial Institutions	40
Hotels and Motels	40
Clubs and Organizations	41
RECREATION	42

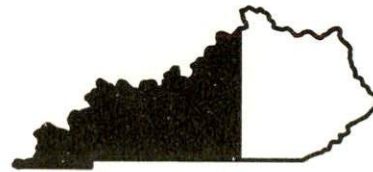


1980 EDITION
 GENERAL HIGHWAY MAP
CHRISTIAN COUNTY
 KENTUCKY

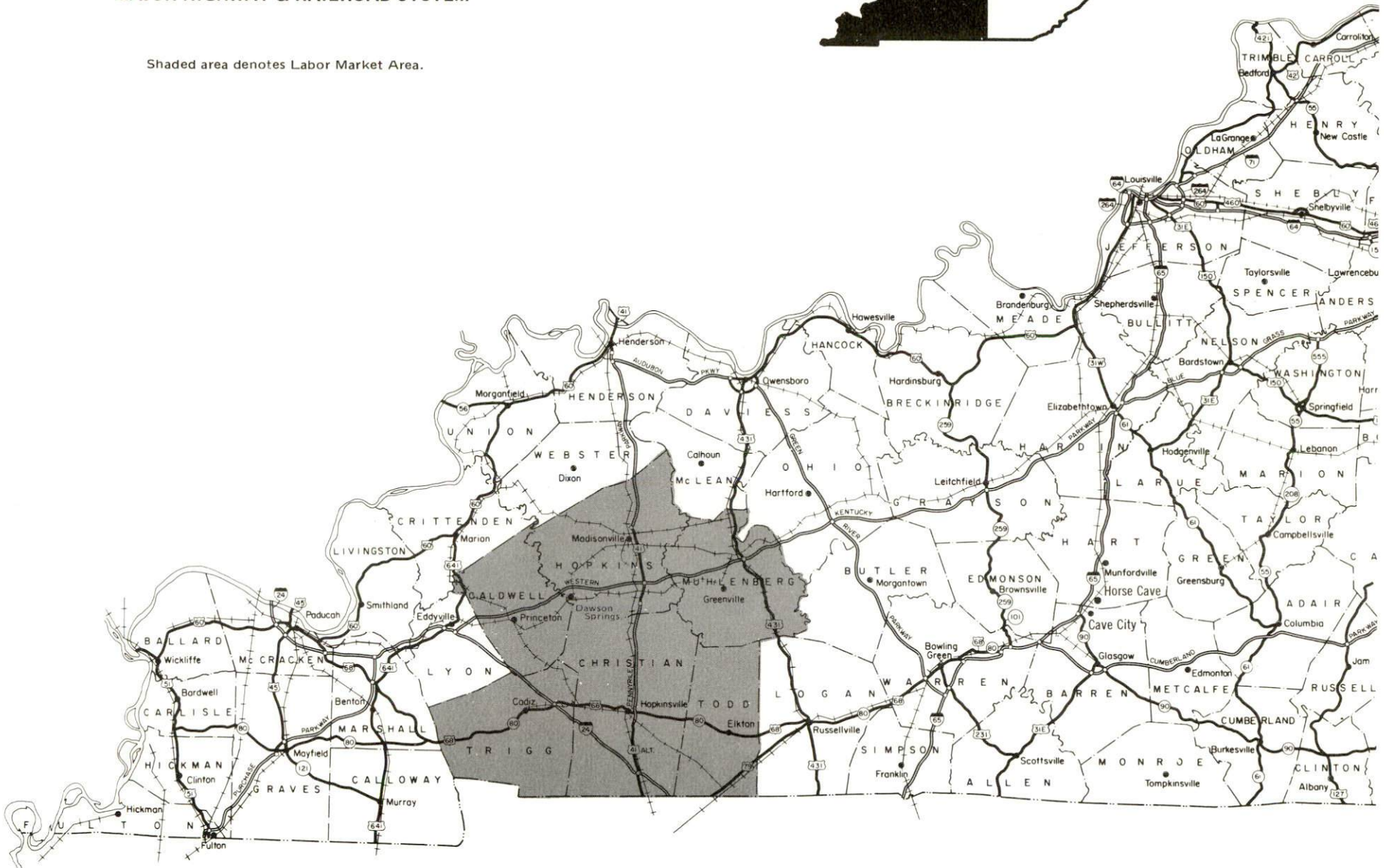
KENTUCKY DEPARTMENT OF TRANSPORTATION
 OFFICE OF TRANSPORTATION PLANNING
 DIVISION OF FACILITIES PLANNING
 IN COOPERATION WITH THE
 U.S. DEPARTMENT OF TRANSPORTATION
 FEDERAL HIGHWAY ADMINISTRATION

HOPKINSVILLE LABOR MARKET AREA

With
MAJOR HIGHWAY & RAILROAD SYSTEM



Shaded area denotes Labor Market Area.



THE LABOR MARKET AREA

The Labor Market Area includes Christian County and the adjoining Kentucky counties of Caldwell, Hopkins, Muhlenberg, Todd, and Trigg.

Area	POPULATION		Percent Nonwhite**
	1978*	1970	
Hopkinsville	26,519**	21,250	24.9
Clarksville-Hopkinsville, Tenn.-Ky. SMSA***	147,700	118,945	N/A
Labor Market Area	180,300	155,550	N/A
Christian County	67,600	56,224	23.4
Caldwell County	13,200	13,179	7.8
Hopkins County	45,400	38,167	7.5
Muhlenberg County	32,000	27,537	4.2
Todd County	12,100	10,823	14.5
Trigg County	10,000	8,620	18.5

*Provisional Estimates.

**1970 Percent Nonwhite for city; 1978 Percent Nonwhite for counties.

***Clarksville-Hopkinsville, Tenn.-Ky. SMSA includes Montgomery County in Tennessee and Christian County in Kentucky.

Sources: U.S. Department of Commerce, Bureau of the Census, Census of Population, 1970. U.S. Department of Commerce, Bureau of the Census, Current Population Reports, Series P-26, No. 78-17, August 1979; Series P-26, No. 78-42, August 1979. U.S. Department of Commerce, Bureau of the Census, April 30, 1980. University of Louisville, Urban Studies Center, Population Research Unit, "Kentucky's Population Disaggregations of 1978 Estimates," January 1980.

LABOR FORCE CHARACTERISTICS OF RESIDENTS, 1979

	Christian County	Labor Market Area
Civilian Labor Force	22,327	72,786
Employment	21,072	68,455
Agricultural	1,471	4,233
Nonagricultural	19,601	64,222
Unemployment	1,255	4,331
Rate of Unemployment (%)	5.6	6.0

Source: Kentucky Department for Human Resources, Kentucky Labor Force Estimates, Annual Averages, 1979.

ESTIMATED MALE LABOR SUPPLY
HOPKINSVILLE LABOR MARKET AREA

Area	Current			Under- employed	Future
	Total	Not in Labor Force	Unemployed		Reaching 18 years of age before 1986
Labor Market Area*	7,834				10,027
Christian	2,629	370	649	1,610	2,505
Caldwell	506	92	234	180	526
Hopkins	1,453	311	662	480	1,718
Muhlenberg	954	217	377	360	1,212
Todd	435	81	154	200	539
Trigg	387	69	168	150	412
Montgomery (Tenn.)	1,180	N/A	N/A	N/A	2,816
Stewart (Tenn.)	290	N/A	N/A	N/A	299

*Additional workers may be drawn from other nearby counties.

Sources: Kentucky Department for Human Resources, Kentucky Labor Supply Estimates by County, 1979. Tennessee Department of Economic & Community Development, Available Labor, February 1979. Kentucky Department of Commerce, Future Labor Supply before 1986.

ESTIMATED FEMALE LABOR SUPPLY
HOPKINSVILLE LABOR MARKET AREA

Area	Current			Under- employed	Future
	Total	Not in Labor Force	Unemployed		Reaching 18 years of age before 1986
Labor Market Area*	7,658				9,575
Christian	1,828	172	606	1,050	2,426
Caldwell	550	45	215	290	497
Hopkins	1,458	141	617	700	1,628
Muhlenberg	805	99	346	360	1,157
Todd	348	36	142	170	484
Trigg	359	28	161	170	377
Montgomery (Tenn.)	2,060	N/A	N/A	N/A	2,728
Stewart (Tenn.)	250	N/A	N/A	N/A	278

*Additional workers may be drawn from other nearby counties.

Sources: Kentucky Department for Human Resources, Kentucky Labor Supply Estimates by County, 1979. Tennessee Department of Economic & Community Development, Available Labor, February 1979. Kentucky Department of Commerce, Future Labor Supply before 1986.

NOTE: "Not in Labor Force" represents those persons who are not now in the labor force, but would enter the labor force if suitable employment were available. Unemployed persons are those persons who are unemployed and actively seeking work. Underemployed persons are those persons who are employed, but are working only 14 to 26 weeks per year.

MAJOR HOPKINSVILLE MANUFACTURING FIRMS,
THEIR PRODUCTS AND EMPLOYMENT*

Firm (Establishment date)	Product	Employment			Labor Unions
		Total	Male	Female	
Bailey Division, USM Corporation (1976)	Molded rubber and urethane automotive products	129	76	53	Auto Workers**
Coca Cola Bottling Company (1932)	Soft drinks	53	--	--	
Dixie Pavers (1959)	Asphalt paving	120	118	2	
Ebonite Company, A Fuqua Company (1967)	Bowling balls	192	145	47	Leather Goods Workers**
Elk Brand Manufacturing Company, Inc. (1930)	Men's and boys' jeans, slacks, walking shorts, and jackets	240	40	200	
Faultless Hardware Division, Bliss and Laughlin Industries (1970)	Decorative furniture, cabinet hard- ware, plastic products	155	80	75	
Flynn Enterprises, Inc. (1976)	Men's, boys', and girls' jeans	250	50	200	
Haywood Company, Hopkinsville Clothing (1927)	Men's and boys' jeans	395	50	345	
Hopkinsville Milling Company (1874)	Wheat flour, corn meal	60	58	2	Retail Wholesale**
Hopkinsville Stone Company (1930)	Crushed and agricultural limestone, bituminous concrete, ready-mixed concrete	55	45	10	
International Shoe Company (1946)	Men's shoes	350	74	276	Steelworkers**

(Contd.)

Firm (Establishment date)	Product	Employment			Labor Unions
		Total	Male	Female	
K-Y Clothing Manufacturing, Inc. (1966)	Men's work coveralls, coats, and jackets	80	10	70	
Kentucky New Era, Inc. (1869)	Newspaper	62	37	25	
Mid Continent Spring Company (1957)	Compression torsion springs	86	37	49	Auto Workers**
Pellon Kentucky Corporation (1973)	Nonwoven textiles	78	69	9	
Phelps Dodge Magnet Wire Company (1965)	Copper magnet wire	450	400	50	Auto Workers**
Phillips Products Company, Inc. (1966)	Plastic products	115	63	52	Teamsters**
Smith and Proffit Machine Company (1963)	Machine shop, special machinery, jigs, fixtures, tools, dies	58	53	5	
Southwestern Tobacco Company, Inc. (1918)	Tobacco redrying	80	50	30	
Thomas Industries, Inc., Residential Lighting Division (1955)	Lighting fixtures, medicine cabinets, decorative mirrors	590	350	240	Teamsters; Electrical Workers, IBEW**
USM Corporation, Fastener Division (1965)	Fasteners	114	96	18	Machinists**
U.S. Tobacco Company (1978)	Tobacco buying and processing	50	45	5	

*Manufacturing firms with 50 or more employees.

**See Labor Organizations below.

Source: Kentucky Department of Commerce, Division of Research and Planning.

LABOR ORGANIZATIONS IN MANUFACTURING FIRMS

<u>Union</u>	<u>Representing workers at:</u>
International Association of Machinists and Aerospace Workers, AFL-CIO	USM Corporation, Fastener Division
International Brotherhood of Electrical Workers, AFL-CIO	Thomas Industries, Inc., Residential Lighting Division
International Brotherhood of Teamsters, Chauffeurs, Warehousemen and Helpers of America	Phillips Products Company, Inc.; Thomas Industries, Inc., Residential Lighting Division
International Leather Goods, Plastic and Novelty Workers' International Union, United Automobile, Aerospace and Agricultural Implement Workers of America	Ebonite Company, A Fuqua Company
Retail, Wholesale and Department Store Union, AFL-CIO	Bailey Division, USM Corporation; Mid Continent Spring Company; Phelps Dodge Magnet Wire Company
United Steelworkers of America, AFL-CIO	Hopkinsville Milling Company
	International Shoe Company

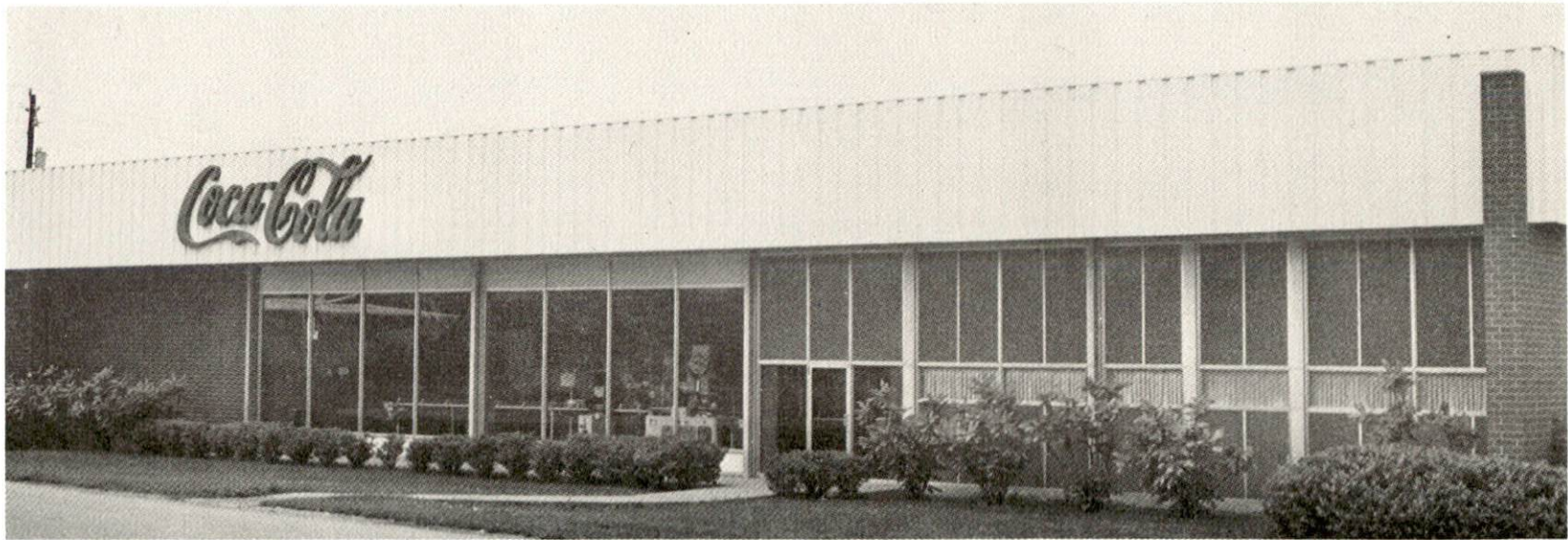
INDUSTRIAL SERVICES

	<u>Location</u>	<u>Mileage from Hopkinsville</u>
Tool & Die, Machine & Pattern Shops	Hopkinsville, Kentucky	--
Metal Service Centers	Russellville, Kentucky	36 miles east
Heat Treating	Nashville, Tennessee	68 miles southeast
Metal Finishers	Nashville, Tennessee	68 miles southeast
	Hartford, Kentucky	69 miles northeast
Electric Motor Repair	Hopkinsville, Kentucky	--

Source: Kentucky Directory of Selected Industrial Services, 1979.



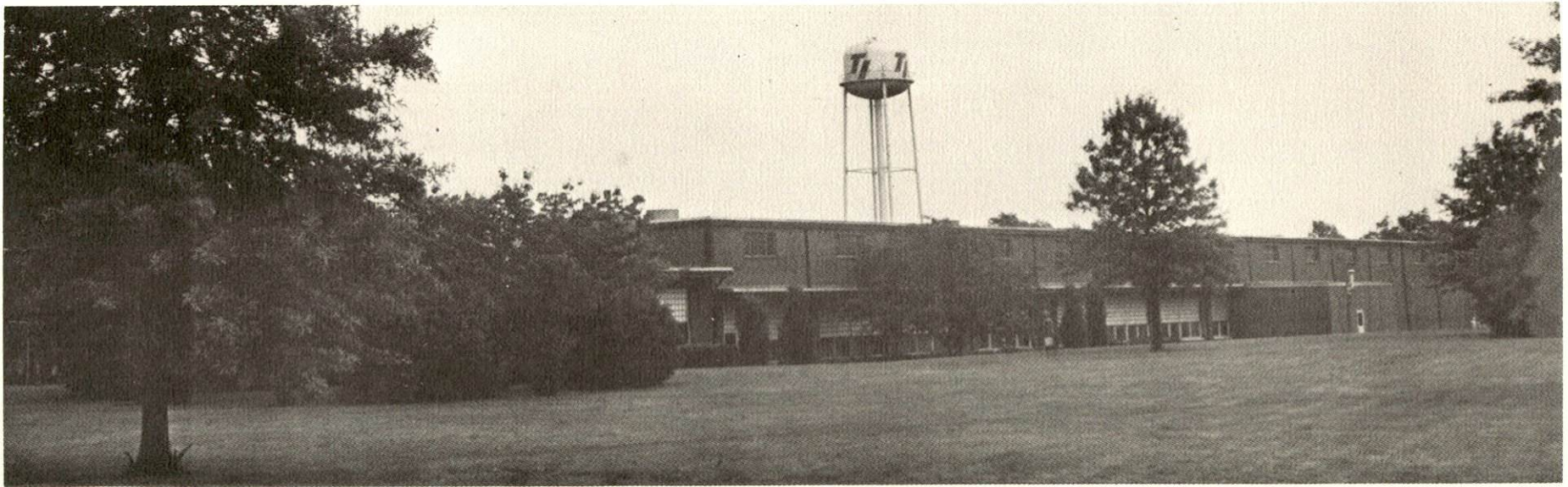
PHILLIPS PRODUCTS COMPANY, INC.



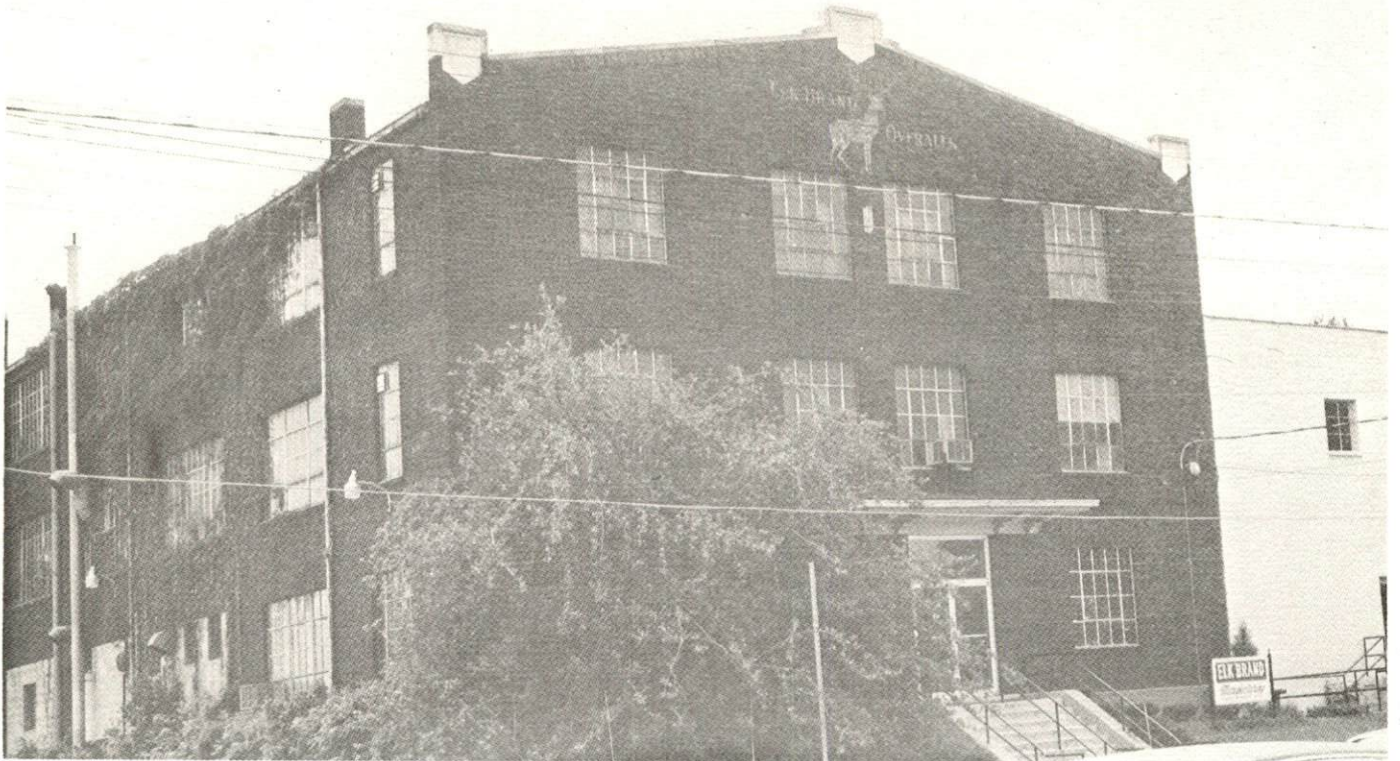
COCA-COLA BOTTLING COMPANY



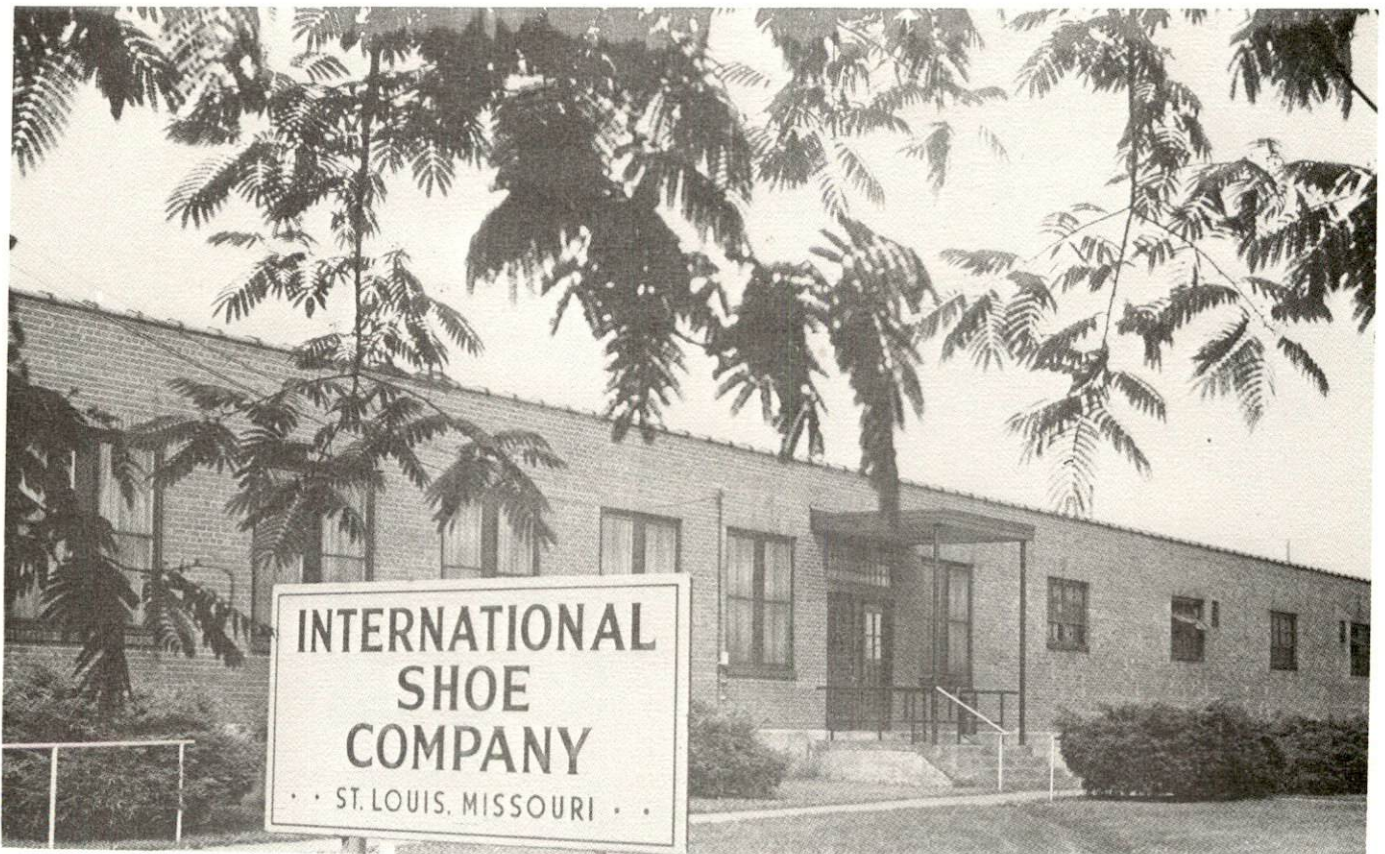
KAUFMAN & BROAD HOME SYSTEMS, INC.



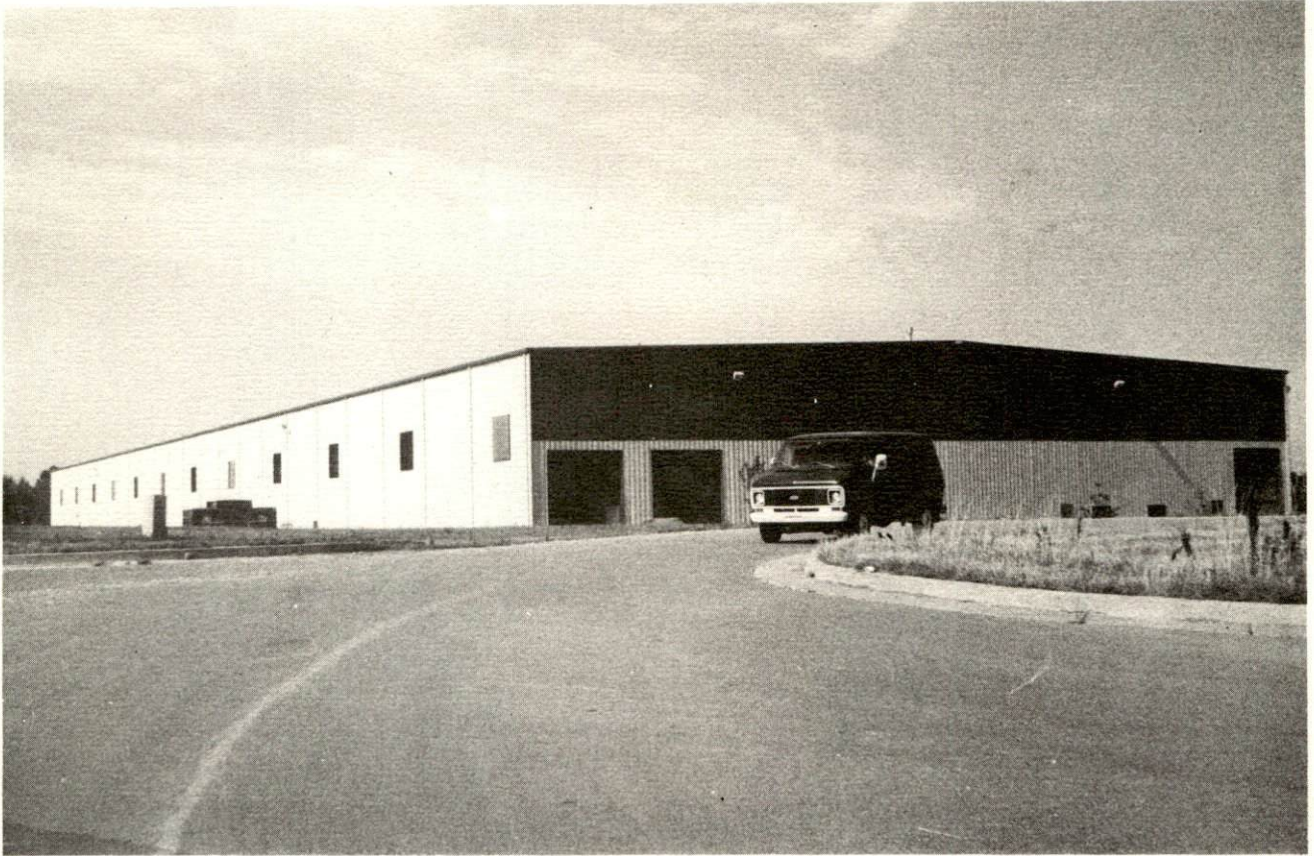
THOMAS INDUSTRIES, INC.



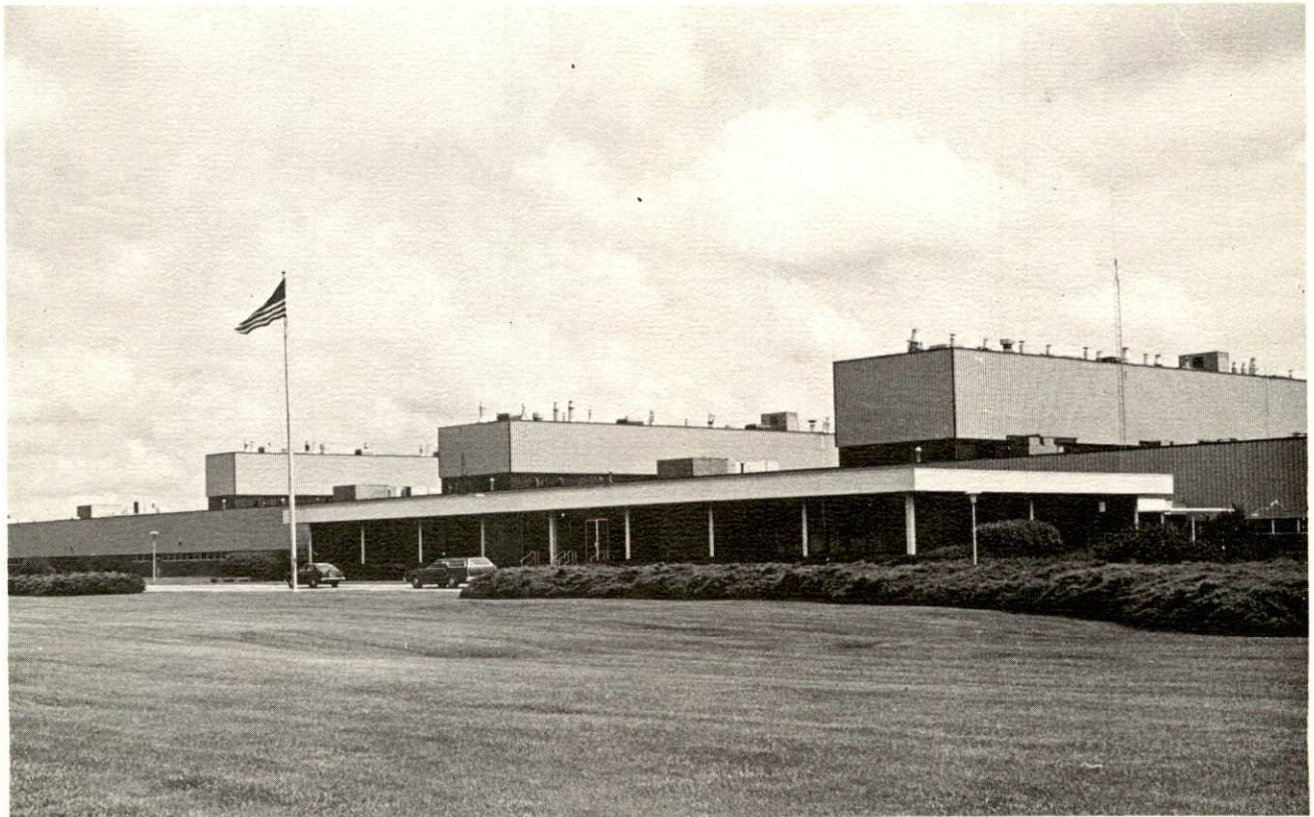
ELK BRAND MANUFACTURING COMPANY, INC.



INTERNATIONAL SHOE COMPANY



PLYMOUTH TUBE COMPANY



PHELPS DODGE MAGNET WIRE CORPORATION



EBONITE COMPANY



HOPKINSVILLE CLOTHING MANUFACTURING COMPANY

AVERAGE WEEKLY WAGES BY INDUSTRY,
BY PLACE OF WORK, 1979

	<u>Christian County</u>	<u>Caldwell County</u>	<u>Hopkins County</u>
All Industries	\$184.70	\$184.40	\$252.06
Mining & Quarrying	292.64	287.31	451.29
Contract Construction	222.30	147.75	270.39
Manufacturing	205.44	207.20	252.16
Transportation, Communications & Public Utilities	251.26	254.77	290.51
Wholesale & Retail Trade	164.37	145.82	178.75
Finance, Insurance & Real Estate	197.54	202.22	194.88
Services	168.59	162.78	184.99
Other	143.61	173.69	134.32

	<u>Muhlenberg County</u>	<u>Todd County</u>	<u>Trigg County</u>
All Industries	\$301.95	\$168.92	\$172.78
Mining & Quarrying	480.48	*	*
Contract Construction	255.55	186.38	242.53
Manufacturing	176.94	190.96	197.36
Transportation, Communications & Public Utilities	288.83	207.66	242.90
Wholesale & Retail Trade	175.77	131.83	112.74
Finance, Insurance & Real Estate	207.14	163.16	174.66
Services	174.21	152.32	158.45
Other	211.90	103.46	*

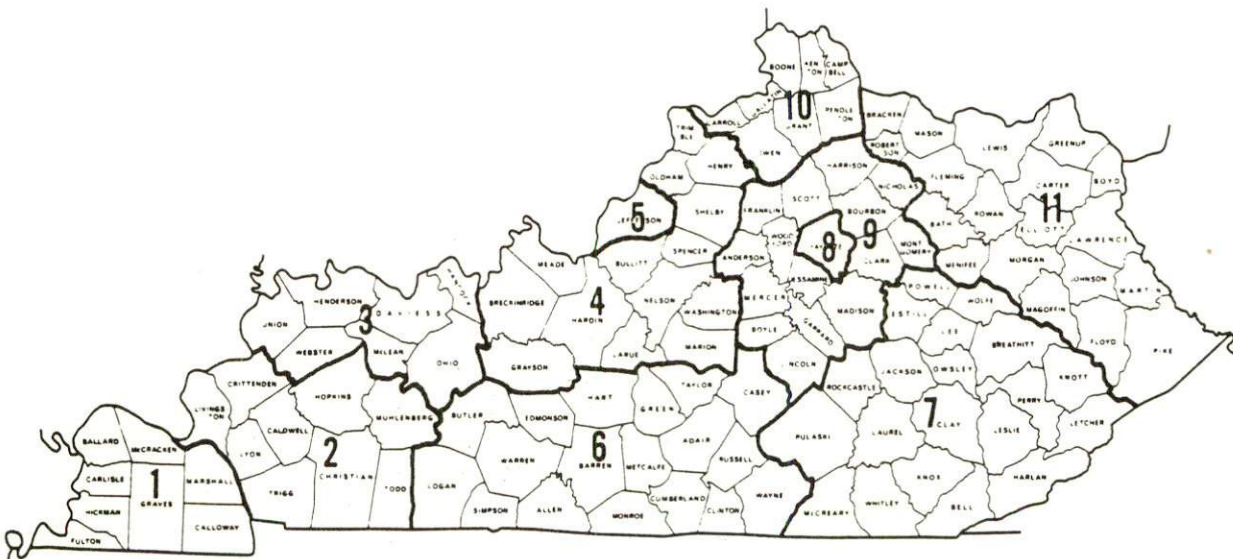
*Not disclosed.

Note: Excludes domestic workers, railway workers, certain nonprofit corporations, majority of federal government workers, and self-employed workers. Effective January 1, 1979, the Kentucky Unemployment Insurance Law extended coverage to include all state and local government agencies (shown in the Services category).

Source: Kentucky Department for Human Resources, Average Weekly Wages of Workers Covered by Kentucky Unemployment Insurance Law, 1979.

Occupational wage rates for specific industries are usually not available to most government agencies, and wage data furnished to state employment agencies by individual industrial employers is protected from disclosure by federal law. The most reliable up-to-date wage information can be obtained by direct contact with local employers.

Associated Industries of Kentucky, a voluntary organization of Kentucky businesses, regularly collects occupational wage rates and fringe benefits data from participating member firms. Data is compiled for over 127 clearly defined office, production, and service occupations. Tabulations are published for eleven regions of Kentucky, as shown on the map below. It should be noted that the data may be weighted by the preponderance of firms in the larger cities and may be somewhat higher than the rates paid in the smaller communities. Data from these tabulations are available, upon request, from the Kentucky Department of Commerce, Frankfort, Kentucky 40601.



Associated Industries of Kentucky Area Wage Surveys

Up-to-date occupational wage rates of the existing industries are maintained by South Kentucky Industrial Development Association, Post Office Box 726, Hopkinsville, Kentucky 42240.

PER CAPITA PERSONAL INCOME

<u>Area</u>	<u>1978</u>	<u>1974</u>	<u>Percent Change</u>
Christian County	\$6,187	\$4,342	42.5
Labor Market Area			
Range	\$4,901 - 8,130	\$3,753 - 5,694	N/A
Kentucky	6,605	4,524	46.0
U.S.	7,840	5,428	44.4

Source: U.S. Department of Commerce, Bureau of Economic Analysis, April 1980.

TRANSPORTATION

Rail

Line serving Hopkinsville - Louisville and Nashville Railroad

Services - One northbound local freight and one southbound local freight stop five days a week; approximately eight northbound and eight southbound through freights daily; switching facilities; team track space for approximately five cars; siding space for approximately 25 cars; nearest Louisville and Nashville Railroad piggyback facilities located at Nashville, Tennessee, 68 miles south, and at Bowling Green, 65 miles east

Line serving Hopkinsville - Illinois Central Gulf Railroad

Services - One northbound freight stops Monday, Wednesday, and Friday; one southbound freight stops Sunday, Tuesday, and Thursday; switching facilities; team track space for 11 cars; siding space for 25 cars; nearest Illinois Central Gulf Railroad piggyback facilities located at Princeton, Kentucky, 29 miles northwest

For details on routing, schedules, rates, and services, contact:

Director of Industrial Development
Louisville and Nashville Railroad
P. O. Box 32290
Louisville, Kentucky 40232
(502) 587-5723

and/or

Manager of Industrial Development
Illinois Central Gulf Railroad Company
112 North Fourth Street
240 Pierce Building
St. Louis, Missouri 63102
(314) 241-9400

Highways

Major highways serving Hopkinsville are U.S. Highways 41, 41A, and 68, all "AAA" trucking highways. The Pennyrile Parkway, an excellent four-lane toll road, has four interchanges located at Hopkinsville and extends north to Henderson, Kentucky.

The Western Kentucky Parkway, a major east-west highway, is 25 miles to the north via the Pennyrile Parkway.

Interstate 24 is routed through the southern portion of Christian County with an interchange 13 miles south of Hopkinsville via U.S. 41A. An interchange is also located 16 miles west of Hopkinsville via Highway 68. Interstate 24 is now complete from Chattanooga, Tennessee, to Interstate 57 in Illinois.

Truck Service

<u>Company</u>	<u>Home Office</u>
A & H Truck Line, Inc.*	1111 East Louisiana Street Evansville, Indiana 47711
Duff Truck Line, Inc.**	P. O. Box 359 Broadway and Vine Streets Lima, Ohio 45802
Kentucky Western Truck Line, Inc. (Irregular route common carrier) (T)**	Gilbert Drive Hopkinsville, Kentucky 42240
Marvin Hayes Lines, Inc. (T)*	P. O. Box 468 Hayes Circle, Guthrie Highway Clarksville, Tennessee 37040
McLean Trucking Company (T)*	P. O. Box 213 Winston-Salem, North Carolina 27102
Overnite Transportation Company*	P. O. Box 1216 1000 Semmes Avenue Richmond, Virginia 23209
Pulaski Highway Express, Inc. (T)*	P. O. Box 23081 640 Hamilton Avenue Nashville, Tennessee 37203
Renner's Express, Inc. (T)**	P. O. Box 882 1350 South West Street Indianapolis, Indiana 46206
Smith's Transfer Corporation (T)*	P. O. Box 1000 Staunton, Virginia 24401
T.I.M.E. - DC, Inc.*	P. O. Box 2550 Lubbock, Texas 79408

(T)Local terminal.

*Interstate only.

**Interstate and intrastate.

Other Freight ServicesNearest Shipping Center or Home Office

Purolator Courier Corporation*
 United Parcel Service*
 KATO Express, Inc. (air cargo
 service)**
 Red Arrow Delivery Service
 (air cargo service)***

Bowling Green, 65 miles east
 Hopkinsville
 Elizabethtown, 126 miles northeast
 Bowling Green, 65 miles east

HIGHWAY MILES AND TRUCK TRANSIT TIME IN DAYS FROM
 HOPKINSVILLE, KENTUCKY, TO SELECTED MARKET CENTERS

City	Highway Miles	Delivery		City	Highway Miles	Delivery Time TL
		Time TL	Time TL			
Atlanta, Ga.	310	1		Los Angeles, Ca.	2,052	7-8
Baltimore, Md.	749	2		Louisville, Ky.	170	1
Birmingham, Ala.	264	1		Nashville, Tenn.	68	1
Chicago, Ill.	390	1		New Orleans, La.	585	2
Cincinnati, Ohio	271	1		New York, N. Y.	911	3
Cleveland, Ohio	515	1-2		Pittsburgh, Pa.	551	2
Detroit, Mich.	530	2-3		St. Louis, Mo.	241	1
Knoxville, Tenn.	245	1				

Note: Mileage computations are via the best interstate or primary highways, not necessarily the most direct route of travel.

Sources: Rand McNally Road Atlas, 1979. Official Kentucky Mileage Map, 1979. Delivery time - Overnite Transportation Company, P. O. Box 1216, Richmond, Virginia 23209.

*For regular scheduled pickups or for occasional pickups, arrangements must be made with the Louisville office of Purolator Courier Corporation or United Parcel Service.

**Daily pickup and delivery service is available to and from Standiford Field in Louisville. Arrangements for service should be made through the home office in Elizabethtown.

***Daily pickup and delivery service is available to and from Standiford Field in Louisville, Kentucky, and Nashville Metropolitan Airport in Nashville, Tennessee. Arrangements for service should be made through the shipping center in Bowling Green.

Air

Local

Location: Hopkinsville-Christian County Airport
1 mile east of Hopkinsville
Runways: 1 paved
Length: 5,000 feet
Traffic
Control: Wind sock on northwest corner
Lighting: Sundown to sunrise
Services: 100 LL octane; major and minor A & E
repairs; tie-down, taxi and T-hangar;
charter; flight training; car rental
Navigation: SDF, localizer
Air Freight
Service: Chartered air freight services must
be arranged.

Nearest Scheduled Airline Service*

Location: Nashville Metropolitan Airport
6 miles southeast of Nashville, Tennessee;
68 miles southeast of Hopkinsville
Runways: 3 paved
Length: 8,000 feet; 7,700 feet; 4,320 feet
Traffic
Control: Tower
Lighting: Beacon, runway
Services: American, Braniff, Delta, Eastern, Ozark,
Piedmont, Republic, TWA, and USAir airlines;
Allegheny commuter, Scheduled Skyways,
Sunbird, and Tennessee Airways commuter
air carriers; 100 LL, 100, and jet fuel;
major repairs, major Avionics repairs;
tie-downs and hangars; charter service;
flight instructions; plane rental; U.S.
Customs; car rental; limousine; taxi;
weather information; hotel; restaurant
Air Freight
Service: Air freight terminal

*Commuter air carrier service is provided by Allegheny Commuter at
Outlaw Field which is located 7 miles northwest of Clarksville,
Tennessee; 27 miles south of Hopkinsville.

Bus - Greyhound Bus Lines

Taxi - 4 companies; 24-hour, radio dispatched service

Rental Services - Car, truck, and trailer rentals

Travel Agency - Pennyrite Travel Advisors and Pennyrite Tours

Water

The nearest navigable waterway to Hopkinsville is Lake Barkley. A public riverport is located on Lake Barkley near Eddyville, 42 miles northwest of Hopkinsville.

POWER AND FUEL

Electricity

Company serving Hopkinsville - Hopkinsville Electric Plant Board*
Source of power - Tennessee Valley Authority
Total generating capacity - 28,539,945 KW
For industrial rates contact:

South Kentucky Industrial
Development Association, Inc.
P. O. Box 726
Hopkinsville, Kentucky 42240
(502) 885-5392

and/or

Hopkinsville Electric Plant Board
101 North Main Street
Hopkinsville, Kentucky 42240
(502) 886-3303

Company serving major part of Christian County - Pennyrile Rural
Electric Cooperative Corporation
Source of power - Tennessee Valley Authority
Total generating capacity - 28,539,945 KW
For industrial rates contact:

South Kentucky Industrial
Development Association, Inc.
P. O. Box 726
Hopkinsville, Kentucky 42240
(502) 885-5392

and/or

Pennyrile RECC
2000 Harrison Street
P. O. Box 551
Hopkinsville, Kentucky 42240
(502) 886-2555

*A 40,000 KW substation, which will serve the western portion of Hopkinsville, is under construction and is planned to be completed in the summer of 1981. The cost of the substation and land is \$600,000.

Company serving northern edge of Christian County - Kentucky
Utilities Company
Source of power - Kentucky Utilities Company
Total generating capacity - 2,383,767 KW
For industrial rates contact:

Industrial Development Department
Kentucky Utilities Company
One Quality Street
Lexington, Kentucky 40507
(606) 255-1461

Natural Gas

Company serving Hopkinsville - Western Kentucky Gas Company
Source of supply - Texas Gas Transmission Corporation
Size of transmission mains - 12 inches (supplier);
8 and 10 inches (distributor)
Distribution mains - 6 and 8 inches
Distribution pressure - 20 to 50 psi
Btu content - 1,000 per cubic foot
Specific gravity - 0.60
For rates and supplies contact:

Director of Industrial Customer Relations
Western Kentucky Gas Company
311 West Seventh Street
Owensboro, Kentucky 42301
(502) 685-8000

Other Fuels

Propane

Harris Propane Gas Company,
Inc.
350 Kraft
Clarksville, Tennessee 37040

Pargas of Hopkinsville
Fort Campbell Boulevard
Hopkinsville, Kentucky 42240

J. Petty Company
Gracey, Kentucky 42232

Southern States Hopkinsville
Petroleum Cooperative
520 Wooldridge Road
Hopkinsville, Kentucky 42240

Fuel oils

Distillate fuel oil -

Ashland Petroleum Company
(bulk plant)
West 15th Street
Hopkinsville, Kentucky 42240

Monarch Oil Company
(Shell Oil jobber)
2500 Virginia Street
Hopkinsville, Kentucky 42240

Chevron USA, Inc.
118 South Clay Street
Hopkinsville, Kentucky 42240

Pennyrile Oil Company
(Sun Oil jobber)
2500 South Virginia Street
Hopkinsville, Kentucky 42240

Exxon Company USA
(bulk plant)
800 West 15th Street
Hopkinsville, Kentucky 42240

Southern States Hopkinsville
Petroleum Cooperative
520 Wooldridge Road
Hopkinsville, Kentucky 42240

Hopkinsville Oil Company
(Phillips 66 jobber)
708 North Main Street
Hopkinsville, Kentucky 42240

Residual fuel oil - Arrangements must be made with the refinery.

Low sulphur content coal - Available in Kentucky.

WATER AND SEWERAGE

Water

Company serving Hopkinsville - Sewerage and Water Works Commission*
101 North Main Street
Hopkinsville, Kentucky 42240
(502) 886-3304

Source - Little River

Treatment plant capacity - 7,000,000 gallons per day

Average daily consumption - 4,700,000 gallons

Peak daily consumption - 5,400,000 gallons

Type treatment - Flash mix, flocculation, clarification, filtration

Storage capacity - 7,500,000 gallons

Size lines - 4 to 18 inches

Average pressure - 78 psi

Average temperature - 75 degrees F.

*Construction is planned for a \$250,000 sludge treatment basin at the water treatment plant. Construction on the basin is expected to begin in May 1981.

MONTHLY WATER RATES

First	3,000 cu. ft.	\$1.00 per 100 cu. ft.
Next	3,000 cu. ft.	.80 per 100 cu. ft.
Next	3,000 cu. ft.	.60 per 100 cu. ft.
Next	3,000 cu. ft.	.55 per 100 cu. ft.
Next	3,000 cu. ft.	.45 per 100 cu. ft.
All over	15,000 cu. ft.	.35 per 100 cu. ft.

Meter Minimum Rate

5/8-inch	\$ 3.00 per month	300 cu. ft.
3/4-inch	4.00 per month	400 cu. ft.
1-inch	6.05 per month	600 cu. ft.
1 1/2-inch	12.10 per month	1,200 cu. ft.
2-inch	19.80 per month	2,000 cu. ft.
3-inch	36.00 per month	
4-inch	60.50 per month	
6-inch	236.50 per month	

Tap-on charge:	1-inch and smaller connection	\$ 400
	1 1/2-inch connection	600
	2-inch connection	900
	3-inch connection	1,200
	4-inch connection	1,400

Private Fire Protection

Through 2-inch connection	\$ 49.50 per year
Through 3-inch connection	71.50 per year
Through 4-inch connection	115.50 per year
Through 6-inch connection	209.00 per year
Through 8-inch connection	302.50 per year
Through 10-inch connection	462.00 per year

Rates and charges not metered - Billed semi-annually in advance.

Tap-on charge: (Fire Service)

4-inch main size	\$ 600
6-inch main size	900
8-inch main size	1,200
10-inch main size	1,400
12-inch main size	1,600

Surface water sources - Little River

Average discharge - Little River near Cadiz - 348 cfs (39 years, USGS)

Expected ground water yield - Varies throughout the county from a high of 200 to 500 gpm to a low of 5 gpm or less, with the majority of the county being in the 5 to 50 gpm range.

Sewerage

Company serving Hopkinsville - Sewerage and Water Works Commission*
101 North Main Street
Hopkinsville, Kentucky 42240
(502) 886-3304

Design capacity - 3,000,000 gallons per day

Average daily flow - 2,800,000 gallons

Treatment - Primary and secondary

Type treatment - Clarifier, drying beds, digester, grit removal,
comminutor, primary settling, fast rate trickling filters, sludge
removal, secondary settling

Treated effluent discharged into - Little River

Size of sanitary mains - 8 to 21 inches

Rates - 80 percent of monthly water bill

Tap-on charge: None

*A 201 Facilities Plan to study infiltration, inflow, and deterioration to the sewerage system is under way. Included in the plan is the construction of a \$8 million sewage treatment plant, with a design capacity of 3.5 million gpd, in the south part of Hopkinsville. The existing sewage treatment plant in the north part of town will be upgraded, which includes an increase in design capacity to 3 million gpd. Plans are also being made for the construction of 20 miles of 48-inch transportation mains which will split the flow equally to each of the two plants. Construction will start on March 1, 1981, and all improvements are expected to be completed by January of 1983.

CLIMATE

Christian County

Temperature

Normal (30-year record)	59.4 degrees
Average annual 1979	57.3 degrees
Record highest, July, 1952 (40-year record)	107.0 degrees
Record lowest, January, 1963 (40-year record)	-15.0 degrees
Normal heating degree days (30-year record)	3,696
(Heating degree day totals are the sums of negative departures of average daily temperatures from 65 degrees F.)	

Precipitation

Normal (30-year record)	46.00 inches
Mean annual snowfall (38-year record)	11.70 inches
Total precipitation 1979	70.12 inches
Mean number days precipitation (.01 inch or more) (38-year record)	120
Mean number days thunderstorms (38-year record)	55

Prevailing Winds (22-year record)

South

Relative Humidity (14-year record)

1 a.m.	80 percent
7 a.m.	85 percent
1 p.m.	58 percent
7 p.m.	62 percent

Source: U.S. Department of Commerce, Environmental Science Services Administration, Climatological Data, 1979.
Station of record: Nashville, Tennessee.

LOCAL GOVERNMENT

City

Structure - Mayor - 4-year term; 12 council members - 2-year terms

Budget 1980-81 - General Fund \$4,200,000

Water and Sewer Fund 2,160,000

Fees and licenses - Occupational license taxes: one percent of the gross salaries, wages, commissions and other compensation earned by persons employed by others; business license fees vary according to the type of business; Manufacturers - (a) to engage in the business or manufacturing any type of product not otherwise classified in Ordinance No. 6-1960, where the number of employees does not exceed 50, a fixed fee of \$100; (b) same, where the number of employees exceeds 50, but does not exceed 100, a fixed fee of \$150; (c) same, where the number of employees exceeds 100, a fixed fee of \$200

County

Structure - County Judge/Executive - 4-year term

8 magistrates - 4-year terms

Budget 1980-81 - General Fund \$1,184,248; Road Fund \$765,841

Assessed Value of Property

<u>Classes of Property</u>	<u>Hopkinsville (1980)</u>	<u>Christian County (1980-81)</u>
Real Estate	\$262,242,562	\$453,725,508
Tangibles	97,012,321	137,048,929

Property Taxes

All property in Kentucky is assessed at 100 percent of fair cash value.

Land and buildings are taxed by the state and may be taxed by local jurisdictions. The state rate is \$0.241 per \$100 of assessed valuation.

Manufacturing machinery, raw materials inventories, pollution control equipment, and goods in the process of manufacture are not subject to local taxation. The state rate is \$0.15 per \$100.

Other tangible personal property owned by manufacturers (automobiles, trucks, finished goods, office furniture, office equipment) is taxed by the state at \$0.45 per \$100 and may be taxed by local jurisdictions.

Property stored in public warehouses in a transit status is not subject to local taxation. The state rate is only \$0.015 per \$100.

Intangible personal property located in Kentucky (money in hand, shares of stock, notes, bonds, accounts receivable, and other credits) is taxed by the state at \$0.25 per \$100, and is not subject to local taxation.

Private leaseholds in industrial facilities owned by cities or counties and financed by industrial revenue bonds are subject to a state tax of \$0.015 per \$100 of value (essentially the lessee's equity, adjusted for appreciation or depreciation). Local taxation is not permitted.

Combined State and Local Rates Per \$100 Valuation, 1980*
(100% assessment)

	<u>Inside City of Hopkinsville</u>	<u>Outside City</u>
1. Land and buildings	\$0.7382	\$0.4682
2. Mfg. machinery, raw materials, goods in process, pollution control equipment	0.1500	0.1500
3. Finished goods, office equipment, vehicles, other tangibles	0.9472	0.6772
4. Intangibles (accounts rec., notes, bonds, etc.)	0.2500	0.2500
5. Leaseholds in I. R. bond financed plants	0.0150	0.0150

Utilities Gross Receipts Tax for Schools

A 3 percent tax is levied on utilities receipts for schools in Christian County. Tax is paid by all consumers of utilities as an add-on to the utilities bills. Exempted are receipts from utilities services that are resold and the receipts from the sale of energy or energy producing fuels that exceed 3 percent of the cost of production in manufacturing, processing, mining or refining.

Planning and Zoning

Joint agency - Hopkinsville-Christian County Planning Commission**
 Zoning enforced - In cities of Hopkinsville and Pembroke
 Subdivision regulations enforced - In all areas except the city of Oak Grove
 Local codes enforced - Building and housing codes in Hopkinsville only
 Mandatory state codes enforced - Kentucky Plumbing Code, National Electric Code, Kentucky Boiler Regulations and Standards, National Fire Protection Association Standards of Safety (for buildings with an occupancy of less than 100 persons), Kentucky Building Code (modeled after BOCA code and applying to buildings with an occupancy of 100 or more persons)

*Kentucky Department of Commerce.

**Includes Christian County and the cities of Hopkinsville, Crofton, LaFayette, Pembroke, and Oak Grove.

Safety

Hopkinsville operates an Emergency Operations Center that has become a model for other EOC's in the area. The EOC houses the police, fire and ambulance services. A central dispatcher relays all emergency calls and the dispatching office contains equipment capable of tracing calls when false alarms are suspected or when an excited caller fails to give an address or other pertinent information about an emergency.

A 911 emergency number has been installed to be used in calling the police, fire or ambulance services. During emergencies, the services can tune to a common radio frequency to communicate with each other.

	<u>Hopkinsville</u> <u>Police</u>	<u>Christian County</u> <u>Sheriff</u>	<u>Police</u>
Total staff	50	24	4
Radio-patrol cars	10	12	3
<u>Fire</u>	<u>Hopkinsville</u>	<u>Christian County</u>	
American Insurance Association Fire Rating	5	10	
Full-time staff	70	--	
Volunteers	--	300	

The Hopkinsville Fire Department is responsible for fire fighting, fire prevention, and the administration of emergency medical services. The fire department reported 1,514 ambulance runs and 418 fire runs in 1979 with an average response time within the city limits of three minutes or less -- well under the national average.

Rescue Service

Christian County Rescue Team

Number of volunteers - 30

Equipment - Two generators, one boat, lake dragging equipment, eight privately-owned boats available for use, 30 radio-equipped cars (citizen band), a van used as first run vehicle, a field kitchen, two oxygen units, a fire truck used for vehicle fires, other heavy duty rescue equipment, and a "Jaws of Life"

Personnel training - All persons are trained in standard First Aid and some have advanced Red Cross training and cardiopulmonary resuscitation. Eighteen men are skilled in lake dragging, three are emergency medical technicians, and a professional scuba diver is available.

Refuse Collection and Disposal

	<u>Hopkinsville</u>	<u>Christian County</u>
Type service	Municipal	Private
Fee charged:		
residential	\$3.60 per month	
business	According to volume (\$4 minimum)	According to volume
industrial	According to volume (\$4 minimum)	According to volume
Collection frequency:		
residential	Weekly	
business	As needed	As needed
industrial	As needed	As needed
Trash pickup	Twice monthly	None
Disposal method	Sanitary landfill	Sanitary landfill

The residents of Christian County are provided with a free sanitation service. Refuse may be disposed of at collection points which are located throughout the county. Pickup service is provided at these points three times weekly with disposal at the sanitary landfill.

EDUCATION

Public Schools

Christian County

Total Enrollment (October 1980)	9,995
Elementary	5,382 (Includes kindergarten)
Middle School	1,558
High School	3,055
Student-Teacher Ratio	19-1
Elementary	19-1
Middle School	19-1
High School	20-1
Accreditation	Southern Association of Colleges and Schools
Percent High School Graduates to College	41.4
Expenditures Per Pupil (1979-80)	\$1,212.09
Bonded Indebtedness, June 30, 1980	\$9,618,000 (Includes \$825,000 refunding issue)

Nonpublic Schools

	<u>Hopkinsville Seventh Day Adventist School</u>	<u>Saints Peter and Paul</u>
Total Enrollment	9	95
Elementary	9	95
Student-Teacher Ratio	9-1	16-1
Elementary	9-1	16-1
	<u>University Heights Academy</u>	<u>Fort Campbell Dependent</u>
Total Enrollment	197	3,309
Elementary	97 (Includes kindergarten)	2,004
Junior High	--	618
Middle School	--	266
High School	100	421
Student-Teacher Ratio	9-1	22-1
Elementary	14-1	24-1
Junior High	--	25-1
Middle School	--	18-1
High School	7-1	18-1

Area Colleges and Universities

<u>Name</u>	<u>Location (Miles distant)</u>	<u>Enrollment (Fall, 1979)</u>	<u>Highest Degree Conferred</u>
Hopkinsville Community College	Hopkinsville, Kentucky	1,054	Associate
Austin Peay State University	Clarksville, Tennessee (27)	5,096	Masters
Madisonville Community College	Madisonville, Kentucky (34)	773	Associate
Murray State University	Murray, Kentucky (60)	7,836	Masters, Specialist*
Bowling Green Business College	Bowling Green, Kentucky (65)	257	Associate
Western Kentucky University	Bowling Green, Kentucky (65)	13,417	Masters, Specialist**
Belmont College	Nashville, Tennessee (68)	1,313	Baccalaureate
David Lipscomb	Nashville, Tennessee (68)	2,196	Baccalaureate
Fisk University	Nashville, Tennessee (68)	1,154	Masters
Free Will Baptist Bible College	Nashville, Tennessee (68)	528	Baccalaureate
Meharry Medical College	Nashville, Tennessee (68)	1,038	M.S., M.D., D.D.S.
Scarritt College	Nashville, Tennessee (68)	124	Masters
Trevecca Nazarene	Nashville, Tennessee (68)	1,344	Baccalaureate
Tennessee State University	Nashville, Tennessee (68)	8,400	Masters
Vanderbilt	Nashville, Tennessee (68)	9,123	Academic and Professional

*Joint doctoral degree programs are offered in cooperation with the University of Kentucky, Lexington.

**Joint doctoral degree programs are offered in cooperation with the University of Kentucky, Lexington, and cooperative doctoral degree programs are offered with the University of Louisville.

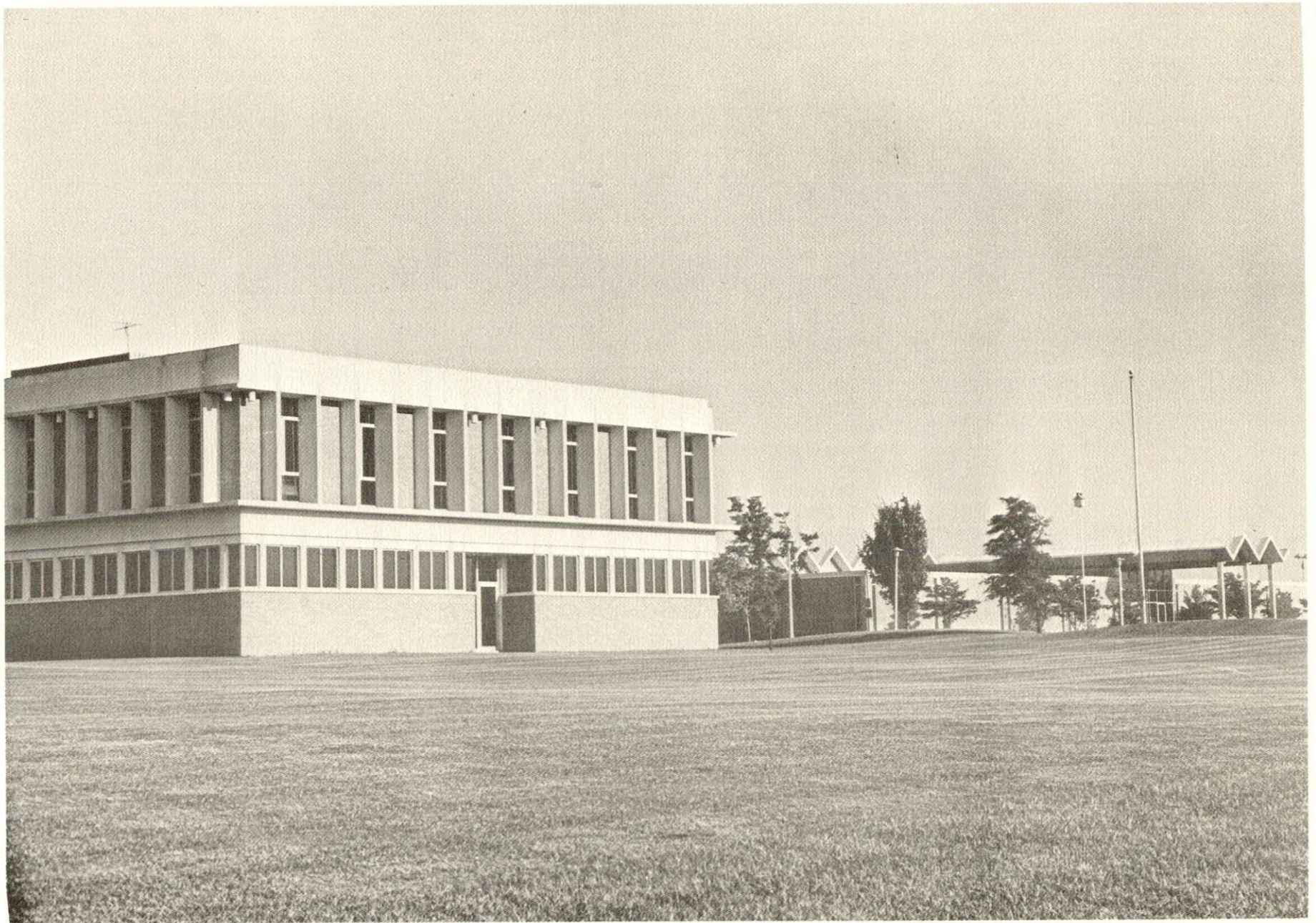
The University of Kentucky's Hopkinsville Community College offers two years of transfer or college parallel courses; associate degrees in Forest and Wood Technology, Management Technology/Business Management, Law Enforcement Technology, Nursing, Secretarial Administration, and Human Services/Mental Health; and a variety of credit and non-credit courses. In addition, the college works with business and industry to provide job-related courses for their employees. The community college also conducts examinations for the certification of professional secretaries, General Education Development Tests (G.E.D's), and State Merit Examinations (for employment with state government) twice monthly.

Vocational Schools

Both the state vocational-technical schools and the area vocational education centers are operated by the Kentucky Department of Education. The state vocational-technical schools enroll persons full-time who are at least 16 years of age and not in school. These students attend classes for six hours each day. The area vocational education centers are designed to accommodate high school students who are at least 15 years of age. These students attend vocational school for three hours each day. The state vocational-technical schools and the area education centers offer evening courses to enable working adults to upgrade current job skills.

Nearest State School

<p>Location Miles Distant Curriculum</p>	<p>Madisonville State Vocational- Technical School Madisonville 34 Consumer and Home Economics Consumer and Family Life Skills Health and Personal Services Occupations Licensed Practical Nursing Medical Laboratory Technician - C Medical Secretary Nurse's Aide/Orderly Radiologic Technology Respiratory Therapy Surgical Technologist Industrial Education Auto Body Repair Auto Mechanics Carpentry Diesel Mechanics Drafting Electronics Industrial Electricity Machine Shop Mine Equipment Maintenance and Operations Welding Learning Resource Center</p>
--	---



HOPKINSVILLE COMMUNITY COLLEGE

Nearest Area Education Center

Location	Christian County Area Vocational Education Center
Curriculum	Hopkinsville Agriculture Adult Farmer Young Adult Farmer Industrial Education Auto Body Repair Auto Mechanics Carpentry/Building Trades Electricity Heating and Air Conditioning Machine Shop Masonry Welding

Arrangements can be made to provide training in the specific production skills required by an industrial plant. Instruction may be conducted either in the vocational school or in the industrial plant, depending upon the desired arrangement and the availability of special equipment.

HEALTH

Local Medical Personnel

Physicians - 70
Dentists - 23

Hospitals

<u>General Hospital</u>	<u>Location</u>	<u>Beds</u>
Jennie Stuart Memorial Hospital*	Hopkinsville	216

General hospital facilities - 10 operating rooms, 10 emergency rooms, critical care unit, OB section, pediatrics, X-ray, radioisotope, laboratory, pathology, physical therapy, respiratory therapy, renal dialysis unit, cobalt treatment unit, blood bank, pharmacy, associate degree nursing program with Hopkinsville Community College, laboratory technological school, licensed practical nursing program and ward clerk training program with Madisonville Community College

Medical staff - 67 doctors, 95 registered nurses, 59 licensed practical nurses

Other Medical Facilities

The Pennyroyal Regional Mental Health-Mental Retardation Center and Western State Hospital, a 520-bed psychiatric treatment facility, are located in Hopkinsville.

Ambulance Service

Name - Hopkinsville Fire Department
Staff - 15 emergency medical technicians
Service - 24-hours, county-wide
Equipment - Five fully-equipped ambulances (two at main station, one each at satellite stations at Crofton and Oak Grove, and one auxiliary back-up ambulance)

Public Health

Facility - Christian County Health Department
Staff - 12 registered nurses, two health environmentalists, 12 clerks, a licensed practical nurse, an administrator, an environmental health technician, six community health workers, a physician (part-time), a medical records administrator, and a health educator

*An eight-story building at the hospital is under construction and is expected to be completed by December 1981. This building will house ancillary services, administrative offices, and six floors of private and semiprivate patient care rooms.

OTHER LOCAL FACILITIES

Communications

Telephone - South Central Bell Telephone Company
Services - Standard

Telegraph - Western Union
Services - Standard

Postal - U.S. Post Office
Class - First
Mail received - Twice daily
Mail dispatched - Twice daily

Newspapers - The Kentucky New Era
Daily and circulation - 16,000
Other papers
received from - Louisville, Kentucky; Evansville, Indiana;
Nashville, Tennessee

Radio - WABD; WHOP; WKAO-WKOF
Stations received from - Bowling Green, Cadiz, Louisville, and
Russellville, Kentucky;
Nashville, Tennessee

Television -
Cable service
Reception from - Three stations are received from Nashville,
Tennessee, without cable service. Paducah
and Bowling Green, Kentucky; Evansville,
Indiana; and Cape Girardeau, Missouri, are
received with cable service.

Educational
Television - Madisonville, Kentucky, transmitter - Channel 35;
Nashville, Tennessee, transmitter - Channel 8

Library Services

Public library - Hopkinsville-Christian County Public Library

Size collection - 51,955 volumes

Circulation, 1979-80 - 90,668

Special collections - The McCarroll Geneology Collections, World War I records, Kentucky collection

Services - Student services (assistance with research projects), bookmobile, children's department, story hour, talking books, microfilm, audiovisual equipment, video tape recorder, records, art prints, community room, newspapers, magazines, films, filmstrips, slides, tape recordings, book reviews, summer outreach program from children's department, film on children and reading (shown to Parent/Teacher Associations, etc.)

College library - Hopkinsville Community College (open to the public)

Size collection - 35,587 volumes

Special collections - Kentucky Collection, Government Documents

Services - 17 newspapers; 160 periodicals; 4,700 records, cassettes, filmstrips, reel-to-reel tapes, audiovisual equipment, microfilm of census records, copying machine

Religious Institutions

Number of churches in Christian County - Approximately 90

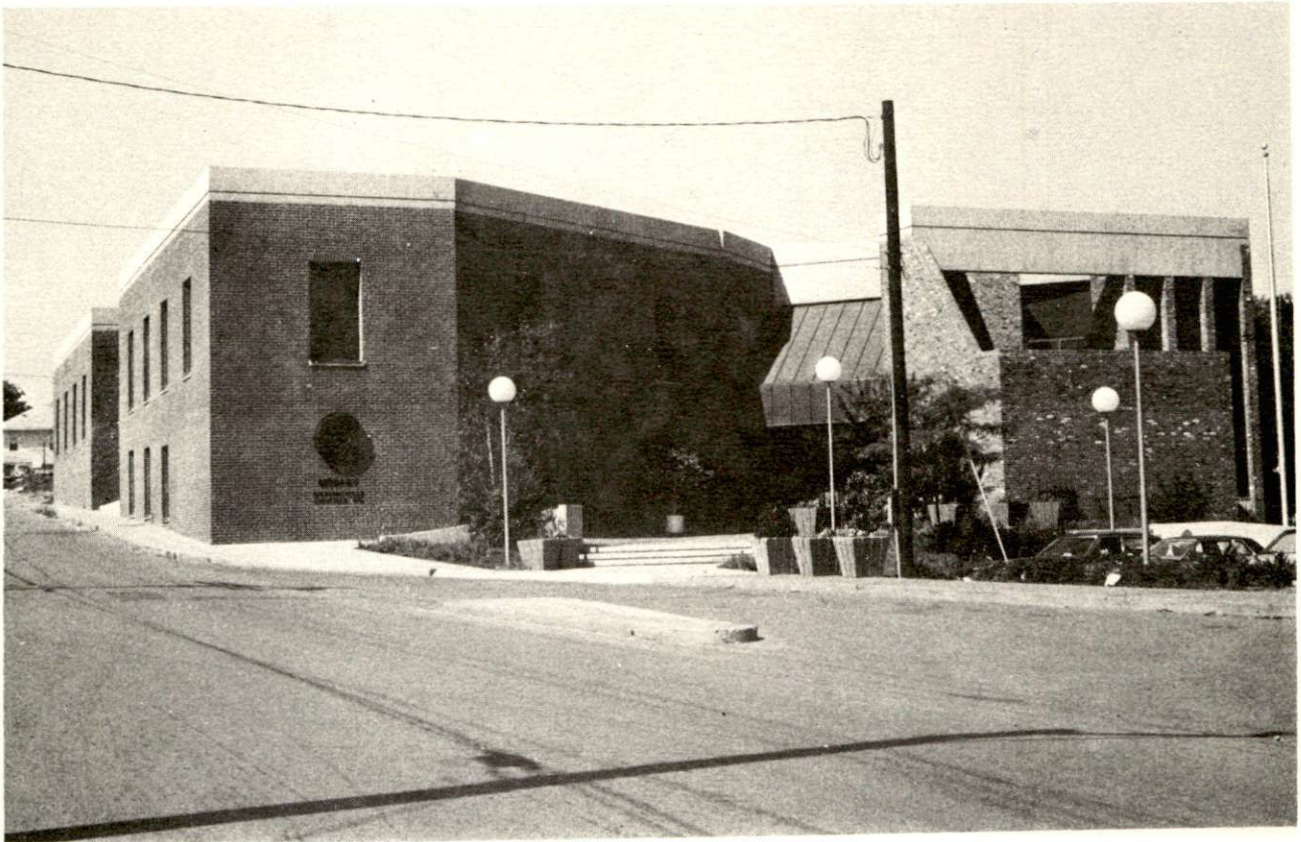
Denominations - Apostolic, Assembly of God, Baptist, Catholic, Christian, Christian Methodist Episcopal, Christian Science, Church of Christ, Church of God, Latter Day Saints, Lutheran, Methodist, Missionary Baptist, Nazarene, Pentecostal, Presbyterian, Salvation Army, Seventh Day Adventist, United Methodist

Nearest Synagogues - Nashville, Tennessee, 68 miles south

Congregations - Sherith Israel (orthodox)

Ohabai Shalom (reform)

West End Synagogue (conservative)



HOPKINSVILLE-CHRISTIAN COUNTY PUBLIC LIBRARY



PENNYROYAL AREA MUSEUM

Financial Institutions

<u>Banks</u>	<u>Assets</u>	<u>Deposits</u>	<u>Statement Date</u>
First City Bank and Trust Company	\$ 94,741,520.00	\$ 84,360,475.00	12/31/79
Planters Bank and Trust Company	121,010,880.38	108,576,954.98	6/30/80
Pennyrile Citizens Bank and Trust Company	24,033,406.06	21,920,355.93	12/31/79
United Peoples Bank	8,850,849.95	7,459,112.91	6/30/80
<u>Savings and Loan Associations</u>	<u>Assets</u>	<u>Savings Accounts</u>	<u>Statement Date</u>
First Federal Savings and Loan Association	\$ 38,880,832.88	\$ 33,960,312.35	6/30/80
Hopkinsville Federal Savings and Loan Association	92,198,737.87	84,606,180.79	12/31/79

Hotels and Motels

Total number - 14
Total rooms - 513

Clubs and Organizations

Alpha Delta Chapter	Junior Auxiliary
Beta Gamma	Katherine Peden Business and Professional Women
Boy Scouts	Kentucky Goodtime Modulators C.B. Club
Bronze Twilighters	Kentucky State Poetry Society
Buddies, Inc.	Kiwanis - Morning
Chamber of Commerce	Kiwanis - Noon
Channel Airways Kentucky C.B. Club	League of Women Voters - Evening
Christian County Baptist Association	League of Women Voters - Morning
Civitan Club	Lions Club - Evening
Clover Acres	Lions Club - Noon
Club 1965	Little River Audubon Society
Community Concert Association	Masonic Lodge #37
Disabled American Veterans	Modernettes
Disabled American Veterans Auxiliary	National Association for the Advancement of Colored People
Eagles	National Secretaries Association
Eastern Star	Newcomers Club
Ebonaire Club	Oakleaf Art and Literary Club
Elk's Club	Optimist Club
Farm Bureau	Pennyrile Foster Parents Association
Girl Scouts	Pennyrile Philatelic Society
Good Sam Club	Pennyrile Players, Inc.
Home Builders	Pennyrile Rose Society
Hopkinsville Art Guild	Pioneers, Inc.
Hopkinsville Board of Realtors	Rainbow Girls
Hopkinsville Business and Professional Women	Rotary Club
Hopkinsville Jaycees	Salvation Army
Hopkinsville Ministerial Association	Shang-Ri-La
Jaycees Burnout	Shrine Club
Junior Achievement	Stateline Hui-O-Hawaii Club
	Veterans of Foreign Wars Post 1913
	Weight Watchers
	Western Kentucky State Fair

RECREATION

Local

Hopkinsville offers a variety of public recreational facilities. Public facilities include eight parks, eight playgrounds, three swimming pools, 18 tennis courts, eight baseball diamonds, one football field, two soccer fields, a 9-hole golf course, a par-3 golf course, two gymnasiums, and Lake Bly, a fishing lake. Four little-league fields are expected to be completed by the summer of 1982.

The Hopkinsville-Christian County Recreation Department employs a full-time director and staff. Supervised recreational programs include classes in golf, tennis, swimming, arts and crafts, and special programs for the handicapped. Sports leagues include women's and men's softball, basketball, and volleyball; co-educational softball and flag football; girls' softball; little-league softball and baseball; Babe Ruth baseball; junior league basketball; pee wee football; and soccer.

Private recreational facilities include a country club, a golf course, swimming pools, bowling lanes, riding stables, indoor and outdoor movie theatres, a roller skating rink, trap shooting facilities, and a racquetball and health club.

The Western Kentucky State Fair is held at the Christian County Fairgrounds each summer. A horse show, horse races, tractor pulls, and performances by famous entertainers are featured. The fair is the largest in western Kentucky.

A community concert series and performances by the Pennyrile Players, an outstanding community theatre group with an active membership of 150, are held at Hopkinsville Community College. A photographic exhibit of approximately 400 local historical pictures dating back to the Civil War is held during the first two weeks of March at the community college. The Hopkinsville Art Guild, which is headquartered at the community college, presents several art exhibits each year.

The Pennyrile Festival of Arts is celebrated during the second week of October. The festival offers juried art exhibits, programs in drama and music, and a garden tour. The Pennyrile Rose Society presents an annual show. Twice yearly, in April and October, a professor at Hopkinsville Community College presents a "Highlights in Local History" program at the Pennyroyal Area Historical Museum in Hopkinsville. Other points of interest in and near Hopkinsville include the 101st Airborne Museum at Fort Campbell; a pioneer cemetery; and the burial site of Edgar Cayce, the world famous clairvoyant.

Area (Within 65 miles)

Embraced by probably the most beautiful wooded area in Western Kentucky, Pennyrile Forest State Resort Park at Dawson Springs is located 27 miles north of Hopkinsville. The lodge and cottages nestled within the trees provide excellent accommodations. Other facilities and activities include a dining room, a gift shop, rental rowboats and pedal boats, a 9-hole golf course, hiking trails, horseback riding, picnicking, playgrounds, shuffleboard, swimming at the lodge pool and off a sand beach, and two tennis courts. Lake Beshear, only four miles from the lodge, sports good fishing.

Lake Barkley State Resort Park, 31 miles west of Hopkinsville near Cadiz, is located on the scenic Little River embayment of the 58,000-acre Lake Barkley. The magnificent lodge includes 120 rooms, four suites, nine cottages, a dining room, a coffee shop, a gift shop, two meeting rooms, and a recreation room. An activities center with a capacity for 400 and a 80-site campground are located near the lodge. A lodge pool, a beach and a bathhouse, an 18-hole golf course, tennis courts, a riding stable, a trapshooting range, a basketball court, hiking trails, playgrounds, and a picnic area comprise the recreational facilities. The marina near the lodge has everything for the "boat lover": covered and open slips; launching ramp; and rentals for fishing boats, skiing boats, and pleasure ride pontoons.

Charm and serenity exemplify Kenlake State Resort Park which is located on the 160,000-acre Kentucky Lake, approximately 40 miles west of Hopkinsville in Calloway County. The park offers hotel and cottage accommodations and an efficient camping site. Other facilities include a 9-hole golf course, pool and lake swimming, horseback riding, hiking trails, fishing, boating, picnicking, playgrounds, shuffleboard, planned recreation, and one of the finest tennis complexes in the area.

Kentucky Dam Village State Resort Park, located approximately 65 miles northwest of Hopkinsville at Gilbertsville, is one of the largest and most popular vacation resorts in Kentucky. A modern lodge with 72 rooms, six different cottage types, and a 225-site campground make up the accommodations. There is also a dining room overlooking the 160,000-acre Kentucky Lake, a coffee shop, a snack bar, two gift shops, a meeting room, an activities center, and a recreation room. Recreational activities to choose from include boating and fishing at the largest docking facility in the Kentucky parks system, golf at the 18-hole Village Green Course, hiking, horseback riding, picnicking, swimming at the lodge pool or off the sand beach, and tennis.

Land Between the Lakes National Recreation Area is a beautiful 170,000-acre woodland that has been developed by TVA into a major area for outdoor recreation, conservation, and environmental learning. It is a peninsula 5 to 10 miles wide and stretching for 40 miles north to south between Kentucky Lake and Lake Barkley. There are facilities for fishing, boating, hiking, swimming, hunting, and camping.

Jefferson Davis Monument State Shrine is located approximately 10 miles east of Hopkinsville at Fairview. The shrine is at the site of the birthplace of Jefferson Davis, a former U.S. Senator, Secretary of War, and the only president of the Confederate States of America. The 16-acre park contains a 351-foot obelisk with an elevator to the top for viewing, a museum, a gift shop, and a playground with picnic tables.

Lake Malone State Park, located in southern Muhlenberg County, approximately 50 miles northeast of Hopkinsville, offers camping facilities, swimming, fishing and boating on a 788-acre lake. Playground facilities and picnic shelters are located in a beautiful scenic cliff area. Located across from the entrance to the park is an inn, featuring luxury rooms, a restaurant, a swimming lake, a beach, boating, fishing, tennis, and nature trails.

