

1978

Industrial Resources: Hardin County - Elizabethtown

Kentucky Library Research Collections
Western Kentucky University, spcol@wku.edu

Follow this and additional works at: https://digitalcommons.wku.edu/hardin_cty



Part of the [Business Administration, Management, and Operations Commons](#), [Growth and Development Commons](#), and the [Infrastructure Commons](#)

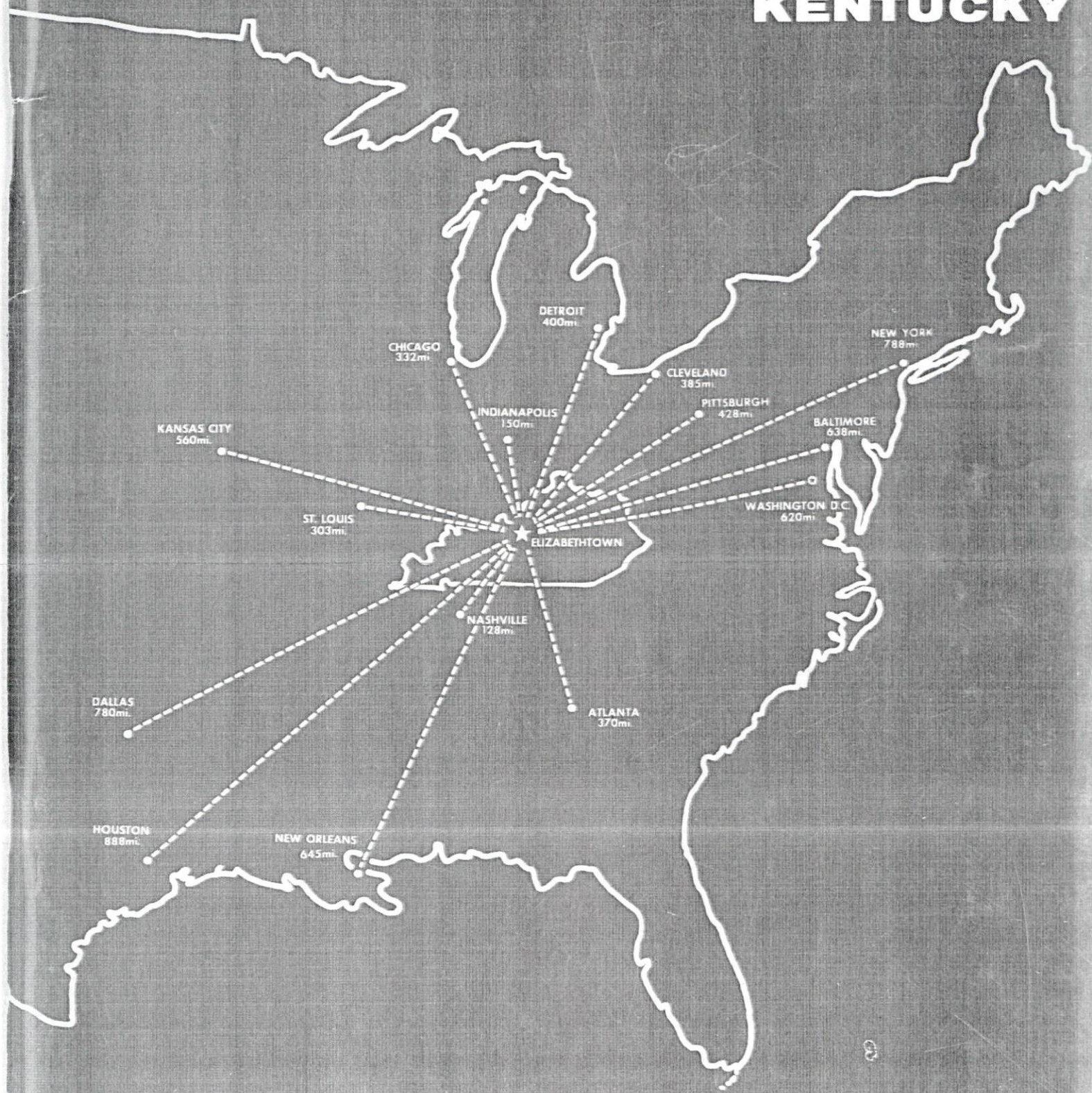
Recommended Citation

Kentucky Library Research Collections, "Industrial Resources: Hardin County - Elizabethtown" (1978). *Hardin County*. Paper 42.
https://digitalcommons.wku.edu/hardin_cty/42

This Report is brought to you for free and open access by TopSCHOLAR®. It has been accepted for inclusion in Hardin County by an authorized administrator of TopSCHOLAR®. For more information, please contact topscholar@wku.edu.

INDUSTRIAL RESOURCES

ELIZABETHTOWN KENTUCKY



ELIZABETHTOWN, KENTUCKY --- 823 ACRES --- SITE 178

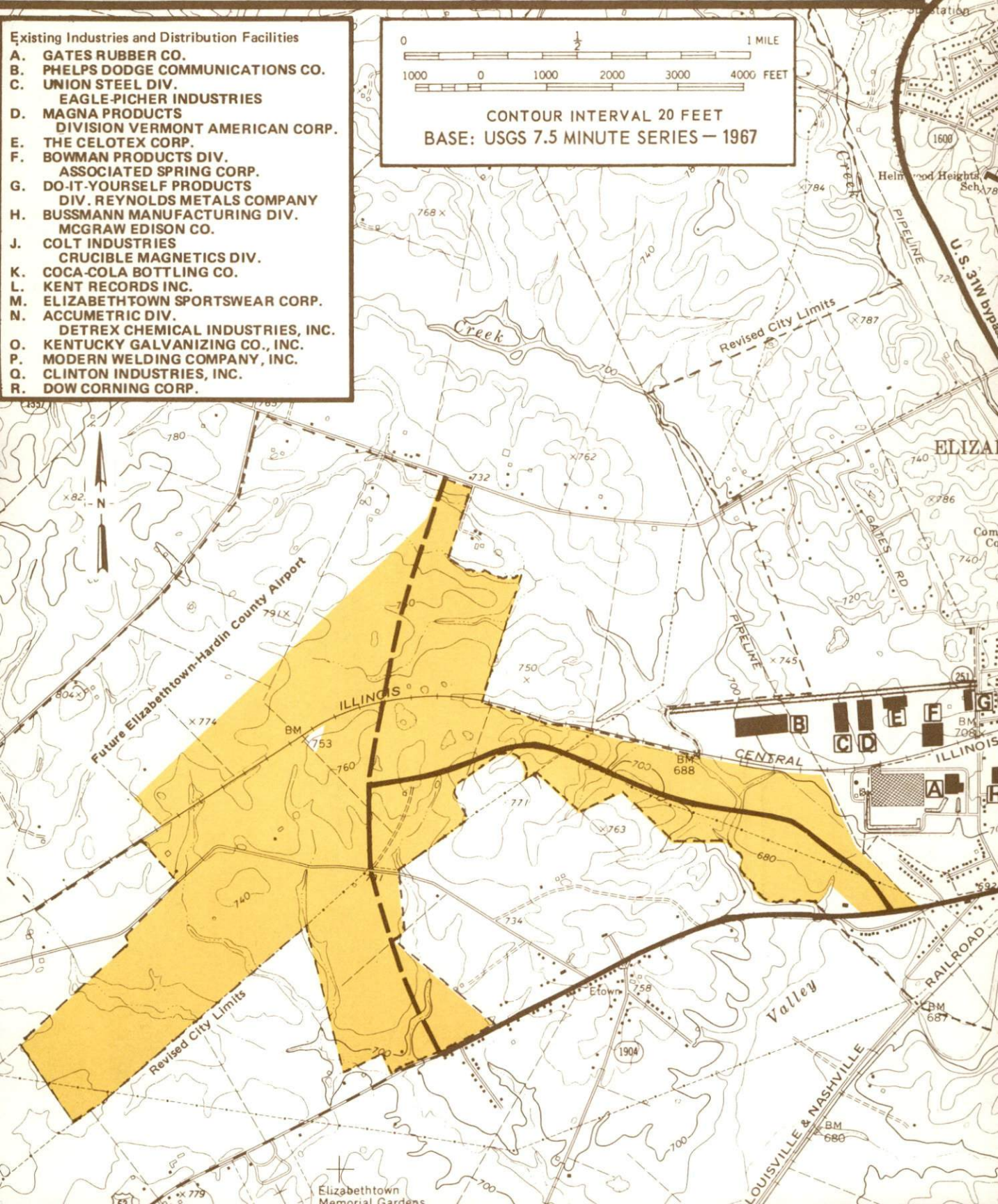
HUGHES CENTER OF COMMERCE AND INDUSTRY - A MULTI-COUNTY REGIONAL INDUSTRIAL PARK AND BUSINESS CENTER

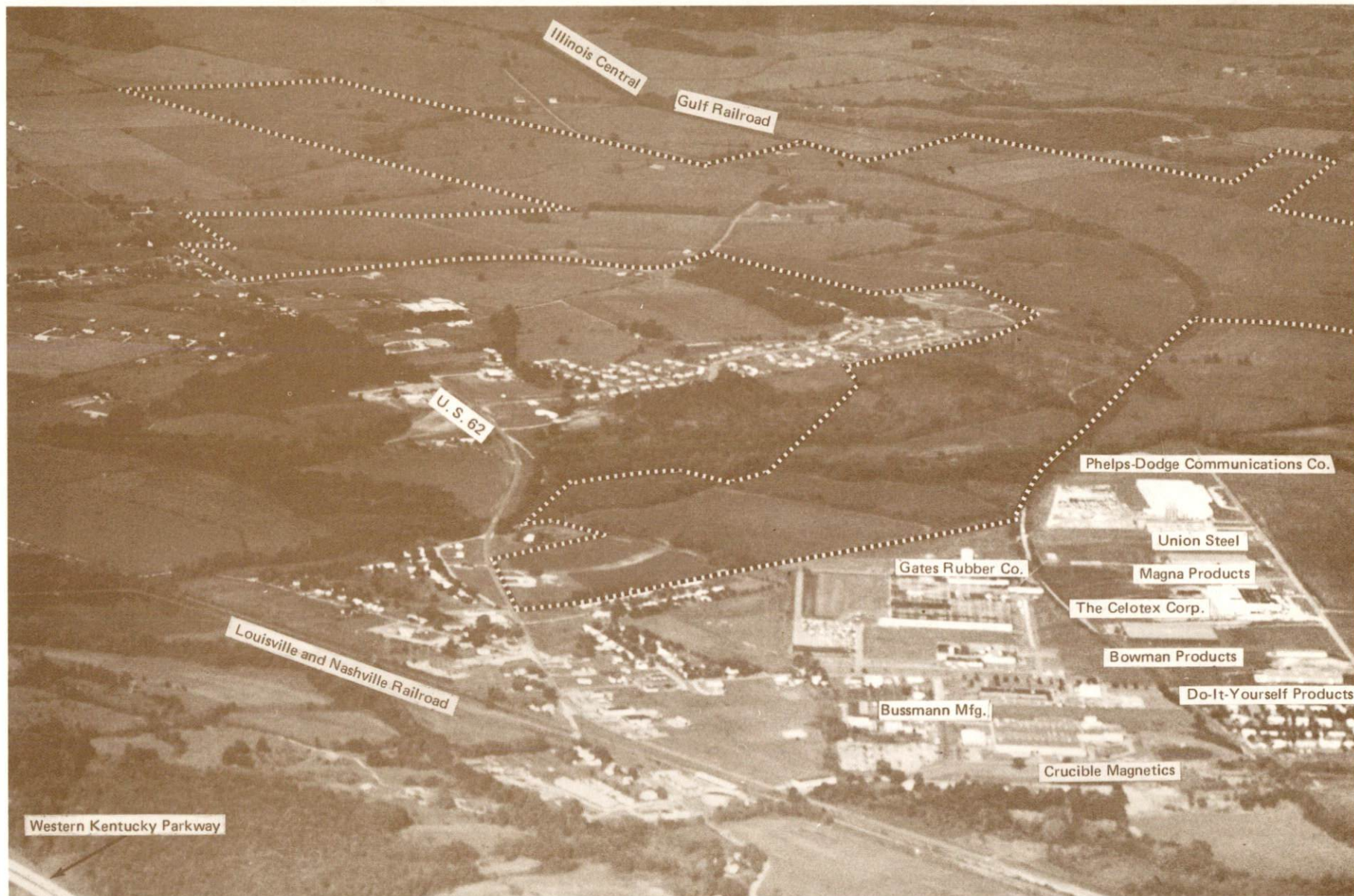
For detailed data contact Lawrence Hughes, Elizabethtown Industrial Foundation, P. O. Box 62, Elizabethtown, Kentucky 42701, (502) 769-5941; or the Industrial Development Division, Kentucky Department of Commerce, Capital Plaza Tower, Frankfort, Kentucky 40601, (502) 564-7140.

- Existing Industries and Distribution Facilities
- A. GATES RUBBER CO.
 - B. PHELPS DODGE COMMUNICATIONS CO.
 - C. UNION STEEL DIV.
EAGLE-PICHER INDUSTRIES
 - D. MAGNA PRODUCTS
DIVISION VERMONT AMERICAN CORP.
 - E. THE CELOTEX CORP.
 - F. BOWMAN PRODUCTS DIV.
ASSOCIATED SPRING CORP.
 - G. DO-IT-YOURSELF PRODUCTS
DIV. REYNOLDS METALS COMPANY
 - H. BUSSMANN MANUFACTURING DIV.
MCGRAW EDISON CO.
 - J. COLT INDUSTRIES
CRUCIBLE MAGNETICS DIV.
 - K. COCA-COLA BOTTLING CO.
 - L. KENT RECORDS INC.
 - M. ELIZABETHTOWN SPORTSWEAR CORP.
 - N. ACCUMETRIC DIV.
DETREX CHEMICAL INDUSTRIES, INC.
 - O. KENTUCKY GALVANIZING CO., INC.
 - P. MODERN WELDING COMPANY, INC.
 - Q. CLINTON INDUSTRIES, INC.
 - R. DOW CORNING CORP.



CONTOUR INTERVAL 20 FEET
BASE: USGS 7.5 MINUTE SERIES - 1967



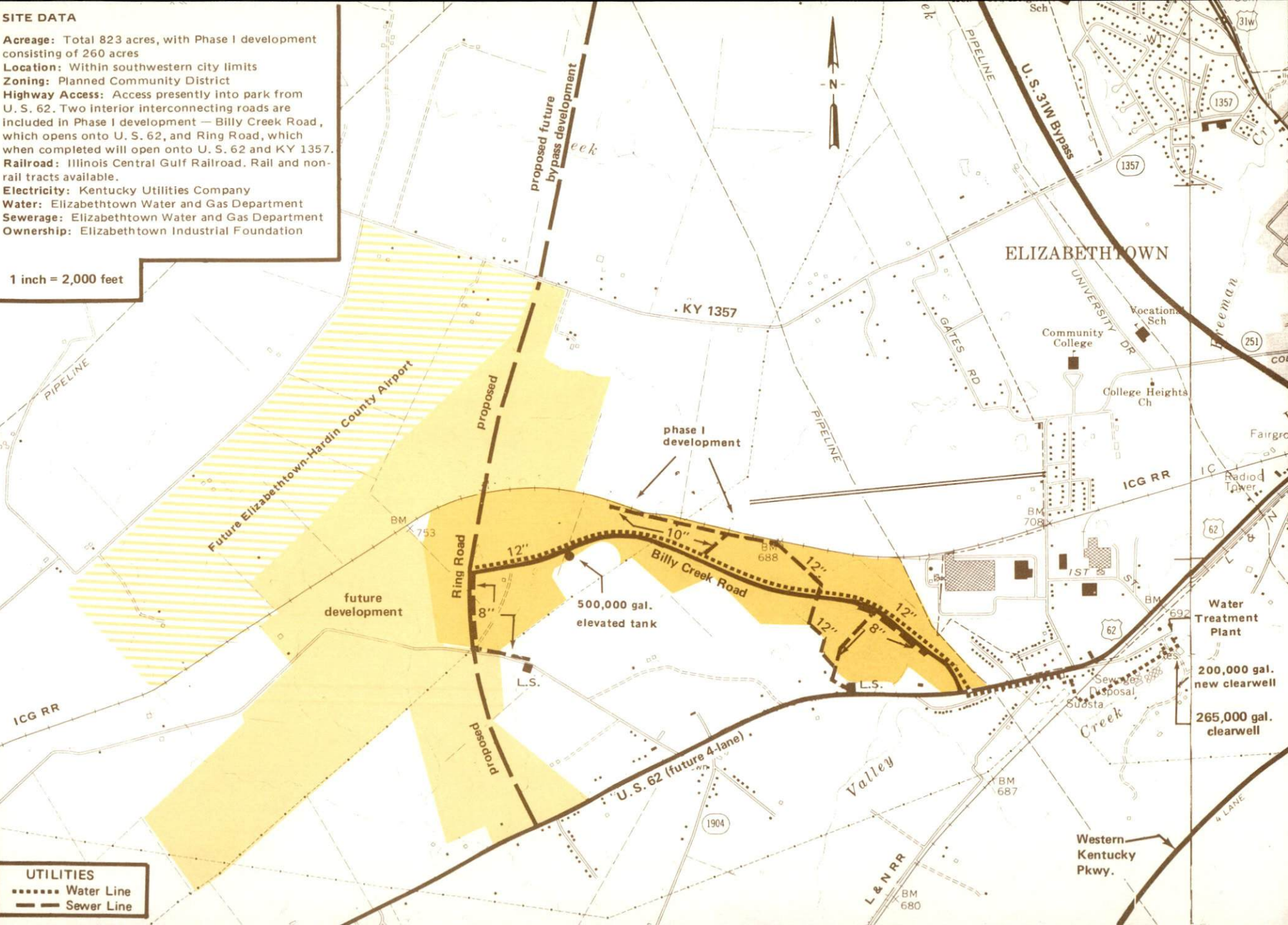


HUGHES CENTER OF COMMERCE AND INDUSTRY — — LOOKING WEST

SITE DATA

Acreage: Total 823 acres, with Phase I development consisting of 260 acres
Location: Within southwestern city limits
Zoning: Planned Community District
Highway Access: Access presently into park from U. S. 62. Two interior interconnecting roads are included in Phase I development — Billy Creek Road, which opens onto U. S. 62, and Ring Road, which when completed will open onto U. S. 62 and KY 1357.
Railroad: Illinois Central Gulf Railroad. Rail and non-rail tracts available.
Electricity: Kentucky Utilities Company
Water: Elizabethtown Water and Gas Department
Sewerage: Elizabethtown Water and Gas Department
Ownership: Elizabethtown Industrial Foundation

1 inch = 2,000 feet



UTILITIES

- Water Line
- Sewer Line



INDUSTRIAL RESOURCES
ELIZABETHTOWN, KENTUCKY

Prepared by
The Kentucky Department of Commerce
Division of Research and Planning
in cooperation with
The Elizabethtown-Hardin County Chamber of Commerce
and
The Elizabethtown Industrial Foundation
1978

Program manager and research: Patsy Wallace; production supervisor: Pam Riley; clerical: Joan Furlong; graphics: Frank Ferrante, Tony Cecconi, Richard Spencer; cartography: Industrial Development Division. Cost of printing paid from state funds.

TABLE OF CONTENTS

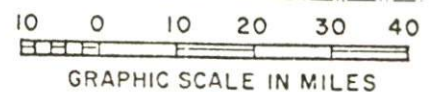
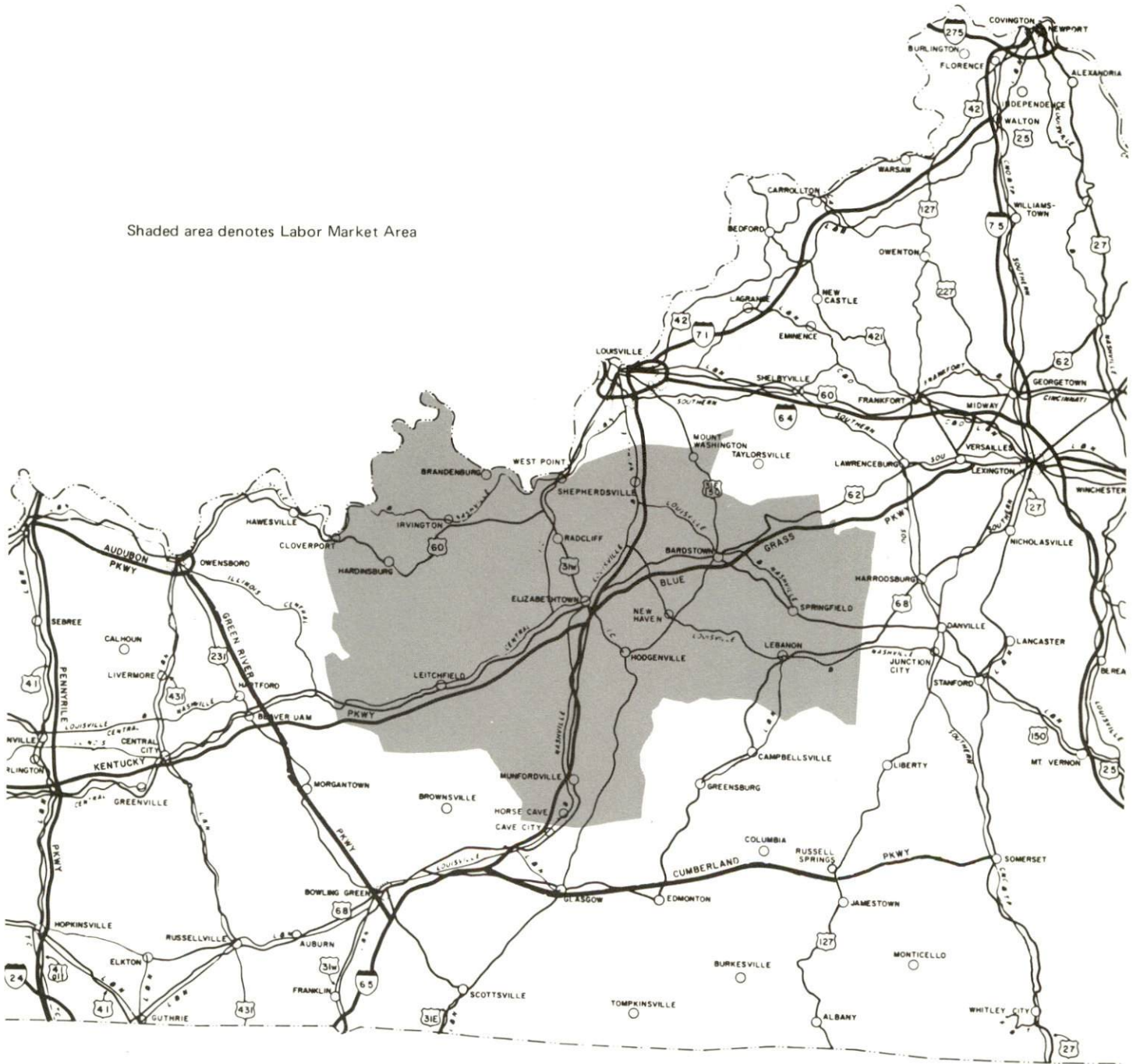
Chapter	Page
INDUSTRIAL SITES	i
SUMMARY OF INDUSTRIAL RESOURCES - ELIZABETHTOWN, KENTUCKY	1
THE LABOR MARKET	6
Population.....	6
Labor Force Characteristics of Residents, 1977	6
Major Elizabethtown Manufacturing Firms, Their Products and Employment.....	7
Labor Organizations	12
Industrial Services	12
Supportive Services	12
Estimated Male Labor Supply	13
Estimated Female Labor Supply	13
Average Weekly Wages by Industry by Place of Work, 1977.....	14
Per Capita Personal Income.....	16
TRANSPORTATION	17
Rail.....	17
Highways.....	17
Truck Service	18
Air.....	22
Bus	23
Taxi.....	23
Rental Services	23
Water.....	23
POWER AND FUEL.....	24
Electricity.....	24
Natural Gas.....	25
Other Fuels.....	25
WATER AND SEWERAGE.....	26
Water.....	26
Sewerage.....	27
CLIMATE.....	28

Chapter	Page
LOCAL GOVERNMENT	29
City	29
County	29
Assessed Value of Property	29
Property Taxes	29
Property Tax Rates Per \$100 Valuation, 1978	30
Utilities Gross Receipts Tax for Schools	30
Planning and Zoning	31
Safety	31
Police	31
Fire	31
Rescue Service	32
Refuse Collection and Disposal	32
EDUCATION	33
Public Schools	33
Non-public Schools	33
Area Colleges and Universities	35
Vocational Schools	37
HEALTH	38
Local Medical Personnel	38
Hospitals	38
Other Medical Facilities	38
Ambulance Service	39
Nursing Homes	39
Public Health	39
OTHER LOCAL FACILITIES	41
Communications	41
Library Services	42
Religious Institutions	42
Financial Institutions	43
Hotels and Motels	43
Clubs and Organizations	43
RECREATION	45
COMMUNITY IMPROVEMENTS	47

ELIZABETHTOWN LABOR MARKET AREA



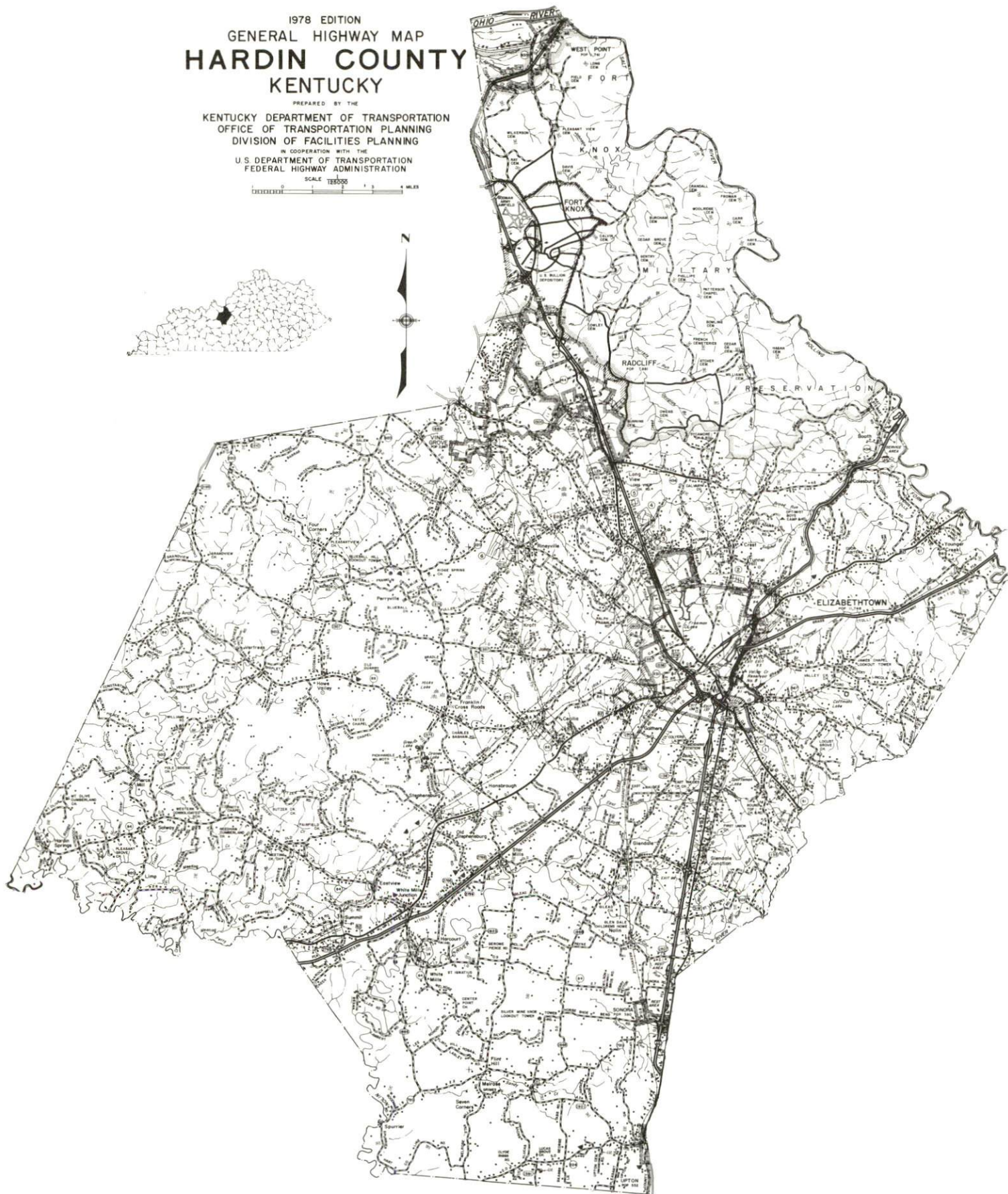
Shaded area denotes Labor Market Area



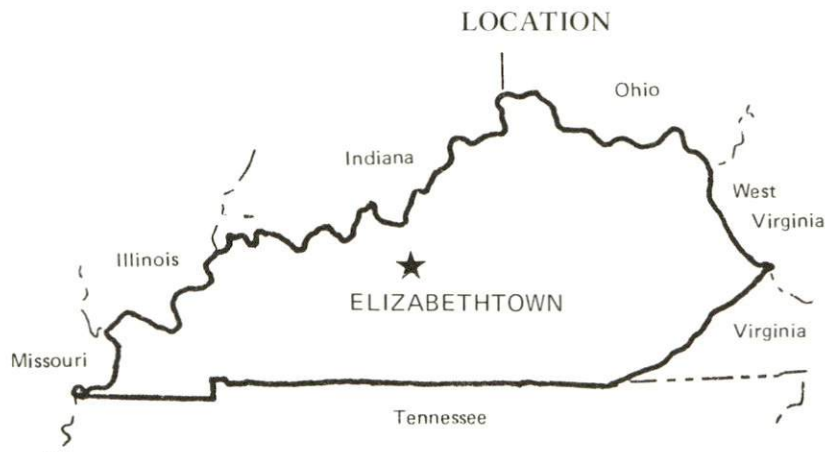
1978 EDITION
GENERAL HIGHWAY MAP
HARDIN COUNTY
KENTUCKY

PREPARED BY THE
KENTUCKY DEPARTMENT OF TRANSPORTATION
OFFICE OF TRANSPORTATION PLANNING
DIVISION OF FACILITIES PLANNING
IN COOPERATION WITH THE
U.S. DEPARTMENT OF TRANSPORTATION
FEDERAL HIGHWAY ADMINISTRATION

SCALE 1:250,000
0 1 2 3 4 MILES



SUMMARY OF INDUSTRIAL RESOURCES ELIZABETHTOWN, KENTUCKY



Road Distance in Miles:

Atlanta	370	Baltimore	638
Chicago	332	Detroit	400
New York	788	St. Louis	303

POPULATION

City of Elizabethtown, 1975	14,152
Hardin County, 1976	80,200
Labor Market Area, 1976	245,400
% Nonwhite, Hardin County, 1970	9.0

LABOR ANALYSIS

Labor Market Area - Includes Hardin, Breckinridge, Bullitt, Grayson, Hart, Larue, Marion, Meade, Nelson and Washington Counties

Estimated available workers from labor market area:

Male	9,920	Female	11,960
Unemployment rate, 1977		Labor Market Area	5.3%
Hardin County	5.0%	Larue County	4.4%
Breckinridge County	4.1%	Marion County	6.6%
Bullitt County	4.3%	Meade County	4.7%
Grayson County	5.5%	Nelson County	7.2%
Hart County	5.5%	Washington County	6.2%

Total employment, Hardin County, 1977 - 22,605
Manufacturing employment in labor market area, 1976 - 9,960

Major local manufacturing plants:

Name	Employment
Bussmann Manufacturing Division of McGraw-Edison Company	348
Celotex Corporation	72
Coca-Cola Bottling Company	159
Colt Industries, Crucible Magnetics Division	453
Dow Corning Corporation	227
E-town Sportswear Corporation	435
Elizabethtown Ice Cream Company	49
Gates Rubber Company	631
Kent Records, Inc.	100
Kentucky Galvanizing Company, Inc.	49
Magna Products, Division of Vermont American Corporation	113
News-Enterprise	62
Phelps Dodge Communications Company, Division of Phelps Dodge Corporation	N/A
Union Steel Division of Eagle-Picher Industries	77

Labor Unions in local manufacturing plants:

Amalgamated Clothing Workers, Aluminum Workers, Chemical Workers, Electrical Workers,
Teamsters, Rubber Workers, Steelworkers

TRANSPORTATION

Highways:

Interstates - I-65; Parkways - Blue Grass and Western Kentucky Parkways
U. S. Highways - U. S. 31W, U. S. 62

Rail:

Railroad - Illinois Central Gulf Railroad; Louisville & Nashville Railroad
Distance to nearest piggyback facilities - 40 miles

Truck:

Number of interstate motor carriers - 7; Local terminals - 2

Water:

Nearest navigable river - Ohio River
Nearest port facilities - At Louisville, Kentucky; Distance - 40 miles

Air:

Nearest commercial service - Standiford Field; Distance - 40 miles

Airlines serving - TWA, American, Eastern, Delta, Piedmont, Ozark, Allegheny, Air Kentucky (commuter)

Nearest local airport - Ben Floyd Field

Distance - 4 miles; Runway length - 2,800 feet; the first phase of construction of the Elizabethtown - Hardin County Airport will include a 4,000-foot runway.

UTILITIES AND SERVICES

Electricity:

Local distributor - Kentucky Utilities Company

Source of power - Kentucky Utilities Company

Natural Gas:

Local Distributor - Elizabethtown Water and Gas Department

Source of supply - Texas Gas Transmission Corporation

Available for new industry - An additional supply is expected to become available, some of which may be available to new industry.

Other Fuels:

Number of area propane distributors - 3 plus distributors in Louisville

Number of local distillate fuel oil distributors - 6

Water, treated:

Local supplier - Municipal; Excess municipal system capacity - 1,700,000 gpd

Expansions planned - Yes

Water, raw:

Surface water sources - Rolling Fork River, Nolin River, Freeman Lake

Sewer:

Excess treatment capacity - 150,000 gpd

Planned expansions - 4,500,000 gpd tertiary treatment plant

Industrial Services

	Location	Miles Distant
Tool & Die, Machine & Pattern Shops	Elizabethtown	---
Metal Service Centers	Louisville	40
Heat Treating	Louisville	40
Metal Finishers	Elizabethtown	---
	Radcliff	11
Electric Motor Repair	Elizabethtown	---

Supportive Services

Located in Elizabethtown

Architects	2
Engineers	3
Contract Security Service	1
Janitorial Services	4
Contract Fleet Maintenance	3
General Contractors, including design and construction	19
Computer services	*

CLIMATE

Temperature, Normal - 55.2 degrees F.

Precipitation, Normal - 44.49 inches

Snowfall, Mean Annual - 15.70 inches

Prevailing Winds - South

Relative Humidity (%) - 7 a.m. - 81; 7 p.m. - 63

GOVERNMENT

Type - Mayor-Councilmen

Police Personnel - Full-time - 29

Fire department personnel - Full-time - 26, volunteers - 10

Fire insurance rating (A.I.A.), class - Inside city - 5, Outside city - 10

TAXES

Property tax rates per \$100 valuation, 1978 (100% assessment)

Property located in Hughes Center of Commerce and Industry

Class of Property	State	County	TAX RATES			Total
			School	City		
1. Land and Buildings	\$0.315	\$0.164	\$0.131	\$0.220		\$0.830
2. Mfg. machinery, raw materials, goods in process, pollution control equipment	0.150	None	None	None		0.150
3. Finished goods, office equipment, vehicles, other tangibles	0.450	0.164	0.131	0.220		0.965
4. Intangibles (accounts rec., bonds, notes, etc.)	0.250	None	None	None		0.250
5. Leaseholds in I. R. Bond financed plants	0.015	None	None	None		0.015

Note: City may exempt new industry from city taxes only for up to five years.

The city of Elizabethtown has agreed to issue industrial revenue bonds up to \$5,000,000 to finance industrial facilities for qualifying corporations.

Special local taxes:

Net profits tax - Eight-tenths of one percent

Utilities tax - 3 percent of electric, gas, water, sewer, telephone services

*Services for accounting needs, including payroll, accounts payable, general ledger, inventory control, job cost accounting, as well as other specialized computer applications.

EDUCATION

State vocational-technical school - Elizabethtown State Vocational-Technical School
College or university - Elizabethtown Community College

Public Schools:

High School enrollment - 3,348; Student/teacher ratio - 19-1
Junior High enrollment - 2,893; Student/teacher ratio - 24-1
Elementary school enrollment - 6,372; Student/teacher ratio - 21-1

Nonpublic Schools:

Enrollment	- 490 (parochial)	4,464 (dependent)
Student/teacher ratio	- 25-1	25-1

FINANCIAL INSTITUTIONS

Banks - 4; Total assets - \$181,143,174
Savings & loan associations - 2; Total assets - \$312,596,171*

COMMUNICATIONS

Local newspaper - News-Enterprise
Daily
Local radio stations - WIEL-AM, WKMO-FM, WQXE-FM
Television - Cable service, ETV-WKZT 23

MEDICAL

Number of physicians locally - 44 physicians; 20 specialists
Number of dentists locally - 11 dentists; 2 orthodontists; 1 oral surgeon
Hospital - Hardin Memorial Hospital; Number of beds - 166 (being increased to 206)

RELIGIOUS FACILITIES

Churches - 36; Nearest synagogues - 40 miles distant

PUBLIC LODGING

Total number hotels and motels - 15; Total rooms - 1,000+

RECREATION FACILITIES

Public golf courses; Parks; Tennis courts; Swimming pools; Country club
Other major facilities - Greenbelt - 16-mile area for hiking, bicycling, and nature walking
Nearest state resort park - Rough River Dam State Resort Park, 47 miles distant
Camping; Swimming; Fishing; Water skiing; Boating; Lodgings; Dining facility; Open year round; Airstrip

*Includes assets of Louisville Home Federal which has a branch office in Elizabethtown

THE LABOR MARKET AREA

POPULATION

<u>Area</u>	<u>1976*</u>	<u>1970</u>	<u>Percent Nonwhite 1970</u>
Elizabethtown	14,152**	11,748	7.6
Labor Market Area	245,400	230,112	N/A
Hardin County	80,200	78,421	9.0
Breckinridge County	15,800	14,789	4.6
Bullitt County	34,900	26,090	0.9
Grayson County	18,800	16,445	0.8
Hart County	15,100	13,980	9.9
Larue County	11,100	10,672	4.7
Marion County	16,400	16,714	8.8
Meade County	18,100	18,796	6.4
Nelson County	24,600	23,477	7.7
Washington County	10,400	10,728	10.6

*Provisional Estimates.

**1975 Population Estimates.

Sources: U. S. Department of Commerce, Bureau of the Census, Census of Population, 1970.
U. S. Department of Commerce, Bureau of the Census, Current Population Reports, Series P-25, No. 665, May 1977, Series P-26, No. 76-17, July 1977.

LABOR FORCE CHARACTERISTICS OF RESIDENTS, 1977

	<u>Hardin County</u>	<u>Labor Market Area</u>
Civilian Labor Force	23,791	93,056
Employment	22,605	88,166
Agricultural	1,137	10,456
Nonagricultural	21,468	77,710
Unemployment	1,186	4,890
Rate of Unemployment (%)	5.0	5.3

Source: Kentucky Department for Human Resources, Kentucky Labor Force Estimates, Annual Averages, 1977.

MAJOR ELIZABETHTOWN MANUFACTURING FIRMS,
THEIR PRODUCTS AND EMPLOYMENT*

Firm (Establishment date)	Product	Employment			Organized
		Total	Male	Female	
Bussmann Manufacturing Div. of McGraw-Edison Co. (1955)	Electrical electronic fuses holder	348	47	301	**
Celotex Corporation (1971)	Urethane roof insulation	72	57	15	
Coca-Cola Bottling Co. (1920)	Soft drinks	159	141	18	
Colt Industries, Crucible Magnetics Div. (1965)	Ceramic alnico crucore magnet	453	382	71	**
Dow Corning Corp. (1963)	Silicone sealants	227			**
E-town Sportswear Corp. (1960)	Men's slacks	435	40	395	**
Elizabethtown Ice Cream Co. (1908)	Ice cream, frozen confections	49	33	16	
Gates Rubber Co. (1964)	Auto V-belts, curved auto hose, urethane polyflex belts, timing belts	631	531	100	**
Kent Records, Inc. (1958)	Phonograph records	100	20	80	**
Kentucky Galvanizing Co., Inc. (1968)	Guardrails and posts, steel fabrication, hot dip galvanizing	49	46	3	
Magna Products, Div. of Vermont American Corp. (1976)	Screwdriver bits and holders, sockets	113	93	20	**
News-Enterprise, Inc. (1969)	Newspaper, commercial printing	62	34	28	
Phelps Dodge Communications Co., Division of Phelps Dodge Corp. (1974)	Telephone cable	N/A			**
Union Steel Div., Eagle- Picher Industries (1971)	Refrigerator shelves, freezer baskets, custom wire parts	77	47	30	**

*40 or more employees

** See Labor Organizations

Source: Kentucky Department of Commerce, Division of Research and Planning



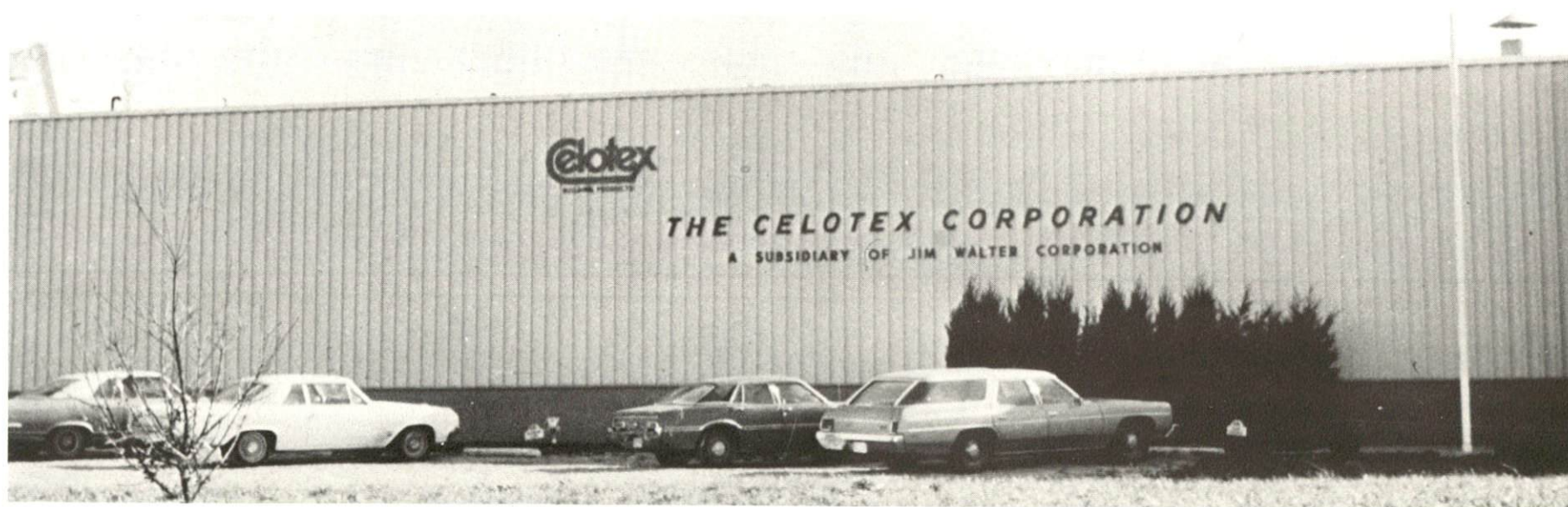
BUSSMANN MANUFACTURING DIVISION



DOW CORNING CORPORATION



PHELPS DODGE COMMUNICATIONS COMPANY



THE CELOTEX CORPORATION



GATES RUBBER COMPANY



COLT INDUSTRIES, CRUCIBLE MAGNETICS DIVISION



COCA-COLA BOTTLING COMPANY



E-TOWN SPORTSWEAR CORPORATION

LABOR ORGANIZATIONS

Union	Representing manufacturing workers at:
Amalgamated Clothing and Textile Workers	E-town Sportswear Corporation
Aluminum Workers International	Magna Products, Division of Vermont American Corporation
International Chemical Workers	Dow Corning Corporation
International Union of Electrical, Radio and Machine Workers	Bussmann Manufacturing Division of Mc-Graw-Edison Company; Colt Industries, Crucible Magnetics Division; Gates Rubber Company; Kent Records, Inc.; Phelps Dodge Communications Company; Kentucky Thermo-Plastics Armour & Company
Teamsters	
United Rubber, Cork, Linoleum and Plastic Workers of America	Gates Rubber Company
United Steelworkers of America	Union Steel Division, Eagle-Picher Industries

INDUSTRIAL SERVICES

	<u>Location</u>	<u>Miles Distant</u>
Tool & Die, Machine & Pattern Shops	Elizabethtown	---
Metal Service Centers	Louisville	40
Heat Treating	Louisville	40
Metal Finishers	Elizabethtown Radcliff	--- 11
Electric Motor Repair	Elizabethtown	---

SUPPORTIVE SERVICES

	<u>Located in Elizabethtown</u>
Architects	2
Engineers	3
Contract Security Service	1
Janitorial Services	4
Contract Fleet Maintenance	3
General Contractors, including design and construction	19
Computer Services	*

*Services for accounting needs, including payroll, accounts payable, general ledger, inventory control, job cost accounting as well as other specialized computer applications.

ESTIMATED MALE LABOR SUPPLY
ELIZABETHTOWN LABOR MARKET AREA

Area	Current			Future	
	Total	Not in Labor Force	Unemployed	Under- employed	Reaching 18 years of age before 1984
Labor Market					
Area	9,920	0	5,100	4,820	12,288
Hardin	3,750	0	1,190	2,560	3,322
Breckinridge	560	0	330	230	754
Bullitt	920	0	520	400	1,772
Grayson	830	0	500	330	802
Hart	410	0	220	190	735
Larue	430	0	240	190	579
Marion	900	0	620	280	1,018
Meade	400	0	240	160	1,258
Nelson	1,200	0	840	360	1,432
Washington	520	0	400	120	616

Sources: Kentucky Department for Human Resources, Kentucky Labor Supply Estimates by County, 1976. Kentucky Department of Commerce, Future Labor Supply Before 1984.

ESTIMATED FEMALE LABOR SUPPLY
ELIZABETHTOWN LABOR MARKET AREA

Area	Current			Future	
	Total	Not in Labor Force	Unemployed	Under- employed	Reaching 18 years of age before 1984
Labor Market					
Area	11,960	6,600	1,390	3,970	11,599
Hardin	6,470	5,060	280	1,130	3,133
Breckinridge	300	0	80	220	751
Bullitt	800	0	150	650	1,617
Grayson	680	280	120	280	748
Hart	750	280	190	280	691
Larue	350	70	60	220	535
Marion	490	100	150	240	995
Meade	1,070	650	60	360	1,127
Nelson	660	0	200	460	1,464
Washington	390	160	100	130	538

Sources: Kentucky Department for Human Resources, Kentucky Labor Supply Estimates by County, 1976. Kentucky Department of Commerce, Future Labor Supply Before 1984.

AVERAGE WEEKLY WAGES BY INDUSTRY,
BY PLACE OF WORK, 1977

	<u>Hardin County</u>	<u>Breckinridge County</u>	<u>Bullitt County</u>	<u>Grayson County</u>	<u>Hart County</u>
All Industries	\$165.20	\$141.07	\$164.13	\$142.33	\$122.68
Mining & Quarrying	160.61	153.58	*	220.89	*
Contract Construction	207.83	120.69	165.14	142.70	126.62
Manufacturing	209.67	155.11	220.29	148.84	142.05
Transportation, Communications & Public Utilities	202.50	253.15	201.15	200.54	140.02
Wholesale & Retail Trade	132.92	119.89	130.64	124.63	109.41
Finance, Insurance & Real Estate	166.88	182.14	154.49	178.84	149.40
Services	134.22	111.82	106.15	124.72	99.25
Other	85.27	*	*	108.20	*
	<u>Larue County</u>	<u>Marion County</u>	<u>Meade County</u>	<u>Nelson County</u>	<u>Washington County</u>
All Industries	\$117.19	\$129.32	\$233.62	\$185.63	\$133.20
Mining & Quarrying		*	*	322.63	
Contract Construction	95.73	120.32	264.49	214.65	217.31
Manufacturing	115.72	163.58	*	232.11	141.41
Transportation, Communications & Public Utilities	233.53	150.32	236.71	271.77	156.32
Wholesale & Retail Trade	109.75	105.84	107.13	127.67	104.68
Finance, Insurance & Real Estate	154.29	144.42	152.89	140.58	170.76
Services	96.18	102.63	108.80	112.48	88.45
Other	53.73	44.25	35.95	114.10	*

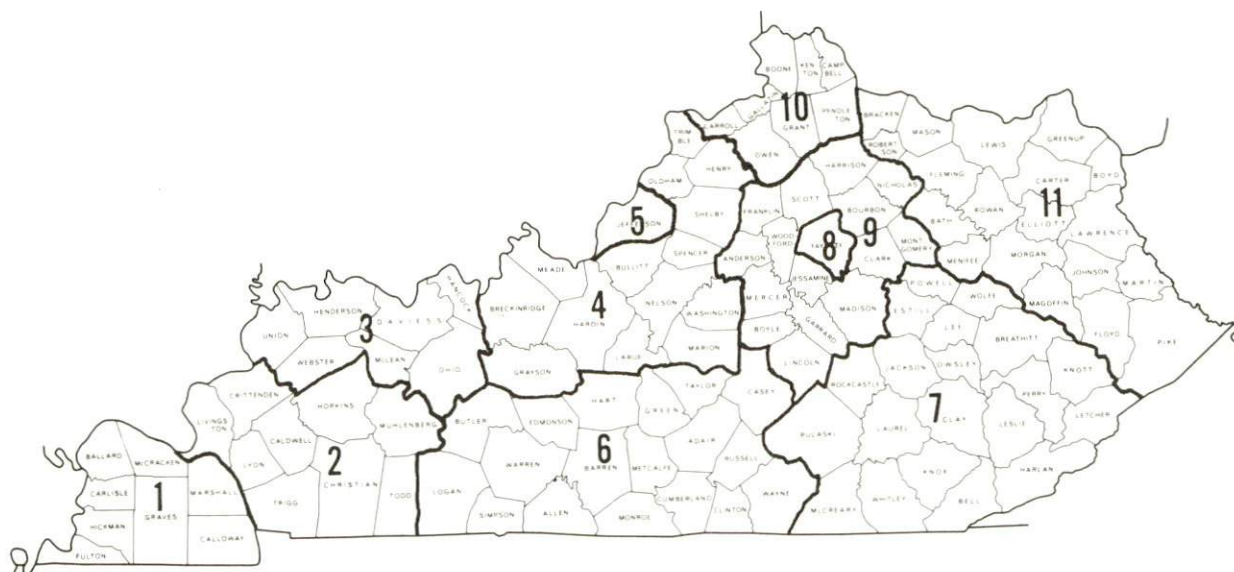
*Not disclosed

Note: Excludes domestic workers, railway workers; certain nonprofit corporations; majority of federal, state, and local government workers; and self-employed workers.

Source: Kentucky Department for Human Resources, Average Weekly Wages of Workers Covered By Kentucky Unemployment Insurance Law, 1977.

Occupational wage rates for specific industries are usually not available to most government agencies, and wage data furnished to state employment agencies by individual industrial employers is protected from disclosure by federal law. The most reliable up-to-date wage information can be obtained by direct contact with local employers.

Associated Industries of Kentucky, a voluntary organization of Kentucky businesses, regularly collects occupational wage rates and fringe benefits data from participating member firms. Data is compiled for over 127 clearly defined office, production, and service occupations. Tabulations are published for eleven regions of Kentucky, as shown on the map below. It should be noted that the data may be weighted by the preponderance of firms in the larger cities and may be somewhat higher than the rates paid in the smaller communities. Data from these tabulations are available, upon request, from the Kentucky Department of Commerce, Frankfort, Kentucky 40601.



Associated Industries of Kentucky Area Wage Surveys

PER CAPITA PERSONAL INCOME

<u>Area</u>	<u>1975</u>	<u>1971</u>	<u>Percent Change</u>
Hardin County	\$5,867	\$4,254	37.9
Labor Market Area Range	\$3,310-5,867	\$2,283-4,254	N/A
Kentucky	4,886	3,314	47.4
U. S.	5,903	4,195	40.7

Sources: U. S. Department of Commerce, Bureau of Economic Analysis, Survey of Current Business, April 1977. U. S. Department of Commerce, Bureau of Economic Analysis, March 1976.

TRANSPORTATION

RAIL

Line serving Elizabethtown - Louisville & Nashville Railroad

Services - One northbound local freight daily except Sunday; one southbound local freight daily except Saturday; six northbound and six southbound through freights daily; switching facilities; team track space for 5 cars; siding space for 20 cars; piggyback facilities at Louisville, 40 miles away.

Line serving Elizabethtown - Illinois Central Gulf Railroad

Services - One northbound and one southbound freight daily; switching facilities; team track space for approximately 10 cars; piggyback facilities at Louisville, 40 miles away

For details on routing, schedules, rates, and services, contact:

Manager of Industrial Development
Louisville and Nashville Railroad Company
908 West Broadway
Louisville, Kentucky 40203
(502)587-5000

and/or

Manager of Industrial Development
Illinois Central Gulf Railroad Company
112 North 4th Street
St. Louis, Missouri 63102
(314) 241-9400

HIGHWAYS

Elizabethtown is ideally located for highway transport of products and materials. Three principal access routes converge at Elizabethtown - north-south Interstate 65, the Blue Grass Parkway, and the Western Kentucky Parkway. These routes interconnect with the nation's major highway network.

Other highways serving Elizabethtown are U. S. 31W, U. S. 62, and Kentucky Route 61, all "AAA" highways.

Planned highway construction projects which will improve access to the multi-county regional industrial park and business center include 4-laning of U. S. 62 from the new Elizabethtown by-pass west beyond the junction of U. S. 62 and Kentucky 86. Also, a second access road into the park from U. S. 62 will traverse the central part of the site and open onto Kentucky 1357, and future plans include extending this road northeast around Elizabethtown providing a by-pass from U. S. 62 west to U. S. 62 east.

TRUCK SERVICE

Name: Bestway Express, Inc.

905 Visco Drive

Nashville, Tennessee 37210

Service: Interstate

Regular or irregular route carrier: Regular

Local terminal: Elizabethtown (502) 769-7947

Pickup and delivery: Both

General or specified commodities: General

Direct service: Nashville Tennessee (Gateway)

Jackson, Mississippi (Gateway)

Baton Rouge, Louisiana (Gateway)

Name: Crutcher Transfer Line, Inc

600 Marrett Avenue

Louisville, Kentucky 40208

Service: Interstate and Intrastate

Regular or irregular route carrier: Regular

Local terminal: Elizabethtown (502) 737-7262

Pickup and delivery: Both

General or specified commodities: General

Direct service: Louisville (Gateway); area from Louisville to Munfordville, east to Hodgenville,
north to Radcliff

Name: Interstate Motor Freight System

134 Grandville Avenue, S.W.

Grand Rapids, Michigan 49503

Service: Interstate

Regular or irregular route carrier: Regular

Nearest terminal: Louisville (502) 635-5251

Pickup and delivery: Both

General or specified commodities: General

Direct service: Points to east and north and south to Georgia, Alabama, Tennessee; points
west to Kansas City; terminals in approximately 30 states

Name: Leitchfield Transfer Company

U. S. 62 East

Leitchfield, Kentucky 42754

(502) 259-5616

Service: Intrastate

Regular or irregular route carrier: Regular

Pickup and delivery: Both

General or specified commodities: General

Direct service: Louisville (Gateway)

Name: McLean Trucking Company
P. O. Box 213
Winston-Salem, North Carolina 27102

Service: Interstate
Regular or irregular route carrier: Regular
Nearest Terminal: Louisville (502) 964-5961
Pickup and delivery: Both
General or specified commodities: General
Direct service: Almost entire Eastern U. S., also to points in Texas; primarily East Coast and points southwest of Kentucky

Name: Overnite Transportation Company
1000 Semmes Avenue
Richmond, Virginia 23209

Service: Interstate
Regular or irregular route carrier: Regular
Nearest terminal: Louisville (502) 491-2670
Pickup and delivery: Both
General or specified commodities: General
Direct service: Far west as Kansas City; southern states down to Jacksonville, Florida; East Coast; Midwestern states

Name: Terminal Transport Company, Inc.
P. O. Box 1918
Atlanta, Georgia 30316

Service: Interstate
Regular or irregular route carrier: Regular
Nearest terminal: Louisville (502) 778-7371
Pickup and delivery: Both
General or specified commodities: General
Direct service: Memphis, Tennessee and St. Louis, Missouri - Gateways west; direct service to most of Eastern U. S.

Name: Turner Expediting Service
Standiford Field
Louisville, Kentucky 40221
(502) 361-1126

Service: Intrastate
Regular or irregular route carrier: Irregular
Pickup and delivery: Both
General or specified commodities: General
Direct service: Louisville (Gateway), Lexington, Paris, Cynthiana, Danville and other points in Kentucky

Name: Wilson Freight Company
 11353 Reed Hartman Highway
 Cincinnati, Ohio 45241

Service: Interstate

Regular or irregular route carrier: Regular

Nearest terminal: Louisville (502) 267-7481

Pickup and delivery: Both

General or specified commodities: General

Direct service: Eastern U. S. south to North Carolina; west to Oklahoma City

Other Services

A & D Moving and Storage, Inc., has authority and resources for local drayage services in the Elizabethtown commercial zone. The firm also has available a series of mini-warehouses for household and commercial use. The firm recently purchased property in the Hughes Center of Commerce and Industry and announced plans to construct a warehousing, distribution and terminal facility to handle a broad range of commodities. The new facility will also include a rail siding for piggyback trailer operations, and packaging and crating operations to prepare shipments for air freight service.

A. Arnold & Son Transfer & Storage Co., Inc., with corporate headquarters in Louisville, maintains a major facility in the Elizabethtown area. The Elizabethtown facility offers complete moving and storage services for local, long distance and international shipments. The firm's corporate move capabilities include handling of employee household goods, motor vehicles, uncrated office furnishings and data processing equipment. Packaging and crating services for shipment via surface and air freight carriers are also available.

Kato Express, Inc.

(air cargo service)

Elizabethtown, Kentucky

United Parcel Service, Inc.

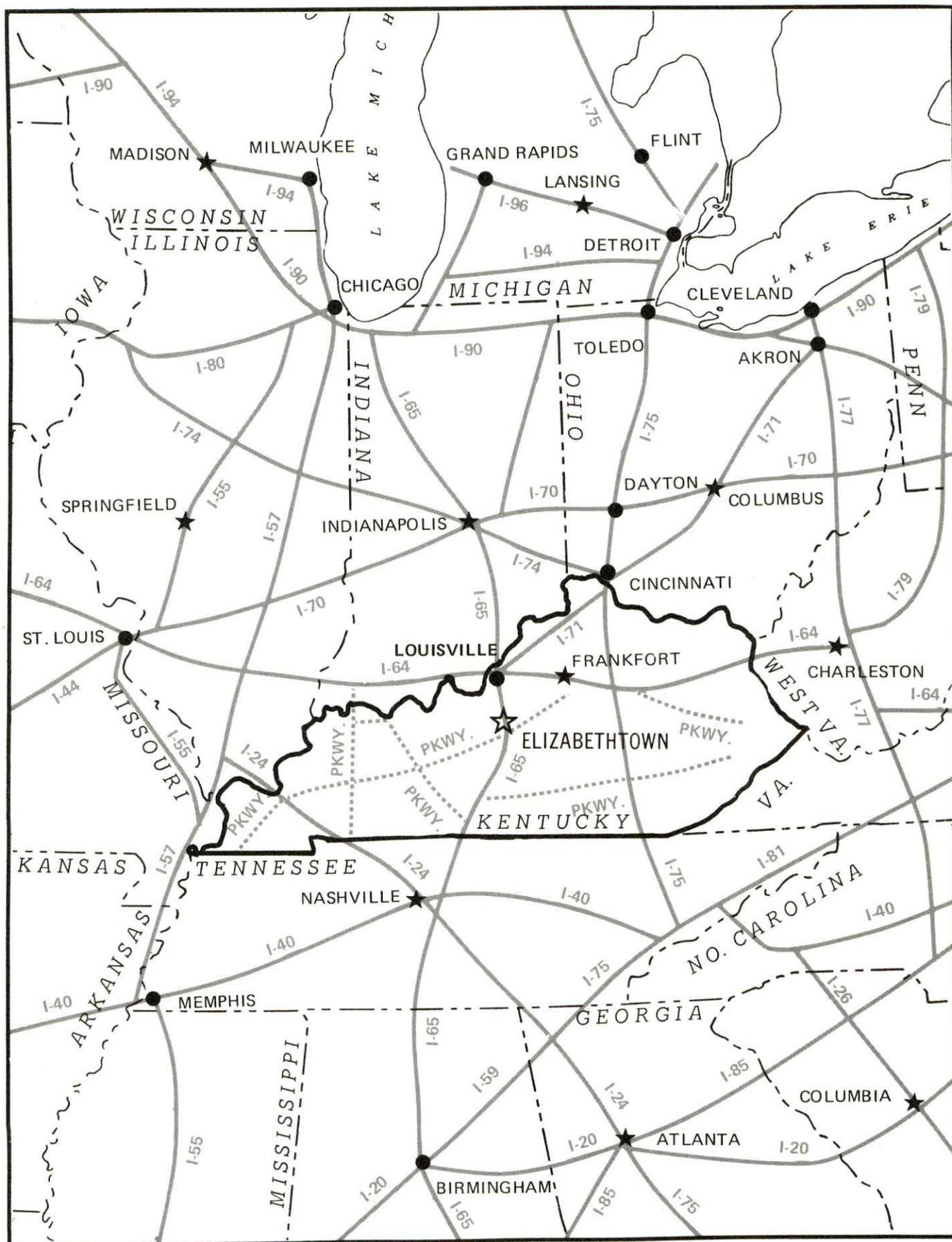
Louisville, Kentucky (shipping center)

HIGHWAY MILES AND TRUCK TRANSIT TIME IN DAYS FROM ELIZABETHTOWN, KENTUCKY, TO SELECTED MARKET CENTERS

City	Highway Miles	Delivery Time TL	City	Highway Miles	Delivery Time TL
Atlanta, Ga.	370	1	Knoxville, Tenn.	258	1
Baltimore, Md.	638	2	Los Angeles, Cal.	2,148	4
Birmingham, Ala.	324	1	Louisville, Ky.	40	1
Chicago, Ill.	332	1	Nashville, Tenn.	128	1
Cincinnati, Ohio	141	1	New Orleans, La.	645	2
Cleveland, Ohio	385	1	New York, N. Y.	788	2
Detroit, Mich.	400	1	Pittsburgh, Pa.	428	1
Houston, Texas	888	2-3	St. Louis, Mo.	303	1

Source: Delivery Time Only-Crutchfield Transfer Line, Inc., 600 Marrett Avenue, Louisville, Kentucky 40208.

Major Highway Network



AIR

The new Elizabethtown-Hardin County Airport will lie adjacent to the northwestern boundary of the Hughes Center of Commerce and Industry, a multi-county regional industrial park and business center. The airport is designed for small business jets. The first phase of construction will include a 4,000-foot runway, access to aircraft parking apron, service hangar, 10-unit tee hangar, auto parking, and administration building. The second phase of construction will include a 1,000-foot extension to the runway west, parallel taxiway west, additional service hangar and auto parking, additional 10-unit tee hangar, and further apron expansion. The third phase of construction will include a 1,000-foot extension to the runway east, completion of full parallel taxiway, additional aircraft parking and apron expansion, additional service hangar and tee hangar, and additional auto parking.

	Local	Nearest Commercial
	Ben Floyd Field	Standiford Field*
Location:	4 miles north-northwest of Elizabethtown	Louisville, 40 miles from Elizabethtown
Runways:	1 paved	3 paved
Length:	2,800 feet	7,800 feet, 7,250 feet, 5,000 feet
Traffic Control:	Wind tee and wind sock	Control tower: approach control, ground control; guards; radar service; departure control; clearance delivery
Lighting:	Sundown to sunrise	Runways, obstructions, beacon and approach and touchdown lights, center line on runways 1-19
Services:	100 octane LL, major and minor A & E repairs, flight instructions, charter, transportation available	TWA, American, Eastern, Delta, Piedmont, Ozark, Allegheny, and Air Kentucky (commuter); 100 octane and jet fuel; storage; major A & E repairs; Hertz, Avis, Nat'l, and Budget rent-a-car service; taxi and city bus service; restaurant; weather bureau phone (502) 368-2188
Air Freight Service:	Chartered air freight services must be arranged	Freight carrying airlines regularly serve Standiford Field

*Southern Airways and Hughes Airwest have been authorized to operate in Louisville by the Civil Aeronautics Board. No date has yet been set to begin operations.

BUS - Greyhound Bus Lines, Kentucky Bus Lines, and Trailways

TAXI - One company, radio-equipped, 24-hour service

RENTAL SERVICES - Car, truck and trailer rentals

WATER

Elizabethtown is only 40 miles from Louisville, via Interstate-65 where port facilities are available on the Ohio River. Louisville has also been classified as a Foreign Trade Zone and offers complete U. S. customs services for exports and imports.

POWER AND FUEL

ELECTRICITY

The Kentucky Utilities Company, which serves the multi-county regional industrial park and business center, provides electric service to approximately 320,000 customers in 603 communities and adjacent suburban and rural areas in 78 counties in Kentucky.

Elizabethtown is one of the major focal points for switching of bulk supplies of high voltage electricity throughout the state. Elizabethtown has eight independent sources of transmission supply, each of which is backed with interconnections to other utilities both within and outside the state.

Kentucky Utilities Company has a generating capacity of 2,330,000 KW. It experienced an historical system peak on January 26, 1978, of 1,845,000 KW. The elaborate transmission system into the Elizabethtown area is backed by a looped substation system with feeder ampacities sufficient to backfeed all substations from a second source. Urban area load is normally in the range of 18,000-20,000 KW.

Kentucky Utilities Company
242 West Dixie
Elizabethtown, Kentucky 42701
(502) 765-4101

Company serving Hardin County - Nolin Rural Electric Cooperative Corporation
Source of Power - East Kentucky Power Cooperative
Total generating capacity - 867,000 KW
For industrial rates contact:

East Kentucky Power Cooperative
P. O. Box 707
Winchester, Kentucky 40391
(606) 744-4812

and/or

Nolin Rural Electric Cooperative Corporation
P. O. Box 668
Elizabethtown, Kentucky 42701
(502) 765-6153

NATURAL GAS

Company serving Elizabethtown - Elizabethtown Water and Gas Department

Source of supply - Texas Gas Transmission Corporation

Size of transmission mains - 16 and 24 inches (supplier)
6 and 8 inches (distributor)

Distribution mains - 2, 3, 4, 6 and 8 inches

Distribution pressure - 30 psi

Btu content - 1,000 per cubic foot; Specific gravity - 0.6

For rates and supplies contact:

Elizabethtown Water and Gas Department
P. O. Box 550
Elizabethtown, Kentucky 42701
(502) 765-6121

OTHER FUELS

Propane

Big-3 Gas Company of Lebanon Junction, Preston Highway, Lebanon Junction (10 miles distant)

Miller's Bottled Gas, Inc., 110 East Campbell Lane, Bowling Green (72 miles distant)

Ugite Gas, Inc., Center Street, New Haven (23 miles distant)

Other distributors are located in Louisville, 40 miles from Elizabethtown.

Fuel Oils

Distillate fuel oil -

Ashland Petroleum Company, 736 Hawkins Drive, Elizabethtown

Cox Oil Company, Southern States Petroleum Cooperative, 337 East Dixie Avenue,
Elizabethtown

Exxon Company, Hawkins Drive, Elizabethtown

Longview Oil Company, North 31W, Elizabethtown

Standard Oil Company, 216 East Poplar, Elizabethtown

Guy Williams & Son, Inc., (SUNOCO), I C Tracks, Elizabethtown

Residual fuel oil - Arrangements must be made with the refinery.

Low sulphur content coal - Available in Kentucky

WATER AND SEWERAGE

WATER

Company serving Elizabethtown - Elizabethtown Water and Gas Department*

P. O. Box 550

Elizabethtown, Kentucky 42701

(502) 765-6121

Source - Two wells, two springs, Freeman Lake

Treatment plant capacity - Plant No. 1 - 2,500,000 gpd; Plant No. 2 - 3,000,000 gpd

Average daily consumption - 2,600,000 gallons

Peak daily consumption - 3,800,000 gallons

Type treatment - Settling, flocculation, filtration, chlorination and fluoridation

Storage capacity - Elevated tanks - 1,500,000 gallons; Standpipe - 116,000 gallons;

Ground - 90,000 gallon tank, 265,000 gallon clearwell, 600,000 gallon clearwell

Size lines - 14, 12, 10, 8, 6 and 4 inches

Average pressure - 65 psi

Average temperature - Plant No. 1 - 55 degrees F.; Plant No. 2 - 60 degrees F.

MONTHLY WATER RATES FOR WHOLESALE AND INDUSTRIAL CONSUMERS

		<u>In City</u>
First	2,000 gallons	\$3.50 (Minimum bill)
Next	3,000 gallons	1.20 per M gallons
Next	5,000 gallons	1.10 per M gallons
Next	5,000 gallons	1.00 per M gallons
Next	10,000 gallons	.80 per M gallons
Next	15,000 gallons	.65 per M gallons
Over	40,000 gallons	.45 per M gallons

Tap-on charge:

<u>Meter Size</u>	<u>In City</u>
3/4-inch	\$ 100.00
1-inch	145.00
1 1/2-inch	265.00
2-inch	400.00
3-inch	800.00
4-inch	1,200.00

*Two new storage facilities - a 200,000 gallon clearwell and a 500,000 gallon elevated tank - will be completed by early fall, 1978, as well as a 12-inch water line extension from the new clearwell into the multi-county regional industrial park and business center.

Surface water sources - Rolling Fork River, Nolin River, Freeman Lake

Average discharge - Nolin River at White Mills - 475 cfs (17-years, USGS); Rolling Fork near Boston - 1,752 cfs (38-years, USGS)

Expected ground water yield - 500 - 1,000 gpm at northern tip of county; 5 - 50 gpm at southern tip, central part and extending into eastern and northern sections, and western tip; 5 gpm or less at eastern and western borders; 50 - 200 gpm in remainder of county

SEWERAGE

Company serving Elizabethtown - Elizabethtown Water and Gas Department *

P. O. Box 550

Elizabethtown, Kentucky 42701

(502) 765-6121

Design capacity - Plant No. 1 - 1,100,000 gpd; Plant No. 2 - 1,000,000 gpd; 350,000 gallon lagoon

Average daily flow - 2,300,000 gallons

Treatment - Primary and secondary

Type treatment - Plant No. 1 - trickling filters, digester, drying beds; Plant No. 2 - extended aeration, aerobic digestion, drying beds

Treated effluent discharged into - Valley Creek

Size of sanitary mains - 16, 12, 10, 8 and 6 inches

Size of storm mains - None

Rates - First 2,000 gallons - \$2.00 minimum bill per month; all over first 2,000 gallons - 75 cents per M gallons

Tap-on charge: \$200.00 in city

*A 4,500,000 gpd tertiary sewage treatment plant and 5 miles of 24-inch outfall line are now in the design stage with construction expected to begin in late 1978 or early 1979. A 28-acre aerated lagoon is now under construction and expected to be in use by summer 1978.

CLIMATE

HARDIN COUNTY

TEMPERATURE

Normal (30-year record)	55.2 degrees
Average annual 1976	52.9 degrees
Record highest, September, 1954 (32-year record)	103.0 degrees
Record lowest, January, 1963 (32-year record)	-21.0 degrees
Normal heating degree days (30-year record)	4,729
(Heating degree day totals are the sums of negative departures of average daily temperatures from 65 degrees F.)	

PRECIPITATION

Normal (30-year record)	44.49 inches
Mean annual snowfall (32-year record)	15.70 inches
Total precipitation 1976	37.48 inches
Mean number days precipitation (.01 inch or more) (32-year record)	130
Mean number days thunderstorms (32-year record)	47

PREVAILING WINDS (17-year record)	South
-----------------------------------	-------

RELATIVE HUMIDITY

1 a.m.	76 percent (12-year record)
7 a.m.	81 percent (13-year record)
1 p.m.	59 percent (13-year record)
7 p.m.	63 percent (13-year record)

Source: U. S. Department of Commerce, Environmental Science Services Administration, Climatological Data, 1976. Station of record: Lexington, Kentucky.

LOCAL GOVERNMENT

CITY

Structure - Mayor - 4 year term 6 councilmen - 2-year terms
Estimated budget 1978 - General Fund \$3,405,500
Water and Sewer Fund 1,345,838
City Gas Fund 2,093,979

Fees and licenses - Eight-tenths of one percent on net profits of all businesses from activity conducted within the city and a required advance payment of a minimum license fee of \$25 for each calendar year which is applied as a credit against total liability when net profits return is filed at close of the accounting period. Employers are required to withhold eight-tenths of one percent from gross wages, salaries, commissions and/or other compensation for services performed within the city.

COUNTY

Structure - County Judge/Executive - 4-year term;
8 magistrates - 4-year terms
Budget 1977-78 - General Fund - \$797,968
Road Fund - 529,800

ASSESSED VALUE OF PROPERTY

Classes of Property	Elizabethtown (1977)	Hardin County (1977-78)
Real Estate	\$135,422,725	\$431,681,223
Tangibles	39,736,031	98,888,592

PROPERTY TAXES

All property in Kentucky is assessed at 100 percent of fair cash value.

Land and buildings are taxed by the state and may be taxed by local jurisdictions. The state rate is \$0.315 per \$100 of assessed valuation.

Manufacturing machinery, raw materials inventories, pollution control equipment, and goods in the process of manufacture are not subject to local taxation. The state rate is \$0.15 per \$100.

Other tangible personal property owned by manufacturers (automobiles, truck, finished goods, office furniture, office equipment) is taxed by the state at \$0.45 per \$100 and may be taxed by local jurisdictions.

Property stored in public warehouses in a transit status is not subject to local taxation. The state rate is only \$0.015 per \$100.

Intangible personal property located in Kentucky (money in hand, shares of stock, notes, bonds, accounts, and other credits) is taxed by the state at \$0.25 per \$100, and is not subject to local taxation.

Intangible personal property owned by corporations in Kentucky as a result of business transactions performed out-of-state, but having a tax situs in Kentucky (accounts receivable, notes, bonds, credits, non-domestic bank deposits, licensing or royalty agreements, shares of stock of any affiliated company, etc.) is taxed by the state at \$0.015 and is not subject to local taxation.

Property tax rates per \$100 valuation, 1978

(100% assessment)

Property located in Hughes Center of Commerce and Industry

Class of Property	TAX RATES				
	State	County	School	City	Total
1. Land and Buildings	\$0.315	\$0.164	\$0.131	\$0.220	\$0.830
2. Mfg. machinery, raw materials, goods in process, pollution control equipment	0.150	None	None	None	0.150
3. Finished goods, office equipment, vehicles, other tangibles	0.450	0.164	0.131	0.220	0.965
4. Intangibles (accounts rec., bonds, notes, etc.)	0.250	None	None	None	0.250
5. Leaseholds in I. R. Bond financed plants	0.015	None	None	None	0.015

Note: City may exempt new industry from city taxes only for up to five years.

The city of Elizabethtown has agreed to issue industrial revenue bonds up to \$5,000,000 to finance industrial facilities for qualifying corporations.

UTILITIES GROSS RECEIPTS TAX FOR SCHOOLS

A 3 percent tax is levied on utilities receipts for schools in Hardin County. Tax is paid by all consumers of utilities as an add-on to the utilities bills. Exempted are receipts from utilities services that are resold and the receipts from the sale of energy or energy producing fuels that exceed 3 percent of the cost of production in manufacturing, processing, mining or refining.

PLANNING AND ZONING

City agency - Elizabethtown Planning and Zoning Commission

Zoning enforced - Enforced within city limits. Planned community district regulations for the new multi-county regional industrial park and business center will provide maximum flexibility for development of the park.

Subdivision regulations enforced - Enforced within city limits and 5 miles outside city limits

Local codes enforced - Building and housing codes enforced within the city limits

Mandatory state codes enforced - Plumbing, National Fire Protection Association Code, National Building Code (for major buildings and residential construction containing more than 12 bedrooms per building)

SAFETY

Police	Elizabethtown	Hardin County
Total staff	29	9
Radio-patrol cars	20	5
Total budget		
1973	\$270,944	--
1978	453,006	--

Providing adequate police and fire protection services has been a continued commitment of the city, and services provided by these departments have been continually expanded and increased as the city has grown. The city's support of these departments is reflected in the 67.2 percent increase in the police department budget and the 110.2 percent increase in the fire department budget during the past five years.

Fire

American Insurance Association Fire Rating	5
Full-time staff	26
Volunteers	10
Total Budget	
1973	\$192,710
1978	\$405,016
Number of stations	2
Time to reach any point within city limits	3 minutes
Training	Daily shift training in general fire department operations; annual 20-hour training course for entire department in basic fire fighting; participates in fire prevention and control classes provided through Eastern Kentucky University - this is a one semester, 3 hr. course and classes are held at Elizabethtown High School - program offered since 1975; entire department participates in a 12 hr. course in cardiac pulmonary resuscitation; emergency medical technician training provided; continuous training includes classes in vehicle rescue, hazardous material handling, etc.

RESCUE SERVICE

Hardin County Disaster and Emergency Services:

Offices for the Hardin County Disaster and Emergency Services are located in Elizabethtown, Upton, Radcliff, Vine Grove, West Point and Sonora. Equipment includes boats and motors, communications equipment and dragging equipment. A county-wide rescue squad, which is part of the Disaster and Emergency Services, is based in Elizabethtown. Equipment for the rescue squad includes 3 rescue vans, a jeep, a 2 1/2 ton rescue truck, communications equipment and an emergency generator. A mutual assistance program has been agreed upon between Hardin and Larue Counties.

REFUSE COLLECTION AND DISPOSAL

Elizabethtown

Type service	Private companies
Fee charged:	
residential	Approximately \$3.00 - \$4.00 per month (varies by company and collection frequency)
business	By contract
Collection frequency:	
residential	Once or twice weekly, as needed
business	As needed
Disposal method	County landfill

Kentucky Industrial Services, Inc., and Industrial Haulers provide service to industrial customers. Services and rates are negotiated.

The City of Elizabethtown provides trash pickup once a year and leaf collection in season at no charge to the city's residents.

Hardin County provides sanitation service to residents of the county. Refuse may be disposed of at collection points which are located throughout the county. Free pickup service is provided at these points. Door-to-door pickup service is provided by the county in selected areas at a cost to the residents of \$4.00 per month.

EDUCATION

PUBLIC SCHOOLS

	Elizabethtown Independent	Hardin County
Total Enrollment (1978)	2,313	10,300
Elementary	1,022*	5,350*
Junior High	643	2,250
High School	648	2,700
Student-Teacher Ratio	19-1	22-1
Elementary	19-1	21-1
Junior High	18-1	26-1
High School	18-1	20-1
Accreditation	Southern Association of Colleges and Schools	
Percent High School Graduates to College (1976)	67.7	32.5
Expenditures Per Pupil (1976-77)	\$914.00	\$894.00
Bonded Indebtedness, June 30, 1977	\$4,932,000**	8,444,000**

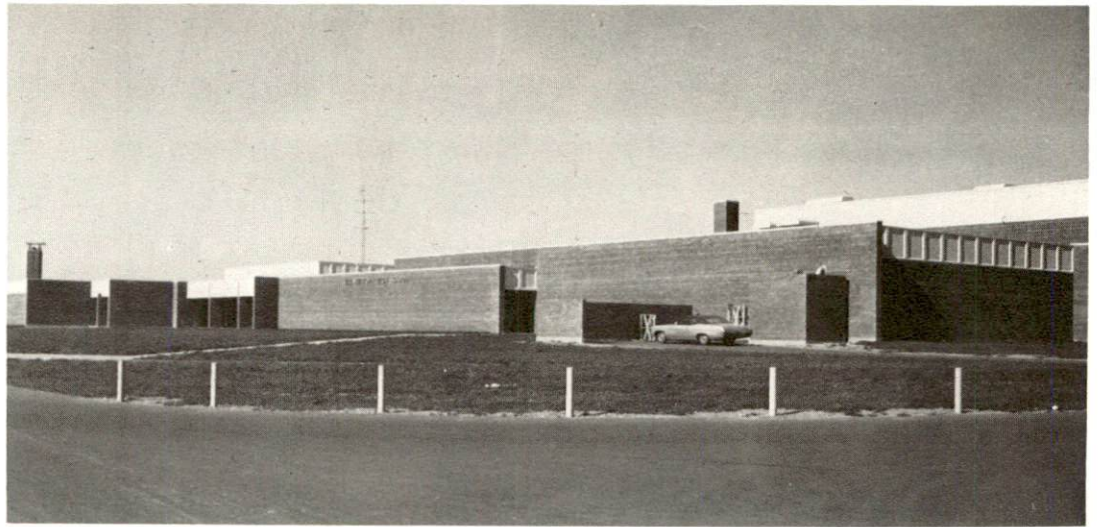
NONPUBLIC SCHOOLS

	St. James Elementary Elizabethtown	St. Brigid Elementary Vine Grove	St. Christopher Elementary Radcliff	Fort Knox Dependent
Total Enrollment	170	165	155	4,464
Elementary	170 (1-6)	165 (1-8)	155 (1-6)	2,647
Middle	--	--	--	1,032
High School	--	--	--	785
Student-Teacher Ratio	28-1	24-1	22-1	25-1
Elementary	28-1	24-1	22-1	27-1
Middle	--	--	--	23-1
High School	--	--	--	21-1

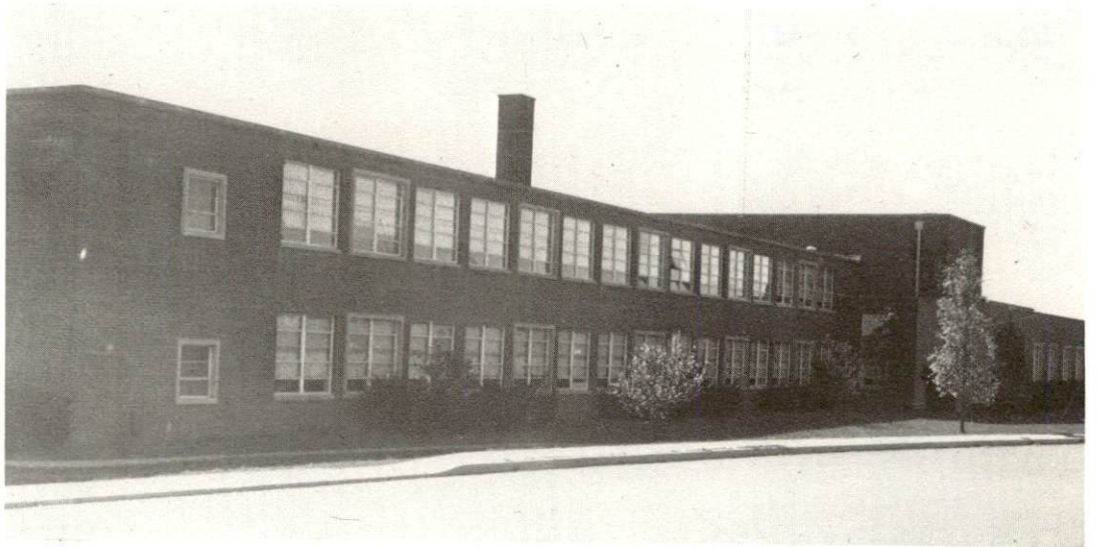
*Includes kindergarten enrollment.

**Includes refunding issues - Elizabethtown Independent, \$2,325,000; Hardin County, \$2,455,000.

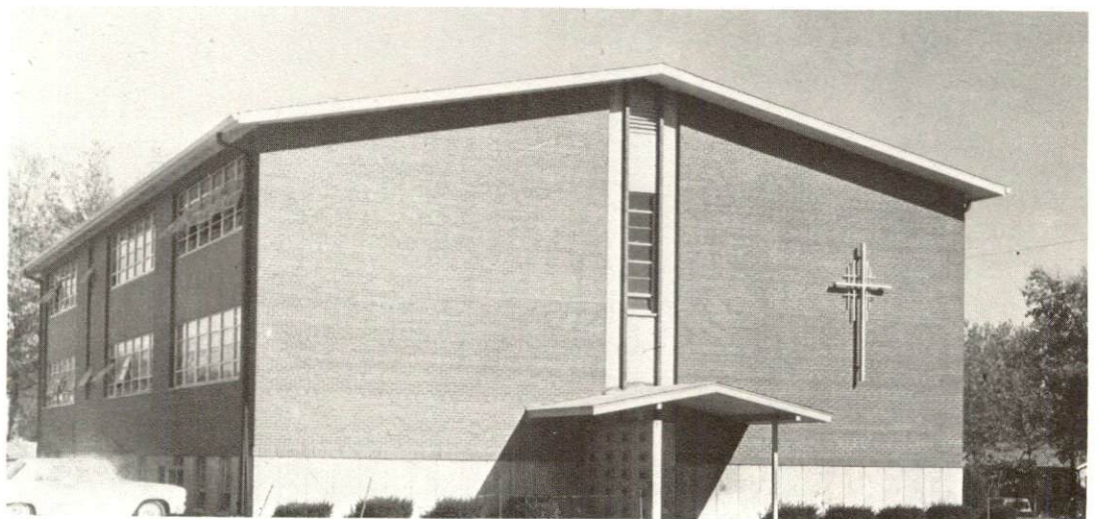
ELIZABETHTOWN
HIGH SCHOOL



T. K. STONE
JUNIOR HIGH SCHOOL



ST. JAMES
ELEMENTARY
SCHOOL



AREA COLLEGES AND UNIVERSITIES

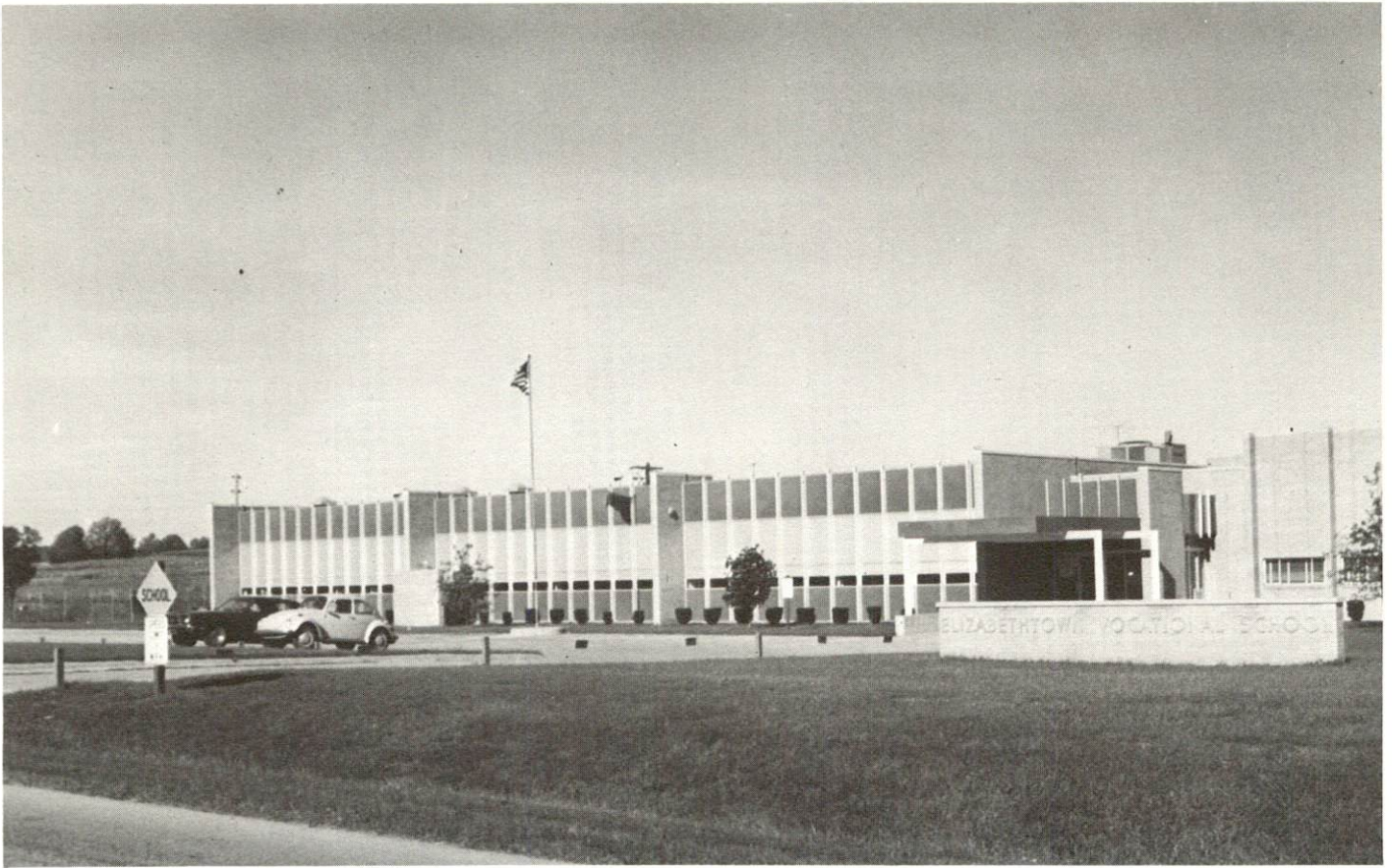
Name	Location	Distance (Miles)	Enrollment (Fall, 1977)	Highest Degree Conferred
Elizabethtown Community College	Elizabethtown	--	1,548	Associate
Fort Knox Extension Campus, University of Kentucky	Fort Knox*	17	**	Baccalaureate***
Bellarmino College	Louisville	40	1,782	Baccalaureate
Jefferson Community College	Louisville	40	5,036	Associate
Spalding College	Louisville	40	1,003	Masters
University of Louisville	Louisville	40	17,799	Ph.D., M.D., J.D., D.M.D.
St. Catharine Junior College	St. Catharine	40	161	Associate
Campbellsville College	Campbellsville	40	691	Baccalaureate

The Elizabethtown Community College opened in 1964, and as part of the Community College System is charged with three specific functions: (1) to offer career-oriented programs designed to prepare students for immediate technical or semi-professional employment; (2) to offer curricula for the first two years of a baccalaureate program, which courses parallel University offerings and are transferable to the Lexington campus of the University of Kentucky or to another four-year institution either public or private; and (3) to provide general educational opportunities for citizens in their immediate areas.

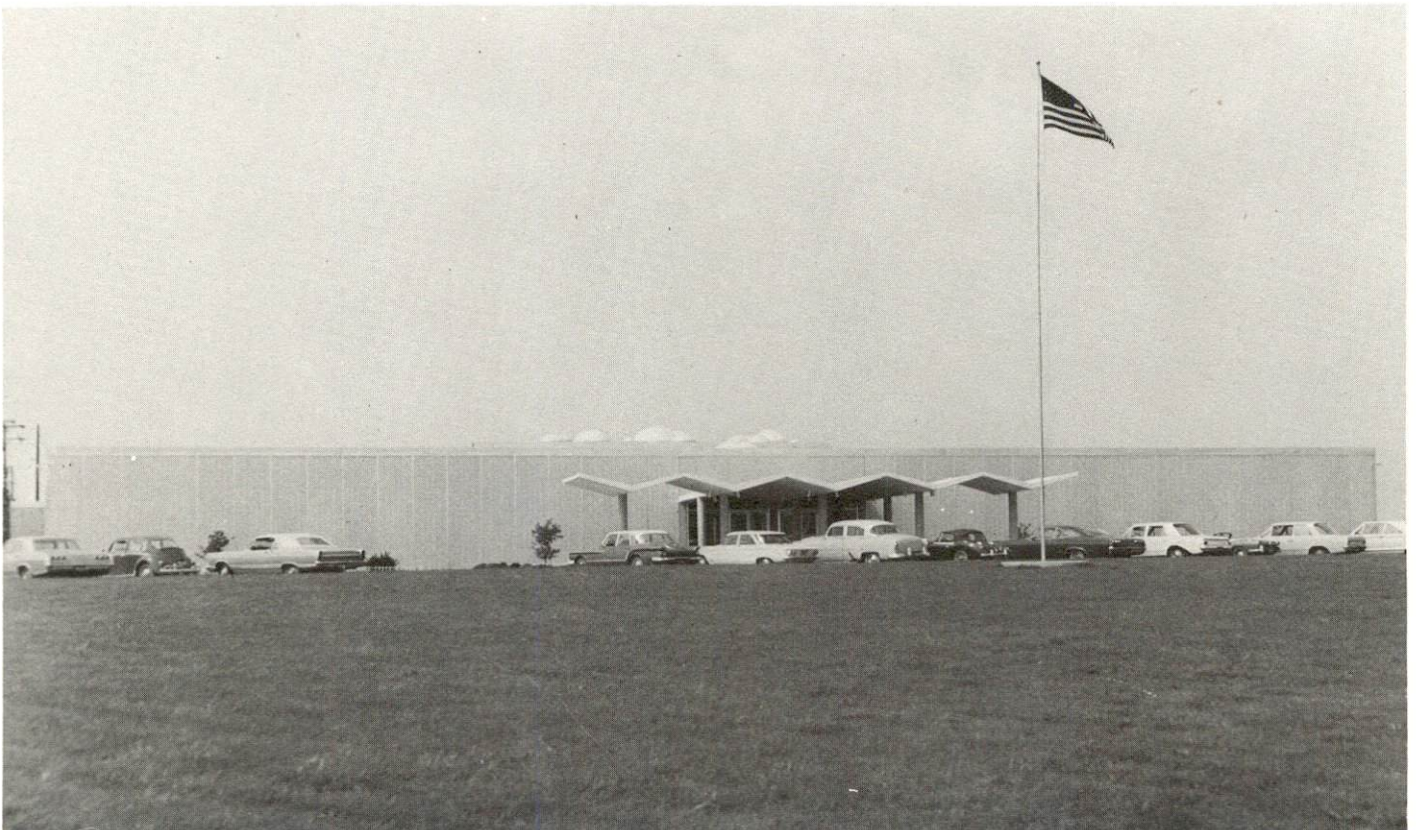
*A Masters Degree program is offered at the Fort Knox Military Base through the University of Southern California and Western Kentucky University.

**Enrollment is included in total enrollment of the University of Kentucky which in 1977 was 22,728.

***Several graduate courses are offered in addition to the Baccalaureate Degree.



ELIZABETHTOWN STATE VOCATIONAL-TECHNICAL SCHOOL



ELIZABETHTOWN COMMUNITY COLLEGE

VOCATIONAL SCHOOLS

The Elizabethtown State Vocational-Technical School serves an eight-county area including Hardin, Meade, Breckinridge, Grayson, Larue, Nelson, Washington, and Marion Counties. The school provides day classes for secondary students from Hardin County, Larue County, Fort Knox, and Elizabethtown. Postsecondary and adult programs are offered primarily at night. The school has moved toward greater emphasis on postsecondary and adult programs as the construction of additional area vocational education centers in the region has permitted. There are now five vocational education centers located in the eight-county area.

State Vocational-Technical School

Elizabethtown State Vocational-Technical School

Location

Elizabethtown

Curriculum

Consumer and Home Economics

Commercial Foods

Health and Personal Service Occupations

Health Careers

Industrial Education

Air Conditioning and Refrigeration

Appliance Repair

Auto Mechanics

Carpentry-Building Trades

Drafting

Industrial Electricity

Industrial Machine Repair

Machine Shop

Radio and TV Repair

Welding

Public Service Programs

Fire Service Training

Arrangements can be made to provide training in the specific production skills required by an industrial plant. Instruction may be conducted either in the vocational school or in the industrial plant, depending upon the desired arrangement and the availability of special equipment.

HEALTH

LOCAL MEDICAL PERSONNEL

Physicians - 44 physicians, of which 14 are Board Certified; 20 specialists (does not include OB/GYN or Pediatricians)

Dentists* - 11 dentists, 2 orthodontists, 1 oral surgeon

HOSPITALS

General Hospital

Hardin Memorial Hospital

The Hardin Memorial Hospital, located in Elizabethtown, is becoming a modern regional medical center and is presently serving a six-county area. Eighteen physicians have been attracted to Elizabethtown during the past two years, and three additional physicians, a urologist, an OB/GYN, and a pediatrician, will be added to the hospital staff by mid-summer, 1978. Construction of a new wing is underway which will bring the total bed complement to 206. This construction is expected to be completed by March 1979. Also, the hospital is renovating and enlarging all existing service departments, and this is expected to be completed by August, 1979.

General hospital facilities and services - 166 beds (being increased to 206), 3 operating rooms, fracture room, cysto room, X-ray department, intensive care, laboratory, pharmacy, emergency room, eye surgery, pediatrics, respiratory therapy, delivery room, nursery, blood bank, physical therapy, social services, psychiatric services, EKG, EEG, accredited by the Joint Commission on Accreditation of Hospitals

Medical staff - 52 physicians and dentists (with 3 additional physicians being added to the staff by mid-summer, 1978), 120 registered nurses, 33 graduate licensed practical nurses, pathologist, radiologists, urologist, anesthesiologist

OTHER MEDICAL FACILITIES

North Central Comprehensive Care Center, Inc.

Regional Renal Dialysis Facility

Speech and Hearing Clinic

1 private laboratory

Approximately 17 laboratories associated with physicians' offices

*Another orthodontist is expected to locate in Elizabethtown in the near future.

AMBULANCE SERVICE

Name - Hardin County Ambulance Service, Elizabethtown

Staff - 6 Emergency Medical Technicians (full time), 11 Emergency Medical Technicians (part time)

Service - 24-hour, county-wide service

Equipment - 4 modular-type ambulances

NURSING HOMES

Number of Homes

Number and Types of Beds

3 Nursing Homes

56 Extended Care
173 Intermediate Care
22 Personal Care

5 Family Care Homes

15 Personal Care

PUBLIC HEALTH

Facility - Hardin County Health Department

Staff - 1 administrator, 9 nurses, 3 sanitarians, 1 health officer, 1 dental hygienist, 1 nutritionist, 1 social worker, 8 clerk typists, 1 custodian

Home Health Agency Staff - 1 nurse, 1 clerk, 1 home health aide



HARDIN
MEMORIAL
HOSPITAL



HARDIN
COUNTY
HEALTH
DEPT.



HELMWOOD
MEDICAL
CENTER

OTHER LOCAL FACILITIES

COMMUNICATIONS

Telephone - General Telephone Company

Services - Standard

Telegraph - Western Union Telegraph

Services - Local office, telephone and messenger delivery; mailgrams, international and telegram messages; open 24 hours a day, 7 days a week, and on holidays

Postal - U. S. Post Office

Class - First

Mail received - 4 times daily

Mail dispatched - 2 times daily

Newspapers -

Daily and circulation - **The News-Enterprise** - 11,887

Other papers received from - Louisville, Radcliff and Fort Knox, Kentucky

Radio - WIEL-AM, WKMO-FM, WQXE-FM

Stations received from - Louisville, Radcliff, Hodgenville and Leitchfield, Kentucky

Television -

Cable Service

Reception from - Louisville, Bowling Green, and Lexington, Kentucky; Nashville, Tennessee; Evansville, Indiana

Kentucky Educational

Television - Elizabethtown transmitter, WKZT 23

LIBRARY SERVICES

Public library - Hardin County Public Library (Lincoln Trail System)

Size collection - 54,200 volumes

Circulation, 1976-77 - 104,664

Services - Bookmobile, children's story hour, records, pictures, tapes, microfilm, reader-printer, copying machine, special adult and children's programs, Dial-a-Story, audio-visual equipment for loan, films, film strips, reference and information service; library building is available for community programs

Public library - Elizabethtown Community College Media Center

Size collection - 24,000 volumes

Circulation, 1976-77 - 16,077

Services - Magazines, films, art, records, record players, projector, pamphlets, newspapers, microfilm, video tape, Kentucky collection, archives; career center - equipped with film strips; all facilities are available to the community

Private library - Brown-Pusey House Library

Special collection - Historical, Genealogy Materials

RELIGIOUS INSTITUTIONS

Number of churches-	36
Denominations-	African Methodist Episcopal
	Apostolic
	Assembly of God
	Baptist
	Christian
	Church of Christ
	Church of God
	Episcopal
	Holiness
	Lutheran
	Methodist
	Nazarene
	Presbyterian
	Roman Catholic
	Seventh Day Adventist
	Wesleyan

Nearest Synagogues -	Louisville, 40 miles away
Congregations -	Adath Israel (reform)
	Adath Jeshurun (conservative)
	Anshei Sfard (orthodox)
	Brith Sholom (reform)
	Keneseth Israel (orthodox)

FINANCIAL INSTITUTIONS

Banks	Assets	Deposits	Statement Date
Citizens Bank of Elizabethtown	\$39,867,767.39	\$36,377,494.16	12/31/77
First Hardin National Bank	92,630,494.00	82,616,826.00	12/31/77
Fort Knox National Bank of Fort Knox (Fort Knox)	29,373,000.00	26,476,000.00	3/31/78
The Cecilian Bank	19,271,912.76	16,663,377.50	12/30/77
Savings and Loan Associations	Assets	Savings Accounts	Statement Date
First Federal Savings and Loan Association	\$ 87,124,777.62	\$ 76,971,498.98	12/31/77
Louisville Home Federal (Branch office, Elizabethtown)	225,471,394.00*	193,645,189.00	12/31/77

HOTELS AND MOTELS

Total number - 15
Total rooms - 1,000+

CLUBS AND ORGANIZATIONS

Business and Civic - American Business Women, American Red Cross, Business and Professional Women's Club, Chamber of Commerce, Elizabethtown Industrial Foundation, Jaycees, Optimist, Rotary, Lions Club

Fraternal - American Legion, Knights of Columbus, Masonic Lodge

Women's - American Legion Ladies Auxiliary, D.A.R., Democratic Women's Club, Elizabethtown Women's Club, Garden Club, Hardin County Republican Women's Club, Hospital Auxiliary, Jaycee-ettes, Junior Women's Club, League of Women Voters, Order of Eastern Star, Retired Live Wires, Homemakers, Welcome Wagon

Youth - Boy Scouts of America, Girl Scouts of America, 4-H, FFA, FHA, Junior Achievement, Youth Theater of Hardin County, Inc.

Other - American Field Service, Audubon Society, Elizabethtown Rod and Gun Club, Farm Bureau, Hardin County Historical Society, Hub-town Twirlers, Lively Arts, Ministerial Association, Alcoholics Anonymous, Antique Auto Club, Weight Watchers, TOPS, Fair Squares

*Total assets of Louisville Home Federal



E-TOWN PLAZA



HARDIN PLAZA



BIG K



HELMWOOD PLAZA

RECREATION

LOCAL

Three public parks provide Elizabethtown with a variety of outdoor activities. Freeman Lake Park offers a 120-acre lake for fishing and boating, picnic areas, grills, playground equipment, hiking trails, and four shelter houses. University Park, with 8 acres, has facilities for tennis, volleyball, baseball, handball, softball, and picnicking. The 32-acre American Legion Park features a picnic area, softball fields, two outdoor swimming pools and kiddie pool, and a par-3 golf course. Three mini-parks offer picnic areas and playground equipment. Greenbelt, an area for hiking, bicycling, and nature walking, presently extends approximately 16 miles. The Elizabethtown Parks and Recreation Department offers supervised programs during the summer months.

Local schools have facilities for track, football, and indoor swimming. Other recreational facilities include a private country club with a swimming pool and an 18-hole golf course; a public 9-hole golf course; a semi-private golf club offering a 9-hole course, swimming pool, tennis courts, hiking trails and picnic tables; bowling facilities; and indoor and drive-in movie theaters.

Historical sites in Elizabethtown include the Lincoln Heritage House, built by Thomas Lincoln before his son's birth; the Governor Helm Mansion, an ante-bellum estate; and the Brown-Pusey House, the first inn and presently a community center. Other tourist attractions in or near Elizabethtown include General Custer Headquarters, The Patton Museum and U. S. Gold Depository at Fort Knox, Severns Valley Baptist Church, and the Coca-Cola Bottling Company which offers art work, sculpture, Japanese landscaping, and a pool containing live imported brilliantly colored carp.

Year-round cultural events are sponsored by three local organizations. Additional programs are offered by the Elizabethtown Community College.

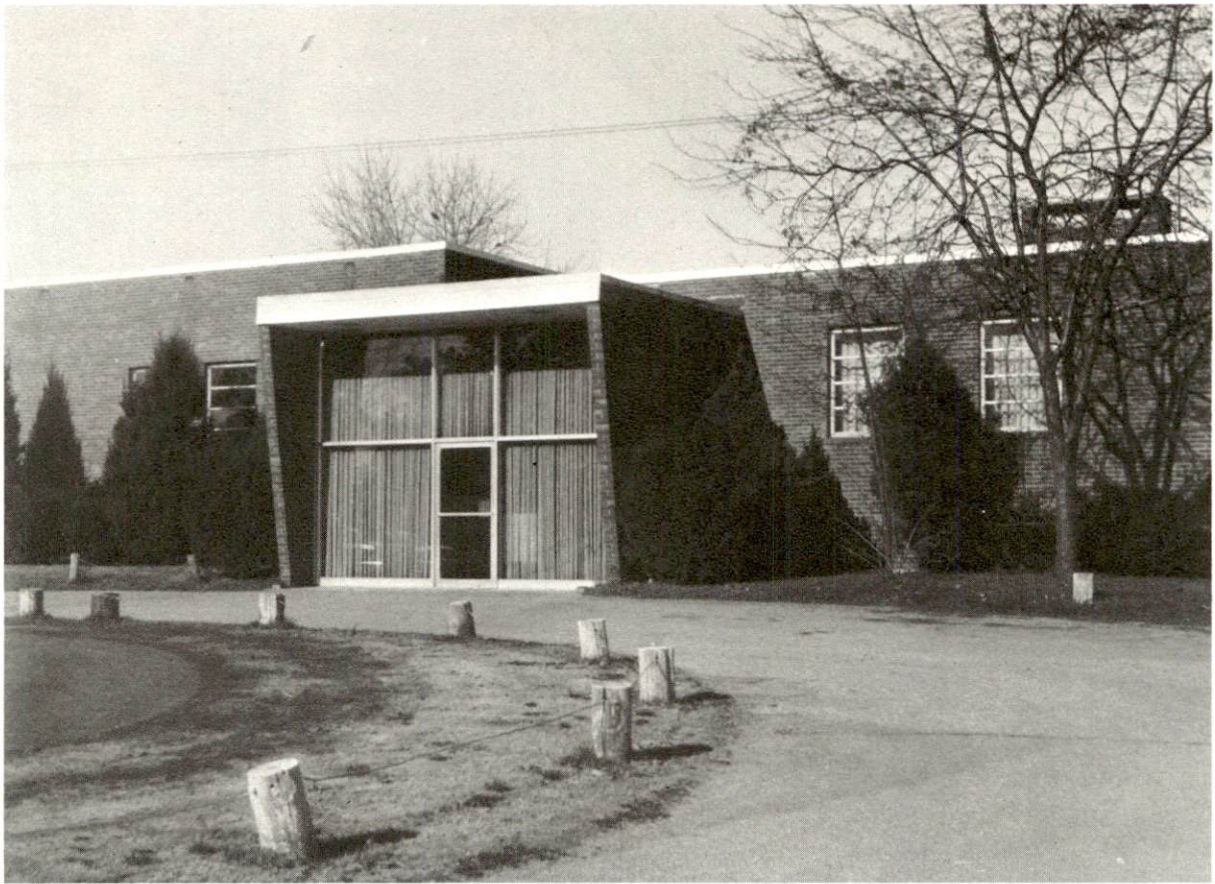
AREA (WITHIN 50 MILES)

Green River Lake State Park, Nolin River Lake, Rough River Dam State Resort Park, and Mammoth Cave National Park provide an opportunity for fishing, boating, picnicking, and camping. In addition, Rough River Dam State Resort Park has a lodge, cottages, a pool, and a paved airstrip. Mammoth Cave National Park features one of the largest cave networks ever discovered. Cave tours and river cruises are available, as well as cottages, a lodge, tennis, and summer theater.

Bernheim Forest is a privately operated 10,000-acre sanctuary with a national forest, nature center, and museum.

Places of historic interest in the area include My Old Kentucky Home, the Lincoln Homestead State Shrine, and the Abraham Lincoln Birthplace National Historic Site.

Proximity to Louisville provides the area with entertainment such as the Kentucky Derby, the Kentucky State Fair, the Louisville Zoological Gardens, the J. B. Speed Art Museum, Actors' Theatre, Kentucky Opera Association, Louisville Ballet, Louisville Orchestra, and harness racing.



ELIZABETHTOWN COUNTRY CLUB



SHELTERED WORKSHOP

COMMUNITY IMPROVEMENTS

Elizabethtown's designation as a 1977 All-Kentucky City is evidence of the successful programs and continued industrial expansion that have taken place in the community. This is the ninth time Elizabethtown has won this award which is based on factors such as industrial development, economic development, advances in medical and other services, recreation, and comprehensive planning. In addition to this award, Elizabethtown has received a special Presidential Citation Award, which is conferred only when a city has been outstanding in continual community planning and development.

INDUSTRIAL DEVELOPMENT

Development of the 823-acre Hughes Center of Commerce and Industry, a multi-county regional industrial park and business center, is well underway with roadway and utilities being extended into the park. Planned community district regulations will provide maximum flexibility for development of the park.

Since 1976, thirteen manufacturing plant expansions have been announced and one company has located a new plant in Elizabethtown. Mid-America Warehousing Company, Inc., has a new facility under construction on U. S. 31-W south, and completion is expected by June 1, 1978.

A & D Moving and Storage, Inc., has purchased property in the Hughes Center of Commerce and Industry and plans to construct a warehousing, distribution and terminal facility.

TRANSPORTATION

The new Elizabethtown-Hardin County Airport will lie adjacent to the northwestern boundary of the multi-county regional industrial park and business center. The airport is designed for small business jets. The first phase of construction will include a 4,000-foot runway, access to aircraft parking apron, service hangar, 10-unit tee hangar, auto parking, and administration building. The second phase of construction will include a 1,000-foot extension to the runway west, parallel taxiway west, additional service hangar and auto parking, additional 10-unit tee hangar, and further apron expansion. The third phase of construction will include a 1,000-foot extension to the runway east, completion of full parallel taxiway, additional aircraft parking and apron expansion, additional service hangar and tee hangar, and additional auto parking.

Planned highway construction projects which will improve access to the multi-county regional industrial park and business center include 4-laning of U. S. 62 from the new Elizabethtown by-pass west beyond the junction of U. S. 62 and Kentucky 86. Also, a second access road into the park from U. S. 62 will traverse the central part of the site and open onto Kentucky 1357 and future plans include extending this road northeast around Elizabethtown providing a by-pass from U. S. 62 west to U. S. 62 east.

Other highway projects which will improve highway access to Elizabethtown include the 4-laning of Kentucky 61 from Hodgenville to Elizabethtown and the 6-laning of Interstate 65 from Elizabethtown to Louisville.

FINANCIAL INSTITUTIONS

Financial institutions are expanding to facilitate the growth and development of Elizabethtown. A new branch bank will open on Highway 62 which will be the ninth banking facility for First Hardin National Bank. In 1979, the Citizens Bank of Elizabethtown plans to construct an additional full-service branch. The Cecilian Bank of Cecilia has recently remodeled its main office and has constructed two branch offices, one of which is located near Elizabethtown. The First Federal Savings and Loan Association plans an expansion which will provide space for offices, a teller counter, and a drive-up window. Louisville Home Federal located a branch office in Elizabethtown in 1977.

WATER AND SEWERAGE

The city has carefully planned the expansion of utility services to meet growth needs. Two new water storage facilities - a 200,000-gallon clearwell and a 500,000-gallon elevated tank - will be completed by early fall, 1978, as well as a 12-inch water line extension from the new clearwell into the multi-county regional industrial park and business center. A 4,500,000-gallon tertiary sewage treatment plant and 5 miles of 24-inch outfall line are now in the design stage with construction expected to begin in late 1978 or early 1979. A 28-acre aerated lagoon is now under construction and expected to be in use by summer of 1978.

EDUCATION

The Hardin County School System has recently completed three construction projects - Hardin Central Junior High School, West Hardin High School physical education facility, and an addition to the Radcliff Elementary School for conversion to a junior high school. Proposed construction includes an addition to Hardin Central Junior High School to convert it to a senior high school and conversion of the East and West Hardin High Schools into junior high schools, and the construction of an additional elementary school. Recent curriculum additions include a gifted/talented class at Hardin Central Junior High School, countywide math management system, practical arts at the junior high level, Indochinese refugee grant - teaching English as a second language (for children and adults), TV production class (complete color television studio), model office class (actually operating a mock business), Artist-in-Residence, night community education program at six school centers, alternative school program at West Hardin High School, and special mathematics instruction for children of migrant farm workers. The Elizabethtown Independent School District is presently constructing a football stadium and a two-classroom building for Head Start, and is planning to construct a cafeteria-activity area at one of the elementary schools.

COMMUNICATIONS

Several improvements in communications services have recently taken place. The Western Union Telegraph Company is now offering service 24 hours a day, seven days a week, and on holidays. The News-Enterprise is placing 7,000 additional boxes at residences in Hardin County, and now provides a free weekly publication to those residences not receiving the daily News-Enterprise. The weekly publication includes news and serves as an advertising vehicle. Approximately 21,000 copies of the publication are sent to residences in Hardin County and several adjoining counties. A new radio station, WKMO-FM, recently signed on the air. The General Telephone Company is involved in an ongoing construction program to assure availability of modern telephone services as service areas expand.

HEALTH

The Hardin Memorial Hospital has begun construction of a new wing which will bring the total bed complement to 206. This is expected to be completed by March 1978. The hospital is also renovating and enlarging all existing service departments, and completion is scheduled for August 1979. The hospital has upgraded radiology by adding nuclear medicine, ultra sound, and special procedures. An additional radiologist was recently added to the staff. One urologist, one OB/GYN and one pediatrician will be added to the hospital staff by mid-summer, 1978. Another orthodontist is also expected to locate in Elizabethtown in the near future. The Hardin County Health Department completed a \$98,000 addition in 1977 which added space for eight new offices. Within the past two years, the Hardin County Ambulance service has received four new modular-type ambulances.

HOUSING

Housing developments underway include: Camelot Place Subdivision with 200+ lots and additional area for future development; Cardinal Creek Subdivision with approximately 205 lots; Woodland Heights North Subdivision with 27 lots; Glendover with 38 lots; Copper Sunset Subdivision section No. 3 with 16 lots; Lakewood Park with plans for 146 lots in total project which includes area for neighborhood commercial development; Quail Meadow Subdivision with 60 lots. Other planned development includes a townhouse condominium and 200-300 apartment units in close proximity to the new mall and Buffalo Creek Recreation Area. A \$1 million project is underway which will provide 48 units of subsidized rental housing for the elderly.

RECREATION

A new civic center, a combination recreation and community building, is now under construction and expected to be completed by October 1978. This \$1,250,000 project will provide: two large all-purpose rooms separated by folding partition, offices for the recreation director and building manager, kitchen, small meeting rooms, two racquetball courts, basketball court, shuffleboard, indoor badminton and ping pong tables. Two other activity centers are planned by the Methodist and Baptist churches.

Additional recreational facilities will become available when construction of the **Creekside Health and Racquet Club** is completed. The private facility will consist of a 2-story building and connected all-weather 29,700 square foot bubble housing tennis courts. Features will include four racquetball courts, five tennis courts, 25-meter indoor pool with sun deck, running track, health spas, and a pro shop and nursery service.

OTHER

A downtown redevelopment program is being coordinated by the Chamber of Commerce and the central business district property owners. Commercial development in Elizabethtown is growing rapidly with 77 commercial permits issued between October 1976 and April 1978.

Plans are well underway for construction of the Valley Creek Mall. The total development will cover 196 acres and offer more than 420,000 square feet of leasing space.

The Elizabethtown Visitor and Information Commission was formed in 1976 to attract more tourists and convention visitors. During 1977, more than \$3 million was generated through tourism. The Commission has reopened two information centers on Interstate 65. One center is located just north of Elizabethtown; one is located south of the city.

Boys Ranch opened late in 1977 on a 101-acre farm in Hardin County. The ranch is designed to provide a family-like residence for homeless or troubled boys ages 8-17. This was a citizen volunteer project and \$165,000 was raised through donations to build and staff the home.

**Kentucky Department of Commerce
Capital Plaza Tower
Frankfort, Kentucky 40601**

**Office of the Commissioner
(502) 564-4270**

**Industrial Development Division
(502) 564-7140**

**Field Services Division
(502) 564-4270**

**Existing Industries Division
(502) 564-4300**

**Agribusiness Division
(502) 564-6784**

**Office of Minority Business Enterprise
(502) 564-2064**

**Tourism Development Division
(502) 564-2868**

**International Trade and Investment
Promotion Division
(502) 564-2170**

**Research and Planning Division
(502) 564-4886
Map Sales Office
133 Holmes Street
(502) 564-4715**

**Kentucky Development Finance Authority (KDFA)
(502) 564-4554**

**Kentucky Film Commission
(502) 564-2240**