

1982

Industrial Resources: Jessamine County - Nicholasville

Kentucky Library Research Collections
Western Kentucky University, spcol@wku.edu

Follow this and additional works at: https://digitalcommons.wku.edu/jessamine_cty



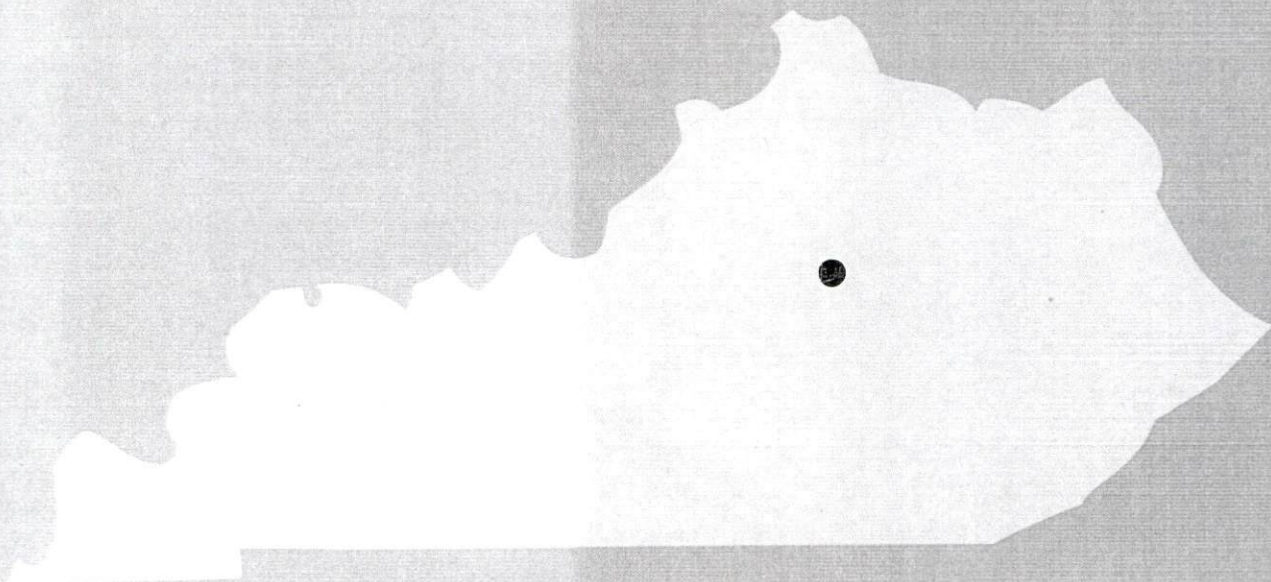
Part of the [Business Administration, Management, and Operations Commons](#), [Growth and Development Commons](#), and the [Infrastructure Commons](#)

Recommended Citation

Kentucky Library Research Collections, "Industrial Resources: Jessamine County - Nicholasville" (1982). *Jessamine County*. Paper 2.
https://digitalcommons.wku.edu/jessamine_cty/2

This Report is brought to you for free and open access by TopSCHOLAR®. It has been accepted for inclusion in Jessamine County by an authorized administrator of TopSCHOLAR®. For more information, please contact topscholar@wku.edu.

A comprehensive
report on
Nicholasville, Ky.

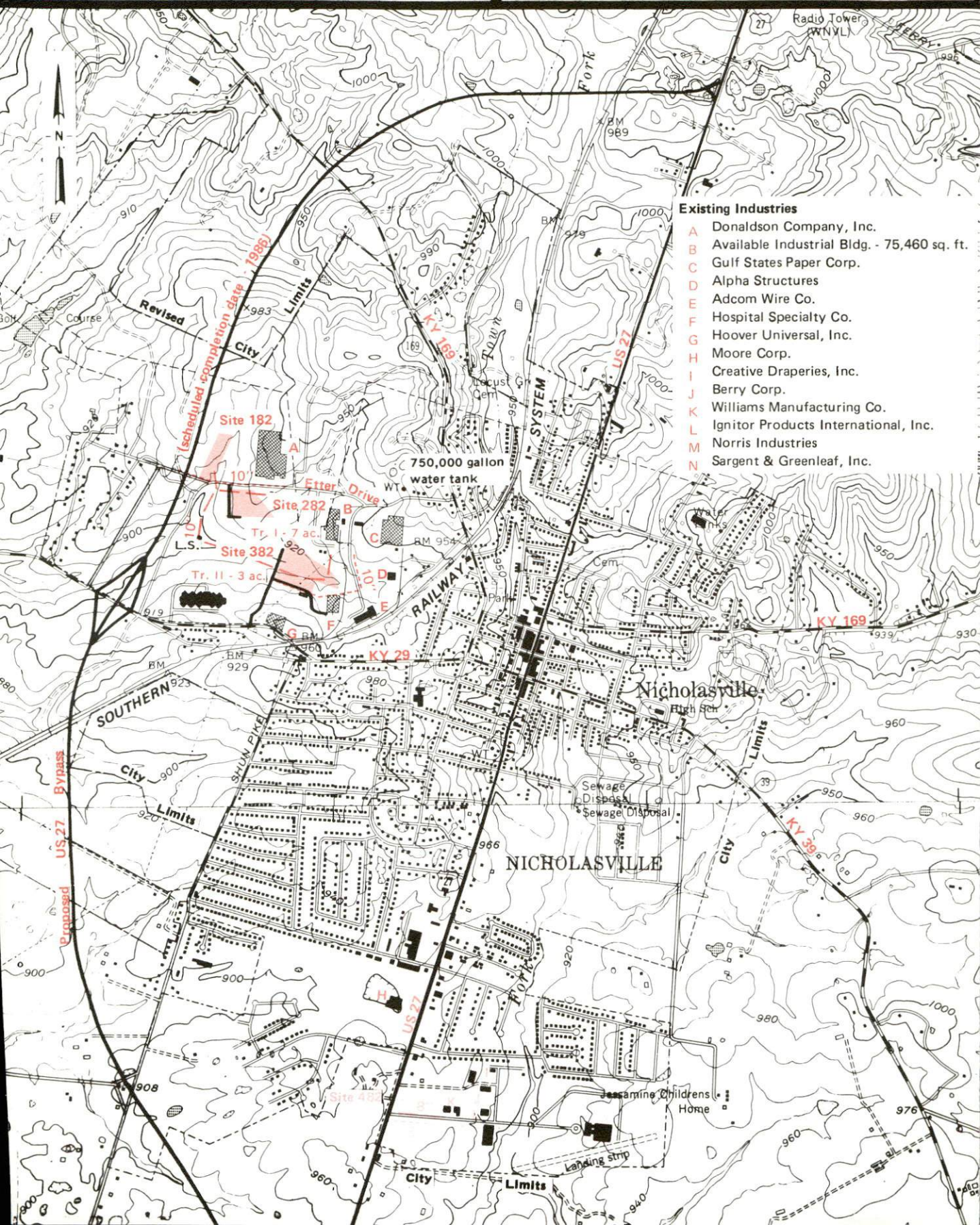


KENTUCKY & CO.
The state that's run like a business.

NICHOLASVILLE, KENTUCKY

Industrial Sites — 1982

For more information contact the Department of Economic Development, Office of Business Development, Industrial Development Division, Capital Plaza Tower, Frankfort, Kentucky 40601 (502 564-7140).



Existing Industries

- A Donaldson Company, Inc.
- B Available Industrial Bldg. - 75,460 sq. ft.
- C Gulf States Paper Corp.
- D Alpha Structures
- E Adcom Wire Co.
- F Hospital Specialty Co.
- G Hoover Universal, Inc.
- H Moore Corp.
- I Creative Draperies, Inc.
- J Berry Corp.
- K Williams Manufacturing Co.
- L Ignitor Products International, Inc.
- M Norris Industries
- N Sargent & Greenleaf, Inc.

A COMPREHENSIVE REPORT ON
NICHOLASVILLE, KENTUCKY

Prepared by
The Kentucky Department of Economic Development
Division of Research and Planning
in cooperation with
The City of Nicholasville
The Jessamine County Industrial Foundation
and
The Jessamine Chamber of Commerce
1982

Program manager - Pam Riley; research - James Thompson; clerical - Shirley Wood; graphics - Frank Ferrante, Tony Cecconi, Robert Owens; cartography - Site Evaluation Section, Industrial Development Division. Cost of printing paid from state funds.

TABLE OF CONTENTS

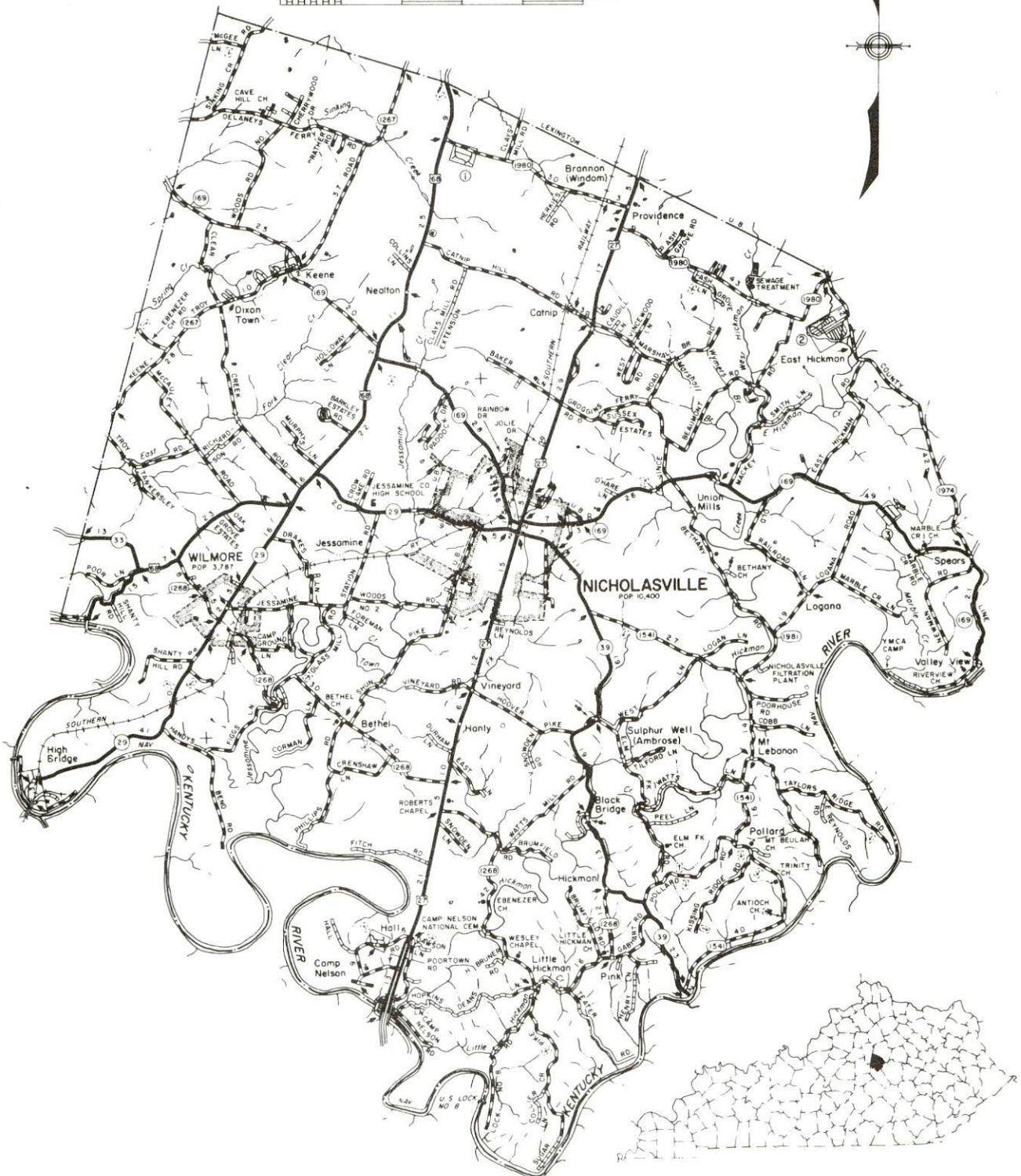
<u>Chapter</u>	<u>Page</u>
INDUSTRIAL SITES	i
NICHOLASVILLE, KENTUCKY - A RESOURCE PROFILE	1
THE LABOR MARKET AREA	3
Population	3
Labor Force Characteristics of Residents, 1981	3
Jessamine County Manufacturing Firms,	
Their Products and Employment	4
Labor Organizations in Manufacturing Firms	6
Industrial Services	6
Estimated Male Labor Supply	7
Estimated Female Labor Supply	7
Average Weekly Wages by Industry,	
by Place of Work, 1981	8
Per Capita Personal Income	10
TRANSPORTATION	11
Rail	11
Highways	11
Truck Service	12
Air	14
Bus	14
Taxi	14
Rental Services	14
Water	14
POWER AND FUEL	15
Electricity	15
Natural Gas	16
Other Fuels	17
WATER AND SEWERAGE	18
Public Water Supply	18
Raw Water	20
Sewerage	21
CLIMATE	22

<u>Chapter</u>	<u>Page</u>
LOCAL GOVERNMENT	23
City	23
County	23
Assessed Value of Property	23
Property Taxes	24
Combined State and Local Rates Per \$100 Valuation, 1981 . . .	25
Utilities Gross Receipts Tax for Schools	25
Planning and Zoning	26
Safety	26
Police	26
Fire	26
Rescue Service	26
Refuse Collection and Disposal	27
EDUCATION	28
Public Schools	28
Area Colleges and Universities	29
Vocational Schools	29
HEALTH	32
Local Medical Personnel	32
Hospitals	32
Other Medical Facilities	32
Ambulance Service	32
Public Health	32
OTHER LOCAL FACILITIES	33
Communications	33
Library Services	33
Religious Institutions	34
Financial Institutions	34
Hotels and Motels	34
Clubs and Organizations	35
RECREATION	36
COMMUNITY IMPROVEMENTS	40

1982 EDITION
GENERAL HIGHWAY MAP
JESSAMINE COUNTY
KENTUCKY

PREPARED BY THE
KENTUCKY DEPARTMENT OF TRANSPORTATION
BUREAU OF HIGHWAYS
DIVISION OF PROJECT DEVELOPMENT
IN COOPERATION WITH THE
U.S. DEPARTMENT OF TRANSPORTATION
FEDERAL HIGHWAY ADMINISTRATION

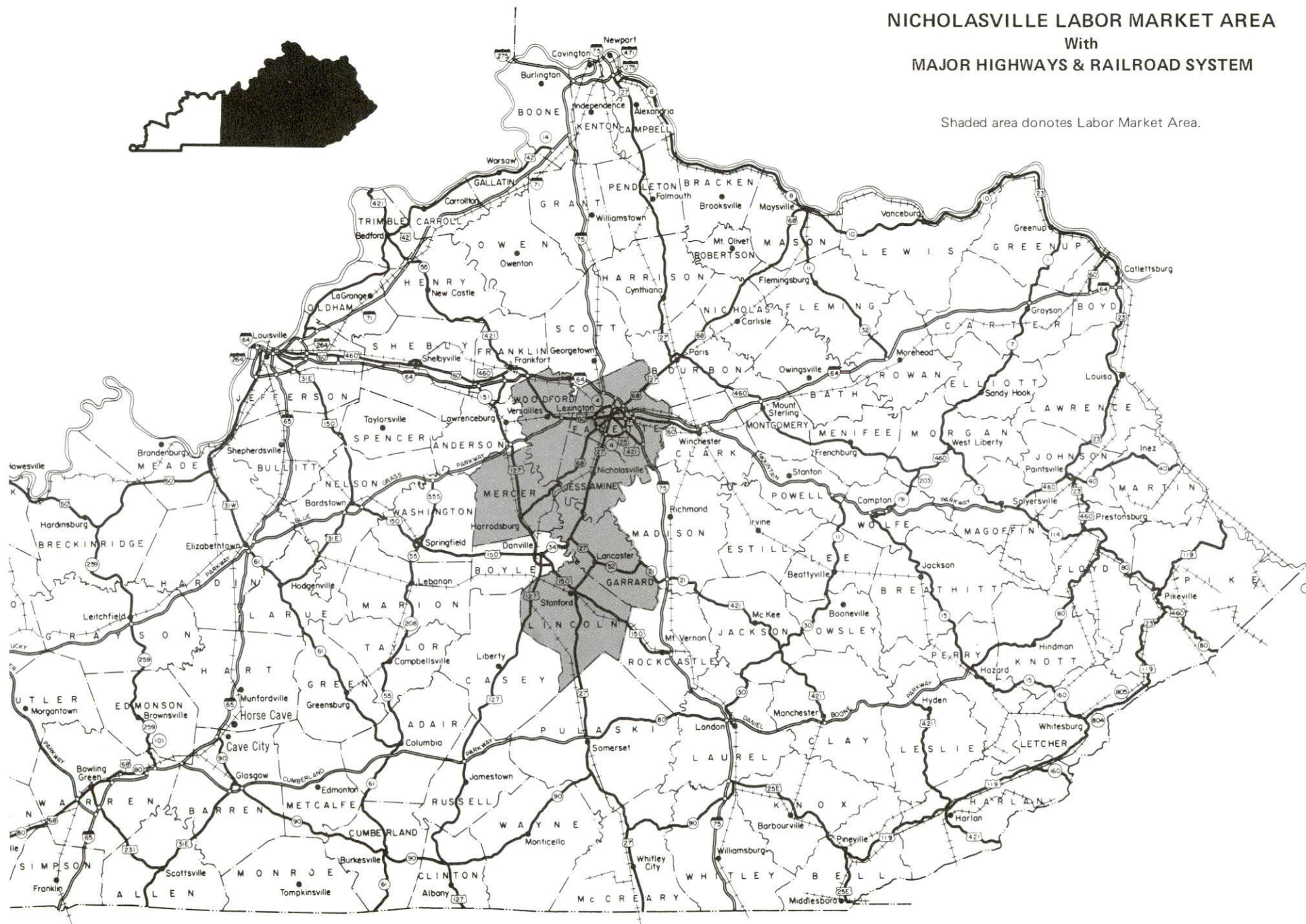
0 1 2 3 4 MILES



NICHOLASVILLE LABOR MARKET AREA

With MAJOR HIGHWAYS & RAILROAD SYSTEM

Shaded area donotes Labor Market Area.



NICHOLASVILLE, KENTUCKY - A RESOURCE PROFILE

Nicholasville, the county seat of Jessamine County, is located in the heart of the Central Kentucky Bluegrass Region. Nicholasville, with a population of 10,319 in 1980, is located 12 miles south of Lexington, Kentucky; 84 miles southeast of Louisville, Kentucky; 90 miles south of Cincinnati, Ohio; 222 miles northeast of Nashville, Tennessee; and 347 miles southeast of St. Louis, Missouri.

Jessamine County, with a 1980 population of 26,065, has a land area of 177 square miles.

The Economic Framework

The total number of Jessamine County residents employed in 1981 averaged 14,240, with nonagricultural jobs accounting for 13,460 workers. Manufacturing employers in the county reported 1,080 workers; wholesale and retail trade 1,340; state and local government 630; and services 620. Manufacturing employment is greatest in fabricated metal products, paper and allied products, rubber and plastics products, and apparel and related products.

Per capita personal income in the county in 1980 was \$6,794. Between 1976 and 1980, per capita income increased by 53.8 percent.

The Nicholasville labor market area includes Jessamine and five adjoining and nearby counties. The total number of residents of the labor market area employed in 1981 averaged 151,570, with nonagricultural jobs accounting for 144,980 workers. Manufacturing employers in the area reported 24,430 workers; wholesale and retail trade 28,940; state and local government 20,720; and services 22,770.

Resources for Growth

1. Labor Supply - There is a current labor supply of 14,390 men and 11,790 women available for industrial jobs in the labor market area. In addition, 11,530 young men and 11,050 young women in the area will become 18 years of age before 1986 and potentially available for work.

2. Transportation - The Southern Railway System provides main line rail service to Nicholasville. Nicholasville is served directly by U. S. 27, a "AAA" rated trucking highway. In addition, Interstates 64 and 75 intersect 17 miles northeast of Nicholasville. Twenty-seven common carriers have authority to serve Nicholasville. The nearest commercial airport, Blue Grass Field, is located 16 miles north of Nicholasville.

3. Power and Fuel - Electric power is provided to Nicholasville by the City of Nicholasville Utilities, which is supplied by the Kentucky Utilities Company. Jessamine County is served electric power by the Kentucky Utilities Company, and also by the Blue Grass Rural Electric Cooperative Corporation, which is supplied by the East Kentucky Power Cooperative. Nicholasville is provided natural gas service by the Delta Natural Gas Company, which is supplied by the Tennessee Gas Pipeline Company. Two distributors of propane and two distributors of distillate fuel oil are located in Nicholasville.

4. Education - Primary and secondary education is provided to Nicholasville and Jessamine County by the Jessamine County School System.

Asbury College, a four-year, coeducational institution with an enrollment of 1,200, is located in Wilmore, only 7 miles from Nicholasville. In addition, seven universities and senior colleges, two junior colleges, and a technical institute are located within 55 miles of Nicholasville.

The Central Kentucky State Vocational-Technical School in Lexington, 12 miles north, offers training in 19 courses. The Northside and Southside Area Vocational Education Centers, also in Lexington, offer training in 17 different courses.

THE LABOR MARKET AREA

The Nicholasville labor market area includes Jessamine County and Fayette, Garrard, Lincoln, Mercer, and Woodford Counties. Residents of this area are within easy commuting distance of Nicholasville.

Area	POPULATION		Percent Nonwhite
	1980	1970	
Nicholasville	10,319	5,829	6.6
Labor Market Area	296,925	248,267	N/A
Jessamine County	26,065	17,430	4.6
Fayette County	204,165	174,323	14.5
Garrard County	10,853	9,457	5.5
Lincoln County	19,053	16,663	4.2
Mercer County	19,011	15,960	4.6
Woodford County	17,778	14,434	8.0

Note: The 1980 counts of population by race are provisional.

Sources: U. S. Department of Commerce, Bureau of the Census, 1980 Census of Population and Housing, March 1981; 1980 Census of Population, Number of Inhabitants. Population Research Unit, Urban Studies Center, University of Louisville, Kentucky Demographics: The 1980 Census of Kentucky, Characteristics of Population, Households, Housing, January 1982.

LABOR FORCE CHARACTERISTICS OF RESIDENTS, 1981

	Jessamine County	Labor Market Area
Civilian Labor Force	14,910	160,086
Employment	14,237	151,573
Agricultural	775	6,597
Nonagricultural	13,462	144,976
Unemployment	673	8,513
Rate of Unemployment (%)	4.5	5.3

Source: Kentucky Cabinet for Human Resources, Kentucky Labor Force Estimates, Annual Averages, 1981.

JESSAMINE COUNTY MANUFACTURING FIRMS,
THEIR PRODUCTS AND EMPLOYMENT

THEIR PRODUCTS AND EMPLOYMENT					
Firm (Establishment date)	Product	Employment			Labor Unions
		Total	Male	Female	
<u>Nicholasville</u>					
Adcom Wire Company (1970)	Bright plat- ing and annealed wire, spring wire high carbon	44	40	4	
Alpha Structures, Inc. (1982)	Fabric structures	20	13	7	
Berry Corporation (1973)	Metal fabrica- tion, joint sealing equipment	12	11	1	
Creative Draperies, Inc. (1969)	Draperies and cubicle curtains	30	1	29	
Donaldson Company, Inc. (1979)	Mufflers, construc- tion, agri- cultural, industrial, mining	70	54	16	
Faulkner-Fain Company, Inc. (1957)	Wood store bank fix- tures, cabinets, institutional furniture	10	8	2	
Gulf States Paper Corporation, Paperboard Converting Division (1970)	Folding cartons	177	126	51	
Hoover Universal, Inc. Beverage Bottle Division (1973)	Plastic bottles	60	-	-	
Hospital Specialty Company (1979)	Disposable diapers, sanitary napkins	60	10	50	

(Cont.)

<u>Firm</u> (Establishment date)	<u>Product</u>	<u>Employment</u>			<u>Labor Unions</u>
		<u>Total</u>	<u>Male</u>	<u>Female</u>	
Ignitor Products International, Inc. (1980)	Self-igniting torches propane	22	10	12	
Jessamine Publishing Company, Inc. (1956)	Newspaper, Job print- ing	10	5	5	
Moore Corporation Subsidiary of Armco, Inc. (1981)	Metal root trusses	53	45	8	
Norris Industries (1979)	Plastic injection molding, tubing stainless steel	152	103	49	
Sargent and Greenleaf, Inc. (1973)	Locks	272	136	136	Teamsters*
Southern States Cooperative (1955)	Fertilizer	6	5	1	
Stanley Smith and Company, Inc. (1975)	Railroad equipment repairs	12	10	2	
Williams Manufacturing Company, Inc. (1976)	Assemblies	31	6	25	
Winges Mixed Concrete Company, Inc. (1969)	Ready mixed concrete	22	20	2	Teamsters*
<u>Wilmore</u>					
Crouse Concrete and Building Supply Company (1961)	Ready mixed concrete	6	5	1	
Tococo, Inc. (1971)	Men's and ladies' jeans	85	8	77	

*See Labor Organizations.

Source: Kentucky Department of Economic Development, Division of
Research and Planning.

LABOR ORGANIZATIONS IN MANUFACTURING FIRMS

Union

Representing workers at:

International Brotherhood of
Teamsters, Chauffeurs,
Warehousemen and Helpers
of America

Sargent and Greenleaf, Inc.
Winges Mixed Concrete Company, Inc.

INDUSTRIAL SERVICES

<u>Types of Services</u>	<u>Location</u>	<u>Miles distant</u>
Tool & Die, Machine & Pattern Shops	Nicholasville	-
Metal Service Centers	Lexington	12
Heat Treating	Georgetown	28
	Richmond	33
Metal Finishers	Lexington	12
Electric Motor Repair	Lexington	12

Source: Kentucky Department of Economic Development, Kentucky Directory
of Selected Industrial Services, 1981.

ESTIMATED MALE LABOR SUPPLY
NICHOLASVILLE LABOR MARKET AREA

Area	Current			Future	
	Total	Not in Labor Force	Unemployed	Under-employed	Reaching 18 years of age before 1986
Labor Market Area*	14,389	2,444	5,127	6,818	11,534
Jessamine	1,100	0	418	682	808
Fayette	8,215	0	3,253	4,962	8,091
Garrard	1,190	768	229	193	409
Lincoln	2,225	1,296	561	368	799
Mercer	1,154	380	421	353	684
Woodford	505	0	245	260	743

*Additional workers may be drawn from other nearby counties.

Note: Not in Labor Force - represents the number of persons who would enter the labor force if suitable employment were available (based on the assumption that persons in Kentucky would like to participate in the labor force in the same proportion that they do nationally). Unemployed - persons unemployed and actively seeking work; Underemployed - persons employed but working only 14 to 26 weeks per year.

Sources: Kentucky Cabinet for Human Resources, Kentucky Labor Supply Estimates by Area Development District and County, 1981. Kentucky Department of Economic Development, Future Labor Supply before 1986.

ESTIMATED FEMALE LABOR SUPPLY
NICHOLASVILLE LABOR MARKET AREA

Area	Current			Future	
	Total	Not in Labor Force	Unemployed	Under-employed	Reaching 18 years of age before 1986
Labor Market Area*	11,793	450	3,386	7,957	11,046
Jessamine	1,120	0	255	865	819
Fayette	7,840	0	1,995	5,845	7,563
Garrard	588	191	192	205	424
Lincoln	1,016	259	467	290	755
Mercer	700	0	351	349	736
Woodford	529	0	126	403	749

*Additional workers may be drawn from other nearby counties.

Note: Not in Labor Force - represents the number of persons who would enter the labor force if suitable employment were available (based on the assumption that persons in Kentucky would like to participate in the labor force in the same proportion that they do nationally). Unemployed - persons unemployed and actively seeking work; Underemployed - persons employed but working only 14 to 26 weeks per year.

Sources: Kentucky Cabinet for Human Resources, Kentucky Labor Supply Estimates by Area Development District and County, 1981. Kentucky Department of Economic Development, Future Labor Supply before 1986.

AVERAGE WEEKLY WAGES BY INDUSTRY,
BY PLACE OF WORK, 1981

	<u>Jessamine County</u>	<u>Fayette County</u>	<u>Garrard County</u>
All Industries	\$221.79	\$282.74	\$187.55
Mining & Quarrying	*	529.79	*
Contract Construction	254.20	340.51	207.40
Manufacturing	263.59	401.73	217.54
Transportation, Communications & Public Utilities	277.62	351.28	249.90
Wholesale & Retail Trade	189.74	199.44	123.99
Finance, Insurance & Real Estate	209.55	273.23	225.48
Services	189.57	242.34	153.40
State/Local Government	218.01	290.61	193.28
Other	210.47	244.71	*
	<u>Lincoln County</u>	<u>Mercer County</u>	<u>Woodford County</u>
All Industries	\$209.83	\$234.82	\$258.17
Mining & Quarrying	*	*	0
Contract Construction	197.71	272.84	270.42
Manufacturing	201.88	299.53	311.93
Transportation, Communications & Public Utilities	346.88	354.57	336.35
Wholesale & Retail Trade	145.62	150.52	157.92
Finance, Insurance & Real Estate	214.70	237.74	199.49
Services	170.95	151.63	185.25
State/Local Government	211.21	222.28	234.39
Other	111.39	145.39	241.93

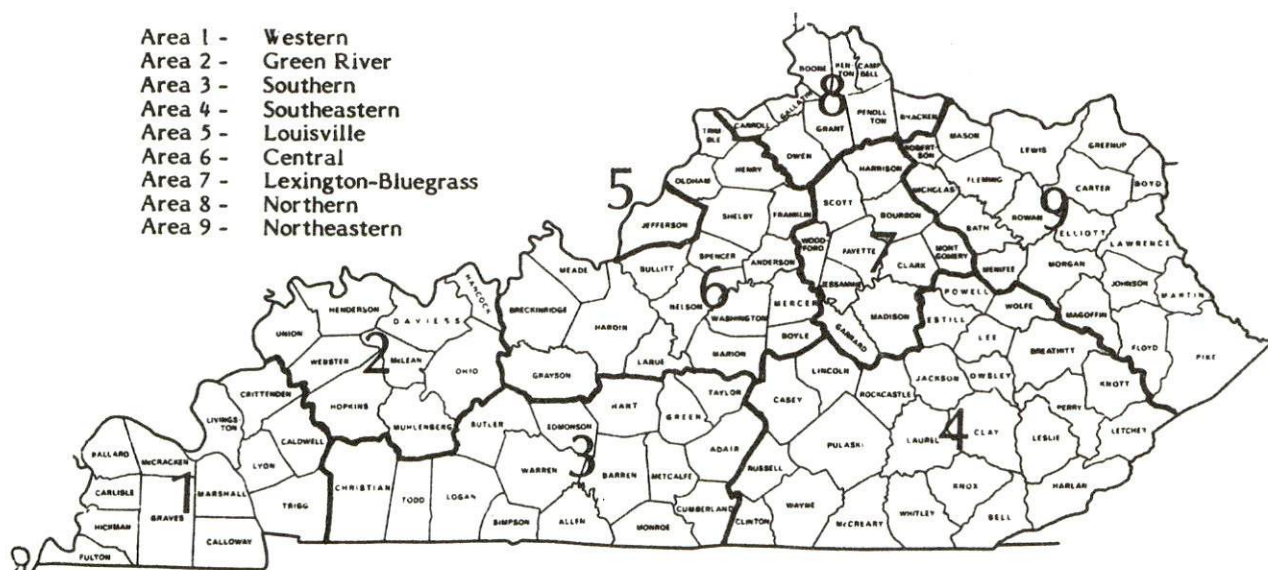
*Not disclosed.

Note: Excludes domestic workers, railway workers, certain nonprofit corporations, majority of federal government workers, and self-employed workers.

Source: Kentucky Cabinet for Human Resources, Average Weekly Wages of Workers Covered by Kentucky Unemployment Insurance Law, 1981.

Occupational wage rates for specific industries are usually not available to most government agencies, and wage data furnished to state employment agencies by individual industrial employers are protected from disclosure by federal law. The most reliable up-to-date wage information can be obtained by direct contact with local employers.

Associated Industries of Kentucky, a voluntary organization of Kentucky businesses, regularly collects occupational wage rates and fringe benefits data from participating member firms. Data are compiled for over 127 clearly defined office, production, and service occupations. Tabulations are published for nine geographical areas of Kentucky, as shown on the map below. It should be noted that the data may be weighted by the preponderance of firms in the larger cities and may be somewhat higher than the rates paid in the smaller communities. Data from these tabulations are available, upon request, from the Kentucky Department of Economic Development, Frankfort, Kentucky 40601.



Associated Industries of Kentucky Area Wage Surveys

PER CAPITA PERSONAL INCOME

<u>Area</u>	<u>1976</u>	<u>1980</u>	<u>Percent Change</u>
Jessamine County	\$4,419	\$ 6,794	53.8
Labor Market Area			
Range	\$3,845 - 6,219	\$5,393 - 10,128	N/A
Kentucky	5,263	7,662	45.6
U. S.	6,367	9,511	49.4

Source: U. S. Bureau of Economic Analysis, Kentucky Economic Information System, June 1982.

TRANSPORTATION

Rail

Line serving Nicholasville - Southern Railway System

Services - Main line; one northbound and one southbound freight stops daily; six northbound and six southbound through freights daily; switching facilities; team track space for six cars; public siding space for approximately 20 cars. Nearest Southern Railway piggyback facilities are located at Danville, 23 miles southwest of Nicholasville.

For details on routing, schedules, rates, and services, contact:

District Sales Manager
Southern Railway System
701 South Broadway
Lexington, Kentucky 40508
(606) 252-2242

Highways

Nicholasville is served by U. S. 27, a "AAA" rated trucking highway, and Kentucky highways 29, 39 and 169, all "AA" rated trucking highways. In addition, Interstate 64, a major east-west highway, and Interstate 75, a major north-south highway, intersect approximately 17 miles northeast of Nicholasville at Lexington.

Truck Service

Company

Home Office

ANR Associates*

200 Monroe Avenue
Grand Rapids, Michigan 49503

Bestway Express, Inc.*

502 Lester Avenue
Nashville, Tennessee 37210

Bishop Motor Express**

Grand Rapids, Michigan 49502

Bronaugh Motor Express, Inc.**

1025 Nandino Boulevard
Lexington, Kentucky 40511

Budig Western**

1100 Gest Street
Cincinnati, Ohio 45203

CW Transport, Inc.*

610 High Street
Wisconsin Rapids, Wisconsin 54494

Claxton Truck Line, Inc.**

453 Versailles Road
Frankfort, Kentucky 40602

Commercial Lovelace Motor
Freight, Inc.

3400 Refugee Road
Columbus, Ohio 43227

Commercial Motor Freight, Inc.
of Indiana*

2141 S. High School Road
Indianapolis, Indiana 46241

Consolidated Freightways
Corp. of Delaware*

175 Linfield Drive
Menlo Park, California 94025

Duff Truck Line, Inc.*

Broadway and Vine Streets
Lima, Ohio 45802

Eldridge Truck Line**

P. O. Box 659
Somerset, Kentucky 42501

General Highway Express, Inc.*

2280 Industrial Drive
Sidney, Ohio 45802

Interstate System*

110 Ionia N. W.
Grand Rapids, Michigan 49503

Lawrenceburg Transfer
Company, Inc.**

Highway 127
Lawrenceburg, Kentucky 40342

McDaniel Motor Express, Inc.**

1115 Winchester Road
Lexington, Kentucky 40505

McLean Trucking Company*

P. O. Box 213
Winston-Salem, North Carolina 27154

Mercury Motor Express, Inc.*

2511 N. Grady Avenue
Tampa, Florida 33607

Middlewest Freightways, Inc.*

6810 Prescott Avenue
St. Louis, Missouri 63147
3000 East Crescentville Road
Cincinnati, Ohio 45241

Overnite Transportation
Company**

1000 Semmes Avenue
Richmond, Virginia 23209

P-I-E (Pacific Intermountain
Express)**

25 North Via Monte
Walnut Creek, California 94598

Quick Transportation, Inc.**

P. O. Box 12248
Lexington, Kentucky 40582

*Interstate service only.

**Interstate and intrastate service.

Truck Service

Company

Home Office

Roadway Express, Inc.*

1077 Gorge Boulevard
Akron, Ohio 44309

Ryder Truck Lines, Inc.*

2050 Kings Road
Jacksonville, Florida 32203

Smith's Transfer Corp.*

P. O. Box 1000
Staunton, Virginia 24401

United Trucking Service, Inc.**

8505 West Warren
Dearborn, Michigan 48126

Other Freight Services

Nearest Shipping Center

Purolator Courier Corporation***

Lexington, 12 miles distant

United Parcel Service****

Lexington, 12 miles distant

Federal Express Corporation*****

Lexington, 12 miles distant

HIGHWAY MILES AND TRUCK TRANSIT TIME IN DAYS FROM NICHOLASVILLE, KENTUCKY, TO SELECTED MARKET CENTERS

City	Highway Miles	Delivery		City	Highway Miles	Delivery	
		Time TL				Time TL	
Atlanta, Ga.	374	2		Los Angeles, Ca.	2,192	8-10	
Baltimore, Md.	548	3		Louisville, Ky.	84	1	
Birmingham, Ala.	416	2		Nashville, Tenn.	222	1	
Chicago, Ill.	364	2		New Orleans, La.	739	3	
Cincinnati, Ohio	90	1		New York, N. Y.	715	3	
Cleveland, Ohio	329	2		Pittsburg, Pa.	355	3	
Detroit, Mich.	349	2-3		St. Louis, Mo.	347	2	
Knoxville, Tenn.	193	1					

Note: Mileage computations are via the best interstate or primary highways, not necessarily the most direct route of travel.

Sources: Rand McNally Interstate Road Atlas, 1981. Official Kentucky Mileage Map, 1979. Delivery time - Quick Transportation, Inc., P. O. Box 12248, Lexington, Kentucky 40582.

*Interstate service only.

**Interstate and intrastate service.

***For regular scheduled pickups or for occasional pickups, arrangements must be made with the Lexington office of Purolator Courier Corporation.

****For regular scheduled pickups or for occasional pickups, arrangements must be made with the Louisville office of United Parcel Service.

*****For information on scheduling, rates, and services, contact the Federal Express shipping station at Lexington, Kentucky, or call the home office in Memphis, Tennessee, Toll-Free at 800-238-5355 (in Tennessee, call 800-542-5171).

Air

Nearest Scheduled Commerical Airline Service

Location: Blue Grass Field
4 miles west of Lexington, Kentucky, 16 miles north
of Nicholasville
Runways: 2 paved
Length: 6,500 feet; 3,500 feet
Traffic
Control: Tower
Lighting: Approach lighting system, beacon, runways and
obstructions lighted, VASI
Services: USAir, Delta, Piedmont, Frontier, Comair, Tennessee
Airways; fuel - 80, 100LL, jet-A; hangars, tie-downs;
major A & P repairs, major Avionics repairs; APU,
charter, flight instruction, oxygen, plane rentals,
survival equipment; taxi, limousine, car rentals,
courtesy car; weather information; restaurant,
snack bar
Air Freight
Service: Air freight terminal

Bus - Greyhound Bus Lines, located in Lexington, 12 miles north of
Nicholasville.

Taxi - One company, 24-hour service

Rental Services

Car rentals are available in Nicholasville. Truck and trailer
rentals are available in Lexington, 12 miles north of Nicholasville.

Water

The Kentucky River is located 10 miles southwest of Nicholasville
near Wilmore. The nearest navigable part of the river, where a 6-foot
navigation channel is maintained, is located at Frankfort, 36 miles
from Nicholasville. The nearest port facilities are located on the
Ohio River at Louisville, 84 miles northwest of Nicholasville.

POWER AND FUEL

Electricity

Company serving Nicholasville - City of Nicholasville Utilities

Source of power - Kentucky Utilities Company*

Total generating capacity - 2,639,100 KW

For industrial rates contact:

City of Nicholasville Utilities
517 North Main Street
Nicholasville, Kentucky 40356
(606) 885-9473

and/or

Industrial Development Department
Kentucky Utilities Company
One Quality Street
Lexington, Kentucky 40507
(606) 255-1461

Company serving central and northern parts of Jessamine County -
Kentucky Utilities Company

Source of power - Kentucky Utilities Company*

Total generating capacity - 2,639,100 KW

For industrial rates contact:

Industrial Development Department
Kentucky Utilities Company
One Quality Street
Lexington, Kentucky 40507
(606) 255-1461

*A new generating unit is under construction in Carroll County. Due to be completed in 1984, the unit will have a generating capacity of 511,000 KW.

Company serving eastern, western, and southern parts of Jessamine
County - Blue Grass Rural Electric Cooperative Corporation
Source of power - East Kentucky Power Cooperative
Total generating capacity - 1,304,000 KW
For industrial rates contact:

Industrial Development Division
East Kentucky Power Cooperative
P. O. Box 707
Winchester, Kentucky 40391
(606) 744-4812

and/or

Blue Grass RECC
U. S. 27 North
P. O. Drawer D
Nicholasville, Kentucky 40356
(606) 885-4191

Natural Gas

Company serving Nicholasville - Delta Natural Gas Company, Inc.
Source of supply - Tennessee Gas Pipeline
Size of transmission mains - 24 to 36 inches (supplier);
6 to 8 inches (distributor)
Distribution mains - 2, 6 and 8 inches
Distribution pressure - 10 to 30 psi (up to 60 psi maximum)
Btu content - 1,040 per cubic foot
Specific gravity - 0.60
For rates and supplies contact:

Delta Natural Gas Company, Inc.
Route 1
Box 30A
Winchester, Kentucky 40391
(606) 744-6171

Other Fuels

Propane

Clarke Gas and Electric Company
219 North Main Street
Nicholasville, Kentucky 40356

Suburban Propane
121 North 4th Street
Nicholasville, Kentucky 40356

Fuel oils

Distillate fuel oil -

Blakeman Oil Service Inc.
200 West Maple
Nicholasville, Kentucky 40356

Coffey's Oil Company
Danville Pike
Nicholasville, Kentucky 40356

Residual fuel oil - Arrangements must be made with the refinery.

Low sulphur content coal - Available in Kentucky.

WATER AND SEWERAGE

Public Water Supply

Company serving Nicholasville - City of Nicholasville Utilities*
517 North Main
Nicholasville, Kentucky 40356
(606) 885-9473

Source - Kentucky River
Treatment plant capacity - 3,600,000 gallons per day
Average daily consumption - 1,900,000 gallons
Peak daily consumption - 2,300,000 gallons
Type treatment - Filtration, coagulation, chlorination, and
sedimentation
Storage capacity - 2,100,000 gallons
Size lines - 4, 6, 8, 10, 12 and 16 inches
Average pressure - 90 psi
Average temperature - 58 degrees F.

MONTHLY WATER RATES

Industrial Rates

First	2,000 gallons	\$20.00 for 3/4-inch meter (min.) 25.00 for 1-inch meter (min.) 35.00 for 1 1/2-inch meter (min.) 40.00 for 2-inch meter (min)
Next	3,000 gallons	.80 per M gallons
Next	15,000 gallons	.70 per M gallons
Next	30,000 gallons	.60 per M gallons
Next	50,000 gallons	.50 per M gallons
All over	100,000 gallons	.40 per M gallons

Tap-on charge:

3/4-inch meter	\$ 100
1-inch meter	175
1 1/2-inch meter	300
2-inch meter	400
3-inch meter	550
4-inch meter	700
6-inch meter	850
8-inch meter	1,000
10-inch meter	1,150
12-inch meter	1,300

*The city of Nicholasville Utilities recently completed a \$500,000 improvement to the water system, and a new 16-inch main now connects the water treatment plant to the city mains.

Name of water district - Jessamine County Water District No. 1*
200 West Maple Street
Nicholasville, Kentucky 40356
(606)885-9314

Area served - Along U. S. Highway 27 from Nicholasville north to the
Jessamine County-Fayette County line and 1.5 miles on each side of
U. S. 27

Date when water district began operating - February 1967

Source of supply of treated water - City of Nicholasville Utilities

Average amount of water used in a 24-hour period - 180,000 gallons

Peak amount of water used in a 24-hour period - 262,060 gallons

Storage capacity - None

Average pressure - 50-55 psi

Size lines - 3 and 6 inches

Monthly rates-

First	3,000 gallons	\$7.50 (Minimum)
Next	7,000 gallons	1.00 per M gallons
All over	10,000 gallons	.80 per M gallons

Tap-on charge:

Single family residence	3/4-inch meter	\$150
Commercial establishment	3/4-inch meter	200
Commercial establishment	1-inch meter	300
Commercial establishment	1 1/2-inch meter	500

Name of water district - Lexington-South Elkton Water District
200 West Maple Street
Nicholasville, Kentucky 40356
(606) 885-9314

Area served - Northwest portion of Jessamine County

Date when water district began operating - May 1972

Source of supply of treated water - Kentucky-American Water Company

Average amount of water used in a 24-hour period - 200,000 gallons

Peak amount of water used in a 24-hour period - 254,318 gallons

Storage capacity - 50,000 gallons

Average pressure - 55 psi

Size lines - 4 and 6 inches

Monthly rates -

First	2,000 gallons	\$8.00 (Minimum)
Next	2,000 gallons	2.00 per M gallons
Next	2,000 gallons	1.50 per M gallons
Next	10,000 gallons	1.25 per M gallons
Next	8,000 gallons	1.10 per M gallons
All over	24,000 gallons	.90 per M gallons

Tap-on charge: 5/8-inch meter \$400

*The Jessamine County Water District No. 1 has plans to build a new
250,000 to 300,000 gallon storage tank.

Name of water district - Spears Water Company, Inc.
104 West Maple Street
Nicholasville, Kentucky 40356
(606) 885-5958

Area served - Southeastern Jessamine County and southern tip of Fayette County

Date when water district began operating - December 1966

Source of supply of treated water - City of Nicholasville Utilities
and Kentucky-American Water Company of Lexington

Average amount of water used in a 24-hour period - 300,000

Peak amount of water used in a 24-hour period - 350,000

Storage capacity - 250,000 gallons

Average pressure - 60 to 70 psi

Average temperature - 50 to 55 degrees F.

Size lines - 2, 3, 4, 6, and 8 inches

Monthly rates -

Area Formerly Served by Jessamine County
Water District No. 3

First	2,000 gallons	\$7.50 (Minimum)
Next	10,000 gallons	3.00 per M gallons
All over	12,000 gallons	1.50 per M gallons

Tap-on charge: Cost of labor and materials

Area Formerly Known as Spears Water District

First	2,000 gallons	\$7.80 (Minimum)
All over	2,000 gallons	1.80 per M gallons

Tap-on charge: 5/8 by 3/4-inch meter \$250
1-inch meter 375

Raw Water

Surface water sources - Kentucky River

Average discharge - Kentucky River at Salvisa, 6,770 cfs
(56-year record, USGS, unadjusted)

Expected ground water yield - 5 to 50 gpm over most of Jessamine County; 50 to 200 gpm along the Kentucky River on the southeastern border of the county; 200 to 500 gpm along the Kentucky River on the south central border of the county

Sewerage

Company serving Nicholasville - City of Nicholasville Utilities*
517 North Main
Nicholasville, Kentucky 40356
(606) 885-9473

Design capacity - 3,500,000 gallons per day

Average daily flow - 1,300,000 gallons

Treatment - Secondary

Type treatment - Rotating biological contactors

Treated effluent discharged into - Town Branch

Size of sanitary mains - 8 to 20 inches

Size of storm mains - 6 to 36 inches

Industrial rates - 40 percent of monthly water bill - Minimum (\$2.10)

Tap-on charge: \$150

*In late 1982, the city of Nicholasville began operation of a new sewage treatment plant, pump stations and mains. The new facility completely replaces the existing treatment plant. Total cost of the project was \$10 million.

CLIMATE

Jessamine County

Temperature

Normal (30-year record)	55.2 degrees
Average annual 1981	54.2 degrees
Record highest, September 1954 (37-year record)	103.0 degrees
Record lowest, January 1963 (37-year record)	-21.0 degrees
Normal heating degree days (30-year record) (Heating degree day totals are the sums of negative departures of average daily temperatures from 65 degrees F.)	4,729

Precipitation

Normal (30-year record)	44.49 inches
Mean annual snowfall (37-year record)	16.70 inches
Total precipitation 1981	36.65 inches
Mean number days precipitation (.01 inch or more) (37-year record)	130
Mean number days thunderstorms (37-year record)	46

Prevailing Winds (17-year record)

South

Relative Humidity

1 a.m.	77 percent (17-year record)
7 a.m.	81 percent (18-year record)
1 p.m.	60 percent (18-year record)
7 p.m.	64 percent (18-year record)

Source: U. S. Department of Commerce, Environmental Science
Services Administration, Climatological Data, 1981.
Station of record: Lexington, Kentucky.

LOCAL GOVERNMENT

City

Nicholasville

Structure - Mayor - 4-year term; 4 commissioners - 2-year terms

Budget 1982 - General Fund \$1,372,000

Water, Sewer and

Electric Fund 3,659,000

Fees and licenses - 1 1/2 percent payroll tax; occupational license fee - minimum \$5.00; gross receipts of retail merchants - minimum \$15, gross receipts of up to \$150,000 per year are taxed on a sliding scale from \$15 to \$110; gross receipts over \$150,000 up to \$500,000 are taxed at a rate of \$0.50 per \$1,000; over \$500,000 annually at \$0.30 per \$1,000

County

Structure - County Judge/Executive - 4-year term;

6 magistrates - 4-year terms

Budget 1981-82 - General Fund \$563,576; Road Fund \$335,095

Assessed Value of Property, 1982*

<u>Classes of Property</u>	<u>Nicholasville</u>	<u>Jessamine County</u>
Real Estate	\$144,726,192	\$346,020,733
Tangibles	27,857,342	66,274,840

*Excludes Homestead Exemptions.

Property Taxes

All property in Kentucky is assessed at 100 percent of fair cash value.

Land and buildings are taxed by the state and may be taxed by local jurisdictions. The state rate (1981) is \$0.229 per \$100 of assessed valuation.

Manufacturing machinery, raw materials inventories, pollution control equipment, and goods in the process of manufacture are not subject to local taxation. The state rate is \$0.15 per \$100.

Other tangible personal property owned by manufacturers (automobiles, trucks, finished goods, office furniture, office equipment) is taxed by the state at \$0.45 per \$100 and may be taxed by local jurisdictions.

Intangible personal property located in Kentucky (money in hand, shares of stock, notes, bonds, accounts receivable, and other credits) is taxed by the state at \$0.25 per \$100, and is subject of local taxation.

Property stored in public warehouses in a transit status is not subject to local taxation. The state rate is only \$0.015 per \$100.

Private leaseholds in industrial facilities owned by cities or counties and financed by industrial revenue bonds are subject to a state tax of \$0.015 per \$100 of value (essentially the lessee's equity, adjusted for appreciation or depreciation). Local taxation is not permitted.

Combined State and Local Rates Per \$100 Valuation, 1981*
(100% assessment)

	<u>Site Inside City of Nicholasville</u>	<u>Site Inside Unincorporated Jessamine County</u>
1. Land and buildings	\$0.796	\$0.575
2. Mfg. machinery, raw materials, goods in process, pollution control equipment	0.150	0.150
3. Finished goods, office equipment, vehicles, other tangibles	1.017	0.796
4. Intangibles (accounts rec., notes, bonds, etc.)	0.250	0.250
5. Property stored in public warehouses in a transit status	0.015	0.015
6. Leaseholds in industrial revenue bond financed plants	0.015	0.015

Utilities Gross Receipts Tax for Schools

A 3 percent tax is levied on utilities receipts for schools in Jessamine County. Tax is paid by all consumers of utilities as an add-on to the utilities bills. Exempted are receipts from utilities services that are resold and the receipts from the sale of energy or energy producing fuels that exceed 3 percent of the cost of production in manufacturing, processing, mining or refining.

*Kentucky Department of Economic Development.

Planning and Zoning

City agency - Nicholasville Planning Commission
Zoning enforced - Within city limits of Nicholasville
Subdivision regulations enforced - Within city limits of Nicholasville
Local codes enforced - Building
Mandatory state codes enforced - Kentucky Plumbing Code, National
Electric Code, Kentucky Boiler Regulations and Standards, Kentucky
Building Code (modeled after BOCA code)

Joint agency - Jessamine County - City of Wilmore Joint Planning Commission
Zoning enforced - Jessamine County and city of Wilmore
Subdivision regulations enforced - Jessamine County and city of Wilmore
Mandatory state codes enforced - Kentucky Plumbing Code, National
Electric Code, Kentucky Boiler Regulations and Standards, Kentucky
Building Code (modeled after BOCA code)

Safety

<u>Police</u>	<u>Nicholasville</u>	<u>Jessamine County</u>
Total staff	22 full time 1 part time	3 full time 7 part time
Radio-patrol cars	10	2

Fire

Insurance Services		
Office, Public		
Protection		
Classification	7	10
Full-time staff	1	-
Volunteers	26	19

Rescue Service

Jessamine County Rescue and Recovery Squad:
Number of volunteers - Approximately 30 (including CPR, EMT
and first aid instructors)
Equipment - Utility van, first aid van, four wheel drive vehicle,
dragging equipment, boats and motors, standard rescue and first
aid equipment
Personnel training - Emergency medical technician training,
registered nurse training, scuba diving training, multimedia
first aid training, basic rescue training

Refuse Collection and Disposal

	<u>Nicholasville</u>	<u>Jessamine County</u>
Type service	Private*	Private
Fee charged:		
residential	\$5.50 to \$8.85 per month	\$7.50 to \$10.50 per month
business	Negotiable	Negotiable
industrial	Negotiable	Negotiable
Collection frequency:		
residential	Twice weekly	Twice weekly
business	Negotiable	Negotiable
industrial	Negotiable	Negotiable
Trash pickup	As needed	As needed
Disposal method	Sanitary landfill	Sanitary landfill

*Five refuse collection companies serve the city of Nicholasville and Jessamine County. The cost and frequency of service may vary slightly.

EDUCATION

Public Schools

Jessamine County*

Total Enrollment	
(May 1982)	4,848
Elementary	2,925
Middle School	1,078
High School	845
Student-Teacher Ratio	24-1
Elementary	26-1
Middle School	24-1
High School	18-1
Percent High School	
Graduates to College (1981)	34.0
Expenditures Per Pupil	
(1980-81)	\$1,171.18
Bonded Indebtedness	
(June 30, 1981)	\$4,982,000**

*The Jessamine County School System is planning an addition to the high school. Tentative plans include increasing the classroom capacity to 1,600 students and moving the 9th grade from the middle school to the high school.

**Includes refunding issues of \$1,880,000.

Area Colleges and Universities

<u>Name</u>	<u>Location (Miles Distant)</u>	<u>Enrollment (Fall, 1981)</u>	<u>Highest Degree Conferred</u>
Asbury College	Wilmore (7)	1,200	Baccalaureate
Lexington Technical Institute	Lexington (12)	2,302	Associate
Transylvania University	Lexington (12)	750	Baccalaureate/ Masters*
University of Kentucky	Lexington (12)	23,441	Doctorate, M.D., D.M.D., J.D.
Centre College of Kentucky	Danville (23)	685	Baccalaureate
Georgetown College	Georgetown (28)	1,263	Masters
Midway College	Midway (29)	338	Associate
Eastern Kentucky University	Richmond (33)	13,394	Masters, Specialist/ Doctorate**
Kentucky State University	Frankfort (36)	2,385	Masters
Berea College	Berea (44)	1,587	Baccalaureate
Saint Catharine College	St. Catharine (53)	246	Associate

Vocational Schools

Both the state vocational-technical schools and the area vocational education centers are operated by the Kentucky Department of Education. The state vocational-technical schools enroll persons full time who are at least 16 years of age and not in school. These students attend classes for six hours each day. The area vocational education centers are designed to accommodate high school students who are at least 15 years of age. These students attend vocational school for three hours each day. The state vocational-technical schools and the area education centers offer evening courses to enable working adults to upgrade current job skills.

*Courses in the masters degree program are taught on the Transylvania campus by faculty members of Xavier University of Cincinnati. The degree is issued by Xavier University.

**Joint doctoral degree programs are offered in cooperation with the University of Kentucky, Lexington, and cooperative doctoral degree programs are offered with Michigan State University and the University of Maryland.

Nearest State Schools

Location	Central Kentucky State Vocational Technical School Lexington
Miles Distant	12
Curriculum	Business and Office Clerical Secretarial Consumer and Home Economics Commercial Foods Health and Personal Services Occupations Cosmetology Dental Assistant Nurse's Aide Practical Nursing Surgical Technician Industrial Education Auto Body Repair Auto Mechanics Carpentry Drafting Electronics Graphic Arts Industrial Electricity Machine Shop Masonry Sheet Metal, Heating and Cooling Welding Learning Resource Center

The Lexington Technical Institute is a unit of Kentucky's community college system operating on the University of Kentucky campus. Courses parallel university offerings and are transferable to the Lexington U of K campus or to another 4-year institution either public or private. The Institute awards the Associate in Arts degree and the Associate in Applied Science degree.

The Associate in Applied Science degree is awarded in the following programs: accounting technology; architectural technology; civil engineering technology; data processing technology (business option, science option); dental hygiene; dental laboratory technology; electrical engineering technology (electronics option); management technology (business option); mechanical engineering technology; nursing; radiologic technology; real estate; respiratory therapy; secretarial administration; transportation.

Nearest Area Education Center

Location	Southside Area Vocational Education Center
Miles Distant	Lexington 12
Curriculum	Health and Personal Services Occupations Health Careers Industrial Education Air Conditioning and Refrigeration Auto Body Repair Auto Mechanics Carpentry Electricity Electronic Service Masonry Plumbing

Location	Northside Area Vocational Education Center
Miles Distant	Lexington 12
Curriculum	Agriculture Horticulture Health and Personal Services Occupations Health Careers Industrial Education Auto Mechanics Auto Parts Construction Electricity Diesel Mechanics Graphic Arts Industrial Equipment Mechanics Machine Shop Welding

Arrangements can be made to provide training in the specific production skills required by an industrial plant. Instruction may be conducted either in the vocational school or in the industrial plant, depending upon the desired arrangement and the availability of special equipment.

HEALTH

Local Medical Personnel

Physicians - 6
Dentists - 5

Hospitals

The nearest hospitals serving Nicholasville are located in Lexington, 12 miles to the north. General hospitals include Central Baptist Hospital, Good Samaritan Hospital, Saint Joseph Hospital, the University of Kentucky Hospital, and the Veterans Administration Medical Center. Special hospitals include Cardinal Hills Hospital, a convalescent and rehabilitation hospital; Eastern State Hospital, a psychiatric hospital; and Shriners Hospital for Crippled Children, a pediatric and orthopedic hospital. These eight hospitals contain over 3,000 beds. Three of the Lexington hospitals are presently constructing or planning expansions. In addition, a new 170-bed hospital is now under construction.

A new medical clinic has recently been constructed in the new Orchard Subdivision development in northeast Nicholasville. The clinic is housed in a 5,000 sq. ft. brick building and contains an emergency room with a trauma care room, operating room and beds, X-ray room, laboratory, five examining rooms, apothecary and offices.

Other Medical Facilities

Jessamine County Comprehensive Care Center

Ambulance Service

Name - Jessamine Ambulance Service, Inc.
Staff - 6 emergency medical technicians
Service - 24-hour; air ambulance service can be provided
Equipment - 2 fully equipped ambulances

Public Health

Facility - Jessamine County Health Center
Staff - Full-time: 2 registered nurses, 1 health environmentalist,
3 community health workers
Part-time: 1 physician (health officer and clinician),
1 plumbing inspector, 1 nurse

OTHER LOCAL FACILITIES

Communications

Telephone - General Telephone Company
Services - Standard

Telegraph - Western Union
Services - Toll-free number, 1-800-325-5100

Postal - U. S. Post Office
Class - First
Mail received - Once daily
Mail dispatched - Once daily

Newspapers - Jessamine Journal
Weekly and circulation - 4,350
Other papers
received from - Lexington and Louisville, Kentucky;
Cincinnati, Ohio

Radio - WNVL-AM
Stations received from - Lexington and Louisville, Kentucky;
Cincinnati, Ohio

Television -
Cable service
Reception from - Lexington and Louisville, Kentucky; Cincinnati,
Ohio; Atlanta, Georgia; and Chicago, Illinois
Kentucky Educational
Television - Lexington-Richmond transmitter, Channel 46

Library Services

Public library - Withers Memorial Library
Size collection - 41,341 volumes
Circulation, 1981-82 - 100,880 including bookmobile circulation
Services - Magazines; periodicals; copy machine; film projector;
slide projector; records; art; film strips; story hour;
interlibrary loan; summer reading program; shut-ins; talking
books for the blind; bookmobile; career education material;
book reviews; Kentucky Room; microfiche reader; reader-printer;
local art displays; meeting rooms and services for the aging;
and programs for young adults. The offices of the Bluegrass
South Regional Library are housed in the Withers Memorial Library.

Religious Institutions

Number of churches - 44 (Jessamine County)
Denominations - AME
Assembly of God
Baptist
Catholic
Christian
Church of Christ
Church of God
Episcopal
Holiness
Interdenominational
Jewish
Nazarene
Presbyterian
Seventh Day Adventist
United Methodist

Nearest Synagogues - Lexington, 12 miles
Congregations - Adath Isarel (reform)
Ohavey Zion (traditional)

Financial Institutions

<u>Banks</u>	<u>Assets</u>	<u>Deposits</u>	<u>Statement Date</u>
First National Bank and Trust Company	\$48,482,430.44	\$43,435,958.67	12/31/81
The Farmers Bank	28,817,393.51	25,988,753.66	12/31/81

<u>Savings and Loan Associations</u>	<u>Assets</u>	<u>Savings Accounts</u>	<u>Statement Date</u>
Jessamine First Federal Savings and Loan Associ- ation & Subsidiary	\$15,304,026.00	\$13,724,176.00	9/30/81

Hotels and Motels

Total number - 2
Total rooms - 37

Clubs and Organizations

American Legion
Art Guild
Association for Mentally Retarded
Babe Ruth League (baseball for girls and boys)
Basketball Leagues
Booster Club
Boy Scouts
Brownies
Business and Professional Women
Chamber of Commerce
Civic Club
Cub Scouts
Eastern Star
Fair Board
4-H
Future Farmers of America (FFA)
Future Homemakers of America (FHA)
Garden Club
Girl Scouts
Historical Society
Homemakers
Jaycees
Junior Woman's Club
Kiwanis Club
Laymen for Christ
Little League (baseball, softball, football and cheerleading)
Lions
Masons
Ministerial Association
Newcomer's Club
Odd Fellows
Optimist
Parents-Teachers Association (PTA)
Rotary
Sea Scouts
Senior Citizens
Sportsman Club
Veterans of Foreign Wars
Woman's Club

RECREATION

Local

The city of Nicholasville and Jessamine County are developing a 22-acre city/county park. A Little League baseball and football field, softball field, basketball court, playground, tennis courts and grills, and a 200-car parking lot have been completed.

A new city-owned park, Lake Mingo Park, has picnic benches, grills, a building which is available for group meetings, etc., and a 70-car parking lot.

Other city parks include the recently constructed Rock Fence Park; the Green Thumb Park, which provides a meeting room and playground; and the Caroline Memorial Community Center, which now houses the YMCA. For YMCA programs not available in Nicholasville, bus transportation is provided to the Lexington YMCA.

Youth athletic programs include Babe Ruth baseball for girls and boys, and Little League baseball, softball and football for boys. The Little League programs have corresponding cheerleading programs for girls.

Commercial recreational facilities include a new 16-lane bowling alley, a boat dock on the Kentucky River, a drag racing strip, a drive-in movie, and a public golf course at Wilmore, seven miles distant.

The Jessamine County Fair and Jessamine Jamboree are held yearly in July and October, respectively. A horse show and other recreational activities are held at the Jessamine County Sportsman Club.

The Lone Oak Country Club offers an 18-hole golf course, swimming pool and tennis.

Asbury College and Asbury Theological Seminary, located in Wilmore, feature special exhibits and performances which are open to the public. Tours of the seminary are provided by appointment.

Camp Nelson Recreation Center is located eight miles south of Nicholasville on the Kentucky River. Facilities include areas for tent camping, a campground with hook-ups for 55 units, picnicking and cooking equipment, a general store, a pool (summer only), a music hall and a boat launching ramp. Plans have been made to construct a boat dock and a museum at Camp Nelson. Horseback riding stables are available nearby.

Area (Within 70 miles)

Lexington, 12 miles east of Nicholasville, offers a variety of cultural, sporting, and recreational activities. Thoroughbred and harness racing is presented at Keeneland Race Course and the Red Mile Harness Track during several meets each year. The University of Kentucky and Transylvania University offer a number of sporting events. The University of Kentucky basketball games are held at Rupp Arena, the world's largest basketball arena. Other attractions include Lexington Philharmonic Concerts, Lexington Children's Theatre, and plays performed by Broadway touring companies, all held in the recently renovated Opera House.

The Kentucky Horse Park, a park dedicated to horses and to man's love for horses, is located 12 miles north of Nicholasville in Lexington. The park, which contains more than 1,000 acres of Kentucky Bluegrass, features the International Museum of the Horse; the Man O'War Memorial; an antique carriage display; horseback and pony rides; walking farm tours; horse-drawn tours; planned recreation; a restaurant; a gift shop; and a campground area, which offers swimming, tennis, and planned activities. Numerous special events are held year-round and include various horse shows, steeplechasing, dressage, polo games, and three-day eventing.

Waveland State Shrine, 12 miles north of Nicholasville near Lexington, features an 1847 Greek Revival mansion depicting Kentucky lifestyles from the days of early settlers to the antebellum era of gentility and elegance as well as the Civil War and postwar periods. The shrine also includes the Kentucky Life Museum and a plantation village on ten acres with many shops and displays.

Herrington Lake, approximately 18 miles southwest of Nicholasville near Danville and Harrodsburg, was developed by the Kentucky Utilities Company in 1925. Dix River Dam near Pleasant Hill is located on the 1,860-acre lake. Fishing, boating, and swimming can all be enjoyed on the lake. Camping and fishing facilities are available near Danville and Harrodsburg.

Constitution Square State Shrine, 23 miles southwest of Nicholasville in Danville, is a reproduction of Kentucky's first courthouse square, including the original 1792 post office which was the first in the west.

Isaac Shelby State Shrine, 23 miles southwest of Nicholasville near Danville, is the burial site of Kentucky's first governor and one of the commonwealth's foremost statesmen.

Old Fort Harrod State Park, 25 miles southwest of Nicholasville, is a 28-acre park in Harrodsburg that features a full-scale reproduction of the original Fort Harrod. The park also contains the log cabin where Abraham Lincoln's parents were wed, the Mansion Museum which houses mementos associated with the great periods of Kentucky history, a pioneer cemetery, and a federal monument dedicated to pioneers. The "Legend of Daniel Boone," an outdoor drama which brings to life on stage the men and women who made Kentucky, is performed in the park amphitheatre during the summer months.

William Whitley House State Shrine, 30 miles south of Nicholasville near Stanford, is the first brick house west of the Allegheny Mountains, built 1787-94. Whitley laid out Kentucky's first race track here and started U. S. counterclockwise racing. The facility provides picnic and playground areas in a ten-acre park.

The spirit of Daniel Boone and his pioneers is reborn at Fort Boonesborough State Park in Boonesboro, 32 miles east of Nicholasville. In the re-created fort 16 pioneer crafts of the eighteenth century are demonstrated by Kentuckians using functioning antiques from the frontier era. Cabins are furnished as they would have been in the days of Boone and documentary films are presented which depict the struggle of the first Kentuckians to make the Kentucky wilderness a home. A gift shop within the fort offers for sale all the handcrafted items made at the fort, along with a wide variety of handcrafts from throughout Kentucky. Other recreational facilities and activities of the park include the finest sand beach on the Kentucky River with a modern bathhouse, sun deck, and snack shop; a modern camping area with 187 sites; a central service building housing showers, restrooms, and laundry facilities for campers; a pavilion with a gift shop and grocery inside and a playground and basketball, volleyball, and shuffleboard courts on the grounds; and planned daily activities and special events under the guidance of a trained recreation director. Near the park is the dock of the Dixie Belle sternwheel excursion boat which operates one-hour trips daily on the Kentucky River leaving from the Fort Boonesborough boat dock.

Perryville Battlefield State Shrine, 33 miles southwest of Nicholasville near Perryville, is the site of the largest Civil War battle in Kentucky. A museum, a picnic area, and a playground are located on the grounds.

White Hall State Shrine, 33 miles southeast of Nicholasville near Richmond, one of the grand estate houses of post-Civil War Kentucky, is the Italianate mansion of Cassius Marcellus Clay, the early abolitionist and politician. Kentucky handcrafts are sold in the White Hall gift shop, only a short walk from the mansion.

Lincoln Homestead State Park, 57 miles west of Nicholasville near Springfield, is a 153-acre park on the original land settled by Abraham Lincoln's family. The actual building in which Nancy Hanks, mother of President Lincoln, lived during her courtship with Thomas Lincoln is preserved here as well as a replica of the 1782 cabin where Lincoln lived as a boy. The park also has a museum, a gift shop, a picnic area, and an 18-hole golf course.

My Old Kentucky Home State Park, 61 miles west of Nicholasville in Bardstown, portrays an image of the South's gentle and leisurely home life before the Civil War. The restored Georgian Colonial mansion is where composer Stephen Foster visited and where he was inspired to write "My Old Kentucky Home." One of the nation's most successful outdoor dramas, "The Stephen Foster Story," is presented in the park's amphitheatre mid-June until Labor Day. The park also offers a 40-site campground, a gift shop, a 9-hole golf course and pro shop, a picnic area, and planned recreation.

Natural Bridge State Resort Park at Slade, 66 miles southeast of Nicholasville, is a 1,899-acre park located in the Daniel Boone National Forest where cliffs and stone arches fill the landscape. The rugged awesomeness of the great Natural Bridge, the largest of 12 natural sandstone arches in the park, is the main attraction. The park has a 35-room resort lodge with a dining room and gift shop, efficiency and one-bedroom cottages, and 95 camping sites. Other facilities include a 54-acre lake, a swimming pool, picnic shelters and playgrounds, hiking trails, and a riding stable. A skylift going up to Natural Bridge is operated from April 15 to October 31 of each year.

COMMUNITY IMPROVEMENTS

Recent

The construction of a picnic shelter, restrooms, and a 200-car parking lot at the City-County Park was recently completed.

Two new ambulances were recently purchased at a cost of \$43,000.

The Jessamine County School System recently completed the construction of a new school bus garage, which features three work bays, a wash bay, lounge for drivers, and offices.

The City of Nicholasville Utilities recently completed a \$500,000 improvement to the water system, and a new 16-inch main now connects the water treatment plant to the city mains.

The city of Nicholasville recently purchased a car and converted it into a police cruiser.

A number of buildings in downtown Nicholasville have recently been remodeled.

In late 1982, the city of Nicholasville began operation of a new sewage treatment plant, pump stations and mains. The new facility completely replaces the existing treatment plant. Total cost of the project was \$10 million.

Construction of the new city-owned park, Lake Mingo Park, was recently completed. The park has picnic benches, grills, a building which is available for group meetings, etc., and a 70-car parking lot.

Under Way

A building which can be used for community group meetings, etc., is being built at the Jessamine County Fairgrounds. The project will cost \$100,000.

The city of Nicholasville recently purchased and remodeled a building which is being used by the Police and Fire Departments and the Rescue Squad.

The Nicholasville Division of Malone and Hyde, a wholesale food warehouse and distribution company, recently increased its delivery load by over one-third when the company acquired 43 more supermarkets. The Nicholasville plant will expand its perishable foods warehouse by 50,000 square feet.

Planned

Plans are being made to build a bypass around Nicholasville and to widen U. S. Highway 27 between Nicholasville and Lexington.

A new access road to the City-County Park is in the planning stage and is scheduled to be completed before the summer of 1983.

The Jessamine County Water District No. 1 has plans to build a new storage tank. The tank will have a capacity of 250,000 to 300,000 gallons.

The new 400-acre, Orchard Subdivision in northeast Nicholasville, which was recently annexed into the city, will undergo immediate development. The plans include a new medical clinic, a doctor's building, a shopping center, construction of a single-family residential area, construction of townhouses with swimming and tennis, and construction of apartments.

The Jessamine County School System is planning a classroom expansion, which will increase the student capacity to 1,600. Also 9th grade students will be moved from the middle school to the high school.