

1993

# Industrial Resources: Mason County - Maysville

Kentucky Library Research Collections  
Western Kentucky University, [spcol@wku.edu](mailto:spcol@wku.edu)

Follow this and additional works at: [https://digitalcommons.wku.edu/mason\\_cty](https://digitalcommons.wku.edu/mason_cty)



Part of the [Business Administration, Management, and Operations Commons](#), [Growth and Development Commons](#), and the [Infrastructure Commons](#)

---

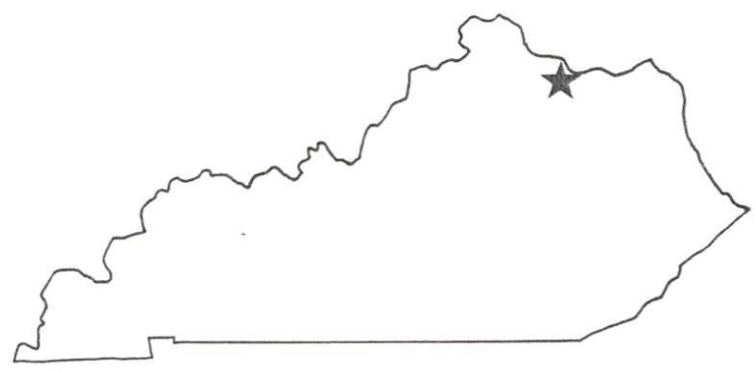
## Recommended Citation

Kentucky Library Research Collections, "Industrial Resources: Mason County - Maysville" (1993). *Mason County*. Paper 3.  
[https://digitalcommons.wku.edu/mason\\_cty/3](https://digitalcommons.wku.edu/mason_cty/3)

This Report is brought to you for free and open access by TopSCHOLAR®. It has been accepted for inclusion in Mason County by an authorized administrator of TopSCHOLAR®. For more information, please contact [topscholar@wku.edu](mailto:topscholar@wku.edu).

*Resources for Economic Development*

Maysville



**KENTUCKY**

---

RESOURCES FOR ECONOMIC DEVELOPMENT  
MAYSVILLE, KENTUCKY

Prepared by  
The Kentucky Cabinet for Economic Development  
Division of Research  
in cooperation with  
Maysville-Mason County Chamber of Commerce  
and  
Maysville-Mason County Industrial Authority

1993

## TABLE OF CONTENTS

<u>Chapter</u>	<u>Page</u>
MAYSVILLE, KENTUCKY - A RESOURCE PROFILE.....	1
THE LABOR MARKET STATISTICS.....	2
Labor Market Area Map .....	2
Population.....	3
Population Projections .....	3
Estimated Labor Supply .....	3
Labor Force Characteristics of Residents, 1992.....	4
Selected Components of Nonagricultural Employment, by Place of Work, 1992 .....	5
Per Capita Personal Income.....	6
Average Placement Wages .....	7
Average Weekly Wages of Workers Covered by Unemployment Insurance 1991 - Bar Chart .....	8
Average Weekly Wages by Industry, by Place of Work, 1991 .....	9
EXISTING INDUSTRY.....	10
Maysville Manufacturing Firms, Their Products and Employment .....	10
Major Distribution Center .....	11
Recent Industrial Developments .....	11
Labor Organizations in Manufacturing Firms .....	11
Selected Industrial Services .....	11
TRANSPORTATION.....	12
Highways .....	12
Truck Service .....	12
Selected Market Location Map .....	13
Rail.....	14
Air .....	14
Water .....	15
UTILITIES .....	16
Electricity.....	16
Natural Gas.....	16
Public Water Supply.....	17
Raw Water .....	17
Sewerage .....	17
CLIMATE.....	18

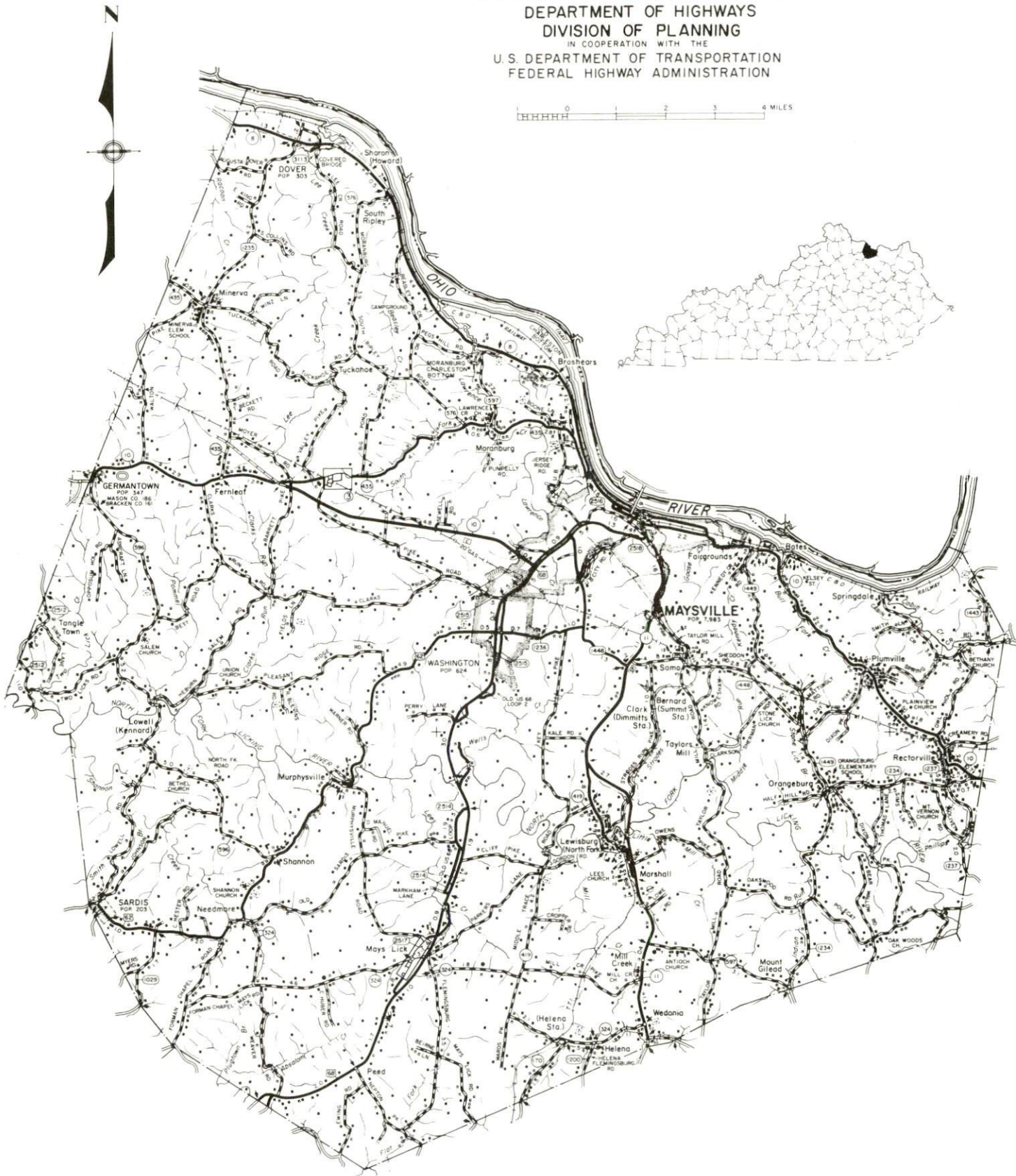
<u>Chapter</u>	<u>Page</u>
LOCAL GOVERNMENT .....	19
Structure .....	19
Planning and Zoning .....	19
Local Fees and Licenses .....	19
State and Local Property Taxes .....	20
EDUCATION .....	21
Public Schools .....	21
Nonpublic Schools .....	21
Area Colleges and Universities .....	21
Vocational Training .....	23
OTHER LOCAL FACILITIES .....	24
Local Medical Personnel .....	24
Hospitals .....	24
Other Medical Facilities and Services .....	24
Banks and Savings & Loan Associations .....	24
Newspapers .....	24
Telephone Service .....	24
RECREATION .....	25
COMMUNITY IMPROVEMENTS .....	26



# GENERAL HIGHWAY MAP MASON COUNTY KENTUCKY

PREPARED BY THE  
KENTUCKY TRANSPORTATION CABINET  
DEPARTMENT OF HIGHWAYS  
DIVISION OF PLANNING  
IN COOPERATION WITH THE  
U.S. DEPARTMENT OF TRANSPORTATION  
FEDERAL HIGHWAY ADMINISTRATION

0 1 2 3 4 MILES





## MAYSVILLE, KENTUCKY - A RESOURCE PROFILE

Maysville, the county seat of Mason County, is situated on the south bank of the Ohio River in the northeastern portion of Kentucky. Maysville is located 51 miles southeast of Cincinnati, Ohio; 135 miles northeast of Louisville, Kentucky; and 154 miles west of Charleston, West Virginia. The city had a 1990 population of 7,964.

Mason County, covering a land area of 241 square miles, is in the Outer Blue Grass Region. The terrain of the county is rolling to hilly. Mason County had a 1990 population of 16,666.

**The Economic Framework** - The total number of Mason County residents employed in 1992 averaged 7,208. Manufacturing firms in the county reported 2,932 employees; wholesale and retail trade provided 2,238 jobs; 1,280 people were employed in service occupations; state and local government accounted for 841 employees; and contract construction firms provided 270 jobs.

**Labor Supply** - There is a current estimated labor supply of 5,360 persons available for industrial jobs in the labor market area. In addition, from 1993 through 1997, 3,992 young persons in the area will become 18 years of age and potentially available for industrial jobs.

**Transportation** - Highways serving Maysville include U.S. Highway 62/68, Kentucky Routes 8, 10, 11, and Kentucky 546 (A-A Highway). All are "AAA"-rated trucking highways. Twenty-nine trucking companies provide interstate and/or intrastate service to Maysville. The Fleming-Mason Airport, a local airport located six miles south of the city, maintains a 5,000-foot paved runway. Scheduled commercial airline service is available at the Bluegrass Airport, 71 miles southwest near Lexington; and at the Cincinnati/Northern Kentucky International Airport in Boone County, Kentucky, 60 miles northwest of Maysville. Maysville is located on the Ohio River, where a nine-foot navigation channel is maintained. Private port facilities are located in Maysville. CSX Transportation, the Trans-Kentucky Transportation Railroad (T.T.I.), and Amtrack provide rail service to Maysville.

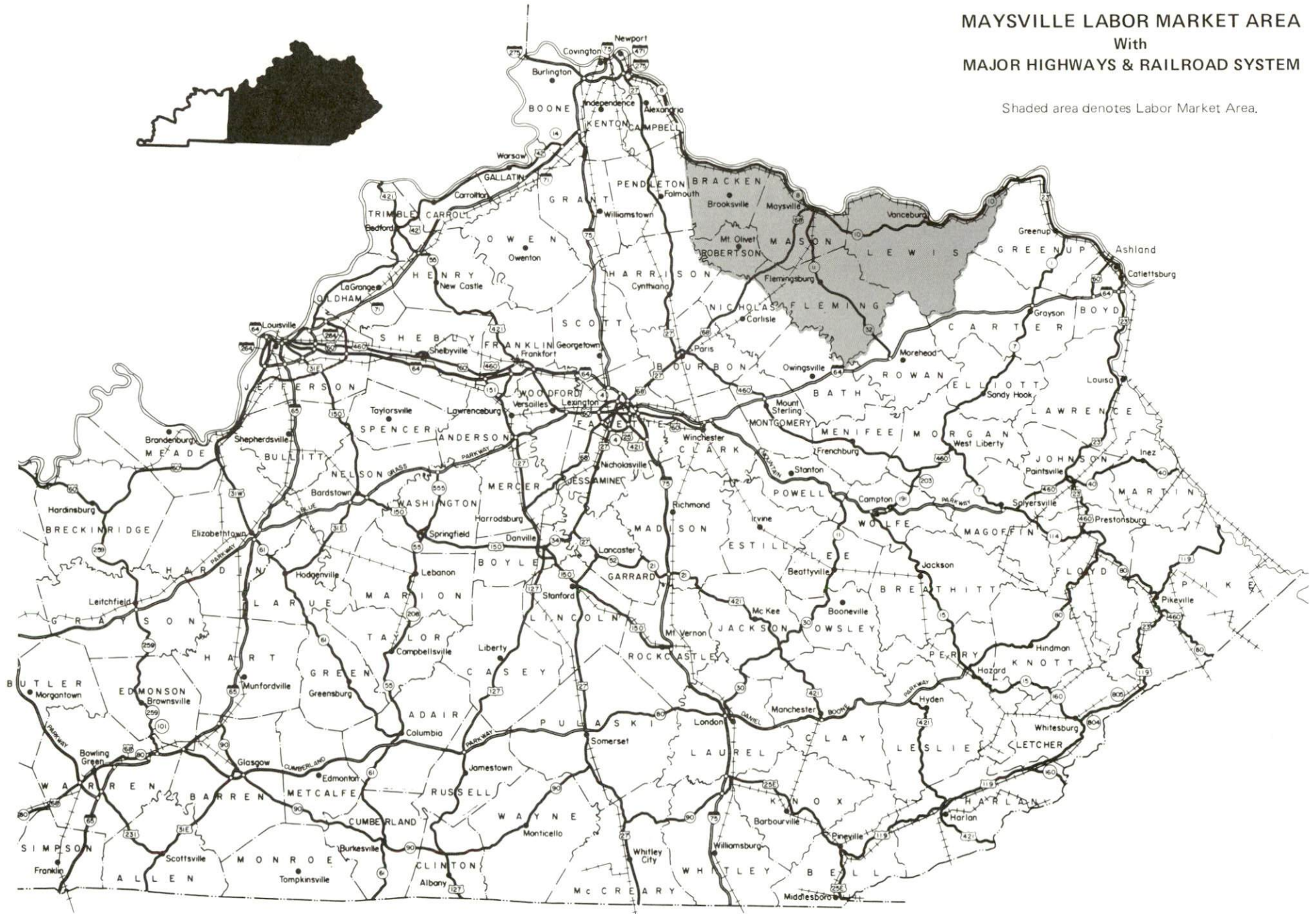
**Power and Fuel** - Electric power is provided to Maysville and portions of Mason County by the Kentucky Utilities Company. The remainder of Mason County is served by the Fleming-Mason Rural Electric Cooperative Corporation. Natural gas service is provided by Columbia Gas of Kentucky, Inc.

**Education** - The Mason County Public School System provides primary and secondary education to Maysville. Two nonpublic schools are located in Maysville. Higher education opportunities are provided by Maysville Community College. In addition, fifteen other colleges and universities are located within 70 miles of the city. Vocational training is available locally at the Maysville Area Vocational Education Center and at the Rowan State Vocational-Technical School in Morehead, 44 miles southeast of Maysville.



# MAYSVILLE LABOR MARKET AREA With MAJOR HIGHWAYS & RAILROAD SYSTEM

Shaded area denotes Labor Market Area.





## LABOR MARKET STATISTICS

The Maysville Labor Market Area includes Mason County and the adjoining Kentucky counties of Bracken, Fleming, Lewis, and Robertson; and the Ohio counties of Adams and Brown.

POPULATION			
	<u>1990</u>	<u>1980</u>	<u>1970</u>
Labor Market Area	112,214	110,884	95,976
Maysville	7,964*	7,983	7,411
Mason County	16,666	17,760	17,273

\* Includes population from the City of Washington which merged with Maysville in 1990.

Source: U.S. Department of Commerce, Bureau of the Census, January 1991.

POPULATION PROJECTIONS				
	<u>1995</u>	<u>2000</u>	<u>2010</u>	<u>2020</u>
Labor Market Area*	51,903	51,742	51,294	50,728
Mason County	16,550	16,379	16,045	15,809

\* Includes the five Kentucky counties only.

Note: Population projections are from Moderate Growth Series forecast.

Source: University of Louisville, Urban Studies Center, State Data Center.

ESTIMATED LABOR SUPPLY				
	<u>Current</u>		<u>Not in Labor Force</u>	<u>Future</u>
	<u>Total</u>	<u>Unemployed</u>		<u>Becoming 18 years of age 1993 thru 1997</u>
Labor Market Area*	5,360	2,377	2,983	3,992
Mason County	1,293	627	666	1,251

\* Includes the five Kentucky counties only.

Note: Unemployed - persons unemployed and actively seeking work; Not in Labor Force - represents the number of persons who would enter the labor force if suitable employment were available (based on the assumption that persons in Kentucky would like to participate in the labor force in the same proportion that they do nationally). Underemployed persons (employed only 14 to 26 weeks during the year) are no longer included in labor surplus estimates.

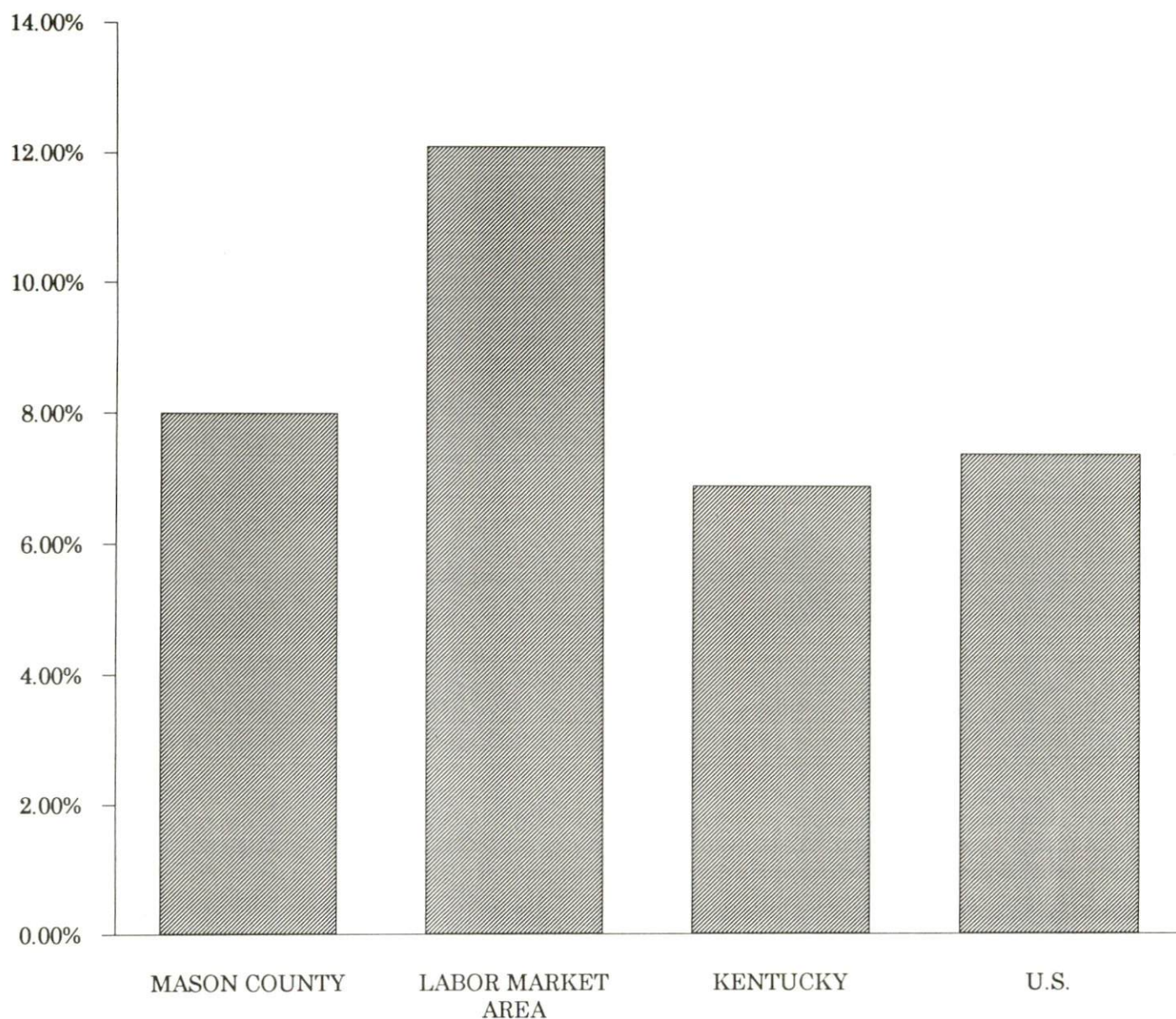
Sources: Kentucky Cabinet for Human Resources, Kentucky Labor Surplus Estimates by County, 1992. Kentucky Cabinet for Economic Development, Future Labor Supply Becoming 18 Years of Age, 1993 thru 1997.

# LABOR FORCE CHARACTERISTICS OF RESIDENTS, 1992

	<u>Mason County</u>	<u>Labor Market Area</u>
Civilian Labor Force	7,835	46,105
Employment	7,208	40,528
Unemployment	627	5,577
Rate of Unemployment (%)	8.0	12.1

Source: Kentucky Cabinet for Human Resources, Kentucky Labor Force Estimates, Annual Averages, 1992. Ohio Bureau of Employment Services.

## UNEMPLOYMENT RATES 1992





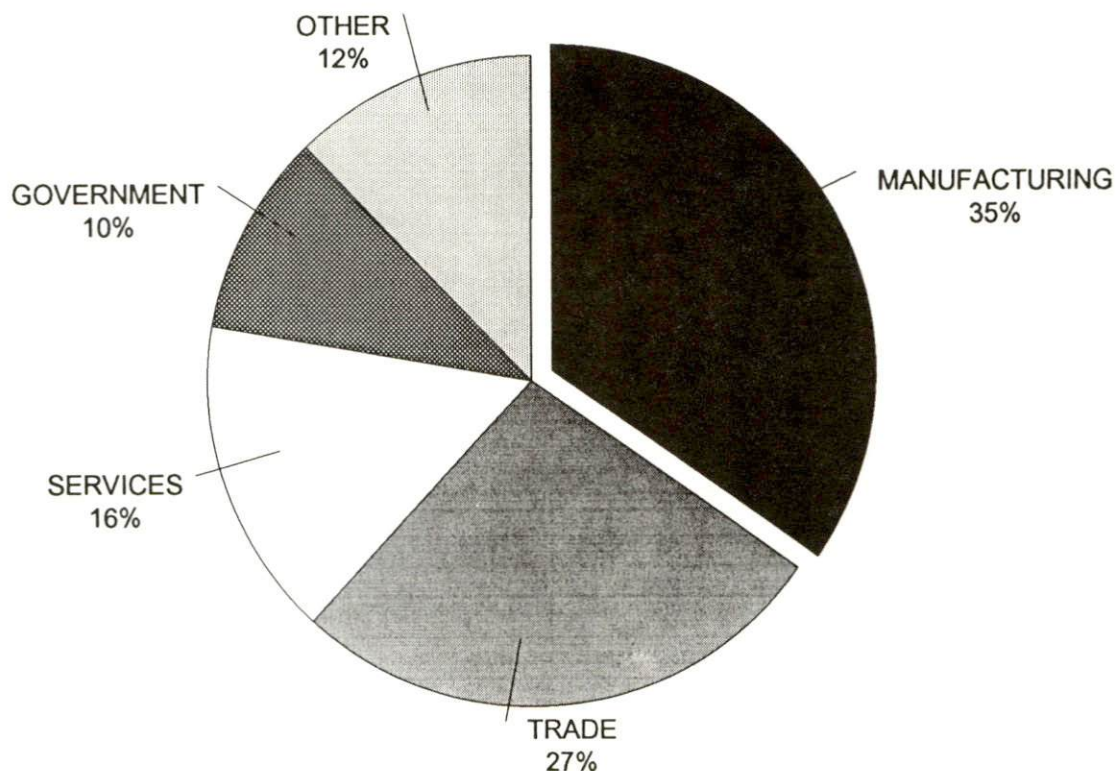
SELECTED COMPONENTS OF NONAGRICULTURAL EMPLOYMENT  
BY PLACE OF WORK, 1992

	<u>Mason County</u>	<u>Labor Market Area*</u>
All Industries (total)	8,267	15,006
Manufacturing	2,932	5,151
Wholesale & Retail Trade	2,238	3,546
Services	1,280	2,009
State/Local Government	841	2,559
Contract Construction	270	429

\* Includes the five Kentucky counties only.

Note: Excludes domestic workers, railway workers, certain nonprofit corporations, majority of federal government workers, and self-employed workers.  
Source: Kentucky Cabinet for Human Resources, Average Monthly Workers Covered by Kentucky Unemployment Insurance Law, 1992.

MASON COUNTY



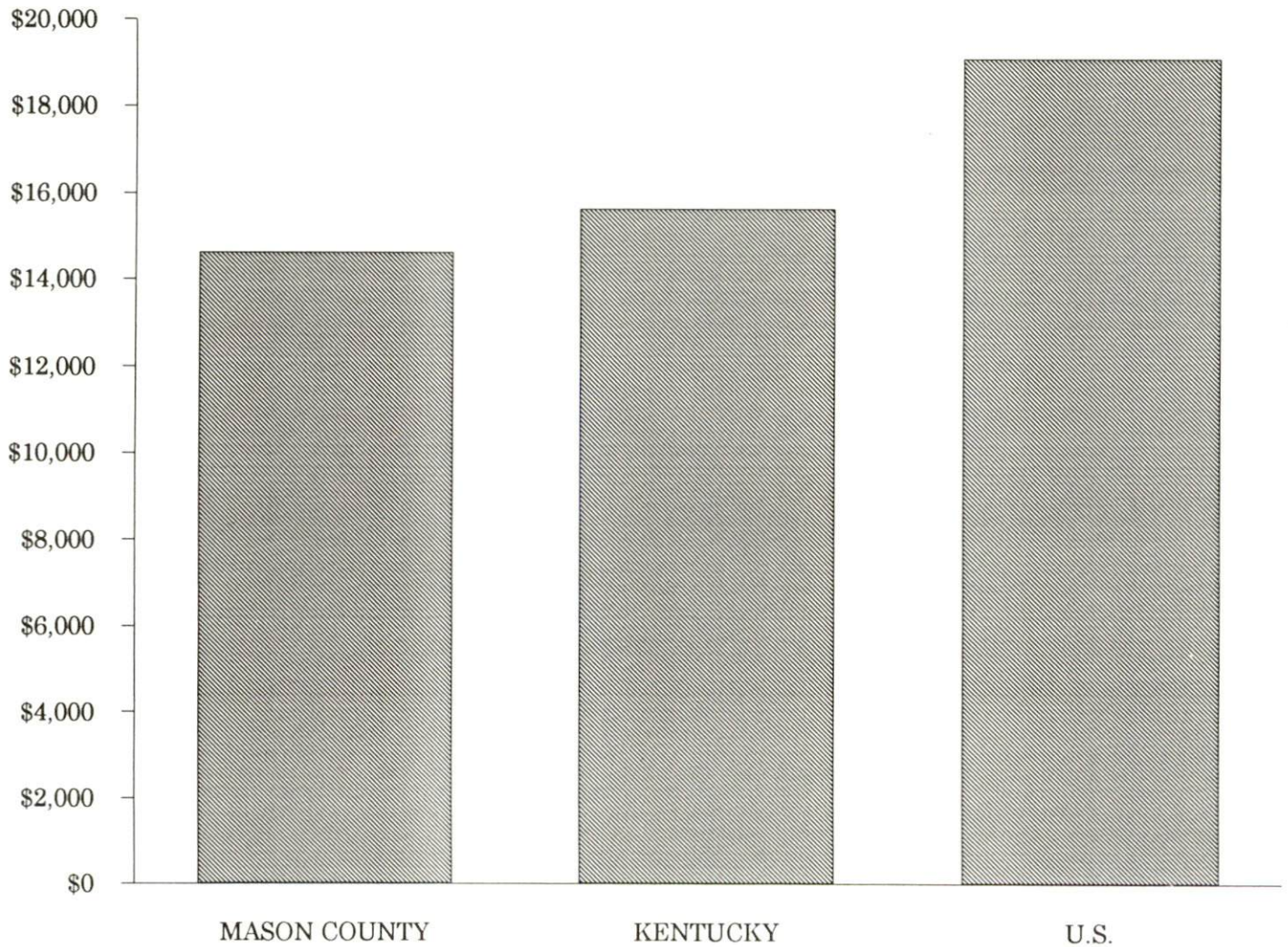


PER CAPITA PERSONAL INCOME

Area	1987	1991	Percent Change
Mason County	\$10,889	\$14,613	34.2
Labor Market Area Range	\$7,990 - \$11,332	\$10,297 - \$14,613	-
Kentucky	\$12,216	\$15,626	27.9
U.S.	\$15,638	\$19,091	22.0

Source: U.S. Bureau of Economic Analysis, Regional Economic Information System, April 1993.

PER CAPITA PERSONAL INCOME  
1991



## AVERAGE PLACEMENT WAGES

Mason County is served by the Maysville local office of the Kentucky Department for Employment Services. The focus of the following data is on job placements made by the Maysville local office and may therefore be used as an indicator of the wages which employers in the area pay new employees. During the twelve months which ended on June 30, 1993, the local employment office filled 1,660 job openings in various occupational categories. The average hourly wage for selected occupational categories were:

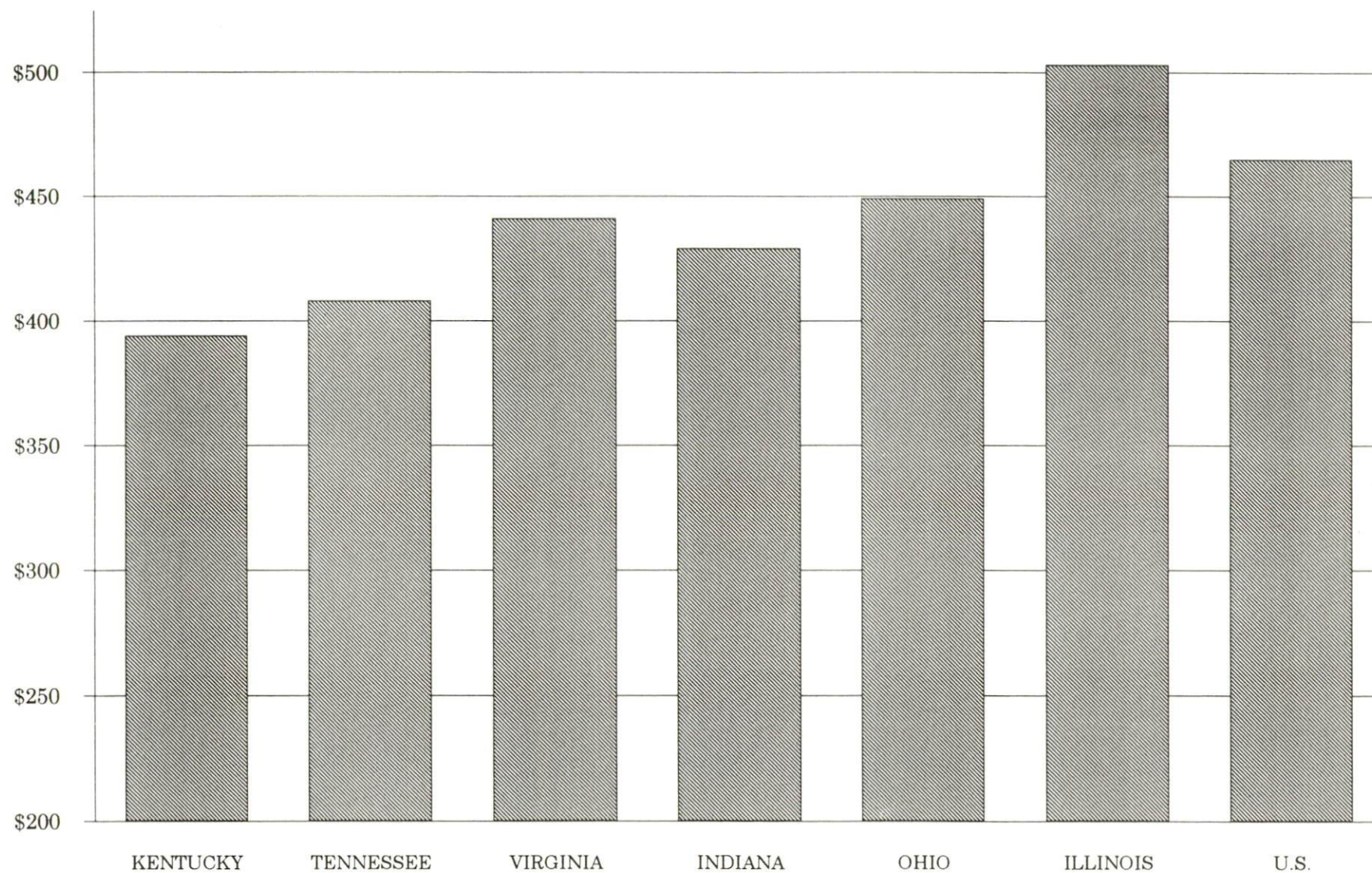
<u>OCCUPATIONAL CATEGORY</u>	<u>NUMBER OF PLACEMENTS</u>	<u>AVERAGE WAGE(\$)</u>
All Occupations	1,660	5.58
Clerical	352	4.35
Sales	25	5.01
Services (excluding domestic)	138	4.30
Agricultural, Fishery, Forestry, etc.	7	5.29
Processing	15	9.70
Machine Trades	190	5.81
Bench Work	159	4.58
Structural	282	9.27
Motor Freight/ Transportation	18	5.35
Packaging and Materials Handling	432	4.53

The Maysville local office also serves Bracken, Fleming, Lewis, and Robertson Counties. The above occupational categories are taken from the Dictionary of Occupational Titles published by the U.S. Department of Labor.

Source: Kentucky Cabinet for Human Resources, Department for Employment Services.



AVERAGE WEEKLY WAGES OF WORKERS COVERED BY  
UNEMPLOYMENT INSURANCE - 1991





AVERAGE WEEKLY WAGES BY INDUSTRY  
BY PLACE OF WORK, 1991\*

	Mason County	Kentucky (State- Wide)	Tennessee	Virginia
All Industries	\$339.77	\$394.46	\$408.00	\$441.00
Mining & Quarrying	0	661.68	528.00	655.00
Contract Construction	352.98	410.33	436.00	452.00
Manufacturing	412.81	505.56	477.00	509.00
Transportation, Communications & Public Utilities	637.92	528.78	541.00	605.00
Wholesale & Retail Trade	213.59	268.42	N/A	N/A
Finance, Insurance & Real Estate	335.77	449.89	495.00	523.00
Services	262.76	350.41	394.00	455.00
State/Local Government	387.82	413.84	N/A	N/A
	<u>Indiana</u>	<u>Ohio</u>	<u>Illinois</u>	<u>U. S.</u>
All Industries	\$429.00	\$449.00	\$503.00	\$465.00
Mining & Quarrying	708.00	609.00	758.00	747.00
Contract Construction	499.00	510.00	635.00	514.00
Manufacturing	583.00	613.00	609.00	579.00
Transportation, Communications & Public Utilities	531.00	567.00	632.00	599.00
Wholesale & Retail Trade	N/A	N/A	N/A	N/A
Finance, Insurance & Real Estate	458.00	498.00	650.00	596.00
Services	368.00	398.00	462.00	443.00
State/Local Government	N/A	N/A	N/A	N/A

\* Wages for U.S. and surrounding states rounded to nearest dollar.

N/A Not Available.

Note: The average weekly wage for each category includes the salaries and wages of all persons working for that type business. For example, the manufacturing category includes both production workers and administrative personnel. Excludes domestic workers, railway workers, certain nonprofit corporations, majority of federal government workers, and self-employed workers.

Source: Kentucky Cabinet for Human Resources, Average Weekly Wages of Workers Covered by Kentucky Unemployment Insurance Law, 1991. U.S. Department of Labor, Bureau of Labor Statistics, Employment and Wages, Annual Averages, 1991, January 1993.

## EXISTING INDUSTRY

### MAYSVILLE MANUFACTURING FIRMS, THEIR PRODUCTS AND EMPLOYMENT

<u>Firm</u> <u>(Establishment date)</u>	<u>Product</u>	<u>1992</u> <u>Average Employment</u>
Browning Manufacturing Division (1886)	Gear reducers, ball and roller bearing units, pulleys, V belt drives, sprockets	1,000
Cargill, Inc. (1951)	Fertilizer	8
Crystal Tissue (1989)	Wrapping paper and gift tissue	95
Dravo Lime Company (1974)	Lime and calcinating plant fines	215
Inland Container (1992)	Liner board, recycled paper and cardboard	160
January & Wood Company (1824)	Cotton, rayon yarns, cotton twine	100
Jockey International, Inc. (1984)	Men's and women's knit underwear	520
Maysville Newspapers, Inc. (1968)	Commercial printing, newspapers	55
Maysville Ready Mix Concrete Company (1950)	Ready-mixed concrete	14
Parker Tobacco Company, Inc. (1932)	Tobacco processing	80
Silgan Containers (1988)	Metal containers	40
Standard Quick Print, Inc. (1981)	Printing, catalogs, commercial printing, calendars	5
Standard Supply Company (1953)	Precast concrete products, concrete block	16
Stober Drives, Inc. (1991)	Traction drives, speed reducers, gear motors	10
Sunier Machine Shop (1951)	Electric motors, controls, machine shop	2
Technotrim (1988)	Automotive trim covers	450
Vickers Welco (1984)	Compressor assembly, electric motor sub-assembly	39
Wald Manufacturing, Inc. (1925)	Bicycle parts	200

Sources: Kentucky Cabinet for Economic Development, Division of Research; Maysville-Mason County Industrial Authority.

<u>Major Distribution Center</u>	<u>Service</u>	<u>Employment</u>
Federal Mogul	Auto parts packaging and distribution, return goods center	160

### RECENT INDUSTRIAL DEVELOPMENTS

The Maysville-Mason County Industrial Authority recently completed construction of a 50,000-square-foot "spec" building. A private developer has also constructed two 100,000-square-foot "spec" buildings.

### LABOR ORGANIZATIONS IN MANUFACTURING FIRMS

<u>Union</u>	<u>Representing workers at:</u>
International Brotherhood of Teamsters, Chauffeurs, Warehousemen and Helpers of America	Silgan Containers
United Textile Workers of America, AFL-CIO	January & Wood Company

### SELECTED INDUSTRIAL SERVICES

<u>Types of Services</u>	<u>Location</u>	<u>Mileage from Maysville</u>
Custom Plastics Producers	Flemingsburg, Kentucky	17
Electric Motor Repair	Maysville, Kentucky	-
Heat Treating Facilities	Cincinnati, Ohio	51
	Georgetown, Kentucky	66
Industrial Waste Removal	Flemingsburg, Kentucky	17
Machine Shops, Tool & Die	Maysville, Kentucky	-
Metal Castings	Cynthiana, Kentucky	47
Metal Finishers	Newport, Kentucky	50
Metal Service Centers	Alexandria, Kentucky	40
	Morehead, Kentucky	44
Millwrights & Riggers	Erlanger, Kentucky	53
	Lexington, Kentucky	67

Sources: Kentucky Cabinet for Economic Development, Division of Research.



## TRANSPORTATION

### Highways

Major highways serving Maysville include U.S. Highway 62/68 and Kentucky Routes 546 (A-A Highway) 8, 10, and 11. All are "AAA"-rated trucking highways (80,000-pound gross load limit). The Simon Kenton Memorial Bridge connects Maysville with U.S. Highway 52, located across the Ohio River in Aberdeen, Ohio.

Access to several interstate highways is available via "AAA"-rated routes. Interchanges of Interstate 64 are located 41 miles southeast of Maysville near Morehead, Kentucky, and 47 miles south near Mount Sterling, Kentucky. These interchanges are accessible via Kentucky Routes 11 and 32. An interchange of Interstates 64 and 75 is located near Lexington, Kentucky, 64 miles southwest of Maysville via U.S. 68. Access to Interstates 71, 74, and 75 is available at Cincinnati, Ohio, 51 miles northwest of Maysville.

Kentucky 546 (A-A Highway) connects Maysville to the Interstate 275/Kentucky 9 interchange in Campbell County, 45 miles west of Maysville; and also extends to Vanceburg, east of Maysville. When completed, Kentucky 546 will extend to I-64 near Grayson and at Greenup Dam Bridge, off U.S. 23.

Construction of another bridge over the Ohio River is planned for Maysville. The bridge and access road will connect Kentucky Highway 546 (A-A Highway) to U.S. 52 in Ohio. Construction of the access road is scheduled to begin in 1994 and bridge construction in 1995. The entire project is to be completed in 1997.

#### HIGHWAY MILES FROM MAYSVILLE, KENTUCKY, TO SELECTED MARKET CENTERS

City	Highway Miles	City	Highway Miles
Atlanta, GA	418	Los Angeles, CA	2,217
Baltimore, MD	471	Louisville, KY	135
Birmingham, AL	453	Nashville, TN	274
Chicago, IL	336	New Orleans, LA	792
Cincinnati, OH	51	New York, NY	649
Cleveland, OH	254	Pittsburgh, PA	277
Detroit, MI	290	St. Louis, MO	390
Knoxville, TN	224		

Note: Mileage computations are via the best interstate or primary highways, not necessarily the most direct route of travel.

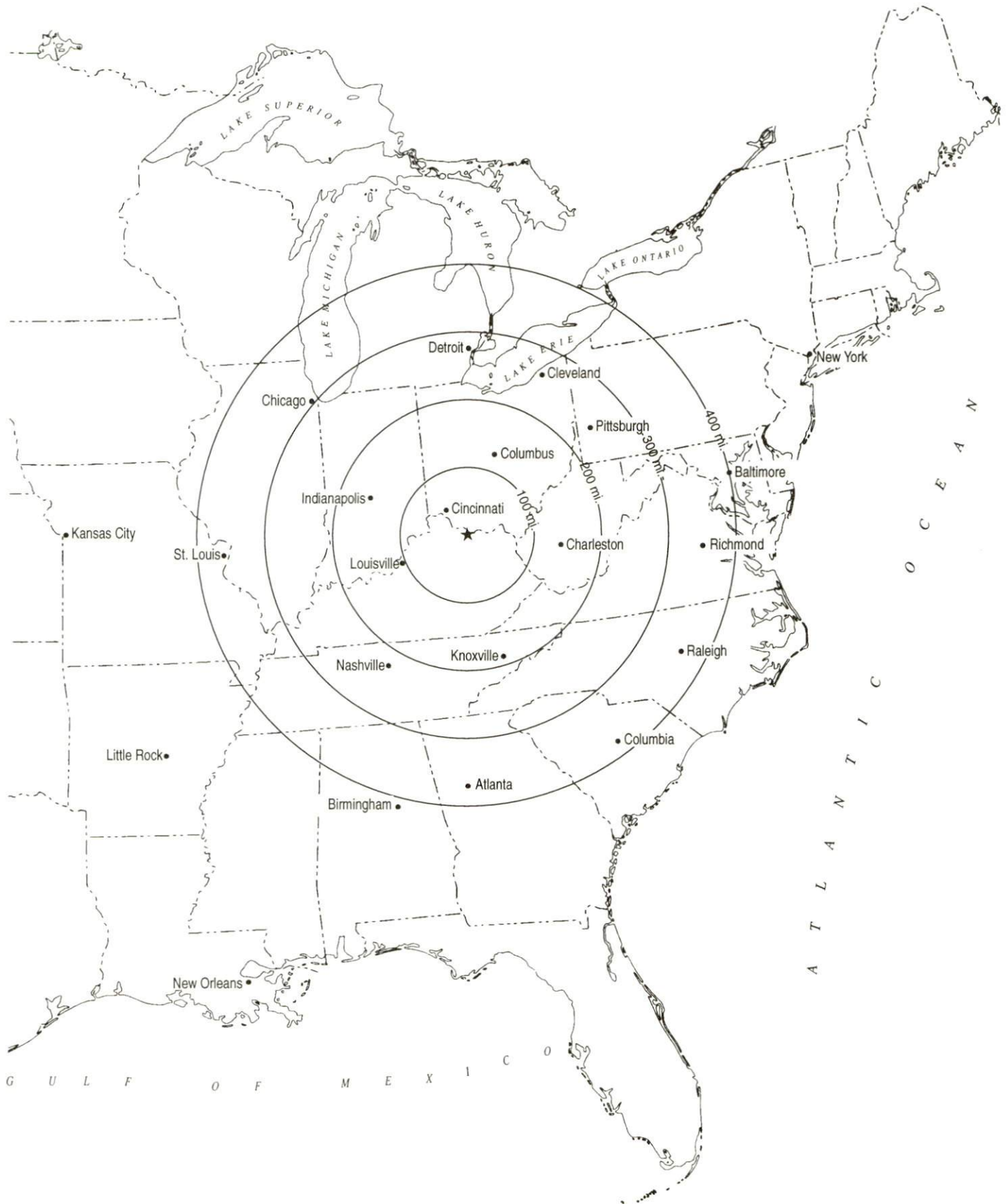
Sources: Rand McNally Standard Highway Mileage Guide, 1990. Official Kentucky Mileage Map, 1985.

### Truck Service

Twenty-nine trucking companies provide interstate and/or intrastate trucking service to Maysville.

Source: American Motor Carrier Directory, Fall 1993.

# Selected Market Centers



## Rail

Maysville is served by three separate rail lines. CSX Transportation provides main line rail service; T.T.I. (Trans-Kentucky Transportation Railroad, Inc.) provides a connecting rail line between the CSX System at Maysville and the CSX system at Paris, Kentucky. Passenger rail line service is available through Amtrack in Maysville. The nearest intermodal facilities are located at Cincinnati, Ohio, 51 miles northwest of Maysville.

For details on routing, schedules, rates, and services contact:

Manager  
Industrial Development  
CSX Transportation  
9420 Bunsen Parkway  
Suite 212  
Louisville, Kentucky 40220  
(502) 499-3025

and/or

President  
T.T.I. Systems, Inc.  
105 Winchester Street  
Paris, Kentucky 40631  
(606) 987-1589

and/or

Amtrack Distribution Center  
1-800-872-7245

## Air

### Local

Location:	Fleming-Mason Airport
Runways:	6 miles south of Maysville
Length:	1 paved
Traffic	5,000 feet
Control:	Segmented circle, wind cone, VOR approach from Falmouth NDB, certified altimeters
Lighting:	MIRL, HIRL, PAPI, beacon, runway lights (sundown to sunrise)
Services:	100LL and jet-A fuel, A & P repairs, hangar, tie-downs, flight instruction, taxi service, auto fuel, attended 24 hours daily



### Scheduled Commercial Airline Service

Cincinnati/Northern Kentucky  
International Airport  
Location: 8 miles southwest of Covington, Kentucky;  
60 miles northwest of Maysville  
Air Service: American, Delta, ComAir, TWA,  
American Eagle, United, USAir,  
Northwest Airlink, USAir Express,  
Continental, Northwest, United Express  
Daily Arrivals  
& Departures: 774

Bluegrass Airport  
Location: 4 miles west of Lexington, Kentucky;  
71 miles southwest of Maysville  
Air Service: Delta, USAir, United Express, American Eagle,  
ComAir, TW Express, Atlantic Southeast  
Airlines, Northwest Airlink  
Daily Arrivals  
& Departures: 120

### **Water**

Maysville is located on the Ohio River, one of the most heavily traveled inland waterways in the United States. A nine-foot navigation channel is maintained along the entire length of the Ohio River. The Transcontinental Terminals Incorporated maintains a 1,500-ton-per-hour coal-loading facility at Maysville. Crounse Corporation operates a commercial barge line with load service offices in Maysville. Four river terminals for private use only are operated within five miles of Maysville.

## UTILITIES

### Electricity

Company serving Maysville and parts of Mason County - Kentucky

Utilities Company

Source of power - Kentucky Utilities Company

For industrial rates contact:

Economic Development Department  
Kentucky Utilities Company  
One Quality Street  
Lexington, Kentucky 40507  
(606) 255-2100

Company serving parts of Mason County - Fleming-Mason Rural Electric  
Cooperative Corporation

Source of power - East Kentucky Power

For industrial rates contact:

Industrial Development Department  
East Kentucky Power  
P.O. Box 707  
Winchester, Kentucky 40392-0707  
(606) 744-4812

and/or

Fleming-Mason Rural Electric  
Cooperative Corporation  
P.O. Drawer 328  
Flemingsburg, Kentucky 41041  
(606) 845-2661

### Natural Gas

Company serving Maysville - Columbia Gas of Kentucky, Inc.

Source of supply - Columbia Gas Transmission Corporation

For rates and supplies contact:

Economic Development Department  
Columbia Gas of Kentucky  
70 Fountain Place  
Frankfort, Kentucky 40601  
(502) 227-4998 Fax (502) 227-7645

## Public Water Supply

Company serving Maysville - Maysville Utility Commission  
Municipal Building Annex  
216 Bridge Street  
Maysville, Kentucky 41056  
(606) 564-9411

Source - Ohio River  
Treatment plant capacity - 3,000,000 gallons per day  
Average daily consumption - 1,700,000 gallons  
Peak daily consumption - 3,000,000 gallons  
Storage capacity - 1,350,000 gallons  
Water pressure - 145 psi to 158 psi

The Maysville Utility Commission plans to upgrade the water treatment plant. This upgrade will effectively increase treatment capacity from three million gallons per day to four million gallons per day. This \$3.5 million project is scheduled to begin in the fall of 1994 and be complete by the spring of 1996.

## Raw Water

Surface water sources - Ohio River and North Fork Licking River  
Average discharge - Ohio River at Greenup Dam - 89,570 cfs  
(24 years, USGS); North Fork Licking River near Mt. Olivet -  
278 cfs (2 years, USGS)  
Expected ground water yield - 500 to 1,000 gpm along Ohio River, 5 to  
50 gpm in a small portion of north central Mason County, 5 gpm or  
less over remainder of county.

## Sewerage

Company serving Maysville - Maysville Utility Commission  
Municipal Building Annex  
216 Bridge Street  
Maysville, Kentucky 41056  
(606) 564-9411

Design capacity - 1,600,000 gallons per day  
Average daily flow - 1,200,000 gallons  
Type of treatment - Secondary  
Treated effluent discharged into - Ohio River



## CLIMATE

### Mason County

#### Temperature

Normal (30-year record)	53.40 degrees
Average annual 1991	56.30 degrees
Record highest, July 1988 (30-year record)	103.00 degrees
Record lowest, January 1977 (30-year record)	-25.00 degrees
Normal heating degree days (30-year record)	5,247
(Heating degree day totals are the sums of negative departures of average daily temperatures from 65 degrees F.)	

#### Precipitation

Normal (30-year record)	40.14 inches
Mean annual snowfall (44-year record)	23.10 inches
Total precipitation 1991	40.09 inches
Mean number days precipitation (.01 inch or more) (44-year record)	129.10
Mean number days thunderstorms (44-year record)	42.40

#### Prevailing winds (through 1963)

South-Southwest

#### Relative Humidity (29-year record)

1 a.m.	77 percent
7 a.m.	81 percent
1 p.m.	59 percent
7 p.m.	63 percent

Source: U.S. Department of Commerce, Environmental Science Services Administration, Climatological Data, 1991. Station of record: Cincinnati, Ohio, Greater Cincinnati Airport.

## LOCAL GOVERNMENT

### Structure

The city of Maysville is governed by a mayor, four city commissioners, and a city manager. The mayor is elected to a four-year term while the commissioners each serve two-year terms. The city manager serves as a full-time employee. Mason County is governed by a county judge/executive and three commissioners. Each county official is elected to a four-year term.

### Planning and Zoning

Joint agency - Mason County Joint Planning Commission

Participating cities - Maysville

Zoning enforced - Within the city limits of Maysville

Subdivision regulations enforced - All areas of Mason County

Local codes enforced - Building and housing within the city limits of Maysville

Mandatory state codes enforced - Kentucky Plumbing Code, National Electric Code, Kentucky Boiler Regulations and Standards, Kentucky Building Code (modeled after BOCA code)

### Local Fees and Licenses

The City of Maysville levies a 1.95% occupational license tax on wages, salaries, and commissions earned within the city. Annual business license fees for manufacturers are: \$150 for firms employing 50 or fewer persons, \$225 for firms employing 51 to 100 persons, and \$50 for each additional 100 employees or fraction thereof. Business license fees range from \$5.00 to \$1,025 annually for other businesses.

## PROPERTY TAXES

The Kentucky Constitution requires the state to tax all classes of taxable property, and state statutes allow local jurisdictions to tax only a few classes. All locally taxed property is subject to county taxes and school district taxes (either a county school district or an independent school district). Property located inside of city limits may also be subject to city property taxes.

Special local taxing jurisdictions (fire protection districts, watershed districts, and sanitation districts) levy taxes within their operating areas (usually a small portion of community or county).

Property assessments in Kentucky are at 100% fair cash value. Accounts receivable are taxed at 85% of face value.

### STATE PROPERTY TAX RATES PER \$100 VALUATION

<u>Selected Classes of Property</u>	<u>1992 State Rate</u>	<u>Local Taxation Permitted</u>
Real Estate	\$0.184	YES
Manufacturing Machinery	0.150	NO
Pollution Control Equipment	0.150	NO
Inventories		
Raw Materials	0.050	NO
Goods in Process	0.050	NO
Finished Goods	0.050	YES
Motor Vehicles	0.450	YES
Other Tangible Personal Property	0.450	YES
Intangibles (Accounts Receivable, Money on Hand)	0.250	NO

### LOCAL PROPERTY TAX RATES PER \$100 VALUATION, 1992

<u>Taxing Jurisdiction</u>	<u>Real Estate</u>	<u>Finished Goods &amp; Tangibles</u>	<u>Motor Vehicles</u>
Mason County	\$0.1940	\$0.2065	\$0.2070
School Districts:			
Mason County	0.4410	0.4410	0.5550
Cities:			
Maysville	0.2123	0.2460	0.2460



## EDUCATION

### Public Schools

#### Mason County

Total Enrollment (Fall, 1992)	2,844
Pupil-Teacher Ratio (1991-92)	17.1-1
Percent High School Graduates to College (1991-92)	47.6
Expenditures Per Pupil (1991-92)	\$3,336.03

### Nonpublic Schools

<u>School</u>	<u>Enrollment</u>	<u>Grades</u>
Faith Academy Christian School	40	K-12
St. Patrick Elementary	225	1-8
St. Patrick High School	105	9-12

### Area Colleges and Universities

<u>Name</u>	<u>Location (Miles distant)</u>	<u>Enrollment (Fall, 1992)</u>
Maysville Community College	Maysville, Kentucky	1,325
Morehead State University	Morehead, Kentucky (44)	9,169
Northern Kentucky University	Highland Heights, Kentucky (44)	11,888
Athenaeum of Ohio	Cincinnati, Ohio (51)	241
Cincinnati Bible Seminary	Cincinnati, Ohio (51)	910
College of Mount St. Joseph	Cincinnati, Ohio (51)	2,594
Hebrew Union College	Cincinnati, Ohio (51)	123
Southern Ohio College	Cincinnati, Ohio (51)	431
University of Cincinnati	Cincinnati, Ohio (51)	28,470
Xavier University	Cincinnati, Ohio (51)	6,373
Thomas More College	Ft. Mitchell, Kentucky (55)	1,299
Shawnee State University	Portsmouth, Ohio (55)	3,484
Georgetown College	Georgetown, Kentucky (66)	1,476
Lexington Community College	Lexington, Kentucky (67)	4,862
Transylvania University	Lexington, Kentucky (67)	974
University of Kentucky	Lexington, Kentucky (67)	24,197

## Maysville Community College

Maysville Community College, a state-supported community college, and accredited by the Southern Association of Colleges and Schools, is one of fourteen institutions in the University of Kentucky Community College System. The College has a service area in northeastern Kentucky which includes Mason County and its surrounding counties.

Campus facilities, housed in three adjoining buildings, include a well equipped library; an auditorium which seats 500+ spectators; multipurpose and special-purpose classrooms; a college bookstore; a learning assistance center; laboratories for biology, chemistry, computer operations, nursing, industrial electrical technology, environmental science and retail merchandising; various office administration specialities; and a television studio. Students enrolled in the College's Associate in Arts and Associate in Science prebaccalaureate programs as well as those pursuing occupational courses in one of MCC's Associate in Applied Science degree programs, are provided with opportunity for hands-on experience in a variety of disciplines.

Prebaccalaureate degree programs prepare graduates to transfer to the University of Kentucky Lexington campus and to other accredited senior institutions in and outside of Kentucky. Career-oriented programs prepare graduates to enter job markets at good beginning salaries typically after two years of full-time study. A broad range of service courses and programs help improve the quality of life for registered students and other members of the College's service community. MCC has a Business/Industry Coordinator who works directly with business and industry in the region to develop and provide training and education for all employment levels.

Maysville Community College recently completed construction of a new \$4 million student center and fine arts building. The complex includes classroom space, a performing auditorium, and a number of facilities for student services.

## VOCATIONAL-TECHNICAL TRAINING

Kentucky Tech schools are operated by the Cabinet for Workforce Development and provide secondary (Sec) and postsecondary (P/S) vocational-technical training.

<u>Kentucky Tech Schools</u>	<u>Location (Mileage from Maysville)</u>	<u>Number of Program Offerings</u>	<u>Cumulative Enrollment 1991-1992</u>	<u>Approximate Number Completing Programs Annually</u>
Mason County Area Vocational Education Center	Maysville	6	<u>Sec</u> 96 <u>P/S</u> 61	55
Rowan State Vocational- Technical School	Morehead (44)	12	<u>Sec</u> 130 <u>P/S</u> 329	139

### Customized Training

The Kentucky Tech system, through its Training and Development Coordinators, will provide technical assistance and will identify and develop low cost customized training programs and services for both established and prospective businesses. Businesses wanting to establish a customized training program should simply contact a Training and Development Coordinator located on the campus of Rowan SVTS.

### Assessment Services

Kentucky Tech Career Connections offers to business, education, and government agencies customized assessment in career inventories, interest inventories, psychomotor skills and academic potential as well as pre-hire assessment. A Career Connections Assessment Center is located on the campus of Rowan SVTS.

### Adult Basic Education

Adult education programs are available to adults who want to develop new skills, improve basic skills or earn a high school equivalency diploma. In Maysville, adult literacy is provided by the Mason County Community Literacy Program and adult education is provided by Maysville Community College.

### Bluegrass State Skills Corporation

The Bluegrass State Skills Corporation, an independent public corporation created and funded by the Kentucky General Assembly, provides programs of skills training to meet the needs of business and industry from entry level to advanced training, and from upgrading present employees to retraining experienced workers.

The Bluegrass State Skills Corporation is a major source for skills training assistance for a new or existing company. The Corporation works in partnership with other employment and job training resources and programs, as well as Kentucky's economic development activities, to package a program customized to meet the specific needs of a company.



## OTHER LOCAL FACILITIES

### Local Medical Personnel

Physicians - 23

Dentists - 9

### Hospitals

<u>General Hospital</u>	<u>Location</u>	<u>Beds</u>
Meadowview Regional Hospital	Maysville	111

Medical staff - 17 active physicians; 37 courtesy physicians;  
91 registered nurses, 20 licensed practical nurses

The Meadowview Regional Hospital is constructing a new three-floor complex adjacent to the existing facility. Two floors will be utilized for physician offices and the other floor for rehabilitation services. Other improvements will include a cafeteria expansion, new meeting rooms, a physician speciality clinic, and restructuring the admitting area, outpatient waiting area, and nursing units. These additions and improvements are scheduled to be completed in the Fall 1994.

### Other Medical Facilities and Services

Comprehend, Inc.

Mental Health-Mental Retardation Board

Mason County Health Center

Maysville-Mason County Ambulance Service

### Banks and Savings & Loan Associations

Bank of Maysville

The Security Bank and Trust Company

The State National Bank (a subsidiary of  
Kentucky Community Bancorp)

Bank of Mayslick

The Cumberland

### Newspapers

The Ledger-Independent (daily)

The Advertiser (weekly)

### Telephone Service

South Central Bell Telephone Company

GTE

## RECREATION

### Local

Seven public parks are open to Maysville and Mason County residents. Facilities at these parks include a swimming pool, a children's pool, ten tennis courts, five basketball goals, a lodge, a ten-acre picnic area, a fishing lake, two softball diamonds, mini-golf, shelters, concession stands, a boat launch, 33 camping pads, a floating dock with a gas pump, a shelter house, a 1/2-mile river walkway, and a playground. Organized Little League baseball and youth soccer are available. A nine-hole public golf course is located six miles south of Maysville. A new nine-hole, par-three golf course was recently developed at the Maysville-Mason County Recreation Park. A privately-owned 18-hole golf course was recently constructed in the community of Washington.

The Maysville Boys' Club sponsors organized basketball, soccer, and baseball.

The YMCA complex consists of an indoor swimming pool, two racquetball courts, a gymnasium, an indoor walking track, several saunas, and a whirlpool.

Private recreational facilities in Maysville include a country club with a swimming pool, an 18-hole golf course and three tennis courts. A cinema with four theaters; a drive-in theater; and a roller rink are also available in Maysville. A bowling facility is located across the Ohio River in Aberdeen, Ohio.

Maysville has one of the most attractive and beautifully preserved downtown areas in Kentucky. Fifteen French-style houses built in Maysville in the mid-1800's are known as "Little New Orleans", and walking tour maps are available at the Maysville-Mason County Chamber of Commerce office.

The Mason County Museum houses a substantial genealogical library, and also features an art gallery and a variety of history exhibits. The City-County Arts Commission is active in attracting both performing and visual arts to Maysville. Concerts and lectures held at Maysville Community College are open to the public. The Maysville Little Theatre presents programs year-round at the Maysville Opera Theatre building.

Historic Old Washington is a historical community located in southwest Maysville. Old Washington has been named to the National Register of Historic Places, and guided tours are available on weekends, and at other times by special arrangement. Activities such as Geranium Day and Frontier Christmas take place April through December.

### Area (Within 70 miles)

- Blue Licks Battlefield State Park
- Kincaid Lake State Park
- The Daniel Boone National Forest
- Cave Run Lake
- Carter Caves State Resort Park
- The Kentucky Horse Park



## COMMUNITY IMPROVEMENTS

Maysville re-certified as a "Kentucky Certified City" in 1992, and is distinguished as a gold award winner recognizing nine consecutive years of certification. Re-certification is based on achievement in the following areas: existing industry assistance, small business assistance, educational resources, and community development factors of health care, public safety, arts and culture, recreation, governmental awareness and resources. The Certified Cities Program is sponsored by the Kentucky Chamber of Commerce.

### Recent

The Maysville-Mason County Industrial Authority recently completed construction of a 50,000-square-foot "spec" building. A private developer has also constructed two 100,000-square-foot "spec" buildings.

Maysville Community College recently completed construction of a new \$4 million student center and fine arts building. The complex includes classroom space, a performing auditorium, and a number of facilities for student services.

Construction of a privately-owned 18-hole golf course, in the community of Washington, was recently completed. Construction of an additional nine holes was also recently completed at the Maysville Country Club golf course.

The Maysville Utility Commission recently extended sewer service in the Jersey Ridge Road area. Approximately two miles of sewer line was installed and serves 350 new customers.

Inland Container completed construction of a manufacturing facility and began operations in 1992. The company manufactures liner board and recycled paper and cardboard.

### Under Way

A riverfront development project is under construction in Maysville. The development will consist of a walkway along the river, boat moorings, and a fishing pier. This \$2.0 million project is scheduled to be completed in 1994. In addition, there are plans for the construction of a new motel on the riverfront. Construction is planned to begin in 1994.

Construction of a new Maysville Boys Club is underway on a new 20-acre site on Maple Leaf Road. The complex will consist of a clubhouse, gym facilities, soccer fields, and baseball fields. This \$2.5 million facility is scheduled to be completed in the spring of 1994.

The Meadowview Regional Hospital is constructing a new three-floor complex adjacent to the existing facility. Two floors will be utilized for physician offices and the other floor for rehabilitation services. Other improvements will include a cafeteria expansion, new meeting rooms, a physician speciality clinic, and restructuring the admitting area, outpatient waiting area, and nursing units. These additions and improvements are scheduled to be completed in the Fall 1994.



## Planned

The Maysville Utility Commission plans to upgrade the water treatment plant. This upgrade will effectively increase treatment capacity from three million gallons per day to four million gallons per day. This \$3.5 million project is scheduled to begin in the fall of 1994 and be complete by the spring of 1996.

The City of Maysville plans to relocate a portion of overhead utility lines in the downtown area to underground. This project is scheduled to be completed during the summer of 1994.

Construction of another bridge over the Ohio River is planned for Maysville. The bridge and access road will connect Kentucky Highway 546 (A-A Highway) to U.S. 52 in Ohio. Construction of the access road is scheduled to begin in 1994 and bridge construction in 1995. The entire project is to be completed in 1997.

The Mason County Library Board has secured funding for a new library facility which will be constructed in the fall of 1994.