

1996

# Industrial Resources: McLean County

Kentucky Library Research Collections  
Western Kentucky University, [spcol@wku.edu](mailto:spcol@wku.edu)

Follow this and additional works at: [https://digitalcommons.wku.edu/mclean\\_cty](https://digitalcommons.wku.edu/mclean_cty)



Part of the [Business Administration, Management, and Operations Commons](#), [Growth and Development Commons](#), and the [Infrastructure Commons](#)

---

## Recommended Citation

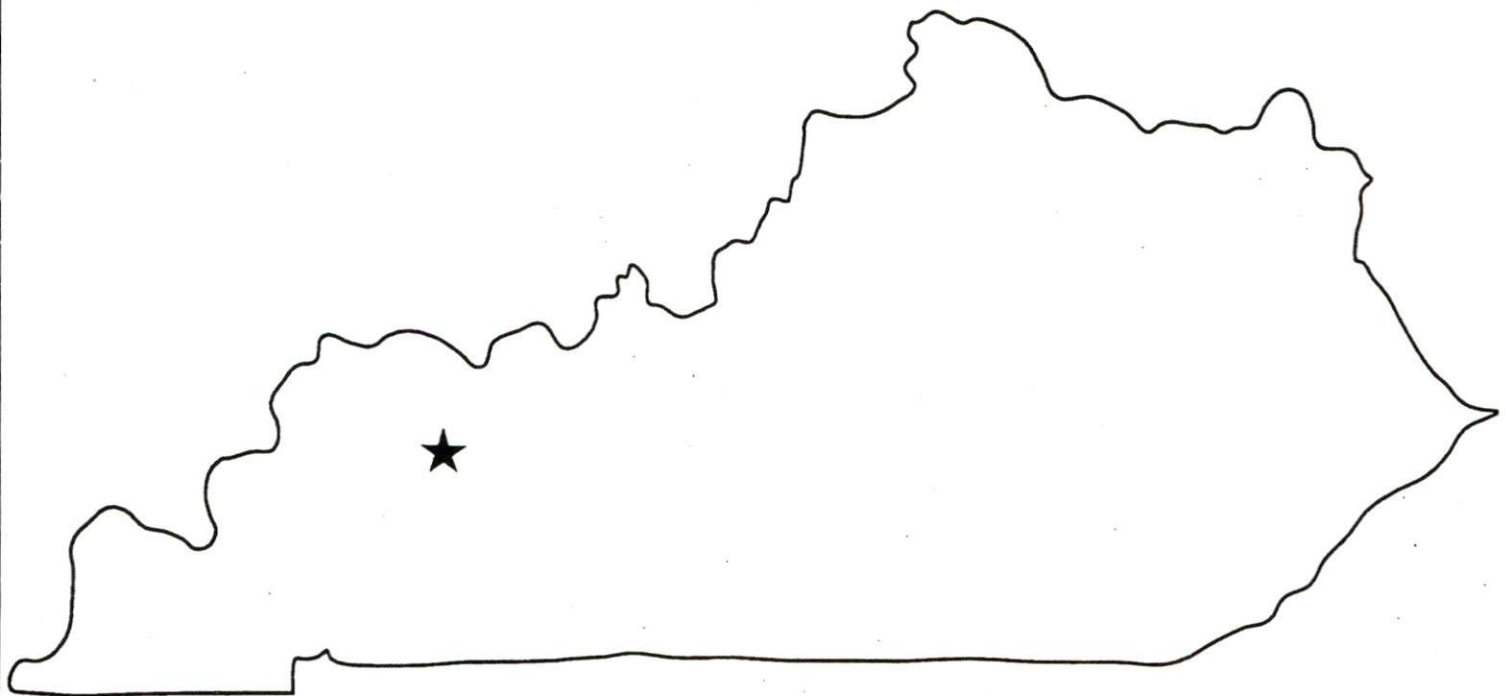
Kentucky Library Research Collections, "Industrial Resources: McLean County" (1996). *McLean County*. Paper 1.  
[https://digitalcommons.wku.edu/mclean\\_cty/1](https://digitalcommons.wku.edu/mclean_cty/1)

This Report is brought to you for free and open access by TopSCHOLAR®. It has been accepted for inclusion in McLean County by an authorized administrator of TopSCHOLAR®. For more information, please contact [topscholar@wku.edu](mailto:topscholar@wku.edu).

# Kentucky

**Resources For  
Economic Development**

**McLean County**



Prepared by  
The Kentucky Cabinet for Economic Development  
Division of Research  
in cooperation with  
McLean County Industrial Foundation  
and  
McLean County Chamber of Commerce

1996

Division Director - Rene' True; program manager - Keith Roberts; research - Debbie Kimbrough; clerical - Wanda Sharp; graphics - Robert Owens. Cost of printing paid from state funds.

## TABLE OF CONTENTS

<u>Chapter</u>	<u>Page</u>
MCLEAN COUNTY, KENTUCKY-A RESOURCE PROFILE.....	1
THE LABOR MARKET STATISTICS.....	2
Labor Market Area Map.....	2
Population.....	3
Population Projections.....	3
Estimated Labor Supply.....	3
Labor Force Characteristics of Residents, 1994.....	4
Selected Components of Nonagricultural Employment, by Place of Work, 1994.....	5
Per Capita Personal Income.....	6
Average Placement Wages.....	7
Average Weekly Wages of Workers Covered by Unemployment Insurance 1993 - Bar Chart.....	8
Average Weekly Wages by Industry, by Place of Work, 1993.....	9
EXISTING INDUSTRY.....	10
McLean County Manufacturing Firms, Their Products and Employment.....	10
Recent Industrial Developments.....	11
Major Non-Manufacturing Firms.....	11
Labor Organizations in Manufacturing Firms.....	11
Selected Industrial Services.....	12
TRANSPORTATION.....	13
Highways.....	13
Truck Service.....	13
Selected Market Location Map.....	14
Rail.....	15
Air .....	15
Water.....	16
UTILITIES.....	17
Electricity.....	17
Natural Gas.....	17
Public Water Supply.....	18
Sewerage.....	19
CLIMATE.....	20

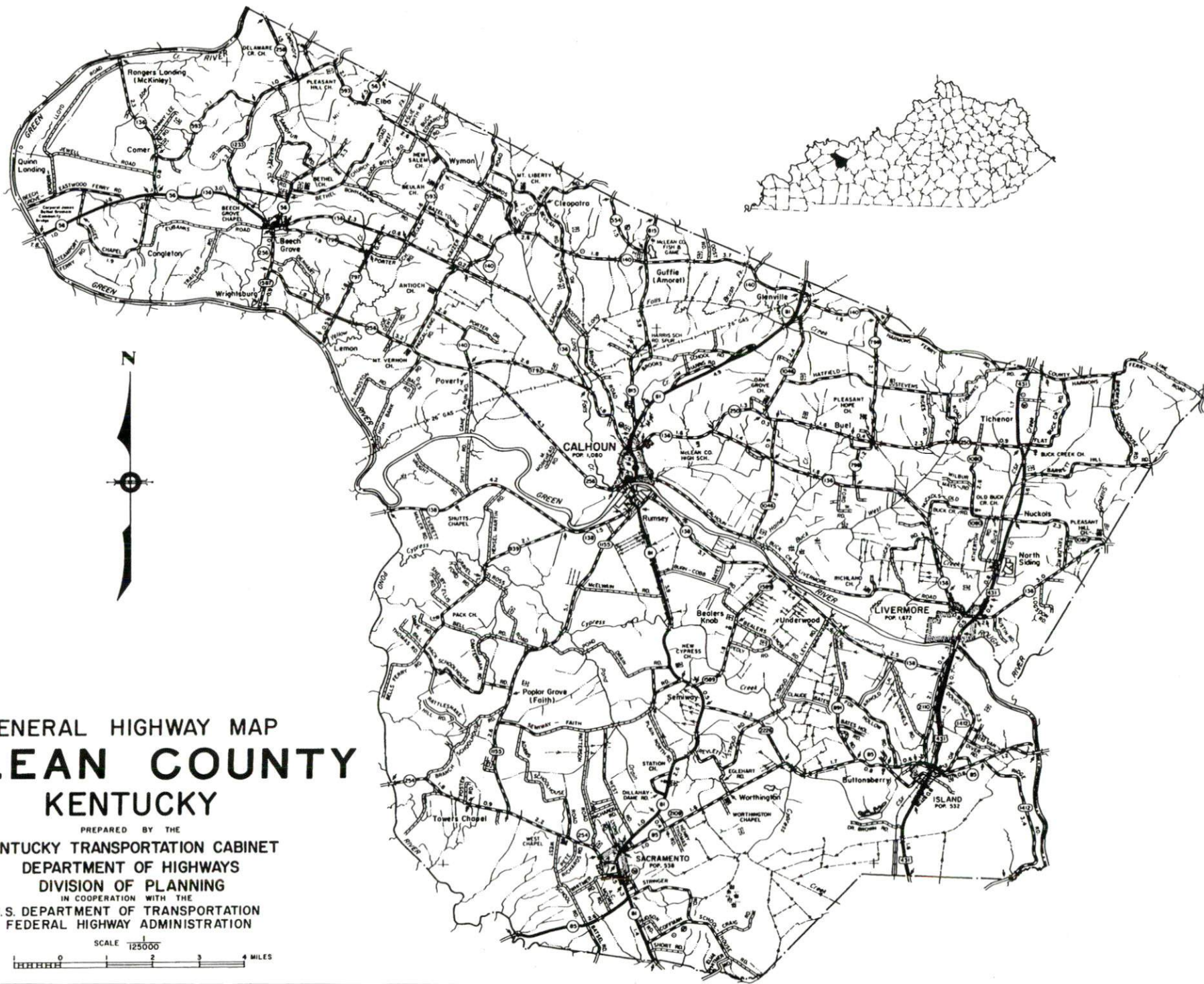
<u>Chapter</u>	<u>Page</u>
LOCAL GOVERNMENT.....	21
Structure.....	21
Planning and Zoning.....	21
Local Fees and Licenses.....	21
State and Local Property Taxes.....	22
EDUCATION.....	23
Public Schools.....	23
Area Colleges and Universities.....	23
Vocational Training.....	24
OTHER LOCAL FACILITIES.....	26
Local Medical Personnel.....	26
Hospitals.....	26
Other Medical Facilities and Services.....	26
Banks and Savings & Loan Associations.....	26
Newspapers.....	26
Telephone Service.....	26
RECREATION.....	27



# GENERAL HIGHWAY MAP MCLEAN COUNTY KENTUCKY

PREPARED BY THE  
KENTUCKY TRANSPORTATION CABINET  
DEPARTMENT OF HIGHWAYS  
DIVISION OF PLANNING  
IN COOPERATION WITH THE  
U.S. DEPARTMENT OF TRANSPORTATION  
FEDERAL HIGHWAY ADMINISTRATION

SCALE 1:25000  
0 1 2 3 4 MILES



## MCLEAN COUNTY, KENTUCKY - A RESOURCE PROFILE

McLean County is located in the Western Kentucky Coal Field Region. The county covers a total land area of 254 square miles. Calhoun, the county seat of McLean County, is located 21 miles south of Owensboro, Kentucky; 55 miles southeast of Evansville, Indiana; 125 miles southwest of Louisville, Kentucky; and 142 miles north of Nashville, Tennessee.

McLean County had an estimated 1994 population of 9,674, with 1,134 persons residing in Calhoun, 488 in Island, and 1,572 in Livermore.

**The Economic Framework** - The total number of McLean County residents employed in 1994 averaged 3,741. Manufacturing firms in the county reported 229 employees; wholesale and retail trade provided 444 jobs; 302 people were employed in service occupations; state and local government accounted for 390 employees; and contract construction firms provided 40 jobs.

**Labor Supply** - There is a current estimated labor supply of 17,875 persons available for industrial jobs in the labor market area. In addition, from 1996 through 2000, 19,578 young persons in the area will become 18 years of age and potentially available for industrial jobs.

**Transportation** - Major highways serving McLean County include U.S. Highway 431 and Kentucky Route 81. Access to the Pennyrile Parkway, the Audubon Parkway, the Western Kentucky Parkway, and the William H. Natcher Parkway is available within thirty miles of Calhoun. Fourteen commercial trucking companies provide interstate and/or intrastate service to McLean County. CSX Transportation provides rail service to Livermore and Island. The Owensboro-Daviess County Airport, 19 miles north of Calhoun, maintains a 6,500-foot and a 3,700-foot paved runway. Scheduled commercial airline service is available at the Evansville Regional Airport near Evansville, Indiana, 58 miles northwest of Calhoun. Calhoun and Livermore are located on the Green River, which has a nine-foot navigation channel to the Ohio River.

**Power and Fuel** - Kentucky Utilities Company and Green River Electric Corporation each provide electric power to McLean County. Western Kentucky Gas Company provides natural gas service to Calhoun and Sacramento. Livermore is provided natural gas by Livermore Utilities, which is supplied by the Texas Gas Transmission Corporation.

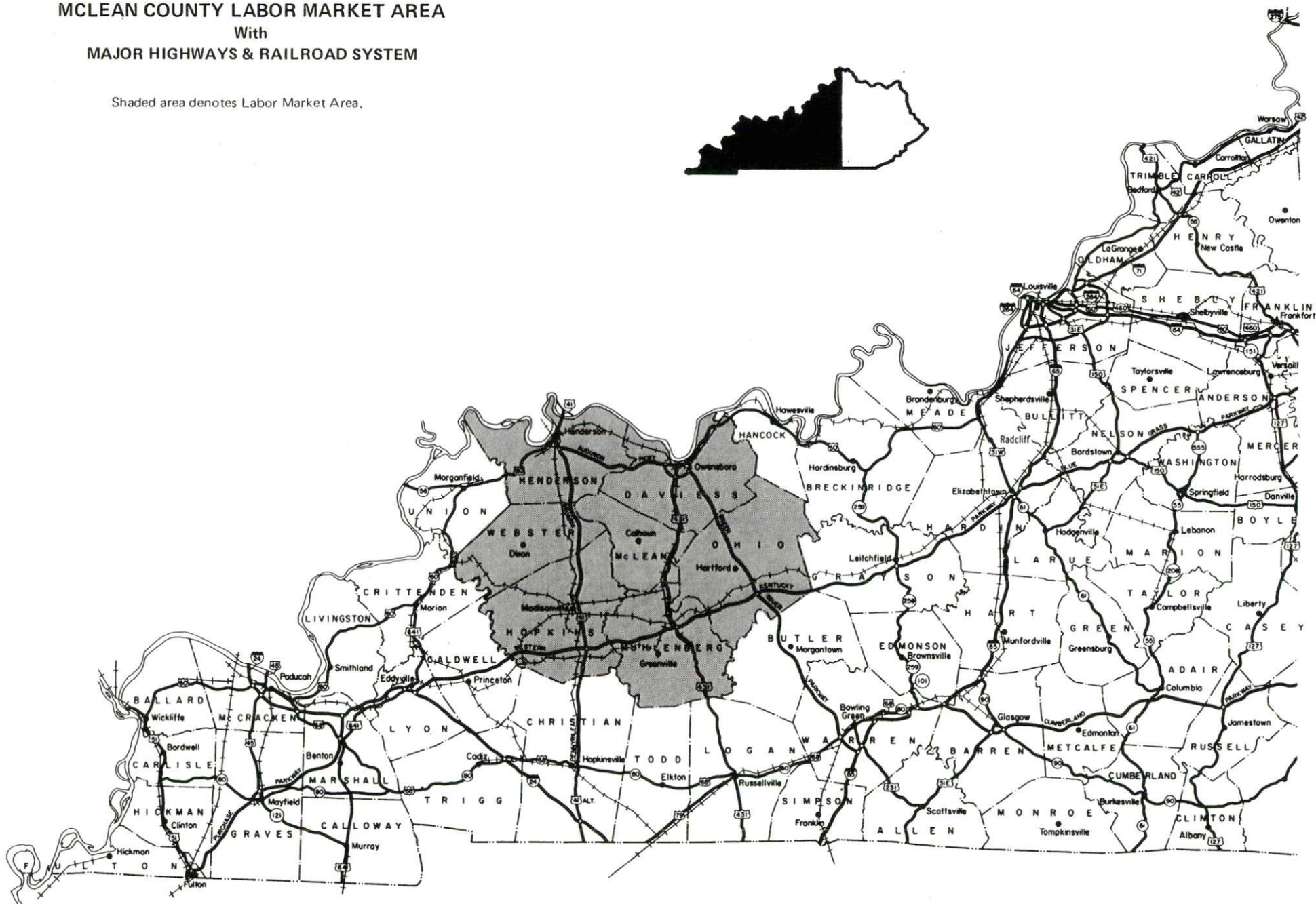
**Education** - The McLean County School System provides primary and secondary education to McLean County. Eight institutions of higher learning including three universities, two senior colleges, and three community colleges, are located within 75 miles of Calhoun. The Daviess County Regional Technology Center and the Owensboro Regional Technology Center, both located 21 miles north of Calhoun in Owensboro, provide the nearest vocational training facilities and services.



# MCLEAN COUNTY LABOR MARKET AREA

With  
MAJOR HIGHWAYS & RAILROAD SYSTEM

Shaded area denotes Labor Market Area.





## LABOR MARKET STATISTICS

The McLean County Labor Market Area includes McLean County and the adjoining Kentucky counties of Daviess, Henderson, Hopkins, Muhlenberg, Ohio, and Webster.

### POPULATION

	<u>1994*</u>	<u>1990</u>	<u>1980</u>	<u>1970</u>
Labor Market Area	256,430	252,365	251,897	222,355
Calhoun	1,134	854	1,080	901
Island	488	446	532	410
Livermore	1,572	1,534	1,672	1,594
Sacramento	554	563	538	437
McLean County	9,674	9,628	10,090	9,062

\*Population estimates.

Source: U.S. Department of Commerce, Bureau of the Census.

### POPULATION PROJECTIONS

	<u>1995</u>	<u>2000</u>	<u>2010</u>	<u>2020</u>
Labor Market Area	257,996	265,044	274,194	278,759
McLean County	9,715	9,905	10,076	10,073

Note: Population projections are from High Growth Series forecast.

Source: University of Louisville, Urban Studies Center, State Data Center.

### ESTIMATED LABOR SUPPLY

	<u>Current</u>			<u>Future</u>
	<u>Total</u>	<u>Unemployed</u>	<u>Not in Labor Force</u>	<u>Becoming 18 years of age 1996 thru 2000</u>
Labor Market Area*	17,875	7,330	10,545	19,578
McLean County	1,271	360	911	732

\* Additional workers may be drawn from other nearby counties.

Note: Unemployed - persons unemployed and actively seeking work; Not in Labor Force - represents the number of persons who would enter the labor force if suitable employment were available (based on the assumption that persons in Kentucky would like to participate in the labor force in the same proportion that they do nationally). Underemployed persons (employed only 14 to 26 weeks during the year) are no longer included in labor surplus estimates.

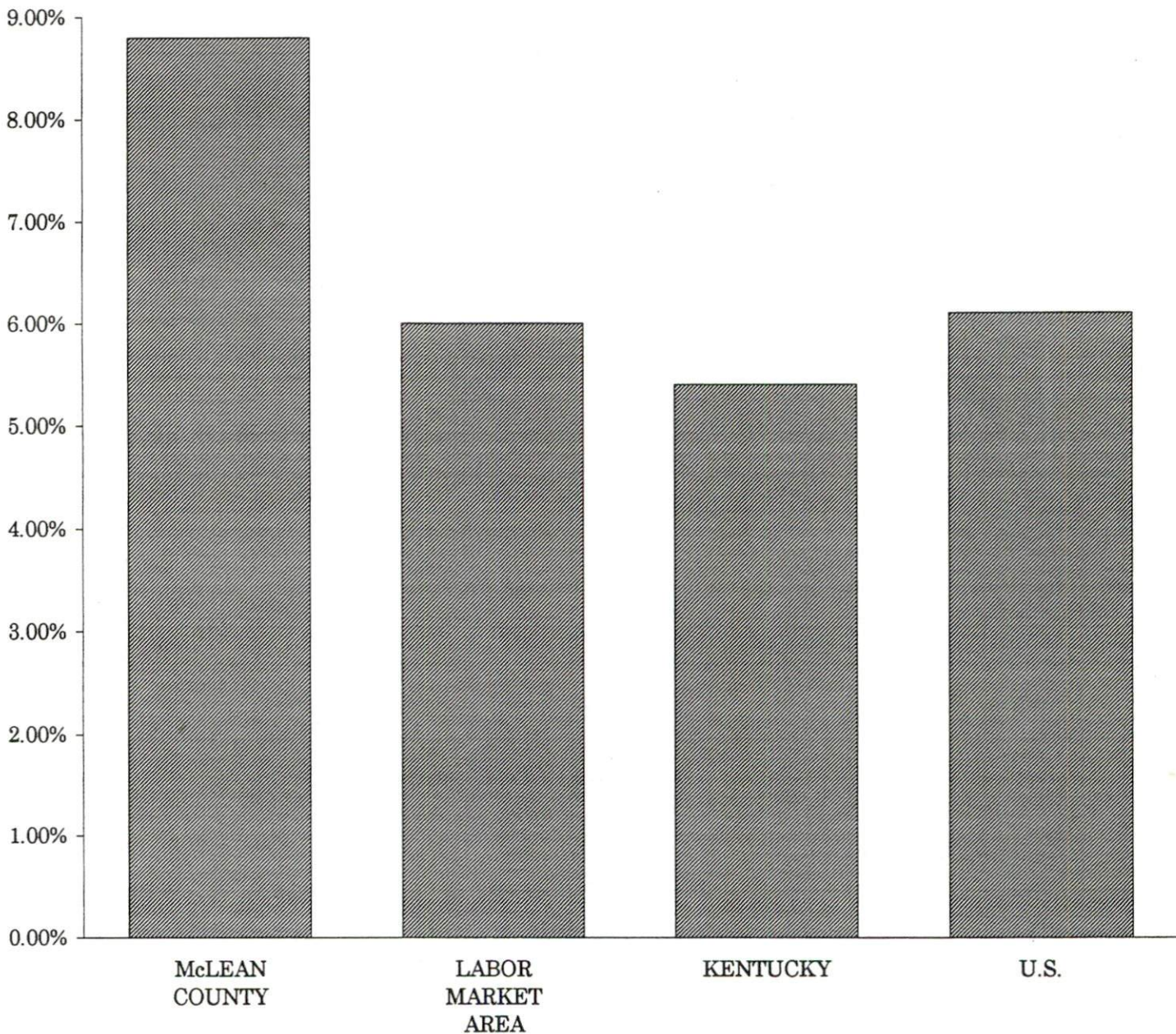
Sources: Kentucky Cabinet for Human Resources, Kentucky Labor Surplus Estimates by County, 1994. Kentucky Cabinet for Economic Development, Future Labor Supply Becoming 18 Years of Age, 1996 thru 2000.

# LABOR FORCE CHARACTERISTICS OF RESIDENTS, 1994

	<u>McLean County</u>	<u>Labor Market Area</u>
Civilian Labor Force	4,101	122,351
Employment	3,741	115,021
Unemployment	360	7,330
Rate of Unemployment (%)	8.8	6.0

Source: Kentucky Cabinet for Human Resources, Kentucky Labor Force Estimates, Annual Averages 1994.

## UNEMPLOYMENT RATES 1994



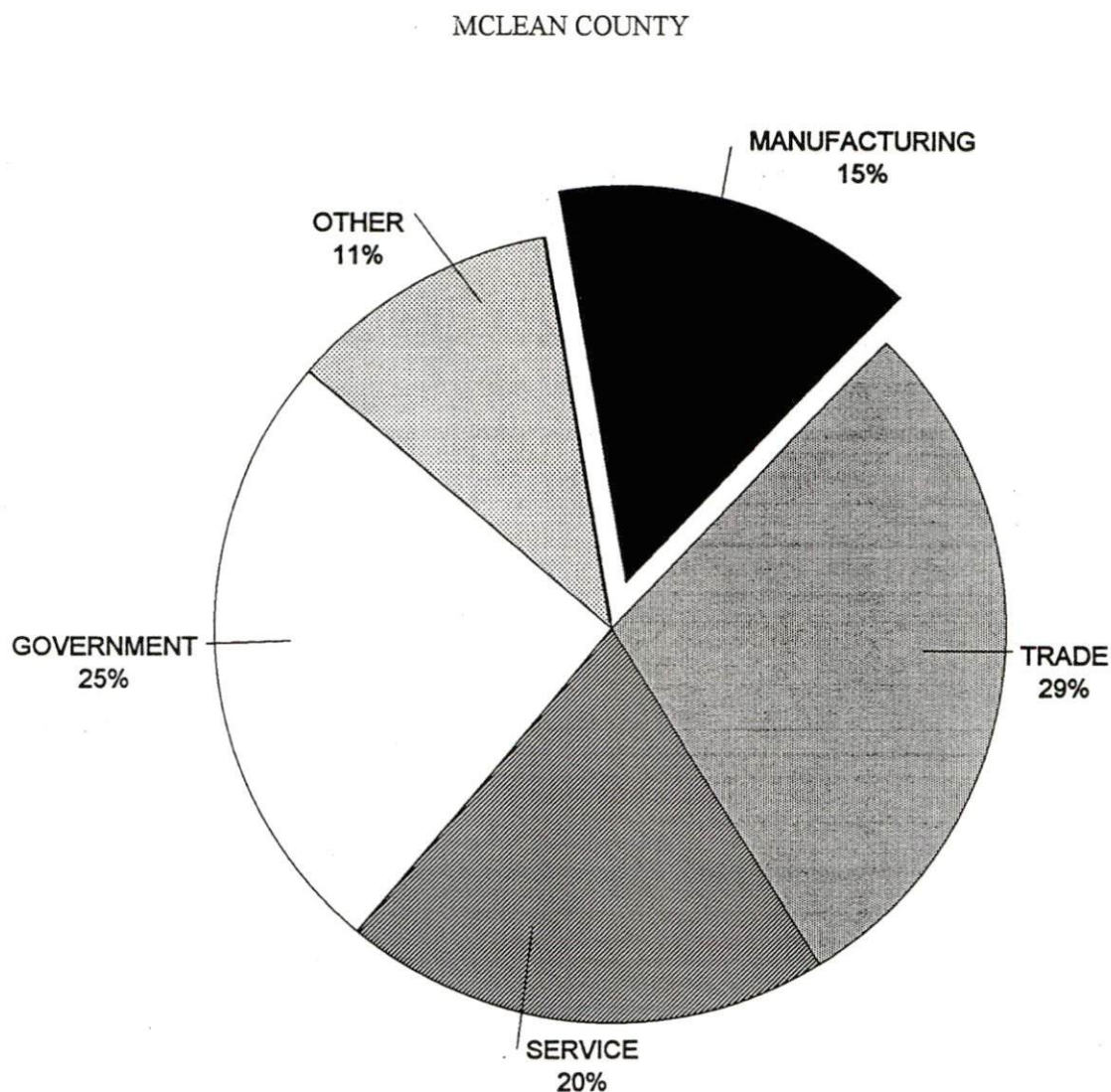


SELECTED COMPONENTS OF NONAGRICULTURAL EMPLOYMENT  
BY PLACE OF WORK, 1994

	<u>McLean County</u>	<u>Labor Market Area</u>
All Industries (total)	1,536	94,866
Manufacturing	229	19,366
Wholesale & Retail Trade	444	22,540
Services	302	21,208
State/Local Government	390	13,754
Contract Construction	40	4,511

**Note:** Excludes domestic workers, railway workers, certain nonprofit corporations, majority of federal government workers, and self-employed workers.

**Source:** Kentucky Cabinet for Human Resources, Average Monthly Workers Covered by Kentucky Unemployment Insurance Law, 1994.



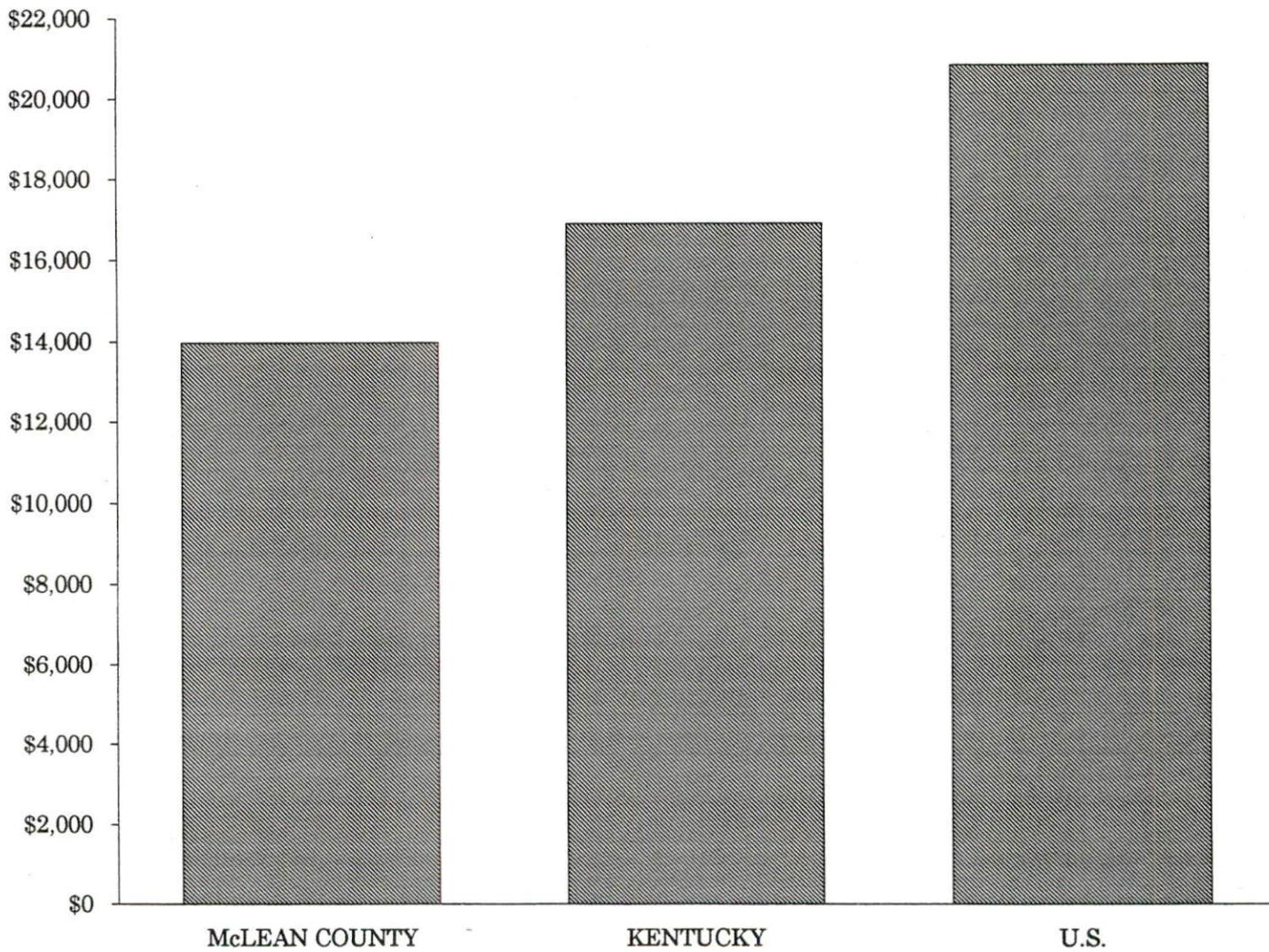


# PER CAPITA PERSONAL INCOME

<u>Area</u>	<u>1989</u>	<u>1993</u>	<u>Percent Change</u>
McLean County	\$12,401	\$13,971	12.7
Labor Market Area Range	\$10,676 - \$15,011	\$12,673 - 17,461	-
Kentucky	\$13,756	\$16,889	22.8
U.S.	\$17,690	\$20,800	17.6

**Source:** U.S. Department of Commerce, Bureau of Economic Analysis, Regional Economic Information System.

## PER CAPITA PERSONAL INCOME 1993



## AVERAGE PLACEMENT WAGES

McLean County is served by the Owensboro local office of the Kentucky Department for Employment Services. The focus of the following data is on job placements made by the Owensboro local office and may therefore be used as an indicator of the wages which employers in the area pay new employees. During the twelve months which ended on June 30, 1995, the local employment office filled 3,112 job openings in various occupational categories. The average hourly wage for selected occupational categories were:

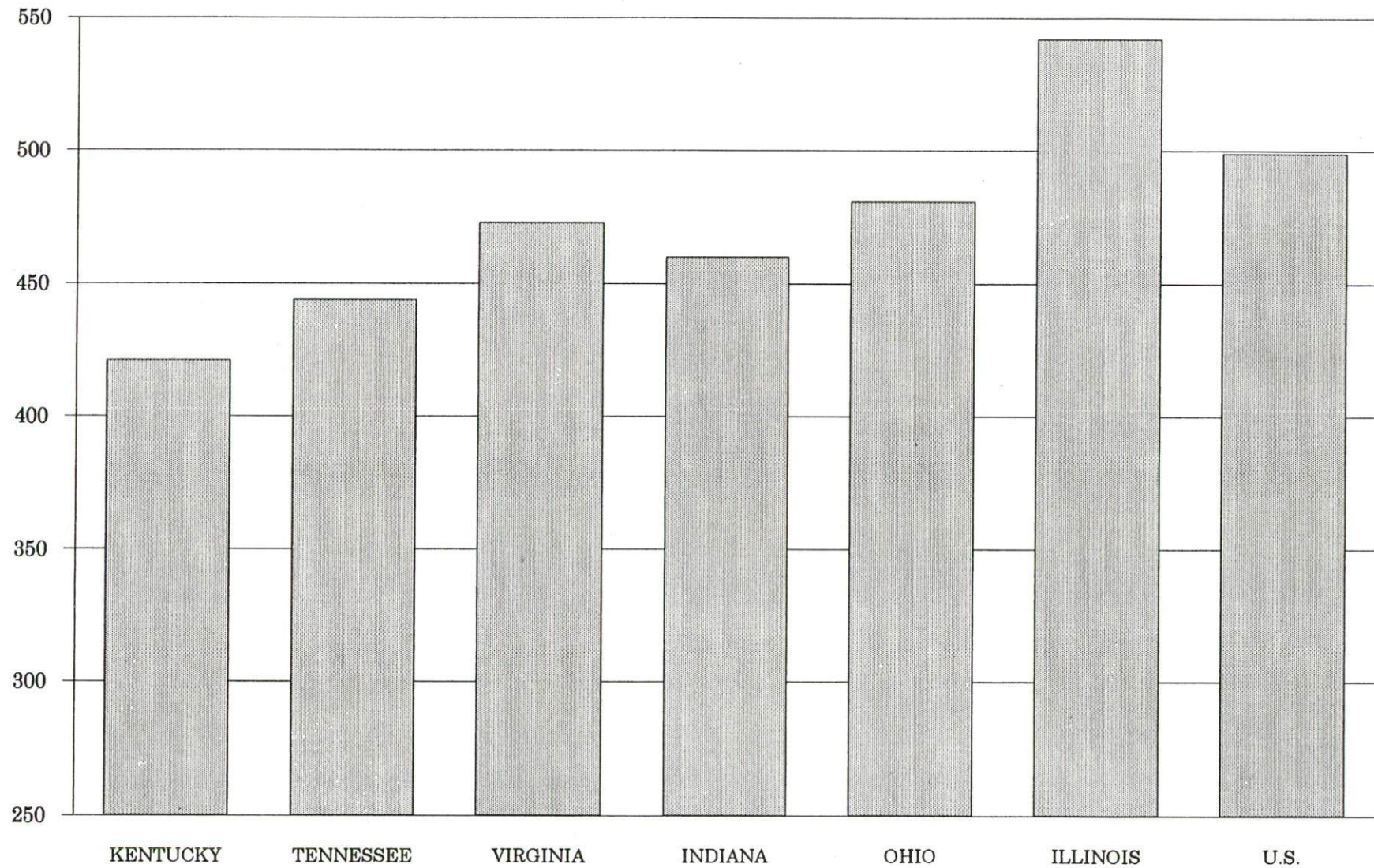
<u>OCCUPATIONAL CATEGORY</u>	<u>NUMBER OF PLACEMENTS</u>	<u>AVERAGE WAGE(\$)</u>
All Occupations	3,112	6.16
Clerical	318	5.27
Sales	75	5.35
Services (excluding domestic)	841	4.78
Agricultural, Fishery, Forestry, etc.	22	5.13
Processing	966	6.59
Machine Trades	169	10.13
Bench Work	131	6.32
Structural	184	6.93
Motor Freight/ Transportation	68	6.54
Packaging and Materials Handling	279	6.75
Other	4	8.06

The Owensboro local office also serves Daviess, Hancock, and Ohio Counties. The above occupational categories are taken from the Dictionary of Occupational Titles published by the U.S. Department of Labor.

**Source:** Kentucky Cabinet for Human Resources, Department for Employment Services.



**AVERAGE WEEKLY WAGES OF WORKERS COVERED BY  
UNEMPLOYMENT INSURANCE - 1993**





AVERAGE WEEKLY WAGES BY INDUSTRY  
BY PLACE OF WORK, 1993\*

	<u>McLean County</u>	<u>Kentucky (Statewide)</u>	<u>Tennessee</u>	<u>Virginia</u>
All Industries	\$293.36	\$421.30	\$444.00	\$473.00
Mining & Quarrying	N/A	691.01	605.00	684.00
Contract Construction	255.36	440.47	467.00	464.00
Manufacturing	309.20	541.18	522.00	543.00
Transportation, Communications & Public Utilities	544.57	567.94	572.00	648.00
Wholesale & Retail Trade	248.90	287.24	N/A	N/A
Finance, Insurance & Real Estate	375.42	449.89	495.00	523.00
Services	241.60	350.41	394.00	455.00
State/Local Government	344.84	413.84	N/A	N/A
	<u>Indiana</u>	<u>Ohio</u>	<u>Illinois</u>	<u>U. S.</u>
All Industries	\$460.00	\$481.00	\$542.00	\$499.00
Mining & Quarrying	757.00	645.00	738.00	816.00
Contract Construction	509.00	534.00	658.00	530.00
Manufacturing	629.00	670.00	667.00	623.00
Transportation, Communications & Public Utilities	561.00	600.00	682.00	643.00
Wholesale & Retail Trade	N/A	N/A	N/A	N/A
Finance, Insurance & Real Estate	527.00	568.00	748.00	693.00
Services	391.00	422.00	494.00	475.00
State/Local Government	N/A	N/A	N/A	N/A

\* Wages for U.S. and surrounding states rounded to nearest dollar.

N/A Not Available.

**Note:** The average weekly wage for each category includes the salaries and wages of all persons working for that type business. For example, the manufacturing category includes both production workers and administrative personnel. Excludes domestic workers, railway workers, certain nonprofit corporations, majority of federal government workers, and self-employed workers.

**Sources:** Kentucky Cabinet for Human Resources, Average Weekly Wages of Workers Covered by Kentucky Unemployment Insurance Law, 1993. U.S. Department of Labor, Bureau of Labor Statistics, Employment and Wages, Annual Averages, 1993, October, 1994.

## EXISTING INDUSTRY

### MCLEAN COUNTY MANUFACTURING FIRMS, THEIR PRODUCTS AND EMPLOYMENT

<u>Firm</u> <u>(Establishment date)</u>	<u>Product</u>	<u>1995</u> <u>Average Employment</u>
<b>Calhoun</b>		
Abrasion Control Systems (1987)	Abrasion resistant linings for ceramics, epoxies, and plastics	2
Brackett Vaults, Inc. (1985)	Burial vaults	7
McLean County News (1884)	Newspaper	7
Quest Apparel Ltd. (1993)	Denim casual and work jackets	57
River Valley Foods (1994)	Tomatoes (juice, diced, whole peeled)	150
<b>Livermore</b>		
A & S Fabricating Company (1969)	Metal fabrication, structural steel, machine shop	65
Advanced Drainage Systems, Inc. (1977)	Corrugated plastic pipe and fittings	40
Geary Brothers Lumber Company (1984)	Crossties, mining timbers, oak grade lumber	34
Livermore Industrial Plating (1976)	Industrial plating	13
James A. Logsdon Lumber Company (1946)	Rough lumber, crossties	4
Re-Tek (1995)	Rubber recycling, extrusion	20
Twin Rivers, Inc. (1992)	Upholstery and casegood items	45

**Sources:** Kentucky Cabinet for Economic Development, Division of Research. McLean County Chamber of Commerce.

## RECENT INDUSTRIAL DEVELOPMENTS

Hudson Foods recently purchased 274 acres in the Robards-Sebree area to construct a poultry processing plant and an adjacent protein rendering plant. A feed mill will be built on 120 acres just north of Sebree and a hatchery built on 45 acres in Beech Grove (McLean County). Total initial investment will be over \$60 million (this excludes nearly \$72 million in investment by area farmers for construction of chicken houses, growers fee of \$20 million, and purchasing of corn from area farmers of \$45 million per year). Start-up is planned for July 1996 with employment expected to reach 1,200 to 1,500 in five years.

Sextet Coal Mining will begin operation in the summer of 1996 in Island, Kentucky. Initial employment is expected to reach 300 employees.

Perdue Farms recently acquired Bungee Grain Elevator in Livermore, Kentucky. Employment will increase from eight to twenty-eight following construction of a feed mill to be completed in 1996 and consists of grain operations, scheduling, and delivery. The operation helps support the Ohio County plant where 400 employees were recently hired for poultry processing and another 400 are expected to be hired.

An industrial site in Beech Grove has recently become available for sale off Kentucky Highway 56. The area consists of five-acre tracts up to 150 acres and is within a few miles access to both the Pennyrite and Audubon Parkways.

Mespar Systems of Kentucky, will begin operation in mid 1996 with a capital investment of \$4.0 million. Mespar is a high-tech industry that utilizes an environmental desalination process to recycle aluminum byproducts for the aluminum industry. Employment is expected to reach 50 employees.

## MAJOR NON-MANUFACTURING FIRMS

<u>Firm</u>	<u>Type of Organization</u>	<u>1995 Average Employment</u>
McLean County Board of Education	School system	220
Reulett Enterprises	Food marts, grocery chain, gasoline stations	90
Ward Implement	Agricultural equipment	27
Winn Construction	Contract construction	24

## LABOR ORGANIZATIONS IN MANUFACTURING FIRMS

There are no unions representing manufacturing workers in McLean County at the present time.



## SELECTED INDUSTRIAL SERVICES

---

<u>Types of Services</u>	<u>Location</u>	<u>Mileage from Calhoun</u>
Custom Plastics Producers	Owensboro, Kentucky	21
Electric Motor Repair	Owensboro, Kentucky	21
Heat Treating Facilities	Evansville, Indiana	55
Industrial Waste Removal	Calhoun, Kentucky	-
Machine Shops, Tool & Die	Livermore, Kentucky	10
Metal Castings	Owensboro, Kentucky	21
Metal Finishers	Livermore, Kentucky	10
Metal Service Centers	Owensboro, Kentucky	21
Millwrights & Riggers	Owensboro, Kentucky	21

---

**Source:** Kentucky Cabinet for Economic Development, Division of Research.

## TRANSPORTATION

### Highways

Major highways serving McLean County are U.S. Highway 431 and Kentucky Route 81. U.S. 431 is a "AAA"-rated (80,000-pound gross load limit) trucking highway. Kentucky Route 81 is a "AAA"-rated trucking highway north of Calhoun and a "AA"-rated (62,000-pound gross load limit) trucking highway south of Calhoun. The Pennyrite Parkway, 14 miles west of Calhoun; the Audubon Parkway, 19 miles north of Calhoun; the Western Kentucky Parkway, 26 miles south of Calhoun; and the William H. Natcher Parkway, 27 miles east of Calhoun, provide McLean County with excellent multi-lane highway accessibility.

Construction on the Green River Bridge project on Kentucky 81 in Calhoun will begin in 1996. A route realignment of Kentucky 85 to bypass Island will begin in 1996 as well as replacement of the wooden bridge. Improvements are also planned for Kentucky 136 and 138. All projects are part of the McLean County six-year plan.

#### HIGHWAY MILES FROM CALHOUN, KENTUCKY, TO SELECTED MARKET CENTERS

City	Highway Miles	City	Highway Miles
Atlanta, GA	380	Los Angeles, CA	2,035
Baltimore, MD	725	Louisville, KY	125
Birmingham, AL	331	Nashville, TN	142
Chicago, IL	346	New Orleans, LA	650
Cincinnati, OH	228	New York, NY	885
Cleveland, OH	473	Pittsburgh, PA	515
Detroit, MI	471	St. Louis, MO	222
Knoxville, TN	283		

**Note:** Mileage computations are via the best interstate or primary highways, not necessarily the most direct route of travel.

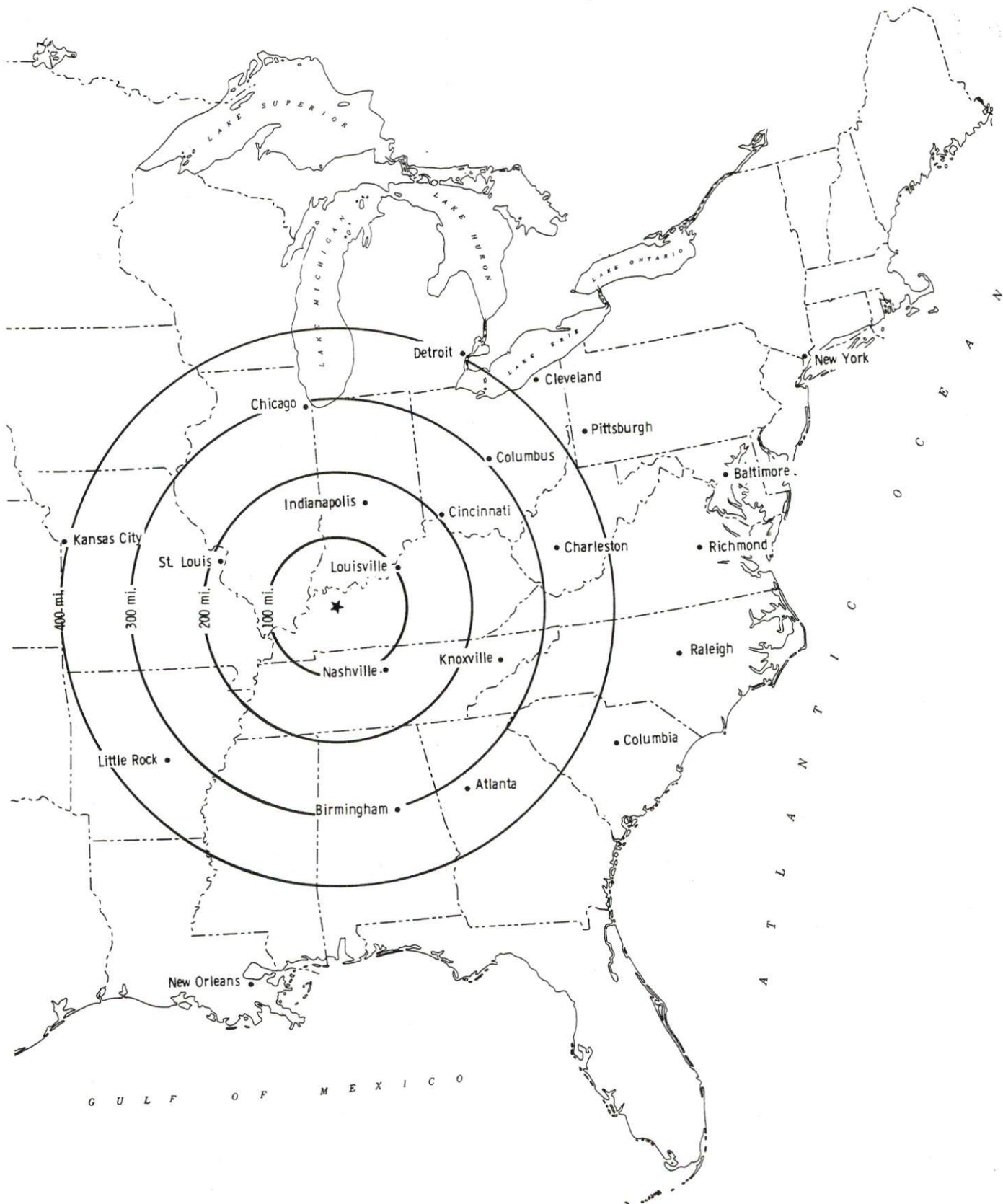
**Sources:** Rand McNally Standard Highway Mileage Guide, 1990. Official Kentucky Mileage Map, 1988.

### Truck Service

Fourteen common carrier trucking companies provide interstate and/or intrastate service to McLean County.

**Source:** American Motor Carrier Directory, Fall 1995.

## Selected Market Centers





## Rail

CSX Transportation provides branch line rail service to Island and to a point less than one mile south of Livermore. Calhoun is not directly served by rail. The nearest intermodal facilities are available in Owensboro, Kentucky, 21 miles northeast of Calhoun.

For details on routing, schedules, rates, and services contact:

Manager  
Industrial Development  
CSX Transportation  
9420 Bunsen Parkway  
Suite 212  
Louisville, Kentucky 40220  
(502) 499-3025

## Air

### Nearest Airport

Location:	Owensboro-Daviess County Regional Airport 2 miles west of Owensboro; 19 miles north of Calhoun
Runways:	2 paved
Length:	6,500 feet; 3,700 feet
Traffic	
Control:	Control tower, ground control, ILS
Lighting:	Beacon, runway, wind sock, obstruction, and taxi lights
Fixed Base	
Operations:	Million-Air-Owensboro, Singleton Aviation, Owensboro Aviation
Services:	100LL and jet-A fuels, storage; hangar; tie-downs; major A & P repairs; general flying services; taxi, rental cars; snack bar; direct line to motel; Avionics; terminal lounge
Air Services:	American Eagle, Northwest Airlink
Daily Arrivals & Departures:	12
Air Freight Service:	Air carriers accept air freight on space available basis

#### Nearest Scheduled Commercial Airline Service

Location:	Evansville Regional Airport 3 miles north of Evansville, Indiana; 58 miles northwest of Calhoun
Air Service:	ASA, Chicago Express, ComAir, American Eagle, Northwest Airlink, TW Express, USAir US Air Express
Daily Arrivals & Departures:	98

#### **Water**

Calhoun and Livermore are located on the banks of the Green River, where a nine-foot navigation channel is maintained to the Ohio River. Commercial barge service is available on the Green River.

The Owensboro Riverport Authority operates a public riverport on the Ohio River at Owensboro, 21 miles north of Calhoun. Available services include direct transfer to and from rail, truck, or barge; over 160,000 square feet of general commodity warehousing, as well as liquid, bulk, and open storage; eight mooring dolphins and tug/fleet service available 24 hours a day; and coal processing and loading. Owensboro is a designated Port of Entry, offering U.S. customs service on a daily basis. The riverport is located on a main line of the CSX rail system and nearby interstate and parkway systems.

The Henderson County Riverport Authority operates a full service port facility on the Ohio River, four miles south of Henderson, 30 miles northwest of Calhoun. The riverport offers both bulk commodity and general cargo handling facilities, as well as warehousing, yard storage, and fully intermodal transportation connections. Unit train to barge transfer facilities include a 180-railcar track storage capacity. A separate coal dock operates on port property.

## UTILITIES

### Electricity

Company serving **Calhoun, Island, Livermore and parts of McLean County** - Kentucky Utilities Company

Source of power - Kentucky Utilities Company

For industrial rates contact:

Economic Development Department  
Kentucky Utilities Company  
One Quality Street  
Lexington, Kentucky 40507  
(606) 255-2100

Company serving **a major portion of McLean County** - Green River Electric Corporation

Source of power - Big Rivers Electric Corporation

For industrial rates contact:

Manager of Economic Development  
Big Rivers Electric Corporation  
P.O. Box 24  
Henderson, Kentucky 42420  
(502) 827-2561

and/or

Green River Electric Corporation  
P.O. Box 1389  
Owensboro, Kentucky 42302  
(502) 926-4141

### Natural Gas

Company serving **Calhoun** - Western Kentucky Gas Company

Source of supply - Texas Gas Transmission Corporation

For rates and supplies contact:

Western Kentucky Gas Company  
2201 New Hartford Road  
P.O. Box 866  
Owensboro, Kentucky 42302-0866  
(502) 685-8069

Company serving **Livermore** - Livermore Utilities

Source of power - Texas Gas Transmission Corporation

For rates and supplies contact:

Livermore Utilities  
P.O. Box 279  
Livermore, Kentucky 42352  
(502) 278-2113

Island is currently not provided natural gas service.



## Public Water Supply

Company serving **Calhoun** - Calhoun Waterworks Department  
P.O. Box 294  
Calhoun, Kentucky 42327  
(502) 273-3092

Source - Green River  
Treatment plant capacity - 1,000,000 gallons per day  
Average daily consumption - 289,000 gallons  
Peak daily consumption - 362,000 gallons  
Storage capacity - 550,000 gallons  
Water pressure - 15 psi to 50 psi

The City of Calhoun is currently erecting a new 500,000-gallon elevated water tank at a cost of \$416,907.

Company serving **Island** - Island Water Department  
P.O. Box 33  
Island, Kentucky 42350  
(502) 486-3992

Source - Wells  
Treatment plant capacity - 230,000 gallons per day  
Average daily consumption - 81,600 gallons  
Peak daily consumption - 96,000 gallons  
Storage capacity - 150,000 gallons  
Water pressure - 60 psi to 80 psi

The City of Island recently completed water plant improvements at a cost of \$47,000.

Company serving **Livermore** - City of Livermore  
P.O. Box 279  
Livermore, Kentucky 42352  
(502) 278-2113

Source - Green River  
Treatment plant capacity - 500,000 gallons per day  
Average daily consumption - 300,000 gallons  
Peak daily consumption - 425,000 gallons  
Storage capacity - 485,000 gallons  
Water pressure - 42 psi to 58 psi

Name of water district - North McLean County Water District  
390 Hickory Hills Drive  
Livermore, Kentucky 42352  
(502) 278-2800

Area served - Northern McLean County  
Source of treated water - Calhoun Water Works, Livermore  
Utilities, West Daviess County Water District  
Amount that can be purchased - 100,000 gallons per day  
for West Daviess County, no specified limit for other companies  
Average daily consumption - 194,900 gallons  
Peak daily consumption - 204,900 gallons  
Storage capacity - 410,000 gallons  
Water pressure - 28 psi to 92 psi

### **Sewerage**

Company serving **Calhoun** - Calhoun Sewer Department  
P.O. Box 294  
Calhoun, Kentucky 42327  
(502) 273-3092

Design capacity - 400,000 gallons per day  
Average daily flow - 110,000 gallons  
Type of treatment - Secondary  
Treated effluent discharged into - Green River

Company serving **Island** - Island Wastewater Department  
P.O. Box 33  
Island, Kentucky 42350  
(502) 486-9967

Design capacity - 128,000 gallons per day  
Average daily flow - Varies  
Type of treatment - Secondary  
Treated effluent discharged into - Green River

Plans are underway to extend sewer lines to Perdue Farms. Cost and completion dates are not yet available.

Company serving **Livermore** - City of Livermore  
P.O. Box 279  
Livermore, Kentucky 42352  
(502) 278-2113

Design capacity - 315,000 gallons per day  
Average daily flow - 200,000 gallons  
Type of treatment - Secondary  
Treated effluent discharged into - Green River

## CLIMATE

### McLean County

#### Temperature

Normal (30-year record)	55.80 degrees
Average annual 1994	57.30 degrees
Record highest, July 1954 (54-year record)	105.00 degrees
Record lowest, February 1951 (54-year record)	-23.00 degrees
Normal heating degree days (30-year record)	4,708
(Heating degree day totals are the sums of negative departures of average daily temperatures from 65 degrees F.)	

#### Precipitation

Normal (54-year record)	43.14 inches
Mean annual snowfall (54-year record)	13.70 inches
Total precipitation 1994	36.75 inches
Mean number days precipitation (.01 inch or more) (54-year record)	115.20
Mean number days thunderstorms (54-year record)	45.00

#### Prevailing Winds (through 1963)

South-Southwest

#### Relative Humidity (33-year record)

1 a.m.	79 percent
7 a.m.	82 percent
1 p.m.	59 percent
7 p.m.	63 percent

**Source:** U.S. Department of Commerce, Environmental Science Services Administration, Climatological Data, 1994. Station of record: Evansville, Indiana.



## **LOCAL GOVERNMENT**

### **Structure**

The Cities of Calhoun and Livermore are each governed by a mayor-city council form of government. The City of Island is served by a mayor-commission form of government. McLean County is governed by a county judge/executive and four magistrates.

### **Planning and Zoning**

Joint agency - McLean County Planning Commission  
Participating cities - Calhoun, Livermore  
Subdivision regulations enforced - All areas  
Mandatory state codes enforced - Kentucky Plumbing Code, National  
Electric Code, Kentucky Boiler Regulations and Standards, Kentucky  
Building Code (modeled after BOCA code)

### **Local Fees and Licenses**

The City of Calhoun levies business license fees ranging from \$25 to \$50 per year for most businesses. Manufacturers pay \$50 annually. Business license fees in Island range from \$3.75 to \$25.50; and in Livermore the fees range from \$6 to \$210. Manufacturing plants in Island and Livermore are assessed \$1 per \$1,000 capital stock. The City of Island also levies an unloading license fee of \$22.50 per year, while the City of Livermore levies an annual unloading license fee of \$18. Auto stickers are \$20 per year in Livermore.

## PROPERTY TAXES

The Kentucky Constitution requires the state to tax all classes of taxable property, and state statutes allow local jurisdictions to tax only a few classes. All locally taxed property is subject to county taxes and school district taxes (either a county school district or an independent school district). Property located inside of city limits may also be subject to city property taxes.

Special local taxing jurisdictions (fire protection districts, watershed districts, and sanitation districts) levy taxes within their operating areas (usually a small portion of community or county).

Property assessments in Kentucky are at 100% fair cash value. Accounts receivable are taxed at 85% of face value.

### **STATE PROPERTY TAX RATES PER \$100 VALUATION**

<u>Selected Classes of Property</u>	<u>1994 State Rate</u>	<u>Local Taxation Permitted</u>
Real Estate	\$0.172	YES
Manufacturing Machinery	0.150	NO
Pollution Control Equipment	0.150	NO
Inventories		
Raw Materials	0.050	NO
Goods in Process	0.050	NO
Finished Goods	0.050	YES
Motor Vehicles	0.450	YES
Other Tangible Personal Property	0.450	YES
Intangibles (Accounts Receivable, Money on Hand)	0.250	NO

### **LOCAL PROPERTY TAX RATES PER \$100 VALUATION, 1994**

<u>Taxing Jurisdiction</u>	<u>Real Estate</u>	<u>Finished Goods &amp; Tangibles</u>	<u>Motor Vehicles</u>
McLean County	\$0.1620	\$0.1812	\$0.1691
School Districts:			
McLean County	0.4050	0.4050	0.5150
Cities:			
Calhoun	0.1840	0.2520	0.1700
Island	0.1510	0.2610	0.1510
Livermore	0.1790	0.1690	0.1770
Other:			
Special (not county-wide)			
Buck Creek Watershed	0.1000	None	None

## EDUCATION

### Public Schools

#### McLean County

Total Enrollment (Fall, 1994)	1,718
Pupil-Teacher Ratio (1993-94)	15.1-1
Percent High School Graduates to College (1993-94)	42.6
Expenditures Per Pupil (1993-94)	\$3,497.09

The McLean County School System recently completed construction of a new middle school and plans to remodel two elementary schools. Total cost of the projects are estimated at \$8.5 million.

### Area Colleges and Universities

<u>Name</u>	<u>Location (Miles from Calhoun)</u>	<u>Enrollment (Fall, 1994)</u>
Brescia College	Owensboro, Kentucky (21)	740
Kentucky Wesleyan College	Owensboro, Kentucky (21)	738
Owensboro Community College	Owensboro, Kentucky (21)	2,552
Madisonville Community College	Madisonville, Kentucky (26)	2,513
Henderson Community College	Henderson, Kentucky (45)	1,240
University of Evansville	Evansville, Indiana (55)	3,306
University of Southern Indiana	Evansville, Indiana (55)	7,443
Western Kentucky University	Bowling Green, Kentucky (71)	14,765



## VOCATIONAL-TECHNICAL TRAINING

Kentucky Tech schools are operated by the Cabinet for Workforce Development and provide secondary (Sec) and postsecondary (P/S) vocational-technical training.

	Location (Mileage from Calhoun)	Number of Program Offerings	Cumulative Enrollment 1994-1995	Approximate Number Completing Long-Term Programs Annually
<u>Kentucky Tech Schools</u>				
Daviess County Regional Technology Center	Owensboro (21)	9	<u>Sec</u> 149 <u>P/S</u> 5,083	43
Owensboro Regional Technology Center	Owensboro (21)	10	<u>Sec</u> 77 <u>P/S</u> 1,746	61
Ohio County Area Technology Center	Hartford (25)	8	<u>Sec</u> 343 <u>P/S</u> 29	81

### Customized Training

The Kentucky Tech system, through its Training and Development Coordinators, will provide technical assistance and will identify and develop low-cost customized training programs and services for both established and prospective businesses. Businesses needing customized training should contact a Training and Development Coordinator located at the Owensboro Regional Technology Center, in Owensboro, Kentucky, (502) 687-7255.

### Assessment Services

Kentucky Tech Career Connections offers to business, education, and government agencies customized assessment in career inventories, interest inventories, pre-hire assessment, psychomotor skills and academic potential. The center also has a Career Connections mobile unit that is available to potential Kentucky Tech students, businesses, and other agencies within McLean County. A Career Connections Assessment Center is located on the Owensboro Regional Technology Center Campus in Owensboro, (502) 686-3234.

### Adult Education Services

Adult education programs are available to adults who want to develop new skills, improve basic skills or earn a high school equivalency diploma. In McLean County adult literacy is provided by the McLean County Literacy Council and adult basic education is provided through the Livermore Community Library.

### Bluegrass State Skills Corporation

The Bluegrass State Skills Corporation, an independent public corporation created and funded by the Kentucky General Assembly, provides programs of skills training to meet the needs of business and industry from entry level to advanced training, and from upgrading present employees to retraining experienced workers.

The Bluegrass State Skills Corporation is a major source for skills training assistance for a new or existing company. The Corporation works in partnership with other employment and job training resources and programs, as well as Kentucky's economic development activities, to package a program customized to meet the specific needs of a company.

## OTHER LOCAL FACILITIES

### Local Medical Personnel

Physicians - 3  
Dentists - 4  
Optometrists - 1

### Hospitals

<u>General Hospital</u>	<u>Location</u>	<u>Beds</u>
McLean County General Hospital	Calhoun	26 (primary skilled nursing beds)

Medical staff - 2 physicians, 1 consulting pathologist, 7 registered nurses, 7 licensed practical nurses

Additional hospitals are located in Owensboro, 21 miles north of Calhoun. The Owensboro-Daviess County Hospital provides 480 beds, and Mercy Hospital maintains 145 beds.

### Other Medical Facilities and Services

Green River Comprehensive Care Center  
Green River District Health Department  
Green River Hospice  
McLean County Ambulance Service  
McLean County Health Center  
McLean County Rural Health Clinic  
McLean County Medical Clinic  
Riverside Manor Nursing Home  
Sunny Acres Nursing Home

### Banks and Savings & Loan Associations

Citizens Deposit Bank (Calhoun)  
Farmers & Merchants Bank (Livermore)  
First Kentucky Federal Savings Bank (Livermore)  
First Security Bank & Trust (Island, Calhoun)  
Great Financial Federal Savings Bank (Calhoun)  
Sacramento Deposit Bank (Sacramento)

### Newspapers

The McLean County News (weekly)

### Telephone Service

BellSouth

McLean County has implemented the enhanced version of the "911" emergency dispatch communications system.



## RECREATION

### Local

A variety of public recreation facilities are available in McLean County. In Calhoun, there are two parks, a playground, two tennis courts, and two lighted baseball diamonds. Myers Creek Park, a 126-acre joint city/county park, offers riding trails and a nature area. Additional areas under construction are a horse arena, livestock complex, and softball and baseball fields. The Island Recreation Committee maintains a miniature park which has a tennis court, a basketball court, a paved multi-use area, playground equipment, a softball field, and picnic tables. Beech Grove Community Park has a lighted ball field and playground. Four tennis courts, a softball field, and a baseball field are available at the McLean County High School.

Livermore's recreational facilities include the Cleat Johnson Memorial Park with picnic areas, a shelter house, tennis courts, baseball diamonds, and playground equipment. Two mini-parks, also in Livermore, contain picnic areas, playgrounds, and basketball courts. The Livermore RV Park on Green River offers camping sites with water/electric hookups, a heated bathhouse, and boat ramp. Additional boat ramps in Livermore provide access to the Green River. Underway is the Livermore Riverfront Park. When complete it will offer nature and walking trails, two picnic shelters, playgrounds, a volleyball court, and a museum located in an old "caboose" depicting life on the railroad and memorabilia. The City has also applied for funding for the "Livermore Historical Bicycle Trail" that will connect the RV Park with the Riverfront Park.

Sacramento hosts the annual civil war "Battle of Sacramento" reenactment in early spring with planned activities and reenactments staged each day of the event. Two tennis courts, two ball fields, and a playground are also available in Sacramento.

The County is home to two privately owned nine-hole golf courses. Royal Cypress Golf is located in Sacramento and Rough River Golf in Livermore.

Windy Hollow Recreation Area and Motor Speedway (NASCAR), ten miles north of Calhoun, features 13 well-stocked lakes, cabins, trailer sites, a restaurant and a country store. The parkland area offers swimming, fishing, picnicking, hiking, playground facilities, miniature golf, and a 250-foot water slide.

The Green and Rough Rivers provide many fishing and boating opportunities throughout McLean County. Fishing is also available at pay lakes near Calhoun. Development of a ten-acre recreational park, including a camping area and marina, is planned along the banks of the Green River.

### Area (Within 45 miles)

**Owensboro**, 21 miles north of Calhoun, is Kentucky's third largest city. Owensboro is a source of many entertainment and recreational facilities associated with larger communities. Points of interest include museums, an orchestra, and three colleges. Several festivals are held annually, including the International Bar-B-Que Festival, the Summer Festival, and the Bluegrass Festival.

**Diamond Lake**, 10 miles north of Calhoun, provides fishing, camping, swimming, and a restaurant.

**Ben Hawes State Park**, 29 miles north of Calhoun near Owensboro, is a 300-acre park which is open year-round. It features a playground, softball field, tennis courts, hiking trails, a picnic area and shelter, 18-hole and nine-hole golf courses, a pro shop, a driving range, and an archery range.

**Lake Malone State Park**, located in southern Muhlenberg County, 44 miles south of Calhoun, offers camping facilities, swimming, fishing, and boating on an 826-acre lake. Playground facilities and picnic shelters are located in a beautiful scenic cliff area. Located across from the entrance to the park is a resort inn featuring luxury rooms, a restaurant, a swimming lake, a beach, boating, fishing, tennis, and nature trails.