

1994

Industrial Resources: Mercer County - Harrodsburg

Kentucky Library Research Collections
Western Kentucky University, spcol@wku.edu

Follow this and additional works at: https://digitalcommons.wku.edu/mercer_cty

 Part of the [Business Administration, Management, and Operations Commons](#), [Growth and Development Commons](#), and the [Infrastructure Commons](#)

Recommended Citation

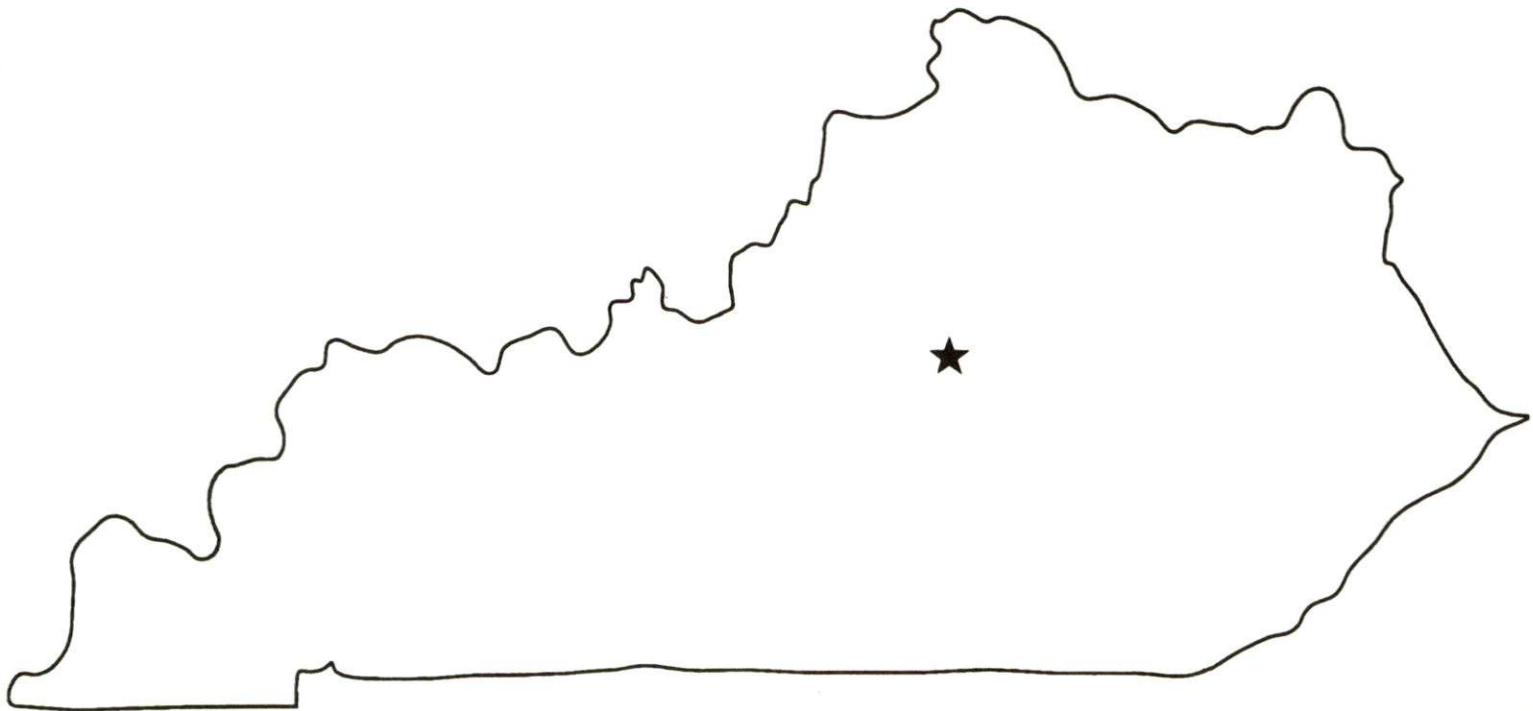
Kentucky Library Research Collections, "Industrial Resources: Mercer County - Harrodsburg" (1994). *Mercer County*. Paper 5.
https://digitalcommons.wku.edu/mercer_cty/5

This Report is brought to you for free and open access by TopSCHOLAR®. It has been accepted for inclusion in Mercer County by an authorized administrator of TopSCHOLAR®. For more information, please contact topscholar@wku.edu.

Kentucky

**Resources For
Economic Development**

Harrodsburg



Prepared by
The Kentucky Cabinet for Economic Development
Division of Research
in cooperation with
Mercer County Chamber of Commerce
and
Harrodsburg/Mercer Development Authority

1994

Division Director - Pamela K. Riley; program manager - Keith Roberts; research - Keith Roberts; clerical - Wanda Sharp; graphics - Robert Owens. Cost of printing paid from state funds.

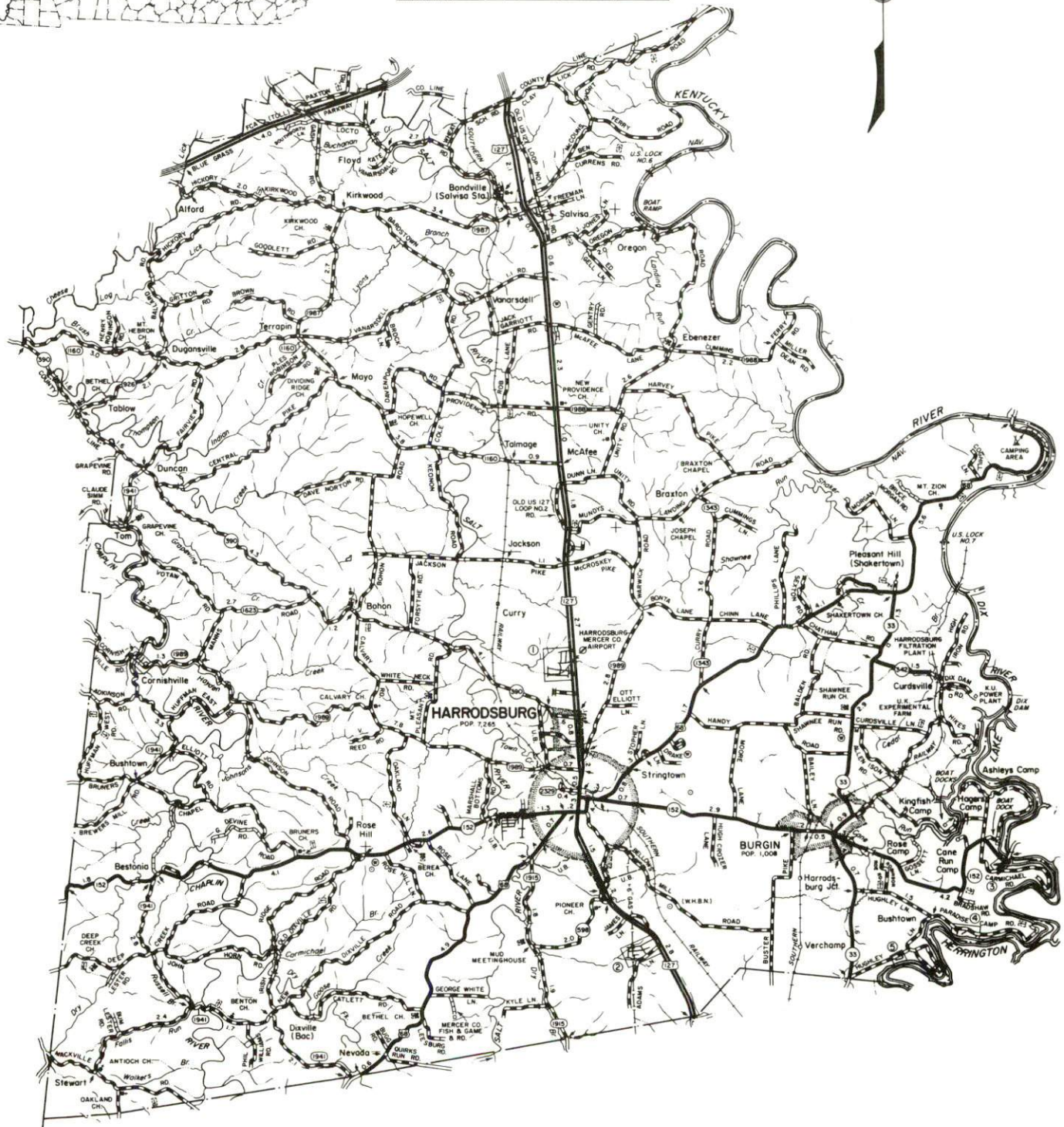
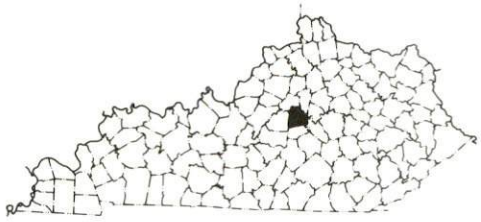
TABLE OF CONTENTS

<u>Chapter</u>	<u>Page</u>
HARRODSBURG, KENTUCKY - A RESOURCE PROFILE	1
THE LABOR MARKET STATISTICS	2
Labor Market Area Map	2
Population	3
Population Projections	3
Estimated Labor Supply	3
Labor Force Characteristics of Residents, 1993	4
Selected Components of Nonagricultural Employment, by Place of Work, 1992	5
Per Capita Personal Income	6
Average Placement Wages	7
Average Weekly Wages of Workers Covered by Unemployment Insurance 1992 - Bar Chart	8
Average Weekly Wages by Industry, by Place of Work, 1992	9
EXISTING INDUSTRY	10
Mercer County Manufacturing Firms, Their Products and Employment	10
Recent Industrial Developments	11
Labor Organizations in Manufacturing Firms	11
Selected Industrial Services	11
TRANSPORTATION	12
Highways	12
Truck Service	12
Selected Market Location Map	13
Rail	14
Air	14
UTILITIES	15
Electricity	15
Natural Gas	15
Public Water Supply	16
Sewerage	16
CLIMATE	17

<u>Chapter</u>	<u>Page</u>
LOCAL GOVERNMENT	18
Structure	18
Planning and Zoning	18
Local Fees and Licenses.....	18
State and Local Property Taxes	19
EDUCATION	20
Public Schools	20
Nonpublic Schools	20
Area Colleges and Universities	20
Vocational Training.....	21
OTHER LOCAL FACILITIES	23
Local Medical Personnel.....	23
Hospitals.....	23
Other Medical Facilities and Services	23
Banks and Savings & Loan Associations	23
Newspapers.....	23
Telephone Service	23
RECREATION	24

GENERAL HIGHWAY MAP MERCER COUNTY KENTUCKY

PREPARED BY THE
KENTUCKY TRANSPORTATION CABINET
DEPARTMENT OF HIGHWAYS
DIVISION OF PLANNING
IN COOPERATION WITH THE
U.S. DEPARTMENT OF TRANSPORTATION
FEDERAL HIGHWAY ADMINISTRATION



HARRODSBURG, KENTUCKY - A RESOURCE PROFILE

Harrodsburg, the county seat of Mercer County, is the oldest permanent English settlement west of the Allegheny Mountains. The city is located 33 miles southwest of Lexington, Kentucky; 74 miles southeast of Louisville, Kentucky; and 111 miles south of Cincinnati, Ohio. In 1992, Harrodsburg had an estimated population of 7,795 persons.

Mercer County, with a land area of 250 square miles, is located in the Bluegrass Region of central Kentucky. The topography of the county is gently rolling to hilly. The 1992 estimated population of Mercer County was 19,511 persons.

The Economic Framework - The total number of Mercer County residents employed in 1993 averaged 9,706. In 1992, manufacturing firms in the county reported 2,273 employees; wholesale and retail trade provided 1,228 jobs; 892 people were employed in service occupations; state and local government accounted for 672 employees; and contract construction firms provided 223 jobs.

Labor Supply - There is a current estimated labor supply of 6,478 persons available for industrial jobs in the labor market area. In addition, from 1994 through 1998, 9,724 young persons in the area will become 18 years of age and potentially available for industrial jobs.

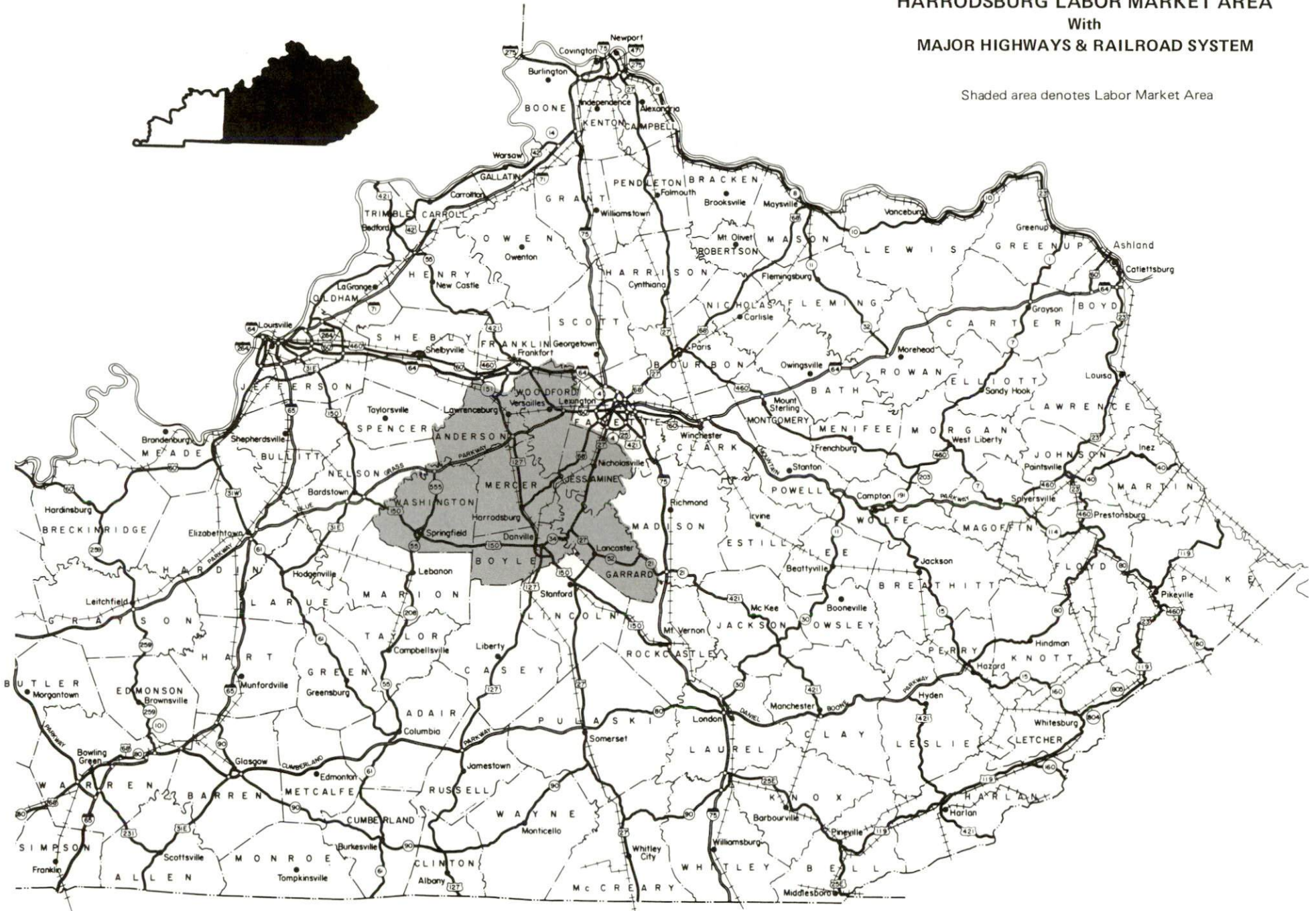
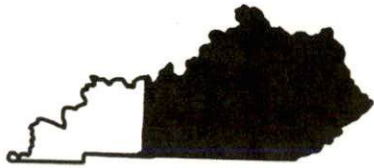
Transportation - Highways serving Harrodsburg include U.S. 68, U.S. 127, and Kentucky 152. The Bluegrass Parkway can be accessed sixteen miles north of Harrodsburg near Lawrenceburg, Kentucky, via U.S. 127; and Interstate 64 is accessible twenty-nine miles north of Harrodsburg via U.S. 127. Twenty-six trucking firms provide intrastate and/or interstate service to Harrodsburg. Rail service is provided by Norfolk Southern Corporation. The nearest local airport is the Danville-Boyle County Airport near Danville, thirteen miles southeast of Harrodsburg. Scheduled commercial air service is available near Lexington at Blue Grass Airport, thirty-two miles northeast of Harrodsburg.

Power and Fuel - Electric power is provided to Harrodsburg and parts of Mercer County by the Kentucky Utilities Company. The remainder of Mercer County is served by the Fox Creek Rural Electric Cooperative Corporation and the Inter-County Rural Electric Cooperative Corporation. Natural gas service is provided by the Western Kentucky Gas Company.

Education - Primary and secondary education is provided to the Harrodsburg area by the Harrodsburg Independent School System and the Mercer County School System. The Harrodsburg Independent School System is accredited by the Southern Association of Colleges and Schools. Eleven colleges and universities are located within fifty miles of Harrodsburg. Vocational training is available locally at the Harrodsburg Area Vocational Education Center and the Central Kentucky State Vocational-Technical School in Lexington, thirty-three miles northeast.

HARRODSBURG LABOR MARKET AREA With MAJOR HIGHWAYS & RAILROAD SYSTEM

Shaded area denotes Labor Market Area



LABOR MARKET STATISTICS

The Harrodsburg Labor Market Area includes Mercer County and the adjoining Kentucky counties of Anderson, Boyle, Garrard, Jessamine, Washington, and Woodford.

POPULATION

	<u>1992*</u>	<u>1990</u>	<u>1980</u>	<u>1970</u>
Labor Market Area	136,922	131,843	122,104	99,228
Harrodsburg	7,795	7,335	7,265	6,741
Mercer County	19,511	19,148	19,011	15,960

* Population estimates.

Source: U.S. Department of Commerce, Bureau of the Census.

POPULATION PROJECTIONS

	<u>1995</u>	<u>2000</u>	<u>2010</u>	<u>2020</u>
Labor Market Area	138,300	143,988	152,383	156,905
Mercer County	19,393	19,518	19,562	19,394

Note: Population projections are from Moderate Growth Series forecast.

Source: University of Louisville, Urban Studies Center, State Data Center.

ESTIMATED LABOR SUPPLY

	<u>Current</u>		<u>Not in Labor Force</u>	<u>Future</u>
	<u>Total</u>	<u>Unemployed</u>		<u>Becoming 18 years of age 1994 thru 1998</u>
Labor Market Area*	6,478	3,796	2,682	9,724
Mercer County	856	714	142	1,420

* Additional workers may be drawn from other nearby counties.

Note: Unemployed - persons unemployed and actively seeking work; Not in Labor Force - represents the number of persons who would enter the labor force if suitable employment were available (based on the assumption that persons in Kentucky would like to participate in the labor force in the same proportion that they do nationally). Underemployed persons (employed only 14 to 26 weeks during the year) are no longer included in labor surplus estimates.

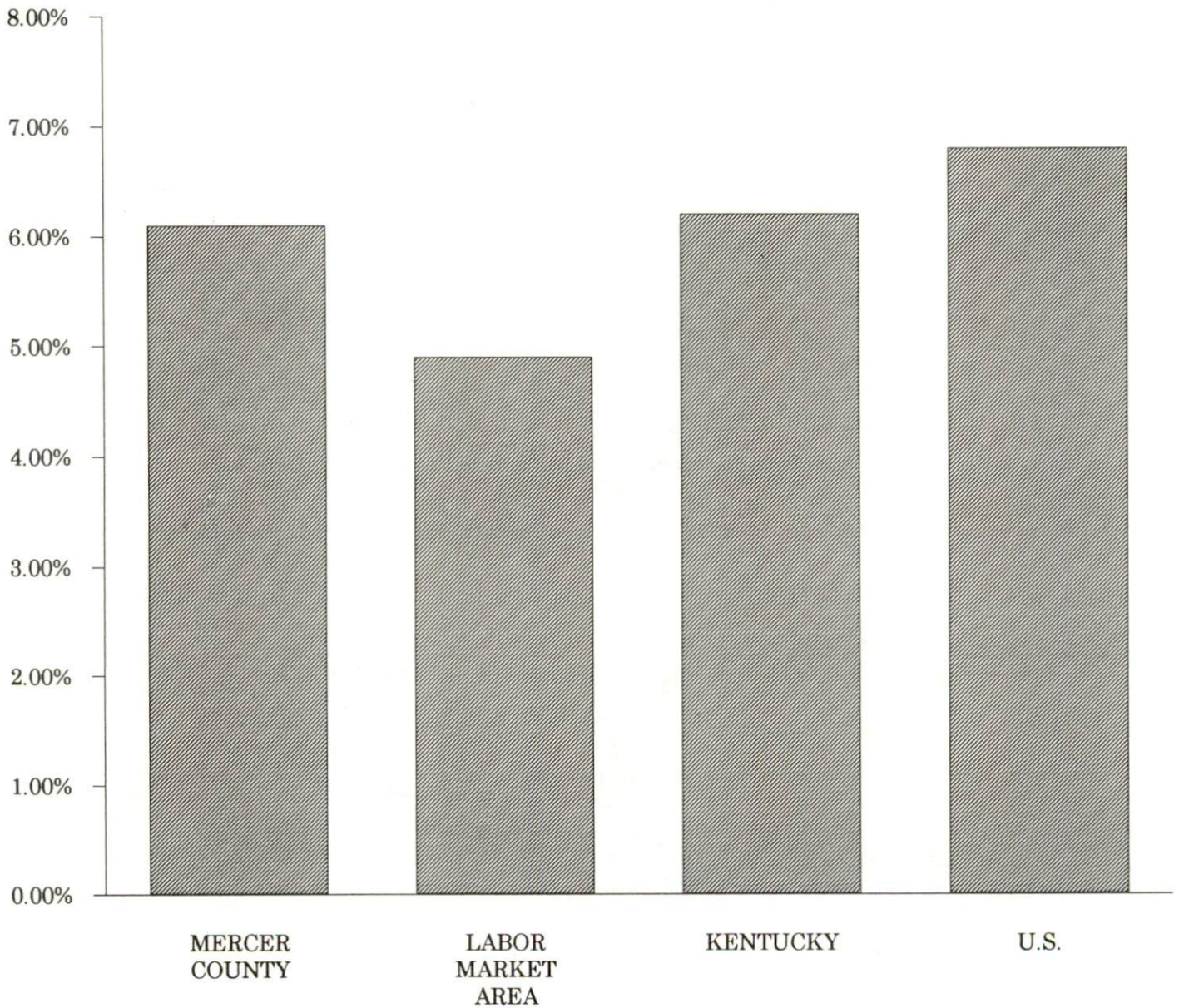
Sources: Kentucky Cabinet for Human Resources, Kentucky Labor Surplus Estimates by County, 1992. Kentucky Cabinet for Economic Development, Future Labor Supply Becoming 18 Years of Age, 1994 thru 1998.

LABOR FORCE CHARACTERISTICS OF RESIDENTS, 1993

	<u>Mercer County</u>	<u>Labor Market Area</u>
Civilian Labor Force	10,340	73,710
Employment	9,706	70,133
Unemployment	634	3,577
Rate of Unemployment (%)	6.1	4.9

Source: Kentucky Cabinet for Human Resources, Kentucky Labor Force Estimates, Annual Averages, 1993.

**UNEMPLOYMENT RATES
1993**

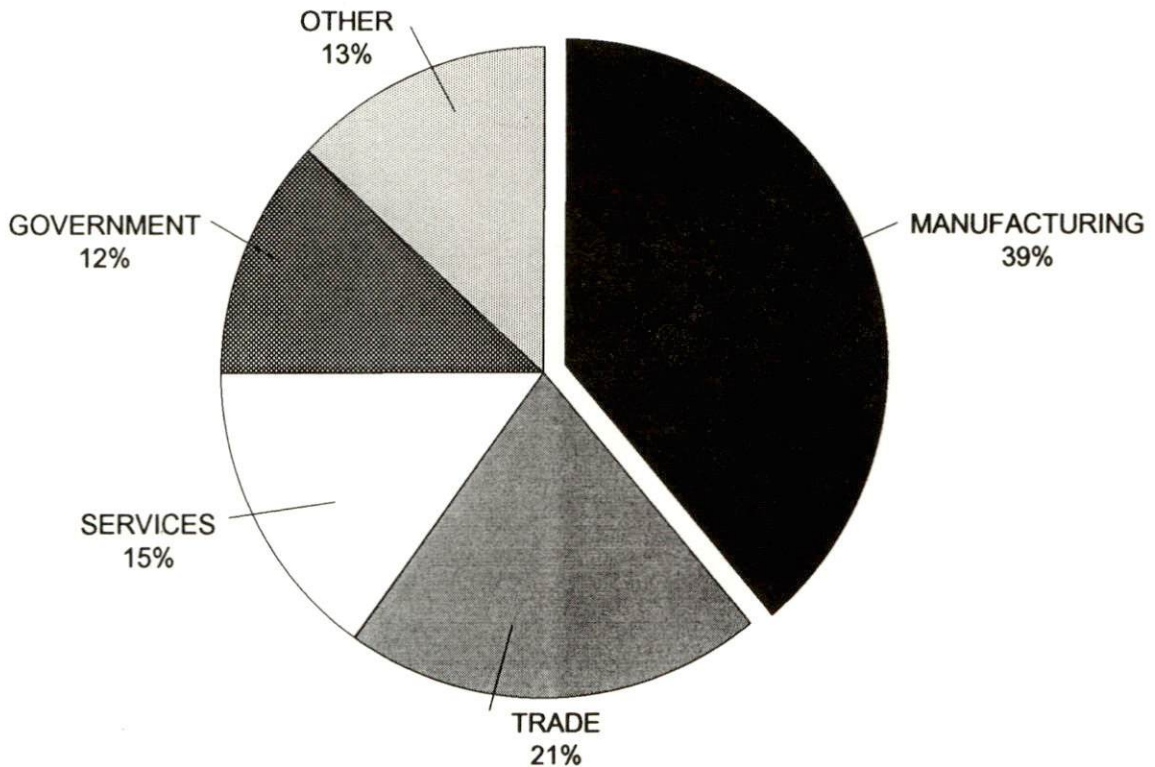


SELECTED COMPONENTS OF NONAGRICULTURAL EMPLOYMENT
BY PLACE OF WORK, 1992

	<u>Mercer County</u>	<u>Labor Market Area</u>
All Industries (total)	5,892	42,678
Manufacturing	2,273	13,170
Wholesale & Retail Trade	1,228	10,146
Services	892	7,159
State/Local Government	672	5,949
Contract Construction	223	2,369

Note: Excludes domestic workers, railway workers, certain nonprofit corporations, majority of federal government workers, and self-employed workers.
Source: Kentucky Cabinet for Human Resources, Average Monthly Workers Covered by Kentucky Unemployment Insurance Law, 1992.

MERCER COUNTY

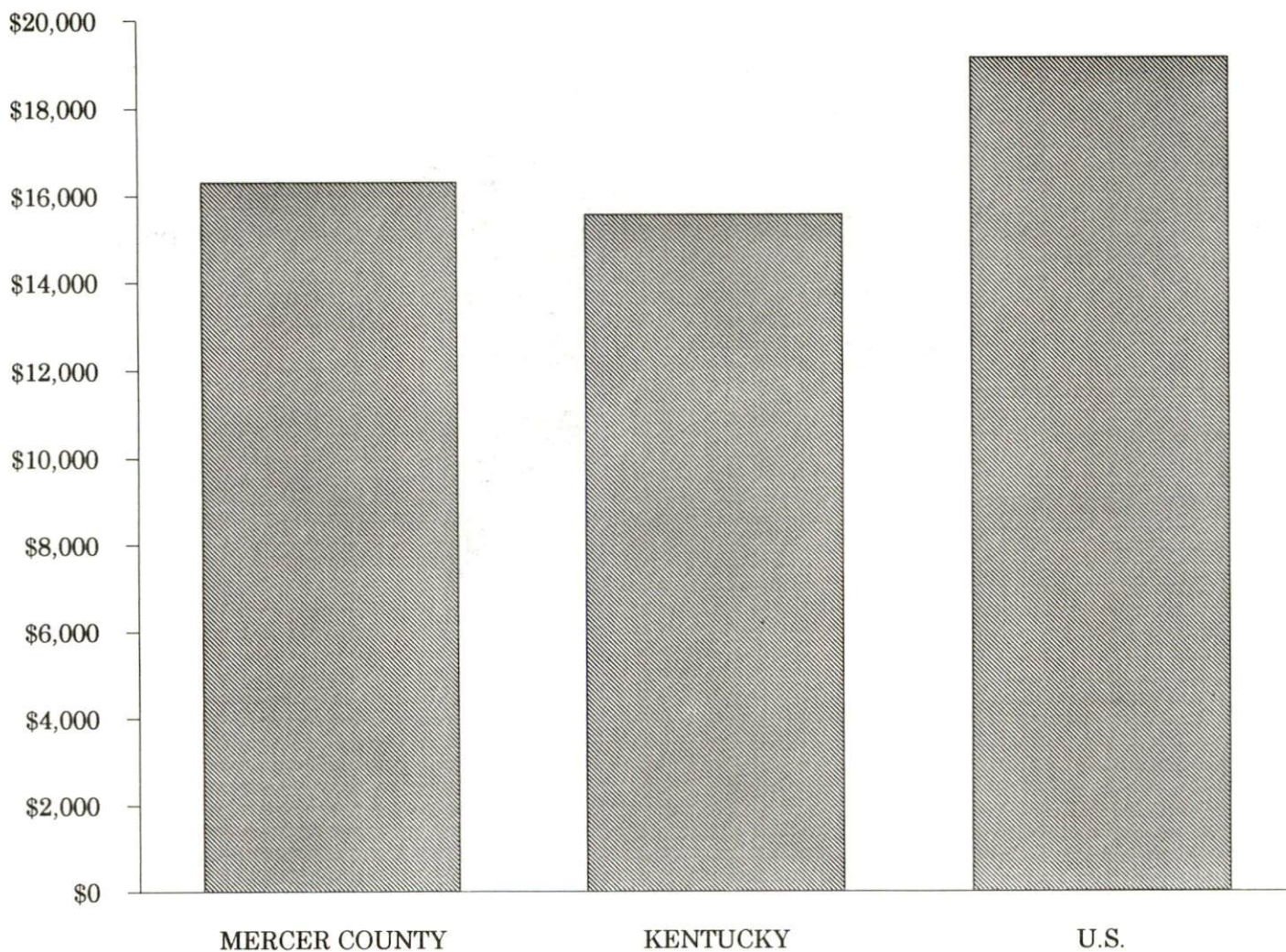


PER CAPITA PERSONAL INCOME

<u>Area</u>	<u>1987</u>	<u>1991</u>	<u>Percent Change</u>
Mercer County	\$12,481	\$16,326	30.8
Labor Market Area Range	\$10,509 - \$19,420	\$13,679 - \$21,893	-
Kentucky	\$12,216	\$15,626	27.9
U.S.	\$15,638	\$19,091	22.0

Source: U.S. Bureau of Economic Analysis, Regional Economic Information System, April 1993.

PER CAPITA PERSONAL INCOME
1991



AVERAGE PLACEMENT WAGES

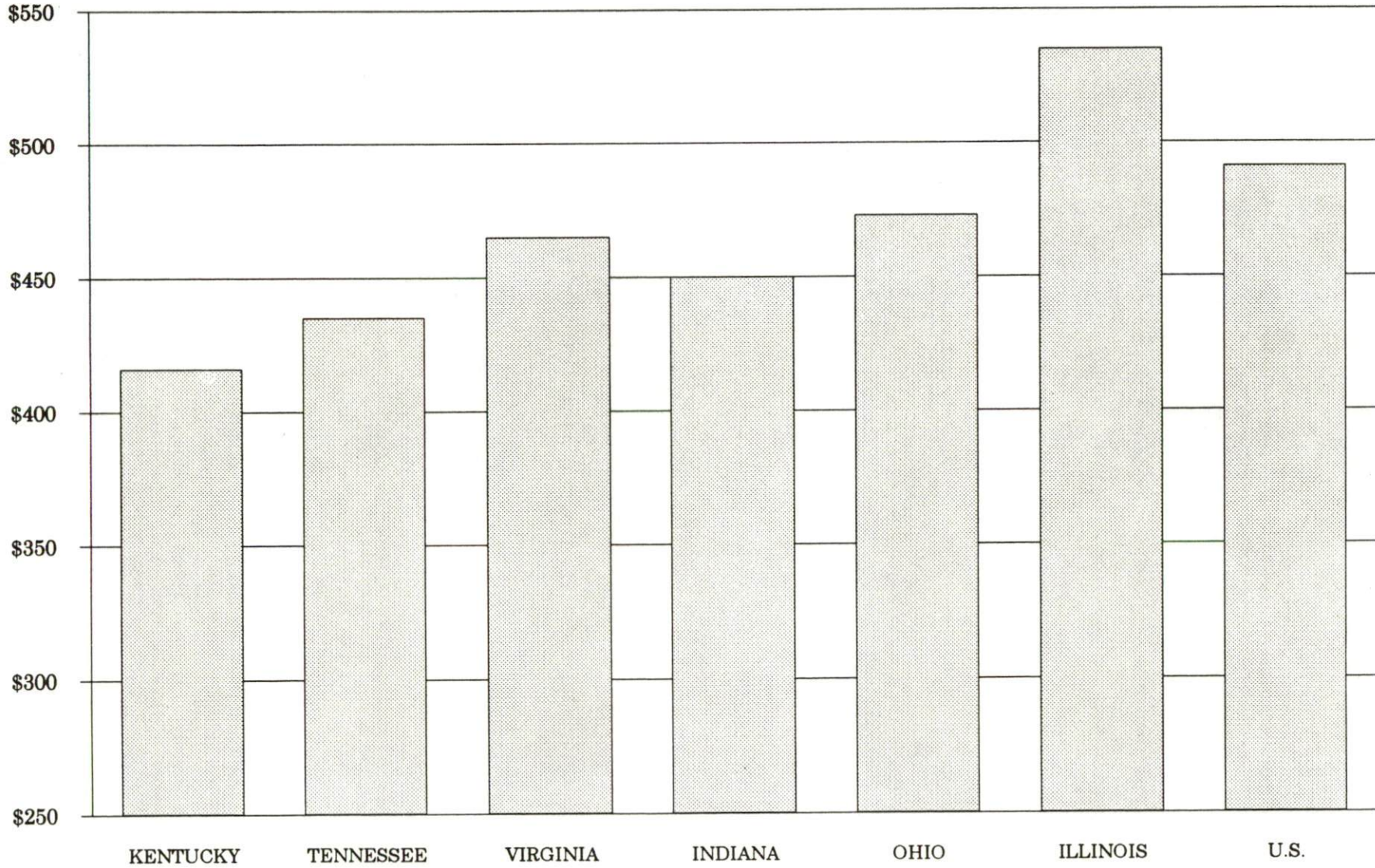
Mercer County is served by the Danville local office of the Kentucky Department for Employment Services. The focus of the following data is on job placements made by the Danville local office and may therefore be used as an indicator of the wages which employers in the area pay new employees. During the twelve months which ended on June 30, 1993, the local employment office filled 1,513 job openings in various occupational categories. The average hourly wage for selected occupational categories were:

<u>OCCUPATIONAL CATEGORY</u>	<u>NUMBER OF PLACEMENTS</u>	<u>AVERAGE WAGE(\$)</u>
All Occupations	1,513	6.02
Clerical	128	5.03
Sales	64	4.72
Services (excluding domestic)	205	4.46
Agricultural, Fishery, Forestry, etc.	27	4.42
Processing	132	6.21
Machine Trades	252	6.68
Bench Work	224	6.33
Structural	200	7.38
Motor Freight/ Transportation	17	5.24
Packaging and Materials Handling	220	8.56

The Danville local office also serves Boyle, Garrard, and Lincoln Counties. The above occupational categories are taken from the Dictionary of Occupational Titles published by the U.S. Department of Labor.

Source: Kentucky Cabinet for Human Resources, Department for Employment Services.

**AVERAGE WEEKLY WAGES OF WORKERS COVERED BY
UNEMPLOYMENT INSURANCE - 1992**



AVERAGE WEEKLY WAGES BY INDUSTRY
BY PLACE OF WORK, 1992*

	Mercer County	Kentucky (State- Wide)	Tennessee	Virginia
All Industries	\$386.19	\$415.94	\$435.00	\$465.00
Mining & Quarrying	N/A	685.48	564.00	690.00
Contract Construction	320.91	431.97	456.00	456.00
Manufacturing	519.38	535.73	510.00	535.00
Transportation, Communications & Public Utilities	615.46	560.84	561.00	637.00
Wholesale & Retail Trade	209.49	282.29	N/A	N/A
Finance, Insurance & Real Estate	414.74	493.68	548.00	576.00
Services	256.45	371.91	419.00	483.00
State/Local Government	373.93	434.01	N/A	N/A
	Indiana	Ohio	Illinois	U. S.
All Industries	\$450.00	\$473.00	\$535.00	\$491.00
Mining & Quarrying	731.00	639.00	787.00	799.00
Contract Construction	504.00	525.00	658.00	527.00
Manufacturing	609.00	653.00	652.00	612.00
Transportation, Communications & Public Utilities	548.00	590.00	674.00	632.00
Wholesale & Retail Trade	N/A	N/A	N/A	N/A
Finance, Insurance & Real Estate	511.00	545.00	728.00	670.00
Services	386.00	419.00	488.00	468.00
State/Local Government	N/A	N/A	N/A	N/A

* Wages for U.S. and surrounding states rounded to nearest dollar.

N/A Not Available.

Note: The average weekly wage for each category includes the salaries and wages of all persons working for that type business. For example, the manufacturing category includes both production workers and administrative personnel. Excludes domestic workers, railway workers, certain nonprofit corporations, majority of federal government workers, and self-employed workers.

Source: Kentucky Cabinet for Human Resources, Average Weekly Wages of Workers Covered by Kentucky Unemployment Insurance Law, 1992. U.S. Department of Labor, Bureau of Labor Statistics, Employment and Wages, Annual Averages, 1992, October 1993.

EXISTING INDUSTRY

MERCER COUNTY MANUFACTURING FIRMS, THEIR PRODUCTS AND EMPLOYMENT

<u>Firm</u> <u>(Establishment date)</u>	<u>Product</u>	<u>1993</u> <u>Average Employment</u>
Harrodsburg		
Bay West Paper Corporation (1990)	Paper towels and tissues	330
Corning Incorporated (1952)	Optical sunglasses, sheet glass, optical & ophthalmic glass	404
Createc Corporation (1986)	Styrofoam packing (EPS)	40
Harrodsburg Herald (1884)	Letterpress & offset printing, newspaper	24
Hitachi Automotive Products (USA), Inc. (1985)	Fuel injection systems, engine control modules, starter motors, alternators	557
Hite Ready Mix (1955)	Ready-mixed concrete	4
Mago Construction Company, Inc. (1966)	Bituminous concrete mixes	6
Mercer Tool & Die (1989)	Jigs, fixtures, dies, gages, machine shop, grinding	4
Sandusky Farm Service (1920)	Feed	4
Signet Systems, Inc. (1969)	Automotive air-conditioning systems	310
Sonoco Products Company (1993)	Cardboard cylinders	5
Trim Masters, Inc. (1988)	Automotive door trim, cloth seat covers, panels	460
Burgin		
Deter Company, Inc. (1984)	Microfoam dust control equipment, microbond surfacants	15
Keystone Brush and Contact, Inc. (1984)	Brushes for electric motors, electrical sliding contacts	72
Resin Tech Corporation (1986)	Epoxy compounds and resins	4

Sources: Kentucky Cabinet for Economic Development, Division of Research; Mercer County Chamber of Commerce.

RECENT INDUSTRIAL DEVELOPMENTS

Trim Masters, Inc. located its corporate headquarters in Harrodsburg during 1992. The headquarters employs 45 persons. Trim Masters, Inc. is also in the process of expanding the Harrodsburg plant. The 40,000-square-foot expansion is expected to be completed in the Fall 1994 and cost approximately \$4.5 million. An additional 100 jobs is expected to be created as a result of the expansion.

LABOR ORGANIZATIONS IN MANUFACTURING FIRMS

<u>Union</u>	<u>Representing workers at:</u>
American Flint Glass Workers of North America	Corning Incorporated

SELECTED INDUSTRIAL SERVICES

<u>Types of Services</u>	<u>Location</u>	<u>Mileage from Harrodsburg</u>
Custom Plastics Producers	Danville, Kentucky	9
Electric Motor Repair	Danville, Kentucky	9
Heat Treating Facilities	Frankfort, Kentucky	33
	Lexington, Kentucky	33
Industrial Waste Removal	Harrodsburg, Kentucky	-
Machine Shops, Tool & Die	Harrodsburg, Kentucky	-
Metal Castings	Cynthiana, Kentucky	67
Metal Finishers	Lexington, Kentucky	33
Metal Service Centers	Junction City, Kentucky	14
Millwrights & Riggers	Nicholasville, Kentucky	25
	Lexington, Kentucky	33

Sources: Kentucky Cabinet for Economic Development, Division of Research.

TRANSPORTATION

Highways

U.S. Highways 68 and 127 are "AAA"-rated (80,000-pound gross load limit) trucking highways serving Harrodsburg. Access to the Bluegrass Parkway is available 16 miles north of Harrodsburg via U.S. 127. Access to Interstate 64 is available 29 miles north via U.S. 127 and 39 miles northeast via U.S. 68. Interstate 75 is also accessible near Lexington, as well as 47 miles southeast of Harrodsburg via U.S. 127 and U.S. 150, also a "AAA"-rated highway. Kentucky Highway 152 is a "AA"-rated (62,000-pound gross load limit) highway serving Harrodsburg.

U.S. Highway 127 was recently upgraded between Harrodsburg and Interstate 64. U.S. 127 is now a four-lane highway from Danville, south of Harrodsburg, to Interstate 64. A U.S. 127 by-pass around downtown Harrodsburg is in the planning stages.

HIGHWAY MILES FROM HARRODSBURG, KENTUCKY, TO SELECTED MARKET CENTERS

City	Highway Miles	City	Highway Miles
Atlanta, GA	358	Los Angeles, CA	2,160
Baltimore, MD	567	Louisville, KY	74
Birmingham, AL	413	Nashville, TN	204
Chicago, IL	361	New Orleans, LA	753
Cincinnati, OH	111	New York, NY	746
Cleveland, OH	351	Pittsburgh, PA	374
Detroit, MI	369	St. Louis, MO	332
Knoxville, TN	163		

Note: Mileage computations are via the best interstate or primary highways, not necessarily the most direct route of travel.

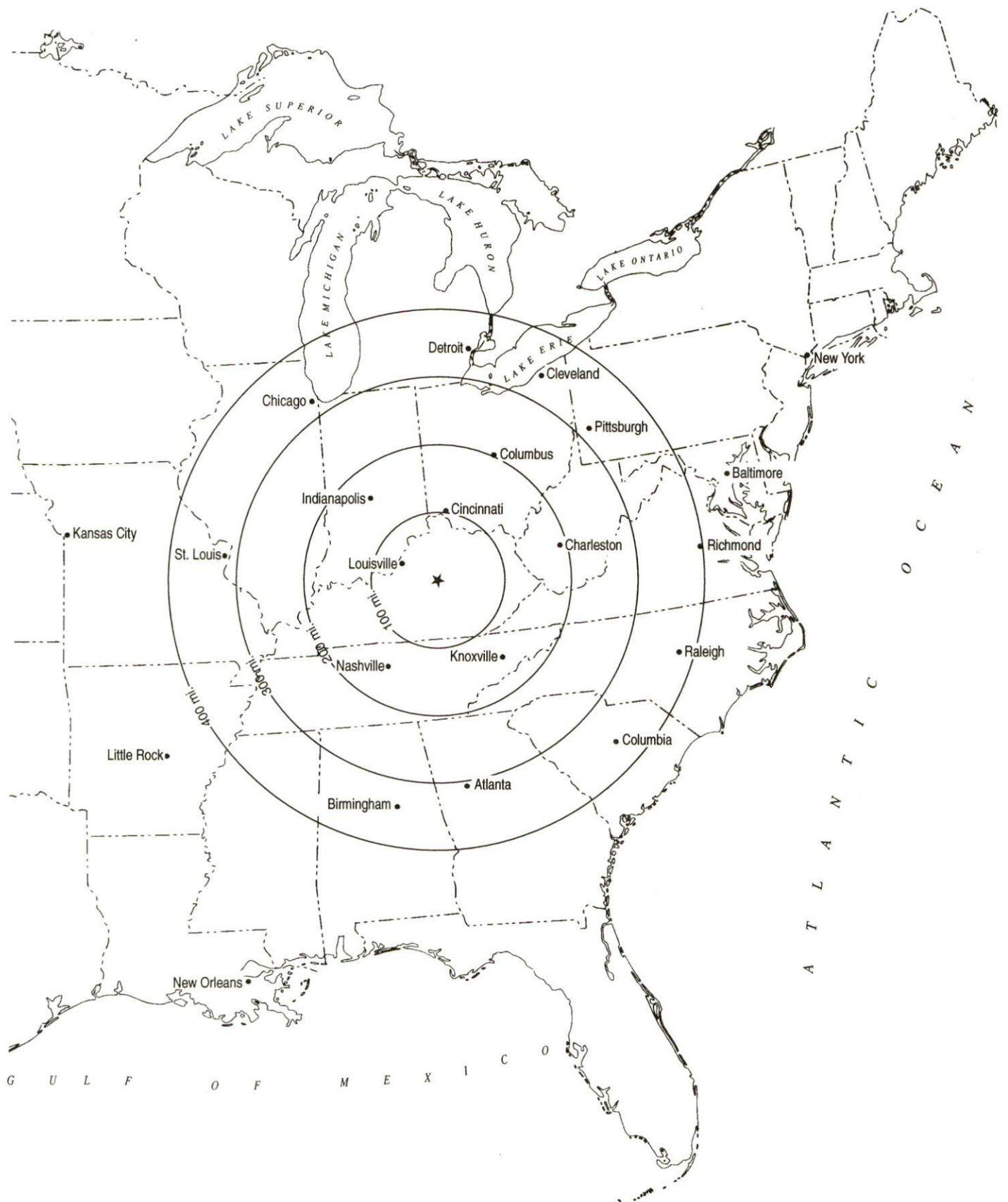
Sources: Rand McNally Standard Highway Mileage Guide, 1990. Official Kentucky Mileage Map, 1985.

Truck Service

Twenty-six trucking companies provide interstate and/or intrastate service to Harrodsburg.

Source: American Motor Carrier Directory, Spring 1994.

Selected Market Centers



Rail

Main line rail service is provided to Harrodsburg by the Norfolk Southern Corporation. The nearest intermodal facilities are located at Georgetown, Kentucky, 50 miles northeast of Harrodsburg.

For details on routing, schedules, rates, and services contact:

Industrial Development Manager
Norfolk Southern Corporation
Industrial Development Department
The Tower Suite 2904
611 Commerce Street
Nashville, Tennessee 37203
(615) 254-3398

Air

Local

Location:	Danville-Boyle County Airport 4 miles south of Danville; 13 miles southeast of Harrodsburg
Runways:	Two paved
Length:	4,800 feet and 2,400 feet
Traffic	
Control:	Wind sock, instrument approach, Unicom 122.8
Lighting:	Rotating beacon, sundown to sunrise; VASI; REILS, medium intensity runway lighting
Services:	100 octane and jet-A fuel; major and minor A & P repairs; hangar; tie-down; flight instruction; car rental
Air Freight Service:	Chartered air freight service must be arranged

Nearest Scheduled Commercial Airline Service

Location:	Blue Grass Airport 4 miles west of Lexington, Kentucky; 32 miles northeast of Harrodsburg
Air Service:	American Eagle, Atlantic Southeast, ComAir, Delta, Northwest AirlinK, TW Express, United Express, USAir
Daily Arrivals & Departures:	120

UTILITIES

Electricity

Company serving Harrodsburg and parts of Mercer County - Kentucky
Utilities Company
Source of power - Kentucky Utilities Company
For industrial rates contact:

Economic Development Department
Kentucky Utilities Company
One Quality Street
Lexington, Kentucky 40507
(606) 255-2100

Company serving parts of Mercer County - Fox Creek Rural Electric
Cooperative Corporation and Inter-County Rural Electric
Cooperative Corporation
Source of power - East Kentucky Power
For industrial rates contact:

Industrial Development Department
East Kentucky Power
P.O. Box 707
Winchester, Kentucky 40392-0707
(606) 744-4812

and/or

Fox Creek Rural Electric Cooperative
Corporation
P.O. Box 150
Lawrenceburg, Kentucky 40342
(502) 839-3442

and/or

Inter-County Rural Electric Cooperative
Corporation
P.O. Box 87
Danville, Kentucky 40423-0087
(606) 236-4561

Natural Gas

Company serving Harrodsburg - Western Kentucky Gas Company
Source of supply - Tennessee Gas Pipeline Company
For rates and supplies contact:

Western Kentucky Gas Company
2401 New Hartford Road
P.O. Box 866
Owensboro, Kentucky 42302-0866
(502) 685-8069

Public Water Supply

Company serving Harrodsburg - Harrodsburg Municipal Water Department
208 South Main Street
Harrodsburg, Kentucky 40330
(606) 734-4971

Source - Kentucky River
Treatment plant capacity - 4,000,000 gallons per day
Average daily consumption - 1,900,000 gallons
Peak daily consumption - 2,900,000 gallons
Storage capacity - 1,900,000 gallons
Water pressure - 25 psi to 100 psi

Sewerage

Company serving Harrodsburg - Harrodsburg Wastewater Treatment Plant
965 Cornishville Road
Harrodsburg, Kentucky 40330
(606) 734-2113

Design capacity - 2,680,000 gallons per day
Average daily flow - 1,000,000 gallons
Type of treatment - Secondary
Treatment effluent discharged into - Town Creek

CLIMATE

Mercer County

Temperature

Normal (30-year record)	54.90 degrees
Average annual 1992	55.10 degrees
Record highest, July 1988 (48-year record)	103.00 degrees
Record lowest, January 1963 (48-year record)	-21.00 degrees
Normal heating degree days (30-year record) (Heating degree day totals are the sums of negative departures of average daily temperatures from 65 degrees F.)	4,814

Precipitation

Normal (30-year record)	45.68 inches
Mean annual snowfall (48-year record)	15.50 inches
Total precipitation 1992	49.09 inches
Mean number days precipitation (.01 inch or more) (48-year record)	129.80
Mean number days thunderstorms (48-year record)	44.70

Prevailing winds (through 1963) South

Relative Humidity (29-year record, except 1 a.m. - 28-year record)

1 a.m.	77 percent
7 a.m.	82 percent
1 p.m.	60 percent
7 p.m.	64 percent

Source: U.S. Department of Commerce, Environmental Science Services Administration, Climatological Data, 1992. Station of record: Lexington, Kentucky.

LOCAL GOVERNMENT

Structure

The City of Harrodsburg is served by a mayor and four commissioners. The mayor serves a four-year term and the commissioners serve two-year terms. Mercer County is served by a county judge/executive and six magistrates. The county judge/executive and magistrates are all elected to four-year terms.

Planning and Zoning

Joint agency - Greater Harrodsburg/Mercer County Planning and Zoning Commission

Participating cities - Harrodsburg

Zoning enforced - All areas of Mercer County, except the city of Burgin

Subdivision regulations enforced - All areas of Mercer County, except the city of Burgin

Local codes enforced - Building codes in all areas except the city of Burgin

Mandatory state codes enforced - Kentucky Plumbing Code, National Electric Code, Kentucky Boiler Regulations and Standards, Kentucky Building Code (modeled after BOCA code)

Local Fees and Licenses

The City of Harrodsburg levies a one percent occupational license tax on wages, salaries, and commissions of individuals and on net profits of businesses operating within the city. The City also levies a business license fee of \$25 per year for businesses operating within the city.

Mercer County levies a 0.75 percent occupational license tax on wages, salaries, and commissions of individuals and on net profits of businesses.

PROPERTY TAXES

The Kentucky Constitution requires the state to tax all classes of taxable property, and state statutes allow local jurisdictions to tax only a few classes. All locally taxed property is subject to county taxes and school district taxes (either a county school district or an independent school district). Property located inside of city limits may also be subject to city property taxes.

Special local taxing jurisdictions (fire protection districts, watershed districts, and sanitation districts) levy taxes within their operating areas (usually a small portion of community or county).

Property assessments in Kentucky are at 100% fair cash value. Accounts receivable are taxed at 85% of face value.

STATE PROPERTY TAX RATES PER \$100 VALUATION

<u>Selected Classes of Property</u>	<u>1993 State Rate</u>	<u>Local Taxation Permitted</u>
Real Estate	\$0.180	YES
Manufacturing Machinery	0.150	NO
Pollution Control Equipment	0.150	NO
Inventories		
Raw Materials	0.050	NO
Goods in Process	0.050	NO
Finished Goods	0.050	YES
Motor Vehicles	0.450	YES
Other Tangible Personal Property	0.450	YES
Intangibles (Accounts Receivable, Money on Hand)	0.250	NO

LOCAL PROPERTY TAX RATES PER \$100 VALUATION, 1993

<u>Taxing Jurisdiction</u>	<u>Real Estate</u>	<u>Finished Goods & Tangibles</u>	<u>Motor Vehicles</u>
Mercer County	\$0.2120	\$0.2295	\$0.1840
School Districts:			
Harrodsburg Independent	0.3710	0.3710	0.5440
Mercer County	0.4660	0.4660	0.3800
Cities:			
Harrodsburg	0.1550	0.2000	0.2300

EDUCATION

Public Schools

	Harrodsburg Independent	Mercer County
Total Enrollment (Fall, 1993)	923	2,040
Accreditation	Southern Association of Colleges and Schools	
Pupil-Teacher Ratio (1992-93)	14.3-1	16.5-1
Percent High School Graduates to College (1992-93)	56.0	51.0
Expenditures Per Pupil (1992-93)	\$3,621.39	\$3,179.00

The Burgin Independent School District also provides primary and secondary education to residents of the city of Burgin.

Nonpublic Schools

<u>School</u>	<u>Enrollment</u>	<u>Grades</u>
Central Kentucky Christian	31	K-6

Area Colleges and Universities

<u>Name</u>	<u>Location (Miles distant)</u>	<u>Enrollment (Fall, 1992)</u>
Centre College	Danville (9)	906
Asbury College	Wilmore (19)	1,138
Saint Catharine College	Springfield (25)	353
Kentucky State University	Frankfort (33)	2,544
Lexington Community College	Lexington (33)	4,862
Transylvania University	Lexington (33)	974
University of Kentucky	Lexington (33)	24,197
Midway College	Midway (39)	798
Berea College	Berea (43)	1,579
Eastern Kentucky University	Richmond (45)	16,866
Georgetown College	Georgetown (48)	1,476

VOCATIONAL-TECHNICAL TRAINING

Kentucky Tech schools are operated by the Cabinet for Workforce Development and provide secondary (Sec) and postsecondary (P/S) vocational-technical training.

<u>Kentucky Tech Schools</u>	<u>Location (Mileage from Harrodsburg)</u>	<u>Number of Program Offerings</u>	<u>Cumulative Enrollment 1992-1993</u>	<u>Approximate Number Completing Programs Annually</u>
Harrodsburg Area Vocational Education Center	Harrodsburg	6	<u>Sec</u> 196 <u>P/S</u> 32	112
Danville School of Health Occupations	Danville (9)	2	<u>Sec</u> 81 <u>P/S</u> 141	87
Central Kentucky State Vocational- Technical School	Lexington (33)	21	<u>P/S</u> 755	240

A five-million-dollar expansion was completed at Kentucky Tech-Central in the fall of 1992. The expansion includes a new manufacturing technology building that houses manufacturing related programs such as machine tool technology, computer aided drafting, electronics and industry electrical technology. A computer-integrated work cell laboratory in one room of the building links all the programs, simulating the operation of an actual manufacturing plant. Applied physics, hydraulics and quality control applications are integrated into the curriculum.

Another room in the new building can be used by business and industry for start-up and new production training.

Moving all manufacturing-related training into one building provided space for Kentucky Tech-Central to add health care programs as part of its expansion. These include medical imaging, medical assisting, bio-medical technician and laboratory technician programs.

Customized Training

The Kentucky Tech system, through its Training and Development Coordinators, will provide technical assistance and will identify and develop low-cost customized training programs and services for both established and prospective businesses. Businesses wanting to establish a customized training program should simply contact a Training and Development Coordinator located on the campus of Kentucky Tech-Central.

Assessment Services

Kentucky Tech Career Connections offers to business, education, and government agencies testing packages for evaluating job applicants, selecting employees for promotional consideration and developing training programs within the organization. A Career Connections Assessment Center is located on the campus of Kentucky Tech-Central.

Tech Prep

Tech Prep is a combined secondary and postsecondary program of studies that leads to an associate degree or diploma in a vocational-technical field. Burgin Independent Schools, Harrodsburg Independent Schools and Mercer County Schools, through the Bluegrass Consortium, are currently in the second-year implementation of a tech prep program in Business, Health, Engineering and Architecture.

Adult Education Services

Adult education programs are available to adults who want to develop new skills, improve basic skills or earn a high school equivalency diploma. In Harrodsburg, adult education and adult literacy programs are provided by the Harrodsburg Adult Learning Center.

Bluegrass State Skills Corporation

The Bluegrass State Skills Corporation, an independent public corporation created and funded by the Kentucky General Assembly, provides programs of skills training to meet the needs of business and industry from entry level to advanced training, and from upgrading present employees to retraining experienced workers.

The Bluegrass State Skills Corporation is a major source for skills training assistance for a new or existing company. The Corporation works in partnership with other employment and job training resources and programs, as well as Kentucky's economic development activities, to package a program customized to meet the specific needs of a company.

OTHER LOCAL FACILITIES

Local Medical Personnel

Physicians - 9
Dentists - 7

Hospitals

<u>General Hospital</u>	<u>Location</u>	<u>Beds</u>
James B. Haggin Memorial Hospital	Harrodsburg	59
Medical staff - 17 active physicians, 20 courtesy physicians, 26 registered nurses, 18 licensed practical nurses		

Other Medical Facilities and Services

Southern Bluegrass Comprehensive Care Center
West Bluegrass District Health Department
Mercer County Ambulance Service
Harrodsburg Health Care Manor

Banks and Savings & Loan Association

PNC Bank
State Bank & Trust Company
The Cumberland
First Federal Savings & Loan Association
Farmers National Bank (Burgin)

Newspapers

Harrodsburg Herald (weekly)

Telephone

South Central Bell

RECREATION

Local

The citizens of Harrodsburg and Mercer County have access to a wide variety of recreational opportunities. The local YMCA manages the five city parks in addition to its own facility, which houses a gymnasium, a co-ed weight room, and offices.

Facilities at Lions Park include the Harrodsburg Community Center, with conference and meeting room areas designed to accommodate over 300 people, and three lighted tennis courts.

Young's Park features a picnic area with tables and grills, a large shelter house that can be rented for group activities, and creative playground. The Salt River Park contains a shelter house and picnic areas.

Sportleigh Field offers baseball and football fields for use by Little League and Babe Ruth teams, and West Lane Park has a soccer field, a lighted softball field, and community meeting rooms. Other public recreational facilities in Harrodsburg include a municipal swimming pool, several tot lots, two tennis courts and three baseball diamonds located at the public schools. Private recreational offerings include several swimming pools and a golf course. A driving range has been recently constructed in Harrodsburg.

The Beaumont Inn is one of Harrodsburg's most famous attractions. The antebellum structure serves as an historic country inn with antique furnishings, modern recreational facilities, a dining room specializing in southern delicacies, and a gift shop.

The Bright Leaf Resort, also a noted local attraction, features a modern 36-hole golf course, a new lighted par-three course, and a health spa on the premises.

Old Fort Harrod State Park is a 28-acre park in Harrodsburg that features a full-scale reproduction of the original Fort Harrod. The park also contains the log cabin where Abraham Lincoln's parents were wed, the Mansion Museum which houses mementos associated with the great periods of Kentucky history, a pioneer cemetery, and a federal monument dedicated to pioneers. The "Legend of Daniel Boone" is an excellent outdoor drama which is performed at the Old Fort Amphitheater during the summer months.

Herrington Lake, near Harrodsburg, was developed by the Kentucky Utilities Company in 1925. Dix River Dam near Pleasant Hill is located on the 3,600-acre lake. Fishing, boating, and swimming can all be enjoyed on the lake. Camping and fishing facilities are available near Harrodsburg.

Pleasant Hill, a restored Shaker Village located seven miles northeast of Harrodsburg, is a National Historic Landmark. Over 20 buildings and grounds have been restored to display unique Shaker skills in furniture making, crafts, and architecture. Dining rooms, lodging, craft shops, and seasonal festivals and plays are offered. Pleasant Hill recently acquired an additional 16,000 acres which will be developed into a recreated Shaker Farm. The West Lot Conference Center and West Family Wash House meeting facility offer an ideal setting for workshops, retreats, and seminars. Services provided include meeting and reception set-up, audiovisual equipment, and coordination of leisure activities.

Plans have been made to construct a new park and recreation complex on a 100-acre tract on U.S. 127 near Harrodsburg. Phase I will consist of construction of baseball and softball fields, tennis courts, football and soccer fields, shelter houses, and a walking and exercise trail. Phase II construction will consist of a multi-purpose building and other additional facilities.

Area (Within 60 miles)

Constitution Square State Historic Site
Perryville Battlefield State Historic Site
Lincoln Homestead State Park
Waveland State Historic Site
The Kentucky Horse Park
My Old Kentucky Home State Park
White Hall State Historic Site
Green River Lake State Park
Fort Boonesborough State Park