

1993

Industrial Resources: Henderson County - Henderson

Kentucky Library Research Collection
Western Kentucky University, spcol@wku.edu

Follow this and additional works at: https://digitalcommons.wku.edu/henderson_cty



Part of the [Business Administration, Management, and Operations Commons](#), [Growth and Development Commons](#), and the [Infrastructure Commons](#)

Recommended Citation

Kentucky Library Research Collection, "Industrial Resources: Henderson County - Henderson" (1993). *Henderson County*. Paper 25.
https://digitalcommons.wku.edu/henderson_cty/25

This Report is brought to you for free and open access by TopSCHOLAR®. It has been accepted for inclusion in Henderson County by an authorized administrator of TopSCHOLAR®. For more information, please contact topscholar@wku.edu.

Handerson

Resources for Economic Development

Handerson



KENTUCKY

RESOURCES FOR ECONOMIC DEVELOPMENT

HENDERSON, KENTUCKY

Prepared by
The Kentucky Cabinet for Economic Development
Division of Research
in cooperation with
The Henderson Area Economic Development Council

1993

Division Director - Pamela K. Riley; program manager - Keith Roberts; research - Barry K. Holder, Jr.; clerical - Wanda Sharp; graphics - Robert Owens, Pat Coleman; cartography - Edwin Scott, Dave Clark. Cost of printing paid from state funds.

TABLE OF CONTENTS

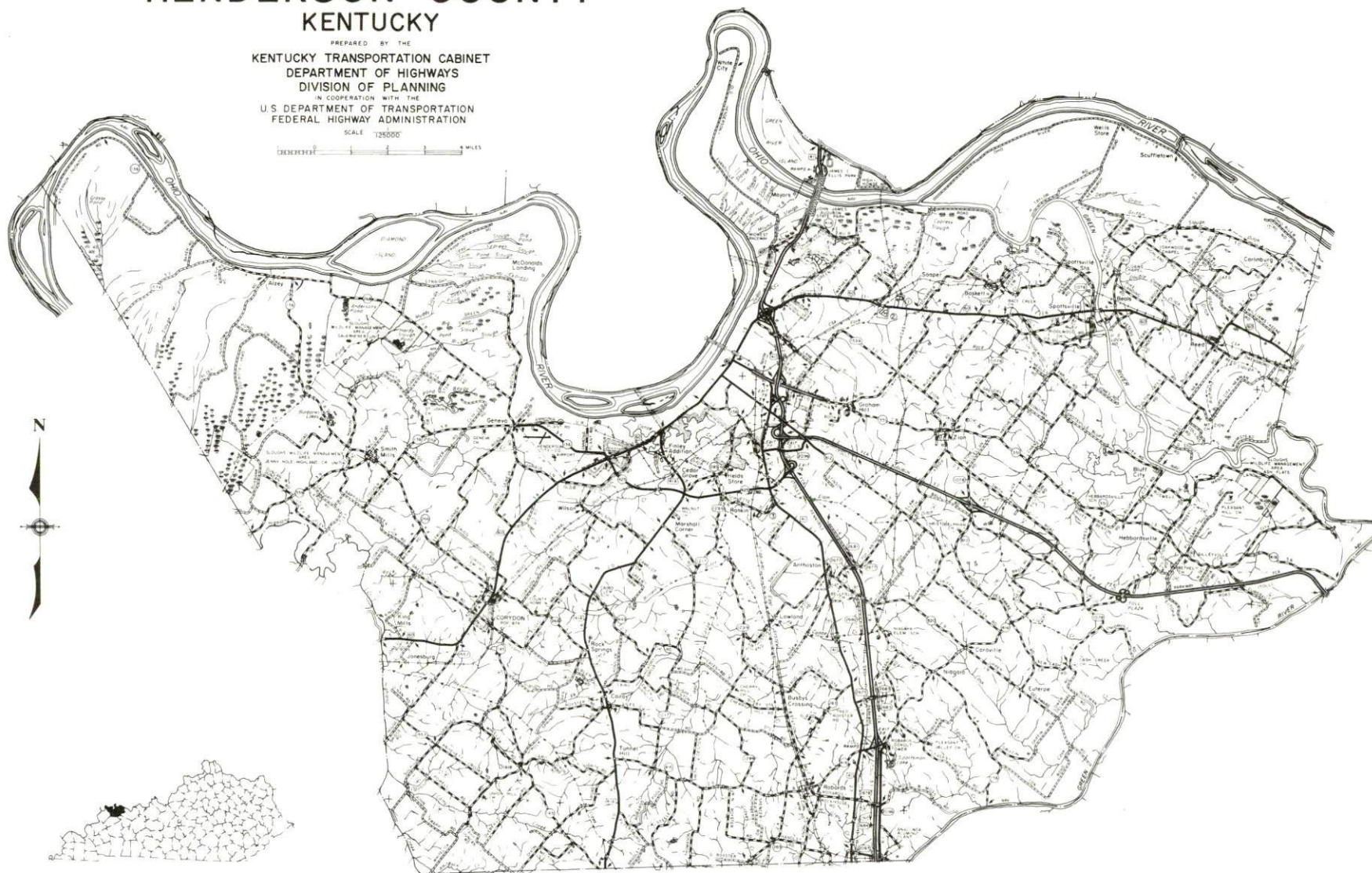
<u>Chapter</u>	<u>Page</u>
HENDERSON, KENTUCKY - A RESOURCE PROFILE	1
THE LABOR MARKET STATISTICS	2
Labor Market Area Map	2
Population	3
Population Projections	3
Estimated Labor Supply	3
Labor Force Characteristics of Residents, 1992	4
Selected Components of Nonagricultural Employment, by Place of Work, 1991	5
Per Capita Personal Income	6
Average Placement Wages	7
Average Weekly Wages of Workers Covered by Unemployment Insurance 1991 - Bar Chart	8
Average Weekly Wages by Industry, by Place of Work, 1991	9
EXISTING INDUSTRY	10
Major Henderson County Manufacturing Firms, Their Products and Employment	10
Recent Industrial Developments	11
Labor Organizations in Manufacturing Firms	12
Selected Industrial Services	12
TRANSPORTATION	13
Highways	13
Truck Service	13
Selected Market Location Map	14
Rail	15
Air	15
Water	16
UTILITIES	17
Electricity	17
Natural Gas	17
Public Water Supply	18
Sewerage	18
CLIMATE	19

<u>Chapter</u>	<u>Page</u>
LOCAL GOVERNMENT	20
Structure	20
Planning and Zoning	20
Local Fees and Licenses	20
State and Local Property Taxes	21
EDUCATION	22
Public Schools	22
Nonpublic Schools	22
Area Colleges and Universities	22
Vocational Training	24
OTHER LOCAL FACILITIES	26
Local Medical Personnel	26
Hospitals	26
Other Medical Facilities and Services	26
Banks and Savings & Loan Associations	26
Newspapers	26
Telephone Service	26
RECREATION	27
COMMUNITY IMPROVEMENTS	29

GENERAL HIGHWAY MAP
HENDERSON COUNTY
KENTUCKY

PREPARED BY THE
KENTUCKY TRANSPORTATION CABINET
DEPARTMENT OF HIGHWAYS
DIVISION OF PLANNING
IN COOPERATION WITH THE
U.S. DEPARTMENT OF TRANSPORTATION
FEDERAL HIGHWAY ADMINISTRATION

SCALE 1:25000



HENDERSON, KENTUCKY - A RESOURCE PROFILE

Henderson, the county seat of Henderson County, is located in northwestern Kentucky along the banks of the Ohio River. The city had a 1990 population of 25,945. Henderson is located ten miles south of Evansville, Indiana; 122 miles west of Louisville, Kentucky; 140 miles northwest of Nashville, Tennessee; and 177 miles southeast of St. Louis, Missouri.

Henderson County covers a land area of 440 square miles in the Western Coal Field Region of Kentucky. The Ohio River forms the northern boundary of the county. Henderson County had a population of 43,044 in 1990.

The Economic Framework - The total number of Henderson County residents employed in 1992 averaged 20,150. In 1991, manufacturing firms in the county reported 5,390 employees; wholesale and retail trade provided 3,719 jobs; 3,495 people were employed in service occupations; state and local government accounted for 1,888 employees; and contract construction firms provided 488 jobs.

Labor Supply - There is a current estimated labor supply of 9,344 persons available for industrial jobs in the labor market area. In addition, from 1993 through 1997, 12,710 young persons in the area will become 18 years of age and potentially available for industrial jobs.

Transportation - Henderson is serviced directly by U.S. Highways 41, 41A, and 60, and the Pennyryle and Audubon Parkways. In addition, Interstate 64 is accessible 25 miles northeast of Henderson via Interstate 164. Thirty-five trucking companies serve Henderson. CSX Transportation provides main line rail service, while the Indiana Hi-Rail Corporation provides branch line rail service to Henderson. The nearest commercial airport, Evansville Regional Airport, is located 13 miles north of Henderson. The Henderson City-County Airport, three miles southwest of Henderson, maintains a 4,800-foot paved runway. The Henderson County Riverport Authority offers public facilities at mile 808 on the Ohio River in Henderson.

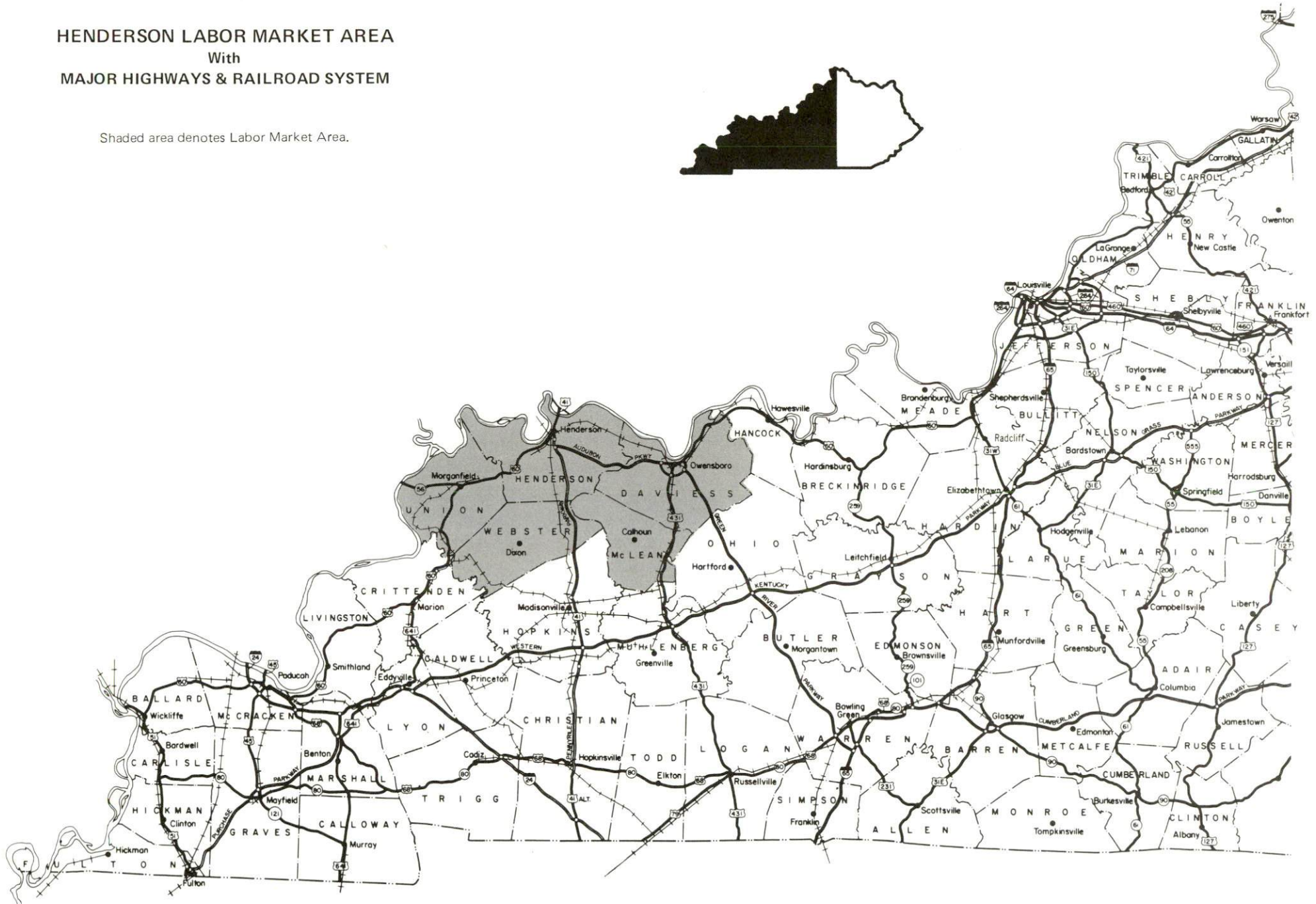
Power and Fuel - Municipal Power and Light, a municipally-owned generating company, provides electric power to Henderson and part of Henderson County. Kentucky Utilities Company and the Henderson-Union Rural Electric Cooperative Corporation also serve Henderson County. Henderson Municipal Gas System provides natural gas service to the community.

Education - The Henderson County School System provides primary and secondary education to Henderson and Henderson County. Henderson Community College, a unit of the University of Kentucky Community College System, offers associate degree, continuing education, and community service programs. The College had a Fall 1992 enrollment of 1,458. Seven other major institutions of higher learning are located within 100 miles of Henderson. The Henderson County Area Vocational Education Center located in Henderson, the Daviess County State Vocational-Technical School and the Owensboro State Vocational-Technical School, located in Owensboro 30 miles east, each provide vocational training services to the community.

HENDERSON LABOR MARKET AREA

With
MAJOR HIGHWAYS & RAILROAD SYSTEM

Shaded area denotes Labor Market Area.



LABOR MARKET STATISTICS

The Henderson Labor Market Area includes Henderson County and the adjoining Kentucky counties of Daviess, McLean, Union and Webster. In addition, the Labor Market Area is supplemented by Posey, Vanderburg, and Warrick Counties in Indiana.

POPULATION			
	<u>1990</u>	<u>1980</u>	<u>1970</u>
Labor Market Area	170,373	169,541	153,743
Henderson	25,945	24,834	22,976
Evansville, IN-KY Metropolitan Statistical Area	278,990	276,252	254,515
Henderson County	43,044	40,849	36,031

Source: U.S. Department of Commerce, Bureau of the Census, January 1991.

POPULATION PROJECTIONS				
	<u>1995</u>	<u>2000</u>	<u>2010</u>	<u>2020</u>
Labor Market Area	171,975	172,745	173,479	172,251
Henderson County	44,078	44,851	45,882	45,991

Note: Population projections are from Moderate Growth Series forecast.

Source: University of Louisville, Urban Studies Center, State Data Center.

ESTIMATED LABOR SUPPLY				
	Current		Not in Labor Force	Future
	<u>Total</u>	<u>Unemployed</u>		<u>Becoming 18 years of age 1993 thru 1997</u>
Labor Market Area*	9,344	6,221	3,123	12,710
Henderson County	1,834	1,638	196	3,160

* Additional workers may be drawn from other nearby counties.

Note: Unemployed - persons unemployed and actively seeking work; Not in Labor Force - represents the number of persons who would enter the labor force if suitable employment were available (based on the assumption that persons in Kentucky would like to participate in the labor force in the same proportion that they do nationally).

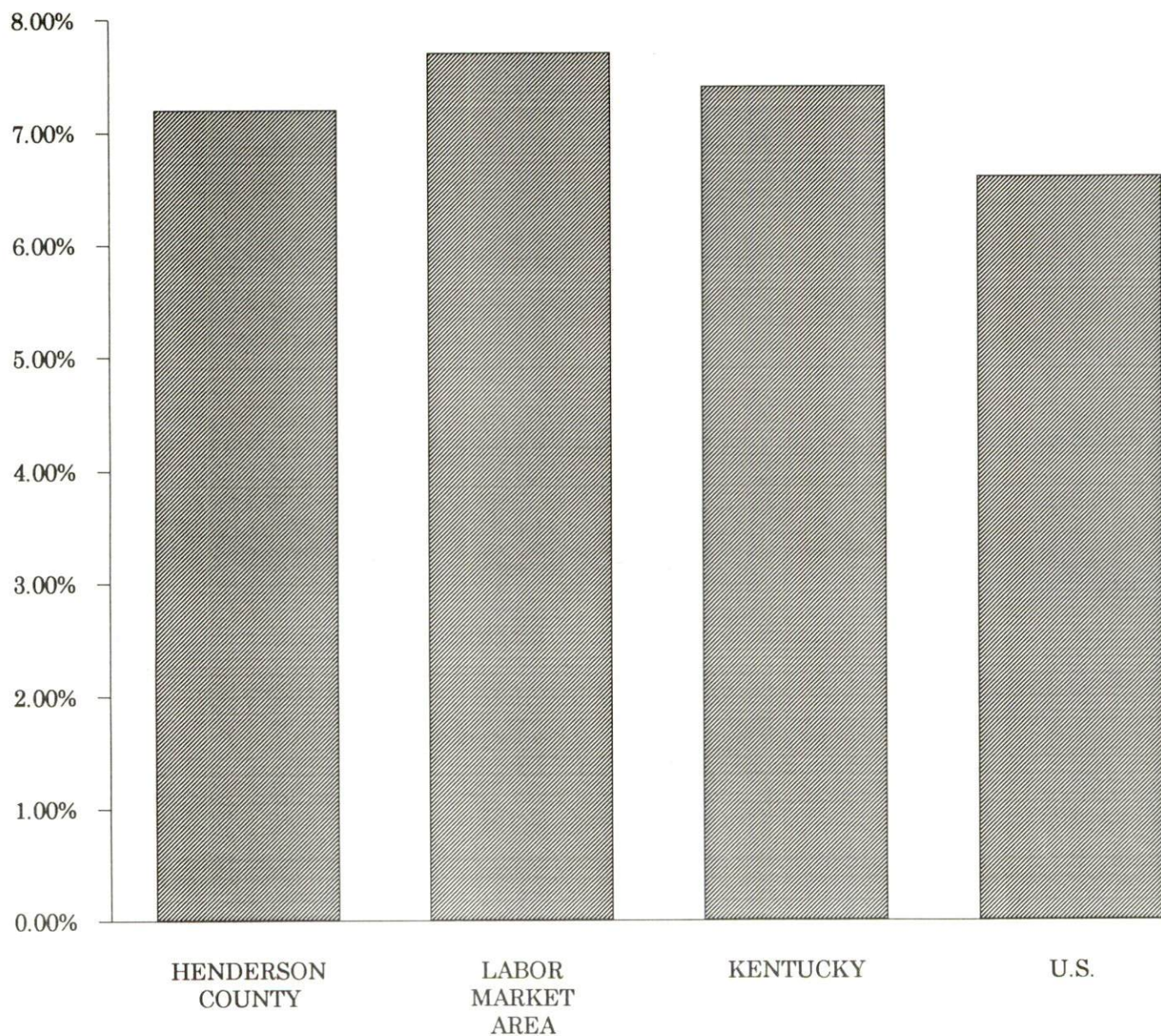
Sources: Kentucky Cabinet for Human Resources, Kentucky Labor Supply Estimates by County, 1991. Kentucky Cabinet for Economic Development, Future Labor Supply Becoming 18 Years of Age, 1993 thru 1997.

LABOR FORCE CHARACTERISTICS OF RESIDENTS, 1992

	<u>Henderson County</u>	<u>Labor Market Area</u>
Civilian Labor Force	21,715	82,297
Employment	20,150	75,996
Unemployment	1,565	6,301
Rate of Unemployment (%)	7.2	7.7

Source: Kentucky Cabinet for Human Resources, Kentucky Labor Force Estimates, Annual Averages, 1992.

UNEMPLOYMENT RATES 1992

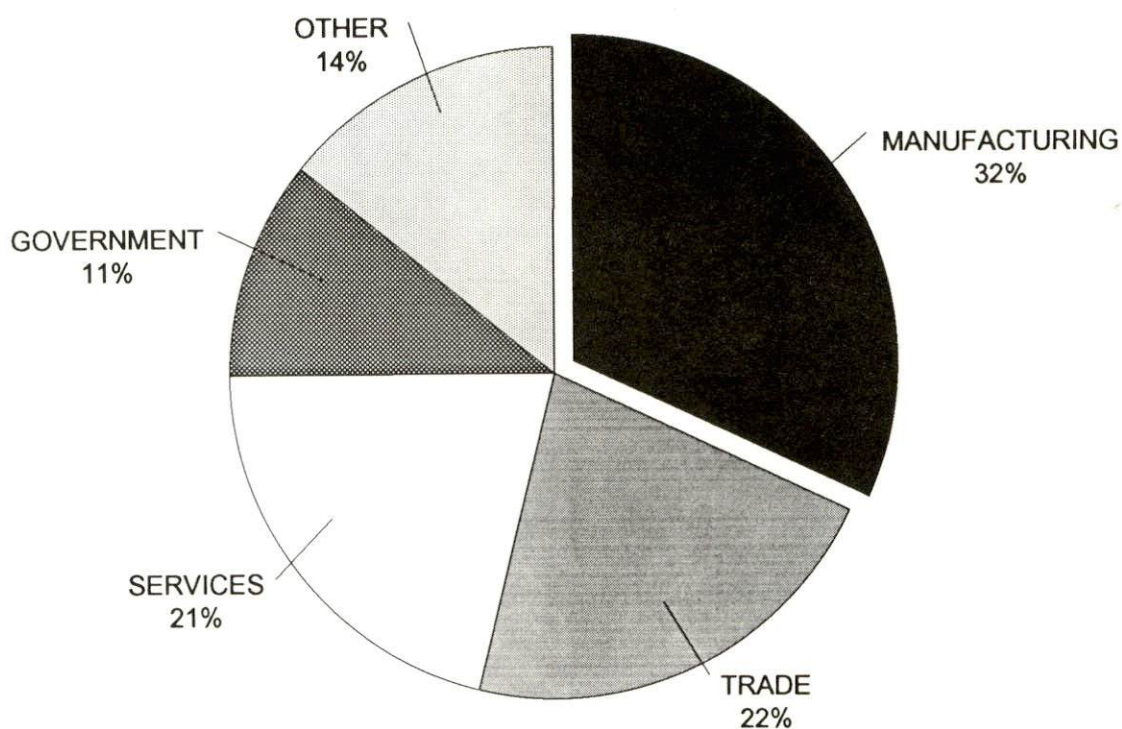


SELECTED COMPONENTS OF NONAGRICULTURAL EMPLOYMENT
BY PLACE OF WORK, 1991

	Henderson County	Labor Market Area
All Industries (total)	16,839	63,553
Manufacturing	5,390	13,939
Wholesale & Retail Trade	3,719	14,865
Services	3,495	12,717
State/Local Government	1,888	8,885
Contract Construction	488	2,772

Note: Excludes domestic workers, railway workers, certain nonprofit corporations, majority of federal government workers, and self-employed workers.
Source: Kentucky Cabinet for Human Resources, Average Monthly Workers Covered by Kentucky Unemployment Insurance Law, 1991.

HENDERSON COUNTY

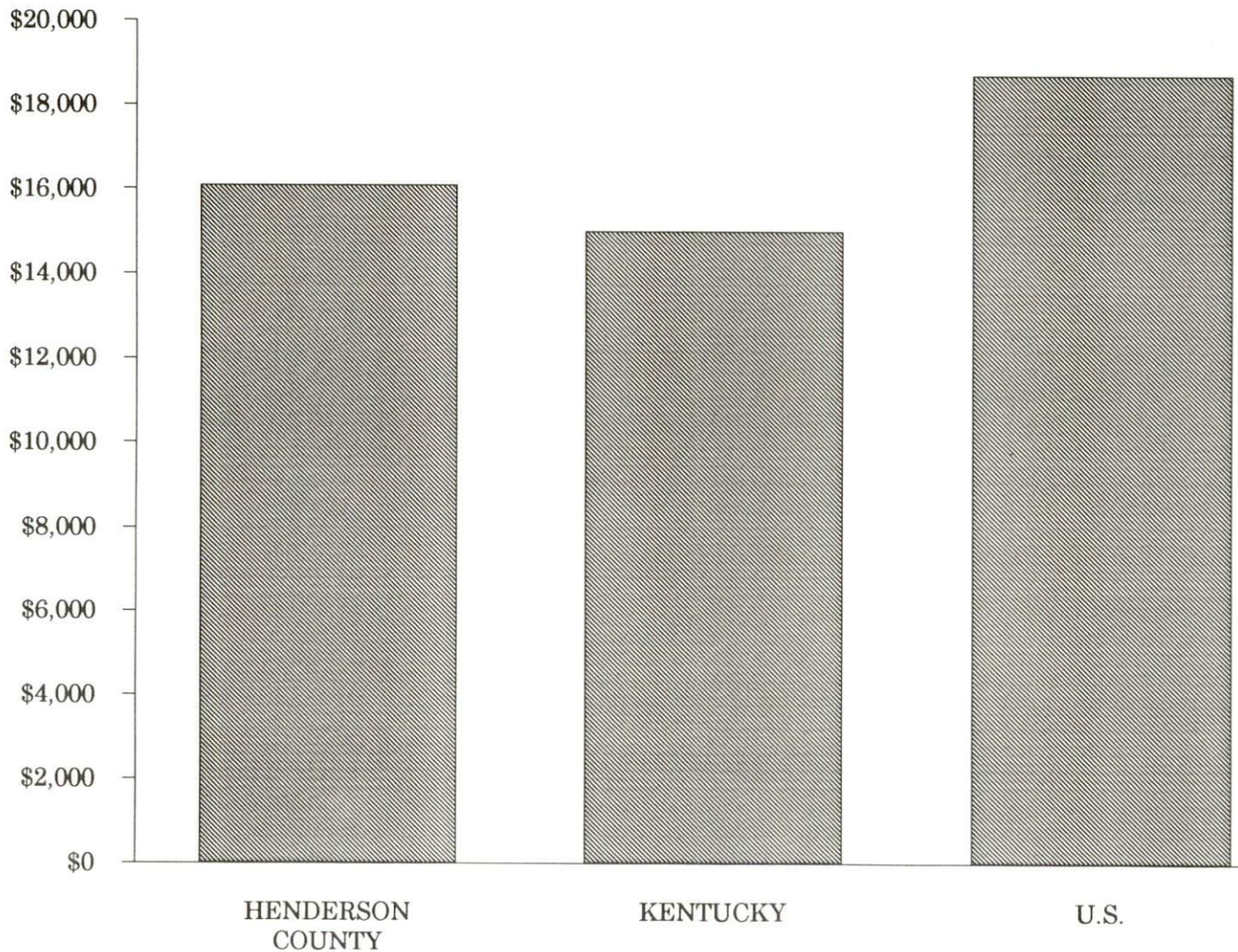


PER CAPITA PERSONAL INCOME

<u>Area</u>	<u>1986</u>	<u>1990</u>	<u>Percent Change</u>
Henderson County	\$12,826	\$16,075	25.3
Labor Market Area Range	\$10,480 - \$12,826	\$13,301 - \$16,883	-
Kentucky	\$11,273	\$14,992	33.0
U.S.	\$14,654	\$18,696	27.6

Source: U.S. Bureau of Economic Analysis, Kentucky Economic Information System, April 1992.

PER CAPITA PERSONAL INCOME
1990



AVERAGE PLACEMENT WAGES

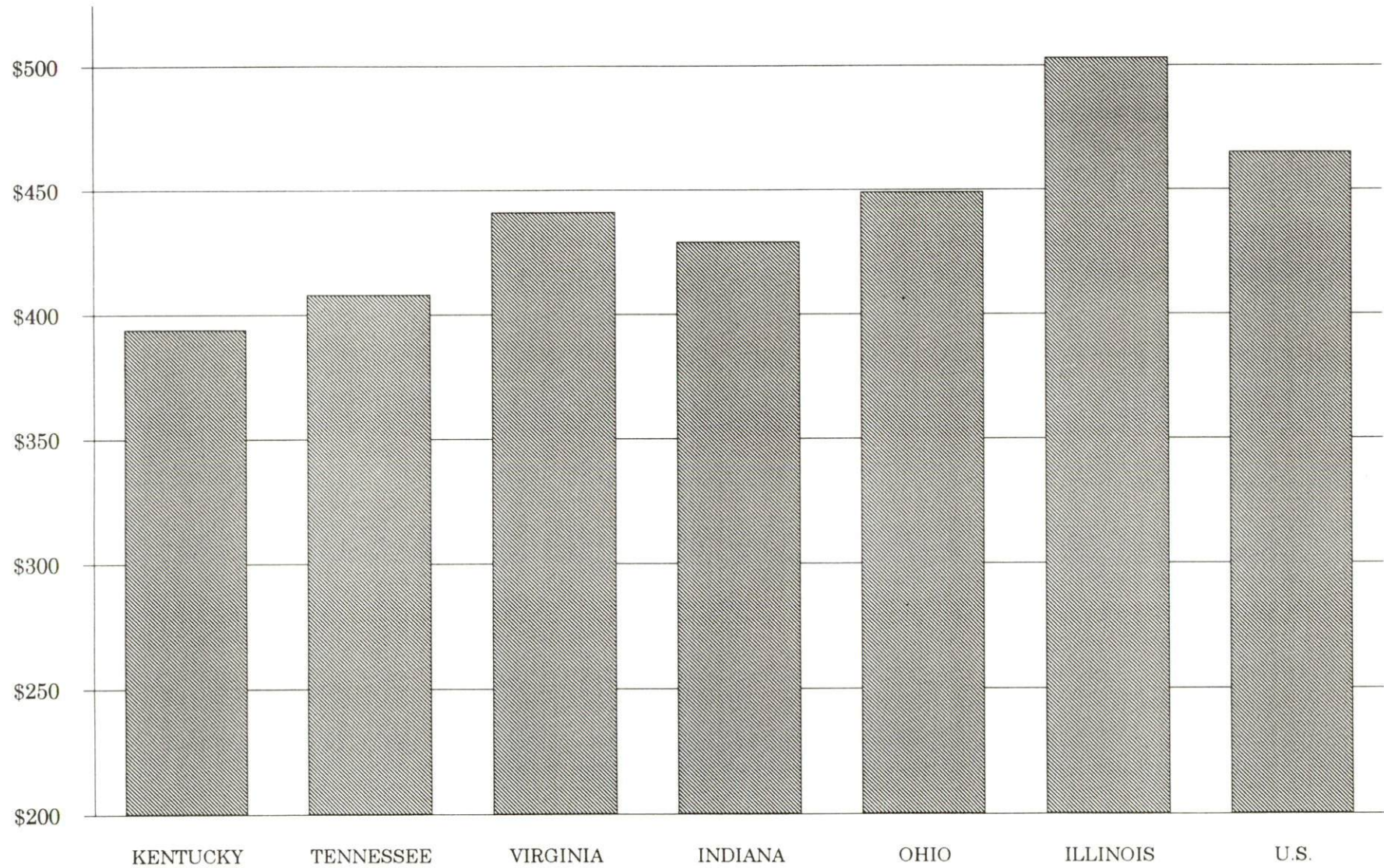
Henderson County is served by the Henderson local office of the Kentucky Department for Employment Services. The focus of the following data is on job placements made by the Henderson local office and may therefore be used as an indicator of the wages which employers in the area pay new employees. During the twelve months which ended on June 30, 1990, the local employment office filled 2,797 job openings in various occupational categories. The average hourly wage for selected occupational categories were:

<u>OCCUPATIONAL CATEGORY</u>	<u>NUMBER OF PLACEMENTS</u>	<u>AVERAGE WAGE(\$)</u>
All Occupations	2,797	4.50
Clerical	652	4.01
Sales	49	4.62
Services (excluding domestic)	917	3.78
Agricultural, Fishery, Forestry, etc.	172	4.04
Processing	476	4.97
Machine Trades	86	5.95
Bench Work	81	5.51
Structural	128	6.51
Motor Freight/ Transportation	35	6.86
Packaging and Materials Handling	125	4.35
Other	19	14.91

The Henderson local office also serves Union and Webster Counties. The above occupational categories are taken from the Dictionary of Occupational Titles published by the U.S. Department of Labor.

Source: Kentucky Cabinet for Human Resources, Department for Employment Services.

AVERAGE WEEKLY WAGES OF WORKERS COVERED BY
UNEMPLOYMENT INSURANCE - 1991



AVERAGE WEEKLY WAGES BY INDUSTRY
BY PLACE OF WORK, 1991*

	Henderson County	Kentucky (State- Wide)	Tennessee	Virginia
All Industries	\$404.59	\$394.46	\$408.00	\$441.00
Mining & Quarrying	832.40	661.68	528.00	655.00
Contract Construction	372.86	410.33	436.00	452.00
Manufacturing	502.43	505.56	477.00	509.00
Transportation, Communications & Public Utilities	566.37	528.78	541.00	605.00
Wholesale & Retail Trade	264.74	268.42	N/A	N/A
Finance, Insurance & Real Estate	358.96	449.89	495.00	523.00
Services	322.26	350.41	394.00	455.00
State/Local Government	381.60	413.84	N/A	N/A
	<u>Indiana</u>	<u>Ohio</u>	<u>Illinois</u>	<u>U. S.</u>
All Industries	\$429.00	\$449.00	\$503.00	\$465.00
Mining & Quarrying	708.00	609.00	758.00	747.00
Contract Construction	499.00	510.00	635.00	514.00
Manufacturing	583.00	613.00	609.00	579.00
Transportation, Communications & Public Utilities	531.00	567.00	632.00	599.00
Wholesale & Retail Trade	N/A	N/A	N/A	N/A
Finance, Insurance & Real Estate	458.00	498.00	650.00	596.00
Services	368.00	398.00	462.00	443.00
State/Local Government	N/A	N/A	N/A	N/A

* Wages for U.S. and surrounding states rounded to nearest dollar.

N/A Not Available.

Note: The average weekly wage for each category includes the salaries and wages of all persons working for that type business. For example, the manufacturing category includes both production workers and administrative personnel. Excludes domestic workers, railway workers, certain nonprofit corporations, majority of federal government workers, and self-employed workers.

Source: Kentucky Cabinet for Human Resources, Average Weekly Wages of Workers Covered by Kentucky Unemployment Insurance Law, 1991. U.S. Department of Labor, Bureau of Labor Statistics, Employment and Wages, Annual Averages, 1991, January 1993.

EXISTING INDUSTRY

MAJOR HENDERSON COUNTY MANUFACTURING FIRMS, THEIR PRODUCTS AND EMPLOYMENT*

<u>Firm</u> <u>(Establishment date)</u>	<u>Product</u>	<u>1992</u> <u>Average Employment</u>
Henderson		
Accuride Corporation (1973)	Truck wheels and rims	550
Aeroquip Corporation (1946)	Plastic auto parts	300
Alcan Ingot (1970)	Primary aluminum ingot, aluminum extrusion billet, aluminum sheet ingot	750
CPS Corporation (1968)	Printed and laminated paper and foils	175
Cresline Plastic Pipe Company (1966)	Plastic pipe	97
Custom Resins, Division of Bemis Company, Inc. (1957)	Nylon	59
Cyanede Plastics, Inc. (1951)	Molded thermo-plastics; automotive, appliance, and power tool components	250
Eaton Corporation, Axle Division, Henderson Plant (1970)	Axle assemblies for trucks	363
Gamco Products Company (1956)	Zinc die castings	200
Gibbs Die Casting Aluminum Corporation (1966)	Magnesium die castings, aluminum die castings	650
Gleaner and Journal Publishing Company (1885)	Job printing, newspaper	70
Millstone Coffee, Inc. (1991)	Whole bean coffee roasting	100
PB&S Chemical Company (1947)	Sodium hypochlorite solution, sodium bisulfite solution, ammonium bisulfite solution	115
Period Furniture (1939)	Custom furniture; motel, hotel, and dormitory furniture	80
Pittsburg Tank and Tower Company (1919)	Steel water tanks	250
Hugh E. Sandefur Training Center (1967)	Corrugated partitions and pads, plastic parts assembly	175
Scott Lumber, Inc. (1945)	Skids, hardwood lumber	121
Service Tool & Plastics (1969)	Molded plastic parts	50

(Continued)

<u>Firm</u> <u>(Establishment date)</u>	<u>Product</u>	<u>1992</u> <u>Average Employment</u>
Sights Denim Systems, Inc., Finishing Plant (1987)	Finishing, pressing of denim	160
Sights Denim Systems, Inc., Laundry Plant (1987)	Stone and acid washing of denim	125
Sonoco Products Company (1967)	Aluminum and steel ends for containers	82
Thompson International, Inc. (1952)	Drill steel and collars, drill bits, fabricated hole openers	53
Thompson Tool, Inc. (1969)	Steel drill bits	75
Vincent Industrial Plastic, Inc. (1981)	Molded plastics-decorating assembly, injection molded plastics, plastic parts for auto and appliances	175
Robards		
KB Alloys, Inc. Henderson County Plant (1981)	Aluminum base alloys	55

*Manufacturing firms with 50 or more employees.

Sources: Kentucky Cabinet for Economic Development, Division of Research;
Henderson Area Economic Development Council.

RECENT INDUSTRIAL DEVELOPMENTS

Matrix Composites, Inc. a new company in Henderson will become the first tenant in the City of Henderson's new industrial park. The 30,000-square-foot facility will employ 30 workers for knitting and weaving fiberglass fabric.

LABOR ORGANIZATIONS IN MANUFACTURING FIRMS

<u>Union</u>	<u>Representing workers at:</u>
Aluminum, Brick and Glass Workers International Union, AFL-CIO	Alcan Ingot
International Association of Machinists and Aerospace Workers, AFL-CIO	Cresline Plastic Pipe Company
International Chemical Workers Union, AFL-CIO	Custom Resins, Division of Bemis Company, Inc.; Valley Grain Products, Inc.; Vincent Industrial Plastic, Inc.
International Union, United Automobile, Aerospace and Agricultural Implement Workers of America	Accuride Corporation
Laborers International Union of North America, AFL-CIO	CPS Corporation; Hydro Conduit Corporation
United Steelworkers of America, AFL-CIO-CLC	Eaton Corporation, Axle Division, Henderson Plant

SELECTED INDUSTRIAL SERVICES

<u>Types of Services</u>	<u>Location</u>	<u>Mileage from Henderson</u>
Custom Plastics Producers	Henderson, Kentucky	-
Electric Motor Repair	Henderson, Kentucky	-
Heat Treating Facilities	Evansville, Indiana	10
Industrial Waste Removal	Henderson, Kentucky	-
Machine Shops, Tool & Die	Henderson, Kentucky	-
Metal Castings	Henderson, Kentucky	-
Metal Finishers	Owensboro, Kentucky	30
Metal Service Centers	Owensboro, Kentucky	30
Millwrights & Riggers	Evansville, Indiana	10

Sources: Kentucky Cabinet for Economic Development, Division of Research.

TRANSPORTATION

Highways

Henderson is served by the Pennyriple Parkway, the Audubon Parkway, and U.S. Highways 41, 41A, and 60, all "AAA"-rated (80,000-pound gross load limit) trucking highways. The Pennyriple Parkway is a four-lane highway that extends from Henderson southward and connects with the Western Kentucky Parkway, 46 miles to the south. The Audubon Parkway, is a four-lane toll road which connects Henderson with Owensboro, Kentucky. Interstate 164 connects with Interstate 64, 25 miles north of Henderson via U.S. 41.

HIGHWAY MILES FROM HENDERSON, KENTUCKY, TO SELECTED MARKET CENTERS

City	Highway Miles	City	Highway Miles
Atlanta, GA	378	Los Angeles, CA	1,984
Baltimore, MD	720	Louisville, KY	122
Birmingham, AL	329	Nashville, TN	140
Chicago, IL	301	New Orleans, LA	636
Cincinnati, OH	223	New York, NY	880
Cleveland, OH	468	Pittsburgh, PA	510
Detroit, MI	456	St. Louis, MO	177
Knoxville, TN	297		

Note: Mileage computations are via the best interstate or primary highways, not necessarily the most direct route of travel.

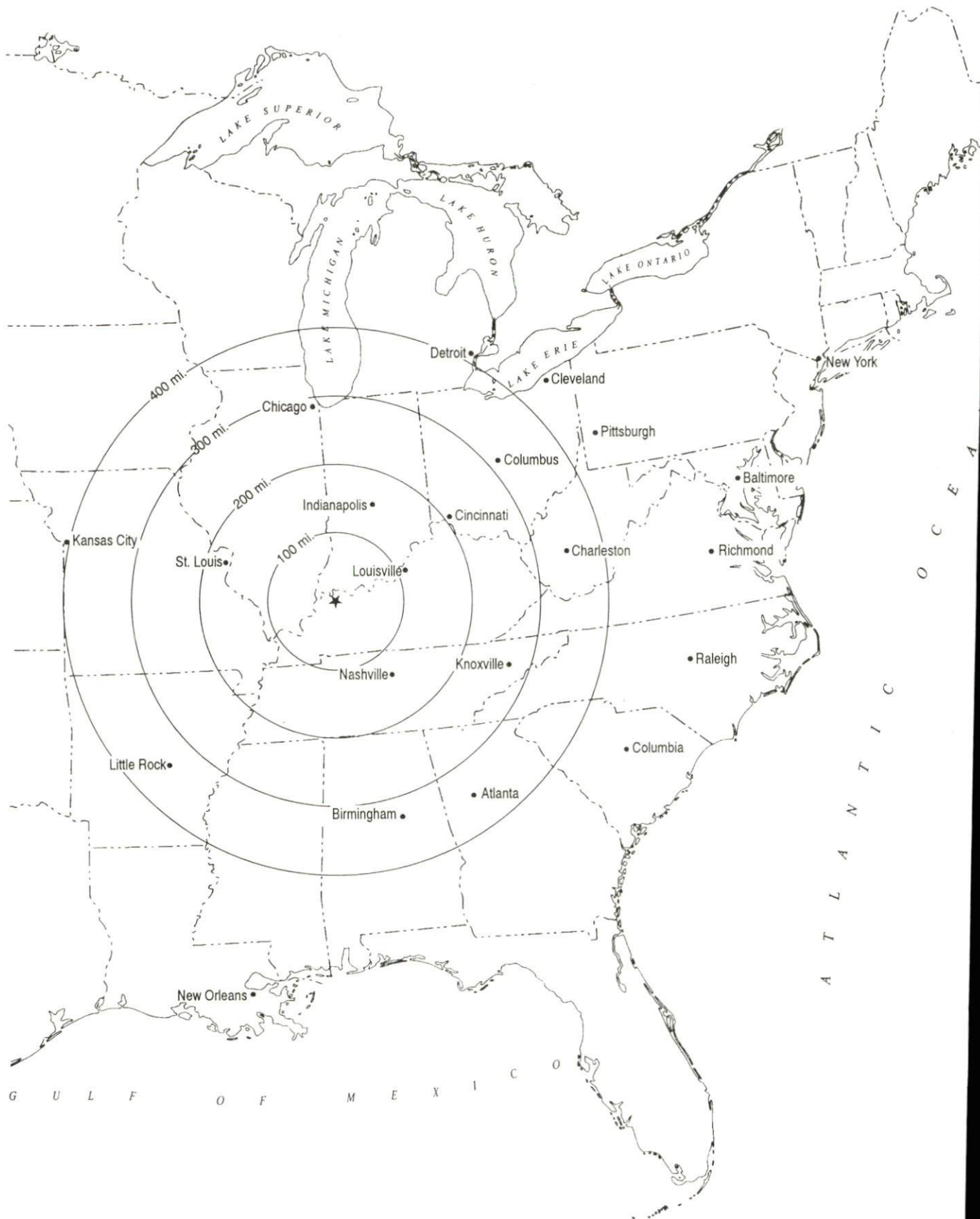
Sources: Rand McNally Standard Highway Mileage Guide, 1990. Official Kentucky Mileage Map, 1985.

Truck Service

Thirty-five common carrier trucking companies provide interstate and/or intrastate service to Henderson.

Source: American Motor Carrier Directory, Spring 1993.

Selected Market Centers



Rail

CSX Transportation provides main line rail service to Henderson, while Indiana Hi-Rail Corporation provides branch line service to the community which connects with the CSX main line in Henderson. Indiana Hi-Rail provides access to four other rail companies in Indiana. CSX Transportation provides the nearest intermodal facilities at Evansville, Indiana, ten miles north of Henderson.

For details on routing, schedules, rates, and services contact:

Manager
Industrial Development
CSX Transportation
9420 Bunsen Parkway
Suite 212
Louisville, Kentucky 40220
(502) 499-3025

and/or

President
Indiana Hi-Rail Corporation
State Road One North
Connersville, Indiana 47331
(317) 825-0349 or (800) 826-2877

Air

Local

Location:	Henderson City-County Airport 3 miles southwest of Henderson
Runways:	1 paved
Length:	4,800 feet with clear approaches
Traffic	
Control:	Wind sock, unicom, and AWOS system
Lighting:	REIL and rotating beacon
Services:	100LL octane and Jet A-50 fuels; piston and turbine approved repair station; major A & P repairs; hangar and tie-down; airplane and helicopter charter service; air ambulance service; flight training; air taxi; APU; oxygen and nitrogen; Cessna service center and courtesy car

Nearest Scheduled Commercial Airline Service

Location:	Evansville Regional Airport 3 miles north of Evansville, Indiana; 13 miles north of Henderson
Air Service:	ComAir, TransWorld Express, Northwest Air Link, USAir, Atlantic Southeast, American Eagle
Daily Arrivals & Departures:	88

Water

Henderson enjoys a strategic location on the Kentucky shores of the Ohio River, approximately twenty miles from its confluence with the Green River. The Ohio River, which has a nine-foot navigation channel depth and a 300-foot channel width throughout its length, joins the Mississippi River approximately 175 river miles below Henderson. A nine-foot navigation channel is currently maintained on the Green River from Lock No. 3 near Rochester, Kentucky, to Henderson.

The Henderson County Riverport Authority operates a full service port facility at mile 808 on the Ohio River, just four miles below Henderson. The riverport offers both bulk commodity and general cargo handling facilities, as well as warehousing, yard storage, and fully intermodal transportation connections. Unit train to barge transfer facilities include a 180-railcar track storage capacity. A separate coal dock operates on port property.

Specific facilities include a bulk material loading system with dump scales, which has a loading capacity of 800 tons per hour, and can handle grain, coal and a variety of other bulk materials; a 42,000-square-foot, sprinkled, freezeproof transit warehouse designed to handle materials from barge, rail or truck; and 4,000 feet of river frontage which provides a sizeable fleet area with river towing services available.

Equipment includes a 125-ton electric pedestal crane capable of loading and unloading from barge, truck and rail; and a 60-ton crawler crane, end loaders, fork lifts and numerous other pieces of equipment used in material handling and barge cleaning. The terminal accommodates all types of integrated transportation activities, such as stevedoring, warehousing, and distribution.

Materials that have been handled within the port include the following; coal, coke, stone, gravel, sand, lime, fertilizers, phosphate, potash, salt, chrome alloy, cryolite, grains, steel aluminum, castings, wire, steel pipe and rods, concrete products, construction materials, and coal production equipment.

The riverport and the adjoining industrial park consist of 276 acres, with an additional 118 acres available for potential development. Adjoining the western city limits of Henderson on Highway 136 within the commercial zone of Evansville and in sight of the Henderson City-County Airport, the port-industrial park is connected to the Pennyrile and Audubon Parkways by the Henderson Bypass. All utilities are available at the industrial park, including gas, electric, water, and sewerage.

For more information contact:

Port Director
Henderson County Riverport Authority
6200 Riverport Road
Henderson, Kentucky 42420
(502) 826-1636

UTILITIES

Electricity

Company serving **Henderson** and portions of **Henderson County** - **Municipal Power and Light**

Source of power - Municipally-owned generators

For industrial rates contact:

Municipal Power and Light
P.O. Box 8
Henderson, Kentucky 42420
(502) 826-2726

Company serving portions of **Henderson County** - **Kentucky Utilities Company**

Source of power - Kentucky Utilities Company

For industrial rates contact:

Industrial Development Department
Kentucky Utilities Company
One Quality Street
Lexington, Kentucky 40507
(606) 255-2100

Company serving a major portion of **Henderson County** - **Henderson-Union**

Rural Electric Cooperative Corporation

Source of power - Big Rivers Electric Corporation

For industrial rates contact:

Manager of Economic Development
Big Rivers Electric Corporation
P.O. Box 24
Henderson, Kentucky 42420
(502) 827-2561

and/or

Henderson-Union Rural Electric
Cooperative Corporation
P.O. Box 18
Henderson, Kentucky 42420
(502) 826-3991 or (800) 242-7069

Natural Gas

Company serving **Henderson** - **Henderson Municipal Gas System**

Source of supply - Texas Gas Transmission Corporation

For rates and supplies contact:

Gas System Manager
Henderson Municipal Gas System
P.O. Box 452
Henderson, Kentucky 42420
(502) 831-1200 ext. 213

Public Water Supply

Company serving Henderson -	Henderson Water and Sewer Utilities P.O. Box 341 Henderson, Kentucky 42420 (502) 826-2421
Source -	Ohio River
Treatment plant capacity -	12,000,000 gallons per day
Average daily consumption -	6,500,000 gallons
Peak daily consumption -	9,000,000 gallons
Storage capacity -	8,780,000 gallons
Water pressure -	40 psi to 75 psi

Henderson Water and Sewer Utilities was recognized for outstanding operation of its water plant in both 1990 and 1992 by the Kentucky/Tennessee Section of American Waterworks Association and by the Kentucky Water and Wastewater Operations Association.

Name of water district -	Henderson County Water District P.O. Box 655 Henderson, Kentucky 42420 (502) 826-9802
--------------------------	--

Area served - Most of unincorporated Henderson County, Corydon, and parts of Webster County

Source of treated water - Henderson Water and Sewer Utilities

Amount of treated water that can be purchased - 2,000,000 gallons per day (Based on a 30-day average but not to exceed 2,500,000 gallons per day)

Average daily consumption -	1,250,000 gallons
Peak daily consumption -	1,600,000 gallons
Storage capacity -	1,150,000 gallons
Water pressure -	30 psi to 105 psi

Henderson County Water District recently installed approximately 30 miles of new water mains and replaced an old water tank with a new 150,000-gallon elevated water storage tank. The City of Corydon and other rural areas in the county are now served by the Water District.

Sewerage

Company serving Henderson -	Henderson Water and Sewer Utilities P.O. Box 341 Henderson, Kentucky 42420 (502) 826-2421
-----------------------------	--

Design capacity -	7,500,000 gallons per day
Average daily flow -	4,500,000 gallons
Type of treatment -	Tertiary
Treated effluent discharged into -	Ohio River

CLIMATE

Henderson County

Temperature

Normal (30-year record)	55.70 degrees
Average annual 1991	57.80 degrees
Record highest, July 1954 (51-year record)	105.00 degrees
Record lowest, February 1951 (51-year record)	-23.00 degrees
Normal heating degree days (30-year record)	4,729
(Heating degree day totals are the sums of negative departures of average daily temperatures from 65 degrees F.)	

Precipitation

Normal (30-year record)	41.55 inches
Mean annual snowfall (51-year record)	13.50 inches
Total precipitation 1991	32.68 inches
Mean number days precipitation (.01 inch or more) (51-year record)	115.20
Mean number days thunderstorms (51-year record)	45.10

Prevailing winds (through 1963)

South-Southwest

Relative Humidity (29-year record)

Midnight	79 percent
6 a.m.	82 percent
Noon	59 percent
6 p.m.	63 percent

Source: U.S. Department of Commerce, Environmental Science Services Administration, Climatological Data, 1991. Station of record: Evansville, Indiana.

LOCAL GOVERNMENT

Structure

The City of Henderson is governed by a mayor, four commissioners, and a full-time city manager. The mayor is elected to a four-year term, while the commissioners each serve two-year terms. Henderson County is governed by a county judge/executive and five magistrates. Each county official is elected to a four-year term.

Planning and Zoning

Joint agency - Henderson City-County Planning Commission

Participating cities - Henderson and Corydon

Zoning enforced - All areas

Subdivision regulations enforced - All areas

Local codes enforced - Building and housing in all areas

Mandatory state codes enforced - Kentucky Plumbing Code, National

Electric Code, Kentucky Boiler Regulations and Standards, Kentucky

Building Code (modeled after BOCA code)

Local Fees and Licenses

The City of Henderson levies an annual occupational license fee ranging from \$25 to \$2,625, based on a sliding scale; the fee levied on manufacturing firms ranges from \$175 to \$2,100, based on gross revenue. Motor vehicle licenses are \$25 per year.

PROPERTY TAXES

The Kentucky Constitution requires the state to tax all classes of taxable property, and state statutes allow local jurisdictions to tax only a few classes. All locally taxed property is subject to county taxes and school district taxes (either a county school district or an independent school district). Property located inside of city limits may also be subject to city property taxes.

Special local taxing jurisdictions (fire protection districts, watershed districts, and sanitation districts) levy taxes within their operating areas (usually a small portion of community or county).

Property assessments in Kentucky are at 100% fair cash value. A 15% reduction is automatically granted for accounts receivable.

STATE PROPERTY TAX RATES PER \$100 VALUATION

<u>Selected Classes of Property</u>	<u>1992 State Rate</u>	<u>Local Taxation Permitted</u>
Real Estate	\$0.184	YES
Manufacturing Machinery	0.150	NO
Pollution Control Equipment	0.150	NO
Inventories		
Raw Materials	0.050	NO
Goods in Process	0.050	NO
Finished Goods	0.050	YES
Motor Vehicles	0.450	YES
Other Tangible Personal Property	0.450	YES
Intangibles (Accounts Receivable, Money on Hand)	0.250	NO

LOCAL PROPERTY TAX RATES PER \$100 VALUATION, 1992

<u>Taxing Jurisdiction</u>	<u>Real Estate</u>	<u>Finished Goods & Tangibles</u>	<u>Motor Vehicles</u>
Henderson County	\$0.1515	\$0.1603	\$0.1536
School Districts:			
Henderson County	0.4210	0.4210	0.5480
Cities:			
Henderson	0.3548	0.4322	0.4013

Twelve special taxing districts in Henderson County not county-wide, levy a special tax on real estate within their boundaries. The rates range from \$0.0100 to \$0.5000 per \$100 valuation.

EDUCATION

Public Schools

Henderson County

Total Enrollment (Fall, 1992)	7,858
Pupil-Teacher Ratio (1991-92)	20.2-1
Percent High School Graduates to College (1991-92)	54.4
Expenditures Per Pupil (1991-92)	\$3,260.54

Recent projects at the Henderson County School System include construction of the Albert Benjamin Chandler Elementary School at Corydon. The 51,000-square-foot facility totaled \$2.5 million. The School System also completed a major renovation/expansion at Jefferson Elementary School which created nine new classrooms, a new cafeteria, and a media center. In addition, the School System plans major renovation/expansion projects at Bend Gate Elementary School and East Heights Elementary School at an estimated cost of \$3.4 million.

Nonpublic Schools

<u>School</u>	<u>Enrollment</u>	<u>Grades</u>
Holy Name Elementary	520	K-8

Area Colleges and Universities

<u>Name</u>	<u>Location (Miles distant)</u>	<u>Enrollment (Fall, 1992)</u>
Henderson Community College	Henderson, Kentucky	1,458
University of Evansville	Evansville, Indiana (10)	3,071
University of Southern Indiana	Evansville, Indiana (10)	7,430
Brescia College	Owensboro, Kentucky (30)	800
Kentucky Wesleyan College	Owensboro, Kentucky (30)	769
Owensboro Community College	Owensboro, Kentucky (30)	2,900
Oakland City College	Oakland City, Indiana (40)	803
Western Kentucky University	Bowling Green, Kentucky (100)	15,750

Henderson Community College

Henderson Community College is part of the University of Kentucky Community College System. It is charged with three specific missions: (1) to offer career-oriented programs designed to prepare students for immediate technical or para-professional employment; (2) to offer general education curriculum for the first two years of a baccalaureate program; and (3) to provide non-credit educational opportunities for area residents and business and industry. Henderson Community College had a 1992 enrollment of 1,458 credit students in the Fall Semester. During the 1990-91 year the college served over 4,000 students in its non-credit, continuing education programs. The college offers the following degrees: Associate of Arts; Associate of Science; and Associate of Applied Science in Business Technology (Management and Management Information Systems Options), Communications Technology, Computer Information Systems (Microcomputer and Programming Options), Engineering Technology (Electrical and Mechanical Options), Human Services, Medical Laboratory Technician, Nursing, and Office Administration. Construction of a 40,000-square-foot Academic/Technical Building and 60,000-square-foot Fine Arts Center are currently under way. The Academic/Technical Building will open for the 1993 Fall Semester and the Fine Arts Center will open for the 1994 Spring Semester. Combined cost for the two projects is over \$10 million.

VOCATIONAL-TECHNICAL TRAINING

Kentucky Tech schools are operated by the Cabinet for Workforce Development and provide secondary (Sec) and postsecondary (P/S) vocational-technical training.

<u>Kentucky Tech Schools</u>	<u>Location (Mileage from Henderson)</u>	<u>Number of Program Offerings</u>	<u>Cumulative Enrollment 1991-1992</u>	<u>Approximate Number Completing Programs Annually</u>
			<u>Sec</u> <u>P/S</u>	
Henderson County Area Vocational Education Center	Henderson	8	434 5	110
Daviess County State Vocational Technical School	Owensboro (30)	13	145 227	77
Owensboro State Vocational-Technical School	Owensboro (30)	15	76 239	128

Customized Training

The Kentucky Tech system, through its Training and Development Coordinators, will provide technical assistance and will identify and develop low cost customized training programs and services for existing, as well as new and expanding businesses and industries. Businesses and industries needing customized training or a continuing education program for its employees should simply contact a Training and Development Coordinator located at the Daviess County SVTS in Owensboro.

Assessment Services

Kentucky Tech Career Connections offers to business, education, and government agencies customized assessment in career inventories, interest inventories, psychomotor skills and academic potential, as well as pre-hire assessment. The center also has a Career Connections mobile unit that is available to potential Kentucky Tech students, business and industry, and other agencies within Henderson County.

Tech Prep

Tech Prep is a combined secondary and postsecondary program of studies that leads to an associate degree or diploma in a vocational-technical field. Henderson County High School in partnership with Henderson County AVEC and Henderson Community College has established a Tech Prep program for students in Henderson County.

Adult Basic Education

Adult education programs are available to adults who want to develop new skills, improve basic skills or earn a high school equivalency diploma. In Henderson County, adult literacy is provided by the Henderson County adult Literacy Council and adult basic education is provided through Henderson Community College.

Bluegrass State Skills Corporation

The Bluegrass State Skills Corporation, an independent public corporation created and funded by the Kentucky General Assembly, provides programs of skills training to meet the needs of business and industry from entry level to advanced training, and from upgrading present employees to retraining experienced workers.

The Bluegrass State Skills Corporation is a major source for skills training assistance for a new or existing company. The Corporation works in partnership with other employment and job training resources and programs, as well as Kentucky's economic development activities, to package a program customized to meet the specific needs of a company.

OTHER LOCAL FACILITIES

Local Medical Personnel

Physicians - 63
Dentists - 18

Hospitals

<u>General Hospital</u>	<u>Location</u>	<u>Beds</u>
Community Methodist Hospital	Henderson	213

Medical staff - 92 active staff physicians, 15 courtesy staff physicians, 394 registered nurses, 107 licensed practical nurses

Other Medical Facilities and Services

Green River Comprehensive Care Center
Green River District Health Department,
Henderson County Health Center
Henderson Cancer Center
Henderson Emergency Ambulance Service
Henderson Med-Surg Center (outpatient surgery)
MEC Medical Center (outpatient services)

Banks and Savings and Loan Associations

Citizens Bank of Henderson County
Farmers Bank of Henderson County
First National Bank
Great Financial Federal
Ohio Valley National Bank
Union Federal Savings Bank

Hotels and Motels

Total number - 9
Total rooms - 500

Newspapers

The Gleaner (daily except Monday)

Telephone

South Central Bell

RECREATION

Local

Henderson offers a wide range of recreational opportunities for all ages. Public recreation activities available in the city include eight parks, a municipal swimming pool, a nine-hole municipal golf course and pro shop, 23 lighted tennis courts, 13 ball diamonds and three lighted basketball courts. Two community centers, the Senior Citizens Recreation Center and the John F. Kennedy Community Center, provide year-round recreational activities. Swimming instructions are offered at the pool and tennis instructions are available to all age groups during the summer. Development of a park for light industry and recreation is under way in Henderson.

The Henderson County YMCA is very active in recruiting new members and promoting physical fitness. Its staff provides instruction in fitness programs ranging from aquatic sports to exercise designed for pre-school children through adulthood. The Henderson County Family YMCA has an indoor swimming pool, a health club, and four lighted tennis courts (overhead bubble is provided during the winter for indoor tennis). The Henderson County Country Club features an 18-hole course, swimming pool, and tennis courts. Other private recreational facilities include an indoor movie theater, a drive-in theater, a swim club, a roller rink, and a bowling facility.

Just north of Henderson is the John James Audubon State Park, a 692-acre park where the famed naturalist gathered material for his painting, "The Birds of America." Many paintings by Audubon and his sons, and 126 first-edition prints of his paintings are on display at the Audubon Memorial and Nature Museum which is the focal point of the park. Other park features include the Audubon Woods, a bird sanctuary, and a 12-acre nature preserve lake. The park has cottages and camping sites. Recreational facilities include a 28-acre recreational lake, a beach and a bathhouse, rental rowboats and pedal boats, a dock, a nine-hole golf course, a tennis court, hiking trails, picnic shelters, and playgrounds. Organized recreation programs are offered during the summer. The park is undergoing a major renovation and expansion of the nature center and museum.

Horse racing is another attraction available in Henderson. Ellis Park Race Course provides 2 1/2 months of racing during the summer and inter-track wagering most of the year, and Riverside Downs features harness horse racing and inter-track wagering.

Henderson has several special events which are held annually. They include the Big River Arts & Crafts Festival, held the first weekend in October; the W.C. Handy Blues & Barbecue Festival in June; Bluegrass in the Park; Tri-Fest on Main Street; Henderson County Fair; Halloween Festival; Christmas Village; and Christmas in the Park.

Area (Within 75 miles)

Evansville, Indiana, ten miles north of Henderson, Kentucky is a major urban area with a wide variety of entertainment and recreational offerings. Among its major attractions are the Evansville Museum of Arts and Science, the Mesker Park Zoological Gardens, cultural events such as the Evansville Philharmonic performances, and numerous restaurants, nightclubs, and theatres.

Owensboro, 30 miles east of Henderson, is Kentucky's third largest city. Owensboro is a source of many entertainment and recreational facilities associated with larger communities. Points of interest include museums, an orchestra and three colleges. Several festivals are held annually, including the International Bar-B-Que Festival, the Summer Festival, and the Bluegrass Festival.

Other offerings in the area include:

Ben Hawes State Park
Higginson-Henry Wildlife Area
Holiday World (theme park)
Lake Malone State Park
Lincoln's Boyhood National Memorial
Pennyrile Forest State Resort Park
The Sauerheber Wildlife Refuge

COMMUNITY IMPROVEMENTS

Henderson re-certified as a "Kentucky Certified City" in 1992, and is distinguished as a gold award winner recognizing seven consecutive years of certification. Re-certification is based on achievement in the following areas: existing industry assistance, small business assistance, educational resources, and community development factors of health care, public safety, arts and culture, recreation, governmental awareness and resources. The Certified Cities Program is sponsored by the Kentucky Chamber of Commerce.

Recent

Millstone Coffee, Inc. recently began construction of a \$2.5 million, 60,000-square-foot expansion of its gourmet coffee roasting facility which will increase employment to 120.

Sights Denim Systems recently completed construction of a 6,000-square-foot expansion to its denim processing operation, bringing its employment level to 350.

PB&S Chemical Company began construction on a new 23,000-square-foot chemical blending facility which will create 25 new jobs.

CPS Corporation recently completed construction of a 196,000-square-foot warehouse for its gift wrapping operation which totaled \$2.3 million.

Henderson Water and Sewer Utilities was recognized for outstanding operation of its water plant in both 1990 and 1992 by the Kentucky/Tennessee Section of American Waterworks Association and by the Kentucky Water and Wastewater Operations Association.

Henderson County Water District recently installed approximately 30 miles of new water mains and replaced an old water tank with a new 150,000-gallon elevated water storage tank. The City of Corydon and other rural areas in the county are now served by the Water District.

Recent projects at the Henderson County School System include construction of the Albert Benjamin Chandler Elementary School at Corydon. The 51,000-square-foot facility totaled \$2.5 million. The School System also completed a major renovation/expansion at Jefferson Elementary School which created nine new classrooms, a new cafeteria, and a media center.

Several businesses, banks, and offices have been extensively renovated in the downtown business district of Henderson.

Construction of State Police Post No. 16 was recently completed.

Under Way

Matrix Composites, Inc., a new company in Henderson will become the first tenant in the City of Henderson's new industrial park. The 30,000-square-foot facility will employ 30 workers for knitting and weaving fiberglass fabric.

Construction of a 40,000-square-foot Academic/Technical Building and 60,000-square-foot Fine Arts Center are currently under way. The Academic/Technical Building will open for the 1993 Fall Semester and the Fine Arts Center will open for the 1994 Spring Semester. Combined cost for the two projects is over \$10 million.

Audubon State Park is in the process of constructing a nature center and renovating its museum. The \$2 million project is scheduled for completion by Fall 1993.

Development of a 580-acre tract of land for light industry and a recreation park is under way in Henderson.

Planned

The Henderson County School System plans major renovation/expansion projects at Bend Gate Elementary School and East Heights Elementary School. Total estimated costs are \$3.4 million.

Approximately a two-mile segment of U.S. 60 east of Henderson will be widened to four lanes.