

1993

# Industrial Resources: Jessamine County - Nicholasville

Kentucky Library Research Collections  
Western Kentucky University, [spcol@wku.edu](mailto:spcol@wku.edu)

Follow this and additional works at: [https://digitalcommons.wku.edu/jessamine\\_cty](https://digitalcommons.wku.edu/jessamine_cty)



Part of the [Business Administration, Management, and Operations Commons](#), [Growth and Development Commons](#), and the [Infrastructure Commons](#)

---

## Recommended Citation

Kentucky Library Research Collections, "Industrial Resources: Jessamine County - Nicholasville" (1993). *Jessamine County*. Paper 1.  
[https://digitalcommons.wku.edu/jessamine\\_cty/1](https://digitalcommons.wku.edu/jessamine_cty/1)

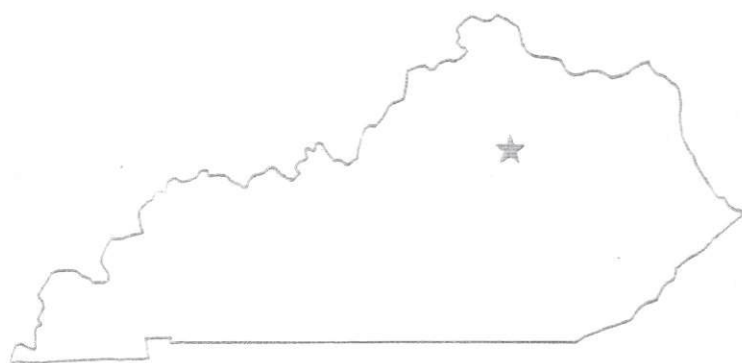
This Report is brought to you for free and open access by TopSCHOLAR®. It has been accepted for inclusion in Jessamine County by an authorized administrator of TopSCHOLAR®. For more information, please contact [topscholar@wku.edu](mailto:topscholar@wku.edu).

IR  
807

Tessamine

# *Resources for Economic Development*

## Nicholasville



**KENTUCKY**

---

RESOURCES FOR ECONOMIC DEVELOPMENT  
NICHOLASVILLE, KENTUCKY

Prepared by  
The Kentucky Cabinet for Economic Development  
Division of Research  
in cooperation with  
Jessamine County Chamber of Commerce  
and  
Nicholasville Economic Development Authority

1993

Division Director - Pamela K. Riley; program manager - Keith Roberts; research - Richard H. Cobb; clerical - Wanda Sharp; graphics - Robert Owens, Pat Coleman; cartography - Edwin Scott, Dave Clark. Cost of printing paid from state funds.

## TABLE OF CONTENTS

<u>Chapter</u>	<u>Page</u>
NICHOLASVILLE, KENTUCKY - A RESOURCE PROFILE.....	1
THE LABOR MARKET STATISTICS .....	2
Labor Market Area Map .....	2
Population .....	3
Population Projections .....	3
Estimated Labor Supply .....	3
Labor Force Characteristics of Residents, 1992.....	4
Selected Components of Nonagricultural Employment, by Place of Work, 1991 .....	5
Per Capita Personal Income.....	6
Average Placement Wages .....	7
Average Weekly Wages of Workers Covered by Unemployment Insurance 1991 - Bar Chart .....	8
Average Weekly Wages by Industry, by Place of Work, 1991 .....	9
EXISTING INDUSTRY .....	10
Jessamine County Manufacturing Firms, Their Products and Employment .....	10
Recent Industrial Developments .....	11
Labor Organizations in Manufacturing Firms .....	12
Selected Industrial Services .....	12
TRANSPORTATION .....	13
Highways .....	13
Truck Service .....	13
Selected Market Location Map .....	14
Rail .....	15
Air .....	15
UTILITIES .....	16
Electricity.....	16
Natural Gas .....	16
Public Water Supply.....	17
Sewerage .....	18
CLIMATE .....	19

<u>Chapter</u>	<u>Page</u>
LOCAL GOVERNMENT .....	20
Structure .....	20
Planning and Zoning .....	20
Local Fees and Licenses .....	20
State and Local Property Taxes .....	21
EDUCATION .....	22
Public Schools .....	22
Area Colleges and Universities .....	22
Vocational Training .....	23
OTHER LOCAL FACILITIES .....	25
Local Medical Personnel .....	25
Hospitals .....	25
Other Medical Facilities and Services .....	25
Banks and Savings & Loan Associations .....	25
Newspapers .....	25
Telephone Service .....	25
RECREATION .....	26
COMMUNITY IMPROVEMENTS .....	27

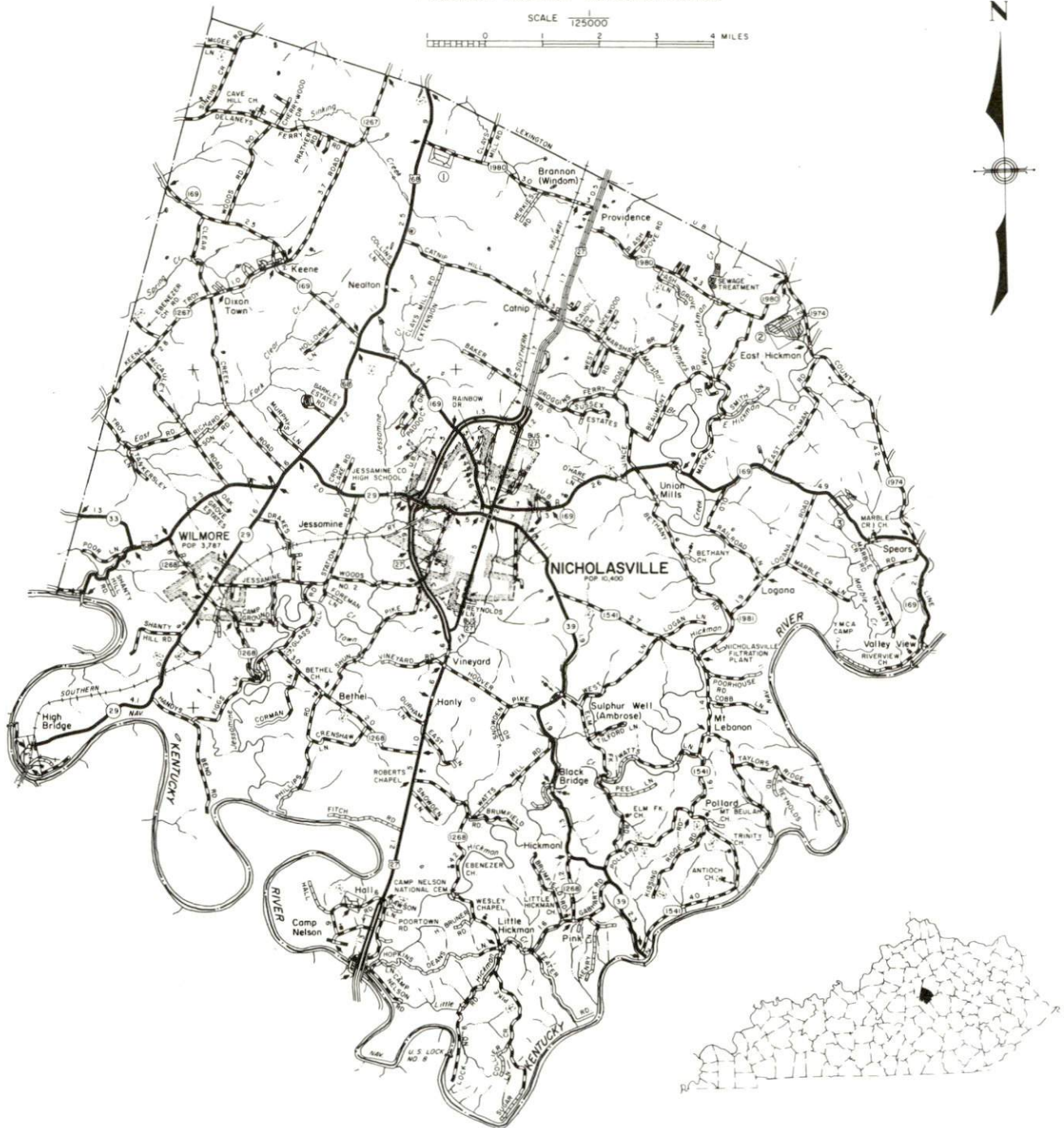


# GENERAL HIGHWAY MAP

# JESSAMINE COUNTY

## KENTUCKY

PREPARED BY THE  
KENTUCKY TRANSPORTATION CABINET  
DEPARTMENT OF HIGHWAYS  
DIVISION OF PLANNING  
IN COOPERATION WITH THE  
U.S. DEPARTMENT OF TRANSPORTATION  
FEDERAL HIGHWAY ADMINISTRATION



## NICHOLASVILLE, KENTUCKY - A RESOURCE PROFILE

Nicholasville, the county seat of Jessamine County, lies within central Kentucky's Blue Grass Region, an area of low rolling hills. Nicholasville is located 12 miles south of Lexington, Kentucky; 87 miles east of Louisville, Kentucky; and 90 miles south of Cincinnati, Ohio. The city had a 1990 population of 13,603 persons.

Jessamine County, with a land area of 173 square miles, features terrain which ranges from rolling hills in the northern and central portions of the county, to steeper hills in the southern portions. Along the Kentucky River, which forms the southern boundary of the county, the landscape is much more rugged. The river winds through a deeply entrenched gorge whose cliff-lined walls rise vertically 400 feet or more. Jessamine County's 1990 population was 30,508 persons.

**The Economic Framework** - The total number of Jessamine County residents employed in 1992 averaged 16,333. In 1991, manufacturing firms in the county reported 1,510 employees; wholesale and retail trade provided 2,260 jobs; 1,127 people were employed in service occupations; state and local government accounted for 1,223 employees; and contract construction firms provided 833 jobs.

**Labor Supply** - There is a current estimated labor supply of 13,209 persons available for industrial jobs in the labor market area. In addition, from 1993 through 1997, 24,593 young persons in the area will become 18 years of age and potentially available for industrial jobs.

**Transportation** - Nicholasville is served by U.S. Highway 27, a "AAA"-rated trucking highway, and by Kentucky Routes 29, 39, and 169, all "AA"-rated highways. In addition, Interstate Highways 64 and 75 are accessible approximately 16 miles northeast of Nicholasville near Lexington. Thirty-seven trucking companies serve Nicholasville. The Norfolk Southern Corporation provides main line rail freight service to Nicholasville. The nearest scheduled commercial airline service is available at Bluegrass Airport, 13 miles northwest of Nicholasville near Lexington.

**Power and Fuel** - The City of Nicholasville Utilities, whose source of electric power is Kentucky Utilities Company, provides electric power to Nicholasville. Kentucky Utilities Company and Blue Grass Rural Electric Cooperative Corporation also serve portions of Jessamine County. Delta Natural Gas Company, Inc. provides natural gas service to Nicholasville.

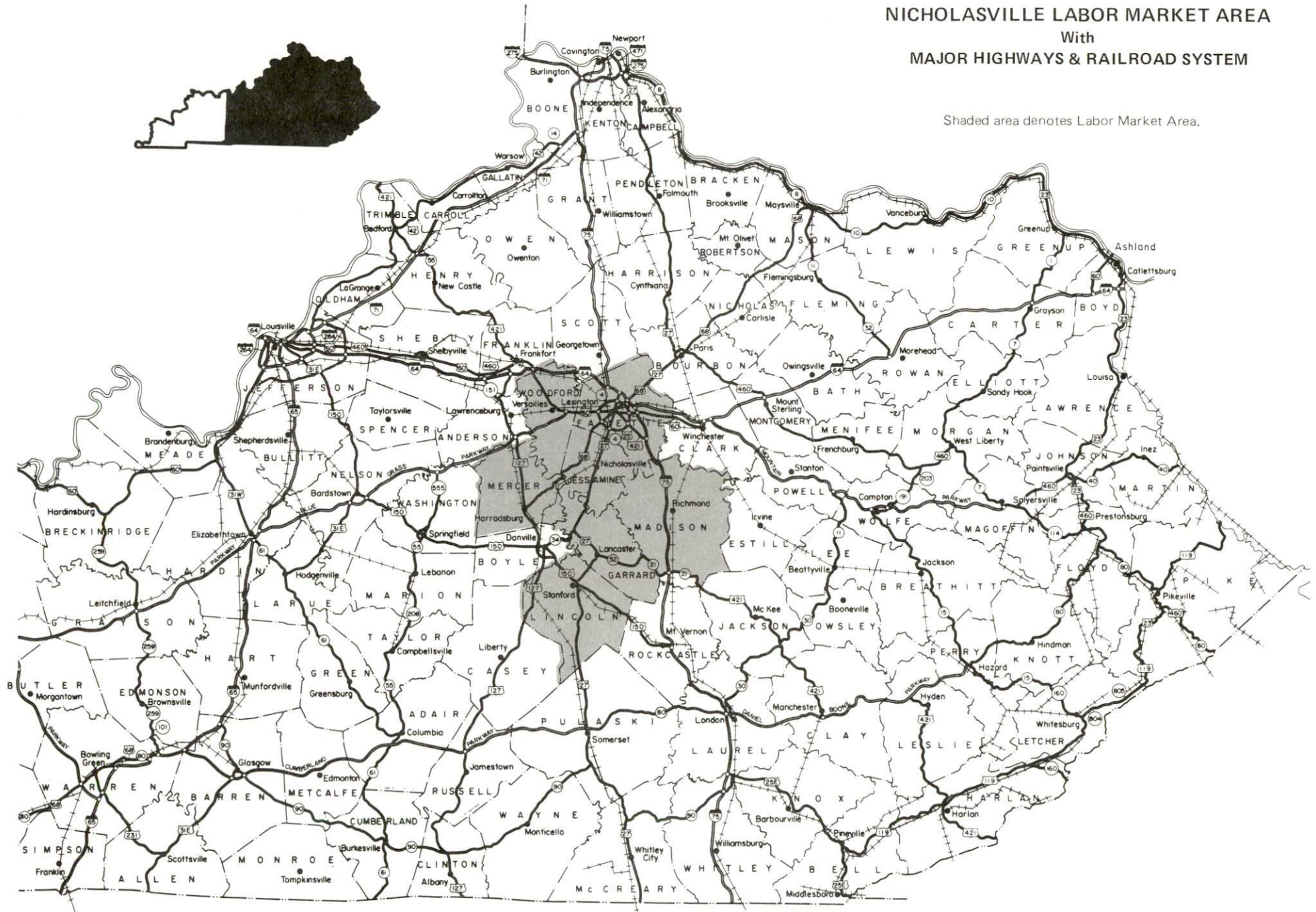
**Education** - The Jessamine County Public School System, accredited by the Southern Association of Colleges and Schools, provides primary and secondary education in Jessamine County. Asbury College, seven miles west of Nicholasville, is the nearest of 11 colleges and universities located within 50 miles of Nicholasville. Vocational training is available at Central Kentucky State Vocational-Technical School, in Lexington, 12 miles north of Nicholasville.



# NICHOLASVILLE LABOR MARKET AREA

With  
MAJOR HIGHWAYS & RAILROAD SYSTEM

Shaded area denotes Labor Market Area.



## LABOR MARKET STATISTICS

The Nicholasville Labor Market Area includes Jessamine County and the adjoining Kentucky counties of Fayette, Garrard, Lincoln, Madison, Mercer, and Woodford.

### POPULATION

	<u>1990</u>	<u>1980</u>	<u>1970</u>
Labor Market Area	384,109	350,277	290,997
Nicholasville	13,603	10,319	5,829
Jessamine County	30,508	26,065	17,430

Source: U.S. Department of Commerce, Bureau of the Census, January 1991.

### POPULATION PROJECTIONS

	<u>1995</u>	<u>2000</u>	<u>2010</u>	<u>2020</u>
Labor Market Area	404,099	421,852	447,689	460,023
Jessamine County	33,049	35,277	38,756	40,828

Note: Population projections are from Moderate Growth Series forecast.

Source: University of Louisville, Urban Studies Center, State Data Center.

### ESTIMATED LABOR SUPPLY

	<u>Current</u>		<u>Future</u>	
	<u>Total</u>	<u>Unemployed</u>	<u>Not in Labor Force</u>	<u>Becoming 18 years of age 1993 thru 1997</u>
Labor Market Area*	13,209	9,592	3,617	24,593
Jessamine County	761	761	0	2,339

\* Additional workers may be drawn from other nearby counties.

Note: Unemployed - persons unemployed and actively seeking work; Not in Labor Force - represents the number of persons who would enter the labor force if suitable employment were available (based on the assumption that persons in Kentucky would like to participate in the labor force in the same proportion that they do nationally). Underemployed persons (employed only 14 to 26 weeks during the year) are no longer included in labor surplus estimates.

Sources: Kentucky Cabinet for Human Resources, Kentucky Labor Surplus Estimates by County, 1992. Kentucky Cabinet for Economic Development, Future Labor Supply Becoming 18 Years of Age, 1993 thru 1997.

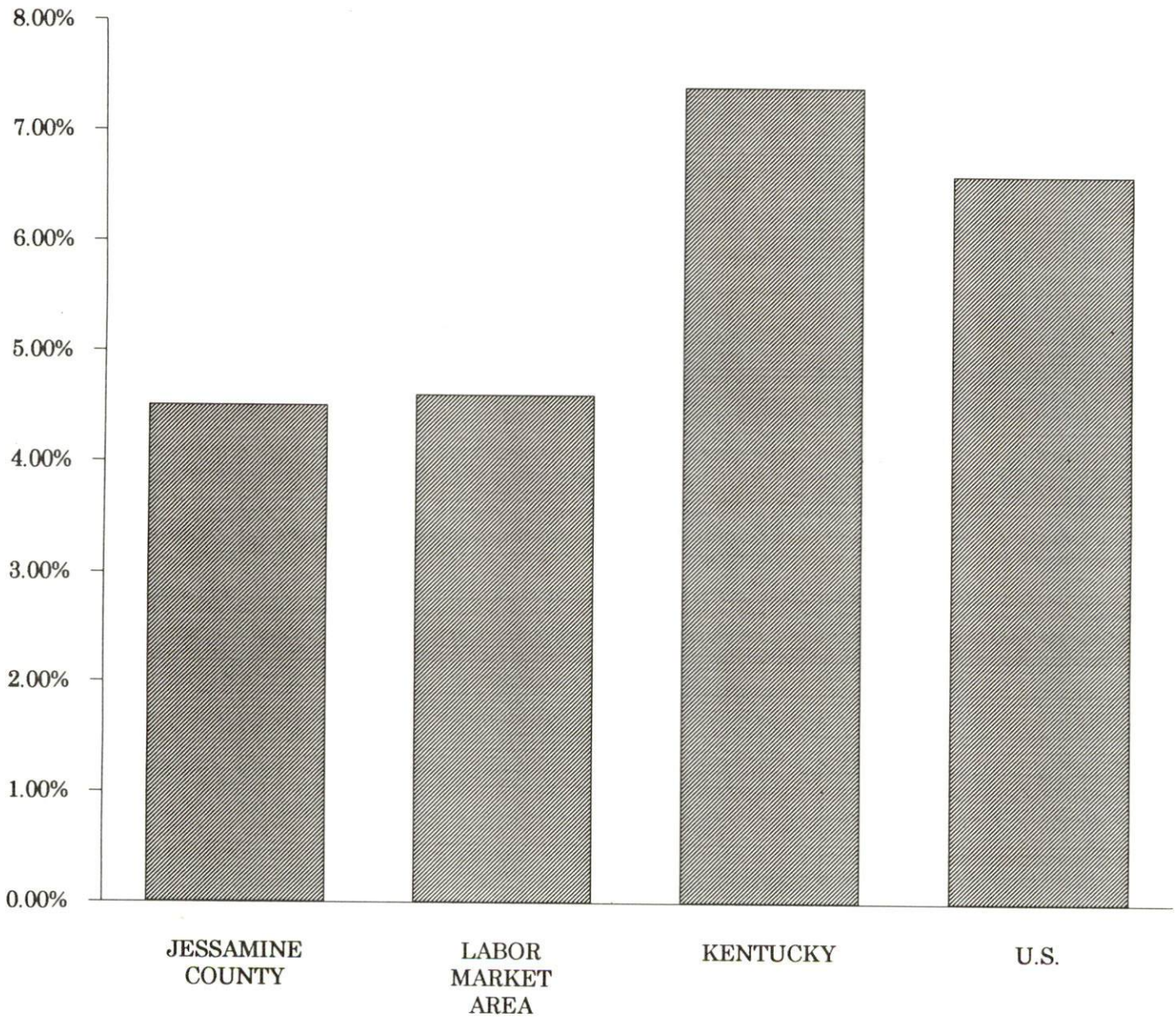


# LABOR FORCE CHARACTERISTICS OF RESIDENTS, 1992

	<u>Jessamine County</u>	<u>Labor Market Area</u>
Civilian Labor Force	17,094	208,349
Employment	16,333	198,757
Unemployment	761	9,592
Rate of Unemployment (%)	4.5	4.6

Source: Kentucky Cabinet for Human Resources, Kentucky Labor Force Estimates, Annual Averages, 1992.

## UNEMPLOYMENT RATES 1992



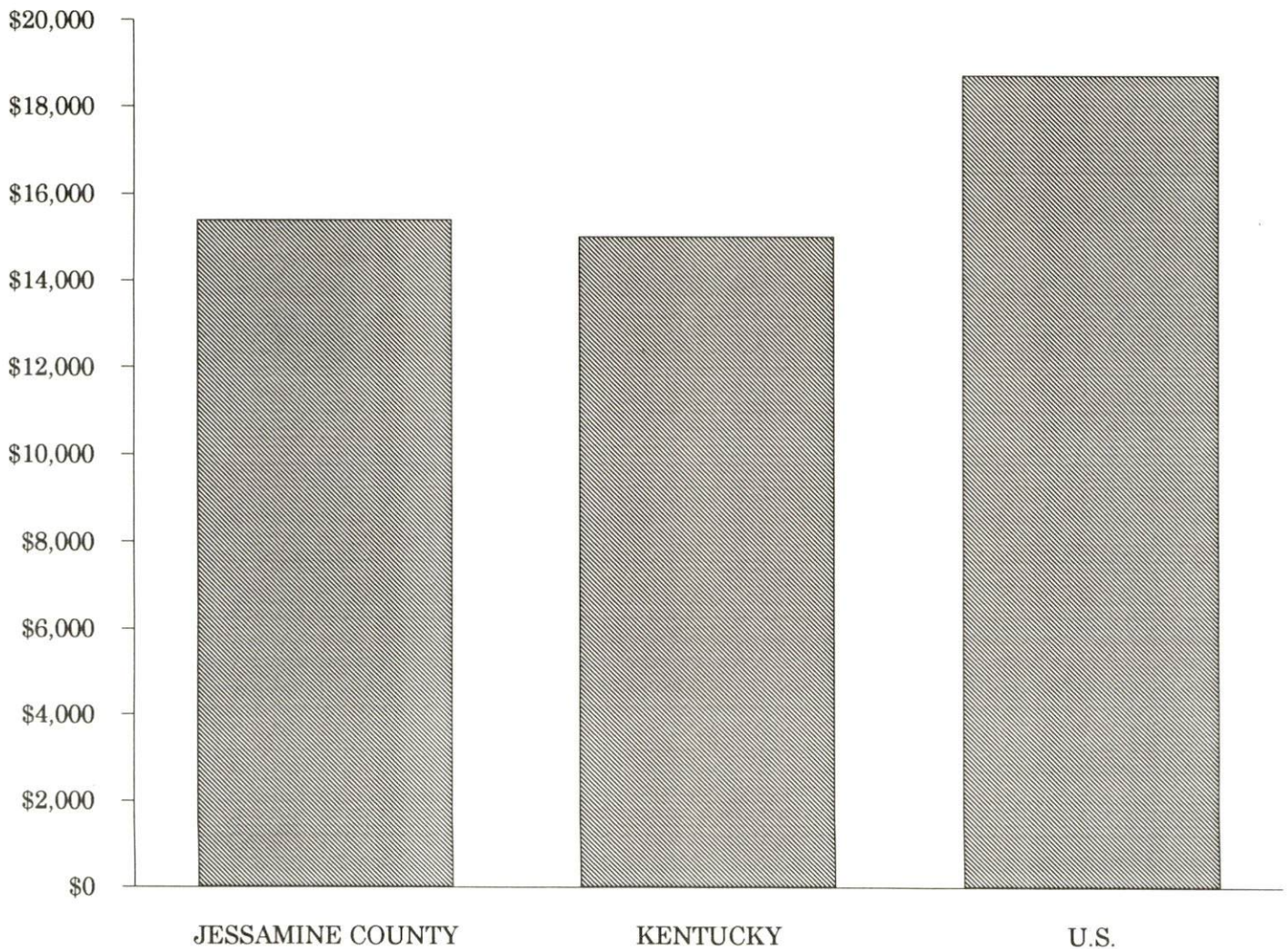


PER CAPITA PERSONAL INCOME

Area	1986	1990	Percent Change
Jessamine County	\$11,704	\$15,381	31.4
Labor Market Area Range	\$8,118 - \$19,486	\$10,316 - \$23,493	-
Kentucky	\$11,273	\$14,992	33.0
U.S.	\$14,654	\$18,696	27.6

Source: U.S. Bureau of Economic Analysis, Kentucky Economic Information System, April 1992.

PER CAPITA PERSONAL INCOME  
1990



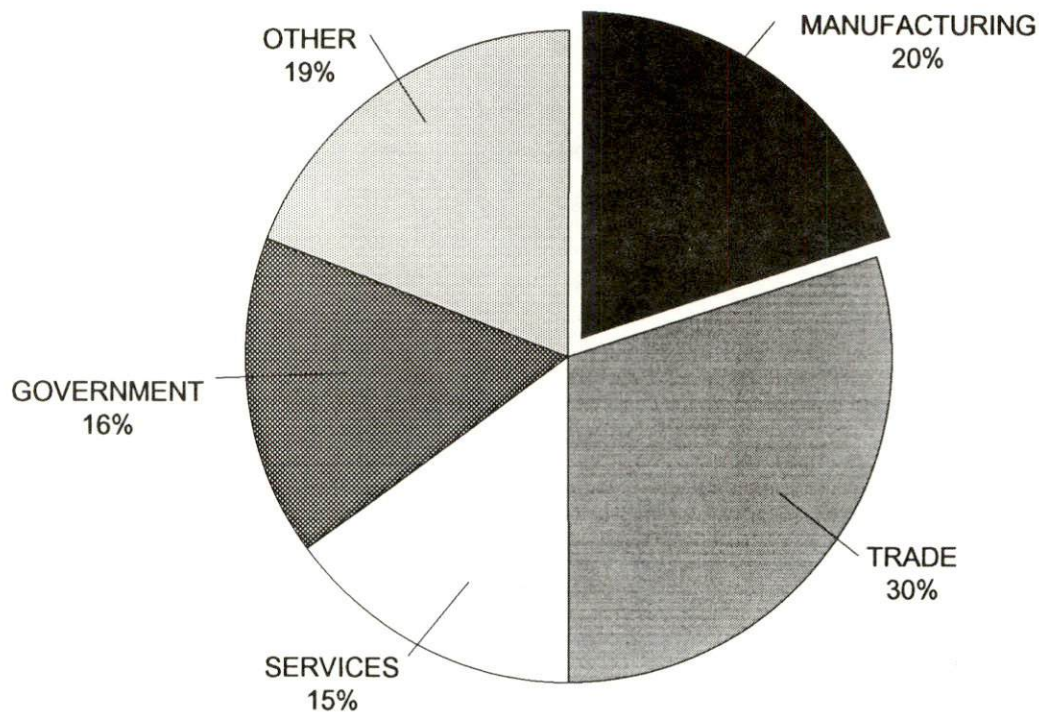


SELECTED COMPONENTS OF NONAGRICULTURAL EMPLOYMENT  
BY PLACE OF WORK, 1991

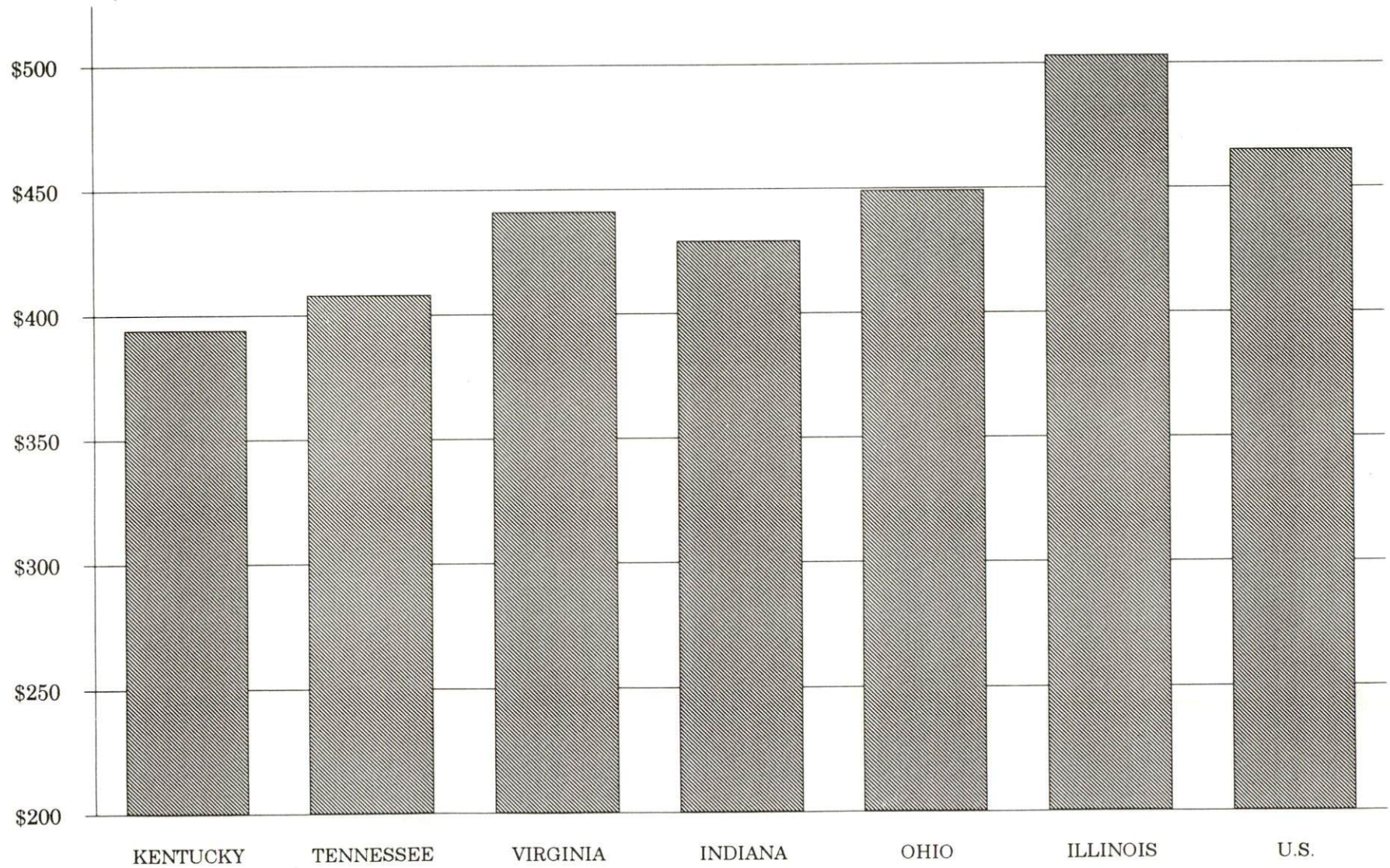
	<u>Jessamine County</u>	<u>Labor Market Area</u>
All Industries (total)	7,607	180,724
Manufacturing	1,510	29,614
Wholesale & Retail Trade	2,260	46,068
Services	1,127	44,081
State/Local Government	1,223	30,524
Contract Construction	833	9,279

Note: Excludes domestic workers, railway workers, certain nonprofit corporations, majority of federal government workers, and self-employed workers.  
Source: Kentucky Cabinet for Human Resources, Average Monthly Workers Covered by Kentucky Unemployment Insurance Law, 1991.

JESSAMINE COUNTY



AVERAGE WEEKLY WAGES OF WORKERS COVERED BY  
UNEMPLOYMENT INSURANCE - 1991





## AVERAGE PLACEMENT WAGES

---

Jessamine County is served by the Lexington local office of the Kentucky Department for Employment Services. The focus of the following data is on job placements made by the Lexington local office and may therefore be used as an indicator of the wages which employers in the area pay new employees. During the twelve months which ended on June 30, 1990, the local employment office filled 4,703 job openings in various occupational categories. The average hourly wage for selected occupational categories were:

<u>OCCUPATIONAL CATEGORY</u>	<u>NUMBER OF PLACEMENTS</u>	<u>AVERAGE WAGE(\$)</u>
All Occupations	4,703	5.72
Clerical	660	4.58
Sales	214	3.89
Services (excluding domestic)	816	4.39
Agricultural, Fishery, Forestry, etc.	59	4.40
Processing	766	5.80
Machine Trades	172	7.33
Bench Work	748	5.85
Structural	491	8.08
Motor Freight/ Transportation	159	7.08
Packaging and Materials Handling	570	6.08
Other	8	5.54

The Lexington local office also serves Fayette County. The above occupational categories are taken from the Dictionary of Occupational Titles published by the U.S. Department of Labor.

---

Source: Kentucky Cabinet for Human Resources, Department for Employment Services.

AVERAGE WEEKLY WAGES BY INDUSTRY  
BY PLACE OF WORK, 1991\*

	Jessamine County	Kentucky (State- Wide)	Tennessee	Virginia
All Industries	\$350.94	\$394.46	\$408.00	\$441.00
Mining & Quarrying	N/A	661.68	528.00	655.00
Contract Construction	375.88	410.33	436.00	452.00
Manufacturing	462.64	505.56	477.00	509.00
Transportation, Communications & Public Utilities	393.16	528.78	541.00	605.00
Wholesale & Retail Trade	291.46	268.42	N/A	N/A
Finance, Insurance & Real Estate	335.64	449.89	495.00	523.00
Services	289.71	350.41	394.00	455.00
State/Local Government	341.65	413.84	N/A	N/A
	<u>Indiana</u>	<u>Ohio</u>	<u>Illinois</u>	<u>U. S.</u>
All Industries	\$429.00	\$449.00	\$503.00	\$465.00
Mining & Quarrying	708.00	609.00	758.00	747.00
Contract Construction	499.00	510.00	635.00	514.00
Manufacturing	583.00	613.00	609.00	579.00
Transportation, Communications & Public Utilities	531.00	567.00	632.00	599.00
Wholesale & Retail Trade	N/A	N/A	N/A	N/A
Finance, Insurance & Real Estate	458.00	498.00	650.00	596.00
Services	368.00	398.00	462.00	443.00
State/Local Government	N/A	N/A	N/A	N/A

\* Wages for U.S. and surrounding states rounded to nearest dollar.

N/A Not Available.

Note: The average weekly wage for each category includes the salaries and wages of all persons working for that type business. For example, the manufacturing category includes both production workers and administrative personnel. Excludes domestic workers, railway workers, certain nonprofit corporations, majority of federal government workers, and self-employed workers.

Source: Kentucky Cabinet for Human Resources, Average Weekly Wages of Workers Covered by Kentucky Unemployment Insurance Law, 1991. U.S. Department of Labor, Bureau of Labor Statistics, Employment and Wages, Annual Averages, 1991, January 1993.



## EXISTING INDUSTRY

### JESSAMINE COUNTY MANUFACTURING FIRMS, THEIR PRODUCTS AND EMPLOYMENT

<u>Firm</u> <u>(Establishment date)</u>	<u>Product</u>	<u>1992</u> <u>Average Employment</u>
<b>Nicholasville</b>		
Adcom Wire Company (1970)	Low carbon wire, high carbon spring wire	84
Alltech, Inc., Biotechnology Center (1980)	Yeast for distilleries, biotechnical additives for feed	100
American Building Components (1991)	Metal building panels	25
American Cabin Supply (1985)	Printing (cups, napkins, etc.)	19
Artistic Wood, Ltd. (1984)	Custom wood cabinets	12
Bluegrass Treated Wood (1978)	Treated posts and boards	7
CNC Machining & Engineering, Inc. (1976)	Production machining, special machining, general machining	25
Clark Machine Tool & Die, Inc. (1968)	Tools, dies, jigs, fixtures, metal stampings and assemblies, machined parts	25
Classic Rattan, Inc. (1978)	Rattan furniture	49
Contemporary Wood Design (1987)	Wooden counters, display fixtures (video), closet components	4
Cowart and Company (1979)	Custom wood cabinets, millwork	18
Creative Draperies, Inc. (1969)	Quilting, bedspreads, draperies and cubicle curtains	30
Custom Wiring, Inc. (1978)	Electrical subassemblies, wire harnesses, wire assemblies	13
Donaldson Company, Inc. Nicholasville Plant (1979)	Non-automotive mufflers, dust collectors, fume exhaust equipment	160
Faulkner-Fain Company, Inc. (1957)	Wood store & bank fixtures, institutional furnitures, interiors, casegoods	15

(Continued)

<u>Firm</u> <u>(Establishment date)</u>	<u>Product</u>	<u>1992</u> <u>Average Employment</u>
Gulf States Paper Corporation, Paperboard Covering Division (1970)	Folding cartons	220
Doc Holiday (1981)	Plaster molds-ceramic hobby	35
Hospital Specialty Company (1979)	Sanitary napkins, disposable diapers	190
Johnson Controls, Inc. Plastic Container Division (1973)	Plastic bottles	65
Jourdan Graphic Services (1985)	Dies, die-cut and embossed paper products, folding cartons	10
Lexington Paint & Supply Company, Inc. (1984)	Paint	7
Linear Films, Inc. (1984)	Flexible packaging film	92
Multi-Link, Inc. (1987)	Telephone ring identifying device, telephone linesharing device, facimile accessory	24
Plastic Products of Kentucky (1987)	Plastic display products, parts; machined plastic parts	4
Sargent & Greenleaf, Inc. (1973)	Locks	200
Southern States Cooperative (1955)	Fertilizer, feed	7
Thompson International (1979)	Plastic injection molding	200
Top Notch Wood Products, Inc. (1986)	Kitchen cabinets, store fixtures, office furniture and plastic laminate	10
Trim Master's, Inc. (1993)	Seating for automotive interiors	140
Winges Mixed Concrete Company, Inc. (1969)	Ready-mixed concrete	22
<b>Wilmore</b>		
Crouse Concrete, Inc. (1961)	Ready-mixed concrete	12
Tococo, Inc. (1971)	Ladies' and men's jeans	105

Sources: Kentucky Cabinet for Economic Development, Division of Research; Jessamine County Chamber of Commerce.

## RECENT INDUSTRIAL DEVELOPMENTS

Trim Master's, Inc. initiated operations in Nicholasville in 1993. The company manufactures seating for automotive interiors and employs approximately 140 persons.

## LABOR ORGANIZATIONS IN MANUFACTURING FIRMS

<u>Union</u>	<u>Representing workers at:</u>
International Brotherhood of Teamsters, Chauffeurs, Warehousemen and Helpers of America	Sargent & Greenleaf, Inc.
International Ladies' Garment Workers Union, AFL-CIO	Tococo, Inc.

## SELECTED INDUSTRIAL SERVICES

<u>Types of Services</u>	<u>Location</u>	<u>Mileage from Nicholasville</u>
Custom Plastics Producers	Nicholasville	-
Electric Motor Repair	Lexington	12
Heat Treating Facilities	Lexington	12
Industrial Waste Removal	Nicholasville	-
Machine Shops, Tool & Die	Nicholasville	-
Metal Castings	Cynthiana	41
Metal Finishers	Lexington	12
Metal Service Centers	Lexington	12
Millwrights & Riggers	Nicholasville	-

Sources: Kentucky Cabinet for Economic Development, Division of Research.



## TRANSPORTATION

### Highways

Nicholasville is served by U.S. Highway 27, a "AAA"-rated (80,000-pound gross load limit) trucking highway, and by Kentucky Routes 29, 39, and 169, all "AA"-rated (60,000-pound gross load limit) trucking highways.

Interstate 64, a major east-west highway; and Interstate 75, a major north-south traffic artery, intersect 16 miles northeast of Nicholasville near Lexington.

Proposed widening of U.S. 27 to four lanes south of Nicholasville to Camp Nelson is being planned.

#### HIGHWAY MILES FROM NICHOLASVILLE, KENTUCKY, TO SELECTED MARKET CENTERS

City	Highway Miles	City	Highway Miles
Atlanta, GA	363	Los Angeles, CA	2,179
Baltimore, MD	547	Louisville, KY	87
Birmingham, AL	384	Nashville, TN	203
Chicago, IL	356	New Orleans, LA	723
Cincinnati, OH	90	New York, NY	725
Cleveland, OH	330	Pittsburgh, PA	353
Detroit, MI	350	St. Louis, MO	344
Knoxville, TN	178		

Note: Mileage computations are via the best interstate or primary highways, not necessarily the most direct route of travel.

Sources: Rand McNally Standard Highway Mileage Guide, 1990. Official Kentucky Mileage Map, 1985.

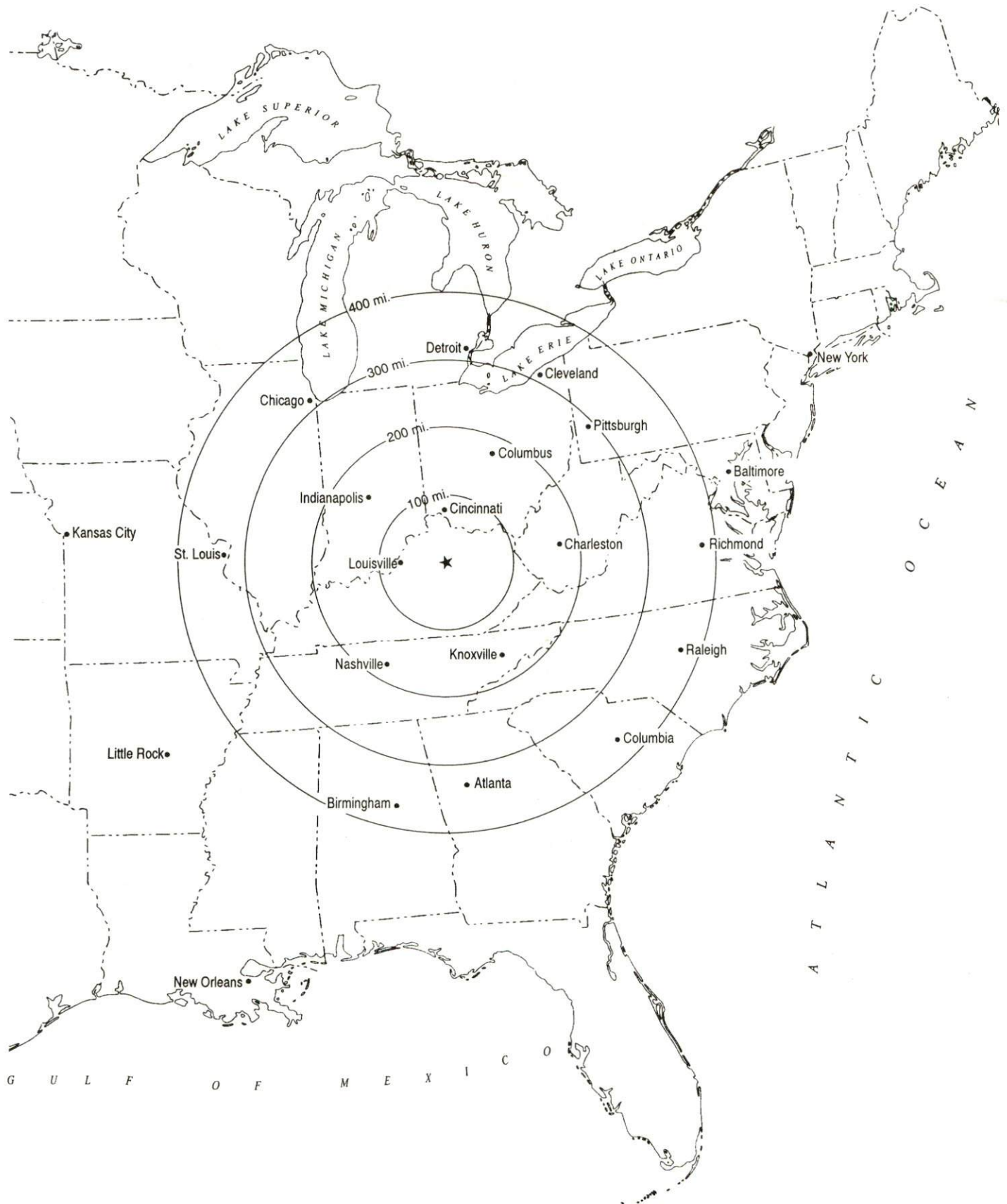
### Truck Service

Thirty-seven common carrier trucking companies provide interstate and/or intrastate service to Nicholasville.

Source: American Motor Carrier Directory, Spring 1993.



# Selected Market Centers



## Rail

The Norfolk Southern Corporation provides main line rail service to Nicholasville. Intermodal facilities are located at Georgetown, Kentucky, 28 miles north of Nicholasville.

For details on routing, schedules, rates, and services contact:

District Sales Manager  
Norfolk Southern Corporation  
1402 South 15th Street  
Louisville, Kentucky 40210  
(502) 636-6023

## Air

### Nearest Scheduled Commercial Airline Service

Location:	Bluegrass Airport 4 miles west of Lexington, Kentucky; 13 miles northwest of Nicholasville
Air Service:	Delta, USAir, United Express, American Eagle, ComAir, TW Express, Atlantic Southeast Airlines, Northwest Airlink
Daily Arrivals & Departures:	120

## UTILITIES

Company serving Nicholasville - City of Nicholasville Utilities  
Source of power - Kentucky Utilities Company  
For industrial rates contact:

Electric Superintendent  
City of Nicholasville Utilities  
517 North Main Street  
P.O. Box 450  
Nicholasville, Kentucky 40340-0450  
(606) 885-9473

Company serving portions of central, southwestern, and northeastern  
Jessamine County - Kentucky Utilities Company  
Source of power - Kentucky Utilities Company  
For industrial rates contact:

Industrial Development Department  
Kentucky Utilities Company  
One Quality Street  
Lexington, Kentucky 40507  
(606) 255-2100

Company serving a major portion of Jessamine County - Blue Grass  
Rural Electric Cooperative Corporation  
Source of power - East Kentucky Power Cooperative  
For industrial rates contact:

Industrial Development Department  
East Kentucky Power Cooperative  
P.O. Box 707  
Winchester, Kentucky 40392-0707  
(606) 744-4812

and/or

Blue Grass Rural Electric Cooperative  
Corporation  
1201 Lexington Road  
P.O. Box 990  
Nicholasville, Kentucky 40340-0990  
(606) 885-4191 Fax #(606) 623-6295

## Natural Gas

Company serving Nicholasville - Delta Natural Gas Company, Inc.  
Source of supply - Tennessee Gas Pipeline Company  
For rates and supplies contact:

VP-Marketing and Public Relations  
Delta Natural Gas Company, Inc.  
3617 Lexington Road  
Winchester, Kentucky 40391  
(606) 744-6171

## Public Water Supply

Company serving Nicholasville - City of Nicholasville  
601 North Main  
P.O. Box 450  
Nicholasville, Kentucky 40340-0450  
(606) 885-9473 Fax #(606) 885-9476

Source - Kentucky River  
Treatment plant capacity - 6,000,000 gallons per day  
Average daily consumption - 1,900,000 gallons  
Peak daily consumption - 3,000,000 gallons  
Storage capacity - 2,350,000 gallons  
Water pressure - 50 psi to 140 psi

The City of Nicholasville is constructing approximately 35,000 feet of 20-inch backbone water transmission line of which 18,000 feet has already been installed. Total cost of the project is \$2.25 million.

The City of Nicholasville plans to construct a one million-gallon elevated water storage tank costing \$900,000.

### Company serving South and Southwest portion of Jessamine County-

Spears Water Company  
104 West Maple Street  
Nicholasville, Kentucky 40356  
(606) 885-5958

Source of treated water - City of Nicholasville and Kentucky-  
American Water Company  
Average daily consumption - 386,421 gallons  
Peak daily consumption - 425,490 gallons  
Storage capacity - 250,000 gallons  
Water pressure - 30 psi to 50 psi

Name of water district - Jessamine County Water District No. 1  
200 West Maple Street  
Nicholasville, Kentucky 40356  
(606) 885-9314

Area served - 1/2 mile each side of U.S. 27 north from Nicholasville  
city limits to Fayette County Line  
Source of supply of treated water - City of Nicholasville  
Average daily consumption - 218,265 gallons  
Peak daily consumption - 367,800 gallons  
Storage capacity - 250,000 gallons  
Water pressure - 48 psi to 120 psi



Name of water district - Lexington-South Elkhorn Water District  
200 West Maple Street  
Nicholasville, Kentucky 40356  
(606) 885-9314

Area served - Western portion of Jessamine County  
Source of supply of treated water - Kentucky American Water Company  
Maximum Amount Available - 1,296,000 gallons per day  
Average daily consumption - 359,000 gallons  
Peak daily consumption - 650,000 gallons  
Storage capacity - 50,000 gallons  
Water pressure - 45 psi to 110 psi

The Lexington-South Elkhorn Water District is constructing a 500,000-gallon storage tank and 20 miles of distribution line. Completion date is scheduled for September 1993.

#### Sewerage

Company serving Nicholasville - City of Nicholasville  
601 North Main  
P.O. Box 450  
Nicholasville, Kentucky 40340-0450

Design capacity - 3,400,000 gallons per day  
Average daily flow - 2,710,000 gallons  
Type of treatment - Secondary  
Treated effluent discharged into - Town Branch

The City of Nicholasville plans to construct a new four million gallon-per-day wastewater treatment plant and conveyance system to transport the sewage to the new facility. Total cost of the project is approximately \$10.3 million and completion date is scheduled for December 1995.

## CLIMATE

### Jessamine County

#### Temperature

Normal (30-year record)	54.90 degrees
Average annual 1991	57.30 degrees
Record highest, July 1988 (47-year record)	103.00 degrees
Record lowest, January 1963 (47-year record)	-21.00 degrees
Normal heating degree days (30-year record)	4,814
(Heating degree day totals are the sums of negative departures of average daily temperatures from 65 degrees F.)	

#### Precipitation

Normal (30-year record)	45.68 inches
Mean annual snowfall (47-year record)	15.70 inches
Total precipitation 1991	41.80 inches
Mean number days precipitation (.01 inch or more)	
(47-year record)	129.40
Mean number days thunderstorms (47-year record)	44.90

#### Prevailing winds (through 1963)

South

#### Relative Humidity (28-year record, except 1 a.m. - 27-year record)

1 a.m.	77 percent
7 a.m.	82 percent
1 p.m.	60 percent
7 p.m.	64 percent

Source: U.S. Department of Commerce, Environmental Science Services Administration, Climatological Data, 1991. Station of record: Lexington, Kentucky.

## LOCAL GOVERNMENT

### Structure

Nicholasville is governed by a mayor and four commissioners. The mayor is elected to a four-year term, while the commissioners serve two-year terms each. Jessamine County is governed by a county judge/executive and six magistrates. Each county official serves a four-year term.

### Planning and Zoning

City agency - Nicholasville Planning Commission

Zoning enforced - Within the corporate limits of Nicholasville

Subdivision regulations enforced - Within the corporate limits of Nicholasville

Local codes enforced - Building

Mandatory state codes enforced - Kentucky Plumbing Code, National

Electric Code, Kentucky Boiler Regulations and Standards, Kentucky

Building Code (modeled after BOCA code)

Joint agency - Jessamine County-City of Wilmore Joint Planning Commission

Participating cities - Wilmore and unincorporated Jessamine County

Zoning enforced - Wilmore and unincorporated Jessamine County

Subdivision regulations enforced - Wilmore and unincorporated Jessamine County

Local codes enforced - Building

Mandatory state codes enforced - Kentucky Plumbing Code, National

Electric Code, Kentucky Boiler Regulations and Standards, Kentucky

Building Code (modeled after BOCA code)

### Local Fees and Licenses

The City of Nicholasville levies an occupational license fee of one and one-half percent of gross salaries and wages for work done or services performed within the city. Some businesses pay a license tax on gross receipts based upon a sliding scale.

Jessamine County levies a one percent occupational license tax on gross wages, salaries, and commissions of individuals and on net profits of businesses.



## PROPERTY TAXES

The Kentucky Constitution requires the state to tax all classes of taxable property, and state statutes allow local jurisdictions to tax only a few classes. All locally taxed property is subject to county taxes and school district taxes (either a county school district or an independent school district). Property located inside of city limits may also be subject to city property taxes.

Special local taxing jurisdictions (fire protection districts, watershed districts, and sanitation districts) levy taxes within their operating areas (usually a small portion of community or county).

Property assessments in Kentucky are at 100% fair cash value. A 15% reduction is automatically granted for accounts receivable.

### STATE PROPERTY TAX RATES PER \$100 VALUATION

<u>Selected Classes of Property</u>	<u>1992 State Rate</u>	<u>Local Taxation Permitted</u>
Real Estate	\$0.184	YES
Manufacturing Machinery	0.150	NO
Pollution Control Equipment	0.150	NO
Inventories		
Raw Materials	0.050	NO
Goods in Process	0.050	NO
Finished Goods	0.050	YES
Motor Vehicles	0.450	YES
Other Tangible Personal Property	0.450	YES
Intangibles (Accounts Receivable, Money on Hand)	0.250	NO

### LOCAL PROPERTY TAX RATES PER \$100 VALUATION, 1992

<u>Taxing Jurisdiction</u>	<u>Real Estate</u>	<u>Finished Goods &amp; Tangibles</u>	<u>Motor Vehicles</u>
Jessamine County	\$0.1218	\$0.1593	\$0.1557
School Districts:			
Jessamine County	0.4470	0.4470	0.5470
Cities:			
Nicholasville	0.1610	0.1610	0.1970

## EDUCATION

### Public Schools

#### Jessamine County

Total Enrollment (Fall, 1992)	5,981
Accreditation	Southern Association of Colleges and Schools
Pupil-Teacher Ratio (1991-92)	18.5-1
Percent High School Graduates to College (1991-92)	49.5
Expenditures Per Pupil (1991-92)	\$3,276.90

A new elementary school, Rosenwald Dunbar Elementary, was constructed by the Jessamine County School System in 1992.

The Jessamine County School System has plans to construct a new middle school and high school costing approximately \$16 million. Completion is scheduled for fall 1995.

### Area Colleges and Universities

<u>Name</u>	<u>Location (Mileage from Nicholasville)</u>	<u>Enrollment (Fall, 1992)</u>
Asbury College	Wilmore (7)	1,138
Lexington Community College	Lexington (12)	4,862
Transylvania University	Lexington (12)	974
University of Kentucky	Lexington (12)	24,197
Centre College	Danville (23)	906
Midway College	Midway (27)	798
Georgetown College	Georgetown (27)	1,476
Eastern Kentucky University	Richomond (33)	16,866
Kentucky State University	Frankfort (36)	2,544
Berea College	Berea (46)	1,579
Saint Catherine College	Springfield (50)	353

## VOCATIONAL-TECHNICAL TRAINING

Kentucky Tech schools are operated by the Cabinet for Workforce Development and provide secondary (Sec) and postsecondary (P/S) vocational-technical training.

<u>Kentucky Tech Schools</u>	<u>Location (Mileage from Nicholasville)</u>	<u>Number of Program Offerings</u>	<u>Cumulative Enrollment 1991-1992</u>	<u>Approximate Number Completing Programs Annually</u>
Central Kentucky State Vocational- Technical School	Lexington (12)	18	<u>P/S</u> 1,061	269
Fayette Area Vocational Education Center	Lexington (12)	14	<u>Sec</u> <u>P/S</u> 536 19	168

A five million dollar expansion was completed at Kentucky Tech-Central in the fall of 1992. The expansion includes a new manufacturing technology building that houses manufacturing related programs such as machine tool technology, computer aided drafting, electronics and industry electrical technology. A computer-integrated work cell laboratory in one room of the building links all the programs, simulating the operation of an actual manufacturing plant. Applied physics, hydraulics and quality control applications are integrated into the curriculum.

Another room in the new building can be used by business and industry for startup and new production training.

Moving all manufacturing-related training into one building provided space for Kentucky Tech-Central to add health care programs as part of its expansion. These include medical imaging, medical assisting, bio-medical technician and laboratory technician programs.

### Customized Training

The Kentucky Tech system, through its Training and Development Coordinators, will provide technical assistance and will identify and develop low cost customized training programs and services for existing, as well as new and expanding businesses and industries. Businesses and industries needing customized training or a continuing education program for its employees should simply contact a Training and Development Coordinator located at the Kentucky Tech North Central region office in Lexington.



### Assessment Services

Kentucky Tech Career Connections offers to business, education, and government agencies customized assessment in career inventories, interest inventories, psychomotor skills and academic potential, as well as pre-hire assessment. The Career Connections Assessment Center is located on the campus of Kentucky Tech-Central.

### Adult Basic Education

Adult education programs are available to adults who want to develop new skills, improve basic skills or earn a high school equivalency diploma. In Jessamine County, adult literacy is provided by Operation Read at the Adult Learning Center and adult basic education is provided by the Jessamine County Board of Education.

### Bluegrass State Skills Corporation

The Bluegrass State Skills Corporation, an independent public corporation created and funded by the Kentucky General Assembly, provides programs of skills training to meet the needs of business and industry from entry level to advanced training, and from upgrading present employees to retraining experienced workers.

The Bluegrass State Skills Corporation is a major source for skills training assistance for a new or existing company. The Corporation works in partnership with other employment and job training resources and programs, as well as Kentucky's economic development activities, to package a program customized to meet the specific needs of a company.

## OTHER LOCAL FACILITIES

### Local Medical Personnel

Physicians - 24  
Dentists - 11

### Hospitals

The nearest hospitals serving Nicholasville are located in Lexington, 12 miles to the north. Lexington has six general hospitals and four special hospitals. These hospitals contain approximately 3,400 beds.

### Other Medical Facilities and Services

Jessamine Medical Center (associated with Lexington Clinic)  
Jessamine County Ambulance Service  
Jessamine County Comprehensive Care Center  
Jessamine County Health Center (public health facility)  
Jessamine County Senior Home Care  
Baptist Health Care Center

### Banks and Savings & Loan Associations

The Farmers Bank  
First National Bank and Trust Company  
First Southern National of Jessamine County  
Jessamine First Federal  
Liberty National Bank of Jessamine

### Newspapers

Jessamine Journal (weekly)

### Telephone Service

GTE South, Inc.

## RECREATION

### Local

City-County Park, a 22-acre facility, was developed jointly by the City of Nicholasville and the Jessamine County Fiscal Court. It is the home of many youth and adult sports activities. Primary facilities include: a softball field, two basketball courts, two shelters, two tennis courts, and four soccer fields. City-County Park also provides space for the Jessamine Youth Football League in an enclosed lighted football facility equipped with a fieldhouse, grandstands, and concession area. The park is also the home of the Jessamine Little League and Babe Ruth Baseball Association. The baseball games are held at a four-field complex which includes a concession area. City-County Park provides a large playground area suitable for all ages of youth.

The Jessamine County Fairgrounds, located at City-County Park, offers a multi-purpose building including restroom facilities with group reservations available. The Fairgrounds also features a horse show ring, a tractor pull arena, animal barns, a 16-pit horseshoe area, and a covered shelter for pageants, shows, and theatricals.

Six other parks are available locally including: Lake Mingo Park, a municipally-owned facility, features three shelter areas which are available for group reservations, a tennis court a playground area, a picnic area, a basketball court, an exercise area, and a one-half mile paved jogging/walking track. Hayden Park, located on Jefferson Street, offers a state of the art playground area, a multi-purpose ball diamond, and a shelter/restroom facility. Rock Fence Park, located on the corner of Oak Street and Kentucky 169, offers a large playground area and a shelter/picnic area for the surrounding neighborhood. The James Mason Soccer Facility, located on Keene Road at Belle Place, offers an olympic-size soccer field that is recessed for amphitheater-type seating on all sides of the field. Billy Lockridge Park is located in the front of Keene Land on Keene Way Drive. The park includes a playground area, a picnic area, and a shelter. Woody Grow Park is located in the rear of Keene Land. The park offers a sand volleyball court, a basketball court, a playground area, and a shelter.

Youth athletic programs include baseball, basketball, football, and soccer. The football programs have corresponding cheerleading programs for girls. Adult leagues for basketball, softball, and volleyball are available as well.

The Lone Oak Country Club offers a 18-hole golf course, a swimming pool, and tennis.

Asbury College, located in Wilmore, features special exhibits, performances, and sports events which are open to the public.

### Area (Within 25 miles)

Constitution Square State Historic Site  
Herrington Lake  
Kentucky Horse Park  
Old Fort Harrod State Park  
Shakertown at Pleasant Hill  
Waveland State Historic Site  
Keeneland Race Course  
Red Mile Harness Track



## COMMUNITY IMPROVEMENTS

Nicholasville re-certified as a "Kentucky Certified City" in 1992 for its' second consecutive year. Re-certification is based on achievement in the following areas: existing industry assistance, small business assistance, educational resources, and community development factors of health care, public safety, arts and culture, recreation, governmental awareness and resources. The Certified Cities Program is sponsored by the Kentucky Chamber of Commerce.

### Recent

Trim Master's, Inc. initiated operations in Nicholasville in 1993. The company manufactures seating for automotive interiors and employs approximately 140 persons.

"Jessamine Tomorrow", a partnership between the public and private sector, was created to formulate a broad based county-wide economic development strategy. This is intended to be a long term plan to guide the economic development of the county into the 21st Century.

The "911" emergency communication system was implemented in Jessamine County in 1992.

The City of Nicholasville constructed a new community building. The facility can be utilized for church groups, civic organizations and private parties.

The Kentucky Veterans Center was constructed in Jessamine County in 1991. The 300-bed facility employs approximately 320 persons and provides domiciliary, intermediate and skilled care.

The Jessamine County Historical Society and the Jessamine County Fiscal Court have worked cooperatively to restore the old county jail where a museum will be placed to hold the history of Jessamine County and will be utilized for receptions and as a meeting house.

A new elementary school, Rosenwald Dunbar Elementary, was constructed by the Jessamine County School System in 1992.

The Jessamine County Health Department recently constructed a new health care center costing approximately \$700,000.

In 1991, a new 50-unit motel was constructed in Nicholasville.

### Under Way

The City of Nicholasville is constructing approximately 35,000 feet of 20-inch backbone water transmission line of which 18,000 feet has already been installed. Total cost of the project is \$2.25 million.

The Lexington-South Elkhorn Water District is constructing a 500,000-gallon storage tank and 20 miles of distribution line. Completion date is scheduled for September 1993.

## Planned

The City of Nicholasville plans to construct a new four million gallon-per-day wastewater treatment plant and conveyance system to transport the sewage to the new facility. Total cost of the project is approximately \$10.3 million and completion date is scheduled for December 1995.

The City of Nicholasville plans to construct a one million-gallon elevated water storage tank costing \$900,000.

The Jessamine County School System has plans to construct a new middle school and high school costing approximately \$16 million. Completion is scheduled for fall 1995.

Proposed widening of U.S. 27 to four lanes south of Nicholasville to Camp Nelson is being planned.