

1985

Industrial Resources: Logan County

Kentucky Library Research Collection
Western Kentucky University, spcol@wku.edu

Follow this and additional works at: https://digitalcommons.wku.edu/logan_cty



Part of the [Business Administration, Management, and Operations Commons](#), [Growth and Development Commons](#), and the [Infrastructure Commons](#)

Recommended Citation

Kentucky Library Research Collection, "Industrial Resources: Logan County" (1985). *Logan County*. Paper 23.
https://digitalcommons.wku.edu/logan_cty/23

This Report is brought to you for free and open access by TopSCHOLAR®. It has been accepted for inclusion in Logan County by an authorized administrator of TopSCHOLAR®. For more information, please contact topscholar@wku.edu.

LOGAN COUNTY

**RESOURCES
FOR
ECONOMIC
DEVELOPMENT**

LOGAN COUNTY

KENTUCKY

The Business Environment is Right

RESOURCES FOR ECONOMIC DEVELOPMENT
LOGAN COUNTY, KENTUCKY

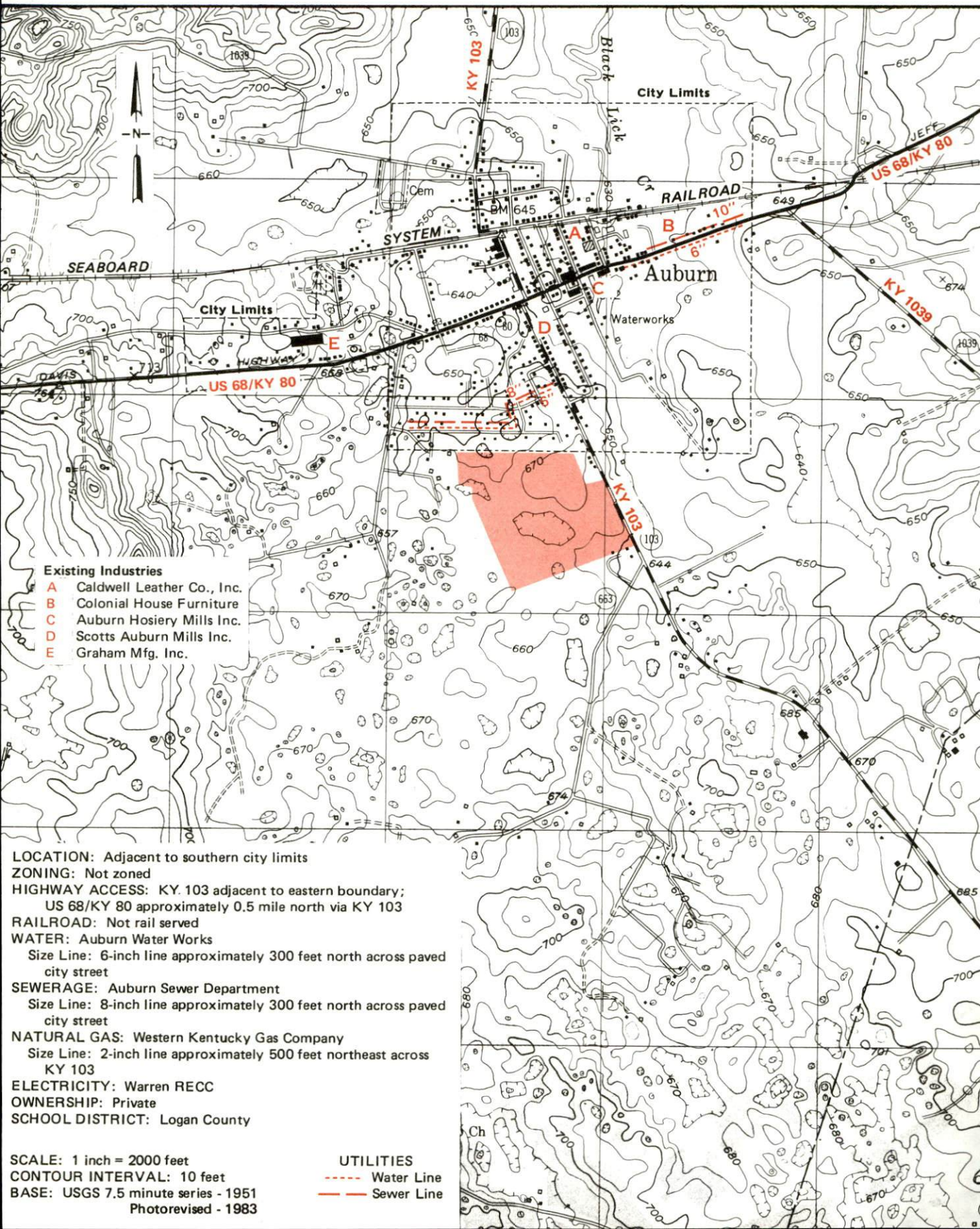
Prepared by
The Kentucky Department of Economic Development
Division of Research and Planning
in cooperation with
The Russellville-Logan County Chamber of Commerce,
The City of Adairville, The City of Auburn,
and The City of Lewisburg

1985

Program manager - Andrew Dennis; research - James R. Thompson; clerical - Bobbi Graves; graphics - Frank Ferrante, Tony Cecconi, Robert Owens; cartography - Site Evaluation Branch, Division of Industrial Development and Marketing. Cost of printing paid from state funds.

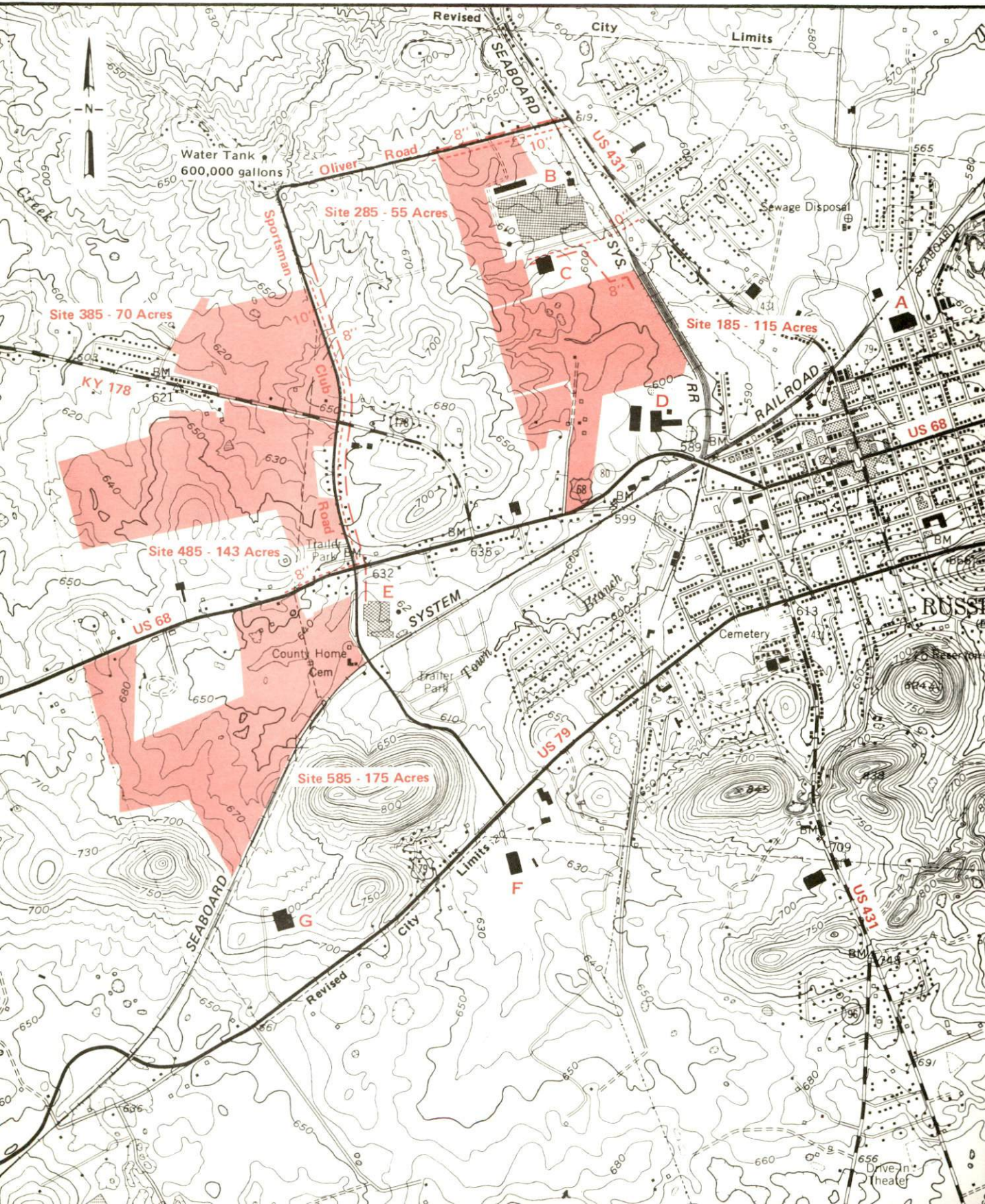
AUBURN, KENTUCKY --- Site 185 --- 90 Acres

For more information contact the Kentucky Department of Economic Development, Industrial Development & Marketing Division, Capital Plaza Tower, Frankfort, Kentucky 40601 (502-564-7140).



RUSSELLVILLE, KENTUCKY --- Industrial Sites --- 1985

For more information contact the Kentucky Department of Economic Development, Industrial Development & Marketing Division, Capital Plaza Tower, Frankfort, Kentucky 40601 (502-564-7140).



Site 185 - 115 Acres

LOCATION: Within northwest city limits
ZONING: Industrial
HIGHWAY ACCESS: US 68/KY 80 adjacent to southern boundary
RAILROAD: Seaboard System Railroad adjacent to eastern boundary
WATER: Russellville Municipal Water Works
Size Line: 10-inch line approximately 600 feet north
SEWERAGE: Russellville Wastewater Treatment Plant
Size Line: 8-inch line crosses northeast corner of site
NATURAL GAS: Western Kentucky Gas Company
Size Line: 4-inch line along eastern boundary
ELECTRICITY: Russellville Electric Plant Board
OWNERSHIP: Private
SCHOOL DISTRICT: Russellville Independent

Site 285 - 55 Acres

LOCATION: Within northwest city limits
ZONING: Industrial
HIGHWAY ACCESS: US 431 approximately 850 feet east via Oliver Road
RAILROAD: Not rail served
WATER: Russellville Municipal Water Works
Size Line: 10-inch line along northern boundary
SEWERAGE: Russellville Wastewater Treatment Plant
Size Line: 8-inch line adjacent to southeast boundary; 8-inch line along north side of Oliver Road
NATURAL GAS: Western Kentucky Gas Company
Size Line: 4-inch line approximately 500 feet east
ELECTRICITY: Russellville Electric Plant Board
OWNERSHIP: Private
SCHOOL DISTRICT: Russellville Independent

Site 385 - 70 Acres

LOCATION: Partially within northwest city limits
ZONING: Not zoned
HIGHWAY ACCESS: KY 178 adjacent to southern boundary; Sportsman Club Road adjacent to eastern boundary
RAILROAD: Not rail served
WATER: Russellville Municipal Water Works
Size Line: 10-inch line along east side of Sportsman Club Road
SEWERAGE: Russellville Wastewater Treatment Plant
Size Line: 8-inch line along east side of Sportsman Club Road
NATURAL GAS: Western Kentucky Gas Company
Size Line: 2-inch line approximately 100 feet southeast across Sportsman Club Road
ELECTRICITY: Russellville Electric Plant Board
OWNERSHIP: Private
SCHOOL DISTRICT: Logan County

Site 485 - 143 Acres

LOCATION: Partially within western city limits
ZONING: Not zoned
HIGHWAY ACCESS: KY 178 adjacent to northern boundary; Sportsman Club Road adjacent to eastern boundary
RAILROAD: Not rail served
WATER: Russellville Municipal Water Works
Size Line: 10-inch line along east side of Sportsman Club Road
SEWERAGE: Russellville Wastewater Treatment Plant
Size Line: 8-inch line along east side of Sportsman Club Road
NATURAL GAS: Western Kentucky Gas Company
Size Line: 2-inch line along east side of Sportsman Club Road
ELECTRICITY: Russellville Electric Plant Board
OWNERSHIP: Private
SCHOOL DISTRICT: Partially in Logan County and partially in Russellville Independent

Site 585 - 175 Acres

LOCATION: Partially within southwestern city limits
ZONING: Not zoned
HIGHWAY ACCESS: US 68 adjacent to northern boundary; Sportsman Club Road adjacent to eastern boundary
RAILROAD: Seaboard System Railroad adjacent to southern boundary
WATER: Russellville Municipal Water Works
Size Line: 8-inch line approximately 50 feet from northeast boundary across US 68
SEWERAGE: Russellville Wastewater Treatment Plant
Size Line: 8-inch line along east side of Sportsman Club Road
NATURAL GAS: Western Kentucky Gas Company
Size Line: 4-inch line along north side of US 68
ELECTRICITY: Russellville Electric Plant Board
OWNERSHIP: Private
SCHOOL DISTRICT: Logan County

SCALE: 1 inch = 2000 feet
CONTOUR INTERVAL: 10 feet
BASE: USGS 7.5 minute series - 1952
Photorevised - 1983

UTILITIES
----- Water Line
----- Sewer Line

Existing Industries

- A Red Kap Industries
- B E. R. Carpenter Co.
- C Isuzu Truck of America, Inc.
- D Rockwell International Corp.
- E Emerson Electric Co.
- F Bilt Rite Products Co.
- G Illinois Tool Works Inc.

TABLE OF CONTENTS

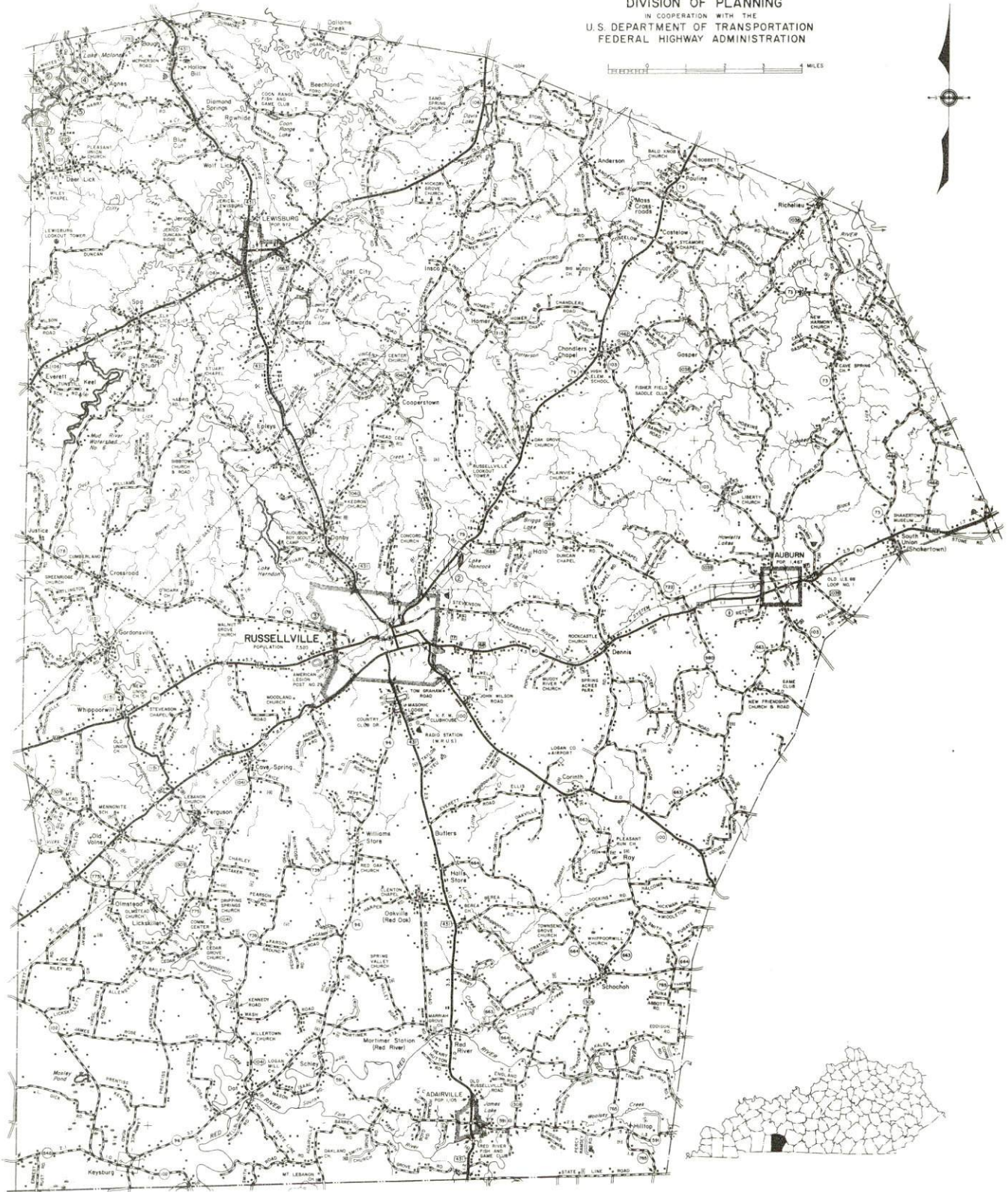
<u>Chapter</u>	<u>Page</u>
INDUSTRIAL SITES	i
LOGAN COUNTY, KENTUCKY - A RESOURCE PROFILE	1
THE LABOR MARKET AREA	3
Population	3
Labor Force Characteristics of Residents, 1984	3
Selected Components of Nonagricultural Employment, by Place of Work, 1984	4
Logan County Manufacturing Firms, Their Products and Employment	5
Labor Organizations in Manufacturing Firms	8
Industrial Services	9
Estimated Male Labor Supply	10
Estimated Female Labor Supply	10
Average Weekly Wages By Industry, by Place of Work, 1984	11
Per Capita Personal Income	13
TRANSPORTATION	14
Rail	14
Highways	14
Truck Service	15
Air	17
Taxi	18
Rental Services	18
Water	18
POWER AND FUEL	19
Electricity	19
Natural Gas	20
Other Fuels	21
WATER AND SEWERAGE	22
Public Water Supply	22
Raw Water	25
Sewerage	26
CLIMATE	29

<u>Chapter</u>	<u>Page</u>
LOCAL GOVERNMENT	30
City	30
County	30
Assessed Value of Property, 1984	31
Property Taxes	31
Combined State and Local Rates Per \$100 Valuation, 1984	32
Utilities Gross Receipts Tax for Schools	33
Planning and Zoning	33
Safety	34
Police	34
Fire	34
Rescue Service	34
Refuse Collection and Disposal	35
EDUCATION	36
Public Schools	36
Nonpublic Schools	36
Area Colleges and Universities	37
Vocational Schools	38
HEALTH	40
Local Medical Personnel	40
Hospitals	40
Other Medical Facilities	40
Ambulance Service	40
OTHER LOCAL FACILITIES	41
Communications	41
Library Services	43
Religious Institutions	43
Financial Institutions	44
Hotels and Motels	44
Clubs and Organizations	45
RECREATION	47
COMMUNITY IMPROVEMENTS	50

1985 EDITION
GENERAL HIGHWAY MAP
LOGAN COUNTY
KENTUCKY

PREPARED BY THE
KENTUCKY TRANSPORTATION CABINET
DEPARTMENT OF HIGHWAYS
DIVISION OF PLANNING
IN COOPERATION WITH THE
U.S. DEPARTMENT OF TRANSPORTATION
FEDERAL HIGHWAY ADMINISTRATION

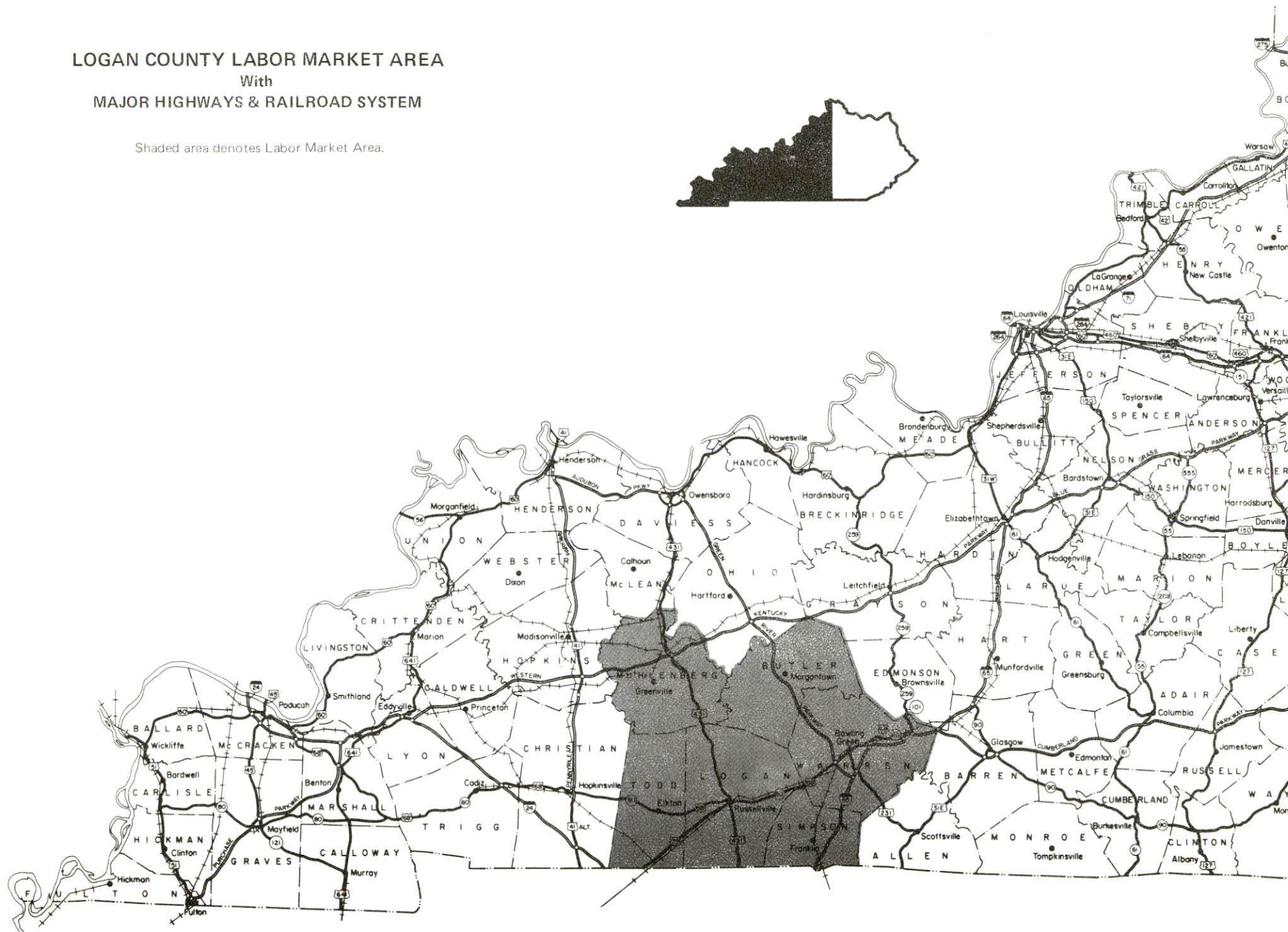
0 1 2 3 4 MILES



LOGAN COUNTY LABOR MARKET AREA

With
MAJOR HIGHWAYS & RAILROAD SYSTEM

Shaded area denotes Labor Market Area.



LOGAN COUNTY, KENTUCKY - A RESOURCE PROFILE

Logan County, with a 1982 estimated population of 24,600, is located in southwestern Kentucky, on the state's border with Tennessee. Logan County, with a land area of 556 square miles, has a terrain ranging from gently rolling to hilly. Russellville, the county seat of Logan County, is situated in the central portion of the county. With a 1980 population of 7,520, Russellville is located 51 miles north of Nashville, Tennessee; 142 miles southwest of Louisville, Kentucky; and 279 miles southeast of St. Louis, Missouri.

Adairville, located 12 miles south of Russellville, had a 1980 population of 1,105; Auburn, located 10 miles east of Russellville, had a 1980 population of 1,467; and Lewisburg, 11 miles north of Russellville, had a 1980 population of 972.

The Economic Framework

The total number of Logan County residents employed in 1984 averaged 10,180, with nonagricultural jobs accounting for 8,930 workers. Manufacturing firms in the county reported 3,870 employees; wholesale and retail trade provided 1,100 jobs; 440 people were employed in service occupations; and state and local government accounted for 870 employees. Manufacturing employment is greatest in fabricated metal products, chemical and allied products, apparel and related products, and electrical machinery.

Per capita personal income in Logan County in 1983 was \$7,604. Between 1979 and 1983, per capita income increased by 17.9 percent.

The Logan County labor market area includes Logan County and the adjoining Kentucky counties of Butler, Muhlenberg, Simpson, Todd, and Warren, and Robertson County in Tennessee. The total number of residents employed in the Kentucky portion of the labor market area in 1984 averaged 72,690, with nonagricultural jobs accounting for 68,025 workers. Manufacturing firms in the area reported 17,440 employees; wholesale and retail trade provided 12,790 jobs; 7,340 people were employed in service occupations; and state and local government accounted for 7,440 employees.

Resources for Growth

1. Labor Supply - There is a current estimated labor supply of 13,360 men and 12,280 women available for industrial jobs in the labor market area. In addition, from 1985 through 1989, 7,970 young men and 7,710 young women in the area will become 18 years of age and potentially available for industrial jobs.

2. Transportation - Rail service is provided to Russellville and Auburn by the Seaboard System Railroad. Adairville and Lewisburg are not served directly by a rail line. U.S. Highways 68, 79, and 431, and Kentucky Highways 79 and 100 are "AAA" rated (80,000-pound gross load limit) trucking highways serving Logan County. Interchanges with Interstate 65 are located 26 miles southeast of Russellville via Kentucky 100 and 30 miles northeast of Russellville via U.S. Highway 68 and the Green River Parkway. U.S. Highway 68 provides access to the Green River Parkway, 25 miles east of Russellville, and to the Pennyryle Parkway, 35 miles west of Russellville. The Western Kentucky Parkway is located 37 miles north of Russellville via U.S. Highway 431. Interstate 24 is accessible 27 miles southwest of Russellville via U.S. Highway 79. Twenty-three common carriers have the authority to serve Logan County with interstate and/or intrastate service. The nearest scheduled commercial airline service is the Nashville Metropolitan Airport, 57 miles south of Russellville. The Russellville-Logan County Airport, located 5 miles southeast of Russellville, has one paved 4000-foot runway.

3. Power and Fuel - Electric Power is provided to Russellville by the Russellville Electric Plant Board. Adairville, Lewisburg and part of Logan County are served by Pennyryle Rural Electric Cooperative Corporation, which is supplied by the Tennessee Valley Authority. Auburn and part of Logan County are served by Warren Rural Electric Cooperative Corporation, which is served by Tennessee Valley Authority. Natural gas is provided to Russellville, Adairville and Auburn by Western Kentucky Gas Company, which is supplied by Texas Gas Transmission Corporation. Natural gas service is presently not available in Lewisburg. Two distributors of propane and four distributors of distillate fuel oil serve Logan County.

4. Education - Primary and secondary education is provided to Logan County by the Russellville Independent School System and the Logan County School System. The Russellville Independent School System, which is accredited by the Southern Association of Colleges and Schools, serves approximately 1,520 students, while the Logan County School System serves approximately 2,970 students.

Five universities, four senior colleges, one community college, one medical college, and one bible college are located within 55 miles of Russellville.

The Bowling Green State Vocational-Technical School, located 29 miles east of Russellville at Bowling Green, offers training in 34 courses. The Russellville Area Vocational Education Center in Russellville offers training in 11 courses.

THE LABOR MARKET AREA

The Logan County Labor Market Area includes Logan County and the adjoining Kentucky counties of Butler, Muhlenberg, Simpson, Todd and Warren. The southern boundary of Logan County is formed by the Tennessee state line. The Logan County Labor Market Area also encompasses the adjoining Tennessee county of Robertson.

POPULATION

Area	1982*	1980	1970	Percent Nonwhite
				1980
Russellville	--	7,520	6,456	15.4
Adairville	--	1,105	973	23.3
Auburn	--	1,467	1,160	11.9
Lewisburg	--	972	651	1.1
Labor Market Area	173,600	165,815	140,814	N/A
Logan County	24,600	24,138	21,793	9.3
Butler County	11,000	11,064	9,723	0.6
Muhlenberg County	32,000	32,238	27,537	5.3
Simpson County	14,500	14,673	13,054	12.4
Todd County	11,400	11,874	10,823	12.4
Warren County	80,100	71,828	57,884	9.0

* Population estimates.

Note: The 1980 city counts of population by race are provisional.

Sources: U.S. Department of Commerce, Bureau of the Census, 1980 Census of Population and Housing, March 1981; 1980 Census of Population, Number of Inhabitants; Local Population Estimates, Series P-26, June 1984, September 1984.

LABOR FORCE CHARACTERISTICS OF RESIDENTS, 1984

	Logan County	Labor Market Area*
Civilian Labor Force	11,401	80,340
Employment	10,179	72,686
Agricultural	1,251	4,661
Nonagricultural	8,928	68,025
Unemployment	1,222	7,654
Rate of Unemployment (%)	10.7	9.5

* Logan County and the five adjoining Kentucky counties.

Source: Kentucky Cabinet for Human Resources, Kentucky Labor Force Estimates, Annual Averages, 1984.

SELECTED COMPONENTS OF NONAGRICULTURAL EMPLOYMENT,
BY PLACE OF WORK, 1984

	<u>Logan County</u>	<u>Labor Market Area*</u>
All Industries (total)	6,924	52,897
Manufacturing	3,869	17,440
Wholesale & Retail Trade	1,101	12,786
Services	438	7,338
State/Local Government	872	7,438
Contract Construction	256	1,933
Mining & Quarrying	14	2,167

* Logan County and the five adjoining Kentucky counties.

Note: Excludes domestic workers, railway workers, certain nonprofit corporations, majority of federal government workers, and self-employed workers.

Source: Kentucky Cabinet for Human Resources, Average Monthly Workers Covered by Kentucky Unemployment Insurance Law, 1984.

LOGAN COUNTY MANUFACTURING FIRMS,
THEIR PRODUCTS AND EMPLOYMENT*

<u>Firm</u> (Establishment date)	<u>Product</u>	<u>Employment</u>			<u>Labor Unions</u>
		<u>Total</u>	<u>Male</u>	<u>Female</u>	
Adairville					
Auburn Hosiery Mills, Inc. (1946)	Ladies' hosiery, panty hose and tights; children's panty hose and tights	141	31	110	
Odom Sausage Company, Inc., of Kentucky (1964)	Sausage	139	91	48	Food and Commercial Workers*
Auburn					
Auburn Hosiery Mills, Inc. (1937)	Ladies' hosiery, panty hose and tights; children's panty hose & tights	109	23	86	
Auburn Roller Mills, Inc. (1915)	Corn meal, feed	24	24	--	
Caldwell Lace Leather Company, Inc. (1863)	Leather tanning, leather laces	90	83	7	
Colonial House Furniture (1960)	Reproduction furniture	10	5	5	
Graham Manufacturing Company (1965)	Church and institutional furniture, bank furniture	19	15	4	
Scotts Auburn Mills, Inc. (1876)	Flour, corn meal, mill feed	29	27	2	

(Continued)

<u>Firm</u> (Establishment date)	<u>Product</u>	<u>Employment</u>			<u>Labor Unions</u>
		<u>Total</u>	<u>Male</u>	<u>Female</u>	
Lewisburg					
Hinton Lumber, Inc. (1933)	Rough lumber, ties, flitches	35	31	4	
Lewisburg Roller Mills (1944)	Feed	4	4	--	
Nelson Company of Kentucky (1976)	Wood pallets	63	49	14	
Red Kap Industries (1972)	Men's work clothes	136	8	128	
Russellville					
Bilt Rite Products Company, A Division of U.S. Industries (1958)	Poultry cages, welded mesh	85	77	8	
E. R. Carpenter Company (1969)	Urethane foam cushion, bonded fiber, polyethlene film	621	408	213	
Cates Lumber & Building Supply, Inc. (1963)	Lumber	30	24	6	
Coca-Cola Bottling Company (1924)	Soft drinks	29	25	4	Teamsters*
Dixie Pavers, Inc. (1984)	Asphaltic paving	2	--	--	
Emerson Electric Company (1961)	Hermetic electric motors	400	200	200	
Griffin Industries of Kentucky (1972)	Tallow by- products, tankage	30	27	3	
Illinois Tool Works, Inc. (1967)	Metal fasteners	164	139	25	
The Kentucky Stone Company (1936)	Agricultural lime, crushed limestone	13	11	2	Steelworkers*

(Continued)

<u>Firm</u> (Establishment date)	<u>Product</u>	<u>Employment</u>			<u>Labor Unions</u>
		<u>Total</u>	<u>Male</u>	<u>Female</u>	
Russellville (Continued)					
Logan Aluminum, Inc. (1984)	Aluminum can stock, aluminum foil, aluminum distributor stock	537	432	105	
Logan Leader, News Democrat (1968)	Newspaper publishing	20	8	12	
McCarley & Richardson, Inc. (1949)	Feed	8	8	0	
Maxwell Tool & Machine Shop (1982)	Tools & dies, machine shop	15	14	1	
Printers Plus, Inc. (1984)	Commercial printing	4	2	2	
Red Kap Industries (1944)	Men's work pants	400	60	340	
Rockwell International Corporation (1956)	Aluminum die castings, gas regulators	385	235	150	
Russellville Concrete Products, Inc. (1937)	Concrete block, ready-mixed concrete, concrete burial vaults	16	15	1	
Russellville Dental Lab (1956)	Dental appliances	9	8	1	
Shortenings, Inc. (1976)	Beef tallow, defatted tissue	3	3	0	
Smith Douglass of Kentucky, Inc. (1949)	Fertilizer	43	35	8	
Southern States Cooperative, Inc. (1959)	Fertilizer	16	15	1	

* See Labor Organizations below.

Sources: Kentucky Department of Economic Development, 1985 Kentucky Directory of Manufacturers; Division of Research and Planning.

New Manufacturing Development - Isuzu Truck of America, Inc., has plans to locate in Russellville. The \$3 million bus-chassis assembly plant, which will employ 30 to 50 people, is expected to be in operation by Spring, 1986.

LABOR ORGANIZATIONS IN MANUFACTURING FIRMS

Union

Representing workers at:

Adairville

United Food and Commercial
Workers International
Union, AFL-CIO

Odom Sausage Company

Russellville

International Brotherhood of
Teamsters, Chauffeurs,
Warehousemen and Helpers
of America
United Steelworkers of
America, AFL-CIO

Coca-Cola Bottling Company

Kentucky Stone Company

INDUSTRIAL SERVICES

<u>Types of Services</u>	<u>Location</u>	<u>Mileage from Russellville</u>
Custom Plastics Producers	Franklin, Kentucky	22
	Bowling Green, Kentucky	29
Electric Motor Repair	Auburn, Kentucky	10
	Bowling Green, Kentucky	29
Grinding, Precision & Tool	Nashville, Tennessee	51
Heat Treating Facilities	Nashville, Tennessee	51
Industrial Equipment & Supplies	Bowling Green, Kentucky	29
	Nashville, Tennessee	51
Industrial Gases	Bowling Green, Kentucky	29
	Nashville, Tennessee	51
Industrial Waste Removal	Russellville, Kentucky	-
Machine Shops, Tool & Die	Russellville, Kentucky	-
Metal Finishers	Nashville, Tennessee	51
	Hartford, Kentucky	52
Metal Service Centers	Russellville, Kentucky	-
Millwrights	Franklin, Kentucky	22
	Bowling Green, Kentucky	29
	Hopkinsville, Kentucky	36
Public Warehouse Facilities	Bowling Green, Kentucky	29
	Hopkinsville, Kentucky	36

Sources: Kentucky Department of Economic Development, Kentucky Directory of Selected Industrial Services, 1985; Division of Research and Planning.

ESTIMATED MALE LABOR SUPPLY
LOGAN COUNTY LABOR MARKET AREA

Area	Current				Future
	Total Male	Unemployed	Under-employed	Not in Labor Force	Becoming 18 years of age 1985 thru 1989
Labor Market Area*	13,358				7,967
Logan	1,896	1,012	489	395	971
Butler	1,234	516	304	414	457
Muhlenberg	2,098	1,348	750	0	1,332
Simpson	956	240	285	431	610
Todd	1,094	184	257	653	511
Warren	5,045	1,449	2,317	1,279	2,552
Robertson (Tenn.)	1,035	N/A	N/A	N/A	1,534

ESTIMATED FEMALE LABOR SUPPLY
LOGAN COUNTY LABOR MARKET AREA

Area	Current				Future
	Total Female	Unemployed	Under-employed	Not in Labor Force	Becoming 18 years of age 1985 thru 1989
Labor Market Area*	12,283				7,709
Logan	1,018	210	513	295	913
Butler	1,179	167	178	834	427
Muhlenberg	3,124	638	742	1,744	1,248
Simpson	799	342	457	0	617
Todd	963	198	207	558	479
Warren	4,344	1,350	2,994	0	2,455
Robertson (Tenn.)	856	N/A	N/A	N/A	1,570

* Additional workers may be drawn from other nearby counties.

Note: Unemployed - persons unemployed and actively seeking work;
Underemployed - persons employed but working only 14 to 26 weeks per year;
Not in Labor Force - represents the number of persons who would enter the labor force if suitable employment were available (based on the assumption that persons in Kentucky would like to participate in the labor force in the same proportion that they do nationally).

Sources: Kentucky Cabinet for Human Resources, Kentucky Labor Supply Estimates by County, 1984. Kentucky Department of Economic Development, Future Labor Supply Becoming 18 Years of Age, 1985 thru 1989.

AVERAGE WEEKLY WAGES BY INDUSTRY,
BY PLACE OF WORK, 1984

	<u>Logan County</u>	<u>Butler County</u>	<u>Muhlenberg County</u>
All Industries	\$ 284.18	\$ 208.18	\$ 375.44
Mining & Quarrying	183.76	392.12	728.94
Contract Construction	384.48	191.49	294.80
Manufacturing	318.40	177.74	238.83
Transportation, Communications & Public Utilities	329.94	304.86	450.04
Wholesale & Retail Trade	172.89	182.84	220.46
Finance, Insurance & Real Estate	255.32	226.60	266.25
Services	205.48	155.17	218.60
State/Local Government	282.95	236.35	275.90
Other	265.29	*	275.55
	<u>Simpson County</u>	<u>Todd County</u>	<u>Warren County</u>
All Industries	\$ 300.77	\$ 228.34	\$ 292.66
Mining & Quarrying	*	*	294.65
Contract Construction	221.09	279.01	257.95
Manufacturing	375.14	243.58	390.98
Transportation, Communications & Public Utilities	406.98	327.08	362.09
Wholesale & Retail Trade	169.08	175.49	193.52
Finance, Insurance & Real Estate	288.46	231.16	290.23
Services	201.86	158.14	252.45
State/Local Government	247.86	234.98	330.19
Other	*	135.30	170.85

* Not disclosed.

Note: Excludes domestic workers, railway workers, certain nonprofit corporations, majority of federal government workers, and self-employed workers.

Source: Kentucky Cabinet for Human Resources, Average Weekly Wages of Workers Covered by Kentucky Unemployment Insurance Law, 1984.

Associated Industries of Kentucky, a voluntary organization of Kentucky businesses, regularly collects occupational wage rates and fringe benefits data from participating member firms. Data are compiled for over 127 clearly defined office, production, and service occupations. Tabulations are published for nine geographical areas of Kentucky, as shown on the map below. It should be noted that the data may be weighted by the preponderance of firms in the larger cities and may be somewhat higher than the rates paid in the smaller communities. Data from these tabulations are available, upon request, from the Kentucky Department of Economic Development, Frankfort, Kentucky 40601.



Up to date occupational wage rates of the existing industries are maintained by South Kentucky Industrial Development Association, Post Office Box 726, Hopkinsville, Kentucky 42240.

PER CAPITA PERSONAL INCOME

<u>Area</u>	<u>1979</u>	<u>1983</u>	<u>Percent Change</u>
Logan County	\$ 6,448	\$ 7,604	17.9
Labor Market Area Range*	\$4,985 - 7,876	\$ 6,079 - 9,897	N/A
Kentucky	7,124	9,396	31.9
U. S.	8,651	11,687	35.1

* Logan County and the five adjoining Kentucky counties.

Sources: U.S. Department of Commerce, Bureau of Economic Analysis; Commerce News, August 28, 1984; May 7, 1985. Kentucky Economic Information System, June 1985.

TRANSPORTATION

Rail

Line serving **Russellville** - Seaboard System Railroad

Services - Branch line; one local turnaround freight serves Russellville 5 days a week, Monday through Friday; switching services; team track space for 10 cars; siding space for 20 cars; nearest piggyback facilities are located at Nashville, Tennessee, 51 miles south of Russellville

Line serving **Auburn** - Seaboard System Railroad

Services - Branch line; one local turnaround freight serves Auburn 5 days a week, Monday through Friday; switching services; team track space for 10 cars; nearest piggyback facilities are located at Nashville, Tennessee, 61 miles south of Auburn

Adairville and **Lewisburg** are not served directly by a rail line.

For details on routing, schedules, rates, and services, contact:

Manager of Industrial Development
Seaboard System Railroad
P. O. Box 2157
Louisville, Kentucky 40201
(502) 587-5228

Highways

U.S. Highways 68, 79 and 431, and Kentucky Highways 79 and 100 are all "AAA" rated (80,000-pound gross load limits) trucking highways serving Logan County. U.S. Highway 68 provides access to the Green River Parkway, 25 miles east of Russellville, and to the Pennyryle Parkway, 35 miles to the west. The Western Kentucky Parkway is located 37 miles north of Russellville via U.S. Highway 431.

Interchanges with Interstate 65 are located 26 miles southeast of Russellville via Kentucky 100 and 30 miles northeast of Russellville via U.S. Highway 68 and the Green River Parkway. Interstate 24 is accessible 27 miles southwest of Russellville via U.S. Highway 79.

There are plans for a 4.6-mile bypass north of Russellville. Construction of the \$8,663,000 project is to start in 1986.

Truck Service

Company

Home Office

Companies serving Russellville, Adairville, Auburn and Lewisburg

A & H Truck Line, Inc.*	Evansville, Indiana 47711
Averitt Express, Inc.*	115 Dacco Drive
	P. O. Box 3166
	Cookeville, Tennessee 38502-3166
Overnite Transportation Company*	1000 Semmes Avenue
	P. O. Box 1216
	Richmond, Virginia 23209
Thurston Motor Lines, Inc.*	600 Johnston Road
	Charlotte, North Carolina 28206

Companies serving Russellville, Adairville and Auburn

ANR Freight System, Inc.*	P. O. Box 5070
	Denver Colorado 80217
Bestway Express, Inc.*	Nashville, Tennessee 37210
Marvin Hayes Lines**	P. O. Box 468
	Clarksville, Tennessee 37040
McLean Trucking Company**	P. O. Box 213
	Winston-Salem, North Carolina 27154

Companies serving Russellville, Auburn and Lewisburg

ARA/Smith's**	P. O. Box 1000
	Staunton, Virginia 24401
Carolina Freight Carriers Corporation*	P. O. Box 697
	Cherryville, North Carolina 28021
General Highway Express, Inc.*	Sidney, Ohio 45365
Majors Transit, Inc.*	P. O. Box 9
	Caneyville, Kentucky 42721

Company serving Russellville

Yellow Freight System, Inc.*	10990 Rope Avenue
	P. O. Box 7270
	Overland Park, Kansas 66207

Company serving Auburn

United Trucking Service, Inc.*	8505 West Warren
	Dearborn, Michigan 48126

Companies serving Russellville and Auburn

AAA Cooper Transportation**	P. O. Box 6827
	Dothan, Alabama 36302

(Continued)

Company

Bailey's Express, Inc.*
CW Transport, Inc.*

Middlewest Freightways, Inc.*

Renner's Express, Inc.*

Roadway Express, Inc.*

TSC Express*

Home Office

Middletown, Connecticut 06457
610 High Street
Wisconsin Rapids, Wisconsin 54494
6810 Prescott Avenue
St. Louis, Missouri 63147
1350 South West Street
P. O. Box 882
Indianapolis, Indiana 46206
1077 Gorge Boulevard
Akron, OH 44310
2704 Bouldercrest Road
P. O. Box 1695
Atlanta, Georgia 30301

Companies serving Lewisburg

Craig's Express, Inc.*

Owenton Express, Inc.*

U.S. Highway 27
Falmouth, Kentucky 41040
Owenton, Kentucky 40359

* Interstate and intrastate service.

** Interstate service only.

Source: American Motor Carrier Directory, Fall 1985.

Other Freight Services

Airborne Express

Emery

Federal Express

KATO Express, Inc.

Purolator Courier

United Parcel Service

Nearest Office or Shipping Center

Bowling Green, Kentucky, 29 miles east
of Russellville
Nashville, Tennessee, 51 miles south of
Russellville
Nashville, Tennessee, 51 miles south of
Russellville
Elizabethtown, Kentucky, 100 miles
northeast of Russellville
Nashville, Tennessee, 51 miles south of
Russellville
Bowling Green, Kentucky, 29 miles east
of Russellville
Hopkinsville, Kentucky, 36 miles west of
Russellville

HIGHWAY MILES AND TRUCK TRANSIT TIME IN DAYS FROM
RUSSELLVILLE, KENTUCKY, TO SELECTED MARKET CENTERS

City	Highway Miles	Delivery Time TL	City	Highway Miles	Delivery Time TL
Atlanta, Ga.	293	2	Los Angeles, Ca.	2,076	5
Baltimore, Md.	721	3	Louisville, Ky.	142	1
Birmingham, Ala.	247	2	Nashville, Tenn.	51	1
Chicago, Ill.	403	2	New Orleans, La.	568	3
Cincinnati, Ohio	243	2	New York, N. Y.	883	3
Cleveland, Ohio	487	2	Pittsburgh, Pa.	523	3
Detroit, Mich.	502	2	St. Louis, Mo.	279	2
Knoxville, Tenn.	228	2			

Note: Mileage computations are via the best interstate or primary highways, not necessarily the most direct route of travel.

Sources: Rand McNally Road Atlas, 1979. Official Kentucky Mileage Map, 1980.

Delivery time - Majors Transit, Inc., P. O. Box 9, Caneyville, Kentucky 42721.

Air

Local

Location: Russellville-Logan County Airport*
 5 miles southeast of Russellville
 Runways: 1 paved
 Length: 4,000 feet
 Traffic
 Control: Wind sock
 Lighting: Sundown to sunrise, VASI, REIL, rotating
 beacon, key control lighting
 Services: 100LL octane, charter, flight
 instruction, tie-down, restrooms,
 hangars, maintenance by appointment
 Air Freight
 Service: Chartered air freight services must be
 arranged.

(Continued)

* The Russellville-Logan County Airport recently completed extending the airport runway from 3,300 feet to 4,000 feet and widened the runway from 60 feet to 75 feet. Total cost of the project was \$450,000.

Nearest Scheduled Commercial Airline Service*

Location:	Nashville Metropolitan Airport 6 miles southeast of Nashville, Tennessee; 57 miles south of Russellville
Runways:	3 paved
Length:	8,000 feet; 7,700 feet; 4,320 feet
Traffic	
Control:	Tower
Lighting:	Beacon, runway
Services:	American, Delta, Eastern, Ozark, Pan Am, Piedmont, Republic, TWA, United, USAir, Allegheny Commuter, Comair, Florida Express, Air Midwest, Peoples Express, Sunbird, Tennessee Airways; fuel - 100LL, jet-A; tie-downs, hangars; major A & P repairs, major Avionics repairs; APU, charter, flight instruction, oxygen, plane rental, survival equipment, U. S. Customs; taxi, limousine, car rental, courtesy car, public transit; weather information; restaurant, snack bar
Air Freight Service:	Air freight terminal

Taxi - Two taxicab companies operate in Russellville from 6 a.m. to 6 p.m.

Rental Services -Car, truck and trailer rentals are available in Russellville.

Water

The Green River at Paradise, Kentucky, which is located 37 miles north of Russellville, is the nearest navigable waterway. A 9-foot navigation channel is maintained on the Green River from Mile 103 near Paradise to the confluence of the Green and Ohio Rivers. Port facilities are available on the Ohio River at Owensboro, 74 miles north of Russellville.

* Commuter air carrier service is provided by Prime Air at Outlaw Field, which is located 7 miles northwest of Clarksville, Tennessee; 41 miles southwest of Russellville.

POWER AND FUEL

Electricity

Company serving **Russellville** - Russellville Electric Plant Board

Source of power - Tennessee Valley Authority

Total generating capacity - 30,900,470 KW

For industrial rates contact:

Russellville Electric Plant Board
165 East Fourth Street
P. O. Box 418
Russellville, Kentucky 42276
(502) 726-2466

Company serving **Adairville, Lewisburg and a major portion of Logan County** -
Pennyrite Rural Electric Cooperative Corporation

Source of power - Tennessee Valley Authority

Total generating capacity - 30,900,470 KW

For industrial rates contact:

South Kentucky Industrial Development
Association, Inc.
P.O. Box 726
Hopkinsville, Kentucky 42240
(502) 885-5392

Company serving **Auburn and northeastern Logan County** - Warren Rural Electric
Cooperative Corporation

Source of power - Tennessee Valley Authority

Total generating capacity - 30,900,470 KW

For industrial rates contact:

South Kentucky Industrial Development
Association, Inc.
P.O. Box 726
Hopkinsville, Kentucky 42240
(502) 885-5392

Natural Gas

Company serving **Russellville** - Western Kentucky Gas Company

Source of supply - Texas Gas Transmission Corporation

Size of transmission mains - 10-inch (supplier); 4-inch (distributor)

Distribution mains - 2 to 4 inches

Distribution pressure - 20 to 35 psi

Btu content - 1,000 per cubic foot

Specific gravity - 0.60

For rates and supplies contact:

Marketing Department
Western Kentucky Gas Company
311 West Seventh Street
Owensboro, Kentucky 42301
(502) 685-8067

Company serving **Adairville** - Western Kentucky Gas Company

Source of supply - Texas Gas Transmission Corporation

Size of transmission mains - 10-inch (supplier); 3-inch (distributor)

Distribution mains - 2 to 4 inches

Distribution pressure - 20 to 30 psi

Btu content - 1,000 per cubic foot

Specific gravity - 0.60

For rates and supplies contact:

Marketing Department
Western Kentucky Gas Company
311 West Seventh Street
Owensboro, Kentucky 42301
(502) 685-8067

Company serving **Auburn** - Western Kentucky Gas Company

Source of supply - Texas Gas Transmission Corporation

Size of transmission mains - 8-inch (supplier)

Distribution mains - 2 to 4 inches

Distribution pressure - 20 to 40 psi

Btu content - 1,000 per cubic foot

Specific gravity - 0.60

For rates and supplies contact:

Western Kentucky Gas Company
311 West Seventh Street
Owensboro, Kentucky 42301
(502) 685-8067

Natural gas service presently is not available in the corporate limits of Lewisburg, but is available 2½ miles south of Lewisburg.

Other Fuels

Propane

Smith-Douglass of Kentucky
Morgantown Road
Russellville, Kentucky 42276

Southern States Russellville Coop
P. O. Box 474
Russellville, Kentucky 42276

Fuel oils

Distillate fuel oil -

Max Arnold & Sons, Inc.
Route 1, Box 4
Russellville, Kentucky 42276

Ballance Oil Company
West Second Street
P. O. Box 230
Russellville, Kentucky 42276

Ashland Oil, Inc.
West Second Street
Russellville, Kentucky 42276

Key Oil Company
210 Hopkinsville Street
Russellville, Kentucky 42276

Residual fuel oil - Arrangements must be made with the refinery.

Low sulphur content coal - Available in Kentucky.

WATER AND SEWERAGE

Public Water Supply

Company serving **Russellville** - Russellville Municipal Water Works*
First and Main Streets
Russellville, Kentucky 42276
(502) 726-2638

Source - Lake Herndon

Treatment plant capacity - 2,592,000 gallons per day

Average daily consumption - 1,600,000 gallons

Peak daily consumption - 2,000,000 gallons

Type treatment - Filtration, chlorination, coagulation, fluoridation, flocculation, sedimentation, rapid mix

Calcium content - 042.0 ppm

Iron content - 0.04 ppm

Hardness - 132.0 ppm as calcium carbonate

Storage capacity - 3,160,000 gallons including clearwell

Size lines - 2 to 12 inches

Average pressure - 40 to 80 psi

MONTHLY WATER RATES

First	2,000 gallons	\$3.74 (Minimum)
Next	5,000 gallons	1.86 per M gallons
Next	15,000 gallons	1.70 per M gallons
Next	25,000 gallons	1.50 per M gallons
Next	53,000 gallons	1.29 per M gallons
Over	100,000 gallons	0.98 per M gallons

Tap-on charge:

5/8-inch meter	\$150
1-inch meter	\$200
1 1/2-inch meter	\$300
2-inch meter	\$500
Larger meter	Actual cost of installation and materials

* Construction of a 1,000,000-gallon storage tank and the installation of a 2,000-gallon-per-minute high service water pump and a 2,400-gallon-per-minute raw water pump, by Russellville Municipal Water Works, was completed in Fall 1984.

Company serving **Adairville** - Adairville Water Works
P. O. Box 185
Adairville, Kentucky 42202
(502) 539-6731

Source - South Fork of Red River
Treatment plant capacity - 750,000 gallons per day
Average daily consumption - 350,000 gallons
Peak daily consumption - 520,000 gallons
Type treatment - Sedimentation, flocculation, coagulation, filtration,
chlorination, fluoridation, rapid mix
Calcium content - 48.70 ppm
Iron content - 0.04 ppm
Hardness - 171.0 ppm as calcium carbonate
Storage capacity - 518,000 gallons including clearwell
Size lines - 8, 6, 4 and 2 inches
Average pressure - 80 to 120 psi

MONTHLY WATER RATES

First	2,000 gallons	\$7.00 (Minimum)
Next	2,000 gallons	3.25 per M gallons
Next	2,000 gallons	2.50 per M gallons
Next	4,000 gallons	1.70 per M gallons
Next	40,000 gallons	1.20 per M gallons
All over	50,000 gallons	0.80 per M gallons

Tap-on charge: \$75

Company serving **Auburn** - Auburn Water Works
P. O. Box 465
Auburn, Kentucky 42206
(502) 542-4475

Source - Blue Hole Spring
Treatment plant capacity - 200,000 gallons per day
Average daily consumption - 130,000 gallons
Peak daily consumption - 170,000 gallons
Type treatment - Coagulation, filtration, sedimentation, fluoridation,
chlorination, flocculation, rapid mix
Calcium content - 071.9 ppm
Iron content - 00.09 ppm
Hardness - 415.0 ppm as calcium carbonate
Storage capacity - 90,000 gallons
Size lines - 6 and 2 inches
Average pressure - 40 to 60 psi

(Continued)

MONTHLY WATER RATES

First	1,500 gallons	\$2.80 (Minimum)
Next	2,500 gallons	1.60 per M gallons
Next	6,000 gallons	1.40 per M gallons
Next	10,000 gallons	1.20 per M gallons
Next	10,000 gallons	1.00 per M gallons
Next	20,000 gallons	0.90 per M gallons
Next	50,000 gallons	0.80 per M gallons
All over	100,000 gallons	0.70 per M gallons

Tap-on charge:

3/4-inch meter	\$150
1-inch meter	\$200
1 1/4-inch meter	\$250
1 1/2-inch meter	\$350
2-inch meter	\$450

Company serving **Lewisburg** - Lewisburg Water and Sewer Department*
P. O. Box 239
Lewisburg, Kentucky 42256
(502) 755-4828

Source of supply of treated water - North Logan Water District
Average daily consumption - 80,000 gallons
Peak daily consumption - 100,000 gallons
Calcium content - 042.0 ppm
Iron content - 0.04 ppm
Hardness - 132.0 ppm as calcium carbonate
Storage capacity - 120,000 gallons
Size lines - 6, 4, 3, 2, 1 and 3/4 inches
Average pressure - 40 to 60 psi

MONTHLY WATER RATES

First	2,000 gallons	\$6.60 (Minimum)
Next	3,000 gallons	1.68 per M gallons
Next	5,000 gallons	1.44 per M gallons
Next	15,000 gallons	1.20 per M gallons
All over	25,000 gallons	1.00 per M gallons

Tap-on charge: \$100

* Lewisburg Water and Sewer Department has plans to build a new water treatment plant. The \$65,000 plant, which will have a treatment capacity of 562,000 gallons per day, is still pending funding.

Name of water district - North Logan Water District

Route 4

Russellville, Kentucky 42276

(502) 726-7988

Area served - Northern Logan County from Russellville to Lewisburg

Date when water district began operating - 1971

Source of supply of treated water - Russellville Water Works

Average amount of water used in a 24-hour period - 250,000 gallons

Peak amount of water used in a 24-hour period - 300,000 gallons

Calcium content - 042.0 ppm

Iron content - 0.04 pm

Hardness - 132.0 ppm as calcium carbonate

Storage capacity - 100,000 gallons

Average pressure - 35 to 80 psi

Size lines - 6, 4 and 3 inches

Monthly rates -

First	2,000 gallons	\$6.60 (Minimum)
Next	2,000 gallons	2.90 per M gallons
Next	6,000 gallons	1.45 per M gallons
Next	15,000 gallons	1.30 per M gallons
All over	25,000 gallons	1.15 per M gallons

Tap-on charge:

\$200 for 3/4-inch meter

Actual cost for off-line installations

Raw Water

Surface water sources - Mud and Red River

Average discharge - Not available

Expected ground water yield - 200 to 500 gpm in the very southeastern corner of the county; 50 to 200 gpm in the southern portion of the county; 5 to 50 gpm in the south central portion of the county; and 5 gpm or less in the remainder of the county

Sewerage

Company serving **Russellville** - Russellville Wastewater Treatment Plant*
Newtown Road
Russellville, Kentucky 42276
(502) 726-7431

Design capacity - 1,600,000 gallons per day

Average daily flow - 1,000,000 gallons

Treatment - Secondary

Type treatment - Screening, grit removal, oxidation ditch, chlorination,
aerobic digester, sludge drying beds, post aeration

Treated effluent discharged into - Town Creek

Size of sanitary mains - 6 to 24 inches

Size of storm mains - 20 and 18 inches

Rates -

First	2,000 gallons	\$2.80 (Minimum)
All over	2,000 gallons	1.40 per M gallons

Tap-on charge: \$75

* The expansion and renovation of the Russellville Waste Water Treatment Plant was completed in Summer 1985. The \$2 million expansion included increasing the design capacity from 1.2 million gallons per day to 1.6 million gallons per day.

Company serving **Adairville** - Adairville Water Works*
P. O. Box 185
Adairville, Kentucky 42202
(502) 539-6731

Design capacity - 150,000 gallons per day

Average daily flow - 109,000 gallons

Treatment - Primary

Type treatment - Screening, extended aeration, chlorination, aerobic digester, sludge drying beds

Treated effluent discharged into - South Fork of Red River

Size of sanitary mains - 12, 10, 8 and 6 inches

Rates - \$3.00 per month minimum charge, plus \$0.70 per 1,000 gallons of water used

<u>Type of Effluent</u>	<u>Rate</u>
Biochemical Oxygen Demand (BOD ₅) loading in excess of 75.0 lbs. per day	\$0.10 per pound
Suspended Solids (SS) loading in excess of 81.3 lbs. per day	0.10 per pound
Amonia Nitrogen (NH ₃ -N) loading in excess of 7.5 lbs. per day	0.10 per pound
Oil and Grease loading in excess of 12.5 lbs. per day	0.10 per pound

Tap-on charge: \$200, plus a \$5 inspection fee

Company serving **Auburn** - Auburn Sewer Department
P. O. Box 465
Auburn, Kentucky 42206
(502) 542-4475

Design capacity - 166,000 gallons per day

Average daily flow - 100,000 gallons

Treatment - Primary and secondary

Type treatment - Grit removal, primary sedimentation, trickling filter, secondary sedimentation, chlorination, aerobic digester, sludge drying beds

Treated effluent discharged into - Black Lick Creek

Size of sanitary mains - 10, 8 and 6 inches

Size of storm mains - 18 inches

Rates - 100 percent of monthly water bill

Tap-on charge: \$250

* Expansion and renovation of the Adairville sewerage treatment plant is scheduled to begin in Fall 1985. The \$450,000 expansion, which will increase the design capacity from 150,000 gallons per day to 250,000 gallons per day, will be completed in Fall 1986.

Company serving **Lewisburg** - Lewisburg Water and Sewer Department*
P. O. Box 239
Lewisburg, Kentucky 42256
(502) 755-4828

Design capacity - 125,000 gallons per day
Average daily flow - 85,000 gallons
Treatment - Primary and secondary
Type treatment - Lagoon system, chlorination
Treated effluent discharged into - Alum Lick Creek
Size of sanitary mains - 8 and 10 inches
Rates - 100 percent of monthly water bill
Tap-on charge: \$150

* The Lewisburg Water and Sewer Department plans to make infiltration improvements and install an aeration system to the sewerage treatment plant. The \$40,000 project will be completed by December 1985.

CLIMATE

Logan County

Temperature

Normal (30-year record)	59.10 degrees
Average annual 1984	58.80 degrees
Record highest, July 1952 (45-year record)	107.00 degrees
Record lowest, January 1963 (45-year record)	-15.00 degrees
Normal heating degree days (30-year record)	3,756
(Heating degree day totals are the sums of negative departures of average daily temperatures from 65 degrees F.)	

Precipitation

Normal (30-year record)	48.49 inches
Mean annual snowfall (29-year record)	11.10 inches
Total precipitation 1984	56.49 inches
Mean number days precipitation (.01 inch or more)	
(43-year record)	119.40
Mean number days thunderstorms (43-year record)	54.40

Prevailing Winds (through 1963)

South

Relative Humidity (19-year record)

Midnight	79 percent
6 a.m.	84 percent
Noon	58 percent
6 p.m.	61 percent

Source: U.S. Department of Commerce, Environmental Science Services
Administration, Climatological Data, 1984. Station of record: Nashville,
Tennessee.

LOCAL GOVERNMENT

City

Russellville

Structure - Mayor - 4-year term; 6 council members - 2-year terms

Budget 1985-86 - General Fund \$1,300,723

Water and Sewer Fund 1,087,700

Fees and licenses - Occupational license taxes - one percent of the gross salaries, wages, commissions and other compensations earned by persons for work done or services performed in the city, and one percent of the net profits of all businesses, professions or occupations from activities conducted in the city.

Adairville

Structure - Mayor - 4-year term; 6 council members - 2-year terms

Budget 1985-86 - General Fund \$ 175,534

Water and Sewer Fund 291,054

Fees and licenses - Occupational license fees - one percent of net profits of all businesses, professions, or occupations from activities conducted in the city and one percent of gross salaries, wages, commissions, and other compensation earned by persons for work rendered within the city (\$10 minimum); unloading license - \$25.50 per year; city automobile sticker - \$20.50 per year

Auburn

Structure - Mayor - 4-year term; 6 council members - 2-year terms

Budget 1984-85 - General Fund \$ 107,500

Water and Sewer Fund 116,000

Fees and licenses - Occupational license taxes - one percent of the gross salaries, wages, commissions and other compensation earned by persons for work done or services performed in the city, and one percent of the net profits of all businesses, professions or occupations from activities conducted in the city.

Lewisburg

Structure - Mayor - 4-year term; 6 council members - 2-year terms

Budget 1985-86 - General Fund \$ 96,512

Water and Sewer Fund 97,000

Fees and licenses - Occupational license fees - one percent of net profits of all businesses, professions, or occupational from activities conducted within the city and one percent of gross salaries, wages, commissions, and other compensation earned by persons for work rendered within the city; unloading license - \$20 per year; city automobile sticker - \$10 per year

County

Structure - County Judge/Executive - 4-year term; 8 magistrates - 4-year terms

Budget 1985-86 - General Fund \$741,221; Road Fund \$504,520

Assessed Value of Property, 1984*

<u>Classes of Property</u>	<u>Russellville</u>	<u>Adairville</u>	<u>Auburn</u>
Real Estate	\$81,976,045	\$ 6,406,975	\$12,783,309
Tangibles	13,361,026	2,912,740	2,383,229
<u>Classes of Property</u>	<u>Lewisburg</u>	<u>Logan County</u>	
Real Estate	\$ 8,859,710	\$346,698,620	
Tangibles	925,967	80,170,785	

Property Taxes

All property in Kentucky is assessed at 100 percent of fair cash value.

Land and buildings are taxed by the state and may be taxed by local jurisdictions. The 1984 state rate is \$0.22 per \$100 of assessed valuation.

Manufacturing machinery, raw materials inventories, pollution control equipment, and goods in the process of manufacture are not subject to local taxation. The state rate is \$0.15 per \$100. (**Note:** Effective January 1, 1986, the state rate for raw materials and goods in process will be reduced to \$0.001 per \$100.)

Other tangible personal property owned by manufacturers (automobiles, trucks, finished goods, office furniture, office equipment) is taxed by the state at \$0.45 per \$100 and may be taxed by local jurisdictions. (**Note:** Effective January 1, 1986, the state rate for finished goods will be reduced to \$0.001 per \$100.)

Intangible personal property located in Kentucky (money in hand, shares of stock, notes, bonds, accounts receivable, and other credits) is taxed by the state at \$0.25 per \$100, and is not subject to local taxation.

Property stored in public warehouses in a transit status is not subject to local taxation. The state rate is only \$0.015 per \$100. (**Note:** Effective January 1, 1986, the state rate will be reduced to \$0.001 per \$100.)

Private leaseholds in industrial facilities owned by cities or counties and financed by industrial revenue bonds are subject to a state tax of \$0.015 per \$100 of value (essentially the lessee's equity, adjusted for appreciation or depreciation). Local taxation is not permitted.

* Excludes Homestead Exemptions.

Combined State and Local Rates Per \$100 Valuation, 1984*
(100% assessment)

Kentucky school districts levy property taxes on property located within individual school district boundaries. Two types of school districts are operated in Kentucky: 1) independent school districts which usually operate within a single city and often do not cover the entire city; and 2) common school districts which operate in portions of counties not covered by independent districts and cover the entire county when there is no independent district. School district boundaries are mutually exclusive and do not cross.

	Site Inside City of Russellville and within the Russellville Independent <u>School District</u>	Site Inside City of Russellville and within the Logan County <u>School District</u>	Site Inside City of Adairville <u></u>
1. Land and buildings	\$0.8800	\$0.6710	\$0.8910
2. Mfg. machinery, raw materials, goods in process, pollution control equipment	0.1500	0.1500	0.1500
3. Automobiles and trucks	1.2000	0.9300	1.1362
4. Finished goods, office equipment, other tangibles	1.1650	0.9300	1.1210
5. Intangibles (accounts receivable, notes, bonds, etc.)	0.2500	0.2500	0.2500
6. Property stored in public warehouses in a transit status	0.0150	0.0150	0.0150
7. Leaseholds in industrial revenue bond financed plants	0.0150	0.0150	0.0150

(Continued)

* Kentucky Department of Economic Development.

	Site Inside City of <u>Auburn</u>	Site Inside City of <u>Lewisburg</u>	Site Inside Unincorporated <u>Logan County</u>
1. Land and buildings	\$0.7310	\$0.7210	\$0.5110
2. Mfg. machinery, raw materials, goods in process, pollution control equipment	0.1500	0.1500	0.1500
3. Automobiles and trucks	0.9610	0.9510	0.7410
4. Finished goods, office equipment, other tangibles	0.9610	0.9510	0.7410
5. Intangibles (accounts receivable, notes, bonds, etc.)	0.2500	0.2500	0.2500
6. Property stored in public warehouses in a transit status	0.0150	0.0150	0.0150
7. Leaseholds in industrial revenue bond financed plants	0.0150	0.0150	0.0150

Utilities Gross Receipts Tax for Schools

A 3 percent tax is levied on utilities receipts for schools in Logan County. Tax is paid by all consumers of utilities as an add-on to the utilities bills. Exempted are receipts from utilities services that are resold and the receipts from the sale of energy or energy producing fuels that exceed 3 percent of the cost of production in manufacturing, processing, mining or refining.

Planning and Zoning

Joint agency - Logan Joint Cities-County Planning Commission

Participating cities - Russellville, Adairville, Auburn, and Lewisburg

Zoning enforced - Within the corporate limits of Russellville and Adairville

Subdivision regulations enforced - Within Russellville and Adairville and three miles beyond the corporate limits of each city

Local codes enforced - Building and housing codes enforced for all duplexes and commercial buildings in all areas of the county

Mandatory state codes enforced - Kentucky Plumbing Code, National Electric Code, Kentucky Boiler Regulations and Standards, Kentucky Building Code (modeled after BOCA code)

Safety

Police	Russellville	Adairville	Auburn
Total staff	24 full-time 1 part-time	2 full-time	1 full-time
Radio-patrol cars	6	1	2
	Lewisburg	Logan County	
Total staff	1	6	
Radio-patrol cars	1	5	

Fire	Russellville	Adairville	Auburn
Insurance Services			
Office, Public			
Protection			
Classification	7	7	7
Full-time staff	3	--	--
Part-time staff	1	--	--
Volunteers	18	34	22

	Lewisburg	Logan County
Insurance Services		
Office, Public		
Protection		
Classification	7	10
Volunteers	25	17

Rescue Service

Logan County Civil Defense Rescue Squad:

Number of volunteers - 22

Equipment - Two fire trucks, auxiliary truck, panel truck, three jeeps, two 2 ½-ton trucks, four-wheel drive panel truck, three 3/4-ton trucks, ambulance, two boats and motors, dragging equipment, radioactivity monitoring sets, generators, hand tools, chain saws, air compressor, communications equipment, utility truck, breathing equipment

Personnel training - Certified Red Cross first aid instructor and two emergency medical technician; all volunteers trained in basic and advanced first aid

Refuse Collection and Disposal

	Russellville	Adairville
Type service	Private	Private
Fee charged:		
residential	\$6.32 per month	\$6.10 per month
commercial	\$3.50 and up per cubic yard	\$3.50 and up per cubic yard
industrial	Negotiable	Negotiable
Collection frequency:		
residential	Weekly	Weekly
commercial	As needed	As needed
industrial	As needed	As needed
Disposal method	Landfill	Landfill
	Auburn	Lewisburg
Type service	Private	Private
Fee charged:		
residential	\$4.00 per month	\$4.00 per month
commercial	\$3.50 and up per cubic yard	\$3.50 and up per cubic yard
industrial	Negotiable	Negotiable
Collection frequency:		
residential	Weekly	Weekly
commercial	As needed	As needed
industrial	As needed	As needed
Disposal method	Landfill	Landfill

Residents of **Logan County** contract with private firms for refuse collection.

EDUCATION

Public Schools

	Russellville Independent	Logan County
Total Enrollment (May, 1985)	1,521	2,967
Kindergarten	132	225
Elementary	501	1,185
Middle School	458	740
High School	430	817
Accreditation	Southern Association of Colleges and Schools	
Pupil-Teacher Ratio (1983-84)	20-1	20-1
Percent High School Graduates to College (1983-84)	52.3	24.8
Expenditures Per Pupil (1983-84)	\$1,935.86	\$ 1,713.11
Bonded Indebtedness (June 30, 1984)	\$ 990,000	\$4,610,000*

Nonpublic Schools

	Sacred Heart	Russellville Christian School
Total Enrollment	38	56 Preschool
Elementary	38	14 Kindergarten
High School		
Pupil-Teacher Ratio	19-1	12-1

* Includes school building authority bonds outstanding \$4,610,000; local school district obligation \$2,472,000.

Area Colleges and Universities

<u>Name</u>	<u>Location (Mileage from Russellville)</u>	<u>Enrollment (Fall, 1984)</u>	<u>Highest Degree Conferred</u>
Western Kentucky University	Bowling Green, Kentucky (29)	11,771	Masters, Specialist*
Austin Peay State University	Clarksville, Tennessee (34)	5,282	Academic and Professional
Hopkinsville Community College	Hopkinsville, Kentucky (36)	1,113	Associate
Belmont College	Nashville, Tennessee (51)	2,040	Baccalaureate
David Lipscomb College	Nashville, Tennessee (51)	2,222	Baccalaureate & Masters in Biblical Studies
Fisk University	Nashville, Tennessee (51)	553	Masters
Free Will Baptist Bible College	Nashville, Tennessee (51)	417	Masters in Pastoral Studies
Meharry Medical College	Nashville, Tennessee (51)	850	Academic and Professional
Scarritt College (Graduate level only)	Nashville, Tennessee (51)	103	Masters
Trevecca Nazarene College	Nashville, Tennessee (51)	927	Baccalaureate
Tennessee State University	Nashville, Tennessee (51)	7,330	Academic and Professional
Vanderbilt University	Nashville, Tennessee (51)	9,117	Academic and Professional

* Joint doctoral degree programs are offered in cooperation with the University of Kentucky, Lexington, and cooperative doctoral degree programs are offered with the University of Louisville. The degrees are issued by the University of Kentucky or the University of Louisville.

Vocational Schools

Both the state vocational-technical schools and the area vocational education centers are operated by the Kentucky Department of Education. The state vocational-technical schools enroll persons full time who are at least 16 years of age and not in school. These students attend classes for six hours each day. The area vocational education centers are designed to accommodate high school students who are at least 15 years of age. These students attend vocational school for three hours each day. The state vocational-technical schools and the area education centers offer evening courses to enable working adults to upgrade current job skills.

Nearest State School

Location	Bowling Green State Vocational-Technical School
Miles Distant	Bowling Green
Curriculum	29 east of Russellville
	Agriculture
	Adult Agriculture
	Business and Office
	Accounting/Jr. Management
	Clerical
	Secretarial
	Retailing
	Consumer and Home Economics
	Commercial Foods
	Consumer and Family Life Skills
	Health and Personal Services Occupations
	Chiropractic Technician
	Dental Assistant
	Health Careers
	Nurse Assistant
	Practical Nurse
	Radiological Technology
	Respiratory Therapy
	Surgical Technician
	Industrial Education
	Auto Body Repair
	Auto Mechanics
	Carpentry
	Civil Highway Technology
	Diesel Mechanics
	Electricity
	Electronics
	Graphic Arts (Printing)
	Industrial Maintenance
	Machine Shop
	Masonry
	Plumbing
	Related Math
	Refrigeration and Air Conditioning
	Small Engine Repair

(Continued)

Technical Drafting
Tool and Die Making
Truck Driving
Welding
Learning Resources Center
Computer Lab

Nearest Area Education Center

Location
Curriculum

Russellville Area Vocational Education Center
Russellville
Agriculture
 Adult and Young Farmer
Business and Office
 Clerical
 Secretarial
Health and Personal Services Occupations
 Health Services
Industrial Education
 Auto Mechanics
 Carpentry/Building Trades
 Drafting
 Electricity
 Electronics
 Machine Shop
 Welding

Arrangements can be made to provide training in the specific production skills required by an industrial plant. Instruction may be conducted either in the vocational school or in the industrial plant, depending upon the desired arrangement and the availability of special equipment.

HEALTH

Local Medical Personnel

Physicians - 13
Dentists - 5
Optometrists - 3

Hospitals

<u>General Hospital</u>	<u>Location</u>	<u>Beds</u>
Logan Memorial Hospital*	Russellville	100

General hospital facilities - Three operating rooms, recovery room, six-bed ICU/CCU, laboratory, X-ray, obstetrical section, inhalation therapy, physical therapy, social services, pharmacy, ultrasound, nuclear medicine, outpatient surgery

Medical staff - 7 family practitioners, 2 internal medicine specialists, 2 general surgeons, 1 OB/GYN specialist, 38 registered nurses, 18 licensed practical nurses, 2 consulting pathologists, 1 radiologist, 2 consulting cardiologists

Other Medical Facilities

Auburn Nursing Center - 66 beds, skilled nursing and intermediate care
Barren River Comprehensive Care Center
Logan County Health Department
Russellville Health Care Manor, Inc. - 88 beds, intermediate and personal care

Ambulance Service

Name - Logan County Ambulance Service, Inc.
Staff - 7 emergency medical technicians (full time)
Service - 24 hours, county-wide
Equipment - 3 fully equipped ambulances

Name - Adairville Volunteer Fire Department and Ambulance Service
Volunteer staff - 12 certified emergency medical technicians
Service - 24 hours, county-wide
Equipment - One fully equipped ambulance

Name - Auburn Rural Fire Department and Ambulance Service
Volunteer staff - 12 emergency medical technicians including 2 trained as paramedics
Service - 24-hour service to Auburn and surrounding area
Equipment - 2 ambulances

* The construction of Logan Memorial Hospital, a new 100-bed facility, was completed in June 1985. The \$16 million hospital replaced the existing hospital.

OTHER LOCAL FACILITIES

Communications

	Russellville	Adairville
Telephone -	South Central Bell Telephone Company	Logan County Rural Telephone Cooperative, Inc.
Services	Standard	Standard
Telegraph - Services -	Western Union Toll-free number, 1-800-325-6000	Western Union Toll-free number, 1-800-325-6000
Postal - U.S. Post Office		
Class -	First	Second
Mail received -	Three times daily	Once daily
Mail dispatched -	Twice daily	Once daily
Newspapers -	The News Democrat and The Logan Leader	
Weekly and circulation -	7,575 and 7,250 respectively	
Other papers received from -	Louisville and Bowling Green, Kentucky; Nashville, Tennessee	Russellville, Louisville and Bowling Green, Kentucky; Nashville, Tennessee
Radio -	WRUS-AM; WBVR-FM	
Stations received from -	Bowling Green, Elkton, Franklin and Hopkinsville, Kentucky; Clarksville and Nashville, Tennessee	Russellville, Bowling Green, Franklin and Hopkinsville, Kentucky; Clarksville, Gallatin, Nashville and Springfield, Tennessee
Television -		
Airwave reception from -	Bowling Green, Kentucky; Nashville, Tennessee	Bowling Green, Kentucky; Murfreesboro and Nashville, Tennessee
Cable service		
Number of cable channels -	11	17
Kentucky Educational Television -	Channel 53 - Bowling Green Transmitter	Channel 53 - Bowling Green Transmitter

	Auburn	Lewisburg
Telephone -	Logan County Rural	Logan County Rural
Services	Telephone Cooperative, Inc. Standard	Telephone Cooperative, Inc. Standard
Telegraph -	Western Union	Western Union
Services -	Toll-free number, 1-800-325-6000	Toll-free number, 1-800-325-6000
Postal - U.S. Post Office		
Class -	Second	Second
Mail received -	Once daily	Once daily
Mail dispatched -	Once daily	Once daily
Newspapers -		
Papers received from -	Russellville, Louisville and Bowling Green, Kentucky; Nashville, Tennessee	Russellville, Louisville, Bowling Green and Owensboro, Kentucky; Nashville, Tennessee
Radio -		
Stations received from -	Russellville, Bowling Green, Louisville, and Franklin, Kentucky; Nashville, Tennessee	Russellville, Bowling Green, Central City, Hopkinsville and Owensboro, Kentucky; Nashville, Tennessee
Television -		
Airwave reception from -	Bowling Green, Kentucky; Nashville, Tennessee	Bowling Green, Kentucky; Nashville, Tennessee
Cable service		
Number of cable channels -	15	10
Kentucky Educational Television	Channel 53 - Bowling Green Transmitter	Channel 53 - Bowling Green Transmitter

Library Services

Public library - Logan County Public Library, Russellville

Size collection - 52,500 volumes

Circulation, 1983-84 - 114,858

Services - Bookmobile throughout the county, periodicals, films, records, tapes, microfilm, audiovisual equipment, story hour, meeting rooms

The Logan County Public Library, a member of the Kentucky Cooperative Library Services Program, serves as a distribution center and provides consultant services for a 10-county area of the Barren River region.

Adairville and **Auburn** each have a library branch open eight hours per week.

Religious Institutions

	Russellville	Adairville
Denominations -	Baptist Catholic Christian Church of Christ Church of God Covenant Episcopal Jehovah's Witnesses Methodist Pentecostal Presbyterian	Baptist Church of Christ Full Gospel Holiness Methodist
	Auburn	Lewisburg
Denominations -	Baptist Christian Church of Christ Cumberland Presbyterian Methodist Presbyterian U.S.A.	Baptist Church of Christ Cumberland Presbyterian Methodist Pentecostal
Nearest Synagogues -	Nashville, Tennessee, 51 miles south of Russellville	
Congregations -	Sherith Israel (orthodox) Ohabia Shalom (reform) West End Synagogue (conservative)	

Financial Institutions

<u>Banks</u>	<u>Assets</u>	<u>Deposits</u>	<u>Statement Date</u>
Russellville			
The Citizens National Bank*	\$64,009,478.53	\$57,813,296.48	12/31/84
Southern Deposit Bank	50,026,571.20	44,697,789.23	12/31/84
Adairville			
Adairville Banking Company	9,303,000.00	8,217,000.00	3/31/85
Auburn			
Auburn Banking Company	23,170,298.05	19,345,386.75	6/30/84
Lewisburg			
Lewisburg Banking Company	18,955,207.91	16,708,903.41	12/31/84
<u>Savings and Loan Associations</u>	<u>Assets</u>	<u>Savings Accounts</u>	<u>Statement Date</u>
Russellville			
First Federal Savings and Loan Association of Russellville	\$36,430,960.60	\$33,732,818.53	12/31/84

Hotels and Motels

Logan County

Total number -	5
Total rooms -	100

* The Citizens National Bank recently added two new full-service branch banks in Logan County.

Clubs and Organizations

Russellville

Aftermath Club
Alcoholics Anonymous
American Legion, Unit 29
American Legion, Unit 229
American Legion Auxiliary,
Unit 29
American Legion Auxiliary,
Unit 229
Bayview Club
Boy Scouts of America
Brownies
Children of the American
Revolution
Cub Scouts
Daughters of the American
Revolution
E & F Rod and Gun Club
Eastern Star
Farm Bureau
Farm League Baseball
4-H Club
Fraternal Order of Police
Future Farmers of America
Future Homemakers of America
Garden Club
Gideon International
Girl Scouts
Heritage Foundation
Historical Society
Homemakers
International Order of Odd
Fellows
Jaycees

Junior Conservation
Kiwanis
Library Club
Lions Club
Little League Baseball
Logan County Arts Foundation
Logan County Civic
Development Association
Logan County Friendship
League
Masonic Lodge
Modern Woodmen of the
World
Moose
National Association for the
Advancement of Colored
People
Octagon Club
Optimist Club
Opti-Mrs. Club
Parents-Teachers Association
Rebekah Lodge
Rotary Club
Russellville-Logan County
Chamber of Commerce
Senior League Baseball
Teen Town Club
Veterans of Foreign Wars
Woman's Club

Adairville

Adairville Christian Center
Adairville Community Medical
Service
Adairville Senior Citizens
Adairville-South Logan County
Chamber of Commerce
Brownies
Chamber of Commerce Ladies'
Auxiliary
Homemakers Clubs
Junior Conservation
Little League Baseball
Modern Woodmen of the World
Junior Club
Parent-Teacher Organization
Pony League Baseball
Red River Fish and Game Club

Auburn

American Legion
American Legion Auxiliary
Boy Scouts
Brownies
Cub Scouts
Eastern Star
4-H Club
Future Business Leaders of
America
Future Farmers of America
Future Homemakers of America
Future Teachers of America
Garden Club
Girl Scouts
Homemakers
Jaycees
Little League baseball
Masons
Mixed Bowling League
Optimist Club
Parents-Teachers Association
Pony League baseball
Rotary
Woman's Club
Woodmen of the World
Younger Women's Garden Club

Lewisburg

Boy Scouts
Brownies
City Baseball League
Coon Range Chapter of
Campers and Hikers
Coon Range Fish and
Game Club
Cub Scouts
Eastern Star
4-H Club
Future Business Leaders of
America
Future Farmers of America
Future Homemakers of
America
Homemakers
Lions Club
Lioness Club
Masons
Parents-Teachers Association
Senior Citizens Club

RECREATION

Local

Recreational facilities in Russellville include the 110-acre Russellville-Logan County Memorial Park with two ball fields, four tennis courts, basketball courts, a nature trail, facilities for shuffleboard and croquet, a miniature golf course, a trapshooting range, playground equipment, picnic areas, four shelters, two concession stands, restrooms and a clubhouse with a kitchen. Future plans include the construction of a \$300,000 swimming pool and the installation of a bike track. Hampton Park, also located in Russellville, has basketball courts, a picnic shelter, playground equipment and a multipurpose baseball and softball field. A recreation room is also available in the old armory building. Planned recreation programs include Little League, Farm League and Senior League baseball; Adult and Peewee League basketball; and tennis tournaments.

Many historic landmark buildings are located in Russellville, including the Old Southern Bank Building, circa 1810, which was the scene of a robbery by three members of the Jesse James gang in 1868.

The Adairville Community Park presently features two lighted ball fields, concession stands, a basketball court, picnic areas with a pavilion, and parking areas.

A lake and clubhouse are also available at the Red River Fish and Game Club's facilities near Adairville.

Coke-McCutchen Park in Auburn contains two ball fields, three tennis courts, basketball and volleyball courts, facilities for shuffleboard and horseshoe pitching, campgrounds, two open-air pavilions and a concession stand.

The lighted 10-acre Lewisburg Municipal Park has a ball field, basketball courts, three tennis courts, a playground, a picnic area, a covered shelter, a concession stand and restrooms. Plans include enlarging the ball field and installing lights on the tennis courts.

Other recreational facilities in Logan County include the Russellville Country Club which has a clubhouse and dining room, a swimming pool, a 9-hole golf course, and two tennis courts. Also available are a public 9-hole golf course and clubhouse, one indoor cinema, a drive-in movie theatre and a public swimming pool.

Special annual events in Logan County include the Logan County Fair, held in June; the Logan County Tobacco Festival, held in October; the Strawberry Festival, held at Adairville in May; and the Shaker Festival, held at South Union in July. South Union, the site of the last Shaker community in Kentucky, features the Shaker Museum and the Shaker Antique Mall and Gifts.

Area (Within 75 miles)

Lake Malone State Park, located in southern Muhlenberg County, 20 miles north of Russellville, offers camping facilities, swimming, fishing, and boating on a 788-acre lake. Playground facilities and picnic shelters are located in a beautiful scenic cliff area. Located across from the entrance to the park is an inn featuring luxury rooms, a restaurant, a swimming lake, a beach, boating, fishing, tennis, and nature trails.

Jefferson Davis Monument State Shrine is located 25 miles west of Russellville at Fairview. The shrine is at the site of the birthplace of Jefferson Davis, a former U.S. Senator, Secretary of War, and the only president of the Confederate States of America. The park contains a 351-foot obelisk with an elevator to the top for viewing, a museum, a gift shop, and a playground with picnic tables.

Bowling Green is located 29 miles northeast of Russellville. Bowling Green serves the area as a recreational and educational center. Western Kentucky University provides the city with many exciting sporting events. Beech Bend Amusement Park has many rides, games and other forms of entertainment.

Pennyrile Forest State Resort Park near Dawson Springs is located 58 miles northwest of Russellville. The 24-room lodge and cottages nestled within the trees provide excellent accommodations. Other facilities and activities include a dining room, a gift shop, rental rowboats and pedal boats, a 9-hole golf course, hiking trails, horseback riding, picnicking, playgrounds, shuffleboard, swimming at the lodge pool and off a sand beach, and two tennis courts. Lake Beshear, only four miles from the lodge, sports good fishing.

Nashville, Tennessee, located 54 miles south of Russellville, offers a number of tourist attractions including Opryland U.S.A., the Grand Ole Opry, the Country Music Hall of Fame and Museum, and the Country Music Wax Museum.

Barren River Lake State Resort Park, 65 miles east of Russellville near Glasgow, is a full-facility resort park offering a 51-room resort lodge, a coffee shop, 12 cottages, a lodge pool, a beach, riding stables, nature trails, open and covered boat slips, a 9-hole golf course, lighted handball and tennis courts, shuffleboard, park camping with a service building, a restaurant, fishing and pleasure boat rentals, picnic areas, and a playground. Barren River Lake, which covers 10,000 acres, is a popular area for skiing, sailing, fishing, and swimming.

Lake Barkley State Resort Park, 65 miles west of Russellville near Cadiz, is located on an embayment of Lake Barkley. The magnificent lodge includes 120 rooms, four suites, nine cottages, a dining room, a coffee shop, a gift shop, two meeting rooms, and a recreation room. An activities center with a capacity for 400 and an 80-site campground are located near the lodge. A lodge pool, a beach and a bathhouse, an 18-hole golf course, tennis courts, a riding stable, a trapshooting range, a basketball court, hiking trails, playgrounds, and a picnic area comprise the recreational facilities. The marina near the lodge has everything for the "boat lover": covered and open slips, launching ramp, and rentals for fishing boats, skiing boats, and pleasure ride pontoons.

Noteworthy for its spaciousness, **Rough River Dam State Resort Park** at Falls of Rough is 66 miles northeast of Russellville. The 377-acre park on Rough River Lake has a 40-room lodge with a dining room, a coffee shop, a gift shop, and a meeting room. Cottages and camping sites are also available. Recreational facilities include a launching ramp, a dock with open and covered slips, fishing and pleasure boat rentals, a 9-hole, 3-par golf course, a swimming pool, a sand beach with a bathhouse complex, tennis courts, an archery range, hiking trails, picnic and playground areas, and planned recreation. Cruise boat excursions on Rough River Lake are available on the "Lady of the Lake" in season.

Mammoth Cave National Park is located 67 miles northeast of Russellville near Cave City. Beneath 52,000 park acres, Mammoth Cave is among the major tourist attractions of all times. It is the largest cave network ever discovered, with at least 230 miles of caverns. Some famous sights are Snowball Dining Room (267 feet below surface), Frozen Niagara, Crystal Lake, and Bottomless Pit. The park also features scenic boat trips on the Green River and nature and hiking trails. Park accommodations include a hotel with distinctive gift shops featuring native Kentucky and Southern Highland handicrafts, a motor lodge, hotel cottages, woodland cottages, and a hotel annex with budget accommodations and craft shop featuring live exhibits of broom making and weaving. Other park facilities include the hotel dining room and coffee shop, a service center, group meeting facilities, a campground, a picnic area, and tennis and shuffleboard courts.

Nolin River Lake is just north of Mammoth Cave National Park. The lake has a surface area of 5,800 acres and offers facilities for camping, boating, and fishing.

The Land Between the Lakes, located on a 170,000-acre wooded peninsula, is an outdoor recreational and conservational education center. Camping, swimming, fishing, boating, hiking, a buffalo herd on a 250-acre range, an Environmental Education Center for school study groups, an educational farm and a central station with films and displays are among the attractions. Kentucky Lake and Lake Barkley are among the top fishing and water sport recreation areas in the southeastern United States. The Land Between the Lakes area is approximately 70 miles west of Russellville.

Owensboro, 74 miles north of Russellville, is Kentucky's third largest city. Owensboro is a source of many entertainment and recreational facilities associated with larger communities. Points of interest include museums, an orchestra and two colleges.

COMMUNITY IMPROVEMENTS

Recent

Construction of the 900,000-square-foot Logan Aluminum, Inc., roller mill plant was completed in 1983. The \$450 million facility employs approximately 500 people.

Auburn Hoisery Mills, Inc., recently finished a \$130,000 expansion of its distribution center. The 10,000 square-foot expansion was completed in August 1985.

The expansion and renovation of the Russellville Waste Water Treatment Plant was completed in Summer 1985. The \$2 million expansion included increasing the design capacity from 1.2 million gallons per day to 1.6 million gallons per day.

Construction of a 1,000,000-gallon storage tank and the installation of a 2,000-gallon-per-minute high service water pump and a 2,400-gallon-per-minute raw water pump, by Russellville Municipal Water Works, was completed in Fall 1984.

The Russellville/Logan County Civic Development Corporation purchased 77.5 acres of land for future industrial development in Summer 1985.

The construction of Logan Memorial Hospital, a new 100-bed facility, was completed in June 1985. The \$16 million hospital replaced the existing hospital.

The Russellville-Logan County Airport recently completed extending the airport runway from 3,300 feet to 4,000 feet and widened the runway from 60 feet to 75 feet. Total cost of the project was \$450,000.

The city of Russellville recently annexed approximately two square miles of land south of Russellville.

Construction of a new \$600,000 U.S. Post Office, in Russellville, was completed in November 1984.

The Logan County School System recently completed construction of a new \$240,000 school bus garage.

A total of 40 new businesses have opened in Russellville since 1983.

The Citizens National Bank recently added two new full-service branch banks in Logan County. Total cost of both banks was \$370,000.

Construction of a \$83,000 combination football and softball field, at Russellville's Hampton Park, was completed in 1984.

The city of Auburn recently purchased a new police cruiser.

Under Way

A \$739,000 rehabilitation project on 5th Street and Bowling Green Road, in Russellville, is currently under way. The project, which will be completed in Spring 1987, includes demolition of 38 houses, rehabilitation of 19 houses, construction of sidewalks, widening of streets and drainage work.

Planned

Isuzu Truck of America, Inc., has plans to locate in Russellville. The \$3 million bus-chassis assembly plant, which will employ 30 to 50 people, is expected to be in operation by Spring 1986.

Lewisburg Water and Sewer Department has plans to build a new water treatment plant. The \$465,000 plant, which will have a treatment capacity of 562,000 gallons per day, is pending funding.

Expansion and renovation of the Adairville sewerage treatment plant is scheduled to begin in Fall 1985. The \$450,000 expansion, which will increase the design capacity from 150,000 gallons per day to 250,000 gallons per day, will be completed in Fall 1986.

The Lewisburg Water and Sewer Department plans to make infiltration improvements and install an aeration system to the sewerage treatment plant. The \$40,000 project will be completed by December 1985.

There are plans for a 4.6-mile bypass north of Russellville. Construction of the \$8,663,000 project is to start in 1986.

The Russellville School System has plans to build an athletic practice gymnasium and locker rooms. Estimated cost of the project will be \$700,000.

Plans at the Russellville Memorial Park include the construction of a \$300,000 swimming pool and the installation of a bike track.

The city of Lewisburg has plans to enlarge the ball field and install lighting on the tennis courts at the city park.