

1974

# Industrial Resources: Madison County - Richmond

Kentucky Library Research Collection  
Western Kentucky University, [spcol@wku.edu](mailto:spcol@wku.edu)

Follow this and additional works at: [https://digitalcommons.wku.edu/madison\\_cty](https://digitalcommons.wku.edu/madison_cty)



Part of the [Business Administration, Management, and Operations Commons](#), [Growth and Development Commons](#), and the [Public Affairs, Public Policy and Public Administration Commons](#)

---

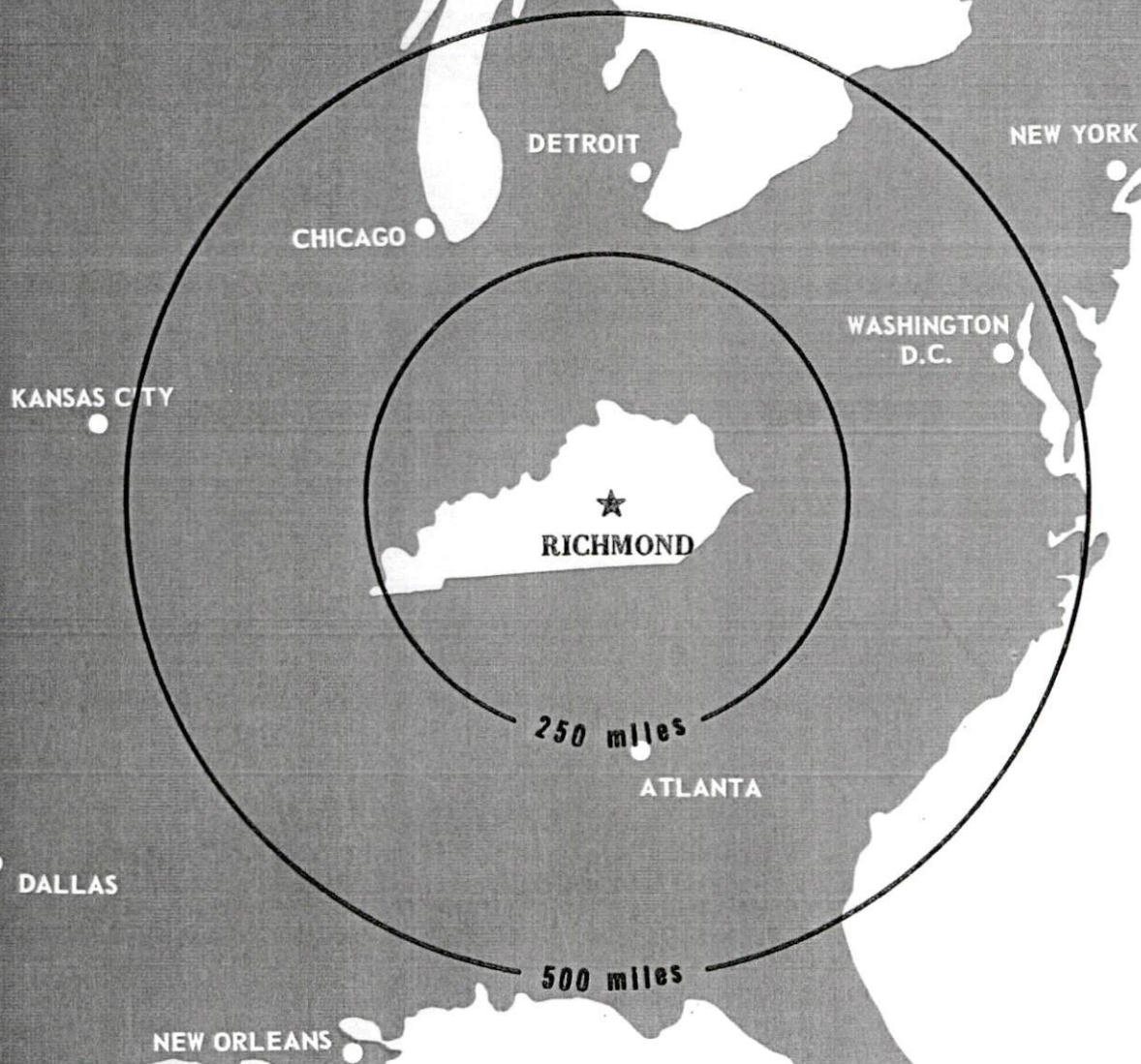
## Recommended Citation

Kentucky Library Research Collection, "Industrial Resources: Madison County - Richmond" (1974). *Madison County*. Paper 22.  
[https://digitalcommons.wku.edu/madison\\_cty/22](https://digitalcommons.wku.edu/madison_cty/22)

This Report is brought to you for free and open access by TopSCHOLAR®. It has been accepted for inclusion in Madison County by an authorized administrator of TopSCHOLAR®. For more information, please contact [topscholar@wku.edu](mailto:topscholar@wku.edu).

# INDUSTRIAL RESOURCES

## ***RICHMOND KENTUCKY***

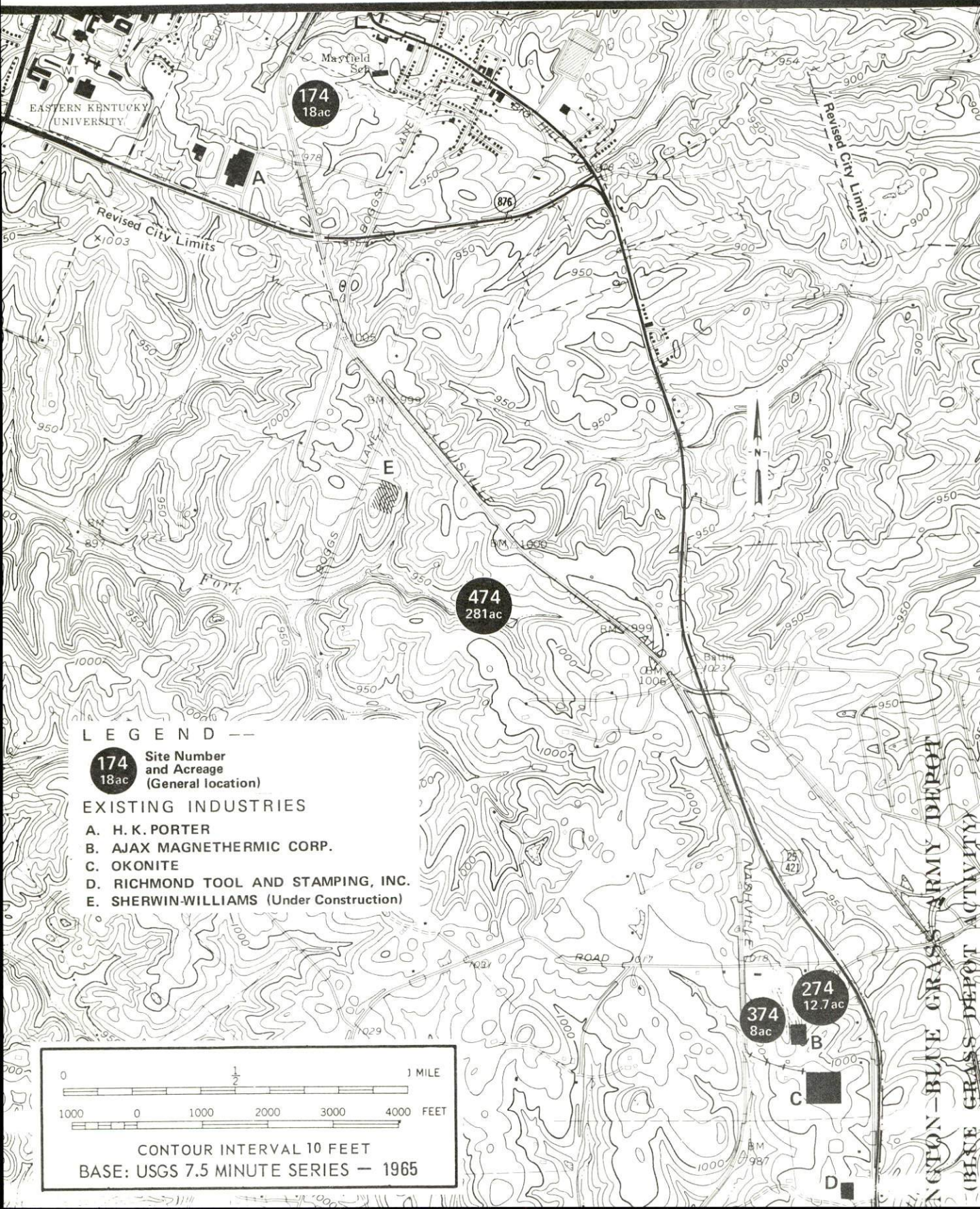


MADISON COUNTY, KENTUCKY



# RICHMOND, KENTUCKY -- Index to Industrial Sites -- 1974

For detailed data on individual sites, contact Mr. Samuel B. Sanders, Kentucky Utilities Company, Richmond, Kentucky or the Kentucky Department of Commerce, Capital Plaza Tower, Frankfort, Kentucky 40601.

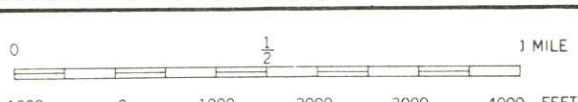


## LEGEND --

**174**  
**18ac** Site Number and Acreage (General location)

### EXISTING INDUSTRIES

- A. H. K. PORTER
- B. AJAX MAGNETHERMIC CORP.
- C. OKONITE
- D. RICHMOND TOOL AND STAMPING, INC.
- E. SHERWIN-WILLIAMS (Under Construction)



CONTOUR INTERVAL 10 FEET  
BASE: USGS 7.5 MINUTE SERIES -- 1965



INDUSTRIAL RESOURCES

RICHMOND, KENTUCKY

Prepared by

The Kentucky Department of Commerce

in cooperation with

The Richmond Chamber of Commerce

1974



## TABLE OF CONTENTS

<u>Chapter</u>	<u>Page</u>
INDUSTRIAL SITES . . . . .	i
RICHMOND, KENTUCKY - A RESOURCE PROFILE. . . . .	1
THE LABOR MARKET . . . . .	6
Population Trends . . . . .	6
General Employment Characteristics, 1972 . . . . .	6
Manufacturing Employment Trends by Industry. . . . .	7
Major Richmond Manufacturing Firms, Their Products and Employment. . . . .	7
Wages. . . . .	14
Labor Organizations . . . . .	15
Estimated Male Labor Supply . . . . .	15
Estimated Female Labor Supply . . . . .	16
Per Capita Personal Income . . . . .	16
TRANSPORTATION . . . . .	17
Rail. . . . .	17
Truck Service . . . . .	17
Air . . . . .	18
Bus . . . . .	19
Taxi . . . . .	19
Rental Services. . . . .	19
POWER AND FUEL . . . . .	20
Electricity. . . . .	20
Natural Gas . . . . .	20
Other Fuels . . . . .	21
WATER AND SEWERAGE . . . . .	22
Water . . . . .	22
Sewerage . . . . .	23
LOCAL GOVERNMENT . . . . .	24
City. . . . .	24
County. . . . .	24

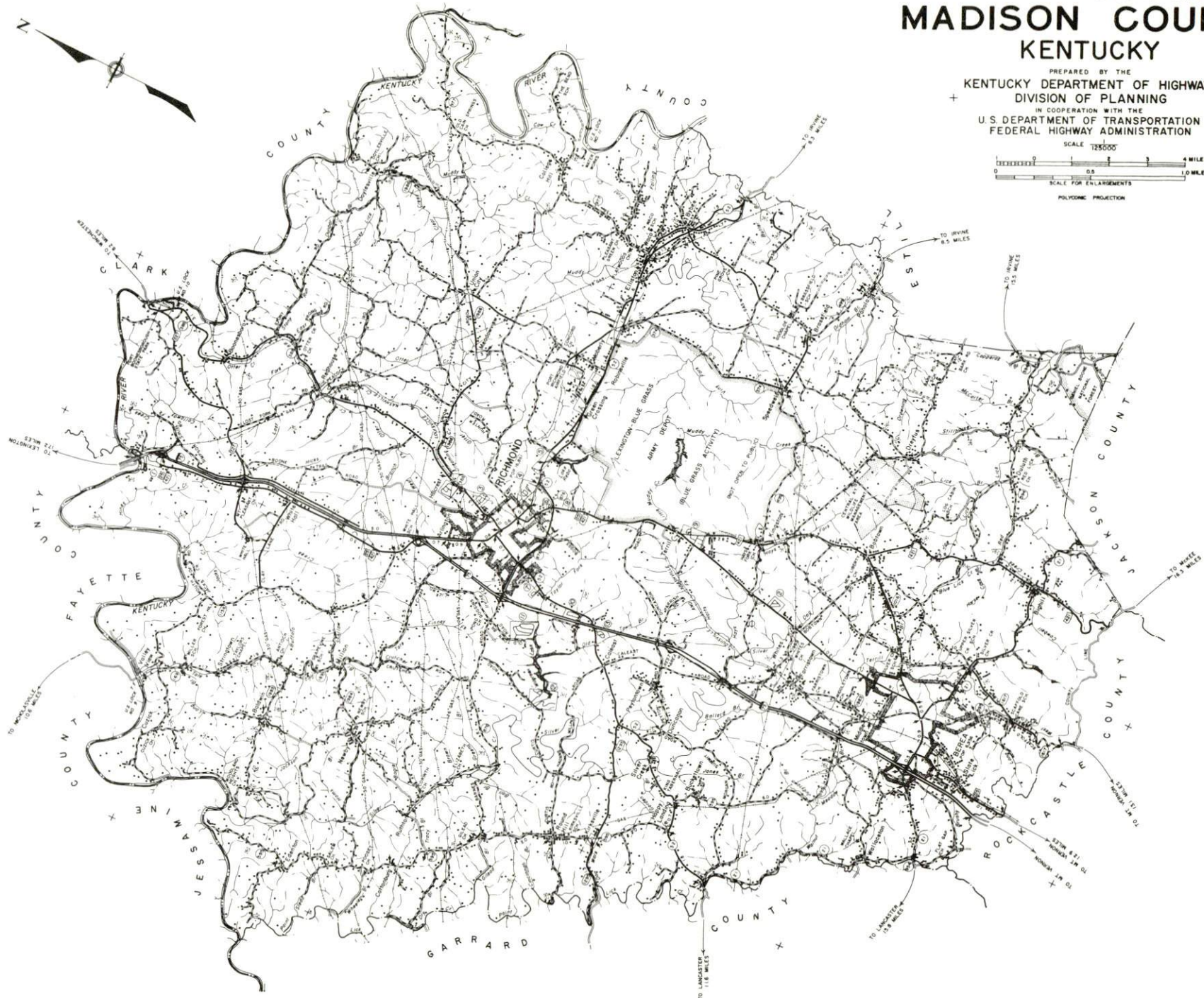
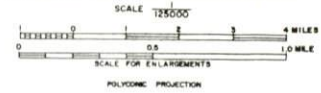
-16/10/75

<u>Chapter</u>	<u>Page</u>
Assessed Value of Property, 1973-74 . . . . .	24
Property Taxes . . . . .	24
Local Property Tax Rate Per \$100 of Assessed	
Valuation, 1973. . . . .	25
Planning and Zoning . . . . .	25
Safety . . . . .	25
Police . . . . .	25
Fire. . . . .	25
Ambulance Service . . . . .	26
Sanitation. . . . .	26
EDUCATION. . . . .	28
Public Schools . . . . .	28
Nonpublic Schools . . . . .	28
Vocational Schools. . . . .	29
Colleges and Universities . . . . .	31
HEALTH . . . . .	33
Hospitals . . . . .	33
Nursing Homes . . . . .	33
Public Health . . . . .	33
OTHER LOCAL FACILITIES . . . . .	34
Communications . . . . .	34
Library Services . . . . .	34
Religious Institutions . . . . .	35
Financial Institutions . . . . .	35
Hotels and Motels . . . . .	35
Clubs and Organizations . . . . .	36
RECREATION . . . . .	37
Local . . . . .	37
Area. . . . .	37
AGRICULTURE - NATURAL RESOURCES - CLIMATE. . . . .	39
Agriculture. . . . .	39
Natural Resources. . . . .	39
Climate . . . . .	40
HISTORY . . . . .	41



GENERAL HIGHWAY MAP  
**MADISON COUNTY**  
**KENTUCKY**

PREPARED BY THE  
KENTUCKY DEPARTMENT OF HIGHWAYS  
DIVISION OF PLANNING  
+  
IN COOPERATION WITH THE  
U.S. DEPARTMENT OF TRANSPORTATION  
FEDERAL HIGHWAY ADMINISTRATION



A map of Madison County, Mississippi, divided into seven parishes. The parishes are labeled as follows: Fayette (top left), Clark (top right), Jessamine (middle left), Garrard (bottom left), Rockcastle (bottom center), Jackson (bottom right), and Estill (middle right). Madison County is the central, largest parish.

Shaded area denotes Labor Market Area.





## RICHMOND, KENTUCKY - A RESOURCE PROFILE

Richmond, the county seat of Madison County, is rich in history and tradition dating back to 1785. Located in the southeastern part of Kentucky's Bluegrass Region, Richmond is 106 miles south of Cincinnati, Ohio, 147 miles north of Knoxville, Tennessee, and 105 miles southeast of Louisville, Kentucky. The population of Richmond in 1970 was 16,861.

Madison County, the largest of the Bluegrass counties, covers a land area of 446 square miles. In 1970, the county had a population of 42,730.

### The Economic Framework

Total employment in Madison County averaged 16,570 in 1972 with agriculture providing 1,580 jobs, manufacturing 2,640, trade and services 4,940, and government 5,490. Between September 1963 and September 1973 manufacturing employment increased 181 percent, providing 2,585 new jobs. The greatest concentration of manufacturing employment is in the electrical machinery, fabricated metal products, and rubber products industries.

Per capita personal income in the county in 1971 was \$2,761, or \$549 below the Kentucky average.

In the Richmond labor market area, which includes Madison County and its seven surrounding counties, total employment in 1972 averaged 146,650 with agriculture providing 8,470 jobs, manufacturing 24,210, trade and services 42,220, and government 32,670. Between September 1963 and September 1973 manufacturing employment in the labor market area increased 82 percent, or 12,866 new jobs, with the sharpest gains in the machinery, fabricated metal products, transportation equipment, and rubber products industries.

Despite important industrial gains in recent years the area still has a deficit of 4,969 manufacturing jobs when measured against the national industrial employment-population ratio for 1972. This indicates an area where the potential for additional manufacturing production is excellent.

### Resources for Growth

1. There is a current estimated labor supply of 12,240 men and 13,630 women available for industrial jobs in the labor market area. In addition, 14,329 young men and 13,705 young women will have become 18 years of age by 1980 and will be potentially available for work.

2. The local transportation capability is excellent. The Louisville and Nashville Railroad provides Richmond with a variety of services, including piggyback facilities. Easy access to Interstate 75, a principal north-south highway, is available at Richmond with an interchange 2 miles north and an interchange 4 miles southwest of Richmond. Commercial air service is available in Lexington, 25 miles north of Richmond. Lackey Airport, 5 miles south of Richmond, provides service for light aircraft.

3. Energy - Electric power is supplied to the City of Richmond by the Kentucky Utilities Company. Madison County is supplied electricity by the Kentucky Utilities Company, the Blue Grass RECC, and the Clark RECC. Natural gas service is provided to Richmond by the Richmond Water, Gas and Sewerage Works. The Delta Natural Gas Company provides natural gas service to an area within the southeastern city limits of Richmond and to parts of Madison County. There are four distributors of propane and four distributors of distillate fuel oil located in Richmond.

4. Education is an important growth asset for Richmond. There are two local school systems - the Richmond Independent School District and the Madison County School System. In addition, the nonpublic schools in Richmond are presently educating over 800 students.

Eastern Kentucky University, located in Richmond, is a coeducational public institution offering general and liberal arts programs, pre-professional and professional training in education and various other fields at both the undergraduate and graduate levels. Eastern offers a joint doctoral program with the University of Kentucky leading toward the Ed. D. Degree in education. The campus embraces approximately 325 acres. The various academic buildings, dormitories, and other facilities are centered around a replica of an ancient Greek amphitheatre, which seats 2,500 persons. Eastern has provided more than six decades of educational service and had a 1973 fall enrollment of 11,088 students.

In addition, there are six senior colleges and two junior colleges within a 50-mile radius of Richmond. Berea College, in Madison County, is just 13 miles south of Richmond.

Vocational training facilities are available at the Central Kentucky State Vocational-Technical School in Lexington which offers 18 course areas and at the Madison County Area Vocational Education Center in Richmond which offers 6 course areas.



## Community Programs for Improvement

Industrial and commercial: A \$1,000,000 expansion is underway at Ajax Magnethermic Corporation which will double the size of the plant, double the amount of equipment, and provide employment for 55 additional people. The Central Offices and Distribution Center of the Begley Drug Company completed a major expansion, renovation, and modernization of its facility at a cost of \$500,000. Numerous new commercial businesses include two indoor movie theatres, three motels with a total of 293 units, a restaurant, several short-order restaurants, and two shopping centers - Shoppers Village and University Center Shopping Center. A new Bank of Richmond building is under construction and a branch office of the State Bank & Trust Company has been completed.

Utilities: A \$3,000,000 project is underway at the Richmond Water Works which includes the enlargement of the water filtration plant at College Hill to increase total filtering capacity to 6,000,000 gallons per day, transmission mains and strengthening mains are being added, additional fire hydrants within the city are being installed, and the construction of a 1,000,000-gallon water storage tank has been completed. An engineering study is underway to reduce infiltration in the present sewerage system and to construct a new sewage treatment plant. A master meter-reading system is being installed at the Richmond Gas Works. Four-inch pumps and a 15 horsepower motor have been installed at Kingston-Terrill Water District to increase its pumping capacity.

Public safety: New radio equipment and photography laboratory have been acquired at the Richmond Police Department and there are plans for an electronic dispatching board and a tape recording system to tape all incoming and outgoing messages. A \$48,000, 1,000 gpm pumper is on order and an additional fire station is under construction for the Richmond Fire Department. Richmond Police and Fire Departments have located in a building completely remodeled for their use. The Madison County Fire Department began operation in March of 1973 and is equipped with a 750 gpm pumper, a 250 gpm pumper, a tank truck, and a pickup truck.

Transportation: Plans are in the final stages for a new airport which will have a 4,000-foot paved runway with landing capacity for planes up to 30,000 pounds, lights, taxiway, apron, and access road. Fourteen miles of city streets will be paved in 1974.

Education: Richmond City Board of Education was selected as national first place winner in the 1973 National School Board Awards program, representing systems with enrollments under 6,000. This award for outstanding achievements and contributions toward improving the quality of education within the local community resulted from the initiation of new educational programs and services and the expansion of existing programs. Projects completed in the Madison County School

System include the restoration of White Hall Elementary School, the addition of several classrooms at Silver Creek Elementary School, a new \$1,200,000 middle school with preliminary plans for another middle school, the addition of career education to the curriculum, and additional special education classes offered at several schools. A private day care nursery and kindergarten for 150 children, ages six months through five years, will open September 1, 1974.

Recreation: A new city park at Lake Reba is under development and will have playground equipment, a baseball diamond and picnic shelters. The picnic area at E. C. Million Memorial Park has been enlarged to include shelters and playground equipment, a concession stand, and rest rooms are being added to the park's facilities. The city park program has been expanded to include girls' softball leagues and two men's softball leagues. The Arlington Association golf course has been enlarged from a 9-hole course to an 18-hole championship golf course.

Other: A tourist information center is being established and the area around the center will be paved and used as a parking lot for downtown shippers. The North Second Street city parking lot will be paved and meters will be installed for all day parking.

#### Recreation, Entertainment and Livability

Richmond and the surrounding area offer varied forms of recreation and entertainment. The City of Richmond sponsors a year-round supervised recreation program for all ages. In addition, the city's parks, playgrounds, tennis courts, baseball and football fields are available for use. Eastern Kentucky University offers a variety of cultural activities including lectures, art exhibits, concerts, and theatre productions, and provides nine months of exciting intercollegiate sporting events annually.

Wilgreen Lake, 3 miles west of Richmond, is a state-owned recreational facility covering approximately 250 acres. It was created primarily as a fishing lake and is 2 1/2 miles long. Lake Reba, the city reservoir, is available for fishing and boating. A new city park at Lake Reba is being developed and facilities will include playground equipment, a baseball diamond, and picnic shelters.

Just north of Richmond is White Hall State Shrine, the home of the abolitionist leader and politician, Cassius Clay. This Italianate mansion contains many authentic items of the Civil War period.



Fort Boonesborough State Park, 13 miles north of Richmond, is a 108-acre park located on the Kentucky River. Park facilities include 55 primitive campsites, a 200-seat restaurant, a beach, a bathhouse with sundeck, boat docks, a playground, and picnic shelters. Boat and motor rentals are available. Recreational activities available at the park include swimming, fishing, boating, and water skiing.

Boone Tavern, located in Berea, 13 miles south of Richmond, is owned by Berea College and staffed by college students. It is noted for its southern charm and excellent food. The outdoor historical drama, "Wilder-ness Road," is presented each summer by Berea College at Indian Fort Theatre. Churchill Weavers, the largest handweaving company in the country, is also located in Berea. Tours are available through the loom-house.

Lexington, 25 miles north of Richmond, offers the full spectrum of sophisticated entertainment, cultural and sporting events. Excellent thoroughbred and harness racing is available at Keeneland Race Course and the Red Mile Trotting Track at several meets each year. The Central Kentucky Concert and Lecture Association presents an annual subscription series which brings to the city world-famous groups and individuals in the arts and sciences. There are three local symphony orchestras, several theatre groups, and concerts, lectures, and art exhibitions presented by the University of Kentucky and Transylvania University. Intercollegiate sporting events are also provided by both universities.

# THE LABOR MARKET

## POPULATION TRENDS

Area	Population				Percent Change	
	1972*	1970	1960	1950	1960-70	1950-60
Richmond	N.A.	16,861	12,168	10,268	+38.6	+18.5
Labor Market Area	317,200	303,092	245,312	216,013	+23.6	+13.6
Madison County	44,700	42,730	33,482	31,179	+27.6	+ 7.4
Clark County	25,700	24,090	21,075	18,898	+14.3	+11.5
Estill County	13,400	12,752	12,466	14,677	+ 2.3	-15.1
Fayette County	182,800	174,323	131,906	100,746	+32.2	+30.9
Garrard County	9,200	9,457	9,747	11,029	- 3.0	-11.6
Jackson County	10,200	10,005	10,677	13,101	- 6.3	-18.5
Jessamine County	18,600	17,430	13,625	12,458	+27.9	+ 9.4
Rockcastle County	12,600	12,305	12,334	13,925	- 0.2	-11.4

\*Provisional Estimates.

Sources: U. S. Department of Commerce, Bureau of the Census, Census of Population, 1970, 1960, 1950. U. S. Bureau of the Census, Current Population Reports, Series P-26, June 1973.

## GENERAL EMPLOYMENT CHARACTERISTICS, 1972

Major Employment Group	Employment	
	Madison County	Labor Market Area
TOTAL	16,570	146,650
Agricultural	1,580	8,470
Nonagricultural	14,990	138,180
Manufacturing	2,640	24,213
Government	5,490	32,670
Trade and Services	4,939	42,220
Other	1,921	39,077

Sources: Kentucky Department for Human Resources, Bureau for Administration and Operations. Kentucky Department of Commerce, 1973 Kentucky Directory of Manufacturers.



MANUFACTURING EMPLOYMENT TRENDS BY INDUSTRY  
SEPTEMBER 1973 AND 1963

Industry	Madison County			Labor Market Area		
	1973	1963	% Change	1973	1963	% Change
TOTAL	4,010	1,425	+ 181.4	28,561	15,695	+ 82.0
Food & Kindred Products	172	87	+ 97.7	1,318	1,383	- 4.7
Tobacco	2	3	- 33.3	964	1,336	- 27.8
Apparel, Textiles, Leather	43	57	- 24.6	2,919	2,438	+ 19.7
Lumber, Furniture	39	2	+1850.0	963	560	+ 72.0
Printing & Publishing, Paper	40	23	+ 73.9	1,715	1,376	+ 24.6
Chemicals, Petroleum & Coal, Rubber	763	394	+ 93.7	1,892	713	+165.4
Stone, Clay & Glass	389	41	+ 848.8	981	459	+113.7
Primary Metals	290	0	--	874	227	+285.0
Machinery, Metal Products, Equip.	1,429	672	+ 112.6	15,353	6,946	+121.0
Other	843	146	+ 477.4	1,582	257	+515.6

Source: Kentucky Department for Human Resources, Number of Workers in Manufacturing Industries Covered by Kentucky Unemployment Insurance Law Classified by Industry and County, September 1973, September 1963.

MAJOR RICHMOND MANUFACTURING FIRMS,  
THEIR PRODUCTS AND EMPLOYMENT

Firm (Establishment date)	Product	Employment			
		Total	Male	Female	Organized
Ajax Magnethermic Corp. (1972)	Induction melting furnace, industrial frequency converters	45	40	5	
Beatrice Foods Co. (1947)	Ice cream	55	43	12	*
National Metal Processing, Inc. (1968)	Commercial heat-treating	42	40	2	
Okonite (1968)	Insulated cable	200			*
H. K. Porter Co., Inc. (1965)	Clutch facings, brake blocks	239	178	61	*
Richmond Tool & Stamping, Inc. (1969)	Tools, metal stampings	160	60	100	
Robinson Tool & Die, Inc. (1961)	Metal stampings, tools, dies	252	148	104	

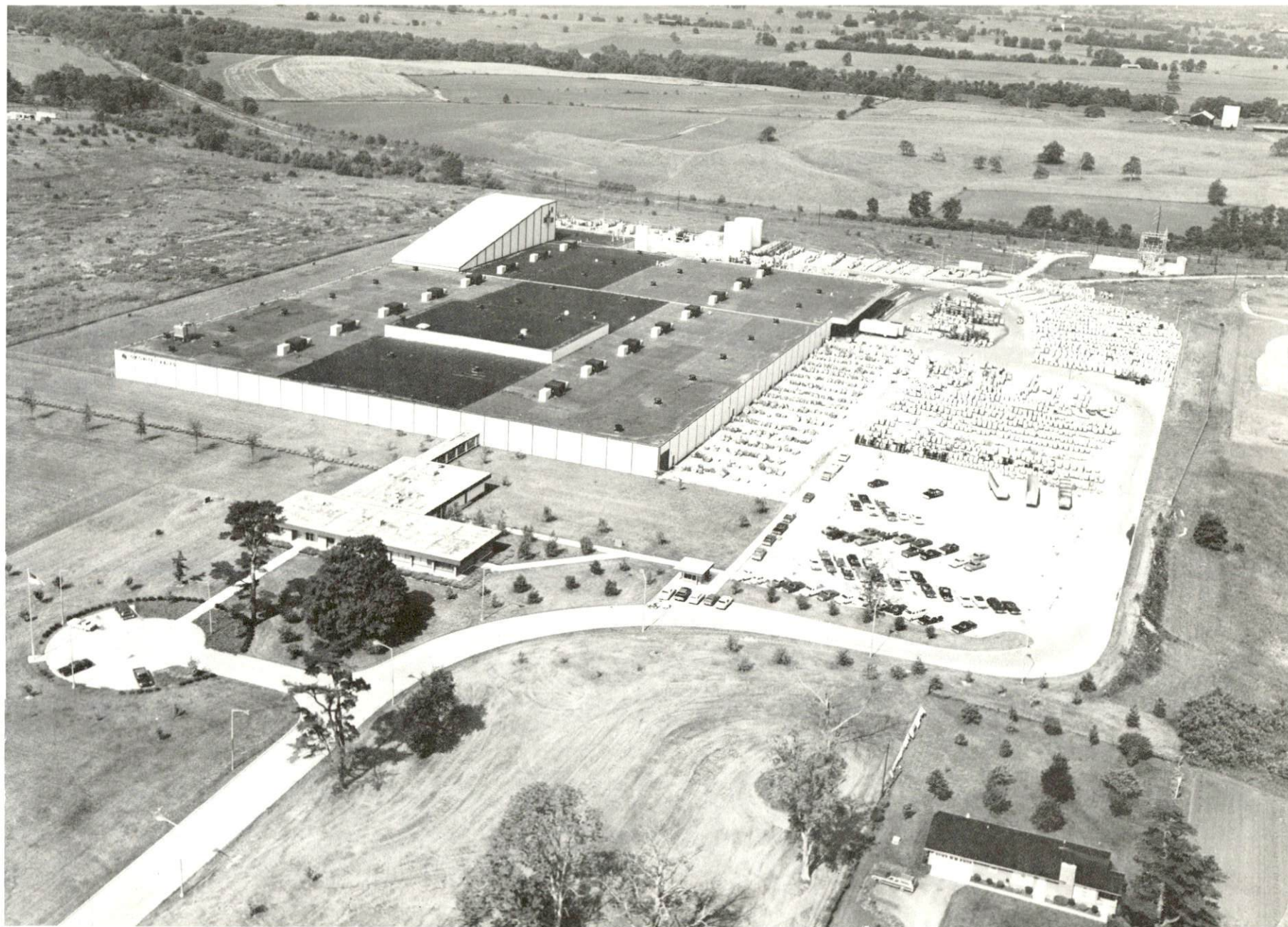
(Cont.)

<u>Firm</u> ( <u>Establishment date</u> )	<u>Product</u>	<u>Employment</u>			<u>Organized</u>
		<u>Total</u>	<u>Male</u>	<u>Female</u>	
Uncle Charlie's Sausage Co. (1957)	Sausage, meat processing, ground beef	85	78	7	
Westinghouse Electric Corp. (1948)	Miniature electric light bulbs	677	185	492	*

\*See Labor Organizations, page 15.

Source: Kentucky Department of Commerce, Division of Research and Planning.





AERIAL VIEW OF OKONITE COMPANY





WESTINGHOUSE ELECTRIC CORPORATION

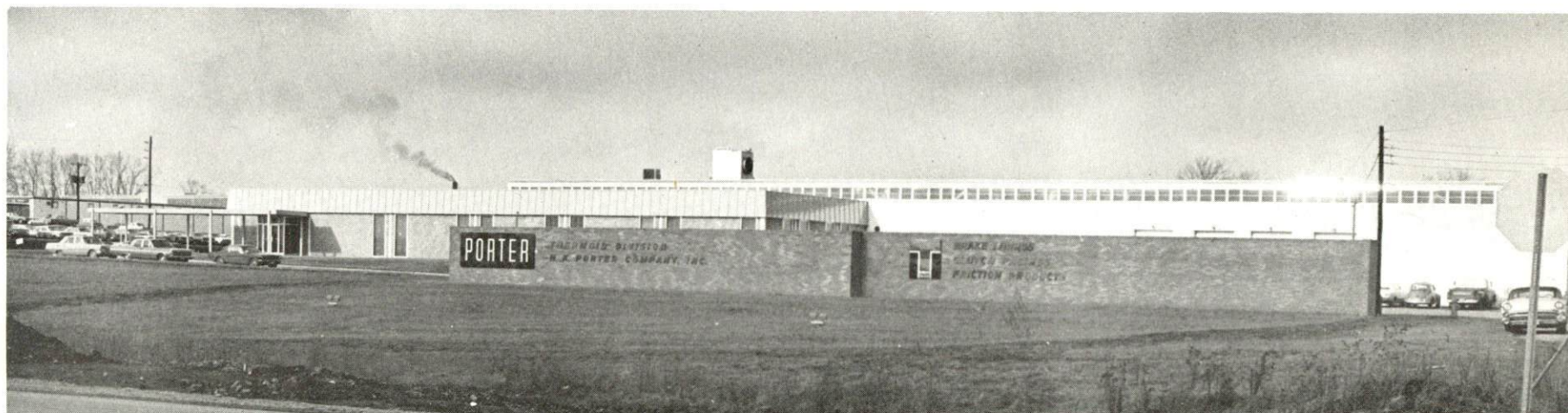


RICHMOND TOOL AND STAMPINGS, INC.





AJAX MAGNETHERMIC CORPORATION



H. K. PORTER COMPANY, INC., THERMOID DIVISION



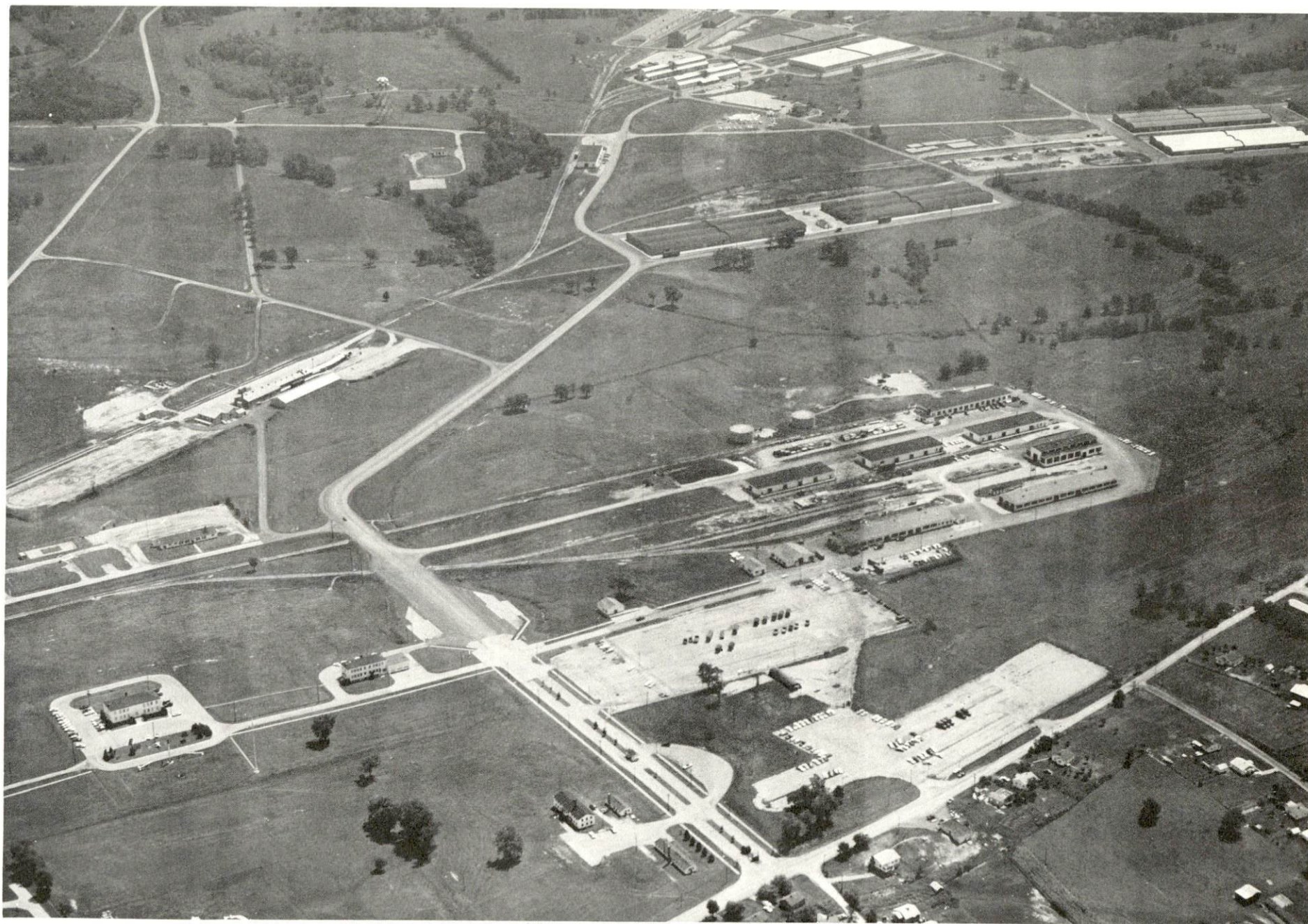


UNCLE CHARLIE'S SAUSAGE CO.



ROBINSON TOOL & DIE, INC.





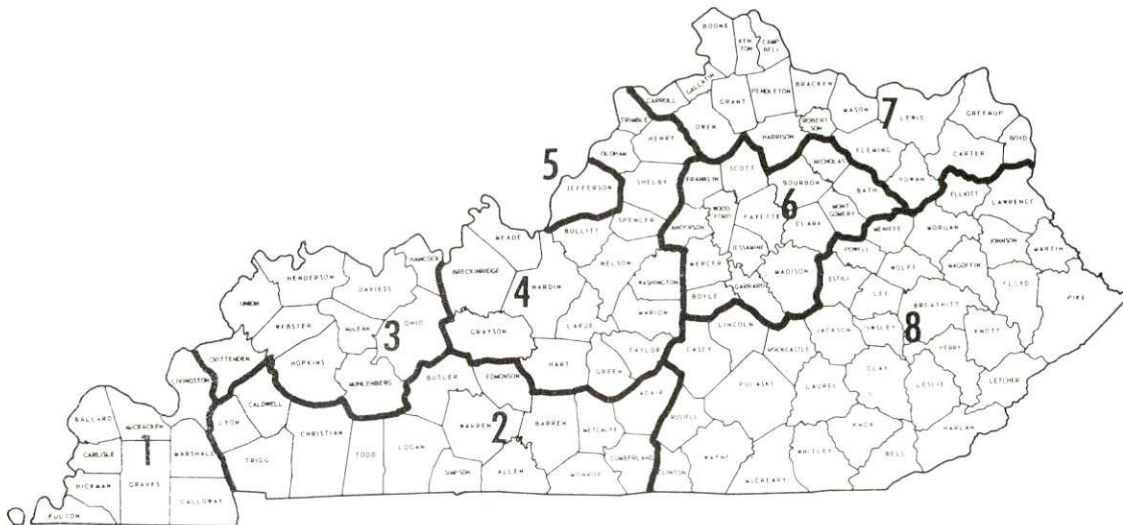
AERIAL VIEW OF LEXINGTON-BLUE GRASS ARMY DEPOT  
BLUE GRASS ACTIVITY



## WAGES

Occupational wage rates for specific industries are usually not available to most government agencies, and wage data furnished to state employment agencies by industrial employers is protected from disclosure by federal law. The most reliable up-to-date wage information can be obtained by direct contact with local employers.

Associated Industries of Kentucky, a voluntary organization of Kentucky businesses, regularly collects occupational wage rates and fringe benefits data from participating member firms. Data is compiled for over 130 clearly defined office, production, and service occupations. Tabulations are published for eight regions of Kentucky, as shown on the map below. It should be noted that the data may be weighted by the preponderance of firms in the larger cities and may be somewhat higher than the rates paid in the smaller communities. Data from these tabulations are available, upon request, from the Kentucky Department of Commerce, Frankfort, Kentucky 40601.



Associated Industries of Kentucky Area Wage Surveys



## LABOR ORGANIZATIONS

<u>Union</u>	<u>Representing manufacturing workers at:</u>
International Brotherhood of Teamsters, Chauffeurs, Warehousemen, and Helpers of America	Beatrice Foods Company
United Auto Workers	H. K. Porter Company, Inc.
International Brotherhood of Electrical Workers	Okonite Company
International Brotherhood of Electrical Workers	Westinghouse Electric Corporation

### ESTIMATED MALE LABOR SUPPLY RICHMOND LABOR MARKET AREA

<u>Area</u>	<u>Current</u>				<u>Future</u>
	<u>Total</u>	<u>Not in Labor Force</u>	<u>Unemployed</u>	<u>Under- employed</u>	<u>Reaching 18 Yrs. of Age by 1980</u>
Labor Market					
Area	12,240	2,280	3,030	6,930	14,329
Madison	2,110	0	590	1,520	1,770
Clark	560	0	200	360	1,230
Estill	1,300	710	360	230	655
Fayette	4,800	0	920	3,880	8,109
Garrard	420	130	140	150	493
Jackson	1,110	690	290	130	552
Jessamine	610	0	160	450	836
Rockcastle	1,330	750	370	210	684

Sources: Kentucky Department for Human Resources, Kentucky Labor Supply Estimates by County, 1973. Kentucky Department of Commerce, Future Labor Supply by 1980.

ESTIMATED FEMALE LABOR SUPPLY  
RICHMOND LABOR MARKET AREA

<u>Area</u>	<u>Current</u>			<u>Future</u>	
	<u>Total</u>	<u>Not in Labor Force</u>	<u>Unemployed</u>	<u>Under- employed</u>	<u>Reaching 18 Yrs. of Age by 1980</u>
Labor Market					
Area	13,630	2,630	2,390	8,610	13,705
Madison	2,050	0	430	1,620	1,694
Clark	970	230	90	650	1,143
Estill	1,100	730	140	230	602
Fayette	6,260	0	1,260	5,000	7,826
Garrard	440	160	110	170	430
Jackson	940	700	100	140	554
Jessamine	720	0	120	600	812
Rockcastle	1,150	810	140	200	644

Sources: Kentucky Department for Human Resources, Kentucky Labor Supply Estimates by County, 1973. Kentucky Department of Commerce, Future Labor Supply by 1980.

PER CAPITA PERSONAL INCOME

<u>Area</u>	<u>1971</u>	<u>1961</u>	<u>% Change</u>
Madison County	\$2,761	\$1,767	+56.3
Labor Market Area Range	\$1,595 - 4,184	\$619 - 2,179	N.A.
Kentucky	3,310	1,677	+97.3
U. S.	4,164	2,265	+83.8

Sources: University of Kentucky, Office of Development Services and Business Research, Per Capita Income in Kentucky. U. S. Department of Commerce, Bureau of Economic Analysis, Survey of Current Business, August, 1973.



## TRANSPORTATION

### Rail

Line serving Richmond - Louisville & Nashville Railroad

Services - Freight - carloads only, 1 northbound and 1 southbound freight daily (except Sundays), 10 to 25 through freights daily; switching facilities; siding space for 600 cars; piggyback facilities

For details on routing, schedules, rates, and services, contact:

Manager of Industrial Development  
Louisville and Nashville Railroad Co.  
908 West Broadway  
Louisville, Kentucky 40203

### Truck Service

#### Company

Bronaugh Motor Express, Inc.  
Consolidated Freightways  
Cooper-Jarrett, Inc.  
McLean Trucking Co.  
Smith's Transfer Corp. of Virginia  
Wilson Freight Co.

#### Home Office

Lexington, Kentucky  
Chicago, Illinois  
Orange, New Jersey  
Winston-Salem, North Carolina  
Staunton, Virginia  
Cincinnati, Ohio

#### Other Freight Services

REA Express  
United Parcel Service

#### Nearest Shipping Center

Local pickup and delivery  
Lexington, Kentucky

HIGHWAY MILES AND TRUCK TRANSIT TIME IN DAYS FROM  
RICHMOND, KENTUCKY, TO SELECTED MARKET CENTERS

City	Delivery		City	Delivery	
	Highway Miles	Time TL		Highway Miles	Time TL
Atlanta, Ga.	341	2	Los Angeles, Calif.	2,212	5
Birmingham, Ala.	401	2	Louisville, Ky.	105	1
Chicago, Ill.	397	2	Nashville, Tenn.	234	2
Cincinnati, Ohio	106	1	New Orleans, La.	756	3
Cleveland, Ohio	358	2	New York, N. Y.	782	3
Detroit, Mich.	372	2	Pittsburgh, Pa.	406	2
Knoxville, Tenn.	147	1	St. Louis, Mo.	369	2

Source: Delivery Time Only - Bronaugh Motor Express, Inc., 1115  
Winchester Road, Lexington, Kentucky 40505.

Air

	<u>Nearest Small Craft Airport</u>	<u>Nearest Commercial</u>
	Lackey Airport	Blue Grass Field
Location:	5 miles south of Richmond	Lexington, 25 miles north
Runways:	1 turf	2 paved
Length:	2,450 feet	6,500 feet and 3,500 feet
Traffic		
Control:	Wind sock and wind tee	Tower, guards, radar, arrival and departure control, ground control, ILS system
Lighting:	None	Approach lighting system, beacon, runways and obstructions lighted
Services:	80 octane, tie down	Eastern, Delta, Piedmont, and Allegheny Airlines; 80, 100, and 145 octane, jet fuel, major A & E repairs, storage, restaurant, Weather Bureau, flight instruction, charter service, taxi, U-Drive-It service
Air Freight Service:		All commercial air carriers accept air freight on a space-available basis



Bus

Greyhound Bus Lines

Taxi

24-hour service, radio dispatched

Rental Services

Car, truck, and trailer rentals

## POWER AND FUEL

### Electricity

Company serving Richmond - Kentucky Utilities Company  
Source of power - Kentucky Utilities Company  
Total generating capacity - 1,735,000 KW  
For industrial rates contact:

Kentucky Utilities Company  
200 East Water Street  
Richmond, Kentucky 40475

Company serving Madison County - Blue Grass RECC  
Source of power - East Kentucky Power Cooperative  
Total generating capacity - 548,000 KW  
For industrial rates contact:

Blue Grass RECC  
P.O. Box 188  
Nicholasville, Kentucky 40356

Company serving Madison County - Clark RECC  
Source of power - East Kentucky Power Cooperative  
Total generating capacity - 548,000 KW  
For industrial rates contact:

Clark RECC  
P.O. Box 748, Route 15  
Winchester, Kentucky 40391

### Natural Gas

Company serving Richmond - Richmond Water, Gas, & Sewerage Works  
Source of supply - Columbia Gas Transmission Corporation  
Size of transmission mains - 8-inch (supplier); 8-inch (distributor)  
Distribution mains - 3 to 8 inches  
Distribution pressure - 6 ounces to 12 pounds  
Btu content - 1000; Specific gravity - .60  
For rates and supplies contact:

Richmond Water, Gas, & Sewerage Works  
West Main Street  
Richmond, Kentucky 40475



Company serving Madison County - Delta Natural Gas Company  
Source of supply - Columbia Gas Transmission Corporation  
Size of transmission mains - 30-inch (supplier); 4-inch (distributor)  
Distribution mains - 2-inch  
Distribution pressure - 20 pounds  
Btu content - 1040; Specific gravity - .60  
For rates and supplies contact:

Delta Natural Gas Company, Inc.  
Box 190  
Berea, Kentucky 40403

#### Other Fuels

##### Propane and butane -

Altom Oil Company, Inc., Irvine Road, Richmond  
Southern States Cooperative, Inc., Irvine Road, Richmond  
Williams Energy Company (Doxol Propane), 206 South Third, Richmond  
Crawford Gas & Appliances, Big Hill Avenue, Richmond

##### Fuel Oils -

##### Distillate fuel oil -

Ashland Petroleum Company (bulk plant), South Estill Ave., Richmond  
High Speed Oil Company, Big Hill Road, Richmond  
Jenkins Red Hed, Inc., Big Hill Road, Richmond  
Standard Oil Company (bulk plant), Boggs Lane, Richmond

Residual fuel oil - arrangements must be made with the refinery.

Low sulphur content coal - available from Eastern Kentucky

## WATER AND SEWERAGE

### Water

Company serving Richmond - Richmond Water, Gas, & Sewerage Works  
Source - Lake Reba and Kentucky River  
Treatment plant capacity - 3,500,000 gpd (2 plants)\*  
Average daily consumption - 3,000,000 gallons  
Peak daily consumption - 3,500,000 gallons  
Type treatment - Sedimentation, flocculation, and filtration  
Storage capacity - 4,000,000 gallons  
Size lines - 4 to 24 inches  
Average pressure - 50 psi  
Average temperature - 50 degrees F.

### MONTHLY WATER RATES FOR WHOLESALE AND INDUSTRIAL CONSUMERS

First	300 cubic feet	\$3.60 Minimum
Next	400 cubic feet	.95 per 100 cubic feet
Next	5,000 cubic feet	.80 per 100 cubic feet
Next	5,000 cubic feet	.65 per 100 cubic feet
All over	10,700 cubic feet	.50 per 100 cubic feet

Tap-on charge - Cost of materials plus 10 percent

Name of water district - Kingston-Terrill Water District\*\*  
Area served - Southeastern Madison County  
Date when water district began operating - 1966  
Source of supply of treated water - Richmond Water Works  
Average amount of water used in a 24-hour period - 260,000 - 335,000 gallons  
Peak amount of water used in a 24-hour period - 400,000 gallons  
Storage capacity - 100,000 gallons  
Average pressure - 60 to 85 psi  
Average temperature - 40 to 65 degrees F.  
Size lines - 8, 6, and 4 inches

\*The water filtration plant at College Hill is now undergoing an enlargement so that total filtering capacity will be increased to 6,000,000 gallons daily. This project is expected to be completed by October of 1974. In addition, a 1,000,000 gallon storage tank has recently been completed.

\*\*The water district has recently installed 4-inch pumps and a 15 horse-power motor to increase its pumping capacity.



MONTHLY WATER RATES FOR WHOLESALE  
AND INDUSTRIAL CONSUMERS

First	200 cubic feet	\$5.30 Minimum
Next	300 cubic feet	2.30 per 100 cubic feet
Next	300 cubic feet	1.55 per 100 cubic feet
All over	800 cubic feet	.80 per 100 cubic feet

Annual charge for fire hydrants: \$50

Tap-on charge - Residential - \$155

Industrial - varies according to the size of service

Surface water sources - Kentucky River

Average discharge - Kentucky River at lock 10, 5,122 cfs (62 years USGS)

Expected ground water yield - 50 to 200 gpm along Kentucky River; 5 to 50 gpm in small portion of southern Madison County; 5 gpm or less in remainder of county.

Sewerage

Company serving Richmond - Richmond Water, Gas, & Sewerage Works\*

Design capacity - 4,000,000 gpd (2 plants)

Average daily flow - 2,500,000 gallons; Treatment - Secondary

Type treatment - Sedimentation, trickling filter, sludge tank, and chlorination

Treated effluent discharged into - Tates Creek and Dreaming Creek

Size of sanitary mains - 6 and 18 inches

Rates - 50 percent of water bill

Tap-on charge - \$10

---

\*An engineering study is underway concerning reducing infiltration in the present system and the construction of a new treatment plant.

## LOCAL GOVERNMENT

### City

Structure - Mayor - 4-year term; 4 commissioners - 2-year terms;  
city manager

Budget 1974 - General Fund	\$1,237,950
1973 - Water and Sewer Fund	960,806
1973 - City Gas Fund	938,331

Fees and licenses - One percent occupational license tax on wages and  
on net profits; business license fees range from \$5 to \$600 annually.

### County

Structure - County Judge - 4-year term; 8 magistrates - 4-year terms

Budget 1974-75 - General Fund \$311,465; Road Fund \$192,700

### Assessed Value of Property, 1973-74

<u>Classes of Property</u>	<u>Richmond</u>	<u>Madison County</u>
Real Estate	\$62,927,167	\$209,722,088
Tangibles	13,762,616	39,636,388
Public Service	4,839,006	41,204,016

### Property Taxes

Land and buildings are taxed by the state and may be taxed by local  
jurisdictions. The state rate is \$0.015 per \$100 of assessed valuation.

Tangible personal property owned by manufacturers (automobiles,  
trucks, finished goods, office furniture, office equipment) is taxed  
by the state at \$0.15 per \$100 and may be taxed by local jurisdictions.

Manufacturing machinery, raw materials inventories, and goods in  
process inventories are not subject to local taxation. The state rate  
is \$0.15 per \$100.

Property stored in public warehouses is not subject to local taxation.  
The state rate is only \$0.015 per \$100.



All property is assessed at 100 percent of fair cash value.

Local Property Tax Rate Per \$100 of Assessed Valuation, 1973\*

<u>Taxing Jurisdiction</u>	<u>Richmond</u>	<u>Madison County</u>
County	\$ .158	\$ .158
School	.693	.404
City	.262	

Planning and Zoning

City agency - Richmond Planning Commission  
 Zoning enforced - Within city of Richmond only  
 Subdivision regulations enforced - Within Richmond only  
 Local codes enforced - Building, housing, electrical  
 Mandatory state codes enforced - Plumbing, National Fire Protection  
 Association Code, National Building Code (for major buildings and  
 residential construction containing more than 12 bedrooms per building)  
 Other programs - Public housing and neighborhood development program

Safety

<u>Police</u>	<u>Richmond</u>	<u>Madison County</u>
Total staff	30	6
Radio-patrol cars	5	4
Other equipment	detective's vehicle patrol wagon	portable radio

Fire

American Insurance		
Association Fire Rating	7 & 9	
Full-time staff	38	10
Volunteers	15	18
Equipment:		
1,250 gpm pumper	1	
750 gpm pumpers	2	1
500 gpm pumper	1	
250 gpm pumper		1
Ladder truck	1	
Other	rescue saw	tank-truck pickup truck

\*Kentucky Department of Revenue, Kentucky Property Tax Rates, 1973.

## Ambulance Service

### City-County Ambulance Service

Staff - 17 full-time employees who receive emergency medical training and are certified as Emergency Medical Technicians.

Equipment - 3 ambulances (2 in Richmond, 1 in Berea). The ambulance service is housed with the Madison County Fire Department and has access to its emergency equipment.

### Private Ambulance Service

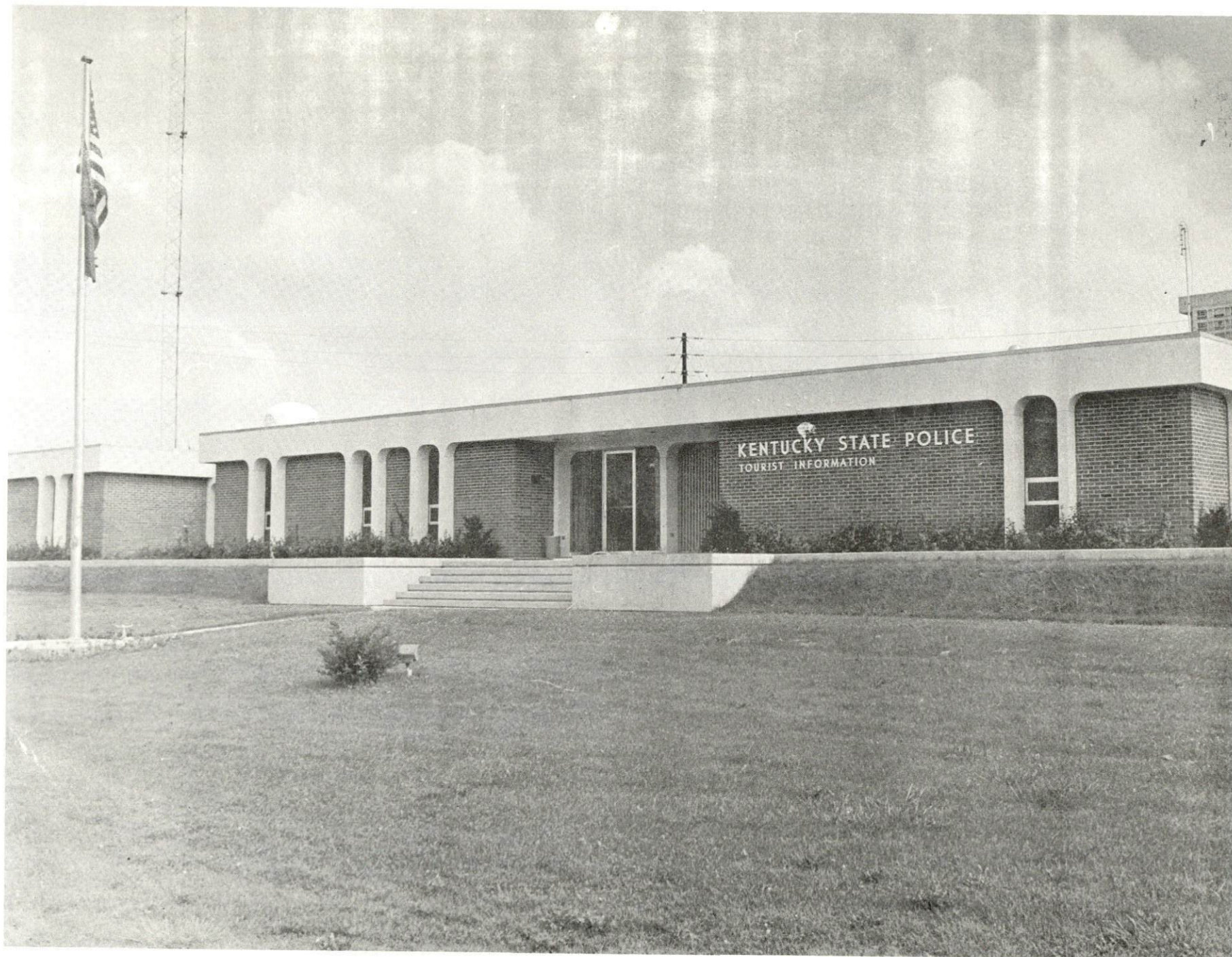
A private ambulance service in Richmond has four staff members which include one registered nurse, one staff member with Red Cross emergency medical training, and two drivers. The service has two ambulances.

## Sanitation

	<u>Richmond</u>	<u>Madison County</u>
Type service	municipal	private
Fee charged:		
residential	no charge	contract
business	no charge	contract
Collection frequency:		
residential	once a week	when desired
business	a maximum of three times a week	when desired
Trash pickup	once a week	when needed
Disposal method	sanitary landfill	sanitary landfill

Two private contractors provide sanitation services.





KENTUCKY STATE POLICE POST NO. 7 - RICHMOND

## EDUCATION

### Public Schools

	<u>Richmond Independent</u>	<u>Madison County</u>
Total Enrollment (1973)	1,211	5,459
Elementary	450	3,879
Junior High	459	
High School	302	1,580
Student-Teacher Ratio	19 to 1	33 to 1
Elementary	17 to 1	31 to 1
Junior High	20 to 1	
High School	19 to 1	40 to 1
Percent High School Graduates to College	32.7	26.4
Expenditures Per Pupil (1972-73)	\$626.61	\$473.22
Bonded Indebtedness, June 30, 1973	\$547,000	\$3,626,000

### Nonpublic Schools

	<u>Model Laboratory*</u>	<u>St. Mark</u>
Total Enrollment	754	85
Elementary	394	85
High School	360	
Student-Teacher Ratio	21 to 1	21 to 1
Elementary	28 to 1	21 to 1
High School	16 to 1	

\*The Model Laboratory School of Eastern Kentucky University is accredited by the Southern Association of Colleges and Schools.



## Vocational Schools

	<u>Nearest State School</u>	<u>Nearest Area Education Center</u>
	Central Kentucky State Vocational Technical School	Madison County Area Vocational Education Center
Location	Lexington	Richmond
Miles Distant	25 miles	
Curriculum	Accounting Junior Management Clerical Secretarial Practical Nursing Learning Lab Electronics (Communications) Technical Drafting Auto Body Repair Auto Mechanics Commercial Foods Cosmetology Drafting Electricity Machine Shop Office Machines Repair Graphic Arts Sheet Metal Welding	Clerical Secretarial Auto Mechanics Drafting Machine Shop Welding

Arrangements can be made to provide training in the specific production skills required by an industrial plant. Instruction may be conducted either in the vocational school or in the industrial plant, depending upon the desired arrangement and the availability of special equipment.



AERIAL VIEW OF EASTERN KENTUCKY UNIVERSITY



## Colleges and Universities

<u>Name</u>	<u>Area - Within 50 Miles</u>		<u>Highest Degree Conferred</u>
	<u>Location</u>	<u>Enrollment (Fall, 1973)</u>	
Eastern Kentucky University	Richmond	11,088	Masters, Ph.D.*
Asbury College	Wilmore	1,170	Baccalaureate
Berea College	Berea	1,340	Baccalaureate
Centre College	Danville	810	Baccalaureate
Georgetown College	Georgetown	1,094	Masters
Lexington Technical Institute	Lexington	**	Associate
Southeastern Christian College	Winchester	111	Associate
Transylvania University	Lexington	697	Baccalaureate
University of Kentucky	Lexington	20,732	Ph.D., M.D., D.M.D., J.D.

\*Cooperative program with the University of Kentucky, Lexington, for a Ph.D. in education only.

\*\*Included in the enrollment figures for University of Kentucky.



PATTIE A. CLAY HOSPITAL



## HEALTH

### Hospitals

<u>General Hospital</u>	<u>Location</u>	<u>Beds</u>
Pattie A. Clay Hospital	Richmond	103

General hospital facilities - 2 operating rooms, 1 minor operating room, fracture room, recovery room, 2 emergency rooms, intensive care-coronary care unit, laboratory, X-ray, obstetrics, 4 outpatient rooms, cystoscopic room, physical therapy, drug room with consulting pharmacist

Medical staff - 12 medical doctors, 19 registered nurses, 10 graduate licensed practical nurses, 10 licensed practical nurses

### Nursing Homes

	<u>Number</u>	<u>Beds</u>
Extended care homes	1	69
Personal care homes	2	82

### Public Health

Facility - Madison County Health Department

Staff - 4 registered nurses, 1 licensed practical nurse, 1 nursing supervisor, 3 sanitarians, 1 health officer, 1 home health aide, 2 clerks

Budget 1973-74 - \$106,654

## OTHER LOCAL FACILITIES

### Communications

Telephone - South Central Bell Telephone Company  
Services - Standard

Telegraph - Western Union  
Services - Telephone and messenger

Postal - U.S. Post Office  
Class - First class  
Mail received - Twice daily  
Mail dispatched - Twice daily

Newspapers -  
Daily and circulation - Richmond Daily Register, 7,390  
Bi-Weekly and circulation - Madison County Newsweek, 5,700  
Weekly and circulation - Madison County Post, 750  
Other papers received from - Louisville and Lexington, Kentucky;  
Cincinnati, Ohio; New York, New York

Radio - WCBR-AM-FM; WEKY-AM; WEKU-FM, Eastern Kentucky  
University  
Stations received from - Louisville, Lexington, Danville, Irvine, and  
Mount Sterling, Kentucky; Cincinnati, Ohio

Television -  
Cable service  
Reception from - Louisville and Lexington, Kentucky; Cincinnati, Ohio

Kentucky Educational Television - Lexington-Richmond transmitter,  
channel 46

### Library Services

Richmond City-County Library  
Size collection - 11,000 volumes  
Circulation, 1972-73 - 17,765 volumes  
Services - Magazines, albums



John Grant Crabbe Library, Eastern Kentucky University  
 Size collection - 500,000 volumes  
 Circulation - 1972-73 - 242,900  
 Special collections - Townsend collection of Kentuckiana  
 Services - Microformats, newspapers, magazines, Xerox machines,  
 photo copiers, inter-library loan, Learning Resource Center, Dorris  
 Museum with Kentucky and Civil War displays

The Richmond Women's Club operates a library by membership  
 only which is open three days a week.

#### Religious Institutions

Number of churches - 22  
 Denominations - Baptist, Christian, Christian Center of Assemblies of  
 God, Catholic, Church of Christ, Church of God, Church of the Naza-  
 rene, Episcopal, Jehovah's Witnesses, Methodist, Presbyterian  
 Nearest Synagogues - Lexington, 25 miles distant  
 Congregations - Adath Israel (reform), Ohavey Zion (traditional)

#### Financial Institutions

<u>Banks</u>	<u>Statement as of December 31, 1973</u>	
	<u>Assets</u>	<u>Deposits</u>
Madison National Bank of Richmond	\$28,552,766.61	\$26,103,903.27
State Bank & Trust Company	42,127,512.19	41,536,307.95
The Bank of Richmond	8,430,013.67	7,802,519.29
 <u>Savings and Loan Associations</u>		
	<u>Assets</u>	<u>Shared Accounts</u>
First Federal Savings & Loan Association of Richmond	\$17,709,720.12	\$16,469,886.00

#### Hotels and Motels

Total number - 20  
 Units - 703

## Clubs and Organizations

Business and Civic - Richmond Chamber of Commerce, Jaycees, Civitan, Rotary, Exchange, Kiwanis, Lions, Madison County History Society, Madison County Bar Association, Madison County Medical Society, Madison County Association of Realtors, Home Builders Association of Madison County, Heart Association

Fraternal - American Legion, VFW, Elks, Masons, Fraternal Order of Police, IOOF, Disabled American Veterans

Women's - Altrusa, American Association of University Women, Business and Professional Women, Richmond's Woman's Club, DAR Boonesborough Chapter, Eastern Star, Job's Daughters, Junior Woman's Club, Richmond Garden Club, League of Women Voters, Pattie A. Clay Hospital Auxiliary

Youth - Boy Scouts, Girl Scouts, Brownies, Cub Scouts, 4-H, FFA, FHA, Little League

Other - Richmond Ministerial Association, Madison Fish and Game Club, Sherwood Archery Club



## RECREATION

### Local

#### Public Recreation Facilities

Supervised program - Richmond Recreation Program

Parks - 3

Playgrounds - 4

Tennis courts - 2

Softball-Baseball diamonds - 6

Football field - 1

Other - 4 gymnasiums, 2 outdoor basketball courts, 1 indoor basketball court

#### Private Recreation Facilities

Country Clubs - 2

Golf courses - 2 (one 9-hole and one 18-hole)

Swimming pools - 2

Movie theaters - 3 indoor, 2 drive-in

Bowling lanes - 20

Other - Lexington Yacht Club, Sherwood Archery Club, Madison Fish and Game Club

#### Tourist Attractions

White Hall, home of Cassius Clay

Birthplace of Kit Carson

Indian Mounds at Round Hill and Moberly

Bybee Pottery - handmade Kentucky pottery since 1845

Squire Boone Rock dated 1776 located at Madison County Court House

#### Cultural Events

Eastern Kentucky University sponsors lectures, drama, art exhibits, ballets, and musical groups

### Area (Within 25 miles)

#### Recreational facilities and tourist attractions

Fort Boonesborough State Park

Wilgreen Lake

Lake Reba

Boone Tavern

Indian Fort Theatre

Churchill Weavers

Lexington, Kentucky, offers a wide variety of sophisticated entertainment, cultural activities, and sporting events.



ARLINGTON HOUSE - EASTERN KENTUCKY UNIVERSITY  
FACULTY - ALUMNI CENTER



MADISON COUNTRY CLUB



# AGRICULTURE - NATURAL RESOURCES - CLIMATE

## Agriculture\*

	<u>Madison County</u>	<u>Labor Market Area</u>
Total land area (acres)	285,184	1,475,968
Percent of area in farm land	88.5	76.3
Number of farms	1,929	9,381
Average size of farms (acres)	130.8	120.1
1969 value of all farm products	\$14,497,487	\$72,008,838
Value per farm	7,515	7,676
Total crop sales	6,131,050	33,558,524
Total livestock & livestock products	8,342,369	38,270,405
1972 agricultural production included:		
Burley tobacco (lbs.) (est.)	10,622,000	52,615,000
Corn for grain (bu.)	598,400**	3,039,500**
Cattle and calves (number)	65,200**	259,900**
Hogs and pigs (number)	10,400**	55,700**
Milk production, 1971 (lbs.)	10,620,000	89,860,000

## Natural Resources

Principal mineral resources	Limestone
Acres of commercial forest land	49,000
Most abundant tree species	Red oak, white oak, yellow pine, hickory, ash, hard maple, and yellow poplar

\*U. S. Department of Commerce, Bureau of the Census, Census of Agriculture, 1969. U. S. Department of Agriculture and Kentucky Department of Agriculture, Kentucky Agricultural Statistics, 1972.  
 \*\*Preliminary figures.

## Climate\*

### Madison County

#### Temperature

Annual mean (30-year record)	55.2 degrees
Average annual 1973	56.6 degrees
Record highest, July, 1966** (10-year record)	98.0 degrees
Record lowest, January, 1972 (10-year record)	-11.0 degrees
Normal heating degree days (30-year record)	4,729
(Heating degree day totals are the sums of negative departures of average daily temperatures from 65° F.)	

#### Precipitation

Mean annual total (30-year record)	44.49 inches
Mean annual snow and sleet (29-year record)	15.90 inches
Total precipitation 1973	50.92 inches
Mean number days precipitation (.01 inch or more) (29-year record)	129
Average number days thunderstorms (29-year record)	47

Prevailing winds (17-year record) South

---

\*U. S. Department of Commerce, Environmental Science Services  
Administration, Climatological Data, 1973. Station of record:  
Lexington.

\*\*Also on earlier dates, months, or years.



## HISTORY

Madison County was the seventh county formed in Kentucky. Dating from 1785, it was taken from Lincoln County and later gave lands to help form Garrard, Nicholas, Clay, Estill, Rockcastle, and Jackson Counties. The largest of the Blue Grass counties - with 446 square miles of territory - it was named for James Madison, who was the fourth President of the United States and "the Father of the Constitution."

The Kentucky River flows along a portion of the eastern side of Madison County and forms all of its northern boundary. Paint Lick Creek forms its western line. The county's surface is gently rolling in the western half, but becomes hilly and rough in the eastern section. Its soil ranges from fertile in the west to thin on the hills and knobs. Some tracts of timber are located throughout the county.

Richmond, the county seat, was named for Richmond, Virginia. It became the seat of county government in 1798 when Milford gave up that honor due to Richmond's more favorable location. Woodlawn, built by General Green Clay for his daughter, and Castlewood, the home of James Estill, Jr., are interesting landmarks.

Richmond is a progressive city with a 1970 population of 16,861.

In 1790 Madison County had a population of 5,772. This grew to 31,179 in 1950, 33,482 in 1960, and 42,730 in 1970.

Historical events of note include:

The Transylvania Company acquired lands in Kentucky in 1775 and the Boonesboro settlement in Madison County resulted from this transaction.

Several distilleries operated near the Kentucky River as early as 1783.

The first Madison County court was organized in 1786.

Berea College was founded in 1853.

The Battle of Richmond in 1862 was a Confederate victory.

Eastern Kentucky University was founded at Richmond in 1906.

Churchill Weavers was established in 1922.

Names worthy of remembrance are:

General Cassius Clay - noted abolitionist and in 1861 Minister to Russia.

John Miller - provided Richmond's site

Kit Carson - a famous mountaineer, trapper, and guide.

William J. Stone and David Francis - Governors of Missouri.

James B. McCreary - twice Governor of Kentucky.

Keen Johnson - Governor of Kentucky.

General Green Clay - served in the Virginia Legislature.

Madison County's early history shows many peaceful, prosperous days. By 1870, the great business of the county had gradually settled into stock-raising, while the production of hemp, which was once a leading crop, had almost ceased. In 1870, Madison was the second largest cattle producing county in the state, the fifth in hogs, and the fourth in corn production. In 1972 agriculture accounted for 1,580 of the total employed in the county with burley tobacco, corn, cattle, hogs, and milk the principal products.

While agriculture remains important, the present-day Madison County is emerging as an industrial area and an education center. Manufacturing employment accounted for 2,640 of the county's 16,570 employed in 1972. Largest of the county's firms are Westinghouse Electric Corporation, which produces miniature electric light bulbs; Parker Seal Company, which makes rubber "O" rings; Dresser Industries, which manufactures pressure gauges; Gibson Greeting Card Company, which makes candles; H. K. Porter Company, Inc., making clutch facings and brake blocks; Okonite, a producer of insulated cable; and Hyster Company, which makes industrial truck lifts.