

1993

Industrial Resources: Pulaski County - Somerset

Kentucky Library Research Collections
Western Kentucky University, spcol@wku.edu

Follow this and additional works at: https://digitalcommons.wku.edu/pulaski_cty

 Part of the [Business Administration, Management, and Operations Commons](#), [Growth and Development Commons](#), and the [Infrastructure Commons](#)

Recommended Citation

Kentucky Library Research Collections, "Industrial Resources: Pulaski County - Somerset" (1993). *Pulaski County*. Paper 9.
https://digitalcommons.wku.edu/pulaski_cty/9

This Report is brought to you for free and open access by TopSCHOLAR®. It has been accepted for inclusion in Pulaski County by an authorized administrator of TopSCHOLAR®. For more information, please contact topscholar@wku.edu.

Resources for Economic Development

Somerset



KENTUCKY

RESOURCES FOR ECONOMIC DEVELOPMENT
SOMERSET, KENTUCKY

Prepared by
The Kentucky Cabinet for Economic Development
Division of Research
in cooperation with
Pulaski County Industrial Development Foundation

1993

TABLE OF CONTENTS

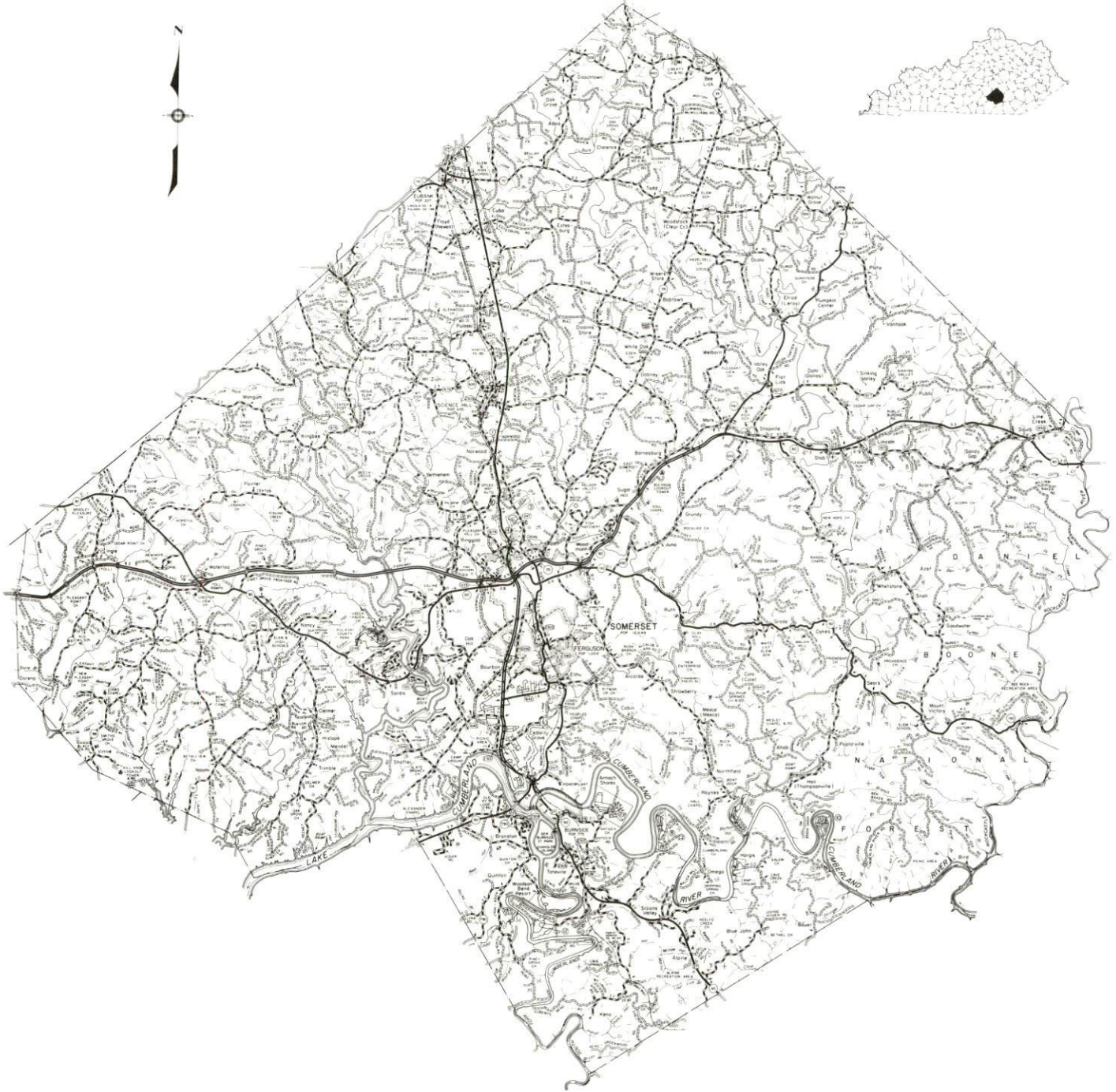
<u>Chapter</u>	<u>Page</u>
SOMERSET, KENTUCKY - A RESOURCE PROFILE	1
THE LABOR MARKET STATISTICS	2
Labor Market Area Map	2
Population	3
Population Projections	3
Estimated Labor Supply	3
Labor Force Characteristics of Residents, 1991	4
Selected Components of Nonagricultural Employment, by Place of Work, 1991	5
Per Capita Personal Income	6
Average Weekly Wages by Industry, by Place of Work, 1990	7
Average Weekly Wages of Workers Covered by Unemployment Insurance 1990 - Bar Chart	8
EXISTING INDUSTRY	9
Somerset Manufacturing Firms, Their Products and Employment	9
Other Major Pulaski County Manufacturing Firms	11
Labor Organizations in Manufacturing Firms	11
Selected Industrial Services	12
TRANSPORTATION	13
Highways	13
Truck Service	13
Selected Market Location Map	14
Rail	15
Air	15
UTILITIES	16
Electricity	16
Natural Gas	16
Public Water Supply	17
Sewerage	17
CLIMATE	18

<u>Chapter</u>	<u>Page</u>
LOCAL GOVERNMENT	19
Structure	19
Planning and Zoning	19
Local Fees and Licenses.....	19
State and Local Property Taxes	20
EDUCATION	21
Public Schools	21
Area Colleges and Universities	21
Vocational Training.....	22
OTHER LOCAL FACILITIES	23
Local Medical Personnel	23
Hospitals.....	23
Other Medical Facilities and Services	23
Banks and Savings & Loan Associations	23
Newspapers	23
Telephone Service	23
RECREATION	24
COMMUNITY IMPROVEMENTS	26

GENERAL HIGHWAY MAP
PULASKI COUNTY
KENTUCKY

PREPARED BY THE
KENTUCKY TRANSPORTATION CABINET
DEPARTMENT OF HIGHWAYS
DIVISION OF PLANNING
IN COOPERATION WITH THE
U.S. DEPARTMENT OF TRANSPORTATION
FEDERAL HIGHWAY ADMINISTRATION

0 1 2 3 4 5 MILES



SOMERSET, KENTUCKY - A RESOURCE PROFILE

Somerset, situated on the northeastern edge of Lake Cumberland, is the county seat of Pulaski County. Somerset is located 76 miles south of Lexington, Kentucky; 117 miles northwest of Knoxville, Tennessee; and 128 miles southeast of Louisville, Kentucky. Somerset had a 1990 population of 10,733. Population density within a three mile radius beyond the city limits is approximately 30,000.

Pulaski County, which covers a land area of 661 square miles, is located in southern Kentucky. The county had a 1990 population of 49,489.

The Economic Framework - The total number of Pulaski County residents employed in 1991 averaged 20,913. Manufacturing firms in the county reported 4,196 employees; wholesale and retail trade provided 5,044 jobs; 3,339 people were employed in service occupations; state and local government accounted for 2,924 employees; contract construction firms provided 840 jobs; and 68 people were employed by mining and quarrying operations.

Labor Supply - There is a current estimated labor supply of 30,798 persons available for industrial jobs in the labor market area. In addition, from 1993 through 1997, 14,806 young persons in the area will become 18 years of age and potentially available for industrial jobs.

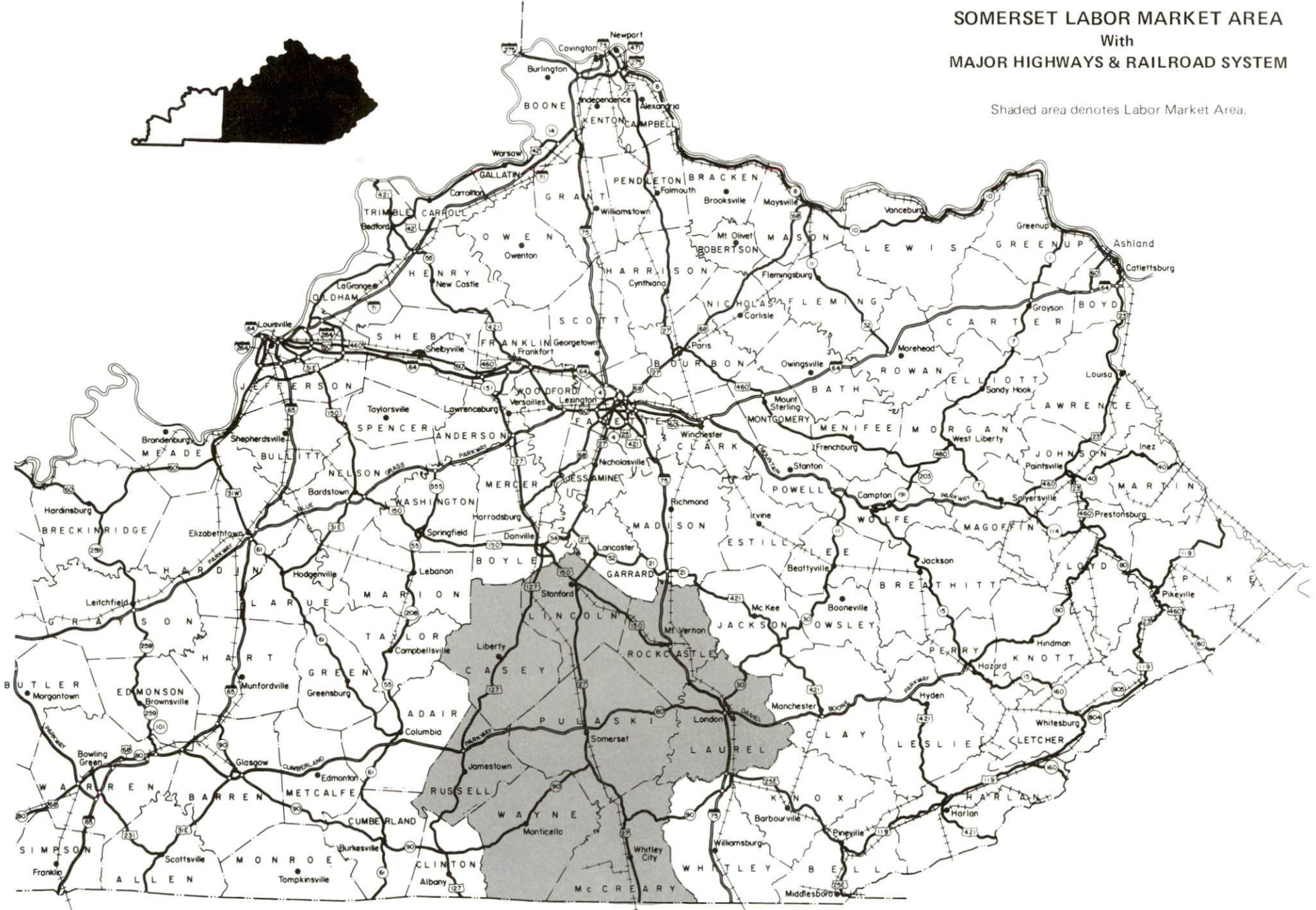
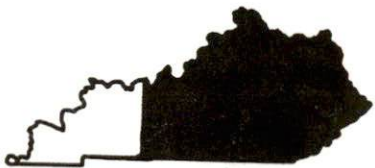
Transportation - Major highways serving Somerset are U.S. Highway 27, the Cumberland Parkway, and Kentucky Routes 80 and 461. Interstate Highway 75 is accessible 32 miles east, via Kentucky 80; and 28 miles northeast via Kentucky 461. Twenty-one trucking companies provide interstate and/or intrastate service to the area. Main line rail service is provided to Somerset by the Norfolk Southern Corporation. The Somerset-Pulaski County Airport, two miles south of Somerset, maintains a 5,500-foot paved runway. The nearest scheduled commercial airline service is available at Bluegrass Airport near Lexington, Kentucky, 80 miles north of Somerset.

Power and Fuel - Electric power is provided to Somerset and Pulaski County by Kentucky Utilities Company, an electric generation and transmission company. Pulaski County is also served by South Kentucky Rural Electric Cooperative Corporation. Natural gas service in Somerset is provided by Somerset Gas Service.

Education - Primary and secondary education is provided to Somerset and Pulaski County by the Somerset Independent School System and Pulaski County School System. The Somerset Independent School System is accredited by the Southern Association of Colleges and Schools. Somerset Community College, a unit of the University of Kentucky Community College System, offers associate degrees and curricula for the first two years of a baccalaureate program. In addition, eight other colleges and universities are located within 65 miles of Somerset. Vocational training is available in Somerset at the Somerset State Vocational-Technical Center.

SOMERSET LABOR MARKET AREA With MAJOR HIGHWAYS & RAILROAD SYSTEM

Shaded area denotes Labor Market Area.



LABOR MARKET STATISTICS

The Somerset Labor Market Area includes Pulaski County and the adjoining Kentucky counties of Casey, Laurel, Lincoln, McCreary, Rockcastle, Russell, and Wayne.

POPULATION

	<u>1990</u>	<u>1980</u>	<u>1970</u>
Labor Market Area	189,773	178,993	141,876
Somerset	10,733	10,829	10,436
Pulaski County	49,489	45,803	35,234

Source: U.S. Department of Commerce, Bureau of the Census, January 1991.

POPULATION PROJECTIONS

	<u>1995</u>	<u>2000</u>	<u>2010</u>	<u>2020</u>
Labor Market Area	181,901	187,885	195,531	197,958
Pulaski County	51,648	53,459	55,373	55,641

Note: Population projections are from Moderate Growth Series forecast.

Source: University of Louisville, Urban Studies Center, State Data Center.

ESTIMATED LABOR SUPPLY

	<u>Current</u>			<u>Not in Labor Force</u>	<u>Future</u>
	<u>Total</u>	<u>Unemployed</u>	<u>Employed Part-Time</u>		<u>Becoming 18 years of age 1993 thru 1997</u>
Labor Market Area*	30,798	6,523	8,441	15,834	14,806
Pulaski County	6,383	1,783	2,050	2,550	3,570

* Additional workers may be drawn from other nearby counties.

Note: Unemployed - persons unemployed and actively seeking work; Employed Part-Time - persons employed but working only 14 to 26 weeks per year; Not in Labor Force - represents the number of persons who would enter the labor force if suitable employment were available (based on the assumption that persons in Kentucky would like to participate in the labor force in the same proportion that they do nationally).

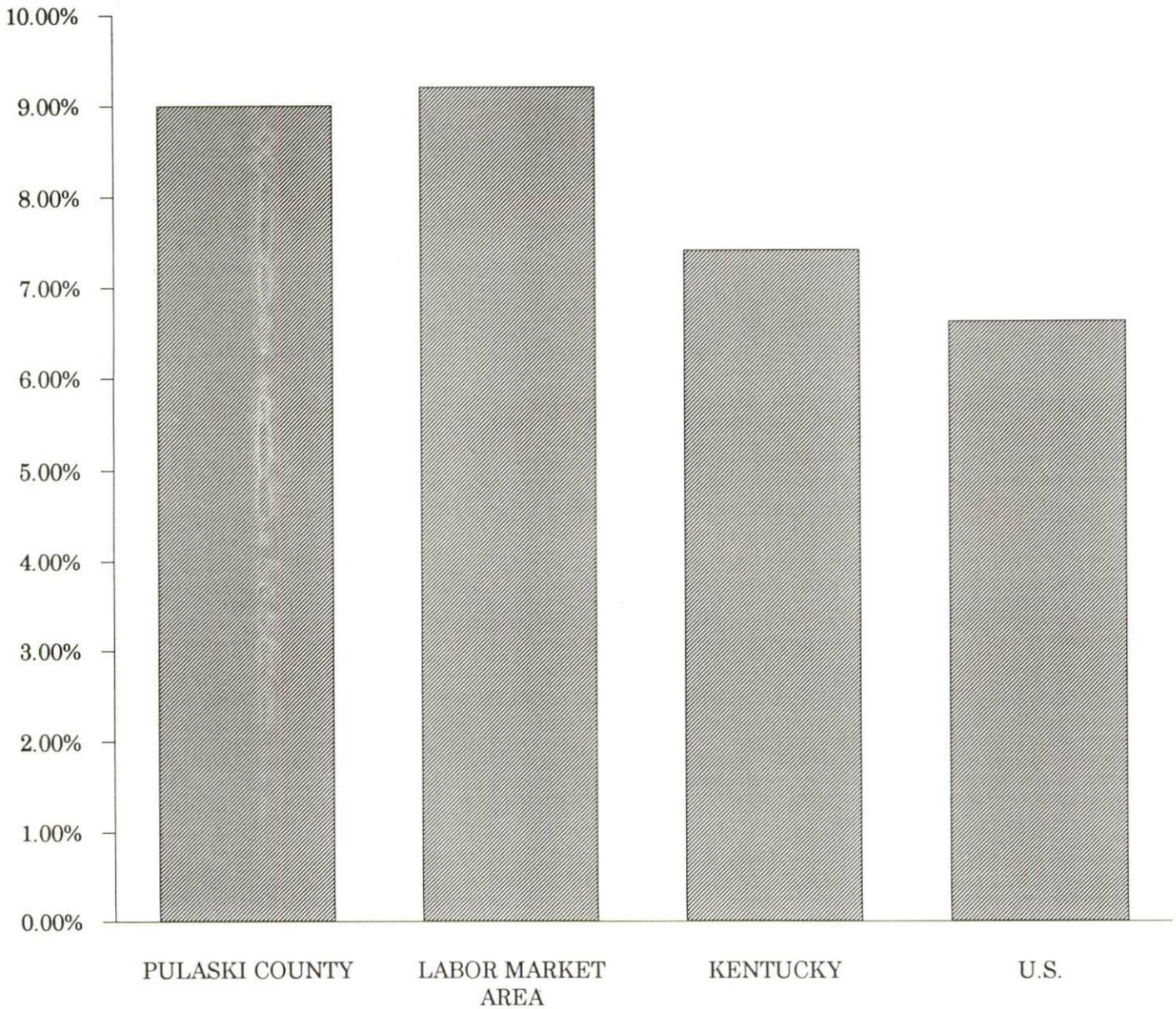
Sources: Kentucky Cabinet for Human Resources, Kentucky Labor Supply Estimates by County, 1989. Kentucky Cabinet for Economic Development, Future Labor Supply Becoming 18 Years of Age, 1993 thru 1997.

LABOR FORCE CHARACTERISTICS OF RESIDENTS, 1991

	<u>Pulaski County</u>	<u>Labor Market Area</u>
Civilian Labor Force	22,983	86,736
Employment	20,913	78,726
Unemployment	2,070	8,010
Rate of Unemployment (%)	9.0	9.2

Source: Kentucky Cabinet for Human Resources, Kentucky Labor Force Estimates, Annual Averages, 1991.

**UNEMPLOYMENT RATES
1991**

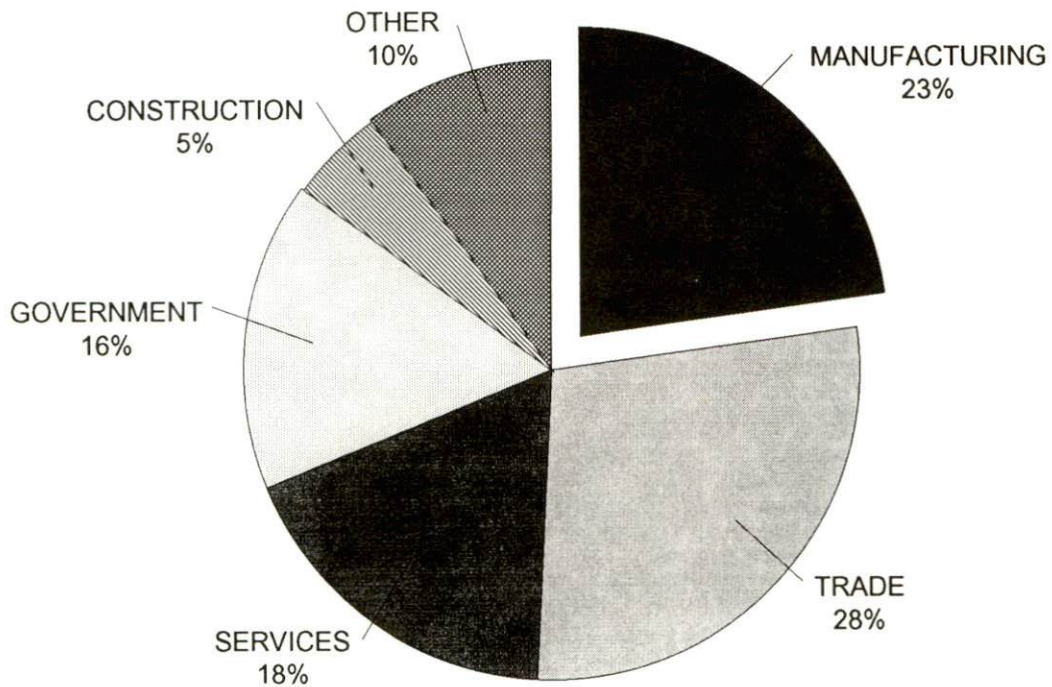


SELECTED COMPONENTS OF NONAGRICULTURAL EMPLOYMENT
BY PLACE OF WORK, 1991

	Pulaski County	Labor Market Area
All Industries (total)	18,167	54,814
Manufacturing	4,196	16,287
Wholesale & Retail Trade	5,044	13,701
Services	3,339	9,123
State/Local Government	2,924	8,783
Contract Construction	840	2,416
Mining & Quarrying	68	342
Other	1,756	4,162

Note: Excludes domestic workers, railway workers, certain nonprofit corporations, majority of federal government workers, and self-employed workers.
Source: Kentucky Cabinet for Human Resources, Average Monthly Workers Covered by Kentucky Unemployment Insurance Law, 1991.

PULASKI COUNTY

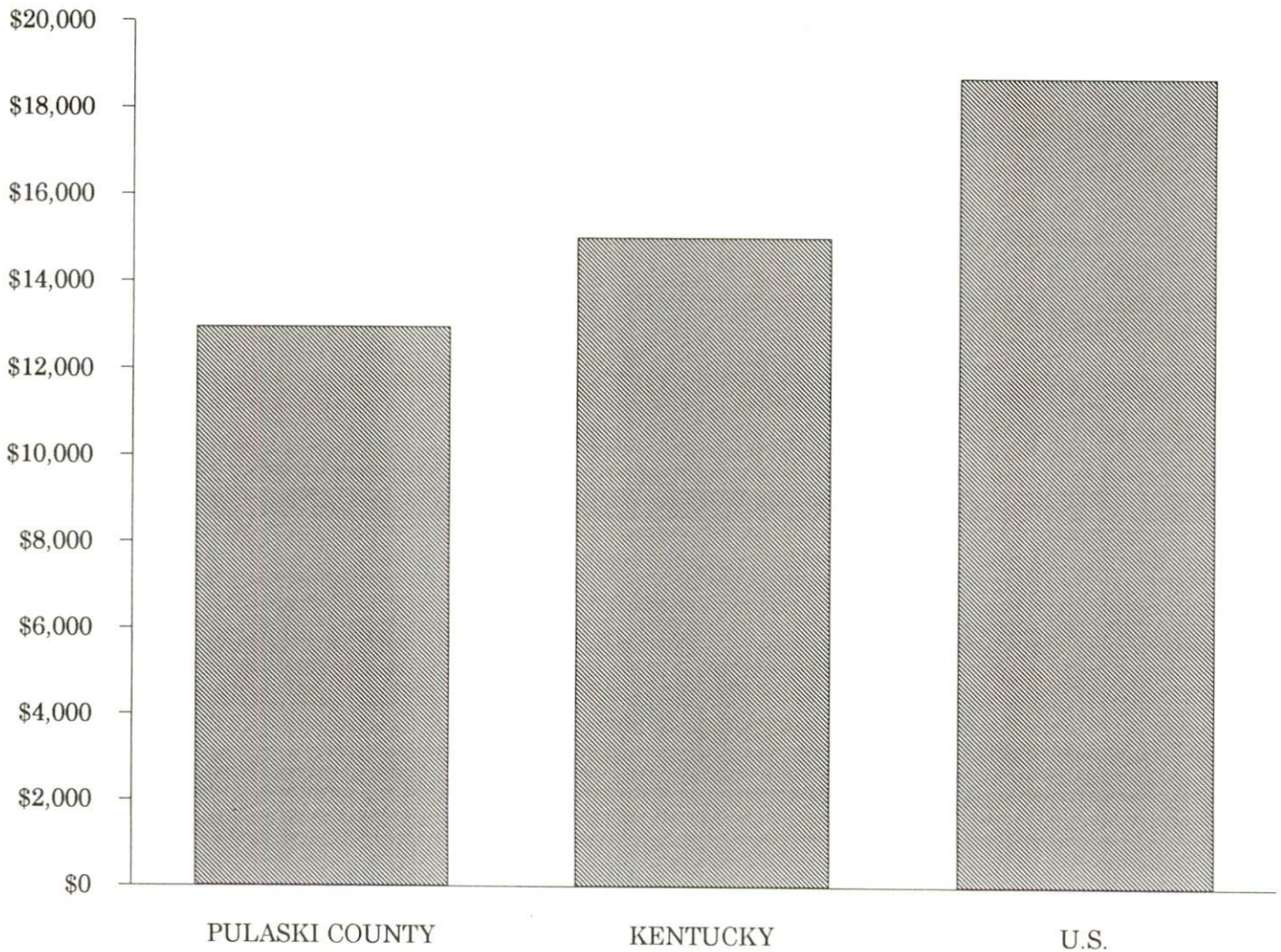


PER CAPITA PERSONAL INCOME

Area	1986	1990	Percent Change
Pulaski County	\$9,635	\$12,942	34.3
Labor Market Area Range	\$5,490 - \$9,635	\$7,663 - \$12,942	-
Kentucky	\$11,273	\$14,992	33.0
U.S.	\$14,654	\$18,696	27.6

Source: U.S. Bureau of Economic Analysis, Kentucky Economic Information System, April 1992.

PER CAPITA PERSONAL INCOME
1990



AVERAGE WEEKLY WAGES BY INDUSTRY
BY PLACE OF WORK, 1990*

	Pulaski County	Kentucky (State- Wide)	Tennessee	Virginia
All Industries	\$301.24	\$379.97	\$396.00	\$438.00
Manufacturing	360.88	496.95	449.00	487.00
Wholesale & Retail Trade	211.79	255.93	N/A	N/A
Finance, Insurance & Real Estate	335.37	434.93	469.00	508.00
Services	295.95	329.76	378.00	430.00
State/Local Government	340.40	392.28	N/A	N/A
Contract Construction	244.74	401.70	421.00	444.00
Mining & Quarrying	536.15	654.24	535.00	635.00
Transportation, Communications & Public Utilities	428.35	500.70	523.00	575.00
	<u>Indiana</u>	<u>Ohio</u>	<u>Illinois</u>	<u>U. S.</u>
All Industries	\$417.00	\$439.00	\$487.00	\$454.00
Manufacturing	561.00	595.00	590.00	555.00
Wholesale & Retail Trade	N/A	N/A	N/A	N/A
Finance, Insurance & Real Estate	442.00	478.00	619.00	571.00
Services	349.00	382.00	444.00	423.00
State/Local Government	N/A	N/A	N/A	N/A
Contract Construction	475.00	504.00	624.00	503.00
Mining & Quarrying	746.00	619.00	747.00	714.00
Transportation, Communications & Public Utilities	519.00	553.00	610.00	578.00

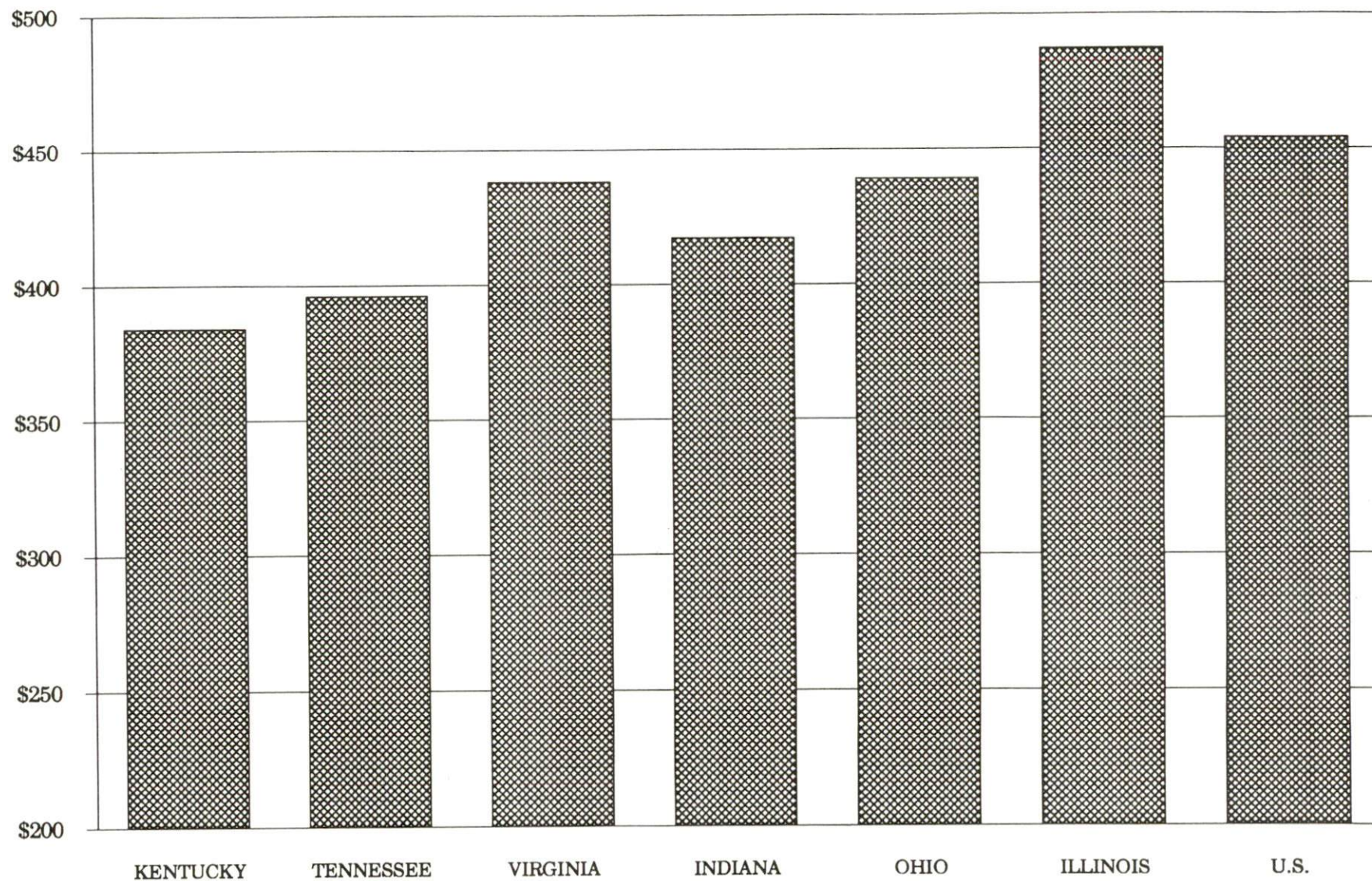
* Wages for U.S. and surrounding states rounded to nearest dollar.

N/A Not Available.

Note: The average weekly wage for each category includes the salaries and wages of all persons working for that type business. For example, the manufacturing category includes both production workers and administrative personnel. Excludes domestic workers, railway workers, certain nonprofit corporations, majority of federal government workers, and self-employed workers.

Source: Kentucky Cabinet for Human Resources, Average Weekly Wages of Workers Covered by Kentucky Unemployment Insurance Law, 1990. U.S. Department of Labor, Bureau of Labor Statistics, Employment and Wages, Annual Averages, 1990, November 1991.

AVERAGE WEEKLY WAGES OF WORKERS COVERED BY
UNEMPLOYMENT INSURANCE - 1990



EXISTING INDUSTRY

SOMERSET MANUFACTURING FIRMS,
THEIR PRODUCTS AND EMPLOYMENT

<u>Firm</u> <u>(Establishment date)</u>	<u>Product</u>	<u>1992</u> <u>Average Employment</u>
Alumitech (1988)	Aluminum wheels	283
B & B Rebuilders (1983)	Rebuilt starters and alternators	2
C.D.R. Manufacturing, Inc. (1987)	Electronic assemblies	50
C & V Machine Shop, Inc. (1983)	Fabrication of parts for machines, machine shop, tool and dies	6
Cardinal Printing, Somerset Publishing, Inc. (1972)	Job printing	4
Commercial Printing Company (1968)	Commercial printing	2
Consolidated Packaging Corporation (1984)	Corrugated packaging and supplies	22
Copy Trolley (1978)	Typesetting, job printing	3
Cornett Machine Shop, Inc. (1948)	Rebuilt engines, machine work	28
Cumberland Impression Die, Inc. (1989)	Tool and die	4
Cumberland Welders Supply, Inc. (1957)	Acetylene, oxygen	11
Custom Silk Screen, Inc. (1979)	Silk screen printing on fabric	25
Denney Lumber Company, Inc. (1957)	Logging	5
Foster Rebuilders (1978)	Rebuilt starters, generators and alternators	2
General Electric Company; Somerset Glass Plant (1958)	Pressed glassware (auto)	225
Hartco (1990)	Hardwood flooring	175
Industrial Machine & Tool Company, Inc. (1976)	Machine shop, welding, tools and dies	5
Jondy Chemicals, Inc. (1988)	Fire retardant chemicals, fabric protection chemicals	33
The Kentucky Stone Company (1976)	Crushed limestone, agricultural lime	20
Lukjan Fabrication & Supply Company, Inc. (1978)	Sheet metal fabrication	10

(Continued)

<u>Firm</u> <u>(Establishment date)</u>	<u>Product</u>	<u>1992</u> <u>Average Employment</u>
M & M Parts and Filters (1984)	Heavy equipment filters	1
Morgan Hopper Lamp Manufacturing Company (1971)	Lamps and lighting fixtures	2
Palm Beach Company (1945)	Men's coats	985
Park Newspapers of the Cumberland (1895)	Job printing, newspaper	47
Quality Woodworks, Inc. (1988)	Interior trim molding, stair parts, wood turning parts	30
Ready Mix Concrete Of Somerset, Inc. (1949)	Concrete blocks, ready-mixed concrete	112
Robinson Milling Company, Inc. (1934)	Feed	8
Somerset Houseboats; Division of Somerset Marine, Inc. (1948)	Luxury houseboats, aluminum houseboats	90
Somerset Plastics (1985)	Poly ceiling panels, insulation boards	7
The Somerset Refinery, Inc. (1932)	Gasoline, kerosene, diesel fuel	150
Somerset Stone Company (1946)	Agricultural lime	19
Somerset Tool & Die Corporation (1978)	Stampings, machine parts, tools, dies, jigs, fixtures	7
Somerset Wilbert Vault Company, Inc. (1964)	Concrete vaults, tile and curb stones	11
Somerset Wood Products, Inc. (1985)	Cabinet parts, kiln dried lumber, dimension stock, hardwood flooring	78
Southern Belle Dairy Company, Inc. (1951)	Ice cream mix, fluid mix, buttermilk, fruit drinks, and juices	250
T's Bass Lures, Inc. (1977)	Fish lures	5
Tecumseh Products Company (1970)	Compressors for refrigeration industry	800
Tenco Industries (1981)	Bookcases, desks, computer tables, household furniture	50
Warner Fertilizer Company, Inc. (1965)	Fertilizer	24
Wesley's Woodworking (1983)	Cabinet doors, wood drawer fronts and panel sections	7
Whitis Cabinets, Inc. (1974)	Counter tops, wood cabinets	17

Sources: Kentucky Cabinet for Economic Development, Division of Research; Pulaski County Industrial Foundation.

OTHER MAJOR PULASKI COUNTY MANUFACTURING FIRMS*

<u>Firm</u> <u>(Establishment date)</u>	<u>Product</u>	<u>1992</u> <u>Average Employment</u>
Burnside		
Kingsford Products Company (1963)	Charcoal briquets	110
Ferguson		
CR/PL, Inc. (1963)	Vitreous china, sanitary ware	265
Mid-State Automotive Parts Rebuilders, Inc. (1962)	Brake shoes, water pumps rebuilt starters, and alternators	200

* Firms with 100 or more employees.

Sources: Kentucky Cabinet for Economic Development, Division of Research.

***LABOR ORGANIZATIONS IN MANUFACTURING FIRMS**

<u>Union</u>	<u>Representing workings at:</u>
Amalgamated Clothing and Textile Workers Union, AFL-CIO	Palm Beach Company
Glass, Pottery, Plastics and Allied Workers International Union, AFL-CIO	Consolidated Packaging Corporation; CR/PL, Inc.
International Brotherhood of Electrical Workers, AFL-CIO	Tecumseh Products Company
International Brotherhood of Teamsters, Chauffeurs, Warehousemen and Helpers of America	Mid-State Automotive Parts Rebuilders, Inc.
International Union of Electronic, Electrical, Technical, Salaried and Machine Workers, AFL-CIO	General Electric Company, Somerset Glass Plant
Laborers International Union of North America, AFL-CIO	Kingsford Products Company
United Food and Commercial Workers International Union, AFL-CIO	Southern Belle Dairy Company, Inc.

*As a vehicle for communication, the local chamber and industrial foundation has in place a Labor Management Committee.

SELECTED INDUSTRIAL SERVICES

<u>Types of Services</u>	<u>Location</u>	<u>Mileage from Somerset</u>
Custom Plastics Producers	Mt. Vernon, Kentucky	26
Electric Motor Repair	Somerset, Kentucky	-
Heat Treating Facilities	Richmond, Kentucky	56
Industrial Waste Removal	Somerset, Kentucky	-
Machine Shops, Tool & Die	Somerset, Kentucky	-
Metal Castings	Middlesboro, Kentucky	92
	Horse Cave, Kentucky	95
Metal Finishers	Richmond, Kentucky	56
Metal Service Centers	Richmond, Kentucky	56
Millwrights	Nicholasville, Kentucky	64

Sources: Kentucky Cabinet for Economic Development, Division of Research.

TRANSPORTATION

Highways

The Cumberland Parkway, U.S. Highway 27 and Kentucky Routes 80 and 461, are all "AAA"-rated (80,000-pound gross load limit) trucking highways serving Somerset. The Cumberland Parkway provides access to Interstate 65, 90 miles west of Somerset. Kentucky Route 80 provides access to Interstate 75, 32 miles east of Somerset, and to the Daniel Boone Parkway, 34 miles east of Somerset.

Interstate 75 is also accessible 28 miles northeast of Somerset via Kentucky Route 461. U.S. Highway 27 provides access to Lexington, Kentucky, 76 miles north of Somerset, and to Interstate 40, 63 miles south in eastern Tennessee.

The reconstruction of Kentucky Route 461 is completed. It provides access to Interstate 75 northeast of Somerset and with this completion, Kentucky 461 is expected to be upgraded to a "AAA"-rated highway.

Phase one of the construction of the Southern Bypass from U.S. 27 at the industrial park to three and one-half miles east is under way. The second phase, which is scheduled to be constructed in 1997, will extend the bypass three and one-half additional miles to Kentucky 80.

HIGHWAY MILES FROM SOMERSET, KENTUCKY, TO SELECTED MARKET CENTERS

City	Highway Miles	City	Highway Miles
Atlanta, GA	293	Los Angeles, CA	2,162
Baltimore, MD	586	Louisville, KY	128
Birmingham, AL	321	Nashville, TN	165
Chicago, IL	411	New Orleans, LA	660
Cincinnati, OH	153	New York, NY	776
Cleveland, OH	386	Pittsburgh, PA	409
Detroit, MI	413	St. Louis, MO	381
Knoxville, TN	117		

Note: Mileage computations are via the best interstate or primary highways, not necessarily the most direct route of travel.

Sources: Rand McNally Standard Highway Mileage Guide, 1990. Official Kentucky Mileage Map, 1985.

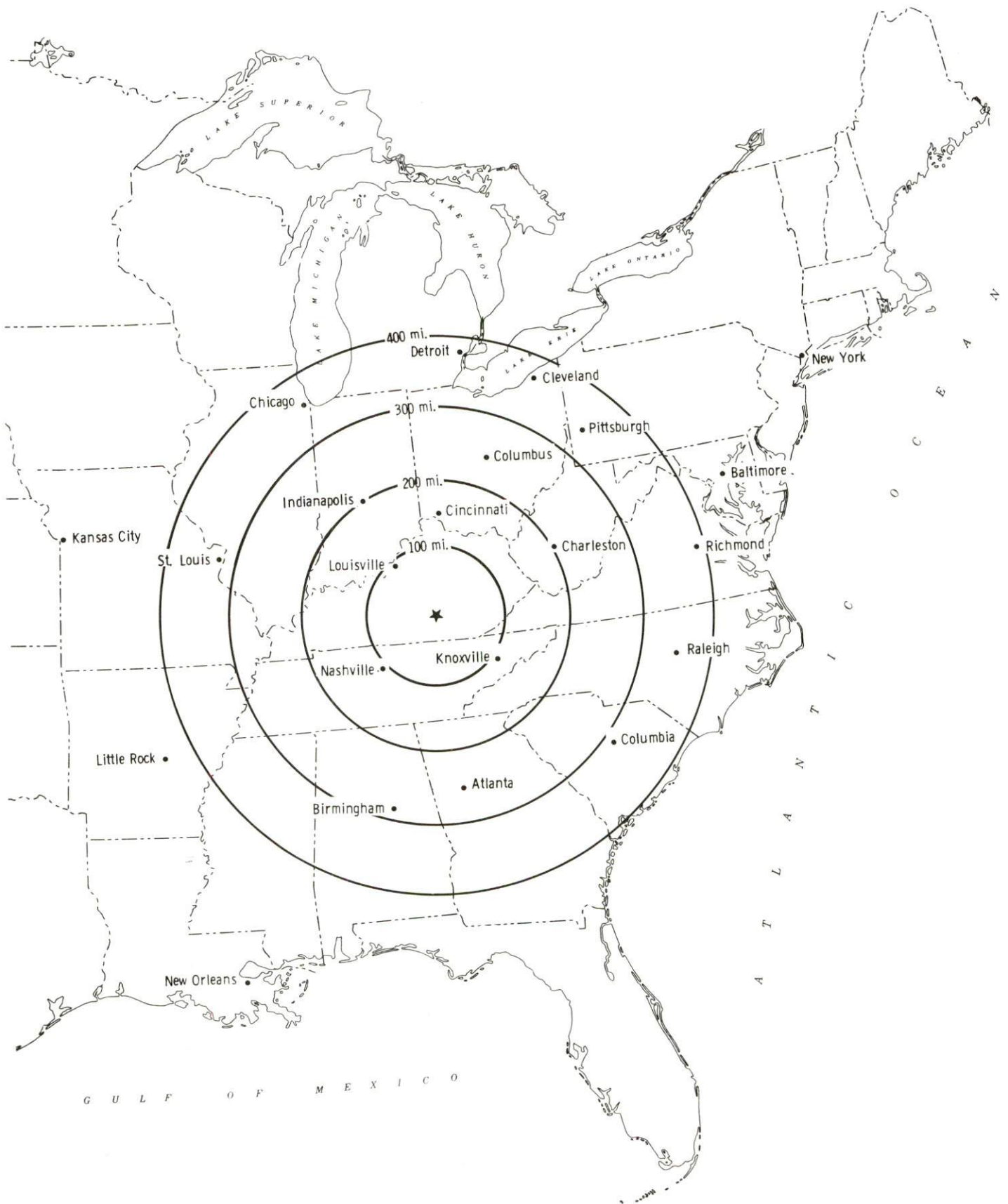
Truck Service

Twenty-one common carrier trucking companies provide interstate and/or intrastate service to Somerset.

A major truck transportation company, Super Service, is located in Somerset. The company has 270 tractors and 575 trailers. All trucks are equipped with computers and voice link capability. Super Service also provides (J.I.T.) Just In Time service.

Source: American Motor Carrier Directory, Fall 1992.

Selected Market Centers



Rail

Main line rail service is provided by the Norfolk Southern Corporation. The nearest intermodal facilities are located at Georgetown, Kentucky, 93 miles north of Somerset.

For details on routing, schedules, rates, and services contact:

District Sales Manager
Norfolk Southern Corporation
1402 South 15th Street
Louisville, Kentucky 40210
(502) 636-6023

Air

Local

Location:	Somerset-Pulaski County Airport 2 miles south of downtown Somerset
Runways:	1 paved
Length:	5,500 feet, 1,000 feet overrun
Traffic	
Control:	Wind sock and intercom
Lighting:	Beacon, runway lights dusk to dawn, VASI and REILS
Services:	Fuel-100LL, Jet-A; major A & P repairs; tie downs, hangars; flight control

The Somerset-Pulaski County Airport Board has extended the airport's runway from 5,000 to 5,500 feet and constructed a 1,000-foot overrun.

Nearest Scheduled Commercial Airline Service

Location:	Bluegrass Airport 4 miles west of Lexington, Kentucky; 80 miles north of Somerset
Air Service:	Delta, USAir, United Express, American Eagle, ComAir, TW Express, Atlantic Southeast Airlines, Northwest Airlink
Daily Arrivals & Departures:	120

UTILITIES

Electricity

Company serving Somerset, Burnside and part of Pulaski County - Kentucky
Utilities Company

Source of power - Kentucky Utilities Company

For industrial rates contact:

Industrial Development Department
Kentucky Utilities Company
One Quality Street
Lexington, Kentucky 40507
(606) 255-2100

Company serving remainder of Pulaski County - South Kentucky Rural
Electric Cooperative Corporation

Source of power - East Kentucky Power Cooperative

For industrial rates contact:

Industrial Development Department
East Kentucky Power Cooperative
P.O. Box 707
Winchester, Kentucky 40392-0707
(606) 744-4812

and/or

South Kentucky Rural Electric
Cooperative Corporation
925-929 North Main Street
P.O. Box 910
Somerset, Kentucky 42502
(606) 678-4121 Fax (606) 679-8279

Natural Gas

Company serving Somerset - Somerset Gas Service

Source of supply - Texas Eastern Transmission Corporation and gas wells
owned by City of Somerset

For rates and supplies contact:

Somerset Gas Service
P.O. Box 989
Somerset, Kentucky 42501
(606) 679-6122

Public Water Supply

Company serving Somerset - City of Somerset Water Service
104 College Street
P.O. Box "A"
Somerset, Kentucky 42502
(606) 678-9907 Fax #(606) 679-6227

Source - Lake Cumberland
Treatment plant capacity - 6,000,000 gallons per day
Average daily consumption - 4,500,000 gallons
Peak daily consumption - 5,200,000 gallons
Storage capacity - 4,500,000 gallons
Water pressure - 40 psi to 135 psi

The City of Somerset plans to expand the water treatment plant capacity from 6 to 7.5 million gallons per day by 1995.

Sewerage

Company serving Somerset - Somerset Sewer Department
400 East Mt. Vernon Street
P.O. Box 989
Somerset, Kentucky 42502-0989
(606) 679-6366 Fax #(606) 679-2481

Design capacity - 3,000,000 gallons per day
Average daily flow - 1,600,000 gallons
Type of treatment - Tertiary
Treated effluent discharged into - Pitman Creek

The Somerset Sewer Department has implemented a major trunk line rehabilitation program, spending over \$90,000 on trunk line replacements and refurbishing. The Sewer Department is in the process of updating its 201 plan which will address the city's wastewater treatment needs of the next twenty years. Somerset is 99% sewer served and service is available in all growth areas of Pulaski County.

CLIMATE

Pulaski County

Temperature

Normal (30-year record)	58.90 degrees
Average annual 1991	60.50 degrees
Record highest, September 1954 (50-year record)	103.00 degrees
Record lowest, January 1985 (50-year record)	-24.00 degrees
Normal heating degree days (30-year record) (Heating degree day totals are the sums of negative departures of average daily temperatures from 65 degrees F.)	3,658

Precipitation

Normal (30-year record)	47.29 inches
Mean annual snowfall (49-year record)	12.00 inches
Total precipitation 1991	58.26 inches
Mean number days precipitation (.01 inch or more) (49-year record)	126.20
Mean number days thunderstorms (49-year record)	47.20

Prevailing winds (through 1963)

Northeast

Relative Humidity (31-year record)

1 a.m.	81 percent
7 a.m.	86 percent
1 p.m.	59 percent
7 p.m.	63 percent

Source: U.S. Department of Commerce, Environmental Science Services Administration, Climatological Data, 1991. Station of record: Knoxville, Tennessee.

LOCAL GOVERNMENT

Structure

The city of Somerset is served by a mayor, twelve council members and a city administrator. Pulaski County is served by a county judge/executive and five magistrates.

Planning and Zoning

City agency - Somerset Planning Commission
Participating cities - Somerset
Zoning enforced - Within corporate limits of Somerset
Subdivision regulations enforced - Within corporate limits of Somerset and one mile beyond
Local codes enforced - Building and housing
Mandatory state codes enforced - Kentucky Plumbing Code, National Electric Code, Kentucky Boiler Regulations and Standards, Kentucky Building Code (modeled after BOCA code)

Local Fees and Licenses

The City of Somerset levies a business license fee ranging from \$10 to \$500 annually. The business license fee for manufacturers is based on the number of employees: 25 employees or less - \$100; 26 to 50 employees - \$200; 51 to 100 employees - \$300; 101 to 200 employees - \$400; more than 200 employees - \$500.

Pulaski County levies a one percent occupational license tax on wages, salaries and commissions of individuals employed within the county and on net profits of businesses.

PROPERTY TAXES

The Kentucky Constitution requires the state to tax all classes of taxable property, and state statutes allow local jurisdictions to tax only a few classes. All locally taxed property is subject to county taxes and school district taxes (either a county school district or an independent school district). Property located inside of city limits may also be subject to city property taxes.

Special local taxing jurisdictions (fire protection districts, watershed districts, and sanitation districts) levy taxes within their operating areas (usually a small portion of community or county).

Property assessments in Kentucky are at 100% fair cash value. A 15% reduction is automatically granted for accounts receivable.

STATE PROPERTY TAX RATES PER \$100 VALUATION

<u>Selected Classes of Property</u>	<u>1992 State Rate</u>	<u>Local Taxation Permitted</u>
Real Estate	\$0.184	YES
Manufacturing Machinery	0.150	NO
Pollution Control Equipment	0.150	NO
Inventories		
Raw Materials	0.050	NO
Goods in Process	0.050	NO
Finished Goods	0.050	YES
Motor Vehicles	0.450	YES
Other Tangible Personal Property	0.450	YES
Intangibles (Accounts Receivable, Money on Hand)	0.250	NO

LOCAL PROPERTY TAX RATES PER \$100 VALUATION, 1992

<u>Taxing Jurisdiction</u>	<u>Real Estate</u>	<u>Finished Goods & Tangibles</u>	<u>Motor Vehicles</u>
Pulaski County	\$0.1230	\$0.1330	\$0.1342
School Districts:			
Pulaski County	0.3500	0.3500	0.4500
Science Hill	0.3790	0.3790	0.5320
Somerset Independent	0.4780	0.4780	0.5680
Cities:			
Somerset	0.2450	0.2450	0.2510

EDUCATION

Public Schools

	Somerset Independent	Pulaski County
Total Enrollment (Fall, 1991)	1,768	6,974
Accreditation	Southern Association of Colleges and Schools	
Pupil-Teacher Ratio (1990-91)	16.3	18.4
Percent High School Graduates to College (1990-91)	76.7	64.2
Expenditures Per Pupil (1990-91)	\$3,375.55	\$2,893.38

Area Colleges and Universities

<u>Name</u>	<u>Location (Mileage from Somerset)</u>	<u>Enrollment (Fall, 1992)</u>
Somerset Community College	Somerset, Kentucky	2,485
Sue Bennett College	London, Kentucky (33)	455
Lindsey Wilson College	Columbia, Kentucky (42)	1,091
Berea College	Berea, Kentucky (44)	1,579
Centre College	Danville, Kentucky (45)	906
Cumberland College	Williamsburg, Kentucky (52)	1,498
Eastern Kentucky College	Richmond, Kentucky (56)	16,866
Campbellsville College	Campbellsville, Kentucky (61)	1,042
Union College	Barbourville, Kentucky (61)	995

VOCATIONAL-TECHNICAL TRAINING

Kentucky Tech schools are operated by the Cabinet for Workforce Development and provide secondary (Sec) and postsecondary (P/S) vocational-technical training.

<u>Kentucky Tech Schools</u>	<u>Location (Mileage from Somerset)</u>	<u>Number of Program Offerings</u>	<u>Cumulative Enrollment 1991-1992</u>	<u>Approximate Number Completing Programs Annually</u>
Somerset State Vocational Technical School	-	13	<u>Sec</u> <u>P/S</u> 154 661	210

Customized Training

The Kentucky Tech system, through its Training and Development Coordinators will provide technical assistance and will identify and develop low cost customized training programs and services for existing, as well as new and expanding businesses and industries. Businesses and industries needing customized training or a continuing education program for its employees should simply contact a Training and Development Coordinator located on the Kentucky Tech-Somerset campus.

Assessment Services

Kentucky Tech Career Connections offers to business, education, and government agencies customized assessment in career inventories, interest inventories, psychomotor skills and academic potential as well as pre-hire assessment. The Career Connections Assessment Center is located on the campus of Kentucky Tech-Somerset.

Adult Education Services

Adult education programs are available to adults who want to develop new skills, improve basic skills or earn a high school equivalency diploma. In Somerset, adult literacy is provided by the Pulaski County Literacy Council, Inc. and adult basic education is provided through the Pulaski County Board of Education, Somerset Adult Learning Center and Somerset Independent Schools.

Bluegrass State Skills Corporation

The Bluegrass State Skills Corporation, an independent public corporation created and funded by the Kentucky General Assembly, provides programs of skills training to meet the needs of business and industry from entry level to advanced training, and from upgrading present employees to retraining experienced workers.

The Bluegrass State Skills Corporation is a major source for skills training assistance for a new or existing company. The Corporation works in partnership with other employment and job training resources and programs, as well as Kentucky's economic development activities, to package a program customized to meet the specific needs of a company.

OTHER LOCAL FACILITIES

Local Medical Personnel

Physicians - 90
Dentists - 22

Hospital

<u>General Hospital</u>	<u>Location</u>	<u>Beds</u>
Humana Hospital-Lake Cumberland	Somerset	227

Medical staff - 62 active physicians; 12 courtesy physicians;
133 registered nurses; and 65 licensed practical nurses

Other Medical Facilities and Services

Lake Cumberland District Health Department
Lake Cumberland Home Health Care
Lifeline Home Health Care
Pulaski County Disaster Emergency Service
Pulaski County Health Care
Somerset-Pulaski County Ambulance
Emergency Medical Service
Somerset-Pulaski County Community Hospice

Banks and Savings and Loan Associations

Citizens National Bank
Cumberland Security Bank
First and Farmers Bank
First Federal Savings Bank
Mutual Federal Savings Bank

Newspapers

The Commonwealth Journal
The Pulaski Week

Telephone Service

General Telephone Company of Kentucky

RECREATION

Local

Lake Cumberland, with 1,255 miles of shoreline, is the centerpiece of scenic beauty and outdoor recreational activity in south central Kentucky. The Somerset area also offers a variety of recreational facilities, including supervised programs during the summer months.

Pulaski County Park, a 365-acre recreational facility, presently contains 54 campsites, five shelter houses, 16 picnic sites, hiking trails, playgrounds, a frisbee golf course, a horse arena, a rodeo arena with bleachers for 400 people, two boat docks, boat launching ramp.

Summer Sport Park, a 40-acre city park, provides facilities for picnicking, a soccer field, two baseball/softball fields, a driving range, tot lot, community building, public restrooms, and concession stand.

General Burnside State Park, nine miles south of Somerset, is Kentucky's only island state park. Rising out of Lake Cumberland and surrounded by beautiful Kentucky mountains, the park offers excellent fishing, an 18-hole golf course which is open year-round, a picnic area, a 110-site camping area for tents and recreational vehicles, a marina on the mainland near the park, and a community pool.

Rocky Hollow Park, in Somerset, contains an amphitheater, bleachers, playgrounds, exercise stations, hard-surface basketball courts, a pavilion, a picnic area and hiking trails.

A portion of Pulaski County is located in the Daniel Boone National Forest, which covers 640,000 acres of timberland in eastern Kentucky. It encompasses much of Kentucky's great beauty and provides a vacation paradise. There are scenic hiking trails, rivers and streams stocked with a variety of fish, hunting preserves, camping sites, and numerous other natural and historical attractions.

Woodson Bend Resort is a private resort located on Lake Cumberland near Burnside. This development features a 18-hole golf course, tennis courts, a swimming pool, horseback riding, boating, skiing, fishing, condominiums for sale or lease, a restaurant, and rental units.

The "Eagles Nest", a private recreational facility located three miles north of Somerset on Highway 39, features an 18-hole golf course, fishing lakes, four tennis courts, an olympic-size swimming pool, and a two-story clubhouse.

Other private recreational facilities include the YMCA and a country club with a nine-hole golf course and a swimming pool, with an additional nine holes under construction.

The Big South Fork National River and Recreation Area, 25 miles south of Somerset, was developed by the U.S. Army Corps of Engineers in cooperation with the National Park Service. The "National Area" is located along the Big South Fork of the Cumberland River from Whitley City in Kentucky, south to Oneida in Tennessee. Recreational opportunities in this rugged scenic area include whitewater rafting, canoeing, kayaking, camping, hiking, horse back riding and picnicking.

The Blue Heron Recreation Area, a restored mining camp, located within the Big South Fork National River and Recreation Area has been completed by the Corps of Engineers and is operated by the National Park Service. The Interpretive exhibits provide visitors with an opportunity to witness life as it was when the mining camp operated on the banks of the Big South Fork of the Cumberland River. A campground, scenic overlooks and hiking trails are also located in the area.

The Big South Fork Scenic Railway offers a chance to see part of the rugged Cumberland River Area by rail. The train operates on a seasonal schedule between Stearns and the Blue Heron Recreation Area within the Big South Fork National River and Recreation area, a distance of about six miles in each direction.

Area (Within 45 miles)

William Whitley House State Historic Site
Cumberland Falls State Resort Park
Lake Cumberland State Resort Park
Constitution Square State Historic Site
Isaac Shelby State Historic Site
Levi Jackson State Park

COMMUNITY IMPROVEMENTS

Somerset re-certified as a "Kentucky Certified City" in 1992, and is distinguished as a gold award winner recognizing ten consecutive years of certification. Re-certification is based on achievement in the following areas: existing industry assistance, small business assistance, educational resources, and community development factors of health care, public safety, arts and culture, recreation, governmental awareness and resource. In addition to receiving the 1992 Gold Award, Somerset was recognized as a Hall of Fame community. This category not only demonstrates that a community is adequately prepared for immediate growth, but also that the community has analyzed emerging economic trends, and has set about planning for the future. The Certified Cities Program is sponsored by the Kentucky Chamber of Commerce.

Recent

The Pulaski County Industrial Development Foundation developed a 130-acre industrial park east of Somerset. The Industrial Development Foundation and other local government entities invested \$3.5 million in water, sewerage, and natural gas service to the park.

The Somerset Sewer Department has implemented a major trunk line rehabilitation program, spending over \$90,000 on trunk line replacements and refurbishing. The Sewer Department is in the process of updating its 201 plan which will address the city's wastewater treatment needs of the next twenty years. Somerset is 99% sewer served and service is available in all growth areas of Pulaski County.

The Humana Hospital-Lake Cumberland now has a Labor Delivery Recovery (L.D.R.) section, M.R.I. equipment and a cardiac cath lab.

The reconstruction of Kentucky Route 461 is completed. It provides access to Interstate 75 northeast of Somerset and with this completion, Kentucky 461 is expected to be upgraded to a "AAA"-rated highway.

The Pulaski County Fiscal Court has purchased 15 new fire trucks and a new ambulance for the rescue squad.

Pulaski County now has a new \$250,000 Senior Citizens Center.

The Somerset-Pulaski County Airport Board has extended the airports runway from 5,000 to 5,500 feet and constructed a 1,000-foot overrun.

Under Way

Somerset Food Service, a warehouse, freezer, cooler and office facility located in Somerset in 1992. The company already has a \$3.5 million expansion under way which will create 36 additional jobs to the company's present 48 employees.

The construction of the \$12 million Rural Development Center (R.D.C.) will begin in Somerset in 1993. The facility will be one of the most impressive structures in the region with approximately 89,500 square feet of gross building space. The facility will have a state of the art 800-seat theater and a 28,000 square foot conference and exhibition center. The structure will house economic, tourism, agriculture and education development organizations. The R.D.C. will provide space for meetings, civic events, conventions, community service programs and training seminars for business and industry groups.

Implementation of the enhanced "911" emergency communication system is under way in Pulaski County.

Phase one of construction of the Southeastern Bypass from U.S. 27 at the industrial park to three and one-half miles east is under way. The second phase, which is scheduled to be constructed in 1997, will extend the bypass three and one-half additional miles to Kentucky 80.

Planned

The City of Somerset plans to expand the water treatment plant capacity from 6 to 7.5 million gallons per day by 1995.

Somerset Independent High School has a new cafeteria and plans are being developed for a total renovation to the high school.