

1977

## Industrial Resources: Whitley County - Corbin

Kentucky Library Research Collections  
Western Kentucky University, [spcol@wku.edu](mailto:spcol@wku.edu)

Follow this and additional works at: [https://digitalcommons.wku.edu/whitley\\_cty](https://digitalcommons.wku.edu/whitley_cty)



Part of the [Business Administration, Management, and Operations Commons](#), [Growth and Development Commons](#), and the [Infrastructure Commons](#)

---

### Recommended Citation

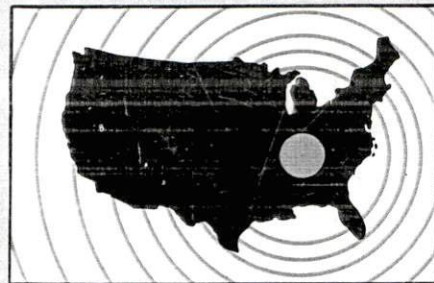
Kentucky Library Research Collections, "Industrial Resources: Whitley County - Corbin" (1977). *Whitley County*. Paper 9.  
[https://digitalcommons.wku.edu/whitley\\_cty/9](https://digitalcommons.wku.edu/whitley_cty/9)

This Report is brought to you for free and open access by TopSCHOLAR®. It has been accepted for inclusion in Whitley County by an authorized administrator of TopSCHOLAR®. For more information, please contact [topscholar@wku.edu](mailto:topscholar@wku.edu).

# ***INDUSTRIAL RESOURCES***

## **CORBIN**

**Kentucky  
first**

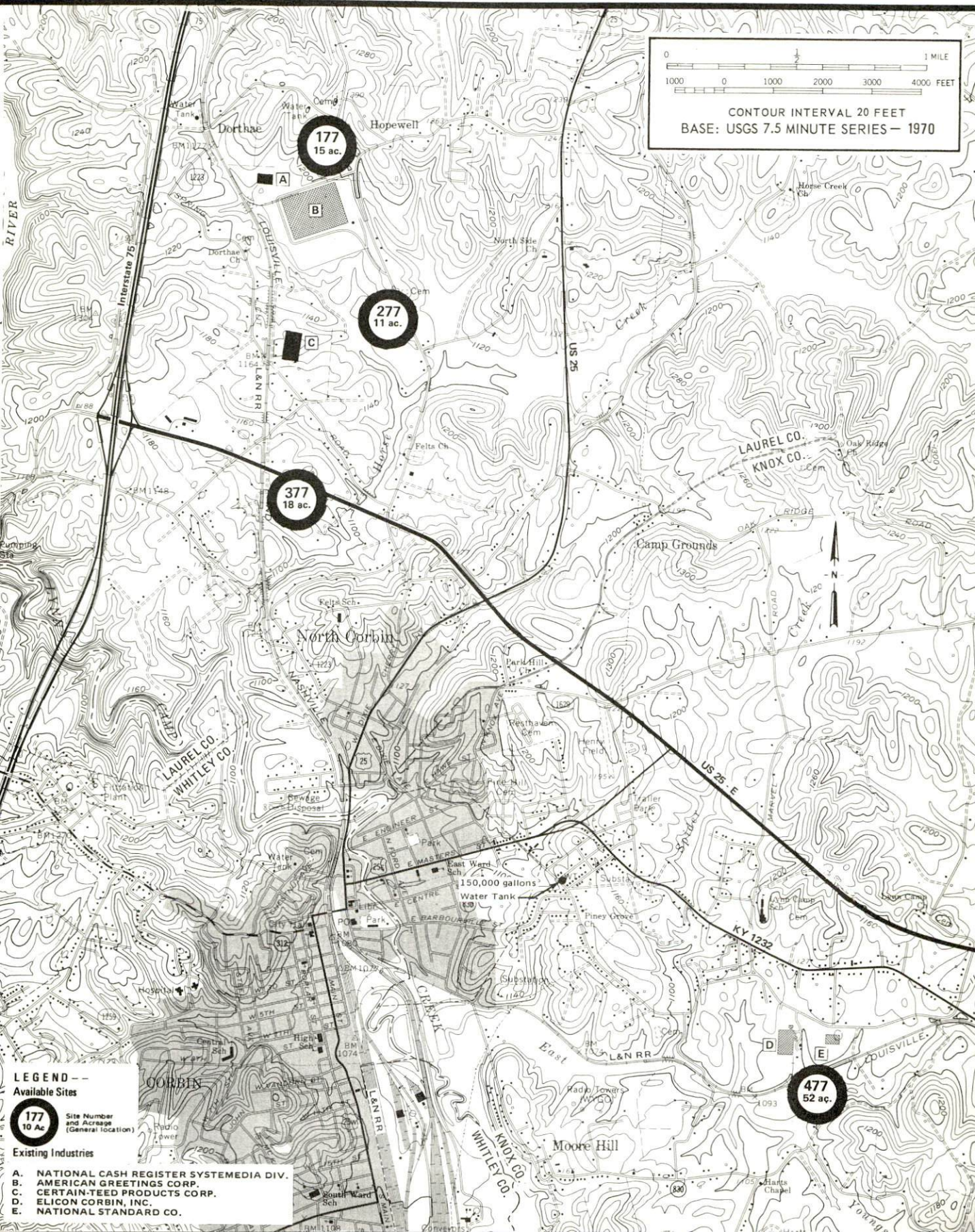


**DEPARTMENT OF COMMERCE**



## CORBIN, KENTUCKY -- Index to Industrial Sites -- 1977

For detailed data on individual sites, contact Mr. Roy Houser, Corbin Chamber of Commerce, 401 South Lynn Avenue, Corbin, Kentucky 40701, or the Industrial Development Division, Kentucky Department of Commerce, Capital Plaza Tower, Frankfort, Kentucky 40601.





INDUSTRIAL RESOURCES

CORBIN, KENTUCKY

Prepared by  
The Kentucky Department of Commerce  
Division of Research and Planning  
in cooperation with  
The Corbin Chamber of Commerce  
and  
The Corbin Industrial Development Commission

1977



Production supervisor: Patsy Wallace; research: Terry Patterson;  
clerical: Edna Beard; graphics: N. C. Montague, Frank Ferrante,  
Tony Cecconi, Richard Spencer; cartography: Industrial Development  
Division. Cost of printing paid from state funds.

# TABLE OF CONTENTS

<u>Chapter</u>	<u>Page</u>
INDUSTRIAL SITES . . . . .	i
CORBIN, KENTUCKY - A RESOURCE PROFILE . . . . .	1
THE LABOR MARKET AREA . . . . .	3
Population . . . . .	3
Labor Force Characteristics of Residents, 1975 . . . . .	3
Nonagricultural Employment by Industry, by Place of Work, 1975 . . . . .	4
Corbin Manufacturing Firms, Their Products and Employment . . . . .	5
Labor Organizations . . . . .	7
Estimated Male Labor Supply . . . . .	8
Estimated Female Labor Supply . . . . .	8
Average Weekly Wages By Industry, by Place of Work, 1975 . . . . .	9
Per Capita Personal Income . . . . .	11
TRANSPORTATION . . . . .	12
Rail . . . . .	12
Highways . . . . .	12
Truck Service . . . . .	12
Air . . . . .	13
Bus . . . . .	13
Taxi . . . . .	13
Rental Services . . . . .	13
POWER AND FUEL . . . . .	14
Electricity . . . . .	14
Natural Gas . . . . .	15
Other Fuels . . . . .	15
WATER AND SEWERAGE . . . . .	18
Water . . . . .	18
Sewerage . . . . .	19
CLIMATE . . . . .	21



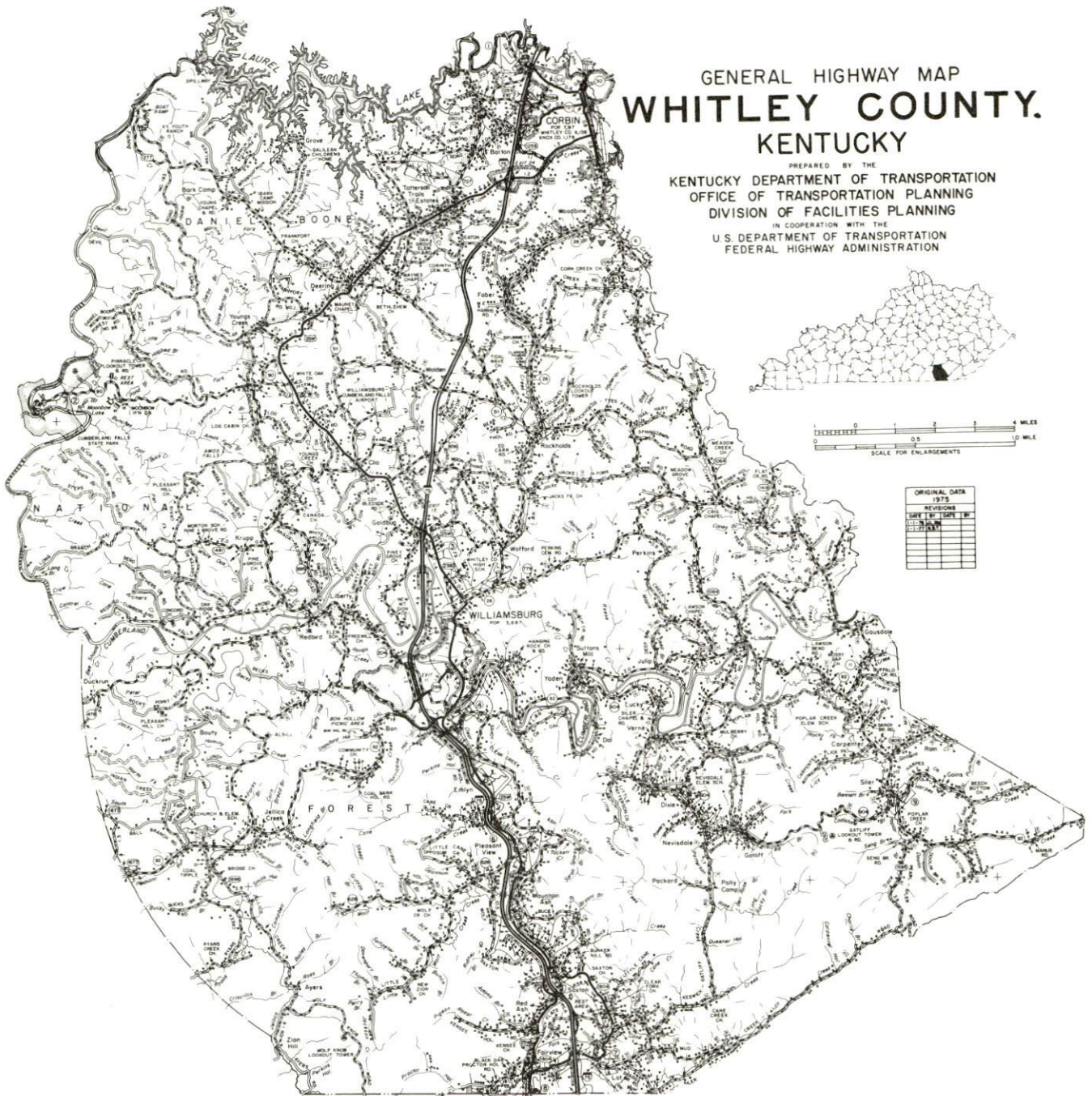
<u>Chapter</u>	<u>Page</u>
LOCAL GOVERNMENT . . . . .	23
City. . . . .	23
County . . . . .	23
Assessed Value of Property, 1976-77 . . . . .	23
Property Taxes . . . . .	23
Local Property Tax Rate Per \$100 of Assessed Valuation, 1976 . . . . .	24
Planning and Zoning . . . . .	24
Safety . . . . .	24
Police . . . . .	24
Fire . . . . .	24
Rescue Service . . . . .	25
Solid Waste . . . . .	25
EDUCATION . . . . .	26
Public Schools . . . . .	26
Nonpublic Schools . . . . .	26
Area Colleges and Universities . . . . .	27
Vocational Schools . . . . .	27
HEALTH . . . . .	30
Local Medical Personnel . . . . .	30
Hospitals . . . . .	30
Ambulance Service . . . . .	30
Public Health . . . . .	30
OTHER LOCAL FACILITIES . . . . .	31
Communications . . . . .	31
Library Services . . . . .	31
Religious Institutions . . . . .	31
Financial Institutions . . . . .	32
Hotels and Motels . . . . .	32
Clubs and Organizations . . . . .	32
RECREATION . . . . .	33
COMMUNITY IMPROVEMENTS . . . . .	36

# GENERAL HIGHWAY MAP WHITLEY COUNTY, KENTUCKY

PREPARED BY THE  
KENTUCKY DEPARTMENT OF TRANSPORTATION  
OFFICE OF TRANSPORTATION PLANNING  
DIVISION OF FACILITIES PLANNING  
IN COOPERATION WITH THE  
U.S. DEPARTMENT OF TRANSPORTATION  
FEDERAL HIGHWAY ADMINISTRATION



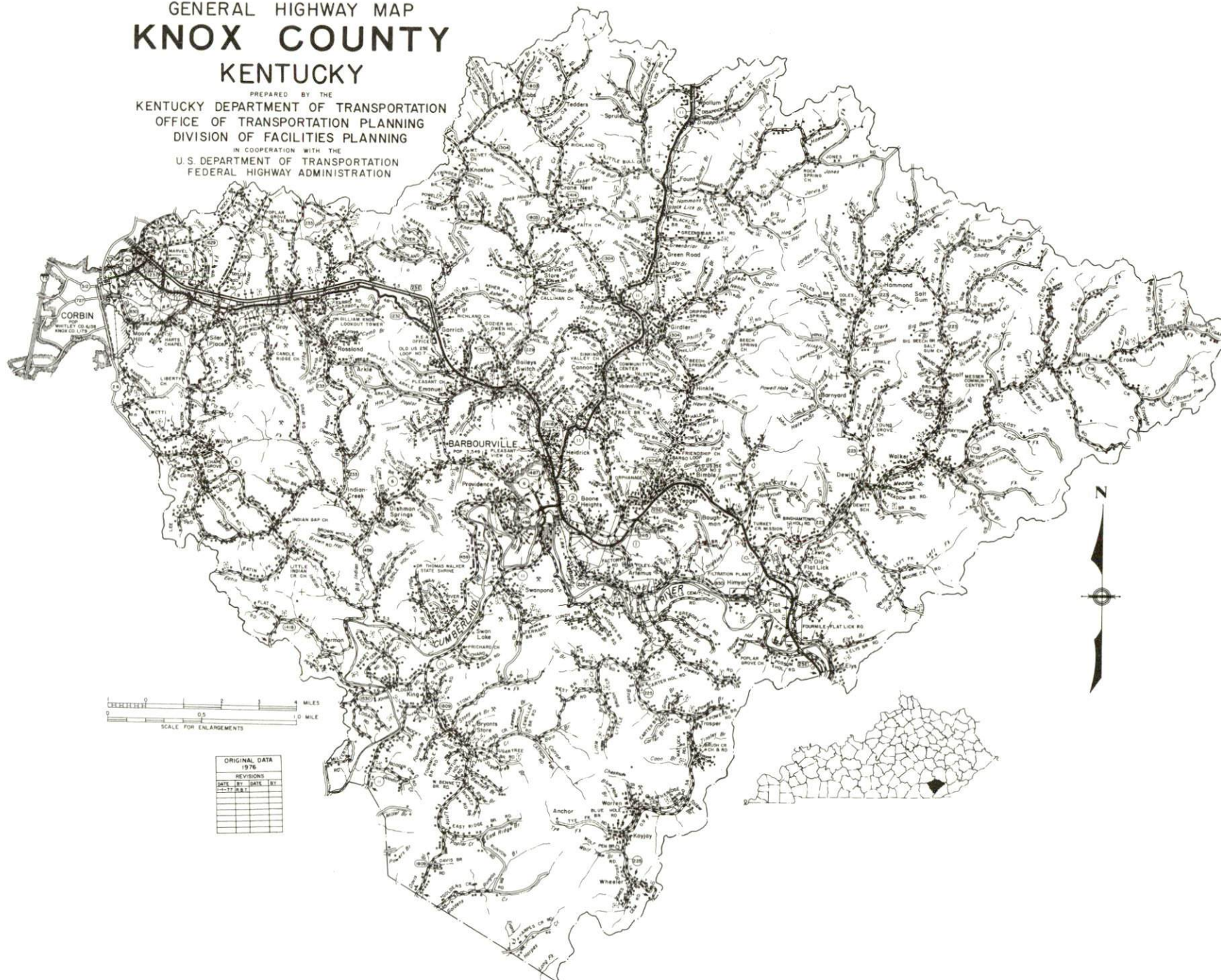
ORIGINAL DATA	
1975	
REVISIONS	
DATE	BY
10/1/75	W





PREPARED BY THE  
KENTUCKY DEPARTMENT OF TRANSPORTATION  
OFFICE OF TRANSPORTATION PLANNING  
DIVISION OF FACILITIES PLANNING  
IN COOPERATION WITH THE  
U.S. DEPARTMENT OF TRANSPORTATION  
FEDERAL HIGHWAY ADMINISTRATION

PREPARED BY THE  
KENTUCKY DEPARTMENT OF TRANSPORTATION  
OFFICE OF TRANSPORTATION PLANNING  
DIVISION OF FACILITIES PLANNING  
IN COOPERATION WITH THE  
U.S. DEPARTMENT OF TRANSPORTATION  
FEDERAL HIGHWAY ADMINISTRATION



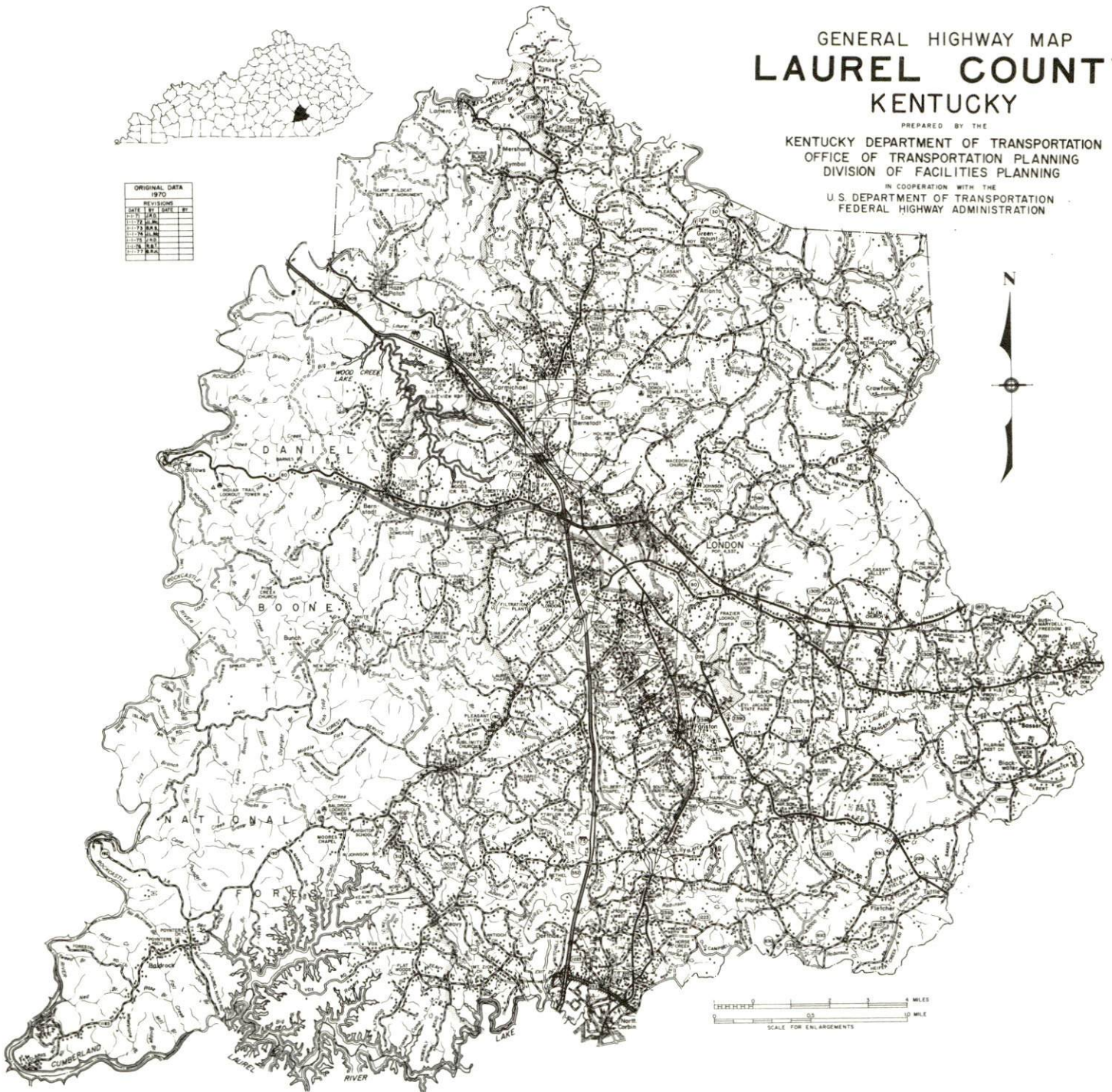


# GENERAL HIGHWAY MAP LAUREL COUNTY KENTUCKY

PREPARED BY THE  
KENTUCKY DEPARTMENT OF TRANSPORTATION  
OFFICE OF TRANSPORTATION PLANNING  
DIVISION OF FACILITIES PLANNING  
IN COOPERATION WITH THE  
U.S. DEPARTMENT OF TRANSPORTATION  
FEDERAL HIGHWAY ADMINISTRATION



ORIGINAL DATA			
1970			
REVISIONS			
DATE	BY	DATE	BY
11-1-70	W.B.A.		
11-1-70	W.B.A.		
11-1-70	W.B.A.		
11-1-70	W.B.A.		
11-1-70	W.B.A.		
11-1-70	W.B.A.		
11-1-70	W.B.A.		
11-1-70	W.B.A.		
11-1-70	W.B.A.		
11-1-70	W.B.A.		



0 1 2 3 4 5 6 7 8 9 10 MILES  
SCALE FOR ENLARGEMENTS



A map showing the five counties in the study area: Laurel, Knox, Whitley, Bell, and McCreary. The counties are arranged in a cluster, with Laurel at the top, Knox in the center, Whitley to the west of Knox, Bell to the east of Knox, and McCreary to the southwest of Whitley.

[illegible]

## CORBIN, KENTUCKY - A RESOURCE PROFILE

Corbin is located in southeastern Kentucky near the eastern edge of the Daniel Boone National Forest. This unique city is situated on the boundaries of Whitley, Knox, and Laurel Counties. The Laurel River drains the area surrounding Corbin and forms the Laurel River Lake just west of Corbin. The land surface is mountainous and broken, but there is much fertile soil in the valleys. Corbin is located 88 miles south of Lexington, 160 miles southeast of Louisville, and 84 miles north of Knoxville, Tennessee. The 1973 estimated population of Corbin was 7,275.

Whitley County, which covers 459 square miles, had an estimated population of 28,400 in 1975.

### The Economic Framework

The total number of Whitley County residents employed in 1975 averaged 8,460, with nonagricultural jobs accounting for 8,340 workers. Manufacturing employers in the county reported 2,180 workers; mining and quarrying 940; construction firms 370; transportation, communications, and public utilities 220; wholesale and retail trade 1,855; finance, insurance, and real estate 280; and employees in the service industries 1,540. Major industrial products are gift wrapping paper, napkins, ribbons, organic fiber padding, industrial wire cloth, work and uniform clothing, electrical switchers, sockets and terminals.

Total unemployment in Whitley County averaged 8.1 percent of the labor force in 1975.

Per capita personal income in the county in 1974 was \$3,297, an increase of 43.6 percent since 1970.

The Corbin labor market area includes Whitley County, the four adjoining Kentucky counties, and Campbell and Claiborne Counties in Tennessee. The total number of residents in the Kentucky portion of the labor market area employed in 1975 averaged 44,640, with non-agricultural jobs accounting for 43,220 workers. Manufacturing employers in the area reported 6,800 workers; mining and quarrying 3,435; construction firms 1,410; transportation, communications, and public utilities 1,240; wholesale and retail trade 6,700; finance, insurance, and real estate 850; and employees in the service industries 4,920.

### Resources for Growth

1. Labor Supply - There is a current estimated labor supply of 8,190 men and 7,350 women available for industrial jobs in the Kentucky portion of the labor market area. In addition, 6,310 young men and 5,990 young women in this area will become 18 years of age before 1983 and potentially available for work. The current labor supply would be supplemented by the number of men and women in the two adjoining Tennessee counties who are available for industrial jobs.



2. Transportation - Rail service for Corbin is provided by the Louisville & Nashville Railroad. The nearest piggyback facility is located at Williamsburg, 15 miles south of Corbin. Two interchanges of Interstate 75 are located at Corbin. Corbin is served by nine truck lines. The nearest United Parcel Service shipping center is located at London, 14 miles distant. Commercial air service is available at the London-Corbin Airport, 11 miles north of Corbin.

3. Utilities and Fuel - Electricity is provided to Corbin by the City Utilities Commission and to Whitley County by the Kentucky Utilities Company and the Cumberland Valley RECC. Natural gas is supplied to Corbin by the Peoples Gas Company of Kentucky, Inc. Ten distributors of propane and eleven distributors of distillate fuel oil serve the Corbin area. Low sulphur content coal is available locally. The Laurel River Lake provides a more than adequate raw water supply for continued growth.

4. Education - The Corbin Independent School District and the Whitley County School System operate within the county. One state university, four senior colleges, two community colleges and one junior college are within a 75-mile radius of Corbin. Vocational training is provided at the Corbin Area Vocational Education Center, which offers classes in six courses. The nearest state vocational-technical school is located at London, 14 miles north of Corbin, and offers twelve courses.

# THE LABOR MARKET AREA

## POPULATION

Area	1975*	1970	Percent Nonwhite
			1970
Corbin	7,275**	7,317	0.3
Labor Market Area	133,100	118,889	N.A.
Whitley County	28,400	24,145	0.7
Bell County	32,800	31,121	3.5
Knox County	26,300	23,689	1.7
Laurel County	31,300	27,386	1.0
McCreary County	14,300	12,548	1.6

\*Provisional Estimates.

\*\*1973 Population Estimates.

Sources: U. S. Department of Commerce, Bureau of the Census, Census of Population, 1970. U. S. Department of Commerce, Bureau of the Census, Current Population Reports, Series P-25, No. 562, June 1975; Series P-26, No. 75-17, May 1976.

## LABOR FORCE CHARACTERISTICS OF RESIDENTS, 1975

	Whitley County	Labor Market Area
Civilian Labor Force	9,211	48,384
Employment	8,463	44,644
Agricultural	126	1,421
Nonagricultural	8,337	43,223
Unemployment	748	3,740
Rate of Unemployment (%)	8.1	7.7

Source: Kentucky Department for Human Resources, Kentucky Labor Force Estimates, Annual Averages, 1975.

NONAGRICULTURAL EMPLOYMENT BY INDUSTRY,  
BY PLACE OF WORK, 1975

	<u>Whitley County</u>	<u>Labor Market Area</u>
All Industries	7,413	25,419
Mining & Quarrying	937	3,435
Contract Construction	370	1,409
Manufacturing	2,183	6,804
Food & Kindred Products	166	973
Apparel, Textiles, Leather	273	2,310
Lumber, Furniture	85	654
Printing & Publishing, Paper	1,385	1,462
Chemicals, Petroleum & Coal,		
Rubber	66	291
Stone, Clay & Glass	60	140
Primary Metals	0	11
Machinery, Metal Products,		
Equipment	147*	886
Other Manufacturing	0	77
Transportation, Communications		
& Public Utilities	222	1,240
Wholesale & Retail Trade	1,855	6,702
Finance, Insurance &		
Real Estate	282	853
Services	1,536	4,919
Other	**	20

\*Does not include Elicon Corbin, Division of Microdot Manufacturing, Inc. or National Standard Company, which are located in Knox County.

\*\*Not disclosed.

Note: Excludes domestic workers, railway workers; certain nonprofit corporations; majority of federal, state, and local government workers; and self-employed workers. Labor market area totals for some employment categories exclude employment that was not disclosed for individual counties. Manufacturing detail may not add to totals because of rounding of base data.

Source: Kentucky Department for Human Resources, Average Monthly Workers Covered by Kentucky Unemployment Insurance Law, 1975.



CORBIN MANUFACTURING FIRMS  
THEIR PRODUCTS AND EMPLOYMENT

<u>Firm</u> (Establishment date)	<u>Product</u>	<u>Employment</u>			<u>Organized</u>
		<u>Total</u>	<u>Male</u>	<u>Female</u>	
American Greetings Corporation (1967)	Gift wrapping paper, napkins, ribbon	1,050	450	600	
Certain-Teed Products Corporation (1973)	Organic fiber padding	286	198	88	
Chandler Printing Company, Inc. (1948)	Job printing	9	7	2	
Clover Top Bakery (1959)	Bakery products	5	2	3	
Concrete Materials Corporation	Ready-mix concrete	4			
Corbin Brick Company (1921)	Brick	28	27	1	*
Corbin Times-Tribune, Inc. (1892)	Newspaper	40	29	11	
Elicon Corbin Division, Microdot Manufacturing, Inc. (1961)	Switches, sockets, terminals	280	70	210	*
Forest Products, Inc. (1966)	Wood pallets, skids, lumber, wood chips	69	65	4	
Hibbard and Sons Aluminum Corporation (1963)	Storm doors, windows, awnings	1	1	0	
Knox Monument Company (1941)	Monuments	5	3	2	
NCR Systemedia Division (1973)	Business forms	175	110	65	
National Standard Company (1962)	Industrial wire, cloth mesh, fine wire	259	250	9	*
Pennington Block Company, Inc. (1955)	Concrete blocks	11	11	0	
Pepsi-Cola Bottling Company of Corbin, Kentucky, Inc. (1938)	Soft drinks	104	99	5	
Tri-County Concrete Products (1946)	Drain and culvert tile, precast concrete products	4	3	1	

\*See Labor Organizations page 7.

Source: Kentucky Department of Commerce, 1977 Kentucky Directory of Manufacturers.





NCR Systemmedia Division



## LABOR ORGANIZATIONS

### Union

International Association of  
Machinists and Aerospace  
Workers

United Mine Workers

United Steel Workers

### Representing manufacturing workers at:

Elicon Corbin Division, Microdot  
Manufacturing, Inc.

Corbin Brick Company

National Standard Company

ESTIMATED MALE LABOR SUPPLY  
CORBIN LABOR MARKET AREA

Area	Current				Future
	Total	Not in Labor Force	Unemployed	Under- employed	Reaching 18 yrs. of age before 1983
Labor Market					
Area	8,190	3,220	2,850	2,120	6,306
Whitley	3,360	2,270	570	520	1,165
Bell	2,150	950	820	380	1,633
Knox	1,090	0	620	470	1,247
Laurel	1,010	0	530	480	1,533
McCreary	580	0	310	270	728

Sources: Kentucky Department for Human Resources, Kentucky Labor Supply Estimates by County, 1976. Kentucky Department of Commerce, Future Labor Supply before 1983.

ESTIMATED FEMALE LABOR SUPPLY  
CORBIN LABOR MARKET AREA

Area	Current				Future
	Total	Not in Labor Force	Unemployed	Under- employed	Reaching 18 yrs. of age before 1983
Labor Market					
Area	7,350	4,690	880	1,780	5,991
Whitley	2,390	1,720	180	490	1,072
Bell	2,760	2,110	240	410	1,592
Knox	540	0	200	340	1,243
Laurel	1,200	590	170	440	1,386
McCreary	460	270	90	100	698

Sources: Kentucky Department for Human Resources, Kentucky Labor Supply Estimates by County, 1976. Kentucky Department of Commerce, Future Labor Supply before 1983.



AVERAGE WEEKLY WAGES BY INDUSTRY,  
BY PLACE OF WORK, 1975

	<u>Whitley County</u>	<u>Bell County</u>	<u>Knox County</u>
All Industries	\$142.27	\$172.13	\$137.91
Mining & Quarrying	245.73	291.22	226.19
Contract Construction	160.83	163.31	124.80
Manufacturing	127.80	154.72	134.16
Transportation, Com- munications & Public Utilities	206.88	197.67	163.80
Wholesale & Retail Trade	117.35	124.32	113.84
Finance, Insurance & Real Estate	138.58	170.48	142.49
Services	117.79	127.81	109.76
Other	*	*	*

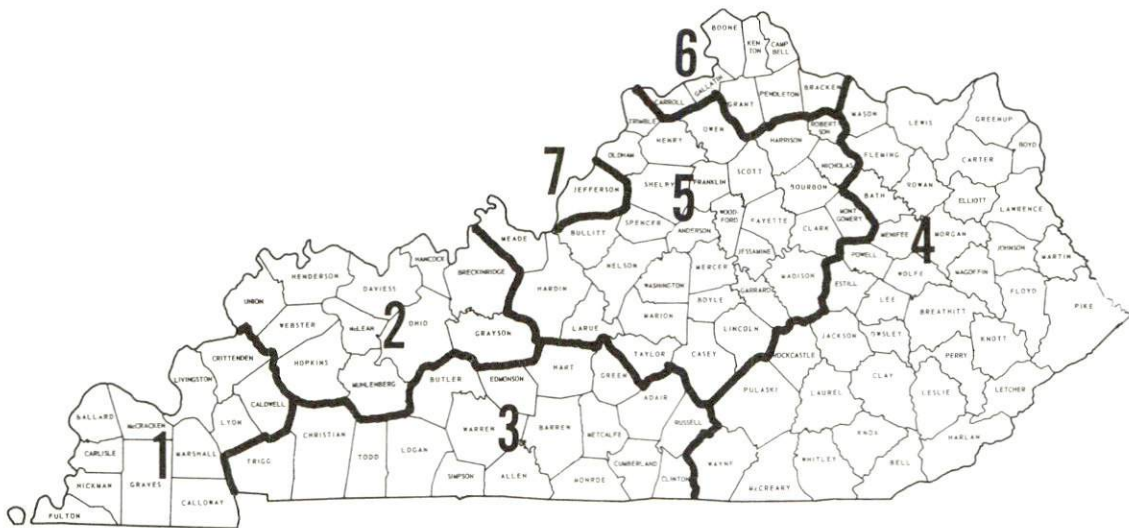
	<u>Laurel County</u>	<u>McCreary County</u>
All Industries	\$148.27	\$142.36
Mining & Quarrying	206.05	260.97
Contract Construction	186.30	130.62
Manufacturing	159.93	87.28
Transportation, Com- munications & Public Utilities	180.25	147.72
Wholesale & Retail Trade	121.91	103.73
Finance, Insurance & Real Estate	134.33	149.93
Services	131.62	100.84
Other	110.11	*

\*Not disclosed.

Note: Excludes domestic workers, railway workers; certain nonprofit corporations; majority of federal, state, and local government workers; and self-employed workers.

Source: Kentucky Department for Human Resources, Average Weekly Wages of Workers Covered By Unemployment Insurance, 1975.

Associated Industries of Kentucky, a voluntary organization of Kentucky businesses, regularly collects occupational wage rates and fringe benefits data from participating member firms. Data is compiled for over 127 clearly defined office, production, and service occupations. Tabulations are published for seven regions of Kentucky, as shown on the map below. It should be noted that the data may be weighted by the preponderance of firms in the larger cities and may be somewhat higher than the rates paid in the smaller communities. Data from these tabulations are available, upon request, from the Kentucky Department of Commerce, Frankfort, Kentucky 40601.



Associated Industries of Kentucky Area Wage Surveys



PER CAPITA PERSONAL INCOME

<u>Area</u>	<u>1974</u>	<u>1970</u>	<u>Percent Change</u>
Whitley County	\$3,297	\$2,296	43.6
Labor Market Area			
Range	\$2,045 - 3,388	\$1,196 - 2,296	N.A.
Kentucky	4,442	3,112	42.7
U. S.	5,448	3,966	37.4

Sources: U. S. Department of Commerce, Bureau of Economic Analysis, Survey of Current Business, August 1975. U. S. Department of Commerce, Bureau of Economic Analysis, March 1976.

## TRANSPORTATION

### Rail

Line serving Corbin - Louisville & Nashville Railroad

Services - 3 northbound and 3 southbound freight stops daily; switching facilities; team track for 8 cars; large yard tracks for siding space; nearest piggyback facilities at Williamsburg, 15 miles south of Corbin.

For details on routing, schedules, rates and services, contact:

Manager of Industrial Development  
Louisville and Nashville Railroad  
908 West Broadway  
Louisville, Kentucky 40203  
(502) 587-5000

### Highways

Corbin is served by north-south Interstate 75 and U. S. Routes 25, 25E and 25W. Two interchanges of Interstate 75 are located at Corbin, and access onto the Daniel Boone Parkway is only 14 miles north of the city. The 14-mile section of U. S. Highway 25E from Interstate 75 at Corbin to within 5 miles of Barbourville has been widened to four lanes.

### Truck Service

<u>Company</u>	<u>Home Office</u>
Bronaugh Motor Express, Inc.*	1025 Nandino Boulevard Lexington, Kentucky 40511
Consolidated Freighways Corpo- ration of Delaware*	175 Linfield Drive Menlo Park, California 94025
Eagle Express Company	P. O. Box 95 Somerset, Kentucky 42501
Interstate Motor Freight System	134 Grandville Avenue, S. W. Grand Rapids, Michigan 49502
McLean Trucking Company	P. O. Box 213 Winston-Salem, North Carolina 27102
Overnite Transportation Company*	1000 Semmes Avenue Richmond, Virginia 23209
Smith's Transfer Corporation	P. O. Box 1000 Staunton, Virginia 24401
United Trucking Service, Inc.*	3047 Lonyo Street Detroit, Michigan 48209
Wilson Freight Company	11353 Reed Hartman Boulevard Cincinnati, Ohio 45241

\*Local terminal.

Other Freight Services

United Parcel Service

Nearest Shipping Center

London, 14 miles distant

HIGHWAY MILES AND TRUCK TRANSIT TIME IN DAYS FROM  
CORBIN, KENTUCKY, TO SELECTED MARKET CENTERS

City	Highway Miles	Delivery Time TL	City	Highway Miles	Delivery Time TL
Atlanta, Ga.	277	2	Los Angeles, Cal.	2,268	6
Birmingham, Ala.	338	2	Louisville, Ky.	160	1
Chicago, Ill.	440	2	Nashville, Tenn.	261	1
Cincinnati, Ohio	166	1	New Orleans, La.	680	3
Cleveland, Ohio	405	1	New York, N. Y.	791	2
Detroit, Mich.	425	1	Pittsburgh, Pa.	431	2
Knoxville, Tenn.	84	1	St. Louis, Mo.	423	2

Source: Delivery Time Only - United Trucking Service, Inc., 3047 Lonyo Road, Detroit, Michigan 48209.

Air

	<u>Local</u>	<u>Nearest Commercial</u>
	Whitley County Airport	London-Corbin Airport (Magee Field)
Location:	13 miles south of Corbin	11 miles north of Corbin
Runways:	1 paved	1 paved
Length:	2,500 feet	6,000 feet
Traffic Control:	Wind sock	Wind sock and FSS advisory service
Lighting:	None	Beacon, runway and obstruction lights
Services:	Tie down	Piedmont Airlines, 100 octane, JP-A-50, weather, flight training, charter and ambulance service, taxi, car rental, vending machines
Air Freight Service:		Freight accepted on a space available basis

Bus - Southern Greyhound Bus Lines; Black Brothers Bus Lines;  
Trailways Bus Lines

Taxi - Two companies with 24-hour service

Rental Services - Truck rentals



## POWER AND FUEL

### Electricity

Company serving Corbin - City Utilities Commission  
Source of power - Kentucky Utilities Company  
Total generating capacity - 1,615,500 KW  
For industrial rates contact:

City Utilities Commission  
901 South Main  
Corbin, Kentucky 40701  
(606) 528-4026

Company serving Whitley County - Kentucky Utilities Company  
Source of power - Kentucky Utilities Company  
Total generating capacity - 1,615,500 KW  
For industrial rates contact:

Industrial Development Department  
Kentucky Utilities Company  
120 South Limestone Street  
Lexington, Kentucky 40507  
(606) 255-1461

Company serving Whitley County - Cumberland Valley RECC  
Source of power - East Kentucky Power Cooperative  
Total generating capacity - 868,000 KW  
For industrial rates contact:

Industrial Development Division  
East Kentucky Power Cooperative  
P. O. Box 707  
Winchester, Kentucky 40391  
(606) 744-4812

and/or

Cumberland Valley RECC  
U. S. Highway 25E  
Gray, Kentucky 40734  
(606) 528-2677

## Natural Gas

Company serving Corbin - Peoples Gas Company of Kentucky, Inc.

Source of supply - Wiser Oil Company and Columbia Gas

Transmission Corporation

Size of transmission mains - 6 and 8 inches (supplier);  
6 inches (distributor)

Distribution mains - 2, 4, 6 and 8 inches

Distribution pressure - 20 psig

Btu content - 1,000 per cubic foot; Specific gravity - .65

For rates and supplies contact:

Peoples Gas Company of Kentucky, Inc.

513 South Main Street

Corbin, Kentucky 40701

(606) 528-3611

## Other Fuels (Within 20 miles)

### Propane

Barton's Gas Service and Appliance

703 Pitzer

Barbourville, Kentucky 40906

Cundari Gas Company

Main Street

London, Kentucky 40741

Empiregas of Corbin

U. S. Highway 25

Corbin, Kentucky 40741

W. E. Hodges Gas Company

119 East 4th Street

London, Kentucky 40741

Home Gas Service

South 3rd Street

Williamsburg, Kentucky 40769

Lewis LP Gas, Inc.

Route 9

London, Kentucky 40741

Lewis LP Gas, Inc.

Barbourville, Kentucky 40906

Morgan Gas and Appliance

Camp Ground Road

Corbin, Kentucky 40701

(Contd.)

Rains Gas and Appliance Company  
Cumberland Falls Road  
Williamsburg, Kentucky 40769

Williams Energy Company  
Camp Ground Road  
Corbin, Kentucky 40701

Fuel oils (Within 20 miles)

Distillate fuel oil -

Ashland Petroleum Company  
Route 6  
London, Kentucky 40741

Curry Oil Company  
South Dixie Highway  
London, Kentucky 40741

Helton's Oil Company and Service Station  
Barbourville Highway  
Corbin, Kentucky 40701

High Speed Oil Company  
Route 6  
London, Kentucky 40741

C. T. Massey Exxon Oil  
North Main Street  
London, Kentucky 40701

Ormsby Oil Company, Inc.  
U. S. Highway 25  
London, Kentucky 40701

Pure Oil Company  
Pineville Road  
Barbourville, Kentucky 40906

Renfro Oil Company  
5th Street  
Williamsburg, Kentucky 40769

Standard Oil Company  
Plant E  
London, Kentucky 40741

Texaco, Inc.  
Route 1  
Corbin, Kentucky 40701

(Contd.)



Paul R. Wilson Oil Company  
London, Kentucky 40741

Residual fuel oil - Arrangements must be made with the refinery.

Low sulphur content coal - Available locally.

## WATER AND SEWERAGE

### Water

Company serving Corbin - City Utilities Commission\*  
901 South Main Street  
Corbin, Kentucky 40701  
(606) 528-4026

Source - Laurel River Lake  
Treatment plant capacity - 5,000,000 gpd  
Average daily consumption - 2,200,000 gallons  
Peak daily consumption - 3,500,000 gallons  
Type treatment - Rapid mix, flocculation, sedimentation,  
filtration, chlorination  
Storage capacity - 3,050,000 gallons  
Size lines 6, 8, 10, 12 and 16 inches  
Average pressure - 70 psi  
Average temperature - 65 degrees F.

### MONTHLY WATER RATES FOR WHOLESALE AND INDUSTRIAL CONSUMERS

---

#### Inside City

First	1,000 gallons	\$2.70 (Minimum)
Next	1,000 gallons	1.05
Next	1,000 gallons	.85
Next	7,000 gallons	.70 per M gallons
Next	90,000 gallons	.60 per M gallons
Next	100,000 gallons	.50 per M gallons
Next	100,000 gallons	.42 per M gallons
All over	300,000 gallons	.40 per M gallons

#### Outside City

First	1,000 gallons	\$3.75 (Minimum)
Next	1,000 gallons	1.40
Next	1,000 gallons	1.13
Next	7,000 gallons	.93 per M gallons
Next	90,000 gallons	.80 per M gallons
Next	100,000 gallons	.67 per M gallons
Next	100,000 gallons	.56 per M gallons
Next	700,000 gallons	.50 per M gallons
All over	1,000,000 gallons	.45 per M gallons

(Contd.)

\*A 500,000-gallon storage tank and a 12- and 16-inch water main will be installed to increase distribution pressure to South Corbin.

#### Water Tap Fees Inside City

3/4 inch tap	\$ 100.00
1 inch tap	175.00
1 1/2 inch tap	300.00
2 inch tap	400.00
4 inch tap	1,400.00
6 inch tap	2,800.00
Other taps	By contract

#### Water Tap Fees Outside City

3/4 inch tap	\$ 275.00
1 inch tap	470.00
1 1/2 inch tap	610.00
2 inch tap	745.00
3 inch tap	1,450.00
4 inch tap	2,100.00
6 inch tap	4,500.00

Surface water sources - Lynn Camp Creek and Laurel River

Mean discharge (Water Year 1976) - Laurel River at Corbin

Municipal Dam, 223 cfs; Lynn Camp Creek at Corbin, 68.7 cfs

Expected ground water yield - 50 to 200 gpm in eastern two-thirds of county; 5 to 50 gpm in western one-third of county

#### Sewerage

Company serving Corbin - City Utilities Commission\*  
901 South Main Street  
Corbin, Kentucky 40701  
(606) 528-4026

Design capacity - 2,500,000 gpd

Average daily flow - 2,000,000 gallons; Treatment - Primary and secondary

Type treatment - Primary clarifier, trickling filter, aeration, secondary clarifier, digester, drying beds

Treated effluent discharged into - Lynn Camp Creek

Size of sanitary mains - 6 to 24 inches

(Contd.)

\*A 201 Facilities Study has been completed. The City is now awaiting the recommendations of a Sewer System Evaluation Study.



Rates -

Inside City (Schedule A)\*

First	1,000 gallons	\$2.30 (Minimum)
Next	1,000 gallons	.89
Next	1,000 gallons	.72
Next	7,000 gallons	.60 per M gallons
Next	90,000 gallons	.51 per M gallons
Next	100,000 gallons	.42 per M gallons
Next	100,000 gallons	.36 per M gallons
Next	700,000 gallons	.31 per M gallons
All over	1,000,000 gallons	.26 per M gallons

Inside City (Schedule B)\*\*

First	1,000 gallons	\$4.03 (Minimum)
Next	1,000 gallons	1.56
Next	1,000 gallons	1.26
Next	7,000 gallons	1.05 per M gallons
Next	90,000 gallons	.89 per M gallons
Next	100,000 gallons	.73 per M gallons
Next	100,000 gallons	.63 per M gallons
Next	700,000 gallons	.54 per M gallons
All over	1,000,000 gallons	.45 per M gallons

Outside City (Schedule C)

First	1,000 gallons	\$4.60 (Minimum)
Next	1,000 gallons	1.78
Next	1,000 gallons	1.44
Next	7,000 gallons	1.20 per M gallons
Next	90,000 gallons	1.02 per M gallons
Next	100,000 gallons	.84 per M gallons
Next	100,000 gallons	.72 per M gallon
Next	700,000 gallons	.62 per M gallons
All over	1,000,000 gallons	.52 per M gallons

Tap-on charges: Fees for residences vary according to location; fees for manufacturing firms can be negotiated with the City Utilities Commission.

\*Schedule A - Inside City rate schedule for customers serviceable by sewers existing as of November 1, 1970.

\*\*Schedule B - Inside City rate schedule for customers serviceable by sewers constructed after November 1, 1970.

## CLIMATE

### Whitley County

#### Temperature

Normal (30-year record)	59.7 degrees
Average annual 1976	57.1
Record highest, September, 1954 (35-year record)	103.0 degrees
Record lowest, January, 1966 (35-year record)	-9.0 degrees
Normal heating degree days (30-year record)	3,478
(Heating degree day totals are the sums of negative departures of average daily temperatures from 65 degrees F.)	

#### Precipitation

Normal (30-year record)	46.18 inches
Mean annual snowfall (34-year record)	12.30 inches
Total precipitation 1976	42.44 inches
Mean number days precipitation (.01 inch or more) (34-year record)	128
Mean number days thunderstorms (34-year record)	47

#### Prevailing Winds (14-year record)

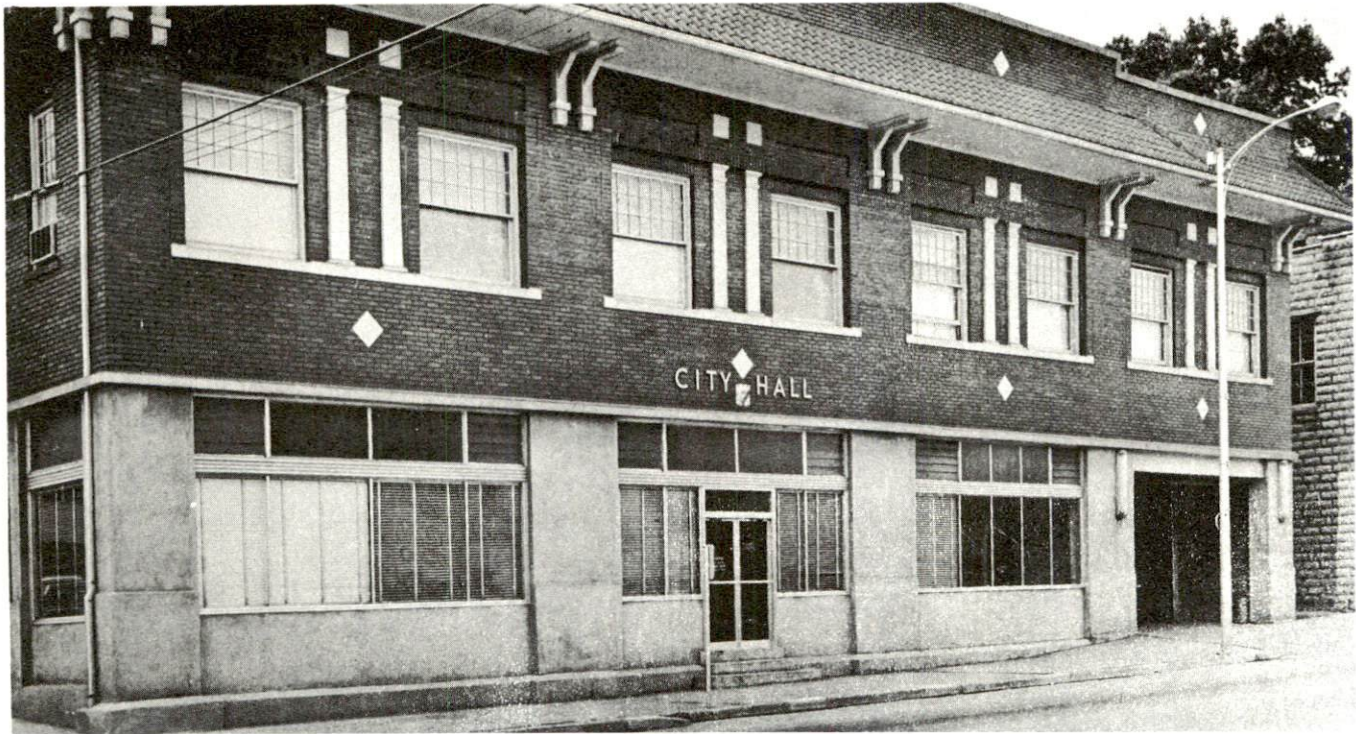
Northeast

#### Relative Humidity (16-year record)

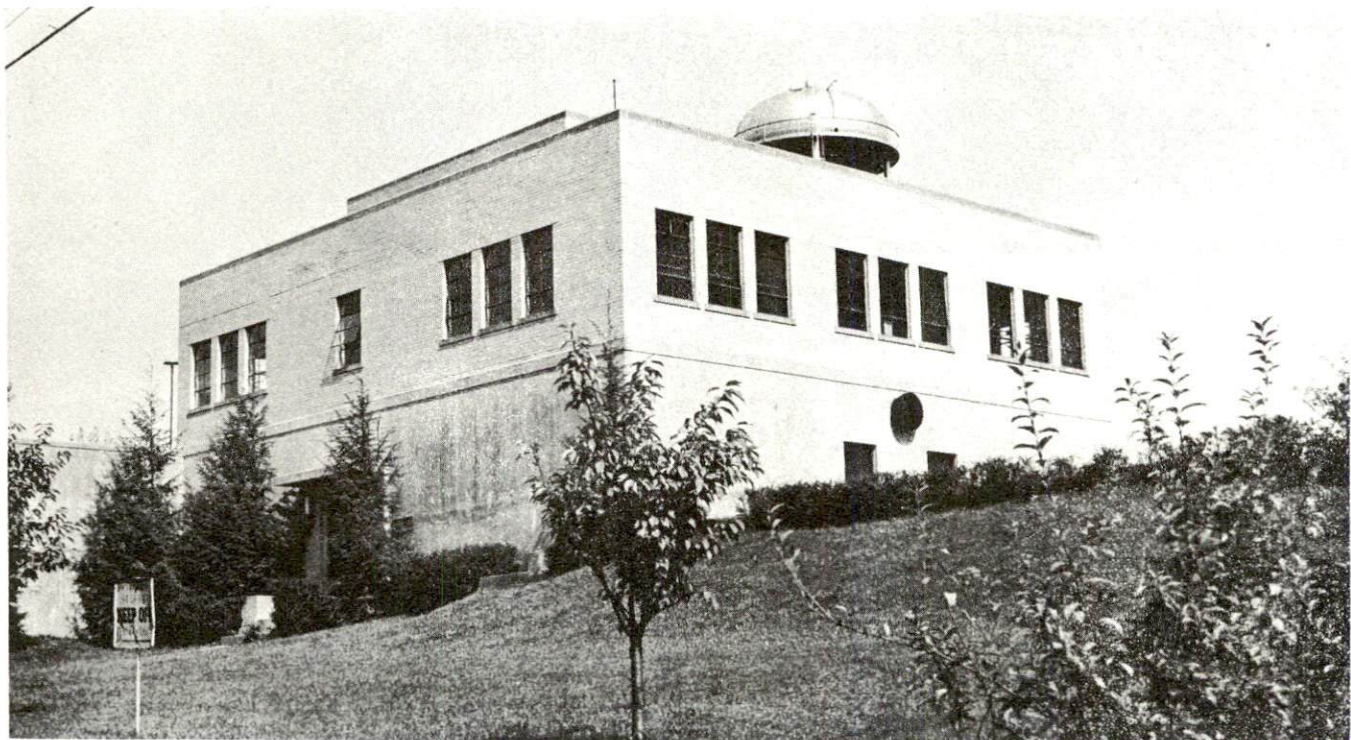
1 a.m.	79 percent
7 a.m.	84 percent
1 p.m.	59 percent
7 p.m.	62 percent

Source: U. S. Department of Commerce, Environmental Science Services Administration, Climatological Data, 1976. Station of record: Knoxville, Tennessee.





City Hall and Fire Station



Modern Water Plant



## LOCAL GOVERNMENT

### City

Structure - Mayor - 4-year term; 4 commissioners - 2-year terms;

City manager

Budget 1976-77 - General Fund \$ 803,800

Electric, Water, and Sewer Fund 2,200,000

Fees and licenses - Auto sticker - \$10 annually; occupational license fees vary according to businesses; building permit - \$150 to \$815 (plus \$0.15 per \$1,000 if estimated cost is over \$500,000)

### County

Structure - County Judge - 4-year term; 3 magistrates - 4-year terms

Budget 1976-77 - General Fund \$223,000; Road Fund \$101,600

### Assessed Value of Property, 1976-77

<u>Classes of Property</u>	<u>Corbin</u>	<u>Whitley County</u>
Real Estate and Tangibles	\$65,651,410	
Real Estate		\$109,067,210
Tangibles		46,642,350

### Property Taxes

All property in Kentucky is assessed at 100 percent of fair cash value.

Land and buildings are taxed by the state and may be taxed by local jurisdictions. The state rate is \$0.315 per \$100 of assessed valuation. Beginning January 1, 1977, local school tax rates were reduced by \$0.30 per \$100 valuation and the state rate was increased by \$0.30 per \$100 (from \$0.015), resulting in no net change in the combined state and local rates.

Manufacturing machinery, raw materials inventories, pollution control equipment, and goods in the process of manufacture are not subject to local taxation. The state rate is \$0.15 per \$100.

Other tangible personal property owned by manufacturers (automobiles, trucks, finished goods, office furniture, office equipment) is taxed by the state at \$0.45 per \$100 and may be taxed by local jurisdictions. Beginning January 1, 1977, local school rates were reduced by \$0.30 per \$100 valuation and the state rate was raised by \$0.30 per \$100 (from \$0.15).

Property stored in public warehouses in a transit status is not subject to local taxation. The state rate is only \$0.015 per \$100.

(Contd.)

Intangible personal property located in Kentucky (money in hand, shares of stock, notes, bonds, accounts, and other credits) is taxed by the state at \$0.25 per \$100, and is not subject to local taxation.

Intangible personal property owned by corporations in Kentucky as a result of business transactions performed out-of-state, but having a tax situs in Kentucky (accounts receivable, notes, bonds, credits, non-domestic bank deposits, licensing or royalty agreements, shares of stock of any affiliated company, etc.) is taxed by the state at \$0.015, and is not subject to local taxation.

Local Property Tax Rate per \$100 of Assessed Valuation, 1976\*

<u>Taxing Jurisdiction</u>	<u>Corbin</u>	<u>Whitley County</u>
County	\$ .205	\$ .205
School	.932	.334
City	.3314	
Special (not county wide):	Fire protection - \$ .003	
	Other - .003	

Planning and Zoning

City agency - Corbin Planning and Zoning Commission  
 Zoning enforced - City only  
 Subdivision regulations enforced - City limits only  
 Local codes enforced - Housing and building  
 Mandatory state codes enforced - Plumbing, National Fire Protection Association Code, National Building Code (for major buildings and residential construction containing more than 12 bedrooms per building)

Safety

<u>Police</u>	<u>Corbin</u>	<u>Corbin** Area</u>	<u>Whitley County</u>
Total staff	19		3
Radio-patrol cars	5		3
<u>Fire</u>			
American Insurance Association Fire Rating	7		
Stations	3	5	
Full-time staff	19		
Volunteers	8	Approximately 100	

\*Kentucky Department of Revenue, Kentucky Property Tax Rates, 1976.

\*\*Within a 10-mile radius.

## Rescue Service

### Whitley County Rescue Squad:

Number of volunteers - 50

Equipment - Jeep, pickup truck, boat and motor, dragging equipment

Personnel training - First aid, Emergency Medical Technician training

## Solid Waste

### Corbin

Type service

Municipal

Fee charged:

residential

\$3.00 per month

business

\$7.50 - \$45.00 per month

industrial

Contract

Collection frequency:

residential

Once weekly

business

1 - 6 times per month

industrial

Contract

Trash pickup

Whenever needed

Disposal method

Sanitary landfill

Manufacturing plants outside the city limits must haul their own refuse to the private landfill or contract with a private collector.



# EDUCATION

## Public Schools

	<u>Corbin Independent</u>	<u>Whitley County</u>
Total Enrollment (February, 1977)	1,836	4,377
Elementary	1,057	2,528
Middle School		817
High School	779	1,032
Student-Teacher Ratio	21-1	22-1
Elementary	22-1	20-1
Middle School		28-1
High School	21-1	22-1
Accreditation	Southern Association of Colleges and Schools	
Percent High School Graduates to College	45.4	28.8
Expenditures Per Pupil (1975-76)	\$675.45	\$659.80
Bonded Indebtedness, June 30, 1976	\$2,850,000	\$1,384,000

## Nonpublic Schools

	<u>St. Camillus Academy</u>
Total Enrollment	265
Elementary	200
High School	65
Student-Teacher Ratio	15-1
Elementary	19-1
High School	9-1

## Area Colleges and Universities

<u>Name</u>	<u>Location (Miles distant)</u>	<u>Enrollment (Fall, 1976)</u>	<u>Highest Degree Conferred</u>
Sue Bennett Junior College	London (14)	226	Associate
Cumberland College	Williamsburg (15)	1,866	Baccalaureate
Union College	Barbourville (17)	1,151	Masters
Somerset Community College	Somerset (48)	798	Associate
Berea College	Berea (51)	1,480	Baccalaureate
Eastern Kentucky University	Richmond (64)	13,450	Masters, Ph.D.*
Centre College	Danville (71)	800	Baccalaureate
Hazard Community College	Hazard (73)	292	Associate

## Vocational Schools

### Nearest State School

	Laurel County State Vocational- Technical School
Location	London
Miles Distant	14
Curriculum	Consumer and Home Economics Commercial Foods Health and Personal Service Occupations Cosmetology Medical Assisting Industrial Education Air Conditioning and Heating Auto Body Repair Auto Mechanics Carpentry-Building Trades Drafting Industrial Electricity Machine Shop Masonry Welding

\*Cooperative program with the University of Kentucky, Lexington, for a Ph.D. in education only.

Nearest Area Education Center

Location	Corbin Area Vocational Education Center
Curriculum	Corbin Industrial Education Appliance Repair Auto Mechanics Drafting Industrial Electricity Welding Health Occupations

Arrangements can be made to provide training in the specific production skills required by an industrial plant. Instruction may be conducted either in the vocational school or in the industrial plant, depending upon the desired arrangement and the availability of special equipment.





South Ward Elementary School



Southeastern Kentucky Baptist Hospital

## HEALTH

### Local Medical Personnel

Physicians - 18  
Dentists - 9

### Hospitals

<u>General Hospital</u>	<u>Location</u>	<u>Beds</u>
Southeastern Kentucky Baptist Hospital	Corbin	133

General hospital facilities - 4 operating rooms, 2 delivery rooms, X-ray and emergency treatment facilities, laboratory, blood bank, OBGYN, surgical suite, EKG, recovery room, nursery, pediatrics ward, ICU-CCU, psychiatric care

Medical staff - 26 physicians, 43 registered nurses, 17 licensed practical nurses, 5 medical technologists, 5 X-ray technicians, 8 surgical technicians, 2 radiologists, 3 anesthesiologists, 1 physical therapist, 1 respiratory therapist, and 1 pathologist

### Ambulance Service

The local funeral homes provide 24-hour service.

### Public Health

Facility - Whitley County Health Department

Staff - 6 registered nurses, 4 licensed practical nurses, 2 health environmentalists, 1 health service aide, 1 consulting administrator, 5 clerks

## OTHER LOCAL FACILITIES

### Communications

Telephone - South Central Bell Telephone Company  
Services - Standard

Telegraph - Western Union  
Services - Standard

Postal - U. S. Post Office  
Class - First  
Mail received - 5 times daily  
Mail dispatched - 5 times daily

Newspapers - Corbin Times-Tribune  
Daily and circulation - 8,100  
Other papers received from - Williamsburg, Lexington, and  
Louisville, Kentucky; Knoxville, Tennessee

Radio - WCTT-AM-FM; WYGO-AM-FM  
Stations received from - Lexington, Louisville, London and  
Barbourville, Kentucky; Knoxville, Tennessee

Television -  
Reception from - Lexington, Kentucky; Knoxville, Tennessee;  
Asheville, North Carolina  
Kentucky Educational Television - Somerset transmitter -  
Channel 29

### Library Services

Public library - Corbin Public Library  
Size collection - 29,000 volumes  
Circulation, 1976 - 88,213  
Services - Meeting room, record player, records, pictures, paintings,  
film strip projector, movie projector, periodicals, copying ma-  
chine, microfilm machine, microfilm reader-printer

### Religious Institutions

Number of churches - 28  
Denominations - Baptist, Catholic, Church of Christ, Christian,  
Church of Latter Day Saints, Church of God, Jehovah's Witnesses,  
Methodist, Nazarene, Pentecostal, Presbyterian

Nearest Synagogues - Knoxville, Tennessee, 84 miles distant  
Congregations - Heska Amuna Congregation (orthodox)  
Temple Bethel (reform)



### Financial Institutions

<u>Banks*</u>	<u>Assets</u>	<u>Deposits</u>	<u>Statement Date</u>
Corbin Deposit Bank and Trust Company	\$27,505,642.70	\$24,413,758.63	12/31/76
Cumberland Valley National Bank and Trust Company**	70,068,533.67	64,750,415.05	12/31/76
First National Bank and Trust Company of Corbin	50,737,932.27	46,416,182.27	12/31/76

<u>Savings and Loan Associations</u>	<u>Assets</u>	<u>Savings Accounts</u>	<u>Statement Date</u>
First Federal Savings and Loan Association of Pineville**	\$20,818,086	\$18,364,553	12/31/76
Mutual Federal Savings and Loan Association**	56,817,962	51,528,759	12/31/76

### Hotels and Motels

Total number - 29  
Total units - 970

### Clubs and Organizations

Business and Civic - Corbin Chamber of Commerce, Corbin Industrial Development Commission, Rotary, Kiwanis, Lions, Optimist, Junior Chamber of Commerce

Fraternal - Masons, Shriners, American Legion, VFW, FOP, Knights of Pythias

Women's - Garden Club, Women's Club, Younger Women's Club, Junior Women's Club, Eastern Star, Tri-County Business and Professional Women's Club, Lady Golfers, Daughters of America, Pythian Sisters Temple 46, American Legion Auxiliary, Book Club, Ossoli Club, Forsythia Garden Club, Cumberland Falls Garden Club, Corbin Business and Professional Women's Club

Youth - Rainbow Girls, 4-H, Boy Scouts, Girl Scouts, Cub Scouts, Brownies, and Little League baseball, football and basketball

Other - Tri-County Saddle Club, Rod and Gun Club, Ministerial Association

\*A branch bank of the American Fidelity Bank and Trust Company of Barboursville is being constructed in Corbin.

\*\*Branch offices.

## RECREATION

### Local

Corbin provides a variety of public recreational facilities under year-round supervision. Facilities include a swimming pool, 9 tennis courts, 3 baseball diamonds, 5 outdoor basketball courts, a softball field, a football field, and a gymnasium. In addition, construction on a \$400,000 city park will begin in the spring of 1977. Immediate plans call for the construction of a baseball diamond, a softball field, 3 tennis courts, and a concession and rest room facility. The city has received a \$258,000 grant to renovate the old railroad depot building and convert it into a civic center.

Corbin also has a country club with a golf course and swimming pool, one indoor and one outdoor movie theater, bowling facility, skating rink, golf driving range and health spa.

The Nibroc Festival is observed in Corbin in August of each year. Highlights are parades, the coronation of a queen, horse show, square dance, Old Fashion Bargain Days, folk music, and arts and crafts sales and shows.

Laurel River Lake, located in the Daniel Boone National Forest, is a 5,600-acre lake that offers camping, fishing, boating, and swimming. Several areas around this new lake are now under development. A 28-acre site picnic area, picnic shelter, playground area, hiking trail, and restroom facilities, only 2 miles from Corbin, are nearly complete. Construction of a 50-slip marina, vehicle-access campground, and amphitheatre are to be constructed approximately 5 miles from Corbin.

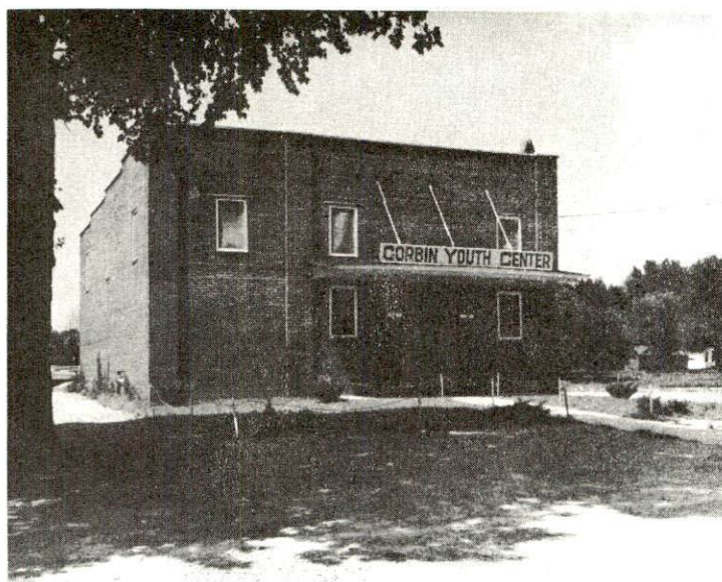
### Area (Within 50 miles)

Cumberland Falls State Resort Park, 10 miles west, is located in the Daniel Boone National Forest and envelopes 1,720 acres. It is famous for Cumberland Falls, where the Cumberland River tumbles 68 feet over a rock precipice. One of the only two moonbows in the world is visible here in the full phase of the moon. The park offers accommodation facilities, camping, fishing, swimming, hiking, horseback riding, playground, and dance pavilion.

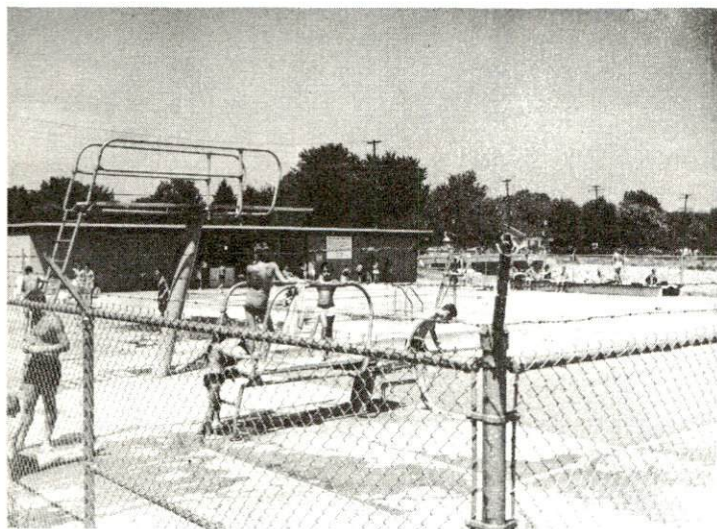
Levi Jackson Wilderness Road State Park, 10 miles north, is an 815-acre park located where the Boone Trace and Wilderness Road pioneer trails converge. In addition to a reproduced pioneer settlement, the park offers a pool, bathhouse, hiking trails, horseback riding, shuffleboard, camp sites, picnic area, and playground.



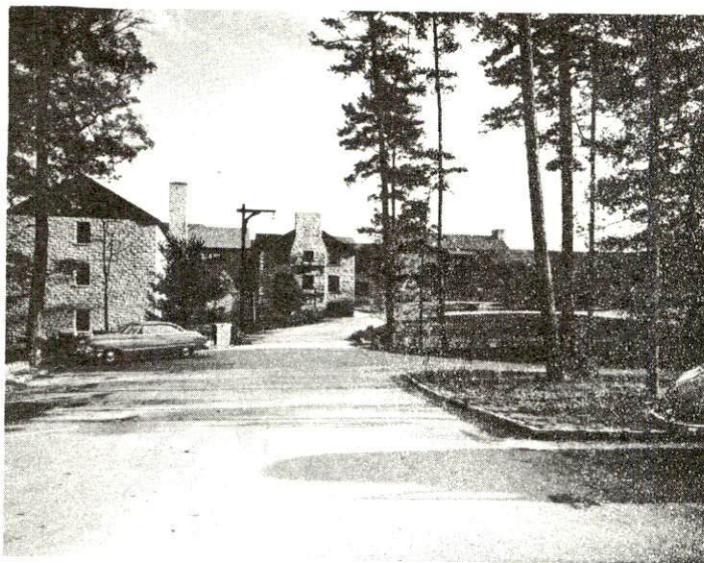
Corbin Youth Center



Corbin  
Municipal Swimming Pool



DuPont Lodge  
Cumberland Falls  
State Park





Dr. Thomas Walker State Shrine, 22 miles southeast, is the site of the cabin built by Dr. Walker, who led the first documented expedition through Cumberland Gap. This 12-acre park contains a replica of the cabin, a playground, and picnic shelter.

Pine Mountain State Resort Park, approximately 35 miles southeast of Corbin near Pineville, is a 2,500-acre park, located in the Kentucky Ridge State Forest. This park is the scene of the Mountain Laurel Festival in the spring, and the summer drama, "The Book of Job." Other park features offered are swimming, hiking, horseback riding, shuffleboard, picnicking, playground, golf, and camping.

General Burnside State Park, 45 miles west of Corbin, is a 400-acre park on Lake Cumberland. This resort park has a bathhouse, beach, dock, fishing, 18-hole golf course, picnic area, camping facilities, and playground.

Cumberland Gap National Historical Park, 50 miles southeast, is the largest national historical park in the United States. Features in this 20,816-acre park include: a frontier museum; Pinnacle Mountain that overlooks 3 states; 3 caves; old iron furnace; and Hensley Settlement, a restored mountain village.

## COMMUNITY IMPROVEMENTS

### Recent:

1. Certain-Teed Products Corporation has constructed a 52,000-square foot warehouse facility.
2. National Standard Company has completed a 50,000-square foot addition to its production facilities at a cost of \$1.3 million.
3. Peoples Gas Company of Kentucky, Inc., has completed a \$5.5 million project for the upgrading of supply transmission mains.
4. St. Camillus Academy has constructed a new \$385,000 classroom building.
5. Two city parks with a total of five tennis courts, one Little League baseball diamond, one softball field, two playground areas, and a concession and restroom facility have been completed.
6. The Corbin Fire Department has purchased a 1,000 gpm pumper, and plans to acquire another pumper.
7. A 44-unit and 24-unit apartment complex have been built.
8. Two savings and loan associations and two branch banks have opened.
9. The City of Corbin has annexed approximately 20 acres that includes the new shopping center.
10. Six new businesses have opened in the shopping center.

### Underway:

1. Joint efforts are underway to establish the Corbin-Tri County Industrial Park, a 688-acre tract of land located 2 miles southeast of Corbin.
2. The Louisville and Nashville Railroad is consolidating the Knoxville and Cincinnati district offices at Corbin. An office building and communications tower are under construction.
3. The London-Corbin Airport is in the process of acquiring 160 acres to improve facilities. A new flight station has been constructed, and construction of a flight terminal building, additional ramp space, and full parallel taxi route is planned.

4. Several areas are under development on the Laurel River Lake. A 28-site picnic area, picnic shelter, playground area, hiking trail, and restroom facilities, only 1 miles from Corbin, are nearly complete. Construction of a 50-slip marina, vehicle-access campground, and amphitheatre are to be constructed approximately 5 miles from Corbin.

5. The American Fidelity Bank and Trust Company is constructing a bank in Corbin.

Planned:

1. The City Utilities Commission plans to install a 500,000-gallon storage tank and a 12-inch and 16-inch water main to increase distribution pressure to South Corbin. In addition, a 201 Facilities Study of the sewerage system has been completed. The city is now awaiting recommendations of a Sewer System Evaluation Study.

2. The Corbin Independent School District plans to renovate the former high school building at a cost of \$850,000 and use the building as a new middle school.

3. The Whitley County School System plans to construct a new middle school.

4. The coal washing plant of U. S. Steel Corporation plans a multi-million dollar expansion of its facilities.

5. Construction on a \$400,000 city park will begin in the spring of 1977. Immediate plans call for the construction of a baseball diamond, a softball field, 3 tennis courts, and a concession and restroom facility.

6. The city intends to renovate the old railroad depot building and use it as a civic center.

7. A shopping center for small businesses is planned.

8. The Kentucky Department for Human Resources is constructing a 6,000-square foot addition to its office building.