

1987

Industrial Resources: Barren County - Glasgow

Kentucky Library Research Collections
Western Kentucky University, spcol@wku.edu

Follow this and additional works at: https://digitalcommons.wku.edu/barren_cty

 Part of the [Business Administration, Management, and Operations Commons](#), [Growth and Development Commons](#), and the [Infrastructure Commons](#)

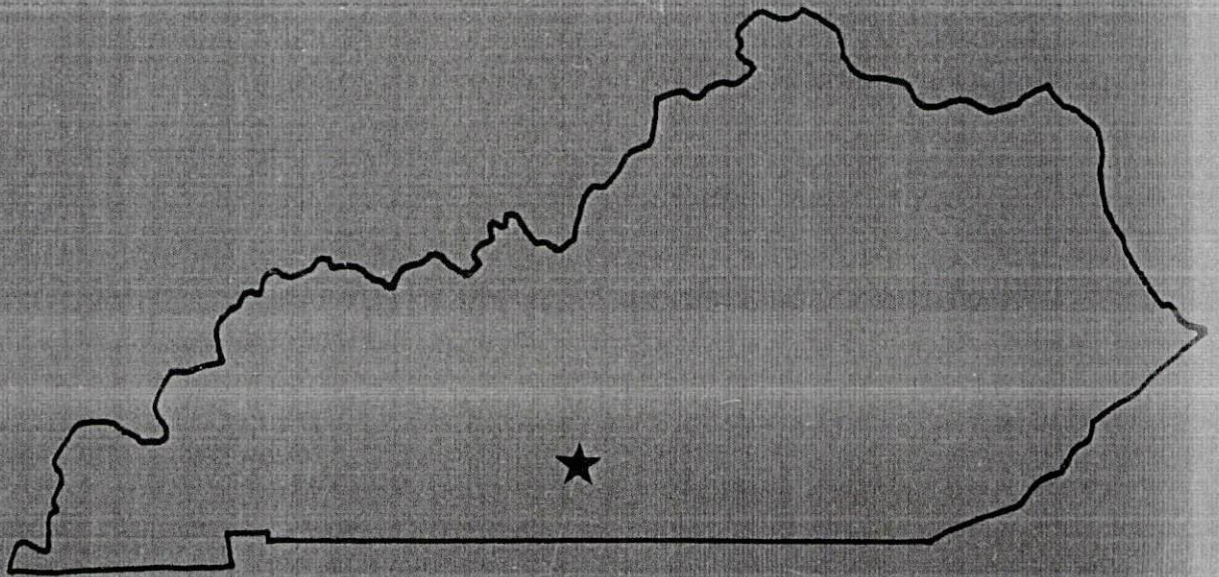
Recommended Citation

Kentucky Library Research Collections, "Industrial Resources: Barren County - Glasgow" (1987). *Barren County*. Paper 15.
https://digitalcommons.wku.edu/barren_cty/15

This Report is brought to you for free and open access by TopSCHOLAR®. It has been accepted for inclusion in Barren County by an authorized administrator of TopSCHOLAR®. For more information, please contact topscholar@wku.edu.

RESOURCES FOR ECONOMIC DEVELOPMENT

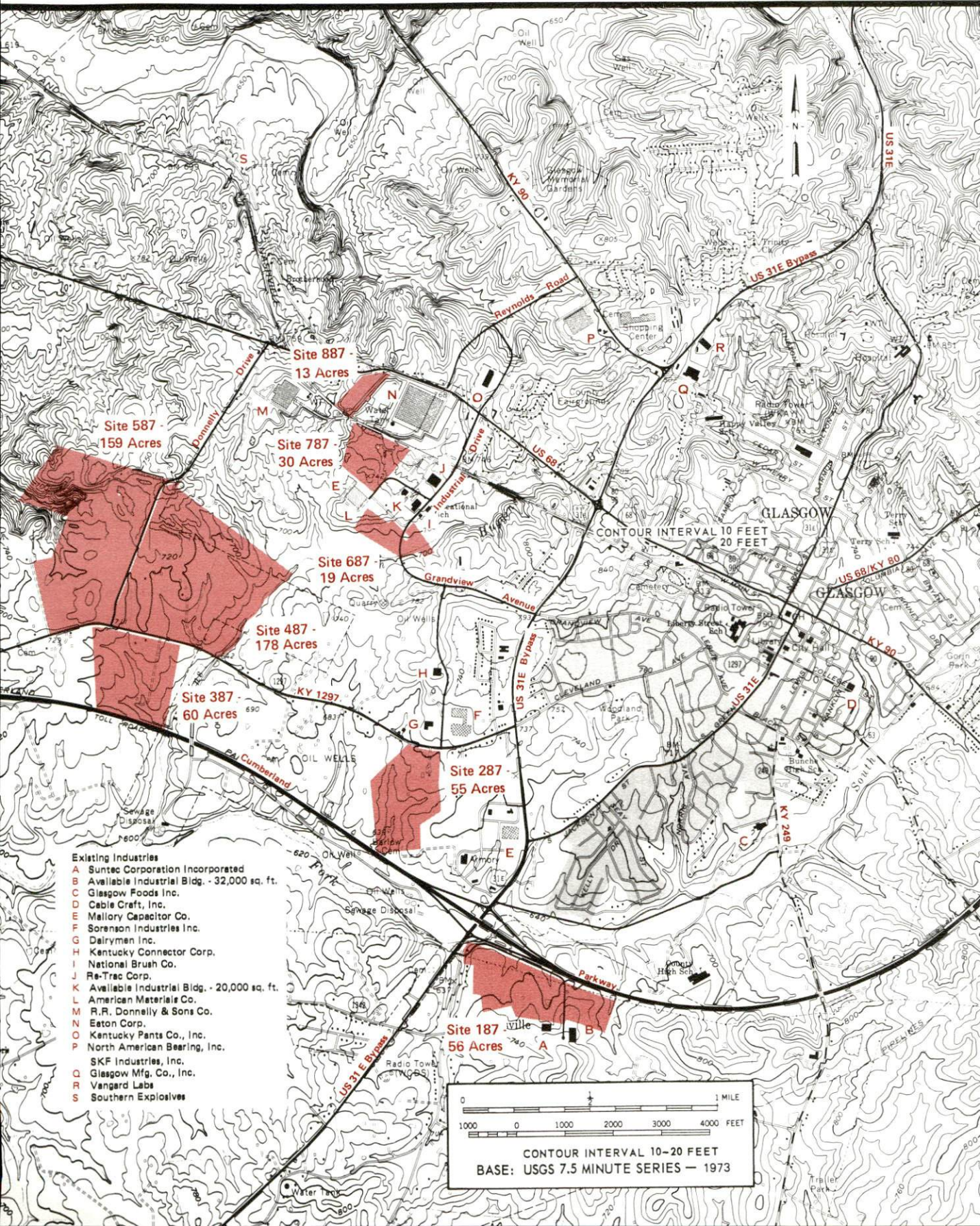
Glasgow



KENTUCKY
The business environment is right.

GLASGOW, KENTUCKY --- Index to Industrial Sites --- 1987

For detailed data on individual sites contact the Kentucky Department of Economic Development, Industrial Development & Marketing Division, Capital Plaza Tower, Frankfort, Kentucky 40601 (502-564-7140).



RESOURCES FOR ECONOMIC DEVELOPMENT

GLASGOW, KENTUCKY

Prepared by
The Kentucky Department of Economic Development
Division of Research and Planning
in cooperation with
The Glasgow-Barren County Chamber of Commerce
and
The Glasgow-Barren County Industrial Development Economic Authority

1987

Program manager - Andrew Dennis; research - James R. Thompson; clerical - Bobbi Graves; graphics - Tony Cecconi, Robert Owens; cartography - Site Evaluation Branch, Division of Industrial Development and Marketing. Cost of printing paid from state funds.

TABLE OF CONTENTS

<u>Chapter</u>	<u>Page</u>
INDUSTRIAL SITES	i
GLASGOW, KENTUCKY - A RESOURCE PROFILE	1
THE LABOR MARKET AREA	2
Population	2
Population Projections	2
Labor Force Characteristics of Residents, 1985	3
Selected Components of Nonagricultural Employment, by Place of Work, 1985	3
Per Capita Personal Income	4
Estimated Male Labor Supply	5
Estimated Female Labor Supply	5
Average Weekly Wages by Industry, by Place of Work, 1985	6
EXISTING INDUSTRY	8
Major Glasgow Manufacturing Firms, Their Products and Employment	8
Labor Organizations in Manufacturing Firms	10
Selected Industrial Services	11
TRANSPORTATION	12
Rail	12
Highways	12
Truck Service	13
Air	14
Air Express Service	15
POWER AND FUEL	16
Electricity	16
Natural Gas	16
Other Fuels	17
WATER AND SEWERAGE	18
Public Water Supply	18
Sewerage	19
CLIMATE	21

<u>Chapter</u>	<u>Page</u>
LOCAL GOVERNMENT	22
Structure	22
Planning and Zoning	22
Local Fees and Licenses	22
State and Local Property Taxes	23
Combined State and Local Rates Per \$100 Valuation, 1986	23
Safety	24
Police	24
Fire	24
Rescue Service	24
Refuse Collection and Disposal	24
EDUCATION	25
Public Schools	25
Nonpublic Schools	25
Area Colleges and Universities	26
College Extension Campuses	26
Vocational Schools	27
HEALTH	29
Local Medical Personnel	29
Hospitals	29
Other Medical Facilities	29
Ambulance Service	29
OTHER LOCAL FACILITIES	30
Communications	30
Library Services	30
Religious Institutions	31
Financial Institutions	31
Hotels and Motels	32
Clubs and Organizations	33
RECREATION	34
COMMUNITY IMPROVEMENTS	37

1986 EDITION
GENERAL HIGHWAY MAP
BARREN COUNTY
KENTUCKY

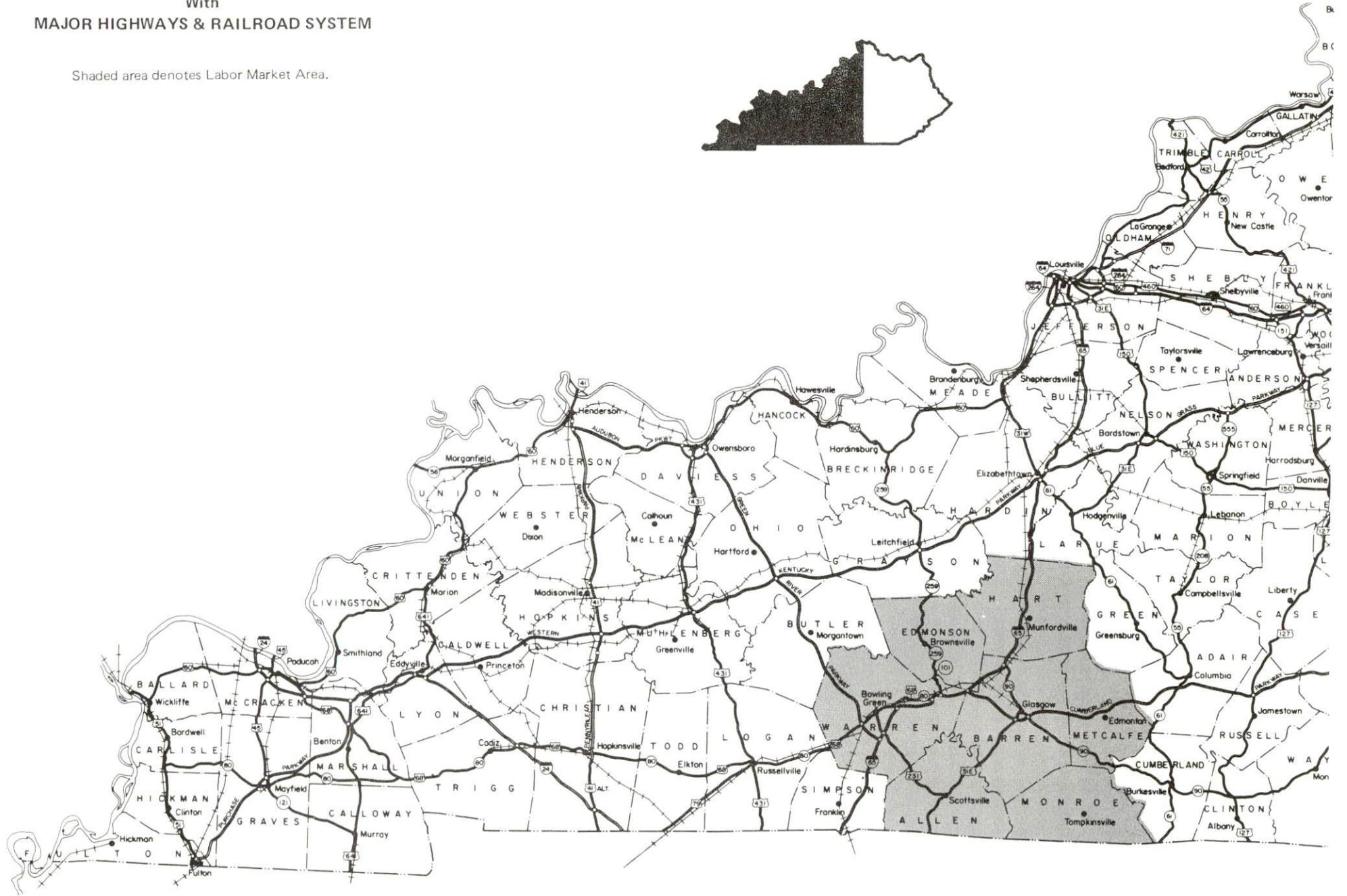
PREPARED BY THE
KENTUCKY TRANSPORTATION CABINET
DEPARTMENT OF HIGHWAYS
DIVISION OF PLANNING
IN COOPERATION WITH THE
U.S. DEPARTMENT OF TRANSPORTATION
FEDERAL HIGHWAY ADMINISTRATION



GLASGOW LABOR MARKET AREA

With
MAJOR HIGHWAYS & RAILROAD SYSTEM

Shaded area denotes Labor Market Area.



GLASGOW, KENTUCKY - A RESOURCE PROFILE

Glasgow, the county seat of Barren County, is located in the heart of south-central Kentucky near Mammoth Cave National Park and Barren River Lake State Resort Park. Glasgow, with a 1984 estimated population of 12,646, is 94 miles northeast of Nashville, Tennessee; 95 miles southeast of Louisville, Kentucky; and 196 miles southwest of Cincinnati, Ohio.

Barren County, with a 1984 estimated population of 34,564, has a land area of 482 square miles.

The Economic Framework - The total number of Barren County residents employed in 1985 averaged 15,430, with nonagricultural jobs accounting for 13,870 workers. Manufacturing firms in the county reported 4,315 employees; wholesale and retail trade provided 2,610 jobs; 2,030 people were employed in service occupations; state and local government accounted for 1,280 employees; and contract construction firms provided 690 jobs.

Labor Supply - There is a current estimated labor supply of 9,940 men and 11,870 women available for industrial jobs in the labor market area. In addition, from 1987 through 1991, 6,450 young men and 6,170 young women in the area will become 18 years of age and potentially available for industrial jobs.

Transportation - Rail service is provided to Glasgow by CSX Transportation. Glasgow is served by the Cumberland Parkway, U.S. 31E and 68 and Kentucky 90. Interstate 65 is located 13 miles northwest. Twenty trucking companies provide Glasgow with intrastate and/or interstate service. Three companies maintain local terminal facilities. Moore Field, two miles northwest of Glasgow, has one paved runway, 4,000 feet long with a 600-foot over-run. The nearest scheduled commercial airline service is located at Louisville's Standiford Field, 90 miles north of Glasgow; or at Nashville Metropolitan Airport, 100 miles southwest of Glasgow.

Power and Fuel - Electric power is provided to Glasgow by the Glasgow Electric Plant Board, which is supplied by the Tennessee Valley Authority. Barren County is provided electric power by the Farmers Rural Electric Cooperative Corporation. Natural gas service is provided to Glasgow by the Western Kentucky Gas Company. Two distributors of propane and five distributors of distillate fuel oil are located in Glasgow.

Education - Primary and secondary education is provided to Glasgow and Barren County by the Glasgow Independent School System and the Barren County School System. Two nonpublic school systems operate in Glasgow. Bowling Green Junior College, Lindsey Wilson College and Western Kentucky University each have an extension campus located in Glasgow. Vocational training is provided by the Barren County Area Vocational Education Center in Glasgow and the Bowling Green State Vocational-Technical School in Bowling Green, 33 miles west.

LABOR MARKET STATISTICS

The Glasgow Labor Market Area includes Barren County and the adjoining Kentucky counties of Allen, Edmonson, Hart, Metcalfe, Monroe and Warren.

POPULATION

Area	1984*	1980	1970	Percent Nonwhite
				1980
Glasgow	12,646	12,958	11,301	8.2
Labor Market Area	180,295	167,166	141,709	-
Barren County	34,564	34,009	28,677	5.1
Allen County	14,326	14,128	12,598	1.3
Edmonson County	11,251	9,962	8,751	1.9
Hart County	16,694	15,402	13,980	8.1
Metcalfe County	10,188	9,484	8,177	3.0
Monroe County	12,569	12,353	11,642	3.0
Warren County	80,703	71,828	57,884	9.0

* Population estimates.

Note: The 1980 city counts of population by race are provisional.

Sources: U.S. Department of Commerce, Bureau of the Census, 1980 Census of Population and Housing, March 1981; 1980 Census of Population, Number of Inhabitants. University of Louisville, Urban Studies Center, Population Unit, October 1985; Kentucky Population Research Notes, Issue Number One, May 1985.

POPULATION PROJECTIONS

Area	1990	1995	2000	2010
Labor Market Area	191,053	199,140	205,046	213,745
Barren County	36,754	38,474	39,711	41,542
Allen County	14,905	15,327	15,604	15,944
Edmonson County	12,007	12,609	13,059	13,695
Hart County	17,360	17,883	18,274	18,787
Metcalfe County	10,741	11,186	11,482	11,905
Monroe County	12,876	13,122	13,284	13,469
Warren County	86,410	90,539	93,632	98,403

Source: University of Louisville, Urban Studies Center, Population Research Unit, How Many Kentuckians: Population Forecasts, 1980-2020, the 1986 Edition, Spring 1986.

LABOR FORCE CHARACTERISTICS OF RESIDENTS, 1985

	<u>Barren County</u>	<u>Labor Market Area</u>
Civilian Labor Force	17,304	88,124
Employment	15,428	79,920
Agricultural	1,562	6,435
Nonagricultural	13,866	73,485
Unemployment	1,876	8,204
Rate of Unemployment (%)	10.8	9.3

Source: Kentucky Cabinet for Human Resources, Kentucky Labor Force Estimates, Annual Averages, 1985.

SELECTED COMPONENTS OF NONAGRICULTURAL EMPLOYMENT
BY PLACE OF WORK, 1985

	<u>Barren County</u>	<u>Labor Market Area</u>
All Industries (total)	12,034	53,831
Manufacturing	4,315	17,644
Wholesale & Retail Trade	2,608	13,676
Services	2,031	8,437
State/Local Government	1,284	7,869
Contract Construction	694	2,064
Mining & Quarrying	118	302

Note: Excludes domestic workers, railway workers, certain nonprofit corporations, majority of federal government workers, and self-employed workers.

Source: Kentucky Cabinet for Human Resources, Average Monthly Workers Covered by Kentucky Unemployment Insurance Law, 1985.

PER CAPITA PERSONAL INCOME

<u>Area</u>	<u>1980</u>	<u>1984</u>	<u>Percent Change</u>
Barren County	\$ 6,575	\$ 9,313	41.6
Labor Market Area Range	\$4,660 - 7,279	\$5,901 - 9,413	-
Kentucky	7,644	10,232	33.9
U.S.	9,494	12,772	34.5

Sources: U.S. Department of Commerce, Bureau of Economic Analysis.
Kentucky Economic Information System, June 1986.

ESTIMATED MALE LABOR SUPPLY
GLASGOW LABOR MARKET AREA

Area	Current				Future
	Total Male	Unemployed	Under- employed	Not in Labor Force	Becoming 18 years of age 1987 thru 1991
Labor Market Area*	9,944	4,475	4,659	810	6,453
Barren	1,822	1,096	726	0	1,342
Allen	739	406	333	0	520
Edmonson	873	363	237	273	439
Hart	1,304	449	452	403	634
Metcalfe	726	320	272	134	404
Monroe	605	366	239	0	476
Warren	3,875	1,475	2,400	0	2,638

ESTIMATED FEMALE LABOR SUPPLY
GLASGOW LABOR MARKET AREA

Area	Current				Future
	Total Female	Unemployed	Under- employed	Not in Labor Force	Becoming 18 years of age 1987 thru 1991
Labor Market Area*	11,873	3,729	5,356	2,788	6,174
Barren	2,061	780	913	368	1,356
Allen	651	372	279	0	510
Edmonson	1,255	292	312	651	414
Hart	1,912	385	312	1,215	597
Metcalfe	952	273	201	478	349
Monroe	561	260	225	76	491
Warren	4,481	1,367	3,114	0	2,457

* Additional workers may be drawn from other nearby counties.

Note: Unemployed - persons unemployed and actively seeking work; Underemployed - persons employed but working only 14 to 26 weeks per year; Not in Labor Force - represents the number of persons who would enter the labor force if suitable employment were available (based on the assumption that persons in Kentucky would like to participate in the labor force in the same proportion that they do nationally).

Sources: Kentucky Cabinet for Human Resources, Kentucky Labor Supply Estimates by County, 1985. Kentucky Department of Economic Development, Future Labor Supply Becoming 18 Years of Age, 1987 thru 1991.

AVERAGE WEEKLY WAGES BY INDUSTRY
BY PLACE OF WORK, 1985

	Barren County	Allen County	Edmonson County	Hart County
All Industries	\$288.15	\$288.61	\$209.17	\$228.74
Mining & Quarrying	362.28	148.16	*	*
Contract Construction	320.35	479.75	194.39	279.85
Manufacturing	375.59	353.12	*	250.85
Transportation, Communications & Public Utilities	337.01	351.34	198.78	223.01
Wholesale & Retail Trade	175.91	219.10	154.70	173.13
Finance, Insurance & Real Estate	298.27	296.06	264.13	281.97
Services	227.64	175.11	225.23	178.73
State/Local Government	274.27	265.90	249.87	268.06
Other	120.51	213.72	*	187.44
	Metcalf County	Monroe County	Warren County	
All Industries	\$198.38	\$203.39	\$305.75	
Mining & Quarrying	215.11	*	300.43	
Contract Construction	153.77	147.47	270.05	
Manufacturing	167.84	202.59	422.17	
Transportation, Communications & Public Utilities	385.03	471.84	371.07	
Wholesale & Retail Trade	155.02	169.64	200.11	
Finance, Insurance & Real Estate	227.46	256.89	312.22	
Services	268.42	129.57	256.46	
State/Local Government	233.18	241.56	333.89	
Other	*	187.80	196.77	

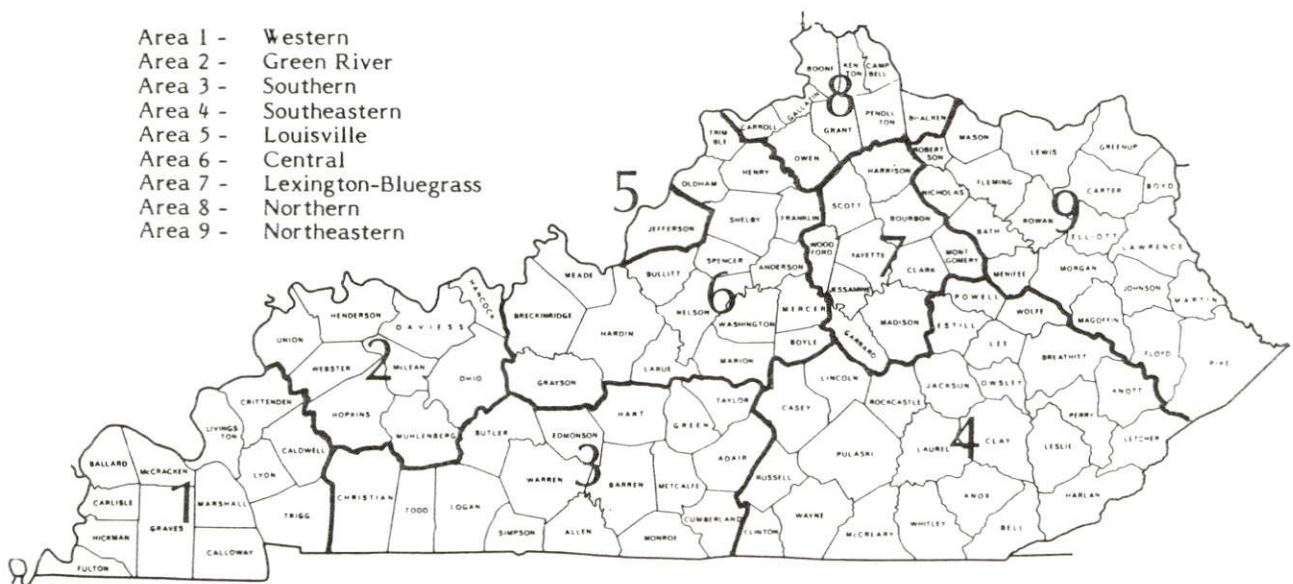
* Not disclosed.

Note: The average weekly wage for each category includes the salaries and wages of all persons working for that type business. For example, the manufacturing category includes both production workers and administrative personnel. Excludes domestic workers, railway workers, certain nonprofit corporations, majority of federal government workers, and self-employed workers.

Source: Kentucky Cabinet for Human Resources, Average Weekly Wages of Workers Covered by Kentucky Unemployment Insurance Law, 1985.

Occupational wage rates for specific industries are usually not available to most government agencies, and wage data furnished to state employment agencies by individual industrial employers are protected from disclosure by federal law. The most reliable up-to-date wage information can be obtained by direct contact with local employers.

Associated Industries of Kentucky, a voluntary organization of Kentucky businesses, regularly collects occupational wage rates and fringe benefits data from participating member firms. Data are compiled for over 127 clearly defined office, production, and service occupations. Tabulations are published for nine geographical areas of Kentucky, as shown on the map below. It should be noted that the data may be weighted by the preponderance of firms in the larger cities and may be somewhat higher than the rates paid in the smaller communities. Data from these tabulations are available, upon request, from the Kentucky Department of Economic Development, Frankfort, Kentucky 40601.



Associated Industries of Kentucky Area Wage Surveys

EXISTING INDUSTRY

MAJOR GLASGOW MANUFACTURING FIRMS,
THEIR PRODUCTS AND EMPLOYMENT*

Firm (Establishment date)	Product	Employment			Labor Unions
		Total	Male	Female	
Cave Lake Workshop (1973)	Cushions, wood stacks	43	27	16	
Dairymen, Inc. (1975)	Cheese, whey powder	60	50	10	Food & Commer- cial Workers**
Dairymen, Inc., Whey Plant (1975)	Extra grade sweet whey	23	22	1	
Dickerson Lumber Company (1947)	Kiln-dried lumber, skids and pallets	77	75	2	
R.R. Donnelley & Sons Company, Glasgow Manu- facturing Division (1970)	Printing	N/A			
Eaton Corporation, Axle Division, Glasgow Plant (1971)	Axles	669	583	116	
Glasgow Foods, Inc. (1969)	Poultry processing	176	106	70	
Glasgow Manufactur- ing Company, Inc. (1946)	Ladies' sportswear, ladies' suits, ladies' dresses	230	30	200	Ladies' Garment Workers

(Continued)

Firm (Establishment date)	Product	Employment			Labor Unions
		Total	Male	Female	
Glasgow Daily Times (1865)	Newspaper, offset printing	35	15	20	
Kentucky Connector Corporation (1971)	Electrical connectors	45	35	10	
Kentucky Pants Company, Inc., #2 (1960)	Industrial work pants	245	43	202	
Mallory Capacitor Company (1964)	Electrolytic capacitors, sonalerts	318	79	239	
National Brush Company Plant #3 (1958)	Brush blocks, wood handles, shape wood parts	64	54	10	
Suntec Industries, Inc. Glasgow Division	Fuel oil pumps	30	-	-	
Re-Trac Corporation (1985)	Truck mirrors	59	--	--	
SKF Industries, Inc., North American Bearing Division, Glasgow Plant (1965)	Roller bearings, tapered	592	491	101	Steel- workers**
Southern Explosives Corporation (1967)	Blasting agents	43	40	3	
Span Tech, Inc. (1976)	Industrial conveyor systems	22	--	--	
Vanguard Labs (1976)	Plastic packaging for pharmacy	70	25	45	

* Firms with 20 or more employees.

** See Labor Organizations next page.

Sources: Kentucky Department of Economic Development, 1986 Kentucky Directory of Manufacturers; Division of Research and Planning.

LABOR ORGANIZATIONS IN MANUFACTURING FIRMS

<u>Union</u>	<u>Representing workers at:</u>
International Ladies' Garment Workers Union, AFL-CIO	Glasgow Manufacturing Company, Inc.
United Food and Commercial Workers International Union, AFL-CIO	Dairymen, Inc.
United Steelworkers of America, AFL-CIO	SKF Industries, Inc., North American Bearing Division, Glasgow Plant

SELECTED INDUSTRIAL SERVICES

<u>Types of Service</u>	<u>Location</u>	<u>Mileage from Glasgow</u>
Custom Plastics Producers	Bowling Green	33
Electric Motor Repair	Glasgow	-
Grinding, Precision & Tool	Nashville, TN	94
	Louisville	95
Heat Treating Facilities	Nashville, TN	94
	Louisville	95
Industrial Equipment & Supplies	Bowling Green	33
Industrial Gases	Bowling Green	33
Industrial Waste Removal	Elizabethtown	53
Machine Shops, Tool & Die	Glasgow	-
Metal Finishers	Elizabethtown	53
Metal Service Centers	Bowling Green	33
Millwrights	Bowling Green	33
Public Warehouse Facilities	Glasgow	-

Sources: Kentucky Department of Economic Development, Kentucky Directory of Selected Industrial Services, 1985; Division of Research and Planning.

TRANSPORTATION

Rail

Line serving Glasgow - CSX Transportation*

Services - Branch line; one local turn-around from Bristow six days a week; switching services; team track can be arranged through owners of private tracks; nearest piggyback facilities are located at Nashville, Tennessee, 94 miles south, and Louisville, Kentucky, 95 miles north

For details on routing, schedules, rates, and services, contact:

Manager of Industrial Development
CSX Transportation
P. O. Box 2157
Louisville, Kentucky 40201
(502) 587-5228

Highways

Glasgow is served by the Cumberland Parkway, an east-west, multi-lane toll road. Glasgow is also served by Interstate 65, (13 miles northwest) which connects Louisville, Kentucky and Nashville, Tennessee. Highway access to Glasgow is also provided by U.S. Highways 31-E and 68, and Kentucky Route 90, all "AAA"-rated, 80,000-pound gross load limit trucking highways.

U.S. 31-E Bypass will be widened to five lanes, from U.S. 68 and Kentucky 80 to Kentucky 90 in 1987.

* CSX Transportation operates the privately-owned Glasgow Railroad.

Truck Service

AAA Cooper Transportation*	Jones Truck Lines, Inc.**
A & H Truck Line, Inc.**	Majors Transit, Inc.**
ANR Freight System, Inc.**	Manning Motor Express, Inc.
ARA/Smith's*	(T)**
American Freight System, Inc.	Middlewest Freightways, Inc.**
(T)*	Overnite Transportation
Averitt Express, Inc.**	Company**
Bestway Express, Inc.**	P-I-E Nationwide, Inc.**
Buske Lines, Inc.**	Roadway Express, Inc.**
CW Transport, Inc.**	Thurston Motor Lines, Inc.*
General Highway Express, Inc.**	Smith Transfer Company, (T)
	Yellow Freight System, Inc.**

(T) Local terminal.

* Interstate service only.

** Interstate and intrastate service.

Source: American Motor Carrier Directory, Fall 1986.

HIGHWAY MILES AND TRUCK TRANSIT TIME IN DAYS FROM GLASGOW, KENTUCKY, TO SELECTED MARKET CENTERS

City	Highway Miles	Delivery Time TL	City	Highway Miles	Delivery Time TL
Atlanta, GA	336	1	Los Angeles, CA	2,169	3
Baltimore, MD	674	2	Louisville, KY	95	1
Birmingham, AL	290	1	Nashville, TN	94	1
Chicago, IL	387	1	New Orleans, LA	611	2
Cincinnati, OH	196	1	New York, NY	836	2
Cleveland, OH	440	2	Pittsburgh, PA	476	2
Detroit, MI	445	1	St. Louis, MO	318	2
Knoxville, TN	207	1			

Note: Mileage computations are via the best interstate or primary highways, not necessarily the most direct route of travel.

Sources: Rand McNally Road Atlas, 1979. Official Kentucky Mileage Map, 1985. Delivery time - Manning Motor Express, Inc., 601 Cavalry Drive, P. O. Box 685, Glasgow, Kentucky 42141.

Air

Local

Moore Field*

Location: 2 miles northwest of Glasgow

Runways: 1 paved

Length: 4,000 feet (600-foot over-run)

Traffic

Control: Wind sock

Lighting: Runway lights sundown to sunrise, VASI, REIL, VOR, DME, SDF, NDB

Services: 100LL, jet-A fuel, charter, flight instruction, taxi, minor A & P repairs, rental cars available, hangar, auxiliary power unit, plane rental, tie-downs

Air Freight Service: Chartered air freight service must be arranged

Nearest Scheduled Commercial Airline Services

Standiford Field

Location: 5 miles southeast of center of Louisville
90 miles north of Glasgow

Runways: 2 paved

Length: 10,000 feet; 7,250 feet

Traffic

Control: Control tower

Lighting: Runways, obstructions, beacon and approach; touchdown lights and center line on one runway

Services: American Airlines, Delta, Eastern, Ozark, Piedmont, Britt Airways, Midstate, Republic, TWA, United, USAir, Allegheny Commuter, Comair, Florida Express; fuel - 100 and jet-A; major A & P repairs; major Avionics repairs; APU, charter, oxygen, U.S. Customs; taxi, car rentals, limousine, courtesy car, public transit; Weather Bureau; restaurant, snack bar

Air Freight Service: Air freight terminal

(Continued)

* There are plans to build a new 3,250-square-foot terminal at Moore Field in 1987.

Location: Nashville Metropolitan Airport
 6 miles southeast of Nashville, TN;
 100 miles southwest of Glasgow, KY
 Runways: 3 paved
 Length: 8,000 feet; 7,700 feet; 4,320 feet
 Traffic Control: Tower
 Lighting: Beacon, runway
 Services: American, Delta, Eastern, Ozark, Pan Am,
 Piedmont, Republic, TWA, United, USAir,
 Allegheny Commuter, Southwest, Comair,
 Florida Express, Air Midwest, Peoples
 Express, Prime Air, Sunbird, Tennessee
 Airways; fuel - 100LL, jet-A; tie-downs,
 hangars; major A & P repairs, major
 Avionics repairs; APU, charter, flight
 instruction, oxygen, plane rental, survival
 equipment, U.S. Customs; taxi, limousine,
 car rental, courtesy car, public transit;
 weather information; restaurant, snack bar
 Air Freight Service: Air freight terminal

Air Express Service

Several major companies offer air express services in Kentucky. These companies provide a quick means of shipping small to medium-sized packages expeditiously.

POWER AND FUEL

Electricity

Company serving **Glasgow** - Glasgow Electric Plant Board

Sources of power - Tennessee Valley Authority

For industrial rates contact:

South Kentucky Industrial Development
Association, Inc.
P. O. Box 726
Hopkinsville, Kentucky 42240
(502) 885-5393

Company serving **Barren County** - Farmers Rural Electric Cooperative Corporation

Source of power - East Kentucky Power Cooperative

For industrial rates contact:

Industrial Development Division
East Kentucky Power Cooperative
P. O. Box 707
Winchester, Kentucky 40391
(606) 744-4812

Natural Gas

Company serving **Glasgow** - Western Kentucky Gas Company

Source of supply - Texas Gas Transmission Corporation

Size of transmission mains - 6-inch (supplier)

Distribution mains - 2 to 6 inches

Distribution pressure - 25 to 40 psi

Btu content - 1,000 per cubic foot

Specific gravity - 0.60

For rates and supplies contact:

Director of Marketing
Western Kentucky Gas Company
311 West 7th Street
Owensboro, Kentucky 42301
(502) 685-8067

Other Fuels

Propane

Doxol Propane*
Buckeye Gas Products Company
921 West Main Street
Glasgow, Kentucky 42141

Suburban Propane*
214 Industrial Drive
Glasgow, Kentucky 42141

Fuel oils

Distillate fuel oil -

Ashland Petroleum, Inc.*
921 West Main Street
Glasgow, Kentucky 42141

Winger Oil Company*
Route 2, Box 288
Highway 31E South
Glasgow, Kentucky 42141

Benedict & Benedict, Inc.*
103 East College (office)
Glasgow, Kentucky 42141

Wyatts Oil Company*
1304 South Green Street
Glasgow, Kentucky 42141

Tri-County Oil Company, Inc.*
715 West Main Street
Glasgow, Kentucky 42141

Residual fuel oil - Arrangements must be made with the refinery.

Low sulphur content coal - Available in Kentucky.

* Bulk Plant.

WATER AND SEWERAGE

Public Water Supply

Company serving Glasgow - Glasgow Water Company*
118 East Washington Street
Glasgow, Kentucky 42141
(502) 651 - 6787

Source - Beaver Creek and Barren River Reservoir
Treatment plant capacity - 8,500,000 gallons per day
Average daily consumption - 3,500,000 gallons
Peak daily consumption - 4,100,000 gallons
Treatment processes - Coagulation, sedimentation, chlorination, rapid mix, flocculation, filtration, fluoridation
Storage capacity - 5,600,000 gallons including clearwells
Size lines - 6 to 24 inches
Water pressure - 30 to 110 psi

MONTHLY WATER RATES

Industrial customers

Customers using over 1,000,000 gallons per month will be billed for all water used at \$.50 per M gallons inside the city limits and \$.70 per M gallons outside the city limits.

Residential and commercial customers

Inside city

First	2,000 gallons	\$5.00	(Minimum bill)
Next	18,000 gallons	1.40	per M gallons
Next	80,000 gallons	.80	per M gallons
Next	900,000 gallons	.70	per M gallons
Over	1,000,000 gallons	.50	per M gallons

* The Glasgow Water and Sewer Commission extended water and sewer service to the new industrial park in January 1987.

Outside city

First	2,000 gallons	\$7.50	Minimum Bill
Next	18,000 gallons	2.10	per M gallons
Next	80,000 gallons	1.20	per M gallons
Next	900,000 gallons	1.00	per M gallons
Over	1,000,000 gallons	.70	per M gallons

Sprinkler charge

\$0.02 per month per sprinkler head

Fire Hydrant charge

\$2.00 per month per fire hydrant

Tap-on charge:

Inside city

\$ 100	for 5/8-, and 1-inch meter service
300	for 1 1/2- and 2-inch meter service
1,000	for 4-inch meter service
2,000	for 6-inch meter service

Outside city

\$ 300	for 5/8-, 3/4- and 1-inch meter service
700	for 1 1/2- and 2-inch meter service
1,250	for 4-inch meter service
2,500	for 6-inch meter service

Sewerage

Company serving Glasgow - Glasgow Water Company
118 East Washington Street
Glasgow, Kentucky 42141
(502) 651-6787

Design capacity - 4,000,000 gallons per day
Average daily flow - 2,100,000 gallons
Type of treatment - Primary, secondary and tertiary
Treatment processes - Screening, grit removal, primary sedimentation, activated sludge, trickling filter, secondary sedimentation, chlorination, aerobic digester, anaerobic digester
Treated effluent discharged into - South Fork of Beaver Creek
Size of sanitary mains - 6 to 24 inches

(continued)

Monthly rates -

Inside City Limits

First	2,000 gallons	\$3.00	Minimum bill
Over	2,000 gallons	1.00	per M gallons

Outside City Limits

First	2,000 gallons	\$4.50	Minimum bill
Over	2,000 gallons	1.50	per M gallons

Sewer service surcharge:

There shall be a surcharge for high oxygen demand wastewater. It shall be based on the highest charges either for B.O.D. or C.O.D. with rates for each calculated as below.

B.O.D. surcharge - Shall be \$0.15 per M gallons per 100 mg per liter over 200 mg per liter up to 500 mg per liter. The surcharge on B.O.D. over 500 mg per liter shall be \$0.30 per M gallons per 100 mg per liter over 500 mg per liter.

C.O.D. surcharge - Shall be \$0.10 per M gallons per 100 mg per liter over 300 mg per liter up to 750 mg per liter. The surcharge on C.O.D. over 750 mg per liter shall be \$0.20 per M gallons per 100 mg per liter over 750 mg per liter.

There shall be a surcharge for high suspended solids levels.

Suspended solids surcharge - Shall be \$0.15 per M gallons per 100 mg per liter over 200 mg per liter.

CLIMATE

Barren County

Temperature

Normal (30-year record)	59.10	degrees
Average annual 1985	58.90	degrees
Record highest, July 1952 (46-year record)	107.00	degrees
Record lowest, January 1985(46-year record)	-17.00	degrees
Normal heating degree days (30-year record) (Heating degree day totals are the sums of negative departures of average daily temperatures from 65 degrees F.)	3,756	

Precipitation

Normal (30-year record)	48.49	inches
Mean annual snowfall (30-year record)	11.30	inches
Total precipitation 1985	30.92	inches
Mean number days precipitation (.01 inch or more) (44-year record)	119.50	
Mean number days thunderstorms (44-year record)	54.10	

Prevailing Winds (through 1963) South

Relative Humidity (20-year record)

Midnight	79 percent
6 a.m.	84 percent
Noon	58 percent
6 p.m.	61 percent

Source: U.S. Department of Commerce, Environmental Science Services Administration, Climatological Data, 1985. Station of record: Nashville, Tennessee.

LOCAL GOVERNMENT

Structure

Glasgow is served by a mayor and twelve council members. Barren County is served by a county judge/executive and seven magistrates.

Planning and Zoning

City agency - Joint City County Planning Commission of Barren County
Participating cities - Glasgow, Cave City, Park City and Hiseville
Zoning enforced - Within the city of Glasgow only
Subdivision regulations enforced - County-wide
Local codes enforced - Building (county-wide), Housing (Glasgow only)
Mandatory state codes enforced - Kentucky Plumbing Code, National Electric Code, Kentucky Boiler Regulations and Standards, Kentucky Building Code (modeled after BOCA code)

Local Fees and Licenses

The city of Glasgow levies an occupational license fee of one percent of wages of individuals and one percent of net profits of businesses. Business licenses range from \$15 to \$200 annually.

State and Local Property Taxes

All property in Kentucky, except items exempted by the state constitution, is taxed by the state. Property which also may be taxed by local jurisdictions includes land and buildings, finished goods inventories, automobiles, trucks, office furniture and office equipment. Local taxing jurisdictions in Kentucky include counties, cities, and school districts.

All property in Kentucky is assessed at 100 percent of fair cash value.

COMBINED STATE AND LOCAL RATES PER \$100 VALUATION, 1986

	<u>Inside Glasgow Independent School District</u>	<u>Inside Glasgow and the Barren County School District</u>	<u>Unincorporated Barren County</u>
Land and Buildings	\$1.1140	\$0.8430	\$0.6160
Manufacturing Machinery	0.1500	0.1500	0.1500
Pollution Control Equipment	0.1500	0.1500	0.1500
Inventories			
Raw materials	0.0010	0.0010	0.0010
Goods in Process	0.0010	0.0010	0.0010
Finished Goods	0.9459	0.6669	0.4399
Automobiles & Trucks	1.4419	1.1389	0.8689
Other Tangible Personal Property	1.3949	1.1159	0.8889
Intangibles (Accounts receivable*, money in hand, stock, notes, bonds)	0.2500	0.2500	0.2500
Goods Stored in Public Warehouses in Transit Status	0.0010	0.0010	0.0010
Private Leaseholds in Industrial Revenue Bond Financed Facilities	0.0150	0.0150	0.0150

* Accounts receivable are taxed at 85 percent of face value, for an effective rate of \$0.2125 per \$100 valuation.

Safety

Police	Glasgow	Barren County
Total staff	28	5
Radio-patrol cars	6	4
Fire*		
Insurance Services Office, Public Protection Classification	6	**
Full-time staff	31	--
Volunteers	--	176

Rescue Service

Barren County Disaster and Emergency Service.

Refuse Collection and Disposal

Refuse collection and disposal is provided to Glasgow by the City of Glasgow. Service to Barren County is provided thru private contractors.

* Includes copyrighted material of ISO Commercial Risk Services, Inc., with its permission.

** Eight volunteer fire departments serve Barren County with ratings ranging from 7 to 10.

EDUCATION

Public Schools

	Glasgow* Independent	Barren County
Total Enrollment (November, 1986)	2,320	3,036
Kindergarten	206	116
Elementary	1,148	1,915
Middle School	344	-
High School	622	1,005
Accreditation	Southern Association of colleges and schools	-
Pupil-Teacher Ratio (1985-86)	19-1	19-1
Percent High School Graduates to College (1985-86)	57.9	23.4
Expenditures Per Pupil (1985-86)	\$1,866.77	\$1,909.22

Nonpublic Schools

<u>School</u>	<u>Enrollment</u>	<u>Grades</u>
Community Montessori School	20	Preschool-Kindergarten
Glasgow Montessori, Inc.	18	Preschool-Kindergarten

* The Glasgow Independent School System will complete construction of a new \$2.3 million elementary school in Fall 1987. Also there are plans to renovate the Glasgow Middle School and install computer labs at each elementary school.

Area Colleges and Universities

<u>Name</u>	<u>Location (Miles Distant)</u>	<u>Enrollment (Fall, 1985)</u>	<u>Highest Degree Conferred</u>
Western Kentucky University	Bowling Green, Kentucky (33)	11,259	Masters, Specialist*
Lindsey Wilson College	Columbia, Kentucky (37)	635	Associate**
Elizabethtown Community College	Elizabethtown, Kentucky (53)	2,049	Associate
Campbellsville College	Campbellsville Kentucky (56)	648	Baccalaureate
Somerset Community College	Somerset, Kentucky (77)	1,161	Associate
Tennessee Technological University	Cookeville, Tennessee (80)	7,660	Masters & Doctorate
St. Catharine College	Springfield, Kentucky (84)	246	Associate

College Extension Campuses

Western Kentucky University, Bowling Green Junior College and Lindsey Wilson College all operate extension campuses in Glasgow.

* Joint doctoral degree programs are offered in cooperation with the University of Kentucky, Lexington, and cooperative doctoral programs are offered with the University of Louisville. The degrees are issued by the University of Kentucky or the University of Louisville.

** Lindsey Wilson College is in the process of changing from a two-year to a four year institution. In the fall of 1986 the college began offering classes for juniors. In the 1987-88 school year it will add classes for seniors and award its first baccalaureate degrees.

Vocational Training

The Bluegrass State Skills Corporation, an independent public corporation created and funded by the Kentucky General Assembly, provides programs of skills training to meet the needs of business and industry from entry level to advanced training, and from upgrading present employees to retraining experienced workers.

The Bluegrass State Skills Corporation is the primary source for skills training assistance for a new or existing company. The Corporation works in partnership with other employment and job training resources and programs, as well as Kentucky's economic development activities, to package a program customized to meet the specific needs of a company.

Vocational training is available at both the state vocational-technical schools and the area vocational education centers. The state vocational-technical schools are post-secondary institutions. The area vocational education centers are designed to supplement the curriculum of high school students. Both the state vocational-technical schools and the area vocational education centers offer evening courses to enable working adults to upgrade current job skills.

Arrangements can be made to provide training in the specific production skills required by an industrial plant. Instruction may be conducted either in the vocational school or in the industrial plant, depending upon the desired arrangement and the availability of special equipment.

(Continued)

Nearest State School

Bowling Green State Vocational-Technical School
Bowling Green, Kentucky 33 miles distant

Agriculture	Auto Body Repair
Adult Agriculture	Auto Mechanics
Business & Office	Carpentry
Accounting/Jr. Management	Diesel Mechanics
Clerical	Electricity
Secretarial	Electronics
Retailing	Graphic Art (Printing)
Consumer & Home Economics	Industrial Maintenance
Commercial Foods	Machine Shop
Consumer & Family Life Skills	Masonry
Health & Personal Services	Plumbing
Occupations	Related Math
Dental Assistant	Refrigeration & Air Conditioning
Health Careers	Technical Drafting
Nurse Assistant	Tool & Die Making
Practical Nurse	Truck Driving
Radiological Technology	Welding
Respiratory Therapy	Learning Resources Center
Surgical Technician	Computer Lab
Industrial Education	
Automated Manufacturing/Robotics	

Nearest Area Education Center

Barren County Area Vocational Education Center
Glasgow, Kentucky

Business & Office	Carpentry
Accounting/Jr. Management	Drafting
Clerical	Electricity
Secretarial	Machine Shop
Health & Personal Services	Refrigeration, Heating & Air Conditioning
Occupations	Welding
Health Services	
Industrial Education	
Auto Mechanics	

HEALTH

Local Medical Personnel

Physicians - 41
Dentists - 12

Hospitals

<u>General Hospital</u>	<u>Location</u>	<u>Beds</u>
T. J. Samson Community Hospital	Glasgow	218

Medical staff - 45 doctors, 72 registered nurses, and 137 licensed practical nurses

Other Medical Facilities

Barren County Comprehensive Care Center of Barren River Mental Health-Mental Retardation Board, Inc.

Barren County Health Center of Barren River Regional Health department.

Ambulance Service

Name - Barren-Metcalfe County Ambulance Service
Staff - 30 emergency medical technicians (full and part-time), and three paramedics.

OTHER LOCAL FACILITIES

Communications

- Telephone - General Telephone Company serves Glasgow
Continental Telephone Company and South
Rural Telephone Company
- Telegraph - Western Union
Toll-Free number, 1-800-325-6000
- Newspapers -
Daily and circulation Glasgow Daily Times - 10,000
Weekly and circulation - Barren County Progress - 6,600
The Glasgow Republican - 1,700
- Radio - WKAY-AM, WGGC-FM, WCDS-AM, WOVO-FM,
WJMJ-AM
- Television -
Airwave reception from - Bowling Green and Campbellsville,
Kentucky;
Nashville, Tennessee
- Cable service - Telescripts Cable T.V.
- Educational
Television - The Kentucky Educational Television
(K.E.T.) network is available
statewide

Library Services

- Public library - The Mary Wood Weldon Memorial Public Library
Size collection - 53,019 volumes
Circulation, 1985-86 - 126,137

The Barren River Regional Library is housed in the Mary Wood Weldon Memorial Public Library. It serves ten counties.

Religious Institutions

Denominations -	Assembly of God	Evangelic Tabernacle
	Baptist	Jehovah's Witnesses
	Catholic	Lutheran
	Christian	Methodist
	Church of Christ	Nazarene
	Church of God	Nondenominational
	Church of Jesus Christ of Latter Day Saints	Penetecostal
	Episcopal	Presbyterian
		Seventh Day Adventist

Nearest Synagogues - Nashville, Tennessee, 94 miles southwest
Louisville, Kentucky, 95 miles north

Congregations -	<u>Nashville</u>	<u>Louisville</u>
	Sherith Israel (orthodox)	Adath Israel Brith
	Ohabai Shalom (reform)	Sholom (reform)
	West End Synagogue (conservative)	Adath Jeshurum (conservative)
		Anshei Sfard (orthodox)
		Keneseth Israel (orthodox)
		Sholom (reform)

Financial Institutions

<u>Banks</u>	<u>Assets</u>	<u>Deposits</u>	<u>Statement Date</u>
Citizens Bank & Trust Company of Glasgow*	\$277,903,000.00	\$262,567,000.00	3/31/86
New Farmers National Bank	96,632,152.89	85,838,015.90	6/30/86
Park City State Bank	13,130,000.00	11,862,000.00	9/30/86

* Total assets and deposit figures are those of the Trans Financial Bancorp, Inc. Trans Financial Bancorp, Inc., is the parent company for the Citizens Bank and Trust Company of Glasgow and the Citizens National Bank of Bowling Green.

<u>Savings and Loan Associations</u>	<u>Assets</u>	<u>Deposits</u>	<u>Statement Date</u>
Cardinal Federal Savings and Loan Association*	\$221,081,418.55	211,410,818.41	12/31/85
Future Federal Savings and Loan**	508,989,008.00	416,838,218.00	12/31/85
Hotels and Motels			
	<u>Glasgow</u>	<u>Barren County</u>	
Total number	3	6	
Total rooms	131	625	

* Includes total assets and savings accounts for offices in Owensboro, Calhoun, Glasgow and Hawesville.

** Includes total assets and savings accounts for offices in Louisville, Crestwood, Glasgow, and Tompkinsville.

Clubs and Organizations

Altrusa Club
American Legion
Quatic Club
Barren County Band Boosters
Barren County Democratic Ladies Club
Barren County Education Association
Barren County Farm Bureau
Barren County Federation of Republican Women
Barren County Gospel Singing Association
Barren County Homemakers
Barren County Medical Auxiliary
Barren County Young Democrats
Barren River Rod and Gun Club
Kay Bledsoe Business and Professional Women's Club
Daughters of the American Revolution (DAR)
Disabled American Veterans
5-Watt Club
Foster Parents
Glasgow Band Boosters
Glasgow-Barren County Bar Association
Glasgow-Barren County Chamber of Commerce
Glasgow-Barren County Jaycees
Glasgow Business and Professional Women's Club
Glasgow Education Association
Glasgow Garden Club
Glasgow Women's Club
Kiawanis Club
Ladies Matinee Musicale
Lions Club
Little League
Ministerial Association
New Comers Club
Optimist Club
Parent-Teachers Association (PTA)
Rotary Club
South Central Kentucky Genealogical and Historical Society
Southern Kentucky Association for Handicapped Citizens
T. J. Samson Community Hospital Auxiliary
Travelers Protective Association
Veterans of Foreign Wars (VFW)

RECREATION

Local

The Glasgow Recreation Board provides opportunities for Glasgow citizens of all ages to participate in numerous types of recreational activities. Among the many organized programs administered by the board are adult and youth softball leagues and tournaments, tennis programs, basketball leagues, Little League baseball, basketball, football, distance running, day camps for children, aerobic classes, gymnastics, ceramics classes, exercise classes, volleyball, youth soccer, cheerleading instruction, and an outstanding Senior Citizens program.

Annual tournaments popular in Glasgow include the W. A. Weldon Invitational Tennis Tournament - one of the South's oldest privately endowed tennis events, and the Glasgow Area Junior Tennis Tournament, which includes Junior Tournament players, male and female.

The Glasgow Women's Invitational Softball Tournament is held each year on Memorial Day weekend and draws some of the best teams from Kentucky as well as surrounding states.

Glasgow has also hosted a Women's State Softball Tournament for the past ten years which brings to town teams from the 15 regions across the state.

Glasgow operates four parks - American Legion Park, Gorin Park, Twyman Park and Weldon Park. These offer beautiful wooded areas for camping and picnicking, in addition to space for rigorous sports.

The American Legion Park features a lighted softball field with dugouts and aluminum bleachers seating up to 1,000 persons, a picnic shelter, a concession stand, a croquet court, a horseshoe pitching area, and restroom facilities. Two playgrounds are also available.

Glasgow's municipal swimming pool - a Junior Olympic-size pool - is open from Memorial Day through Labor Day each year. A wading pool and a baby pool are available at this facility. The pool is home to the Glasgow Aquatic Club, a group offering programs to promote physical fitness and competition for the young people of Glasgow.

Weldon Park serves as the location for youth and adult softball league play. Features include a lighted softball field, dugouts, bleachers, a concession stand, picnic shelters, a playground and a large parking area.

In 1986, the city invested \$51,500 at Weldon Park for a new lighting system. The park was enlarged so that men's softball as well as women and youth can be played there. A new fence was added around the ball field area.

Twyman Park hosts a variety of organized games with the assistance of a part-time summer supervisor. The park has two paved outdoor basketball courts, a baseball/softball field, a picnic shelter, and a playground area with restrooms.

Gorin Park, Glasgow's oldest, was established in 1950 and now offers complete facilities for a wide variety of sports. Picnic areas and playground equipment are available, as are basketball and volleyball courts.

Indoor recreational facilities include the Lera B. Mitchell Clubhouse and the Glasgow Recreation Center. The Glasgow Senior Citizens meet daily at the Lera B. Mitchell Clubhouse, where a comprehensive program for this segment of the community is offered. Leisure time activities such as card playing, crafts, and billiards round out the program offerings which include free legal aid, blood pressure checks, a Senior Citizens lunch program, and aerobics classes. The clubhouse is also used for various public functions.

The three-story Glasgow Recreation Center houses the Glasgow Recreation Department offices, and scouts, civic groups, church groups, and many other local organizations hold activities at the center. The Beulah C. Nunn minipark is located adjacent to the facility.

Local private recreational facilities include a country club, four golf courses, two swimming pools, a bowling facility, a three-unit indoor theater, and a skating center.

The Barren County Fair, held each year during June, offers a week of shows and activities which include horse shows, livestock exhibits, truck and tractor pulls, midway attractions, a stock car race, beauty pageants, and floor hall exhibits.

The Glasgow Highland Games was initiated in 1986 and held at Barren River State Park. The games themselves are a gathering of families made up of Scots, their descendants, septs (adopted Scots) for the sole purpose of carrying on an ancient tradition. There is singing, dancing (Scottish Country and Highland), the sheaf toss, caber turning, hammer throwing, 10-k run, 26 & 56 lb. weight toss and distance throws, battleaxe throwing, mass bands, solo piping and drumming, sheepherding demonstrations, golf classic, haggis toss, bonniest knees contest, clan tug-of-war, children's games, appearance of "Barrie" the Loch Barren Monster and a Monster Egg Hunt.

Area (Within 50 miles)

Barren River Lake State Resort Park, 14 miles south of Glasgow, is a full-facility resort park offering a 51-room resort lodge, a coffee shop, 12 cottages, a lodge pool, a beach, riding stables, nature trails, open and covered boat slips, a 9-hole golf course, lighted handball and tennis courts, shuffleboard, park camping with a service building, a restaurant, fishing and pleasure boat rentals, picnic areas, and a playground. Barren River Lake, which covers 10,000 acres, is a popular area for skiing, sailing, fishing, and swimming.

Mammoth Cave National Park is located 13 miles northwest of Glasgow near Cave City. Beneath 52,000 park acres, Mammoth Cave is among the major tourist attractions of all times. It is the largest cave network ever discovered, with over 300 miles of caverns. Some famous sights are Snowball Dining Room (267 feet below surface), Frozen Niagra, Crystal Lake, and Bottomless Pit. The park also features scenic boat trips on the Green River and nature and hiking trails. Park accommodations include a hotel with distinctive gift shops featuring native Kentucky and Southern Highland handicrafts, a motor lodge, hotel cottages, and woodland cottages. Other park facilities include the hotel dining room and a coffee shop, a service center, group meeting facilities, a campground, a picnic area, and tennis and shuffleboard courts. The park is open for tours every day of the year (except Christmas Day).

Nolin River Lake is just north of Mammoth Cave National Park. The lake has a surface area of 5,800 acres and offers facilities for camping, boating, and fishing.

Old Mulkey Meeting House State Shrine, 35 miles southeast of Glasgow near Tompkinsville, offers picnic areas and playgrounds. The house was built in 1804, and is the oldest log meeting house in the state. Daniel Boone's sister is buried in the graveyard and authentic records written in pokeberry ink are on display.

Bowling Green is located 33 miles east of Glasgow. Bowling Green serves the area as a recreational and educational center. Western Kentucky University provides the city with many exciting sporting events. Beech Bend Amusement Park has many rides, games and other forms of entertainment.

Abraham Lincoln Birthplace National Historic Site, located 41 miles north of Glasgow near Hodgenville, features the log cabin which was the birthplace of Abraham Lincoln, enclosed within a granite memorial shrine. The grounds include 116 acres of the original Thomas Lincoln farm and a visitors' center with audiovisual programs and exhibits on the Lincoln family.

Dale Hollow Lake State Park, 48 miles southeast of Glasgow, is located alongside 48 square miles of surface water in southeastern Cumberland County. Park facilities include a marina, a picnic area, and 144 sites for tent and trailer camping. Dale Hollow Lake straddles the Kentucky-Tennessee state line. Several private recreation facilities are located near the lake.

COMMUNITY IMPROVEMENTS

Recent

Glasgow was chosen as a "Kentucky Certified City" in 1986. The award is based on achievement in the following categories: economic development, transportation, public affairs, utilities, health, commercial development, housing, education and recreation. The Certified Cities Program is sponsored by the Kentucky Chamber of Commerce.

The Glasgow/Barren County Industrial Development Economic Authority purchased an 88-acre industrial site in Summer 1986.

The Glasgow Water and Sewer Commission extended water and sewer service to the new industrial park in January 1987.

Smith Transfer Company has recently constructed a terminal in Glasgow. The new facility began operation in Spring 1987 and employees approximately 20 people.

In 1986, the city of Glasgow invested \$51,500 at Weldon Park for a new lighting system. The park was enlarged so that men's softball as well as women's and youth leagues can be played there.

Suntec Industries, Inc. recently built a new manufacturing facility in Glasgow. The new plant, which produces fuel oil pumps, employs approximately 30 people.

Construction of a 32,000-square-foot available "spec" building, by the Glasgow/Barren County Industrial Development Economic Authority, was completed in the spring of 1987.

Under Way

The Glasgow Independent School will complete construction of a new \$2.3 million elementary school in Fall 1987.

Southgate Plaza, a new 100,000-square-foot shopping center, is being developed in Glasgow. The center now contains a grocery store and a drug store and will be fully developed by 1988.

Lakeview Apartments, a 48-unit middle to high income complex, is under construction. The new complex will be completed in Spring 1987.

Delwood Apartments are currently under construction. The 48-unit apartment complex for low to middle income will be completed in Summer 1987.

Planned

U.S. 31-E Bypass will be widened to five lanes, from U.S. 68 and Kentucky 80 to Kentucky 90 in Spring 1987.

The Glasgow/Barren County Chamber of Commerce has plans to expand its existing facility. The expansion will include the addition of a conference room, video room, and office space.

The Glasgow Independent School System has plans to renovate the Glasgow Middle School and install computer labs at each elementary school.

There are plans to build a new 3,250-square-foot terminal at Moore Field in 1987.