

1982

Industrial Resources: Bell County - Middlesboro and Pineville

Kentucky Library Research Collections
Western Kentucky University, spcol@wku.edu

Follow this and additional works at: https://digitalcommons.wku.edu/bell_cty

 Part of the [Business Administration, Management, and Operations Commons](#), [Growth and Development Commons](#), and the [Infrastructure Commons](#)

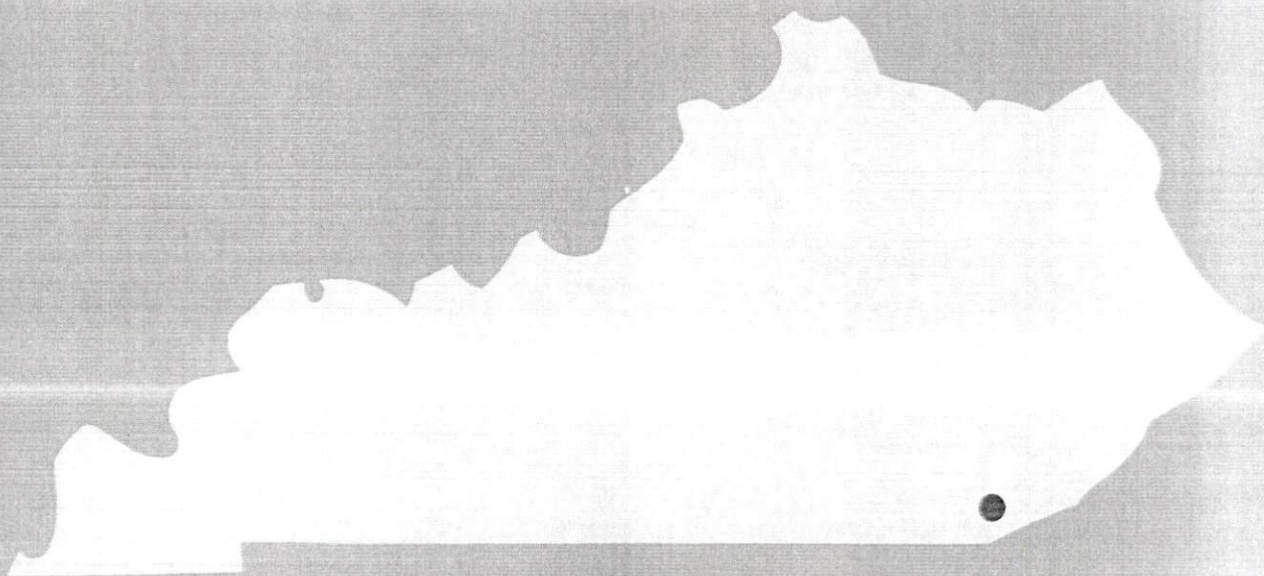
Recommended Citation

Kentucky Library Research Collections, "Industrial Resources: Bell County - Middlesboro and Pineville" (1982). *Bell County*. Paper 21.
https://digitalcommons.wku.edu/bell_cty/21

This Report is brought to you for free and open access by TopSCHOLAR®. It has been accepted for inclusion in Bell County by an authorized administrator of TopSCHOLAR®. For more information, please contact topscholar@wku.edu.

IR
311 Bell County

A comprehensive
report on
**Middlesboro and
Pineville, Ky.**



KENTUCKY & CO.
The state that's run like a business.

A COMPREHENSIVE REPORT ON
MIDDLESBORO AND PINEVILLE, KENTUCKY

Prepared by
The Kentucky Department of Economic Development
Division of Research and Planning
in cooperation with
The Middlesboro Chamber of Commerce
and
The Pineville-Bell County Community Development Agency

1982

Program manager - Brenda Roberts; research - Andrew Dennis; clerical - Linda Fint; graphics - Frank Ferrante, Tony Cecconi, Robert Owens; cartography - Site Evaluation Section, Division of New Industries. Cost of printing paid from state funds.

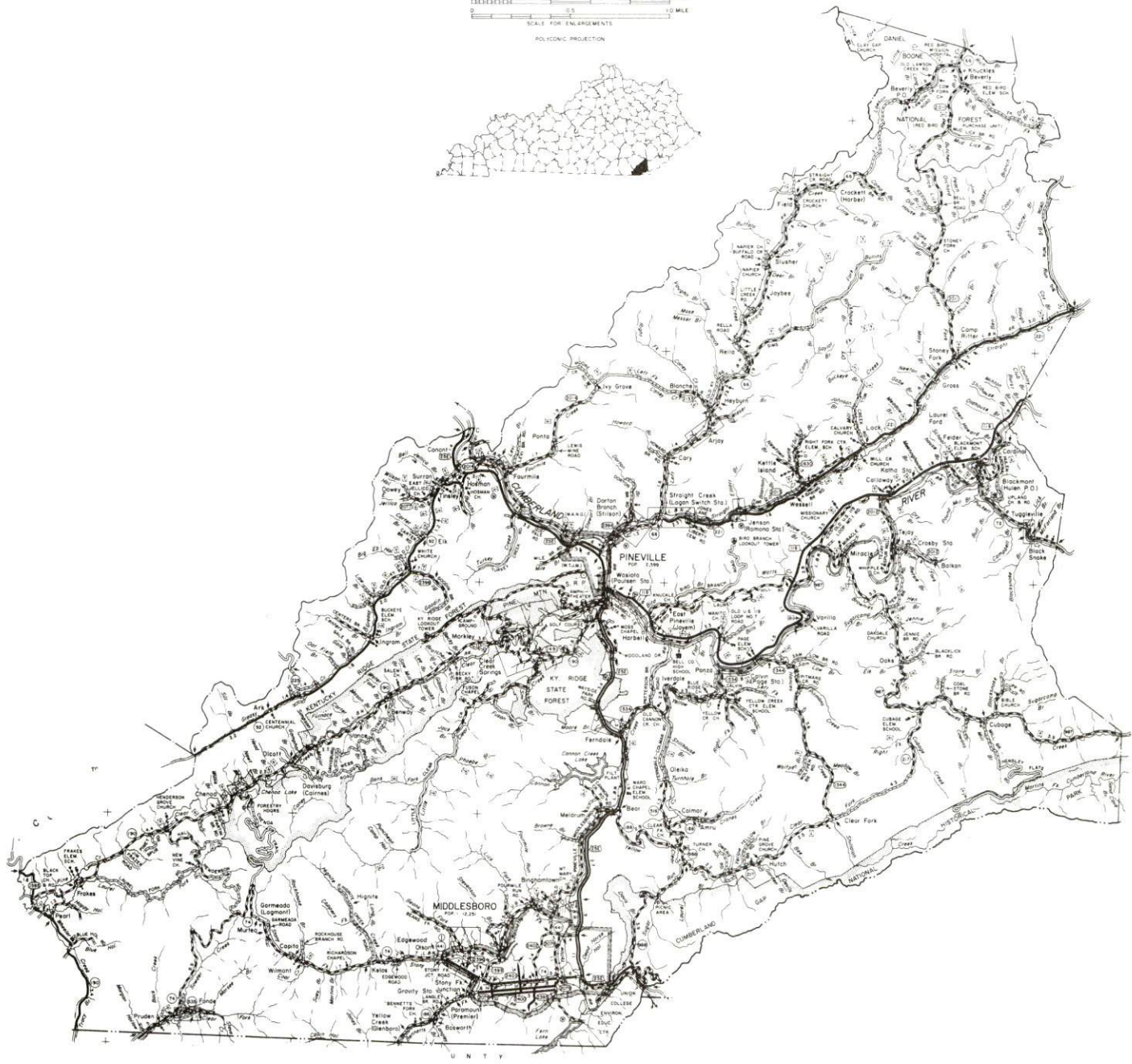
TABLE OF CONTENTS

<u>Chapter</u>	<u>Page</u>
INDUSTRIAL SITES	i
MIDDLESBORO AND PINEVILLE, KENTUCKY - A RESOURCE PROFILE	1
THE LABOR MARKET AREA	3
Population	3
Labor Force Characteristics of Residents, 1981	3
Estimated Male Labor Supply	4
Estimated Female Labor Supply	4
Bell County Manufacturing Firms, Their Products and Employment	5
Labor Organizations in Manufacturing Firms	7
Industrial Services	7
Average Weekly Wages by Industry, by Place of Work	8
Per Capita Personal Income	10
TRANSPORTATION	11
Rail	11
Highways	12
Truck Service	12
Air	13
Bus	14
Taxi	14
Rental Services	14
POWER AND FUEL	15
Electricity	15
Natural Gas	16
Other Fuels	17
WATER AND SEWERAGE	18
Public Water Supply	18
Raw Water	19
Sewerage	20
CLIMATE	21

<u>Chapter</u>	<u>Page</u>
LOCAL GOVERNMENT	22
City	22
County	22
Assessed Value of Property, 1981	22
Property Taxes	23
Combined State and Local Rates Per \$100 Valuation, 1981	23
Utilities Gross Receipts Tax for Schools	24
Planning and Zoning	24
Safety	24
Police	24
Fire	24
Rescue Service	25
Refuse Collection and Disposal	25
EDUCATION	26
Public Schools	26
Nonpublic Schools	27
Area Colleges and Universities	28
Vocational Schools	29
HEALTH	31
Local Medical Personnel	31
Hospitals	31
Other Medical Facilities	32
Ambulance Service	32
Public Health	32
OTHER LOCAL FACILITIES	33
Communications	33
Library Services	34
Religious Institutions	35
Financial Institutions	35
Hotels and Motels	36
Clubs and Organizations	36
RECREATION	38

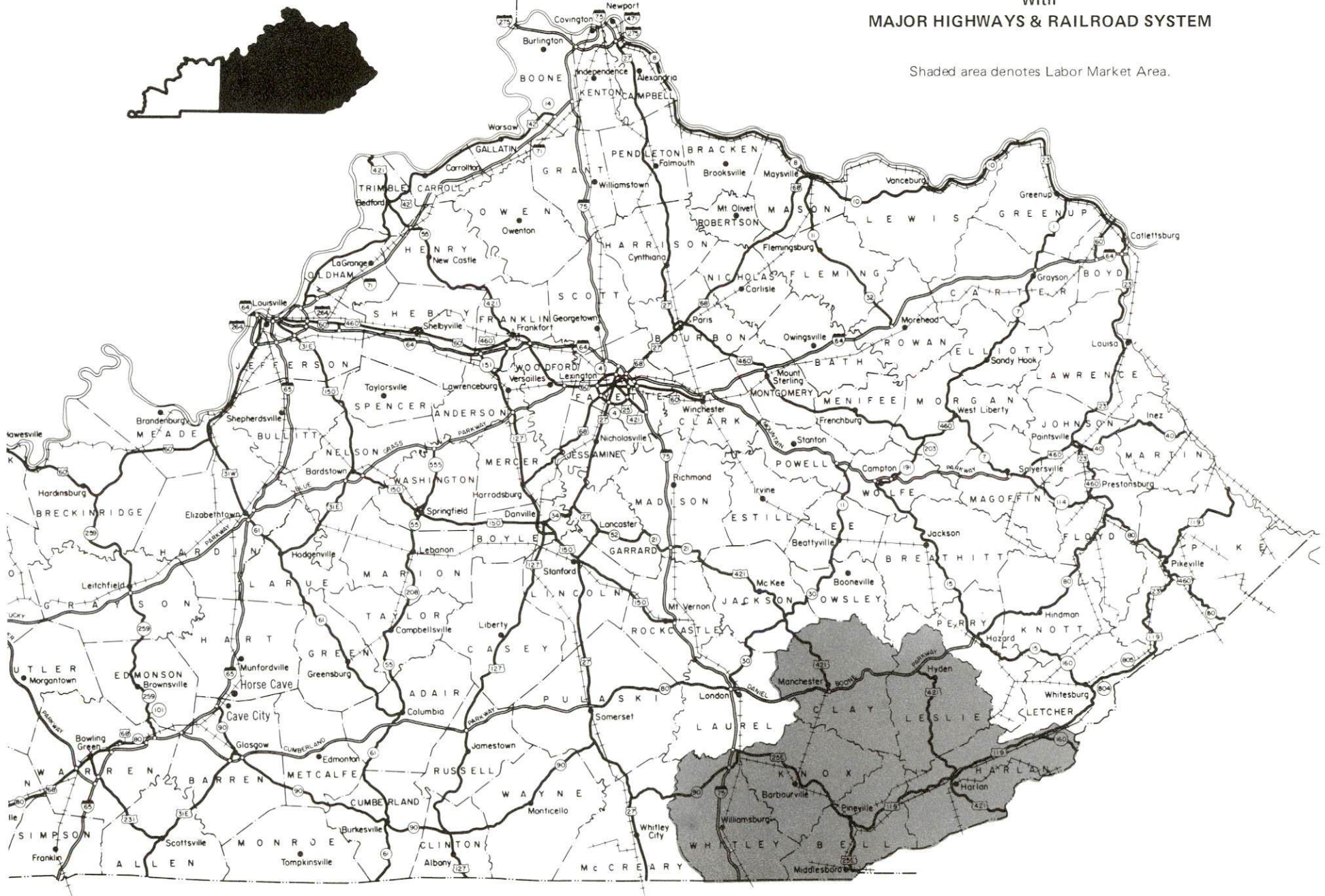
1982 EDITION
GENERAL HIGHWAY MAP
BELL COUNTY
KENTUCKY

PREPARED BY THE
KENTUCKY DEPARTMENT OF TRANSPORTATION
BUREAU OF HIGHWAYS
DIVISION OF PROJECT DEVELOPMENT
IN COOPERATION WITH THE
U.S. DEPARTMENT OF TRANSPORTATION
FEDERAL HIGHWAY ADMINISTRATION



MIDDLESBORO AND PINEVILLE LABOR MARKET AREA With MAJOR HIGHWAYS & RAILROAD SYSTEM

Shaded area denotes Labor Market Area.



MIDDLESBORO AND PINEVILLE, KENTUCKY - A RESOURCE PROFILE

Middlesboro, a seven time recipient of the "All Kentucky City" award, is Bell County's largest city. The city had a 1980 population of 12,251. Located in the southeastern corner of the state, Middlesboro is only a few miles from the Tennessee and Virginia state lines. Middlesboro is 80 miles northeast of Knoxville, Tennessee; 133 miles southeast of Lexington, Kentucky; 205 miles southeast of Louisville, Kentucky; 211 miles south of Cincinnati, Ohio; and less than 300 miles north of Atlanta, Georgia.

Pineville, a six time recipient of the "All Kentucky City" award, is the county seat of Bell County and is located 13 miles north of Middlesboro. In 1980, Pineville had a population of 2,599.

Bell County covers 370 square miles and is situated in the Eastern Coal Field region of Kentucky. In 1980, Bell County had a population of 34,330.

The Economic Framework

The total number of Bell County residents employed in 1981 averaged 11,943; with nonagricultural jobs accounting for 11,880 workers. Manufacturing employers in the county reported 1,185 workers; mining and quarrying 2,326; construction firms 271; transportation, communications, and public utilities 532; wholesale and retail trade 2,032; finance, insurance, and real estate 374; and employees in the service industries 1,464. Manufacturing employment is greatest in the leather and leather products, food and kindred products, apparel and related products and non-electrical machinery industries.

Per capita income in the county in 1980 was \$6,555. Between 1976 and 1980, per capita income increased by 57 percent.

The Middlesboro and Pineville labor market area includes Bell County, the five adjoining Kentucky counties, and Claiborne County, Tennessee, and Lee County, Virginia. The total number of residents in the Kentucky portion of the labor market area employed in 1981 averaged 54,799, with nonagricultural jobs accounting for 53,987 workers. Manufacturing employers in the area reported 3,956 workers; mining and quarrying 10,181; construction firms 1,207; transportation, communications, and public utilities 1,533; wholesale and retail trade 8,377; finance, insurance, and real estate 1,213; and employees in the service industries 6,561.

Resources for Growth

1. There is a current estimated labor supply of 15,605 men and 14,201 women available for industrial jobs in the Kentucky and Tennessee portions of the labor market area. In addition, 8,397 young men and 7,975 young women will become 18 years of age before 1986 and potentially available for work.

2. Middlesboro and Pineville are served by the Louisville & Nashville Railroad. Middlesboro is also served by the Southern Railway System. The nearest piggyback facilities available for both the Louisville & Nashville Railroad and Southern Railway System are in Knoxville, Tennessee, 80 miles southwest of Middlesboro. Middlesboro is served by U.S. Highways 25E and 58 plus Kentucky Highway 74. Pineville is served by U.S. Highways 25E and 119 plus Kentucky Highways 66 and 221. Interstate 75 is 48 miles northwest of Middlesboro and 35 miles northwest of Pineville via U.S. 25E. Interstate 81 is 55 miles southeast of Middlesboro and 68 miles southeast of Pineville via U.S. 25E. Five common carriers serve Middlesboro and Pineville. The Middlesboro-Bell County Airport is equipped with a 3,650-foot runway which can accommodate light aircraft. The nearest scheduled airline service is available in Knoxville, Tennessee, at the McGhee Tyson Airport, 92 miles southwest of Middlesboro.

3. Electric power is provided to Middlesboro, Pineville and the majority of Bell County by the Kentucky Utilities Company. The Cumberland Valley RECC serves the remainder of the county. Natural gas service is provided to both Middlesboro and Pineville by Delta Natural Gas Company, Inc., whose source of supply is the Columbia Gas Transmission Corporation. Two propane and seven distillate fuel oil dealers serve the area.

4. Three public school systems operate in Bell County: the Middlesboro Independent School System, the Pineville Independent School System and the Bell County School System. All three school systems are accredited by the Southern Association of Colleges and Schools. There are 13 institutions of higher learning within 120 miles of Middlesboro. The Harlan State Vocational-Technical School, 46 miles from Middlesboro and 33 miles from Pineville, offers 15 training programs. Two vocational education centers are located in Pineville - The Bell County Area Vocational Education Center offering 10 courses of study, and the Pineville School of Practical Nursing.

THE LABOR MARKET AREA

The Middlesboro and Pineville Labor Market Area includes Bell County and the adjoining Kentucky counties of Clay, Harlan, Knox, Leslie and Whitley.

POPULATION			
Area	1980	1970	Percent Nonwhite
Middlesboro	12,251	11,878	6.2
Pineville	2,599	2,817	5.5
Labor Market Area	177,488	146,429	N/A
Bell County	34,330	31,121	2.8
Clay County	22,752	18,481	1.7
Harlan County	41,889	37,370	5.0
Knox County	30,239	23,689	1.3
Leslie County	14,882	11,623	0.2
Whitley County	33,396	24,145	0.9

Note: The 1980 counts of population by race are provisional.

Source: U.S. Department of Commerce, Bureau of the Census, 1980 Census of Population and Housing, March 1981.

LABOR FORCE CHARACTERISTICS OF RESIDENTS, 1981

	<u>Bell County</u>	<u>Labor Market Area</u>
Civilian Labor Force	13,094	60,259
Employment	11,943	54,797
Agricultural	63	812
Nonagricultural	11,880	53,987
Unemployment	1,151	5,730
Rate of Unemployment (%)	9.5	9.5

Source: Kentucky Department for Human Resources, Kentucky Labor Force Estimates, Annual Averages, 1981.

ESTIMATED MALE LABOR SUPPLY
MIDDLESBORO AND PINEVILLE LABOR MARKET AREA

Area	Current			Under- employed	Future
	Total	Not in Labor Force	Unemployed		Reaching 18 years of age before 1986
Labor Market Area*	15,605				8,397
Bell	2,053	720	934	399	1,566
Clay	2,117	1,163	542	412	1,167
Harlan	4,689	3,131	897	661	1,763
Knox	1,518	192	795	531	1,226
Leslie	1,232	819	312	101	720
Whitley	3,364	1,939	845	580	1,093
Claiborne (Tenn.)	632	N/A	N/A	N/A	862

*The current labor supply would be supplemented by the number of men in adjoining Lee County, Virginia, who are available for industrial jobs.

Note: Unemployed - persons unemployed and actively seeking work;

Underemployed - persons employed but working only 14 to 26 weeks per year;

Not in Labor Force - represents the number of persons who would enter the labor force if suitable employment were available (based on the assumption that persons in Kentucky would like to participate in the labor force in the same proportion that they do nationally).

Sources: Kentucky Department for Human Resources, Kentucky Labor Supply Estimates by County, 1980. Tennessee Department of Employment Security, Available Labor Estimates, 1980. Kentucky Department of Economic Development, Future Labor Supply before 1986.

ESTIMATED FEMALE LABOR SUPPLY
MIDDLESBORO AND PINEVILLE LABOR MARKET AREA

Area	Current			Under- employed	Future Reaching 18 years of age before 1986
	Total	Not in Labor Force	Unemployed		
Labor Market Area*	14,201				7,975
Bell	2,552	1,808	311	433	1,497
Clay	1,674	1,224	263	187	1,012
Harlan	4,385	3,597	294	494	1,706
Knox	1,914	1,135	387	392	1,231
Leslie	1,144	987	84	73	656
Whitley	3,098	2,135	410	553	964
Claiborne (Tenn.)	334	N/A	N/A	N/A	909

*The current labor supply would be supplemented by the number of women in adjoining Lee County, Virginia, who are available for industrial jobs.

Note: Unemployed - persons unemployed and actively seeking work;

Underemployed - persons employed but working only 14 to 26 weeks per year;

Not in Labor Force - represents the number of persons who would enter the labor force if suitable employment were available (based on the assumption that persons in Kentucky would like to participate in the labor force in the same proportion that they do nationally).

Sources: Kentucky Department for Human Resources, Kentucky Labor Supply Estimates by County, 1980. Tennessee Department of Employment Security, Available Labor Estimates, 1980. Kentucky Department of Economic Development, Future Labor Supply before 1986.

BELL COUNTY MANUFACTURING FIRMS,
THEIR PRODUCTS AND EMPLOYMENT

<u>Firm</u> (Establishment date)	<u>Product</u>	<u>Employment</u>			<u>Labor Unions</u>
		<u>Total</u>	<u>Male</u>	<u>Female</u>	
Middlesboro					
Barnes Manufacturing Company, Inc. (1981)	Storm and replacement windows	6	-	-	
Bell Concrete Industries, Inc. (1966)	Ready mixed concrete, packaged cement mixes, precast concrete products	27	23	4	
Bell Printing Company (1916)	Offset printing, letterpress printing	5	3	2	
Coppinger Machinery (1967)	Sprockets, gears, shafts, mine machinery repair	47	46	1	
Cowden Manufacturing Company (1976)	Men's jeans	180	10	170	Clothing & Textile Workers
Cumberland Gap Provision Company (1979)	Meat processing	90	45	45	
Dura Line Corporation (1971)	Plastic pipe	33	31	2	
J. R. Hoe and Sons, Inc. (1909)	Coal preparation equipment, gray iron castings, fabricated structural steel	48	46	2	
J. M. Huber Corporation, Sawmill and Logging (1967)	Lumber, wood chips, pallet materials	45	45	-	
Kentucky Newspapers, Inc. (1916)	Newspaper	28	15	13	

<u>Firm</u> (Establishment date)	<u>Product</u>	<u>Employment</u>			<u>Labor Unions</u>
		<u>Total</u>	<u>Male</u>	<u>Female</u>	
Middlesboro (Contd.)					
Kirby Steel Products, Inc. (1957)	Truck beds, transport trailers	34	33	1	
Martin Manufacturing Corporation (1922)	Elastic webbing, yarn bleaching and dyeing, athletic supporters	25	5	20	
Middlesboro Block Company, Inc. (1954)	Concrete block	9	9	0	
Middlesboro Coca Cola Bottling, Inc. (1904)	Soft drinks	90	85	5	
Middlesboro Tanning Company of Delaware (1960)	Tanning and coloring leather	300	270	30	Food and Commercial Workers*
Millett Hardwoods, Inc. (1943)	Hardwood lumber	15	14	1	
Perma Pipe Corporation (1953)	Extruded plastic pipe, tubing	40	37	3	
Three States Printing Company (1948)	Job printing	5	4	1	
Pineville					
Arthur Asher Lumber (1946)	Rough lumber mine timber, crossties	6	6	0	
Delaware Powder Company (1964)	Explosives	45	37	8	Steelworkers*
Paul Elliott Lumber (1947)	Cap boards, mine timbers, crossties	1	1	0	

<u>Firm (Establishment date)</u>	<u>Product</u>	<u>Employment</u>			<u>Labor Unions</u>
		<u>Total</u>	<u>Male</u>	<u>Female</u>	
Pineville (Contd.)					
Oxygen of Kentucky, Inc. (1968)	Acetylene and oxygen gases	10	8	2	
Stoney Fork					
Brock Lumber Company (1969)	Mine timber, lumber, furniture lumber	7	7	0	

*See Labor Organizations below.

Source: Kentucky Department of Economic Development, 1982 Kentucky Directory of Manufacturers.

LABOR ORGANIZATIONS IN MANUFACTURING FIRMS

<u>Union</u>	<u>Representing workers at:</u>
Amalgamated Clothing and Textile Workers Union, AFL-CIO	Cowden Manufacturing Company
United Food and Commercial Workers International Union, AFL-CIO	Middlesboro Tanning Company of Delaware
United Steelworkers of America, AFL-CIO	Delaware Powder Company

INDUSTRIAL SERVICES

<u>Types of Services</u>	<u>Location</u>	<u>Mileage from Middlesboro</u>
Tool & Die, Machine & Pattern Shops	Harlan, Kentucky	46
	Corbin, Kentucky	47
Metal Service Centers	Knoxville, Tennessee	80
Heat Treating	Richmond, Kentucky	109
Metal Finishers	Richmond, Kentucky	109
Electric Motor Repair	Middlesboro, Kentucky	--

Sources: Kentucky Department of Economic Development, Division of Research and Planning; Kentucky Directory of Selected Industrial Services, 1981.

AVERAGE WEEKLY WAGES BY INDUSTRY,
BY PLACE OF WORK, 1981

	<u>Bell County</u>	<u>Clay County</u>	<u>Harlan County</u>
All Industries	\$294.34	\$303.82	\$351.96
Mining & Quarrying	487.43	450.93	492.48
Contract Construction	279.96	171.25	343.92
Manufacturing	251.67	*	343.93
Transportation, Communications & Public Utilities	339.81	325.98	343.57
Wholesale & Retail Trade	191.63	210.79	233.44
Finance, Insurance & Real Estate	284.43	207.60	291.30
Services	209.07	158.65	275.90
State/Local Government	229.29	222.17	215.10
Other	113.81	*	*
	<u>Knox County</u>	<u>Leslie County</u>	<u>Whitley County</u>
All Industries	\$231.10	\$251.65	\$233.82
Mining & Quarrying	395.15	434.03	403.42
Contract Construction	257.78	145.85	258.11
Manufacturing	255.42	112.75	210.02
Transportation, Communications & Public Utilities	279.01	297.70	281.59
Wholesale & Retail Trade	179.38	145.53	208.66
Finance, Insurance & Real Estate	222.11	225.43	222.90
Services	175.11	190.40	204.30
State/Local Government	207.71	205.70	224.98
Other	*	0	160.24

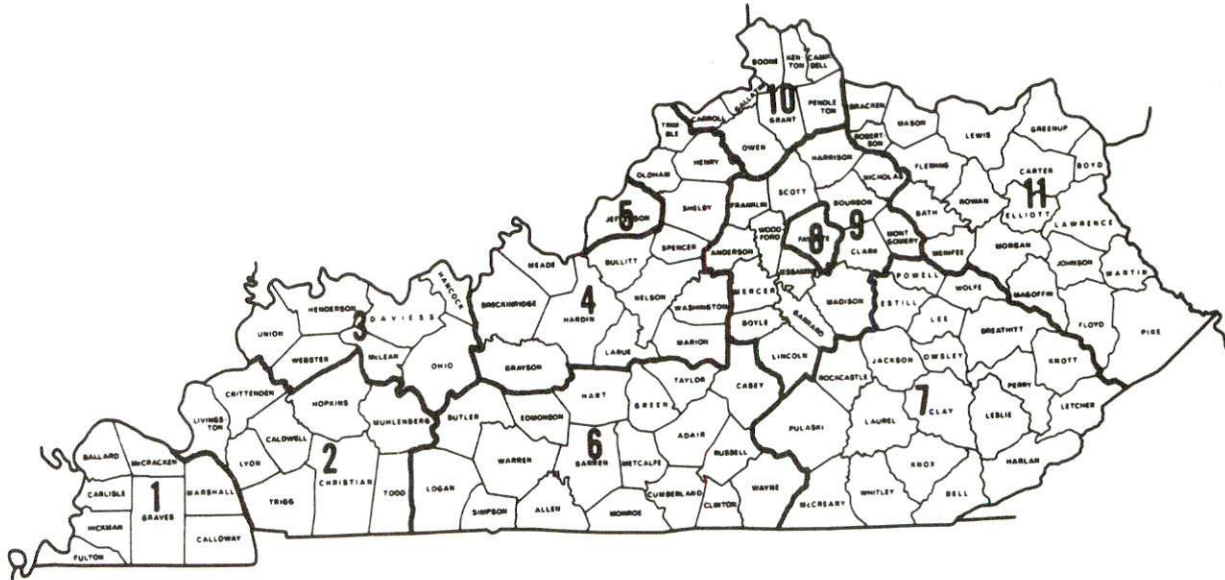
*Not disclosed.

Note: Excludes domestic workers, railway workers, certain nonprofit corporations, majority of federal government workers, and self-employed workers.

Source: Kentucky Department for Human Resources, Average Weekly Wages of Workers Covered by Kentucky Unemployment Insurance Law, 1980.

Occupational wage rates for specific industries are usually not available to most government agencies, and wage data furnished to state employment agencies by individual industrial employers are protected from disclosure by federal law. The most reliable up-to-date wage information can be obtained by direct contact with local employers.

Associated Industries of Kentucky, a voluntary organization of Kentucky businesses, regularly collects occupational wage rates and fringe benefits data from participating member firms. Data are compiled for over 127 clearly defined office, production, and service occupations. Tabulations are published for 11 regions of Kentucky, as shown on the map below. It should be noted that the data may be weighted by the preponderance of firms in the larger cities and may be somewhat higher than the rates paid in the smaller communities. Data from these tabulations are available, upon request, from the Kentucky Department of Economic Development, Frankfort, Kentucky 40601.



Associated Industries of Kentucky Area Wage Surveys

PER CAPITA PERSONAL INCOME

<u>Area</u>	<u>1976</u>	<u>1980</u>	<u>Percent Change</u>
Bell County	\$ 4,174	\$ 6,555	57.0
Labor Market Area Range	\$3,188 - 4,582	\$4,763 - 6,822	N/A
Kentucky	5,263	7,662	45.6
U.S.	6,367	9,511	49.4

Sources: U.S. Department of Commerce, Bureau of Economic Analysis, April 1981.
 U.S. Department of Commerce, Bureau of Economic Analysis, August 1981.

TRANSPORTATION

Rail

Line serving Middlesboro - Louisville and Nashville Railroad

Services - One freight makes a turnaround trip from Pineville Monday thru Friday; switching facilities; team track space for five cars; siding space for 70 cars; nearest piggyback facilities at Knoxville, Tennessee, 80 miles southwest of Middlesboro

Line serving Middlesboro - Southern Railway System

Services - One northbound and one southbound freight stops daily; two through freights daily; switching facilities; team track and siding space for 175 cars; nearest piggyback facilities at Knoxville, Tennessee, 80 miles southwest of Middlesboro

Line serving Pineville - Louisville and Nashville Railroad

Services - Main line service; one northbound and one southbound freight stops daily; eight northbound and eight southbound through freights daily; switching facilities; nearest piggyback facilities at Knoxville, Tennessee, 93 miles southwest of Pineville

For details on routing, schedules, rates, and services, contact:

Director of Industrial Development
Louisville and Nashville Railroad
P. O. Box 32290
Louisville, Kentucky 40232
(502) 587-5723

and/or

District Sales Manager
Southern Railway System
2117 Central Avenue North
Knoxville, Tennessee 37917
(615) 521-1426

Highways

U.S. Highway 25E, a "AAA" rated, 80,000 pound gross load limit highway, U.S. Highway 58 and Kentucky Highway 74 serve Middlesboro. Pineville is served by U.S. Highways 25E and 119, both "AAA" rated, and Kentucky 221 and 66.

Interstate 75 is 35 miles northwest of Pineville and 48 miles northwest of Middlesboro via U.S. 25E. The 13-mile section of U.S. 25E between Middleboro and Pineville is a multilane highway. Interstate 81 is 55 miles southeast of Middlesboro and 68 miles southeast of Pineville via U.S. 25E.

Truck Service

<u>Company</u>	<u>Home Office</u>
Bronaugh Motor Express, Inc.*(T)	1025 Nandino Boulevard Lexington, Kentucky 40511
Maislin Transport, Ltd.**	7401 Newman Boulevard Montreal, Quebec, Canada H8N 1X4
Overnite Transportation Company*	1000 Semmes Avenue P. O. Box 1216 Richmond, Virginia 23209
Skyline Transportation, Inc.***	131 Quincy Avenue Knoxville, Tennessee 37917
Thurston Motor Lines, Inc.***	600 Johnston Road Charlotte, North Carolina 28206

<u>Other Freight Services</u>	<u>Nearest Shipping Center</u>
Purolator Courier Corporation****	Lexington, 133 miles distant
United Parcel Service*****	Cornettsville, 75 miles distant

-
- (T) Local terminal.
* Interstate and intrastate service.
** Interstate service, truckload only.
*** Interstate only.
**** For regular scheduled pickups or for occasional pickups, arrangements must be made with the Lexington office of Purolator Courier Corporation.
***** For regular scheduled pickups or for occasional pickups, arrangements must be made with the Louisville office of United Parcel Service.

HIGHWAY MILES AND TRUCK TRANSIT TIME IN DAYS FROM
MIDDLESBORO, KENTUCKY, TO SELECTED MARKET CENTERS

City	Highway Miles	Delivery Time* TL	City	Highway Miles	Delivery Time* TL
Atlanta, Ga.	273	1	Los Angeles, Ca.	2,282	6-8
Baltimore, Md.	599	1-2	Louisville, Ky.	205	1
Birmingham, Ala.	334	1	Nashville, Tenn.	257	1
Chicago, Ill.	485	1-2	New Orleans, La.	676	2
Cincinnati, Ohio	211	1	New York, N. Y.	795	2-3
Cleveland, Ohio	450	1	Pittsburgh, Pa.	476	1
Detroit, Mich.	470	2	St. Louis, Mo.	468	1
Knoxville, Tenn.	80	1			

*Does not include day of pickup.

Note: Mileage computations are via the best interstate or primary highways, not necessarily the most direct route of travel.

Sources: Rand McNally Road Atlas, 1979. Official Kentucky Mileage Map, 1979.
Delivery time - Overnite Transportation Company, P. O. Box 1216, Richmond, Virginia 23209

Air

Local

Middlesboro-Bell County Airport
 Location: 1 mile west of Middlesboro
 Runways: 1 paved
 Length: 3,650 feet
 Traffic
 Control: Wind sock, Unicom
 Lighting: None
 Services: 80 and 100 octane, major and minor A & P repairs,
 general flying service, taxi, aircraft
 inspection and authorization

(Contd.)

Nearest Scheduled Commercial Airline Service*

Location: McGhee Tyson Airport
12 miles south of Knoxville, Tennessee;
92 miles southwest of Middlesboro

Runways: 2 paved
Length: 9,000 feet and 6,000 feet

Traffic Control: Tower

Lighting: Beacon, runway

Services: Delta, Republic, United, USAir, Sunbird, Skyways,
Tennessee Airways; fuel - 100, jet; tie-downs,
hangars; minor A & P repairs, major Avionics
repairs; APU, charter, flight instruction, oxygen,
plane rental, U.S. Customs; limousine, car rental,
public transit; weather information, restaurant,
snack bar

Air Freight Service: Air freight terminal

Bus - Greyhound Bus Lines serves both Middlesboro and Pineville.

Taxi - Middlesboro has four taxi companies and 24-hour, radio-dispatched service.
Pineville has three taxi companies and 24-hour, radio-dispatched service.

Rental Services - Car, truck and trailer rentals are available in Middlesboro.

*Commuter air carrier service is provided by Allegheny Commuter at the London-Corbin Airport which is located three miles south of London, Kentucky, and 56 miles north of Middlesboro.

POWER AND FUEL

Electricity

Company serving Middlesboro, Pineville and the majority of Bell County -
Kentucky Utilities Company
Source of power - Kentucky Utilities Company
Total generating capacity - 2,639,100 KW*
For industrial rates contact:

Industrial Development Department
Kentucky Utilities Company
One Quality Street
Lexington, Kentucky 40507
(606) 255-1461

Company serving a small portion of Bell County - Cumberland Valley Rural
Electric Cooperative Corporation
Source of power - East Kentucky Power Cooperative
Total generating capacity - 1,304,000 KW
For industrial rates contact:

Industrial Development Division
East Kentucky Power Cooperative
P. O. Box 707
Winchester, Kentucky 40391
(606) 744-4812

and/or

Cumberland Valley RECC
Highway 25E
Gray, Kentucky 40734
(606) 528-2677

*A new generating unit is under construction in Carroll County. Due to be completed in 1984, the unit will have a generating capacity of 511,000 KW.

Natural Gas

Company serving Middlesboro - Delta Natural Gas Company, Inc.
Sources of supply - Columbia Gas Transmission Corporation and local
production
Size of transmission mains - 6 and 8 inches (supplier);
6 and 8 inches (distributor)
Distribution mains - 2 through 6 inches
Distribution pressure - 15 to 90 psi
Btu content - 1,000 to 1,100 per cubic foot
Specific gravity - 0.565 to 0.650
For rates and supplies contact:

Delta Natural Gas Company, Inc.
Route 1, Box 30-A
Winchester, Kentucky 40391
(606) 744-6171

Company serving Pineville - Delta Natural Gas Company, Inc.
Sources of supply - Columbia Gas Transmission Corporation and local
production
Size of transmission mains - 6 and 8 inches (supplier);
6 inch (distributor)
Distribution mains - 2 through 6 inches
Distribution pressure - 15 to 90 psi
Btu content - 1,000 to 1,100 per cubic foot
Specific gravity - 0.565 to 0.650
For rates and supplies contact:

Delta Natural Gas Company, Inc.
Route 1, Box 30-A
Winchester, Kentucky 40391
(606) 744-6171

Other Fuels

Propane (Within 10 miles of Middlesboro)

Lewis LP Gas Company
200 Ellenwood Drive
Middlesboro, Kentucky 40965

Empiregas, Inc., of Tazewell
Tazewell, Tennessee 37825

Fuel oils

Distillate fuel oil -

Bell County Oil Company (Texaco)
Wilderness Road
Middlesboro, Kentucky 40965

Harris Oil Company (Shell)
1632 East Cumberland Avenue
Middlesboro, Kentucky 40965

Blakeman and Sons, Inc.
Fitzpatrick Avenue
Middlesboro, Kentucky 40965

Sam Mars Gulf Oil Products, Inc.
North 19th Street
Middlesboro, Kentucky 40965

Brooks Oil Company, Inc.
Fitzpatrick Avenue
Middlesboro, Kentucky 40965

Red Ace Oil Company
Highway 25E
Pineville, Kentucky 40977

Chevron Oil Company
(Bulk plant)
U.S. 119
Pineville, Kentucky 40977

Residual fuel oil - Arrangements must be made with the refinery.

Low sulphur content coal - Available locally.

WATER AND SEWERAGE

Public Water Supply

Company serving Middlesboro - Middlesboro Water Service Company, Inc.
2103 Cumberland Avenue
Middlesboro, Kentucky 40965
(606) 248-5730

Source - Fern Lake

Treatment plant capacity - 2,500,000 gallons per day

Average daily consumption - 1,354,838 gallons

Peak daily consumption - 1,500,000 gallons

Type treatment - Filtration, coagulation, chlorination, sedimentation,
fluoridation

Storage capacity - 2,490,000 gallons

Size lines - 1 inch through 24 inches

Average pressure - 105 psi

Average temperature - 57 degrees F.

MONTHLY WATER RATES

First	1,000 gallons	\$5.00 (Minimum)
Next	9,000 gallons	1.90 per M gallons
Next	15,000 gallons	1.75 per M gallons
Next	25,000 gallons	1.60 per M gallons
Next	50,000 gallons	1.45 per M gallons
Over	100,000 gallons	1.35 per M gallons

Minimum Monthly Charges

5/8-or	3/4-inch meter	\$ 5.00
1-or	1 1/4-inch meter	14.50
	1 1/2-inch meter	27.50
	2-inch meter	42.00
	3-inch meter	115.00
	4-inch meter	198.00
	6-inch meter	406.00

Tap-on charge: None (Except by specific contract to subdivisions not on main line, for which the company will reimburse the contractor expenses equivalent to the cost of 50 feet of extension)

Company serving Pineville - Pineville Water System
P. O. Box 277
Pineville, Kentucky 40977
(606) 337-6611

Source - Cannon Creek Dam
Treatment plant capacity - 1,500,000 gallons per day
Average daily consumption - 700,000 gallons
Peak daily consumption - 1,000,000 gallons
Type treatment - Chlorination, fluoridation, coagulation, filtration
Storage capacity - 1,200,000 gallons
Size lines - 2, 3, 4, 6, 8 and 12 inches
Average pressure - 100 psi
Average temperature - 65 degrees F.

MONTHLY WATER RATES

First	1,000 gallons	\$4.20 (Minimum)
Next	9,000 gallons	1.90 per M gallons
Next	20,000 gallons	1.35 per M gallons
Over	30,000 gallons	1.05 per M gallons

Tap-on charge:

5/8-inch residential	\$150
1-inch residential	250

All other sizes Actual cost

Raw Water

Surface water sources - Yellow Creek and Cumberland River
Average discharge - Yellow Creek near Middlesboro, 116 cfs (40-year record, USGS); Cumberland River at Barbourville, 1,785 cfs (41-year record, USGS)
Expected ground water yield - Small areas around Middlesboro and Pineville yield 200 to 500 gpm; most of Bell County yields 50 to 200 gpm; the southeastern corner and a strip in the central portion of the county yield 5 to 50 gpm

Sewerage

Company serving Middlesboro - Middlesboro Sewerage Commission
P. O. Box 596
Middlesboro, Kentucky 40965
(606) 248-5670

Design capacity - 3,000,000 gallons per day
Average daily flow - 2,000,000 gallons
Treatment - Primary and secondary
Type treatment - Aeration, clarifier, drying beds
Treated effluent discharged into - Yellow Creek
Size of sanitary mains - 8, 10, 12 and 24 inches
Size of storm mains - 8 inches to 8 feet
Rates -

Residential - One bath and five or less rooms - \$4.76 per month
Two baths or six or more rooms - \$5.71 per month
Commercial - 80% of monthly water bill; \$7.76 minimum
Tap-on charge: \$100

Company serving Pineville - Pineville Municipal Sanitation Commission*
P. O. Box 722
Pineville, Kentucky 40977
(606) 337-6614

Design capacity - 400,000 gallons per day
Average daily flow - 250,000 gallons
Treatment - Primary and secondary
Type treatment - Aeration, one anaerobic digester and final settling tanks
Treated effluent discharged into - Cumberland River
Size of sanitary mains - 6 inches through 24 inches
Size of storm mains - 12 inches through 48 inches
Rates - 65% of monthly water bill
Tap-on charge: \$100

*An eight-inch sewer line is currently being extended approximately one mile along U.S. 25E South to the new Bell County High School.

CLIMATE

Bell County

Temperature

Normal (30-year record)	59.70 degrees
Average annual 1980	59.10 degrees
Record highest, September 1954 (39-year record)	103.00 degrees
Record lowest, January 1966 (39-year record)	-9.00 degrees
Normal heating degree days (30-year record) (Heating degree day totals are the sums of negative departures of average daily temperatures from 65 degrees F.)	3,478

Precipitation

Normal (30-year record)	46.18 inches
Mean annual snowfall (38-year record)	12.80 inches
Total precipitation 1980	40.46 inches
Mean number days precipitation (.01 inch or more) (38-year record)	127
Mean number days thunderstorms (38-year record)	47

Prevailing Winds (14-year record)

Northeast

Relative Humidity (20-year record)

1 a.m.	79 percent
7 a.m.	85 percent
1 p.m.	59 percent
7 p.m.	62 percent

Source: U.S. Department of Commerce, Environmental Science Services Administration, Climatological Data, 1980. Station of record: Knoxville, Tennessee.

LOCAL GOVERNMENT

City

Middlesboro

Structure - Mayor - 4-year term; 12 council members - 2-year terms

Budget 1981-82 - General Fund \$1,830,900
 Sewer Fund 540,200
 Garbage Collection 269,000

Fees and licenses - Two percent of all salaries, wages, commissions, and other compensation earned by every person for work done or services rendered in the city; Two percent of net profits of all businesses, professions or occupations for activities conducted in the city. Motor vehicle licenses fees range from \$10 to \$50 per year.

Pineville

Structure - Mayor - 4-year term; 8 council members - 2-year terms

Budget 1981-82 - General Fund \$612,821
 Water Fund 300,000

Fees and licenses - 1.5 percent of all salaries, wages, commissions, and other compensation earned by every person for work done or services rendered in the city; business licenses are \$35 upward per year

County

Structure - County Judge/Executive - 4-year term; 4 magistrates - 4-year terms

Budget 1981-82 - General Fund \$752,262; Road Fund \$329,635

Assessed Value of Property, 1981*

<u>Classes of Property</u>	<u>Middlesboro</u>	<u>Pineville</u>	<u>Bell County</u>
Real Estate	\$86,017,500	\$21,205,708	\$193,663,900
Tangibles	32,808,000	1,709,200	141,257,570

*Excludes Homestead Exemptions.

Property Taxes

All property in Kentucky is assessed at 100 percent of fair cash value.

Land and buildings are taxed by the state and may be taxed by local jurisdictions. The state rate is \$0.229 per \$100 of assessed valuation.

Manufacturing machinery, raw materials inventories, pollution control equipment, and goods in the process of manufacture are not subject to local taxation. The state rate is \$0.15 per \$100.

Other tangible personal property owned by manufacturers (automobiles, trucks, finished goods, office furniture, office equipment) is taxed by the state at \$0.45 per \$100 and may be taxed by local jurisdictions.

Property stored in public warehouses in a transit status is not subject to local taxation. The state rate is only \$0.015 per \$100.

Intangible personal property located in Kentucky (money in hand, shares of stock, notes, bonds, accounts receivable, and other credits) is taxed by the state at \$0.25 per \$100, and is not subject to local taxation.

Private leaseholds in industrial facilities owned by cities or counties and financed by industrial revenue bonds are subject to a state tax of \$0.015 per \$100 of value (essentially the lessee's equity, adjusted for appreciation or depreciation). Local taxation is not permitted.

Combined State and Local Rates Per \$100 Valuation, 1981* (100% assessment)

	<u>Inside City of Middlesboro</u>	<u>Inside City of Pineville</u>	<u>Outside City</u>
1. Land and buildings	\$1.059	\$1.223	\$0.654
2. Mfg. machinery, raw materials, goods in process, pollution control equipment	0.150	0.150	0.150
3. Finished goods, office equipment, vehicles, other tangibles	1.280	0.144	0.875
4. Intangibles (accounts receivable, notes, bonds, etc.)	0.250	0.250	0.250
5. Leaseholds in industrial revenue bond financed plants	0.015	0.015	0.015

*Kentucky Department of Economic Development.

Utilities Gross Receipts Tax for Schools

A 3 percent tax is levied on utilities receipts for schools in the Pineville Independent School System. Tax is paid by all consumers of utilities as an add-on to the utilities bills. Exempted are receipts from utilities services that are resold and the receipts from the sale of energy or energy producing fuels that exceed 3 percent of the cost of production in manufacturing, processing, mining or refining.

Planning and Zoning

City agency - Middlesboro City Planning Commission

Zoning enforced - City only

Subdivision regulations enforced - City only

Local codes enforced - Building and housing

Mandatory state codes enforced - Kentucky Plumbing Code, National Electric Code, Kentucky Boiler Regulations and Standards, Kentucky Building Code (modeled after BOCA code and applying to buildings with an occupancy of 100 or more persons)

City agency - Pineville Planning Commission

Zoning enforced - City only

Subdivision regulations enforced - City and 5 miles beyond city limits

Local codes enforced - Building and housing

Mandatory state codes enforced - Kentucky Plumbing Code, National Electric Code, Kentucky Boiler Regulations and Standards, Kentucky Building Code (modeled after BOCA code and applying to buildings with an occupancy of 100 or more persons)

Safety

<u>Police</u>	<u>Middlesboro</u>	<u>Pineville</u>	<u>Bell County</u>
Total staff	29	12	6 full time 2 part time
Radio-patrol cars	6	2	4

Fire

American Insurance
Association Fire

Rating	6	8	10
Full-time staff	22	4	--
Volunteers	10	12	*

*The Bell County Volunteer Fire Department is divided into six separate "companies" with a total of 486 volunteers.

Rescue Service

Middlesboro-Bell County Rescue Squad:*

Number of volunteers - 27 active

Equipment - Crash truck, pick-up truck, two jeeps with trailers, five boats, four motors, two large portable generators, two small portable generators, portable kitchen, eight mobile radios and base station, 12-passenger van, two reconditioned 2 1/2 ton trucks, one flat bed trailer

Personnel training - First aid, civil defense (radiologist), CPR, four emergency medical technicians, dragging operation procedures

Refuse Collection and Disposal

	<u>Middlesboro</u>	<u>Pineville</u>	<u>Bell County</u>
Type service	Municipal	Municipal	County
Fee charged:			
residential	\$3 per month	\$3 per month	\$4.50 per month
business	\$15 per month/ \$7.50 per pickup	Based on volume	Based on volume
industrial	\$15 per month/ \$7.50 per pickup	Based on volume	Based on volume
Collection frequency:			
residential	Once weekly	Once weekly	Once weekly
business	As needed	Based on volume	Twice weekly
industrial	As needed	Based on volume	Based on volume
Trash pickup	Once weekly	As needed	Once weekly
Disposal method	Landfill	Landfill	Landfill

*Member of both Kentucky Association of Rescue Squads and Tennessee Association of Rescue Squads.

EDUCATION

Public Schools

	<u>Middlesboro Independent</u>	<u>Pineville Independent*</u>	<u>Bell County**</u>
Total Enrollment (Spring, 1982)	2,504	520	4,466
Elementary	1,120	303	3,300
Junior High	--	108	--
Middle School	577	--	--
High School	807	109	1,166
Student-Teacher Ratio	17-1	16-1	17-1
Elementary	17-1	18-1	17-1
Junior High	--	13-1	--
Middle School	16-1	--	--
High School	17-1	13-1	18-1
Accreditation	Southern Association of Colleges and Schools	Southern Association of Colleges and Schools	Southern Association of Colleges and Schools
Percent High School Graduates to College (1981)	50.4	70.0	36.0
Expenditures Per Pupil (1980-81)	\$1,393.05	\$1,310.99	\$1,097.41
Bonded Indebtedness (June 30, 1981)	\$2,169,000	\$330,000	\$697,000

Nonpublic Schools

	<u>St. Julian</u>
Total Enrollment	70
Elementary	70
Student-Teacher Ratio	18-1
Elementary	18-1

* The Pineville Independent Schools began construction on an addition to the present high school building in December 1981. Completion of the \$608,541 project is scheduled for August 1982.

** A new high school is currently under construction within the Bell County school system. The new facility will include a 145,000 square-foot building and new athletic fields on a 47-acre tract. The new school is scheduled to be in operation for the 1984-85 school year.

Area Colleges and Universities

<u>Name</u>	<u>Location (Miles distant)*</u>	<u>Enrollment (Fall, 1981)</u>	<u>Highest Degree Conferred</u>
Lincoln Memorial University	Harrogate, Tennessee (5)	1,278	Baccalaureate
Union College	Barbourville, Kentucky (31)	975	Masters, Specialist
Cumberland College	Williamsburg, Kentucky (51)	2,033	Baccalaureate
Sue Bennett College	London, Kentucky (59)	315	Associate
Carson-Newman University	Jefferson City, Tennessee (65)	1,731	Baccalaureate
Southeast Community College	Cumberland, Kentucky (68)	600	Associate
Johnson Bible College	Knoxville, Tennessee (80)	398	Baccalaureate
Knoxville College	Knoxville, Tennessee (80)	444	Baccalaureate
University of Tennessee	Knoxville, Tennessee (80)	28,601	Academic & Professional
Hazard Community College	Hazard, Kentucky (95)	341	Associate
Berea College	Berea, Kentucky (96)	1,587	Baccalaureate
Eastern Kentucky University	Richmond, Kentucky (109)	13,394	Masters, Specialist/ Doctorate**
Lees Junior College	Jackson, Kentucky (119)	347	Associate

* Mileage from Middlesboro.

** Joint doctoral degree programs are offered in cooperation with the University of Kentucky, Lexington, and cooperative doctoral degree programs are offered with Michigan State University and the University of Maryland.

Vocational Schools

Both the state vocational-technical schools and the area vocational education centers are operated by the Kentucky Department of Education. The state vocational-technical schools enroll persons full time who are at least 16 years of age and not in school. These students attend classes for six hours each day. The area vocational education centers are designed to accommodate high school students who are at least 15 years of age. These students attend vocational school for three hours each day. The state vocational-technical schools and the area education centers offer evening courses to enable working adults to upgrade current job skills.

Nearest State School

Location	Harlan State Vocational- Technical School
Miles Distant	Harlan 46 from Middlesboro
Curriculum	Business and Office Accounting/Jr. Management Clerical Secretarial (General, Legal and Medical) Consumer and Home Economics Food Service Industrial Education Air Conditioning and Refrigeration Auto Body Repair Auto Mechanics Carpentry-Building Trades Diesel Mechanics Drafting Electronics Industrial Electricity Machine Shop Mine Machine Repair Welding Learning Resource Center

Nearest Area Education Centers

Location	Bell County Area Vocational Education Center
Curriculum	Pineville Health Careers Industrial Education Auto Body Carpentry Diesel Mechanics Drafting Electronics Heavy Equipment Operator Industrial Electricity Machine Shop Welding

Location	Pineville School of Practical Nursing
Curriculum	Pineville Practical Nursing

Arrangements can be made to provide training in the specific production skills required by an industrial plant. Instruction may be conducted either in the vocational school or in the industrial plant, depending upon the desired arrangement and the availability of special equipment.

HEALTH

Local Medical Personnel (Bell County)

Physicians - 45

Dentists - 12

Hospitals

<u>General Hospital</u>	<u>Location</u>	<u>Beds</u>
The Middlesboro Community Hospital - ARH, Inc.	Middlesboro	96
The Pineville Community Hospital	Pineville	155

The Middlesboro Community Hospital - ARH, Inc.

General hospital facilities - Radiology department, clinical laboratory, four operating rooms, two delivery rooms, newborn nursery, emergency unit, respiratory therapy, intensive care/coronary care unit, physical therapy, social service, home care, pulmonary function studies

Medical staff - Active members - three surgeons, three pediatricians, one ENT specialist, one general practitioner, two family practitioners, one urologist, one internist, three emergency room physicians, one ophthalmologist, two radiologists, one pathologist; Courtesy staff - 24 physicians, four dentists; Hospital staff - 41 registered nurses, 33 licensed practical nurses, 13 nurses' aides, three anesthetists, four part-time medical technologists, three medical technicians, one respiratory therapist, one physical therapist, one medical social worker, four pharmacists, one medical records administrator, one registered dietician

The Pineville Community Hospital

General hospital facilities - X-ray department, delivery room, two operating rooms, obstetrics and diagnostic department, ambulant care center, community physicians' offices, laboratory, home health service, eight intensive and coronary care beds, pharmacy, physical therapy, respiratory therapy, social services, nuclear medicine laboratory, pathology department, emergency ambulance service with 24-hour physician coverage, ultra sound department, EEG, stress testing, Holter monitor

Medical staff - Total personnel - 355 including ten active physicians, three dentists, 30 registered nurses, 53 licensed practical nurses, 76 nurses' aides, orderlies and ward clerks. Specialists are available on a consultation basis.

Other Medical Facilities

Daniel Boone Clinic
Cumberland River Comprehensive Care Center

Ambulance Service

Name - Middlesboro Ambulance Service (operated by Middlesboro Fire Department)
Staff - Full-time staff from the Middlesboro Fire Department
Service - 24-hour, seven days per week in Middlesboro and southern Bell County
Equipment - Two fully-equipped ambulances, one back-up ambulance

Name - Bell County Emergency Ambulance Service
Staff - 11 Emergency Medical Technicians
Service - 24-hour, seven days per week in Pineville and northern Bell County
Equipment - Two fully-equipped ambulances, one back-up ambulance

Public Health

Facility - Bell County Health Department, Middlesboro and Pineville
Staff - Three registered nurses, two health environmentalists, four clerks, one administrator, three practical nurses, three health workers

OTHER LOCAL FACILITIES

Communications

Middlesboro

Telephone - Services -	South Central Bell Telephone Company Standard; WATS line
Telegraph - Services -	Western Union Local office; toll-free number, 1-800-325-5100
Postal - U.S. Post Office Class -	First
Mail received -	Twice daily
Mail dispatched -	Twice daily
Newspapers - Daily and circulation -	Middleboro Daily News 8,500
Other papers received from -	Lexington and Louisville, Kentucky; Knoxville, Tennessee
Radio - Major stations received from -	WFXY-AM and WMIK-AM/FM Pineville, London and Corbin, Kentucky; Knoxville, Tennessee
Television - Cable service Reception from -	 Lexington, Kentucky; Knoxville and Johnson City, Tennessee; Bristol, Virginia; Asheville, North Carolina
Educational Television -	Hazard, Kentucky, transmitter - Channel 35; Sneedville, Tennessee - Channel 2

(Contd.)

Pineville

Telephone - Services -	South Central Bell Telephone Company Standard; WATS line; data processing capability through Cincinnati, Ohio
Telegraph - Services -	Western Union Local office; toll-free number, 1-800-325-5100
Postal - U.S. Post Office	
Class -	First
Mail received -	Twice daily
Mail dispatched -	Twice daily
Newspapers -	Pineville Sun-Cumberland Courier
Weekly and circulation -	2,500
Other papers received from -	Lexington and Louisville, Kentucky; Knoxville, Tennessee
Radio -	WANO-AM and WTJM-FM
Major stations received from -	Barbourville, Corbin, London and Middlesboro, Kentucky; Knoxville and Oak Ridge, Tennessee
Television -	
Cable service	
Reception from -	Lexington, Kentucky; Knoxville and Johnson City, Tennessee; Bristol, Virginia; Asheville, North Carolina; also "pay-tv"
Educational Television -	Somerset, Kentucky, transmitter - Channel 29; Sneedville, Tennessee - Channel 2

Library Services

Public library - Bell County Public Library (Middlesboro)

Size collection - 35,075 volumes

Circulation, 1980-81 - 62,301 (library); 25,339 (bookmobile)

Services - Magazines, newspapers, books, story hour, bookmobile, talking books for the blind, records, microfilm reader/printer, microfilm, historical room, children's room, service to shut-ins and convalescent patients, community room with kitchen facilities, film programs, projectors, filmstrips, art prints, oral history project, telephone reference service, traveling puppet troupe, member - Kentucky Inter-Library Local Communications Library

Public library - Bell County Public Library (Pineville)

Size collection - 21,124 volumes

Circulation, 1980-81 - 28,156 (library); 53,190 (bookmobile)

Services - Same as Middlesboro

Religious Institutions

	<u>Middlesboro</u>	<u>Pineville</u>
Number of churches -	30	14
Denominations -	AME Zion	Baptist
	Assemblies of God	Catholic
	Baptist	Christian
	Catholic	Church of God
	Christian	Methodist
	Christian Science	Nazarene
	Church of Christ	Presbyterian
	Church of God	Salvation Army
	Episcopal	
	Jehovah's Witnesses	
	Methodist	
	Nazarene	
	Pentecostal	
	Presbyterian	
	Salvation Army	
	Seventh Day Adventist	
Nearest synagogues -	Knoxville, Tennessee, 80 miles from Middlesboro	
Congregations -	Heska Amuna (orthodox)	
	Temple Bethel (reform)	

Financial Institutions

<u>Banks</u>	<u>Assets</u>	<u>Deposits</u>	<u>Statement Date</u>
<u>Middlesboro</u>			
City and County Bank of Bell County	\$51,929,789.00	\$45,264,743.00	12/31/81
Commercial Bank	64,061,014.00	59,114,241.00	12/31/81
<u>Pineville</u>			
First State Bank	22,636,292.68	18,435,017.73	12/31/81
<u>Savings and Loan Associations</u>	<u>Assets</u>	<u>Savings Accounts</u>	<u>Statement Date</u>
<u>Middlesboro</u>			
Home Federal Savings & Loan Association	\$64,906,759.24	\$60,709,518.65	12/31/81
Middlesboro Federal Savings & Loan Association	42,802,360.40	38,649,099.37	12/31/81

Pineville

First Federal Savings & Loan Association	44,581,956.28	38,146,010.60	6/31/81
--	---------------	---------------	---------

Hotels and Motels

Bell County

Total number	12
Total rooms	252

Clubs and Organizations

Middlesboro

Alcoholics Anonymous	Key Club
Alpha Delta Kappa - Phi Chapter	Kiwanis
American Legion	Lions
American Legion Auxiliary	Little League Program
American Association of Retired Persons	Masonic Lodge
American Red Cross	Middlesboro Art Club
Bell County Baptist Association	Middlesboro Chamber of Commerce
Bell County Education Association	Middlesboro Democratic Women's Club
Beta Sigma Phi - Xi Phi Chapter, Alpha Mu Chapter	Middlesboro Federated Music Club
Boy Scouts	Middlesboro Garden Club
Brownies	Middlesboro Junior Women's Club
Business and Professional Women's Club	Middlesboro Little Theater
Cub Scouts	Middlesboro Ministerial Association
Cumberland Park Garden Club	Middlesboro Senior Homemakers
Daughters of the American Revolution	Mountain View Homemakers
Disabled American Veterans	Palette Art League
Eastern Star	Parent-Teacher Organization
Elks	Pinnacle Valley CB Club
4-H Club	Powell Valley Bus Line
Future Farmers of America (FFA)	Rebekahs
Future Homemakers of America (FHA)	Red Men Oniska Tribe
Girl Scouts	Republican Women's Club
Nancy Hanks Club	Retail Merchants Association
Intermediate League Program	RoHo Club
Jaycees	Rotary
Jaycettes	Senior Citizens' Club
J.O.U.A.M.	Tri-State Citizens' Band Radio Club
	Tri-State Saddle Club
	Women's Association of Country Clubs
	Xian Family Resource Center

Pineville

American Legion	Junior Homemakers
Bell County Bar Association	Junior Woman's Club
Bell Youth Center	Kiwanis
Boy Scouts	Lions
Brownies	Little League
Business and Professional Women's Club	Masonic Lodge
Cub Scouts	Mountain Laurel Garden Club
Eastern Star	Parent-Teacher Organization
4-H Club	Pineville Garden Club
Future Farmers of America (FFA)	Pineville Improvement Committee
Future Homemakers of America (FHA)	Rotary
Girl Scouts	Senior Homemakers
	Senior Woman's Club

RECREATION

Local

The city of Middlesboro offers a variety of recreational facilities and programs. The city supports supervised programs, six parks, four playgrounds, a swimming pool, six tennis courts, one softball field, two baseball diamonds, one football field, four basketball courts and a city maintained civic center.

Private recreational facilities in Middlesboro are as extensive as the public. The country club offers an 18-hole golf course and a swimming pool. A bowling alley, two movie theatres (one indoor and one drive-in) and a roller skating rink are available to the public.

Pineville offers numerous recreational facilities. These include supervised programs, three parks, six playgrounds, a swimming pool, one golf course, two tennis courts, two baseball diamonds, two football fields and four basketball courts. Also located in Pineville is the Bell County Youth Center.

Numerous tourist attractions are found in and around Middlesboro and Pineville.

The Cumberland Gap Arts and Crafts Festival is held in Middlesboro in mid-October. Other tourist attractions found in Middlesboro are the Little Theater and Coal House (Chamber of Commerce Building). Lincoln Memorial University, located a few miles outside of Middlesboro in Harrogate, Tennessee, has the world's second largest collection of Abraham Lincoln relics on display. Cumberland Gap National Historical Park, 3 miles distant, is the second largest national historic park in the United States. Features in this 20,270-acre park include: a frontier museum; Pinnacle Mountain that overlooks three states; three caves; an old iron furnace; and Hensley Settlement, a restored mountain village where the "Old Fashion Days Festival" is held annually.

Pineville offers a variety of cultural events and attractions. The Southeastern Kentucky Community Concert Series performs concerts on a regular basis. Also held in town each year is the Sidewalk Art Show. Located just outside of town is Pine Mountain State Resort Park, a 2,500-acre park, located in the Kentucky Ridge State Forest. This park is the scene of the Mountain Laurel Festival in the spring. Also, "Song of Cumberland Gap" a musical drama based on the life of Daniel Boone is held at Pine Mountain during the summer months. Other park offerings are lodge and cottage accommodations, swimming, hiking, horseback riding, shuffleboard, picnicking, playgrounds, golf, camping and fishing.

Area (Within 70 miles)

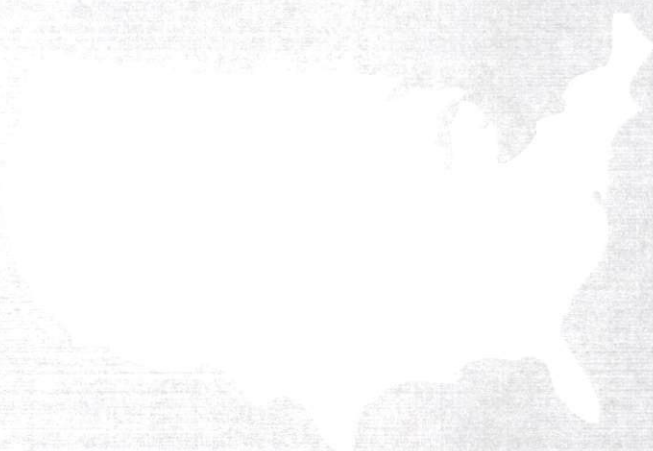
Dr. Thomas Walker State Shrine, 31 miles northwest of Middlesboro near Barbourville, is the site of the cabin built by Dr. Walker, who led the first documented expedition through Cumberland Gap around 1750. This 12-acre park contains a replica of the cabin, a playground, a picnic shelter, and an amphitheater.

Cumberland Falls State Resort Park is located 47 miles northwest of Middlesboro at Corbin in the Daniel Boone National Forest. The park is famous for Cumberland Falls which drops 68 feet over a rock precipice and shows one of only two known "moonbows" in the world at full moon. Little Eagle Falls, a mountain creek which tumbles 125 feet into the Cumberland River, is also part of the 1,794-acre park. The park offers lodge rooms, woodland suites, cottages, camping, fishing, swimming, hiking, horseback riding, picnicking, tennis, backpacking, horse shows, shuffleboard, planned recreation, a playground, a dance pavilion, and an amphitheater.

Laurel River Lake, 48 miles from Middlesboro, is a 5,600-acre lake in the Daniel Boone National Forest. This beautiful new lake offers camping, fishing, boating and swimming.

Levi Jackson Wilderness Road State Park, 59 miles northwest of Middlesboro at London, is an 815-acre park located where the Boone Trace and Wilderness Road pioneer trails converge. In addition to a reproduced pioneer settlement, the park offers a pool, a bathhouse, hiking trails, horseback riding, shuffleboard, camp sites, a picnic area, a playground, and an amphitheater. The Wilderness Road is thought to be the first state built road in the United States (1796-1875) and a section of the original road is preserved in the park.

Kingdom Come State Park, located 68 miles northwest of Middlesboro near Cumberland, Kentucky, contains 1,000 beautiful mountain acres. It is named for John Fox, Jr.'s, "The Little Shepherd of Kingdom Come," which was written in 1903 and was the first U.S. novel to sell one million copies. Features include a three-acre fishing lake, a picnic area, a hiking trail, a playground, and Raven Rock, a fascinating stone formation with a large cave opening at the top. The park is located on the mid-way point of the Little Shepherd Trail, a hiking and driving trail which follows Pine Mountain from Harlan to Whitesburg.



www.3evolution.com

1-800-333-2111