

1982

Industrial Resources: Boyd County

Kentucky Library Research Collections
Western Kentucky University, spcol@wku.edu

Follow this and additional works at: https://digitalcommons.wku.edu/boyd_cty

 Part of the [Business Administration, Management, and Operations Commons](#), [Growth and Development Commons](#), and the [Infrastructure Commons](#)

Recommended Citation

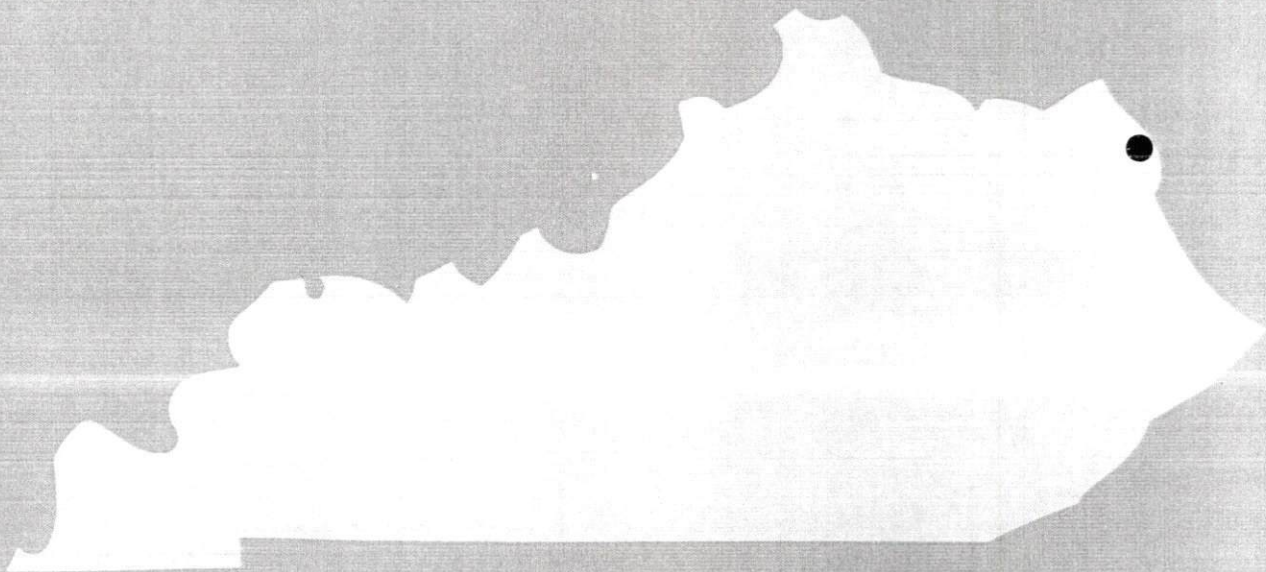
Kentucky Library Research Collections, "Industrial Resources: Boyd County" (1982). *Boyd County*. Paper 20.
https://digitalcommons.wku.edu/boyd_cty/20

This Report is brought to you for free and open access by TopSCHOLAR®. It has been accepted for inclusion in Boyd County by an authorized administrator of TopSCHOLAR®. For more information, please contact topscholar@wku.edu.

IR Boyd County

314

A comprehensive
report on
Boyd County Ky.



KENTUCKY & CO.
The state that's run like a business.

ASHLAND AREA --- Site No. 182 --- 200 Acres

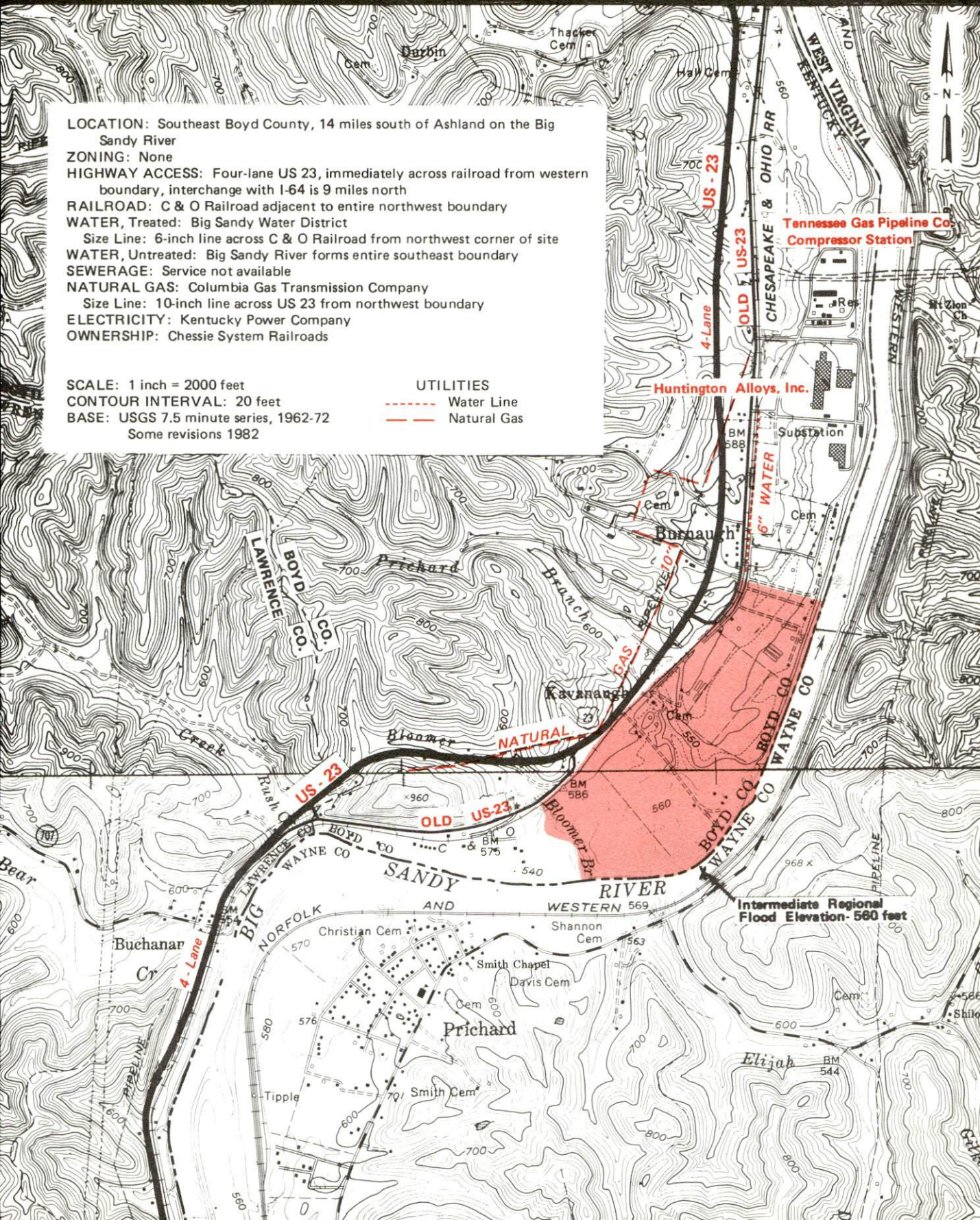
For more information contact the Department of Economic Development, Office of Business Development, Industrial Development Division, Capital Plaza Tower, Frankfort, Kentucky 40601 (502-564-7140).

LOCATION: Southeast Boyd County, 14 miles south of Ashland on the Big Sandy River
ZONING: None
HIGHWAY ACCESS: Four-lane US 23, immediately across railroad from western boundary, interchange with I-64 is 9 miles north
RAILROAD: C & O Railroad adjacent to entire northwest boundary
WATER, Treated: Big Sandy Water District
Size Line: 6-inch line across C & O Railroad from northwest corner of site
WATER, Untreated: Big Sandy River forms entire southeast boundary
SEWERAGE: Service not available
NATURAL GAS: Columbia Gas Transmission Company
Size Line: 10-inch line across US 23 from northwest boundary
ELECTRICITY: Kentucky Power Company
OWNERSHIP: Chessie System Railroads

SCALE: 1 inch = 2000 feet
CONTOUR INTERVAL: 20 feet
BASE: USGS 7.5 minute series, 1962-72
Some revisions 1982

UTILITIES

- Water Line
- Natural Gas



A COMPREHENSIVE REPORT ON
BOYD COUNTY, KENTUCKY

Prepared by
The Kentucky Department of Economic Development
Division of Research and Planning
in cooperation with
The Chamber of Commerce of Boyd and Greenup Counties, Inc.

1982

Program manager - Brenda Roberts; research - Andrew Dennis; clerical - Linda Fint; graphics - Frank Ferrante, Tony Cecconi, Robert Owens; cartography - Site Evaluation Section, Division of New Industries. Cost of printing paid from state funds.

TABLE OF CONTENTS

<u>Chapter</u>	<u>Page</u>
INDUSTRIAL SITES	i
BOYD COUNTY - A RESOURCE PROFILE	1
THE LABOR MARKET AREA	3
Population	3
Labor Force Characteristics of Residents, 1981	3
Estimated Male Labor Supply	4
Estimated Female Labor Supply	5
Major Boyd County Manufacturing Firms, Their Products and Employment	6
Labor Organizations in Manufacturing Firms	8
Industrial Services	9
Average Weekly Wages by Industry, by Place of Work, 1981	10
Per Capita Personal Income	12
TRANSPORTATION	13
Rail	13
Highways	14
Truck Service	14
Air	16
Bus	17
Taxi	17
Rental Services	17
Water	17
POWER AND FUEL	18
Electricity	18
Natural Gas	18
Other Fuels	19
WATER AND SEWERAGE	20
Public Water Supply	20
Raw Water	21
Sewerage	22
CLIMATE	23

<u>Chapter</u>	<u>Page</u>
LOCAL GOVERNMENT	24
City	24
County	24
Assessed Value of Property, 1981	24
Property Taxes	25
Combined State and Local Rates Per \$100 Valuation, 1981	26
Utilities Gross Receipts Tax for Schools	26
Planning and Zoning	26
Safety	27
Police	27
Fire	27
Rescue Service	27
Refuse Collection and Disposal	28
EDUCATION	29
Public Schools	29
Nonpublic Schools	29
Area Colleges and Universities	30
Vocational Schools	32
HEALTH	34
Local Medical Personnel	34
Hospitals	34
Other Medical Facilities	35
Ambulance Service	35
Public Health	35
OTHER LOCAL FACILITIES	36
Communications	36
Library Services	37
Religious Institutions	37
Financial Institutions	38
Hotels and Motels	38
Clubs and Organizations	39
RECREATION	40

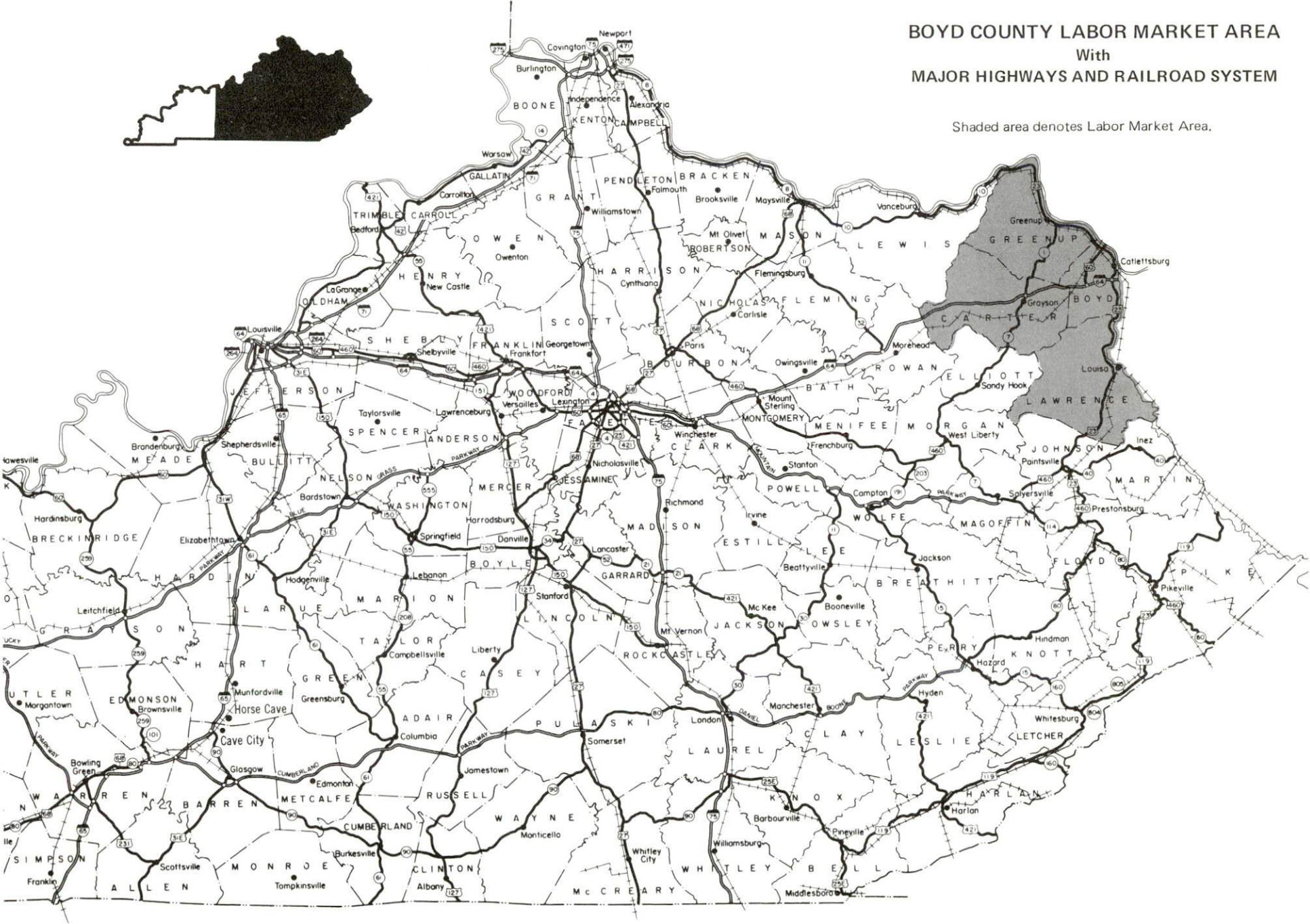
1982 EDITION
GENERAL HIGHWAY MAP
BOYD COUNTY
KENTUCKY

PREPARED BY THE
KENTUCKY DEPARTMENT OF TRANSPORTATION
BUREAU OF HIGHWAYS
DIVISION OF PROJECT DEVELOPMENT
IN COOPERATION WITH THE
U.S. DEPARTMENT OF TRANSPORTATION
FEDERAL HIGHWAY ADMINISTRATION



BOYD COUNTY LABOR MARKET AREA
With
MAJOR HIGHWAYS AND RAILROAD SYSTEM

Shaded area denotes Labor Market Area.



BOYD COUNTY, KENTUCKY - A RESOURCE PROFILE

Boyd County, covering 159 square miles, is located in extreme northeastern Kentucky along the Ohio River at its junction with the Big Sandy River. Boyd County had a 1980 population of 55,513.

Ashland, a four-time recipient of the "All Kentucky City" award, is the largest city in Eastern Kentucky. Ashland had a 1980 population of 27,064. Ashland is located 17 miles west of Huntington, West Virginia; 67 miles west of Charleston, West Virginia; 118 miles east of Lexington, Kentucky; and within 200 miles of Louisville, Kentucky and Cincinnati, Ohio.

Catlettsburg, the county seat, is located adjacent to the southern city limits of Ashland. Catlettsburg had a 1980 population of 3,005.

The Economic Framework

Total employment in Boyd County during 1981 averaged 20,547 with only 221 employed in agricultural jobs. Manufacturing provided 6,617 jobs, wholesale and retail trade provided 4,957, service occupations 3,503 and 1,802 people were employed in construction trades. Manufacturing employment is greatest in the primary metals, petroleum and coal products, chemical and allied products and nonelectrical machinery industries.

Per capita income in the county in 1980 was \$9,474 or \$1,812 above the state average for that year. Between 1976 and 1980 per capita income increased by 47.6 percent.

The labor market area includes Boyd and the three adjoining Kentucky counties, plus Cabell and Wayne Counties in West Virginia and Lawrence County in Ohio. Total employment in the Kentucky portion of the labor market area during 1981 averaged 46,122 with over 45,000 of those employed in nonagricultural jobs. Within the Kentucky portion, manufacturing provided 12,039 jobs, wholesale and retail trade provided 7,743, service occupations 5,074 and construction provided 2,335.

Resources for Growth

1. Labor Supply - There is a current estimated labor supply of 9,247 men and 11,671 women available for industrial jobs in the Kentucky portion of the labor market area. In addition, 5,562 young men and 5,037 young women in this area will become 18 years of age before 1986 and potentially available for work. The current labor supply would be supplemented by the number of men and women in the adjoining Ohio and West Virginia counties who are available for industrial jobs.

2. Transportation - The local transportation capability is excellent. Amtrak provides the area with passenger rail service and the Chessie System provides the area with a variety of rail freight services. An interchange of Interstate 64 is located 12 miles from Ashland via U.S. 60 and 8 miles away via U.S. 23. Catlettsburg is only 2 miles from an I-64 interchange. There are twenty-eight trucking companies serving the area, with three terminals located in Ashland. The Ashland-Boyd County Airport has a 5,600-foot paved runway capable of accommodating light aircraft and small business jets. Tri-State Airport in Huntington, West Virginia, 21 miles from Ashland, offers commercial air service. Public riverport facilities are currently being developed in Ashland.

3. Utilities and Fuel - Electricity is furnished to Boyd County by the Kentucky Power Company. Natural gas is provided to Ashland and Catlettsburg by Columbia Gas Transmission Company. Three propane distributors and two distillate fuel oil distributors are located in the area. The local raw water supply is more than adequate for continued industrial growth.

4. Education - Three public school systems operate in Boyd County plus three non-public institutions.

Ashland Community College, a two-year college offering an associate degree, is located in Ashland. In addition, five other institutions of higher learning are located within 60 miles.

The Ashland State Vocational-Technical School offers training in 17 courses. The Boyd County Area Vocational Education Center offers 12 courses.

THE LABOR MARKET AREA

The Labor Market Area includes Boyd County and the adjoining Kentucky counties of Carter, Greenup, and Lawrence.

<u>Area</u>	<u>POPULATION</u>		
	<u>1980</u>	<u>1970</u>	<u>Percent Nonwhite</u>
Ashland	27,064	29,245	3.0
Catlettsburg	3,005	3,420	0.5
Huntington-Ashland WVA-KY-OH SMSA*	311,350	286,935	N/A
Labor Market Area	133,826	116,144	N/A
Boyd County	55,513	52,376	2.3
Carter County	25,060	19,850	0.2
Greenup County	39,132	33,192	0.6
Lawrence County	14,121	10,726	0.4

* The Huntington-Ashland WVA-KY-OH Standard Metropolitan Statistical Area includes Boyd and Greenup Counties in Kentucky, Cabel and Wayne Counties in West Virginia and Lawrence County in Ohio.

Note: The 1980 counts of population by race are provisional.

Sources: U.S. Department of Commerce, Bureau of the Census, 1980 Census of Population and Housing, March 1981; 1980 Census of Population, Number of Inhabitants. Population Research Unit, Urban Studies Center, University of Louisville, Kentucky Demographics: The 1980 Census of Kentucky, Characteristics of Population, Households, Housing, January 1982.

LABOR FORCE CHARACTERISTICS OF RESIDENTS, 1981

	<u>Boyd County</u>	<u>Labor Market Area</u>
Civilian Labor Force	22,570	51,544
Employment	20,547	46,122
Agricultural	221	1,060
Nonagricultural	20,326	45,062
Unemployment	2,023	5,422
Rate of Unemployment (%)	9.0	10.5

Source: Kentucky Cabinet for Human Resources, Kentucky Labor Force Estimates, Annual Averages, 1981.

ESTIMATED MALE LABOR SUPPLY
BOYD COUNTY LABOR MARKET AREA

<u>Area</u>	<u>Current</u>			<u>Under- employed</u>	<u>Future</u>
	<u>Total</u>	<u>Not in Labor Force</u>	<u>Unemployed</u>		<u>Reaching 18 years of age before 1986</u>
Labor Market					
Area*	9,247	3,061	4,202	1,984	5,562
Boyd	2,834	464	1,568	802	2,365
Carter	2,428	808	1,253	367	948
Greenup	2,067	509	996	562	1,737
Lawrence	1,918	1,280	385	253	512

*The labor supply will be supplemented by the number of men available for industrial jobs from adjoining Cabell and Wayne Counties in West Virginia and Lawrence County in Ohio.

Note: Unemployed - persons unemployed and actively seeking work;

Underemployed - persons employed but working only 14 to 26 weeks per year;

Not in Labor Force - represents the number of persons who would enter the labor force if suitable employment were available (based on the assumption that persons in Kentucky would like to participate in the labor force in the same proportion that they do nationally).

Sources: Kentucky Cabinet for Human Resources, Kentucky Labor Supply Estimates by Area Development District and County, 1981. Kentucky Department of Economic Development, Future Labor Supply before 1986.

ESTIMATED FEMALE LABOR SUPPLY
BOYD COUNTY LABOR MARKET AREA

<u>Area</u>	<u>Current</u>			<u>Under- employed</u>	<u>Future</u>
	<u>Total</u>	<u>Not in Labor Force</u>	<u>Unemployed</u>		<u>Reaching 18 years of age before 1986</u>
Labor Market					
Area*	11,671	8,507	1,220	1,944	5,037
Boyd	4,936	3,559	455	922	2,066
Carter	2,219	1,572	364	283	937
Greenup	2,946	2,029	289	628	1,608
Lawrence	1,570	1,347	112	111	426

*The labor supply will be supplemented by the number of women available for industrial jobs from adjoining Cabell and Wayne Counties in West Virginia and Lawrence County in Ohio.

Note: Unemployed - persons unemployed and actively seeking work;

Underemployed - persons employed but working only 14 to 26 weeks per year;

Not in Labor Force - represents the number of persons who would enter the labor force if suitable employment were available (based on the assumption that persons in Kentucky would like to participate in the labor force in the same proportion that they do nationally).

Sources: Kentucky Cabinet for Human Resources, Kentucky Labor Supply Estimates by Area Development District and County, 1981. Kentucky Department of Economic Development, Future Labor Supply before 1986.

MAJOR BOYD COUNTY MANUFACTURING FIRMS,
THEIR PRODUCTS AND EMPLOYMENT*

Firm (Establishment date)	Product	Employment			Labor Unions
		Total	Male	Female	
<u>Ashland</u>					
Armco, Inc., Eastern Steel Division (1922)	Iron, steel sheets, coils, blooms	4,266	4,130	136	Steelworkers**
Armco, Inc., Coke Division (1913)	Coke, crude tar, ammonia	275	--	--	
Armco, Inc., Metal Products Division (1966)	Culvert pipe, mine roof mats, mine overcasts	48	45	3	Steelworkers**
Ashland Asphalt Paving Company (1955)	Asphaltic concrete	43	40	3	
Ashland Crafts, Inc. (1951)	Children's dresses, children's sportswear	101	3	98	
Ashland Publishing Company (1921)	Newspapers	122	95	27	Typographical, Printing and Graphic Communications**
Castle Showcase Company (1944)	Display show-cases, display fixtures, hardware	45	40	5	Carpenters**
Johnsons Dairy, Inc. (1931)	Milk, cottage cheese, ice cream	48	44	4	
Kentucky Electric Steel Company (1964)	Steel flats, steel rounds, squares	425	422	3	Steelworkers**
A. C. Lawrence Leather Company (1894)	Sole leather	69	68	1	Leather workers**

<u>Firm</u> (Establishment date)	<u>Product</u>	<u>Employment</u>			<u>Labor Unions</u>
		<u>Total</u>	<u>Male</u>	<u>Female</u>	
National Mine Service Company, National Service Centers (1950)	Mining machinery and equip- ment repair	125	--	--	Machinists**
Pennco, Inc. (1956)	Aluminum windows, glass and patio doors	110	75	35	
Standard Slag Company (1930)	Crushed slag	55	--	--	Steelworkers**
<u>Catlettsburg</u>					
Ashland Petroleum Company (1924)	Petroleum products, petro- chemicals	997	950	47	Oil, Chemical & Atomic Workers**
Calgon Corporation (1960)	Activated carbon	294	246	48	Steelworkers**
Huntington Alloys, Inc. (1964)	Extended vacuum induction nickel alloys, vacuum induction high nickel alloys	259	--	--	Steelworkers**

* Firms with 40 or more employees.

** See Labor Organizations below.

Source: Kentucky Department of Economic Development, Division of Research and Planning.

LABOR ORGANIZATIONS IN MANUFACTURING FIRMS

<u>Union</u>	<u>Representing workers at:</u>
<u>Ashland</u>	
United Steelworkers of America, AFL-CIO	Armco, Inc., Eastern Steel Division; Armco, Inc., Metal Products Division; Kentucky Electric Steel Company; Standard Slag Company
International Ladies' Garment Workers' Union, AFL-CIO	Ashland Crafts, Inc.
International Typographical Union, AFL-CIO	Ashland Publishing Company; Dickenson Printing Company; Graber Printing Company
International Printing and Graphic Communications Union, AFL-CIO	Ashland Publishing Company
Aluminum, Brick and Clay Workers' International Union, AFL-CIO	Cline Brick Company
United Brotherhood of Carpenters and Joiners of America, AFL-CIO	Castle Showcase Company
International Brotherhood of Painters and Allied Trades of the United States and Canada, AFL-CIO	Fannin Glass and Paint Company, Inc.
Leather Workers International Union of America, AFL-CIO	A. C. Lawrence Leather Company, Inc.
International Association of Machinists and Aerospace Workers, AFL-CIO	National Mine Service Company, National Service Centers
International Brotherhood of Teamsters, Chauffeurs, Warehousemen and Helpers of America	Scioto Building Units Division
Oil, Chemical and Atomic Workers International Union, AFL-CIO	Semet Solvay Division, Allied Chemical Corporation

<u>Union</u>	<u>Representing workers at:</u>
<u>Catlettsburg</u>	
Oil, Chemical and Atomic Workers International Union, AFL-CIO	Ashland Petroleum Company
United Steelworkers of America, AFL-CIO	Calgon Corporation; Huntington Alloys, Inc.

INDUSTRIAL SERVICES

<u>Types of Services</u>	<u>Location</u>	<u>Mileage from Ashland</u>
Tool & Die, Machine & Pattern Shops	Ashland, Kentucky	--
Metal Service Centers	Huntington, West Virginia	17
Heat Treating	Georgetown, Kentucky	128
Metal Finishers	Huntington, West Virginia	17
Electric Motor Repair	Huntington, West Virginia	17

Source: Kentucky Department of Economic Development, Kentucky Directory of Selected Industrial Services, 1981. Kentucky Department of Economic Development, Division of Research and Planning.

AVERAGE WEEKLY WAGES BY INDUSTRY,
BY PLACE OF WORK, 1981

	<u>Boyd County</u>	<u>Carter County</u>	<u>Greenup County</u>	<u>Lawrence County</u>
All Industries	\$332.20	\$221.37	\$404.94	\$244.27
Mining & Quarrying	388.27	377.13	*	271.61
Contract Construction	437.60	334.91	315.89	195.67
Manufacturing	464.65	221.24	572.98	182.94
Transportation, Communications & Public Utilities	374.68	318.11	420.63	*
Wholesale & Retail Trade	205.51	172.07	176.74	173.91
Finance, Insurance & Real Estate	252.86	230.16	241.66	239.27
Services	261.96	180.71	200.71	199.52
State/Local Government	259.09	211.11	206.57	190.59
Other	190.00	*	90.17	0

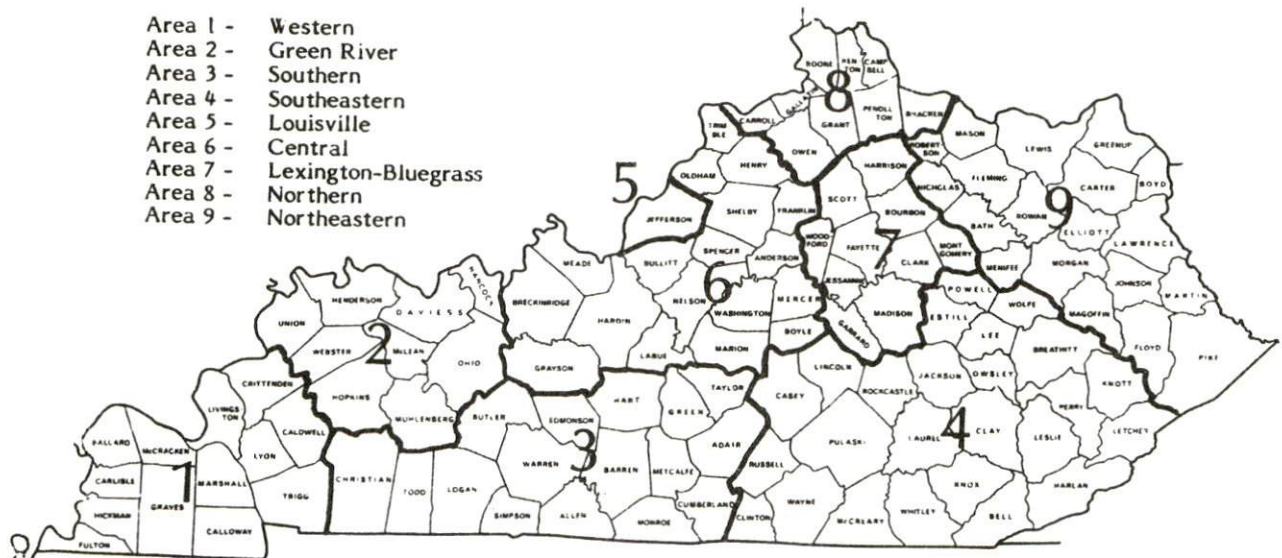
*Not disclosed.

Note: Excludes domestic workers, railway workers, certain nonprofit corporations, majority of federal government workers, and self-employed workers.

Source: Kentucky Cabinet for Human Resources, Average Weekly Wages of Workers Covered by Kentucky Unemployment Insurance Law, 1981.

Occupational wage rates for specific industries are usually not available to most government agencies, and wage data furnished to state employment agencies by individual industrial employers are protected from disclosure by federal law. The most reliable up-to-date wage information can be obtained by direct contact with local employers.

Associated Industries of Kentucky, a voluntary organization of Kentucky businesses, regularly collects occupational wage rates and fringe benefits data from participating member firms. Data are compiled for over 127 clearly defined office, production, and service occupations. Tabulations are published for nine geographical areas of Kentucky, as shown on the map below. It should be noted that the data may be weighted by the preponderance of firms in the larger cities and may be somewhat higher than the rates paid in the smaller communities. Data from these tabulations are available, upon request, from the Kentucky Department of Economic Development, Frankfort, Kentucky 40601.



Associated Industries of Kentucky Area Wage Surveys

PER CAPITA PERSONAL INCOME

<u>Area</u>	<u>1976</u>	<u>1980</u>	<u>Percent Change</u>
Boyd County	\$ 6,419	\$ 9,474	47.6
Labor Market Area Range	\$3,409 - 6,419	\$4,729 - 9,474	N/A
Kentucky	5,263	7,662	45.6
U.S.	6,367	9,511	49.4

Source: U.S. Bureau of Economic Analysis, Kentucky Economic Information System, June 1982.

TRANSPORTATION

Rail

Line serving Ashland - The Chessie System

Services - Main line; 14 eastbound and 14 westbound freights make daily stops; 25 eastbound and 25 westbound through freights daily; switching facilities; team track space for 20 to 30 cars; siding space for 500 cars; siding space for 12,200 cars available in Russell, 4 miles north of Ashland; refrigeration and heating services available in Russell; nearest piggyback facilities located at Huntington, West Virginia, 17 miles southeast of Ashland

Line serving Catlettsburg - The Chessie System

Services - Main line; 25 eastbound and 25 westbound through freights daily; nearest piggyback facilities located at Huntington, West Virginia, 11 miles east of Catlettsburg

Passenger line serving Ashland and Catlettsburg - Amtrak

Service - One eastbound train to Washington, D. C. three times weekly; one westbound train to Cincinnati and Chicago three times weekly; passenger station located at Catlettsburg

For details on routing, schedules, rates, and services, contact:

The Chessie System
Real Estate and Industrial
Development Department
808 Dixie Terminal Building
Cincinnati, Ohio 45202
(513) 369-5258

and/or

Accounts Manager
Amtrak
39 Jackson Place
Indianapolis, Indiana 46225
(317) 263-0531
Toll-free number 1-800-874-2775

Highways

U.S. 23 and U.S. 60 serve the Ashland and Catlettsburg area. U.S. 23 is a four-lane highway from 5 miles south of Catlettsburg to Portsmouth, Ohio. An interchange of Interstate 64 is located 8 miles south of Ashland and 2 miles south of Catlettsburg via U.S. 23. Another interchange of I-64 is located 12 miles southwest of Ashland via U.S. 60.

U.S. 52, located across the Ohio River from Ashland, provides four-lane access to Huntington, West Virginia, and to Portsmouth, Ohio.

A bridge over the Ohio River between 13th Street (U.S. 60) in Ashland and U.S. 52 in Ohio is under construction. Also within Ashland, several intersections on 13th Street (U.S. 60) are being redesigned. In addition, a bridge between U.S. 60 at Catlettsburg and Kenova, West Virginia, is in the design phase.

Truck Service

<u>Company</u>	<u>Home Office</u>
C & H Transportation Company, Inc.*	9757 Military Parkway P. O. Box 270535 Dallas, Texas 75227
Carolina Freight Carriers Corporation**	P. O. Box 697 Cherryville, North Carolina 28021
Central Transport, Inc.**	34200 Mound Road Sterling Heights, Michigan 48077
Chemical Leaman Tank Lines, Inc.* (T) (transports chemicals only)	Route 2 P. O. Box 570-B Ashland, Kentucky 41101
Commercial Lovelace Motor Freight, Inc.**	3400 Refugee Road Columbus, Ohio 43227
Consolidated Freightways Corporation of Delaware*	175 Linfield Drive Menlo Park, California 94025
Consolidated Motor Express, Inc.*	Bluefield, West Virginia 24740
Cook Motor Lines, Inc.*	P. O. Box 370 Akron, Ohio 44309
Daily Express* (Irregular route common carrier)	P. O. Box 285 Ironton, Ohio 45638
F.M.S. Transportation*	2564 Harley Drive St. Louis, Missouri 63043

<u>Company</u>	<u>Home Office</u>
Farson Motor Lines, Inc.** (T) (Irregular route common carrier)	P. O. Box 227 Ashland, Kentucky 41101
Ford Brothers, Inc.*	510 Riverside Drive P. O. Box 727 Ironton, Ohio 45638
General Highway Express, Inc.**	2280 Industrial Drive P. O. Box 727 Sidney, Ohio 45365
Gordons Transports, Inc.**	P. O. Box 59 Memphis, Tennessee 38101
Helms Express*	12731 Route 30 P. O. Box 340 Irwin, Pennsylvania 15642
Liquid Transporters, Inc.* (T)	P. O. Box 1645 Ashland, Kentucky 41101
McLean Trucking Company**	P. O. Box 213 Winston-Salem, North Carolina 27154
O. K. Trucking Company*	300 East Crescentville Road Cincinnati, Ohio 45241
Overnite Transportation Company*	P. O. Box 1216 Richmond, Virginia 23209
Putnam Transfer & Storage Company* (Irregular route common carrier)	1705 Moxahola Avenue Zanesville, Ohio 43701
Reinhardt Transfer Company*	P. O. Box 7 Portsmouth, Ohio 45662
Riss International**	215 West Pershing Road P. O. Box 100 Kansas City, Missouri 64141
Ryder Truck Lines, Inc.*	2050 Kings Road P. O. Box 2408 Jacksonville, Florida 32203
Schipper's Express, Inc.**	11425 Williamson Road Cincinnati, Ohio 45241
Sewell Motor Express*	Wilmington, Ohio 45177
Smith's Transfer Corporation**	P. O. Box 1000 Staunton, Virginia 24401
Suburban Motor Freight, Inc.**	P. O. Box 1739 Columbus, Ohio 43216
Yellow Freight System, Inc.**	P. O. Box 7270 Overland Park, Kansas 66207

(T) Local terminal.

* Interstate and intrastate service.

** Interstate service only.

Other Freight Services

Nearest Shipping Center

Purolator Courier Corporation*
United Parcel Service**

Huntington, West Virginia, 17 miles distant
Ashland, Kentucky

HIGHWAY MILES AND TRUCK TRANSIT TIME IN DAYS FROM
ASHLAND, KENTUCKY, TO SELECTED MARKET CENTERS

City	Highway Miles	Delivery Time TL	City	Highway Miles	Delivery Time TL
Atlanta, Ga.	480	1-2	Los Angeles, Ca.	2,298	6-8
Baltimore, Md.	448	1	Louisville, Ky.	190	1
Birmingham, Ala.	516	1-2	Nashville, Tenn.	328	1
Chicago, Ill.	470	1-2	New Orleans, La.	845	2
Cincinnati, Ohio	196	1	New York, N. Y.	620	2-3
Cleveland, Ohio	310	1	Pittsburgh, Pa.	280	1
Detroit, Mich.	423	2	St. Louis, Mo.	453	1-2
Knoxville, Tenn.	293	1			

Notes: Mileage computations are via the best interstate or primary highways, not necessarily the most direct route of travel. Delivery time does not include day of pick-up.

Sources: Rand McNally Road Atlas, 1979. Official Kentucky Mileage Map, 1979.
Delivery time - Overnite Transportation Company, P. O. Box 1216, Richmond, Virginia 23209.

Air

Local

Ashland-Boyd County Airport
6 miles northwest of Ashland

Location: Ashland-Boyd County Airport
Runways: 1 paved
Length: 5,600 feet
Traffic
Control: Wind sock and VASI
Lighting: Sundown to sunrise
Services: Jet fuel, 100 octane and oil, storage

(Contd.)

* For regular scheduled pickups or for occasional pickups, arrangements must be made with the Huntington, West Virginia, office of Purolator Courier Corporation.

** For regular scheduled pickups or for occasional pickups, arrangements must be made with the Louisville, Kentucky, office of United Parcel Service.

Nearest Scheduled Commercial Airline Service

Location: Tri-State Airport (Walker-Long Field)
9 miles southwest of Huntington, West Virginia;
21 miles southeast of Ashland

Runways: 2 paved
Length: 6,509 feet and 3,007 feet

Traffic Control: Tower

Lighting: Beacon, runway

Services: USAir, Piedmont, Aeromech, Comair; fuel - 100LL,
jet; tie-downs, hangars; major A & P repairs,
major Avionics repairs; APU, charter, flight
instruction, oxygen, plane rental, survival
equipment, U.S. Customs; taxi, limousine, car
rental; restaurant

Air Freight Service: Air freight terminal

Bus - Commercial: Greyhound Bus Lines and Continental Trailways Bus Lines
serve Ashland and Catlettsburg.

Local: Ashland City Bus Service serves Ashland, Catlettsburg,
Flatwoods and Russell, Kentucky; Huntington and Ceredo,
West Virginia. Service is available Monday through
Saturday, 6:45 a.m. to 6 p.m.

Taxi - One company in Ashland provides 24-hour service to the Ashland and
Catlettsburg area.

Rental Services - Car, truck and trailer rentals and charter bus services are
available in the Ashland-Catlettsburg area.

Water

Ashland is located on the Ohio River and Catlettsburg is located at the
confluence of the Ohio and Big Sandy Rivers. A nine-foot navigation channel is
maintained on the Ohio River and to a point just south of Catlettsburg on the Big
Sandy River.

The Eastern Kentucky Riverport Authority is in the process of developing a
riverport in Ashland. The port will be located off 34th Street at Mile 321 on the
Ohio River. The riverport will eventually include docking facilities, warehouses,
bulk storage areas and coal handling equipment.

Approximately 15 river terminals operate for private use only in the
Ashland-Catlettsburg area.

POWER AND FUEL

Electricity

Company serving Boyd County - Kentucky Power Company
Source of power - Kentucky Power Company
Total generating capacity - 1,065,000 KW
For industrial rates contact:

Kentucky Power Company
1701 Central Avenue
P. O. Box 1428
Ashland, Kentucky 41101
(606) 329-2220

Natural Gas

Company serving Boyd County - Columbia Gas of Kentucky, Inc.
Source of supply - Columbia Gas Transmission Corporation
Size of transmission mains - 10-inch (supplier); 10-inch (distributor)
Distribution mains - 2 thru 8 inches
Distribution pressure - 6 ounces to 45 psi
Btu content - 1,050 per cubic foot
Specific gravity - 0.65
For rates and supplies contact:

Columbia Gas of Kentucky, Inc.
1733 Winchester Avenue
P. O. Box 1030
Ashland, Kentucky 41101
(606) 324-7114

Other Fuels

Propane

Qualls & Son Heating and
Air Conditioning
326 10th Street
Ashland, Kentucky 41101

Buckeye Gas Products Company
(bulk plant)
Route 2
Catlettsburg, Kentucky 41129

Moyer's Chevron Service
4100 Winchester Avenue
Ashland, Kentucky 41101

Fuel oils

Distillate fuel oil -

John W. Clark Oil Company
(Gulf)
101 Wheatley Road
Ashland, Kentucky 41101

T. N. Marshall Ashland Oil
Distributor
U.S. 60
Meads, Kentucky 41101

Residual fuel oil - Arrangements must be made with the refinery.

Low sulphur content coal - Available locally.

WATER AND SEWERAGE

Public Water Supply

Company serving Ashland and Catlettsburg - City of Ashland Department
of Utilities
P. O. Box 1839
Ashland, Kentucky 41101
(606) 325-8571

Source - Ohio River
Treatment plant capacity - 12,000,000 gallons per day
Average daily consumption - 6,500,000 gallons
Peak daily consumption - 8,530,000 gallons
Type treatment - Filtration, coagulation, chlorination, fluoridation
Storage capacity - 8,150,000 gallons
Size lines - 2 to 24 inches
Average pressure - 75 psi
Average temperature - 60 degrees F.

MONTHLY WATER RATES

Inside Ashland city limits

First	2,000 gallons	\$2.64 (Minimum)
Next	8,000 gallons	.94 per M gallons
Next	90,000 gallons	.78 per M gallons
Over	100,000 gallons	.55 per M gallons

Outside Ashland city limits

First	2,000 gallons	\$4.22 (Minimum)
Next	8,000 gallons	1.50 per M gallons
Next	90,000 gallons	1.25 per M gallons
Over	100,000 gallons	.88 per M gallons

Tap-on charge:

	<u>Inside city of Ashland</u>	<u>Outside City of Ashland</u>
	5/8-inch meter	\$250
	3/4-inch meter	\$300
	1-inch meter	350
Over	1-inch meter	400
	Actual cost, \$400 minimum	Actual cost, \$400 minimum

Name of water district - Cannonsburg Water District
P. O. Box 1535
Ashland, Kentucky 41101
(606) 928-9808

Area served - Rural Boyd County (Cannonsburg, Coalton, Meades, Ponderosa, Graydon Heights)

Date when water district began operating - 1971

Source of supply of treated water - City of Ashland

Average amount of water used in a 24-hour period - 750,000 gallons

Peak amount of water used in a 24-hour period - 1,200,000 gallons

Storage capacity - 475,000 gallons

Average pressure - 75 psi

Size lines - 3, 4, 6, 8, and 12 inches

MONTHLY RATES

<u>Meter Size</u>	<u>Gallage Provided For Minimum Bill</u>	<u>Rate</u>
5/8-inch	2,000 gallons	\$ 9.00
1-inch	2,000 gallons	12.50
1 1/2-inch	2,000 gallons	14.00
2-inch	2,000 gallons	17.00
3-inch	2,000 gallons	30.00
4-inch	2,000 gallons	40.00
6-inch	2,000 gallons	60.00
8-inch	2,000 gallons	75.00
10-inch	2,000 gallons	100.00
12-inch	2,000 gallons	200.00

Monthly Rates After Minimum Bill Gallage

Next	3,000 gallons	\$2.05 per M gallons
Next	15,000 gallons	1.55 per M gallons
Next	30,000 gallons	1.25 per M gallons
Next	50,000 gallons	1.05 per M gallons
Over	100,000 gallons	.60 per M gallons

Tap-on charge:

5/8 x 3/4-inch tap - \$325

3/4 x 1-inch tap - \$375

Larger taps are based on actual cost.

Raw Water

Surface water sources - Ohio and Big Sandy Rivers

Average discharge - Ohio River at Greenup Dam, Kentucky - 95,210 cfs (12 years, USGS); Big Sandy River - no data available

Expected ground water yield - Along northeastern border of Boyd County - 500 to 1,000 gpm; western portion of Boyd County - 5 to 50 gpm; remainder of county - 50 to 200 gpm

Sewerage

Company serving Ashland - City of Ashland Department of Utilities
P. O. Box 1839
Ashland, Kentucky 41101
(606) 325-8571

Design capacity - 11,000,000 gallons per day
Average daily flow - 3,000,000 gallons
Treatment - Primary and secondary
Type treatment - Aeration and clarifier
Treated effluent discharged into - Ohio River
Size of sanitary mains - 6 to 60 inches
Size of storm mains - 8 to 60 inches
Rates -

First	1,000 gallons	\$2.30 (Minimum)
Next	9,000 gallons	1.60 per M gallons
Next	90,000 gallons	1.20 per M gallons
Next	200,000 gallons	1.00 per M gallons
Next	400,000 gallons	.85 per M gallons
Next	300,000 gallons	.70 per M gallons
All over	1,000,000 gallons	.60 per M gallons

Tap-on charge:

Inside city - \$100
Outside city - \$150

Company serving Catlettsburg - City of Catlettsburg
P. O. Box 533
26th and Division Streets
Catlettsburg, Kentucky 41129
(606) 739-5223

Design capacity - 500,000 gallons per day
Average daily flow - 250,000 gallons
Treatment - Primary and secondary
Type treatment - Aeration and clarifier
Treated effluent discharged into - Big Sandy River
Size of sanitary mains - 10 to 24 inches
Size of storm mains - 24 inches to 5 feet
Rates - 65% of water bill
Tap-on charge: \$75

CLIMATE

Boyd County

Temperature

Normal (30-year record)	54.60 degrees
Average annual 1981	53.10 degrees
Record highest, August 1918 (93-year record)	106.00 degrees
Record lowest, February 1899 (93-year record)	-27.00 degrees
Normal heating degree days (30-year record) (Heating degree day totals are the sums of negative departures of average daily temperatures from 65 degrees F.)	4,817

Precipitation

Normal (30-year record)	38.44 inches
Mean annual snowfall (94-year record)	24.40 inches
Total precipitation 1981	26.68 inches
Mean number days precipitation (.01 inch or more) (93-year record)	141
Mean number days thunderstorms (76-year record)	44

Prevailing Winds

N/A

Relative Humidity

1 a.m.	N/A
7 a.m.	80 percent (60-year record)
1 p.m.	56 percent (31-year record)
7 p.m.	68 percent (60-year record)

Source: U.S. Department of Commerce, Environmental Science Services
Administration, Climatological Data, 1981. Station of record: Parkersburg,
West Virginia.

LOCAL GOVERNMENT

City

Ashland

Structure - Mayor - 4-year term; 4 commissioners - 2-year terms; city manager

Budget 1982-83 - General Fund \$6,966,857

Water and Sewer Fund 3,355,293

Fees and licenses - Occupational license fee of 1 1/2% on all businesses with a \$100 minimum. Automobile stickers - \$20 per year.

Catlettsburg

Structure - Mayor - 4-year term; 7 council members - 2-year terms

Budget 1982 - General Fund \$348,854.65

Water and Sewer Fund 68,934.82

Fees and licenses - Business licenses range from \$25 to \$500 per year

County

Structure - County Judge/Executive - 4-year term; 3 commissioners - 4-year terms

Budget 1981-82 - General Fund \$1,170,000; Road Fund \$593,144

Assessed Value of Property, 1981*

<u>Classes of Property</u>	<u>Ashland</u>	<u>Catlettsburg</u>	<u>Boyd County</u>
Real Estate	\$298,050,540	\$16,842,314	\$745,171,971
Tangibles	84,561,300	4,102,117	195,076,968

*Excludes Homestead Exemptions.

Property Taxes

All property in Kentucky is assessed at 100 percent of fair cash value.

Land and buildings are taxed by the state and may be taxed by local jurisdictions. The state rate is \$0.229 per \$100 of assessed valuation.

Manufacturing machinery, raw materials inventories, pollution control equipment, and goods in the process of manufacture are not subject to local taxation. The state rate is \$0.15 per \$100.

Other tangible personal property owned by manufacturers (automobiles, trucks, finished goods, office furniture, office equipment) is taxed by the state at \$0.45 per \$100 and may be taxed by local jurisdictions.

Property stored in public warehouses in a transit status is not subject to local taxation. The state rate is only \$0.015 per \$100.

Intangible personal property located in Kentucky (money in hand, shares of stock, notes, bonds, accounts receivable, and other credits) is taxed by the state at \$0.25 per \$100, and is not subject to local taxation.

Private leaseholds in industrial facilities owned by cities or counties and financed by industrial revenue bonds are subject to a state tax of \$0.015 per \$100 of value (essentially the lessee's equity, adjusted for appreciation or depreciation). Local taxation is not permitted.

Combined State and Local Rates Per \$100 Valuation, 1981*
(100% assessment)

	<u>Inside City of Ashland</u>	<u>Inside City of Catlettsburg</u>	<u>Site Inside Unincorporated Boyd County</u>
1. Land and buildings	\$1.2562	\$1.060**	\$0.655***
2. Mfg. machinery, raw materials, goods in process, pollution control equipment	0.1500	0.150	0.150
3. Finished goods, office equipment, vehicles, other tangibles	1.4772	1.281**	0.876***
4. Intangibles (accounts receivable, notes, bonds, etc.)	0.2500	0.250	0.250
5. Leaseholds in industrial revenue bond financed plants	0.0150	0.015	0.015

Utilities Gross Receipts Tax for Schools

A 3 percent tax is levied on utilities receipts for schools in the Ashland Independent School district. Tax is paid by all consumers of utilities as an add-on to the utilities bills. Exempted are receipts from utilities services that are resold and the receipts from the sale of energy or energy producing fuels that exceed 3 percent of the cost of production in manufacturing, processing, mining or refining.

Planning and Zoning

City agencies - City of Ashland Planning Commission and Catlettsburg Planning and Zoning Commission
 Zoning enforced - In the city of Ashland and in the city of Catlettsburg
 Subdivision regulations enforced - In the city of Ashland and in the city of Catlettsburg
 Local codes enforced - Building and housing
 Mandatory state codes enforced - Kentucky Plumbing Code, National Electric Code, Kentucky Boiler Regulations and Standards, Kentucky Building Code (modeled after BOCA code)

-
- * Kentucky Department of Economic Development.
 - ** An additional \$0.2475 rate applies to residents inside the floodwall for maintenance.
 - *** Residents in areas of Boyd County within the Fairview Independent School District are taxed at a rate of \$0.836 per \$100 on land and buildings and \$1.057 per \$100 on finished goods, etc.

Safety

<u>Police</u>	<u>Ashland</u>	<u>Catlettsburg</u>	<u>Boyd County</u>
Total staff	64	6	18
Radio-patrol cars	23	2	8

Fire

Insurance Service

Office, Public Protection Classifications	4	7	*
Full-time staff	60 (3 stations)	4	--
Volunteers	--	20	--

Rescue Service

Rescue service is provided by the combined resources of local fire departments, police departments and ambulance service.

* Seven volunteer fire departments, served by approximately 150 volunteers, operate in Boyd County. Their fire ratings are:

Big Sandy	10	North Branch	10
Cannonsburg	6 & 9	Summitt-Ironville	9 & 10
East Fork	9 & 10	Westwood	9 & 10
England Hill	10		

Refuse Collection and Disposal

	<u>Ashland</u>	<u>Catlettsburg</u>
Type service	Municipal	Private
Fee charged:		
residential	\$7.50 per month	\$4 per month
business	*	*
industrial	*	*
Collection frequency:		
residential	Once weekly	Once weekly
business	*	*
industrial	*	*
Trash pickup	Once weekly	One to two times weekly
Disposal method	Landfill	Landfill

	<u>Boyd County</u>
Type service	Private
Fee charged:	
residential	\$4 per month
business	*
industrial	*
Collection frequency:	
residential	Once weekly
business	*
industrial	*
Trash pickup	Upon request
Disposal method	Landfill

* The fee charged and the collection frequency for commercial operations is based on the volume.

EDUCATION

Public Schools

	<u>Ashland Independent*</u>	<u>Fairview Independent</u>	<u>Boyd County</u>
Total Enrollment (Spring 1982)	3,628	950	4,788
Elementary	1,798	500	2,432
Junior High	--	--	1,232
Middle School	635	--	--
High School	1,195	450	1,124
Student-Teacher Ratio	17-1	21-1	22-1
Elementary	19-1	25-1	20-1
Junior High	--	--	27-1
Middle School	15-1	--	--
High School	16-1	18-1	23-1
Accreditation	Southern Association of Colleges and Schools	Southern Association of Colleges and Schools	
Percent High School Graduates to College (1981)	56.7	36.1	41.0
Expenditures Per Pupil (1980-81)	\$1,462	\$1,415	\$1,267
Bonded Indebtedness (June 30, 1981)	\$ 00	\$165,000	\$9,607,000**

Nonpublic Schools

	<u>Holy Family</u>	<u>Rose Hill Christian School</u>	<u>Seventh Day Adventist</u>
Total Enrollment	265	100	11
Elementary	190	100	11
High School	75	--	--
Student-Teacher Ratio	16-1	17-1	11-1
Elementary	21-1	17-1	11-1
High School	10-1	--	--

* Construction began in early 1982 on a new middle school for the Ashland Independent School District. The \$3.75 million project is scheduled for completion in Spring 1983.

** Includes refunding of \$3,900,000.

Area Colleges and Universities

<u>Name</u>	<u>Location (Miles distant)*</u>	<u>Enrollment (Fall, 1981)</u>	<u>Highest Degree Conferred</u>
Ashland Community College	Ashland, Kentucky	1,572	Associate
Ohio University, Ironton Campus	Ironton, Ohio (4)	1,242	Academic and Professional
Marshall University	Huntington, West Virginia (17)	11,846	Academic and Professional
Kentucky Christian College	Grayson, Kentucky (23)	457	Baccalaureate
Shawnee State Community College	Portsmouth, Ohio (33)	2,130	Associate
Morehead State University	Morehead, Kentucky (59)	6,739	Masters, Specialist/ Doctorate**

* Mileage from Ashland.

** Joint doctoral degree programs are offered in cooperation with the University of Kentucky, Lexington.

Ashland Community College offers Associate in Applied Science degrees in the following areas: Accounting Technology, Civil Engineering Technology - General and Fluid Process options, Communications Technology, Management Technology - Banking, Business, or Real Estate options, Nursing, Real Estate, and Secretarial Administration - Administrative Assistant area, Executive Secretary area, Information Processing area, Legal Secretary area, and Medical Secretary area. Students desiring to complete baccalaureate degree programs may transfer to other colleges or universities after completing two years of appropriate course work at Ashland Community College.

In addition to programs leading to a degree, the college offers a variety of Continuing Education Programs. Recent offerings have included courses in Computer Programming for adults and grades 7-12, Graduate Record Examination Review, Cardiopulmonary Resuscitation, Engineers in Training Review, Basic Photography, French and German for Travelers, board approved classes for registered nurses, Writing for Business and Industry and Time Management for Professionals. During fiscal year 1981-82, 5,604 individuals participated in Continuing Education Programs.

The college also performs a variety of community oriented services. The college offers concerts and a lecture series, sponsors an annual Health Fair and an Energy Fair, provides a weekly news article to six different newspapers and 30 - second public service announcements to 11 different radio stations in the service area, sponsors a Speakers Bureau, and makes its facilities available to civic and community groups. During fiscal year 1981-82, the college reached 34,081 people in the Ashland area through its Community Service Program.

Vocational Schools

Both the state vocational-technical schools and the area vocational education centers are operated by the Kentucky Department of Education. The state vocational-technical schools enroll persons full time who are at least 16 years of age and not in school. These students attend classes for six hours each day. The area vocational education centers are designed to accommodate high school students who are at least 15 years of age. These students attend vocational school for three hours each day. In Ashland, the high school program and the adult program are both taught at the state vocational-technical school. The state vocational-technical schools and the area education centers offer evening courses to enable working adults to upgrade current job skills.

Nearest State School

Location	Ashland State Vocational- Technical School
Curriculum	Ashland Business and Office Clerical Secretarial-Stenographic Consumer and Home Economics Child Care Commercial Foods Health and Personal Services Occupations Cosmetology Nurse Assistant Practical Nursing Industrial Education Auto Body Repair Auto Mechanics Carpentry-Building Trades Drafting Industrial Electricity Industrial Electronics Machine Shop Radio and Television Repair Tool and Die Making Welding

Nearest Area Education Center

Location	Boyd County Area Vocational Education Center
Miles Distant	Cannonsburg 6 from Ashland
Curriculum	Consumer and Home Economics Child Care Services Commercial Sewing Health and Personal Services Occupations Health Careers Industrial Education Auto Body Repair Auto Mechanics Carpentry Diesel Mechanics Drafting Electricity Heating and Air Conditioning Office Machine Repair Welding

Arrangements can be made to provide training in the specific production skills required by an industrial plant. Instruction may be conducted either in the vocational school or in the industrial plant, depending upon the desired arrangement and the availability of special equipment.

HEALTH

Local Medical Personnel

Physicians - 86
Dentists - 33

Hospitals

<u>General Hospital</u>	<u>Location</u>	<u>Beds</u>
King's Daughters' Hospital*	Ashland	340
Our Lady of Bellefonte Hospital	Russell, 4 miles north of Ashland	115

King's Daughters' Hospital

General hospital facilities - Emergency room, seven operating rooms, recovery room, X-ray, laboratory, OB section, pediatrics, pediatrics special care unit, intensive care unit, cardiac care unit, 17-bed psychiatric unit, occupational therapy, physical therapy, respiratory therapy, nuclear medicine, home health services, cardiac rehabilitation program, prenatal clinic, EKG, EEG, blood bank, CAT Scanner, 20-bed unit for alcoholism

Medical staff - 74 physicians on active staff, 18 physicians on courtesy staff, 9 dentists, 2 pathologists, 194 registered nurses (full-time), 61 registered nurses (part-time), 97 licensed practical nurses, 9 emergency medical technicians, 21 X-ray technicians

Our Lady of Bellefonte Hospital

General hospital facilities - Emergency room, surgery, recovery room, central sterile supply, radiology (X-ray), nuclear medicine, ultrasound, cardiac services, EEG, laboratory, physical therapy, respiratory therapy, intensive coronary care unit, special adult care unit, chemical dependency care unit, children's care unit

Medical staff - 48 physicians on active staff, 16 physicians on courtesy staff, 82 registered nurses and 21 licensed practical nurses

* A major expansion project is currently under way at King's Daughters' Hospital. The \$12.9 million project includes the addition of two floors onto the existing building and new 4-story (plus basement) building which will connect to the present facility. Construction on the project began in April 1982 with an estimated two years until completion.

Other Medical Facilities

Landsdowne Mental Health Center offers outpatient psychiatric and social services and also offers inpatient services at King's Daughters' Hospital.

Ambulance Service

Name - Emergency Ambulance Service, Inc.

Staff - 12 paramedics

Services - 24-hour, county-wide

Equipment - Two modular ambulances and two van-type ambulances

Public Health

Facility - Fivco District Health Department

Staff (serving Boyd and Lawrence Counties) - 11 registered nurses, 3 health environmentalists, 3 community health workers, 8 clerks, 1 part-time dentist, 1 part-time medical director, a director

OTHER LOCAL FACILITIES

Communications

	<u>Ashland</u>	<u>Catlettsburg</u>
Telephone - Services -	General Telephone Company Direct dial and push button	General Telephone Company Direct dial and push button
Telegraph - Services -	Western Union Counter service and toll free number 1-800-325-5100	Western Union Counter service and toll free number 1-800-325-5100
Postal - Class - Mail received - Mail dispatched -	U.S. Post Office First 11 times daily 2 times daily	U.S. Post Office First 2 times daily 1 time daily
Newspapers - Daily and circulation - Sunday and circulation - Other papers received from -	Ashland Daily Independent 25,076 27,704 Lexington and Louisville, Kentucky; Huntington, West Virginia	 Ashland, Kentucky; Huntington and Charleston, West Virginia
Radio - Stations received from -	WCMI-AM; WAMX-FM Louisville, Kentucky; Huntington and Charleston, West Virginia	WTCR-FM; WCAK-FM Louisville, Kentucky; Huntington and Charleston, West Virginia
Television - Cable service Reception from -	Yes Lexington, Kentucky; Cincinnati, Ohio; Huntington and Charleston, West Virginia	Yes Lexington, Kentucky; Cincinnati, Ohio; Huntington and Charleston, West Virginia
Kentucky Educational Television -	Ashland transmitter, Channel 25	Ashland transmitter, Channel 25

Library Services

Public library - Boyd County Public Library

Size collection - 104,276 volumes

Circulation, 1982-83 - 150,000 (estimated)

Services - Interlibrary Loan, prints, newspapers, periodicals, magazines, records, films and projector, genealogy collection, Kentucky Authors Collection, U.S. Government Deposit Library, bookmobile, microfilm, microfiche, photocopy machine, meeting room, typing room

College library - Ashland Community College Library - Open to the public in Boyd, Carter, Elliott, Greenup and Lawrence Counties

Size collection - 28,437 volumes; audiovisual materials - 6,931 items

Circulation, 1980-81 - 26,000

Services - Newspapers, instructional materials, magazines, records, films, video cassette playback machines, filmstrips, slides, microfilm, study desks, copy machine, tapes, periodicals, educational games; reading, writing and math laboratories

Religious Institutions

Number of churches - Approximately 65 in Boyd County

Denominations -	Assembly of God	Holiness
	Apostolic	Jehovah's Witnesses
	Baptist	Latter Day Saints
	Catholic	Lutheran
	Christian	Nazarene
	Christian-Disciples of Christ	Pentecostal
	Church of Christ	Presbyterian
	Church of God	Salvation Army
	Episcopal	Seventh Day Adventist
	Freewill Baptist	Southern Baptist
		United Methodist

Nearest synagogues - Ashland

Huntington, West Virginia, 17 miles east of Ashland

Congregations - Agudath Achim (reform) in Ashland

B'nai Sholom (conservative and reform) in Huntington,
West Virginia

Financial Institutions

<u>Banks</u>	<u>Assets</u>	<u>Deposits</u>	<u>Statement Date</u>
<u>Ashland</u>			
Bank of Ashland	\$ 49,547,666.00	\$ 43,118,298.00	3/31/82
First Bank and Trust Company of Ashland	141,728,441.00	120,418,781.00	3/31/82
Third National Bank	121,720,200.00	105,212,600.00	3/31/82

Catlettsburg

Kentucky Farmers Bank	68,914,738.97	58,470,909.15	3/31/82
<u>Savings and Loan Associations</u>	<u>Assets</u>	<u>Savings Accounts</u>	<u>Statement Date</u>

Ashland

Ashland Federal Savings and Loan Association	\$ 33,008,842.07	\$ 29,325,863.30	12/31/81
First Federal Savings and Loan Association	37,654,378.21	31,281,218.21	9/30/81
Home Federal Savings and Loan Association	42,271,368.03	35,485,448.87	3/31/82

Catlettsburg

Catlettsburg Federal Savings and Loan Association	31,491,567.79	27,230,669.08	12/31/81
---	---------------	---------------	----------

Hotels and Motels

Total number - 12
Total rooms - 415

Clubs and Organizations

American Association of University
Women Ashland Area Branch
American Heart Association
American Legion-France Leece Post
182
Arcoettes
Ashland Altrusa Club
Ashland American Legion Post 76
Ashland Area Jaycettes
Ashland Area Welcome Wagon
Ashland Art Gallery
Ashland Board of Realtors
Ashland-Boyd County Humane Society
Ashland Business & Professional
Women's Club
Ashland City Council - Beta Sigma Phi
Ashland Civic League
Ashland Duplicate Bridge Club
Ashland Insurance Women
Ashland Jaycees
Ashland Kiwanis Club
Ashland Lions Club
Ashland Optimist Club
Ashland Pilot Club
Ashland Rotary Club
Ashland Stamp Club
Ashland Tennis Center
Ashland Toastmasters
Ashland White Shrine #7
B.P.O.E. #942
Bellefonte Garden Club
Boyd County Bar Association
Boyd County Bar Association Auxiliary
Boyd County Cancer Society
Boyd County Chapter of the American
Red Cross
Boyd County Citizens Caucus
Boyd County Community Club
Boyd County Council on Aging
Boyd County Historical Society
Boyd County Medical Association
Car Dealers Association (New)
Cerebral Palsy of Eastern Kentucky
Colonial Dames, Col. Thomas Ballard
ChapterClub
Community Senior Club
Continental Dance Club
Daughters of American Colonist
Daughters of American Revolution
Eastern Kentucky Chapter of
Diabetes
Eastern Kentucky Genealogical
Society
El Hasa Motor Corps
El Hasa Shrine Temple
Friends of Children
Fraternal Order of Eagles
Fraternal Order of Police
Geiger Speech & Hearing Center
for Easter Seal
Goldenrod Chapter of the March
of Dimes
Greenbo Bass Club
Junior Achievement of Ohio
Valley, Inc.
Kentucky Chapter of the
Arthritis Foundation
King's Daughters' Auxiliary
La Leche League
Loyal Order of Moose
Meal on Wheels
NAACP
New Boyd County Democratic
Woman's Club
Parents Anonymous
Parents Without Partners
Performing Arts Guild, Inc.
Survivors Group of Alateen
Three Arts Club
Toastmistress
Tri-State Big Brother/Big Sister
Tri-State Building &
Construction Trades Council
Tri-State Council of Camp Fire
Tri-State Road Runners Travel
Club
United Council of Church
Women
Veterans of Foreign Wars
Post 10017
White Cane Chapter of the Blind
of Kentucky
Wilderness Road Girl Scouts

RECREATION

Local

Public recreation facilities in the Ashland-Catlettsburg area include: Armco Park which contains a picnic area with shelters; Dawson Park with a swimming pool and playground area; Ashland City Pool which includes a swimming pool, a baby pool, a concession stand, a bathhouse, basketball/volleyball courts and a playground; Clyffeside Park which has a lighted baseball diamond, a basketball court, picnic areas and a shelter house; Charles Russel Park, a 22-acre park with nature trails and picnic areas; Central Park which contains 55 acres with three baseball diamonds, five tennis courts, playgrounds, picnic areas, a concession stand, a croquet court, and several prehistoric Indian mounds; Southside Pool, an Olympic size swimming pool; and twenty tennis courts (five of which are being enclosed for year round use) at Ashland Community College. Four public golf courses are located in Boyd County.

Privately-owned facilities open to the public include Camden Park, an amusement park near Huntington, West Virginia, 9 miles east of Ashland; two bowling facilities with a combined total of 50 lanes; two cinemas; two drive-in movie theatres; two riding academies; a roller rink with a 1,000-person capacity; two tennis centers; and the YMCA, which has recently added a men's health club.

Ashland has two private swim clubs. Breezeland Swim Club has a pool, baby pool, concession stand, tennis courts, shuffleboard court, bathhouse and lockers. Princeland has a pool, baby pool, concession stand and bathhouse.

Bellefonte Country Club is located in nearby Greenup County. The country club has a swimming pool, golf course and two tennis courts.

Organized recreation programs are available in most sports such as baseball, basketball, soccer, T-ball, football and softball through the Ashland Recreation Department. The Ashland Recreation Department also sponsors plays in Central Park, puppet shows, special seasonal events, and horseshoe and frisbee tournaments.

The Paramount Arts Center which is owned and operated by the Greater Ashland Foundation, a non-profit group, is the site of many cultural events. Subscription series featuring plays, symphony concerts, and ballets are available at the Arts Center as well as individual events. Recent offerings have included a youth education series, a women's series, the Atlanta Symphony, and the Joffrey Ballet. Groups may rent the building for conventions and performances.

The first Tri-State Fair and Regatta was held in 1978 and has since become an annual event. Fair activities are held over a three week period for one week each in Ashland, Kentucky; the Huntington, West Virginia area; and the Ironton, Ohio area. Events include a Valvoline speed cup boat race, a flotilla, a float boat race, sternwheeler rides, air shows, balloon races, fairs, horse shows, exhibitions, musical productions, arts and crafts shows, and a national cycling classic.

In addition, the Negro Baseball Hall of History Exhibit is located in Ashland and hosts the National Negro League's annual reunion.

Area (Within 35 miles)

Two state resort parks and one state park are located within 35 miles of Ashland and Catlettsburg.

Grayson Lake State Park is located approximately 23 miles west of Ashland near Grayson. Facilities available include 71 campsites, a beach, and a picnic area. Good fishing and organized recreational programs can be found during the summer. The park is located in the 7,350-acre Grayson Lake Wildlife Area. Hunting information is available from the Kentucky Department of Fish and Wildlife Resources. The Rosedale Recreation Area, located near a dam on Grayson Lake, includes Kitchen House, a log house circa 1838 which was the scene of a Civil War skirmish. The nearby Camp Webb Conservation Center has a wildlife museum.

Greenbo Lake State Resort Park, which is located approximately 25 miles west of Ashland, has a magnificent fieldstone lodge and every article in each room of the lodge has been made in Kentucky. The lodge offers 36 lodge rooms, a dining room, a gift shop, a meeting room, a lodge pool, and a recreation room. Other facilities and activities at the park include a well-equipped campground, a marina, miniature golf, tennis courts, playgrounds, shuffleboard, planned recreation, fishing, hiking, horseback riding, and picnicking.

Carter Caves State Resort Park, approximately 32 miles west of Ashland, provides a restful atmosphere with its mountain wildflowers, a rippling stream, the underground wonders of three caves, a lodge, a restaurant, and a gift shop. Recreational facilities available include something for the whole family with playgrounds, a swimming pool, tennis courts, shuffleboard, a 9-hole golf course, boating, fishing, horseback riding, picnicking, and cave tours.



Kentucky Department of Economic Development
Capital Plaza Tower
Franklin, Kentucky 40501 • Phone: (502) 564-4270