

1992

Industrial Resources: Laurel County - London

Kentucky Library Research Collections
Western Kentucky University, spcol@wku.edu

Follow this and additional works at: https://digitalcommons.wku.edu/laurel_cty



Part of the [Business Administration, Management, and Operations Commons](#), [Growth and Development Commons](#), and the [Infrastructure Commons](#)

Recommended Citation

Kentucky Library Research Collections, "Industrial Resources: Laurel County - London" (1992). *Laurel County*. Paper 2.
https://digitalcommons.wku.edu/laurel_cty/2

This Report is brought to you for free and open access by TopSCHOLAR®. It has been accepted for inclusion in Laurel County by an authorized administrator of TopSCHOLAR®. For more information, please contact topscholar@wku.edu.

IR
722

Lowell Co.

Resources for Economic Development

London



KENTUCKY
Open for Business

RESOURCES FOR ECONOMIC DEVELOPMENT
LONDON, KENTUCKY

Prepared by
The Kentucky Cabinet for Economic Development
Division of Research and Planning
in cooperation with
London-Laurel County Chamber of Commerce

1992

Division Director - Pamela K. Riley; program manager - Keith Roberts; research* - Richard Cobb; clerical - Wanda Sharp; graphics - Robert Owens, Pat Coleman; cartography - Edwin Scott, Dave Clark. Cost of printing paid from state funds.

TABLE OF CONTENTS

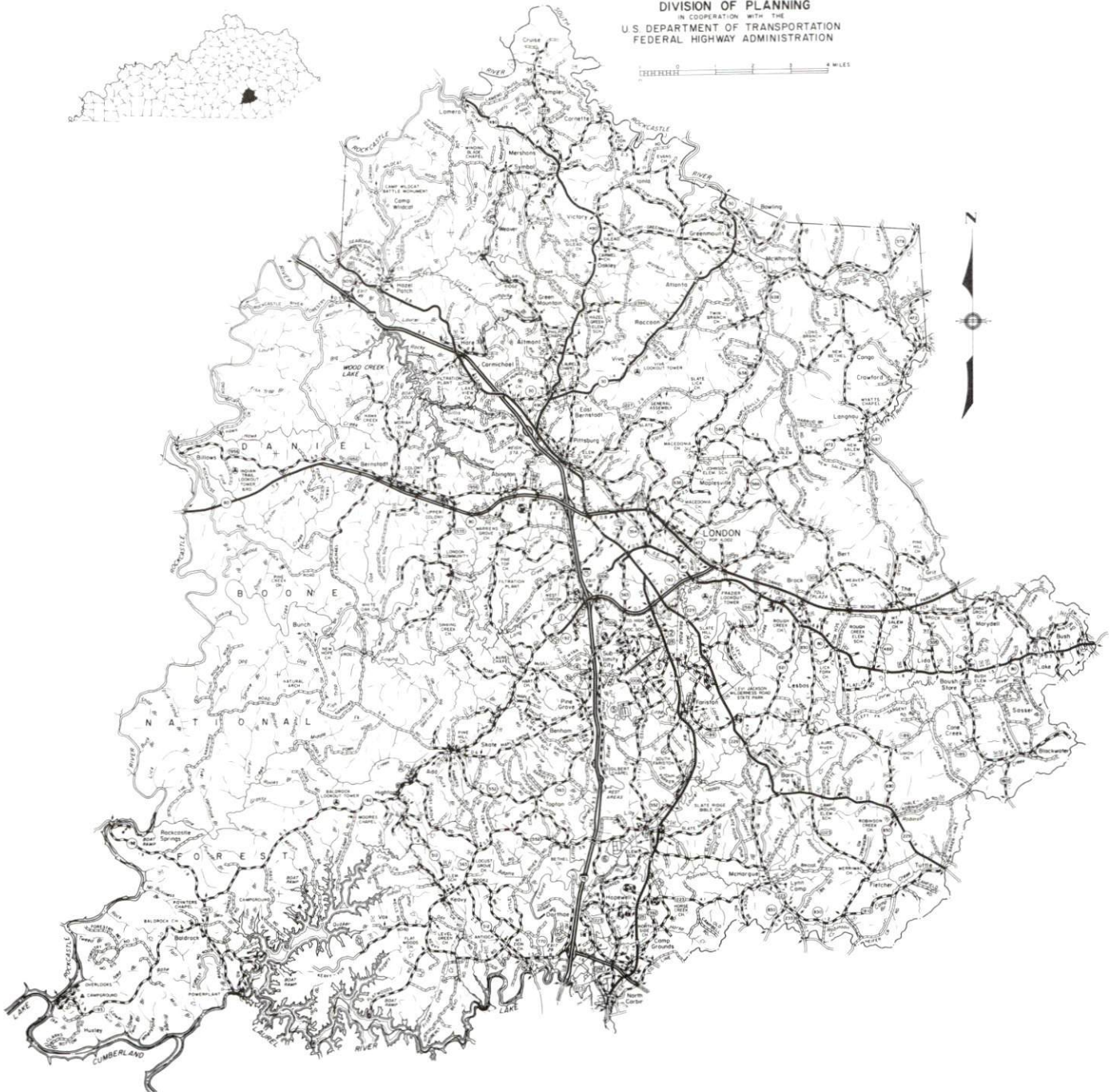
<u>Chapter</u>	<u>Page</u>
LONDON, KENTUCKY - A RESOURCE PROFILE	1
THE LABOR MARKET STATISTICS	2
Labor Market Area Map	2
Population	3
Population Projections	3
Estimated Labor Supply	3
Labor Force Characteristics of Residents, 1990	4
Selected Components of Nonagricultural Employment, by Place of Work, 1990	5
Per Capita Personal Income	6
Average Placement Wages	7
Average Weekly Wages of Workers Covered by Unemployment Insurance 1989 - Bar Chart	8
Average Weekly Wages by Industry, by Place of Work, 1989	9
EXISTING INDUSTRY	10
London Manufacturing Firms, Their Products and Employment	10
Major Non-Manufacturing Firms	11
Labor Organizations in Manufacturing Firms	11
Selected Industrial Services	12
TRANSPORTATION	13
Highways	13
Truck Service	13
Selected Market Location Map	14
Rail	15
Air	15
UTILITIES	16
Electricity	16
Natural Gas	16
Public Water Supply	17
Sewerage	17
CLIMATE	18

<u>Chapter</u>	<u>Page</u>
LOCAL GOVERNMENT	19
Structure	19
Planning and Zoning	19
Local Fees and Licenses	19
State and Local Property Taxes	20
EDUCATION	21
Public Schools	21
Nonpublic Schools	21
Area Colleges and Universities	22
Vocational Training	23
OTHER LOCAL FACILITIES	24
Local Medical Personnel	24
Hospitals	24
Other Medical Facilities and Services	24
Banks and Savings & Loan Associations	24
Newspapers	24
Telephone Service	24
RECREATION	25
COMMUNITY IMPROVEMENTS	26

GENERAL HIGHWAY MAP
LAUREL COUNTY
KENTUCKY

PREPARED BY THE
KENTUCKY TRANSPORTATION CABINET
DEPARTMENT OF HIGHWAYS
DIVISION OF PLANNING
IN COOPERATION WITH THE
U.S. DEPARTMENT OF TRANSPORTATION
FEDERAL HIGHWAY ADMINISTRATION

0 1 2 3 4 MILES



LONDON, KENTUCKY - A RESOURCE PROFILE

London, the county seat of Laurel County is located in southeastern Kentucky. The city of London is located 75 miles south of Lexington, Kentucky, 100 miles north of Knoxville, Tennessee; and 153 miles south of Cincinnati, Ohio. In 1990, London had a population of 5,757.

Laurel County has a land area of 434 square miles. Approximately one-half of the county is located in the eastern coal field region and the western portion of the county is located within the Daniel Boone National Forest. In 1990 Laurel County had a population of 43,438.

The Economic Framework - The total number of Laurel County residents employed in 1990 averaged 17,505. Manufacturing firms in the county reported 3,666 employees; wholesale and retail trade provided 4,250 jobs; 3,069 people were employed in service occupations; state and local government accounted for 1,630 employees; and contract construction firms provided 934 jobs.

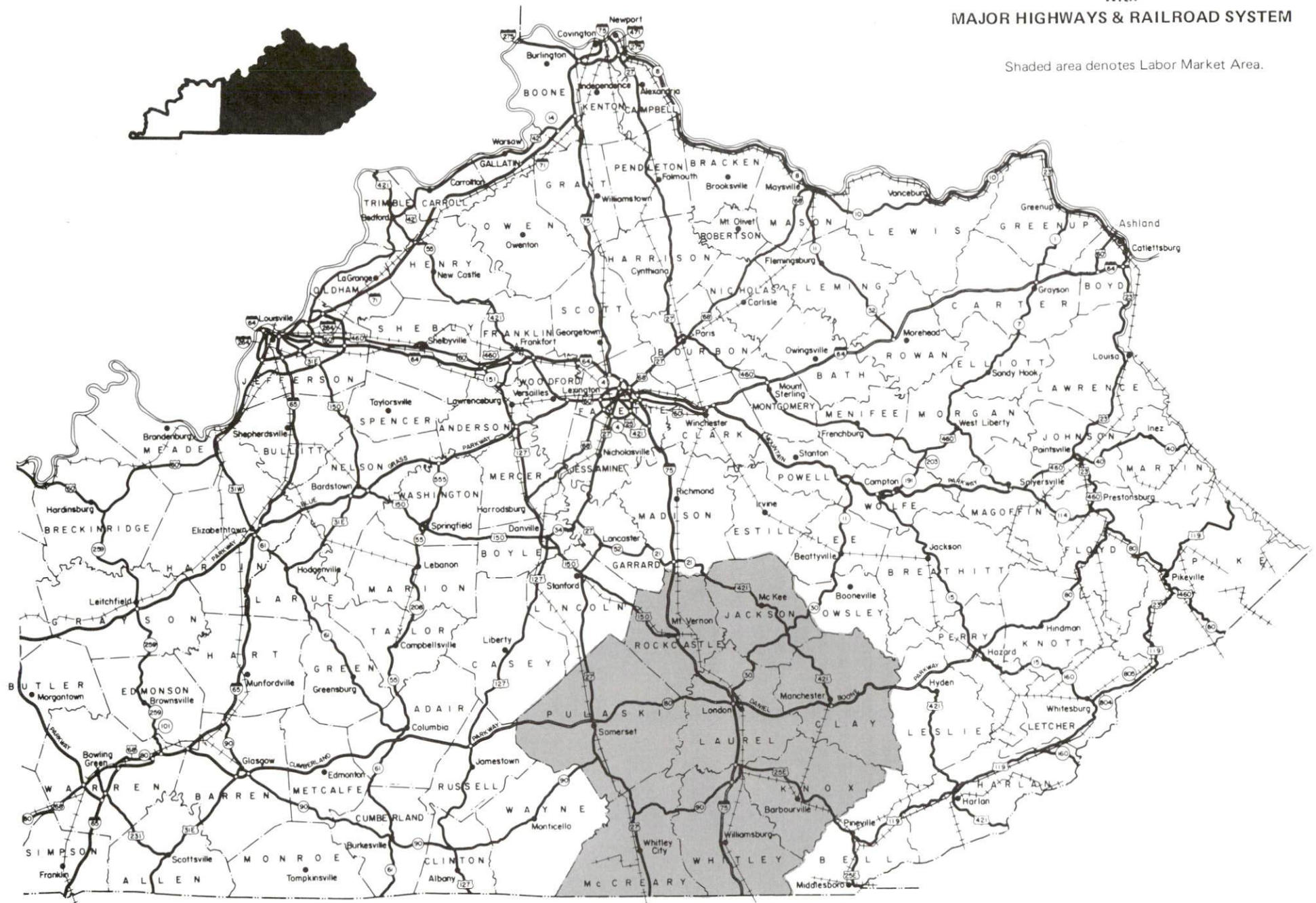
Labor Supply - There is a current estimated labor supply of 45,428 persons available for industrial jobs in the labor market area. In addition, from 1992 through 1996, 18,046 young persons in the area will become 18 years of age and potentially available for industrial jobs.

Transportation - CSX Transportation provides main line rail service to London. Interstate 75, a major north-south highway corridor, directly serves London with an interchange two miles west of the downtown area. London is located on the Daniel Boone Parkway, a multi-lane toll road, which extends from London to the east. U.S. Highway 25 and Kentucky 80, both AAA-rated trucking highways, also serve London. Twenty-five trucking companies provide interstate and/or intrastate service to London. The London-Corbin Airport, a local airport located three miles south of London, has a 6,000-foot paved runway. Scheduled commercial airline service is available at Blue Grass Airport near Lexington, Kentucky, 79 miles north of London.

Power and Fuel - Electric power is provided to London and Laurel County by the Kentucky Utilities Company and by the Jackson County Rural Electric Cooperative Corporation. Natural gas service is provided by the Delta Natural Gas Company.

Education - The Laurel County School System provides primary and secondary education in London and Laurel County, and the East Bernstadt Independent School System provides education through the eighth grade. In addition, there are three non-public schools in London. London is the home of Sue Bennett College, a two-year college, with a 1990 fall enrollment of 517. In addition, there are 13 other colleges and universities within 75 miles of London. Vocational training is available locally at the Laurel County State Vocational Technical School.

Shaded area denotes Labor Market Area.



LABOR MARKET STATISTICS

The London Labor Market Area includes Laurel County and the adjoining Kentucky counties of Clay, Jackson, Knox, McCreary, Pulaski, Rockcastle and Whitley.

POPULATION			
	<u>1990</u>	<u>1980</u>	<u>1970</u>
Labor Market Area	220,036	212,775	163,793
London	5,757	4,002	4,337
Laurel County	43,438	38,982	27,386

Source: U.S. Department of Commerce, Bureau of the Census, January 1991.

POPULATION PROJECTIONS				
	<u>2000</u>	<u>2010</u>	<u>2020</u>	<u>2030</u>
Labor Market Area	251,490	267,970	280,190	286,800
Laurel County	51,620	56,600	60,750	63,800

Source: University of Louisville, Urban Studies Center, State Data Center.

ESTIMATED LABOR SUPPLY					
	Current				Future
	<u>Total</u>	<u>Unemployed</u>	<u>Employed Part-Time</u>	<u>Not in Labor Force</u>	<u>Becoming 18 years of age 1992 thru 1996</u>
Labor Market Area*	45,428	7,031	9,574	28,823	18,046
Laurel County	6,815	1,300	1,914	3,601	3,620

* Additional workers may be drawn from other nearby counties.

Note: Unemployed - persons unemployed and actively seeking work; Employed Part-Time - persons employed but working only 14 to 26 weeks per year; Not in Labor Force - represents the number of persons who would enter the labor force if suitable employment were available (based on the assumption that persons in Kentucky would like to participate in the labor force in the same proportion that they do nationally).

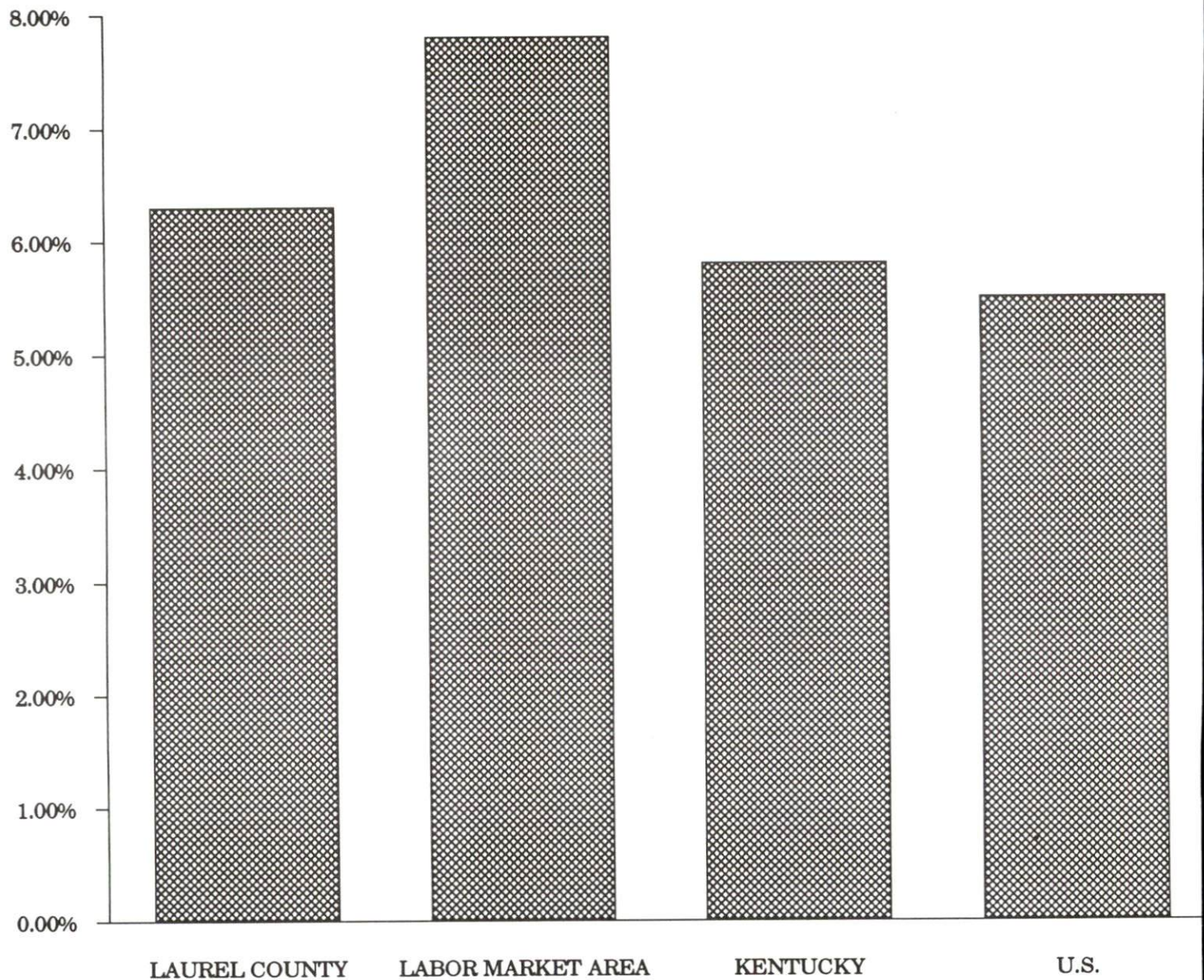
Sources: Kentucky Cabinet for Human Resources, Kentucky Labor Supply Estimates by County, 1989. Kentucky Cabinet for Economic Development, Future Labor Supply Becoming 18 Years of Age, 1992 thru 1996.

LABOR FORCE CHARACTERISTICS OF RESIDENTS, 1990

	Laurel County	Labor Market Area
Civilian Labor Force	18,682	85,414
Employment	17,505	78,766
Unemployment	1,177	6,648
Rate of Unemployment (%)	6.3	7.8

Source: Kentucky Cabinet for Human Resources, Kentucky Labor Force Estimates, Annual Averages, 1990.

UNEMPLOYMENT RATES 1990

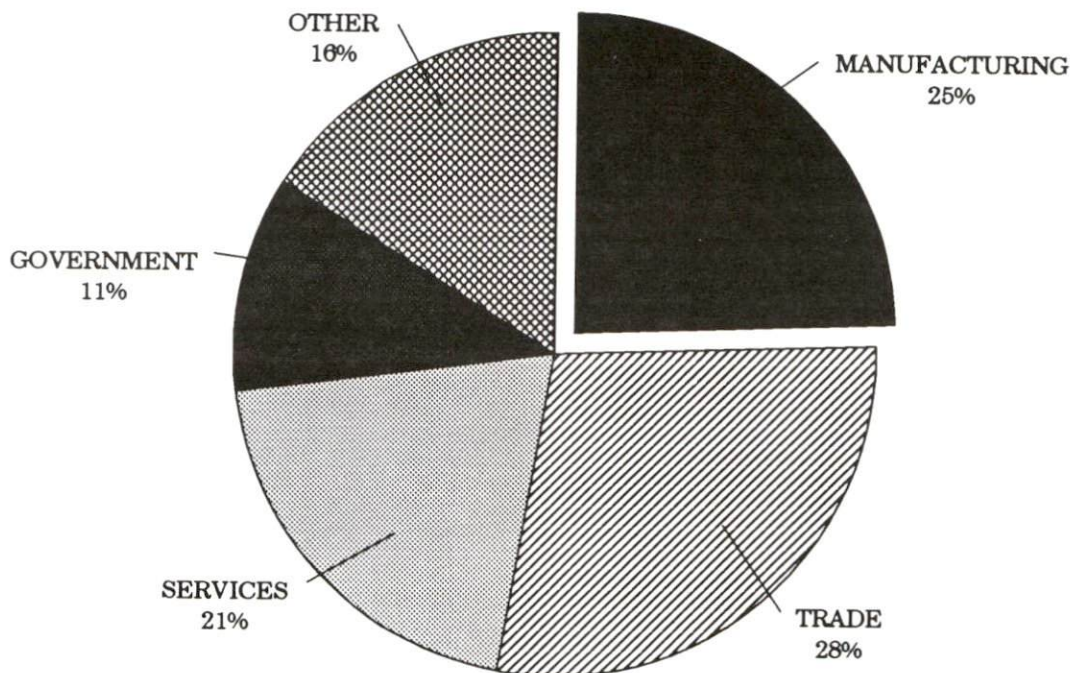


SELECTED COMPONENTS OF NONAGRICULTURAL EMPLOYMENT
BY PLACE OF WORK, 1990

	Laurel County	Labor Market Area
All Industries (total)	14,989	58,912
Manufacturing	3,666	12,668
Wholesale & Retail Trade	4,250	16,191
Services	3,069	11,724
State/Local Government	1,630	9,531
Contract Construction	934	2,468

Note: Excludes domestic workers, railway workers, certain nonprofit corporations, majority of federal government workers, and self-employed workers.
Source: Kentucky Cabinet for Human Resources, Average Monthly Workers Covered by Kentucky Unemployment Insurance Law, 1990.

LAUREL COUNTY

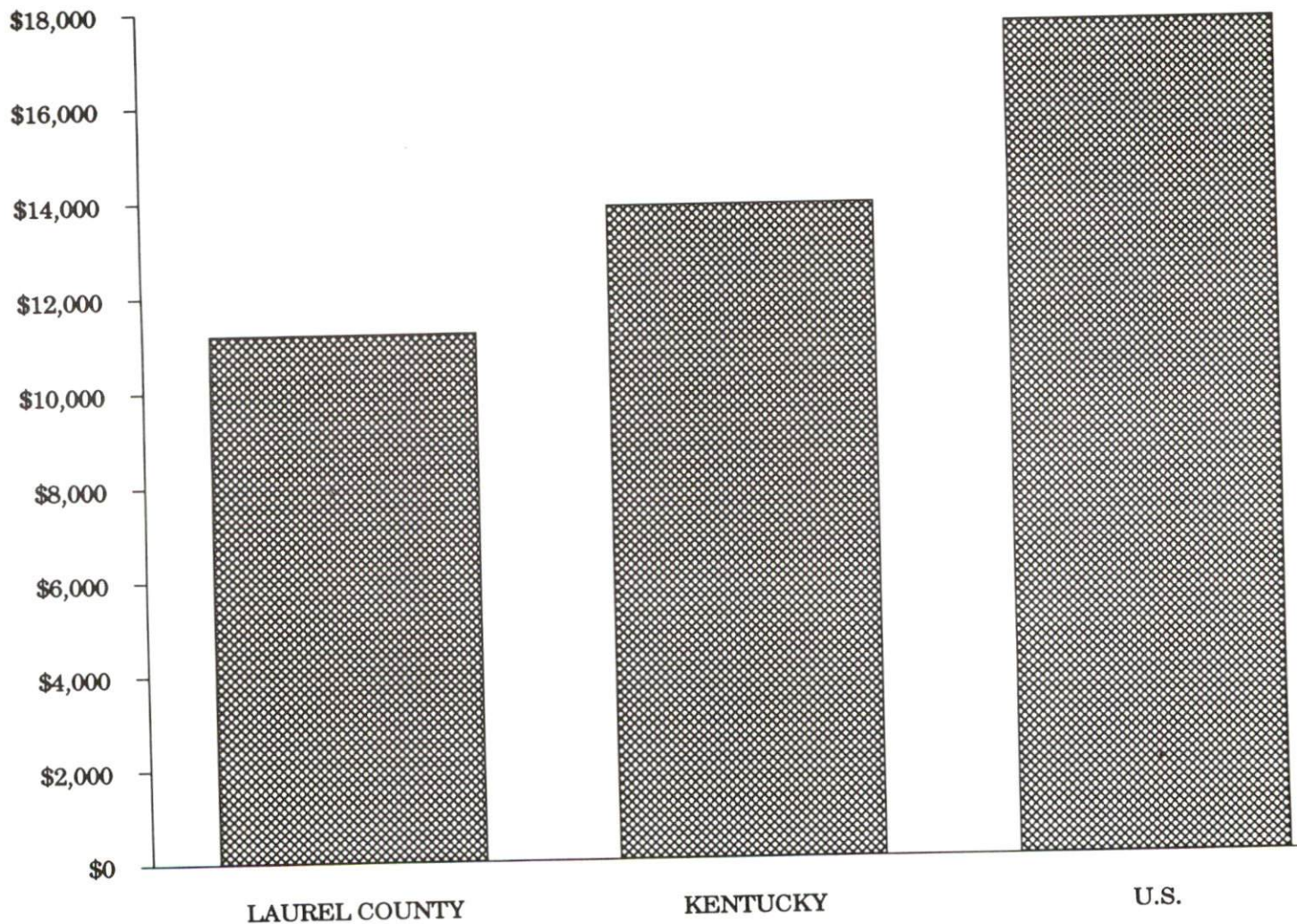


PER CAPITA PERSONAL INCOME

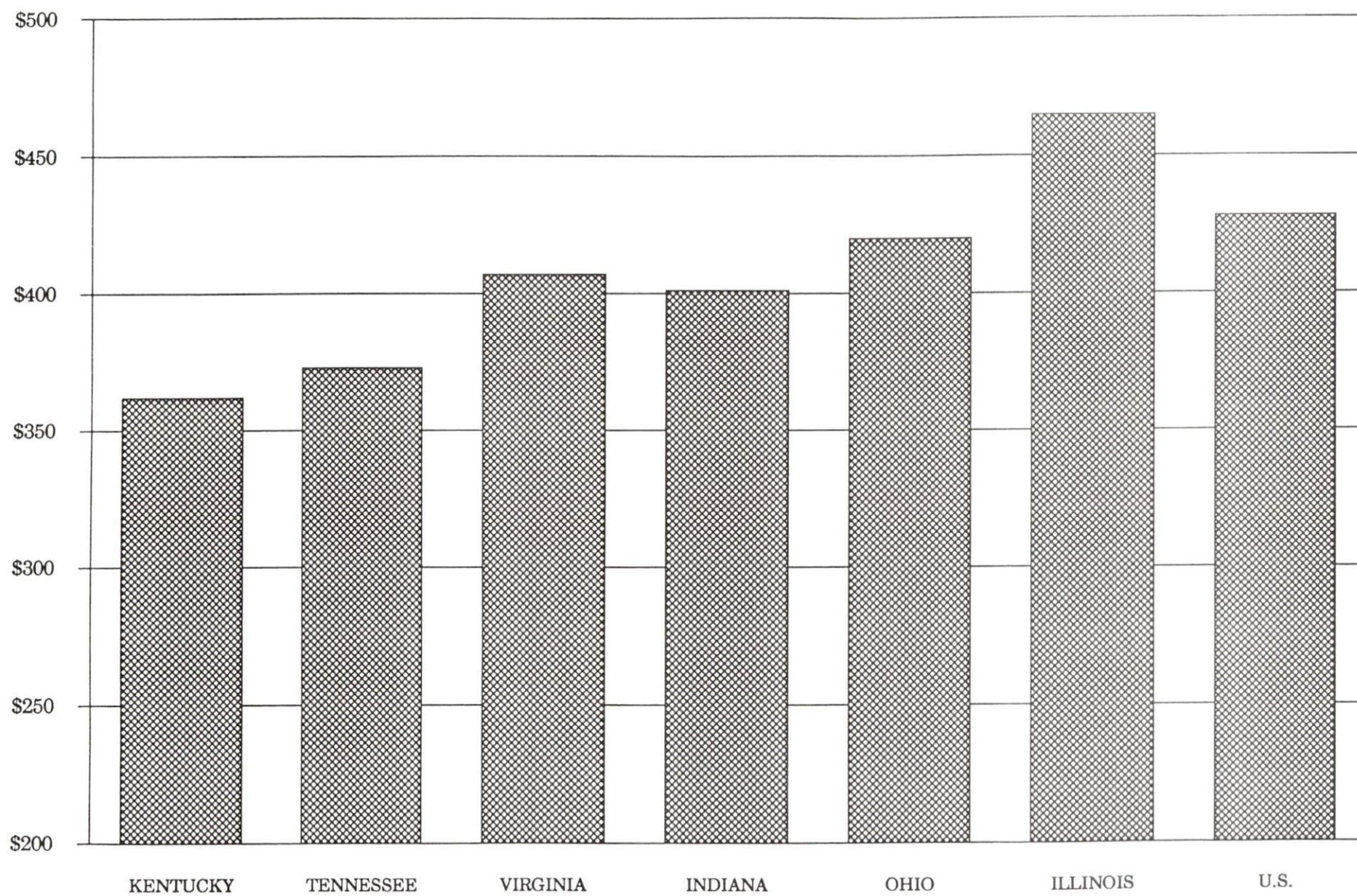
Area	1985	1989	Percent Change
Laurel County	\$8,909	\$11,194	25.6
Labor Market Area Range	\$5,046 - \$9,061	\$6,834 - \$12,465	-
Kentucky	\$10,755	\$13,823	28.5
U.S.	\$13,899	\$17,594	26.6

Source: U.S. Bureau of Economic Analysis, Kentucky Economic Information System, April 1991.

PER CAPITA PERSONAL INCOME
1989



AVERAGE WEEKLY WAGES OF WORKERS COVERED BY
UNEMPLOYMENT INSURANCE - 1989



AVERAGE PLACEMENT WAGES

Laurel County is served by the Corbin local office of the Kentucky Department for Employment Services. The focus of the following data is on job placements made by the Corbin local office and may therefore be used as an indicator of the wages which employers in the area pay new employees. During the twelve months which ended on June 30, 1990, the local employment office filled 2,508 job openings in various occupational categories. The average hourly wage for selected occupational categories were:

<u>OCCUPATIONAL CATEGORY</u>	<u>NUMBER OF PLACEMENTS</u>	<u>AVERAGE WAGE(\$)</u>
All Occupations	2,508	4.20
Clerical	953	3.75
Sales	141	4.04
Services (excluding domestic)	463	3.48
Agricultural, Fishery, Forestry, etc.	10	4.23
Processing	103	4.76
Machine Trades	36	6.10
Bench Work	213	3.63
Structural	245	5.11
Motor Freight/ Transportation	70	4.90
Packaging and Materials Handling	210	6.37
Other	9	5.49

The Corbin local office also serves Clay, Jackson, Knox, Rockcastle, and Whitley Counties. The above occupational categories are taken from the Dictionary of Occupational Titles published by the U.S. Department of Labor.

Source: Kentucky Cabinet for Human Resources, Department for Employment Services.

AVERAGE WEEKLY WAGES BY INDUSTRY
BY PLACE OF WORK, 1989*

	Laurel County	Kentucky (State- Wide)	Tennessee	Virginia
All Industries	\$313.28	\$362.03	\$373.00	\$407.00
Mining & Quarrying	630.53	623.82	522.00	576.00
Contract Construction	455.87	388.21	407.00	434.00
Manufacturing	350.45	472.92	431.00	470.00
Transportation, Communications & Public Utilities	430.95	482.22	493.00	575.00
Wholesale & Retail Trade	237.95	245.12	N/A	N/A
Finance, Insurance & Real Estate	250.15	417.89	448.00	488.00
Services	266.66	310.29	357.00	409.00
State/Local Government	345.59	370.61	N/A	N/A
	<u>Indiana</u>	<u>Ohio</u>	<u>Illinois</u>	<u>U. S.</u>
All Industries	\$401.00	\$420.00	\$465.00	\$428.00
Mining & Quarrying	693.00	596.00	707.00	688.00
Contract Construction	464.00	480.00	608.00	485.00
Manufacturing	546.00	580.00	566.00	534.00
Transportation, Communications & Public Utilities	504.00	533.00	582.00	556.00
Wholesale & Retail Trade	N/A	N/A	N/A	N/A
Finance, Insurance & Real Estate	418.00	456.00	594.00	544.00
Services	328.00	360.00	419.00	399.00
State/Local Government	N/A	N/A	N/A	N/A

* Wages for U.S. and surrounding states rounded to nearest dollar.

N/A Not Available.

Note: The average weekly wage for each category includes the salaries and wages of all persons working for that type business. For example, the manufacturing category includes both production workers and administrative personnel. Excludes domestic workers, railway workers, certain nonprofit corporations, majority of federal government workers, and self-employed workers.

Source: Kentucky Cabinet for Human Resources, Average Weekly Wages of Workers Covered by Kentucky Unemployment Insurance Law, 1989. U.S. Department of Labor, Bureau of Labor Statistics, Employment and Wages, Annual Averages, 1989, October 1990.

EXISTING INDUSTRY

LONDON MANUFACTURING FIRMS, THEIR PRODUCTS AND EMPLOYMENT

<u>Firm</u> <u>(Establishment date)</u>	<u>Product</u>	<u>1990</u> <u>Average Employment</u>
Caron Spinning Company (1963)	Synthetic tops, worsted yarns, synthetic yarns	244
Chaney Lumber Company, Inc. (1956)	Millwork, kiln drying, hardwood	52
Cumberland Forest Products Company, Inc. (1952)	Veneer & plywood	20
E & C Web Printing, Inc. (1987)	Commercial printing	8
Flav-O-Rich, Inc. (1976)	Ice cream mix, fluid milk	154
Griffen Pie Company, Inc. (1953)	Bakery products	477
Jasper Iron and Metal Company, Inc. (1974)	Aluminum, secondary smelting	30
Ken Al Company, Inc. (1961)	Hydraulic telescopic cranes, aluminum awnings, marquees	3
Kentucky Concrete Pipe Company, Inc. (1956)	Concrete pipe, precast manholes	12
Kerns Bakery, Inc. (1948)	Bakery products	367
Laminated Timbers, Inc. (1960)	Wood roof decking, laminated wood structural members	48
London Bucket Company, Inc. (1931)	Fabricated sheet metal products	8
London Church Furniture, Inc. (1967)	Church furniture	26
London-Clay Ready Mix, Inc. (1950)	Precast concrete specialties, ready-mix concrete	20
London Rotary Forms, Inc. (1982)	Typesetting, computer & snap-out forms	65
Micro Devices Products Group (1973)	Thermal cutoffs, thermostats	280
Moore Signs, Inc. (1949)	Neon, plastic metal signs	3
Phoenix Manufacturing Company (1972)	Non-woven fabrics	88
The Kentucky Stone Company (1967)	Bituminous concrete, agricultural lime	21

(Continued)

<u>Firm</u> <u>(Establishment date)</u>	<u>Product</u>	<u>1990</u> <u>Average Employment</u>
The Sentinel-Echo (1873)	Shopping circulars, commercial printers, newspaper	18
Tri-County Concrete Products (1946)	Precasting concrete products drain & culvert tile, ornamental products	5
Westinghouse Electric Corporation (1979)	Automatic transfer switches, insulated case circuit breakers, enclosures for circuit breakers	90

Sources: Kentucky Cabinet for Economic Development, Division of Research and Planning.

MAJOR NON-MANUFACTURING EMPLOYERS

One of the largest non-manufacturing employers in London is the Appalachian Computer Services which employs 1,450.

LABOR ORGANIZATIONS IN MANUFACTURING FIRMS

<u>Union</u>	<u>Representing workers at:</u>
International Brotherhood of Teamsters, Chauffeurs, Warehousemen and Helpers of America	Kentucky Concrete Pipe Company, Inc. Caron Spinning Company Flav-O-Rich, Inc.

SELECTED INDUSTRIAL SERVICES

<u>Types of Services</u>	<u>Location</u>	<u>Mileage from London</u>
Custom Data Processing	London, Kentucky	-
Custom Plastics Producers	Mt. Vernon, Kentucky	22
Electric Motor Repair	Corbin, Kentucky	14
Grinding, Precision & Tool	Richmond, Kentucky	51
Heat Treating Facilities	Richmond, Kentucky	51
Industrial Equipment & Supplies	Richmond, Kentucky	51
Industrial Gases	London, Kentucky	-
Industrial Waste Removal	Corbin, Kentucky	14
Machine Shops, Tool & Die	Corbin, Kentucky	14
	Manchester, Kentucky	20
Metal Castings	Middlesboro, Kentucky	59
Metal Finishers	Richmond, Kentucky	51
Metal Service Centers	Richmond, Kentucky	51
Millwrights	Lexington, Kentucky	75
	Knoxville, Tennessee	100
Public Warehouse Facilities	Danville, Kentucky	58
	Lexington, Kentucky	75

Sources: Kentucky Cabinet for Economic Development, Division of Research and Planning.

TRANSPORTATION

Highways

London is located two miles east of Interstate 75, a major north-south interstate highway. The Daniel Boone Parkway originates in London and extends to the east. Kentucky Highway 80, a "AAA"-rated highway with an 80,000 pound gross load limit, serves London to the east and west; and U.S. 25, another "AAA"-rated highway, serves London to the north and south. Kentucky Highway 229, a "AA"-highway with a 62,000 pound gross load limit, extends from London to the south.

HIGHWAY MILES FROM LONDON, KENTUCKY,
TO SELECTED MARKET CENTERS

City	Highway Miles	City	Highway Miles
Atlanta, GA	295	Los Angeles, CA	2,234
Baltimore, MD	609	Louisville, KY	148
Birmingham, AL	350	Nashville, TN	198
Chicago, IL	418	New Orleans, LA	690
Cincinnati, OH	153	New York, NY	788
Cleveland, OH	393	Pittsburgh, PA	416
Detroit, MI	411	St. Louis, MO	406
Knoxville, TN	100		

Note: Mileage computations are via the best interstate or primary highways, not necessarily the most direct route of travel.

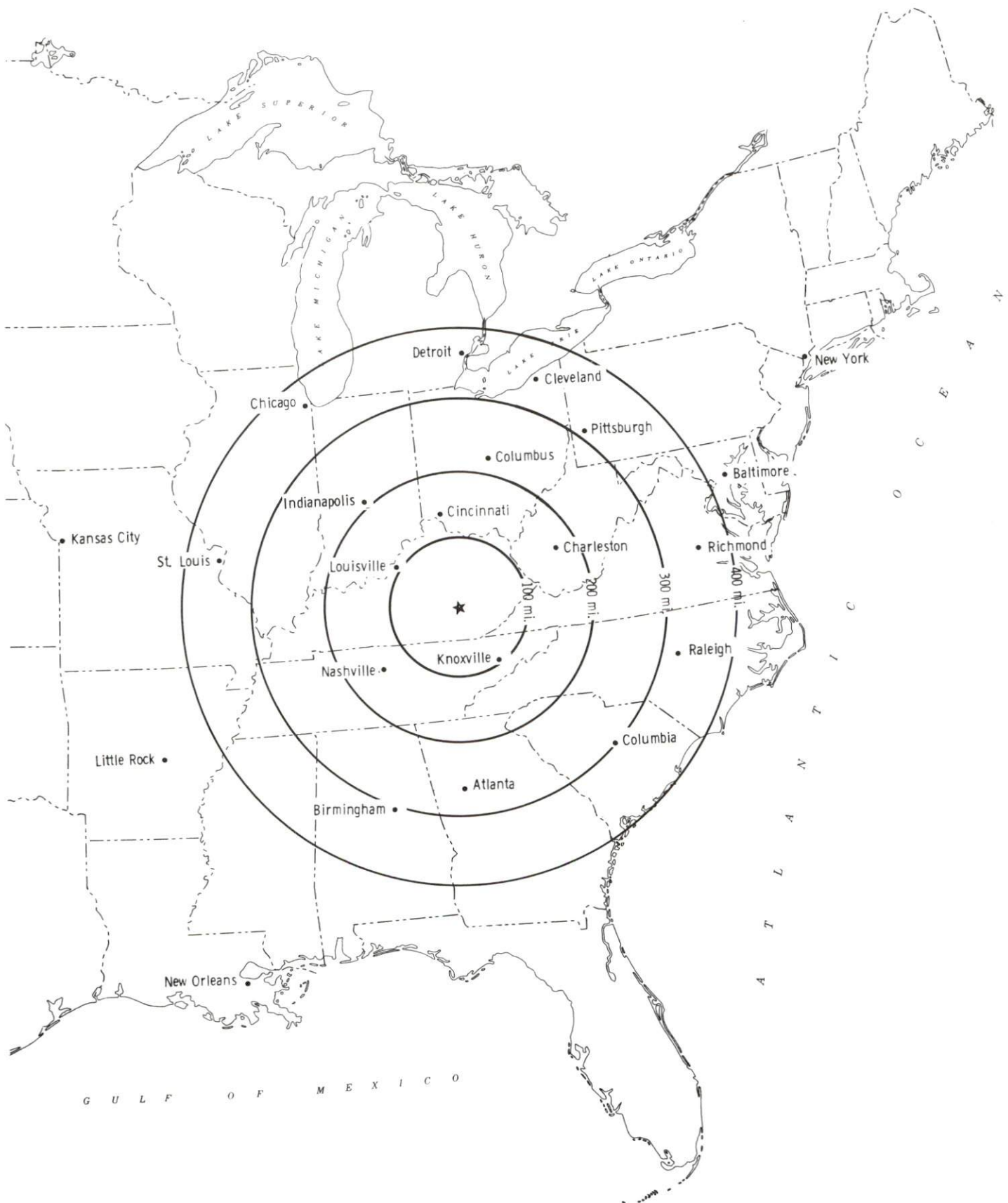
Sources: Rand McNally Deluxe Motor Carriers' Road Atlas, 1989. Official Kentucky Mileage Map, 1980.

Truck Service

Twenty-five trucking companies provide interstate and/or intrastate service to the London area. One company maintains a local terminal.

Source: American Motor Carrier Directory, Fall 1991.

Selected Market Centers



Rail

Main line rail service is provided to London by CSX Transportation. The nearest piggyback facilities are available in Knoxville, 100 miles south of London, and are provided by Norfolk Southern Railroad.

For details on routing, schedules, rates, and services contact:

Manager
Industrial Development
CSX Transportation
9420 Bunsen Parkway
Suite 212
Louisville, Kentucky 40220
(502) 499-3025

Air

Local

Location:	London-Corbin Airport (Magee Field)
Runways:	3 miles south of London
Length:	1 paved
Traffic	6,000 feet
Control:	Wind sock and FSS advisory service
Lighting:	Beacon, runway and obstruction lights, REIL, VASI
Services:	Fuel (100 octane, JP-A-50); minor A&P repairs; tie-downs; aircraft rental, auto rental, taxi; weather data, flight training; charter flights and ambulance service

Nearest Scheduled Commercial Airline Service

Location:	Bluegrass Airport
	4 miles west of Lexington, Kentucky;
	79 miles north of London
Air Service:	Delta, USAir, United Express, American Eagle, ComAir, TW Express, Atlantic Southeast Airlines, Northwest Airlink, Henson Airlines
Daily Arrivals & Departures:	120

UTILITIES

Electricity

Company serving London and Central Laurel County - Kentucky Utilities
Company

Source of power - Kentucky Utilities Company
For industrial rates contact:

Industrial Development Department
Kentucky Utilities Company
One Quality Street
Lexington, Kentucky 40507
(606) 255-1461

Company serving a majority of Laurel County - Jackson County Rural
Electric Corporation

Source of power - East Kentucky Power Cooperative
For industrial rates contact:

Industrial Development Division
East Kentucky Power Cooperative
P.O. Box 707
Winchester, Kentucky 40392-0707
(606) 744-4812

and/or

Jackson County Rural Electric
Cooperative Corporation, Inc.
P.O. Box 307
McKee, Kentucky 40447
(606) 287-7161

Natural Gas

Company serving London and Laurel County - Delta Natural Gas Company,
Inc.

Source of supply - Wiser Oil Company
For rates and supplies contact:

Marketing Manager
Delta Natural Gas Company, Inc.
3617 Lexington Road
Winchester, Kentucky 40391
(606) 744-6171

Public Water Supply

Company serving London - London Utility Commission
801 North Main Street
London, Kentucky 40743-0918
(606) 864-2103

Source -	Laurel Lake Impoundment
Treatment plant capacity -	3,000,000 gallons per day
Average daily consumption -	1,500,000 gallons
Peak daily consumption -	2,000,000 gallons
Storage capacity -	2,150,000 gallons
Water pressure -	35 psi to 95 psi

Company serving parts of Laurel County - Wood Creek Water District
1670 Daniel Boone Parkway
London, Kentucky 40741
(606) 878-9420

Source -	Wood Creek Lake
Treatment plant capacity -	4,320,000 gallons per day
Average daily consumption -	2,243,193 gallons
Peak daily consumption -	2,690,000 gallons
Storage capacity -	2,891,000 gallons
Water pressure -	30 psi to 150 psi

The Wood Creek Water District plans to construct a 500,000 gallon storage tank and an additional fourteen miles of distribution lines. Estimated cost of these expansions is \$780,000 and is scheduled to be completed in the summer of 1992.

Sewerage

Company serving London - London Utility Commission
801 North Main Street
London, Kentucky 40743-0918
(606) 864-2103

Design capacity -	4,000,000 gallons per day
Average daily flow -	1,800,000 gallons
Type of treatment -	Tertiary
Treated effluent discharged into -	Whitley Branch

The London Utility Commission has plans to extend its collector sewer system. Thirty-five miles of new collector lines are planned at an estimated cost of \$7 million.

CLIMATE

Laurel County

Temperature

Normal (29-year record)	58.90 degrees
Average annual 1989	58.00 degrees
Record highest, September 1954 (48-year record)	103.00 degrees
Record lowest, January 1985 (48-year record)	-24.00 degrees
Normal heating degree days (29-year record)	3,658
(Heating degree day totals are the sums of negative departures of average daily temperatures from 65 degrees F.)	

Precipitation

Normal (29-year record)	47.29 inches
Mean annual snowfall (47-year record)	12.40 inches
Total precipitation 1989	56.22 inches
Mean number days precipitation (.01 inch or more) (47-year record)	126.40
Mean number days thunderstorms (47-year record)	47.20

Prevailing winds (through 1963)

Northeast

Relative Humidity (29-year record)

1 a.m.	81 percent
7 a.m.	85 percent
1 p.m.	59 percent
7 p.m.	63 percent

Source: U.S. Department of Commerce, Environmental Science Services Administration, Climatological Data, 1989. Station of record: Knoxville, Tennessee.

LOCAL GOVERNMENT

Structure

The city of London is served by a mayor and six council members. The mayor is elected to a four-year term and the council members serve two-year terms. Laurel County is served by a county judge/executive and six magistrates. The judge/executive and magistrates are elected to four-year terms.

Planning and Zoning

Joint agency - London-Laurel County Joint Planning Commission

Participating cities - London

Zoning enforced - Within city limits of London

Subdivision regulations enforced - All areas of Laurel County

Local codes enforced - Building and housing within city limits of London

Mandatory state codes enforced - Kentucky Plumbing Code, National Electric Code, Kentucky Boiler Regulations and Standards, Kentucky Building Code (modeled after BOCA code)

Local Fees and Licenses

The city of London levies business license fees which range from \$5 to \$300 annually. An annual fee of \$10 is charged by the city for automobiles and trucks.

PROPERTY TAXES

The Kentucky Constitution requires the state to tax all classes of taxable property, and state statutes allow local jurisdictions to tax only a few classes. All locally taxed property is subject to county taxes and school district taxes (either a county school district or an independent school district). Property located inside of city limits may also be subject to city property taxes.

Special local taxing jurisdictions (fire protection districts, watershed districts, and sanitation districts) levy taxes within their operating areas (usually a small portion of community or county).

Property assessments in Kentucky are at 100% fair cash value. A 15% reduction is automatically granted for accounts receivable.

STATE PROPERTY TAX RATES PER \$100 VALUATION

<u>Selected Classes of Property</u>	<u>1990 State Rate</u>	<u>Local Taxation Permitted</u>
Real Estate	\$0.189	YES
Manufacturing Machinery	0.150	NO
Pollution Control Equipment	0.150	NO
Inventories		
Raw Materials	0.050	NO
Goods in Process	0.050	NO
Finished Goods	0.050	YES
Motor Vehicles	0.450	YES
Other Tangible Personal Property	0.450	YES
Intangibles (Accounts Receivable, Money on Hand)	0.250	NO

LOCAL PROPERTY TAX RATES PER \$100 VALUATION, 1990

<u>Taxing Jurisdiction</u>	<u>Real Estate</u>	<u>Finished Goods & Tangibles</u>	<u>Motor Vehicles</u>
Laurel County	\$0.1564	\$0.1833	\$0.1838
School Districts:			
Laurel County	0.4810	0.4810	0.1520
East Bernstadt			
Independent	0.3850	0.3850	0.1540
Cities:			
London	0.1620	0.1810	0.1810

EDUCATION

Public Schools

	East Bernstadt Independent	Laurel County
Total Enrollment (Fall, 1990)	389	8,180
Pupil-Teacher Ratio (1989-90)	20.8-1	19.9-1
Percent High School Graduates to College (1989-90)	N/A	50.3
Expenditures Per Pupil (1989-90)	\$2,384.29	\$2,492.86

Nonpublic Schools

<u>School</u>	<u>Enrollment</u>	<u>Grades</u>
London Christian Academy	44	1-12
Faith Assembly Christian School	65	K-12
Garden Life Christian	70	K-6

Area Colleges and Universities

<u>Name</u>	<u>Location (Miles distant)</u>	<u>Enrollment (Fall, 1990)</u>
Sue Bennett College	London, Kentucky	517
Union College	Barbourville, Kentucky (28)	1,028
Cumberland College	Williamsburg, Kentucky (31)	1,812
Somerset Community College	Somerset, Kentucky (33)	2,087
Berea College	Berea, Kentucky (33)	1,550
Eastern Kentucky University	Richmond, Kentucky (51)	15,371
Hazard Community College	Hazard, Kentucky (57)	1,318
Centre College	Danville, Kentucky (57)	879
Lindsey Wilson College	Columbia, Kentucky (59)	1,327
Lincoln Memorial University	Harrogate, Tennessee (66)	1,819
University of Kentucky	Lexington, Kentucky (75)	23,081
Transylvania University	Lexington, Kentucky (75)	1,091
Lexington Community College	Lexington, Kentucky (75)	4,588
Lees College	Jackson, Kentucky (75)	352

Sue Bennett College

Sue Bennett College is a two-year, coeducational institution located in London. The school was established in 1896 for elementary students and became a college in 1922. Sue Bennett College is owned by the United Methodist Church. The college offers an Associate degree in the following areas of study: education, secondary education, physical education, psychology, social work, English, music, pre-medical, pre-pharmacy, pre-law, paralegal, communications, business administration, accounting, computer information systems, office administrator, medical and legal secretary.

Vocational Training

Vocational training is available at both the state vocational-technical schools and the area vocational education centers. The state vocational-technical schools are post-secondary institutions. The area vocational education centers are designed to supplement the curriculum of high school students. Both the state vocational-technical schools and the area vocational education centers offer evening courses to enable working adults to upgrade current job skills.

Arrangements can be made to provide training in the specific production skills required by an industrial plant. Instruction may be conducted either in the vocational school or in the industrial plant, depending upon the desired arrangement and the availability of special equipment.

Bluegrass State Skills Corporation

The Bluegrass State Skills Corporation, an independent public corporation created and funded by the Kentucky General Assembly, provides programs of skills training to meet the needs of business and industry from entry level to advanced training, and from upgrading present employees to retraining experienced workers.

The Bluegrass State Skills Corporation is the primary source for skills training assistance for a new or existing company. The Corporation works in partnership with other employment and job training resources and programs, as well as Kentucky's economic development activities, to package a program customized to meet the specific needs of a company.

<u>Vocational School</u>	<u>Location (Miles distant)</u>	<u>Cumulative Enrollment 1989-1990</u>
Laurel County State Vocational- Technical School	London	529
Corbin Area Vocational Education Center	Corbin (14)	319

OTHER LOCAL FACILITIES

Local Medical Personnel

Physicians - 24
Dentists - 13

Hospitals

<u>General Hospital</u>	<u>Location</u>	<u>Beds</u>
Marymount Hospital	London	100

Medical staff - 25 staff physicians, 52 registered nurses,
29 licensed practical nurses

Other Medical Facilities and Services

Cumberland River Comprehensive Care Center
Ambulance, Inc. of Laurel County
Laurel County Health Department

Banks and Savings & Loan Associations

Cumberland Valley National Bank & Trust Company
First National Bank & Trust
London Bank & Trust
Manchester Bank

Newspapers

Sentinel-Echo (daily)
The Laurel County Weekly (weekly)
News-Leader (weekly)

Telephone Service

Continental Telephone Company of Kentucky

RECREATION

Local

London offers a wide variety of public recreation facilities including two playgrounds, a swimming pool, three baseball diamonds, four football fields, and a park and fairgrounds area with a horse show ring, one basketball court, two tennis courts, and a picnic shelter house. The city supervises Little League baseball and football programs and men's and women's softball leagues.

Private recreation facilities include a country club, a golf course, two swimming pools, four tennis courts, one indoor movie theatre, and a go-cart track.

London residents enjoy fishing in Daniel Boone National Forest and Wood Creek Lake, a large reservoir just northwest of London, and the Laurel River Lake and Dam, 10 miles southwest of London, where camping facilities and a marina are also available.

Levi Jackson Wilderness Road State Park, two miles south of London, is a 815-acre park located where the Boone Trace and Wilderness Road pioneer trails converge. In addition to a reproduced pioneer settlement, the park offers a pool, a bathhouse, hiking trails, horseback riding, shuffleboard, 200 campsites, a picnic area, a playground, and a amphitheater.

The Sue Bennett Folk Festival is an annual event held at Sue Bennett College in London each spring. This festival includes folk music plus arts and crafts exhibits.

Area (Within 60 miles)

Dr. Thomas Walker State Historic Site
Cumberland Falls State Resort Park
General Burnside State Park
William Whitley House State Historic Site
Pine Mountain State Resort Park
Issac Shelby State Historic Site
The Big South Fork National River and Recreation Area

COMMUNITY IMPROVEMENTS

London re-certified as a "Kentucky Certified City" in 1991, and is distinguished as a gold award winner recognizing seven consecutive years of certification. Re-certification is based on achievement in the following areas: existing industry assistance, small business assistance, educational resources, and community development factors of health care, public safety, arts and culture, recreation, governmental awareness and resources. The Certified Cities Program is sponsored by the Kentucky Chamber of Commerce.

Construction is underway for a 61-unit motel near the south I-75 interchange. The new \$2.4 million Comfort Suites motel is scheduled for completion in the spring of 1992.

The Wood Creek Water District plans to construct a 500,000-gallon storage tank and an additional fourteen miles of distribution lines. Estimated cost of these expansions is \$780,000 and is scheduled to be completed in the summer of 1992.

The London Utility Commission has plans to extend its sewage collector system. Thirty-five miles of new collector lines are planned at an estimated cost of \$7 million.