

1988

# Industrial Resources: Logan County

Kentucky Library Research Collection  
Western Kentucky University, [spcol@wku.edu](mailto:spcol@wku.edu)

Follow this and additional works at: [https://digitalcommons.wku.edu/logan\\_cty](https://digitalcommons.wku.edu/logan_cty)



Part of the [Business Administration, Management, and Operations Commons](#), [Growth and Development Commons](#), and the [Infrastructure Commons](#)

---

## Recommended Citation

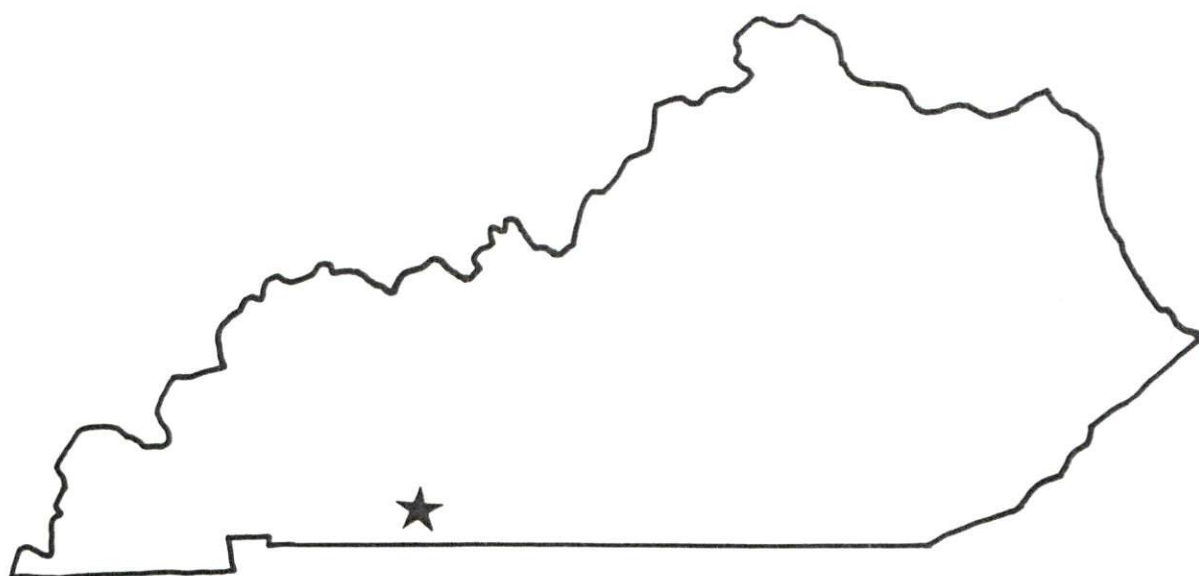
Kentucky Library Research Collection, "Industrial Resources: Logan County" (1988). *Logan County*. Paper 22.  
[https://digitalcommons.wku.edu/logan\\_cty/22](https://digitalcommons.wku.edu/logan_cty/22)

This Report is brought to you for free and open access by TopSCHOLAR®. It has been accepted for inclusion in Logan County by an authorized administrator of TopSCHOLAR®. For more information, please contact [topscholar@wku.edu](mailto:topscholar@wku.edu).

**RESOURCES FOR ECONOMIC DEVELOPMENT**

---

# Logan County



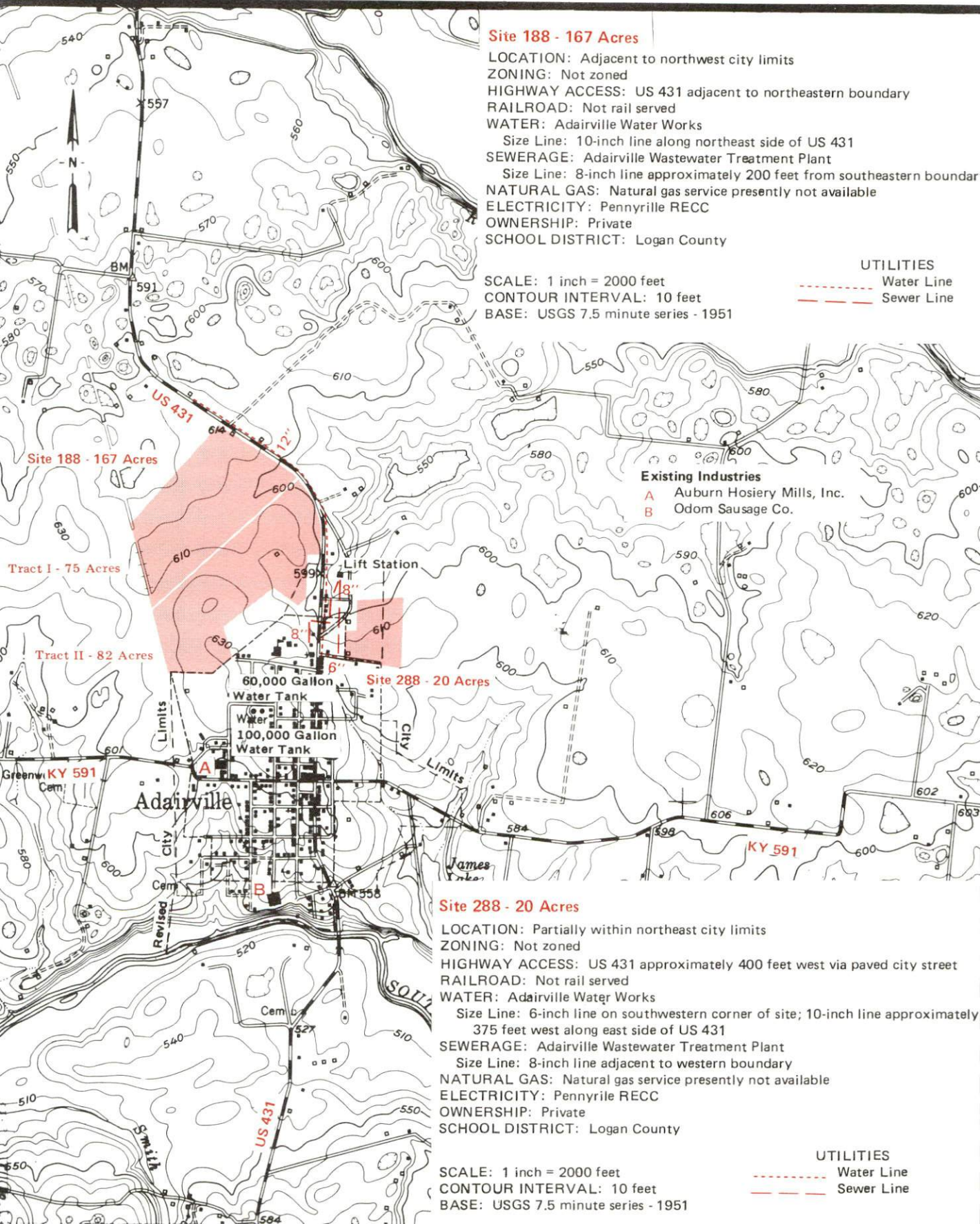
---

**KENTUCKY**

Open for Business

# Adairville, Kentucky -- Industrial Sites -- 1988

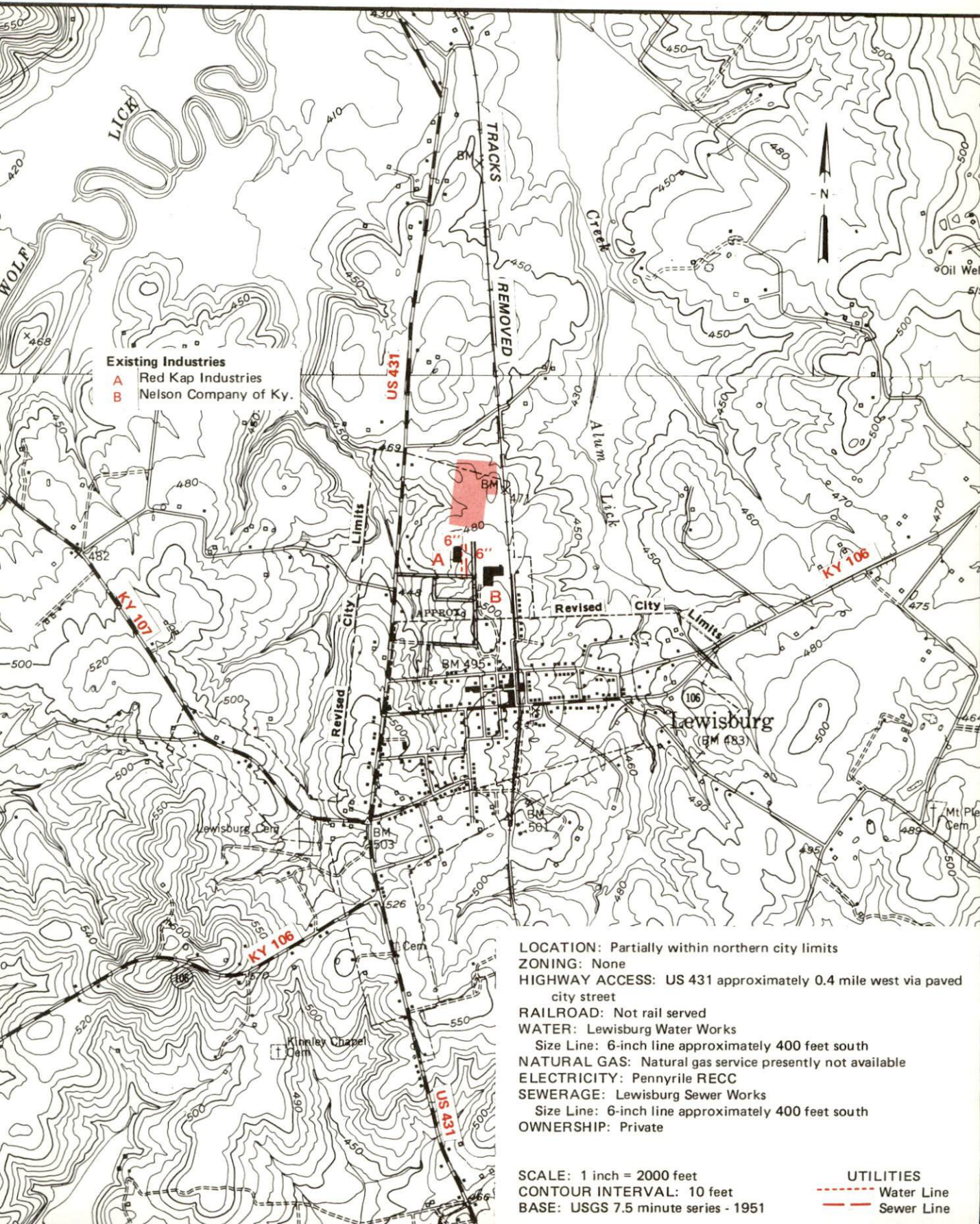
For more information contact the Cabinet for Economic Development, Department of Business Development,  
Industrial Development & Marketing Division, Capital Plaza Tower, Frankfort, Kentucky 40601  
(502-564-7140)





# LEWISBURG, KENTUCKY --- Site 188 --- 14 Acres

For more information contact the Cabinet for Economic Development, Department of Business Development,  
Industrial Development & Marketing Division, Capital Plaza Tower, Frankfort, Kentucky 40601  
(502-564-7140)



LOCATION: Partially within northern city limits

ZONING: None

HIGHWAY ACCESS: US 431 approximately 0.4 mile west via paved city street

RAILROAD: Not rail served

WATER: Lewisburg Water Works

Size Line: 6-inch line approximately 400 feet south

NATURAL GAS: Natural gas service presently not available

ELECTRICITY: Pennyrile RECC

SEWERAGE: Lewisburg Sewer Works

Size Line: 6-inch line approximately 400 feet south

OWNERSHIP: Private

SCALE: 1 inch = 2000 feet

CONTOUR INTERVAL: 10 feet

BASE: USGS 7.5 minute series - 1951

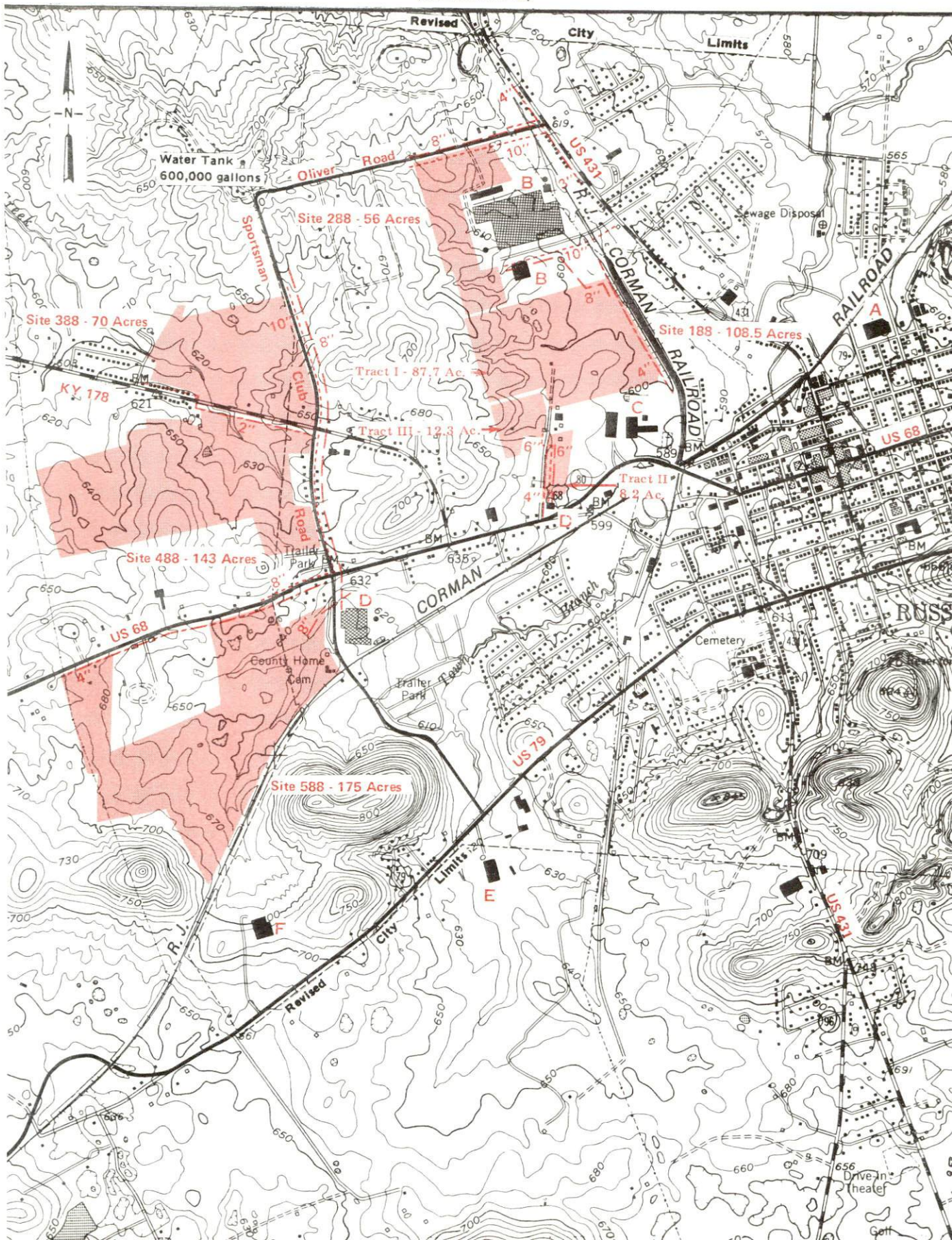
UTILITIES

--- Water Line  
 --- Sewer Line



# RUSSELLVILLE, KENTUCKY --- Industrial Sites --- 1988

For more information contact the Cabinet for Economic Development, Department of Business Development,  
Industrial Development & Marketing Division, Capital Plaza Tower, Frankfort, Kentucky 40601  
(502-564-7140)





Site 188 - 108.5 Acres

LOCATION: Within northwest city limits  
ZONING: Industrial  
HIGHWAY ACCESS: US 68/KY 80 via gravel access road along western boundary of Tract II; Paved industrial access road approximately 650 feet north of Tract I  
RAILROAD: R. J. Corman Railroad adjacent to eastern boundary  
WATER: Russellville Municipal Water Works  
Size Line: 10-inch line approximately 600 feet north of Tract I; 6-inch line along western boundary of Tract II  
SEWERAGE: Russellville Wastewater Treatment Plant  
Size Line: 8-inch line crosses northeastern boundary of site; 6-inch line along western boundary of Tract II  
NATURAL GAS: Western Kentucky Gas Company  
Size Line: 4-inch line along eastern boundary of Tract I; 4-inch line along western boundary of Tract II  
ELECTRICITY: Russellville Electric Plant Board  
OWNERSHIP: Tract I - Russellville/Logan County Civic - Development Corporation; Tract II - Private  
SCHOOL DISTRICT: Russellville Independent

Site 288 - 56 Acres

LOCATION: Within northwest city limits  
ZONING: Industrial  
HIGHWAY ACCESS: US 431 approximately 850 feet east via Oliver Road  
RAILROAD: Not rail served  
WATER: Russellville Municipal Water Works  
Size Line: 10-inch line along northern boundary; 10-inch line adjacent to southeastern boundary  
SEWERAGE: Russellville Wastewater Treatment Plant  
Size Line: 8-inch line along north side of Oliver Road; 8-inch line adjacent to southeastern boundary  
NATURAL GAS: Western Kentucky Gas Company  
Size Line: 4-inch line approximately 600 feet from northeastern boundary  
ELECTRICITY: Russellville Electric Plant Board  
OWNERSHIP: Private  
SCHOOL DISTRICT: Russellville Independent

Site 388 - 70 Acres

LOCATION: Partially within northeast city limits  
ZONING: Not zoned  
HIGHWAY ACCESS: KY 178 adjacent to southern boundary; Sportsman Club Road adjacent to eastern boundary  
RAILROAD: Not rail served  
WATER: Russellville Municipal Water Works  
Size Line: 10-inch line along east side of Sportsman Club Road  
SEWERAGE: Russellville Wastewater Treatment Plant  
Size Line: 8-inch line along east side of Sportsman Club Road  
NATURAL GAS: Western Kentucky Gas Company  
Size Line: 2-inch line adjacent to southeastern boundary  
ELECTRICITY: Russellville Electric Plant Board  
OWNERSHIP: Private  
SCHOOL DISTRICT: Logan County

Site 488 - 143 Acres

LOCATION: Partially within western city limits  
ZONING: Not zoned  
HIGHWAY ACCESS: KY 178 adjacent to northern boundary; Sportsman Club Road adjacent to eastern boundary  
RAILROAD: Not rail served  
WATER: Russellville Municipal Water Works  
Size Line: 10-inch line along east side of Sportsman Club Road  
SEWERAGE: Russellville Wastewater Treatment Plant  
Size Line: 8-inch line along east side of Sportsman Club Road  
NATURAL GAS: Western Kentucky Gas Company  
Size Line: 2-inch line along northern boundary  
ELECTRICITY: Russellville Electric Plant Board  
OWNERSHIP: Private  
SCHOOL DISTRICT: Partially in Logan County and partially in Russellville Independent

Site 588 - 175 Acres

LOCATION: Partially within southwestern city limits  
ZONING: Not zoned  
HIGHWAY ACCESS: US 68/KY 80 adjacent to northern boundary; Sportsman Club Road adjacent to eastern boundary  
RAILROAD: R. J. Corman Railroad adjacent to southeastern boundary  
WATER: Russellville Municipal Water Works  
Size Line: 8-inch line on north side of US 68/KY 80 at northeastern boundary  
SEWERAGE: Russellville Wastewater Treatment Plant  
Size Line: 8-inch line on site at northeastern boundary  
NATURAL GAS: Western Kentucky Gas Company  
Size Line: 4-inch line along northern boundary  
ELECTRICITY: Pennyriple RECC  
OWNERSHIP: Private  
SCHOOL DISTRICT: Logan County

SCALE: 1 inch = 2000 feet  
CONTOUR INTERVAL: 10 feet  
BASE: USGS 7.5 minute series - 1952  
Photorevised - 1983

UTILITIES

----- Water Line  
----- Sewer Line  
----- Gas Line

- Existing Industries
- A Red Kap Industries
  - B E. R. Carpenter Co.
  - C Rockwell International Corp.
  - D Emerson Electric Co.
  - E Bilt Rite Products Co.
  - F Illinois Tool Works Inc.  
Shake Proof Division



RESOURCES FOR ECONOMIC DEVELOPMENT  
LOGAN COUNTY, KENTUCKY

Prepared by  
The Kentucky Department of Business Development  
Division of Research and Planning  
in cooperation with  
The Russellville-Logan County Chamber of Commerce  
and  
The Cities of Adairville, Auburn and Lewisburg

1988

Program manager - Andrew Dennis; research - Barry K. Holder, Jr. and Keith Roberts; clerical - Bobbi Graves; graphics - Tony Cecconi, Robert Owens, Pat Coleman; cartography - Site Evaluation Branch, Division of Industrial Development and Marketing. Cost of printing paid from state funds.

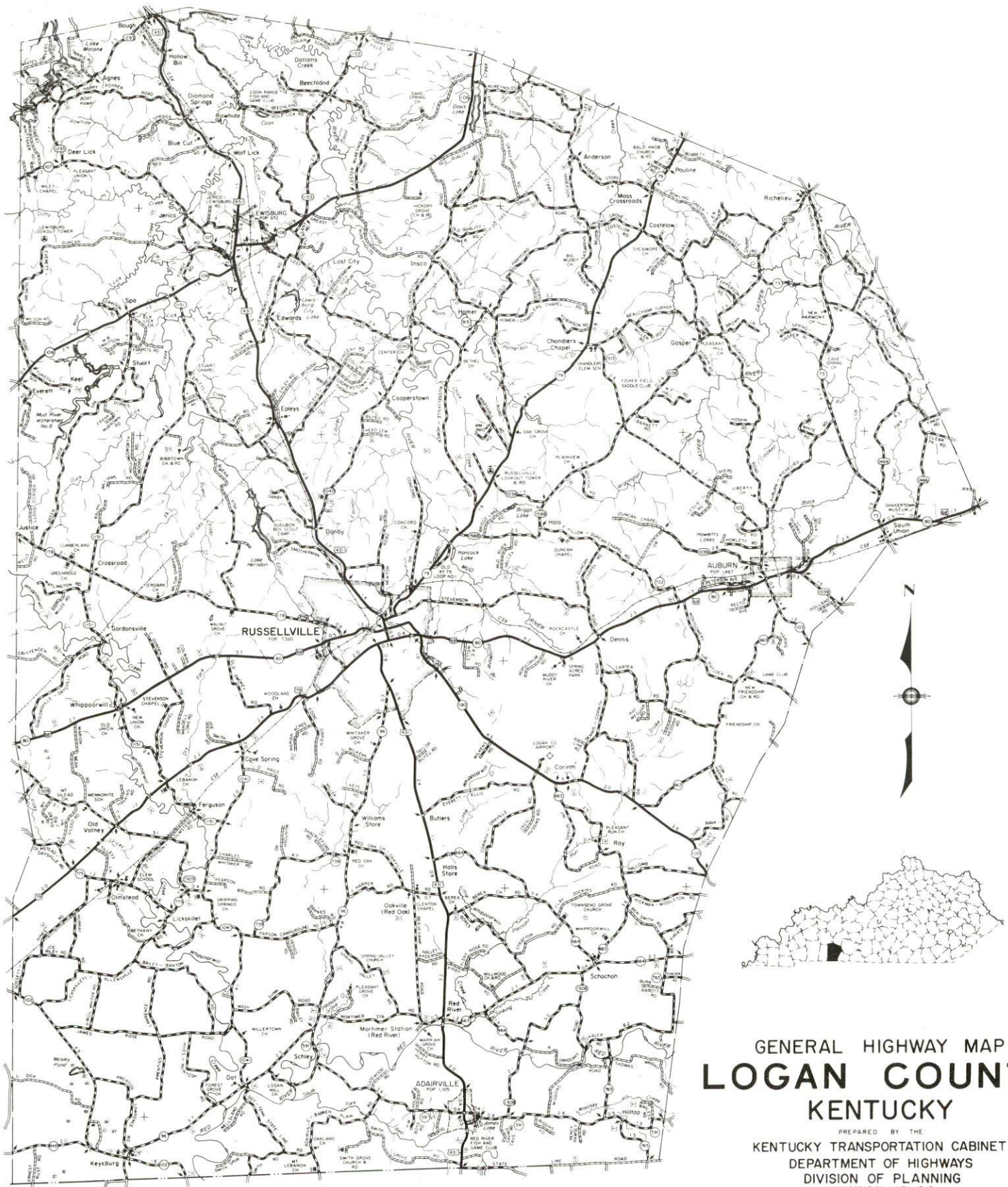


# TABLE OF CONTENTS

<u>Chapter</u>	<u>Page</u>
INDUSTRIAL SITES . . . . .	i
LOGAN COUNTY, KENTUCKY - A RESOURCE PROFILE . . . . .	1
THE LABOR MARKET STATISTICS . . . . .	2
Labor Market Area Map . . . . .	2
Population . . . . .	3
Population Projections . . . . .	3
Unemployment Rates, 1980-1987 - Line Chart . . . . .	4
Labor Force Characteristics of Residents, 1987 . . . . .	5
Selected Components of Nonagricultural Employment, by Place of Work, 1986 . . . . .	5
Estimated Male Labor Supply . . . . .	6
Estimated Female Labor Supply . . . . .	6
Average Placement Wages . . . . .	7
Per Capita Personal Income . . . . .	7
Average Weekly Wages of Workers Covered by Unemployment Insurance F.Y. 1986-87 - Bar Chart . . . . .	8
Average Weekly Wages by Industry, by Place of Work, 1986 . . . . .	9
EXISTING INDUSTRY . . . . .	10
Logan County Manufacturing Firms, Their Products and Employment . . . . .	10
Labor Organizations in Manufacturing Firms . . . . .	13
Recent Industrial Developments . . . . .	13
Selected Industrial Services . . . . .	14
TRANSPORTATION . . . . .	15
Rail . . . . .	15
Highways . . . . .	15
Truck Service . . . . .	16
Air . . . . .	17
Air Express Service . . . . .	17
Water . . . . .	18
POWER AND FUEL . . . . .	19
Electricity . . . . .	19
Natural Gas . . . . .	20
Other Fuels . . . . .	21
WATER AND SEWERAGE . . . . .	22
Public Water Supply . . . . .	22
Sewerage . . . . .	26

<u>Chapter</u>	<u>Page</u>
CLIMATE . . . . .	28
LOCAL GOVERNMENT . . . . .	29
Structure . . . . .	29
Planning and Zoning . . . . .	29
Local Fees and Licenses . . . . .	29
State and Local Property Taxes . . . . .	30
Combined State and Local Rates Per \$100 Valuation, 1987 . . . . .	30
Safety . . . . .	32
Police . . . . .	32
Fire . . . . .	32
Rescue Service . . . . .	32
Refuse Collection and Disposal . . . . .	32
EDUCATION . . . . .	33
Public Schools . . . . .	33
Area Colleges and Universities . . . . .	34
Vocational Training . . . . .	35
HEALTH . . . . .	37
Local Medical Personnel . . . . .	37
Hospitals . . . . .	37
Other Medical Facilities . . . . .	37
Ambulance Service . . . . .	37
OTHER LOCAL FACILITIES . . . . .	38
Communications . . . . .	38
Library Services . . . . .	38
Religious Institutions . . . . .	39
Financial Institutions . . . . .	39
Hotels and Motels . . . . .	39
Clubs and Organizations . . . . .	40
RECREATION . . . . .	42
COMMUNITY IMPROVEMENTS . . . . .	45





# GENERAL HIGHWAY MAP LOGAN COUNTY KENTUCKY

PREPARED BY THE  
KENTUCKY TRANSPORTATION CABINET  
DEPARTMENT OF HIGHWAYS  
DIVISION OF PLANNING  
IN COOPERATION WITH THE  
U.S. DEPARTMENT OF TRANSPORTATION  
FEDERAL HIGHWAY ADMINISTRATION

SCALE 1:25,000  
0 1 2 3 4 MILES



## LOGAN COUNTY, KENTUCKY - A RESOURCE PROFILE

Logan County, with a 1986 estimated population of 25,760, is located in southwestern Kentucky, on the state's border with Tennessee. Logan County, with a land area of 556 square miles, has a terrain ranging from gently rolling to hilly. Russellville, the county seat of Logan County, is situated in the central portion of the county. With a 1986 estimated population of 8,090, Russellville is located 51 miles north of Nashville, Tennessee; 144 miles southwest of Louisville, Kentucky; and 279 miles southeast of St. Louis, Missouri.

Adairville, located 12 miles south of Russellville, had a 1986 estimated population of 1,050; Auburn, located 11 miles east of Russellville, had a 1986 estimated population of 1,430; and Lewisburg, 10 miles north of Russellville, had a 1986 estimated population of 1,260.

**The Economic Framework** - The total number of Logan County residents employed in 1987 averaged 11,200. In 1986, manufacturing firms in the county reported 3,800 employees; wholesale and retail trade provided 1,230 jobs; 660 people were employed in service occupations; state and local government accounted for 780 employees; and contract construction firms provided 230 jobs.

**Labor Supply** - There is a current estimated labor supply of 10,880 men and 15,150 women available for industrial jobs in the labor market area. In addition, from 1988 through 1992, 8,040 young men and 7,670 young women in the area will become 18 years of age and potentially available for industrial jobs.

**Transportation** - Rail service is provided to Russellville and Auburn by the R. J. Corman Railroad Corporation. U.S. Highways 68, 79, and 431, and Kentucky Highways 79 and 100 are "AAA"-rated trucking highways serving Logan County. Interchanges with Interstate 65 are located 26 miles southeast of Russellville via Kentucky 100 and 30 miles northeast of Russellville via U.S. Highway 68 and Green River Parkway. Interstate 24 is accessible 27 miles southwest of Russellville via U.S. Highway 79. Twenty-seven common carriers have the authority to serve Logan County with interstate and/or intrastate service. The Nashville Metropolitan Airport, located 57 miles south of Russellville, provides the nearest scheduled commercial airline service. The Russellville-Logan County Airport, located five miles southeast of Russellville, maintains one paved 4,000-foot runway.

**Power and Fuel** - Electric power is provided to Russellville by the Russellville Electric Plant Board. Adairville, Lewisburg and part of Logan County are served by Pennyrite Rural Electric Cooperative Corporation. Auburn and part of Logan County are served by Warren Rural Electric Cooperative Corporation. Natural gas is provided to Russellville, Adairville and Auburn by Western Kentucky Gas Company.

**Education** - Primary and secondary education is provided to Logan County by the Russellville Independent School System and the Logan County School System. The Russellville Independent School System is accredited by the Southern Association of Colleges and Schools. Twelve institutions of higher learning are located within 55 miles of Russellville. The Bowling Green State Vocational-Technical School, located 29 miles east of Russellville at Bowling Green, and the Russellville Area Vocational Education Center, in Russellville, provide vocational training for Logan County.



# LOGAN COUNTY LABOR MARKET AREA With MAJOR HIGHWAYS & RAILROAD SYSTEM

Shaded area denotes Labor Market Area.

This map illustrates the Logan County Labor Market Area, which is shaded in gray. The area is bounded by major highways and includes several counties: Logan, Warren, Todd, Simpson, and parts of Boone, Lincoln, and Wayne. The map shows a dense network of major highways, including Interstate 75 (I-75) running north-south through the center, and Interstate 40 (I-40) running east-west along the southern border. Numerous other highways, such as US-421, US-431, and KY-60, are also depicted. The railroad system is shown as a series of lines with dots representing stations. Major cities and towns within the labor market area include Middlesboro, Johnson City, and Ellettsburg. The map also shows the surrounding counties and states, including Kentucky, Tennessee, and North Carolina. A legend indicates that the shaded area represents the Labor Market Area.

## LABOR MARKET STATISTICS

The Logan County Labor Market Area includes Logan County and the adjoining Kentucky counties of Butler, Muhlenberg, Simpson, Todd and Warren. Also included in the Labor Market Area is Robertson County, Tennessee.

### POPULATION

Area	1986*	1980	1970	Percent Nonwhite
				1980
Russellville, KY	8,090	7,858	6,456	15.4
Adairville, KY	1,050	1,105	973	23.3
Auburn, KY	1,430	1,467	1,160	11.9
Lewisburg, KY	1,260	972	651	1.1
Labor Market Area	218,414	202,836	169,916	-
Logan County, KY	25,760	24,138	21,793	9.3
Butler County, KY	11,129	11,064	9,723	0.6
Muhlenberg County, KY	31,869	32,238	27,537	5.3
Simpson County, KY	14,852	14,673	13,054	12.4
Todd County, KY	10,899	11,874	10,823	12.4
Warren County, KY	83,905	71,828	57,884	9.0
Robertson County, TN	40,000	37,021	29,102	13.6

\* Population estimates.

Sources: U.S. Department of Commerce, Bureau of the Census. University of Louisville, Urban Studies Center, Population Unit.

### POPULATION PROJECTIONS

Area	1990	1995	2000	2010
Labor Market Area	228,390	238,879	248,054	-
Logan County, KY	26,752	27,609	28,263	29,227
Butler County, KY	12,361	12,817	13,174	13,754
Muhlenberg County, KY	33,035	33,989	34,740	35,865
Simpson County, KY	15,919	16,752	17,402	18,482
Todd County, KY	11,193	11,450	11,654	11,968
Warren County, KY	86,410	90,539	93,632	98,403
Robertson County, TN	42,720	45,723	49,189	-

Source: University of Louisville, Urban Studies Center, Population Research Unit, How Many Kentuckians: Population Forecasts, 1980-2020, the 1986 Edition, Spring 1986. University of Tennessee, Department of Sociology and the Tennessee Center for Health Statistics, April 11, 1986.



# UNEMPLOYMENT RATES



# LABOR FORCE CHARACTERISTICS OF RESIDENTS, 1987

	Logan County	Labor Market Area
Civilian Labor Force	12,237	102,161
Employment	11,196	93,176
Unemployment	1,041	8,985
Rate of Unemployment (%)	8.5	8.8

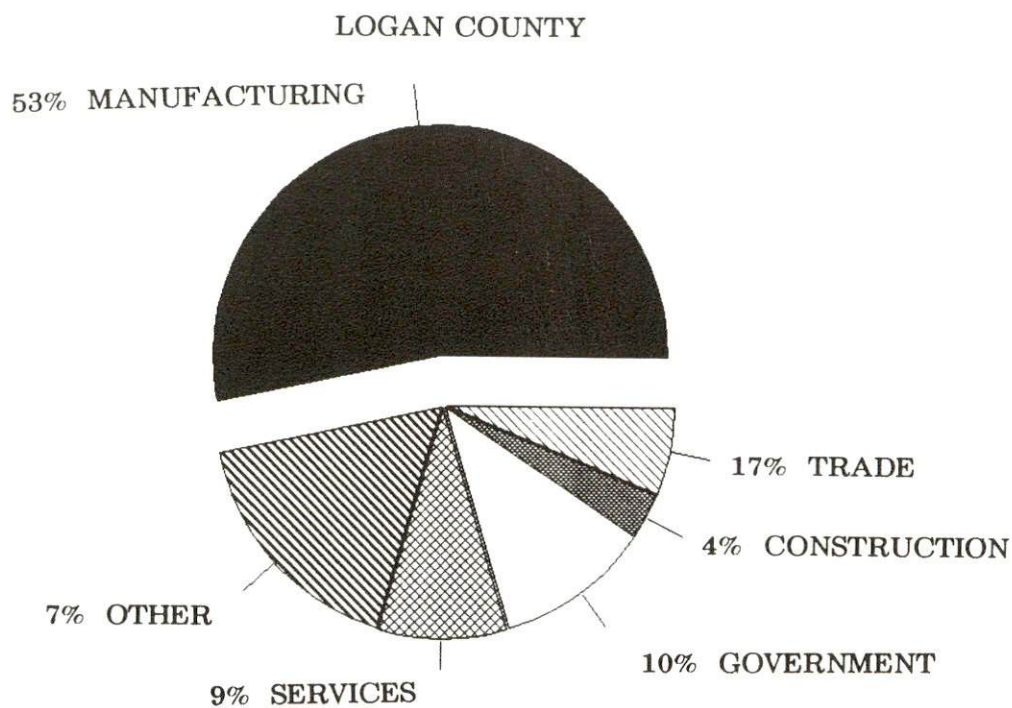
Source: Kentucky Cabinet for Human Resources, Kentucky Labor Force Estimates, Annual Averages, 1987. Tennessee Department of Employment Security, Research and Statistics Division, Labor Force Estimates Summary, Annual Averages, 1987.

## SELECTED COMPONENTS OF NONAGRICULTURAL EMPLOYMENT BY PLACE OF WORK, 1986

	Logan County	Labor Market Area*
All Industries (total)	7,129	55,206
Manufacturing	3,797	17,324
Wholesale & Retail Trade	1,230	13,536
Services	658	8,444
State/Local Government	781	7,861
Contract Construction	227	1,896

\* Tennessee county not included.

Note: Excludes domestic workers, railway workers, certain nonprofit corporations, majority of federal government workers, and self-employed workers.  
Source: Kentucky Cabinet for Human Resources, Average Monthly Workers Covered by Kentucky Unemployment Insurance Law, 1986.





ESTIMATED MALE LABOR SUPPLY  
LOGAN COUNTY LABOR MARKET AREA

Area	Current			Not in Labor Force	Future Becoming 18 years of age 1988 thru 1992
	Total Male	Unemployed	Under- employed		
Labor Market Area*	10,878	-	-	-	8,042
Logan	1,205	692	513	0	944
Butler	843	484	327	32	449
Muhlenberg	2,830	1,123	741	966	1,383
Simpson	509	214	295	0	629
Todd	516	272	244	0	456
Warren	4,022	1,747	2,275	0	2,644
Robertson (TN)	953	N/A	N/A	N/A	1,537

ESTIMATED FEMALE LABOR SUPPLY  
LOGAN COUNTY LABOR MARKET AREA

Area	Current			Not in Labor Force	Future Becoming 18 years of age 1988 thru 1992
	Total Female	Unemployed	Under- employed		
Labor Market Area*	15,153	-	-	-	7,669
Logan	1,678	641	542	495	920
Butler	1,296	207	192	897	426
Muhlenberg	4,483	694	736	3,053	1,251
Simpson	899	396	475	28	597
Todd	981	379	199	403	475
Warren	5,036	2,109	2,927	0	2,467
Robertson (TN)	780	N/A	N/A	N/A	1,533

\* Additional workers may be drawn from other nearby counties.

Note: Unemployed - persons unemployed and actively seeking work; Underemployed - persons employed but working only 14 to 26 weeks per year; Not in Labor Force - represents the number of persons who would enter the labor force if suitable employment were available (based on the assumption that persons in Kentucky would like to participate in the labor force in the same proportion that they do nationally).

Sources: Kentucky Cabinet for Human Resources, Kentucky Labor Supply Estimates by County, 1986. Kentucky Department of Economic Development, Future Labor Supply Becoming 18 Years of Age, 1988 thru 1992. Tennessee Department of Employment Security, Research and Statistics Section, 1986.

## AVERAGE PLACEMENT WAGES

Logan County is served by the Bowling Green local office of the Kentucky Department for Employment Services. The focus of the following data is on job placements made by the Bowling Green local office and may therefore be used as an indicator of the wages which employers in the area pay new employees. During the twelve months which ended on June 30, 1987, the local employment office filled 3,469 job openings in various occupational categories. The average hourly wage for selected occupational categories were:

<u>OCCUPATIONAL CATEGORY</u>	<u>NUMBER OF PLACEMENTS</u>	<u>AVERAGE WAGE(\$)</u>
All Occupations	3,469	4.15
Clerical	845	3.70
Sales	159	3.60
Services (excluding domestic)	583	3.52
Agricultural, Fishery, Forestry, etc.	71	3.60
Processing	45	7.24
Machine Trades	338	4.80
Bench Work	314	4.36
Structural	237	4.71
Motor Freight/ Transportation	153	5.13
Packaging and Materials Handling	584	4.42
Other	31	4.20

The Bowling Green local office also serves Allen, Butler, Edmonson, Logan, Simpson, and Warren Counties. The above occupational categories are taken from the Dictionary of Occupational Titles published by the U.S. Department of Labor.

Source: Kentucky Cabinet for Human Resources, Department for Employment Services.

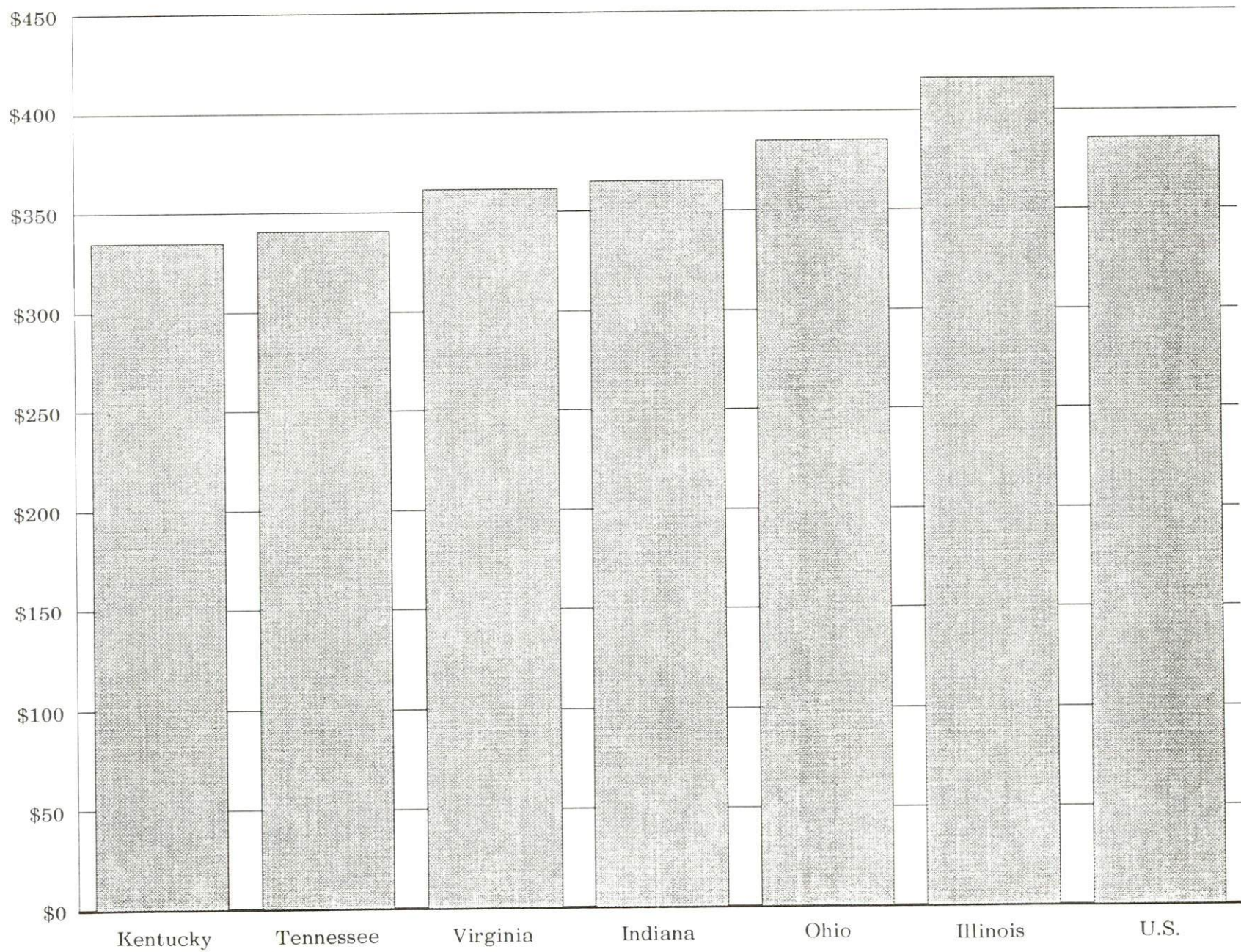
## PER CAPITA PERSONAL INCOME

<u>Area</u>	<u>1982</u>	<u>1986</u>	<u>Percent Change</u>
Logan County	\$ 8,784	\$ 9,951	13.3
Labor Market Area Range	\$6,642 - 9,004	\$8,344 - 11,103	-
Kentucky	9,277	11,342	22.3
U.S.	11,480	14,636	27.5

Sources: Kentucky Economic Information System, April 1988.



AVERAGE WEEKLY WAGES OF WORKERS COVERED BY  
UNEMPLOYMENT INSURANCE F.Y. 1986-87





AVERAGE WEEKLY WAGES BY INDUSTRY  
BY PLACE OF WORK, 1986

	<u>Logan County</u>	<u>Butler County</u>	<u>Muhlenberg County</u>
All Industries	\$300.95	\$215.97	\$391.69
Mining & Quarrying	239.46	439.63	788.90
Contract Construction	357.77	211.26	269.22
Manufacturing	348.48	183.83	262.39
Transportation, Communications & Public Utilities	344.21	302.43	477.54
Wholesale & Retail Trade	175.01	202.82	215.69
Finance, Insurance & Real Estate	264.77	271.89	286.12
Services	258.47	164.41	232.71
State/Local Government	293.56	244.54	300.68
Other	220.60	*	250.56
	<u>Simpson County</u>	<u>Todd County</u>	<u>Warren County</u>
All Industries	\$329.87	\$234.81	\$311.80
Mining & Quarrying	*	*	322.28
Contract Construction	227.25	235.27	273.18
Manufacturing	427.69	259.41	431.73
Transportation, Communications & Public Utilities	420.79	344.93	374.38
Wholesale & Retail Trade	169.67	172.81	206.88
Finance, Insurance & Real Estate	322.38	234.11	339.38
Services	204.16	126.44	269.92
State/Local Government	261.81	246.74	341.46
Other	*	255.20	184.40

\* Not disclosed.

Note: The average weekly wage for each category includes the salaries and wages of all persons working for that type business. For example, the manufacturing category includes both production workers and administrative personnel. Excludes domestic workers, railway workers, certain nonprofit corporations, majority of federal government workers, and self-employed workers.

Source: Kentucky Cabinet for Human Resources, Average Weekly Wages of Workers Covered by Kentucky Unemployment Insurance Law, 1986.



# EXISTING INDUSTRY

## LOGAN COUNTY MANUFACTURING FIRMS, THEIR PRODUCTS AND EMPLOYMENT

<u>Firm</u> <u>(Establishment date)</u>	<u>Product</u>	<u>1987</u> <u>Average Employment</u>	<u>Labor</u> <u>Unions</u>
<b>Adairville</b>			
Auburn Hosiery Mills, Inc. (1946)	Ladies' hosiery, panty hose & tights; children's panty hose & tights	141	
Odom Sausage Company, Inc., of Kentucky (1964)	Sausage	139	Food & Com- mercial Workers*
<b>Auburn</b>			
Auburn Hosiery Mills, Inc. (1937)	Ladies' hosiery, panty hose & tights; children's panty hose & tights	109	
Auburn Roller Mills, Inc. (1915)	Corn meal, feed	24	
Auburn Leather Company, Inc. (1863)	Leather laces, western tack	24	
Caldwell Gasket, Inc. (1985)	Non-metallic gaskets, high- temperature electric insulation, molded thermo- plastics elastomers	52	
Colonial House Furniture (1960)	Reproduction furniture	10	

(Continued)

<u>Firm (Establishment date)</u>	<u>Product</u>	<u>1987 Average Employment</u>	<u>Labor Unions</u>
Graham Manufacturing Company; B.A.H., Inc. (1965)	Church & institutional furniture, bank furniture	19	
M.R. Wood, Inc. (1983)	Wood accent items	5	
Scotts Auburn Mills, Inc. (1876)	Flour, corn meal, mill feed	20	
<b>Lewisburg</b>			
Hinton Lumber, Inc. (1933)	Rough lumber, ties, flitches	35	
Lewisburg Roller Mills (1944)	Feed, fertilizer	4	
Nelson Company of Kentucky (1976)	Wood pallets	63	
Red Kap Industries (1972)	Men's work clothes	162	
<b>Russellville</b>			
Bilt Rite Products Company, A Division of Big Dutchman (1958)	Poultry cages, welded mesh	72	
E.R. Carpenter Company (1969)	Urethane foam cushion, bonded fiber, polyethylene film	621	
Coca-Cola Bottling Company (1924)	Soft drinks	29	Teamsters*
Emerson Electric Company (1961)	Hermetic electric motors	526	
Griffin Industries of Kentucky (1972)	Tallow by- products, tankage	42	

(Continued)



<u>Firm</u> <u>(Establishment date)</u>	<u>Product</u>	<u>1987</u> <u>Average Employment</u>	<u>Labor</u> <u>Unions</u>
Illinois Tool Works, Inc. (1967)	Metal fasteners	110	
The Kentucky Stone Company (1936)	Agricultural lime, crushed limestone	13	Steel- workers*
Logan Aluminum, Inc. (1984)	Aluminum can stock, aluminum foil, aluminum distributor stock	625	
Logan Leader, News Democrat (1968)	Newspaper publishing	26	
Maxwell Tool & Machine Shop (1982)	Tools & dies, machine shop	15	
McCarley & Richardson, Inc. (1949)	Feed	8	
National Lumber Division, National Brush Company (1986)	Hardwood lumber, pallet flitches	10	
Printers Plus, Inc. (1984)	Commercial printing	4	
Red Kap Industires (1944)	Men's & women's sportswear	400	
Rockwell International Corporation (1956)	Aluminum die castings, gas regulators	399	
Russellville Concrete Products, Inc. (1945)	Ready-mixed concrete, concrete block	16	
Russellville Dental Lab (1956)	Dental appliances	9	
Southern States Cooperative Inc., Fertilizer Division (1959)	Fertilizer	12	

\* See Labor Organizations on next page.

Sources: Kentucky Department of Economic Development, 1988 Kentucky Directory of Manufacturers; Division of Research and Planning.

## LABOR ORGANIZATIONS IN MANUFACTURING FIRMS

<u>Union</u>	<u>Representing workers at:</u>
International Brotherhood of Teamsters, Chauffeurs, Warehousemen and Helpers of America	Coca-Cola Bottling Company
United Food and Commercial Workers International Union, AFL-CIO	Odom Sausage Company, Inc., of Kentucky
United Steelworkers of America, AFL-CIO	Kentucky Stone Company

## RECENT INDUSTRIAL DEVELOPMENTS

Auburn Hosiery Mills is currently expanding its warehousing facilities at the Auburn plant. The 300,000-square-foot expansion is scheduled for completion during the summer of 1988.



# SELECTED INDUSTRIAL SERVICES

<u>Types of Service</u>	<u>Location</u>	<u>Mileage from Russellville</u>
Custom Data Processing	Bowling Green, Kentucky	29
Custom Plastics Producers	Franklin, Kentucky	22
Electric Motor Repair	Auburn, Kentucky	11
Grinding, Precision & Tool	Hopkinsville, Kentucky	36
Heat Treating Facilities	Nashville, Tennessee	51
Industrial Equipment & Supplies	Bowling Green, Kentucky	29
Industrial Gases	Bowling Green, Kentucky	29
Industrial Waste Removal	Russellville, Kentucky	-
Machine Shops, Tool & Die	Russellville, Kentucky	-
Metal Castings	Elkton, Kentucky	16
Metal Finishers	Nashville, Tennessee	51
Metal Service Centers	Russellville, Kentucky	-
Millwrights	Franklin, Kentucky	22
Public Warehouse Facilities	Bowling Green, Kentucky	29

Sources: Kentucky Department of Economic Development, Kentucky Directory of Selected Industrial Services, 1987; Division of Research and Planning.

## TRANSPORTATION

### Rail

The R. J. Corman Railroad Corporation provides branch line rail service to Russellville and Auburn, which connects with CSX Transportation main line rail at Bowling Green, Kentucky, 29 miles northeast. CSX Transportation provides the nearest piggyback facilities at Nashville, Tennessee, 51 miles south of Russellville.

For details on routing, schedules, rates, and services, contact:

R. J. Corman Railroad Corporation  
P. O. Box 788  
Nicholasville, Kentucky 40356  
(606) 885-9457

### Highways

U.S. Highways 68, 79, and 431, and Kentucky Highways 79 and 100 are all "AAA"-rated (80,000-pound gross load limit) trucking highways serving Logan County. U.S. Highway 68 provides access to the Green River Parkway, 25 miles east of Russellville, and to the Pennyryle Parkway, 35 miles to the west. The Western Kentucky Parkway is located 37 miles north of Russellville via U.S. Highway 431.

Interchanges with Interstate 65 are located 25 miles southeast of Russellville via Kentucky 100, and 30 miles northeast of Russellville via U.S. Highway 68 and the Green River Parkway. Interstate 24 is accessible 27 miles southwest of Russellville via U.S. Highway 79.

The reconstruction of U.S. 68/Kentucky 80 between Auburn and Bowling Green and the construction of a bypass around Auburn are tentatively planned for the near future.

Construction of a 4.6-mile bypass north of Russellville is planned. The project is scheduled for completion in 1990.



## Truck Service

### Logan County

AAA Cooper Transportation*	Marvin Hayes Lines, Inc.*
A and H Truck Line, Inc.**	Hohenwald Truck Lines, Inc.**
Aberdeen Express, Inc.	Jones Truck Lines, Inc.**
(Lewisburg only)**	Majors Transit, Inc.**
ANR Freight System, Inc.**	Manning Motor Express, Inc.**
Advance Transportation Company**	Middlewest Freightways, Inc.**
American Freight System, Inc.*	Overnite Transportation Company**
Averitt Express, Inc.**	Owenton Express, Inc.
Bailey's Express, Inc.**	(Lewisburg only)**
Birmingham-Nashville Express, Inc.**	P-I-E Nationwide, Inc.**
CW Transport, Inc.**	Roadway Express, Inc.*
Central Transport, Inc.**	TSC Express*
Consolidated Freightways Corporation of Delaware**	Thurston Motor Lines, Inc.*
Craig's Express, Inc.	Tyme Dedicated Truck Service, Inc.**
(Lewisburg only)**	Yellow Freight System, Inc.**

\* Provides interstate service only.

\*\* Provides both interstate and intrastate service.

Source: American Motor Carrier Directory, Spring 1988.

### HIGHWAY MILES AND TRUCK TRANSIT TIME IN DAYS FROM RUSSELLVILLE, KENTUCKY, TO SELECTED MARKET CENTERS

City	Highway Miles	Delivery Time TL	City	Highway Miles	Delivery Time TL
Atlanta, GA	293	2	Los Angeles, CA	2,076	8
Baltimore MD	717	5	Louisville, KY	144	1
Birmingham, AL	247	2	Nashville, TN	51	1
Chicago, IL	403	2	New Orleans, LA	568	4
Cincinnati, OH	245	1	New York, NY	888	5
Cleveland, OH	489	3	Pittsburgh, PA	532	4
Detroit, MI	504	3	St. Louis, MO	279	2
Knoxville, TN	228	1			

Note: Mileage computations are via the best interstate or primary highways, not necessarily the most direct route of travel.

Sources: Rand McNally Deluxe Motor Carriers' Road Atlas, 1987. Official Kentucky Mileage Map, 1980. Delivery time - Majors Transit, Inc., P. O. Box 9, Caneyville, Kentucky 42721.

## Air

### Local

Location: Russellville-Logan County Airport  
5 miles southeast of Russellville  
Runways: 1 paved  
Length: 4,000 feet  
Traffic  
Control: Wind sock, unicom 122.7  
Lighting: Sundown to sunrise, VASI, REIL, rotating beacon, key control lighting  
Services: 100LL octane fuel, flight instruction, tie-down, restrooms, hangars, maintenance by appointment  
Air Freight Service: Chartered air freight services must be arranged

### Nearest Scheduled Commercial Airline Service\*

Location: Nashville Metropolitan Airport  
6 miles southeast of Nashville, Tennessee;  
57 miles south of Russellville  
Runways: 3 paved  
Length: 8,500 feet; 7,700 feet; 4,300 feet  
Traffic  
Control: Control tower  
Lighting: Beacon, runway  
Services: American, Delta, Eastern, Pan Am, Piedmont, Northwest, TWA, United, USAir, Allegheny Commuter, Southwest, Comair, Braniff, American Eagle; fuel - 100LL, jet-A; tie-downs, hangars; major A & P repairs, major Avionics repairs; APU, charter, flight instruction, oxygen, plane rental, survival equipment, U.S. Customs; taxi, limousine, car rental, courtesy car, public transit; weather information; restaurants, snack bars, hotel, business center  
Air Freight Service: Air freight terminal

### **Air Express Service**

Several major companies offer air express services in Kentucky. These companies provide a quick means of shipping small to medium-sized packages expeditiously.

\* Commuter air carrier service is provided by Prime Air and Northwest Air Link at Outlaw Field which is located 7 miles northwest of Clarksville, Tennessee; 42 miles southwest of Russellville.



## Water

The Green River at Paradise, Kentucky, located 37 miles north of Russellville, is the nearest navigable waterway. A 9-foot navigation channel is maintained on the Green River from Mile 103 near Paradise to the confluence of the Green and Ohio Rivers. Port facilities are available on the Ohio River at Owensboro, 74 miles north of Russellville.

## POWER AND FUEL

### Electricity

Company serving Russellville - Russellville Electric Plant Board  
Source of power - Tennessee Valley Authority  
For industrial rates contact:

Russellville Electric Plant Board  
165 East Fourth Street  
P. O. Box 418  
Russellville, Kentucky 42276-0418  
(502) 726-2466

Company serving Adairville, Lewisburg and a major portion of Logan  
County - Pennyryle Rural Electric Cooperative Corporation  
Source of power - Tennessee Valley Authority  
For industrial rates contact:

South Kentucky Industrial Development  
Association, Inc.  
P. O. Box 726  
Hopkinsville, Kentucky 42240  
(502) 885-5392

and/or

Pennyryle RECC  
P. O. Box 551  
Hopkinsville, Kentucky 42240  
(502) 886-2555

Company serving Auburn and northeastern Logan County - Warren Rural  
Electric Cooperative Corporation  
Source of power - Tennessee Valley Authority  
For industrial rates contact:

South Kentucky Industrial Development  
Association, Inc.  
P. O. Box 726  
Hopkinsville, Kentucky 42240  
(502) 885-5392

and/or

Warren RECC  
P. O. Box 1118  
Bowling Green, Kentucky 42102  
(502) 842-6541



## Natural Gas

Company serving Russellville - Western Kentucky Gas Company  
Source of supply - Texas Gas Transmission Corporation  
Size of transmission mains - 10-inch (supplier); 4-inch (distributor)  
Distribution mains - 2 to 4 inches  
Distribution pressure - 30 psi  
Btu content - 1,000 per cubic foot  
Specific gravity - 0.60  
For rates and supplies contact:

Marketing Department  
Western Kentucky Gas Company  
311 West Seventh Street  
Owensboro, Kentucky 42302  
(502) 685-8067

Company serving Adairville - Western Kentucky Gas Company  
Source of supply - Texas Gas Transmission Corporation  
Size of transmission mains - 10-inch (supplier); 3-inch (distributor)  
Distribution mains - 2 to 4 inches  
Distribution pressure - 25 psi  
Btu content - 1,000 per cubic foot  
Specific gravity - 0.60  
For rates and supplies contact:

Marketing Department  
Western Kentucky Gas Company  
311 West Seventh Street  
Owensboro, Kentucky 42302  
(502) 685-8067

Company serving Auburn - Western Kentucky Gas Company  
Source of supply - Texas Gas Transmission Corporation  
Size of transmission mains - 8-inch (supplier)  
Distribution mains - 2 to 4 inches  
Distribution pressure - 25 psi  
Btu content - 1,000 per cubic foot  
Specific gravity - 0.60  
For rates and supplies contact:

Marketing Department  
Western Kentucky Gas Company  
311 West Seventh Street  
Owensboro, Kentucky 42302  
(502) 685-8067

Natural gas service is not available in the corporate limits of Lewisburg,  
but is available 2 1/2 miles south of the city.

## Other Fuels\*

### Propane

Smith-Douglass of Kentucky  
P. O. Box 8  
Russellville, Kentucky 42276

Southern States Russellville Coop  
P. O. Box 480  
Russellville, Kentucky 42276

### Fuel oils

Distillate fuel oil -

Max Arnold & Sons, Inc.  
Route 1, Box 4  
Russellville, Kentucky 42276

Ballance Oil Company  
P. O. Box 235  
Russellville, Kentucky 42276

Ashland Oil, Inc.  
P. O. Box 153  
Russellville, Kentucky 42276

Key Oil Company  
P. O. Box 128  
Russellville, Kentucky 42276

Residual fuel oil - Arrangements must be made with the refinery.

Low sulphur content coal - Available in Kentucky.

---

\* Each distributor operates a bulk plant.



## WATER AND SEWERAGE

### Public Water Supply

Company serving Russellville - Russellville Municipal Water Works\*  
First and Main Streets  
Russellville, Kentucky 42276  
(502) 726-5026

Source - Lake Herndon

Treatment plant capacity - 3,000,000 gallons per day

Average daily consumption - 2,000,000 gallons

Peak daily consumption - 2,600,000 gallons

Treatment processes - Aeration, filtration, chlorination, coagulation,  
fluoridation, flocculation, sedimentation, rapid mix

Storage capacity - 3,100,000 gallons, including clear well

Size lines - 4 through 14 inches

Water pressure - 40 to 96 psi

### MONTHLY WATER RATES

First	2,000 gallons	\$5.00 (Minimum)
Next	5,000 gallons	2.48 per M gallons
Next	15,000 gallons	2.27 per M gallons
Next	25,000 gallons	2.00 per M gallons
Next	53,000 gallons	1.72 per M gallons
Over	100,000 gallons	1.31 per M gallons

#### Tap-on charge:

5/8-inch meter	\$150
1-inch meter	\$200
1 1/2-inch meter	\$300
2-inch meter	\$500
Larger meter	Actual cost of installation and materials

\* Russellville Municipal Water Works plans to install a 12-inch raw water main from an alternative water source.

Company serving Adairville - Adairville Water Works  
P. O. Box 185  
Adairville, Kentucky 42202  
(502) 539-6731 or (502) 539-8661

Source - South Fork of Red River  
Treatment plant capacity - 750,000 gallons per day  
Average daily consumption - 395,200 gallons  
Peak daily consumption - 511,500 gallons  
Treatment processes - Sedimentation, flocculation, coagulation,  
filtration, chlorination, fluoridation, rapid mix  
Storage capacity - 328,000 gallons, including clear well  
Size lines - 2 through 8 inches  
Water pressure - 80 to 120 psi

#### MONTHLY WATER RATES

First	2,000 gallons	\$7.00 (Minimum)
Next	2,000 gallons	3.25 per M gallons
Next	2,000 gallons	2.50 per M gallons
Next	4,000 gallons	1.70 per M gallons
Next	40,000 gallons	1.20 per M gallons
All over	50,000 gallons	0.80 per M gallons

Tap-on charge: \$200

Company serving Auburn - Auburn Water Department  
P. O. Box 465  
Auburn, Kentucky 42206  
(502) 542-4475

Source - Blue Hole Spring  
Treatment plant capacity - 201,000 gallons per day  
Average daily consumption - 150,000 gallons  
Peak daily consumption - 184,000 gallons  
Treatment processes - Coagulation, filtration, sedimentation,  
fluoridation, chlorination, flocculation, rapid mix  
Storage capacity - 90,000 gallons  
Size lines - 2 through 6 inches  
Water pressure - 30 to 60 psi

(Continued)

### MONTHLY WATER RATES

First	1,500 gallons	\$2.80 (Minimum)
Next	2,500 gallons	1.60 per M gallons
Next	6,000 gallons	1.40 per M gallons
Next	10,000 gallons	1.20 per M gallons
Next	10,000 gallons	1.00 per M gallons
Next	20,000 gallons	0.90 per M gallons
Next	50,000 gallons	0.80 per M gallons
All over	100,000 gallons	0.70 per M gallons

Tap-on charge:

3/4-inch meter	\$ 200
1-inch meter	\$ 250
1 1/2-inch meter	\$ 500
2-inch meter	\$1,000
3-inch meter	\$2,500

Company serving Lewisburg - Lewisburg Water Works\*  
P. O. Box 239  
Lewisburg, Kentucky 42256  
(502) 755-2311

Source - Spa Lake

Treatment plant capacity - 192,000 gallons per day

Average daily consumption - 85,000 gallons

Peak daily consumption - 110,000 gallons

Storage capacity - 220,000 gallons, including clear well

Size lines - 6 and 8 inches

Water pressure - 48 to 80 psi

### MONTHLY WATER RATES

First	2,000 gallons	\$9.95 (Minimum)
Next	3,000 gallons	2.42 per M gallons
Next	5,000 gallons	2.07 per M gallons
Next	15,000 gallons	1.73 per M gallons
Next	25,000 gallons	1.73 per M gallons

Tap-on charge:

\$150 inside city limits  
\$200 outside city limits

\* Lewisburg Water Works is in the process of constructing a new water treatment plant. The \$900,000 facility will have a treatment capacity of 192,000 gallons-per-day and is scheduled for completion in Fall 1988.



Name of water district - North Logan Water District  
5311 Lewisburg Road  
Russellville, Kentucky 42276  
(502) 726-7988

Area served - Northern Logan County from Russellville to Lewisburg

Date when water district began operating - 1971

Source of supply of treated water - Russellville Municipal Water Works

Average amount of water used in a 24-hour period - 175,000 gallons

Peak amount of water used in a 24-hour period - 200,000 gallons

Storage capacity - 100,000 gallons

Size lines - 3, 4, and 6 inches

Water pressure - 40 to 90 psi

Monthly rates -

First	2,000 gallons	\$8.90 (Minimum)
Next	2,000 gallons	3.95 per M gallons
Next	6,000 gallons	2.25 per M gallons
Next	15,000 gallons	2.05 per M gallons
All over	25,000 gallons	1.90 per M gallons

Tap-on charge:

\$200 for 3/4-inch meter

Actual cost for off-line installations

Name of water district - South Logan Water Association  
11245 Clarksville Road  
Olmstead, Kentucky 42265  
(502) 726-3894

Area served - Most of southern Logan County

Date when water district began operating - 1978

Source of supply of treated water - City of Adairville Water Works

Average amount of water used in a 24-hour period - 266,000 gallons

Peak amount of water used in a 24-hour period - 300,000 gallons

Storage capacity - 200,000 gallons

Size lines - 4 through 8 inches

Water pressure - 60 to 95 psi

#### MONTHLY WATER RATES

First	2,000 gallons	\$9.83 (Minimum)
Next	2,000 gallons	4.04 per M gallons
Next	2,000 gallons	3.14 per M gallons
Next	4,000 gallons	2.29 per M gallons
Over	10,000 gallons	1.54 per M gallons

Tap-on charge: None

## Sewerage

Company serving Russellville - Russellville Wastewater Treatment Plant\*  
Francis Avenue  
Russellville, Kentucky 42276  
(502) 726-5037

Design capacity - 1,600,000 gallons per day  
Average daily flow - 600,000 gallons  
Type of treatment - Secondary  
Treatment processes - Screening, grit removal, oxidation ditch,  
chlorination, aerobic digester, sludge drying beds, post aeration  
Treated effluent discharged into - Town Creek  
Size of sanitary mains - 4 to 16 inches  
Monthly rates -

First	2,000 gallons	\$3.74 (Minimum)
All over	2,000 gallons	1.87 per M gallons

Tap-on charge: \$75

A quality treatment surcharge of \$1,000 is assessed to customers discharging heavy metals which exceed specified limits based on type of industry.

Company serving Adairville - Adairville Wastewater Treatment Plant\*\*  
P. O. Box 185  
Adairville, Kentucky 42202  
(502) 539-6731

Design capacity - 260,000 gallons per day  
Average daily flow - 90,000 gallons  
Type of treatment - Primary  
Treatment processes - Screening, activated sludge, contact stabilization,  
chlorination, aerobic digester, sludge drying beds  
Treated effluent discharged into - South Fork of Red River  
Size of sanitary mains - 6 through 12 inches  
Monthly rates - \$3.00 minimum, plus \$0.70 per 1,000 gallons of water  
used

\* The City of Russellville Sewer Department's improvement plans include the construction of two additional sewer mains and the replacement of sewer lines in the High Hope area.

\*\* An expansion project at the Adairville Wastewater Treatment Plant was completed in July of 1987. This \$595,000 expansion increased the treatment capacity of the plant from 150,000 gallons-per-day to 260,000 gallons-per-day.

<u>Type of Effluent</u>	<u>Rate</u>
Biochemical Oxygen Demand (BOD <sub>5</sub> ) loading in excess of 75.0 lbs. per day	\$0.10 per pound
Suspended Solids (SS) loading in excess of 81.3 lbs. per day	0.10 per pound
Ammonia Nitrogen (NH <sub>3</sub> -N) loading in excess of 7.5 lbs. per day	0.10 per pound
Oil and Grease loading in excess of 12.5 lbs. per day	0.10 per pound

Tap-on charge: \$200, plus a \$5 inspection fee

Company serving Auburn - Auburn Sewer Department  
P. O. Box 465  
Auburn, Kentucky 42206  
(502) 542-4475

Design capacity - 166,000 gallons per day  
Average daily flow - 154,000 gallons  
Type of treatment - Primary and secondary  
Treatment processes - Primary sedimentation, trickling filter,  
secondary sedimentation, chlorination, sludge drying beds  
Treated effluent discharged into - Black Lick Creek  
Size of sanitary mains - 8 and 10 inches  
Monthly rates - 100 percent of water bill  
Tap-on charge: \$250

Company serving Lewisburg - Lewisburg Sewer Department\*  
P. O. Box 239  
Lewisburg, Kentucky 42256  
(502) 755-4828

Design capacity - 125,000 gallons per day  
Average daily flow - 65,000 gallons  
Type of treatment - Primary and secondary  
Treatment processes - Lagoon system, chlorination  
Treated effluent discharged into - Alum Lick Creek  
Size of sanitary mains - 8 and 10 inches  
Monthly rates - 100 percent of water bill  
Tap-on charge: \$150

\* The Lewisburg Sewer Department is presently constructing a five million gallon holding lagoon and an out-fall line to Mud River. The project is scheduled for completion during the fall of 1988.



## CLIMATE

### Logan County

#### Temperature

Normal (30-year record)	59.10 degrees
Average annual 1986	60.30 degrees
Record highest, July 1952 (47-year record)	107.00 degrees
Record lowest, January 1985 (47-year record)	-17.00 degrees
Normal heating degree days (30-year record)	3,756
(Heating degree day totals are the sums of negative departures of average daily temperatures from 65 degrees F.)	

#### Precipitation

Normal (30-year record)	48.49 inches
Mean annual snowfall (30-year record)	3.00 inches
Total precipitation 1986	31.60 inches
Mean number days precipitation (.01 inch or more)	
(45-year record)	119.20
Mean number days thunderstorms (45-year record)	53.90

#### Prevailing winds (through 1963)

South

#### Relative Humidity (21-year record)

6 a.m.	79 percent
Midnight	84 percent
6 a.m.	58 percent
Noon	61 percent

Source: U.S. Department of Commerce, Environmental Science Services Administration, Climatological Data, 1986. Station of record: Nashville, Tennessee.

## LOCAL GOVERNMENT

### Structure

The cities of Russellville, Adairville, Auburn and Lewisburg are each served by a mayor and six council members. The mayor is elected to a four-year term while the council members each serve two-year terms. Logan County is served by a county judge/executive and eight magistrates. Each official serves a four-year term.

### Planning and Zoning

Joint agency - Logan Joint Cities-County Planning Commission

Participating cities - Russellville, Adairville, Auburn, and Lewisburg

Zoning enforced - Within the corporate limits of Russellville and Adairville, and three miles beyond the corporate limits of each city

Subdivision regulations enforced - Within the corporate limits of Russellville and Adairville, and three miles beyond the corporate limits of each city

Local codes enforced - Building and housing codes enforced for all duplexes, commercial buildings, and industrial buildings in all areas of Logan County

Mandatory state codes enforced - Kentucky Plumbing code, National Electric Code, Kentucky Boiler Regulations and Standards, Kentucky Building Code (modeled after BOCA code)

### Local Fees and Licenses

The cities of Adairville, Auburn and Lewisburg each levy an occupational license fee of one percent of all salaries, wages, commissions, and other compensation earned by every person in these cities for work performed or services rendered, and one percent of the net profits of all businesses, professions, or other activities conducted in these cities.

Unloading licenses are \$25.50 per year in Adairville and \$20.00 annually in Lewisburg.

A 3 percent tax is levied on utilities receipts for schools in Logan County. Tax is paid by all consumers of utilities as an add-on to the utilities bills. Exempted are receipts from utilities services that are resold and the receipts from the sale of energy or energy producing fuels that exceed 3 percent of the cost of production in manufacturing, processing, mining or refining.

## State and Local Property Taxes

All property in Kentucky, except items exempted by the state constitution, is taxed by the state. Property which also may be taxed by local jurisdictions includes land and buildings, finished goods inventories, automobiles, trucks, office furniture and office equipment. Local taxing jurisdictions in Kentucky include counties, cities, and school districts.

All property in Kentucky is assessed at 100 percent of fair cash value.

### COMBINED STATE AND LOCAL RATES PER \$100 VALUATION, 1987

	Russellville/ Russellville Independent School District	Russellville/ Logan County School District	City of Adairville
Land and Buildings	\$0.943	\$0.683	\$0.932
Manufacturing			
Machinery	0.150	0.150	0.150
Pollution Control			
Equipment	0.150	0.150	0.150
Inventories			
Raw materials	0.001	0.001	0.001
Goods in Process	0.001	0.001	0.001
Finished Goods	0.758	0.498	0.719
Automobiles & Trucks	1.200	0.948	1.179
Other Tangible			
Personal Property	1.207	0.947	1.168
Intangibles (Accounts receivable*, money in hand, stock, notes, bonds)	0.250	0.250	0.250
Goods Stored in Public Warehouses in Transit Status	0.001	0.001	0.001
Private Leaseholds in Industrial Revenue Bond Financed Facilities	0.015	0.015	0.015

(Continued)



	City of Auburn	City of Lewisburg	Unincorporated Logan County
Land and Buildings	\$0.764	\$0.732	\$0.522
Manufacturing			
Machinery	0.150	0.150	0.150
Pollution Control			
Equipment	0.150	0.150	0.150
Inventories			
Raw materials	0.001	0.001	0.001
Goods in Process	0.001	0.001	0.001
Finished Goods	0.551	0.519	0.309
Automobiles & Trucks	1.003	0.969	0.759
Other Tangible			
Personal Property	1.000	0.968	0.758
Intangibles (Accounts			
receivable*, money			
in hand, stock,			
notes, bonds)	0.250	0.250	0.250
Goods Stored in Public			
Warehouses in Transit			
Status	0.001	0.001	0.001
Private Leaseholds in			
Industrial Revenue			
Bond Financed			
Facilities	0.015	0.015	0.015

\* Accounts receivable are taxed at 85 percent of face value, for an effective rate of \$0.2125 per \$100 valuation.

## Safety

Police	Russellville	Adairville	Auburn
Total staff	27	2	2
Radio-patrol cars	19	2	2

	Lewisburg	Logan County
Total staff	1	8
Radio-patrol cars	1	6

Fire*	Russellville	Adairville	Auburn
Insurance Services Office, Public Protection Classification	7	7	7
Full-time staff	3	0	0
Volunteers	18	33	21

	Lewisburg	Logan County
Insurance Services Office, Public Protection Classification	7	**
Volunteers	24	132

## Rescue Service

Rescue service is provided to Logan County by the Logan County Civil Defense Rescue Squad.

## Refuse Collection and Disposal

Refuse collection and disposal service is provided to Logan County by private firms.

\* Includes copyrighted material of ISO Commercial Risk Services, Inc., with its permission.

\*\* Insurance classifications for fire protection associations are based upon proximity to a responding fire station and to a fire hydrant. The protection class listed applies to areas within 5 road miles of a responding fire station and within 1,000 feet of a fire hydrant. Fire protection classes range from 7 to 10 in unincorporated Logan County.

## EDUCATION

### Public Schools

	Russellville Independent*	Logan County**
Total Enrollment (March 1988)	1,515	3,058
Kindergarten	124	208
Elementary	533	1,292
Middle School	427	663
High School	431	895
Accreditation	Southern Association of Colleges and Schools	
Pupil-Teacher Ratio (1985-86)	19-1	19-1
Percent High School Graduates to College (1985-86)	42.6	31.8
Expenditures Per Pupil (1985-86)	\$2,271.76	\$1,937.03

\* The Russellville Independent School District plans to construct an Alternative Learning Center adjacent to the high school. The new \$125,000 structure will contain two classrooms and will be completed in the fall of 1988. An athletic practice gymnasium and locker rooms are also planned for construction in the near future.

\*\* The Logan County School System recently completed construction of an elementary/middle school. The new \$1.8 facility presently serves approximately 700 students. In addition, another elementary/middle school is under construction and is scheduled for completion in January 1989. This \$2.3 million school will serve approximately 500 students.



## Area Colleges and Universities

<u>Name</u>	<u>Location (Miles distant)</u>	<u>Enrollment (Fall, 1987)</u>	<u>Highest Degree Conferred</u>
Western Kentucky University	Bowling Green, Kentucky (29)	13,520	Masters, Specialist*
Austin Peay State University	Clarksville, Tennessee (34)	4,739	Masters
Hopkinsville Community College	Hopkinsville, Kentucky (36)	1,341	Associate
Belmont College	Nashville, Tennessee (51)	2,677	Masters
David Lipscomb College	Nashville, Tennessee (51)	2,352	Baccalaureate & Masters in Biblical Studies
Fisk University	Nashville, Tennessee (51)	650	Masters
Free Will Baptist Bible College	Nashville, Tennessee (51)	300	Masters in Pastoral Studies
Meharry Medical College	Nashville, Tennessee (51)	505	Academic & Professional
Scarritt College (Graduate level only)	Nashville, Tennessee (51)	58	Masters
Trevecca Nazarene College	Nashville, Tennessee (51)	1,727	Masters
Tennessee State University	Nashville, Tennessee (51)	7,012	Academic & Professional
Vanderbilt University	Nashville, Tennessee (51)	8,961	Academic & Professional

\* Joint doctoral degree programs are offered in cooperation with the University of Kentucky, Lexington, and cooperative doctoral degree programs are offered with the University of Louisville. The degrees are issued by the University of Kentucky or the University of Louisville.

## Vocational Training

The Bluegrass State Skills Corporation, an independent public corporation created and funded by the Kentucky General Assembly, provides programs of skills training to meet the needs of business and industry from entry level to advanced training, and from upgrading present employees to retraining experienced workers.

The Bluegrass State Skills Corporation is the primary source for skills training assistance for a new or existing company. The Corporation works in partnership with other employment and job training resources and programs, as well as Kentucky's economic development activities, to package a program customized to meet the specific needs of a company.

Vocational training is available at both the state vocational-technical schools and the area vocational education centers. The state vocational-technical schools are post-secondary institutions. The area vocational education centers are designed to supplement the curriculum of high school students. Both the state vocational-technical schools and the area vocational education centers offer evening courses to enable working adults to upgrade current job skills.

Arrangements can be made to provide training in the specific production skills required by an industrial plant. Instruction may be conducted either in the vocational school or in the industrial plant, depending upon the desired arrangement and the availability of special equipment.

(Continued)

Nearest State School

Bowling Green State Vocational-Technical School  
Bowling Green, 29 miles distant

Agriculture	Auto Mechanics
Adult Agriculture	Automated Manufacturing/ Robotics
Business & Office	Carpentry
Accounting/Management	Diesel Mechanics
Clerical	Electricity
Exploratory Business & Office	Electronics
Secretarial	Graphic Arts
Distributive Education	Industrial Maintenance
Retailing	Machine Shop
Consumer & Home Economics	Masonry
Commercial Foods	Plumbing
Consumer & Family Life Skills	Welding
Health & Personal Services	Learning Resources Center
Occupations	Public Service Occupations
Dental Assisting	Business/Industry Security Training
Health Services	CPR Training
Nurse Assisting	Electrical Safety Training
Radiologic Technology	Emergency Medical Care
Respiratory Therapy Technician	Fire Service Training
Surgical Technology	First Aid & Safety
Industrial Education	Rescue & Emergency Services Training
Air Conditioning	
Auto Body Repair	

Nearest Area Education Center

Russellville Area Vocational Education Center  
Russellville

Business & Office	Carpentry
Clerical	Drafting
Secretarial	Electricity
Health & Personal Services	Machine Shop
Occupations	Welding
Health Services	
Industrial Education	
Auto Mechanics	



## HEALTH

### Local Medical Personnel

#### Logan County

Physicians -	31
Dentists -	8
Optometrists -	3

### Hospitals

<u>General Hospital</u>	<u>Location</u>	<u>Beds</u>
Logan Memorial Hospital	Russellville	100

Medical staff - 16 physicians, 37 registered nurses, 22 licensed practical nurses

### Other Medical Facilities

Auburn Nursing Center  
Barren River Comprehensive Care Center (Russellville)  
Home Health Care (four agencies)  
Logan County Health Department (Russellville)  
Russellville Health Care Manor, Inc.

### Ambulance Service

Name - Russellville-Logan County Ambulance Service, Inc.  
Staff - Six emergency medical technicians

Name - Adairville Volunteer Fire Department and Ambulance Service  
Staff - Eight volunteer emergency medical technicians

Name - Auburn Rural Fire Department and Ambulance Service  
Staff - Ten volunteer emergency medical technicians

## OTHER LOCAL FACILITIES

### Communications

Telephone -	South Central Bell Telephone Company (serves Russellville); Logan County Rural Telephone Cooperative, Inc. (serves Adairville, Auburn, and Lewisburg)
Telegraph -	Western Union Toll-Free number, 1-800-325-6000
Newspapers - Weekly and circulation -	The Logan Leader and The News Democrat 7,220
Radio -	WRUS-AM; WBVR-FM
Television - Airwave reception from -	Bowling Green, Kentucky; Nashville, Tennessee
Cable service - Educational Television -	Tele-Media Company of Logan County  The Kentucky Educational Television (K.E.T.) network is available statewide

### Library Services

Public library - Logan County Public Library, Russellville  
Size collection - 50,000 volumes  
Circulation, 1986-87 - 123,115

Adairville and Auburn each have a library branch open eight hours per week.

## Religious Institutions

### Logan County

Denominations -	Baptist	Episcopal
	Catholic	Full Gospel
	Christian	Holiness
	Church of Christ	Jehovah's Witnesses
	Church of God	Methodist
	Covenant	Pentecostal
	Cumberland Presbyterian	Presbyterian

Nearest Synagogues -	Nashville, Tennessee, 51 miles south of Russellville
Congregations -	Sherith Israel (orthodox)
	Ohabai Shalom (reform)
	West End Synagogue (conservative)

## Financial Institutions

<u>Banks</u>	<u>Assets</u>	<u>Deposits</u>	<u>Statement Date</u>
The Citizens National Bank (Russellville)	\$73,070,328.56	\$65,617,200.60	6/30/87
Southern Deposit Bank (Russellville)	59,499,498.77	53,411,341.11	12/31/87
Adairville Banking Company	10,016,000.00	9,030,000.00	12/31/87
Auburn Banking Company	30,856,313.67	22,246,710.83	12/31/87
Lewisburg Banking Company	22,997,516.16	20,040,403.55	12/31/87

<u>Savings and Loan Associations</u>	<u>Assets</u>	<u>Deposits</u>	<u>Statement Date</u>
First Federal Savings and Loan Association of Russellville	\$39,784,332.73	\$35,279,063.56	12/31/87

## Hotels and Motels

### Logan County

Total number -	5
Total rooms -	100



## Clubs and Organizations

### Russellville

Aftermath Club  
Alcoholics Anonymous  
American Legion, Unit 29  
American Legion, Unit 229  
American Legion Auxiliary,  
Unit 29  
American Legion Auxiliary,  
Unit 229  
American Red Cross  
Bayview Club  
Boy Scouts of America  
Brownies  
Children of the American  
Revolution  
Cub Scouts  
Daughters of the American  
Revolution  
E & F Rod and Gun Club  
Eastern Star  
Farm Bureau  
Farm League Baseball  
4-H Club  
Fraternal Order of Police  
Future Farmers of America  
Future Homemakers of America  
Garden Club  
Gideon International  
Girl Scouts  
Heritage Foundation  
Historical Society  
Homemakers  
International Order of  
Odd Fellows

Jaycees  
Junior Conservation  
Kiwanis  
Library Club  
Lions Club  
Little League Baseball  
Logan County Arts Foundation  
Logan County Civic Development  
Association  
Logan County Friendship  
League  
Logan County Home Builders  
Masonic Lodge  
Modern Woodmen of the World  
Moose  
National Association for the  
Advancement of Colored  
People  
Octagon Club  
Optimist Club  
Opti-Mrs. Club  
Parents-Teachers Association  
Rebekah Lodge  
Retired Teachers Association  
Rotary Club  
Russellville-Logan County Board  
of Realtors  
Russellville-Logan County  
Chamber of Commerce  
Senior League Baseball  
Teen Town Club  
Veterans of Foreign Wars  
Woman's Club

### Adairville

Adairville Christian Center  
Adairville Community Medical  
Service  
Adairville Senior Citizens  
Adairville-South Logan County  
Chamber of Commerce  
Brownies  
Chamber of Commerce Ladies'  
Auxiliary

Homemakers Clubs  
Junior Conservation  
Little League Baseball  
Modern Woodmen of the World  
Junior Club  
Parent-Teacher Organization  
Pony League Baseball  
Red River Fish and Game Club

## Auburn

American Legion  
American Legion Auxiliary  
Boy Scouts  
Brownies  
Cub Scouts  
Eastern Star  
4-H Club  
Future Business Leaders of  
America  
Future Farmers of America  
Future Homemakers of America  
Future Teachers of America  
Garden Club  
Girl Scouts  
Homemakers  
Jaycees  
Little League Baseball  
Masons  
Mixed Bowling League  
Optimist Club  
Parents-Teachers Association  
Pony League Baseball  
Rotary  
Woman's Club  
Woodmen of the World  
Younger Women's Garden Club

## Lewisburg

Boy Scouts  
Brownies  
City Baseball League  
Coon Range Chapter of Campers  
and Hikers  
Coon Range Fish and Game  
Club  
Cub Scouts  
Eastern Star  
4-H Club  
Future Business Leaders of  
America  
Future Farmers of America  
Future Homemakers of America  
Homemakers  
Lions Club  
Lioness Club  
Masons  
Parents-Teachers Association  
Senior Citizens Club

## RECREATION

### Local

Recreational facilities in Russellville include the 110-acre Russellville-Logan County Memorial Park with two ball fields, four tennis courts, basketball courts, a nature trail, facilities for shuffleboard and croquet, a miniature golf course, a trapshooting range, playground equipment, picnic areas, four shelters, two concession stands, restrooms and a clubhouse with a kitchen. Future plans include the construction of a \$300,000 swimming pool and the installation of a bike track. Hampton Park, also located in Russellville, features basketball courts, a picnic shelter, playground equipment and a multipurpose baseball and softball field. A recreation room is also available in the old armory building. Planned recreation programs include Little League, Farm League and Senior League baseball; Adult and Peewee League basketball; and tennis tournaments.

Many historic landmark buildings are located in Russellville, including the Old Southern Bank Building, circa 1810, which was the scene of a robbery by three members of the Jesse James gang in 1868.

The 10-acre Adairville Community Park features two lighted ball fields, concession stands, a basketball court, picnic areas with a pavilion, and parking areas. A lake and clubhouse are also available at the Red River Fish and Game Club's facilities near Adairville.

Coke-McCutchen Park in Auburn contains two ball fields, three tennis courts, basketball and volleyball courts, facilities for shuffleboard and horseshoe pitching, campgrounds, two open-air pavilions and a concession stand.

The lighted 10-acre Lewisburg Municipal Park has a ball field, basketball courts, three tennis courts, a playground, a picnic area, a covered shelter, a concession stand and restrooms. Plans include enlarging the ball field and installing lights on the tennis courts.

Other recreational facilities in Logan County include the Russellville Country Club which features a clubhouse and dining room, a swimming pool, a 9-hole golf course, and two tennis courts. Also available are a public 9-hole golf course and clubhouse, one indoor cinema, a drive-in movie theatre and a public swimming pool.

Special annual events in Logan County include the Logan County Fair, held in June; the Logan County Tobacco Festival, held in October; the Strawberry Festival, held at Adairville in May; and the Shaker Festival, held at South Union in July. South Union, the site of the last Shaker community in Kentucky, features the Shaker Museum and the Shaker Antique Mall and Gifts.



#### Area (Within 75 miles)

Lake Malone State Park, located in southern Muhlenberg County, 20 miles northwest of Russellville, offers camping facilities, swimming, fishing, and boating on an 826-acre lake. Playground facilities and picnic shelters are located in a beautiful scenic cliff area. Located across from the entrance to the park is an inn featuring luxury rooms, a restaurant, a swimming lake, a beach, boating, fishing, tennis, and nature trails.

Jefferson Davis Monument State Shrine is located 25 miles west of Russellville at Fairview. The shrine is at the site of the birthplace of Jefferson Davis, a former U.S. Senator, Secretary of War, and the only president of the Confederate States of America. The park contains a 351-foot obelisk with an elevator to the top for viewing, a museum, a gift shop, and a playground with picnic tables.

Bowling Green is located 29 miles east of Russellville. Bowling Green serves the area as a recreational and educational center. Kentucky Museum and Library offers extensive collections relating to the history and heritage of the Commonwealth. Western Kentucky University provides the city with many exciting sporting events. Beech Bend Amusement Park has many rides, games, an international raceway, and other forms of entertainment.

Pennyrile Forest State Resort Park near Dawson Springs is located 58 miles northwest of Russellville. The 24-room lodge, 13 cottages, and 68 campsites nestled within the trees provide excellent accommodations. Other facilities and activities include a dining room, a gift shop, rental rowboats and pedal boats, a 9-hole golf course, miniature golf, hiking trails, horseback riding, picnicking, playgrounds, shuffleboard, swimming at the lodge pool and off a sand beach, and two tennis courts. Lake Beshear, only four miles from the lodge, sports good fishing.

Barren River Lake State Resort Park, 65 miles east of Russellville near Glasgow, is a full-facility resort park offering a 51-room resort lodge, 12 cottages, a coffee shop, a heated lodge and cottage pool, a beach, riding stables, nature trails, open and covered boat slips, a 9-hole golf course, lighted handball and tennis courts, shuffleboard, park camping with a service building, a restaurant, fishing and pleasure boat rentals, picnic areas, and a playground. Barren River Lake, which covers 10,000 acres, is a popular area for skiing, sailing, fishing, and swimming.

Lake Barkley State Resort Park, 65 miles west of Russellville near Cadiz, is located on an embayment of Lake Barkley. The magnificent lodge includes 130 rooms, five suites, 13 cottages, a dining room, a coffee shop, a gift shop, two meeting rooms, and a recreation room. An activities center with a capacity for 1,000, a complete fitness center, and an 80-site campground are located near the lodge. A lodge pool, a beach and a bathhouse, an 18-hole golf course, a pro shop, tennis courts, a riding stable, a trapshooting range, a basketball court, hiking trails, playgrounds, and a picnic area round out the recreational facilities. The marina near the lodge has everything for the "boat lover": covered and open slips, a launching ramp, and rentals for fishing boats, skiing boats, and pleasure ride pontoons. An airport, including a 4,800-foot lighted airstrip, is available.



Noteworthy for its spaciousness, Rough River Dam State Resort Park at Falls of Rough is 66 miles northeast of Russellville. The 637-acre park on Rough River Lake features a 40-room lodge with a dining room, a coffee shop, a gift shop, a meeting room, and a 2,500-foot lighted airstrip. Cottages and camping sites are also available. Recreational facilities include a launching ramp, a dock with open and covered slips, fishing and pleasure boat rentals, a 9-hole, 3-par golf course, a swimming pool, a sand beach with a bathhouse complex, tennis courts, an archery range, hiking and fitness trails, picnic and playground areas, and planned recreation. Cruise boat excursions on Rough River Lake are available on the "Lady of the Lake" in season.

Mammoth Cave National Park is located 67 miles northeast of Russellville near Cave City. Beneath 52,000 park acres, Mammoth Cave is among the major tourist attractions of all times. It is the largest cave network ever discovered, with over 300 miles of caverns. Some famous sights are Snowball Dining Room (267 feet below surface), Frozen Niagara, Crystal Lake, and Bottomless Pit. The park also features scenic boat trips on the Green River and nature and hiking trails. Park accommodations include a hotel with distinctive gift shops featuring native Kentucky and Southern Highland handicrafts, a motor lodge, hotel cottages, and woodland cottages. Other park facilities include the hotel dining room and coffee shop, a service center, group meeting facilities, a campground, boat rides, a picnic area, and tennis and shuffleboard courts. The park is open for tours every day of the year (except Christmas Day).

Nolin River Lake is just north of Mammoth Cave National Park. The lake has a surface area of 5,800 acres and offers facilities for camping, boating, and fishing.

The Land Between the Lakes, located on a 170,000-acre wooded peninsula, is an outdoor recreational and conservational education center. The Golden Pond Visitors Center offers a multimedia theatre/planetarium and observatory. Camping, swimming, fishing, boating, hiking, a buffalo herd on a 250-acre range, an Environmental Education Center for school study groups, an educational farm and a central station with films and displays are among the attractions. Kentucky Lake and Lake Barkley are among the top fishing and water sport recreation areas in the southeastern United States. The Land Between the Lakes area is 70 miles west of Russellville.

Owensboro, 74 miles north of Russellville, is Kentucky's third largest city. Owensboro is a source of many entertainment and recreational facilities associated with larger communities. Points of interest include museums, an orchestra and two colleges. Several festivals are held annually, including the International Bar-B-Que Festival, the Summer Festival, and the Bluegrass Festival.

## COMMUNITY IMPROVEMENTS

### Recent

Russellville was chosen as a "Kentucky Certified City" in 1987. The award is based on achievement in the following categories: economic development, transportation, public affairs, utilities, health, commercial development, housing, education and recreation. The Certified Cities Program is sponsored by the Kentucky Chamber of Commerce.

The E. R. Carpenter Company recently purchased additional acreage and a building adjacent to its existing facility. This expansion created approximately 20 new jobs.

The Russellville-Logan County Civic Development Corporation recently purchased 159 acres of land for an industrial site. Approximately 82 acres of the new site are privately-owned.

An expansion project at the Adairville Wastewater Treatment Plant was completed in July of 1987. This \$595,000 expansion increased the treatment capacity of the plant from 150,000 gallons-per-day to 260,000 gallons-per-day.

The Logan County School System recently completed construction of an elementary/middle school. The new \$1.8 facility presently serves approximately 700 students. In addition, another elementary/middle school is under construction and is scheduled for completion in January, 1989. This \$2.3 million school will serve approximately 500 students.

The 911 emergency system was recently installed in Logan County. The system is based at the Russellville Police Department.

A new Logan County extension office building was recently constructed in the county.

### Under Way

Auburn Hosiery Mills is currently expanding its warehousing facilities at the Auburn plant. The 300,000-square-foot expansion is scheduled for completion during the summer of 1988.

Lewisburg Water Works is in the process of constructing a new water treatment plant. The \$900,000 facility will have a treatment capacity of 192,000 gallons-per-day and is scheduled for completion in Fall 1988.

The Lewisburg Sewer Department is presently constructing a five million gallon holding lagoon and an out-fall line to Mud River. The project is scheduled for completion during the fall of 1988.



## Planned

The city of Russellville has several water and sewer improvement projects planned. These projects include the installation of a new 12-inch raw water line from an alternative water source, the construction of two miles of additional sewer mains, and the replacement of sewer lines in the High Hope area. Total projected cost of these improvements is approximately \$2.5 million.

The reconstruction of U.S. 68/Kentucky 80 between Auburn and Bowling Green and the construction of a bypass around Auburn is tentatively planned for the near future.

Construction of a 4.6-mile bypass north of Russellville is planned. The project is scheduled for completion in 1990.

The Russellville Independent School District plans to construct an Alternative Learning Center adjacent to the high school. The new \$125,000 structure will contain two classrooms and will be completed in the fall of 1988. An athletic practice gymnasium and locker rooms are also planned for construction in the near future.