

1976

Industrial Resources: Madison County - Richmond

Kentucky Library Research Collection
Western Kentucky University, spcol@wku.edu

Follow this and additional works at: https://digitalcommons.wku.edu/madison_cty



Part of the [Business Administration, Management, and Operations Commons](#), [Growth and Development Commons](#), and the [Infrastructure Commons](#)

Recommended Citation

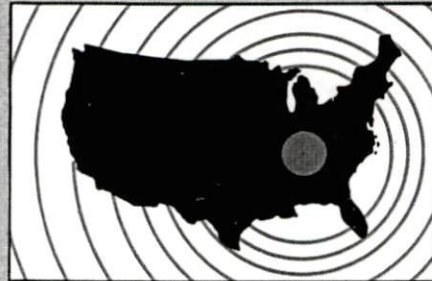
Kentucky Library Research Collection, "Industrial Resources: Madison County - Richmond" (1976). *Madison County*. Paper 21.
https://digitalcommons.wku.edu/madison_cty/21

This Report is brought to you for free and open access by TopSCHOLAR®. It has been accepted for inclusion in Madison County by an authorized administrator of TopSCHOLAR®. For more information, please contact topscholar@wku.edu.

INDUSTRIAL RESOURCES

Richmond

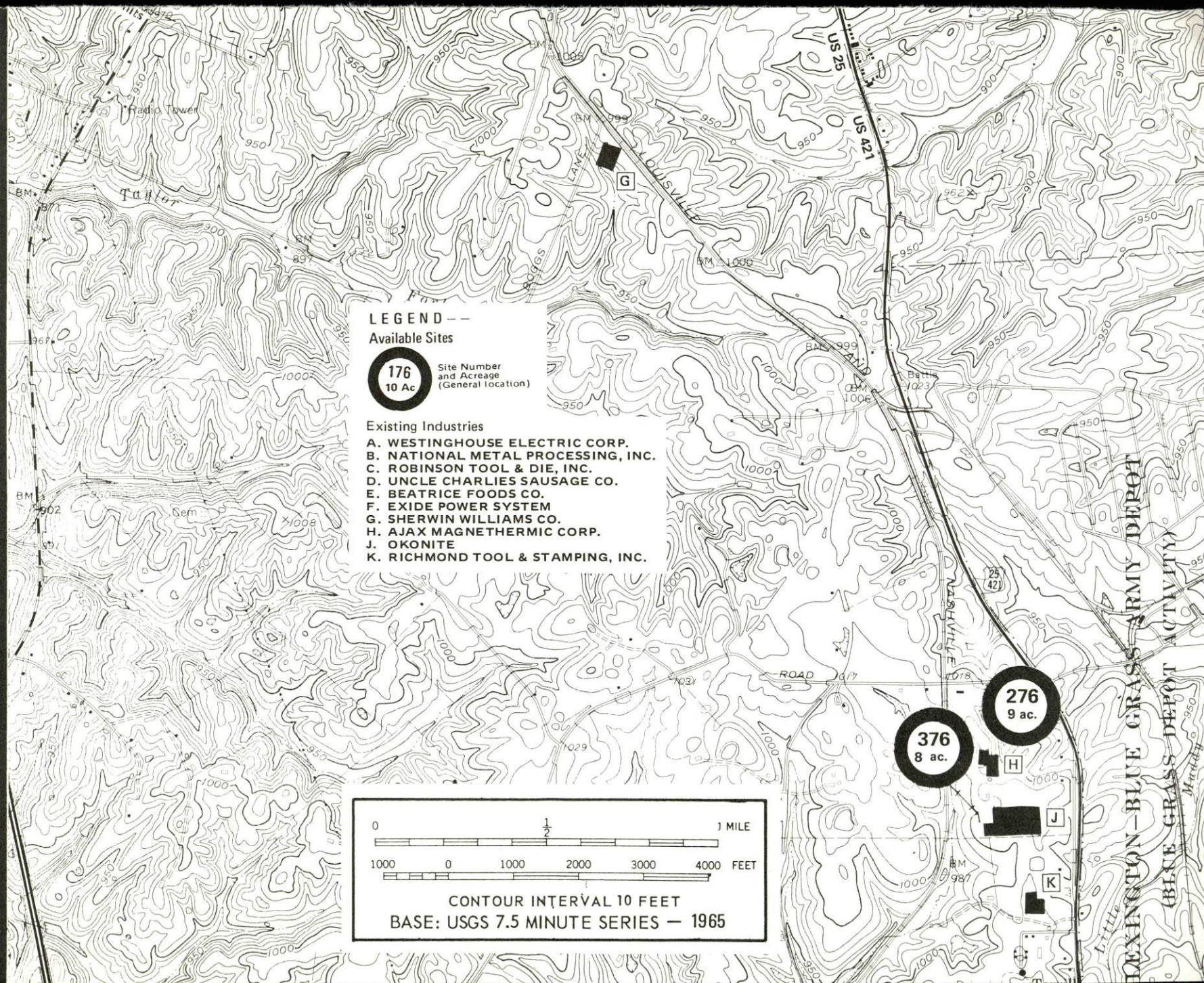
**Kentucky
first**



DEPARTMENT OF COMMERCE

RICHMOND, KENTUCKY --- Index to Industrial Sites --- 1976

For detailed data on individual sites, contact Howard L. Colyer, Executive Director, Richmond Chamber of Commerce, Post Office Box 785, Richmond, Kentucky 40475, or the Industrial Development Division, Kentucky Department of Commerce, Capital Plaza Tower, Frankfort, Kentucky 40601.





Revised City Limits

Arlington

Kit Carson Sch

RICHMOND

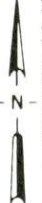
RICHMOND

EASTERN KENTUCKY UNIVERSITY

Revised City Limits

Richmond Bypass

176
18 ac.



L & N RR

TOURMILEO.

Radio Tower

Cem

JUVINE

RACE ST

Mayfield Sch

F

876

1003

52

A

B

C

D

E

Daniel Boone Sch

Madison High Sch

Sewage Disposal

City Hall

Madison Sch

St

St

St

St

St

St

St

St

St

St

St

St

St

St

INDUSTRIAL RESOURCES

RICHMOND, KENTUCKY

Prepared by
The Kentucky Department of Commerce
Division of Research and Planning
in cooperation with
The Greater Richmond Area Chamber of Commerce

1976

Production supervisor: Patsy Wallace; research: Craig Turner;
clerical: Mildred Keefer; graphics: N. C. Montague, Frank Ferrante,
Tony Cecconi; cartography: Site Development Section. Cost of printing
paid from state funds.

TABLE OF CONTENTS

<u>Chapter</u>	<u>Page</u>
INDUSTRIAL SITES	i
RICHMOND, KENTUCKY - A RESOURCE PROFILE.	1
THE LABOR MARKET AREA	3
Population	3
General Employment Characteristics, 1974	3
Manufacturing Employment by Industry	4
Major Richmond Manufacturing Firms, Their Products and Employment.	5
Labor Organizations.	5
Estimated Male Labor Supply.	11
Estimated Female Labor Supply	11
Wages	12
Per Capita Personal Income	13
TRANSPORTATION	14
Rail	14
Highways.	14
Truck Service	15
Air	16
Bus	16
Taxi.	16
Rental Services.	16
POWER AND FUEL	17
Electricity	17
Natural Gas	18
Other Fuels	19
WATER AND SEWERAGE.	20
Water	20
Sewerage.	22
CLIMATE	23

<u>Chapter</u>	<u>Page</u>
LOCAL GOVERNMENT	24
City	24
County	24
Assessed Value of Property, 1975	24
Property Taxes	24
Local Property Tax Rate Per \$100 of Assessed Valuation, 1975	25
Planning and Zoning	25
Safety	25
Police	25
Fire	25
Solid Waste	26
EDUCATION	27
Public Schools	27
Nonpublic Schools	27
Area Colleges and Universities	29
Vocational Schools	30
HEALTH.	31
Local Medical Personnel	31
Hospitals	31
Ambulance Service	31
Nursing Homes.	33
Public Health	33
OTHER LOCAL FACILITIES	34
Communications	34
Library Services	34
Religious Institutions	35
Financial Institutions	35
Hotels and Motels	35
Clubs and Organizations.	36
RECREATION	37
COMMUNITY IMPROVEMENTS.	39
HISTORY.	41

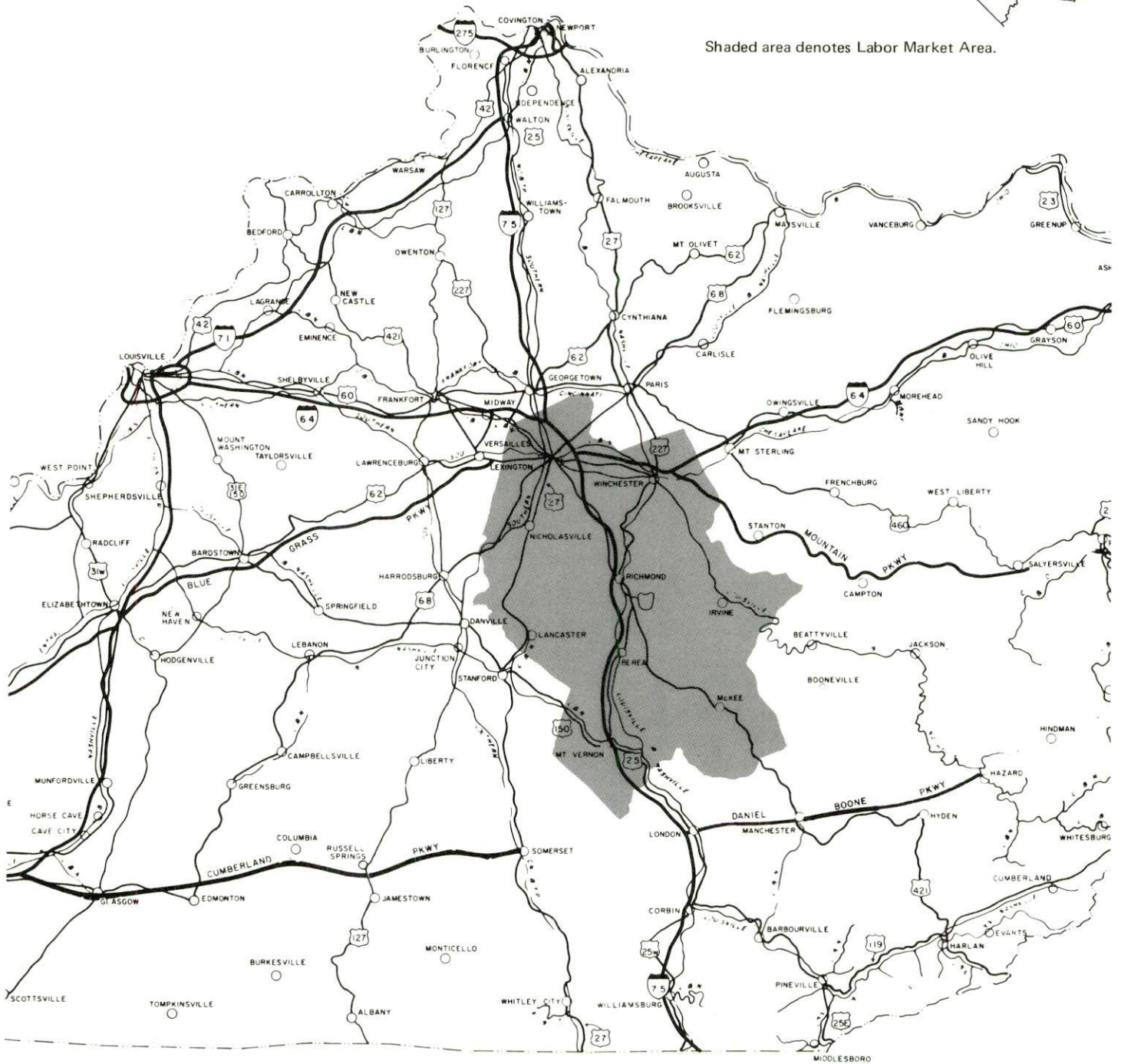
PREPARED BY THE
KENTUCKY DEPARTMENT OF TRANSPORTATION
OFFICE OF TRANSPORTATION PLANNING
DIVISION OF FACILITIES PLANNING
IN COOPERATION WITH THE
U.S. DEPARTMENT OF TRANSPORTATION
FEDERAL HIGHWAY ADMINISTRATION



RICHMOND LABOR MARKET AREA



Shaded area denotes Labor Market Area.



RICHMOND, KENTUCKY - A RESOURCE PROFILE

Richmond, a 1975 All Kentucky City and home of Eastern Kentucky University, is situated in the central portion of Madison County. The county seat of Madison County, it is rich in history and tradition. Richmond is located 27 miles south of Lexington, 99 miles southeast of Louisville, 148 miles north of Knoxville, and 105 miles south of Cincinnati. The population of Richmond in 1973 was 18,358.

Madison County, located in the Bluegrass Region, is the largest of the Bluegrass counties, with a land area of 446 square miles. The Bluegrass is emerging as an important industrial, educational, and research area. In 1975, Madison County had a population of 47,400.

The Economic Framework

The total number of Madison County residents employed in 1974 averaged 26,405, including 1,680 in agriculture and 4,650 in government. Manufacturing employers in the county reported 4,010 workers; trade and services firms employed 6,560. Major industrial products are: miniature electric light bulbs; rubber o-rings; pressure gauges; candles, aluminum windows, patio doors, and aluminum extrusion; furniture, wooden games, and fireside brooms; metal stampings, tools, and dies; and insulated cable.

Total unemployment in Madison County averaged 2.6 percent of the labor force in 1974.

Per capita personal income in the county in 1974 was \$3,510, an increase of 40.1 percent since 1970.

The Richmond labor market area includes Madison and the seven adjoining counties. The total number of residents of the labor market area employed in 1974 averaged 154,170, including 8,550 in agriculture and 34,730 in government. Manufacturing employers in the labor market area reported 28,590 workers; trade and services firms employed 54,590, mining reported 90.

Resources for Growth

1. Labor Supply - There is a current labor supply of 11,050 men and 11,760 women available for industrial jobs in the labor market area. In addition, 14,580 young men and 13,835 young women in the area will become 18 years of age before 1982 and potentially available for work.

2. Transportation - The Louisville and Nashville Railroad provides Richmond with northbound and southbound freight service and piggyback facilities. Interstate 75 is within easy access with interchanges located 2 miles northeast and 4 miles southwest. Richmond has one local truck terminal and is serviced by seven truck lines. Commercial air service is available in Lexington, 27 miles north of Richmond. Lackey Airport, 5 miles south of Richmond, provides service for light aircraft. Plans are in the final stages for a new airport to be located between Richmond and Berea with a landing capacity for planes up to 30,000 pounds.

3. Utilities and Fuel - Electric power is supplied to Richmond and Madison County by the Kentucky Utilities Company. Electricity to Madison County is also supplied by the Blue Grass RECC and the Clark RECC. Natural gas service is provided to Richmond by the Richmond Water, Gas, and Sewerage Works. The Delta Natural Gas Company supplies gas to Madison County. There are four distributors of propane and four distributors of distillate fuel oil serving Richmond.

4. Education - There are two local public school systems, the Richmond Independent School District and the Madison County School System. The nonpublic schools enrollment in Richmond is over 900 students.

Eastern Kentucky University, located in Richmond, offers general and liberal arts programs, pre-professional and professional training in education and various other fields at both undergraduate and graduate levels. Eastern's enrollment has increased steadily over the past six decades and in 1975 enrollment reached 13,430.

In addition to Eastern Kentucky University, there are two universities, four senior colleges, one junior college, and one technical institute within a 40-mile radius of Richmond. Berea College is also located in Madison County only 12 miles south of Richmond.

Vocational training is available through the Central Kentucky State Vocational-Technical School in Lexington, offering 16 course areas, and the Madison County Area Vocational Education Center in Richmond, which offers 5 course areas.

THE LABOR MARKET AREA

POPULATION

Area	1975*	1970	Percent Nonwhite
			1970
Richmond	18,358**	16,861	12.8
Labor Market Area	332,200	303,092	N.A.
Madison County	47,400	42,730	6.8
Clark County	26,400	24,090	7.7
Estill County	13,300	12,752	0.3
Fayette County	189,700	174,323	12.7
Garrard County	10,000	9,457	7.6
Jackson County	10,500	10,005	0.2
Jessamine County	22,100	17,430	6.8
Rockcastle County	12,800	12,305	0.1

*Provisional Estimates.

**1973 Population Estimates.

Sources: U. S. Department of Commerce, Bureau of the Census, Census of Population, 1970. U. S. Bureau of the Census, Current Population Reports, Series P-25, No. 562, June 1975; Series P-26, No. 75-17, May 1976.

GENERAL EMPLOYMENT CHARACTERISTICS, 1974

Major Employment Group	Employment by Place of Residence of Workers	
	Madison County	Labor Market Area
Total Employment	26,405	154,166
Agriculture	1,679	8,548
Government	4,652	34,727
	Employment by Location of Jobs	
	Madison County	Labor Market Area
Manufacturing	4,008	28,587
Trade and Services	6,564	54,592

Source: Kentucky Department for Human Resources, Bureau for Administration and Operations.

MANUFACTURING EMPLOYMENT BY INDUSTRY
MARCH 1975

<u>Industry</u>	<u>Madison County</u>	<u>Labor Market Area</u>
TOTAL	3,397	25,897
Food & Kindred Products	120	1,200
Tobacco	0	1,567
Apparel, Textiles, Leather	34	2,056
Lumber, Furniture	0	730
Printing & Publishing, Paper	47	1,637
Chemicals, Petroleum &		
Coal, Rubber	215	632
Stone, Clay & Glass	594	1,348
Primary Metals	271	685
Machinery, Metal Products,		
Equipment	1,515	14,838
Other	601	1,204

Source: Kentucky Department for Human Resources, Number of Workers in Manufacturing Industries Covered by Kentucky Unemployment Insurance Law Classified by Industry and County, March, 1975.

MAJOR RICHMOND MANUFACTURING FIRMS,
THEIR PRODUCTS AND EMPLOYMENT*

<u>Firm</u> (Establishment date)	<u>Product</u>	<u>Employment</u>			<u>Organized</u>
		<u>Total</u>	<u>Male</u>	<u>Female</u>	
Ajax Magnethermic Corp. (1972)	Industrial melting and heating equipment, industrial dryers equipment	86	78	8	
Beatrice Foods Company (1947)	Ice cream	55	43	12	**
Exide Power Systems Division of ESB, Inc. (1976)	Storage batteries	200 (estimated)			
Okonite (1968)	Insulated cable	200			
Richmond Tool and Stamping, Inc. (1969)	Tools, metal stamping	125	50	75	
Robinson Tool and Die, Inc. (1961)	Metal stampings, tools, die	284	163	121	
Uncle Charlie's Sausage Company (1957)	Sausage, meat processing, ground beef	62	57	5	
Westinghouse Electric Corporation (1948)	Miniature electric light bulbs	655	179	476	**

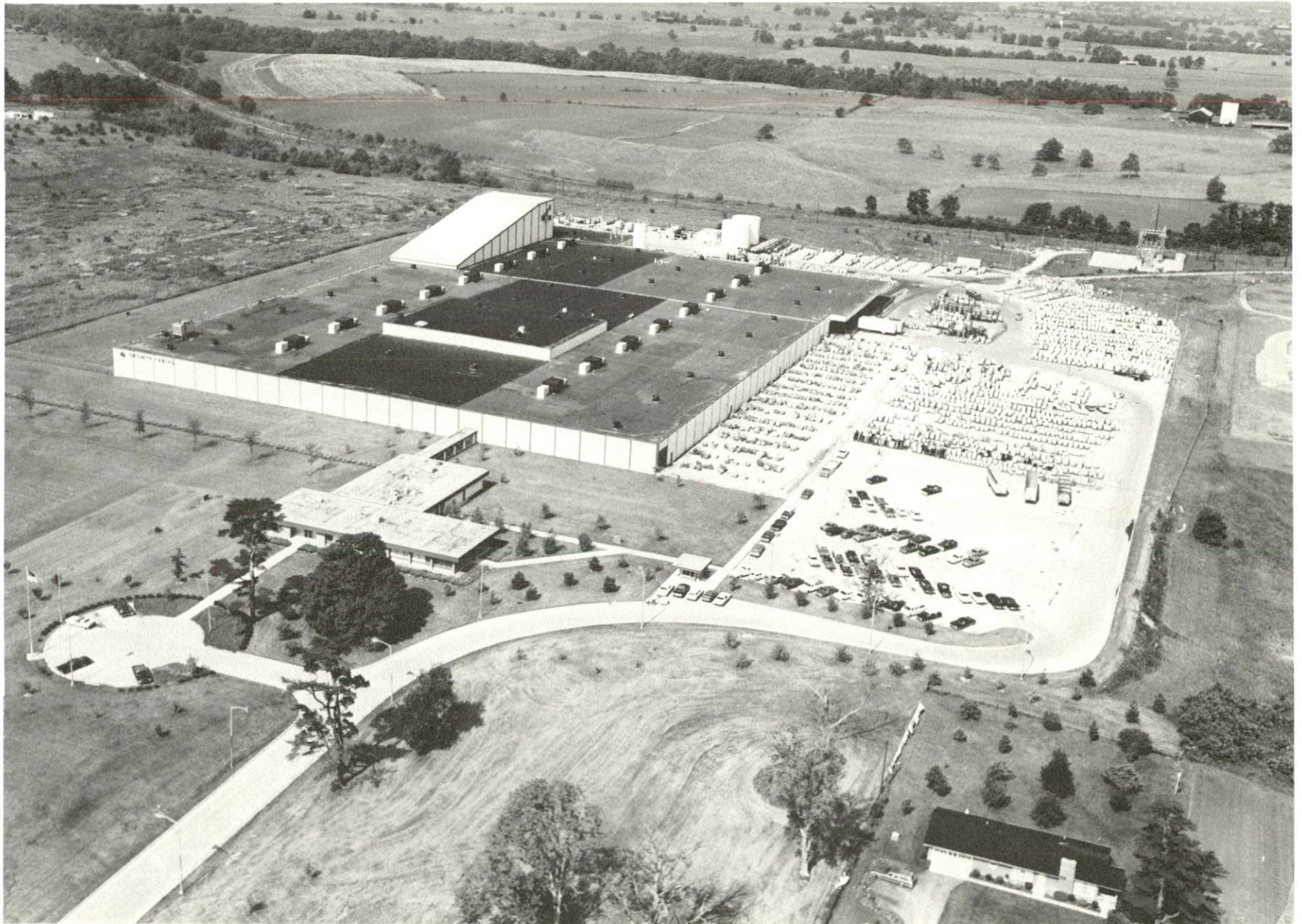
*50 or more employees.

**See Labor Organizations below.

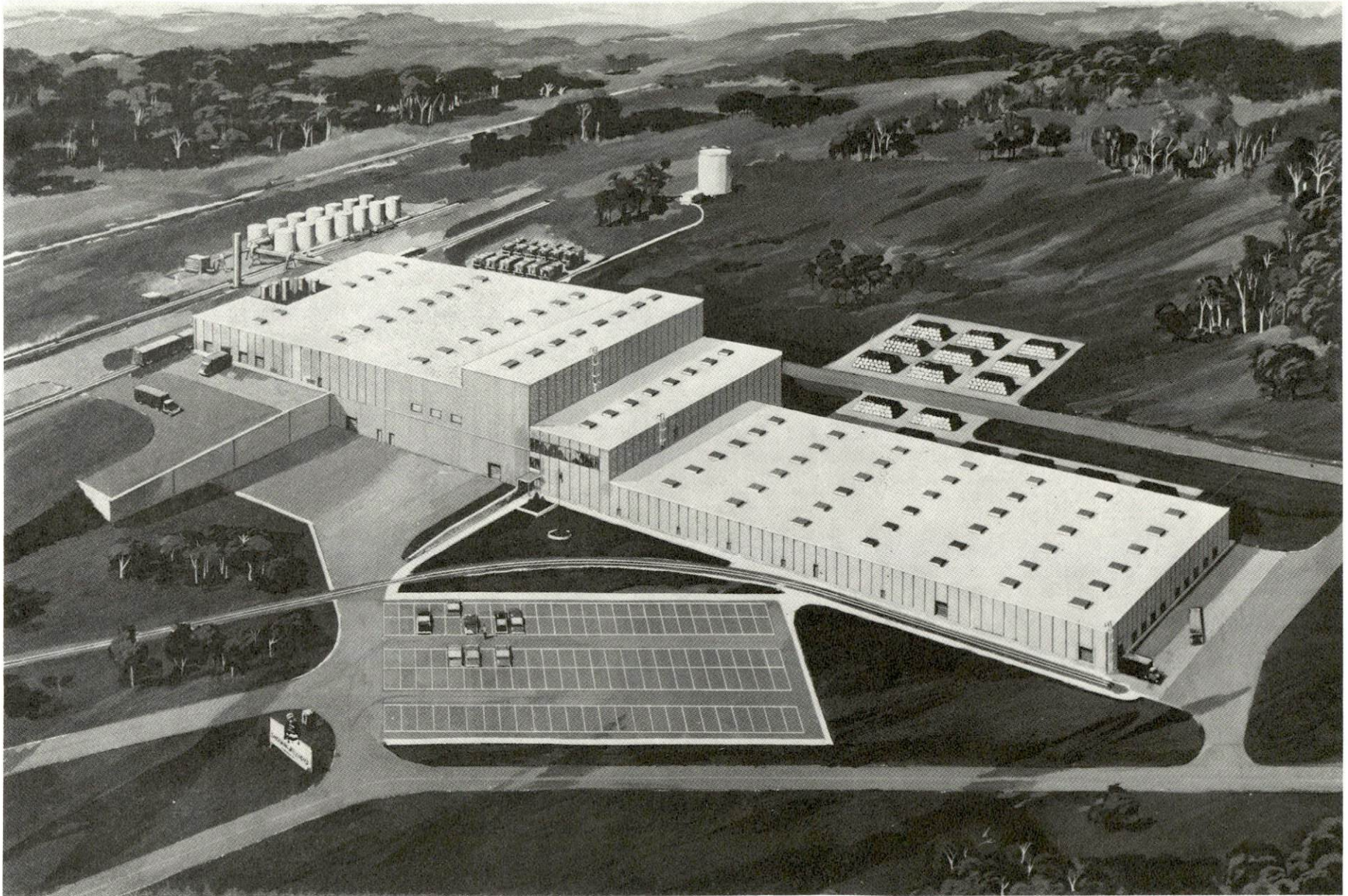
Source: Kentucky Department of Commerce, Division of Research and Planning.

LABOR ORGANIZATIONS

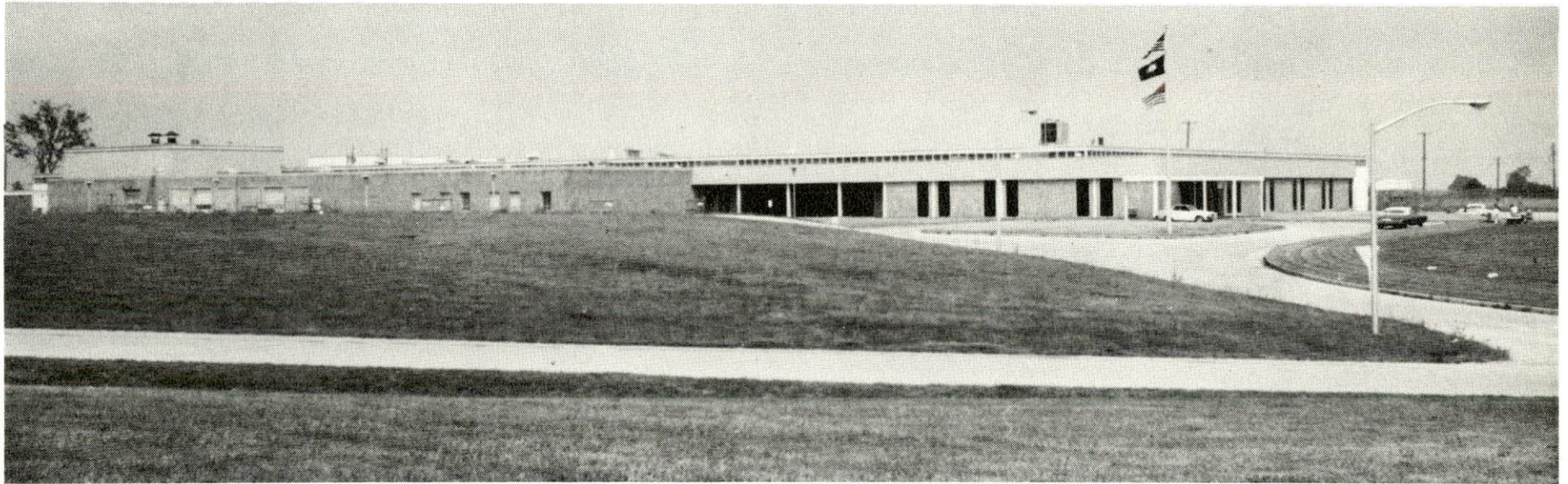
<u>Union</u>	<u>Representing manufacturing workers at:</u>
International Brotherhood of Teamsters, Chauffeurs, Warehousemen, and Helpers of America	Beatrice Foods Company
International Brotherhood of Electrical Workers	Okonite Company
International Brotherhood of Electrical Workers	Westinghouse Electric Corporation



AERIAL VIEW OF OKONITE COMPANY



SHERWIN-WILLIAMS COMPANY



EXIDE POWER SYSTEMS DIVISION OF ESB, INC.



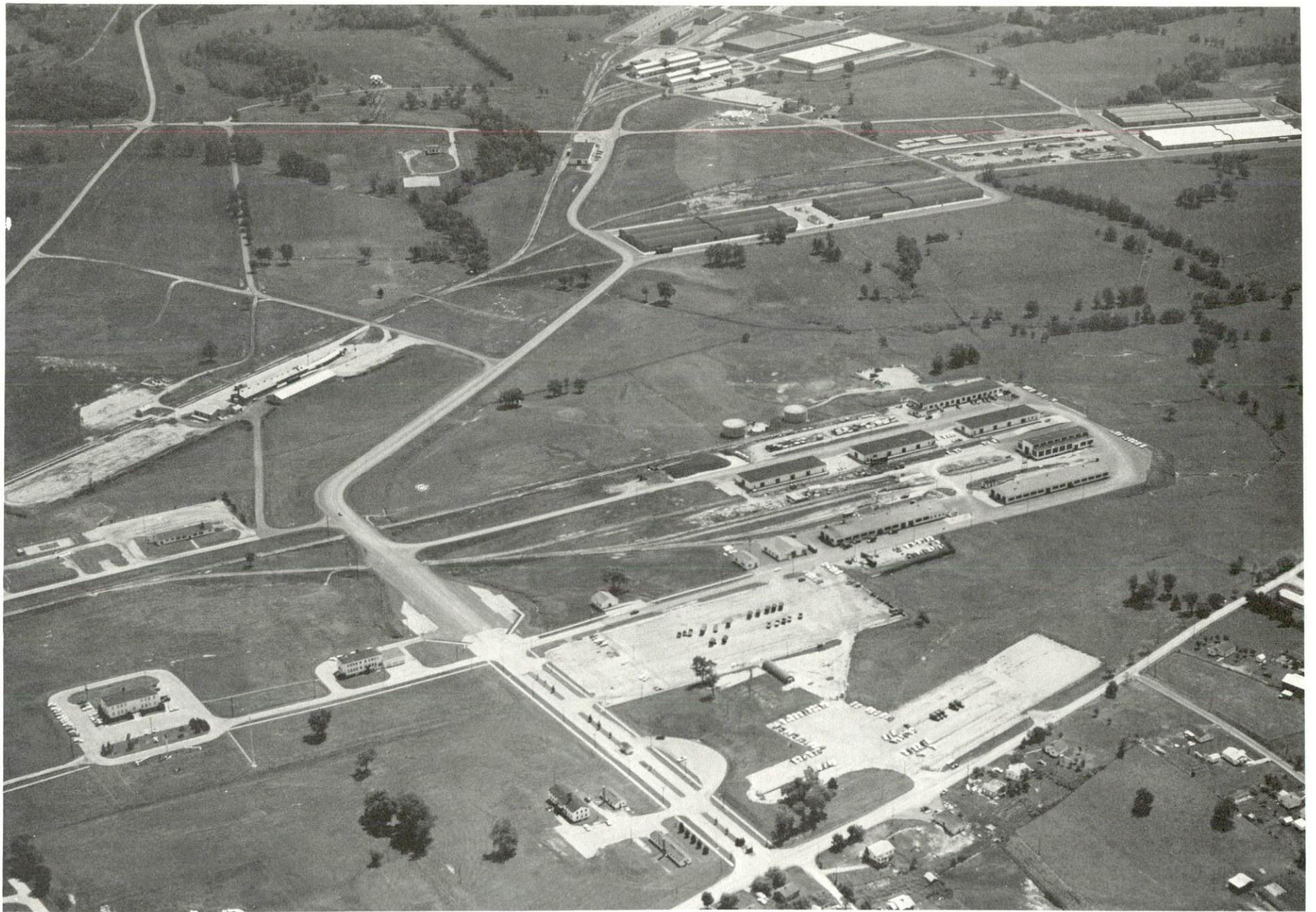
AJAX MAGNETHERMIC CORPORATION



WESTINGHOUSE ELECTRIC CORPORATION



RICHMOND TOOL AND STAMPINGS, INC.



AERIAL VIEW OF LEXINGTON-BLUE GRASS ARMY DEPOT
BLUE GRASS ACTIVITY

ESTIMATED MALE LABOR SUPPLY
RICHMOND LABOR MARKET AREA

Area	Current			Under- employed	Future Reaching 18 yrs. of age before 1982
	Total	Not in Labor Force	Unemployed		
Labor Market					
Area	11,050	270	3,140	7,640	14,584
Madison	2,270	0	420	1,850	1,821
Clark	570	0	190	380	1,268
Estill	450	0	190	260	666
Fayette	5,760	0	1,640	4,120	8,258
Garrard	560	270	130	160	475
Jackson	340	0	190	150	545
Jessamine	690	0	170	520	881
Rockcastle	410	0	210	200	670

Sources: Kentucky Department for Human Resources, Kentucky Labor Supply Estimates by County, 1975. Kentucky Department of Commerce, Future Labor Supply before 1982.

ESTIMATED FEMALE LABOR SUPPLY
RICHMOND LABOR MARKET AREA

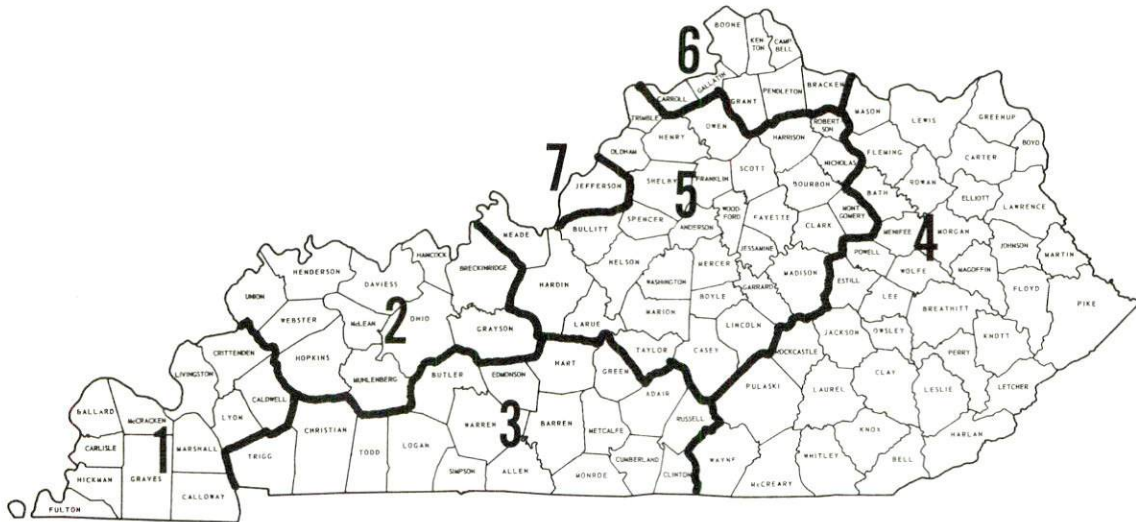
Area	Current			Under- employed	Future Reaching 18 yrs. of age before 1982
	Total	Not in Labor Force	Unemployed		
Labor Market					
Area	11,760	1,560	1,550	8,650	13,835
Madison	2,070	0	280	1,790	1,727
Clark	1,110	340	130	640	1,142
Estill	540	170	130	240	623
Fayette	5,550	0	710	4,840	7,939
Garrard	630	380	80	170	439
Jackson	630	410	70	150	523
Jessamine	710	0	70	640	827
Rockcastle	520	260	80	180	615

Sources: Kentucky Department for Human Resources, Kentucky Labor Supply Estimates by County, 1975. Kentucky Department of Commerce, Future Labor Supply before 1982.

WAGES

Occupational wage rates for specific industries are usually not available to most government agencies, and wage data furnished to state employment agencies by individual industrial employers is protected from disclosure by federal law. The most reliable up-to-date wage information can be obtained by direct contact with local employers.

Associated Industries of Kentucky, a voluntary organization of Kentucky businesses, regularly collects occupational wage rates and fringe benefits data from participating member firms. Data is compiled for over 127 clearly defined office, production, and service occupations. Tabulations are published for seven regions of Kentucky, as shown on the map below. It should be noted that the data may be weighted by the preponderance of firms in the larger cities and may be somewhat higher than the rates paid in the smaller communities. Data from these tabulations are available, upon request, from the Kentucky Department of Commerce, Frankfort, Kentucky 40601.



Associated Industries of Kentucky Area Wage Surveys

PER CAPITA PERSONAL INCOME

<u>Area</u>	<u>1974</u>	<u>1970</u>	<u>Percent Change</u>
Madison County	\$3,510	\$2,505	40.1
Labor Market Area			
Range	\$2,586 to 5,348	\$1,584 to 3,844	N.A.
Kentucky	4,442	3,112	42.7
U. S.	5,448	3,966	37.4

Sources: U. S. Department of Commerce, Bureau of Economic Analysis, Survey of Current Business, August, 1975. U. S. Department of Commerce, Bureau of Economic Analysis, March, 1976.

TRANSPORTATION

Rail

Line serving Richmond - Louisville & Nashville Railroad

Services - 1 northbound and 1 southbound freight stops six days per week, 6 northbound and 6 southbound through freights daily; switching facilities; siding space for 40 cars; team track for 15 cars; piggyback facilities

For details on routing, schedules, rates, and services, contact:

Manager of Industrial Development
Louisville & Nashville Railroad Company
908 West Broadway
Louisville, Kentucky 40203
(502) 587-5000

Highways

Richmond, situated in the central portion of Madison County, has easy access to Interstate 75. I-75 runs north-south through Madison County. Richmond is accessible through two interchanges, one located 2 miles northwest and the other 4 miles southwest. Richmond is within easy access of Interstate 64, 23 miles to the north. U. S. Highway 421 serves Richmond and southern Madison County while State Highways 52, 388, 1156 and 169 provide access to the remainder of the county.

Truck Service

<u>Company</u>	<u>Home Office</u>
Bronaugh Motor Express, Inc.*	1025 Nandino Blvd. Lexington, Kentucky 40511
Cooper-Jarrett, Inc.	23 South Essex Avenue Orange, New Jersey 07050
McLean Trucking Company	P. O. Box 213 Winston Salem, North Carolina 27102
Overnite Transportation Company	1100 Commerce Road Richmond, Virginia 23209
Shepherd Truck Line, Inc.**	P. O. Box 481 Irvine, Kentucky 40336
Smith's Transfer Corporation of Virginia	P. O. Box 1000 Staunton, Virginia 24401
Wilson Freight Company	3636 Follett Avenue Cincinnati, Ohio 45223

<u>Other Freight Services</u>	<u>Nearest Shipping Center</u>
United Parcel Service***	Lexington, Kentucky, 27 miles north

HIGHWAY MILES AND TRUCK TRANSIT TIME IN DAYS FROM RICHMOND, KENTUCKY, TO SELECTED MARKET CENTERS

City	Delivery		City	Delivery	
	Highway Miles	Time TL		Highway Miles	Time TL
Atlanta, Ga.	341	2	Los Angeles, Calif.	2,207	5
Birmingham, Ala.	402	2	Louisville, Ky.	99	1
Chicago, Ill	379	1	Nashville, Tenn.	237	1
Cincinnati, Ohio	105	1	New Orleans, La.	623	3
Cleveland, Ohio	344	1	New York, N. Y.	730	3
Detroit, Mich.	364	1	Pittsburgh, Pa.	370	2
Knoxville, Tenn.	148	1	St. Louis, Mo.	362	1

Source: Delivery Time Only - Bronaugh Motor Express, Inc., 1025
Nandino Boulevard, Lexington, Kentucky 40505.

*Local terminal.

**Restricted service.

***For regular scheduled pickups or for occasional pickups, arrangements must be made with the Louisville office of U.P.S.

Air

	<u>Local</u>	<u>Nearest Commercial</u>
	Lackey Airport	Blue Grass Field
Location:	5 miles south of Richmond	Lexington, 27 miles north
Runways:	1 turf	2 paved
Length:	2,450 feet	6,500 feet and 3,500 feet
Traffic		
Control:	Wind sock and wind tee	Tower, guards, radar, arrival and departure control, ILS System
Lighting:	None	Approach lighting system, beacon, runways and obstructions lighted
Services:	Tie down	Delta, Eastern, Piedmont and Allegheny Airlines; 100, 145 octane and jet fuel; major A & E repairs, Weather Service, restaurant, flight instructions, charter service, storage, taxi, limousine, and car rentals
Air Freight Service:		All commercial air carriers accept air freight on a space-available basis

Bus - Greyhound Bus Lines

Taxi - 24-hour service, radio dispatched

Rental Services - Car, truck, and trailer rentals

POWER AND FUEL

Electricity

Company serving Richmond and part of Madison County - Kentucky
Utilities Company

Source of power - Kentucky Utilities Company

Total generating capacity - 1,615,500 KW

For industrial rates contact:

Industrial Development Department
Kentucky Utilities Company
120 South Limestone Street
Lexington, Kentucky 40507
(606) 255-1461

Company serving Madison County - Blue Grass RECC; Clark RECC

Source of power - East Kentucky Power Cooperative

Total generating capacity - 496,000 KW

For industrial rates contact:

Industrial Development Division
East Kentucky Power Cooperative
P. O. Box 707
Winchester, Kentucky 40391
(606) 744-4812

and/or

Blue Grass RECC
P. O. Box 188
Nicholasville, Kentucky 40356
(606) 885-4191

and/or

Clark RECC
P. O. Box 748, Route 15
Winchester, Kentucky 40391
(606) 774-4251

Natural Gas

Company serving Richmond - Richmond Water, Gas, and Sewerage Works

Source of supply - Columbia Gas Transmission Corporation

Size of transmission mains - 8 inch (supplier); 2 - 8 inches,

1-4 inches (distributor)

Distribution mains - 2, 3, 4, 6, 8, and 10 inches

Distribution pressure - 5 ounces in service mains

Btu content - 1000 per cubic foot

Specific gravity - .60

For rates and supplies contact:

Richmond Water, Gas, and Sewerage Works

P. O. Box 700

Richmond, Kentucky 40475

(606) 623-2323

Company serving Madison County - Delta Natural Gas Company, Inc.

Source of supply - Tennessee Gas Transmission Company

Size of transmission mains - 24 and 30 inches (supplier);

4-inch (distributor)

Distribution mains - 4 inches down through 1 inch

Distribution pressure - 40 to 100 pounds

Btu content - 1040 per cubic foot

Specific gravity - .60

For rates and supplies contact:

Delta Natural Gas Company, Inc.

120 South Main Street

Winchester, Kentucky 40391

(606) 744-6171

Other Fuels

Propane

Crawford Gas and Appliances
Big Hill Avenue
Richmond, Kentucky

Million Appliance Company
South 3rd Street
Richmond, Kentucky

Southern States Cooperative, Inc.
Irvine Road
Richmond, Kentucky

Williams Energy Company (Doxol Propane)
Edwards Avenue
Richmond, Kentucky

Fuel oils

Distillate fuel oil -

Ashland Petroleum Company (bulk plant)
South Estill Avenue
Richmond, Kentucky

Congleton's Sunoco
Moberly Street
Waco, Kentucky

Jenkins Red Head, Inc.
Big Hill Road
Richmond, Kentucky

Standard Oil Company (bulk plant)
Boggs Lane
Richmond, Kentucky

Residual fuel oil - Arrangements must be made with the refinery.

Low sulphur content coal - Available from eastern Kentucky.

WATER AND SEWERAGE

Water

Company serving Richmond - Richmond Water, Gas and Sewerage Works
P. O. Box 700
Richmond, Kentucky 40475
(606) 623-2323

Source - Lake Reba and the Kentucky River

Treatment plant capacity - 7,250,000 gallons per day (2 plants)*

Average daily consumption - 3,000,000 gallons

Peak daily consumption - 4,000,000 gallons

Type treatment - Flocculation, settling, coagulation, filtered and
fluoridation

Storage capacity - 3,400,000 gallons

Size lines - 6, 8 and 12 inches

Average pressure - 70 psi

Average temperature - 50 degrees F.

MONTHLY WATER RATES FOR WHOLESALE AND INDUSTRIAL CONSUMERS

First	300 cubic feet	\$4.30 (Minimum)
Next	400 cubic feet	1.15 per 100 cubic feet
Next	5,000 cubic feet	.95 per 100 cubic feet
Next	5,000 cubic feet	.80 per 100 cubic feet
Over	10,700 cubic feet	.60 per 100 cubic feet

Tap-on charge: No tap-on charge

*The Richmond Water, Gas and Sewerage Works has expanded its
treatment plant at the Kentucky River to a capacity of 6,000,000 gpd.

Name of water district - Waco Water District

203 Ridgeway Drive, P. O. Box 792
Richmond, Kentucky 40475
(606) 623-0142

Area served - Northeast quarter of Madison County

Date when water district began operating - 1965

Source of supply of treated water - Richmond Water, Gas and
Sewerage Works

Average amount of water used in a 24-hour period - 140,000 gallons

Peak amount of water used in a 24-hour period - 217,815 gallons

Average pressure - 90 psi

Size lines - 4 and 6 inches

Rates -

First	175 cubic feet - \$5.00 (Minimum)
Next	225 cubic feet - 2.10 per 100 cubic feet
Next	300 cubic feet - 1.50 per 100 cubic feet
Next	500 cubic feet - 1.25 per 100 cubic feet
Next	1,000 cubic feet - 1.00 per 100 cubic feet
All over	2,200 cubic feet - .80 per 100 cubic feet

Tap-on charge: \$175 or cost of installation (whichever
is greater)

Name of water district - Kingston-Terrill Water District

P. O. Box 546, 202 South Third Street
Richmond, Kentucky 40475
(606) 623-7723

Area served - Madison County - south

Date when water district began operating - 1966

Source of supply of treated water - Richmond Water, Gas and Sewerage
Works

Average amount of water used in a 24-hour period - 184,000 gallons

Peak amount of water used in a 24-hour period - 238,800 gallons

Storage capacity - 100,000 gallons

Average pressure - 55 psi

Average temperature - 60 degrees F.

Size lines - 3, 4, 6, and 8 inches

Rates -

First	200 cubic feet - \$5.30 per month (Minimum)
Next	300 cubic feet - 2.30 per 100 cubic feet
Next	300 cubic feet - 1.55 per 100 cubic feet
All over	800 cubic feet - .80 per 100 cubic feet

Tap-on charge: \$150 single; \$200 double

Surface water sources - Kentucky River

Average discharge - Kentucky River at Lock 10, 5,279 cfs (68 years USGS), unadjusted

Expected ground water yield - 50 to 200 gpm along Kentucky River;
5 to 50 gpm in small portion of southcentral Madison County; 5 gpm or less in remainder of county

Sewerage

Company serving Richmond - Richmond Water, Gas and Sewerage Works*

P. O. Box 700

Richmond, Kentucky 40475

(606) 623-2323

Design capacity - 3,000,000 gallons per day

Average daily flow - 2,450,000 gallons

Treatment - secondary

Type treatment - Sedimentation, trickling filter, clarifier, sludge tank, drying beds, and chlorination

Treated effluent discharged into - Tates Creek and Dreaming Creek

Size of sanitary mains - 18 and 24 inches

Rates - 50 percent of water bill

Tap-on charge: \$10

*The Richmond Water, Gas and Sewerage Works has completed Step I of a 201 Facilities Plan for sewerage system improvements.

CLIMATE

Madison County

Temperature

Annual mean (30-year record)	55.2 degrees
Average annual 1975	55.9 degrees
Record highest, July, 1966 (12-year record)	98.0 degrees
Record lowest, January, 1972 (12-year record)	-11.0 degrees
Normal heating degree days (30-year record)	4,729
(Heating degree day totals are the sums of negative departures of average daily temperatures from 65 degrees F.)	

Precipitation

Mean annual total (30-year record)	44.49 inches
Mean annual snowfall (30-year record)	15.60 inches
Total precipitation 1975	59.11 inches
Mean number days precipitation (.01 inch or more) (31-year record)	131
Average number days thunderstorms (31-year record)	47

Prevailing Winds

South

Relative Humidity

1 a.m.	76 percent (11-year record)
7 a.m.	81 percent (12-year record)
1 p.m.	59 percent (12-year record)
7 p.m.	64 percent (12-year record)

Source: U. S. Department of Commerce, Environmental Science Services
Administration, Climatological Data, 1975. Station of record:
Lexington, Kentucky.

LOCAL GOVERNMENT

City

Structure - Mayor - 4-year term; 4 commissioners - 2-year terms;
city manager

Budget 1976 - General Fund	\$1,548,090.00
Water and Gas Fund	1,868,698.25
City Sewer System	278,763.26

Fees and licenses - One percent occupational license tax on wages
and on net profits; business license fees range from \$5 to \$600
annually

County

Structure - County Judge - 4-year term; 4 magistrates - 4-year terms
Budget 1975-76 - General Fund \$410,624; Road Fund \$174,340

Assessed Value of Property, 1975

<u>Classes of Property</u>	<u>Madison County</u>
Real Estate	\$247,299,228
Tangibles	56,160,505

Property Taxes

Land and buildings are taxed by the state and may be taxed by local
jurisdictions. The state rate is \$0.015 per \$100 of assessed valuation.

Tangible personal property owned by manufacturers (automobiles, trucks,
finished goods, office furniture, office equipment) is taxed by the state
at \$0.15 per \$100 and may be taxed by local jurisdictions.

Manufacturing machinery, raw materials inventories, pollution control
equipment, and goods in process inventories, are not subject to local
taxation. The state rate is \$0.15 per \$100.

Property stored in public warehouses is not subject to local taxation.
The state rate is only \$0.015 per \$100.

All property is assessed at 100 percent of fair cash value.

Local Property Tax Rate Per \$100 of Assessed Valuation, 1975*

<u>Taxing Jurisdiction</u>	<u>Richmond</u>	<u>Madison County</u>
County	\$.163	\$.163
School	.700	.407
City	.262	

Special (not county wide): Red Lick Watershed (Real Estate only) \$.500

Planning and Zoning

City agency - Richmond Planning Commission
Zoning enforced - City only
Subdivision regulations enforced - City and 5 miles beyond city limits
Local codes enforced - Housing, building
Mandatory state codes enforced - Plumbing, National Fire Protection Association Code, National Building Code (for major buildings and residential construction containing more than 12 bedrooms per building)

Safety

<u>Police</u>	<u>Richmond</u>	<u>Madison County</u>
Total staff	33	6
Radio-patrol cars	8	4

Fire

American Insurance Association Fire Rating	7	
Full-time staff	52	14
Volunteers	14	17

*Kentucky Department of Revenue, Kentucky Property Tax Rates, 1975.

Solid Waste

Richmond

Type service	Municipal (supplemented by private)
Fee charged:	
residential	No charge
business	No charge
Collection frequency:	
residential	Once a week
business	A maximum of three times a week
Trash pickup	Once a week
Disposal method	Sanitary landfill

Thirty dumpsters are placed in various locations throughout the county for the convenience of the county residents. The county provides pickup service at these points with disposal at the Richmond landfill.

EDUCATION

Public Schools

	<u>Richmond Independent</u>	<u>Madison County</u>
Total Enrollment		
(Fall 1975)	1,137	5,403
Elementary	408	3,928
Junior High	389	
High School	340	1,475
Student-Teacher Ratio	16 to 1	22 to 1
Elementary	14 to 1	22 to 1
Junior High	16 to 1	
High School	18 to 1	24 to 1
Percent High School Graduates to College	34.7	55.4
Expenditures Per Pupil (1974-75)	\$802.69	\$612.60
Bonded Indebtedness, June 30, 1975	\$491,000	\$3,433,000

Nonpublic Schools

	<u>Model Laboratory*</u>	<u>Christian School</u>	<u>St. Mark</u>
Total Enrollment	754	60	97
Elementary	514	60	97
High School	240		
Student-Teacher Ratio	23 to 1	20 to 1	24 to 1
Elementary	26 to 1	20 to 1	24 to 1
High School	18 to 1		

*The Model Laboratory School of Eastern Kentucky University is accredited by the Southern Association of Colleges and Schools.



AERIAL VIEW OF EASTERN KENTUCKY UNIVERSITY

Area Colleges and Universities

<u>Name</u>	<u>Location (Miles distant)</u>	<u>Enrollment (Fall, 1975)</u>	<u>Highest Degree Conferred</u>
Asbury College	Wilmore (33)	1,225	Baccalaureate
Berea College	Berea (12)	1,504	Baccalaureate
Centre College	Danville (36)	775	Baccalaureate
Eastern Kentucky University	Richmond	13,430	Masters, Ph. D. *
Georgetown College	Georgetown (39)	1,062	Masters
Lexington Technical Institute	Lexington (27)	1,654	Associate
Southeastern Christian College	Winchester (22)	91	Associate
Transylvania University	Lexington (27)	722	Masters**
University of Kentucky	Lexington (27)	22,526	Ph. D., M. D., D. M. D., J. D.

*Cooperative program with the University of Kentucky, Lexington, for a Ph. D. in education only.

**Courses in the Masters Degree program are taught on the Transylvania campus by Xavier University of Cincinnati faculty members. The degree is issued by Xavier University.

Vocational Schools

	<u>Nearest State School</u>	<u>Nearest Area Education Center</u>
	Central Kentucky State Vocational-Technical School	Madison County Area Vocational Education Center
Location	Lexington	Richmond
Miles Distant	27	
Curriculum	Clerical Secretarial-Stenographical Commercial Foods Cosmetology Equine Education Practical Nursing Industrial Education Auto Body Repair Auto Mechanics Drafting Electronics Graphic Arts (Printing) Industrial Electricity Machine Shop Office Machine Repair Sheet Metal Welding	Business and Office Industrial Education Auto Mechanics Drafting Machine Shop Welding

Arrangements can be made to provide training in the specific production skills required by an industrial plant. Instruction may be conducted either in the vocational school or in the industrial plant, depending upon the desired arrangement and the availability of special equipment.

HEALTH

Local Medical Personnel

Physicians - 16

Dentists - 13

Hospitals

<u>General Hospital</u>	<u>Location</u>	<u>Beds</u>
Pattie A. Clay Hospital	Richmond	103

General hospital facilities - 2 operating rooms, 1 minor operating room, fracture room, recovery room, 2 emergency rooms, intensive care-coronary care unit, laboratory, X-ray, obstetrics, 4 outpatient rooms, cystoscopic room, physical therapy, drug room, pharmacy

Medical staff - 22 medical doctors, 27 registered nurses, 20 licensed practical nurses, 50 nursing aides, 6 medical technologists, 4 X-ray technicians, 1 dietitian, 2 respiratory therapists, and 1 physical therapist

Ambulance Service

Name - Madison County Ambulance Service

Staff - 19 full-time and 2 part-time employees who are certified
Emergency Medical Technicians

Service - 24-hour service, county-wide

Equipment - 4 ambulances (3 in Richmond, 1 in Berea) - equipment
is housed in the new Madison County Ambulance Center on the
Richmond By-Pass



PATTIE A. CLAY HOSPITAL

Nursing Homes

	<u>Number</u>	<u>Beds</u>
Extended care homes	2	152
Personal care homes	2	82

Public Health

Facility - Madison County Health Department

Staff - 1 administrator, 5 registered nurses, 2 licensed practical nurses, 2 nursing supervisors, 1 health officer, 2 nutritionists, 5 community health workers, 2 social workers, 3 health environmentalists, 1 medical clinician, 4 clerks

OTHER LOCAL FACILITIES

Communications

Telephone - South Central Bell Telephone Company
Services - Standard

Telegraph - Western Union
Services - Telephone and messenger

Postal - U. S. Post Office
Class - First class
Mail received - Twice daily
Mail dispatched - Twice daily

Newspapers -
Daily and circulation - Richmond Daily Register, 7,200
Bi-Weekly and circulation - Madison County Newsweek, 4,200
Weekly and circulation - Madison County Post, 8,300
Other papers received from - Louisville and Lexington, Kentucky;
Cincinnati, Ohio; New York, New York

Radio - WCBR - AM-FM; WEKY-AM; WEKU-FM Eastern Kentucky
University
Stations received from - Louisville, Lexington, Danville, Irvin and
Mount Sterling, Kentucky; Cincinnati, Ohio

Television -
Cable service
Reception from - Louisville and Lexington, Kentucky; Cincinnati,
Ohio
Kentucky Educational Television - Lexington-Richmond transmitter,
Channel 46

Library Services

City-County Library
Size collection - 13,109 volumes
Circulation, 1975-76 - 13,367 volumes
Services - Magazines, albums

John Grant Crabbe Library - Eastern Kentucky University

Size collection - 520,000 volumes

Circulation, 1975-76 - 314,899 volumes

Special collections - Townsend collection of Kentuckiana

Services - Microformats, newspapers, magazines, photo copiers,
inter-library loan, Learning Resource Center, Dorris Museum
with Kentucky and Civil War displays, reader prints

The Richmond Women's Club operates a library by membership only.

The library is open three days a week.

Religious Institutions

Number of churches - 22

Denominations - Baptist, Christian, Christian Center of Assemblies
of God, Catholic, Church of Christ, Church of God, Church of the
Nazarene, Episcopal, Jehovah's Witnesses, Methodist, Presbyterian

Nearest Synagogues - Lexington, 27 miles distant

Congregations - Adath Israel (reform), Ohavey Zion (traditional)

Financial Institutions

<u>Banks</u>	<u>Assets</u>	<u>Deposits</u>	<u>Statement Date</u>
Madison National Bank of Richmond	\$33,044,362.74	\$30,066,962.66	12/31/75
State Bank and Trust Company	52,781,889.37	46,800,607.17	12/31/75
Richmond Bank	15,245,867.28	13,695,100.30	12/31/75

<u>Savings and Loan Association</u>	<u>Assets</u>	<u>Shared Accounts</u>	<u>Statement Date</u>
First Federal Savings and Loan Association of Richmond	\$25,231,272.86	\$23,487,594.33	12/31/75

Hotels and Motels

Total number - 10

Total units - 629

Clubs and Organizations

Business and Civic - Richmond Chamber of Commerce, Jaycees, Civitan, Rotary, Exchange, Kiwanis, Lions, Madison County Historical Society, Madison County Bar Association, Madison County Medical Society, Madison County Association of Realtors, Home Builders Association of Madison County, Heart Association, Welcome Wagon, Optimist Club

Fraternal - American Legion, VFW, Elks, Masons, Fraternal Order of Police, IOOF, Disabled American Veterans

Women's - Altrusa, American Association of University Women, Business and Professional Women, Richmond's Woman's Club, DAR Boonesborough Chapter, Eastern Star, Job's Daughters, Junior Woman's Club, Richmond Garden Club, League of Women Voters, Pattie A. Clay Hospital Auxiliary

Youth - Boy Scouts, Girl Scouts, Brownies, Cub Scouts, 4-H, FFA, FHA, Little League

Other - Richmond Ministerial Association, Madison Fish and Game Club, Sherwood Archery Club

RECREATION

Local:

A new city park at Lake Reba has been completed and offers playground equipment, a baseball diamond, and picnic shelters. Lake Reba is one of three city parks. The Richmond Recreation Program offers supervised programs in basketball, softball-baseball, football, and tennis. In addition to these programs four playgrounds are located in various sections of town.

Private recreation facilities are numerous. There are two country clubs offering golf and swimming, 5 theaters, and 20 bowling lanes. Other private clubs include the Lexington Yacht Club, Sherwood Archery Club, Madison Fish and Game Club and the Richmond Racket Club.

Eastern Kentucky University sponsors a variety of entertainment. The University offers lectures, drama, art exhibits, ballets, musical groups and sporting events.

Tourist attractions include: White Hall, home of Cassius Clay; Kit Carson historical marker and monument; Bybee Pottery, famous handmade Kentucky pottery since 1845; and Valley View Ferry, the oldest continuous operated business in Kentucky.

Area:

Many excellent recreation facilities and noted tourist attractions are located within a thirty-mile radius of Richmond.

Fort Boonesborough State Park offers lodging, campsites, picnic areas, playground, fishing, boating, and swimming. Fort Boonesborough was the first town in Kentucky to be incorporated.

Boone Tavern, Indian Fort Theatre, Churchill Weavers and the outdoor drama, "Wilderness Road," are found in or near Berea.

Lexington, Kentucky, offers a wide variety of sophisticated entertainment, cultural activities, and sporting events. Excellent thoroughbred and harness racing is available at Keeneland Race Course and Red Mile Trotting Track at several meets each year.



ARLINGTON HOUSE - EASTERN KENTUCKY UNIVERSITY
FACULTY - ALUMNI CENTER



MADISON COUNTRY CLUB

COMMUNITY IMPROVEMENTS

Recent:

1. The Richmond Water, Gas and Sewerage Works has expanded its treatment plant at the Kentucky River to a capacity of 6,000,000 gallons per day. Also erected was a 1,000,000 gallon tank on the Richmond By-Pass and new water transmission mains.

2. The Ajax Magnethermic Corporation recently completed a \$1,000,000 expansion that doubled the plant in size and equipment.

3. The Richmond Bank has completed construction of its new building in the downtown district.

4. A \$48,000, 1,000-gpm pumper has been acquired by the Richmond Fire Department. The department has also constructed a new fire station on the Richmond By-Pass.

5. The city park at Lake Reba has been completed.

6. The historic Miller House has been renovated and now serves as the headquarters of the Greater Richmond Area Chamber of Commerce. The Miller House is also being used for various meetings of civic organizations and business people.

7. A new downtown parking lot containing 50 spaces has been completed while three other parking lots are being developed in the downtown district.

8. The city has purchased a five-acre site for a new armory.

9. A new accounting machine has been acquired by the city at a cost of \$35,000.

10. A new intermediate care facility, the Madison Manor, a sixty-bed unit, was constructed in 1975 at a cost of \$500,000. The new facility provides regular medical, nursing and social services.

11. Revitalization of the downtown area has been very successful. Numerous downtown merchants have remodeled facilities in addition to several new commercial buildings that should increase business activity in the downtown district.

Underway:

1. The Richmond Water, Gas and Sewerage Works has completed Step I of a 201 Facilities Plan for sewerage system improvements.

2. The State Bank and Trust Company is expanding its present facilities and providing additional parking space.

3. Plans are in the final stage for a new airport which will have a 4,000-foot paved runway with landing capacity for planes up to 30,000 pounds, lights, taxiway, apron and access road. The airport will be located between Richmond and Berea.

4. Phase one of a three-year program to extend sanitary sewers to every home in the corporate limits is underway.

School Improvements:

The Richmond Independent School District has recently constructed a greenhouse as part of its Environmental Laboratory. New programs include: Selective English, District Wide Kindergarten, Breakfast Program, Special Education Work Program, Career Education, Environmental Education, Parent-Teacher Conferences, Interlocking Cooperative Vocational Education, Social Reading, and Math Programs. In addition to this, plans are underway for a Vocational Practical Arts Program for the 1977 school year.

The Madison County School System is offering new curriculum additions: Career Education, Environmental Education, and Consumer Education. A new middle school was opened in Richmond in 1974 and the White Hall Elementary School has been reconstructed. A new middle school is being constructed in Berea with a tentative opening date of Fall, 1977.

HISTORY

Madison County was the seventh county formed in Kentucky. Dating from 1785, it was taken from Lincoln County and later gave land to help form Garrard, Nicholas, Clay, Estill, Rockcastle, and Jackson Counties. The largest of the Bluegrass counties - with 446 square miles of territory - it was named for James Madison, who was the fourth President of the United States and "the Father of the Constitution."

The Kentucky River flows along a portion of the eastern side of Madison County and forms all of its northern boundary. Paint Lick Creek forms its western line. The county's surface is gently rolling in the western half, but becomes hilly and rough in the eastern section. Its soil ranges from fertile in the west to thin on the hills and knobs. Some tracts of timber are located throughout the county.

Richmond, the county seat, was named for Richmond, Virginia. It became the seat of county government in 1798 when Milford gave up that honor due to Richmond's more favorable location. Woodlawn, built by General Green Clay for his daughter, and Castlewood, the home of James Estill, Jr., are interesting landmarks.

Richmond is a progressive city with a 1973 population of 18,358.

In 1790 Madison County had a population of 5,772. This grew to 31,179 in 1950, 33,482 in 1960, and 42,730 in 1970. In 1975, population of the county was estimated to be 47,400.

Historical events of note include:

The Transylvania Company acquired lands in Kentucky in 1775 and the Boonesboro settlement in Madison County resulted from this transaction.

Several distilleries operated near the Kentucky River as early as 1783.

The first Madison County court was organized in 1786.

Berea College was founded in 1853.

The Battle of Richmond in 1862 was a Confederate victory.

Eastern Kentucky University was founded at Richmond in 1906.

Churchill Weavers was established in 1922.

Names worthy of remembrance are:

General Cassius Clay - noted abolitionist and in 1861
Minister to Russia.

John Miller - provided Richmond's site.

Kit Carson - a famous mountaineer, trapper, and guide.

William J. Stone and David Francis - Governors of Missouri

James B. McCreary - twice Governor of Kentucky

Keen Johnson - Governor of Kentucky

General Green Clay - served in the Virginia Legislature.

In 1870, Madison County was the second largest cattle producing county in the state, the fifth in hogs, and the fourth in corn production. In 1974 agriculture accounted for 1,680 of the total employed residents in Madison County.

Madison County is emerging as an industrial area and education center. Manufacturing employment was reported to be 4,010 in 1974. Largest of the county's firms are Westinghouse Electric Corporation, which produces miniature electric light bulbs; Parker Seal Company, which makes rubber "O" rings; Dresser Industries, which manufactures pressure gauges; Gibson Greeting Card Company, which makes candles; Keller Industries, Inc., making aluminum window units, patio doors and aluminum extrusion; Berea College Industries, which makes furniture, wooden games, and fireside brooms; Robinson Tool and Die, Inc., making tools and metal stampings; Okonite, manufacturing insulated cable; and Exide Power Systems Division of ESB, Inc., manufacturing storage batteries.