

1982

# Industrial Resources: Laurel County - London

Kentucky Library Research Collections  
Western Kentucky University, [spcol@wku.edu](mailto:spcol@wku.edu)

Follow this and additional works at: [https://digitalcommons.wku.edu/laurel\\_cty](https://digitalcommons.wku.edu/laurel_cty)



Part of the [Business Administration, Management, and Operations Commons](#), [Growth and Development Commons](#), and the [Infrastructure Commons](#)

---

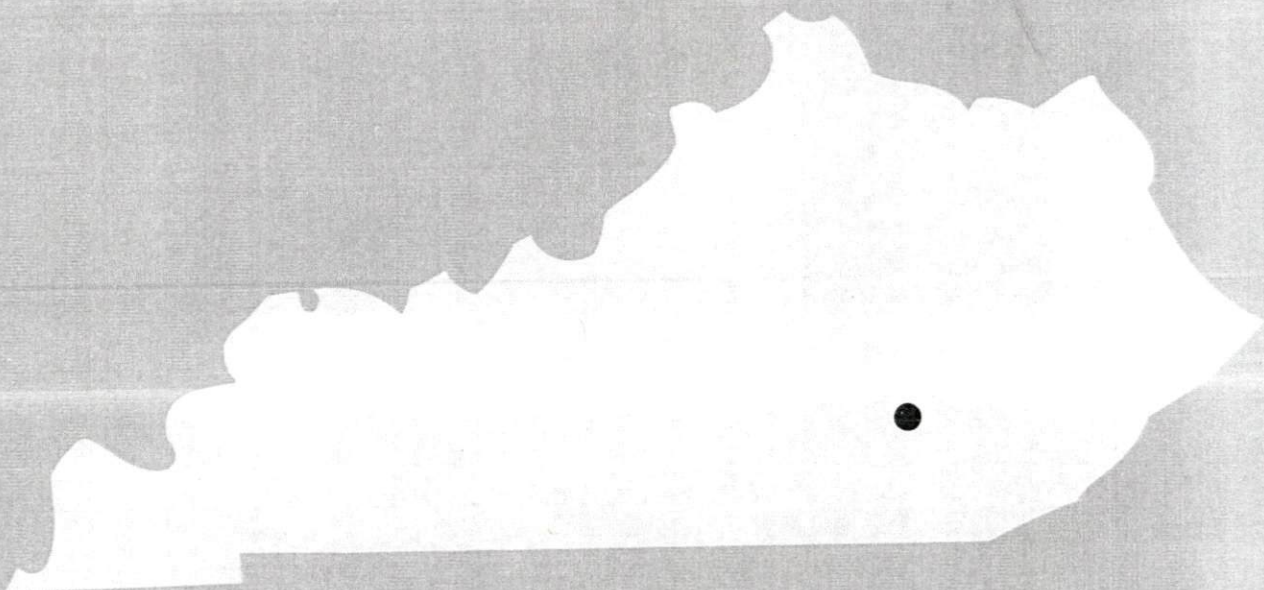
## Recommended Citation

Kentucky Library Research Collections, "Industrial Resources: Laurel County - London" (1982). *Laurel County*. Paper 1.  
[https://digitalcommons.wku.edu/laurel\\_cty/1](https://digitalcommons.wku.edu/laurel_cty/1)

This Report is brought to you for free and open access by TopSCHOLAR®. It has been accepted for inclusion in Laurel County by an authorized administrator of TopSCHOLAR®. For more information, please contact [topscholar@wku.edu](mailto:topscholar@wku.edu).

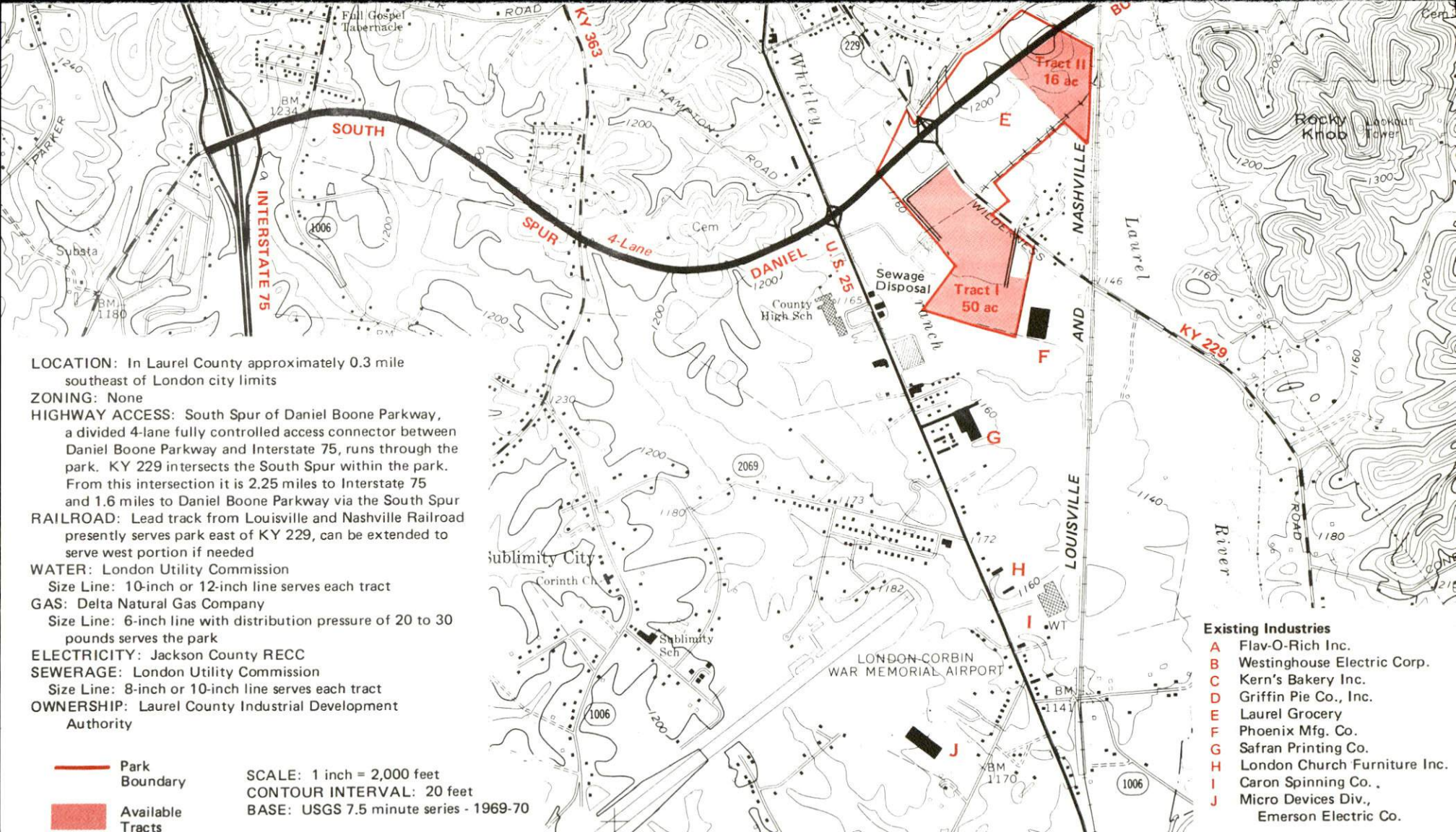
S.R. 333 Laurel County

A comprehensive  
report on  
**London, Ky.**



**KENTUCKY & CO.**  
The state that's run like a business.





**LOCATION:** In Laurel County approximately 0.3 mile southeast of London city limits

**ZONING:** None

**HIGHWAY ACCESS:** South Spur of Daniel Boone Parkway, a divided 4-lane fully controlled access connector between Daniel Boone Parkway and Interstate 75, runs through the park. KY 229 intersects the South Spur within the park. From this intersection it is 2.25 miles to Interstate 75 and 1.6 miles to Daniel Boone Parkway via the South Spur

**RAILROAD:** Lead track from Louisville and Nashville Railroad presently serves park east of KY 229, can be extended to serve west portion if needed

**WATER:** London Utility Commission

Size Line: 10-inch or 12-inch line serves each tract

**GAS:** Delta Natural Gas Company

Size Line: 6-inch line with distribution pressure of 20 to 30 pounds serves the park

**ELECTRICITY:** Jackson County RECC

**SEWERAGE:** London Utility Commission

Size Line: 8-inch or 10-inch line serves each tract

**OWNERSHIP:** Laurel County Industrial Development Authority

— Park Boundary

Available Tracts

SCALE: 1 inch = 2,000 feet  
CONTOUR INTERVAL: 20 feet  
BASE: USGS 7.5 minute series - 1969-70

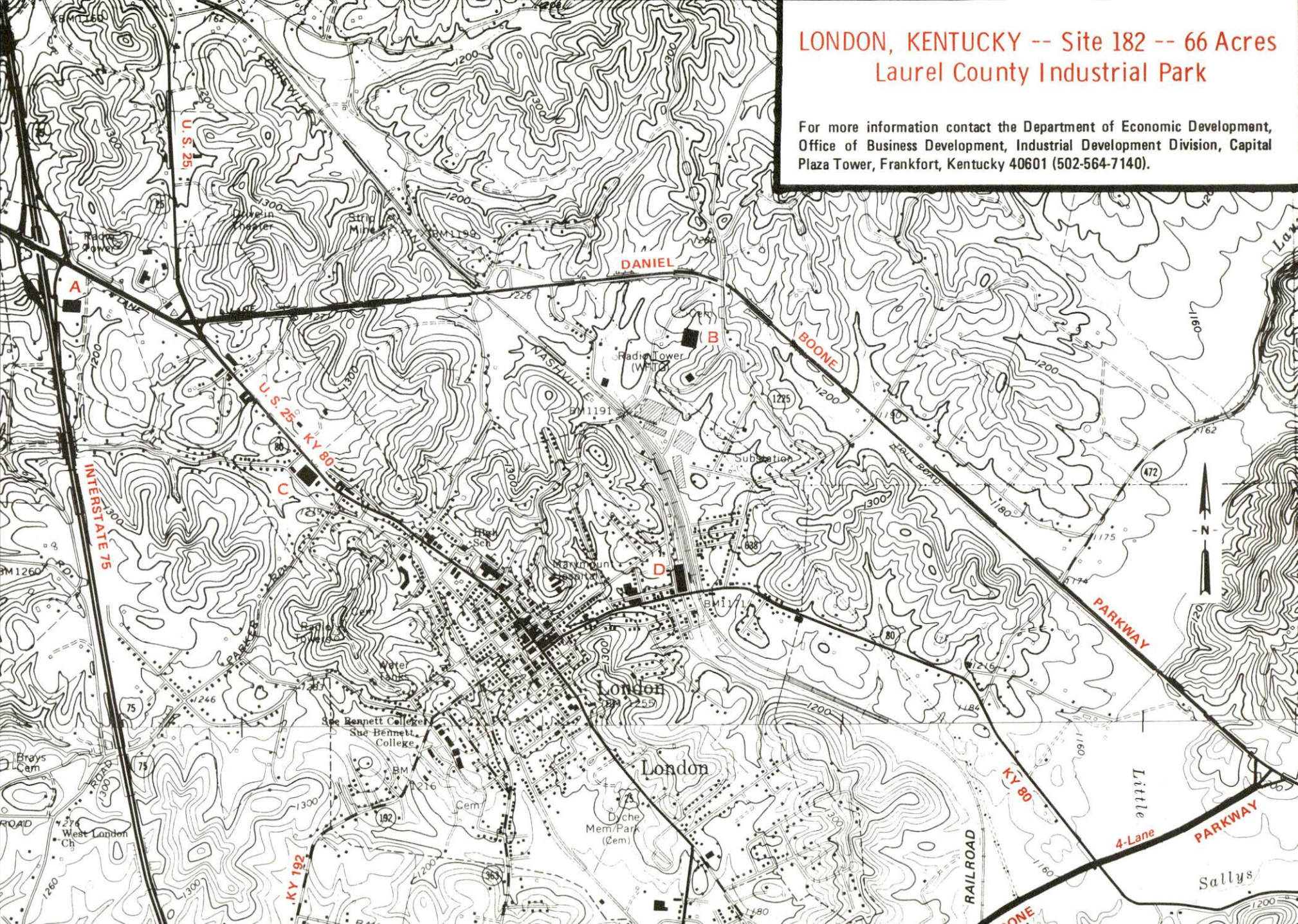
#### Existing Industries

- A Flav-O-Rich Inc.
- B Westinghouse Electric Corp.
- C Kern's Bakery Inc.
- D Griffin Pie Co., Inc.
- E Laurel Grocery
- F Phoenix Mfg. Co.
- G Safran Printing Co.
- H London Church Furniture Inc.
- I Caron Spinning Co.,
- J Micro Devices Div., Emerson Electric Co.



## LONDON, KENTUCKY -- Site 182 -- 66 Acres Laurel County Industrial Park

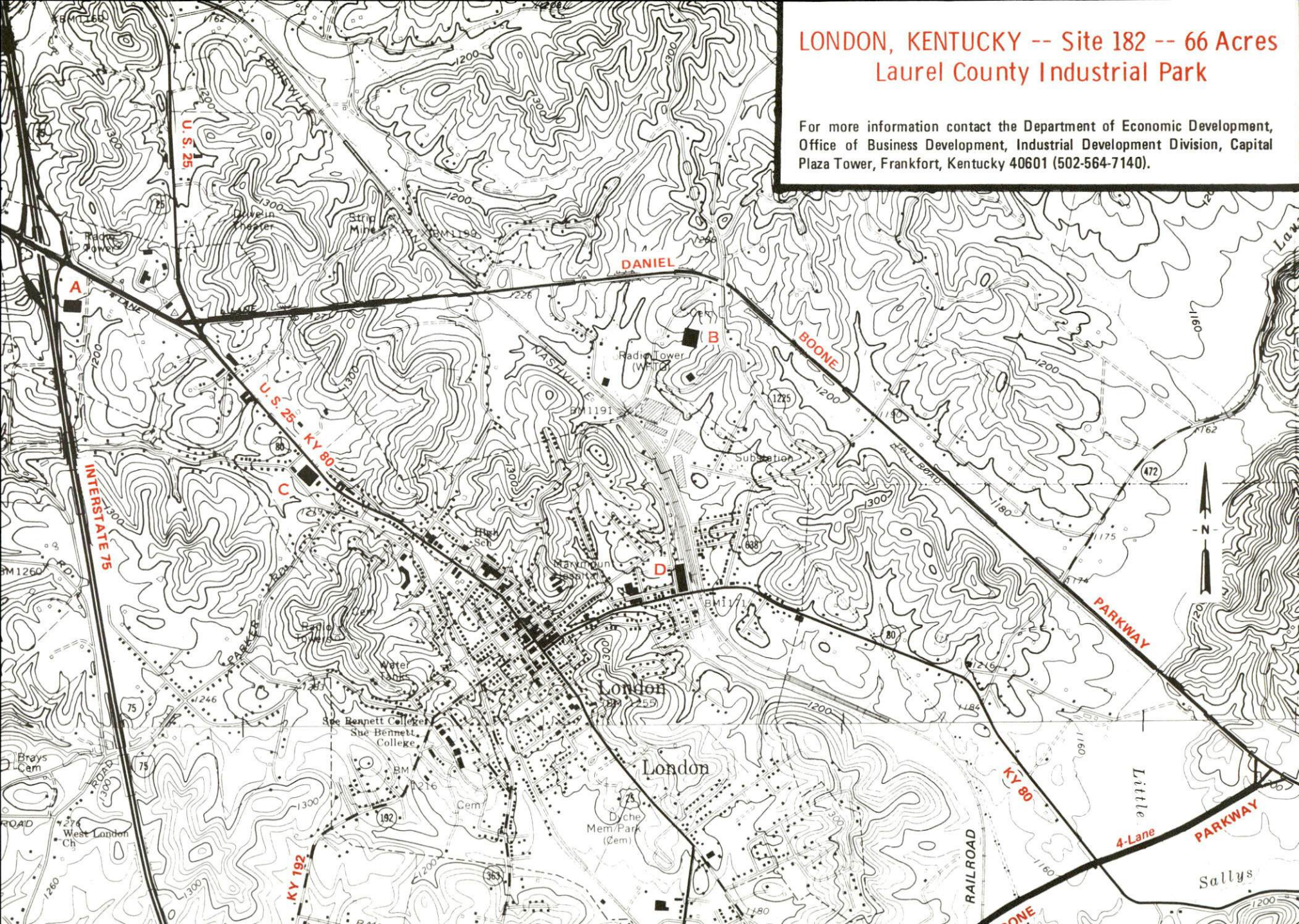
For more information contact the Department of Economic Development,  
Office of Business Development, Industrial Development Division, Capital  
Plaza Tower, Frankfort, Kentucky 40601 (502-564-7140).



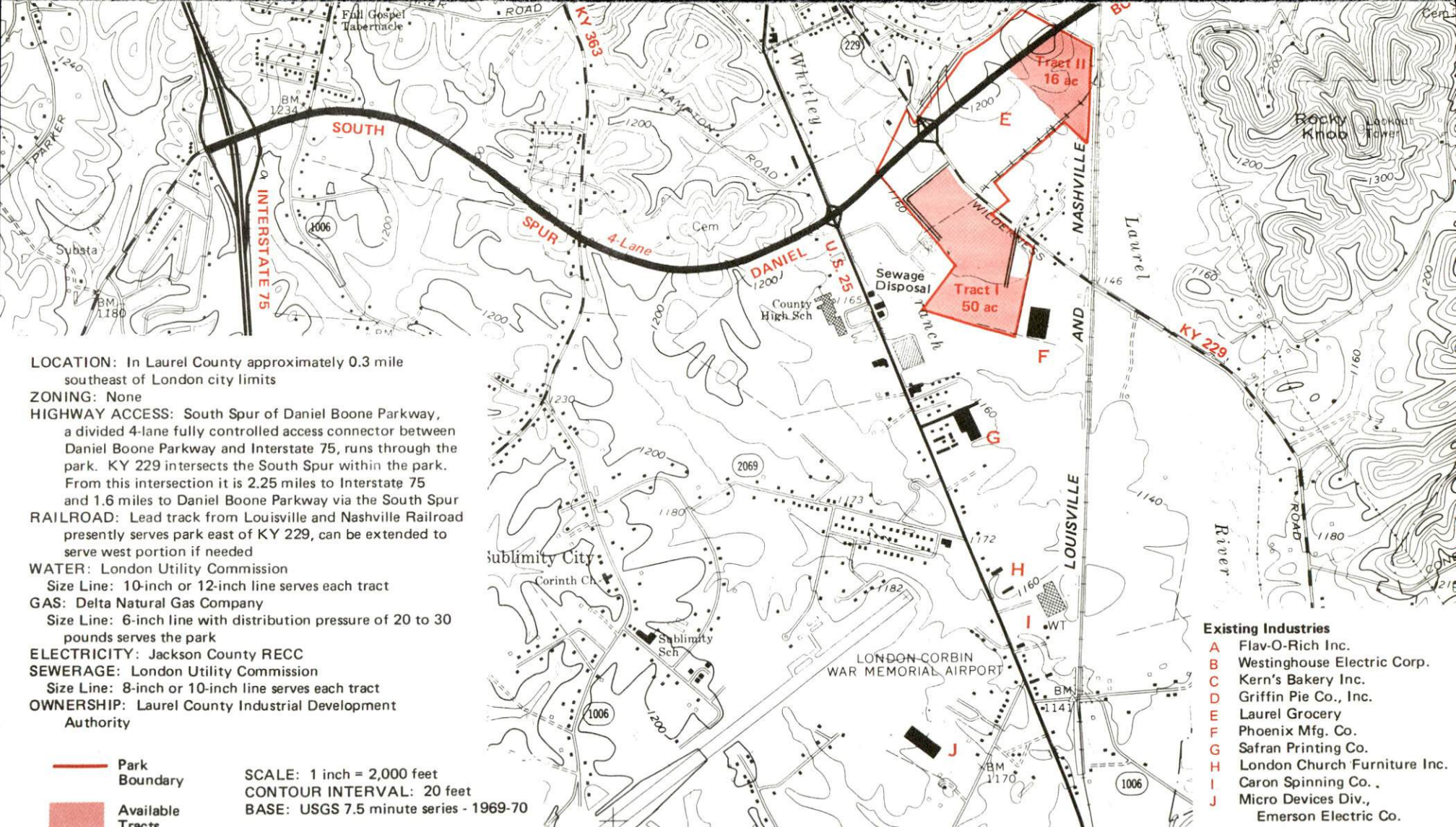


For more information contact the Department of Economic Development, Office of Business Development, Industrial Development Division, Capital Plaza Tower, Frankfort, Kentucky 40601 (502-564-7140).

For more information contact the Department of Economic Development, Office of Business Development, Industrial Development Division, Capital Plaza Tower, Frankfort, Kentucky 40601 (502-564-7140).







**LOCATION:** In Laurel County approximately 0.3 mile southeast of London city limits

**ZONING:** None

**HIGHWAY ACCESS:** South Spur of Daniel Boone Parkway, a divided 4-lane fully controlled access connector between Daniel Boone Parkway and Interstate 75, runs through the park. KY 229 intersects the South Spur within the park. From this intersection it is 2.25 miles to Interstate 75 and 1.6 miles to Daniel Boone Parkway via the South Spur

**RAILROAD:** Lead track from Louisville and Nashville Railroad presently serves park east of KY 229, can be extended to serve west portion if needed

**WATER:** London Utility Commission

Size Line: 10-inch or 12-inch line serves each tract

**GAS:** Delta Natural Gas Company

Size Line: 6-inch line with distribution pressure of 20 to 30 pounds serves the park

**ELECTRICITY:** Jackson County RECC

**SEWERAGE:** London Utility Commission

Size Line: 8-inch or 10-inch line serves each tract

**OWNERSHIP:** Laurel County Industrial Development Authority

— Park Boundary

— Available Tracts

SCALE: 1 inch = 2,000 feet

CONTOUR INTERVAL: 20 feet

BASE: USGS 7.5 minute series - 1969-70

#### Existing Industries

- A Flav-O-Rich Inc.
- B Westinghouse Electric Corp.
- C Kern's Bakery Inc.
- D Griffin Pie Co., Inc.
- E Laurel Grocery
- F Phoenix Mfg. Co.
- G Safran Printing Co.
- H London Church Furniture Inc.
- I Caron Spinning Co.
- J Micro Devices Div., Emerson Electric Co.



A COMPREHENSIVE REPORT ON  
LONDON, KENTUCKY

Prepared by  
The Kentucky Department of Economic Development  
Division of Research and Planning  
in cooperation with  
The London-Laurel County Chamber of Commerce

1982



Program manager - Brenda Roberts; research - John McMurray; clerical - Shirley Wood; graphics - Frank Ferrante, Tony Cecconi, Jimmy Thompson; cartography - Site Evaluation Section, Industrial Development Division. Cost of printing paid from state funds.



# TABLE OF CONTENTS

<u>Chapter</u>	<u>Page</u>
INDUSTRIAL SITES . . . . .	i
LONDON, KENTUCKY - A RESOURCE PROFILE . . . . .	1
THE LABOR MARKET AREA . . . . .	3
Population . . . . .	3
Labor Force Characteristics of Residents, 1980 . . . . .	3
Estimated Male Labor Supply . . . . .	4
Estimated Female Labor Supply . . . . .	4
Laurel County Manufacturing Firms, Their Products and Employment . . . . .	5
Labor Organizations in Manufacturing Firms . . . . .	7
Industrial Services . . . . .	8
Average Weekly Wages by Industry, by Place of Work, 1980 . . . . .	9
Per Capita Personal Income . . . . .	11
TRANSPORTATION . . . . .	12
Rail . . . . .	12
Highways . . . . .	12
Truck Service . . . . .	13
Air . . . . .	15
Bus . . . . .	15
Taxi . . . . .	15
Rental Services . . . . .	16
Water . . . . .	16
POWER AND FUEL . . . . .	17
Electricity . . . . .	17
Natural Gas . . . . .	18
Other Fuels . . . . .	19
WATER AND SEWERAGE . . . . .	20
Public Water Supply . . . . .	20
Raw Water . . . . .	21
Sewerage . . . . .	21
CLIMATE . . . . .	22

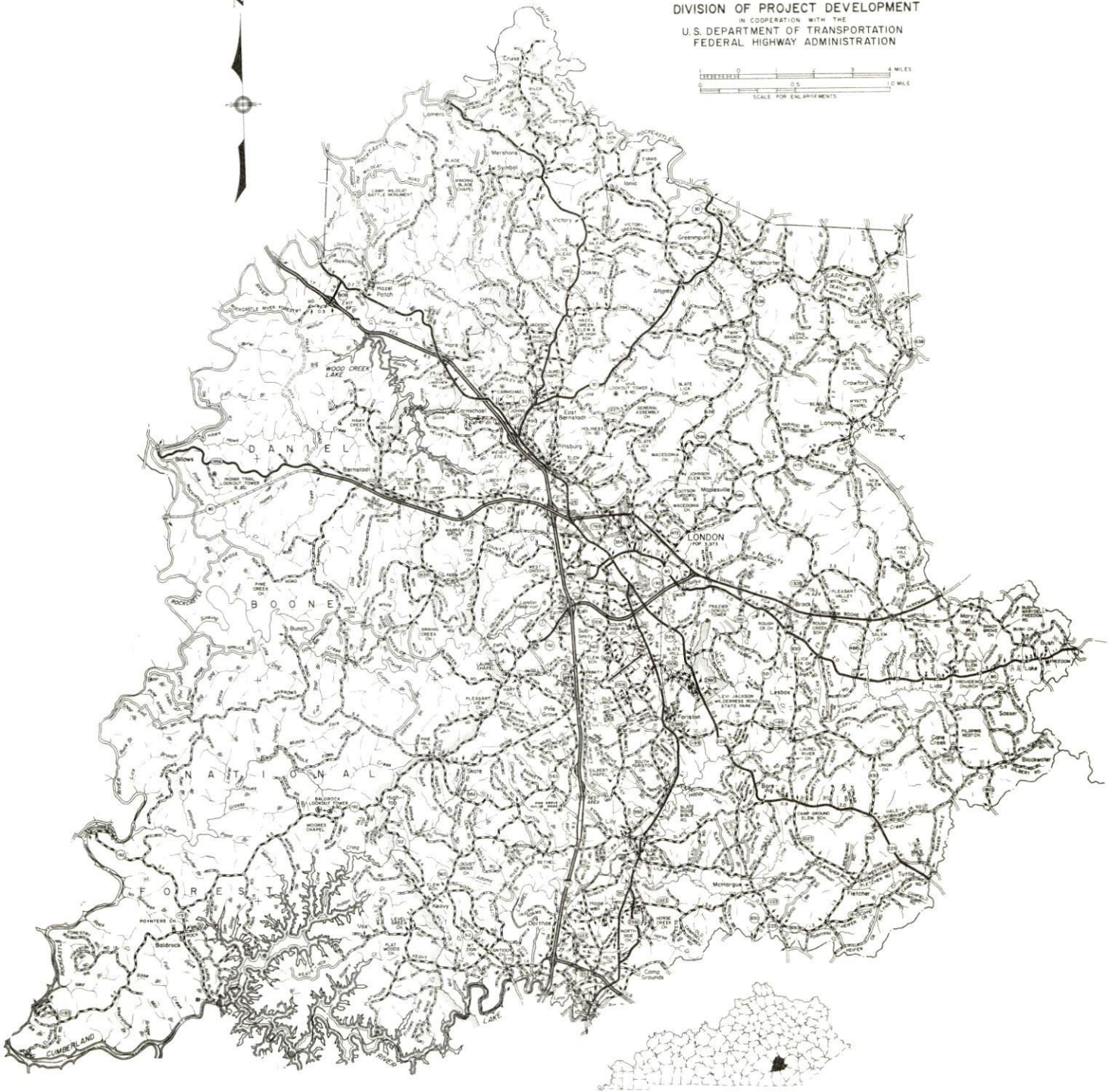


<u>Chapter</u>	<u>Page</u>
LOCAL GOVERNMENT . . . . .	23
City . . . . .	23
County . . . . .	23
Assessed Value of Property . . . . .	23
Property Taxes . . . . .	23
Combined State and Local Rates Per \$100 Valuation, 1981 . . . . .	24
Planning and Zoning . . . . .	24
Safety . . . . .	25
Police . . . . .	25
Fire . . . . .	25
Rescue Service . . . . .	25
Refuse Collection and Disposal . . . . .	25
EDUCATION . . . . .	26
Public Schools . . . . .	26
Nonpublic Schools . . . . .	26
Area Colleges and Universities . . . . .	27
Vocational Schools . . . . .	28
HEALTH . . . . .	29
Local Medical Personnel . . . . .	29
Hospitals . . . . .	29
Ambulance Service . . . . .	29
Public Health . . . . .	29
OTHER LOCAL FACILITIES . . . . .	30
Communications . . . . .	30
Library Services . . . . .	30
Religious Institutions . . . . .	31
Financial Institutions . . . . .	31
Hotels and Motels . . . . .	31
Clubs and Organizations . . . . .	32
RECREATION . . . . .	33



1981 EDITION  
GENERAL HIGHWAY MAP  
**LAUREL COUNTY**  
**KENTUCKY**

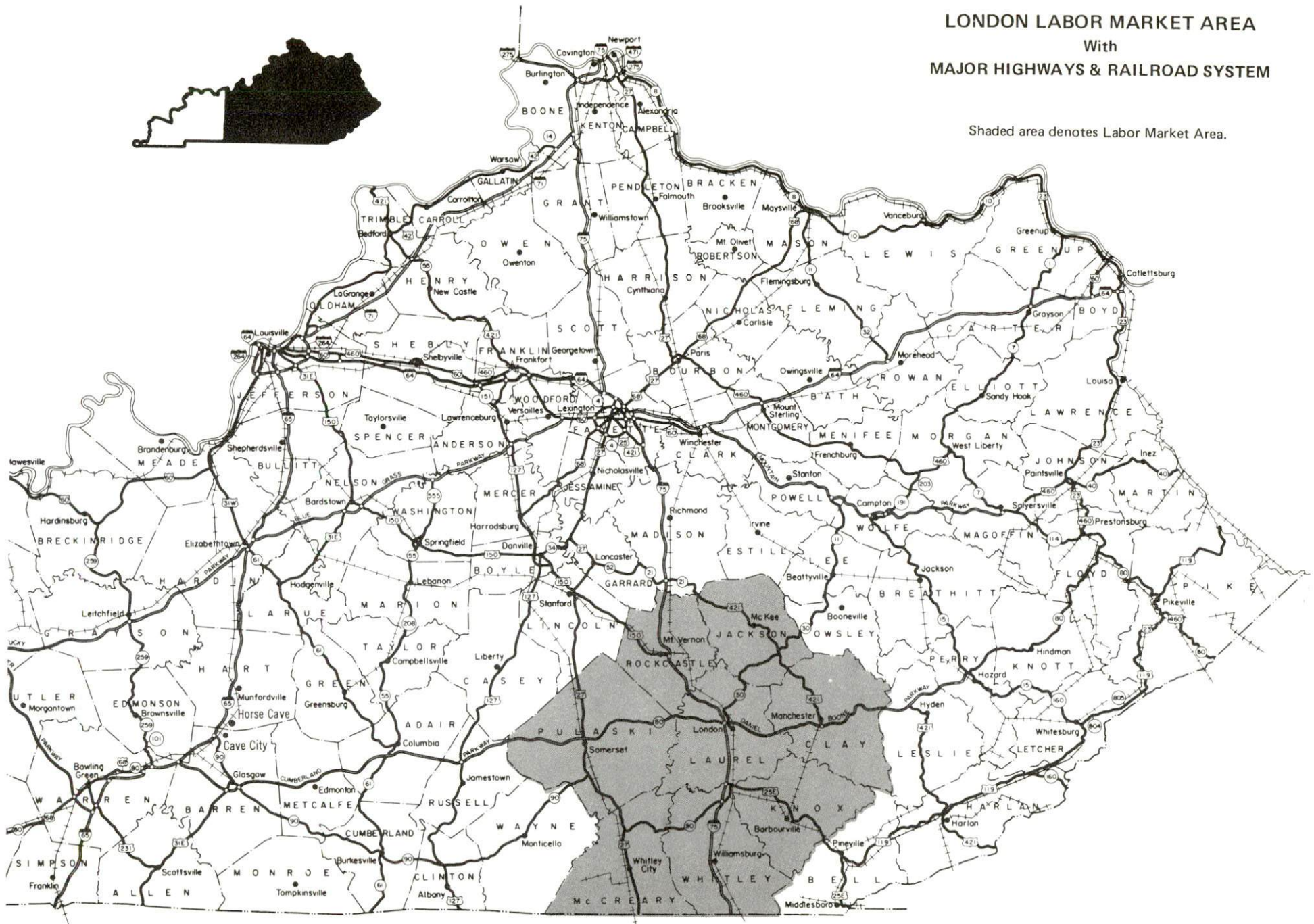
PREPARED BY THE  
KENTUCKY DEPARTMENT OF TRANSPORTATION  
BUREAU OF HIGHWAYS  
DIVISION OF PROJECT DEVELOPMENT  
IN COOPERATION WITH THE  
U.S. DEPARTMENT OF TRANSPORTATION  
FEDERAL HIGHWAY ADMINISTRATION





# LONDON LABOR MARKET AREA With MAJOR HIGHWAYS & RAILROAD SYSTEM

Shaded area denotes Labor Market Area.





## LONDON, KENTUCKY - A RESOURCE PROFILE

London, the county seat of Laurel County, is the hub of Interstate 75 and the Daniel Boone Parkway. Serving as the southern gateway to the vast Daniel Boone National Forest, London lies in the eastern coal fields physiographic region of Kentucky. London is also the home of Sue Bennett College, a co-ed junior college. It is located 98 miles south of Lexington, Kentucky; 149 miles southeast of Louisville, Kentucky; 98 miles north of Knoxville, Tennessee; and 155 miles south of Cincinnati, Ohio. The 1980 population of London was 4,002.

Laurel County, which covers 446 square miles, had a 1970 population of 27,386. In 1980, the population of the county was 38,982, an increase of 42.3 percent.

### The Economic Framework

Total employment in Laurel County in 1980 averaged 17,105 with 16,450 employed in nonagricultural jobs. Manufacturing provided 3,747 jobs, wholesale and retail trade provided 2,478 jobs, government provided 1,191 jobs and service occupations provided 1,150 jobs. Manufacturing employment is greatest in the food and kindred products, textile mill products and instruments and related products industries.

Per capita income in Laurel County in 1979 was \$5,712. Between 1975 and 1979, per capita income increased by 46.9 percent.

London is the hub of a labor market area which includes Laurel and its seven surrounding counties. Area employment in 1980 averaged 74,449 with 71,055 employed in nonagricultural jobs. Manufacturing provided 10,854 jobs, wholesale and retail trade provided 10,663 jobs, service occupations provided 6,521 jobs, and government provided 8,280 jobs.

### Resources for Growth

1. There is a current estimated labor supply of 15,469 men and 12,678 women available for industrial jobs in the labor market area. In addition 8,401 young men and 7,867 young women will become 18 years of age before 1986 and potentially available for work.

2. Local transportation capability is excellent. London is provided main line rail service by the Louisville and Nashville Railroad. Two northbound and two southbound manifest freights make daily stops. Piggyback facilities are maintained by L & N at Knoxville, Tennessee, 98 miles south of London. The Southern Railway Systems maintains piggyback facilities at Danville, Kentucky, 58 miles northwest of London. London is the hub of Interstate 75 and the Daniel Boone Parkway. Nine common carrier truck companies provide either interstate or interstate and intrastate service. Local terminal facilities are maintained by two of the nine truck companies. Air service is provided by a commuter airline at the London-Corbin Airport, 3 miles southwest of London. Air freight is



accepted on a space available basis. The nearest scheduled commercial airline service is at Blue Grass Field, 4 1/2 miles west of Lexington, Kentucky, and 81 miles north of London.

3. Ample electricity is provided to London and Laurel County by the Kentucky Utilities Company and the Jackson County Rural Electric Cooperative Corporation. Natural gas is provided by the Delta Natural Gas Company Inc. There are four suppliers of liquefied petroleum gas and 10 suppliers of distillate fuel oil located in the area. Low sulphur content coal is available in Laurel County.

4. Two school systems, the Laurel County School System and the East Bernstadt Independent District, operate within the county.

Sue Bennett Junior College is located in London. This coeducational institution was established in 1897 and is affiliated with the Methodist Church. Also within 60 miles of London are a state university, four senior colleges, and two community colleges.

The Laurel County State Vocational-Technical School is located in London and offers classes in 13 course areas.

## THE LABOR MARKET AREA

The London Labor Market Area includes Laurel County and the adjoining Kentucky counties of Clay, Jackson, Knox, McCreary, Pulaski, Rockcastle and Whitley.

Area	POPULATION		Percent Nonwhite
	1980	1970	
London	4,002	4,337	2.7
Labor Market Area	212,775	163,793	N/A
Laurel County	38,982	27,386	1.0
Clay County	22,752	18,481	1.7
Jackson County	11,996	10,005	0.1
Knox County	30,239	23,689	1.3
McCreary County	15,634	12,548	1.7
Pulaski County	45,803	35,234	1.5
Rockcastle County	13,973	12,305	0.3
Whitley County	33,396	24,145	0.9

Note: The 1980 counts of population by race are provisional.

Sources: U.S. Department of Commerce, Bureau of the Census, 1980 Census of Population and Housing, March 1981. Population Research Unit, Urban Studies Center, University of Louisville, Kentucky Demographics: The 1980 Census of Kentucky, Characteristics of Population, Households, Housing, January 1982.

LABOR FORCE CHARACTERISTICS OF RESIDENTS, 1980		
	Laurel County	Labor Market Area
Civilian Labor Force	18,630	83,244
Employment	17,105	74,449
Agricultural	655	3,394
Nonagricultural	16,450	71,055
Unemployment	1,525	8,795
Rate of Unemployment (%)	8.2	10.6

Source: Kentucky Department for Human Resource, Kentucky Labor Force Estimates, Annual Averages, 1980.



ESTIMATED MALE LABOR SUPPLY  
LONDON LABOR MARKET AREA

Area	Current				Future
	Total	Not in Labor Force	Unemployed	Under-employed	Reaching 18 years of age before 1986
Labor Market Area*	15,469	6,058	5,918	3,493	8,401
Laurel	1,608	0	1,026	582	1,432
Clay	2,117	1,163	542	412	1,167
Jackson	1,360	817	369	174	495
Knox	1,518	192	795	531	1,226
McCreary	2,138	1,376	440	322	654
Pulaski	2,688	571	1,454	663	1,641
Rockcastle	676	0	447	229	693
Whitley	3,364	1,939	845	580	1,093

\*Additional workers may be drawn from other nearby counties.

Note: Unemployed - persons unemployed and actively seeking work; Under-employed - persons employed but working only 14 to 26 weeks per year; Not in Labor Force - represents the number of persons who would enter the labor force if suitable employment were available (based on the assumption that persons in Kentucky would like to participate in the labor force in the same proportion that they do nationally).

Sources: Kentucky Department for Human Resources, Kentucky Labor Supply Estimates by County, 1980. Kentucky Department of Economic Development, Future Labor Supply before 1986.

ESTIMATED FEMALE LABOR SUPPLY  
LONDON LABOR MARKET AREA

Area	Current				Future
	Total	Not in Labor Force	Unemployed	Under-employed	Reaching 18 years of age before 1986
Labor Market Area*	12,678	6,869	2,877	2,932	7,867
Laurel	1,037	0	499	538	1,348
Clay	1,674	1,224	263	187	1,012
Jackson	1,063	709	180	174	500
Knox	1,914	1,135	387	392	1,231
McCreary	1,384	1,045	214	125	651
Pulaski	1,807	347	707	753	1,541
Rockcastle	701	274	217	210	620
Whitley	3,098	2,135	410	553	964

\*Additional workers may be drawn from other nearby counties.

Note: Unemployed - persons unemployed and actively seeking work; Under-employed - persons employed but working only 14 to 26 weeks per year; Not in labor Force - represents the number of persons who would enter the labor force if suitable employment were available (based on the assumption that persons in Kentucky would like to participate in the labor force in the same proportion that they do nationally).

Sources: Kentucky Department for Human Resources, Kentucky Labor Supply Estimates by County, 1980. Kentucky Department of Economic Development, Future Labor Supply before 1986.

LAUREL COUNTY MANUFACTURING FIRMS,  
THEIR PRODUCTS AND EMPLOYMENT

Firm (Establishment date)	Product	Employment			Labor Union
		Total	Male	Female	
Binder & Wilson Lumber Company (1974)	Lumber	12	11	1	
Donald Binder Lumber Company (1957)	Lumber	15	15	0	
Burley Belt Chemical Company (1967)	Fertilizer	14	11	3	
Caron Spinning Company (1963)	Synthetic yarns, synthetic tops, worsted yarns	600	240	360	Teamsters*
Chaney Lumber Company Inc. (1940)	Rough-dressed and kiln-dried lumber, millwork	22	21	1	
Cumberland Forest Products Company Inc. (1952)	Veneer, plywood	15	15	0	
Dairymen Inc. (1976)	Fluid milk	13	8	5	
Flav O Rich Inc.	Fluid milk, ice cream mix	134	111	23	Teamsters*
Griffin Pie Company Inc. (1953)	Bakery products	340	240	100	
Ken Al Company Inc. (1961)	Aluminum awnings, marquees, hydraulic telescopic cranes	3	2	1	
Kentucky Concrete Pipe Company Inc. (1965)	Concrete pipe, precast man-holes	11	11	0	Teamsters*
Kentucky Stone Company Inc. (1967)	Bituminous concrete	21	20	1	
Kerns Bakery Inc. (1948)	Bakery products	392	354	38	



LAUREL COUNTY MANUFACTURING FIRMS,  
THEIR PRODUCTS AND EMPLOYMENT

<u>Firm (Establishment date)</u>	<u>Product</u>	<u>Employment</u>			<u>Labor Union</u>
		<u>Total</u>	<u>Male</u>	<u>Female</u>	
Laminated Timbers Inc. (1960)	Laminated wood structural members, wood roof decking	17	15	2	
Laurel Pallet Company (1965)	Pallets, skids, wood boxes	18	16	2	
O. P. Link Handle Company Inc. (1960)	Handle blanks, saw dust, hickory wood	16	16	0	
London Bucket Company Inc. (1931)	Fabricated sheet metal products, fabricated steel bar joists	20	16	4	
London Church Furniture Inc. (1967)	Church fur- niture	35	34	1	
London-Clay Ready Mix Inc. (1950)	Ready-mixed concrete, precast concrete specialities	20	18	2	
Micro Devices Division, Emerson Electric Company (1973)	Thermal cut- offs	280	43	237	
Moore Signs Inc. (1949)	Neon, plastic and metal signs	2	2	-	

LAUREL COUNTY MANUFACTURING FIRMS,  
THEIR PRODUCTS AND EMPLOYMENT

<u>Firm (Establishment date)</u>	<u>Product</u>	<u>Employment</u>			<u>Labor Union</u>
		<u>Total</u>	<u>Male</u>	<u>Female</u>	
Phoenix Manufacturing Company (1972)	Non-woven fabrics, fiber filters	107	89	18	
Robinsons Sausage Company (1960)	Prepared meats, slaughtering	14	11	3	
Safran Printing Company, Rotary Manifold Forms Division (1974)	Business forms	61	45	16	
The Sentinel Echo (1873)	Newspaper, commercial flat printing, shopping circulars	26	16	10	
Tri-County Concrete Products (1946)	Drain and culvert tile, precast concrete products	3	2	1	
Westinghouse Electric Corporation (1979)	Automatic transfer switches	75	40	35	

\*See Labor Organizations below.

Source: Kentucky Department of Economic Development, Division of Research and Planning.

LABOR ORGANIZATIONS IN MANUFACTURING FIRMS

<u>Union</u>	<u>Representing workers at:</u>
International Brotherhood of Teamsters, Chauffeurs, Warehousemen and Helpers of America	Caron Spinning Company; Flav O Rich Inc.; Kentucky Concrete Pipe Company Inc.



# INDUSTRIAL SERVICES

<u>Types of Services</u>	<u>Location</u>	<u>Mileage from London</u>
Tool & Die, Machine & Pattern Shops	London	-
Metal Service Centers	Lexington	78
Heat Treating	Richmond	51
Metal Finishers	Richmond	51
Electric Motor Repair	London	-
<u>Source: Kentucky Directory of Selected Industrial Services, 1981.</u>		

AVERAGE WEEKLY WAGES BY INDUSTRY  
BY PLACE OF WORK, 1980

	<u>Laurel County</u>	<u>Clay County</u>	<u>Jackson County</u>	<u>Knox County</u>
All Industries	\$233.01	\$261.59	\$184.29	\$214.66
Mining & Quarrying	329.88	402.63	244.65	347.71
Contract Construction	363.87	219.30	176.58	247.14
Manufacturing	223.54	159.08	159.01	237.00
Transportation, Communications & Public Utilities	289.34	290.53	249.18	248.43
Wholesale & Retail Trade	205.69	188.60	159.52	167.28
Finance, Insurance & Real Estate	211.04	190.85	*	226.12
Services	178.62	146.13	145.40	170.65
State/Local Government	227.92	202.34	177.36	190.28
Other	137.38	*	*	*
	<u>McCreary County</u>	<u>Pulaski County</u>	<u>Rockcastle County</u>	<u>Whitley County</u>
All Industries	\$201.67	\$210.27	\$156.06	\$219.58
Mining & Quarrying	398.39	312.49	264.51	383.26
Contract Construction	190.67	178.35	121.70	244.30
Manufacturing	152.03	240.54	141.42	197.21
Transportation, Communications & Public Utilities	250.03	290.51	225.06	337.55
Wholesale & Retail Trade	127.13	158.16	128.43	187.33
Finance, Insurance & Real Estate	194.07	246.84	204.26	203.52
Services	155.10	198.25	151.80	185.65
State/Local Government	180.87	205.01	180.00	200.60
Other	*	168.77	*	151.59

\*Not disclosed.

Note: Excludes domestic workers, railway workers, certain nonprofit corporations, majority of federal government workers, and self-employed workers.

Source: Kentucky Department for Human Resources, Average Weekly Wages of Workers Covered by Kentucky Unemployment Insurance Law, 1980.





PER CAPITA PERSONAL INCOME

<u>Area</u>	<u>1979</u>	<u>1975</u>	<u>Percent Change</u>
Laurel County	\$5,712	\$3,889	46.9
Labor Market Area			
Range	\$3,592 - 6,444	\$2,467 - 4,232	N/A
Kentucky	7,052	4,882	44.4
U.S.	8,637	5,861	47.4

Source: U.S. Department of Commerce, Bureau of Economic Analysis,  
 April 1981. U.S. Department of Commerce, Bureau of Economic Analysis,  
 August 1981.



## TRANSPORTATION

### Rail

Line serving London - Louisville and Nashville Railroad Company  
Services - Main line; two northbound and two southbound freights  
make daily stops; 10 northbound and 10 southbound through freights  
daily; switching facilities; team track space for 10 cars.

L & N maintains piggyback facilities at Knoxville, Tennessee, 98  
miles south of London. The Southern Railway System maintains  
piggyback facilities at Danville, Kentucky, 58 miles northwest of  
London.

For details on routing, schedules, rates, and services, contact:

Director of Industrial Development  
Louisville and Nashville Railroad  
P.O. Box 32290  
Louisville, Kentucky 40232  
(502) 587-5723

### Highways

London is served by an excellent highway system. Major highways  
serving London are Interstate 75, which has two interchanges at London;  
the Daniel Boone Parkway, an excellent multilane toll road between  
London and Hazard; U.S. 25; and Kentucky Route 80.

Other highways serving London are Kentucky 192, 229 and 363.

Kentucky Highway 80 is being widened to a 4-lane highway between  
London and Somerset, Kentucky. When construction is completed, the  
highway will provide a major east-west link connecting Hazard, via the  
Daniel Boone Parkway, with Bowling Green, via the Cumberland Parkway.

## Truck Service

### Company

### Home Office

Bronaugh Motor  
Express Inc.\*

1025 Nandino Boulevard  
Lexington, Kentucky 40511

Consolidated Freightways  
Corporation of Delaware\*

175 Linfield Drive  
Menlo Park, California 94025

Detherage Freight Line\*

Highway 27  
Somerset, Kentucky 42501

Interstate System\*\*

110 Ionia N.W.  
Grand Rapids, Michigan 49503

McLean Trucking Company\*\*

P.O. Box 213  
Winston-Salem, North Carolina 27154

Overnite Transportation  
Company\*(T)

1000 Semmes Avenue  
Richmond, Virginia 23209

Skyline Transportation Inc.\*\*

131 Quincy Avenue  
Knoxville, Tennessee 37917

Smiths Transfer Corporation\*\*(T)

P.O. Box 1000  
Staunton, Virginia 24401

United Trucking Service Inc.\*

8505 West Warren  
Dearborn, Michigan 48126

### Other Freight Services

### Nearest Shipping Center

Purolator Courier Corporation\*\*\*  
United Parcel Service\*\*\*\*

Lexington, 78 miles north of London  
London

(T)Terminal

\*Interstate and intrastate.

\*\*Interstate service only.

\*\*\*For regular scheduled pickups or for occasional pickups, arrangements must be made with the Lexington office of Purolator Courier Corporation.

\*\*\*\*For regular scheduled pickups or for occasional pickups, arrangements must be made with the Louisville office of United Parcel Service.



HIGHWAY MILES AND TRUCK TRANSIT TIME IN DAYS FROM  
LONDON, KENTUCKY, TO SELECTED MARKET CENTERS\*

City	Highway Miles	Delivery		City	Highway Miles	Delivery	
		Time TL				Time TL	
Atlanta	291	1		Los Angeles, Ca.	2,257	6-8	
Baltimore, Md.	618	1-2		Louisville, Ky.	149	1	
Birmingham, Ala.	352	1		Nashville, Tenn.	205	1	
Chicago, Ill.	429	1-2		New Orleans, La.	694	2	
Cincinnati, Ohio	155	1		New York, N.Y.	780	2-3	
Cleveland, Ohio	394	1		Pittsburgh, Pa.	420	1	
Detroit, Mich.	414	2-3		St. Louis, Mo.	412	1	
Knoxville, Tenn.	98	1					

\*Transit time does not include the day of pickup.

Note: Mileage computations are via the best interstate or primary highways, not necessarily the most direct route of travel.

Sources: Rand McNally Road Atlas, 1979. Official Kentucky Mileage Map, 1979. Delivery time - Overnite Transportation Company; 1100 Commerce Road; Richmond, Virginia 23209.

## Air

### Local

Location: London-Corbin Airport (Magee Field)\*  
Runways: 3 miles south-southeast of London  
Length: 1 paved  
Traffic: 6,000 feet  
Control: Wind sock and FSS advisory service  
Lighting: Beacon, runway and obstruction lights, REIL  
Services: Allegheny commuter airline; fuel (100 octane, JP-A-50);  
aircraft rental, auto rental, taxi; weather data;  
flight training; charter and ambulance service;  
vending machines

Air Freight  
Service: Air carriers accept air freight on a space available  
basis

### Nearest Scheduled Commercial Airline Service

Location: Blue Grass Field  
4 1/2 miles west of Lexington, Kentucky; 81 miles  
north of London  
Runways: 2 paved  
Length: 6,500 feet; 3,500 feet  
Traffic:  
Control: Tower  
Lighting: Approach lighting system, beacon, runways and  
obstructions lighted, VASI  
Services: USAir, Delta, Piedmont, Frontier, Comair, Tennessee Airways;  
fuel - 80, 100LL, jet-A; hangars, tie-downs; major A & P  
repairs, major Avionics repairs; APU, charter, flight  
instruction, oxygen, plane rentals, survival equipment  
taxi, limousine, car rentals, courtesy car; weather  
information; restaurant, snack bar

Air Freight  
Service: Air freight terminal

Bus - Southern Greyhound Bus Lines; Trailway Bus Lines

Taxi - Taxi service is available from 7 a.m. to 7 p.m.

\*Commuter air carrier service is provided by Allegheny Commuter at the London-Corbin Airport which is located 3 miles south of London. Improvements to the London-Corbin Airport (Magee Field) are being made. An aircraft parking apron and a terminal building have been constructed. A tank farm, providing storage for 100 LL jet fuel, is under construction.



Rental Services - Automobile, truck and trailer rentals are available.

Water

Access to the inland waterway is by the Tennessee River at Knoxville, Tennessee, 98 miles south of London, Kentucky, where a 9-foot navigation channel is maintained.

## POWER AND FUEL

### Electricity

Company serving - London and the central portion of Laurel County -  
Kentucky Utilities Company  
Source of power - Kentucky Utilities Company  
Total generating capacity - 2,883,767 KW\*  
For industrial rates contact:

Industrial Development Department  
Kentucky Utilities Company  
One Quality Street  
Lexington, Kentucky 40507  
(606) 255-1461

Company serving - Major portion of Laurel County - Jackson County  
Rural Electric Cooperative Corporation  
Source of power - East Kentucky Power Cooperative  
Total generating capacity - 1,304,000 KW  
For industrial rates contact:

Industrial Development Division  
East Kentucky Power Cooperative  
P.O. Box 707  
Winchester, Kentucky 40391  
(606) 744-4812

and/or

Jackson County RECC  
P.O. Box 307  
McKee, Kentucky 40447  
(606) 287-7161

\*A new generating unit is under construction in Carroll County. Due to be completed in 1984, the unit will have a generating capacity of 511,000 KW.



## Natural Gas

Company serving London - Delta Natural Gas Company Inc.

Sources of supply - Wiser Oil Company

Size of transmission mains - 6 inches (supplier);  
6 inches (distributor)

Distribution mains - 2 inches through 8 inches

Distribution pressure - 11 psi through 35 psi

Btu content - 1,000 per cubic foot

Specific gravity - 0.60

For rates and supplies contact:

Delta Natural Gas Company Inc.

Route 1

Box 30-A

Winchester, Kentucky 40391

(606) 744-6171

Company serving Laurel County - Delta Natural Gas Company Inc.

Source of supply - Wiser Oil Company

Size of transmission mains - 8 and 6 inches (supplier);  
6 inches (distributor)

Distribution mains - 2 to 6 inches

Distribution pressure - 4 oz. to 60 psi

Btu content - 1,040 per cubic foot

Specific gravity - 0.68

For rates and supplies contact:

Delta Natural Gas Company Inc.

Route 1

Box 30-A

Winchester, Kentucky 40391

(606) 744-6171

## Other Fuels

### Propane (Within 15 miles)

Ralph Casteel Doxol Gas  
East Bernstadt, Kentucky 40729

Empiregas Inc. of Corbin  
U.S. Highway 25 South  
Corbin, Kentucky 40701

Lewis L.P. Gas Inc.  
Route 11  
London, Kentucky 40741

Buckeye Gas Products Company  
Camp Ground Road  
Corbin, Kentucky 40701

### Fuel oils

#### Distillate fuel oil (Within 15 miles)

Ashland Petroleum Company  
Route 6, Box 70  
London, Kentucky 40741

C. T. Massey, Exxon Distributor  
North Main Street  
London, Kentucky 40741

Chevron USA Inc.  
110 Tobacco Road  
London, Kentucky 40741

Michael-Walters Industries  
Barbourville Highway  
Corbin, Kentucky 40701

Curry Oil Company  
South Dixie Highway  
London, Kentucky 40741

R. C. Miller Oil Company Inc.  
(Texaco)  
Route 7  
Corbin, Kentucky 40701

Helton's Oil Corporation and  
Service Station  
Barbourville Highway  
Corbin, Kentucky 40701

Ormsby Oil and Industrial Supplies  
Inc. (bulk plant)  
P.O. Box 430  
London, Kentucky 40741

High Speed Oil Company  
Route 6  
London, Kentucky 40741

Paul R. Wilson Oil Company  
(bulk plant)  
Box 58  
London, Kentucky 40741

Residual fuel oil - Arrangements must be made with the refinery.

Low sulphur content coal - Available locally.



## WATER AND SEWERAGE

### Public Water Supply

Company serving London - City of London Utiltiy Commission  
123 East Second Street  
London, Kentucky 40741  
(606) 864-2103

Source - Laurel River Lake

Treatment plant capacity - 1,500,000 gallons per day\*

Average daily consumption - 1,300,000 gallons

Peak daily consumption - 1,500,000 gallons

Type treatment - Coagulation, sedimentation, filtration, chlorination, fluoridation and settling basins

Storage capacity - 2,300,000 gallons

Size lines - 16, 12, and 8 inches

Average pressure - 30 to 100 psi (intermediate)

Average temperature - 50 degrees F.

### MONTHLY WATER RATES

First	2,000 gallons	\$5.43 (Minimum)
Next	4,000 gallons	1.40 per M gallons
Next	14,000 gallons	1.24 per M gallons
Next	80,000 gallons	1.09 per M gallons
Next	100,000 gallons	.93 per M gallons
Next	800,000 gallons	.78 per M gallons
All over	1,000,000 gallons	.62 per M gallons

### Minimum Bills for Meters Larger than 5/8-inch

1-inch	\$ 7.70	for first 2,000 gallons
1 1/2-inch	14.00	for first 2,000 gallons
2-inch	23.10	for first 2,000 gallons
3-inch	45.50	for first 2,000 gallons
4-inch	70.00	for first 2,000 gallons
6-inch	138.60	for first 2,000 gallons

Rates are 50 percent higher for customers outside the city limits.

Tap-on charge: 5/8-inch tap - \$100  
1-inch or larger - \$200

\*The capacity of the water treatment plant is being doubled to 3,000,000 gallons per day. Construction design will permit future expansion to 6,000,000 gallons per day with the installation of six pumps at the raw water intake station. A 300,000-gallon clearwell has been constructed and an 18-inch raw-water line is being extended a distance of 10 miles to Laurel River Lake. The \$3 million project is expected to be completed by late 1982 or early 1983.

## Raw Water

Surface water sources - Laurel and Rockcastle Rivers

Average discharge - Rockcastle River at Billows, Kentucky - 940 cfs (44-year record, USGS); Laurel River at Municipal Dam near Corbin, Kentucky - 272 cfs (7-year record, USGS).

Expected ground water yield - 5 gpm or less in northern and northwestern portion of Laurel County; 5 to 50 gpm in band running from north central to southwestern portion of county; 50 to 200 gpm in eastern half of county

## Sewerage

Company serving London - City of London Utility Commission\*  
123 East Second Street  
London, Kentucky 40741  
(606) 864-2103

Design capacity - 4,000,000 gallons per day

Average daily flow - 2,000,000 gallons

Treatment - Secondary

Type treatment - Grit removal, screw pumps, static screens, rotating biological contactors, secondary clarifiers, sand filters, chlorine contact chambers, post-aeration, anaerobic digestion

Treated effluent discharged into - Whitley Branch

Size of sanitary mains - 21, 18, 15, 10 and 8 inches

Rates - One-third of water bill plus \$0.56 (minimum), \$0.28 per M gallons thereafter

Tap-on charge: \$100

\*The capacity of the sewage treatment plant will be increased to 4,000,000 gallons per day as of spring 1982. The \$9 million project included installation of advanced secondary treatment facilities, two pumping stations and an outfall sewer line.



## CLIMATE

### Laurel County

#### Temperature

Normal (30-year record)	59.7 degrees
Average annual 1980	59.1 degrees
Record highest, September, 1954 (39-year record)	103.0 degrees
Record lowest, January, 1966 (39-year record)	-9.0 degrees
Normal heating degree days (30-year record)	3,478
(Heating degree day totals are the sums of negative departures of average daily temperatures from 65 degrees F.)	

#### Precipitation

Normal (30-year record)	46.18 inches
Mean annual snowfall (38-year record)	12.80 inches
Total precipitation 1980	40.46 inches
Mean number days precipitation (.01 inch or more) (38-year record)	127
Mean number days thunderstorms (38-year record)	47

#### Prevailing Winds (14-year record)

Northeast

#### Relative Humidity (20-year record)

1 a.m.	79 percent
7 a.m.	85 percent
1 p.m.	59 percent
7 p.m.	62 percent

Source: U.S. Department of Commerce, Environmental Science Services Administration, Climatological Data, 1980.  
Station of record: Knoxville, Tennessee.

## LOCAL GOVERNMENT

### City

Structure - Mayor - 4-year term; 6 council members - 2-year terms;  
Budget 1981 - General Fund \$722,157  
                    Water and Sewer Fund 685,076  
Fees and licenses - Occupational licenses range from \$5 to \$300  
annually; stickers - \$10 per vehicle annually

### County

Structure - County Judge/Executive - 4-year term;  
6 magistrates - 4-year terms  
Budget 1981-82 - General Fund \$1,097,873; Road Fund \$455,774

### Assessed Value of Property, 1981

<u>Classes of Property</u>	<u>London</u>	<u>Laurel County</u>
Real Estate	\$56,470,730	\$310,316,240
Tangibles	21,814,965	118,473,030

### Property Taxes

All property in Kentucky is assessed at 100 percent of fair cash value.

Land and buildings are taxed by the state and may be taxed by local jurisdictions. The state rate is \$0.229 per \$100 of assessed valuation.

Manufacturing machinery, raw materials inventories, pollution control equipment, and goods in the process of manufacture are not subject to local taxation. The state rate is \$0.15 per \$100.

Other tangible personal property owned by manufacturers (automobiles, trucks, finished goods, office furniture, office equipment) is taxed by the state at \$0.45 per \$100 and may be taxed by local jurisdictions.

Property stored in public warehouses in a transit status is not subject to local taxation. The state rate is only \$0.015 per \$100.

Intangible personal property located in Kentucky (money in hand, shares of stock, notes, bonds, accounts receivable, and other credits) is taxed by the state at \$0.25 per \$100, and is not subject to local taxation.

Private leaseholds in industrial facilities owned by cities or counties and financed by industrial revenue bonds are subject to a state tax of \$0.015 per \$100 of value (essentially the lessee's equity, adjusted for appreciation or depreciation). Local taxation is not permitted.



Combined State and Local Rates Per \$100 Valuation, 1981\*  
(100% assessment)

	<u>Inside City of London</u>	<u>Site Inside Unincorporated Laurel County**</u>
1. Land and buildings	\$0.7510	\$0.5351
2. Mfg. machinery, raw materials, goods in process, pollution control equipment	0.1500	0.1500
3. Finished goods, office equipment, vehicles, other tangibles	0.9720	0.7561
4. Intangibles (accounts rec., notes, bonds, etc.)	0.2500	0.2500
5. Leaseholds in industrial revenue bond financed plants	0.0150	0.0150

Planning and Zoning

Joint agency - London-Laurel County Joint Planning Commission  
 Zoning enforced - City only  
 Subdivision regulations enforced - City of London and Laurel County  
 Mandatory state codes enforced - Kentucky Plumbing Code, National Electric Code, Kentucky Boiler Regulations and Standards, Kentucky Building Code (modeled after BOCA code and applying to buildings with an occupancy of 100 or more persons)

\*Kentucky Department of Economic Development.

\*\*Tax rates for the area of Laurel County encompassing the East. Bernstadt Independent School District are equivalent to those for the remainder of the unincorporated county.

## Safety

<u>Police</u>	<u>London</u>	<u>Laurel County</u>
Total staff	11	6
Radio-patrol cars	4	4
<u>Fire</u>		
American Insurance Association Fire Rating	6	10
Volunteers	25	Approximately 110 (for six fire stations including city)

## Rescue Service

London-Laurel County Rescue Squad:

Number of volunteers - 30

Equipment - 2 vans, 2 station wagons, utility truck, 4 boats with outboard motors, dragging equipment, emergency lighting (generator, floodlights, extension lines), highway rescue truck, Jaws of Life rescue apparatus

Personnel training - 10 volunteers are emergency medical technicians, some volunteers with civil defense and fire training; all volunteers are trained in advanced first aid and some volunteers are trained in rappelling.

## Refuse Collection and Disposal

	<u>London</u>
Type service	Municipal
Fee charged:	
residential	\$4 per month
business	By volume
industrial	By volume
Collection frequency:	
residential	Weekly
business	Daily if needed
industrial	Daily if needed
Trash pickup	As requested
Disposal method	Sanitary landfill

Several private contractors serve Laurel County and fees vary according to the volume and frequency of collection. Manufacturers located outside the city limits of London may also negotiate with the city for refuse collection and disposal service.

# EDUCATION

## Public Schools

	<u>East Bernstadt Independent</u>	<u>Laurel County</u>
Total Enrollment		
(Fall 1981)	343	7,804
Elementary	343	4,930
Junior High	-	1,267
High School	-	1,607
Student-Teacher Ratio	20-1	21-1
Elementary	20-1	21-1
Junior High	-	20-1
High School	-	22-1
Percent High School Graduates to College (1980)	N/A	50.6
Expenditures Per Pupil (1980-81)	\$1,078.72	\$1,194.61
Bonded Indebtedness (June 30, 1980)	\$29,000	\$4,693,000

## Nonpublic Schools

	<u>London Christian Academy</u>
Total Enrollment	54
Elementary	46
High School	8
Student-Teacher Ratio	11-1
Elementary	12-1
High School	8-1



## Area Colleges and Universities

<u>Name</u>	<u>Location (Miles distant)</u>	<u>Enrollment (Fall, 1981)</u>	<u>Highest Degree Conferred</u>
Sue Bennett College	London	315	Associate
Cumberland College	Williamsburg (31)	2,033	Baccalaureate
Union College	Barbourville (31)	975	Masters, Specialist
Somerset Community College	Somerset (35)	1,065	Associate
Berea College	Berea (38)	1,587	Baccalaureate
Eastern Kentucky University	Richmond (51)	13,394	Masters, Specialist/ Doctorate*
Centre College of Kentucky	Danville (58)	685	Baccalaureate
Hazard Community College	Hazard (59)	341	Associate

Sue Bennett College, a two-year, independent coeducational institution in London offers Associate in Arts degrees in business administration, elementary education, secondary education, pre-engineering and pre-medical, and Associate in Applied Science degrees in human services, office administration, recreational leadership, and vocational programs.

\*Joint doctoral degree programs are offered in cooperation with the University of Kentucky, Lexington, and cooperative doctoral degree programs are offered with Michigan State University and the University of Maryland.

## Vocational Schools

Both the state vocational-technical schools and the area vocational education centers are operated by the Kentucky Department of Education. The state vocational-technical schools enroll persons full time who are at least 16 years of age and not in school. These students attend classes for six hours each day. The area vocational education centers are designed to accommodate high school students who are at least 15 years of age. These students attend vocational school for three hours each day. In London, the high school program and the adult program are both taught at the state vocational-technical school. The state vocational-technical schools and the area education centers offer evening courses to enable working adults to upgrade current job skills.

### Nearest State School

Location	Laurel County State Vocational-Technical School London
Curriculum	Consumer and Home Economics Commercial Foods Consumer and Family Life Skills Health and Personal Services Occupations Cosmetology Medical Assistant Industrial Education Air Conditioning and Heating Auto Body Repair Auto Mechanics Carpentry Drafting Electricity Machine Shop Masonry Welding Learning Resource Center

## HEALTH

### Local Medical Personnel

Physicians - 11  
Dentists - 8

### Hospitals

<u>General Hospital</u>	<u>Location</u>	<u>Beds</u>
Marymount Hospital	London	55

General hospital facilities - 3 operating rooms, nursery, X-ray equipment, laboratory, delivery room, emergency rooms, pharmacy, recovery room, pediatrics section, physical therapy, respiratory therapy

Medical staff - 7 general practitioners, 1 physician assigned to emergency room, 1 surgeon, 1 orthopedic surgeon, 3 internists, 2 pediatricians, 2 pathologists, 6 cardiologists, 2 radiologists, 20 registered nurses, 23 licensed practical nurses

### Ambulance Service

Name - Laurel County Ambulance Service  
Staff - 8 emergency medical technicians (full time)  
6 emergency medical technicians (part time)  
Service - 24 hours, county-wide  
Equipment - 4 ambulances, fully equipped

### Public Health

Facility - Laurel County Health Department  
Staff - 2 health environmentalists, 4 registered nurses, 3 county health workers, 1 clerk, 1 administrator, 1 visiting physician



## OTHER LOCAL FACILITIES

### Communications

Telephone - Continental Telephone Company of Kentucky  
Services - Standard

Telegraph - Western Union Telegraph Company  
Services - Toll-free number, 1-800-325-5100; area office for counter service and other purposes

Postal - U.S. Post Office  
Class - First  
Mail received - Once daily  
Mail dispatched - Once daily

Newspapers - The Sentinel Echo  
Weekly and circulation - 9,000  
Other papers  
received from - Lexington and Louisville, Kentucky;  
Knoxville, Tennessee

Radio - WFTG-AM & FM  
Stations received from - Lexington and Louisville, Kentucky;  
Knoxville, Tennessee

Television -  
Cable service  
Reception from - Lexington, Kentucky; Knoxville, Johnson City,  
Kingsport and Bristol, Tennessee; Ashville,  
North Carolina; Atlanta, Georgia  
Kentucky Educational  
Television - Somerset transmitter, Channel 29

### Library Services

Public library - Laurel County Public Library  
Size collection - 42,281 volumes  
Circulation, 1980-81 - 136,825  
Services - Bookmobile, genealogy research, story hour, reading programs, puppet shows, plays, film programs, community meeting room, movie night, audio-visual equipment, craft club, newspapers, magazines, prints, Interlibrary Loan

Private library - Minerva Daniel Library, Sue Bennett College  
Size collection - 34,000 volumes  
Special collections - Back issues of magazines dating from the 1920's, Methodist magazines, Appalachian and Kentucky books

## Religious Institutions

Number of churches - 18

Denominations - Assembly of God  
Baptist  
Catholic  
Christian  
Church of Christ  
Full Gospel Tabernacle  
Nazarene  
Presbyterian  
Seventh Day Adventist  
United Methodist

Nearest Synagogues - Lexington, Kentucky, 75 miles north of London;  
Knoxville, Tennessee, 98 miles south of London

Congregations - Lexington:  
Adath Israel (reform)  
Ohavey Zion (traditional)  
Knoxville:  
Heska Amuna Congregation (orthodox)  
Temple Bethel (reform)

## Financial Institutions

<u>Banks</u>	<u>Assets</u>	<u>Deposits</u>	<u>Statement Date</u>
Cumberland Valley National Bank and Trust Company	\$118,615,650.49	\$108,810,672.72	6/30/81
First National Bank in London	58,645,875.00	50,488,016.24	6/30/81
London Bank and Trust Company	29,068,536.04	26,038,013.13	6/30/81

<u>Savings and Loan Association</u>	<u>Assets</u>	<u>Savings Accounts</u>	<u>Statement Date</u>
First Federal Savings and Loan Association*	\$40,935,341.05	\$35,233,700.69	12/31/80
London Federal Savings and Loan Association	16,664,696.36	14,897,797.13	12/31/80

## Hotels and Motels

Total number - 9  
Total rooms - 391

\*Branch of Pineville, Kentucky, office.

## Clubs and Organizations

American Legion  
Boy Scouts  
Business and Professional Women's Club  
Conservation Club  
Cub Scouts  
Daughters of the American Revolution (DAR)  
Fish and Game Club  
4-H Club  
Future Farmers of America (FFA)  
Future Homemakers of America (FHA)  
Garden Club  
Girl Scouts  
Jaycees  
Kiwanis  
Laurel County Industrial Development Authority  
Lions  
Little League (baseball and football)  
London-Laurel County Chamber of Commerce  
Masons  
Ministerial Association  
Moose Lodge  
Newcomer's Club  
Rotary  
Southeastern Kentucky Saddle Club  
Veterans of Foreign Wars (VFW)  
Woman's Club  
Younger Women's Club



## RECREATION

### Local

London offers a wide variety of public recreation facilities including two playgrounds, a swimming pool, three baseball diamonds, four football fields, and a park and fairgrounds area with a horse show ring, one basketball court, two tennis courts, and a picnic shelter house. The city supervises Little League baseball and football programs and men's and women's softball leagues.

Private recreation facilities include a country club, a golf course, two swimming pools, four tennis courts, one indoor movie theatre, two drive-in theatres, and a go-cart track.

London area residents enjoy fishing in Daniel Boone National Forest at Wood Creek Lake, a large reservoir just northwest of London, and at Laurel River Lake and Dam, 10 miles southwest of London, where camping facilities and a marina are also available.

Levi Jackson Wilderness Road State Park, located near London, is an 815-acre park located where the Boone Trace and Wilderness Road pioneer trails converge. In addition to a reproduced pioneer settlement, the park offers a pool, a bathhouse, hiking trails, horseback riding, shuffleboard, camp sites, a picnic area, a playground, and an amphitheater. The Wilderness Road is thought to be the first state-built road in the United States (1796-1875) and a section of the original road is preserved in the park.

### Area (Within 60 miles)

Cumberland Falls State Resort Park is located 14 miles south of London at Corbin in the Daniel Boone National Forest. The park is famous for Cumberland Falls which drops 68 feet over a rock precipice and shows one of only two known "moonbows" in the world at full moon. Little Eagle Falls, a mountain creek which tumbles 125 feet into the Cumberland River, is also part of the 1,794-acre park. The park offers lodge rooms, woodland suites, cottages, camping, fishing, swimming, hiking, horseback riding, picnicking, tennis, backpacking, horse shows, shuffleboard, planned recreation, a playground, a dance pavilion, and an amphitheater.

Dr. Thomas Walker State Shrine, 27 miles southeast of London near Barbourville, is the site of the cabin built by Dr. Walker, who led the first documented expedition through Cumberland Gap around 1750. This 12-acre park contains a replica of the cabin, a playground, a picnic shelter, and an amphitheater.

General Burnside State Park, 40 miles southwest of London, is Kentucky's only island state park. Rising out of Lake Cumberland and surrounded by beautiful Kentucky mountains, the park offers excellent fishing, an 18-hole golf course which is open year-round, a picnic area, a 150-site camping area for tents and recreational vehicles, a marina on the mainland near the park, and planned recreation.

Pine Mountain State Resort Park in Pineville, 46 miles southeast from London, provides the finest in mountain scenery and the ultimate in quiet comfort. The 2,500-acre park is located in the Kentucky Ridge State Forest and is the scene of the Mountain Laurel Festival each spring. Also featured is a 35-acre lake, 30 lodge rooms, seven rustic log cottages, a dining room, a gift shop, a meeting room, 36 camping sites, a lodge pool, fishing, a 9-hole golf course, hiking trails, a nature center, picnicking, playgrounds, shuffleboard, and planned recreation.

William Whitley House State Shrine, 47 miles northwest of London near Stanford, is the first brick house west of the Allegheny Mountains, built 1787-94. Whitley laid out Kentucky's first race track here and started U.S. counterclockwise racing. The facility provides picnic and playground areas in a 10-acre park.

Constitution Square State Shrine, 58 miles northwest of London in Danville, is a reproduction of Kentucky's first courthouse square, including the original 1792 post office which was the first in the west.

Cumberland Gap National Historic Park, 59 miles southeast of London near Middlesboro, is located on 20,270 acres shared by Tennessee, Virginia and Kentucky. It is the second largest national historical park in the nation. Pinnacle Mountain overlooks three states. Also featured are three caves and a restored mountain village. There are 165 campsites available at the park and picnicking is offered year round.

Isaac Shelby State Shrine, 60 miles northwest of London near Danville, is the burial site of Kentucky's first governor and one of the Commonwealth's foremost statesmen.

White Hall State Shrine, 60 miles north of London near Richmond, one of the grand estate houses of post-Civil War Kentucky, is the Italianate mansion of Cassius Marcellus Clay, the early abolitionist and politician. Kentucky handcrafts are sold in the White Hall gift shop, only a short walk from the mansion.