

1980

Industrial Resources: Logan County

Kentucky Library Research Collections
Western Kentucky University, spcol@wku.edu

Follow this and additional works at: https://digitalcommons.wku.edu/logan_cty



Part of the [Business Administration, Management, and Operations Commons](#), [Growth and Development Commons](#), and the [Infrastructure Commons](#)

Recommended Citation

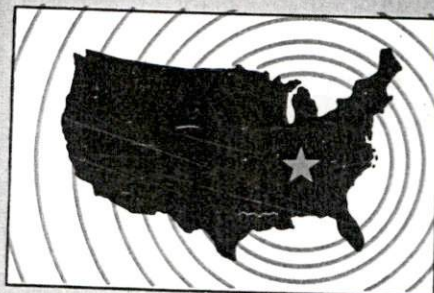
Kentucky Library Research Collections, "Industrial Resources: Logan County" (1980). *Logan County*. Paper 25.
https://digitalcommons.wku.edu/logan_cty/25

This Report is brought to you for free and open access by TopSCHOLAR®. It has been accepted for inclusion in Logan County by an authorized administrator of TopSCHOLAR®. For more information, please contact topscholar@wku.edu.

INDUSTRIAL RESOURCES

LOGAN COUNTY

**Kentucky
first**

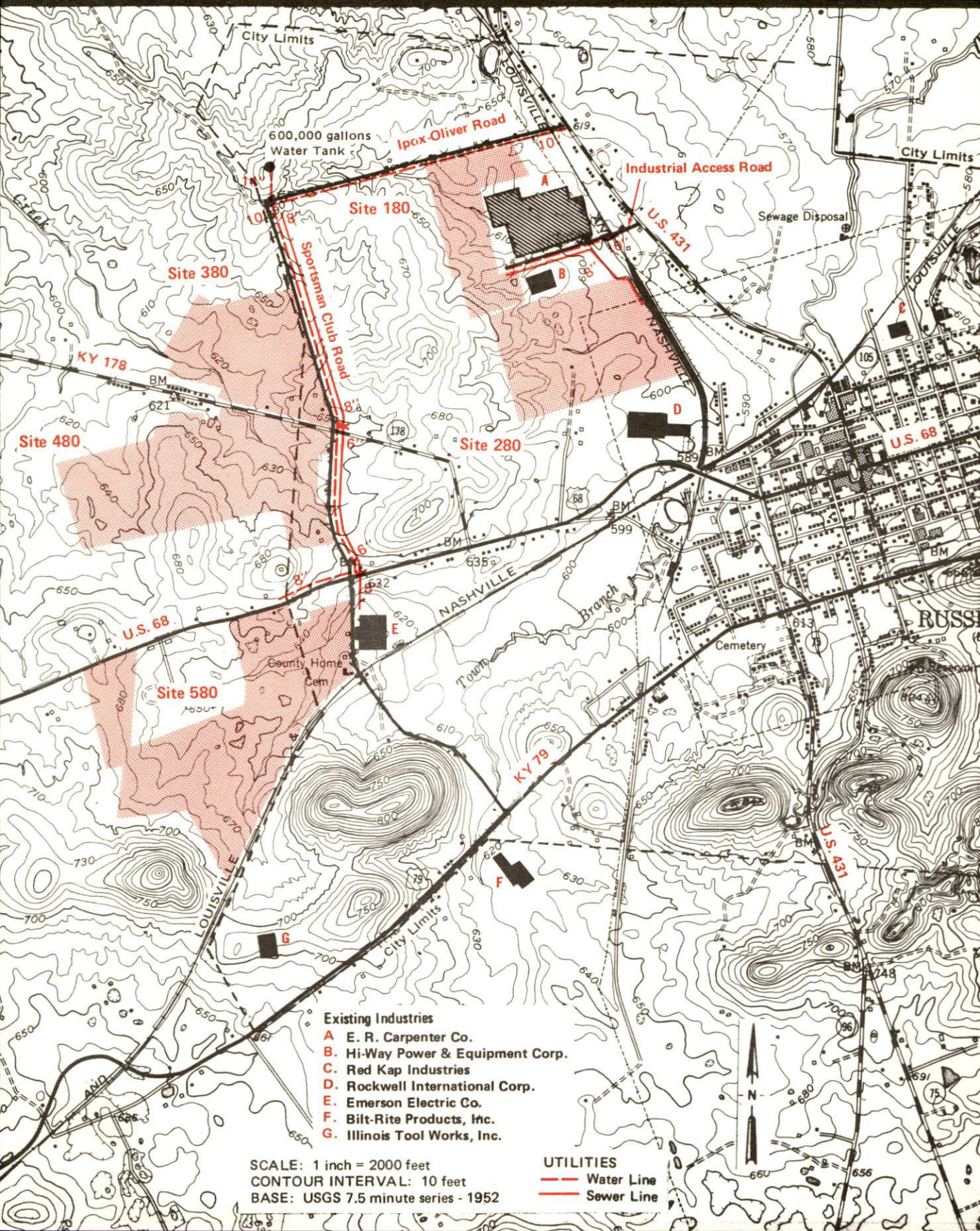


DEPARTMENT OF COMMERCE

RUSSELLVILLE, KENTUCKY

Industrial Sites -- 1980

For more information contact William Fuqua, Circuit Judge, Logan County Courthouse, Russellville, Kentucky 42276 or the Kentucky Department of Commerce, Industrial Development Division, Capital Plaza Tower, Frankfort, Kentucky 40601.



Site 180
55 acres

LOCATION: Within northwest city limits
ZONING: Industrial
HIGHWAY ACCESS: Ipox-Oliver Road forms northern boundary of site; industrial access road extends to southeast portion of site; U.S. 431 approximately 1000 feet east via Ipox-Oliver Road and approximately .3 mile east via access road
RAILROAD: Louisville and Nashville Railroad approximately 650 feet east
WATER: Russellville Water and Sewer Department
Size Line: 10-inch line along northern boundary; 10-inch line adjacent to southeast portion of site, south of industrial access road
NATURAL GAS: Western Kentucky Gas Company
ELECTRICITY: Russellville Electric Plant Board
SEWERAGE: Russellville Water and Sewer Department
Size Line: 8-inch line extends to southeast portion of site, south of industrial access road
OWNERSHIP: Private

Site 280
90 acres

LOCATION: Within northwest city limits
ZONING: Industrial
HIGHWAY ACCESS: Paved industrial access road leading to U.S. 431 is approximately 600 feet north
RAILROAD: Louisville and Nashville Railroad adjacent to eastern boundary
WATER: Russellville Water and Sewer Department
Size Line: 10-inch line approximately 600 feet north of site along south side of access road
NATURAL GAS: Western Kentucky Gas Company
ELECTRICITY: Russellville Electric Plant Board
SEWERAGE: Russellville Water and Sewer Department
Size Line: 8-inch line adjacent to northeast corner of site
OWNERSHIP: Private

Site 380
70 acres

LOCATION: Partially within northwest city limits
ZONING: Not zoned
HIGHWAY ACCESS: KY 178 along southeastern boundary; Sportsman Club Road along eastern boundary; U.S. 68 approximately 0.3 mile south via Sportsman Club Road
RAILROAD: Not rail served
WATER: Russellville Water and Sewer Department
Size Line: 10-inch line across Sportsman Club Road from eastern boundary
GAS: Western Kentucky Gas Company
ELECTRICITY: Russellville Electric Plant Board
SEWERAGE: Russellville Water and Sewer Department
Size Line: 8-inch line across Sportsman Club Road from eastern boundary
OWNERSHIP: Private

Site 480
143 acres

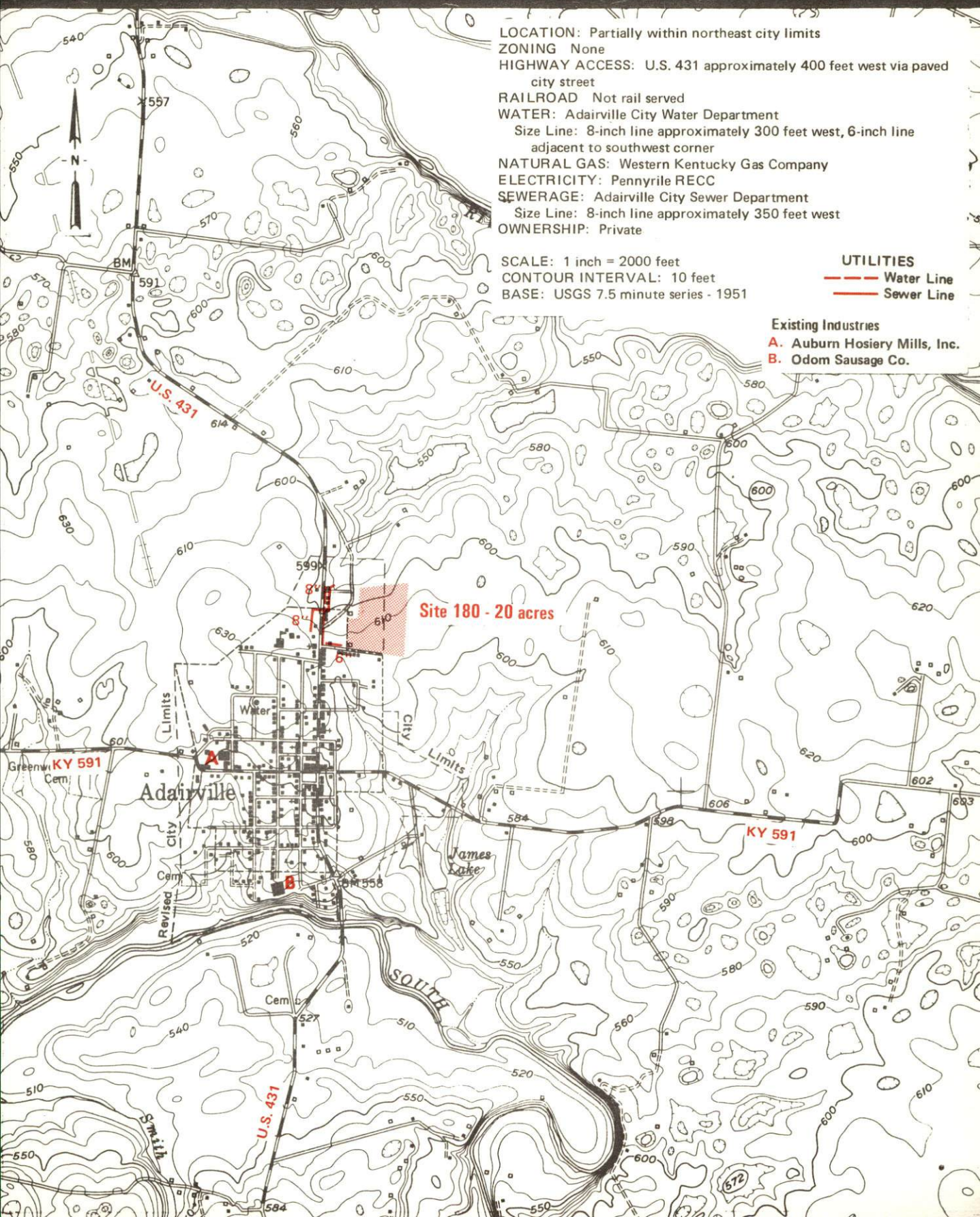
LOCATION: Partially within western city limits
ZONING: Not zoned
HIGHWAY ACCESS: KY 178 along northeastern boundary; Sportsman Club Road along eastern boundary; U.S. 68 approximately 500 feet south via Sportsman Club Road
RAILROAD: Not rail served
WATER: Russellville Water and Sewer Department
Size Line: 10-inch line across Sportsman Club Road from eastern boundary
GAS: Western Kentucky Gas Company
ELECTRICITY: Russellville Electric Plant Board
SEWERAGE: Russellville Water and Sewer Department
Size Line: 6-inch line across Sportsman Club Road from eastern boundary
OWNERSHIP: Private

Site 580
175 acres

LOCATION: Partially within southwestern city limits
ZONING: Not zoned
HIGHWAY ACCESS: U.S. 68 along northern boundary; Sportsman Club Road along eastern boundary
RAILROAD: Louisville and Nashville Railroad along southern boundary
WATER: Russellville Water and Sewer Department
Size Line: 8-inch line across U.S. 68 from northeastern boundary
GAS: Western Kentucky Gas Company
ELECTRICITY: Russellville Electric Plant Board
SEWERAGE: Russellville Water and Sewer Department
Size Line: 8-inch line across Sportsman Club Road from northeast corner of site
OWNERSHIP: Private

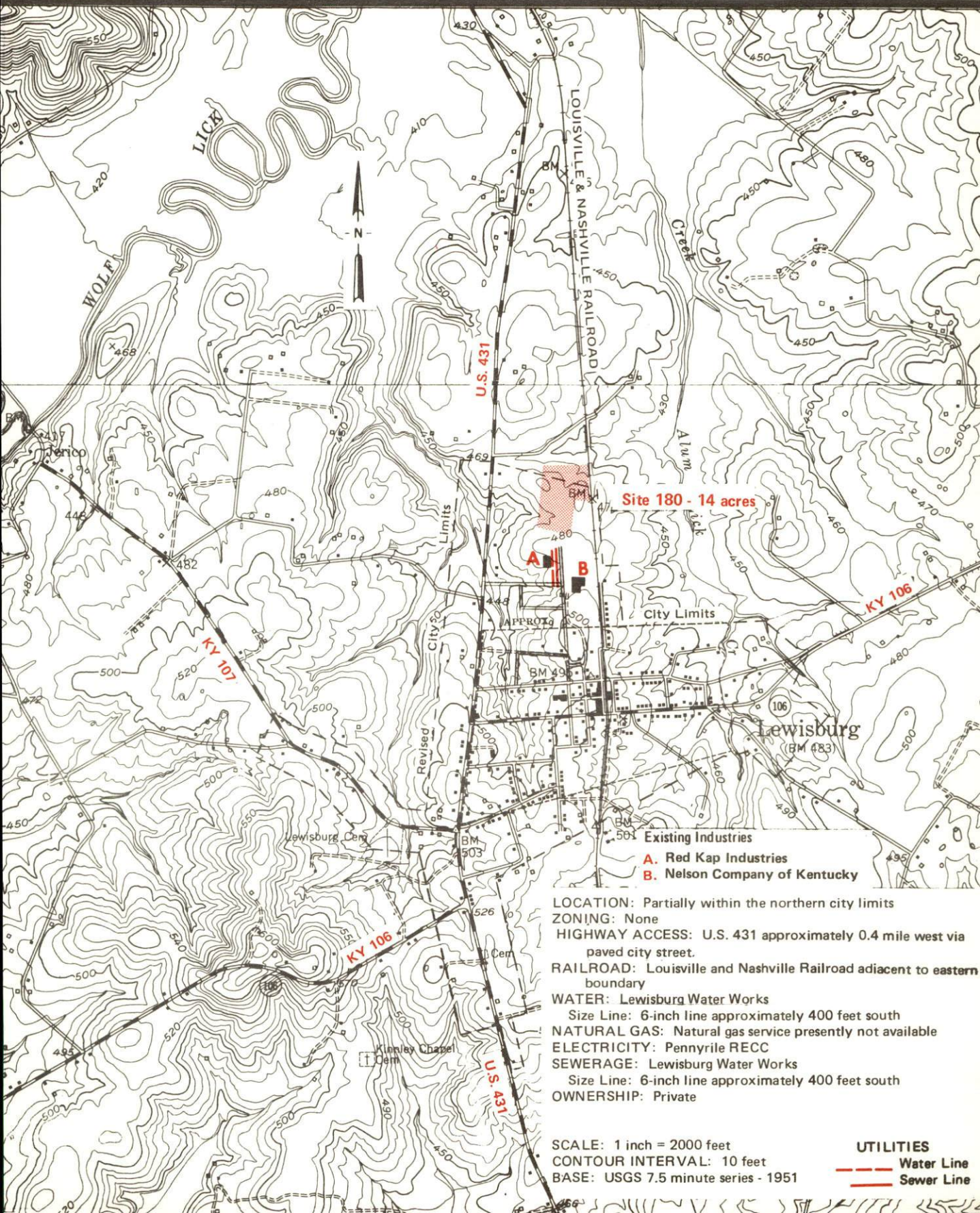
ADAIRVILLE, KENTUCKY --- Industrial Site --- 1980

For more information contact Mr. Burton Estep, Adairville Banking Company, Adairville, Kentucky 42202, or the Kentucky Department of Commerce, Industrial Development Division, Capital Plaza Tower, Frankfort, Kentucky 40601.



LEWISBURG, KENTUCKY --- Industrial Site -- 1980

For more information contact Warren McReynolds, Route 1, Lewisburg, Kentucky 42256, or the Kentucky Department of Commerce, Industrial Development Division, Capital Plaza Tower, Frankfort, Kentucky 40601.



Site 180 - 14 acres

City Limits

Lewisburg
(BM 483)

Existing Industries

- A. Red Kap Industries
- B. Nelson Company of Kentucky

LOCATION: Partially within the northern city limits

ZONING: None

HIGHWAY ACCESS: U.S. 431 approximately 0.4 mile west via paved city street.

RAILROAD: Louisville and Nashville Railroad adjacent to eastern boundary

WATER: Lewisburg Water Works

Size Line: 6-inch line approximately 400 feet south

NATURAL GAS: Natural gas service presently not available

ELECTRICITY: Pennyrile RECC

SEWERAGE: Lewisburg Water Works

Size Line: 6-inch line approximately 400 feet south

OWNERSHIP: Private

SCALE: 1 inch = 2000 feet

CONTOUR INTERVAL: 10 feet

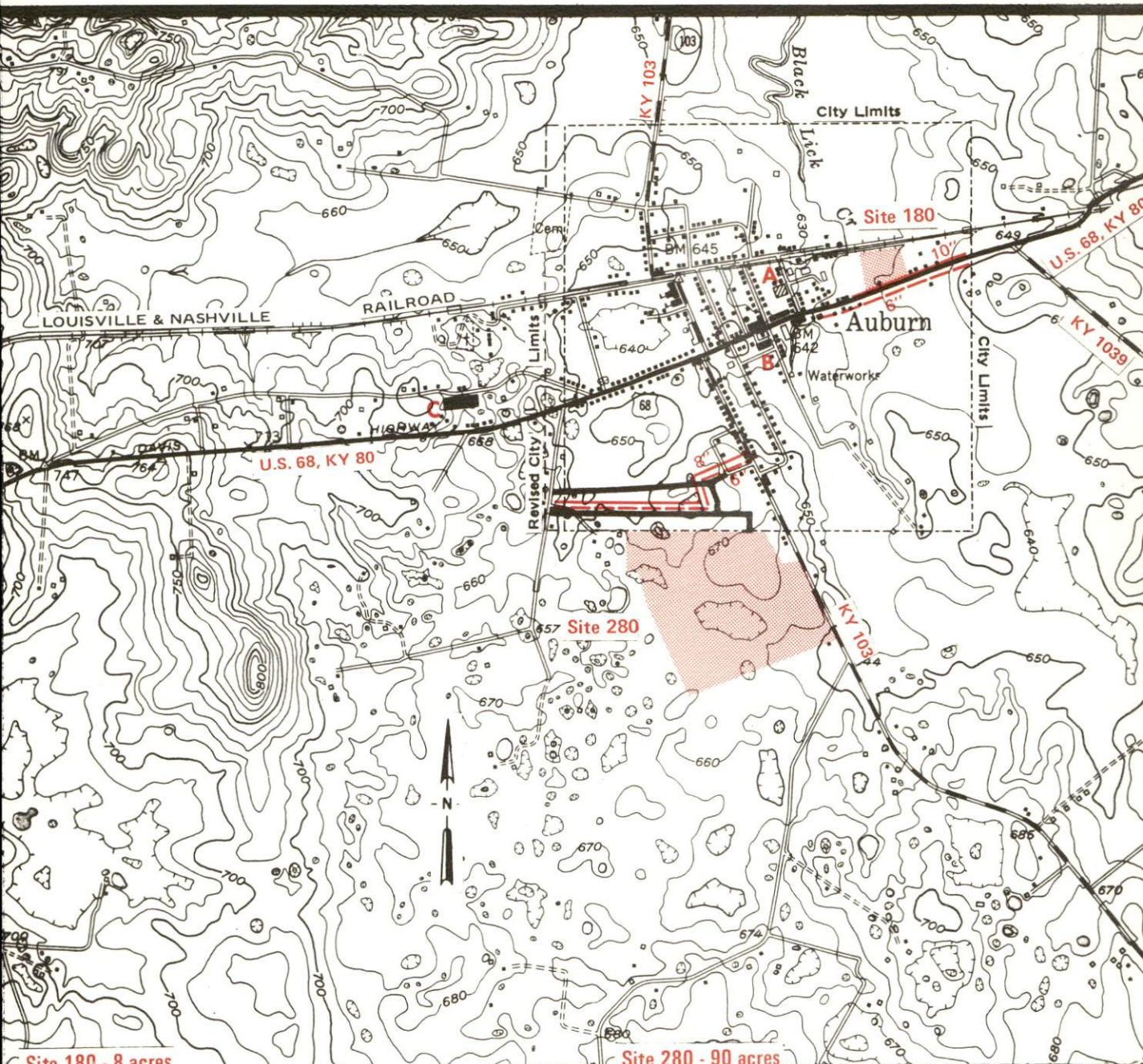
BASE: USGS 7.5 minute series - 1951

UTILITIES

--- Water Line
--- Sewer Line

AUBURN, KENTUCKY --- Industrial Sites -- 1980

For more information contact Mr. Grover Corum, P. O. Box 128, Auburn, Kentucky 42206 or the Kentucky Department of Commerce, Industrial Development Division, Capital Plaza Tower, Frankfort, Kentucky 40601.



Site 180 - 8 acres

LOCATION: Within eastern city limits
ZONING: None
HIGHWAY ACCESS: U.S. 68, KY 80 along southern boundary
RAILROAD: Louisville and Nashville Railroad along northern boundary
WATER: Auburn Water and Sewer Department
Size Line: 6-inch line along south side of U.S. 68
NATURAL GAS: Western Kentucky Gas Company
ELECTRICITY: Warren RECC
SEWERAGE: Auburn Water and Sewer Department
Size Line: 10-inch line along southern boundary
OWNERSHIP: Private

Site 280 - 90 acres

LOCATION: Adjacent to southern city limits
ZONING: None
HIGHWAY ACCESS: KY 103 along eastern boundary
RAILROAD: Not rail served
WATER: Auburn Water and Sewer Department
Size Line: 6-inch line approximately 200 feet north across paved city street
NATURAL GAS: Western Kentucky Gas Company
ELECTRICITY: Warren RECC
SEWERAGE: Auburn Water and Sewer Department
Size Line: 8-inch line approximately 200 feet north across paved city street
OWNERSHIP: Private

SCALE: 1 inch = 2000 feet
CONTOUR INTERVAL: 10 feet
BASE: USGS 7.5 minute series - 1951

UTILITIES
 --- Water Line
 --- Sewer Line

Existing Industries

- A.** Caldwell Lace Leather Co., Inc.
- B.** Auburn Hosiery Mills, Inc.
- C.** Graham Manufacturing, Inc.

INDUSTRIAL RESOURCES

RUSSELLVILLE, ADAIRVILLE, AUBURN AND LEWISBURG, KENTUCKY

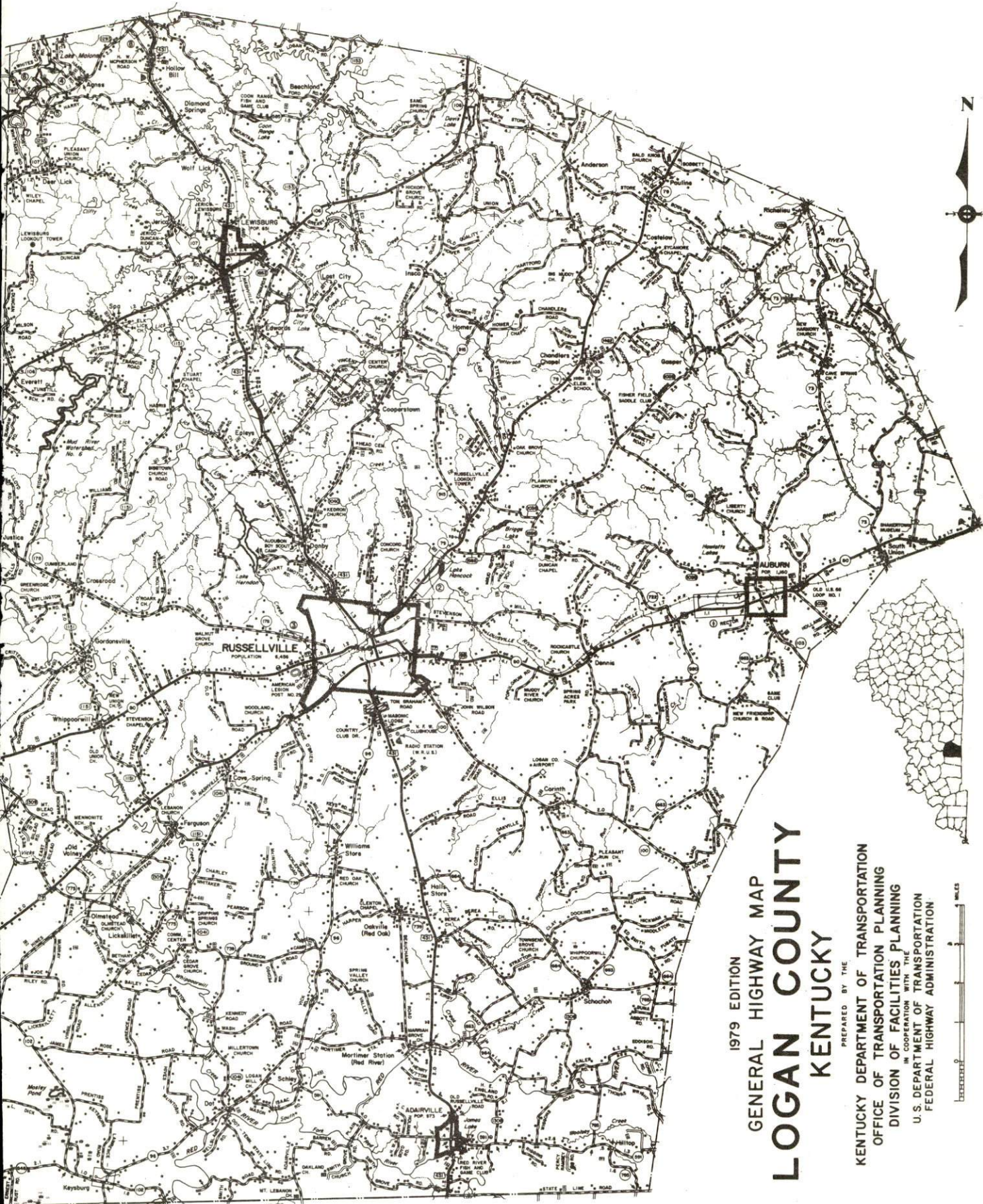
Prepared by
The Kentucky Department of Commerce
Division of Research and Planning
in cooperation with
The Russellville-Logan County Chamber of Commerce
and
The City of Adairville
and
The City of Auburn
and
The City of Lewisburg

1980

TABLE OF CONTENTS

| <u>Chapter</u> | <u>Page</u> |
|---|-------------|
| INDUSTRIAL SITES | i |
| SUMMARY OF INDUSTRIAL RESOURCES - RUSSELLVILLE, ADAIRVILLE, AUBURN AND LEWISBURG, KENTUCKY | 1 |
| THE LABOR MARKET AREA | 9 |
| Population | 9 |
| Labor Force Characteristics of Residents, 1979 | 9 |
| Logan County Manufacturing Firms, Their Products and Employment | 10 |
| Labor Organizations | 12 |
| Industrial Services | 12 |
| Estimated Male Labor Supply | 16 |
| Estimated Female Labor Supply | 16 |
| Average Weekly Wages by Industry, by Place of Work, 1978 | 17 |
| Per Capita Personal Income | 19 |
| TRANSPORTATION | 20 |
| Rail | 20 |
| Highways | 20 |
| Truck Service | 21 |
| Air | 23 |
| Bus | 24 |
| Taxi | 24 |
| Rental Services | 24 |
| Water | 24 |
| POWER AND FUEL | 25 |
| Electricity | 25 |
| Natural Gas | 26 |
| Other Fuels | 27 |
| WATER AND SEWERAGE | 28 |
| Water | 28 |
| Sewerage | 35 |
| CLIMATE | 37 |

| <u>Chapter</u> | <u>Page</u> |
|--|-------------|
| LOCAL GOVERNMENT | 38 |
| City | 38 |
| County | 38 |
| Assessed Value of Property | 39 |
| Property Taxes | 39 |
| Combined State and Local Rates Per \$100 | |
| Valuation, 1979 | 40 |
| Utilities Gross Receipts Tax for Schools | 40 |
| Planning and Zoning | 41 |
| Safety | 41 |
| Police | 41 |
| Fire | 41 |
| Rescue Service | 41 |
| Refuse Collection and Disposal | 42 |
| EDUCATION | 43 |
| Public Schools | 43 |
| Nonpublic Schools | 43 |
| Area Colleges and Universities | 45 |
| Vocational Schools | 46 |
| HEALTH | 49 |
| Local Medical Personnel | 49 |
| Hospitals | 49 |
| Other Medical Facilities | 49 |
| Ambulance Service | 49 |
| Public Health | 49 |
| OTHER LOCAL FACILITIES | 50 |
| Communications | 50 |
| Library Services | 51 |
| Religious Institutions | 53 |
| Financial Institutions | 53 |
| Hotels and Motels | 54 |
| Clubs and Organizations | 54 |
| RECREATION | 56 |
| COMMUNITY IMPROVEMENTS | 59 |



1979 EDITION
GENERAL HIGHWAY MAP
LOGAN COUNTY
KENTUCKY

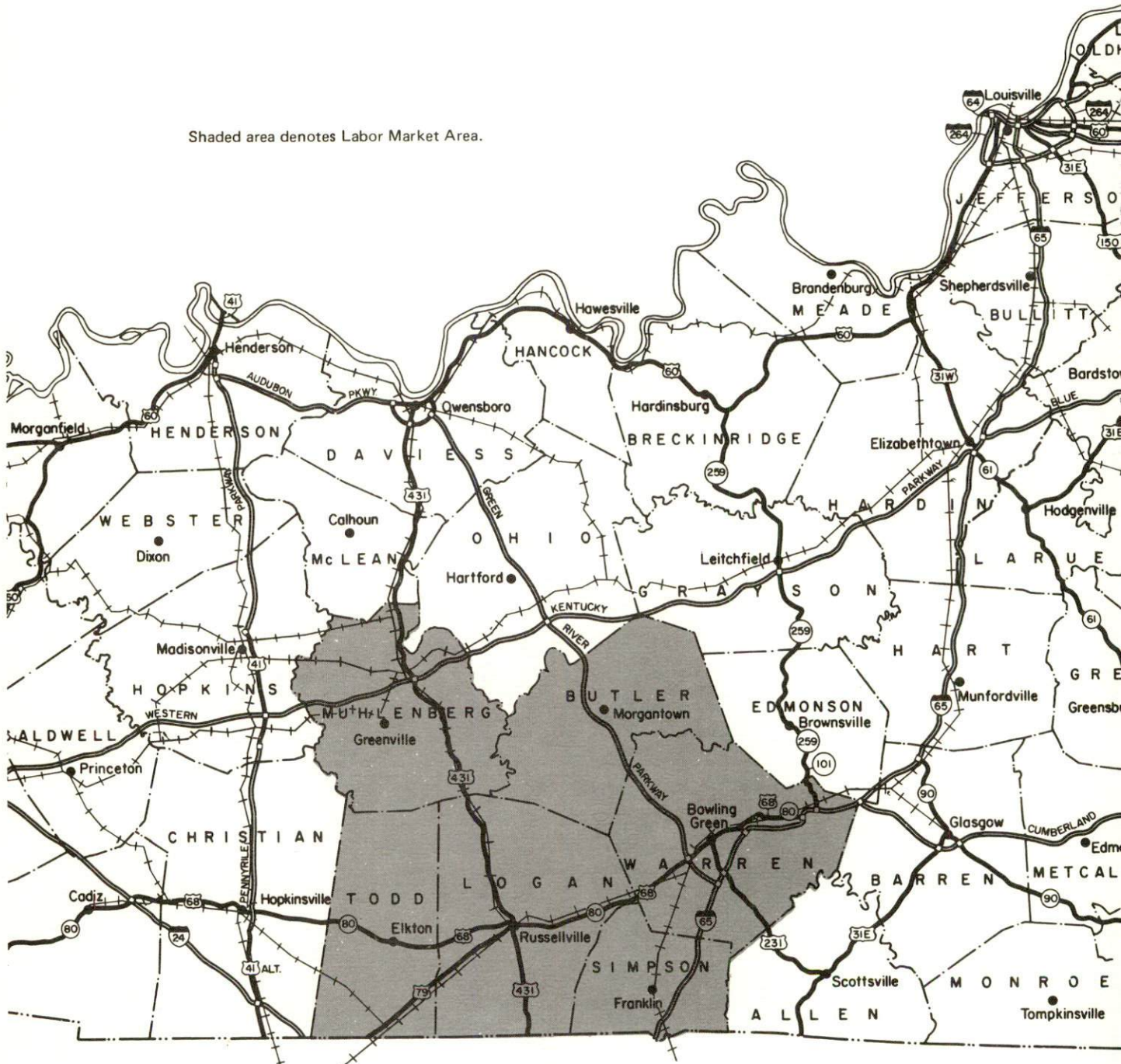
PREPARED BY THE
KENTUCKY DEPARTMENT OF TRANSPORTATION
OFFICE OF TRANSPORTATION PLANNING
DIVISION OF FACILITIES PLANNING
IN COOPERATION WITH THE
U.S. DEPARTMENT OF TRANSPORTATION
FEDERAL HIGHWAY ADMINISTRATION



RUSSELLVILLE, ADAIRVILLE, AUBURN & LEWISBURG LABOR MARKET AREA

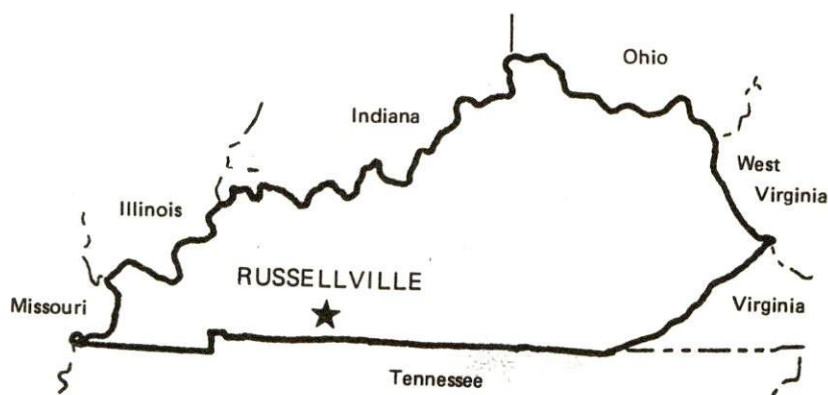
With
MAJOR HIGHWAY & RAILROAD SYSTEM

Shaded area denotes Labor Market Area.



SUMMARY OF INDUSTRIAL RESOURCES RUSSELLVILLE, ADAIRVILLE, AUBURN AND LEWISBURG, KENTUCKY

LOCATION



Road Distance in Miles from Russellville:

| | | | |
|----------|------------|-----------|------------|
| Atlanta | <u>296</u> | Baltimore | <u>724</u> |
| Chicago | <u>405</u> | Detroit | <u>505</u> |
| New York | <u>886</u> | St. Louis | <u>283</u> |

POPULATION

| | |
|--------------------------------|----------------|
| City of Russellville, 1977 | <u>6,394</u> |
| City of Adairville, 1977 | <u>1,059</u> |
| City of Auburn, 1977 | <u>956</u> |
| City of Lewisburg, 1977 | <u>719</u> |
| Logan County, 1978 | <u>22,300</u> |
| Labor Market Area, 1978 | <u>155,900</u> |
| % Nonwhite, Logan County, 1978 | <u>11.4</u> |

LABOR ANALYSIS

Labor Market Area - Logan, Butler, Muhlenberg, Simpson, Todd, and Warren Counties

Estimated available workers from labor market area, 1978:

| | | | |
|-------------------------|---------------|-------------------|---------------|
| Male | <u>6,562*</u> | Female | <u>6,272*</u> |
| Unemployment rate, 1979 | | Labor Market Area | <u>4.8%</u> |
| Logan County | <u>5.0%</u> | Simpson County | <u>4.7%</u> |
| Butler County | <u>9.2%</u> | Todd County | <u>6.5%</u> |
| Muhlenberg County | <u>5.5%</u> | Warren County | <u>3.9%</u> |

*Includes the number of men and women in adjoining Robertson County, Tennessee, who are available for industrial jobs.

Total employment, Logan County, 1979 - 9,981
 Manufacturing employment in labor market area, 1978 - 17,191
 Major local manufacturing plants:

| <u>Name</u> | <u>Employment</u> |
|---|-------------------|
| <u>Auburn</u> | |
| <u>Auburn Hosiery Mills, Inc.</u> | <u>250</u> |
| <u>Russellville</u> | |
| <u>E. R. Carpenter Company</u> | <u>525</u> |
| <u>Emerson Electric Company</u> | <u>500</u> |
| <u>Red Kap Industries</u> | <u>385</u> |
| <u>Rockwell International Corporation</u> | <u>413</u> |

Labor unions in local manufacturing plants:

Food and Commercial Workers; Teamsters; Steelworkers

INDUSTRIAL SERVICES

| | <u>Location</u> | <u>Mileage from Russellville</u> |
|--|-------------------------------|--------------------------------------|
| Tool & Die, Machine & Pattern Shops | <u>Russellville, Kentucky</u> | <u>--</u> |
| Metal Service Centers | <u>Russellville, Kentucky</u> | <u>--</u> |
| Heat Treating | <u>Nashville, Tennessee</u> | <u>54</u> |
| Metal Finishers | <u>Nashville, Tennessee</u> | <u>54</u> |
| | <u>Hartford, Kentucky</u> | <u>60</u> |
| Electric Motor Repair | <u>Auburn, Kentucky</u> | <u>11</u> |

TRANSPORTATION

Rail:

Railroad serving Russellville, Auburn and Lewisburg -
Louisville and Nashville Railroad
 Distance to nearest piggyback - 29 miles from Russellville

Highways:

Interstates - I-24 and I-65, both within 30 miles of Russellville
 Parkways - Green River, Pennyryle and Western Kentucky Parkways,
all within 40 miles of Russellville
 U.S. Highways - 68, 79 and 431 serve Logan County

Truck:

Number of interstate motor carriers - Russellville - 10, Adairville - 5,
Auburn - 7, Lewisburg - 4

Air:

Nearest scheduled airline service - Nashville Metropolitan Airport
Distance - 60 miles south of Russellville; Airlines serving - American, Braniff, Delta, Eastern, Ozark, Piedmont, Southern, TWA, and USAir
plus 5 commuter air carriers

Nearest local airport - Russellville-Logan County Airport
Distance - 5 miles southeast of Russellville;
Runway length - 3,300 feet

Water:

Nearest navigable river - Green River
Nearest public port - Owensboro, Kentucky; Distance - 74 miles north of Russellville

UTILITIES AND SERVICES

Electricity:

Russellville

Local distributor - Russellville Electric Plant Board
Source of power - Tennessee Valley Authority

Adairville and Lewisburg

Local distributor - Pennyrite RECC
Source of power - Tennessee Valley Authority

Auburn

Local distributor - Warren RECC
Source of power - Tennessee Valley Authority

Natural Gas:

Russellville, Adairville and Auburn

Local distributor - Western Kentucky Gas Company
Source of supply - Texas Gas Transmission Corporation
Available for new industry - Yes, in limited quantities

Natural gas service is not available in Lewisburg.

Other Fuels:

Number of area propane distributors - 2
Number of area distillate fuel oil distributors - 6

Water, treated:

Russellville

Local supplier - Municipal
Excess municipal system capacity - 1,100,000 gpd
Storage capacity - 1,600,000 gallons
Expansions planned - Yes

Adairville

Local supplier - Municipal
Excess municipal system capacity - 612,000 gpd
Storage capacity - 325,000 gallons
Expansions planned - No

Auburn

Local supplier - Municipal
Excess municipal system capacity - 15,000 gpd
Storage capacity - 90,000 gallons
Expansions planned - Yes

Lewisburg

Local supplier - Municipal
Excess municipal system capacity - None
Storage capacity - 100,000 gallons
Expansions planned - No

Water, raw:

Sources - Mud River and Red River

Sewer:

Russellville

Excess treatment capacity - 100,000 gpd
Planned expansions - Yes

Adairville

Excess treatment capacity - 75,000 gpd
Planned expansions - No

Auburn

Excess treatment capacity - 63,000 gpd
Planned Expansions - No

Lewisburg

Excess treatment capacity - 25,000 gpd
Planned expansions - No

CLIMATE

Temperature, Normal - 59.4 degrees F.
Precipitation, Normal - 46.00 inches
Snowfall, Mean Annual - 11.2 inches
Prevailing winds - South
Relative humidity (%) - 6 a.m. 84; 6 p.m. 62

GOVERNMENT

Russellville

Type - Mayor-City Council
Police personnel - full-time - 19
Fire department personnel - full-time - 4, volunteer - 22
Fire insurance rating (A.I.A.), class - Inside city - 7
Outside city - 10

Adairville

Type - Mayor-City Council
Police personnel - full-time - 1
Fire department personnel - volunteer - 26
Fire insurance rating (A.I.A.), class - Inside city - 7
Outside city - 10

Auburn

Type - Mayor-City Council
Police personnel - full-time - 2
Fire department personnel - volunteer - 20
Fire insurance rating (A.I.A.), class - Inside city - 7
Outside city - 10

Lewisburg

Type - Board of Trustees
Police personnel - full-time - 1
Fire department personnel - volunteer - 28
Fire insurance rating (A.I.A.), class - Inside city - 7
Outside city - 10

TAXES

Property taxes:

Combined state and local rates per \$100 valuation, 1979
(100% assessment)

| | <u>Inside City of Russellville</u> | <u>Inside City of Adairville</u> | |
|---|--|--------------------------------------|-------------------------|
| 1. Land and buildings | \$0.975 | \$1.002 | |
| 2. Mfg. machinery, raw materials, goods in process, pollution control equipment | 0.150 | 0.150 | |
| 3. Finished goods, office equipment, vehicles, other tangibles | 1.146 | 1.173 | |
| 4. Intangibles (accounts receivable, notes, bonds, etc.) | 0.250 | 0.250 | |
| 5. Leaseholds in I. R. bond financed plants | 0.015 | 0.015 | |
| | <u>Inside City of Auburn</u> | <u>Inside City of Lewisburg</u> | <u>Outside City</u> |
| 1. Land and buildings | \$0.847 | \$0.822 | \$0.572 |
| 2. Mfg. machinery, raw materials, goods in process, pollution control equipment | 0.150 | 0.150 | 0.150 |
| 3. Finished goods, office equipment, vehicles, other tangibles | 1.018 | 0.993 | 0.743 |
| 4. Intangibles (accounts receivable, notes, bonds, etc.) | 0.250 | 0.250 | 0.250 |
| 5. Leaseholds in I. R. bond financed plants | 0.015 | 0.015 | 0.015 |

Special local taxes:

Net profits tax - 1% in Russellville and 1% in Auburn

Utilities tax - 3% of electric, gas, water, sewer, telephone services

EDUCATION

Nearest state vocational-technical school - Bowling Green State
Vocational-Technical School at Bowling Green, 29 miles east
of Russellville

Area vocational education center - Russellville Area Vocational
Education Center at Russellville

Nearest college or university - Western Kentucky University at
Bowling Green, 29 miles east of Russellville

Public Schools:

High school enrollment - 1,424; Student/teacher ratio - 15-1
Middle school enrollment - 499; Student/teacher ratio - 17-1
Elementary school enrollment - 2,711; Student/teacher ratio - 18-1

Nonpublic Schools:

Enrollment - 45; Student/teacher ratio - 23-1

MEDICAL

Number of physicians locally - 11; Number of dentists locally - 6
Hospital - Logan County Hospital at Russellville
Number of beds - 108

COMMUNICATIONS

Local newspapers - News Democrat - Weekly; Logan Leader - Weekly
Local radio stations - WRUS-AM; WAKQ-FM stereo
Television reception - Bowling Green, Kentucky; Nashville, Tennessee

RELIGIOUS FACILITIES

Churches - 21 in Russellville, 8 in Adairville, 9 in Auburn and
5 in Lewisburg; Nearest Synagogues - Nashville, Tennessee, 54 miles
south of Russellville

FINANCIAL INSTITUTIONS

Logan County

Banks - 5; Total assets - \$105,103,208.72
Savings and loan associations - 1; Total assets - \$22,311,736.01

PUBLIC LODGING

Total number of hotels and motels - 5; Total rooms - 100

RECREATIONAL FACILITIES

Logan County

Public golf course; Parks; Tennis courts; Baseball fields; Football fields;
Basketball courts; Volleyball courts; Playgrounds; Picnic areas;
Country club with golf course, swimming pool and tennis court

Nearest state resort parks -

Lake Barkley State Resort Park

Camping; Swimming; Fishing; Water skiing; Boating; Lodgings;
Dining facility; Open year round

Pennyrile Forest State Resort Park

Camping; Swimming; Fishing; Boating; Lodgings; Dining facility

THE LABOR MARKET AREA

| Area | POPULATION | | |
|-------------------|------------|---------|--------------------|
| | 1978* | 1970 | Percent Nonwhite** |
| Russellville | 6,394** | 6,456 | 13.8 |
| Adairville | 1,059** | 973 | N/A |
| Auburn | 956** | 1,160 | 8.4 |
| Lewisburg | 719** | 651 | N/A |
| Labor Market Area | 155,900 | 140,814 | N/A |
| Logan County | 22,300 | 21,793 | 11.4 |
| Butler County | 10,600 | 9,723 | 0.6 |
| Muhlenberg County | 32,000 | 27,537 | 4.2 |
| Simpson County | 14,500 | 13,054 | 13.1 |
| Todd County | 12,100 | 10,823 | 14.5 |
| Warren County | 64,400 | 57,884 | 9.0 |

*Provisional Estimates.

**1977 Population Estimates; 1970 Percent Nonwhite for city; 1978 Percent Nonwhite for counties.

Sources: U.S. Department of Commerce, Bureau of the Census, Census of Population, 1970. U.S. Department of Commerce, Bureau of the Census, Current Population Reports, Series P-25, No. 830, October 1979; Series P-26, No. 78-17, August 1979. University of Louisville, Urban Studies Center, Population Research Unit, "Kentucky's Population Disaggregations of 1978 Estimates," January 1980.

LABOR FORCE CHARACTERISTICS OF RESIDENTS, 1979

| | Logan County | Labor Market Area |
|--------------------------|--------------|-------------------|
| Civilian Labor Force | 10,506 | 74,026 |
| Employment | 9,981 | 70,459 |
| Agricultural | 1,408 | 5,236 |
| Nonagricultural | 8,573 | 65,223 |
| Unemployment | 525 | 3,567 |
| Rate of Unemployment (%) | 5.0 | 4.8 |

Source: Kentucky Department for Human Resources, Kentucky Labor Force Estimates, Annual Averages, 1979.

LOGAN COUNTY MANUFACTURING FIRMS,
THEIR PRODUCTS AND EMPLOYMENT

| <u>Firm</u> (<u>Establishment date</u>) | <u>Product</u> | <u>Employment</u> | | | <u>Organized</u> |
|---|---|-------------------|-------------|---------------|------------------|
| | | <u>Total</u> | <u>Male</u> | <u>Female</u> | |
| <u>Adairville</u> | | | | | |
| Auburn Hosiery Mills, Inc. (1946) | Women's hosiery, T-shirts, shorts | 140 | 40 | 100 | |
| Odom Sausage Company (1964) | Sausage | 132 | 85 | 47 | * |
| <u>Auburn</u> | | | | | |
| Auburn Hosiery Mills, Inc. (1978) | Ladies' hosiery, panty hose | 250 | 50 | 200 | |
| Auburn Roller Mills, Inc. (1915) | Corn meal, feed | 24 | 24 | 0 | |
| Caldwell Lace Leather Company, Inc. (1863) | Leather tanning, gaskets, leather laces | 90 | 83 | 7 | |
| Colonial House Furniture (1960) | Reproduction furniture | 6 | 4 | 2 | |
| Graham Manufacturing, Inc. (1965) | Church and institutional furniture, bank furniture | 41 | 35 | 6 | |
| Scotts Auburn Mills, Inc. (1876) | Flour, corn meal, mill feed | 29 | 27 | 2 | |
| <u>Lewisburg</u> | | | | | |
| Hinton Lumber, Inc. (1933) | Rough lumber, ties, flitches | 14 | 13 | 1 | |
| Lewisburg Roller Mills (1944) | Feed | 4 | 4 | 0 | |
| Nelson Company of Kentucky (1976) | Wood pallets | 60 | 58 | 2 | |
| Red Kap Industries (1972) | Men's sportswear | 125 | 15 | 110 | |

(Contd.)

| Firm (Establishment date) | Product | Employment | | | Organized |
|--|--|------------|------|--------|-----------|
| | | Total | Male | Female | |
| Russellville | | | | | |
| Bilt-Rite Products Company, A Division of U.S. Industries (1958) | Poultry cages, welded mesh | 89 | 83 | 6 | |
| E. R. Carpenter Company (1969) | Urethane foam cushion | 525 | - | - | |
| Cates Lumber and Building Supply, Inc. (1963) | Lumber | 20 | 17 | 3 | |
| Coca-Cola Bottling Company (1924) | Soft drinks | 29 | 25 | 4 | * |
| Emerson Electric Company (1961) | Hermetic electric motors | 500 | 250 | 250 | |
| Green Meadows Dairy, Inc. (1957) | Milk | 14 | 11 | 3 | |
| Griffin Industries of Kentucky (1972) | Tallow by-products | 50 | 49 | 1 | |
| Hedges Office Equipment Company (1963) | Job printing | 5 | 3 | 2 | |
| Hi-Way Power and Equipment Corporation (1977) | Engine and transmission rebuilding | 41 | - | - | * |
| Illinois Tool Works, Inc. (1967) | Metal fasteners | 189 | 144 | 45 | |
| KAPCO, Inc. (N/A) | Asphalt | 75 | 73 | 2 | |
| The Kentucky Stone Company (1936) | Agricultural lime, crushed limestone | 12 | 12 | 0 | * |
| Logan Leader, News Democrat (1968) | Newspaper publishing | 20 | 8 | 12 | |
| McCarley and Richardson, Inc. (1949) | Feed | 12 | 11 | 1 | |
| Red Kap Industries (1944) | Men's work pants | 385 | 60 | 325 | |
| Rockwell International Corporation (1956) | Aluminum die castings, gas meters | 413 | 232 | 181 | |
| Russellville Concrete Products, Inc. (1937) | Concrete block, ready mixed concrete, concrete burial vaults | 15 | 15 | 0 | (Contd.) |

| <u>Firm</u> (Establishment date) | <u>Product</u> | <u>Employment</u> | | | <u>Organized</u> |
|---|---------------------------------|-------------------|-------------|---------------|------------------|
| | | <u>Total</u> | <u>Male</u> | <u>Female</u> | |
| Russellville Dental Lab (1956) | Dental appliances | 9 | 8 | 1 | |
| Shortenings, Inc. (1976) | Beef tallow, defatted tissue | 3 | 3 | 0 | |
| Smith Douglass Division, Borden Chemical, Borden Inc. (1949) | Fertilizer | 37 | 28 | 9 | |
| Southern States Cooperative, Inc., Fertilizer Division (1959) | Fertilizer | 21 | 20 | 1 | |

*See Labor Organizations below.

Source: Kentucky Department of Commerce, Division of Research and Planning.

LABOR ORGANIZATIONS

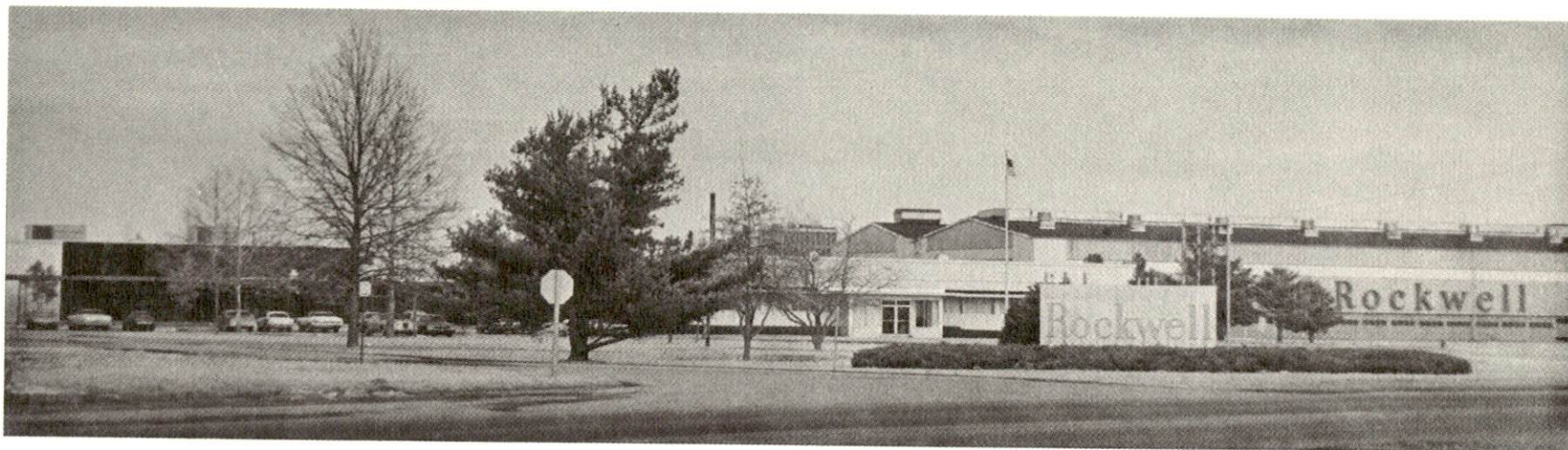
| <u>Union</u> | <u>Representing manufacturing workers at:</u> |
|--|---|
| <u>Adairville</u> | |
| United Food and Commercial Workers Union of North America, AFL-CIO | Odom Sausage Company |
| <u>Russellville</u> | |
| International Brotherhood of Teamsters, Chauffeurs, Warehousemen and Helpers of America | Coca-Cola Bottling Company; Hi-Way Power and Equipment Corporation |
| United Steelworkers of America, AFL-CIO | The Kentucky Stone Company |

INDUSTRIAL SERVICES

| | <u>Location</u> | <u>Mileage from Russellville</u> |
|--|--|--------------------------------------|
| Tool & Die, Machine & Pattern Shops | Russellville, Kentucky | - |
| Metal Service Centers | Russellville, Kentucky | - |
| Heat Treating | Nashville, Tennessee | 54 |
| Metal Finishers | Nashville, Tennessee Hartford, Kentucky | 54 60 |
| Electric Motor Repair | Auburn, Kentucky | 11 |

Sources: Kentucky Directory of Selected Industrial Services, 1979.

Kentucky Department of Commerce, Division of Research and Planning.



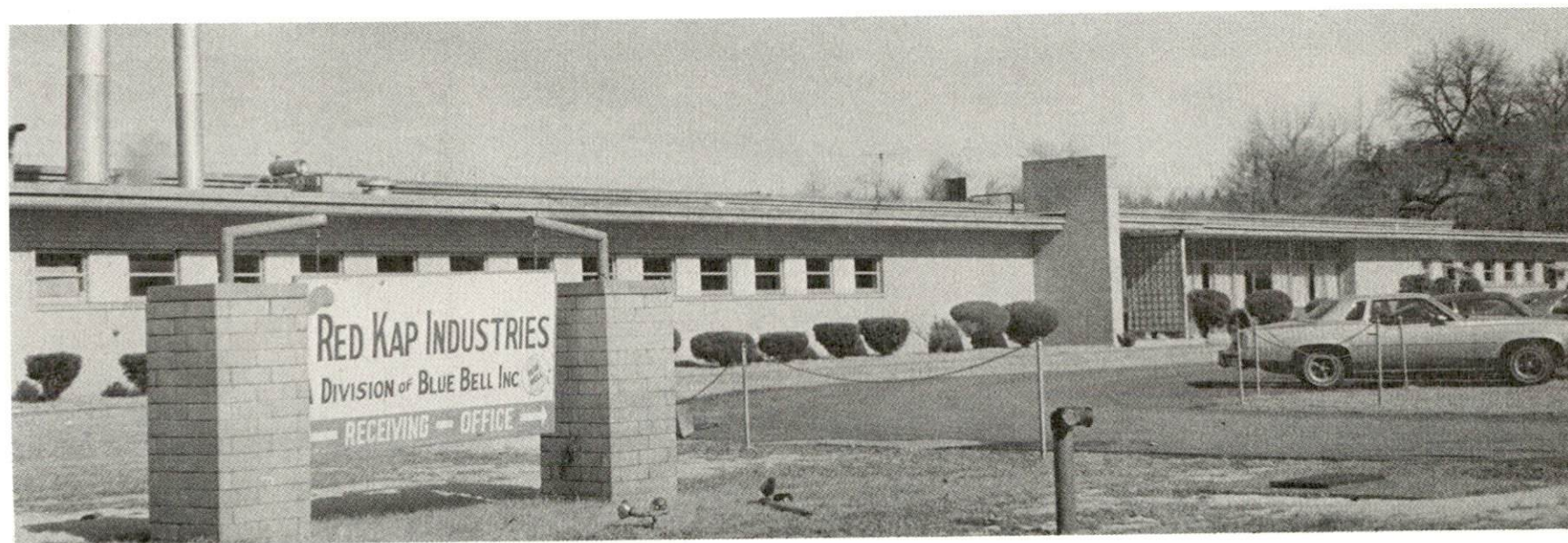
ROCKWELL INTERNATIONAL CORPORATION



E. R. CARPENTER COMPANY



EMERSON ELECTRIC COMPANY



RED KAP INDUSTRIES



ILLINOIS TOOL WORKS, INC.



BILT-RITE PRODUCTS COMPANY

ESTIMATED MALE LABOR SUPPLY
LOGAN COUNTY LABOR MARKET AREA

| Area | Current | | | | Future |
|-------------------|---------|--------------------|------------|----------------|--------------------------------------|
| | Total | Not in Labor Force | Unemployed | Under-employed | Reaching 18 years of age before 1986 |
| Labor Market Area | 6,562 | | | | 7,553 |
| Logan | 713 | 154 | 239 | 320 | 992 |
| Butler | 411 | 79 | 122 | 210 | 421 |
| Muhlenberg | 914 | 217 | 337 | 360 | 1,212 |
| Simpson | 444 | 98 | 156 | 190 | 679 |
| Todd | 437 | 81 | 156 | 200 | 539 |
| Warren | 3,083 | 414 | 679 | 1,990 | 2,357 |
| Robertson (Tenn.) | 560 | N/A | N/A | N/A | 1,353 |

Sources: Kentucky Department for Human Resources, Kentucky Labor Supply Estimates by County, 1978. Tennessee Department of Economic & Community Development, Available Labor, February 1979. Kentucky Department of Commerce, Future Labor Supply before 1986.

ESTIMATED FEMALE LABOR SUPPLY
LOGAN COUNTY LABOR MARKET AREA

| Area | Current | | | | Future |
|-------------------|---------|--------------------|------------|----------------|--------------------------------------|
| | Total | Not in Labor Force | Unemployed | Under-employed | Reaching 18 years of age before 1986 |
| Labor Market Area | 6,272 | | | | 7,233 |
| Logan | 656 | 70 | 266 | 320 | 981 |
| Butler | 357 | 32 | 125 | 200 | 419 |
| Muhlenberg | 836 | 99 | 377 | 360 | 1,157 |
| Simpson | 458 | 44 | 174 | 240 | 591 |
| Todd | 377 | 36 | 171 | 170 | 484 |
| Warren | 2,808 | 168 | 710 | 1,930 | 2,281 |
| Robertson (Tenn.) | 780 | N/A | N/A | N/A | 1,320 |

Sources: Kentucky Department for Human Resources, Kentucky Labor Supply Estimates by County, 1978. Tennessee Department of Economic & Community Development, Available Labor, February 1979. Kentucky Department of Commerce, Future Labor Supply before 1986.

AVERAGE WEEKLY WAGES BY INDUSTRY,
BY PLACE OF WORK, 1978

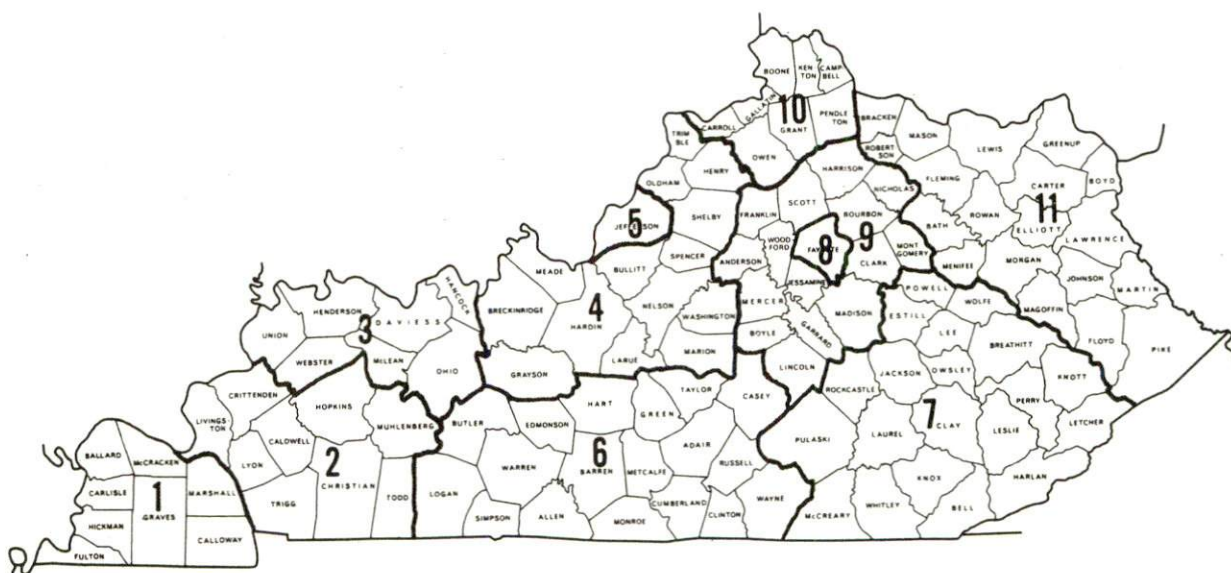
| | <u>Logan County</u> | <u>Butler County</u> | <u>Muhlenberg County</u> |
|---|---------------------------|--------------------------|------------------------------|
| All Industries | \$167.62 | \$163.01 | \$274.16 |
| Mining & Quarrying | * | * | * |
| Contract Construction | 227.26 | 96.17 | 197.02 |
| Manufacturing | 181.90 | 127.83 | 147.17 |
| Transportation, Communications & Public Utilities | 201.52 | 214.19 | 281.13 |
| Wholesale & Retail Trade | 124.50 | 131.20 | 159.26 |
| Finance, Insurance & Real Estate | 142.73 | * | 198.31 |
| Services | 123.14 | 131.91 | 130.06 |
| Other | 68.49 | 0 | 202.47 |
| | <u>Simpson County</u> | <u>Todd County</u> | <u>Warren County</u> |
| All Industries | \$186.19 | \$153.20 | \$187.08 |
| Mining & Quarrying | * | * | 253.84 |
| Contract Construction | 132.46 | 155.97 | 178.38 |
| Manufacturing | 215.82 | 168.72 | 216.92 |
| Transportation, Communications & Public Utilities | 277.35 | 198.22 | 258.78 |
| Wholesale & Retail Trade | 142.92 | 133.54 | 144.68 |
| Finance, Insurance & Real Estate | 152.25 | 146.20 | 204.93 |
| Services | 117.89 | 94.62 | 179.43 |
| Other | * | * | * |

*Not disclosed.

Note: Excludes domestic workers, railway workers; certain nonprofit corporations; majority of federal, state, and local government workers; and self-employed workers.

Source: Kentucky Department for Human Resources, Average Weekly Wages of Workers Covered by Kentucky Unemployment Insurance Law, 1978.

Associated Industries of Kentucky, a voluntary organization of Kentucky businesses, regularly collects occupational wage rates and fringe benefits data from participating member firms. Data is compiled for over 127 clearly defined office, production, and service occupations. Tabulations are published for eleven regions of Kentucky, as shown on the map below. It should be noted that the data may be weighted by the preponderance of firms in the larger cities and may be somewhat higher than the rates paid in the smaller communities. Data from these tabulations are available, upon request, from the Kentucky Department of Commerce, Frankfort, Kentucky 40601.



Associated Industries of Kentucky Area Wage Surveys

Up-to-date occupational wage rates of the existing industries are maintained by South Kentucky Industrial Development Association, Inc., Post Office Box 726, Hopkinsville, Kentucky 42240.

PER CAPITA PERSONAL INCOME

| <u>Area</u> | <u>1977</u> | <u>1973</u> | <u>Percent Change</u> |
|-------------------|-----------------|-----------------|---------------------------|
| Logan County | \$5,371 | \$3,586 | 49.8 |
| Labor Market Area | | | |
| Range | \$3,865 - 6,407 | \$2,583 - 4,015 | N/A |
| Kentucky | 5,989 | 4,021 | 48.9 |
| U.S. | 7,026 | 4,980 | 41.1 |

Source: U.S. Department of Commerce, Bureau of Economic Analysis,
April 1979.

TRANSPORTATION

Rail

Line serving Russellville - Louisville and Nashville Railroad

Services - Main line; one local freight from Russellville to Bowling Green and return six days a week; team track space for six cars; piggyback facilities available at Bowling Green, Kentucky, 29 miles east of Russellville, and at Nashville, Tennessee, 54 miles south of Russellville

Line serving Auburn - Louisville and Nashville Railroad

Services - Main line; one local freight from Russellville to Bowling Green and return six days a week with stops at Auburn; piggyback facilities available at Bowling Green, Kentucky, 18 miles east of Auburn

Line serving Lewisburg - Louisville and Nashville Railroad*

Services - Branch line; freight service provided when needed; team track space for six cars; piggyback facilities available at Bowling Green, Kentucky, 40 miles southeast of Lewisburg

For details on routing, schedules, rates, and services, contact:

Director of Industrial Development
Louisville and Nashville Railroad
908 West Broadway
Louisville, Kentucky 40201
(502) 587-5723

Highways

U.S. Highways 68, 79 and 431, all "AAA" rated highways with 80,000 pound gross load limits, serve Logan County. U.S. 68 provides easy access to the Green River Parkway, 25 miles east of Russellville, and to the Pennyryle Parkway, 35 miles to the west. The Western Kentucky Parkway is 37 miles to the north via U.S. 431.

An interchange of Interstate 65 is located 30 miles east of Russellville via U.S. 68 and the Green River Parkway, and an interchange of Interstate 24 is located 27 miles southwest of Russellville via U.S. 79.

*The Louisville and Nashville Railroad has made a request to abandon that portion of the branch line which runs between Drakesboro and Russellville and passes through Lewisburg.

Truck Service

| <u>Company</u> | <u>Home Office</u> |
|--------------------------------------|--|
| <u>Russellville</u> | |
| Branch Motor Express Company* | 114 Fifth Avenue New York, New York 10011 |
| Cooper-Jarrett, Inc.** | Hanover Plaza Morristown, New Jersey 07960 |
| Marvin Hayes Lines, Inc.** | Box 468 Clarksville, Tennessee 37040 |
| McLean Trucking Company** | P.O. Box 213 Winston-Salem, North Carolina 27102 |
| Overnite Transportation Company** | P.O. Box 1216 Richmond, Virginia 23209 |
| Pulaski Highway Express, Inc.** | P.O. Box 23081 Nashville, Tennessee 37203 |
| Renner's Express, Inc.* | P.O. Box 882 Indianapolis, Indiana 46206 |
| Smith's Transfer Corporation** | P.O. Box 1000 Staunton, Virginia 24401 |
| Springfield Express, Inc.** | P.O. Box 310 Springfield, Tennessee 37172 |
| Wilson Freight Company** | 11353 Reed Hartman Highway Cincinnati, Ohio 45241 |
| <u>Adairville</u> | |
| Branch Motor Express Company* | -Same as above- |
| Cooper-Jarret, Inc.** | -Same as above- |
| McLean Trucking Company** | -Same as above- |
| Overnite Transportation Company** | -Same as above- |
| Springfield Express, Inc.** | -Same as above- |
| <u>Auburn</u> | |
| Branch Motor Express Company* | -Same as above- |
| Cooper-Jarret, Inc.** | -Same as above- |
| McLean Trucking Company** | -Same as above- |
| Overnite Transportation Company** | -Same as above- |
| Renner's Express, Inc.* | -Same as above- |
| Smith's Transfer Corporation** | -Same as above- |
| United Trucking Company* | 8505 West Warren Dearborn, Michigan 48126 |

(Contd.)

*Interstate and intrastate service.
**Interstate service only.

CompanyHome OfficeLewisburg

Cooper-Jarret, Inc.*

Hanover Plaza
Morristown, New Jersey 07960Overnite Transportation
Company*P.O. Box 1216
Richmond, Virginia 23209

Smith's Transfer Corporation*

P.O. Box 1000
Staunton, Virginia 24401

Springfield Express, Inc.*

P.O. Box 310
Springfield, Tennessee 37172Other Freight ServicesNearest Shipping Center or Home OfficePurolator Courier
Corporation**

Bowling Green

United Parcel Service**

Bowling Green

KATO Express (air cargo
service)***

Elizabethtown

*Interstate only.

**For regular scheduled pickups or for occasional pickups, arrangements must be made with the Louisville office of Purolator Courier Corporation or United Parcel Service.

***Daily pickup and delivery service is available to and from Standiford Field in Louisville. Arrangements for service should be made through the home office in Elizabethtown.

HIGHWAY MILES AND TRUCK TRANSIT TIME IN DAYS FROM
RUSSELLVILLE, KENTUCKY, TO SELECTED MARKET CENTERS

| City | Highway Miles | Delivery | | City | Highway Miles | Delivery | |
|------------------|------------------|------------|--|------------------|------------------|------------|--|
| | | Time TL | | | | Time TL | |
| Atlanta, Ga. | 296 | 3 | | Los Angeles, Ca. | 2,079 | 5 | |
| Baltimore, Md. | 724 | 4 | | Louisville, Ky. | 145 | 1 | |
| Birmingham, Ala. | 250 | 3 | | Nashville, Tenn. | 54 | 1 | |
| Chicago, Ill. | 405 | 3 | | New Orleans, La. | 571 | 3 | |
| Cincinnati, Ohio | 246 | 3 | | New York, N.Y. | 886 | 5 | |
| Cleveland, Ohio | 490 | 4 | | Pittsburgh, Pa. | 526 | 4 | |
| Detroit, Mich. | 505 | 4 | | St. Louis, Mo. | 283 | 3 | |
| Knoxville, Tenn. | 231 | 3 | | | | | |

Source: Delivery Time Only - Renner's Express, Inc., 1350 South West
Street, P.O. Box 882, Indianapolis, Indiana 46206.

Air

Local

Location: Russellville-Logan County Airport*
 Runways: 5 miles southeast of Russellville
 Length: 1 paved
 Traffic: 3,300 feet
 Control: Wind sock
 Lighting: Sundown to sunrise, rotating beacon
 Services: 100 LL octane, charter, flight instruction,
 tie down, restrooms
 Air Freight
 Service: Chartered air freight services must be
 arranged

*During 1980, a visual approach slope indicator (VASI) and a hangar which
will contain office space will be added to the airport facilities.

Nearest Scheduled Airline Service

| | |
|----------------------|--|
| Location: | Nashville Metropolitan Airport 6 miles southeast of Nashville, Tennessee; 60 miles south of Russellville |
| Runways: | 3 paved |
| Length: | 8,000 feet; 7,700 feet; 4,320 feet |
| Traffic Control: | Tower |
| Lighting: | Beacon, runway |
| Services: | American, Braniff, Delta, Eastern, Ozark, Piedmont, Southern, TWA, and USAir airlines; Air Kentucky, Air Bama, Comair, Tennessee Airways, and Vale International commuter air carriers; 100 LL, 100, and jet fuel; major repairs, major Avionics repairs; tiedowns and hangars; charter service; flight instructions; plane rental; U.S. Customs; car rental; limousine; taxi; weather information; hotel; restaurant |
| Air Freight Service: | Air freight terminal |

Bus - Russellville, Adairville, Auburn and Lewisburg are served by Tennessee Trailblazers.

Taxi - Two radio-dispatched companies operate in Russellville from 6 a.m. to 6 p.m.

Rental Services - Car, truck and trailer rentals are available in Russellville.

Water

The Green River, which is located 34 miles north of Russellville, is the nearest navigable waterway. A 9-foot navigation channel is maintained on the Green River from Mile 103 near Paradise to the confluence of the Green and Ohio Rivers. Port facilities are available on the Ohio River at Owensboro, 74 miles north of Russellville.

POWER AND FUEL

Electricity

Company serving Russellville - Russellville Electric Plant Board

Source of power - Tennessee Valley Authority

Total generating capacity - 27,071,480 KW*

For industrial rates contact:

South Kentucky Industrial Development
Association, Inc.

P.O. Box 726

Hopkinsville, Kentucky 42240

(502) 885-5392

and/or

Electric Plant Board

P.O. Box 208

Russellville, Kentucky 42276

(502) 726-2466

Company serving Adairville, Lewisburg and parts of Logan County -

Pennyryle Rural Electric Cooperative Corporation

Source of power - Tennessee Valley Authority

Total generating capacity - 27,071,480 KW*

For industrial rates contact:

South Kentucky Industrial Development
Association, Inc.

P.O. Box 726

Hopkinsville, Kentucky 42240

(502) 885-5392

and/or

Pennyryle RECC

2000 Harrison Street

P.O. Box 551

Hopkinsville, Kentucky 42240

(502) 886-2555

(Contd.)

*1976 capacity in service - kilowatts.

Company serving Auburn and parts of Logan County - Warren Rural
Electric Cooperative Corporation
Source of power - Tennessee Valley Authority
Total generating capacity - 27,071,480 KW*
For industrial rates contact:

South Kentucky Industrial Development
Association, Inc.
P.O. Box 726
Hopkinsville, Kentucky 42240
(502) 885-5392

and/or

Warren RECC
951 Fairview Avenue
P.O. Box 1118
Bowling Green, Kentucky 42101
(502) 842-6541

Natural Gas

Company serving Russellville - Western Kentucky Gas Company
Source of supply - Texas Gas Transmission Corporation
Size of transmission mains - 10 inches (supplier)
4 inches (distributor)
Distribution mains - 4, 3 and 2 inches
Distribution pressure - 15 to 40 psi
Btu content - 1,000 per cubic foot
Specific gravity - 0.65
For rates and supplies contact:

Western Kentucky Gas Company
311 West 7th Street
Owensboro, Kentucky 42301
(502) 684-8411

Company serving Adairville - Western Kentucky Gas Company
Source of supply - Texas Gas Transmission Corporation
Size of transmission mains - 10 inches (supplier)
3 inches (distributor)
Distribution mains - 4, 3 and 2 inches
Distribution pressure - 10 to 15 psi
Btu content - 1,000 per cubic foot
Specific gravity - 0.65
For rates and supplies contact:

Western Kentucky Gas Company
311 West 7th Street
Owensboro, Kentucky 42301
(502) 684-8411

*1976 capacity in service - kilowatts.

Company serving Auburn - Western Kentucky Gas Company
Source of supply - Texas Gas Transmission Corporation
Size of transmission mains - 8 inches (supplier)
4 inches (distributor)
Distribution mains - 4, 3 and 2 inches
Distribution pressure - 25 psi
Btu content - 1,000 per cubic foot
Specific gravity - 0.65
For rates and supplies contact:

Western Kentucky Gas Company
311 West 7th Street
Owensboro, Kentucky 42301
(502) 684-8411

Natural gas service is not available in Lewisburg.

Other Fuels

Propane

Pargas of Franklin
700 North Main Street
Franklin, Kentucky 42134

Southern States Russellville Cooperative
Cornelius Avenue
Russellville, Kentucky 42276

Fuel oils

Distillate fuel oil -

Ashland Oil, Inc.
West 2nd Street
Russellville, Kentucky 42276

Gulf Heating Oil
Cornelius Avenue
Russellville, Kentucky 42276

Ballance Oil Company
West 2nd Street
Russellville, Kentucky 42276

Miles and Arnold Oil Company
Hopkinsville Road
Russellville, Kentucky 42276

Chevron USA, Inc.
118 South Clay
Hopkinsville, Kentucky 42240

Shaw Oil Company - DX Products
210 Hopkinsville Road
Russellville, Kentucky 42276

Residual fuel oil - Arrangements must be made with the refinery.

Low sulphur content coal - Available in Kentucky.

WATER AND SEWERAGE

Water

Company serving Russellville - Russellville Water Works*
1st and Main Streets
Russellville, Kentucky 42276
(502) 726-2638

Source - Lake Herndon

Treatment plant capacity - 2,500,000 gallons per day

Average daily consumption - 1,250,000 gallons

Peak daily consumption - 1,400,000 gallons

Type treatment - Coagulation, flocculation, sedimentation,
filtration, chlorination, fluoridation

Storage capacity - 1,600,000 gallons

Size lines - 12, 10, 8, 6 and 4 inches

Average pressure - 74 psi

Average temperature - 18 degrees C.

MONTHLY WATER RATES

| | | | |
|-------|-----------------|--------|---------------|
| First | 2,000 gallons | \$3.25 | Minimum |
| Next | 5,000 gallons | 1.17 | per M gallons |
| Next | 15,000 gallons | 1.04 | per M gallons |
| Next | 25,000 gallons | .91 | per M gallons |
| Next | 53,000 gallons | .78 | per M gallons |
| Over | 100,000 gallons | .455 | per M gallons |

Tap-on charges: 5/8-inch meter - \$105
1-inch meter - 160
1 1/2-inch meter - 250
2-inch meter - 425

*There are plans to increase the capacity of the water treatment plant by 1,000,000 gallons per day by changing rapid sand filters in the plant to a microfloc system.

Company serving Adairville - Adairville Water Works*
P.O. Box 185
Adairville, Kentucky 42202
(502) 539-8661

Source - South Fork Red River
Treatment plant capacity - 912,000 gallons per day**
Average daily consumption - 210,000 gallons
Peak daily consumption - 300,000 gallons
Type treatment - Coagulation, flocculation, sedimentation,
filtration, chlorination, fluoridation
Storage capacity - 325,000 gallons
Size lines - 8, 6, 4 and 2 inches
Average pressure - 40 to 65 psi
Average temperature - 25 degrees C.

MONTHLY WATER RATES

| | | |
|----------|----------------|--------------------|
| First | 2,000 gallons | \$7.00 Minimum |
| Next | 2,000 gallons | 3.25 per M gallons |
| Next | 2,000 gallons | 2.50 per M gallons |
| Next | 4,000 gallons | 1.70 per M gallons |
| Next | 40,000 gallons | 1.20 per M gallons |
| All over | 50,000 gallons | .80 per M gallons |

Tap-on charge: \$75 for 5/8-inch meter

*A new 912,000 gallon per day water treatment plant was put into operation in November of 1978.

**Kentucky Department for Natural Resources and Environmental Protection.

Company serving Auburn - Auburn Water Works*
P.O. Box 465
Auburn, Kentucky 42206
(502) 542-4475

Source - Blue Hole Spring

Treatment plant capacity - 200,000 gallons per day

Average daily consumption - 142,000 gallons

Peak daily consumption - 185,000 gallons

Type treatment - Prechlorination, coagulation, sedimentation,
filtration, postchlorination, fluoridation

Storage capacity - 90,000 gallons

Size lines - 6 and 2 inches

Average pressure - 58 psi

Average temperature - 59 degrees F.

MONTHLY WATER RATES

| | | |
|----------|-----------------|--------------------|
| First | 1,500 gallons | \$2.80 Minimum |
| Next | 2,500 gallons | 1.60 per M gallons |
| Next | 6,000 gallons | 1.40 per M gallons |
| Next | 10,000 gallons | 1.20 per M gallons |
| Next | 10,000 gallons | 1.00 per M gallons |
| Next | 20,000 gallons | .90 per M gallons |
| Next | 50,000 gallons | .80 per M gallons |
| All over | 100,000 gallons | .70 per M gallons |

Tap-on charges:

| | |
|------------------|---------|
| 3/4-inch meter | - \$150 |
| 1-inch meter | - 200 |
| 1 1/4-inch meter | - 250 |
| 1 1/2-inch meter | - 350 |
| 2-inch meter | - 450 |

*Six fire hydrants and 8,000 feet of 6-inch water line have been installed to serve a recently annexed residential area and an additional 3,000 feet of water line will be extended to the area. A water line has been extended to hook onto the East Logan Water District. The water district, which will be in operation by the summer of 1980, will purchase treated water from the Russellville Water Works and will serve as an additional water source for the city of Auburn.

Company serving Lewisburg - Lewisburg Water Works
P.O. Box 239
Lewisburg, Kentucky 42256
(502) 755-4490

Source - 45-acre lake

Treatment plant capacity - 108,000 gallons per day*

Average daily consumption - 70,000 gallons*

Peak daily consumption - At capacity*

Type treatment - Coagulation, flocculation, sedimentation,
chlorination, fluoridation

Storage capacity - 100,000 gallons

Size lines - 4 and 6 inches

Average pressure - 60 psi

Average temperature - 50 degrees F.

MONTHLY WATER RATES

| | | |
|----------|----------------|--------------------|
| First | 2,000 gallons | \$4.50 Minimum |
| Next | 3,000 gallons | 1.30 per M gallons |
| Next | 5,000 gallons | 1.00 per M gallons |
| Next | 15,000 gallons | .80 per M gallons |
| All over | 25,000 gallons | .65 per M gallons |

Tap-on charges: \$ 85.00 inside city limits
127.50 outside city limits

*Kentucky Department for Natural Resources and Environmental Protection.

Name of water district - Russellville Water District #1
166 1/2 South Main Street
Russellville, Kentucky 42276
(502) 726-7151

Area served - Adjacent to southern city limits of Russellville

Date when water district began operating - 1966

Source of supply of treated water - Russellville Water Works and
Adairville Water Works

Average amount of water used in a 24-hour period - 200,000 gallons

Peak amount of water used in a 24-hour period - 232,000 gallons

Storage capacity - 100,000 gallons

Average pressure - 54 psi

Average temperature - 20 degrees C.

Size lines - 6, 4 and 2 inches

Monthly rates -

| | | |
|----------|----------------|--------------------|
| First | 2,000 gallons | \$10.00 Minimum |
| Next | 3,000 gallons | 1.00 per M gallons |
| Next | 5,000 gallons | .75 per M gallons |
| All over | 10,000 gallons | .50 per M gallons |

Tap-on charge: Cost of materials and labor

Name of water district - North Logan Water District #1
Route 4
Russellville, Kentucky 42276
(502) 726-7988

Area served - North Logan County

Date when water district began operating - March 1971

Source of supply of treated water - Russellville Water Works

Average amount of water used in a 24-hour period - 60,000 gallons

Peak amount of water used in a 24-hour period - 75,000 gallons

Storage capacity - 100,000 gallons

Average pressure - 100 psi

Size lines - 6, 4 and 3 inches

Monthly rates -

| | | |
|----------|----------------|--------------------|
| First | 2,000 gallons | \$5.50 Minimum |
| Next | 2,000 gallons | 2.50 per M gallons |
| Next | 6,000 gallons | 1.10 per M gallons |
| Next | 15,000 gallons | .90 per M gallons |
| All over | 25,000 gallons | .75 per M gallons |

Tap-on charge: \$200

Name of water district - South Logan Water District
Route 3
Adairville, Kentucky 42202
(502) 539-6731

Area served - South Logan County

Date when water district began operating - August 1977

Source of supply of treated water - Adairville Water Works and
Russellville Water District #1

Average amount of water used in a 24-hour period - 59,000 gallons

Peak amount of water used in a 24-hour period - 76,600 gallons

Storage capacity - 100,000 gallons

Average pressure - 60 psi

Size lines - 8, 6 and 4 inches

Monthly rates -

5/8-inch Meter

| | | |
|-------|----------------|--------------------|
| First | 2,000 gallons | \$8.75 Minimum |
| Next | 2,000 gallons | 3.50 per M gallons |
| Next | 2,000 gallons | 2.60 per M gallons |
| Next | 4,000 gallons | 1.75 per M gallons |
| Over | 10,000 gallons | 1.00 per M gallons |

3/4-inch Meter

| | | |
|-------|----------------|--------------------|
| First | 3,000 gallons | \$12.25 Minimum |
| Next | 1,000 gallons | 3.50 per M gallons |
| Next | 2,000 gallons | 2.60 per M gallons |
| Next | 4,000 gallons | 1.75 per M gallons |
| Over | 10,000 gallons | 1.00 per M gallons |

1-inch Meter

| | | |
|-------|----------------|--------------------|
| First | 5,000 gallons | \$18.35 Minimum |
| Next | 1,000 gallons | 2.60 per M gallons |
| Next | 4,000 gallons | 1.75 per M gallons |
| Over | 10,000 gallons | 1.00 per M gallons |

1 1/2-inch Meter

| | | |
|-------|----------------|--------------------|
| First | 25,000 gallons | \$43.00 Minimum |
| Over | 25,000 gallons | 1.00 per M gallons |

2-inch Meter

| | | |
|-------|----------------|--------------------|
| First | 50,000 gallons | \$68.00 Minimum |
| Over | 50,000 gallons | 1.00 per M gallons |

Tap-on charges: 5/8-inch meter - \$250 plus \$50 deposit
1-inch meter - \$350 plus \$50 deposit

Name of water district - East Logan Water District
209 East 4th Street
Russellville, Kentucky 42276
(502) 726-8922

The East Logan Water District is presently under construction and scheduled to be in operation by the summer of 1980. The water district will purchase treated water from the Russellville Water Works and will serve approximately 580 customers in eastern Logan County. Storage facilities will consist of one 200,000-gallon storage tank and water mains will be 3 to 6 inches in size. Monthly water rates and tap-on charges for customers served by the East Logan Water District will be as follows:

Monthly rates -

5/8 x 3/4-inch Meter

| | | |
|-------|----------------|--------------------|
| First | 2,000 gallons | \$9.00 Minimum |
| Next | 2,000 gallons | 4.25 per M gallons |
| Next | 2,000 gallons | 4.00 per M gallons |
| Next | 4,000 gallons | 2.65 per M gallons |
| Over | 10,000 gallons | 1.25 per M gallons |

1-inch Meter

| | | |
|-------|----------------|--------------------|
| First | 4,000 gallons | \$17.50 Minimum |
| Next | 2,000 gallons | 4.00 per M gallons |
| Next | 4,000 gallons | 2.65 per M gallons |
| Over | 10,000 gallons | 1.25 per M gallons |

1 1/2-inch Meter

| | | |
|-------|----------------|--------------------|
| First | 6,000 gallons | \$25.50 Minimum |
| Next | 4,000 gallons | 2.65 per M gallons |
| Over | 10,000 gallons | 1.25 per M gallons |

2-inch Meter

| | | |
|-------|----------------|--------------------|
| First | 10,000 gallons | \$36.10 Minimum |
| Over | 10,000 gallons | 1.25 per M gallons |

| | | |
|-----------------|----------------------|-------|
| Tap-on charges: | 5/8 x 3/4-inch meter | \$300 |
| | 3/4-inch meter | 300 |
| | 1-inch meter | 400 |
| | 1 1/2-inch meter | 600 |
| | 2-inch meter | 800 |

| | |
|--------------------------|---------------------------------------|
| Larger than 2-inch meter | Actual cost of meter and installation |
|--------------------------|---------------------------------------|

Surface water sources - Mud River and Red River
Average discharge - Not available
Expected ground water yield - 5 to 200 gpm in southern half of county;
5 gpm or less in northern half of county

Sewerage

Company serving Russellville - Russellville Sewer Department*
Public Square
Russellville, Kentucky 42276
(502) 726-2733

Design capacity - 1,200,000 gallons per day
Average daily flow - 1,100,000 gallons
Treatment - Primary and secondary
Type treatment - Clarifier, drying beds, trickling filter,
chlorine contact chamber
Treated effluent discharged into - Town Creek
Size of sanitary mains - 18, 16, 12, 10, 8 and 6 inches
Rates - 75 percent of monthly water bill
Tap-on charge: \$50

Company serving Adairville - Adairville Sewer Department**
P.O. Box 185
Adairville, Kentucky 42202
(502) 539-8661

Design capacity - 166,000 gallons per day***
Average daily flow - 91,000 gallons
Treatment - Secondary
Type treatment - Aeration, clarifier, drying beds
Treated effluent discharged into - South Fork Red River
Size of sanitary mains - 12, 10 and 8 inches
Rates - \$3.00 minimum monthly charge plus \$.70 per 1,000 gallons
of water used
Tap-on charge: \$200 plus a \$5 inspection fee

*Engineering plans and specifications are being drawn up for a new sewage treatment plant which will be designed for an average capacity of 2 million gallons per day and a peak capacity of 3.5 million gallons per day.

**A lift station has been installed in the eastern part of the city. Step I of a 201 Facilities Plan has been completed.

***Kentucky Department for Natural Resources and Environmental Protection.

Company serving Auburn - Auburn Sewer Department*
U.S. 68 East
Auburn, Kentucky 42206
(502) 542-4475

Design capacity - 166,000 gallons per day
Average daily flow - 103,000 gallons
Treatment - Primary and secondary
Type treatment - Grit chamber, prechlorination, comminutor,
deep well primary clarifier, digester, heat exchanger,
trickling filter, secondary clarifier, final chlorine
contact basin
Treated effluent discharged into - Black Lick Creek
Size of sanitary mains - 10, 8 and 6 inches
Size of storm mains - 18 inches
Rates - 100 percent of monthly water rates
Tap-on charge: \$250

Company serving Lewisburg - Lewisburg Sewer Works
P.O. Box 239
Lewisburg, Kentucky 42256
(502) 755-4828

Design capacity - 125,000 gallons per day
Average daily flow - 100,000 gallons
Treatment - Secondary
Type treatment - Two-cell lagoon system
Treated effluent discharged into - Alum Lick Creek
Size of sanitary mains - 8, 10 and 12 inches
Rates - 100 percent of monthly water bill
Tap-on charge: \$150

*The sewer department has installed 3,500 feet of new sewer main and plans to install an additional 5,000 feet of main.

CLIMATE

Logan County

Temperature

| | |
|--|---------------|
| Normal (30-year record) | 59.4 degrees |
| Average annual 1978 | 58.0 degrees |
| Record highest, July, 1952 (39-year record) | 107.0 degrees |
| Record lowest, January, 1963 (39-year record) | -15.0 degrees |
| Normal heating degree days (30-year record) | 3,696 |
| (Heating degree day totals are the sums of negative departures of average daily temperatures from 65 degrees F.) | |

Precipitation

| | |
|--|--------------|
| Normal (30-year record) | 46.00 inches |
| Mean annual snowfall (37-year record) | 11.20 inches |
| Total precipitation 1978 | 53.44 inches |
| Mean number days precipitation (.01 inch or more) (37-year record) | 119 |
| Mean number days thunderstorms (37-year record) | 55 |

Prevailing Winds (22-year record)

South

Relative Humidity (13-year record)

| | |
|----------|------------|
| Midnight | 79 percent |
| 6 a.m. | 84 percent |
| Noon | 58 percent |
| 6 p.m. | 62 percent |

Source: U.S. Department of Commerce, Environmental Science
Services Administration, Climatological Data, 1978.
Station of record: Nashville, Tennessee.

LOCAL GOVERNMENT

City

Russellville

Structure - Mayor - 4-year term; 6 councilmen - 2-year terms

Budget 1979 - General Fund \$685,800.00

Water and Sewer Fund 617,200.00

Fees and licenses - Occupational license taxes - one percent of the gross salaries, wages, commissions and other compensations earned by persons for work done or services performed in the City, and one percent of the net profits of all businesses, professions or occupations from activities conducted in the City.

Adairville

Structure - Mayor - 4-year term; 6 councilmen - 2-year terms

Budget 1978 - General Fund \$ 67,147.79

Water and Sewer Fund 143,324.69

Fees and licenses - Unloading license - \$25.50 annually; city automobile stickers - \$12.50 annually

Auburn

Structure - Mayor - 4-year term; 6 councilmen - 2-year terms

Budget 1979-80 - General Fund \$78,000.00

Water and Sewer Fund 90,000.00

Fees and licenses - Occupational license taxes - one percent of the gross salaries, wages, commissions and other compensation earned by persons for work done or services performed in the City, and one percent of the net profits of all businesses, professions or occupations from activities conducted in the City

Lewisburg

Structure - Board of Trustees - Chairman and 4 board members - 2-year terms

Receipts 1978-79 - General Fund \$36,279.00

Water and Sewer Fund 75,998.00

Fees and licenses - Unloading license fees - \$15 and \$20 annually; city automobile stickers - \$7.50 annually

County

Structure - County Judge/Executive - 4-year term;

8 magistrates - 4-year terms

Budget 1979-80 - General Fund \$741,509; Road Fund \$229,000

Assessed Value of Property

| <u>Classes of Property</u> | <u>Russellville (1979)</u> | <u>Adairville (1979)</u> |
|----------------------------|----------------------------|--------------------------|
| Real Estate | \$51,746,112 | \$5,123,861 |
| Tangibles | 16,971,000 | 1,840,399 |

| <u>Classes of Property</u> | <u>Auburn (1979-80)</u> | <u>Lewisburg (1979-80)</u> | <u>Logan County (1979-80)</u> |
|----------------------------|-----------------------------|--------------------------------|-----------------------------------|
| Real Estate | \$8,214,971 | \$4,419,366 | \$219,502,016 |
| Tangibles | 2,596,863 | 1,017,699 | 44,666,719 |

Property Taxes

All property in Kentucky is assessed at 100 percent of fair cash value.

Land and buildings are taxed by the state and may be taxed by local jurisdictions. The state rate is \$0.279 per \$100 of assessed valuation.

Manufacturing machinery, raw materials inventories, pollution control equipment, and goods in the process of manufacture are not subject to local taxation. The state rate is \$0.15 per \$100.

Other tangible personal property owned by manufacturers (automobiles, trucks, finished goods, office furniture, office equipment) is taxed by the state at \$0.45 per \$100 and may be taxed by local jurisdictions.

Property stored in public warehouses in a transit status is not subject to local taxation. The state rate is only \$0.015 per \$100.

Intangible personal property located in Kentucky (money in hand, shares of stock, notes, bonds, accounts receivable, and other credits) is taxed by the state at \$0.25 per \$100, and is not subject to local taxation.

Private leaseholds in industrial facilities owned by cities or counties and financed by industrial revenue bonds are subject to a state tax of \$0.015 per \$100 of value (essentially the lessee's equity, adjusted for appreciation or depreciation). Local taxation is not permitted.

Combined State and Local Rates Per \$100 Valuation, 1979*
(100% assessment)

| | <u>Inside City of Russellville</u> | <u>Inside City of Adairville</u> | |
|---|--|--------------------------------------|-------------------------|
| 1. Land and buildings | \$0.975 | \$1.002 | |
| 2. Mfg. machinery, raw materials, goods in process, pollution control equipment | 0.150 | 0.150 | |
| 3. Finished goods, office equipment, vehicles, other tangibles | 1.146 | 1.173 | |
| 4. Intangibles (accounts receivable, notes, bonds, etc.) | 0.250 | 0.250 | |
| 5. Leaseholds in I.R. bond financed plants | 0.015 | 0.015 | |
| | <u>Inside City of Auburn</u> | <u>Inside City of Lewisburg</u> | <u>Outside City</u> |
| 1. Land and buildings | \$0.847 | \$0.822 | \$0.572 |
| 2. Mfg. machinery, raw materials, goods in process, pollution control equipment | 0.150 | 0.150 | 0.150 |
| 3. Finished goods, office equipment, vehicles, other tangibles | 1.018 | 0.993 | 0.743 |
| 4. Intangibles (accounts receivable, notes, bonds, etc.) | 0.250 | 0.250 | 0.250 |
| 5. Leaseholds in I.R. bond financed plants | 0.015 | 0.015 | 0.015 |

Utilities Gross Receipts Tax for Schools

A 3 percent tax is levied on utilities receipts for schools in Logan County. Tax is paid by all consumers of utilities as an add-on to the utilities bills. Exempted are receipts from utilities services that are resold and the receipts from the sale of energy or energy producing fuels that exceed 3 percent of the cost of production in manufacturing, processing, mining or refining.

*Kentucky Department of Commerce.

Planning and Zoning

Joint agency - Joint Cities-County Planning Commission*

Zoning enforced - Within the city of Russellville and 3 miles beyond the city limits

Subdivision regulations enforced - Within the city of Russellville and 3 miles beyond the city limits

Local codes enforced - Building and housing within the city of Russellville and 3 miles beyond the city limits

Mandatory state codes enforced - Kentucky Plumbing Code, National Electric Code, Kentucky Boiler Regulations and Standards, National Fire Protection Association Standards of Safety (for buildings with an occupancy of less than 100 persons), Kentucky Building Code (modeled after BOCA code and applying to buildings with an occupancy of 100 or more persons)

Safety

| <u>Police</u> | <u>Russellville</u> | <u>Adairville</u> | <u>Auburn</u> | <u>Lewisburg</u> | <u>Logan County</u> |
|-------------------|---------------------|-------------------|---------------|------------------|---------------------|
| Total staff | 19 | 1 | 2 | 1 | 8 |
| Radio-patrol cars | 5 | 1 | 2 | 1 | 6 |

| <u>Fire</u> | <u>Russellville</u> | <u>Adairville</u> | <u>Auburn</u> | <u>Lewisburg</u> | <u>Logan County</u> |
|--|---------------------|-------------------|---------------|------------------|---------------------|
| American Insurance Association Fire Rating | 7 | 7 | 7 | 7 | 10 |
| Full-time staff | 4 | | | | |
| Volunteers | 22 | 26 | 20 | 28 | ** |

Rescue Service

Logan County Civil Defense Rescue Squad:

Number of volunteers - 22

Equipment - 2 rural fire trucks, auxiliary truck, 2 jeeps, panel trucks, four-wheel drive panel truck, 2 3/4-ton trucks, ambulance, 2 boats and motors, dragging equipment, radioactivity monitoring sets, generators, hand tools, chain saws, air compressor, 150-bed hospital available

Personnel training - Certified Red Cross first aid instructor, 1 emergency medical technician, all volunteers trained in basic and advanced first aid

*The planning commission includes Logan County and the cities of Russellville, Adairville, Auburn and Lewisburg. The city of Russellville and the city of Adairville each have an adjustment board with jurisdiction within the city limits.

**Five rural volunteer fire departments provide fire protection services to residents of Logan County.

Refuse Collection and Disposal

| | <u>Russellville</u> | <u>Adairville</u> | <u>Auburn & Lewisburg</u> |
|-----------------------|---------------------|-------------------|-----------------------------------|
| Type service | Private | Private | Private |
| Fee charged: | | | |
| residential | \$3.75 per month | \$4.00 per month | \$3.00 per month |
| business | Contract | Contract | Contract |
| industrial | Contract | Contract | Contract |
| Collection frequency: | | | |
| residential | Once weekly | Once weekly | Once weekly |
| business | Contract | Contract | Contract |
| industrial | Contract | Contract | Contract |
| Disposal method | Landfill | Landfill | Landfill |

EDUCATION

Public Schools

| | <u>Russellville Independent</u> | <u>Logan County</u> |
|---|---|---------------------|
| Total Enrollment (Spring 1979) | 1,670 | 2,964 |
| Elementary | 658 (K-4) | 2,053 (K-8) |
| Middle School | 499 (5-8) | |
| High School | 513 (9-12) | 911 (9-12) |
| Student-Teacher Ratio | 19-1 | 16-1 |
| Elementary | 21-1 | 18-1 |
| Middle School | 17-1 | |
| High School | 19-1 | 14-1 |
| Accreditation | Southern Association of Colleges and Schools | |
| Percent High School Graduates to College | 38.1 | 24.6 |
| Expenditures Per Pupil (1978-79) | \$1,079.16 | \$1,078.79 |
| Bonded Indebtedness, June 30, 1979 | \$1,469,000 | 0 |

Nonpublic Schools

| | <u>Sacred Heart</u> |
|-----------------------|---------------------|
| Total Enrollment | 45 |
| Elementary | 45 |
| Student-Teacher Ratio | 23-1 |
| Elementary | 23-1 |



RUSSELLVILLE HIGH SCHOOL

Area Colleges and Universities

| <u>Name</u> | <u>Location (Miles distant)</u> | <u>Enrollment (Fall, 1979)</u> | <u>Highest Degree Conferred</u> |
|------------------------------------|-------------------------------------|------------------------------------|-------------------------------------|
| Western Kentucky University | Bowling Green, Kentucky (29) | 13,417 | Masters, Specialist* |
| Austin Peay State University | Clarksville, Tennessee (34) | 5,096 | Masters |
| Hopkinsville Community College | Hopkinsville, Kentucky (36) | 1,054 | Associate |
| Belmont College | Nashville, Tennessee (54) | 1,313 | Baccalaureate |
| David Lipscomb | Nashville, Tennessee (54) | 2,196 | Baccalaureate |
| Fisk University | Nashville, Tennessee (54) | 1,154 | Masters |
| Free Will Baptist Bible College | Nashville, Tennessee (54) | 528 | Baccalaureate |
| Meharry Medical College | Nashville, Tennessee (54) | 1,038 | M.S., M.D., D.D.S. |
| Scarritt College | Nashville, Tennessee (54) | 124 | Masters |
| Trevecca Nazarene College | Nashville, Tennessee (54) | 1,344 | Baccalaureate |
| Tennessee State University | Nashville, Tennessee (54) | 8,400 | Masters |
| Vanderbilt University | Nashville, Tennessee (54) | 9,123 | Academic and Professional |

*Joint doctoral degree programs are offered in cooperation with the University of Kentucky, Lexington, and cooperative doctoral degree programs are offered with the University of Louisville.

Vocational Schools

Location
Miles Distant
Curriculum

Nearest State School

Bowling-Green State Vocational-
Technical School
Bowling Green
29
Business and Office
Accounting/Jr. Management
Clerical
Secretarial
Consumer and Home Economics
Commercial Foods
Distributive Education
Fashion Merchandising
Health and Personal Services Occupations
Dental Assistant
Health Careers
Nurse Assistant
Practical Nurse*
Respiratory Therapy*
Surgical Technician
Industrial Education
Auto Body Repair
Auto Mechanics
Carpentry
Civil Highway Technology
Electronics Technology
Electronics Servicing Occupations
Graphic Arts (Printing)
Industrial Electricity
Machine Shop
Masonry
Refrigeration & Air Conditioning
Small Engine Repair
Technical Drafting
Tool and Die Making
Welding

*These courses are taught at the T.J. Samson Community Hospital in Glasgow.

Nearest Area Education Center

Location
Curriculum

Russellville Area Vocational
Education Center
Russellville
Agriculture
Adult and Young Farmer
Business and Office
Accounting/Jr. Management
Clerical
Secretarial
Health and Personal Services Occupations
Health Careers
Industrial Education
Auto Mechanics
Carpentry-Building Trades
Drafting
Electricity
Electronics
Machine Shop
Welding

Arrangements can be made to provide training in the specific production skills required by an industrial plant. Instruction may be conducted either in the vocational school or in the industrial plant, depending upon the desired arrangement and the availability of special equipment.



LOGAN COUNTY HOSPITAL

HEALTH

Local Medical Personnel

Physicians - 11
Dentists - 6

Hospitals

| <u>General Hospital</u> | <u>Location</u> | <u>Beds</u> |
|-------------------------|-----------------|-------------|
| Logan County Hospital | Russellville | 108 |

General hospital facilities - 2 operating rooms, recovery room, 4-bed coronary care unit, laboratory, X-ray, obstetrical section, inhalation therapy, physical therapy, social services, home health agency, pharmacy

Medical staff - 7 family practitioners, 1 internal medicine specialist, 2 general surgeons, 1 OB/GYN specialist, 27 registered nurses, 25 licensed practical nurses, 2 consulting pathologists, 3 consulting radiologists, 2 consulting cardiologists, 2 consulting urologists

Other Medical Facilities

Barren River Comprehensive Care Center

Ambulance Service

Name - Logan County Ambulance Service

Staff - 6 emergency medical technicians (full time), 2 emergency medical technicians (part time)

Service - 24 hours, county-wide

Equipment - 3 ambulances

Name - Adairville Volunteer Fire Department and Ambulance Service

Volunteer staff - 5 certified emergency medical technicians, 6 drivers trained in cardiopulmonary resuscitation and first aid

Service - 24 hours, Adairville and within a 12-mile radius of the city

Equipment - 1 ambulance

Name - Auburn Rural Fire Department and Ambulance Service

Volunteer staff - 15 emergency medical technicians including 2 trained as paramedics

Service - 24 hours, Auburn and surrounding area

Equipment - 2 ambulances

Public Health

Facility - Logan County Health Department

Staff - Health environmentalist, 3 registered nurses, 2 clerk-typists (1 full time, 1 part time)

OTHER LOCAL FACILITIES

Communications

| | <u>Russellville</u> | <u>Adairville</u> |
|---------------------------|--|------------------------------|
| Telephone - | South Central Bell | Logan County Rural Telephone |
| Services - | Telephone Company | Cooperative, Inc. |
| | Standard | Standard |
| Telegraph - | Western Union | Western Union |
| Services - | Toll-free number to send mailgrams, telegrams and international messages | |
| Postal - U.S. Post Office | | |
| Class - | First | Second |
| Mail received - | Three times daily | Once daily |
| Mail dispatched - | Once daily | Once daily |
| Newspapers - | News Democrat and | |
| | Logan Leader | |
| Weekly and | | |
| circulation - | 6,400 and 6,100, | |
| | respectively | |
| Other papers | | |
| received from - | Louisville and Bowling | Russellville, Louisville, |
| | Green, Kentucky; | and Bowling Green, |
| | Nashville, Tennessee | Kentucky; Nashville, |
| | | Tennessee |
| Radio - | WRUS-AM; WAKQ-FM stereo | |
| Stations | | |
| received from - | Bowling Green, Franklin | Russellville, Bowling Green, |
| | and Hopkinsville, | Franklin and Hopkinsville, |
| | Kentucky; Nashville, | Kentucky; Clarksville, |
| | Tennessee | Gallatin, Nashville and |
| | | Springfield, Tennessee |
| Television - | | |
| Cable service - | Yes* | No |
| Reception from - | Bowling Green, Kentucky; | Bowling Green, Kentucky; |
| | Nashville, Tennessee | Nashville, Tennessee |
| Kentucky Educational | | |
| Television - | Channel 53 - Bowling Green transmitter | |

*Cable television service will be available in Russellville in 1980 and will include reception from Atlanta, Georgia.

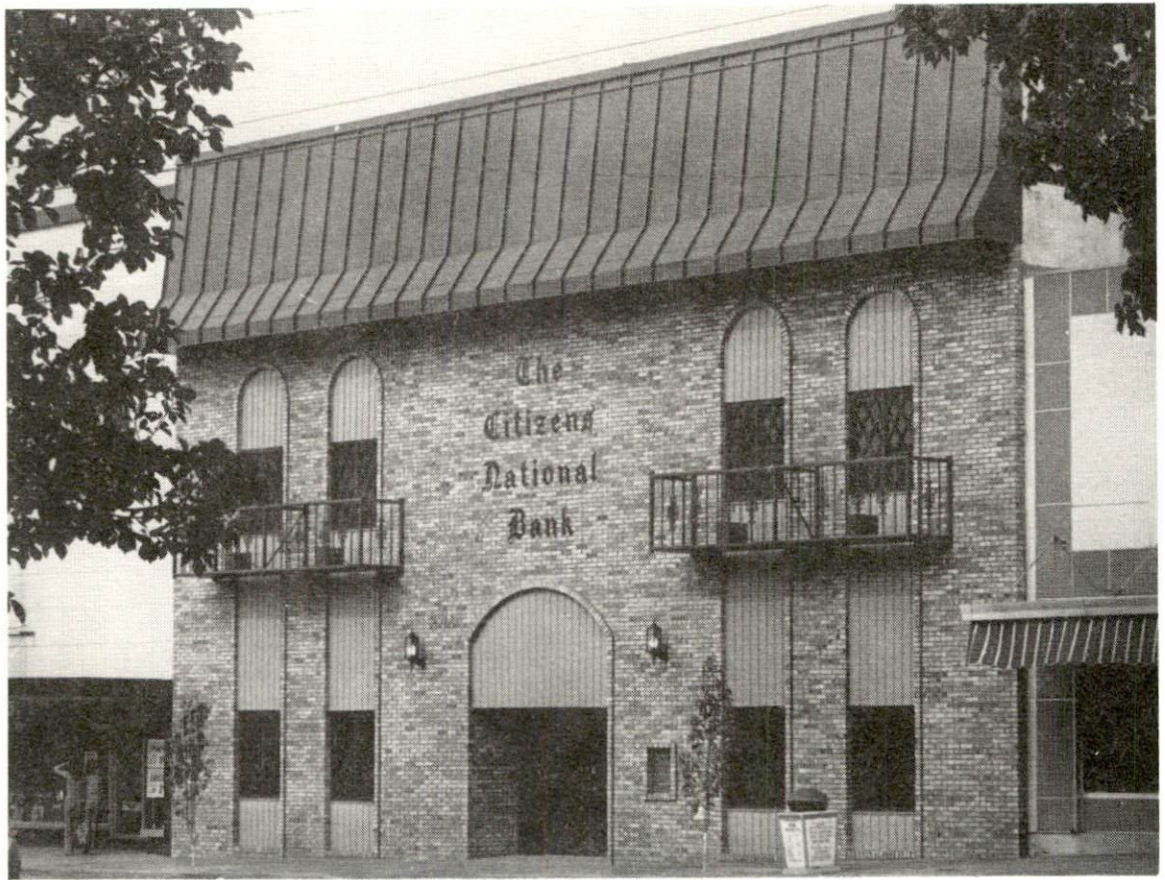
| | <u>Auburn</u> | <u>Lewisburg</u> |
|-----------------------------------|--|--|
| Telephone - | Logan County Rural Telephone Cooperative, Inc. | Logan County Rural Telephone Cooperative, Inc. |
| Services - | Standard | Standard |
| Telegraph - | Western Union | Western Union |
| Services - | Toll-free number to send mailgrams, telegrams, and international messages | |
| Postal - U.S. Post Office | | |
| Class - | Second | Second |
| Mail received - | Once daily | Once daily |
| Mail dispatched - | Once daily | Once daily |
| Newspapers - | | |
| Papers received from - | Russellville, Louisville and Bowling Green, Kentucky; Nashville, Tennessee | Russellville, Louisville, Bowling Green and Owensboro, Kentucky |
| Radio - | | |
| Stations received from - | Russellville, Bowling Green and Franklin, Kentucky; Nashville, Tennessee | Russellville, Bowling Green, Central City and Hopkinsville, Kentucky; Nashville, Tennessee |
| Television - | | |
| Reception from - | Bowling Green, Kentucky; Nashville, Tennessee | Bowling Green, Kentucky; Nashville, Tennessee |
| Kentucky Educational Television - | Channel 53 - Bowling Green transmitter | |

Library Services

Public library - Logan County Public Library, Russellville
 Size collection - 47,000 volumes
 Circulation, 1978-79 - 116,650
 Services - Bookmobile throughout the county, periodicals, films, records, tapes, microfilm, audiovisual equipment, story hour, meeting rooms

The Logan County Public Library, a member of the Kentucky Cooperative Library Services Program, serves as a distribution center and provides consultant services for a 10-county area of the Barren River region.

Adairville, Auburn and Lewisburg each have a library branch open 12 hours a week.



THE CITIZENS NATIONAL BANK



SOUTHERN DEPOSIT BANK

Religious InstitutionsRussellvilleAdairville

Number of churches -
Denominations -

21
Baptist
Catholic
Christian
Church of Christ
Church of God
Episcopal
Jehovah's Witnesses
Methodist
Pentecostal
Presbyterian

8
Baptist
Church of Christ
Holiness
Methodist
Pentecostal

AuburnLewisburg

Number of churches -
Denominations -

9
Baptist
Christian
Church of Christ
Cumberland
Presbyterian
Methodist
Presbyterian U.S.A.

5
Baptist
Church of Christ
Cumberland Presbyterian
Methodist

Nearest Synagogues - Nashville, 54 miles south of Russellville
Congregations - Sherith Israel (orthodox)
Ohabai Shalom (reform)
West End Synagogue (conservative)

Financial InstitutionsBanksAssetsDepositsStatement
DateRussellville

| | | | |
|----------------------------|-----------------|-----------------|---------|
| The Citizens National Bank | \$37,155,205.75 | \$34,338,469.25 | 6/29/79 |
| Southern Deposit Bank | 35,629,151.74 | 30,897,025.03 | 6/29/79 |

Adairville

| | | | |
|----------------------------|-----------------|-----------------|---------|
| Adairville Banking Company | \$ 7,710,000.00 | \$ 5,519,000.00 | 6/30/79 |
|----------------------------|-----------------|-----------------|---------|

Auburn

| | | | |
|------------------------|-----------------|-----------------|---------|
| Auburn Banking Company | \$13,892,421.68 | \$12,299,840.20 | 6/30/79 |
|------------------------|-----------------|-----------------|---------|

Lewisburg

| | | | |
|---------------------------|-----------------|-----------------|---------|
| Lewisburg Banking Company | \$10,716,429.55 | \$ 9,667,204.44 | 6/30/79 |
|---------------------------|-----------------|-----------------|---------|

| <u>Savings and Loan Associations</u> | <u>Assets</u> | <u>Savings Accounts</u> | <u>Statement Date</u> |
|---|-----------------|-----------------------------|---------------------------|
| First Federal Savings and Loan Association of Russellville, Kentucky | \$22,311,736.01 | \$19,999,767.80 | 6/30/79 |

Hotels and Motels

Total number - 5
Total units - 100

Clubs and Organizations

Russellville

| | |
|--------------------------------------|--|
| Aftermath Club | Jaycettes |
| American Legion Unit 29 | Junior Conservation |
| American Legion Unit 229 | Junior Women's Club |
| American Legion Auxiliary Unit 29 | Kiwanis |
| American Legion Auxiliary Unit 229 | Lion's Club |
| Bayview Club | Little League baseball |
| Boy Scouts | Logan County Civic Development Association |
| Brownies | Logan County Hospital Auxiliary |
| Children of the American Revolution | Masonic Lodge |
| Cub Scouts | Moose |
| Daughters of the American Revolution | Octagon Club |
| E & F Rod and Gun Club | Optimist Club |
| Eastern Star | Opti-Mrs. Club |
| Farm League baseball | Parents-Teachers Association |
| 4-H Club | Rebekah Lodge |
| Fraternal Order of Police | Rotary Club |
| Future Farmers of America | Russellville-Logan County Chamber of Commerce |
| Future Homemakers of America | Senior League baseball |
| Garden Club | Teen Town Club |
| Girl Scouts | Veterans of Foreign Wars |
| Heritage Foundation | Women's Club |
| Historical Society | Woodmen of the World |
| Homemakers | |
| International Order of Odd Fellows | |
| Jaycees | |

Adairville

| | |
|--|------------------------------|
| Adairville-South Logan County Chamber of Commerce | Future Homemakers of America |
| Chamber of Commerce Ladies' Auxiliary | Junior Conservation |
| 4-H Club | Little League baseball |
| Future Farmers of America | Pony League baseball |
| | Red River Fish and Game Club |
| | Schochoh Homemakers Club |

Auburn

American Legion
American Legion Auxiliary
Boy Scouts
Brownies
Cub Scouts
Eastern Star
4-H Club
Future Business Leaders of America
Future Farmers of America
Future Homemakers of America
Future Teachers of America
Garden Club

Girl Scouts
Homemakers
Jaycees
Little League baseball
Masons
Mixed Bowling League
Optimist Club
Parents-Teachers Association
Pony League baseball
Rotary
Woodmen of the World
Younger Women's Garden Club

Lewisburg

Boy Scouts
Brownies
City Baseball League
Coon Range Chapter of Campers
and Hikers
Coon Range Fish and Game Club
Cub Scouts
Eastern Star
4-H Club

Future Business Leaders of America
Future Farmers of America
Future Homemakers of America
Homemakers
Lions Club
Lioness Club
Masons
Parents-Teachers Association
Senior Citizens Club

RECREATION

Local

A variety of recreational facilities are available in Logan County. Facilities at the 110-acre Russellville-Logan County Memorial Park include two ball fields, four tennis courts, basketball courts, a nature trail, facilities for shuffleboard and croquet, a miniature golf course, a trapshooting range, playground equipment, picnic areas and four shelters, two concession stands, restrooms, and a clubhouse with a kitchen. Little League, Farm League and Senior League baseball programs, tennis tournaments, and other planned summer programs for all ages are offered at the park. Hampton Park, also located in Russellville, has basketball courts, a picnic shelter, and playground equipment.

Many historic landmark buildings are located in Russellville including the Old Southern Bank Building, circa 1810, which was the scene of a robbery by three of Jesse James' gang in 1868.

The City of Adairville has received a \$40,900 grant for the development of a 10-acre community park. The park will contain a baseball-softball field, a picnic area, a playground, and parking facilities.

Coke-McCutchen Park in Auburn contains two ball fields, three tennis courts, basketball and volleyball courts, facilities for shuffleboard and horseshoe pitching, campgrounds, two open-air pavillions, and a concession stand.

The 10-acre Lewisburg Municipal Park has a ball field, basketball courts, three tennis courts, a playground, a picnic area, a covered shelter, a concession stand, and restrooms.

Other recreational facilities in Logan County include the Russellville Country Club which has a clubhouse and dining room, a swimming pool, a 9-hole golf course, and two tennis courts; a public 9-hole golf course and clubhouse; and one indoor cinema and one drive-in movie theatre.

Special annual events in Logan County include the Logan County Fair, held in June; the Logan County Tobacco Festival, held in October; the Strawberry Festival, held at Adairville in May; and the Shaker Festival, held at South Union in July. South Union, the site of the last Shaker community in Kentucky, features the Shaker Museum and the Shaker Antique Mall and Gifts.

Area (Within 65 miles of Russellville)

A state shrine, a national park, four state resort parks, and one state park are located within 65 miles of Russellville.

Jefferson Davis Monument State Shrine, located 25 miles west of Russellville, is the site of the birthplace of Jefferson Davis who served as a U.S. Senator, Secretary of War, and the only president of the Confederate States of America. The 16-acre park contains a 351-foot obelisk with an elevator to the top for viewing, a museum, a gift shop, a playground, and a picnic area.

Mammoth Cave National Park, located northeast of Russellville, features one of the world's largest networks of cavern corridors. Mammoth Cave covers 150 miles of charted caverns situated beneath 51,000 acres of beautiful park grounds. In addition to the cave tours that are available year round, park attractions include a visitor center exhibit room with audiovisual programs, nature trails, and a scenic boat trip on the Green River. Hotel and cottage accommodations and camping sites are also available.

Lake Barkley State Resort Park is located approximately 65 miles west of Russellville on the shores of Lake Barkley. Park accommodations include a resort lodge with 120 rooms and 4 suites, cottages, and camping sites. Recreation facilities include a lodge pool, a beach with bathhouse, an 18-hole golf course, tennis courts, riding stable, trapshooting range, basketball court, hiking trails, playgrounds, and a picnic area. A marina located near the lodge has open and covered slips, a launching ramp, and rental boats of all types.

Pennyrile Forest State Resort Park, located northwest of Russellville, is a 435-acre park situated in the Pennyrile State Forest. Facilities at the park include a resort lodge, cottages, camping sites, a lodge pool, a 55-acre lake, a beach with bathhouse, boat rentals, 9-hole and miniature golf courses, tennis courts, riding stable, hiking trails, playgrounds and picnic areas.

Rough River Dam State Resort Park, located northeast of Russellville, is situated on the shores of the 4,860-acre Rough River Lake. Lodge and cottage accommodations and camping sites are available. The park offers facilities for swimming, boating, fishing, golfing, hiking, tennis and picnicking.

Barren River Lake State Resort Park, located southeast of Russellville, is an 1,800-acre park with a lodge, cottages, and camping sites. Recreation facilities at the park include a lodge pool, a beach with bathhouse, 9-hole golf course, tennis and basketball courts, and picnic and playground areas. The main attraction of the park is the 10,000-acre Barren River Lake. A marina at the park has open and covered slips, a launching ramp, and rental boats.

(Contd.)

Lake Malone State Park, located approximately 20 miles north of Russellville, offers camping facilities, a beach and bathhouse, picnic areas, a playground, and a game court. A boat dock with open slips and a launching ramp is located near the park entrance. Rental boats of all types are available.

Beech Bend Park is located in Bowling Green, 29 miles east of Russellville. Beech Bend features a swimming pool, an amusement park, a small zoo, stage entertainment, horseback riding, restaurants, playgrounds, and 6,500 campsites.

Nashville, Tennessee, located 54 miles south of Russellville, offers a number of tourist attractions including Opryland U.S.A., the Grand Ole Opry, the Country Music Hall of Fame and Museum, and the Country Music Wax Museum.

COMMUNITY IMPROVEMENTS

Russellville and Logan County

Hi-Way Power and Equipment Corporation began its engine and transmission rebuilding operation in Russellville in 1977.

Since 1977 six existing manufacturing firms in Russellville have expanded or upgraded their facilities. Rockwell International Corporation invested approximately \$1,000,000 for new equipment; Bilt Rite Products Company spent \$200,000 for new equipment; and Coca-Cola Bottling Company purchased \$10,000 worth of new equipment. Emerson Electric Company constructed an addition to its plant, replaced some existing equipment, and purchased additional equipment at a total cost of \$2,715,000. Southern States Cooperative, Inc., constructed a \$225,000 storage building and spent \$50,000 for new equipment. Smith Douglass Division of Borden Chemical expanded its office facilities and upgraded its equipment and plant facilities at a cost of \$155,000.

Lapey Rouse Grain Company has constructed a new grain storage facility south of Russellville.

A six-acre shopping center has been completed in Russellville.

Several storefronts in downtown Russellville have been renovated and/or restored to the original design.

A new 50-space parking lot has been constructed in downtown Russellville and another lot has been enlarged.

A motel in Russellville has added five units and a swimming pool.

There are plans to increase the capacity of the Russellville water treatment plant by one million gallons per day by changing rapid sand filters in the plant to a microfloc system.

Engineering plans and specifications are being drawn up for a new sewage treatment plant for the city of Russellville. The new plant is being designed for an average capacity of 2 million gallons per day and a peak capacity of 3.5 million gallons per day.

The South Logan Water District began operating in August of 1977 and serves approximately 425 customers in southern Logan County. Engineers are drawing up plans to extend service to 120 additional customers.

The East Logan Water District, which is scheduled to be in operation by the summer of 1980, will serve approximately 580 customers in eastern Logan County. Water mains have been installed and a 200,000 gallon storage tank has been constructed. The water district will purchase treated water from the Russellville Water Works.

The runway at the Russellville-Logan County Airport has been extended from 2,800 to 3,300 feet. Installation of a visual approach slope indicator (VASI) and construction of a hangar with office space is scheduled to be completed in 1980.

An emergency backup radio system has been installed at the Russellville Police Department. The system will be operated by the Russellville Police Department to serve all of Logan County.

A new municipal building houses the Russellville Fire Department and offices of the Russellville-Logan County Chamber of Commerce.

The Russellville Fire Department has purchased a new 1,250-gpm pumper.

A new Logan County jail has been constructed in Russellville.

An \$800,000 renovation project has been completed at the Logan County Hospital in Russellville.

The Logan County Health Department has moved into a new \$242,000 building adjacent to the Logan County Hospital.

Recent improvements by the Russellville Independent School District include the addition of two classrooms, one science room, and a band room at Russellville High School; the addition of four classrooms at Stevenson Elementary School; and the addition of Spanish to the middle school curriculum.

In the Logan County School System, a new home economics room and a new agriculture room have been completed at Chandlers High School. Four kindergarten units were added to the school system in the 1979-80 school year and new kindergarten rooms were added to the elementary schools at Auburn, Lewisburg and Olmstead. Five kindergarten units are now available to serve all eligible children in the county. The school system has purchased a 55-acre site located 1.2 miles east of Russellville for a new central high school. The five county high schools will be consolidated into the new school which is being designed to accommodate 1,000 students.

A new shelter for the picnic area and lights for the Little League ball field have been added at the Russellville-Logan County Memorial Park.

A new clubhouse has been constructed for the Russellville Country Club and a new 9-hole golf course with a clubhouse is located south of Russellville.

Several beautification projects have been completed in Russellville including the beautification of the downtown Park Square and the Hospital grounds.

A \$500,000 Community Development Block Grant has provided funds to revitalize a two-block area of 6th Street in Russellville. The project, which is scheduled for completion in September of 1981, includes acquiring and clearing substandard housing, relocating families into standard housing, rehabilitating some existing houses, and making street and drainage improvements. Two previous grants were used for neighborhood revitalization in Russellville.

Construction is scheduled to begin in the fall of 1980 on 70 additional low-income public housing units.

Adairville

Since 1978 the Auburn Hosiery Mills, Inc., has invested \$850,000 to replace existing equipment and to purchase some additional equipment. Approximately 15 to 20 new employees have been added to the work force.

In 1978 and 1979 Odom Sausage Company expanded its facilities at a cost of \$475,000 to provide additional building space for processing and packaging.

A new water treatment plant with a design capacity of 912,000 gallons per day was put into operation in November 1978.

The study phase (Step 1) of a 201 Facilities Plan has been completed. The study is designed to determine what improvements need to be made to upgrade and/or expand the municipal sewerage system. In addition, a lift station has been installed in the eastern part of the city.

Two Community Development Block Grants have provided funds totaling \$660,000 for the redevelopment of a two block area in the southwest section of town. The project involves the acquisition of land, clearance of substandard housing, relocation of families, and rehabilitation of some houses in the area.

Fifty low-rent housing units have been completed.

A \$40,900 federal grant has been approved for the development of a community park. The 10-acre park will contain a baseball-softball field, a picnic area, a playground, and parking facilities.

Reconstruction of the city square is under way.

Auburn

Since 1977 the Caldwell Lace Leather Company has added approximately 20 employees to its work force and has expanded its facilities with additional equipment and an additional building.

Since 1977 Colonial House Furniture has made a \$45,000 investment for additional equipment and expanded facilities for manufacturing reproduction furniture.

Improvements by the Auburn Water Works include the installation of six fire hydrants and 8,000 feet of 6-inch water line to a newly annexed residential area. There are plans to extend another 3,000 feet of water line to the area. In addition, a water line has been extended to hook onto the East Logan Water District. The water district, which will be in operation by the summer of 1980, will purchase treated water from the Russellville Water Works and will serve as an additional water source for the city of Auburn.

The Auburn Sewer Department has installed 3,500 feet of new sewer main and plans to install an additional 5,000 feet of line in 1980.

All the sidewalks in Auburn have been repaired, 3 1/2 miles of new and existing streets have been paved, and a contract has been awarded to resurface or repair the remaining city streets.

A Little League ball field has been added to the facilities at the municipal park.

Lewisburg

The Nelson Company of Kentucky has hired additional employees and added a second assembly line for the production of wood pallets.

A 10-acre municipal park has been developed. Facilities include basketball courts, tennis courts, a ball field, a playground, a picnic area and a covered shelter. A concession stand and restrooms are being added to the park facilities.

The City purchased a new police cruiser.

Two new subdivisions are being developed.