

1997

Industrial Resources: Pulaski County - Somerset

Kentucky Library Research Collections
Western Kentucky University, spcol@wku.edu

Follow this and additional works at: https://digitalcommons.wku.edu/pulaski_cty

 Part of the [Business Administration, Management, and Operations Commons](#), [Growth and Development Commons](#), and the [Infrastructure Commons](#)

Recommended Citation

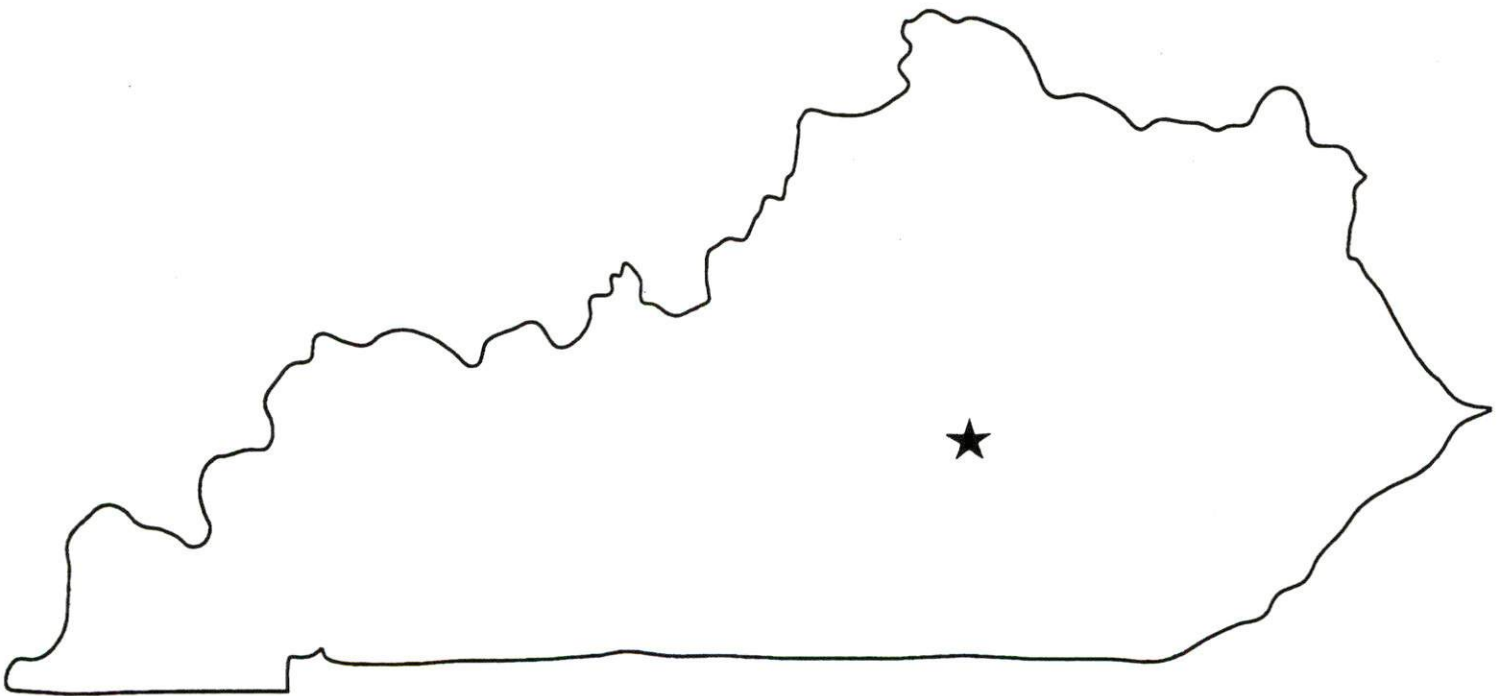
Kentucky Library Research Collections, "Industrial Resources: Pulaski County - Somerset" (1997). *Pulaski County*. Paper 3.
https://digitalcommons.wku.edu/pulaski_cty/3

This Report is brought to you for free and open access by TopSCHOLAR®. It has been accepted for inclusion in Pulaski County by an authorized administrator of TopSCHOLAR®. For more information, please contact topscholar@wku.edu.

Kentucky

**Resources For
Economic Development**

Somerset



Prepared by
The Kentucky Cabinet for Economic Development
Division of Research
in cooperation with
Somerset-Pulaski County Development Foundation
and
City of Somerset

1997

Division Director - Rene' True; program manager - Keith Roberts; research - Mary Rawlings; clerical - Wanda Sharp; graphics - Robert Owens. Cost of printing paid from state funds.

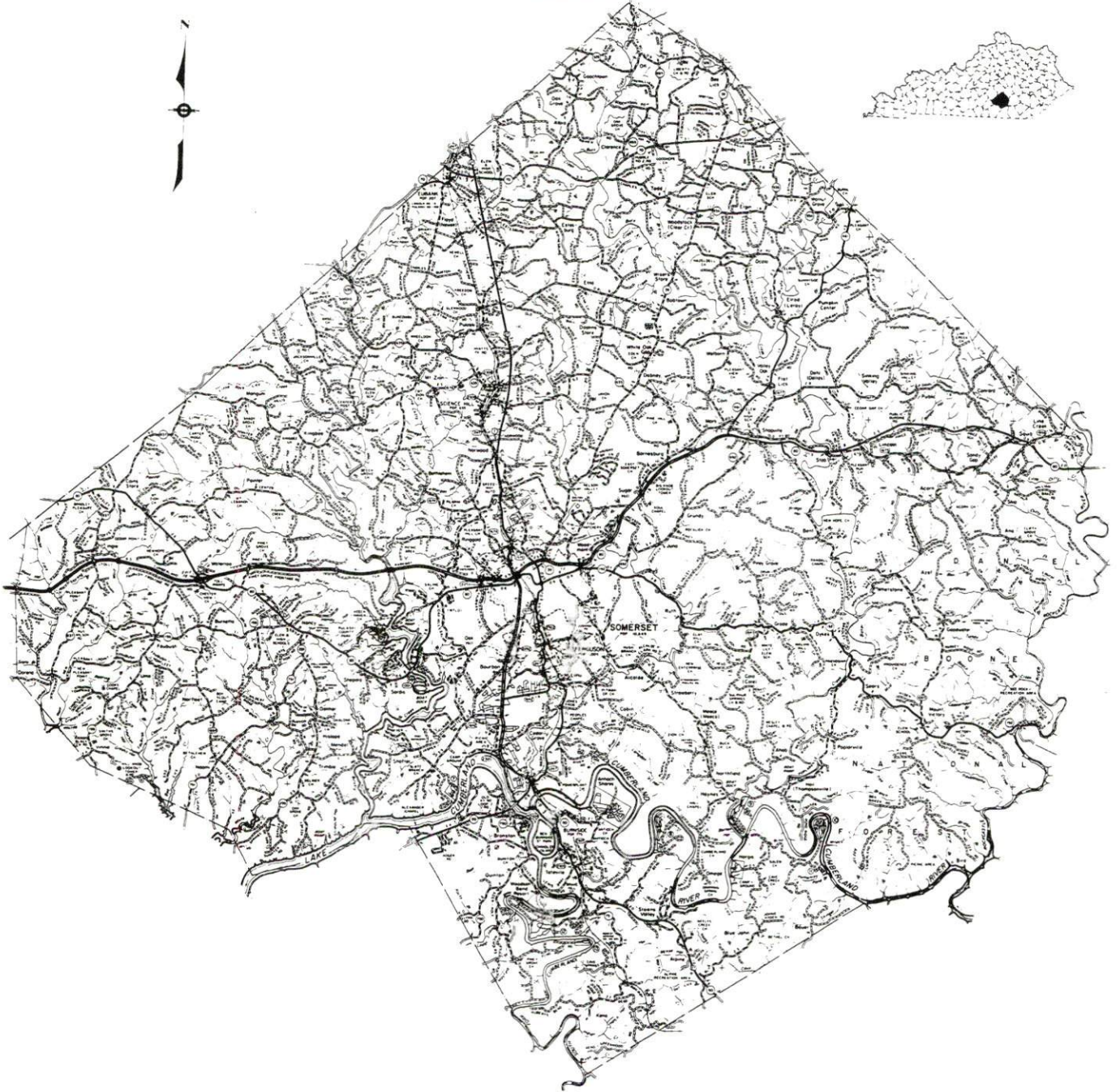
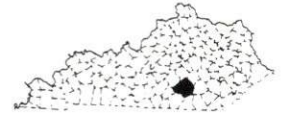
TABLE OF CONTENTS

<u>Chapter</u>	<u>Page</u>
SOMERSET, KENTUCKY-A RESOURCE PROFILE.....	1
THE LABOR MARKET STATISTICS.....	2
Labor Market Area Map.....	2
Population.....	3
Population Projections.....	3
Estimated Labor Supply.....	3
Labor Force Characteristics of Residents, 1996.....	4
Selected Components of Nonagricultural Employment, by Place of Work, 1995.....	5
Per Capita Personal Income.....	6
Average Placement Wages.....	7
Average Weekly Wages of Workers Covered by Unemployment Insurance 1995 - Bar Chart.....	8
Average Weekly Wages by Industry, by Place of Work, 1995.....	9
EXISTING INDUSTRY.....	10
Somerset Manufacturing Firms, Their Products and Employment.....	10
Other Major Manufacturing Firms.....	12
Recent Industrial Developments.....	12
Labor Organizations in Manufacturing Firms.....	13
Selected Industrial Services.....	14
TRANSPORTATION.....	15
Highways.....	15
Truck Service.....	15
Selected Market Location Map.....	16
Rail.....	17
Air.....	17
UTILITIES.....	18
Electricity.....	18
Natural Gas.....	18
Public Water Supply.....	19
Sewerage.....	19
CLIMATE.....	20

<u>Chapter</u>	<u>Page</u>
LOCAL GOVERNMENT.....	21
Structure.....	21
Planning and Zoning.....	21
Local Fees and Licenses.....	21
State and Local Property Taxes.....	22
EDUCATION.....	23
Public Schools.....	23
Nonpublic Schools.....	23
Area Colleges and Universities.....	23
Vocational Training.....	24
OTHER LOCAL FACILITIES.....	25
Local Medical Personnel.....	25
Hospitals.....	25
Other Medical Facilities and Services.....	25
Banks and Savings & Loan Associations.....	26
Newspapers.....	26
Telephone Service.....	26
RECREATION.....	27

GENERAL HIGHWAY MAP
PULASKI COUNTY
KENTUCKY

PREPARED BY THE
KENTUCKY TRANSPORTATION CABINET
DEPARTMENT OF HIGHWAYS
DIVISION OF PLANNING
IN COOPERATION WITH THE
U.S. DEPARTMENT OF TRANSPORTATION
FEDERAL HIGHWAY ADMINISTRATION



SOMERSET, KENTUCKY - A RESOURCE PROFILE

Somerset, situated on the northeastern edge of Lake Cumberland, is the county seat of Pulaski County. Somerset is located 76 miles south of Lexington, Kentucky; 117 miles northwest of Knoxville, Tennessee; and 131 miles southeast of Louisville, Kentucky. Somerset had an estimated 1994 population of 12,079.

Pulaski County, which covers a land area of 661 square miles, is located in southern Kentucky. The county had an estimated 1994 population of 53,516.

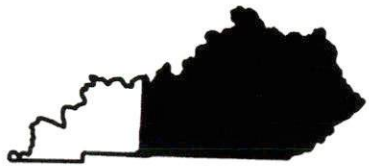
The Economic Framework - The total number of Pulaski County residents employed in 1996 averaged 23,137. In 1995, manufacturing firms in the county reported 4,609 employees; wholesale and retail trade provided 5,815 jobs; 4,120 people were employed in service occupations; state and local government accounted for 3,258 employees; contract construction firms provided 882 jobs; and 54 people were employed by mining and quarrying operations.

Labor Supply - There is a current estimated labor supply of 22,027 persons available for industrial jobs in the labor market area. In addition, from 1997 through 2002, 14,040 young persons in the area will become 18 years of age and potentially available for industrial jobs.

Transportation - Major highways serving Somerset are U.S. Highway 27, the Cumberland Parkway, and Kentucky Routes 80 and 461. Interstate Highway 75 is accessible 32 miles east, via Kentucky 80; and 16 miles northeast via Kentucky 461. Twenty-one common carrier trucking companies provide interstate and/or intrastate service to the area. Main line rail service is provided to Somerset by the Norfolk Southern Corporation. The Somerset-Pulaski County Airport, two miles south of Somerset, maintains a 5,500-foot paved runway. The nearest scheduled commercial airline service is available at Blue Grass Airport near Lexington, Kentucky, 80 miles north of Somerset.

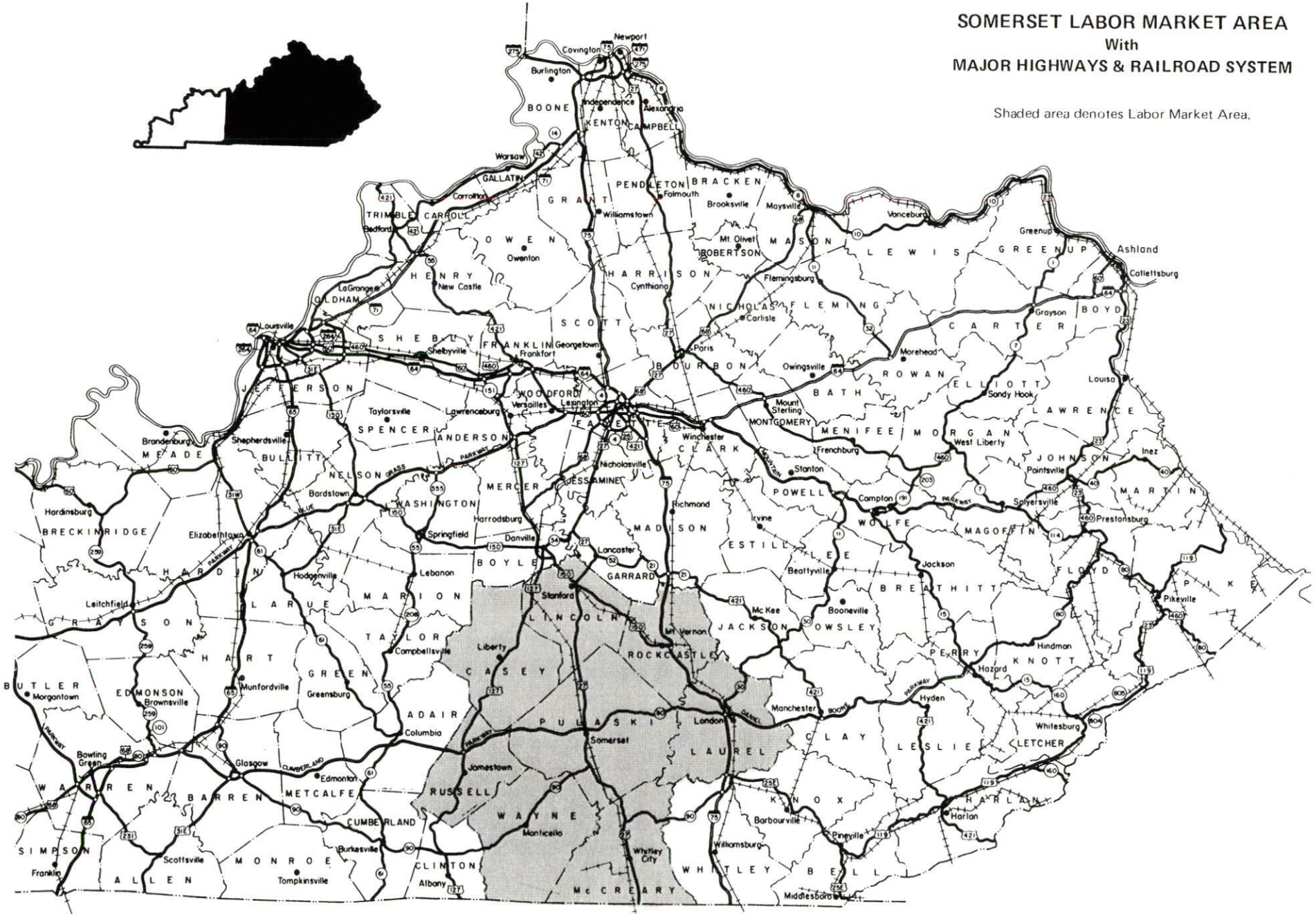
Power and Fuel - Electric power is provided to Somerset and Pulaski County by Kentucky Utilities Company, an electric generation and transmission company. Pulaski County is also served by South Kentucky Rural Electric Cooperative Corporation. Natural gas service in Somerset is provided by Somerset Gas Service.

Education - Primary and secondary education is provided to Somerset and Pulaski County by the Somerset Independent School System and the Pulaski County School System. The Somerset Independent School System is accredited by the Southern Association of Colleges and Schools. Somerset Community College, a unit of the University of Kentucky Community College System, offers associate degrees and curricula for the first two years of a baccalaureate program. In addition, eight other colleges and universities are located within 61 miles of Somerset. Vocational-technical training is available at Somerset Regional Technology Center.



SOMERSET LABOR MARKET AREA With MAJOR HIGHWAYS & RAILROAD SYSTEM

Shaded area denotes Labor Market Area.



LABOR MARKET STATISTICS

The Somerset Labor Market Area includes Pulaski County and the adjoining Kentucky counties of Casey, Laurel, Lincoln, McCreary, Rockcastle, Russell, and Wayne.

POPULATION

	<u>1994*</u>	<u>1990</u>	<u>1980</u>	<u>1970</u>
Labor Market Area	201,880	189,773	178,993	141,876
Somerset	12,079	10,735	10,649	10,436
Pulaski County	53,516	49,489	45,803	35,234

*Population estimates.

Source: U.S. Department of Commerce, Bureau of the Census.

POPULATION PROJECTIONS

	<u>2000</u>	<u>2010</u>	<u>2020</u>
Labor Market Area	218,187	236,164	249,911
Pulaski County	58,552	63,545	67,009

Note: Population projections are from High Growth Series forecast.

Source: University of Louisville, Urban Studies Center, State Data Center.

ESTIMATED LABOR SUPPLY

	<u>Current</u>			<u>Future</u>
	<u>Total</u>	<u>Unemployed</u>	Not in Labor Force	Becoming 18 years of age <u>1998 thru 2002</u>
Labor Market Area*	22,027	5,570	16,457	14,040
Pulaski County	5,395	1,319	4,076	3,399

* Additional workers may be drawn from other nearby counties.

Note: Unemployed - persons unemployed and actively seeking work; Not in Labor Force - represents the number of persons who would enter the labor force if suitable employment were available (based on the assumption that persons in Kentucky would like to participate in the labor force in the same proportion that they do nationally). Underemployed persons (employed only 14 to 26 weeks during the year) are no longer included in labor surplus estimates.

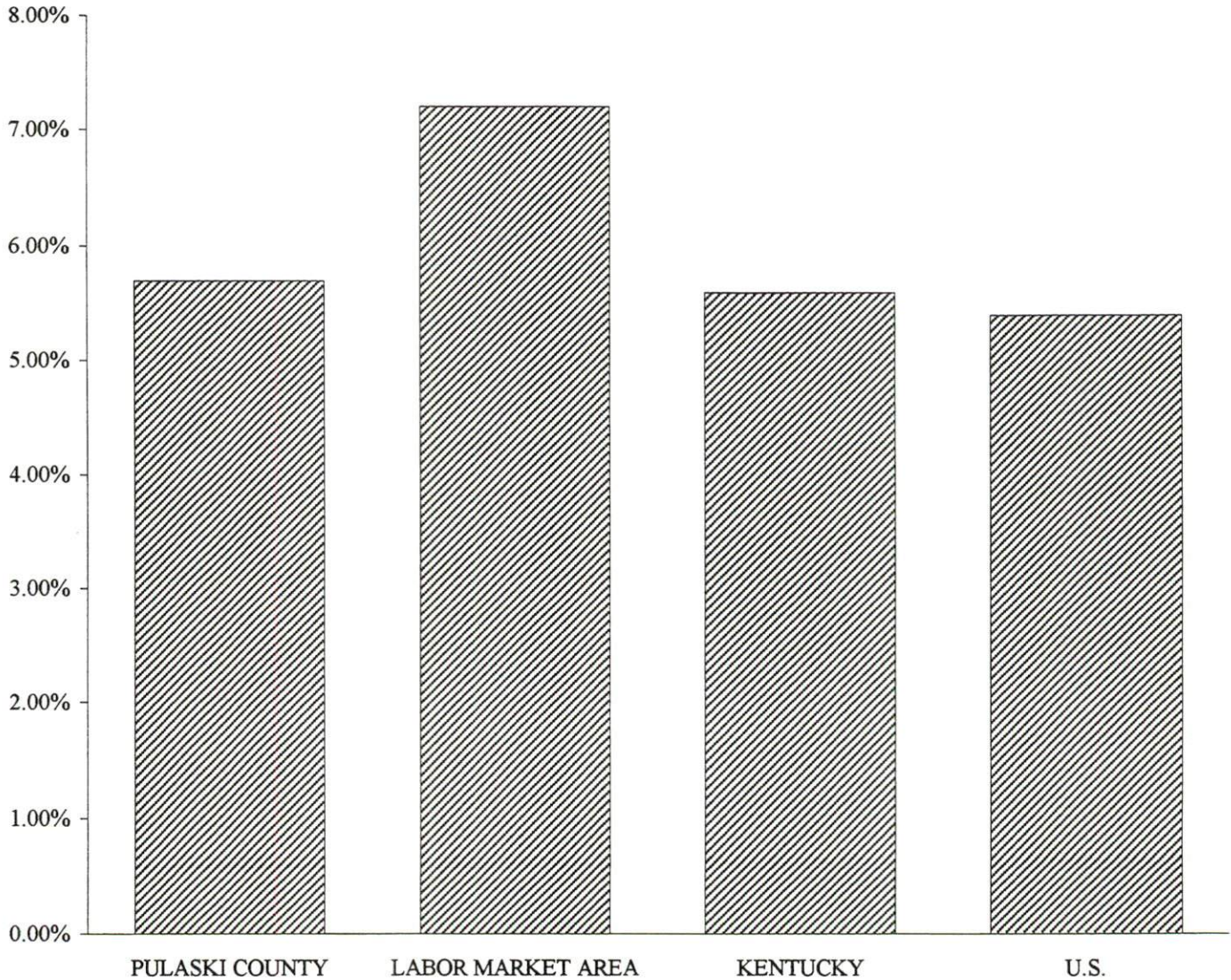
Sources: Kentucky Workforce Development Cabinet, Kentucky Labor Surplus Estimates by County, 1995. Kentucky Cabinet for Economic Development, Future Labor Supply Becoming 18 Years of Age, 1998 thru 2002.

LABOR FORCE CHARACTERISTICS OF RESIDENTS, 1996

	<u>Pulaski County</u>	<u>Labor Market Area</u>
Civilian Labor Force	24,529	89,482
Employment	23,137	83,070
Unemployment	1,392	6,412
Rate of Unemployment (%)	5.7	7.2

Source: Kentucky Workforce Development Cabinet, Kentucky Labor Force Estimates, Annual Averages 1996.

UNEMPLOYMENT RATES
1996



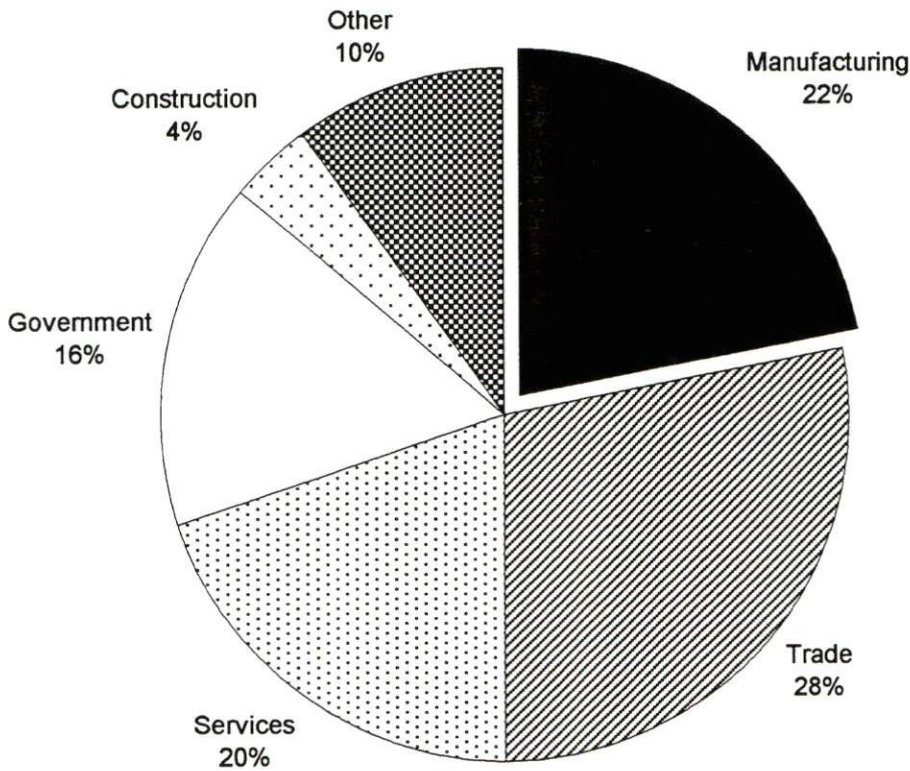
SELECTED COMPONENTS OF NONAGRICULTURAL EMPLOYMENT
BY PLACE OF WORK, 1995

	<u>Pulaski County</u>	<u>Labor Market Area</u>
All Industries (total)	20,988	64,200
Manufacturing	4,609	14,636
Wholesale & Retail Trade	5,815	16,895
Services	4,120	11,233
State/Local Government	3,258	10,239
Contract Construction	882	2,742
Mining & Quarrying	54	294

Note: Excludes domestic workers, railway workers, certain nonprofit corporations, majority of federal government workers, and self-employed workers.

Source: Kentucky Workforce Development Cabinet, Average Monthly Workers Covered by Kentucky Unemployment Insurance Law, 1995.

PULASKI COUNTY

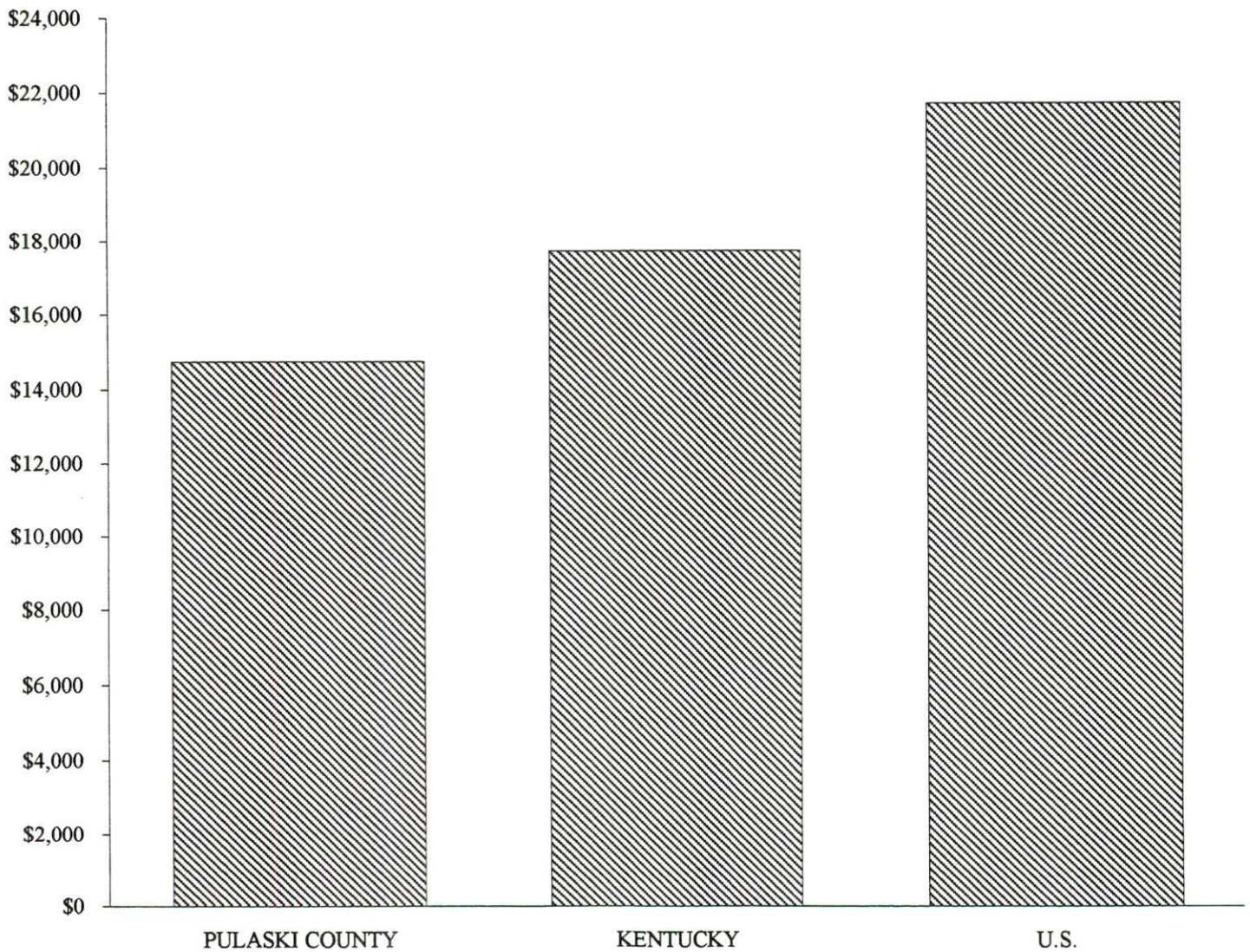


PER CAPITA PERSONAL INCOME

Area	1990	1994	Percent Change
Pulaski County	\$12,474	\$14,736	18.1
Labor Market Area Range	\$7,823 - \$12,474	\$10,601 - \$14,736	-
Kentucky	\$14,747	\$17,721	20.2
U.S.	\$18,666	\$21,696	16.2

Source: U.S. Department of Commerce, Bureau of Economic Analysis, Regional Economic Information System.

PER CAPITA PERSONAL INCOME
1994



AVERAGE PLACEMENT WAGES

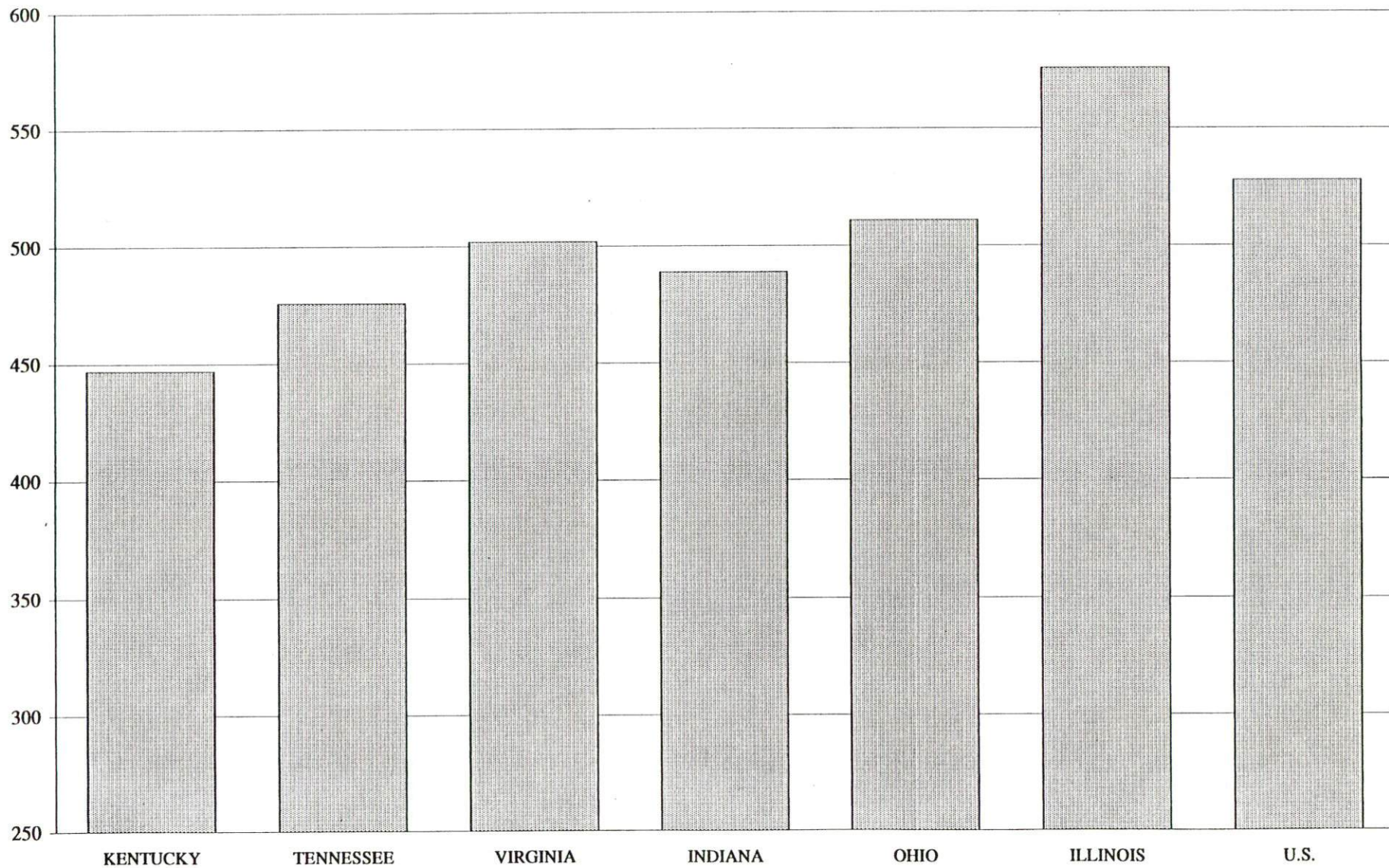
Pulaski County is served by the Somerset local office of the Kentucky Department for Employment Services. The focus of the following data is on job placements made by the Somerset local office and may therefore be used as an indicator of the wages which employers in the area pay new employees. During the twelve months which ended on June 30, 1996 the local employment office filled 3,378 openings in various occupational categories. The average hourly wage for selected occupational categories were:

<u>OCCUPATIONAL CATEGORY</u>	<u>NUMBER OF PLACEMENTS</u>	<u>AVERAGE WAGE(\$)</u>
All Occupations	3,378	5.31
Clerical	264	4.71
Sales	199	4.46
Services (excluding domestic)	434	4.39
Agricultural, Fishery, Forestry, etc.	108	5.67
Processing	13	4.63
Machine Trades	336	6.55
Bench Work	1,407	5.45
Structural	235	5.35
Motor Freight/ Transportation	53	4.85
Packaging and Materials Handling	254	5.66
Other	9	6.08

The Somerset local office also serves Adair, Casey, Clinton, Cumberland, Green, McCreary, Russell, Taylor, and Wayne Counties. The above occupational categories are taken from the Dictionary of Occupational Titles published by the U.S. Department of Labor

Source: Kentucky Workforce Development Cabinet, Department for Employment Services.

AVERAGE WEEKLY WAGES OF WORKERS COVERED BY
UNEMPLOYMENT INSURANCE - 1995



AVERAGE WEEKLY WAGES BY INDUSTRY
BY PLACE OF WORK, 1995*

	<u>Pulaski County</u>	<u>Kentucky (Statewide)</u>	<u>Tennessee</u>	<u>Virginia</u>
All Industries	\$353.07	\$447.03	\$476.00	\$502.00
Mining & Quarrying	497.84	739.22	671.00	736.00
Contract Construction	301.45	466.73	505.00	497.00
Manufacturing	411.33	577.94	559.00	589.00
Transportation, Communications & Public Utilities	471.08	586.90	612.00	679.00
Wholesale & Retail Trade	253.34	308.87	N/A	N/A
Finance, Insurance & Real Estate	413.19	546.83	614.00	643.00
Services	354.64	404.99	459.00	524.00
State/Local Government	394.97	457.63	N/A	N/A
	<u>Indiana</u>	<u>Ohio</u>	<u>Illinois</u>	<u>U. S.</u>
All Industries	\$489.00	\$511.00	\$576.00	\$528.00
Mining & Quarrying	770.00	684.00	828.00	871.00
Contract Construction	558.00	569.00	699.00	562.00
Manufacturing	671.00	716.00	715.00	668.00
Transportation, Communications & Public Utilities	589.00	623.00	710.00	674.00
Wholesale & Retail Trade	N/A	N/A	N/A	N/A
Finance, Insurance & Real Estate	552.00	601.00	815.00	742.00
Services	418.00	449.00	526.00	503.00
State/Local Government	N/A	N/A	N/A	N/A

* Wages for U.S. and surrounding states rounded to nearest dollar.

N/A Not Available.

Note: The average weekly wage for each category includes the salaries and wages of all persons working for that type business. For example, the manufacturing category includes both production workers and administrative personnel. Excludes domestic workers, railway workers, certain nonprofit corporations, majority of federal government workers, and self-employed workers.

Sources: Kentucky Workforce Development Cabinet, Average Weekly Wages of Workers Covered by Kentucky Unemployment Insurance Law, 1995. U.S. Department of Labor, Bureau of Labor Statistics, Employment and Wages, Annual Averages, 1995, December 1996.

EXISTING INDUSTRY

SOMERSET MANUFACTURING FIRMS, THEIR PRODUCTS AND EMPLOYMENT

<u>Firm</u> <u>(Establishment date)</u>	<u>Product</u>	<u>1997</u> <u>Average Employment</u>
Alumitech (1988)	Aluminum wheels (auto)	384
Anderson Packaging, Somerset Division (1984)	Corrugated packaging and supplies	25
B & B Rebuilders (1983)	Rebuilt starters and alternators	2
Bee Lick Tool & Manufacturing, Inc. (1983)	Plastic injection molds, tool fixtures, precision spare parts	16
C.D.R. Manufacturing, Inc. (1987)	Electronic assemblies	77
C & V Machine Shop, Inc. (1983)	Fabrication of parts for machines, machine shop, tool and die work	5
Cardinal Quality Printing (1972)	Job printing	4
Commercial Printing Company (1968)	Commercial printing	2
Cornett Machine Shop, Inc. (1948)	Rebuilt engines, machine work	34
CR/PL, Limited Partnership DBA Crane/Fiat/ Sanymetal (1990)	Plastic laminated bathroom partitions, metal bonded bathroom partitions, packaged showers	98
Cumberland Impression Die, Inc. (1989)	Tool and die	7
Cumberland Welders Supply, Inc. (1957)	Acetylene, oxygen	11
Denney Lumber Company, Inc. (1957)	Logging	5
Foster Rebuilders (1978)	Rebuilt starters and generators, alternators	2
General Electric Company; Somerset Glass Plant (1958)	Pressed glassware (auto)	218
Hartco (1990)	Hardwood flooring	288
Hinkle Contracting Corporation (1971)	Asphalt	55
Industrial Machine & Tool Company, Inc. (1969)	Machine shop, welding	5

(Continued)

<u>Firm</u> <u>(Establishment date)</u>	<u>Product</u>	<u>1997</u> <u>Average Employment</u>
Jet Press (1978)	Typesetting, job printing	3
Jondy Chemicals, Inc. (1988)	Fire retardant chemicals, fabric protection chemicals, upholstery and leather cleaners	11
K & L Caseworks, Inc. (1992)	Laminated cabinets	4
The Kentucky Stone Company (1976)	Crushed limestone, agricultural lime	15
Lukjan Fabrication & Supply Company, Inc. (1978)	Sheet metal fabrication	8
M & M Parts and Filters (1984)	Heavy equipment filters	1
Media General (1995)	Job printing, newspaper	60
Modern Pallet (1971)	Pallets and skids	8
Morgan Hopper Lamp Manufacturing Company (1971)	Lamps and lighting fixtures	3
New Life Industries, Inc. (1979)	Silk screen printing on fabric	60
Palm Beach Company (1945)	Men's coats	600
Quality Woodworks, Inc. (1988)	Solid wood interior doors, wood turnings	35
Ready Mix Concrete of Somerset, Inc. (1949)	Concrete blocks, ready-mixed concrete	200
Robinson Milling Company, Inc. (1934)	Feed	6
Smith Monument Works, Inc. (1939)	Stone and cut stone products	12
Somerset Copy Center (1978)	Printing	2
Somerset Plastics (1985)	Poly ceiling panels, insulation boards, packaging cuts	5
The Somerset Refinery, Inc. (1932)	Gasoline, kerosene, diesel fuel	125
Somerset Stone Company (1946)	Agricultural lime, crushed stone	30
Somerset Tool & Die Corporation (1978)	Machined parts, tools, dies, jigs, fixtures	3
Somerset Wilbert Vault Company, Inc. (1964)	Concrete vaults, tile and curb stones	8
Somerset Wood Products, Inc. (1985)	Cabinet parts, kiln dried lumber, dimension stock, hardwood flooring	98
Southern Belle Dairy Company, Inc. (1951)	Ice cream mix, fluid milk, buttermilk, fruit drinks	270

<u>Firm</u> <u>(Establishment date)</u>	<u>Product</u>	<u>1997</u> <u>Average Employment</u>
Sumerset Houseboats; Division of Somerset Marine, Inc. (1948)	Luxury houseboats, aluminum houseboats	200
T's Bass Lures, Inc. (1977)	Fish lures	5
Tecumseh Products Company (1970)	Compressors for refrigeration industry	1,055
Toyotetsu America, Inc. (1997)	Automotive stampings	29
Tucker Ready Mix, Inc. (1986)	Concrete	12
University Sports Apparel (1992)	Screen printing - shirts/hats/ jackets/signs	2
Warner Fertilizer Company, Inc. (1965)	Fertilizer	3
Wesley's Woodworking, Inc. (1983)	Cabinet doors, wood drawer fronts and panel sections	10
Whitis Cabinets, Inc. (1974)	Counter tops, wood cabinets	22
Woodmont Woodworks, Inc. (1989)	Pallet slats	11

OTHER MAJOR PULASKI COUNTY MANUFACTURING FIRMS*

Burnside

Kingsford Manufacturing Company (1963)	Charcoal briquets	110
---	-------------------	-----

Ferguson

CR/PL, Inc. (1963)	Vitreous china, sanitary ware	293
Mid-State Automotive Parts Rebuilders, Inc. (1962)	Brake shoes, water pumps, rebuilt starters, and alternators	180

*Firms with 100 or more employees.

The primary and secondary wood industry in Somerset employs approximately 1,076 people.

Source: Kentucky Cabinet for Economic Development, Division of Research; Somerset-Pulaski County Development Foundation.

RECENT INDUSTRIAL DEVELOPMENTS

In 1997, Toyotetsu America, Inc. began operations of its Somerset facility making stamping components for the automotive industry. The company has invested approximately \$35 million and will create 135 new jobs initially.

Somerset firms announcing expansion plans include Alumitech, New Life Industries, Somerset Food Service, Anderson Packaging, Glen Oak Lumber, and Somerset Houseboats.

DISTRIBUTION CENTERS

<u>Firm</u> <u>(Establishment Date)</u>	<u>Employment</u>
Modern Distribution (1965)	170
Somerset Food Service (1962)	68

Source: Somerset-Pulaski County Development Foundation.

LABOR ORGANIZATIONS IN MANUFACTURING FIRMS

<u>Union</u>	<u>Representing workers at:</u>
Amalgamated Clothing and Textile Workers Union, AFL-CIO	Palm Beach Company
Glass, Molders, Pottery, Plastics and Allied Workers International Union, AFL-CIO, CLC	Somerset Packaging; CR/PL, Inc.
International Brotherhood of Electrical Workers, AFL-CIO	Tecumseh Products Company
International Brotherhood of Teamsters	CR/PL, Limited Partnership DBA Crane/Fiat/Sanymetal; Southern Bell Dairy Company, Inc.
International Union of Electronic, Electrical, Technical, Salaried Machine, and Furniture Workers, AFL-CIO	General Electric Company, Somerset Glass Plant
Laborers International Union, AFL-CIO	Kingsford Manufacturing Company

SELECTED INDUSTRIAL SERVICES

<u>Types of Services</u>	<u>Location</u>	<u>Mileage from Somerset</u>
Custom Plastics Producers	Mt. Vernon, Kentucky	26
Electric Motor Repair	Somerset, Kentucky	-
Heat Treating Facilities	Richmond, Kentucky	56
Industrial Waste Removal	Somerset, Kentucky	-
Machine Shops, Tool & Die	Somerset, Kentucky	-
Metal Castings	Middlesboro, Kentucky	92
	Horse Cave, Kentucky	95
Metal Finishers	Richmond, Kentucky	56
Metal Service Centers	Corbin, Kentucky	47
Millwrights & Riggers	Glasgow, Kentucky	77
	Nicholasville, Kentucky	80

Source: Kentucky Cabinet for Economic Development, Division of Research.

TRANSPORTATION

Highways

The Cumberland Parkway, U.S. Highway 27 and Kentucky Routes 80 and 461, are all AAA-rated (80,000-pound gross load limit) trucking highways serving Somerset. The Cumberland Parkway provides access to Interstate 65, 90 miles west of Somerset. Kentucky Route 80 provides access to Interstate 75, 32 miles east of Somerset, and to the Daniel Boone Parkway, 34 miles east of Somerset.

Interstate 75 is also accessible 16 miles northeast of Somerset via Kentucky Route 461. U.S. Highway 27 provides access to Lexington, Kentucky, 76 miles north of Somerset, and to Interstate 40, 63 miles south in eastern Tennessee.

The seven-mile "Bypass Corridor" has been completed from U.S. 27 South to Kentucky 80 East.

HIGHWAY MILES FROM SOMERSET, KENTUCKY, TO SELECTED MARKET CENTERS

City	Highway Miles	City	Highway Miles
Atlanta, GA	290	Los Angeles, CA	2,166
Baltimore, MD	589	Louisville, KY	131
Birmingham, AL	321	Nashville, TN	165
Chicago, IL	412	New Orleans, LA	660
Cincinnati, OH	158	New York, NY	788
Cleveland, OH	405	Pittsburgh, PA	432
Detroit, MI	418	St. Louis, MO	386
Knoxville, TN	117		

Note: Mileage computations are via the best interstate or primary highways, not necessarily the most direct route of travel.

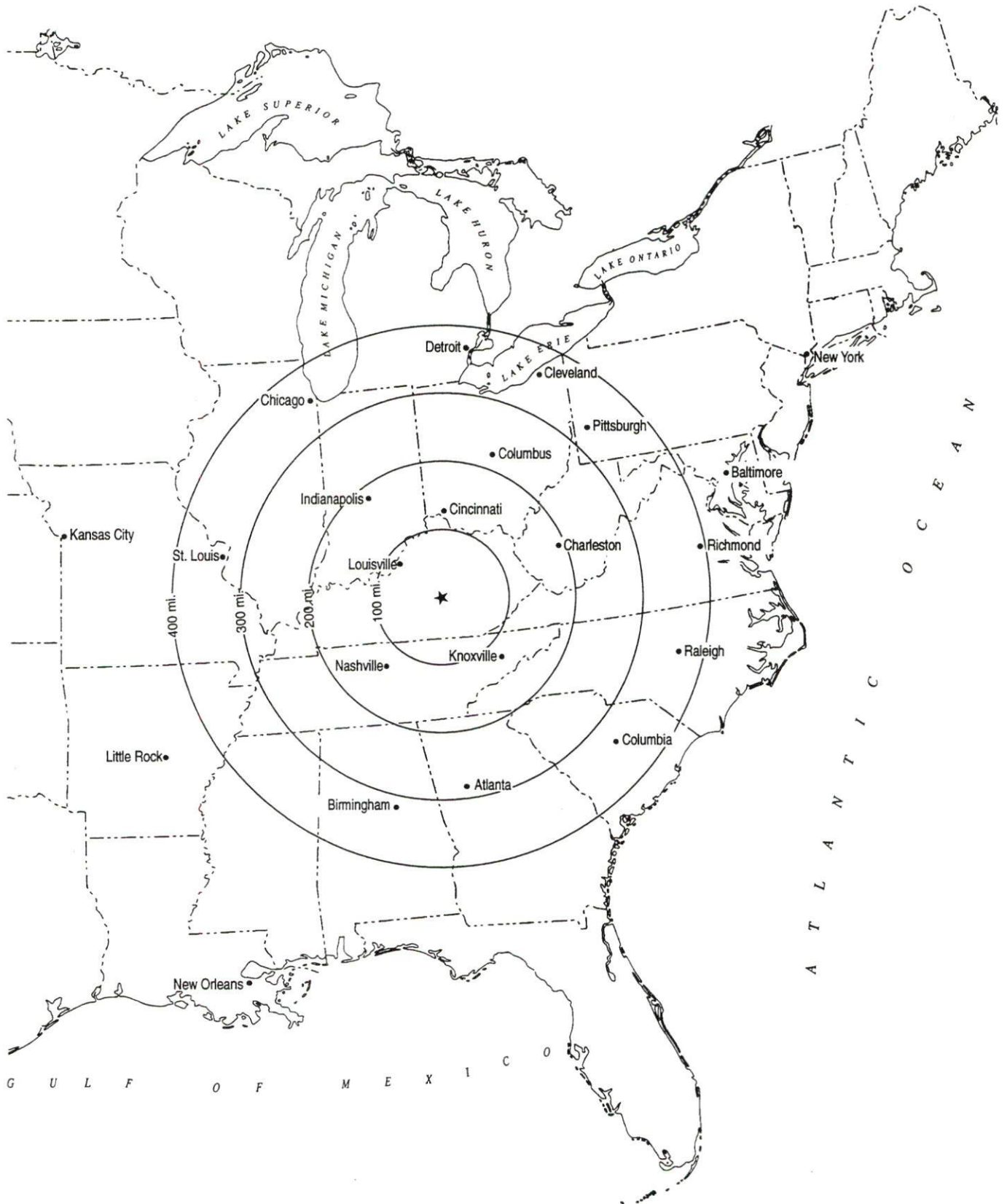
Sources: Rand McNally Standard Highway Mileage Guide, 1993. Official Kentucky Mileage Map, 1988.

Truck Service

Twenty-one common carrier trucking companies provide interstate and/or intrastate service to Somerset.

Source: American Motor Carrier Directory, Spring 1997.

Selected Market Centers



Rail

Main line rail service is provided by the Norfolk Southern Corporation. The nearest intermodal facilities are located at Georgetown, Kentucky, 93 miles north of Somerset.

For details on routing, schedules, rates, and services contact:

Industrial Development Manager
Norfolk Southern Corporation
Industrial Development Department
The Tower Suite 2904
611 Commerce Street
Nashville, Tennessee 37203
(615) 254-3398

Air

Local

Location: Somerset-Pulaski County Airport
Runways: 2 miles south of downtown Somerset
Length: 1 paved
Traffic: 5,500 feet and 1,000-foot overrun
Control: Wind sock and intercom; AWOS3
Lighting: Beacon, runway lights dusk to dawn,
VASI AND REILS
Services: Fuel-100LL, Jet-A fuel; major A & P repairs;
tie downs, hangars; flight control;
PanAm Weatheration

Nearest Scheduled Commercial Airline Service

Location: Blue Grass Airport
4 miles west of Lexington, Kentucky;
80 miles north of Somerset
Air Service: ASA, Comair, Continental Express,
Delta, Northwest Airlink, TW
Express, United Express, US Airways
Daily Arrivals
& Departures: 192

Location: Louisville International Airport
4 miles southeast of center of Louisville,
128 miles northeast of Somerset
Air Service: American, ASA, Comair, Continental,
Continental Express, Delta, Delta Express
Northwest, Northwest Airlink, Skyway,
Southwest, TWA, United, United Express,
US Airways, Valujet
Daily Arrivals
& Departures: 172

UTILITIES

Electricity

Company serving **Somerset, Burnside and part of Pulaski County** - Kentucky Utilities Company

Source of power - Kentucky Utilities Company

For industrial rates contact:

Economic Development Department
Kentucky Utilities Company
One Quality Street
Lexington, Kentucky 40507
(606) 255-2100

Company serving **remainder of Pulaski County** - South Kentucky Rural Electric Cooperative Corporation

Source of power - East Kentucky Power

For industrial rates contact:

Industrial Development Department
East Kentucky Power
P.O. Box 707
Winchester, Kentucky 40392-0707
(606) 744-4812

and/or

South Kentucky Rural Electric
Cooperative Corporation
925-929 North Main Street
P.O. Box 910
Somerset, Kentucky 42502
(606) 678-4121 Fax (606) 679-8279

Public Water Supply

Company serving **Somerset** - City of Somerset Water Service
104 College Street
P.O. Box 989
Somerset, Kentucky 42502
(606) 678-9907 Fax (606) 679-6227

Source - Lake Cumberland
Treatment plant capacity- 7,500,000 gallons per day
Average daily consumption - 5,350,000 gallons
Peak daily consumption - 5,800,000 gallons
Storage capacity - 4,500,000 gallons
Water pressure - 40 psi to 150 psi

Sewerage

Company serving **Somerset** - Somerset Sewer Department
400 East Mt. Vernon Street
P.O. Box 989
Somerset, Kentucky 42502-0989
(606) 679-6366 Fax (606) 679-2481

Design capacity - 3,000,000 gallons per day
Average daily flow - 1,700,000 gallons
Type of treatment - Tertiary
Treated effluent discharged into - Pitman Creek

CLIMATE

Pulaski County

Temperature

Normal (29-year record)	57.60 degrees
Average annual 1995	58.90 degrees
Record highest, September 1954 (54-year record)	103.00 degrees
Record lowest, January 1985 (54-year record)	-24.00 degrees
Normal heating degree days (29-year record) (Heating degree day totals are the sums of negative departures of average daily temperatures from 65 degrees F.)	3,937

Precipitation

Normal (29-year record)	47.14 inches
Mean annual snowfall (52-year record)	11.50 inches
Total precipitation 1995	42.83 inches
Mean number days precipitation (.01 inch or more) (53-year record)	126.50
Mean number days thunderstorms (53-year record)	47.00

Prevailing Winds (through 1963)

Northeast

Relative Humidity (35-year record)

1 a.m.	81 percent
7 a.m.	86 percent
1 p.m.	59 percent
7 p.m.	63 percent

Source: U.S. Department of Commerce, Environmental Science Services Administration, Climatological Data, 1995. Station of record: Knoxville, Tennessee.

LOCAL GOVERNMENT

Structure

The city of Somerset is served by a mayor and twelve council members. Pulaski County is served by a county judge/executive and seven magistrates.

Planning and Zoning

City agency - Somerset Planning and Zoning

Zoning enforced - Within corporate limits of Somerset

Subdivision regulations enforced - Within corporate limits of Somerset
and one mile beyond

Local codes enforced - Building and housing

Mandatory state codes enforced - Kentucky Plumbing Code, National
Electric Code, Kentucky Boiler Regulations and Standards, Kentucky
Building Code (modeled after BOCA code)

Local Fees and Licenses

The City of Somerset levies a business license fee ranging from \$10 to \$500 annually. The business license fee for manufacturers is based on the number of employees: 25 employees or less - \$100; 26 to 50 employees - \$200; 51 to 100 employees - \$300; 101 to 200 employees - \$400; more than 200 employees - \$500.

Pulaski County levies a one percent occupational license tax on wages, salaries, and commissions of individuals employed within the county and on net profits of businesses.

PROPERTY TAXES

The Kentucky Constitution requires the state to tax all classes of taxable property, and state statutes allow local jurisdictions to tax only a few classes. All locally taxed property is subject to county taxes and school district taxes (either a county school district or an independent school district). Property located inside of city limits may also be subject to city property taxes.

Special local taxing jurisdictions (fire protection districts, watershed districts, and sanitation districts) levy taxes within their operating areas (usually a small portion of community or county).

Property assessments in Kentucky are at 100% fair cash value. Accounts receivable are taxed at 85% of face value.

STATE PROPERTY TAX RATES PER \$100 VALUATION

<u>Selected Classes of Property</u>	<u>1996 State Rate</u>	<u>Local Taxation Permitted</u>
Real Estate	\$0.163	YES
Manufacturing Machinery	0.150	NO
Pollution Control Equipment	0.150	NO
Inventories		
Raw Materials	0.050	NO
Goods in Process	0.050	NO
Finished Goods	0.050	YES
Motor Vehicles	0.450	YES
Other Tangible Personal Property	0.450	YES
Intangibles (Accounts Receivable, Money on Hand)	0.250	NO

LOCAL PROPERTY TAX RATES PER \$100 VALUATION, 1996

<u>Taxing Jurisdiction</u>	<u>Real Estate</u>	<u>Finished Goods & Tangibles</u>	<u>Motor Vehicles</u>
Pulaski County	\$0.1169	\$0.1291	\$0.1342
School Districts:			
Pulaski County	0.3500	0.3500	0.4500
Science Hill	0.3630	0.3800	0.5320
Somerset Independent	0.4750	0.4880	0.5680
City:			
Somerset	0.2150	0.2900	0.2800

EDUCATION

Public Schools

	Somerset Independent	Pulaski County
Total Enrollment (Fall, 1996)	1,871	6,970
Accreditation	Southern Association of Colleges and Schools	
Pupil-Teacher Ratio (1996-97)	15.5-1	17.0-1
Percent High School Graduates to College (1996-97)	75.0	60.0
Expenditures Per Pupil (1995-96)	\$4,374.78	\$3,850.54

Pulaski County Southwestern High School is a new 147,000 square foot, \$9.0 million complex. Facilities include a 300-seat auditorium, a gym with an inside running track around the upper bleachers and a very modern library which is computer-linked to the new elementary school built adjacent to the high school. Also available at the new high school is a modern cafeteria, two computer labs, and an up-to-date technology lab, along with outdoor features including a baseball field, tennis courts, football field, and a track and soccer field.

Nonpublic Schools

<u>School</u>	<u>Enrollment</u>	<u>Grades</u>
Saline Christian Academy	120	K-12
Temple Christian Academy	55	K-12

Area Colleges and Universities

<u>Name</u>	<u>Location (Miles from Somerset)</u>	<u>Enrollment (Fall, 1996)</u>
Somerset Community College	Somerset, Kentucky	2,555
Sue Bennett College	London, Kentucky (33)	404
Lindsey Wilson College	Columbia, Kentucky (42)	1,363
Berea College	Berea, Kentucky (44)	1,526
Centre College	Danville, Kentucky (45)	968
Cumberland College	Williamsburg, Kentucky (52)	1,613
Eastern Kentucky University	Richmond, Kentucky (56)	15,161
Campbellsville University	Campbellsville, Kentucky (61)	1,533
Union College	Barbourville, Kentucky (61)	988

VOCATIONAL-TECHNICAL TRAINING

Kentucky Tech schools are operated by the Cabinet for Workforce Development and provide secondary (Sec) and postsecondary (P/S) vocational-technical training.

<u>Kentucky Tech Schools</u>	<u>Location (Mileage from Somerset)</u>	<u>Number of Program Offerings</u>	<u>Enrollment 1995-1996</u>		<u>Approximate Number Completing Programs Annually</u>
Somerset Regional Technology Center	Somerset	13	<u>Sec</u> 3	<u>P/S</u> 620	200

Customized Training

The Kentucky Tech system, through its training and development coordinators, will provide technical assistance and will identify and develop low-cost customized training programs and services for both established and prospective businesses. Businesses wanting to establish a customized training program should contact a training and development coordinator located at the Somerset Regional Technology Center.

Assessment Services

Kentucky Tech Career Connections offers to business, education, and government agencies testing packages for evaluating job applicants, selecting employees for promotional consideration and developing training programs within the organization. A Career Connections Assessment Centers are located at the Somerset Regional Technology Center.

Adult Education Services

Adult education programs are available to adults who want to develop new academic skills, improve basic skills, or earn a high school equivalence diploma. In Somerset, adult basic education and adult literacy classes are administered through the Pulaski County Board of Education.

Bluegrass State Skills Corporation

The Bluegrass State Skills Corporation (BSSC), an independent public corporation created and funded by the Kentucky General Assembly, provides programs of skills training to meet the needs of business and industry. Programs range from entry level for new workers to advanced training for experienced employees.

The Bluegrass State Skills Corporation is a major source for skills training assistance for new and existing companies. BSSC works in partnership with other employment and job training resources and programs, as well as Kentucky's economic development activities, to package programs customized to meet the specific needs of a company.

OTHER LOCAL FACILITIES

Local Medical Personnel

Physicians - 92
Dentists - 22

Hospital

<u>General Hospital</u>	<u>Location</u>	<u>Beds</u>
Columbia Lake Cumberland Regional Hospital	Somerset	227

Medical staff - 80 active staff physicians, 44 courtesy staff physicians; 200 registered nurses; and 70 licensed practical nurses

The Lake Cumberland Regional Hospital, a 227-bed facility is designed and equipped to provide medical service to a primary and secondary area of nine counties with 220,000 residents. The facilities include modern, state-of-the-art intensive care and coronary care units, a 42-bed psychiatric chemical dependency unit, a complete clinical and pathological laboratory, a radiological department with nuclear medicine, ultra-sound and whole-body CT scanning, MRI, a regional cancer treatment center with Cobalt and Linear Accelerator and a 24-hour emergency room equipped to handle all major and minor traumas. Emergency ambulance service is staffed by certified emergency medical technicians and paramedics.

There is a surgical suite which includes orthopedic, general surgery, gynecology, ophthalmology, urology, ENT and neurosurgery in addition to other surgical specialties and day surgery.

Special services include OB/GYN, a Level II neonatal nursery, respiratory therapy, psychiatric and chemical dependency units, a 20-bed physical rehabilitation unit, physical therapy and a pharmacy. The home health division currently serves 26 counties in the region.

Other Medical Facilities and Services

Lake Cumberland District Health Department
Lake Cumberland Home Health Care
Lifeline Home Health Care
Pulaski County Disaster Emergency Service
Pulaski County Health Care
Somerset-Pulaski County Ambulance
Emergency Medical Service
Somerset-Pulaski County Community Hospice

Banks and Savings & Loan Associations

Alliance Bank
Bank of Mt. Vernon
Citizens National Bank
Community Trust Bank
Cumberland Security Bank
First and Farmers Bank
First Southern National Bank
Somerset National Bank

Newspapers

Commonwealth Journal
Somerset-Pulaski County News Journal

Telephone Service

General Telephone Company of Kentucky

RECREATION

Lake Cumberland, with 1,255 miles of shoreline, is the centerpiece of scenic beauty and outdoor recreational activity in south central Kentucky. The Somerset area also offers a variety of recreational facilities, including supervised programs during the summer months.

Pulaski County Park, a 465-acre recreational facility, presently contains 36 campsites with electrical hook-ups, and numerous primitive sites. There are seven shelter houses, playgrounds, a disc golf course, and two boat launching ramps.

Somersport Park, a 20-acre city park, provides facilities for picnicking, soccer fields, baseball and softball fields, a youth football field, driving range, tot lot, community building, public restrooms, and concession stand. A theme playground is also under construction.

General Burnside Island State Park, seven miles south of Somerset on U.S. 27, is Kentucky's only island state park. Rising out of Lake Cumberland and surrounded by beautiful Kentucky mountains, the park encompasses 430 acres offering excellent fishing, an 18-hole golf course which is open year-round, picnicking areas, two shelters, 94 campsites with water and electricity, and numerous primitive sites. The park also has a community swimming pool and one of the best boat launching ramps on the entire lake. Beginning November 17 - January 1, General Burnside Island is transformed into **Christmas Island's festival of lights**.

Rock Hollow Park, in Somerset, contains an amphitheater, bleachers, playgrounds, exercise stations, hard-surface basketball courts, a pavilion, a picnic area, and hiking trails.

A portion of Pulaski County is located in the **Daniel Boone National Forest**, which covers 640,000 acres of timberland in eastern Kentucky. It encompasses much of Kentucky's great beauty and provides a vacation paradise. There are scenic hiking trails, rivers and streams stocked with a variety of fish, hunting preserves, camping sites and numerous other natural and historical attractions such as Natural Arch and Yahoo Falls.

Woodson Bend Resort is a private resort located on Lake Cumberland near Burnside, Kentucky. This development features an 18-hole golf course, five tennis courts, a swimming pool, boating, skiing, fishing, condominiums for sale or lease, a restaurant, and rental units.

Eagles Nest Country Club, a private recreational facility located three miles north of Somerset on Kentucky 39 features an 18-hole golf course, a fishing lake, four tennis courts, an Olympic size swimming pool, and a two-story clubhouse with restaurant.

Fishing Creek and Waitsboro are both U.S. Army Corps of Engineers recreational areas. Waitsboro has 24 campsites and several picnicking areas, and is located south of Somerset on U.S. 27. Fishing Creek is about 3 miles west, off Kentucky 80, with 44 campsites, picnic areas, playground equipment, and a beach area.

The **YMCA**, as well as other private recreational facilities are available in the area. Slate Branch Golf Course is a public 18-hole course located just off Slate Branch road in southern Somerset.

The Big South Fork National River and Recreation area, (now a National Park Concessionaire) is located 25 miles south of Somerset, and was developed by the U.S. Army Corps of Engineers in cooperation with the National Park Service. The "National Area" is located along the Big South Fork of the Cumberland River from Whitley City in Kentucky, south to Oneida in Tennessee. Recreational opportunities in this rugged scenic area include whitewater rafting, canoeing, kayaking, camping, hiking, horseback riding and picnicking.

The Blue Heron Recreation Area, a restored mining camp, is located within the Big South Fork National River and Recreation Area. The interpretive exhibits allow visitors to witness life as it was when the mining camp operated on the banks of the Big South Fork in the Cumberland River. A campground, scenic overlooks, and hiking trails are also located in the area.

The Big South Fork Scenic Railway offers a chance to see part of the rugged Cumberland River Area by rail. The train operates on a seasonal schedule between Stearns and the Blue Heron Recreation Area within the Big South Fork National River and Recreation Area, a distance of about six miles in each direction.

Step into the past with two popular tours in Pulaski County. Visit historic downtown Somerset on a self-guided walking tour--a 1.75 mile journey of fact, recollection, legend and imagination. A driving tour of the **Battle of Mill Springs** offers stops at the Mill Springs National Cemetery, which was established in 1866; Zollicoffer Park, the scene of the heaviest fighting during the height of the battle; the Confederate's last stand; the Confederate camp at Beech Grove; and the Confederate retreat.

Area (Within 45 miles)

- William Whitley House State Historic Site
- Cumberland Falls State Resort Park
- Lake Cumberland State Resort Park
- Constitution Square State Historic Site
- Isaac Shelby Historic Site
- Levi Jackson State Park