

1994

# Industrial Resources: Scott County - Georgetown

Kentucky Library Research Collections  
Western Kentucky University, [spcol@wku.edu](mailto:spcol@wku.edu)

Follow this and additional works at: [https://digitalcommons.wku.edu/scott\\_cty](https://digitalcommons.wku.edu/scott_cty)

 Part of the [Business Administration, Management, and Operations Commons](#), [Growth and Development Commons](#), and the [Infrastructure Commons](#)

---

## Recommended Citation

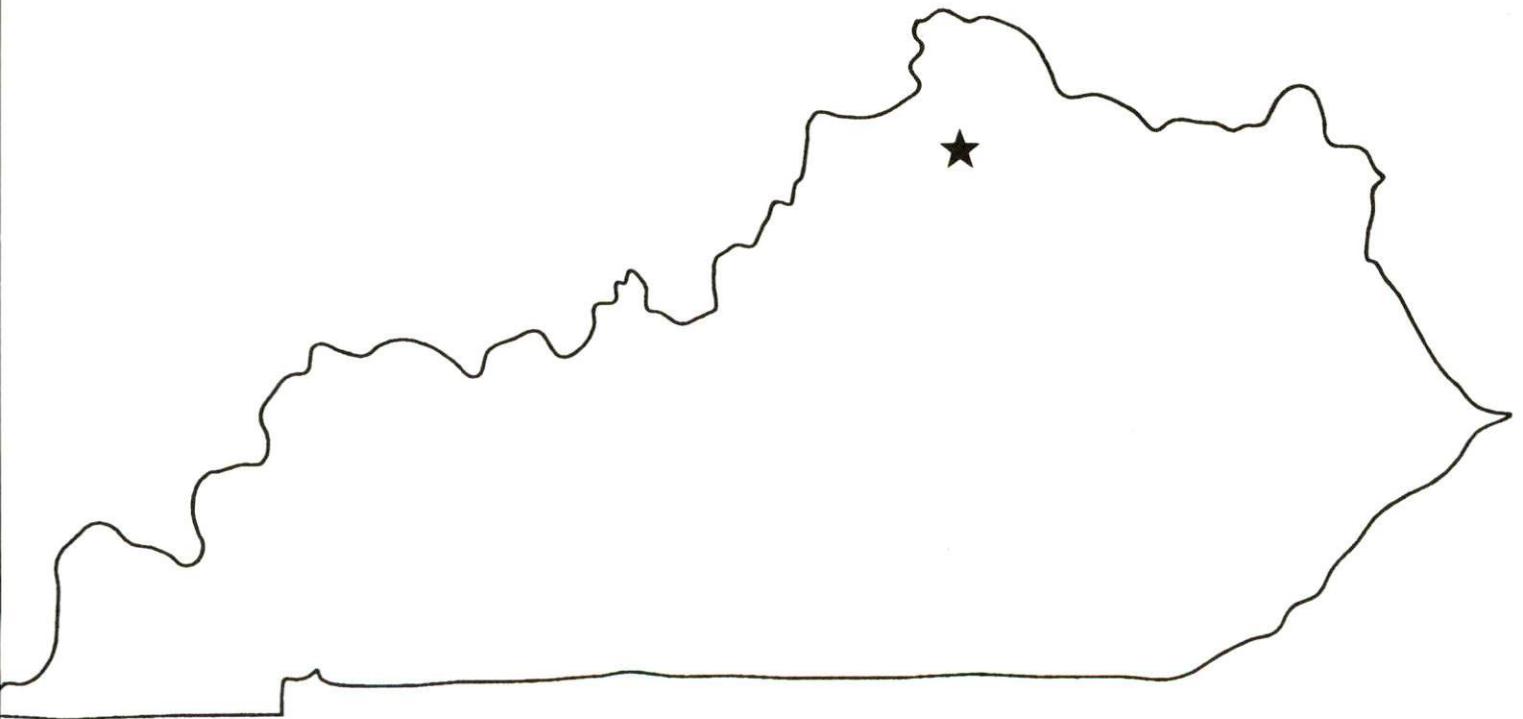
Kentucky Library Research Collections, "Industrial Resources: Scott County - Georgetown" (1994). *Scott County*. Paper 6.  
[https://digitalcommons.wku.edu/scott\\_cty/6](https://digitalcommons.wku.edu/scott_cty/6)

This Report is brought to you for free and open access by TopSCHOLAR®. It has been accepted for inclusion in Scott County by an authorized administrator of TopSCHOLAR®. For more information, please contact [topscholar@wku.edu](mailto:topscholar@wku.edu).

# Kentucky

**Resources For  
Economic Development**

**Georgetown**



Prepared by  
The Kentucky Cabinet for Economic Development  
Division of Research  
in cooperation with  
Georgetown-Scott County Chamber of Commerce

1994

Division Director - Pamela K. Riley; program manager - Keith Roberts; research - Barry K. Holder, Jr.; clerical - Wanda Sharp; graphics - Robert Owens. Cost of printing paid from state funds.

## TABLE OF CONTENTS

<u>Chapter</u>	<u>Page</u>
GEORGETOWN, KENTUCKY - A RESOURCE PROFILE .....	1
THE LABOR MARKET STATISTICS .....	2
Labor Market Area Map.....	2
Population .....	3
Population Projections .....	3
Estimated Labor Supply.....	3
Labor Force Characteristics of Residents, 1992 .....	4
Selected Components of Nonagricultural Employment, by Place of Work, 1992 .....	5
Per Capita Personal Income .....	6
Average Placement Wages .....	7
Average Weekly Wages of Workers Covered by Unemployment Insurance 1992 - Bar Chart .....	8
Average Weekly Wages by Industry, by Place of Work, 1992 .....	9
EXISTING INDUSTRY .....	10
Major Georgetown Manufacturing Firms, Their Products and Employment .....	10
Recent Industrial Developments .....	11
Labor Organizations in Manufacturing Firms.....	12
Selected Industrial Services .....	12
TRANSPORTATION.....	13
Highways .....	13
Truck Service .....	13
Selected Market Location Map.....	14
Rail .....	15
Air .....	15
UTILITIES .....	16
Electricity .....	16
Natural Gas .....	16
Public Water Supply .....	17
Sewerage .....	17
CLIMATE.....	18

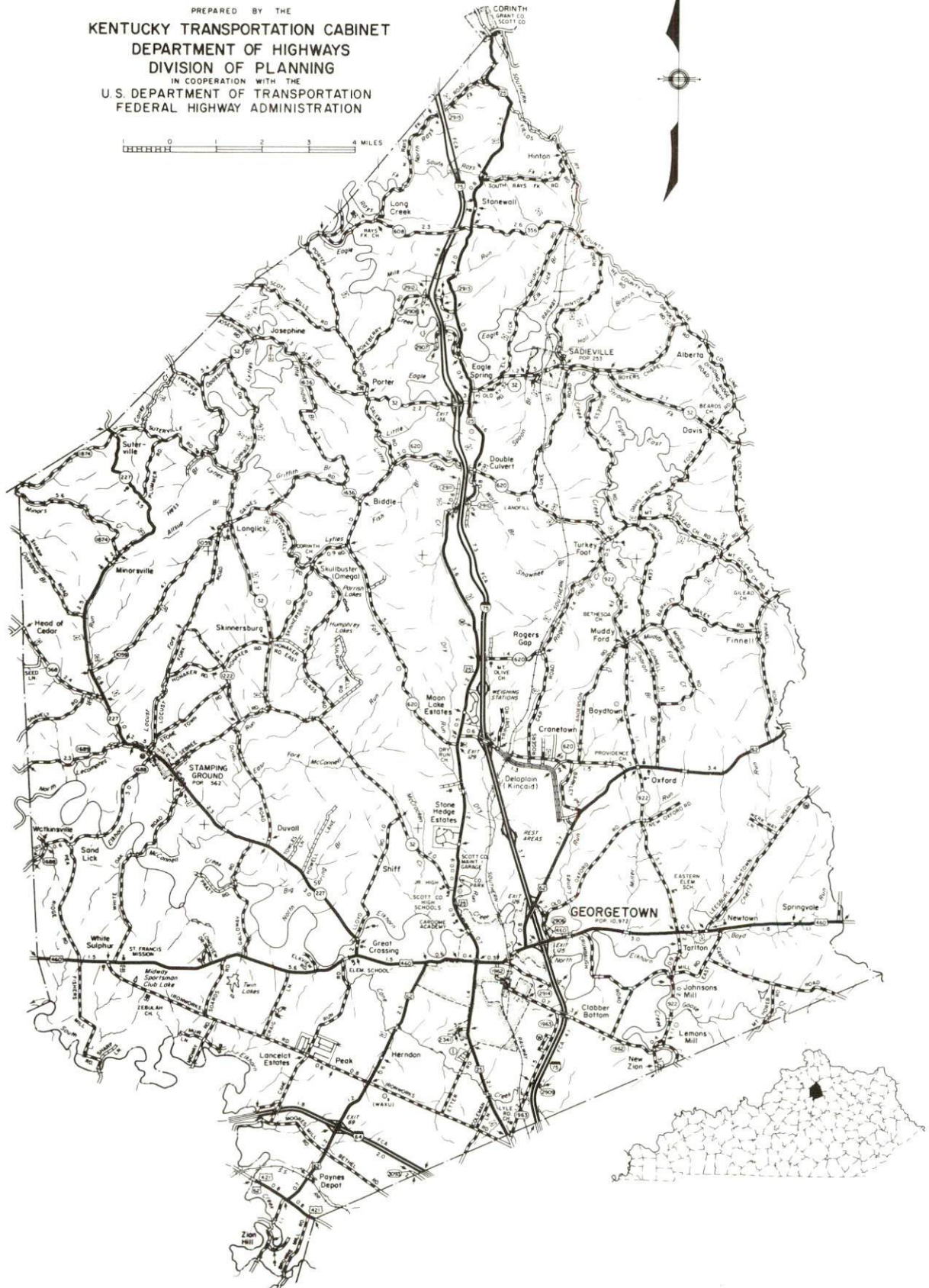
<u>Chapter</u>	<u>Page</u>
LOCAL GOVERNMENT .....	19
Structure .....	19
Planning and Zoning .....	19
Local Fees and Licenses .....	19
State and Local Property Taxes .....	20
EDUCATION .....	21
Public Schools .....	21
Nonpublic Schools .....	21
Area Colleges and Universities .....	21
Vocational Training .....	22
OTHER LOCAL FACILITIES .....	24
Local Medical Personnel .....	24
Hospitals .....	24
Other Medical Facilities and Services .....	24
Banks and Savings & Loan Associations .....	24
Newspapers .....	24
Telephone Service .....	24
RECREATION .....	25
COMMUNITY IMPROVEMENTS .....	27



# GENERAL HIGHWAY MAP SCOTT COUNTY KENTUCKY

PREPARED BY THE  
KENTUCKY TRANSPORTATION CABINET  
DEPARTMENT OF HIGHWAYS  
DIVISION OF PLANNING  
IN COOPERATION WITH THE  
U.S. DEPARTMENT OF TRANSPORTATION  
FEDERAL HIGHWAY ADMINISTRATION

0 1 2 3 4 MILES





## GEORGETOWN, KENTUCKY - A RESOURCE PROFILE

Georgetown, the county seat of Scott County, is located in central Kentucky's scenic Blue Grass Region, an area famous for its many beautiful horse farms and low rolling hills. Located only two miles from Interstate Highway 75 and nine miles from Interstate 64, Georgetown is ideally situated for easy highway access. Georgetown is 16 miles north of Lexington, Kentucky; 79 miles east of Louisville, Kentucky; and 64 miles south of Cincinnati, Ohio. Georgetown was named a "Hall of Fame Kentucky Certified City" in 1993 based upon progress in community and economic development, and had a 1990 population of 11,414 persons.

Scott County, which covers a land area of 285 square miles, had a 1990 population of 23,867 persons.

**The Economic Framework** - The total number of Scott County residents employed in 1992 averaged 12,604. Manufacturing firms in the county reported 6,162 employees; wholesale and retail trade provided 2,043 jobs; 1,900 people were employed in service occupations; state and local government accounted for 1,180 employees; and contract construction firms provided 528 jobs.

**Labor Supply** - There is a current estimated labor supply of 11,180 persons available for industrial jobs in the labor market area. In addition, from 1994 through 1998, 24,796 young persons in the area will become 18 years of age and potentially available for industrial jobs.

**Transportation** - U.S. Highways 25, 62, and 460 are "AAA"-rated trucking highways serving Georgetown, and two interchanges of Interstate 75 are only two miles east of the city. Interstate Highway 64 is accessible nine miles south of Georgetown. Thirty-six common carrier trucking companies provide interstate and/or intrastate service. The Norfolk Southern Corporation provides daily rail freight and intermodal service to Georgetown. The nearest scheduled commercial airline service is available at Blue Grass Airport near Lexington, 18 miles south. Marshall Field (Georgetown-Scott County Airport), located seven miles east of the city, maintains a 4,000-foot paved runway.

**Power and Fuel** - Kentucky Utilities Company, an electric power generation and transmission company, provides electricity to Georgetown and parts of Scott County. The remainder of the county is served by East Kentucky Power Cooperative through the Harrison Rural Electric Cooperative Corporation and the Owen Electric Cooperative. Columbia Gas of Kentucky provides natural gas service to Georgetown.

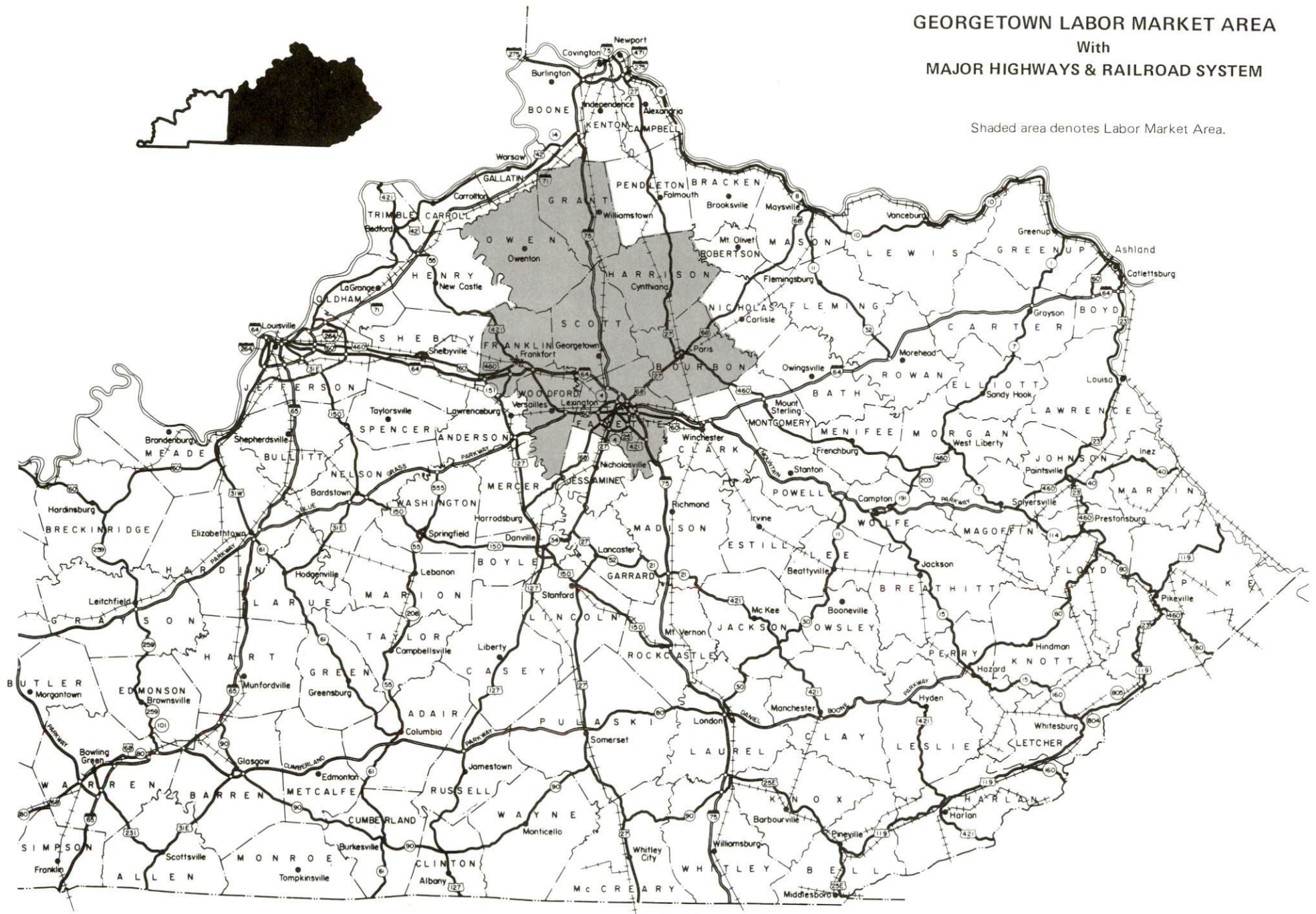
**Education** - The Scott County Public School System provides primary and secondary education in Scott County. One nonpublic school operates in the county. Georgetown College is a coeducational, liberal arts college conferring Baccalaureate and Masters degrees, as well as offering a Rank I program. There are seven other institutions of higher learning within 40 miles of Georgetown. The nearest vocational training is available at the Central Kentucky State Vocational-Technical School, the Fayette County South Area Vocational Education Center, and the Fayette County East Area Vocational Education Center, all located in Lexington, Kentucky, 16 miles south of Georgetown.



# GEORGETOWN LABOR MARKET AREA

With  
MAJOR HIGHWAYS & RAILROAD SYSTEM

Shaded area denotes Labor Market Area.





## LABOR MARKET STATISTICS

The Georgetown Labor Market Area includes Scott County and the adjoining Kentucky counties of Bourbon, Fayette, Franklin, Grant, Harrison, Owen and Woodford.

POPULATION			
	<u>1990</u>	<u>1980</u>	<u>1970</u>
Labor Market Area	373,225	342,389	291,289
Georgetown	11,414	10,972	8,629
Scott County	23,867	21,813	17,948

Source: U.S. Department of Commerce, Bureau of the Census, January 1991.

POPULATION PROJECTIONS				
	<u>1995</u>	<u>2000</u>	<u>2010</u>	<u>2020</u>
Labor Market Area	390,792	406,417	429,440	439,796
Scott County	25,208	26,460	28,405	29,662

Note: Population projections are from Moderate Growth Series forecast.

Source: University of Louisville, Urban Studies Center, State Data Center.

ESTIMATED LABOR SUPPLY				
	Current		Not in Labor Force	Future
	<u>Total</u>	<u>Unemployed</u>		<u>Becoming 18 years of age 1994 thru 1998</u>
Labor Market Area*	11,180	9,168	2,012	24,796
Scott County	629	629	0	1,945

\* Additional workers may be drawn from other nearby counties.

Note: Unemployed - persons unemployed and actively seeking work; Not in Labor Force - represents the number of persons who would enter the labor force if suitable employment were available (based on the assumption that persons in Kentucky would like to participate in the labor force in the same proportion that they do nationally). Underemployed persons (employed only 14 to 26 weeks during the year) are no longer included in labor surplus estimates.

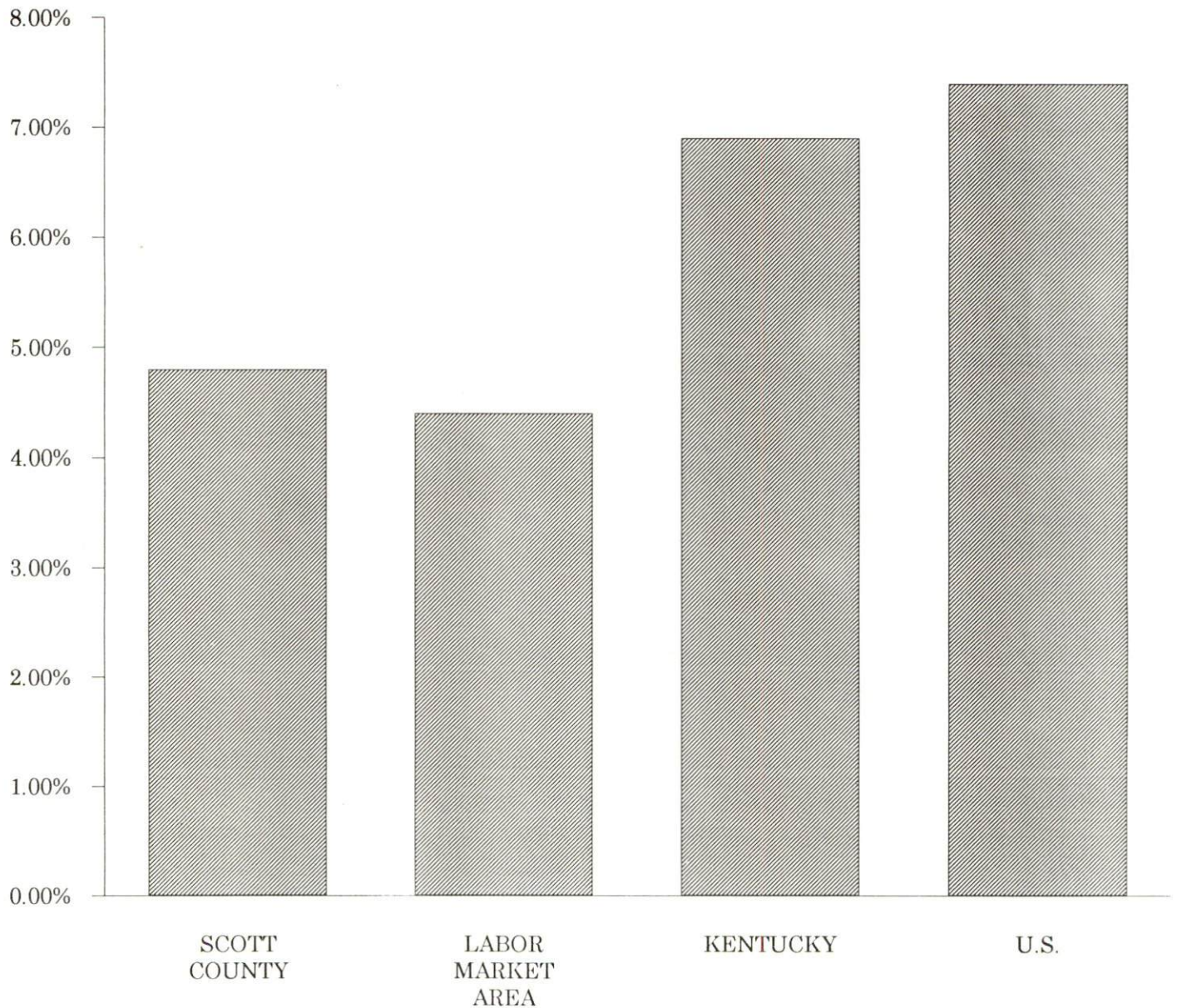
Sources: Kentucky Cabinet for Human Resources, Kentucky Labor Surplus Estimates by County, 1992. Kentucky Cabinet for Economic Development, Future Labor Supply Becoming 18 Years of Age, 1994 thru 1998.

# LABOR FORCE CHARACTERISTICS OF RESIDENTS, 1992

	<u>Scott County</u>	<u>Labor Market Area</u>
Civilian Labor Force	13,233	206,494
Employment	12,604	197,326
Unemployment	629	9,168
Rate of Unemployment (%)	4.8	4.4

Source: Kentucky Cabinet for Human Resources, Kentucky Labor Force Estimates, Annual Averages, 1992.

## UNEMPLOYMENT RATES 1992



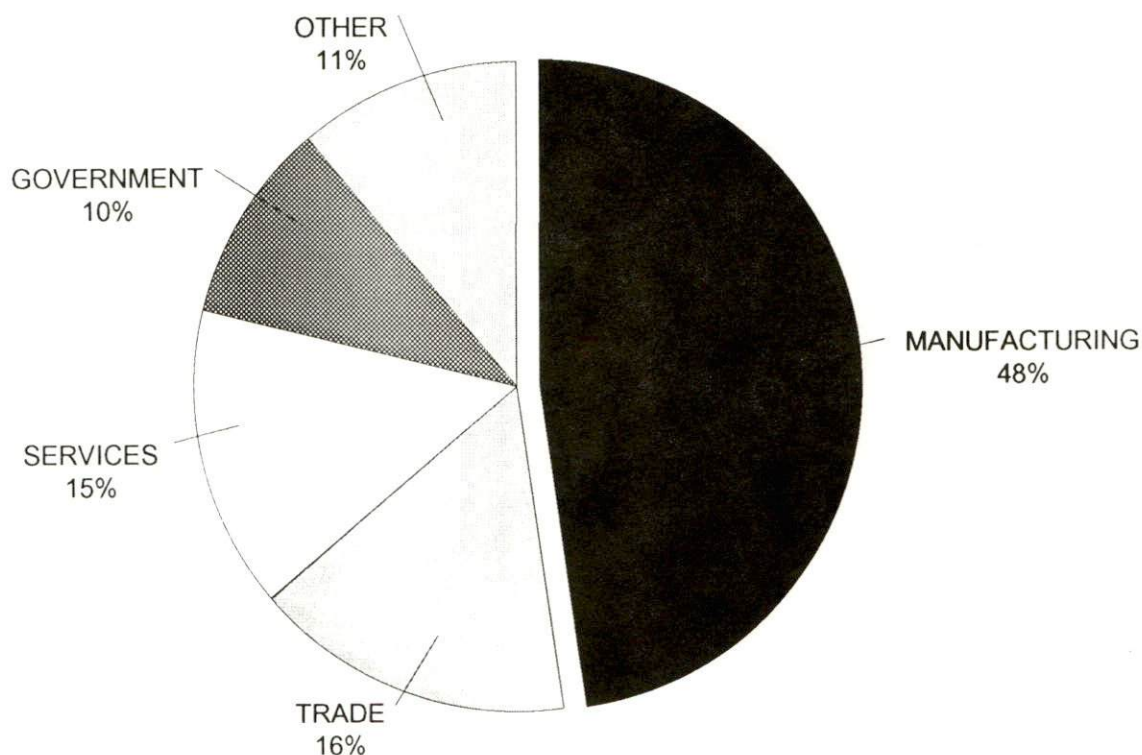


SELECTED COMPONENTS OF NONAGRICULTURAL EMPLOYMENT  
BY PLACE OF WORK, 1992

	Scott County	Labor Market Area
All Industries (total)	12,707	202,979
Manufacturing	6,162	33,914
Wholesale & Retail Trade	2,043	47,638
Services	1,900	47,021
State/Local Government	1,180	42,081
Contract Construction	528	9,796

Note: Excludes domestic workers, railway workers, certain nonprofit corporations, majority of federal government workers, and self-employed workers.  
Source: Kentucky Cabinet for Human Resources, Average Monthly Workers Covered by Kentucky Unemployment Insurance Law, 1992.

SCOTT COUNTY



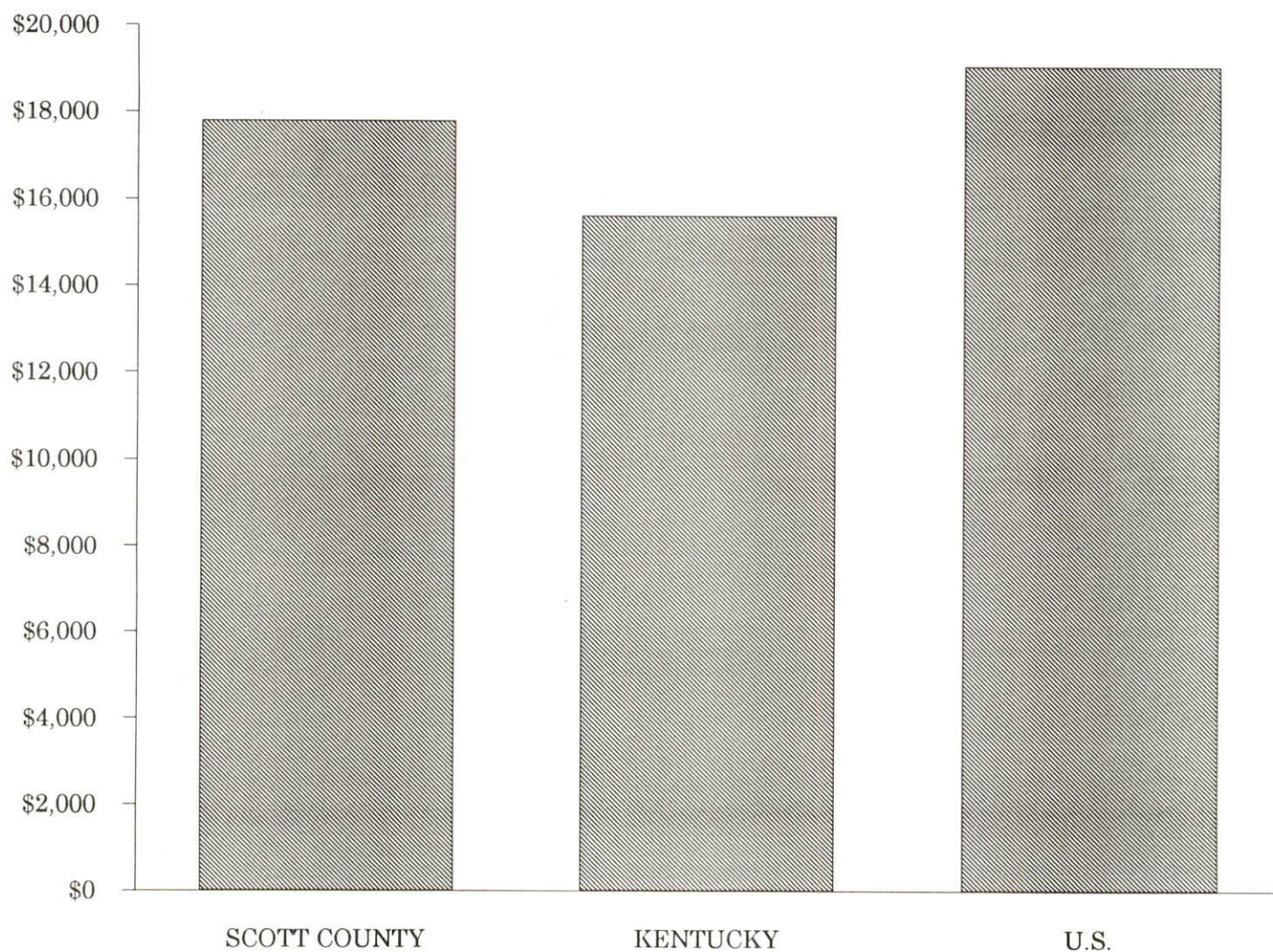


# PER CAPITA PERSONAL INCOME

Area	1987	1991	Percent Change
Scott County	\$12,975	\$17,804	37.2
Labor Market Area Range	\$8,823 - \$19,420	\$12,369 - \$21,893	-
Kentucky	\$12,216	\$15,626	27.9
U.S.	\$15,638	\$19,091	22.0

Source: U.S. Bureau of Economic Analysis, Regional Economic Information System, April 1993.

## PER CAPITA PERSONAL INCOME 1991



## AVERAGE PLACEMENT WAGES

Scott County is served by the Georgetown local office of the Kentucky Department for Employment Services. The focus of the following data is on job placements made by the Georgetown local office and may therefore be used as an indicator of the wages which employers in the area pay new employees. During the twelve months which ended on June 30, 1993, the local employment office filled 2,538 job openings in various occupational categories. The average hourly wage for selected occupational categories were:

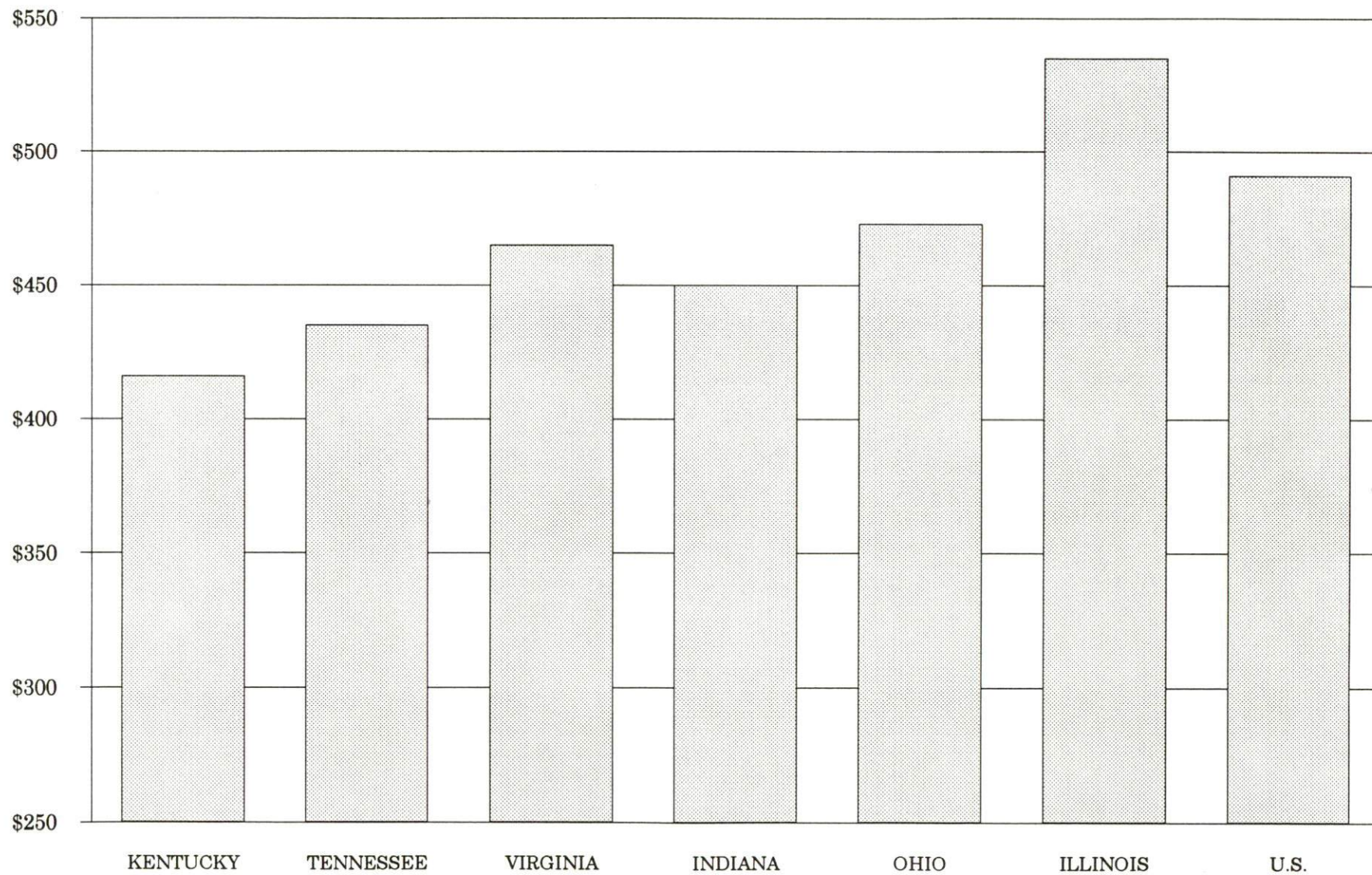
<u>OCCUPATIONAL CATEGORY</u>	<u>NUMBER OF PLACEMENTS</u>	<u>AVERAGE WAGE(\$)</u>
All Occupations	2,538	5.83
Clerical	211	4.78
Sales	184	4.53
Services (excluding domestic)	580	6.61
Agricultural, Fishery, Forestry, etc.	47	4.25
Processing	67	4.99
Machine Trades	45	8.33
Bench Work	944	5.39
Structural	223	8.11
Motor Freight/ Transportation	11	5.18
Packaging and Materials Handling	165	6.00

The Georgetown local office also serves Bourbon, Harrison, and Nicholas Counties. The above occupational categories are taken from the Dictionary of Occupational Titles published by the U.S. Department of Labor.

Source: Kentucky Cabinet for Human Resources, Department for Employment Services.



**AVERAGE WEEKLY WAGES OF WORKERS COVERED BY  
UNEMPLOYMENT INSURANCE - 1992**





AVERAGE WEEKLY WAGES BY INDUSTRY  
BY PLACE OF WORK, 1992\*

	Scott County	Kentucky (State- Wide)	Tennessee	Virginia
All Industries	\$563.01	\$415.94	\$435.00	\$465.00
Mining & Quarrying	N/A	685.48	564.00	690.00
Contract Construction	473.85	431.97	456.00	456.00
Manufacturing	807.43	535.73	510.00	535.00
Transportation, Communications & Public Utilities	703.81	560.84	561.00	637.00
Wholesale & Retail Trade	215.59	282.29	N/A	N/A
Finance, Insurance & Real Estate	339.85	493.68	548.00	576.00
Services	311.20	371.91	419.00	483.00
State/Local Government	376.72	434.01	N/A	N/A
	<u>Indiana</u>	<u>Ohio</u>	<u>Illinois</u>	<u>U. S.</u>
All Industries	\$450.00	\$473.00	\$535.00	\$491.00
Mining & Quarrying	731.00	639.00	787.00	799.00
Contract Construction	504.00	525.00	658.00	527.00
Manufacturing	609.00	653.00	652.00	612.00
Transportation, Communications & Public Utilities	548.00	590.00	674.00	632.00
Wholesale & Retail Trade	N/A	N/A	N/A	N/A
Finance, Insurance & Real Estate	511.00	545.00	728.00	670.00
Services	386.00	419.00	488.00	468.00
State/Local Government	N/A	N/A	N/A	N/A

\* Wages for U.S. and surrounding states rounded to nearest dollar.

N/A Not Available.

Note: The average weekly wage for each category includes the salaries and wages of all persons working for that type business. For example, the manufacturing category includes both production workers and administrative personnel. Excludes domestic workers, railway workers, certain nonprofit corporations, majority of federal government workers, and self-employed workers.

Source: Kentucky Cabinet for Human Resources, Average Weekly Wages of Workers Covered by Kentucky Unemployment Insurance Law, 1992. U.S. Department of Labor, Bureau of Labor Statistics, Employment and Wages, Annual Averages, 1992, October 1993.

# EXISTING INDUSTRY

## MAJOR GEORGETOWN MANUFACTURING FIRMS, THEIR PRODUCTS AND EMPLOYMENT\*

<u>Firm</u> <u>(Establishment date)</u>	<u>Product</u>	<u>1993</u> <u>Average Employment</u>
Berol Blue Ribbon Pen and Pencil Corporation (1958)	Imprinted pens, pencils	58
C & D Products, Inc. (1984)	Machine shop, wire containers	71
Carbide Products, Inc. (1943)	Boring tools, cutter blades, carbide tools & accessories	42
Fosroc, Inc.; Celtite Mining & Tunneling Division (1981)	Resin cartridges, mine roof control, construction chemicals, packaged cementitious products	60
The GCA Group (Georgetown Cable & Assembly) (1962)	Electronic sub-assemblies and wiring harnesses	425
Georgetown Tool & Manufacturing, Inc. (1969)	Special machined parts, precision tooling	22
Hoover Group, Inc.; Wire Products Division (1965)	Automotive seating components, bed & furniture springs, miscellaneous wire fabricated products	140
International Crankshaft, Inc. (1990)	Auto crankshafts, steel forgings	100
Interstate Transformer Company (1982)	Electrical switch gear, transformers	46
Johnson Controls, Inc. Auto Systems Group (1961)	Automotive seating assemblies	625
Johnson Controls/FoaMech (1993)	Automotive seating	85
Jordan Plating, Inc. (1969)	Electroplating, metal finishing	72
Kardon Industries, Inc.; Plastic Parts Division (1958)	Plastic closures	25
Nally & Gibson Georgetown, Inc. (1959)	Crushed limestone, ready-mix concrete	63
Polycraft Tool (1987)	Machine shop	20
Premix, Inc.; Injection Molding Division (1989)	Custom plastic injection molding, custom molded parts, custom engineered composites	125
R & J Manufacturing, Inc. (1976)	Millwork, wooden handles chair & ladder rungs, dowels	60

(Continued)



<u>Firm</u> <u>(Establishment date)</u>	<u>Product</u>	<u>1993</u> <u>Average Employment</u>
STM, Inc.; Russell Manufacturing Company (1971)	Tools, dies, jigs, fixtures, special machines	20
Toyota Motor Manufacturing U.S.A., Inc. (1987)	Four-door sedan automobiles, five-door station wagons, engines, axles	4,800
Toyota Tsusho, Inc. (1988)	Steel splitting	104
Trinity Industrial Corporation of America (1987)	Auto paint finishes, paint finishing systems	50
Vuteq Corporation (1987)	Auto glass sub-assembly	70
Western Pacific Storage Systems (1989)	Gravity flow storage systems, metal shelving	50
Wilhoite Tool Company, Inc. (1980)	Machine parts, carbide cutting tools, disposable scalpel blades	22
Willmott Hardwoods, Inc. (1973)	Hardwood lumber, mulch, veneer logs & sawlogs	25

\* Firms with 20 or more employees.

Sources: Kentucky Cabinet for Economic Development, Division of Research; Georgetown-Scott County Chamber of Commerce.

### RECENT INDUSTRIAL DEVELOPMENTS

Toyota Motor Manufacturing, USA is completing its 3.2 million-square-foot expansion which will allow for the increase in Camry production and employment in 1994. In addition, the local TMM plant is now producing the Camry Station Wagon, and the Camry Coupe. Announcements have been made that the Georgetown plant will also produce the new "Avalon" vehicle in 1994.

Numerous industrial developments have been announced in 1993 and include:

A. Johnson Controls/FoaMech has purchased and developed the existing facility at Lemons Mill and is now manufacturing foam and tracks for automotive seats. Employment will reach approximately 250 in 1994. Project plans also include the construction of a new road connecting Johnson Controls-Showalter with McClellan Circle.

B. The American Trading and Production Corporation (Atapco) has located its central distribution and warehousing operation in Georgetown for its office products division. Employment will reach 70 in 1994.

C. Vuteq, Inc., Fosroc, Inc., The GCA Group, Interstate Transformer, Inc., Toyota Tsusho, Inc. and Commonwealth Tool and Machine have all undergone or announced expansions to their facilities and/or operations.



## LABOR ORGANIZATIONS IN MANUFACTURING FIRMS

There are no labor organizations representing workers in Scott County manufacturing firms at the present time.

### SELECTED INDUSTRIAL SERVICES

<u>Types of Services</u>	<u>Location</u>	<u>Mileage from Georgetown</u>
Custom Plastics Producers	Georgetown	-
Electric Motor Repair	Lexington	16
	Frankfort	18
Heat Treating Facilities	Georgetown	-
Industrial Waste Removal	Georgetown	-
Machine Shops, Tool & Die	Georgetown	-
Metal Castings	Cynthiana	21
Metal Finishers	Georgetown	-
Metal Service Centers	Lexington	16
Millwrights & Riggers	Lexington	16

Sources: Kentucky Cabinet for Economic Development, Division of Research.

## TRANSPORTATION

### Highways

Interstate 75, a major north-south corridor, has two interchanges locally, each two miles east of Georgetown. U.S. Highways 25, 62, and 460 are "AAA"-rated (80,000-pound gross load limit) trucking highways serving Georgetown. Access to Interstate 64, a major east-west highway, is available nine miles south of Georgetown via Interstate 75.

Construction on the Georgetown Bypass (extending from U.S. 25 to Frankfort Pike) is expected to begin in 1994. Interstate 75 is being widened to six lanes from Georgetown to Lexington. The \$55 million project is scheduled for completion in 1994.

#### HIGHWAY MILES FROM GEORGETOWN, KENTUCKY, TO SELECTED MARKET CENTERS

City	Highway Miles	City	Highway Miles
Atlanta, GA	379	Los Angeles, CA	2,168
Baltimore, MD	549	Louisville, KY	79
Birmingham, AL	409	Nashville, TN	217
Chicago, IL	351	New Orleans, LA	731
Cincinnati, OH	64	New York, NY	713
Cleveland, OH	309	Pittsburgh, PA	343
Detroit, MI	322	St. Louis, MO	334
Knoxville, TN	187		

Note: Mileage computations are via the best interstate or primary highways, not necessarily the most direct route of travel.

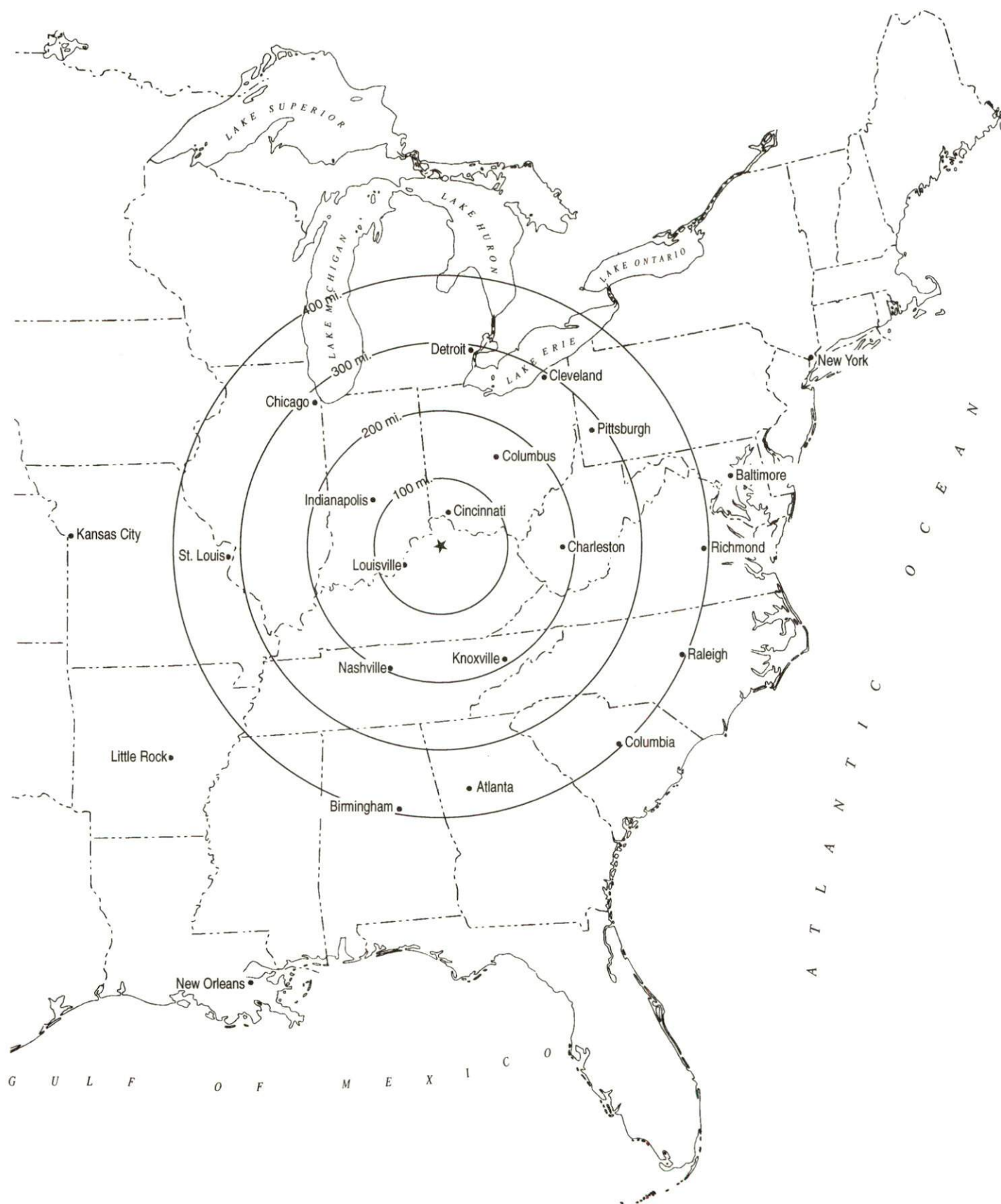
Sources: Rand McNally Standard Highway Mileage Guide, 1990. Official Kentucky Mileage Map, 1985.

### Truck Service

Thirty-four common carrier trucking companies provide interstate and/or intrastate service to Georgetown.

Source: American Motor Carrier Directory, Spring 1994.

## Selected Market Centers





## Rail

Norfolk Southern Corporation provides main line rail service and intermodal facilities to Georgetown.

For details on routing, schedules, rates, and services contact:

Industrial Development Manager  
Norfolk Southern Corporation  
Industrial Development Department  
The Tower Suite 2904  
611 Commerce Street  
Nashville, Tennessee 37203  
(615) 254-3398

## Air

### Local

	Marshall Field (Georgetown-Scott County Regional Airport)
Location:	7 miles east of Georgetown
Runways:	1 paved
Length:	4,000 feet
Traffic	
Control:	Wind sock, unicom 122.9 or 123.0
Lighting:	Lighted wind cone, rotating beacon, PAPI, REIL, MIRL, MITL
Services:	100LL octane and jet-A fuels, tie-downs, flight instruction, major A & P repairs, rental car, ultralight and balloon training

### Nearest Scheduled Commercial Airline Service

	Blue Grass Airport
Location:	4 miles west of Lexington, Kentucky; 18 miles south of Georgetown
Air Service:	American Eagle, Atlantic Southeast, ComAir, Delta, Northwest Airlink, TW Express, United Express, USAir
Daily Arrivals & Departures:	120

### Nearest International Airport

	Cincinnati/Northern Kentucky International Airport
Location:	8 miles southwest of Covington, Kentucky; 58 miles north of Georgetown
Air Service:	American, American Eagle, ComAir, Continental, Continental Express, Delta, Northwest, Northwest Airlink, TWA, United, United Express, USAir, USAir Express
Daily Arrivals & Departures:	846

## UTILITIES

### Electricity

Company serving Georgetown and parts of Scott County - Kentucky  
Utilities Company

Source of power - Kentucky Utilities Company

For industrial rates contact:

Economic Development Department  
Kentucky Utilities Company  
One Quality Street  
Lexington, Kentucky 40507  
(606) 255-2100

Company serving parts of Scott County - Harrison Rural Electric  
Cooperative Corporation and Owen Electric Cooperative

Source of power - East Kentucky Power

For industrial rates contact:

Industrial Development Department  
East Kentucky Power  
P.O. Box 707  
Winchester, Kentucky 40392-0707  
(606) 744-4812

and/or

Harrison Rural Electric Cooperative  
Corporation  
P.O. Box 130  
Cynthiana, Kentucky 41031  
(606) 234-3131 or (800) 842-7481

and/or

Owen Electric Cooperative  
510 South Main Street  
Owenton, Kentucky 40359  
(502) 484-3471 or (800) 372-7612

### Natural Gas

Company serving Georgetown - Columbia Gas of Kentucky  
Source of supply - Columbia Gas Transmission Corporation  
For rates and supplies contact:

Economic Development Department  
Columbia Gas of Kentucky  
70 Fountain Place  
Frankfort, Kentucky 40601  
(502) 227-4998 Fax (502) 227-7645

## Public Water Supply

Company serving Georgetown - Georgetown Municipal Water & Sewer Service  
P.O. Box 653  
Georgetown, Kentucky 40324  
(502) 863-7816

Source -	Royal Spring & North Elkhorn Creek
Treatment plant capacity -	4,000,000 gallons per day
Source of treated water -	Frankfort Electric and Water Plant Board
Amount of treated water that can be purchased -	2,000,000 gallons per day
Average daily consumption -	1,400,000 gallons
Peak daily consumption -	2,500,000 gallons
Storage capacity -	1,990,000 gallons
Water pressure -	30 psi to 100 psi

The Georgetown Municipal Water and Sewer Service has undertaken a major expansion and renovation of water and sewer plants. Waste Treatment Plant #1 has been expanded and renovated. The northeast interceptor line has been upgraded with improvements to the pump station and lines. Facility improvements are under way at Waste Treatment Plant #2 (oxidation and clarifier ditches). Total cost of these activities are \$6.9 million.

Company serving Scott County - Kentucky-American Water Company  
2300 Richmond Road  
Lexington, Kentucky 40502  
(606) 268-6373

Source -	Kentucky River and Jacobson Reservoir
Treatment plant capacity -	65,000,000 gallons per day
Average daily consumption -	36,350,000 gallons
Peak daily consumption -	63,910,000 gallons
Storage capacity -	1,284,000 gallons
Water pressure -	30 psi to 120 psi

Kentucky-American Water Company plans to construct a 3.0-million gallon storage tank at Clays Mill Road which is scheduled for completion in early 1995.

## Sewerage

Company serving Georgetown - Georgetown Municipal Water & Sewer Service  
P.O. Box 653  
Georgetown, Kentucky 40324  
(502) 863-7816

Design capacity -	Plant No. 1: 4,500,000 gallons per day
	Plant No. 2: 2,200,000 gallons per day
	Total: 6,700,000 gallons per day
Average daily flow -	Plant No. 1: 2,390,000 gallons
	Plant No. 2: 850,000 gallons
	Total: 3,240,000 gallons
Type of treatment -	Plant No. 1: Tertiary
	Plant No. 2: Tertiary
Treated effluent discharged into -	Plant No. 1: North Elkhorn Creek
	Plant No. 2: Lanes Run



## CLIMATE

### Scott County

#### Temperature

Normal (30-year record)	54.90 degrees
Average annual 1991	57.30 degrees
Record highest, July 1988 (47-year record)	103.00 degrees
Record lowest, January 1963 (47-year record)	-21.00 degrees
Normal heating degree days (30-year record)	4,814
(Heating degree day totals are the sums of negative departures of average daily temperatures from 65 degrees F.)	

#### Precipitation

Normal (30-year record)	45.68 inches
Mean annual snowfall (47-year record)	15.70 inches
Total precipitation 1991	41.80 inches
Mean number days precipitation (.01 inch or more) (47-year record)	129.40
Mean number days thunderstorms (47-year record)	44.90

#### Prevailing winds (through 1963)

South

#### Relative Humidity (28-year record, except 1 a.m. - 27-year record)

1 a.m.	77 percent
7 a.m.	82 percent
1 p.m.	60 percent
7 p.m.	64 percent

Source: U.S. Department of Commerce, Environmental Science Services Administration, Climatological Data, 1991. Station of record: Lexington, Kentucky.

## LOCAL GOVERNMENT

### Structure

The City of Georgetown is governed by a mayor and eight council members. The mayor is elected to a four-year term while the council members each serve two-year terms. Scott County is governed by a county judge/executive and three commissioners. Each county official serves a four-year term.

### Planning and Zoning

Joint agency - Georgetown-Scott County Joint Planning Commission

Participating cities - Georgetown, Stamping Ground and Sadieville

Zoning enforced - In all areas

Subdivision regulations enforced - In all areas

Local codes enforced - Building and housing in all areas

Mandatory state codes enforced - Kentucky Plumbing Code, National Electric Code, Kentucky Boiler Regulations and Standards, Kentucky Building Code (modeled after BOCA code)

### Local Fees and Licenses

The City of Georgetown levies a one percent payroll license fee on wages, salaries, and commissions of individuals and a net profit license fee of one percent on net profits of businesses.

Scott County levies a one percent occupational license tax on wages, salaries, and commissions of individuals and on net profits of businesses. The first \$10,000 in net profits is exempt.

Motels and hotels in Scott County charge an additional three percent to room rates, with the proceeds going to the Georgetown/Scott County Tourism Commission.

The Scott County School District levies a one-half of one percent occupational license tax on wages, salaries, and commissions of individuals employed within the school district and on net profits of businesses within the district. Non-residents employed within the school district are exempt from this tax.



## PROPERTY TAXES

The Kentucky Constitution requires the state to tax all classes of taxable property, and state statutes allow local jurisdictions to tax only a few classes. All locally taxed property is subject to county taxes and school district taxes (either a county school district or an independent school district). Property located inside of city limits may also be subject to city property taxes.

Special local taxing jurisdictions (fire protection districts, watershed districts, and sanitation districts) levy taxes within their operating areas (usually a small portion of community or county).

Property assessments in Kentucky are at 100% fair cash value. Accounts receivable are taxed at 85% of face value.

### STATE PROPERTY TAX RATES PER \$100 VALUATION

<u>Selected Classes of Property</u>	<u>1992 State Rate</u>	<u>Local Taxation Permitted</u>
Real Estate	\$0.184	YES
Manufacturing Machinery	0.150	NO
Pollution Control Equipment	0.150	NO
Inventories		
Raw Materials	0.050	NO
Goods in Process	0.050	NO
Finished Goods	0.050	YES
Motor Vehicles	0.450	YES
Other Tangible Personal Property	0.450	YES
Intangibles (Accounts Receivable, Money on Hand)	0.250	NO

### LOCAL PROPERTY TAX RATES PER \$100 VALUATION, 1992

<u>Taxing Jurisdiction</u>	<u>Real Estate</u>	<u>Finished Goods &amp; Tangibles</u>	<u>Motor Vehicles</u>
Scott County	\$0.1660	\$0.2433	\$0.2372
School Districts:			
Scott County	0.3430	0.3490	0.5480
Cities:			
Georgetown	0.0820	0.2080	0.1680

## EDUCATION

### Public Schools

#### Scott County

Total Enrollment (Fall, 1992)	4,842
Accreditation	Southern Association of Colleges and Schools
Pupil-Teacher Ratio (1991-92)	17.2-1
Percent High School Graduates to College (1991-92)	66.2
Expenditures Per Pupil (1991-92)	\$3,826.98

The Scott County School System has recently completed construction of the Northern and Eastern Elementary Schools. In addition, the School System will continue to plan for improvements at all elementary schools, the middle schools and Scott County High School.

### Nonpublic Schools

<u>School</u>	<u>Enrollment</u>	<u>Grades</u>
St. John Elementary	50	PS-5

### Area Colleges and Universities

<u>Name</u>	<u>Location (Miles distant)</u>	<u>Enrollment (Fall, 1993)</u>
Georgetown College	Georgetown	1,500
Midway College	Midway (10)	396
Lexington Community College	Lexington (16)	5,046
Transylvania University	Lexington (16)	916
University of Kentucky	Lexington (16)	24,288
Kentucky State University	Frankfort (18)	2,487
Asbury College	Wilmore (34)	987
Eastern Kentucky University	Richmond (37)	16,391

### Georgetown College

Georgetown College is a coeducational liberal arts college related to the Kentucky Baptist Convention. The College is accredited by the Southern Association of Colleges and Schools and is approved by the Kentucky Department of Education for the certification of teachers. Georgetown College confers the following degrees including: Bachelor of Arts, Bachelor of Science, Bachelor of Science in Medical Technology, Bachelor of Music Education, Master of Arts in Education, and a Rank I program.



## VOCATIONAL-TECHNICAL TRAINING

Kentucky Tech schools are operated by the Cabinet for Workforce Development and provide secondary (Sec) and postsecondary (P/S) vocational-technical training.

<u>Kentucky Tech Schools</u>	<u>Location (Mileage from Georgetown)</u>	<u>Number of Program Offerings</u>	<u>Cumulative Enrollment 1992-1993</u>	<u>Approximate Number Completing Programs Annually</u>
Central Kentucky State Vocational- Technical School	Lexington (16)	21	<u>P/S</u> 755	240
<u>Other Vocational Schools</u>				
Fayette County South Area Vocational Education Center	Lexington (16)	8	<u>Sec</u> <u>P/S</u> 295 2	55
Fayette County East Area Vocational Education Center	Lexington (16)	8	<u>Sec</u> <u>P/S</u> 291 3	69

A five million dollar expansion was completed at Kentucky Tech-Central in the fall of 1992. The expansion includes a new manufacturing technology building that houses manufacturing related programs such as machine tool technology, computer aided drafting, electronics and industry electrical technology. A computer-integrated work cell laboratory in one room of the building links all the programs, simulating the operation of an actual manufacturing plant. Applied physics, hydraulics and quality control applications are integrated into the curriculum.

Another room in the new building can be used by business and industry for start-up and new production training.

Moving all manufacturing-related training into one building provided space for Kentucky Tech-Central to add health care programs as part of its expansion. These include medical imaging, medical assisting, bio-medical technician and laboratory technician programs.

### Customized Training

The Kentucky Tech system, through its Training and Development Coordinators, will provide technical assistance and will identify and develop low cost customized training programs and services for established and prospective businesses. Businesses wanting to establish a customized training program should contact a Training and Development Coordinator located at the Kentucky Tech North Central Region office in Lexington.

### Assessment Services

Kentucky Tech Career Connections offers to business, education, and government agencies testing packages for evaluating job applicants, selecting employees for promotional consideration and developing training programs within the organization. A Career Connections Assessment Center is located on the campus of Central Kentucky SVTS.

### Tech Prep

Tech Prep is a combined secondary and postsecondary program of studies that leads to an associate degree or diploma in a vocational-technical field. Scott County High School, in partnership with Kentucky Tech Central and Lexington Community College, is currently in the second year implementation of its tech prep program.

### Adult Education Services

Adult education programs are available to adults who want to develop new skills, improve basic skills, or earn a high school equivalency diploma. In Georgetown, adult education and adult literacy programs are provided through the Scott County Adult Education program.

### Bluegrass State Skills Corporation

The Bluegrass State Skills Corporation, an independent public corporation created and funded by the Kentucky General Assembly, provides programs of skills training to meet the needs of business and industry from entry level to advanced training, and from upgrading present employees to retraining experienced workers.

The Bluegrass State Skills Corporation is a major source for skills training assistance for a new or existing company. The Corporation works in partnership with other employment and job training resources and programs, as well as Kentucky's economic development activities, to package a program customized to meet the specific needs of a company.

## OTHER LOCAL FACILITIES

### Local Medical Personnel

Physicians - 20  
Dentists - 12

### Hospitals

<u>General Hospital</u>	<u>Location</u>	<u>Beds</u>
Scott General Hospital	Georgetown	75

Medical staff - 81 active and courtesy staff physicians,  
70 registered nurses, and seven licensed practical nurses

### Other Medical Facilities and Services

WEDCO District Health Department  
Bluegrass West Comprehensive Care Center  
Scott County Home Health Agency  
Scott County Rescue Squad  
Georgetown-Scott County Ambulance Service

### Banks and Savings & Loan Associations

Farmers Bank & Trust Company  
First Federal Savings & Loan Association  
First National Bank & Trust Company  
Georgetown Bank & Trust Company  
Kentucky Bank - Federal Savings Bank

### Newspapers

The Georgetown News - Graphic (bi-weekly)

### Telephone Service

South Central Bell



## RECREATION

### Local

A wide variety of recreational opportunities are available to residents of Georgetown and Scott County. Public facilities include four parks where supervised recreational programs are offered each summer.

Features at the 12-acre Suffoletta Park include a swimming pool, tennis courts, basketball and volleyball courts, four baseball fields, a horseshoe pitching complex, a picnic pavilion, picnic tables, and playground equipment.

The Ed Davis Playground features playground equipment, a recreation building, two basketball courts, horseshoe pits, and a picnic shelter.

Marshall Park features a softball field, a youth football/soccer field, and playground equipment.

Cardome Park offers a boat ramp, walking trail, and picnic area. Adjacent to the park is the Scott County Historical Society's Museum where displays depict the heritage of Scott County.

The 91-acre Scott County Community Park has a baseball and softball field, two soccer fields, tennis courts, basketball courts, volleyball courts, a lighted horse show ring with a show barn, a picnic area, several playground areas, a lighted regulation-size croquet court, a tractor-pull area, a concession/multi-purpose building, and parking.

The City of Georgetown maintains Oser Landing, a public recreation point on Elkhorn Creek, which includes a boat ramp, walking trail, and picnic facilities.

The Georgetown-Scott County Parks and Recreation Board sponsors youth sports programs in baseball, soccer, T-ball, basketball, swimming, tennis, and ponytail softball. The board sponsors a supervised summer playground program at four locations for ages six to fifteen, a summer camp for handicapped children, and a year-round supervised latchkey service is offered at the Ed Davis Recreation Building. The Board also offers Red Cross-approved swimming lessons and sponsors a 10K race and two tennis tournaments yearly. During the evening hours, the community pool may be rented for private parties. Adult programs are offered in men's, women's co-recreational, and church softball; men's, women's, and co-recreational volleyball; men's basketball; square dance classes; horseshoe pitching leagues; and tennis lessons and leagues.

Georgetown Youth Center, "The Center of Town", opened in 1991. The renovated facility provides space for youth gatherings, dances, and general purpose activities.

Annual events in Georgetown include the Festival of the Horse and the Bourbon-Scott Classic 30K Race. The Festival of the Horse is held during the latter part of September and features a variety of entertainment, including a parade featuring all types of horses, appearances by celebrities, a 2.4-mile run, games and contests, arts and crafts, food booths, music and bands, dances, a picnic and style show, and carnival rides. The Bourbon-Scott Classic is a 30-kilometer (18.1-mile) state championship run. The event is held on the second Saturday in May.

Private facilities in the county include a country club, an 18-hole golf course, a swimming pool, a bowling alley, a riding club, and campgrounds.

Georgetown College offers sporting and cultural activities including concerts, lectures, and a theatre. Most of these events are open to the public.

**Area (Within 50 miles)**

The Kentucky Horse Park  
Lexington  
Frankfort (the state capital)  
Waveland State Historic Site  
White Hall State Historic Site  
Fort Boonesborough State Park  
Blue Licks Battlefield State Park  
Pleasant Hill (restored Shaker village)  
Herrington Lake  
Kincaid Lake State Park  
Old Fort Harrod State Park



## COMMUNITY IMPROVEMENTS

Georgetown recertified as a "Hall of Fame Kentucky Certified City" in 1993 and is distinguished as a gold award winner. Re-certification is based on achievement in the following areas: existing industry assistance, small business assistance, educational resources, and community development factors of health care, public safety, arts and culture, recreation, governmental awareness and resources. The Certified Cities Program is sponsored by the Kentucky Chamber of Commerce.

### Recent

Scott County has recently completed an intensive and public update of its comprehensive plan for the community. Areas covered in the plan include economic development (industrial recruitment and expansion, retention, start-up of small/minority businesses), capital budget for roads, water and sewer service, recycling and county-wide refuse collection.

Carolina Pottery (Factory Stores of America) has recently expanded from 20 to over 30 outlet stores and employs in excess of 250 persons.

In 1992-93, the Georgetown Municipal Water and Sewer Service has installed, along with private development, over five miles of water lines in Scott County.

The Scott County School System has recently completed construction of the Northern and Eastern Elementary Schools.

The City of Georgetown has completed construction and development of Royal Springs Park; which includes a promenade to view the "Big Springs Park", historic cabin, fishing and picnic area. Total cost of the project was \$125,000.

The Scott County Jail/Justice Center opened in 1992 and houses the new detention facility as well as all court chambers.

The Georgetown Centre commercial shopping area recently opened and is anchored by Winn-Dixie and K-Mart. A new Wal-Mart "super" store has opened on McClellan Circle with over 103,000 square feet.

### Under Way

Toyota Motor Manufacturing, USA is completing its 3.2 million-square-foot expansion which will allow for the increase in Camry production and employment in 1994. In addition, the local TMM plant is now producing the Camry Station Wagon, and the Camry Coupe. Announcements have been made that the Georgetown plant will also produce the new "Avalon" vehicle in 1994.

The Scott County Courthouse is undergoing a complete renovation which is expected to reach completion in the summer of 1994. Total cost will be approximately \$1.3 million.



The Georgetown Municipal Water and Sewer Service has undertaken a major expansion and renovation of water and sewer plants. Waste Treatment Plant #1 has been expanded and renovated. The northeast interceptor line has been upgraded with improvements to the pump station and lines. Facility improvements are under way at Waste Treatment Plant #2 (oxidation and clarifier ditches). Total costs of these activities are \$6.9 million.

The Georgetown News-Graphic has filed development plans to construct a new publishing facility on Cynthiana Pike. Completion is scheduled for 1994.

Numerous industrial developments have been announced in 1993 and include:

A. Johnson Controls/FoaMech has purchased and developed the existing facility at Lemons Mill and is now manufacturing foam and tracks for automotive seats. Employment will reach approximately 250 in 1994. Project plans also included the construction of a new road connecting Johnson Controls-Showalter with McClellen Circle.

B. The American Trading and Production Corporation (Atapco) has located its central distribution and warehousing operation in Georgetown for its office products division. Employment will reach 70 in 1994.

C. Vuteq, Inc., Fosroc, Inc., The GCA Group, Interstate Transformer, Inc., Toyota Tsusho, Inc. and Commonwealth Tool and Machine have all undergone or announced expansions to their facilities and/or operations.

Numerous housing developments (both single-family and multi-family) have been planned and are under way in Scott County. Total residential units approved in 1993 are in excess of 425.

#### **Planned**

The Georgetown Municipal Water and Sewer Service plans to continue the extension of water lines into the county in 1994 and beyond.

The Scott County School System will continue to plan for improvements at all elementary schools, the middle schools and Scott County High School.