

1982

# Industrial Resources: Union County

Kentucky Library Research Collections  
Western Kentucky University, [spcol@wku.edu](mailto:spcol@wku.edu)

Follow this and additional works at: [https://digitalcommons.wku.edu/union\\_cty](https://digitalcommons.wku.edu/union_cty)



Part of the [Business Administration, Management, and Operations Commons](#), [Growth and Development Commons](#), and the [Infrastructure Commons](#)

---

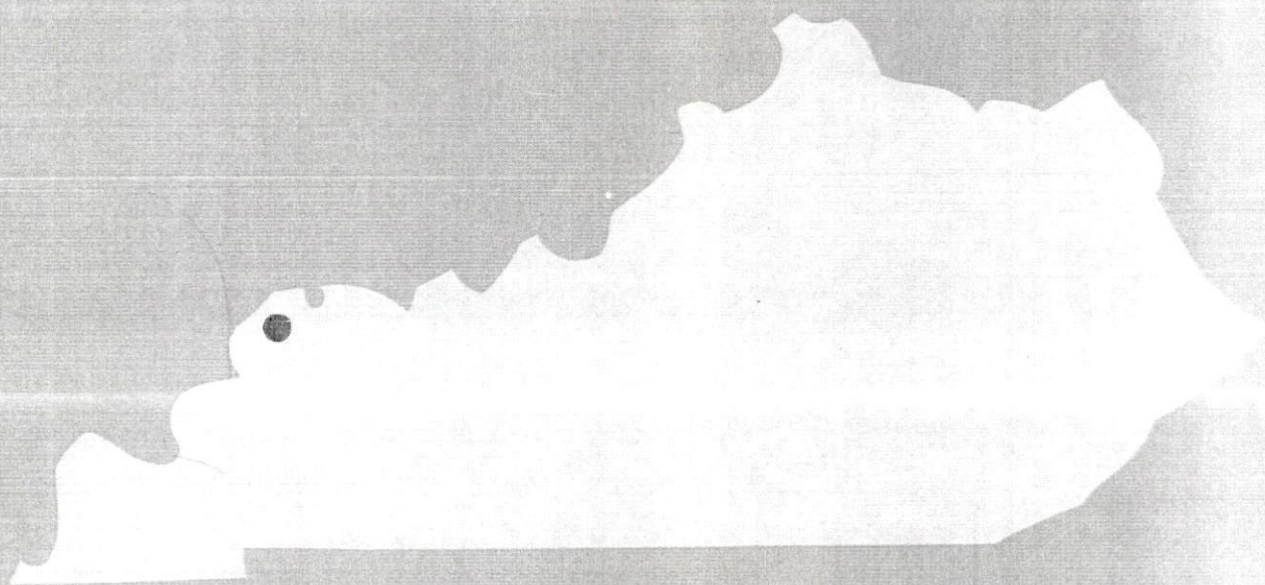
## Recommended Citation

Kentucky Library Research Collections, "Industrial Resources: Union County" (1982). *Union County*. Paper 5.  
[https://digitalcommons.wku.edu/union\\_cty/5](https://digitalcommons.wku.edu/union_cty/5)

This Report is brought to you for free and open access by TopSCHOLAR®. It has been accepted for inclusion in Union County by an authorized administrator of TopSCHOLAR®. For more information, please contact [topscholar@wku.edu](mailto:topscholar@wku.edu).

Union County

A comprehensive  
report on  
**Union County, Ky.**



**KENTUCKY & CO.**  
The state that's run like a business.

A COMPREHENSIVE REPORT ON  
UNION COUNTY, KENTUCKY

Prepared by  
The Kentucky Department of Commerce  
Division of Research and Planning  
in cooperation with  
The Morganfield Chamber of Commerce

1982

Program manager - Brenda Roberts; research - Bill Morris; clerical - Shirley Wood; graphics - Frank Ferrante, Tony Cecconi, Jimmy Thompson; cartography - Economic Development Division. Cost of printing paid from state funds.



# TABLE OF CONTENTS

<u>Chapter</u>	<u>Page</u>
INDUSTRIAL SITES . . . . .	i
UNION COUNTY, KENTUCKY - A RESOURCE PROFILE . . . . .	1
THE LABOR MARKET AREA . . . . .	3
Population . . . . .	3
Labor Force Characteristics of Residents, 1980 . . . . .	3
Estimated Male Labor Supply . . . . .	4
Estimated Female Labor Supply . . . . .	4
Union County Manufacturing Firms,	
Their Products and Employment . . . . .	5
Labor Organizations in Manufacturing Firms . . . . .	7
Industrial Services . . . . .	7
Average Weekly Wages by Industry,	
by Place of Work, 1980 . . . . .	8
Per Capita Personal Income . . . . .	10
TRANSPORTATION . . . . .	11
Rail . . . . .	11
Highways . . . . .	12
Truck Service . . . . .	12
Air . . . . .	14
Bus . . . . .	15
Taxi . . . . .	15
Rental Services . . . . .	15
Water . . . . .	15
POWER AND FUEL . . . . .	16
Electricity . . . . .	16
Natural Gas . . . . .	16
Other Fuels . . . . .	17
WATER AND SEWERAGE . . . . .	18
Public Water Supply . . . . .	18
Raw Water . . . . .	18
Sewerage . . . . .	18
CLIMATE . . . . .	23

<u>Chapter</u>	<u>Page</u>
LOCAL GOVERNMENT . . . . .	24
City . . . . .	24
County . . . . .	24
Assessed Value of Property . . . . .	26
Property Taxes . . . . .	26
Combined State and Local Rates Per \$100 Valuation, 1981 . . . . .	27
Utilities Gross Receipts Tax for Schools . . . . .	27
Planning and Zoning . . . . .	28
Safety . . . . .	28
Police . . . . .	28
Fire . . . . .	28
Rescue Service . . . . .	28
Refuse Collection and Disposal . . . . .	29
EDUCATION . . . . .	30
Public Schools . . . . .	30
Nonpublic Schools . . . . .	30
Area Colleges and Universities . . . . .	31
Vocational Schools . . . . .	33
HEALTH . . . . .	36
Local Medical Personnel . . . . .	36
Hospitals . . . . .	36
Other Medical Facilities . . . . .	36
Ambulance Service . . . . .	36
Public Health . . . . .	36
OTHER LOCAL FACILITIES . . . . .	37
Communications . . . . .	37
Library Services . . . . .	38
Religious Institutions . . . . .	38
Financial Institutions . . . . .	39
Hotels and Motels . . . . .	39
Clubs and Organizations . . . . .	40
RECREATION . . . . .	42



1980 EDITION  
GENERAL HIGHWAY MAP  
**UNION COUNTY**  
**KENTUCKY**

PREPARED BY THE  
KENTUCKY DEPARTMENT OF TRANSPORTATION  
OFFICE OF TRANSPORTATION PLANNING  
DIVISION OF FACILITIES PLANNING  
IN COOPERATION WITH THE  
U.S. DEPARTMENT OF TRANSPORTATION  
FEDERAL HIGHWAY ADMINISTRATION

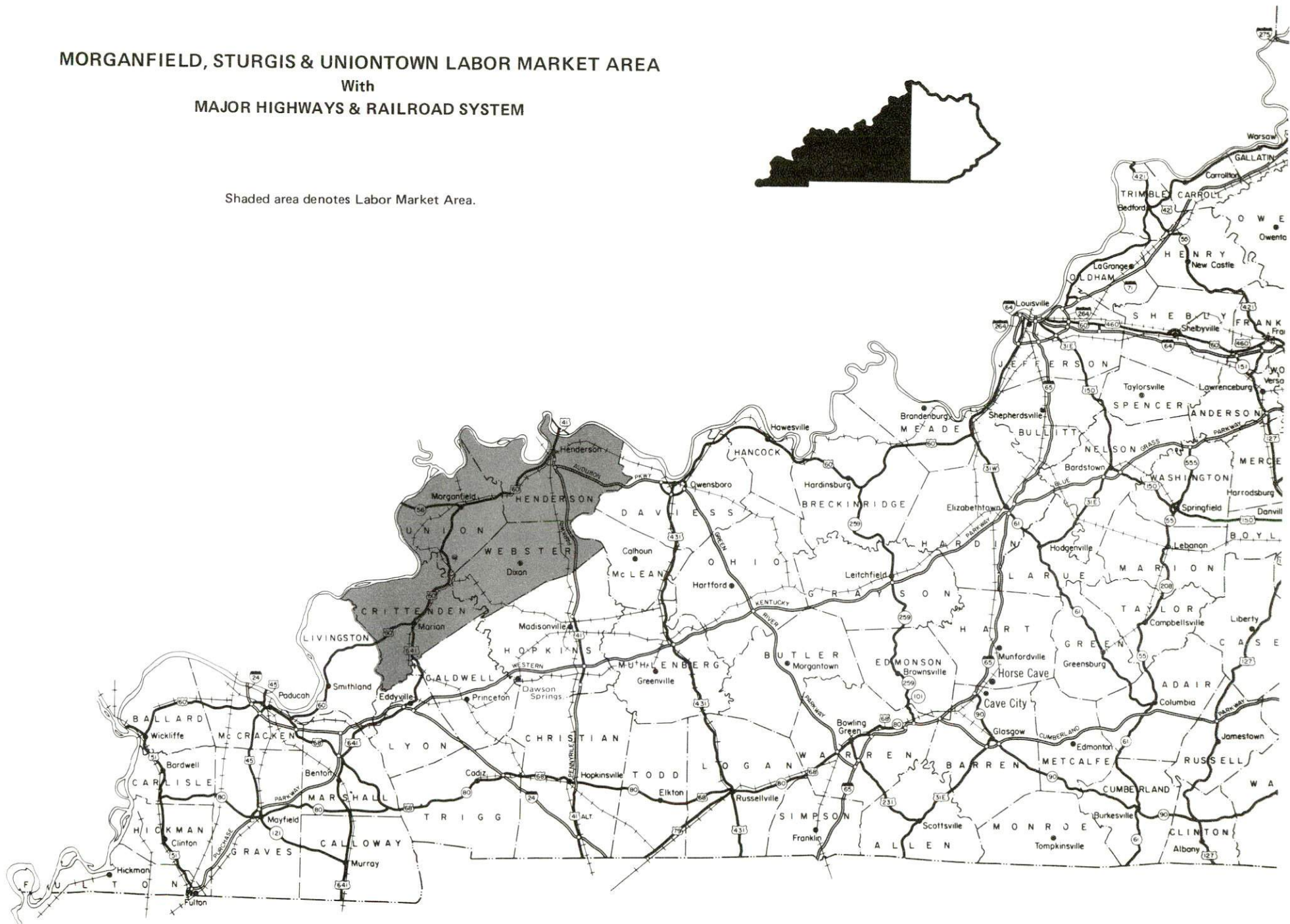
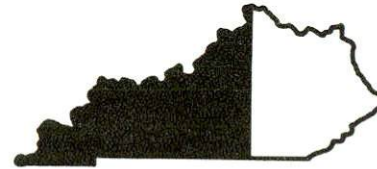




# MORGANFIELD, STURGIS & UNIONTOWN LABOR MARKET AREA

With  
MAJOR HIGHWAYS & RAILROAD SYSTEM

Shaded area denotes Labor Market Area.





## UNION COUNTY - A RESOURCE PROFILE

Union County, situated on the Ohio River at the western edge of Kentucky's Western Coal Field region, has as its principal cities Morganfield - the county seat, Sturgis, and Uniontown. Union County has a land area of 340 square miles and is located less than 140 miles west of Louisville, 180 miles southeast of St. Louis, and 140 miles northwest of Nashville. The city of Morganfield had a 1980 population of 3,781 persons; Sturgis' population was 2,293; and Uniontown's was 1,169. Union County had a total 1980 census of 17,821 persons.

### The Economic Framework

Total employment in Union County in 1980 averaged 8,918, with 8,315 persons employed in nonagricultural jobs. Manufacturing provided 773 jobs, mining and quarrying provided 3,042 jobs, service occupations provided 1,375 jobs, and wholesale and retail trade provided 878 jobs. Manufacturing employment was greatest in the fabricated metals and the apparel products industries.

Per capita income in Union County in 1979 was \$7,285, \$233 above the state average. Between 1975 and 1979, per capita income increased 60 percent.

Union County is the hub of a labor market area which includes the surrounding Kentucky counties of Crittenden, Henderson and Webster, and the Illinois county of Gallatin. Area employment in 1980 averaged 37,168, with 35,184 employed in nonagricultural jobs. Manufacturing provided 6,515 jobs; mining and quarrying provided 4,550 jobs; service occupations provided 4,296 jobs, and wholesale and retail trade provided 5,081 jobs.

### Resources for Growth

1. There is a current estimated labor supply of 3,388 men and 3,158 women available for industrial jobs in the labor market area. In addition, 3,329 young men and 3,211 young women will become 18 years of age and potentially available for work before 1986.

2. Major highways serving Union County are U.S. Highway 60 and Kentucky Route 56. Eight common carriers provide motor freight service to the area. Both Morganfield and Sturgis have local airports.

3. Electric power is provided by Kentucky Utilities Company and by Big Rivers Electric Corporation through the Henderson - Union Rural Electric Cooperative Corporation. Texas Gas Transmission Corporation supplies natural gas to Morganfield and Sturgis. There are two liquid propane dealers and four distillate fuel oil dealers located in Union County.

4. Education is an important growth asset for Union County. The public school system is accredited by the Southern Association of Colleges and Schools. In addition, two nonpublic elementary schools are located in Union County. The Union County Area Vocational Education Center at Morganfield offers training in six courses. A mining school is also located at Morganfield. The Earle C. Clements Job Corps Center, located near Morganfield, provides vocational training in 21 fields for disadvantaged youth.

## THE LABOR MARKET AREA

The Labor Market Area includes Union County and the adjoining Kentucky counties of Crittenden, Henderson and Webster.

Area	POPULATION		Percent Nonwhite
	1980	1970	
Morganfield	3,781	3,563	14.6
Sturgis	2,293	2,210	9.1
Uniontown	1,169	1,255	8.3
Labor Market Area	82,709	73,688	N/A
Union County	17,821	15,882	18.9
Crittenden County	9,207	8,493	1.0
Henderson County	40,849	36,031	7.7
Webster County	14,832	13,282	6.1

Note: The 1980 counts of population by race are provisional.

Source: U.S. Department of Commerce, Bureau of the Census, 1980 Census of Population and Housing, March 1981.

LABOR FORCE CHARACTERISTICS OF RESIDENTS, 1980		
	Union County	Labor Market Area
Civilian Labor Force	9,304	39,783
Employment	8,918	37,168
Agricultural	603	1,984
Nonagricultural	8,315	35,184
Unemployment	386	2,615
Rate of Unemployment (%)	4.1	6.6

Source: Kentucky Department for Human Resources, Kentucky Labor Force Estimates, Annual Averages, 1980.



ESTIMATED MALE LABOR SUPPLY  
UNION COUNTY LABOR MARKET AREA

Area	Current			Future	
	Total	Not in Labor Force	Unemployed	Under-employed	Reaching 18 years of age before 1986
Labor Market Area*	3,388	358	1,722	1,308	3,329
Union	666	0	249	417	701
Crittenden	750	277	322	151	330
Henderson	1,337	0	836	501	1,764
Webster	635	81	315	239	534

\*The labor supply will be supplemented by the number of men in the adjoining Illinois county of Gallatin who are available for industrial jobs. Additional workers may be drawn from other nearby counties.

Note: Unemployed - persons unemployed and actively seeking work;  
Underemployed - persons employed but working only 14 to 26 weeks per year; Not in Labor Force - represents the number of persons who would enter the labor force if suitable employment were available (based on the assumption that persons in Kentucky would like to participate in the labor force in the same proportion that they do nationally).

Sources: Kentucky Department for Human Resources, Kentucky Labor Supply Estimates by County, 1980. Kentucky Department of Commerce, Future Labor Supply before 1986.

ESTIMATED FEMALE LABOR SUPPLY  
UNION COUNTY LABOR MARKET AREA

Area	Current			Future	
	Total	Not in Labor Force	Unemployed	Under-employed	Reaching 18 years of age before 1986
Labor Market Area*	3,158	611	893	1,654	3,211
Union	560	0	137	423	679
Crittenden	597	308	122	167	314
Henderson	1,280	0	460	820	1,705
Webster	721	303	174	244	513

\*The labor supply will be supplemented by the number of women in the adjoining Illinois county of Gallatin who are available for industrial jobs. Additional workers may be drawn from other nearby counties.

Note: Unemployed - persons unemployed and actively seeking work;  
Underemployed - persons employed but working only 14 to 26 weeks per year; Not in Labor Force - represents the number of persons who would enter the labor force if suitable employment were available (based on the assumption that persons in Kentucky would like to participate in the labor force in the same proportion that they do nationally).

Sources: Kentucky Department for Human Resources, Kentucky Labor Supply Estimates by County, 1980. Kentucky Department of Commerce, Future Labor Supply before 1986.



UNION COUNTY MANUFACTURING FIRMS,  
THEIR PRODUCTS AND EMPLOYMENT

Firm (Establishment date)	Product	Employment			Labor Unions
		Total	Male	Female	
Morganfield					
Custom Feed Mills, Inc. (1950)	Feed	6	5	1	
Ferrocrafft Division of Dart Industries, Inc. (1948)	Wire display equipment, metal house- hold furni- ture, metal advertising displays	35	30	5	
Genaut Industries (1973)	Automotive parts	75	-	-	
Morganfield Ice Company (1918)	Ice	5	4	1	
Morganfield Ready Mix (1975)	Concrete	7	6	1	
Mo-Vac Corporation (1955)	Vacuum met- allizing sputtering, metallic spray coat- ing, silk screening	140	49	91	Laborers*
Munford Publishing Company (1924)	Newspaper, job print- ing	9	6	3	
Sheller - Globe Corporation (1979)	Automotive interior trim	124	42	82	
Sonoco Products Company (1973)	Paper tub- ing	19	18	1	
T & G Construction and Supply Co., Inc. (1978)	Industrial paint spray equipment, conveyor systems, industrial air filter systems	13	11	2	

UNION COUNTY MANUFACTURING FIRMS,  
THEIR PRODUCTS AND EMPLOYMENT

THEIR PRODUCTS AND EMPLOYMENT					
Firm (Establishment date)	Product	Employment			Labor Unions
		Total	Male	Female	
<u>Morganfield</u>					
Union Fertilizer Company, Inc. (1964)	Fertilizer	9	8	1	
West Kentucky Fertilizer & Chemical, Inc. (1977)	Fertilizer, farm chemicals	5	4	1	
Western Kentucky Rubber Company (1979)	Rubber motor mounts, molded parts	100	50	50	
<u>Sturgis</u>					
Agrico Chemical Company (1950)	Fertilizer, chemicals	6	5	1	
Circle - O Farm Center (1974)	Fertilizer, liquid and dry mix	4	3	1	
Genes Ag Supply (1968)	Fertilizer	4	3	1	
M & M Printing, Company (1976)	Newspaper publishing, job printing	9	4	5	
Mine Safe Electronics, Inc. (1975)	Methane monitoring equipment, fire sensing communication equipment, voice communication equipment	16	9	7	
Morgan Concrete, Inc. (1964)	Ready-mixed concrete	8	7	1	
Saturn Machine & Welding (1964)	Coke oven equipment, specialized machinery, general steel fabrication	18	17	1	

UNION COUNTY MANUFACTURING FIRMS,  
THEIR PRODUCTS AND EMPLOYMENT

THEIR PRODUCTS AND EMPLOYMENT					
<u>Firm</u> (Establishment date)	<u>Product</u>	<u>Employment</u>			<u>Labor Unions</u>
		<u>Total</u>	<u>Male</u>	<u>Female</u>	
<u>Sturgis</u>					
Sturgis Clothing Company (1947)	Mens slacks	190	6	184	
Sturgis News, Inc. (1885)	Newspaper, job print- ing	6	3	3	
<u>Uniontown</u>					
Kentucky Cap Manufactur- ing Company (1968)	Ball golf and tennis caps	81	1	80	Hatters*

\*See Labor Organizations below.

Source: Kentucky Department of Commerce, Division of Research and Planning.

LABOR ORGANIZATIONS IN MANUFACTURING FIRMS

<u>Union</u>	<u>Representing workers at:</u>
Laborer's International Union of North America, AFL-CIO	Mo-Vac Corporation
United Hatters, Cap and Millinery Workers International Union	Kentucky Cap Manufacturing Company

INDUSTRIAL SERVICES

<u>Types of Services</u>	<u>Location</u>	<u>Mileage from Morganfield</u>
Tool & Die, Machine & Pattern Shops	Henderson, Kentucky	23
	Clay, Kentucky	23
Metal Service Centers	Owensboro, Kentucky	53
Heat Treating	Evansville, Indiana	33
Metal Finishers	Morganfield, Kentucky	-
Electric Motor Repair	Henderson, Kentucky	23

Source: Kentucky Directory of Selected Industrial Services, 1981.

AVERAGE WEEKLY WAGES BY INDUSTRY,  
BY PLACE OF WORK, 1980

	<u>Union County</u>	<u>Crittenden County</u>	<u>Henderson County</u>	<u>Webster County</u>
All Industries	\$332.30	\$189.10	\$254.11	\$314.02
Mining & Quarrying	513.34	209.52	354.89	534.43
Contract Construction	279.61	206.68	315.29	450.74
Manufacturing	192.71	251.77	307.36	209.45
Transportation, Communications & Public Utilities	323.78	253.70	327.13	*
Wholesale & Retail Trade	170.02	135.16	181.67	166.63
Finance, Insurance & Real Estate	239.19	216.17	220.55	208.74
Services	175.57	131.57	214.60	139.57
State/Local Government	218.05	172.14	229.16	186.61
Other	244.18	*	243.99	172.19

\*Not disclosed.

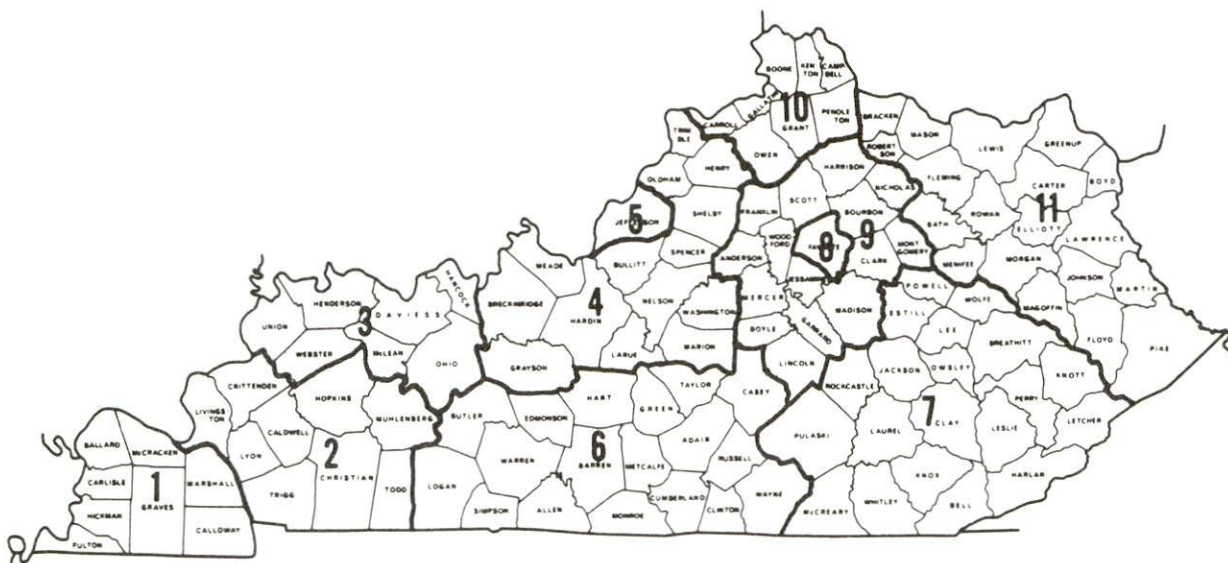
Note: Excludes domestic workers, railway workers, certain nonprofit corporations, majority of federal government workers, and self-employed workers.

Source: Kentucky Department for Human Resources, Average Weekly Wages of Workers Covered by Kentucky Unemployment Insurance Law, 1980.



Occupational wage rates for specific industries are usually not available to most government agencies, and wage data furnished to state employment agencies by individual industrial employers is protected from disclosure by federal law. The most reliable up-to-date wage information can be obtained by direct contact with local employers.

Associated Industries of Kentucky, a voluntary organization of Kentucky businesses, regularly collects occupational wage rates and fringe benefits data from participating member firms. Data is compiled for over 127 clearly defined office, production, and service occupations. Tabulations are published for eleven regions of Kentucky, as shown on the map below. It should be noted that the data may be weighted by the preponderance of firms in the larger cities and may be somewhat higher than the rates paid in the smaller communities. Data from these tabulations are available, upon request, from the Kentucky Department of Commerce, Frankfort, Kentucky 40601.



Associated Industries of Kentucky Area Wage Surveys

PER CAPITA PERSONAL INCOME

<u>Area</u>	<u>1979</u>	<u>1975</u>	<u>Percent Change</u>
Union County	\$7,285	\$4,552	60.0
Labor Market Area			
Range	\$6,448 - 8,616	\$3,968 - 5,360	N/A
Kentucky	7,052	4,882	44.4
U.S.	8,637	5,861	47.4

Source: U.S. Department of Commerce, Bureau of Economic Analysis,  
April 1981.

## TRANSPORTATION

### Rail

Line serving Henderson, Kentucky, 23 miles northeast of Morganfield -  
Louisville and Nashville Railroad

Services - Main line; 4 trains make daily stops (2 northbound and 2 southbound), 16 through freights daily (8 northbound and 8 southbound); switching facilities; team track space for 15 cars. Piggyback facilities are located at Evansville, Indiana, 10 miles north of Henderson, and 33 miles northeast of Morganfield.

Line serving Henderson and Princeton, Kentucky - Illinois Central  
Gulf Railroad Company

The Illinois Central Gulf Railroad Company has been given approval to abandon the line from Henderson to Princeton (42 miles south of Sturgis). At the present time, a committee is appealing the decision. If final approval for abandonment is given, a private company plans to purchase the line from Princeton to Corydon, Kentucky, about 10 miles southwest of Henderson, and 20 miles east of Morganfield.

For details on routing, schedules, rates, and services, contact:

Director of Industrial Development  
Louisville and Nashville Railroad  
P.O. Box 32290  
Louisville, Kentucky 40232  
(502) 587-5723

and/or

Manager of Industrial Development  
Illinois Central Gulf Railroad Company  
Pet Plaza  
400 South Fourth Street  
St. Louis, Missouri 63102  
(314) 241-9400

## Highways

Major highways serving Union County are U.S. 60 and Kentucky 56.

Morganfield and Sturgis are both served by U.S. 60. In addition, Morganfield is served by Kentucky highways 56, 359 and 130. Sturgis is also served by Kentucky highways 365, 109 and 270. Uniontown is served by Kentucky highways 130 and 360. Access to U.S. 60 is 6 miles south of Uniontown via Kentucky 130.

Access to the Pennyrile and Audubon Parkways, excellent four-lane toll roads, is available 23 miles east of Morganfield via U.S. 60. Access to the Western Kentucky Parkway, another excellent four-lane road, is available 43 miles south of Sturgis via U.S. 60 and U.S. 641. Access to Interstate 24 is available approximately 41 miles south of Sturgis via U.S. 60 and U.S. 641.

## Truck Service

<u>Company</u>	<u>Home Office</u>
A & H Truck Line, Inc.*	1111 East Louisiana Street Evansville, Indiana 47711
Central Transport, Inc.*	34200 Mound Road Sterling Heights, Michigan 48077
McLean Trucking Company*	P.O. Box 213 Winston-Salem, North Carolina 27102
Overnite Transportation Company*	1000 Semmes Avenue P.O. Box 1216 Richmond, Virginia 23209
Robbins Truck Line, Inc.**	Route 1 Hardinsburg, Kentucky 40143
Smith's Transfer Corporation*	P.O. Box 1000 Staunton, Virginia 24401
T.I.M.E. - DC, Inc.*	P.O. Box 2550 Lubbock, Texas 79408
Transcon Lines*	P.O. Box 92220 Los Angeles, California 90009

\*Interstate service.

\*\*Interstate and intrastate service.



Other Freight Services

Purolator Courier Corporation\*  
 (serves Morganfield and Sturgis)  
 United Parcel Service\*\*  
 (serves Morganfield, Sturgis and  
 Uniontown)  
 Federal Express\*\*\*  
 (serves Uniontown)

Nearest Shipping Center

Evansville, Indiana; 33 miles northeast  
 of Morganfield, Kentucky  
 Madisonville, Kentucky; 46 miles  
 southeast of Morganfield, Kentucky  
 Evansville, Indiana; 33 miles northeast  
 of Morganfield, Kentucky

HIGHWAY MILES AND TRUCK TRANSIT TIME IN DAYS FROM  
 MORGANFIELD, KENTUCKY, TO SELECTED MARKET CENTERS

City	Delivery		City	Delivery	
	Highway Miles	Time TL		Highway Miles	Time TL
Atlanta, Ga.	390	1	Los Angeles, Ca.	2,025	6-8
Baltimore, Md.	742	2	Louisville, Ky.	144	1
Birmingham, Ala.	344	1	Nashville, Tenn.	148	1
Chicago, Ill.	325	1	New Orleans, La.	665	2
Cincinnati, Ohio	245	1	New York, N. Y.	892	2-3
Cleveland, Ohio	489	1	Pittsburgh, Pa.	532	1-2
Detroit, Mich.	504	2-3	St. Louis, Mo.	180	1
Knoxville, Tenn.	325	1			

Note: Mileage computations are via the best interstate or primary highways, not necessarily the most direct route of travel.

Sources: Rand McNally Road Atlas, 1979. Official Kentucky Mileage Map, 1979. Delivery time - Overnite Transportation Company; 1100 Commerce Road; Richmond, Virginia 23209.

\*For regular scheduled pickups or for occasional pickups, arrangements must be made with the Evansville, Indiana, office of Purolator Courier Corporation.

\*\*For regular scheduled pickups or for occasional pickups, arrangements must be made with the Louisville office of United Parcel Service.

\*\*\*For information on scheduling, rates, and services, contact the Federal Express shipping station at Evansville, Indiana, or call the home office in Memphis, Tennessee, toll-free at 800-238-5355 (in Tennessee, call 800-542-5171).

## Air

### Local

Morganfield Airport  
Location: 4 miles east of Morganfield  
Runways: 1 paved  
Length: 2,700 feet  
Traffic  
Control: Wind tee  
Lighting: Low intensity, dusk to dawn  
Services: None

Sturgis Airport  
Location: 1 mile southeast of Sturgis  
Runways: 3 paved  
Length: 5,000 feet each  
Traffic  
Control: Wind sock and tetrahedron  
Lighting: MIRL and VASI 18-36 sunset to sunrise,  
Rtg Ben, tetrahedron  
Services: 100 octane, flight training, tie-downs, hangars

### Nearest Scheduled Commercial Airline Service

Evansville Dress Regional Airport  
Location: 4 miles north of Evansville, Indiana; 37 miles  
northeast of Morganfield  
Runways: 3 paved  
Length: 8,021 feet; 5,088 feet; 3,500 feet  
Traffic  
Control: Tower  
Lighting: Beacon, runway  
Services: USAir, Eastern, Britt Airways, Comair; fuel - 80,  
100LL; hangars, tie-downs; major A & P repairs,  
major Avionics repairs; flight instruction, APU,  
charter, oxygen, plane rental, survival equipment;  
taxi, car rentals, courtesy car; weather information,  
restaurant  
Air Freight  
Service: Air freight terminal

Bus - Greyhound Bus Lines serves Morganfield and Sturgis.

Taxi- Morganfield has two companies which offer 24-hour service.

Rental Services - Car rentals are available in Morganfield and Sturgis.  
Truck and trailer rentals are available at Henderson,  
23 miles northeast of Morganfield.

#### Water

The Ohio River forms the western boundary of Union County, and Uniontown is located at Mile 843 on the Ohio River. A 9-foot navigation channel is maintained for the river's entire length. Several private docking facilities are located along the Ohio River in Union County.

The Henderson County Port Authority operates a public riverport facility at Henderson, 23 miles northeast of Morganfield.

## POWER AND FUEL

### Electricity

Company serving Morganfield, Sturgis, Uniontown and parts of Union  
County - Kentucky Utilities Company  
Source of power - Kentucky Utilities Company  
Total generating capacity - 2,639,100 KW  
For industrial rates contact:

Industrial Development Department  
Kentucky Utilities Company  
One Quality Street  
Lexington, Kentucky 40507  
(606) 255-1461

Company serving remainder of Union County - Henderson - Union Rural  
Electric Cooperative Corporation  
Source of power - Big Rivers Electric Corporation  
Total generating capacity - 1,184,000 KW  
For industrial rates contact:

Henderson - Union RECC  
South "Y" - Junction 41A and 60  
P.O. Box 18  
Henderson, Kentucky 42420  
(502) 826-3991  
Special toll-free number: 800-242-7069

### Natural Gas

Company serving Morganfield - City of Morganfield Municipal Gas System  
Source of supply - Texas Gas Transmission Corporation  
Size of transmission mains - 30 inches (supplier);  
6 inches (distributor)  
Distribution mains - 6, 4, 2 and 1 1/2 inches  
Distribution pressure - 36 psi  
Btu content - 1,000 per cubic foot;  
Specific gravity - .6  
For rates and supplies contact:

City Administrator  
130 East Main Street  
Morganfield, Kentucky 42437  
(502) 389-2525



Company serving Sturgis - City of Sturgis Gas Company  
Source of supply - Texas Gas Transmission Corporation  
Size of transmission mains - 26 inch (supplier);  
6 inch (distributor)  
Distribution mains - 6, 4, 3 and 2 inches  
Distribution pressure - 18 psi  
Btu content - 1,005 per cubic foot  
Specific gravity - .59  
For rates and supplies contact:

City Clerk  
206 W. 6th Street  
Sturgis, Kentucky 42459  
(502) 333-2166

There is no natural gas service available in Uniontown at the present time.

#### Other Fuels

##### Propane

Pargas\*  
P.O. Box 286  
Sturgis, Kentucky 42459

Union Propane Gas Company\*  
P.O. Box 178  
Morganfield, Kentucky 42437

Additional supplies of propane are available from dealers in Henderson, 23 miles northeast of Morganfield.

##### Fuel Oils

Distillate fuel oil -

Hayes Oil Company\*  
Route 2  
Sturgis, Kentucky 42459

Morgan Gas & Oil, Inc.\*  
P.O. Box 187  
Morganfield, Kentucky 42437

Shelton Foeman Gulf Distributor\*  
P.O. Box 178  
Morganfield, Kentucky 42437

Tradewater Oil Company\*  
P.O. Box 127  
Sturgis, Kentucky 42459

Residual fuel oil - Arrangements must be made with the refinery.

Low sulphur content coal - Available in Kentucky

\*Bulk plant.

## WATER AND SEWERAGE

### Public Water Supply

Company serving Morganfield - City of Morganfield  
Municipal Water Works  
130 East Main Street  
Morganfield, Kentucky 42437  
(502) 389-2525

Source - Ohio River

Treatment plant capacity - 4,000,000 gallons per day

Average daily consumption - 1,850,000 gallons

Peak daily consumption - 2,100,000 gallons

Type treatment - Filtration, flocculation, sedimentation and treatment  
with alum, lime, carbon, chlorine and fluoride

Storage capacity - 1,400,000 gallons

Size lines - 20, 18, 16, 14, 12, 10, 8 and 6 inches

Average pressure - 55 psi

Average temperature - 41.6 degrees F.

### MONTHLY WATER RATES

First	2,000 gallons	\$5.50 (Minimum)
Next	3,000 gallons	2.30 per M gallons
Next	10,000 gallons	1.80 per M gallons
Next	35,000 gallons	1.30 per M gallons
Next	450,000 gallons	.80 per M gallons
Next	1,500,000 gallons	.73 per M gallons
Over	2,000,000 gallons	.65 per M gallons

Outside city limits: 50 percent additional charge, except for customers using over 2,000,000 gallons per month.

Tap-on charge:	<u>Meter Size</u>	<u>Fee</u>
	3/4-inch	\$ 200
	1-inch	500
	1 1/2-inch	1,000
	2-inch	1,500
	3-inch	3,000
	4-inch	4,500
	6-inch	5,500
	Over 6-inch	Contract with city

Tap-on charges do not include the cost of meter and assembly.

Company serving Sturgis - City of Sturgis  
206 W. 6th Street  
Sturgis, Kentucky 42459  
(502) 333-2166

Source - Ohio River

Treatment plant capacity - 1,209,600 gallons per day

Average daily consumption - 340,000 gallons

Peak daily consumption - 370,000 gallons

Type treatment - Flocculation, sedimentation and filtration

Storage capacity - 1,085,000 gallons

Size lines - 12, 10, 8, 6 and 4 inches

Average pressure - 62 psi

Average temperature - 57 degrees F.

#### MONTHLY WATER RATES

##### 5/8 X 3/4-inch meter

First	1,000 gallons	\$6.00 (Minimum)
Next	4,000 gallons	2.67 per M gallons
Next	5,000 gallons	1.60 per M gallons
Next	40,000 gallons	1.34 per M gallons
All over	50,000 gallons	.94 per M gallons

##### Larger meter rates

1-inch meter	20,000 gallons	\$22.50 first 20,000 (Minimum bill)
1 1/2-inch meter	40,000 gallons	45.00 first 40,000 (Minimum bill)
2-inch meter	64,000 gallons	72.00 first 64,000 (Minimum bill)

##### Special rates for customers using over 1,000,000 gallons per month

Constructural minimum usage at \$0.50 per 1,000 gallons up to 1,000,000 gallons and \$0.60 per 1,000 gallons over 1,000,000 gallons.

##### Rates for multiple living units served by single meter

Each living unit is billed at minimum rate with balance of total usage billed at the standard meter rates.

Tap-on charge: \$125



Company serving Uniontown - City of Uniontown Water Works\*

P.O. Box 548

Uniontown, Kentucky 42461

(502) 822-4233

822-4277

822-9188

Source - Ohio River

Treatment plant capacity - 450,000 gallons per day

Average daily consumption - 180,000 gallons

Peak daily consumption - 290,000 gallons

Type Treatment - Mechanical, chemical, filtration, disinfection

Storage capacity - 1,000,000 gallons

Size lines - 8, 6, 4 and 2 inches

Average pressure - 65 psi

Average temperature - 60 degrees F.

#### MONTHLY WATER RATES

##### Inside City

First	2,000 gallons (Minimum)	\$6.00 (Minimum bill @ \$3.00 per M gallons)
Next	8,000 gallons	2.60 per M gallons
Next	10,000 gallons	2.00 per M gallons
Next	20,000 gallons	1.60 per M gallons
Over	40,000 gallons	1.40 per M gallons

##### Outside City

A 60 percent surcharge is added to the bills of customers outside the city of Uniontown.

Tap-on charge: \$200

\*A contract has been awarded for construction of a 150,000-gallon elevated storage tank, to be completed in 1982.

## Raw Water

Surface water sources - Ohio and Tradewater Rivers  
Average discharge - Ohio River at Evansville, Indiana -  
133,330 cfs, (34 years, USGS, unadjusted); Tradewater River  
at Olney, Kentucky, 334 cfs, (40 years, USGS)  
Expected ground water yield - 500 to 1,000 gpm along Ohio River;  
50 to 200 gpm along Tradewater River in southern tip of county;  
50 to 5 gpm or less over remainder of county.

## Sewerage

Company serving Morganfield - City of Morganfield  
Municipal Waste Water Treatment Plant  
130 East Main Street  
Morganfield, Kentucky 42437  
(502) 389-2525  
Design capacity - 3,500,000 gallons per day  
Average daily flow - 1,500,000 gallons  
Treatment - Primary and secondary  
Type treatment - Lagoon aeration, clarifier, drying beds  
Treatment effluent discharged into - Casey Creek to Ohio River  
Size of sanitary mains - 6 to 36 inches  
Size of storm mains - 6 to 20 inches  
Rates - \$1.90 plus \$0.55 per 1,000 gallons used  
Tap-on charge: \$300 for new construction; \$50 inspection charge  
for reconnection or connection to existing main.

Company serving Sturgis - City of Sturgis\*  
206 W. 6th Street  
Sturgis, Kentucky 42459  
Design capacity - 300,000 gallons per day\*\*  
Average daily flow- 200,000 gallons  
Treatment - Primary  
Type treatment - Aeration  
Treated effluent discharged into - Cypress Creek  
Size of sanitary mains - 10, 8 and 6 inches  
Size of storm mains - 34, 24 and 15 inches  
Rates - 50 percent of monthly water bill  
Tap-on charge: \$75

\*A 200,000-gallon expansion of the sewerage plant's design capacity is being planned.

\*\*Kentucky Department for Natural Resources and Environmental Protection.

Company serving Uniontown - Uniontown Sewerage Department\*

P.O. Box 548

Uniontown, Kentucky 42461

Design capacity - 1,000,000 gallons per day

Average daily flow - 40,000 gallons

Treatment - Primary and secondary

Type treatment - Three-stage lagoon

Treated effluent discharged into - Tributary to Lost Creek,  
then to Ohio River.

Size of sanitary mains - 8 inches

Size of storm mains - 36, 12, 8 and 6 inches

Rates - 100 percent of monthly water bill inside city; 60 percent  
additional surcharge outside city

Tap-on charge: \$400

---

\*Construction of drying beds and a 43,000 gallon sedimentation basin was completed in 1979. A contract has been made for the installation of tube settlers.



## CLIMATE

### Union County

#### Temperature

Normal (30-year record)	56.0 degrees
Average annual 1980	55.4 degrees
Record highest, July, 1954 (40-year record)	105.0 degrees
Record lowest, February, 1951 (40-year record)	-23.0 degrees
Normal heating degree days (30-year record)	4,629
(heating degree day totals are the sums of negative departures of average daily temperature from 65 degrees F.)	

#### Precipitation

Normal (30-year record)	41.88 inches
Mean annual snowfall (40-year record)	14.3 inches
Total precipitation 1980	35.76 inches
Mean number days precipitation (.01 or more) (40-year record)	115
Mean number days thunderstorms (40-year record)	45

Prevailing Winds (14-year record) South-southwest

#### Relative Humidity (19-year record)

Midnight	78 percent
6 a.m.	81 percent
Noon	59 percent
6 p.m.	62 percent

Source: U.S. Department of Commerce, Environmental Science  
Services Administration, Climatological Data, 1980.  
Station of record: Evansville, Indiana.

## LOCAL GOVERNMENT

### City

#### Morganfield

Structure - Mayor - 4-year term; 6 council members - 2-year terms;  
city administrator

Budget 1981-82 - General Fund                 \$ 331,655  
                    Water and Sewer Fund         772,731  
                    City Gas System             1,751,705

Fees and licenses - Occupational licenses range from \$10 to \$60  
annually for businesses inside the city limits.

#### Sturgis

Structure - Mayor - 4-year term; 6 council members - 2-year terms

Budget 1981 - General Fund                 \$276,990.13  
                    Water and Sewer Fund         334,488.79  
                    City Gas System             626,799.10

Fees and licenses - Occupational license taxes range from \$5 to \$150  
annually.

#### Uniontown\*

Structure - Mayor - 4-year term; 6 council members - 2-year terms

Budget 1980 - General Fund                 \$ 88,300  
                    Water and Sewer Fund         145,000

Fees and licenses - Occupational license taxes range from \$10 to \$30  
annually; city vehicle registration - \$5

### County

Structure - County Judge/Executive - 4-year term;  
6 magistrates - 4-year terms

Budget 1980-81 - General Fund \$729,123; Road Fund \$537,319

---

\*Uniontown completed construction of a new \$90,000, 3,855 square-foot city hall in 1979. The new structure also houses the fire department and serves as a community center.





MORGANFIELD MUNICIPAL BUILDING



### Assessed Value of Property

<u>Classes of Property</u>	<u>Morganfield (1981)</u>	<u>Sturgis (1981)</u>	<u>Uniontown (1980)</u>
Real Estate and Tangibles			\$5,801,000
Real Estate	\$28,327,125	\$13,588,975	
Tangibles	13,575,192	6,239,430	
<u>Classes of Property</u>	<u>Union County (1981)</u>		
Real Estate	\$196,385,005		
Tangibles	94,075,275		

### Property Taxes

All property in Kentucky is assessed at 100 percent of fair cash value.

Land and buildings are taxed by the state and may be taxed by local jurisdictions. The state rate is \$0.229 per \$100 of assessed valuation.

Manufacturing machinery, raw materials inventories, pollution control equipment, and goods in the process of manufacture are not subject to local taxation. The state rate is \$0.15 per \$100.

Other tangible personal property owned by manufacturers (automobiles, trucks, finished goods, office furniture, office equipment) is taxed by the state at \$0.45 per \$100 and may be taxed by local jurisdictions.

Property stored in public warehouses in a transit status is not subject to local taxation. The state rate is only \$0.015 per \$100.

Intangible personal property located in Kentucky (money in hand, shares of stock, notes, bonds, accounts receivable, and other credits) is taxed by the state at \$0.25 per \$100, and is not subject to local taxation.

Private leaseholds in industrial facilities owned by cities or counties and financed by industrial revenue bonds are subject to a state tax of \$0.015 per \$100 of value (essentially the lessee's equity, adjusted for appreciation or depreciation). Local taxation is not permitted.

Combined State and Local Rates Per \$100 Valuation, 1981\*  
(100% assessment)

	<u>Inside City of Morganfield</u>	<u>Inside City of Sturgis</u>
1. Land and buildings	\$1.202	\$1.032
2. Mfg. machinery, raw materials, goods in process, pollution control equipment	0.150	0.150
3. Finished goods, office equipment, vehicles, other tangibles	1.423	1.253
4. Intangibles (accounts rec., notes, bonds, etc.)	0.250	0.250
5. Leaseholds in industrial revenue bond financed plants	0.015	0.015

	<u>Inside City of Uniontown</u>	<u>Outside City</u>
1. Land and buildings	\$1.066	\$0.662
2. Mfg. machinery, raw materials, goods in process, pollution control equipment	0.150	0.150
3. Finished goods, office equipment, vehicles, other tangibles	1.287	0.883
4. Intangibles (accounts rec., notes, bonds, etc.)	0.250	0.250
5. Leaseholds in industrial revenue bond financed plants	0.015	0.015

Utilities Gross Receipts Tax for Schools

A 3 percent tax is levied on utilities receipts for schools in Union County. Tax is paid by all consumers of utilities as an add-on to the utilities bills. Exempted are receipts from utilities services that are resold and the receipts from the sale of energy or energy producing fuels that exceed 3 percent of the cost of production in manufacturing, processing, mining or refining.

\*Kentucky Department of Commerce

## Planning and Zoning

Joint agency - Union County Planning Commission\*

Zoning enforced - Within corporate limits of Morganfield, Sturgis and Waverly

Subdivision regulations enforced - All areas

Local codes enforced - Building: all areas

Mandatory state code enforced - Kentucky Plumbing Code, National Electric Code, Kentucky Boiler Regulations and Standards, Kentucky Building Code (modeled after BOCA code and applying to buildings with an occupancy of 100 or more persons)

## Safety

<u>Police</u>	<u>Morganfield</u>	<u>Sturgis</u>	<u>Uniontown</u>	<u>Union County</u>
Total staff	14 full-time 10 part-time	4 full-time 8 part-time	3 full-time 3 part-time	5 -
Radio-patrol cars	3	2	1	3

## Fire

American Insurance  
Association Fire

Rating	6	7**	10	10
Full-time staff	5	3	-	-
Volunteers	15	24	18	18

## Rescue Service

Union County Rescue Squad -

Morganfield division:

Number of volunteers - 12

Equipment - Rescue vehicle and life saving equipment

Personnel training - All members trained in first aid and CPR;  
1 emergency medical technician

Sturgis division\*\*:

Number of volunteers - 24

Equipment - Extrication equipment, 2 trucks

Personnel training - All members trained in CPR; 12 emergency  
medical technicians

(Contd.)

\*Participating cities: Morganfield, Sturgis and Waverly.

\*\*The Sturgis fire department also handles the operation of the rescue service. A new 3,000 square-foot fire station was completed in February 1981. New equipment includes a combination mini-pumper and rescue truck, and foam equipment for flammable-chemical hazards.

Uniontown division:

Number of volunteers - 26

Equipment - 1 crash truck, 1 pickup truck, 1 4x4 truck, 4 boats, chain saws, 3 generators and other miscellaneous rescue equipment.

Personnel training - 18 members are trained in CPR and are certified emergency medical technicians. Also training in land-water safety and recovery, radiological monitoring, and hazardous material handling.

Refuse Collection and Disposal

	<u>Morganfield</u>	<u>Sturgis</u>	<u>Uniontown</u>
Type service	Municipal	Municipal	Municipal
Fee charged:			
residential	\$3.50 per month	\$3.00 per month	\$3.50 inside city \$4.00 outside city
business and industrial	\$4.55 to \$175.00 per month	\$4.50 to \$35.00 per month	\$4.00 to \$50.00 per month
Collection frequency:			
residential	Weekly	Weekly	Weekly
business and industrial	As required	One to five times weekly	One to five times weekly
Trash pickup	Annual (spring)	Same as garbage	-
Disposal method	Landfill	Landfill	Landfill



## EDUCATION

### Public Schools

#### Union County\*

Total Enrollment (September, 1981)	2,815
Elementary	1,407
Middle School	371
High School	1,037
Student-Teacher Ratio	21-1
Elementary	21-1
Middle School	21-1
High School	22-1
Accreditation	Southern Association of Colleges and Schools
Percent High School Graduates to College (1980)	41.3
Expenditures Per Pupil (1979-80)	\$1,296.87
Bonded Indebtedness (June 30, 1980)	687,000

### Nonpublic Schools

	<u>Morganfield St. Ann</u>	<u>Uniontown St. Agnes</u>
Total Enrollment	258	109
Elementary	258	109
Student-Teacher Ratio	20-1	16-1
Elementary	20-1	16-1

\*The Union County High School is undergoing \$2.6 million in renovation projects, with the final completion date set for the Fall of 1982. A model kindergarten classroom for the severe profoundly handicapped began functioning in 1980.

# Area Colleges and Universities

<u>Name</u>	<u>Location Miles distant from Morganfield</u>	<u>Enrollment (Fall, 1980)</u>	<u>Highest Degree Conferred</u>
Henderson Community College	Henderson, Kentucky (23)	811	Associate
Indiana State University, Evansville Campus	Evansville, Indiana (33)	3,251	Academic and Professional
University of Evansville	Evansville, Indiana (33)	7,212	Academic and Professional
Madisonville Community College	Madisonville, Kentucky (46)	845	Associate
Brescia College	Owensboro, Kentucky (53)	860	Baccalaureate/ Masters*
Kentucky Wesleyan College	Owensboro, Kentucky (53)	918	Baccalaureate/ Masters*
Oakland City College	Oakland City, Indiana (63)	610	Baccalaureate
Paducah Community College	Paducah, Kentucky (69)	1,850	Associate
Southern Illinois University	Carbondale, Illinois (77)	23,236	Academic and Professional
Hopkinsville Community College	Hopkinsville, Kentucky (80)	1,089	Associate
St. Meinrad College	St. Meinrad, Indiana (84)	208	Baccalaureate
Murray State University	Murray, Kentucky (94)	8,064	Masters, Specialist/ Doctorate**

(Contd.)

### Area Colleges and Universities

<u>Name</u>	<u>Location Miles distant from Morganfield</u>	<u>Enrollment (Fall, 1980)</u>	<u>Highest Degree Conferred</u>
Austin Peay State University	Clarksville, Tennessee (101)	5,260	Masters
Southeast Missouri State University	Cape Girardeau, Missouri (124)	9,135	Masters and Specialist in Education
Western Kentucky University	Bowling Green, Kentucky (125)	13,358	Masters, Specialist/ Doctorate***

A two-year mining technology program, leading to the associate in applied sciences degree, is available in Union County. Technical courses are taught by Madisonville Community College with technical support facilities and much of the instructor force provide by several private coal companies in the county. General education courses are provided by Henderson Community College, usually at the Union County Area Vocational Education Center's facilities. The program was developed to benefit those persons unable to attend regular classes outside Union County, and is designed to provide individuals with an overview of every aspect of mining, including design, engineering, technology, safety, economics and laws.

The degree is issued by Madisonville Community College.

---

\*Masters degree programs are taught by members of the Western Kentucky University or Murray State University faculty. The degree is issued by Western Kentucky University or Murray State University.

\*\*Joint doctoral degree programs are offered in cooperation with the University of Kentucky, Lexington.

\*\*\*Joint doctoral degree programs are offered in cooperation with the University of Kentucky, Lexington, and cooperative doctoral degree programs are offered with the University of Louisville.

## Vocational Schools

Both the state vocational-technical schools and the area vocational education centers are operated by the Kentucky Department of Education. The state vocational-technical schools enroll persons full time who are at least 16 years of age and not in school. These students attend classes for six hours each day. The area vocational education centers are designed to accommodate high school students who are at least 15 years of age. These students attend vocational school for three hours each day. The state vocational-technical schools and the area education centers offer evening courses to enable working adults to upgrade current job skills.

### Nearest State School

Location	Madisonville State Vocational-Technical School
Miles Distant from Morganfield	Madisonville 46
Curriculum	Consumer and Home Economics Consumer and Family Life Skills Health and Personal Services Occupations Licensed Practical Nursing Medical Laboratory Technician - C Medical Secretary Nurse's Aide/Orderly Radiologic Technology Respiratory Therapy Surgical Technologist Industrial Education Auto Body Repair Auto Mechanics Carpentry Diesel Mechanics Drafting Electronics Industrial Electricity Machine Shop Mine Equipment Maintenance and Operations Welding Learning Resource Center



Nearest Area Education Center

Location	Union County Area Vocational Education Center
	Morganfield
Curriculum	Health and Personal Services Occupations
	Health Careers
	Industrial Education
	Auto Mechanics
	Carpentry
	Industrial Electricity
	Mining Careers
	Welding

Arrangements can be made to provide training in the specific production skills required by an industrial plant. Instruction may be conducted either in the vocational school or in the industrial plant, depending upon the desired arrangement and the availability of special equipment.

## The Earle C. Clements Job Corps Center

The Earle C. Clements Job Corps Center at Morganfield is part of a federally funded training program administered by the U.S. Department of Labor through a contract with a private company. The center provides opportunities for disadvantaged young men and women between the ages of 16 and 21 to develop academic and vocational skills, as well as a responsible and productive attitude.

Curriculum	Auto Body Repairs
	Automobile Service Repair
	Baking
	Brick and Stone Masonry
	Building and Grounds Maintenance
	Business Clerical
	Carpentry
	Cashier Checking
	Cooking
	Drafting
	Electricity
	Engine and Power Train Repair
	Heavy Equipment Maintenance
	Heavy Equipment Operation
	Household Appliance Repair
	Nurse's Aide
	Offset Operation
	Painting
	Plumbing
	Retail Sales Clerking
	Structural and Assembly Line Welding

## HEALTH

### Local Medical Personnel

	<u>Morganfield</u>	<u>Sturgis</u>	<u>Uniontown</u>
Physicians -	8	2	1
Dentist -	4	3	-

### Hospitals

<u>General Hospital</u>	<u>Location</u>	<u>Beds</u>
Union County Hospital	Midway between Morganfield and Sturgis	54

General hospital facilities - Laboratory, X-ray, obstetrics, emergency room intensive care, coronary unit, major and minor operating room, recovery room, inhalation and physical therapy room, satellite of Coal Miners Respiratory Clinic at Greenville.

Medical staff - 10 physicians including 1 internist and 1 general surgeon, 12 registered nurses, 14 licensed practical nurses; consulting staff includes a cardiologist, radiologist, pathologist, urologist and an ophthalmologist.

### Other Medical Facilities

Green River Comprehensive Care Center

### Ambulance Service

Name - Union County Ambulance Service  
Staff - 10 emergency medical technicians  
Service - 24 hours, county-wide  
Equipment - 2 fully-equipped ambulances, 1 back-up ambulance

### Public Health

Facility - Union County Health Center  
Staff - 1 administrator, 3 registered nurses, 1 health environmentalist, 1 physician (part-time), home health care provided by district



## OTHER LOCAL FACILITIES

### Communications

Telephone - South Central Bell (Morganfield)  
Services - Standard

Telephone - South Central Bell (Sturgis)  
Services - Standard

Telephone - Uniontown Telephone Company (Uniontown)  
Services - Standard

Telegraph - Western Union  
Services - Toll-free number, 1-800-325-5100  
Counter service available in Morganfield

Postal - U.S. Post Office - Morganfield  
Class - First  
Mail received - Once daily  
Mail dispatched - Once daily

Postal - U.S. Post Office - Sturgis  
Class - Second  
Mail received - Once daily  
Mail dispatched - Once daily

Postal - U.S. Post Office - Uniontown  
Class - Third  
Mail received - Once daily  
Mail dispatched - Once daily

Newspapers - The Union County Advocate (Morganfield)  
Weekly and circulation - 5,400

Newspapers - The Sturgis News (Sturgis)  
Weekly and circulation - 3,100

Other papers received in Morganfield, Sturgis and Uniontown from -  
Henderson, Louisville, Madisonville, Owensboro and Paducah,  
Kentucky; Evansville, Indiana; Chicago, Illinois; Cincinnati,  
Ohio; St. Louis, Missouri

Radio - WMSK-AM & FM (Morganfield)

Major stations received in Morganfield, Sturgis and Uniontown from -  
Henderson, Madisonville and Owensboro, Kentucky; Evansville,  
Indiana; Harrisburg, Carmi and Chicago, Illinois

## Television -

### Cable service

Reception received in Morganfield, Sturgis and Uniontown from -  
Paducah, Kentucky; Evansville, Indiana; Harrisburg, Illinois;  
Cape Girardeau, Missouri

Kentucky Educational Television received in Morganfield, Sturgis  
and Uniontown from -  
Madisonville, Kentucky - Channel 35

## Library Services

Public library - Union County Public Library, Morganfield branch

Size of collection - 37,910

Circulation, 1980 - 49,438

Services - Magazines, newspapers, art, records, record player, film  
projector, story hour, copy machine, bookmobile, service to shut-ins,  
Interlibrary Loan, 8-mm film projector, films, filmstrips, slide  
projector, microfilm, microfilm reader-printer, microfiche, Special  
collections - The Union County Advocate and The Sturgis News on  
microfilm, Union County Census - 1820 to 1880.

Public library - Sturgis branch of Union County Public Library

Services - Magazines, newspapers, records, record player, Interlibrary  
Loan, paintings

Public library - Uniontown branch of Union County Public Library

Services - Magazines, records, record player, Interlibrary Loan

## Religious Institutions

	<u>Morganfield</u>	<u>Sturgis</u>	<u>Uniontown</u>
Denominations -	Baptist	Apostolic	Baptist
	Catholic	Tabernacle	Catholic
	Christian	Baptist	Christian
	Church of Christ	Catholic	Christian Methodist
	Church of God	Christian	Methodist
	Episcopal	Church of Christ	
	Jehovah's Witnesses	Church of God	
	Presbyterian	Church of God	
	United Methodist	of Prophecy	
		Cumberland	
		Presbyterian	
		Presbyterian	
		United Methodist	

Nearest Synagogue - Henderson (23 miles northeast)

Congregations - Adath Israel (reform)

## Financial Institutions

<u>Banks</u>	<u>Assets</u>	<u>Deposits</u>	<u>Statement Date</u>
<u>Morganfield</u>			
Morganfield National Bank	\$54,208,000.00	\$42,549,000.00	6/30/81
Union Bank and Trust Company*	38,878,169.00	34,363,718.00	6/30/81
<u>Sturgis</u>			
Farmers State Bank of Sturgis	33,404,446.49	29,156,175.49	6/30/81
<u>Savings and Loan Associations</u>	<u>Assets</u>	<u>Savings Accounts</u>	<u>Statement Date</u>
First Federal Savings and Loan Association (Morganfield office)**	58,046,930.75	53,778,979.54	12/31/80

## Hotels and Motels

	<u>Sturgis</u>
Total number -	2
Total rooms -	26

\*A \$2.4 million bond has been issued for the construction of a new main office of The Morganfield National Bank. The Morganfield National Bank has opened a new branch office in Sturgis.

\*\*Figures are from the main office in Madisonville, Kentucky, and include branch offices in Dawson Springs, Marion, Morganfield, Eddyville and Providence.



## Clubs and Organizations

### Morganfield

American Legion  
American Legion Auxilliary  
Boy Scouts  
Brownies  
Business and Professional  
Women's Club  
Chamber of Commerce  
Cub Scouts  
Eastern Star  
4-H  
Future Business Leaders  
of America (FBLA)  
Future Farmers of America (FFA)  
Future Homemakers of America (FHA)  
Girl Scouts  
Homemakers  
IOOF  
Jaycees  
Jay-C-Ettes  
Key Club  
Knights of Columbus  
Lions  
Little League (baseball, basket-  
ball, football)  
Masonic Lodge  
Ministerial Association  
Parent-Teachers Association (PTA)  
Pony League Baseball  
Red Cross  
VICA (vocational school)  
Veterans of Foreign Wars  
VFW Auxilliary  
Welcome Wagon

### Sturgis

American Legion  
Boy Scouts  
Brownies  
Business and Professional  
Women's Club  
Chamber of Commerce  
Cub Scouts  
Democratic Women's Club  
Eastern Star  
4-H  
Future Business Leaders  
of America (FBLA)  
Future Farmers of America (FFA)  
Future Homemakers of America (FHA)  
Independent Softball League  
IOOF  
Junior Chamber of Commerce  
Kiwanis  
Little League (baseball, basketball,  
football)  
Masonic Lodge  
Teen Center  
Union County Flying Club  
VICA  
Volunteer Fire Department Auxilliary  
Women's Club

## Clubs and Organizations

### Uniontown

Boy Scouts  
Brownies  
Cub Scouts  
Eastern Star  
Future Business Leaders of America (FBLA)  
Future Farmers of America (FFA)  
Future Homemakers of America (FHA)  
Girl Scouts  
Homemakers  
IOOF  
Jaycees  
Jaycettes  
Knights of Columbus  
Little League (baseball and football)  
Masonic Lodge  
Pony League Baseball  
Rebekah  
Senior Citizens\*  
Veterans of Foreign Wars  
VFW Ladies Auxilliary  
VICA

---

\*Uniontown recently completed construction of a \$28,700 senior citizens' center. The new structure opened in September of 1980.

## RECREATION

### Local

A variety of public recreational facilities is available in Morganfield. Four tennis courts, a swimming pool, a softball field, a football field, picnic and playground areas and two shelter houses are available at a city park. A drive-in movie theatre and two mini-parks with playground areas and basketball goals are located at Morganfield.

The Jaycees sponsor a Corn Festival at Morganfield in September. Performances by local bands, merchant promotions and a burgoo picnic are featured events.

The Breckinridge Golf and Country Club, at Morganfield, is a private club which has a clubhouse, dining room, a 9-hole golf course with 18 tees, a swimming pool and two tennis courts.

The Union County Fair is held each summer at the Union County Fairgrounds near the Sturgis Airport. Featured events include harness racing, a horse show, and a demolition derby.

Public recreation facilities at Sturgis include two parks, four tennis courts, a swimming pool, three baseball diamonds and a football field. Trade Day, celebrated in June, features a parade, carnival and flea market. Bowling lanes and a skating rink are located at Sullivan, four miles south of Sturgis.

Uniontown currently has a public park, two tennis courts, a concessions building and a ballpark. Another new park is being constructed on a city-owned lot, and two basketball goals have already been installed.

The U.S. Army Corps of Engineers recently turned over an Ohio River boat dock to the city of Uniontown for use as a recreational facility. The facility has 35 parking spaces and is open to the public.

The 5,420-acre Higgins-Henry Wildlife Area, located about 6 miles southeast of Morganfield, features 80-acre Lake Mausy, boat ramps and picnic areas.

The Union County recreation board recently purchased the 150-acre Moffit Lake Recreation Area, located about 12 miles southeast of Morganfield. The park has a 50-acre lake, a 300-foot swimming beach, campsites with utility hook-ups, a boat dock, pavilions, restrooms, and facilities for boat leasing and fishing. Watson's Wildlife and Game Preserve is another recreational area located near Moffit Lake.



## Area

Just north of Henderson, 23 miles northeast of Morganfield, is the John James Audubon State Park, a 692-acre park where the famed naturalist gathered material for his paintings, "The Birds of America." Many paintings by Audubon and his sons, and 126 first-edition prints of his paintings are on display at the Audubon Memorial and Nature Museum which is the focal point of the park. Other park features include the Audubon woods, a bird sanctuary, and a 12-acre nature preserve lake. The park has cottages and camping sites. Recreational facilities include a 28-acre recreational lake, a beach and a bathhouse, rental rowboats and pedal boats, a dock, a 9-hole golf course, hiking trails, picnic shelters, and playgrounds. Organized recreation programs are offered during the summer.

Thoroughbred racing is available at Ellis Park, north of Henderson, and harness racing is held at the Midwest Harness Raceway near Henderson.

The Sauerheber Wildlife Refuge, located 30 miles northeast of Morganfield near Geneva, Kentucky, offers regulated fishing and hunting.

Embraced by probably the most beautiful wooded area in Western Kentucky, Pennyryle Forest State Resort Park at Dawson Springs is located 50 miles south of Morganfield. The lodge and cottages nestled within the trees provide excellent accommodations. Other facilities and activities include a dining room, a gift shop, rental rowboats and pedal boats, a 9-hole golf course, hiking trails, horseback riding, picnicking, playgrounds, shuffleboard, swimming at the lodge pool and off a sand beach, and two tennis courts. Lake Beshear, only four miles from the lodge, sports good fishing.

Ben Hawes State Park, 53 miles east of Morganfield near Owensboro, is a 300-acre park which is open year-round. It contains a softball field, tennis courts, an archery range, hiking trails, a picnic area and shelters, and an 18 and 9-hole golf course.

Union County is located about 1 1/2 hours north of two of the largest inland lakes in America, Kentucky Lake and Lake Barkley, which provide over 3,300 miles of shoreline. This lakeland area offers numerous recreational facilities for water sports, fishing, boating, camping, and hunting. Located around this lakeland area are three of the state's finest resort parks - Kentucky Dam Village State Resort Park, Kenlake State Resort Park, and Lake Barkley State Resort Park. All three parks offer the following facilities: lakeside locations; lodge, cottage and camping accommodations; dining rooms; picnic areas; gift shops; golf; swimming; fishing; boat rentals; horseback riding; tennis; playgrounds; and planned recreation.



## Area

Land Between the Lakes National Recreation Area, a 170,000-acre wooded peninsula between Kentucky Lake and Lake Barkley, is a major national area for outdoor recreation and conservation. Facilities for fishing, boating, hiking, swimming, hunting and camping are available. A 5,000-acre environmental education center for school study groups is located on the peninsula.