

1985

Industrial Resources: Whitley County - Corbin

Kentucky Library Research Collections
Western Kentucky University, spcol@wku.edu

Follow this and additional works at: https://digitalcommons.wku.edu/whitley_cty

 Part of the [Business Administration, Management, and Operations Commons](#), [Growth and Development Commons](#), and the [Infrastructure Commons](#)

Recommended Citation

Kentucky Library Research Collections, "Industrial Resources: Whitley County - Corbin" (1985). *Whitley County*. Paper 7.
https://digitalcommons.wku.edu/whitley_cty/7

This Report is brought to you for free and open access by TopSCHOLAR®. It has been accepted for inclusion in Whitley County by an authorized administrator of TopSCHOLAR®. For more information, please contact topscholar@wku.edu.

Whitley County

417

**RESOURCES
FOR
ECONOMIC
DEVELOPMENT**

CORBIN



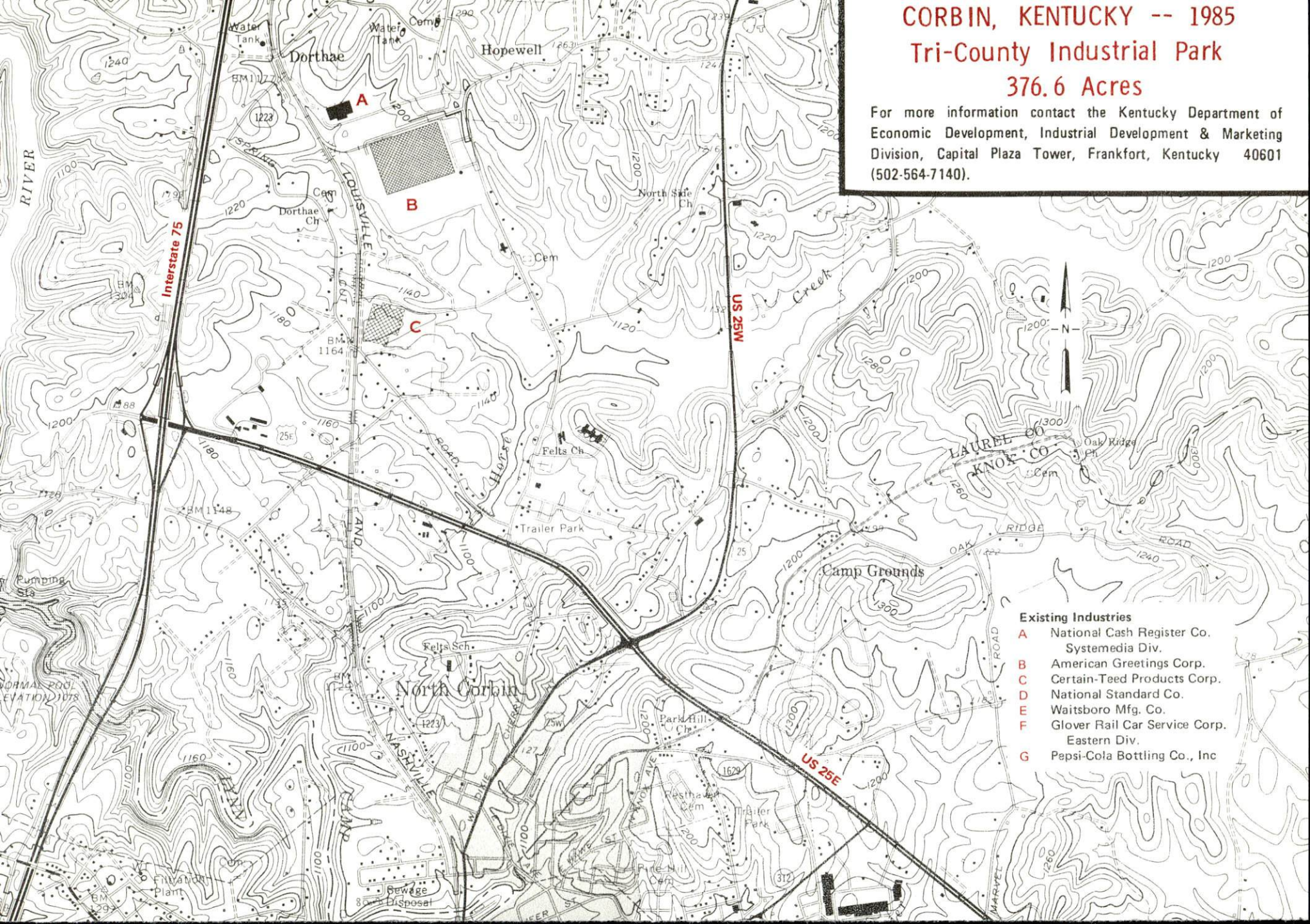
KENTUCKY
The Business Environment is Right

CORBIN, KENTUCKY -- 1985

Tri-County Industrial Park

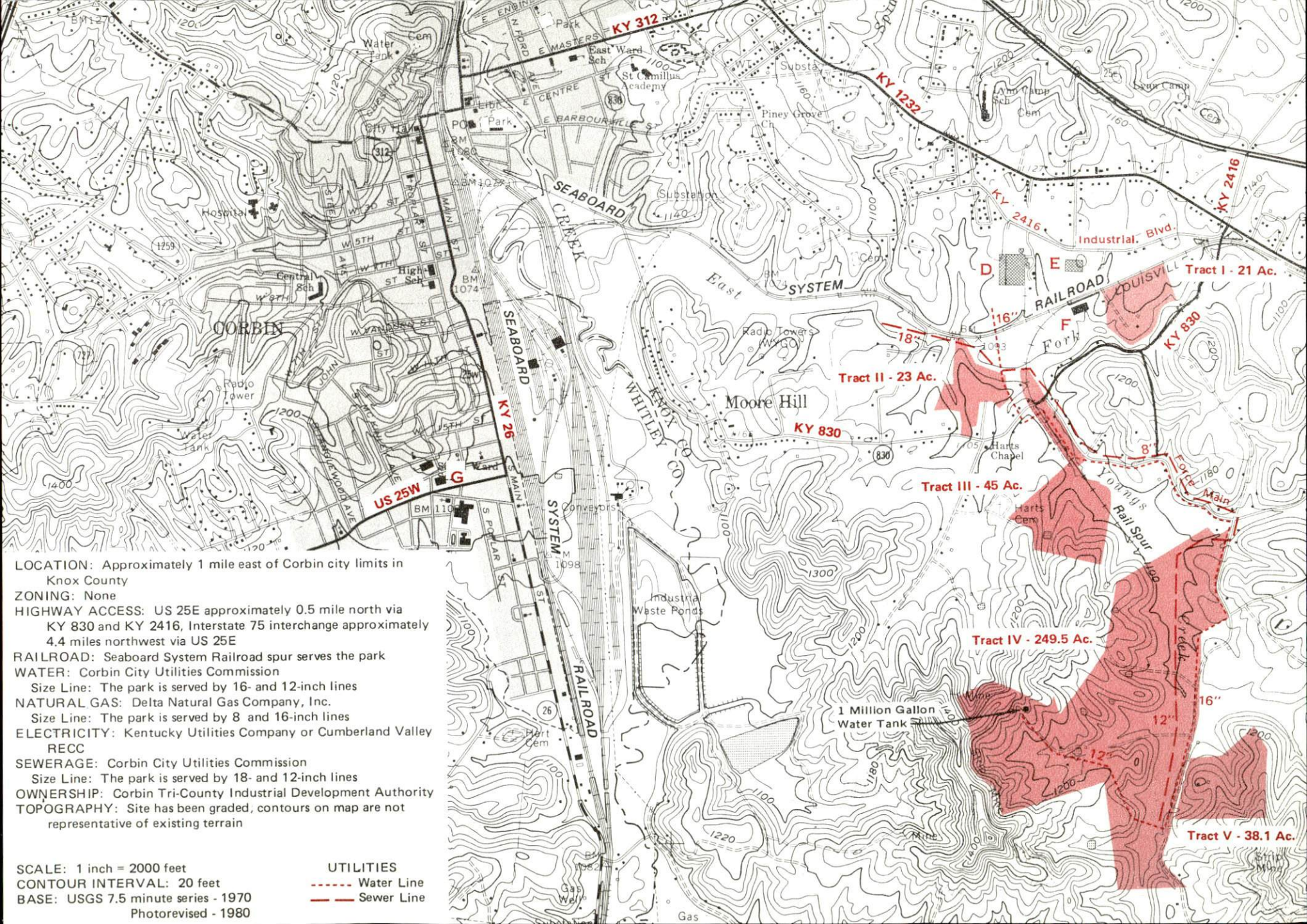
376.6 Acres

For more information contact the Kentucky Department of Economic Development, Industrial Development & Marketing Division, Capital Plaza Tower, Frankfort, Kentucky 40601 (502-564-7140).



Existing Industries

- A** National Cash Register Co. Systemedia Div.
- B** American Greetings Corp.
- C** Certain-Teed Products Corp.
- D** National Standard Co.
- E** Waitsboro Mfg. Co.
- F** Glover Rail Car Service Corp. Eastern Div.
- G** Pepsi-Cola Bottling Co., Inc



LOCATION: Approximately 1 mile east of Corbin city limits in Knox County

ZONING: None

HIGHWAY ACCESS: US 25E approximately 0.5 mile north via KY 830 and KY 2416, Interstate 75 interchange approximately 4.4 miles northwest via US 25E

RAILROAD: Seaboard System Railroad spur serves the park

WATER: Corbin City Utilities Commission
 Size Line: The park is served by 16- and 12-inch lines

NATURAL GAS: Delta Natural Gas Company, Inc.
 Size Line: The park is served by 8 and 16-inch lines

ELECTRICITY: Kentucky Utilities Company or Cumberland Valley RECC

SEWERAGE: Corbin City Utilities Commission
 Size Line: The park is served by 18- and 12-inch lines

OWNERSHIP: Corbin Tri-County Industrial Development Authority

TOPOGRAPHY: Site has been graded, contours on map are not representative of existing terrain

SCALE: 1 inch = 2000 feet
CONTOUR INTERVAL: 20 feet
BASE: USGS 7.5 minute series - 1970
 Photorevised - 1980

UTILITIES
 - - - - - Water Line
 - - - - - Sewer Line

RESOURCES FOR ECONOMIC DEVELOPMENT
CORBIN, KENTUCKY

Prepared by
The Kentucky Department of Economic Development
Division of Research and Planning
in cooperation with
The Greater Corbin Chamber of Commerce
and
The Corbin Industrial Commission

1985

Program manager - Andrew Dennis; research - James R. Thompson; clerical - Bobbi Graves; graphics - Frank Ferrante, Tony Cecconi, Robert Owens; cartography - Site Evaluation Section, Division of New Industries. Cost of printing paid from state funds.

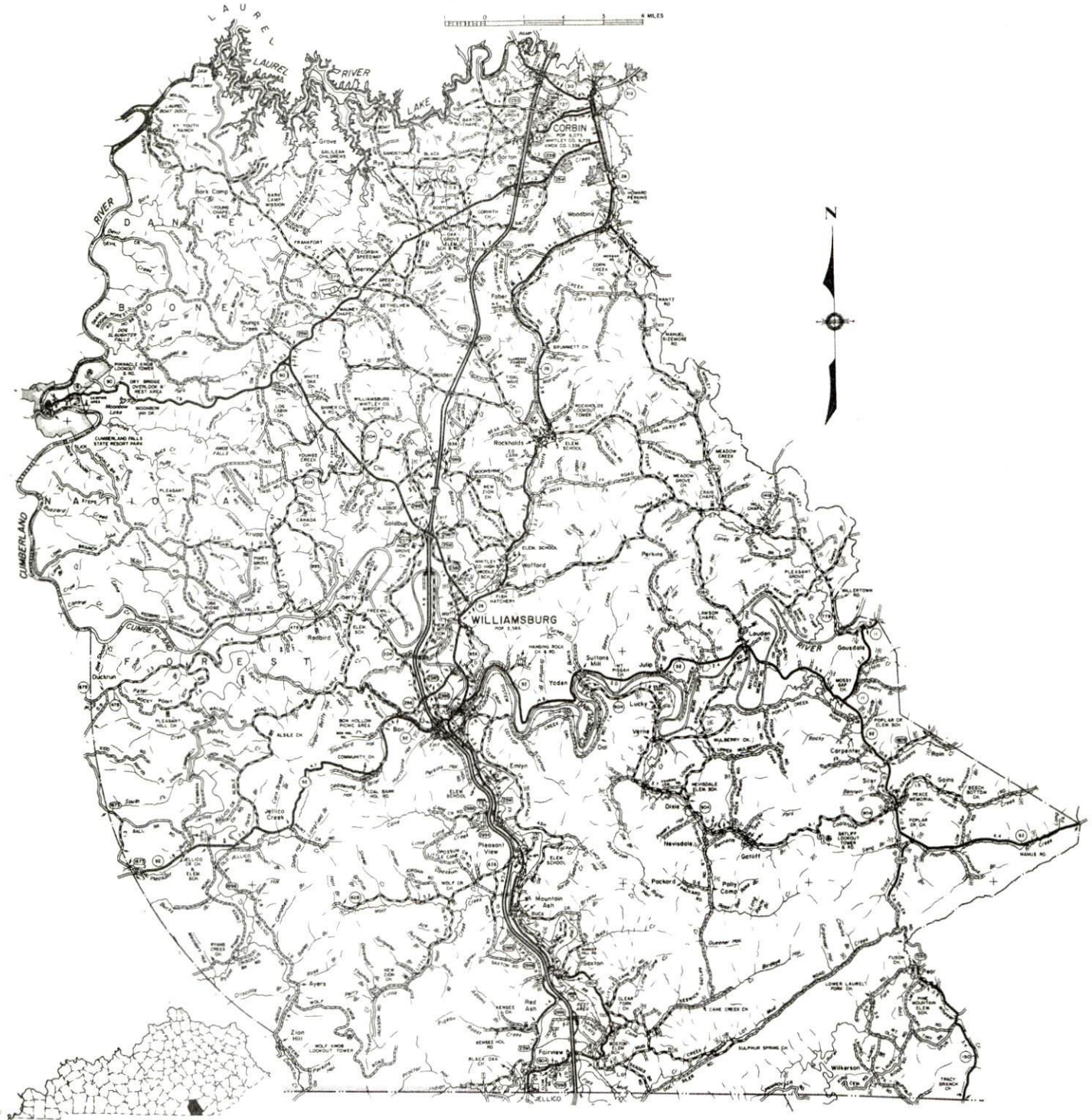
TABLE OF CONTENTS

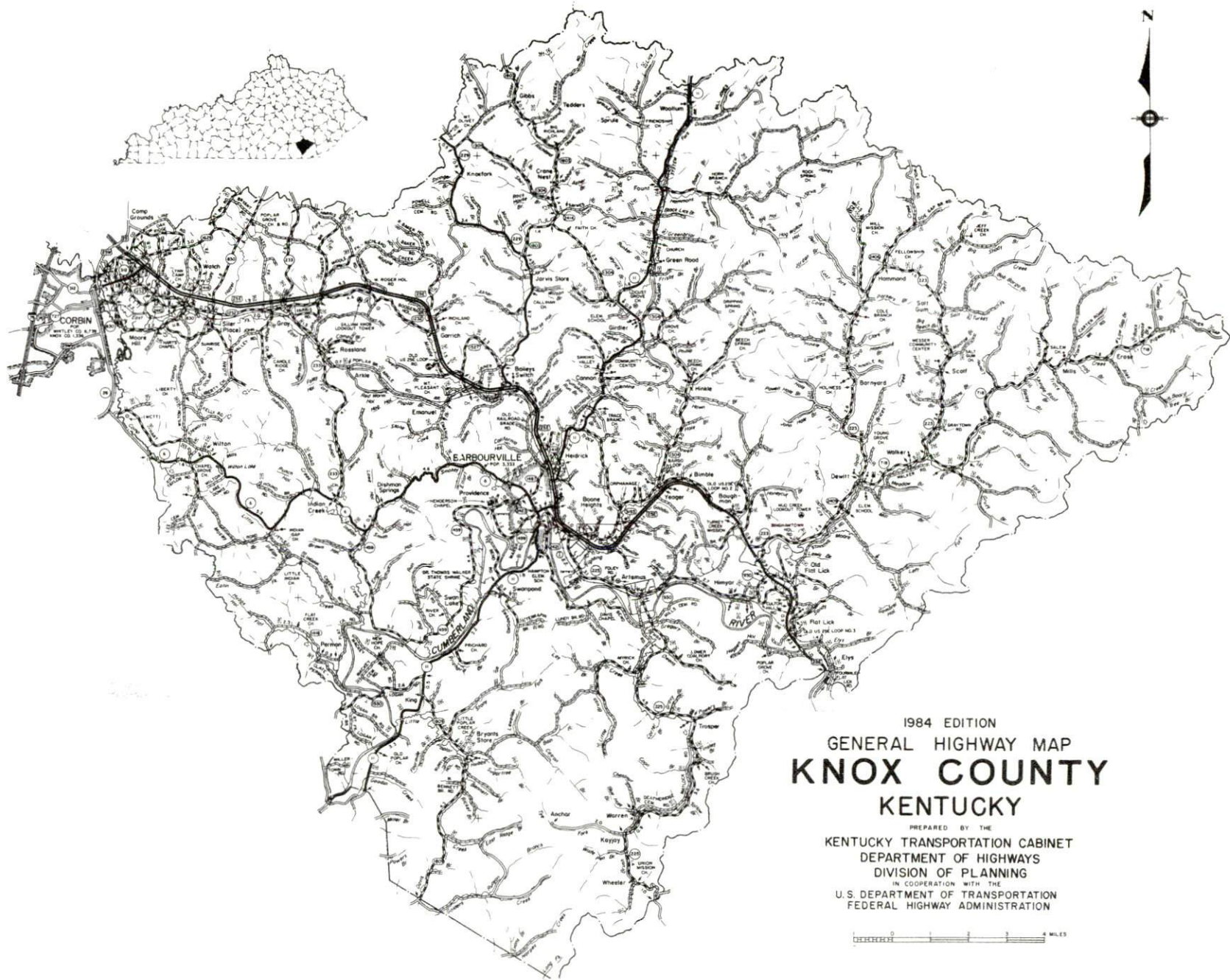
<u>Chapter</u>	<u>Page</u>
INDUSTRIAL SITES	i
CORBIN, KENTUCKY - A RESOURCE PROFILE	1
THE LABOR MARKET AREA	3
Population	3
Labor Force Characteristics of Residents, 1983	3
Selected Components of Nonagricultural Employment, by Place of Work, 1983	4
Corbin Manufacturing Firms, Their Products and Employment	5
Labor Organizations in Manufacturing Firms	6
Industrial Services	7
Estimated Male Labor Supply	8
Estimated Female Labor Supply	8
Average Weekly Wages By Industry, by Place of Work, 1983	9
Per Capita Personal Income	11
TRANSPORTATION	12
Rail	12
Highways	12
Truck Service	13
Air	14
Bus	15
Taxi	15
Rental Services	15
POWER AND FUEL	16
Electricity	16
Natural Gas	17
Other Fuels	17
WATER AND SEWERAGE	18
Public Water Supply	18
Raw Water	19
Sewerage	19
CLIMATE	21

<u>Chapter</u>	<u>Page</u>
LOCAL GOVERNMENT	22
City	22
County	22
Assessed Value of Property, 1984	22
Property Taxes	23
Combined State and Local Rates Per \$100 Valuation, 1984	24
Planning and Zoning	25
Safety	25
Police	25
Fire	25
Rescue Service	25
Refuse Collection and Disposal	26
EDUCATION	27
Public Schools	27
Nonpublic Schools	27
Area Colleges and Universities	28
Vocational Schools	29
HEALTH	30
Local Medical Personnel	30
Hospitals	30
Other Medical Facilities	30
Ambulance Service	30
Public Health	30
OTHER LOCAL FACILITIES	31
Communications	31
Library Services	31
Religious Institutions	32
Financial Institutions	32
Hotels and Motels	33
Clubs and Organizations	33
RECREATION	34
COMMUNITY IMPROVEMENTS	36

1984 EDITION
GENERAL HIGHWAY MAP
WHITLEY COUNTY
KENTUCKY

PREPARED BY THE
KENTUCKY TRANSPORTATION CABINET
DEPARTMENT OF HIGHWAYS
DIVISION OF PLANNING
IN COOPERATION WITH THE
U.S. DEPARTMENT OF TRANSPORTATION
FEDERAL HIGHWAY ADMINISTRATION





1984 EDITION
GENERAL HIGHWAY MAP
KNOX COUNTY
KENTUCKY

PREPARED BY THE
KENTUCKY TRANSPORTATION CABINET
DEPARTMENT OF HIGHWAYS
DIVISION OF PLANNING
IN COOPERATION WITH THE
U.S. DEPARTMENT OF TRANSPORTATION
FEDERAL HIGHWAY ADMINISTRATION



1984 EDITION
GENERAL HIGHWAY MAP
LAUREL COUNTY
KENTUCKY

PREPARED BY THE
KENTUCKY TRANSPORTATION CABINET
DEPARTMENT OF HIGHWAYS
DIVISION OF PLANNING
IN COOPERATION WITH THE
U.S. DEPARTMENT OF TRANSPORTATION
FEDERAL HIGHWAY ADMINISTRATION



CORBIN, KENTUCKY - A RESOURCE PROFILE

Corbin is located in southeastern Kentucky near the eastern edge of the Daniel Boone National Forest. Greater Corbin is uniquely situated on the boundaries of Whitley, Knox and Laurel Counties. The city is located 88 miles south of Lexington, Kentucky; 160 miles southeast of Louisville, Kentucky; 84 miles north of Knoxville, Tennessee; and 166 miles south of Cincinnati, Ohio. In 1982, Corbin had an estimated population of 8,196.

While Greater Corbin is situated in three counties, the city of Corbin itself is incorporated in only Whitley and Knox Counties with the majority of businesses and residents located in Whitley County. The county's southern boundary is formed by the Kentucky-Tennessee state line. In 1982, Whitley County had an estimated population of 33,900. In that same year, Knox County had 30,500 residents and Laurel County had 40,100.

The Economic Framework

The total number of Whitley County residents employed in 1983 averaged 8,390, with nonagricultural jobs accounting for 8,300. Manufacturing employers in the county reported 1,100 workers; wholesale and retail trade 2,160 workers; services 1,830 workers; and state and local government 1,110 workers. Manufacturing employment is greatest in the paper and allied products, rubber and plastics products, and textile mill products industries.

Per capita income in Whitley County in 1982 was \$7,177. Between 1978 and 1892, per capita income increased by 35 percent.

The Corbin labor market area includes Whitley County and the adjoining Kentucky counties of Bell, Knox, Laurel, and McCreary, plus Campbell and Claiborne Counties in Tennessee. The total number of residents in the Kentucky portion of the labor market area employed in 1983 averaged 54,100, with nonagricultural jobs accounting for 52,970 workers. Manufacturing employers in the area reported 7,270; wholesale and retail trade 8,850; services 5,670; and state and local government 4,960.

Resources for Growth

1. Labor Supply - There is a current labor supply of 20,231 men and 16,732 women available for industrial jobs in the labor market area. In addition, from 1985 through 1989, 10,102 young men and 9,367 young women will become 18 years of age and potentially available for work.

2. Transportation - The Seaboard System Railroad provides main line rail service to Corbin. Corbin is served directly by U.S. Highways 25, 25E, and 25W, all "AAA" rated (80,000-pound gross load limit) trucking highways. Interchanges of Interstate 75 are located two miles southwest and three miles northwest of Corbin. The Daniel Boone Parkway, a multilane toll road, is located 14 miles north of Corbin. Five of the fifteen common carriers which have the authority to serve Corbin have terminals located in the Corbin area. The nearest commercial airports, Blue Grass Field near Lexington and McGhee Tyson Airport near Knoxville, are located 93 miles north and 96 miles south of Corbin, respectively. Commuter air service is available at the London-Corbin Airport (McGhee Field), 11 miles north of Corbin. The Whitley County Airport, 14 miles south of Corbin, has a 2,500-foot paved runway to accommodate small aircraft.

3. Power and Fuel - Electric power is provided to Corbin by the Corbin City Utilities Commission, which is supplied by the Kentucky Utilities Company. Whitley County is provided electric power by the Kentucky Utilities Company, an electric generation and transmission company, and the Cumberland Valley RECC, which is supplied by the East Kentucky Power Cooperative. Natural gas service is provided to Corbin by the Delta Natural Gas Company, Inc., which is supplied by the Wiser Oil Company. Four distributors of propane and four distributors of distillate fuel oil serve Corbin.

4. Education - Primary and secondary education is provided by the Corbin Independent School System and the Whitley County School System.

Two universities, four senior colleges, one two-year college, and two community colleges are located within 75 miles of Corbin.

The Laurel County State Vocational-Technical School in London, 14 miles north of Corbin, offers training in 14 courses. The Corbin Area Vocational Education Center in Corbin offers training in 6 courses.

THE LABOR MARKET AREA

The Corbin Labor Market Area includes Whitley County and the adjoining Kentucky counties of Bell, Knox, Laurel and McCreary. The southern boundary of Whitley County is formed by the Tennessee state line. The Corbin Labor Market Area also encompasses two of the adjoining Tennessee counties.

POPULATION

<u>Area</u>	<u>1982*</u>	<u>1980</u>	<u>1970</u>	<u>Percent Nonwhite</u> <u>1980</u>
Corbin	8,196	8,075	7,474	0.5
Labor Market Area	155,100	152,581	118,889	N/A
Whitley County	33,900	33,396	24,145	0.9
Bell County	34,500	34,330	31,121	2.8
Knox County	30,500	30,239	23,689	1.3
Laurel County	40,100	38,982	27,386	1.0
McCreary County	16,100	15,634	12,548	1.7

* Population estimates.

Note: The 1980 city counts of population by race are provisional.

Sources: U.S. Department of Commerce, Bureau of the Census, 1980 Census of Population and Housing, March 1981; 1980 Census of Population, Number of Inhabitants; Local Population Estimates, Series P-26, No. 82-17-C, June 1984.

LABOR FORCE CHARACTERISTICS OF RESIDENTS, 1983

	<u>Whitley County</u>	<u>Knox County</u>	<u>Labor Market Area*</u>
Civilian Labor Force	10,217	11,877	62,634
Employment	8,393	10,347	54,101
Agricultural	97	308	1,134
Nonagricultural	8,296	10,039	52,967
Unemployment	1,824	1,530	8,533
Rate of Unemployment (%)	17.9	12.9	13.6

* Whitley County and the four adjoining Kentucky counties.

Source: Kentucky Department for Human Resources, Kentucky Labor Force Estimates, Annual Averages, 1983.

SELECTED COMPONENTS OF NONAGRICULTURAL EMPLOYMENT,
BY PLACE OF WORK, 1983

	<u>Whitley County</u>	<u>Knox County</u>	<u>Labor Market Area</u>
All Industries (total)	7,933	4,566	34,268
Manufacturing	1,102	899	7,268
Wholesale & Retail Trade	2,158	1,131	8,847
Services	1,833	787	5,674
State/Local Government	1,114	917	4,964
Contract Construction	317	261	1,470
Mining & Quarrying	729	286	3,236

Note: Excludes domestic workers, railway workers, certain nonprofit corporations, majority of federal government workers, and self-employed workers.

Source: Kentucky Cabinet for Human Resources, Average Monthly Workers Covered by Kentucky Unemployment Insurance Law, 1983.

CORBIN MANUFACTURING FIRMS,
THEIR PRODUCTS AND EMPLOYMENT

Firm (Establishment date)	Product	Employment			Labor Unions
		Total	Male	Female	
American Greetings Corporation (1967)	Gift wrapping paper, napkins, ribbon	1,050	450	600	Teamsters*
Certain-Teed Products Corporation (1973)	Organic fiber padding, industrial insulation	467	272	195	
Chandler Printing Company, Inc. (1948)	Job printing	10	7	3	
Clover Top Bakery (1959)	Bakery products	2	1	1	
Corbin Brick Company (1921)	Brick	34	32	2	
Corbin Rail Car Services Corporation (1984)	Rail car repair	10	--	--	
Corbin Times-Tribune, Inc. (1892)	Newspaper, shopper	41	29	12	
Forest Products, Inc. (1966)	Wood pallets, skids, lumber, wood chips	70	64	6	
General Molded Products, Inc. (1976)	Custom injection molding, mechanical assembly and sub-assembly	34	18	16	
Hibbard and Sons Aluminum Corporation (1963)	Storm doors, windows	2	2	0	
Karr Industries, Inc. (1981)	Machine shop, tools and dies	4	3	1	
Metal Products, Inc. (1980)	Metal doors and frames	25	22	3	
NCR Systemedia Division (1973)	Business forms	145	94	51	Auto Workers*

(Cont'd)

<u>Firm (Establishment date)</u>	<u>Product</u>	<u>Employment</u>			<u>Labor Unions</u>
		<u>Total</u>	<u>Male</u>	<u>Female</u>	
National Standard Company, Woven Products Division (1962)	Industrial wire cloth, steel wire low carbon, metal fibers and fiber products	238	218	20	Steelworkers*
Pennington Block Company, Inc. (1955)	Concrete blocks	11	11	0	
Pepsi-Cola Bottling Company of Corbin, Kentucky, Inc. (1938)	Soft drinks	168	158	10	
Waitsboro Manufacturing Company (1982)	Fiberglass boats, steel utility trailers	50	42	8	

* See Labor Organizations below.

Source: Kentucky Department of Economic Development, 1985 Kentucky Directory of Manufacturers; Division of Research and Planning.

LABOR ORGANIZATIONS IN MANUFACTURING FIRMS

<u>Union</u>	<u>Representing workers at:</u>
International Brotherhood of Teamsters, Chauffeurs, Warehousemen and Helpers of America	American Greetings Corporation
International Union, United Automobile, Aerospace and Agricultural Implement Workers of America	NCR Systemedia Division
United Steelworkers of America, AFL-CIO	National Standard Company

INDUSTRIAL SERVICES

<u>Types of Services</u>	<u>Location</u>	<u>Mileage from Corbin</u>
Custom Plastics Producers	Corbin, Kentucky	-
Electric Motor Repair	Corbin, Kentucky	-
Grinding, Precision & Tool	Richmond, Kentucky	64
Heat Treating Facilities	Richmond, Kentucky	64
Industrial Equipment & Supplies	Knoxville, Tennessee	84
	Lexington, Kentucky	88
Industrial Gases	Somerset, Kentucky	47
Industrial Waste Removal	Somerset, Kentucky	47
Machine Shops, Tool & Die	Corbin, Kentucky	-
Metal Finishers	Richmond, Kentucky	64
Metal Service Centers	Knoxville, Tennessee	84
	Lexington, Kentucky	88
Millwrights	Knoxville, Tennessee	84
	Nicholasville, Kentucky	87
	Lexington, Kentucky	88

Sources: Kentucky Department of Economic Development, Kentucky Directory of Selected Industrial Services, 1983; Division of Research and Planning.

ESTIMATED MALE LABOR SUPPLY
CORBIN LABOR MARKET AREA

Area	Current			Not in Labor Force	Future
	Total Male	Unemployed	Under- employed		Becoming 18 years of age 1985 thru 1989
Labor Market					
Area*	20,231				10,102
Whitley	5,966	1,249	1,263	3,454	1,463
Bell	2,931	1,536	428	967	1,632
Knox	2,650	997	480	1,073	1,525
Laurel	2,096	1,417	679	0	1,899
McCreary	3,147	640	360	2,147	828
Campbell (Tenn.)	2,330	N/A	N/A	N/A	1,656
Claiborne (Tenn.)	1,111	N/A	N/A	N/A	1,099

ESTIMATED FEMALE LABOR SUPPLY
CORBIN LABOR MARKET AREA

Area	Current			Not in Labor Force	Future
	Total Female	Unemployed	Under- employed		Becoming 18 years of age 1985 thru 1989
Labor Market					
Area*	16,732				9,367
Whitley	4,526	575	646	3,305	1,439
Bell	3,553	450	443	2,660	1,579
Knox	2,872	533	423	1,916	1,379
Laurel	1,777	827	601	349	1,658
McCreary	2,476	309	136	2,031	788
Campbell (Tenn.)	903	N/A	N/A	N/A	1,497
Claiborne (Tenn.)	625	N/A	N/A	N/A	1,027

* Additional workers may be drawn from other nearby counties.

Note: Unemployed - persons unemployed and actively seeking work;
Underemployed - persons employed but working only 14 to 26 weeks per year;
Not in Labor Force - represents the number of persons who would enter the labor force if suitable employment were available (based on the assumption that persons in Kentucky would like to participate in the labor force in the same proportion that they do nationally).

Sources: Kentucky Cabinet for Human Resources, Kentucky Labor Supply Estimates by County, 1982. Tennessee Department of Economic and Community Development, Tennessee Available Labor, 1983. Kentucky Department of Economic Development, Future Labor Supply Becoming 18 Years of Age, 1985 thru 1989.

AVERAGE WEEKLY WAGES BY INDUSTRY,
BY PLACE OF WORK, 1983

	<u>Whitley County</u>	<u>Bell County</u>	<u>Knox County</u>
All Industries	\$254.88	\$311.05	\$248.43
Mining & Quarrying	387.31	558.35	386.38
Contract Construction	253.89	267.66	327.98
Manufacturing	268.86	288.29	294.20
Transportation, Communications & Public Utilities	302.23	369.05	314.80
Wholesale & Retail Trade	221.06	190.34	193.75
Finance, Insurance & Real Estate	222.50	325.10	240.44
Services	234.98	246.93	192.44
State/Local Government	258.90	286.19	244.39
Other	230.94	176.41	*

	<u>Laurel County</u>	<u>McCreary County</u>
All Industries	\$270.34	\$211.59
Mining & Quarrying	416.12	278.00
Contract Construction	348.18	*
Manufacturing	283.41	195.89
Transportation, Communications & Public Utilities	354.45	299.47
Wholesale & Retail Trade	222.06	141.38
Finance, Insurance & Real Estate	246.68	310.98
Services	204.99	185.96
State/Local Government	295.10	239.67
Other	212.21	*

* Not disclosed.

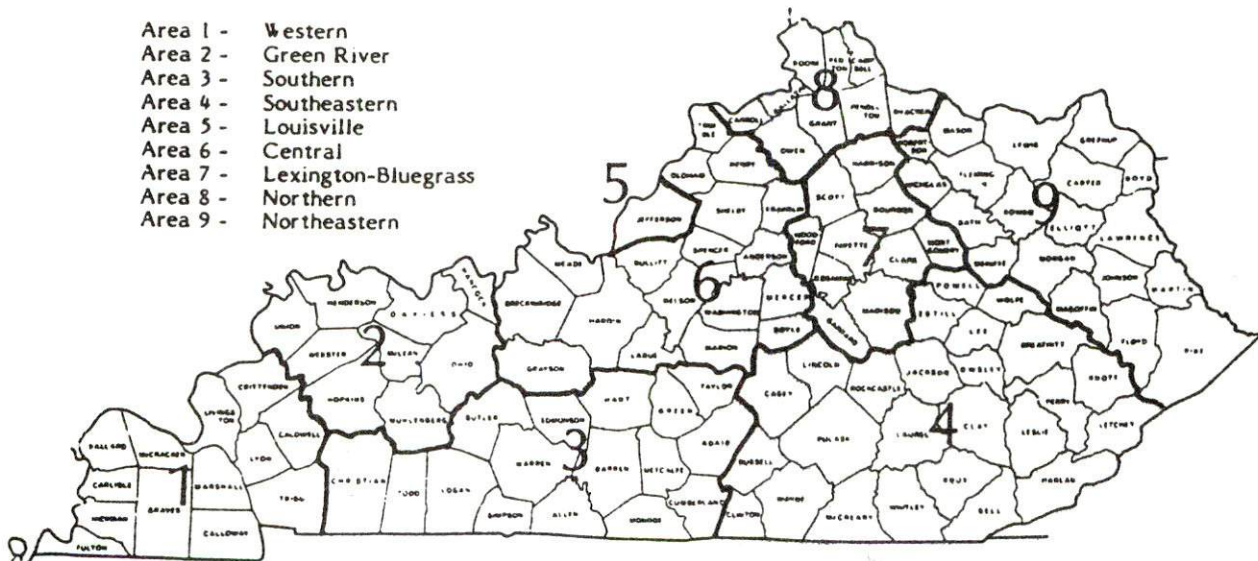
Note: Excludes domestic workers, railway workers, certain nonprofit corporations, majority of federal government workers, and self-employed workers.

Source: Kentucky Department for Human Resources, Average Weekly Wages of Workers Covered by Kentucky Unemployment Insurance Law, 1983.

Occupational wage rates for specific industries are usually not available to most government agencies, and wage data furnished to state employment agencies by individual industrial employers are protected from disclosure by federal law. The most reliable up-to-date wage information can be obtained by direct contact with local employers.

Associated Industries of Kentucky, a voluntary organization of Kentucky businesses, regularly collects occupational wage rates and fringe benefits data from participating member firms. Data are compiled for over 127 clearly defined office, production, and service occupations. Tabulations are published for nine geographical areas of Kentucky, as shown on the map below. It should be noted that the data may be weighted by the preponderance of firms in the larger cities and may be somewhat higher than the rates paid in the smaller communities. Data from these tabulations are available, upon request, from the Kentucky Department of Economic Development, Frankfort, Kentucky 40601.

- Area 1 - Western
- Area 2 - Green River
- Area 3 - Southern
- Area 4 - Southeastern
- Area 5 - Louisville
- Area 6 - Central
- Area 7 - Lexington-Bluegrass
- Area 8 - Northern
- Area 9 - Northeastern



PER CAPITA PERSONAL INCOME

<u>Area</u>	<u>1978</u>	<u>1982</u>	<u>Percent Change</u>
Whitley County	\$ 5,300	\$ 7,177	35.4
Knox County	\$ 4,088	\$ 5,532	35.3
Labor Market Area Range*	\$3,245 - 5,300	\$ 4,522 - 7,397	N/A
Kentucky	6,389	8,893	39.2
U. S.	7,776	11,100	42.7

* Whitley County and the four adjoining Kentucky counties.

Sources: U.S. Department of Commerce, Bureau of Economic Analysis, Survey of Current Business, April 1983; Commerce News, April 29, 1984. Kentucky Economic Information System, July 1984.

TRANSPORTATION

Rail

Line serving **Corbin** - Seaboard System Railroad*

Services - Main line; 15 northbound and 15 southbound freights making daily stops; 2 northbound and 2 southbound through freights daily; switch engine; team track space for 10 cars; siding space for 30 cars; nearest piggyback facilities are operated by Southern Railway System in Knoxville, Tennessee, 84 miles south of Corbin

For details on routing, schedules, rates, and services, contact:

Manager of Industrial Development
Seaboard System Railroad
P. O. Box 2157
Louisville, Kentucky 40201
(502) 587-5228

Highways

Corbin is served by Interstate 75, a major north-south route, with an interchange three miles northwest of the city and an interchange two miles southwest of the city. Corbin is also served by U.S. Highways 25, 25E and 25W, all "AAA" rated (80,000-pound gross load limit) trucking highways. Access onto the Daniel Boone Parkway, a multilane toll road, is 14 miles to the north at London via U.S. 25.

* The Seaboard System Railroad is currently undergoing a \$41 million expansion of its railroad facilities in Corbin. The project includes converting one of the two existing rail yards into a facility for servicing coal trains, and building an engine house and diesel service building. The project is scheduled for completion in the summer of 1986.

Truck Service

Company

Bailey's Express Company, Inc.*
Bestway Express, Inc.*
Consolidated Freightways
Corporation of Delaware (T)*

Expressway, Inc.*
Interstate System*
Lawrenceburg Transfer Company,
Inc.*

Middlewest Freightways, Inc. (T)*

Overnite Transportation Company*

Quick Transportation Company (T)*

Roadway Express, Inc.*

Skyline Transportation, Inc.*

Smith's Transfer Corporation (T)*

J. Fred Smith Trucking
Company*

Suburban Motor Freight, Inc.**

United Trucking Service, Inc. (T)*

Home Office

Middletown, Connecticut 06457
Nashville, Tennessee 37210

175 Linfield Drive
Menlo Park, California 94025
Louisville, Kentucky 40210
Grand Rapids, Michigan 49503

P.O. Box 220
Lawrenceburg, Kentucky 40342
6810 Prescott Avenue
St. Louis, Missouri 63147
P. O. Box 1216
Richmond, Virginia 23209
South Kentucky Avenue
Corbin, Kentucky 40701
1077 Gorge Boulevard
Akron, Ohio 44309
P. O. Box 3569
Knoxville, Tennessee 37917
P. O. Box 1000
Staunton, Virginia 24401

West Fackler
Danville, Kentucky 40422
P.O. Box 1739
Columbus, Ohio 43216
8505 West Warren
Dearborn, Michigan 48126

(T) Local terminal.

* Interstate and intrastate service.

** Interstate service only.

Other Freight Services

Emery
Federal Express

Purolator Courier
United Parcel Service

Nearest Office or Shipping Center

Lexington, Kentucky, 88 miles north
Knoxville, Tennessee, 84 miles south
Lexington, Kentucky, 88 miles north
Lexington, Kentucky, 88 miles north
London, Kentucky, 14 miles north

HIGHWAY MILES AND TRUCK TRANSIT TIME IN DAYS FROM
CORBIN, KENTUCKY, TO SELECTED MARKET CENTERS

City	Highway Miles	Delivery		City	Highway Miles	Delivery	
		Time TL				Time TL	
Atlanta, Ga.	277	1-2		Los Angeles, Ca.	2,268	4-5	
Baltimore, Md.	629	2-3		Louisville, Ky.	160	1	
Birmingham, Ala.	338	1-2		Nashville, Tenn.	218	1-2	
Chicago, Ill.	440	1-2		New Orleans, La.	680	2-3	
Cincinnati, Ohio	166	1		New York, N. Y.	791	N/A	
Cleveland, Ohio	405	1-2		Pittsburgh, Pa.	431	1-2	
Detroit, Mich.	425	1-2		St. Louis, Mo.	423	1-2	
Knoxville, Tenn.	84	1					

Note: Mileage computations are via the best interstate or primary highways, not necessarily the most direct route of travel.

Sources: Rand McNally Road Atlas, 1979. Official Kentucky Mileage Map, 1980.

Delivery time - Overnite Transportation Company, P.O. Box 1216, Richmond, Virginia 23209.

Air

Local

London-Corbin Airport (Magee Field)

Location: 11 miles north of Corbin

Runways: 1 paved

Length: 6,000 feet

Traffic

Control: Wind sock and FSS advisory service

Lighting: Beacon, runway and obstruction lights, VASI, REIL

Services: Tennessee Airways, 100 octane, JP-A-50, weather data, minor A & P repairs, tie downs, flight training, charter and ambulance service, taxi, auto rental, aircraft rental

Air Freight Service: All carriers accept freight on a space available basis

Whitley County Airport

Location: 14 miles south of Corbin

Runways: 1 paved

Length: 2,500 feet

Traffic

Control: Wind sock

Lighting: None

Services: Tie-down

(Contd.)

Nearest Scheduled Commercial Airline Service

Location: Blue Grass Field
5 miles west of Lexington, Kentucky;
93 miles north of Corbin

Runways: 2 paved
Length: 7,000 feet; 3,500 feet

Traffic Control: Tower

Lighting: Approach lighting system, beacon, runways and obstructions lighted, VASI

Services: Delta, Piedmont, United, USAir, Allegheny Commuter, Comair, Tennessee Airways; fuel - 100LL and jet-A; hangars, tie-downs; major A & P repairs; major Avionics repairs; APU, charter, flight instruction, oxygen, plane rentals, survival equipment; taxi, limousine, car rentals, courtesy car, weather information; restaurant, snack bar

Air Freight Service: Air freight terminal

Location: McGhee Tyson Airport
12 miles south of Knoxville, Tennessee;
96 miles south of Corbin

Runways: 2 paved
Length: 9,000 feet and 6,000 feet

Traffic Control: Tower

Lighting: Beacon, runway

Services: Delta, Eastern, Republic, United, USAir, Atlantis, Comair, New York Air, Scheduled Skyways, Tennessee Airways; fuel - 100, jet-A; tie-downs, hangars; minor A & P repairs, major Avionics repairs; APU, charter, flight instruction, oxygen, plane rental, U. S. Customs; limousine, car rental, public transit; weather information; restaurant, snack bar

Air Freight Service: Air freight terminal

Bus - Southern Greyhound Bus Lines; Trailways Bus Lines

Taxi - Two companies with 24-hour, radio-dispatched service

Rental Services - Truck and trailer rentals available at Corbin; car rentals available near the London-Corbin Airport, 11 miles north of Corbin.

POWER AND FUEL

Electricity

Company serving **Corbin** - City Utilities Commission
Source of power - Kentucky Utilities Company
Total generating capacity - 3,164,000 KW*
For industrial rates contact:

City Utilities Commission
901 South Main Street
Corbin, Kentucky 40701
(606) 528-4026

Company serving **parts of Whitley County** - Kentucky Utilities Company
Source of power - Kentucky Utilities Company
Total generating capacity - 3,164,000 KW*
For industrial rates contact:

Industrial Development Department
Kentucky Utilities Company
One Quality Street
Lexington, Kentucky 40507
(606) 255-1461

Company serving **parts of Whitley County** - Cumberland Valley Rural Electric
Cooperative Corporation
Source of power - East Kentucky Power Cooperative
Total generating capacity - 1,309,000 KW**
For industrial rates contact:

Industrial Development Division
East Kentucky Power Cooperative
P. O. Box 707
Winchester, Kentucky 40391
(606) 744-4812

* Kentucky Utilities Company's total generating capacity will be increased when a new 650,000 KW generation plant is completed in Hancock County in 1993.

** East Kentucky Power Cooperative's total generating capacity will be increased when a new 650,000 KW coal-fired generation plant is completed in southeast Clark County in 1992.

Natural Gas

Company serving Corbin - Delta Natural Gas Company, Inc.

Source of supply - Wiser Oil Company*

Size of transmission mains - 6 and 8 inch (supplier);
6 and 8 inch (distributor)

Distribution mains - 1 inch through 8 inches

Distribution pressure - 4 ounces to 60 pounds psi

Btu content - 1,050 per cubic foot

Specific gravity - 0.65

For rates and supplies contact:

Manager of Marketing and Public Relations
Delta Natural Gas Company, Inc.
Route 1, Box 30-A
Winchester, Kentucky 40391
(606) 744-6171

Other Fuels

Propane (Within 15 miles)

Buckey Gas Products Company
(Doxol propane)**
Camp Ground Road
Corbin, Kentucky 40701

Empiregas, Inc., of Corbin**
Highway 25 North
London, Kentucky 40741

Lewis LP Gas, Inc.
Highway 229
London, Kentucky 40741

Rains Gas and Appliance Company
(Pyrofax gas)**
Cumberland Falls Road
Williamsburg, Kentucky 40769

Fuel oils

Distillate fuel oil -

Combs Fuels, Inc.
420 South Fifth Street
Williamsburg, Kentucky 40769

Helton's Oil Corporation and
Service Station
Highway 312 East
Corbin, Kentucky 40701

Michael-Walters Industries
Barbourville Road
Corbin, Kentucky 40701

R. C. Miller Oil Company, Inc.
Route 7
Corbin, Kentucky 40701

Residual fuel oil - Arrangements must be made with the refinery.

Low sulphur content coal - Available locally.

* The Columbia Gas Transmission Company serves as a backup source of supply.

** Bulk plant.

WATER AND SEWERAGE

Public Water Supply

Company serving Corbin - City Utilities Commission
901 South Main Street
Corbin, Kentucky 40701
(606) 528-4026

Source - City owned lake on Laurel River
Treatment plant capacity - 5,000,000 gallons per day
Average daily consumption - 2,260,000 gallons
Peak daily consumption - 3,600,000 gallons
Type treatment - Rapid mix, flocculation, sedimentation, filtration,
chlorination
Storage capacity - 4,850,000 gallons
Size lines - 2 through 16 inches
Average pressure - 80 psi
Average temperature - 75 degrees F.

MONTHLY WATER RATES

Inside City

Monthly service charge		\$2.00
First	10,000 gallons	1.05 per M gallons
Next	290,000 gallons	1.00 per M gallons
Over	300,000 gallons	.71 per M gallons
Minimum bill		3.05

Outside City

Monthly service charge		\$4.00
First	10,000 gallons	1.57 per M gallons
Next	290,000 gallons	1.50 per M gallons
Over	300,000 gallons	1.06 per M gallons
Minimum bill		5.57

(Contd.)

Tap-on charge

Inside city

	3/4-inch tap	\$ 150
	1-inch tap	250
	2-inch tap	650
	4-inch tap	2,750
	6-inch tap	5,000
Over	6-inch	By contract

Outside city

	3/4-inch tap	\$ 325
	1-inch tap	545
	2-inch tap	975
	4-inch tap	4,125
	6-inch tap	7,500
Over	6-inch	By contract

Raw Water

Surface water sources - Laurel River and Lynn Camp Creek

Average discharge - Laurel River at Municipal Dam near Corbin, Kentucky, 251 cfs (10 years, USGS); Lynn Camp Creek at Corbin, Kentucky, 90.4 cfs (10 years, USGS)

Expected ground water yield - 50 to 200 gpm in eastern two-thirds of county; 5 to 50 gpm in western one-third of county

Sewerage

Company serving Corbin - City Utilities Commission
901 South Main Street
Corbin, Kentucky 40701
(606) 528-4026

Design capacity - 4,500,000 gallons per day

Average daily flow - 2,500,000 gallons

Treatment - Primary and secondary

Type treatment - Aeration, clarifier, chlorination, drying beds

Treated effluent discharged into - Lynn Camp Creek

Size of sanitary mains - 4 through 24 inches

(Contd.)

SEWER RATES

Inside city residential and commercial service

Monthly service charge	\$ 2.15
First 10,000 gallons	1.38 per M gallons
Over 10,000 gallons	.74 per M gallons
Minimum bill	3.53

Inside city industrial service

Monthly service charge	\$50.00
First 10,000 gallons	1.38 per M gallons
Over 10,000 gallons	.74 per M gallons
Minimum bill	50.00

Excess BOD charge (over 300 mg per liter)	\$ 0.10 per pound
Excess suspended solids charge (over 350 mg per liter)	0.036 per pound

Outside city residential and commercial service

Monthly service charge	\$ 3.25
First 10,000 gallons	2.07 per M gallons
Over 10,000 gallons	1.11 per M gallons
Minimum bill	5.32

Outside city industrial service

Monthly service charge	\$50.00
First 10,000 gallons	2.07 per M gallons
Over 10,000 gallons	1.11 per M gallons
Minimum bill	50.00

Excess BOD charge (over 250 mg per liter)	\$ 0.15 per pound
Excess suspended solids charge (over 300 mg per liter)	0.054 per pound

Tap-on charge:

Residential - \$300

Commercial and Industrial - By contract

CLIMATE

Whitley County

Temperature

Normal (30-year record)	58.90 degrees
Average annual 1983	57.70 degrees
Record highest, September 1954 (42-year record)	103.00 degrees
Record lowest, January 1966 (42-year record)	-9.00 degrees
Normal heating degree days (30-year record) (Heating degree day totals are the sums of negative departures of average daily temperatures from 65 degrees F.)	3,658

Precipitation

Normal (30-year record)	47.29 inches
Mean annual snowfall (41-year record)	12.40 inches
Total precipitation 1983	42.48 inches
Mean number days precipitation (.01 inch or more) (41-year record)	127
Mean number days thunderstorms (41-year record)	47

Prevailing Winds (14-year record)

Northeast

Relative Humidity (23-year record)

1 a.m.	80 percent
7 a.m.	85 percent
1 p.m.	59 percent
7 p.m.	63 percent

Source: U.S. Department of Commerce, Environmental Science Services Administration, Climatological Data, 1983. Station of record: Knoxville, Tennessee.

LOCAL GOVERNMENT

City

Structure - Mayor - 4-year term; 4 commissioners - 2-year terms; city manager

Budget 1984 -	General Fund	\$1,432,126.67
	Water Fund	1,000,000.00
	Sewer Fund	800,000.00
	Electric Fund	3,000,000.00

Fees and licenses - Business license fees range from \$5 to \$800 per year according to type of business; building permit fees vary according to estimated cost of construction; automobile sticker - \$15 per year

County

Whitley County*

Structure - County Judge/Executive - 4-year term; 3 magistrates - 4-year terms

Budget 1984-85 - General Fund \$436,000; Road Fund \$454,000

Knox County*

Structure - County Judge/Executive - 4-year term; 8 magistrates - 4-year terms

Budget 1984-85 - General Fund \$286,630; Road Fund - \$423,500

Assessed Value of Property, 1984**

<u>Classes of Property</u>	Corbin	Whitley County*	Knox County*
Real Estate	\$69,940,657	\$228,282,644	\$180,681,582
Tangibles	49,632,222	117,040,043	73,479,278

* The city of Corbin is incorporated in both Whitley and Knox Counties.

** Excludes Homestead Exemptions.

Property Taxes

All property in Kentucky is assessed at 100 percent of fair cash value.

Land and buildings are taxed by the state and may be taxed by local jurisdictions. The 1984 state rate is \$0.22 per \$100 of assessed valuation.

Manufacturing machinery, raw materials inventories, pollution control equipment, and goods in the process of manufacture are not subject to local taxation. The state rate is \$0.15 per \$100.

Other tangible personal property owned by manufacturers (finished goods, office furniture, office equipment) is taxed by the state at \$0.45 per \$100 and may be taxed by local jurisdictions.

Intangible personal property located in Kentucky (money in hand, shares of stock, notes, bonds, accounts receivable, and other credits) is taxed by the state at \$0.25 per \$100, and is not subject to local taxation.

Property stored in public warehouses in a transit status is not subject to local taxation. The state rate is only \$0.015 per \$100.

Private leaseholds in industrial facilities owned by cities or counties and financed by industrial revenue bonds are subject to a state tax of \$0.015 per \$100 of value (essentially the lessee's equity, adjusted for appreciation or depreciation). Local taxation is not permitted.

Combined State and Local Rates Per \$100 Valuation, 1984*
(100% assessment)

	<u>Site Inside City of Corbin, (Whitley County)**</u>			<u>Site Inside City of Corbin, (Knox County)**</u>
1. Land and buildings	\$ 1.1762			1.2262
2. Mfg. machinery, raw materials, goods in process, pollution control equipment	0.1500			0.1500
3. Finished goods, office equipment, other tangibles	1.4071			1.5160
4. Intangibles (accounts receivable, notes, bonds, etc.)	0.2500			0.2500
5. Property stored in public warehouses in a transit status	0.0150			0.0150
6. Leaseholds in industrial revenue bond financed plants	0.0150			0.0150
	<u>Site In Unincorporated Whitley County</u>	<u>Site In Unincorporated Knox County</u>	<u>Site In Unincorporated Laurel County</u>	
1. Land and buildings	\$ 0.5320	\$0.5820	\$0.5120	
2. Mfg. machinery, raw materials, goods in process, pollution control equipment	0.1500	0.1500	0.1500	
3. Finished goods, office equipment, other tangibles	0.7629	0.8718	0.7663	
4. Intangibles (accounts receivable, notes, bonds, etc.)	0.2500	0.2500	0.2500	
5. Property stored in public warehouses in a transit status	0.0150	0.0150	0.0150	
5. Leaseholds in industrial revenue bond financed plants	0.0150	0.0150	0.0150	

* Kentucky Department of Economic Development

** The City of Corbin is incorporated in both Whitley and Knox Counties.

Planning and Zoning

City agency - Corbin Planning Commission

Zoning enforced - City only

Subdivision regulations enforced - City only

Local codes enforced - Housing and building

Mandatory state codes enforced - Kentucky Plumbing Code, National Electric Code, Kentucky Boiler Regulations and Standards, Kentucky Building Code (modeled after BOCA code)

Safety

Police	Corbin	Corbin Area*	Whitley County
Total staff	20	--	6 full-time 2 part-time
Radio-patrol cars	5	--	2

Fire

Insurance Services

Organization

Public Protection

Classification

Full-time staff

Volunteers

5

21

--

9

--

150

--

--

--

(Approximately)

The Corbin Fire Department provides fire protection to industries located outside the city.

Rescue Service

Corbin-Tri-County Emergency and Rescue Squad, Inc.:

Number of volunteers - 17

Equipment - 3 boats, 1 ambulance, tent, generators, towing cables, extrication equipment, crash truck, radiological monitoring equipment, airbags, one jeep, one rescue truck

Personnel training - 4 emergency medical technicians, first aid training, fire fighting, rescue operations, dragging operations, extrication training, CPR, mine rescue training, and handling of hazardous materials

* Within a 6-mile radius.

Refuse Collection and Disposal

	Corbin	Whitley County
Type service	Municipal	Private
Fee charged:		
residential	\$4 per month	\$5 - \$7 per month
business and industrial	\$10 - \$67.50 per month; dumpster rental - \$12.50 each per month	Contract
Collection frequency:		
residential	Weekly	Weekly
business and industrial	As needed	As needed
Trash pickup	Weekly	--
Disposal method	Sanitary landfill	Sanitary landfill

EDUCATION

Public Schools

	Corbin Independent*	Whitley County
Total Enrollment (Fall 1984)	1,853	4,615
Elementary	925	2,779
Middle School	313	973
High School	615	863
Student-Teacher Ratio	19-1	20-1
Elementary	18-1	21-1
Middle School	22-1	19-1
High School	21-1	20-1
Accreditation	Southern Association of Colleges and Schools	
Percent High School Graduates to College (May 1983)	59.3	21.5
Expenditures Per Pupil (1983-84)	\$ 1,462.98	\$ 1,311.64
Bonded Indebtedness (June 30, 1984)	\$2,183,000	\$2,915,000

Nonpublic Schools

	St. Camillus Academy
Total Enrollment	282
Elementary	215
High School	67
Student-Teacher Ratio	20-1
Elementary	20-1
High School	19-1

* The addition of a third floor at the Corbin Middle School was completed in Summer 1983. Total cost of the project was \$125,000. Several projects currently under way within the Corbin Independent School System include: the renovation of East Ward Elementary School; the installation of a new roof at the Central Elementary School; and the addition of a 13-level math program in the elementary schools. Also, there are plans for an addition to and remodeling of the bus maintenance garage.

Area Colleges and Universities

<u>Name</u>	<u>Location (Miles distant)</u>	<u>Enrollment (Fall, 1984)</u>	<u>Highest Degree Conferred</u>
Sue Bennett College	London, Kentucky (14)	330	Associate
Cumberland College	Williamsburg, Kentucky (15)	2,106	Baccalaureate
Union College	Barbourville, Kentucky (16)	887	Masters, Specialist
Somerset Community College	Somerset, Kentucky (47)	1,193	Associate
Berea College	Berea, Kentucky (51)	1,554	Baccalaureate
Lincoln Memorial University	Harrogate, Tennessee (52)	1,425	Masters
Eastern Kentucky University	Richmond, Kentucky (64)	12,357	Masters Specialist*
Centre College	Danville, Kentucky (71)	748	Baccalaureate
Hazard Community College	Hazard, Kentucky (73)	629	Associate

* Joint doctoral degree programs are offered in cooperation with the University of Kentucky, Lexington. The degrees are issued by the University of Kentucky.

Vocational Schools

Both the state vocational-technical schools and the area vocational education centers are operated by the Kentucky Department of Education. The state vocational-technical schools enroll persons full time who are at least 16 years of age and not in school. These students attend classes for six hours each day. The area vocational education centers are designed to accommodate high school students who are at least 15 years of age. These students attend vocational school for three hours each day. The state vocational-technical schools and the area education centers offer evening courses to enable working adults to upgrade current job skills.

Nearest State School

Location	Laurel County State Vocational-Technical School
Miles Distant	London
Curriculum	14
	Consumer and Home Economics
	Commercial Foods
	Consumer and Family Life Skills
	Health and Personal Services Occupations
	Cosmetology
	Medical Assistant
	Industrial Education
	Air Conditioning and Heating
	Auto Body Repair
	Auto Mechanics
	Carpentry
	Drafting (with CAD/CAM)
	Electricity
	Machine Shop
	Masonry
	Plant Maintenance
	Welding
	Learning Resource Center

Nearest Area Education Center

Location	Corbin Area Vocational Education Center
Curriculum	Corbin
	Health and Personal Services Occupations
	Health Careers
	Industrial Education
	Auto Mechanics
	Drafting
	Industrial Electricity
	Major Appliance Repair
	Welding

Arrangements can be made to provide training in the specific production skills required by an industrial plant. Instruction may be conducted either in the vocational school or in the industrial plant, depending upon the desired arrangement and the availability of special equipment.

HEALTH

Local Medical Personnel

Physicians - 39
Dentists - 20

Hospitals

<u>General Hospital</u>	<u>Location</u>	<u>Beds</u>
Southeastern Kentucky Baptist Hospital*	Corbin	149 plus 4 neonatal

General hospital facilities - Four operating rooms, delivery room, X-ray, Ultrasound, laboratory, nuclear medicine, dietary, pediatrics, outpatient surgery, non-invasive laboratory, obstetrics, education room, respiratory therapy, physical therapy, chaplin, social services, gift shop

Medical staff - 39 physicians, 89 registered nurses, 31 licensed practical nurses

Other Medical Facilities

Cumberland River Comprehensive Care Center

Ambulance Service

Name - Professional Medical Transport**
Staff - 20 full time emergency medical technicians
Service - 24-hour, county-wide
Equipment - 10 ambulances

Public Health

Facility - Whitley County Health Department***
Staff - Full-time: Nine registered nurses, two health environmentalists, five health service aides, six clerks, two social workers, nutritionist, two licensed practical nurses, health educator, administrator
Part-time: Registered nurse, two janitors

* The construction of the \$40 million Baptist Regional Medical Center is currently under way. The 202-bed hospital, which will replace the existing hospital, is scheduled for completion in the fall of 1986.

** Stations are located in Corbin and Williamsburg.

*** Health centers located in Corbin and Williamsburg.

OTHER LOCAL FACILITIES

Communications

Telephone -	South Central Bell Telephone Company
Telegraph - Services -	Western Union Toll-free number, 1-800-325-5100
Postal - Class - Mail received - Mail dispatched -	U.S. Post Office First Eight times daily Six times daily
Newspapers - Daily and circulation - Other papers received from -	Corbin Times-Tribune 8,700 Williamsburg, Lexington, and Louisville, Kentucky; Knoxville, Tennessee
Radio - Major stations received from -	WCTT-AM/FM; WYGO-AM/FM Lexington, Louisville, London and Barbourville, Kentucky; Knoxville, Tennessee
Television - Cable service Reception from - Kentucky Educational Television -	Lexington, Kentucky; Knoxville, Tennessee; Asheville, North Carolina; Atlanta, Georgia Somerset transmitter - Channel 29

Library Services

Public library - Corbin Public Library
Size collection - 36,046 volumes
Circulation, 1983-84 - 52,647
Services - Meeting room, record player, records, pictures, film strip projector,
movie projector, periodicals, copy machine, microfilm reader, microfilm
reader-printer

Religious Institutions

Number of churches - 28

Denominations - Apostolic
 Assembly of God
 Baptist
 Catholic
 Christian
 Church of Christ
 Church of God
 Church of Jesus Christ of Latter Day Saints
 Episcopal
 Jehovah's Witnesses
 Methodist
 Nazarene
 Pentecostal
 Presbyterian

Nearest synagogues - Knoxville, Tennessee, 84 miles south of Corbin

Congregations - Heska Amuna Congregation (orthodox)
 Temple Bethel (reform)

Financial Institutions

<u>Banks*</u>	<u>Assets</u>	<u>Deposits</u>	<u>Statement Date</u>
American Fidelity Bank and Trust Company	\$ 32,016,000.00	\$ 28,138,000.00	6/30/84
Corbin Deposit Bank and Trust Company	44,432,000.00	41,946,000.00	6/30/84
Cumberland Valley Financial Corporation	137,059,000.00	124,738,000.00	12/31/83
The First National Bank and Trust Company of Corbin	107,574,157.60	93,278,613.83	6/30/84
<u>Savings and Loan Associations</u>	<u>Assets</u>	<u>Savings Accounts</u>	<u>Statement Date</u>
First Federal Savings and Loan Association	\$ 59,635,235.67	\$ 54,499,674.34	6/30/84
Mutual Federal Savings and Loan Association	127,652,532.00	116,484,522.00	12/31/83

* The Tri-County Bank is currently under construction. The scheduled completion date is Spring 1985.

Hotels and Motels (Corbin area)

Total number - 16

Total rooms - 938

Clubs and Organizations

American Legion
American Legion Auxiliary
Book Club
Boy Scouts
Brownies
Corbin Business and Professional Women's Club
Corbin Industrial Development Commission
Corbin Jaycees
Cub Scouts
Cumberland Falls Garden Club
Daughters of the American Revolution
Eastern Star
Forsythia Garden Club
4-H
Fraternal Order of Police
Garden Club
Girl Scouts
Greater Corbin Chamber of Commerce
Junior Woman's Club
Kiwanis
Knights of Pythias
Lady Golfers
Lions
Little League Baseball
Little League Basketball
Little League Football
Masons
Ministerial Association
Optimists
Ossoli
Pythian Sisters Temple 46
Rainbow Girls
Rod and Gun Club
Rotary
Shriners
Tri-County Business and Professional Women's Club
Tri-County Saddle Club
Veterans of Foreign Wars
Woman's Club
Younger Woman's Club

RECREATION

Local

Public recreation facilities available in Corbin include a swimming pool, two mini-parks with playground equipment and picnic areas, six tennis courts, four ball fields, seven outdoor basketball courts, a football field, and a recreation center.

The Corbin Recreation Commission offers a year-round recreational program for all ages. A supervised playground program is available during the summer months and sports enthusiasts may participate in leagues for baseball, softball, T-ball, football and basketball. Classes in karate, judo, and dancing and a recreation program for senior citizens are offered at the recreation center.

A recently completed city park in west Corbin contains two multi-purpose fields and three tennis courts. A multi-purpose court, picnic area and camping area, and three shelter houses with restrooms will be added during the next three years.

The Chamber of Commerce Civicgrounds offers a lighted horseshow ring with bleachers seating 2,000 people, and a 15,000-square-foot multi-purpose building featuring a full-sized indoor basketball court and two indoor tennis courts. The building also contains a conference room, office, kitchen for caterings, men's and women's restrooms and showers, and storage space. An outdoor amphitheater complete with concert stage, dressing rooms, and seating for 2,500 to 3,000 people is currently under construction. Future plans include the construction of an outdoor running and walking track, picnic area and a small playground area.

Facilities at the Tri-County Country Club in Corbin include a golf course, swimming pool and two tennis courts. Other private facilities include a bowling facility, skating rink, miniature golf course, golf driving range and one indoor and one outdoor movie theater.

The Nibroc Festival (that's Corbin spelled backwards) is observed each summer and includes parades, folk music, square dancing, a midway and horse show, and the coronation of a queen. Arts and crafts and gun and coin shows, and old-fashioned bargain days are also a part of the festivities.

Laurel River Lake, located in Whitley County, is a 5,600-acre lake that offers camping, fishing, boating, and swimming. Several areas around this new lake are now under development. A 28-acre site picnic area, picnic shelter, playground area, hiking trail, and restroom facilities, only two miles from Corbin, were recently completed. A 50-slip marina, vehicle-access campground, and an amphitheater are under construction approximately five miles from Corbin.

Cumberland Falls State Resort Park is located 20 miles west of Corbin in the Daniel Boone National Forest. The park is famous for Cumberland Falls which drops 68 feet over a rock precipice and shows one of only two known "moonbows" in the world at full moon. The park offers 53 lodge rooms, woodland suites, 27 cottages, camping, fishing, swimming, hiking, horseback riding, picnicking, tennis, backpacking, shuffleboard, planned recreation, a playground, and an amphitheater.

Whitley County is located in the southern portion of the **Daniel Boone National Forest**, which covers 640,000 acres of timberland in eastern Kentucky. It encompasses much of Kentucky's great beauty and provides a vacation paradise. There are scenic hiking trails, rivers and streams stocked with a variety of fish, hunting preserves, camping sites, and numerous other natural and historical attractions.

Area (Within 50 miles)

Levi Jackson Wilderness Road State Park, 14 miles north of Corbin at London, is an 815-acre park located where the Boone Trace and Wilderness Road pioneer trails converge. In addition to a reproduced pioneer settlement, the park offers a pool, a bathhouse, hiking trails, horseback riding, shuffleboard, 200 campsites, a picnic area, a playground, and an amphitheater.

Dr. Thomas Walker State Shrine, 22 miles southeast of Corbin near Barbourville, is the site of the cabin built by Dr. Walker, who led an expedition through Cumberland Gap around 1750. This 12-acre park contains a replica of the cabin, a playground, a picnic shelter, and an amphitheater.

Pine Mountain State Resort Park in Pineville, 31 miles from Corbin, provides the finest in mountain scenery and the ultimate in quiet comfort. The 2,500-acre park is located in the Kentucky Ridge State Forest and is the scene of the Mountain Laurel Festival each spring. Also featured is a 35-acre lake, 330 lodge rooms, 20 cottages, a dining room, a gift shop, a meeting room, 36 camping sites, a lodge pool, fishing, a 9-hole golf course, hiking trails, a nature center, picnicking, playgrounds, shuffleboard, and planned recreation.

The Big South Fork National River and Recreation Area, 40 miles southwest of Corbin near Whitley City, is being developed as an outdoor recreation area by the U.S. Army Corps of Engineers in cooperation with the National Park Service. The area lies along the Big South Fork of the Cumberland River in Kentucky and Tennessee and encompasses some of the state's most rugged and scenic terrain. Recreational opportunities in the "National Area" include hiking, camping, horseback riding and picnicking, whitewater rafting, canoeing and kayaking trips. The Big South Fork Scenic Railway offers a chance to see part of the rugged Cumberland River area by rail. The train operates on a regular schedule between Stearns and the Big South Fork National River and Recreation Area near the historic Blue Heron Coal Tipple, a distance of about 5 miles each direction.

General Burnside State Park, 44 miles west of Corbin, is Kentucky's only island state park. Rising out of Lake Cumberland and surrounded by beautiful Kentucky mountains, the park offers excellent fishing, an 18-hole golf course which is open year-round, a picnic area, a 161-site camping area for tents and recreational vehicles, a marina on the mainland near the park, and recreation.

COMMUNITY IMPROVEMENTS

Recent

The addition of a third floor at the Corbin Middle School was completed in the summer of 1983. Total cost of the project was \$125,000.

Construction of a 15,000-square-foot multi-purpose building, at the Chamber of Commerce Civicgrounds, was recently completed. The \$400,000 building includes a full-sized indoor basketball court, two indoor tennis courts, a conference room, office, kitchen, men's and women's restrooms and showers, and storage space.

Under Way

The Seaboard System Railroad is currently undergoing a \$41 million expansion of its railroad facilities in Corbin. The project includes converting one of the two existing rail yards into a facility for servicing coal trains, and building an engine house and diesel service building. The project is scheduled for completion in the summer of 1986.

The construction of the \$40 million Baptist Regional Medical Center is currently under way. The 202-bed hospital, which will replace the existing hospital, is scheduled for completion in the fall of 1986.

The construction of a 2,500- to 3,000- seat outdoor amphitheater with covered stage and dressing rooms is currently under way at the Commerce Civicgrounds.

The renovation of the old railroad depot is currently under way. The project will consist of converting the depot into a community-type building.

The construction of the Tri-County National Bank is currently under way. The scheduled completion date is for spring of 1985.

Several projects currently under way within the Corbin Independent School System include: the renovation of East Ward Elementary School; the installation of a new roof at the Central Elementary School; and the addition of a 13-level math program in the elementary schools.

Planned

There are plans for the renovation of the old city hall building. Total cost of the project will be \$1 million.

The Whitley County School System has plans for the addition to and remodeling of the bus maintenance garage.