

1996

Industrial Resources: Henderson County - Henderson

Kentucky Library Research Collection
Western Kentucky University, spcol@wku.edu

Follow this and additional works at: https://digitalcommons.wku.edu/henderson_cty



Part of the [Business Administration, Management, and Operations Commons](#), [Growth and Development Commons](#), and the [Infrastructure Commons](#)

Recommended Citation

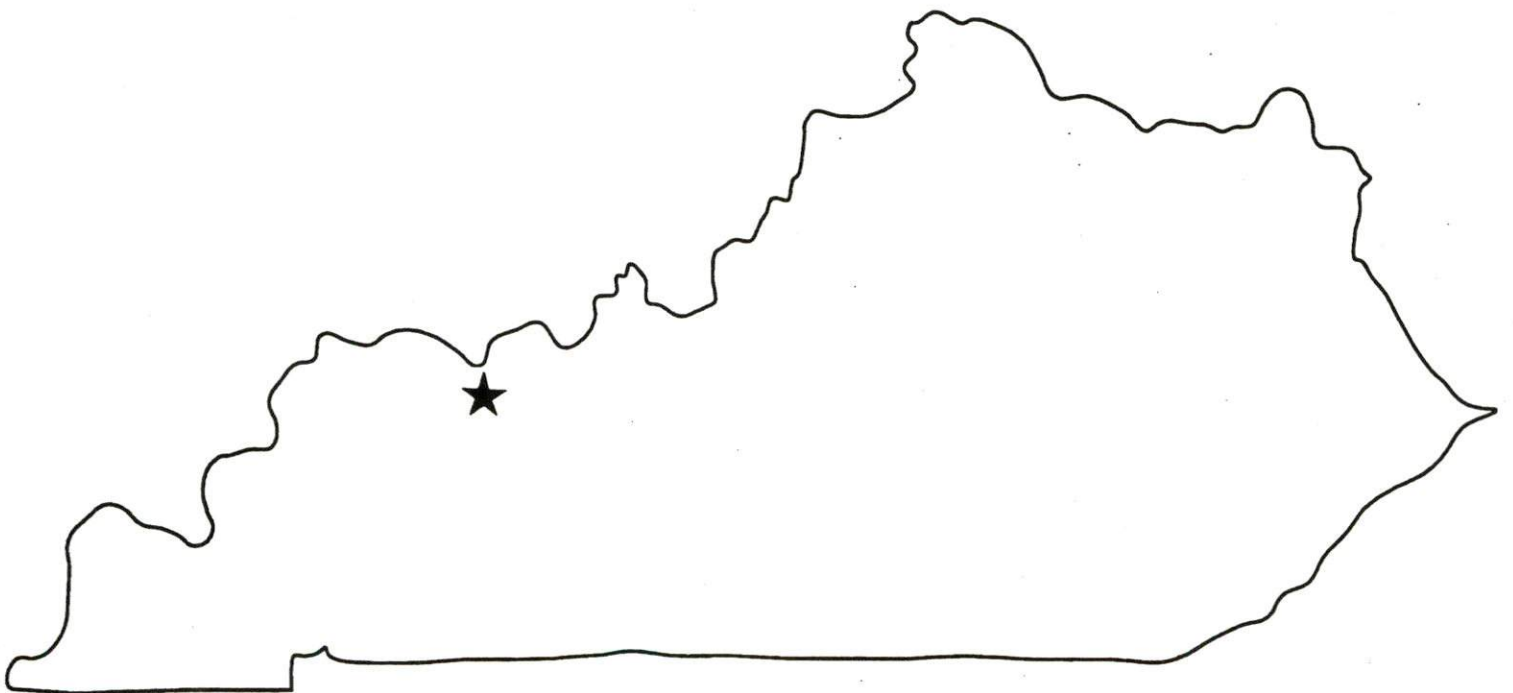
Kentucky Library Research Collection, "Industrial Resources: Henderson County - Henderson" (1996). *Henderson County*. Paper 22.
https://digitalcommons.wku.edu/henderson_cty/22

This Report is brought to you for free and open access by TopSCHOLAR®. It has been accepted for inclusion in Henderson County by an authorized administrator of TopSCHOLAR®. For more information, please contact topscholar@wku.edu.

Kentucky

**Resources For
Economic Development**

Henderson



Prepared by
The Kentucky Cabinet for Economic Development
Division of Research
in cooperation with
The Henderson Area Economic Development Council

1996

Division Director - Rene' True; program manager - Keith Roberts; research - Debbie Kimbrough; clerical
- Wanda Sharp; graphics - Robert Owens. Cost of printing paid from state funds.

TABLE OF CONTENTS

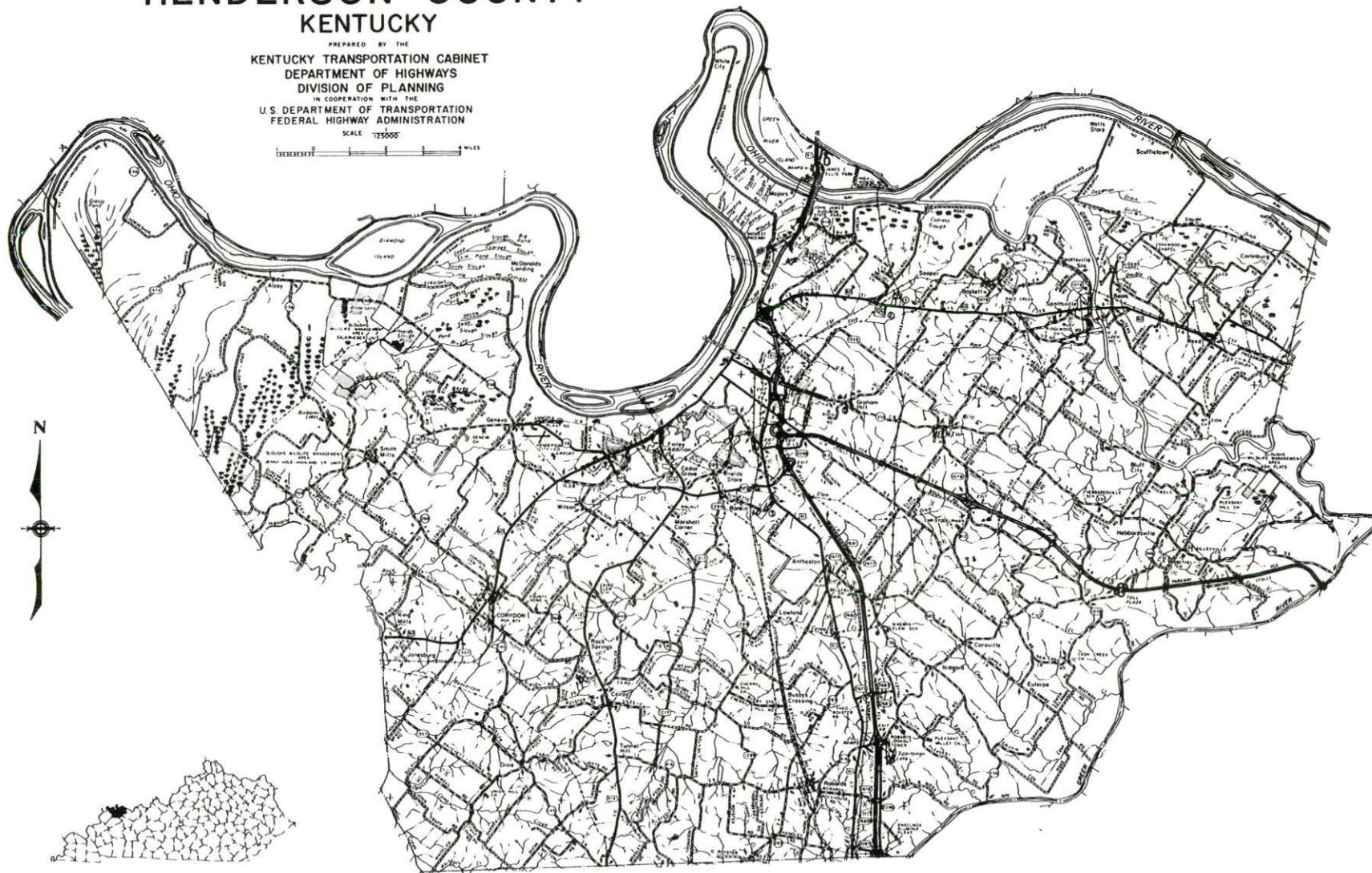
<u>Chapter</u>	<u>Page</u>
HENDERSON, KENTUCKY-A RESOURCE PROFILE.....	1
THE LABOR MARKET STATISTICS.....	2
Labor Market Area Map.....	2
Population.....	3
Population Projections.....	3
Estimated Labor Supply.....	3
Labor Force Characteristics of Residents, 1994.....	4
Selected Components of Nonagricultural Employment, by Place of Work, 1994.....	5
Per Capita Personal Income.....	6
Average Placement Wages.....	7
Average Weekly Wages of Workers Covered by Unemployment Insurance 1993 - Bar Chart.....	8
Average Weekly Wages by Industry, by Place of Work, 1993.....	9
EXISTING INDUSTRY.....	10
Major Henderson County Manufacturing Firms, Their Products and Employment.....	10
Recent Industrial Developments.....	12
Labor Organizations in Manufacturing Firms.....	13
Selected Industrial Services.....	13
TRANSPORTATION.....	14
Highways.....	14
Truck Service.....	14
Selected Market Location Map.....	15
Rail.....	16
Air.....	16
Water.....	17
UTILITIES.....	18
Electricity.....	18
Natural Gas.....	18
Public Water Supply.....	19
Sewerage.....	19
CLIMATE.....	20

<u>Chapter</u>	<u>Page</u>
LOCAL GOVERNMENT.....	21
Structure.....	21
Planning and Zoning.....	21
Local Fees and Licenses.....	21
State and Local Property Taxes.....	22
EDUCATION.....	23
Public Schools.....	23
Nonpublic Schools.....	23
Area Colleges and Universities.....	24
Vocational Training.....	25
OTHER LOCAL FACILITIES.....	27
Local Medical Personnel.....	27
Hospitals.....	27
Other Medical Facilities and Services.....	27
Banks and Savings & Loan Associations.....	27
Newspapers.....	27
Telephone Service.....	27
RECREATION.....	28

GENERAL HIGHWAY MAP
HENDERSON COUNTY
KENTUCKY

PREPARED BY THE
KENTUCKY TRANSPORTATION CABINET
DEPARTMENT OF HIGHWAYS
DIVISION OF PLANNING
IN COOPERATION WITH THE
U.S. DEPARTMENT OF TRANSPORTATION
FEDERAL HIGHWAY ADMINISTRATION
SCALE 1:250,000

0 1 2 3 4 5 MILES



HENDERSON, KENTUCKY - A RESOURCE PROFILE

Henderson, the county seat of Henderson County, is located in northwestern Kentucky along the banks of the Ohio River. The city had an estimated 1994 population of 26,862. Henderson is located ten miles south of Evansville, Indiana; 121 miles west of Louisville, Kentucky; 141 miles northwest of Nashville, Tennessee; and 178 miles southeast of St. Louis, Missouri.

Henderson County covers a land area of 440 square miles in the Western Coal Field Region of Kentucky. The Ohio River forms the northern boundary of the county. Henderson County had an estimated population of 44,210 in 1994.

The Economic Framework - The total number of Henderson County residents employed in 1994 averaged 22,011. Manufacturing firms in the county reported 6,356 employees; wholesale and retail trade provided 3,981 jobs; 4,482 people were employed in service occupations; state and local government accounted for 2,102 employees; contract construction firms provided 703 jobs; and 563 people were employed by mining and quarrying operations.

Labor Supply - There is a current estimated labor supply of 6,815 persons available for industrial jobs in the labor market area. In addition, from 1996 through 2000, 13,491 young persons in the area will become 18 years of age and potentially available for industrial jobs.

Transportation - Henderson is served by U.S. Highways 41, 41A, and 60, and the Pennyriple and Audubon Parkways. In addition, Interstate 64 is accessible 25 miles north of Henderson via U.S. 41 and Interstate 164. Twenty-seven trucking companies serve Henderson. CSX Transportation provides main line and branch line rail service to Henderson. The nearest commercial airport, Evansville Regional Airport, is located 13 miles north of Henderson. The Henderson City-County Airport, three miles southwest of Henderson, maintains a 4,800-foot paved runway. The Henderson County Riverport Authority offers public facilities at mile 808 on the Ohio River in Henderson.

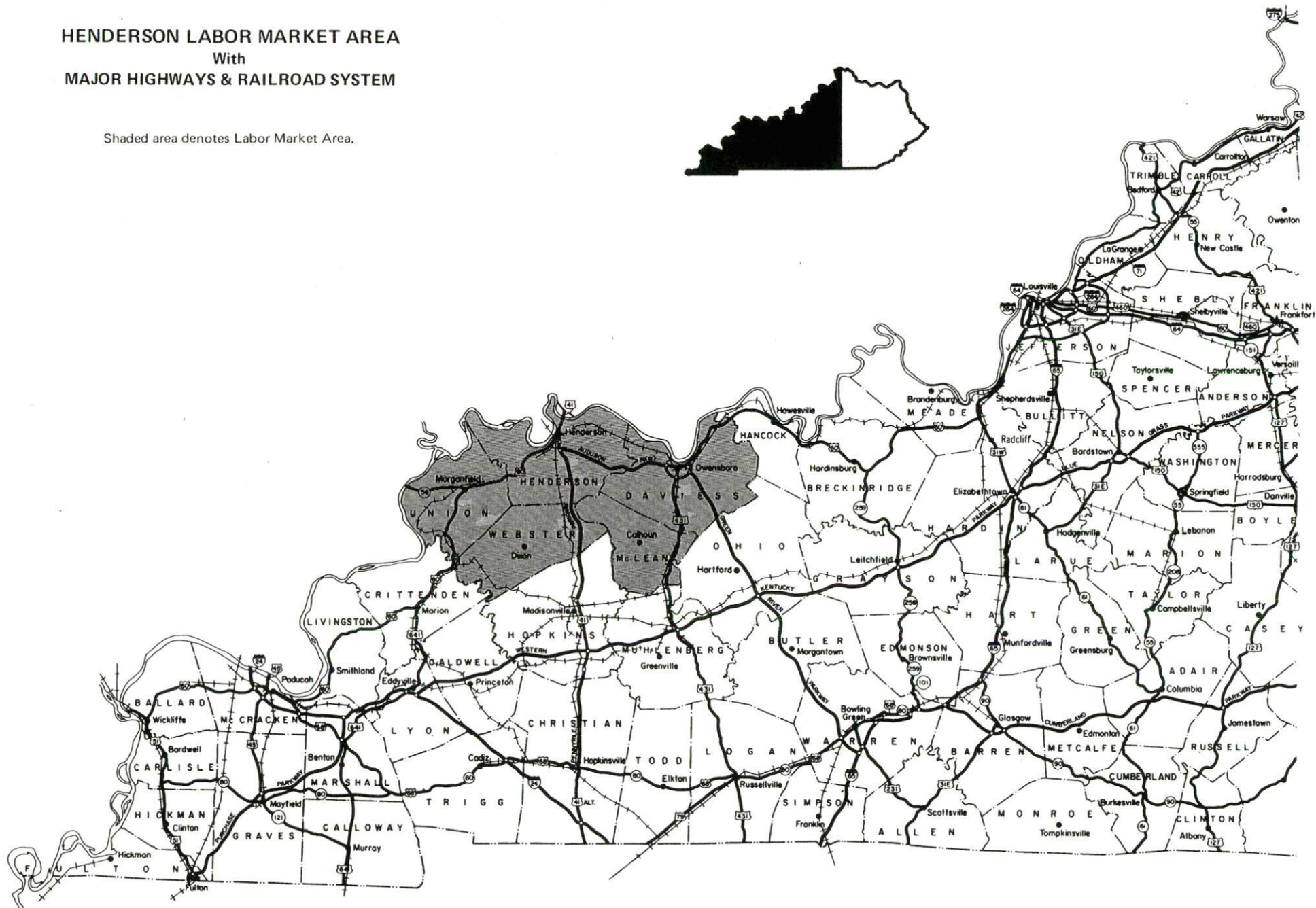
Power and Fuel - Municipal Power and Light, a municipally-owned generating company, provides electric power to Henderson and part of Henderson County. Kentucky Utilities Company and the Henderson-Union Electric Cooperative also serve Henderson County. Henderson Municipal Gas System provides natural gas service to the community.

Education - The Henderson County School System provides primary and secondary education to Henderson and Henderson County. Henderson Community College, a unit of the University of Kentucky Community College System, offers associate degree, continuing education, and community service programs. The College had a Fall 1994 enrollment of 1,240. Seven other major institutions of higher learning are located within 100 miles of Henderson. The Henderson County Area Technology Center located in Henderson, the Daviess County Regional Technology Center, and the Owensboro Regional Technology Center, located in Owensboro, 30 miles east, provide vocational training services to the community.

HENDERSON LABOR MARKET AREA

With
MAJOR HIGHWAYS & RAILROAD SYSTEM

Shaded area denotes Labor Market Area.



LABOR MARKET STATISTICS

The Henderson Labor Market Area includes Henderson County and the adjoining Kentucky counties of Daviess, McLean, Union, and Webster. In addition, the Labor Market Area is supplemented by Posey, Vanderburg, and Warrick Counties in Indiana.

POPULATION

	<u>1994*</u>	<u>1990</u>	<u>1980</u>	<u>1970</u>
Labor Market Area	174,036	170,373	169,541	153,743
Henderson	26,862	25,945	24,834	22,976
Evansville, IN-KY Metropolitan Statistical Area	286,624	278,990	276,252	254,515
Henderson County	44,210	43,044	40,849	36,031

*Population estimates.

Source: U.S. Department of Commerce, Bureau of the Census.

POPULATION PROJECTIONS

	<u>1995</u>	<u>2000</u>	<u>2010</u>	<u>2020</u>
Labor Market Area	175,162	180,272	187,078	190,450
Henderson County	44,564	46,110	47,960	48,625

Note: Population projections are from High Growth Series forecast.

Source: University of Louisville, Urban Studies Center, State Data Center.

ESTIMATED LABOR SUPPLY

	<u>Current</u>		<u>Not in Labor Force</u>	<u>Future</u>
	<u>Total</u>	<u>Unemployed</u>		<u>Becoming 18 years of age 1996 thru 2000</u>
Labor Market Area*	6,815	4,745	2,070	13,491
Henderson County	1,218	1,218	0	3,472

* Additional workers may be drawn from other nearby counties.

Note: Unemployed - persons unemployed and actively seeking work; Not in Labor Force - represents the number of persons who would enter the labor force if suitable employment were available (based on the assumption that persons in Kentucky would like to participate in the labor force in the same proportion that they do nationally). Underemployed persons (employed only 14 to 26 weeks during the year) are no longer included in labor surplus estimates.

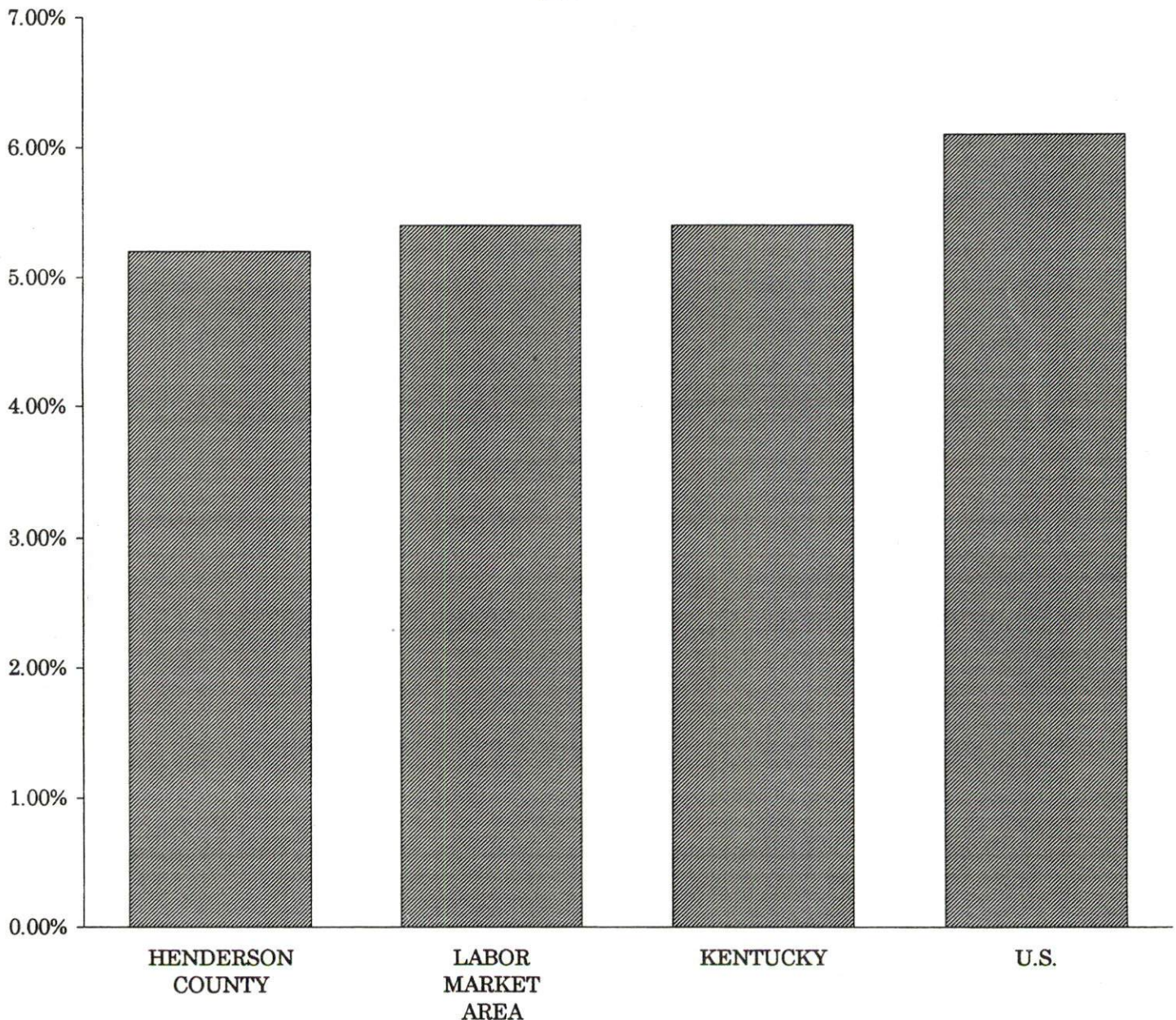
Sources: Kentucky Cabinet for Human Resources, Kentucky Labor Surplus Estimates by County, 1994. Kentucky Cabinet for Economic Development, Future Labor Supply Becoming 18 Years of Age, 1996 thru 2000.

LABOR FORCE CHARACTERISTICS OF RESIDENTS, 1994

	<u>Henderson County</u>	<u>Labor Market Area</u>
Civilian Labor Force	23,229	87,621
Employment	22,011	82,876
Unemployment	1,218	4,745
Rate of Unemployment (%)	5.2	5.4

Source: Kentucky Cabinet for Human Resources, Kentucky Labor Force Estimates, Annual Averages 1994.

UNEMPLOYMENT RATES 1994

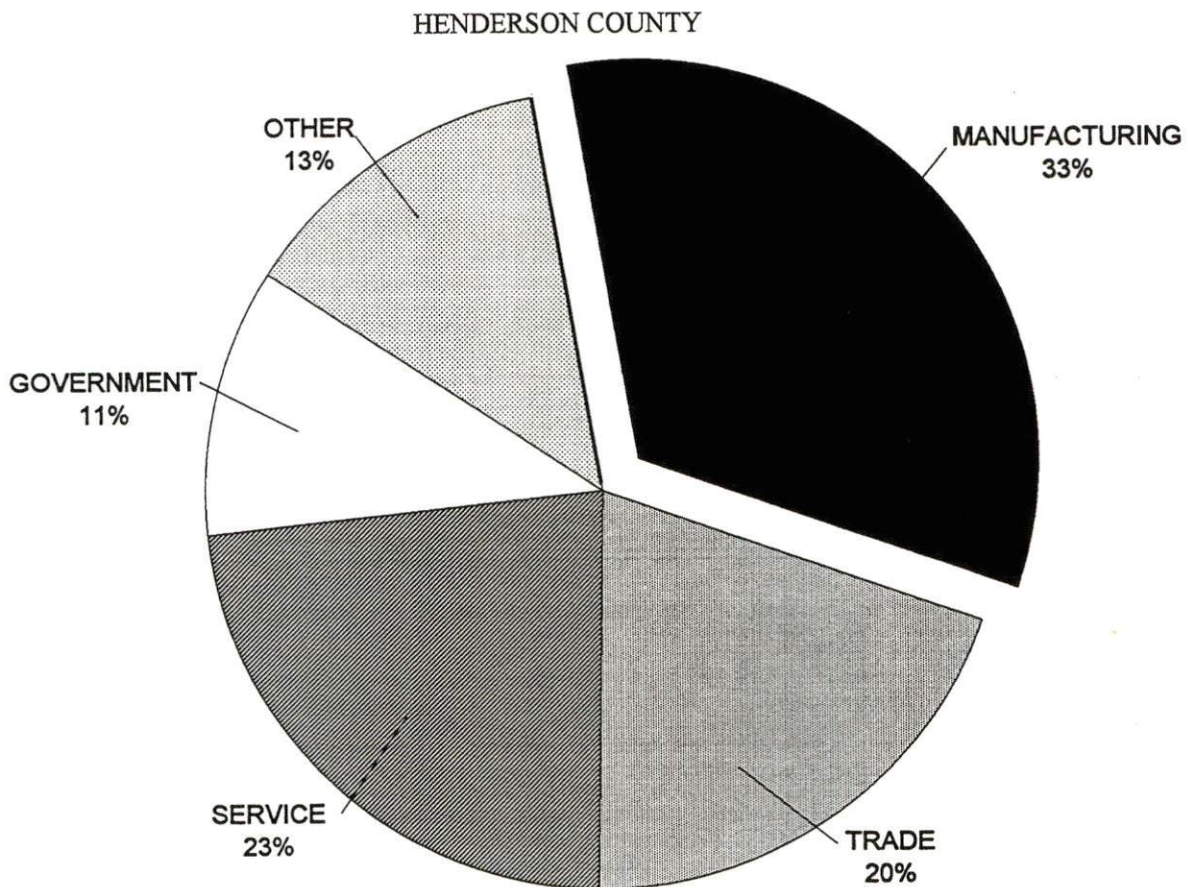


SELECTED COMPONENTS OF NONAGRICULTURAL EMPLOYMENT
BY PLACE OF WORK, 1994

	<u>Henderson County</u>	<u>Labor Market Area</u>
All Industries (total)	19,450	71,191
Manufacturing	6,356	15,344
Wholesale & Retail Trade	3,981	16,284
Services	4,482	15,847
State/Local Government	2,102	9,509
Contract Construction	703	3,672
Mining & Quarrying	563	3,681

Note: Excludes domestic workers, railway workers, certain nonprofit corporations, majority of federal government workers, and self-employed workers.

Source: Kentucky Cabinet for Human Resources, Average Monthly Workers Covered by Kentucky Unemployment Insurance Law, 1994.

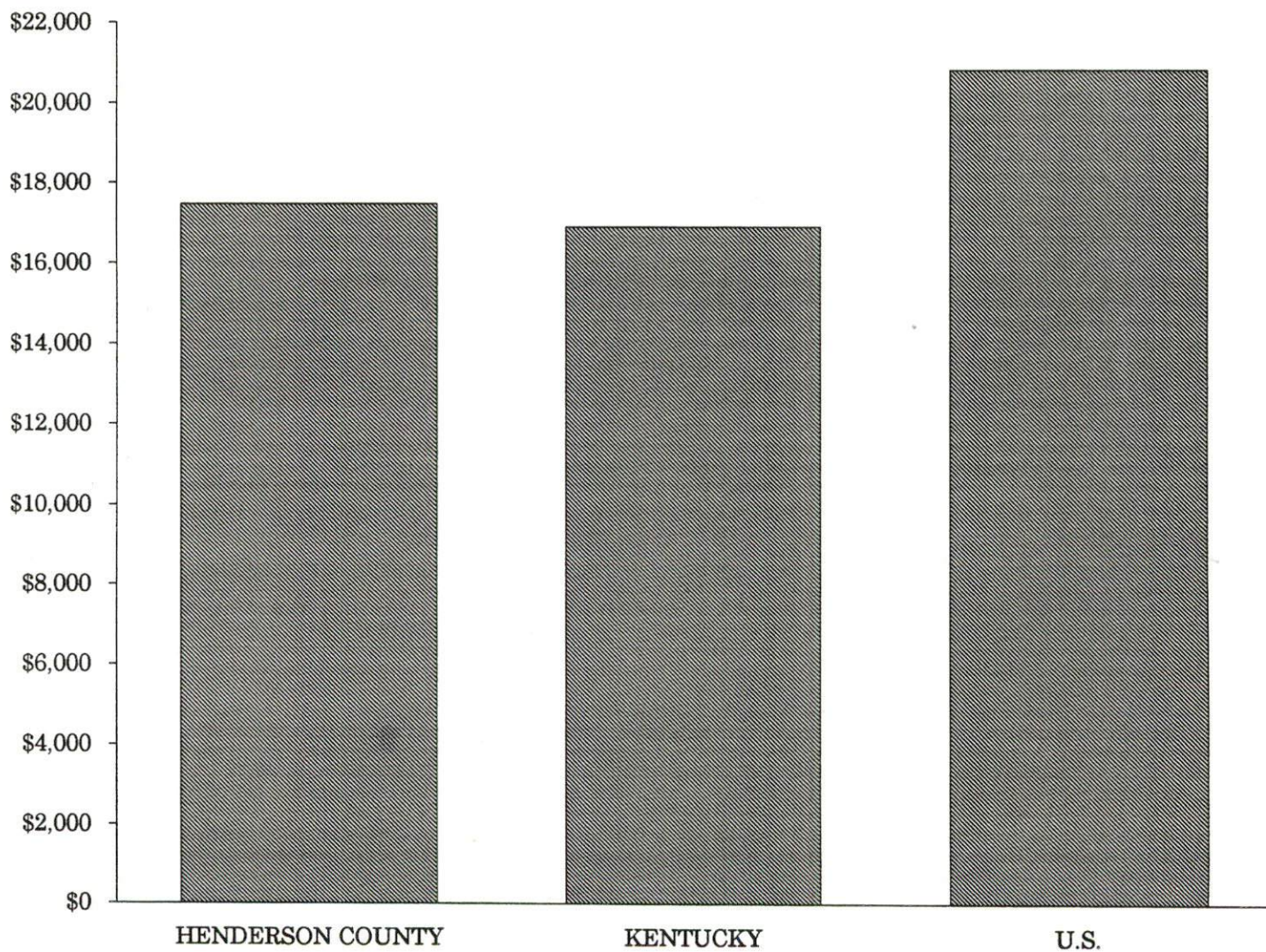


PER CAPITA PERSONAL INCOME

<u>Area</u>	<u>1989</u>	<u>1993</u>	<u>Percent Change</u>
Henderson County	\$14,766	\$17,461	18.3
Labor Market Area Range	\$12,401 - \$14,766	\$13,971 - \$17,461	-
Kentucky	\$13,756	\$16,889	22.8
U.S.	\$17,690	\$20,800	17.6

Source: U.S. Department of Commerce, Bureau of Economic Analysis, Regional Economic Information System.

PER CAPITA PERSONAL INCOME 1993



AVERAGE PLACEMENT WAGES

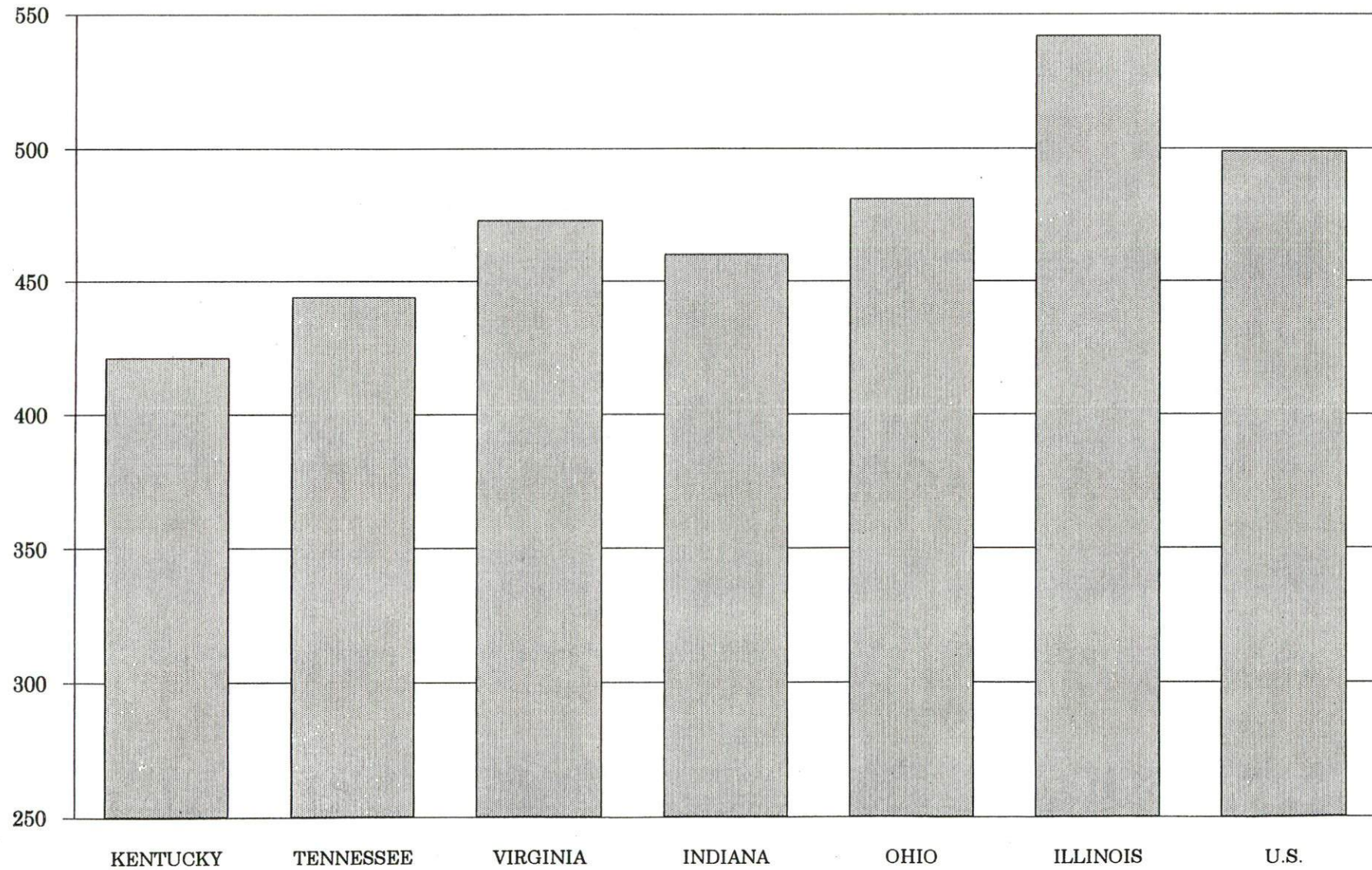
Henderson County is served by the Henderson local office of the Kentucky Department for Employment Services. The focus of the following data is on job placements made by the Henderson local office and may therefore be used as an indicator of the wages which employers in the area pay new employees. During the twelve months which ended on June 30, 1995, the local employment office filled 2,296 job openings in various occupational categories. The average hourly wage for selected occupational categories were:

<u>OCCUPATIONAL CATEGORY</u>	<u>NUMBER OF PLACEMENTS</u>	<u>AVERAGE WAGE(\$)</u>
All Occupations	2,296	6.28
Clerical	153	5.64
Sales	42	5.18
Services (excluding domestic)	407	5.21
Agricultural, Fishery, Forestry, etc.	19	4.82
Processing	548	5.52
Machine Trades	593	7.89
Bench Work	100	5.93
Structural	146	6.93
Motor Freight/ Transportation	77	6.25
Packaging and Materials Handling	146	5.75
Other	5	9.41

The Henderson local office also serves Union, and Webster Counties. The above occupational categories are taken from the Dictionary of Occupational Titles published by the U.S. Department of Labor.

Source: Kentucky Cabinet for Human Resources, Department for Employment Services.

**AVERAGE WEEKLY WAGES OF WORKERS COVERED BY
UNEMPLOYMENT INSURANCE - 1993**



AVERAGE WEEKLY WAGES BY INDUSTRY
BY PLACE OF WORK, 1993*

	<u>Henderson County</u>	<u>Kentucky (Statewide)</u>	<u>Tennessee</u>	<u>Virginia</u>
All Industries	\$436.87	\$421.30	\$444.00	\$473.00
Mining & Quarrying	908.55	691.01	605.00	684.00
Contract Construction	455.51	440.47	467.00	464.00
Manufacturing	550.92	541.18	522.00	543.00
Transportation, Communications & Public Utilities	660.47	567.94	572.00	648.00
Wholesale & Retail Trade	285.23	287.24	N/A	N/A
Finance, Insurance & Real Estate	392.72	449.89	495.00	523.00
Services	342.34	350.41	394.00	455.00
State/Local Government	411.84	413.84	N/A	N/A
	<u>Indiana</u>	<u>Ohio</u>	<u>Illinois</u>	<u>U. S.</u>
All Industries	\$460.00	\$481.00	\$542.00	\$499.00
Mining & Quarrying	757.00	645.00	738.00	816.00
Contract Construction	509.00	534.00	658.00	530.00
Manufacturing	629.00	670.00	667.00	623.00
Transportation, Communications & Public Utilities	561.00	600.00	682.00	643.00
Wholesale & Retail Trade	N/A	N/A	N/A	N/A
Finance, Insurance & Real Estate	527.00	568.00	748.00	693.00
Services	391.00	422.00	494.00	475.00
State/Local Government	N/A	N/A	N/A	N/A

* Wages for U.S. and surrounding states rounded to nearest dollar.

N/A Not Available.

Note: The average weekly wage for each category includes the salaries and wages of all persons working for that type business. For example, the manufacturing category includes both production workers and administrative personnel. Excludes domestic workers, railway workers, certain nonprofit corporations, majority of federal government workers, and self-employed workers.

Sources: Kentucky Cabinet for Human Resources, Average Weekly Wages of Workers Covered by Kentucky Unemployment Insurance Law, 1993. U.S. Department of Labor, Bureau of Labor Statistics, Employment and Wages, Annual Averages, 1993, October, 1994.

EXISTING INDUSTRY

MAJOR HENDERSON COUNTY MANUFACTURING FIRMS, THEIR PRODUCTS AND EMPLOYMENT*

<u>Firm</u> <u>(Establishment date)</u>	<u>Product</u>	<u>1995</u> <u>Average Employment</u>
Corydon		
Quality Tooling, Inc. (1969)	Plastic injection molds, tools and dies	25
Tunnel Hill Plastics, Inc. (1970)	Plastic parts	37
Henderson		
Accuride Corporation (1973)	Truck and trailer wheels and rims	650
Aeroquip Corporation (1946)	Plastic auto parts	350
Alcan Ingot (1970)	Primary aluminum ingot, aluminum extrusion billet, aluminum sheet ingot	600
American Chrome Company, Inc. (1947)	Metal tables, chairs	47
Atlantis Plastics, Inc. (1951)	Molded thermo-plastics; automotive, appliance, and power tool components	280
Audubon Printers (1965)	Commercial printing	25
CPS Corporation (1968)	Printed and laminated paper and foils	150
Cresline Plastic Pipe Company (1966)	Plastic pipe and fittings	97
Custom Resins, Division of Bemis Company, Inc. (1957)	Nylon	59
Custom Wood Design, Inc. (1985)	Wood healthcare, institutional, dormitory furniture	45
Eaton Corporation, Axle Division, Henderson Plant (1970)	Axle assemblies for trucks	502
Gamco Products Company (1956)	Zinc die castings	290
Gibbs Die Casting Aluminum Corporation (1966)	Magnesium and aluminum die castings	1,000
Gleaner and Journal Publishing Company (1885)	Job printing, newspaper	70
Hercules Manufacturing Company (1902)	Van bodies (dry freight); truck bodies and trailers (refrigerated)	73
Hydro Conduit Corporation (1960)	Prestressed concrete products	35

<u>Firm</u> <u>(Establishment date)</u>	<u>Product</u>	<u>1995</u> <u>Average Employment</u>
J-Ron, Inc. (1980)	Injected molded plastics, shotgun shell wads	55
KB-Alloys, Inc., Henderson County Plant (1981)	Master aluminum alloys	58
MacMillian Bloedel Packaging (1994)	Recycled linerboard	90
Meuth Construction Supply, Inc. (1970)	Septic tanks, parking bumpers, ready-mixed concrete	35
Ohio Valley Marine Service, Inc. (1975)	Welding/towing services	45
PB&S Chemical Company (1947)	Sodium hypochlorite solution, sodium bisulfite solution, ammonium bisulfite solution	200
Period Furniture (1939)	Custom furniture; motel, hotel, and dormitory furniture	98
Pittsburg Tank and Tower Company (1919)	Steel water and fuel tanks	250
Proctor and Gamble, dba Millstone Coffee, Inc. (1991)	Gourmet coffee roasting and packaging	100
Quality Tooling, Inc. (1968)	Plastic injection molds	25
Royster's Machine Shop, Inc. (1975)	Steel fabrications, molds, machine shop	55
Sandefur Training Center, Inc. (1967)	Corrugated partitions and pads, chipboard partitions, cartons, and survey stakes	171
Scott Lumber, Inc. (1945)	Skids, hardwood lumber	130
Scott Manufacturing Company (1991)	Fabricator of insulation products for auto and appliance industry	25
Service Tool & Die, Inc. (1969)	Tools, dies, and molds	99
Service Tool & Plastics, Inc. (1969)	Molded plastic parts	100
Sights Denim Systems, Inc., Finishing Plant (1987)	Finishing of denim apparel	350
Sights Denim Systems, Inc., Laundry Plant (1987)	Stone and acid washing of denim	150
Sonoco Products Company (1967)	Aluminum and steel ends for containers	85
Sunrise Tool & Die, Inc. (1989)	Plastic injection molds; tools, dies, molds	27
Taubensee Steel & Wire Company (1995)	Cold drawn steel products	30
Teknor Color Company (1977)	Colors for plastics	25

(Continued)

<u>Firm</u> <u>(Establishment date)</u>	<u>Product</u>	<u>1995</u> <u>Average Employment</u>
Thompson International, Inc. (1952)	Drill steel and collars, drill bits, fabricated hole openers	41
Thompson Tool, Inc. (1969)	Steel drill bits	55
Tri-State, Inc. (1977)	Plastic injection molding, zinc aluminum die casting	25
Valley Grain Products/ADM Milling (1989)	Masa flour	45
Vincent Industrial Plastic, Inc. (1981)	Molded plastics-decorating/ assembly, injection molded plastics, plastic parts for automobiles and appliances	180
Robards		
KB Alloys, Inc. Henderson County Plant (1981)	Aluminum base alloys	56

* Manufacturing firms with 25 or more employees.

Sources: Kentucky Cabinet for Economic Development, Division of Research; Henderson Area Economic Development Council.

RECENT INDUSTRIAL DEVELOPMENTS

Hudson Foods recently purchased 274 acres in the Robards (Henderson County) and Sebree (Webster County) area to construct a poultry processing plant and adjacent protein rendering plant. A feed mill will be built on 120 acres just north of Sebree and a hatchery built on 45 acres in Beech Grove (McLean County). Total initial investment will be over \$60 million (this excludes nearly \$72 million in investment by area farmers for construction of chicken houses, grower fee of \$20 million, and purchasing of corn from area farmers of \$45 million per year). Start-up is planned for July 1996 with employment expected to reach 1,200 to 1,500 in five years with approximately 1,100 employees to be located at the poultry processing plant in the Robards-Sebree area.

In 1995, 19 manufacturing firms announced expansion plans in Henderson with a total investment of \$61.5 million and creating 489 jobs. Those firms investing over \$1.0 million were: Gamco Products added 50 new jobs in 1995 as a result of a \$7.0 million expansion; Gibbs Die Casting announced a \$44 million expansion in 1995 creating an additional 250 jobs; Taubensee Steel and Wire announced a \$5.5 million expansion that will increase employment to 80 jobs; MacMillan Bloedel recently completed a \$100 million plant and operations employing 90 persons; Service Tool and Die, Inc. announced a \$1.9 million expansion creating 20 additional jobs; Alcan Ingot announced an \$8.0 million expansion; Audubon Printers, Inc. announced a \$1.1 million expansion creating three jobs; and Eaton Corporation announced a \$2.6 million expansion.

Audubon Metals LLC announced in early 1996 that it will begin operations in Henderson by late 1996 to produce molten and ingot aluminum and to sell other metals recovered from automobiles. The \$20 million investment is expected to create 70 jobs.

LABOR ORGANIZATIONS IN MANUFACTURING FIRMS

<u>Union</u>	<u>Representing workers at:</u>
Aluminum, Brick and Glass Workers International Union, AFL-CIO	Alcan Ingot
International Association of Machinists and Aerospace Workers, AFL-CIO	Cresline Plastic Pipe Company
American Federation of Grain Millers, AFL-CIO	Valley Grain Products/ADM Milling
International Chemical Workers Union, AFL-CIO	Vincent Industrial Plastic, Inc.
International Union, United Automobile, Aerospace and Agricultural Implement Workers of America	Accuride Corporation
Laborers International Union of North America, AFL-CIO	CPS Corporation; Hydro Conduit Corporation
United Steelworkers of America, AFL-CIO-CLC	Eaton Corporation, Axles Division, Henderson Plant

SELECTED INDUSTRIAL SERVICES

<u>Types of Services</u>	<u>Location</u>	<u>Mileage from Henderson</u>
Custom Plastics Producers	Henderson, Kentucky	-
Electric Motor Repair	Henderson, Kentucky	-
Heat Treating Facilities	Evansville, Indiana	10
Industrial Waste Removal	Henderson, Kentucky	-
Machine Shops, Tool & Die	Henderson, Kentucky	-
Metal Castings	Henderson, Kentucky	-
Metal Finishers	Owensboro, Kentucky	30
Metal Service Centers	Owensboro, Kentucky	30
Millwrights & Riggers	Evansville, Indiana	10

Source: Kentucky Cabinet for Economic Development, Division of Research.

TRANSPORTATION

Highways

Henderson is served by the Pennyriple Parkway, the Audubon Parkway, and U.S. Highways 41, 41A, and 60, all "AAA"-rated (80,000-pound gross load limit) trucking highways. The Pennyriple Parkway is a four-lane highway that extends from Henderson southward and connects with the Western Kentucky Parkway, 46 miles to the south. The Audubon Parkway, is a four-lane road which connects Henderson with Owensboro, Kentucky. Interstate 64 is accessible 25 miles north of Henderson via U.S. 41 and Interstate 164.

HIGHWAY MILES FROM HENDERSON, KENTUCKY, TO SELECTED MARKET CENTERS

City	Highway Miles	City	Highway Miles
Atlanta, GA	382	Los Angeles, CA	2,005
Baltimore, MD	721	Louisville, KY	121
Birmingham, AL	328	Nashville, TN	141
Chicago, IL	300	New Orleans, LA	639
Cincinnati, OH	222	New York, NY	881
Cleveland, OH	469	Pittsburgh, PA	509
Detroit, MI	459	St. Louis, MO	178
Knoxville, TN	299		

Note: Mileage computations are via the best interstate or primary highways, not necessarily the most direct route of travel.

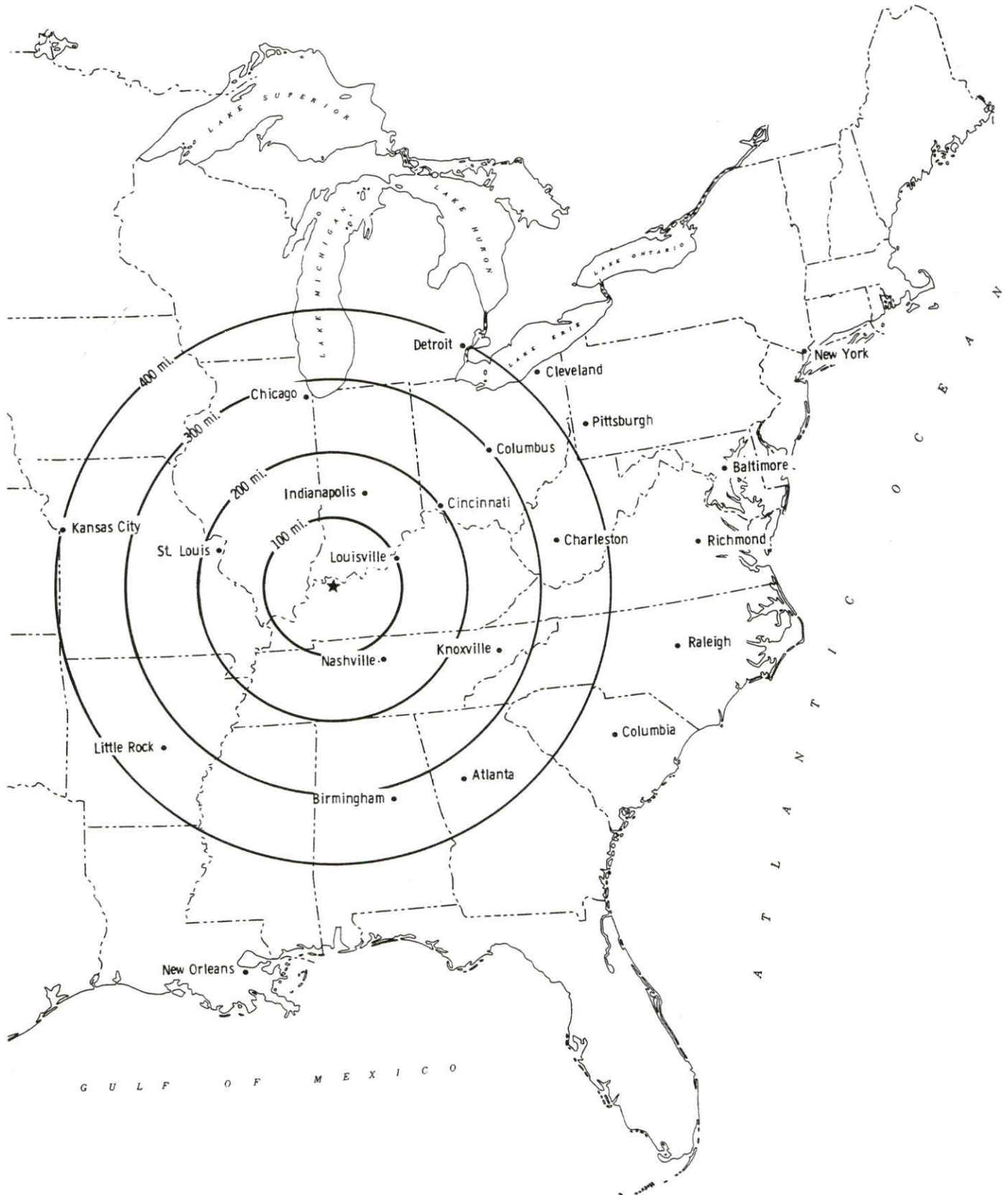
Sources: Rand McNally Standard Highway Mileage Guide, 1990. Official Kentucky Mileage Map, 1988.

Truck Service

Twenty-seven common carrier trucking companies provide interstate and/or intrastate service to Henderson.

Source: American Motor Carrier Directory, Fall 1995.

Selected Market Centers



Rail

CSX Transportation provides main line and branch line rail service to Henderson. CSX Transportation provides the nearest intermodal facilities at Evansville, Indiana, ten miles north of Henderson.

For details on routing, schedules, rates, and services contact:

Manager
Industrial Development
CSX Transportation
9420 Bunsen Parkway
Suite 212
Louisville, Kentucky 40220
(502) 499-3025

Air

Local

Location:	Henderson City-County Airport 3 miles southwest of Henderson
Runways:	1 paved
Length:	4,800 feet with clear approaches
Traffic Control:	Wind sock, unicom, and AWOS system
Lighting:	REIL and rotating beacon
Services:	100LL octane and Jet A-50 fuels; piston and turbine approved repair station; major A & P repairs; hangar and tie-down; airplane and helicopter charter service; air ambulance service; flight training; air taxi; APU; oxygen and nitrogen; Cessna service center and courtesy car.

Nearest Scheduled Commercial Airline Service

Location:	Evansville Regional Airport 3 miles north of Evansville, Indiana; 13 miles north of Henderson
Air Service:	ASA, Chicago Express, ComAir, American Eagle, Northwest Airlink, TW Express, USAir, US Air Express
Daily Arrivals & Departures:	98

Water

Henderson enjoys a strategic location on the Kentucky shores of the Ohio River, approximately twenty miles from its confluence with the Green River. The Ohio River, which has a nine-foot navigation channel depth and a 300-foot channel width throughout its length, joins the Mississippi River approximately 175 river miles below Henderson. A nine-foot navigation channel is currently maintained on the Green River from Lock No. 3 near Rochester, Kentucky, to Henderson.

The Henderson County Riverport Authority operates a full service port facility at mile 808 on the Ohio River, just four miles below Henderson. The riverport offers both bulk commodity and general cargo handling facilities, as well as warehousing, yard storage, and full intermodal transportation connections. Unit train to barge transfer facilities include a 180-railcar track storage capacity. A separate coal dock operates on port property. A grain storage facility with 168,000 bushel capacity is served by truck, rail, and barge.

Specific facilities include a bulk material loading system with dump scales, which has a loading capacity of 800 tons per hour, and can handle grain, coal and a variety of other bulk materials; a 42,000-square-foot, sprinkled, freeze proof transit warehouse designed to handle materials from barge, rail or truck; and 4,000 feet of river frontage which provides a sizeable fleet area with river towing services available.

Equipment includes a 125-ton electric pedestal crane capable of loading and unloading from barge, truck and rail; and end loaders, fork lifts, and numerous other pieces of equipment used in material handling and barge cleaning. The terminal accommodates all types of integrated transportation activities, such as stevedoring, warehousing, and distribution.

Materials that have been handled within the port include the following; coal, coke, stone, gravel, sand, lime, fertilizers, phosphate, potash, salt, chrome alloy, cryolite, grains, steel aluminum, castings, wire, steel pipe and rods, concrete products, construction materials, and coal production equipment.

The riverport and the adjoining industrial park consists of 276 acres, with an additional 118 acres available for potential development. Adjoining the western city limits of Henderson on Highway 136 within the commercial zone of Evansville and in sight of the Henderson City-County Airport, the port-industrial park is connected to the Pennyriple and Audubon Parkways by the Henderson Bypass. All utilities are available at the industrial park, including gas, electric, water, and sewerage.

For more information contact:

Port Director
Henderson County Riverport Authority
6200 Riverport Road
Henderson, Kentucky 42420
(502) 826-1636 Fax (502) 827-4523

UTILITIES

Electricity

Company serving **Henderson and portions of Henderson County** - Municipal Power and Light

Source of power - Municipally-owned generators

For industrial rates contact:

Municipal Power and Light
P.O. Box 8
Henderson, Kentucky 42420
(502) 826-2726

Company serving **portions of Henderson County** - Kentucky Utilities Company

Source of power - Kentucky Utilities Company

For industrial rates contact:

Economic Development Department
Kentucky Utilities Company
One Quality Street
Lexington, Kentucky 40507
(606) 255-2100

Company serving **a major portion of Henderson County** - Henderson-Union Electric Cooperative

Source of power - Big Rivers Electric Corporation

For industrial rates contact:

Manager of Economic Development
Big Rivers Electric Corporation
P.O. Box 24
Henderson, Kentucky 42420
(502) 827-2561

and/or

Henderson-Union Electric Cooperative
P.O. Box 18
Henderson, Kentucky 42420
(502) 826-3991 or (800) 844-4832

Natural Gas

Company serving **Henderson** - Henderson Municipal Gas System

Source of supply - Texas Gas Transmission Corporation

For rates and supplies contact:

Gas System Manager
Henderson Municipal Gas System
P.O. Box 452
Henderson, Kentucky 42420
(502) 831-1200 ext. 213

Public Water Supply

Company serving **Henderson** - Henderson Water and Sewer Utilities
P.O. Box 341
Henderson, Kentucky 42420
(502) 826-2421

Source - Ohio River
Treatment plant capacity- 12,000,000 gallons per day
Average daily consumption - 7,400,000 gallons
Peak daily consumption - 10,000,000 gallons
Storage capacity - 7,600,000 gallons
Water pressure - 40 psi to 80 psi

Henderson Water and Sewer Utilities is involved in a significant on-going capital improvement program primarily to make improvements in the water distribution system.

Name of water district - Henderson County Water District
P.O. Box 655
Henderson, Kentucky 42420
(502) 826-9802

Area served - Most of unincorporated Henderson County, Corydon, and parts of Webster County

Source of treated water - Henderson Water and Sewer Utilities
Amount that can be purchased - 2,500,000 gallons per day
Average daily consumption - 1,300,000 gallons
Peak daily consumption - 1,700,000 gallons
Storage capacity - 1,150,000 gallons
Water pressure - 30 psi to 100 psi

Preliminary work is under way to gain access (new tie-in) to city facilities near the Hudson Foods complex. The proposal under consideration is for a 12-inch main; pump station; and a 500,000 gallon elevated tank. Estimated cost is \$1.4 million.

Sewerage

Company serving **Henderson** - Henderson Water and Sewer Utilities
P.O. Box 341
Henderson, Kentucky 42420
(502) 826-2421

Design capacity - 7,500,000 gallons per day
Average daily flow - 6,800,000 gallons
Type of treatment - Secondary
Treated effluent discharged into - Ohio River

Henderson Water and Sewer Utilities plans to double the capacity of its wastewater treatment plant beginning in 1996 with completion expected in 1997.

CLIMATE

Henderson County

Temperature

Normal (30-year record)	55.80 degrees
Average annual 1994	57.30 degrees
Record highest, July 1954 (54-year record)	105.00 degrees
Record lowest, February 1951 (54-year record)	-23.00 degrees
Normal heating degree days (30-year record)	4,708
(Heating degree day totals are the sums of negative departures of average daily temperatures from 65 degrees F.)	

Precipitation

Normal (54-year record)	43.14 inches
Mean annual snowfall (54-year record)	13.70 inches
Total precipitation 1994	36.75 inches
Mean number days precipitation (.01 inch or more) (54-year record)	115.20
Mean number days thunderstorms (54-year record)	45.00

Prevailing Winds (through 1963)

South-Southwest

Relative Humidity (33-year record)

1 a.m.	79 percent
7 a.m.	82 percent
1 p.m.	59 percent
7 p.m.	63 percent

Source: U.S. Department of Commerce, Environmental Science Services Administration, Climatological Data, 1994. Station of record: Evansville, Indiana.

LOCAL GOVERNMENT

Structure

The City of Henderson is governed by a mayor, four commissioners, and a full-time city manager. The mayor is elected to a four-year term, while the commissioners each serve two-year terms. Henderson County is governed by a county judge/executive and five magistrates. Each county official is elected to a four-year term.

Planning and Zoning

Joint agency - Henderson City-County Planning Commission

Participating cities - Henderson and Corydon

Zoning enforced - All areas

Subdivision regulations enforced - All areas

Local codes enforced - Building and housing in all areas

Mandatory state codes enforced - Kentucky Plumbing Code, National

Electric Code, Kentucky Boiler Regulations and Standards, Kentucky

Building Code (modeled after BOCA code)

Local Fees and Licenses

The City of Henderson levies an annual business license tax ranging from \$25 to \$2,625, based on a sliding scale; the tax levied on manufacturing firms ranges from \$175 to \$2,100, based on gross receipts. Motor vehicle licenses are \$20 per year and \$14 for senior citizens.

PROPERTY TAXES

The Kentucky Constitution requires the state to tax all classes of taxable property, and state statutes allow local jurisdictions to tax only a few classes. All locally taxed property is subject to county taxes and school district taxes (either a county school district or an independent school district). Property located inside of city limits may also be subject to city property taxes.

Special local taxing jurisdictions (fire protection districts, watershed districts, and sanitation districts) levy taxes within their operating areas (usually a small portion of community or county).

Property assessments in Kentucky are at 100% fair cash value. Accounts receivable are taxed at 85% of face value.

STATE PROPERTY TAX RATES PER \$100 VALUATION

<u>Selected Classes of Property</u>	<u>1994 State Rate</u>	<u>Local Taxation Permitted</u>
Real Estate	\$0.172	YES
Manufacturing Machinery	0.150	NO
Pollution Control Equipment	0.150	NO
Inventories		
Raw Materials	0.050	NO
Goods in Process	0.050	NO
Finished Goods	0.050	YES
Motor Vehicles	0.450	YES
Other Tangible Personal Property	0.450	YES
Intangibles (Accounts Receivable, Money on Hand)	0.250	NO

LOCAL PROPERTY TAX RATES PER \$100 VALUATION, 1994

<u>Taxing Jurisdiction</u>	<u>Real Estate</u>	<u>Finished Goods & Tangibles</u>	<u>Motor Vehicles</u>
Henderson County	\$0.1637	\$0.1938	\$0.1530
School Districts:			
Henderson County	0.4360	0.4360	0.5480
Cities:			
Henderson	0.3819	0.4527	0.3927

Nine special taxing districts in Henderson County, not county-wide, levy a special tax on real estate within their boundaries. The rates range from \$0.0200 to \$0.1000 per \$100 valuation.

EDUCATION

Public Schools

Henderson County

Total Enrollment (Fall, 1994)	7,702
Accreditation	Southern Association of Colleges and Schools
Pupil-Teacher Ratio (1993-94)	18.5-1
Percent High School Graduates to College (1993-94)	59.3
Expenditures Per Pupil (1993-94)	\$3,682.75

The Henderson County School System recently completed a major renovation/expansion project at Bend Gate Elementary School and a similar project at East Heights Elementary School is underway at an estimated cost of \$3.4 million.

All schools and school system offices were recently connected to the wide-area network allowing access to the Internet. The school system just completed a new video conferencing center, housed at the central office, through participation in a federally funded multiple school system project. The center now offers masters level college courses, staff development courses, conferences, and high-school courses such as Japanese as well as dual credit (high school and college credit) courses. The center is also open to the public and to industry for use.

Nonpublic Schools

<u>School</u>	<u>Enrollment</u>	<u>Grades</u>
Holy Name of Jesus Elementary	532	K-8

Area Colleges and Universities

<u>Name</u>	<u>Location (Miles distant)</u>	<u>Enrollment (Fall, 1994)</u>
Henderson Community College	Henderson, Kentucky	1,240
University of Evansville	Evansville, Indiana (10)	3,306
University of Southern Indiana	Evansville, Indiana (10)	7,443
Brescia College	Owensboro, Kentucky (30)	740
Kentucky Wesleyan College	Owensboro, Kentucky (30)	738
Owensboro Community College	Owensboro, Kentucky (30)	2,552
Oakland City College	Oakland City, Indiana (40)	983
Western Kentucky University	Bowling Green, Kentucky (100)	14,765

Henderson Community College

Henderson Community College is one of the fourteen community colleges in the University of Kentucky Community College System. The College's mission is threefold: (1) to offer career-oriented programs designed to prepare students for immediate technical or para-professional employment; (2) to offer general education curriculum for the first two years of a baccalaureate degree; and (3) to provide non-credit educational and recreational opportunities for area residents and business and industry. Credit enrollment for fall semester 1995/96 was 1,211. The College offers Associate of Arts, Associate of Science, and Associate of Applied Science in business technology (management, management information systems, and office administration options), clinical laboratory technician, engineering technology, human services, and nursing.

The College's Department of Continuing Education and Business/Industry Training offers area businesses and industries job analyses and work profiling, assistance in securing state funding through Blue Grass State Skills grants, and assistance in certification in ISO9000 and QS900 for companies using the Kentucky Quality Initiative. A CAD/CAM computer laboratory is available to train machinists in Computer Aided Manufacturing and Computer Aided Design. During the 1994/95 academic year more than 4,000 individuals participated in non-credit continuing education and workforce training programs.

The Henderson Fine Arts Center opened on HCC's campus in 1994 and serves as a cultural center for the tri-county area. More than 46,000 individuals attended events in the center during its first year. Performances have included Kathy Mattea, Marvin Hamlisch, Boots Randolph, Crazy for You, Paul Taylor Dance Company, and Bill Monroe and the Bluegrass Boys. Programs for area elementary and secondary school students have included Peter Rabbit, The Little Prince, Boy Meets Girl Meets Shakespeare, A Children's Nutcracker, Alice in Wonderland, and the Red Badge of Courage. In addition to the performing arts, visual art exhibits in the Center have included the Kentucky National Art and Wildlife Exhibit; Music, Color, and Harmony; the Kentucky Heritage Quilters' Society 1995 Challenge Quilt Travelling Exhibit; Down on the Farm; and Festival Marketplace.

VOCATIONAL-TECHNICAL TRAINING

Kentucky Tech schools are operated by the Cabinet for Workforce Development and provide secondary (Sec) and postsecondary (P/S) vocational-technical training.

<u>Kentucky Tech Schools</u>	<u>Location (Mileage from Henderson)</u>	<u>Number of Program Offerings</u>	<u>Cumulative Enrollment 1994-1995</u>		<u>Approximate Number Completing Long-Term Programs Annually</u>
Henderson County Area Technology Center	Henderson	8	<u>Sec</u> 495	<u>P/S</u> 5	101
Daviess County Regional Technology Center	Owensboro (30)	9	<u>Sec</u> 149	<u>P/S</u> 5,083	43
Owensboro Regional Technology Center	Owensboro (30)	10	<u>Sec</u> 77	<u>P/S</u> 1,746	61

Customized Training

The Kentucky Tech system, through its Training and Development Coordinators, will provide technical assistance and will identify and develop low-cost customized training programs and services for both established and prospective businesses. Businesses needing customized training should contact a Training and Development Coordinator located at the Owensboro Regional Technology Center in Owensboro, Kentucky (502) 687-7255.

Assessment Services

Kentucky Tech Career Connections offers to business, education, and government agencies customized assessment in career inventories, interest inventories, pre-hire assessment, psychomotor skills and academic potential. The center also has a Career Connections mobile unit that is available to potential Kentucky Tech students, businesses, and other agencies within Henderson County. A Career Connections Assessment Center is located on the Owensboro Regional Technology Center campus in Owensboro, Kentucky (502) 686-3234.

Tech Prep

Tech Prep is a combined secondary and postsecondary program of studies that leads to an associate degree or diploma in a vocational-technical field. Henderson County High School, in partnership with Henderson County Area Technology Center and Henderson Community College, has established a Tech Prep program for students in Henderson County.

Adult Education Services

Adult education programs are available to adults who want to develop new skills, improve basic skills or earn a high school equivalency diploma. In Henderson County, adult literacy is provided by the Henderson County Adult Literacy Council and adult basic education is provided through Henderson Community College.

Bluegrass State Skills Corporation

The Bluegrass State Skills Corporation, an independent public corporation created and funded by the Kentucky General Assembly, provides programs of skills training to meet the needs of business and industry from entry level to advanced training, and from upgrading present employees to retraining experienced workers.

The Bluegrass State Skills Corporation is a major source for skills training assistance for a new or existing company. The Corporation works in partnership with other employment and job training resources and programs, as well as Kentucky's economic development activities, to package a program customized to meet the specific needs of a company.

OTHER LOCAL FACILITIES

Local Medical Personnel

Physicians - 58, Dentists - 20

Hospitals

<u>General Hospital</u>	<u>Location</u>	<u>Beds</u>
Community Methodist Hospital	Henderson	213

Medical staff - 58 active staff physicians, 48 courtesy staff physicians, 203 registered nurses, 39 licensed practical nurses

Community Methodist Hospital recently began a three-phase \$8.1 million renovation/expansion project. Major improvements will be a new intensive care unit; laboratory, rehabilitative services, and physical therapy expansion; the addition of occupational therapy and speech pathology; expanded cardiopulmonary and radiology departments, emergency/recovery rooms; and relocating administrative functions.

Other Medical Facilities and Services

Green River Comprehensive Care Center
Green River District Health Department,
Henderson County Health Center
Henderson Cancer Center
Henderson Emergency Ambulance Service
Henderson Med-Surg Center (outpatient surgery)
Mathis & Wood Therapy Associates
MEC Medical Center (outpatient services)

Banks and Savings & Loan Associations

Citizens Bank
Farmers Bank
First National Bank
Great Financial Federal
Ohio Valley National Bank

Hotels and Motels

Total number - 8
Total rooms - 507

Newspapers

The Gleaner (daily except Monday)

Telephone

BellSouth

Henderson County has implemented the enhanced version of the "911" emergency dispatch communications system.

RECREATION

Local

Henderson offers a wide range of recreational opportunities for all ages. Public recreation facilities available in the city include seven parks, a municipal swimming pool, a nine-hole municipal golf course and pro shop, 14 lighted tennis courts, 13 baseball/softball fields, and a skate park. Two community centers, the Senior Citizens Recreation Center and the John F. Kennedy Community Center, provide year-round recreational activities. Swimming instructions are offered at the pool and tennis instructions are available to all age groups during the summer. Development of a park for light industry and recreation is under way in Henderson.

The Henderson County YMCA is very active in recruiting new members and promoting physical fitness. Its staff provides instruction in fitness programs ranging from aquatic sports to exercise designed for pre-school children through adults. The Henderson County Family YMCA has an indoor swimming pool, a health club, and four lighted tennis courts (overhead bubble is provided during the winter for indoor tennis). The Henderson County Country Club features an 18-hole course, swimming pool, and tennis courts. Other private recreational facilities include an indoor movie theater, a drive-in theater, swim club, roller rink, and bowling facility.

Just north of Henderson is the John James Audubon State Park, a 692-acre park where the famed naturalist gathered material for his painting, "The Birds of America." Many paintings by Audubon and his sons, and 126 first-edition prints of his paintings are on display at the Audubon Memorial and Nature Museum which is the focal point of the park. Other park features include the Audubon Woods, a bird sanctuary, and a 12-acre nature preserve lake. The park has cottages and camping sites. Recreational facilities include a 28-acre recreational lake, a beach and bathhouse, rental rowboats and pedal boats, a dock, a nine-hole golf course, a tennis court, hiking trails, picnic shelters, and playgrounds. Organized recreational programs are offered during the summer. The park is undergoing a major renovation and expansion of the nature center and museum.

Horse racing is another attraction available in Henderson. Ellis Park Race Course provides 2 1/2 months of racing during the summer and inter-track wagering most of the year, and Riverside Downs features harness horse racing and inter-track wagering.

Henderson has several special events which are held annually. They include the Big River Arts & Crafts Festival, held the first weekend in October; the W.C. Handy Blues & Barbecue Festival in June; Bluegrass in the Park; Tri-Fest on Main Street; Henderson County Fair; Halloween Festival; Christmas Village; and Christmas in the Park.

Area (Within 75 miles)

Evansville, Indiana, ten miles north of Henderson, Kentucky is a major urban area with a wide variety of entertainment and recreational offerings. Among its major attractions are the Evansville Museum of Arts and Science, the Mesker Park Zoological Gardens, cultural events such as the Evansville Philharmonic performances, and numerous restaurants, nightclubs, and theatres.

Owensboro, 30 miles east of Henderson, is Kentucky's third largest city. Owensboro is a source of many entertainment and recreational facilities associated with larger communities. Points of interest include museums, an orchestra, and three colleges. Several festivals are held annually, including the International Bar-B-Que Festival, the Summer Festival, and the Bluegrass Festival.

Other offerings in the area include:

Ben Hawes State Park
Higginson-Henry Wildlife Area
Holiday World (theme park)
Lake Malone State Park
Lincoln's Boyhood National Memorial
Pennyrile Forest State Resort Park
The Sauerheber Wildlife Refuge