

1981

Industrial Resources: Hardin County - Elizabethtown

Kentucky Library Research Collections
Western Kentucky University, spcol@wku.edu

Follow this and additional works at: https://digitalcommons.wku.edu/hardin_cty



Part of the [Business Administration, Management, and Operations Commons](#), [Growth and Development Commons](#), and the [Infrastructure Commons](#)

Recommended Citation

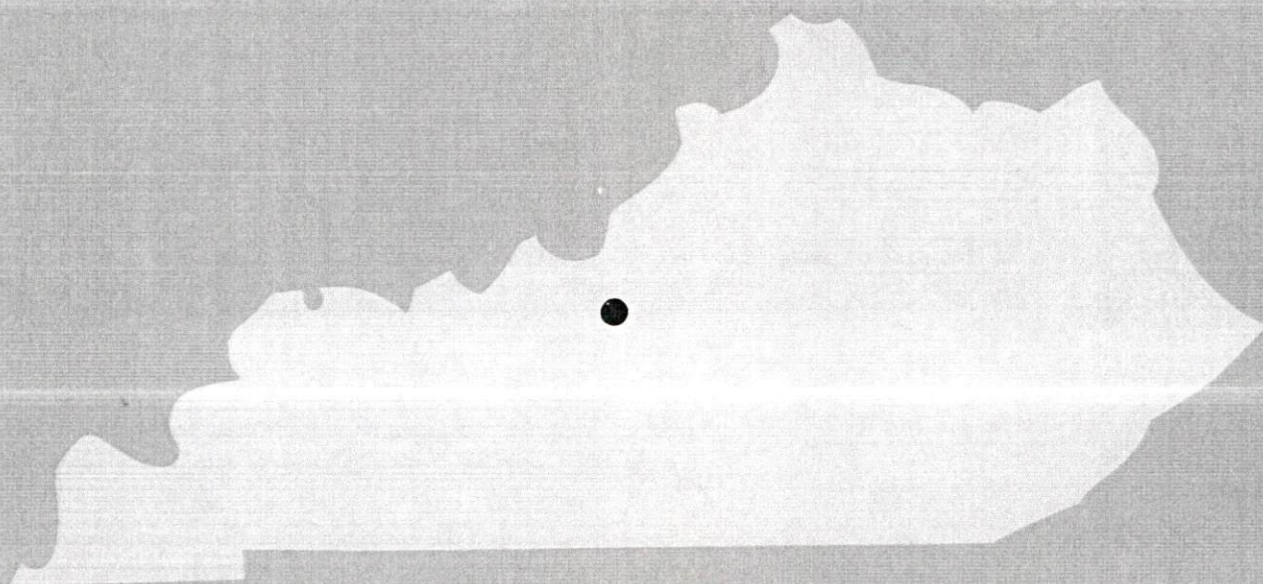
Kentucky Library Research Collections, "Industrial Resources: Hardin County - Elizabethtown" (1981). *Hardin County*. Paper 37.
https://digitalcommons.wku.edu/hardin_cty/37

This Report is brought to you for free and open access by TopSCHOLAR®. It has been accepted for inclusion in Hardin County by an authorized administrator of TopSCHOLAR®. For more information, please contact topscholar@wku.edu.

1R
218

Harrison County

A comprehensive
report on
Elizabethtown, Ky.

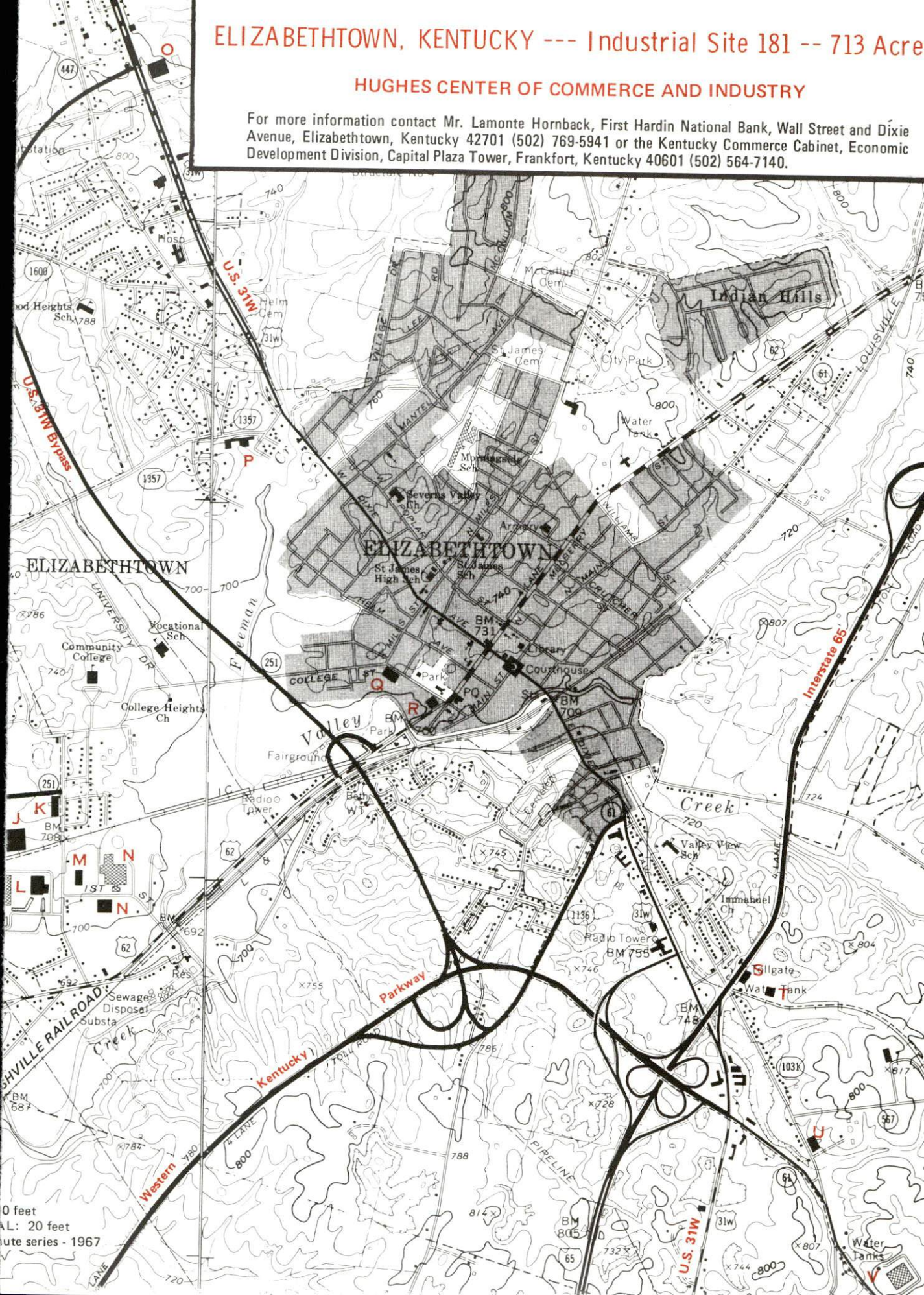


KENTUCKY & CO.
The state that's run like a business.

ELIZABETHTOWN, KENTUCKY --- Industrial Site 181 -- 713 Acre

HUGHES CENTER OF COMMERCE AND INDUSTRY

For more information contact Mr. Lamonte Hornback, First Hardin National Bank, Wall Street and Dixie Avenue, Elizabethtown, Kentucky 42701 (502) 769-5941 or the Kentucky Commerce Cabinet, Economic Development Division, Capital Plaza Tower, Frankfort, Kentucky 40601 (502) 564-7140.



Existing Industries

- A. Chromatic Color Corp.
- B. A & D Warehousing & Distributing
- C. Industrial Welding
- D. R. B. I., Inc.
- E. Phelps Dodge Communications Co.
- F. Union Steel Div.
Eagle-Picher Industries
- G. Magna Products
Div. Vermont American Corp.
- H. The Celotex Corp.
- J. Bowman Products Division
Associated Spring Corp.
- K. Do-It-Yourself Products
Div. Reynolds Metals Co.
- L. Gates Rubber Co.
- M. Bussman Div.
McGraw Edison Co.
- N. Colt Industries
- O. Coca-Cola Bottling Co.
- P. Kent Records, Inc.
- Q. Elizabethtown Sportswear Corp.
- R. Accumetric, Inc.
- S. Kentucky Galvanizing Co., Inc.
- T. Modern Welding Co., Inc.
- U. Clinton Industries, Inc.
- V. Dow Corning Corp.

LOCATION: Within southwestern city limits

ZONING: Planned Community District

HIGHWAY ACCESS: U.S. 62 via paved internal access roads;
Interstate 65 interchange approximately 3.0 miles away;
Western Kentucky Parkway interchange approximately 2.2 miles away

RAILROAD: Illinois Central Gulf Railroad serves the park;
rail and non-rail tracts available

WATER: Elizabethtown Water and Gas Department

Size Line: The park is served by a 12-inch line

GAS: Elizabethtown Water and Gas Department

Size Line: The park is served by a 4-inch line

ELECTRICITY: Kentucky Utilities Company

SEWERAGE: Elizabethtown Water and Gas Department

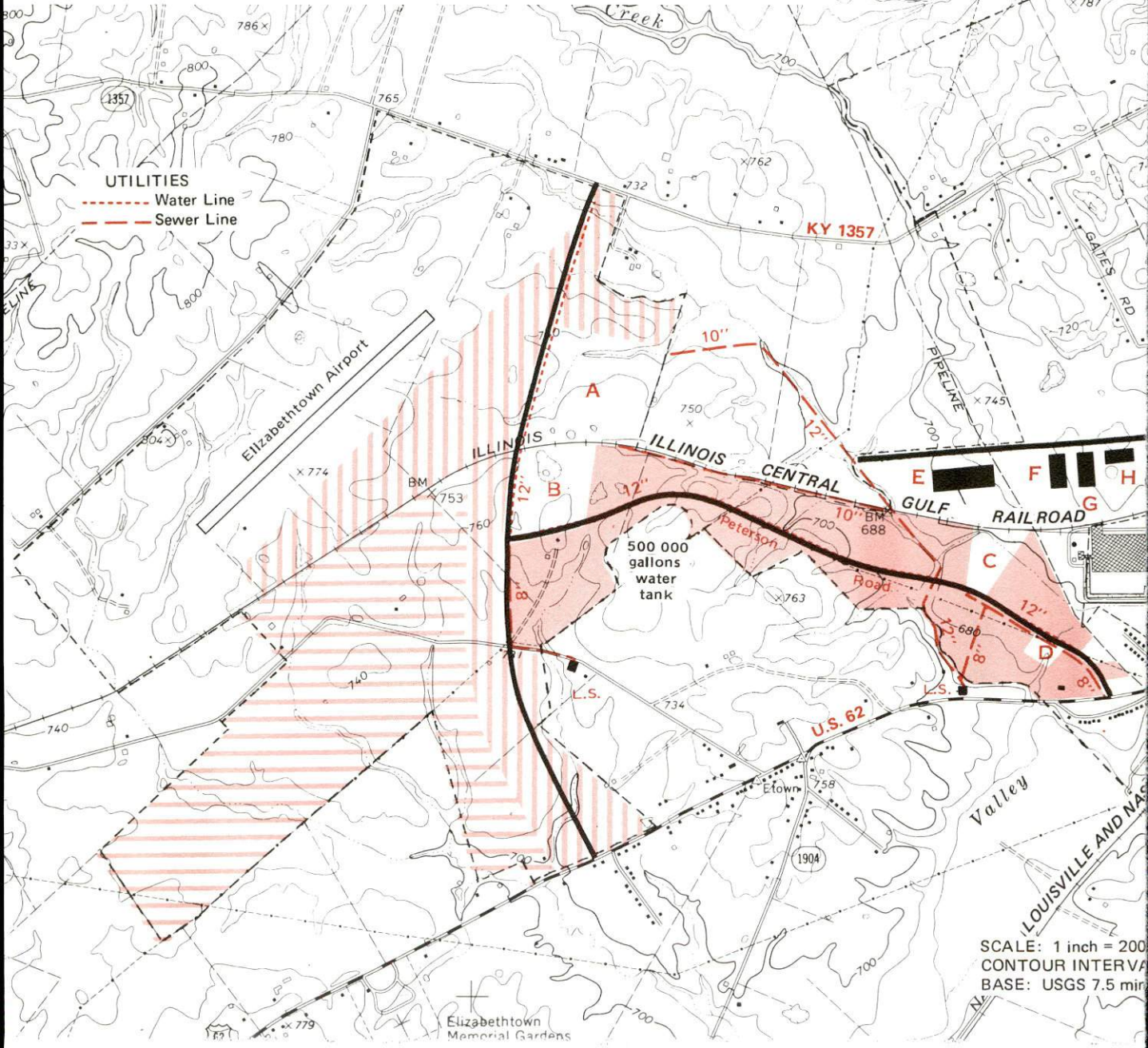
Size Line: 12, 10, and 8-inch lines serve the park

OWNERSHIP: Elizabethtown Industrial Foundation

PHASE I 204 Acres

PHASE II 236 Acres

**FUTURE
DEVELOPMENT 273 Acres**



A COMPREHENSIVE REPORT ON
ELIZABETHTOWN, KENTUCKY

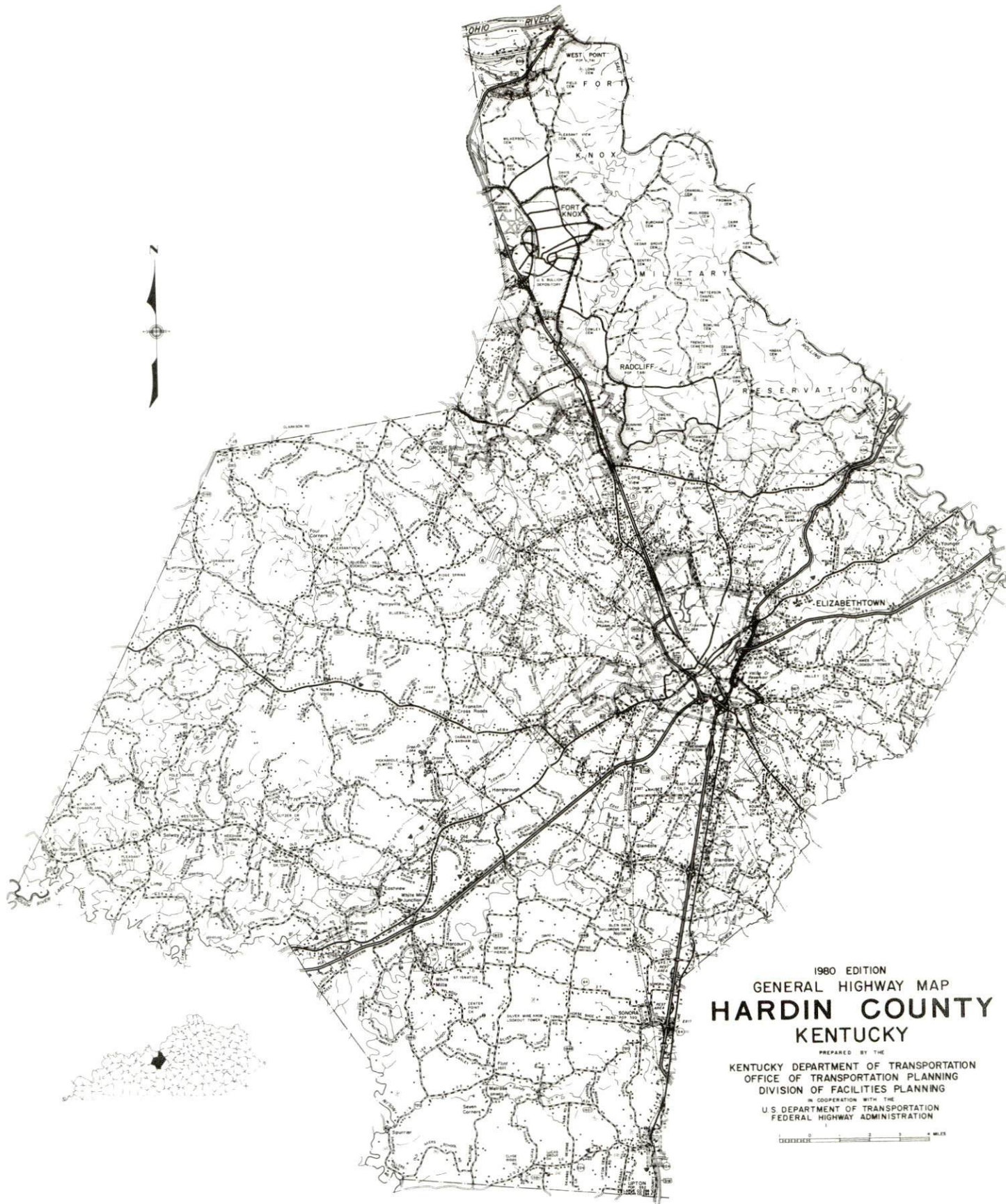
Prepared by
The Kentucky Department of Commerce
Division of Research and Planning
in cooperation with
The Elizabethtown-Hardin County Chamber of Commerce

1981

TABLE OF CONTENTS

<u>Chapter</u>	<u>Page</u>
INDUSTRIAL SITES	i
THE LABOR MARKET AREA	1
Population	1
Labor Force Characteristics of Residents, 1979	1
Estimated Male Labor Supply	2
Estimated Female Labor Supply	2
Major Elizabethtown Manufacturing Firms, Their Products and Employment	3
Labor Organizations in Manufacturing Firms	5
Industrial Services	6
Supportive Services	6
Average Weekly Wages by Industry, by Place of Work, 1979	7
Per Capita Personal Income	9
TRANSPORTATION	10
Rail	10
Highways	11
Truck Service	12
Air	15
Bus	16
Taxi	16
Rental Services	16
Water	16
POWER AND FUEL	17
Electricity	17
Natural Gas	18
Other Fuels	18
WATER AND SEWERAGE	20
Water	20
Sewerage	22
CLIMATE	23

<u>Chapter</u>	<u>Page</u>
LOCAL GOVERNMENT	24
City	24
County	24
Assessed Value of Property	24
Property Taxes	25
Combined State and Local Rates Per \$100 Valuation, 1980	25
Utilities Gross Receipts Tax for Schools	26
Planning and Zoning	26
Safety	26
Police	26
Fire	26
Rescue Service	27
Refuse Collection and Disposal	27
EDUCATION	28
Public Schools	28
Nonpublic Schools	28
Local College	29
Area Colleges and Universities	30
Vocational Schools	32
HEALTH	33
Local Medical Personnel	33
Hospitals	33
Other Medical Facilities	33
OTHER LOCAL FACILITIES	35
Communications	35
Library Services	36
Religious Institutions	36
Financial Institutions	37
Hotels and Motels	37
Clubs and Organizations	38
RECREATION	40



1980 EDITION
GENERAL HIGHWAY MAP
HARDIN COUNTY
KENTUCKY

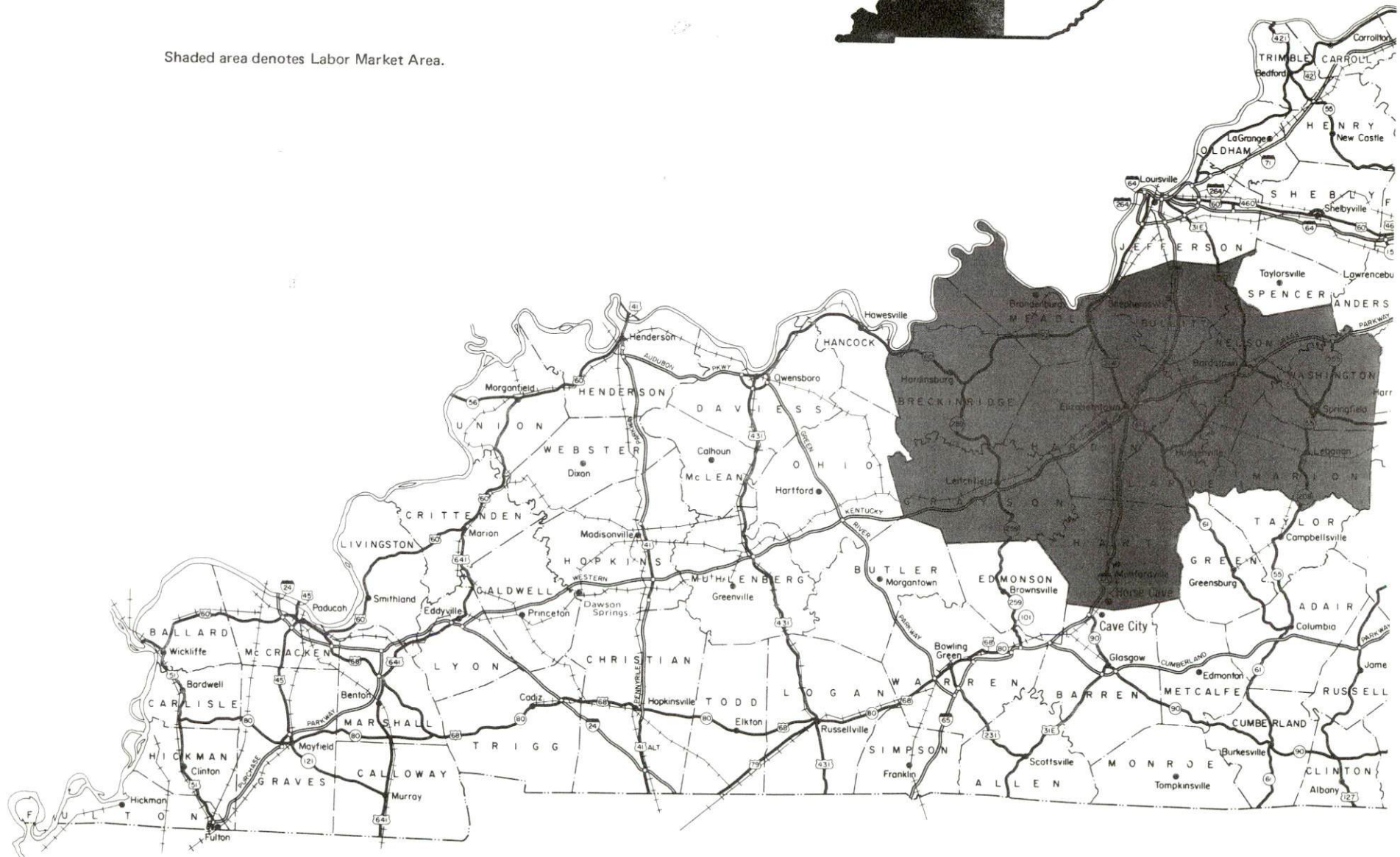
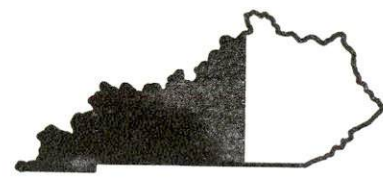
PREPARED BY THE
KENTUCKY DEPARTMENT OF TRANSPORTATION
OFFICE OF TRANSPORTATION PLANNING
DIVISION OF FACILITIES PLANNING
IN COOPERATION WITH THE
U.S. DEPARTMENT OF TRANSPORTATION
FEDERAL HIGHWAY ADMINISTRATION

0 1 2 3 4 5 6 7 8 9 10 MILES

ELIZABETHTOWN LABOR MARKET AREA

With
MAJOR HIGHWAY & RAILROAD SYSTEM

Shaded area denotes Labor Market Area.



THE LABOR MARKET AREA

The Labor Market Area includes Hardin County and the adjoining Kentucky counties of Breckinridge, Bullitt, Grayson, Hart, Larue, Marion, Meade, Nelson and Washington.

Area	POPULATION		Percent Nonwhite
	1980	1970	
Elizabethtown	15,380	11,748	9.5
Labor Market Area	276,475	230,112	N/A
Hardin County	88,917	78,421	14.7
Breckinridge County	16,861	14,789	3.8
Bullitt County	43,346	26,090	0.8
Grayson County	20,854	16,445	0.6
Hart County	15,402	13,980	8.1
Larue County	11,983	10,672	4.7
Marion County	17,910	16,714	8.0
Meade County	22,854	18,796	9.0
Nelson County	27,584	23,477	6.6
Washington County	10,764	10,728	10.3

Note: The 1980 counts of population by race are provisional.

Source: U.S. Department of Commerce, Bureau of the Census, March 1981, as published in Special Report No. 8, State Data Center, Urban Studies Center, University of Louisville, March 1981.

LABOR FORCE CHARACTERISTICS OF RESIDENTS, 1980		
	Hardin County	Labor Market Area
Civilian Labor Force	25,705	101,391
Employment	23,624	92,301
Agricultural	896	8,224
Nonagricultural	22,728	84,077
Unemployment	2,081	9,090
Rate of Unemployment (%)	8.1	9.0

Source: Kentucky Department for Human Resources, Kentucky Labor Force Estimates, Annual Averages, 1980.

ESTIMATED MALE LABOR SUPPLY
ELIZABETHTOWN LABOR MARKET AREA

Area	Current			Future	
	Total	Not in Labor Force	Unemployed	Under-employed	Reaching 18 years of age before 1986
Labor Market Area*	9,806	1,623	3,363	4,820	11,559
Hardin	3,870	446	864	2,560	3,033
Breckinridge	580	116	234	230	705
Bullitt	1,034	250	384	400	1,749
Grayson	821	140	351	330	730
Hart	543	109	244	190	692
Larue	434	82	162	190	518
Marion	652	111	261	280	994
Meade	516	132	224	160	1,235
Nelson	980	166	454	360	1,327
Washington	376	71	185	120	576

*Additional workers may be drawn from other nearby counties.

Sources: Kentucky Department for Human Resources, Kentucky Labor Supply Estimates by County, 1979. Kentucky Department of Commerce, Future Labor Supply before 1986.

ESTIMATED FEMALE LABOR SUPPLY
ELIZABETHTOWN LABOR MARKET AREA

Area	Current			Future	
	Total	Not in Labor Force	Unemployed	Under-employed	Reaching 18 years of age before 1986
Labor Market Area*	7,724	665	3,089	3,970	11,026
Hardin	2,104	180	794	1,130	2,946
Breckinridge	483	47	216	220	695
Bullitt	1,095	92	353	650	1,606
Grayson	658	56	322	280	738
Hart	552	48	224	280	642
Larue	401	35	146	220	455
Marion	529	49	240	240	936
Meade	618	52	206	360	1,143
Nelson	954	75	419	460	1,343
Washington	330	31	169	130	522

*Additional workers may be drawn from other nearby counties.

Sources: Kentucky Department for Human Resources, Kentucky Labor Supply Estimates by County, 1979. Kentucky Department of Commerce, Future Labor Supply before 1986.

NOTE: "Not in Labor Force" represents those persons who are not now in the labor force, but would enter the labor force if suitable employment were available. Unemployed persons are those persons who are unemployed and actively seeking work. Underemployed persons are those persons who are employed, but are working only 14 to 26 weeks per year.

MAJOR ELIZABETHTOWN MANUFACTURING FIRMS,
THEIR PRODUCTS AND EMPLOYMENT*

Firm (Establishment date)	Product	Employment			Labor Unions
		Total	Male	Female	
Bussman Division, McGraw-Edison Company (1955)	Electrical and electronic fuses	371	50	321	Electrical Workers, IUE**
The Celotex Corporation (1971)	Urethane roof insulation	72	57	15	Paperworkers**
Coca-Cola Bottling Company (1920)	Soft drinks	165	138	27	
Colt Industries, Crucible Magnetics Division (1965)	Ceramic alnico, crucore magnets	575	459	116	Electrical Workers, IUE**
Dow Corning Corporation (1963)	Silicone sealants	233	167	66	Chemical Workers**
EMB Corporation (1973)	Motor start relays, snap switches	43	7	36	
E-town Sportswear Corporation (1960)	Men's slacks	435	40	395	Clothing and Textile Workers Union**
Gates Rubber Company (1964)	Auto V-belts, curved auto hose, urethane polyflex belts	468	---	---	Electrical Workers, IUE and Rubber Workers**
Kentucky Galvanizing Company, Inc. (1968)	Guardrails and posts, steel fabrication, hot dip galvanizing	49	46	3	

(Contd.)

<u>Firm (Establishment date)</u>	<u>Product</u>	<u>Employment</u>			<u>Labor Unions</u>
		<u>Total</u>	<u>Male</u>	<u>Female</u>	
Magna Products Division, Vermont American Corporation (1976)	Screwdriver bits and holders, sockets, nut runners	167	129	38	Aluminum Workers**
Modern Welding Company, Inc. (1964)	Steel fabrication, steel tanks	40	38	2	
News Enterprise, Inc. (1969)	Newspaper, commercial printing	98	36	62	
Phelps Dodge Communications Company, Division of Phelps Dodge Corporation (1974)	Telephone cable	217	163	54	Electrical Workers, IUE**
Union Steel Division, Eagle-Picher Industries (1971)	Refrigerator shelves, freezer baskets, custom wire parts	110	80	30	Steelworkers**

*Manufacturing firms with 40 or more employees.

**See Labor Organizations.

Source: Kentucky Department of Commerce, Division of Research and Planning.

New Manufacturing Development

The Flint Ink Company plans to locate at the Hughes Center of Commerce and Industry and will have an estimated employment of 250 employees.

The Industrial Welding Company, which rebuilds manufacturing machinery, plans to be in operation in 1981.

LABOR ORGANIZATIONS IN MANUFACTURING FIRMS

<u>Union</u>	<u>Representing workers at:</u>
Aluminum Workers International Union, AFL-CIO	Magna Products, Division Vermont American Corporation
Amalgamated Clothing and Textile Workers Union, AFL-CIO	E-town Sportswear Corporation
International Brotherhood of Teamsters, Chauffeurs, Warehousemen and Helpers of America	Armour and Company
International Chemical Workers Union, AFL-CIO	Accumetric, Inc.; Dow Corning Corporation
International Union of Electrical, Radio and Machine Workers, AFL-CIO	Bussman Division, McGraw-Edison Company; Colt Industries, Crucible Magnetics Division; Gates Rubber Company; Kent Records, Inc.; Kentucky Thermo-plastics; Phelps Dodge Communications Company, Division of Phelps Dodge Corporation
United Paperworkers International Union, AFL-CIO	The Celotex Corporation
United Rubber, Cork, Linoleum and Plastic Workers of America, AFL-CIO	Gates Rubber Company
United Steelworkers of America, AFL-CIO	Union Steel Division, Eagle-Picher Industries

INDUSTRIAL SERVICES

	<u>Location</u>	<u>Mileage from Elizabethtown</u>
Tool & Die, Machine & Pattern Shops	Elizabethtown	--
Metal Service Centers	Louisville	44 miles north
Heat Treating	Louisville	44 miles north
Metal Finishers	Elizabethtown	--
Electric Motor Repair	Elizabethtown	--
Source: <u>Kentucky Directory of Selected Industrial Services, 1979.</u>		

SUPPORTIVE SERVICES

	<u>Located in Elizabethtown</u>
Architects	6
Engineers	6
Contract Security Service	4
Janitorial Services	5
Contract Fleet Maintenance	3
General Contractors, including design and construction	30
Computer Services	2
Source: <u>Kentucky Department of Commerce, Division of Research and Planning.</u>	

AVERAGE WEEKLY WAGES BY INDUSTRY,
BY PLACE OF WORK, 1979

	<u>Hardin County</u>	<u>Breckinridge County</u>	<u>Bullitt County</u>	<u>Grayson County</u>	<u>Hart County</u>
All Industries	\$196.82	\$173.90	\$193.34	\$171.31	\$157.15
Mining & Quarrying	*	181.29	*	247.35	182.38
Contract Construction	249.41	171.55	201.77	210.46	143.68
Manufacturing	252.19	187.87	279.71	182.15	169.03
Transportation, Communications & Public Utilities	232.27	319.16	225.74	223.75	180.60
Wholesale & Retail Trade	151.68	134.44	132.39	147.80	130.65
Finance, Insurance & Real Estate	196.48	206.19	184.54	195.30	178.50
Services	184.94	166.62	163.87	157.36	167.18
Other	78.47	*	196.33	119.68	*

	<u>Larue County</u>	<u>Marion County</u>	<u>Meade County</u>	<u>Nelson County</u>	<u>Washington County</u>
All Industries	\$146.49	\$158.87	\$241.47	\$205.18	\$164.30
Mining & Quarrying	0	*	*	347.48	0
Contract Construction	115.48	135.29	159.35	222.20	239.11
Manufacturing	129.04	214.64	*	274.60	186.22
Transportation, Communications & Public Utilities	263.24	198.62	298.56	292.90	179.63
Wholesale & Retail Trade	125.76	129.09	127.00	142.66	132.36
Finance, Insurance & Real Estate	192.90	183.32	159.60	172.38	175.24
Services	164.61	139.04	182.69	159.81	148.20
Other	71.47	83.26	*	111.82	86.40

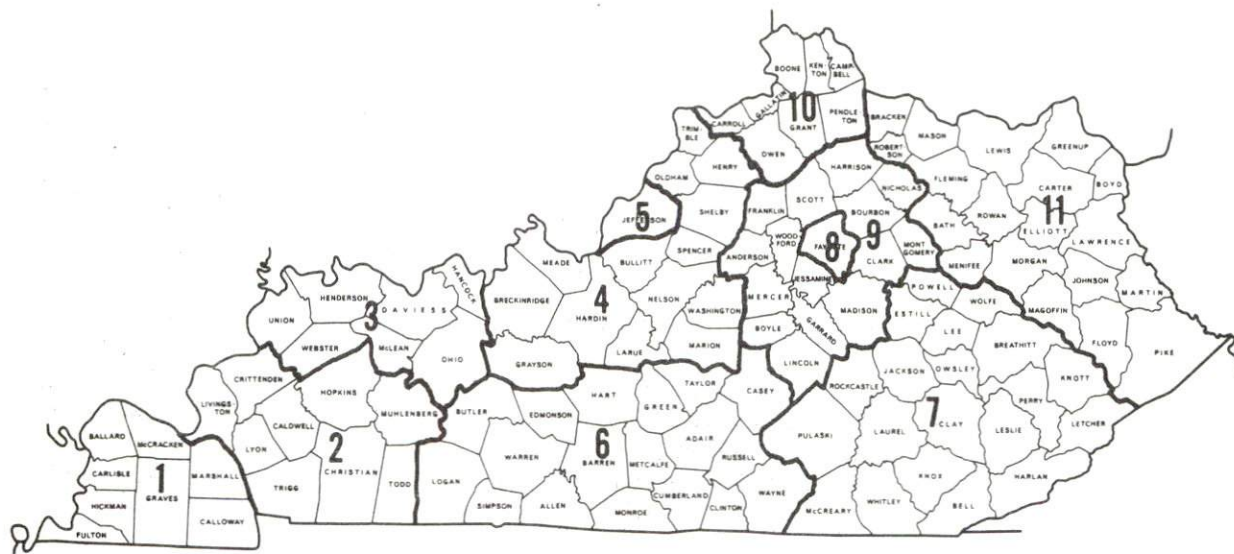
*Not disclosed.

Note: Excludes domestic workers, railway workers; certain nonprofit corporations; majority of federal government workers; and self-employed workers. Effective January 1, 1979, the Kentucky Unemployment Insurance Law extended coverage to include all state and local government agencies (shown in the Services category).

Source: Kentucky Department for Human Resources, Average Weekly Wages of Workers Covered by Kentucky Unemployment Insurance Law, 1979.

Occupational wage rates for specific industries are usually not available to most government agencies, and wage data furnished to state employment agencies by individual industrial employers is protected from disclosure by federal law. The most reliable up-to-date wage information can be obtained by direct contact with local employers.

Associated Industries of Kentucky, a voluntary organization of Kentucky businesses, regularly collects occupational wage rates and fringe benefits data from participating member firms. Data is compiled for over 127 clearly defined office, production, and service occupations. Tabulations are published for eleven regions of Kentucky, as shown on the map below. It should be noted that the data may be weighted by the preponderance of firms in the larger cities and may be somewhat higher than the rates paid in the smaller communities. Data from these tabulations are available, upon request, from the Kentucky Department of Commerce, Frankfort, Kentucky 40601.



Associated Industries of Kentucky Area Wage Surveys

PER CAPITA PERSONAL INCOME

<u>Area</u>	<u>1978</u>	<u>1974</u>	<u>Percent Change</u>
Hardin County	\$6,530	\$5,222	25.0
Labor Market Area Range	\$4,351 - 6,530	\$3,341 - 5,222	N/A
Kentucky	6,605	4,524	46.0
U.S.	7,840	5,428	44.4

Source: U.S. Department of Commerce, Bureau of Economic Analysis,
April 1980.

TRANSPORTATION

Rail

Line serving Elizabethtown - Louisville & Nashville Railroad

Services - One northbound and one southbound local freight daily;
11 northbound and nine southbound through freights daily;
switching facilities; team track space for 40 cars; piggyback
facilities at Louisville, 44 miles north of Elizabethtown

Line serving Elizabethtown - Illinois Central Gulf Railroad

Services - One northbound and one southbound freight daily;
switching facilities; team track space for approximately 10 cars;
piggyback facilities at Louisville, 44 miles north of Elizabethtown

For details on routing, schedules, rates, and services, contact:

Director of Industrial Development
Louisville and Nashville Railroad
P. O. Box 32290
Louisville, Kentucky 40232
(502) 587-5723

and/or

Manager of Industrial Development
Illinois Central Gulf Railroad Company
112 North 4th Street
240 Pierce Building
St. Louis, Missouri 63102
(314) 241-9400

Highways

Elizabethtown is ideally located for highway transport of products and materials. Three principal access routes converge at Elizabethtown -- north-south Interstate 65, the Blue Grass Parkway, which runs northeast from Elizabethtown to Lexington, and the Western Kentucky Parkway, which runs southwest from Elizabethtown to Eddyville. These routes interconnect with the nation's major highway network.

Other highways serving Elizabethtown are U.S. 31W, U.S. 62 and Kentucky 61, all "AAA" highways.

A second access road has been completed into the Hughes Center of Commerce and Industry that traverses the central part of the site. The road extends from U.S. 62 east to Kentucky 1357. Future plans include extending this road northeast around Elizabethtown, providing a bypass from U.S. 62 west to U.S. 62 east.

Other planned highway improvements include the reconstruction of Kentucky 61 from Hodgenville to Elizabethtown. Initially the highway will be two lanes, but there are plans to eventually make it a four-lane highway. A 1982 completion date is expected.

There are also plans to reconstruct Interstate 65 from north of Elizabethtown to near the Bullitt County line into a six-lane highway.

Truck Service

<u>Company</u>	<u>Home Office</u>
American Freight System, Inc.*	9393 West 110th Street Overland Park, Kansas 66210
Bestway Express, Inc.*(T)	905 Visco Drive Nashville, Tennessee 37210
Central Motor Express, Inc.*	P. O. Drawer C Campbellsville, Kentucky 42718
Crutcher Transfer Line, Inc.** (T)	P. O. Box 8346 600 Marrett Avenue Louisville, Kentucky 40208
Interstate Motor Freight System*	110 Ionia Northwest Grand Rapids, Michigan 49503
Leitchfield Transfer Company***	U.S. 62 East Leitchfield, Kentucky 42754
McLean Trucking Company*	P. O. Box 213 Winston-Salem, North Carolina 27102
Overnite Transportation Company*	P. O. Box 1216 1000 Semmes Avenue Richmond, Virginia 23209
Robbins Truck Line, Inc.** (T)	Route 1 Hardinsburg, Kentucky 40143
Smith's Transfer Corporation*	P. O. Box 1000 Staunton, Virginia 24401
T.I.M.E.-DC, Inc.*	P. O. Box 2550 Lubbock, Texas 79408
Turner Expediting Service***	Standiford Field Louisville, Kentucky 40221
United Trucking Service, Inc.**	8505 West Warren Dearborn, Michigan 48126

Other Freight Services

Nearest Shipping Center or Home Office

Purolator Courier Corporation****	Elizabethtown
United Parcel Service****	Louisville, 44 miles north
KATO Express, Inc. (air cargo service)*****	Elizabethtown

(T) Terminal.

* Interstate only.

** Interstate and intrastate.

*** Intrastate only.

**** For regular scheduled pickups or for occasional pickups, arrangements must be made with the Louisville office of Purolator Courier Corporation or United Parcel Service.

***** Daily pickup and delivery service is available to and from Standiford Field in Louisville. Arrangements for service should be made through the home office in Elizabethtown.

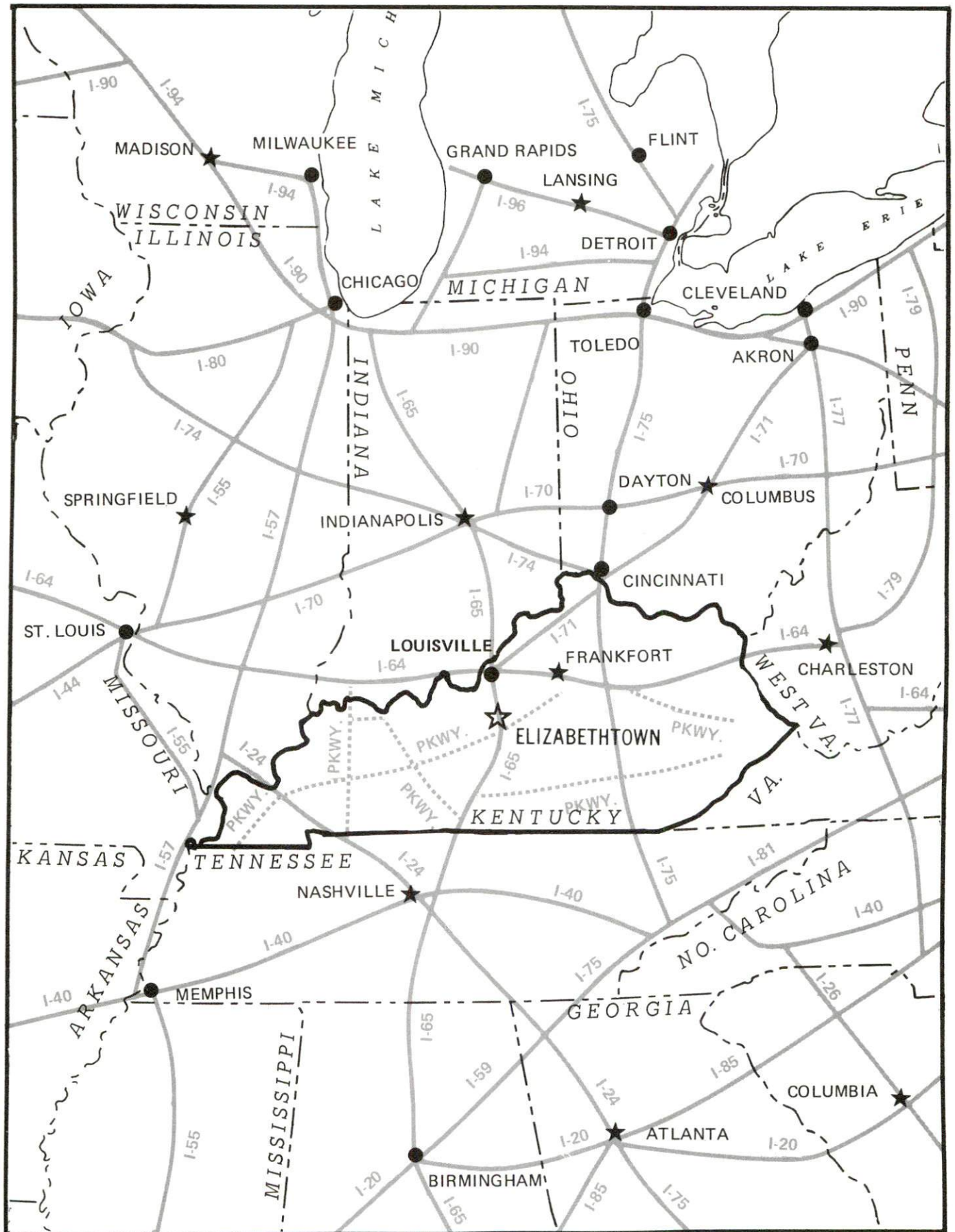
HIGHWAY MILES AND TRUCK TRANSIT TIME IN DAYS FROM
ELIZABETHTOWN, KENTUCKY, TO SELECTED MARKET CENTERS

City	Highway Miles	Delivery Time		City	Highway Miles	Delivery Time	
		TL				TL	
Atlanta, Ga.	376	2		Los Angeles, Ca.	2,152	3	
Baltimore, Md.	625	2		Louisville, Ky.	44	Same day	
Birmingham, Ala.	330	2		Nashville, Tenn.	134	1	
Chicago, Ill.	336	1		New Orleans, La.	651	2	
Cincinnati, Ohio	145	1		New York, N. Y.	787	2	
Cleveland, Ohio	389	1		Pittsburgh, Pa.	427	2	
Detroit, Mich.	404	2		St. Louis, Mo.	317	2	
Knoxville, Tenn.	260	1					

Note: Mileage computations are via the best interstate or primary highways, not necessarily the most direct route of travel.

Sources: Rand McNally Road Atlas, 1979. Official Kentucky Mileage Map, 1979. Delivery time - Crutcher Transfer Line, Inc., P. O. Box 8346, 600 Marrett Avenue, Louisville, Kentucky 40208.

Major Highway Network



Air

Local

Ben Floyd Field
Location: 4 miles north-northwest of Elizabethtown
Runways: 1 paved
Length: 2,800 feet
Traffic
Control: Wind tee and wind sock
Lighting: Sundown to sunrise
Services: 100 octane LL, major and minor A & E repairs, flight instructions, charter, transportation available, lodging by reservation, restaurant

Air Freight
Service: Chartered air freight services must be arranged

The new Elizabethtown Municipal Airport, adjacent to the Hughes Center of Commerce and Industry, is scheduled for completion in mid-summer 1981. The airport is located approximately 4 miles west of Elizabethtown on a 220-acre tract and it has been designed for aircraft normally used by business.

A 4,000 foot runway was completed at the airport in August, and the Elizabethtown Airport Board recently awarded a contract for an administration/hangar building at a cost of \$220,000. A second \$43,000 contract for a fueling system and other allied service requirements has also been initiated. Lighting of the runway was completed at a cost of \$48,000.

Services at the Ben Floyd Field will be terminated when the Elizabethtown Municipal Airport can fully accommodate air traffic.

Nearest Scheduled Airline Service

Standiford Field
Location: 4 1/2 miles southeast of center of Louisville, Kentucky; 40 miles north of Elizabethtown
Runways: 3 paved
Length: 7,800 feet; 7,250 feet; 5,000 feet
Traffic
Control: Control tower
Lighting: Runways, obstructions, beacon and approach and touchdown lights, center line on one runway
Services: American, Delta, Eastern, Ozark, Piedmont, TWA and USAir airlines; Air Kentucky commuter air carrier; 100 octane and jet fuel; major A & E repairs; storage; Louisville-Jefferson County Air Board; Hertz, Avis, National and Budget rental car services; taxi, city bus service; restaurant

Air Freight
Service: Air freight terminal

Bus - Greyhound Bus Lines, Kentucky Bus Lines, and Trailways

Taxi - One company, radio-equipped, 24-hour service

Rental Services - Car, truck, and trailer rentals

Water

Elizabethtown is only 44 miles south of Louisville, via Interstate 65, where port facilities are available on the Ohio River. Louisville has also been classified as a Foreign Trade Zone and offers complete U.S. customs services for exports and imports.

POWER AND FUEL

Electricity

Company serving Elizabethtown and portions of Hardin County -
Kentucky Utilities Company
Source of power - Kentucky Utilities Company
Total generating capacity - 2,383,767 KW
For industrial rates contact:

Industrial Development Department
Kentucky Utilities Company
One Quality Street
Lexington, Kentucky 40507
(606) 255-1461

Company serving most of Hardin County - Nolin Rural Electric
Cooperative Corporation
Source of power - East Kentucky Power Cooperative
Total generating capacity - 1,318,010 KW
For industrial rates contact:

Industrial Development Division
East Kentucky Power Cooperative
P. O. Box 707
Winchester, Kentucky 40391
(606) 744-4812

and/or

Nolin RECC
612 East Dixie Avenue
P. O. Box 668
Elizabethtown, Kentucky 42701
(502) 765-6153

Natural Gas

Company serving Elizabethtown - Elizabethtown Water and Gas Department
Source of supply - Texas Gas Transmission Corporation
Size of transmission mains - 24 and 30 inches (supplier);
8 inches (distributor)
Distribution mains - 2 to 6 inches
Distribution pressure - 34 psi
Btu content - 1,007 per cubic foot
Specific gravity - .583
For rates and supplies contact:

Elizabethtown Water and Gas Department
111 West Dixie Avenue
P. O. Box 550
Elizabethtown, Kentucky 42701
(502) 765-6121, extension 221

Other Fuels

Propane

AmeriGas
Liquefied Petroleum Gas
Division
Center Street
New Haven, Kentucky 40051

Big 3 Gas Company
1402 Preston Highway
Lebanon Junction, Kentucky 40150

Magnolia Bottle Gas
(Doxol Propane Dealer)
East Highway 31
Magnolia, Kentucky 42757

Smith's Propane Gas Service, Inc.
Highway 61
P. O. Box 120
Hodgenville, Kentucky 42748

Other distributors are located in Louisville 44 miles north of
Elizabethtown.

Fuel oils

Distillate fuel oil -

Ashland Petroleum Company
736 Hawkins Drive
Elizabethtown, Kentucky 42701

Ball Brothers Oil Company
(Shell Oil Products Jobber)
Hawkins Drive
Elizabethtown, Kentucky 42701

Chevron USA, Inc.
Hawkins Drive
Elizabethtown, Kentucky 42701

Cox Oil Company
Southern States Petroleum Cooperative
337 East Dixie Avenue
Elizabethtown, Kentucky 42701

Exxon Company
Hawkins Drive
Elizabethtown, Kentucky 42701

Guy Williams & Son, Inc.
(Sunoco Products)
I C Tracks
Elizabethtown, Kentucky 42701

Residual fuel oil - Arrangements must be made with the refinery

Low sulphur content coal - Available in Kentucky

WATER AND SEWERAGE

Water

Company serving Elizabethtown - Elizabethtown Water and Gas Department
111 West Dixie Avenue
P. O. Box 550
Elizabethtown, Kentucky 42701
(502) 765-6121

Sources - Two wells, two springs, Freeman Lake

Treatment plant capacity - Plant #1 - 2,500,000 gpd
Plant #2 - 3,000,000 gpd

Average daily consumption - Plant #1 - 1,540,573 gallons
Plant #2 - 1,363,189 gallons

Peak daily consumption - Plant #1 - 1,921,227 gallons
Plant #2 - 2,066,900 gallons

Type treatment - Plant #1 - Coagulation, sedimentation, filtration, chlorination
Plant #2 (circular clarifier) - Coagulation, sedimentation, filtration, chlorination

Storage capacity - Elevated tanks - 1,750,000 gallons; Standpipe - 116,000 gallons; Clear wells - 1,156,000 gallons; Ground level tank - 90,000 gallons

Size lines - 4, 6, 8, 10, 12, and 14 inches

Average pressure - 60 psi

Average temperature - Plant #1 - 60 degrees F.
Plant #2 - 59 degrees F.

MONTHLY WATER RATES

Inside City Limits

First	2,000 gallons	\$4.50 (minimum bill)
Next	2,001 to 5,000 gallons	1.55 per M gallons
Next	5,001 to 10,000 gallons	1.45 per M gallons
Next	10,001 to 15,000 gallons	1.35 per M gallons
Next	15,001 to 25,000 gallons	1.25 per M gallons
Over	25,000 gallons	1.10 per M gallons

Outside City Limits

First	2,000 gallons	\$9.00 (minimum bill)
Next	2,001 to 5,000 gallons	3.10 per M gallons
Next	5,001 to 10,000 gallons	2.90 per M gallons
Next	10,001 to 15,000 gallons	2.70 per M gallons
Next	15,001 to 25,000 gallons	2.50 per M gallons
Over	25,000 gallons	2.20 per M gallons

Tap-on charge:

	<u>Inside City Limits</u>	<u>Outside City Limits</u>
3/4-inch	\$ 150.00	\$ 225.00
1-inch	220.00	330.00
1 1/2-inch	400.00	600.00
2-inch	600.00	900.00
3-inch	1,200.00	1,800.00
4-inch	1,800.00	2,700.00

Tap-on charge for standby fire protection outside city limits:

<u>Size of Service</u>	<u>Cost Per Year</u>
4-inch tap	\$ 250.00
6-inch tap	500.00
8-inch tap	1,000.00
12-inch tap	1,500.00

A charge of \$100.00 per year is levied on all private fire hydrants located on private property outside the city limits.

Surface water sources - Nolin River, Rolling Fork River, Freeman Lake
 Average discharge - Nolin River at White Mills - 501 cfs (20-years, USGS); Rolling Fork near Boston - 1,820 cfs (41-years, USGS)
 Expected ground water yield - 500 to 1,000 gpm at northern tip of county; 5 to 50 gpm at southern tip, central part and extending into eastern and northern sections, and western tip; 5 gpm or less at eastern and western borders; 50 to 200 gpm in remainder of county

Sewerage

Company serving Elizabethtown - Elizabethtown Water and Gas Department*
 111 West Dixie Avenue
 P. O. Box 550
 Elizabethtown, Kentucky 42701
 (502) 765-6121

Design capacity - 3,000,000 gallons
 Average daily flow - 1,700,000 gallons
 Treatment - Primary and secondary
 Type treatment - Plants #1 and #2 - grit removal, primary settling, trickling filter, secondary settling; plant #3 - grit removal, aeration, settling. Effluent from plants pumped to lagoons;
 Lagoon #1 - aeration; Lagoon #2 - settling
 Treated effluent discharged into - Valley Creek
 Size of sanitary mains - 6, 8, 10, 12, 15, and 24 inches
 Size of storm mains - 10, 12, 15, 18, 24, 30, and 36 inches
 Rates -

Inside City Limits

<u>Number of gallons of water per month</u>	<u>Monthly sewer charge</u>
First 2,000 gallons	\$4.00 (minimum bill)
Over 2,000 gallons	1.25 per M gallons

Outside City Limits

<u>Number of gallons of water per month</u>	<u>Monthly sewer charge</u>
First 2,000 gallons	\$8.00 (minimum bill)
Over 2,000 gallons	2.50 per M gallons

Tap-on charge: \$300.00 inside city limits, \$450.00
 outside city limits

*A 4.5 million gallons per day tertiary sewage treatment plant and five miles of 24-inch outfall line are now in the design stage with construction expected to begin in 1981. Bids will be let for the project in March 1981.

CLIMATE

Hardin County

Temperature

Normal (30-year record)	55.2 degrees
Average annual 1979	53.4 degrees
Record highest, September, 1954 (35-year record)	103.0 degrees
Record lowest, January, 1963 (35-year record)	-21.0 degrees
Normal heating degree days (30-year record)	4,729
(Heating degree day totals are the sums of negative departures of average daily temperatures from 65 degrees F.)	

Precipitation

Normal (30-year record)	44.49 inches
Mean annual snowfall (35-year record)	16.80 inches
Total precipitation 1979	54.00 inches
Mean number days precipitation (.01 inch or more) (35-year record)	131
Mean number days thunderstorms (35-year record)	47

Prevailing Winds (17-year record)

South

Relative Humidity

1 a.m.	77 percent (15-year record)
7 a.m.	81 percent (16-year record)
1 p.m.	60 percent (16-year record)
7 p.m.	64 percent (16-year record)

Source: U.S. Department of Commerce, Environmental Science Services Administration, Climatological Data, 1979.
Station of record: Lexington, Kentucky.

LOCAL GOVERNMENT

City

Structure - Mayor - 4-year term; 6 council members - 2-year terms

Budget 1980 - General Fund \$3,596,629

Water and Sewer Fund 1,551,639

City Gas System 3,848,380

Fees and licenses - Eight-tenths of one percent on net profits of all businesses from activity conducted within the city and a required advance payment of a minimum license fee of \$25 for each calendar year which is applied as a credit against total liability when net profits return is filed at close of the accounting period. Employers are required to withhold eight-tenths of one percent from wages, salaries, commissions, and/or other compensation for services performed within the city.

County

Structure - County Judge/Executive - 4-year term;

8 magistrates - 4-year terms

Budget 1980-81 - General Fund \$1,571,325; Road Fund \$1,057,159

Assessed Value of Property

<u>Classes of Property</u>	<u>Elizabethtown (1980)</u>	<u>Hardin County (1980-81)</u>
Real Estate	\$207,080,140	\$700,253,985
Tangibles	56,938,876	142,854,274

Property Taxes

All property in Kentucky is assessed at 100 percent of fair cash value.

Land and buildings are taxed by the state and may be taxed by local jurisdictions. The state rate is \$0.241 per \$100 of assessed valuation.

Manufacturing machinery, raw materials inventories, pollution control equipment, and goods in the process of manufacture are not subject to local taxation. The state rate is \$0.15 per \$100.

Other tangible personal property owned by manufacturers (automobiles, trucks, finished goods, office furniture, office equipment) is taxed by the state at \$0.45 per \$100 and may be taxed by local jurisdictions.

Property stored in public warehouses in a transit status is not subject to local taxation. The state rate is only \$0.015 per \$100.

Intangible personal property located in Kentucky (money in hand, shares of stock, notes, bonds, accounts receivable, and other credits) is taxed by the state at \$0.25 per \$100, and is not subject to local taxation.

Private leaseholds in industrial facilities owned by cities or counties and financed by industrial revenue bonds are subject to a state tax of \$0.015 per \$100 of value (essentially the lessee's equity, adjusted for appreciation or depreciation). Local taxation is not permitted.

Combined State and Local Rates Per \$100 Valuation, 1980* (100% assessment)

	<u>Inside City of Elizabethtown</u>	<u>Inside Hughes Center of Commerce and Industry</u>	<u>Outside City</u>
1. Land and building	\$0.9686	\$0.7086	\$0.4886
2. Mfg. machinery, raw materials, goods in process, pollution control equipment	0.1500	0.1500	0.1500
3. Finished goods, office equipment, vehicles, other tangibles	1.1776	0.9176	0.6976
4. Intangibles (accounts rec., notes, bonds, etc.)	0.2500	0.2500	0.2500
5. Leaseholds in I. R. bond financed plants	0.0150	0.0150	0.0150

*Kentucky Department of Commerce.

Utilities Gross Receipts Tax for Schools

A 3 percent tax is levied on utilities receipts for schools in Hardin County. Tax is paid by all consumers of utilities as an add-on to the utilities bills. Exempted are receipts from utilities services that are resold and the receipts from the sale of energy or energy producing fuels that exceed 3 percent of the cost of production in manufacturing, processing, mining or refining.

Planning and Zoning

City agency - Elizabethtown Planning and Zoning Commission
Zoning enforced - Within city limits
Subdivision regulations enforced - Within city limits
Local codes enforced - Building and housing codes within the city limits

County agency - Hardin County Planning Commission
Subdivision regulations enforced - Outside city limits. The Land Use Permit System will be implemented in 1982.

Mandatory state codes enforced - Kentucky Plumbing Code, National Electric Code, Kentucky Boiler Regulations and Standards, National Fire Protection Association Standards of Safety (for buildings with an occupancy of less than 100 persons), Kentucky Building Code (modeled after BOCA code and applying to buildings with an occupancy of 100 or more persons)

Safety

<u>Police</u>	<u>Elizabethtown</u>	<u>Hardin County</u>
Total staff	26	8
Radio-patrol cars	21	4

Fire

American Insurance Association Fire Rating	5	Fire departments are being subsidized throughout the county. Presently there are 11 volunteer fire departments that serve all of Hardin County, excluding the cities of Elizabethtown and Radcliff.
Full-time staff	26	
Volunteers	10	

Rescue Service

Hardin County Disaster and Emergency Services:

Offices for the Hardin County Disaster and Emergency Services are located in Elizabethtown, Upton, Radcliff, Vine Grove, West Point and Sonora. Equipment includes boats and motors, communications equipment and dragging equipment. A county-wide rescue squad, which is part of the Disaster and Emergency Services, is based in Elizabethtown. Equipment for the rescue squad includes three rescue vans, a jeep, a 2 1/2 ton rescue truck, communications equipment and an emergency generator. A mutual assistance program has been agreed upon between Hardin and Larue Counties.

Refuse Collection and Disposal

	<u>Elizabethtown</u>
Type service	Private companies
Fee charged:	
residential	Variable/approximately \$3 to \$4 per month
business	By contract
Collection frequency:	
residential	Once or twice weekly, as needed
business	As needed
Disposal method	County landfill

Kentucky Industrial Services, Inc., and Industrial Haulers provide service to industrial customers. Services and rates are negotiated.

The City of Elizabethtown provides trash pickup once a year and leaf collection in season at no charge to the city's residents.

Hardin County provides sanitation service to residents of the county. Refuse may be disposed of at collection points which are located throughout the county. Free pickup service is provided at these points. Door-to-door pickup service is provided by the county in selected areas at a cost to the residents of approximately \$7.00 per month.

EDUCATION

Public Schools

	<u>Elizabethtown Independent</u>	<u>Hardin County**</u>
Total Enrollment (November 1980)	2,064	10,548
Elementary	900*	5,741*
Junior High	502	1,934
High School	662	2,873
Student-Teacher Ratio	18-1	22-1
Elementary	17-1	22-1
Junior High	18-1	21-1
High School	19-1	23-1
Accreditation	Southern Association of Colleges and Schools	
Percent High School Graduates to College	70.0	31.7
Expenditures Per Pupil (1979-80)	\$1,542.03	\$1,265.10
Bonded Indebtedness, June 30, 1980	\$4,707,000	\$10,505,000

Nonpublic Schools

	<u>St. James Elementary Elizabethtown</u>	<u>St. Brigid Elementary Vine Grove</u>	<u>St. Christopher Elementary Radcliff</u>	<u>Fort Knox Dependent</u>
Total Enrollment	182	178	142	4,018
Elementary	182 (1-6)	178 (1-8)	142 (1-6)	2,601*
Middle	--	--	--	746
High School	--	--	--	671
Student-Teacher Ratio	20-1	20-1	20-1	17-1
Elementary	20-1	20-1	20-1	20-1
Middle	--	--	--	15-1
High School	--	--	--	13-1

*Includes kindergarten enrollment.

**The Hardin County School System purchased a 110-acre site on North 31W. A \$2.4 million elementary school that will accommodate 650 students is under construction on this site, with a completion date scheduled for August 1981. There are also long-range plans for the construction of a junior high school and a high school on the same site.

Local College

<u>Name</u>	<u>Location</u>	<u>Enrollment (Fall, 1979)</u>	<u>Highest Degree Conferred</u>
Elizabethtown Community College	Elizabethtown	1,767	Associate

The Elizabethtown Community College opened in 1964, and as part of the Community College System is charged with three specific functions: (1) to offer career-oriented programs designed to prepare students for immediate technical or semi-professional employment; (2) to offer curricula for the first two years of a baccalaureate program, in which courses parallel University offerings and are transferable to the Lexington campus of the University of Kentucky or to another four-year institution either public or private; and (3) to provide general educational opportunities for citizens in their immediate areas.

Area Colleges and Universities

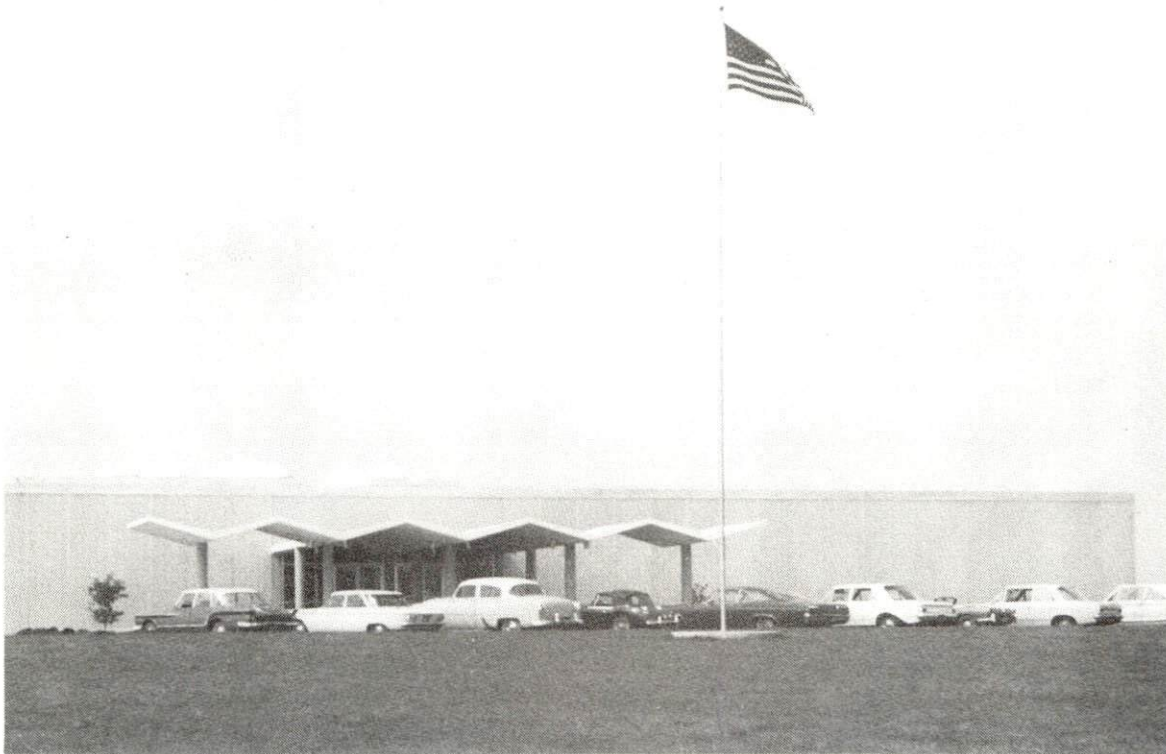
<u>Name</u>	<u>Location (Miles distant)</u>	<u>Enrollment (Fall, 1979)</u>	<u>Highest Degree Conferred</u>
Fort Knox Extension of University of Kentucky Campus	Fort Knox (17)	*	Baccalaureate**
St. Catharine College	St. Catharine (40)	180	Associate
Campbellsville College	Campbellsville (43)	674	Baccalaureate
Bellarmino College	Louisville (44)	2,095	Masters
Jefferson Community College	Louisville (44)	4,205	Associate
Spalding College	Louisville (44)	928	Masters
University of Louisville	Louisville (44)	19,156	Doctorate, M.D., D.M.D., J.D.
Lindsey Wilson College	Columbia (60)	393	Associate
Centre College	Danville (70)	766	Baccalaureate
Bowling Green Business College	Bowling Green (71)	275	Associate
Western Kentucky University	Bowling Green (71)	13,417	Masters, Specialist***
Kentucky State University	Frankfort (81)	2,180	Masters
Lexington Technical Institute	Lexington (84)	2,074	Associate
Transylvania University	Lexington (84)	810	Masters****
University of Kentucky	Lexington (84)	22,899	Doctorate, M.D., D.M.D., J.D.
Midway College	Midway (85)	328	Associate

*Enrollment is included in the total enrollment of the University of Kentucky.

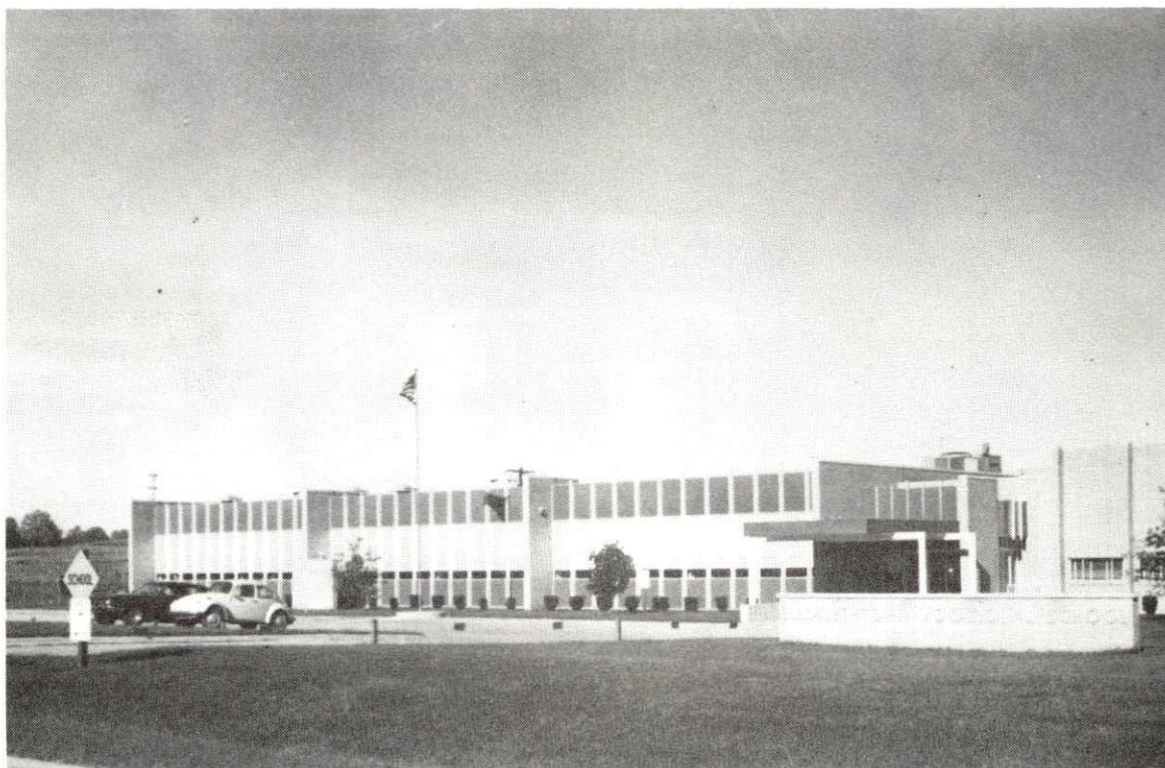
**A Masters Degree program is offered at the Fort Knox Military Base through the University of Southern California, Western Kentucky University, and Embry-Riddle Aeronautical University.

***Joint doctoral degree programs are offered in cooperation with the University of Kentucky, Lexington, and cooperative doctoral degree programs are offered with the University of Louisville.

****Courses in the masters degree program are taught on the Transylvania campus by faculty members of Xavier University of Cincinnati. The degree is issued by Xavier University.



ELIZABETHTOWN COMMUNITY COLLEGE



ELIZABETHTOWN STATE VOCATIONAL-TECHNICAL SCHOOL

Vocational Schools

Both the state vocational-technical schools and the area vocational education centers are operated by the Kentucky Department of Education. The state vocational-technical schools enroll persons full time who are at least 16 years of age and not in school. These students attend classes for six hours each day. The area vocational education centers are designed to accommodate high school students who are at least 15 years of age. These students attend vocational school for three hours each day. In Elizabethtown, the high school program and the adult program are both taught at the state vocational-technical school. The state vocational-technical schools and the area education centers offer evening courses to enable working adults to upgrade current job skills.

Nearest State School

Location	Elizabethtown State Vocational- Technical School
Curriculum	Elizabethtown Business and Office Clerical Consumer and Home Economics Commercial Foods Health and Personal Services Occupations Health Careers Industrial Education Appliance Repair Auto Mechanics Carpentry-Building Trades Commercial Heating and Air Conditioning Drafting Industrial Electricity Industrial Maintenance Machine Shop Radio and Television Repair Welding

Arrangements can be made to provide training in the specific production skills required by an industrial plant. Instruction may be conducted either in the vocational school or in the industrial plant, depending upon the desired arrangement and the availability of special equipment.

HEALTH

Local Medical Personnel

Physicians - 46

Dentists - 12 dentists, 3 orthodontists, 1 oral surgeon

Hospitals

General Hospital

Hardin Memorial Hospital

The Hardin Memorial Hospital, located in Elizabethtown, is a modern regional medical center and is presently serving a six county area. Twenty-four physicians have been attracted to Elizabethtown during the past three years with the first orthopedic surgeon joining the staff during the summer of 1980. Construction of a new wing has been completed bringing the total bed complement to 206.

General hospital facilities and services - 206 beds, four operating rooms, fracture room, cysto room, X-ray, nuclear medicine and ultrasound department, intensive care, automated laboratory, pharmacy, emergency room, eye surgery, pediatrics, respiratory therapy, delivery room, nursery, blood bank, physical therapy, social services, psychiatric services, EKG, EEG, accredited by the Joint Commission on Accreditation of Hospitals.

Medical staff - 63 physicians and dentists, 196 registered nurses, 29 graduate licensed practical nurses, two pathologists, three radiologists, two urologists, three anesthesiologists

Other Medical Facilities

North Central Comprehensive Care Center, Inc.

Regional Renal Dialysis Facility

Speech and Hearing Clinic

Approximately 18 laboratories

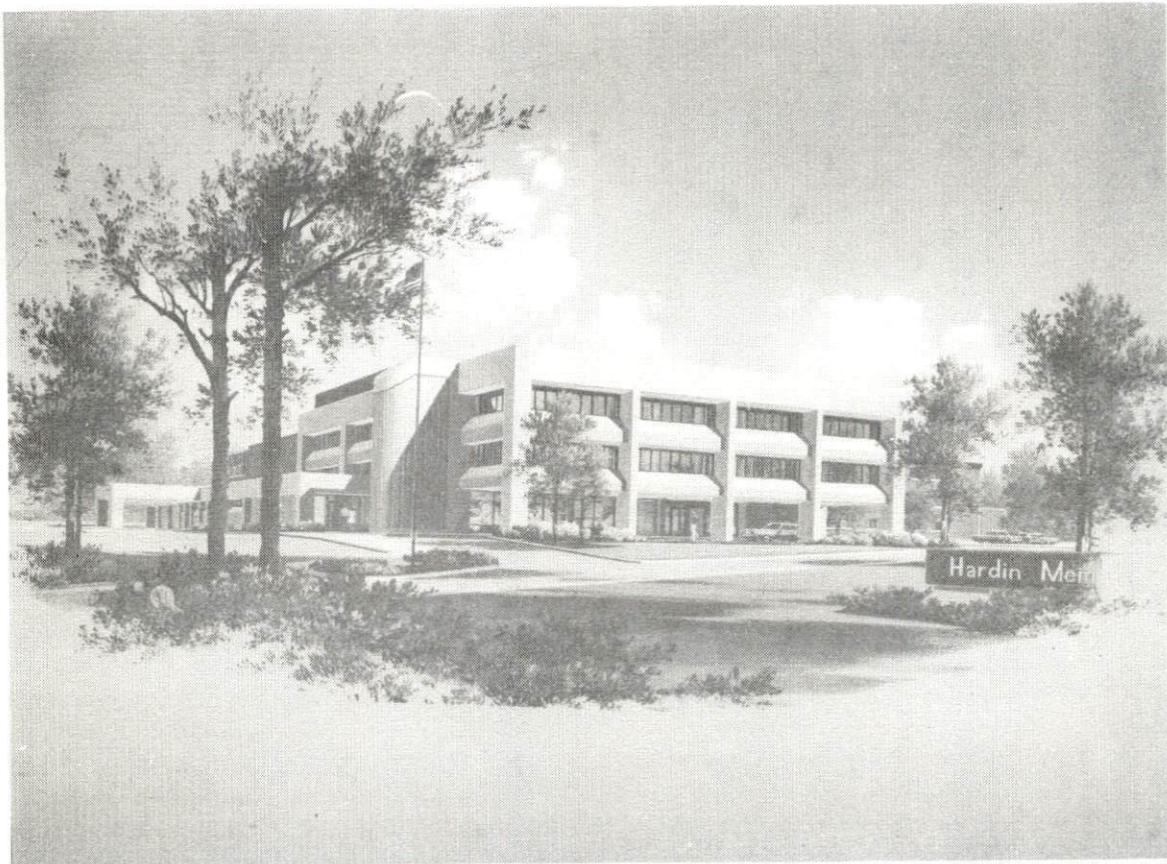
Ambulance Service

Name - Hardin County Ambulance Service (Stations in Elizabethtown, south Hardin County and north Hardin County)
Staff - 15 emergency medical technicians (full-time), eight emergency medical technicians (part-time)
Service - 24-hour, county-wide service (except for the city of West Point)
Equipment - Six modular-type ambulances

Public Health

Facility - Hardin County Health Department
Staff - One administrator, nine nurses, three sanitarians, one health officer, one dental hygienist, one nutritionist, one social workers, two speech audiologists, eight clerk typists, one custodian

Home Health Agency Staff - One nurse, one clerk, one home health aide, one speech therapist, one physical therapist



HARDIN MEMORIAL HOSPITAL

OTHER LOCAL FACILITIES

Communications

Telephone - General Telephone Company
Services - Standard

Telegraph - Western Union Telegraph
Services - Local office, telephone and messenger delivery;
mailgrams; international and telegram messages;
open 24 hours a day, seven days a week, and on
holidays

Postal - U.S. Post Office*
Class - First
Mail received - 4 times daily
Mail dispatched - 2 times daily

Newspapers -
Daily and circulation - The News-Enterprise - 13,196
Other papers
received from - Louisville, Radcliff, and Fort Knox, Kentucky

Radio - WIEL-AM, WKMO-FM, WQXE-FM
Stations received
from - Louisville, Radcliff, Hodgenville, and Leitchfield, Kentucky

Television -
Cable service
Reception from - Louisville, Bowling Green, and Lexington, Kentucky;
Nashville, Tennessee; Evansville, Indiana
Kentucky Educational
Television - Elizabethtown transmitter, WKZT 23

*The U.S. Post Office in Elizabethtown is a Sectional Center Facility, which involves working the mail for 56 post offices in an eight-county area. Trucks go out with the mail for these counties in the morning and return to Elizabethtown in the evening.

Library Services

Public library - Hardin County Public Library (Lincoln Trail System)

Size collection - 61,384 volumes

Circulation, 1979-80 - 165,143

Services - Bookmobile, children's story hour, records, pictures, tapes, microfilm, reader-printer, copying machine, special adult and children's programs, Dial-a-Story, audio-visual equipment for loan, films, film strips, reference and information service, Interlibrary Loan, library building is available for community programs

Public library - Elizabethtown Community College Media Center

Size collection - 25,500 volumes

Circulation, 1978-79 - 16,705

Special collection - Kentucky collection

Services - Magazines, films, art, records, record players, projector, pamphlets, newspapers, microfilm, video tape, archives, career center - equipped with film strips

Private library - Brown-Pusey House Library

Special collection - Historical, Genealogy materials

Religious Institutions

Number of churches - 40

Denominations - Africian Methodist Episcopal

Apostolic

Assembly of God

Baptist

Christian

Church of Christ

Church of God

Episcopal

Jehovah's Witnesses

Lutheran

Methodist

Nazarene

Presbyterian

Roman Catholic

Seventh Day Adventist

Wesleyan

Nearest Synagogues - Louisville, 44 miles north

Congregations - Adath Israel (reform)

Adath Jeshurun (conservative)

Anshei Sfard (orthodox)

Brith Sholom (reform)

Keneseth Israel (orthodox)

Financial Institutions

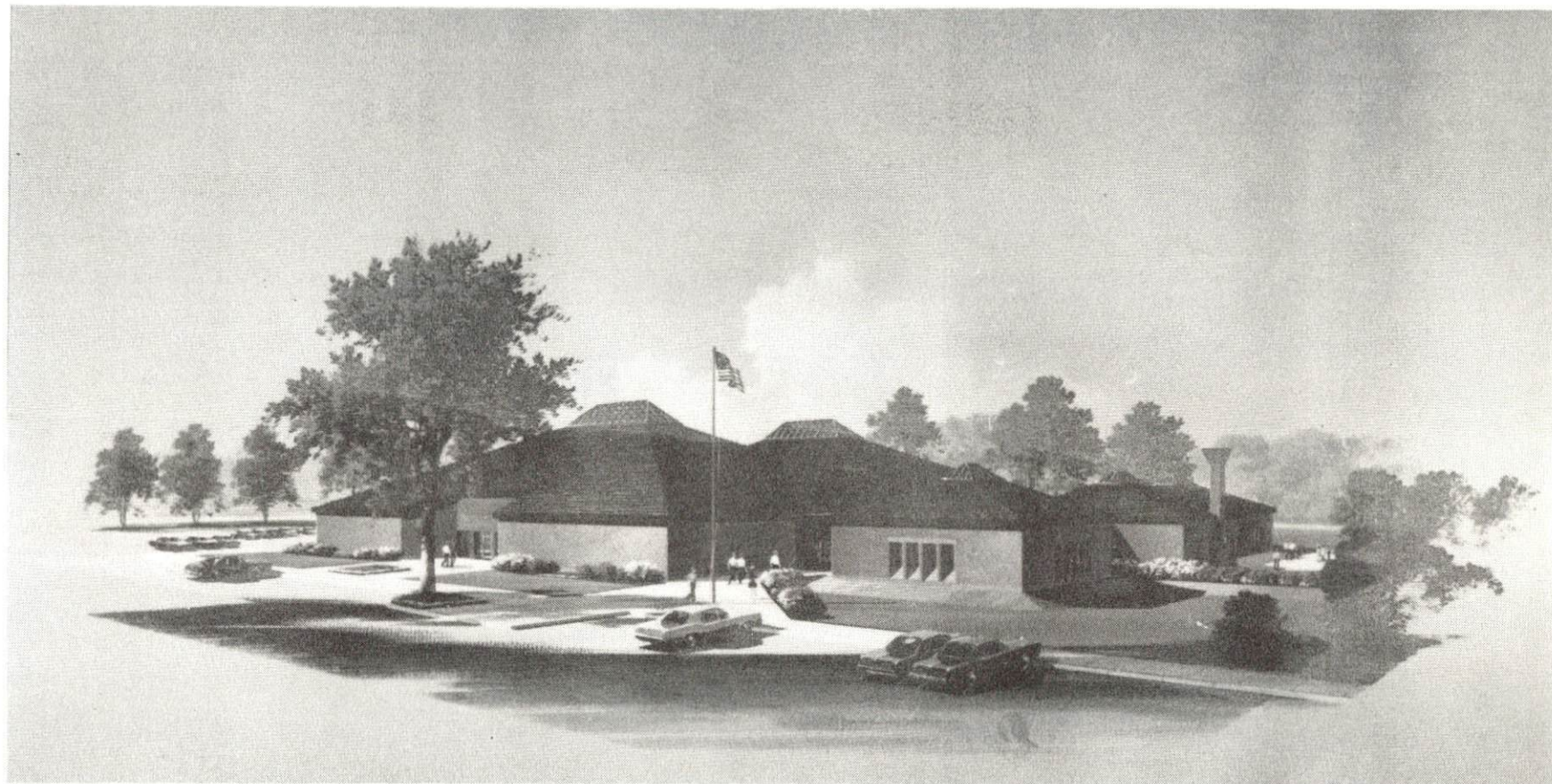
<u>Banks</u>	<u>Assets</u>	<u>Deposits</u>	<u>Statement Date</u>
Citizens Bank of Elizabethtown	\$ 47,193,157.02	\$ 41,996,966.26	6/30/80
Farmers Bank (Vine Grove)	7,856,128.63	6,720,245.11	12/31/80
First Hardin National Bank	107,234,173.00	94,336,585.00	6/30/80
Fort Knox National Bank (Fort Knox)	31,410,000.00	28,045,000.00	9/30/80
The Bank of North Hardin (Radcliff)	12,981,329.34	10,438,735.74	12/31/80
The Cecilian Bank	24,401,306.57	20,246,621.11	6/30/80
<u>Savings and Loan Associations</u>	<u>Assets</u>	<u>Savings Accounts</u>	<u>Statement Date</u>
First Federal Savings and Loan Association	\$114,988,840.40	\$ 98,577,117.26	6/30/80
Future Federal Savings and Loan Association	273,411,701.00	204,589,361.00	6/30/80

Hotels and Motels

Total number - 13
Total rooms - 904

Clubs and Organizations

Alcoholics Anonymous	Hardin County Environmental Council
Alcoholics Treatment Unit	Hardin County Fair Squares
American Field Service	Hardin County Heart Fund
American Legion	Hardin County Historical Society
American Legion Ladies	Hardin County Senior Citizens
Auxiliary	Hardin Memorial Hospital Auxiliary
American Red Cross	Helping Hand
Animal Control Center	Hub Town Twirlers
Arthritis Campaign	James R. Pritchard Community Center
Audubon Society	Jaycees
Boy Scouts of America	Junior Women's Club
Boys Ranch Home	Knights of Columbus
Business and Professional	League of Women Voters
Women's Club	Lincoln Trail Antique Auto Club
Cancer Society	Lions Club
Civil Defense	Lively Arts
Community Action Kitchen	March of Dimes
Community Education	Masonic Lodge
Comprehensive Care	Medical Society
Continuing Education	National Association of Retired
Democratic Women's Club	Federal Employees
Duplicate Bridge Club	National Secretaries Association
Elizabethtown-Hardin County	Opportunity Workshop
Ministerial Association	Optimist Club
Elizabethtown Outing Club	Overeaters Anonymous
Elizabethtown Recreation	Parents Encouraging Parents
Department	Parents Without Partners
Elizabethtown Rod and Gun Club	Paws & Claws Cat Club
Elizabethtown Women's Club	Real Estate Board
Family Counseling Service	Retired Live Wires
Fraternal Order of Police	Rotary Club
Garden Club	Saddle Club
Girl Scouts of the United	Shrine Club
States of America	Teenage Opportunity Programs in
Golden Crossroads Model T Club	Summer
Goodwill Industries	Weight Watchers
Handyman	Welcome Wagon
Hardin County Board of Realtors	Youth Theatre of Hardin County, Inc.



ELIZABETHTOWN COMMUNITY CENTER

RECREATION

Local

Three public parks provide Elizabethtown with a variety of outdoor activities. Freeman Lake Park offers a 120-acre lake for fishing and boating, picnic areas, grills, playground equipment, hiking trails, and four shelter houses. University Park, with eight acres, has 10 lighted tennis courts; two soccer fields; and facilities for volleyball, baseball, handball, softball, and picnicking. The 32-acre American Legion Park features a picnic area, four tennis courts, a soccer field, softball fields, two outdoor swimming pools and kiddie pool, and a par-3 golf course. Three mini-parks offer picnic areas and playground equipment. Greenbelt, an area for hiking, bicycling, and nature walking, extends approximately 16 miles.

The Elizabethtown Parks and Recreation Department offers supervised programs including youth baseball leagues; spring and fall soccer leagues; a swim team; an adult, mixed volleyball league; an adult, half-court basketball league; and a women's tennis league. Golf and tennis lessons are also taught by the Recreation Department.

The J. R. Pritchard Community Center was completed in August 1979. Features include a multi-use area with a seating capacity of 855 and banquet arrangements for 400 people; two meeting rooms with seating capacities of 100 each; a kitchen; stage facilities; a snack area; bathroom and shower facilities; two full-size basketball courts; handball and racquetball courts; an indoor tennis court; a weight room; and equipment for Ping-Pong, badminton, volleyball, and gymnastics.

Both the Severns Valley Baptist Church and the Memorial Methodist Church offer athletic facilities.

Local schools have facilities for track, football, and indoor swimming. Other recreational facilities include a private country club with a swimming pool and an 18-hole golf course; a public 9-hole, par-3 golf course; a semi-private golf club offering a 9-hole course, swimming pool, tennis courts, hiking trails and picnic tables; bowling facilities; and indoor and drive-in movie theaters.

Historical sites in Elizabethtown include the Lincoln Heritage House, built by Thomas Lincoln before his son's birth; the Governor Helm Mansion, an ante-bellum estate; and the Brown-Pusey House, the first inn and presently a community center. Other tourist attractions in or near Elizabethtown include General Custer Headquarters, The Patton Museum and U.S. Gold Depository at Fort Knox, and the Coca-Cola Bottling Company which offers art work, sculpture, Japanese landscaping, and a pool containing live, imported, brilliantly colored carp.

Year-round cultural events are sponsored by three local organizations. Additional programs are offered by the Elizabethtown Community College.

Area (Within 50 miles)

Abraham Lincoln Birthplace National Historic Site, located 15 miles southeast of Elizabethtown near Hodgenville, features the log cabin, which was the birthplace of Abraham Lincoln, enclosed within a granite memorial shrine. The grounds include 116 acres of the original Thomas Lincoln farm and a visitors' center with audio-visual programs and exhibits on the Lincoln family.

Otter Creek Park, approximately 25 miles northwest of Elizabethtown between Muldraugh and Brandenburg, is a 3,000-acre woodland area on the Ohio River. Facilities include rustic lodges and family cabins available by reservation; a 165-site campground; a visitors center; picnic areas; hiking trails; a boat ramp; tennis, basketball, and volleyball courts; a ballfield; and a playground.

Bernheim Forest, 25 miles north of Elizabethtown, is a privately operated 10,000-acre sanctuary with a national forest, nature center, and museum.

My Old Kentucky Home State Park, 26 miles east of Elizabethtown in Bardstown, portrays an image of the South's gentle and leisurely home life before the Civil War. The restored Georgian Colonial mansion is where composer Stephen Foster visited and where he was inspired to write "My Old Kentucky Home". One of the nation's most successful outdoor dramas, "The Stephen Foster Story", is presented in the park's amphitheatre mid-June until Labor Day. The park also offers a 40-site campground, a gift shop, a 9-hole golf course and pro shop, a picnic area, and planned recreation.

Nolin River Lake, approximately 40 miles south of Elizabethtown, is just north of Mammoth Cave National Park. The lake has a surface area of 5,800 acres and offers facilities for camping, boating, and fishing.

Mammoth Cave National Park is located 42 miles south of Elizabethtown near Cave City. Beneath 51,000 park acres, Mammoth Cave is among the major tourist attractions of all times. It is one of the largest cave networks ever discovered, with at least 150 miles charted on five levels and vast areas not yet mapped. Some famous sights are Snowball Dining Room (267 feet below surface), Frozen Niagara, Crystal Lake, and Bottomless Pit. The park also features scenic boat trips on the Green River and nature and hiking trails. Park accommodations include a hotel with distinctive gift shops featuring native Kentucky and Southern Highland handicrafts, a motor lodge, hotel cottages, woodland cottages, and a hotel annex with budget accommodations and craft shop featuring live exhibits of broom making and weaving. Other park facilities include the hotel dining room and coffee shop, a service center, group meeting facilities, a campground, a picnic area, and tennis and shuffleboard courts.

Noteworthy for its spaciousness and perfect grooming, Rough River Dam State Resort Park at Falls of Rough is 42 miles west of Elizabethtown. The 377-acre park on Rough River Lake has a 40-room lodge with a dining room, a coffee shop, a gift shop, and a meeting room. Cottages and camping sites are also available. Recreational facilities include a launching ramp, a dock with open and covered slips, fishing and pleasure boat rentals, a 9-hole golf course, a swimming pool, a sand beach with a bathhouse complex, three tennis courts, an archery range, hiking trails, picnic and playground areas, and planned recreation. Cruise boat excursions on Rough River Lake are available on the "Lady of the Lake".

Lincoln Homestead State Park, 43 miles east of Elizabethtown near Springfield, is a 153-acre park on the original land settled by Abraham Lincoln's family. The actual building in which Nancy Hanks, mother of President Lincoln, lived during her courtship with Thomas Lincoln is preserved here, as well as a replica of the 1782 cabin where Lincoln lived as a boy. The park also has a museum, a gift shop, a picnic area, and an 18-hole golf course.

E. P. "Tom" Sawyer State Park, 44 miles north of Elizabethtown, is a 400-acre park located in Louisville. Recreational facilities include an outdoor Olympic-size pool, a bathhouse, 12 lighted tennis courts, a picnic area, an archery range, and soccer fields. Planned recreation and a playground are offered year-round.

Green River Lake State Park near Campbellsville, approximately 50 miles southeast of Elizabethtown, is made up of 1,300 acres surrounding an 8,200-acre lake. The park is open all year-round and offers 96 campsites, a beach, boat docks, fishing, swimming and a picnic area.

Proximity to Louisville provides the area with entertainment such as the Kentucky Derby, the Kentucky State Fair, the Louisville Zoological Gardens, the J. B. Speed Art Museum, Actors' Theatre, Kentucky Opera Association, the Louisville Ballet Company, the Louisville Orchestra, and harness racing.