

1987

## Industrial Resources: Whitley County - Corbin

Kentucky Library Research Collections  
Western Kentucky University, [spcol@wku.edu](mailto:spcol@wku.edu)

Follow this and additional works at: [https://digitalcommons.wku.edu/whitley\\_cty](https://digitalcommons.wku.edu/whitley_cty)

 Part of the [Business Administration, Management, and Operations Commons](#), [Growth and Development Commons](#), and the [Infrastructure Commons](#)

---

### Recommended Citation

Kentucky Library Research Collections, "Industrial Resources: Whitley County - Corbin" (1987). *Whitley County*. Paper 5.  
[https://digitalcommons.wku.edu/whitley\\_cty/5](https://digitalcommons.wku.edu/whitley_cty/5)

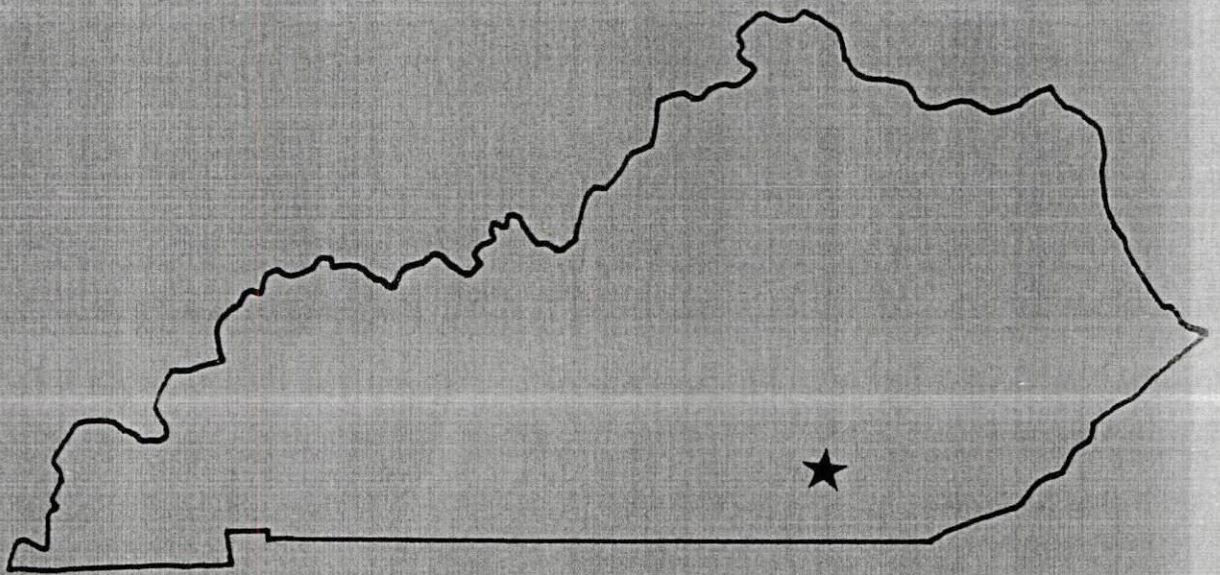
This Report is brought to you for free and open access by TopSCHOLAR®. It has been accepted for inclusion in Whitley County by an authorized administrator of TopSCHOLAR®. For more information, please contact [topscholar@wku.edu](mailto:topscholar@wku.edu).

IR  
513 Whitley County, Ky.

# RESOURCES FOR ECONOMIC DEVELOPMENT

---

## Corbin

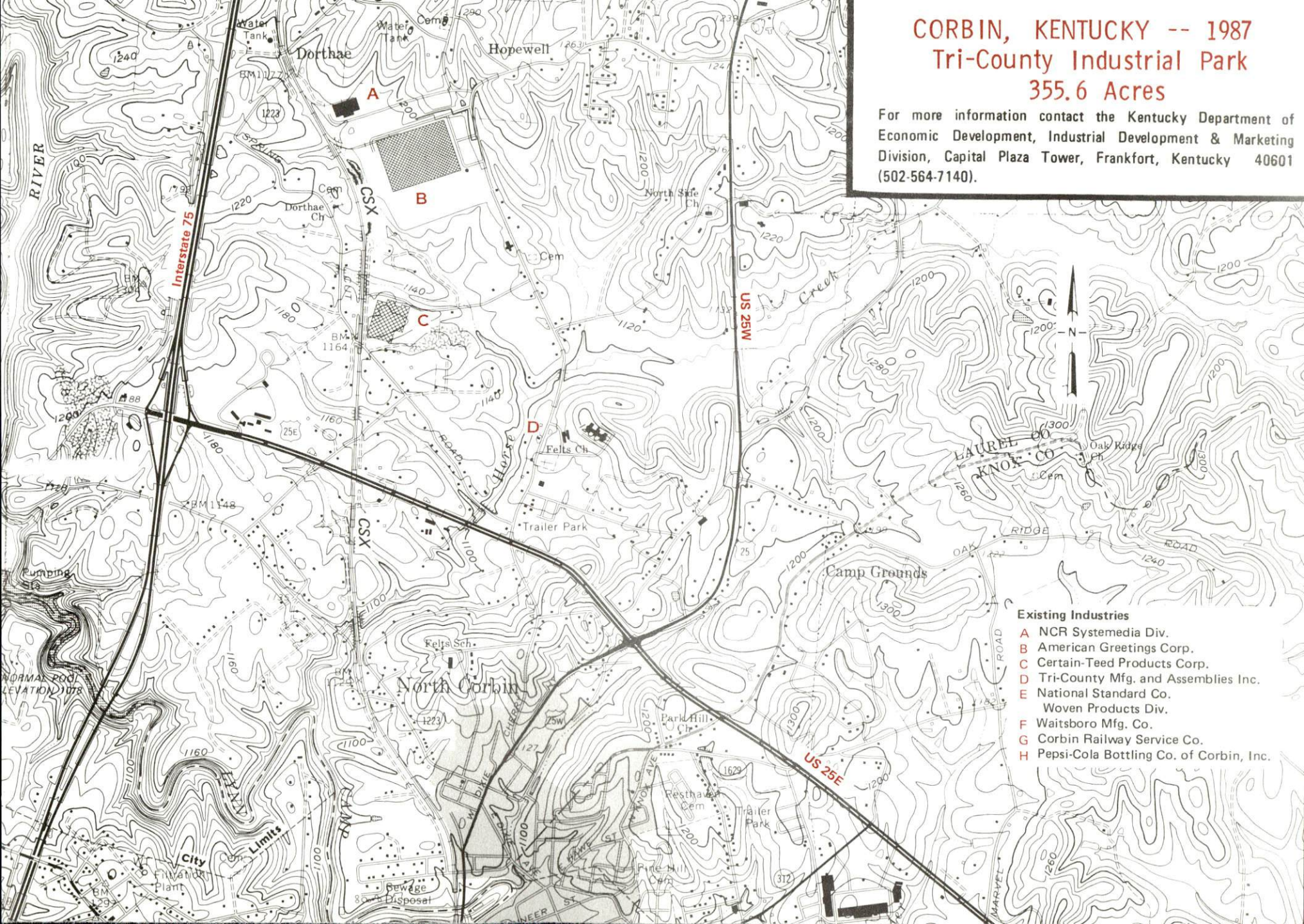


---

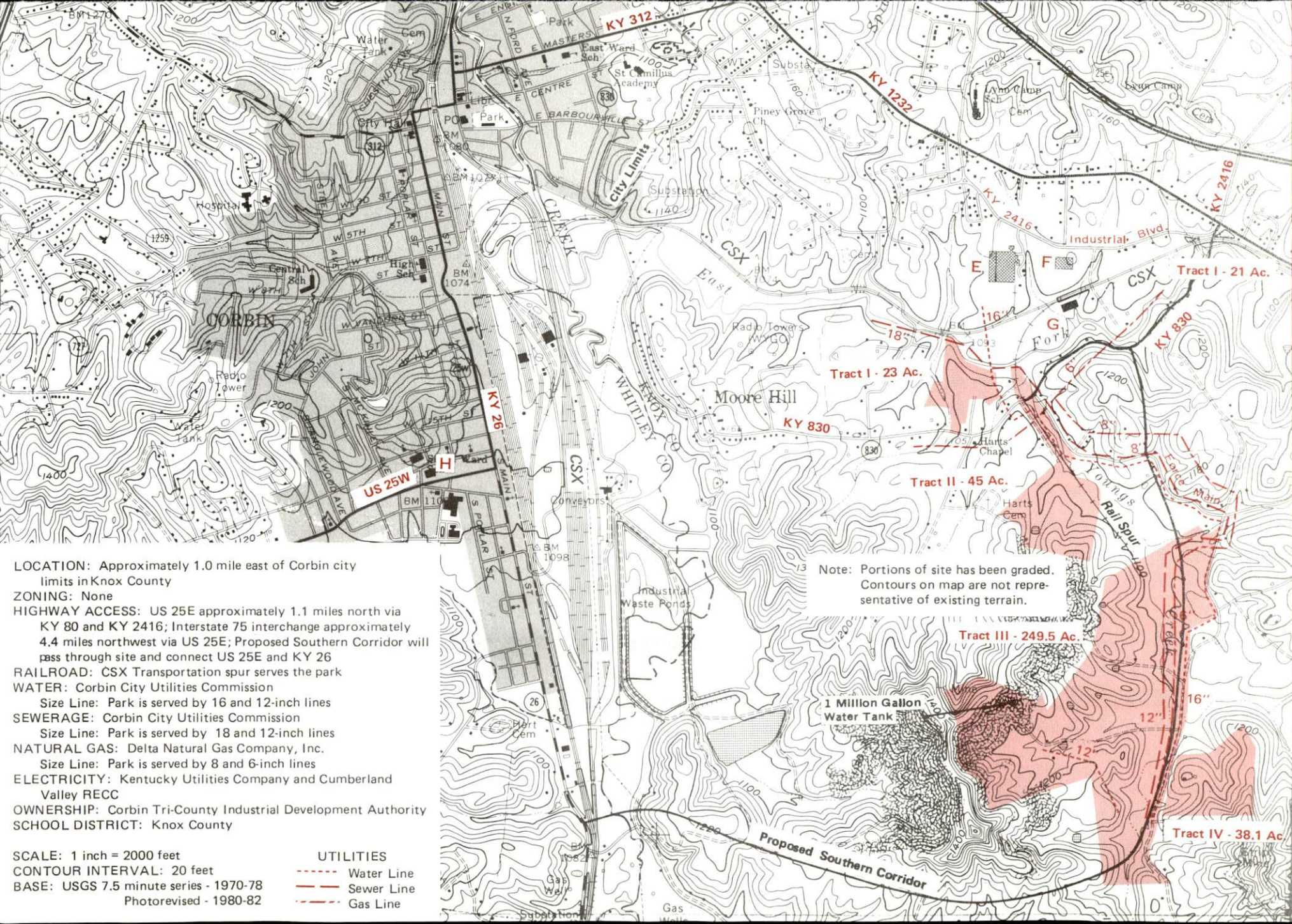
**KENTUCKY**  
The business environment is right.

# CORBIN, KENTUCKY -- 1987 Tri-County Industrial Park 355.6 Acres

For more information contact the Kentucky Department of Economic Development, Industrial Development & Marketing Division, Capital Plaza Tower, Frankfort, Kentucky 40601 (502-564-7140).



- Existing Industries**
- A NCR Systemedia Div.
  - B American Greetings Corp.
  - C Certain-Teed Products Corp.
  - D Tri-County Mfg. and Assemblies Inc.
  - E National Standard Co. Woven Products Div.
  - F Waitsboro Mfg. Co.
  - G Corbin Railway Service Co.
  - H Pepsi-Cola Bottling Co. of Corbin, Inc.



**LOCATION:** Approximately 1.0 mile east of Corbin city limits in Knox County

**ZONING:** None

**HIGHWAY ACCESS:** US 25E approximately 1.1 miles north via KY 80 and KY 2416; Interstate 75 interchange approximately 4.4 miles northwest via US 25E; Proposed Southern Corridor will pass through site and connect US 25E and KY 26

**RAILROAD:** CSX Transportation spur serves the park

**WATER:** Corbin City Utilities Commission  
 Size Line: Park is served by 16 and 12-inch lines

**SEWERAGE:** Corbin City Utilities Commission  
 Size Line: Park is served by 18 and 12-inch lines

**NATURAL GAS:** Delta Natural Gas Company, Inc.  
 Size Line: Park is served by 8 and 6-inch lines

**ELECTRICITY:** Kentucky Utilities Company and Cumberland Valley RECC

**OWNERSHIP:** Corbin Tri-County Industrial Development Authority

**SCHOOL DISTRICT:** Knox County

**SCALE:** 1 inch = 2000 feet

**CONTOUR INTERVAL:** 20 feet

**BASE:** USGS 7.5 minute series - 1970-78  
 Photorevised - 1980-82

**UTILITIES**

- - - - - Water Line
- - - - - Sewer Line
- - - - - Gas Line

Note: Portions of site has been graded. Contours on map are not representative of existing terrain.

1 Million Gallon Water Tank

Proposed Southern Corridor

RESOURCES FOR ECONOMIC DEVELOPMENT

CORBIN, KENTUCKY

Prepared by  
The Kentucky Department of Economic Development  
Division of Research and Planning  
in cooperation with  
The Greater Corbin Chamber of Commerce  
and  
The Corbin Industrial Commission  
and  
Corbin Tri-County Development Authority

1987

Program manager - Andrew Dennis; research - Keith Roberts; clerical - Bobbi Graves; graphics - Tony Cecconi, Robert Owens, Pat Coleman; cartography - Site Evaluation Branch, Division of Industrial Development and Marketing. Cost of printing paid from state funds.

## TABLE OF CONTENTS

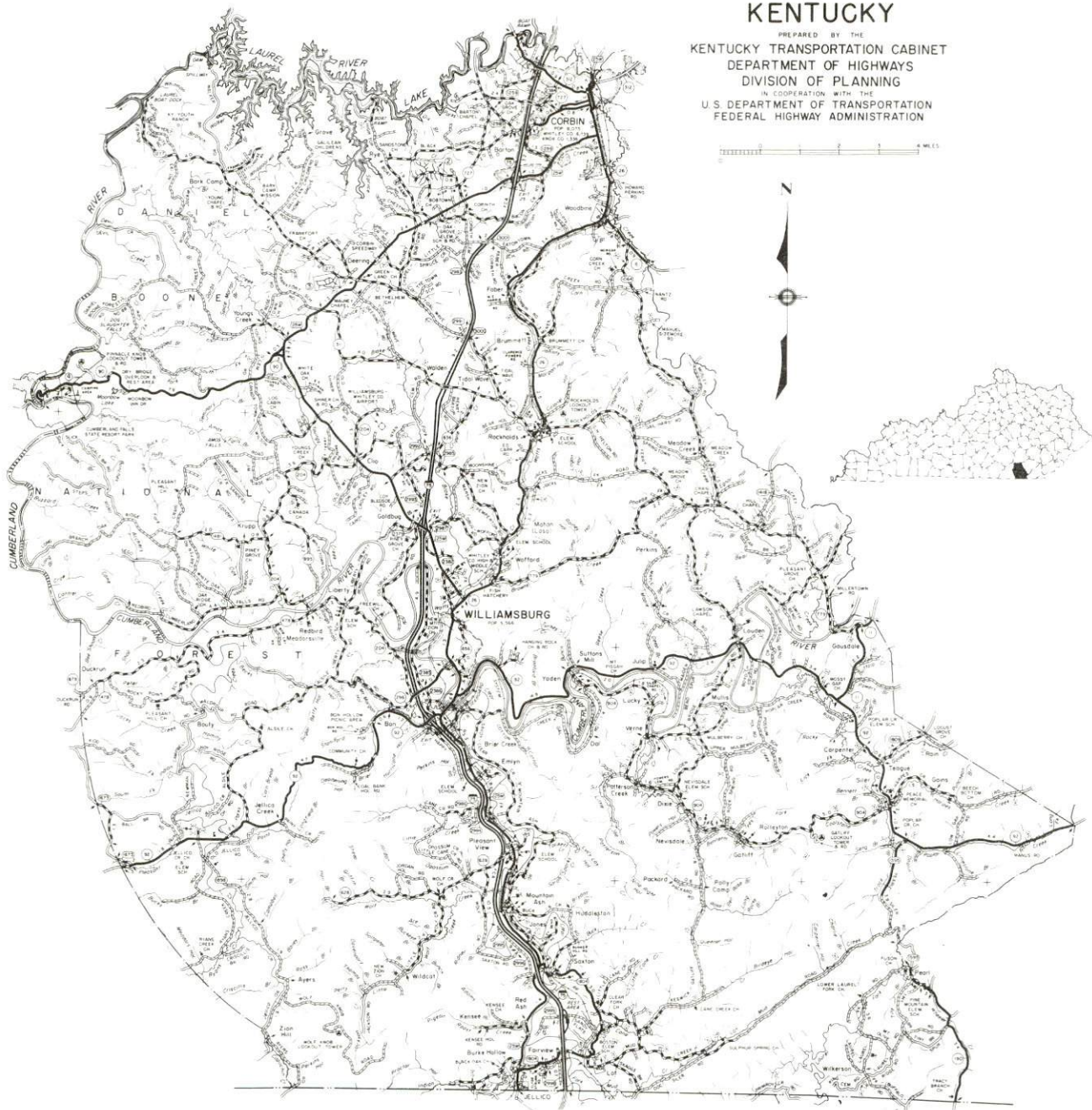
<u>Chapter</u>	<u>Page</u>
INDUSTRIAL SITES . . . . .	i
CORBIN, KENTUCKY - A RESOURCE PROFILE . . . . .	1
THE LABOR MARKET AREA . . . . .	2
Population . . . . .	2
Population Projections . . . . .	2
Labor Force Characteristics of Residents, 1986 . . . . .	3
Selected Components of Nonagricultural Employment, by Place of Work, 1985 . . . . .	3
Per Capita Personal Income . . . . .	4
Estimated Male Labor Supply . . . . .	5
Estimated Female Labor Supply . . . . .	5
Average Weekly Wages by Industry, by Place of Work, 1985 . . . . .	6
EXISTING INDUSTRY . . . . .	8
Corbin Manufacturing Firms, Their Products and Employment . . . . .	8
Major Non-Manufacturing Employers . . . . .	10
Labor Organizations in Manufacturing Firms . . . . .	10
Selected Industrial Services . . . . .	11
TRANSPORTATION . . . . .	12
Rail . . . . .	12
Highways . . . . .	12
Truck Service . . . . .	12
Air . . . . .	13
Air Express Service . . . . .	14
Water . . . . .	14
POWER AND FUEL . . . . .	15
Electricity . . . . .	15
Natural Gas . . . . .	16
Other Fuels . . . . .	16
WATER AND SEWERAGE . . . . .	17
Public Water Supply . . . . .	17
Sewerage . . . . .	18
CLIMATE . . . . .	20

<u>Chapter</u>	<u>Page</u>
LOCAL GOVERNMENT . . . . .	21
Structure . . . . .	21
Planning and Zoning . . . . .	21
Local Fees and Licenses . . . . .	21
State and Local Property Taxes . . . . .	22
Combined State and Local Rates Per \$100 Valuation, 1986 . . . . .	22
Safety . . . . .	23
Police . . . . .	23
Fire . . . . .	23
Rescue Service . . . . .	24
Refuse Collection and Disposal . . . . .	24
EDUCATION . . . . .	25
Public Schools . . . . .	25
Nonpublic Schools . . . . .	25
Area Colleges and Universities . . . . .	26
Vocational Schools . . . . .	27
HEALTH . . . . .	29
Local Medical Personnel . . . . .	29
Hospitals . . . . .	29
Other Medical Facilities . . . . .	29
Ambulance Service . . . . .	29
OTHER LOCAL FACILITIES . . . . .	30
Communications . . . . .	30
Library Services . . . . .	30
Religious Institutions . . . . .	30
Financial Institutions . . . . .	31
Hotels and Motels . . . . .	31
Clubs and Organizations . . . . .	32
RECREATION . . . . .	33
COMMUNITY IMPROVEMENTS . . . . .	36



1986 EDITION  
GENERAL HIGHWAY MAP  
**WHITLEY COUNTY**  
KENTUCKY

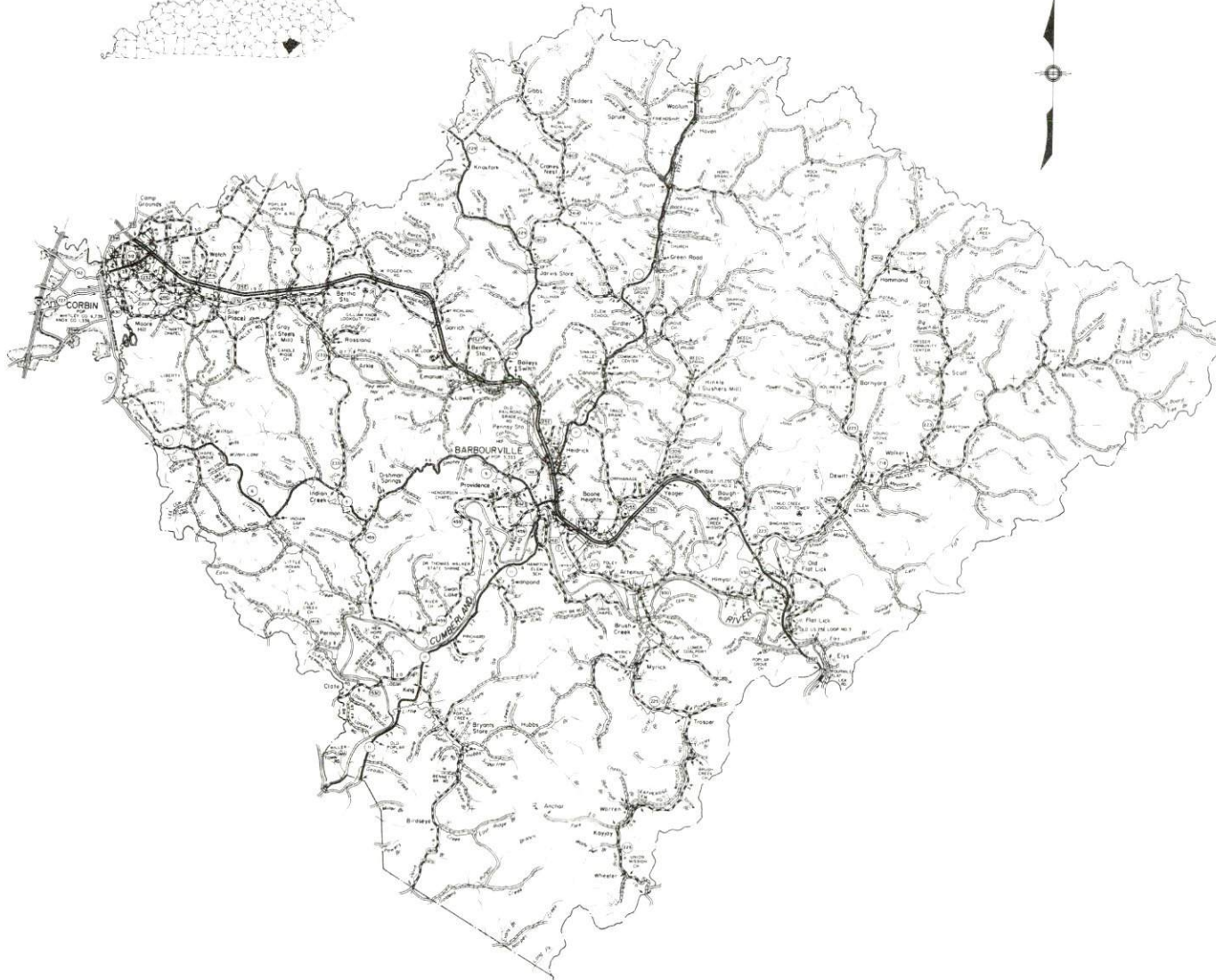
PREPARED BY THE  
KENTUCKY TRANSPORTATION CABINET  
DEPARTMENT OF HIGHWAYS  
DIVISION OF PLANNING  
IN COOPERATION WITH THE  
U.S. DEPARTMENT OF TRANSPORTATION  
FEDERAL HIGHWAY ADMINISTRATION



1986 EDITION  
GENERAL HIGHWAY MAP  
**KNOX COUNTY**  
KENTUCKY

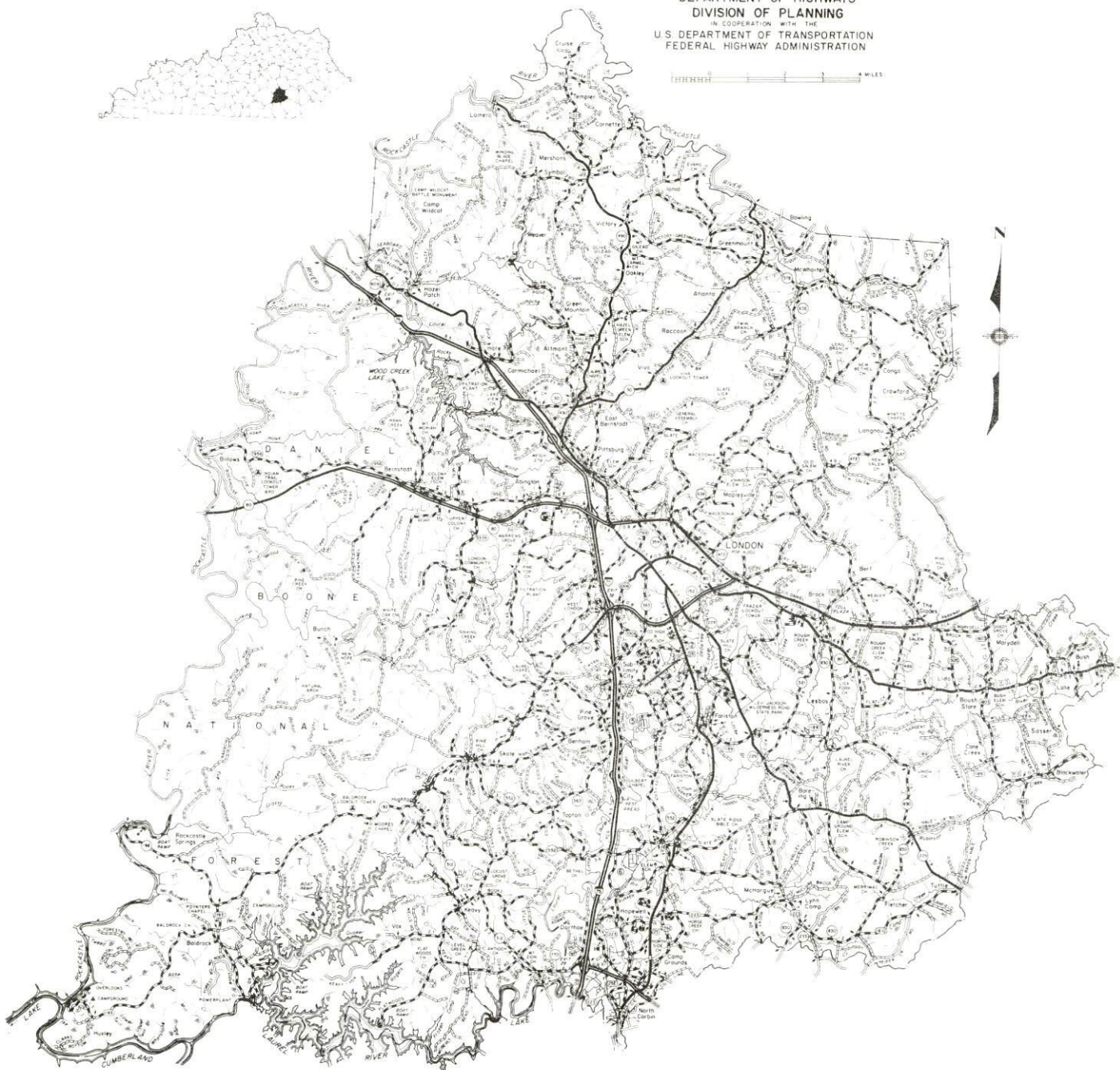
PREPARED BY THE  
KENTUCKY TRANSPORTATION CABINET  
DEPARTMENT OF HIGHWAYS  
DIVISION OF PLANNING  
IN COOPERATION WITH THE  
U.S. DEPARTMENT OF TRANSPORTATION  
FEDERAL HIGHWAY ADMINISTRATION

0 1 2 3 4 5 6 7 8 9 10 MILES



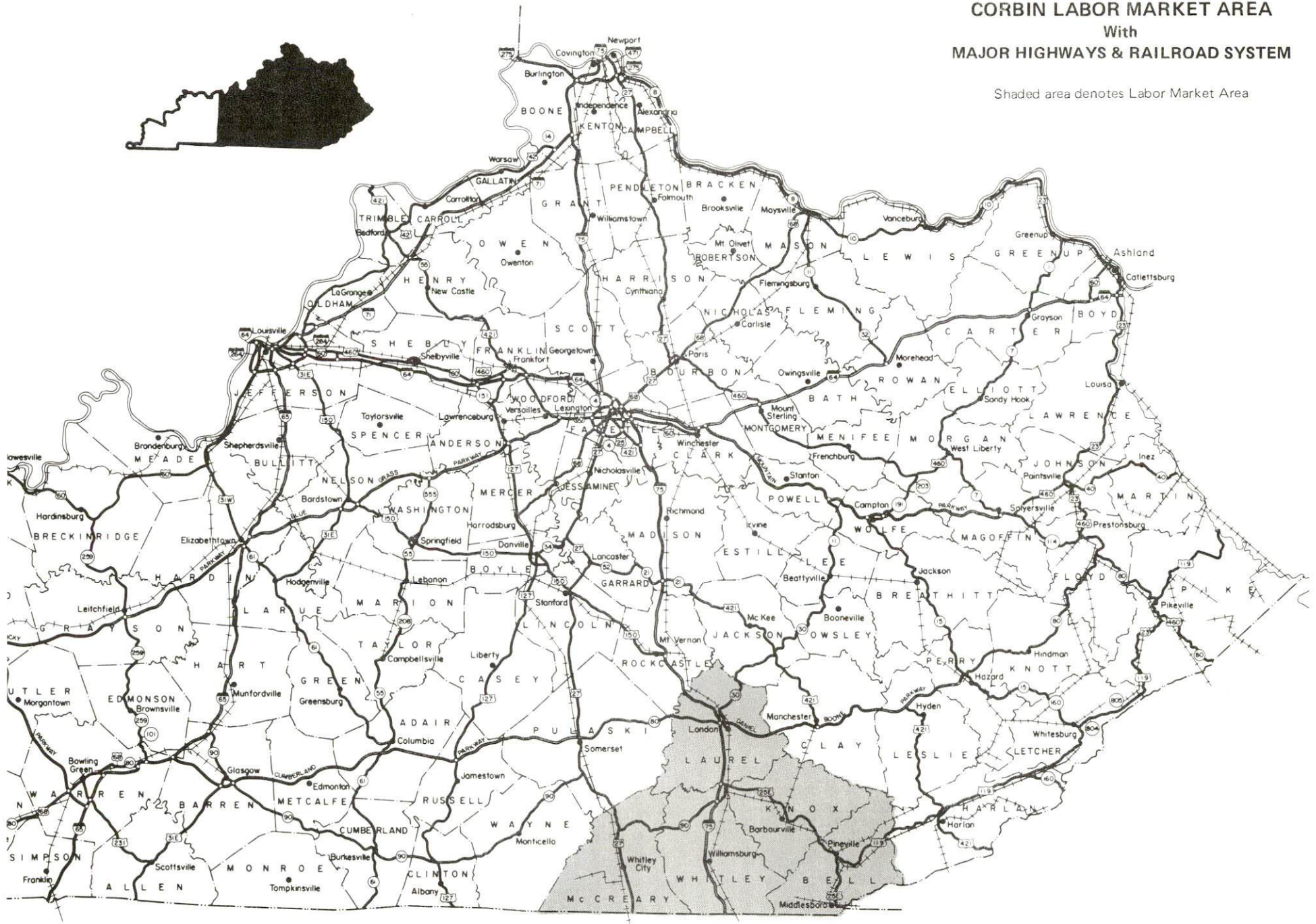
1986 EDITION  
GENERAL HIGHWAY MAP  
**LAUREL COUNTY**  
KENTUCKY

PREPARED BY THE  
KENTUCKY TRANSPORTATION CABINET  
DEPARTMENT OF HIGHWAYS  
DIVISION OF PLANNING  
IN COOPERATION WITH THE  
U.S. DEPARTMENT OF TRANSPORTATION  
FEDERAL HIGHWAY ADMINISTRATION



# CORBIN LABOR MARKET AREA With MAJOR HIGHWAYS & RAILROAD SYSTEM

Shaded area denotes Labor Market Area



## CORBIN, KENTUCKY - A RESOURCE PROFILE

Corbin is located in southeastern Kentucky near the eastern edge of the Daniel Boone National Forest. The city is uniquely situated on the boundaries of Whitley, Knox, and Laurel Counties. Corbin is located 88 miles south of Lexington, Kentucky; 84 miles north of Knoxville, Tennessee; and 166 miles south of Cincinnati, Ohio. In 1984, Corbin had an estimated population of 8,318 persons.

While Corbin is incorporated in both Whitley and Knox Counties, the majority of businesses and population are located in Whitley County. In 1985, Whitley County had an estimated population of 35,520 persons.

**The Economic Framework** - The total number of Whitley County residents employed in 1986 averaged 10,190. In 1985, manufacturing firms in the county reported 1,200 employees; wholesale and retail trade provided 2,460 jobs; 1,830 people were employed in service occupations; state and local government accounted for 1,240 employees; contract construction firms provided 315 jobs; and 855 people were employed by mining and quarrying operations.

**Labor Supply** - There is a current estimated labor supply of 18,740 men and 21,020 women available for industrial jobs in the labor market area. In addition, from 1987 through 1991, 10,000 young men and 9,210 young women in the area will become 18 years of age and potentially available for industrial jobs.

**Transportation** - CSX Transportation provides main line rail service to Corbin. Major highways serving the city are Interstate 75, and U.S. Highways 25, 25E, and 25W. All are "AAA"-rated trucking highways. Of the fifteen trucking companies which provide interstate and/or intrastate service to Corbin, four maintain local terminals. The London-Corbin Airport (Magee Field), 11 miles north of Corbin, has a 6,000-foot paved runway. Scheduled commercial airline service is available at Bluegrass Airport near Lexington, 93 miles north; and at McGhee Tyson Airport near Knoxville, 96 miles south of Corbin.

**Power and Fuel** - Electric power is provided to Corbin by the Corbin City Utilities Commission. Whitley County is provided electric power by the Kentucky Utilities Company and the Cumberland Valley Rural Electric Cooperative Corporation. Natural Gas service is provided to Corbin by the Delta Natural Gas Company, Inc. Four distributors of propane and three fuel oil dealers serve Corbin.

**Education** - Primary and secondary education is provided by the Corbin Independent School System and the Whitley County School System. The Corbin Independent School System is accredited by the Southern Association of Colleges and Schools. One non-public school system operates in Corbin. Nine colleges and universities are located within 75 miles of Corbin. Vocational training is available locally at the Corbin Area Vocational Education Center. The Laurel County State Vocational-Technical School in London, 14 miles north, offers training in 14 course areas.

## LABOR MARKET STATISTICS

The Corbin Labor Market Area includes Whitley County and the adjoining Kentucky counties of Bell, Knox, Laurel and McCreary. The Corbin Labor Market Area also encompasses the Tennessee counties of Campbell and Claiborne.

### POPULATION

Area	POPULATION			Percent Nonwhite
	1985*	1980	1970	1980
Corbin	8,318	8,075	7,474	0.5
Labor Market Area	158,309	152,581	118,889	-
Whitley County	35,520	33,396	24,145	0.9
Bell County	34,304	34,330	31,121	2.8
Knox County	30,218	30,239	23,689	1.3
Laurel County	41,772	38,982	27,386	1.0
McCreary County	16,495	15,634	12,548	1.7

\* Population estimates. City estimates are for 1984.

Note: The 1980 city counts of population by race are provisional.

Sources: U.S. Department of Commerce, Bureau of the Census, 1980 Census of Population, Number of Inhabitants. University of Louisville, Urban Studies Center, Population Unit, October 1985; Kentucky Population Research Notes, Issue Number One, May 1985.

### POPULATION PROJECTIONS

Area	1990	1995	2000	2010
Labor Market Area	168,993	178,626	186,677	199,876
Whitley County	38,589	41,361	43,653	47,559
Bell County	35,305	36,221	36,995	38,083
Knox County	32,529	34,480	36,138	38,833
Laurel County	45,956	49,501	52,404	57,299
McCreary County	16,614	17,063	17,487	18,102

Source: University of Louisville, Urban Studies Center, Population Research Unit, How Many Kentuckians: Population Forecasts, 1980-2020, the 1986 Edition, Spring 1986.

LABOR FORCE CHARACTERISTICS OF RESIDENTS, 1986

	Whitley County	Labor Market Area*
Civilian Labor Force	11,853	54,319
Employment	10,190	47,343
Unemployment	1,663	6,976
Rate of Unemployment (%)	14.0	12.8

\* Whitley County and the four adjoining Kentucky counties.

Source: Kentucky Cabinet for Human Resources, Kentucky Labor Force Estimates, Annual Averages, 1986.

SELECTED COMPONENTS OF NONAGRICULTURAL EMPLOYMENT  
BY PLACE OF WORK, 1985

	Whitley County	Labor Market Area*
All Industries (total)	8,541	37,915
Manufacturing	1,202	7,446
Wholesale & Retail Trade	2,461	10,250
Services	1,828	6,410
State/Local Government	1,237	5,505
Contract Construction	315	1,737
Mining & Quarrying	855	3,786

\* Whitley County and the four adjoining Kentucky counties.

Note: Excludes domestic workers, railway workers, certain nonprofit corporations, majority of federal government workers, and self-employed workers.

Source: Kentucky Cabinet for Human Resources, Average Monthly Workers Covered by Kentucky Unemployment Insurance Law, 1985.

PER CAPITA PERSONAL INCOME

<u>Area</u>	<u>1980</u>	<u>1984</u>	<u>Percent Change</u>
Whitley County	\$ 6,572	\$ 8,246	25.5
Labor Market Area* Range	\$4,066 - 6,572	\$4,852 - 8,246	-
Kentucky	7,644	10,232	33.9
U.S.	9,494	12,772	34.5

\* Whitley County and the four adjoining Kentucky counties.

Sources: U.S. Department of Commerce, Bureau of Economic Analysis.  
Kentucky Economic Information System, June 1986.



ESTIMATED MALE LABOR SUPPLY  
CORBIN LABOR MARKET AREA

Area	Current			Not in Labor Force	Future
	Total Male	Unemployed	Under- employed		Becoming 18 years of age 1987 thru 1991
Labor Market Area*	18,742	-	-	-	10,000
Whitley	4,320	1,038	938	2,344	1,458
Bell	3,823	1,178	709	1,936	1,641
Knox	3,115	606	599	1,910	1,509
Laurel	2,760	1,041	980	739	1,887
McCreary	2,502	505	440	1,557	784
Campbell (Tenn)	1,498	-	-	-	1,630
Claiborne (Tenn)	724	-	-	-	1,091

ESTIMATED FEMALE LABOR SUPPLY  
CORBIN LABOR MARKET AREA

Area	Current			Not in Labor Force	Future
	Total Female	Unemployed	Under- employed		Becoming 18 years of age 1987 thru 1991
Labor Market Area*	21,020	-	-	-	9,211
Whitley	4,538	625	902	3,011	1,344
Bell	4,588	454	487	3,647	1,565
Knox	3,741	421	536	2,784	1,432
Laurel	4,276	790	886	2,600	1,626
McCreary	2,597	318	306	1,973	785
Campbell (Tenn)	802	-	-	-	1,482
Claiborne (Tenn)	478	-	-	-	977

\* Additional workers may be drawn from other nearby counties.

**Note:** Unemployed - persons unemployed and actively seeking work; Underemployed - persons employed but working only 14 to 26 weeks per year; Not in Labor Force - represents the number of persons who would enter the labor force if suitable employment were available (based on the assumption that persons in Kentucky would like to participate in the labor force in the same proportion that they do nationally).

**Sources:** Kentucky Cabinet for Human Resources, Kentucky Labor Supply Estimates by County, 1986. Kentucky Department of Economic Development, Future Labor Supply Becoming 18 Years of Age, 1987 thru 1991.

AVERAGE WEEKLY WAGES BY INDUSTRY  
BY PLACE OF WORK, 1985

	<u>Whitley County</u>	<u>Bell County</u>	<u>Knox County</u>
All Industries	\$266.08	\$325.59	\$252.46
Mining & Quarrying	388.03	569.22	345.71
Contract Construction	301.28	315.47	321.94
Manufacturing	268.53	289.30	319.31
Transportation, Communications & Public Utilities	298.57	420.20	353.66
Wholesale & Retail Trade	225.08	197.08	192.32
Finance, Insurance & Real Estate	253.30	362.42	256.92
Services	254.70	270.89	185.83
State/Local Government	268.23	308.43	241.00
Other	254.29	255.61	191.61
	<u>Laurel County</u>	<u>McCreary County</u>	
All Industries	\$286.17	\$214.70	
Mining & Quarrying	437.28	417.68	
Contract Construction	403.66	276.85	
Manufacturing	304.80	179.95	
Transportation, Communications & Public Utilities	384.87	291.38	
Wholesale & Retail Trade	229.06	148.90	
Finance, Insurance & Real Estate	276.17	360.22	
Services	221.71	187.42	
State/Local Government	318.73	238.14	
Other	208.24	*	

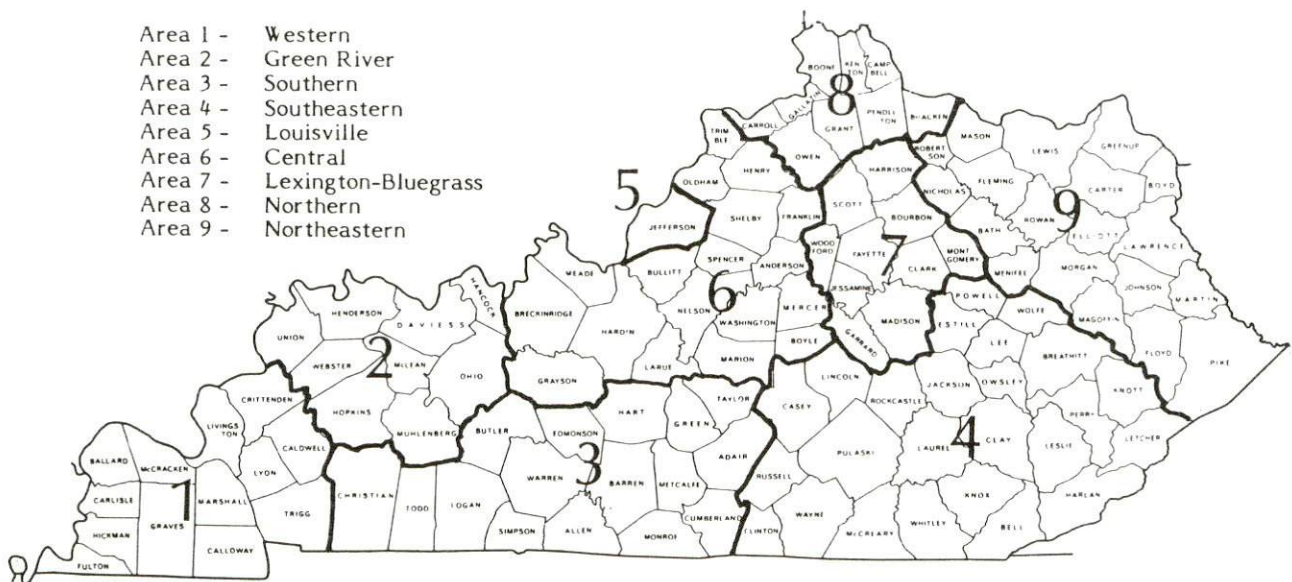
\* Not disclosed.

Note: The average weekly wage for each category includes the salaries and wages of all persons working for that type business. For example, the manufacturing category includes both production workers and administrative personnel. Excludes domestic workers, railway workers, certain nonprofit corporations, majority of federal government workers, and self-employed workers.

Source: Kentucky Cabinet for Human Resources, Average Weekly Wages of Workers Covered by Kentucky Unemployment Insurance Law, 1985.

Occupational wage rates for specific industries are usually not available to most government agencies, and wage data furnished to state employment agencies by individual industrial employers are protected from disclosure by federal law. The most reliable up-to-date wage information can be obtained by direct contact with local employers.

Associated Industries of Kentucky, a voluntary organization of Kentucky businesses, regularly collects occupational wage rates and fringe benefits data from participating member firms. Data are compiled for over 127 clearly defined office, production, and service occupations. Tabulations are published for nine geographical areas of Kentucky, as shown on the map below. It should be noted that the data may be weighted by the preponderance of firms in the larger cities and may be somewhat higher than the rates paid in the smaller communities. Data from these tabulations are available, upon request, from the Kentucky Department of Economic Development, Frankfort, Kentucky 40601.



Associated Industries of Kentucky Area Wage Surveys

EXISTING INDUSTRY

CORBIN MANUFACTURING FIRMS,  
THEIR PRODUCTS AND EMPLOYMENT

Firm (Establishment date)	Product	Employment			Labor Unions
		Total	Male	Female	
American Greetings Corporation (1967)	Gift wrapping paper, napkins, ribbon, greeting cards	1,000	400	600	Teamsters*
Allen Campbell Meats (1982)	Slaughtering, beef & pork, pork sausage	3	3	-	
Certain-Teed Products Corporation (1973)	Organic fiber padding, industrial insulation	463	274	189	
Chandler Printing Company, Inc., (1948)	Job printing	10	7	3	
Clover Top Bakery (1959)	Bakery products	2	1	1	
Corbin Brick Company (1921)	Brick	40	38	2	
Corbin Railway Service Company (1984)	Rail car repair	35	-	-	
Corbin Times- Tribune, Inc., (1892)	Newspaper, shopper	41	21	20	
Forest Products, Inc., (1966)	Wood pallets skids, lumber, wood chips	91	85	6	
Karr Industries, Inc., (1981)	Machine shop & repair, tools & dies	5	4	1	

(Continued)

Firm (Establishment date)	Product	Employment			Labor Unions
		Total	Male	Female	
Metal Products, Inc., (1980)	Doors & frames	37	-	-	
NCR Systemedia Division (1973)	Business forms	155	100	55	Auto Workers*
National Standard Company, Woven Products Division (1962)	Industrial wire cloth, metal fibers & fiber products, steel wire low carbon	238	218	20	Steel- workers*
Pennington Block Company, Inc., (1955)	Concrete blocks	15	15	0	
Pepsi-Cola Bottling Company of Corbin Kentucky, Inc. (1938)	Soft drinks	180	170	10	
Southeastern Kentucky Rehabilitation Industries (1971)	Pallets, wood cabinets & furniture, upholstery truck seats	54	30	24	
Tri-County Manufacturing & Assemblies, Inc. Plant #1 (1979)	Typewriter components	300	-	-	
Tri-County Manufacturing & Assemblies, Inc. Plant #2 (1981)	Typewriter components	50	-	-	

(Continued)

<u>Firm</u> <u>(Establishment date)</u>	<u>Product</u>	<u>Employment</u>			<u>Labor</u> <u>Unions</u>
		<u>Total</u>	<u>Male</u>	<u>Female</u>	
Waitsboro Manufacturing Company (1982)	Fiberglass boats	86	72	14	

\* See Labor Organizations below.

Sources: Kentucky Department of Economic Development, 1986 Kentucky Directory of Manufacturers; Division of Research and Planning; Greater Corbin Chamber of Commerce.

#### MAJOR NON-MANUFACTURING EMPLOYERS

	<u>Employment</u>
Baptist Regional Medical Center	597
Whayne Supply Company	238

#### LABOR ORGANIZATIONS IN MANUFACTURING FIRMS

<u>Union</u>	<u>Representing workers at:</u>
International Brotherhood of Teamsters, Chauffers, Warehousemen and Helpers of America	American Greetings Corporation
International Union, United Automobile, Aerospace and Agricultural Implement Workers of America	NCR Systemedia Division
United Steelworkers of America, AFL-CIO	National Standard Company Woven Products Division

SELECTED INDUSTRIAL SERVICES

<u>Types of Service</u>	<u>Location</u>	<u>Mileage from Corbin</u>
Custom Plastics Producers	Corbin	-
Electric Motor Repair	Corbin	-
Grinding, Precision & Tool	Richmond	64
Heat Treating Facilities	Richmond	64
Industrial Equipment & Supplies	Knoxville, Tennessee	84
	Lexington	88
Industrial Gases	London	14
Industrial Waste Removal	Somerset	47
Machine Shops, Tool & Die	Corbin	-
Metal Finishers	Richmond	64
Metal Service Centers	Richmond	64
Millwrights	Knoxville, Tennessee	84
	Nicholasville	87
	Lexington	88
Public Warehouse Facilities	Danville	70
	Lexington	88

Sources: Kentucky Department of Economic Development, Kentucky Directory of Selected Industrial Services, 1985; Division of Research and Planning.

## TRANSPORTATION

### Rail

#### Line serving Corbin - CSX Transportation

Services - Main-line; 3 northbound and 3 southbound freights make daily stops; 2 northbound and 2 southbound through freights daily; switch engine; team track space available for 10 cars; nearest piggyback facilities are provided by the Norfolk Southern Railway at Danville, Kentucky, 70 miles northwest of Corbin

For details on routing, schedules, rates, and services contact:

Corporate Communications  
CSX Transportation  
908 West Broadway  
Louisville, Kentucky 40203  
(502) 587-5445

### Highways

Corbin is located just two miles east of Interstate 75, a major north-south interstate system. Corbin is also served by U.S. Highways 25, 25E and 25W, which are "AAA"-rated (80,000-pound gross load limit) trucking highways. The Daniel Boone Parkway, a multilane toll road which extends from London to Eastern Kentucky, is accessible 14 miles north of Corbin via U.S. Highway 25.

### Truck Service

ANR Freight Systems, Inc.\*  
ARA/Smiths (T)\*  
American Freight System, Inc.  
(T)\*\*  
Averitt Express, Inc.\*  
Baileys Express, Inc.\*  
Consolidated Freightways  
Corporation of Delaware  
(T)\*

Jones Truck Lines, Inc.\*  
Lawrenceburg Transfer, Inc.\*  
Manning Motor Express, Inc.\*  
Middlewest Freightways, Inc.  
(T)\*  
Overnite Transportation Company\*  
Roadway Express, Inc.\*  
Skyline Transportation, Inc.\*  
Suburban Motor Freight, Inc.\*

\* Interstate and intrastate service.

\*\* Interstate service only.

(T) Terminal

Source: American Motor Carrier Directory, Spring 1987.



HIGHWAY MILES AND TRUCK TRANSIT TIME IN DAYS FROM  
CORBIN, KENTUCKY, TO SELECTED MARKET CENTERS

City	Highway Miles	Delivery		City	Highway Miles	Delivery	
		Time TL				Time TL	
Atlanta, GA	277	1		Los Angeles, CA	2,268	5	
Baltimore MD	629	2		Louisville, KY	160	1	
Birmingham, AL	338	1		Nashville, TN	218	1	
Chicago, IL	440	2		New Orleans, LA	680	2	
Cincinnati, OH	166	1		New York, NY	791	-	
Cleveland, OH	405	1		Pittsburgh, PA	431	2	
Detroit, MI	425	1		St. Louis, MO	423	2	
Knoxville, TN	84	1					

Note: Mileage computations are via the best interstate or primary highways, not necessarily the most direct route of travel.

Sources: Rand McNally Road Atlas, 1979. Official Kentucky Mileage Map, 1980. Delivery time - Overnite Transportation Company, 1020 Whipple Court, Lexington, Kentucky.

Air

Local

Location: London-Corbin Airport (Magee Field)  
 11 miles north of Corbin  
 Runways: 1 paved  
 Length: 6,000 feet  
 Traffic  
 Control: Wind sock and FSS advisory service  
 Lighting: Beacon, runway and obstruction lights, VASI, REIL  
 Services: 100 octane, JP-A-50, weather data, minor A & P  
 repairs, tie-downs, flight training, charter  
 and ambulance service, taxi, auto rental,  
 aircraft rental

### Nearest Scheduled Commercial Airline Service

Bluegrass Airport  
Location: 4 miles west of Lexington, Kentucky;  
93 miles north of Corbin  
Runways: 2 paved  
Length: 7,000 feet; 3,500 feet  
Traffic  
Control: Tower  
Lighting: Approach lighting system, beacon, runways and  
obstructions lighted, VASI  
Services: Delta, Piedmont, United, USAir, Allegheny Commuter,  
TWA, Continental Jet Express, Piedmont Commuter,  
Eastern Metro, Comair, American Eagle; fuel -  
100LL and jet-A; hangars, tie-downs; major A & P  
repairs; major Avionics repairs; APU, charter,  
flight instruction, oxygen, plane rentals,  
survival equipment; taxi, limousine, car rentals,  
courtesy car, weather information; restaurant,  
snack bar

Air Freight  
Service: Air freight terminal

McGhee Tyson Airport  
Location: 10 miles south of Knoxville, Tennessee;  
96 miles south of Corbin  
Runways: 2 paved  
Length: 9,000 feet and 6,000 feet  
Traffic  
Control: Tower  
Lighting: Beacon, runway  
Services: Delta, United, USAir, Comair, Northwest,  
Continental, Eastern Metro Express, Piedmont,  
Tennessee Airways, Florida Express, American  
Eagle; fuel - 100, jet-A; tie-downs, hangars;  
minor A & P repairs, major Avionics repairs, APU  
charter, flight instruction, oxygen, plane rental,  
U.S. Customs; limousine, car rental, public  
transit; weather information; restaurant, snack  
bar, hotel

Air Freight  
Service: Air freight terminal

### **Air Express Service**

Several major companies offer air express services in Kentucky. These companies provide a quick means of shipping small to medium-sized packages expeditiously.

### **Water**

The nearest commercially navigable waterway is the Tennessee River at Knoxville, Tennessee (84 miles south of Corbin), where a nine-foot navigation channel is maintained.

## POWER AND FUEL

### Electricity

Company serving Corbin - City Utilities Commission  
Source of power - Kentucky Utilities Company  
For industrial rates contact:

City Utilities Commission  
901 South Main Street  
Corbin, Kentucky 40701  
(606) 528-4026

and/or

Industrial Development Department  
Kentucky Utilities Company  
One Quality Street  
Lexington, Kentucky 40507  
(606) 255-1461

Company serving parts of Whitley County - Kentucky Utilities Company  
Source of power - Kentucky Utilities Company  
For industrial rates contact:

Industrial Development Department  
Kentucky Utilities Company  
One Quality Street  
Lexington, Kentucky 40507  
(606) 255-1461

Company serving parts of Whitley County - Cumberland Valley Rural  
Electric Cooperative Corporation  
Source of power - East Kentucky Power Cooperative  
For industrial rates contact:

Industrial Development Division  
East Kentucky Power Cooperative  
P. O. Box 707  
Winchester, Kentucky 40391  
(606) 744-4812

and/or

Cumberland Valley Rural Electric  
Cooperative Corporation  
U.S. Highway 25E  
Gray, Kentucky 40734  
(606) 528-2677

## Natural Gas

Company serving Corbin and Whitley County - Delta Natural Gas Company, Inc.

Source of supply - Wiser Oil Company and Columbia Gas Transmission

Size of transmission mains - 6 to 8 inches (supplier); 6 to 8 inches (distributor)

Distribution mains - 1 to 8 inches

Distribution pressure - 4 ounces to 60 psi

Btu content - 1,040 per cubic foot

Specific gravity - 0.65

For rates and supplies contact:

Manager of Marketing and  
Public Relations  
Delta Natural Gas Company, Inc.  
3617 Lexington Road  
Winchester, Kentucky 40391  
(606) 744-6171

## Other Fuels

### Propane (within 15 miles)

Doxol Propane of Corbin  
Camp Ground Road  
Corbin, Kentucky 40701

Empiregas, Inc. of Corbin  
Highway 25 North  
London, Kentucky 40741

Lewis LP Gas, Inc.  
Highway 229  
London, Kentucky 40741

Rains Gas and Appliance Company  
(Petrolane Gas)  
Cumberland Falls Road  
Williamsburg, Kentucky 40769

### Fuel oils

Distillate fuel oil -

Helton's Oil Corporation  
and Service Station  
Highway 312 East  
Corbin, Kentucky 40701

R. C. Miller Company, Inc.  
Route 7  
Corbin, Kentucky 40701

Penny Oil Corporation  
2427 South Main Street  
Corbin, Kentucky 40701

Residual fuel oil - Arrangements must be made with the refinery.

Low sulphur content coal - Available locally.

## WATER AND SEWERAGE

### Public Water Supply

Company serving Corbin - City Utilities Commission  
901 South Main Street  
Corbin, Kentucky 40701  
(606) 528-4026

Source - Laurel Lake Impoundment  
Treatment plant capacity - 5,000,000 gallons per day  
Average daily consumption - 2,740,000 gallons  
Peak daily consumption - 4,000,000 gallons  
Treatment processes - Aeration, rapid mix, flocculation,  
sedimentation, filtration, chlorination, fluoridation  
Storage capacity - 4,850,000 gallons, including clear well  
Size lines - 2 to 16 inches  
Water pressure - 30 psi to 110 psi

### MONTHLY WATER RATES

#### Inside City

Monthly service charge	\$2.00
First 10,000 gallons	1.05 per M gallons
Next 290,000 gallons	1.00 per M gallons
Over 300,000 gallons	.71 per M gallons
Minimum bill	3.05

#### Outside City

Monthly service charge	\$4.00
First 10,000 gallons	1.57 per M gallons
Next 290,000 gallons	1.50 per M gallons
Over 300,000 gallons	1.06 per M gallons
Minimum bill	5.57

(Continued)

Tap-on charge:

Inside City

3/4-inch tap	\$ 150
1-inch tap	250
2-inch tap	650
4-inch tap	2,750
6-inch tap	5,000
Over 6-inch	By contract

Outside City

3/4-inch tap	\$ 325
1-inch tap	545
2-inch tap	975
4-inch tap	4,125
6-inch tap	7,500
Over 6-inch	By contract

Sewerage

Company serving Corbin - City Utilities Commission  
901 South Main Street  
Corbin, Kentucky 40701  
(606) 528-4026

Design capacity - 4,500,000 gallons per day

Average daily flow - 2,400,000 gallons

Type of treatment - Primary and secondary

Treatment processes - Screening, grit removal, oxidation ditch,  
extended aeration, activated sludge, chlorination, sludge  
drying beds

Treated effluent discharged into - Lynn Camp Creek

Size of sanitary mains - 4 to 24 inches

SEWER RATES

Inside City (residential and commercial service)

Monthly service charge	\$2.15	
First 10,000 gallons	1.38	per M gallons
Over 10,000 gallons	.74	per M gallons
Minimum bill	3.53	

Inside City (industrial service)

Monthly service charge	\$50.00	
First 10,000 gallons	1.38	per M gallons
Over 10,000 gallons	.74	per M gallons
Minimum bill	50.00	

(Continued)

Excess BOD charge (over 250 mg per liter)	\$0.10	per pound
Excess suspended solids charge (over 300 mg per liter)	0.036	per pound
Excess ammonia charge (over 20 mg per liter)	0.30	per pound

Outside City (residential and commercial service)

Monthly service charge	\$3.25	
First 10,000 gallons	2.07	per M gallons
Over 10,000 gallons	1.11	per M gallons
Minimum bill	5.32	

Outside City (industrial service)

Monthly service charge	\$50.00	
First 10,000 gallons	2.07	
Over 10,000 gallons	1.11	per M gallons
Minimum bill	50.00	

Excess BOD charge (over 250 mg per liter)	\$0.15	per pound
Excess suspended solids charge (over 300 mg per liter)	0.054	per pound
Excess ammonia charge (over 20 mg per liter)	0.30	per pound

Tap-on charge:

Residential - \$300  
Commercial and Industrial - By contract

## CLIMATE

### Whitley County

#### Temperature

Normal (30-year record)	58.80 degrees
Average annual 1985	57.40 degrees
Record highest, September 1954 (44-year record)	103.00 degrees
Record lowest, January 1985 (44-year record)	-24.00 degrees
Normal heating degree days (30-year record)	3,658
(Heating degree day totals are the sums of negative departures of average daily temperatures from 65 degrees F.)	

#### Precipitation

Normal (30-year record)	47.29 inches
Mean annual snowfall (30-year record)	12.50 inches
Total precipitation 1985	36.40 inches
Mean number days precipitation (.01 inch or more) (43-year record)	127.00
Mean number days thunderstorms (43-year record)	46.80

#### Prevailing winds (through 1963)

Northeast

#### Relative Humidity (25-year record)

1 a.m.	80 percent
7 a.m.	85 percent
1 p.m.	59 percent
7 p.m.	63 percent

Source: U.S. Department of Commerce, Environmental Science Services Administration, Climatological Data, 1985. Station of record: Knoxville, Tennessee.



## LOCAL GOVERNMENT

### Structure

The city of Corbin is served by a mayor, four city commissioners, and a city manager. Whitley County is served by a county judge/executive and three magistrates.

### Planning and Zoning

City agency - Corbin Planning and Zoning Board

Zoning enforced - Within city of Corbin only

Subdivision regulations enforced - Within city of Corbin only

Local codes enforced - Building and housing

Mandatory state codes enforced - Kentucky Plumbing code, National Electric Code, Kentucky Boiler Regulations and Standards, Kentucky Building Code (modeled after BOCA code)

### Local Fees and Licenses

The city of Corbin levies a business license fee on businesses operating within the city. The fees range from \$5 to \$800 annually. An automobile sticker fee of \$15 per year is also required for automobiles owned by city residents.

## State and Local Property Taxes

All property in Kentucky, except items exempted by the state constitution, is taxed by the state. Property which also may be taxed by local jurisdictions includes land and buildings, finished goods inventories, automobiles, trucks, office furniture and office equipment. Local taxing jurisdictions in Kentucky include counties, cities, and school districts.

All property in Kentucky is assessed at 100 percent of fair cash value.

The city of Corbin and the Corbin Independent School District are incorporated in both Whitley and Knox Counties. The Corbin Independent School District extends beyond the Corbin city limits in Whitley County. Therefore, property may be subject to city school tax, but not city tax.

### COMBINED STATE AND LOCAL RATES PER \$100 VALUATION, 1986

	Corbin, Corbin Independent School District, Whitley County	Corbin, Corbin Independent School District, Knox County	Whitley County, Corbin Independent School District
Land and Buildings	\$1.1593	\$1.1923	\$0.937
Manufacturing			
Machinery	0.150	0.150	0.150
Pollution Control			
Equipment	0.150	0.150	0.150
Inventories			
Raw materials	0.001	0.001	0.001
Goods in Process	0.001	0.001	0.001
Finished Goods	0.9472	1.0501	0.7249
Automobiles & Trucks	1.5549	1.6588	1.3149
Other Tangible			
Personal Property	1.3962	1.4991	1.1739
Intangibles (Accounts receivable*, money in hand, stock, notes, bonds)	0.250	0.250	0.250
Goods Stored in Public Warehouses in Transit Status	0.001	0.001	0.001
Private Leaseholds in Industrial Revenue Bond Financed Facilities	0.015	0.015	0.015

(Continued)

	<u>Unincorporated Whitley County</u>	<u>Unincorporated Knox County</u>
Land and Buildings	\$0.705	\$0.698
Manufacturing		
Machinery	0.150	0.150
Pollution Control		
Equipment	0.150	0.150
Inventories		
Raw materials	0.001	0.001
Goods in Process	0.001	0.001
Finished Goods	0.4929	0.5558
Automobiles & Trucks	0.7719	0.8758
Other Tangible		
Personal Property	0.9419	1.0048
Intangibles (Accounts receivable <sup>‡</sup> , money in hand, stock, notes, bonds)	0.250	0.250
Goods Stored in Public Warehouses in Transit Status	0.001	0.001
Private Leaseholds in Industrial Revenue Bond Financed Facilities	0.015	0.015

#### Safety

Police	Corbin	Whitley County
Total staff	16	5 full-time 2 part-time
Radio-patrol cars	8	2

#### Fire\*\*

Insurance Services Office, Public Protection Classification	5	***
Full-time staff	21	5
Volunteers	-	105

\* Accounts receivable are taxed at 85 percent of face value, for an effective rate of \$0.2125 per \$100 valuation.

\*\* Includes copyrighted material of ISO Commercial Risk Services, Inc., with its permission.

\*\*\* There are four fire districts located in Whitley County. Property situated within these districts maintain a fire classification rating of class 9. All other property in unincorporated Whitley County is class 10.

### Rescue Service

The city of Corbin is provided rescue service by the Corbin Tri-County Emergency and Rescue Squad, Inc.

### Refuse Collection and Disposal

Refuse collection and disposal is provided to residents, businesses, and industry within the city of Corbin by the city. Whitley County is provided refuse collection and disposal by private contractors.

## EDUCATION

### Public Schools

	Corbin Independent*	Whitley County**
Total Enrollment (Feb., 1987)	2,074	4,336
Kindergarten	159	288
Elementary	988	2,164
Junior High	-	1,039
Middle School	346	-
High School	581	845
Accreditation	Southern Association of Colleges and Schools	
Pupil-Teacher Ratio (1985-86)	23-1	22-1
Percent High School Graduates to College (1985-86)	71	21.6
Expenditures Per Pupil (1985-86)	\$1,773.90	\$1,723.40

### Nonpublic Schools

<u>School</u>	<u>Enrollment</u>	<u>Grades</u>
St. Camillus Academy Elementary	220	K-8
St. Camillus Academy High School	75	9-12

\* The Corbin Independent School System plans to construct additional elementary classrooms and physical education facilities.

\*\* The Whitley County School System is currently constructing a new \$2 million elementary school, a music building at the high school, and a middle school addition. Construction is scheduled to be completed in 1988.

### Area Colleges and Universities

<u>Name</u>	<u>Location (Miles distant)</u>	<u>Enrollment (Fall, 1986)</u>	<u>Highest Degree Conferred</u>
Sue Bennett College	London, Kentucky (14)	452	Associate
Union College	Barbourville, Kentucky (16)	1,000	Masters
Cumberland College	Williamsburg, Kentucky (19)	1,927	Masters
Sommerset Community College	Somerset, Kentucky (47)	1,302	Associate
Berea College	Berea, Kentucky (47)	1,587	Baccalaureate
Lincoln Memorial University	Harrogate, Tennessee (52)	1,348	Masters
Eastern Kentucky University	Richmond, Kentucky (65)	12,737	Masters, Specialist*
Center College	Danville, Kentucky (71)	814	Baccalaureate
Lindsey Wilson College	Columbia, Kentucky (73)	884	Baccalaureate

\* Joint doctoral degree programs are offered in cooperation with the University of Kentucky, Lexington. The degrees are issued by the University of Kentucky.

## Vocational Training

The Bluegrass State Skills Corporation, an independent public corporation created and funded by the Kentucky General Assembly, provides programs of skills training to meet the needs of business and industry from entry level to advanced training, and from upgrading present employees to retraining experienced workers.

The Bluegrass State Skills Corporation is the primary source for skills training assistance for a new or existing company. The Corporation works in partnership with other employment and job training resources and programs, as well as Kentucky's economic development activities, to package a program customized to meet the specific needs of a company.

Vocational training is available at both the state vocational-technical schools and the area vocational education centers. The state vocational-technical schools are post-secondary institutions. The area vocational education centers are designed to supplement the curriculum of high school students. Both the state vocational-technical schools and the area vocational education centers offer evening courses to enable working adults to upgrade current job skills.

Arrangements can be made to provide training in the specific production skills required by an industrial plant. Instruction may be conducted either in the vocational school or in the industrial plant, depending upon the desired arrangement and the availability of special equipment.

### Nearest State School

Laurel County State Vocational-Technical School  
London, Kentucky, 14 miles distant

Consumer & Home Economics  
  Commercial Foods  
  Consumer & Family Life  
  Skills  
Health & Personal Services  
Occupations  
  Cosmetology  
  Medical Assisting  
Industrial Education  
  Air Conditioning  
  Auto Body Repair  
  Auto Mechanics  
  Carpentry  
  Drafting (with CAD/CAM)  
  Electricity

Machine Shop  
Masonry  
Welding  
Learning Resource Center  
Public Service Occupations  
  Business/Industry Security  
  Training  
  CPR Training  
  Electrical Safety Training  
  Emergency Medical Care  
  Fire Service Training  
  First Aid & Safety  
  Rescue & Emergency Services  
  Training

Nearest Area Education Center

Corbin Area Vocational Education Center  
Corbin

Health & Personal Services  
Occupations  
    Health Careers  
Industrial Education  
    Auto Mechanics

Drafting  
Industrial Electricity  
Major Appliance Repair  
Welding



## HEALTH

### Local Medical Personnel

Physicians - 42  
Dentists - 20

### Hospitals

<u>General Hospital</u>	<u>Location</u>	<u>Beds</u>
Baptist Regional Medical Center*	Corbin	210

Medical staff - 52 physicians, 125 registered nurses, and 69 licensed practical nurses

### Other Medical Facilities

Cumberland River Comprehensive Care Center  
Whitley County Health Department (a public health facility)

### Ambulance Service

Name - PMT Ambulance  
Staff - 20 emergency medical technicians

---

\* Construction of the new \$40 million Baptist Regional Medical Center was completed in the fall of 1986. The new hospital contains 210 beds and employs 597 persons.

## OTHER LOCAL FACILITIES

### Communications

Telephone -	South Central Bell Telephone Company
Telegraph -	Western Union Toll-Free number, 1-800-325-6000
Newspapers -	Corbin Times-Tribune
Daily and circulation -	8,200
Radio -	WCTT AM & FM; WYGO AM & FM
Television -	
Airwave reception from -	Lexington, Kentucky; Knoxville, Tennessee; Asheville, North Carolina; Atlanta, Georgia Southern Cablevision
Cable service -	
Educational Television -	The Kentucky Educational Television (K.E.T.) network is available statewide

### Library Services

Public library - Corbin Public Library  
Size collection - 36,930 volumes  
Circulation, 1985-86 - 51,004

### Religious Institutions

Denominations -	Apostolic	Episcopal
	Assembly of God	Jehovah's Witnesses
	Baptist	Methodist
	Catholic	Nazarene
	Christian	Pentecostal
	Church of Christ	Presbyterian
	Church of God	
	Church of Jesus Christ of Latter Day Saints	
Nearest synagogues -	Knoxville, Tennessee, 84 miles south of Corbin	
Congregations -	Heska Amuna Congregation (orthodox)	
	Temple Bethel (reform)	

## Financial Institutions

<u>Banks</u>	<u>Assets</u>	<u>Deposits</u>	<u>Statement Date</u>
American Fidelity Bank & Trust Company	\$ 40,171,000.00	\$ 36,126,000.00	12/31/86
Corbin Deposit Bank & Trust Company	51,270,000.00	46,161,000.00	6/30/86
Cumberland Valley Financial Corporation	206,763,000.00	177,061,000.25	12/31/85
The First National Bank & Trust Company of Corbin	132,529,814.65	117,411,672.25	12/31/86
Tri-County National Bank	14,241,898.65	13,121,825.81	12/31/86
<u>Savings and Loan Associations</u>	<u>Assets</u>	<u>Deposits</u>	<u>Statement Date</u>
First Federal Savings & Loan Association*	\$ 75,390,368.28	\$ 69,396,178.72	12/31/86
Mutual Federal Savings & Loan Association**	128,490,347.00	123,062,146.00	12/31/86

## Hotels and Motels

Total number - 16  
Total rooms - 938

\* Offices in Corbin, London, Williamsburg, Barbourville, and Pineville.  
\*\* Offices in Corbin, Monticello, Russell Springs, and Somerset.

## Clubs and Organizations

American Legion  
American Legion Auxiliary  
Book Club  
Boy Scouts  
Brownies  
Corbin Business & Professional  
Women's Club  
Corbin Industrial Development  
Commission  
Corbin Jaycees  
Cub Scouts  
Cumberland Falls Garden Club  
Daughters of the American  
Revolution  
Eastern Star  
Forsythia Garden Club  
4-H  
Fraternal Order of Police  
Garden Club  
Girl Scouts  
Greater Corbin Chamber of  
Commerce  
Junior Woman's Club

Kiwanis  
Knights of Pythias  
Lady Golfers  
Lions  
Little League Baseball  
Little League Basketball  
Little League Football  
Masons  
Ministerial Association  
Optimists  
Ossoli  
Pythian Sisters Temple 46  
Rainbow Girls  
Rod and Gun Club  
Rotary  
Shriners  
Tri-County Business &  
Professional Women's Club  
Tri-County Saddle Club  
Veterans of Foreign Wars  
Woman's Club  
Younger Woman's Club

## RECREATION

### Local

Public recreation facilities available in Corbin include a swimming pool, two mini-parks with playground equipment and picnic areas, six tennis courts, four ball fields, seven outdoor basketball courts, a football field, and a recreation center.

The Corbin Recreation Commission offers a year-round recreational program for all ages. A supervised playground program is available during the summer months and sports enthusiasts may participate in leagues for baseball, softball, T-ball, football and basketball. Classes in karate, judo, and dancing and a recreation program for senior citizens are offered at the recreation center.

A recently completed city park in west Corbin contains two multi-purpose fields and three tennis courts. A multi-purpose court, picnic area and camping area, and three shelter houses with restrooms will be added during the next three years.

The Chamber of Commerce Civicgrounds offer a lighted horse show ring with bleachers seating 2,000 people, and a 15,000-square-foot multi-purpose building featuring a full-sized indoor basketball court and two indoor tennis courts. The building also contains a conference room, office, kitchen for caterings, men's and women's restrooms and showers, and storage space. An outdoor amphitheater complete with concert stage, dressing rooms, and seating for 2,500 to 3,000 people is currently under construction. Future plans include the construction of an outdoor running and walking track, picnic area and a small playground area.

Facilities at the Tri-County Country Club in Corbin include a golf course, swimming pool and two tennis courts. Other private facilities include a bowling facility, skating rink, miniature golf course, golf driving range and one indoor and one outdoor movie theater.

The Nibroc Festival (that's Corbin spelled backwards) is observed each summer and includes parades, folk music, square dancing, a midway and horse show, and the coronation of a queen. Arts and crafts and gun and coin shows, and old-fashioned bargain days are also a part of the festivities.

Laurel River Lake, located in Whitley County, is a 5,600-acre lake that offers camping, fishing, boating, and swimming. Several Areas around this new lake are now under development. A 28-acre site picnic area, picnic shelter, playground area, hiking trail, and restroom facilities, only two miles from Corbin, were recently completed. A 50-slip marina, vehicle-access campground, and an amphitheater are under construction approximately five miles from Corbin.

Whitley County is located in the southern portion of the Daniel Boone National Forest, which covers 640,000 acres of timberland in eastern Kentucky. It encompasses much of Kentucky's great beauty and provides a vacation paradise. There are scenic hiking trails, rivers and streams stocked with a variety of fish, hunting preserves, camping sites, and numerous other natural and historical attractions.

#### Area (Within 50 miles)

Cumberland Falls State Resort Park is located 20 miles west of Corbin near Corbin in the Daniel Boone National Forest. The park is famous for Cumberland Falls which drops 68 feet over a rock precipice and shows one of only two known "moonbows" in the world at full moon. The park offers 73 lodge rooms, woodland suites, 25 cottages, a convention center, camping, fishing, swimming, hiking, horseback riding, picnicking, tennis, backpacking, a nature center, shuffleboard, planned recreation, a playground, a gift shop, and an amphitheater.

Levi Jackson Wilderness Road State Park, 12 miles north of Corbin at London, is a 815-acre park located where the Boone Trace and Wilderness Road pioneer trails converge. In addition to a reproduced pioneer settlement, the park offers a museum on mountain folklore, 15 cabins, a pool, a bathhouse, hiking trails, horseback riding, miniature golf, shuffleboard, 185 campsites, a picnic area, a playground, and an amphitheater. A new 40-acre historical theme park, Wilderness Road Village, will open at the park in the fall depicting frontier life with a working crafts area, exhibits, entertainment, horse-drawn carriages and a tavern.

Dr. Thomas Walker State Shrine, 22 miles southeast of Corbin near Barbourville, is the site of the cabin built by Dr. Walker, who led an expedition through Cumberland Gap around 1750. This 12-acre park contains a replica of the cabin, a playground, a picnic shelter, and an amphitheater.

Pine Mountain State Resort Park in Pineville, 35 miles southeast of Corbin near Pineville, provides the finest in mountain scenery and the ultimate in quiet comfort. The 2,500-acre park is located in the Kentucky Ridge State Forest and is the scene of the Mountain Laurel Festival each spring. Also featured is a 35-acre lake, 30 lodge rooms, 20 cottages, a dining room, a gift shop, a meeting room, 33 camping sites, a lodge pool, fishing, a 9-hole golf course, hiking trails, a nature center, a recreation room, picnicking, playgrounds, miniature golf, shuffleboard, and planned recreation.

The Big South Fork National River and Recreation Area, 40 miles southwest of Corbin near Whitley City, was developed as an outdoor recreation area by the U.S. Army Corps of Engineers in cooperation with the National Park Service. The area lies along the Big South Fork of the Cumberland River in Kentucky and Tennessee and encompasses some of the state's most rugged and scenic terrain. Recreational opportunities in the National Area include hiking, camping, horseback riding and picnicking, whitewater rafting, canoeing and kayaking trips. The Big South Fork Scenic Railway offers a chance to see part of the rugged Cumberland River area by rail. The train operates on a regular schedule between Stearns and the Big South Fork National River and Recreation Area near the historic Blue Heron Coal Tipple, a distance of about 5 miles each direction.

General Burnside State Park, 44 miles west of Corbin, is Kentucky's only island state park. Rising out of Lake Cumberland and surrounded by beautiful Kentucky mountains, the park offers excellent fishing, an 18-hole golf course which is open year-round, a picnic area, a 110-site camping area for tents and recreational vehicles, a marina on the mainland near the park, a community pool, and recreation.

Cumberland Gap National Historic Park is located 50 miles southeast of Corbin near Middlesboro. Features at the 20,270-acre park include a frontier museum, Pinnacle Mountain, a restored mountain village, an old iron furnace and caves. In addition, the park provides facilities for camping, picnicking, and hiking.

## COMMUNITY IMPROVEMENTS

### Recent

Corbin was chosen as a "Kentucky Certified City" in 1985 and 1986. The award is based on achievement in the following categories: economic development, transportation, public affairs, utilities, health, commercial development, housing, education and recreation. The Certified Cities Program is sponsored by the Kentucky Chamber of Commerce.

Waitsboro Manufacturing Company recently announced plans to construct a 50,000-square-foot addition to their Corbin facility. The expansion is scheduled for construction in mid-1987 and approximately 60 additional persons will be employed.

CSX Transportation recently completed a \$41 million expansion of its railroad facilities in Corbin. The project included converting a rail yard into a facility for servicing coal trains and constructing an engine house and diesel service building.

Construction of the new \$40 million Baptist Regional Medical Center was completed in the fall of 1986. The new hospital contains 210 beds and employs 597 persons.

A \$1.5 million expansion project was recently completed at the Whitley County Courthouse.

### Under Way

Corbin Railway Service is currently undergoing a \$1.4 million expansion. The size of the existing facility will be doubled and track storage will be expanded. This expansion is scheduled to be completed in the summer of 1987. Another expansion is planned in 1988 to add facilities for aluminum railcar repair.

CSX Transportation is in the process of relocating approximately 180 employees to their Corbin facility.

Construction of a 3,000-seat outdoor amphitheatre with a covered stage and dressing rooms is under way at the Commerce Civicgrounds.

Renovation of the old railroad depot is currently under way. The renovated building will house the Chamber of Commerce, Industrial Authority, and the Tourism Commission. Completion is scheduled for the fall of 1987.

The Whitley County School System is currently constructing a new \$2 million elementary school, a music building at the high school, and a middle school addition. Construction is scheduled to be completed in 1988.



## Planned

The United States Postal Service has tentative plans to construct a 30,000-square-foot management service center and a 60,000-square-foot mail sorting center in the Corbin area. These centers will employ approximately 200 persons.

A \$9 million highway improvement project is planned for downtown Corbin. The project will consist of rerouting streets and construction of new overpasses. The project is scheduled to begin in 1989.

The city of Corbin has plans for renovation of the Main Street area. This project consists of resurfacing streets; installing curbs, gutters, and sidewalks; and converting the second stories of downtown businesses into apartments.

The Corbin Independent School System plans to construct additional elementary classrooms and physical education facilities.