

1981

# Industrial Resources: Hardin County - Radcliff

Kentucky Library Research Collections  
Western Kentucky University, [spcol@wku.edu](mailto:spcol@wku.edu)

Follow this and additional works at: [https://digitalcommons.wku.edu/hardin\\_cty](https://digitalcommons.wku.edu/hardin_cty)

 Part of the [Business Administration, Management, and Operations Commons](#), [Growth and Development Commons](#), and the [Infrastructure Commons](#)

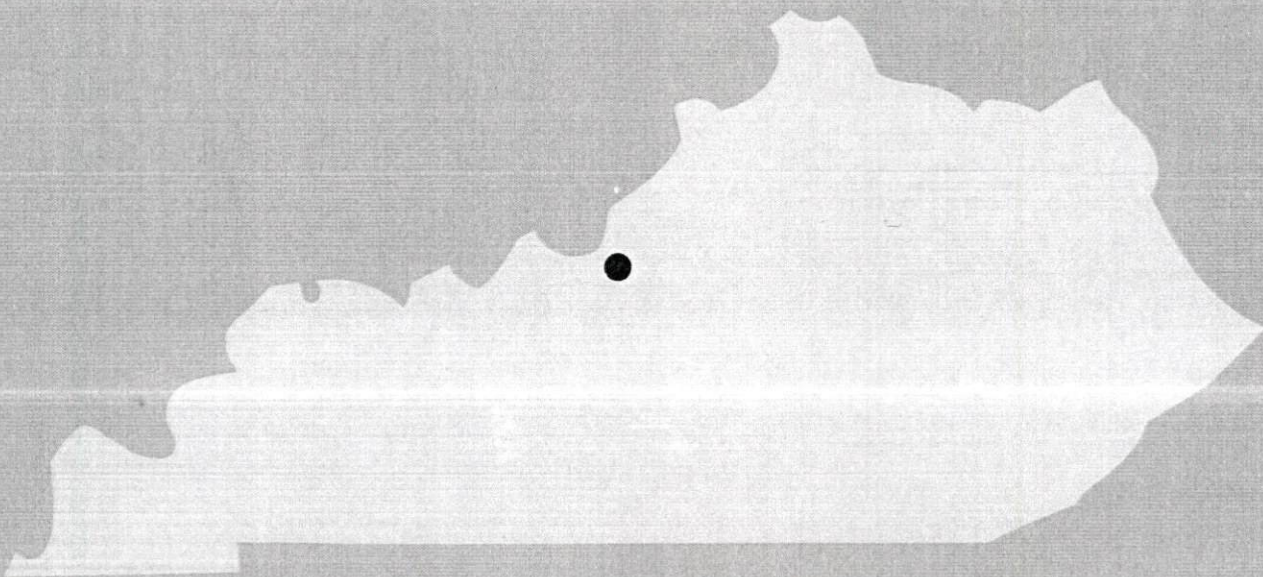
---

## Recommended Citation

Kentucky Library Research Collections, "Industrial Resources: Hardin County - Radcliff" (1981). *Hardin County*. Paper 36.  
[https://digitalcommons.wku.edu/hardin\\_cty/36](https://digitalcommons.wku.edu/hardin_cty/36)

This Report is brought to you for free and open access by TopSCHOLAR®. It has been accepted for inclusion in Hardin County by an authorized administrator of TopSCHOLAR®. For more information, please contact [topscholar@wku.edu](mailto:topscholar@wku.edu).

A comprehensive  
report on  
**Radcliff, Ky.**

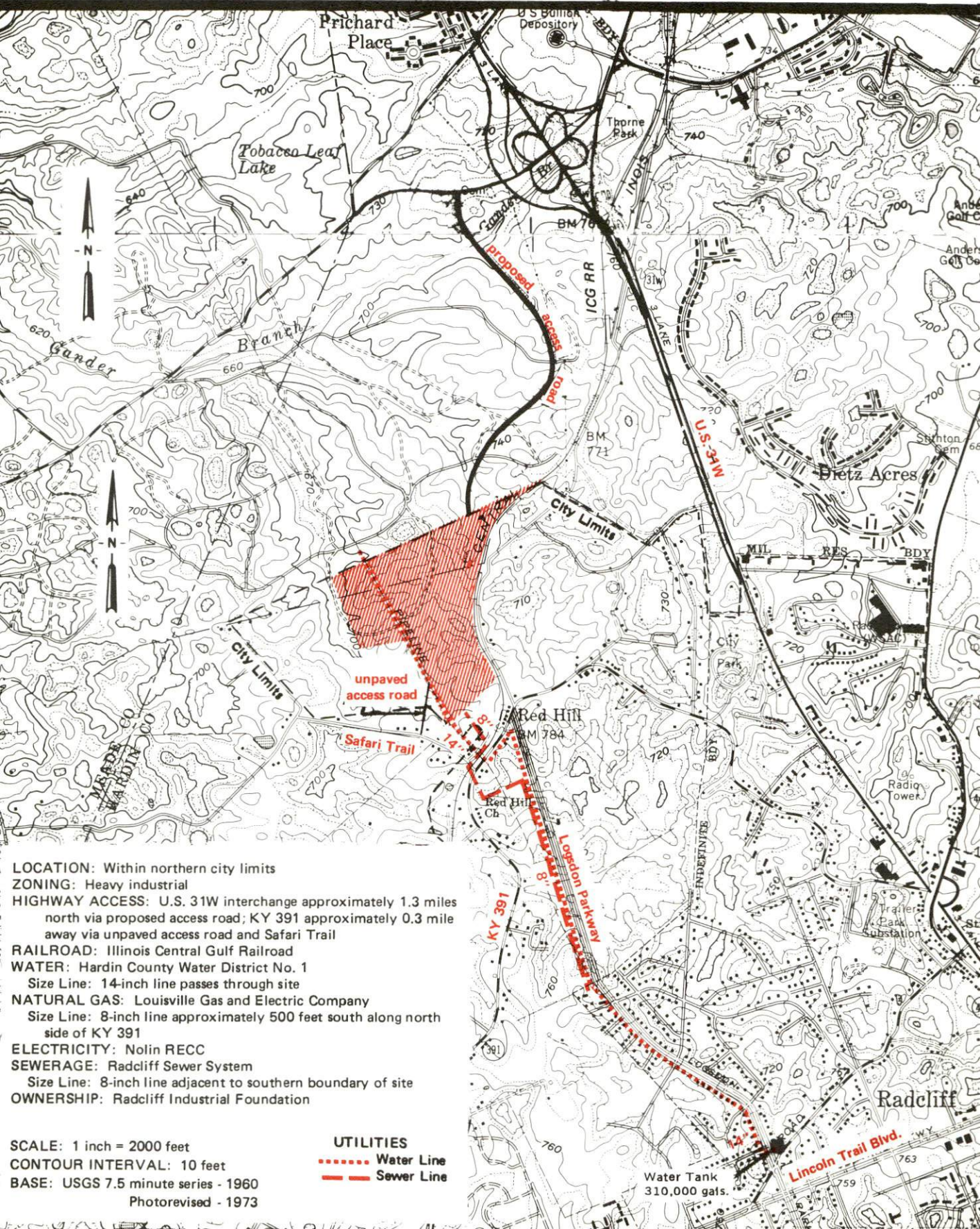


**KENTUCKY & CO.**  
The state that's run like a business.



# RADCLIFF, KENTUCKY --- Site No. 181 -- 93 Acres

For more information contact Mr. Virgil Pearman, 402 Lincoln Trail, Radcliff, Kentucky 40160 (502-351-3230), or the Kentucky Commerce Cabinet, Office of Industrial Development, New Industry Division, Capital Plaza Tower, Frankfort, Kentucky 40601 (502-564-7140).



- LOCATION: Within northern city limits
- ZONING: Heavy industrial
- HIGHWAY ACCESS: U.S. 31W interchange approximately 1.3 miles north via proposed access road; KY 391 approximately 0.3 mile away via unpaved access road and Safari Trail
- RAILROAD: Illinois Central Gulf Railroad
- WATER: Hardin County Water District No. 1  
Size Line: 14-inch line passes through site
- NATURAL GAS: Louisville Gas and Electric Company  
Size Line: 8-inch line approximately 500 feet south along north side of KY 391
- ELECTRICITY: Nolin RECC
- SEWERAGE: Radcliff Sewer System  
Size Line: 8-inch line adjacent to southern boundary of site
- OWNERSHIP: Radcliff Industrial Foundation

SCALE: 1 inch = 2000 feet  
 CONTOUR INTERVAL: 10 feet  
 BASE: USGS 7.5 minute series - 1960  
 Photorevised - 1973

**UTILITIES**  
 ..... Water Line  
 --- Sewer Line

Water Tank  
 310,000 gals.



A COMPREHENSIVE REPORT ON  
RADCLIFF, KENTUCKY

Prepared by  
The Kentucky Department of Commerce  
Division of Research and Planning  
in cooperation with  
The Radcliff-North Hardin Chamber of Commerce

1981



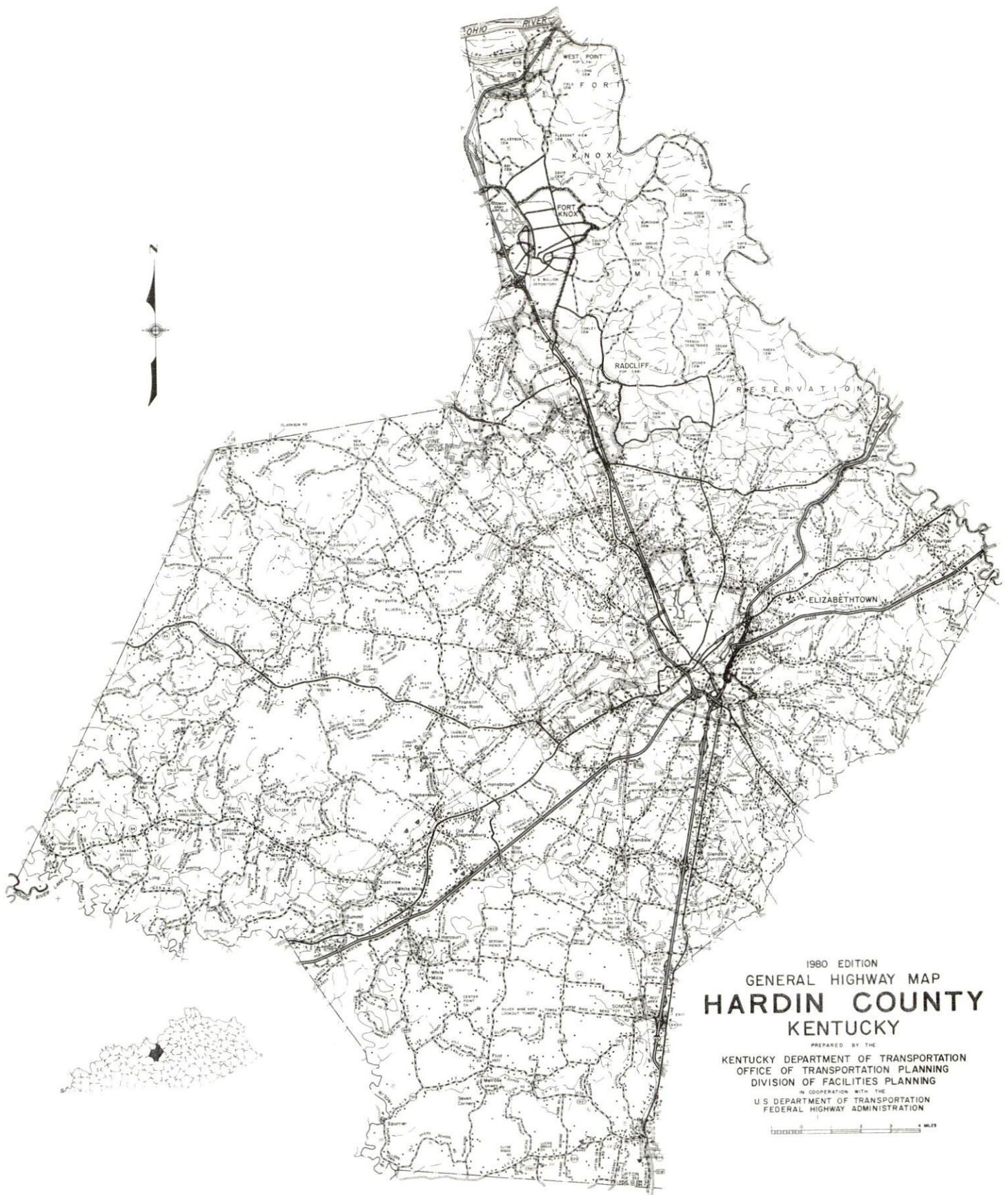
Program manager - Brenda Roberts; research - John McMurray; clerical Shirley Wood; graphics - Frank Ferrante, Tony Cecconi, Jimmy Thompson; cartography - Economic Development Division. Cost of printing paid from state funds.

# TABLE OF CONTENTS

<u>Chapter</u>	<u>Page</u>
INDUSTRIAL SITES . . . . .	i
RADCLIFF, KENTUCKY - A RESOURCE PROFILE . . . . .	1
THE LABOR MARKET AREA . . . . .	3
Population . . . . .	3
Labor Force Characteristics of Residents, 1980 . . . . .	3
Estimated Male Labor Supply . . . . .	4
Estimated Female Labor Supply . . . . .	5
Radcliff Manufacturing Firms,	
Their Products and Employment . . . . .	6
Labor Organizations in Manufacturing Firms . . . . .	6
Industrial Services . . . . .	8
Average Weekly Wages by Industry,	
by Place of Work, 1980 . . . . .	9
Per Capita Personal Income . . . . .	11
TRANSPORTATION . . . . .	12
Rail . . . . .	12
Highways . . . . .	12
Truck Service . . . . .	13
Air . . . . .	15
Bus . . . . .	15
Taxi . . . . .	15
Rental Services . . . . .	15
Water . . . . .	15
POWER AND FUEL . . . . .	16
Electricity . . . . .	16
Natural Gas . . . . .	17
Other Fuels . . . . .	17
WATER AND SEWERAGE . . . . .	18
Water . . . . .	18
Sewerage . . . . .	20
CLIMATE . . . . .	21



<u>Chapter</u>	<u>Page</u>
LOCAL GOVERNMENT . . . . .	22
City . . . . .	22
County . . . . .	22
Assessed Value of Property . . . . .	22
Property Taxes . . . . .	22
Combined State and Local Rates Per \$100 Valuation, 1980 . . . . .	23
Utilities Gross Receipts Tax for Schools . . . . .	23
Planning and Zoning . . . . .	23
Safety . . . . .	24
Police . . . . .	24
Fire . . . . .	24
Rescue Service . . . . .	24
Refuse Collection and Disposal . . . . .	25
EDUCATION . . . . .	26
Public Schools . . . . .	26
Nonpublic Schools . . . . .	26
Area Colleges and Universities . . . . .	27
Vocational Schools . . . . .	28
HEALTH . . . . .	29
Local Medical Personnel . . . . .	29
Hospitals . . . . .	29
Ambulance Service . . . . .	29
Public Health . . . . .	29
OTHER LOCAL FACILITIES . . . . .	30
Communications . . . . .	30
Library Services . . . . .	30
Religious Institutions . . . . .	31
Financial Institutions . . . . .	31
Hotels and Motels . . . . .	31
Clubs and Organizations . . . . .	32
RECREATION . . . . .	33



1980 EDITION  
GENERAL HIGHWAY MAP  
**HARDIN COUNTY**  
KENTUCKY

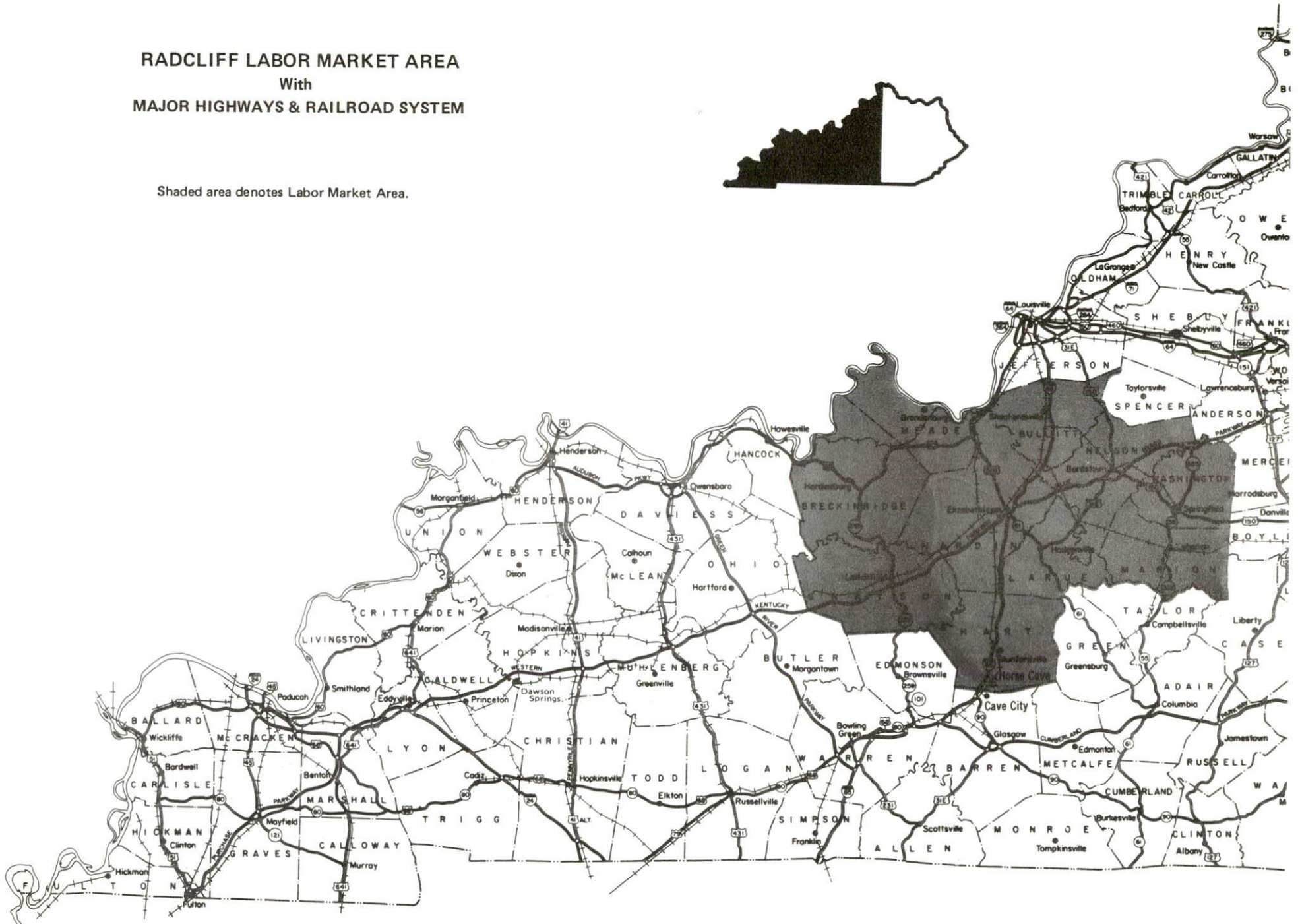
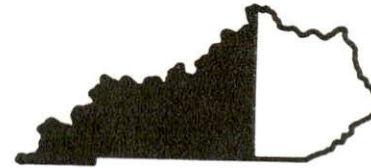
PREPARED BY THE  
KENTUCKY DEPARTMENT OF TRANSPORTATION  
OFFICE OF TRANSPORTATION PLANNING  
DIVISION OF FACILITIES PLANNING  
IN COOPERATION WITH THE  
U.S. DEPARTMENT OF TRANSPORTATION  
FEDERAL HIGHWAY ADMINISTRATION

0 1 2 3 4 5 6 7 8 9 10 MILES



# RADCLIFF LABOR MARKET AREA With MAJOR HIGHWAYS & RAILROAD SYSTEM

Shaded area denotes Labor Market Area.



## RADCLIFF, KENTUCKY - A RESOURCE PROFILE

Radcliff, located in northcentral Hardin County, is a neighbor to the vast Fort Knox military reservation. Fort Knox, embracing 109,362 acres, is the location of the United States Gold Depository, containing a great part of the U. S. gold reserve.

Radcliff had a 1980 population of 14,519-an 72.3 percent increase since 1970.

Served by a multilane highway, Radcliff is 35 miles southwest of Louisville, Kentucky; 136 miles southwest of Cincinnati, Ohio; 144 miles northeast of Nashville, Tennessee; and 298 miles east of St. Louis, Missouri.

Hardin County, encompassed by nine counties and covering 616 square miles, had a 1980 population of 88,917-a 13.4 percent increase since 1970.

### The Economic Framework

Total employment in Hardin County in 1980 averaged 23,623 with 22,727 employed in nonagricultural jobs. Manufacturing provided 3,725 jobs, wholesale and retail trade provided 4,940 jobs, service occupations provided 2,203 jobs and government provided 2,785 jobs. In Radcliff, manufacturing employment is greatest in the printing and publishing industry.

Per capita income in Hardin County in 1979 was \$7,120, an increase of 38.9 percent above the 1975 average of \$5,128.

The labor market area includes Hardin County and its nine surrounding counties. Area employment in 1980 averaged 92,296 with 84,072 employed in nonagricultural jobs. Manufacturing provided 10,935 jobs, wholesale and retail trade provided 11,404 jobs, service occupations provided 5,490 jobs and government provided 8,199 jobs.

### Resources for Growth

1. There is a current estimated labor supply of 9,806 men and 7,724 women available for industrial jobs in the labor market area. In addition 11,559 young men and 11,026 young women will become 18 years of age before 1986 and potentially available for work.

2. U.S. Highway 31W, an excellent multilane highway, provides Radcliff access to the interstate highway system at Elizabethtown, 11 miles to the south. The Illinois Central Gulf Railroad provides main-line service at Vine Grove, 5 miles west of Radcliff. Seven common carrier truck companies provide interstate and intrastate service. Regular scheduled airlines and air freight service is available at Standiford Field, 39 miles east of Radcliff, at Louisville.

(Contd.)



### Resources for Growth (Contd.)

3. Electric power is provided to Radcliff and Hardin County by Kentucky Utilities Company and Nolin Rural Electric Cooperative Corporation (whose source of power is East Kentucky Power Cooperative), with a combined generating capacity of 4,201,777 KW. Natural gas service is provided by the Louisville Gas and Electric Company. There are five distributors of liquefied petroleum gas and six distributors of distillate fuel oil serving the area.

4. Radcliff is served by the Hardin County Public School System and two private schools. Radcliff is within 50 miles of two universities, three colleges, one junior college and two community colleges. The Elizabethtown State Vocational-Education Technical School, located 11 miles from Radcliff, offers training in 13 different courses.

## THE LABOR MARKET AREA

The Labor Market Area includes Hardin County and the adjoining Kentucky counties of Breckinridge, Bullitt, Grayson, Hart, Larue, Marion, Meade, Nelson and Washington.

Area	POPULATION		Percent Nonwhite
	1980	1970	
Radcliff	14,519	8,426	23.9
Labor Market Area	276,475	230,112	N/A
Hardin County	88,917	78,421	14.7
Breckinridge County	16,861	14,789	3.8
Bullitt County	43,346	26,090	0.8
Grayson County	20,854	16,445	0.6
Hart County	15,402	13,980	8.1
Larue County	11,983	10,672	4.7
Marion County	17,910	16,714	8.0
Meade County	22,854	18,796	9.0
Nelson County	27,584	23,477	6.6
Washington County	10,764	10,728	10.3

Note: The 1980 counts of population by race are provisional.

Source: U.S. Department of Commerce, Bureau of the Census, March 1981, as published in Special Report No. 8, State Data Center, Urban Studies Center, University of Louisville, March 1981.

LABOR FORCE CHARACTERISTICS OF RESIDENTS, 1980		
	Hardin County	Labor Market Area
Civilian Labor Force	25,704	101,389
Employment	23,623	92,296
Agricultural	896	8,224
Nonagricultural	22,727	84,072
Unemployment	2,081	9,093
Rate of Unemployment (%)	8.1	9.0

Source: Kentucky Department for Human Resources, Kentucky Labor Force Estimates, Annual Averages, 1980.



ESTIMATED MALE LABOR SUPPLY  
RADCLIFF LABOR MARKET AREA

Area	Current			Future	
	Total	Not in Labor Force	Unemployed	Under- employed	Reaching 18 years of age before 1986
Labor Market Area*	9,806	1,623	3,363	4,820	11,559
Hardin	3,870	446	864	2,560	3,033
Breckinridge	580	116	234	230	705
Bullitt	1,034	250	384	400	1,749
Grayson	821	140	351	330	730
Hart	543	109	244	190	692
Larue	434	82	162	190	518
Marion	652	111	261	280	994
Meade	516	132	224	160	1,235
Nelson	980	166	454	360	1,327
Washington	376	71	185	120	576

\*Additional workers may be drawn from other nearby counties.

Note: Unemployed - persons unemployed and actively seeking work;  
Underemployed - persons employed but working only 14 to 26 weeks  
per year; Not in Labor Force - represents the number of persons  
who would enter the labor force if suitable employment were  
available (based on the assumption that persons in Kentucky would  
like to participate in the labor force in the same proportion that  
they do nationally).

Sources: Kentucky Department for Human Resources, Kentucky Labor  
Supply Estimated by County, 1980. Kentucky Department of Commerce,  
Future Labor Supply before 1986.

ESTIMATED FEMALE LABOR SUPPLY  
RADCLIFF LABOR MARKET AREA

Area	Current			Future	
	Total	Not in Labor Force	Unemployed	Under-employed	Reaching 18 years of age before 1986
Labor Market Area*	7,724	665	3,089	3,970	11,026
Hardin	2,104	180	794	1,130	2,946
Breckinridge	483	47	216	220	695
Bullitt	1,095	92	353	650	1,606
Grayson	658	56	322	280	738
Hart	552	48	224	280	642
Larue	401	35	146	220	455
Marion	529	49	240	240	936
Meade	618	52	206	360	1,143
Nelson	954	75	419	460	1,343
Washington	330	31	169	130	522

\*Additional workers may be drawn from other nearby counties.

Note: Unemployed - persons unemployed and actively seeking work;  
Underemployed - persons employed but working only 14 to 26 weeks per year; Not in Labor Force - represents the number of persons who would enter the labor force if suitable employment were available (based on the assumption that persons in Kentucky would like to participate in the labor force in the same proportion that they do nationally).

Sources: Kentucky Department for Human Resources, Kentucky Labor Supply Estimates by County, 1980. Kentucky Department of Commerce, Future Labor Supply before 1986.

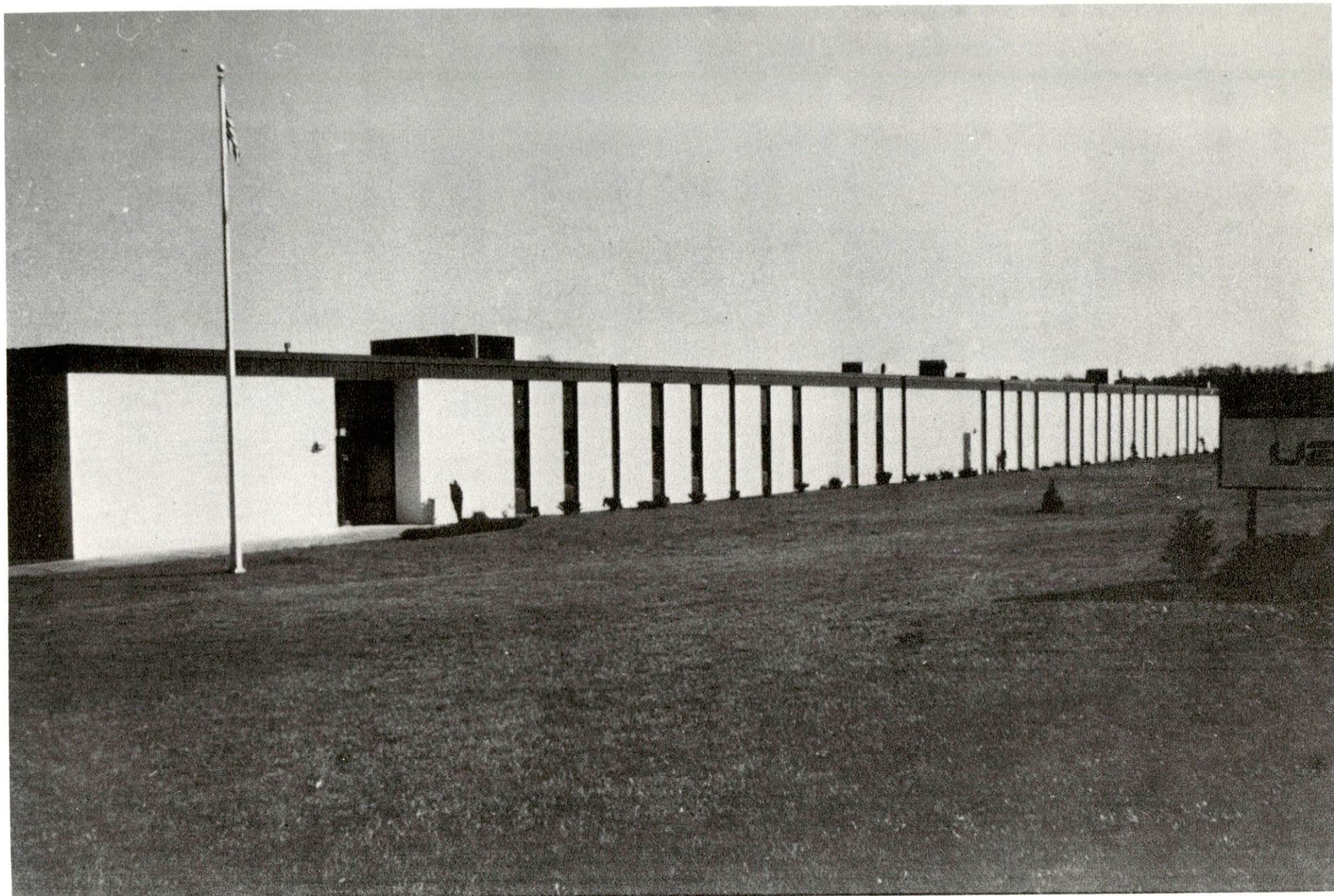


RADCLIFF MANUFACTURING FIRMS,  
THEIR PRODUCTS AND EMPLOYMENT

<u>Firm</u> (Establishment data)	<u>Product</u>	<u>Employment</u>			<u>Labor Unions</u>
		<u>Total</u>	<u>Male</u>	<u>Female</u>	
Defilade Products, Inc. (1962)	Wallets, fabric watchbands, holsters	4	1	3	
Hardin County Ready Mix (1979)	Ready-mixed concrete	14	12	2	
Radcliff Concrete, Inc. (1957)	Ready-mixed concrete	30	28	2	Teamsters
Royalty Printing Company and The Sentinel (1957)	Newspaper, job printing	7	3	4	
UARCO, Inc. (1972)	Business forms	280	-	-	

LABOR ORGANIZATIONS IN MANUFACTURING FIRMS

<u>Union</u>	<u>Representing workers at:</u>
International Brotherhood of Teamsters, Chauffeurs, Warehousemen and Helpers of America	Radcliff Concrete, Inc.



UARCO, Inc.



---

---

INDUSTRIAL SERVICES

---

<u>Type of Services</u>	<u>Location</u>	<u>Mileage from Radcliff</u>
Tool & Die, Machine & Pattern Shops	Elizabethtown	11
Metal Service Centers	Louisville	35
Heat Treating	Louisville	35
Metal Finishers	Elizabethtown	11
Electric Motor Repair	Elizabethtown	11
Source: <u>Kentucky Directory of Selected Industrial Services, 1981.</u>		

AVERAGE WEEKLY WAGES BY INDUSTRY  
BY PLACE OF WORK, 1980

	<u>Hardin County</u>	<u>Breckinridge County</u>	<u>Bullitt County</u>	<u>Grayson County</u>	<u>Hart County</u>
All Industries	\$211.03	\$190.36	\$205.60	\$185.38	\$174.45
Mining & Quarrying	*	191.42	*	185.15	174.21
Contract Construction	275.96	185.61	210.79	222.50	172.39
Manufacturing	274.97	201.05	285.48	191.51	186.83
Transportation, Communications & Public Utilities	243.66	312.75	267.12	237.48	177.16
Wholesale & Retail Trade	160.49	150.00	140.28	163.03	147.54
Finance, Insurance & Real Estate	212.67	233.77	193.56	220.75	193.95
Services	188.57	146.44	128.59	138.36	137.26
State/Local Government	206.55	209.47	202.65	204.84	213.03
Other	113.94	192.51	190.18	140.14	*
	<u>Larue County</u>	<u>Marion County</u>	<u>Meade County</u>	<u>Nelson County</u>	<u>Washington County</u>
All Industries	\$162.44	\$172.67	\$269.99	\$225.65	\$175.18
Mining & Quarrying	0	*	*	364.59	*
Contract Construction	119.04	206.45	176.91	261.84	282.26
Manufacturing	148.37	208.69	*	301.31	201.04
Transportation, Communications & Public Utilities	289.92	186.70	316.86	326.19	201.08
Wholesale & Retail Trade	142.44	140.53	139.43	155.11	134.92
Finance, Insurance & Real Estate	208.73	201.46	178.57	187.12	206.74
Services	124.78	135.44	141.69	130.77	106.46
State/Local Government	202.21	198.78	214.74	200.57	170.08
Other	113.05	102.00	*	148.61	100.24

\*Not disclosed.

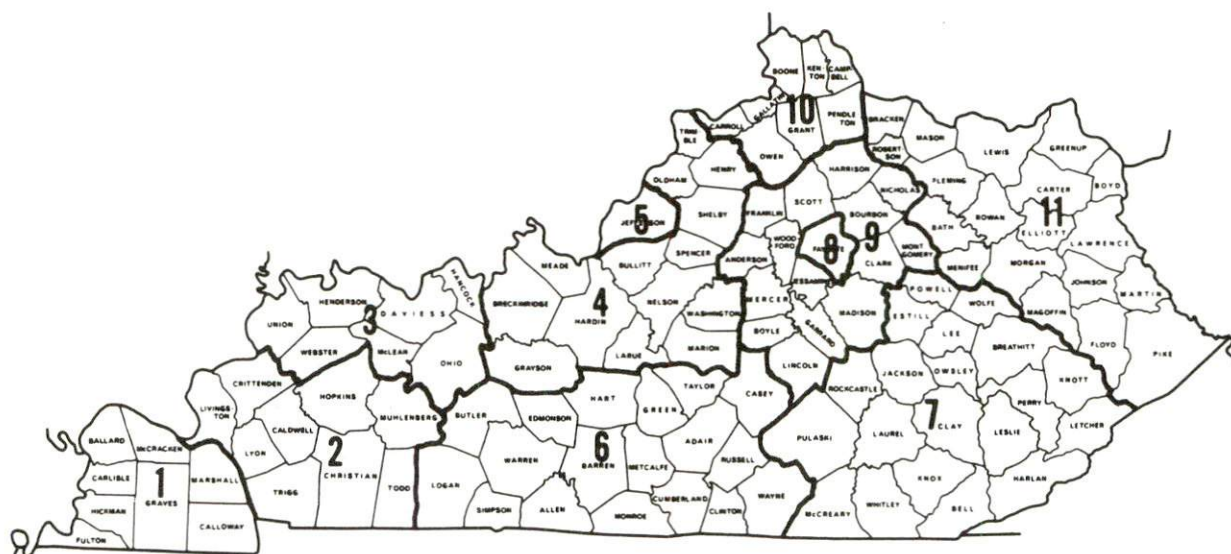
Note: Excludes domestic workers, railway workers, certain nonprofit corporations, majority of federal government workers, and self-employed workers.

Source: Kentucky Department for Human Resources, Average Weekly Wages of Workers Covered by Kentucky Unemployment Insurance Law, 1980.



Occupational wage rates for specific industries are usually not available to most government agencies, and wage data furnished to state employment agencies by individual industrial employers is protected from disclosure by federal law. The most reliable up-to-date wage information can be obtained by direct contact with local employers.

Associated Industries of Kentucky, a voluntary organization of Kentucky businesses, regularly collects occupational wage rates and fringe benefits data from participating member firms. Data is compiled for over 127 clearly defined office, production, and service occupations. Tabulations are published for eleven regions of Kentucky, as shown on the map below. It should be noted that the data may be weighted by the preponderance of firms in the larger cities and may be somewhat higher than the rates paid in the smaller communities. Data from these tabulations are available, upon request, from the Kentucky Department of Commerce, Frankfort, Kentucky 40601.



Associated Industries of Kentucky Area Wage Surveys

PER CAPITA PERSONAL INCOME

<u>Area</u>	<u>1979</u>	<u>1975</u>	<u>Percent Change</u>
Hardin County	\$7,120	\$5,128	38.9
Labor Market Area			
Range	\$5,086 - 7,120	\$3,427 - 5,128	N/A
Kentucky	7,377	4,882	44.4
U.S.	8,757	5,861	47.4

Source: U.S. Department of Commerce, Bureau of Economic Analysis,  
 April 1981. U.S. Department of Commerce, Bureau of Economic Analysis,  
 August 1981.



## TRANSPORTATION

### Rail

Line serving Vine Grove, 5 miles west of Radcliff - Illinois Central Gulf Railroad Company

Services - Main line; 4 northbound (2 manifest - 2 unit) 4 southbound (2 manifest - 2 unit) through freights daily; a turnaround switcher Tuesday, Thursday and Saturday from Cecilia to Fort Knox; siding space for 6-8 cars; piggyback facilities at Louisville, 35 miles northeast of Radcliff.

For details on routing, schedules, rates, and services, contact:

Manager of Industrial Development  
Illinois Central Gulf Railroad Company  
Pet Plaza  
400 South Fourth Street  
St. Louis, Missouri 63102  
(314) 241-9400

### Highways

Radcliff is provided access to the interstate highway system via U.S. 31W (an excellent 4-lane "AAA" rated highway) at Elizabethtown, 11 miles to the south. Connections are provided with I-65, the Blue Grass Parkway and the Western Kentucky Parkway.

I-65 is a major north-south artery extending from the industrial city of Chicago, Illinois, to the gulf port city of Mobile, Alabama. The Blue Grass Parkway (an interstate-type toll road), affords easy access to the famed Blue Grass region at Lexington. The Western Kentucky Parkway (an interstate-type toll road), is an excellent route to the Land Between the Lakes area in Western Kentucky.

## Truck Service

### Company

### Home Office

Branch Motor Express  
Company\*

114 Fifth Avenue  
New York, New York 10011

Bowling Green Express, Inc.\*\*

721 South Third Street  
Nashville, Tennessee 37206

Interstate Motor Freight  
System\*

110 Ionia, N.W.  
Grand Rapids, Michigan 49501

Overnite Transportation  
Company\*\*

1000 Semmes Avenue  
Richmond, Virginia 23209

Robbins Truck Line, Inc.\*\*

Route 1  
Hardinsburg, Kentucky 40143

Smith's Transfer Corporation\*

P.O. Box 1000  
Staunton, Virginia 24401

United Trucking Service, Inc.\*\*

8505 West Warren  
Dearborn, Michigan 48126

### Other Freight Services

### Nearest Shipping Center or Home Office

Purolator Courier Corporation\*\*\*

Louisville, 35 miles northeast

United Parcel Service\*\*\*

Louisville, 35 miles northeast

KATO Express, Inc. (air  
cargo service)\*\*\*\*

Elizabethtown, 11 miles south

\*Interstate service only.

\*\*Interstate and intrastate service.

\*\*\*For regular scheduled pickups or for occasional pickups, arrangements must be made with the Louisville office of Purolator Courier Corporation or United Parcel Service.

\*\*\*\*Daily pickup and delivery service is available to and from Standiford Field in Louisville. Arrangements for service should be made through the home office in Elizabethtown.

HIGHWAY MILES AND TRUCK TRANSIT TIME IN DAYS FROM  
RADCLIFF, KENTUCKY, TO SELECTED MARKET CENTERS

City	Highway Miles	Delivery		City	Highway Miles	Delivery	
		Time TL				Time TL	
Atlanta, Ga.	386	2		Los Angeles, Ca.	2,169	5	
Baltimore, Md.	639	3		Louisville, Ky.	35	1	
Birmingham, Ala.	340	2		Nashville, Tenn.	144	1	
Chicago, Ill.	327	2		New Orleans, La.	661	3	
Cincinnati, Ohio	136	1		New York, N.Y.	783	3	
Cleveland, Ohio	383	2		Pittsburg, Pa.	423	3	
Detroit, Mich.	395	2		St. Louis, Mo.	298	2	
Knoxville, Tenn.	270	2					

Note: Mileage computations are via the best interstate or primary highways, not necessarily the most direct route of travel.

Sources: Rand McNally Road Atlas, 1979. Official Kentucky Mileage Map, 1979. Delivery time - Robbins Truck Line, Inc., P.O. Box 145, Hardinsburg, Kentucky 40143.



## Air

### Local

Location: Elizabethtown Municipal Airport  
4 miles north-northwest of Elizabethtown, approximately  
8 miles south-southwest of Radcliff

Runway: 1 paved  
Length: 4,000 feet

Traffic Control: Wind sock

Lighting: Runway, REIL, VASI

Services: Fuel-jet/100 octane; minor A & E repairs; hanger;  
lounge; taxi

### Air Freight

Service: Charter air freight services must be arranged

### Nearest Scheduled Airline Service

Location: Standiford Field  
4 1/2 miles southeast of center of Louisville, Kentucky;  
39 miles east of Radcliff

Runways: 3 paved  
Length: 7,800 feet; 7,250 feet; 5,000 feet

Traffic Control: Control tower

Lighting: Runways, obstructions, beacon and approach and touch-  
down lights, center line on one runway

Services: American, Delta, Eastern, Ozark, Piedmont, TWA, USAir,  
Wright airlines; Allegheny and New York Air (commuter  
air carriers); 100 octane and jet fuel; major A&E repairs;  
storage; Louisville-Jefferson County Air Board; Hertz,  
Avis, National and Budget rental car services; taxi,  
city bus service; restaurant

### Air Freight

Service: Air freight terminal

Bus - Southern Greyhound Bus Line

Taxi - 24-hour service

Rental Services - Auto, truck and trailer rental available in Radcliff.

## Water

The Ohio River, located 35 miles north of Radcliff at Louisville, is a major waterway providing annual river traffic flow in excess of 151,000,000 tons.

Facilities at Louisville are the Port of Louisville and the Louisville and Jefferson County Riverport Authority. Louisville has been designated as a Foreign Trade Zone and offers complete U.S. Customs services for imports and exports.

POWER AND FUEL

Electricity

Company serving Radcliff and part of Hardin County - Kentucky Utilities  
Company

Source of power - Kentucky Utilities Company

Total generating capacity - 2,883,767 KW

For industrial rates contact:

Industrial Development Department  
Kentucky Utilities Company  
One Quality Street  
Lexington, Kentucky 40507  
(606) 255-1461

Company serving Radcliff and part of Hardin County - Nolin Rural Electric  
Cooperative Corporation

Source of power - East Kentucky Power Cooperative

Total generating capacity - 1,318,010 KW

For industrial rates contact:

Industrial Development Division  
East Kentucky Power Cooperative  
P.O. Box 707  
Winchester, Kentucky 40391  
(606) 744-4812

and/or

Nolin RECC  
P.O. Box 668  
Elizabethtown, Kentucky 42701  
(502) 765-6153

### Natural Gas

Company serving Radcliff - Louisville Gas and Electric Company  
Source of supply - Texas Gas Transmission Corporation  
Size of transmission mains - 26 and 30 inches (supplier);  
12, 16 and 20 inches (distributor)  
Distribution mains - 2, 4, 6 and 8 inches  
Distribution pressure - 4 ounces to 35 psi  
Btu content - 1,020 per cubic foot  
Specific gravity - .59  
For rates and supplies contact:

Louisville Gas and Electric Company  
P.O. Box 32010  
Louisville, Kentucky 40232  
(502) 566-4253

### Other Fuels

#### Propane (Within 30 miles)

Ameri Gas  
P.O. Box 64  
New Haven, Kentucky 40051

Pargas of Canmer, Inc.  
Highway 31 E.  
Canmer, Kentucky 42722

Buckeye Gas Products  
Company  
East Highway 31  
Magnolia, Kentucky 42757

Smith's Propane Gas Service, Inc.  
Highway 61  
Hodgenville, Kentucky 42240

Bullitt County LP Gas  
Company  
Highway 61 South  
Shepherdsville, Kentucky 40165

### Fuel Oils

#### Distillate fuel oil -

Ashland Petroleum Company  
736 Hawkins Drive  
Elizabethtown, Kentucky 42701

Cox Oil Company  
Southern States Petroleum  
Cooperative  
337 East Dixie Avenue  
Elizabethtown, Kentucky 42701

Ball Brothers Oil Company  
(Shell Oil Products Jobber)  
Hawkins Drive  
Elizabethtown, Kentucky 42701

Exxon Company  
Hawkins Drive  
Elizabethtown, Kentucky 42701

Chevron USA, Inc.  
Hawkins Drive  
Elizabethtown, Kentucky 42701

Guy Williams & Son, Inc.  
(Sunoco Products)  
I C Tracks  
Elizabethtown, Kentucky 42701

Residual fuel oil - Arrangements must be made with the refinery.

Low sulphur content coal - Available in Kentucky.



## WATER AND SEWERAGE

### Water

Company serving Radcliff - Hardin County Water District No. 1 \*  
409 West Lincoln Trail Boulevard  
Radcliff, Kentucky 40160  
(502) 351-3222

Source - Wells along with Ohio River and spring fed impoundments  
Treatment plant capacity - Saunders Spring Plant - 1,200,000 gallons  
per day; Muldraugh Plant - 4,000,000 gallons per day  
Average daily consumption - 3,200,000 gallons  
Peak daily consumption - 3,800,000 gallons  
Type treatment - Aeration, chlorination, coagulation, filtration,  
fluoridation, sedimentation  
Storage capacity - 915,000 gallons  
Size lines - 14, 12, 10, 8, 6, 4 and 2 inches  
Average pressure - 45 psi  
Average temperature - 60 degrees F.

### MONTHLY WATER RATES

First	2,000 gallons	\$2.00 per M gallons (\$4 minimum)
Next	8,000 gallons	1.00 per M gallons
Next	15,000 gallons	.80 per M gallons
Next	15,000 gallons	.70 per M gallons
All over	40,000 gallons	.50 per M gallons

#### Tap-on charge:

5/8 x 3/4-inch meter	- \$200
3/4-inch meter	- 240
1-inch meter	- 275
1 1/2-inch meter	- 450
2-inch meter	- 575

#### Meter installations in existing services:

Utilizing the existing meter box \$105  
Installing additional meter box \$135

\*The capacity of the Muldraugh treatment plant has been increased to 4,000 gallons per day and a 100,000-gallon clearwell has been constructed. Bids have been received for construction of a new 3,000,000 gallon per day water treatment plant, located in the western part of Hardin County near Ventress, and the laying of 32 inches of distribution mains. Construction of the \$2.9 million project will commence upon approval by the Public Service Commission.

Name of water district - Hardin County Water District No. 2

P.O. Box 66

Elizabethtown, Kentucky 42701

(502) 737-2387

Area served - Hardin County (Elizabethtown, Radcliff, Vine Grove and Upton expected)

Date when water district began operating - 1969

Source of supply of treated water - Hardin County Water District No. 1

Average amount of water used in 24-hour period - 1,243,000 gallons

Peak amount of water used in a 24-hour period - 1,777,000 gallons

Storage capacity - 1,000,000 gallons

Average pressure - 115 psi

Average temperature - 59 degrees F.

Size lines - 8, 6, 4 and 2 inches

#### MONTHLY WATER RATES

Rates - Hardin County Water District No. 2

##### 5/8 and 3/4-inch meter

First	2,000 gallons	\$ 5.60 minimum bill
Next	2,000 gallons	1.70 per M gallons
Next	6,000 gallons	1.30 per M gallons
Next	30,000 gallons	1.05 per M gallons
Next	60,000 gallons	.90 per M gallons
All over	100,000 gallons	.80 per M gallons

##### 1-inch meter

First	5,000 gallons	\$14.00 minimum bill
Next	5,000 gallons	1.30 per M gallons
Next	30,000 gallons	1.05 per M gallons
Next	60,000 gallons	.90 per M gallons
All over	100,000 gallons	.80 per M gallons

##### 1 1/2-inch meter

First	10,000 gallons	\$28.00 minimum bill
Next	30,000 gallons	1.05 per M gallons
Next	60,000 gallons	.90 per M gallons
All over	100,000 gallons	.80 per M gallons

##### 2-inch meter

First	20,000 gallons	\$55.00 minimum bill
Next	20,000 gallons	1.05 per M gallons
Next	60,000 gallons	.90 per M gallons
All over	100,000 gallons	.80 per M gallons

##### 3-inch meter

First	30,000 gallons	\$84.00 minimum bill
Next	10,000 gallons	1.05 per M gallons
Next	60,000 gallons	.90 per M gallons
Next	100,000 gallons	.80 per M gallons

(Contd.)



MONTHLY WATER RATES (Contd.)

4-inch meter

First	50,000 gallons	\$140.00 per M gallons
Next	50,000 gallons	.90 per M gallons
All over	100,000 gallons	.80 per M gallons

6-inch meter

First	100,000 gallons	\$280.00 minimum bill
All over	100,000 gallons	.80 per M gallons

Tap-on charge:

5/8-inch x 3/4-inch meter	-\$ 325.00
1-inch meter	- 410.00
1 1/2-inch meter	- 800.00
2-inch meter	- 1,250.00
3-inch meter	- 2,090.00
4-inch meter	- 3,575.00
6-inch meter	- 5,550.00

Surface water sources - Ohio, Salt, and Rolling Fork Rivers

Average discharge - Ohio--unlimited; Rolling Fork near Boston--

1,820 cfs (41 years, USGS); Salt River at Shepherdsville-- 1,601 cfs (41 years, USGS)

Expected ground water yield - 500 to 1,000 gpm in northern tip; 5 to 50 gpm at southern tip, central part and extending into eastern and northern sections, and western tip; 5 gpm or less at eastern and western borders; 50 to 200 gpm in remainder of county

Sewerage

Company serving Radcliff - City of Radcliff Sewerage System

P.O. Box 606

Radcliff, Kentucky 40160

(502) 351-4714

Design capacity - Plant No. 1 - 500,000 gallons per day; Plant No. 2 - 1,000,000 gallons per day

Average daily flow - 1,200,000 gallons

Treatment - Primary and secondary

Type treatment - Aeration, contact stabilization, clarification; two lagoons, one for further aeration and the second for final clarification and scrubbing; chlorination

Treated effluent discharged into - Mill Creek

Size of sanitary mains - 24, 15, 12, 10 and 8 inches

Rates -

First	2,000 gallons	\$1.625 per M gallons (\$3.25 minimum)
Next	8,000 gallons	.875 per M gallons
Next	30,000 gallons	.70 per M gallons
Over	40,000 gallons	.65 per M gallons

Each customer located outside the city limits of the city shall be charged an amount equal to 125% of the monthly sewer rates.

## CLIMATE

### Hardin County

#### Temperature

Normal (30-year record)	55.2 degrees
Average annual 1980	54.3 degrees
Record highest, September, 1954 (36-year record)	103.0 degrees
Record lowest, January, 1963 (36-year record)	-21.0 degrees
Normal heating degree days (30-year record)	4,729
(Heating degree day totals are the sums of negative departures of average daily temperatures from 65 degrees F.)	

#### Precipitation

Normal (30-year record)	44.49 inches
Mean annual snowfall (36-year record)	17.00 inches
Total precipitation 1979	34.69 inches
Mean number days precipitation (.01 inch or more) (36-year record)	131
Mean number days thunderstorms (36-year record)	47

#### Prevailing Winds (17-year record)

South

#### Relative Humidity

1 a.m.	77 percent (16-year record)
7 a.m.	81 percent (17-year record)
1 p.m.	60 percent (17-year record)
7 p.m.	64 percent (17-year record)

Source: U.S. Department of Commerce, Environmental Science  
Services Administration, Climatological Data, 1980.  
Station of record: Lexington, Kentucky.

## LOCAL GOVERNMENT

### City

Structure - Mayor - 4-year term; 6 council members - 2-year terms

Estimated budget 1982 - General Fund \$1,413,798.00

Sewer Fund 791,890.00

Fees and licenses - Business license fee based on gross receipts with a set minimum fee.

### County

Structure - County Judge/Executive - 4-year term;

8 magistrates - 4-year terms

Budget 1980-81 - General Fund \$1,571,325; Road Fund \$1,057,159

### Assessed Value of Property

<u>Classes of Property</u>	<u>Radcliff</u> (1980)	<u>Hardin County</u> (1980-81)
Real Estate and Tangibles	\$184,000,000	
Real Estate Tangibles		\$700,253,985 142,854,274

### Property Taxes

All property in Kentucky is assessed at 100 percent of fair cash value.

Land and buildings are taxed by the state and may be taxed by local jurisdictions. The state rate is \$0.241 per \$100 of assessed valuation.

Manufacturing machinery, raw materials inventories, pollution control equipment, and goods in the process of manufacture are not subject to local taxation. The state rate is \$0.15 per \$100.

Other tangible personal property owned by manufacturers (automobiles, trucks, finished goods, office furniture, office equipment) is taxed by the state at \$0.45 per \$100 and may be taxed by local jurisdictions.

Property stored in public warehouses in a transit status is not subject to local taxation. The state rate is only \$0.015 per \$100.

Intangible personal property located in Kentucky (money in hand, shares of stock, notes, bonds, accounts receivable, and other credits) is taxed by the state at \$0.25 per \$100, and is not subject to local taxation.

Private leaseholds in industrial facilities owned by cities or counties and financed by industrial revenue bonds are subject to a state tax of \$0.015 per \$100 of value (essentially the lessee's equity, adjusted for appreciation or depreciation). Local taxation is not permitted.



Combined State and Local Rates Per \$100 Valuation, 1980\*  
(100% assessment)

	<u>Inside City of Radcliff</u>	<u>Outside City</u>
1. Land and buildings	\$0.6876	\$0.4886
2. Mfg. machinery, raw materials, goods in process, pollution control equipment	0.1500	0.1500
3. Finished goods, office equipment, vehicles, other tangibles	0.8966	0.6976
4. Intangibles (accounts rec., notes, bonds, etc.)	0.2500	0.2500
5. Leaseholds in industrial revenue bond financed plants	0.0150	0.0150

Utilities Gross Receipts Tax for Schools

A 3 percent tax is levied on utilities receipts for schools in Hardin County. Tax is paid by all consumers of utilities as an add-on to the utilities bills. Exempted are receipts from utilities services that are resold and the receipts from the sale of energy or energy producing fuels that exceed 3 percent of the cost of production in manufacturing, processing, mining or refining.

Planning and Zoning

City agency - Radcliff Planning and Zoning Commission  
Zoning enforced - City of Radcliff only  
Subdivision regulations enforced - City and 5 miles beyond corporate limits  
Mandatory state codes enforced - Kentucky Plumbing Code, National Electric Code, Kentucky Boiler Regulations and Standards, National Fire Protection Association Standards of Safety (for buildings with an occupancy of less than 100 persons), Kentucky Building Code (modeled after BOCA code and applying to buildings with an occupancy of 100 or more persons)

\*Kentucky Department of Commerce.

## Safety

<u>Police</u>	<u>Radcliff*</u>	<u>Hardin County</u>
Total staff	17	8
	4 (auxillary)	
Radio-patrol cars	10	4
<u>Fire</u>		
American Insurance Association Fire Rating	6**	***
Volunteers	25	

## Rescue Service

### Hardin County Disaster and Emergency Services:

Offices for the Hardin County Disaster and Emergency Services are located in Elizabethtown, Upton, Radcliff, Vine Grove, West Point and Sonora. Equipment includes boats and motors, communications equipment and dragging equipment. A county-wide rescue squad, which is part of the Disaster and Emergency Services, is based in Elizabethtown. Equipment for the rescue squad includes three rescue vans, a jeep, communications equipment and an emergency generator. A mutual assistance program has been agreed upon between Hardin and Larue Counties.

\*The Radcliff Police Department is testing a Surveillance Burglar Alarm System. Final evaluation is under way, and if feasible, the system will become operational and available to businesses as well as homeowners. The system is radio-frequency operated and is monitored 24-hours by the police department. An annual fee of \$50 will be charged for the service.

\*\*The Radcliff Fire Department has taken delivery of a new fire engine. Purchase of the \$136,000 apparatus has resulted in the reduction of the city's fire insurance rating from 7 to 6.

\*\*\*Fire departments are being subsidized throughout the county. Presently there are 11 volunteer fire departments that serve all of Hardin County, excluding the cities of Elizabethtown and Radcliff.

## Refuse Collection and Disposal

### Radcliff

Type service	Private
Fee charged:	
residential	\$6.25 monthly
business	Contract
industrial	Contract
Collection frequency:	
residential	Twice weekly
business	Twice weekly
industrial	Twice weekly
Disposal method	County landfill

Kentucky Industrial Services, Inc., and Industrial Haulers provide service to industrial customers. Services and rates are negotiated.

Hardin County provides sanitation service to residents of the county. Refuse may be disposed of at collection points which are located throughout the county. Free pickup service is provided at these points. Door-to-door pickup service is provided by the county in selected areas at a cost to the residents of approximately \$7.00 per month.



## EDUCATION

### Public Schools

	<u>Hardin*</u> <u>County</u>
Total Enrollment (Spring 1981)	10,525
Elementary	5,785 (K-8)
Junior High	1,945 (7-9)
High School	2,795 (10-12)
Student-Teacher Ratio	21-1
Elementary	22-1
Junior High	20-1
High School	21-1
Percent High School Graduates to College	24.9
Expenditures Per Pupil (1979-80)	\$1,265.10
Bonded Indebtedness (June 30, 1980)	\$10,505,000

### Nonpublic Schools

	<u>Hardin Christ</u> <u>Academy</u>	<u>St. Christopher</u> <u>Elementary</u>
Total Enrollment	80	132
Elementary	40	132
High School	40	-
Student-Teacher Ratio	10-1	19-1
Elementary	10-1	19-1
High School	10-1	-

\*The Hardin County School System purchased a 110-acre site on North 31W. A \$2.4 million elementary school that accommodates 650 students opened in August 1981. There are also long-range plans for the construction of a junior high school and a high school on the same site.

## Area Colleges and Universities

<u>Name</u>	<u>Location (Miles distant)</u>	<u>Enrollment (Fall, 1980)</u>	<u>Highest Degree Conferred</u>
Fort Knox Extension Campus, University of Kentucky	Fort Knox (6)	*	Baccalaureate**
Elizabethtown Community College	Elizabethtown (11)	1,930	Associate
Bellarmino College	Louisville (35)	2,284	Masters
Jefferson Community College	Louisville (35)	4,822	Associate
Jefferson Community College - Southwest Campus	Louisville (35)	1,167	Associate
Spaulding College	Louisville (35)	1,048	Masters
University of Louisville	Louisville (35)	20,585	Doctorate, M.D., D.M.D., J.D.
Indiana University Southeast	New Albany (38)	4,361	Masters***
St. Catharine Junior College	St. Catharine (51)	243	Associate
Campbellsville College	Campbellsville (51)	698	Baccalaureate

\*Enrollment is included in the total enrollment of the University of Kentucky, which was 23,468 in the fall of 1980.

\*\*A Masters Degree program is offered at the Fort Knox Military Base through the University of Southern California, Western Kentucky University, and Embry-Riddle Aeronautical University.

\*\*\*Masters degree is offered only in education.

## Vocational Schools

Both the state vocational-technical schools and the area vocational education centers are operated by the Kentucky Department of Education. The state vocational-technical schools enroll persons full time who are at least 16 years of age and not in school. These students attend classes for six hours each day. The area vocational education centers are designed to accommodate high school students who are at least 15 years of age. These students attend vocational school for three hours each day. The state vocational-technical schools and the area education centers offer evening courses to enable working adults to upgrade current job skills.

	<u>Nearest State School</u>
	Elizabethtown State Vocational-Technical School
Location	Elizabethtown
Miles Distant	11 miles south of Radcliff
Curriculum	Business and Office Clerical Consumer and Home Economics Commercial Foods Health and Personal Services Occupations Health Careers Industrial Education Appliance Repair Auto Mechanics Carpentry-Building Trades Commercial Heating and Air Conditioning Drafting Industrial Electricity Industrial Maintenance Machine Shop Radio and Television Repair Welding

Arrangements can be made to provide training in the specific production skills required by an industrial plant. Instruction may be conducted either in the vocational school or in the industrial plant, depending upon the desired arrangement and the availability of special equipment.



## HEALTH

### Local Medical Personnel

Physicians - 5  
Dentists - 5

### Hospitals

<u>General Hospital</u>	<u>Location</u>	<u>Beds</u>
Hardin Memorial Hospital	Elizabethtown, 11 miles away	206

The Hardin Memorial Hospital, located in Elizabethtown, is a modern regional medical center and is presently serving a six county area. Twenty-four physicians have been attracted to Elizabethtown during the past three years with the first orthopedic surgeon joining the staff during the summer of 1980. Construction of a new wing has been completed bringing the total bed complement to 206.

General hospital facilities and services - 206 beds, four operating rooms, fracture room, cysto room, X-ray, nuclear medicine and ultrasound department, intensive care, automated laboratory, pharmacy, emergency room, eye surgery, pediatrics, respiratory therapy, delivery room, nursery, blood bank, physical therapy, social services, psychiatric services, EKG, EEG, accredited by the Joint Commission on Accreditation of Hospitals.

Medical staff - 63 physicians and dentists, 196 registered nurses, 29 graduate licensed practical nurses, two pathologists, three radiologists, two urologists, three anesthesiologists

### Ambulance Service

Name - Hardin County Ambulance Service (franchise based in Vine Grove)  
Staff - 6 full-time emergency medical technicians  
Service - 24-hour service provided to northern Hardin County  
Equipment - 1 ambulance located at Vine Grove

### Public Health

Facility - Hardin County Health Department, based in Elizabethtown  
Staff - 1 administrator, 9 nurses, 3 sanitarians, 1 health officer, 1 dental hygienist, 1 nutritionist, 1 social worker, 2 speech audiologists, 8 clerk typists, 1 custodian

## OTHER LOCAL FACILITIES

### Communications

Telephone - Brandenburg Telephone Company; General Telephone Company  
Services - Standard

Telegraph - Western Union Telegraph Company  
Services - Toll free number -800-325-5100 (counter service available  
at Fort Knox)

Postal - U.S. Post Office  
Class - First  
Mail received - 3 times daily  
Mail dispatched - 3 times daily

Newspapers -  
Daily and circulation - News-Enterprise, 13,821 (4,800 in northern Hardin  
County)  
Weekly and circulation - The Sentinel, 4,200  
Other papers  
received from - Elizabethtown and Louisville, Kentucky

Radio - WSAC AM-FM  
Stations received from - Louisville, Kentucky; Cincinnati, Ohio;  
Nashville, Tennessee

Television -  
Cable service  
Reception from - Bowling Green, Lexington, Louisville, Kentucky;  
Evansville, Indiana

Kentucky Educational  
Television - Elizabethtown transmitter - WKZT 23  
Louisville transmitter - WKMJ 68

### Library Services

Public library - Hardin County Public Library (branch located in Radcliff)  
Size collection - 61,384 volumes  
Circulation, 1979-80 - 165,143  
Services - Reference and information services; special programs;  
bookmobile; records; films; filmstrips; Interlibrary Loan; story  
hour; microfilm reader; copy machine; audio visual aids; newspapers  
and a meeting room

### Religious Institutions

Number of churches - 17

Denominations - Assembly of God  
Baptist  
Catholic  
Christian Church  
Church of Christ  
Church of God  
Church of the Nazarene  
Interdenominational  
Methodist

Nearest Synagogues - Louisville, 35 miles away

Congregations - Adath Israel (reform)  
Adath Jeshurum (conservative)  
Anshei Sfard (orthodox)  
Brith Sholom (reform)  
Keneseth Israel (orthodox)

### Financial Institutions

<u>Banks</u>	<u>Assets</u>	<u>Deposits</u>	<u>Statement Date</u>
The Bank of North Hardin	\$ 12,981,329.34	\$10,438,735.74	12/31/80
Citizens Bank (Branch at Radcliff)	48,909,059.00	43,916,236.00	12/31/80
First Hardin National Bank and Trust (Branch at Radcliff)	111,500,121.00	98,367,162.00	12/31/80
Fort Knox National Bank (Branch at Radcliff)	30,890,042.00	27,461,267.00	12/31/80
<u>Savings and Loan Associations</u>	<u>Assets</u>	<u>Savings Accounts</u>	<u>Statement Date</u>
First Federal Sav- ings and Loan Association (Branch at Radcliff)	\$121,840,890.02	\$104,795,092.50	12/31/80
South East Federal Savings and Loan Association (Branch at Radcliff)	135,828,157.27	112,509,869.51	12/31/80
<u>Hotels and Motels</u>			
Total number - 2			
Total rooms - 55			



## Clubs and Organizations

Adult Activities Club  
American Federation of Government  
Employees (AFGE)  
American Legion  
American Legion Auxiliary  
Ancestral Trails  
Armor Center Civic League  
Association of United States  
Army (AUSA)  
Boy Scouts  
Brownies  
CB Club  
Chamber of Commerce  
Eastern Star  
Emergency Disaster Unit  
Foreign Language Club  
Fort Knox NCO Wives Club  
Fort Knox Officer's Wives Club  
Fraternal Order of Police  
Future Business Leaders of  
America (FBLA)  
Future Farmers of America (FFA)  
Future Homemakers of America (FHA)  
Future Teachers of America (FTA)  
Girl Scouts  
International F&AM Masons  
International Wives Club  
Jaycees  
Knights of Columbus Council  
Ladies Auxiliary (Fire Department)  
Lions Club  
Masonic Lodge  
Math Club  
Music Club  
Optimist International  
Parents Without Partners  
Pep Club  
Radcliff Arts Guild  
Radcliff Homemakers  
Radcliff Industrial Foundation  
Radcliff Junior Women's Club  
Radcliff Ministerial Association  
Radcliff Sunrise Optimist  
Radcliff Woman's Club  
Retired Officers Association  
Rotary Club  
Teens Who Care  
Veterans of Foreign Wars (VFW)  
Veterans of Foreign Wars Ladies Auxilliary

## RECREATION

### Local

The citizens of Radcliff and North Hardin County are provided excellent recreational facilities. Under the supervision of a full-time recreation director, many programs are available for tots to senior citizens.

The recent completion of the David S. Colvin Community Center, provides the community with an Olympic - sized swimming pool, a wading pool, horseshoe pits, shuffleboard courts, tennis courts, and a game room. Two meeting rooms (one fully equipped with kitchen facilities) are available for community and private gatherings.

The Radcliff City Park has ample parking space, shade trees, walkways, a pavillion and is the location of the Hardin County Playhouse.

The Duvall Park provides 4 baseball/softball fields, a concession stand and experiences heavy participation by teams in organized league play.

Radcliff Junior High School maintains an excellent softball field which is used by male and female softball teams. The North Hardin High School's football field and the Parkway Elementary School's soccer field are available for public use.

Summer activities supervised by the Radcliff Recreation Department are soccer, baseball/softball, water polo, tennis, kids' crafts, swimming lessons, teen dances, super-dad competition day and children's theater.

Senior citizens are provided recreation programs including bingo, horseshoe and shuffleboard competition.

### Area (Within 60 miles)

Located near Radcliff is the Fort Knox Military Reservation. Named in honor of revolutionary war general, first secretary of war, Henry T. Knox, the vast 110,300-acre military reservation was activated in 1918.

The Patton Museum of Cavalry and Armor is located at Fort Knox. Opened in 1949, the museum has cavalry and armor displays dating from the revolutionary war to the war in Vietnam. Also displayed are personal effects of famed World War II General George S. Patton, Jr. Much enemy armor, captured by General Patton and his troops, are displayed on the grounds of the museum.

(Contd.)



Area (Within 60 miles) (Contd.)

The United States Gold Depository at Fort Knox is a two-story granite, steel, and concrete bullion depository containing a greater part of the United States gold reserve. The stored gold is in standard mint bars of almost pure gold or melted coin gold.

WHP  
LMS  
Otter Creek Park, approximately 15 miles northwest of Radcliff between Muldraugh and Brandenburg, is a 3,000-acre woodland area on the Ohio River. Facilities include rustic lodges and family cabins available by reservation; a 165-site campground; a visitors center; picnic areas; hiking trails; a boat ramp; tennis, basketball, and volleyball courts; a ballfield; and a playground.

Abraham Lincoln Birthplace National Historic Site, located 25 miles southeast of Radcliff near Hodgenville, features the log cabin, which was the birthplace of Abraham Lincoln, enclosed within a granite memorial shrine. The grounds include 116 acres of the original Thomas Lincoln farm and a visitor's center with audio-visual programs and exhibits on the Lincoln family.

My Old Kentucky Home State Park, 32 miles east of Radcliff in Bardstown, portrays an image of the South's gentle and leisurely home life before the Civil War. The restored Georgian Colonial mansion is where composer Stephen Foster visited and where he was inspired to write "My Old Kentucky Home." One of the nation's most successful outdoor dramas, "The Stephen Foster Story," is presented in the park's amphitheatre mid-june until Labor Day. The Park also offers a 40-site campground, a gift shop, a 9-hole golf course and pro shop, a picnic area, and planned recreation.

Louisville, 35 miles northeast of Radcliff, offers a wide variety of recreational, sporting, and cultural events. Most notable is the running of the Kentucky Derby. The most prestigious thoroughbred horse race in America is held at historic Churchill Downs the first Saturday in May. The Kentucky Derby was modeled after the Epsom Derby (Darby) held at Epsom Downs in Surrey County, England.

Other famous Louisville attractions are the renowned sternwheeler, the Belle of Louisville, (the Belle vies for honors in the Great Steamboat Race held annually during the Derby festival); the Kentucky Derby Museum; the Louisville Zoological Gardens; the Museum of Natural History and Science; and the J.B. Speed Art Museum. Seasonal performances of the arts are presented by Actors Theatre, the Louisville Ballet Company, the Kentucky Opera Association, the Louisville Bach Society, the Louisville Orchestra, and Shakespeare-in-the-Park.

(Contd.)



Area (Within 60 miles) (Contd.)

Noteworthy for its spaciousness and perfect grooming, Rough River Dam State Resort Park at Falls of Rough is 42 miles west of Radcliff. The 377-acre park on Rough River Lake has a 40-room lodge with a dining room, a coffee shop, a gift shop, and a meeting room. Cottages and camping sites are also available. Recreational facilities include a launching ramp, a dock with open and covered slips, fishing and pleasure boat rentals, a 9-hole golf course, a swimming pool, a sand beach with a bathhouse complex, three tennis courts, an archery range, hiking trails, picnic and playground areas, and planned recreation. Cruise boat excursions on Rough River Lake are available on the "Lady of the Lake."

Nolin River Lake, approximately 50 miles south of Radcliff is just north of Mammoth Cave National Park. The lake has a surface area of 5,800 acres and offers facilities for camping, boating, and fishing.

Mammoth Cave National Park is located 53 miles south of Radcliff near Cave City. Beneath 51,000 park acres, Mammoth Cave is among the major tourist attractions of all times. It is one the largest cave networks ever discovered, with at least 150 miles charted on five levels and vast areas not yet mapped. Some famous sights are Snowball Dining Room (267 feet below surface), Frozen Niagara, Crystal Lake, and Bottomless Pit. The park also features scenic boat trips on the Green River and nature and hiking trails. Park accommodations include a hotel with distinctive gift shops featuring native Kentucky and Southern Highland handicrafts, a motor lodge, hotel cottages, woodland cottages, and a hotel annex with budget accommodations and craft shop featuring live exhibits of broom making and weaving. Other park facilities include the hotel dining room and coffee shop, a service center, group meeting facilities, a campground, a picnic area, and tennis and shuffleboard courts.

Green River Lake State Park near Campbellsville, approximately 60 miles southeast of Radcliff, is made up of 1,300 acres surrounding an 8,200-acre lake. The park is open all year-round and offers 96 campsites, a beach, boat docks, fishing, swimming and a picnic area.





Kentucky Department of Commerce  
Capital Plaza Tower  
Frankfort, Kentucky 40601 • Phone (502) 564-4270