

1983

Industrial Resources: Logan County

Kentucky Library Research Collections
Western Kentucky University, spcol@wku.edu

Follow this and additional works at: https://digitalcommons.wku.edu/logan_cty

 Part of the [Business Administration, Management, and Operations Commons](#), [Growth and Development Commons](#), and the [Infrastructure Commons](#)

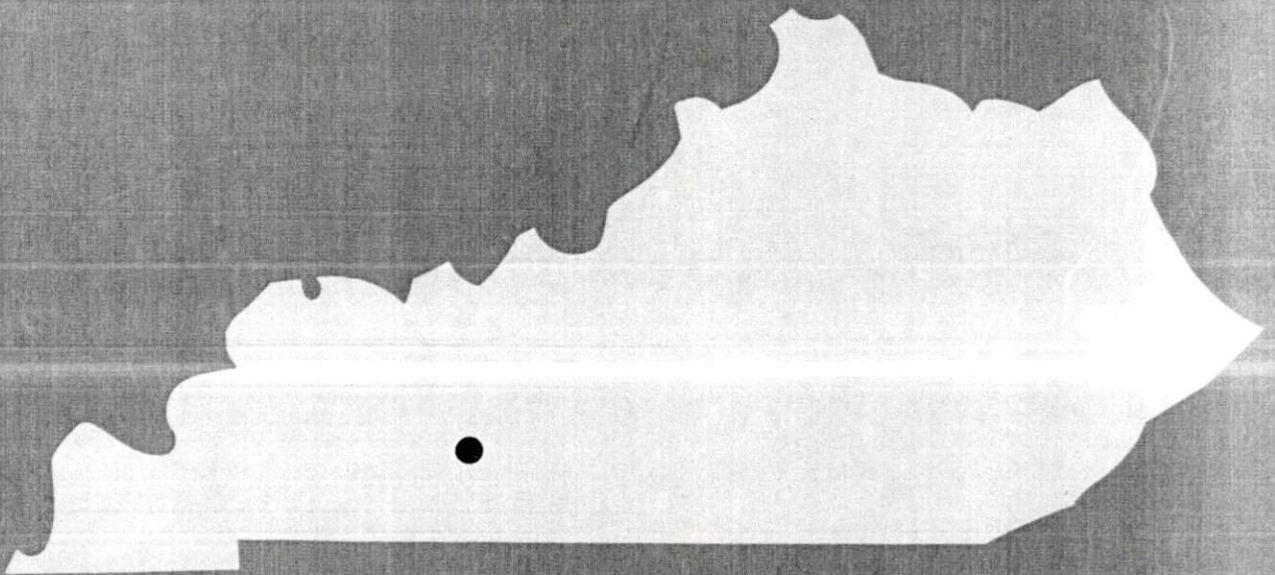
Recommended Citation

Kentucky Library Research Collections, "Industrial Resources: Logan County" (1983). *Logan County*. Paper 28.
https://digitalcommons.wku.edu/logan_cty/28

This Report is brought to you for free and open access by TopSCHOLAR®. It has been accepted for inclusion in Logan County by an authorized administrator of TopSCHOLAR®. For more information, please contact topscholar@wku.edu.

IR/ Logan Co.

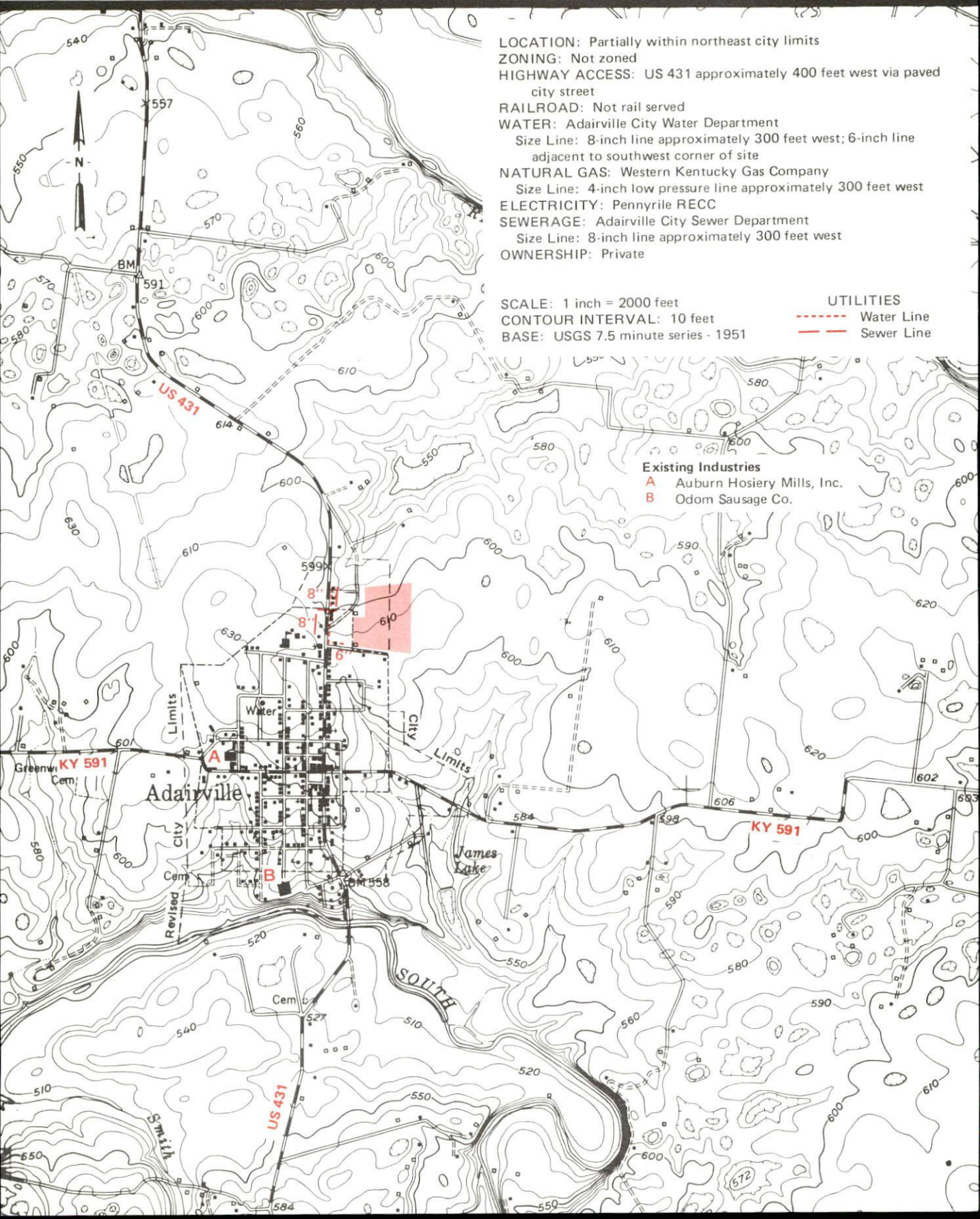
1983
A comprehensive
report on
Logan County, Ky.



KENTUCKY & CO.
The state that's run like a business.

ADAIRVILLE, KENTUCKY --- Site 183 -- 20 Acres

For more information contact the Department of Economic Development, Office of Business Development, Industrial Development Division, Capital Plaza Tower, Frankfort, Kentucky 40601 (502-564-7140).



LOCATION: Partially within northeast city limits
 ZONING: Not zoned
 HIGHWAY ACCESS: US 431 approximately 400 feet west via paved city street
 RAILROAD: Not rail served
 WATER: Adairville City Water Department
 Size Line: 8-inch line approximately 300 feet west; 6-inch line adjacent to southwest corner of site
 NATURAL GAS: Western Kentucky Gas Company
 Size Line: 4-inch low pressure line approximately 300 feet west
 ELECTRICITY: Pennyrile RECC
 SEWERAGE: Adairville City Sewer Department
 Size Line: 8-inch line approximately 300 feet west
 OWNERSHIP: Private

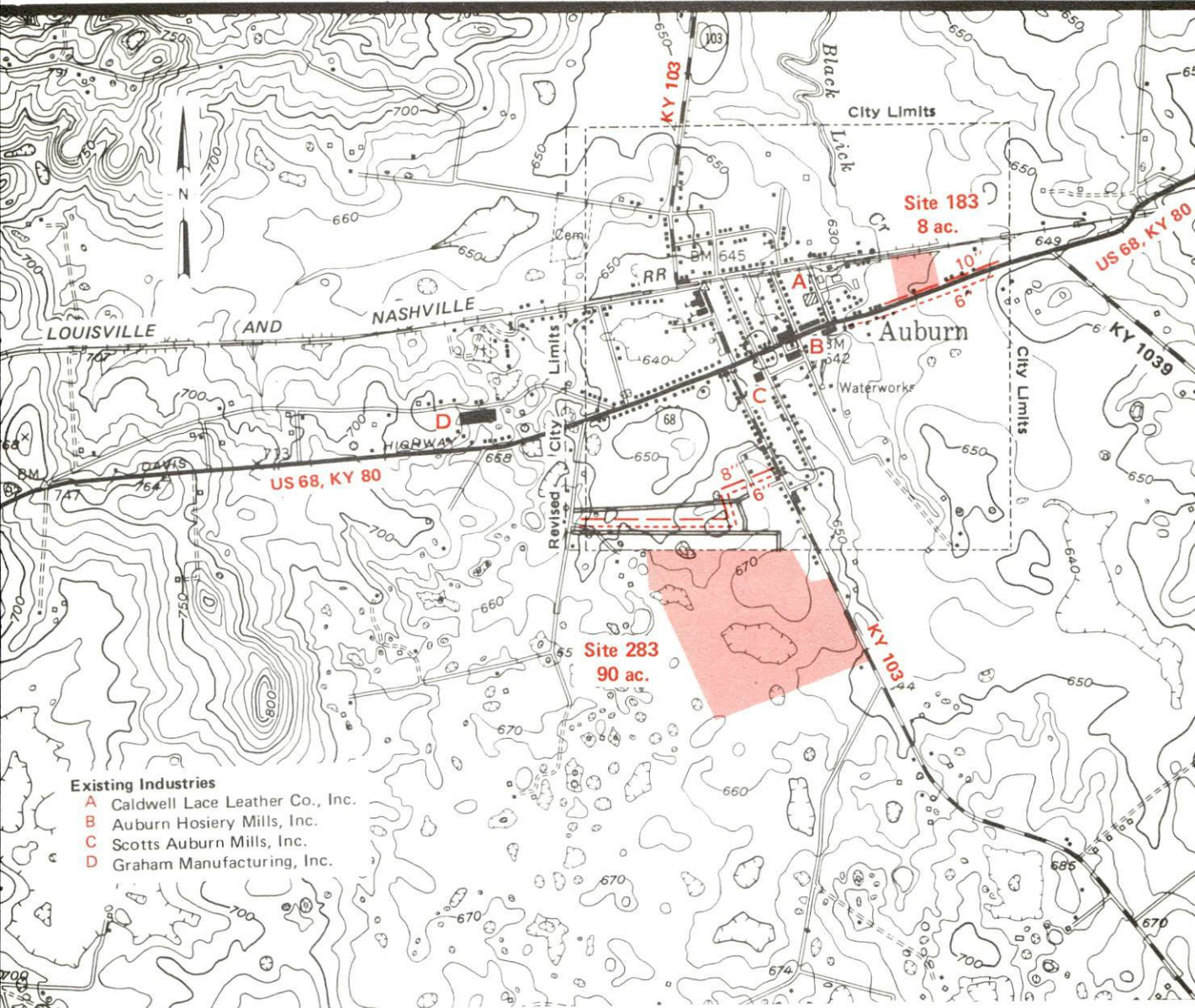
SCALE: 1 inch = 2000 feet
 CONTOUR INTERVAL: 10 feet
 BASE: USGS 7.5 minute series - 1951

UTILITIES
 - - - - - Water Line
 - - - - - Sewer Line

Existing Industries
 A Auburn Hosiery Mills, Inc.
 B Odom Sausage Co.

AUBURN, KENTUCKY --- Industrial Sites --- 1983

For more information contact the Department of Economic Development, Office of Business Development, Industrial Development Division, Capital Plaza Tower, Frankfort, Kentucky 40601 (502-564-7140).



Site 183 - 8 Acres

LOCATION: Within eastern city limits
ZONING: Not zoned
HIGHWAY ACCESS: US 68, KY 80 along southern boundary
RAILROAD: Louisville and Nashville Railroad along northern boundary
WATER: Auburn Water and Sewer Department
 Size Line: 6-inch line approximately 100 feet south across US 68, KY 80
NATURAL GAS: Western Kentucky Gas Company
 Size Line: 2-inch low pressure line approximately 100 feet south across US 68, KY 80
ELECTRICITY: Warren RECC
SEWERAGE: Auburn Water and Sewer Department
 Size Line: 10-inch line along southern boundary
OWNERSHIP: Private

Site 283 - 90 Acres

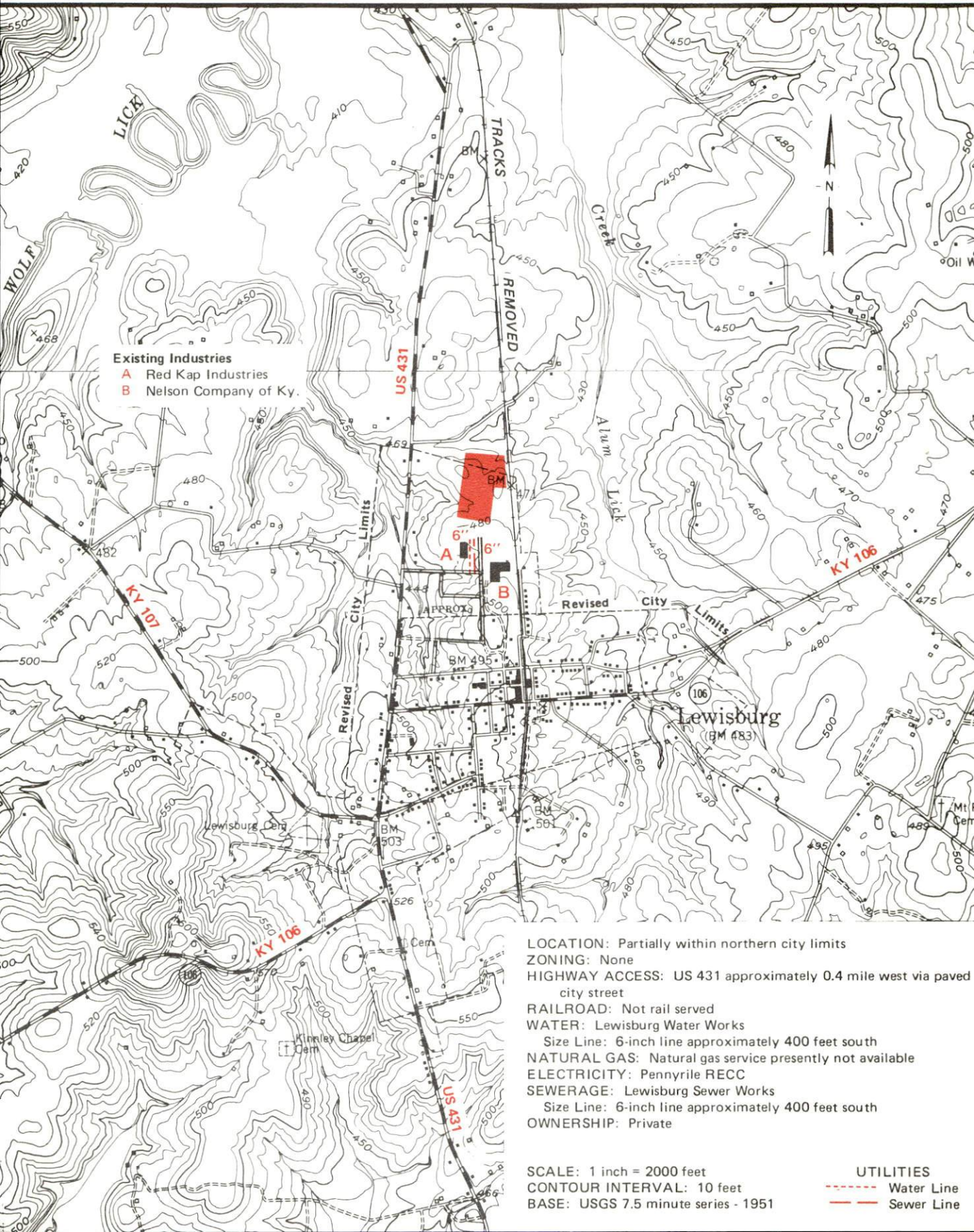
LOCATION: Adjacent to southern city limits
ZONING: Not zoned
HIGHWAY ACCESS: KY 103 along eastern boundary; US 68, KY 80 approximately 0.5 mile north via KY 103
RAILROAD: Not rail served
WATER: Auburn Water and Sewer Department
 Size Line: 6-inch line approximately 300 feet north across paved city street
NATURAL GAS: Western Kentucky Gas Company
 Size Line: 2-inch low pressure line approximately 500 feet northeast across KY 103
ELECTRICITY: Warren RECC
SEWERAGE: Auburn Water and Sewer Department
 Size Line: 8-inch line approximately 300 feet north across paved city street
OWNERSHIP: Private

SCALE: 1 inch = 2000 feet
CONTOUR INTERVAL: 10 feet
BASE: USGS 7.5 minute series - 1951

UTILITIES
 - - - - - Water Line
 - - - - - Sewer Line

LEWISBURG, KENTUCKY --- Site 183 --- 14 Acres

For more information contact the Department of Economic Development, Office of Business Development, Industrial Development Division, Capital Plaza Tower, Frankfort, Kentucky 40601 (502-564-7140).

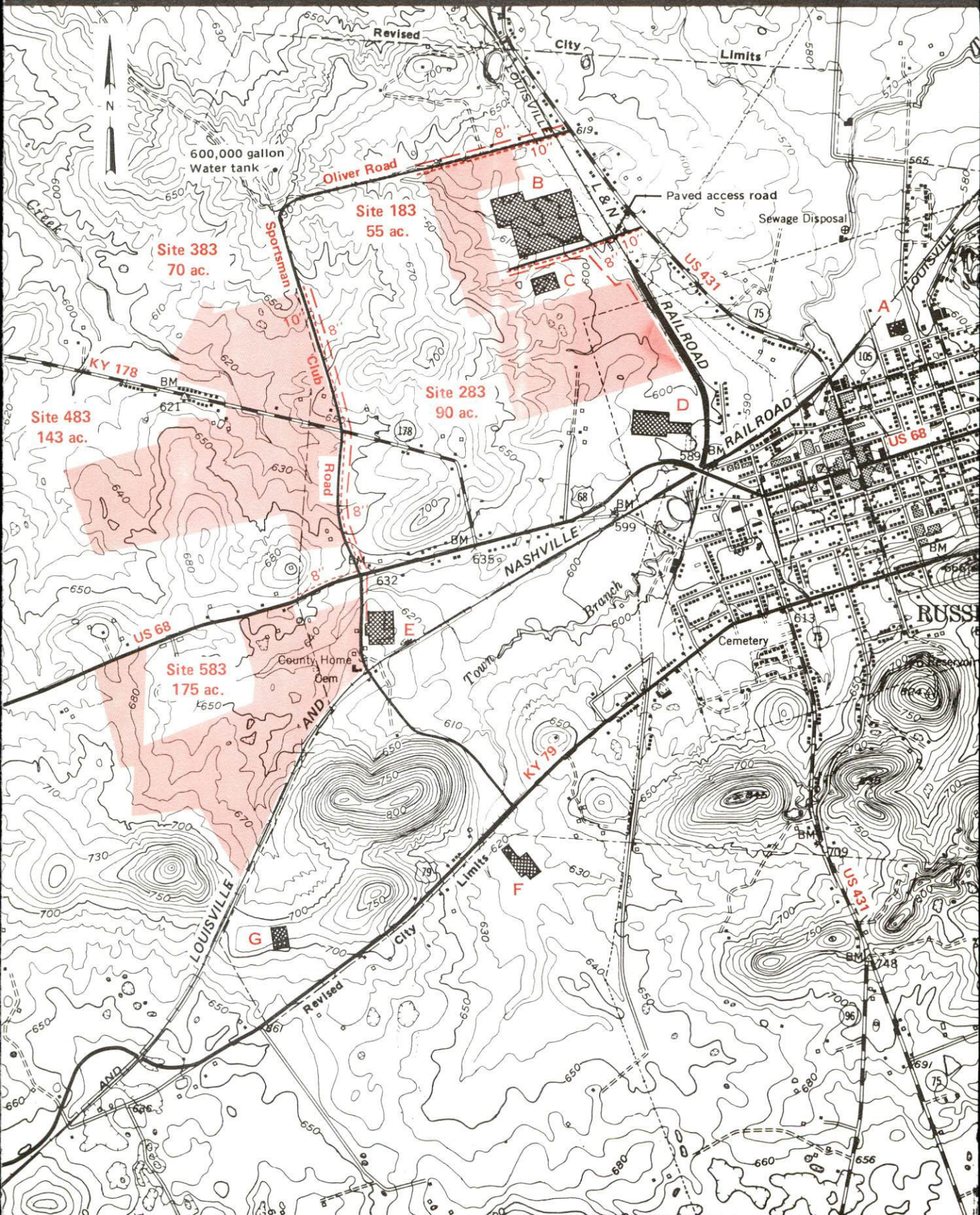


LOCATION: Partially within northern city limits
 ZONING: None
 HIGHWAY ACCESS: US 431 approximately 0.4 mile west via paved city street
 RAILROAD: Not rail served
 WATER: Lewisburg Water Works
 Size Line: 6-inch line approximately 400 feet south
 NATURAL GAS: Natural gas service presently not available
 ELECTRICITY: Pennyrile RECC
 SEWERAGE: Lewisburg Sewer Works
 Size Line: 6-inch line approximately 400 feet south
 OWNERSHIP: Private

SCALE: 1 inch = 2000 feet
 CONTOUR INTERVAL: 10 feet
 BASE: USGS 7.5 minute series - 1951

RUSSELLVILLE, KENTUCKY --- Industrial Sites --- 1983

For more information contact the Department of Economic Development, Office of Business Development, Industrial Development Division, Capital Plaza Tower, Frankfort, Kentucky 40601 (502-564-7140).



Site 183 - 55 Acres

LOCATION: Within northwest city limits
ZONING: Industrial
HIGHWAY ACCESS: Paved access road (Oliver Road) along northern boundary, US 431 approximately 0.2 mile east via Oliver Road
RAILROAD: Louisville and Nashville Railroad approximately 650 feet east
WATER: Russellville Water and Sewer Department
Size Line: 10-inch line along northern boundary; 10-inch line adjacent to southeast portion of site
NATURAL GAS: Western Kentucky Gas Company
Size Line: 4-inch medium pressure line approximately 500 feet east of southeast corner of site along south side of paved access road
ELECTRICITY: Russellville Electric Plant Board
SEWERAGE: Russellville Water and Sewer Department
Size Line: 8-inch line adjacent to southeast portion of site
OWNERSHIP: Private

Site 283 - 90 Acres

LOCATION: Within northwest city limits
ZONING: Industrial
HIGHWAY ACCESS: Paved industrial access road approximately 600 feet north, US 431 approximately 0.2 mile northwest via paved access road
RAILROAD: Louisville and Nashville Railroad along eastern boundary
WATER: Russellville Water and Sewer Department
Size Line: 10-inch line approximately 600 feet north
NATURAL GAS: Western Kentucky Gas Company
Size Line: 4-inch medium pressure line along eastern boundary
ELECTRICITY: Russellville Electric Plant Board
SEWERAGE: Russellville Water and Sewer Department
Size Line: 8-inch line adjacent to northeast corner of site
OWNERSHIP: Private

Site 383 - 70 Acres

LOCATION: Partially within northwest city limits
ZONING: Not zoned
HIGHWAY ACCESS: KY 178 along southern boundary; paved access road (Sportsman Club Road) along eastern boundary
RAILROAD: Not rail served
WATER: Russellville Water and Sewer Department
Size Line: 10-inch line approximately 100 feet east across Sportsman Club Road
NATURAL GAS: Western Kentucky Gas Company
Size Line: 2-inch medium pressure line approximately 100 feet southeast across Sportsman Club Road
ELECTRICITY: Russellville Electric Plant Board
SEWERAGE: Russellville Water and Sewer Department
Size Line: 8-inch line approximately 100 feet east across Sportsman Club Road
OWNERSHIP: Private

Site 483 - 143 Acres

LOCATION: Partially within western city limits
ZONING: Not zoned
HIGHWAY ACCESS: KY 178 along northern boundary; US 68 approximately 500 feet south via paved access road (Sportsman Club Road)
RAILROAD: Not rail served
WATER: Russellville Water and Sewer Department
Size Line: 10-inch line approximately 100 feet east across Sportsman Club Road
NATURAL GAS: Western Kentucky Gas Company
Size Line: 2-inch medium pressure line approximately 100 feet east across Sportsman Club Road
ELECTRICITY: Russellville Electric Plant Board
SEWERAGE: Russellville Water and Sewer Department
Size Line: 8-inch line approximately 100 feet east across Sportsman Club Road
OWNERSHIP: Private

Site 583 - 175 Acres

LOCATION: Partially within southwestern city limits
ZONING: Not zoned
HIGHWAY ACCESS: US 68 along northern boundary; Sportsman Club Road along eastern boundary
RAILROAD: Not rail served
WATER: Russellville Water and Sewer Department
Size Line: 8-inch line approximately 100 feet northeast across US 68
NATURAL GAS: Western Kentucky Gas Company
Size Line: 4-inch medium pressure line approximately 100 feet north across US 68
ELECTRICITY: Russellville Electric Plant Board
SEWERAGE: Russellville Water and Sewer Department
Size Line: 8-inch line approximately 100 feet east across Sportsman Club Road
OWNERSHIP: Private

SCALE: 1 inch = 2000 feet
CONTOUR INTERVAL: 10 feet
BASE: USGS 7.5 minute series - 1952

UTILITIES
----- Water Line
----- Sewer Line

Existing Industries

- A Red Kap Industries
- B E. R. Carpenter Co.
- C Available Industrial Bldg. - 80,000 sq. ft.
- D Rockwell International Corp.
- E Emerson Electric Co.
- F Bilt-Rite Products Co.
- G Illinois Tool Works Inc.

A COMPREHENSIVE REPORT ON
LOGAN COUNTY, KENTUCKY

Prepared by
The Kentucky Department of Economic Development
Division of Research and Planning
in cooperation with
The Russellville-Logan County Chamber of Commerce
The Adairville-South Logan County Chamber of Commerce
The City of Auburn
The City of Lewisburg

1983

Program manager - Pamela Riley; research - Bill Morris; clerical - Linda Fint; graphics - Frank Ferrante, Tony Cecconi, Robert Owens; cartography - Site Evaluation Section, Division of New Industries. Cost of printing paid from state funds.

TABLE OF CONTENTS

<u>Chapter</u>	<u>Page</u>
INDUSTRIAL SITES	i
LOGAN COUNTY - A RESOURCE PROFILE	1
THE LABOR MARKET AREA	3
Population	3
Labor Force Characteristics of Residents, 1981	3
Selected Components of Nonagricultural Employment, by Place of Work, 1981	4
Logan County Manufacturing Firms, Their Products and Employment	5
Labor Organizations in Manufacturing Firms	8
Industrial Services	8
Estimated Male Labor Supply	9
Estimated Female Labor Supply	10
Average Weekly Wages by Industry, by Place of Work, 1981	11
Per Capita Personal Income	13
TRANSPORTATION	14
Rail	14
Highways	14
Truck Service	15
Air	17
Bus	18
Taxi	18
Rental Services	18
Water	18
POWER AND FUEL	19
Electricity	19
Natural Gas	20
Other Fuels	21
WATER AND SEWERAGE	22
Public Water Supply	22
Raw Water	26
Sewerage	27
CLIMATE	29

<u>Chapter</u>	<u>Page</u>
LOCAL GOVERNMENT	30
City	30
County	30
Assessed Value of Property, 1982	31
Property Taxes	31
Combined State and Local Rates Per \$100 Valuation, 1982	32
Utilities Gross Receipts Tax for Schools	33
Planning and Zoning	34
Safety	34
Police	34
Fire	34
Rescue Service	35
Refuse Collection and Disposal	35
EDUCATION	36
Public Schools	36
Nonpublic Schools	36
Area Colleges and Universities	37
Vocational Schools	38
HEALTH	40
Local Medical Personnel	40
Hospitals	40
Other Medical Facilities	40
Ambulance Service	40
Public Health	40
OTHER LOCAL FACILITIES	41
Communications	41
Library Services	43
Religious Institutions	43
Financial Institutions	44
Hotels and Motels	44
Clubs and Organizations	45
RECREATION	47
COMMUNITY IMPROVEMENTS	50

LOGAN COUNTY - A RESOURCE PROFILE

Logan County is located in south central Kentucky's Pennyryle Region, on the state's border with Tennessee. The county has a land area of 556 square miles and had a 1980 population of 24,138. Russellville, the manufacturing center and county seat, is located in the central portion of the county and had a 1980 population of 7,520. Russellville is located 54 miles north of Nashville, Tennessee; 146 miles southwest of Louisville, Kentucky; and 279 miles southeast of St. Louis, Missouri.

Adairville, located 12 miles south of Russellville, had a 1980 population of 1,105; Auburn, located 10 miles east of Russellville, had a 1980 population of 1,467; and Lewisburg, 15 miles north of Russellville, had a 1980 population of 972.

The Economic Framework

The total number of Logan County residents employed in 1981 averaged 9,360 with 8,020 employed in nonagricultural jobs. Manufacturing employers in the county reported 3,030 workers; wholesale and retail trade 1,050; state and local government 970; and 460 in the services industries. Manufacturing employment is greatest in the apparel and related products, chemical and allied products, fabricated metal products, and electrical machinery industries.

Per capita income in Logan County in 1980 was \$6,852. Between 1976 and 1980, per capita income in the county increased by 38 percent.

The Logan County labor market area includes the five surrounding Kentucky counties and Robertson County in Tennessee. The total number of residents in the Kentucky portion of the labor market area employed in 1981 averaged 69,440 with 64,430 employed in nonagricultural jobs. Manufacturing employers in this area reported 15,920 workers; wholesale and retail trade 11,490; state and local government 7,540; and 6,950 in the services industries.

Resources for Growth

1. Labor Supply - There is a current estimated labor supply of 12,700 men and 9,360 women available for industrial jobs in the labor market area. In addition, from 1983 through 1987, 8,120 young men and 7,860 young women in the area will become 18 years of age and potentially available for work.

2. Transportation - Local transportation capability is excellent. The Seaboard System Railroad provides main line service to Russellville and Auburn. U.S. Highways 68, 79 and 431, and Kentucky Route 100 are all 80,000-pound gross load limit highways serving Russellville and Logan County. Nearby express routes include the Green River Parkway, 25 miles east of Russellville; the Pennyryle Parkway, 35 miles west; and the Western Kentucky Parkway, 37 miles north. An interchange of Interstate 65 is located 30 miles east of Russellville and Interstate 24 is accessible 27 miles southwest of Russellville.

Thirteen common carriers provide motor freight service to Logan County.

The Russellville-Logan County Airport, located five miles southeast of Russellville, has one paved 3,300-foot runway. The nearest scheduled commercial airline service is available at Nashville, Tennessee, 60 miles south of Russellville.

3. Power and Fuel - Electric Power is provided to Russellville by the Russellville Electric Plant Board. Adairville, Auburn, Lewisburg and Logan County are served by the Pennyrite RECC and/or the Warren RECC. The Tennessee Valley Authority is the source of power for all three companies. Natural Gas service is provided to Russellville, Adairville and Auburn by the Western Kentucky Gas Company, whose source of supply is Texas Gas Transmission Corporation. There are two propane dealers and four fuel oil dealers serving Logan County.

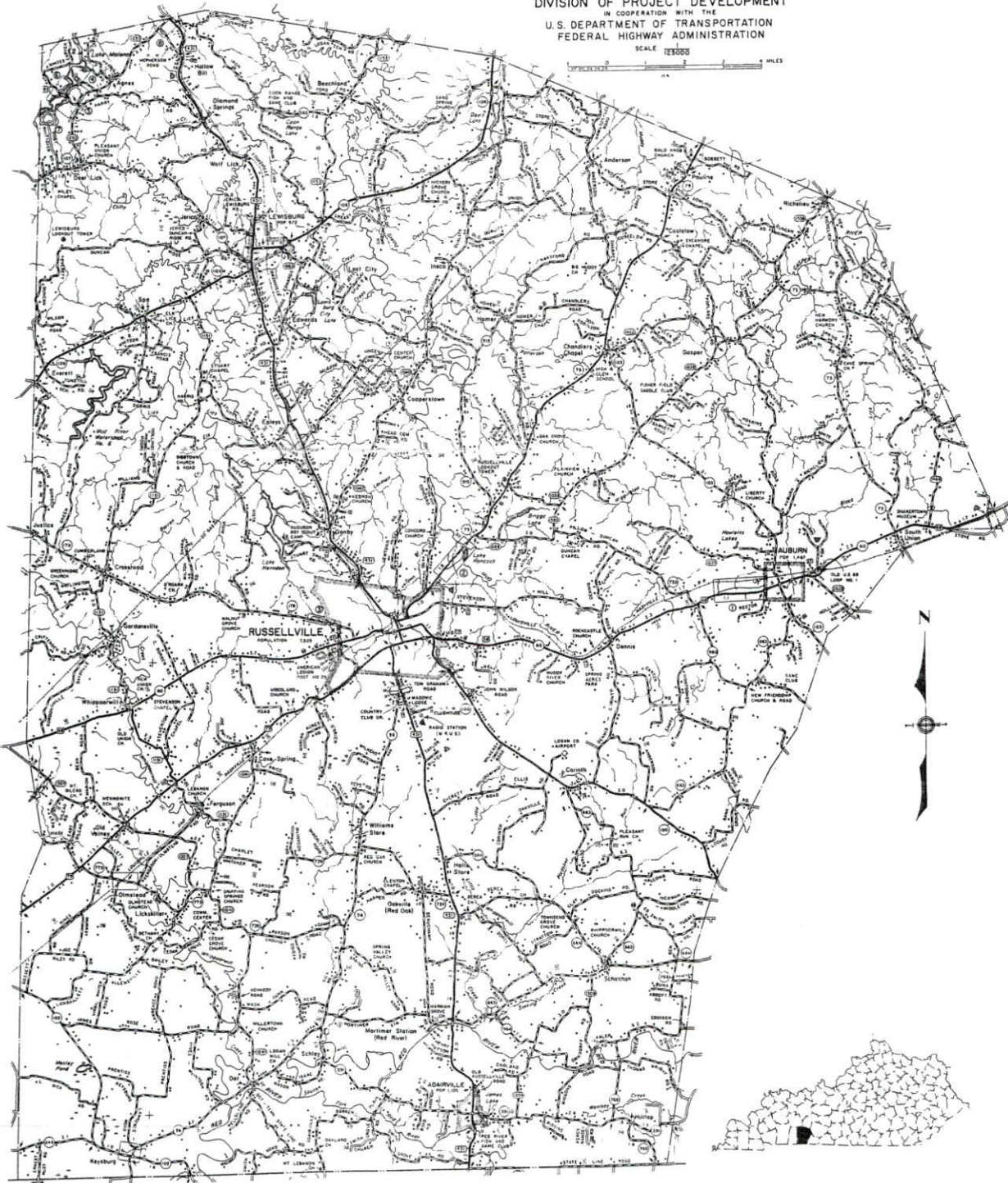
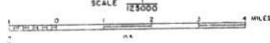
4. Education - There are two public school systems operating in Logan County. The Russellville Independent School System serves approximately 1,600 students and is accredited by the Southern Association of Colleges and Schools. The Logan County School System serves over 3,000 students. In addition, two nonpublic schools operate in Logan County.

Twelve institutions of higher learning are located within 55 miles of Russellville.

The Bowling Green State Vocational-Technical School, located 29 miles east of Russellville at Bowling Green, offers training in 29 course areas. The Russellville Area Vocational Education Center in Russellville offers training in 11 course areas.

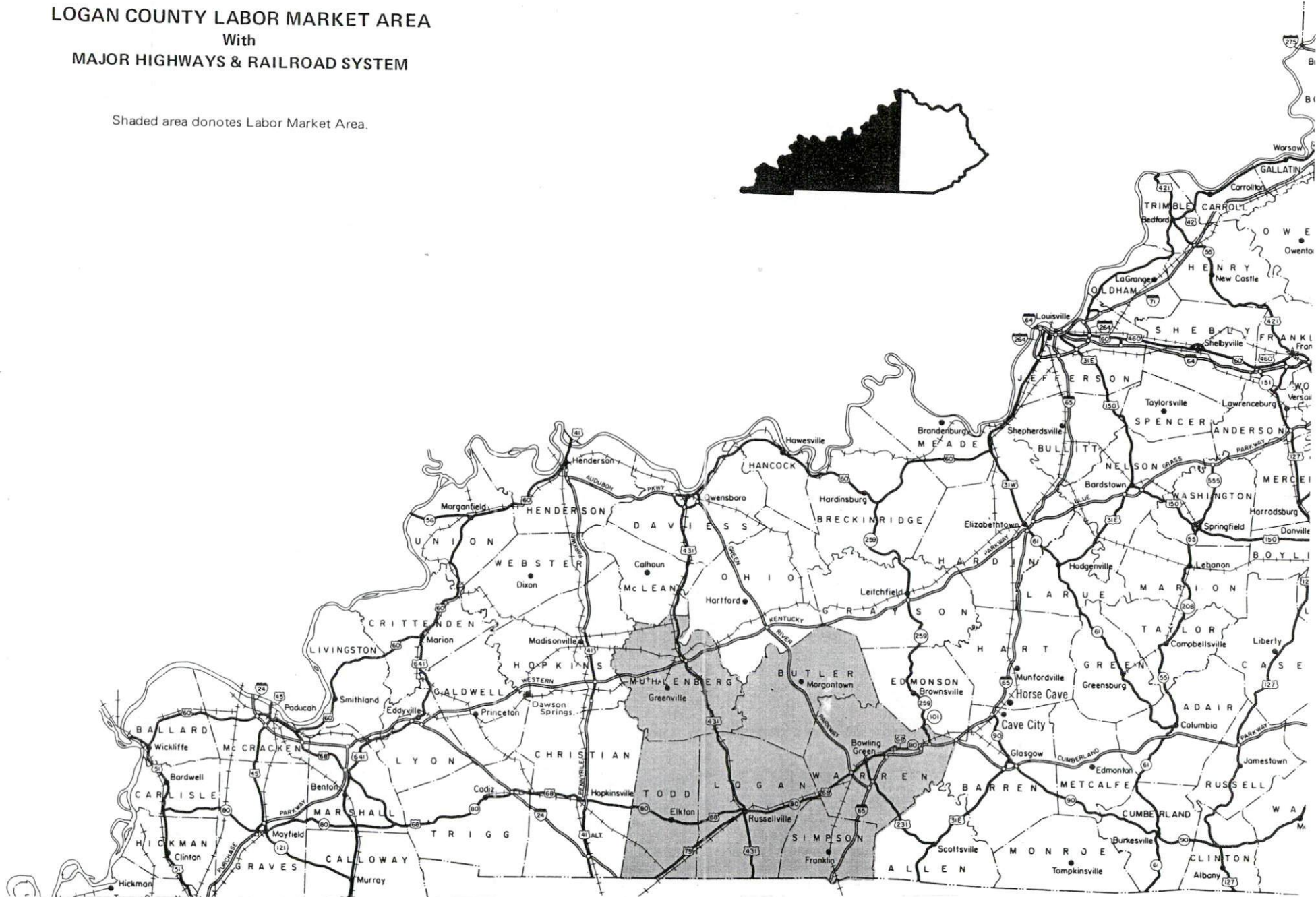
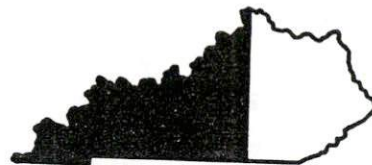
1982 EDITION
GENERAL HIGHWAY MAP
LOGAN COUNTY
KENTUCKY

PREPARED BY THE
KENTUCKY DEPARTMENT OF TRANSPORTATION
BUREAU OF HIGHWAYS
DIVISION OF PROJECT DEVELOPMENT
IN COOPERATION WITH THE
U.S. DEPARTMENT OF TRANSPORTATION
FEDERAL HIGHWAY ADMINISTRATION



LOGAN COUNTY LABOR MARKET AREA With MAJOR HIGHWAYS & RAILROAD SYSTEM

Shaded area donotes Labor Market Area.



THE LABOR MARKET AREA

The Labor Market Area includes Logan County and the adjoining Kentucky counties of Butler, Muhlenberg, Simpson, Todd, and Warren. The southern boundary of Logan County is formed by the Tennessee state line. The Logan County Labor Market Area also encompasses the adjoining Tennessee county of Robertson.

POPULATION

Area	1980	1970	Percent Nonwhite
Russellville	7,520	6,456	15.4
Adairville	1,105	973	23.3
Auburn	1,467	1,160	11.9
Lewisburg	972	651	1.1
Labor Market Area	165,815	140,814	N/A
Logan County	24,138	21,793	9.3
Butler County	11,064	9,723	0.6
Muhlenberg County	32,238	27,537	5.3
Simpson County	14,673	13,054	12.4
Todd County	11,874	10,823	12.4
Warren County	71,828	57,884	9.0

Note: The 1980 counts of population by race are provisional.

Sources: U.S. Department of Commerce, Bureau of the Census, 1980 Census of Population and Housing, March 1981; 1980 Census of Population, Number of Inhabitants. Population Research Unit, Urban Studies Center, University of Louisville, Kentucky Demographics: The 1980 Census of Kentucky, Characteristics of Population, Households, Housing, January 1982.

LABOR FORCE CHARACTERISTICS OF RESIDENTS, 1981

	Logan County	Labor Market Area*
Civilian Labor Force	10,376	76,551
Employment	9,359	69,438
Agricultural	1,342	5,010
Nonagricultural	8,017	64,428
Unemployment	1,017	7,113
Rate of Unemployment (%)	9.8	9.3

*Logan County and the five adjoining Kentucky counties.

Source: Kentucky Cabinet for Human Resources, Kentucky Labor Force Estimates, Annual Averages, 1981.

SELECTED COMPONENTS OF NONAGRICULTURAL EMPLOYMENT,
BY PLACE OF WORK, 1981

	<u>Logan County</u>	<u>Labor Market Area*</u>
All Industries (total)	6,542	50,870
Manufacturing	3,029	15,917
Wholesale & Retail Trade	1,051	11,494
Services	458	6,950
State/Local Government	968	7,536
Contract Construction	633	2,931

*Logan County and the five adjoining Kentucky counties.

Source: Kentucky Cabinet for Human Resources, Average Monthly Workers Covered by Kentucky Unemployment Insurance Law, 1981.

LOGAN COUNTY MANUFACTURING FIRMS,
THEIR PRODUCTS AND EMPLOYMENT

Firm (Establishment date)	Product	Employment			Labor Unions
		Total	Male	Female	
Adairville					
Auburn Hosiery Mills, Inc. (1946)	Ladies' hosiery, panty hose and tights; children's panty hose and tights	80	24	56	
Odom Sausage Company (1964)	Sausage	156	97	59	Food and Commercial Workers*
Auburn					
Auburn Hosiery Mills, Inc. (1937)	Ladies' hosiery, panty hose and tights; children's tights	76	13	63	
Auburn Roller Mills, Inc. (1915)	Corn meal, feed	24	24	--	
Caldwell Lace Leather Company, Inc. (1863)	Leather tanning, gaskets, leather laces	90	83	7	
Colonial House Furniture (1960)	Reproduction furniture	10	5	5	
Graham Manufacturing, Inc. (1965)	Church and institutional furniture, bank furniture	19	15	4	
Scotts Auburn Mills, Inc. (1876)	Flour, corn meal, mill feed	29	27	2	

(Contd.)

<u>Firm</u> (Establishment date)	<u>Product</u>	<u>Employment</u>			<u>Labor Unions</u>
		<u>Total</u>	<u>Male</u>	<u>Female</u>	
Lewisburg					
Hinton Lumber, Inc. (1933)	Rough lumber, ties, flitches	16	14	2	
Lewisburg Roller Mills (1944)	Feed	4	4	--	
Nelson Company of Kentucky (1976)	Wood pallets	63	49	14	
Red Kap Industries (1972)	Men's work clothes	97	7	90	
Russellville					
Bilt Rite Products Company, A Division of U.S. Industries (1958)	Poultry cages, welded mesh	56	51	5	
E. R. Carpenter Company (1969)	Urethane foam cushion	475	--	--	
Cates Lumber & Building Supply, Inc. (1963)	Lumber	19	14	5	
Coca-Cola Bottling Company (1924)	Soft drinks	29	25	4	Teamsters*
Emerson Electric Company (1961)	Hermetic electric motors	500	250	250	
Green Meadows Dairy, Inc. (1957)	Milk	11	8	3	
Griffin Industries of Kentucky (1972)	Tallow by- products, tankage	50	49	1	
Hedges Office Equipment Company (1963)	Job printing	4	2	2	
Illinois Tool Works, Inc. (1967)	Metal fasteners	136	114	22	
KAPCO, Inc. (1960)	Asphalt	55	53	2	
The Kentucky Stone Company (1936)	Agricultural lime, crushed limestone	13	11	2	Steelworkers*

(Contd.)

<u>Firm</u> (Establishment date)	<u>Product</u>	<u>Employment</u>			<u>Labor Unions</u>
		<u>Total</u>	<u>Male</u>	<u>Female</u>	
Russellville (Contd.)					
Logan Leader, News Democrat (1968)	Newspaper publishing	20	8	12	
McCarley & Richardson, Inc. (1949)	Feed	12	11	1	
Red Kap Industries (1944)	Men's work pants	450	70	380	
Rockwell International Corporation (1956)	Aluminum die castings, gas regulators, gas meters	338	202	136	
Russellville Concrete Products, Inc. (1937)	Concrete block, ready-mixed concrete, concrete burial vaults	15	15	--	
Russellville Dental Lab (1956)	Dental appliances	9	8	1	
Shortenings, Inc. (1976)	Beef tallow, defatted tissue	3	3	--	
Smith Douglass of Kentucky, Inc. (1949)	Fertilizer	38	31	7	
Southern States Cooperative, Inc. (1959)	Fertilizer	21	19	2	

*See Labor Organizations below.

Source: Kentucky Department of Economic Development, 1982 Kentucky Directory of Manufacturers.

New Manufacturing Development - Construction began in 1981 on the new \$450,000,000 Arco Industries aluminum roller mill plant in Logan County. The 900,000-square-foot plant is expected to be completed in late 1983 and will employ 400 to 500 people.

LABOR ORGANIZATIONS IN MANUFACTURING FIRMS

<u>Union</u>	<u>Representing workers at:</u>
Adairville	
United Food and Commercial Workers International Union, AFL-CIO	Odom Sausage Company
Russellville	
International Brotherhood of Teamsters, Chauffeurs, Warehousemen and Helpers of America	Coca-Cola Bottling Company
United Steelworkers of America, AFL-CIO	Kentucky Stone Company

INDUSTRIAL SERVICES

<u>Types of Services</u>	<u>Location</u>	<u>Mileage from Russellville</u>
Tool & Die, Machine & Pattern Shops	Russellville, Kentucky	--
Metal Service Centers	Russellville, Kentucky	--
Heat Treating	Nashville, Tennessee	54
Metal Finishers	Nashville, Tennessee Hartford, Kentucky	54 60
Electric Motor Repair	Auburn, Kentucky	10

Source: Kentucky Department of Economic Development, Kentucky Directory of Selected Industrial Services, 1981.

ESTIMATED MALE LABOR SUPPLY
LOGAN COUNTY LABOR MARKET AREA

Area	Current			Not in Labor Force	Future
	Total	Unemployed	Under- employed		Becoming 18 years of age 1983 thru 1987
Labor Market Area*	12,704				8,116
Logan	1,958	555	361	1,042	966
Butler	1,600	273	236	1,091	483
Muhlenberg	2,180	1,097	394	689	1,371
Simpson	969	353	203	413	664
Todd	1,161	271	223	667	537
Warren	3,980	1,611	2,369	0	2,528
Robertson (Tenn.)	856	N/A	N/A	N/A	1,567

*Additional workers may be drawn from other nearby counties.

Note: Unemployed - persons unemployed and actively seeking work;
Underemployed - persons employed but working only 14 to 26 weeks per year;
Not in Labor Force - represents the number of persons who would enter the labor force if suitable employment were available (based on the assumption that persons in Kentucky would like to participate in the labor force in the same proportion that they do nationally).

Sources: Kentucky Cabinet for Human Resources, Kentucky Labor Supply Estimates by Area Development District and County, 1981. Tennessee Department of Employment Security, Available Labor Estimates, 1981. Kentucky Department of Economic Development, Future Labor Supply Becoming 18 Years of Age, 1983 thru 1987.

ESTIMATED FEMALE LABOR SUPPLY
LOGAN COUNTY LABOR MARKET AREA

Area	Current				Future
	Total	Unemployed	Under- employed	Not in Labor Force	Becoming 18 years of age 1983 thru 1987
Labor Market					
Area*	9,361				7,857
Logan	1,018	462	374	182	960
Butler	897	228	223	446	457
Muhlenberg	1,225	414	388	423	1,235
Simpson	686	295	264	127	641
Todd	896	207	192	497	492
Warren	3,788	1,347	2,441	0	2,446
Robertson (Tenn.)	851	N/A	N/A	N/A	1,626

*Additional workers may be drawn from other nearby counties.

Note: Unemployed - persons unemployed and actively seeking work;
Underemployed - persons employed but working only 14 to 26 weeks per year;
Not in Labor Force - represents the number of persons who would enter the labor force if suitable employment were available (based on the assumption that persons in Kentucky would like to participate in the labor force in the same proportion that they do nationally).

Sources: Kentucky Cabinet for Human Resources, Kentucky Labor Supply Estimates by Area Development District and County, 1981. Tennessee Department of Employment Security, Available Labor Estimates, 1981. Kentucky Department of Economic Development, Future Labor Supply Becoming 18 Years of Age, 1983 thru 1987.

AVERAGE WEEKLY WAGES BY INDUSTRY,
BY PLACE OF WORK, 1981

	<u>Logan County</u>	<u>Butler County</u>	<u>Muhlenberg County</u>
All Industries	\$236.22	\$199.48	\$322.65
Mining & Quarrying	297.34	358.78	558.89
Contract Construction	350.53	163.56	333.71
Manufacturing	249.43	165.93	195.14
Transportation, Communications & Public Utilities	299.31	316.30	362.47
Wholesale & Retail Trade	168.47	176.61	210.14
Finance, Insurance & Real Estate	223.13	193.81	239.24
Services	167.11	145.18	184.85
State/Local Government	220.21	199.40	230.93
Other	190.47	*	225.79
	<u>Simpson County</u>	<u>Todd County</u>	<u>Warren County</u>
All Industries	\$257.42	\$195.85	\$255.64
Mining & Quarrying	*	*	246.72
Contract Construction	244.99	260.52	282.52
Manufacturing	309.96	230.53	330.88
Transportation, Communications & Public Utilities	397.68	279.68	326.80
Wholesale & Retail Trade	168.44	139.70	181.90
Finance, Insurance & Real Estate	256.92	188.99	256.98
Services	164.59	108.90	204.28
State/Local Government	222.80	178.51	268.15
Other	*	119.79	127.81

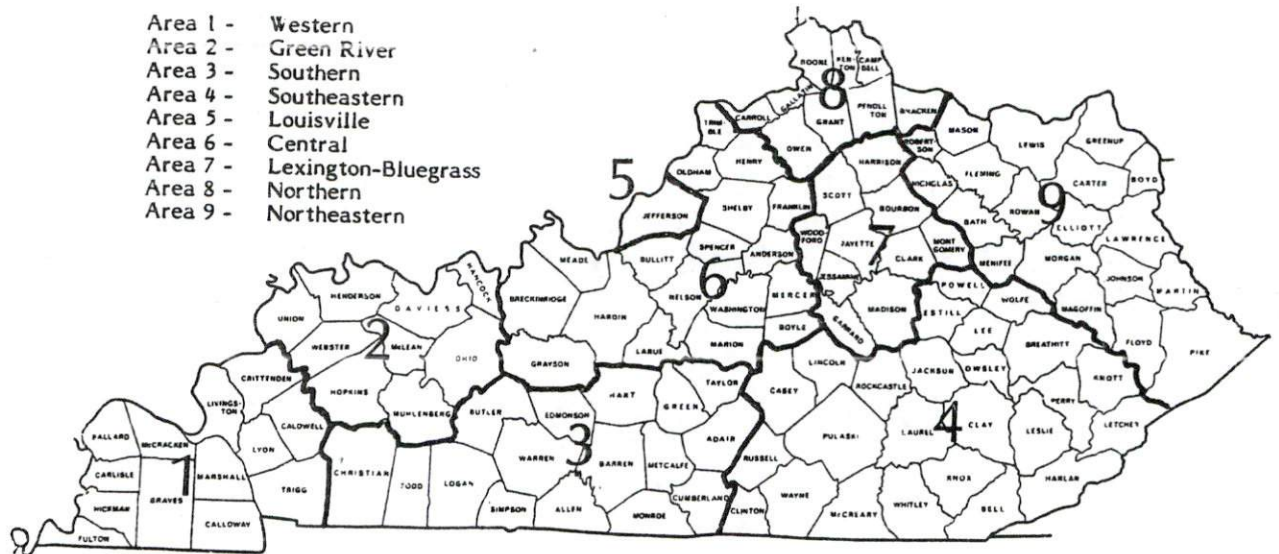
*Not disclosed.

Note: Excludes domestic workers, railway workers, certain nonprofit corporations, majority of federal government workers, and self-employed workers.

Source: Kentucky Cabinet for Human Resources, Average Weekly Wages of Workers Covered by Kentucky Unemployment Insurance Law, 1981.

Occupational wage rates for specific industries are usually not available to most government agencies, and wage data furnished to state employment agencies by individual industrial employers are protected from disclosure by federal law. The most reliable up-to-date wage information can be obtained by direct contact with local employers.

Associated Industries of Kentucky, a voluntary organization of Kentucky businesses, regularly collects occupational wage rates and fringe benefits data from participating member firms. Data are compiled for over 127 clearly defined office, production, and service occupations. Tabulations are published for nine geographical areas of Kentucky, as shown on the map below. It should be noted that the data may be weighted by the preponderance of firms in the larger cities and may be somewhat higher than the rates paid in the smaller communities. Data from these tabulations are available, upon request, from the Kentucky Department of Economic Development, Frankfort, Kentucky 40601.



Associated Industries of Kentucky Area Wage Surveys

Up-to-date occupational wage rates of the existing industries are maintained by South Kentucky Industrial Development Association, Post Office Box 726, Hopkinsville, Kentucky 42240.

PER CAPITA PERSONAL INCOME

<u>Area</u>	<u>1976</u>	<u>1980</u>	<u>Percent Change</u>
Logan County	\$ 4,972	\$ 6,852	37.8
Labor Market Area Range*	\$3,658 - 5,760	\$5,292 - 8,254	N/A
Kentucky	5,263	7,662	45.6
U.S.	6,367	9,511	49.4

*Logan County and the five adjoining Kentucky counties.

Source: U.S. Bureau of Economic Analysis, Kentucky Economic Information System, June 1982.

TRANSPORTATION

Rail

Line serving **Russellville** - Seaboard System Railroad

Services - Main line; one local turnaround freight operates between Russellville and Bowling Green 5 days a week, Monday through Friday; switching facilities; team track space for 20 cars; siding space for 50 cars; nearest piggyback facilities are located at Bowling Green, 29 miles east of Russellville via U.S. Highway 68, an 80,000-pound gross load limit highway.

Line serving **Auburn** - Seaboard System Railroad

Services - Main line; one local turnaround freight operating between Russellville and Bowling Green 5 days a week, Monday through Friday, averages one stop per month at Auburn; team track space for 12 cars; nearest piggyback facilities are located at Bowling Green, 19 miles east of Auburn via U.S. Highway 68.

Adairville and **Lewisburg** are not served directly by a rail line.

For details on routing, schedules, rates, and services, contact:

Manager of Industrial Development
Seaboard System Railroad
P. O. Box 32290
Louisville, Kentucky 40232
(502) 587-5228

Highways

U.S. Highways 68, 79 and 431, and Kentucky Route 100 are all "AAA" rated highways (80,000-pound gross load limits) serving Logan County. U.S. Highway 68 provides access to the Green River Parkway, 25 miles east of Russellville, and to the Pennyrile Parkway, 35 miles to the west. The Western Kentucky Parkway is located 37 miles north of Russellville via U.S. Highway 431.

An interchange of Interstate 65 is located 30 miles east of Russellville via U.S. Highway 68 and the Green River Parkway. Interstate 24 is accessible 27 miles southwest of Russellville via U.S. Highway 79.

Truck Service

Companies serving Russellville, Adairville, Auburn and Lewisburg Home Office

Duff Truck Line, Inc.*	Broadway and Vine Streets Lima, Ohio 45802
Interstate System*	110 Ionia Avenue, N.W. P. O. Box 175 Grand Rapids, Michigan 49501
McLean Trucking Company*	P. O. Box 213 Winston-Salem, North Carolina 27102
Overnite Transportation Company**	1000 Semmes Avenue P. O. Box 1216 Richmond, Virginia 23209
Renner's Express, Inc.**	1350 South West Street Indianapolis, Indiana 46225
Robbins Truck Line, Inc.***	Route 1 Hardinsburg, Kentucky 40143
Smith's Transfer Corporation*	P. O. Box 1000 Staunton, Virginia 24401
Thurston Motor Lines, Inc.*	600 Johnston Road Charlotte, North Carolina 28206
United Trucking Service, Inc.*	8505 West Warren Dearborn, Michigan 48126
Yellow Freight System, Inc.*	P. O. Box 7270 Overland Park, Kansas 66207

Company serving Russellville, Adairville and Lewisburg

Birmingham-Nashville Express, Inc.**	P. O. Box 100417 Nashville, Tennessee 37210
---	--

Company serving Russellville, Adairville and Auburn

Marvin Hayes Lines, Inc.**	Guthrie Highway P. O. Box 468 Clarksville, Tennessee 37040
----------------------------	--

Company serving Russellville and Auburn

TSC Express*	P. O. Box 1695 Atlanta, Georgia 30301
--------------	--

* Interstate service only.

** Interstate and intrastate service.

*** Intrastate service only.

Other Freight ServicesNearest Shipping Center or Home Office
(Distance from Russellville)

Purolator Courier Corporation*	Evansville, Indiana, 115 miles northwest
United Parcel Service*	Bowling Green, Kentucky, 29 miles east
KATO Express, Inc. (air cargo service)**	Elizabethtown, Kentucky, 104 miles northeast
Federal Express Corporation***	Clarksville, Tennessee, 34 miles southwest

HIGHWAY MILES AND TRUCK TRANSIT TIME IN DAYS FROM
RUSSELLVILLE, KENTUCKY, TO SELECTED MARKET CENTERS

City	Highway Miles	Delivery Time TL	City	Highway Miles	Delivery Time TL
Atlanta, Ga.	296	2	Los Angeles, Ca.	2,079	4-5
Baltimore, Md.	725	2-3	Louisville, Ky.	146	2
Birmingham, Ala.	250	2	Nashville, Tenn.	54	1
Chicago, Ill.	407	2	New Orleans, La.	571	2-3
Cincinnati, Ohio	247	2	New York, N. Y.	887	3-4
Cleveland, Ohio	491	2	Pittsburgh, Pa.	527	2
Detroit, Mich.	506	2-4	St. Louis, Mo.	279	2
Knoxville, Tenn.	231	2			

Note: Mileage computations are via the best interstate or primary highways, not necessarily the most direct route of travel.

Sources: Rand McNally Road Atlas, 1979. Official Kentucky Mileage Map, 1980.
Delivery time - Overnite Transportation Company, 1000 Semmes Avenue, P. O. Box 1216, Richmond, Virginia 23209.

- * For regular scheduled pickups or for occasional pickups, arrangements must be made with the Louisville, Kentucky, office of Purolator Courier Corporation or United Parcel Service.
- ** Daily pickup and delivery service is available to and from Standiford Field in Louisville. Arrangements for service should be made through the home office in Elizabethtown.
- *** For information on scheduling, rates, and services, contact the Federal Express shipping station at Clarksville, Tennessee, or the home office in Memphis, Tennessee.

Air

Local

Russellville-Logan County Airport*
Location: 5 miles southeast of Russellville
Runways: 1 paved
Length: 3,300 feet
Traffic Control: Wind sock
Lighting: Sundown to sunrise, VASI, rotating beacon, key control lighting
Services: 100LL octane, charter, flight instruction, tie-down, restrooms, hangars, maintenance by appointment
Air Freight Service: Chartered air freight services must be arranged.

Nearest Scheduled Commercial Airline Service**

Nashville Metropolitan Airport
Location: 6 miles southeast of Nashville, Tennessee;
60 miles south of Russellville
Runways: 3 paved
Length: 8,000 feet; 7,700 feet; 4,320 feet
Traffic Control: Tower
Lighting: Beacon, runway
Services: American, Delta, Eastern, Ozark, Piedmont, Republic, TWA, USAir, Allegheny Commuter, Comair, Scheduled Skyways, Sunbird, Tennessee Airways; fuel - 100LL, jet-A; tie-downs, hangars; major A & P repairs, major Avionics repairs; APU, charter, flight instruction, oxygen, plane rental, survival equipment, U.S. Customs; taxi, limousine, car rental, courtesy car, public transit; weather information, restaurant, snack bar
Air Freight Service: Air freight terminal

* Planned improvements to the Russellville-Logan County Airport include extension of the runway to 4,000 feet and widening of the runway to 75 feet from its present width of 60 feet.

** Commuter air carrier service is provided by Allegheny Commuter at Outlaw Field which is located 7 miles northwest of Clarksville, Tennessee; 41 miles southwest of Russellville.

- Bus -** Russellville, Auburn and Lewisburg are served by the Tennessee Trailblazers bus line.
- Taxi -** One taxicab company, with four radio-dispatched taxicabs, operates in Russellville from 6 a.m. to 6 p.m.
- Rental Services -** Car, truck and trailer rentals are available in Russellville.

Water

The Green River at Paradise, Kentucky, which is located 37 miles north of Russellville, is the nearest navigable waterway. A 9-foot navigation channel is maintained on the Green River from Mile 103 near Paradise to the confluence of the Green and Ohio Rivers. Port facilities are available on the Ohio River at Owensboro, 74 miles north of Russellville.

POWER AND FUEL

Electricity

Company serving **Russellville** - Russellville Electric Plant Board
Source of power - Tennessee Valley Authority
Total generating capacity - 31,109,160 KW
For industrial rates contact:

Russellville Electric Plant Board
165 East Fourth Street
Russellville, Kentucky 42276
(502) 726-2466

Company serving **Adairville, Lewisburg and major portion of Logan County** -
Pennyrile Rural Electric Cooperative Corporation
Source of power - Tennessee Valley Authority
Total generating capacity - 31,109,160 KW
For industrial rates contact:

South Kentucky Industrial
Development Association, Inc.
P. O. Box 726
Hopkinsville, Kentucky 42240
(502) 885-5392

and/or

Pennyrile RECC
2000 Harrison Street
P. O. Box 551
Hopkinsville, Kentucky 42240
(502) 886-2555

Company serving **Auburn and northeastern Logan County** - Warren Rural Electric Cooperative Corporation
Source of power - Tennessee Valley Authority
Total generating capacity - 31,109,160 KW
For industrial rates contact:

South Kentucky Industrial
Development Association, Inc.
P. O. Box 726
Hopkinsville, Kentucky 42240
(502) 885-5392

and/or

Warren RECC
951 Fairview Avenue
P. O. Box 1118
Bowling Green, Kentucky 42101
(502) 842-6541

Natural Gas

Company serving **Russellville** - Western Kentucky Gas Company
Source of supply - Texas Gas Transmission Corporation
Size of transmission mains - 10-inch (supplier); 6-inch (distributor)
Distribution mains - 2 to 4 inches
Distribution pressure - 20 to 55 psi
Btu content - 1,005 per cubic foot
Specific gravity - 0.6
For rates and supplies contact:

Marketing Department
Western Kentucky Gas Company
311 West SEventh Street
Owensboro, Kentucky 42301
(502) 685-8067

Company serving **Adairville** - Western Kentucky Gas Company
Source of supply - Texas Gas Transmission Corporation
Size of transmission mains - 10-inch (supplier); 3-inch (distributor)
Distribution mains - 1 ¼ to 2 inches and 3 inches
Distribution pressure - 20 psi
Btu content - 1,005 per cubic foot
Specific gravity - 0.6
For rates and supplies contact:

Marketing Department
Western Kentucky Gas Company
311 West Seventh Street
Owensboro, Kentucky 42301
(502) 685-8067

Company serving **Auburn** - Western Kentucky Gas Company
Source of supply - Texas Gas Transmission Corporation
Size of transmission mains - 8-inch (supplier)
Distribution mains - 2 to 4 inches
Distribution pressure - 10 to 30 psi
Btu content - 1,000 per cubic foot
Specific gravity - 0.6
For rates and supplies contact:

District Manager
Western Kentucky Gas Company
201 West Cedar Street
Franklin, Kentucky 42134
(502) 586-4448

Natural gas service presently is not available in **Lewisburg**.

Other Fuels

Propane (Within 25 miles of Russellville)

Pargas of Franklin, Inc.*
700 North Main Street
Franklin, Kentucky 42134

Southern States Russellville Coop*
P. O. Box 474
Russellville, Kentucky 42276

Fuel oils

Distillate fuel oil -

Max Arnold & Sons, Inc.*
Route 1, Box 4
Russellville, Kentucky 42276

Ballance Oil Company*
West Second Street
P. O. Box 230
Russellville, Kentucky 42276

Ashland Oil, Inc.*
West Second Street
Russellville, Kentucky 42276

Key Oil Company*
210 Hopkinsville Street
Russellville, Kentucky 42276

Residual fuel oil - Arrangements must be made with the refinery.

Low sulphur content coal - Available in Kentucky.

*Bulk plant.

WATER AND SEWERAGE

Public Water Supply

Company serving **Russellville** - Russellville Water Works*
First and Main Streets
Russellville, Kentucky 42276
(502) 726-2638

Source - Lake Herndon
Treatment plant capacity - 2,592,000 gallons per day
Average daily consumption - 1,600,000 gallons
Peak daily consumption - 2,000,000 gallons
Type treatment - Filtration, chlorination, coagulation, fluoridation,
floculation, sedimentation
Storage capacity - 2,100,000 gallons including clearwell
Size lines - 12,10, 8, 6, 4 and 2 inches
Average pressure - 78 psi
Average temperature - 26 degrees C.

MONTHLY WATER RATES

First	2,000 gallons	\$3.25 (Minimum)
Next	5,000 gallons	1.62 per M gallons
Next	15,000 gallons	1.48 per M gallons
Next	25,000 gallons	1.30 per M gallons
Next	53,000 gallons	1.12 per M gallons
Over	100,000 gallons	0.85 per M gallons

Tap-on charge:

5/8-inch meter	\$150
1-inch meter	\$200
1 1/2-inch meter	\$300
2-inch meter	\$500

* Several projects to upgrade the Russellville water treatment plant are under way. Contracts have been let for the installation of a 2,000-gallon-per-minute high-service pump and a 2,400-gallon-per-minute raw water pump, and also for the construction of a 1,000,000-gallon storage reservoir. The projects are expected to be completed by the end of 1984.

Company serving **Adairville** -

Adairville Water Works
P. O. Box 185
Adairville, Kentucky 42202
(502) 539-6731

Source - Red River

Treatment plant capacity - 720,000 gallons per day

Average daily consumption - 258,900 gallons

Peak daily consumption - 357,600 gallons

Type treatment - Sedimentation, flocculation, coagulation, filtration,
chlorination, fluoridation

Storage capacity - 325,000 gallons including clearwell

Size lines - 8, 6, 4 and 2 inches

Average pressure - 40 to 65 psi

Average temperature - 70 degrees F.

MONTHLY WATER RATES

First	2,000 gallons	\$7.00 (Minimum)
Next	2,000 gallons	3.25 per M gallons
Next	2,000 gallons	2.50 per M gallons
Next	4,000 gallons	1.70 per M gallons
Next	40,000 gallons	1.20 per M gallons
All over	50,000 gallons	0.80 per M gallons

Tap-on charge: \$75

Company serving **Auburn** - Auburn Water Works
 P. O. Box 465
 Auburn, Kentucky 42206
 (502) 542-4475

Source - Blue Hole Spring
 Treatment plant capacity - 200,000 gallons per day
 Average daily consumption - 160,836 gallons
 Peak daily consumption - 190,000 gallons
 Type treatment - Prechlorination, postchlorination, coagulation, filtration,
 sedimentation, fluoridation
 Storage capacity - 90,000 gallons
 Size lines - 6 and 2 inches
 Average pressure - 57 psi
 Average temperature - 58 degrees F.

MONTHLY WATER RATES

First	1,500 gallons	\$2.80 (Minimum)
Next	2,500 gallons	1.60 per M gallons
Next	6,000 gallons	1.40 per M gallons
Next	10,000 gallons	1.20 per M gallons
Next	10,000 gallons	1.00 per M gallons
Next	20,000 gallons	0.90 per M gallons
Next	50,000 gallons	0.80 per M gallons
All over	100,000 gallons	0.70 per M gallons

Tap-on charge:

3/4-inch meter	\$150
1-inch meter	\$200
1 1/4-inch meter	\$250
1 1/2-inch meter	\$350
2-inch meter	\$450

Company serving Lewisburg - Lewisburg Water Works*
P. O. Box 239
Lewisburg, Kentucky 42256
(502) 755-4828

Source of supply of treated water - North Logan Water District
Average daily consumption - 95,000 gallons
Peak daily consumption - 112,000 gallons
Storage capacity - 120,000 gallons
Size lines - 6, 3, 1 and 3/4 inches
Average pressure - 50 psi
Average temperature - 50 degrees F.

MONTHLY WATER RATES

First	2,000 gallons	\$5.50 (Minimum)
Next	3,000 gallons	1.40 per M gallons
Next	5,000 gallons	1.20 per M gallons
Next	15,000 gallons	1.00 per M gallons
All over	25,000 gallons	1.00 per M gallons

Tap-on charge:

3/4-inch meter - \$100 Inside City; \$150 Outside City
Larger meter - Standard 3/4-inch meter tap fee plus
cost of materials

* The City of Lewisburg has applied to the U.S. Department of Housing and Urban Development and the Farmers Home Administration for a combination loan/grant to build a new water treatment plant.

Name of water district - North Logan Water District
Route 4
Russellville, Kentucky 42276
(502) 726-7988

Area served - The city of Lewisburg; north Logan County from Russellville to Lewisburg

Date when water district began operating - 1971

Source of supply of treated water - Russellville Water Works

Average amount of water used in a 24-hour period - 190,000 gallons

Peak amount of water used in a 24-hour period - 250,000 gallons

Storage capacity - 100,000 gallons

Average pressure - Not available

Average temperature - Not available

Size lines - 6, 4 and 3 inches

Monthly rates -

First	2,000 gallons	\$6.30 (Minimum)
Next	2,000 gallons	2.75 per M gallons
Next	6,000 gallons	1.30 per M gallons
Next	15,000 gallons	1.15 per M gallons
All over	25,000 gallons	1.00 per M gallons

Tap-on charge:

\$200 for 3/4-inch meter

Actual cost for off-line installations

Raw Water

Surface water sources - Mud River and Red River

Average discharge - Not available

Expected ground water yield - 5 to 200 gpm in southern half of county; 5 gpm or less in northern half of county

Sewerage

Company serving **Russellville** - Russellville Wastewater Treatment Plant
Newtown Road
Russellville, Kentucky 42276
(502) 726-7431

Design capacity - 1,200,000 gallons per day*
Average daily flow - 800,000 gallons
Treatment - Primary and secondary
Type treatment - Clarifier, drying beds, trickling filter, chlorine contact chamber
Treated effluent discharged into - Town Creek
Size of sanitary mains - 18, 16, 12, 10, 8 and 6 inches
Size of storm mains - 20 and 18 inches
Rates - 65 percent of monthly water bill; \$2.12 minimum
Tap-on charge: \$75

Company serving **Adairville** - Adairville Water and Sewer
P. O. Box 185
Adairville, Kentucky 42202
(502) 539-6731

Design capacity - 150,000 gallons per day
Average daily flow - 105,000 gallons
Treatment - Secondary
Type treatment - Aeration, clarifier and drying beds
Treated effluent discharged into - South Fork of Red River
Size of sanitary mains - 12, 10, 8 and 6 inches
Rates - \$3.00 per month minimum charge, plus \$0.70 per 1,000 gallons of water used
Tap-on charge: \$200, plus a \$5 inspection fee

* Russellville is currently in the third phase of a 201 Facilities Plan to upgrade its sewerage system. Construction is scheduled to begin in 1983 on a new oxidation ditch facility to be added to the existing treatment plant. The improvement will increase the system's average treatment capacity by 1.6 million gallons per day and will cost approximately \$2 million.

Company serving **Auburn** - Auburn Sewer Department
P. O. Box 465
Auburn, Kentucky 42206
(502) 542-4475

Design capacity - 166,000 gallons per day
Average daily flow - 104,000 gallons
Treatment - Primary and secondary
Type treatment - Grit chamber, prechlorination, communitor, deep well,
primary and secondary clarifiers, digester, heat exchanger, trickling filters,
post chlorination, aeration
Treated effluent discharged into - Black Lick Creek
Size of sanitary mains - 10, 8 and 6 inches
Size of storm mains - 18 inches
Rates - 100 percent of monthly water bill
Tap-on charge: \$250

Company serving **Lewisburg** - Lewisburg Sewer System
P. O. Box 239
Lewisburg, Kentucky 42256
(502) 755-4828

Design capacity - 125,000 gallons per day*
Average daily flow - 106,000 gallons*
Treatment - Secondary
Type treatment - Lagoon system, chlorination
Treated effluent discharged into - Alum Lick Creek
Size of sanitary mains - 8 and 6 inches
Rates - 100 percent of monthly water bill
Tap-on charge: \$150

*Kentucky Natural Resources and Environmental Protection Cabinet.

CLIMATE

Logan County

Temperature

Normal (30-year record)	59.40 degrees
Average annual 1981	58.70 degrees
Record highest, July 1952 (42-year record)	107.00 degrees
Record lowest, January 1963 (42-year record)	-15.00 degrees
Normal heating degree days (30-year record) (Heating degree day totals are the sums of negative departures of average daily temperatures from 65 degrees F.)	3,696

Precipitation

Normal (30-year record)	46.00 inches
Mean annual snowfall (40-year record)	11.60 inches
Total precipitation 1981	41.68 inches
Mean number days precipitation (.01 inch or more) (40-year record)	119
Mean number days thunderstorms (40-year record)	54

Prevailing Winds (22-year record)

South

Relative Humidity (16-year record)

Midnight	79 percent
6 a.m.	84 percent
Noon	58 percent
6 p.m.	61 percent

Source: U.S. Department of Commerce, Environmental Science Services Administration, Climatological Data, 1981. Station of record: Nashville, Tennessee.

LOCAL GOVERNMENT

City

Russellville

Structure - Mayor - 4-year term; 6 council members - 2-year terms

Budget 1982 -	General Fund	\$798,700
	Water and Sewer Fund	689,500

Fees and licenses - Occupational license taxes - one percent of the gross salaries, wages, commissions and other compensations earned by persons for work done or services performed in the city, and one percent of the net profits of all businesses, professions or occupations from activities conducted in the city.

Adairville

Structure - Mayor - 4-year term; 6 council members - 2-year terms

Budget 1982 -	General Fund	\$ 66,941
	Water and Sewer Fund	236,893

Fees and licenses - Unloading license - \$25.50 per year; city automobile sticker - \$20.50 per year.

Auburn

Structure - Mayor - 4-year term; 6 council members - 2-year terms

Budget 1982-83 -	General Fund	\$87,210
	Water and Sewer Fund	96,000

Fees and licenses - Occupational license taxes - one percent of the gross salaries, wages, commissions and other compensation earned by persons for work done or services performed in the city, and one percent of the net profits of all businesses, professions or occupations from activities conducted in the city.

Lewisburg

Structure - Mayor - 4-year term; 5 council members - 2-year terms

Budget 1982-83 -	General Fund	\$47,150
	Water and Sewer Fund	97,360

Fees and licenses - Unloading license - \$20 per year; city automobile sticker -\$10 per year.

County

Structure - County Judge/Executive - 4-year term; 8 magistrates - 4-year terms
Budget 1982-83 - General Fund \$700,589; Road Fund \$549,217

Assessed Value of Property, 1982*

<u>Classes of Property</u>	<u>Russellville</u>	<u>Adairville</u>	<u>Auburn</u>
Real Estate Tangibles	\$69,570,571	\$ 6,058,420	\$9,651,335
	24,139,430	2,728,833	2,364,981
<u>Classes of Property</u>	<u>Lewisburg</u>	<u>Logan County</u>	
Real Estate and Tangibles	\$ 8,196,726		
Real Estate Tangibles		\$291,106,773	
		56,578,777	

Property Taxes

All property in Kentucky is assessed at 100 percent of fair cash value.

Land and buildings are taxed by the state and may be taxed by local jurisdictions. The state rate is \$0.224 per \$100 of assessed valuation.

Manufacturing machinery, raw materials inventories, pollution control equipment, and goods in the process of manufacture are not subject to local taxation. The state rate is \$0.15 per \$100.

Other tangible personal property owned by manufacturers (automobiles, trucks, finished goods, office furniture, office equipment) is taxed by the state at \$0.45 per \$100 and may be taxed by local jurisdictions.

Intangible personal property located in Kentucky (money in hand, shares of stock, notes, bonds, accounts receivable, and other credits) is taxed by the state at \$0.25 per \$100, and is not subject to local taxation.

Property stored in public warehouses in a transit status is not subject to local taxation. The state rate is only \$0.015 per \$100.

Private leaseholds in industrial facilities owned by cities or counties and financed by industrial revenue bonds are subject to a state tax of \$0.015 per \$100 of value (essentially the lessee's equity, adjusted for appreciation or depreciation). Local taxation is not permitted.

*Excludes Homestead Exemptions.

Combined State and Local Rates Per \$100 Valuation, 1982*
(100% assessment)

Kentucky school districts levy property taxes on property located within individual school district boundaries. Two types of school districts are operated in Kentucky: 1) independent school districts which usually operate within a single city and often do not cover the entire city; and 2) common school districts which operate in portions of counties not covered by independent districts and cover the entire county when there is no independent district. School district boundaries are mutually exclusive and do not cross.

	Site Inside City of Russellville and within the Russellville <u>School District</u>	Site Inside City of Russellville and within the Logan County <u>School District</u>	Site Inside City of Adairville and within the Logan County <u>School District</u>
1. Land and buildings	\$0.8513	\$0.6353	\$0.8593
2. Mfg. machinery, raw materials, goods in process, pollution control equipment	0.1500	0.1500	0.1500
3. Finished goods, office equipment, vehicles, other tangibles	1.1703	0.9113	1.1023
4. Intangibles (accounts receivable, notes, bonds, etc.)	0.2500	0.2500	0.2500
5. Property stored in public warehouses in a transit status	0.0150	0.0150	0.0150
6. Leaseholds in industrial revenue bond financed plants	0.0150	0.0150	0.0150

(Contd.)

	Site Inside City of Auburn and within the Logan County School District	Site Inside City of Lewisburg and within the Logan County School District	Site Inside Unincorporated Logan County
1. Land and buildings	\$0.6993	\$0.6893	\$0.4793
2. Mfg. machinery, raw materials, goods in process, pollution control equipment	0.1500	0.1500	0.1500
3. Finished goods, office equipment, vehicles, other tangibles	0.9423	0.9323	0.7223
4. Intangibles (accounts receivable, notes, bonds, etc.)	0.2500	0.2500	0.2500
5. Property stored in public warehouses in a transit status	0.0150	0.0150	0.0150
6. Leaseholds in industrial revenue bond financed plants	0.0150	0.0150	0.0150

Utilities Gross Receipts Tax for Schools

A 3 percent tax is levied on utilities receipts for schools in Logan County. Tax is paid by all consumers of utilities as an add-on to the utilities bills. Exempted are receipts from utilities services that are resold and the receipts from the sale of energy or energy-producing fuels that exceed 3 percent of the cost of production in manufacturing, processing, mining or refining.

*Kentucky Department of Economic Development.

Planning and Zoning

Joint agency - Joint Cities-County Planning Commission*

Zoning enforced - Within the corporate limits of Russellville and Adairville

Subdivision regulations enforced - Within Russellville and Adairville and three miles beyond the corporate limits of each city

Local codes enforced - Building and housing codes enforced for all duplexes and commercial buildings in all areas of the county

Mandatory state codes enforced - Kentucky Plumbing Code, National Electric Code, Kentucky Boiler Regulations and Standards, Kentucky Building Code (modeled after BOCA code)

Safety

Police	Russellville	Adairville	Auburn
Total staff	18 part-time	1 full-time	1 full-time
	2 full-time	1 part-time	1 part-time
Radio-patrol cars	5	1	2
	Lewisburg	Logan County	
Total staff	1	7	
Radio-patrol cars	1	6	
Fire	Russellville	Adairville	Auburn
Insurance Services			
Office, Public Protection			
Classification	7	7	7
Full-time staff	4	--	--
Volunteers	20	32	22
	Lewisburg	Logan County	
Insurance Services			
Office, Public Protection			
Classification	7	**	
Volunteers	22	17***	

* Participating cities include Russellville, Adairville, Auburn and Lewisburg.

** For areas within 5 miles of a city and within 1,000 feet of a fire hydrant, a class 8 rating applies. For areas within 5 miles of a responding fire department, a class 9 rating applies. A class 10 rating applies to all remaining areas of the county.

*** Rural volunteer fire departments provide fire protection service to residents of Logan County.

Rescue Service

Logan County Civil Defense Rescue Squad:

Number of volunteers - 22

Equipment - Two fire trucks, auxiliary truck, panel truck, three jeeps, two 2 ½-ton trucks, four-wheel drive panel truck, three ¾-ton trucks, ambulance, two boats and motors, dragging equipment, radioactivity monitoring sets, generators, hand tools, chain saws, air compressor, communications equipment

Personnel training - Certified Red Cross first aid instructor and one emergency medical technician; all volunteers trained in basic and advanced first aid

Refuse Collection and Disposal

	Russellville	Adairville
Type service	Private	Private
Fee charged:		
residential	\$6.32 per month	\$5.85 per month
business	\$2.75 to \$3.00 per cubic yard	\$5.85 per month
industrial	By contract	By contract
Collection frequency:		
residential	Weekly	Weekly
business	1 to 5 days per week	Weekly
industrial	By contract	By contract
Trash pickup	Monthly	N/A
Disposal method	Landfill	Landfill
	Auburn	Lewisburg
Type service	Private	Private
Fee charged:		
residential	\$3.75 per month	\$3.00 per month
business	By contract	By contract
industrial	By contract	By contract
Collection frequency:		
residential	Weekly	Weekly
business	By contract	By contract
industrial	By contract	By contract
Trash pickup	Annually	Annually
Disposal method	Landfill	Landfill

Residents of **Logan County** contract with private firms for refuse collection.

EDUCATION

Public Schools

	Russellville Independent	Logan County*
Total Enrollment (Fall 1982)	1,586	3,030
Elementary	599	2,188
Middle School	514	---
High School	473	842
Student-Teacher Ratio	17-1	20-1
Elementary	18-1	19-1
Middle School	17-1	---
High School	16-1	23-1
Accreditation	Southern Association of Colleges and Schools	
Percent High School Graduates to College (1982)	49.6	25.1
Expenditures Per Pupil (1981-82)	\$1,635.30	\$1,467.05
Bonded Indebtedness (June 30, 1981)	\$1,224,000	\$4,770,000

Nonpublic Schools

	Sacred Heart	Russellville Christian School (Preschool and kindergarten)
Total Enrollment	36	
Elementary	3	33 Preschool (4 sections) 11 Kindergarten
Student-Teacher Ratio	18-1	--
Elementary	18-1	--

* The Logan County School System completed a new consolidated high school in June of 1982, at a cost of \$5,000,000.

Area Colleges and Universities

<u>Name</u>	<u>Location (Mileage from Russellville)</u>	<u>Enrollment (Fall, 1982)</u>	<u>Highest Degree Conferred</u>
Western Kentucky University	Bowling Green, Kentucky (29)	12,855	Masters, Specialist*
Austin Peay State University	Clarksville, Tennessee (34)	5,060	Academic and Professional
Hopkinsville Community College	Hopkinsville, Kentucky (36)	1,164	Associate
Belmont College	Nashville, Tennessee (54)	1,927	Baccalaureate
David Lipscomb College	Nashville, Tennessee (54)	2,262	Baccalaureate
Fisk University	Nashville, Tennessee (54)	750	Masters
Free Will Baptist Bible College	Nashville, Tennessee (54)	510	Masters in Pastoral Studies
Meharry Medical College	Nashville, Tennessee (54)	985	Academic and Professional
Scarritt College	Nashville, Tennessee (54)	90	Masters
Trevecca Nazarene College	Nashville, Tennessee (54)	972	Baccalaureate
Tennessee State University	Nashville, Tennessee (54)	8,011	Academic and Professional
Vanderbilt University	Nashville, Tennessee (54)	8,782	Academic and Professional

* Joint doctoral degree programs are offered in cooperation with the University of Kentucky, Lexington, and cooperative doctoral degree programs are offered with the University of Louisville. The degrees are issued by the University of Kentucky or the University of Louisville.

Vocational Schools

Both the state vocational-technical schools and the area vocational education centers are operated by the Kentucky Department of Education. The state vocational-technical schools enroll persons full time who are at least 16 years of age and not in school. These students attend classes for six hours each day. The area vocational education centers are designed to accommodate high school students who are at least 15 years of age. These students attend vocational school for three hours each day. The state vocational-technical schools and the area education centers offer evening courses to enable working adults to upgrade current job skills.

Nearest State School

Location	Bowling Green State Vocational-Technical School
Miles Distant	Bowling Green
Curriculum	29
	Business and Office
	Accounting/Jr. Management
	Clerical
	Secretarial
	Consumer and Home Economics
	Commercial Foods
	Health and Personal Services Occupations
	Dental Assistant
	Health Careers
	Nurse Assistant
	Practical Nurse*
	Radiological Technology
	Respiratory Therapy
	Surgical Technician
	Industrial Education
	Auto Body Repair
	Auto Mechanics
	Carpentry
	Civil Highway Technology
	Diesel Mechanics
	Electricity
	Electronics Servicing Occupations
	Electronics Technology
	Graphic Arts (Printing)
	Industrial Maintenance
	Machine Shop
	Masonry
	Plumbing
	Refrigeration and Air Conditioning
	Small Engine Repair
	Technical Drafting
	Tool and Die Making
	Welding

*This course is taught at the T. J. Samson Community Hospital in Glasgow.

Nearest Area Education Center

Location

Russellville Area Vocational Education Center

Curriculum

Russellville

Agriculture

Adult and Young Farmer

Business and Office

Clerical

Secretarial

Health and Personal Services Occupations

Health Services

Industrial Education

Auto Mechanics

Carpentry/Building Trades

Drafting

Electricity

Electronics

Machine Shop

Welding

Arrangements can be made to provide training in the specific production skills required by an industrial plant. Instruction may be conducted either in the vocational school or in the industrial plant, depending upon the desired arrangement and the availability of special equipment.

HEALTH

Local Medical Personnel

Physicians - 14 (includes one in Adairville and one in Lewisburg)
Dentists - 5
Optometrists - 3

Hospitals

<u>General Hospital</u>	<u>Location</u>	<u>Beds</u>
Logan County Hospital	Russellville	108

General hospital facilities - 2 operating rooms, recovery room, 4-bed coronary care unit, laboratory, X-ray, obstetrical section, inhalation therapy, physical therapy, social services, home health agency, pharmacy

Medical staff - 8 family practitioners, 2 internal medicine specialists, 2 general surgeons, 1 OB/GYN specialist, 38 registered nurses, 20 licensed practical nurses, 2 consulting pathologists, 1 radiologist, 2 consulting cardiologists

Other Medical Facilities

Auburn Nursing Center - 66 beds, skilled nursing and intermediate care
Russellville Health Care Manor, Inc. - 88 beds, intermediate and personal care
Barren River Comprehensive Care Center

Ambulance Service

Name - Logan County Ambulance Service, Inc.
Staff - 7 emergency medical technicians (full time)
Service - 24 hours, county-wide
Equipment - 3 fully equipped ambulances

Name - Adairville Volunteer Fire Department and Ambulance Service
Volunteer staff - 12 certified emergency medical technicians
Service - 24 hours, county-wide
Equipment - One fully equipped ambulance

Name - Auburn Rural Fire Department and Ambulance Service
Volunteer staff - 15 emergency medical technicians including 2 trained as paramedics
Service - 24-hour service to Auburn and surrounding area
Equipment - 2 ambulances

Public Health

Facility - Logan County Health Department
Staff - Health environmentalist, 2 full-time registered nurses, 2 part-time registered nurses, 1 full-time clerk typist, 1 part-time clerk typist, 1 community health worker

OTHER LOCAL FACILITIES

Communications

	Russellville	Adairville
Telephone -	South Central Bell Telephone Company	Logan County Rural Telephone Cooperative, Inc.
Services	Standard	Standard
Telegraph - Services -	Western Union Toll-free number, 1-800-325-5100	Western Union Toll-free number, 1-800-325-5100
Postal - U.S. Post Office		
Class -	First	Second
Mail received -	Three times daily	Once daily
Mail dispatched -	Once daily	Once daily
Newspapers -	The News Democrat and The Logan Leader	
Weekly and circulation -	6,925 and 6,550 respectively	
Other papers received from -	Louisville and Bowling Green, Kentucky; Nashville, Tennessee	Russellville, Louisville and Bowling Green, Kentucky; Nashville, Tennessee
Radio - Stations	WRUS-AM; WAKQ-FM stereo	
received from -	Bowling Green, Franklin and Hopkinsville, Kentucky; Nashville, Tennessee	Russellville, Bowling Green, Franklin and Hopkinsville, Kentucky; Clarksville, Gallatin, Nashville and Springfield, Tennessee
Television -		
Cable service -	Yes	*
Reception from -	Bowling Green, Kentucky; Nashville, Tennessee	Bowling Green, Kentucky; Nashville, Tennessee
Kentucky Educational Television -	Channel 53 - Bowling Green Transmitter	

*A contract has been let for a cable television service franchise in Adairville.

	Auburn	Lewisburg
Telephone -	Logan County Rural Telephone Cooperative, Inc.	Logan County Rural Telephone Cooperative, Inc.
Services	Standard	Standard
Telegraph -	Western Union	Western Union
Services -	Toll-free number, 1-800-325-5100	Toll-free number, 1-800-325-5100
Postal - U.S. Post Office		
Class -	Second	Second
Mail received -	Once daily	Once daily
Mail dispatched -	Once daily	Once daily
Newspapers -		
Papers		
received from -	Russellville, Louisville and Bowling Green, Kentucky; Nashville, Tennessee	Russellville, Louisville, Bowling Green and Owensboro, Kentucky; Nashville, Tennessee
Radio -		
Stations		
received from -	Russellville, Bowling Green and Franklin, Kentucky;	Russellville, Bowling Green, Central City, Hopkinsville and Owensboro, Kentucky; Nashville, Tennessee
Television -		
Cable service	*	No
Reception from -	Bowling Green, Kentucky; Nashville, Tennessee	Bowling Green, Kentucky; Nashville, Tennessee
Kentucky Educational Television	Channel 53 - Bowling Green Transmitter	Channel 53 - Bowling Green Transmitter

*A contract has been let for a cable television service franchise in Auburn.

Library Services

Public library - Logan County Public Library, Russellville

Size collection - 50,000 volumes

Circulation, 1981-82 - 112,000

Services - Bookmobile throughout the county, periodicals, films, records, tapes, microfilm, audiovisual equipment, story hour, meeting rooms

The Logan County Public Library, a member of the Kentucky Cooperative Library Services Program, serves as a distribution center and provides consultant services for a 10-county area of the Barren River region.

Adairville and **Auburn** each have a library branch open eight hours per week.

Religious Institutions

	Russellville	Adairville
Denominations -	Baptist Catholic Christian Church of Christ Church of God Episcopal Jehovah's Witnesses Methodist Pentecostal Presbyterian	Baptist Church of Christ Full Gospel Holiness Methodist
	Auburn	Lewisburg
Denominations -	Baptist Christian Church of Christ Cumberland Presbyterian Methodist Presbyterian U.S.A.	Baptist Church of Christ Cumberland Presbyterian Methodist
Nearest Synagogues -	Nashville, Tennessee, 54 miles south of Russellville	
Congregations -	Sherith Israel (orthodox) Ohabia Shalom (reform) West End Synagogue (conservative)	

Financial Institutions

<u>Banks</u>	<u>Assets</u>	<u>Deposits</u>	<u>Statement Date</u>
Russellville			
The Citizens National Bank	\$54,348,038.27	\$49,228,961.73	6/30/82
Southern Deposit Bank	42,716,975.17	37,006,381.34	6/30/82
Adairville			
Adairville Banking Company	8,204,000.00	6,807,000.00	6/30/82
Auburn			
Auburn Banking Company	18,488,439.73	16,090,566.19	6/30/82
Lewisburg			
Lewisburg Banking Company	14,635,387.61	12,999,415.85	6/30/82
<u>Savings and Loan Associations</u>	<u>Assets</u>	<u>Savings Accounts</u>	<u>Statement Date</u>
Russellville			
First Federal Savings and Loan	\$28,275,211.45	\$25,862,105.05	12/31/81

Hotels and Motels

	<u>Logan County</u>
Total number -	5
Total rooms -	100

Clubs and Organizations

Russellville

Aftermath Club
Alcoholics Anonymous
American Legion, Unit 29
American Legion, Unit 229
American Legion Auxiliary,
Unit 29
American Legion Auxiliary,
Unit 229
Bayview Club
ScoutsAuxiliary
Brownies
Children of the American
Revolution
Cub Scouts
Daughters of the American
Revolution
E & F Rod and Gun Club
Eastern Star
Farm Bureau
Farm League baseball
4-H Club
Fraternal Order of Police
Future Farmers of America
Future Homemakers of America
Garden Club
Girl Scouts
Heritage Foundation
Historical Society
Homemakers
International Order of Odd
Fellows
Jaycees
Jaycettes
Junior Conservation
Junior Women's Club
Kiwanis
Library Club
Lions Club
Little League baseball
Logan County Civic
Development Association
Logan County Hospital Boy
Masonic Lodge
Modern Woodmen of the
World
Moose
National Association for the
Advancement of Colored
People
Newcomer's Club
Octagon Club
Optimist Club
Opti-Mrs. Club
Parents-Teachers Association
Rebekah Lodge
Rotary Club
Russellville-Logan County
Chamber of Commerce
Senior League baseball
Teen Town Club
Veterans of Foreign Wars
Women's Club
Woodmen of the World

Adairville

Adairville Christian Center
Adairville Community Medical
Service
Adairville Senior Citizens
Adairville-South Logan County
Chamber of Commerce
Chamber of Commerce Ladies'
Auxiliary
Homemakers Clubs
Junior Conservation
Little League baseball
Pony League baseball
Red River Fish and Game Club

Auburn

American Legion
American Legion Auxiliary
Boy Scouts
Brownies
Cub Scouts
Eastern Star
4-H Club
Future Business Leaders of
America
Future Farmers of America
Future Homemakers of America
Future Teachers of America
Garden Club
Girl Scouts
Homemakers
Jaycees
Little League baseball
Masons
Mixed Bowling League
Optimist Club
Parents-Teachers Association
Pony League baseball
Rotary
Woodmen of the World
Younger Women's Garden Club

Lewisburg

Boy Scouts
Brownies
City Baseball League
Coon Range Chapter of
Campers and Hikers
Coon Range Fish and
Game Club
Cub Scouts
Eastern Star
4-H Club
Future Business Leaders of
America
Future Farmers of America
Future Homemakers of
America
Homemakers
Lions Club
Lioness Club
Masons
Parents-Teachers Association
Senior Citizens Club

RECREATION

Local

Recreational facilities in Russellville include the 110 acre Russellville-Logan County Memorial Park with two ball fields, four tennis courts, basketball courts, a nature trail, facilities for shuffleboard and croquet, a miniature golf course, a trapshooting range, playground equipment, picnic areas, four shelters, two concession stands, restrooms and a clubhouse with a kitchen. Hampton Park, also located in Russellville, has basketball courts, a picnic shelter, playground equipment and a multipurpose baseball and softball field. A recreation room is also available in the old armory building. Planned recreation programs include Little League, Farm League and Senior League baseball; Adult and Peewee League basketball; and tennis tournaments.

Many historic landmark buildings are located in Russellville, including the Old Southern Bank Building, circa 1810, which was the scene of a robbery by three members of the Jesse James gang in 1868.

The Adairville Community Park presently features two lighted ball fields, concession stands, a basketball court, picnic areas with a pavilion, and parking areas. Plans are being made to add a playground.

A lake and clubhouse are also available at the Red River Fish and Game Club's facilities near Adairville.

Coke-McCutchen Park in Auburn contains two ball fields, three tennis courts, basketball and volleyball courts, facilities for shuffleboard and horseshoe pitching, campgrounds, two open-air pavilions and a concession stand.

The lighted 10-acre Lewisburg Municipal Park has a ball field, basketball courts, three tennis courts, a playground, a picnic area, a covered shelter, a concession stand and restrooms.

Other recreational facilities in Logan County include the Russellville Country Club which has a clubhouse and dining room, a swimming pool, a 9-hole golf course, and two tennis courts. Also available are a public 9-hole golf course and clubhouse, one indoor cinema, a drive-in movie theatre and a public swimming pool.

Special annual events in Logan County include the Logan County Fair, held in June; the Logan County Tobacco Festival, held in October; the Strawberry Festival, held at Adairville in May; and the Shaker Festival, held at South Union in July. South Union, the site of the last Shaker community in Kentucky, features the Shaker Museum and the Shaker Antique Mall and Gifts.

Area (Within 80 miles)

Abundant recreational opportunities are available in and near Logan County.

Lake Malone State Park, located in northern Logan County and southern Muhlenberg County, 24 miles north of Russellville, offers camping facilities, swimming, fishing and boating on a 788-acre lake. Playground facilities and picnic shelters are located in a beautiful scenic cliff area. Located across from the entrance to the park is an inn, featuring luxury rooms, a restaurant, a swimming lake, a beach, boating, fishing, tennis, and nature trails.

Jefferson Davis Monument State Shrine is located 25 miles west of Russellville at Fairview. The shrine is at the site of the birthplace of Jefferson Davis, a former U.S. Senator, Secretary of War, and the only president of the Confederate States of America. The 16-acre park contains a 351-foot obelisk with an elevator to the top for viewing, a museum, a gift shop, and a playground with picnic tables.

Beech Bend Park is located in Bowling Green, 29 miles east of Russellville. Beech Bend features a swimming pool, an amusement park, a small zoo, stage entertainment, horseback riding, restaurants, playgrounds and 6,500 campsites.

Barren River Lake State Resort Park, 59 miles east of Russellville near Glasgow, is a full-facility resort park offering a resort lodge, a coffee shop, cottages, a lodge pool, a beach, riding stables, nature trails, open and covered boat slips, a 9-hole par-3 golf course, lighted handball and tennis courts, shuffleboard, park camping with a service building, a restaurant, fishing and pleasure boat rentals, picnic areas, and a playground. Barren River Lake, which covers 10,000 acres, is a popular area for skiing, sailing, fishing, and swimming.

Embraced by probably the most beautiful wooded area in Western Kentucky, **Pennyroyal Forest State Resort Park** near Dawson Springs is located 60 miles northwest of Russellville. The lodge and cottages nestled within the trees provide excellent accommodations. Other facilities and activities include a dining room, a gift shop, rental rowboats and pedal boats, a 9-hole golf course, hiking trails, horseback riding, picnicking, playgrounds, shuffleboard, swimming at the lodge pool and off a sand beach, and two tennis courts. Lake Beshear, only four miles from the lodge, sports good fishing.

Mammoth Cave National Park is located 61 miles northeast of Russellville near Cave City. Beneath 51,000 park acres, Mammoth Cave is among the major tourist attractions of all times. It is one of the largest cave networks ever discovered, with at least 150 miles charted on five levels and vast areas not yet mapped. Some famous sights are Snowball Dining Room (267 feet below surface), Frozen Niagara, Crystal Lake, and Bottomless Pit. The park also features scenic boat trips on the Green River and nature and hiking trails. Park accommodations include a hotel with distinctive gift shops featuring native Kentucky and Southern Highland handicrafts, a motor lodge, hotel cottages, woodland cottages, and a hotel annex with budget accommodations and craft shop featuring live exhibits of broom making and weaving. Other park facilities include the hotel dining room and coffee shop, a service center, group meeting facilities, a campground, a picnic area, and tennis and shuffleboard courts.

Lake Barkley State Resort Park, 65 miles west of Russellville at Cadiz, is located on the scenic Little River embayment of the 58,000-acre Lake Barkley. The magnificent lodge includes 120 rooms, four suites, nine cottages, a dining room, a coffee shop, a gift shop, two meeting rooms, and a recreation room. Activities center with a capacity for 400 and an 80-site campground are located near the lodge. A lodge pool, a beach and a bathhouse, an 18-hole golf course, tennis courts, a riding stable, a trapshooting range, a basketball court, hiking trails, playgrounds, and a picnic area comprise the recreational facilities. The marina near the lodge has everything for the "boat lover:" covered and open slips, launching ramp, and rentals for fishing boats, skiing boats, and pleasure-ride pontoons.

Noteworthy for its spaciousness and perfect grooming, **Rough River Dam State Resort Park** at Falls of Rough, is 66 miles northeast of Russellville. The 377-acre park on Rough River Lake has a 40-room lodge with a dining room, a coffee shop, a gift shop, and a meeting room. Cottages and camping sites are also available. Recreational facilities include a launching ramp, a dock with open and covered slips, fishing and pleasure boat rentals, a 9-hole golf course, a swimming pool, a sand beach with a bathhouse complex, three tennis courts, an archery range, hiking trails, picnic and playground areas, and planned recreation. Cruise boat excursions on Rough River Lake are available on the "Lady of the Lake."

Russellville is 70 miles east of one of the largest outdoor recreation areas in the southeastern United States - the **Land Between the Lakes**. This 170,000-acre wooded peninsula between Kentucky and Barkley lakes offers a variety of recreational facilities for hiking, camping, hunting, fishing, boating and swimming. Several centers operated on the peninsula by the Tennessee Valley Authority also stress environmental education and conservation.

Nolin River Lake, 71 miles northeast of Russellville, is just north of Mammoth Cave National Park. The lake has a surface area of 5,800 acres and offers facilities for camping, boating, and fishing.

Ben Hawes State Park, 76 miles north of Russellville near Owensboro, is a 300-acre park which is open year-round. It contains a softball field, tennis courts, an archery range, hiking trails, a picnic area and shelters, and an 18- and 9-hole golf course.

Charm and serenity exemplify **Kenlake State Resort Park** which is located on the 160,000-acre Kentucky Lake, 77 miles west of Russellville. The park offers hotel and cottage accommodations and an efficient camping site. Other facilities include a 9-hole golf course, pool and lake swimming, horseback riding, hiking trails, fishing, boating, picnicking, playgrounds, shuffleboard, planned recreation, and one of the finest tennis complexes in the area.

Nashville, Tennessee, located 54 miles south of Russellville, offers a number of tourist attractions including Opryland U.S.A., the Grand Ole Opry, the Country Music Hall of Fame and Museum, and the Country Music Wax Museum.

COMMUNITY IMPROVEMENTS

Russellville and Logan County

Bilt Rite Products Company has installed major new equipment at its plant, including a \$325,000 wire drawing machine in 1980 and a \$300,000 spot welder in 1981.

Emerson Electric Company enlarged its plant in 1980 and installed a new steel slitting machine.

Smith Douglass of Kentucky, Inc., has constructed new office and warehouse space and has added raw material storage tanks since 1981 at an estimated cost of \$150,000.

A total of 17 new businesses have opened in the Russellville area since 1980.

The Logan County School System completed construction of a new \$5 million consolidated high school building in June of 1982. The new school includes a gymnasium with a seating capacity of 3,000.

The Southern Deposit Bank installed automatic teller machines at its main office in Russellville and at its three branch locations in July of 1982 at a cost of \$250,000.

A \$500,000 Community Development Block Grant provided funds for acquiring and clearing substandard housing in a two-block area of Sixth Street in Russellville, relocating families to standard housing, rehabilitating some existing housing, and making street and sewer drainage improvements in the low-lying areas of the city. The project was completed in 1981.

A 70-unit, low-income public housing complex and 80 units of subsidized rental housing were recently completed in Russellville.

Contracts have been let for the construction of a 1,000,000-gallon water storage reservoir, the installation of a 2,000-gallon-per-minute high service water pump, and a 2,400-gallon-per-minute raw water pump for Russellville Water Works. The projects are expected to be completed by the end of 1984.

Russellville has entered the third phase of a 201 Facilities Plan to upgrade its sewerage system. Construction is to begin in 1983 on a new oxidation ditch facility to be added to the existing treatment plant. The improvement is expected to cost \$2 million and will increase the system's average treatment capacity by 1.6 million gallons per day (from 1.2 to 2.8 million gallons per day).

Construction is scheduled for completion in 1983 on a new pilot plant to test the feasibility of extracting oil from tar sands. The \$3 million plant will be located on a 6-acre site seven miles north of Russellville and will process 200 tons of raw material per day.

Restoration of the historic Old Southern Bank Building in Russellville is under way.

A \$100,000 grant is being used to build a combination football-softball field at a Russellville park.

Citizens National Bank is in the process of adding a new full-service branch on U.S. 431, to be completed during 1983.

Plans are being made to construct a new building to house both the Russellville-Logan County Ambulance Service and the Russellville Rural Fire Department.

The Russellville-Logan County Airport Board is making plans to extend the airport runway from its present length of 3,300 feet to 4,000 feet and to widen the runway to 75 feet from its present width of 60 feet.

Adairville

The Adairville and Auburn plants of Auburn Hosiery Mills, Inc., have been undergoing renovation since 1981.

Approximately \$660,000 in Community Development Block Grants were used to redevelop a two-block area of Adairville. The project was completed in 1981 and involved clearing substandard housing, relocating families and rehabilitating some homes.

The Adairville city square has been reconstructed, and a new fountain house and curbsings have been installed.

The Adairville Community Park has been completed at a cost of \$100,000. The new park contains two lighted ball fields, a concessions area, a basketball court, a parking area and picnic facilities. Plans call for a playground to be added in the future.

A contract has been let for a cable television service franchise in Adairville.

Auburn

Caldwell Lace Leather Company, Inc., recently expanded its tannery facilities, constructed a new 15,000-square-foot gasket manufacturing facility, and added a new 10,000-square-foot office building, at a total cost of \$250,000.

Auburn Hosiery Mills, Inc., has invested \$1 million since 1981 on remodeling its Auburn and Adairville plants. The streamlining of the plants' operations included the installation of new knitting machines and has resulted in a 50 percent increase in production at the plants.

A project to resurface the driveways of the cemeteries in Auburn was completed in 1982 at a cost of \$13,000.

A contract has been let for a cable television service franchise in Auburn.

Lewisburg

A 22-unit housing complex for elderly and disabled persons and a 32 unit apartment complex have been completed.

A \$900,000 shopping center was completed in 1981 and three new businesses located there in 1982.

A new bank building for the Lewisburg Banking Company is to be completed during 1983 at a cost of \$360,000.

ARCO Industries began construction in 1981 on its new \$450 million ARCO Metals Company aluminum roller mill plant. The 900,000-square-foot facility is to be completed in late 1983 and will employ 400 to 500 people.

Two new subdivisions are under development at Lewisburg.

The City of Lewisburg has applied for a combination loan/grant to build a new water treatment plant.