

1980

Industrial Resources: Madison County - Richmond

Kentucky Library Research Collection
Western Kentucky University, spcol@wku.edu

Follow this and additional works at: https://digitalcommons.wku.edu/madison_cty



Part of the [Business Administration, Management, and Operations Commons](#), [Growth and Development Commons](#), and the [Infrastructure Commons](#)

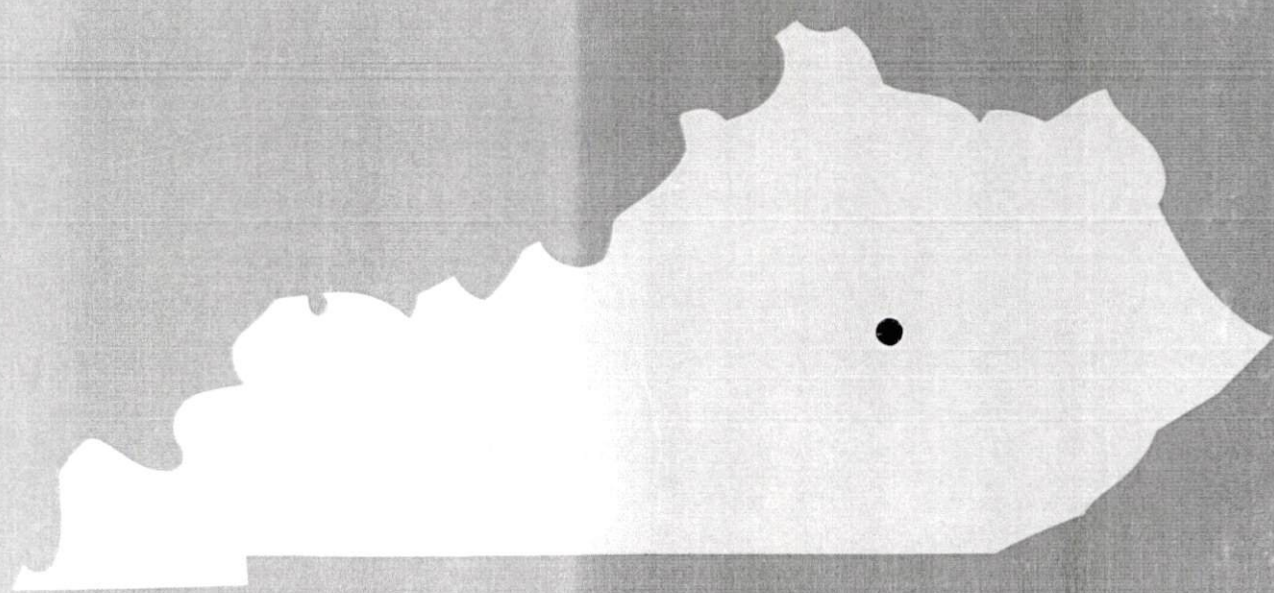
Recommended Citation

Kentucky Library Research Collection, "Industrial Resources: Madison County - Richmond" (1980). *Madison County*. Paper 17.
https://digitalcommons.wku.edu/madison_cty/17

This Report is brought to you for free and open access by TopSCHOLAR®. It has been accepted for inclusion in Madison County by an authorized administrator of TopSCHOLAR®. For more information, please contact topscholar@wku.edu.

Madison County

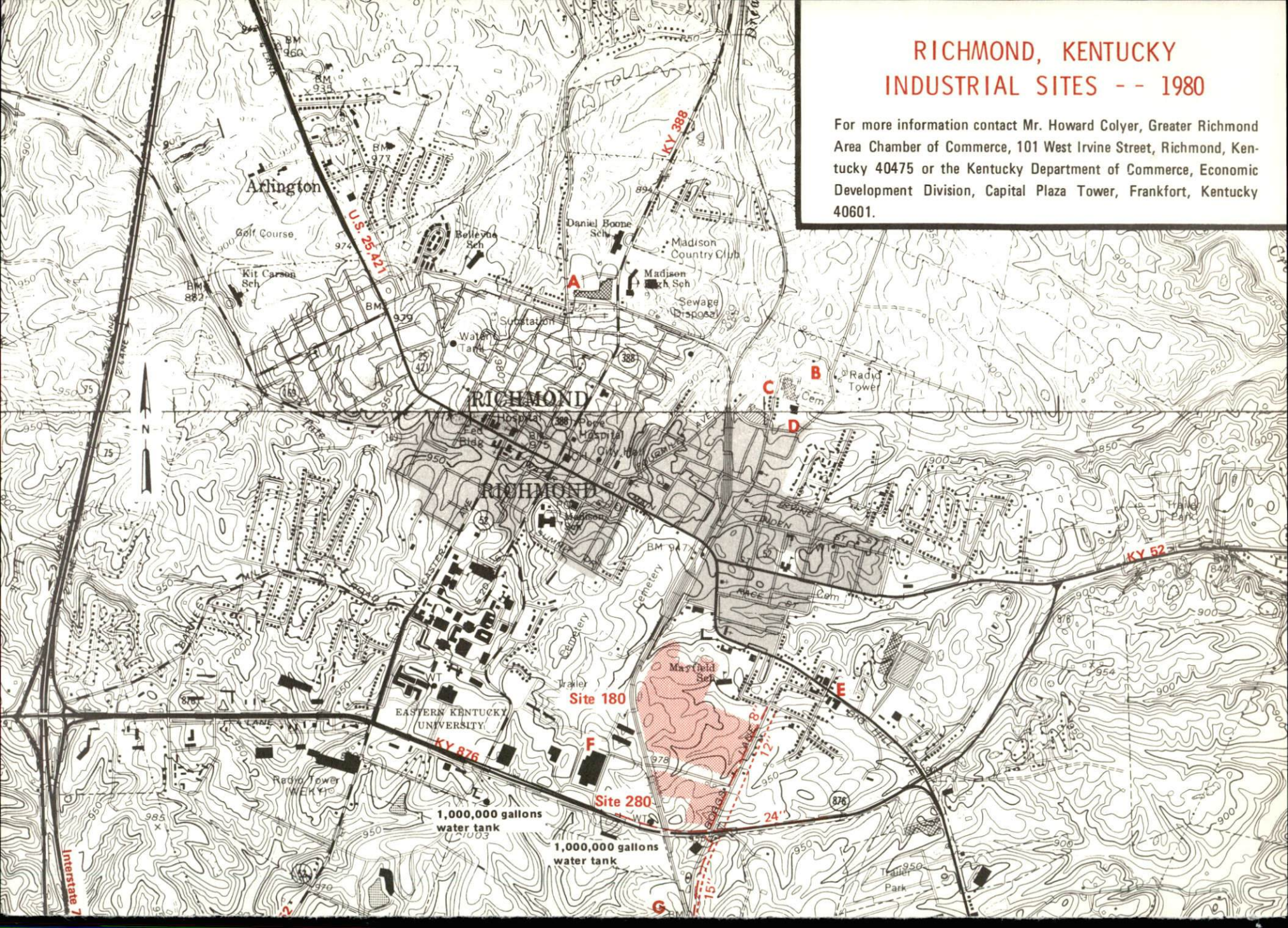
A comprehensive
report on
Richmond, Ky.



KENTUCKY & CO.
The state that's run like a business.

RICHMOND, KENTUCKY INDUSTRIAL SITES -- 1980

For more information contact Mr. Howard Colyer, Greater Richmond Area Chamber of Commerce, 101 West Irvine Street, Richmond, Kentucky 40475 or the Kentucky Department of Commerce, Economic Development Division, Capital Plaza Tower, Frankfort, Kentucky 40601.



- A. Westinghouse Electric Corp.
 B. National Metal Processing, Inc.
 C. Irvin Industries
 D. Uncle Charles Sausage Co.
 E. Beatrice Foods Co.
 F. Exide Power System
 G. Helmick Corp.
 H. Sherwin Williams Co.
 J. Ajax Magnethermic Corp.
 K. The Okonite Co.
 L. Richmond Tool and Stamping, Inc.
 M. Available Industrial Building (101, 405 sq. ft.)

UTILITIES

- Water Line
 - - - - - Sewer Line

SCALE: 1 inch = 2000 feet
 CONTOUR INTERVAL: 10 feet
 BASE: USGS 7.5 MINUTE SERIES — 1979

Site 180 - 55 Acres

LOCATION: Within southeast city limits

ZONING: Residential

HIGHWAY ACCESS: KY 876 (Richmond Bypass) 900 feet south via paved street (Boggs Lane); Interstate 75 interchange approximately 2.2 miles west via Boggs Lane and KY 876

RAILROAD: Louisville and Nashville Railroad adjacent to southwest boundary

WATER: Richmond Water, Gas and Sewerage Works

Size Line: 8-inch line along eastern boundary; 24-inch line approximately 900 feet south along north side of KY 876

GAS: Richmond Water, Gas and Sewerage Works

Size Line: 6-inch line along eastern boundary

ELECTRICITY: Kentucky Utilities Company

SEWERAGE: Richmond Water, Gas and Sewerage Works

Size Line: 12 inch line along east side of Boggs Lane

OWNERSHIP: Private

Site 380 - 8 Acres

LOCATION: Approximately 800 feet south of city limits

ZONING: Industrial

HIGHWAY ACCESS: KY 876 (Richmond Bypass) approximately 0.3 mile north via paved access road (Boggs Lane); Interstate 75 interchange approximately 2.3 miles west via Boggs Lane and KY 876

RAILROAD: Louisville and Nashville Railroad

WATER: Richmond Water, Gas and Sewerage Works

Size Line: 16-inch line along northern boundary

GAS: Richmond Water, Gas and Sewerage Works

Size Line: 6-inch line to be within 200 feet by January 1981

ELECTRICITY: Kentucky Utilities Company

SEWERAGE: Richmond Water, Gas and Sewerage Works

Size Line: 15-inch line along northern boundary

OWNERSHIP: Private

Site 280 - 13 Acres

LOCATION: Within southeast city limits

ZONING: Business

HIGHWAY ACCESS: KY 876 200 feet south via paved city street (Boggs Lane); Interstate 75 interchange approximately 2 miles west via Boggs Lane and KY 876

RAILROAD: Louisville and Nashville Railroad adjacent to western boundary

WATER: Richmond Water, Gas and Sewerage Works

Size Line: 8-inch line along eastern boundary; 24-inch line approximately 150 feet south along north side of KY 876

GAS: Richmond Water, Gas and Sewerage Works

Size Line: 6-inch line along eastern boundary

ELECTRICITY: Kentucky Utilities Company

SEWERAGE: Richmond Water, Gas and Sewerage Works

Size Line: 12-inch line along east side of Boggs Lane

OWNERSHIP: Private

Site 480 - 14.34 Acres

LOCATION: Approximately 2.7 miles south of city limits

ZONING: Not zoned

HIGHWAY ACCESS: U.S. 25,421 approximately 800 feet east via paved access road; Interstate 75 interchange approximately 5.7 miles northwest via U.S. 25,421 and KY 876

RAILROAD: Louisville and Nashville Railroad adjacent to western boundary

WATER: Kingston-Terrill Water District

Size Line: 8-inch line passes through eastern boundary

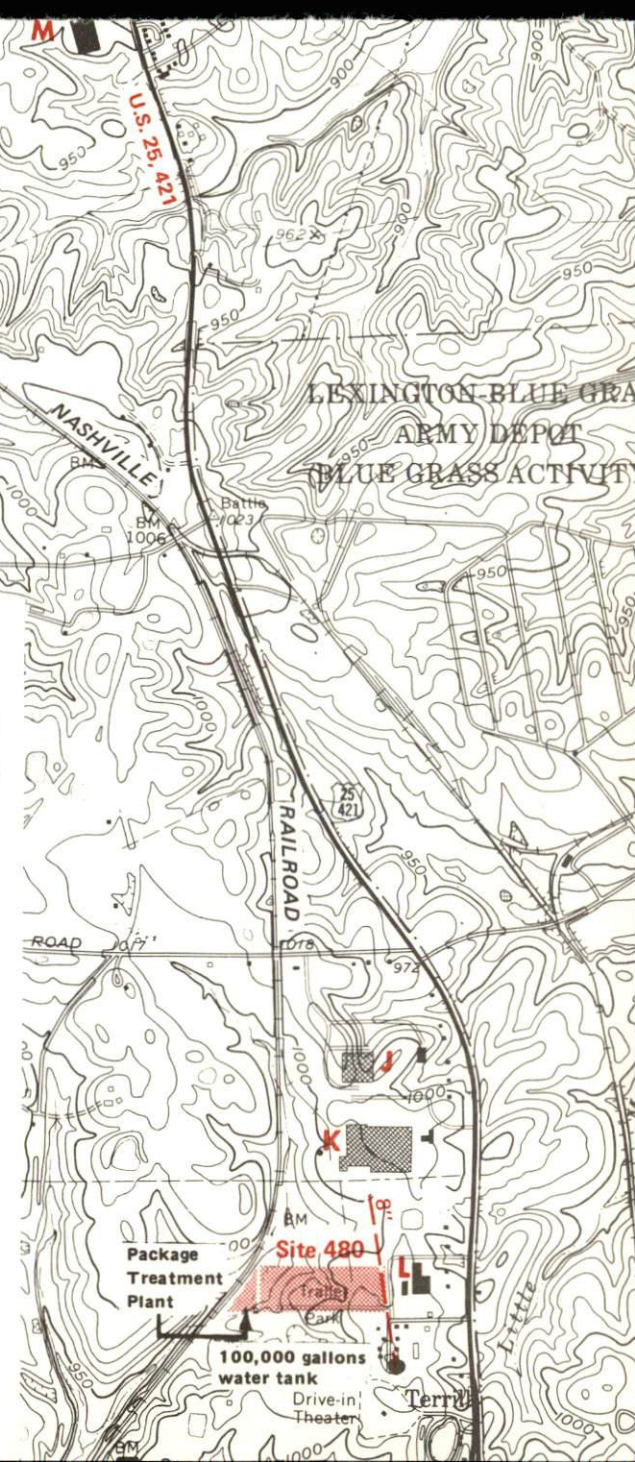
GAS: Delta Natural Gas Company

Size Line: 2-inch line approximately 800 feet east along west side of U.S. 25,421

ELECTRICITY: Kentucky Utilities Company

SEWERAGE: Package treatment plant (5,000 gallons per day capacity) to be constructed on site by January 1981

OWNERSHIP: Private



A COMPREHENSIVE REPORT ON
RICHMOND, KENTUCKY

Prepared by
The Kentucky Department of Commerce
Division of Research and Planning
in cooperation with
The Greater Richmond Area Chamber of Commerce

1980

TABLE OF CONTENTS

<u>Chapter</u>	<u>Page</u>
INDUSTRIAL SITES	i
THE LABOR MARKET AREA	1
Population	1
Labor Force Characteristics of Residents, 1979	1
Estimated Male Labor Supply	2
Estimated Female Labor Supply	2
Major Richmond Manufacturing Firms, Their Products and Employment	3
Labor Organizations In Manufacturing Firms	4
Industrial Services	5
Average Weekly Wages by Industry, by Place of Work, 1979	6
Per Capita Personal Income	8
TRANSPORTATION	9
Rail	9
Highways	9
Truck Service	10
Air	11
Bus	12
Taxi	12
Rental Services	12
Water	12
POWER AND FUEL	13
Electricity	13
Natural Gas	14
Other Fuels	15
WATER AND SEWERAGE	16
Water	16
Sewerage	18
CLIMATE	19

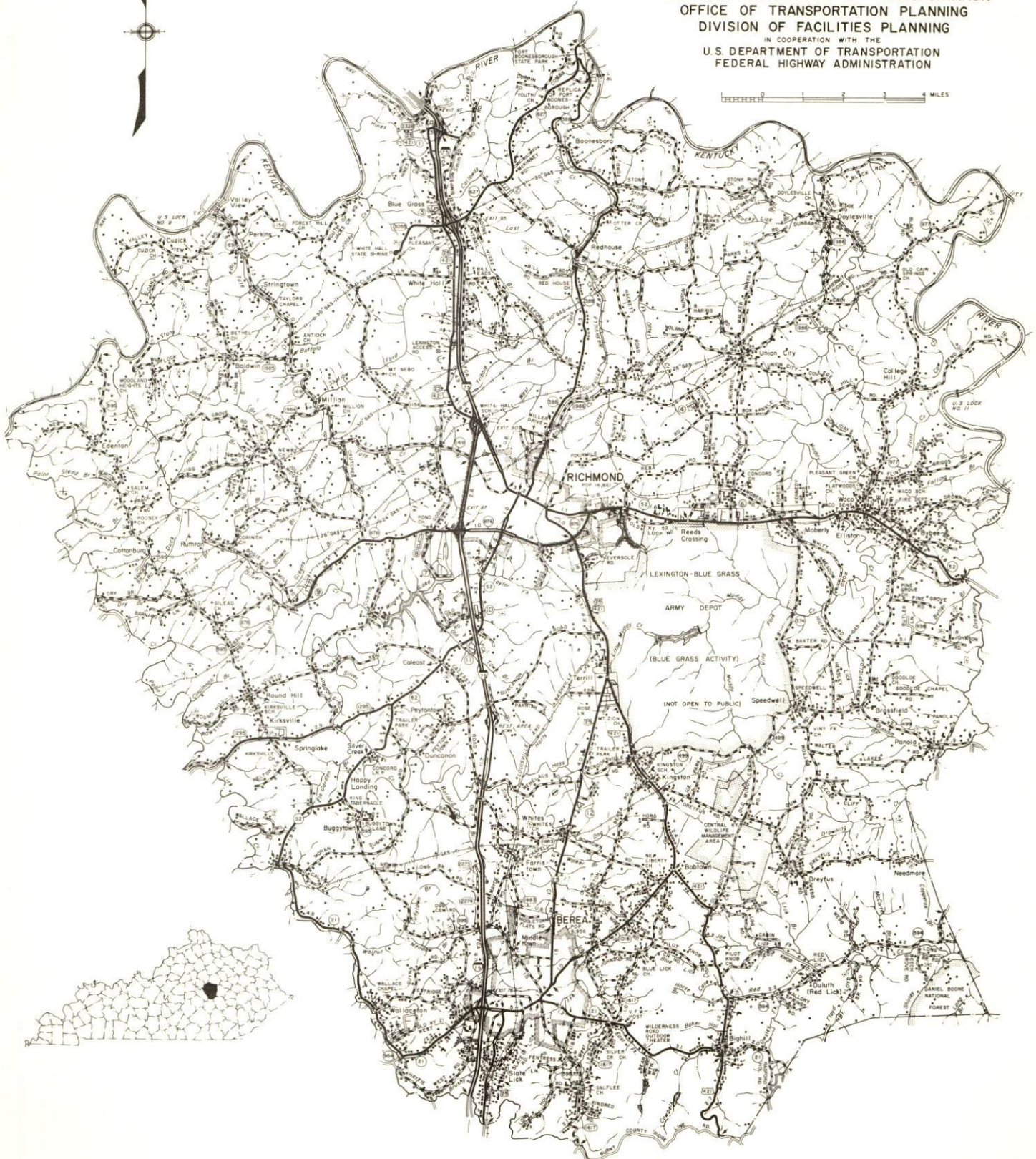
<u>Chapter</u>	<u>Page</u>
LOCAL GOVERNMENT	20
City	20
County	20
Assessed Value of Property	20
Property Taxes	20
Combined State and Local Rates Per \$100 Valuation, 1979	21
Utilities Gross Receipts Tax for Schools	21
Planning and Zoning	21
Safety	22
Police	22
Fire	22
Rescue Service	22
Refuse Collection and Disposal	22
EDUCATION	23
Public Schools	23
Nonpublic Schools	23
Area Colleges and Universities	24
Vocational Schools	25
HEALTH	27
Local Medical Personnel	27
Hospitals	27
Ambulance Service	27
Public Health	27
OTHER LOCAL FACILITIES	28
Communications	28
Library Services	29
Religious Institutions	29
Financial Institutions	30
Hotels and Motels	30
Clubs and Organizations	30
RECREATION	31
COMMUNITY IMPROVEMENTS	33

1980 EDITION
GENERAL HIGHWAY MAP
MADISON COUNTY
KENTUCKY



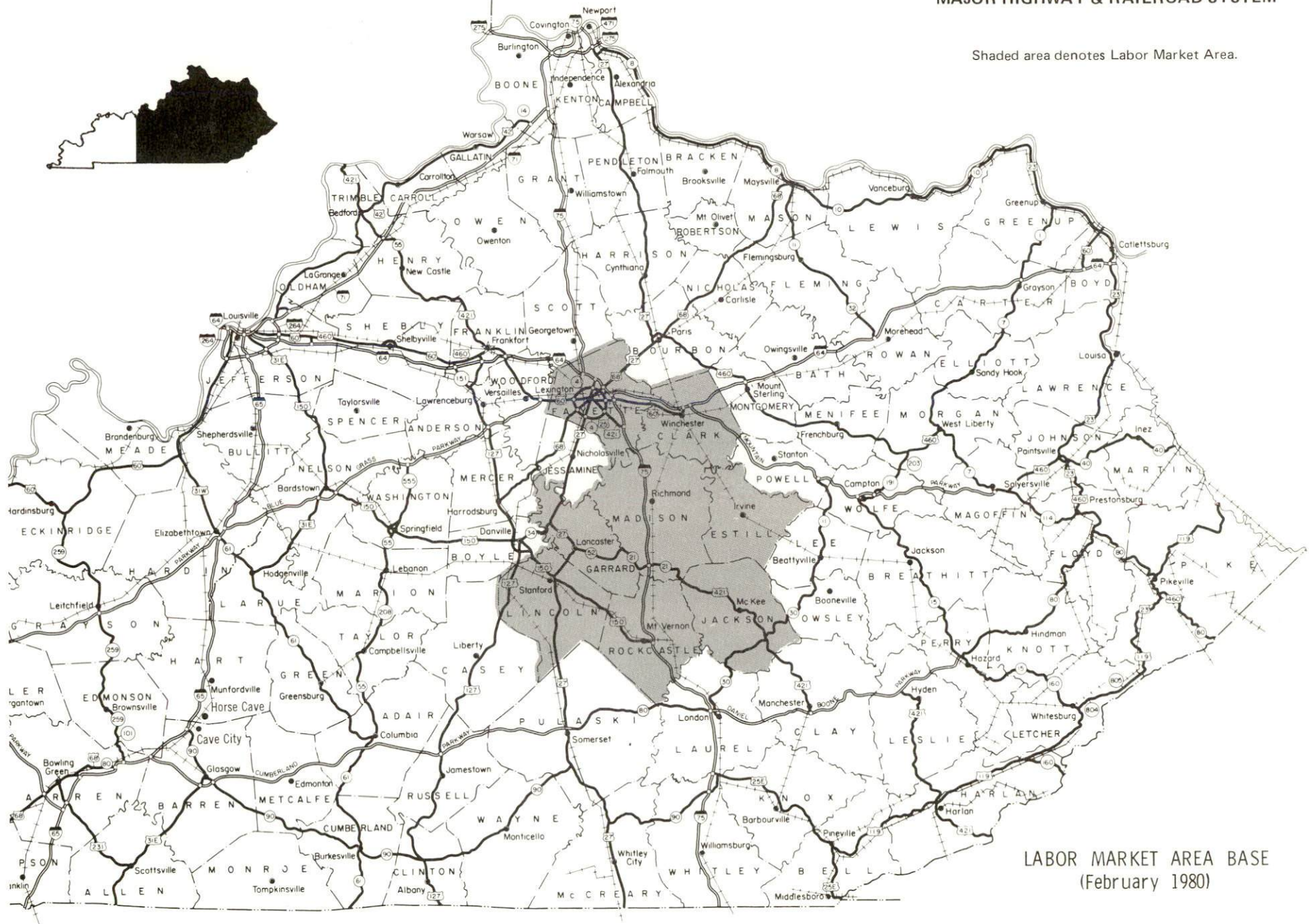
PREPARED BY THE
KENTUCKY DEPARTMENT OF TRANSPORTATION
OFFICE OF TRANSPORTATION PLANNING
DIVISION OF FACILITIES PLANNING
IN COOPERATION WITH THE
U.S. DEPARTMENT OF TRANSPORTATION
FEDERAL HIGHWAY ADMINISTRATION

0 1 2 3 4 MILES



RICHMOND LABOR MARKET AREA **With** **MAJOR HIGHWAY & RAILROAD SYSTEM**

Shaded area denotes Labor Market Area.



LABOR MARKET AREA BASE
 (February 1980)

THE LABOR MARKET AREA

The Labor Market Area includes Madison County and the adjoining Kentucky counties of Clark, Estill, Fayette, Garrard, Jackson, Lincoln, and Rockcastle.

Area	POPULATION		Percent Nonwhite**
	1978*	1970	
Richmond	19,586**	16,861	12.8
Labor Market Area	334,000	302,325	N/A
Madison County	49,500	42,730	6.7
Clark County	26,900	24,090	7.6
Estill County	13,600	12,752	0.3
Fayette County	191,600	174,323	13.7
Garrard County	10,100	9,457	7.8
Jackson County	10,600	10,005	0.2
Lincoln County	18,300	16,663	5.4
Rockcastle County	13,400	12,305	0.1

*Provisional Estimates.

**1978 Population Estimates; 1970 Percent Nonwhite for city; 1978 Percent Nonwhite for counties.

Sources: U.S. Department of Commerce, Bureau of the Census, Census of Population, 1970. U.S. Department of Commerce, Bureau of the Census, Current Population Reports, Series P-26, No. 78-17, August 1979. U.S. Department of Commerce, Bureau of the Census, April 30, 1980. University of Louisville, Urban Studies Center, Population Research Unit, "Kentucky's Population Disaggregations of 1978 Estimates," January 1980.

LABOR FORCE CHARACTERISTICS OF RESIDENTS, 1979

	Madison County	Labor Market Area
Civilian Labor Force	27,761	174,642
Employment	26,624	167,201
Agricultural	1,383	7,443
Nonagricultural	25,241	159,758
Unemployment	1,137	7,441
Rate of Unemployment (%)	4.1	4.3

Source: Kentucky Department for Human Resources, Kentucky Labor Force Estimates, Annual Averages, 1979.

ESTIMATED MALE LABOR SUPPLY
RICHMOND LABOR MARKET AREA

Area	Current				Future
	Total	Not in Labor Force	Unemployed	Under employed	Reaching 18 years of age before 1986
Labor Market Area*	13,577	2,130	3,837	7,610	14,112
Madison	2,769	276	593	1,900	1,747
Clark	935	177	368	390	1,219
Estill	582	91	231	260	659
Fayette	7,159	1,217	1,762	4,180	8,091
Garrard	370	72	128	170	409
Jackson	445	77	208	160	495
Lincoln	783	130	313	340	799
Rockcastle	534	90	234	210	693

*Additional workers may be drawn from other nearby counties.

Sources: Kentucky Department for Human Resources, Kentucky Labor Supply Estimates by County, 1979. Kentucky Department of Commerce, Future Labor Supply before 1986.

ESTIMATED FEMALE LABOR SUPPLY
RICHMOND LABOR MARKET AREA

Area	Current				Future
	Total	Not in Labor Force	Unemployed	Under employed	Reaching 18 years of age before 1986
Labor Market Area*	12,983	949	3,604	8,430	13,281
Madison	2,503	119	544	1,840	1,636
Clark	1,094	83	351	660	1,144
Estill	496	41	215	240	639
Fayette	7,135	554	1,671	4,910	7,563
Garrard	327	30	117	180	424
Jackson	374	30	194	150	500
Lincoln	606	55	291	260	755
Rockcastle	448	37	221	190	620

*Additional workers may be drawn from other nearby counties.

Sources: Kentucky Department for Human Resources, Kentucky Labor Supply Estimates by County, 1979. Kentucky Department of Commerce, Future Labor Supply before 1986.

Note: "Not in Labor Force" represents those persons who are not now in the labor force, but would enter the labor force if suitable employment were available. Unemployed persons are those persons who are unemployed and actively seeking work. Underemployed persons are those persons who are employed, but are working only 14 to 26 weeks per year.

MAJOR RICHMOND MANUFACTURING FIRMS,
THEIR PRODUCTS AND EMPLOYMENT*

Firm (Establishment date)	Product	Employment			Labor Unions
		Total	Male	Female	
Ajax Magnethermic Corporation (1972)	Induction melting and heating equipment, industrial dryer equipment	88	76	12	
Beatrice Foods Company (1947)	Ice cream	57	45	12	Teamsters, Ind.**
Blue Grass Plating (1969)	Electroplating, tumbling	34	28	6	
Concrete Materials Corporation (1949)	Septic tanks, highway markers, ready mixed concrete	30	28	2	
Exide Power System, Division of ESB, Inc. (1976)	Storage batteries	279	---	---	
Irvin Industries, Metal Stamping Division (1961)	Metal stampings, tools, dies	163	93	70	Auto Workers, Ind.**
National Metal Processing, Inc. (1968)	Commercial heat treating	34	24	10	Electrical Workers, IUE, AFL-CIO**
The Okonite Company (1968)	Insulated cable	200	194	6	Electrical Workers, IBEW, AFL-CIO**
Richmond Publishing Corporation, Publishers of The Richmond Register (1917)	Newspapers, off-set printing	46	28	18	

(Contd.)

<u>Firm</u> (<u>Establishment date</u>)	<u>Product</u>	<u>Employment</u>			<u>Labor Unions</u>
		<u>Total</u>	<u>Male</u>	<u>Female</u>	
Richmond Tool and Stamping, Inc. (1969)	Tools, metal stampings, bank equip- ment, safe deposit boxes	177	84	93	
Sembo Systems (1978)	Electro mechanical assemblies, machine shop	45	5	40	
Sherwin Williams Company (1974)	Coatings	158	126	32	
Uncle Charlie's Sausage Company (1957)	Sausage, meat processing, ground beef	59	50	9	
Westinghouse Electric Corporation (1948)	Miniature electric light bulbs	655	178	477	Electrical Workers, IBEW, AFL-CIO**

*Firms with 30 employees or more.

**See Labor Organizations below.

Source: Kentucky Department of Commerce, Division of Research and Planning.

LABOR ORGANIZATIONS IN MANUFACTURING FIRMS

<u>Union</u>	<u>Representing workers at:</u>
International Brotherhood of Teamsters, Chauffeurs, Warehousemen and Helpers of America	Beatrice Foods Company
International Union, United Automobile, Aerospace and Agricultural Implement Workers of America	Irvin Industries, Metal Stamping Division
International Union of Electrical, Radio and Machine Workers, AFL-CIO	National Metal Processing, Inc.
International Brotherhood of Electrical Workers, AFL-CIO	The Okonite Company; Westinghouse Electric Corporation

INDUSTRIAL SERVICES

	<u>Location</u>	<u>Miles Distant</u>
Tool & Die, Machine & Pattern Shops	Richmond	--
Metal Service Centers	Lexington	25
Heat Treating	Richmond	--
Metal Finishers	Richmond	--
Electric Motor Repair	Lexington	25

Source: Kentucky Directory of Selected Industrial Services, 1979.

AVERAGE WEEKLY WAGES BY INDUSTRY,
BY PLACE OF WORK, 1979

	<u>Madison County</u>	<u>Clark County</u>	<u>Estill County</u>	<u>Fayette County</u>
All Industries	\$182.34	\$237.31	\$187.21	\$229.98
Mining & Quarrying	*	*	*	462.69
Contract Construction	199.52	221.17	136.41	282.77
Manufacturing	219.28	300.80	*	316.97
Transportation, Communications & Public Utilities	211.26	316.65	190.09	281.68
Wholesale & Retail Trade	131.66	140.40	129.63	165.01
Finance, Insurance & Real Estate	188.57	183.70	174.53	220.99
Services	188.83	174.63	173.28	215.19
Other	90.09	144.28	0	186.80
	<u>Garrard County</u>	<u>Jackson County</u>	<u>Lincoln County</u>	<u>Rockcastle County</u>
All Industries	\$154.25	\$169.25	\$174.45	\$144.72
Mining & Quarrying	*	*	*	229.16
Contract Construction	175.80	164.73	170.67	129.13
Manufacturing	173.03	131.48	158.93	147.31
Transportation, Communications & Public Utilities	215.10	222.37	238.25	193.69
Wholesale & Retail Trade	110.66	123.13	132.53	116.04
Finance, Insurance & Real Estate	164.84	*	178.73	176.73
Services	152.05	175.70	180.05	157.58
Other	*	*	90.00	*

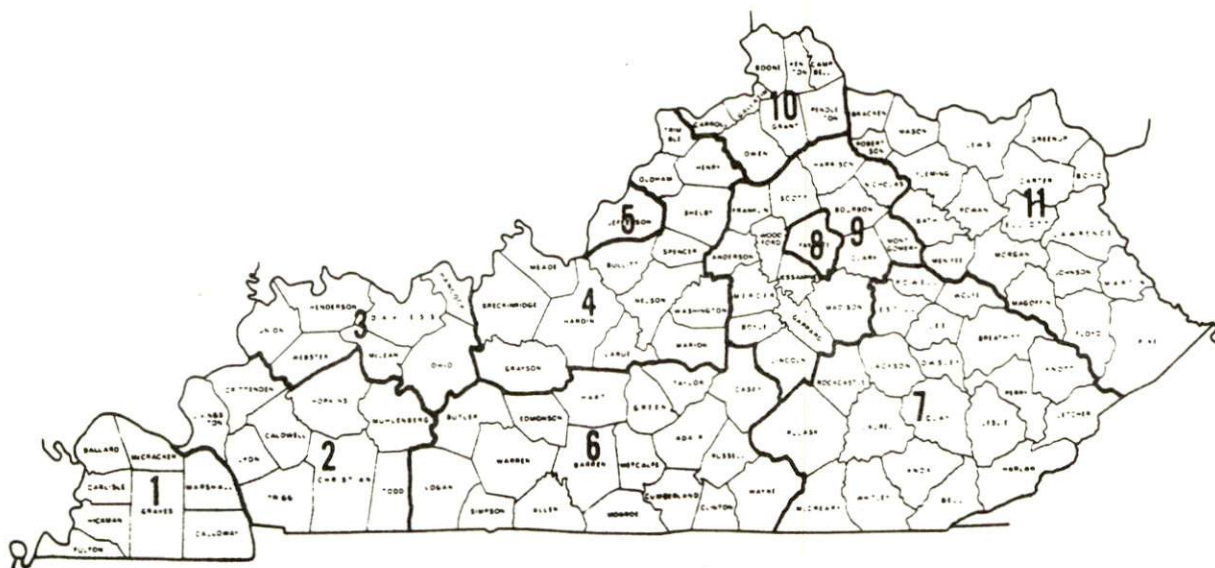
*Not disclosed.

Note: Excludes domestic workers, railway workers, certain nonprofit corporations, majority of federal government workers, and self-employed workers. Effective January 1, 1979, the Kentucky Unemployment Insurance Law extended coverage to include all state and local government agencies (shown in the Services category).

Source: Kentucky Department for Human Resources, Average Weekly Wages of Workers Covered by Kentucky Unemployment Insurance Law, 1979.

Occupational wage rates for specific industries are usually not available to most government agencies, and wage data furnished to state employment agencies by individual industrial employers is protected from disclosure by federal law. The most reliable up-to-date wage information can be obtained by direct contact with local employers.

Associated Industries of Kentucky, a voluntary organization of Kentucky businesses, regularly collects occupational wage rates and fringe benefits data from participating member firms. Data is compiled for over 127 clearly defined office, production, and service occupations. Tabulations are published for eleven regions of Kentucky, as shown on the map below. It should be noted that the data may be weighted by the preponderance of firms in the larger cities and may be somewhat higher than the rates paid in the smaller communities. Data from these tabulations are available, upon request, from the Kentucky Department of Commerce, Frankfort, Kentucky 40601.



Associated Industries of Kentucky Area Wage Surveys

PER CAPITA PERSONAL INCOME

<u>Area</u>	<u>1978</u>	<u>1974</u>	<u>Percent Change</u>
Madison County	\$5,480	\$3,695	48.3
Labor Market Area			
Range	\$3,649 - 7,860	\$2,585 - 5,243	N/A
Kentucky	6,605	4,524	46.0
U.S.	7,840	5,428	44.4

Source: U. S. Department of Commerce, Bureau of Economic Analysis,
April 1980.

TRANSPORTATION

Rail

Line serving Richmond - Louisville and Nashville Railroad

Services - Main line; terminal for local freight; 10 northbound and 10 southbound through freights daily; switching facilities; team track space for 22 cars; siding space for 40 cars. Nearest L & N piggyback facilities are located at Frankfort, 52 miles away. Piggyback facilities are also provided by the Southern Railway System at Danville, 36 miles southwest.

For details on routing, schedules, rates, and services, contact:

Director of Industrial Development
Louisville and Nashville Railroad
908 West Broadway
Louisville, Kentucky 40203
(502) 587-5723

Highways

Richmond, located in the central portion of Madison County, is served by I-75 with interchanges located 2 miles northwest and 2 miles southwest of the city. Interstate 75 provides access to I-64, only 23 miles north near Lexington. Richmond is also served by U.S. Highway 25/421 and Kentucky Highways 52, 388, 1156, 169 and 876.

Truck Service

Company

Home Office

Bronaugh Motor Express, Inc.*

1025 Nandino Boulevard
Lexington, Kentucky 40511

Consolidated Freightways
Corporation of Delaware**

175 Linfield Drive
Menlo Park, California 94025
Hanover Plaza
Morristown, New Jersey 07960

Cooper-Jarrett, Inc.**

Interstate Motor Freight
System**

110 Ionia N.W.
Grand Rapids, Michigan 49503
P. O. Box 213
Winston-Salem, North Carolina 27102

McLean Trucking Company**

Overnite Transportation
Company***

1000 Semmes Avenue
P. O. Box 1216
Richmond, Virginia 23209

Smith's Transfer
Corporation**

P. O. Box 1000
Staunton, Virginia 24401

Other Freight Services

Nearest Shipping Center

Purolator Courier
Corporation****

Lexington, 25 miles north
Lexington, 25 miles north

United Parcel Service****

*Interstate and intrastate service.

**Interstate service only.

***Intrastate service only.

****For regular scheduled pickups or for occasional pickups, arrangements must be made with the Louisville office of Purolator Courier Corporation or United Parcel Service.

HIGHWAY MILES AND TRUCK TRANSIT TIME IN DAYS FROM
RICHMOND, KENTUCKY, TO SELECTED MARKET CENTERS

City	Highway Miles	Delivery		City	Highway Miles	Delivery	
		Time TL				Time TL	
Atlanta, Ga.	339	2-3		Los Angeles, Ca.	2,205	5	
Baltimore, Md.	566	2-3		Louisville, Ky.	97	1	
Birmingham, Ala.	400	2		Nashville, Tenn.	235	1	
Chicago, Ill.	377	3		New Orleans, La.	742	3	
Cincinnati, Ohio	103	1		New York, N. Y.	728	3	
Cleveland, Ohio	342	3		Pittsburgh, Pa.	368	3	
Detroit, Mich.	362	3		St. Louis, Mo.	361	2-3	
Knoxville, Tenn.	146	1					

Note: Mileage computations are via the best interstate or primary highways, not necessarily the most direct route of travel.

Sources: Rand McNally Road Atlas, 1979. Official Kentucky Mileage Map, 1979. Delivery time - Bronaugh Motor Express, 1025 Nandino Boulevard, Lexington, Kentucky 40511.

Air

Local

Location: Madison Airport
Runways: 6 1/2 miles south of Richmond
Length: 1 paved
Traffic: 4,000 feet
Control: Lighted wind cone
Lighting: Runway, taxiway, VASI, and REIL
Services: Flight training; tie down; and fuel - 100 octane and jet fuel

Nearest Scheduled Airline Service

Location: Blue Grass Field
Runways: 4 1/2 miles west of Lexington, Kentucky; 29 1/2 miles northwest of Richmond
Length: 2 paved
Traffic: 6,500 feet; 3,500 feet
Control: Tower
Lighting: Approach lighting system, beacon, runways and obstructions lighted, VASI
Services: Delta, Frontier, Piedmont, and USAir airlines; Tennessee Airways commuter air carrier; fuel - 24-hour service, 100, and jet fuel; repair service - major A & E repairs, Certified Avionics repair station; National Weather Service; flight instructions; charter service; storage, taxi, limousine and car rentals; restaurant

Air Freight Service: Air freight terminal

Bus - Greyhound Bus Lines

Taxi - 24-hour service, radio-dispatched

Rental Services - Car, truck, and trailer rentals

Water

The nearest navigable river is the Kentucky River, located 13 miles north of Richmond, where a 6-foot navigation channel is maintained. The nearest port facilities, which include the Louisville and Jefferson County Riverport Authority and the Port of Louisville, are located on the Ohio River at Louisville, 103 miles northwest of Richmond. The Louisville and Jefferson County Riverport Authority has been designated as a Foreign Trade Zone and offers complete U.S. Customs services for exports and imports. The Northern Kentucky Port Authority, located 107 miles north of Richmond near Covington, has also been designated as a Foreign Trade Zone and also offers complete U.S. Customs services for exports and imports.

POWER AND FUEL

Electricity

Company serving Richmond and part of Madison County - Kentucky
Utilities Company

Source of power - Kentucky Utilities Company

Total generating capacity - 2,383,767 KW

For industrial rates contact:

Industrial Development Department
Kentucky Utilities Company
One Quality Street
Lexington, Kentucky 40507
(606) 255-1461

Companies serving Madison County - Blue Grass Rural Electric
Cooperative Corporation; Clark Rural Electric Cooperative
Corporation

Source of power - East Kentucky Power Cooperative

Total generating capacity - 809,720 KW

For industrial rates contact:

Industrial Development Division
East Kentucky Power Cooperative
P. O. Box 707
Winchester, Kentucky 40391
(606) 744-4812

and/or

Blue Grass RECC
P. O. Drawer D
Nicholasville, Kentucky 40356
(606) 885-4191

and/or

Clark RECC
P. O. Box 748
Winchester, Kentucky 40391
(606) 744-4251

Natural Gas

Company serving Richmond - Richmond Water, Gas and Sewerage Works

Source of supply - Columbia Gas Transmission Corporation

Size of transmission mains - 8-inch (supplier)

Distribution mains - 8, 6, 4, 3, and 2 inches

Distribution pressure - .25 psi to 20 psi

Btu content - 1,000 per cubic foot

Specific gravity - .60

For rates and supplies contact:

Richmond Water, Gas and
Sewerage Works
P. O. Box 700
Richmond, Kentucky 40475
(606) 623-2323

Company serving parts of Madison County - Delta Natural Gas Company, Inc.

Source of supply - Columbia Gas Transmission Company and Tennessee
Gas Transmission Company

Size of transmission mains - 24 and 30 inches (supplier);
4 and 6 inches (distributor)

Distribution mains - 2, 4, 6, and 8 inches

Distribution pressure - 90 psi

Btu content - 1,000 per cubic foot

Specific gravity - .65

For rates and supplies contact:

Delta Natural Gas Company, Inc.
Route 1, Box 30-A
Winchester, Kentucky 40391
(606) 744-6171

Other Fuels

Propane

Buckeye Gas Products Company
(Doxol)
Edwards Avenue
Richmond, Kentucky 40475

Crawford Gas and Appliances
(Pyrofax Gas)
Big Hill Avenue
Richmond, Kentucky 40475

Million's Appliance Company
(Doxol)
South Third Street
Richmond, Kentucky 40475

Southern States Cooperative, Inc.
Irvine Road
Richmond, Kentucky 40475

Fuels oils

Distillate fuel oil -

Chevron Oil Company
(bulk plant)
Boggs Lane
Richmond, Kentucky 40475

Congleton's Sunoco
(bulk plant)
Route 3
Richmond, Kentucky 40475

Grimes and Curry, Agent
(Ashland Oil bulk plant)
Route 2, Quality Drive
Richmond, Kentucky 40475

Jenkins Fuel Oil and Gas, Inc.
Route 2, Berea Road
Richmond, Kentucky 40475

Residual fuel oil - Arrangements must be made with the refinery.

Low sulphur content coal - Available from eastern Kentucky.

WATER AND SEWERAGE

Water

Company serving Richmond - Richmond Water, Gas, and Sewerage Works
P. O. Box 700
Richmond, Kentucky 40475
(606) 623-2323

Source - Kentucky River

Treatment plant capacity - 6,000,000 gallons per day

Average daily consumption - 4,000,000 gallons

Peak daily consumption - 5,000,000 gallons

Type treatment - Coagulation, filtration, chlorination and
fluoridation

Storage capacity - 4,600,000 gallons

Size lines - 4, 6, 8, 12, 16, 18, 20 and 24 inches

Average pressure - 70 psi

Average temperature - 55 degrees F.

MONTHLY WATER RATES

First	300 cubic feet	\$4.30 (Minimum)
Next	400 cubic feet	1.15 per 100 cubic feet
Next	5,000 cubic feet	.95 per 100 cubic feet
Next	5,000 cubic feet	.80 per 100 cubic feet
Over	10,700 cubic feet	.60 per 100 cubic feet

Tap-on charge: Actual cost of labor and materials

Name of water district - Waco Water District
#5 Southern Hills Plaza
Richmond, Kentucky 40475
(606) 623-0142

Area served - East Madison County, Waco and Union City

Date when water district began operating - 1965

Source of supply of treated water - Richmond Water, Gas, and
Sewerage Works

Average amount of water used in a 24-hour period - 250,770 gallons

Average pressure - 80 psi

Average temperature - 55 degrees F.

Size lines - 4 and 6 inches

Monthly rates* -

First	175 cubic feet	\$4.75 (Minimum)
Next	225 cubic feet	1.85 per 100 cubic feet
Next	300 cubic feet	1.45 per 100 cubic feet
Next	500 cubic feet	1.15 per 100 cubic feet
Next	1,000 cubic feet	.95 per 100 cubic feet
Over	2,200 cubic feet	.75 per 100 cubic feet

Tap-on charge: \$225 (Minimum)

Name of water district - Kingston-Terrill Water District
P. O. Box 546
Richmond, Kentucky 40475
(606) 623-7723

Area served - Southeast Madison County

Date when water district began operating - 1965

Source of supply of treated water - Richmond Water, Gas, and
Sewerage Works

Average amount of water used in a 24-hour period - 299,240 gallons

Peak amount of water used in a 24-hour period - 411,455 gallons

Storage capacity - 100,000 gallons

Average pressure - 85 psi

Average temperature - 60 degrees F.

Size lines - 3, 4, 6, and 8 inches

Monthly rates -

First	200 cubic feet	\$5.30 (Minimum)
Next	300 cubic feet	2.30 per 100 cubic feet
Next	300 cubic feet	1.55 per 100 cubic feet
Over	800 cubic feet	.80 per 100 cubic feet

Tap-on charge: \$300

*A rate increase is pending with the Utilities Regulatory Commission.

Surface water sources - Kentucky River

Average discharge - Kentucky River at Lock 10 near Winchester,
Kentucky, 5,313 cfs (72 years, USGS), unadjusted

Expected ground water yield - 50 to 200 gpm along Kentucky River in
the northwest portion of the county; 5 to 50 gpm in small portion
of southcentral Madison County; 5 gpm or less in remainder of county

Sewerage

Company serving Richmond - Richmond Water, Gas, and Sewerage Works*
P. O. Box 700

Richmond, Kentucky 40475

(606) 623-2323

Design capacity - Plant #1 - 2,000,000 gallons per day;

Plant #2 - 1,000,000 gallons per day

Average daily flow - At capacity at both plants

Treatment - Primary and secondary

Type treatment - Sedimentation, trickling filter, clarifier, sludge
tank, drying beds, and chlorination

Treated effluent discharged into - Plant #1 - Dreaming Creek;

Plant #2 - Tates Creek

Size of sanitary mains - 16 and 18 inches

Rates - 63 percent of water bill inside city limits; 113 percent
of water bill outside city limits

Tap-on charge: \$300

*The Richmond Water, Gas, and Sewerage Works has a major rehabilitation project under way on the municipal sewer plants. Step I of a 201 Facilities Plan has been completed and bids are to be accepted for construction in December 1980 and February 1981. The capacity of treatment plant #1 will be increased to 3,650,000 gallons per day and a tertiary treatment process will be installed. The capacity of treatment plant #2 will be increased to 2,990,000 gallons per day and a tertiary treatment process will be installed. The completion date for the \$15.5 million project is scheduled for 1983.

CLIMATE

Madison County

Temperature

Normal (30-year record)	55.2 degrees
Average annual 1979	53.4 degrees
Record highest, September, 1954 (35-year record)	103.0 degrees
Record lowest, January, 1963 (35-year record)	-21.0 degrees
Normal heating degree days (30-year record)	4,729
(Heating degree day totals are the sums of negative departures of average daily temperatures from 65 degrees F.)	

Precipitation

Normal (30-year record)	44.49 inches
Mean annual snowfall (35-year record)	16.80 inches
Total precipitation 1979	54.00 inches
Mean number days precipitation (.01 inch or more) (35-year record)	131
Mean number days thunderstorms (35-year record)	47

Prevailing Winds (17-year record)

South

Relative Humidity

1 a.m.	77 percent (15-year record)
7 a.m.	81 percent (16-year record)
1 p.m.	60 percent (16-year record)
7 p.m.	64 percent (16-year record)

Source: U.S. Department of Commerce, Environmental Science
Services Administration, Climatological Data, 1979.
Station of record: Lexington, Kentucky.

LOCAL GOVERNMENT

City

Structure - Mayor - 4-year term; 4 commissioners - 2-year terms;
city manager

Budget 1980 - General Fund	\$2,035,425
Water and Sewer Fund	1,798,500
City Gas System	2,812,000

Fees and licenses - One percent occupational license tax on wages and on net profits; business license fees range from \$3 to \$300 annually

County

Structure - County Judge/Executive - 4-year term;
4 magistrates - 4-year terms

Budget 1979-80 - General Fund \$960,682; Road Fund \$370,786

Assessed Value of Property

<u>Classes of Property</u>	<u>Richmond (1979)</u>	<u>Madison County (1980-81)</u>
Real Estate	\$124,694,492	\$482,391,919
Tangibles	33,442,334	92,643,241

Property Taxes

All property in Kentucky is assessed at 100 percent of fair cash value.

Land and buildings are taxed by the state and may be taxed by local jurisdictions. The state rate is \$0.279 per \$100 of assessed valuation.

Manufacturing machinery, raw materials inventories, pollution control equipment, and goods in the process of manufacture are not subject to local taxation. The state rate is \$0.15 per \$100.

Other tangible personal property owned by manufacturers (automobiles, trucks, finished goods, office furniture, office equipment) is taxed by the state at \$0.45 per \$100 and may be taxed by local jurisdictions.

Property stored in public warehouses in a transit status is not subject to local taxation. The state rate is only \$0.015 per \$100.

Intangible personal property located in Kentucky (money in hand, shares of stock, notes, bonds, accounts receivable, and other credits) is taxed by the state at \$0.25 per \$100, and is not subject to local taxation.

Private leaseholds in industrial facilities owned by cities or counties and financed by industrial revenue bonds are subject to a state tax of \$0.015 per \$100 of value (essentially the lessee's equity, adjusted for appreciation or depreciation). Local taxation is not permitted.

Combined State and Local Rates Per \$100 Valuation, 1979*
(100% assessment)

	<u>Inside City of Richmond</u>	<u>Outside City</u>
1. Land and buildings	\$1.038	\$0.499
2. Mfg. machinery, raw materials, goods in process, pollution control equipment	0.150	0.150
3. Finished goods, office equipment, vehicles, other tangibles	1.209	0.670
4. Intangibles (accounts receivable, notes, bonds, etc.)	0.250	0.250
5. Leaseholds in industrial revenue bond financed plants	0.015	0.015

Utilities Gross Receipts Tax for Schools

A 3 percent tax is levied on utilities receipts for the Madison County School District. Tax is paid by all consumers of utilities as an add-on to the utilities bills. Exempted are receipts from utilities services that are resold and the receipts from the sale of energy or energy producing fuels that exceed 3 percent of the cost of production in manufacturing, processing, mining or refining.

Planning and Zoning

City agency - Richmond Planning and Zoning Commission

Zoning enforced - City of Richmond only

Subdivision regulations enforced - City of Richmond and 5 miles beyond city limits

Local codes enforced - Housing and building

Mandatory state codes enforced - Kentucky Plumbing Code, National

Electric Code, Kentucky Boiler Regulations and Standards, National

Fire Protection Association Standards of Safety (for buildings with

an occupancy of less than 100 persons), Kentucky Building Code

(modeled after BOCA code and applying to buildings with an occupancy of 100 or more persons)

*Kentucky Department of Commerce.

Safety

<u>Police</u>	<u>Richmond</u>	<u>Madison County</u>
---------------	-----------------	-----------------------

Total staff	36	7
Radio-patrol cars	12	5

Fire

American Insurance Association Fire Rating	6	10
Full-time staff	52	14
Volunteers	35	13

Rescue Service

The Madison County Rescue Squad:

Number of volunteers - 30

Equipment - The unit is equipped with modern emergency rescue apparatus.

Personnel training - Six members are paramedics and six members are emergency medical technicians. All volunteers are trained in basic first aid.

Refuse Collection and Disposal

	<u>Richmond</u>
Type service	Municipal
Fee charged:	
residential	No charge
business	No charge
industrial	No charge
Collection frequency:	
residential	Weekly
business	Daily
industrial	Daily
Trash pickup	Daily
Disposal method	Sanitary landfill

Dumpsters are placed at various locations throughout the county for the convenience of county residents. The county provides pickup service at these points with disposal at the Richmond landfill.

EDUCATION

Public Schools

	<u>Richmond Independent</u>	<u>Madison County</u>
Total Enrollment		
(Spring, 1980)	848	5,922
Elementary	585	3,336
Middle School	--	1,000
High School	263	1,586
Student-Teacher Ratio	14-1	17-1
Elementary	13-1	16-1
Middle School	--	20-1
High School	16-1	21-1
Percent High School		
Graduates to College	21.4	46.4
Expenditures Per Pupil		
(1978-79)	\$1,434.63	\$961.82
Bonded Indebtedness,		
June 30, 1979	\$366,000	\$4,083,000

Nonpublic Schools

	<u>Model Laboratory*</u>	<u>St. Mark's Catholic School</u>
Total Enrollment	392	85
Elementary	152	85
High School	240	--
Student-Teacher Ratio	13-1	21-1
Elementary	15-1	21-1
High School	12-1	--

*The Model Laboratory School of Eastern Kentucky University is accredited by the Southern Association of Colleges and Schools.

Area Colleges and Universities

<u>Name</u>	<u>Location (Miles distant)</u>	<u>Enrollment (Fall, 1979)</u>	<u>Highest Degree Conferred</u>
Eastern Kentucky University	Richmond	13,668	Masters, Specialists*
Berea College	Berea (14)	1,434	Baccalaureate
University of Kentucky	Lexington (25)	22,899	Doctorate, M.D., D.M.D., J.D.
Transylvania University	Lexington (25)	810	Masters**
Lexington Technical Institute	Lexington (25)	2,074	Associate
Centre College	Danville (36)	766	Baccalaureate
Georgetown College	Georgetown (39)	1,189	Masters
Asbury College	Wilmore (41)	1,248	Baccalaureate
Midway College	Midway (41)	328	Associate

Eastern Kentucky University has served the Commonwealth of Kentucky for more than seven decades.

Throughout its service the university has focused on three specific functions - teaching, public service, and research. Along with these functions, it has strived to remain responsive and flexible in order to serve the changing needs of the Commonwealth.

Because of its location and accessibility, Eastern Kentucky University's influence can be felt in all parts of Kentucky and in surrounding states.

*Joint doctoral degree programs are offered in cooperation with the University of Kentucky, Lexington, and cooperative doctoral degree programs are offered with Michigan State University and the University of Maryland.

**Courses in the masters degree program are taught on the Transylvania campus by faculty members of Xavier University of Cincinnati. The degree is issued by Xavier University.

Vocational Schools

Both the state vocational-technical schools and the area vocational education centers are operated by the Kentucky Department of Education. The state vocational-technical schools enroll persons full time who are at least 16 years of age and not in school. These students attend classes for six hours each day. The area vocational education centers are designed to accommodate high school students who are at least 15 years of age. These students attend vocational school for three hours each day. The state vocational-technical schools and the area education centers offer evening courses to enable working adults to upgrade current job skills.

Nearest State School

Location	Central Kentucky State Vocational-Technical School
Miles Distant	Lexington 25
Curriculum	Business and Office Clerical Secretarial Consumer and Home Economics Commercial Foods Health and Personal Services Occupations Cosmetology Dental Assistant Nurse's Aide Practical Nursing Surgical Technician Industrial Education Auto Body Repair Auto Mechanics Carpentry Drafting Electronics Graphic Arts Industrial Electricity Machine Shop Masonry Office Machine Repair Sheet Metal, Heating and Cooling Welding Learning Resource Center

(Contd.)

Nearest Area Education Center

Location	Madison County Area Vocational Education Center
Curriculum	Richmond Business and Office Clerical Secretarial Stenographer Industrial Education Auto Mechanics Drafting Machine Shop Welding

Arrangements can be made to provide training in the specific production skills required by an industrial plant. Instruction may be conducted either in the vocational school or in the industrial plant, depending upon the desired arrangement and the availability of special equipment.

HEALTH

Local Medical Personnel

Physicians - 30
Dentists - 17

Hospitals

<u>General Hospital</u>	<u>Location</u>	<u>Beds</u>
Pattie A. Clay Hospital	Richmond	103

General hospital facilities - 4 operating rooms, fracture room, recovery room, 6 emergency rooms, intensive care-coronary care unit, laboratory, X-ray, OB/GYN, 4 outpatient rooms, cystoscopic room, physical therapy, pharmacy, respiratory therapy, nuclear medicine, and clinical services

Medical staff - 30 medical doctors, 82 registered nurses, 22 licensed practical nurses, 36 nursing aides, 8 medical technologists, 9 X-ray technologists, 1 dietician, 2 respiratory therapists, and 2 physical therapists

Ambulance Services

Name - Madison County Ambulance Service
Staff - 19 full-time and 12 part-time emergency medical technicians;
7 paramedics
Service - 24-hour service, county-wide
Equipment - 4 fully-equipped ambulances (3 in Richmond and 1 in Berea)

Public Health

Facility - Madison County Health Department
Staff - 1 administrator, 7 registered nurses, 2 licensed practical nurses, 1 nursing supervisor, 1 health officer, 3 nutritionists, 6 community health workers, 1 social worker, 3 health environmentalists, 2 medical clinicians, 8 clerks, 1 physical therapist (part time), and 1 speech therapist (part time)

OTHER LOCAL FACILITIES

Communications

Telephone - South Central Bell Telephone Company
Services - Standard

Telegraph - Western Union
Services - Telephone, messenger and counter

Postal - U.S. Post Office
Class - First
Mail received - Twice daily
Mail dispatched - Twice daily

Newspapers -
Daily and circulation - Richmond Daily Register, 9,200
Weekly and circulation - Madison County Journal, 1,000
Madison County Post, 10,400

Other papers
received from - Louisville and Lexington, Kentucky;
Cincinnati, Ohio

Radio - WCBR-AM-FM; WEKY-AM; WEKU-FM (Eastern Kentucky University)
Stations received
from - Louisville, Lexington, Danville, Irvine and Mt. Sterling,
Kentucky; Cincinnati, Ohio

Television -
Cable service
Reception from - Louisville and Lexington, Kentucky; Cincinnati, Ohio
Kentucky Educational
Television - Lexington-Richmond transmitter, Channel 46

Library Services

Public library - City-County Public Library

Size collection - 11,424 volumes

Circulation, 1978-79 - 11,358

Services - Newspapers, magazines, Interlibrary Loan, and albums

University library - John Grant Crabbe Library, Eastern Kentucky University

Size collection - 615,018 volumes

Circulation, 1978-79 - 290,723

Special collections - Townsend collection of Kentuckiana; music library; and law enforcement library

Services - Microformats, newspapers, magazines, photo copiers, Interlibrary Loan, Dorris Museum with Kentucky and Civil War displays, reader prints

Private library - The Richmond Women's Club operates a library by membership only. The library is open three days a week.

Religious Institutions

Number of churches - 27

Denominations - Baptist
Catholic
Christian
Christian Center of Assemblies
of God
Church of Christ
Church of God
Church of Latter Day Saints
Church of the Nazarene
Episcopal
Jehovah's Witnesses
Methodist
Presbyterian

Nearest Synagogues - Lexington, 25 miles distant

Congregations - Adath Israel (reform)
Ohavey Zion (traditional)

Financial Institutions

<u>Banks</u>	<u>Assets</u>	<u>Deposits</u>	<u>Statement Date</u>
Madison National Bank of Richmond	\$47,879,661.27	\$43,362,389.71	12/31/79
Richmond Bank	17,026,239.34	14,579,865.67	12/31/79
State Bank and Trust Company	80,793,947.93	71,117,154.20	12/31/79
<u>Savings and Loan Associations</u>	<u>Assets</u>	<u>Savings Accounts</u>	<u>Statement Date</u>
First Federal Savings and Loan Association of Richmond	\$53,956,301.92	\$50,753,360.97	12/31/79

Hotels and Motels

Total number - 13
Total rooms - 739

Clubs and Organizations

Altrusa	League of Women Voters
American Legion	Lions Club
American Association of Retired Persons	Madison County Association of Realtors
American Association of University Women	Madison County Bar Association
Boy Scouts of America	Madison County Historical Society
Business and Professional Women's Club	Madison County Medical Society
Civitan	Madison County Toastmasters
Daughters of the American Revolution	Madison Fish and Game Club
Elks Lodge	Madison Shrine Club
Exchange Club	Masons Richmond Lodge
Girl Scouts of America	Newcomer's Club
Home Builders Association of Madison County	Optimist Club
Independent Order of Oddfellows	Pattie A. Clay Hospital Auxiliary
Jaycees	Richmond Garden Club
Kiwanis	Richmond Ministerial Association
	Richmond Woman's Club
	Richmond Younger Woman's Club
	Rotary International
	Veterans of Foreign Wars

RECREATION

Local

The Richmond Parks and Recreation Department provides supervised recreational programs throughout the year. The recreational programs offered are basketball, softball, baseball, and tennis. In addition to these programs, six parks are located in the city that provide playgrounds with recreational equipment, sheltered picnic areas, lighted tennis courts, ball diamonds, a soccer field, and basketball courts. Lake Reba offers fishing, boating, walkways, and jogging trails. The E. C. Million Park, completed in 1975, is a 4-acre park providing a play area for orthopedic children. Plans to develop a senior citizens' park are under way.

Private recreational facilities include two country clubs offering golf and swimming, two indoor and two drive-in theaters, and 20 bowling lanes. Other private clubs include the Lexington Yacht Club, Sherwood Archery Club, Madison Fish and Game Club, and the Richmond Racket Club.

Eastern Kentucky University, located at Richmond, is a coeducational institution. Founded in 1874, the university is Richmond's center for cultural activity offering lectures, drama, art exhibits, ballets, musical groups, and sporting events. Located on the university campus is the John Grant Crabbe Library which houses a museum of Kentucky and Civil War displays.

Historical buildings in Richmond include the Madison County Courthouse. Erected in 1849-50, the building served as a hospital for the wounded after the Civil War Battle of Richmond. Records housed here date from 1786. Irvinton, erected circa 1820 and listed on the National Register of Historic Places, now houses the City-County Public Library.

Area (Within 35 miles)

Richmond is located just 25 miles from Lexington, Kentucky's second largest city. Broadway national tours, ballet, and symphony and rock concerts are available in Lexington. Tours of horse farms and historic homes; thoroughbred and standardbred racing; horse shows and numerous sporting events are also available in Lexington.

The Kentucky Horse Park, located north of Lexington and 33 miles north of Richmond, is a 1,032-acre park dedicated to the equine kingdom and to humankind's love for horses. Numerous special events are scheduled at the park.

Fort Boonesborough State Park, a 184-acre park located on the Kentucky River about 15 miles north of Richmond, features a full-size operating reproduction of the original fort. Campsites, a sand beach, a pavilion with a sun deck and bath house, boat docks, a playground, picnic shelters, a restaurant, a museum and a gift shop are among the facilities available. Built by Daniel Boone in the 1700's, Fort Boonesborough withstood many sieges by Indians. Pioneer crafts are demonstrated by costumed artisans using functioning antiques. Visitors can "walk back in time" to the life and work of the 18th century.

Berea College, located in Berea, 15 miles south of Richmond, provides a wide range of entertainment and cultural attractions. The Appalachian Museum offers exhibits depicting the traditional lifestyle of the people of the Southern Appalachian Highlands. The Wallace Nutting Collection of Early American furniture and the Kress Study Collection of Renaissance Paintings are also on display at the college. The Berea College Student Craft Industries serves to preserve and promote the art of craftsmanship and includes the industries of wood-craft, broomcraft, fireside weaving, needlecraft, ceramics, and lapidary arts. Boone Tavern, owned by Berea College and staffed by college students, is noted for its southern charm and excellent food.

Churchill Weavers, the largest handweaving company in the country, is located in Berea. Tours are available through the loomhouse.

Special events that are held in Berea include the Kentucky Guild of Artist and Craftmen's Fairs and the annual Mountain Folk Festival featuring folk music and dancing. The outdoor historical drama, "Wilderness Road," is presented each summer in the Indian Fort Theatre. The Berea Community Players, a local theater group, also presents several productions each year.

Bybee Pottery, established in 1809, is located 9 miles east of Richmond and is the oldest existing pottery maker west of the Allegheny Mountains. Clay is mined from an open pit, mixed with water, and ground in a pug mill. Each piece is hand-thrown in the original pioneer tradition.

Other historical attractions include White Hall State Shrine just north of Richmond. The Italianate mansion is the former home of Cassius Marcellus Clay, anti-slavery advocate and minister to Russia under President Lincoln. Construction of the 44-room mansion was completed in 1798 by Green Clay, father of Cassius, on the original 2,200 acres of land. Some of the family furnishings are still displayed.

Waveland State Shrine, a complete plantation village, is located 27 miles northwest of Richmond. The shrine contains a number of shops, displays, and gardens, a Greek Revival Mansion, and the Kentucky Life Museum.

COMMUNITY IMPROVEMENTS

The Madison Airport, located 6 1/2 miles south of Richmond, began operation in November 1979. The \$1 million facility has a 4,000-foot paved runway. A large hangar, planned for the immediate future, will house an office, a maintenance section, and several aircraft. Flight training, tie down, and fuel are available at the airport.

The Pattie A. Clay Hospital has a major remodeling project under way. The \$3 million project is scheduled for completion in late 1980. Two operating rooms are being added and the emergency room and the X-ray department are being enlarged. The coronary care unit is being expanded to seven beds and ultra-sound medicine is being added.

The Madison County Rescue Squad, Inc., has been organized and is now operational. The squad has a volunteer staff of 30, of which six are paramedics and six are emergency medical technicians. The unit is equipped with modern emergency rescue apparatus.

The Richmond Water, Gas, and Sewerage Works has a major rehabilitation project under way on the municipal sewer plants. Step I of a 201 Facilities Plan has been completed and bids are to be accepted for construction in December 1980 and February 1981. The capacity of treatment plant #1 will be increased to 3,650,000 gallons per day and a tertiary treatment process will be installed. The capacity of treatment plant #2 will be increased to 2,990,000 gallons per day and a tertiary treatment process will be installed. The completion date for the \$15.5 million project is scheduled for 1983.

Grants totaling \$2.75 million from the Department of Housing and Urban Development to the city of Richmond have provided for the construction and rehabilitation of housing for elderly and low-income families.

Rehabilitation of 32 homes and relocation of 18 families from substandard housing has been provided by the Hill Street redevelopment project. New streets have been built and utilities extended to the area.

The Madison Avenue project has provided dwellings for 79 families. Substandard houses, located on an 8-acre tract, were demolished and apartments were erected under a HUD section-8 grant.

The Helmick Corporation has a new manufacturing plant under construction. The first stage of the construction, which will be 36,000-square-feet, will be completed at the end of 1980. Production at the facility is scheduled to begin the first quarter in 1981 with 39 employees. When construction of the \$5 million project is completed, it will have an area of 70,000-square-feet and a total of 100 employees.

The Madison National Bank of Richmond has opened a branch bank on the Eastern By-Pass. The branch bank provides full service banking and the convenience of a drive-in window.

The State Bank and Trust Company has recently remodeled its Big Hill Branch Bank. Additional office space was created and a general outside "spruce-up" was completed. A \$1 million addition to the main branch has provided additional office space and added to the customer service area. Walk up facilities featuring a 24-hour money machine have been completed.

The Madison County School System has completed improvements which include two relocatable classrooms at the Kit Carson Elementary School; a four-classroom addition to the White Hall Elementary School; a six-classroom addition to the Madison Central High School; a new middle school at Berea; and four tennis courts at Madison Central High School. A six-classroom addition to the Daniel Boone Elementary School is now under construction with completion scheduled for late 1980.

The Kingston-Terrill Water District has completed a \$275,000 expansion project. Service to 170 new customers was provided by the installation of 15 miles of an 8-inch water main.

The Waco Water District has extended a water main 2,850 feet along Fike Road. Old meter replacements will be completed by the fall of 1980.

Small City Grants has allowed the city of Richmond to construct sidewalks, install sewer lines, rehabilitate 70 homes, demolish 88 substandard houses, and renovate a community center building in the southeastern section of the city.

Repaving and improved lighting to the tennis courts located at the Irvine-McDowell Park have been completed.

The E. C. Million Park, completed in 1975, is a 4-acre park providing a play area for orthopedic children. Plans to develop a senior citizens' park are now under way.

A community center, to be converted from a former National Guard Armory, is planned.