

1986

Industrial Resources: Hopkins County - Dawson Springs

Kentucky Library Research Collections
Western Kentucky University, spcol@wku.edu

Follow this and additional works at: https://digitalcommons.wku.edu/hopkins_cty



Part of the [Business Administration, Management, and Operations Commons](#), [Growth and Development Commons](#), and the [Infrastructure Commons](#)

Recommended Citation

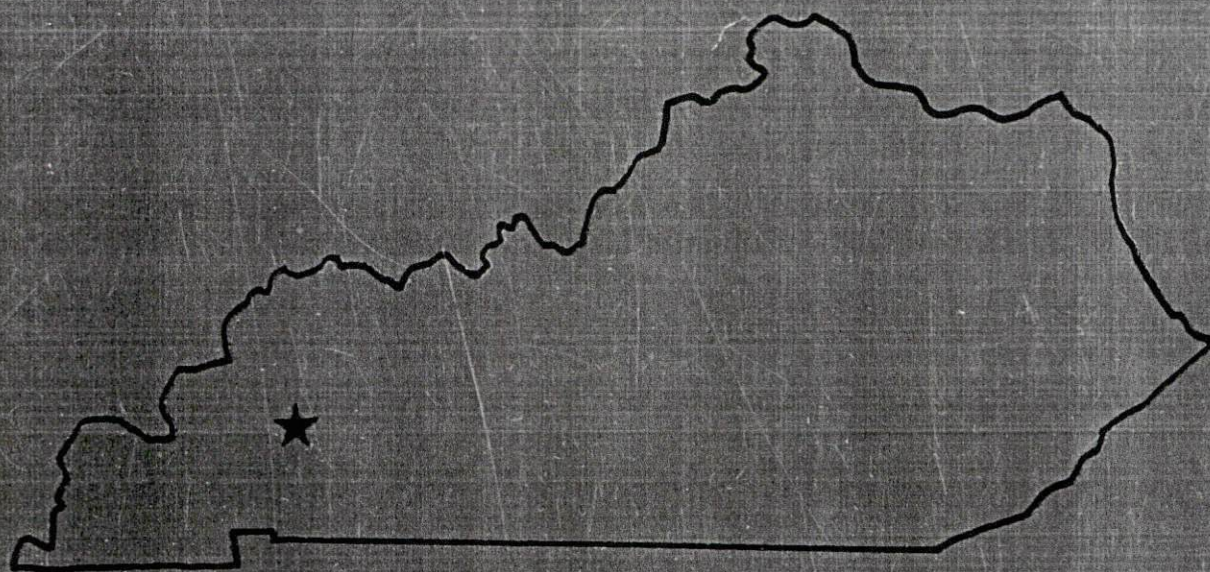
Kentucky Library Research Collections, "Industrial Resources: Hopkins County - Dawson Springs" (1986). *Hopkins County*. Paper 6.
https://digitalcommons.wku.edu/hopkins_cty/6

This Report is brought to you for free and open access by TopSCHOLAR®. It has been accepted for inclusion in Hopkins County by an authorized administrator of TopSCHOLAR®. For more information, please contact topscholar@wku.edu.

Hopkins County

RESOURCES FOR ECONOMIC DEVELOPMENT

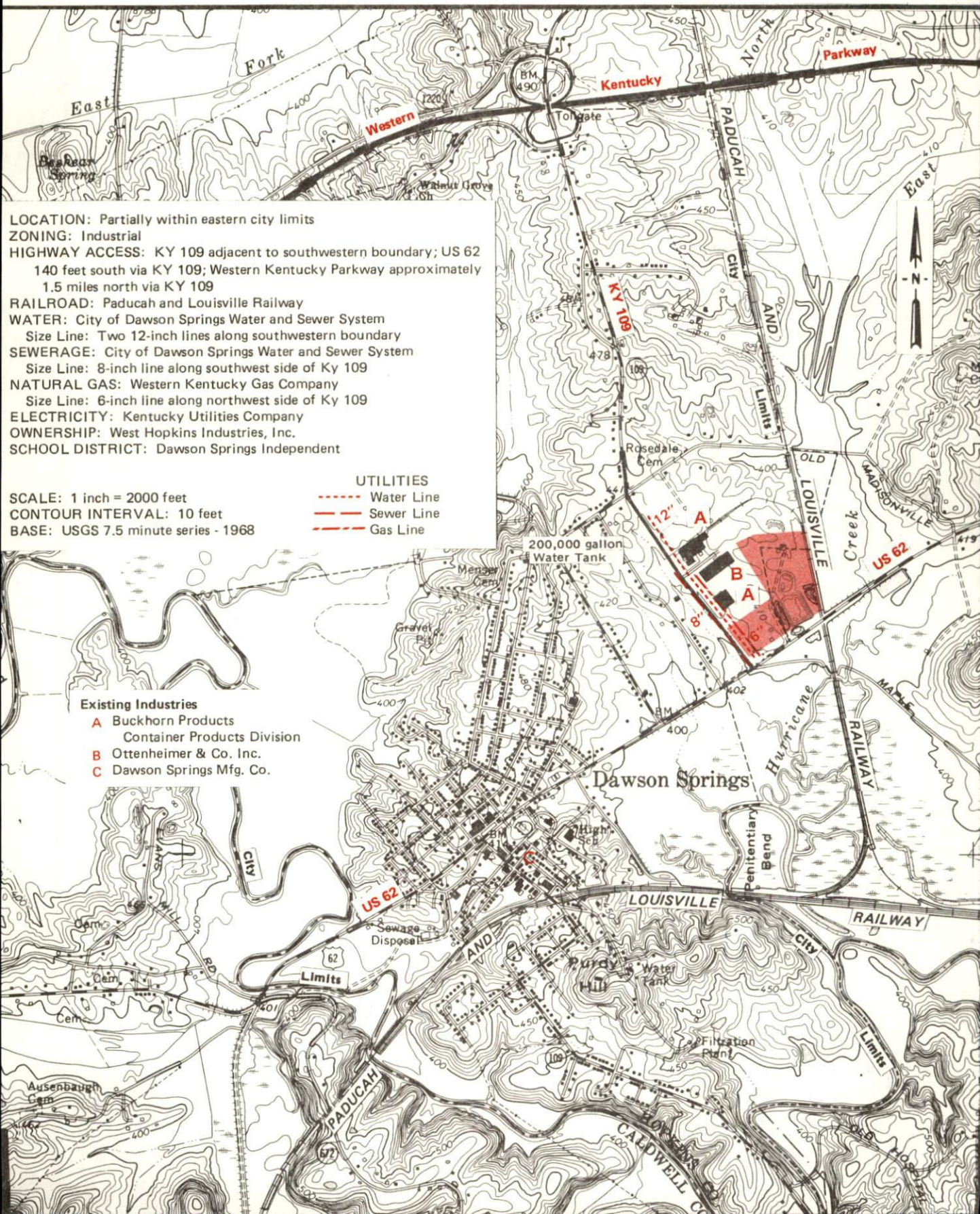
Dawson Springs



KENTUCKY
The business environment is right.

DAWSON SPRINGS, KENTUCKY --- Site 186 --- 35 Acres

For more information contact the Kentucky Department of Economic Development, Industrial Development & Marketing Division, Capital Plaza Tower, Frankfort, Kentucky 40601 (502-564-7140).



LOCATION: Partially within eastern city limits
ZONING: Industrial
HIGHWAY ACCESS: KY 109 adjacent to southwestern boundary; US 62 140 feet south via KY 109; Western Kentucky Parkway approximately 1.5 miles north via KY 109
RAILROAD: Paducah and Louisville Railway
WATER: City of Dawson Springs Water and Sewer System
Size Line: Two 12-inch lines along southwestern boundary
SEWERAGE: City of Dawson Springs Water and Sewer System
Size Line: 8-inch line along southwest side of Ky 109
NATURAL GAS: Western Kentucky Gas Company
Size Line: 6-inch line along northwest side of Ky 109
ELECTRICITY: Kentucky Utilities Company
OWNERSHIP: West Hopkins Industries, Inc.
SCHOOL DISTRICT: Dawson Springs Independent

SCALE: 1 inch = 2000 feet
CONTOUR INTERVAL: 10 feet
BASE: USGS 7.5 minute series - 1968

UTILITIES
 - - - - - Water Line
 - - - - - Sewer Line
 - - - - - Gas Line

Existing Industries
A Buckhorn Products
 Container Products Division
B Ottenheimer & Co. Inc.
C Dawson Springs Mfg. Co.

RESOURCES FOR ECONOMIC DEVELOPMENT

DAWSON SPRINGS, KENTUCKY

Prepared by
The Kentucky Department of Economic Development
Division of Research and Planning
in cooperation with
The Dawson Springs Chamber of Commerce
and
West Hopkins Industries, Inc.

1986

Program manager - Andrew Dennis; research - Keith Roberts; clerical - Bobbi Graves; graphics - Frank Ferrante, Tony Cecconi, Robert Owens; cartography - Site Evaluation Branch, Division of Industrial Development and Marketing. Cost of printing paid from state funds.

TABLE OF CONTENTS

<u>Chapter</u>	<u>Page</u>
INDUSTRIAL SITES	i
DAWSON SPRINGS, KENTUCKY - A RESOURCE PROFILE	1
LABOR MARKET STATISTICS	2
Population	2
Population Projections	2
Labor Force Characteristics of Residents, 1985	3
Selected Components of Nonagricultural Employment, by Place of Work, 1985	3
Per Capita Personal Income	3
Estimated Male Labor Supply	4
Estimated Female Labor Supply	4
Average Weekly Wages By Industry, by Place of Work, 1985	5
EXISTING INDUSTRY	7
Dawson Springs Manufacturing Firms, Their Products and Employment	7
Labor Organizations in Manufacturing Firms	7
Selected Industrial Services	8
TRANSPORTATION	9
Rail	9
Highways	9
Truck Service	9
Air	10
Air Express Service	11
Water	11
POWER AND FUEL	12
Electricity	12
Natural Gas	12
Other Fuels	13
WATER AND SEWERAGE	14
Public Water Supply	14
Sewerage	15

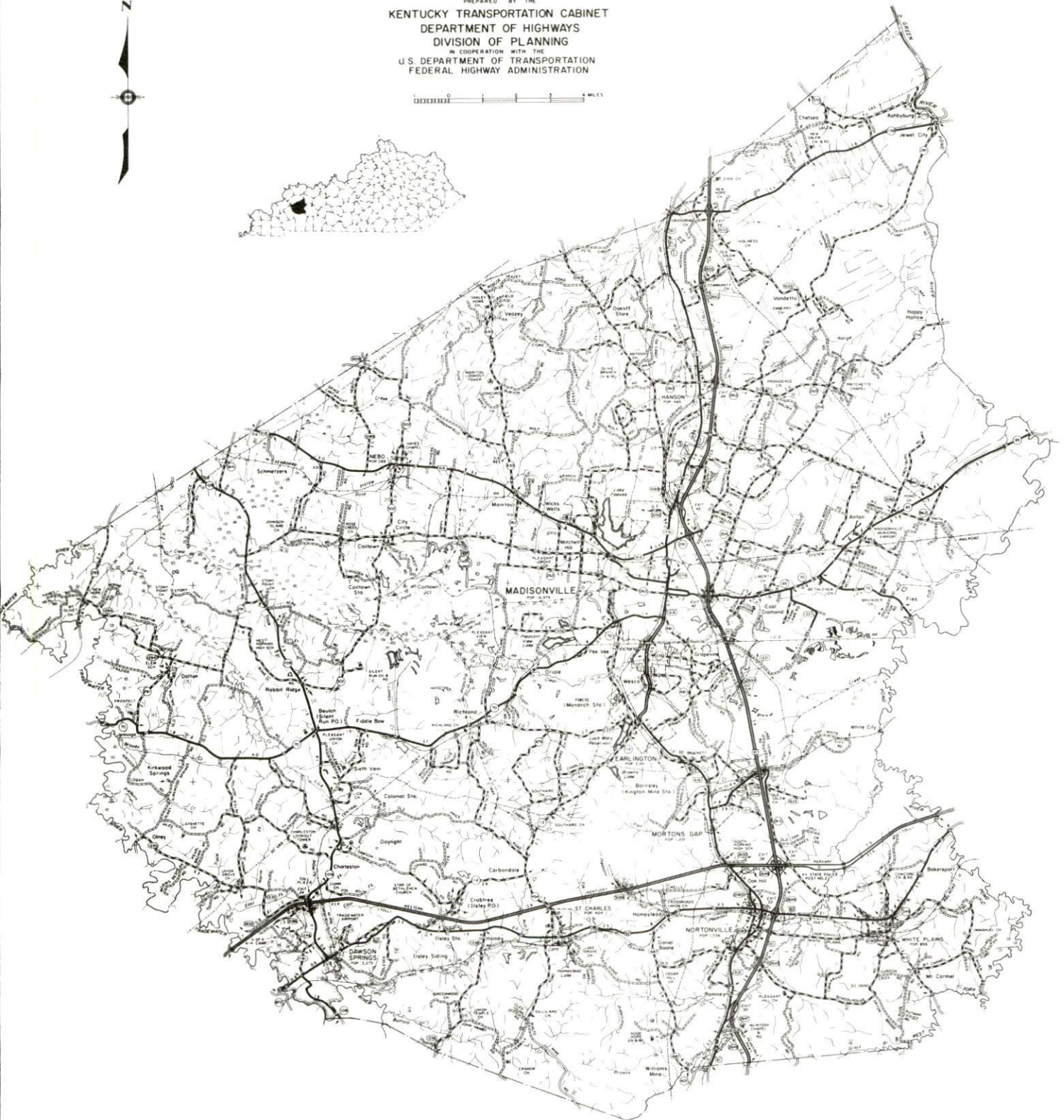
<u>Chapter</u>	<u>Page</u>
CLIMATE	16
LOCAL GOVERNMENT	17
Structure	17
Planning and Zoning	17
Local Fees and Licenses	17
State and Local Property Taxes	18
Safety	19
Police	19
Fire	19
Rescue Service	19
Refuse Collection and Disposal	19
EDUCATION	20
Public Schools	20
Area Colleges and Universities	21
Vocational Training	22
HEALTH	24
Local Medical Personnel	24
Hospitals	24
Other Medical Facilities	24
Ambulance Service	24
OTHER LOCAL FACILITIES	25
Communications	25
Library Services	25
Religious Institutions	25
Financial Institutions	26
Hotels and Motels	26
RECREATION	27
COMMUNITY IMPROVEMENTS	29

1986 EDITION
GENERAL HIGHWAY MAP
HOPKINS COUNTY
KENTUCKY

PREPARED BY THE
KENTUCKY TRANSPORTATION CABINET
DEPARTMENT OF HIGHWAYS
DIVISION OF PLANNING
IN COOPERATION WITH THE
U.S. DEPARTMENT OF TRANSPORTATION
FEDERAL HIGHWAY ADMINISTRATION



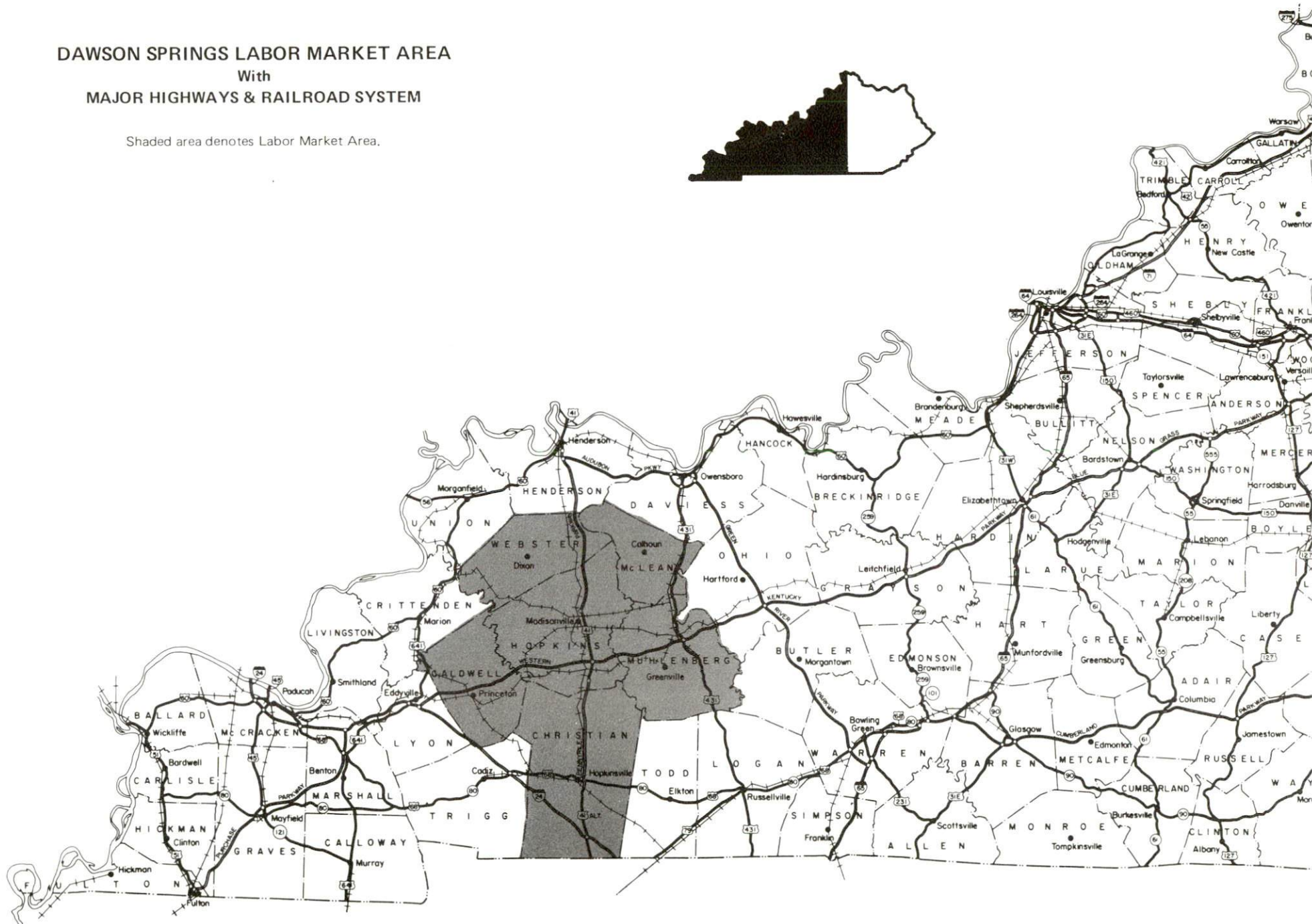
0 1 2 3 4 5 MILES



DAWSON SPRINGS LABOR MARKET AREA

With
MAJOR HIGHWAYS & RAILROAD SYSTEM

Shaded area denotes Labor Market Area.



DAWSON SPRINGS, KENTUCKY - A RESOURCE PROFILE

Dawson Springs, located in Hopkins County, lies in western Kentucky's Pennyroyal Region. The city is located 161 miles southwest of Louisville, Kentucky; 100 miles northwest of Nashville, Tennessee; and 229 miles southeast of St. Louis, Missouri. Dawson Springs had a 1984 estimated population of 3,216.

Hopkins County, with a land area of 552 square miles, has a topography that ranges from nearly flat along the broad valleys of the Green, Pond, and Tradewater Rivers to hilly in the southern and central parts of the county. Hopkins County had a 1984 estimated population of 46,384.

The Economic Framework - The total number of Hopkins County residents employed in 1985 averaged 17,840, with nonagricultural jobs accounting for 17,350 workers. Manufacturing firms in the county reported 3,230 employees; wholesale and retail trade provided 3,250 jobs; 3,380 people were employed in service occupations; state and local government accounted for 1,980 employees; contract construction firms provided 430 jobs; and 1,810 people were employed by mining and quarrying operations.

Labor Supply - There is a current estimated labor supply of 9,940 men and 16,240 women available for industrial jobs in the labor market area. In addition, from 1986 through 1990, 7,500 young men and 6,540 young women in the area will become 18 years of age and potentially available for industrial jobs.

Transportation - Paducah and Louisville Railway, Inc., provides main line rail service to Dawson Springs. The Western Kentucky Parkway and U.S. Highway 62, both AAA-rated highways, serve Dawson Springs. The Western Kentucky Parkway provides access to Interstate 24 and the Pennyryle Parkway. Fifteen trucking companies serve Dawson Springs with interstate and/or intrastate service. The nearest scheduled commercial airline service is at Barkley Regional Airport near Paducah, 68 miles west of Dawson Springs. A local airstrip with a 3,100-foot turf runway is located one mile northeast. The nearest navigable waterway is Lake Barkley, 28 miles west, where riverport facilities are available.

Power and Fuel - Electric power is provided to Dawson Springs and portions of Hopkins County by Kentucky Utilities Company. Hopkins County is also served by the Green River Electric Corporation and Henderson-Union Rural Electric Cooperative Corporation. Natural gas service is provided by Western Kentucky Gas Company. There are five propane dealers and seven fuel oil dealers located within 25 miles of Dawson Springs.

Education - The Dawson Springs Independent School System provides primary and secondary education to residents of Dawson Springs. The remainder of Hopkins County is served by the Hopkins County Public School System. Eleven colleges and universities are located within 95 miles of Dawson Springs. Vocational training is available at the Madisonville State Vocational-Technical School, 25 miles northeast; and the Caldwell County Area Vocational Education Center, 12 miles west of Dawson Springs.

LABOR MARKET STATISTICS

The Dawson Springs Labor Market Area includes Hopkins County and the adjoining Kentucky counties of Caldwell, Christian, McLean, Muhlenberg and Webster.

POPULATION				
<u>Area</u>	<u>1984*</u>	<u>1980</u>	<u>1970</u>	<u>Percent Nonwhite</u> <u>1980</u>
Dawson Springs	3,216	3,275	3,009	0.9
Labor Market Area	181,123	183,685	157,451	N/A
Hopkins County	46,384	46,174	38,167	7.2
Caldwell County	13,310	13,473	13,179	6.4
Christian County	64,880	66,878	56,224	28.9
McLean County	9,980	10,090	9,062	0.8
Muhlenberg County	31,814	32,238	27,537	5.3
Webster County	14,755	14,832	13,282	6.1

* Population estimates.

Note: The 1980 city counts of population by race are provisional.

Sources: U.S. Department of Commerce, Bureau of the Census, 1980 Census of Population and Housing, March 1981; 1980 Census of Population, Number of Inhabitants. University of Louisville, Urban Studies Center, Population Unit, October 1985; Kentucky Population Research Notes, Issue Number One, May 1985.

POPULATION PROJECTIONS				
<u>Area</u>	<u>1990</u>	<u>1995</u>	<u>2000</u>	<u>2010</u>
Labor Market Area	189,273	196,023	202,522	215,154
Hopkins County	48,401	49,995	51,317	53,335
Caldwell County	13,325	13,328	13,255	13,100
Christian County	68,819	72,251	76,142	84,851
McLean County	10,442	10,807	11,070	11,425
Muhlenberg County	33,035	33,989	34,740	35,865
Webster County	15,251	15,653	15,998	16,578

Source: University of Louisville, Urban Studies Center, Population Research Unit, How Many Kentuckians: Population Forecasts, 1980-2020, the 1986 Edition, Spring 1986.

LABOR FORCE CHARACTERISTICS OF RESIDENTS, 1985

	<u>Hopkins County</u>	<u>Labor Market Area</u>
Civilian Labor Force	19,970	70,823
Employment	17,843	62,833
Agricultural	491	3,483
Nonagricultural	17,352	59,350
Unemployment	2,127	7,990
Rate of Unemployment (%)	10.7	11.3

Source: Kentucky Cabinet for Human Resources, Kentucky Labor Force Estimates, Annual Averages, 1985.

SELECTED COMPONENTS OF NONAGRICULTURAL EMPLOYMENT,
BY PLACE OF WORK, 1985

	<u>Hopkins County</u>	<u>Labor Market Area</u>
All Industries (total)	15,503	46,015
Manufacturing	3,234	8,966
Wholesale & Retail Trade	3,248	11,568
Services	3,376	8,545
State/Local Government	1,979	6,931
Contract Construction	429	1,413
Mining & Quarrying	1,809	4,141

Note: Excludes domestic workers, railway workers, certain nonprofit corporations, majority of federal government workers, and self-employed workers.

Source: Kentucky Cabinet for Human Resources, Average Monthly Workers Covered by Kentucky Unemployment Insurance Law, 1985.

PER CAPITA PERSONAL INCOME

<u>Area</u>	<u>1980</u>	<u>1984</u>	<u>Percent Change</u>
Hopkins County	\$ 9,367	\$ 12,066	28.8
Labor Market Area Range	\$6,674 - 9,367	\$9,198 - 12,066	N/A
Kentucky	7,644	10,232	33.9
U. S.	9,494	12,772	34.5

Sources: U.S. Department of Commerce, Bureau of Economic Analysis. Kentucky Economic Information System, June 1986.

ESTIMATED MALE LABOR SUPPLY
DAWSON SPRINGS LABOR MARKET AREA

Area	Current			Future	
	Total Male	Unemployed	Under-employed	Not in Labor Force	Becoming 18 years of age 1986 thru 1990
Labor Market					
Area*	9,936	4,586	4,039	1,311	7,498
Hopkins	2,241	1,305	936	0	1,934
Caldwell	1,024	523	291	210	544
Christian	2,459	857	1,602	0	2,631
McLean	631	384	247	0	452
Muhlenberg	2,473	1,205	749	519	1,338
Webster	1,108	312	214	582	599

ESTIMATED FEMALE LABOR SUPPLY
DAWSON SPRINGS LABOR MARKET AREA

Area	Current			Future	
	Total Female	Unemployed	Under-employed	Not in Labor Force	Becoming 18 years of age 1986 thru 1990
Labor Market					
Area*	16,242	3,404	4,501	8,337	6,543
Hopkins	4,487	822	1,206	2,459	1,773
Caldwell	1,377	360	354	663	468
Christian	3,339	997	1,677	665	2,051
McLean	980	271	218	491	407
Muhlenberg	4,021	570	742	2,709	1,253
Webster	2,038	384	304	1,350	591

* Additional workers may be drawn from other nearby counties.

Note: Unemployed - persons unemployed and actively seeking work;
Underemployed - persons employed but working only 14 to 26 weeks per year;
Not in Labor Force - represents the number of persons who would enter the labor force if suitable employment were available (based on the assumption that persons in Kentucky would like to participate in the labor force in the same proportion that they do nationally).

Sources: Kentucky Cabinet for Human Resources, Kentucky Labor Supply Estimates by County, 1985. Kentucky Department of Economic Development, Future Labor Supply Becoming 18 Years of Age, 1986 thru 1990.

AVERAGE WEEKLY WAGES BY INDUSTRY,
BY PLACE OF WORK, 1985

	<u>Hopkins County</u>	<u>Caldwell County</u>	<u>Christian County</u>
All Industries	\$ 351.50	\$ 257.81	\$ 265.65
Mining & Quarrying	708.36	377.92	334.97
Contract Construction	290.20	216.75	282.96
Manufacturing	412.85	335.39	358.58
Transportation, Communications & Public Utilities	405.71	394.75	335.05
Wholesale & Retail Trade	231.01	179.67	203.81
Finance, Insurance & Real Estate	273.07	291.01	287.93
Services	249.35	220.57	201.72
State/Local Government	318.79	267.94	300.42
Other	181.36	157.27	173.94
	<u>McLean County</u>	<u>Muhlenberg County</u>	<u>Webster County</u>
All Industries	\$ 251.54	\$ 373.77	\$ 338.99
Mining & Quarrying	239.28	744.80	682.89
Contract Construction	143.67	277.22	268.25
Manufacturing	330.08	242.33	281.95
Transportation, Communications & Public Utilities	468.83	433.21	512.78
Wholesale & Retail Trade	197.26	225.13	198.31
Finance, Insurance & Real Estate	259.60	279.36	266.05
Services	153.75	224.84	146.82
State/Local Government	248.52	283.03	264.83
Other	*	*	184.57

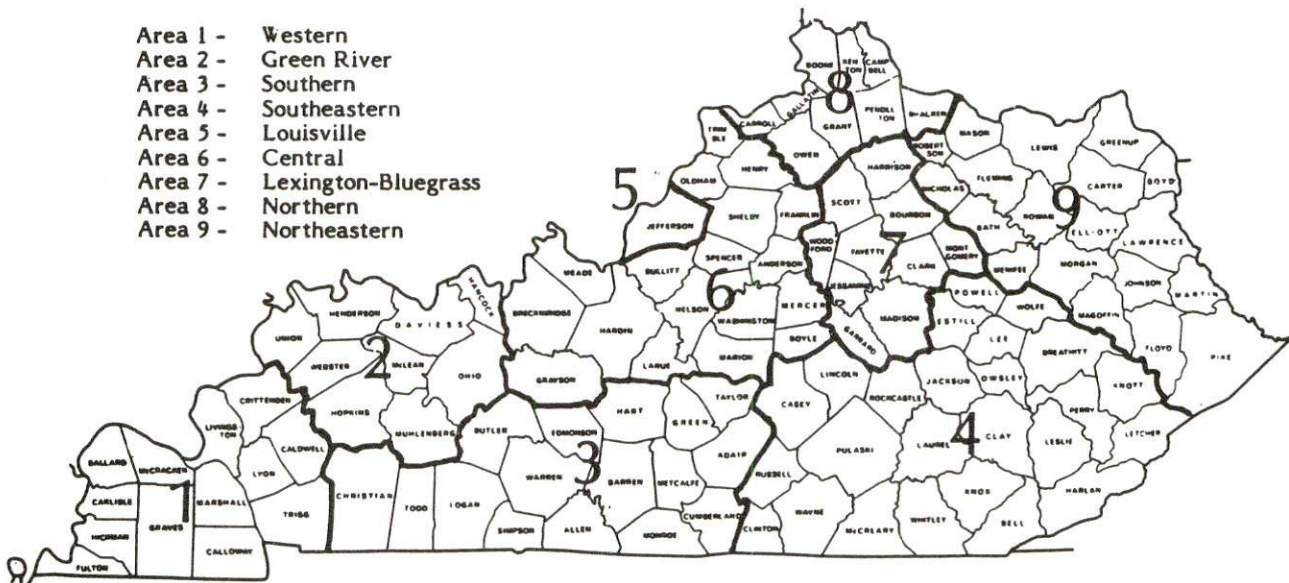
* Not disclosed.

Note: The average weekly wage for each category includes the salaries and wages of all persons working for that type business. For example, the manufacturing category includes both production workers and administrative personnel. Excludes domestic workers, railway workers, certain nonprofit corporations, majority of federal government workers, and self-employed workers.

Source: Kentucky Cabinet for Human Resources, Average Weekly Wages of Workers Covered by Kentucky Unemployment Insurance Law, 1985.

Occupational wage rates for specific industries are usually not available to most government agencies, and wage data furnished to state employment agencies by individual industrial employers are protected from disclosure by federal law. The most reliable up-to-date wage information can be obtained by direct contact with local employers.

Associated Industries of Kentucky, a voluntary organization of Kentucky businesses, regularly collects occupational wage rates and fringe benefits data from participating member firms. Data are compiled for over 127 clearly defined office, production, and service occupations. Tabulations are published for nine geographical areas of Kentucky, as shown on the map below. It should be noted that the data may be weighted by the preponderance of firms in the larger cities and may be somewhat higher than the rates paid in the smaller communities. Data from these tabulations are available, upon request, from the Kentucky Department of Economic Development, Frankfort, Kentucky 40601.



Associated Industries of Kentucky Area Wage Surveys

EXISTING INDUSTRY

DAWSON SPRINGS MANUFACTURING FIRMS, THEIR PRODUCTS AND EMPLOYMENT

<u>Firm</u> (Establishment date)	<u>Product</u>	<u>Employment</u>			<u>Labor Unions</u>
		<u>Total</u>	<u>Male</u>	<u>Female</u>	
Buckhorn Corporation, Container Products Division (1965)	Plastic trays, containers, gravity conveyors, storage racks	165	125	40	Steelworkers*
Dawson Springs Manufacturing Company (1980)	Men's shirts, ladies' shirts	70	4	66	
The Dawson Springs Progress (1919)	Newspaper, job printing	6	3	3	
Holt Manufacturing Company, Inc. (1965)	Foam pillows	12	2	10	
Ottenheimer & Company Inc. (1947)	Washable service apparel	47	13	34	Clothing and Textile Workers*
Vinise Menser Lumber Company (1951)	Rough lumber	2	--	--	

*See Labor Organizations below.

Sources: Kentucky Department of Economic Development, 1986 Kentucky
Directory of Manufacturers; Division of Research and Planning.

LABOR ORGANIZATIONS IN MANUFACTURING FIRMS

<u>Union</u>	<u>Representing workers at:</u>
Amalgamated Clothing and Textile Workers Union, AFL-CIO	Ottenheimer & Company Inc.
United Steelworkers of America, AFL-CIO	Buckhorn Corporation, Container Products Division

SELECTED INDUSTRIAL SERVICES

<u>Types of Services</u>	<u>Location</u>	<u>Mileage from Dawson Springs</u>
Custom Plastics Producers	Dawson Springs, Kentucky	-
Electric Motor Repair	Madisonville, Kentucky	25
	Hopkinsville, Kentucky	27
Grinding, Precision & Tool	Hopkinsville, Kentucky	27
Heat Treating Facilities	Evansville, Indiana	72
Industrial Equipment & Supplies	Hopkinsville, Kentucky	27
Industrial Gases	Hopkinsville, Kentucky	27
Industrial Waste Removal	Dawson Springs, Kentucky	-
Machine Shops, Tool & Die	Madisonville, Kentucky	25
	Hopkinsville, Kentucky	27
Metal Finishers	Morganfield, Kentucky	49
	Hartford, Kentucky	50
Metal Service Centers	Hopkinsville, Kentucky	27
	Greenville, Kentucky	33
Millwrights	Hopkinsville, Kentucky	27
Public Warehouse Facilities	Hopkinsville, Kentucky	27

Sources: Kentucky Department of Economic Development, Kentucky Directory of Selected Industrial Services, 1985; Division of Research and Planning.

TRANSPORTATION

Rail

Line serving **Dawson Springs** - Paducah and Louisville Railway, Inc.

Services - Main line; five northbound and five southbound through freights daily; two northbound and two southbound freights stop if necessary; switching services; siding space for 150 cars; nearest piggyback facilities located at Paducah, 62 miles west of Dawson Springs

For details on routing, schedules, rates, and services, contact:

Marketing Director
Paducah and Louisville Railway, Inc.
1500 Kentucky Avenue
Paducah, Kentucky 42001
(502) 443-1246

Highways

Major highways serving Dawson Springs are the Western Kentucky Parkway and U.S. Highway 62, both AAA-rated trucking highways (80,000-pound gross load limit). Kentucky Route 109 also serves Dawson Springs. The Western Kentucky Parkway is a multilane, east-west toll road. An interchange of Interstate 24 is located 27 miles west of Dawson Springs via the Western Kentucky Parkway. The Pennyriple Parkway (a multilane, north-south toll road) and U.S. Highway 41 are accessible 16 miles east via the Western Kentucky Parkway. Interstate 64 is located approximately 90 miles north of Dawson Springs.

Truck Service

A & H Truck Line, Inc.*
ANR Freight System, Inc.*
ARA/Smith's*
American Freight System, Inc.**
Averitt Express, Inc.*
Bailey's Express, Inc.*
Bestway Express, Inc.*
Carolina Freight Carriers
Corporation*

Jones Truck Lines, Inc.*
Majors Transit, Inc.*
Manning Motor Express, Inc.*
Overnite Transportation
Company*
P-I-E Nationwide, Inc.*
Thompson, Steve D.
Trucking, Inc.*
Yellow Freight System, Inc.*

* Interstate and intrastate service.

** Intrastate service only.

Source: American Motor Carrier Directory, Fall 1986.

HIGHWAY MILES AND TRUCK TRANSIT TIME IN DAYS FROM
DAWSON SPRINGS, KENTUCKY, TO SELECTED MARKET CENTERS

City	Highway Miles	Delivery Time TL	City	Highway Miles	Delivery Time TL
Atlanta, Ga.	342	2	Los Angeles, Ca.	2,125	6
Baltimore, Md.	759	3	Louisville, Ky.	161	1
Birmingham, Ala.	296	3	Nashville, Tenn.	100	1
Chicago, Ill.	364	2	New Orleans, La.	617	3
Cincinnati, Ohio	262	2	New York, N. Y.	909	-
Cleveland, Ohio	506	3	Pittsburgh, Pa.	549	2
Detroit, Mich.	521	3	St. Louis, Mo.	229	2
Knoxville, Tenn.	277	3			

Note: Mileage computations are via the best interstate or primary highways, not necessarily the most direct route of travel.

Sources: Rand McNally Road Atlas, 1979. Official Kentucky Mileage Map, 1985.
Delivery time - Overnite Transportation Company, P. O. Box 99308, Louisville, Kentucky 40299.

Air

Local

	Dawson Springs Airport
Location:	1 mile northeast of Dawson Springs
Runways:	1 turf
Length:	3,100 feet
Traffic	
Control:	Wind sock
Lighting:	None
Services:	None
	Madisonville Municipal Airport
Location:	6 miles east of Madisonville; 29 miles northeast of Dawson Springs
Runways:	1 paved
Length:	5,000 feet
Traffic	
Control:	Wind tee and sock
Lighting:	Runway lighting sunset to sunrise, rotating beacon, VASI 4, REIL
Services:	100 octane, Jet A; major and minor repairs; tie downs; hangar; charter; flight training
Air Freight	
Service:	Chartered air freight services must be arranged.

(Continued)

Nearest Scheduled Commercial Airline Service

Location: Barkley Regional Airport
6 miles west of Paducah, Kentucky;
68 miles west of Dawson Springs

Runways: 2 paved
Length: 6,499 feet; 4,000 feet

Traffic Control: Wind sock, wind tee

Lighting: HIRL, MALSRail, REIL, VASI, MIRL, MITL, rotating beacon

Services: Allegheny Commuter, American Eagle, Britt Airways,
Midwest, Ozark, Republic Express; fuel - 100LL and jet-A;
hangar, 10 T-hangars, 30 tie-downs; major and minor A & P
repairs; APU, charter, flight instruction, plane rental,
aerial photography; car rentals, limousine, restaurant,
weather information; Part 139 Airport Operating
Certificate, airport security

Air Freight Service: Air carriers accept air freight on a space available basis

Location: Evansville Dress Regional Airport
4 miles north of Evansville, Indiana;
76 miles north of Dawson Springs

Runways: 3 paved
Length: 8,021 feet; 5,088 feet; 3,500 feet

Traffic Control: Tower

Lighting: Beacon, runway

Services: Eastern, USAir, Piedmont, Republic Express, Ozark Midwest,
Britt Airways, Comair, American Eagle; fuel - 100LL, jet-A;
hangars, tie-downs; major A & P repairs, major Avionics
repairs; flight instruction, APU, charter, oxygen, plane
rental, survival equipment; taxi, car rentals, courtesy car;
weather information; restaurant

Air Freight Service: Air freight terminal

Air Express Service

Several major companies offer air express services in Kentucky. These companies provide a quick means of shipping small to medium-sized packages expeditiously.

Water

The nearest navigable waterway is Lake Barkley at Eddyville, 28 miles west of Dawson Springs, where the Port Authority of Lyon County operates a public riverport facility. The Riverport offers grain and coal loading facilities, coal storage, public dock with crane service, outside storage area, mooring facilities, and harbor service.

POWER AND FUEL

Electricity

Company serving **Dawson Springs and southern Hopkins County** - Kentucky
Utilities Company
Source of power - Kentucky Utilities Company
For industrial rates contact:

Industrial Development Department
Kentucky Utilities Company
One Quality Street
Lexington, Kentucky 40507
(606) 255-1461

Companies serving **northern Hopkins County** - Green River Electric Corporation
and Henderson-Union Rural Electric Cooperative Corporation
Source of power - Big Rivers Electric Corporation
For industrial rates contact:

Green River Electric Corporation
3111 Fairview Drive
P. O. Box 1389
Owensboro, Kentucky 42302
(502) 926-4141

and/or

Henderson-Union Rural Electric Cooperative
Corporation
P. O. Box 18
Henderson, Kentucky 42420
(502) 826-3991 or (800) 242-7069

Natural Gas

Company serving **Dawson Springs** - Western Kentucky Gas Company
Source of supply - Texas Gas Transmission Corporation
Size of transmission mains - 10 inches (supplier); 4 inches (distributor)
Distribution mains - 2 to 4 inches
Distribution pressure - 20 psi
Btu content - 1,000 per cubic foot
Specific gravity - 0.60
For rates and supplies contact:

District Manager
Western Kentucky Gas Company
311 West Seventh Street
Owensboro, Kentucky 42301
(502) 685-8067

Other Fuels (Within 25 miles)

Propane

Fortner LP Gas Company Inc.*
Cadiz Street
P. O. Box 312
Princeton, Kentucky 42445

Home Gas and Heating Company
113 Arcadia Avenue
Dawson Springs, Kentucky 42408

Pargas Inc.*
Highway 41A
P. O. Box 56
Nebo, Kentucky 42441

Texgas Corporation
P. O. Box 630
Manitou, Kentucky 42436

Union Propane of Hopkins Co., Inc.
North Main
Madisonville, Kentucky 42431

Fuel oils

Distillate fuel oil -

Max Arnold & Sons, Chevron
Distributors Inc.*
181 Murray Street
Madisonville, Kentucky 42431

Ashland Bulk Plant
708 South Main
Madisonville, Kentucky 42431

W. H. Cox Distributing Company
Inc.*
Highway 70 East
P. O. Box 399
Madisonville, Kentucky 42431

Gulf Oil Bulk Plant
640 Lincoln Avenue
Madisonville, Kentucky 42431

Hart Gas & Oil Company Inc.*
North Broadway
Providence, Kentucky 42450

Ky-Penn Oil Company, Inc.
Island Ford Road
Madisonville, Kentucky 42431

F.M. Wilcox Inc.;
Jack Pedley, Chevron Jobber*
309 Legion Drive
P. O. Box 149
Princeton, Kentucky 42445

Residual fuel oil - Arrangements must be made with the refinery.

Low sulphur content coal - Available in Kentucky.

* Bulk plant.

WATER AND SEWERAGE

Public Water Supply

Company serving **Dawson Springs** - City of Dawson Springs Water
and Sewer System
102 Arcadia Avenue
P. O. Box 216
Dawson Springs, Kentucky 42408
(502) 797-2844

Source - Lake Beshear

Treatment plant capacity - 3,000,000 gallons per day

Average daily consumption - 750,000 gallons

Peak daily consumption - 1,270,000 gallons

Type treatment - Aeration, chlorination, coagulation, filtration,
sedimentation, rapid mix; flocculation, and flouridation

Storage capacity - 2,100,000 gallons

Size lines - 2 to 12 inches

Average pressure - 25 psi to 120 psi

MONTHLY WATER RATES

First	2,000 gallons	\$6.90 (Minimum)
Next	3,000 gallons	3.00 per M gallons
Next	15,000 gallons	2.25 per M gallons
Next	30,000 gallons	1.50 per M gallons
All over	50,000 gallons	1.00 per M gallons

Tap-on charge:

3/4-inch or 1-inch meter - \$150

Larger than 1-inch meter - \$50 plus cost of labor and materials

Sewerage

Company serving **Dawson Springs** - City of Dawson Springs Water
and Sewer System*
102 Arcadia Avenue
P. O. Box 216
Dawson Springs, Kentucky 42408
(502) 797-2844

Design capacity - 320,000 gallons per day

Average daily flow - 190,000 gallons

Treatment - Secondary

Type treatment - Primary sedimentation, secondary sedimentation, anaerobic digester, trickling filter, sludge drying beds

Treated effluent discharged into - Tradewater River

Size of sanitary mains - 6 to 12 inches

Size of storm mains - 12 to 36 inches

Rates - 50 percent of monthly water bill; \$3.45 (minimum)

Tap-on charge:

4-inch or 6-inch service - \$150

Larger than 6-inch service - \$50 plus actual cost of installation

* The Dawson Springs Water and Sewer System plans to install additional treatment processes to the sewer system. These improvements are scheduled to be completed in 1988. The estimated cost of the project is \$1 million.

CLIMATE

Hopkins County

Temperature

Normal (30-year record)	59.10 degrees
Average annual 1985	58.90 degrees
Record highest, July 1952 (46-year record)	107.00 degrees
Record lowest, January 1985 (46-year record)	-17.00 degrees
Normal heating degree days (30-year record)	3,756
(Heating degree day totals are the sums of negative departures of average daily temperatures from 65 degrees F.)	

Precipitation

Normal (30-year record)	48.49 inches
Mean annual snowfall (30-year record)	11.30 inches
Total precipitation 1985	30.92 inches
Mean number days precipitation (.01 inch or more) (44-year record)	119.50
Mean number days thunderstorms (44-year record)	54.10

Prevailing Winds (through 1963)

South

Relative Humidity (20-year record)

Midnight	79 percent
6 a.m.	84 percent
Noon	58 percent
6 p.m.	61 percent

Source: U.S. Department of Commerce, Environmental Science Services Administration, Climatological Data, 1985. Station of record: Nashville, Tennessee.

LOCAL GOVERNMENT

Structure

Dawson Springs is served by a mayor and six council members. The mayor serves a four-year term and the council members serve two-year terms. Hopkins County is served by a county judge/executive and seven magistrates. All are elected to four-year terms.

Planning and Zoning

Joint agency - Hopkins County Joint Planning Commission

Participating cities - Dawson Springs, Earlington, Hanson, Madisonville, Morton's Gap, Nortonville

Zoning enforced - Not presently enforced in Dawson Springs

Subdivision regulations enforced - All areas

Local codes enforced - None presently enforced in Dawson Springs

Mandatory state codes enforced - Kentucky Plumbing Code, National Electric Code, Kentucky Boiler Regulations and Standards, Kentucky Building Code (modeled after BOCA code)

Local Fees and Licenses

The city of Dawson Springs levies a 1½ percent occupational license tax on gross wages, salaries, and commissions earned inside the city. This tax is also levied on net profits of businesses operating inside the city limits (\$50 minimum). Other fees are: truck operators license - \$25, and car license - \$10.

A 3 percent tax is levied on utilities receipts for schools in the Dawson Springs Independent School District. Tax is paid by all consumers of utilities as an add-on to the utilities bills. Exempted are receipts from utilities services that are resold and the receipts from the sale of energy or energy producing fuels that exceed 3 percent of the cost of production in manufacturing, processing, mining or refining.

State and Local Property Taxes

All property in Kentucky, except items exempted by the state constitution, is taxed by the state. Property which also may be taxed by local jurisdictions includes land and buildings, finished goods inventories, automobiles, trucks, office furniture and office equipment. Local taxing jurisdictions in Kentucky include counties, cities, and school districts.

All property in Kentucky is assessed at 100 percent of fair cash value.

COMBINED STATE AND LOCAL RATES PER \$100 VALUATION, 1985

	<u>Dawson Springs and Dawson Springs Independent School District</u>	<u>Dawson Springs and Hopkins County School District</u>	<u>Unincorporated Hopkins County</u>
Land and Buildings	\$1.163	\$0.935	\$0.745
Manufacturing Machinery	0.150	0.150	0.150
Pollution Control Equipment	0.150	0.150	0.150
Inventories			
Raw materials	0.001*	0.001*	0.001*
Goods in Process	0.001*	0.001*	0.001*
Finished Goods	0.951*	0.744*	0.554*
Automobiles and Trucks	1.382	1.218	1.028
Other Tangible Personal Property	1.400	1.193	1.003
Intangibles (Accounts receivable, money in hand, stock, notes, bonds)	0.250**	0.250**	0.250**
Goods Stored in Public Warehouses in Transit Status	0.001*	0.001*	0.001*
Private Leaseholds in Industrial Revenue Bond Financed Facilities	0.015	0.015	0.015

Three special taxing districts in Hopkins County levy property taxes in their district boundaries at rates ranging from \$0.067 to \$0.50 per \$100 valuation.

* Includes 1986 state rate.

** Accounts receivable are taxed at 85 percent of face value, for an effective rate of \$0.2125 per \$100 valuation.

Safety

Police	Dawson Springs	Hopkins County
---------------	-----------------------	-----------------------

Total staff	5	12
Radio-patrol cars	2	5

Fire*

Insurance Services Office,
Public Protection
Classification
Volunteers

6	**
23	

Rescue Service

The Dawson Springs Emergency Squad provides rescue service to the city. The squad is staffed by members of the volunteer fire department.

Refuse Collection and Disposal

The city of Dawson Springs provides refuse collection and disposal inside the city. Hopkins County provides refuse collection and disposal in unincorporated portions of the county. Disposal is in a county owned landfill.

* Includes copyrighted material of ISO Commercial Risk Services, Inc., with its permission.

** In addition to the Dawson Spring fire department, eleven other fire departments serve Hopkins County with classification ratings ranging from 6 to 10.

EDUCATION

Public Schools

	Dawson Springs Independent	Hopkins County
Total Enrollment (Fall 1986)	663	8,177*
Kindergarten	63	614
Elementary	323	3,373
Middle School	--	1,834
High School	277	2,346
Accreditation	--	Southern Association of Colleges and Schools
Pupil-Teacher Ratio (1984-85)	19-1	20-1
Percent High School Graduates to College (1984-85)	44.4	43.6
Expenditures Per Pupil (1984-85)	\$2,052.24	\$1,858.80

* Includes ten students receiving home instruction.

Area Colleges and Universities

<u>Name</u>	<u>Location (Miles distant)</u>	<u>Enrollment (Fall, 1985)</u>	<u>Highest Degree Conferred</u>
Madisonville Community College	Madisonville, Kentucky (25)	1,330	Associate
Hopkinsville Community College	Hopkinsville, Kentucky (27)	942	Associate
Henderson Community College	Henderson, Kentucky (62)	1,859	Associate
Paducah Community College	Paducah, Kentucky (62)	1,682	Associate
Austin Peay State University	Clarksville, Tennessee (65)	5,012	Academic & Professional
Murray State University	Murray, Kentucky (71)	7,294	Masters, Specialist*
University of Southern Indiana	Evansville, Indiana (72)	4,025	Baccalaureate
University of Evansville	Evansville, Indiana (72)	6,091	Masters
Brescia College	Owensboro, Kentucky (73)	744	Baccalaureate**
Kentucky Wesleyan College	Owensboro, Kentucky (73)	808	Baccalaureate**
Western Kentucky University	Bowling Green, Kentucky (92)	11,259	Masters, Specialist***

* Joint doctoral degree programs are offered in cooperation with the University of Kentucky, Lexington. The degrees are issued by the University of Kentucky.

** Masters degree programs are taught by members of the Western Kentucky University or Murray State University faculty. The degrees are issued by Western Kentucky University or Murray State University.

*** Joint doctoral degree programs are offered in cooperation with the University of Kentucky, Lexington, and cooperative doctoral degree programs are offered with the University of Louisville. The degrees are issued by the University of Kentucky or the University of Louisville.

Vocational Training

The Bluegrass State Skills Corporation, an independent public corporation created and funded by the Kentucky General Assembly, provides programs of skills training to meet the needs of business and industry from entry level to advanced training, and from upgrading present employees to retraining experienced workers.

The Bluegrass State Skills Corporation is the primary source for skills training assistance for a new or existing company. The Corporation works in partnership with other employment and job training resources and programs, as well as Kentucky's economic development activities, to package a program customized to meet the specific needs of a company.

Vocational training is available at both the state vocational-technical schools and the area vocational education centers. The state vocational-technical schools are post-secondary institutions. The area vocational education centers are designed to supplement the curriculum of high school students. Both the state vocational-technical schools and the area vocational education centers offer evening courses to enable working adults to upgrade current job skills.

Arrangements can be made to provide training in the specific production skills required by an industrial plant. Instruction may be conducted either in the vocational school or in the industrial plant, depending upon the desired arrangement and the availability of special equipment.

Nearest State School

Madisonville State Vocational-Technical School
Madisonville, Kentucky, 25 miles northeast of Dawson Springs

Health & Personal Services Occupations
Bimedical Equipment Technician
Licensed Practical Nursing
Medical Laboratory Technician
Medical Secetary/Medical Office Clerk
Health Services
Radiologic Technology
Respiratory Therapy
Surgical Techologist
Industrial Education
Auto Body Repair

Auto Mechanics
Carpentry
Diesel Mechanics
Drafting (with CAD/CAM)
Electronics
Industrial Electricity
Machine Shop
Mine Maintenance Technology
Tool & Die
Welding
Learning Resource Center

(Continued)

Nearest Area Education Center

Caldwell County Area Vocational Education Center
Princeton, Kentucky, 12 miles west of Dawson Springs

Consumer & Home Economics

Food Services

Health & Personal Services Occupations

Health Services

Industrial Education

Air Conditioning & Refrigeration

Auto Mechanics

Carpentry

Industrial Electricity

Welding

HEALTH

Local Medical Personnel*

Physicians - 2
Dentists - 4

Hospitals

<u>General Hospital</u>	<u>Location</u>	<u>Beds</u>
Regional Medical Center of Hopkins County**	Madisonville, 25 miles northeast	401

Medical staff - 95 physicians, 250 registered nurses, and 122 licensed practical nurses

Other Medical Facilities

Trover Clinic of Dawson Springs***
Outwood Res-Care (residential facility for the mentally retarded)
Dawson Springs Health Care Center

Ambulance Service

Name - Medical Center Ambulance Service
Staff - 2 emergency medical technicians, and 3 paramedics

-
- * Approximately 100 physicians maintain offices in Madisonville, 25 miles northeast.
- ** The Merle M. Mahr Cancer Center was completed in 1985. The \$2 million facility offers full treatment for cancer patients.
- *** Trover Clinic of Dawson Springs was opened in 1983. The clinic contains over 6,000 square feet of modern, well equipped medical service space, including diagnostic X-ray and laboratory facilities. Regular rotations of specialty physicians serve the clinic in fields such as cardiology, allergy, obstetrics and gynecology, and general surgery.

OTHER LOCAL FACILITIES

Communications

Telephone -	South Central Bell Telephone Company
Telegraph -	Western Union Toll-free number, 1-800-325-6000
Newspaper - Weekly and circulation -	Dawson Springs Progress - 4,000
Television - Airwave reception from -	Paducah and Bowling Green, Kentucky; Nashville, Tennessee; Harrisburg, Illinois; Cape Girardeau, Missouri; Evansville, Indiana
Cable service - Educational television -	Horizon TCI The Kentucky Educational Television (K.E.T.) network is available statewide

Library Services

Public library - Hopkins County Public Library
Size collection - 57,433 volumes (includes branch)
Circulation, 1984-85 - 187,461

Religious Institutions

Denominations -	Apostolic Holiness Baptist Catholic Christian Church of Christ Gospel Assembly Holiness Methodist New Covenant Pentecostal
Nearest Synagogues - Congregations -	Paducah, 62 miles west Temple Israel (reform)

Financial Institutions

<u>Banks</u>	<u>Assets</u>	<u>Deposits</u>	<u>Statement Date</u>
Commercial Bank of Dawson	\$29,276,000.00	\$25,927,000.00	6/30/86
<u>Savings and Loan Associations</u>	<u>Assets</u>	<u>Savings Accounts</u>	<u>Statement Date</u>
First Federal Savings and Loan Association of Hopkins County*	\$62,805,370.00	\$60,557,222.00	12/31/85

Hotels and Motels**

Total number - 2
Total rooms - 18

* A branch of the Madisonville main office is located in Dawson Springs.

** Additional accomodations are available at Pennyriple Forest State Resort Park,
6 miles south of Dawson Springs.

RECREATION

Local

Recreational facilities are abundant in and around Dawson Springs. The Dawson Springs Community Center has a full-time recreation director and provides year-round recreational programs for all ages. Small stage productions are presented at the center in addition to an annual barbecue, banquets, and facilities for family or group activities. The Dawson Springs Municipal Park offers playgrounds, two ball fields, running tracks, a basketball court, two lighted tennis courts, picnic areas and shelters, and a public swimming pool.

The Dawson Springs Museum and Arts Center is planned to be in full operation in the fall of 1986. The center will offer a variety of exhibits and displays, host historical tours and productions, and sponsor amateur art shows.

Located just south of Dawson Springs is the Pennyryle State Forest. This state forest, Kentucky's largest, contains 15,000 acres of native pine and hardwood trees. Hiking trails and picnic areas are located throughout the forest. A variety of water sports may be enjoyed on the 857-acre Lake Beshear, which is located within the forest. **Pennyryle Forest State Resort Park** is located 6 miles south of Dawson Springs. The lodge and cottages nestled within the trees provide excellent accommodations. Other facilities and activities include a dining room, a gift shop, rental rowboats and pedal boats, a 9-hole golf course, hiking trails, horseback riding, picnicking, playgrounds, shuffleboard, swimming at the lodge pool and sand beach at the adjacent Pennyryle Forest Lake, and two tennis courts.

Area (Within 55 miles)

Lake Barkley State Resort Park, 40 miles southwest of Dawson Springs near Cadiz, is located on an embayment of Lake Barkley. The magnificent lodge includes 130 rooms, five suites, 13 cottages, a dining room, a coffee shop, a gift shop, two meeting rooms, and a recreation room. An activities center with a capacity for 1,000, a complete fitness center, and an 80-site campground are located near the lodge. A lodge pool, a beach and a bathhouse, an 18-hole golf course, tennis courts, a riding stable, a trapshooting range, a basketball court, hiking trails, playgrounds, and a picnic area round out the recreational facilities. The marina near the lodge has everything for the "boat lover": covered and open slips, a launching ramp, and rentals for fishing boats, skiing boats, and pleasure ride pontoons. An airport is available also.

The Land Between the Lakes, located on a 170,000-acre wooded peninsula, is an outdoor recreational and conservational education center. Camping, swimming, fishing, boating, hiking, a buffalo herd on a 250-acre range, an Environmental Education Center for school study groups, an educational farm and a central station with films and displays are among the attractions. Kentucky Lake and Lake Barkley are among the top fishing and water sport recreation areas in the southeastern United States. The Land Between the Lakes area is 41 miles southwest of Dawson Springs.

Kentucky Dam Village State Resort Park, located 42 miles west of Dawson Springs near Gilbertsville, is one of the largest and most popular vacation resorts in Kentucky. A modern lodge with 72 rooms, six different cottage types, and a 225-site campground make up the accommodations. There is also a dining room overlooking Kentucky Lake, a coffee shop, a snack bar, two gift shops, a meeting room, an activities center, and a recreation room. Recreational activities to choose from include boating and fishing at the largest docking facility in the Kentucky parks system, golf at the 18-hole Village Green Course, fishing, hiking, horseback riding, picnicking, swimming at the lodge pool or off the sand beach, and tennis.

Charm and serenity exemplify **Kenlake State Resort Park** which is located on Kentucky Lake, 50 miles southwest of Dawson Springs. The park offers hotel and cottage accommodations and an efficient camping site. Other facilities include a 9-hole golf course, pool and lake swimming, horseback riding, hiking trails, fishing, boating, picnicking, planned recreation, and one of the finest tennis complexes in the area.

Jefferson Davis Monument State Shrine is located 50 miles southeast of Dawson Springs at Fairview. The shrine is at the site of the birthplace of Jefferson Davis, a former U.S. Senator, Secretary of War, and the only president of the Confederate States of America. The park contains a 351-foot obelisk with an elevator to the top for viewing, a museum, a gift shop, and a playground with picnic tables.

Lake Malone State Park, located in southern Muhlenberg County, 55 miles east of Dawson Springs, offers camping facilities, swimming, fishing, and boating on a 788-acre lake. Playground facilities and picnic shelters are located in a beautiful scenic cliff area. Located across from the entrance to the park is an inn featuring luxury rooms, a restaurant, a swimming lake, a beach, boating, fishing, tennis, and nature trails.

COMMUNITY IMPROVEMENTS

Recent

A medical clinic, Trover Clinic of Dawson Springs, was recently constructed. The clinic contains over 6,000 square feet of modern, well equipped medical service space, including diagnostic X-ray and laboratory facilities. Regular rotations of specialty physicians serve the clinic.

Construction of the new Dawson Springs Municipal Park was completed in 1985. The park contains two ball fields, running tracks, a basketball court, two lighted tennis courts, a playground, picnic areas, shelters, and a public swimming pool.

Several new businesses recently began operations in Dawson Springs including two restaurants, a discount department store, and a grocery store.

The Housing Authority of Dawson Springs recently constructed a 100-unit complex for low-income, handicapped, and senior citizens. The \$4 million project was completed in October, 1985.

The Dawson Springs Independent School System recently purchased twenty-five new personal computers for advanced computer training.

Under Way

New heating and air conditioning systems are currently being installed in school buildings in the Dawson Springs School System. This project is due to be completed in December 1986, at an estimated cost of \$250,000.

Organization of a new company, Dawson Springs Mineral Water, Inc., is under way. The company plans to bottle and distribute both mineral water and fresh water. Operations are planned to begin by the spring of 1987 with an initial investment of \$125,000.

The Dawson Springs Museum and Arts Center is planned to be in full operation in the fall of 1986. The center will offer a variety of exhibits and displays, host historical tours and productions, and sponsor amateur art shows.

Planned

The city of Dawson Springs plans to construct a building to house ambulances, equipment, and personnel. The tentative completion date is December 1986.

The Dawson Springs City Water and Sewer System plans to add several treatment processes to the sewer system. The estimated \$1 million project is scheduled for completion in 1988.

The Hopkins County School System plans to renovate an old school building to be utilized as a central office. Additional classroom construction is also planned. Combined estimated cost of these projects is \$1.3 million.