

1980

## Industrial Resources: Madison County - Berea

Kentucky Library Research Collections  
Western Kentucky University, [spcol@wku.edu](mailto:spcol@wku.edu)

Follow this and additional works at: [https://digitalcommons.wku.edu/madison\\_cty](https://digitalcommons.wku.edu/madison_cty)



Part of the [Business Administration, Management, and Operations Commons](#), [Growth and Development Commons](#), and the [Infrastructure Commons](#)

---

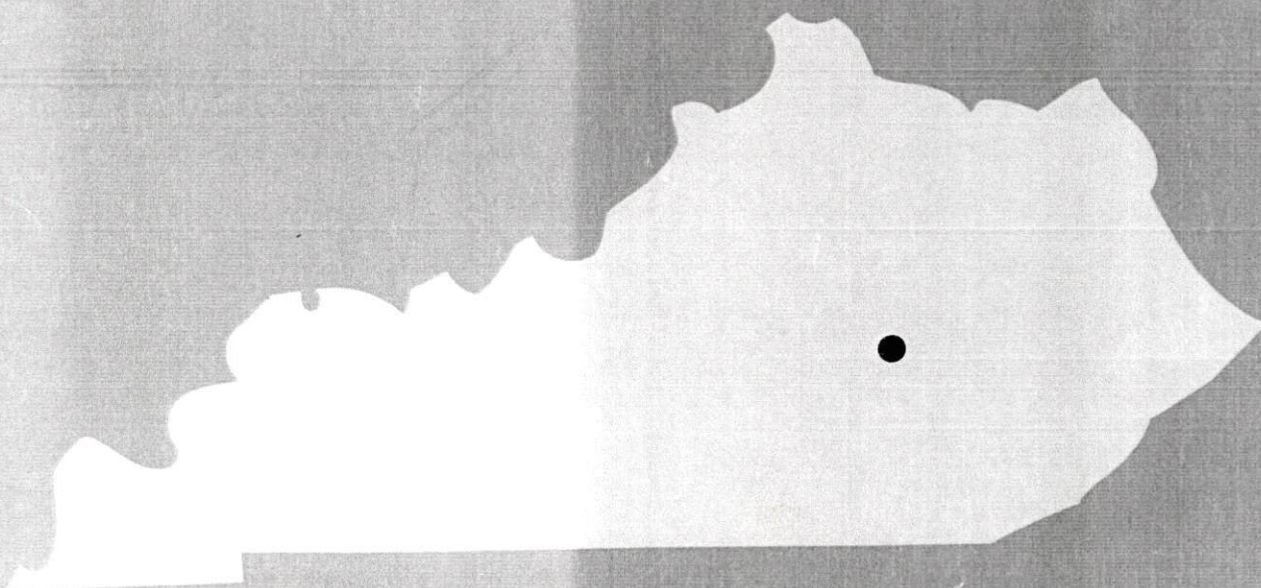
### Recommended Citation

Kentucky Library Research Collections, "Industrial Resources: Madison County - Berea" (1980). *Madison County*. Paper 16.  
[https://digitalcommons.wku.edu/madison\\_cty/16](https://digitalcommons.wku.edu/madison_cty/16)

This Report is brought to you for free and open access by TopSCHOLAR®. It has been accepted for inclusion in Madison County by an authorized administrator of TopSCHOLAR®. For more information, please contact [topscholar@wku.edu](mailto:topscholar@wku.edu).

22

A comprehensive  
report on  
Berea, Ky.



**KENTUCKY & CO.**  
The state that's run like a business.



**Site 180 - 13 ac.**

**LOCATION:** Adjacent to northern city limits

**ZONING:** Not zoned

**HIGHWAY ACCESS:** KY 1983 and KY 595 adjacent to western boundary; Interstate 75 interchange approximately 2.7 miles southwest via KY 595 and U.S. 25, KY 21

**RAILROAD:** Not rail served

**WATER:** Southern Madison Water District

Size Line: 6-inch line along western boundary; Berea College Water and Electric Utility has a 10-inch line 500 feet south across Glade Road

**GAS:** Delta Natural Gas Company

Size Line: 4-inch line along western boundary

**ELECTRICITY:** Berea College Water and Electric Utility

**SEWERAGE:** Berea Sewer Commission

Size Line: 8-inch line crosses western boundary

**OWNERSHIP:** Private

**Site 280 - 39.5 ac.**

**LOCATION:** Partially within western city limits

**ZONING:** Tract A - Business; Tract B - Not zoned

**HIGHWAY ACCESS:** KY 21 approximately 700 feet south via paved road; Interstate 75 approximately 1500 feet southeast via paved road and KY 21

**RAILROAD:** Not rail served

**WATER:** Berea College Water and Electric Utility

Size Line: 8-inch line approximately 300 feet south of Tract A

**GAS:** Natural gas service presently not available

**ELECTRICITY:** Blue Grass RECC

**SEWERAGE:** Berea Sewer Commission

Size Line: 8-inch line approximately 300 feet south of Tract A

**OWNERSHIP:** Private

**SCALE:** 1 inch = 2000 feet

**CONTOUR INTERVAL:** 20 feet

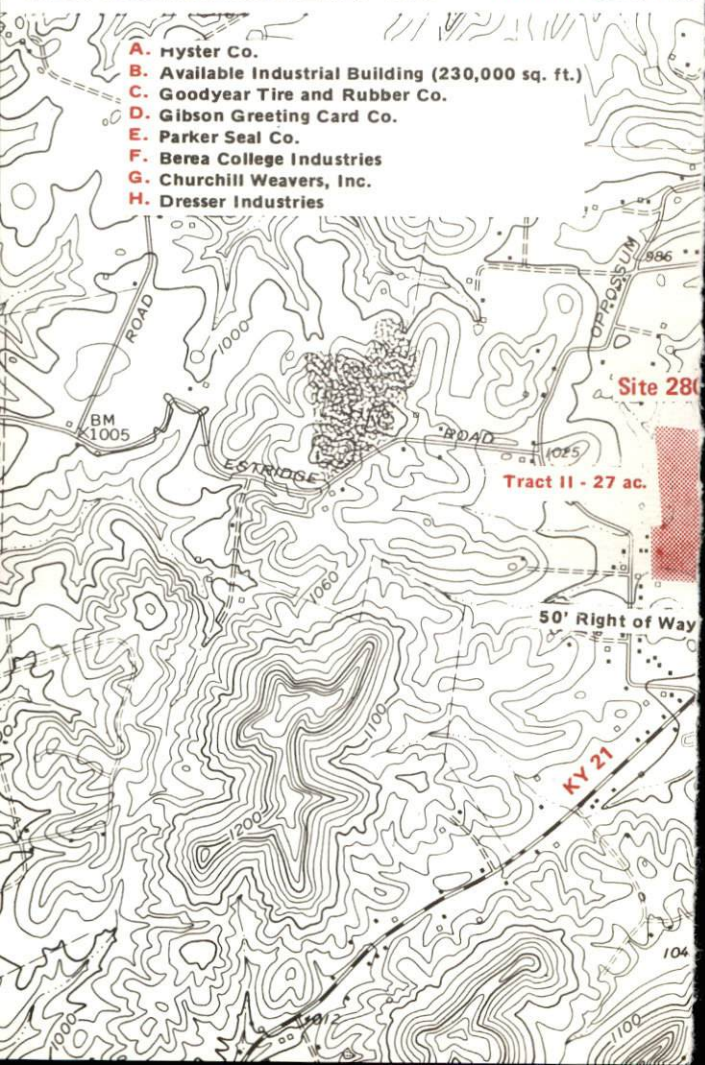
**BASE:** USGS 7.5 MINUTE SERIES - 1979

**UTILITIES**

— — — — — Water Line

- - - - - Sewer Line

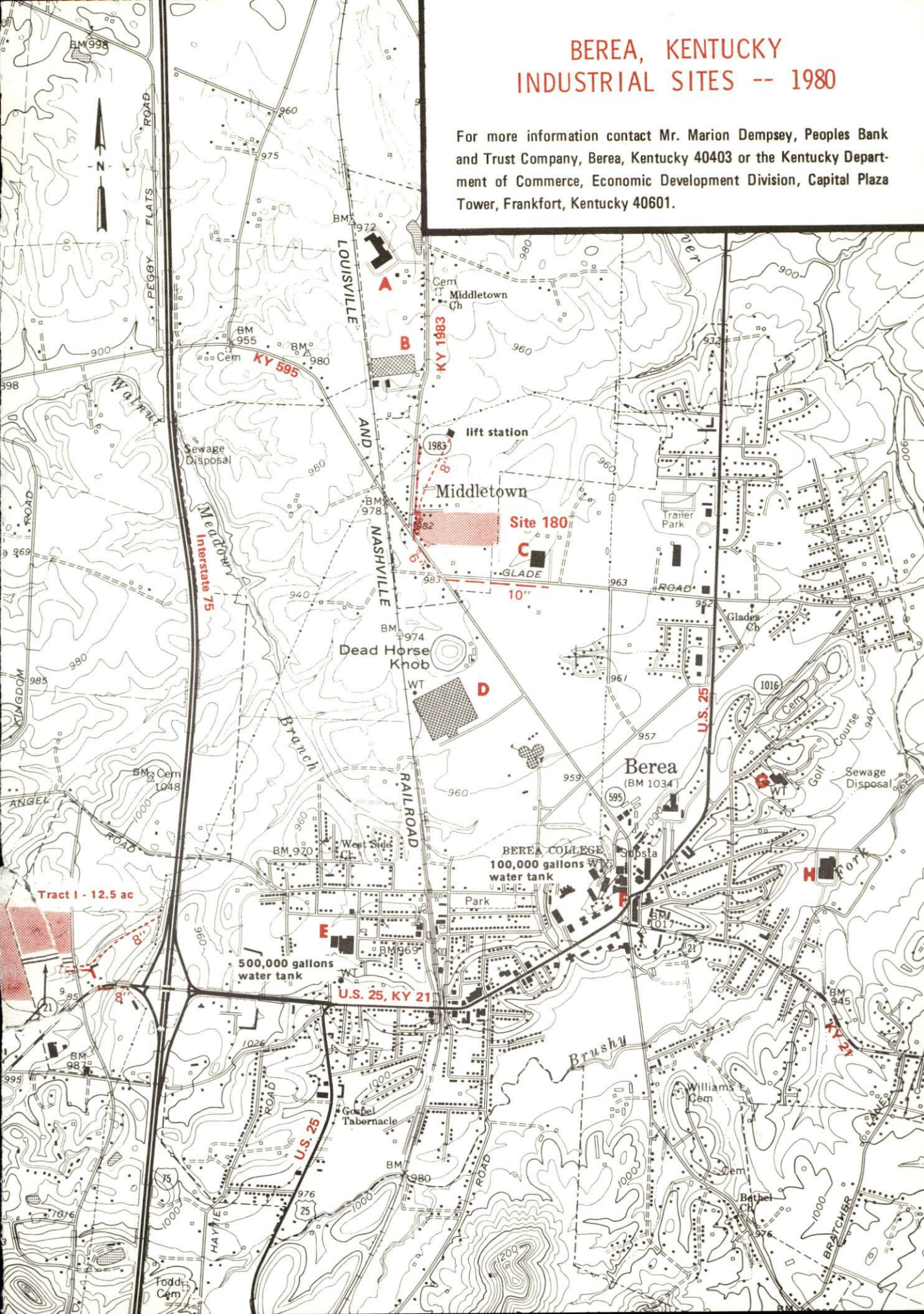
- A. Hyster Co.**
- B. Available Industrial Building (230,000 sq. ft.)**
- C. Goodyear Tire and Rubber Co.**
- D. Gibson Greeting Card Co.**
- E. Parker Seal Co.**
- F. Berea College Industries**
- G. Churchill Weavers, Inc.**
- H. Dresser Industries**





# BEREA, KENTUCKY INDUSTRIAL SITES -- 1980

For more information contact Mr. Marion Dempsey, Peoples Bank and Trust Company, Berea, Kentucky 40403 or the Kentucky Department of Commerce, Economic Development Division, Capital Plaza Tower, Frankfort, Kentucky 40601.





A COMPREHENSIVE REPORT ON  
BEREA, KENTUCKY

Prepared by  
The Kentucky Department of Commerce  
Division of Research and Planning  
in cooperation with  
The Berea Chamber of Commerce

1980



## TABLE OF CONTENTS

<u>Chapter</u>	<u>Page</u>
INDUSTRIAL SITES . . . . .	i
THE LABOR MARKET AREA . . . . .	1
Population . . . . .	1
Labor Force Characteristics of Residents, 1979 . . . . .	1
Estimated Male Labor Supply . . . . .	2
Estimated Female Labor Supply . . . . .	2
Berea Manufacturing Firms, Their Products and Employment . . . . .	3
Labor Organizations in Manufacturing Firms . . . . .	3
Industrial Services . . . . .	4
Average Weekly Wages by Industry, by Place of Work, 1979 . . . . .	5
Per Capita Personal Income . . . . .	7
TRANSPORTATION . . . . .	8
Rail . . . . .	8
Highways . . . . .	8
Truck Service . . . . .	8
Air . . . . .	10
Bus . . . . .	10
Taxi . . . . .	10
Rental Services . . . . .	10
Water . . . . .	10
POWER AND FUEL . . . . .	11
Electricity . . . . .	11
Natural Gas . . . . .	12
Other Fuels . . . . .	13
WATER AND SEWERAGE . . . . .	14
Water . . . . .	14
Sewerage . . . . .	16
CLIMATE . . . . .	17



<u>Chapter</u>	<u>Page</u>
LOCAL GOVERNMENT . . . . .	18
City . . . . .	18
County . . . . .	18
Assessed Value of Property . . . . .	18
Property Taxes . . . . .	18
Combined State and Local Rates Per \$100 Valuation, 1979 . .	19
Planning and Zoning . . . . .	19
Safety . . . . .	19
Police . . . . .	19
Fire . . . . .	19
Rescue Service . . . . .	20
Refuse Collection and Disposal . . . . .	20
EDUCATION . . . . .	21
Public Schools . . . . .	21
Nonpublic Schools . . . . .	21
Area Colleges and Universities . . . . .	22
Vocational Schools . . . . .	23
HEALTH . . . . .	25
Local Medical Personnel . . . . .	25
Hospitals . . . . .	25
Other Medical Facilities . . . . .	25
Ambulance Service . . . . .	25
Public Health . . . . .	25
OTHER LOCAL FACILITIES . . . . .	26
Communications . . . . .	26
Library Services . . . . .	26
Religious Institutions . . . . .	27
Financial Institutions . . . . .	27
Hotels and Motels . . . . .	27
Clubs and Organizations . . . . .	28
RECREATION . . . . .	29
COMMUNITY IMPROVEMENTS . . . . .	32

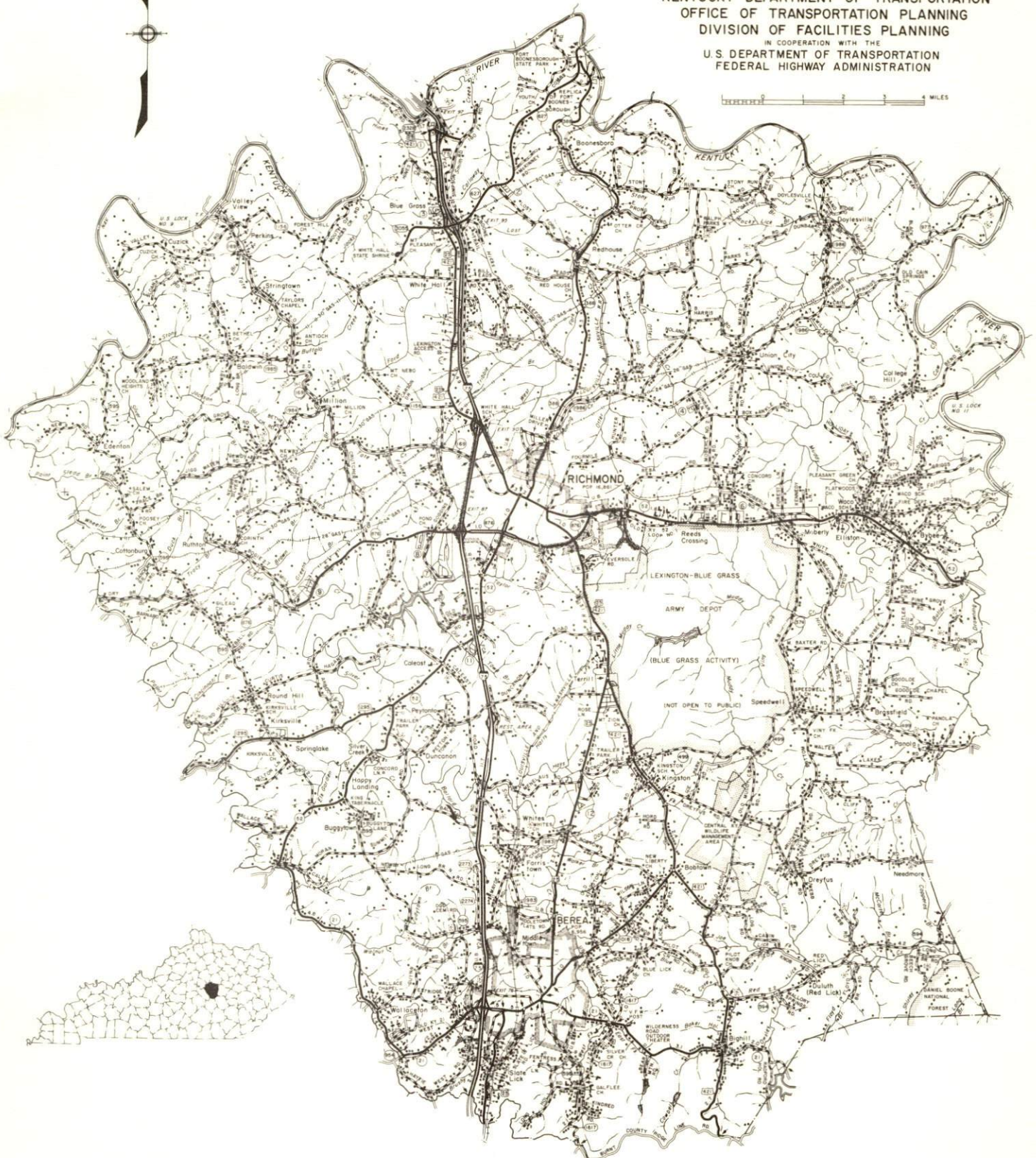


1980 EDITION  
GENERAL HIGHWAY MAP  
**MADISON COUNTY**  
KENTUCKY

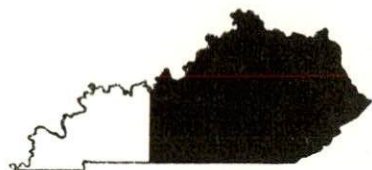


PREPARED BY THE  
KENTUCKY DEPARTMENT OF TRANSPORTATION  
OFFICE OF TRANSPORTATION PLANNING  
DIVISION OF FACILITIES PLANNING  
IN COOPERATION WITH THE  
U.S. DEPARTMENT OF TRANSPORTATION  
FEDERAL HIGHWAY ADMINISTRATION

0 1 2 3 4 MILES



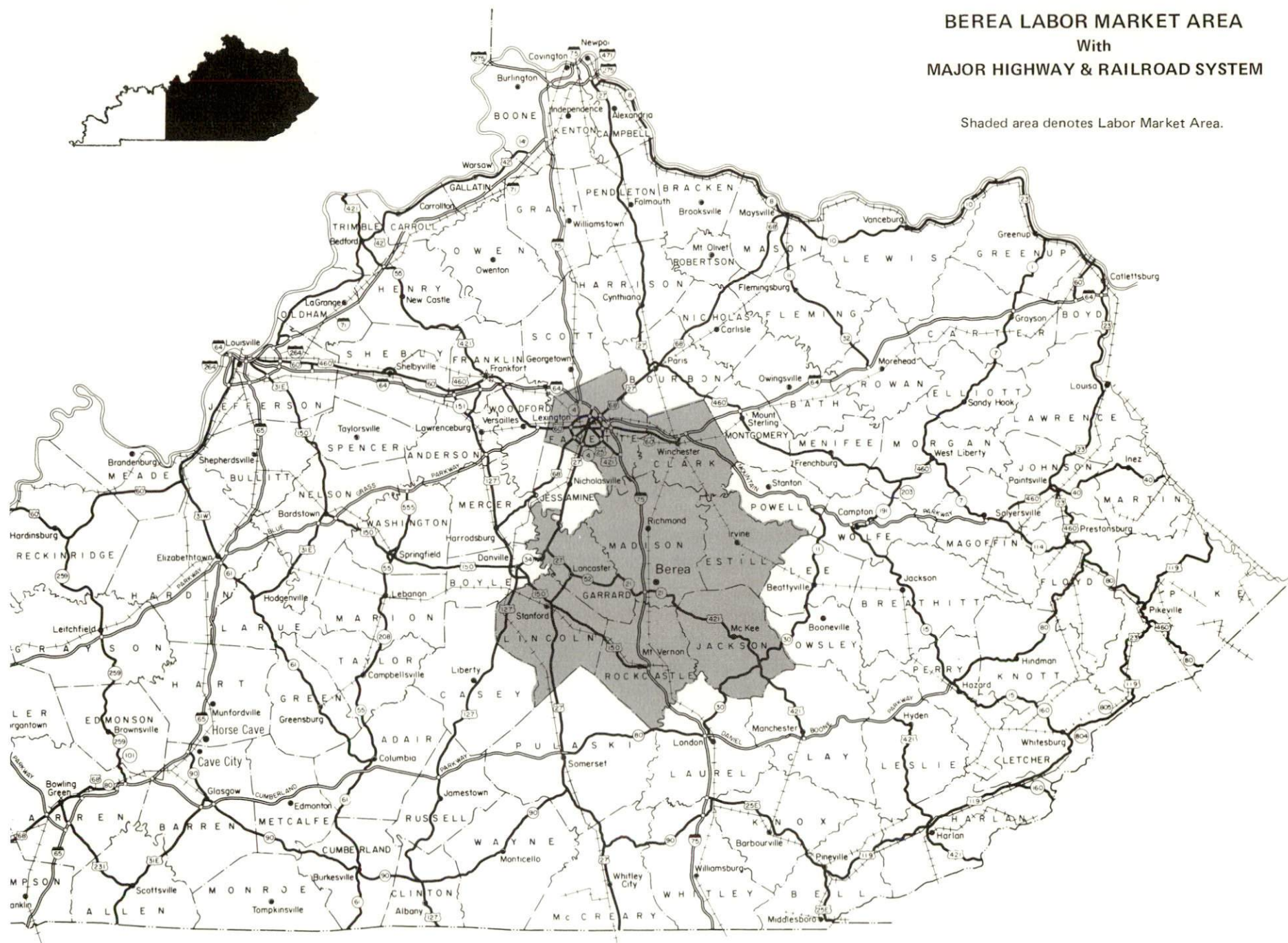




# BEREA LABOR MARKET AREA

With  
MAJOR HIGHWAY & RAILROAD SYSTEM

Shaded area denotes Labor Market Area.



## THE LABOR MARKET AREA

The Labor Market Area includes Madison County and the adjoining Kentucky counties of Clark, Estill, Fayette, Garrard, Jackson, Lincoln and Rockcastle.

POPULATION			
Area	1978*	1970	Percent Nonwhite**
Berea	7,868**	6,956	2.9
Labor Market Area	334,000	302,325	N/A
Madison County	49,500	42,730	6.7
Clark County	26,900	24,090	7.6
Estill County	13,600	12,752	0.3
Fayette County	191,600	174,323	13.7
Garrard County	10,100	9,457	7.8
Jackson County	10,600	10,005	0.2
Lincoln County	18,300	16,663	5.4
Rockcastle County	13,400	12,305	0.1

\*Provisional Estimates.

\*\*1978 Population Estimates; 1970 Percent Nonwhite for city; 1978 Percent Nonwhite for counties.

Sources: U.S. Department of Commerce, Bureau of the Census, Census of Population, 1970. U.S. Department of Commerce, Bureau of the Census, Current Population Reports, Series P-26, No. 78-17, August 1979. U.S. Department of Commerce, Bureau of the Census, April 30, 1980. University of Louisville, Urban Studies Center, Population Research Unit, "Kentucky's Population Disaggregations of 1978 Estimates," January 1980.

LABOR FORCE CHARACTERISTICS OF RESIDENTS, 1979		
	Madison County	Labor Market Area
Civilian Labor Force	27,761	174,642
Employment	26,624	167,201
Agricultural	1,383	7,443
Nonagricultural	25,241	159,758
Unemployment	1,137	7,441
Rate of Unemployment (%)	4.1	4.3

Source: Kentucky Department for Human Resources, Kentucky Labor Force Estimates, Annual Averages, 1979.



ESTIMATED MALE LABOR SUPPLY  
BEREA LABOR MARKET AREA

Area	Total	Current		Under- employed	Future Reaching 18 years of age before 1986
		Not in Labor Force	Unemployed		
Labor Market Area*	13,577	2,130	3,837	7,610	14,112
Madison	2,769	276	593	1,900	1,747
Clark	935	177	368	390	1,219
Estill	582	91	231	260	659
Fayette	7,159	1,217	1,762	4,180	8,091
Garrard	370	72	128	170	409
Jackson	445	77	208	160	495
Lincoln	783	130	313	340	799
Rockcastle	534	90	234	210	693

\*Additional workers may be drawn from other nearby counties.

Sources: Kentucky Department for Human Resources, Kentucky Labor Supply Estimates by County, 1979. Kentucky Department of Commerce, Future Labor Supply before 1986.

ESTIMATED FEMALE LABOR SUPPLY  
BEREA LABOR MARKET AREA

Area	Total	Current		Under- employed	Future Reaching 18 years of age before 1986
		Not in Labor Force	Unemployed		
Labor Market Area*	12,983	949	3,604	8,430	13,281
Madison	2,503	119	544	1,840	1,636
Clark	1,094	83	351	660	1,144
Estill	496	41	215	240	639
Fayette	7,135	554	1,671	4,910	7,563
Garrard	327	30	117	180	424
Jackson	374	30	194	150	500
Lincoln	606	55	291	260	755
Rockcastle	448	37	221	190	620

\*Additional workers may be drawn from other nearby counties.

Sources: Kentucky Department for Human Resources, Kentucky Labor Supply Estimates by County, 1979. Kentucky Department of Commerce, Future Labor Supply before 1986.

NOTE: "Not in Labor Force" represents those persons who are not now in the labor force, but would enter the labor force if suitable employment were available. Unemployed persons are those persons who are unemployed and actively seeking work. Underemployed persons are those persons who are employed, but are working only 14 to 26 weeks per year.

BEREA MANUFACTURING FIRMS,  
THEIR PRODUCTS AND EMPLOYMENT

Firm (Establishment date)	Product	Employment			Labor Unions
		Total	Male	Female	
Berea College Industries (1855)	Furniture, wooden games, fireside brooms	225	108	117	
Berea Publishing Company (1904)	Newspaper	8	4	4	
Churchill Weavers, Inc. (1922)	Baby blankets, afghans, shawls, ties	41	7	34	
Dresser Industries (1961)	Pressure gauges	450	100	350	Industrial Workers, Allied*
Gibson Greeting Card Company (1967)	Candles	290	130	160	Firemen and Oilers*
Goodyear Aerospace Corporation (1972)	Industrial brakes, linings	198	162	36	
Hyster Company (1973)	Industrial lift trucks and chassis	310	---	---	
Parker Seal Company (1951)	Rubber O-rings	477	168	309	Firemen and Oilers*
Wyatt Supply, Inc. (1947)	Concrete block, ready mixed concrete	14	13	1	

\*See Labor Organizations below.

Source: Kentucky Department of Commerce, Division of Research and Planning.

LABOR ORGANIZATIONS IN MANUFACTURING FIRMS

Union	Representing workers at:
International Union, Allied Industrial Workers of America, AFL-CIO	Dresser Industries
International Brotherhood of Firemen and Oilers, AFL-CIO	Gibson Greeting Card Company; Parker Seal Company



# INDUSTRIAL SERVICES

	<u>Location</u>	<u>Mileage from Berea</u>
Tool & Die, Machine & Pattern Shops	Richmond	14
Metal Service Centers	Lexington	41
Heat Treating	Richmond	14
Metal Finishers	Richmond	14
Electric Motor Repair	Lexington	41
<u>Source: Kentucky Directory of Selected Industrial Services, 1979.</u>		

AVERAGE WEEKLY WAGES BY INDUSTRY,  
BY PLACE OF WORK, 1979

	<u>Madison County</u>	<u>Clark County</u>	<u>Estill County</u>	<u>Fayette County</u>
All Industries	\$182.34	\$237.31	\$187.21	\$229.98
Mining & Quarrying	*	*	*	462.69
Contract Construction	199.52	221.17	136.41	282.77
Manufacturing	219.28	300.80	*	316.97
Transportation, Communications & Public Utilities	211.26	316.65	190.09	281.68
Wholesale & Retail Trade	131.66	140.40	129.63	165.01
Finance, Insurance & Real Estate	188.57	183.70	174.53	220.99
Services	188.83	174.63	173.28	215.19
Other	90.09	144.28	0	186.80
	<u>Garrard County</u>	<u>Jackson County</u>	<u>Lincoln County</u>	<u>Rockcastle County</u>
All Industries	\$154.25	\$169.25	\$174.45	\$144.72
Mining & Quarrying	*	*	*	229.16
Contract Construction	175.80	164.73	170.67	129.13
Manufacturing	173.03	131.48	158.93	147.31
Transportation, Communications & Public Utilities	215.10	222.37	238.25	193.69
Wholesale & Retail Trade	110.66	123.13	132.53	116.04
Finance, Insurance & Real Estate	164.84	*	178.73	176.73
Services	152.05	175.70	180.05	157.58
Other	*	*	90.00	*

\*Not disclosed.

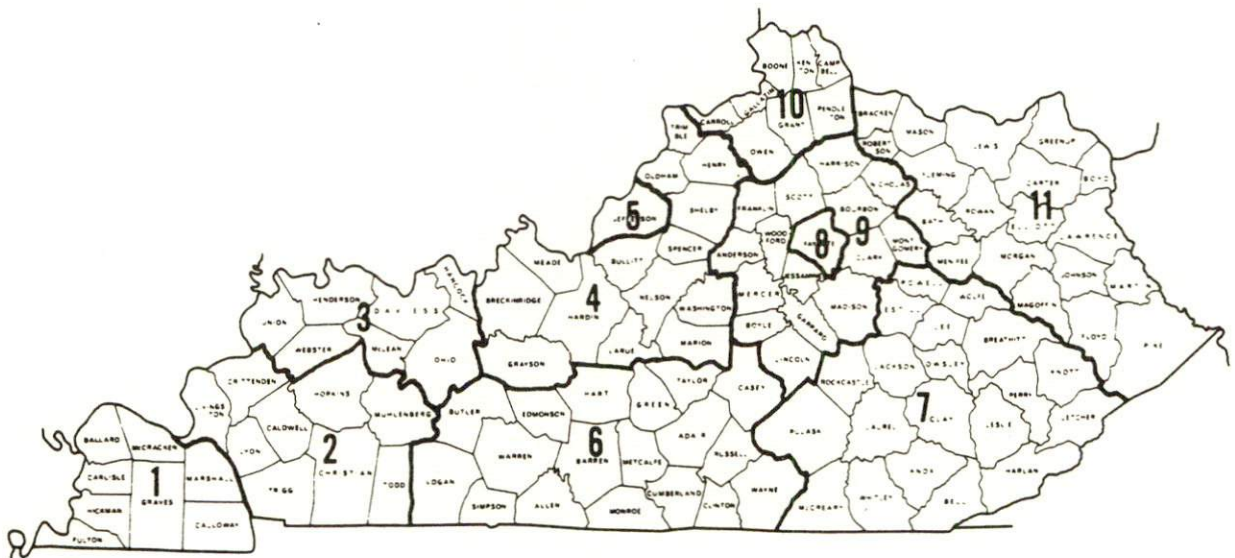
Note: Excludes domestic workers, railway workers, certain nonprofit corporations, majority of federal government workers, and self-employed workers. Effective January 1, 1979, the Kentucky Unemployment Insurance Law extended coverage to include all state and local government agencies (shown in the Services category).

Source: Kentucky Department for Human Resources, Average Weekly Wages of Workers Covered by Kentucky Unemployment Insurance Law, 1979.



Occupational wage rates for specific industries are usually not available to most government agencies, and wage data furnished to state employment agencies by individual industrial employers is protected from disclosure by federal law. The most reliable up-to-date wage information can be obtained by direct contact with local employers.

Associated Industries of Kentucky, a voluntary organization of Kentucky businesses, regularly collects occupational wage rates and fringe benefits data from participating member firms. Data is compiled for over 127 clearly defined office, production, and service occupations. Tabulations are published for eleven regions of Kentucky, as shown on the map below. It should be noted that the data may be weighted by the preponderance of firms in the larger cities and may be somewhat higher than the rates paid in the smaller communities. Data from these tabulations are available, upon request, from the Kentucky Department of Commerce, Frankfort, Kentucky 40601.



Associated Industries of Kentucky Area Wage Surveys

PER CAPITA PERSONAL INCOME

<u>Area</u>	<u>1978</u>	<u>1974</u>	<u>Percent Change</u>
Madison County	\$5,480	\$3,695	48.3
Labor Market Area			
Range	\$3,649 - 7,860	\$2,585 - 5,243	N/A
Kentucky	6,605	4,524	46.0
U.S.	7,840	5,428	44.4

Source: U.S. Department of Commerce, Bureau of Economic Analysis,  
April 1980.



## TRANSPORTATION

### Rail

Line serving Berea - Louisville and Nashville Railroad

Services - Main line; one northbound freight and one southbound freight make daily stops; 10 northbound and 10 southbound through freights daily; switching facilities; team track space for 15 cars. The L & N maintains piggyback facilities at Frankfort, 66 miles northwest of Berea. The Southern Railway System maintains piggyback facilities at Danville, 34 miles west of Berea.

For details on routing, schedules, rates, and services, contact:

Director of Industrial Development  
Louisville & Nashville Railroad  
P. O. Box 32290  
Louisville, Kentucky 40232  
(502) 587-5723

### Highways

Interstate 75 serves Berea directly and provides access to Interstate 64, the Bluegrass Parkway, and the Mountain Parkway at Lexington, located about 40 miles north of Berea. The Bluegrass Parkway runs west out of Lexington and the Mountain Parkway runs east out of Lexington. Berea is also served by U.S. Highway 25, a north-south class "AAA" rated highway with an 80,000 pound gross load limit.

### Truck Service

<u>Company</u>	<u>Home Office</u>
Bronaugh Motor Express, Inc.*	1025 Nandino Boulevard Lexington, Kentucky 40511
Consolidated Freightways Corporation of Delaware**	175 Linfield Drive Menlo Park, California 94025
Cooper-Jarrett, Inc.**	Hanover Plaza Morristown, New Jersey 07960
Interstate Motor Freight System**	110 Ionia N.W. Grand Rapids, Michigan 49503
McLean Trucking Company**	P. O. Box 213 Winston-Salem, North Carolina 27102
Smith's Transfer Corporation**	P. O. Box 1000 Staunton, Virginia 24401

\*Interstate and intrastate service.

\*\*Interstate service only.

Other Freight ServicesNearest Shipping Center

Purolator Courier Corporation\*

London, 38 miles southeast

Lexington, 41 miles north

United Parcel Service\*

Danville, 34 miles west

Lexington, 41 miles north

HIGHWAY MILES AND TRUCK TRANSIT TIME IN DAYS FROM  
BEREA, KENTUCKY, TO SELECTED MARKET CENTERS

City	Highway Miles	Delivery		City	Highway Miles	Delivery	
		Time TL				Time TL	
Atlanta, Ga.	327	2		Los Angeles, Ca.	2,236	6	
Baltimore, Md.	582	3		Louisville, Ky.	113	1	
Birmingham, Ala.	388	2		Nashville, Tenn.	212	1	
Chicago, Ill.	393	2-3		New Orleans, La.	730	3	
Cincinnati, Ohio	119	1		New York, N. Y.	744	3	
Cleveland, Ohio	358	2-3		Pittsburgh, Pa.	384	3	
Detroit, Mich.	378	2-3		St. Louis, Mo.	376	2-3	
Knoxville, Tenn.	134	1					

Note: Mileage computations are via the best interstate or primary highways, not necessarily the most direct route of travel.

Sources: Rand McNally Road Atlas, 1979. Official Kentucky Mileage Map, 1979. Delivery time - Bronaugh Motor Express, 1025 Nandino Boulevard, Lexington, Kentucky 40511.

\*For regular scheduled pickups or for occasional pickups, arrangements must be made with the Louisville office of Purolator Courier Corporation or United Parcel Service.



## Air

### Local

Location: Madison Airport  
7 1/2 miles north of Berea  
Runways: 1 paved  
Length: 4,000 feet  
Traffic  
Control: Lighted wind cone  
Lighting: Runway, taxiway, VASI and REIL  
Services: Flight training, tie-down, and fuel (100 octane and jet fuel)  
Air Freight  
Service: Chartered air freight services must be arranged.

### Nearest Scheduled Airline Service\*

Location: Blue Grass Field  
4 1/2 miles west of Lexington, Kentucky;  
45 1/2 miles northwest of Berea  
Runways: 2 paved  
Length: 6,500 feet; 3,500 feet  
Traffic  
Control: Tower  
Lighting: Approach lighting system, beacon, runways and obstructions lighted, VASI  
Services: Delta, Frontier, Piedmont, USAir airlines, and Tennessee Airways commuter air carrier; fuel - 24-hour service, 100, and jet fuel; repair service - major A & E repairs, Certified Avionics repair station; National Weather Service; flight instructions; charter service; storage; taxi, limousine and car rentals; restaurant  
Air Freight  
Service: Air freight terminal

Bus - Greyhound Bus Lines

Taxi - 24-hour, radio-dispatched service

Rental Services - Car, truck and trailer rentals are available at Richmond, 14 miles distant

## Water

Berea is located 27 miles from a point on the Kentucky River near Boonesboro where a 6-foot navigation channel is maintained.

\*Commuter air carrier service is provided by Allegheny Commuter at the London-Corbin Airport which is located 3 miles south of London, Kentucky; 41 miles southwest of Berea.

POWER AND FUEL

Electricity

Company serving Berea and surrounding parts of Madison County - Berea  
College Electric and Water Utilities  
Source of power - Kentucky Utilities Company  
Total generating capacity - 2,383,767 KW  
For industrial rates contact:

Berea College Electric and  
Water Utilities  
CPO 2337  
Berea, Kentucky 40404  
(606) 986-3451

and/or

Industrial Development Department  
Kentucky Utilities Company  
One Quality Street  
Lexington, Kentucky 40507  
(606) 255-1461

Company serving central part of Madison County - Kentucky Utilities  
Company  
Source of power - Kentucky Utilities Company  
Total generating capacity - 2,383,767 KW  
For industrial rates contact:

Industrial Development Department  
Kentucky Utilities Company  
One Quality Street  
Lexington, Kentucky 40507  
(606) 255-1461



Companies serving remaining parts of Madison County - Blue Grass  
Rural Electric Cooperative Corporation; Clark Rural Electric  
Cooperative Corporation

Source of power - East Kentucky Power Cooperative

Total generating capacity - 809,720 KW

For industrial rates contact:

Industrial Development Division  
East Kentucky Power Cooperative  
P. O. Box 707  
Winchester, Kentucky 40391  
(606) 744-4812

and/or

Blue Grass RECC  
P. O. Drawer D  
Nicholasville, Kentucky 40356  
(606) 885-4191

and/or

Clark RECC  
P. O. Box 748  
Winchester, Kentucky 40391  
(606) 744-4251

#### Natural Gas

Company serving Berea - Delta Natural Gas Company, Inc.

Sources of supply - Columbia Gas Transmission Corporation; Tennessee  
Gas Transmission Company

Size of transmission mains - 30-inch (supplier);

4 and 6 inches (distributor)

Distribution mains - 2 and 4 inches

Distribution pressure - 90 psi

Btu content - 1,000 per cubic foot

Specific gravity - 0.650

For rates and supplies contact:

Delta Natural Gas Company, Inc.  
P. O. Box 190  
Berea, Kentucky 40403  
(606) 986-4291

## Other Fuels

### Propane (Within a 15 mile radius of Berea)

Buckeye Gas Products Company  
(Doxol)  
Edwards Avenue  
Richmond, Kentucky 40475

Million's Gas & Appliance Company  
(Doxol)  
206 South Third Street  
Richmond, Kentucky 40475

Crawford Gas and Appliances  
(Pyrofax Gas)  
Big Hill Avenue  
Richmond, Kentucky 40475

Southern States Cooperative, Inc.  
Irvine Road  
Richmond, Kentucky 40475

### Fuel oils

#### Distillate fuel oil - (Within a 15 mile radius of Berea)

J. E. Ammons Oil Company  
(Gulf oil bulk plant)  
305 Jefferson Street  
Berea, Kentucky 40403

Grimes and Curry, Agent  
(Ashland Oil bulk plant)  
Route 2, Quality Drive  
Richmond, Kentucky 40475

Chevron Oil Company  
(bulk plant)  
Boggs Lane  
Richmond, Kentucky 40475

Jenkins Fuel Oil and Gas, Inc.  
Route 2, Berea Road  
Richmond, Kentucky 40475

Congleton's Sunoco  
(bulk plant)  
Route 3  
Richmond, Kentucky 40475

Residual fuel oil - Arrangements must be made with the refinery.

Low sulphur content coal - Available from eastern Kentucky.



## WATER AND SEWERAGE

### Water

Company serving Berea - Berea College Electric and Water Utilities  
CPO 2337  
Berea, Kentucky 40404  
(606) 986-3451

Source - Four reservoirs in Berea College Forest  
Treatment plant capacity - 3,000,000 gallons per day  
Average daily consumption - 1,321,973 gallons  
Peak daily consumption - 1,720,000 gallons  
Type treatment - Micro-flock clarifiers, sand-anthracite filters  
Storage capacity - 1,045,000 gallons (three tanks)  
Size lines - 2, 4, 6, 8, 10 and 12 inches  
Average pressure - 70 psi  
Average temperature - 50 degrees F.

### MONTHLY WATER RATES

First	200 cubic feet	\$3.90 (Minimum)
Next	1,800 cubic feet	1.85 per 100 cubic feet
Next	3,000 cubic feet	1.65 per 100 cubic feet
Next	5,000 cubic feet	1.45 per 100 cubic feet
Next	5,000 cubic feet	1.20 per 100 cubic feet
All over	15,000 cubic feet	.95 per 100 cubic feet

Tap-on charge: None

ANNUAL RENTAL FOR FIRE PROTECTION: In cases where the Utility is required to provide water services to industrial plants and other large facilities which require considerably larger diameter water lines, fire hydrants and other facilities, the expenses for which cannot be recovered through the prescribed rates and charges because there is normally no usage of water except in the event of fire at which time the water is not metered, such unusual costly facilities are paid for by the industrial plant or other larger consumer. The usual stand-by rates charged for this service are as follows:

Lines 6 inches in diameter or under	\$31.00 per month
Lines 8 inches in diameter	43.50 per month
Lines 10 inches in diameter	56.00 per month
Lines 12 inches in diameter	68.50 per month
Lines 14 inches in diameter	81.00 per month

Fire Hydrants	\$93.00 per hydrant per year
---------------	------------------------------

Name of water district - Southern Madison Water District

P. O. Box 168

Berea, Kentucky 40403

(606) 986-9031

Area served - Southern Madison County

Date when water district began operating - September 1969

Source of supply of treated water - Berea College Electric and Water Utilities

Average amount of water used in a 24-hour period - 267,040 gallons

Peak amount of water used in a 24-hour period - 308,115 gallons

Storage capacity - None

Average pressure - 60 psi

Average temperature - 60 degrees F.

Size lines - 2, 4, 6 and 8 inches

Monthly rates -

First	2,000 gallons	\$6.65 (Minimum)
Next	1,000 gallons	3.25 per M gallons
Next	3,000 gallons	2.90 per M gallons
Next	4,000 gallons	2.00 per M gallons
Next	15,000 gallons	1.75 per M gallons
Next	25,000 gallons	1.50 per M gallons
All over	50,000 gallons	1.00 per M gallons

Tap-on charge: 3/4-inch or 5/8-inch meter - \$225 (Minimum)

Over 5/8-inch meter - Cost of meter and installation

Surface water sources - Kentucky River and Silver Creek

Average discharge - Kentucky River at Lock 10, near Winchester, Kentucky - 5,313 cfs (72 years, unadjusted, USGS); Silver Creek near Kingston, Kentucky - 45.4 cfs (12 years, USGS)

Expected ground water yield - 50 to 200 gpm along Kentucky River in northern portion of county; 5 to 50 gpm in small area of south-central portion of county; 5 gpm or less in remainder of county



## Sewerage

Company serving Berea - Berea Sewer Commission\*

P. O. Box 405

Berea, Kentucky 40403

(606) 986-4391

Design capacity - Plant #1 - 1,000,000 gallons per day;

Plant #2 - 500,000 gallons per day

Average daily flow - Plant #1 - 850,000 gallons per day;

Plant #2 - 350,000 gallons per day

Treatment - Primary and secondary

Type treatment - Plant #1 - Trickling filter system;

Plant #2 - Extended aeration

Treated effluent discharged into - Plant #1 - Brusy Fork at Silver Creek;

Plant #2 - Walnut Meadow Creek

Size of sanitary mains - 6 to 14 inches

### MONTHLY SEWER RATES

Users of less than 200,000 cubic feet

First 200 cubic feet \$3.00 (Minimum)

All over 200 cubic feet .66 per 100 cubic feet

Users of 200,000 cubic feet or more

First 200 cubic feet \$300.00

All over 200 cubic feet .66 per 100 cubic feet

Tap-on charge - The tap-on charge is \$350 and includes the tap-on and up to 25 feet of sewer line. Additional sewer line is at the owner's expense.

\*Step 1 of a 201 Facilities Plan has been completed.

## CLIMATE

### Madison County

#### Temperature

Normal (30-year record)	55.2 degrees
Average annual 1979	53.4 degrees
Record highest, September, 1954 (35-year record)	103.0 degrees
Record lowest, January, 1963 (35-year record)	-21.0 degrees
Normal heating degree days (30-year record)	4,729
(Heating degree day totals are the sums of negative departures of average daily temperatures from 65 degrees F.)	

#### Precipitation

Normal (30-year record)	44.49 inches
Mean annual snowfall (35-year record)	16.80 inches
Total precipitation 1979	54.00 inches
Mean number days precipitation (.01 inch or more) (35-year record)	131
Mean number days thunderstorms (35-year record)	47

#### Prevailing Winds (17-year record)

South

#### Relative Humidity

1 a.m.	77 percent (15-year record)
7 a.m.	81 percent (16-year record)
1 p.m.	60 percent (16-year record)
7 p.m.	64 percent (16-year record)

Source: U.S. Department of Commerce, Environmental Science  
Services Administration, Climatological Data, 1979.  
Station of record: Lexington, Kentucky.



## LOCAL GOVERNMENT

### City

Structure - Mayor - 4-year term; 8 councilmen - 2-year terms  
Budget 1980 - General Fund \$1,414,589  
Fees and licenses - 1 1/2 percent occupational license fee on wages and net profits; regulatory licenses fees range from \$10 to \$200 per year

### County

Structure - County Judge/Executive - 4-year term;  
4 magistrates - 4-year terms  
Budget 1979-80 - General Fund \$960,682; Road Fund \$370,786

### Assessed Value of Property

<u>Classes of Property</u>	<u>Berea (1979)</u>	<u>Madison County (1980-81)</u>
Real Estate	\$66,227,878	\$482,391,919
Tangibles	15,000,000 (approximate)	92,643,241

### Property Taxes

All property in Kentucky is assessed at 100 percent of fair cash value.

Land and buildings are taxed by the state and may be taxed by local jurisdictions. The state rate is \$0.279 per \$100 of assessed valuation.

Manufacturing machinery, raw materials inventories, pollution control equipment, and goods in the process of manufacture are not subject to local taxation. The state rate is \$0.15 per \$100.

Other tangible personal property owned by manufacturers (automobiles, trucks, finished goods, office furniture, office equipment) is taxed by the state at \$0.45 per \$100 and may be taxed by local jurisdictions.

Property stored in public warehouses in a transit status is not subject to local taxation. The state rate is only \$0.015 per \$100.

Intangible personal property located in Kentucky (money in hand, shares of stock, notes, bonds, accounts receivable, and other credits) is taxed by the state at \$0.25 per \$100, and is not subject to local taxation.

Private leaseholds in industrial facilities owned by cities or counties and financed by industrial revenue bonds are subject to a state tax of \$0.015 per \$100 of value (essentially the lessee's equity, adjusted for appreciation or depreciation): Local taxation is not permitted.

Combined State and Local Rates Per \$100 Valuation, 1979\*  
(100% assessment)

	<u>Inside City of Berea</u>	<u>Outside City</u>
1. Land and buildings	\$0.860	\$0.499
2. Mfg. machinery, raw materials, goods in process, pollution control equipment	0.150	0.150
3. Finished goods, office equipment, vehicles, other tangibles	1.031	0.670
4. Intangibles (accounts receivable, notes, bonds, etc.)	0.250	0.250
5. Leaseholds in industrial revenue bond financed plants	0.015	0.015

Planning and Zoning

City agency - Berea Planning and Zoning Commission

Zoning enforced - In city of Berea

Subdivision regulations enforced - In city of Berea and three miles beyond corporate limits

Local codes enforced - Building and housing

Mandatory state codes enforced - Kentucky Plumbing Code, National Electric Code, Kentucky Boiler Regulations and Standards, National Fire Protection Association Standards of Safety (for buildings with an occupancy of less than 100 persons), Kentucky Building Code (modeled after BOCA code and applying to buildings with an occupancy of 100 or more persons)

Safety

<u>Police</u>	<u>Berea</u>	<u>Madison County</u>
Total staff	17	7
Radio-patrol cars	5	5
<u>Fire</u>		
American Insurance Association Fire Rating	6	10
Full-time staff	11	14
Volunteers	35	13

\*Kentucky Department of Commerce.

### Rescue Service

#### Berea Volunteer Fire Rescue Squad:

Number of volunteers - 35

Equipment - 2 fully-equipped rescue trucks, Jaws of Life

Personnel training - Auto rescue, metal cutting, first aid, 2  
certified emergency medical technicians

### Refuse Collection and Disposal

Type service	Municipal
Fee charged:	
residential	\$2.50 per month
business	By volume
industrial	By volume
Collection frequency:	
residential	Weekly
business	Twice weekly
industrial	Negotiated
Trash pickup	On request (extra fee charged)
Disposal method	Sanitary landfill

Dumpsters are placed at various locations throughout the county for the convenience of county residents. The county provides pickup service at these points with disposal at the landfill.



# EDUCATION

## Public Schools

	<u>Berea Independent</u>	<u>Madison County</u>
Total Enrollment (Spring 1980)	1,108	5,922
Elementary	552	3,336
Middle School	--	1,000
High School	556	1,586
Student-Teacher Ratio	14-1	17-1
Elementary	15-1	16-1
Middle School	--	20-1
High School	13-1	21-1
Accreditation	Southern Association of Colleges and Schools	
Percent High School Graduates to College	56.4	46.4
Expenditures Per Pupil (1978-79)	\$1,370.83	\$961.82
Bonded Indebtedness, June 30, 1979	\$1,635,000	\$4,083,000

## Nonpublic Schools

	<u>Model Laboratory</u>	<u>St. Mark</u>
Total Enrollment	392	85
Elementary	152	85
High School	240	--
Student-Teacher Ratio	13-1	21-1
Elementary	15-1	21-1
High School	12-1	--
Accreditation	Southern Association of Colleges and Schools	

### Area Colleges and Universities

<u>Name</u>	<u>Location (Miles distant)</u>	<u>Enrollment (Fall, 1979)</u>	<u>Highest Degree Conferred</u>
Berea College	Berea	1,434	Baccalaureate
Eastern Kentucky University	Richmond (14)	13,668	Masters, Specialists*
Centre College	Danville (34)	766	Baccalaureate
Sue Bennett College	London (38)	250	Associate
Transylvania University	Lexington (41)	810	Masters**
University of Kentucky	Lexington (41)	22,899	Doctorate, M.D., D.M.D., J.D.
Lexington Technical Institute	Lexington (41)	2,074	Associate
Somerset Community College	Somerset (43)	894	Associate

Berea College is a private four-year institution with courses of study leading to a B.A. and B.S. degrees. It offers two distinctive assets: a student work program structured for positive learning as well as a source of student income; and a strong Christian commitment that is non-sectarian as it strives to better understand and achieve Christian goals.

As an integral part of the educational program, each student is expected to perform some of the labor required in maintaining the institution, thus to gain an appreciation of the worth and dignity of all the labor needed in a common enterprise; to acquire some useful skill; and to develop a sense of responsibility for a specific task.

The aim is to make available a sound education to students who are unable to meet usual college expenses, but who have the ability and the character to use a liberal education for responsible, intelligent service to society.

Hand-made furniture, toys, and gift items are sold in the gift shop located on campus.

\*Joint doctoral degree programs are offered in cooperation with the University of Kentucky, Lexington, and cooperative doctoral degree programs are offered with Michigan State University and the University of Maryland.

\*\*Courses in the masters degree program are taught on the Transylvania campus by faculty members of Xavier University of Cincinnati. The degree is issued by Xavier University.

## Vocational Schools

Both the state vocational-technical schools and the area vocational education centers are operated by the Kentucky Department of Education. The state vocational-technical schools enroll persons full time who are at least 16 years of age and not in school. These students attend classes for six hours each day. The area vocational education centers are designed to accommodate high school students who are at least 15 years of age. These students attend vocational school for three hours each day. The state vocational-technical schools and the area education centers offer evening courses to enable working adults to upgrade current job skills.

### Nearest State School

Location	Laurel County State Vocational- Technical School
Miles Distant	London 38
Curriculum	Consumer and Home Economics Commercial Foods Consumer and Family Life Skills Health and Personal Services Occupations Cosmetology Medical Assistant Industrial Education Air Conditioning and Heating Auto Body Repair Auto Mechanics Carpentry Drafting Electricity Machine Shop Masonry Welding Learning Resource Center

(Contd.)



Nearest Area Education Center

Location	Madison County Area Vocational Education Center
Miles Distant	Richmond 14
Curriculum	Business and Office Clerical Secretarial Stenographer Industrial Education Auto Mechanics Drafting Machine Shop Welding

Arrangements can be made to provide training in the specific production skills required by an industrial plant. Instruction may be conducted either in the vocational school or in the industrial plant, depending upon the desired arrangement and the availability of special equipment.

## HEALTH

### Local Medical Personnel

Physicians - 10  
Dentists - 4

### Hospitals

<u>General Hospital</u>	<u>Location</u>	<u>Beds</u>
Berea Hospital, Inc.	Berea	73 acute, 37 extended care

General hospital facilities - Operating room, intensive-coronary care unit, emergency room, laboratory, diagnostic X-ray, respiratory therapy, physiotherapy, outpatient clinic, social services, pharmacy, dietary kitchen, library

Medical staff - 22 physicians, 4 dentists, 1 licensed physical therapist, 2 physical therapy aides, 1 licensed respiratory therapist, 3 respiratory therapy aides, 2 social services workers, 1 dietitian, 4 operating room technicians, 2 operating room nurses, 6 intensive coronary care nurses, 40 registered nurses (full time), 18 registered nurses (part time), 13 licensed practical nurses, 30 nurses' aides (full time), 15 nurses' aides (part time), 7 ward clerks, 5 orderlies, 1 pharmacist (part time), 1 librarian (part time)

### Other Medical Facilities

Comprehensive Care Center

### Ambulance Service

Name - Madison County Ambulance Service  
Staff - 19 full-time employees and 12 part-time employees who are certified emergency medical technicians; 7 paramedics  
Service - 24-hour, county-wide  
Equipment - 4 ambulances (1 in Berea, 3 in Richmond)

### Public Health

Facility - Madison County Health Department  
Staff - 1 administrator, 7 registered nurses, 2 licensed practical nurses, 1 nursing supervisor, 1 health officer, 3 nutritionists, 6 community health workers, 1 social worker, 3 health environmentalists, 2 medical clinicians, 8 clerks, 1 physical therapist (part time), and 1 speech therapist (part time)

## OTHER LOCAL FACILITIES

### Communications

Telephone - General Telephone Company  
Services - Standard

Telegraph - Western Union  
Services - Toll-free number

Postal - U.S. Post Office  
Class - First  
Mail received - Once daily  
Mail dispatched - Twice daily

Newspapers - The Berea Citizen  
Weekly and circulation - 3,200  
Other papers received from - Richmond, Lexington, and Louisville,  
Kentucky; Cincinnati, Ohio

Radio - WKXO-AM  
Stations received from - Richmond, Renfro Valley, Lexington, and  
Louisville, Kentucky; Cincinnati, Ohio

Television -  
Cable service  
Reception from - Lexington and Louisville, Kentucky;  
Cincinnati, Ohio  
Kentucky Educational  
Television - Lexington-Richmond transmitter - Channel 46

### Library Services

Hutchins Library - Berea College\*  
Size collection - 225,230 volumes  
Circulation, 1978-79 - 59,122  
Special collections - Weatherford-Hammond Mountain Collection,  
Shedd Lincoln Collection, Berea Collection, Rare Book Collection  
(Curio), Children's Collection  
Services - Microfilm, magazines, newspapers, records, copy machines,  
reader-printer

\*Hutchins Library also serves as a public library for the community.



### Religious Institutions

Number of churches - 48  
Denominations - Assembly of God      Quaker  
                         Baha'i                      Nazarene  
                         Baptist                     Pentecostal  
                         Catholic                    Pentecostal Holiness  
                         Christian                   Presbyterian  
                         Church of Christ           Trinity Holiness  
                         Church of God             United for Jesus  
                         Gospel Tabernacle        United Methodist  
                         Lutheran

Nearest Synagogues - Lexington, 41 miles distant  
Congregations - Adath Israel (reform)  
                         Ohavey Zion (traditional)

### Financial Institutions

<u>Banks</u>	<u>Assets</u>	<u>Deposits</u>	<u>Statement Date</u>
Berea National Bank	\$21,209,553.39	\$19,106,536.43	12/31/79
Peoples Bank and Trust Company	23,680,698.06	21,301,439.71	12/31/79

<u>Savings and Loan Associations</u>	<u>Assets</u>	<u>Savings Accounts</u>	<u>Statement Date</u>
First Federal Savings and Loan Association (branch of Richmond office)	\$53,956,301.92	\$50,753,360.97	12/31/79

### Hotels and Motels

Total number - 9  
Total rooms - 355

## Clubs and Organizations

American Association of Retired Persons	Daughters of the American Revolution (DAR)
American Association of University Women	Eastern Star
American Legion	4-H Club
Berea Association of Congregations	Future Farmers of America (FFA)
Berea Band Boosters	Future Homemakers of America (FHA)
Berea Chamber of Commerce	Garden Club
Berea Community Schools Boosters Club	Girl Scouts
Berea Industrial Development Corporation	Jaycees
Berea Lodge 617 Free and Accepted Masons (F&AM)	Kiwanians
Berea Woman's Club	Kiwanis
Berea Younger Woman's Club	League of Women Voters
Boy Scouts	Lioness
Brownies	Lions
Business and Professional Women's Club	Little League
Church Women United of Southern Madison County	Optimists Club
Cub Scouts	Parents-Teachers Organization (PTO)
	Pony League
	Progress Club
	Rotary
	Shrine Club
	Teen-Age Club
	Veterans of Foreign Wars (VFW)
	Wilderness Trail Radio Club

## RECREATION

### Local

The City of Berea sponsors a supervised recreational program during the summer months. Little League Baseball, Junior League Football, and basketball programs are also offered. Public recreational facilities include city parks, playgrounds, tennis courts, baseball/softball fields, a football field, and a municipal swimming pool. Private recreational facilities include a golf course, a swimming pool, a skating rink, an indoor movie theater, and a drive-in movie theater. Also available is a trailer park for overnight camping with 100 water and sewer hookups, a swimming pool, a bathhouse, and nature trails.

Berea College provides a wide range of entertainment and cultural attractions. The Appalachian Museum offers exhibits depicting the traditional lifestyle of the people of the Southern Appalachian Highlands. The Wallace Nutting Collection of Early American furniture and the Kress Study Collection of Renaissance Paintings are also on display at the college. The Berea College Student Craft Industries serves to preserve and promote the art of craftsmanship and includes the industries of woodcraft, broomcraft, fireside weaving, needlecraft, ceramics, and lapidary arts. Boone Tavern, owned by Berea College and staffed by college students, is noted for its southern charm and excellent food.

Churchill Weavers, the largest handweaving company in the country, is located in Berea. Tours are available through the loomhouse.

Special events that are held in Berea include the Kentucky Guild of Artist and Craftsmen's Fairs and the annual Mountain Folk Festival featuring folk music and dancing. The outdoor historical drama, "Wilderness Road," is presented each summer in Indian Fort Theatre and the Berea Community Players, a local theater group, presents several productions each year.

### Area (Within 45 miles)

Berea's location at the edges of the Bluegrass Region and the Cumberland foothills places it in an area of numerous recreational facilities which include state parks, state shrines, and a number of university activities.

Art exhibits, drama productions, concerts, lectures, and inter-collegiate sports are provided by Eastern Kentucky University, only 14 miles away at Richmond.

(Condt.)



Bybee Pottery, located 24 miles northeast of Berea, is known nationwide for its unusual handmade Kentucky pottery. Generations of craftsmen-potters have been creating the Bybee line for over a century. Tours are available.

The Daniel Boone National Forest, approximately 25 miles east of Berea, covers 1,500,000 acres of timberland in eastern Kentucky. It encompasses much of Kentucky's great beauty and provides a vacation paradise. There are scenic hiking trails, rivers and streams stocked with a variety of fish, hunting preserves, camping sites, and numerous other natural and historical attractions.

The Spirit of Daniel Boone and his pioneers is reborn at Fort Boonesborough State Park near Boonesboro, 26 miles north of Berea. In the re-created fort 16 pioneer crafts of the eighteenth century are demonstrated by Kentuckians using functioning antiques from the frontier era. Cabins are furnished as they would have been in the days of Boone and documentary films are presented which depict the struggle of the first Kentuckians to make the Kentucky wilderness a home. A gift shop within the fort offers for sale all the handcrafted items made at the fort, along with a wide variety of handcrafts from throughout Kentucky. Other recreational facilities and activities of the park include the finest sand beach on the Kentucky River with a modern bathhouse, sun deck, and snack shop; a modern camping area with 187 sites; a central service building housing showers, restrooms, and laundry facilities for campers; a pavilion with a gift shop and grocery inside and a playground and basketball, volleyball, and shuffleboard courts on the grounds; and planned daily activities and special events under the guidance of a trained recreation director. Near the park is the dock of the Dixie Belle sternwheel excursion boat which operates one-hour trips daily on the Kentucky River leaving from the Fort Boonesborough boat dock.

The Kentucky Horse Park, a park dedicated to horses and to man's love for horses, is located 41 miles north of Berea in Lexington. The park, which contains more than 1,000 acres of Kentucky Bluegrass, features the International Museum of the Horse; the Man O'War Memorial; an antique carriage display; horseback and pony rides; walking farm tours; horse-drawn tours; planned recreation; a restaurant; a gift shop; and a campground area, which offers swimming, tennis, and planned activities. Numerous special events are held year-round and include various horse shows, steeplechasing, dressage, polo games, and three-day eventing.

Lexington also offers a wide variety of entertainment, cultural and sporting events. Excellent thoroughbred and harness racing is available at Keeneland Race Course and Red Mile Trotting Track at several meets each year. Other attractions offered in Lexington include concerts by the Lexington Philharmonic, a lecture series, art exhibitions, theater productions, and intercollegiate sporting events.

Old Fort Harrod State Park, 43 miles northwest of Berea, is a 28-acre park in Harrodsburg that features a full-scale reproduction of the original Fort Harrod. The park also contains the log cabin where Abraham Lincoln's parents were wed, the Mansion Museum which houses mementos associated with the great periods of Kentucky history, a pioneer cemetery, and a federal monument dedicated to pioneers. The "Legend of Daniel Boone", an outdoor drama which brings to life on stage the men and women who made Kentucky, is performed in the park amphitheatre during the summer months.

Herrington Lake, about 45 miles west of Berea near Danville and Harrodsburg, was developed by the Kentucky Utilities Company in 1925. Dix River Dam near Pleasant Hill is located on the 1,860-acre lake. Fishing, boating, and swimming can all be enjoyed on the lake. Camping and fishing facilities are available near Danville and Harrodsburg.

Six state shrines of historical interest in the area are:

Isaac Shelby State Shrine, near Danville - burial site of Kentucky's first governor.

Constitution Square State Shrine, in Danville - reproduction of Kentucky's first courthouse square.

William Whitley House State Shrine, near Stanford - first brick house west of the Alleghenies.

White Hall State Shrine, near Richmond - restored mansion of Cassius Marcellus Clay, early politician and abolitionist.

Waveland State Shrine, near Lexington - Greek Revival mansion containing Kentucky Life Museum, hundreds of pioneer items and Civil War relics.

Perryville Battlefield State Shrine, near Perryville - site of the largest Civil War battle in Kentucky.



## COMMUNITY IMPROVEMENTS

The Goodyear Aerospace Corporation has completed the first phase of a \$3 million plant expansion project. Construction is scheduled to add an additional 62,250 square feet of floor space to the present plant. The second phase, a \$5 million expansion, is scheduled for completion in May 1981. It will eventually provide 90 new jobs and consolidate all local manufacturing into one plant.

Wyatt Supply, Inc., has completed a major plant expansion and renovation project. A new building provides office space, warehouse space, a boiler room, and a steam curing room for light-weight concrete blocks. The bulk concrete plant has been updated with new equipment and two new concrete delivery trucks have been purchased. The \$500,000 project provided four new jobs.

The Hyster Company has also completed a major construction and renovation project. The construction phase has added 130,000 square feet of new manufacturing space and 14,000 square feet of office space. Construction costs have exceeded \$6 million and an additional \$3 million has been expended for new manufacturing and support equipment.

Restoration of the 200-year old Louisville and Nashville Railroad depot is under way. When completed, the \$300,000 project will house the home office of MATCH, Inc., (Marketing Appalachia's Traditional Community Handcrafts). In addition, the depot will provide space for a restaurant featuring traditional foods from the region, craft shops, a living resource center, and a Folk-Art Gallery.

The Berea Independent School System is in the process of establishing a program for kindergarten-age children who have physical and mental handicaps. The school system has been appointed to employ a teacher for a special autistic unit established at Eastern Kentucky University.

The City of Berea plans to build a picnic shelter, restroom facilities, and a storage area at the public park. Construction of the \$40,000 improvement will begin in late 1980.

Berea is continuing a street repair project which has already provided new sidewalk curbs, and resurfaced and widened city streets.