

1977

# Industrial Resources: Warren County - Bowling Green

Kentucky Library Research Collections  
Western Kentucky University, [spcol@wku.edu](mailto:spcol@wku.edu)

Follow this and additional works at: [https://digitalcommons.wku.edu/warren\\_cty](https://digitalcommons.wku.edu/warren_cty)



Part of the [Business Administration, Management, and Operations Commons](#), [Growth and Development Commons](#), and the [Infrastructure Commons](#)

---

## Recommended Citation

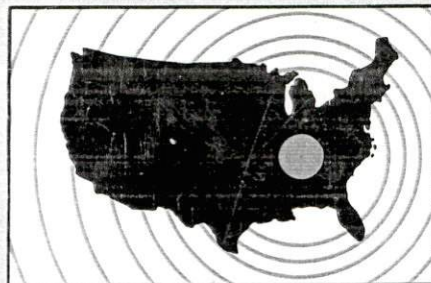
Kentucky Library Research Collections, "Industrial Resources: Warren County - Bowling Green" (1977). *Warren County*. Paper 2.  
[https://digitalcommons.wku.edu/warren\\_cty/2](https://digitalcommons.wku.edu/warren_cty/2)

This Report is brought to you for free and open access by TopSCHOLAR®. It has been accepted for inclusion in Warren County by an authorized administrator of TopSCHOLAR®. For more information, please contact [topscholar@wku.edu](mailto:topscholar@wku.edu).

# ***INDUSTRIAL RESOURCES***

## **BOWLING GREEN**

**Kentucky  
first**



**DEPARTMENT OF COMMERCE**



# BOWLING GREEN, KENTUCKY

## Index to Industrial Sites--1977







## BOWLING GREEN, KENTUCKY --- Index to Industrial Sites --- 1977

For detailed data on individual sites contact Mr. Harold Huffman, Executive Vice President, Bowling Green-Warren County Chamber of Commerce, Post Office Box 51, Bowling Green, Kentucky 42101, or the Industrial Development Division, Kentucky Department of Commerce, Capital Plaza Tower, Frankfort, Kentucky 40601.



INDUSTRIAL RESOURCES  
BOWLING GREEN, KENTUCKY

Prepared by  
The Kentucky Department of Commerce  
Division of Research and Planning  
in cooperation with  
The Bowling Green-Warren County Chamber of Commerce, Inc.

1977



Production supervisor: Patsy Wallace; research: Betty Clary;  
clerical: Mary Jo Ballinger; graphics: N. C. Montague, Frank Ferrante,  
Tony Cecconi, Richard Spencer; cartography: Industrial Development  
Division. Cost of printing paid from state funds.



# TABLE OF CONTENTS

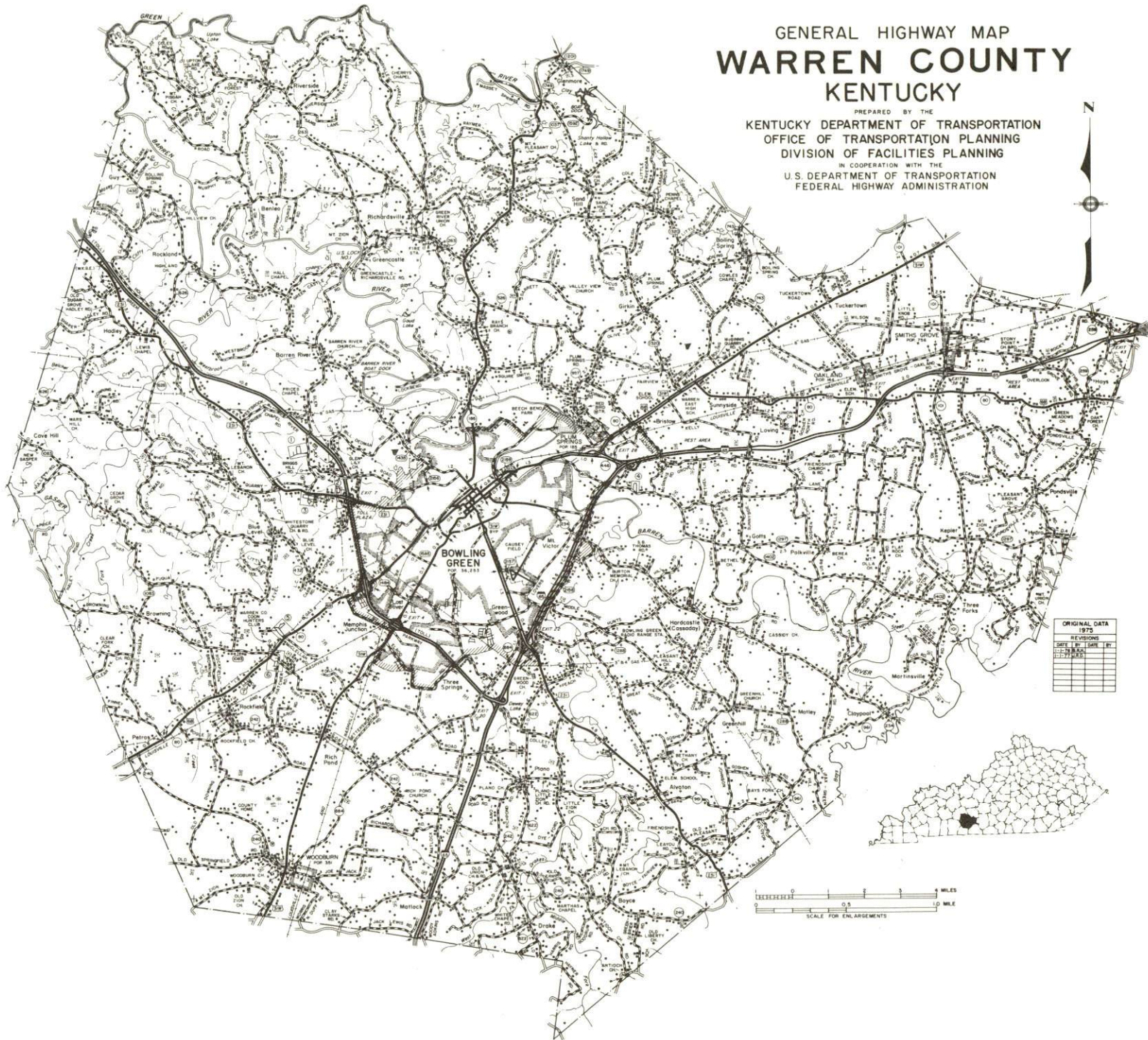
<u>Chapter</u>	<u>Page</u>
INDUSTRIAL SITES . . . . .	i
BOWLING GREEN, KENTUCKY - A RESOURCE PROFILE . . . . .	1
THE LABOR MARKET AREA. . . . .	4
Population. . . . .	4
Labor Force Characteristics of Residents, 1975. . . . .	4
Nonagricultural Employment by Industry, by Place of Work, 1975. . . . .	5
Major Bowling Green Manufacturing Firms, Their Products and Employment . . . . .	6
Labor Organizations. . . . .	7
Estimated Male Labor Supply . . . . .	13
Estimated Female Labor Supply . . . . .	13
Average Weekly Wages by Industry, by Place of Work, 1975. . . . .	14
Per Capita Personal Income. . . . .	16
TRANSPORTATION . . . . .	17
Rail. . . . .	17
Highways. . . . .	17
Truck Service . . . . .	18
Air . . . . .	19
Bus . . . . .	19
Taxi. . . . .	19
Rental Services . . . . .	19
POWER AND FUEL . . . . .	20
Electricity . . . . .	20
Natural Gas . . . . .	20
Other Fuels . . . . .	21
WATER AND SEWERAGE . . . . .	22
Water . . . . .	22
Sewerage. . . . .	24
CLIMATE. . . . .	26



<u>Chapter</u>	<u>Page</u>
LOCAL GOVERNMENT . . . . .	28
City. . . . .	28
County. . . . .	28
Assessed Value of Property, 1976. . . . .	28
Property Taxes. . . . .	28
Local Property Tax Rate Per \$100 of Assessed Valuation, 1976 . . . . .	29
Utilities Gross Receipts Tax for Schools . . . . .	29
Planning and Zoning . . . . .	29
Safety. . . . .	29
Police. . . . .	29
Fire. . . . .	31
Rescue Squad. . . . .	31
Solid Waste . . . . .	31
EDUCATION. . . . .	32
Public Schools. . . . .	32
Nonpublic Schools . . . . .	32
Area Colleges and Universities. . . . .	36
Vocational Schools. . . . .	37
HEALTH . . . . .	39
Local Medical Personnel . . . . .	39
Hospitals . . . . .	39
Other Medical Facilities. . . . .	40
Ambulance Service . . . . .	40
Nursing Homes . . . . .	40
Public Health . . . . .	40
OTHER LOCAL FACILITIES . . . . .	42
Communications. . . . .	42
Library Services. . . . .	42
Day Care Services . . . . .	43
Religious Institutions. . . . .	43
Financial Institutions. . . . .	43
Hotels and Motels . . . . .	43
Clubs and Organizations . . . . .	47
RECREATION . . . . .	49
COMMUNITY IMPROVEMENTS . . . . .	53

# GENERAL HIGHWAY MAP WARREN COUNTY KENTUCKY

PREPARED BY THE  
KENTUCKY DEPARTMENT OF TRANSPORTATION  
OFFICE OF TRANSPORTATION PLANNING  
DIVISION OF FACILITIES PLANNING  
IN COOPERATION WITH THE  
U.S. DEPARTMENT OF TRANSPORTATION  
FEDERAL HIGHWAY ADMINISTRATION



ORIGINAL DATA		
1975		
REVISIONS		
DATE	BY	REVISION
11-1-75	PL	1
11-1-75	PL	2
11-1-75	PL	3
11-1-75	PL	4
11-1-75	PL	5
11-1-75	PL	6
11-1-75	PL	7
11-1-75	PL	8
11-1-75	PL	9
11-1-75	PL	10

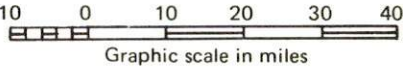
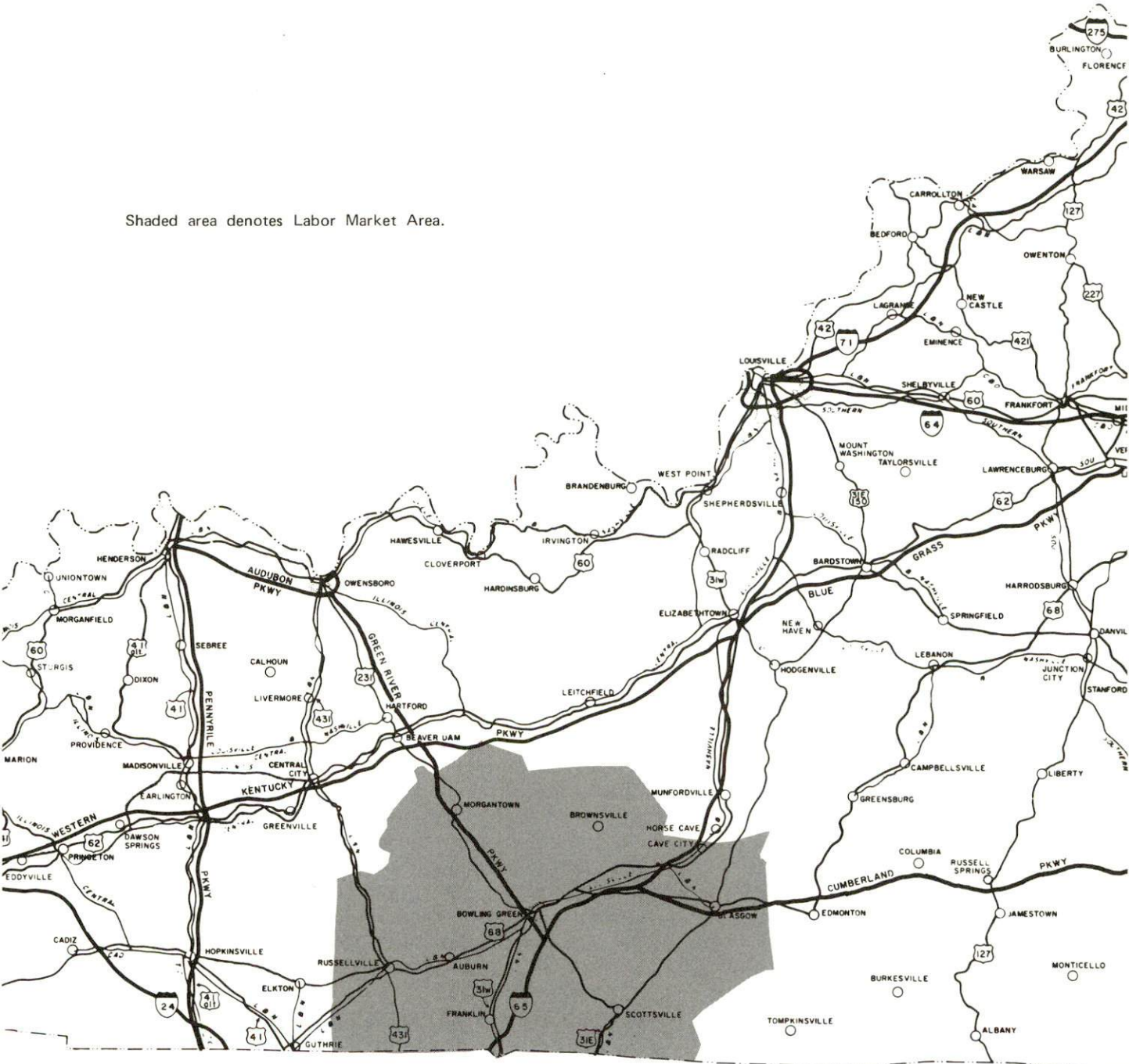
0 1 2 3 4 5 6 7 8 9 10 MILES  
0 1 2 3 4 5 6 7 8 9 10 MILE  
SCALE FOR ENLARGEMENTS



BOWLING GREEN LABOR MARKET AREA



Shaded area denotes Labor Market Area.



## BOWLING GREEN, KENTUCKY - A RESOURCE PROFILE

Bowling Green, county seat of Warren County and home of Western Kentucky University, is a progressive and fast-growing southern Kentucky city serving the area as an educational, industrial, and commercial center. Bowling Green, fifth largest city in Kentucky, had a 1973 population of 36,315. Situated on the banks of the Barren River in the southwestern section of central Kentucky, Bowling Green is 27 miles north of the Kentucky-Tennessee border, 65 miles northeast of Nashville, Tennessee, 115 miles southwest of Louisville, Kentucky, and 282 miles southwest of St. Louis, Missouri.

Warren County is part of the ten-county Barren River Area Development District (BRADD) which has its headquarters in Bowling Green. The area development district is a statutory administrative agency organized to plan for the development of a region and to provide technical assistance to local governments.

Warren County is located in Kentucky's Pennyryle Region and covers a land area of 546 square miles. The 1975 county population was 62,400.

### The Economic Framework

The total number of Warren county residents employed in 1975 averaged 28,685, with nonagricultural jobs accounting for 27,060 workers. Manufacturing employment in the county, as reported by employers, averaged 7,030 workers; mining and quarrying 140; construction firms 1,160; transportation, communications, and public utilities 970; wholesale and retail trade 5,900; finance, insurance, and real estate 880; and employees in the service industries 4,510. Major industrial products are carburetors, air conditioning and refrigeration equipment, men's and boys' underwear, electrical and electronic controls, tire fabric, rubber tire mounted truck cranes, and portable space heaters.

Total unemployment in Warren county averaged 6.3 percent of the labor force in 1975.

Per capita personal income in the county in 1975 was \$4,713, an increase of 59 percent since 1971.

The Bowling Green labor market area includes Warren and the six adjoining counties. The total number of residents of the labor market area employed in 1975 averaged 68,110, with nonagricultural jobs accounting for 59,650 workers. Manufacturing employment in the area, as reported by employers, averaged 17,780 workers; mining and quarrying 430; construction firms 1,970; transportation, communications, and public utilities 1,790; wholesale and retail trade 11,295; finance, insurance, and real estate 1,680; and employees in the service industries 6,970.



## Resources for Growth

1. Labor Supply - There is a current labor supply of 8,410 men and 7,910 women available for industrial jobs in the labor market area. In addition, 7,360 young men and 6,940 young women in the area will become 18 years of age before 1983 and potentially available for work.

2. Transportation - The local transportation capability is excellent. Rail freight service, passenger service, and a variety of other services including piggyback facilities are provided by the Louisville and Nashville Railroad and Amtrak. Interstate 65, a major highway artery into the industrial south and midwest, is routed through Warren County with interchanges located east and southeast of Bowling Green only minutes from the downtown business district. The route of the Green River Parkway passes through the western and southern city limits and the east-west Cumberland Parkway intersects with Interstate 65 just 21 miles northeast of Bowling Green. Seven of the ten truck lines serving Bowling Green maintain terminals in the city. Charter and commuter air service is available locally and the Nashville Metropolitan Airport, 65 miles south of Bowling Green, offers commercial passenger and scheduled air freight services.

3. Utilities and Fuel - Electric power is provided by the Bowling Green Municipal Utilities and the Warren Rural Electric Cooperative Corporation, with TVA serving as the source of supply. Natural gas service is provided by the Western Kentucky Gas Company. There are three distributors of propane and seven distributors of distillate fuel oil located in Bowling Green. The raw water supply from the Barren River is more than adequate for continued growth.

4. Education - Education is an important growth asset for Bowling Green. The Bowling Green Independent School District and the Warren County School System offer excellent educational programs. Vocational training is available on the secondary level through the Occupational Training Center of the Bowling Green Independent School District which offers training in 32 different course areas. The Bowling Green State Vocational-Technical School offers career training in 24 different course areas.

Western Kentucky University, located on a hill overlooking the city of Bowling Green, is acclaimed as one of the most beautiful in the nation. The main campus of the University has 66 major buildings and approximately 200 acres. The enrollment for Fall 1976 was approximately 13,400.

Western's undergraduate division provides four-year programs leading to the Bachelor of Arts, the Bachelor of Fine Arts, the Bachelor of Science, the Bachelor of Science in Nursing and the Bachelor of Music Degrees. Two-year programs are offered leading to the Associate of Arts Degree, the Associate of Science Degree and the Associate of Liberal Studies Degree. One-year certificate programs are also offered in several areas. The Graduate College offers eight different masters degrees: Master of Arts, Master of Arts in College Teaching, Master of

Arts in Education, Master of Science, Master of Public Service, Master of Business Administration, Master of Music and Master of Science in Engineering Physics. The University also confers the Specialist Degree and provides a Rank I program and cooperative doctoral programs.

Of special interest to industry is the broad program of study offered by the University Department of Industrial Education and Technology. The industrial technology curriculums appeal to high school graduates seeking technical training, students completing a vocational school program who wish to broaden their educational experience, and people working in industry who wish to advance in their occupation or to prepare for a new position. Program offerings or areas of study are one, two, or four years in duration. Ten associate degree programs are available in the following areas; Architectural Drafting Technology, Building Construction Technology, Drafting and Design Technology, Graphic Reproduction Technology, Industrial Electrical Technology, Industrial Plastics Technology, Manufacturing Technology, Metals Technology, Power Mechanics Technology, and Wood Products Technology. In the Bachelor of Science Degree programs, specialization may also be planned in one or more of the above areas.



# THE LABOR MARKET AREA

POPULATION			Percent Nonwhite
Area	1975*	1970	1970
Bowling Green	36,315**	36,705	10.4
Labor Market Area	162,500	152,480	N.A.
Warren County	62,400	57,884	8.6
Allen County	13,600	12,598	2.1
Barren County	30,700	28,677	6.3
Butler County	10,100	9,723	0.7
Edmonson County	9,500	8,751	2.7
Logan County	22,100	21,793	10.1
Simpson County	14,100	13,054	12.4

\*Provisional Estimates.

\*\*1973 Population Estimates.

Sources: U. S. Department of Commerce, Bureau of the Census, Census of Population, 1970. U. S. Department of Commerce, Bureau of the Census, Current Population Reports, Series P-25, No. 562, June 1975; Series P-26, No. 75-17, May 1976.

LABOR FORCE CHARACTERISTICS OF RESIDENTS, 1975		
	Warren County	Labor Market Area
Civilian Labor Force	30,611	74,088
Employment	28,685	68,111
Agricultural	1,625	8,457
Nonagricultural	27,060	59,654
Unemployment	1,926	5,977
Rate of Unemployment (%)	6.3	8.1

Source: Kentucky Department for Human Resources, Kentucky Labor Force Estimates, Annual Averages, 1975.

NONAGRICULTURAL EMPLOYMENT BY INDUSTRY,  
BY PLACE OF WORK, 1975

	Warren County	Labor Market Area
All Industries	20,665	42,084
Mining & Quarrying	144	431
Contract Construction	1,157	1,971
Manufacturing	7,027	17,780
Food & Kindred Products	515	1,050
Tobacco	147	147
Apparel, Textiles, Leather	1,882	4,658
Lumber, Furniture	244	1,005
Printing & Publishing, Paper	157	820
Chemicals, Petroleum & Coal,		
Rubber	72	853
Stone, Clay & Glass	40	103
Primary Metals	55	497
Machinery, Metal Products,		
Equipment	3,916	7,686
Other Manufacturing	0	965
Transportation, Communications &		
Public Utilities	967	1,786
Wholesale & Retail Trade	5,904	11,295
Finance, Insurance &		
Real Estate	881	1,678
Services	4,512	6,970
Other	74	156

Note: Excludes domestic workers, railway workers; certain nonprofit corporations; majority of federal, state, and local government workers; and self-employed workers. Labor market area totals for some employment categories exclude employment that was not disclosed for individual counties. Manufacturing detail may not add to totals because of rounding of base data.

Source: Kentucky Department for Human Resources, Average Monthly Workers Covered by Kentucky Unemployment Insurance Law, 1975.



MAJOR BOWLING GREEN MANUFACTURING FIRMS,  
THEIR PRODUCTS AND EMPLOYMENT \*

<u>Firm</u> (Establishment date)	<u>Product</u>	<u>Employment</u>			<u>Organized</u>
		<u>Total</u>	<u>Male</u>	<u>Female</u>	
Airtemp Applied Machinery Company (1968)	Air conditioning equipment	650			**
Atomaster Division of Koehring Company (1964)	Oil-fired portable space heaters	232	180	52	**
Bada Company, Inc. (1972)	Lead wheel weights	92	46	46	
Bowling Green Plant, Holley Carburetor Division of Colt Industries, Inc. (1951)	Carburetors	1,800	1,200	600	
Corco, Inc., Corrugated Container Division (1965)	Shipping containers	80	70	10	**
Cutler-Hammer, Inc. (1964)	Electrical and electronic controls	900	550	350	**
Detrex Chemical Company (1955)	Industrial degreasing equipment, commercial dry cleaning equipment	181	162	19	**
Dibrell-Kentucky, Inc. (1962)	Tobacco redrying	550	350	200	
Exceptional Industries (1968)	Assemble coils for box springs, frames for box springs, silver remelting	60	30	30	
FMC Corporation (1974)	Truck cranes	439	376	63	
Firestone Textiles Company (1967)	Tire fabric	864	606	258	
Lord Corporation (1974)	Shock and vibration control systems	57	49	8	
Nehi Royal Crown Bottling Co., Inc. (1931)	Soft drinks	98	89	9	
News Publishing Company (1854)	Newspaper	63	40	23	
Page Welding Division, American Chain & Cable Company, Inc. (1967)	Automatic welding wire	135	125	10	**
Scott Tobacco Company (1902)	Twist and smoking tobacco	130	104	26	

(Contd.)

<u>Firm (Establishment date)</u>	<u>Product</u>	<u>Employment</u>			<u>Organized</u>
		<u>Total</u>	<u>Male</u>	<u>Female</u>	
L. F. Strassheim Company (1929)	Wood brush blocks & handles, furni- ture parts, chairs, plastic handles	170	130	40	**
Tri State Bedding Company, Inc. (1957)	Mattresses, box springs, felt	65	50	15	**
Union Underwear Company, Inc. (1941)	Men's and boys' underwear	1,015	125	890	
Bob White Packing Company, Inc. (1951)	Beef and pork products, smoked meats, custom slaughtering	60	42	18	

\*50 or more employees.

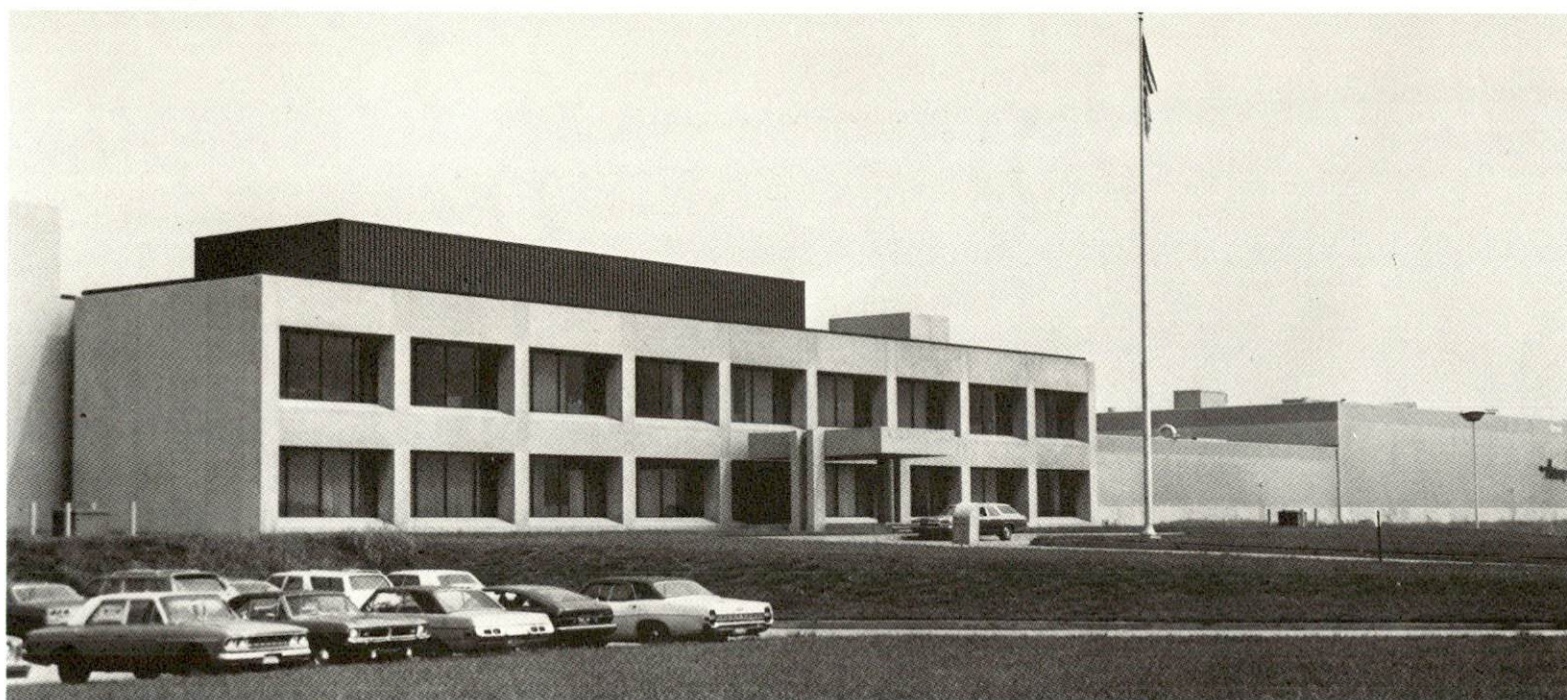
\*\*See Labor Organizations below.

Sources: Kentucky Department of Commerce, 1977 Kentucky Directory of Manufacturers; Bowling Green-Warren County Chamber of Commerce.

#### LABOR ORGANIZATIONS

<u>Union</u>	<u>Representing manufacturing workers at:</u>
International Association of Machinists and Aerospace Workers	Cutler-Hammer, Inc.; L. F. Strassheim Company
Sheet Metal Workers' International Association	Detrex Chemical Company; Atomaster Division of Koehring Company
United Auto Workers	Airtemp Applied Machinery Company; Capitol Aluminum Manufacturing Company, Inc.; Page Welding Division, American Chain & Cable Company, Inc.
United Brotherhood of Carpenters and Joiners of America	True Temper Corporation
Teamsters	Corco, Inc. Corrugated Container Division; Cutler-Hammer, Inc.; Tri-State Bedding Company, Inc.; Western Concrete, Inc.
International Union of Operating Engineers	Gary Brothers Crushed Stone Company; State Contracting and Stone Company





APPLIED MACHINERY COMPANY, AIRTEMP CORPORATION

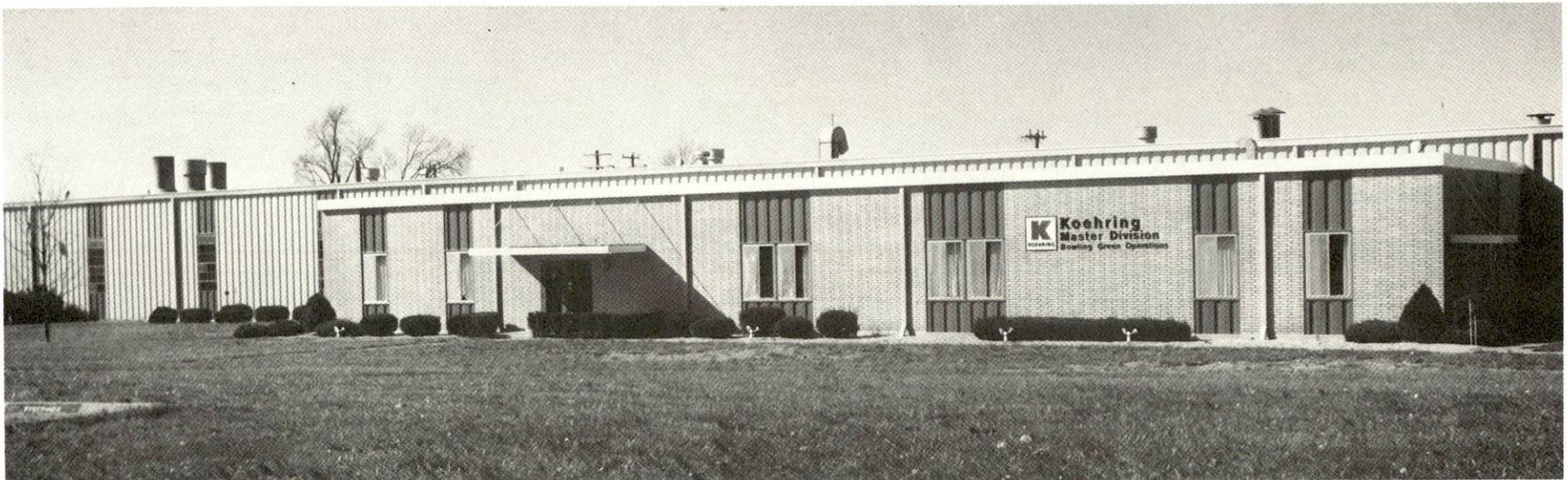


LORD CORPORATION





FMC CORPORATION

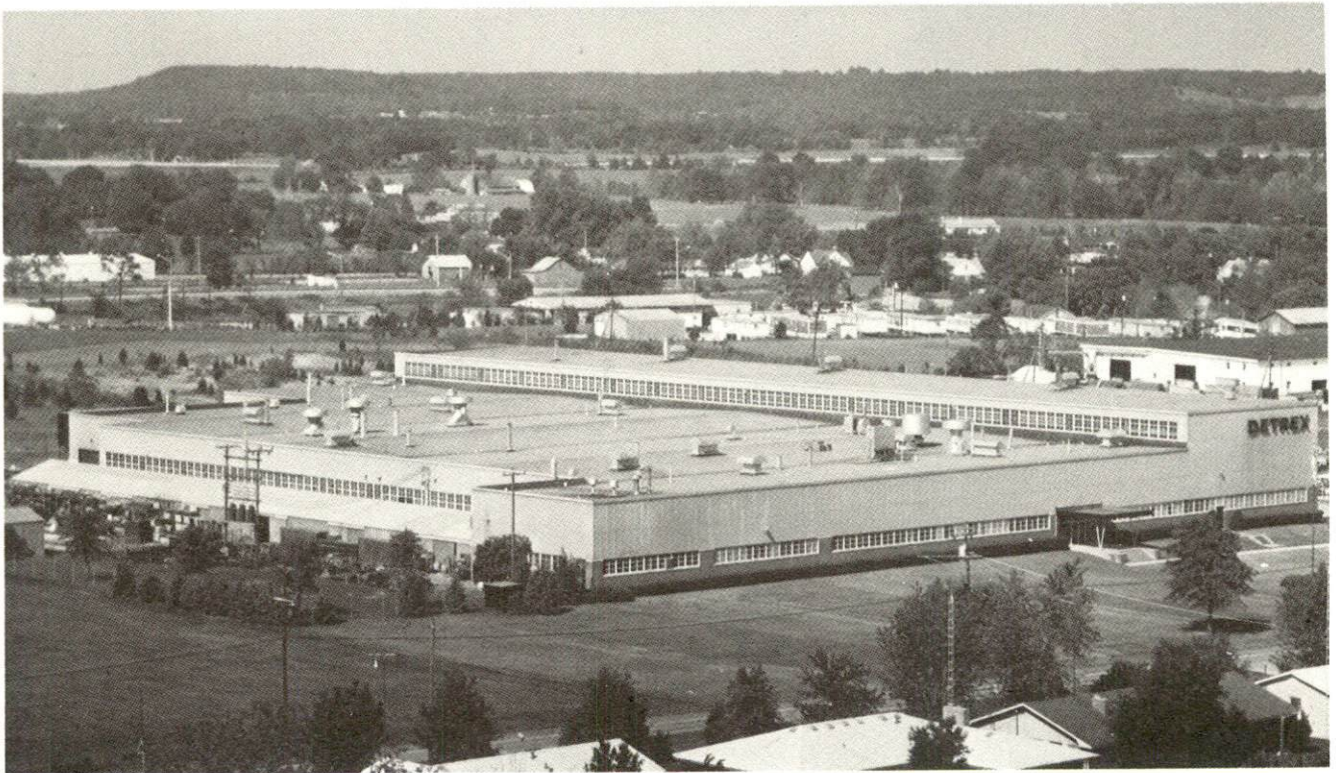


MASTER DIVISION OF KOEHRING COMPANY



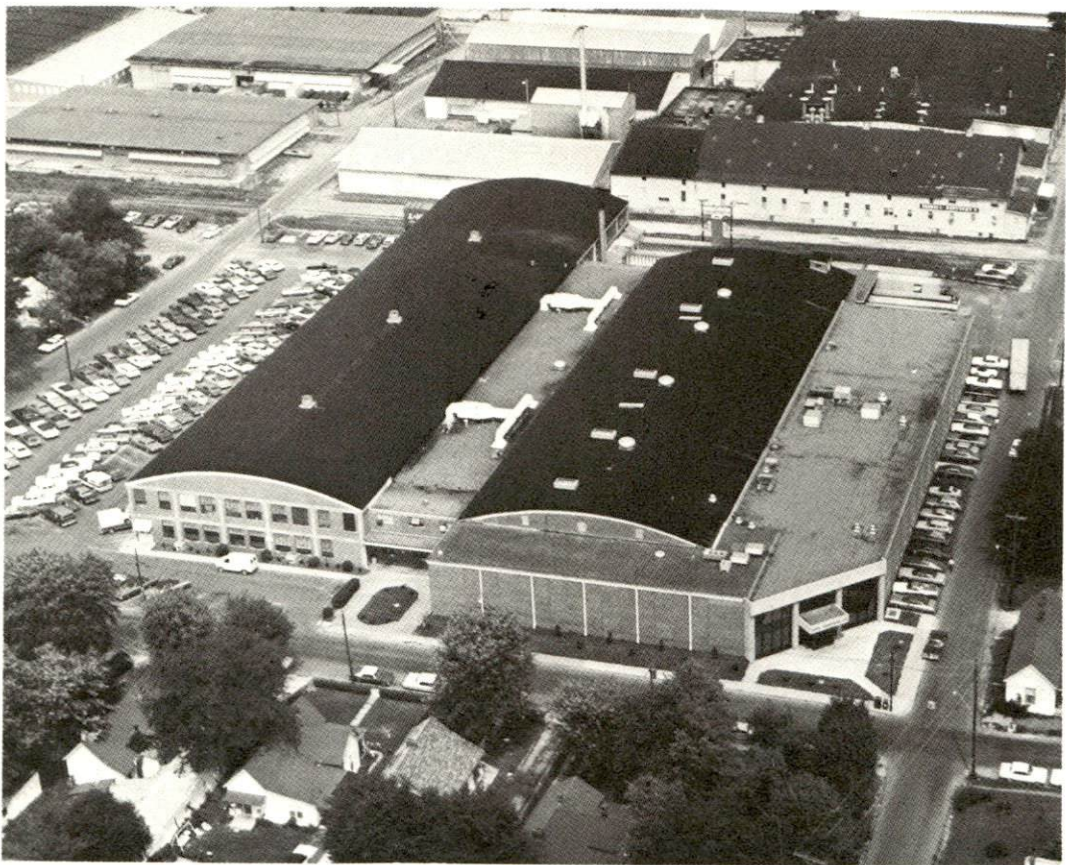


BOWLING GREEN PLANT  
HOLLEY CARBURATOR DIVISION OF COLT INDUSTRIES

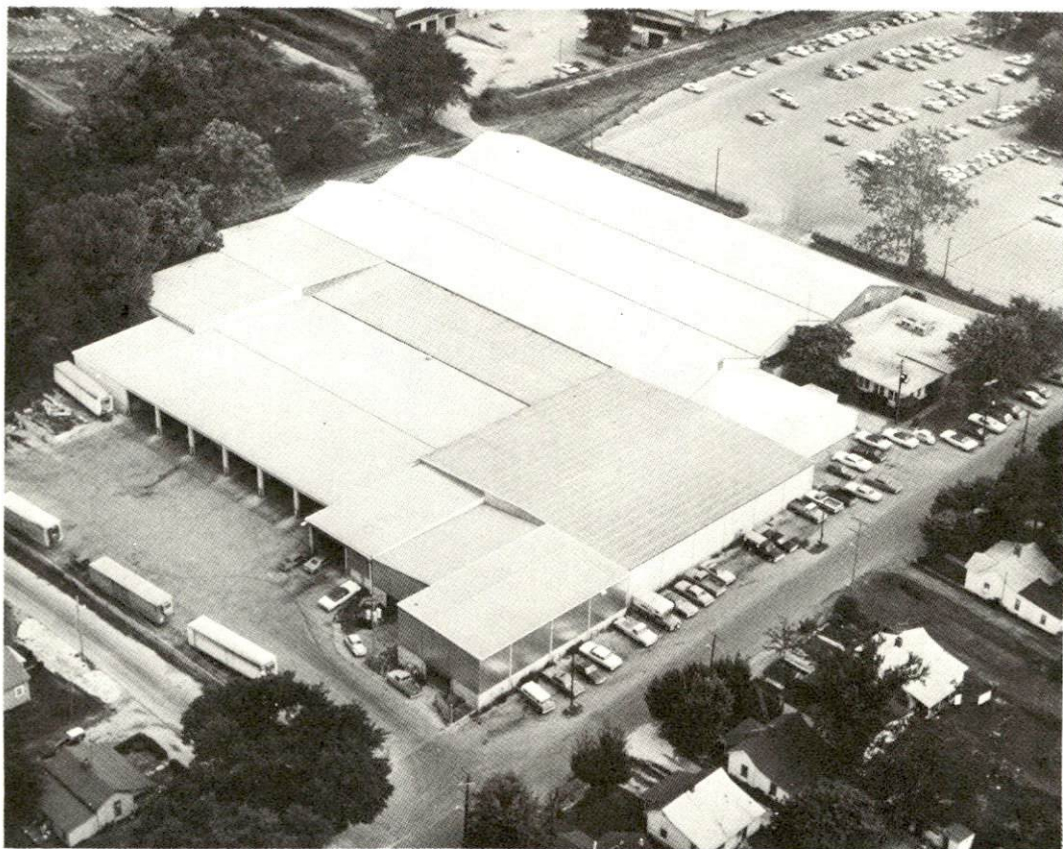


DETREX CHEMICAL COMPANY





UNION UNDERWEAR COMPANY, INC.



HOUCHENS INDUSTRIES HEADQUARTERS





CUTLER-HAMMER, INC.



FIRESTONE TEXTILES COMPANY



ESTIMATED MALE LABOR SUPPLY  
BOWLING GREEN LABOR MARKET AREA

Area	Current				Future
	Total	Not in Labor Force	Unemployed	Under- employed	Reaching 18 yrs. of age before 1983
Labor Market					
Area	8,410	1,090	3,770	3,550	7,356
Warren	3,250	0	1,260	1,990	2,671
Allen	560	0	370	190	547
Barren	1,220	0	690	530	1,417
Butler	900	460	230	210	465
Edmonson	320	0	200	120	438
Logan	1,080	190	570	320	1,110
Simpson	1,080	440	450	190	708

Sources: Kentucky Department for Human Resources, Kentucky Labor Supply Estimates by County, 1976. Kentucky Department of Commerce, Future Labor Supply before 1983.

ESTIMATED FEMALE LABOR SUPPLY  
BOWLING GREEN LABOR MARKET AREA

Area	Current				Future
	Total	Not in Labor Force	Unemployed	Under- employed	Reaching 18 yrs. of age before 1983
Labor Market					
Area	7,910	2,130	2,210	3,570	6,944
Warren	2,590	0	660	1,930	2,477
Allen	440	0	190	250	591
Barren	1,090	0	600	490	1,292
Butler	850	530	120	200	473
Edmonson	570	330	100	140	437
Logan	1,380	760	300	320	1,034
Simpson	990	510	240	240	640

Sources: Kentucky Department for Human Resources, Kentucky Labor Supply Estimates by County, 1976. Kentucky Department of Commerce, Future Labor Supply before 1983.



AVERAGE WEEKLY WAGES BY INDUSTRY,  
BY PLACE OF WORK, 1975

	<u>Warren County</u>	<u>Allen County</u>	<u>Barren County</u>	<u>Butler County</u>
All Industries	\$151.90	\$126.42	\$135.49	\$121.11
Mining & Quarrying	193.50	108.25	173.54	216.99
Contract Construc- tion	157.63	119.26	173.72	91.69
Manufacturing	172.83	138.12	156.82	103.62
Transportation, Communications & Public Utilities	189.62	190.46	178.08	169.11
Wholesale & Retail Trade	117.22	114.17	100.39	119.14
Finance, Insurance & Real Estate	159.79	143.59	151.40	135.20
Services	153.13	84.98	103.48	105.35
Other	97.52	79.65	87.15	0

	<u>Edmonson County</u>	<u>Logan County</u>	<u>Simpson County</u>
All Industries	\$110.22	\$128.53	\$142.18
Mining & Quarrying	176.50	*	*
Contract Construc- tion	88.89	136.08	118.43
Manufacturing	*	141.34	158.59
Transportation, Communications & Public Utilities	105.72	141.51	220.57
Wholesale & Retail Trade	98.47	103.48	111.45
Finance, Insurance & Real Estate	118.81	119.65	151.20
Services	111.32	100.30	100.66
Other	*	65.43	*

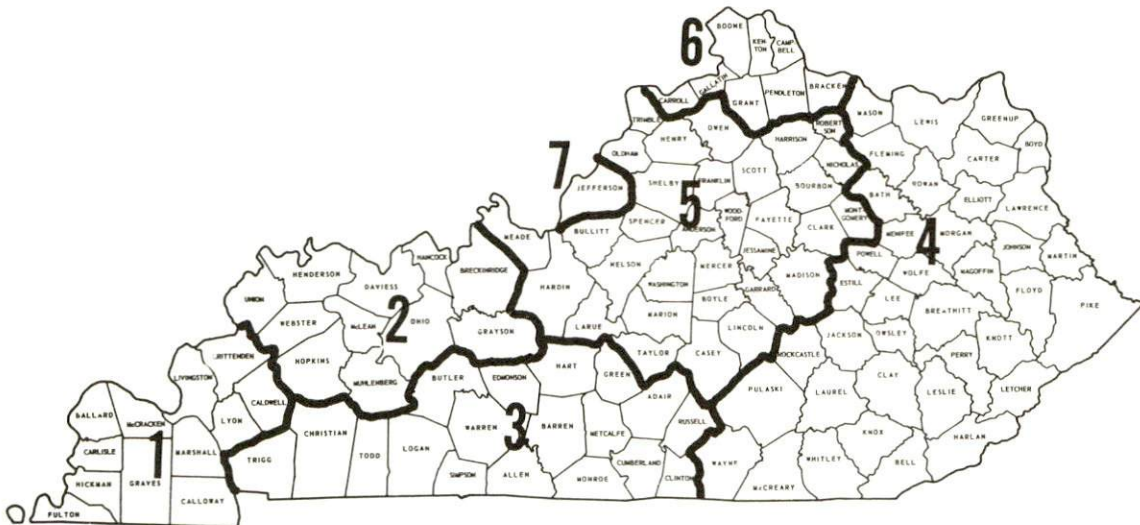
\*Not disclosed.

Note: Excludes domestic workers, railway workers; certain nonprofit corporations; majority of federal, state, and local government workers; and self-employed workers.

Source: Kentucky Department for Human Resources, Average Weekly Wages of Workers Covered By Unemployment Insurance, 1975.

Occupational wage rates for specific industries are usually not available to most government agencies, and wage data furnished to state employment agencies by individual industrial employers is protected from disclosure by federal law. The most reliable up-to-date wage information can be obtained by direct contact with local employers.

Associated Industries of Kentucky, a voluntary organization of Kentucky businesses, regularly collects occupational wage rates and fringe benefits data from participating member firms. Data is compiled for over 127 clearly defined office, production, and service occupations. Tabulations are published for seven regions of Kentucky, as shown on the map below. It should be noted that the data may be weighted by the preponderance of firms in the larger cities and may be somewhat higher than the rates paid in the smaller communities. Data from these tabulations are available, upon request, from the Kentucky Department of Commerce, Frankfort, Kentucky 40601.



Associated Industries of Kentucky Area Wage Surveys



Up-to-date occupational wage rates of the existing industries are maintained by South Kentucky Industrial Development Association, Post Office Box 726, Hopkinsville, Kentucky 42240.

PER CAPITA PERSONAL INCOME			
<u>Area</u>	<u>1975</u>	<u>1971</u>	<u>Percent Change</u>
Warren County	\$4,713	\$2,963	59.1
Labor Market Area			
Range	\$2,833 - 4,713	\$1,774 - 2,963	N.A.
Kentucky	4,886	3,314	47.4
U. S.	5,903	4,195	40.7

Sources: U. S. Department of Commerce, Bureau of Economic Analysis, Survey of Current Business, April 1977. U. S. Department of Commerce, Bureau of Economic Analysis, March 1976.

## TRANSPORTATION

### Rail

Line serving Bowling Green - Louisville and Nashville Railroad Company

Services - 1 northbound and 1 southbound freight daily, 6 northbound and 6 southbound through freights daily, switching facilities, team track with space for 15 cars plus siding, piggyback facilities.

Line serving Bowling Green - Amtrak

Services - Passenger, 1 northbound and 1 southbound daily.

For details on routing, schedules, rates, and services, contact:

Manager of Industrial Development  
Louisville and Nashville Railroad Company  
908 West Broadway  
Louisville, Kentucky 40203  
(502) 587-5000

and/or

Amtrak  
Passenger Station  
401 Kentucky  
Bowling Green, Kentucky 42101  
(502) 842-8269

### Highways

Bowling Green is easily accessible by highway. U. S. Highway 31-W and Interstate 65 intersect with U. S. Highways 68 and 231 at Bowling Green. Interstate 65 is a major north-south route which extends from the Chicago area to Mobile, Alabama. The Cumberland and Green River Parkways provide additional easy access to Bowling Green from the south central and northwestern parts of the state.



## Truck Service

<u>Company</u>	<u>Home Office</u>
Bowling Green Express, Inc.*	P. O. Box 1111 Bowling Green, Kentucky 42101
Cooper-Jarrett, Inc.*	Hanover Plaza Morristown, New Jersey 07960
Interstate Motor Freight Systems*	134 Grandville Avenue, S. W. Grand Rapids, Michigan 49503
McLean Trucking Company*	P. O. Box 213 Winston-Salem, North Carolina 27107
Overnite Transportation Company	P. O. Box 1216 Richmond, Virginia 23209
Renner's Express, Inc.*	P. O. Box 613 Indianapolis, Indiana 46206
Roadway Express, Inc.	1077 Gorge Boulevard Akron, Ohio 44309
Smith's Transfer Corporation*	P. O. Box 1000 Staunton, Virginia 24401
United Trucking Service, Inc.*	3047 Lonyo Road Detroit, Michigan 48209
Wilson Freight Company	3636 Follett Avenue Cincinnati, Ohio 45223
<u>Other Freight Services</u>	<u>Shipping Center</u>
United Parcel Service	Bowling Green

## HIGHWAY MILES AND TRUCK TRANSIT TIME IN DAYS FROM BOWLING GREEN, KENTUCKY, TO SELECTED MARKET CENTERS

City	Highway Miles	Delivery		City	Highway Miles	Delivery	
		Time	TL			Time	TL
Atlanta, Ga.	307	3		Los Angeles, Calif.	2,090	5	
Birmingham, Ala.	261	3		Louisville, Ky.	115	1	
Chicago, Ill.	381	3		Nashville, Tenn.	65	1	
Cincinnati, Ohio	204	3		New Orleans, La.	582	3	
Cleveland, Ohio	460	3		New York, N. Y.	851	4	
Detroit, Mich.	475	3		Pittsburgh, Pa.	488	3	
Knoxville, Tenn.	242	3		St. Louis, Mo.	282	3	

Source: Delivery Time Only - Renner's Express, Inc., P. O. Box 613,  
Indianapolis, Indiana 46206.

\*Local terminal.

## Air

### Local

Location: Bowling Green-Warren County Airport  
2 miles southeast of Bowling Green  
Runways: 2 paved  
Length: 6,500 feet; 4,000 feet  
Traffic  
Control: Wind tee, Airport Advisory Service  
Lighting: Runways, obstructions, taxiways, beacon,  
wind tee and strobes approach, VASI  
Services: Air Kentucky (commuter air carrier), 100  
octane, jet A-50, storage, major and minor  
A & E repairs, FAA Flight Service Station,  
taxi and rental car service, vending  
machines, pilot training, aircraft rental  
Air Freight  
Service: Chartered air services must be arranged

### Nearest Commercial

Location: Nashville Metropolitan Airport  
Nashville, Tennessee, 65 miles south of  
Bowling Green  
Runways: 3 paved  
Length: 8,000 feet; 7,700 feet; 4,025 feet  
Traffic  
Control: Approved Instrument Approach (ILS, VOR/DME)  
Lighting: High and medium intensity, 36-inch beacon  
Services: Aerie, Allegheny, American, Braniff, Delta,  
Eastern, Ozark, Piedmont, and Southern  
Airlines; 80/100/115 octane, jet fuel;  
major repairs, tie downs and hangars;  
oxygen; charter service; flight instructions;  
limousine, bus, taxi and car rentals; weather  
information; restaurant; hotel  
Air Freight  
Service: Air Freight Terminal

Bus - Fuqua Bus Lines, Greyhound Bus Lines, Tennessee Trailblazers

Taxi - One company, 24-hour radio-dispatched service

Rental Services - Automobile, truck, and trailer rentals



## POWER AND FUEL

### Electricity

Company serving Bowling Green - Bowling Green Municipal Utilities

Source of power - Tennessee Valley Authority

Total generating capacity - 27,071,480 KW\*

For industrial rates contact:

Bowling Green Municipal Utilities  
801 Center Street  
Bowling Green, Kentucky 42101  
(502) 782-1200

and/or

South Kentucky Industrial Development Association, Inc.  
P. O. Box 726  
Hopkinsville, Kentucky 42240  
(502) 885-5392

Company serving Warren County - Warren RECC

Source of power - Tennessee Valley Authority

Total generating capacity - 27,071,480 KW\*

For industrial rates contact:

Warren RECC  
P. O. Box 1118  
951 Fairview Avenue  
Bowling Green, Kentucky 42101  
(502) 842-6541

### Natural Gas

Company serving Bowling Green - Western Kentucky Gas Company

Source of supply - Texas Gas Transmission Corporation

Size of transmission mains - 8 and 10 inches (supplier);  
6 inches (distributor)

Distribution mains - 1 1/4 to 10 inches

Distribution pressure - 30 psi

Btu content - 1,000 per cubic feet; Specific gravity - .60

For rates and supplies contact:

Western Kentucky Gas Company  
1020 College Street  
Bowling Green, Kentucky 42101  
(502) 842-2447

\*1976 capacity in service-kilowatts

## Other Fuels

### Propane (All in Bowling Green)

McClard Doxol Gas Company  
801 Victoria Street

Miller's Bottled Gas, Inc.  
110 East Campbell Lane

Southern States Bowling Green  
Petroleum Cooperative  
Emmett Drive

### Fuel oils

#### Distillate fuel oils - (All in Bowling Green)

Amoco Oil Company  
Louisville Road

Exxon Company U. S. A.  
3170 Industrial Boulevard

Phillips 66 Petroleum Company - distributed by  
Ramsey Oil Company  
31-W Bypass

Shell Heating Oils - distributed by Browning  
Oil Company  
Louisville Road

Southern States Bowling Green Petroleum  
Cooperative  
Emmett Drive

Standard Oil Company Plant  
316 Portage Railroad

Texaco Heating Oil - distributed by  
R. C. McKinney  
110 Plain Avenue

Residual fuel oil - Arrangements must be made with the refinery.

Low sulphur content coal - Available in eastern Kentucky.



## WATER AND SEWERAGE

### Water

Company serving Bowling Green - Bowling Green Municipal Utilities\*  
 801 Center Street  
 Bowling Green, Kentucky 42101  
 (502) 782-1220

Source - Barren River

Treatment plant capacity - 10,500,000 gpd

Average daily consumption - 6,724,000 gallons

Peak daily consumption - 9,115,000 gallons

Type treatment - Conventional rapid sand filtration

Storage capacity - Total 9,400,000 gallons; clearwell 2,400,000 gallons; ground storage 5,000,000 gallons; 2 elevated tanks 1,000,000 each

Size lines - 18, 10, and 24 inches

Average pressure - 60 psi

Average temperature - 59 degrees F.

### MONTHLY WATER RATES FOR WHOLESALE AND INDUSTRIAL CONSUMERS

#### Inside City

First	300 cu. ft.	\$2.80 (Minimum)
Next	200 cu. ft.	.82 per 100 cu. ft.
Next	1,000 cu. ft.	.75 per 100 cu. ft.
Next	1,500 cu. ft.	.65 per 100 cu. ft.
Next	3,000 cu. ft.	.50 per 100 cu. ft.
Next	4,000 cu. ft.	.40 per 100 cu. ft.
Next	15,000 cu. ft.	.30 per 100 cu. ft.
Next	25,000 cu. ft.	.23 per 100 cu. ft.
Next	25,000 cu. ft.	.20 per 100 cu. ft.
Next	25,000 cu. ft.	.20 per 100 cu. ft.
All over	100,000 cu. ft.	.20 per 100 cu. ft.

#### Outside City

First	300 cu. ft.	\$3.92 (Minimum)
Next	200 cu. ft.	1.15 per 100 cu. ft.
Next	1,000 cu. ft.	1.05 per 100 cu. ft.
Next	1,500 cu. ft.	.91 per 100 cu. ft.
Next	3,000 cu. ft.	.70 per 100 cu. ft.
Next	4,000 cu. ft.	.56 per 100 cu. ft.
Next	15,000 cu. ft.	.42 per 100 cu. ft.
Next	25,000 cu. ft.	.32 per 100 cu. ft.
Next	25,000 cu. ft.	.28 per 100 cu. ft.
Next	25,000 cu. ft.	.28 per 100 cu. ft.
All over	100,000 cu. ft.	.28 per 100 cu. ft.

\*A study is underway for upgrading plant capacity to 14,400,000 gpd.

Tap-on charge:

5/8-inch meter - \$160 plus \$15 deposit  
1-inch meter - \$260 plus \$40 deposit  
2-inch meter - Based on actual cost of  
installation plus \$100 deposit  
4-inch meter - Based on actual cost of  
installation plus \$150 deposit  
6-inch meter - Based on actual cost of  
installation plus \$200 deposit

Name of water district - Warren County Water District\*  
951 Fairview  
Bowling Green, Kentucky 42101  
(502) 842-0052

Area served - Warren County

Date when water district began operating - 1964

Source of supply of treated water - Bowling Green Municipal  
Utilities

Source of raw water - Barren River

Capacity of treatment plant - 150 gpm

Type of treatment - Rapid sand

Average amount of water used in a 24-hour period - 1,690,000 gallons

Peak amount of water used in a 24-hour period - 2,300,000 gallons

Storage capacity - 1,940,000 gallons

Average pressure - 70 psi

Average temperature - 68 degrees F.

Size lines - 2, 4, 6, 8, 10, 12, 14, 16, and 20 inches

Monthly rates -

5/8 x 3/4" meter

First	2,000 gals.	\$6.00 (Minimum)
Next	3,000 gals.	1.80 per M gals.
Next	3,000 gals.	1.20 per M gals.
Next	4,000 gals.	1.00 per M gals.
Next	20,000 gals.	.90 per M gals.
Next	50,000 gals.	.70 per M gals.
Next	60,000 gals.	.60 per M gals.
Next	3,000,000 gals.	.45 per M gals.
All over	3,142,000 gals.	.35 per M gals.

\*Expansion of various parts of the existing system is underway with  
35 miles of 4 and 6-inch lines added.



Tap-on charge: Residential, Commercial, and  
Industrial

5/8-inch meter (Residential)	\$ 250
3/4-inch meter	300
1-inch meter	350
1 1/2-inch meter	500
2-inch meter	675
3-inch meter	950
4-inch meter	1,350
6-inch meter, or larger, meter	Actual Cost

Surface water source - Barren and Green Rivers  
Average discharge - Barren River at Bowling Green, Kentucky,  
2,520 cfs (37-year record, unadjusted)  
Expected ground water yield - 50 to 200 gpm along Barren and Green  
Rivers, 5 to 50 gpm in southeastern and southwestern portions,  
5 gpm or less in northern part of county

Sewerage

Company serving Bowling Green - Bowling Green Municipal Utilities\*  
801 Center Street  
Bowling Green, Kentucky 42101  
(502) 782-1220

Design capacity - 8,400,000 gpd\*\*

Average daily flow - 6,000,000 gallons; Treatment - Primary and  
secondary\*\*

Type treatment - Primary clarification followed by 2-stage  
bio-filtration with intermediate and final clarification.

Sludge treatment consists of aerobic digestion with dewatering  
in drying beds.

Treated effluent discharged into - Barren River

Size of sanitary mains - 8, 10, 12, 15, 24, 30 and 36 inches

Monthly rates -

Inside City

First	300 cu. ft.	\$2.38 (Minimum)
Next	200 cu. ft.	.6970 per 100 cu. ft.
Next	1,000 cu. ft.	.6375 per 100 cu. ft.
Next	1,500 cu. ft.	.5525 per 100 cu. ft.
Next	3,000 cu. ft.	.4250 per 100 cu. ft.
Next	4,000 cu. ft.	.3400 per 100 cu. ft.
Next	15,000 cu. ft.	.2550 per 100 cu. ft.
Next	25,000 cu. ft.	.1955 per 100 cu. ft.
Next	25,000 cu. ft.	.1700 per 100 cu. ft.
Next	25,000 cu. ft.	.1615 per 100 cu. ft.
All over	100,000 cu. ft.	.1530 per 100 cu. ft.

\*A recently completed expansion and upgrading of the treatment plant  
provides for 100 percent secondary treatment of waste water generated  
in Bowling Green and some areas of Warren County.

\*\*Kentucky Department for Natural Resources and Environmental Protection.

Outside City

First	300 cu. ft.	\$3.33 (Minimum)
Next	200 cu. ft.	.9758 per 100 cu. ft.
Next	1,000 cu. ft.	.8925 per 100 cu. ft.
Next	1,500 cu. ft.	.7735 per 100 cu. ft.
Next	3,000 cu. ft.	.5950 per 100 cu. ft.
Next	4,000 cu. ft.	.4760 per 100 cu. ft.
Next	15,000 cu. ft.	.3570 per 100 cu. ft.
Next	25,000 cu. ft.	.2737 per 100 cu. ft.
Next	25,000 cu. ft.	.2380 per 100 cu. ft.
Next	25,090 cu. ft.	.2261 per 100 cu. ft.
All over	100,000 cu. ft.	.2142 per 100 cu. ft.

Tap-on charges: Through 8 inch - \$250  
Over 8 inch - Based on actual cost of  
installation

Company serving Warren County - Warren County Water District - Sewer  
Division  
951 Fairview  
Bowling Green, Kentucky 42101  
(502) 842-0052

Date when water district began providing sewerage service - 1970

Note: The District's sewerage mains empty into the Bowling Green  
Municipal Utilities' sewage treatment plant. 1,500,000  
gallons can be disposed of daily.

Treated effluent discharged into - Barren River

Size of sanitary mains - 8, 10, 12, 15, 20, and 24 inches

Monthly rates -

First	2,000 gals.	\$4.00 (Minimum)
Next	3,000 gals.	1.50 per M gals.
Next	3,000 gals.	1.00 per M gals.
Next	4,000 gals.	.85 per M gals.
Next	20,000 gals.	.75 per M gals.
Next	50,000 gals.	.60 per M gals.
Next	60,000 gals.	.50 per M gals.
Next	3,000,000 gals.	.30 per M gals.
All over		.20 per M gals

Metered sewage shall be billed at a rate of - .315 per  
1,000 gallons

Tap-on charge: Residential, Commercial, and  
Industrial

5/8-inch meter	\$100
3/4-inch meter	150
1-inch meter	190
1 1/2-inch meter	200
2-inch meter	250
3-inch meter	300
4-inch meter	300



## CLIMATE

### Warren County

#### Temperature

Normal (30-year record)	59.4 degrees
Average annual 1976	57.5 degrees
Record highest, July, 1952 (37-year record)	107.0 degrees
Record lowest, January, 1963 (37-year record)	-15.0 degrees
Normal heating degree days (30-year record)	3,696
(Heating degree day totals are the sums of negative departures of average daily temperatures from 65 degrees F.)	

#### Precipitation

Normal (30-year record)	46.00 inches
Mean annual snowfall (35-year record)	10.70 inches
Total precipitation 1976	49.57 inches
Mean number days precipitation (.01 inch or more) (35-year record)	119
Mean number days thunderstorms (35-year record)	55

#### Prevailing Winds (22-year record)

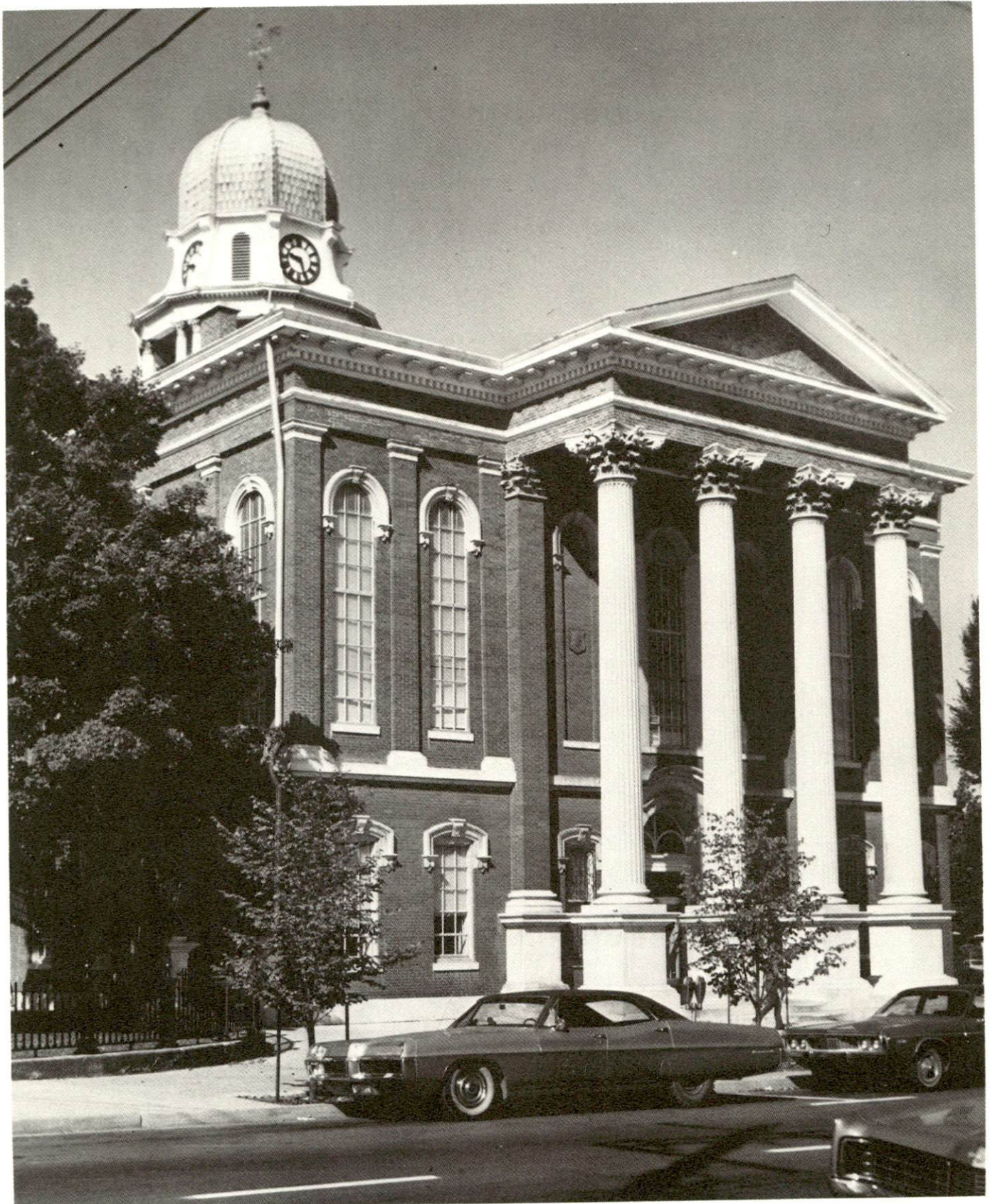
South

#### Relative Humidity (11-year record)

Midnight	80 percent
6 a.m.	85 percent
Noon	58 percent
6 p.m.	62 percent

Source: U. S. Department of Commerce, Environmental Science Services  
Administration, Climatological Data, 1976. Station of record:  
Nashville, Tennessee.





WARREN COUNTY COURTHOUSE



## LOCAL GOVERNMENT

### City

Structure - Mayor - 4-year term; 4 commissioners - 2-year terms;

City manager

Estimated budget 1976-77 - General Fund \$4,570,517

Water and Sewer Fund 2,212,100

Fees and licenses - Occupational license fees-1 1/2 percent of wages and earnings of individuals; 1 1/2 percent of net profits of businesses.

### County

Structure - County Judge - 4-year term; 8 magistrates - 4-year terms

Budget 1976-77 - General Fund \$1,120,979; Road Fund \$273, 525

### Assessed Value of Property, 1976

<u>Classes of Property</u>	<u>Bowling Green</u>	<u>Warren County</u>
Real Estate	\$257,463,390	\$478,337,330
Tangibles	68,584,430	111,337,100

### Property Taxes

All property in Kentucky is assessed at 100 percent of fair cash value.

Land and buildings are taxed by the state and may be taxed by local jurisdictions. The state rate is \$0.315 per \$100 of assessed valuation. Beginning January 1, 1977, local school tax rates were reduced by \$0.30 per \$100 valuation and the state rate was increased by \$0.30 per \$100 (from \$0.015), resulting in no net change in the combined state and local rates.

Manufacturing machinery, raw materials inventories, pollution control equipment, and goods in the process of manufacture are not subject to local taxation. The state rate is \$0.15 per \$100.

Other tangible personal property owned by manufacturers (automobiles, trucks, finished goods, office furniture, office equipment) is taxed by the state at \$0.45 per \$100 and may be taxed by local jurisdictions. Beginning January 1, 1977, local school rates were reduced by \$0.30 per \$100 valuation and the state rate was raised by \$0.30 per \$100 (from \$0.15).

Property stored in public warehouses in a transit status is not subject to local taxation. The state rate is only \$0.015 per \$100.

Intangible personal property located in Kentucky (money in hand, shares of stock, notes, bonds, accounts, and other credits) is taxed by the state at \$0.25 per \$100, and is not subject to local taxation.

Intangible personal property owned by corporations in Kentucky as a result of business transactions performed out-of-state, but having a tax situs in Kentucky (accounts receivable, notes, bonds, credits, non-domestic bank deposits, licensing or royalty agreements, shares of stock of any affiliated company, etc.) is taxed by the state at \$0.015 and is not subject to local taxation.

Local Property Tax Rate Per \$100 of Assessed Valuation, 1976\*

<u>Taxing Jurisdiction</u>	<u>Bowling Green</u>	<u>Warren County</u>
County	\$ .135	\$ .135
School	.847	.366
City	.300	

Utilities Gross Receipts Tax For Schools

A 3 percent tax is levied on utilities receipts for schools in Warren County. Tax is paid by all consumers of utilities as an add-on to the utilities bills. Exempted are receipts from utilities services that are resold and the receipts from the sale of energy or energy producing fuels that exceed 3 percent of the cost of production in manufacturing, processing, mining or refining.

Planning and Zoning

Joint agency - City-County Planning Commission of Warren County  
 Zoning enforced - All areas  
 Subdivision regulations enforced - All areas  
 Local codes enforced - Housing, building and storm water management in all areas; flood in all areas except Oak and Smith Grove and Woodburn  
 Mandatory state codes enforced - Plumbing, National Fire Protection Association Code, National Building Code (from major buildings and residential construction containing more than 12 bedrooms per buildings.)

Safety

<u>Police</u>	<u>Bowling Green</u>	<u>Warren County</u>
Total staff	69	16
Radio-patrol cars	20	11

\*Kentucky Department of Revenue, Kentucky Property Tax Rates, 1976.





BOWLING GREEN CITY HALL AND POLICE DEPARTMENT

<u>Fire</u>	<u>Bowling Green</u>	<u>Warren County</u>
American Insurance Association Fire Rating	6	
Full-time staff	75	
Volunteers		135 for 7 Volunteer Fire Departments
Stations	4	6

#### Rescue Service

Bowling Green-Warren County Rescue Squad Civil Defense:

Number of volunteers - 62

Equipment - Three 6 x 6 specially equipped trucks, station wagon, headquarters and communications van, Jeep, 1 pickup truck, 1 utility truck, 6 boats and motors, jeep trailer, 2 way radios in all vehicles, generators, specialized small equipment, pontoon

Personnel training - Civil Defense Training, fire fighting, First Aide, Emergency Medical Technician training, training with the Army Reserves, special training

#### Solid Waste

	<u>Bowling Green</u>
Type service	Municipal*
Fee charged:	
residential	\$3.50
business	Based on volume and frequency of collection
Collection frequency:	
residential	Weekly
business	As needed
Trash pickup	On call
Disposal method	Municipal sanitary landfill

Solid waste disposal service is available to manufacturing plants located inside and outside the corporate limits. The fee is based on volume and frequency of collection.

\*The city franchises the service to private firms.



## EDUCATION

### Public Schools

	<u>Bowling Green Independent</u>	<u>Warren County</u>
Total Enrollment	4,313*	7,240**
Elementary	2,377	4,901
Junior High	866	
High School	1,070	2,339
Student-Teacher Ratio	19-1	21-1
Elementary	19-1	22-1
Junior High	20-1	
High School	18-1	20-1
Accreditation	Southern Association of Colleges and Schools (2)	Southern Association of Colleges and Schools (1)
Percent High School Graduates to College	64.0	35.7
Expenditures Per Pupil (1975-76)	\$952.33	\$670.84
Bonded Indebtedness, June 30, 1976	\$4,989,000	\$8,290,000

### Nonpublic Schools

	<u>Jones-Jagger Laboratory School</u>	<u>Seventh Day Adventist School</u>	<u>St. Joseph Elementary School</u>
Total Enrollment	170	9	202
Grades	KG-6	1-8	KG-7
Student-Teacher Ratio	14 to 1	9 to 1	22 to 1
<u>Potter Orphan Home and School</u>			
Total Enrollment		42	
Grades		4-8	
Student-Teacher Ratio		12 to 1	

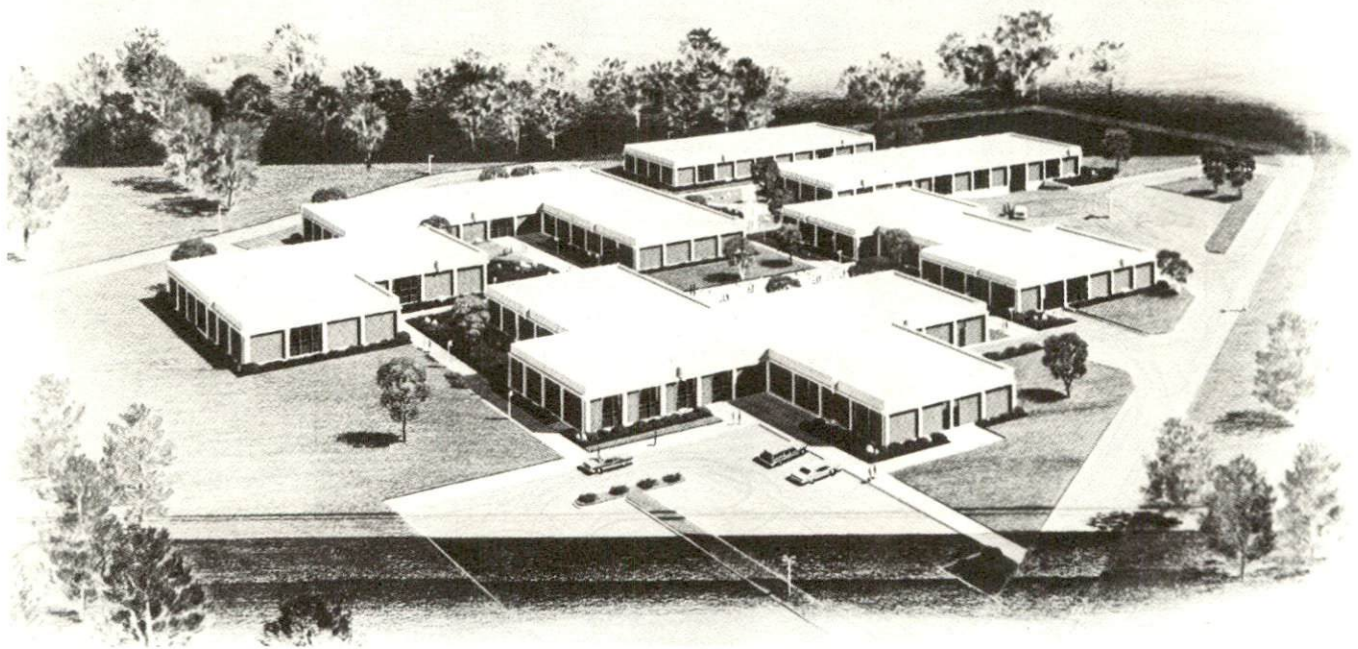
\*February 1977 enrollment.

\*\*September 1976 enrollment.

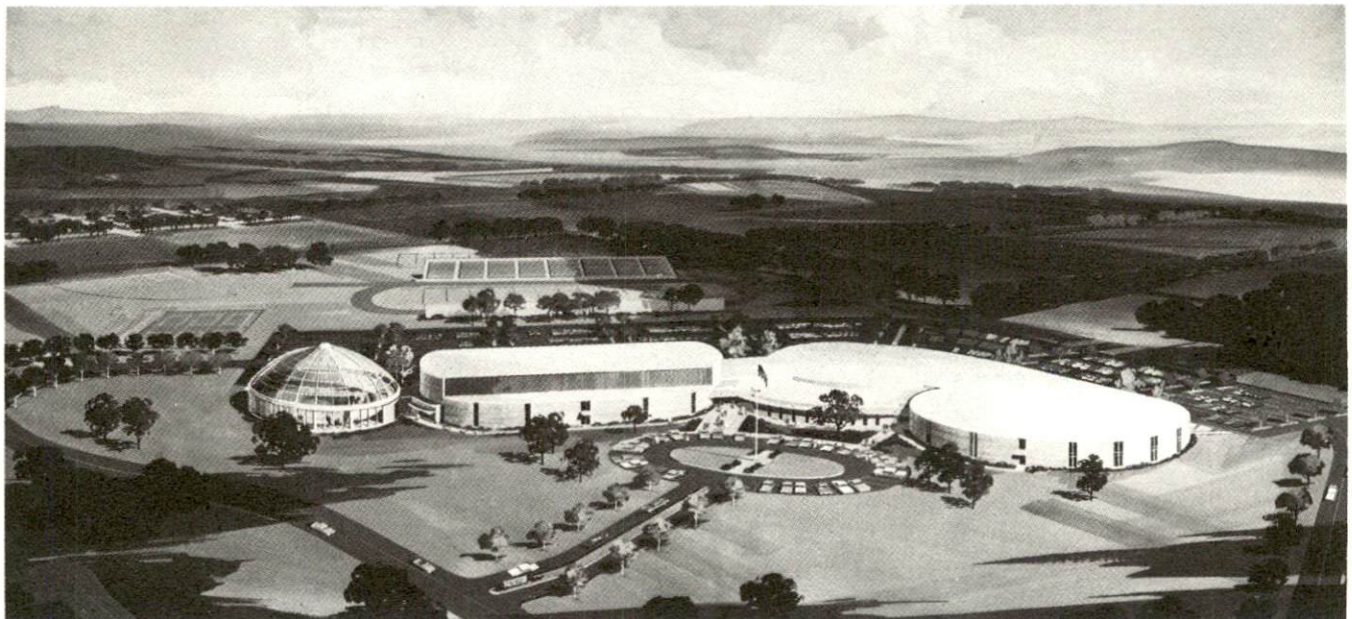


WARREN COUNTY HIGH SCHOOL





BOWLING GREEN STATE VOCATIONAL-TECHNICAL SCHOOL



BOWLING GREEN HIGH SCHOOL





AERIAL VIEW OF WESTERN KENTUCKY UNIVERSITY



## Area Colleges and Universities

<u>Name</u>	<u>Location (Miles distant)</u>	<u>Enrollment (Fall, 1976)</u>	<u>Highest Degree Conferred</u>
Western Kentucky University	Bowling Green	13,385	Ph.D.*
Hopkinsville Commu- nity College	Hopkinsville (67)	1,082**	Associate
Austin Peay State University	Clarksville, Tennessee (63)	3,643	Academic and Professional
Belmont College	Nashville, Tennessee (65)	264**	Baccalaureate
David Lipscomb	Nashville, Tennessee (65)	2,154	Baccalaureate
Fisk University	Nashville, Tennessee (65)	1,269***	Masters
George Peabody College for Teachers	Nashville, Tennessee (65)	1,222	Academic and Professional
Meharry Medical College	Nashville, Tennessee (65)	968	M.S., M.D., D.D.S., Certificate
Trevecca Nazarene	Nashville, Tennessee (65)	948	Baccalaureate
Tennessee State University	Nashville, Tennessee (65)	5,483	Masters
Vanderbilt Univer- sity	Nashville, Tennessee (65)	7,156	Academic and Professional

\*Cooperative program with the University of Kentucky, Lexington, for a Ph.D. in education only.

\*\*Does not include Eagle University.

\*\*\*Full-time equivalency total based on 12 credit hours.

## Vocational Schools

Location  
Curriculum

### Nearest State School

Bowling Green State Vocational-  
Technical School

Bowling Green

Agriculture

Adult Agriculture

Business and Office

Accounting

Clerical

Secretarial

Distributive Education

Health and Personal Service Occupations

Health Careers

Nurse Assistant (Adult)

Surgical Technician

Industrial Education

Air Conditioning and Heating

Auto Body Repair

Auto Mechanics

Carpentry

Civil Highway Technician

Drafting

Electronics (Technology)

Graphic Arts (Printing)

Industrial Electricity

Machine Shop

Masonry

Radio and TV Repair

Small Engine Repair

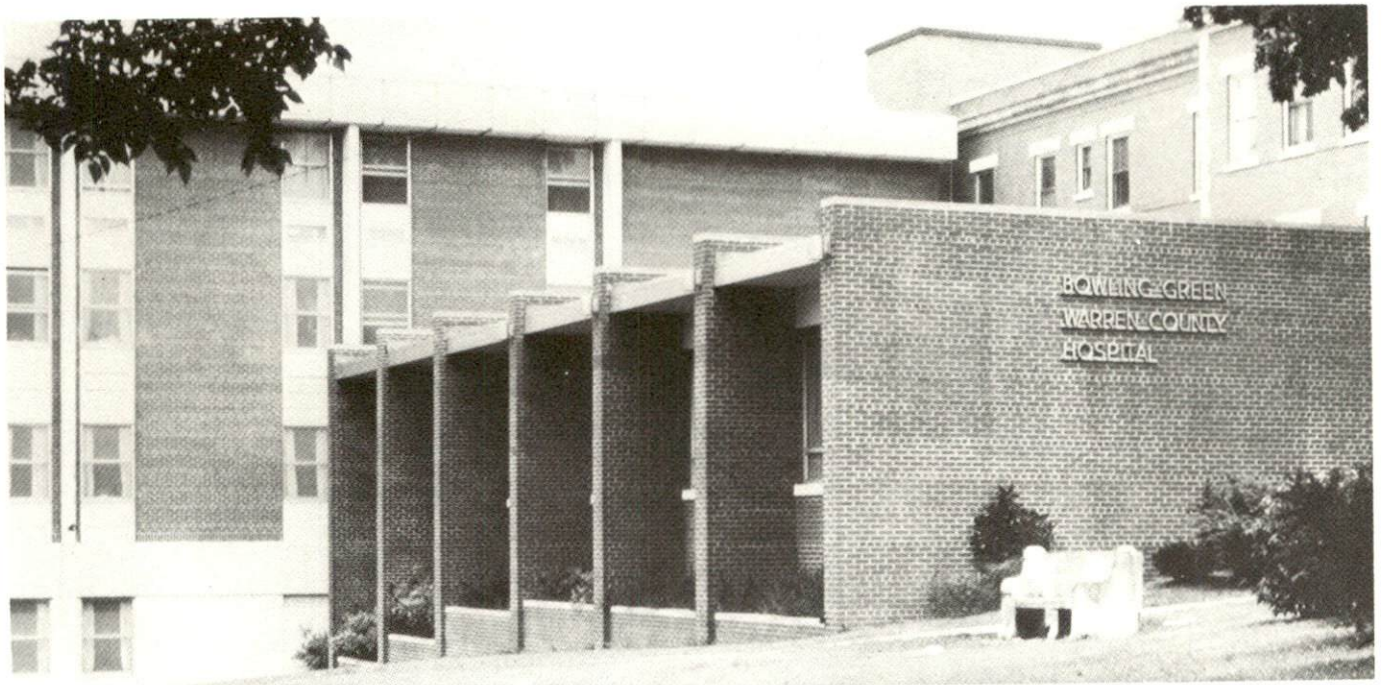
Tool and Die Making

Welding

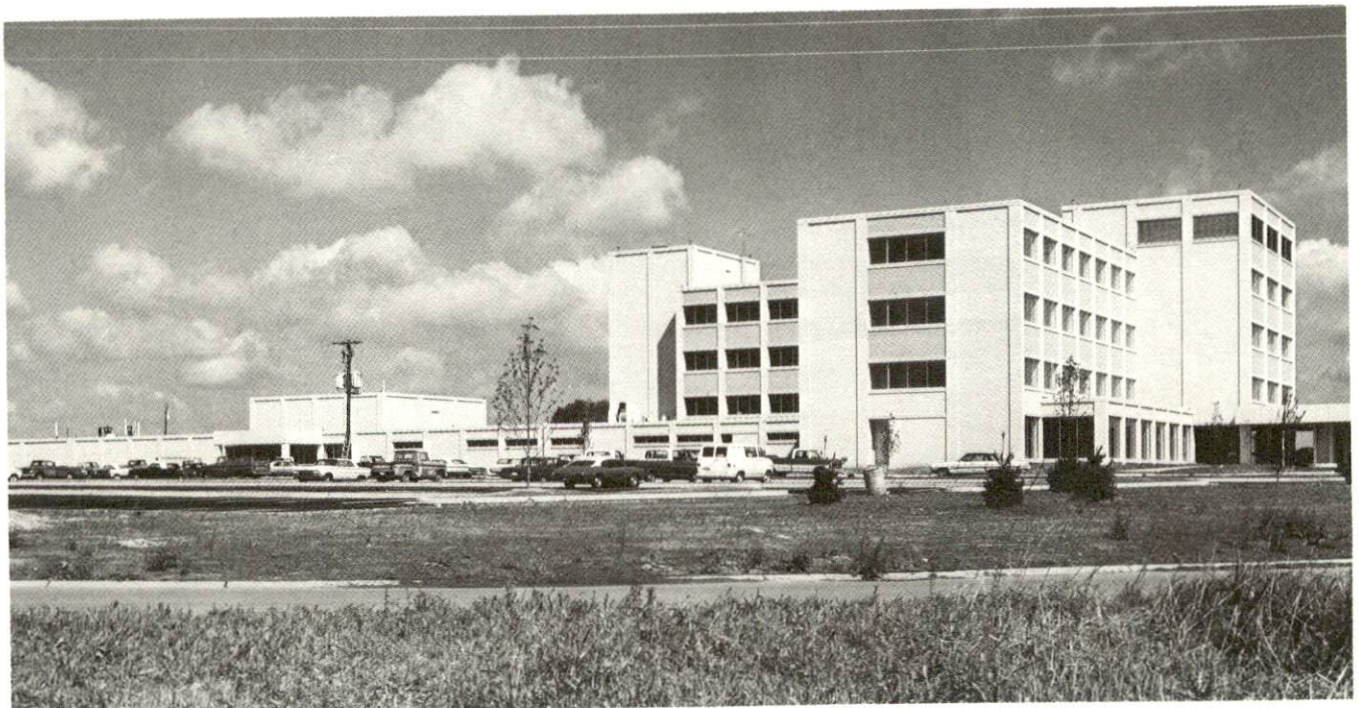
Learning Resource Center

Arrangements can be made to provide training in the specific production skills required by an industrial plant. Instruction may be conducted either in the vocational school or in the industrial plant, depending upon the desired arrangement and the availability of special equipment.





BOWLING GREEN-WARREN COUNTY HOSPITAL



GREENVIEW HOSPITAL

## HEALTH

### Local Medical Personnel

Physicians - 73  
Dentists - 33

### Hospitals

<u>General Hospitals</u>	<u>Location</u>	<u>Beds</u>
Bowling Green-Warren County Hospital	Bowling Green	298 hospital beds including 15 psychiatric beds; 23 extended care facility beds; 24 bassinets
Greenview Hospital	Bowling Green	157 beds

#### Bowling Green-Warren County Hospital

General hospital facilities and services - 5 operating rooms, 6 emergency rooms, 4-bed coronary care unit, 6-bed intensive care unit, physical therapy department, respiratory therapy department, 15-bed psychiatric unit, laboratory and pathology, electrocardiograph, electroencephalograph, computerized tomography, xeroradiography, neonatal intensive care unit, X-ray facilities, ambulance service, social services, home health agency, pharmacy, coffee shop

Medical staff - 78 doctors, 91 registered nurses, 37 licensed practical nurses, 109 aides and 443 other employees

#### Greenview Hospital

General hospital facilities and services - 4 operating rooms, emergency facilities, 8-bed coronary care-intensive care unit, physical therapy department, pathological laboratory, electroencephalography, nuclear medicine diagnostic department, inhalation therapy, X-ray department, outpatient department, pharmacy, coffee shop, gift shop

Medical staff - 82 doctors, 82 registered nurses, 28 licensed practical nurses and 214 other employees



### Other Medical Facilities

Barren River Mental Health-Mental Retardation Board, Inc.  
Barren River Comprehensive Care Center  
Comprehensive Family Services, Inc.  
Commission for Handicapped Children  
Lion's Handicapped School

### Ambulance Service

Name - Bowling Green-Warren County Hospital Ambulance Service  
Staff - 14 full time, 7 part time  
Service - 24 hours a day, 7 days a week  
Equipment - 3 ambulances, 1 vehicle for transporting patients  
between hospital and nursing home, 2-way radio system with  
base station at the hospital, emergency medical equipment

### Nursing Homes

<u>Number of Homes</u>	<u>Number and Type of Beds</u>
6	112 extended care 93 personal care 129 intermediate care

### Public Health

Facility - Bowling Green-Warren County Health Department  
Staff - Administrator, 12 registered nurses, 3 licensed practical  
nurses, 6 environmental health technicians, venereal disease  
inspector (state), X-ray technician, laboratory technician, 8  
clerks, clerk registrar, milk inspector (state), dentist (part  
time), dental hygienist (part time), 3 pediatric clinicians  
(part time), 2 general clinicians, program planner, social  
worker.





BOWLING GREEN PUBLIC LIBRARY



## OTHER LOCAL FACILITIES

### Communications

Telephone - South Central Bell Telephone Company  
Services - Full line of telephone communication services

Telegraph - Western Union Telegraph Company  
Services - Telephone and taxi delivery services

Postal - U. S. Post Office  
Class - First  
Mail received - 10 times daily  
Mail dispatched - 10 times daily

Newspapers - Park City Daily News (Daily except Saturday  
Daily and circulation - 17,600; circulation (Sunday) 20,100  
Other papers received from - Louisville, Kentucky and  
Nashville, Tennessee

Radio - WBGN-AM; WKCT-AM; WDNS-FM; WLBK-AM and FM

Television - WBKO-Channel 13 (ABC affiliate operating daily from  
6:45 a.m. to midnight)  
Reception from - Louisville, Kentucky, and Nashville, Tennessee  
  
Kentucky Educational Television - WKGB - Channel 53,  
Bowling Green transmitter

### Library Services

Public library - Bowling Green Public Library  
Size collection - 72,000 volumes  
Circulation, 1975-76 - 164,000 volumes  
Services - Two bookmobiles, fiction and non-fiction books, map  
file, telephone directories, large print books, periodicals  
and newspapers, records, framed prints, films, stock market  
guides, audio-visual equipment loan, business guides, tax  
information, reference help, interlibrary loan, information  
file, occupational file, automobile fix-up manuals, picture file,  
hospital libraries, book-by-mail for shut-ins, talking book  
service for the blind and physically handicapped, informational  
service for 23 counties, DAR genealogical and historical  
library special collections, public copy machine, public type-  
writer, Notary Public Services, children's story hour, art  
gallery with monthly art exhibits, lecture series, music programs,  
film shows, conference and public meeting facilities, microfilm  
reader/printer, Western Kentucky University card catalogue on  
microfiche

University library - Six libraries and resource centers on Western Kentucky University campus

Size collection - Combined total - over 685,000 volumes

Special collections - The Kentucky Library houses study and research collections relating to Kentucky life and history.

The Kentucky Museum contains historical, anthropological, biological and artistic objects and specimens relating to the heritage and environment of Kentucky and the contiguous states.

Services - Recordings, documents, newspapers, magazines, clippings, scrapbooks, tapes, sheet music, museum programs, duplication, interlibrary loan

#### Day Care Services - 12

#### Religious Institutions

Number of churches - There are over 67 churches representing 19 different denominations in Bowling Green and Warren County

Nearest synagogues and type of congregations - Nashville, Tennessee, 65 miles distant - Sherith Israel (orthodox), Ohabai Shalom (reform), and West End Synagogue (conservative)  
Hopkinsville, Kentucky, 65 miles distant - Adath Israel (reform)

#### Financial Institutions

<u>Banks</u>	<u>Assets</u>	<u>Deposits</u>	<u>Statement Date</u>
American National Bank & Trust Company	\$92,533,000	\$86,354,000	12/31/76
Bowling Green Bank & Trust Company	43,037,867	30,560,613	12/31/76
Citizens National Bank of Bowling Green	84,863,663	78,631,025	12/31/76
<u>Savings and Loan Associations</u>	<u>Assets</u>	<u>Savings Accounts</u>	<u>Statement Date</u>
Fidelity Federal Savings & Loan Association	\$25,124,151	\$22,447,853	12/31/76
First Federal Savings & Loan Association	82,704,537	74,471,190	12/31/76

#### Hotels and Motels

Total number - 27  
Total units - 1,580





BOWLING GREEN BANK & TRUST COMPANY



AMERICAN NATIONAL BANK & TRUST COMPANY





CITIZENS NATIONAL BANK





FIDELITY FEDERAL SAVINGS & LOAN ASSOCIATION



FIRST FEDERAL SAVINGS AND LOAN ASSOCIATION

## Clubs and Organizations

Business and Civic - Bowling Green-Warren County Chamber of Commerce, Bar Association, Dental Association, Civitan Club, Farm Bureau, Jaycees, Kiwanis Clubs, Lions Club, Optimist Club, Rotary Club, Independent Insurance Agents, Medical Society, American Cancer Society, United Givers Fund, Board of Realtors, Homebuilders Association, Ministerial Association

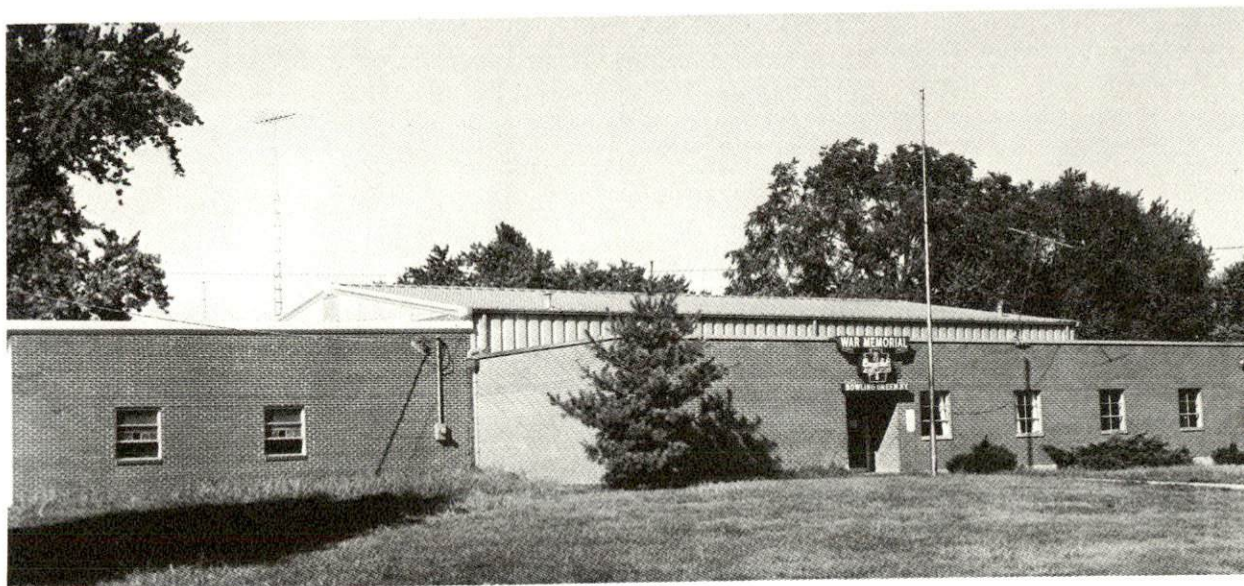
Fraternal - American Legion, Elks Club, Shrine Club, Fraternal Order of Police, International Order of Odd Fellows, Knights of Columbus, Masonic Lodge, Moose, VFW, Sons of the American Revolution, Veterans of World War I

Women's - Altrusa Club, American Association of University Women, American Business Women's Association, American Legion Auxiliary, Junior Woman's Club, Business and Professional Women's Club, Civitana Club, Daughters of the American Revolution, Farm Bureau-Women, Jaycee-Ettes, Lioness Club, National Secretaries Association, Opti-Mrs. Club, Order of Eastern Star, PEO Sisterhood, Rebekahs, VFW Auxiliary, Veterans of World War I Auxiliary, Western Kentucky University Faculty Wives Club, Garden Clubs, Woman's Club, Daughters of American Colonists, Home Economics Clubs, Eloise Houchen Center for Women

Youth - Boy Scouts, Boys' Club, Girl Scouts, Girls' Club, 4-H

Other - Community Greeters, Current Events Club, Retired Officer's Association, National Association of Retired Civil Employees, 4-H Leaders Council, Historical Society, Welcome Wagon Club, Square Dance Clubs, Saddle Club, City Hostess, Coin Club, H.A.N.D.S. Organization, Sweet Adelines





WAR MEMORIAL BOYS CLUB



DELAFIELD GIRLS CLUB

## RECREATION

### Local

Bowling Green and the surrounding area offer numerous and varied recreational facilities. There are 13 public parks, 22 playgrounds and 3 youth centers in Bowling Green and Warren County with a variety of facilities including indoor and outdoor swimming pools, tennis courts, 9-hole golf courses, ball fields, community centers, and a gymnasium. Two country clubs with 18-hole golf courses, bowling and skating facilities, a drive-in movie theater, and two indoor movie theaters furnish additional recreational opportunities.

One thousand-acre Beech Bend Park is located just west of Bowling Green on bluffs overlooking Barren River. The amusement park offers camping sites, swimming, horseback riding, miniature golf, trampolines, a zoo, and over 42 rides. The Beech Bend International Raceway has several national championships scheduled each year.

Western Kentucky University offers an array of cultural and athletic activities, including a fine arts series, a University lecture series, various musical performances and productions by the Western Players. The Hardin Planetarium and the Kentucky Building are open to the public. The Kentucky Building, devoted to state and local history, houses a large art collection; collections of animals, birds, insects and fossils, Indian and pioneer relics; early musical instruments; and special exhibits.

The Bowling Green Public Library provides additional cultural events through lecture series, art exhibits, and music programs.

Points of historical interest in Bowling Green include Civil War fortifications; the Hobson House, which was used as a Confederate arsenal during the Civil War; and the Maria Moore House, which is the oldest structure in Bowling Green.





INDIAN HILLS COUNTRY CLUB



BOWLING GREEN COUNTRY CLUB





HOBSON HOUSE



## Area

Bowling Green is located in Kentucky's famous "Cave Country." Mammoth Cave National Park, only 30 miles northeast of the city by Interstate, features guided tours of one of the largest cave networks ever discovered. The 51,000 surface acres of the National park provide a beautiful wildlife preserve filled with nature trails and overlooks. Additional features of the park include a scenic boat trip on the Green River, Snowball Dining Room located 267 feet below the surface, an amphitheatre, and a visitor center exhibit room. Hotel, lodge and cottage accommodations are available at the park. Other caves in the area with tours are: Crystal Onyx Cave, Diamond Caverns, Jesse James Cave, Hundred Dome Cave, Slave Cave and Mammoth Onyx Cave.

Three large lakes located within an hour's drive of Bowling Green provide additional opportunities for outdoor recreational activities. Nolin River Lake, just north of Mammoth Cave National Park, features boating, fishing and camping facilities. Another beautiful southern Kentucky lake popular for recreation and fishing is Lake Malone, approximately 43 miles west of Bowling Green. Swimming, boating, tennis and a lodge are featured at Lake Malone State Park. Barren River State Resort Park, located 37 miles east of Bowling Green, is an 1,800-acre park with resort lodge and cottages. A marina, boat ramp, and fishing facilities are available on the 1,000-acre lake. The park also offers camping sites, swimming pool, riding stables and a 9-hole par 3 golf course.

## COMMUNITY IMPROVEMENTS

### Industrial and Commercial

1. Three new manufacturing firms have recently located in Bowling Green. FMC and Lord Corporation began operations in 1975. FMC is a manufacturer of truck cranes, while Lord Corporation produces shock and vibration control systems. Continental Poly, Inc., opened a Bowling Green plant in 1976 for the production of plastic tubes, sheeting and bags.

2. Union Underwear, Koehring Atomaster Division and Airtemp Applied Machinery Company have recently located corporate or divisional headquarters in Bowling Green.

3. Recent expansions by existing firms include an expansion by Pan-American Mills which has more than doubled the firm's storage and manufacturing facilities; Atomaster has begun construction of a 13,000-square-foot building which will accommodate the Division's headquarters offices and allow for additional production space; Union Underwear has completed construction of additional office space for the corporate and accounting staff members; Western Kentucky Coca-Cola Bottling Company has completed construction of a 30,000-square-foot building for storage and offices, and has additional production and maintenance facilities under construction; Corco, Inc., has added \$800,000 of new production equipment and anticipates a facilities expansion in the near future.

4. Modern Welding Company and Barnard Printing Company have both relocated into new facilities. New facilities for Agrico Chemical Company are now under construction on a 5-acre plot. Their relocation and expansion operations are scheduled for completion in 1977.

5. Commercial developments in Bowling Green during 1975-76 include the opening of several retail shops, a department store, and approximately twelve new restaurants. Several local banks have renovated existing facilities and added new branch facilities. Twin-theatres are under construction as an addition to the Fairview Shopping Center. Southern States Cooperative has completed a \$4,400,000 building to house their retail and warehousing operations.

6. Acreage title has been taken for the construction of a mall-type shopping center which will accommodate three or four major department stores and up to eighty small businesses. The shopping center is scheduled to open in 1979.

7. Additional land has been purchased adjacent to the Bowling Green Mall to accommodate another department store, several small shops and an additional parking area. Construction for the addition will begin in 1977.



8. The Bowling Green Chamber of Commerce has purchased land adjoining the chamber office and plans to double the size of the present building.

### Utilities

1. The Bowling Green Municipal Utilities has completed a \$6 million expansion and upgrading of the sewerage treatment facilities. The expansion has increased the capacity of the waste water treatment plant to 8.4 million gallons per day. The treatment plant now provides for 100 percent secondary treatment of waste water generated in Bowling Green and some areas of Warren County. A 201 Facilities Plan study recently completed will determine other improvements needed to upgrade the sewerage system. A study is also underway for upgrading the water treatment plant capacity to 14.4 million gallons per day.

2. The Warren County Water District is expanding four- and six-inch lines to various parts of the existing system.

### Transportation

1. Construction will begin in 1977 on an east-west corridor which will be a major thoroughfare through parts of Bowling Green. A north-south corridor is now in the early planning stages. Other road improvements in Bowling Green-Warren County include the extension of Industrial Drive; Chestnut Street has been realigned; a rail-road underpass is planned at Sixth Street; the county is in the process of replacing all one-lane bridges in the county with larger structures; and plans are underway to widen and resurface some of the county roads.

2. The City-County Planning Commission of Warren County has completed a study of access roads to major roads throughout the county.

3. Approval has been given for an off-site land use plan for the Bowling Green-Warren County Airport. The study will determine alternate growth patterns for those parts of the county affected by the airport and will make recommendations for the future of the air facility.

### Public Safety

1. Five new fire stations equipped with trucks have been constructed in Warren County for the volunteer fire departments. Two more stations are planned. Another volunteer fire unit, to be organized in 1977, will bring the total number of units to eight.

2. The Bowling Green Police Department is continuing participation in a college program coordinated with Western Kentucky University and Eastern Kentucky University leading to a Bachelor of Science degree in Police Science. The program has recently been expanded to include a Master of Science degree. Eighty-four percent of the police force are either enrolled in the college program or have attained one of the degrees.

## Health

1. The Bowling Green-Warren County Hospital Board has commissioned a study of the hospital facilities and the role of the hospital in the community. A new site for the relocation of the hospital is now being considered. The proposed new City-County Hospital, to cost about \$14 million, would be approximately twice the size of the present facility.

2. Recent improvements at the Bowling Green-Warren County Hospital are as follows: new services, including xeroradiography, a nuclear medicine department, a neonatal intensive care unit, coronary monitoring with telemetry equipment, 24-hour emergency room physician coverage, fetal monitoring for OB patients, and expanded ambulance service; new X-ray facilities, including special procedures; an expanded nursery; two house anesthesiologists; and \$250,000 of new equipment for the clinical laboratory.

3. Several other health service facilities have recently been constructed or expanded: Turtle Creek Convalescent Centre has completed a new addition to house 98 additional intermediate care beds; Barren River Comprehensive Care Center occupied new facilities in 1976; a new pharmacy-medical office building has opened.

## Education

1. The Warren County School System has completed additions to two elementary schools at a cost of over \$1.5 million and has completed a new football field at Warren East High School. The opening of a new \$1.5 million elementary school is scheduled for 1978.

2. The Bowling Green Independent School System is studying the need for the renovation and improvement of the junior and senior high school facilities.

3. A planned two-building addition to the Bowling Green State Vocational-Technical School is scheduled to be completed in 1978 or early 1979. The \$2.2 million addition will nearly double the size of the present facility and allow for the expansion of the business and office program and the masonry program.

4. Western Kentucky University is continuing to expand and upgrade facilities and programs. A Bachelor of Science in Nursing program has been implemented and a continuing education center will open in Fall of 1977. An Environmental Sciences and Technology Building was completed in 1975. Construction has begun on the renovation and expansion of the Kentucky Museum. A \$2.5 million Agricultural Exposition Center, scheduled to open in 1978, will include facilities for meetings, instruction, and livestock exhibition.



## Recreation

1. The following improvements have been made in the public parks and recreational facilities: Two new city parks with little league fields have been completed; the Alverton Park has rebuilt the ball diamond and has added lighting, fencing, bleachers, parking lot, dugouts and concession stands; the parks at Bristow and Richardsville have improved lighting, new fencing and improved ball facilities; new fencing and a concession stand have been added to the Smiths Grove Park; a community playground has been completed at Browning; Pedigo Park has been acquired by the city and improvements to the park are underway. Future plans for recreational facilities include improvements at three city parks and the development of a 60-acre county-owned park with a 9-hole par 3 golf course, picnic areas and camping facilities.

## Other

1. Operation Townlift, a program jointly sponsored by the City of Bowling Green, the Bowling Green-Warren County Chamber of Commerce, and TVA, is now in the final stages. The major developments of the project included: improved access to the downtown area from all parts of the city; improved traffic circulation within the central business area; creation of additional and more convenient parking facilities; and encouragement to businesses to occupy previously vacant downtown stores.

2. The Bowling Green Public Library has completed a 14,000-square-foot expansion to the library and the existing facility has been completely remodeled. The expansion houses a youth library and public meeting facilities.

3. Other recent city-county improvements include: the restoration of the 90-year old fountain and pool in Fountain Square Park; a major sidewalk improvement program; an improved storm sewer system; the implementation of an on-going program to prevent flood damage to residential and commercial property; and the acquisition of a new sanitary landfill which is city owned and operated.

4. Proposed city-county projects include: A regional sanitary landfill and transfer station; a \$15-18 million Urban Renewal project to clear three areas which will be used for commercial businesses, light industry and highways; construction of 100 two- and three-bedroom single family units; conversion of an existing apartment building into 187 efficiency units for the elderly; and construction of a county-owned livestock pavillion at the Southern Kentucky Fairgrounds.

5. Improvements by private groups in Bowling Green are as follows: The Potter Children's Home and School has construction of a new addition underway; an existing building in Bowling Green has been remodeled to house the Eloise B. Houchen Center for Women; and Christ Episcopal Church has completed an addition which has doubled the size of the church building.