

1992

Industrial Resources: Whitley County - Corbin

Kentucky Library Research Collections
Western Kentucky University, spcol@wku.edu

Follow this and additional works at: https://digitalcommons.wku.edu/whitley_cty

 Part of the [Business Administration, Management, and Operations Commons](#), [Growth and Development Commons](#), and the [Infrastructure Commons](#)

Recommended Citation

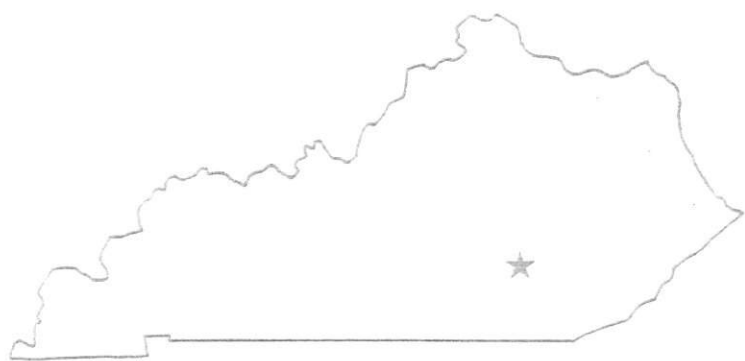
Kentucky Library Research Collections, "Industrial Resources: Whitley County - Corbin" (1992). *Whitley County*. Paper 3.
https://digitalcommons.wku.edu/whitley_cty/3

This Report is brought to you for free and open access by TopSCHOLAR®. It has been accepted for inclusion in Whitley County by an authorized administrator of TopSCHOLAR®. For more information, please contact topscholar@wku.edu.

Whitley Co.

Resources for Economic Development

Corbin



KENTUCKY
Open for Business

RESOURCES FOR ECONOMIC DEVELOPMENT

CORBIN, KENTUCKY

Prepared by
The Kentucky Cabinet for Economic Development
Division of Research and Planning
in cooperation with
Corbin Industrial Development Commission

1992

Division Director - Pamela K. Riley; program manager - Keith Roberts; research - Richard H. Cobb; clerical - Wanda Sharp; graphics - Robert Owens, Pat Coleman; cartography - Edwin Scott, Dave Clark. Cost of printing paid from state funds.

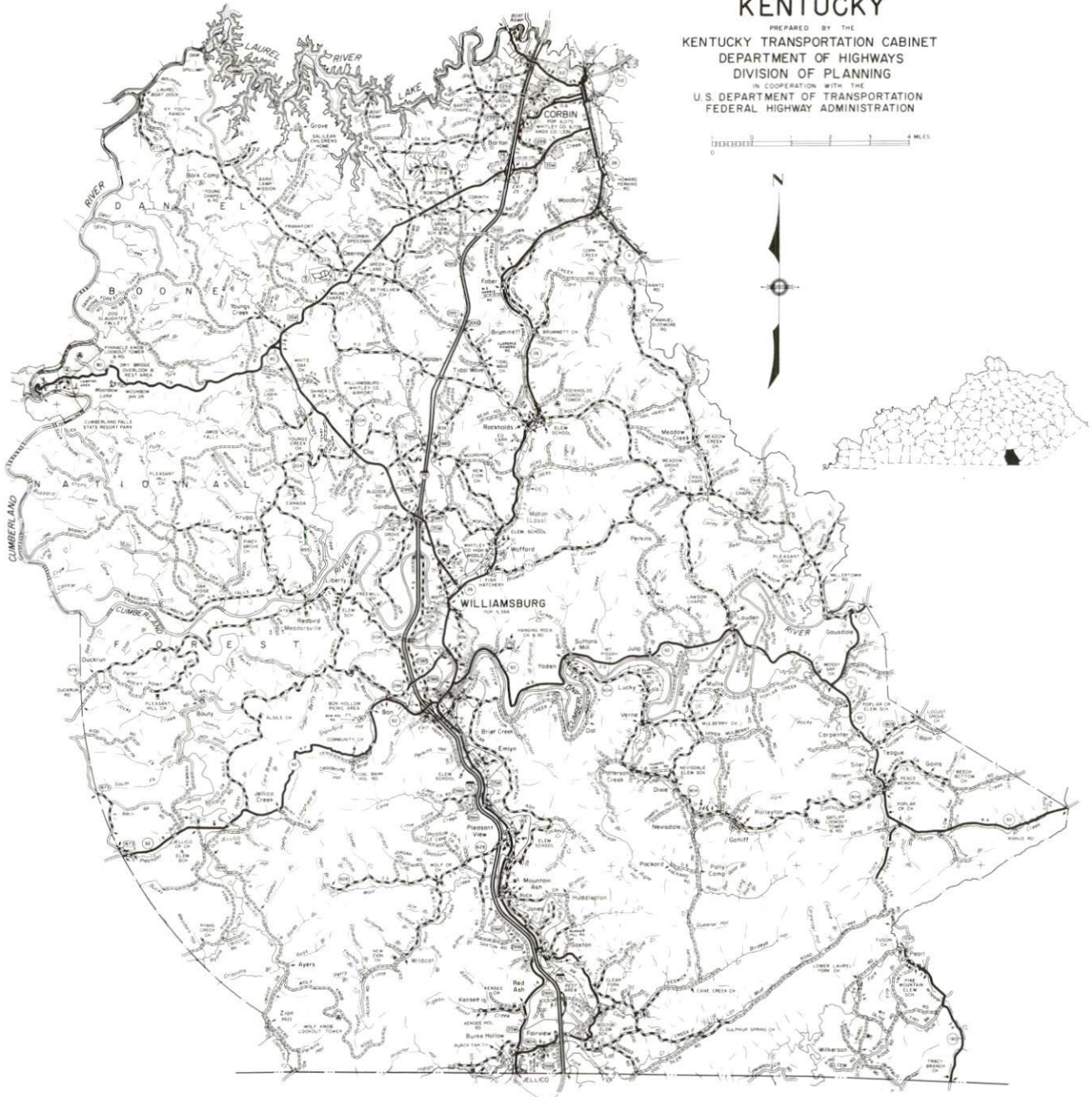
TABLE OF CONTENTS

<u>Chapter</u>	<u>Page</u>
CORBIN, KENTUCKY - A RESOURCE PROFILE	1
THE LABOR MARKET STATISTICS	2
Labor Market Area Map	2
Population	3
Population Projections	3
Estimated Labor Supply	3
Labor Force Characteristics of Residents, 1990	4
Selected Components of Nonagricultural Employment, by Place of Work, 1990	5
Per Capita Personal Income	6
Average Placement Wages	7
Average Weekly Wages of Workers Covered by Unemployment Insurance 1989 - Bar Chart	8
Average Weekly Wages by Industry, by Place of Work, 1989	9
EXISTING INDUSTRY	10
Corbin Manufacturing Firms, Their Products and Employment	10
Labor Organizations in Manufacturing Firms	11
Selected Industrial Services	12
TRANSPORTATION	13
Highways	13
Truck Service	13
Selected Market Location Map	14
Rail	15
Air	15
UTILITIES	16
Electricity	16
Natural Gas	17
Public Water Supply	17
Sewerage	17
CLIMATE	18

<u>Chapter</u>	<u>Page</u>
LOCAL GOVERNMENT.....	19
Structure.....	19
Planning and Zoning.....	19
Local Fees and Licenses.....	19
State and Local Property Taxes.....	20
EDUCATION.....	21
Public Schools.....	21
Nonpublic Schools	21
Area Colleges and Universities	21
Vocational Training.....	22
OTHER LOCAL FACILITIES	23
Local Medical Personnel.....	23
Hospitals	23
Other Medical Facilities and Services	23
Banks and Savings & Loan Associations	23
Newspapers.....	23
Telephone Service	23
RECREATION.....	24
COMMUNITY IMPROVEMENTS	26

GENERAL HIGHWAY MAP
WHITLEY COUNTY
KENTUCKY

PREPARED BY THE
KENTUCKY TRANSPORTATION CABINET
DEPARTMENT OF HIGHWAYS
DIVISION OF PLANNING
IN COOPERATION WITH THE
U.S. DEPARTMENT OF TRANSPORTATION
FEDERAL HIGHWAY ADMINISTRATION



CORBIN, KENTUCKY - A RESOURCE PROFILE

Corbin is located in southeastern Kentucky near the eastern edge of the Daniel Boone National Forest. Uniquely situated on the boundaries of Whitley, Knox, and Laurel Counties, the city of Corbin is located 87 miles south of Lexington, Kentucky; 86 miles north of Knoxville, Tennessee; and 165 miles south of Cincinnati, Ohio. In 1990, Corbin has a population of 7,419.

While Corbin is incorporated in both Whitley and Knox Counties, the majority of businesses and population are in Whitley County. In 1990, Whitley County had a population of 33,326. The county seat of Whitley County, Williamsburg, is located 19 miles from Corbin. In 1990, Williamsburg had a population of 5,493.

The Economic Framework - The total number of Whitley County residents employed in 1990 averaged 10,608. Manufacturing firms in the county reported 1,193 employees; wholesale and retail trade provided 2,911 jobs; 2,508 people were employed in service occupations; state and local government accounted for 1,371 employees; contract construction firms provided 228 jobs; and 802 people were employed by mining and quarrying operations.

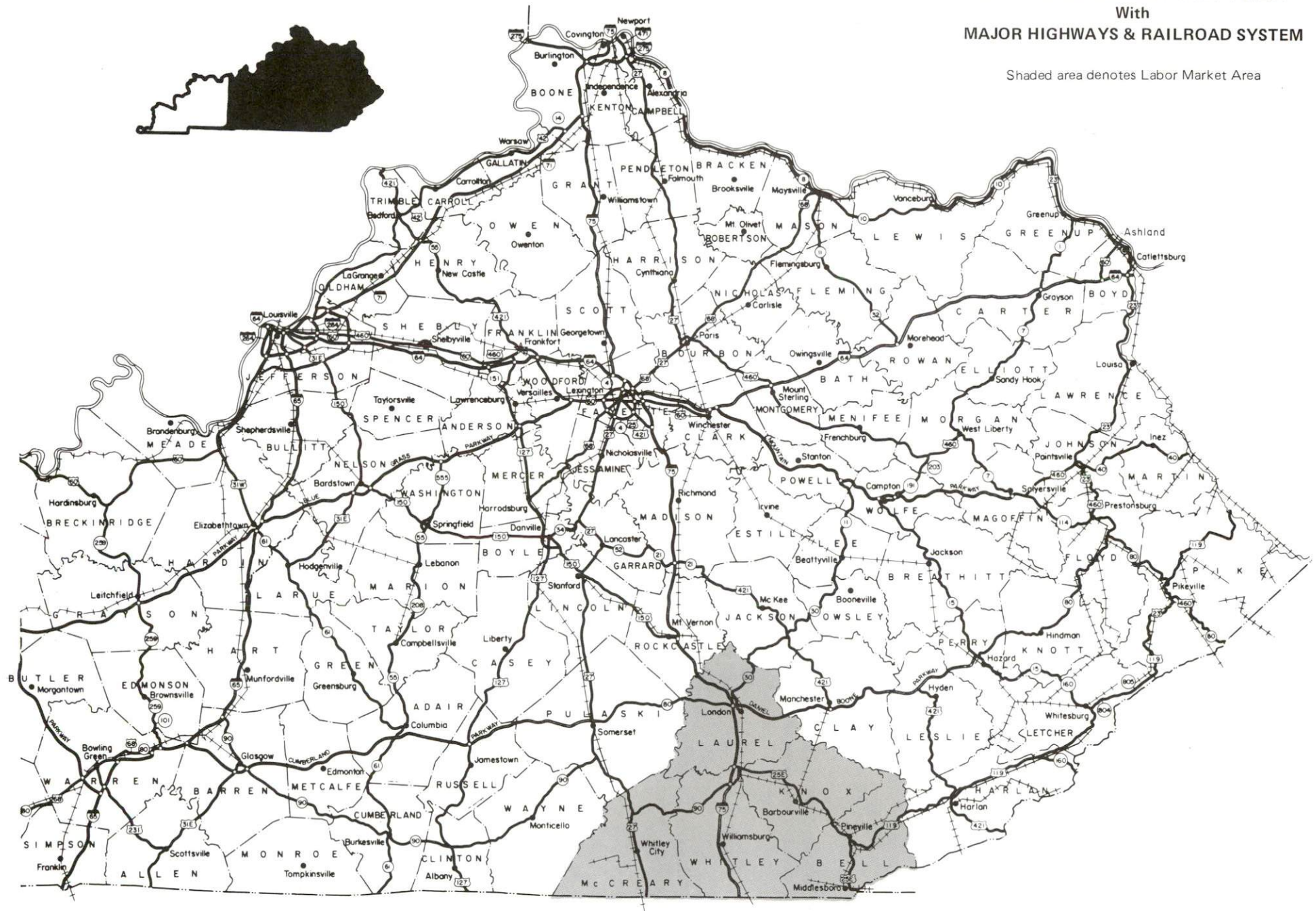
Labor Supply - There is a current estimated labor supply of 35,925 persons available for industrial jobs in the labor market area. In addition, from 1992 through 1996, 12,826 young persons in the area will become 18 years of age and potentially available for industrial jobs.

Transportation - Major highways serving Corbin are Interstate 75, and U.S. Highways 25, 25E, and 25W, all of which are "AAA"-rated trucking highways. Of the twenty-one trucking companies serving Corbin, two maintain local terminals. CSX Transportation provides mainline rail service to Corbin. The London-Corbin Airport (Magee Field), 11 miles north of Corbin, provides local air service. Scheduled commercial airline service is available at Bluegrass Airport near Lexington, 87 miles north; and at McGhee Tyson Airport near Knoxville, 96 miles south of Corbin.

Power and Fuel - Electric power is provided to Corbin by the Corbin City Utilities Commission. Whitley County is provided electric power by the Kentucky Utilities Company and the Cumberland Valley Rural Electric Cooperative Corporation. Natural Gas service is provided to Corbin by the Delta Natural Gas Company, Inc.

Education - Primary and secondary education is provided by the Corbin Independent School System and the Whitley County School System. The Corbin Independent School System is accredited by the Southern Association of Colleges and Schools. In addition, one non-public school system operates in Corbin. Vocational training is available locally at the Corbin Area Vocational Education Center. The Laurel County State Vocational-Technical School is located in London, 14 miles north of Corbin.

Shaded area denotes Labor Market Area



LABOR MARKET STATISTICS

The Corbin Labor Market Area includes Whitley County and the adjoining Kentucky counties of Bell, Knox, Laurel, and McCreary.

POPULATION			
	<u>1990</u>	<u>1980</u>	<u>1970</u>
Labor Market Area	153,549	152,581	118,889
Corbin	7,419	6,739	7,474
Whitley County	33,326	33,396	24,145
Knox County	29,676	30,239	23,689

Source: U.S. Department of Commerce, Bureau of the Census, January 1991.

POPULATION PROJECTIONS				
	<u>2000</u>	<u>2010</u>	<u>2020</u>	<u>2030</u>
Labor Market Area	177,930	190,170	199,800	205,730
Whitley County	40,410	43,590	46,310	48,200
Knox County	32,950	34,770	36,030	36,550

Source: University of Louisville, Urban Studies Center, State Data Center.

ESTIMATED LABOR SUPPLY					
	Current			Future	
	<u>Total</u>	<u>Unemployed</u>	<u>Employed Part-Time</u>	<u>Not in Labor Force</u>	<u>Becoming 18 years of age 1992 thru 1996</u>
Labor Market Area*	35,925	4,765	6,681	24,479	12,826
Whitley County	8,817	991	1,762	6,064	2,751
Knox County	6,808	889	1,109	4,810	2,477

* Additional workers may be drawn from other nearby counties.

Note: Unemployed - persons unemployed and actively seeking work; Employed Part-Time - persons employed but working only 14 to 26 weeks per year; Not in Labor Force - represents the number of persons who would enter the labor force if suitable employment were available (based on the assumption that persons in Kentucky would like to participate in the labor force in the same proportion that they do nationally).

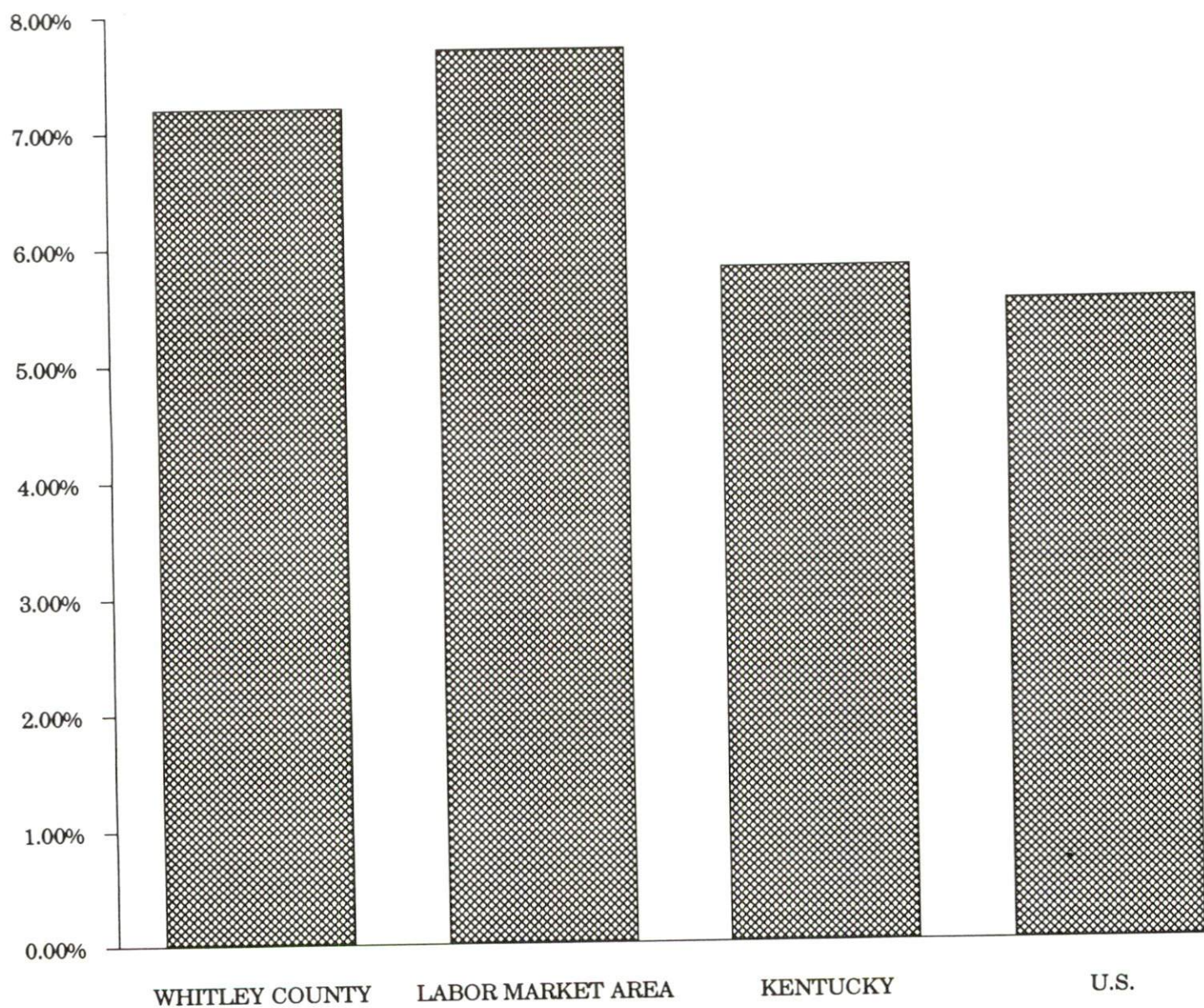
Sources: Kentucky Cabinet for Human Resources, Kentucky Labor Supply Estimates by County, 1989. Kentucky Cabinet for Economic Development, Future Labor Supply Becoming 18 Years of Age, 1992 thru 1996.

LABOR FORCE CHARACTERISTICS OF RESIDENTS, 1990

	Whitley County	Labor Market Area
Civilian Labor Force	11,428	54,637
Employment	10,608	50,413
Unemployment	820	4,224
Rate of Unemployment (%)	7.2	7.7

Source: Kentucky Cabinet for Human Resources, Kentucky Labor Force Estimates, Annual Averages, 1990.

UNEMPLOYMENT RATES 1990

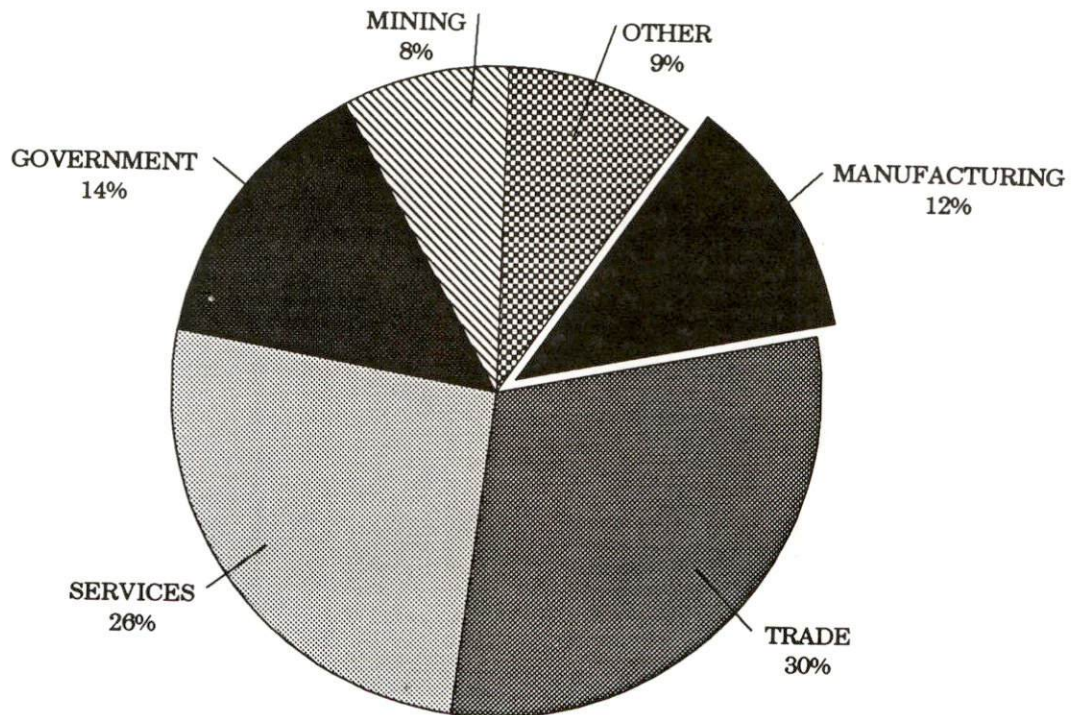


SELECTED COMPONENTS OF NONAGRICULTURAL EMPLOYMENT
BY PLACE OF WORK, 1990

	Whitley County	Labor Market Area
All Industries (total)	9,679	41,835
Manufacturing	1,193	7,542
Wholesale & Retail Trade	2,911	11,920
Services	2,508	8,646
State/Local Government	1,371	6,275
Contract Construction	228	1,649
Mining & Quarrying	802	2,656

Note: Excludes domestic workers, railway workers, certain nonprofit corporations, majority of federal government workers, and self-employed workers.
Source: Kentucky Cabinet for Human Resources, Average Monthly Workers Covered by Kentucky Unemployment Insurance Law, 1990.

WHITLEY COUNTY

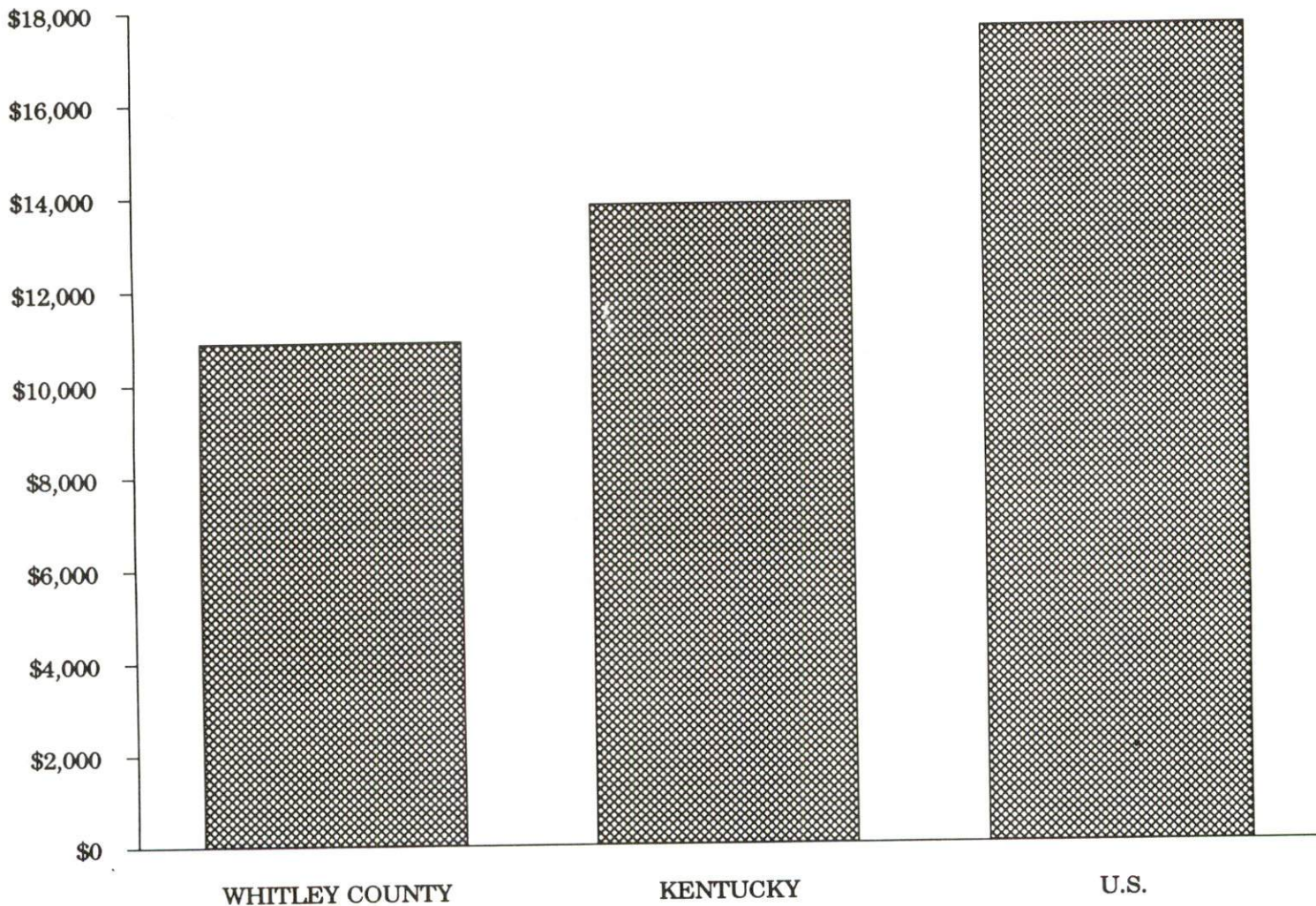


PER CAPITA PERSONAL INCOME

Area	1985	1989	Percent Change
Whitley County	\$8,422	\$10,898	29.4
Labor Market Area Range	\$5,046 - \$8,909	\$6,834 - \$11,194	-
Kentucky	\$10,755	\$13,823	28.5
U.S.	\$13,899	\$17,594	26.6

Source: U.S. Bureau of Economic Analysis, Kentucky Economic Information System, April 1991.

PER CAPITA PERSONAL INCOME
1989



AVERAGE PLACEMENT WAGES

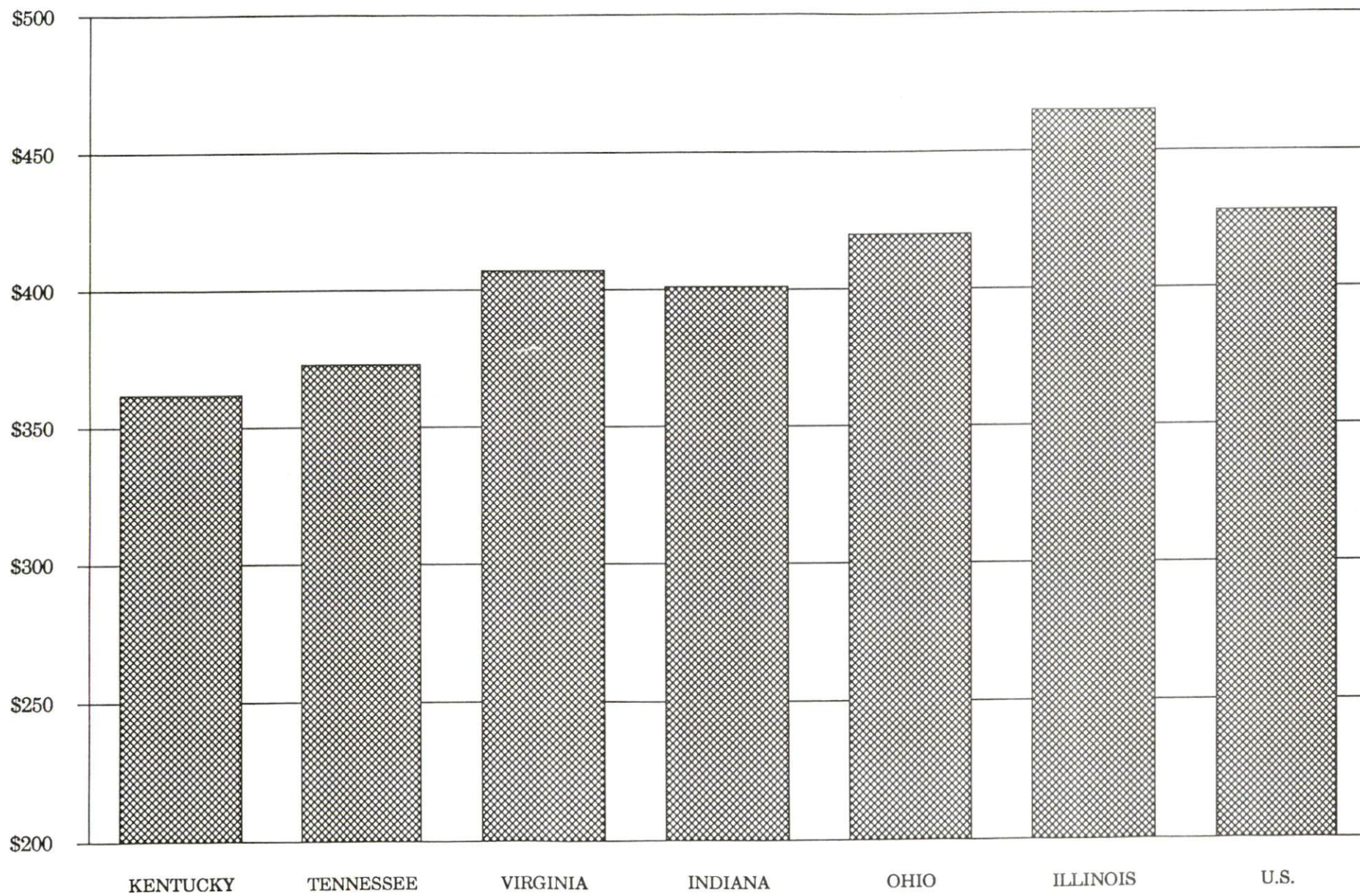
Whitley County is served by the Corbin local office of the Kentucky Department for Employment Services. The focus of the following data is on job placements made by the Corbin local office and may therefore be used as an indicator of the wages which employers in the area pay new employees. During the twelve months which ended on June 30, 1990, the local employment office filled 2,508 job openings in various occupational categories. The average hourly wage for selected occupational categories were:

<u>OCCUPATIONAL CATEGORY</u>	<u>NUMBER OF PLACEMENTS</u>	<u>AVERAGE WAGE(\$)</u>
All Occupations	2,508	4.20
Clerical	953	3.75
Sales	141	4.04
Services (excluding domestic)	463	3.48
Agricultural, Fishery, Forestry, etc.	10	4.23
Processing	103	4.76
Machine Trades	36	6.10
Bench Work	213	3.63
Structural	245	5.11
Motor Freight/ Transportation	70	4.90
Packaging and Materials Handling	210	6.37
Other	9	5.49

The Corbin local office also serves Clay, Jackson, Knox, and Rockcastle Counties. The above occupational categories are taken from the Dictionary of Occupational Titles published by the U.S. Department of Labor.

Source: Kentucky Cabinet for Human Resources, Department for Employment Services.

AVERAGE WEEKLY WAGES OF WORKERS COVERED BY
UNEMPLOYMENT INSURANCE - 1989



AVERAGE WEEKLY WAGES BY INDUSTRY
BY PLACE OF WORK, 1989*

	Whitley County	Kentucky (State- Wide)	Tennessee	Virginia
All Industries	\$300.08	\$362.03	\$373.00	\$407.00
Mining & Quarrying	512.16	623.82	522.00	576.00
Contract Construction	294.82	388.21	407.00	434.00
Manufacturing	298.51	472.92	431.00	470.00
Transportation, Communications & Public Utilities	368.80	482.22	493.00	575.00
Wholesale & Retail Trade	227.04	245.12	N/A	N/A
Finance, Insurance & Real Estate	301.68	417.89	448.00	488.00
Services	305.54	310.29	357.00	409.00
State/Local Government	314.88	370.61	N/A	N/A
	<u>Indiana</u>	<u>Ohio</u>	<u>Illinois</u>	<u>U. S.</u>
All Industries	\$401.00	\$420.00	\$465.00	\$428.00
Mining & Quarrying	693.00	596.00	707.00	688.00
Contract Construction	464.00	480.00	608.00	485.00
Manufacturing	546.00	580.00	566.00	534.00
Transportation, Communications & Public Utilities	504.00	533.00	582.00	556.00
Wholesale & Retail Trade	N/A	N/A	N/A	N/A
Finance, Insurance & Real Estate	418.00	456.00	594.00	544.00
Services	328.00	360.00	419.00	399.00
State/Local Government	N/A	N/A	N/A	N/A

* Wages for U.S. and surrounding states rounded to nearest dollar.

N/A Not Available.

Note: The average weekly wage for each category includes the salaries and wages of all persons working for that type business. For example, the manufacturing category includes both production workers and administrative personnel. Excludes domestic workers, railway workers, certain nonprofit corporations, majority of federal government workers, and self-employed workers.

Source: Kentucky Cabinet for Human Resources, Average Weekly Wages of Workers Covered by Kentucky Unemployment Insurance Law, 1989. U.S. Department of Labor, Bureau of Labor Statistics, Employment and Wages, Annual Averages, 1989, October 1990.

EXISTING INDUSTRY

CORBIN MANUFACTURING FIRMS, THEIR PRODUCTS AND EMPLOYMENT

<u>Firm</u> <u>(Establishment date)</u>	<u>Product</u>	<u>1990</u> <u>Average Employment</u>
Allen Campbell Meats (1982)	Pork sausage, beef & pork slaughtering	2
American Greetings Corporation (1967)	Greeting cards, napkins, gift wrapping paper, plastic bows	900
Certain-Teed Corporation (1973)	Organic fiber auto insulation, industrial insulation & ductliner	540
Chandler Printing Company, Inc. (1948)	Job printing	10
Clover Top Bakery (1959)	Bakery products	2
Forest Products, Inc. (1966)	Lumber, wood chips, pallets, skids	128
General Shale Products Corporation - Corbin Brick Division (1921)	Brick	60
Karr Industries, Inc. (1981)	Tools & dies, machine shop & repair	8
Metal Products, Inc. (1980)	Hollow metal doors & frames	49
NCR Systemedia Division (1973)	Business forms	115
National Standard Company, Woven Products Division (1962)	Low carbon steel wire micronic metal fibers & fiber products, industrial wire cloth	185
P.D.F., Inc. (1986)	Custom molded products	30
Pennington Block Company, Inc. (1955)	Concrete blocks	11
Pepsi-Cola Bottling Company of Kentucky, Inc. (1938)	Soft drinks	180
Shadow, Inc. (1987)	Fiberglass boats	29
Southeastern Kentucky Rehabilitation Ind. (1971)	Truck & boat seat upholstery, pallets textile bags	86
Times-Tribune (1892)	Commercial printing, newspaper	41
Waitsboro Manufacturing Company (1982)	Fiberglass boats	86
Whitley County Concrete & Supply Company, Inc. (1963)	Concrete septic tanks, ready mix concrete	16

(Continued)

OTHER MAJOR WHITLEY COUNTY MANUFACTURING FIRMS

<u>Firm</u> <u>(Establishment date)</u>	<u>Product</u>	<u>1990</u> <u>Average Employment</u>
Williamsburg		
Appalachian Bottling Company (1935)	Soft drinks	35
Firestone Industrial Products (1989)	Motor vehicle parts and accessories	42
Lion Apparel (1959)	Government uniform clothing, industrial work clothing	300
Tri-County Manufacturing Assembly, Inc. (1978)	Electrical automotive wire harness, typewriter components	200

Sources: Kentucky Cabinet for Economic Development, Division of Research and Planning. Corbin Industrial Development Commission.

LABOR ORGANIZATIONS IN MANUFACTURING FIRMS

<u>Union</u>	<u>Representing workers at:</u>
International Brotherhood of Teamsters, Chauffeurs, Warehousemen and Helpers of America	American Greetings Corporation
International Union, United Automobile, Aerospace and Agricultural Implement Workers of America	NCR Systemedia Division
United Steelworkers of America, AFL-CIO-CLC	National Standard Company

SELECTED INDUSTRIAL SERVICES

<u>Types of Services</u>	<u>Location</u>	<u>Mileage from Corbin</u>
Custom Data Processing	London, Kentucky	14
	Barbourville, Kentucky	17
Custom Plastics Producers	Mt. Vernon, Kentucky	36
	Middlesboro, Kentucky	48
Electric Motor Repair	Corbin, Kentucky	-
Grinding, Precision & Tool	Richmond, Kentucky	65
	Lexington, Kentucky	87
Heat Treating Facilities	Richmond, Kentucky	65
Industrial Equipment & Supplies	Richmond, Kentucky	65
	Knoxville, Tennessee	86
Industrial Gases	Corbin, Kentucky	-
Industrial Waste Removal	Corbin, Kentucky	-
Machine Shops, Tool & Die	Corbin, Kentucky	-
Metal Castings	Middlesboro, Kentucky	48
Metal Finishers	Richmond, Kentucky	65
Metal Service Centers	Richmond, Kentucky	65
	Knoxville, Tennessee	86
Millwrights	Knoxville, Tennessee	86
	Lexington, Kentucky	87
Public Warehouse Facilities	Danville, Kentucky	72

Sources: Kentucky Cabinet for Economic Development, Division of Research and Planning.

13

PORTATION

t of Interstate 75, a major north-south
is served by U.S. Highway 25, 25E and
ound gross load limit) trucking highways.
ne toll road extending from London to
north via U.S. Highway 25.

CORBIN, KENTUCKY, MARKET CENTERS

City	Highway Miles
Los Angeles, CA	2,223
Louisville, KY	167
Memphis, TN	219
New Orleans, LA	676
New York, NY	800
Pittsburgh, PA	428
St. Louis, MO	418

Note: ... via the best interstate or primary highways, not
neces... the most direct route of travel.

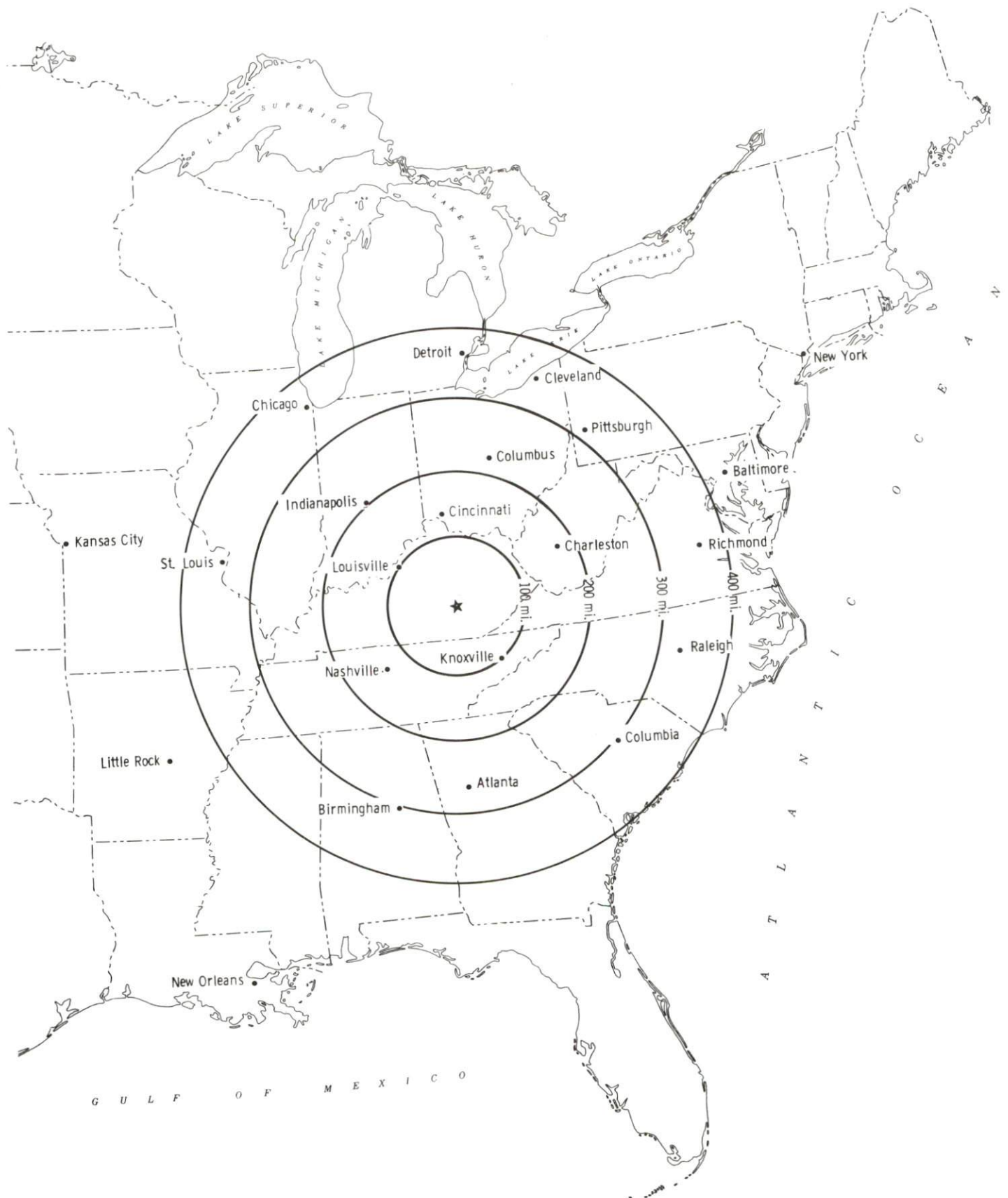
Sources: Rand McNally Deluxe Motor Carriers' Road Atlas, 1989. Official
Kentucky Mileage Map, 1980.

Truck Service

Twenty-one common carrier trucking companies provide interstate and/or
intrastate service to Corbin. Two companies maintain local terminals in
Corbin.

Source: American Motor Carrier Directory, Fall 1991.

Selected Market Centers



Rail

CSX Transportation provides main line rail service to Corbin. Norfolk Southern Railway provides the nearest piggyback facilities located in Knoxville, Tennessee, 86 miles south of Corbin.

For details on routing, schedules, rates, and services contact:

Manager
Industrial Development
CSX Transportation
9420 Bunsen Parkway
Suite 212
Louisville, Kentucky 40220
(502) 499-3025

Air

Local

Location:	London-Corbin Airport (Magee Field) 3 miles south-southeast of London, Kentucky 11 miles north of Corbin
Runways:	1 paved
Length:	6,000 feet
Traffic	
Control:	Wind sock and FSS advisory service on 123.6
Lighting:	Beacon, runway and obstruction lights, REIL, VASI Fuel-100 octane and jet-A; minor A & E repairs; tie-downs; aircraft rental, weather, flight training, charter and ambulance service, vending machines, taxi, car rentals
Air Freight Service:	Air carriers accept air freight on a space available basis

Nearest Scheduled Commercial Airline Service

Location:	Bluegrass Airport 4 miles west of Lexington, Kentucky; 87 miles north of Corbin
Air Service:	Delta, USAir, United Express, American Eagle, ComAir, TW Express, Atlantic Southeast Airlines, Northwest Airlink, Henson Airlines
Daily Arrivals & Departures:	120

Location:	McGhee Tyson Airport 10 miles south of Knoxville, Tennessee; 96 miles south of Corbin
Air Service:	American Eagle, ComAir, Delta, Northwest, USAir, TransWorld Express, United, United Express, USAir Express
Daily Arrivals & Departures:	126

UTILITIES

Electricity

Company serving **Corbin** - City Utilities Commission
Source of power - Kentucky Utilities Company
For industrial rates contact:

City Utilities Commission
901 South Main Street
Corbin, Kentucky 40701
(606) 528-4026

and/or

Industrial Development Department
Kentucky Utilities Company
One Quality Street
Lexington, Kentucky 40507
(606) 255-1461

Company serving **small portions of Whitley County** - Kentucky
Utilities Company
Source of power - Kentucky Utilities Company
For industrial rates contact:

Industrial Development Department
Kentucky Utilities Company
One Quality Street
Lexington, Kentucky 40507
(606) 255-1461

Company serving **major portions of Whitley County** - Cumberland Valley
Rural Electric Cooperative Corporation
Source of power - East Kentucky Power Cooperative
For industrial rates contact:

Industrial Development Division
East Kentucky Power Cooperative
P. O. Box 707
Winchester, Kentucky 40392-0707
(606) 744-4812

and/or

Cumberland Valley Rural Electric
Cooperative Corporation
U.S. Highway 25E
Gray, Kentucky 40734
(606) 528-2677

Natural Gas

Company serving Corbin and Whitley County - Delta Natural Gas Company, Inc.

Source of supply - Wiser Oil Company and Columbia Gas Transmission
For rates and supplies contact:

Marketing and Public Relations
Delta Natural Gas Company, Inc.
3617 Lexington Road
Winchester, Kentucky 40391
(606) 744-6171

Public Water Supply

Company serving Corbin - City Utilities Commission
901 South Main Street
Corbin, Kentucky 40701
(606) 528-4026

Source -	Laurel Lake Impoundment
Treatment plant capacity -	5,000,000 gallons per day
Average daily consumption -	2,500,000 gallons
Peak daily consumption -	3,500,000 gallons
Storage capacity -	4,850,000 gallons
Water pressure -	30 psi to 110 psi

The City Utilities Commission has several projects under way. An additional 10 miles of water distribution lines; 200,000 gallon storage tank, valves, hydrants and other related equipment are under construction. Completion date is tentatively set for March 1992.

Sewerage

Company serving Corbin - City Utilities Commission
901 South Main Street
Corbin, Kentucky 40701
(606) 528-4026

Design capacity -	4,500,000 gallons per day
Average daily flow -	2,360,000 gallons
Type of treatment -	Secondary
Treated effluent discharged into -	Lynn Camp Creek

The City Utilities Commission has implemented a monitoring and telemetering project at a cost of \$580,000.

CLIMATE

Whitley County

Temperature

Normal (29-year record)	58.90 degrees
Average annual 1989	58.00 degrees
Record highest, September 1954 (48-year record)	103.00 degrees
Record lowest, January 1985 (48-year record)	-24.00 degrees
Normal heating degree days (29-year record)	3,658
(Heating degree day totals are the sums of negative departures of average daily temperatures from 65 degrees F.)	

Precipitation

Normal (29-year record)	47.29 inches
Mean annual snowfall (47-year record)	12.40 inches
Total precipitation 1989	56.22 inches
Mean number days precipitation (.01 inch or more) (47-year record)	126.40
Mean number days thunderstorms (47-year record)	47.20

Prevailing winds (through 1963)

Northeast

Relative Humidity (29-year record)

1 a.m.	81 percent
7 a.m.	85 percent
1 p.m.	59 percent
7 p.m.	63 percent

Source: U.S. Department of Commerce, Environmental Science Services Administration, Climatological Data, 1989. Station of record: Knoxville, Tennessee.

LOCAL GOVERNMENT

Structure

The city of Corbin is served by a mayor, four city commissioners, and a city manager. The mayor serves a four-year term and city commissioners are elected to two-year terms. Whitley County is served by a county judge/executive and three magistrates both of which are elected to four-year terms.

Planning and Zoning

City agency - Corbin Planning Commission

Zoning enforced - Within city limits

Subdivision regulations enforced - Within city limits

Local codes enforced - Building and housing within city limits

Mandatory state codes enforced - Kentucky Plumbing Code, National

Electric Code, Kentucky Boiler Regulations and Standards, Kentucky

Building Code (modeled after BOCA code)

Local Fees and Licenses

The city of Corbin levies a business license fee on businesses operating within the city. The fees range from \$5 to \$800 annually. There is also a fee charged for an automobile sticker of \$15.

PROPERTY TAXES

The Kentucky Constitution requires the state to tax all classes of taxable property, and state statutes allow local jurisdictions to tax only a few classes. All locally taxed property is subject to county taxes and school district taxes (either a county school district or an independent school district). Property located inside of city limits may also be subject to city property taxes.

Special local taxing jurisdictions (fire protection districts, watershed districts, and sanitation districts) levy taxes within their operating areas (usually a small portion of community or county).

Property assessments in Kentucky are at 100% fair cash value. A 15% reduction is automatically granted for accounts receivable.

STATE PROPERTY TAX RATES PER \$100 VALUATION

<u>Selected Classes of Property</u>	<u>1990 State Rate</u>	<u>Local Taxation Permitted</u>
Real Estate	\$0.189	YES
Manufacturing Machinery	0.150	NO
Pollution Control Equipment	0.150	NO
Inventories		
Raw Materials	0.050	NO
Goods in Process	0.050	NO
Finished Goods	0.050	YES
Motor Vehicles	0.450	YES
Other Tangible Personal Property	0.450	YES
Intangibles (Accounts Receivable, Money on Hand)	0.250	NO

LOCAL PROPERTY TAX RATES PER \$100 VALUATION, 1990

<u>Taxing Jurisdiction</u>	<u>Real Estate</u>	<u>Finished Goods & Tangibles</u>	<u>Motor Vehicles</u>
Whitley County	\$0.1630	\$0.1739	\$0.1749
Knox County	0.2100	0.2758	0.2768
School Districts:			
Corbin Independent	0.4580	0.4580	0.6930
Whitley County	0.5260	0.5260	0.0400
Knox County	0.5180	0.5180	0.1580
Cities:			
Corbin	0.1835	0.1835	0.2423

EDUCATION

Public Schools

	Corbin Independent	Whitley County
Total Enrollment (Fall, 1990)	2,064	3,999
Accreditation	Southern Association of Colleges and Schools	
Pupil-Teacher Ratio (1989-90)	20.8-1	20.1-1
Percent High School Graduates to College (1989-90)	76.1	46.6
Expenditures Per Pupil (1989-90)	\$2,448.62	\$2,377.27

Nonpublic Schools

<u>School</u>	<u>Enrollment</u>	<u>Grades</u>
St. Camillus Academy Elementary	250	K-8
St. Camillus Academy High School	97	9-12

Area Colleges and Universities

<u>Name</u>	<u>Location (Miles distant)</u>	<u>Enrollment (Fall, 1990)</u>
Sue Bennett College	London, Kentucky (14)	517
Union College	Barbourville, Kentucky (16)	1,028
Cumberland College	Williamsburg, Kentucky (19)	1,812
Somerset Community College	Somerset, Kentucky (47)	2,087
Berea College	Berea, Kentucky (47)	1,550
Lincoln Memorial University	Harrogate, Tennessee (52)	1,819
Eastern Kentucky University	Richmond, Kentucky (65)	15,371
Centre College	Danville, Kentucky (71)	879
Lindsey Wilson College	Columbia, Kentucky (73)	1,327
Hazard Community College	Hazard, Kentucky (74)	1,318
University of Kentucky	Lexington, Kentucky (87)	23,081
Transylvania University	Lexington, Kentucky (87)	1,091
Lexington Community College	Lexington, Kentucky (87)	4,588
Georgetown College	Georgetown, Kentucky (99)	1,595

Vocational Training

Vocational training is available at both the state vocational-technical schools and the area vocational education centers. The state vocational-technical schools are post-secondary institutions. The area vocational education centers are designed to supplement the curriculum of high school students. Both the state vocational-technical schools and the area vocational education centers offer evening courses to enable working adults to upgrade current job skills.

Arrangements can be made to provide training in the specific production skills required by an industrial plant. Instruction may be conducted either in the vocational school or in the industrial plant, depending upon the desired arrangement and the availability of special equipment.

Bluegrass State Skills Corporation

The Bluegrass State Skills Corporation, an independent public corporation created and funded by the Kentucky General Assembly, provides programs of skills training to meet the needs of business and industry from entry level to advanced training, and from upgrading present employees to retraining experienced workers.

The Bluegrass State Skills Corporation is the primary source for skills training assistance for a new or existing company. The Corporation works in partnership with other employment and job training resources and programs, as well as Kentucky's economic development activities, to package a program customized to meet the specific needs of a company.

<u>Vocational School</u>	<u>Location (Miles distant)</u>	<u>Cumulative Enrollment 1989-1990</u>
Corbin Area Vocational Education Center	Corbin	319
Laurel County State Vocational-Technical Center	London (14)	529

OTHER LOCAL FACILITIES

Local Medical Personnel

Physicians - 57
Dentists - 20

Hospitals

<u>General Hospital</u>	<u>Location</u>	<u>Beds</u>
Baptist Regional Medical Center	Corbin	210

Medical staff - 57 staff physicians, 42 courtesy physicians,
157 registered nurses, 67 licensed practical nurses

Other Medical Facilities and Services

Psychiatric and Chemical Dependency Unit
of Baptist Regional Medical Center
Cumberland River Comprehensive Care Center
Dialysis Clinic

Banks and Savings & Loan Associations

American Fidelity Bank & Trust Company
Corbin Deposit Bank & Trust
First Federal Savings Bank
First National Bank & Trust
Mutual Federal Savings & Loan Association
Tri-County National Bank

Newspapers

Corbin Times-Tribune (daily)
Corbin! This Week (weekly)

Telephone Service

South Central Bell

RECREATION

Local

Public recreation facilities available in Corbin include a swimming pool, two mini-parks with playground equipment and picnic areas, six tennis courts, four baseball fields, seven outdoor basketball courts, a football field, and a recreation center.

The Corbin Recreation Commission offers a year-round recreational program for all ages. A supervised playground program is available during the summer months and sports enthusiasts may participate in leagues for baseball, softball, T-ball, football and basketball. Classes in karate, judo, and dancing and a recreation program for senior citizens are offered at the recreation center.

Corbin City Park in west Corbin contains two multi-purpose fields and three tennis courts. A multi-purpose court, picnic area and camping area, and three shelter houses with restrooms will be added during the next three years.

The Chamber of Commerce Civicgrounds offer a lighted horse show ring with bleachers seating 2,000 people, a 15,000-square-foot multi-purpose building featuring a full-size indoor basketball court, an office, kitchen for caterings, men's and women's restrooms and showers, and storage space. An outdoor amphitheater complete with concert stage, dressing rooms, and seating for 2,500 to 3,000 people has recently been completed. Plans have been made to construct an outdoor running and walking track, picnic area and a small playground area.

Facilities at the Tri-County Country Club in Corbin include a golf course, swimming pool and two tennis courts. Other private facilities include a bowling alley, skating rink, miniature golf course, golf driving range and one indoor and one outdoor movie theater.

Laurel River Lake, located in Whitley County, is a 5,600-acre lake that offers camping, fishing, boating and swimming. The park contains a 28-acre picnic area, picnic shelter, playground area, hiking trail, and restroom facilities. Grove Marina is also located on Laurel River Lake. The marina has 150 boat slips, full service marina, runabouts, houseboats, fishing boats, and pontoons available to rent.

The Beautiful Cumberland Falls is located 20 miles west of Corbin in the Cumberland Falls State Resort Park. The falls, which drops 68 feet over a rock precipice, shows one of only two known "moonbows" in the world.

The Nibroc Festival (that's Corbin spelled backwards) is observed each summer and includes parades, folk music, square dancing, a midway and horse show, and the coronation of a queen. Arts and crafts, gun and coin shows, and old-fashioned bargain days are also a part of the festivities.

Whitley county is located in the southern portion of the Daniel Boone National Forest, which covers 640,000 acres of timberland in eastern Kentucky. It encompasses much of Kentucky's great beauty and provides a vacation paradise. There are scenic hiking trails, rivers and streams stocked with a variety of fish, hunting preserves, camping sites, and numerous other natural and historical attractions.

Area (Within 50 miles)

Cumberland Falls State Resort Park
Levi Jackson Wilderness Road State Park
Dr. Thomas Walker State Shrine
Pine Mountain State Resort Park
The Big South Fork National River and Recreational Area
General Burnside State Park
Cumberland Gap National Historic Park

COMMUNITY IMPROVEMENTS

Corbin re-certified as a "Kentucky Certified City" in 1991, and is distinguished as a gold award winner recognizing seven consecutive years of certification. Re-certification is based on achievement in the following areas: existing industry assistance, small business assistance, educational resources, and community development factors of health care, public safety, arts and culture, recreation, governmental awareness and resources. The Certified Cities Program is sponsored by the Kentucky Chamber of Commerce.

The City Utilities Commission has several projects under way. An additional ten miles of water distribution lines; 200,000 gallon storage tank, valves, hydrants and other related equipment are under construction. Completion date is tentatively set for March 1992.

The City Utilities Commission has implemented a monitoring and telemetering project at a cost of \$580,000.

An additional lane to U.S. Highway 25 from the downtown area to the South I-75 interchange is in the planning stages. Approximate cost of the project is \$5 million.

The City of Corbin has plans to construct a new 100-bed nursing home.

Development of an enhanced version of the "911" emergency communications system is under way in Corbin.

A \$400,000 community recreation and senior citizen facility was constructed in 1990.