

1982

# Industrial Resources: Fulton County - Fulton

Kentucky Library Research Collections  
Western Kentucky University, [spcol@wku.edu](mailto:spcol@wku.edu)

Follow this and additional works at: [https://digitalcommons.wku.edu/fulton\\_cty](https://digitalcommons.wku.edu/fulton_cty)



Part of the [Business Administration, Management, and Operations Commons](#), [Growth and Development Commons](#), and the [Infrastructure Commons](#)

---

## Recommended Citation

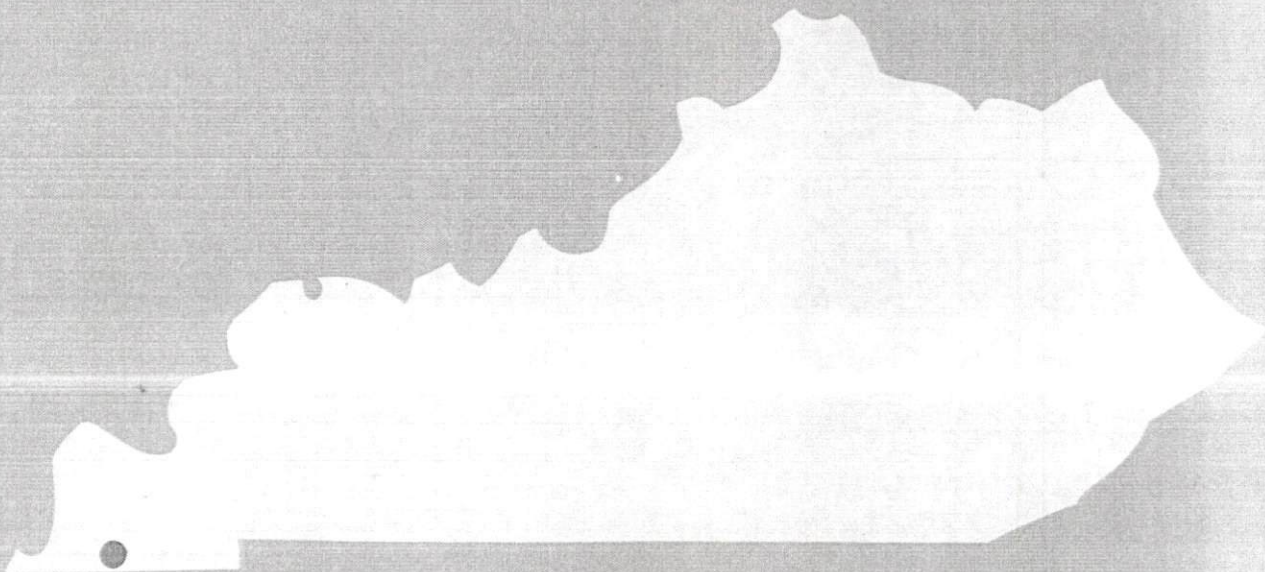
Kentucky Library Research Collections, "Industrial Resources: Fulton County - Fulton" (1982). *Fulton County*. Paper 28.  
[https://digitalcommons.wku.edu/fulton\\_cty/28](https://digitalcommons.wku.edu/fulton_cty/28)

This Report is brought to you for free and open access by TopSCHOLAR®. It has been accepted for inclusion in Fulton County by an authorized administrator of TopSCHOLAR®. For more information, please contact [topscholar@wku.edu](mailto:topscholar@wku.edu).

IR  
258

Fulton County, Ky.

A comprehensive  
report on  
**Fulton, Ky.**



**KENTUCKY & CO.**  
The state that's run like a business.



# FULTON, KENTUCKY --- Site 182 --- 70 Acres

For more information contact the Department of Economic Development, Office of Business Development, Industrial Development Division, Capital Plaza Tower, Frankfort, Kentucky 40601 (502-564-7140).

**LOCATION:** Within northern city limits

**ZONING:** Industrial

**HIGHWAY ACCESS:** Site served by paved internal access road;  
Purchase Parkway interchange approximately 0.3 mile south  
via KY 307

**RAILROAD:** Illinois Central Gulf Railroad along western boundary

**WATER:** Fulton Utility System

Size Line: 12-inch and 14-inch lines serve the site

**NATURAL GAS:** Fulton Utility System

Size Line: 6-inch high pressure line approximately 3700 feet south  
along north side of US 45

**ELECTRICITY:** Fulton Electric System

**SEWERAGE:** Municipal sewage service presently not available, package  
treatment plant necessary for any additional development

**OWNERSHIP:** Fulton Industrial Development Authority

**SCALE:** 1 inch = 2000 feet

**CONTOUR INTERVAL:** 10 feet

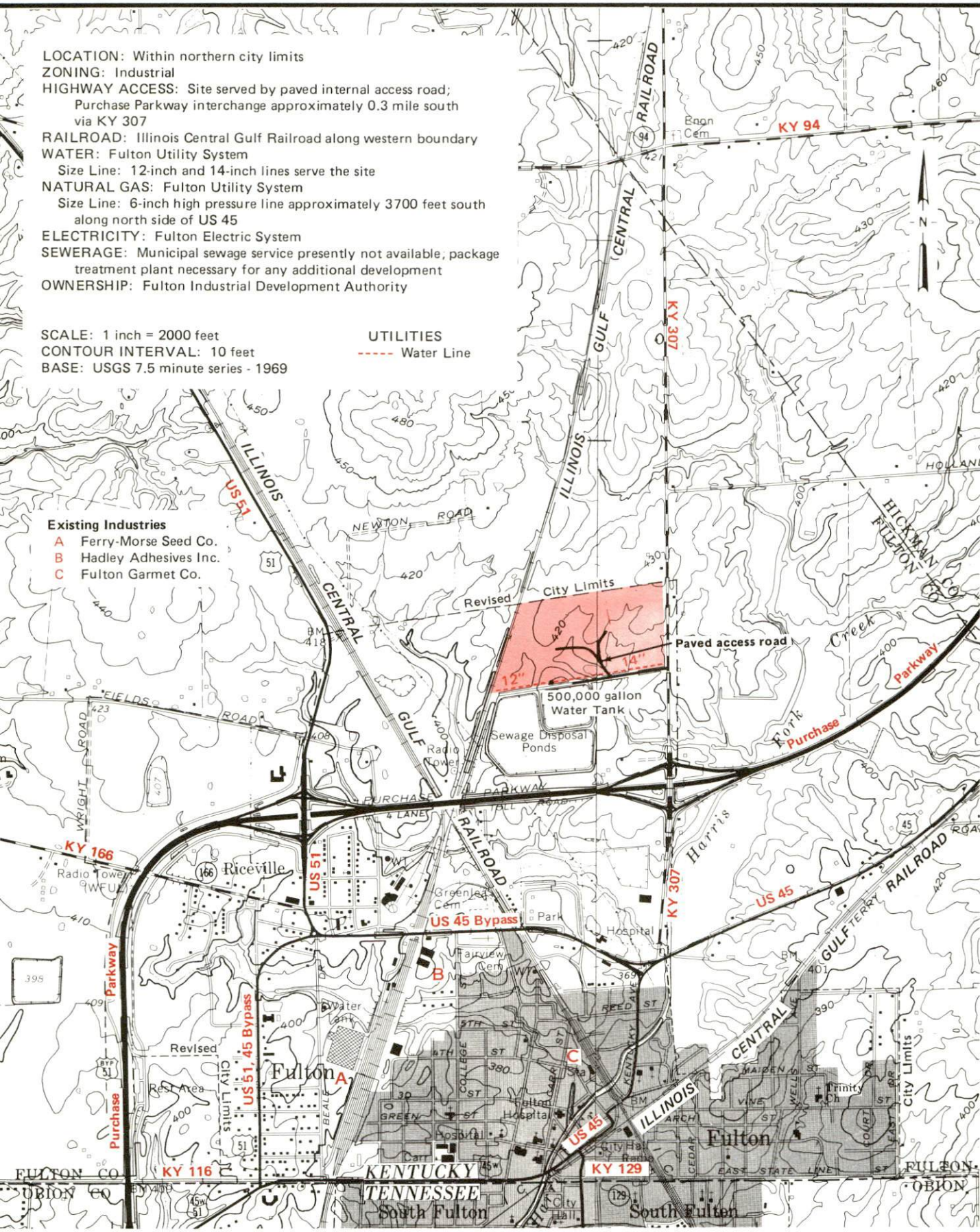
**BASE:** USGS 7.5 minute series - 1969

## UTILITIES

--- Water Line

## Existing Industries

- A** Ferry-Morse Seed Co.
- B** Hadley Adhesives Inc.
- C** Fulton Garmet Co.



A COMPREHENSIVE REPORT ON  
FULTON, KENTUCKY

Prepared by  
The Kentucky Department of Economic Development  
Division of Research and Planning  
in cooperation with  
The Fulton-South Fulton Chamber of Commerce

1982



Program manager - Brenda Roberts; research - Andrew Dennis; clerical - Linda Fint; graphics - Frank Ferrante, Tony Cecconi, Robert Owens; cartography - Site Evaluation Section, Division of New Industries. Cost of printing paid from state funds.

# TABLE OF CONTENTS

<u>Chapter</u>	<u>Page</u>
INDUSTRIAL SITES .....	i
FULTON, KENTUCKY - A RESOURCE PROFILE .....	1
THE LABOR MARKET AREA .....	3
Population .....	3
Labor Force Characteristics of Residents, 1981 .....	3
Estimated Male Labor Supply .....	4
Estimated Female Labor Supply .....	5
Fulton Manufacturing Firms, Their Products and Employment .....	6
Labor Organizations in Manufacturing Firms .....	7
Industrial Services .....	7
Average Weekly Wages by Industry, by Place of Work, 1981 .....	8
Per Capita Personal Income .....	10
TRANSPORTATION .....	11
Rail .....	11
Highways .....	11
Truck Service .....	12
Air .....	13
Bus .....	14
Taxi .....	14
Rental Services .....	14
Water .....	14
POWER AND FUEL .....	16
Electricity .....	16
Natural Gas .....	17
Other Fuels .....	17
WATER AND SEWERAGE .....	18
Public Water Supply .....	18
Raw Water .....	18
Sewerage .....	19
CLIMATE .....	20



<u>Chapter</u>	<u>Page</u>
LOCAL GOVERNMENT .....	21
City .....	21
County .....	21
Assessed Value of Property, 1981 .....	21
Property Taxes .....	22
Combined State and Local Rates Per \$100 Valuation, 1981 .....	22
Utilities Gross Receipts Tax for Schools .....	23
Planning and Zoning .....	23
Safety .....	23
Police .....	23
Fire .....	23
Rescue Service .....	23
Refuse Collection and Disposal .....	24
EDUCATION .....	25
Public Schools .....	25
Area Colleges and Universities .....	26
Vocational Schools .....	27
HEALTH .....	29
Local Medical Personnel .....	29
Hospitals .....	29
Other Medical Facilities .....	29
Ambulance Service .....	29
Public Health .....	29
OTHER LOCAL FACILITIES .....	30
Communications .....	30
Library Services .....	30
Religious Institutions .....	31
Financial Institutions .....	31
Hotels and Motels .....	31
Clubs and Organizations .....	32
RECREATION .....	33

1981 EDITION  
GENERAL HIGHWAY MAP  
**FULTON COUNTY**  
**KENTUCKY**

PREPARED BY THE  
KENTUCKY DEPARTMENT OF TRANSPORTATION  
BUREAU OF HIGHWAYS  
DIVISION OF PROJECT DEVELOPMENT  
IN COOPERATION WITH THE  
U.S. DEPARTMENT OF TRANSPORTATION  
FEDERAL HIGHWAY ADMINISTRATION

0 1 2 3 4 5 MILES

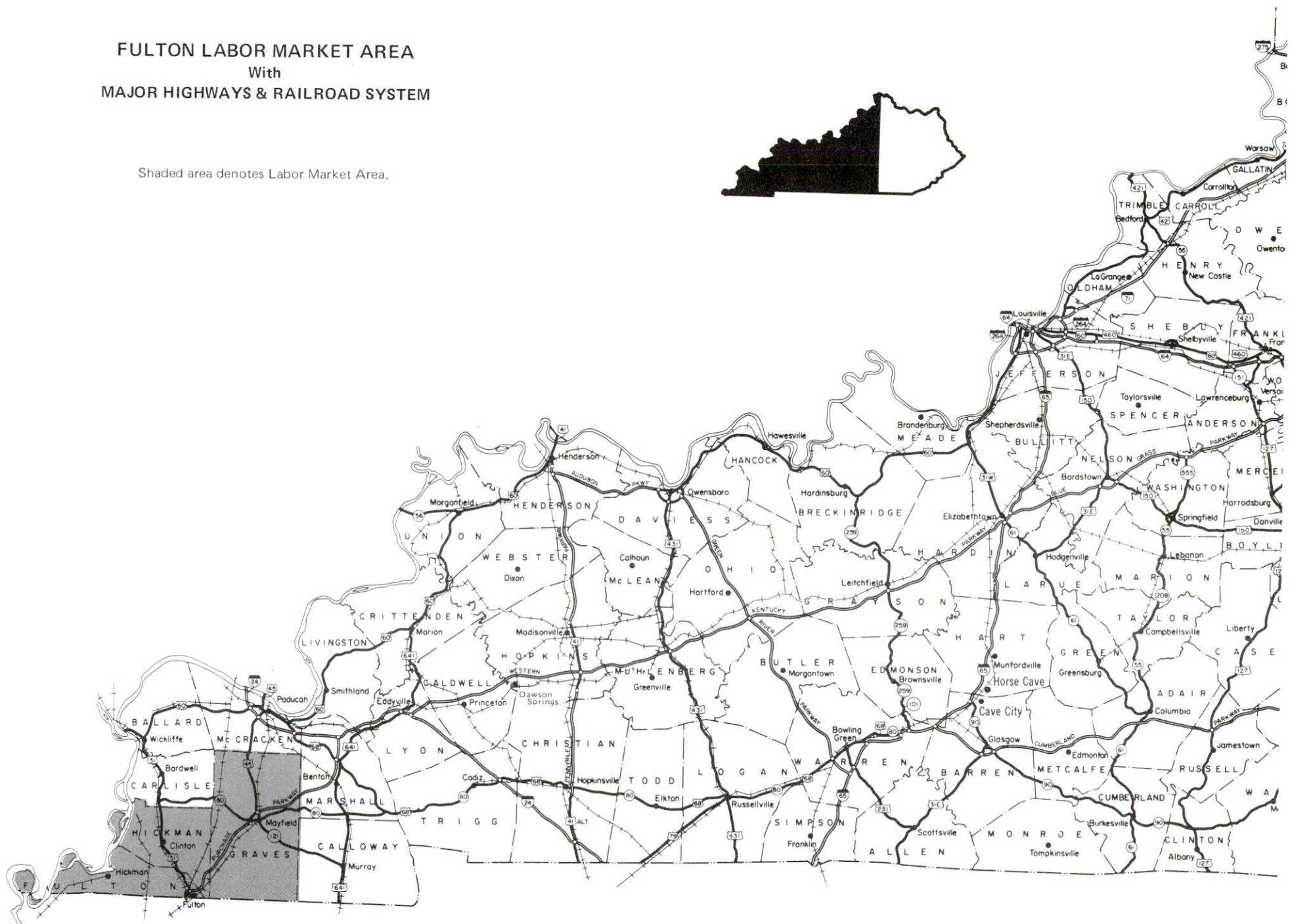




# FULTON LABOR MARKET AREA

With  
MAJOR HIGHWAYS & RAILROAD SYSTEM

Shaded area denotes Labor Market Area.



## FULTON, KENTUCKY - A RESOURCE PROFILE

Fulton, the largest city in Fulton County, is located in extreme southwestern Kentucky. The Kentucky-Tennessee line divides Fulton from South Fulton in Obion County, Tennessee. The two cities utilize many common facilities and unite in efforts to insure economic and cultural growth. Fulton is a three time recipient of the "All Kentucky City" award and was recognized as a "Kentucky Certified City" in 1981. Fulton is 49 miles south of Paducah, Kentucky; 252 miles southwest of Louisville, Kentucky; 166 miles northwest of Nashville, Tennessee; and 211 miles southeast of St. Louis, Missouri. Fulton had a 1980 population of 3,137.

Fulton County, covering 203 square miles, is located in Kentucky's Jackson Purchase region. Tennessee forms the southern border of the county and the Mississippi River separates the county from Missouri on the west. In 1980, Fulton County had a population of 8,971.

### The Economic Framework

The total number of Fulton County residents employed in 1981 averaged 3,361, with nonagricultural jobs accounting for 2,902 workers. Manufacturing employers in the county reported 632 workers; construction firms 77; transportation, communications, and public utilities 96; wholesale and retail trade 948; finance, insurance, and real estate 133; and employees in the service industries 295. Manufacturing employment is greatest in the electrical machinery, apparel and related products, and the food and kindred products industries.

Per capita personal income in the county in 1980 was \$7,070, an increase of 38.25 percent since 1976.

The Fulton labor market area includes Fulton, Hickman, Carlisle and Graves Counties in Kentucky and Lake, Obion and Weakley Counties in Tennessee. The total number of residents in the Kentucky portion of the labor market area employed in 1980 averaged 21,458, with nonagricultural jobs accounting for 19,608 workers. Manufacturing employers in the area reported 4,134 workers; mining and quarrying 481; construction firms 419; transportation, communications, and public utilities 469; wholesale and retail trade 3,285; finance, insurance, and real estate 583, and employees in the service industries 1,617.

### Resources for Growth

1. There is a current estimated labor supply of 5,185 men and 4,696 women available for industrial jobs in the Fulton labor market area. In addition, 4,904 young men and 4,516 young women in this area will become 18 years of age before 1986 and potentially available for work.



2. The Illinois Central Gulf Railroad provides main line rail service to Fulton. Fulton is served by the Jackson Purchase Parkway, a multi-lane toll road, which connects with Interstate 24, 51 miles to the northeast. The city is also served by U.S. Highways 51 and 45 plus Kentucky Highways 94, 129, 166 and 307. The Hickman-Fulton County Riverport, a major riverport on the Mississippi River, is 20 miles distant. Thirteen common carriers have authority to serve the city. Regularly scheduled air service is available at Cape Girardeau, Missouri, 69 miles northwest of Fulton.

3. Electric power is provided by the Fulton Electric System and the Hickman-Fulton Counties RECC. The Tennessee Valley Authority is the source of power to both systems. The Fulton Utility System, supplied by Texas Gas Transmission Corporation, provides natural gas service. There are three distributors of propane within 11 miles of Fulton and three distributors of distillate fuel oil within 20 miles.

4. Two public school systems operate in Fulton County. The Fulton Independent School System is accredited by the Southern Association of Colleges and Schools and serves 600 students. The Fulton County School System serves over 1,100 students. There are four institutions of higher learning within 50 miles of Fulton. The West Kentucky State Vocational-Technical School, 49 miles distant in Paducah, offers vocational training in 33 different courses. The Fulton County Area Vocational Education Center, located 20 miles away at Hickman, offers 12 courses and the Mayfield Area Vocational Education Center, 24 miles distant, offers 10 courses.

## THE LABOR MARKET AREA

The Fulton Labor Market Area includes Fulton County and the Kentucky counties of Carlisle, Graves, and Hickman.

POPULATION			
<u>Area</u>	<u>1980</u>	<u>1970</u>	<u>Percent Nonwhite</u>
Fulton	3,137	3,250	15.3
Labor Market Area	54,572	52,740	N/A
Fulton County	8,971	10,183	16.9
Carlisle County	5,487	5,354	1.0
Graves County	34,049	30,939	4.7
Hickman County	6,065	6,264	10.5

Note: The 1980 counts of population by race are provisional.

Sources: U.S. Department of Commerce, Bureau of the Census, 1980 Census of Population and Housing, March 1981. Population Research Unit, Urban Studies Center, University of Louisville, Kentucky Demographics: The 1980 Census of Kentucky, Characteristics of Population, Households, Housing, January 1982.

LABOR FORCE CHARACTERISTICS OF RESIDENTS, 1981		
	<u>Fulton County</u>	<u>Labor Market Area</u>
Civilian Labor Force	3,866	24,259
Employment	3,361	20,840
Agricultural	459	1,808
Nonagricultural	2,902	19,032
Unemployment	505	3,419
Rate of Unemployment (%)	13.1	14.1

Source: Kentucky Cabinet for Human Resources, Kentucky Labor Force Estimates, Annual Averages, 1980.



ESTIMATED MALE LABOR SUPPLY  
FULTON LABOR MARKET AREA

Area	Current				Future
	Total	Not in Labor Force	Unemployed	Under-employed	Reaching 18 years of age before 1986
Labor Market Area*	5,185				4,904
Fulton	390	0	236	154	414
Carlisle	819	474	186	159	202
Graves	2,360	526	1,299	535	1,326
Hickman	508	251	158	99	273
Lake (Tenn.)	293	N/A	N/A	N/A	364
Obion (Tenn.)	500	N/A	N/A	N/A	1,247
Weakley (Tenn.)	315	N/A	N/A	N/A	1,078

\*Additional workers may be drawn from other nearby counties, including Mississippi and New Madrid counties in Missouri.

Note: Unemployed - persons unemployed and actively seeking work;

Underemployed - persons employed but working only 14 to 26 weeks per year;

Not in Labor Force - represents the number of persons who would enter the labor force if suitable employment were available (based on the assumption that persons in Kentucky would like to participate in the labor force in the same proportion that they do nationally).

Sources: Kentucky Cabinet for Human Resources, Kentucky Labor Supply Estimates by County, 1980. Tennessee Department of Employment Security, Available Labor Estimates, 1980. Kentucky Department of Economic Development, Future Labor Supply before 1986.

ESTIMATED FEMALE LABOR SUPPLY  
FULTON LABOR MARKET AREA

Area	Current			Under- employed	Future Reaching 18 years of age before 1986
	Total	Not in Labor Force	Unemployed		
Labor Market Area*	4,696				4,516
Fulton	569	179	171	219	437
Carlisle	583	362	85	136	176
Graves	1,976	351	940	685	1,184
Hickman	406	176	114	116	244
Lake (Tenn.)	98	N/A	N/A	N/A	380
Obion (Tenn.)	551	N/A	N/A	N/A	1,187
Weakley (Tenn.)	513	N/A	N/A	N/A	908

\*Additional workers may be drawn from other nearby counties, including Mississippi and New Madrid counties in Missouri.

Note: Unemployed - persons unemployed and actively seeking work;

Underemployed - persons employed but working only 14 to 26 weeks per year;

Not in Labor Force - represents the number of persons who would enter the labor force if suitable employment were available (based on the assumption that persons in Kentucky would like to participate in the labor force in the same proportion that they do nationally).

Sources: Kentucky Cabinet for Human Resources, Kentucky Labor Supply Estimates by County, 1980. Tennessee Department of Employment Security, Available Labor Estimates, 1980. Kentucky Department of Economic Development, Future Labor Supply before 1986.



FULTON MANUFACTURING FIRMS,  
THEIR PRODUCTS AND EMPLOYMENT

Firm (Establishment date)	Product	Employment		
		Total	Male	Female
<u>Fulton, Kentucky</u>				
Ashby Veneer & Lumber Company (1956)	Lumber, wood chips, switch ties	25	25	--
Brundige Sausage Company (1951)	Sausage	5	5	--
Fulton Garment Company (1982)	Shirts, men's military	100	10	90
Fulton Publishing Company, Inc. (1898)	Newspaper, commercial printing	15	7	8
Hadley Adhesives, Inc. (1971)	Solvent & latex adhesives, solvent cleaner	48	40	8
Laine Vineyards & Winery (1979)	Wine	7	6	1
Turner Dairies, Inc., of Fulton (1972)	Plastic jugs, milk, ice cream	63	58	5
<u>South Fulton, Tennessee</u>				
Central Metal Products Company, Inc. (1958)	Duct work, blow pipe & fittings, boiler breeching	22	--	--
Concrete, Inc., of Obion County (1976)	Ready-mix concrete	5	--	--
Fulton Marble & Fiberglass Corporation (1972)	Cultured marble products	1	--	--
Martin Machine Works (1960)	Defense hardware, metal components, screw machine products	25	--	--
Henry I. Siegel Company, Inc. (1959)	Women's sportswear	350	--	--
Waymatic Welding & Fabricating (1952)	Handling equipment	85	--	--

Sources: Kentucky Department of Economic Development, 1982 Kentucky Directory of Manufacturers. Tennessee Directory of Manufacturers 1982.

In addition to the previous manufacturing firms, the Ferry-Morse Seed Company is a major employer in Fulton. This company, which packages seeds, has a total employment of approximately 280. The American Federation of Grain Millers represents the plant workers at this company.

#### LABOR ORGANIZATIONS IN MANUFACTURING FIRMS

There are no labor unions representing manufacturing workers in Fulton at the present.

#### INDUSTRIAL SERVICES

<u>Types of Services</u>	<u>Location</u>	<u>Miles Distant</u>
Tool & Die, Machine & Pattern Shops	South Fulton, Tennessee	1
	Martin, Tennessee	11
	Union City, Tennessee	11
Metal Service Centers	Greenville, Kentucky	130
Heat Treating	Evansville, Indiana	158
	Nashville, Tennessee	166
Metal Finishers	Morganfield, Kentucky	117
Electric Motor Repair	Union City, Tennessee	11

Sources: Kentucky Department of Economic Development, Kentucky Directory of Selected Industrial Services, 1981. Fulton-South Fulton Chamber of Commerce.



AVERAGE WEEKLY WAGES BY INDUSTRY,  
BY PLACE OF WORK, 1981

	<u>Fulton County</u>	<u>Carlisle County</u>	<u>Graves County</u>	<u>Hickman County</u>
All Industries	\$220.86	\$165.73	\$266.46	\$205.40
Mining & Quarrying	*	0	264.41	0
Contract Construction	257.05	161.37	205.80	253.83
Manufacturing	308.83	160.52	387.44	192.08
Transportation, Communications & Public Utilities	338.64	*	358.30	295.18
Wholesale & Retail Trade	183.03	139.13	165.94	206.07
Finance, Insurance & Real Estate	202.65	199.17	251.06	195.36
Services	160.91	143.14	170.67	152.13
State/Local Government	218.25	189.45	249.29	217.25
Other	117.30	*	188.17	*

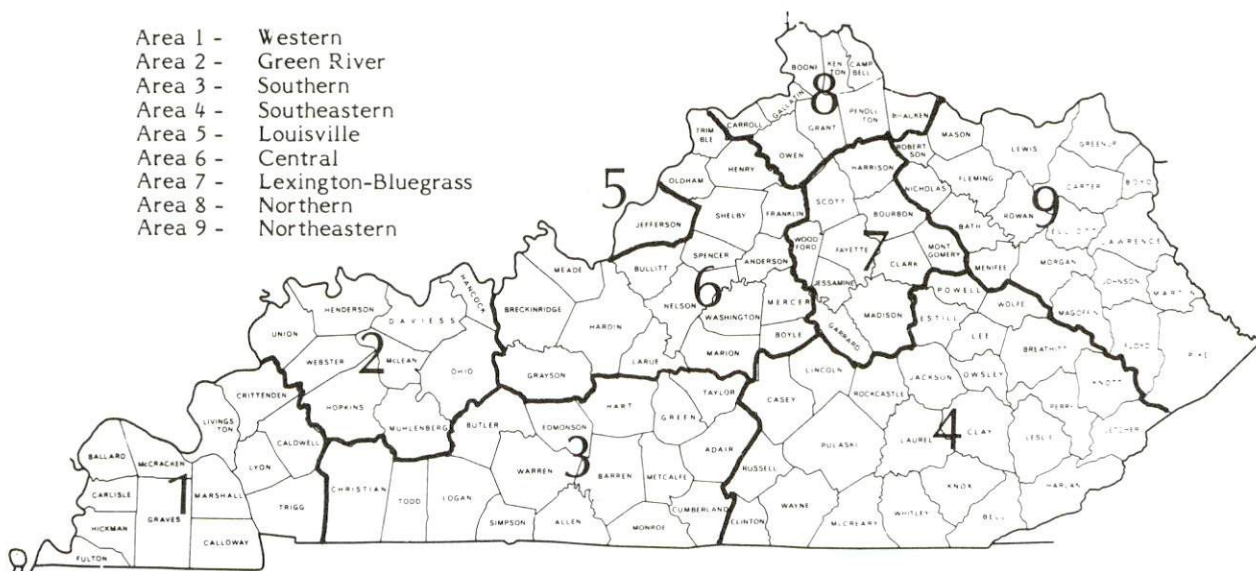
\*Not disclosed.

Note: Excludes domestic workers, railway workers, certain nonprofit corporations, majority of federal government workers, and self-employed workers.

Source: Kentucky Cabinet for Human Resources, Average Weekly Wages of Workers Covered by Kentucky Unemployment Insurance Law, 1981.

Occupational wage rates for specific industries are usually not available to most government agencies, and wage data furnished to state employment agencies by individual industrial employers are protected from disclosure by federal law. The most reliable up-to-date wage information can be obtained by direct contact with local employers.

Associated Industries of Kentucky, a voluntary organization of Kentucky businesses, regularly collects occupational wage rates and fringe benefits data from participating member firms. Data are compiled for over 127 clearly defined office, production, and service occupations. Tabulations are published for nine geographical areas of Kentucky, as shown on the map below. It should be noted that the data may be weighted by the preponderance of firms in the larger cities and may be somewhat higher than the rates paid in the smaller communities. Data from these tabulations are available, upon request, from the Kentucky Department of Economic Development, Frankfort, Kentucky 40601.



Associated Industries of Kentucky Area Wage Surveys



Up to date occupational wage rates of the existing industries are maintained by South Kentucky Industrial Development Association, Post Office Box 726, Hopkinsville, Kentucky 42240.

PER CAPITA PERSONAL INCOME

<u>Area</u>	<u>1976</u>	<u>1980</u>	<u>Percent Change</u>
Fulton County	\$ 5,114	\$ 7,070	38.25
Labor Market Area Range	\$4,618 - 5,317	\$5,860 - 7,246	N/A
Kentucky	4,882	7,052	44.4
U.S.	5,861	8,637	47.4

Source: U.S. Bureau of Economic Analysis, Kentucky Economic Information System, June 1982.

## TRANSPORTATION

### Rail

Line serving Fulton - Illinois Central Gulf Railroad

Services - Main line; 24 freights (both northbound and southbound) make daily stops; 24 through freights daily (both northbound and southbound); 24-hour, 7 day-a-week switching with 21 tracks that can handle 1,200 cars; piggyback facilities available at Princeton, Kentucky, 80 miles northeast of Fulton, or Memphis, Tennessee, 131 miles south of Fulton

For details on routing, schedules, rates, and services, contact:

Director of Industrial Development  
Illinois Central Gulf Railroad  
Central Region  
Pet Plaza  
400 South Fourth Street  
St. Louis, Missouri 63102  
(314) 622-6430

### Highways

Fulton is the terminus of the Jackson Purchase Parkway, a toll road which is the major route through extreme Western Kentucky. The Purchase Parkway connects with Interstate 24, 51 miles northeast of Fulton. Other major highways through the city are U.S. 51 and U.S. 45. U.S. 51 is a four-lane highway from Fulton to Memphis, Tennessee, 131 miles southwest of Fulton, where Interstate 40 and Interstate 55 converge. Interstate 55 is also accessible 72 miles southwest of Fulton via U.S. 51 and Interstate 155. U.S. 51 also connects Fulton with Interstate 57 near Cairo, Illinois, 45 miles to the northwest. All these routes are rated "AAA" trucking highways with 80,000 pound gross load limits. Kentucky Highways 94, 129, 166 and 307 also serve Fulton.

## Truck Service

### Company

A & H Truck Line\*  
Henry Edwards Trucking  
Company\*  
Harrison Trucking Company\*\*  
McLean Trucking Company\*  
Milan Express, Inc.\*\*  
Overnite Transportation  
Company\*  
Paschall Truck Lines, Inc.\*\*  
Roadway Express, Inc.\*  
Robbins Truck Line, Inc.\*\*  
Smith's Transfer Corporation\*  
T.I.M.E. - DC, Inc.\*  
Thurston Motor Lines, Inc.  
(Interline service)  
Yellow Freight Systems, Inc.\*

### Home Office

1111 East Louisiana Street  
Evansville, Indiana 47711  
P. O. Box 97  
Clinton, Kentucky 42031  
3301 Park Avenue  
Paducah, Kentucky 42001  
P. O. Box 213  
Winston-Salem, North Carolina 27154  
Jackson Highway  
Milan, Tennessee 38358  
P. O. Box 1216  
Richmond, Virginia 23209  
Route 4  
Murray, Kentucky 42071  
1077 Gorge Boulevard  
Akron, Ohio 44309  
Route 1  
Hardinsburg, Kentucky 40143  
P. O. Box 1000  
Staunton, Virginia 24401  
P. O. Box 2550  
Lubbock, Texas 79408  
600 Johnston Road  
Charlotte, North Carolina 28206  
10990 Roe Avenue  
P. O. Box 7270  
Overland Park, Kansas 66207

### Other Freight Services

Purolator Courier Corporation\*\*\*  
United Parcel Service\*\*\*\*

### Nearest Shipping Center

Paducah, 49 miles distant  
Paducah, 49 miles distant

\* Interstate only.

\*\* Interstate and intrastate.

\*\*\* For regular scheduled pickups or for occasional pickups, arrangements must be made with the Paducah office of Purolator Courier Corporation.

\*\*\*\* For regular scheduled pickups or for occasional pickups, arrangements must be made with the Louisville office of United Parcel Service.



HIGHWAY MILES AND TRUCK TRANSIT TIME IN DAYS FROM  
FULTON, KENTUCKY, TO SELECTED MARKET CENTERS

City	Highway Miles	Delivery Time TL	City	Highway Miles	Delivery Time TL
Atlanta, Ga.	408	1	Los Angeles, Ca.	2,056	4
Baltimore, Md.	850	2	Louisville, Ky.	252	1
Birmingham, Ala.	362	1	Nashville, Tenn.	166	1
Chicago, Ill.	414	1	New Orleans, La.	683	1
Cincinnati, Ohio	353	1	New York, N.Y.	1,000	2
Cleveland, Ohio	597	1	Pittsburgh, Pa.	640	2
Detroit, Mich.	612	1	St. Louis, Mo.	211	1
Knoxville, Tenn.	343	1			

Note: Mileage computations are via the best interstate or primary highways, not necessarily the most direct route of travel.

Sources: Rand McNally Road Atlas, 1979. Official Kentucky Mileage Map, 1979.  
Delivery time - Paschall Truck Lines, Inc., Highway 641 South, Murray,  
Kentucky 42071.

## Air

### Local

Location: Fulton Municipal Airport\*  
Runways: 2 miles northwest of Fulton  
Length: 1 paved  
Traffic: 2,700 feet  
Control: Wind sock  
Lighting: Runway lights sunset to sunrise

### Nearest Scheduled Commercial Airline Service\*\*

Location: Cape Girardeau Municipal Airport  
5 miles southwest of Cape Girardeau, Missouri;  
69 miles northwest of Fulton  
Runways: 2 paved  
Length: 6,500 feet and 4,000 feet  
Traffic:  
Control: Tower  
Lighting: Beacon, runway  
Services: Ozark, Air Illinois; 100LL, jet-A-fuel; major  
A & P repairs, minor Avionics repairs; hangars,  
tie-downs; charter service; flight instruction;  
plane rental; taxi; car rentals; weather  
information; restaurant  
Air Freight  
Service: Air freight terminal

Bus - Greyhound Bus Lines; Continental Trailways, Inc.

Taxi - 2 companies, 24-hour service

Rental Services - Car and truck rentals are available in Mayfield, 18 miles north of Fulton. Trailer rentals are available locally.

\* A new \$40,000 radio-activated lighting system is planned.

\*\* Commuter air carrier service is provided by Allegheny Commuter and Air Illinois at Barkley Field which is located 8 miles west of Paducah, Kentucky; 53 miles north of Fulton.

## Water

The nearest water transportation facilities are located in Hickman, 20 miles west of Fulton.

The Mississippi River bounds Hickman on the west and has port facilities available for barges. Hickman Harbor has private unloading facilities, 24-hour service, 24-hour food and provision service, fresh water, and refueling service for the large freight boats and barges that serve the area. Hickman Harbor Service, Inc., and Flowers Transportation, Inc., provide fleet service for the harbor. Hickman is a headquarters for the U.S. Coast Guard, serving an area of 190 miles up and down the river, and the home base for the Coast Guard Cutter Chippewa.

The Hickman-Fulton County Riverport Authority, a still, warm-water harbor on the Mississippi River, has completed a \$2.4 million general cargo facility. The heart of the port is the docking facility, consisting of two 16-foot diameter mooring cells, one 20-foot diameter mooring and conveyor cell, one mooring "dolphin" structure, and a 30-foot diameter crane cell which has a pedestal-mounted crane rated at 125-ton lifting capacity. This crane, which has a 120-foot long boom, is able to lift 50 tons out of a barge and place a 20-ton load on a truck.

Linking the docking facility with the flood-protected material handling and processing segment of the port on the other side of the levee is an 86-foot long bridge with paved roadway over the levee. At the land end of the bridge is an 18,400-square-foot heated warehouse, a 6,000-square-foot warehouse and a paved staging area with truck height loading dock which has a rail spur at one end for rail transshipment. There is also a 10,000-square-foot outside storage space.

The second main element of the port is a 125-foot long radial stacker which has the capability of stockpiling ten or more bargeloads of material. In the barge unloading operation, it is fed by a hopper on the 20-foot diameter river cell which will be loaded by a clamshell attached to the crane. The stacker is connected to the docking facility by a 1,205-foot-long conveyor system which has a 30-inch-wide belt with the capacity to transport material at a rate of 350 tons per hour outbound and 400 tons per hour inbound.

The entire facility is constructed on approximately 25 acres of land adjoining the harbor. A two tract industrial site is being developed with one tract located adjacent to the port and the other tract located 1/4 mile from the port. The port was built primarily to handle and transport bulk commodities, mainly corn, grain and coal. As demand for other commodities has grown, the port has added the capability to adapt to handle virtually any cargo moved on the inland waterways system.

Hickman Elevator Company has constructed a grain facility at the riverport consisting of an elevator and 558,000 bushels of storage. Other private facilities within the harbor area include a river dredge and a sand and gravel company operated by the Lattus Ready-Mix Company; a million-bushel grain terminal operated by the Bunge Corporation; and a grain terminal operated by the Fulton County Grain Company.



## POWER AND FUEL

### Electricity

Company serving Fulton and a small part of Fulton County - Fulton Electric System

Source of power - Tennessee Valley Authority

Total generating capacity - 31,109,160 KW

For industrial rates contact:

South Kentucky Industrial  
Development Association, Inc.  
P. O. Box 726  
Hopkinsville, Kentucky 42240  
(502) 885-5392

and/or

Fulton Electric System  
101 Nelson Tripp Place  
P. O. Box 130  
Fulton, Kentucky 42041  
(502) 472-1362

Company serving a major portion of Fulton County - Hickman-Fulton Counties Rural Electric Cooperative Corporation

Source of power - Tennessee Valley Authority

Total generating capacity - 31,109,160 KW

For industrial rates contact:

South Kentucky Industrial  
Development Association, Inc.  
P. O. Box 726  
Hopkinsville, Kentucky 42240  
(502) 885-5392

and/or

Hickman-Fulton Counties RECC  
P. O. Box 190  
Hickman, Kentucky 42050  
(502) 236-2521

### Natural Gas

Company serving Fulton - Fulton Utility System  
Source of supply - Texas Gas Transmission Corporation  
Size of transmission mains - 24 and 36 inches (supplier);  
4 inches (distributor)  
Distribution mains - 1, 2, 3, 4, and 6 inches  
Distribution pressure - 30 psi  
Btu content - 1,000 per cubic foot  
Specific gravity - 0.60  
For rates and supplies contact:

Fulton Utility System  
City Hall  
P. O. Box 305  
Fulton, Kentucky 42041  
(502) 472-1320

### Other Fuels

#### Propane (Within 11 miles)

Amerigas  
603 West Highland Drive  
Fulton, Kentucky 42041

Tri-State Gas and Appliance  
Company  
Jefferson Street  
Clinton, Kentucky 42031

Texgas  
610 Perkins Street  
Union City, Tennessee 38261

#### Fuel oils

##### Distillate fuel oil - (Within 20 miles)

Ralph Puckett Oil Company  
Union City Highway  
Fulton, Kentucky 42041

Stokes Oil Company, Inc.  
Highway 94-W  
Hickman, Kentucky 42050

Reynolds Brothers Oil Company, Inc.  
400 East Church Street  
Union City, Tennessee 38261

Residual fuel oil - Arrangements must be made with the refinery.

Low sulphur content coal - Available in Kentucky.

## WATER AND SEWERAGE

### Public Water Supply

Company serving Fulton - Fulton Utilities System  
101 Nelson Tripp Place  
Fulton, Kentucky 42041  
(502) 472-1320

Source - Deep wells

Treatment plant capacity - 1,500,000 gallons per day

Average daily consumption - 998,000 gallons

Peak daily consumption - 1,200,800 gallons

Type treatment - Filtration and chlorination

Storage capacity - 1,380,000 gallons

Size lines - 2, 4, 6, 8, 10, 12 and 14 inches

Average pressure - 70 psi

Average temperature - 55 degrees F.

### MONTHLY WATER RATES

First	3,000 gallons	\$ 5.00 (Minimum)
Next	5,000 gallons	2.40 per M gallons
Next	5,000 gallons	2.35 per M gallons
Next	7,000 gallons	2.25 per M gallons
Next	10,000 gallons	2.00 per M gallons
Next	20,000 gallons	1.60 per M gallons
Next	50,000 gallons	.85 per M gallons
Next	100,000 gallons	.65 per M gallons
All over	200,000 gallons	.45 per M gallons

Tap-on charge: \$150

### Raw Water

Surface water sources in Fulton County - Mississippi River, Obion Creek and Bayou de Chien

Average discharge - Bayou de Chien near Clinton - 107 cfs (39-year record, USGS)

Expected ground water yield - 500 to 1,000 gpm over the entire county



## Sewerage

Company serving Fulton - Fulton Utilities System\*  
101 Nelson Tripp Place  
Fulton, Kentucky 42041  
(502) 472-1320

Design capacity - 400,000 gallons per day

Average daily flow - 320,000 gallons

Treatment - Primary

Type treatment - Aeration and oxidation

Treated effluent discharged into - Harris Fork Creek

Size of sanitary mains - 8 to 24 inches

Size of storm mains - 8 to 36 inches

Rates - 65 percent of the amount of the customer's water bill, except in cases where special contracts are to be made or continued in effect on an individual customer basis

Tap-on charge: \$10 for residential; separate contracts for commercial and industrial customers

---

\*Step I of a 201 Facilities Plan has been completed for Fulton's wastewater treatment system. The plan recommends a combined facility for Fulton, Kentucky, and South Fulton, Tennessee. Current plans would increase Fulton's treatment capacity to approximately 720,000 gallons per day.

## CLIMATE

### Fulton County

#### Temperature

Normal (30-year record)	59.40 degrees
Average annual 1980	59.40 degrees
Record highest, July 1980 (38-year record)	104.00 degrees
Record lowest, January 1963 (38-year record)	-5.00 degrees
Normal heating degree days (30-year record)	3,833
(Heating degree day totals are the sums of negative departures of average daily temperatures from 65 degrees F.)	

#### Precipitation

Normal (30-year record)	47.12 inches
Mean annual snowfall (38-year record)	10.50 inches
Total precipitation 1980	33.83 inches
Mean number days precipitation (.01 inch or more) (38-year record)	113
Mean number days thunderstorms (22-year record)	53

#### Prevailing Winds (22-year record)

Southwest

#### Relative Humidity (22-year record)

1 a.m.	N/A percent
6 a.m.	82 percent
Noon	59 percent
7 p.m.	N/A percent

Source: U.S. Department of Commerce, Environmental Science Services Administration, Climatological Data, 1980. Station of record: Cairo, Illinois.

## LOCAL GOVERNMENT

### City

Structure - Mayor - 4-year term; 4 commissioners - 2-year terms; city manager

Budget 1981 - General Fund \$528,132

Water and Sewer Fund 400,775

City Gas System 591,598

Fees and licenses - Occupational license tax of one percent of the gross wages of individuals; occupational license tax on most businesses based on gross receipts; occupational license tax on manufacturers where the number of employees does not exceed 50, a fixed fee of \$100; where the number of employees exceeds 50, but does not exceed 100, a fixed fee of \$150; where the number of employees exceeds 100, a fixed fee of \$200

### County

Structure - County Judge/Executive - 4-year term; 4 magistrates - 4-year terms

Budget 1981-82 - General Fund \$241,598; Road Fund \$239,776

### Assessed Value of Property, 1981\*

<u>Classes of Property</u>	<u>Fulton</u>	<u>Fulton County</u>
Real Estate	\$27,681,419	\$85,680,125
Tangibles	14,444,737	24,232,784

\*Excludes Homestead Exemptions.



## Property Taxes

All property in Kentucky is assessed at 100 percent of fair cash value.

Land and buildings are taxed by the state and may be taxed by local jurisdictions. The state rate is \$0.229 per \$100 of assessed valuation.

Manufacturing machinery, raw materials inventories, pollution control equipment, and goods in the process of manufacture are not subject to local taxation. The state rate is \$0.15 per \$100.

Other tangible personal property owned by manufacturers (automobiles, trucks, finished goods, office furniture, office equipment) is taxed by the state at \$0.45 per \$100 and may be taxed by local jurisdictions.

Property stored in public warehouses in a transit status is not subject to local taxation. The state rate is only \$0.015 per \$100.

Intangible personal property located in Kentucky (money in hand, shares of stock, notes, bonds, accounts receivable, and other credits) is taxed by the state at \$0.25 per \$100, and is not subject to local taxation.

Private leaseholds in industrial facilities owned by cities or counties and financed by industrial revenue bonds are subject to a state tax of \$0.015 per \$100 of value (essentially the lessee's equity, adjusted for appreciation or depreciation). Local taxation is not permitted.

### Combined State and Local Rates Per \$100 Valuation, 1981\* (100% assessment)

	<u>Inside City of Fulton</u>	<u>Site Inside Unincorporated Fulton County</u>
1. Land and buildings	\$1.3515	\$0.5925
2. Mfg. machinery, raw materials, goods in process, pollution control equipment	0.1500	0.1500
3. Finished goods, office equipment, vehicles, other tangibles	1.5725	0.8135
4. Intangibles (accounts receivable, notes, bonds, etc.)	0.2500	0.2500
5. Leaseholds in industrial revenue bond financed plants	0.0150	0.0150

\*Kentucky Department of Economic Development.

### Utilities Gross Receipts Tax for Schools

A 3 percent tax is levied on utilities receipts for schools in the Fulton County School District. Tax is paid by all consumers of utilities as an add-on to the utilities bills. Exempted are receipts from utilities services that are resold and the receipts from the sale of energy or energy producing fuels that exceed 3 percent of the cost of production in manufacturing, processing, mining or refining.

### Planning and Zoning

City agency - Fulton Planning Commission

Zoning enforced - City only

Subdivision regulations enforced - Within city and three miles beyond corporate limits

Local codes enforced - Building and housing

Mandatory state codes enforced - Kentucky Plumbing Code, National Electric Code, Kentucky Boiler Regulations and Standards, Kentucky Building Code (modeled after BOCA code and applying to buildings with an occupancy of 100 or more persons)

### Safety

<u>Police</u>	<u>Fulton</u>	<u>Fulton County</u>
Total staff	8 full-time	3 full-time
	5 part-time	4 part-time
Radio-patrol cars	3	4

### Fire

American Insurance

Association Fire

Rating

Full-time staff

Volunteers

7

10

14

10

--

--

### Rescue Service

Hickman Rescue Squad:

Number of volunteers - 25

Equipment - Boat and motor, dragging equipment, oxygen, two generators, 3/4-ton van/truck, lights, radios, basic rescue equipment, army trailer with lights, 3/4-ton jeep

Personnel training - Advanced and standard first aid, CPR. Most members are also volunteer firemen and have received fire fighting training.

Refuse Collection and Disposal

	<u>Fulton</u>	<u>Fulton County</u>
Type service	Municipal	Private
Fee charged:		
residential	\$4.50 monthly	\$4.75 per month*
business	Based on volume	**
industrial	Based on volume	**
Collection frequency:		
residential	Once weekly	Once weekly
business	Based on volume	Twice weekly
industrial	Based on volume	Based on volume
Trash pickup	Once weekly	Once weekly
Disposal method	Landfill	Landfill

\* Discount available for senior citizens.

\*\* Fees range from \$7.90 to \$84.40 based on volume.



## EDUCATION

### Public Schools

	<u>Fulton Independent</u>	<u>Fulton County</u>
Total Enrollment (Spring, 1982)	601	1,169
Elementary	400	430*
Middle School	--	410
High School	201	329
Student-Teacher Ratio	16-1	17-1
Elementary	16-1	14-1
Middle School	--	23-1
High School	15-1	16-1
Accreditation	Southern Association of Colleges and Schools	
Percent High School Graduates to College (1981)	47.1	44.7
Expenditures Per Pupil (1980-81)	\$1,404.37	\$1,490.89
Bonded Indebtedness (June 30, 1981)	\$815,000**	\$819,000

\* Includes kindergarten.

\*\* Includes refunding issue of \$720,000.

Area Colleges and Universities

<u>Name</u>	<u>Location (Miles distant)</u>	<u>Enrollment (Fall, 1981)</u>	<u>Highest Degree Conferred</u>
University of Tennessee	Martin, Tennessee (12)	5,538	Academic & Professional
Murray State University	Murray, Kentucky (35)	7,722	Masters, Specialist/ Doctorate*
Bethel College	McKenzie, Tennessee (37)	424	Baccalaureate
Paducah Community College	Paducah, Kentucky (49)	1,843	Associate

\*Joint doctoral degree programs are offered in cooperation with the University of Kentucky, Lexington.

## Vocational Schools

Both the state vocational-technical schools and the area vocational education centers are operated by the Kentucky Department of Education. The state vocational-technical schools enroll persons full time who are at least 16 years of age and not in school. These students attend classes for six hours each day. The area vocational education centers are designed to accommodate high school students who are at least 15 years of age. These students attend vocational school for three hours each day. The state vocational-technical schools and the area education centers offer evening courses to enable working adults to upgrade current job skills.

### Nearest State School

Location	West Kentucky State Vocational- Technical School
Miles Distant	Paducah 49
Curriculum	Business and Communications Business and Office Occupations Commercial Art* Consumer Education Cooperative Education Distributive Education Printing Construction Trades Air Conditioning and Refrigeration Architectural Drafting Carpentry Electricity Masonry Mechanical Drafting Welding Health Programs Dental Assistant Emergency Medical Technology Nurse's Assistant Operating Room Technology Practical Nursing Respiratory Therapy Ward Secretary Service Trades Auto Body Repair and Painting Auto Mechanics Barbering Commercial Foods Cosmetology Diesel Mechanics Tailoring

(Contd.)



Technical Education  
 Chemical Lab Technology\*  
 Civil and Highway Technology  
 Electronics  
 Industrial Plant Maintenance\*  
 Instrumentation\*  
 Machine Shop\*

Nearest Area Education Centers

Location	Fulton County Area Vocational Education Center
Miles Distant	Hickman
Curriculum	20
	Business and Office
	Accounting Jr. Management
	Clerical
	Computer Services
	Secretarial
	Industrial Education
	Agriculture
	Auto Mechanics
	Carpentry
	Electricity
	Welding
	Special Vocational Programs
	Co-op Training
	Fireman Training
	First Aid and Safety

Location	Mayfield Area Vocational Education Center
Miles Distant	Mayfield
Curriculum	24
	Agriculture
	Adult Farmer
	Business and Office
	Clerical
	Secretarial
	Health Occupations
	Health Careers
	Industrial Education
	Auto Body Repair
	Auto Mechanics
	Carpentry/Building Trades
	Industrial Electricity
	Machine Shop
	Welding

Arrangements can be made to provide training in the specific production skills required by an industrial plant. Instruction may be conducted either in the vocational school or in the industrial plant, depending upon the desired arrangement and the availability of special equipment.

\*Planned additions to the curriculum.

## HEALTH

### Local Medical Personnel

Physicians - 6  
Dentists - 5

### Hospitals

<u>General Hospital</u>	<u>Location</u>	<u>Beds</u>
Fulton Hospital	Fulton	41
Hillview Hospital	Fulton	34

#### Fulton Hospital

General hospital facilities - Operating room, emergency room, X-ray, laboratory, pharmacy, respiratory therapy

Medical staff - Three medical doctors, six registered nurses, five licensed practical nurses

#### Hillview Hospital

General hospital facilities - Operating room, emergency room, X-ray, laboratory, EKG facilities

Medical staff - Three medical doctors, six registered nurses, five licensed practical nurses

### Other Medical Facilities

Western Kentucky Mental Health Association

### Ambulance Service

Name - Fulton Fire Department Municipal Ambulance Service

Staff - Ten emergency medical technicians (full time); four emergency medical technicians (part time)

Service - 24-hour; serving four counties in two states

Equipment - Three fully-equipped ambulances

### Public Health

Facility - Fulton County Health Department

Staff - Four registered nurses, one licensed practical nurse, three community health workers, three clerks, one environmentalist

## OTHER LOCAL FACILITIES

### Communications

Telephone - South Central Bell Telephone Company  
Services - Standard and touchtone

Telegraph - Western Union  
Services - Local office; toll-free number, 1-800-325-5100

Postal - U.S. Post Office  
Class - First  
Mail received - Twice daily  
Mail dispatched - Twice daily

Newspapers - Fulton Daily Leader  
Daily and  
circulation - 3,150  
Major papers  
received from - Hickman, Louisville and Paducah, Kentucky;  
Union City and Memphis, Tennessee

Radio - WFUL-AM & FM, WALR-FM  
Major stations  
received from - Louisville and Paducah, Kentucky; Union City, Memphis and  
Nashville, Tennessee; St. Louis, Missouri;  
Chicago, Illinois; New Orleans, Louisiana

Television -  
Cable service  
Reception from - Paducah, Kentucky; Cape Girardeau, Missouri;  
Harrisburg, Illinois; Jackson, Memphis and  
Nashville, Tennessee; Atlanta, Georgia

Kentucky Educational  
Television - Murray-Mayfield transmitter, Channel 21  
Tennessee Educational  
Television - Lexington transmitter, Channel 11

### Library Services

Public library - Fulton-South Fulton Public Library  
Size collection - 39,963 volumes\*  
Circulation, 1980-81 - 70,363 (libraries); 37,987 (bookmobile); 108,350 (total)  
Services - Bookmobile, magazines, movie projector, films, records, pictures,  
microfilm recorder-printer, reading program, story hour, book displays,  
meeting room, reference services, Interlibrary Loans, special programs for  
organizations upon request, services to shut-ins, copying services

\*Includes both the Fulton and the Hickman libraries.



### Religious Institutions

Number of churches - 29

Denominations - AME  
Assembly of God  
Baptist  
Catholic  
Christian  
Church of Christ  
Church of Christ Scientist  
Church of God in Christ  
Church of God of Prophecy  
Church of Jesus Christ of Latter Day Saints  
Church of the Nazarene  
CME  
Cumberland Presbyterian  
Episcopal  
Holiness  
Methodist  
Seventh Day Adventist  
United Church of the Living God  
United Methodist

Nearest synagogues -

Congregations - Temple Israel (reform), Paducah, 49 miles north  
Jewish Center (reform), Union City, Tennessee, 13 miles  
(September through May)

### Financial Institutions

<u>Banks</u>	<u>Assets</u>	<u>Deposits</u>	<u>Statement Date</u>
City National Bank	\$ 42,249,449.62	\$ 38,364,029.98	12/31/81
Fulton Bank	24,882,415.00	22,385,271.00	12/31/81

<u>Savings and Loan Associations</u>	<u>Assets</u>	<u>Savings Accounts</u>	<u>Statement Date</u>
First Federal Savings and Loan Association of Paducah	\$ 94,965,331.01	\$ 86,602,648.08	12/31/81

### Hotels and Motels

Total number - 6  
Total rooms - 176

### Clubs and Organizations

American Legion  
American Legion Auxiliary  
American Red Cross  
Band Parents  
Boy Scouts  
Brownies  
Business and Professional Women's Club  
Chamber of Commerce  
Civitan  
Cub Scouts  
Daughters of the American Revolution (DAR)  
Eastern Star  
Elks  
4-H  
Fulton Bulldog Club  
Future Farmers of America (FFA)  
Future Homemakers of America (FHA)  
Genealogical Society  
Girl Scouts  
Homemakers Clubs  
International Banana Festival  
Jaycees  
Jaycettes  
Kiwanis  
Lions  
Masons  
Parents-Teachers Association (PTA)  
Retail Merchants Bureau  
Rotary  
Senior Citizens  
South Fulton Boosters Club  
Twin Cities Art Guild  
Twin Cities Barracks of WW I Veterans  
Twin Cities Ministerial Alliance  
Twin Cities Youth (baseball)  
Woman's Club  
Young Men's Business Club

## RECREATION

### Local

The City of Fulton's 35-acre public park contains four baseball diamonds, four double tennis courts, picnic shelters and playgrounds. Supervised baseball activities are offered here in the summer.

A public park in South Fulton, Tennessee, contains two tennis courts and a baseball diamond.

The Willow Plunge Corporation, a nonprofit organization in Fulton, charges admission to its swimming pool and tennis courts.

A country club near Fulton features an 18-hole golf course, swimming pool, and three tennis courts. Other private recreational facilities in the area include one drive-in movie theater, a bowling alley, supper clubs, and a youth recreation center.

The International Banana Festival is held annually in Fulton and draws thousands of visitors. This festival, celebrating the area's historic role as a center for the redistribution of bananas, is a tribute to the community's warm relationship with Latin America as well as with its sister community, South Fulton, Tennessee, which also takes part in the festival.

Other annual events in the area include the Summer Salute to Agriculture, sponsored jointly by the Hickman-Fulton County Chamber of Commerce and the Fulton-South Fulton Chamber of Commerce, and the Mississippi River water festivities which are the highlight of the Fourth of July "Spirit of America" celebration at Hickman, 20 miles to the west.

### Area (Within 75 miles)

Reelfoot Lake and the Kentucky Bend are approximately 25 miles from Fulton. Reelfoot Lake is a 70-square mile lake in Kentucky and Tennessee known for its fishing. Kentucky maintains a 2,000-acre wildlife area near the lake for hunting. The Kentucky Bend is land totally separated from the state by the Mississippi River. Both lake and bend were created in 1811 and 1812 by the largest earthquakes ever recorded in North America.

A Confederate cannon, a network of earthen trenches, and a massive chain and anchor give the feeling of being transported back to the Civil War. All of this and more can be discovered at Columbus-Belmont Battlefield State Park at Columbus, 20 miles northwest of Fulton. Other attractions at the 156-acre park include a 38-site campground, a gift shop, a historical hiking trail, miniature golf, a picnic area, and a playground. A visit to the museum at the park, which is in a building that served as a Civil War infirmary, offers a display of Civil War relics and early Indian artifacts and an audiovisual slide program on the Battle of Belmont.



Charm and serenity exemplify Kenlake State Resort Park which is located on the 160,000-acre Kentucky Lake, 54 miles northeast of Fulton. The park offers hotel and cottage accommodations and an efficient camping site. Other facilities include a 9-hole golf course, pool and lake swimming, horseback riding, hiking trails, fishing, boating, picnicking, playgrounds, shuffleboard, planned recreation, and one of the finest tennis complexes in the area.

Kentucky Dam Village State Resort, located 55 miles northeast of Fulton at Gilbertsville, is one of the largest and most popular vacation resorts in Kentucky. A modern lodge with 72 rooms, six different cottage types, and a 225-site campground make up the accommodations. There is also a dining room overlooking the 160,000-acre Kentucky Lake, a coffee shop, a snack bar, two gift shops, a meeting room, an activities center, and a recreation room. Recreational activities to choose from include boating and fishing at the largest docking facility in the Kentucky parks system, golf at the 18-hole Village Green Course, hiking, horseback riding, picnicking, swimming at the lodge pool or off the sand beach, and tennis.

The Land Between the Lakes, located on a 170,000-acre wooded peninsula approximately 66 miles from Fulton, is an outdoor recreational and conservational education center. Camping, swimming, fishing, boating, hiking, a buffalo herd on a 250-acre range, an Environmental Education Center for school study groups, an educational farm and a central station with films and displays are among the attractions.

