

1983

## Industrial Resources: Barren County - Cave City

Kentucky Library Research Collections  
Western Kentucky University, [spcol@wku.edu](mailto:spcol@wku.edu)

Follow this and additional works at: [https://digitalcommons.wku.edu/barren\\_cty](https://digitalcommons.wku.edu/barren_cty)

 Part of the [Business Administration, Management, and Operations Commons](#), [Growth and Development Commons](#), and the [Infrastructure Commons](#)

---

### Recommended Citation

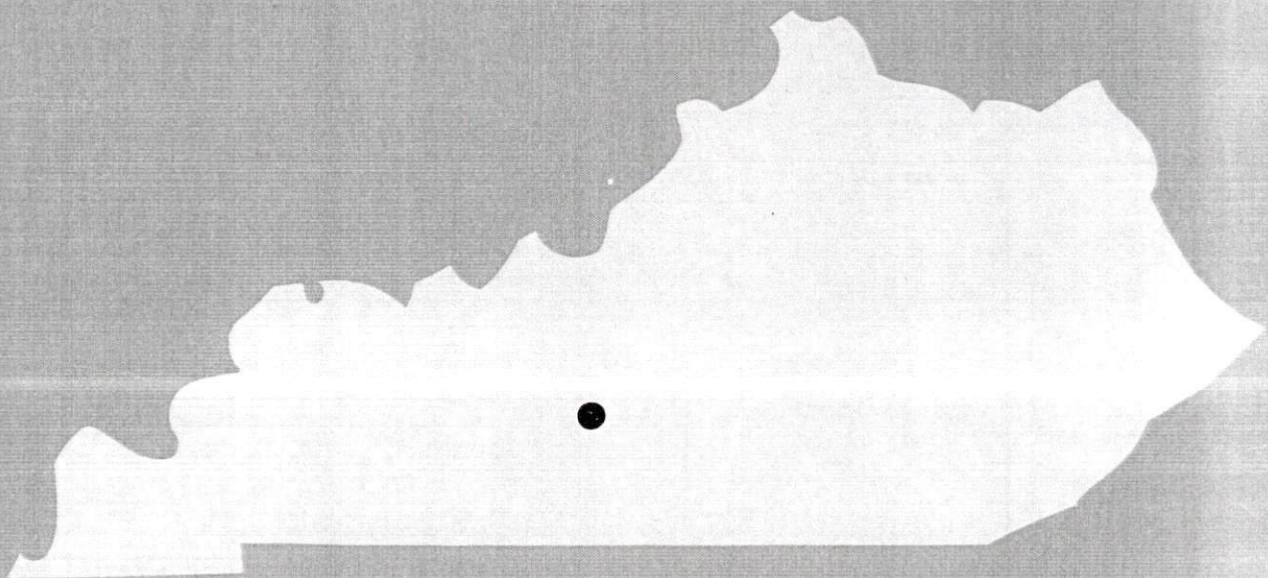
Kentucky Library Research Collections, "Industrial Resources: Barren County - Cave City" (1983). *Barren County*. Paper 30.  
[https://digitalcommons.wku.edu/barren\\_cty/30](https://digitalcommons.wku.edu/barren_cty/30)

This Report is brought to you for free and open access by TopSCHOLAR®. It has been accepted for inclusion in Barren County by an authorized administrator of TopSCHOLAR®. For more information, please contact [topscholar@wku.edu](mailto:topscholar@wku.edu).

1983

A comprehensive  
report on

**Cave City, Ky.**



**KENTUCKY & CO.**

The state that's run like a business.



# CAVE CITY, KENTUCKY

## Industrial Sites — 1983

For more information contact the Department of Economic Development, Office of Business Development, Industrial Development Division, Capital Plaza Tower, Frankfort, Kentucky 40601 (502-564-7140).





## Site 183 - 38 Acres

LOCATION: Within southern city limits  
ZONING: None  
HIGHWAY ACCESS: KY 90 adjacent to southwestern boundary;  
US 31W approximately 0.2 mile south via gravel access road  
and KY 90; Interstate 65 interchange approximately 0.5 mile  
northwest via KY 90  
RAILROAD: Louisville and Nashville Railroad adjacent to  
northwestern boundary  
WATER: Green River Valley Water District  
Size Line: 6-inch line parallel to southwest boundary across  
KY 90, 8-inch line approximately 1100 feet south along US 31W  
NATURAL GAS: Western Kentucky Gas Company  
Size Line: 4-inch line along southwest boundary  
ELECTRICITY: Kentucky Utilities Company  
SEWERAGE: Cave City Sewerage System  
Size Line: 8-inch line approximately 1100 feet south along US 31W;  
Sewage Disposal Plant 200 feet northwest across L & N Railroad  
OWNERSHIP: Private

## Site 283 - 7 Acres

LOCATION: Within southern city limits  
ZONING: None  
HIGHWAY ACCESS: US 31W adjacent to southeastern boundary;  
KY 90, 0.2 mile southwest; Interstate 65 interchange  
approximately 1 mile west via US 31W and KY 90  
RAILROAD: Not rail served  
WATER: Green River Valley Water District  
Size Line: 8-inch line along southeastern boundary  
NATURAL GAS: Western Kentucky Gas Company  
Size Line: 4-inch line along southeast side of US 31W  
ELECTRICITY: Kentucky Utilities Company  
SEWERAGE: Cave City Sewerage System  
Size Line: 8-inch line along southeastern boundary  
OWNERSHIP: Private

## Site 383 - 14 Acres

LOCATION: Within southern city limits  
ZONING: None  
HIGHWAY ACCESS: US 31W adjacent to southeastern boundary;  
KY 90 adjacent to northeastern boundary; Interstate 65  
interchange approximately 0.8 mile northwest via KY 90  
RAILROAD: Not rail served  
WATER: Green River Valley Water District  
Size Line: 6-inch line along northeastern boundary, 8-inch line  
along southeastern boundary  
NATURAL GAS: Western Kentucky Gas Company  
Size Line: 4-inch line along northeast side of KY 90  
ELECTRICITY: Kentucky Utilities Company  
SEWERAGE: Cave City Sewerage System  
Size Line: 8-inch line at eastern corner of site across KY 90  
OWNERSHIP: Private

SCALE: 1 inch = 2000 feet  
CONTOUR INTERVAL: 10 feet  
BASE: USGS 7.5 minute series - 1966 & 73

UTILITIES  
----- Water Line  
----- Sewer Line

### Existing Industries

- A Rolco Mfg. Inc.
- B Mammoth Cave Garment Co.
- C Sweitzer Mfg. Inc.



A COMPREHENSIVE REPORT ON  
CAVE CITY, KENTUCKY

Prepared by  
The Kentucky Department of Economic Development  
Division of Research and Planning  
in cooperation with  
The Cave City Chamber of Commerce

1983



Program manager - Pamela Riley; research - James Thompson; clerical - Shirley Wood; graphics - Frank Ferrante, Tony Cecconi; Robert Owens; cartography - Site Evaluation Section, Division of New Industries. Cost of printing paid from state funds.



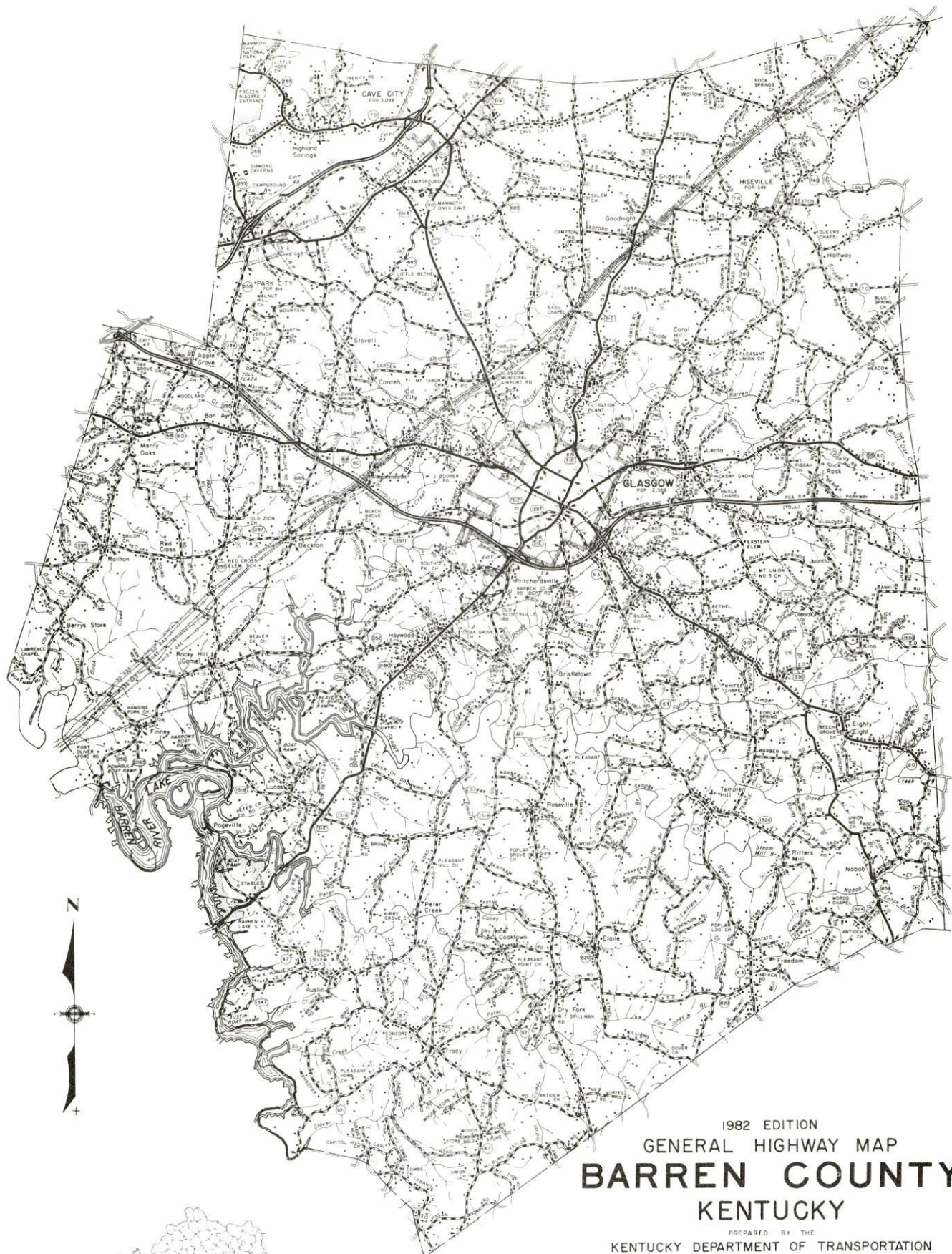
## TABLE OF CONTENTS

<u>Chapter</u>	<u>Page</u>
INDUSTRIAL SITES . . . . .	i
CAVE CITY, KENTUCKY - A RESOURCE PROFILE . . . . .	1
THE LABOR MARKET AREA . . . . .	3
Population . . . . .	3
Labor Force Characteristics of Residents, 1981 . . . . .	3
Selected Components of Nonagricultural Employment, by Place of Work, 1981 . . . . .	4
Cave City Manufacturing Firms, Their Products and Employment . . . . .	4
Labor Organizations . . . . .	4
Industrial Services . . . . .	5
Estimated Male Labor Supply . . . . .	6
Estimated Female Labor Supply . . . . .	7
Average Weekly Wages by Industry, by Place of Work, 1981 . . . . .	8
Per Capita Personal Income . . . . .	10
TRANSPORTATION . . . . .	11
Rail . . . . .	11
Highways . . . . .	11
Truck Service . . . . .	12
Air . . . . .	14
Bus . . . . .	14
Taxi . . . . .	14
Rental Services . . . . .	14
Water . . . . .	14
POWER AND FUEL . . . . .	15
Electricity . . . . .	15
Natural Gas . . . . .	15
Other Fuels . . . . .	16
WATER AND SEWERAGE . . . . .	17
Public Water Supply . . . . .	17
Raw Water . . . . .	18
Sewerage . . . . .	18
CLIMATE . . . . .	19



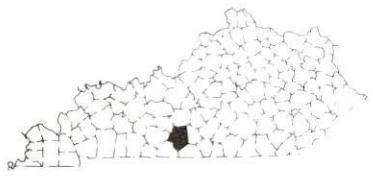
<u>Chapter</u>	<u>Page</u>
LOCAL GOVERNMENT . . . . .	20
City . . . . .	20
County . . . . .	20
Assessed Value of Property, 1982 . . . . .	20
Property Taxes . . . . .	20
Combined State and Local Rates Per \$100 Valuation, 1982 . . . . .	21
Planning and Zoning . . . . .	22
Safety . . . . .	22
Police . . . . .	22
Fire . . . . .	22
Refuse Collection and Disposal . . . . .	22
EDUCATION . . . . .	23
Public Schools . . . . .	23
Area Colleges and Universities . . . . .	23
Vocational Schools . . . . .	24
HEALTH . . . . .	26
Local Medical Personnel . . . . .	26
Hospitals . . . . .	26
Ambulance Service . . . . .	27
Public Health . . . . .	27
OTHER LOCAL FACILITIES . . . . .	28
Communications . . . . .	28
Library Services . . . . .	28
Religious Institutions . . . . .	29
Financial Institutions . . . . .	29
Hotels and Motels . . . . .	29
Clubs and Organizations . . . . .	29
RECREATION . . . . .	30
COMMUNITY IMPROVEMENTS . . . . .	32





1982 EDITION  
 GENERAL HIGHWAY MAP  
**BARREN COUNTY**  
 KENTUCKY

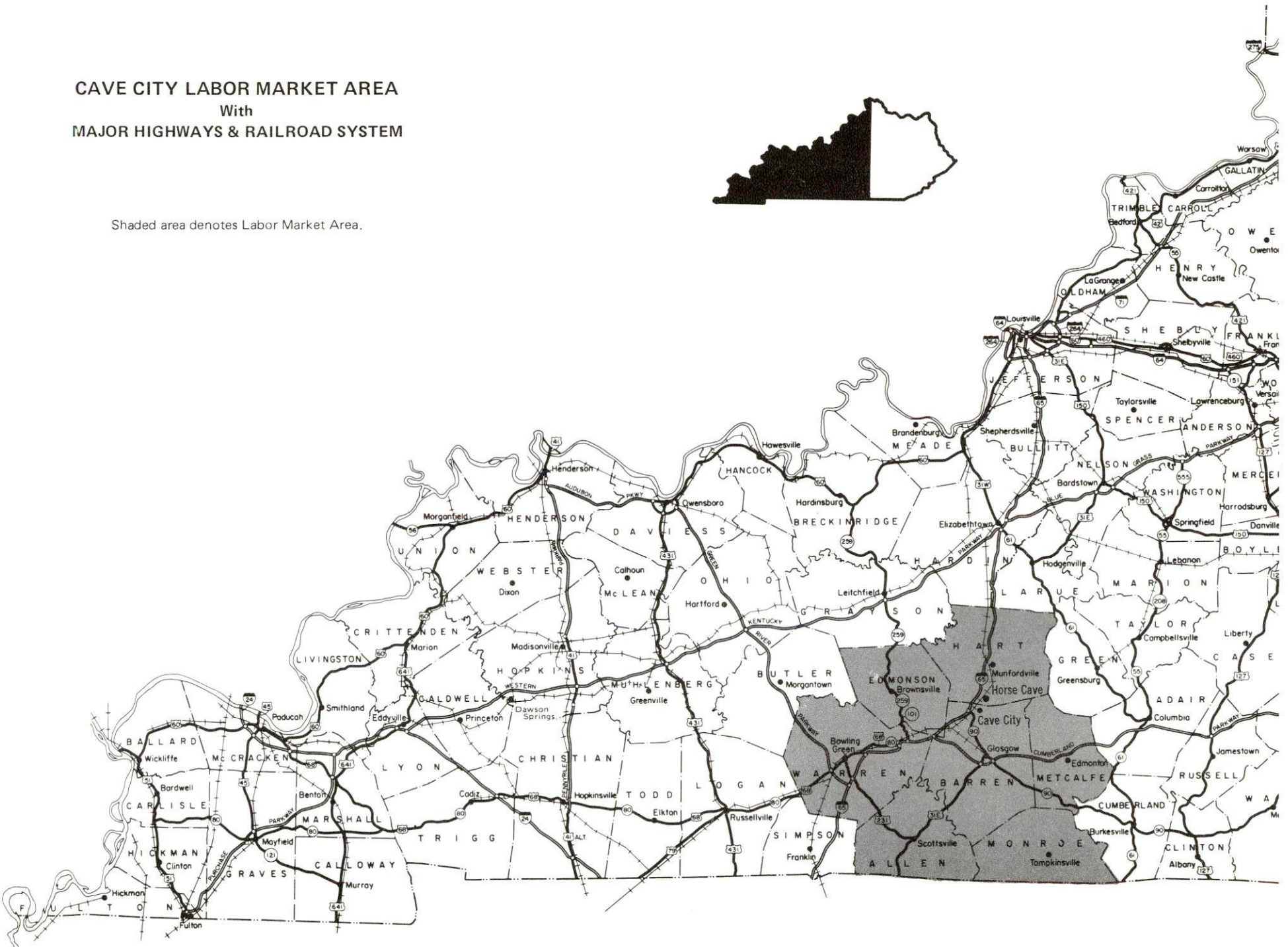
PREPARED BY THE  
 KENTUCKY DEPARTMENT OF TRANSPORTATION  
 BUREAU OF HIGHWAYS  
 DIVISION OF PROJECT DEVELOPMENT  
 IN COOPERATION WITH THE  
 U.S. DEPARTMENT OF TRANSPORTATION  
 FEDERAL HIGHWAY ADMINISTRATION





# CAVE CITY LABOR MARKET AREA With MAJOR HIGHWAYS & RAILROAD SYSTEM

Shaded area denotes Labor Market Area.





## CAVE CITY, KENTUCKY - A RESOURCE PROFILE

Cave City, a small community in northern Barren County, is located in the heart of the Kentucky Cave County. Cave City, with a population of 2,098 in 1980, is located 31 miles northeast of Bowling Green, Kentucky; 86 miles southwest of Louisville, Kentucky; 92 miles northeast of Nashville, Tennessee; and 315 miles southeast of St. Louis, Missouri.

Barren County, with a land area of 482 square miles, is located in southwestern Kentucky within the Mississippian Plateau Region. In 1980, Barren County had a population of 34,009.

### The Economic Framework

The total number of Barren County residents employed in 1981 averaged 17,230, with nonagricultural jobs accounting for 14,920 workers. Manufacturing employers in the county reported 4,390 workers; wholesale and retail trade 2,390; state and local government 1,220; and 1,800 employees in service occupations. Manufacturing employment in Cave City is greatest in the apparel and related products industry.

Per capita personal income in Barren County in 1980 was \$6,769. Between 1976 and 1980 per capita income in the county increased by 41 percent.

The Cave City labor market area includes Barren and the six adjoining counties. The total number of residents of the labor market area employed in 1981 averaged 75,220, with nonagricultural jobs accounting for 67,460 workers. Manufacturing employers in the area reported 16,240 workers; wholesale and retail trade 11,570; state and local government 7,780; and 7,660 in the service industries.

### Resources for Growth

1. Labor Supply - There is a current labor supply of 10,800 men and 8,210 women available for industrial jobs in the labor market area. In addition, from 1983 through 1987, 6,590 young men and 6,450 young women in the area will become 18 years of age and potentially available for work.

2. Transportation - The Seaboard System Railroad provides Cave City with daily freight service. Cave City is served by Interstate 65 which intersects with the Cumberland Parkway, 11 miles to the southwest, the Green River Parkway, 34 miles to the southwest, and Western Kentucky Parkway and Blue Grass Parkway, 40 miles to the north. Cave City is served by nine common carriers. Scheduled commercial airline service is available at Standiford Field in Louisville, 81 miles northeast of Cave City. Moore Field, 9 miles south of Cave City, has one paved, 4,000-foot runway.

3. Power and Fuel - Electric power is provided to Cave City and part of Barren County by the Kentucky Utilities Company. Barren County is also served by the Farmers Rural Electric Cooperative Corporation, with East Kentucky Power Cooperative serving as the source of supply. Natural gas service is provided by the Western Kentucky Gas Company which is supplied by Texas Gas Transmission Corporation. Three distributors of propane and seven distributors of distillate fuel oil serve Cave City.

4. Education - Education is an important growth asset for Cave City. There are two public school systems that serve the area. The Caverna Independent School System serves 1,047 students in Cave City. The Barren County School System serves 3,294 students in the unincorporated areas in Barren County.

Higher educational institutions within 55 miles of Cave City include one university, one senior college, one community college, and one junior college.

The Bowling Green State Vocational-Technical School, located 31 miles from Cave City, offers courses in 25 different subject areas. The Barren County Area Vocational Education Center, located in Glasgow, 11 miles from Cave City, offers 11 different subject areas.



## THE LABOR MARKET AREA

The Cave City Labor Market Area includes Barren County and the adjoining Kentucky counties of Allen, Edmonson, Hart, Metcalfe, Monroe, and Warren.

### POPULATION

Area	1980	1970	Percent Nonwhite
Cave City	2,098	1,818	8.8
Labor Market Area	167,166	141,709	N/A
Barren County	34,009	28,677	5.1
Allen County	14,128	12,598	1.3
Edmonson County	9,962	8,751	1.9
Hart County	15,402	13,980	8.1
Metcalfe County	9,484	8,177	3.0
Monroe County	12,353	11,642	3.0
Warren County	71,828	57,884	9.0

Note: The 1980 counts of population by race are provisional.

Sources: U. S. Department of Commerce, Bureau of the Census, 1980 Census of Population and Housing, March 1981; 1980 Census of Population, Number of Inhabitants. Population Research Unit, Urban Studies Center, University of Louisville, Kentucky Demographics: The 1980 Census of Kentucky, Characteristics of Population, Households, Housing, January 1982.

### LABOR FORCE CHARACTERISTICS OF RESIDENTS, 1981

	Barren County	Labor Market Area
Civilian Labor Force	18,730	82,348
Employment	17,228	75,219
Agricultural	2,306	7,760
Nonagricultural	14,922	67,459
Unemployment	1,502	7,129
Rate of Unemployment (%)	8.0	8.7

Source: Kentucky Cabinet for Human Resources, Kentucky Labor Force Estimates, Annual Averages, 1981.

SELECTED COMPONENTS OF NONAGRICULTURAL EMPLOYMENT,  
BY PLACE OF WORK, 1981

	Barren County	Labor Market Area
All Industries (total)	11,525	49,788
Manufacturing	4,392	16,244
Wholesale & Retail Trade	2,394	11,570
Services	1,799	7,656
State/Local Government	1,221	7,779

Source: Kentucky Cabinet for Human Resources, Average Monthly Workers Covered by Kentucky Unemployment Insurance Law, 1981.

CAVE CITY MANUFACTURING FIRMS,  
THEIR PRODUCTS AND EMPLOYMENT

Firm (Establishment date)	Products	Employment		
		Total	Male	Female
The Barren County Progress (1935)	Newspaper, job printing, booklets	4	1	3
Mammoth Cave Garment Company (1945)	Women's and children's jeans	211	26	185
Monroe Brothers Sweet Feed Mill (1955)	Feed	4	3	1
Rolco Manufacturing, Inc. (1972)	Boat trailers	12	10	2
Square Deal Lumber Company, Inc. (1932)	Cabinets, custom millwork	10	10	-
Sweitzer Manufacturing, Inc. (1981)	Oil pumping equipment, horse trailers	12	11	1

Source: Kentucky Department of Economic Development, 1982 Kentucky Directory of Manufacturers. Kentucky Department of Economic Development, Division of Research and Planning.

LABOR ORGANIZATIONS IN MANUFACTURING FIRMS

Presently there are no labor organizations representing manufacturing workers in Cave City.



INDUSTRIAL SERVICES

<u>Types of Services</u>	<u>Location</u>	<u>Miles Distant</u>
Tool & Die, Machine & Pattern Shops	Horse Cave, Kentucky	5
Metal Service Centers	Bowling Green, Kentucky	31
Heat Treating	Louisville, Kentucky	86
	Nashville, Tennessee	92
Metal Finishers	Elizabethtown, Kentucky	44
Electric Motor Repair	Bowling Green, Kentucky	31

Source: Kentucky Department of Economic Development, Kentucky Directory of Selected Industrial Services, 1981.

ESTIMATED MALE LABOR SUPPLY  
CAVE CITY LABOR MARKET AREA

Area	Current			Future
	Total	Unemployed	Under-employed	Not in Labor Force
Labor Market				Becoming 18 years of age 1983 thru 1987
Area*	10,880	3,977	3,922	2,981
Barren	1,470	864	606	0
Allen	578	298	203	77
Edmonson	1,336	328	127	881
Hart	1,690	352	214	1,124
Metcalfe	656	224	147	285
Monroe	1,170	300	256	614
Warren	3,980	1,611	2,369	0
				6,590
				1,395
				592
				417
				702
				417
				539
				2,528

\*Additional workers may be drawn from other nearby counties.

Note: Unemployed - persons unemployed and actively seeking work; Under-employed - persons employed but working only 14 to 26 weeks per year; Not in Labor Force - represents the number of persons who would enter the labor force if suitable employment were available (based on the assumption that persons in Kentucky would like to participate in the labor force in the same proportion that they do nationally).

Sources: Kentucky Cabinet for Human Resources, Kentucky Labor Supply Estimates by Area Development District and County, 1981. Kentucky Department of Economic Development, Future Labor Supply Becoming 18 Years of Age, 1983 Thru 1987.



ESTIMATED FEMALE LABOR SUPPLY  
CAVE CITY LABOR MARKET AREA

Area	Current			Future	
	Total	Unemployed	Under- employed	Not in Labor Force	Becoming 18 years of age 1983 thru 1987
Labor Market					
Area*	8,209	3,152	4,065	992	6,448
Barren	1,210	638	572	0	1,383
Allen	512	248	264	0	589
Edmonson	796	273	159	364	425
Hart	1,077	259	321	497	657
Metcalfe	258	165	93	0	402
Monroe	568	222	215	131	546
Warren	3,788	1,347	2,441	0	2,446

\*Additional workers may be drawn from other nearby counties.

Note: Unemployed - persons unemployed and actively seeking work; Under-employed - persons employed but working only 14 to 26 weeks per year; Not in Labor Force - represents the number of persons who would enter the labor force if suitable employment were available (based on the assumption that persons in Kentucky would like to participate in the labor force in the same proportion that they do nationally).

Sources: Kentucky Cabinet for Human Resources, Kentucky Labor Supply Estimates by Area Development District and County, 1981. Kentucky Department of Economic Development, Future Labor Supply Becoming 18 Years of Age, 1983 Thru 1987.

AVERAGE WEEKLY WAGES BY INDUSTRY,  
BY PLACE OF WORK, 1981

	<u>Barren County</u>	<u>Allen County</u>	<u>Edmonson County</u>	<u>Hart County</u>
All Industries	\$235.25	\$218.24	\$174.10	\$189.97
Mining & Quarrying	281.58	93.60	*	196.84
Contract Construction	277.36	147.21	210.26	201.89
Manufacturing	286.43	250.83	*	219.25
Transportation, Communications & Public Utilities	272.00	254.98	210.52	178.47
Wholesale & Retail Trade	167.83	192.58	155.98	158.47
Finance, Insurance & Real Estate	258.67	218.70	177.49	210.92
Services	176.68	139.27	191.35	152.65
State/Local Government	224.72	199.30	186.63	208.34
Other	116.94	105.45	*	*

	<u>Metcalfe County</u>	<u>Monroe County</u>	<u>Warren County</u>
All Industries	\$166.34	\$181.77	\$255.64
Mining & Quarrying	157.98	*	246.72
Contract Construction	118.24	230.64	282.52
Manufacturing	144.06	180.92	330.88
Transportation, Communications & Public Utilities	290.44	336.61	326.80
Wholesale & Retail Trade	142.03	156.97	181.90
Finance, Insurance & Real Estate	177.46	293.07	256.98
Services	216.54	120.16	204.28
State/Local Government	201.49	197.67	268.15
Other	*	105.63	127.81

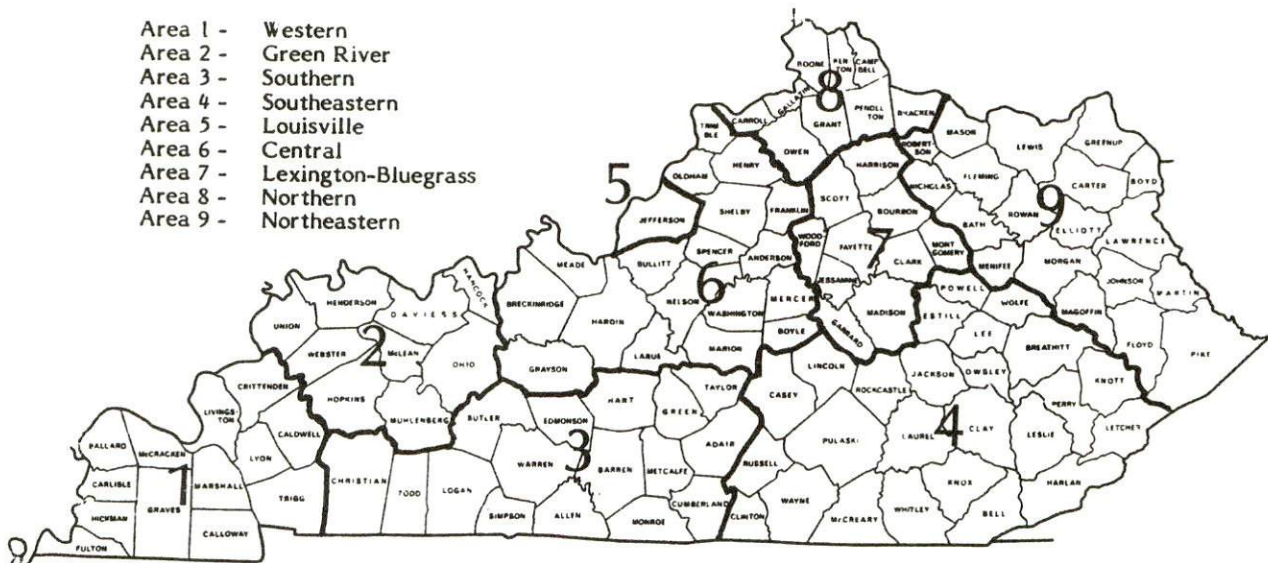
\*Not disclosed.

Note: Excludes domestic workers, railway workers, certain nonprofit corporations, majority of federal government workers, and self-employed workers.

Source: Kentucky Cabinet for Human Resources, Average Weekly Wages of Workers Covered by Kentucky Unemployment Insurance Law, 1981.

Occupational wage rates for specific industries are usually not available to most government agencies, and wage data furnished to state employment agencies by individual industrial employers are protected from disclosure by federal law. The most reliable up-to-date wage information can be obtained by direct contact with local employers.

Associated Industries of Kentucky, a voluntary organization of Kentucky businesses, regularly collects occupational wage rates and fringe benefits data from participating member firms. Data are compiled for over 127 clearly defined office, production, and service occupations. Tabulations are published for nine geographical areas of Kentucky, as shown on the map below. It should be noted that the data may be weighted by the preponderance of firms in the larger cities and may be somewhat higher than the rates paid in the smaller communities. Data from these tabulations are available, upon request, from the Kentucky Department of Economic Development, Frankfort, Kentucky 40601.



Associated Industries of Kentucky Area Wage Surveys



PER CAPITA PERSONAL INCOME

<u>Area</u>	<u>1976</u>	<u>1980</u>	<u>Percent Change</u>
Barren County	\$4,787	\$6,769	41.4
Labor Market Area Range	\$3,221 - 5,040	\$4,453 - 7,311	N/A
Kentucky	5,263	7,662	45.6
U. S.	6,367	9,511	49.4

Source: U. S. Bureau of Economic Analysis, Kentucky Economic Information System, June 1982.

## TRANSPORTATION

### Rail

Line serving Cave City - Seaboard System Railroad

Services - Main line; one northbound and one southbound freight stops daily; three northbound and three southbound through freights daily; switching facilities; team track space for 25 cars; piggyback facilities at Bowling Green, 31 miles southwest of Cave City.

For details on routing, schedules, rates, and services, contact:

Manager of Industrial Development  
Seaboard System Railroad  
P. O. Box 32290  
Louisville, Kentucky 40232  
(502) 587-5228

### Highways

Cave City is served by Interstate 65, U. S. 31W, and Kentucky Route 90, all "AAA" rated, 80,000-pound gross load limit highways. I-65 intersects with the Cumberland Parkway, 11 miles southwest of Cave City, and with the Green River Parkway, 34 miles southwest near Bowling Green. I-65 also provides access to the Western Kentucky Parkway and the Blue Grass Parkway approximately 40 miles north of Cave City at Elizabethtown.

## Truck Service

<u>Company</u>	<u>Home Office</u>
Bestway Express, Inc.*	520 Lester Avenue Nashville, Tennessee 37210
Bowling Green Express, Inc.**	Plum Springs Road P. O. Box 1111 Bowling Green, Kentucky 42101
Interstate Motor Freight System*	110 Ionia, N. W. Grand Rapids, Michigan 49503
Mason and Dixon Lines, Inc.*	P. O. Box 969 Kingsport, Tennessee 37662
McLean Trucking Company*	P. O. Box 213 Winston-Salem, North Carolina 27102
Overnite Transportation Company*	P. O. Box 1216 Richmond, Virginia 23209
Smith's Transfer Corporation*	P. O. Box 1000 Staunton, Virginia 24401
Thurston Motor Lines, Inc.*	600 Johnston Road Charlotte, North Carolina 28206
United Trucking Service, Inc.**	8505 West Warren Dearborn, Michigan 48126

### Other Freight Services

### Nearest Shipping Center or Home Office

Purolator Courier Corporation***	Louisville, 86 miles
United Parcel Service****	Bowling Green, 31 miles
KATO Express, Inc. (air cargo service)*****	Elizabethtown, 44 miles
Red Arrow Delivery Service***** (all cargo service)	Bowling Green, 31 miles

\*Interstate service only.

\*\*Interstate and intrastate service.

\*\*\*For regular scheduled pickups or for occasional pickups, arrangements must be made with the Louisville, Kentucky office of Purolator Courier Corporation.

\*\*\*\*For regular scheduled pickups or for occasional pickups, arrangements must be made with the Louisville office of United Parcel service.

\*\*\*\*\*Daily pickup and delivery service is available to and from Standiford Field in Louisville. Arrangements for service should be made through the home office in Elizabethtown.

\*\*\*\*\*Daily pickup and delivery service is available to and from Standiford Field in Louisville, Kentucky, and Nashville Metropolitan Airport in Nashville, Tennessee. Arrangements for service should be made through the shipping center in Bowling Green.



HIGHWAY MILES AND TRUCK TRANSIT TIME IN DAYS FROM  
CAVE CITY, KENTUCKY, TO SELECTED MARKET CENTERS

City	Highway Miles	Delivery		City	Highway Miles	Delivery	
		Time TL				Time TL	
Atlanta, Ga.	336	2		Los Angeles, Ca.	2,117	6	
Baltimore, Md.	665	3		Louisville, Ky.	86	2	
Birmingham, Ala.	288	2		Nashville, Tenn.	92	1	
Chicago, Ill.	378	2		New Orleans, La.	609	2	
Cincinnati, Ohio	187	2		New York, N. Y.	827	3	
Cleveland, Ohio	431	2		Pittsburgh, Pa.	467	2	
Detroit, Mich.	446	2		St. Louis, Mo.	315	2	
Knoxville, Tenn.	269	2					

Note: Mileage computations are via the best interstate or primary highways, not necessarily the most direct route of travel.

Sources: Rand McNally Interstate Road Atlas, 1981. Official Kentucky Mileage Map, 1980. Delivery time - Bestway Express, Inc., 520 Lester Avenue, Nashville, Tennessee 37210.

## Air

### Local

Moore Field  
Location 2 miles northeast of Glasgow; 9 miles south of Cave City  
Runways: 1 paved  
Length: 4,000 feet (600 feet overrun)  
Traffic  
Control: Wind sock  
Lighting: Runway lights sundown to sunrise, VASI  
Services: 100 octane, jet fuel, charter, flight instruction, taxi, A & E repairs, rental cars available, hangar rental, tug, and auxiliary power unit

Air Freight  
Service: Chartered air freight service must be arranged

### Nearest Scheduled Commercial Airline Service

Standiford Field  
Location: 4 1/2 miles southeast of center of Louisville, Kentucky; 81 miles northeast of Cave City  
Runways: 3 paved  
Length: 7,800 feet; 7,250 feet; 5,000 feet  
Traffic  
Control: Control tower  
Lighting: Runways, obstructions, beacon and approach and touch-down lights, center line on one runway  
Services: Continental, Delta, Eastern, Ozark, Piedmont, TWA, United USAir, Wright, Allegheny Commuter; fuel - 100 and jet; storage; minor A & P repairs; APU, charter, oxygen, survival equipment; taxi, car rentals, limousine, courtesy car, public transit; weather information; restaurant, snack bar

Air Freight  
Service: Air freight terminal

Bus - Southern Greyhound Bus Lines

Taxi - One company, 24-hour service.

Rental Services - Truck and trailer rentals available in Cave City, car rentals available in Glasgow, 11 miles from Cave City.

## Water

Cave City is approximately 86 miles southwest of the Ohio River at Louisville, Kentucky, where port facilities are available. Louisville has also been classified as a Foreign Trade Zone and offers complete U. S. Customs services for exports and imports.

In addition, Cave City is approximately 88 miles east of the Green River at Paradise, Kentucky. A 9-foot navigation channel is maintained on the Green River from Paradise to the Ohio River.

## POWER AND FUEL

### Electricity

Company serving Cave City and part of Barren County - Kentucky Utilities Company

Source of power - Kentucky Utilities Company

Total generating capacity - 2,639,100 KW\*

For industrial rates contact:

Industrial Development Department  
Kentucky Utilities Company  
One Quality Street  
Lexington, Kentucky 40507  
(606) 255-1461

Company serving most of Barren County - Farmers Rural Electric Cooperative Corporation

Source of power - East Kentucky Power Cooperative

Total generating capacity - 1,304,000 KW

For industrial rates contact:

Industrial Development Division  
East Kentucky Power Cooperative  
P. O. Box 707  
Winchester, Kentucky 40391  
(606) 744-4812

and/or

Farmers RECC  
504 South Broadway  
Glasgow, Kentucky 42141  
(502) 651-2191

### Natural Gas

Company serving Cave City - Western Kentucky Gas Company

Source of supply - Texas Gas Transmission Corporation

Size of transmission mains - 6 inches (supplier)

Distribution mains - 2, 4 and 6 inches

Distribution pressure - 7 to 50 psi

Btu content - 1,000 per cubic foot

Specific gravity - .60

For rates and supplies contact:

Director of Marketing  
Western Kentucky Gas Company  
311 West Seventh Street  
Owensboro, Kentucky 42301  
(502) 685-8000

\*A new generating unit is under construction in Carroll County. Due to be completed in 1984, the unit will have a generating capacity of 511,000 KW.



Other Fuels

Propane

Amerigas - Ugite Division  
North Highway 31W  
Horse Cave, Kentucky 42749

Pargas of Glasgow  
214 Industrial Drive  
Glasgow, Kentucky 42141

Doxol Propane  
921 West Main Street  
P. O. Box 516  
Glasgow, Kentucky 42141

Fuel oils

Distillate fuel oil -

Ashland Oil, Inc.  
National Turnpike  
Munfordville, Kentucky 42765

Paul Bridges Oil Company (Exxon)  
Industrial Drive  
Glasgow, Kentucky 42141

Ashland Petroleum Company  
921 West Main Street  
Glasgow, Kentucky 42141

Tri-County Oil Company, Inc.  
(Shell)  
715 West Main Street  
P. O. Box 442  
Glasgow, Kentucky 42141

Bale Oil Company  
225 Main Street  
Horse Cave, Kentucky 42749

LeRoy Williams Oil Company, Inc.  
(Phillips 66)  
South 31E  
Glasgow, Kentucky 42141

Benedict and Benedict  
103 East College  
Glasgow, Kentucky 42141

Residual fuel oil - Arrangements must be made with the refinery.

Low sulphur content coal - Available in Kentucky.

## WATER AND SEWERAGE

### Public Water Supply

Company serving Cave City - Green River Valley Water District\*  
Cave City, Kentucky 42127  
(502) 773-2135

Source - Rio Spring and Green River  
Treatment plant capacity - 4 million gallons per day  
Average daily consumption - 1.9 million gallons  
Peak daily consumption - 2.2 million gallons  
Type treatment - Filtration, coagulation, sedimentation, and chlorination  
Storage capacity - 3,060,000 gallons in the Green River Valley Water District, including 560,000 gallons in Cave City  
Size lines - 2, 3, 4, 6, 8, 10, and 12 inches  
Average pressure - 80 psi  
Average temperature - 60 degrees F.

### MONTHLY WATER RATES

First	1,999 gallons	\$5.95 (Minimum bill)
	2,000 - 5,000 gallons	1.60 per M gallons
	5,000 - 10,000 gallons	1.50 per M gallons
	10,000 - 20,000 gallons	1.40 per M gallons
	20,000 - 30,000 gallons	1.30 per M gallons
	30,000 - 40,000 gallons	1.10 per M gallons
	40,000 - 80,000 gallons	1.00 per M gallons
Over	80,000 -	.95 per M gallons

Tap-on charge: \$263 for 3/4-inch meter

\*In June of 1981, the Green River Valley Water District completed a \$1.5 million expansion project, which increased the water treatment plant capacity from 2 million gallons per day to 4 million gallons per day. The project also included the laying of approximately 16 miles of water line.



## Raw Water

Surface water sources - Green River

Average discharge - Green River at Munfordville, Kentucky, 2,710 cfs  
(55 years, USGS)

Expected ground water yield - 5 gpm or less in northwest corner and  
southern Barren County; 5 to 50 gpm in northern one-third of county;  
50 to 200 gpm in central part of county

## Sewerage

Company serving Cave City - Cave City Water and Sewer Company\*  
P. O. Box 191  
Cave City, Kentucky 42127  
(502) 773-2416

Design capacity - 320,000 gallons per day

Average daily flow - 200,000 gallons

Treatment - Primary and secondary

Type treatment - Grit chamber, communitor, primary clarifier,  
trickling filter, secondary clarifier, chlorine contact chamber,  
digester, and drying beds

Treated effluent discharged into - Sinkhole to subterranean stream

Size of sanitary mains - 6, 8, 10, and 12 inches

Rates - 80 percent of monthly water bill

Tap-on charge: \$200 (Minimum)

\*A regional sewer system is proposed for Cave City, Horse Cave, and Park City. Under this proposal, each community will provide its own treatment and the treated effluent will be pumped to the Green River at Lowler's Bend.

## CLIMATE

### Barren County

#### Temperature

Normal (30-year record)	55.2 degrees
Average annual 1981	54.2 degrees
Record highest, September 1954 (37-year record)	103.0 degrees
Record lowest, January 1963 (37-year record)	-21.0 degrees
Normal heating degree days (30-year record)	4,729
(Heating degree day totals are the sums of negative departures of average daily temperatures from 65 degrees F.)	

#### Precipitation

Normal (30-year record)	44.49 inches
Mean annual snowfall (37-year record)	16.70 inches
Total precipitation 1981	36.65 inches
Mean number days precipitation (.01 inch or more) (37-year record)	130
Mean number days thunderstorms (37-year record)	46

#### Prevailing Winds (17-year record)

South

#### Relative Humidity

1 a.m.	77 percent (17-year record)
7 a.m.	81 percent (18-year record)
1 p.m.	60 percent (18-year record)
7 p.m.	64 percent (18-year record)

Source: U. S. Department of Commerce, Environmental Science Services Administration, Climatological Data, 1981.  
Station of record: Lexington, Kentucky.

## LOCAL GOVERNMENT

### City

Structure - Mayor - 4-year term; 6 council members - 2-year terms  
Budget 1982-83 - General Fund \$296,725  
                  1983 - Sewer Fund 204,000  
Fees and licenses - Unloading license - \$30 annually; business  
                  licenses - \$15 and up annually

### County

Structure - County Judge/Executive - 4-year term;  
          7 magistrates - 4-year terms  
Budget 1982-83 - General Fund \$816,580; Road Fund \$557,200

### Assessed Value of Property, 1982\*

<u>Classes of Property</u>	<u>Cave City</u>	<u>Barren County</u>
Real Estate	\$19,717,065	\$368,408,307
Tangibles	5,418,641	89,777,832

### Property Taxes

All property in Kentucky is assessed at 100 percent of fair cash value.

Land and buildings are taxed by the state and may be taxed by local jurisdictions. The state rate is \$0.224 per \$100 of assessed valuation.

Manufacturing machinery, raw materials inventories, pollution control equipment, and goods in the process of manufacture are not subject to local taxation. The state rate is \$0.15 per \$100.

Other tangible personal property owned by manufacturers (automobiles, trucks, finished goods, office furniture, office equipment) is taxed by the state at \$0.45 per \$100 and may be taxed by local jurisdictions.

Intangible personal property located in Kentucky (money in hand, shares of stock, notes, bonds, accounts receivable, and other credits) is taxed by the state at \$0.25 per \$100, and is not subject to local taxation.

Property stored in public warehouses in a transit status is not subject to local taxation. The state rate is only \$0.015 per \$100.

Private leaseholds in industrial facilities owned by cities or counties and financed by industrial revenue bonds are subject to a state tax of \$0.015 per \$100 of value (essentially the lessee's equity, adjusted for appreciation or depreciation). Local taxation is not permitted.

\*Excludes Homestead Exemptions.



Combined State and Local Rates Per \$100 Valuation, 1982\*  
 (100% assessment)

Kentucky school districts levy property taxes on property located within individual school district boundaries. Two types of school districts are operated in Kentucky: 1) independent school districts which usually operate within a single city and often do not cover the entire city; and 2) common school districts which operate in portions of counties not covered by independent districts and cover the entire county when there is no independent district. School district boundaries are mutually exclusive and do not cross.

	<u>Site Inside City of Cave City and within the Caverna Independent School District</u>	<u>Site Inside City of Cave City and within the Barren County School District</u>	<u>Site Inside Unincorporated Barren County</u>
1. Land and buildings	\$1.0891	\$0.7371	\$0.5584
2. Mfg. machinery, raw materials, goods in process, pollution control equipment	0.1500	0.1500	0.1500
3. Finished goods, office equipment, vehicles, other tangibles	1.4176	1.0316	0.8529
4. Intangibles (accounts rec., notes, bonds, etc.)	0.2500	0.2500	0.2500
5. Property stored in public warehouses in a transit status	0.0150	0.0150	0.0150
6. Leaseholds in industrial revenue bond financed plants	0.0150	0.0150	0.0150

\*Kentucky Department of Economic Development.

## Planning and Zoning

Joint agency - Joint City-County Planning Commission of Barren County\*  
Zoning enforced - Within the city of Glasgow only  
Subdivision regulation enforced - County-wide  
Local codes enforced - Building (county-wide)  
Mandatory state codes enforced - Kentucky Plumbing Code, National  
Electric Code, Kentucky Boiler Regulations and Standards, Kentucky  
Building Code (modeled after BOCA code)

## Safety

<u>Police</u>	<u>Cave City</u>	<u>Barren County</u>
Total staff	5 full-time 1 part-time	6
Radio-patrol cars	3	4
<u>Fire</u>		
Insurance Services Office, Public Protection Classification	7	-
Volunteers	38	-

## Refuse Collection and Disposal

	<u>Cave City</u>
Type Service	Private
Fee charged:	
residential	\$4.40 per month
business	\$10 to \$35 per month
industrial	Negotiable
Collection frequency:	
residential	Once per week
business	According to need
industrial	According to need
Trash pickup	Once per month
Disposal method	Landfill

\*Participating cities - Glasgow, Cave City, Park City and Hiseville.

## EDUCATION

### Public Schools

	<u>Caverna Independent</u>	<u>Barren County</u>
Total Enrollment (October 1982)	1,047	3,294
Elementary	589	2,247
High School	458	1,047
Student-Teacher Ratio	18-1	19-1
Elementary	19-1	18-1
High School	16-1	20-1
Percent High School Graduates to College (1981)	45.8	27.2
Expenditures Per Pupil (1981-82)	\$1,339.90	\$1,345.87
Bonded Indebtedness (June 30, 1981)	\$1,070,000	\$2,885,000

### Area Colleges and Universities

<u>Name</u>	<u>Location (Miles distant)</u>	<u>Enrollment (Fall, 1981)</u>	<u>Highest Degree Conferred</u>
Western Kentucky University	Bowling Green (31)	13,174	Masters, Specialist/ Doctorate*
Elizabethtown Community College	Elizabethtown (44)	1,967	Associate
Lindsey Wilson College	Columbia (48)	418	Associate
Campbellsville College	Campbellsville (51)	712	Baccalaureate

\*Joint doctoral degree programs are offered in cooperation with the University of Kentucky, Lexington, and cooperative doctoral degree programs are offered with the University of Louisville.



## Vocational Schools

Both the state vocational-technical schools and the area vocational education centers are operated by the Kentucky Department of Education. The state vocational-technical schools enroll persons full time who are at least 16 years of age and not in school. These students attend classes for six hours each day. The area vocational education centers are designed to accommodate high school students who are at least 15 years of age. These students attend vocational school for three hours each day. The state vocational-technical schools and the area education centers offer evening courses to enable working adults to upgrade current job skills.

### Nearest State School

Location	Bowling Green State Vocational-Technical School
Miles Distant	Bowling Green
Curriculum	31
	Business and Office
	Accounting/Jr. Management
	Clerical
	Secretarial
	Consumer and Home Economics
	Commercial Foods
	Health and Personal Services Occupations
	Dental Assistant
	Health Careers
	Nurse Assistant
	Practical Nurse*
	Respiratory Therapy*
	Surgical Technician
	Industrial Education
	Auto Body Repair
	Auto Mechanics
	Carpentry
	Civil Highway Technology
	Electricity
	Electronics Servicing Occupations
	Electronics Technology
	Graphic Arts (Printing)
	Machine Shop
	Masonry
	Refrigeration and Air Conditioning
	Small Engine Repair
	Technical Drafting
	Tool and Die Making
	Welding

\*These courses are taught at the T. J. Samson Community Hospital in Glasgow.

Nearest Area Education Center

Location	Barren County Area Vocational Education Center
Miles Distant	Glasgow 11
Curriculum	Business and Office Accounting/Jr. Management Clerical Secretarial Health and Personal Services Occupations Health Careers Industrial Education Auto Mechanics Carpentry - Building Trades Drafting Electricity Machine Shop Refrigeration, Heating, and Air Conditioning Welding

Arrangements can be made to provide training in the specific production skills required by an industrial plant. Instruction may be conducted either in the vocational school or in the industrial plant, depending upon the desired arrangement and the availability of special equipment.

## HEALTH

### Local Medical Personnel

Physicians - 2  
Dentists - 2

### Hospitals

<u>General Hospital</u>	<u>Location</u>	<u>Beds</u>
Caverna Memorial Hospital	Horse Cave, 5 miles distant	30
T. J. Samson Community Hospital*	Glasgow, 11 miles distant	199

### Caverna Memorial Hospital

General hospital facilities - Operating room, recovery room, X-ray, laboratory, emergency room, delivery room, nursery, intensive care unit, and pharmacy

Medical staff - 7 medical doctors, 2 surgeons, 12 registered nurses, 15 licensed practical nurses, 2 radiologists, 1 pathologist, 1 anesthetist, and 4 dentists

### T. J. Samson Community Hospital

General hospital facilities - Four operating rooms, intensive recovery room, nine emergency rooms, 10 coronary care/intensive care beds, six diagnostic radiological rooms with image intensifiers and automatic film processor, ultrasound nuclear medicine department, inhalation therapy department, physical therapy department, EKG laboratory, and clinical and anatomical laboratory services on the premises

Medical staff - 38 doctors, 67 registered nurses, 106 licensed practical nurses, orthopedic and numerous supporting staff members

\*A \$5.2 million expansion project has provided the hospital with new and expanded services. A new emergency and outpatient department, a radiology department, a cardiology department, an ICU/CCU and a step-down ICU/CCU, a surgical suite containing four operating rooms, and a recovery room were constructed.



### Ambulance Service

Name - Barren-Metcalfe County Ambulance Service (based in Glasgow)

Staff - 18 full-time attendants, 4 dispatchers, 1 supervisor and 1 secretary

Service - County-wide in Barren and Metcalfe counties, 24 hours a day, 7 days a week. The ambulance service currently provides basic life support and is in the process of upgrading to paramedic services.

Equipment - 4 ambulances, 2 Medi-Cruisers, and some rescue equipment

### Public Health

Facility - Barren County Health Department

Staff - 1 registered nurse, 1 licensed practical nurse, 1 community health worker I, 1 health environmentalist, 1 plumbing inspector, and 2 clerks

## OTHER LOCAL FACILITIES

### Communications

Telephone - South Central Rural Telephone Cooperative Corporation, Inc.  
Services - Standard

Telegraph - Western Union  
Services - Toll-free number, 1-800-325-5100

Postal - U. S. Post Office  
Class - Second  
Mail received - Once daily  
Mail dispatched - Once daily

Newspapers - Barren County Progress  
Weekly and circulation - 5,472  
Other papers  
received from - Bowling Green, Glasgow, and Louisville, Kentucky

Radio - WKVE-AM  
Stations received from - Bowling Green, Glasgow, Louisville, and  
Munfordville, Kentucky; Nashville,  
Tennessee; and St. Louis, Missouri

Television -  
Cable service  
Reception from - Bowling Green and Louisville, Kentucky;  
Nashville, Tennessee; Evansville, Indiana;  
and Atlanta, Georgia

Kentucky Educational  
Television - Elizabethtown transmitter, Channel 23

### Library Services

Public library - Mary Wood Weldon Memorial (Glasgow)  
Size collection - 47,810 volumes  
Circulation, 1981-82 - 140,945 volumes  
Services - Records, audiovisual equipment, films, film strips, tapes,  
summer reading program, story hour; college course classes,  
microfilms, magazines and bookmobile

### Religious Institutions

Number of churches - 8  
Denominations - Baptist  
Catholic  
Christian  
Church of Christ  
Methodist

Nearest Synagogues - Louisville, 86 miles north  
Congregations - Adath Israel (reform)  
Adath Jeshurum (conservative)  
Anshei Sfard (orthodox)  
Brith Sholom (reform)  
Keneseth Israel (orthodox)

### Financial Institutions

<u>Banks</u>	<u>Assets</u>	<u>Deposits</u>	<u>Statement Date</u>
Citizen Bank and Trust Company (H. Y. Davis Office)	\$91,650,502.01	\$80,944,104.24	6/30/82
New Farmers National Bank	95,239,453.42	84,920,170.01	6/30/82

### Hotels and Motels

Total number - 14  
Total rooms - Approximately 1,000

### Clubs and Organizations

American Legion  
Boy Scouts  
Business and Professional Women  
Chamber of Commerce  
Civitan  
Cub Scouts  
Eastern Star  
Jaycees  
Little League Baseball and Football  
Masons  
Senior Woman's Club  
Younger Woman's Club



## RECREATION

### Local

Public recreational facilities include the Brain Doyle Park, a city park, a golf course, three tennis courts, two playgrounds, two baseball diamonds, two go-cart tracks, a community center, a convention center, miniature golf, a giant slide, a water slide, an alpine slide, and a supervised recreational program for youth.

Other recreational facilities include a country club with golf course and swimming pool, public golf courses and tennis courts, and a live professional theater.

The athletic complex at the Caverna High School is open to area residents and includes four tennis courts, a running track, baseball field and football field.

Numerous tourist attractions include museums, an amusement area, a reconstructed 19th century village, and several camp sites.

### Area (Within 55 miles)

Mammoth Cave National Park is located only a few miles northwest of Cave City. Beneath 51,000 park acres, Mammoth Cave is among the major tourist attractions of all times. It is one of the largest cave networks ever discovered, with at least 150 miles charted on five levels and vast areas not yet mapped. Some famous sights are Snowball Dining Room (267 feet below surface), Frozen Niagara, Crystal Lake, and Bottomless Pit. The park also features scenic boat trips on the Green River and nature and hiking trails. Park accommodations include a hotel with distinctive gift shops featuring native Kentucky and Southern Highland handicrafts, a motor lodge, hotel cottages, woodland cottages, and a hotel annex with budget accommodations and craft shop featuring live exhibits of broom making and weaving. Other park facilities include the hotel dining room and coffee shop, a service center, group meeting facilities, a campground, a picnic area, tennis and shuffleboard courts.

Nolin River Lake, 25 miles northwest of Cave City, is just north of Mammoth Cave National Park. The lake has a surface area of 5,800 acres and offers facilities for camping, boating, and fishing.

Barren River Lake State Resort Park, 25 miles south of Cave City near Glasgow, is a full-facility resort park offering a resort lodge, a coffee shop, cottages, a lodge pool, a beach, riding stables, nature trails, open and covered boat slips, a 9-hole par-3 golf course, lighted handball and tennis courts, shuffleboard, park camping with a service building, a restaurant, fishing and pleasure boat rentals, picnic areas, and a playground. Barren River Lake, which covers 10,000 acres, is a popular area for skiing, sailing fishing, and swimming.

Abraham Lincoln Birthplace National Historic Site, located 43 miles northeast of Cave City near Hodgenville, features the log cabin, which was the birthplace of Abraham Lincoln, enclosed within the granite memorial shrine. The grounds include 116 acres of the original Thomas Lincoln farm and a visitor's center with audiovisual programs and exhibits on the Lincoln family.

Green River Lake State Park near Campbellsville, 51 miles northeast of Cave City is made up of 1,300 acres surrounding an 8,200-acre lake. The park is open all year-round and offers 96 campsites, a beach, boat docks, fishing, swimming, and a picnic area.

## COMMUNITY IMPROVEMENTS

### Recent

In June of 1981, the Green River Valley Water District completed a \$1.5 million expansion project, which increased the water treatment plant capacity from 2 million gallons per day to 4 million gallons per day. The project also included the laying of approximately 16 miles of water line.

A \$140,000 community center, which was completed the summer of 1980, was constructed by the Great Onyx Job Corps Center. The community center, which contains a large meeting room and kitchen facilities, will be used for a variety of purposes.

The Great Onyx Job Corps Center completed the construction of a \$170,000 fire station in the summer of 1982.

The Department of Housing and Urban Development awarded Cave City a \$500,000 Community Development Block Grant in 1979, to purchase or repair substandard housing. The project was completed in December of 1982.

Recent improvements to the Caverna School System include reroofing of the high school, the purchase of a new bus, carpeting of the elementary school and the band room at the high school and seating and retracking the running track at the high school. Total cost of this project was approximately \$90,000.

During 1982, the Barren County School System purchased 5 new buses for a total cost of \$90,000.

A \$5.2 million expansion project was recently completed at the T. J. Samson Community Hospital, which provided the hospital with new and expanded services. A new emergency and outpatient department, a radiology department, a cardiology department, an ICU/CCU and a step-down ICU/CCU, a surgical suite containing four operating rooms, and a recovery room were constructed.

Recent businesses that have located in Cave City are a grocery store, a pharmacy and a discount store.

The Barren-Metcalfe County Ambulance Service recently completed the construction of a \$80,000 ambulance building.

### Under Way

Currently under construction, by the Great Onyx Job Corps Center, is a restroom facilities project at the city park. The \$40,000 project is due to be completed in the spring of 1983.



## Planned

A regional sewer system is proposed for Cave City, Horse Cave, and Park City. Under this proposal, each community will provide its own treatment and the treated effluent will be pumped to the Green River at Lowler's Bend.



Department of Economic Development  
100 West Broadway, Room 1000  
New York, New York 10038  
Telephone (212) 564-4270