

1984

Industrial Resources: Madison County - Berea

Kentucky Library Research Collection
Western Kentucky University, spcol@wku.edu

Follow this and additional works at: https://digitalcommons.wku.edu/madison_cty

 Part of the [Business Administration, Management, and Operations Commons](#), [Growth and Development Commons](#), and the [Infrastructure Commons](#)

Recommended Citation

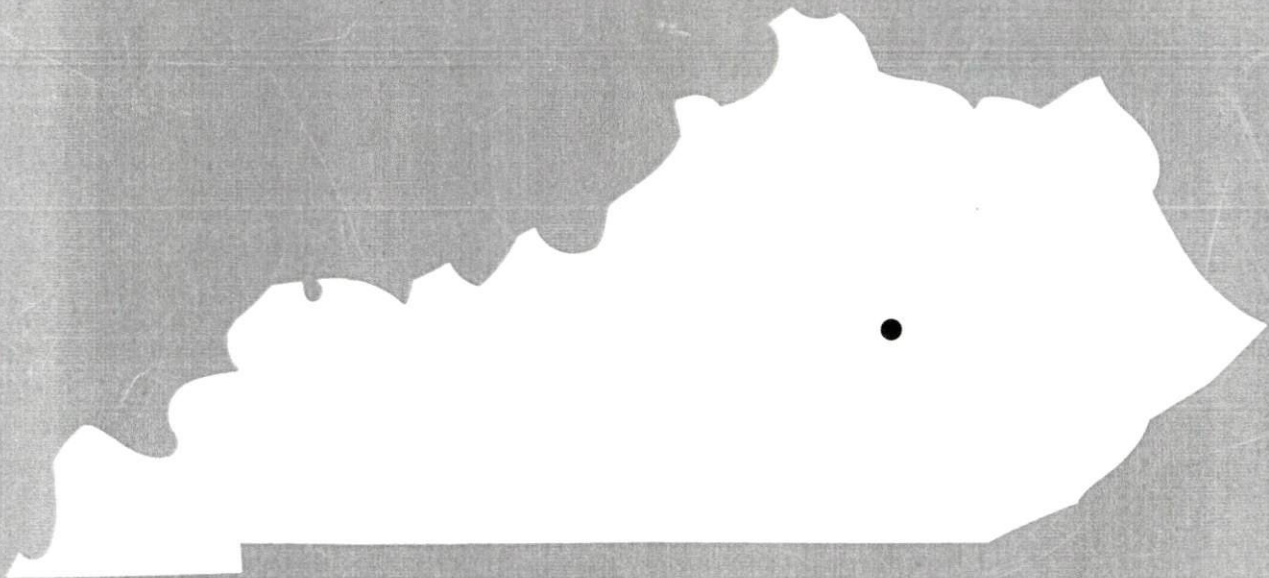
Kentucky Library Research Collection, "Industrial Resources: Madison County - Berea" (1984). *Madison County*. Paper 14.
https://digitalcommons.wku.edu/madison_cty/14

This Report is brought to you for free and open access by TopSCHOLAR®. It has been accepted for inclusion in Madison County by an authorized administrator of TopSCHOLAR®. For more information, please contact topscholar@wku.edu.

1984

**A comprehensive
report on**

Berea, Ky.



A COMPREHENSIVE REPORT ON
BEREA, KENTUCKY

Prepared by
The Kentucky Department of Economic Development
Division of Research and Planning
in cooperation with
The Industrial Foundation of Berea
and
The Berea Chamber of Commerce

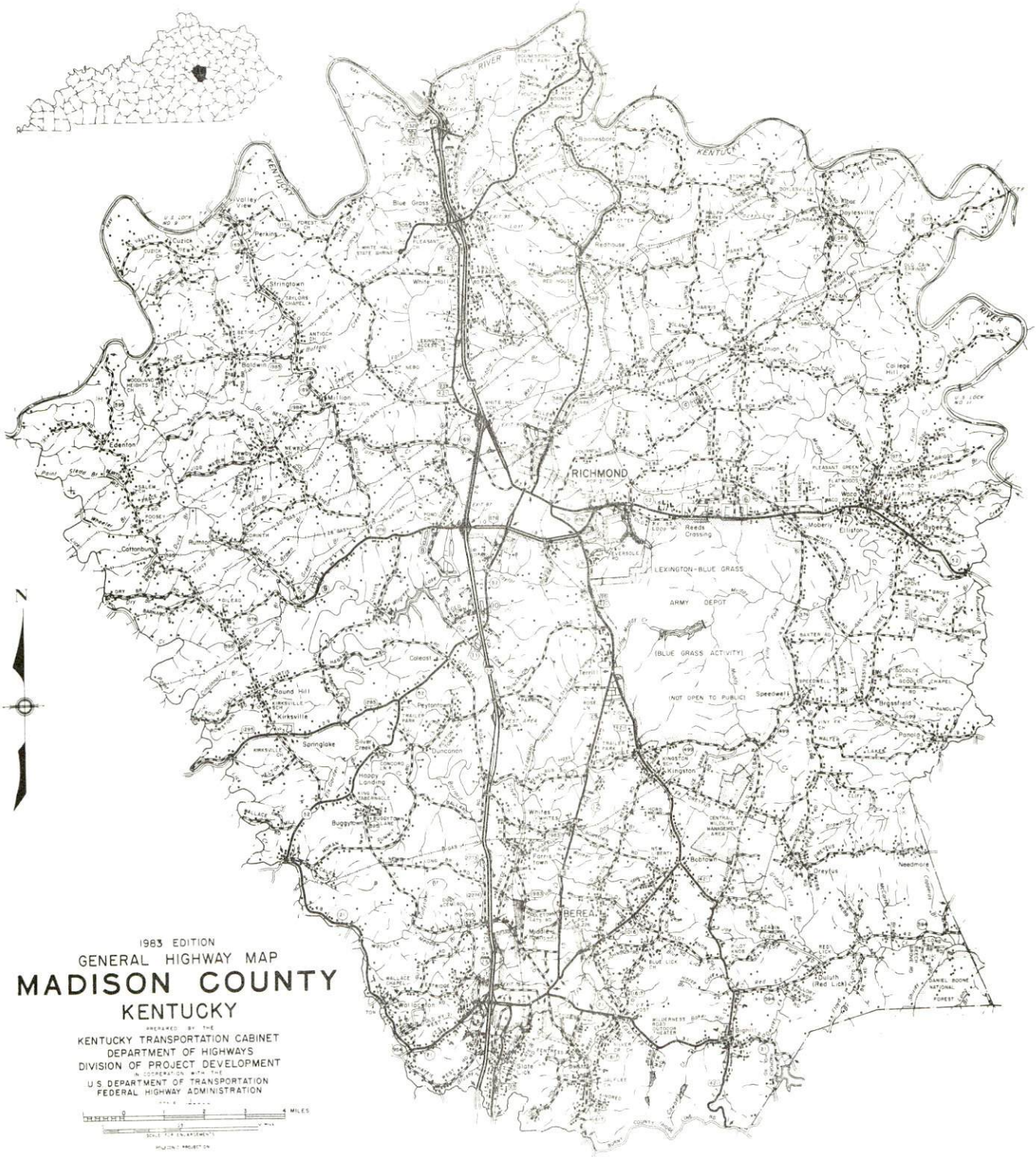
1984

Program manager - Pamela Riley; research - James R. Thompson; clerical - Bobbi Medley; graphics - Frank Ferrante, Tony Cecconi, Robert Owens; cartography - Site Evaluation Branch, Division of Industrial Development. Cost of printing paid from state funds.

TABLE OF CONTENTS

<u>Chapter</u>	<u>Page</u>
INDUSTRIAL SITES	i
BEREA, KENTUCKY - A RESOURCE PROFILE	1
THE LABOR MARKET AREA	4
Population	4
Labor Force Characteristics of Residents, 1982	4
Selected Components of Nonagricultural Employment, by Place of Work, 1982	5
Berea Manufacturing Firms, Their Products and Employment	6
Labor Organizations in Manufacturing Firms	7
Industrial Services	8
Estimated Male Labor Supply	9
Estimated Female Labor Supply	10
Average Weekly Wages By Industry, by Place of Work, 1982	11
Per Capita Personal Income	13
TRANSPORTATION	14
Rail	14
Highways	14
Truck Service	15
Air	17
Bus	18
Taxi	18
Rental Services	18
Water	18
POWER AND FUEL	19
Electricity	19
Natural Gas	20
Other Fuels	20
WATER AND SEWERAGE	22
Public Water Supply	22
Raw Water	23
Sewerage	24
CLIMATE	25

<u>Chapter</u>	<u>Page</u>
LOCAL GOVERNMENT	26
City	26
County	26
Assessed Value of Property, 1983	26
Property Taxes	27
Combined State and Local Rates Per \$100 Valuation, 1983	28
Utilities Gross Receipts Tax for Schools	28
Planning and Zoning	29
Safety	29
Police	29
Fire	29
Rescue Service	29
Refuse Collection and Disposal	30
EDUCATION	31
Public Schools	31
Nonpublic Schools	31
Area Colleges and Universities	32
Vocational Schools	33
HEALTH	36
Local Medical Personnel	36
Hospitals	36
Other Medical Facilities	36
Ambulance Service	36
Public Health	36
OTHER LOCAL FACILITIES	38
Communications	38
Library Services	38
Religious Institutions	39
Financial Institutions	39
Hotels and Motels	39
Clubs and Organizations	40
RECREATION	41
COMMUNITY IMPROVEMENTS	45



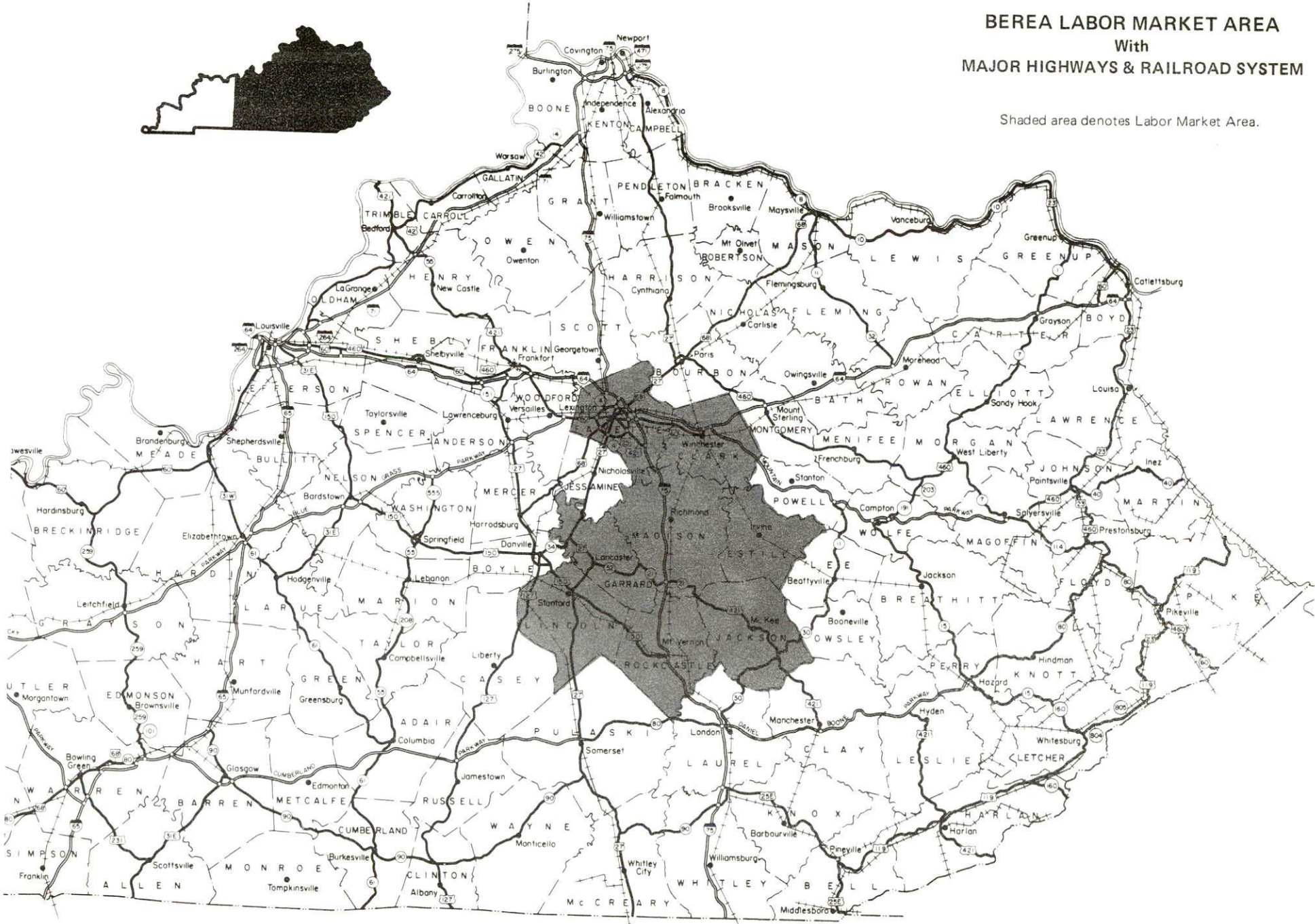
1963 EDITION
GENERAL HIGHWAY MAP
MADISON COUNTY
KENTUCKY

PREPARED BY THE
KENTUCKY TRANSPORTATION CABINET
DEPARTMENT OF HIGHWAYS
DIVISION OF PROJECT DEVELOPMENT
IN COOPERATION WITH THE
U.S. DEPARTMENT OF TRANSPORTATION
FEDERAL HIGHWAY ADMINISTRATION



BEREA LABOR MARKET AREA
With
MAJOR HIGHWAYS & RAILROAD SYSTEM

Shaded area denotes Labor Market Area.



BEREA, KENTUCKY - A RESOURCE PROFILE

Berea, a major center for the production and marketing of Appalachian and traditional American handicrafts and the home of Berea College, is located in southern Madison County. Berea, with a 1980 population of 8,226, is located 39 miles south of Lexington, Kentucky; 114 miles southeast of Louisville, Kentucky; 120 miles south of Cincinnati, Ohio; and 134 miles north of Knoxville, Tennessee.

Madison County, located in central Kentucky's famous Blue Grass Region, covers a total land area of 443 square miles which ranges from gently rolling to hilly terrain. The Kentucky River forms the northern boundary of the county. Madison County had a 1980 population of 53,352.

The Economic Framework

The total number of Madison County residents employed in 1982 averaged 24,030, with nonagricultural jobs accounting for 22,740 workers. Manufacturing employers in the county reported 3,080 workers; wholesale and retail trade 4,040; state and local government 3,630; and services 2,450. Manufacturing employment is greatest in instruments and related products, miscellaneous manufacturing, nonelectrical machinery, furniture and fixtures, rubber and plastic products, and transportation equipment.

Per capita personal income in the county in 1981 was \$6,639. Between 1977 and 1981, per capita personal income increased by 38 percent.

The Berea labor market area includes Madison and seven adjoining and nearby counties. The total number of residents of the labor market area employed in 1982 averaged 173,820, with nonagricultural jobs accounting for 166,870 workers. Manufacturing employers in the area reported 24,310; wholesale and retail trade 33,610; services 25,850; and state and local government 24,410.

Handicraft Industry

Since the late 19th century, Berea has been a center for the training for production and sale of Appalachian handicrafts. The Berea College Student Craft Industries started in 1897, the same year the first craft fair was held as part of Commencement Day. Throughout the early 20th century, Berea provided the leadership for craft development in all of Appalachia, helping to organize the Southern Highland Handicraft Guild and becoming the primary regional marketplace.

Berea's first industry, Churchill Weavers, was founded because of the readily available local weaving skills.

In 1960 Berea led in the organization of the Kentucky Guild of Artists and Craftsmen, whose first fair at Indian Fort Theater in 1967 triggered a new growth of the industry. The Guild is still headquartered in Berea, and their two annual fairs draw 30,000 visitors each year and are honored for excellence.

MATCH Inc., a seven-state handicraft cooperative, moved to Berea in 1974, and in 1981 renovated the historic L&N depot for use as a shop, warehouse, and direct mail marketing center.

Seventeen craft shops/galleries are now open in Berea, including those sponsored by organizations and those privately operated. Another 50 individuals, studio craftsmen who sell through shops and fairs, are located in Berea, and the craft industry provides full-time employment for over 200 Bereans.

In 1982 another major craft fair (a regional event) was added, and both the Southern Highland Handicraft Guild and MATCH Inc., host annual meetings here. Classes, private and through Berea College, offer expert instruction.

The handicrafts are Berea's major tourist attraction, and the industry is well organized to expand the market.

Berea's reputation as a craft center is international, one of quality and Appalachian heritage, of authentic skills and carefully preserved traditions.

Resources for Growth

1. Labor Supply - There is a current labor supply of 18,180 men and 18,640 women available for industrial jobs in the labor market area. In addition, from 1984 through 1988, 13,735 young men and 12,870 young women in the area will become 18 years of age and potentially available for work.

2. Transportation - The Seaboard System Railroad provides main line rail service to Berea. Berea is served directly by Interstate 75 and U.S. Highway 25. Twenty-four common carriers have authority to serve Berea. The nearest scheduled commercial airline service is available at Lexington's Blue Grass Field, 44 miles northwest of Berea, and commuter air service is available at the London-Corbin Airport, 41 miles south of Berea. Local airports include the Madison Airport with a 4,000-foot paved runway and Lackey Airport with a 2,400-foot turf runway.

3. Power and Fuel - Electric power is provided to Berea by the Berea College Electric Utility, which is supplied by the Kentucky Utilities Company. Madison County is served electric power by the Kentucky Utilities Company, and also by the Blue Grass Rural Electric Cooperative Corporation and Clark Rural Electric Cooperative Corporation, which are supplied by the East Kentucky Power Cooperation. Berea is provided natural gas by the Delta Natural Gas Company, which is supplied by the Tennessee Gas Pipeline Company. Four distributors of propane and six distributors of distillate fuel oil serve Berea.

4. Education - Primary and secondary education is provided to Berea and Madison County by the Berea Independent School System and the Madison County School System. Model Laboratory and St. Mark, two nonpublic schools, are located in Richmond, 12 miles north.

Berea College, a private, four-year, tuition-free institution has courses leading to B.A. and B.S. degrees, and also offers many recreational, cultural and entertainment opportunities to the community. In addition, three universities, one senior college, one junior college, one community college and one technical institute are located within 50 miles of Berea.

The Laurel County State Vocational-Technical School at London, 38 miles south, offers courses in 14 areas, and the Central Kentucky State Vocational-Technical School at Lexington, 39 miles north, offers courses in 20 areas. Seven course areas are offered at the Madison County Area Vocational Education Center in Richmond, 12 miles north of Berea. Additional technical training is available through the Lexington Technical Institute, a unit of the University of Kentucky's community college system.

THE LABOR MARKET AREA

The Berea Labor Market Area includes Madison County and the adjoining or nearby Kentucky counties of Clark, Estill, Fayette, Garrard, Jackson, Lincoln, and Rockcastle.

POPULATION			
Area	1980	1970	Percent Nonwhite
Berea	8,226	6,956	4.2
Labor Market Area	356,209	302,325	N/A
Madison County	53,352	42,730	6.8
Clark County	28,322	24,090	6.5
Estill County	14,495	12,752	0.2
Fayette County	204,165	174,323	14.5
Garrard County	10,853	9,457	5.5
Jackson County	11,996	10,005	0.1
Lincoln County	19,053	16,663	4.2
Rockcastle County	13,973	12,305	0.3

Note: The 1980 counts of population by race are provisional.

Sources: U.S. Department of Commerce, Bureau of the Census, 1980 Census of Population and Housing, March 1981; 1980 Census of Population, Number of Inhabitants. Population Research Unit, Urban Studies Center, University of Louisville, Kentucky Demographics: The 1980 Census of Kentucky, Characteristics of Population, Households, Housing, January 1982.

LABOR FORCE CHARACTERISTICS OF RESIDENTS, 1982

	<u>Madison County</u>	<u>Labor Market Area</u>
Civilian Labor Force	25,762	187,038
Employment	24,026	173,816
Agricultural	1,289	6,949
Nonagricultural	22,737	166,867
Unemployment	1,736	13,222
Rate of Unemployment (%)	6.7	7.1

Source: Kentucky Cabinet for Human Resources, Kentucky Labor Force Estimates, Annual Averages, 1982.

SELECTED COMPONENTS OF NONAGRICULTURAL EMPLOYMENT,
BY PLACE OF WORK, 1982

	<u>Madison County</u>	<u>Labor Market Area</u>
All Industries (total)	14,308	132,203
Manufacturing	3,079	24,307
Wholesale & Retail Trade	4,036	33,611
Services	2,446	25,848
State/Local Government	3,630	24,412

Note: Excludes domestic workers, railway workers, certain nonprofit corporations, majority of federal government workers, and self-employed workers.

Source: Kentucky Cabinet for Human Resources, Average Monthly Workers Covered by Kentucky Unemployment Insurance Law, 1982.

BEREA MANUFACTURING FIRMS,
THEIR PRODUCTS AND EMPLOYMENT

<u>Firm</u> (Establishment date)	<u>Product</u>	<u>Employment</u>			<u>Labor Unions</u>
		<u>Total</u>	<u>Male</u>	<u>Female</u>	
Berea College Industries (1855)	Furniture, wooden games, fireside brooms	225	108	117	
Berea Publishing Company (1904)	Newspaper	5	1	4	
Chestnut Street Gallery, Inc. (1982)	Custom furniture, wood accessories	20	--	--	
Churchill Weavers, Inc. (1922)	Baby blankets, afghans, ties, ladies' apparel accessories	41	7	34	
Dresser Industries, Instrument Division (1961)	Pressure gauges	350	113	237	Industrial Workers*
Gibson Greeting Card Company (1967)	Candles, pom pom bows, gifts	290	82	208	Firemen and Oilers*
Goodyear Aerospace Corporation, Industrial Brake Operations (1972)	Industrial brakes, linings	189	122	67	
Hyster Company (1973)	Industrial lift trucks and uprights	250	210	40	
Parker Seal Company (1951)	Rubber O-rings	240	90	150	Firemen and Oilers*
Phoenix Products, Inc. (1973)	Fiberglass kayaks, waterproof containers, fiberglass custom cases	20	4	16	

(Contd.)

<u>Firm (Establishment date)</u>	<u>Product</u>	<u>Employment</u>			<u>Labor Unions</u>
		<u>Total</u>	<u>Male</u>	<u>Female</u>	
Tree Finery Workshop (1979)	Custom furniture, wood specialty products	3	3	0	
Wyatt Supply, Inc. (1947)	Concrete block, ready mixed concrete	12	11	1	

* See Labor Organizations below.

Sources: Kentucky Department of Economic Development, 1984 Kentucky Directory of Manufacturers; Division of Research and Planning.

LABOR ORGANIZATIONS IN MANUFACTURING FIRMS

<u>Union</u>	<u>Representing workers at:</u>
International Brotherhood of Firemen and Oilers, AFL-CIO	Gibson Greeting Card Company; Parker Seal Company
International Union, Allied Industrial Workers of America, AFL-CIO	Dresser Industries, Instrument Operations

INDUSTRIAL SERVICES

<u>Types of Services</u>	<u>Location</u>	<u>Mileage from Berea</u>
Custom Plastics Producers	Mt. Vernon	17
Electric Motor Repair	Winchester Lexington	35 39
Grinding, Precision & Tool	Richmond	12
Heat Treating Facilities	Richmond	12
Industrial Equipment & Supplies	Lexington	39
Industrial Gases	Richmond	12
Industrial Waste Removal	Lexington	39
Machine Shops, Tool & Die	Berea	-
Metal Finishers	Richmond	12
Metal Service Centers	Lexington	39
Millwrights	Lexington	39

Sources: Kentucky Department of Economic Development, Kentucky Directory of Selected Industrial Services, 1983; Division of Research and Planning.

ESTIMATED MALE LABOR SUPPLY
BEREA LABOR MARKET AREA

Area	Current			Not in Labor Force	Future
	Total	Unemployed	Under- employed		Becoming 18 years of age 1984 thru 1988
Labor Market					
Area*	18,184	7,798	8,816	1,570	13,735
Madison	3,042	898	2,144	0	1,838
Clark	1,195	749	446	0	1,282
Estill	912	626	286	0	721
Fayette	8,353	3,391	4,962	0	7,245
Garrard	929	321	193	415	424
Jackson	1,203	503	181	519	576
Lincoln	1,843	839	368	636	890
Rockcastle	707	471	236	0	759

*Additional workers may be drawn from other nearby counties.

Note: Unemployed - persons unemployed and actively seeking work;
Underemployed - persons employed but working only 14 to 26 weeks per year;
Not in Labor Force - represents the number of persons who would enter the labor force if suitable employment were available (based on the assumption that persons in Kentucky would like to participate in the labor force in the same proportion that they do nationally).

Sources: Kentucky Cabinet for Human Resources, Kentucky Labor Supply Estimates by Area Development District and County, 1982. Kentucky Department of Economic Development, Future Labor Supply Becoming 18 Years of Age, 1984 thru 1988.

ESTIMATED FEMALE LABOR SUPPLY
BEREA LABOR MARKET AREA

Area	Current			Not in Labor Force	Future
	Total	Unemployed	Under- employed		Becoming 18 years of age 1984 thru 1988
Labor Market					
Area*	18,640	5,424	10,067	3,149	12,872
Madison	3,133	838	2,295	0	1,780
Clark	1,500	748	752	0	1,178
Estill	1,115	288	275	552	663
Fayette	8,345	2,500	5,845	0	6,942
Garrard	964	203	205	556	405
Jackson	1,337	184	187	966	533
Lincoln	1,751	393	290	1,068	786
Rockcastle	495	270	218	7	585

*Additional workers may be drawn from other nearby counties.

Note: Unemployed - persons unemployed and actively seeking work;
Underemployed - persons employed but working only 14 to 26 weeks per year;
Not in Labor Force - represents the number of persons who would enter the labor force if suitable employment were available (based on the assumption that persons in Kentucky would like to participate in the labor force in the same proportion that they do nationally).

Sources: Kentucky Cabinet for Human Resources, Kentucky Labor Supply Estimates by Area Development District and County, 1982. Kentucky Department of Economic Development, Future Labor Supply Becoming 18 Years of Age, 1984 thru 1988.

AVERAGE WEEKLY WAGES BY INDUSTRY,
BY PLACE OF WORK, 1982

	<u>Madison County</u>	<u>Clark County</u>	<u>Estill County</u>	<u>Fayette County</u>
All Industries	\$239.54	\$282.63	\$242.83	\$301.62
Mining & Quarrying	*	*	440.36	558.54
Contract Construction	244.17	386.92	176.32	338.13
Manufacturing	318.96	333.99	218.62	448.79
Transportation, Communications & Public Utilities	294.56	435.39	247.81	372.38
Wholesale & Retail Trade	166.92	174.61	165.09	207.99
Finance, Insurance & Real Estate	245.70	255.75	251.23	295.41
Services	203.41	187.70	145.81	260.88
State/Local Government	273.62	232.41	248.47	318.81
Other	128.50	154.07	*	259.01
	<u>Garrard County</u>	<u>Jackson County</u>	<u>Lincoln County</u>	<u>Rockcastle County</u>
All Industries	\$196.21	\$240.47	\$213.85	\$185.06
Mining & Quarrying	*	326.84	*	252.80
Contract Construction	203.23	232.56	209.84	157.07
Manufacturing	217.50	181.23	196.77	181.07
Transportation, Communications & Public Utilities	297.84	282.27	331.54	218.12
Wholesale & Retail Trade	137.76	166.95	153.58	148.32
Finance, Insurance & Real Estate	244.49	*	228.72	249.71
Services	176.54	207.56	180.54	175.58
State/Local Government	205.49	251.89	253.85	215.94
Other	*	*	120.37	*

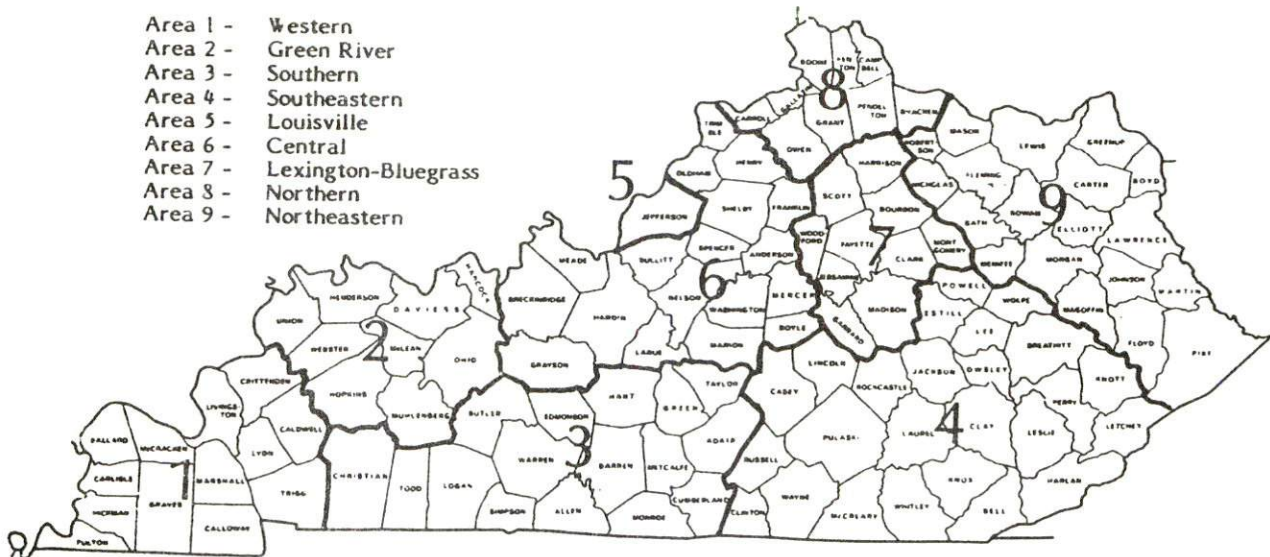
*Not disclosed.

Note: Excludes domestic workers, railway workers, certain nonprofit corporations, majority of federal government workers, and self-employed workers.

Source: Kentucky Cabinet for Human Resources, Average Weekly Wages of Workers Covered by Kentucky Unemployment Insurance Law, 1982.

Occupational wage rates for specific industries are usually not available to most government agencies, and wage data furnished to state employment agencies by individual industrial employers are protected from disclosure by federal law. The most reliable up-to-date wage information can be obtained by direct contact with local employers.

Associated Industries of Kentucky, a voluntary organization of Kentucky businesses, regularly collects occupational wage rates and fringe benefits data from participating member firms. Data are compiled for over 127 clearly defined office, production, and service occupations. Tabulations are published for nine geographical areas of Kentucky, as shown on the map below. It should be noted that the data may be weighted by the preponderance of firms in the larger cities and may be somewhat higher than the rates paid in the smaller communities. Data from these tabulations are available, upon request, from the Kentucky Department of Economic Development, Frankfort, Kentucky 40601.



Associated Industries of Kentucky Area Wage Surveys

PER CAPITA PERSONAL INCOME

<u>Area</u>	<u>1977</u>	<u>1981</u>	<u>Percent Change</u>
Madison County	\$ 4,826	\$ 6,639	37.6
Labor Market Area Range	\$3,130 - 6,998	\$4,560 - 10,677	N/A
Kentucky	5,797	8,416	45.2
U. S.	6,984	10,495	50.3

Source: U. S. Bureau of Economic Analysis, Kentucky Economic Information System, May 1983.

TRANSPORTATION

Rail

Line serving **Berea** - Seaboard System Railroad

Services - Main line; one local switch engine operates five days a week out of Richmond; seven northbound and seven southbound through freights daily; team track space for 8 cars; siding space for 20 cars. The nearest piggyback facilities are maintained by Southern Railway at Danville, 34 miles west of Berea. Seaboard System piggyback facilities are located at Louisville, Kentucky, and Cincinnati, Ohio, both within 120 miles of Berea.

For details on routing, schedules, rates, and services, contact:

Manager of Industrial Development
Seaboard System Railroad
P.O. Box 32290
Louisville, Kentucky 40232
(502) 587-5228

Highways

Interstate 75 serves Berea with an interchange one mile west of the city. I-75 provides access to I-64, 37 miles north; to the Blue Grass Parkway, 49 miles northwest; and to the Bert T. Combs Mountain Parkway, 53 miles northeast. Berea also is served by U.S. Highway 25, a "AAA" rated (80,000 pound gross load limit), north-south route.

There are plans to construct an interchange at the junction of Interstate 75 and Kentucky 595, two miles north of Berea. The \$3.5 million project is scheduled to be built in 1985.

Truck Service

<u>Company</u>	<u>Home Office</u>
ANR Freight System, Inc.*	One Woodward Avenue Detroit, Michigan 48226
Bestway Express, Inc.*	520 Lester Avenue Nashville, Tennessee 37210
Branch Motor Express**	114 Fifth Avenue New York, New York 10011
Briggs Transportation Company*	St. Paul, Minnesota 55113
Carolina Freight Carriers Corp.**	P.O. Box 697 Cherryville, North Carolina 28021
Commercial Lovelace Motor Freight, Inc.**	3400 Refugee Road Columbus, Ohio 43227
Consolidated Freightways Corporation of Delaware*	175 Linfield Drive Menlo Park, California 94025
Duff Truck Line, Inc.**	Broadway & Vine Streets P.O. Box 359 Lima, Ohio 45802
Expressway, Inc.**	Louisville, Kentucky 40210
F.M.S. Transportation** (Truck load only)	P.O. Box 22628 St. Louis, Missouri 63147
Interstate System*	110 Ionia, NW Grand Rapids, Michigan 49503
Lawrenceburg Transfer Company, Inc.**	Highway 127 P.O. Box 220 Lawrenceburg, Kentucky 40342
The Mason and Dixon Lines, Inc.**	P.O. Box 969 Kingsport, Tennessee 37662
McLean Trucking Company*	P.O. Box 213 Winston-Salem, North Carolina 27154
Middlewest Freightways, Inc.**	6810 Prescott Avenue St. Louis, Missouri 63147
O. K. Trucking Company**	3000 East Crescentville Road Cincinnati, Ohio 45241
Overnite Transportation Company**	1000 Semmes Avenue P.O. Box 1216 Richmond, Virginia 23209
Razorback Express, Inc.**	Harrison, Arkansas 72601
Renner's Express, Inc.*	1350 South West Street P.O. Box 882 Indianapolis, Indiana 46206
Roadway Express, Inc.**	1077 Gorge Boulevard Akron, Ohio 44310

(Cont'd)

<u>Company</u>	<u>Home Office</u>
Ryder/P-I-E Nationwide, Inc.*	2050 Kings Road P.O. Box 2408 Jacksonville, Florida 32203
Smith's Transfer Corporation**	P.O. Box 1000 Staunton, Virginia 24401
Suburban Motor Freight, Inc.**	110 King Avenue P.O. Box 1739 Columbus, Ohio 43216
Transcon Lines**	101 Continental Boulevard El Segundo, California 90245

Source: American Motor Carrier Directory, Spring 1984.

* Interstate service only.

** Interstate and intrastate service.

<u>Other Freight Services</u>	<u>Nearest Office or Shipping Center</u>
Emery	Lexington, 39 miles north
Federal Express	Lexington, 39 miles north
Purolator Courier	Lexington, 39 miles north
United Parcel Service	London, 38 miles south Lexington, 39 miles north

HIGHWAY MILES AND TRUCK TRANSIT TIME IN DAYS FROM
BEREA, KENTUCKY, TO SELECTED MARKET CENTERS

<u>City</u>	<u>Highway Miles</u>	<u>Delivery Time TL</u>	<u>City</u>	<u>Highway Miles</u>	<u>Delivery Time TL</u>
Atlanta, Ga.	327	1	Los Angeles, Ca.	2,219	3-4
Baltimore, Md.	580	2	Louisville, Ky.	114	1
Birmingham, Ala.	388	1	Nashville, Tenn.	214	1
Chicago, Ill.	391	1-2	New Orleans, La.	730	2
Cincinnati, Ohio	120	1	New York, N. Y.	742	-
Cleveland, Ohio	356	1	Pittsburgh, Pa.	382	1
Detroit, Mich.	376	1	St. Louis, Mo.	374	1
Knoxville, Tenn.	134	1			

Note: Mileage computations are via the best interstate or primary highways, not necessarily the most direct route of travel.

Sources: Rand McNally Road Atlas, 1979. Official Kentucky Mileage Map, 1980.
Delivery time - Overnite Transportation Company, P.O. Box 1216, Richmond, Virginia 23209.

Air

Local

Lackey Airport
Location: 5 miles north of Berea
Runway: 1 turf
Length: 2,400 feet
Traffic
Control: None
Lighting: None
Services: 100LL fuel, tie-down, sport parachuting

Madison Airport*
Location: 6 miles north of Berea
Runway: 1 paved
Length: 4,000 feet
Traffic
Control: Lighted wind cone
Lighting: Runway, taxiway, VASI, REIL and MIRL
Services: 100LL and jet-A fuel; major A & P repairs; tie-down; hangar; flight training; charter; parking; car rental

Air Freight Service: Chartered air freight services must be arranged

Nearest Scheduled Commercial Airline Service**

Blue Grass Field
Location: 5 miles west of Lexington, Kentucky;
44 miles northwest of Berea
Runways: 2 paved
Length: 6,500 feet; 3,500 feet
Traffic
Control: Tower
Lighting: Approach lighting system, beacon, runways and obstructions lighted, VASI
Services: Delta, Frontier, Piedmont, United, USAir, Comair, Tennessee Airways, Allegheny Commuter; fuel - 100LL and jet-A; hangars, tie-downs; major A & P repairs, major Avionics repairs; APU, charter, flight instruction, oxygen, plane rentals, survival equipment; taxi, limousine, car rentals, courtesy car; weather information; restaurant, snack bar

Air Freight Service: Air freight terminal

* Construction of an interchange at the junction of Interstate 75 and Kentucky 595 is planned for 1985. The new interchange will provide direct access from I-75 to the Madison Airport.

** Commuter air service is provided by Tennessee Airways at the London-Corbin Airport which is located 3 miles south of London, Kentucky; 41 miles south of Berea.

Bus - Greyhound Bus Lines

Taxi - 24-hour service, radio-dispatched

Rental Services - Car, truck, and trailer rentals are available in Berea.

Water

The Kentucky River forms the northern boundary of Madison County. The nearest navigable point of the Kentucky River is located near Frankfort, 65 miles northwest of Berea, where a 6-foot navigation channel is maintained.

POWER AND FUEL

Electricity

Company serving **Berea and parts of Madison County** - Berea College Electric Utility

Source of power - Kentucky Utilities Company

Total generating capacity - 2,639,100 KW*

For industrial rates contact:

Industrial Development Department
Kentucky Utilities Company
One Quality Street
Lexington, Kentucky 40507
(606) 255-1461

and/or

Berea College Electric Utility
C.P.O. 2337
Berea, Kentucky 40404
(606) 986-3451

Company serving parts of **Madison County** - Kentucky Utilities Company

Source of power - Kentucky Utilities Company

Total generating capacity - 2,639,100 KW*

For industrial rates contact:

Industrial Development Department
Kentucky Utilities Company
One Quality Street
Lexington, Kentucky 40507
(606) 255-1461

Company serving parts of **Madison County** - Blue Grass Rural Electric Cooperative Corporation and Clark Rural Electric Cooperative Corporation

Source of power - East Kentucky Power Cooperative

Total generating capacity - 1,304,000 KW**

For industrial rates contact:

Industrial Development Division
East Kentucky Power Cooperative
P.O. Box 707
Winchester, Kentucky 40391
(606) 744-4812

* A new generating unit is under construction in Carroll County. Due to be completed in 1984, the unit will have a generating capacity of 511,000 KW.

** East Kentucky Power Cooperative's total generating capacity will be increased when a new 600,000 KW coal-fired generation plant is completed in southeast Clark County in 1992.

Natural Gas

Company serving **Berea** - Delta Natural Gas Company, Inc.
Source of supply - Tennessee Gas Pipeline Company
Size of transmission mains - 30 inches (supplier); 2, 4, and 6 inches (distributor)
Distribution mains - 1 to 6 inches
Distribution pressure - 80 psi
Btu content - 1,020 per cubic foot
Specific gravity - 0.650
For rates and supplies contact:

Marketing Manager
Delta Natural Gas Company, Inc.
Route 1, Box 30A
Winchester, Kentucky 40391
(606) 744-6171

Other Fuels

Propane

Buckeye Gas Products
Company*
Edwards Avenue
P.O. Box 741
Richmond, Kentucky 40475

Crawford Gas & Appliances,
Inc.*
Big Hill Avenue
P.O. Box 833
Richmond, Kentucky 40475

Parsons Gas & Appliance Service,
Inc.*
Route 3
Mount Vernon, Kentucky 40456

Southern States Cooperative, Inc.
Richmond Kentucky Service*
Irvine Road
P.O. Box 916
Richmond, Kentucky 40475

(Cont'd)

* Bulk plant.

Fuel oils

Distillate fuel oil -

Altom Oil Company, Inc.
Irvine Road
P.O. Box 787
Richmond, Kentucky 40475

Ammons Oil Company*
305 Jefferson Street
P.O. Box 29
Berea, Kentucky 40403

Chevron U.S.A., Inc.*
Boggs Lane
Richmond, Kentucky 40475

Congleton's Oil Company, Inc.*
Route 3
Richmond, Kentucky 40475

Grimes and Curry,
Ashland Oil Agents*
Quality Drive
Route 2
Richmond, Kentucky 40475

Jenkins Fuel Oil and Gas, Inc.*
P.O. Box 328
Richmond, Kentucky 40475

Residual fuel oil - Arrangements must be made with the refinery.

Low sulphur content coal - Available in Kentucky.

* Bulk plant.

WATER AND SEWERAGE

Public Water Supply

Company serving **Berea** - Berea College Utilities
C.P.O. 2337
Berea, Kentucky 40404
(606) 986-4611

Source - Four man-made lakes
Treatment plant capacity - 2,880,000 gallons per day
Average daily consumption - 1,200,000 gallons
Peak daily consumption - 2,000,000 gallons
Type treatment - Filtration, coagulation, and chlorination
Storage capacity - 1,045,000 gallons including clearwell
Size lines - 12, 10, 8, 6, 4, and 2 inches
Average pressure - 70 psi
Average temperature - 55 degrees F.

MONTHLY WATER RATES

First	200 cubic feet	\$ 4.90 (Minimum)
Next	1,800 cubic feet	2.35 per 100 cubic feet
Next	3,000 cubic feet	2.10 per 100 cubic feet
Next	5,000 cubic feet	1.85 per 100 cubic feet
Next	5,000 cubic feet	1.50 per 100 cubic feet
All over	15,000 cubic feet	1.25 per 100 cubic feet

Tap-on charge: None

Annual Rental for Fire Protection

The usual stand-by rates charged for non-metered service to facilities which require large-diameter water lines and fire hydrants, but which use no water except in the event of a fire are as follows:

Lines 6 inches in diameter or under	\$ 33.00 per month
Lines 8 inches in diameter	46.50 per month
Lines 10 inches in diameter	60.00 per month
Lines 12 inches in diameter	73.00 per month

Fire hydrants: \$116 per hydrant per year

Name of water district - Southern Madison Water District*
P.O. Box 168
Berea, Kentucky 40403
(606) 986-9031

Area served - Southern Madison County
Date when water district began operating - 1969
Source of supply of treated water - Berea College Utilities
Average amount of water used in a 24-hour period - 249,700 gallons
Peak amount of water used in a 24-hour period - N/A
Storage capacity - None
Average pressure - 30 to 140 psi
Average temperature - N/A
Size lines - 8, 6, 4, and 2 inches

MONTHLY WATER RATES

First	2,000 gallons	\$ 7.91 (Minimum)
Next	1,000 gallons	3.83 per M gallons
Next	3,000 gallons	3.48 per M gallons
Next	4,000 gallons	3.08 per M gallons
Next	15,000 gallons	2.33 per M gallons
Next	25,000 gallons	2.08 per M gallons
All over	50,000 gallons	1.63 per M gallons

Tap-on charge: 3/4-inch meter - \$225
Larger meter - Actual cost of labor and materials

Raw Water

Surface water sources - Kentucky River, Paint Lick Creek and Silver Creek
Average discharge - Kentucky River at Lock 10, near Winchester, Kentucky -
5,271 cfs (75 years, unadjusted, USGS); Silver Creek, near Kingston,
Kentucky - 42.5 cfs (15 years, USGS)
Expected ground water yield - 50 to 200 gpm along Kentucky River in
northwestern portion of county; 5 to 50 gpm in small area of south-central
portion of county; 5 gpm or less in remainder of county

* Improvements planned by the Southern Madison Water District include construction of a 100,000-gallon standpipe and a pump station, extension of water lines in three areas, and installation of three line loops. Total cost of the project will be approximately \$800,000.

Sewerage

Company serving **Berea** - Berea Sewer Commission*
P.O. Box 405
Berea, Kentucky 40403
(606) 986-4391

Design capacity - Plant #1 - 1,000,000 gallons per day
Plant #2 - 500,000 gallons per day

Average daily flow - At capacity

Type of treatment - Secondary

Treatment processes - Plant #1 - Trickling filter facility
Plant #2 - Aeration activated sludge facility

Treated effluent discharged into - Plant #1 - Brushy Fork of Silver Creek
Plant #2 - Walnut Meadow Brook

Size of sanitary mains - 8 to 15 inches

Monthly rates - Based on monthly water usage:

First 200 cubic feet - \$3.50 (Minimum)
Each additional 100 cubic feet - \$.95

Tap-on charge: \$200

* The study phase of a 201 facilities plan study has been completed. The design phase is currently under way. Recommendations of the study phase include the construction of a new wastewater treatment plant and trunk lines. The design capacity of the plant will be 2.1 million gallons per day.

CLIMATE

Madison County

Temperature

Normal (30-year record)	55.20 degrees
Average annual 1982	55.50 degrees
Record highest, September 1954 (38-year record)	103.00 degrees
Record lowest, January 1963 (38-year record)	-21.00 degrees
Normal heating degree days (30-year record) (Heating degree day totals are the sums of negative departures of average daily temperatures from 65 degrees F.)	4,729

Precipitation

Normal (30-year record)	44.49 inches
Mean annual snowfall (39-year record)	16.40 inches
Total precipitation 1982	38.76 inches
Mean number days precipitation (.01 inch or more) (38-year record)	131
Mean number days thunderstorms (38-year record)	46

Prevailing Winds (17-year record)

South

Relative Humidity

1 a.m.	77 percent (18-year record)
7 a.m.	81 percent (19-year record)
1 p.m.	60 percent (19-year record)
7 p.m.	64 percent (19-year record)

Source: U.S. Department of Commerce, Environmental Science Services Administration, Climatological Data, 1982. Station of record: Lexington, Kentucky.

LOCAL GOVERNMENT

City

Structure - Mayor - 4-year term; 8 council members - 2-year terms; city administrator

Budget 1983-84 - General Fund \$1,500,000
Sewer Fund 500,000

Fees and licenses - Occupational license fees - 1½ percent of the wages of individuals and 1½ percent of the net profits of businesses with an initial license fee of \$10 for each new business; minimum regulatory license fees for certain businesses range from \$7.50 per day to \$250 per year, depending on the type of business

County

Structure - County Judge/Executive - 4-year term; 4 magistrates - 4-year terms
Budget 1983-84 - General Fund \$918,500; Road Fund \$405,644

Assessed Value of Property, 1983*

<u>Classes of Property</u>	Berea	Madison County
Real Estate	\$85,500,000	\$557,708,639
Tangibles	24,500,000	124,154,070

* Excludes Homestead Exemptions.

Property Taxes

All property in Kentucky is assessed at 100 percent of fair cash value.

Land and buildings are taxed by the state and may be taxed by local jurisdictions. The state rate is \$0.221 per \$100 of assessed valuation.

Manufacturing machinery, raw materials inventories, pollution control equipment, and goods in the process of manufacture are not subject to local taxation. The state rate is \$0.15 per \$100.

Other tangible personal property owned by manufacturers (automobiles, trucks, finished goods, office furniture, office equipment) is taxed by the state at \$0.45 per \$100 and may be taxed by local jurisdictions.

Intangible personal property located in Kentucky (money in hand, shares of stock, notes, bonds, accounts receivable, and other credits) is taxed by the state at \$0.25 per \$100, and is not subject to local taxation.

Property stored in public warehouses in a transit status is not subject to local taxation. The state rate is only \$0.015 per \$100.

Private leaseholds in industrial facilities owned by cities or counties and financed by industrial revenue bonds are subject to a state tax of \$0.015 per \$100 of value (essentially the lessee's equity, adjusted for appreciation or depreciation). Local taxation is not permitted.

Combined State and Local Rates Per \$100 Valuation, 1983*
(100% assessment)

Kentucky school districts levy property taxes on property located within individual school district boundaries. Two types of school districts are operated in Kentucky: 1) independent school districts which usually operate within a single city and often do not cover the entire city; and 2) common school districts which operate in portions of counties not covered by independent districts and cover the entire county when there is no independent district. School district boundaries are mutually exclusive and do not cross.

	Site Inside City of Berea and Within the Berea Independent <u>School District</u>	Site Inside City of Berea and Within the Madison County School <u>District</u>	Site Inside Unincorporated Madison County
1. Land and buildings	\$ 0.8072	\$ 0.4832	\$ 0.432
2. Mfg. machinery, raw materials, goods in process, pollution control equipment	0.1500	0.1500	0.150
3. Finished goods, office equipment, vehicles, other tangibles	1.1292	0.7272	0.676
4. Intangibles (accounts rec., notes, bonds, etc.)	0.2500	0.2500	0.250
5. Property stored in public warehouses in a transit status	0.0150	0.0150	0.015
6. Leaseholds in industrial revenue bond financed plants	0.0150	0.0150	0.015

Utilities Gross Receipts Tax for Schools

A 3 percent tax is levied on utilities receipts for schools in Madison County. Tax is paid by all consumers of utilities as an add-on to the utilities bills. Exempted are receipts from utilities services that are resold and the receipts from the sale of energy or energy producing fuels that exceed 3 percent of the cost of production in manufacturing, processing, mining or refining.

Planning and Zoning

City agency - Berea Planning Commission

Zoning enforced - City of Berea

Subdivision regulations enforced - City of Berea and 3 miles beyond corporate limits

Local codes enforced - Building and housing

Mandatory state codes enforced - Kentucky Plumbing Code, National Electric Code, Kentucky Boiler Regulations and Standards, Kentucky Building Code (modeled after BOCA code)

Safety

Police	Berea	Madison County
Total staff	19	8
Radio-patrol cars	5	5
Fire		
Insurance Services Office, Public Protection Classification	5	6/9*
Full-time staff	13	14
Volunteers	28	8**

Rescue Service

Berea Volunteer Fire Rescue Squad:

Number of volunteers - 28

Equipment - 2 fully-equipped rescue trucks, Jaws of Life

Personnel training - Auto rescue, metal cutting, first aid, certified emergency medical technicians

* The Berea Fire Protection Area covers the area within 3 road miles of the Berea Fire Station No. 1 and served by the Berea College Utilities water hydrants. A Class 6 rating applies to property within 1,000 feet of a fire hydrant and Class 9 applies to property more than 1,000 feet from a fire hydrant.

** In addition, volunteer fire departments at Kirksville, Union City, White Hall, and Waco serve the county with approximately 80 firefighters. Central dispatching is provided by the Madison County Fire Department which also responds to fires in these areas of the county.

Refuse Collection and Disposal

Berea

Type service	Municipal
Fee charged:	
residential	\$4.00 per month
business	Based on frequency and volume
industrial	Negotiable
Collection frequency:	
residential	Weekly
business	As needed
industrial	As needed
Trash pickup	Semi-annually
Disposal method	Landfill

County residents may use the municipal landfill for a fee.

EDUCATION

Public Schools

	Berea Independent	Madison County
Total Enrollment (Fall, 1983)	1,032	6,097
Elementary	481	3,267
Middle School	--	1,109
High School	551	1,721
Student-Teacher Ratio	16-1	18-1
Elementary	16-1	16-1
Middle School	--	20-1
High School	17-1	22-1
Accreditation	Southern Association of Colleges and Schools	
Percent High School Graduates to College (1983)	55.1	28.1
Expenditures Per Pupil (1982-83)	\$ 1,843.37	\$ 1,372.62
Bonded Indebtedness (June 30, 1983)	\$1,935,000	\$3,418,000

Nonpublic Schools

	<u>Model Laboratory, Richmond</u>	<u>St. Mark, Richmond</u>
Total Enrollment	780	158
Nursery thru Elementary	354	--
Kindergarten	--	26
Elementary	--	132
Middle School	180	--
High School	246	--
Student-Teacher Ratio	20-1	20-1
Nursery thru Elementary	25-1	--
Kindergarten	--	13-1
Elementary	--	22-1
Middle School and High School	17-1	--

Area Colleges and Universities

<u>Name</u>	<u>Location (Miles distant)</u>	<u>Enrollment (Fall, 1983)</u>	<u>Highest Degree Conferred</u>
Berea College	Berea	1,600	Baccalaureate
Eastern Kentucky University	Richmond (12)	12,660	Masters, Specialist*
Centre College	Danville (34)	762	Baccalaureate
Sue Bennett College	London (38)	330	Associate
Lexington Technical Institute	Lexington (39)	2,532	Associate
Transylvania University	Lexington (39)	655	Baccalaureate**
University of Kentucky	Lexington (39)	22,055	Doctorate, M.D., D.M.D., J.D.
Somerset Community College	Somerset (43)	1,079	Associate

Berea College

Berea College is a private, four-year, tuition-free institution with courses of study leading to B.A. and B.S. degrees in the liberal arts, agriculture, business administration, home economics, industrial arts, and nursing. It offers two distinctive assets: a required student work program structured for positive learning as well as a source of student income, and a strong Christian commitment that is non-sectarian as it strives to better understand and achieve Christian goals.

As an integral part of the educational program, each student is expected to perform some of the labor required in maintaining the institution, thus to gain an appreciation of the worth and dignity of all the labor needed in a common enterprise; to acquire some useful skill; and to develop a sense of responsibility for a specific task.

The aim is to make available a sound education to students who are unable to meet usual college expenses, but who have the ability and the character to use a liberal education for responsible, intelligent service to society.

Hand-made furniture, toys, and gift items are sold in the two gift shops located on campus. Student guides provide regularly-scheduled tours of the campus and student craft industries.

* Joint doctoral degree programs are offered in cooperation with the University of Kentucky, Lexington. The degrees are issued by the University of Kentucky.

** Courses in a masters degree program are taught on the Transylvania campus by faculty members of Xavier University of Cincinnati. The degree is issued by Xavier University.

Vocational Schools

Both the state vocational-technical schools and the area vocational education centers are operated by the Kentucky Department of Education. The state vocational-technical schools enroll persons full time who are at least 16 years of age and not in school. These students attend classes for six hours each day. The area vocational education centers are designed to accommodate high school students who are at least 15 years of age. These students attend vocational school for three hours each day. The state vocational-technical schools and the area education centers offer evening courses to enable working adults to upgrade current job skills.

	<u>Nearest State School</u>
Location	Laurel County State Vocational- Technical School
Miles Distant	London
Curriculum	38
	Consumer and Home Economics
	Commercial Foods
	Consumer and Family Life Skills
	Health and Personal Services Occupations
	Cosmetology
	Medical Assistant
	Industrial Education
	Air Conditioning and Heating
	Auto Body Repair
	Auto Mechanics
	Carpentry
	Drafting (with CAD/CAM)
	Electricity
	Machine Shop
	Masonry
	Plant Maintenance
	Welding
	Learning Resource Center

(Cont'd)

Location Miles Distant Curriculum	Central Kentucky State Vocational- Technical School Lexington 39 Business and Office Accounting Clerical Secretarial Consumer and Home Economics Commercial Foods Health and Personal Services Occupations Cosmetology Dental Assistant Nurse's Aide Practical Nursing Surgical Technician Industrial Education Air Conditioning Auto Body Repair Auto Mechanics Carpentry Drafting (with CAD/CAM) Electronics Graphic Arts Industrial Electricity Machine Shop Masonry Welding Learning Resource Center
---	--

Nearest Area Education Center

Location Miles Distant Curriculum	Madison County Area Vocational Education Center Richmond 12 Business and Office Accounting/Management Clerical Secretarial Industrial Education Auto Mechanics Drafting Machine Shop Welding
---	--

Arrangements can be made to provide training in the specific production skills required by an industrial plant. Instruction may be conducted either in the vocational school or in the industrial plant, depending upon the desired arrangement and the availability of special equipment.

Lexington Technical Institute

The Lexington Technical Institute is a unit of Kentucky's community college system operating on the University of Kentucky campus. The Institute awards the Associate in Applied Science degree in the following programs: Accounting Technology; Architectural Technology; Civil Engineering Technology; Data Processing Technology; Dental Hygiene; Dental Laboratory Technology; Electrical Engineering Technology (electronics option); Management Technology (Business and Transportation options); Mechanical Engineering Technology; Nuclear Medicine Technology; Nursing; Radiologic Technology; Real Estate; Respiratory Therapy; Secretarial and Office Administration.

HEALTH

Local Medical Personnel

Physicians - 20
Dentists - 5

Hospitals

<u>General Hospital</u>	<u>Location</u>	<u>Beds</u>
Berea Hospital, Inc.	Berea	73 acute 37 skilled

General hospital facilities - Operating room, intensive-coronary care unit, emergency room, laboratory, diagnostic X-ray, respiratory therapy, physiotherapy, outpatient clinic, social services, pharmacy, dietary kitchen, library

Medical staff - 22 physicians, 4 dentists, 4 operating room nurses, 7 intensive-coronary care nurses, 37 registered nurses (full-time), 14 registered nurses (part-time), 14 licensed practical nurses, 35 nurses' aides (full-time), 18 nurses' aides (part-time), 4 operating room technicians, 1 licensed physical therapist, 2 physical therapy aides, 1 licensed respiratory therapist, 3 respiratory therapy aides, 1 pharmacist, 2 social services workers, 1 dietician, 8 ward clerks, 4 orderlies, 1 librarian (part-time), 1 quality assurance/infection control coordinator, 1 in-service/continuing education coordinator

Other Medical Facilities

Comprehensive Care Center (Richmond)

Ambulance Service

Name - Madison County Ambulance Service
Staff - 19 full-time and 10 part-time emergency medical technicians; 5 paramedics
Service - 24-hour, county-wide
Equipment - 4 ambulances (1 in Berea, 3 in Richmond)

Public Health

Facility - Madison County Health Department - Richmond
Staff - 1 administrator, 9 registered nurses, 2 licensed practical nurses, 1 nursing supervisor, 1 health officer, 3 nutritionists, 5 community health workers, 3 health environmentalists, 8 clerks, 1 physical therapist (part-time), 1 speech therapist (part-time) and 1 occupational therapist

Facility - Berea Health Clinic (operated one day per week by Madison County Health Department at Berea Hospital, Inc.)
Staff - 1 registered nurse, 2 clerks, 1 nutritionist

Facility - MEPCO Home Health Agency (operated by Madison County Health Department)

Staff - 1 registered nurse supervisor, 2 registered nurses, 2 licensed practical nurses, 2 clerks, 1 physical therapist, 1 speech therapist, 1 occupational therapist, 3 home health aides

OTHER LOCAL FACILITIES

Communications

Telephone - Services -	General Telephone Company Standard
Telegraph - Services -	Western Union Toll-free number, 1-800-325-5100
Postal - Class - Mail received - Mail dispatched -	U.S. Post Office First Once daily Once daily
Newspapers - Weekly and circulation - Other papers received from -	The Berea Citizen 3,400 Richmond, Lexington, and Louisville, Kentucky; Cincinnati, Ohio
Radio - Stations received from -	WKXO - AM Richmond, Renfro Valley, Lexington, and Louisville, Kentucky; Cincinnati, Ohio
Television - Cable service Reception from -	Lexington and Louisville, Kentucky; Cincinnati, Ohio; Chicago, Illinois; Atlanta, Georgia; and New York, New York
Kentucky Educational Television -	Lexington-Richmond transmitter - Channel 46

Library Services

Hutchins Library - Berea College*
Size collection - 250,000 volumes
Circulation, 1982-83 - 63,000
Special collections - Weatherford-Hammond Mountain Collection, Shedd
Lincoln Collection, Rare Book Collection (Curio), Children's Collection
Services - Reference assistance, circulation, photocopier, Interlibrary Loan,
on-line searching

* Hutchins Library also serves as a public library for the community.

Religious Institutions

Denominations - Assembly of God
 Baha'i
 Baptist
 Catholic
 Christian
 Church of Christ
 Church of God
 Gospel Tabernacle
 Lutheran
 Quaker
 Nazarene
 Pentecostal
 Pentecostal Holiness
 Presbyterian
 Trinity Holiness
 United for Jesus
 United Methodist

Nearest Synagogues - Lexington, 39 miles north
 Congregations - Adath Israel (reform)
 Ohavey Zion (traditional)

Financial Institutions

<u>Banks</u>	<u>Assets</u>	<u>Deposits</u>	<u>Statement Date</u>
Berea National Bank	\$ 37,196,000.00	\$ 32,648,000.00	6/30/83
The Peoples Bank and Trust Company	134,884,786.47	128,142,571.21	6/30/83

<u>Savings and Loan Associations</u>	<u>Assets</u>	<u>Savings Accounts</u>	<u>Statement Date</u>
First Federal Savings and Loan Association of Richmond*	\$ 66,997,352.59	\$ 63,883,568.44	12/31/82

Hotels and Motels

Total number - 8
 Total rooms - 382

* Branch office located in Berea.

Clubs and Organizations

American Association of Retired Persons
American Association of University Women
American Legion
Berea Association of Congregations
Berea Band Boosters
Berea Chamber of Commerce
Berea Community Schools Boosters Club
Berea Industrial Management Club
Berea Lodge 617 Free and Accepted Masons (F&AM)
Berea Woman's Club
Berea Younger Woman's Club
Boy Scouts
Brownies
Business and Professional Women's Club
Church Women United of Southern Madison County
Cub Scouts
Daughters of the American Revolution (DAR)
Eastern Star
4-H Club
Future Farmers of America (FFA)
Future Homemakers of America (FHA)
Garden Club
Girl Scouts
Industrial Foundation of Berea
Jaycees
Kiwanians
Kiwanis
League of Women Voters
Lioness
Lions
Little League
Optimists Club
Parents-Teachers Organization (PTO)
Pony League
Progress Club
Rotary
Shrine Club
Teen-Age Club
Toastmaster Club
Veterans of Foreign Wars (VFW)
Wilderness Trail Radio Club

RECREATION

Local

The city of Berea offers diversified recreational and leisure services to the public. In summer, Berea sponsors little league baseball; minor league, senior league, adult league, teen's and girl's softball; T-ball; and American Legion league for youth. Persons of all ages may participate in the city's tennis and softball tournaments and in the 10,000-meter runs. A daily playground program for youth is also offered during the summer, with weekly special events scheduled. Soccer and basketball leagues are available for youth during the winter.

Year-round offerings include special interest classes such as clogging, quilting, macrame and exercise.

Public recreational facilities include city parks, playgrounds, shelter houses, and a football field and stadium area. Private facilities include a golf course, a swimming pool, a skating rink, movie theaters and a camping area.

Special events held annually in Berea include the Kentucky Guild of Artists and Craftsmen's spring and fall fairs, the McLain Family Bluegrass Festival, and the Berea Crafts Festival. Berea College sponsors a month-long summer repertory theater program, the annual Traditional Music Celebration, the Mountain Folk Festival, and the Christmas Country Dance School, which feature folk music and dancing and other special events.

Berea College makes available to the public a wide range of recreational, cultural and entertainment attractions, often at no charge. Regular student-guided tours of the campus and student craft industries are offered. Concert and lecture series are offered to the public at no charge and drama productions and intercollegiate sports are open to the public. The new track and field facilities, baseball/softball and soccer fields, tennis courts, and swimming pool are open with permission under special arrangements. The Rodgers/Traylor Art Building offers traveling art exhibits and selections from the college collections which include the Kress Study Collection of Renaissance Paintings and the Doris Ulmann photographs. One of the finest collections of fossil, mineral and gemstone specimens in the state is displayed in the Burroughs Geology Museum. The Appalachian Museum offers exhibits and slide/tape programs depicting the traditional lifestyle and crafts of the Appalachian Southern Highlands. Selections from the Wallace Nutting Collection of Early American furniture styles are also on display. The Berea College Student Craft Industries serves to preserve and promote folk art and craftsmanship and includes the industries of woodcraft, broomcraft, fireside weaving, needlecraft, ceramics, and lapidary arts. Boone Tavern Hotel, owned by Berea College and staffed by college students, is noted for its southern charm and excellent food. The college's 7,000-acre forests include popular hiking trails at Indian Fort Mountain, three miles east of Berea, and fishing and non-motorized boating at Owsley Fork Lake, ten miles east of Berea.

Churchill Weavers, the largest handweaving company in the country, is located in Berea. Tours are available through the loomhouse.

Area (Within 50 miles)

Berea's location on the original Wilderness Road, at the boundary between the Blue Grass Region and the Cumberland foothills, places it near a wide variety of recreational facilities and cultural and entertainment centers.

Richmond, 12 miles north of Berea, offers a variety of cultural, sporting, and recreational activities. Eastern Kentucky University is the center for numerous cultural activities including lectures, theater productions, art exhibits, ballets, concerts, and sporting events.

The Daniel Boone National Forest, approximately 12 miles east of Berea, covers 640,000 acres of timberland in eastern Kentucky. It encompasses much of Kentucky's great beauty and provides a vacation paradise. There are scenic hiking trails, rivers and streams stocked with a variety of fish, hunting preserves, camping sites, and numerous other natural and historical attractions.

Lake Linville, 17 miles south of Berea at Mt. Vernon, offers recreational facilities, as well as fishing and boating.

White Hall State Shrine, 20 miles north of Berea near Richmond, one of the grand estate houses of post-Civil War Kentucky, is the Italianate mansion of Cassius Marcellus Clay, the early abolitionist and politician. Kentucky handcrafts are sold in the White Hall gift shop, only a short walk from the mansion.

The spirit of Daniel Boone and his pioneers is reborn at **Fort Boonesborough State Park** in Boonesboro, 25 miles north of Berea. In the re-created fort, pioneer crafts of the eighteenth century are demonstrated by using functioning antiques from the frontier era. Cabins are furnished as they would have been in the days of Boone and documentary films are presented which depict the struggle of the first Kentuckians to make the Kentucky wilderness a home. A gift shop within the fort offers for sale all the handcrafted items made at the fort. Other recreational facilities and activities of the park include the finest sand beach on the Kentucky River with a modern bathhouse and a modern camping area with 187 sites.

Bybee Pottery, located 25 miles northeast of Berea, is known nation-wide for its unusual handmade Kentucky pottery. Generations of craftsmen-potters have been creating the Bybee line for over a century. Tours are available.

William Whitley House State Shrine, 34 miles southwest of Berea near Stanford, is the first brick house west of the Allegheny Mountains, built 1787-94. Whitley laid out Kentucky's first race track here and started U.S. counterclockwise racing. The facility provides picnic and playground areas in a ten-acre park.

Constitution Square State Shrine, 34 miles west of Berea in Danville, is a reproduction of Kentucky's first courthouse square, including the original 1792 post office which was the first in the west.

Lexington, 39 miles northwest of Berea, offers a variety of cultural, sporting, and recreational activities. Thoroughbred and harness racing is presented at Keeneland Race Course and the Red Mile Harness Track during several meets each year. The University of Kentucky and Transylvania University offer a number of sporting events. The University of Kentucky basketball games are held at Rupp Arena, the world's largest basketball arena. Other attractions include Lexington Philharmonic concerts, Lexington Children's Theatre, and plays performed by Broadway touring companies, all held in the recently renovated Opera House.

The Kentucky Horse Park, a park dedicated to horses and to man's love for horses, is located 45 miles north of Berea near Lexington. The park, which contains more than 1,000 acres of Kentucky Bluegrass, features the International Museum of the Horse; the Man O'War Memorial; an antique carriage display; horseback and pony rides; walking farm tours; horse-drawn tours; a restaurant; a gift shop; and a campground area, which offers swimming, tennis, and planned activities. Numerous special events are held year-round and include various horse shows, steeplechasing, dressage, polo games, and rodeos.

Waveland State Shrine, 40 miles northeast of Berea near Lexington, features an 1847 Greek Revival mansion depicting Kentucky lifestyles from the days of early settlers to the antebellum era of gentility and elegance as well as the Civil War and postwar periods. The shrine also includes the Kentucky Life Museum and a plantation village on ten acres with many shops and displays.

Isaac Shelby State Shrine, 39 miles west of Berea near Danville, is the burial site of Kentucky's first governor and one of the Commonwealth's foremost statesmen.

Wood Creek Lake, 39 miles south of Berea near London, is a large reservoir offering good fishing.

Herrington Lake, 40 miles west of Berea near Danville and Harrodsburg, was developed by the Kentucky Utilities Company in 1925. Dix River Dam near Pleasant Hill is located on the 3,600-acre lake. Fishing, boating, and swimming can all be enjoyed on the lake. Camping and fishing facilities are available near Danville and Harrodsburg.

Levi Jackson Wilderness Road State Park, 40 miles south of Berea at London, is an 815-acre park located where the Boone Trace and Wilderness Road pioneer trails converge. In addition to a reproduced pioneer settlement, the park offers a pool, a bathhouse, hiking trails, horseback riding, shuffleboard, 200 campsites, a picnic area, a playground, and an amphitheater.

Old Fort Harrod State Park, 43 miles northwest of Berea, is a 28-acre park in Harrodsburg that features a full-scale reproduction of the original Fort Harrod. The park also contains the log cabin where Abraham Lincoln's parents were wed, the Mansion Museum which houses mementos associated with the great periods of Kentucky history, a pioneer cemetery, and a federal monument dedicated to pioneers. The "Legend of Daniel Boone" and "Lincoln" are two excellent outdoor dramas which are performed at the Old Fort Amphitheater during the summer months.

Perryville Battlefield State Shrine, 47 miles west of Berea near Perryville, is the site of the largest Civil War battle in Kentucky. A museum, a picnic area, and a playground are located on the grounds.

Lake Cumberland, 50 miles south of Berea near Somerset, is a magnificent 50,250-acre lake extending along 100 miles of the Cumberland River basin. The lake is renowned for its productive fishing and the scenic beauty of its 1,200 miles of shoreline.

Pleasant Hill, a restored Shaker Village located 50 miles northwest of Berea, is a National Historic Landmark. Over 20 buildings and grounds have been restored to display unique Shaker skills in furniture making, crafts, and architecture. Dining rooms, lodging, craft shops, and seasonal festivals and plays are offered.

COMMUNITY IMPROVEMENTS

Recent

The Hyster Company recently announced a \$22 million expansion. The expansion will consist of a new fork-lift line and the addition of 150 jobs by April 1984 and 150 jobs by April 1985.

The Berea Independent School System recently introduced a computer education program with the purchase of eight computers. The \$18,000 project will be implemented in grades seven through twelve. Another program recently introduced is a professional adult education program, which helps parents learn to deal with handicapped children. Also, a \$550,000 project, which consists of remodeling and roof repair of the school building, was recently completed.

The Madison County School System recently completed a \$400,000 six classroom addition of the Clark-Moores Middle School. Also, a \$50,000 six-office addition to the administration building was recently completed. In addition, a word-processing program was recently introduced to the school system.

An overnite camping area was recently opened, 2 miles east of Berea. The camping area has approximately 30 sites with water and electric hookups, showers, laundry facilities and a swimming pool.

Under Way

The study phase of a 201 facilities plan study of the Berea Sewer Commission has been completed. The design phase is currently under way. Recommendations of the study phase include the construction of a new wastewater treatment plant and truck lines. The design capacity of the plant will be 2.1 million gallons per day.

Planned

Construction of a \$3.5 million interchange at the junction of Interstate 75 and Kentucky 595, two miles north of Berea, is planned. The new interchange will provide direct access from Interstate 75 to the Madison Airport.

The Berea Independent School system has plans to replace the air conditioning unit in the school building. The estimated cost of the project is \$100,000.

Improvements planned by the Southern Madison Water District include construction of a 100,000-gallon standpipe and a pump station, extension of water lines in three areas, and installation of three line loops. Total cost of the project will be approximately \$800,000.