

1981

## Industrial Resources: Barren County - Glasgow

Kentucky Library Research Collections  
Western Kentucky University, [spcol@wku.edu](mailto:spcol@wku.edu)

Follow this and additional works at: [https://digitalcommons.wku.edu/barren\\_cty](https://digitalcommons.wku.edu/barren_cty)

 Part of the [Business Administration, Management, and Operations Commons](#), [Growth and Development Commons](#), and the [Infrastructure Commons](#)

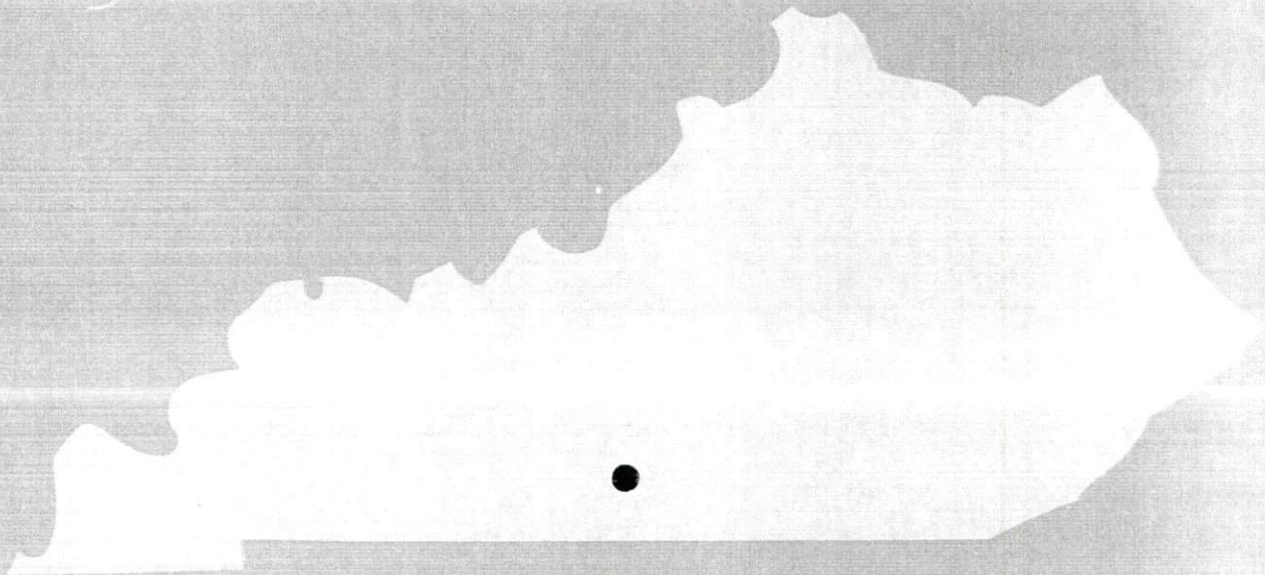
---

### Recommended Citation

Kentucky Library Research Collections, "Industrial Resources: Barren County - Glasgow" (1981). *Barren County*. Paper 29.  
[https://digitalcommons.wku.edu/barren\\_cty/29](https://digitalcommons.wku.edu/barren_cty/29)

This Report is brought to you for free and open access by TopSCHOLAR®. It has been accepted for inclusion in Barren County by an authorized administrator of TopSCHOLAR®. For more information, please contact [topscholar@wku.edu](mailto:topscholar@wku.edu).

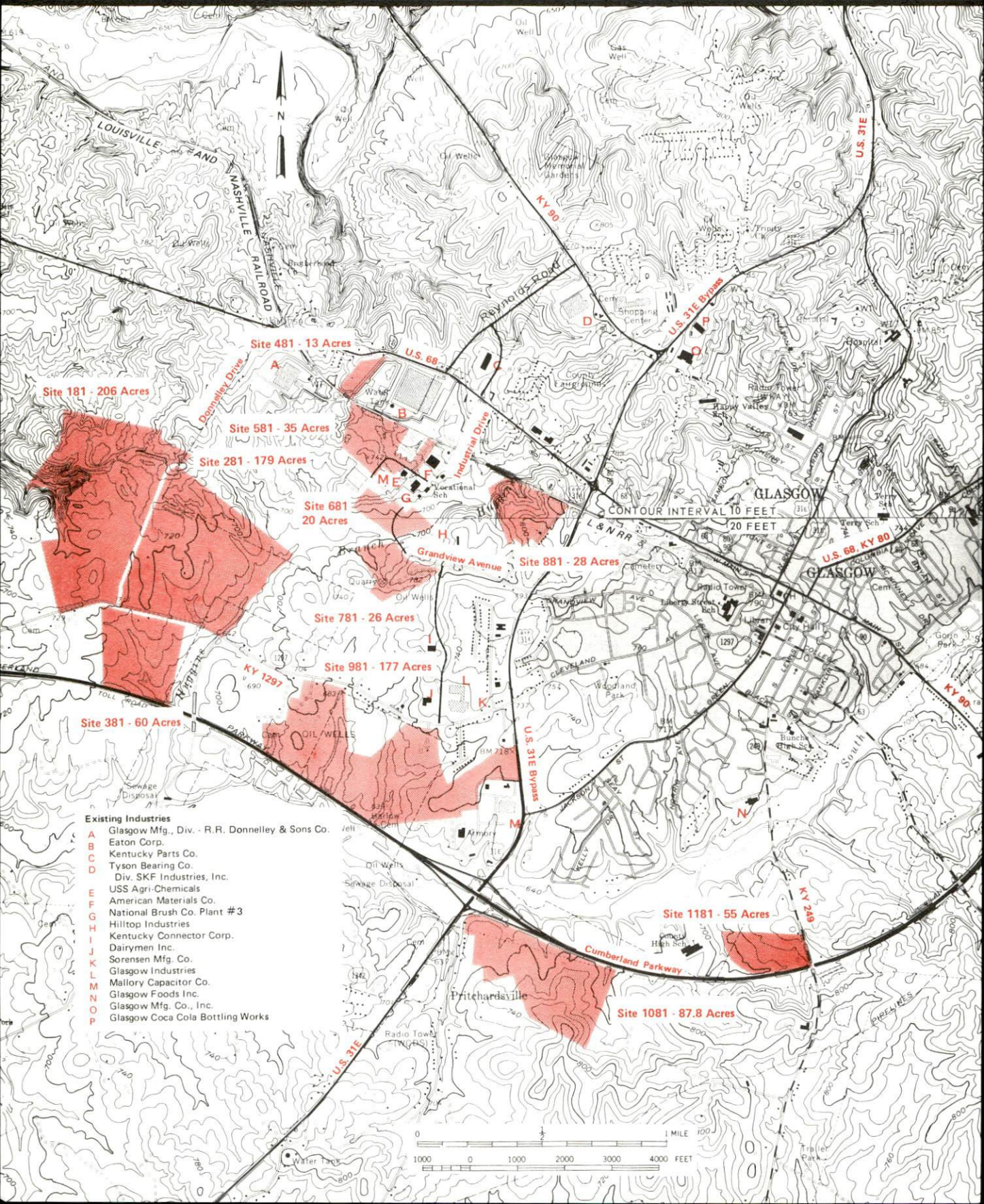
A comprehensive  
report on  
**Glasgow, Ky.**



**KENTUCKY & CO.**  
The state that's run like a business.

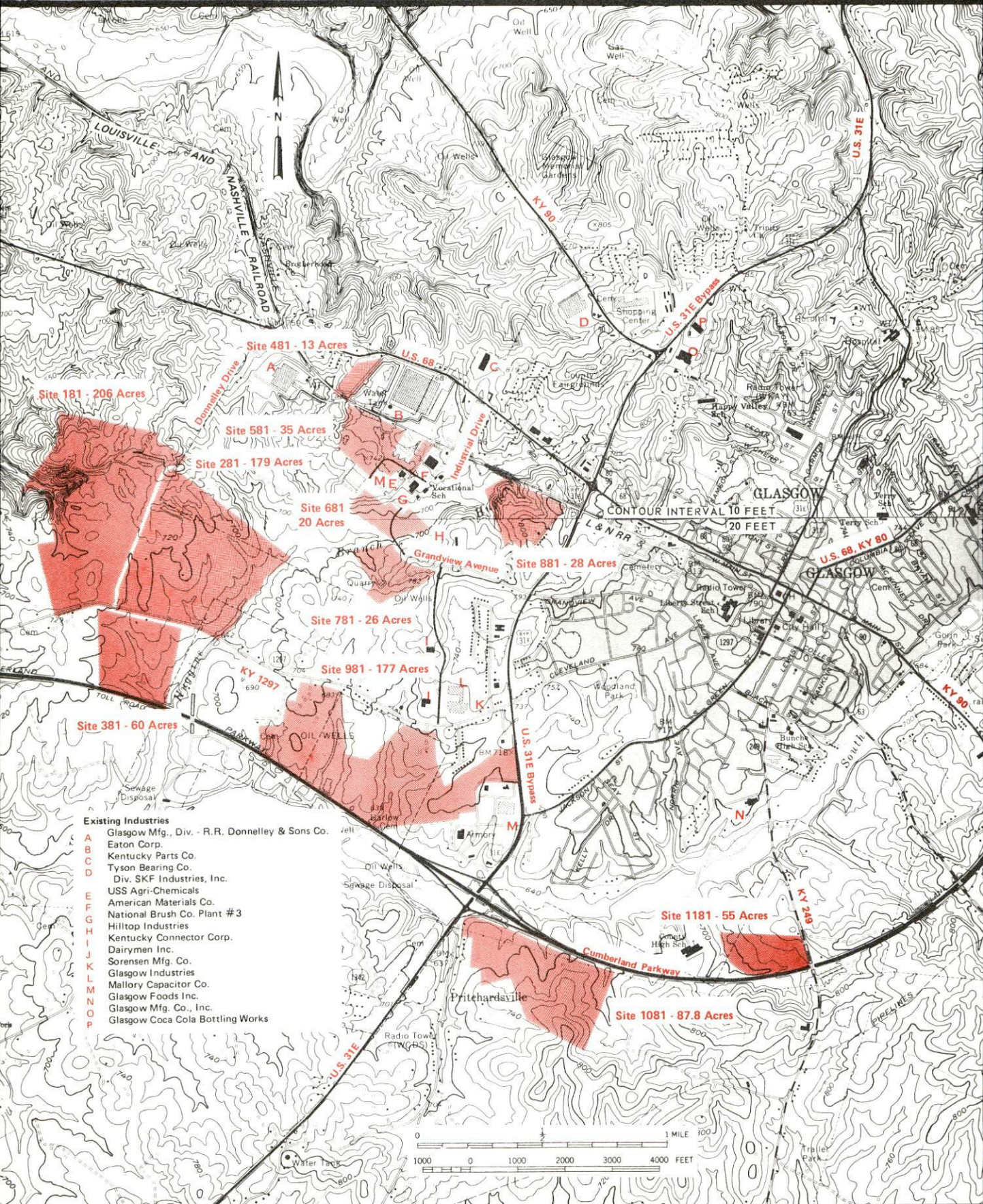
# GLASGOW KENTUCKY --- Index to Industrial Sites -- 1981

For detailed data on individual sites contact Mr. Ted Winbiger, Glasgow-Barren County Chamber of Commerce, 301 West Main Street, Glasgow, Kentucky 42141 (502-651-3161), or the Kentucky Commerce Cabinet, Office of Industrial Development, New Industry Division, Capital Plaza Tower, Frankfort, Kentucky 40601 (502-564-7140).



# GLASGOW KENTUCKY --- Index to Industrial Sites -- 1981

For detailed data on individual sites contact Mr. Ted Winbiger, Glasgow-Barren County Chamber of Commerce, 301 West Main Street, Glasgow, Kentucky 42141 (502-651-3161), or the Kentucky Commerce Cabinet, Office of Industrial Development, New Industry Division, Capital Plaza Tower, Frankfort, Kentucky 40601 (502-564-7140).



A COMPREHENSIVE REPORT ON  
GLASGOW, KENTUCKY

Prepared by  
The Kentucky Department of Commerce  
Division of Research and Planning  
in cooperation with  
The Glasgow-Barren County Chamber of Commerce

1981

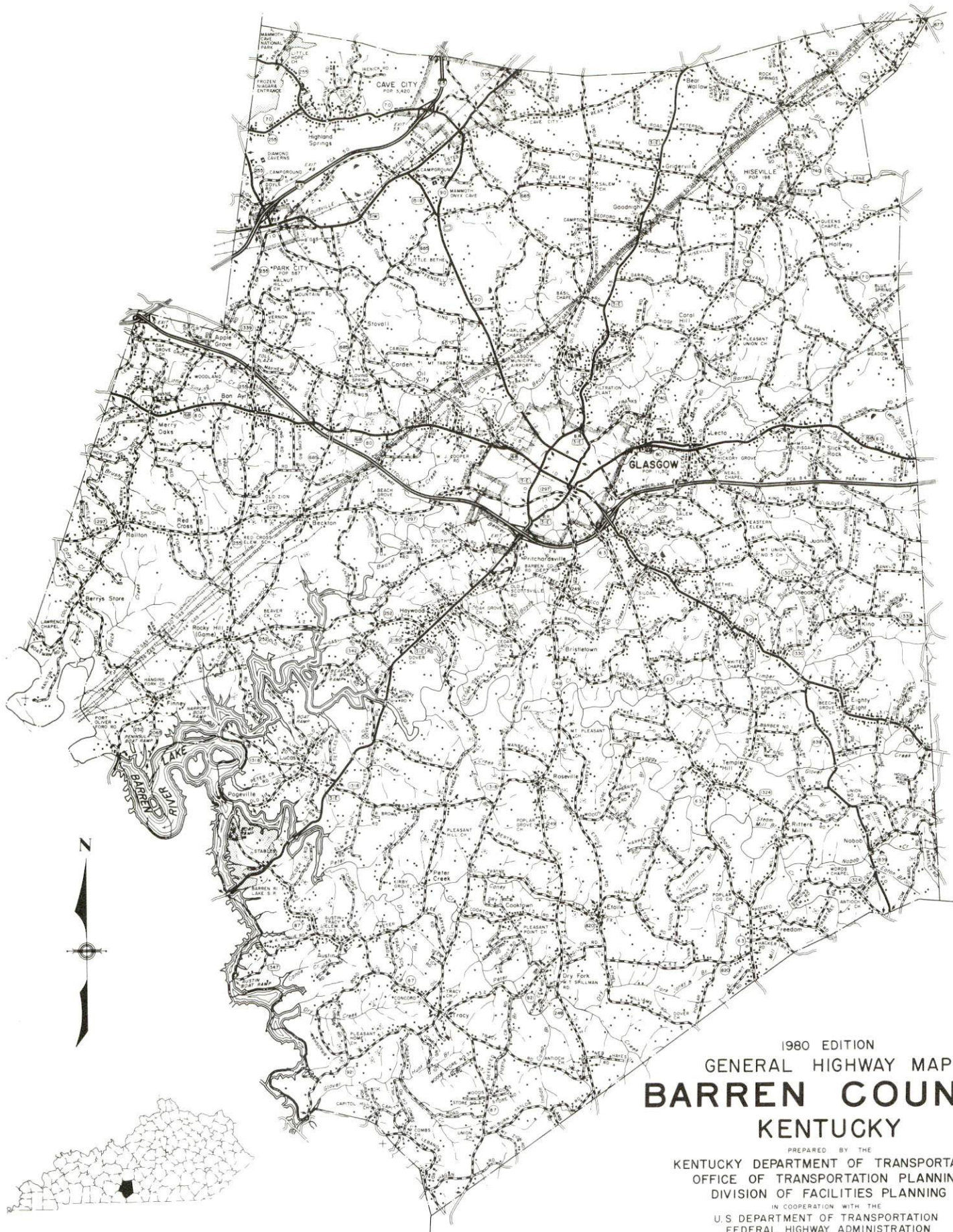
Program supervisor - Brenda Roberts; research - John McMurray; clerical - Shirley Wood; graphics - Frank Ferrante, Tony Cecconi, Jimmy Thompson; cartography - Site Evaluation Section, Division of New Industries. Cost of printing paid from state funds.

## TABLE OF CONTENTS

<u>Chapter</u>	<u>Page</u>
INDUSTRIAL SITES . . . . .	i
THE LABOR MARKET AREA . . . . .	1
Population . . . . .	1
Labor Force Characteristics of Residents, 1980 . . . . .	1
Estimated Male Labor Supply . . . . .	2
Estimated Female Labor Supply . . . . .	2
Glasgow Manufacturing Firms, Their Products and Employment . . . . .	3
Labor Organizations in Manufacturing Firms . . . . .	5
Industrial Services . . . . .	5
Average Weekly Wages by Industry, by Place of Work, 1980 . . . . .	6
Per Capita Personal Income . . . . .	8
TRANSPORTATION . . . . .	9
Rail . . . . .	9
Highways . . . . .	9
Truck Service . . . . .	10
Air . . . . .	12
Bus . . . . .	13
Taxi . . . . .	13
Rental Services . . . . .	13
Water . . . . .	13
POWER AND FUEL . . . . .	14
Electricity . . . . .	14
Natural Gas . . . . .	15
Other Fuels . . . . .	15
WATER AND SEWERAGE . . . . .	16
Water . . . . .	16
Raw Water . . . . .	18
Sewerage . . . . .	19
CLIMATE . . . . .	20

<u>Chapter</u>	<u>Page</u>
LOCAL GOVERNMENT . . . . .	21
City . . . . .	21
County . . . . .	21
Assessed Value of Property, 1980 . . . . .	21
Property Taxes . . . . .	21
Combined State and Local Rates Per \$100 Valuation, 1980 . . . . .	22
Planning and Zoning . . . . .	22
Safety . . . . .	23
Police . . . . .	23
Fire . . . . .	23
Rescue Service . . . . .	23
Refuse Collection and Disposal . . . . .	24
EDUCATION . . . . .	25
Public Schools . . . . .	25
Area Colleges and Universities . . . . .	26
Vocational Schools . . . . .	27
HEALTH . . . . .	29
Local Medical Personnel . . . . .	29
Hospitals . . . . .	29
Ambulance Service . . . . .	29
Public Health . . . . .	29
OTHER LOCAL FACILITIES . . . . .	30
Communications . . . . .	30
Library Services . . . . .	30
Religious Institutions . . . . .	31
Financial Institutions . . . . .	31
Hotels and Motels . . . . .	31
Clubs and Organizations . . . . .	32
RECREATION . . . . .	33



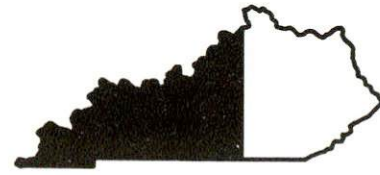


1980 EDITION  
 GENERAL HIGHWAY MAP  
**BARREN COUNTY**  
 KENTUCKY

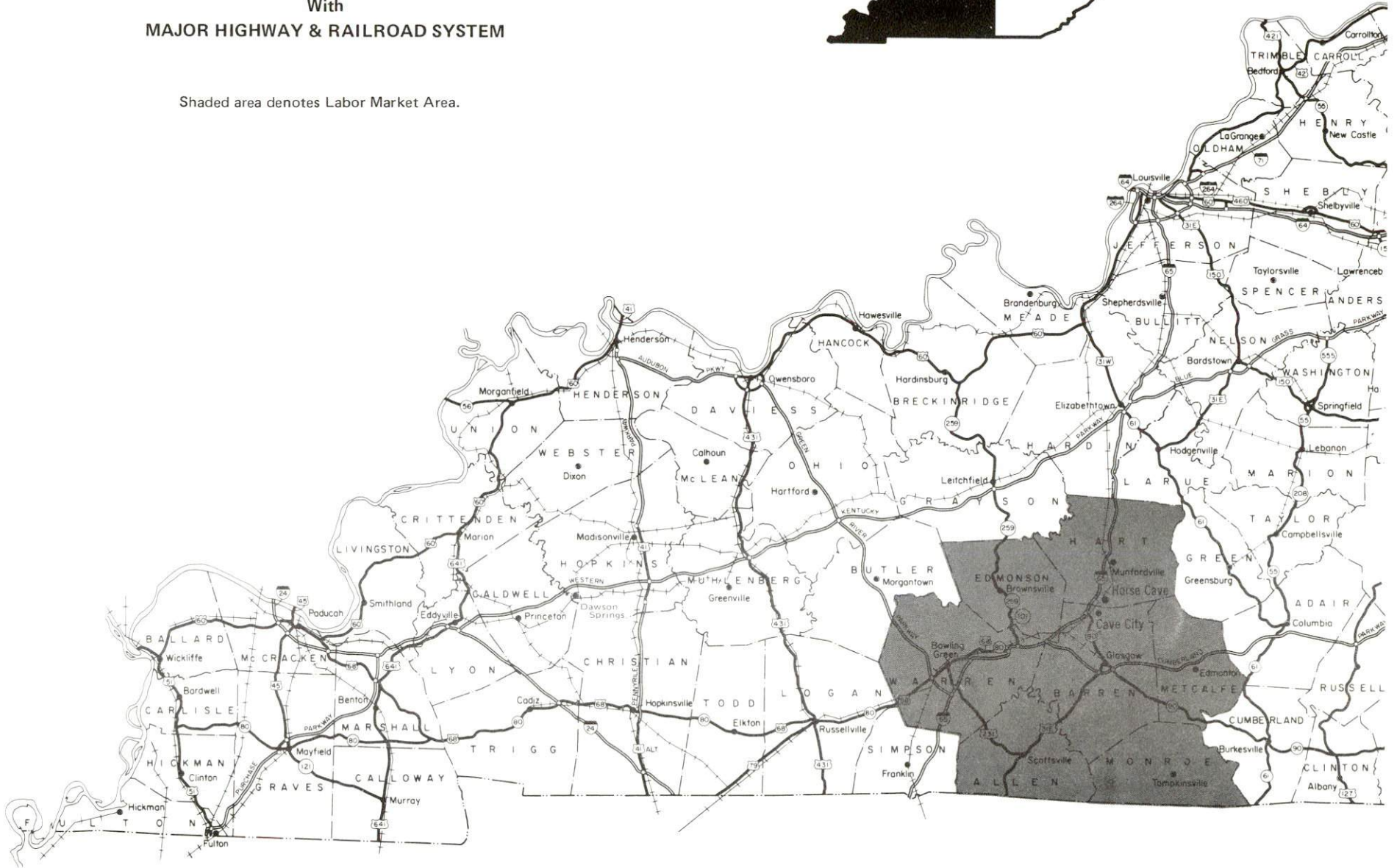
PREPARED BY THE  
 KENTUCKY DEPARTMENT OF TRANSPORTATION  
 OFFICE OF TRANSPORTATION PLANNING  
 DIVISION OF FACILITIES PLANNING  
 IN COOPERATION WITH THE  
 U.S. DEPARTMENT OF TRANSPORTATION  
 FEDERAL HIGHWAY ADMINISTRATION



**GLASGOW LABOR MARKET AREA**  
With  
**MAJOR HIGHWAY & RAILROAD SYSTEM**



Shaded area denotes Labor Market Area.



## THE LABOR MARKET AREA

The Glasgow Labor Market Area includes Barren County and the adjoining Kentucky counties of Allen, Edmonson, Hart, Metcalfe, Monroe and Warren.

### POPULATION

Area	1980	1970	Percent Nonwhite
Glasgow	12,958	11,301	8.2
Labor Market Area	167,166	141,709	N/A
Barren County	34,009	28,677	5.1
Allen County	14,128	12,598	1.3
Edmonson County	9,962	8,751	1.9
Hart County	15,402	13,980	8.1
Metcalfe County	9,484	8,177	3.0
Monroe County	12,353	11,642	3.0
Warren County	71,828	57,884	9.0

Note: The 1980 counts of population by race are provisional.

Source: U.S. Department of Commerce, Bureau of the Census, March 1981, as published in Special Report No. 8, State Data Center, Urban Studies Center, University of Louisville, March 1981.

### LABOR FORCE CHARACTERISTICS OF RESIDENTS, 1980

	Barren County	Labor Market Area
Civilian Labor Force	18,605	81,216
Employment	17,031	73,939
Agricultural	2,361	7,942
Nonagricultural	14,670	65,997
Unemployment	1,574	7,277
Rate of Unemployment (%)	8.5	9.0

Source: Kentucky Department for Human Resources, Kentucky Labor Force Estimates, Annual Averages, 1980.

ESTIMATED MALE LABOR SUPPLY  
GLASGOW LABOR MARKET AREA

Area	Current			Future	
	Total	Not in Labor Force	Unemployed	Under-employed	Reaching 18 years of age before 1986
Labor Market Area*	6,565	1,053	2,132	3,380	6,169
Barren	1,215	218	467	530	1,314
Allen	464	96	178	190	531
Edmonson	393	70	203	120	375
Hart	543	109	244	190	692
Metcalfe	332	62	150	120	374
Monroe	486	84	162	240	526
Warren	3,132	414	728	1,990	2,357

\*Additional workers may be drawn from other nearby counties.

Note: Not in Labor Force - persons who would enter the labor force if suitable employment were available; Unemployed - persons unemployed and actively seeking work; Underemployed - persons employed but working only 14 to 26 weeks per year.

Sources: Kentucky Department for Human Resources, Kentucky Labor Supply Estimates by County, 1979. Kentucky Department of Commerce, Future Labor Supply before 1986.

ESTIMATED FEMALE LABOR SUPPLY  
GLASGOW LABOR MARKET AREA

Area	Current			Future	
	Total	Not in Labor Force	Unemployed	Under-employed	Reaching 18 years of age before 1986
Labor Market Area*	5,801	451	1,980	3,370	5,866
Barren	1,024	100	434	490	1,190
Allen	457	43	164	250	516
Edmonson	357	29	188	140	372
Hart	552	48	224	280	642
Metcalfe	242	27	135	80	363
Monroe	385	36	149	200	502
Warren	2,784	168	686	1,930	2,281

\*Additional workers may be drawn from other nearby counties.

Note: Not in Labor Force - persons who would enter the labor force if suitable employment were available; Unemployed - persons unemployed and actively seeking work; Underemployed - persons employed but working only 14 to 26 weeks per year.

Sources: Kentucky Department for Human Resources, Kentucky Labor Supply Estimates by County, 1979. Kentucky Department of Commerce, Future Labor Supply before 1986.

GLASGOW MANUFACTURING FIRMS,  
THEIR PRODUCTS AND EMPLOYMENT\*

Firm (Establishment date)	Product	Employment			Labor Unions
		Total	Male	Female	
Dairymen, Inc. (1975)	Cheese, whey powder	60	50	10	Food and Commercial Workers**
Dickerson Lumber Company (1947)	Lumber, cross-ties, skids, pallets	62	60	2	
R. R. Donnelley & Sons Company, Glasgow Manufacturing Division (1968)	Printing	950	-	-	
Eaton Corporation, Axle Division (1971)	Axles	440	380	60	
Glasgow Foods, Inc. (1969)	Poultry processing	194	113	81	
Glasgow Industries (1962)	Automotive parts	560	185	375	Auto Workers**
Glasgow Manufacturing Company, Inc. (1946)	Ladies' sportswear, ladies' suits, ladies' dresses	230	33	197	Ladies' Garment Workers**
Kentucky Pants Company, Inc. (1937)	Men's work pants, jeans	472	48	424	
Mallory Capacitor Company (1964)	Electrolytic capacitors, sonalerts	477	122	355	
National Brush Company Plant #3 (1958)	Brush blocks, wood handles, shape wood parts	64	54	10	

<u>Firm (Establishment date)</u>	<u>Product</u>	<u>Employment</u>			<u>Labor Unions</u>
		<u>Total</u>	<u>Male</u>	<u>Female</u>	
Sorensen Manufacturing Company (1962)	Automotive ignition parts, auto- motive wire and cable products, automotive carburetor repair kits	144	75	69	Auto Workers**
Tyson Bearing Company Division, SKF Industries, Inc. (1965)	Roller bear- ings, ta- pered	700	605	95	Steelworkers**

\*Firms with 50 or more employees.

\*\*See Labor Organizations.

Sources: Kentucky Department of Commerce, Division of Research and Planning;  
Glasgow-Barren County Chamber of Commerce.

LABOR ORGANIZATIONS IN MANUFACTURING FIRMS

<u>Union</u>	<u>Representing workers at:</u>
United Food and Commercial Workers International Union, AFL-CIO	Dairymen, Inc.
International Union, United Automobile, Aerospace and Agricultural Implement Workers of America	Glasgow Industries Sorensen Manufacturing Company
International Ladies' Garment Workers Union, AFL-CIO	Glasgow Manufacturing Company
United Steelworkers of America, AFL-CIO	Tyson Bearing Company Division, SKF Industries, Inc.

INDUSTRIAL SERVICES

<u>Types of Services</u>	<u>Location</u>	<u>Mileage from Glasgow</u>
Tool & Die, Machine & Pattern Shops	Horse Cave, Kentucky	16
Metal Service Centers	Bowling Green, Kentucky	33
Heat Treating	Louisville, Kentucky	94
	Nashville, Tennessee	96
Metal Finishers	Elizabethtown, Kentucky	52
Electric Motor Repair	Bowling Green, Kentucky	33

Sources: Kentucky Directory of Selected Industrial Services, 1979.  
Kentucky Department of Commerce, Division of Research and Planning.

AVERAGE WEEKLY WAGES BY INDUSTRY,  
BY PLACE OF WORK, 1980

	<u>Barren County</u>	<u>Allen County</u>	<u>Edmonson County</u>	<u>Hart County</u>
All Industries	\$214.01	\$203.85	\$170.98	\$174.45
Mining & Quarrying	245.74	118.94	*	174.21
Contract Construction	259.76	137.90	174.45	172.39
Manufacturing	254.02	237.99	134.79	186.83
Transportation, Communications & Public Utilities	262.66	248.01	198.32	177.16
Wholesale & Retail Trade	152.30	176.93	136.97	147.54
Finance, Insurance & Real Estate	250.01	204.52	156.73	193.95
Services	167.07	128.65	180.64	137.26
State/Local Government	203.65	188.84	202.88	213.03
Other	108.72	*	*	*

	<u>Metcalfe County</u>	<u>Monroe County</u>	<u>Warren County</u>
All Industries	\$155.11	\$170.11	\$223.88
Mining & Quarrying	147.31	*	269.07
Contract Construction	122.70	176.89	238.72
Manufacturing	134.55	171.02	264.92
Transportation, Communications & Public Utilities	232.94	285.07	309.37
Wholesale & Retail Trade	132.89	144.67	170.37
Finance, Insurance & Real Estate	163.56	255.03	237.86
Services	197.34	121.60	181.27
State/Local Government	189.72	182.72	256.87
Other	*	111.03	121.63

\*Not disclosed.

Note: Excludes domestic workers, railway workers, certain nonprofit corporations, majority of federal government workers, and self-employed workers.

Source: Kentucky Department for Human Resources, Average Weekly Wages of Workers Covered by Kentucky Unemployment Insurance Law, 1980.





Up-to-date occupational wage rates of the existing industries are maintained by South Kentucky Industrial Development Association, Post Office Box 726, Hopkinsville, Kentucky 42240.

PER CAPITA PERSONAL INCOME			
<u>Area</u>	<u>1979</u>	<u>1975</u>	<u>Percent Change</u>
Barren County	\$6,866	\$4,307	59.4
Labor Market Area Range	\$4,315 - 7,421	\$2,836 - 4,776	N/A
Kentucky	7,052	4,882	44.7
U.S.	8,637	5,861	47.4

Source: U.S. Department of Commerce, Bureau of Economic Analysis, April 1981.

## TRANSPORTATION

### Rail

Line serving Glasgow - Louisville and Nashville Railroad\*

Services - One local turn-around to Park City 5 days per week; switching facilities; team track space for 15 cars and piggyback facilities.

For details on routing, schedules, rates, and services, contact:

Director of Industrial Development  
Louisville and Nashville Railroad  
P. O. Box 32290  
Louisville, Kentucky 40232  
(502) 587-5723

### Highways

Glasgow is served by the Cumberland Parkway, which intersects with Interstate 65, 13 miles northwest of Glasgow. Interstate 65 is a major north-south route which extends from the Chicago area to Mobile, Alabama. Highway access to Glasgow is also provided by U.S. Routes 31-E and 68, and Kentucky Route 90, all "AAA" rated (80,000 lb. gross load limit) highways.

\*The Louisville and Nashville Railroad operates the privately-owned Glasgow Railroad.

Truck Service

Company

Home Office

American Freight System,  
Inc.\* (T)

9393 West 110th Street  
Overland Park, Kansas 66210

Interstate Motor Freight  
System\*

110 Ionia N.W.  
Grand Rapids, Michigan 49503

Manning Motor Express,  
Inc.\*\* (T)

Westwood Avenue  
Glasgow, Kentucky 42141

McLean Trucking Company\*

P. O. Box 213  
Winston-Salem, North Carolina 27102

Overnite Transportation  
Company\*\*

1000 Semmes Avenue  
Richmond, Virginia 23209

Renner's Express, Inc.\*\*

1350 South West Street  
P. O. Box 882  
Indianapolis, Indiana 46206

Smith's Transfer Corporation\*

P. O. Box 1000  
Staunton, Virginia 24401

United Trucking Service, Inc.\*\*

8505 West Warren  
Dearborn, Michigan 48126

(T) Local Terminal

\*Interstate service only

\*\*Interstate and intrastate service

Other Freight ServicesNearest Shipping Center or Home Office

Purolator Courier Corporation*	Louisville, 94 miles distant
United Parcel Service*	Bowling Green, 33 miles distant
KATO Express, Inc. (air cargo service)**	Elizabethtown, 52 miles distant
Red Arrow Delivery Service (air cargo service)***	Bowling Green, 33 miles distant

HIGHWAY MILES AND TRUCK TRANSIT TIME IN DAYS FROM  
GLASGOW, KENTUCKY, TO SELECTED MARKET CENTERS

City	Highway Miles	Delivery		City	Highway Miles	Delivery	
		Time TL				Time TL	
Atlanta, Ga.	343	2		Los Angeles, Ca.	2,126	7	
Baltimore, Md.	674	3		Louisville, Ky.	94	1	
Birmingham, Ala.	297	2		Nashville, Tenn.	101	1	
Chicago, Ill.	386	2		New Orleans, La.	618	2	
Cincinnati, Ohio	202	1		New York, N. Y.	842	3	
Cleveland, Ohio	439	1		Pittsburgh, Pa.	476	2	
Detroit, Mich.	454	2		St. Louis, Mo.	314	2	
Knoxville, Tenn.	203	2					

Note: Mileage computations are via the best interstate or primary highways, not necessarily the most direct route of travel.

Sources: Rand McNally Road Atlas, 1979. Official Kentucky Mileage Map, 1979. Delivery time - Manning Motor Express, Inc., 1203 South Green Street, Glasgow, Kentucky 42141.

\*For regular scheduled pickups or for occasional pickups, arrangements must be made with the Louisville office of Purolator Courier Corporation or United Parcel Service.

\*\*Daily pickup and delivery service is available to and from Standiford Field in Louisville. Arrangements for service should be made through the home office in Elizabethtown.

\*\*\*Daily pickup and delivery service is available to and from Standiford Field in Louisville, Kentucky, and Nashville Metropolitan Airport in Nashville, Tennessee. Arrangements for service should be made through the shipping center in Bowling Green.

## Air

### Local Airports

Moore Field  
Location: 2 miles northwest of Glasgow  
Runways: 1 paved  
Length: 4,000 feet, 600 feet of paved overrun  
Traffic  
Control: Wind sock  
Lighting: Runways lights sundown to sunrise, REIL, VASI  
Services: 100 octane, jet fuel, charter, flight instruction,  
taxi, A & E repairs, rental cars available, hangar,  
auxiliary power unit

Air Freight  
Service: Chartered air freight service must be arranged.

### Nearest Scheduled Airline Services

Standiford Field  
Location: 4½ miles southeast of center of Louisville, Kentucky;  
95 miles north of Glasgow  
Runways: 3 paved  
Length: 7,800 feet; 7,250 feet; 5,000 feet  
Traffic  
Control: Control tower  
Lighting: Runways, obstructions, beacon and approach and touch-  
down lights, center line on one runway  
Services: American, Delta, Eastern, New York Air, Ozark, Piedmont,  
TWA, USAir, and Wright airlines; Allegheny Commuter air  
carrier; 100 octane and jet fuel; major A & E repairs;  
storage; Louisville-Jefferson County Air Board; Hertz,  
Avis, National and Budget rental car services; taxi,  
city bus service; restaurant

Air Freight  
Service: Air freight terminal

(contd.)

Nashville Metropolitan Airport  
Location: 6 miles southeast of Nashville, Tennessee; 96 miles southwest of Glasgow  
Runways: 3 paved  
Length: 8,000 feet; 7,700 feet; 4,320 feet  
Traffic  
Control: Tower  
Lighting: Beacon, runway  
Services: American, Braniff, Delta, Eastern, Ozark, Piedmont, Republic, TWA, and USAir airlines; Allegheny Commuter Scheduled Skyways; Sunbird, and Tennessee Airways commuter air carriers; 100 LL, 100, and jet fuel; major repairs, major Avionics repairs; tie-downs and hangars; charter service; flight instructions; plane rental; U.S. Customs; car rental; limousine; taxi; weather information; hotel; restaurant

Air Freight  
Service: Air freight terminal

Bus - Southern Greyhound Bus Lines

Taxi - 24-hour service, radio-equipped

Rental Services - Automobile, truck and trailer rentals

#### Water

The nearest navigable river is the Green River at Rochester, approximately 70 miles distant. A 9-foot navigation channel is maintained on the Green River, extending from the confluence with the Ohio River to Lock and Dam #3.

POWER AND FUEL

Electricity

Company serving Glasgow - Glasgow Electric Plant Board\*  
Source of power - Tennessee Valley Authority  
Total generating capacity - 28,539,945 KW  
For industrial rates contact:

South Kentucky Industrial Development  
Association, Inc.  
P. O. Box 726  
Hopkinsville, Kentucky 42240  
(502) 885-5392

and/or

Glasgow Electric Plant Board  
100 Mallory Drive  
Glasgow, Kentucky 42141  
(502) 651-8341

Company serving the major part of Barren County - Farmers Rural Electric  
Cooperative Corporation  
Source of power - East Kentucky Power Cooperative  
Total generating capacity - 1,318,010 KW  
For industrial rates contact:

Industrial Development Division  
East Kentucky Power Cooperative  
P. O. Box 707  
Winchester, Kentucky 40391  
(606) 744-4812

and/or

Farmers RECC  
504 South Broadway  
Glasgow, Kentucky 42141  
(502) 651-2191

\*A feasibility study is under way for a hydroelectric generating plant of 21 megawatts on the Barren River Reservoir.



## Natural Gas

Company serving Glasgow - Western Kentucky Gas Company  
Source of supply - Texas Gas Transmission Corporation  
Size of transmission mains - 8-inch- high pressure (supplier);  
4-inch- high pressure (distributor)  
Distribution mains - 8, 6, 4, 3 and 2 inches  
Distribution pressure - 10 to 50 psi  
Btu content - 1,000 per cubic foot; Specific gravity - .60  
For rates and supplies contact:

Director of Marketing  
Western Kentucky Gas Company  
311 West Seventh Street  
Owensboro, Kentucky 42301  
(502) 685-8000

## Other Fuels

### Propane (within 10 miles)

Pargas of Glasgow  
214 Industrial Drive  
Glasgow, Kentucky 42141

Williams Energy Company  
West Main Street  
Glasgow, Kentucky 42141

Ugite Gas, Incorporated  
North Highway 31W  
Horse Cave, Kentucky 42749

### Fuel oils

#### Distillate fuel oil -

Paul Bridges Oil Company  
(Exxon)  
Industrial Drive  
Glasgow, Kentucky 42141

Tri-County Oil Company, Inc.  
(Shell bulk plant)  
715 West Main Street  
Glasgow, Kentucky 42141

Benedict and Benedict  
(Chevron bulk plant)  
Parkview Drive  
Glasgow, Kentucky 42141

Douglas Wyatt, Jobber  
(Gulf)  
1304 South Green Street  
Glasgow, Kentucky 42141

Dale Smith, Agent  
(Ashland Oil bulk plant)  
921 West Main Street  
Glasgow, Kentucky 42141

Residual fuel oil - Arrangements must be made with the refinery.

Low sulphur content coal - Available in Kentucky.

## WATER AND SEWERAGE

### Water

Company serving Glasgow - Glasgow Water Company\*  
118 East Washington Street  
Glasgow, Kentucky 42141  
(502) 651-3727

Source - Beaver Creek

Treatment plant capacity - 8,500,000 gallons per day

Average daily consumption - 3,000,000 gallons

Peak daily consumption - 4,000,000 gallons

Type treatment - Flash mix, primary settling, rapid sand filter,  
chlorination

Storage capacity - 3,963,000 gallons

Size lines - 20, 16, 12, 10, 8, 6 and 4 inches

Average pressure - 65 psi

Average temperature - 60 degrees F.

---

\*A \$1.5 million project to extend 90 miles of water mains (12, 8, 6, and 4 inches) to Barren County's rural area is under way.

## MONTHLY WATER RATES

### Industrial customers

Customers using over 1,000 gallons per month will be billed for all water used at .50 per M gallons inside the city limits and .70 per M gallons outside the city limits.

### Residential and commercial customers

#### Inside city

First	2,000 gallons	\$5.00 Minimum Bill
Next	18,000 gallons	1.40 per M gallons
Next	80,000 gallons	.80 per M gallons
Next	900,000 gallons	.70 per M gallons
Over	1,000,000 gallons	.50 per M gallons

#### Outside city

First	2,000 gallons	\$7.50 Minimum Bill
Next	18,000 gallons	2.10 per M gallons
Next	80,000 gallons	1.20 per M gallons
Next	900,000 gallons	1.00 per M gallons
Over	1,000,000 gallons	.70 per M gallons

### Sprinkler charge

\$0.02 per month per sprinkler head

### Fire Hydrant charge

\$2.00 per month per fire hydrant

(contd.)

Tap-on charge:

Inside city

\$ 100 for 5/8-, 3/4- and 1-inch meter service  
300 for 1 1/2- and 2-inch meter service  
1,000 for 4-inch meter service  
2,000 for 6-inch meter service

Outside city

\$ 300 for 5/8-, 3/4- and 1-inch meter service  
700 for 1 1/2- and 2-inch meter service  
1,250 for 4-inch meter service  
2,500 for 6-inch meter service

Water connection fee:

An additional fee of \$5.00 shall be made and collected for the start of water service or for change for location when customer moves.

An additional charge of \$5.00 shall be made and collected for reconnecting and reinstating water service after cut-off for nonpayment of bills for water and sewer services.

Raw Water

Surface water sources - Barren River and Barren River Lake, Beaver Creek  
Average discharge - Barren River near Finney, Kentucky - 1,504 cfs  
(28-year record, unadjusted, USGS)  
Expected ground water yield - 50 to 200 gpm from east-west belt through central section; 5 to 50 gpm in northern section; 5 gpm or less through the southern section.

Sewerage

Company serving Glasgow - Glasgow Water Company\*  
118 East Washington Street  
Glasgow, Kentucky 42141  
(502) 651-3727

Design capacity - 4,000,000 gallons per day  
Average daily flow - 2,000,000 gallons  
Treatment - Primary, secondary and tertiary  
Type treatment - Clarification, filtration, chlorination, aeration,  
and digestion  
Treated effluent discharged into - South Fork Beaver Creek  
Size of sanitary mains - 8 inches through 24 inches  
Rates-

Residential and commercial customers  
(Based on water meter reading)

Inside City Limits

First 2,000 gallons \$3.00 minimum bill  
Over 2,000 gallons \$1.00 per M gallons

Outside City Limits

First 2,000 gallons \$4.50 minimum bill  
Over 2,000 gallons \$1.50 per M gallons

Sewer service surcharge:

There shall be a surcharge for high oxygen demand wastewater. It shall be based on the highest charges either for B.O.D. or C.O.D. with rates for each calculated as below:

B.O.D surcharge - Shall be \$0.15 per M gallons per 100 mg per liter over 200 mg per liter up to 500 mg per liter. The surcharge on B.O.D. over 500 mg per liter shall be \$0.30 per M gallons per 100 mg per liter over 500 mg per liter.

C.O.D. surcharge - Shall be \$0.10 per M gallons per 100 mg per liter over 300 mg per liter up to 750 mg per liter. The surcharge on C.O.D. over 750 mg per liter shall be \$0.20 per M gallons per 100 mg per liter over 750 mg per liter.

There shall be a surcharge for high suspended solids levels.

Suspended solids surcharge - Shall be \$0.15 per M gallons per 100 mg per liter over 200 mg per liter.

\*Step 1 of a 201 Facilities Plan has been completed. Facilities that will provide easier handling, loading, and control of aerobic sludge have been completed at a cost of \$325,000.

## CLIMATE

### Barren County

#### Temperature

Normal (30-year record)	59.4 degrees
Average annual 1980	59.2 degrees
Record highest, July 1952 (41-year record)	107.0 degrees
Record lowest, January 1963 (41-year record)	-15.0 degrees
Normal heating degree days (30-year record) (Heating degree day totals are the sums of negative departures of average daily temperatures from 65 degrees F.)	3,696

#### Precipitation

Normal (30-year record)	46.00 inches
Mean annual snowfall (39-year record)	11.60 inches
Total precipitation 1980	34.92 inches
Mean number days precipitation (.01 inch or more) (39-year record)	119
Mean number days thunderstorms (39-year record)	54

Prevailing Winds (22-year record) South

#### Relative Humidity (15-year record)

1 a.m.	79 percent
7 a.m.	84 percent
1 p.m.	58 percent
7 p.m.	62 percent

Source: U.S. Department of Commerce, Environmental Science Services  
Administration, Climatological Data, 1980.  
Station of record: Nashville, Tennessee.

LOCAL GOVERNMENT

City

Structure - Mayor - 4 year term; 12 council members - 2 year terms;  
Budget 1981 - General Fund \$ 2,223,405  
                  Water and Sewer Fund 1,787,300  
Fees and licenses - One percent occupational license tax on wages and  
net profits; business license fees range from \$25 to \$200 annually.

County

Structure - County Judge/Executive - 4 year term;  
7 magistrates - 4 year terms  
Budget 1980-81 - General Fund \$851,518; Road Fund \$531, 222

Assessed Value of Property, 1980

<u>Classes of Property</u>	<u>Glasgow</u>	<u>Barren County</u>
Real Estate	\$113,889,983	\$303,386,133
Tangibles	41,757,119	79,608,563

Property Taxes

All property in Kentucky is assessed at 100 percent of fair cash value.

Land and buildings are taxed by the state and may be taxed by local jurisdictions. The state rate is \$0.241 per \$100 of assessed valuation.

Manufacturing machinery, raw materials inventories, pollution control equipment, and goods in the process of manufacture are not subject to local taxation. The state rate is only \$0.15 per \$100.

Other tangible personal property owned by manufactures (automobiles, trucks, finished goods, office furniture, office equipment) is taxed by the state at \$0.45 per \$100 and may be taxed by local jurisdictions.

Property stored in public warehouses in a transit status is not subject to local taxation. The state rate is only \$0.015 per \$100.

Intangible personal property located in Kentucky (money in hand, shares of stock, notes, bonds, accounts receivable, and other credits) is taxed by the state at \$0.25 per \$100, and is not subject to local taxation.

Private leaseholds in industrial facilities owned by cities or counties and financed by industrial revenue bonds are subject to a state tax of \$0.015 per \$100 of value (essentially the lessee's equity, adjusted for appreciation or depreciation). Local taxation is not permitted.

Combined State and Local Rates Per \$100 Valuation, 1980\*  
(100% assessment)

	<u>Inside City of Glasgow, Glasgow Independent School District</u>	<u>Inside City of Glasgow, Barren County School District</u>	<u>Outside City Barren County School District</u>
1. Land and buildings	\$1.151	\$0.856	\$0.596
2. Mfg. machinery, raw materials, goods in process, pollution control equipment	0.150	0.150	0.150
3. Finished goods, office equipment, vehicles, other tangibles	1.360	1.065	0.805
4. Intangibles (accounts rec., notes, bonds, etc.)	0.250	0.250	0.250
5. Leaseholds in industrial revenue bond financed plants	0.015	0.015	0.015

Planning and Zoning

Joint agency - Joint City-County Planning Commission\*\*

Zoning enforced - Within the city of Glasgow

Subdivision regulations enforced - Within the city of Glasgow and one mile beyond

Local codes enforced - City of Glasgow only

Mandatory state codes enforced - Kentucky Plumbing Code, National Electric Code, Kentucky Boiler Regulations and Standards, National Fire Protection Association Standards of Safety (for buildings with an occupancy of less than 100 persons), Kentucky Building Code (modeled after BOCA code and applying to buildings with an occupancy of 100 or more persons)

\*Kentucky Department of Commerce

\*\*Includes Barren County and the cities of Glasgow, Hiseville, Cave City, and Park City.



Safety

<u>Police</u>	<u>Glasgow</u>	<u>Barren County</u>
Total staff	29	4
Radio-patrol cars	6	3

Fire

American Insurance Association Fire Rating	6	10
Full-time staff	32	*

Rescue Service

Cave City Fire Department Rescue Squad\*\*

Number of volunteers - 38

Equipment - 3 in-line fire trucks (one equipped for emergency rescue service, 1 rescue van (equipped with oxygen and emergency paraphernalia), 2 4-wheel drive vehicles, Jaws of Life, self-contained breathing apparatus and assorted rescue equipment.

Personnel training - 30 persons are trained in advanced first aid and 5 members are certified emergency medical technicians.

\*Fire protection is provided to Barren County residents by the Municipal Fire Departments. A fire-run fee is charged.

\*\*New firehouse facilities are being constructed. The \$125,00 structure is to be completed in the fall of 1981.

Refuse Collection and Disposal

	<u>Glasgow</u>	<u>Barren County</u>
Type service	Municipal	
Fee charged:		
residential	No charge	Some county service is provided by private individuals
business	*	
industrial	**	
Collection frequency:		
residential	Weekly	
business	Weekly	
industrial	-	
Trash pickup	-	
Disposal method	Sanitary landfill	

\*A \$1 per month fee is charged for 5 trash cans or less per pickup. Over 5 cans, a \$1-per-minute loading charge is applied.

\*\*The landfill is available to manufacturing firms without charge.

## EDUCATION

### Public Schools

	<u>Glasgow Independent*</u>	<u>Barren County**</u>
Total Enrollment (January 1981)	2,350	3,346
Elementary	1,241	2,245
Junior High	417	-
High School	692	1,101
Student-Teacher Ratio	17-1	20-1
Elementary	15-1	18-1
Junior High	17-1	-
High School	19-1	23-1
Accreditation	Southern Association of Colleges and Schools	
Percent High School Graduates to College	52.8	24.2
Expenditures Per Pupil (1979-80)	1,150.60	1,130.12
Bonded Indebtedness (June 30, 1980)	934,000	3,025,000

\*School buildings, housing students from kindergarten through grade eight, have been air-conditioned at a cost of \$150,000.

\*\*A \$163,000 school bus garage has been constructed to house buses of the Barren County schools.

Area Colleges and Universities

<u>Name</u>	<u>Location (Miles distant)</u>	<u>Enrollment (Fall, 1980)</u>	<u>Highest Degree Conferred</u>
Western Kentucky University	Bowling Green (33)	13,358	Masters, Specialists*
Lindsey Wilson Junior College	Columbia (41)	408	Associate
Elizabethtown Community College	Elizabethtown (52)	1,930	Associate
Campbellsville College	Campbellsville (58)	698	Baccalaureate
Fort Knox Extension of University of Kentucky Campus	Fort Knox (70)	**	Baccalaureate***
Somerset Community College	Somerset (77)	980	Associate

Additional institutions for higher education are located in Nashville Tennessee, 86 miles distant.

\*Joint doctoral degree programs are offered in cooperation with the University of Kentucky, Lexington, and cooperative doctoral degree programs are offered with the University of Louisville.

\*\*Enrollment is included in the total enrollment of the University of Kentucky, which was 23,468 in the fall of 80.

\*\*\*A masters degree program is offered at the Fort Knox Military Base through the University of Southern California, Western Kentucky University, and Embry-Riddle Aeronautical University.

## Vocational Schools

Both the state vocational-technical schools and the area vocational education centers are operated by the Kentucky Department of Education. The state vocational-technical schools enroll persons full time who are at least 16 years of age and not in school. These students attend classes for six hours each day. The area vocational education centers are designed to accommodate high school students who are at least 15 years of age. These students attend vocational school for three hours each day. The state vocational-technical schools and the area education centers offer evening courses to enable working adults to upgrade current job skills.

### Nearest State School

Location	Bowling Green State Vocational- Technical School
Miles Distant	Bowling Green 33
Curriculum	Business and Office Accounting/Jr. Management Clerical Secretarial Consumer and Home Economics Commercial Foods Distributive Education Fashion Merchandising Health and Personal Services Occupations Dental Assistant Health Careers Nurse Assistant Practical Nurse* Respiratory Therapy* Surgical Technician Industrial Education Auto Body Repair Auto Mechanics Carpentry Civil Highway Technology Electronics Servicing Occupations Electronics Technology Graphic Arts (Printing) Industrial Electricity Machine Shop Masonry Refrigeration and Air Conditioning Small Engine Repair Technical Drafting Tool and Die Making Welding

\*These courses are taught at the T.J. Samson Community Hospital in Glasgow.

Nearest Area Education Center

Location  
Curriculum

Barren County Area Vocational Education  
Center  
Glasgow  
Business and Office  
    Secretarial  
    Clerical  
    Junior Management  
Health and Personal Services Occupations  
Industrial Education  
    Air Conditioning and Refrigeration  
    Auto Mechanics  
    Building Trades  
    Drafting  
    Electricity (industrial and residential)  
    Machine Shop  
    Welding

Adult Evening Classes are offered in:  
    Business and Office  
    Electricity  
    Machine Shop  
    Refrigeration  
    Welding

Arrangements can be made to provide training in the specific production skills required by an industrial plant. Instruction may be conducted either in the vocational school or in the industrial plant, depending upon the desired arrangement and the availability of special equipment.

## HEALTH

### Local Medical Personnel

Physicians - 37  
Dentists - 8

### Hospitals

<u>General Hospital</u>	<u>Location</u>	<u>Beds</u>
T. J. Samson Community Hospital*	Glasgow	199

General hospital facilities - 4 operating rooms, intensive recovery room, 9 emergency rooms, 8 coronary care-intensive care, 6 diagnostic radiological rooms with image intensifiers and automatic film processor, ultrasound nuclear medicine department, inhalation therapy department, physical therapy department, EKG laboratory, and clinical and anatomical laboratory services on the premises

Medical staff - 37 doctors, 67 registered nurses, 106 licensed practical nurses, orthopedic and numerous supporting staff members

### Ambulance Service

Name - Barren-Metcalfe County Ambulance Service (based in Glasgow)  
Staff - 18 attendants, 1 supervisor, 1 secretary  
Service - County-wide in Barren and Metcalfe Counties, 24 hours a day, 7 days a week  
Equipment - 5 ambulances (comply with all federal and state requirements) complemented with a variety of rescue equipment, 1 Ford Modulance with capability for conversion into an Advanced Life Support Unit, radio communication with all hospitals and public safety agencies within region

### Public Health

Facility - Barren County Health Department  
Staff - 2 registered nurses, 1 licensed practical nurse, 2 clerks, 1 health environmentalist, and 1 community health worker (part time)

\*A \$5.2 million expansion project has provided the hospital with new and expanded services. A new emergency and out-patient department, a radiology department, a cardiology department, an ICU/CCU and a step-down ICU/CCU, a surgical suite containing four operating rooms, and a recovery room were constructed.

## OTHER LOCAL FACILITIES

### Communications

Telephone -	<u>Glasgow</u> General Telephone Company	<u>Barren County</u> Continental Telephone Company, South Central Rural Telephone Company
Services -	Standard	
Telegraph -	Western Union Telegraph Company	
Services	Counter service and toll- free number (1-800-325-5100)	

Postal - U.S. Post Office

Class -	First	-
Mail received -	Once daily	-
Mail dispatched -	Once daily	-

### Newspapers -

Daily and circulation - Glasgow Daily Times - 7,300

Weekly and circulation - The Glasgow Republican - 1,500

### Other papers

received from - Bowling Green and Louisville, Kentucky; Nashville, Tennessee

### Radio - WKAY-AM; WGGC-FM; WCDS-AM; WOVO-FM

#### Major stations

received from - Louisville, Kentucky; Nashville, Tennessee

### Television -

#### Cable service

Reception from- Major cities in the surrounding area

Kentucky Educational Television - Bowling Green transmitter

### Library Services

Public library - The Mary Wood Weldon Memorial Library

Size collection - 44,342 volumes

Circulation, 1978-79 - 176,360 (includes bookmobile and audio-visual aids)

Services - Provides recreational games; films; filmstrips; reading programs; story hour; bookmobile (with stops scheduled to nursing homes and housing projects); framed paintings; access to state Interlibrary Loan services; printer-reader microfilm collection; Kentucky collection consisting of census, tax records, family trees, etc.; circulated magazines; 2 community rooms; serves 9 schools, 6 shut-ins, and 5 deposit stations; Western Kentucky University classes (average of 12 per semester)



Religious Institutions

Number of churches - 40  
 Denominations - Assembly of God Evangelistic Tabernacle  
 Baptist Jehovah's Witnesses  
 Catholic Lutheran  
 Christian Methodist  
 Church of Christ Nazarene  
 Church of God Nondenominational  
 Church of Jesus Christ of Latter Day Saints Pentecostal  
 Episcopal Presbyterian  
 Seventh Day Adventist

Nearest Synagogues - Louisville, Kentucky, 95 miles distant  
 Nashville, Tennessee, 96 miles distant

Congregations - Louisville - Adath Israel (reform)  
 Adath Jeshurun (conservative)  
 Anshei Sfarad (orthodox)  
 Brith Sholom (reform)  
 Keneseth Israel (orthodox)  
 Nashville - Sherith Israel (orthodox)  
 Ohabai Shalom (reform)  
 West End Synagogue (conservative)

Financial Institutions

<u>Banks</u>	<u>Assets</u>	<u>Deposits</u>	<u>Statement Date</u>
Citizens Bank and Trust Company*	\$83,272,276.00	\$74,761,204.00	12/31/80
New Farmers National Bank	91,771,308.39	83,255,884.76	12/31/80
<u>Savings and Loan Associations</u>	<u>Assets</u>	<u>Savings Account</u>	<u>Statement Date</u>
First Federal Savings and Loan Association	\$51,087,946.69	\$45,073,005.21	12/31/80
Security Savings and Loan Association of Glasgow	18,755,545.16	17,731,540.23	12/31/80

Hotels and Motels

Total number - 3  
 Total rooms - 131

\*A \$2.5 million project was completed in May 1980. The new 40,000-square-foot building houses the bank's main office.

## Clubs and Organizations

Altrusa Club  
American Legion  
Aquatic Club  
Barren County Boosters  
Barren County Democratic Ladies Club  
Barren County Education Association  
Barren County Farm Bureau  
Barren County Federation of Republican Women  
Barren County Gospel Singing Association  
Barren County Historical Society  
Barren County Homemakers  
Barren County Medical Auxiliary  
Barren County Young Democrats  
Barren River Rod and Gun Club  
Daughters of the American Revolution (DAR)  
Foster Parents  
Glasgow-Barren County Bar Association  
Glasgow-Barren County Chamber of Commerce  
Glasgow-Barren County Jaycetts  
Glasgow Business and Professional Women's Club  
Glasgow Education Association  
Glasgow Garden Club  
Glasgow Jaycees  
Glasgow Women's Club  
Heritage Garden Club  
International Club  
Kiwanis Club  
Ladies Matinee Musicale  
Lions Club  
Little League  
Ministerial Association  
Newcomers Club  
Optimist Club  
Parent-Teachers Association (PTA)  
Rotary Club  
South Central Kentucky Genealogical and Historical Society  
Southern Kentucky Association for Handicapped Citizens  
T. J. Samson Community Hospital Auxiliary  
Travelers Protective Association  
Veterans of Foreign Wars (VFW)  
5-Watt Club

## RECREATION

### Local

Glasgow has provided its citizens with excellent recreational facilities and varied recreational programs for juveniles to senior citizens.

The four city parks (American Legion Park, Gorin Park, Twyman Park, and Weldon Park) are well maintained and provide beautiful wooded areas for camping and picnicking as well as space for rigorous sports.

A renovation project at the American Legion Park has been completed. The buildings were repaired and updated and additional recreational facilities were developed. A softball field with dugouts, lights, and aluminum bleachers (seating 800 to 1,000 spectators) has been completed. A picnic shelter, a concession stand, restroom facilities, a croquet court, a horseshoe-pitching area and two playgrounds (one featuring an old Army tank for use by the youngsters) are available.

Weldon Park's facilities are used primarily for adult softball programs. A softball field, a concession stand, dugouts, bleachers and lights are provided for league play. A picnic shelter, a playground area and a large parking area are available for family outings. Construction of a one-mile obstacle course is planned for the wooded area in the park.

Twyman Park has become one of Glasgow's busiest. With the aid of a part-time summer supervisor, various games are offered and they all receive heavy participation. The park provides two paved outdoor basketball courts, a baseball/softball field, a picnic shelter and a playground area with restrooms.

Gorin Park is Glasgow's oldest city park. Established in 1950, the park offers complete facilities for participation and competition covering a wide range of sports. Family outings are facilitated by the presence of excellent picnic areas and playground equipment.

Gorin Park is home to the W. A. Weldon Invitational Tennis Tournament. The park's 10 tennis courts provide excellent facilities for the annual event, hailed as one of the oldest privately endowed tennis events in the south.

Also held annually is another important tennis tournament - the Glasgow Classic Junior Tennis Tournament. This tournament included junior tournament players, male and female, ranging from 12 to 18 years of age. A different division of the tournament included adult men, age 35 and older.

A very popular place in the summer months is Glasgow's municipal swimming pool. The pool, which opens annually on Memorial Day weekend and closes on Labor Day, is a Junior Olympic-size pool and is joined by a separate wading pool and a baby pool. The pool is also home to the Glasgow Aquatic Club. The purpose of the club is to promote physical fitness, competition and development of individuals and teams for young people, ages 6 through 18.

The Glasgow Recreation Board continually encourages Glasgow's citizens to participate in organized recreational programs. In addition to its excellent recreational facilities, the board provides day camps for children, adult softball leagues and tournaments, tennis programs, distance running, basketball leagues, little league baseball/basketball/football, dance classes, gymnastics, ceramic classes, exercise classes, volleyball, a Christian Youth Club, and an outstanding program for senior citizens.

Private recreational facilities include a country club, golf courses (four within easy driving distance), two swimming pools, a bowling facility, an indoor theater and a drive-in theater.

#### Area (Within 50 miles)

Barren River Lake State Resort Park, 14 miles southwest of Glasgow, is a full-facility resort park offering a resort lodge, a coffee shop, cottages, a lodge pool, a beach, riding stables, nature trails, open and covered boat slips, a 9-hole par-3 golf course, lighted handball and tennis courts, shuffleboard, park camping with a service building, a restaurant, fishing and pleasure boat rentals, picnic areas, and a playground. Barren River Lake, which covers 10,000 acres, is a popular area for skiing, sailing, fishing, and swimming.

Mammoth Cave National Park is located 15 miles northwest of Glasgow near Cave City. Beneath 51,000 park acres, Mammoth Cave is among the major tourist attractions of all times. It is one of the largest cave networks ever discovered, with at least 150 miles charted on five levels and vast areas not yet mapped. Some famous sights are Snowball Dining Room (267 feet below surface), Frozen Niagara, Crystal Lake, and Bottomless Pit. The park also features scenic boat trips on the Green River and nature and hiking trails. Park accommodations include a hotel with distinctive gift shops featuring native Kentucky and Southern Highland handicrafts, a motor lodge, hotel cottages, woodland cottages, and a hotel annex with budget accommodations and craft shop featuring live exhibits of broom making and weaving. Other park facilities include the hotel dining room and coffee shop, a service center, group meeting facilities, a campground, a picnic area, and tennis and shuffleboard courts.

Nolin River Lake, 25 miles northwest of Glasgow, is just north of Mammoth Cave National Park. The lake has a surface area of 5,800 acres and offers facilities for camping, boating, and fishing.

Western Kentucky University at Bowling Green, 35 miles distant, offers an array of cultural and athletic activities, including a fine arts series, a university lecture series, various musical performances, and productions by the Western players. The Hardin Planetarium and the Kentucky Building, housing a collection of art and artifacts devoted to local and state history, are open to the public.

Abraham Lincoln Birthplace National Historic Site, located 48 miles north of Glasgow near Hodgenville, features the log cabin, which was the birthplace of Abraham Lincoln, enclosed within a granite memorial shrine. The grounds include 116 acres of the original Thomas Lincoln farm and a visitors' center with audio-visual programs and exhibits on the Lincoln family.

Old Mulkey Meeting House State Shrine, 30 miles south of Glasgow near Tompkinsville, offers picnic areas and playgrounds. The house was built in 1804, and is the oldest log meeting house in the state. Daniel Boone's sister is buried in the graveyard and authentic records written in pokeberry ink are on display.

