

1986

Industrial Resources: Madison County - Berea

Kentucky Library Research Collection
Western Kentucky University, spcol@wku.edu

Follow this and additional works at: https://digitalcommons.wku.edu/madison_cty

 Part of the [Business Administration, Management, and Operations Commons](#), [Growth and Development Commons](#), and the [Infrastructure Commons](#)

Recommended Citation

Kentucky Library Research Collection, "Industrial Resources: Madison County - Berea" (1986). *Madison County*. Paper 13.
https://digitalcommons.wku.edu/madison_cty/13

This Report is brought to you for free and open access by TopSCHOLAR®. It has been accepted for inclusion in Madison County by an authorized administrator of TopSCHOLAR®. For more information, please contact topscholar@wku.edu.

RESOURCES FOR ECONOMIC DEVELOPMENT

Berea



KENTUCKY
The business environment is right.

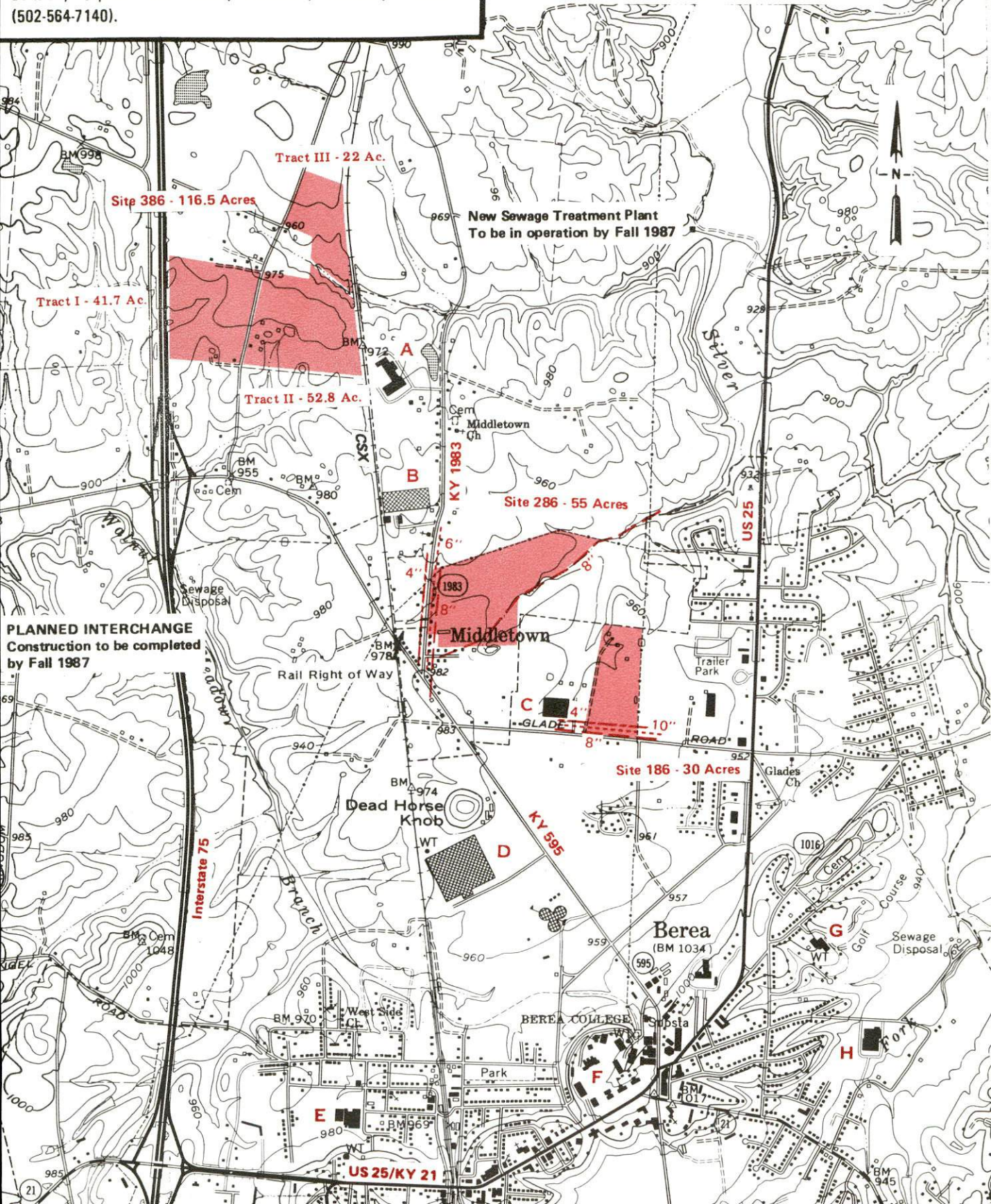
BEREA, KENTUCKY

Industrial Sites - 1986

For more information contact the Kentucky Department of Economic Development, Industrial Development & Marketing Division, Capital Plaza Tower, Frankfort, Kentucky 40601 (502-564-7140).

Existing Industries

- A Hyster Co.
- B Available Industrial Bldg. (230,000 sq. ft.)
- C Goodyear Aerospace Corp.
- D Gibson Greeting Card Co.
- E Parker Seal Co.
- F Berea College Industries
- G Churchill Weavers Inc.
- H Dresser Industries



RESOURCES FOR ECONOMIC DEVELOPMENT

BEREA, KENTUCKY

Prepared by
The Kentucky Department of Economic Development
Division of Research and Planning
in cooperation with
The Industrial Foundation of Berea, Inc.
and
The Berea Chamber of Commerce

1986

Program manager - Andrew Dennis; research - Bill Morris; clerical - Bobbi Graves; graphics - Frank Ferrante, Tony Cecconi, Robert Owens; cartography - Site Evaluation Branch, Division of Industrial Development and Marketing. Cost of printing paid from state funds.

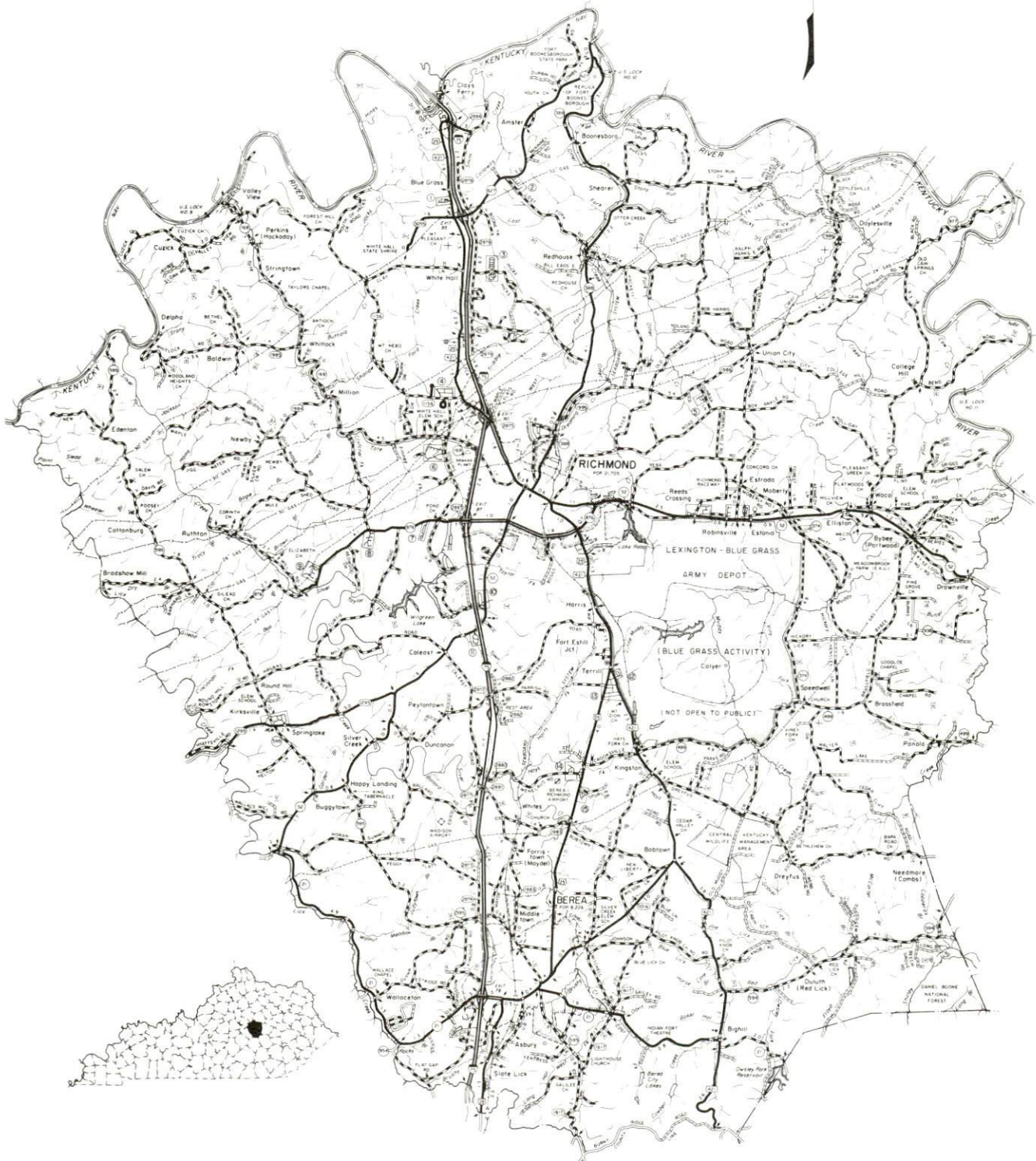
TABLE OF CONTENTS

| <u>Chapter</u> | <u>Page</u> |
|--|-------------|
| INDUSTRIAL SITES | i |
| BEREA, KENTUCKY - A RESOURCE PROFILE | 1 |
| LABOR MARKET STATISTICS | 2 |
| Population | 2 |
| Population Projections | 2 |
| Labor Force Characteristics of Residents, 1985 | 3 |
| Selected Components of Nonagricultural Employment, by Place of Work, 1985 | 3 |
| Per Capita Personal Income | 3 |
| Estimated Male Labor Supply | 4 |
| Estimated Female Labor Supply | 4 |
| Average Weekly Wages By Industry, by Place of Work, 1985 | 5 |
| EXISTING INDUSTRY | 7 |
| Berea Manufacturing Firms, Their Products and Employment | 7 |
| Labor Organizations in Manufacturing Firms | 8 |
| Other Major Berea Industries | 8 |
| Selected Industrial Services | 9 |
| TRANSPORTATION | 10 |
| Rail | 10 |
| Highways | 10 |
| Truck Service | 10 |
| Air | 11 |
| Air Express Service | 12 |
| Water | 12 |
| POWER AND FUEL | 13 |
| Electricity | 13 |
| Natural Gas | 13 |
| Other Fuels | 14 |
| WATER AND SEWERAGE | 15 |
| Public Water Supply | 15 |
| Sewerage | 17 |

| <u>Chapter</u> | <u>Page</u> |
|--------------------------------------|-------------|
| CLIMATE | 18 |
| LOCAL GOVERNMENT | 19 |
| Structure | 19 |
| Planning and Zoning | 19 |
| Local Fees and Licenses | 19 |
| State and Local Property Taxes | 20 |
| Safety | 21 |
| Police | 21 |
| Fire | 21 |
| Rescue Service | 21 |
| Refuse Collection and Disposal | 21 |
| EDUCATION | 22 |
| Public Schools | 22 |
| Nonpublic Schools | 22 |
| Area Colleges and Universities | 23 |
| Vocational Training | 24 |
| HEALTH..... | 26 |
| Local Medical Personnel | 26 |
| Hospitals | 26 |
| Other Medical Facilities | 26 |
| Ambulance Service | 26 |
| OTHER LOCAL FACILITIES..... | 27 |
| Communications | 27 |
| Library Services | 27 |
| Religious Institutions | 27 |
| Financial Institutions | 28 |
| Hotels and Motels | 28 |
| RECREATION | 29 |
| COMMUNITY IMPROVEMENTS | 32 |

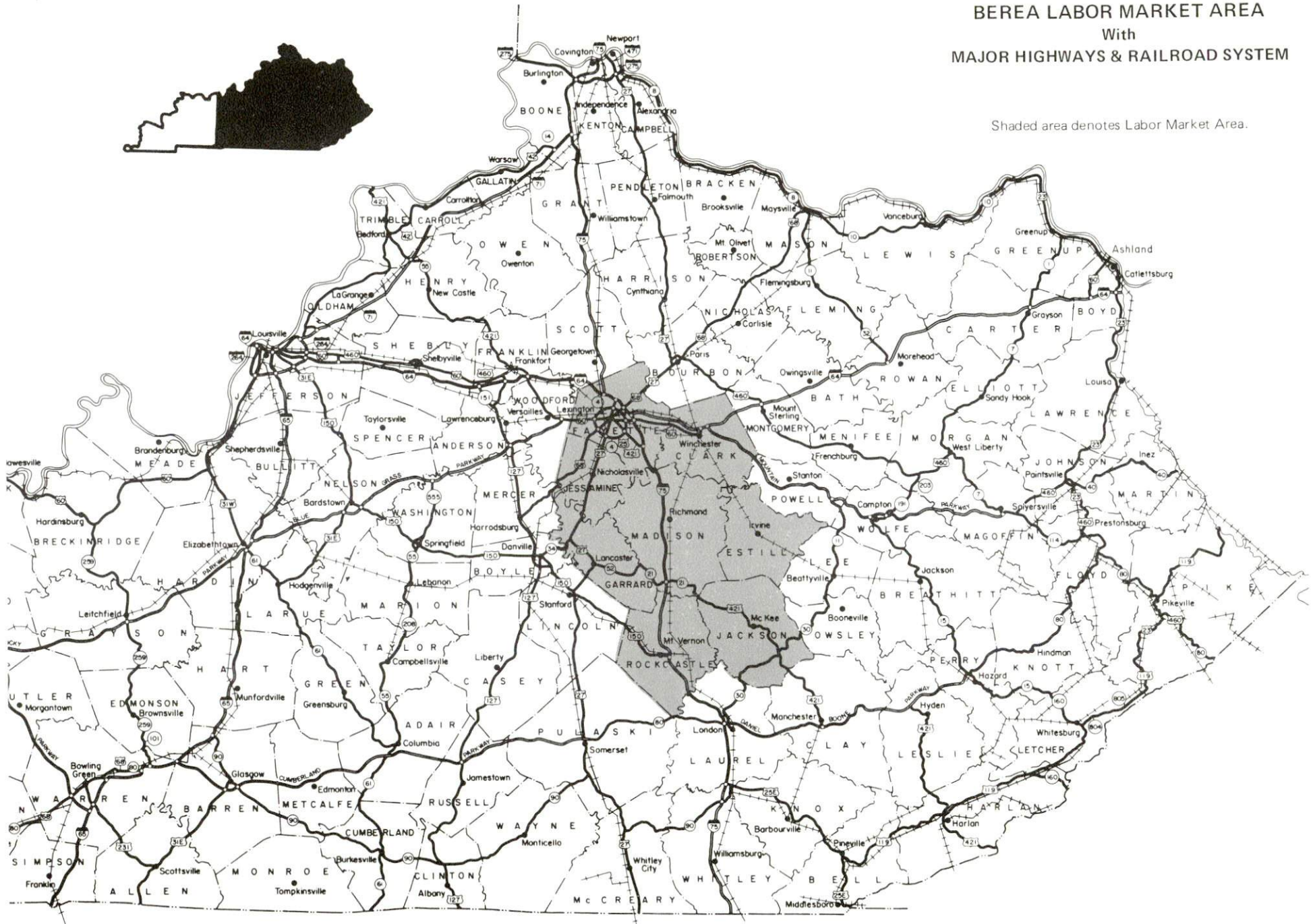
1986 EDITION
GENERAL HIGHWAY MAP
MADISON COUNTY
KENTUCKY

PREPARED BY THE
KENTUCKY TRANSPORTATION CABINET
DEPARTMENT OF HIGHWAYS
DIVISION OF PLANNING
IN COOPERATION WITH THE
U.S. DEPARTMENT OF TRANSPORTATION
FEDERAL HIGHWAY ADMINISTRATION



BEREA LABOR MARKET AREA With MAJOR HIGHWAYS & RAILROAD SYSTEM

Shaded area denotes Labor Market Area.



BEREA, KENTUCKY - A RESOURCE PROFILE

Berea, home of Berea College, is a major center for the production and marketing of Appalachian handicrafts. Berea is situated in southern Madison County near the edge of central Kentucky's Blue Grass Region. The city is located 39 miles south of Lexington, Kentucky; 116 miles southeast of Louisville, Kentucky; and 134 miles north of Knoxville, Tennessee.

Madison County covers a land area of 443 square miles and had a 1984 estimated population of 54,396 persons, with 8,595 persons living in the city of Berea.

Berea's reputation as a craft center is international -- one of quality, of authentic skills, and carefully preserved Appalachian heritage. The handicrafts are Berea's major tourist attraction, and many craft shops and galleries are open in Berea, including shops owned by organizations as well as by private individuals.

The Economic Framework - The total number of Madison County residents employed in 1985 averaged 25,230. Manufacturing firms in the county reported 3,340 employees; wholesale and retail trade provided 5,260 jobs; 2,930 people were employed in service occupations; state and local government accounted for 3,650 employees; and contract construction firms provided 540 jobs.

Labor Supply - There is a current estimated labor supply of 19,000 men and 20,295 women available for industrial jobs in the labor market area. In addition, from 1986 through 1990, 14,140 young men and 13,255 young women in the area will become 18 years of age and potentially available for industrial jobs.

Transportation - Berea receives main line freight service from CSX Transportation. "AAA"-rated highways serving Berea are Interstate Highway 75 and U.S. Highway 25. There are twenty-one common carrier trucking companies serving Berea. The nearest scheduled commercial airline service is available at Lexington's Bluegrass Airport, 44 miles northwest of Berea. The Madison Airport, 6 miles north of Berea, has a 4,000-foot paved runway and offers charter service.

Power and Fuel - Berea receives electric power from the Berea College Electric Utility, whose source of power is Kentucky Utilities Company. Kentucky Utilities Company also serves portions of Madison County, as do the Blue Grass Rural Electric Cooperative Corporation and the Clark Rural Electric Cooperative Corporation. Delta Natural Gas Company, Inc., provides natural gas service to Berea. Four propane dealers and seven fuel oil dealers are located within 25 miles of Berea.

Education - The Madison County School System and the Berea Independent School System (which is accredited by the Southern Association of Colleges and Schools) provide primary and secondary public education to residents of Berea and Madison County. Two nonpublic schools also operate in Madison County. Berea College is a private, four-year college offering a unique, tuition-free work/study program. Vocational training is available at the Madison County Area Vocational Education Center, 12 miles north of Berea, and at the Laurel County State Vocational-Technical School and the Central Kentucky State Vocational-Technical School, both within 40 miles of Berea.

LABOR MARKET STATISTICS

The Berea Labor Market Area includes Madison County and the adjoining Kentucky counties of Clark, Estill, Fayette, Garrard, Jackson, Jessamine and Rockcastle.

| POPULATION | | | | |
|-------------------|---------|---------|---------|--------------------------|
| Area | 1984* | 1980 | 1970 | Percent Nonwhite 1980 |
| Berea | 8,595 | 8,226 | 6,956 | 4.2 |
| Labor Market Area | 375,072 | 363,221 | 303,092 | N/A |
| Madison County | 54,396 | 53,352 | 42,730 | 6.8 |
| Clark County | 29,223 | 28,322 | 24,090 | 6.5 |
| Estill County | 14,991 | 14,495 | 12,752 | 0.2 |
| Fayette County | 210,150 | 204,165 | 174,323 | 14.5 |
| Garrard County | 11,292 | 10,853 | 9,457 | 5.5 |
| Jackson County | 12,473 | 11,996 | 10,005 | 0.1 |
| Jessamine County | 28,016 | 26,065 | 17,430 | 4.6 |
| Rockcastle County | 14,531 | 13,973 | 12,305 | 0.3 |

* Population estimates.

Note: The 1980 city counts of population by race are provisional.

Sources: U.S. Department of Commerce, Bureau of the Census, 1980 Census of Population and Housing, March 1981; 1980 Census of Population, Number of Inhabitants. University of Louisville, Urban Studies Center, Population Unit, October 1985; Kentucky Population Research Notes, Issue Number One, May 1985.

| POPULATION PROJECTIONS | | | | |
|------------------------|---------|---------|---------|---------|
| Area | 1990 | 1995 | 2000 | 2010 |
| Labor Market Area | 395,166 | 409,608 | 420,765 | 436,092 |
| Madison County | 54,156 | 54,005 | 53,820 | 52,894 |
| Clark County | 31,081 | 32,565 | 33,731 | 35,330 |
| Estill County | 15,704 | 16,303 | 16,779 | 17,470 |
| Fayette County | 223,311 | 232,104 | 238,725 | 247,882 |
| Garrard County | 11,849 | 12,252 | 12,543 | 12,899 |
| Jackson County | 12,882 | 13,246 | 13,570 | 14,052 |
| Jessamine County | 31,085 | 33,572 | 35,699 | 39,306 |
| Rockcastle County | 15,098 | 15,561 | 15,898 | 16,259 |

Source: University of Louisville, Urban Studies Center, Population Research Unit, How Many Kentuckians: Population Forecasts, 1980-2020, the 1986 Edition, Spring 1986.

LABOR FORCE CHARACTERISTICS OF RESIDENTS, 1985

| | <u>Madison County</u> | <u>Labor Market Area</u> |
|--------------------------|-----------------------|--------------------------|
| Civilian Labor Force | 26,976 | 194,275 |
| Employment | 25,229 | 181,987 |
| Unemployment | 1,747 | 12,288 |
| Rate of Unemployment (%) | 6.5 | 6.3 |

Source: Kentucky Cabinet for Human Resources, Kentucky Labor Force Estimates, Annual Averages, 1985.

SELECTED COMPONENTS OF NONAGRICULTURAL EMPLOYMENT,
BY PLACE OF WORK, 1985

| | <u>Madison County</u> | <u>Labor Market Area</u> |
|--------------------------|-----------------------|--------------------------|
| All Industries (total) | 16,640 | 156,552 |
| Manufacturing | 3,344 | 28,236 |
| Wholesale & Retail Trade | 5,263 | 40,829 |
| Services | 2,932 | 31,990 |
| State/Local Government | 3,647 | 25,826 |
| Contract Construction | 540 | 8,591 |

Note: Excludes domestic workers, railway workers, certain nonprofit corporations, majority of federal government workers, and self-employed workers.

Source: Kentucky Cabinet for Human Resources, Average Monthly Workers Covered by Kentucky Unemployment Insurance Law, 1985.

PER CAPITA PERSONAL INCOME

| <u>Area</u> | <u>1980</u> | <u>1984</u> | <u>Percent Change</u> |
|----------------------------|-----------------|------------------|---------------------------|
| Madison County | \$ 6,246 | \$ 8,782 | 40.6 |
| Labor Market Area Range | \$3,933 - 9,977 | \$5,548 - 14,421 | N/A |
| Kentucky | 7,644 | 10,232 | 33.9 |
| U. S. | 9,494 | 12,772 | 34.5 |

Sources: U.S. Department of Commerce, Bureau of Economic Analysis. Kentucky Economic Information System, June 1986.

ESTIMATED MALE LABOR SUPPLY
BEREA LABOR MARKET AREA

| Area | Current | | | Not in Labor Force | Future |
|--------------|---------------|------------|--------------------|-----------------------|--|
| | Total Male | Unemployed | Under- employed | | Becoming 18 years of age 1986 thru 1990 |
| Labor Market | | | | | |
| Area* | 19,000 | 7,175 | 10,291 | 1,534 | 14,137 |
| Madison | 2,717 | 903 | 1,814 | 0 | 1,919 |
| Clark | 1,129 | 632 | 497 | 0 | 1,296 |
| Estill | 1,513 | 483 | 408 | 622 | 699 |
| Fayette | 8,904 | 3,229 | 5,675 | 0 | 7,443 |
| Garrard | 905 | 353 | 285 | 267 | 429 |
| Jackson | 1,408 | 522 | 353 | 533 | 594 |
| Jessamine | 1,433 | 549 | 884 | 0 | 1,082 |
| Rockcastle | 991 | 504 | 375 | 112 | 675 |

ESTIMATED FEMALE LABOR SUPPLY
BEREA LABOR MARKET AREA

| Area | Current | | | Not in Labor Force | Future |
|--------------|-----------------|------------|--------------------|-----------------------|--|
| | Total Female | Unemployed | Under- employed | | Becoming 18 years of age 1986 thru 1990 |
| Labor Market | | | | | |
| Area* | 20,295 | 5,113 | 11,700 | 3,482 | 13,255 |
| Madison | 3,277 | 844 | 2,433 | 0 | 1,814 |
| Clark | 1,275 | 639 | 636 | 0 | 1,131 |
| Estill | 1,600 | 223 | 295 | 1,082 | 629 |
| Fayette | 9,140 | 2,375 | 6,765 | 0 | 7,136 |
| Garrard | 1,009 | 223 | 196 | 590 | 373 |
| Jackson | 1,498 | 191 | 173 | 1,134 | 518 |
| Jessamine | 1,351 | 330 | 1,021 | 0 | 1,069 |
| Rockcastle | 1,145 | 288 | 181 | 676 | 585 |

* Additional workers may be drawn from other nearby counties.

Note: Unemployed - persons unemployed and actively seeking work;
Underemployed - persons employed but working only 14 to 26 weeks per year;
Not in Labor Force - represents the number of persons who would enter the labor force if suitable employment were available (based on the assumption that persons in Kentucky would like to participate in the labor force in the same proportion that they do nationally).

Sources: Kentucky Cabinet for Human Resources, Kentucky Labor Supply Estimates by County, 1985. Kentucky Department of Economic Development, Future Labor Supply Becoming 18 Years of Age, 1986 thru 1990.

AVERAGE WEEKLY WAGES BY INDUSTRY,
BY PLACE OF WORK, 1985

| | <u>Madison County</u> | <u>Clark County</u> | <u>Estill County</u> | <u>Fayette County</u> |
|---|---------------------------|---------------------------|-----------------------------|------------------------------|
| All Industries | \$271.60 | \$318.58 | \$253.94 | \$334.95 |
| Mining & Quarrying | * | * | 411.19 | 733.11 |
| Contract Construction | 274.23 | 344.07 | 117.95 | 339.93 |
| Manufacturing | 390.48 | 399.16 | * | 533.18 |
| Transportation, Communications & Public Utilities | 295.76 | 508.00 | 324.01 | 401.22 |
| Wholesale & Retail Trade | 178.76 | 197.95 | 176.37 | 224.06 |
| Finance, Insurance & Real Estate | 308.09 | 294.13 | 244.52 | 351.92 |
| Services | 233.50 | 211.14 | 166.26 | 285.59 |
| State/Local Government | 322.16 | 280.77 | 276.29 | 356.53 |
| Other | 153.48 | 116.39 | * | 286.06 |
| | <u>Garrard County</u> | <u>Jackson County</u> | <u>Jessamine County</u> | <u>Rockcastle County</u> |
| All Industries | \$205.20 | \$244.51 | \$262.49 | \$196.01 |
| Mining & Quarrying | * | 330.56 | * | 382.98 |
| Contract Construction | 247.69 | 228.76 | 290.82 | 150.58 |
| Manufacturing | 204.82 | 187.96 | 321.75 | 187.39 |
| Transportation, Communications & Public Utilities | 328.36 | 311.93 | 320.03 | 237.30 |
| Wholesale & Retail Trade | 137.67 | 181.11 | 219.60 | 150.98 |
| Finance, Insurance & Real Estate | 275.51 | * | 248.61 | 209.88 |
| Services | 212.48 | 211.72 | 208.05 | 189.64 |
| State/Local Government | 220.87 | 243.71 | 232.48 | 245.70 |
| Other | 161.46 | * | 257.10 | * |

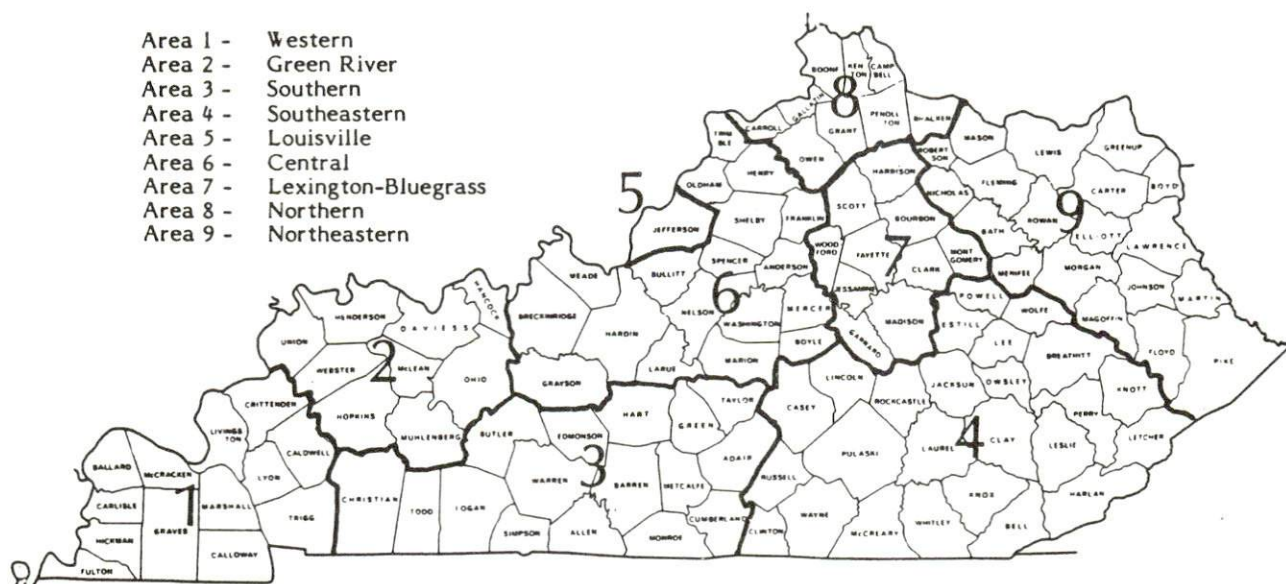
* Not disclosed.

Note: The average weekly wage for each category includes the salaries and wages of all persons working for that type business. For example, the manufacturing category includes both production workers and administrative personnel. Excludes domestic workers, railway workers, certain nonprofit corporations, majority of federal government workers, and self-employed workers.

Source: Kentucky Cabinet for Human Resources, Average Weekly Wages of Workers Covered by Kentucky Unemployment Insurance Law, 1985.

Occupational wage rates for specific industries are usually not available to most government agencies, and wage data furnished to state employment agencies by individual industrial employers are protected from disclosure by federal law. The most reliable up-to-date wage information can be obtained by direct contact with local employers.

Associated Industries of Kentucky, a voluntary organization of Kentucky businesses, regularly collects occupational wage rates and fringe benefits data from participating member firms. Data are compiled for over 127 clearly defined office, production, and service occupations. Tabulations are published for nine geographical areas of Kentucky, as shown on the map below. It should be noted that the data may be weighted by the preponderance of firms in the larger cities and may be somewhat higher than the rates paid in the smaller communities. Data from these tabulations are available, upon request, from the Kentucky Department of Economic Development, Frankfort, Kentucky 40601.



Associated Industries of Kentucky Area Wage Surveys

EXISTING INDUSTRY

BEREA MANUFACTURING FIRMS, THEIR PRODUCTS AND EMPLOYMENT

| <u>Firm</u> (Establishment date) | <u>Product</u> | <u>Employment</u> | | | <u>Labor Unions</u> |
|--|---|-------------------|-------------|---------------|------------------------|
| | | <u>Total</u> | <u>Male</u> | <u>Female</u> | |
| Berea College Student Craft Programs (1855) | Furniture, wooden games, kitchen items, fireside brooms | 225 | 108 | 117 | |
| The Berea Citizen (1904) | Newspaper | 5 | 1 | 4 | |
| Booneway Farms, Inc. (1982) | Jellies and preserves | 24 | -- | -- | |
| Churchill Weavers, Inc. (1922) | Baby blankets, afghans, ties, ladies' apparel accessories | 43 | 8 | 35 | |
| Dresser Industries, Instrument Division (1961) | Pressure gauges | 430 | 132 | 298 | Industrial Workers* |
| Gibson Greeting Card Company (1967) | Candles, pom pom bows, gifts | 379 | 111 | 268 | Firemen and Oilers* |
| Hyster Company (1973) | Industrial lift trucks and uprights | 356 | 308 | 48 | |
| Motor Wheel Corporation (1972) | Truck hubs, truck brake drums | 157 | -- | -- | |
| Parker Seal Company (1951) | Rubber O-rings | 320 | 120 | 200 | Firemen and Oilers* |

(Continued)

| <u>Firm (Establishment date)</u> | <u>Product</u> | <u>Employment</u> | | | <u>Labor Unions</u> |
|----------------------------------|---|-------------------|-------------|---------------|---------------------|
| | | <u>Total</u> | <u>Male</u> | <u>Female</u> | |
| Phoenix Products, Inc. (1973) | Fiberglass kayaks, custom-manufactured waterproof containers, fiberglass custom cases | 20 | 4 | 16 | |
| Tree Finery Workshop (1979) | Custom furniture | 2 | -- | -- | |
| Wyatt Supply, Inc. (1947) | Concrete block, ready-mixed concrete | 16 | 15 | 1 | |

*See Labor Organizations below.

Sources: Kentucky Department of Economic Development, 1986 Kentucky Directory of Manufacturers; Division of Research and Planning.

LABOR ORGANIZATIONS IN MANUFACTURING FIRMS

| <u>Union</u> | <u>Representing workers at:</u> |
|--|--|
| International Brotherhood of Firemen and Oilers, AFL-CIO | Gibson Greeting Card Company; Parker Seal Company |
| International Union, Allied Industrial Workers of America, AFL-CIO | Dresser Industries, Instrument Division |

Other Major Berea Industries

Appalachian Computer Services (ACS), a computer data service company, operates a facility at Berea which employs 300 persons. The company provides data conversion, data processing, document processing and word processing services.

SELECTED INDUSTRIAL SERVICES

| <u>Types of Services</u> | <u>Location</u> | <u>Mileage from Berea</u> |
|---------------------------------|-----------------|-------------------------------|
| Computer Data Conversion | Berea | - |
| Custom Plastics Producers | Berea | - |
| Electric Motor Repair | Winchester | 35 |
| | Lexington | 39 |
| Grinding, Precision & Tool | Richmond | 12 |
| Heat Treating Facilities | Richmond | 12 |
| Industrial Equipment & Supplies | Lexington | 39 |
| Industrial Gases | London | 38 |
| | Lexington | 39 |
| Industrial Waste Removal | Lexington | 39 |
| Machine Shops, Tool & Die | Berea | - |
| Metal Finishers | Richmond | 12 |
| Metal Service Centers | Lexington | 39 |
| Millwrights | Lexington | 39 |
| Public Warehouse Facilities | Lexington | 39 |

Sources: Kentucky Department of Economic Development, Kentucky Directory of Selected Industrial Services, 1985; Division of Research and Planning.

TRANSPORTATION

Rail

Line serving **Berea** - CSX Transportation

Services - Main line; freights stop as needed; two northbound and two southbound through freights daily; switching services; team track space for 6 cars. The nearest piggyback facilities are maintained by Southern Railway at Danville, 53 miles west of Berea.

For details on routing, schedules, rates, and services, contact:

Manager of Industrial Development
CSX Transportation
P.O. Box 2157
Louisville, Kentucky 40201
(502) 587-5228

Highways

Interstate Highway 75 and U.S. Highway 25 are "AAA"-rated (80,000-pound gross load limit) trucking highways serving Berea. An interchange of Interstate 75 is located one mile west of the center of Berea, and the highway provides direct access to Interstate 64, 37 miles north of Berea near Lexington. The Mountain Parkway is accessible 38 miles north of Berea, and provides multilane highway access to eastern Kentucky. The Blue Grass Parkway, accessible 49 miles northwest of Berea, provides multilane highway access to western Kentucky.

Truck Service

ABF Freight System, Inc.*
ANR Freight System, Inc.**
ARA/Smith's*
Bailey's Express, Inc.*
Bestway Express, Inc.**
CW Transport, Inc.*
Carolina Freight Carriers
Corporation*
Central Transport, Inc.**
Consolidated Freightways
Corporation of Delaware**
Duff Truck Line, Inc.*

Lawrenceburg Transfer Company,
Inc.*
Manning Motor Express, Inc.*
Middlewest Freightways, Inc.*
The O.K. Trucking Company*
Overnite Transportation Company*
Owenton Express, Inc.*
Preston Trucking Company, Inc.*
Roadway Express, Inc.*
Ryder/P-I-E Nationwide, Inc.**
Suburban Motor Freight, Inc.*
Transcon Lines*

* Interstate and intrastate service.

** Interstate service only.

Source: American Motor Carrier Directory, Spring 1986.

HIGHWAY MILES AND TRUCK TRANSIT TIME IN DAYS FROM
BEREA, KENTUCKY, TO SELECTED MARKET CENTERS

| City | Highway Miles | Delivery | | City | Highway Miles | Delivery | |
|------------------|------------------|------------|--|------------------|------------------|------------|--|
| | | Time TL | | | | Time TL | |
| Atlanta, Ga. | 327 | 1 | | Los Angeles, Ca. | 2,219 | 5 | |
| Baltimore, Md. | 572 | 2 | | Louisville, Ky. | 116 | 1 | |
| Birmingham, Ala. | 388 | 2 | | Nashville, Tenn. | 238 | 1 | |
| Chicago, Ill. | 391 | 1 | | New Orleans, La. | 730 | 2 | |
| Cincinnati, Ohio | 121 | 1 | | New York, N. Y. | 742 | - | |
| Cleveland, Ohio | 356 | 1 | | Pittsburgh, Pa. | 382 | 2 | |
| Detroit, Mich. | 376 | 1 | | St. Louis, Mo. | 374 | 2 | |
| Knoxville, Tenn. | 134 | 1 | | | | | |

Note: Mileage computations are via the best interstate or primary highways, not necessarily the most direct route of travel.

Sources: Rand McNally Road Atlas, 1979. Official Kentucky Mileage Map, 1985.
Delivery time - Overnite Transportation Company, Lexington, Kentucky.

Air

Local

Madison Airport*

Location: 6 miles north of Berea
Runway: 1 paved
Length: 4,000 feet
Traffic
Control: Lighted wind cone
Lighting: Runway, taxiway, VASI, REIL and MIRL, beacon
Services: 100LL and jet-A fuel; major A & P repairs; tie-down; plane rental; hangar with office, lobby, and maintenance shop; flight training; charter; parking; car rental

Air Freight Service: Chartered air freight services must be arranged

Lackey Airport

Location: 5 miles north of Berea
Runway: 1 turf
Length: 2,400 feet
Traffic
Control: None
Lighting: None
Services: 100LL fuel, tie-down, sport parachuting

(Continued)

* Construction of an interchange at the junction of Interstate 75 and Kentucky 595 is scheduled to begin during 1986. The new interchange will provide direct access from I-75 to the Madison Airport.

Nearest Scheduled Commercial Airline Service

| | |
|-------------------------|--|
| Location: | Bluegrass Airport 5 miles west of Lexington, Kentucky; 44 miles northwest of Berea |
| Runways: | 2 paved |
| Length: | 7,000 feet; 3,500 feet |
| Traffic | |
| Control: | Tower |
| Lighting: | Approach lighting system, beacon, runways and obstructions lighted, VASI |
| Services: | Delta, Piedmont, United, USAir, Allegheny Commuter, Piedmont Commuter, Eastern Metro, Comair, American Eagle; fuel - 100LL and jet-A; hangars, tie-downs; major A & P repairs; major Avionics repairs; APU, charter, flight instruction, oxygen, plane rentals, survival equipment; taxi, limousine, car rentals, courtesy car, weather information; restaurant, snack bar |
| Air Freight Service: | Air freight terminal |

Air Express Service

Several major companies offer air express services in Kentucky. These companies provide a quick means of shipping small to medium-sized packages expeditiously.

Water

The Kentucky River forms the northern boundary of Madison County. The nearest navigable point on the Kentucky River is located at Frankfort, 66 miles northwest of Berea, where a 6-foot navigation channel begins.

POWER AND FUEL

Electricity

Company serving **Berea and parts of Madison County** - Berea College Electric Utility

Source of power - Kentucky Utilities Company
For industrial rates contact:

Berea College Electric Utility
C.P.O. 2337
Berea, Kentucky 40404
(606) 986-3451 or (606) 986-4611

Company serving **parts of Madison County** - Kentucky Utilities Company

Source of power - Kentucky Utilities Company
For industrial rates contact:

Industrial Development Department
Kentucky Utilities Company
One Quality Street
Lexington, Kentucky 40507
(606) 255-1461

Companies serving **parts of Madison County** - Blue Grass Rural Electric Cooperative Corporation and Clark Rural Electric Cooperative Corporation

Source of power - East Kentucky Power Cooperative
For industrial rates contact:

Industrial Development Division
East Kentucky Power Cooperative
P.O. Box 707
Winchester, Kentucky 40391
(606) 744-4812

Natural Gas

Company serving **Berea** - Delta Natural Gas Company, Inc.

Source of supply - Tennessee Gas Pipeline Company
Size of transmission mains - 30 inches (supplier); 2, 4, and 6 inches (distributor)
Distribution mains - 1 to 6 inches
Distribution pressure - 15 psi to 80 psi
Btu content - 1,020 per cubic foot
Specific gravity - 0.65
For rates and supplies contact:

Manager of Marketing and Public Relations
Delta Natural Gas Company, Inc.
Route 1, Box 30A
Winchester, Kentucky 40391
(606) 744-6171

Other Fuels (Within 25 miles)

Propane

Buckeye Gas Products
Company
Edwards Avenue
P.O. Box 741
Richmond, Kentucky 40475

Crawford Gas & Appliances,
Inc.
Big Hill Avenue
P.O. Box 833
Richmond, Kentucky 40475

Parsons Gas & Appliance Service,
Inc.
Route 3
Mount Vernon, Kentucky 40456

Southern States Cooperative, Inc.,
Richmond Kentucky Service
Irvine Road
P.O. Box 916
Richmond, Kentucky 40475

Fuel oils

Distillate fuel oil -

Ammons Oil Company
305 Jefferson Street
P.O. Box 29
Berea, Kentucky 40403

Chevron U.S.A., Inc.
Boggs Lane
Richmond, Kentucky 40475

Cole Oil Company, Inc.
P.O. Box 93
McKee, Kentucky 40447

Congleton's Oil Company, Inc.
Route 3
Richmond, Kentucky 40475

Grimes and Curry,
Ashland Oil Agents
Quality Drive
Route 2
Richmond, Kentucky 40475

Jenkins Fuel Oil and Gas, Inc.
P.O. Box 328
Richmond, Kentucky 40475

Red Hed Oil Company, Inc.
Irvine Road
Richmond, Kentucky 40475

Residual fuel oil - Arrangements must be made with the refinery.

Low sulphur content coal - Available in Kentucky.

WATER AND SEWERAGE

Public Water Supply

Company serving **Berea** - Berea College Water Utility
C.P.O. 2337
Berea, Kentucky 40404
(606) 986-4611 or (606) 986-3451

Source - Four man-made lakes

Treatment plant capacity - 3,000,000 gallons per day

Average daily consumption - 1,350,000 gallons

Peak daily consumption - 2,000,000 gallons

Type treatment - Rapid mix, coagulation, flocculation, sedimentation, filtration, chlorination, and fluoridation

Storage capacity - 1,045,000 gallons including clearwell

Size lines - 12, 10, 8, 6, 4, and 2 inches

Average pressure - 60 psi to 75 psi

MONTHLY WATER RATES

| | | |
|----------|-------------------|-------------------------|
| First | 200 cubic feet | \$4.90 (Minimum) |
| Next | 1,800 cubic feet | 2.35 per 100 cubic feet |
| Next | 3,000 cubic feet | 2.10 per 100 cubic feet |
| Next | 5,000 cubic feet | 1.85 per 100 cubic feet |
| Next | 5,000 cubic feet | 1.50 per 100 cubic feet |
| All over | 15,000 cubic feet | 1.25 per 100 cubic feet |

Tap-on charge: None

Annual Rental for Fire Protection

The usual stand-by rates charged for non-metered service to facilities which require large-diameter water lines and fire hydrants, but which use no water except in the event of a fire are as follows:

| | |
|-------------------------------------|--------------------|
| Lines 6 inches in diameter or under | \$ 33.00 per month |
| Lines 8 inches in diameter | 46.50 per month |
| Lines 10 inches in diameter | 60.00 per month |
| Lines 12 inches in diameter | 73.00 per month |

Fire hydrants: \$116 per hydrant per year

Name of water district - Southern Madison Water District*
P.O. Box 168
Berea, Kentucky 40403
(606) 986-9031

Area served - Southern Madison County

Date when water district began operating - 1969

Source of supply of treated water - Berea College Water Utility

Average amount of water used in a 24-hour period - 317,649 gallons

Peak amount of water used in a 24-hour period - 343,920

Storage capacity - None

Average pressure - 36 psi to 140 psi

Size lines - 8, 6, 4, and 2 inches

MONTHLY WATER RATES

| | | |
|----------|----------------|--------------------|
| First | 2,000 gallons | \$9.26 (Minimum) |
| Next | 1,000 gallons | 4.54 per M gallons |
| Next | 3,000 gallons | 4.13 per M gallons |
| Next | 4,000 gallons | 3.67 per M gallons |
| Next | 15,000 gallons | 2.79 per M gallons |
| Next | 25,000 gallons | 2.49 per M gallons |
| All over | 50,000 gallons | 1.94 per M gallons |

Tap-on charge:

3/4-inch meter - \$225

Larger meter - Actual cost of labor and materials

* Improvements planned by the Southern Madison Water District include construction of a 100,000-gallon storage tank and installation of 2 miles of new lines.

Sewerage

Company serving **Berea** - Berea Sewer Commission*

P.O. Box 405
Berea, Kentucky 40403
(606) 986-4391

Design capacity - Plant #1 - 1,000,000 gallons per day
Plant #2 - 500,000 gallons per day
Total - 1,500,000 gallons per day

Average daily flow - At capacity

Type of treatment - Plant #1 - tertiary; Plant #2 - secondary

Treatment processes - Plant #1 - Screening, grit removal, trickling filter,
secondary sedimentation, chlorination,
anaerobic digester, sludge drying beds
Plant #2 - Screening, grit removal, activated sludge,
chlorination

Treated effluent discharged into - Plant #1 - Silver Creek at Brushy Fork
Plant #2 - Walnut Meadow Brook

Size of sanitary mains - 8 to 15 inches

Monthly rates - Based on monthly water usage:

First 200 cubic feet - \$6.35 (Minimum)
Each additional 100 cubic feet - \$2.40

Tap-on charge: \$200

* Construction of a new \$12,800,000 wastewater treatment facility is under way. When completed in 1987, the plant will have a design capacity of 2,100,000 gallons per day. Tentative plans are to use the existing treatment plants as pump stations when the new plant is complete.

CLIMATE

Madison County

Temperature

| | |
|---|----------------|
| Normal (30-year record) | 54.90 degrees |
| Average annual 1985 | 54.60 degrees |
| Record highest, August 1983 (41-year record) | 103.00 degrees |
| Record lowest, January 1963 (41-year record) | -21.00 degrees |
| Normal heating degree days (30-year record) (Heating degree day totals are the sums of negative departures of average daily temperatures from 65 degrees F.) | 4,814 |

Precipitation

| | |
|---|--------------|
| Normal (30-year record) | 45.68 inches |
| Mean annual snowfall (30-year record) | 16.50 inches |
| Total precipitation 1985 | 37.75 inches |
| Mean number days precipitation (.01 inch or more) (41-year record) | 130.70 |
| Mean number days thunderstorms (41-year record) | 45.80 |

Prevailing Winds (through 1963)

South

Relative Humidity

| | |
|--------|-----------------------------|
| 1 a.m. | 77 percent (21-year record) |
| 7 a.m. | 82 percent (22-year record) |
| 1 p.m. | 60 percent (22-year record) |
| 7 p.m. | 64 percent (22-year record) |

Source: U.S. Department of Commerce, Environmental Science Services Administration, Climatological Data, 1985. Station of record: Lexington, Kentucky.

LOCAL GOVERNMENT

Structure

Berea is served by a mayor and eight council members. Madison County is served by a county judge/executive and four magistrates.

Planning and Zoning

City agency - Berea Planning and Zoning Commission

Zoning enforced - Within the city of Berea

Subdivision regulations enforced - Within the city and 3 miles beyond the corporate limits

Local codes enforced - Building, housing and fire codes

Mandatory state codes enforced - Kentucky Plumbing Code, National Electric Code, Kentucky Boiler Regulations and Standards, Kentucky Building Code (modeled after BOCA code)

Local Fees and Licenses

Madison County began levying a one percent tax on wages and on net profits of businesses on June 1, 1986. The tax levy could be halted if voters do not approve it in the November 1986 election. The city of Berea levies a one and one-half percent tax on wages and on net profits of businesses. Taxpayers located within the city of Berea will be subject to both city and county taxes.

A 3 percent tax is levied on utilities receipts for schools in Madison County. Tax is paid by all consumers of utilities as an add-on to the utilities bills. Exempted are receipts from utilities services that are resold and the receipts from the sale of energy or energy producing fuels that exceed 3 percent of the cost of production in manufacturing, processing, mining or refining.

State and Local Property Taxes

All property in Kentucky, except items exempted by the state constitution, is taxed by the state. Property which also may be taxed by local jurisdictions includes land and buildings, finished goods inventories, automobiles, trucks, office furniture and office equipment. Local taxing jurisdictions in Kentucky include counties, cities, and school districts.

All property in Kentucky is assessed at 100 percent of fair cash value.

COMBINED STATE AND LOCAL RATES PER \$100 VALUATION, 1985

| | <u>Berea and Berea School District</u> | <u>Berea and Madison County School District</u> | <u>Unincorporated Madison County</u> |
|--|--|---|--|
| Land and Buildings | \$ 0.9002 | \$ 0.5422 | \$ 0.4910 |
| Manufacturing Machinery | 0.150 | 0.150 | 0.150 |
| Pollution Control Equipment | 0.150 | 0.150 | 0.150 |
| Inventories | | | |
| Raw materials | 0.001* | 0.001* | 0.001* |
| Goods in Process | 0.001* | 0.001* | 0.001* |
| Finished Goods | 0.6882* | 0.3302* | 0.2790* |
| Automobiles and Trucks | 1.1202 | 0.7792 | 0.7280 |
| Other Tangible Personal Property | 1.1372 | 0.7792 | 0.7280 |
| Intangibles (Accounts receivable, money in hand, stock, notes, bonds) | 0.250** | 0.250** | 0.250** |
| Goods Stored in Public Warehouses in Transit Status | 0.001* | 0.001* | 0.001* |
| Private Leaseholds in Industrial Revenue Bond Financed Facilities | 0.015 | 0.015 | 0.015 |

Two special taxing districts in Madison County levy property taxes on real estate in their district boundaries at rates of \$0.10 per \$100 valuation and \$0.003 per acre, respectively.

* Includes 1986 state rate.

** Accounts receivable are taxed at 85 percent of face value, for an effective rate of \$0.2125 per \$100 valuation.

Safety

| Police | Berea | Madison County |
|---|-------|----------------|
| Total staff | 18 | 8 |
| Radio-patrol cars | 5 | 5 |
| Fire* | | |
| Insurance Services Office, Public Protection Classification | 5 | ** |
| Full-time staff | 13 | -- |
| Volunteers | 30 | 60 |
| Rescue Service | | |

The Berea Volunteer Fire Rescue Squad, a part of the Berea Volunteer Fire Department, provides rescue service to the community.

Refuse Collection and Disposal

Municipal refuse collection service is provided to residential, commercial, and industrial customers inside the city of Berea. Private haulers contract with customers in outlying Madison County and with some industrial customers in the city. The city will negotiate terms for use of its landfill on an individual basis by industrial firms.

* Includes copyrighted material of ISO Commercial Risk Services, Inc., with its permission.

** Property within the Berea Fire District that is located 3 road miles or less from Berea Fire Station #1 has a class 6 rating if within 1,000 feet of a fire hydrant, and a class 9 rating if more than 1,000 feet from a fire hydrant. Property within the Madison County Fire District or the White Hall Fire District that is located 5 road miles or less from a fire station has a class 9 rating. The remainder of Madison County has a class 10 rating.

EDUCATION

Public Schools

| | Berea Independent | Madison County |
|--|--|-------------------|
| Total Enrollment (Spring, 1986) | 998 | 6,884 |
| Kindergarten | 81 | 505 |
| Elementary | 412 | 3,310 |
| Middle School | - | 1,121 |
| High School | 505 | 1,948 |
| Accreditation | Southern Association of Colleges and Schools | - |
| Pupil-Teacher Ratio (1984-85) | 17-1 | 20-1 |
| Percent High School Graduates to College (1984-85) | 52.2 | 68.2 |
| Expenditures Per Pupil (1984-85) | \$2,115.11 | \$1,657.31 |

Nonpublic Schools

| <u>School</u> | <u>Enrollment</u> | <u>Grades</u> |
|--------------------------------------|-------------------|-------------------------------------|
| Berea Christian Montessori School | 15 | Pre-school (2 to 5 years of age) |
| Model Laboratory (Richmond)* | 532 | K-12 |
| St. Mark Elementary (Richmond) | 150 | K-8 |

* The Model Laboratory School of Eastern Kentucky University is accredited by the Southern Association of Colleges and Schools. Model Laboratory enrollment is included in the enrollment figures for the Madison County School System.

Area Colleges and Universities

| <u>Name</u> | <u>Location (Miles distant)</u> | <u>Enrollment (Fall, 1985)</u> | <u>Highest Degree Conferred</u> |
|--------------------------------|-------------------------------------|------------------------------------|-------------------------------------|
| Berea College | Berea | 1,566 | Baccalaureate |
| Eastern Kentucky University | Richmond (12) | 12,229 | Masters, Specialist* |
| Sue Bennett College | London (38) | 403 | Associate |
| Lexington Community College | Lexington (39) | 2,538 | Associate |
| Transylvania University | Lexington (39) | 856 | Baccalaureate** |
| University of Kentucky | Lexington (39) | 20,895 | Doctorate, M.D., D.M.D., J.D. |
| Somerset Community College | Somerset (43) | 1,161 | Associate |
| Georgetown College | Georgetown (53) | 1,315 | Masters |
| Asbury College | Wilmore (54) | 980 | Baccalaureate |
| Midway College | Midway (54) | 314 | Associate |
| Centre College | Danville (55) | 804 | Baccalaureate |

Berea College

Berea College is a private, four-year, tuition-free institution with courses of study leading to B.A. and B.S. degrees in agriculture, business administration, home economics, industrial arts, the liberal arts, and nursing. The college's unique tuition-free program requires all students to participate in work-study assignments designed to help the students develop useful skills and responsible, cooperative attitudes. The work-study program also provides students with a source of income and helps defray the cost of a sound college education for promising students who are otherwise unable to meet usual college expenses.

* Joint doctoral degree programs are offered in cooperation with the University of Kentucky, Lexington. The degrees are issued by the University of Kentucky.

** Courses in a masters degree program are taught on the Transylvania campus by faculty members of Xavier University of Cincinnati. The degree is issued by Xavier University.

Vocational Training

The Bluegrass State Skills Corporation, an independent public corporation created and funded by the Kentucky General Assembly, provides programs of skills training to meet the needs of business and industry from entry level to advanced training, and from upgrading present employees to retraining experienced workers.

The Bluegrass State Skills Corporation is the primary source for skills training assistance for a new or existing company. The Corporation works in partnership with other employment and job training resources and programs, as well as Kentucky's economic development activities, to package a program customized to meet the specific needs of a company.

Vocational training is available at both the state vocational-technical schools and the area vocational education centers. The state vocational-technical schools are post-secondary institutions. The area vocational education centers are designed to supplement the curriculum of high school students. Both the state vocational-technical schools and the area vocational education centers offer evening courses to enable working adults to upgrade current job skills.

Arrangements can be made to provide training in the specific production skills required by an industrial plant. Instruction may be conducted either in the vocational school or in the industrial plant, depending upon the desired arrangement and the availability of special equipment.

Nearest State Schools

Laurel County State Vocational-Technical School
London, 38 miles distant

| | |
|--|--------------------------|
| Consumer & Home Economics | Drafting (with CAD/CAM) |
| Commercial Foods | Electricity |
| Consumer & Family Life Skills | Machine Shop |
| Health & Personal Services Occupations | Masonry |
| Cosmetology | Plant Maintenance |
| Medical Assistant | Welding |
| Industrial Education | Learning Resource Center |
| Air Conditioning & Heating | Computer Literacy |
| Auto Body Repair | Academic Remediation |
| Auto Mechanics | GED Testing & Study |
| Carpentry | |

(Continued)

Central Kentucky State Vocational-Technical School
Lexington, 39 miles distant

Academic Related Subjects

Language

Math

Technical Related Math

Business & Office

Accounting

Clerical

Secretarial

Consumer & Home Economics

Commercial Foods

Distributive Education

Retail Training-Merchandising/

Food Marketing

Hotel/Motel-Waiter/Waitress-

Housekeeping Services

Health & Personal Services Occupations

Cosmetology

Dental Assistant

Nurse's Aide

Practical Nursing

Surgical Technician

Ward Clerk

Medications Aide

Home Health Care

Geriatric

Industrial Education

Air Conditioning

Auto Body Repair

Auto Mechanics

Carpentry

Drafting (with CAD/CAM)

Electronics

Graphic Arts

Industrial Electricity

Machine Shop

Masonry

Welding

Learning Resource Center

GED

Public Service

E.M.T. Training

Fire Training

Cardiopulmonary Resuscitation

First Aid

Industrial Fire Brigade Training

Apprenticeship

Electrical

Tool & Die

Up-Grade Programs

Nearest Area Education Center

Madison County Area Vocational Education Center
Richmond, 12 miles distant

Business & Office

Accounting/Jr. Management

Clerical

Secretarial

Health & Personal Services Occupations

Health Services

Industrial Education

Auto Mechanics

Drafting

Machine Shop

Welding

Learning Resource Center

HEALTH

Local Medical Personnel

Physicians - 20

Dentists - 5

Hospitals

| <u>General Hospital</u> | <u>Location</u> | <u>Beds</u> |
|-------------------------|-----------------|------------------------|
| Berea Hospital, Inc. | Berea | 73 acute 37 skilled |

Medical staff - 29 doctors, 47 registered nurses, and 10 licensed practical nurses

Other Medical Facilities

Berea Health Clinic at Berea Hospital, Inc. (operated one day per week by the Madison County Health Department, a public health agency based in Richmond, 12 miles north of Berea)

Berea Health Care Center - 47 intermediate-care beds

Blythe Nursing Home - 20 intermediate-care beds

Madison Association for Retarded Citizens (MARC), a job training and employment agency

Ambulance Service

Name - Madison County Ambulance Service

Staff - 18 full-time and 15 part-time emergency medical technicians, and 4 paramedics

OTHER LOCAL FACILITIES

Communications

| | |
|---|--|
| Telephone - | General Telephone Company |
| Telegraph - | Western Union Toll-free number, 1-800-325-6000; counter service is available locally |
| Newspaper - Weekly and circulation - | The Berea Citizen 3,000 |
| Radio - | WKXO-AM |
| Television - Airwave reception from - | Danville and Lexington, Kentucky |
| Cable service - | Centel Cable Television of Kentucky |
| Educational television - | The Kentucky Educational Television (K.E.T.) network is available statewide |

Library Services

Hutchins Library - Berea College*
Size collection - 275,000 volumes
Circulation, 1984-85 - 74,668

Religious Institutions

| | | |
|----------------------|--|----------------------|
| Denominations - | Assembly of God | Quaker |
| | Baha'i | Nazarene |
| | Baptist | Pentecostal |
| | Catholic | Pentecostal Holiness |
| | Christian | Presbyterian |
| | Church of Christ | Trinity Holiness |
| | Church of God | United for Jesus |
| | Gospel Tabernacle | United Methodist |
| | Lutheran | |
| Nearest Synagogues - | Lexington, 39 miles northwest of Berea | |
| Congregations - | Adath Israel (reform) | |
| | Ohavey Zion (traditional) | |

* Hutchins Library also serves as a public library for the community.

Financial Institutions

| <u>Banks</u> | <u>Assets</u> | <u>Deposits</u> | <u>Statement Date</u> |
|---------------------------------------|-----------------|-----------------|-----------------------|
| Berea National Bank | \$46,028,000.00 | \$40,060,000.00 | 3/31/86 |
| The Peoples Bank and Trust Company | 48,851,800.00 | 41,360,368.00 | 12/31/85 |

| <u>Savings and Loan Associations</u> | <u>Assets</u> | <u>Savings Accounts</u> | <u>Statement Date</u> |
|--|-----------------|-------------------------|-----------------------|
| First Federal Savings and Loan Association of Richmond* | \$86,276,752.33 | \$81,570,362.86 | 12/31/85 |

Hotels and Motels

Total number - 13
Total rooms - 832

* A branch office is located in Berea.

RECREATION

Local

The city of Berea provides a variety of public recreational facilities and activities. Berea's summer offerings include little league baseball; minor league, senior league, adult league, teen's and girls' softball; T-ball; and American Legion league for youth. Persons of all ages may participate in the city's tennis and softball tournament. A daily playground program for youth also is offered during the summer, with weekly special events scheduled. Soccer and basketball leagues are available for youth during the winter.

Year-round offerings include special interest classes such as clogging, quilting, macrame and exercise.

Public recreational facilities include city parks, playgrounds, shelter houses, and a football field and stadium area. Private facilities include a golf course, a swimming pool, a skating rink, and camping areas.

Berea has an active senior citizens organization offering a variety of programs including meals programs, home health care, special activities, and tours.

Special events held annually in Berea include the Kentucky Guild of Artists and Craftsmen's spring and fall fairs, the McLain Family Bluegrass Festival, and the Berea Crafts Festival. Berea College sponsors a month-long summer repertory theater program, as well as the annual Traditional Music Celebration, the Mountain Folk Festival, and the Christmas Country Dance School, which feature folk music and dancing and other special events.

Berea College makes available to the public a wide range of recreational, cultural and entertainment attractions, often at no charge. Regular student-guided tours of the campus and the student industries are offered. Concerts and lecture series are offered to the public at no charge, and drama productions and intercollegiate sports are open to the public. The track and field facilities, baseball/softball and soccer fields, tennis courts, and swimming pool are available for public use with permission under special arrangements. The Rogers/Traylor Art Building offers traveling art exhibits and selections from the college collections which include the Kress Study Collection of Renaissance Paintings and the Doris Ulmann photographs. One of the finest collections of fossil, mineral and gemstone specimens in the state is displayed in the Burroughs Geology Museum. The Appalachian Museum offers exhibits and audio-visual programs depicting the traditional lifestyle and crafts of the Appalachian Southern Highlands. Selections from the Wallace Nutting collection of Early American furniture styles are on display also. The Berea College Student Industries program serves to preserve and promote folk art and craftsmanship and comprises woodcraft, broomcraft, weaving, needlecraft, ceramics, and wrought iron arts. Boone Tavern Hotel, owned by Berea College and staffed by college students, is noted for its southern charm and excellent food. The college's forest areas total 7,700 acres and include popular hiking trails at Indian Fort Mountain, three miles east of Berea, and Owsley Fork Lake, ten miles east of Berea, which offers fishing and non-motorized boating.

Churchill Weavers, the largest handweaving company in the country, is located in Berea. Tours are available through the loomhouse.

Area (Within 50 miles)

Richmond, 12 miles north of Berea, offers a variety of cultural, sporting, and recreational activities. Eastern Kentucky University is the center for numerous cultural activities including lectures, theater productions, art exhibits, ballets, concerts, and sporting events.

The Daniel Boone National Forest, approximately 20 miles southeast of Berea, covers 640,000 acres of timberland in eastern Kentucky. It encompasses much of Kentucky's great beauty and provides a vacation paradise. There are scenic hiking trails, rivers and streams stocked with a variety of fish, hunting preserves, camping sites, and numerous other natural and historical attractions.

White Hall State Shrine, 22 miles north of Berea near Richmond, one of the grand estate houses of post-Civil War Kentucky, is the Italianate mansion of Cassius Marcellus Clay, the early abolitionist and politician. Kentucky handcrafts are sold in the White Hall gift shop, only a short walk from the mansion.

Bybee Pottery, located 25 miles northeast of Berea, is know nation-wide for its unusual handmade Kentucky pottery. Generations of craftsmen-potters have been creating the Bybee line for over a century. Tours are available.

The spirit of Daniel Boone and his pioneers is reborn at **Fort Boonesborough State Park** in Boonesboro, 30 miles north of Berea. In the re-created fort, pioneer crafts of the eighteenth century are demonstrated by using functioning antiques from the frontier era. Cabins are furnished as they would have been in the days of Boone and documentary films are presented which depict the struggle of the first Kentuckians to make the Kentucky wilderness a home. A gift shop within the fort offers for sale all the handcrafted items made at the fort. Other recreational facilities and activities of the park include the finest sand beach on the Kentucky River with a modern bathhouse and a modern camping area with 187 sites.

Constitution Square State Shrine, 34 miles west of Berea in Danville, is a reproduction of Kentucky's first courthouse square, including the original 1792 post office which was the first in the west.

William Whitley House State Shrine, 38 miles southwest of Berea near Stanford, is the first brick house west of the Allegheny Mountains, built 1787-94. Whitley laid out Kentucky's first race track here and started U.S. counterclockwise racing. The facility provides picnic and playground areas in a ten-acre park.

Isaac Shelby State Shrine, 39 miles west of Berea near Danville, is the burial site of Kentucky's first governor and one of the Commonwealth's foremost statesmen.

Levi Jackson Wilderness Road State Park, 39 miles southeast of Berea at London, is an 815-acre park located where the Boone Trace and Wilderness Road pioneer trails converge. In addition to a reproduced pioneer settlement, the park offers a pool, a bathhouse, hiking trails, horseback riding, shuffleboard, 200 campsites, a picnic area, a playground, and an amphitheater.

Lexington, 39 miles northwest of Berea, offers a variety of cultural, sporting, and recreational activities. Thoroughbred and harness racing is presented at Keeneland Race Course and the Red Mile Harness Track during several meets each year. The University of Kentucky and Transylvania University offer a number of sporting events. The University of Kentucky basketball games are held at Rupp Arena, the world's largest basketball arena. Other attractions include Lexington Philharmonic concerts, Lexington Children's Theatre, and plays performed by Broadway touring companies, all held in the recently renovated Opera House.

Herrington Lake, 40 miles northwest of Berea near Danville and Harrodsburg, was developed by the Kentucky Utilities Company in 1925. Dix River Dam near Pleasant Hill is located on the 3,600-acre lake. Fishing, boating, and swimming can all be enjoyed on the lake. Camping and fishing facilities are available near Danville and Harrodsburg.

Waveland State Shrine, 40 miles northwest of Berea near Lexington, features an 1847 Greek Revival mansion depicting Kentucky lifestyles from the days of early settlers to the antebellum era of gentility and elegance as well as the Civil War and postwar periods. The shrine also includes the Kentucky Life Museum and a plantation village on ten acres with many shops and displays.

Old Fort Harrod State Park, 43 miles northwest of Berea, is a 28-acre park in Harrodsburg that features a full-scale reproduction of the original Fort Harrod. The park also contains the log cabin where Abraham Lincoln's parents were wed, the Mansion Museum which houses mementos associated with the great periods of Kentucky history, a pioneer cemetery, and a federal monument dedicated to pioneers. The "Legend of Daniel Boone" and "Lincoln" are two excellent outdoor dramas which are performed at the Old Fort Amphitheater during the summer months.

The Kentucky Horse Park, a park dedicated to horses and to man's love for horses, is located 47 miles northwest of Berea near Lexington. The park, which contains more than 1,000 acres of Kentucky Bluegrass, features the International Museum of the Horse; the Man O'War Memorial; an antique carriage display; horseback and pony rides; walking farm tours; horse-drawn tours; a restaurant; a gift shop; and a campground area, which offers swimming, tennis, and planned activities. Numerous special events are held year-round and include various horse shows, steeplechasing, dressage, polo games, and rodeos.

Perryville Battlefield State Shrine, 47 miles west of Berea near Perryville, is the site of the largest Civil War battle in Kentucky. A museum, a picnic area, and a playground are located on the grounds.

Pleasant Hill, a restored Shaker Village located 50 miles northwest of Berea, is a National Historic Landmark. Over 20 buildings and grounds have been restored to display unique Shaker skills in furniture making, crafts, and architecture. Dining rooms, lodging, craft shops, and seasonal festivals and plays are offered.

COMMUNITY IMPROVEMENTS

Recent

During 1984 and 1985, four Berea manufacturing companies announced plans to expand their facilities, representing an anticipated investment of nearly \$6,000,000.

An industrial development foundation was formed recently in Berea.

The city of Berea recently purchased a building to house the activities of the local senior citizens group.

The Berea Independent School System recently renovated its school building.

The Madison County School System recently added five classrooms at Silver Creek Elementary School in Berea.

Under Way

The city of Berea is constructing a new \$12,800,000 sewage treatment facility. The plant is scheduled for completion in late 1987, and will have a design capacity of 2,100,000 gallons per day.

The city of Berea and Berea College are cooperating in the revision of the city's comprehensive plan.

A new city parking area is under construction at the Berea city hall.

The Berea Independent School System is expanding its computer program with the installation of a high school computer lab.

Planned

A new interchange of Interstate 75 and Kentucky 595 north of Berea is planned. The new interchange will improve access to the Madison Airport.

The Berea College Water Utility is making plans for construction of a new water treatment facility.

The Southern Madison Water District is planning to begin construction of a new 100,000-gallon water storage tank in 1986.

The Madison County School System is planning to construct a new high school at Berea.

The city of Berea is planning a new 5,000-square-foot community center and folk dance center.

A new ball field is planned at the city park.

A senior citizens fitness organization is planning to construct a fitness center in 1986.